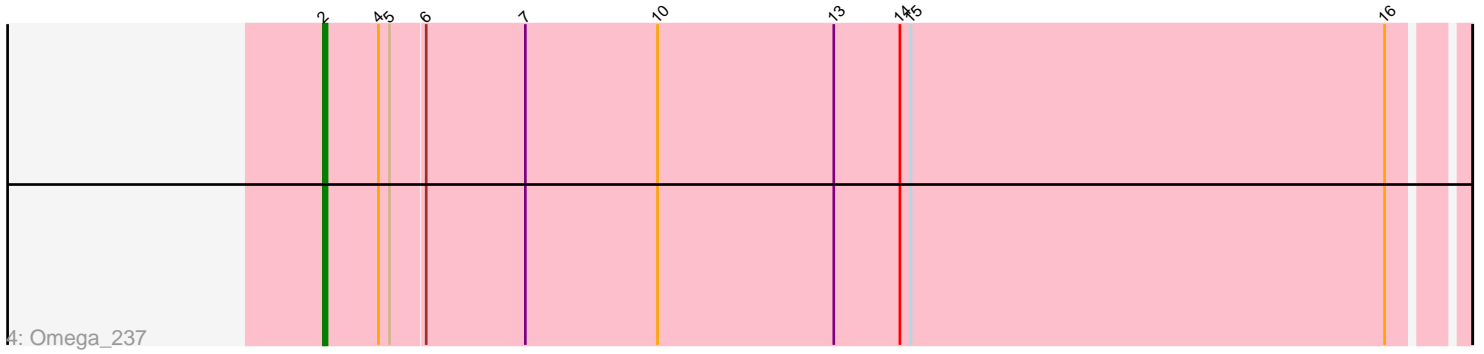
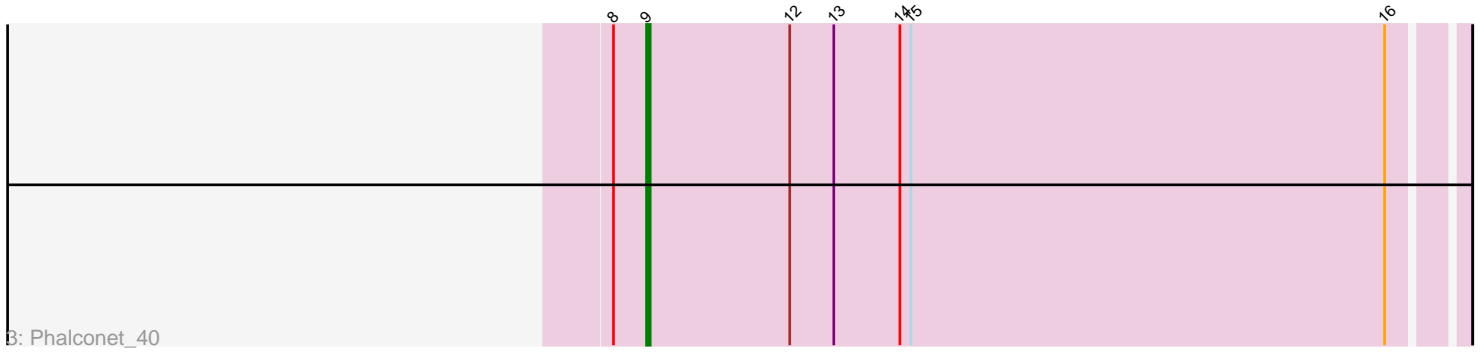
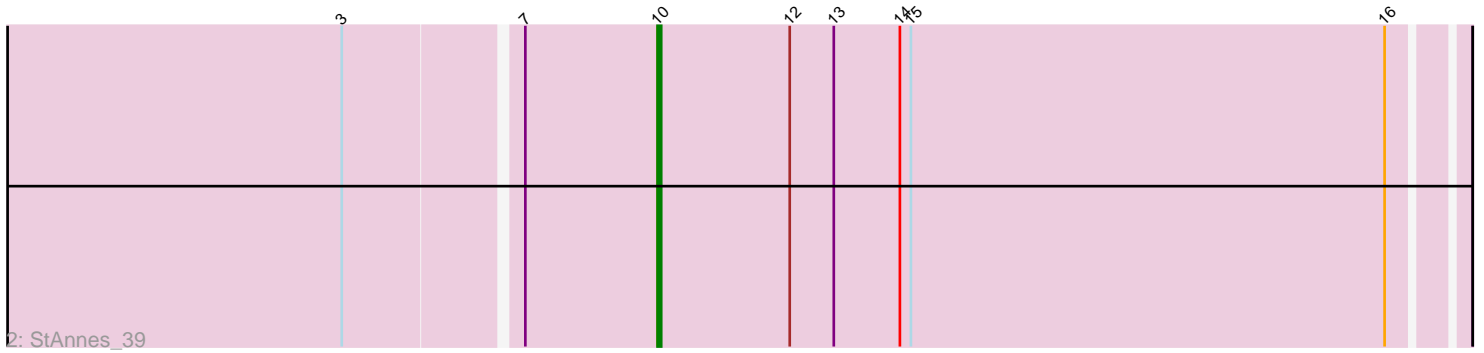
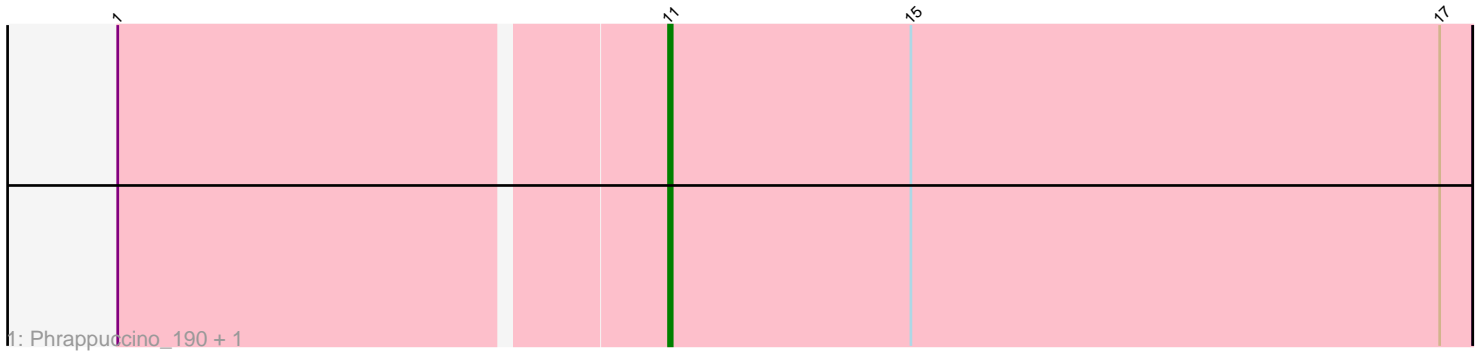


Pham 190457



Note: Tracks are now grouped by subcluster and scaled. Switching in subcluster is indicated by changes in track color. Track scale is now set by default to display the region 30 bp upstream of start 1 to 30 bp downstream of the last possible start. If this default region is judged to be packed too tightly with annotated starts, the track will be further scaled to only show that region of the ORF with annotated starts. This action will be indicated by adding "Zoomed" to the title. For starts, yellow indicates the location of called starts comprised solely of Glimmer/GeneMark auto-annotations, green indicates the location of called starts with at least 1 manual gene annotation.

Pham 190457 Report

This analysis was run 11/02/24 on database version 579.

Pham number 190457 has 5 members, 0 are drafts.

Phages represented in each track:

- Track 1 : Phrappuccino_190, Settecandela_215
- Track 2 : StAnnes_39
- Track 3 : Phalconet_40
- Track 4 : Omega_237

Summary of Final Annotations (See graph section above for start numbers):

The start number called the most often in the published annotations is 11, it was called in 2 of the 5 non-draft genes in the pham.

Genes that call this "Most Annotated" start:

- Phrappuccino_190, Settecandela_215,

Genes that have the "Most Annotated" start but do not call it:

-

Genes that do not have the "Most Annotated" start:

- Omega_237, Phalconet_40, StAnnes_39,

Summary by start number:

Start 2:

- Found in 1 of 5 (20.0%) of genes in pham
- Manual Annotations of this start: 1 of 5
- Called 100.0% of time when present
- Phage (with cluster) where this start called: Omega_237 (J),

Start 9:

- Found in 1 of 5 (20.0%) of genes in pham
- Manual Annotations of this start: 1 of 5
- Called 100.0% of time when present
- Phage (with cluster) where this start called: Phalconet_40 (F1),

Start 10:

- Found in 2 of 5 (40.0%) of genes in pham
- Manual Annotations of this start: 1 of 5
- Called 50.0% of time when present
- Phage (with cluster) where this start called: StAnnes_39 (F1),

Start 11:

- Found in 2 of 5 (40.0%) of genes in pham
- Manual Annotations of this start: 2 of 5
- Called 100.0% of time when present
- Phage (with cluster) where this start called: Phrappuccino_190 (AA), Settecandela_215 (AA),

Summary by clusters:

There are 3 clusters represented in this pham: AA, F1, J,

Info for manual annotations of cluster AA:

- Start number 11 was manually annotated 2 times for cluster AA.

Info for manual annotations of cluster F1:

- Start number 9 was manually annotated 1 time for cluster F1.
- Start number 10 was manually annotated 1 time for cluster F1.

Info for manual annotations of cluster J:

- Start number 2 was manually annotated 1 time for cluster J.

Gene Information:

Gene: Omega_237 Start: 110502, Stop: 110197, Start Num: 2

Candidate Starts for Omega_237:

(Start: 2 @110502 has 1 MA's), (4, 110487), (5, 110484), (6, 110475), (7, 110448), (Start: 10 @110412 has 1 MA's), (13, 110364), (14, 110346), (15, 110343), (16, 110214),

Gene: Phalconet_40 Start: 31533, Stop: 31315, Start Num: 9

Candidate Starts for Phalconet_40:

(8, 31542), (Start: 9 @31533 has 1 MA's), (12, 31494), (13, 31482), (14, 31464), (15, 31461), (16, 31332),

Gene: Phrappuccino_190 Start: 121245, Stop: 121463, Start Num: 11

Candidate Starts for Phrappuccino_190:

(1, 121101), (Start: 11 @121245 has 2 MA's), (15, 121311), (17, 121455),

Gene: Settecandela_215 Start: 130092, Stop: 130310, Start Num: 11

Candidate Starts for Settecandela_215:

(1, 129948), (Start: 11 @130092 has 2 MA's), (15, 130158), (17, 130302),

Gene: StAnnes_39 Start: 32000, Stop: 31785, Start Num: 10

Candidate Starts for StAnnes_39:

(3, 32081), (7, 32036), (Start: 10 @32000 has 1 MA's), (12, 31964), (13, 31952), (14, 31934), (15, 31931), (16, 31802),