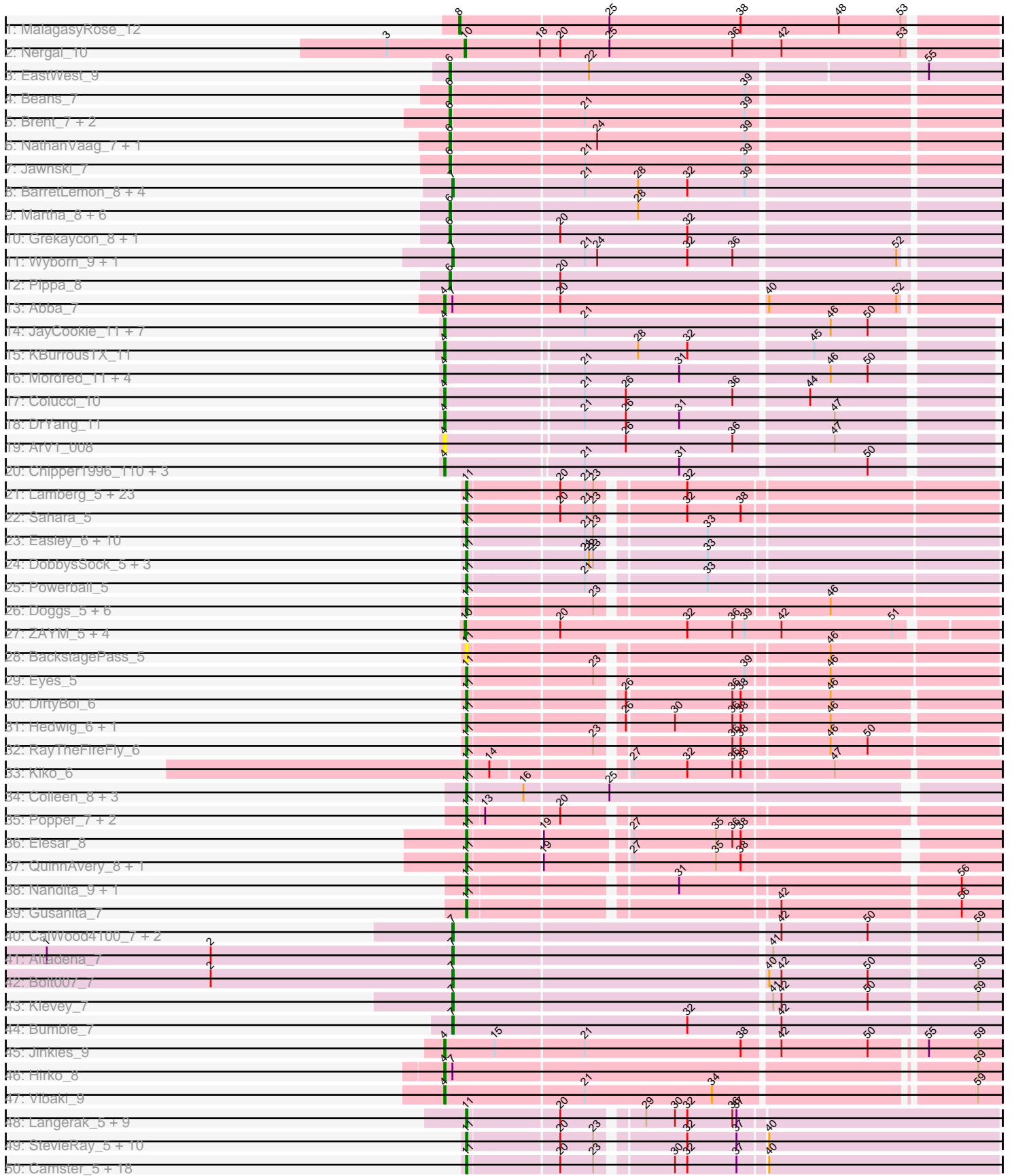
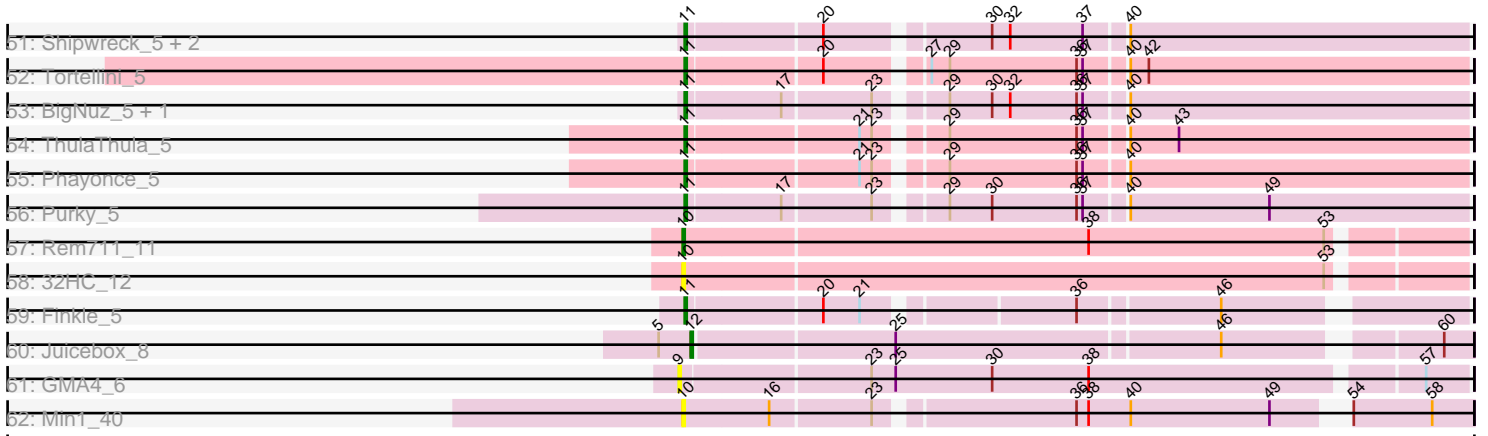


Pham 191081



Pham 191081



Note: Tracks are now grouped by subcluster and scaled. Switching in subcluster is indicated by changes in track color. Track scale is now set by default to display the region 30 bp upstream of start 1 to 30 bp downstream of the last possible start. If this default region is judged to be packed too tightly with annotated starts, the track will be further scaled to only show that region of the ORF with annotated starts. This action will be indicated by adding "Zoomed" to the title. For starts, yellow indicates the location of called starts comprised solely of Glimmer/GeneMark auto-annotations, green indicates the location of called starts with at least 1 manual gene annotation.

Pham 191081 Report

This analysis was run 11/02/24 on database version 579.

Pham number 191081 has 187 members, 19 are drafts.

Phages represented in each track:

- Track 1 : MalagasyRose_12
- Track 2 : Nergal_10
- Track 3 : EastWest_9
- Track 4 : Beans_7
- Track 5 : Brent_7, Franzy_7, King2_7
- Track 6 : NathanVaag_7, Piccoletto_7
- Track 7 : Jawnski_7
- Track 8 : BarretLemon_8, GravityBall_8, Timinator_8, StevieBAY_8, LeeroyJ_8
- Track 9 : Martha_8, JKerns_8, TaeYoung_8, Jordan_8, Zartrosa_8, Sonny_8, Shade_8
- Track 10 : Grekaycon_8, BossLady_8
- Track 11 : Wyborn_9, Sicarius2_9
- Track 12 : Pippa_8
- Track 13 : Abba_7
- Track 14 : JayCookie_11, Lymara_11, Chocolat_11, RosiePosie_11, MoyaNatalis_11, Chubster_11, Linus_11, PrincessTrina_11
- Track 15 : KBurroustX_11
- Track 16 : Mordred_11, HumptyDumpty_11, Scavito_11, JaNo_11, Kabreeze_11
- Track 17 : Colucci_10
- Track 18 : DrYang_11
- Track 19 : ArV1_008
- Track 20 : Chipper1996_110, EdgarPoe_11, Tophat_11, Conboy_11
- Track 21 : Lamberg_5, EdnaMode_5, LordFarquaad_5, JCole_5, Cynthia_5, Clap_5, GemG_5, Denise_5, Vasanti_5, Attis_5, Gizermo_5, Sproutie_5, SoilAssassin_5, Nettuno_5, TuertoX_5, Ebert_5, Matteo_5, Savage_5, Bjanes7_5, Pickett_5, Haley23_5, Mocha12_5, Yeet412_5, Whiteclaw_5
- Track 22 : Sahara_5
- Track 23 : Easley_6, Oregano_6, Suerte_5, MichaelScott_6, Dolores_6, Samman98_6, Beenie_6, Clark_6, Sekhmet_6, WinkNick_6, Thimann_6
- Track 24 : DobbysSock_5, Dorito_5, Annalisa_6, PhriskyACE_5
- Track 25 : Powerball_5
- Track 26 : Doggs_5, GEazy_5, Bunker_5, Bowser_5, BBQValindra_5, HannahD_5, Coriander_6
- Track 27 : ZAYM_5, Opie_5, TaronosaurusRx_5, MagicMan_5, Schnabeltier_5
- Track 28 : BackstagePass_5
- Track 29 : Eyes_5
- Track 30 : DirtyBoi_6

- Track 31 : Hedwig_6, Dmitri_6
- Track 32 : RayTheFireFly_6
- Track 33 : Kiko_6
- Track 34 : Colleen_8, TouchMeNot_8, Arianna_8, Poushou_8
- Track 35 : Popper_7, Zaheer_9, Ryan_9
- Track 36 : Elesar_8
- Track 37 : QuinnAvery_8, Cole_7
- Track 38 : Nandita_9, Lenoxika_9
- Track 39 : Gusanita_7
- Track 40 : CalWood4100_7, Lilmac1015_7, Prairie_7
- Track 41 : Altadena_7
- Track 42 : Bolt007_7
- Track 43 : Klevey_7
- Track 44 : Bumble_7
- Track 45 : Jinkies_9
- Track 46 : Hirko_8
- Track 47 : Vibaki_9
- Track 48 : Langerak_5, Mangethe_5, Majeke_5, Donovan_5, Sonah_5, Arib1_5, Phegasus_5, Jebeks_5, Juniormint_5, Techage_5
- Track 49 : StevieRay_5, Bunnies_5, Phalm_5, Megiddo_5, Polkaroo_5, Glaske_5, KilKor_5, StressBall_5, Willsammy_5, CactusJack_5, Ksquared_5
- Track 50 : Camster_5, Thespis_5, Malithi_5, Venti_5, Brusacoram_5, Atcoo_5, FirstPlacePfu_5, Jung_5, HUHilltop_5, Necropolis_5, Phineas_5, Xavia_5, Dynamo_5, GreaseLightnin_5, Zilizebeth_5, Kari_5, Bartholomew_5, Fishburne_5, Vidya_5
- Track 51 : Shipwreck_5, Pygmy_5, Bogie_5
- Track 52 : Tortellini_5
- Track 53 : BigNuz_5, Nazo_5
- Track 54 : ThulaThula_5
- Track 55 : Phayonce_5
- Track 56 : Purky_5
- Track 57 : Rem711_11
- Track 58 : 32HC_12
- Track 59 : Finkle_5
- Track 60 : Juicebox_8
- Track 61 : GMA4_6
- Track 62 : Min1_40

Summary of Final Annotations (See graph section above for start numbers):

The start number called the most often in the published annotations is 11, it was called in 108 of the 168 non-draft genes in the pham.

Genes that call this "Most Annotated" start:

• Annalisa_6, Arianna_8, Arib1_5, Atcoo_5, Attis_5, BBQValindra_5, BackstagePass_5, Bartholomew_5, Beenie_6, BigNuz_5, Bjaner7_5, Bogie_5, Bowser_5, Brusacoram_5, Bunker_5, Bunnies_5, CactusJack_5, Camster_5, Clap_5, Clark_6, Cole_7, Colleen_8, Coriander_6, Cynthia_5, Denise_5, DirtyBoi_6, Dmitri_6, DobbysSock_5, Doggs_5, Dolores_6, Donovan_5, Dorito_5, Dynamo_5, Easley_6, Ebert_5, EdnaMode_5, Elesar_8, Eyes_5, Finkle_5, FirstPlacePfu_5, Fishburne_5,

GEazy_5, GemG_5, Gizermo_5, Glaske_5, GreaseLightnin_5, Gusanita_7, HUHilltop_5, Haley23_5, HannahD_5, Hedwig_6, JCole_5, Jebeks_5, Jung_5, Juniormint_5, Kari_5, Kiko_6, KilKor_5, Ksquared_5, Lamberg_5, Langerak_5, Lenoxika_9, LordFarquaad_5, Majeke_5, Malithi_5, Mangethe_5, Matteo_5, Megiddo_5, MichaelScott_6, Mocha12_5, Nandita_9, Nazo_5, Necropolis_5, Nettuno_5, Oregano_6, Phalm_5, Phayonce_5, Phegasus_5, Phineas_5, PhriskyACE_5, Pickett_5, Polkaroo_5, Popper_7, Poushou_8, Powerball_5, Purky_5, Pygmy_5, QuinnAvery_8, RayTheFireFly_6, Ryan_9, Sahara_5, Samman98_6, Savage_5, Sekhmet_6, Shipwreck_5, SoilAssassin_5, Sonah_5, Sproutie_5, StevieRay_5, StressBall_5, Suerte_5, Techage_5, Thespi_5, Thimann_6, ThulaThula_5, Tortellini_5, TouchMeNot_8, TuertoX_5, Vasanti_5, Venti_5, Vidya_5, Whiteclaw_5, Willsammy_5, WinkNick_6, Xavia_5, Yeet412_5, Zaheer_9, Zilizebeth_5,

Genes that have the "Most Annotated" start but do not call it:

-

Genes that do not have the "Most Annotated" start:

- 32HC_12, Abba_7, Altadena_7, ArV1_008, BarretLemon_8, Beans_7, Bolt007_7, BossLady_8, Brent_7, Bumble_7, CalWood4100_7, Chipper1996_110, Chocolat_11, Chubster_11, Colucci_10, Conboy_11, DrYang_11, EastWest_9, EdgarPoe_11, Franzy_7, GMA4_6, GravityBall_8, Grekaycon_8, Hirko_8, HumptyDumpty_11, JKerns_8, JaNo_11, Jawnski_7, JayCookie_11, Jinkies_9, Jordan_8, Juicebox_8, KBurrousTX_11, Kabreeze_11, King2_7, Klevey_7, LeeroyJ_8, Lilmac1015_7, Linus_11, Lymara_11, MagicMan_5, MalagasyRose_12, Martha_8, Min1_40, Mordred_11, MoyaNatalis_11, NathanVaag_7, Nergal_10, Opie_5, Piccoletto_7, Pippa_8, Prairie_7, PrincessTrina_11, Rem711_11, RosiePosie_11, Scavito_11, Schnabeltier_5, Shade_8, Sicarius2_9, Sonny_8, StevieBAY_8, TaeYoung_8, TaronosaurusRx_5, Timinator_8, Tophat_11, Vibaki_9, Wyborn_9, ZAYM_5, Zartrosa_8,

Summary by start number:

Start 4:

- Found in 25 of 187 (13.4%) of genes in pham
- Manual Annotations of this start: 23 of 168
- Called 100.0% of time when present
- Phage (with cluster) where this start called: Abba_7 (AO3), ArV1_008 (AR), Chipper1996_110 (AR), Chocolat_11 (AR), Chubster_11 (AR), Colucci_10 (AR), Conboy_11 (AR), DrYang_11 (AR), EdgarPoe_11 (AR), Hirko_8 (FL), HumptyDumpty_11 (AR), JaNo_11 (AR), JayCookie_11 (AR), Jinkies_9 (FL), KBurrousTX_11 (AR), Kabreeze_11 (AR), Linus_11 (AR), Lymara_11 (AR), Mordred_11 (AR), MoyaNatalis_11 (AR), PrincessTrina_11 (AR), RosiePosie_11 (AR), Scavito_11 (AR), Tophat_11 (AR), Vibaki_9 (FL),

Start 6:

- Found in 18 of 187 (9.6%) of genes in pham
- Manual Annotations of this start: 18 of 168
- Called 100.0% of time when present
- Phage (with cluster) where this start called: Beans_7 (AO1), BossLady_8 (AO2), Brent_7 (AO1), EastWest_9 (AO), Franzy_7 (AO1), Grekaycon_8 (AO2), JKerns_8 (AO2), Jawnski_7 (AO1), Jordan_8 (AO2), King2_7 (AO1), Martha_8 (AO2), NathanVaag_7 (AO1), Piccoletto_7 (AO1), Pippa_8 (AO2), Shade_8 (AO2), Sonny_8

(AO2), TaeYoung_8 (AO2), Zartrosa_8 (AO2),

Start 7:

- Found in 16 of 187 (8.6%) of genes in pham
- Manual Annotations of this start: 12 of 168
- Called 87.5% of time when present
- Phage (with cluster) where this start called: Altadena_7 (FH), BarretLemon_8 (AO2), Bolt007_7 (FH), Bumble_7 (FH), CalWood4100_7 (FH), GravityBall_8 (AO2), Klevey_7 (FH), LeeroyJ_8 (AO2), Lilmac1015_7 (FH), Prairie_7 (FH), Sicarius2_9 (AO2), StevieBAY_8 (AO2), Timinator_8 (AO2), Wyborn_9 (AO2),

Start 8:

- Found in 1 of 187 (0.5%) of genes in pham
- Manual Annotations of this start: 1 of 168
- Called 100.0% of time when present
- Phage (with cluster) where this start called: MalagasyRose_12 (AG),

Start 9:

- Found in 1 of 187 (0.5%) of genes in pham
- No Manual Annotations of this start.
- Called 100.0% of time when present
- Phage (with cluster) where this start called: GMA4_6 (singleton),

Start 10:

- Found in 9 of 187 (4.8%) of genes in pham
- Manual Annotations of this start: 5 of 168
- Called 100.0% of time when present
- Phage (with cluster) where this start called: 32HC_12 (Z), MagicMan_5 (DB), Min1_40 (singleton), Nergal_10 (AG), Opie_5 (DB), Rem711_11 (Z), Schnabeltier_5 (DB), TaronosaurusRx_5 (DB), ZAYM_5 (DB),

Start 11:

- Found in 118 of 187 (63.1%) of genes in pham
- Manual Annotations of this start: 108 of 168
- Called 100.0% of time when present
- Phage (with cluster) where this start called: Annalisa_6 (CZ4), Arianna_8 (EO), Arib1_5 (P1), Atcoo_5 (P1), Attis_5 (CZ2), BBQValindra_5 (DB), BackstagePass_5 (DB), Bartholomew_5 (P1), Beenie_6 (CZ4), BigNuz_5 (P4), Bjanes7_5 (CZ2), Bogie_5 (P1), Bowser_5 (DB), Brusacoram_5 (P1), Bunker_5 (DB), Bunnies_5 (P1), CactusJack_5 (P1), Camster_5 (P1), Clap_5 (CZ2), Clark_6 (CZ4), Cole_7 (FF), Colleen_8 (EO), Coriander_6 (DB), Cynthia_5 (CZ2), Denise_5 (CZ5), DirtyBoi_6 (DB), Dmitri_6 (DB), DobbysSock_5 (CZ4), Doggs_5 (DB), Dolores_6 (CZ4), Donovan_5 (P1), Dorito_5 (CZ4), Dynamo_5 (P1), Easley_6 (CZ4), Ebert_5 (CZ2), EdnaMode_5 (CZ2), Elesar_8 (FF), Eyes_5 (DB), Finkle_5 (singleton), FirstPlacePfu_5 (P1), Fishburne_5 (P1), GEazy_5 (DB), GemG_5 (CZ2), Gizermo_5 (CZ2), Glaske_5 (P1), GreaseLightnin_5 (P1), Gusanita_7 (FF), HUHilltop_5 (P1), Haley23_5 (CZ2), HannahD_5 (DB), Hedwig_6 (DB), JCole_5 (CZ2), Jebeks_5 (P1), Jung_5 (P1), Juniormint_5 (P1), Kari_5 (P1), Kiko_6 (DB), KilKor_5 (P1), Ksquard_5 (P1), Lamberg_5 (CZ2), Langerak_5 (P1), Lenoxika_9 (FF), LordFarquaad_5 (CZ2), Majeke_5 (P1), Malithi_5 (P1), Mangethe_5 (P1), Matteo_5 (CZ2), Megiddo_5 (P1), MichaelScott_6 (CZ4), Mocha12_5 (CZ2), Nandita_9 (FF), Nazo_5 (P4), Necropolis_5 (P1), Nettuno_5 (CZ2), Oregano_6 (CZ4), Phalm_5 (P1), Phayonce_5 (P5), Phegasus_5 (P1), Phineas_5 (P1), PhriskyACE_5 (CZ4), Pickett_5 (CZ2),

Polkaroo_5 (P1), Popper_7 (FF), Poushou_8 (EO), Powerball_5 (CZ4), Purky_5 (P6), Pygmy_5 (P1), QuinnAvery_8 (FF), RayTheFireFly_6 (DB), Ryan_9 (FF), Sahara_5 (CZ2), Samman98_6 (CZ4), Savage_5 (CZ2), Sekhmet_6 (CZ4), Shipwreck_5 (P1), SoilAssassin_5 (CZ2), Sonah_5 (P1), Sproutie_5 (CZ2), StevieRay_5 (P1), StressBall_5 (P1), Suerte_5 (CZ4), Techage_5 (P1), Thespis_5 (P1), Thimann_6 (CZ4), ThulaThula_5 (P5), Tortellini_5 (P2), TouchMeNot_8 (EO), TuertoX_5 (CZ2), Vasanti_5 (CZ2), Venti_5 (P1), Vidya_5 (P1), Whiteclaw_5 (CZ2), Willsammy_5 (P1), WinkNick_6 (CZ4), Xavia_5 (P3), Yeet412_5 (CZ2), Zaheer_9 (FF), Zilizabeth_5 (P1),

Start 12:

- Found in 1 of 187 (0.5%) of genes in pham
- Manual Annotations of this start: 1 of 168
- Called 100.0% of time when present
- Phage (with cluster) where this start called: Juicebox_8 (singleton),

Summary by clusters:

There are 22 clusters represented in this pham: singleton, CZ2, DB, CZ4, CZ5, FF, FH, FL, P4, P2, P3, EO, P1, P6, AG, P5, AO, AR, AO3, AO2, AO1, Z,

Info for manual annotations of cluster AG:

- Start number 8 was manually annotated 1 time for cluster AG.
- Start number 10 was manually annotated 1 time for cluster AG.

Info for manual annotations of cluster AO:

- Start number 6 was manually annotated 1 time for cluster AO.

Info for manual annotations of cluster AO1:

- Start number 6 was manually annotated 7 times for cluster AO1.

Info for manual annotations of cluster AO2:

- Start number 6 was manually annotated 10 times for cluster AO2.
- Start number 7 was manually annotated 6 times for cluster AO2.

Info for manual annotations of cluster AO3:

- Start number 4 was manually annotated 1 time for cluster AO3.

Info for manual annotations of cluster AR:

- Start number 4 was manually annotated 19 times for cluster AR.

Info for manual annotations of cluster CZ2:

- Start number 11 was manually annotated 23 times for cluster CZ2.

Info for manual annotations of cluster CZ4:

- Start number 11 was manually annotated 14 times for cluster CZ4.

Info for manual annotations of cluster CZ5:

- Start number 11 was manually annotated 1 time for cluster CZ5.

Info for manual annotations of cluster DB:

- Start number 10 was manually annotated 3 times for cluster DB.
- Start number 11 was manually annotated 12 times for cluster DB.

Info for manual annotations of cluster EO:

- Start number 11 was manually annotated 4 times for cluster EO.

Info for manual annotations of cluster FF:

- Start number 11 was manually annotated 7 times for cluster FF.

Info for manual annotations of cluster FH:

- Start number 7 was manually annotated 6 times for cluster FH.

Info for manual annotations of cluster FL:

- Start number 4 was manually annotated 3 times for cluster FL.

Info for manual annotations of cluster P1:

- Start number 11 was manually annotated 39 times for cluster P1.

Info for manual annotations of cluster P2:

- Start number 11 was manually annotated 1 time for cluster P2.

Info for manual annotations of cluster P3:

- Start number 11 was manually annotated 1 time for cluster P3.

Info for manual annotations of cluster P4:

- Start number 11 was manually annotated 2 times for cluster P4.

Info for manual annotations of cluster P5:

- Start number 11 was manually annotated 2 times for cluster P5.

Info for manual annotations of cluster P6:

- Start number 11 was manually annotated 1 time for cluster P6.

Info for manual annotations of cluster Z:

- Start number 10 was manually annotated 1 time for cluster Z.

Gene Information:

Gene: 32HC_12 Start: 7864, Stop: 8238, Start Num: 10

Candidate Starts for 32HC_12:

(Start: 10 @7864 has 5 MA's), (53, 8179),

Gene: Abba_7 Start: 6995, Stop: 7381, Start Num: 4

Candidate Starts for Abba_7:

(Start: 4 @6995 has 23 MA's), (Start: 7 @7001 has 12 MA's), (20, 7076), (40, 7223), (52, 7316),

Gene: Altadena_7 Start: 6762, Stop: 7148, Start Num: 7

Candidate Starts for Altadena_7:

(1, 6465), (2, 6585), (Start: 7 @6762 has 12 MA's), (41, 6987),

Gene: Annalisa_6 Start: 4955, Stop: 5317, Start Num: 11

Candidate Starts for Annalisa_6:

(Start: 11 @4955 has 108 MA's), (21, 5036), (22, 5039), (23, 5042), (33, 5114),

Gene: ArV1_008 Start: 7635, Stop: 8015, Start Num: 4
Candidate Starts for ArV1_008:
(Start: 4 @7635 has 23 MA's), (26, 7761), (36, 7839), (47, 7908),

Gene: Arianna_8 Start: 6945, Stop: 7313, Start Num: 11
Candidate Starts for Arianna_8:
(Start: 11 @6945 has 108 MA's), (16, 6984), (25, 7044),

Gene: Arib1_5 Start: 4896, Stop: 5261, Start Num: 11
Candidate Starts for Arib1_5:
(Start: 11 @4896 has 108 MA's), (20, 4959), (29, 5010), (30, 5031), (32, 5040), (36, 5073), (37, 5076),

Gene: Atcoo_5 Start: 4880, Stop: 5245, Start Num: 11
Candidate Starts for Atcoo_5:
(Start: 11 @4880 has 108 MA's), (20, 4943), (23, 4967), (30, 5015), (32, 5024), (37, 5060), (40, 5078),

Gene: Attis_5 Start: 4464, Stop: 4826, Start Num: 11
Candidate Starts for Attis_5:
(Start: 11 @4464 has 108 MA's), (20, 4527), (21, 4545), (23, 4551), (32, 4608),

Gene: BBQValindra_5 Start: 4809, Stop: 5171, Start Num: 11
Candidate Starts for BBQValindra_5:
(Start: 11 @4809 has 108 MA's), (23, 4896), (46, 5052),

Gene: BackstagePass_5 Start: 4786, Stop: 5148, Start Num: 11
Candidate Starts for BackstagePass_5:
(Start: 11 @4786 has 108 MA's), (46, 5029),

Gene: BarretLemon_8 Start: 7142, Stop: 7528, Start Num: 7
Candidate Starts for BarretLemon_8:
(Start: 7 @7142 has 12 MA's), (21, 7235), (28, 7274), (32, 7310), (39, 7352),

Gene: Bartholomew_5 Start: 4892, Stop: 5257, Start Num: 11
Candidate Starts for Bartholomew_5:
(Start: 11 @4892 has 108 MA's), (20, 4955), (23, 4979), (30, 5027), (32, 5036), (37, 5072), (40, 5090),

Gene: Beans_7 Start: 6812, Stop: 7198, Start Num: 6
Candidate Starts for Beans_7:
(Start: 6 @6812 has 18 MA's), (39, 7022),

Gene: Beenie_6 Start: 4955, Stop: 5317, Start Num: 11
Candidate Starts for Beenie_6:
(Start: 11 @4955 has 108 MA's), (21, 5036), (23, 5042), (33, 5114),

Gene: BigNuz_5 Start: 4865, Stop: 5230, Start Num: 11
Candidate Starts for BigNuz_5:
(Start: 11 @4865 has 108 MA's), (17, 4910), (23, 4952), (29, 4979), (30, 5000), (32, 5009), (36, 5042), (37, 5045), (40, 5063),

Gene: Bjaner7_5 Start: 4464, Stop: 4826, Start Num: 11
Candidate Starts for Bjaner7_5:
(Start: 11 @4464 has 108 MA's), (20, 4527), (21, 4545), (23, 4551), (32, 4608),

Gene: Bogie_5 Start: 4880, Stop: 5245, Start Num: 11
Candidate Starts for Bogie_5:
(Start: 11 @4880 has 108 MA's), (20, 4943), (30, 5015), (32, 5024), (37, 5060), (40, 5078),

Gene: Bolt007_7 Start: 6714, Stop: 7100, Start Num: 7
Candidate Starts for Bolt007_7:
(2, 6537), (Start: 7 @6714 has 12 MA's), (40, 6936), (42, 6945), (50, 7008), (59, 7083),

Gene: BossLady_8 Start: 7160, Stop: 7546, Start Num: 6
Candidate Starts for BossLady_8:
(Start: 6 @7160 has 18 MA's), (20, 7235), (32, 7328),

Gene: Bowser_5 Start: 4806, Stop: 5168, Start Num: 11
Candidate Starts for Bowser_5:
(Start: 11 @4806 has 108 MA's), (23, 4893), (46, 5049),

Gene: Brent_7 Start: 6810, Stop: 7196, Start Num: 6
Candidate Starts for Brent_7:
(Start: 6 @6810 has 18 MA's), (21, 6903), (39, 7020),

Gene: Brusacoram_5 Start: 4879, Stop: 5244, Start Num: 11
Candidate Starts for Brusacoram_5:
(Start: 11 @4879 has 108 MA's), (20, 4942), (23, 4966), (30, 5014), (32, 5023), (37, 5059), (40, 5077),

Gene: Bumble_7 Start: 6769, Stop: 7155, Start Num: 7
Candidate Starts for Bumble_7:
(Start: 7 @6769 has 12 MA's), (32, 6937), (42, 7000),

Gene: Bunker_5 Start: 4809, Stop: 5171, Start Num: 11
Candidate Starts for Bunker_5:
(Start: 11 @4809 has 108 MA's), (23, 4896), (46, 5052),

Gene: Bunnies_5 Start: 4892, Stop: 5257, Start Num: 11
Candidate Starts for Bunnies_5:
(Start: 11 @4892 has 108 MA's), (20, 4955), (23, 4979), (32, 5036), (37, 5072), (40, 5090),

Gene: CactusJack_5 Start: 4879, Stop: 5244, Start Num: 11
Candidate Starts for CactusJack_5:
(Start: 11 @4879 has 108 MA's), (20, 4942), (23, 4966), (32, 5023), (37, 5059), (40, 5077),

Gene: CalWood4100_7 Start: 6693, Stop: 7079, Start Num: 7
Candidate Starts for CalWood4100_7:
(Start: 7 @6693 has 12 MA's), (42, 6924), (50, 6987), (59, 7062),

Gene: Camster_5 Start: 4892, Stop: 5257, Start Num: 11
Candidate Starts for Camster_5:
(Start: 11 @4892 has 108 MA's), (20, 4955), (23, 4979), (30, 5027), (32, 5036), (37, 5072), (40, 5090),

Gene: Chipper1996_110 Start: 9277, Stop: 9657, Start Num: 4
Candidate Starts for Chipper1996_110:
(Start: 4 @9277 has 23 MA's), (21, 9373), (31, 9442), (50, 9574),

Gene: Chocolat_11 Start: 9275, Stop: 9658, Start Num: 4

Candidate Starts for Chocolat_11:

(Start: 4 @9275 has 23 MA's), (21, 9374), (46, 9548), (50, 9575),

Gene: Chubster_11 Start: 9045, Stop: 9428, Start Num: 4

Candidate Starts for Chubster_11:

(Start: 4 @9045 has 23 MA's), (21, 9144), (46, 9318), (50, 9345),

Gene: Clap_5 Start: 4464, Stop: 4826, Start Num: 11

Candidate Starts for Clap_5:

(Start: 11 @4464 has 108 MA's), (20, 4527), (21, 4545), (23, 4551), (32, 4608),

Gene: Clark_6 Start: 4955, Stop: 5317, Start Num: 11

Candidate Starts for Clark_6:

(Start: 11 @4955 has 108 MA's), (21, 5036), (23, 5042), (33, 5114),

Gene: Cole_7 Start: 5835, Stop: 6194, Start Num: 11

Candidate Starts for Cole_7:

(Start: 11 @5835 has 108 MA's), (19, 5886), (27, 5943), (35, 6003), (38, 6021),

Gene: Colleen_8 Start: 6945, Stop: 7313, Start Num: 11

Candidate Starts for Colleen_8:

(Start: 11 @6945 has 108 MA's), (16, 6984), (25, 7044),

Gene: Colucci_10 Start: 8778, Stop: 9158, Start Num: 4

Candidate Starts for Colucci_10:

(Start: 4 @8778 has 23 MA's), (21, 8874), (26, 8904), (36, 8982), (44, 9033),

Gene: Conboy_11 Start: 9276, Stop: 9656, Start Num: 4

Candidate Starts for Conboy_11:

(Start: 4 @9276 has 23 MA's), (21, 9372), (31, 9441), (50, 9573),

Gene: Coriander_6 Start: 5185, Stop: 5547, Start Num: 11

Candidate Starts for Coriander_6:

(Start: 11 @5185 has 108 MA's), (23, 5272), (46, 5428),

Gene: Cynthia_5 Start: 4464, Stop: 4826, Start Num: 11

Candidate Starts for Cynthia_5:

(Start: 11 @4464 has 108 MA's), (20, 4527), (21, 4545), (23, 4551), (32, 4608),

Gene: Denise_5 Start: 4473, Stop: 4835, Start Num: 11

Candidate Starts for Denise_5:

(Start: 11 @4473 has 108 MA's), (20, 4536), (21, 4554), (23, 4560), (32, 4617),

Gene: DirtyBoi_6 Start: 5167, Stop: 5529, Start Num: 11

Candidate Starts for DirtyBoi_6:

(Start: 11 @5167 has 108 MA's), (26, 5269), (36, 5344), (38, 5350), (46, 5410),

Gene: Dmitri_6 Start: 5167, Stop: 5529, Start Num: 11

Candidate Starts for Dmitri_6:

(Start: 11 @5167 has 108 MA's), (26, 5269), (30, 5302), (36, 5344), (38, 5350), (46, 5410),

Gene: DobbysSock_5 Start: 4453, Stop: 4815, Start Num: 11

Candidate Starts for DobbysSock_5:

(Start: 11 @4453 has 108 MA's), (21, 4534), (22, 4537), (23, 4540), (33, 4612),

Gene: Doggs_5 Start: 4882, Stop: 5244, Start Num: 11

Candidate Starts for Doggs_5:

(Start: 11 @4882 has 108 MA's), (23, 4969), (46, 5125),

Gene: Dolores_6 Start: 4955, Stop: 5317, Start Num: 11

Candidate Starts for Dolores_6:

(Start: 11 @4955 has 108 MA's), (21, 5036), (23, 5042), (33, 5114),

Gene: Donovan_5 Start: 4896, Stop: 5261, Start Num: 11

Candidate Starts for Donovan_5:

(Start: 11 @4896 has 108 MA's), (20, 4959), (29, 5010), (30, 5031), (32, 5040), (36, 5073), (37, 5076),

Gene: Dorito_5 Start: 4453, Stop: 4815, Start Num: 11

Candidate Starts for Dorito_5:

(Start: 11 @4453 has 108 MA's), (21, 4534), (22, 4537), (23, 4540), (33, 4612),

Gene: DrYang_11 Start: 9210, Stop: 9590, Start Num: 4

Candidate Starts for DrYang_11:

(Start: 4 @9210 has 23 MA's), (21, 9306), (26, 9336), (31, 9375), (47, 9483),

Gene: Dynamo_5 Start: 4892, Stop: 5257, Start Num: 11

Candidate Starts for Dynamo_5:

(Start: 11 @4892 has 108 MA's), (20, 4955), (23, 4979), (30, 5027), (32, 5036), (37, 5072), (40, 5090),

Gene: Easley_6 Start: 4955, Stop: 5317, Start Num: 11

Candidate Starts for Easley_6:

(Start: 11 @4955 has 108 MA's), (21, 5036), (23, 5042), (33, 5114),

Gene: EastWest_9 Start: 7229, Stop: 7612, Start Num: 6

Candidate Starts for EastWest_9:

(Start: 6 @7229 has 18 MA's), (22, 7325), (55, 7559),

Gene: Ebert_5 Start: 4464, Stop: 4826, Start Num: 11

Candidate Starts for Ebert_5:

(Start: 11 @4464 has 108 MA's), (20, 4527), (21, 4545), (23, 4551), (32, 4608),

Gene: EdgarPoe_11 Start: 9276, Stop: 9656, Start Num: 4

Candidate Starts for EdgarPoe_11:

(Start: 4 @9276 has 23 MA's), (21, 9372), (31, 9441), (50, 9573),

Gene: EdnaMode_5 Start: 4464, Stop: 4826, Start Num: 11

Candidate Starts for EdnaMode_5:

(Start: 11 @4464 has 108 MA's), (20, 4527), (21, 4545), (23, 4551), (32, 4608),

Gene: Elesar_8 Start: 6224, Stop: 6583, Start Num: 11

Candidate Starts for Elesar_8:

(Start: 11 @6224 has 108 MA's), (19, 6275), (27, 6332), (35, 6392), (36, 6404), (38, 6410),

Gene: Eyes_5 Start: 4815, Stop: 5177, Start Num: 11

Candidate Starts for Eyes_5:

(Start: 11 @4815 has 108 MA's), (23, 4902), (39, 5001), (46, 5058),

Gene: Finkle_5 Start: 4607, Stop: 4954, Start Num: 11

Candidate Starts for Finkle_5:

(Start: 11 @4607 has 108 MA's), (20, 4670), (21, 4688), (36, 4781), (46, 4847),

Gene: FirstPlacePfu_5 Start: 4892, Stop: 5257, Start Num: 11

Candidate Starts for FirstPlacePfu_5:

(Start: 11 @4892 has 108 MA's), (20, 4955), (23, 4979), (30, 5027), (32, 5036), (37, 5072), (40, 5090),

Gene: Fishburne_5 Start: 4892, Stop: 5257, Start Num: 11

Candidate Starts for Fishburne_5:

(Start: 11 @4892 has 108 MA's), (20, 4955), (23, 4979), (30, 5027), (32, 5036), (37, 5072), (40, 5090),

Gene: Franzy_7 Start: 6810, Stop: 7196, Start Num: 6

Candidate Starts for Franzy_7:

(Start: 6 @6810 has 18 MA's), (21, 6903), (39, 7020),

Gene: GEazy_5 Start: 4818, Stop: 5180, Start Num: 11

Candidate Starts for GEazy_5:

(Start: 11 @4818 has 108 MA's), (23, 4905), (46, 5061),

Gene: GMA4_6 Start: 5937, Stop: 6311, Start Num: 9

Candidate Starts for GMA4_6:

(9, 5937), (23, 6027), (25, 6039), (30, 6087), (38, 6135), (57, 6291),

Gene: GemG_5 Start: 4464, Stop: 4826, Start Num: 11

Candidate Starts for GemG_5:

(Start: 11 @4464 has 108 MA's), (20, 4527), (21, 4545), (23, 4551), (32, 4608),

Gene: Gizermo_5 Start: 4464, Stop: 4826, Start Num: 11

Candidate Starts for Gizermo_5:

(Start: 11 @4464 has 108 MA's), (20, 4527), (21, 4545), (23, 4551), (32, 4608),

Gene: Glaske_5 Start: 4879, Stop: 5244, Start Num: 11

Candidate Starts for Glaske_5:

(Start: 11 @4879 has 108 MA's), (20, 4942), (23, 4966), (32, 5023), (37, 5059), (40, 5077),

Gene: GravityBall_8 Start: 7142, Stop: 7528, Start Num: 7

Candidate Starts for GravityBall_8:

(Start: 7 @7142 has 12 MA's), (21, 7235), (28, 7274), (32, 7310), (39, 7352),

Gene: GreaseLightnin_5 Start: 4892, Stop: 5257, Start Num: 11

Candidate Starts for GreaseLightnin_5:

(Start: 11 @4892 has 108 MA's), (20, 4955), (23, 4979), (30, 5027), (32, 5036), (37, 5072), (40, 5090),

Gene: Grekaycon_8 Start: 7169, Stop: 7555, Start Num: 6

Candidate Starts for Grekaycon_8:

(Start: 6 @7169 has 18 MA's), (20, 7244), (32, 7337),

Gene: Gusanita_7 Start: 6107, Stop: 6469, Start Num: 11

Candidate Starts for Gusanita_7:

(Start: 11 @6107 has 108 MA's), (42, 6314), (56, 6440),

Gene: HUHilltop_5 Start: 4892, Stop: 5257, Start Num: 11
Candidate Starts for HUHilltop_5:
(Start: 11 @4892 has 108 MA's), (20, 4955), (23, 4979), (30, 5027), (32, 5036), (37, 5072), (40, 5090),

Gene: Haley23_5 Start: 4464, Stop: 4826, Start Num: 11
Candidate Starts for Haley23_5:
(Start: 11 @4464 has 108 MA's), (20, 4527), (21, 4545), (23, 4551), (32, 4608),

Gene: HannahD_5 Start: 4818, Stop: 5180, Start Num: 11
Candidate Starts for HannahD_5:
(Start: 11 @4818 has 108 MA's), (23, 4905), (46, 5061),

Gene: Hedwig_6 Start: 5167, Stop: 5529, Start Num: 11
Candidate Starts for Hedwig_6:
(Start: 11 @5167 has 108 MA's), (26, 5269), (30, 5302), (36, 5344), (38, 5350), (46, 5410),

Gene: Hirko_8 Start: 8319, Stop: 8705, Start Num: 4
Candidate Starts for Hirko_8:
(Start: 4 @8319 has 23 MA's), (Start: 7 @8325 has 12 MA's), (59, 8688),

Gene: HumptyDumpty_11 Start: 9275, Stop: 9655, Start Num: 4
Candidate Starts for HumptyDumpty_11:
(Start: 4 @9275 has 23 MA's), (21, 9371), (31, 9440), (46, 9545), (50, 9572),

Gene: JCole_5 Start: 4464, Stop: 4826, Start Num: 11
Candidate Starts for JCole_5:
(Start: 11 @4464 has 108 MA's), (20, 4527), (21, 4545), (23, 4551), (32, 4608),

Gene: JKerns_8 Start: 7199, Stop: 7585, Start Num: 6
Candidate Starts for JKerns_8:
(Start: 6 @7199 has 18 MA's), (28, 7331),

Gene: JaNo_11 Start: 9275, Stop: 9655, Start Num: 4
Candidate Starts for JaNo_11:
(Start: 4 @9275 has 23 MA's), (21, 9371), (31, 9440), (46, 9545), (50, 9572),

Gene: Jawnski_7 Start: 6807, Stop: 7193, Start Num: 6
Candidate Starts for Jawnski_7:
(Start: 6 @6807 has 18 MA's), (21, 6900), (39, 7017),

Gene: JayCookie_11 Start: 9275, Stop: 9658, Start Num: 4
Candidate Starts for JayCookie_11:
(Start: 4 @9275 has 23 MA's), (21, 9374), (46, 9548), (50, 9575),

Gene: Jebeks_5 Start: 4896, Stop: 5261, Start Num: 11
Candidate Starts for Jebeks_5:
(Start: 11 @4896 has 108 MA's), (20, 4959), (29, 5010), (30, 5031), (32, 5040), (36, 5073), (37, 5076),

Gene: Jinkies_9 Start: 7642, Stop: 8028, Start Num: 4
Candidate Starts for Jinkies_9:
(Start: 4 @7642 has 23 MA's), (15, 7678), (21, 7741), (38, 7855), (42, 7879), (50, 7942), (55, 7975),
(59, 8011),

Gene: Jordan_8 Start: 7169, Stop: 7555, Start Num: 6

Candidate Starts for Jordan_8:

(Start: 6 @7169 has 18 MA's), (28, 7301),

Gene: Juicebox_8 Start: 6592, Stop: 6951, Start Num: 12

Candidate Starts for Juicebox_8:

(5, 6577), (Start: 12 @6592 has 1 MA's), (25, 6688), (46, 6844), (60, 6937),

Gene: Jung_5 Start: 4879, Stop: 5244, Start Num: 11

Candidate Starts for Jung_5:

(Start: 11 @4879 has 108 MA's), (20, 4942), (23, 4966), (30, 5014), (32, 5023), (37, 5059), (40, 5077),

Gene: Juniormint_5 Start: 4899, Stop: 5264, Start Num: 11

Candidate Starts for Juniormint_5:

(Start: 11 @4899 has 108 MA's), (20, 4962), (29, 5013), (30, 5034), (32, 5043), (36, 5076), (37, 5079),

Gene: KBurrousTX_11 Start: 9054, Stop: 9434, Start Num: 4

Candidate Starts for KBurrousTX_11:

(Start: 4 @9054 has 23 MA's), (28, 9189), (32, 9225), (45, 9312),

Gene: Kabreeze_11 Start: 9275, Stop: 9655, Start Num: 4

Candidate Starts for Kabreeze_11:

(Start: 4 @9275 has 23 MA's), (21, 9371), (31, 9440), (46, 9545), (50, 9572),

Gene: Kari_5 Start: 4892, Stop: 5257, Start Num: 11

Candidate Starts for Kari_5:

(Start: 11 @4892 has 108 MA's), (20, 4955), (23, 4979), (30, 5027), (32, 5036), (37, 5072), (40, 5090),

Gene: Kiko_6 Start: 5029, Stop: 5388, Start Num: 11

Candidate Starts for Kiko_6:

(Start: 11 @5029 has 108 MA's), (14, 5044), (27, 5131), (32, 5170), (36, 5203), (38, 5209), (47, 5272),

Gene: KilKor_5 Start: 4879, Stop: 5244, Start Num: 11

Candidate Starts for KilKor_5:

(Start: 11 @4879 has 108 MA's), (20, 4942), (23, 4966), (32, 5023), (37, 5059), (40, 5077),

Gene: King2_7 Start: 6812, Stop: 7198, Start Num: 6

Candidate Starts for King2_7:

(Start: 6 @6812 has 18 MA's), (21, 6905), (39, 7022),

Gene: Klevey_7 Start: 6702, Stop: 7088, Start Num: 7

Candidate Starts for Klevey_7:

(Start: 7 @6702 has 12 MA's), (41, 6927), (42, 6933), (50, 6996), (59, 7071),

Gene: Ksquared_5 Start: 4892, Stop: 5257, Start Num: 11

Candidate Starts for Ksquared_5:

(Start: 11 @4892 has 108 MA's), (20, 4955), (23, 4979), (32, 5036), (37, 5072), (40, 5090),

Gene: Lamberg_5 Start: 4464, Stop: 4826, Start Num: 11

Candidate Starts for Lamberg_5:

(Start: 11 @4464 has 108 MA's), (20, 4527), (21, 4545), (23, 4551), (32, 4608),

Gene: Langerak_5 Start: 4896, Stop: 5261, Start Num: 11
Candidate Starts for Langerak_5:
(Start: 11 @4896 has 108 MA's), (20, 4959), (29, 5010), (30, 5031), (32, 5040), (36, 5073), (37, 5076),

Gene: LeeroyJ_8 Start: 7141, Stop: 7527, Start Num: 7
Candidate Starts for LeeroyJ_8:
(Start: 7 @7141 has 12 MA's), (21, 7234), (28, 7273), (32, 7309), (39, 7351),

Gene: Lenoxika_9 Start: 6218, Stop: 6580, Start Num: 11
Candidate Starts for Lenoxika_9:
(Start: 11 @6218 has 108 MA's), (31, 6356), (56, 6551),

Gene: Lilmac1015_7 Start: 6693, Stop: 7079, Start Num: 7
Candidate Starts for Lilmac1015_7:
(Start: 7 @6693 has 12 MA's), (42, 6924), (50, 6987), (59, 7062),

Gene: Linus_11 Start: 9272, Stop: 9655, Start Num: 4
Candidate Starts for Linus_11:
(Start: 4 @9272 has 23 MA's), (21, 9371), (46, 9545), (50, 9572),

Gene: LordFarquaad_5 Start: 4464, Stop: 4826, Start Num: 11
Candidate Starts for LordFarquaad_5:
(Start: 11 @4464 has 108 MA's), (20, 4527), (21, 4545), (23, 4551), (32, 4608),

Gene: Lymara_11 Start: 9262, Stop: 9645, Start Num: 4
Candidate Starts for Lymara_11:
(Start: 4 @9262 has 23 MA's), (21, 9361), (46, 9535), (50, 9562),

Gene: MagicMan_5 Start: 5039, Stop: 5413, Start Num: 10
Candidate Starts for MagicMan_5:
(Start: 10 @5039 has 5 MA's), (20, 5105), (32, 5198), (36, 5231), (39, 5240), (42, 5267), (51, 5348),

Gene: Majeke_5 Start: 4896, Stop: 5261, Start Num: 11
Candidate Starts for Majeke_5:
(Start: 11 @4896 has 108 MA's), (20, 4959), (29, 5010), (30, 5031), (32, 5040), (36, 5073), (37, 5076),

Gene: MalagasyRose_12 Start: 7571, Stop: 7951, Start Num: 8
Candidate Starts for MalagasyRose_12:
(Start: 8 @7571 has 1 MA's), (25, 7676), (38, 7772), (48, 7844), (53, 7889),

Gene: Malithi_5 Start: 4892, Stop: 5257, Start Num: 11
Candidate Starts for Malithi_5:
(Start: 11 @4892 has 108 MA's), (20, 4955), (23, 4979), (30, 5027), (32, 5036), (37, 5072), (40, 5090),

Gene: Mangethe_5 Start: 4896, Stop: 5261, Start Num: 11
Candidate Starts for Mangethe_5:
(Start: 11 @4896 has 108 MA's), (20, 4959), (29, 5010), (30, 5031), (32, 5040), (36, 5073), (37, 5076),

Gene: Martha_8 Start: 7106, Stop: 7492, Start Num: 6
Candidate Starts for Martha_8:
(Start: 6 @7106 has 18 MA's), (28, 7238),

Gene: Matteo_5 Start: 4464, Stop: 4826, Start Num: 11

Candidate Starts for Matteo_5:

(Start: 11 @4464 has 108 MA's), (20, 4527), (21, 4545), (23, 4551), (32, 4608),

Gene: Megiddo_5 Start: 4879, Stop: 5244, Start Num: 11

Candidate Starts for Megiddo_5:

(Start: 11 @4879 has 108 MA's), (20, 4942), (23, 4966), (32, 5023), (37, 5059), (40, 5077),

Gene: MichaelScott_6 Start: 4955, Stop: 5317, Start Num: 11

Candidate Starts for MichaelScott_6:

(Start: 11 @4955 has 108 MA's), (21, 5036), (23, 5042), (33, 5114),

Gene: Min1_40 Start: 21806, Stop: 22165, Start Num: 10

Candidate Starts for Min1_40:

(Start: 10 @21806 has 5 MA's), (16, 21848), (23, 21896), (36, 21986), (38, 21992), (40, 22013), (49, 22082), (54, 22106), (58, 22145),

Gene: Mocha12_5 Start: 4464, Stop: 4826, Start Num: 11

Candidate Starts for Mocha12_5:

(Start: 11 @4464 has 108 MA's), (20, 4527), (21, 4545), (23, 4551), (32, 4608),

Gene: Mordred_11 Start: 9275, Stop: 9655, Start Num: 4

Candidate Starts for Mordred_11:

(Start: 4 @9275 has 23 MA's), (21, 9371), (31, 9440), (46, 9545), (50, 9572),

Gene: MoyaNatalis_11 Start: 9275, Stop: 9658, Start Num: 4

Candidate Starts for MoyaNatalis_11:

(Start: 4 @9275 has 23 MA's), (21, 9374), (46, 9548), (50, 9575),

Gene: Nandita_9 Start: 6219, Stop: 6581, Start Num: 11

Candidate Starts for Nandita_9:

(Start: 11 @6219 has 108 MA's), (31, 6357), (56, 6552),

Gene: NathanVaag_7 Start: 6812, Stop: 7198, Start Num: 6

Candidate Starts for NathanVaag_7:

(Start: 6 @6812 has 18 MA's), (24, 6914), (39, 7022),

Gene: Nazo_5 Start: 4865, Stop: 5230, Start Num: 11

Candidate Starts for Nazo_5:

(Start: 11 @4865 has 108 MA's), (17, 4910), (23, 4952), (29, 4979), (30, 5000), (32, 5009), (36, 5042), (37, 5045), (40, 5063),

Gene: Necropolis_5 Start: 4892, Stop: 5257, Start Num: 11

Candidate Starts for Necropolis_5:

(Start: 11 @4892 has 108 MA's), (20, 4955), (23, 4979), (30, 5027), (32, 5036), (37, 5072), (40, 5090),

Gene: Nergal_10 Start: 8026, Stop: 8406, Start Num: 10

Candidate Starts for Nergal_10:

(3, 7969), (Start: 10 @8026 has 5 MA's), (18, 8080), (20, 8095), (25, 8131), (36, 8221), (42, 8257), (53, 8344),

Gene: Nettuno_5 Start: 4464, Stop: 4826, Start Num: 11

Candidate Starts for Nettuno_5:

(Start: 11 @4464 has 108 MA's), (20, 4527), (21, 4545), (23, 4551), (32, 4608),

Gene: Opie_5 Start: 5048, Stop: 5422, Start Num: 10
Candidate Starts for Opie_5:
(Start: 10 @5048 has 5 MA's), (20, 5114), (32, 5207), (36, 5240), (39, 5249), (42, 5276), (51, 5357),

Gene: Oregano_6 Start: 4626, Stop: 4988, Start Num: 11
Candidate Starts for Oregano_6:
(Start: 11 @4626 has 108 MA's), (21, 4707), (23, 4713), (33, 4785),

Gene: Phalm_5 Start: 4879, Stop: 5244, Start Num: 11
Candidate Starts for Phalm_5:
(Start: 11 @4879 has 108 MA's), (20, 4942), (23, 4966), (32, 5023), (37, 5059), (40, 5077),

Gene: Phayonce_5 Start: 4861, Stop: 5226, Start Num: 11
Candidate Starts for Phayonce_5:
(Start: 11 @4861 has 108 MA's), (21, 4942), (23, 4948), (29, 4975), (36, 5038), (37, 5041), (40, 5059),

Gene: Phegasus_5 Start: 4896, Stop: 5261, Start Num: 11
Candidate Starts for Phegasus_5:
(Start: 11 @4896 has 108 MA's), (20, 4959), (29, 5010), (30, 5031), (32, 5040), (36, 5073), (37, 5076),

Gene: Phineas_5 Start: 4880, Stop: 5245, Start Num: 11
Candidate Starts for Phineas_5:
(Start: 11 @4880 has 108 MA's), (20, 4943), (23, 4967), (30, 5015), (32, 5024), (37, 5060), (40, 5078),

Gene: PhriskyACE_5 Start: 4453, Stop: 4815, Start Num: 11
Candidate Starts for PhriskyACE_5:
(Start: 11 @4453 has 108 MA's), (21, 4534), (22, 4537), (23, 4540), (33, 4612),

Gene: Piccoletto_7 Start: 6813, Stop: 7199, Start Num: 6
Candidate Starts for Piccoletto_7:
(Start: 6 @6813 has 18 MA's), (24, 6915), (39, 7023),

Gene: Pickett_5 Start: 4464, Stop: 4826, Start Num: 11
Candidate Starts for Pickett_5:
(Start: 11 @4464 has 108 MA's), (20, 4527), (21, 4545), (23, 4551), (32, 4608),

Gene: Pippa_8 Start: 7199, Stop: 7585, Start Num: 6
Candidate Starts for Pippa_8:
(Start: 6 @7199 has 18 MA's), (20, 7274),

Gene: Polkaroo_5 Start: 4892, Stop: 5257, Start Num: 11
Candidate Starts for Polkaroo_5:
(Start: 11 @4892 has 108 MA's), (20, 4955), (23, 4979), (32, 5036), (37, 5072), (40, 5090),

Gene: Popper_7 Start: 5711, Stop: 6073, Start Num: 11
Candidate Starts for Popper_7:
(Start: 11 @5711 has 108 MA's), (13, 5723), (20, 5774),

Gene: Poushou_8 Start: 6945, Stop: 7313, Start Num: 11
Candidate Starts for Poushou_8:
(Start: 11 @6945 has 108 MA's), (16, 6984), (25, 7044),

Gene: Powerball_5 Start: 4453, Stop: 4815, Start Num: 11

Candidate Starts for Powerball_5:

(Start: 11 @4453 has 108 MA's), (21, 4534), (33, 4612),

Gene: Prairie_7 Start: 6702, Stop: 7088, Start Num: 7

Candidate Starts for Prairie_7:

(Start: 7 @6702 has 12 MA's), (42, 6933), (50, 6996), (59, 7071),

Gene: PrincessTrina_11 Start: 9275, Stop: 9658, Start Num: 4

Candidate Starts for PrincessTrina_11:

(Start: 4 @9275 has 23 MA's), (21, 9374), (46, 9548), (50, 9575),

Gene: Purky_5 Start: 4864, Stop: 5229, Start Num: 11

Candidate Starts for Purky_5:

(Start: 11 @4864 has 108 MA's), (17, 4909), (23, 4951), (29, 4978), (30, 4999), (36, 5041), (37, 5044), (40, 5062), (49, 5131),

Gene: Pygmy_5 Start: 4880, Stop: 5245, Start Num: 11

Candidate Starts for Pygmy_5:

(Start: 11 @4880 has 108 MA's), (20, 4943), (30, 5015), (32, 5024), (37, 5060), (40, 5078),

Gene: QuinnAvery_8 Start: 6175, Stop: 6534, Start Num: 11

Candidate Starts for QuinnAvery_8:

(Start: 11 @6175 has 108 MA's), (19, 6226), (27, 6283), (35, 6343), (38, 6361),

Gene: RayTheFireFly_6 Start: 5191, Stop: 5553, Start Num: 11

Candidate Starts for RayTheFireFly_6:

(Start: 11 @5191 has 108 MA's), (23, 5278), (36, 5368), (38, 5374), (46, 5434), (50, 5461),

Gene: Rem711_11 Start: 7918, Stop: 8292, Start Num: 10

Candidate Starts for Rem711_11:

(Start: 10 @7918 has 5 MA's), (38, 8116), (53, 8233),

Gene: RosiePosie_11 Start: 9275, Stop: 9658, Start Num: 4

Candidate Starts for RosiePosie_11:

(Start: 4 @9275 has 23 MA's), (21, 9374), (46, 9548), (50, 9575),

Gene: Ryan_9 Start: 6329, Stop: 6691, Start Num: 11

Candidate Starts for Ryan_9:

(Start: 11 @6329 has 108 MA's), (13, 6341), (20, 6392),

Gene: Sahara_5 Start: 4455, Stop: 4817, Start Num: 11

Candidate Starts for Sahara_5:

(Start: 11 @4455 has 108 MA's), (20, 4518), (21, 4536), (23, 4542), (32, 4599), (38, 4638),

Gene: Samman98_6 Start: 4955, Stop: 5317, Start Num: 11

Candidate Starts for Samman98_6:

(Start: 11 @4955 has 108 MA's), (21, 5036), (23, 5042), (33, 5114),

Gene: Savage_5 Start: 4464, Stop: 4826, Start Num: 11

Candidate Starts for Savage_5:

(Start: 11 @4464 has 108 MA's), (20, 4527), (21, 4545), (23, 4551), (32, 4608),

Gene: Scavito_11 Start: 9275, Stop: 9655, Start Num: 4
Candidate Starts for Scavito_11:
(Start: 4 @9275 has 23 MA's), (21, 9371), (31, 9440), (46, 9545), (50, 9572),

Gene: Schnabeltier_5 Start: 5040, Stop: 5414, Start Num: 10
Candidate Starts for Schnabeltier_5:
(Start: 10 @5040 has 5 MA's), (20, 5106), (32, 5199), (36, 5232), (39, 5241), (42, 5268), (51, 5349),

Gene: Sekhmet_6 Start: 4955, Stop: 5317, Start Num: 11
Candidate Starts for Sekhmet_6:
(Start: 11 @4955 has 108 MA's), (21, 5036), (23, 5042), (33, 5114),

Gene: Shade_8 Start: 7148, Stop: 7534, Start Num: 6
Candidate Starts for Shade_8:
(Start: 6 @7148 has 18 MA's), (28, 7280),

Gene: Shipwreck_5 Start: 4880, Stop: 5245, Start Num: 11
Candidate Starts for Shipwreck_5:
(Start: 11 @4880 has 108 MA's), (20, 4943), (30, 5015), (32, 5024), (37, 5060), (40, 5078),

Gene: Sicarius2_9 Start: 7705, Stop: 8085, Start Num: 7
Candidate Starts for Sicarius2_9:
(Start: 7 @7705 has 12 MA's), (21, 7798), (24, 7807), (32, 7873), (36, 7906), (52, 8020),

Gene: SoilAssassin_5 Start: 4464, Stop: 4826, Start Num: 11
Candidate Starts for SoilAssassin_5:
(Start: 11 @4464 has 108 MA's), (20, 4527), (21, 4545), (23, 4551), (32, 4608),

Gene: Sonah_5 Start: 4896, Stop: 5261, Start Num: 11
Candidate Starts for Sonah_5:
(Start: 11 @4896 has 108 MA's), (20, 4959), (29, 5010), (30, 5031), (32, 5040), (36, 5073), (37, 5076),

Gene: Sonny_8 Start: 7169, Stop: 7555, Start Num: 6
Candidate Starts for Sonny_8:
(Start: 6 @7169 has 18 MA's), (28, 7301),

Gene: Sproutie_5 Start: 4464, Stop: 4826, Start Num: 11
Candidate Starts for Sproutie_5:
(Start: 11 @4464 has 108 MA's), (20, 4527), (21, 4545), (23, 4551), (32, 4608),

Gene: StevieBAY_8 Start: 7142, Stop: 7528, Start Num: 7
Candidate Starts for StevieBAY_8:
(Start: 7 @7142 has 12 MA's), (21, 7235), (28, 7274), (32, 7310), (39, 7352),

Gene: StevieRay_5 Start: 4883, Stop: 5248, Start Num: 11
Candidate Starts for StevieRay_5:
(Start: 11 @4883 has 108 MA's), (20, 4946), (23, 4970), (32, 5027), (37, 5063), (40, 5081),

Gene: StressBall_5 Start: 4879, Stop: 5244, Start Num: 11
Candidate Starts for StressBall_5:
(Start: 11 @4879 has 108 MA's), (20, 4942), (23, 4966), (32, 5023), (37, 5059), (40, 5077),

Gene: Suerte_5 Start: 4453, Stop: 4815, Start Num: 11

Candidate Starts for Suerte_5:

(Start: 11 @4453 has 108 MA's), (21, 4534), (23, 4540), (33, 4612),

Gene: TaeYoung_8 Start: 7169, Stop: 7555, Start Num: 6

Candidate Starts for TaeYoung_8:

(Start: 6 @7169 has 18 MA's), (28, 7301),

Gene: TaronosaurusRx_5 Start: 5047, Stop: 5421, Start Num: 10

Candidate Starts for TaronosaurusRx_5:

(Start: 10 @5047 has 5 MA's), (20, 5113), (32, 5206), (36, 5239), (39, 5248), (42, 5275), (51, 5356),

Gene: Techage_5 Start: 4899, Stop: 5264, Start Num: 11

Candidate Starts for Techage_5:

(Start: 11 @4899 has 108 MA's), (20, 4962), (29, 5013), (30, 5034), (32, 5043), (36, 5076), (37, 5079),

Gene: Thespis_5 Start: 4879, Stop: 5244, Start Num: 11

Candidate Starts for Thespis_5:

(Start: 11 @4879 has 108 MA's), (20, 4942), (23, 4966), (30, 5014), (32, 5023), (37, 5059), (40, 5077),

Gene: Thimann_6 Start: 4955, Stop: 5317, Start Num: 11

Candidate Starts for Thimann_6:

(Start: 11 @4955 has 108 MA's), (21, 5036), (23, 5042), (33, 5114),

Gene: ThulaThula_5 Start: 4906, Stop: 5271, Start Num: 11

Candidate Starts for ThulaThula_5:

(Start: 11 @4906 has 108 MA's), (21, 4987), (23, 4993), (29, 5020), (36, 5083), (37, 5086), (40, 5104), (43, 5128),

Gene: Timinator_8 Start: 7141, Stop: 7527, Start Num: 7

Candidate Starts for Timinator_8:

(Start: 7 @7141 has 12 MA's), (21, 7234), (28, 7273), (32, 7309), (39, 7351),

Gene: Tophat_11 Start: 9277, Stop: 9657, Start Num: 4

Candidate Starts for Tophat_11:

(Start: 4 @9277 has 23 MA's), (21, 9373), (31, 9442), (50, 9574),

Gene: Tortellini_5 Start: 4852, Stop: 5217, Start Num: 11

Candidate Starts for Tortellini_5:

(Start: 11 @4852 has 108 MA's), (20, 4915), (27, 4957), (29, 4966), (36, 5029), (37, 5032), (40, 5050), (42, 5059),

Gene: TouchMeNot_8 Start: 6945, Stop: 7313, Start Num: 11

Candidate Starts for TouchMeNot_8:

(Start: 11 @6945 has 108 MA's), (16, 6984), (25, 7044),

Gene: TuertoX_5 Start: 4464, Stop: 4826, Start Num: 11

Candidate Starts for TuertoX_5:

(Start: 11 @4464 has 108 MA's), (20, 4527), (21, 4545), (23, 4551), (32, 4608),

Gene: Vasanti_5 Start: 4465, Stop: 4827, Start Num: 11

Candidate Starts for Vasanti_5:

(Start: 11 @4465 has 108 MA's), (20, 4528), (21, 4546), (23, 4552), (32, 4609),

Gene: Venti_5 Start: 4892, Stop: 5257, Start Num: 11
Candidate Starts for Venti_5:
(Start: 11 @4892 has 108 MA's), (20, 4955), (23, 4979), (30, 5027), (32, 5036), (37, 5072), (40, 5090),

Gene: Vibaki_9 Start: 8796, Stop: 9182, Start Num: 4
Candidate Starts for Vibaki_9:
(Start: 4 @8796 has 23 MA's), (21, 8895), (34, 8988), (59, 9165),

Gene: Vidya_5 Start: 4892, Stop: 5257, Start Num: 11
Candidate Starts for Vidya_5:
(Start: 11 @4892 has 108 MA's), (20, 4955), (23, 4979), (30, 5027), (32, 5036), (37, 5072), (40, 5090),

Gene: Whiteclaw_5 Start: 4464, Stop: 4826, Start Num: 11
Candidate Starts for Whiteclaw_5:
(Start: 11 @4464 has 108 MA's), (20, 4527), (21, 4545), (23, 4551), (32, 4608),

Gene: Willsammy_5 Start: 4882, Stop: 5247, Start Num: 11
Candidate Starts for Willsammy_5:
(Start: 11 @4882 has 108 MA's), (20, 4945), (23, 4969), (32, 5026), (37, 5062), (40, 5080),

Gene: WinkNick_6 Start: 4955, Stop: 5317, Start Num: 11
Candidate Starts for WinkNick_6:
(Start: 11 @4955 has 108 MA's), (21, 5036), (23, 5042), (33, 5114),

Gene: Wyborn_9 Start: 7566, Stop: 7946, Start Num: 7
Candidate Starts for Wyborn_9:
(Start: 7 @7566 has 12 MA's), (21, 7659), (24, 7668), (32, 7734), (36, 7767), (52, 7881),

Gene: Xavia_5 Start: 4893, Stop: 5258, Start Num: 11
Candidate Starts for Xavia_5:
(Start: 11 @4893 has 108 MA's), (20, 4956), (23, 4980), (30, 5028), (32, 5037), (37, 5073), (40, 5091),

Gene: Yeet412_5 Start: 4464, Stop: 4826, Start Num: 11
Candidate Starts for Yeet412_5:
(Start: 11 @4464 has 108 MA's), (20, 4527), (21, 4545), (23, 4551), (32, 4608),

Gene: ZAYM_5 Start: 5040, Stop: 5414, Start Num: 10
Candidate Starts for ZAYM_5:
(Start: 10 @5040 has 5 MA's), (20, 5106), (32, 5199), (36, 5232), (39, 5241), (42, 5268), (51, 5349),

Gene: Zaheer_9 Start: 6418, Stop: 6780, Start Num: 11
Candidate Starts for Zaheer_9:
(Start: 11 @6418 has 108 MA's), (13, 6430), (20, 6481),

Gene: Zartrosa_8 Start: 7169, Stop: 7555, Start Num: 6
Candidate Starts for Zartrosa_8:
(Start: 6 @7169 has 18 MA's), (28, 7301),

Gene: Zilizebeth_5 Start: 4892, Stop: 5257, Start Num: 11
Candidate Starts for Zilizebeth_5:
(Start: 11 @4892 has 108 MA's), (20, 4955), (23, 4979), (30, 5027), (32, 5036), (37, 5072), (40, 5090),