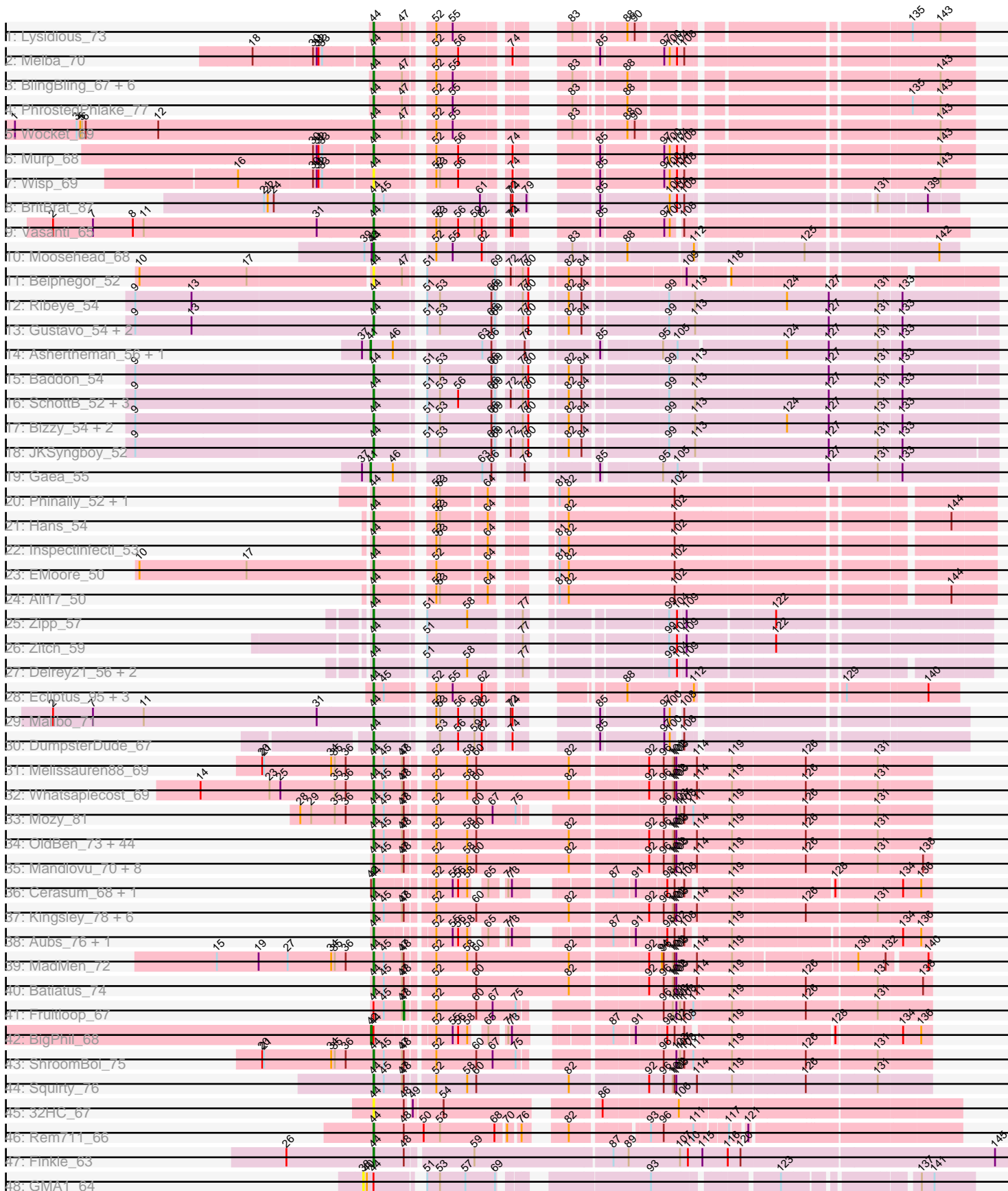


Pham 191146



Note: Tracks are now grouped by subcluster and scaled. Switching in subcluster is indicated by changes in track color. Track scale is now set by default to display the region 30 bp upstream of start 1 to 30 bp downstream of the last possible start. If this default region is judged to be packed too tightly with annotated starts, the track will be further scaled to only show that region of the ORF with annotated starts. This action will be indicated by adding "Zoomed" to the title. For starts, yellow indicates the location of called starts comprised solely of Glimmer/GeneMark auto-annotations, green indicates the location of called starts with at least 1 manual gene annotation.

Pham 191146 Report

This analysis was run 11/02/24 on database version 579.

Pham number 191146 has 128 members, 11 are drafts.

Phages represented in each track:

- Track 1 : Lysidious_73
- Track 2 : Melba_70
- Track 3 : BlingBling_67, UmaThurman_71, Fenry_70, Samba_71, Barco_68, Zarbodnamra_74, Petra_75
- Track 4 : PhrostedPhlake_77
- Track 5 : Wocket_69
- Track 6 : Murp_68
- Track 7 : Wisp_69
- Track 8 : BritBrat_87
- Track 9 : Vasanti_65
- Track 10 : Moosehead_68
- Track 11 : Belphegor_52
- Track 12 : Ribeye_54
- Track 13 : Gustavo_54, Saronaya_54, Tangerine_53
- Track 14 : Ashertheman_56, Bibwit_55
- Track 15 : Baddon_54
- Track 16 : SchottB_52, YorkOnyx_55, Kwobi_55, Kroos_54
- Track 17 : Bizzy_54, Derg_51, Flatwoods_54
- Track 18 : JKSyngboy_52
- Track 19 : Gaea_55
- Track 20 : Phinally_52, Leonard_52
- Track 21 : Hans_54
- Track 22 : Inspectinfecti_53
- Track 23 : EMOore_50
- Track 24 : Ali17_50
- Track 25 : Zipp_57
- Track 26 : Zitch_59
- Track 27 : Delrey21_56, DoctorFroggo_56, Verity_56
- Track 28 : Ecliptus_95, Crater_88, Phistory_86, Apricot_88
- Track 29 : Malibo_71
- Track 30 : DumpsterDude_67
- Track 31 : Melissauren88_69
- Track 32 : Whatsapiecost_69
- Track 33 : Mozy_81
- Track 34 : OldBen_73, JoeyJr_76, PopTart_65, Hamulus_75, JalFarm20_83, EleanorGeorge_77, Doomhist_79, KingMidas_75, Harley_74, Polka14_80, SiSi_71, Poenanya_79, Minnie_72, Fastidio_69, Nimbo_68, Taj_81, SG4_72, Flathead_74,

DillTech15_76, Girafales_84, PHappiness_76, Leperchaun_74, Quico_84, Geralt_69, Wee_80, KristaRAM_73, Akhila_69, Daenerys_75, Sassafras_77, Inventum_74, RedBird_77, Scottish_74, Seagreen_76, LittleShirley_75, Dorothy_77, Filuzino_76, Empress_74, Deb65_69, Sandalphon_70, Florinda_87, MilanaBonita_68, RitaG_76, SassyB_65, Juice456_71, DaddyRickover_79

- Track 35 : Mandlovu_70, Bobi_82, DLane_72, Phalconet_72, PhesterPhotato_78, IMpilo_65, Hlubikazi_70, Strokeseat_70, StAnnes_72
- Track 36 : Cerasum_68, Coco12_71
- Track 37 : Kingsley_78, DeadP_76, Ms6_73, Shauna1_74, Bipolar_78, Ogoopogo_80, Phanphagia_73
- Track 38 : Aubs_76, Guppsters_69
- Track 39 : MadMen_72
- Track 40 : Batiatus_74
- Track 41 : Fruitloop_67
- Track 42 : BigPhil_68
- Track 43 : ShroomBoi_75
- Track 44 : Squirty_76
- Track 45 : 32HC_67
- Track 46 : Rem711_66
- Track 47 : Finkle_63
- Track 48 : GMA1_64

Summary of Final Annotations (See graph section above for start numbers):

The start number called the most often in the published annotations is 44, it was called in 112 of the 117 non-draft genes in the pham.

Genes that call this "Most Annotated" start:

- 32HC_67, Akhila_69, Ali17_50, Apricot_88, Aubs_76, Baddon_54, Barco_68, Batiatus_74, Belphegor_52, Bipolar_78, Bizzy_54, BlingBling_67, Bobi_82, BritBrat_87, Cerasum_68, Coco12_71, Crater_88, DLane_72, DaddyRickover_79, Daenerys_75, DeadP_76, Deb65_69, Delrey21_56, Derg_51, DillTech15_76, DoctorFroggo_56, Doomphist_79, Dorothy_77, DumpsterDude_67, EMoore_50, Ecliptus_95, EleanorGeorge_77, Empress_74, Fastidio_69, Fenry_70, Filuzino_76, Finkle_63, Flathead_74, Flatwoods_54, Florinda_87, Geralt_69, Girafales_84, Guppsters_69, Gustavo_54, Hamulus_75, Hans_54, Harley_74, Hlubikazi_70, IMpilo_65, Inspectinfecti_53, Inventum_74, JKSyngboy_52, JalFarm20_83, JoeyJr_76, Juice456_71, KingMidas_75, Kingsley_78, KristaRAM_73, Kroos_54, Kwobi_55, Leonard_52, Leperchaun_74, LittleShirley_75, Lysidious_73, MadMen_72, Malibo_71, Mandlovu_70, Melba_70, Melissauren88_69, MilanaBonita_68, Minnie_72, Moosehead_68, Mozy_81, Ms6_73, Murp_68, Nimbo_68, Ogoopogo_80, OldBen_73, PHappiness_76, Petra_75, Phalconet_72, Phanphagia_73, PhesterPhotato_78, Phinally_52, Phistory_86, PhrostedPhlake_77, Poenanya_79, Polka14_80, PopTart_65, Quico_84, RedBird_77, Rem711_66, Ribeye_54, RitaG_76, SG4_72, Samba_71, Sandalphon_70, Saronaya_54, Sassafras_77, SassyB_65, SchottB_52, Scottish_74, Seagreen_76, Shauna1_74, ShroomBoi_75, SiSi_71, Squirty_76, StAnnes_72, Strokeseat_70, Taj_81, Tangerine_53, UmaThurman_71, Vasanti_65, Verity_56, Wee_80, Whatsapiecost_69, Wisp_69, Wocket_69, YorkOnyx_55, Zarbodnamra_74, Zipp_57, Zitch_59,

Genes that have the "Most Annotated" start but do not call it:

- BigPhil_68, Fruitloop_67, GMA1_64,

Genes that do not have the "Most Annotated" start:

- Ashertheman_56, Bibwit_55, Gaea_55,

Summary by start number:

Start 38:

- Found in 1 of 128 (0.8%) of genes in pham
- No Manual Annotations of this start.
- Called 100.0% of time when present
- Phage (with cluster) where this start called: GMA1_64 (singleton),

Start 41:

- Found in 3 of 128 (2.3%) of genes in pham
- Manual Annotations of this start: 3 of 117
- Called 100.0% of time when present
- Phage (with cluster) where this start called: Ashertheman_56 (DE1), Bibwit_55 (DE1), Gaea_55 (DE1),

Start 42:

- Found in 3 of 128 (2.3%) of genes in pham
- Manual Annotations of this start: 1 of 117
- Called 33.3% of time when present
- Phage (with cluster) where this start called: BigPhil_68 (F1),

Start 44:

- Found in 125 of 128 (97.7%) of genes in pham
- Manual Annotations of this start: 112 of 117
- Called 97.6% of time when present
- Phage (with cluster) where this start called: 32HC_67 (Z), Akhila_69 (F1), Ali17_50 (DE2), Apricot_88 (DN3), Aubs_76 (F1), Baddon_54 (DE1), Barco_68 (CV), Batiatus_74 (F1), Belphegor_52 (DE), Bipolar_78 (F1), Bizzy_54 (DE1), BlingBling_67 (CV), Bobi_82 (F1), BritBrat_87 (CY2), Cerasum_68 (F1), Coco12_71 (F1), Crater_88 (DN3), DLane_72 (F1), DaddyRickover_79 (F1), Daenerys_75 (F1), DeadP_76 (F1), Deb65_69 (F1), Delrey21_56 (DE4), Derg_51 (DE1), DillTech15_76 (F1), DoctorFroggo_56 (DE4), Doomphist_79 (F1), Dorothy_77 (F1), DumpsterDude_67 (DW), EMoore_50 (DE2), Ecliptus_95 (DN), EleanorGeorge_77 (F1), Empress_74 (F1), Fastidio_69 (F1), Fenry_70 (CV), Filuzino_76 (F1), Finkle_63 (singleton), Flathead_74 (F1), Flatwoods_54 (DE1), Florinda_87 (F1), Geralt_69 (F1), Girafales_84 (F1), Guppsters_69 (F1), Gustavo_54 (DE1), Hamulus_75 (F1), Hans_54 (DE2), Harley_74 (F1), Hlubikazi_70 (F1), IMpilo_65 (F1), Inspectinfecti_53 (DE2), Invention_74 (F1), JKSyngboy_52 (DE1), JalFarm20_83 (F1), JoeyJr_76 (F1), Juice456_71 (F1), KingMidas_75 (F1), Kingsley_78 (F1), KristaRAM_73 (F1), Kroos_54 (DE1), Kwobi_55 (DE1), Leonard_52 (DE2), Leperchaun_74 (F1), LittleShirley_75 (F1), Lysidious_73 (CV), MadMen_72 (F1), Malibo_71 (DW), Mandlovu_70 (F1), Melba_70 (CV), Melissauren88_69 (F1), MilanaBonita_68 (F1), Minnie_72 (F1), Moosehead_68 (CZ6), Mozy_81 (F1), Ms6_73 (F1), Murp_68 (CV), Nimbo_68 (F1), Ogotogo_80 (F1), OldBen_73 (F1), PHappiness_76 (F1), Petra_75 (CV), Phalconet_72 (F1), Phanphagia_73 (F1), PhesterPhotato_78 (F1), Phinally_52 (DE2), Phistory_86 (DN1), PhrostedPhlake_77 (CV), Poenanya_79 (F1), Polka14_80 (F1), PopTart_65 (F1), Quico_84 (F1), RedBird_77 (F1), Rem711_66 (Z), Ribeye_54

(DE1), RitaG_76 (F1), SG4_72 (F1), Samba_71 (CV), Sandalphon_70 (F1), Saronaya_54 (DE1), Sassafras_77 (F1), SassyB_65 (F1), SchottB_52 (DE1), Scottish_74 (F1), Seagreen_76 (F1), Shauna1_74 (F1), ShroomBoi_75 (F1), SiSi_71 (F1), Squirty_76 (F3), StAnnes_72 (F1), Strokeseat_70 (F1), Taj_81 (F1), Tangerine_53 (DE1), UmaThurman_71 (CV), Vasanti_65 (CZ2), Verity_56 (DE4), Wee_80 (F1), Whatsapiecost_69 (F1), Wisp_69 (CV), Wocket_69 (CV), YorkOnyx_55 (DE1), Zarbodnamra_74 (CV), Zipp_57 (DE4), Zitch_59 (DE4),

Start 48:

- Found in 72 of 128 (56.2%) of genes in pham
- Manual Annotations of this start: 1 of 117
- Called 1.4% of time when present
- Phage (with cluster) where this start called: Fruitloop_67 (F1),

Summary by clusters:

There are 16 clusters represented in this pham: DN, F1, CZ6, F3, CY2, CZ2, DE1, DE2, DE, DE4, singleton, DN1, DN3, DW, Z, CV,

Info for manual annotations of cluster CV:

- Start number 44 was manually annotated 12 times for cluster CV.

Info for manual annotations of cluster CY2:

- Start number 44 was manually annotated 1 time for cluster CY2.

Info for manual annotations of cluster CZ2:

- Start number 44 was manually annotated 1 time for cluster CZ2.

Info for manual annotations of cluster CZ6:

- Start number 44 was manually annotated 1 time for cluster CZ6.

Info for manual annotations of cluster DE1:

- Start number 41 was manually annotated 3 times for cluster DE1.
- Start number 44 was manually annotated 9 times for cluster DE1.

Info for manual annotations of cluster DE2:

- Start number 44 was manually annotated 6 times for cluster DE2.

Info for manual annotations of cluster DE4:

- Start number 44 was manually annotated 5 times for cluster DE4.

Info for manual annotations of cluster DN:

- Start number 44 was manually annotated 1 time for cluster DN.

Info for manual annotations of cluster DN1:

- Start number 44 was manually annotated 1 time for cluster DN1.

Info for manual annotations of cluster DN3:

- Start number 44 was manually annotated 2 times for cluster DN3.

Info for manual annotations of cluster DW:

- Start number 44 was manually annotated 2 times for cluster DW.

Info for manual annotations of cluster F1:

- Start number 42 was manually annotated 1 time for cluster F1.
- Start number 44 was manually annotated 68 times for cluster F1.
- Start number 48 was manually annotated 1 time for cluster F1.

Info for manual annotations of cluster F3:

- Start number 44 was manually annotated 1 time for cluster F3.

Info for manual annotations of cluster Z:

- Start number 44 was manually annotated 1 time for cluster Z.

Gene Information:

Gene: 32HC_67 Start: 42023, Stop: 42889, Start Num: 44

Candidate Starts for 32HC_67:

(Start: 44 @42023 has 112 MA's), (Start: 48 @42071 has 1 MA's), (49, 42077), (54, 42122), (86, 42338), (106, 42455),

Gene: Akhila_69 Start: 45149, Stop: 46000, Start Num: 44

Candidate Starts for Akhila_69:

(Start: 44 @45149 has 112 MA's), (45, 45164), (47, 45194), (Start: 48 @45197 has 1 MA's), (52, 45236), (58, 45287), (60, 45302), (82, 45452), (92, 45566), (96, 45584), (101, 45599), (102, 45602), (103, 45605), (114, 45638), (119, 45692), (126, 45803), (131, 45914),

Gene: Ali17_50 Start: 43224, Stop: 44075, Start Num: 44

Candidate Starts for Ali17_50:

(Start: 44 @43224 has 112 MA's), (52, 43299), (53, 43305), (64, 43374), (81, 43428), (82, 43443), (102, 43611), (144, 44007),

Gene: Apricot_88 Start: 47456, Stop: 48217, Start Num: 44

Candidate Starts for Apricot_88:

(Start: 44 @47456 has 112 MA's), (45, 47471), (52, 47531), (55, 47558), (62, 47606), (88, 47750), (112, 47843), (129, 48044), (140, 48167),

Gene: Ashertheman_56 Start: 44845, Stop: 45732, Start Num: 41

Candidate Starts for Ashertheman_56:

(37, 44833), (Start: 41 @44845 has 3 MA's), (46, 44881), (63, 45001), (66, 45016), (78, 45046), (85, 45118), (95, 45205), (105, 45229), (124, 45391), (127, 45460), (131, 45541), (133, 45577),

Gene: Aubs_76 Start: 47632, Stop: 48345, Start Num: 44

Candidate Starts for Aubs_76:

(Start: 44 @47632 has 112 MA's), (52, 47707), (55, 47734), (56, 47743), (58, 47758), (65, 47773), (71, 47794), (73, 47800), (87, 47902), (91, 47932), (98, 47974), (102, 47986), (108, 47998), (119, 48058), (134, 48301), (136, 48328),

Gene: Baddon_54 Start: 45452, Stop: 46342, Start Num: 44

Candidate Starts for Baddon_54:

(9, 45062), (Start: 44 @45452 has 112 MA's), (51, 45512), (53, 45533), (66, 45617), (69, 45623), (77, 45647), (80, 45656), (82, 45683), (84, 45704), (99, 45827), (113, 45866), (127, 46076), (131, 46157), (133, 46193),

Gene: Barco_68 Start: 43101, Stop: 43886, Start Num: 44

Candidate Starts for Barco_68:

(Start: 44 @43101 has 112 MA's), (47, 43146), (52, 43176), (55, 43203), (83, 43326), (88, 43395), (143, 43830),

Gene: Batiatus_74 Start: 46887, Stop: 47738, Start Num: 44

Candidate Starts for Batiatus_74:

(Start: 44 @46887 has 112 MA's), (45, 46902), (47, 46932), (Start: 48 @46935 has 1 MA's), (52, 46974), (60, 47040), (82, 47190), (92, 47304), (96, 47322), (101, 47337), (102, 47340), (103, 47343), (114, 47376), (119, 47430), (126, 47541), (131, 47652), (138, 47724),

Gene: Belphegor_52 Start: 45051, Stop: 45884, Start Num: 44

Candidate Starts for Belphegor_52:

(10, 44676), (17, 44853), (Start: 44 @45051 has 112 MA's), (47, 45096), (51, 45111), (69, 45222), (72, 45231), (77, 45246), (80, 45255), (82, 45282), (84, 45303), (109, 45450), (118, 45507),

Gene: Bibwit_55 Start: 44359, Stop: 45243, Start Num: 41

Candidate Starts for Bibwit_55:

(37, 44347), (Start: 41 @44359 has 3 MA's), (46, 44395), (63, 44515), (66, 44530), (78, 44560), (85, 44632), (95, 44719), (105, 44743), (124, 44905), (127, 44974), (131, 45055), (133, 45091),

Gene: BigPhil_68 Start: 42702, Stop: 43418, Start Num: 42

Candidate Starts for BigPhil_68:

(Start: 42 @42702 has 1 MA's), (Start: 44 @42705 has 112 MA's), (52, 42780), (55, 42807), (56, 42816), (58, 42831), (65, 42846), (71, 42867), (73, 42873), (87, 42975), (91, 43005), (98, 43047), (102, 43059), (108, 43071), (119, 43131), (128, 43275), (134, 43374), (136, 43401),

Gene: Bipolar_78 Start: 48531, Stop: 49382, Start Num: 44

Candidate Starts for Bipolar_78:

(Start: 44 @48531 has 112 MA's), (45, 48546), (47, 48576), (Start: 48 @48579 has 1 MA's), (52, 48618), (60, 48684), (82, 48834), (92, 48948), (96, 48966), (101, 48981), (102, 48984), (103, 48987), (114, 49020), (119, 49074), (126, 49185), (131, 49296),

Gene: Bizzy_54 Start: 44167, Stop: 45060, Start Num: 44

Candidate Starts for Bizzy_54:

(9, 43777), (Start: 44 @44167 has 112 MA's), (51, 44227), (53, 44248), (66, 44332), (69, 44338), (77, 44362), (80, 44371), (82, 44398), (84, 44419), (99, 44542), (113, 44581), (124, 44722), (127, 44791), (131, 44872), (133, 44908),

Gene: BlingBling_67 Start: 43983, Stop: 44768, Start Num: 44

Candidate Starts for BlingBling_67:

(Start: 44 @43983 has 112 MA's), (47, 44028), (52, 44058), (55, 44085), (83, 44208), (88, 44277), (143, 44712),

Gene: Bobi_82 Start: 49186, Stop: 50037, Start Num: 44

Candidate Starts for Bobi_82:

(Start: 44 @49186 has 112 MA's), (45, 49201), (47, 49231), (Start: 48 @49234 has 1 MA's), (52, 49273), (58, 49324), (60, 49339), (82, 49489), (92, 49603), (96, 49621), (101, 49636), (102, 49639), (103, 49642), (114, 49675), (119, 49729), (126, 49840), (131, 49951), (138, 50023),

Gene: BritBrat_87 Start: 50794, Stop: 51558, Start Num: 44

Candidate Starts for BritBrat_87:

(21, 50614), (22, 50620), (24, 50629), (Start: 44 @50794 has 112 MA's), (45, 50809), (61, 50941), (72, 50971), (74, 50974), (79, 50992), (85, 51055), (100, 51160), (104, 51172), (108, 51184), (131, 51445), (139, 51511),

Gene: Cerasum_68 Start: 42723, Stop: 43436, Start Num: 44

Candidate Starts for Cerasum_68:

(Start: 42 @42720 has 1 MA's), (Start: 44 @42723 has 112 MA's), (52, 42798), (55, 42825), (56, 42834), (58, 42849), (65, 42864), (71, 42885), (73, 42891), (87, 42993), (91, 43023), (98, 43065), (102, 43077), (108, 43089), (119, 43149), (128, 43293), (134, 43392), (136, 43419),

Gene: Coco12_71 Start: 46780, Stop: 47493, Start Num: 44

Candidate Starts for Coco12_71:

(Start: 42 @46777 has 1 MA's), (Start: 44 @46780 has 112 MA's), (52, 46855), (55, 46882), (56, 46891), (58, 46906), (65, 46921), (71, 46942), (73, 46948), (87, 47050), (91, 47080), (98, 47122), (102, 47134), (108, 47146), (119, 47206), (128, 47350), (134, 47449), (136, 47476),

Gene: Crater_88 Start: 47800, Stop: 48561, Start Num: 44

Candidate Starts for Crater_88:

(Start: 44 @47800 has 112 MA's), (45, 47815), (52, 47875), (55, 47902), (62, 47950), (88, 48094), (112, 48187), (129, 48388), (140, 48511),

Gene: DLane_72 Start: 46465, Stop: 47316, Start Num: 44

Candidate Starts for DLane_72:

(Start: 44 @46465 has 112 MA's), (45, 46480), (47, 46510), (Start: 48 @46513 has 1 MA's), (52, 46552), (58, 46603), (60, 46618), (82, 46768), (92, 46882), (96, 46900), (101, 46915), (102, 46918), (103, 46921), (114, 46954), (119, 47008), (126, 47119), (131, 47230), (138, 47302),

Gene: DaddyRickover_79 Start: 48497, Stop: 49348, Start Num: 44

Candidate Starts for DaddyRickover_79:

(Start: 44 @48497 has 112 MA's), (45, 48512), (47, 48542), (Start: 48 @48545 has 1 MA's), (52, 48584), (58, 48635), (60, 48650), (82, 48800), (92, 48914), (96, 48932), (101, 48947), (102, 48950), (103, 48953), (114, 48986), (119, 49040), (126, 49151), (131, 49262),

Gene: Daenerys_75 Start: 48094, Stop: 48945, Start Num: 44

Candidate Starts for Daenerys_75:

(Start: 44 @48094 has 112 MA's), (45, 48109), (47, 48139), (Start: 48 @48142 has 1 MA's), (52, 48181), (58, 48232), (60, 48247), (82, 48397), (92, 48511), (96, 48529), (101, 48544), (102, 48547), (103, 48550), (114, 48583), (119, 48637), (126, 48748), (131, 48859),

Gene: DeadP_76 Start: 45713, Stop: 46564, Start Num: 44

Candidate Starts for DeadP_76:

(Start: 44 @45713 has 112 MA's), (45, 45728), (47, 45758), (Start: 48 @45761 has 1 MA's), (52, 45800), (60, 45866), (82, 46016), (92, 46130), (96, 46148), (101, 46163), (102, 46166), (103, 46169), (114, 46202), (119, 46256), (126, 46367), (131, 46478),

Gene: Deb65_69 Start: 45816, Stop: 46667, Start Num: 44

Candidate Starts for Deb65_69:

(Start: 44 @45816 has 112 MA's), (45, 45831), (47, 45861), (Start: 48 @45864 has 1 MA's), (52, 45903), (58, 45954), (60, 45969), (82, 46119), (92, 46233), (96, 46251), (101, 46266), (102, 46269), (103, 46272), (114, 46305), (119, 46359), (126, 46470), (131, 46581),

Gene: Delrey21_56 Start: 46577, Stop: 47413, Start Num: 44

Candidate Starts for Delrey21_56:

(Start: 44 @46577 has 112 MA's), (51, 46637), (58, 46703), (77, 46772), (99, 46952), (104, 46964), (109, 46976),

Gene: Derg_51 Start: 43759, Stop: 44652, Start Num: 44

Candidate Starts for Derg_51:

(9, 43369), (Start: 44 @43759 has 112 MA's), (51, 43819), (53, 43840), (66, 43924), (69, 43930), (77, 43954), (80, 43963), (82, 43990), (84, 44011), (99, 44134), (113, 44173), (124, 44314), (127, 44383), (131, 44464), (133, 44500),

Gene: DillTech15_76 Start: 45410, Stop: 46261, Start Num: 44

Candidate Starts for DillTech15_76:

(Start: 44 @45410 has 112 MA's), (45, 45425), (47, 45455), (Start: 48 @45458 has 1 MA's), (52, 45497), (58, 45548), (60, 45563), (82, 45713), (92, 45827), (96, 45845), (101, 45860), (102, 45863), (103, 45866), (114, 45899), (119, 45953), (126, 46064), (131, 46175),

Gene: DoctorFroggo_56 Start: 46577, Stop: 47413, Start Num: 44

Candidate Starts for DoctorFroggo_56:

(Start: 44 @46577 has 112 MA's), (51, 46637), (58, 46703), (77, 46772), (99, 46952), (104, 46964), (109, 46976),

Gene: Doomphist_79 Start: 47907, Stop: 48758, Start Num: 44

Candidate Starts for Doomphist_79:

(Start: 44 @47907 has 112 MA's), (45, 47922), (47, 47952), (Start: 48 @47955 has 1 MA's), (52, 47994), (58, 48045), (60, 48060), (82, 48210), (92, 48324), (96, 48342), (101, 48357), (102, 48360), (103, 48363), (114, 48396), (119, 48450), (126, 48561), (131, 48672),

Gene: Dorothy_77 Start: 48545, Stop: 49396, Start Num: 44

Candidate Starts for Dorothy_77:

(Start: 44 @48545 has 112 MA's), (45, 48560), (47, 48590), (Start: 48 @48593 has 1 MA's), (52, 48632), (58, 48683), (60, 48698), (82, 48848), (92, 48962), (96, 48980), (101, 48995), (102, 48998), (103, 49001), (114, 49034), (119, 49088), (126, 49199), (131, 49310),

Gene: DumpsterDude_67 Start: 49217, Stop: 50014, Start Num: 44

Candidate Starts for DumpsterDude_67:

(Start: 44 @49217 has 112 MA's), (53, 49298), (56, 49328), (59, 49355), (62, 49367), (74, 49397), (85, 49478), (97, 49574), (100, 49583), (108, 49595),

Gene: EMoore_50 Start: 44399, Stop: 45250, Start Num: 44

Candidate Starts for EMoore_50:

(10, 44021), (17, 44198), (Start: 44 @44399 has 112 MA's), (52, 44474), (64, 44549), (81, 44603), (82, 44618), (102, 44786),

Gene: Ecliptus_95 Start: 50999, Stop: 51760, Start Num: 44

Candidate Starts for Ecliptus_95:

(Start: 44 @50999 has 112 MA's), (45, 51014), (52, 51074), (55, 51101), (62, 51149), (88, 51293), (112, 51386), (129, 51587), (140, 51710),

Gene: EleanorGeorge_77 Start: 47500, Stop: 48351, Start Num: 44

Candidate Starts for EleanorGeorge_77:

(Start: 44 @47500 has 112 MA's), (45, 47515), (47, 47545), (Start: 48 @47548 has 1 MA's), (52, 47587), (58, 47638), (60, 47653), (82, 47803), (92, 47917), (96, 47935), (101, 47950), (102, 47953), (103, 47956), (114, 47989), (119, 48043), (126, 48154), (131, 48265),

Gene: Empress_74 Start: 46718, Stop: 47569, Start Num: 44

Candidate Starts for Empress_74:

(Start: 44 @46718 has 112 MA's), (45, 46733), (47, 46763), (Start: 48 @46766 has 1 MA's), (52, 46805), (58, 46856), (60, 46871), (82, 47021), (92, 47135), (96, 47153), (101, 47168), (102, 47171), (103, 47174), (114, 47207), (119, 47261), (126, 47372), (131, 47483),

Gene: Fastidio_69 Start: 42216, Stop: 43067, Start Num: 44

Candidate Starts for Fastidio_69:

(Start: 44 @42216 has 112 MA's), (45, 42231), (47, 42261), (Start: 48 @42264 has 1 MA's), (52, 42303), (58, 42354), (60, 42369), (82, 42519), (92, 42633), (96, 42651), (101, 42666), (102, 42669), (103, 42672), (114, 42705), (119, 42759), (126, 42870), (131, 42981),

Gene: Fenry_70 Start: 44774, Stop: 45559, Start Num: 44

Candidate Starts for Fenry_70:

(Start: 44 @44774 has 112 MA's), (47, 44819), (52, 44849), (55, 44876), (83, 44999), (88, 45068), (143, 45503),

Gene: Filuzino_76 Start: 48444, Stop: 49295, Start Num: 44

Candidate Starts for Filuzino_76:

(Start: 44 @48444 has 112 MA's), (45, 48459), (47, 48489), (Start: 48 @48492 has 1 MA's), (52, 48531), (58, 48582), (60, 48597), (82, 48747), (92, 48861), (96, 48879), (101, 48894), (102, 48897), (103, 48900), (114, 48933), (119, 48987), (126, 49098), (131, 49209),

Gene: Finkle_63 Start: 39287, Stop: 40303, Start Num: 44

Candidate Starts for Finkle_63:

(26, 39143), (Start: 44 @39287 has 112 MA's), (Start: 48 @39335 has 1 MA's), (59, 39437), (87, 39656), (89, 39680), (107, 39764), (110, 39776), (115, 39800), (116, 39842), (120, 39863), (145, 40274),

Gene: Flathead_74 Start: 46158, Stop: 47009, Start Num: 44

Candidate Starts for Flathead_74:

(Start: 44 @46158 has 112 MA's), (45, 46173), (47, 46203), (Start: 48 @46206 has 1 MA's), (52, 46245), (58, 46296), (60, 46311), (82, 46461), (92, 46575), (96, 46593), (101, 46608), (102, 46611), (103, 46614), (114, 46647), (119, 46701), (126, 46812), (131, 46923),

Gene: Flatwoods_54 Start: 44108, Stop: 44998, Start Num: 44

Candidate Starts for Flatwoods_54:

(9, 43718), (Start: 44 @44108 has 112 MA's), (51, 44168), (53, 44189), (66, 44273), (69, 44279), (77, 44303), (80, 44312), (82, 44339), (84, 44360), (99, 44483), (113, 44522), (124, 44663), (127, 44732), (131, 44813), (133, 44849),

Gene: Florinda_87 Start: 49360, Stop: 50211, Start Num: 44

Candidate Starts for Florinda_87:

(Start: 44 @49360 has 112 MA's), (45, 49375), (47, 49405), (Start: 48 @49408 has 1 MA's), (52, 49447), (58, 49498), (60, 49513), (82, 49663), (92, 49777), (96, 49795), (101, 49810), (102, 49813), (103, 49816), (114, 49849), (119, 49903), (126, 50014), (131, 50125),

Gene: Fruitloop_67 Start: 44726, Stop: 45490, Start Num: 48

Candidate Starts for Fruitloop_67:

(Start: 44 @44678 has 112 MA's), (45, 44693), (47, 44723), (Start: 48 @44726 has 1 MA's), (52, 44765), (60, 44831), (67, 44858), (75, 44894), (96, 45074), (101, 45089), (103, 45095), (107, 45101), (108, 45107), (111, 45122), (119, 45182), (126, 45293), (131, 45404),

Gene: GMA1_64 Start: 38118, Stop: 38942, Start Num: 38

Candidate Starts for GMA1_64:

(38, 38118), (40, 38124), (Start: 44 @38133 has 112 MA's), (51, 38193), (53, 38214), (57, 38256), (69, 38304), (93, 38499), (123, 38673), (137, 38859), (141, 38880),

Gene: Gaea_55 Start: 44145, Stop: 45029, Start Num: 41

Candidate Starts for Gaea_55:

(37, 44133), (Start: 41 @44145 has 3 MA's), (46, 44181), (63, 44301), (66, 44316), (78, 44346), (85, 44418), (95, 44505), (105, 44529), (127, 44760), (131, 44841), (133, 44877),

Gene: Geralt_69 Start: 45814, Stop: 46665, Start Num: 44

Candidate Starts for Geralt_69:

(Start: 44 @45814 has 112 MA's), (45, 45829), (47, 45859), (Start: 48 @45862 has 1 MA's), (52, 45901), (58, 45952), (60, 45967), (82, 46117), (92, 46231), (96, 46249), (101, 46264), (102, 46267), (103, 46270), (114, 46303), (119, 46357), (126, 46468), (131, 46579),

Gene: Girafales_84 Start: 48965, Stop: 49816, Start Num: 44

Candidate Starts for Girafales_84:

(Start: 44 @48965 has 112 MA's), (45, 48980), (47, 49010), (Start: 48 @49013 has 1 MA's), (52, 49052), (58, 49103), (60, 49118), (82, 49268), (92, 49382), (96, 49400), (101, 49415), (102, 49418), (103, 49421), (114, 49454), (119, 49508), (126, 49619), (131, 49730),

Gene: Guppsters_69 Start: 44386, Stop: 45099, Start Num: 44

Candidate Starts for Guppsters_69:

(Start: 44 @44386 has 112 MA's), (52, 44461), (55, 44488), (56, 44497), (58, 44512), (65, 44527), (71, 44548), (73, 44554), (87, 44656), (91, 44686), (98, 44728), (102, 44740), (108, 44752), (119, 44812), (134, 45055), (136, 45082),

Gene: Gustavo_54 Start: 44390, Stop: 45280, Start Num: 44

Candidate Starts for Gustavo_54:

(9, 44000), (13, 44093), (Start: 44 @44390 has 112 MA's), (51, 44450), (53, 44471), (66, 44555), (69, 44561), (77, 44585), (80, 44594), (82, 44621), (84, 44642), (99, 44765), (113, 44804), (127, 45014), (131, 45095), (133, 45131),

Gene: Hamulus_75 Start: 46843, Stop: 47694, Start Num: 44

Candidate Starts for Hamulus_75:

(Start: 44 @46843 has 112 MA's), (45, 46858), (47, 46888), (Start: 48 @46891 has 1 MA's), (52, 46930), (58, 46981), (60, 46996), (82, 47146), (92, 47260), (96, 47278), (101, 47293), (102, 47296), (103, 47299), (114, 47332), (119, 47386), (126, 47497), (131, 47608),

Gene: Hans_54 Start: 43864, Stop: 44715, Start Num: 44

Candidate Starts for Hans_54:

(Start: 44 @43864 has 112 MA's), (52, 43939), (53, 43945), (64, 44014), (82, 44083), (102, 44251), (144, 44647),

Gene: Harley_74 Start: 46048, Stop: 46899, Start Num: 44

Candidate Starts for Harley_74:

(Start: 44 @46048 has 112 MA's), (45, 46063), (47, 46093), (Start: 48 @46096 has 1 MA's), (52, 46135), (58, 46186), (60, 46201), (82, 46351), (92, 46465), (96, 46483), (101, 46498), (102, 46501), (103, 46504), (114, 46537), (119, 46591), (126, 46702), (131, 46813),

Gene: Hlubikazi_70 Start: 44428, Stop: 45279, Start Num: 44

Candidate Starts for Hlubikazi_70:

(Start: 44 @44428 has 112 MA's), (45, 44443), (47, 44473), (Start: 48 @44476 has 1 MA's), (52, 44515), (58, 44566), (60, 44581), (82, 44731), (92, 44845), (96, 44863), (101, 44878), (102, 44881), (103, 44884), (114, 44917), (119, 44971), (126, 45082), (131, 45193), (138, 45265),

Gene: IMpilo_65 Start: 42573, Stop: 43424, Start Num: 44

Candidate Starts for IMpilo_65:

(Start: 44 @42573 has 112 MA's), (45, 42588), (47, 42618), (Start: 48 @42621 has 1 MA's), (52, 42660), (58, 42711), (60, 42726), (82, 42876), (92, 42990), (96, 43008), (101, 43023), (102, 43026), (103, 43029), (114, 43062), (119, 43116), (126, 43227), (131, 43338), (138, 43410),

Gene: Inspectinfecti_53 Start: 44310, Stop: 45161, Start Num: 44

Candidate Starts for Inspectinfecti_53:

(Start: 44 @44310 has 112 MA's), (52, 44385), (53, 44391), (64, 44460), (81, 44514), (82, 44529), (102, 44697),

Gene: Inventum_74 Start: 46730, Stop: 47581, Start Num: 44

Candidate Starts for Inventum_74:

(Start: 44 @46730 has 112 MA's), (45, 46745), (47, 46775), (Start: 48 @46778 has 1 MA's), (52, 46817), (58, 46868), (60, 46883), (82, 47033), (92, 47147), (96, 47165), (101, 47180), (102, 47183), (103, 47186), (114, 47219), (119, 47273), (126, 47384), (131, 47495),

Gene: JKSyngboy_52 Start: 44983, Stop: 45873, Start Num: 44

Candidate Starts for JKSyngboy_52:

(9, 44593), (Start: 44 @44983 has 112 MA's), (51, 45043), (53, 45064), (66, 45148), (69, 45154), (72, 45163), (77, 45178), (80, 45187), (82, 45214), (84, 45235), (99, 45358), (113, 45397), (127, 45607), (131, 45688), (133, 45724),

Gene: JalFarm20_83 Start: 47508, Stop: 48359, Start Num: 44

Candidate Starts for JalFarm20_83:

(Start: 44 @47508 has 112 MA's), (45, 47523), (47, 47553), (Start: 48 @47556 has 1 MA's), (52, 47595), (58, 47646), (60, 47661), (82, 47811), (92, 47925), (96, 47943), (101, 47958), (102, 47961), (103, 47964), (114, 47997), (119, 48051), (126, 48162), (131, 48273),

Gene: JoeyJr_76 Start: 47719, Stop: 48570, Start Num: 44

Candidate Starts for JoeyJr_76:

(Start: 44 @47719 has 112 MA's), (45, 47734), (47, 47764), (Start: 48 @47767 has 1 MA's), (52, 47806), (58, 47857), (60, 47872), (82, 48022), (92, 48136), (96, 48154), (101, 48169), (102, 48172), (103, 48175), (114, 48208), (119, 48262), (126, 48373), (131, 48484),

Gene: Juice456_71 Start: 45464, Stop: 46315, Start Num: 44

Candidate Starts for Juice456_71:

(Start: 44 @45464 has 112 MA's), (45, 45479), (47, 45509), (Start: 48 @45512 has 1 MA's), (52, 45551), (58, 45602), (60, 45617), (82, 45767), (92, 45881), (96, 45899), (101, 45914), (102, 45917), (103, 45920), (114, 45953), (119, 46007), (126, 46118), (131, 46229),

Gene: KingMidas_75 Start: 47133, Stop: 47984, Start Num: 44

Candidate Starts for KingMidas_75:

(Start: 44 @47133 has 112 MA's), (45, 47148), (47, 47178), (Start: 48 @47181 has 1 MA's), (52, 47220), (58, 47271), (60, 47286), (82, 47436), (92, 47550), (96, 47568), (101, 47583), (102, 47586), (103, 47589), (114, 47622), (119, 47676), (126, 47787), (131, 47898),

Gene: Kingsley_78 Start: 48970, Stop: 49821, Start Num: 44

Candidate Starts for Kingsley_78:

(Start: 44 @48970 has 112 MA's), (45, 48985), (47, 49015), (Start: 48 @49018 has 1 MA's), (52, 49057), (60, 49123), (82, 49273), (92, 49387), (96, 49405), (101, 49420), (102, 49423), (103, 49426), (114, 49459), (119, 49513), (126, 49624), (131, 49735),

Gene: KristaRAM_73 Start: 45833, Stop: 46684, Start Num: 44

Candidate Starts for KristaRAM_73:

(Start: 44 @45833 has 112 MA's), (45, 45848), (47, 45878), (Start: 48 @45881 has 1 MA's), (52, 45920), (58, 45971), (60, 45986), (82, 46136), (92, 46250), (96, 46268), (101, 46283), (102, 46286), (103, 46289), (114, 46322), (119, 46376), (126, 46487), (131, 46598),

Gene: Kroos_54 Start: 44667, Stop: 45560, Start Num: 44

Candidate Starts for Kroos_54:

(9, 44277), (Start: 44 @44667 has 112 MA's), (51, 44727), (53, 44748), (56, 44778), (66, 44832), (69, 44838), (72, 44847), (77, 44862), (80, 44871), (82, 44898), (84, 44919), (99, 45042), (113, 45081), (127, 45291), (131, 45372), (133, 45408),

Gene: Kwobi_55 Start: 45093, Stop: 45986, Start Num: 44

Candidate Starts for Kwobi_55:

(9, 44703), (Start: 44 @45093 has 112 MA's), (51, 45153), (53, 45174), (56, 45204), (66, 45258), (69, 45264), (72, 45273), (77, 45288), (80, 45297), (82, 45324), (84, 45345), (99, 45468), (113, 45507), (127, 45717), (131, 45798), (133, 45834),

Gene: Leonard_52 Start: 43949, Stop: 44800, Start Num: 44

Candidate Starts for Leonard_52:

(Start: 44 @43949 has 112 MA's), (52, 44024), (53, 44030), (64, 44099), (81, 44153), (82, 44168), (102, 44336),

Gene: Leperchaun_74 Start: 46953, Stop: 47804, Start Num: 44

Candidate Starts for Leperchaun_74:

(Start: 44 @46953 has 112 MA's), (45, 46968), (47, 46998), (Start: 48 @47001 has 1 MA's), (52, 47040), (58, 47091), (60, 47106), (82, 47256), (92, 47370), (96, 47388), (101, 47403), (102, 47406), (103, 47409), (114, 47442), (119, 47496), (126, 47607), (131, 47718),

Gene: LittleShirley_75 Start: 45889, Stop: 46740, Start Num: 44

Candidate Starts for LittleShirley_75:

(Start: 44 @45889 has 112 MA's), (45, 45904), (47, 45934), (Start: 48 @45937 has 1 MA's), (52, 45976), (58, 46027), (60, 46042), (82, 46192), (92, 46306), (96, 46324), (101, 46339), (102, 46342), (103, 46345), (114, 46378), (119, 46432), (126, 46543), (131, 46654),

Gene: Lysidious_73 Start: 45614, Stop: 46399, Start Num: 44

Candidate Starts for Lysidious_73:

(Start: 44 @45614 has 112 MA's), (47, 45659), (52, 45689), (55, 45716), (83, 45839), (88, 45908), (90, 45917), (135, 46298), (143, 46343),

Gene: MadMen_72 Start: 45229, Stop: 46047, Start Num: 44

Candidate Starts for MadMen_72:

(15, 44971), (19, 45040), (27, 45088), (34, 45160), (35, 45166), (36, 45184), (Start: 44 @45229 has 112 MA's), (45, 45244), (47, 45274), (Start: 48 @45277 has 1 MA's), (52, 45316), (58, 45367), (60, 45382), (82, 45532), (92, 45646), (94, 45661), (96, 45664), (101, 45679), (102, 45682), (103, 45685), (114, 45718), (119, 45772), (130, 45946), (132, 45985), (140, 46042),

Gene: Malibo_71 Start: 46632, Stop: 47426, Start Num: 44

Candidate Starts for Malibo_71:

(2, 46107), (7, 46173), (11, 46257), (31, 46542), (Start: 44 @46632 has 112 MA's), (52, 46707), (53, 46713), (56, 46743), (59, 46770), (62, 46782), (72, 46809), (74, 46812), (85, 46893), (97, 46989), (100, 46998), (108, 47010),

Gene: Mandlovu_70 Start: 44370, Stop: 45221, Start Num: 44

Candidate Starts for Mandlovu_70:

(Start: 44 @44370 has 112 MA's), (45, 44385), (47, 44415), (Start: 48 @44418 has 1 MA's), (52, 44457), (58, 44508), (60, 44523), (82, 44673), (92, 44787), (96, 44805), (101, 44820), (102, 44823), (103, 44826), (114, 44859), (119, 44913), (126, 45024), (131, 45135), (138, 45207),

Gene: Melba_70 Start: 42725, Stop: 43543, Start Num: 44

Candidate Starts for Melba_70:

(18, 42542), (30, 42635), (31, 42641), (32, 42644), (33, 42650), (Start: 44 @42725 has 112 MA's), (52, 42800), (56, 42836), (74, 42905), (85, 42986), (97, 43082), (100, 43091), (104, 43103), (108, 43115),

Gene: Melissauren88_69 Start: 43991, Stop: 44842, Start Num: 44

Candidate Starts for Melissauren88_69:

(20, 43808), (21, 43811), (34, 43922), (35, 43928), (36, 43946), (Start: 44 @43991 has 112 MA's), (45, 44006), (47, 44036), (Start: 48 @44039 has 1 MA's), (52, 44078), (58, 44129), (60, 44144), (82, 44294), (92, 44408), (96, 44426), (101, 44441), (102, 44444), (103, 44447), (114, 44480), (119, 44534), (126, 44645), (131, 44756),

Gene: MilanaBonita_68 Start: 45149, Stop: 46000, Start Num: 44

Candidate Starts for MilanaBonita_68:

(Start: 44 @45149 has 112 MA's), (45, 45164), (47, 45194), (Start: 48 @45197 has 1 MA's), (52, 45236), (58, 45287), (60, 45302), (82, 45452), (92, 45566), (96, 45584), (101, 45599), (102, 45602), (103, 45605), (114, 45638), (119, 45692), (126, 45803), (131, 45914),

Gene: Minnie_72 Start: 48329, Stop: 49180, Start Num: 44

Candidate Starts for Minnie_72:

(Start: 44 @48329 has 112 MA's), (45, 48344), (47, 48374), (Start: 48 @48377 has 1 MA's), (52, 48416), (58, 48467), (60, 48482), (82, 48632), (92, 48746), (96, 48764), (101, 48779), (102, 48782), (103, 48785), (114, 48818), (119, 48872), (126, 48983), (131, 49094),

Gene: Moosehead_68 Start: 38475, Stop: 39236, Start Num: 44

Candidate Starts for Moosehead_68:

(39, 38460), (43, 38472), (Start: 44 @38475 has 112 MA's), (52, 38550), (55, 38577), (62, 38625), (83, 38700), (88, 38769), (112, 38862), (125, 39012), (142, 39204),

Gene: Mozy_81 Start: 46079, Stop: 46891, Start Num: 44

Candidate Starts for Mozy_81:

(28, 45959), (29, 45977), (35, 46016), (36, 46034), (Start: 44 @46079 has 112 MA's), (45, 46094), (47, 46124), (Start: 48 @46127 has 1 MA's), (52, 46166), (60, 46232), (67, 46259), (75, 46295), (96, 46475), (103, 46496), (107, 46502), (108, 46508), (111, 46523), (119, 46583), (126, 46694), (131, 46805),

Gene: Ms6_73 Start: 42712, Stop: 43563, Start Num: 44

Candidate Starts for Ms6_73:

(Start: 44 @42712 has 112 MA's), (45, 42727), (47, 42757), (Start: 48 @42760 has 1 MA's), (52, 42799), (60, 42865), (82, 43015), (92, 43129), (96, 43147), (101, 43162), (102, 43165), (103, 43168), (114, 43201), (119, 43255), (126, 43366), (131, 43477),

Gene: Murp_68 Start: 45979, Stop: 46797, Start Num: 44

Candidate Starts for Murp_68:

(30, 45889), (31, 45895), (32, 45898), (33, 45904), (Start: 44 @45979 has 112 MA's), (52, 46054), (56, 46090), (74, 46159), (85, 46240), (97, 46336), (100, 46345), (104, 46357), (108, 46369), (143, 46741),

Gene: Nimbo_68 Start: 45817, Stop: 46668, Start Num: 44

Candidate Starts for Nimbo_68:

(Start: 44 @45817 has 112 MA's), (45, 45832), (47, 45862), (Start: 48 @45865 has 1 MA's), (52, 45904), (58, 45955), (60, 45970), (82, 46120), (92, 46234), (96, 46252), (101, 46267), (102, 46270), (103, 46273), (114, 46306), (119, 46360), (126, 46471), (131, 46582),

Gene: Ogotogo_80 Start: 46334, Stop: 47185, Start Num: 44

Candidate Starts for Ogotogo_80:

(Start: 44 @46334 has 112 MA's), (45, 46349), (47, 46379), (Start: 48 @46382 has 1 MA's), (52, 46421), (60, 46487), (82, 46637), (92, 46751), (96, 46769), (101, 46784), (102, 46787), (103, 46790), (114, 46823), (119, 46877), (126, 46988), (131, 47099),

Gene: OldBen_73 Start: 47209, Stop: 48060, Start Num: 44

Candidate Starts for OldBen_73:

(Start: 44 @47209 has 112 MA's), (45, 47224), (47, 47254), (Start: 48 @47257 has 1 MA's), (52, 47296), (58, 47347), (60, 47362), (82, 47512), (92, 47626), (96, 47644), (101, 47659), (102, 47662), (103, 47665), (114, 47698), (119, 47752), (126, 47863), (131, 47974),

Gene: PHappiness_76 Start: 48038, Stop: 48889, Start Num: 44

Candidate Starts for PHappiness_76:

(Start: 44 @48038 has 112 MA's), (45, 48053), (47, 48083), (Start: 48 @48086 has 1 MA's), (52, 48125), (58, 48176), (60, 48191), (82, 48341), (92, 48455), (96, 48473), (101, 48488), (102, 48491), (103, 48494), (114, 48527), (119, 48581), (126, 48692), (131, 48803),

Gene: Petra_75 Start: 45325, Stop: 46110, Start Num: 44

Candidate Starts for Petra_75:

(Start: 44 @45325 has 112 MA's), (47, 45370), (52, 45400), (55, 45427), (83, 45550), (88, 45619), (143, 46057),

Gene: Phalconet_72 Start: 45686, Stop: 46537, Start Num: 44

Candidate Starts for Phalconet_72:

(Start: 44 @45686 has 112 MA's), (45, 45701), (47, 45731), (Start: 48 @45734 has 1 MA's), (52, 45773), (58, 45824), (60, 45839), (82, 45989), (92, 46103), (96, 46121), (101, 46136), (102, 46139), (103, 46142), (114, 46175), (119, 46229), (126, 46340), (131, 46451), (138, 46523),

Gene: Phanphagia_73 Start: 46766, Stop: 47617, Start Num: 44

Candidate Starts for Phanphagia_73:

(Start: 44 @46766 has 112 MA's), (45, 46781), (47, 46811), (Start: 48 @46814 has 1 MA's), (52, 46853), (60, 46919), (82, 47069), (92, 47183), (96, 47201), (101, 47216), (102, 47219), (103, 47222), (114, 47255), (119, 47309), (126, 47420), (131, 47531),

Gene: PhesterPhotato_78 Start: 46854, Stop: 47705, Start Num: 44

Candidate Starts for PhesterPhotato_78:

(Start: 44 @46854 has 112 MA's), (45, 46869), (47, 46899), (Start: 48 @46902 has 1 MA's), (52, 46941), (58, 46992), (60, 47007), (82, 47157), (92, 47271), (96, 47289), (101, 47304), (102, 47307), (103, 47310), (114, 47343), (119, 47397), (126, 47508), (131, 47619), (138, 47691),

Gene: Phinally_52 Start: 43946, Stop: 44797, Start Num: 44

Candidate Starts for Phinally_52:

(Start: 44 @43946 has 112 MA's), (52, 44021), (53, 44027), (64, 44096), (81, 44150), (82, 44165), (102, 44333),

Gene: Phistory_86 Start: 47064, Stop: 47825, Start Num: 44

Candidate Starts for Phistory_86:

(Start: 44 @47064 has 112 MA's), (45, 47079), (52, 47139), (55, 47166), (62, 47214), (88, 47358), (112, 47451), (129, 47652), (140, 47775),

Gene: PhrostedPhlake_77 Start: 45573, Stop: 46358, Start Num: 44

Candidate Starts for PhrostedPhlake_77:

(Start: 44 @45573 has 112 MA's), (47, 45618), (52, 45648), (55, 45675), (83, 45798), (88, 45867), (135, 46257), (143, 46302),

Gene: Poenanya_79 Start: 47907, Stop: 48758, Start Num: 44

Candidate Starts for Poenanya_79:

(Start: 44 @47907 has 112 MA's), (45, 47922), (47, 47952), (Start: 48 @47955 has 1 MA's), (52, 47994), (58, 48045), (60, 48060), (82, 48210), (92, 48324), (96, 48342), (101, 48357), (102, 48360), (103, 48363), (114, 48396), (119, 48450), (126, 48561), (131, 48672),

Gene: Polka14_80 Start: 48697, Stop: 49548, Start Num: 44

Candidate Starts for Polka14_80:

(Start: 44 @48697 has 112 MA's), (45, 48712), (47, 48742), (Start: 48 @48745 has 1 MA's), (52, 48784), (58, 48835), (60, 48850), (82, 49000), (92, 49114), (96, 49132), (101, 49147), (102, 49150), (103, 49153), (114, 49186), (119, 49240), (126, 49351), (131, 49462),

Gene: PopTart_65 Start: 43552, Stop: 44403, Start Num: 44

Candidate Starts for PopTart_65:

(Start: 44 @43552 has 112 MA's), (45, 43567), (47, 43597), (Start: 48 @43600 has 1 MA's), (52, 43639), (58, 43690), (60, 43705), (82, 43855), (92, 43969), (96, 43987), (101, 44002), (102, 44005), (103, 44008), (114, 44041), (119, 44095), (126, 44206), (131, 44317),

Gene: Quico_84 Start: 49180, Stop: 50031, Start Num: 44

Candidate Starts for Quico_84:

(Start: 44 @49180 has 112 MA's), (45, 49195), (47, 49225), (Start: 48 @49228 has 1 MA's), (52, 49267), (58, 49318), (60, 49333), (82, 49483), (92, 49597), (96, 49615), (101, 49630), (102, 49633), (103, 49636), (114, 49669), (119, 49723), (126, 49834), (131, 49945),

Gene: RedBird_77 Start: 48412, Stop: 49263, Start Num: 44

Candidate Starts for RedBird_77:

(Start: 44 @48412 has 112 MA's), (45, 48427), (47, 48457), (Start: 48 @48460 has 1 MA's), (52, 48499), (58, 48550), (60, 48565), (82, 48715), (92, 48829), (96, 48847), (101, 48862), (102, 48865), (103, 48868), (114, 48901), (119, 48955), (126, 49066), (131, 49177),

Gene: Rem711_66 Start: 42013, Stop: 42843, Start Num: 44

Candidate Starts for Rem711_66:

(Start: 44 @42013 has 112 MA's), (Start: 48 @42061 has 1 MA's), (50, 42094), (53, 42121), (68, 42211), (70, 42223), (76, 42238), (82, 42277), (93, 42385), (96, 42406), (111, 42454), (117, 42499), (121, 42517),

Gene: Ribeye_54 Start: 45091, Stop: 45984, Start Num: 44

Candidate Starts for Ribeye_54:

(9, 44701), (13, 44794), (Start: 44 @45091 has 112 MA's), (51, 45151), (53, 45172), (66, 45256), (69, 45262), (77, 45286), (80, 45295), (82, 45322), (84, 45343), (99, 45466), (113, 45505), (124, 45646),

(127, 45715), (131, 45796), (133, 45832),

Gene: RitaG_76 Start: 47840, Stop: 48691, Start Num: 44

Candidate Starts for RitaG_76:

(Start: 44 @47840 has 112 MA's), (45, 47855), (47, 47885), (Start: 48 @47888 has 1 MA's), (52, 47927), (58, 47978), (60, 47993), (82, 48143), (92, 48257), (96, 48275), (101, 48290), (102, 48293), (103, 48296), (114, 48329), (119, 48383), (126, 48494), (131, 48605),

Gene: SG4_72 Start: 45615, Stop: 46466, Start Num: 44

Candidate Starts for SG4_72:

(Start: 44 @45615 has 112 MA's), (45, 45630), (47, 45660), (Start: 48 @45663 has 1 MA's), (52, 45702), (58, 45753), (60, 45768), (82, 45918), (92, 46032), (96, 46050), (101, 46065), (102, 46068), (103, 46071), (114, 46104), (119, 46158), (126, 46269), (131, 46380),

Gene: Samba_71 Start: 46102, Stop: 46887, Start Num: 44

Candidate Starts for Samba_71:

(Start: 44 @46102 has 112 MA's), (47, 46147), (52, 46177), (55, 46204), (83, 46327), (88, 46396), (143, 46831),

Gene: Sandalphon_70 Start: 46314, Stop: 47165, Start Num: 44

Candidate Starts for Sandalphon_70:

(Start: 44 @46314 has 112 MA's), (45, 46329), (47, 46359), (Start: 48 @46362 has 1 MA's), (52, 46401), (58, 46452), (60, 46467), (82, 46617), (92, 46731), (96, 46749), (101, 46764), (102, 46767), (103, 46770), (114, 46803), (119, 46857), (126, 46968), (131, 47079),

Gene: Saronaya_54 Start: 44390, Stop: 45280, Start Num: 44

Candidate Starts for Saronaya_54:

(9, 44000), (13, 44093), (Start: 44 @44390 has 112 MA's), (51, 44450), (53, 44471), (66, 44555), (69, 44561), (77, 44585), (80, 44594), (82, 44621), (84, 44642), (99, 44765), (113, 44804), (127, 45014), (131, 45095), (133, 45131),

Gene: Sassafras_77 Start: 46729, Stop: 47580, Start Num: 44

Candidate Starts for Sassafras_77:

(Start: 44 @46729 has 112 MA's), (45, 46744), (47, 46774), (Start: 48 @46777 has 1 MA's), (52, 46816), (58, 46867), (60, 46882), (82, 47032), (92, 47146), (96, 47164), (101, 47179), (102, 47182), (103, 47185), (114, 47218), (119, 47272), (126, 47383), (131, 47494),

Gene: SassyB_65 Start: 43552, Stop: 44403, Start Num: 44

Candidate Starts for SassyB_65:

(Start: 44 @43552 has 112 MA's), (45, 43567), (47, 43597), (Start: 48 @43600 has 1 MA's), (52, 43639), (58, 43690), (60, 43705), (82, 43855), (92, 43969), (96, 43987), (101, 44002), (102, 44005), (103, 44008), (114, 44041), (119, 44095), (126, 44206), (131, 44317),

Gene: SchottB_52 Start: 44927, Stop: 45820, Start Num: 44

Candidate Starts for SchottB_52:

(9, 44537), (Start: 44 @44927 has 112 MA's), (51, 44987), (53, 45008), (56, 45038), (66, 45092), (69, 45098), (72, 45107), (77, 45122), (80, 45131), (82, 45158), (84, 45179), (99, 45302), (113, 45341), (127, 45551), (131, 45632), (133, 45668),

Gene: Scottish_74 Start: 46388, Stop: 47239, Start Num: 44

Candidate Starts for Scottish_74:

(Start: 44 @46388 has 112 MA's), (45, 46403), (47, 46433), (Start: 48 @46436 has 1 MA's), (52, 46475), (58, 46526), (60, 46541), (82, 46691), (92, 46805), (96, 46823), (101, 46838), (102, 46841),

(103, 46844), (114, 46877), (119, 46931), (126, 47042), (131, 47153),

Gene: Seagreen_76 Start: 47662, Stop: 48513, Start Num: 44

Candidate Starts for Seagreen_76:

(Start: 44 @47662 has 112 MA's), (45, 47677), (47, 47707), (Start: 48 @47710 has 1 MA's), (52, 47749), (58, 47800), (60, 47815), (82, 47965), (92, 48079), (96, 48097), (101, 48112), (102, 48115), (103, 48118), (114, 48151), (119, 48205), (126, 48316), (131, 48427),

Gene: Shauna1_74 Start: 47016, Stop: 47867, Start Num: 44

Candidate Starts for Shauna1_74:

(Start: 44 @47016 has 112 MA's), (45, 47031), (47, 47061), (Start: 48 @47064 has 1 MA's), (52, 47103), (60, 47169), (82, 47319), (92, 47433), (96, 47451), (101, 47466), (102, 47469), (103, 47472), (114, 47505), (119, 47559), (126, 47670), (131, 47781),

Gene: ShroomBoi_75 Start: 46810, Stop: 47622, Start Num: 44

Candidate Starts for ShroomBoi_75:

(20, 46627), (21, 46630), (34, 46741), (35, 46747), (36, 46765), (Start: 44 @46810 has 112 MA's), (45, 46825), (47, 46855), (Start: 48 @46858 has 1 MA's), (52, 46897), (60, 46963), (67, 46990), (75, 47026), (96, 47206), (103, 47227), (107, 47233), (108, 47239), (111, 47254), (119, 47314), (126, 47425), (131, 47536),

Gene: SiSi_71 Start: 45846, Stop: 46697, Start Num: 44

Candidate Starts for SiSi_71:

(Start: 44 @45846 has 112 MA's), (45, 45861), (47, 45891), (Start: 48 @45894 has 1 MA's), (52, 45933), (58, 45984), (60, 45999), (82, 46149), (92, 46263), (96, 46281), (101, 46296), (102, 46299), (103, 46302), (114, 46335), (119, 46389), (126, 46500), (131, 46611),

Gene: Squirty_76 Start: 49943, Stop: 50794, Start Num: 44

Candidate Starts for Squirty_76:

(Start: 44 @49943 has 112 MA's), (45, 49958), (47, 49988), (Start: 48 @49991 has 1 MA's), (52, 50030), (58, 50081), (60, 50096), (82, 50246), (92, 50360), (96, 50378), (101, 50393), (102, 50396), (103, 50399), (114, 50432), (119, 50486), (126, 50597), (131, 50708),

Gene: StAnnes_72 Start: 47004, Stop: 47855, Start Num: 44

Candidate Starts for StAnnes_72:

(Start: 44 @47004 has 112 MA's), (45, 47019), (47, 47049), (Start: 48 @47052 has 1 MA's), (52, 47091), (58, 47142), (60, 47157), (82, 47307), (92, 47421), (96, 47439), (101, 47454), (102, 47457), (103, 47460), (114, 47493), (119, 47547), (126, 47658), (131, 47769), (138, 47841),

Gene: Strokeseat_70 Start: 44427, Stop: 45278, Start Num: 44

Candidate Starts for Strokeseat_70:

(Start: 44 @44427 has 112 MA's), (45, 44442), (47, 44472), (Start: 48 @44475 has 1 MA's), (52, 44514), (58, 44565), (60, 44580), (82, 44730), (92, 44844), (96, 44862), (101, 44877), (102, 44880), (103, 44883), (114, 44916), (119, 44970), (126, 45081), (131, 45192), (138, 45264),

Gene: Taj_81 Start: 48470, Stop: 49321, Start Num: 44

Candidate Starts for Taj_81:

(Start: 44 @48470 has 112 MA's), (45, 48485), (47, 48515), (Start: 48 @48518 has 1 MA's), (52, 48557), (58, 48608), (60, 48623), (82, 48773), (92, 48887), (96, 48905), (101, 48920), (102, 48923), (103, 48926), (114, 48959), (119, 49013), (126, 49124), (131, 49235),

Gene: Tangerine_53 Start: 43802, Stop: 44692, Start Num: 44

Candidate Starts for Tangerine_53:

(9, 43412), (13, 43505), (Start: 44 @43802 has 112 MA's), (51, 43862), (53, 43883), (66, 43967), (69, 43973), (77, 43997), (80, 44006), (82, 44033), (84, 44054), (99, 44177), (113, 44216), (127, 44426), (131, 44507), (133, 44543),

Gene: UmaThurman_71 Start: 44454, Stop: 45239, Start Num: 44

Candidate Starts for UmaThurman_71:

(Start: 44 @44454 has 112 MA's), (47, 44499), (52, 44529), (55, 44556), (83, 44679), (88, 44748), (143, 45183),

Gene: Vasanti_65 Start: 43214, Stop: 44008, Start Num: 44

Candidate Starts for Vasanti_65:

(2, 42689), (7, 42755), (8, 42821), (11, 42839), (31, 43124), (Start: 44 @43214 has 112 MA's), (52, 43289), (53, 43295), (56, 43325), (59, 43352), (62, 43364), (72, 43391), (74, 43394), (85, 43475), (97, 43571), (100, 43580), (108, 43592),

Gene: Verity_56 Start: 46577, Stop: 47413, Start Num: 44

Candidate Starts for Verity_56:

(Start: 44 @46577 has 112 MA's), (51, 46637), (58, 46703), (77, 46772), (99, 46952), (104, 46964), (109, 46976),

Gene: Wee_80 Start: 48546, Stop: 49397, Start Num: 44

Candidate Starts for Wee_80:

(Start: 44 @48546 has 112 MA's), (45, 48561), (47, 48591), (Start: 48 @48594 has 1 MA's), (52, 48633), (58, 48684), (60, 48699), (82, 48849), (92, 48963), (96, 48981), (101, 48996), (102, 48999), (103, 49002), (114, 49035), (119, 49089), (126, 49200), (131, 49311),

Gene: Whatsapiecost_69 Start: 42354, Stop: 43205, Start Num: 44

Candidate Starts for Whatsapiecost_69:

(14, 42069), (23, 42183), (25, 42201), (35, 42291), (36, 42309), (Start: 44 @42354 has 112 MA's), (45, 42369), (47, 42399), (Start: 48 @42402 has 1 MA's), (52, 42441), (58, 42492), (60, 42507), (82, 42657), (92, 42771), (96, 42789), (101, 42804), (102, 42807), (103, 42810), (114, 42843), (119, 42897), (126, 43008), (131, 43119),

Gene: Wisp_69 Start: 43753, Stop: 44571, Start Num: 44

Candidate Starts for Wisp_69:

(16, 43546), (30, 43663), (31, 43669), (32, 43672), (33, 43678), (Start: 44 @43753 has 112 MA's), (52, 43828), (53, 43834), (56, 43864), (74, 43933), (85, 44014), (97, 44110), (100, 44119), (104, 44131), (108, 44143), (143, 44515),

Gene: Wocket_69 Start: 44140, Stop: 44925, Start Num: 44

Candidate Starts for Wocket_69:

(1, 43552), (3, 43654), (4, 43660), (5, 43663), (6, 43669), (12, 43789), (Start: 44 @44140 has 112 MA's), (47, 44185), (52, 44215), (55, 44242), (83, 44365), (88, 44434), (90, 44443), (143, 44869),

Gene: YorkOnyx_55 Start: 44582, Stop: 45475, Start Num: 44

Candidate Starts for YorkOnyx_55:

(9, 44192), (Start: 44 @44582 has 112 MA's), (51, 44642), (53, 44663), (56, 44693), (66, 44747), (69, 44753), (72, 44762), (77, 44777), (80, 44786), (82, 44813), (84, 44834), (99, 44957), (113, 44996), (127, 45206), (131, 45287), (133, 45323),

Gene: Zarbodnamra_74 Start: 44266, Stop: 45051, Start Num: 44

Candidate Starts for Zarbodnamra_74:

(Start: 44 @44266 has 112 MA's), (47, 44311), (52, 44341), (55, 44368), (83, 44491), (88, 44560), (143, 44995),

Gene: Zipp_57 Start: 46492, Stop: 47337, Start Num: 44

Candidate Starts for Zipp_57:

(Start: 44 @46492 has 112 MA's), (51, 46552), (58, 46618), (77, 46687), (99, 46867), (104, 46879), (109, 46891), (122, 47023),

Gene: Zitch_59 Start: 44615, Stop: 45460, Start Num: 44

Candidate Starts for Zitch_59:

(Start: 44 @44615 has 112 MA's), (51, 44675), (77, 44810), (99, 44990), (104, 45002), (109, 45014), (122, 45146),