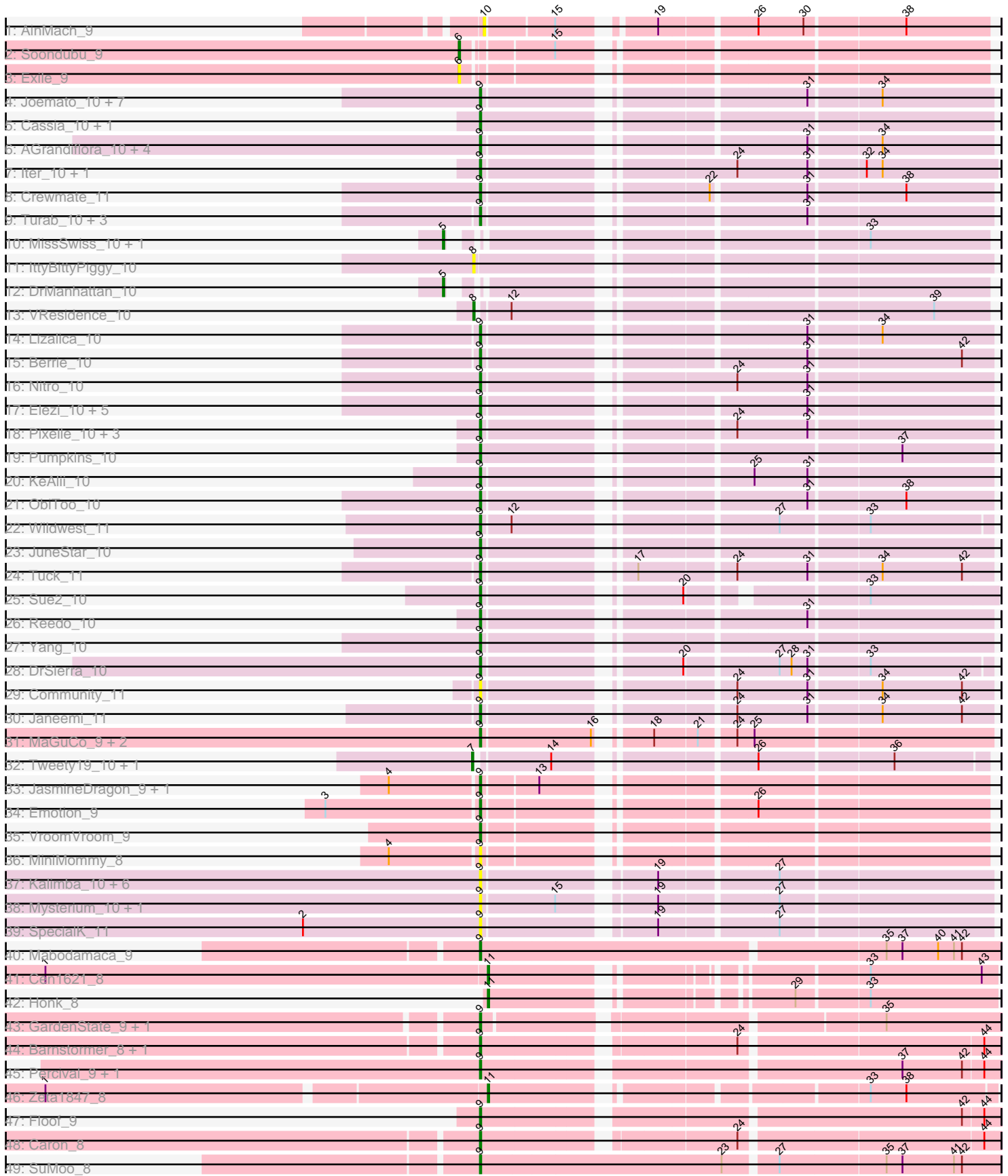


Pham 191226



Note: Tracks are now grouped by subcluster and scaled. Switching in subcluster is indicated by changes in track color. Track scale is now set by default to display the region 30 bp upstream of start 1 to 30 bp downstream of the last possible start. If this default region is judged to be packed too tightly with annotated starts, the track will be further scaled to only show that region of the ORF with annotated starts. This action will be indicated by adding "Zoomed" to the title. For starts, yellow indicates the location of called starts comprised solely of Glimmer/GeneMark auto-annotations, green indicates the location of called starts with at least 1 manual gene annotation.

Pham 191226 Report

This analysis was run 11/02/24 on database version 579.

Pham number 191226 has 88 members, 22 are drafts.

Phages represented in each track:

- Track 1 : AinMach_9
- Track 2 : Soondubu_9
- Track 3 : Exile_9
- Track 4 : Joemato_10, JohnDoe_10, Simpson_11, Kaylissa_10, Warda_10, Tbone_10, Cyan_10, Mudpuppy_10
- Track 5 : Cassia_10, TforTroy_10
- Track 6 : AGrandiflora_10, Lego_10, YesChef_10, Tutumahutu_10, Powerpuff_10
- Track 7 : lter_10, Ascela_10
- Track 8 : Crewmate_11
- Track 9 : Turab_10, Tallboi_10, Adumb2043_10, AEgle_10
- Track 10 : MissSwiss_10, Adolin_10
- Track 11 : IttyBittyPiggy_10
- Track 12 : DrManhattan_10
- Track 13 : VResidence_10
- Track 14 : Lizalica_10
- Track 15 : Berrie_10
- Track 16 : Nitro_10
- Track 17 : Elezi_10, Jstan_10, London_10, Eraser_10, Niobe_10, Asa16_10
- Track 18 : Pixelle_10, Tian_10, Amyev_10, Phives_11
- Track 19 : Pumpkins_10
- Track 20 : KeAlii_10
- Track 21 : ObiToo_10
- Track 22 : Wildwest_11
- Track 23 : JuneStar_10
- Track 24 : Tuck_11
- Track 25 : Sue2_10
- Track 26 : Reedo_10
- Track 27 : Yang_10
- Track 28 : DrSierra_10
- Track 29 : Community_11
- Track 30 : Janeemi_11
- Track 31 : MaGuCo_9, Liebe_9, Maureen_9
- Track 32 : Tweety19_10, Sneek_10
- Track 33 : JasmineDragon_9, ShakeltOph_9
- Track 34 : Emotion_9
- Track 35 : VroomVroom_9
- Track 36 : MiniMommy_8

- Track 37 : Kalimba_10, Halsey_11, Cappuccino_10, Donkey_10, Gambol_10, Moss_11, Sooty_10
- Track 38 : Mysterium_10, Ashes_12
- Track 39 : SpecialK_11
- Track 40 : Mabodamaca_9
- Track 41 : Cen1621_8
- Track 42 : Honk_8
- Track 43 : GardenState_9, IAmGroot_9
- Track 44 : Barnstormer_8, UtzChips_8
- Track 45 : Percival_9, Gretchen_9
- Track 46 : Zeta1847_8
- Track 47 : Floof_9
- Track 48 : Caron_8
- Track 49 : SuMoo_8

Summary of Final Annotations (See graph section above for start numbers):

The start number called the most often in the published annotations is 9, it was called in 56 of the 66 non-draft genes in the pham.

Genes that call this "Most Annotated" start:

- AEgle_10, AGrandiflora_10, Adumb2043_10, Amyev_10, Asa16_10, Ascela_10, Ashes_12, Barnstormer_8, Berrie_10, Cappuccino_10, Caron_8, Cassia_10, Community_11, Crewmate_11, Cyan_10, Donkey_10, DrSierra_10, Elezi_10, Emotion_9, Eraser_10, Floof_9, Gambol_10, GardenState_9, Gretchen_9, Halsey_11, IAmGroot_9, Iter_10, Janeemi_11, JasmineDragon_9, Joemato_10, JohnDoe_10, Jstan_10, JuneStar_10, Kalimba_10, Kaylissa_10, KeAlii_10, Lego_10, Liebe_9, Lizalica_10, London_10, MaGuCo_9, Mabodamaca_9, Maureen_9, MiniMommy_8, Moss_11, Mudpuppy_10, Mysterium_10, Niobe_10, Nitro_10, ObiToo_10, Percival_9, Phives_11, Pixelle_10, Powerpuff_10, Pumpkins_10, Reedo_10, ShakeltOph_9, Simpson_11, Sooty_10, SpecialK_11, SuMoo_8, Sue2_10, Tallboi_10, Tbone_10, TforTroy_10, Tian_10, Tuck_11, Turab_10, Tutumahutu_10, UtzChips_8, VroomVroom_9, Warda_10, Wildwest_11, Yang_10, YesChef_10,

Genes that have the "Most Annotated" start but do not call it:

-

Genes that do not have the "Most Annotated" start:

- Adolin_10, AinMach_9, Cen1621_8, DrManhattan_10, Exile_9, Honk_8, IttyBittyPiggy_10, MissSwiss_10, Sneak_10, Soondubu_9, Tweety19_10, VResidence_10, Zeta1847_8,

Summary by start number:

Start 5:

- Found in 3 of 88 (3.4%) of genes in pham
- Manual Annotations of this start: 3 of 66
- Called 100.0% of time when present

- Phage (with cluster) where this start called: Adolin_10 (AZ1), DrManhattan_10 (AZ1), MissSwiss_10 (AZ1),

Start 6:

- Found in 2 of 88 (2.3%) of genes in pham
- Manual Annotations of this start: 1 of 66
- Called 100.0% of time when present
- Phage (with cluster) where this start called: Exile_9 (AZ), Soondubu_9 (AZ),

Start 7:

- Found in 2 of 88 (2.3%) of genes in pham
- Manual Annotations of this start: 2 of 66
- Called 100.0% of time when present
- Phage (with cluster) where this start called: Snek_10 (AZ3), Tweety19_10 (AZ3),

Start 8:

- Found in 2 of 88 (2.3%) of genes in pham
- Manual Annotations of this start: 1 of 66
- Called 100.0% of time when present
- Phage (with cluster) where this start called: IttyBittyPiggy_10 (AZ1), VResidence_10 (AZ1),

Start 9:

- Found in 75 of 88 (85.2%) of genes in pham
- Manual Annotations of this start: 56 of 66
- Called 100.0% of time when present
- Phage (with cluster) where this start called: AEgle_10 (AZ1), AGrandiflora_10 (AZ1), Adumb2043_10 (AZ1), Amyev_10 (AZ1), Asa16_10 (AZ1), Ascela_10 (AZ1), Ashes_12 (AZ5), Barnstormer_8 (EH), Berrie_10 (AZ1), Cappuccino_10 (AZ5), Caron_8 (EH), Cassia_10 (AZ1), Community_11 (AZ1), Crewmate_11 (AZ1), Cyan_10 (AZ1), Donkey_10 (AZ5), DrSierra_10 (AZ1), Elezi_10 (AZ1), Emotion_9 (AZ4), Eraser_10 (AZ1), Floof_9 (EH), Gambol_10 (AZ5), GardenState_9 (EH), Gretchen_9 (EH), Halsey_11 (AZ5), IAmGroot_9 (EH), Iter_10 (AZ1), Janeemi_11 (AZ1), JasmineDragon_9 (AZ4), Joemato_10 (AZ1), JohnDoe_10 (AZ1), Jstan_10 (AZ1), JuneStar_10 (AZ1), Kalimba_10 (AZ5), Kaylissa_10 (AZ1), KeAlii_10 (AZ1), Lego_10 (AZ1), Liebe_9 (AZ2), Lizalica_10 (AZ1), London_10 (AZ1), MaGuCo_9 (AZ2), Mabodamaca_9 (EH), Maureen_9 (AZ2), MiniMommy_8 (AZ4), Moss_11 (AZ5), Mudpuppy_10 (AZ1), Mysterium_10 (AZ5), Niobe_10 (AZ1), Nitro_10 (AZ1), ObiToo_10 (AZ1), Percival_9 (EH), Phives_11 (AZ1), Pixelle_10 (AZ1), Powerpuff_10 (AZ1), Pumpkins_10 (AZ1), Reedo_10 (AZ1), ShakeltOph_9 (AZ4), Simpson_11 (AZ1), Sooty_10 (AZ5), SpecialK_11 (AZ5), SuMoo_8 (EH), Sue2_10 (AZ1), Tallboi_10 (AZ1), Tbone_10 (AZ1), TforTroy_10 (AZ1), Tian_10 (AZ1), Tuck_11 (AZ1), Turab_10 (AZ1), Tutumahutu_10 (AZ1), UtzChips_8 (EH), VroomVroom_9 (AZ4), Warda_10 (AZ1), Wildwest_11 (AZ1), Yang_10 (AZ1), YesChef_10 (AZ1),

Start 10:

- Found in 1 of 88 (1.1%) of genes in pham
- No Manual Annotations of this start.
- Called 100.0% of time when present
- Phage (with cluster) where this start called: AinMach_9 (AZ),

Start 11:

- Found in 3 of 88 (3.4%) of genes in pham

- Manual Annotations of this start: 3 of 66
- Called 100.0% of time when present
- Phage (with cluster) where this start called: Cen1621_8 (EH), Honk_8 (EH), Zeta1847_8 (EH),

Summary by clusters:

There are 7 clusters represented in this pham: AZ, EH, AZ1, AZ2, AZ3, AZ4, AZ5,

Info for manual annotations of cluster AZ:

- Start number 6 was manually annotated 1 time for cluster AZ.

Info for manual annotations of cluster AZ1:

- Start number 5 was manually annotated 3 times for cluster AZ1.
- Start number 8 was manually annotated 1 time for cluster AZ1.
- Start number 9 was manually annotated 40 times for cluster AZ1.

Info for manual annotations of cluster AZ2:

- Start number 9 was manually annotated 3 times for cluster AZ2.

Info for manual annotations of cluster AZ3:

- Start number 7 was manually annotated 2 times for cluster AZ3.

Info for manual annotations of cluster AZ4:

- Start number 9 was manually annotated 3 times for cluster AZ4.

Info for manual annotations of cluster EH:

- Start number 9 was manually annotated 10 times for cluster EH.
- Start number 11 was manually annotated 3 times for cluster EH.

Gene Information:

Gene: AEgle_10 Start: 8385, Stop: 8732, Start Num: 9

Candidate Starts for AEgle_10:

(Start: 9 @8385 has 56 MA's), (31, 8598),

Gene: AGrandiflora_10 Start: 8369, Stop: 8716, Start Num: 9

Candidate Starts for AGrandiflora_10:

(Start: 9 @8369 has 56 MA's), (31, 8582), (34, 8633),

Gene: Adolin_10 Start: 8355, Stop: 8705, Start Num: 5

Candidate Starts for Adolin_10:

(Start: 5 @8355 has 3 MA's), (33, 8616),

Gene: Adumb2043_10 Start: 8384, Stop: 8731, Start Num: 9

Candidate Starts for Adumb2043_10:

(Start: 9 @8384 has 56 MA's), (31, 8597),

Gene: AinMach_9 Start: 7495, Stop: 7833, Start Num: 10

Candidate Starts for AinMach_9:

(10, 7495), (15, 7543), (19, 7600), (26, 7666), (30, 7699), (38, 7771),

Gene: Amyev_10 Start: 8400, Stop: 8747, Start Num: 9

Candidate Starts for Amyev_10:

(Start: 9 @8400 has 56 MA's), (24, 8562), (31, 8613),

Gene: Asa16_10 Start: 8354, Stop: 8701, Start Num: 9

Candidate Starts for Asa16_10:

(Start: 9 @8354 has 56 MA's), (31, 8567),

Gene: Ascela_10 Start: 8380, Stop: 8736, Start Num: 9

Candidate Starts for Ascela_10:

(Start: 9 @8380 has 56 MA's), (24, 8548), (31, 8599), (32, 8638), (34, 8650),

Gene: Ashes_12 Start: 7908, Stop: 8258, Start Num: 9

Candidate Starts for Ashes_12:

(Start: 9 @7908 has 56 MA's), (15, 7962), (19, 8022), (27, 8103),

Gene: Barnstormer_8 Start: 7585, Stop: 7941, Start Num: 9

Candidate Starts for Barnstormer_8:

(Start: 9 @7585 has 56 MA's), (24, 7756), (44, 7930),

Gene: Berrie_10 Start: 8356, Stop: 8703, Start Num: 9

Candidate Starts for Berrie_10:

(Start: 9 @8356 has 56 MA's), (31, 8569), (42, 8680),

Gene: Cappuccino_10 Start: 7817, Stop: 8167, Start Num: 9

Candidate Starts for Cappuccino_10:

(Start: 9 @7817 has 56 MA's), (19, 7931), (27, 8012),

Gene: Caron_8 Start: 7613, Stop: 7969, Start Num: 9

Candidate Starts for Caron_8:

(Start: 9 @7613 has 56 MA's), (24, 7784), (44, 7958),

Gene: Cassia_10 Start: 8476, Stop: 8826, Start Num: 9

Candidate Starts for Cassia_10:

(Start: 9 @8476 has 56 MA's),

Gene: Cen1621_8 Start: 6748, Stop: 7080, Start Num: 11

Candidate Starts for Cen1621_8:

(1, 6415), (Start: 11 @6748 has 3 MA's), (33, 6985), (43, 7069),

Gene: Community_11 Start: 9435, Stop: 9782, Start Num: 9

Candidate Starts for Community_11:

(Start: 9 @9435 has 56 MA's), (24, 9597), (31, 9648), (34, 9699), (42, 9759),

Gene: Crewmate_11 Start: 8821, Stop: 9168, Start Num: 9

Candidate Starts for Crewmate_11:

(Start: 9 @8821 has 56 MA's), (22, 8968), (31, 9034), (38, 9103),

Gene: Cyan_10 Start: 8373, Stop: 8720, Start Num: 9

Candidate Starts for Cyan_10:

(Start: 9 @8373 has 56 MA's), (31, 8586), (34, 8637),

Gene: Donkey_10 Start: 7817, Stop: 8167, Start Num: 9

Candidate Starts for Donkey_10:

(Start: 9 @7817 has 56 MA's), (19, 7931), (27, 8012),

Gene: DrManhattan_10 Start: 8345, Stop: 8695, Start Num: 5

Candidate Starts for DrManhattan_10:

(Start: 5 @8345 has 3 MA's),

Gene: DrSierra_10 Start: 8382, Stop: 8726, Start Num: 9

Candidate Starts for DrSierra_10:

(Start: 9 @8382 has 56 MA's), (20, 8511), (27, 8574), (28, 8583), (31, 8595), (33, 8637),

Gene: Elezi_10 Start: 8355, Stop: 8702, Start Num: 9

Candidate Starts for Elezi_10:

(Start: 9 @8355 has 56 MA's), (31, 8568),

Gene: Emotion_9 Start: 6723, Stop: 7064, Start Num: 9

Candidate Starts for Emotion_9:

(3, 6612), (Start: 9 @6723 has 56 MA's), (26, 6897),

Gene: Eraser_10 Start: 8355, Stop: 8702, Start Num: 9

Candidate Starts for Eraser_10:

(Start: 9 @8355 has 56 MA's), (31, 8568),

Gene: Exile_9 Start: 8263, Stop: 8613, Start Num: 6

Candidate Starts for Exile_9:

(Start: 6 @8263 has 1 MA's),

Gene: Floof_9 Start: 7145, Stop: 7507, Start Num: 9

Candidate Starts for Floof_9:

(Start: 9 @7145 has 56 MA's), (42, 7481), (44, 7496),

Gene: Gambol_10 Start: 7817, Stop: 8167, Start Num: 9

Candidate Starts for Gambol_10:

(Start: 9 @7817 has 56 MA's), (19, 7931), (27, 8012),

Gene: GardenState_9 Start: 7818, Stop: 8174, Start Num: 9

Candidate Starts for GardenState_9:

(Start: 9 @7818 has 56 MA's), (35, 8088),

Gene: Gretchen_9 Start: 8691, Stop: 9053, Start Num: 9

Candidate Starts for Gretchen_9:

(Start: 9 @8691 has 56 MA's), (37, 8982), (42, 9027), (44, 9042),

Gene: Halsey_11 Start: 7908, Stop: 8258, Start Num: 9

Candidate Starts for Halsey_11:

(Start: 9 @7908 has 56 MA's), (19, 8022), (27, 8103),

Gene: Honk_8 Start: 6713, Stop: 7048, Start Num: 11

Candidate Starts for Honk_8:

(Start: 11 @6713 has 3 MA's), (29, 6902), (33, 6953),

Gene: IAmGroot_9 Start: 8462, Stop: 8818, Start Num: 9
Candidate Starts for IAmGroot_9:
(Start: 9 @8462 has 56 MA's), (35, 8732),

Gene: Iter_10 Start: 8380, Stop: 8736, Start Num: 9
Candidate Starts for Iter_10:
(Start: 9 @8380 has 56 MA's), (24, 8548), (31, 8599), (32, 8638), (34, 8650),

Gene: IttyBittyPiggy_10 Start: 8374, Stop: 8727, Start Num: 8
Candidate Starts for IttyBittyPiggy_10:
(Start: 8 @8374 has 1 MA's),

Gene: Janeemi_11 Start: 9466, Stop: 9813, Start Num: 9
Candidate Starts for Janeemi_11:
(Start: 9 @9466 has 56 MA's), (24, 9628), (31, 9679), (34, 9730), (42, 9790),

Gene: JasmineDragon_9 Start: 6658, Stop: 6999, Start Num: 9
Candidate Starts for JasmineDragon_9:
(4, 6595), (Start: 9 @6658 has 56 MA's), (13, 6697),

Gene: Joemato_10 Start: 8373, Stop: 8720, Start Num: 9
Candidate Starts for Joemato_10:
(Start: 9 @8373 has 56 MA's), (31, 8586), (34, 8637),

Gene: JohnDoe_10 Start: 8371, Stop: 8718, Start Num: 9
Candidate Starts for JohnDoe_10:
(Start: 9 @8371 has 56 MA's), (31, 8584), (34, 8635),

Gene: Jstan_10 Start: 8355, Stop: 8702, Start Num: 9
Candidate Starts for Jstan_10:
(Start: 9 @8355 has 56 MA's), (31, 8568),

Gene: JuneStar_10 Start: 8474, Stop: 8821, Start Num: 9
Candidate Starts for JuneStar_10:
(Start: 9 @8474 has 56 MA's),

Gene: Kalimba_10 Start: 7817, Stop: 8167, Start Num: 9
Candidate Starts for Kalimba_10:
(Start: 9 @7817 has 56 MA's), (19, 7931), (27, 8012),

Gene: Kaylissa_10 Start: 8374, Stop: 8721, Start Num: 9
Candidate Starts for Kaylissa_10:
(Start: 9 @8374 has 56 MA's), (31, 8587), (34, 8638),

Gene: KeAlii_10 Start: 8406, Stop: 8753, Start Num: 9
Candidate Starts for KeAlii_10:
(Start: 9 @8406 has 56 MA's), (25, 8580), (31, 8619),

Gene: Lego_10 Start: 8372, Stop: 8719, Start Num: 9
Candidate Starts for Lego_10:
(Start: 9 @8372 has 56 MA's), (31, 8585), (34, 8636),

Gene: Liebe_9 Start: 6828, Stop: 7175, Start Num: 9

Candidate Starts for Liebe_9:

(Start: 9 @6828 has 56 MA's), (16, 6909), (18, 6936), (21, 6966), (24, 6990), (25, 7002),

Gene: Lizalica_10 Start: 8361, Stop: 8708, Start Num: 9

Candidate Starts for Lizalica_10:

(Start: 9 @8361 has 56 MA's), (31, 8574), (34, 8625),

Gene: London_10 Start: 8355, Stop: 8702, Start Num: 9

Candidate Starts for London_10:

(Start: 9 @8355 has 56 MA's), (31, 8568),

Gene: MaGuCo_9 Start: 6687, Stop: 7034, Start Num: 9

Candidate Starts for MaGuCo_9:

(Start: 9 @6687 has 56 MA's), (16, 6768), (18, 6795), (21, 6825), (24, 6849), (25, 6861),

Gene: Mabodamaca_9 Start: 7894, Stop: 8274, Start Num: 9

Candidate Starts for Mabodamaca_9:

(Start: 9 @7894 has 56 MA's), (35, 8188), (37, 8200), (40, 8227), (41, 8239), (42, 8245),

Gene: Maureen_9 Start: 6828, Stop: 7175, Start Num: 9

Candidate Starts for Maureen_9:

(Start: 9 @6828 has 56 MA's), (16, 6909), (18, 6936), (21, 6966), (24, 6990), (25, 7002),

Gene: MiniMommy_8 Start: 6658, Stop: 6999, Start Num: 9

Candidate Starts for MiniMommy_8:

(4, 6595), (Start: 9 @6658 has 56 MA's),

Gene: MissSwiss_10 Start: 8349, Stop: 8699, Start Num: 5

Candidate Starts for MissSwiss_10:

(Start: 5 @8349 has 3 MA's), (33, 8610),

Gene: Moss_11 Start: 7908, Stop: 8258, Start Num: 9

Candidate Starts for Moss_11:

(Start: 9 @7908 has 56 MA's), (19, 8022), (27, 8103),

Gene: Mudpuppy_10 Start: 8372, Stop: 8719, Start Num: 9

Candidate Starts for Mudpuppy_10:

(Start: 9 @8372 has 56 MA's), (31, 8585), (34, 8636),

Gene: Mysterium_10 Start: 7909, Stop: 8259, Start Num: 9

Candidate Starts for Mysterium_10:

(Start: 9 @7909 has 56 MA's), (15, 7963), (19, 8023), (27, 8104),

Gene: Niobe_10 Start: 8355, Stop: 8702, Start Num: 9

Candidate Starts for Niobe_10:

(Start: 9 @8355 has 56 MA's), (31, 8568),

Gene: Nitro_10 Start: 8372, Stop: 8725, Start Num: 9

Candidate Starts for Nitro_10:

(Start: 9 @8372 has 56 MA's), (24, 8540), (31, 8591),

Gene: ObiToo_10 Start: 8558, Stop: 8905, Start Num: 9

Candidate Starts for ObiToo_10:

(Start: 9 @8558 has 56 MA's), (31, 8771), (38, 8840),

Gene: Percival_9 Start: 8525, Stop: 8887, Start Num: 9

Candidate Starts for Percival_9:

(Start: 9 @8525 has 56 MA's), (37, 8816), (42, 8861), (44, 8876),

Gene: Phives_11 Start: 9460, Stop: 9807, Start Num: 9

Candidate Starts for Phives_11:

(Start: 9 @9460 has 56 MA's), (24, 9622), (31, 9673),

Gene: Pixelle_10 Start: 8403, Stop: 8750, Start Num: 9

Candidate Starts for Pixelle_10:

(Start: 9 @8403 has 56 MA's), (24, 8565), (31, 8616),

Gene: Powerpuff_10 Start: 8423, Stop: 8770, Start Num: 9

Candidate Starts for Powerpuff_10:

(Start: 9 @8423 has 56 MA's), (31, 8636), (34, 8687),

Gene: Pumpkins_10 Start: 8478, Stop: 8828, Start Num: 9

Candidate Starts for Pumpkins_10:

(Start: 9 @8478 has 56 MA's), (37, 8760),

Gene: Reedo_10 Start: 8425, Stop: 8772, Start Num: 9

Candidate Starts for Reedo_10:

(Start: 9 @8425 has 56 MA's), (31, 8638),

Gene: ShakeltOph_9 Start: 6658, Stop: 6999, Start Num: 9

Candidate Starts for ShakeltOph_9:

(4, 6595), (Start: 9 @6658 has 56 MA's), (13, 6697),

Gene: Simpson_11 Start: 8373, Stop: 8720, Start Num: 9

Candidate Starts for Simpson_11:

(Start: 9 @8373 has 56 MA's), (31, 8586), (34, 8637),

Gene: Snek_10 Start: 7472, Stop: 7813, Start Num: 7

Candidate Starts for Snek_10:

(Start: 7 @7472 has 2 MA's), (14, 7523), (26, 7649), (36, 7745),

Gene: Soondubu_9 Start: 8264, Stop: 8614, Start Num: 6

Candidate Starts for Soondubu_9:

(Start: 6 @8264 has 1 MA's), (15, 8324),

Gene: Sooty_10 Start: 7818, Stop: 8168, Start Num: 9

Candidate Starts for Sooty_10:

(Start: 9 @7818 has 56 MA's), (19, 7932), (27, 8013),

Gene: SpecialK_11 Start: 7815, Stop: 8165, Start Num: 9

Candidate Starts for SpecialK_11:

(2, 7683), (Start: 9 @7815 has 56 MA's), (19, 7929), (27, 8010),

Gene: SuMoo_8 Start: 6854, Stop: 7234, Start Num: 9

Candidate Starts for SuMoo_8:

(Start: 9 @6854 has 56 MA's), (23, 7034), (27, 7070), (35, 7148), (37, 7160), (41, 7199), (42, 7205),

Gene: Sue2_10 Start: 8396, Stop: 8734, Start Num: 9
Candidate Starts for Sue2_10:
(Start: 9 @8396 has 56 MA's), (20, 8525), (33, 8639),

Gene: Tallboi_10 Start: 8389, Stop: 8736, Start Num: 9
Candidate Starts for Tallboi_10:
(Start: 9 @8389 has 56 MA's), (31, 8602),

Gene: Tbone_10 Start: 8369, Stop: 8716, Start Num: 9
Candidate Starts for Tbone_10:
(Start: 9 @8369 has 56 MA's), (31, 8582), (34, 8633),

Gene: TforTroy_10 Start: 8501, Stop: 8851, Start Num: 9
Candidate Starts for TforTroy_10:
(Start: 9 @8501 has 56 MA's),

Gene: Tian_10 Start: 8400, Stop: 8747, Start Num: 9
Candidate Starts for Tian_10:
(Start: 9 @8400 has 56 MA's), (24, 8562), (31, 8613),

Gene: Tuck_11 Start: 9415, Stop: 9762, Start Num: 9
Candidate Starts for Tuck_11:
(Start: 9 @9415 has 56 MA's), (17, 9511), (24, 9577), (31, 9628), (34, 9679), (42, 9739),

Gene: Turab_10 Start: 8384, Stop: 8731, Start Num: 9
Candidate Starts for Turab_10:
(Start: 9 @8384 has 56 MA's), (31, 8597),

Gene: Tutumahutu_10 Start: 8423, Stop: 8770, Start Num: 9
Candidate Starts for Tutumahutu_10:
(Start: 9 @8423 has 56 MA's), (31, 8636), (34, 8687),

Gene: Tweety19_10 Start: 7471, Stop: 7812, Start Num: 7
Candidate Starts for Tweety19_10:
(Start: 7 @7471 has 2 MA's), (14, 7522), (26, 7648), (36, 7744),

Gene: UtzChips_8 Start: 7573, Stop: 7929, Start Num: 9
Candidate Starts for UtzChips_8:
(Start: 9 @7573 has 56 MA's), (24, 7744), (44, 7918),

Gene: VResidence_10 Start: 8441, Stop: 8785, Start Num: 8
Candidate Starts for VResidence_10:
(Start: 8 @8441 has 1 MA's), (12, 8462), (39, 8744),

Gene: VroomVroom_9 Start: 6670, Stop: 7011, Start Num: 9
Candidate Starts for VroomVroom_9:
(Start: 9 @6670 has 56 MA's),

Gene: Warda_10 Start: 8369, Stop: 8716, Start Num: 9
Candidate Starts for Warda_10:
(Start: 9 @8369 has 56 MA's), (31, 8582), (34, 8633),

Gene: Wildwest_11 Start: 9289, Stop: 9633, Start Num: 9

Candidate Starts for Wildwest_11:

(Start: 9 @9289 has 56 MA's), (12, 9310), (27, 9481), (33, 9544),

Gene: Yang_10 Start: 8474, Stop: 8821, Start Num: 9

Candidate Starts for Yang_10:

(Start: 9 @8474 has 56 MA's),

Gene: YesChef_10 Start: 8423, Stop: 8770, Start Num: 9

Candidate Starts for YesChef_10:

(Start: 9 @8423 has 56 MA's), (31, 8636), (34, 8687),

Gene: Zeta1847_8 Start: 6684, Stop: 7025, Start Num: 11

Candidate Starts for Zeta1847_8:

(1, 6363), (Start: 11 @6684 has 3 MA's), (33, 6933), (38, 6960),