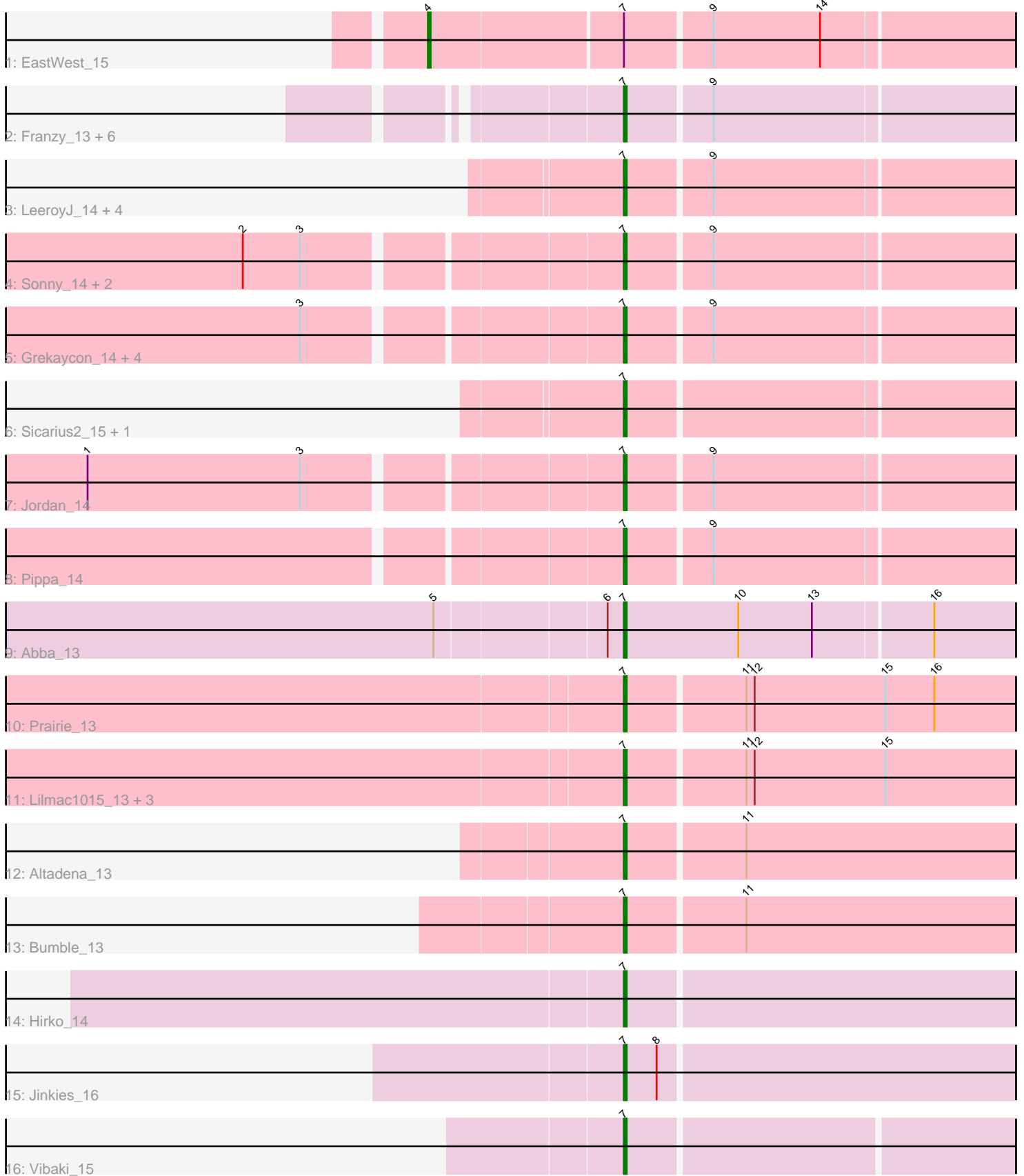


Pham 191407



Note: Tracks are now grouped by subcluster and scaled. Switching in subcluster is indicated by changes in track color. Track scale is now set by default to display the region 30 bp upstream of start 1 to 30 bp downstream of the last possible start. If this default region is judged to be packed too tightly with annotated starts, the track will be further scaled to only show that region of the ORF with annotated starts. This action will be indicated by adding "Zoomed" to the title. For starts, yellow indicates the location of called starts comprised solely of Glimmer/GeneMark auto-annotations, green indicates the location of called starts with at least 1 manual gene annotation.

Pham 191407 Report

This analysis was run 11/02/24 on database version 579.

Pham number 191407 has 36 members, 2 are drafts.

Phages represented in each track:

- Track 1 : EastWest_15
- Track 2 : Franzy_13, NathanVaag_13, King2_13, Piccoletto_13, Jawnski_13, Beans_13, Brent_13
- Track 3 : LeeroyJ_14, Timinator_14, StevieBAY_14, GravityBall_14, BarretLemon_14
- Track 4 : Sonny_14, Zartrosa_14, JKerns_14
- Track 5 : Grekaycon_14, Shade_14, BossLady_14, Martha_14, TaeYoung_14
- Track 6 : Sicarius2_15, Wyborn_15
- Track 7 : Jordan_14
- Track 8 : Pippa_14
- Track 9 : Abba_13
- Track 10 : Prairie_13
- Track 11 : Lilmac1015_13, Klevey_13, Bolt007_13, CalWood4100_13
- Track 12 : Altadena_13
- Track 13 : Bumble_13
- Track 14 : Hirko_14
- Track 15 : Jinkies_16
- Track 16 : Vibaki_15

Summary of Final Annotations (See graph section above for start numbers):

The start number called the most often in the published annotations is 7, it was called in 33 of the 34 non-draft genes in the pham.

Genes that call this "Most Annotated" start:

- Abba_13, Altadena_13, BarretLemon_14, Beans_13, Bolt007_13, BossLady_14, Brent_13, Bumble_13, CalWood4100_13, Franzy_13, GravityBall_14, Grekaycon_14, Hirko_14, JKerns_14, Jawnski_13, Jinkies_16, Jordan_14, King2_13, Klevey_13, LeeroyJ_14, Lilmac1015_13, Martha_14, NathanVaag_13, Piccoletto_13, Pippa_14, Prairie_13, Shade_14, Sicarius2_15, Sonny_14, StevieBAY_14, TaeYoung_14, Timinator_14, Vibaki_15, Wyborn_15, Zartrosa_14,

Genes that have the "Most Annotated" start but do not call it:

- EastWest_15,

Genes that do not have the "Most Annotated" start:

-

Summary by start number:

Start 4:

- Found in 1 of 36 (2.8%) of genes in pham
- Manual Annotations of this start: 1 of 34
- Called 100.0% of time when present
- Phage (with cluster) where this start called: EastWest_15 (AO),

Start 7:

- Found in 36 of 36 (100.0%) of genes in pham
- Manual Annotations of this start: 33 of 34
- Called 97.2% of time when present
- Phage (with cluster) where this start called: Abba_13 (AO3), Altadena_13 (FH), BarretLemon_14 (AO2), Beans_13 (AO1), Bolt007_13 (FH), BossLady_14 (AO2), Brent_13 (AO1), Bumble_13 (FH), CalWood4100_13 (FH), Franzy_13 (AO1), GravityBall_14 (AO2), Grekaycon_14 (AO2), Hirko_14 (FL), JKerns_14 (AO2), Jawnski_13 (AO1), Jinkies_16 (FL), Jordan_14 (AO2), King2_13 (AO1), Klevey_13 (FH), LeeroyJ_14 (AO2), Lilmac1015_13 (FH), Martha_14 (AO2), NathanVaag_13 (AO1), Piccoletto_13 (AO1), Pippa_14 (AO2), Prairie_13 (FH), Shade_14 (AO2), Sicarius2_15 (AO2), Sonny_14 (AO2), StevieBAY_14 (AO2), TaeYoung_14 (AO2), Timinator_14 (AO2), Vibaki_15 (FL), Wyborn_15 (AO2), Zartrosa_14 (AO2),

Summary by clusters:

There are 6 clusters represented in this pham: AO, AO3, AO2, AO1, FH, FL,

Info for manual annotations of cluster AO:

- Start number 4 was manually annotated 1 time for cluster AO.

Info for manual annotations of cluster AO1:

- Start number 7 was manually annotated 7 times for cluster AO1.

Info for manual annotations of cluster AO2:

- Start number 7 was manually annotated 16 times for cluster AO2.

Info for manual annotations of cluster AO3:

- Start number 7 was manually annotated 1 time for cluster AO3.

Info for manual annotations of cluster FH:

- Start number 7 was manually annotated 6 times for cluster FH.

Info for manual annotations of cluster FL:

- Start number 7 was manually annotated 3 times for cluster FL.

Gene Information:

Gene: Abba_13 Start: 10446, Stop: 10676, Start Num: 7

Candidate Starts for Abba_13:
(5, 10380), (6, 10440), (Start: 7 @10446 has 33 MA's), (10, 10488), (13, 10515), (16, 10557),

Gene: Altadena_13 Start: 10131, Stop: 10352, Start Num: 7
Candidate Starts for Altadena_13:
(Start: 7 @10131 has 33 MA's), (11, 10173),

Gene: BarretLemon_14 Start: 10650, Stop: 10889, Start Num: 7
Candidate Starts for BarretLemon_14:
(Start: 7 @10650 has 33 MA's), (9, 10680),

Gene: Beans_13 Start: 10336, Stop: 10575, Start Num: 7
Candidate Starts for Beans_13:
(Start: 7 @10336 has 33 MA's), (9, 10366),

Gene: Bolt007_13 Start: 10029, Stop: 10229, Start Num: 7
Candidate Starts for Bolt007_13:
(Start: 7 @10029 has 33 MA's), (11, 10071), (12, 10074), (15, 10122),

Gene: BossLady_14 Start: 10652, Stop: 10891, Start Num: 7
Candidate Starts for BossLady_14:
(3, 10544), (Start: 7 @10652 has 33 MA's), (9, 10682),

Gene: Brent_13 Start: 10318, Stop: 10557, Start Num: 7
Candidate Starts for Brent_13:
(Start: 7 @10318 has 33 MA's), (9, 10348),

Gene: Bumble_13 Start: 10130, Stop: 10345, Start Num: 7
Candidate Starts for Bumble_13:
(Start: 7 @10130 has 33 MA's), (11, 10172),

Gene: CalWood4100_13 Start: 10012, Stop: 10218, Start Num: 7
Candidate Starts for CalWood4100_13:
(Start: 7 @10012 has 33 MA's), (11, 10054), (12, 10057), (15, 10105),

Gene: EastWest_15 Start: 10619, Stop: 10891, Start Num: 4
Candidate Starts for EastWest_15:
(Start: 4 @10619 has 1 MA's), (Start: 7 @10688 has 33 MA's), (9, 10718), (14, 10757),

Gene: Franzy_13 Start: 10318, Stop: 10557, Start Num: 7
Candidate Starts for Franzy_13:
(Start: 7 @10318 has 33 MA's), (9, 10348),

Gene: GravityBall_14 Start: 10649, Stop: 10888, Start Num: 7
Candidate Starts for GravityBall_14:
(Start: 7 @10649 has 33 MA's), (9, 10679),

Gene: Grekaycon_14 Start: 10661, Stop: 10900, Start Num: 7
Candidate Starts for Grekaycon_14:
(3, 10553), (Start: 7 @10661 has 33 MA's), (9, 10691),

Gene: Hirko_14 Start: 11651, Stop: 11887, Start Num: 7
Candidate Starts for Hirko_14:

(Start: 7 @11651 has 33 MA's),

Gene: JKerns_14 Start: 10688, Stop: 10927, Start Num: 7
Candidate Starts for JKerns_14:
(2, 10559), (3, 10580), (Start: 7 @10688 has 33 MA's), (9, 10718),

Gene: Jawnski_13 Start: 10331, Stop: 10570, Start Num: 7
Candidate Starts for Jawnski_13:
(Start: 7 @10331 has 33 MA's), (9, 10361),

Gene: Jinkies_16 Start: 12256, Stop: 12480, Start Num: 7
Candidate Starts for Jinkies_16:
(Start: 7 @12256 has 33 MA's), (8, 12268),

Gene: Jordan_14 Start: 10658, Stop: 10897, Start Num: 7
Candidate Starts for Jordan_14:
(1, 10472), (3, 10550), (Start: 7 @10658 has 33 MA's), (9, 10688),

Gene: King2_13 Start: 10320, Stop: 10559, Start Num: 7
Candidate Starts for King2_13:
(Start: 7 @10320 has 33 MA's), (9, 10350),

Gene: Klevey_13 Start: 10022, Stop: 10228, Start Num: 7
Candidate Starts for Klevey_13:
(Start: 7 @10022 has 33 MA's), (11, 10064), (12, 10067), (15, 10115),

Gene: LeeroyJ_14 Start: 10649, Stop: 10888, Start Num: 7
Candidate Starts for LeeroyJ_14:
(Start: 7 @10649 has 33 MA's), (9, 10679),

Gene: Lilmac1015_13 Start: 10012, Stop: 10218, Start Num: 7
Candidate Starts for Lilmac1015_13:
(Start: 7 @10012 has 33 MA's), (11, 10054), (12, 10057), (15, 10105),

Gene: Martha_14 Start: 10599, Stop: 10838, Start Num: 7
Candidate Starts for Martha_14:
(3, 10491), (Start: 7 @10599 has 33 MA's), (9, 10629),

Gene: NathanVaag_13 Start: 10324, Stop: 10563, Start Num: 7
Candidate Starts for NathanVaag_13:
(Start: 7 @10324 has 33 MA's), (9, 10354),

Gene: Piccoletto_13 Start: 10325, Stop: 10564, Start Num: 7
Candidate Starts for Piccoletto_13:
(Start: 7 @10325 has 33 MA's), (9, 10355),

Gene: Pippa_14 Start: 10697, Stop: 10936, Start Num: 7
Candidate Starts for Pippa_14:
(Start: 7 @10697 has 33 MA's), (9, 10727),

Gene: Prairie_13 Start: 10019, Stop: 10225, Start Num: 7
Candidate Starts for Prairie_13:
(Start: 7 @10019 has 33 MA's), (11, 10061), (12, 10064), (15, 10112), (16, 10130),

Gene: Shade_14 Start: 10637, Stop: 10876, Start Num: 7
Candidate Starts for Shade_14:
(3, 10529), (Start: 7 @10637 has 33 MA's), (9, 10667),

Gene: Sicarius2_15 Start: 11144, Stop: 11380, Start Num: 7
Candidate Starts for Sicarius2_15:
(Start: 7 @11144 has 33 MA's),

Gene: Sonny_14 Start: 10658, Stop: 10897, Start Num: 7
Candidate Starts for Sonny_14:
(2, 10529), (3, 10550), (Start: 7 @10658 has 33 MA's), (9, 10688),

Gene: StevieBAY_14 Start: 10649, Stop: 10888, Start Num: 7
Candidate Starts for StevieBAY_14:
(Start: 7 @10649 has 33 MA's), (9, 10679),

Gene: TaeYoung_14 Start: 10662, Stop: 10901, Start Num: 7
Candidate Starts for TaeYoung_14:
(3, 10554), (Start: 7 @10662 has 33 MA's), (9, 10692),

Gene: Timinator_14 Start: 10649, Stop: 10888, Start Num: 7
Candidate Starts for Timinator_14:
(Start: 7 @10649 has 33 MA's), (9, 10679),

Gene: Vibaki_15 Start: 12095, Stop: 12331, Start Num: 7
Candidate Starts for Vibaki_15:
(Start: 7 @12095 has 33 MA's),

Gene: Wyborn_15 Start: 11005, Stop: 11241, Start Num: 7
Candidate Starts for Wyborn_15:
(Start: 7 @11005 has 33 MA's),

Gene: Zartrosa_14 Start: 10661, Stop: 10900, Start Num: 7
Candidate Starts for Zartrosa_14:
(2, 10532), (3, 10553), (Start: 7 @10661 has 33 MA's), (9, 10691),