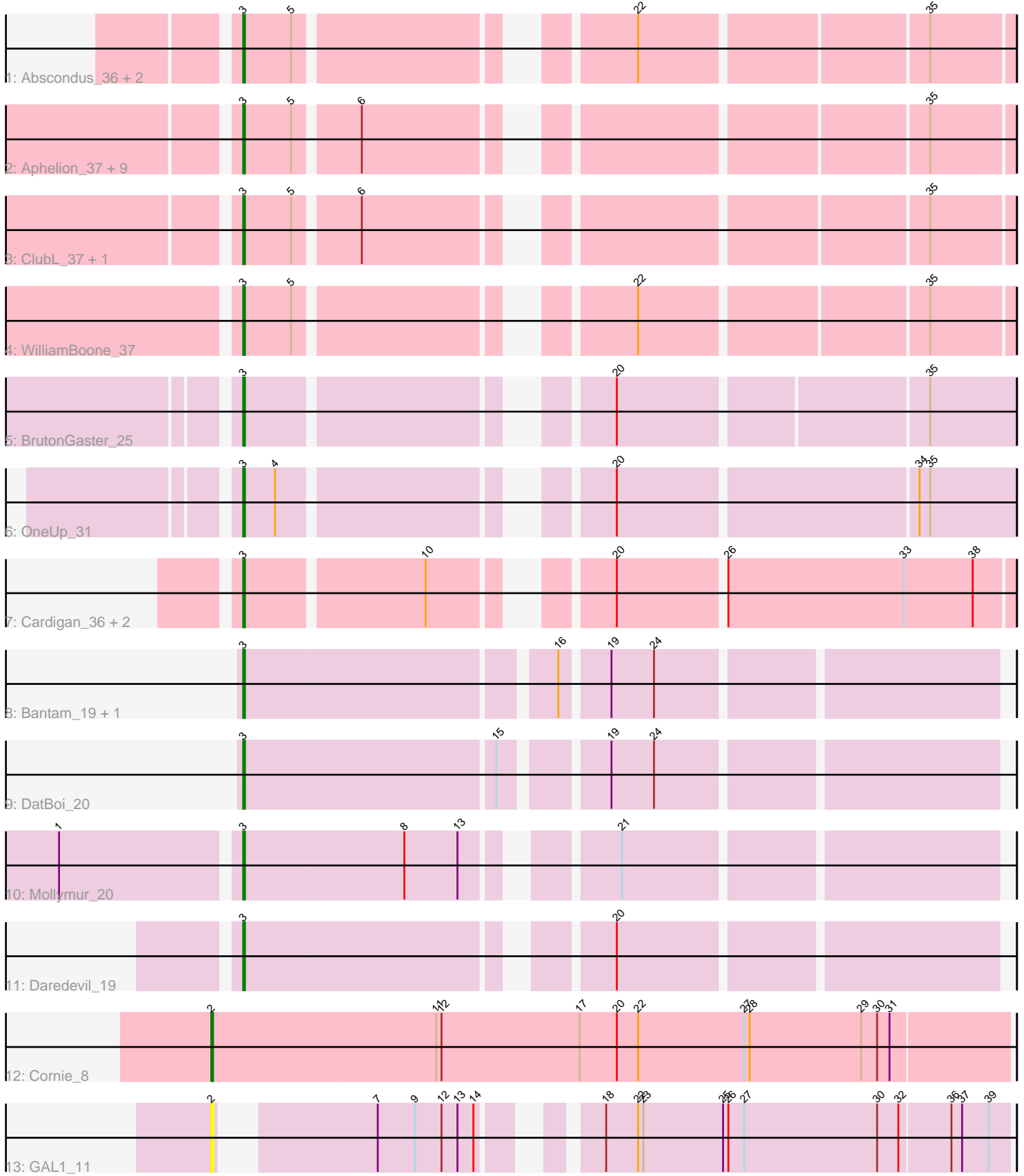


Pham 191463



Note: Tracks are now grouped by subcluster and scaled. Switching in subcluster is indicated by changes in track color. Track scale is now set by default to display the region 30 bp upstream of start 1 to 30 bp downstream of the last possible start. If this default region is judged to be packed too tightly with annotated starts, the track will be further scaled to only show that region of the ORF with annotated starts. This action will be indicated by adding "Zoomed" to the title. For starts, yellow indicates the location of called starts comprised solely of Glimmer/GeneMark auto-annotations, green indicates the location of called starts with at least 1 manual gene annotation.

Pham 191463 Report

This analysis was run 11/02/24 on database version 579.

Pham number 191463 has 28 members, 6 are drafts.

Phages represented in each track:

- Track 1 : Abscondus_36, Dusty_35, Culver_37
- Track 2 : Aphelion_37, Bachita_39, Norvs_38, Geeche_36, Smoothie_38, Lozinak_37, Cucurbita_39, PhinkBoden_37, Toniann_37, Engineer_38
- Track 3 : ClubL_37, Miskis_39
- Track 4 : WilliamBoone_37
- Track 5 : BrutonGaster_25
- Track 6 : OneUp_31
- Track 7 : Cardigan_36, JonJames_36, Yvonnetastic_34
- Track 8 : Bantam_19, SpeedDemon_200
- Track 9 : DatBoi_20
- Track 10 : Mollymur_20
- Track 11 : Daredevil_19
- Track 12 : Cornie_8
- Track 13 : GAL1_11

Summary of Final Annotations (See graph section above for start numbers):

The start number called the most often in the published annotations is 3, it was called in 21 of the 22 non-draft genes in the pham.

Genes that call this "Most Annotated" start:

- Abscondus_36, Aphelion_37, Bachita_39, Bantam_19, BrutonGaster_25, Cardigan_36, ClubL_37, Cucurbita_39, Culver_37, Daredevil_19, DatBoi_20, Dusty_35, Engineer_38, Geeche_36, JonJames_36, Lozinak_37, Miskis_39, Mollymur_20, Norvs_38, OneUp_31, PhinkBoden_37, Smoothie_38, SpeedDemon_200, Toniann_37, WilliamBoone_37, Yvonnetastic_34,

Genes that have the "Most Annotated" start but do not call it:

-

Genes that do not have the "Most Annotated" start:

- Cornie_8, GAL1_11,

Summary by start number:

Start 2:

- Found in 2 of 28 (7.1%) of genes in pham
- Manual Annotations of this start: 1 of 22
- Called 100.0% of time when present
- Phage (with cluster) where this start called: Cornie_8 (F5), GAL1_11 (singleton),

Start 3:

- Found in 26 of 28 (92.9%) of genes in pham
- Manual Annotations of this start: 21 of 22
- Called 100.0% of time when present
- Phage (with cluster) where this start called: Abscondus_36 (CQ1), Aphelion_37 (CQ1), Bachita_39 (CQ1), Bantam_19 (DL), BrutonGaster_25 (CQ2), Cardigan_36 (DD), ClubL_37 (CQ1), Cucurbita_39 (CQ1), Culver_37 (CQ1), Daredevil_19 (DL), DatBoi_20 (DL), Dusty_35 (CQ1), Engineer_38 (CQ1), Geeche_36 (CQ1), JonJames_36 (DD), Lozinak_37 (CQ1), Miskis_39 (CQ1), Mollymur_20 (DL), Norvs_38 (CQ1), OneUp_31 (CQ2), PhinkBoden_37 (CQ1), Smoothie_38 (CQ1), SpeedDemon_200 (DL), Toniann_37 (CQ1), WilliamBoone_37 (CQ1), Yvonnestic_34 (DD),

Summary by clusters:

There are 6 clusters represented in this pham: DL, F5, DD, singleton, CQ2, CQ1,

Info for manual annotations of cluster CQ1:

- Start number 3 was manually annotated 12 times for cluster CQ1.

Info for manual annotations of cluster CQ2:

- Start number 3 was manually annotated 2 times for cluster CQ2.

Info for manual annotations of cluster DD:

- Start number 3 was manually annotated 2 times for cluster DD.

Info for manual annotations of cluster DL:

- Start number 3 was manually annotated 5 times for cluster DL.

Info for manual annotations of cluster F5:

- Start number 2 was manually annotated 1 time for cluster F5.

Gene Information:

Gene: Abscondus_36 Start: 15494, Stop: 15874, Start Num: 3

Candidate Starts for Abscondus_36:

(Start: 3 @15494 has 21 MA's), (5, 15521), (22, 15677), (35, 15830),

Gene: Aphelion_37 Start: 15763, Stop: 16143, Start Num: 3

Candidate Starts for Aphelion_37:

(Start: 3 @15763 has 21 MA's), (5, 15790), (6, 15823), (35, 16099),

Gene: Bachita_39 Start: 16196, Stop: 16576, Start Num: 3

Candidate Starts for Bachita_39:

(Start: 3 @16196 has 21 MA's), (5, 16223), (6, 16256), (35, 16532),

Gene: Bantam_19 Start: 13233, Stop: 13628, Start Num: 3

Candidate Starts for Bantam_19:

(Start: 3 @13233 has 21 MA's), (16, 13398), (19, 13422), (24, 13446),

Gene: BrutonGaster_25 Start: 12392, Stop: 12775, Start Num: 3

Candidate Starts for BrutonGaster_25:

(Start: 3 @12392 has 21 MA's), (20, 12563), (35, 12728),

Gene: Cardigan_36 Start: 17393, Stop: 17779, Start Num: 3

Candidate Starts for Cardigan_36:

(Start: 3 @17393 has 21 MA's), (10, 17489), (20, 17564), (26, 17621), (33, 17720), (38, 17759),

Gene: ClubL_37 Start: 15685, Stop: 16065, Start Num: 3

Candidate Starts for ClubL_37:

(Start: 3 @15685 has 21 MA's), (5, 15712), (6, 15745), (35, 16021),

Gene: Cornie_8 Start: 6217, Stop: 6663, Start Num: 2

Candidate Starts for Cornie_8:

(Start: 2 @6217 has 1 MA's), (11, 6343), (12, 6346), (17, 6424), (20, 6445), (22, 6457), (27, 6517), (28, 6520), (29, 6583), (30, 6592), (31, 6598),

Gene: Cucurbita_39 Start: 17055, Stop: 17435, Start Num: 3

Candidate Starts for Cucurbita_39:

(Start: 3 @17055 has 21 MA's), (5, 17082), (6, 17115), (35, 17391),

Gene: Culver_37 Start: 15494, Stop: 15874, Start Num: 3

Candidate Starts for Culver_37:

(Start: 3 @15494 has 21 MA's), (5, 15521), (22, 15677), (35, 15830),

Gene: Daredevil_19 Start: 12081, Stop: 12467, Start Num: 3

Candidate Starts for Daredevil_19:

(Start: 3 @12081 has 21 MA's), (20, 12264),

Gene: DatBoi_20 Start: 14024, Stop: 14419, Start Num: 3

Candidate Starts for DatBoi_20:

(Start: 3 @14024 has 21 MA's), (15, 14162), (19, 14213), (24, 14237),

Gene: Dusty_35 Start: 15494, Stop: 15874, Start Num: 3

Candidate Starts for Dusty_35:

(Start: 3 @15494 has 21 MA's), (5, 15521), (22, 15677), (35, 15830),

Gene: Engineer_38 Start: 15711, Stop: 16091, Start Num: 3

Candidate Starts for Engineer_38:

(Start: 3 @15711 has 21 MA's), (5, 15738), (6, 15771), (35, 16047),

Gene: GAL1_11 Start: 8169, Stop: 8561, Start Num: 2

Candidate Starts for GAL1_11:

(Start: 2 @8169 has 1 MA's), (7, 8238), (9, 8259), (12, 8274), (13, 8283), (14, 8292), (18, 8337), (22, 8355), (23, 8358), (25, 8403), (26, 8406), (27, 8415), (30, 8490), (32, 8502), (36, 8529), (37, 8535), (39, 8550),

Gene: Geeche_36 Start: 15585, Stop: 15965, Start Num: 3
Candidate Starts for Geeche_36:
(Start: 3 @15585 has 21 MA's), (5, 15612), (6, 15645), (35, 15921),

Gene: JonJames_36 Start: 19608, Stop: 19994, Start Num: 3
Candidate Starts for JonJames_36:
(Start: 3 @19608 has 21 MA's), (10, 19704), (20, 19779), (26, 19836), (33, 19935), (38, 19974),

Gene: Lozinak_37 Start: 15766, Stop: 16146, Start Num: 3
Candidate Starts for Lozinak_37:
(Start: 3 @15766 has 21 MA's), (5, 15793), (6, 15826), (35, 16102),

Gene: Miskis_39 Start: 15529, Stop: 15909, Start Num: 3
Candidate Starts for Miskis_39:
(Start: 3 @15529 has 21 MA's), (5, 15556), (6, 15589), (35, 15865),

Gene: Mollymur_20 Start: 14083, Stop: 14469, Start Num: 3
Candidate Starts for Mollymur_20:
(1, 13987), (Start: 3 @14083 has 21 MA's), (8, 14173), (13, 14203), (21, 14269),

Gene: Norvs_38 Start: 15768, Stop: 16148, Start Num: 3
Candidate Starts for Norvs_38:
(Start: 3 @15768 has 21 MA's), (5, 15795), (6, 15828), (35, 16104),

Gene: OneUp_31 Start: 13478, Stop: 13864, Start Num: 3
Candidate Starts for OneUp_31:
(Start: 3 @13478 has 21 MA's), (4, 13496), (20, 13649), (34, 13811), (35, 13817),

Gene: PhinkBoden_37 Start: 16149, Stop: 16529, Start Num: 3
Candidate Starts for PhinkBoden_37:
(Start: 3 @16149 has 21 MA's), (5, 16176), (6, 16209), (35, 16485),

Gene: Smoothie_38 Start: 15766, Stop: 16146, Start Num: 3
Candidate Starts for Smoothie_38:
(Start: 3 @15766 has 21 MA's), (5, 15793), (6, 15826), (35, 16102),

Gene: SpeedDemon_200 Start: 13549, Stop: 13944, Start Num: 3
Candidate Starts for SpeedDemon_200:
(Start: 3 @13549 has 21 MA's), (16, 13714), (19, 13738), (24, 13762),

Gene: Toniann_37 Start: 15711, Stop: 16091, Start Num: 3
Candidate Starts for Toniann_37:
(Start: 3 @15711 has 21 MA's), (5, 15738), (6, 15771), (35, 16047),

Gene: WilliamBoone_37 Start: 15075, Stop: 15455, Start Num: 3
Candidate Starts for WilliamBoone_37:
(Start: 3 @15075 has 21 MA's), (5, 15102), (22, 15258), (35, 15411),

Gene: Yvonnetastic_34 Start: 17157, Stop: 17543, Start Num: 3
Candidate Starts for Yvonnetastic_34:
(Start: 3 @17157 has 21 MA's), (10, 17253), (20, 17328), (26, 17385), (33, 17484), (38, 17523),