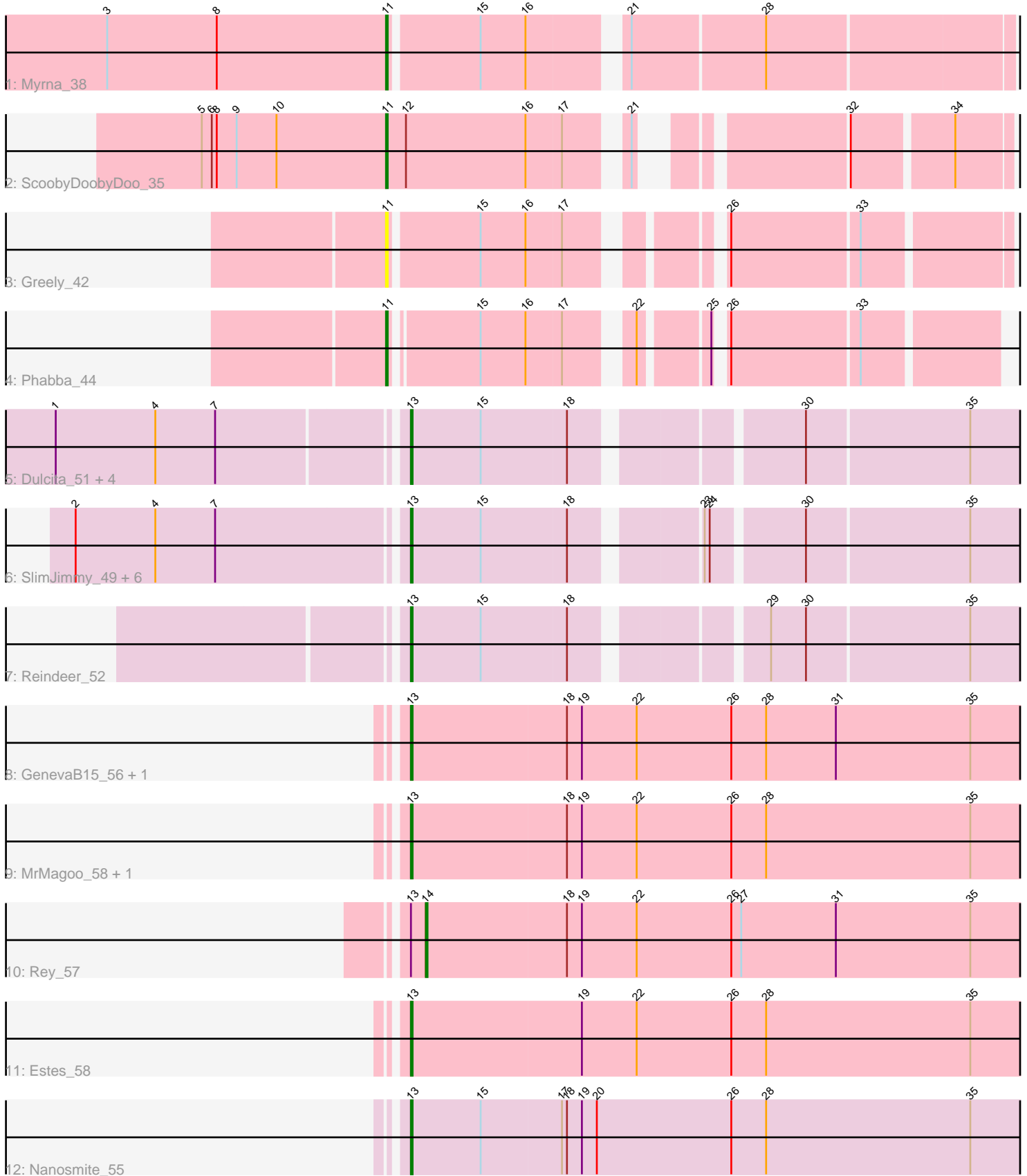


Pham 191504



Note: Tracks are now grouped by subcluster and scaled. Switching in subcluster is indicated by changes in track color. Track scale is now set by default to display the region 30 bp upstream of start 1 to 30 bp downstream of the last possible start. If this default region is judged to be packed too tightly with annotated starts, the track will be further scaled to only show that region of the ORF with annotated starts. This action will be indicated by adding "Zoomed" to the title. For starts, yellow indicates the location of called starts comprised solely of Glimmer/GeneMark auto-annotations, green indicates the location of called starts with at least 1 manual gene annotation.

## Pham 191504 Report

This analysis was run 11/02/24 on database version 579.

Pham number 191504 has 24 members, 1 are drafts.

Phages represented in each track:

- Track 1 : Myrna\_38
- Track 2 : ScoobyDoobyDoo\_35
- Track 3 : Greely\_42
- Track 4 : Phabba\_44
- Track 5 : Dulcita\_51, Bricole\_50, Glaske16\_51, Diminimus\_51, Auspice\_50
- Track 6 : SlimJimmy\_49, Bongo\_50, IPhane7\_50, PegLeg\_50, Skinny\_51, LilhomieP\_49, TyDawg\_50
- Track 7 : Reindeer\_52
- Track 8 : GenevaB15\_56, Aziz\_56
- Track 9 : MrMagoo\_58, GardenSalsa\_58
- Track 10 : Rey\_57
- Track 11 : Estes\_58
- Track 12 : Nanosmite\_55

### ***Summary of Final Annotations (See graph section above for start numbers):***

The start number called the most often in the published annotations is 13, it was called in 19 of the 23 non-draft genes in the pham.

Genes that call this "Most Annotated" start:

- Auspice\_50, Aziz\_56, Bongo\_50, Bricole\_50, Diminimus\_51, Dulcita\_51, Estes\_58, GardenSalsa\_58, GenevaB15\_56, Glaske16\_51, IPhane7\_50, LilhomieP\_49, MrMagoo\_58, Nanosmite\_55, PegLeg\_50, Reindeer\_52, Skinny\_51, SlimJimmy\_49, TyDawg\_50,

Genes that have the "Most Annotated" start but do not call it:

- Rey\_57,

Genes that do not have the "Most Annotated" start:

- Greely\_42, Myrna\_38, Phabba\_44, ScoobyDoobyDoo\_35,

### **Summary by start number:**

Start 11:

- Found in 4 of 24 ( 16.7% ) of genes in pham
- Manual Annotations of this start: 3 of 23
- Called 100.0% of time when present
- Phage (with cluster) where this start called: Greely\_42 (C2), Myrna\_38 (C2), Phabba\_44 (C2), ScoobyDoobyDoo\_35 (C2),

Start 13:

- Found in 20 of 24 ( 83.3% ) of genes in pham
- Manual Annotations of this start: 19 of 23
- Called 95.0% of time when present
- Phage (with cluster) where this start called: Auspice\_50 (M1), Aziz\_56 (M2), Bongo\_50 (M1), Bricole\_50 (M1), Diminimus\_51 (M1), Dulcita\_51 (M1), Estes\_58 (M2), GardenSalsa\_58 (M2), GenevaB15\_56 (M2), Glaske16\_51 (M1), IPhone7\_50 (M1), LilhomieP\_49 (M1), MrMagoo\_58 (M2), Nanosmite\_55 (M3), PegLeg\_50 (M1), Reindeer\_52 (M1), Skinny\_51 (M1), SlimJimmy\_49 (M1), TyDawg\_50 (M1),

Start 14:

- Found in 1 of 24 ( 4.2% ) of genes in pham
- Manual Annotations of this start: 1 of 23
- Called 100.0% of time when present
- Phage (with cluster) where this start called: Rey\_57 (M2),

### **Summary by clusters:**

There are 4 clusters represented in this pham: C2, M1, M3, M2,

Info for manual annotations of cluster C2:

- Start number 11 was manually annotated 3 times for cluster C2.

Info for manual annotations of cluster M1:

- Start number 13 was manually annotated 13 times for cluster M1.

Info for manual annotations of cluster M2:

- Start number 13 was manually annotated 5 times for cluster M2.
- Start number 14 was manually annotated 1 time for cluster M2.

Info for manual annotations of cluster M3:

- Start number 13 was manually annotated 1 time for cluster M3.

### **Gene Information:**

Gene: Auspice\_50 Start: 37254, Stop: 37604, Start Num: 13

Candidate Starts for Auspice\_50:

(1, 37053), (4, 37113), (7, 37149), (Start: 13 @37254 has 19 MA's), (15, 37296), (18, 37347), (30, 37467), (35, 37563),

Gene: Aziz\_56 Start: 39168, Stop: 39545, Start Num: 13

Candidate Starts for Aziz\_56:

(Start: 13 @39168 has 19 MA's), (18, 39261), (19, 39270), (22, 39303), (26, 39360), (28, 39381), (31, 39423), (35, 39504),

Gene: Bongo\_50 Start: 37258, Stop: 37608, Start Num: 13  
Candidate Starts for Bongo\_50:  
(2, 37066), (4, 37114), (7, 37150), (Start: 13 @37258 has 19 MA's), (15, 37300), (18, 37351), (23, 37417), (24, 37420), (30, 37471), (35, 37567),

Gene: Bricole\_50 Start: 37240, Stop: 37590, Start Num: 13  
Candidate Starts for Bricole\_50:  
(1, 37039), (4, 37099), (7, 37135), (Start: 13 @37240 has 19 MA's), (15, 37282), (18, 37333), (30, 37453), (35, 37549),

Gene: Diminimus\_51 Start: 37253, Stop: 37603, Start Num: 13  
Candidate Starts for Diminimus\_51:  
(1, 37052), (4, 37112), (7, 37148), (Start: 13 @37253 has 19 MA's), (15, 37295), (18, 37346), (30, 37466), (35, 37562),

Gene: Dulcita\_51 Start: 37254, Stop: 37604, Start Num: 13  
Candidate Starts for Dulcita\_51:  
(1, 37053), (4, 37113), (7, 37149), (Start: 13 @37254 has 19 MA's), (15, 37296), (18, 37347), (30, 37467), (35, 37563),

Gene: Estes\_58 Start: 39425, Stop: 39802, Start Num: 13  
Candidate Starts for Estes\_58:  
(Start: 13 @39425 has 19 MA's), (19, 39527), (22, 39560), (26, 39617), (28, 39638), (35, 39761),

Gene: GardenSalsa\_58 Start: 39575, Stop: 39952, Start Num: 13  
Candidate Starts for GardenSalsa\_58:  
(Start: 13 @39575 has 19 MA's), (18, 39668), (19, 39677), (22, 39710), (26, 39767), (28, 39788), (35, 39911),

Gene: GenevaB15\_56 Start: 39168, Stop: 39545, Start Num: 13  
Candidate Starts for GenevaB15\_56:  
(Start: 13 @39168 has 19 MA's), (18, 39261), (19, 39270), (22, 39303), (26, 39360), (28, 39381), (31, 39423), (35, 39504),

Gene: Glaske16\_51 Start: 37253, Stop: 37603, Start Num: 13  
Candidate Starts for Glaske16\_51:  
(1, 37052), (4, 37112), (7, 37148), (Start: 13 @37253 has 19 MA's), (15, 37295), (18, 37346), (30, 37466), (35, 37562),

Gene: Greely\_42 Start: 16620, Stop: 16946, Start Num: 11  
Candidate Starts for Greely\_42:  
(Start: 11 @16620 has 3 MA's), (15, 16671), (16, 16698), (17, 16719), (26, 16788), (33, 16863),

Gene: IPhane7\_50 Start: 37258, Stop: 37608, Start Num: 13  
Candidate Starts for IPhane7\_50:  
(2, 37066), (4, 37114), (7, 37150), (Start: 13 @37258 has 19 MA's), (15, 37300), (18, 37351), (23, 37417), (24, 37420), (30, 37471), (35, 37567),

Gene: LilhomieP\_49 Start: 37258, Stop: 37608, Start Num: 13  
Candidate Starts for LilhomieP\_49:  
(2, 37066), (4, 37114), (7, 37150), (Start: 13 @37258 has 19 MA's), (15, 37300), (18, 37351), (23, 37417), (24, 37420), (30, 37471), (35, 37567),

Gene: MrMagoo\_58 Start: 39575, Stop: 39952, Start Num: 13

Candidate Starts for MrMagoo\_58:

(Start: 13 @39575 has 19 MA's), (18, 39668), (19, 39677), (22, 39710), (26, 39767), (28, 39788), (35, 39911),

Gene: Myrna\_38 Start: 17055, Stop: 17402, Start Num: 11

Candidate Starts for Myrna\_38:

(3, 16887), (8, 16953), (Start: 11 @17055 has 3 MA's), (15, 17106), (16, 17133), (21, 17181), (28, 17259),

Gene: Nanosmite\_55 Start: 38885, Stop: 39262, Start Num: 13

Candidate Starts for Nanosmite\_55:

(Start: 13 @38885 has 19 MA's), (15, 38927), (17, 38975), (18, 38978), (19, 38987), (20, 38996), (26, 39077), (28, 39098), (35, 39221),

Gene: PegLeg\_50 Start: 37257, Stop: 37607, Start Num: 13

Candidate Starts for PegLeg\_50:

(2, 37065), (4, 37113), (7, 37149), (Start: 13 @37257 has 19 MA's), (15, 37299), (18, 37350), (23, 37416), (24, 37419), (30, 37470), (35, 37566),

Gene: Phabba\_44 Start: 16811, Stop: 17128, Start Num: 11

Candidate Starts for Phabba\_44:

(Start: 11 @16811 has 3 MA's), (15, 16859), (16, 16886), (17, 16907), (22, 16937), (25, 16973), (26, 16976), (33, 17051),

Gene: Reindeer\_52 Start: 38460, Stop: 38810, Start Num: 13

Candidate Starts for Reindeer\_52:

(Start: 13 @38460 has 19 MA's), (15, 38502), (18, 38553), (29, 38652), (30, 38673), (35, 38769),

Gene: Rey\_57 Start: 39459, Stop: 39827, Start Num: 14

Candidate Starts for Rey\_57:

(Start: 13 @39450 has 19 MA's), (Start: 14 @39459 has 1 MA's), (18, 39543), (19, 39552), (22, 39585), (26, 39642), (27, 39648), (31, 39705), (35, 39786),

Gene: ScoobyDoobyDoo\_35 Start: 13310, Stop: 13627, Start Num: 11

Candidate Starts for ScoobyDoobyDoo\_35:

(5, 13199), (6, 13205), (8, 13208), (9, 13220), (10, 13244), (Start: 11 @13310 has 3 MA's), (12, 13322), (16, 13394), (17, 13415), (21, 13442), (32, 13538), (34, 13595),

Gene: Skinny\_51 Start: 37687, Stop: 38037, Start Num: 13

Candidate Starts for Skinny\_51:

(2, 37495), (4, 37543), (7, 37579), (Start: 13 @37687 has 19 MA's), (15, 37729), (18, 37780), (23, 37846), (24, 37849), (30, 37900), (35, 37996),

Gene: SlimJimmy\_49 Start: 37241, Stop: 37591, Start Num: 13

Candidate Starts for SlimJimmy\_49:

(2, 37049), (4, 37097), (7, 37133), (Start: 13 @37241 has 19 MA's), (15, 37283), (18, 37334), (23, 37400), (24, 37403), (30, 37454), (35, 37550),

Gene: TyDawg\_50 Start: 37258, Stop: 37608, Start Num: 13

Candidate Starts for TyDawg\_50:

(2, 37066), (4, 37114), (7, 37150), (Start: 13 @37258 has 19 MA's), (15, 37300), (18, 37351), (23, 37417), (24, 37420), (30, 37471), (35, 37567),

