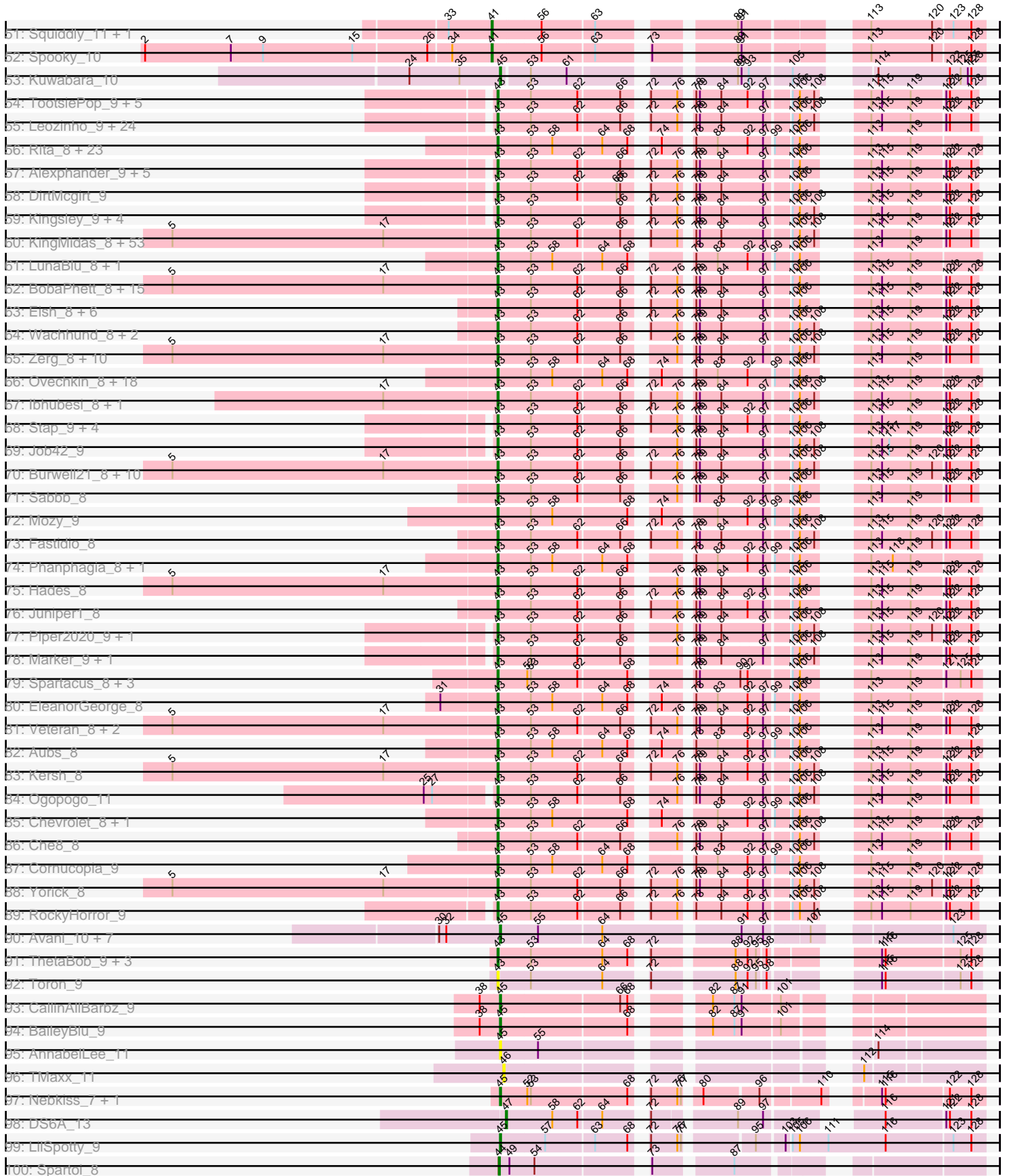


Pham 192185



Note: Tracks are now grouped by subcluster and scaled. Switching in subcluster is indicated by changes in track color. Track scale is now set by default to display the region 30 bp upstream of start 1 to 30 bp downstream of the last possible start. If this default region is judged to be packed too tightly with annotated starts, the track will be further scaled to only show that region of the ORF with annotated starts. This action will be indicated by adding "Zoomed" to the title. For starts, yellow indicates the location of called starts comprised solely of Glimmer/GeneMark auto-annotations, green indicates the location of called starts with at least 1 manual gene annotation.

Pham 192185 Report

This analysis was run 11/02/24 on database version 579.

Pham number 192185 has 366 members, 26 are drafts.

Phages represented in each track:

- Track 1 : NoShow_10
- Track 2 : Maco6_10
- Track 3 : JacoRen57_9
- Track 4 : FF47_12
- Track 5 : Muddy_12
- Track 6 : MalagasyRose_16
- Track 7 : Nergal_14
- Track 8 : Yakult_11
- Track 9 : Elliott_10, RedBaron_11, Burnsey_10, Agatha_10, Cozz_10, PsychoKiller_10, Quasar_10, Sopespian_10, Axym_10, GoldHunter_11
- Track 10 : Lauer_9
- Track 11 : Azira_12, Survivors_12, MaVan_12, Nibbles_12
- Track 12 : SweatNTears_12, MScarn_12, SketchMex_9, Troje_10, Horseradish_11, Yummy_11, Biskit_11, Buttrmlkdreams_10
- Track 13 : Nina_11
- Track 14 : Orla_12
- Track 15 : Tolls_12, SteamedHams_12, GTE2_08, AndPeggy_9, BillDoor_12, Yarn_9
- Track 16 : Dre3_10, Cleo_10, Gibbous_10
- Track 17 : HippoPololi_12
- Track 18 : Mayweather_11, MAnor_10, CherryonLim_11, Pons_10
- Track 19 : Nodigi_12
- Track 20 : Amok_9, AikoCarson_9, Emalyn_9
- Track 21 : PotPie_10, KayGee_10, SummitAcademy_9, Elinal_11
- Track 22 : Button_11
- Track 23 : Jamzy_13
- Track 24 : Zareef_14
- Track 25 : Typhonomachy_11
- Track 26 : Hexbug_12
- Track 27 : Feastonyeet_9, BigChungus_9
- Track 28 : RanchParmCat_13
- Track 29 : SheckWes_9
- Track 30 : Carsonalex_11
- Track 31 : Margaret_13
- Track 32 : Fribs8_11
- Track 33 : GiKK_13
- Track 34 : Vine_11

- Track 35 : MunkgeeRoachy_10
- Track 36 : BeeGee_10, Wrigley_10
- Track 37 : Jablanski_10, Pytheas_10
- Track 38 : Cashline_10
- Track 39 : Pollux_10, BritBrat_10, LonelyBoi_10, EMSquaredA_10, Lilas_10, Posh_10, Bradissa_10, Floral_10, EnalisNailo_10, Confidence_10, Marteena_10
- Track 40 : Angelique_10
- Track 41 : Morkie_9, PhorbesPhlower_9
- Track 42 : Lucky10_9
- Track 43 : Ecliptus_10, ODay_10
- Track 44 : Budski_10, Phabuloso_10, CheeseTouch_10, Holliday_10, LitninMcQueen_10, Kamaru_10
- Track 45 : BearBQ_10, MortyNRick_10, Birdsong_10, Apricot_10, Crater_10
- Track 46 : Malisha_10
- Track 47 : Periwinkle_10
- Track 48 : Kenna_10, Lutum_10
- Track 49 : Horus_10, BENtherdunthat_10, Frickyeah_10, Leroy_10, Asapag_10
- Track 50 : Getalong_10, Whitney_10
- Track 51 : Squiddly_11, Phistory_10
- Track 52 : Spooky_10
- Track 53 : Kuwabara_10
- Track 54 : TootsiePop_9, DocMcStuffins_9, Misha28_9, ChickenDinner_9, Mova_9, Tootsieroll_9
- Track 55 : Leozinho_9, Spikelee_9, Plumbus_9, Hegedechwinu_9, Kimberlium_9, Frankie_9, OwlsT2W_9, Squirty_9, Girafales_9, DosHalletts_9, Juice456_9, SimranZ1_9, Boomer_9, Starcevich_9, Beakin_9, DaWorst_9, Totinger_9, Flathead_9, Rialto_9, MulchExplorer_10, Ramsey_9, Madiba_9, Pollywog_9, LittleShirley_9, Quico_9
- Track 56 : Rita_8, Guppsters_8, IMpilo_8, Taj_8, Kenuha5_8, SuperGrey_8, Bipolar_8, DotProduct_8, Ms6_8, MilanaBonita_9, DLane_8, SiSi_8, QuickMath_8, Firehouse51_8, SG4_8, KristaRAM_9, MilleniumForce_9, DillTech15_8, Wee_8, DeadP_8, Hamulus_8, Akhila_9, Emma_8, Ardmore_8
- Track 57 : Alexphander_9, UncleRicky_9, Drago_9, Enby_9, Lorde_9, Oksu_9
- Track 58 : DirtMcgirt_9
- Track 59 : Kingsley_9, Cerasum_9, Sarma624_9, Velveteen_9, BigPhil_9
- Track 60 : KingMidas_8, Nimbo_8, Scottish_8, Estave1_8, ByChance_8, Dorothy_8, OldBen_8, Doug_8, BlueCrab_8, Pacc40_8, Polka14_8, Cabrinians_8, PMC_8, Leperchaun_8, Dante_8, Sandalphon_8, Minnie_8, Empress_8, Inventum_8, MadMen_8, Sassafras_8, Pippy_8, DaddyRickover_8, Gorge_8, LilMoolah_8, Eradicator_8, RedBird_8, Phatniss_8, FreddyB_8, Koella_8, Blexus_8, Radiance_8, Saal_8, RitaG_8, NormanBulbieJr_8, Gandolph_8, TDanisky_8, DRBy19_8, Deb65_8, Mahavrat_8, BodEinwohner17_8, PHappiness_8, JoeyJr_8, Llij_8, Clifton_8, Sparkdehlily_8, Geralt_8, Doomphist_8, Brocalys_8, IbOuu_8, Daenerys_8, Rockne_8, Poenanya_8, Priscilla_8
- Track 61 : LunaBlu_8, Galactic_8
- Track 62 : BobaPhett_8, Ochi17_8, Sebastian_8, MulchSalad_8, James_8, Modragons_8, Hlubikazi_8, Mattes_8, Fancypants_8, Strokeseat_8, LastJedi_8, Llama_8, AlpineSix_8, Mandlovu_8, OfUltron_8, Jinglebell_8
- Track 63 : Eish_8, Latretium_8, Girr_8, Whouxphf_8, Phasih_8, MisterCuddles_8, Ruby_8
- Track 64 : Wachhund_8, Byougenkin_8, Spoonbill_8
- Track 65 : Zerg_8, VRedHorse_8, Florinda_8, Crumble_8, GigiOuiOui_8, Donkeykong_8, Mantra_8, Nitzel_9, Bubbles123_8, OlympiaSaint_8, Moonbeam_8

- Track 66 : Ovechkin_8, StAnnes_8, Phalconet_8, PopTart_8, XFactor_8, Melissau88_8, Fruitloop_8, Royals2015_8, CaptainTrips_9, Krakatau_9, PhesterPhotato_8, MinionDave_9, Batiatus_8, Chuckly_8, Whatsapiecost_8, Tweety_8, ShroomBoi_8, SassyB_8, Filuzino_8
- Track 67 : lbhubesi_8, Harley_8
- Track 68 : Stap_9, BuzzLyseyear_9, Bobi_9, Seagreen_9, JalFarm20_9
- Track 69 : Job42_9
- Track 70 : Burwell21_8, ShowerHandel_8, Nivrat_8, Lizziana_8, Zizzle_8, Maravista_8, Philus_8, SwagPiggett_8, ShiLan_8, Jarcob_8, Martik_8
- Track 71 : Sabbb_8
- Track 72 : Mozy_9
- Track 73 : Fastidio_8
- Track 74 : Phanphagia_8, Shauna1_8
- Track 75 : Hades_8
- Track 76 : Juniper1_8
- Track 77 : Piper2020_9, Awesomesauce_9
- Track 78 : Marker_9, Coco12_9
- Track 79 : Spartacus_8, IrishSherpFalk_8, Mutaforma13_8, WillSterrel_8
- Track 80 : EleanorGeorge_8
- Track 81 : Veteran_8, Karhdo_8, GUmbie_8
- Track 82 : Aubs_8
- Track 83 : Kersh_8
- Track 84 : Ogopogo_11
- Track 85 : Chevrolet_8, ArcusAngelus_8
- Track 86 : Che8_8
- Track 87 : Cornucopia_9
- Track 88 : Yorick_8
- Track 89 : RockyHorror_9
- Track 90 : Avani_10, Soul22_10, Che9d_10, Demsculpinboyz_10, Zapner_11, Blarby_11, Jabbawokkie_11, Yoshi_10
- Track 91 : ThetaBob_9, Renaud18_9, TChen_9, LunaStella_9
- Track 92 : Toron_9
- Track 93 : CallinAllBarbz_9
- Track 94 : BaileyBlu_9
- Track 95 : AnnabelLee_11
- Track 96 : TMaxx_11
- Track 97 : Nebkiss_7, Gaia_7
- Track 98 : DS6A_13
- Track 99 : LilSpotty_9
- Track 100 : Spartoi_8

Summary of Final Annotations (See graph section above for start numbers):

The start number called the most often in the published annotations is 43, it was called in 221 of the 340 non-draft genes in the pham.

Genes that call this "Most Annotated" start:

- Akhila_9, Alexphander_9, AlpineSix_8, ArcusAngelus_8, Ardmore_8, Aubs_8, Awesomesauce_9, Batiatus_8, Beakin_9, BigPhil_9, Bipolar_8, Blexus_8, BlueCrab_8, BobaPhett_8, Bobi_9, BodEinwohner17_8, Boomer_9, Brocalys_8,

Bubbles123_8, Burwell21_8, BuzzLyseyear_9, ByChance_8, Byougenkin_8, Cabrinians_8, CaptainTrips_9, Cerasum_9, Che8_8, Chevrolet_8, ChickenDinner_9, Chuckly_8, Clifton_8, Coco12_9, Cornucopia_9, Crumble_8, DLane_8, DRBy19_8, DaWorst_9, DaddyRickover_8, Daenerys_8, Dante_8, DeadP_8, Deb65_8, DillTech15_8, DirtMcgirt_9, DocMcStuffins_9, Donkeykong_8, Doomphist_8, Dorothy_8, DosHalletts_9, DotProduct_8, Doug_8, Drago_9, Eish_8, EleanorGeorge_8, Emma_8, Empress_8, Enby_9, Eradicator_8, Estave1_8, Fancypants_8, Fastidio_8, Filuzino_8, Firehouse51_8, Flathead_9, Florinda_8, Frankie_9, FreddyB_8, Fruitloop_8, GUmbie_8, Galactic_8, Gandalph_8, Geralt_8, GigiOuiOui_8, Girafales_9, Girr_8, Gorge_8, Guppsters_8, Hades_8, Hamulus_8, Harley_8, Hegedechwinu_9, Hlubikazi_8, IMpilo_8, IbOuu_8, Ibhubesi_8, Inventum_8, IrishSherpFalk_8, JalFarm20_9, James_8, Jarcob_8, Jinglebell_8, Job42_9, JoeyJr_8, Juice456_9, Juniper1_8, Karhdo_8, Kenuha5_8, Kersh_8, Kimberlium_9, KingMidas_8, Kingsley_9, Koella_8, Krakatau_9, KristaRAM_9, LastJedi_8, Latretium_8, Leozinho_9, Leperchaun_8, LilMoolah_8, LittleShirley_9, Lizziana_8, Llama_8, Llij_8, Lorde_9, LunaBlu_8, LunaStella_9, MadMen_8, Madiba_9, Mahavrat_8, Mandlovu_8, Mantra_8, Maravista_8, Marker_9, Martik_8, Mattes_8, Melissauren88_8, MilanaBonita_9, MilleniumForce_9, MinionDave_9, Minnie_8, Misha28_9, MisterCuddles_8, Modragons_8, Moonbeam_8, Mova_9, Mozy_9, Ms6_8, MulchExplorer_10, MulchSalad_8, Mutaforma13_8, Nimbo_8, Nitzel_9, Nivrat_8, NormanBulbieJr_8, Ochi17_8, OfUltron_8, Ogopogo_11, Oksu_9, OldBen_8, OlympiaSaint_8, Ovechkin_8, OwlsT2W_9, PHappiness_8, PMC_8, Pacc40_8, Phalconet_8, Phanphagia_8, Phasih_8, Phatniss_8, PhesterPhotato_8, Philus_8, Piper2020_9, Pippy_8, Plumbus_9, Poenanya_8, Polka14_8, Pollywog_9, PopTart_8, Priscilla_8, QuickMath_8, Quico_9, Radiance_8, Ramsey_9, RedBird_8, Renaud18_9, Rialto_9, RitaG_8, Rita_8, Rockne_8, RockyHorror_9, Royals2015_8, Ruby_8, SG4_8, Saal_8, Sabbb_8, Sandalphon_8, Sarma624_9, Sassafra_8, SassyB_8, Scottish_8, Seabastian_8, Seagreen_9, Shauna1_8, ShiLan_8, ShowerHandel_8, ShroomBoi_8, SiSi_8, SimranZ1_9, Sparkdehlily_8, Spartacus_8, Spikelee_9, Spoonbill_8, Squirty_9, StAnnes_8, Stap_9, Starcevich_9, Strokeseat_8, SuperGrey_8, SwagPigglett_8, TChen_9, TDanisky_8, Taj_8, ThetaBob_9, TootsiePop_9, Tootsieroll_9, Toron_9, Totinger_9, Tweety_8, UncleRicky_9, VRedHorse_8, Velveteen_9, Veteran_8, Wachhund_8, Wee_8, Whatsapiecost_8, Whouxphf_8, WillSterrel_8, XFactor_8, Yorick_8, Zerg_8, Zizzle_8,

Genes that have the "Most Annotated" start but do not call it:

•

Genes that do not have the "Most Annotated" start:

• Agatha_10, AikoCarson_9, Amok_9, AndPeggy_9, Angelique_10, AnnabelLee_11, Apricot_10, Asapag_10, Avani_10, Axym_10, Azira_12, BENtherdunthat_10, BaileyBlu_9, BearBQ_10, BeeGee_10, BigChungus_9, BillDoor_12, Birdsong_10, Biskit_11, Blarby_11, Bradissa_10, BritBrat_10, Budski_10, Burnsey_10, Button_11, Buttrmlkdreams_10, CallinAllBarbz_9, Carsonalex_11, Cashline_10, Che9d_10, CheeseTouch_10, CherryonLim_11, Cleo_10, Confidence_10, Cozz_10, Crater_10, DS6A_13, Demsculpinboyz_10, Dre3_10, EMSquaredA_10, Ecliptus_10, Elinal_11, Elliott_10, Emalyn_9, EnalisNailo_10, FF47_12, Feastonyeet_9, Floral_10, Fribs8_11, Frickyeah_10, GTE2_08, Gaia_7, Getalong_10, GiKK_13, Gibbous_10, GoldHunter_11, Hexbug_12, HippoPololi_12, Holliday_10, Horseradish_11, Horus_10, Jabbawokkie_11, Jablanski_10, JacoRen57_9, Jamzy_13, Kamaru_10, KayGee_10, Kenna_10, Kuwabara_10, Lauer_9, Leroy_10, LilSpotty_9, Lilas_10, LitninMcQueen_10, LonelyBoi_10, Lucky10_9, Lutum_10, MAnor_10, MScarn_12, MaVan_12, Maco6_10, MalagasyRose_16, Malisha_10, Margaret_13, Marteena_10,

Mayweather_11, Morkie_9, MortyNRick_10, Muddy_12, MunkgeeRoachy_10, Nebkiss_7, Nergal_14, Nibbles_12, Nina_11, NoShow_10, Nodigi_12, ODay_10, Orla_12, Periwinkle_10, Phabuloso_10, Phistory_10, PhorbesPhlower_9, Pollux_10, Pons_10, Posh_10, PotPie_10, PsychoKiller_10, Pytheas_10, Quasar_10, RanchParmCat_13, RedBaron_11, SheckWes_9, SketchMex_9, Sopespian_10, Soul22_10, Spartoi_8, Spooky_10, Squiddly_11, SteamedHams_12, SummitAcademy_9, Survivors_12, SweatNTears_12, TMaxx_11, Tolls_12, Troje_10, Typhonomachy_11, Vine_11, Whitney_10, Wrigley_10, Yakult_11, Yarn_9, Yoshi_10, Yummy_11, Zapner_11, Zareef_14,

Summary by start number:

Start 36:

- Found in 1 of 366 (0.3%) of genes in pham
- Manual Annotations of this start: 1 of 340
- Called 100.0% of time when present
- Phage (with cluster) where this start called: NoShow_10 (AB),

Start 37:

- Found in 5 of 366 (1.4%) of genes in pham
- No Manual Annotations of this start.
- Called 20.0% of time when present
- Phage (with cluster) where this start called: Zareef_14 (CT),

Start 39:

- Found in 4 of 366 (1.1%) of genes in pham
- Manual Annotations of this start: 3 of 340
- Called 100.0% of time when present
- Phage (with cluster) where this start called: FF47_12 (AB), JacoRen57_9 (AB), Maco6_10 (AB), Muddy_12 (AB),

Start 41:

- Found in 20 of 366 (5.5%) of genes in pham
- Manual Annotations of this start: 19 of 340
- Called 100.0% of time when present
- Phage (with cluster) where this start called: Asapag_10 (DN1), BENtherdunthat_10 (DN1), Budski_10 (DN), CheeseTouch_10 (DN1), Frickyeah_10 (DN1), Getalong_10 (DN1), Holliday_10 (DN1), Horus_10 (DN1), Kamaru_10 (DN1), Kenna_10 (DN1), Leroy_10 (DN1), LitninMcQueen_10 (DN1), Lutum_10 (DN1), Malisha_10 (DN), Periwinkle_10 (DN1), Phabuloso_10 (DN1), Phistory_10 (DN1), Spooky_10 (DN2), Squiddly_11 (DN2), Whitney_10 (DN1),

Start 42:

- Found in 2 of 366 (0.5%) of genes in pham
- Manual Annotations of this start: 2 of 340
- Called 100.0% of time when present
- Phage (with cluster) where this start called: Ecliptus_10 (DN), ODay_10 (DN),

Start 43:

- Found in 231 of 366 (63.1%) of genes in pham
- Manual Annotations of this start: 221 of 340
- Called 100.0% of time when present

• Phage (with cluster) where this start called: Akhila_9 (F1), Alexphander_9 (F1), AlpineSix_8 (F1), ArcusAngelus_8 (F1), Ardmore_8 (F1), Aubs_8 (F1), Awesomesauce_9 (F1), Batiatus_8 (F1), Beakin_9 (F1), BigPhil_9 (F1), Bipolar_8 (F1), Blexus_8 (F1), BlueCrab_8 (F1), BobaPhett_8 (F1), Bobi_9 (F1), BodEinwohner17_8 (F1), Boomer_9 (F1), Brocalys_8 (F1), Bubbles123_8 (F1), Burwell21_8 (F1), BuzzLyseyear_9 (F1), ByChance_8 (F1), Byougenkin_8 (F1), Cabrinians_8 (F1), CaptainTrips_9 (F1), Cerasum_9 (F1), Che8_8 (F1), Chevrolet_8 (F1), ChickenDinner_9 (F1), Chuckly_8 (F1), Clifton_8 (F1), Coco12_9 (F1), Cornucopia_9 (F1), Crumble_8 (F1), DLane_8 (F1), DRBy19_8 (F1), DaWorst_9 (F1), DaddyRickover_8 (F1), Daenerys_8 (F1), Dante_8 (F1), DeadP_8 (F1), Deb65_8 (F1), DillTech15_8 (F1), DirtMcgirt_9 (F1), DocMcStuffins_9 (F1), Donkeykong_8 (F1), Doomphist_8 (F1), Dorothy_8 (F1), DosHalletts_9 (F1), DotProduct_8 (F1), Doug_8 (F1), Drago_9 (F1), Eish_8 (F1), EleanorGeorge_8 (F1), Emma_8 (F1), Empress_8 (F1), Enby_9 (F1), Eradicator_8 (F1), Estave1_8 (F1), Fancypants_8 (F1), Fastidio_8 (F1), Filuzino_8 (F1), Firehouse51_8 (F1), Flathead_9 (F1), Florinda_8 (F1), Frankie_9 (F1), FreddyB_8 (F1), Fruitloop_8 (F1), GUmbie_8 (F1), Galactic_8 (F1), Gandalph_8 (F1), Geralt_8 (F1), GigiOuiOui_8 (F1), Girafales_9 (F1), Girr_8 (F1), Gorge_8 (F1), Guppsters_8 (F1), Hades_8 (F1), Hamulus_8 (F1), Harley_8 (F1), Hegedechwinu_9 (F1), Hlubikazi_8 (F1), IMpilo_8 (F1), IbOuu_8 (F1), Ibhubesi_8 (F1), Inventum_8 (F1), IrishSherpFalk_8 (F1), JalFarm20_9 (F1), James_8 (F1), Jarcob_8 (F1), Jinglebell_8 (F1), Job42_9 (F1), JoeyJr_8 (F1), Juice456_9 (F1), Juniper1_8 (F1), Karhdo_8 (F1), Kenuha5_8 (F1), Kersh_8 (F1), Kimberlium_9 (F1), KingMidas_8 (F1), Kingsley_9 (F1), Koella_8 (F1), Krakatau_9 (F1), KristaRAM_9 (F1), LastJedi_8 (F1), Latretium_8 (F1), Leozinho_9 (F1), Leperchaun_8 (F1), LilMoolah_8 (F1), LittleShirley_9 (F1), Lizziana_8 (F1), Llama_8 (F1), Llij_8 (F1), Lorde_9 (F1), LunaBlu_8 (F1), LunaStella_9 (F4), MadMen_8 (F1), Madiba_9 (F1), Mahavrat_8 (F1), Mandlovu_8 (F1), Mantra_8 (F1), Maravista_8 (F1), Marker_9 (F1), Martik_8 (F1), Mattes_8 (F1), Melissauren88_8 (F1), MilanaBonita_9 (F1), MilleniumForce_9 (F1), MinionDave_9 (F1), Minnie_8 (F1), Misha28_9 (F1), MisterCuddles_8 (F1), Modragons_8 (F1), Moonbeam_8 (F1), Mova_9 (F1), Mozy_9 (F1), Ms6_8 (F1), MulchExplorer_10 (F1), MulchSalad_8 (F1), Mutaforma13_8 (F1), Nimbo_8 (F1), Nitzel_9 (F1), Nivrat_8 (F1), NormanBulbieJr_8 (F1), Ochi17_8 (F1), OfUltron_8 (F1), Ogotogo_11 (F1), Oksu_9 (F1), OldBen_8 (F1), OlympiaSaint_8 (F1), Ovechkin_8 (F1), OwlsT2W_9 (F1), PHappiness_8 (F1), PMC_8 (F1), Pacc40_8 (F1), Phalconet_8 (F1), Phanphagia_8 (F1), Phasih_8 (F1), Phatniss_8 (F1), PhesterPhotato_8 (F1), Philus_8 (F1), Piper2020_9 (F1), Pippy_8 (F1), Plumbus_9 (F1), Poenanya_8 (F1), Polka14_8 (F1), Pollywog_9 (F1), PopTart_8 (F1), Priscilla_8 (F1), QuickMath_8 (F1), Quico_9 (F1), Radiance_8 (F1), Ramsey_9 (F1), RedBird_8 (F1), Renaud18_9 (F4), Rialto_9 (F1), RitaG_8 (F1), Rita_8 (F1), Rockne_8 (F1), RockyHorror_9 (F1), Royals2015_8 (F1), Ruby_8 (F1), SG4_8 (F1), Saal_8 (F1), Sabbb_8 (F1), Sandalphon_8 (F1), Sarma624_9 (F1), Sassafras_8 (F1), SassyB_8 (F1), Scottish_8 (F1), Seabastian_8 (F1), Seagreen_9 (F1), Shauna1_8 (F1), ShiLan_8 (F1), ShowerHandel_8 (F1), ShroomBoi_8 (F1), SiSi_8 (F1), SimranZ1_9 (F1), Sparkdehlily_8 (F1), Spartacus_8 (F1), Spikelee_9 (F1), Spoonbill_8 (F1), Squirty_9 (F3), StAnnes_8 (F1), Stap_9 (F1), Starcevich_9 (F1), Strokeseat_8 (F1), SuperGrey_8 (F1), SwagPigglett_8 (F1), TChen_9 (F4), TDanisky_8 (F1), Taj_8 (F1), ThetaBob_9 (F4), TootsiePop_9 (F1), Tootsieroll_9 (F1), Toron_9 (F6), Totinger_9 (F1), Tweety_8 (F1), UncleRicky_9 (F1), VRedHorse_8 (F1), Velveteen_9 (F1), Veteran_8 (F1), Wachhund_8 (F1), Wee_8 (F1), Whatsapiecost_8 (F1), Whouxphf_8 (F1), WillSterrel_8 (F1), XFactor_8 (F1), Yorick_8 (F1), Zerg_8 (F1), Zizzle_8 (F1),

Start 44:

- Found in 1 of 366 (0.3%) of genes in pham
- Manual Annotations of this start: 1 of 340
- Called 100.0% of time when present
- Phage (with cluster) where this start called: Spartoi_8 (singleton),

Start 45:

- Found in 40 of 366 (10.9%) of genes in pham
- Manual Annotations of this start: 37 of 340
- Called 100.0% of time when present
- Phage (with cluster) where this start called: Angelique_10 (CY1), AnnabelLee_11 (FR), Apricot_10 (DN3), Avani_10 (F2), BaileyBlu_9 (FP), BearBQ_10 (DN), BeeGee_10 (CY), Birdsong_10 (DN), Blarby_11 (F), Bradissa_10 (CY1), BritBrat_10 (CY2), CallinAllBarbz_9 (FP), Cashline_10 (CY), Che9d_10 (F2), Confidence_10 (CY1), Crater_10 (DN3), Demsculpinboyz_10 (F2), EMsquaredA_10 (CY1), EnalisNailo_10 (CY1), Floral_10 (CY1), Gaia_7 (X), Jabbawokkie_11 (F2), Jablanski_10 (CY), Kuwabara_10 (DN4), LilSpotty_9 (singleton), Lilas_10 (CY1), LonelyBoi_10 (CY), Lucky10_9 (DH), Marteenaa_10 (CY1), Morkie_9 (DH), MortyNRick_10 (DN), Nebkiss_7 (X), PhorbessPhlower_9 (DH), Pollux_10 (CY1), Posh_10 (CY), Pytheas_10 (CY), Soul22_10 (F2), Wrigley_10 (CY), Yoshi_10 (F2), Zapner_11 (F2),

Start 46:

- Found in 64 of 366 (17.5%) of genes in pham
- Manual Annotations of this start: 53 of 340
- Called 96.9% of time when present
- Phage (with cluster) where this start called: Agatha_10 (CT), AikoCarson_9 (CT), Amok_9 (CT), AndPeggy_9 (CT), Axym_10 (CT), Azira_12 (CT), BigChungus_9 (CT), BillDoor_12 (CT), Biskit_11 (CT), Burnsey_10 (CT), Button_11 (CT), Buttrmilkdreams_10 (CT), CherryonLim_11 (CT), Cleo_10 (CT), Cozz_10 (CT), Dre3_10 (CT), Elinall_11 (CT), Elliott_10 (CT), Emalyn_9 (CT), Feastonyeet_9 (CT), Fribs8_11 (CT), GTE2_08 (CT), GiKK_13 (CT), Gibbous_10 (CT), GoldHunter_11 (CT), Hexbug_12 (CT), HippoPololi_12 (CT), Horseradish_11 (CT), Jamzy_13 (CT), KayGee_10 (CT), Lauer_9 (CT), MAnor_10 (CT), MScarn_12 (CT), MaVan_12 (CT), Margaret_13 (CT), Mayweather_11 (CT), MunkgeeRoachy_10 (CT), Nibbles_12 (CT), Nina_11 (CT), Nodigi_12 (CT), Orla_12 (CT), Pons_10 (CT), PotPie_10 (CT), PsychoKiller_10 (CT), Quasar_10 (CT), RanchParmCat_13 (CT), RedBaron_11 (CT), SheckWes_9 (CT), SketchMex_9 (CT), Sopespian_10 (CT), SteamedHams_12 (CT), SummitAcademy_9 (CT), Survivors_12 (CT), SweatNTears_12 (CT), TMaxx_11 (FR), Tolls_12 (CT), Troje_10 (CT), Typhonomachy_11 (CT), Vine_11 (CT), Yakult_11 (CT), Yarn_9 (CT), Yummy_11 (CT),

Start 47:

- Found in 1 of 366 (0.3%) of genes in pham
- Manual Annotations of this start: 1 of 340
- Called 100.0% of time when present
- Phage (with cluster) where this start called: DS6A_13 (singleton),

Start 48:

- Found in 2 of 366 (0.5%) of genes in pham
- Manual Annotations of this start: 2 of 340
- Called 100.0% of time when present
- Phage (with cluster) where this start called: MalagasyRose_16 (AG), Nergal_14 (AG),

Start 51:

- Found in 14 of 366 (3.8%) of genes in pham
- No Manual Annotations of this start.
- Called 7.1% of time when present
- Phage (with cluster) where this start called: Carsonalex_11 (CT),

Summary by clusters:

There are 22 clusters represented in this pham: DN, FP, FR, DH, singleton, DN4, DN1, DN3, DN2, CY2, CY1, AB, AG, F, CY, X, CT, F1, F2, F3, F4, F6,

Info for manual annotations of cluster AB:

- Start number 36 was manually annotated 1 time for cluster AB.
- Start number 39 was manually annotated 3 times for cluster AB.

Info for manual annotations of cluster AG:

- Start number 48 was manually annotated 2 times for cluster AG.

Info for manual annotations of cluster CT:

- Start number 46 was manually annotated 53 times for cluster CT.

Info for manual annotations of cluster CY:

- Start number 45 was manually annotated 7 times for cluster CY.

Info for manual annotations of cluster CY1:

- Start number 45 was manually annotated 9 times for cluster CY1.

Info for manual annotations of cluster CY2:

- Start number 45 was manually annotated 1 time for cluster CY2.

Info for manual annotations of cluster DH:

- Start number 45 was manually annotated 3 times for cluster DH.

Info for manual annotations of cluster DN:

- Start number 41 was manually annotated 2 times for cluster DN.
- Start number 42 was manually annotated 2 times for cluster DN.
- Start number 45 was manually annotated 2 times for cluster DN.

Info for manual annotations of cluster DN1:

- Start number 41 was manually annotated 15 times for cluster DN1.

Info for manual annotations of cluster DN2:

- Start number 41 was manually annotated 2 times for cluster DN2.

Info for manual annotations of cluster DN3:

- Start number 45 was manually annotated 2 times for cluster DN3.

Info for manual annotations of cluster DN4:

- Start number 45 was manually annotated 1 time for cluster DN4.

Info for manual annotations of cluster F1:

- Start number 43 was manually annotated 216 times for cluster F1.

Info for manual annotations of cluster F2:

- Start number 45 was manually annotated 7 times for cluster F2.

Info for manual annotations of cluster F3:

- Start number 43 was manually annotated 1 time for cluster F3.

Info for manual annotations of cluster F4:

- Start number 43 was manually annotated 4 times for cluster F4.

Info for manual annotations of cluster FP:

- Start number 45 was manually annotated 2 times for cluster FP.

Info for manual annotations of cluster X:

- Start number 45 was manually annotated 2 times for cluster X.

Gene Information:

Gene: Agatha_10 Start: 6923, Stop: 7264, Start Num: 46

Candidate Starts for Agatha_10:

(Start: 46 @6923 has 53 MA's), (51, 6932), (63, 6992), (89, 7085), (117, 7187),

Gene: AikoCarson_9 Start: 6653, Stop: 6994, Start Num: 46

Candidate Starts for AikoCarson_9:

(Start: 46 @6653 has 53 MA's), (91, 6818), (117, 6917), (125, 6974),

Gene: Akhila_9 Start: 7094, Stop: 7426, Start Num: 43

Candidate Starts for Akhila_9:

(Start: 43 @7094 has 221 MA's), (53, 7118), (58, 7136), (64, 7175), (68, 7196), (74, 7211), (78, 7229), (83, 7247), (92, 7271), (97, 7283), (99, 7289), (105, 7301), (106, 7307), (113, 7337), (119, 7370),

Gene: Alexphander_9 Start: 6296, Stop: 6625, Start Num: 43

Candidate Starts for Alexphander_9:

(Start: 43 @6296 has 221 MA's), (53, 6320), (62, 6359), (66, 6392), (72, 6404), (76, 6425), (78, 6431), (79, 6434), (84, 6452), (97, 6485), (105, 6503), (106, 6509), (113, 6539), (115, 6548), (119, 6572), (121, 6599), (122, 6602), (128, 6620),

Gene: AlpineSix_8 Start: 6442, Stop: 6771, Start Num: 43

Candidate Starts for AlpineSix_8:

(5, 6172), (17, 6349), (Start: 43 @6442 has 221 MA's), (53, 6466), (62, 6505), (66, 6538), (72, 6550), (76, 6571), (78, 6577), (79, 6580), (84, 6598), (97, 6631), (105, 6649), (106, 6655), (113, 6685), (115, 6694), (119, 6718), (121, 6745), (122, 6748), (128, 6766),

Gene: Amok_9 Start: 6653, Stop: 6994, Start Num: 46

Candidate Starts for Amok_9:

(Start: 46 @6653 has 53 MA's), (91, 6818), (117, 6917), (125, 6974),

Gene: AndPeggy_9 Start: 6941, Stop: 7282, Start Num: 46

Candidate Starts for AndPeggy_9:

(Start: 46 @6941 has 53 MA's), (91, 7106), (123, 7256), (125, 7262),

Gene: Angelique_10 Start: 7476, Stop: 7823, Start Num: 45

Candidate Starts for Angelique_10:

(23, 7398), (Start: 45 @7476 has 37 MA's), (67, 7572), (73, 7584), (96, 7668), (112, 7731), (125, 7803),

Gene: AnnabelLee_11 Start: 7129, Stop: 7464, Start Num: 45

Candidate Starts for AnnabelLee_11:

(Start: 45 @7129 has 37 MA's), (55, 7159), (114, 7381),

Gene: Apricot_10 Start: 6791, Stop: 7132, Start Num: 45

Candidate Starts for Apricot_10:

(24, 6716), (35, 6758), (Start: 45 @6791 has 37 MA's), (53, 6812), (61, 6842), (89, 6956), (91, 6959), (93, 6965), (97, 6977), (114, 7043), (125, 7112), (127, 7118), (128, 7121),

Gene: ArcusAngelus_8 Start: 6436, Stop: 6768, Start Num: 43

Candidate Starts for ArcusAngelus_8:

(Start: 43 @6436 has 221 MA's), (53, 6460), (58, 6478), (68, 6538), (74, 6553), (83, 6589), (92, 6613), (97, 6625), (99, 6631), (105, 6643), (106, 6649), (113, 6679), (119, 6712),

Gene: Ardmore_8 Start: 6446, Stop: 6778, Start Num: 43

Candidate Starts for Ardmore_8:

(Start: 43 @6446 has 221 MA's), (53, 6470), (58, 6488), (64, 6527), (68, 6548), (74, 6563), (78, 6581), (83, 6599), (92, 6623), (97, 6635), (99, 6641), (105, 6653), (106, 6659), (113, 6689), (119, 6722),

Gene: Asapag_10 Start: 6480, Stop: 6827, Start Num: 41

Candidate Starts for Asapag_10:

(33, 6444), (Start: 41 @6480 has 19 MA's), (56, 6519), (63, 6561), (82, 6633), (89, 6654), (91, 6657), (104, 6690), (110, 6717), (113, 6735), (120, 6786), (123, 6801), (125, 6807), (128, 6816),

Gene: Aubs_8 Start: 6446, Stop: 6778, Start Num: 43

Candidate Starts for Aubs_8:

(Start: 43 @6446 has 221 MA's), (53, 6470), (58, 6488), (64, 6527), (68, 6548), (74, 6563), (78, 6581), (83, 6599), (92, 6623), (97, 6635), (99, 6641), (105, 6653), (106, 6659), (113, 6689), (119, 6722), (128, 6770),

Gene: Avani_10 Start: 6438, Stop: 6791, Start Num: 45

Candidate Starts for Avani_10:

(30, 6387), (32, 6393), (Start: 45 @6438 has 37 MA's), (55, 6468), (64, 6519), (91, 6624), (97, 6642), (107, 6675), (123, 6765),

Gene: Awesomesauce_9 Start: 6299, Stop: 6628, Start Num: 43

Candidate Starts for Awesomesauce_9:

(Start: 43 @6299 has 221 MA's), (53, 6323), (62, 6362), (66, 6395), (76, 6428), (78, 6434), (79, 6437), (84, 6455), (97, 6488), (105, 6506), (106, 6512), (108, 6524), (113, 6542), (115, 6551), (119, 6575), (120, 6593), (121, 6602), (122, 6605), (128, 6623),

Gene: Axym_10 Start: 6923, Stop: 7264, Start Num: 46

Candidate Starts for Axym_10:

(Start: 46 @6923 has 53 MA's), (51, 6932), (63, 6992), (89, 7085), (117, 7187),

Gene: Azira_12 Start: 7820, Stop: 8170, Start Num: 46

Candidate Starts for Azira_12:

(27, 7760), (37, 7796), (Start: 46 @7820 has 53 MA's), (53, 7838), (60, 7862), (63, 7889), (89, 7985), (95, 8000), (105, 8030), (114, 8084), (122, 8141),

Gene: BENtherdunthat_10 Start: 6480, Stop: 6827, Start Num: 41

Candidate Starts for BENtherdunthat_10:

(33, 6444), (Start: 41 @6480 has 19 MA's), (56, 6519), (63, 6561), (82, 6633), (89, 6654), (91, 6657), (104, 6690), (110, 6717), (113, 6735), (120, 6786), (123, 6801), (125, 6807), (128, 6816),

Gene: BaileyBlu_9 Start: 6175, Stop: 6513, Start Num: 45

Candidate Starts for BaileyBlu_9:

(38, 6163), (Start: 45 @6175 has 37 MA's), (68, 6277), (82, 6322), (87, 6340), (91, 6346), (101, 6376),

Gene: Batiatus_8 Start: 6446, Stop: 6778, Start Num: 43

Candidate Starts for Batiatus_8:

(Start: 43 @6446 has 221 MA's), (53, 6470), (58, 6488), (64, 6527), (68, 6548), (74, 6563), (78, 6581), (83, 6599), (92, 6623), (99, 6641), (105, 6653), (106, 6659), (113, 6689), (119, 6722),

Gene: Beakin_9 Start: 6299, Stop: 6628, Start Num: 43

Candidate Starts for Beakin_9:

(Start: 43 @6299 has 221 MA's), (53, 6323), (62, 6362), (66, 6395), (72, 6407), (76, 6428), (78, 6434), (79, 6437), (84, 6455), (97, 6488), (105, 6506), (106, 6512), (108, 6524), (113, 6542), (115, 6551), (119, 6575), (121, 6602), (122, 6605), (128, 6623),

Gene: BearBQ_10 Start: 6791, Stop: 7132, Start Num: 45

Candidate Starts for BearBQ_10:

(24, 6716), (35, 6758), (Start: 45 @6791 has 37 MA's), (53, 6812), (61, 6842), (89, 6956), (91, 6959), (93, 6965), (97, 6977), (114, 7043), (125, 7112), (127, 7118), (128, 7121),

Gene: BeeGee_10 Start: 7478, Stop: 7825, Start Num: 45

Candidate Starts for BeeGee_10:

(23, 7400), (Start: 45 @7478 has 37 MA's), (73, 7586), (112, 7733), (125, 7805),

Gene: BigChungus_9 Start: 6720, Stop: 7061, Start Num: 46

Candidate Starts for BigChungus_9:

(Start: 46 @6720 has 53 MA's), (58, 6756), (59, 6759), (87, 6879), (94, 6894), (125, 7041),

Gene: BigPhil_9 Start: 6295, Stop: 6624, Start Num: 43

Candidate Starts for BigPhil_9:

(Start: 43 @6295 has 221 MA's), (53, 6319), (66, 6391), (72, 6403), (76, 6424), (78, 6430), (79, 6433), (84, 6451), (97, 6484), (105, 6502), (106, 6508), (108, 6520), (113, 6538), (115, 6547), (119, 6571), (121, 6598), (122, 6601), (128, 6619),

Gene: BillDoor_12 Start: 6906, Stop: 7247, Start Num: 46

Candidate Starts for BillDoor_12:

(Start: 46 @6906 has 53 MA's), (91, 7071), (123, 7221), (125, 7227),

Gene: Bipolar_8 Start: 6446, Stop: 6778, Start Num: 43

Candidate Starts for Bipolar_8:

(Start: 43 @6446 has 221 MA's), (53, 6470), (58, 6488), (64, 6527), (68, 6548), (74, 6563), (78, 6581), (83, 6599), (92, 6623), (97, 6635), (99, 6641), (105, 6653), (106, 6659), (113, 6689), (119, 6722),

Gene: Birdsong_10 Start: 6791, Stop: 7132, Start Num: 45

Candidate Starts for Birdsong_10:

(24, 6716), (35, 6758), (Start: 45 @6791 has 37 MA's), (53, 6812), (61, 6842), (89, 6956), (91, 6959), (93, 6965), (97, 6977), (114, 7043), (125, 7112), (127, 7118), (128, 7121),

Gene: Biskit_11 Start: 6907, Stop: 7248, Start Num: 46

Candidate Starts for Biskit_11:

(Start: 46 @6907 has 53 MA's), (76, 7030), (117, 7171), (123, 7222), (125, 7228),

Gene: Blarby_11 Start: 6962, Stop: 7315, Start Num: 45

Candidate Starts for Blarby_11:

(30, 6911), (32, 6917), (Start: 45 @6962 has 37 MA's), (55, 6992), (64, 7043), (91, 7148), (97, 7166), (107, 7199), (123, 7289),

Gene: Blexus_8 Start: 6459, Stop: 6788, Start Num: 43

Candidate Starts for Blexus_8:

(5, 6189), (17, 6366), (Start: 43 @6459 has 221 MA's), (53, 6483), (62, 6522), (66, 6555), (72, 6567), (76, 6588), (78, 6594), (79, 6597), (84, 6615), (97, 6648), (105, 6666), (106, 6672), (108, 6684), (113, 6702), (115, 6711), (119, 6735), (121, 6762), (122, 6765), (128, 6783),

Gene: BlueCrab_8 Start: 6443, Stop: 6772, Start Num: 43

Candidate Starts for BlueCrab_8:

(5, 6173), (17, 6350), (Start: 43 @6443 has 221 MA's), (53, 6467), (62, 6506), (66, 6539), (72, 6551), (76, 6572), (78, 6578), (79, 6581), (84, 6599), (97, 6632), (105, 6650), (106, 6656), (108, 6668), (113, 6686), (115, 6695), (119, 6719), (121, 6746), (122, 6749), (128, 6767),

Gene: BobaPhett_8 Start: 6435, Stop: 6764, Start Num: 43

Candidate Starts for BobaPhett_8:

(5, 6165), (17, 6342), (Start: 43 @6435 has 221 MA's), (53, 6459), (62, 6498), (66, 6531), (72, 6543), (76, 6564), (78, 6570), (79, 6573), (84, 6591), (97, 6624), (105, 6642), (106, 6648), (113, 6678), (115, 6687), (119, 6711), (121, 6738), (122, 6741), (128, 6759),

Gene: Bobi_9 Start: 6296, Stop: 6625, Start Num: 43

Candidate Starts for Bobi_9:

(Start: 43 @6296 has 221 MA's), (53, 6320), (62, 6359), (66, 6392), (72, 6404), (76, 6425), (78, 6431), (79, 6434), (84, 6452), (92, 6473), (97, 6485), (105, 6503), (106, 6509), (113, 6539), (115, 6548), (119, 6572), (121, 6599), (122, 6602), (128, 6620),

Gene: BodEinwohner17_8 Start: 6443, Stop: 6772, Start Num: 43

Candidate Starts for BodEinwohner17_8:

(5, 6173), (17, 6350), (Start: 43 @6443 has 221 MA's), (53, 6467), (62, 6506), (66, 6539), (72, 6551), (76, 6572), (78, 6578), (79, 6581), (84, 6599), (97, 6632), (105, 6650), (106, 6656), (108, 6668), (113, 6686), (115, 6695), (119, 6719), (121, 6746), (122, 6749), (128, 6767),

Gene: Boomer_9 Start: 6296, Stop: 6625, Start Num: 43

Candidate Starts for Boomer_9:

(Start: 43 @6296 has 221 MA's), (53, 6320), (62, 6359), (66, 6392), (72, 6404), (76, 6425), (78, 6431), (79, 6434), (84, 6452), (97, 6485), (105, 6503), (106, 6509), (108, 6521), (113, 6539), (115, 6548), (119, 6572), (121, 6599), (122, 6602), (128, 6620),

Gene: Bradissa_10 Start: 7482, Stop: 7829, Start Num: 45

Candidate Starts for Bradissa_10:

(Start: 45 @7482 has 37 MA's), (73, 7590), (112, 7737), (125, 7809),

Gene: BritBrat_10 Start: 7484, Stop: 7831, Start Num: 45
Candidate Starts for BritBrat_10:
(Start: 45 @7484 has 37 MA's), (73, 7592), (112, 7739), (125, 7811),

Gene: Brocalys_8 Start: 6432, Stop: 6761, Start Num: 43
Candidate Starts for Brocalys_8:
(5, 6162), (17, 6339), (Start: 43 @6432 has 221 MA's), (53, 6456), (62, 6495), (66, 6528), (72, 6540),
(76, 6561), (78, 6567), (79, 6570), (84, 6588), (97, 6621), (105, 6639), (106, 6645), (108, 6657), (113,
6675), (115, 6684), (119, 6708), (121, 6735), (122, 6738), (128, 6756),

Gene: Bubbles123_8 Start: 6462, Stop: 6791, Start Num: 43
Candidate Starts for Bubbles123_8:
(5, 6192), (17, 6369), (Start: 43 @6462 has 221 MA's), (53, 6486), (62, 6525), (66, 6558), (76, 6591),
(78, 6597), (79, 6600), (84, 6618), (97, 6651), (105, 6669), (106, 6675), (108, 6687), (113, 6705), (115,
6714), (119, 6738), (121, 6765), (122, 6768), (128, 6786),

Gene: Budski_10 Start: 6485, Stop: 6832, Start Num: 41
Candidate Starts for Budski_10:
(33, 6449), (Start: 41 @6485 has 19 MA's), (56, 6524), (89, 6659), (91, 6662), (104, 6695), (113,
6740), (120, 6791), (123, 6806), (128, 6821),

Gene: Burnsey_10 Start: 6924, Stop: 7265, Start Num: 46
Candidate Starts for Burnsey_10:
(Start: 46 @6924 has 53 MA's), (51, 6933), (63, 6993), (89, 7086), (117, 7188),

Gene: Burwell21_8 Start: 6443, Stop: 6772, Start Num: 43
Candidate Starts for Burwell21_8:
(5, 6173), (17, 6350), (Start: 43 @6443 has 221 MA's), (53, 6467), (62, 6506), (66, 6539), (72, 6551),
(76, 6572), (78, 6578), (79, 6581), (84, 6599), (97, 6632), (105, 6650), (106, 6656), (108, 6668), (113,
6686), (115, 6695), (119, 6719), (120, 6737), (121, 6746), (122, 6749), (128, 6767),

Gene: Button_11 Start: 6943, Stop: 7281, Start Num: 46
Candidate Starts for Button_11:
(20, 6853), (21, 6856), (23, 6862), (Start: 46 @6943 has 53 MA's), (96, 7123), (102, 7138), (108,
7162), (110, 7168), (125, 7261),

Gene: Buttrmlkdreams_10 Start: 6901, Stop: 7242, Start Num: 46
Candidate Starts for Buttrmlkdreams_10:
(Start: 46 @6901 has 53 MA's), (76, 7024), (117, 7165), (123, 7216), (125, 7222),

Gene: BuzzLyseyear_9 Start: 6295, Stop: 6624, Start Num: 43
Candidate Starts for BuzzLyseyear_9:
(Start: 43 @6295 has 221 MA's), (53, 6319), (62, 6358), (66, 6391), (72, 6403), (76, 6424), (78, 6430),
(79, 6433), (84, 6451), (92, 6472), (97, 6484), (105, 6502), (106, 6508), (113, 6538), (115, 6547), (119,
6571), (121, 6598), (122, 6601), (128, 6619),

Gene: ByChance_8 Start: 6445, Stop: 6774, Start Num: 43
Candidate Starts for ByChance_8:
(5, 6175), (17, 6352), (Start: 43 @6445 has 221 MA's), (53, 6469), (62, 6508), (66, 6541), (72, 6553),
(76, 6574), (78, 6580), (79, 6583), (84, 6601), (97, 6634), (105, 6652), (106, 6658), (108, 6670), (113,
6688), (115, 6697), (119, 6721), (121, 6748), (122, 6751), (128, 6769),

Gene: Byougenkin_8 Start: 6433, Stop: 6762, Start Num: 43

Candidate Starts for Byougenkin_8:

(Start: 43 @6433 has 221 MA's), (53, 6457), (62, 6496), (66, 6529), (72, 6541), (76, 6562), (78, 6568), (79, 6571), (84, 6589), (97, 6622), (105, 6640), (106, 6646), (108, 6658), (113, 6676), (115, 6685), (119, 6709), (121, 6736), (122, 6739), (128, 6757),

Gene: Cabrinians_8 Start: 6435, Stop: 6764, Start Num: 43

Candidate Starts for Cabrinians_8:

(5, 6165), (17, 6342), (Start: 43 @6435 has 221 MA's), (53, 6459), (62, 6498), (66, 6531), (72, 6543), (76, 6564), (78, 6570), (79, 6573), (84, 6591), (97, 6624), (105, 6642), (106, 6648), (108, 6660), (113, 6678), (115, 6687), (119, 6711), (121, 6738), (122, 6741), (128, 6759),

Gene: CallinAllBarbz_9 Start: 6185, Stop: 6523, Start Num: 45

Candidate Starts for CallinAllBarbz_9:

(38, 6173), (Start: 45 @6185 has 37 MA's), (66, 6281), (68, 6287), (82, 6332), (87, 6350), (91, 6356), (101, 6386),

Gene: CaptainTrips_9 Start: 7094, Stop: 7426, Start Num: 43

Candidate Starts for CaptainTrips_9:

(Start: 43 @7094 has 221 MA's), (53, 7118), (58, 7136), (64, 7175), (68, 7196), (74, 7211), (78, 7229), (83, 7247), (92, 7271), (99, 7289), (105, 7301), (106, 7307), (113, 7337), (119, 7370),

Gene: Carsonalex_11 Start: 6989, Stop: 7321, Start Num: 51

Candidate Starts for Carsonalex_11:

(Start: 46 @6980 has 53 MA's), (51, 6989), (63, 7049), (89, 7142), (117, 7244),

Gene: Cashline_10 Start: 7331, Stop: 7678, Start Num: 45

Candidate Starts for Cashline_10:

(23, 7253), (Start: 45 @7331 has 37 MA's), (67, 7427), (73, 7439), (96, 7523), (125, 7658),

Gene: Cerasum_9 Start: 6295, Stop: 6624, Start Num: 43

Candidate Starts for Cerasum_9:

(Start: 43 @6295 has 221 MA's), (53, 6319), (66, 6391), (72, 6403), (76, 6424), (78, 6430), (79, 6433), (84, 6451), (97, 6484), (105, 6502), (106, 6508), (108, 6520), (113, 6538), (115, 6547), (119, 6571), (121, 6598), (122, 6601), (128, 6619),

Gene: Che8_8 Start: 6447, Stop: 6776, Start Num: 43

Candidate Starts for Che8_8:

(Start: 43 @6447 has 221 MA's), (53, 6471), (62, 6510), (66, 6543), (76, 6576), (78, 6582), (79, 6585), (84, 6603), (97, 6636), (105, 6654), (106, 6660), (108, 6672), (113, 6690), (115, 6699), (119, 6723), (121, 6750), (122, 6753), (128, 6771),

Gene: Che9d_10 Start: 6447, Stop: 6800, Start Num: 45

Candidate Starts for Che9d_10:

(30, 6396), (32, 6402), (Start: 45 @6447 has 37 MA's), (55, 6477), (64, 6528), (91, 6633), (97, 6651), (107, 6684), (123, 6774),

Gene: CheeseTouch_10 Start: 6485, Stop: 6832, Start Num: 41

Candidate Starts for CheeseTouch_10:

(33, 6449), (Start: 41 @6485 has 19 MA's), (56, 6524), (89, 6659), (91, 6662), (104, 6695), (113, 6740), (120, 6791), (123, 6806), (128, 6821),

Gene: CherryonLim_11 Start: 7446, Stop: 7787, Start Num: 46

Candidate Starts for CherryonLim_11:

(Start: 46 @7446 has 53 MA's), (58, 7482), (87, 7605), (94, 7620), (109, 7668), (125, 7767),

Gene: Chevrolet_8 Start: 6436, Stop: 6768, Start Num: 43

Candidate Starts for Chevrolet_8:

(Start: 43 @6436 has 221 MA's), (53, 6460), (58, 6478), (68, 6538), (74, 6553), (83, 6589), (92, 6613), (97, 6625), (99, 6631), (105, 6643), (106, 6649), (113, 6679), (119, 6712),

Gene: ChickenDinner_9 Start: 6299, Stop: 6628, Start Num: 43

Candidate Starts for ChickenDinner_9:

(Start: 43 @6299 has 221 MA's), (53, 6323), (62, 6362), (66, 6395), (72, 6407), (76, 6428), (78, 6434), (79, 6437), (84, 6455), (92, 6476), (97, 6488), (105, 6506), (106, 6512), (108, 6524), (113, 6542), (115, 6551), (119, 6575), (121, 6602), (122, 6605), (128, 6623),

Gene: Chuckly_8 Start: 6446, Stop: 6778, Start Num: 43

Candidate Starts for Chuckly_8:

(Start: 43 @6446 has 221 MA's), (53, 6470), (58, 6488), (64, 6527), (68, 6548), (74, 6563), (78, 6581), (83, 6599), (92, 6623), (99, 6641), (105, 6653), (106, 6659), (113, 6689), (119, 6722),

Gene: Cleo_10 Start: 7123, Stop: 7470, Start Num: 46

Candidate Starts for Cleo_10:

(Start: 46 @7123 has 53 MA's), (89, 7285), (95, 7300), (96, 7303), (114, 7384),

Gene: Clifton_8 Start: 6431, Stop: 6760, Start Num: 43

Candidate Starts for Clifton_8:

(5, 6161), (17, 6338), (Start: 43 @6431 has 221 MA's), (53, 6455), (62, 6494), (66, 6527), (72, 6539), (76, 6560), (78, 6566), (79, 6569), (84, 6587), (97, 6620), (105, 6638), (106, 6644), (108, 6656), (113, 6674), (115, 6683), (119, 6707), (121, 6734), (122, 6737), (128, 6755),

Gene: Coco12_9 Start: 6296, Stop: 6625, Start Num: 43

Candidate Starts for Coco12_9:

(Start: 43 @6296 has 221 MA's), (53, 6320), (62, 6359), (66, 6392), (76, 6425), (78, 6431), (79, 6434), (84, 6452), (97, 6485), (105, 6503), (106, 6509), (108, 6521), (113, 6539), (115, 6548), (119, 6572), (121, 6599), (122, 6602), (128, 6620),

Gene: Confidence_10 Start: 7478, Stop: 7825, Start Num: 45

Candidate Starts for Confidence_10:

(Start: 45 @7478 has 37 MA's), (73, 7586), (112, 7733), (125, 7805),

Gene: Cornucopia_9 Start: 6296, Stop: 6628, Start Num: 43

Candidate Starts for Cornucopia_9:

(Start: 43 @6296 has 221 MA's), (53, 6320), (58, 6338), (64, 6377), (68, 6398), (78, 6431), (83, 6449), (92, 6473), (97, 6485), (99, 6491), (105, 6503), (106, 6509), (113, 6539), (119, 6572),

Gene: Cozz_10 Start: 6924, Stop: 7265, Start Num: 46

Candidate Starts for Cozz_10:

(Start: 46 @6924 has 53 MA's), (51, 6933), (63, 6993), (89, 7086), (117, 7188),

Gene: Crater_10 Start: 6791, Stop: 7132, Start Num: 45

Candidate Starts for Crater_10:

(24, 6716), (35, 6758), (Start: 45 @6791 has 37 MA's), (53, 6812), (61, 6842), (89, 6956), (91, 6959), (93, 6965), (97, 6977), (114, 7043), (125, 7112), (127, 7118), (128, 7121),

Gene: Crumble_8 Start: 6445, Stop: 6774, Start Num: 43

Candidate Starts for Crumble_8:

(5, 6175), (17, 6352), (Start: 43 @6445 has 221 MA's), (53, 6469), (62, 6508), (66, 6541), (76, 6574), (78, 6580), (79, 6583), (84, 6601), (97, 6634), (105, 6652), (106, 6658), (108, 6670), (113, 6688), (115, 6697), (119, 6721), (121, 6748), (122, 6751), (128, 6769),

Gene: DLane_8 Start: 6447, Stop: 6779, Start Num: 43

Candidate Starts for DLane_8:

(Start: 43 @6447 has 221 MA's), (53, 6471), (58, 6489), (64, 6528), (68, 6549), (74, 6564), (78, 6582), (83, 6600), (92, 6624), (97, 6636), (99, 6642), (105, 6654), (106, 6660), (113, 6690), (119, 6723),

Gene: DRBy19_8 Start: 6459, Stop: 6788, Start Num: 43

Candidate Starts for DRBy19_8:

(5, 6189), (17, 6366), (Start: 43 @6459 has 221 MA's), (53, 6483), (62, 6522), (66, 6555), (72, 6567), (76, 6588), (78, 6594), (79, 6597), (84, 6615), (97, 6648), (105, 6666), (106, 6672), (108, 6684), (113, 6702), (115, 6711), (119, 6735), (121, 6762), (122, 6765), (128, 6783),

Gene: DS6A_13 Start: 9721, Stop: 10056, Start Num: 47

Candidate Starts for DS6A_13:

(Start: 47 @9721 has 1 MA's), (58, 9760), (62, 9781), (64, 9799), (72, 9826), (89, 9886), (97, 9907), (116, 9976), (121, 10024), (122, 10027), (128, 10045),

Gene: DaWorst_9 Start: 6297, Stop: 6626, Start Num: 43

Candidate Starts for DaWorst_9:

(Start: 43 @6297 has 221 MA's), (53, 6321), (62, 6360), (66, 6393), (72, 6405), (76, 6426), (78, 6432), (79, 6435), (84, 6453), (97, 6486), (105, 6504), (106, 6510), (108, 6522), (113, 6540), (115, 6549), (119, 6573), (121, 6600), (122, 6603), (128, 6621),

Gene: DaddyRickover_8 Start: 6443, Stop: 6772, Start Num: 43

Candidate Starts for DaddyRickover_8:

(5, 6173), (17, 6350), (Start: 43 @6443 has 221 MA's), (53, 6467), (62, 6506), (66, 6539), (72, 6551), (76, 6572), (78, 6578), (79, 6581), (84, 6599), (97, 6632), (105, 6650), (106, 6656), (108, 6668), (113, 6686), (115, 6695), (119, 6719), (121, 6746), (122, 6749), (128, 6767),

Gene: Daenerys_8 Start: 6443, Stop: 6772, Start Num: 43

Candidate Starts for Daenerys_8:

(5, 6173), (17, 6350), (Start: 43 @6443 has 221 MA's), (53, 6467), (62, 6506), (66, 6539), (72, 6551), (76, 6572), (78, 6578), (79, 6581), (84, 6599), (97, 6632), (105, 6650), (106, 6656), (108, 6668), (113, 6686), (115, 6695), (119, 6719), (121, 6746), (122, 6749), (128, 6767),

Gene: Dante_8 Start: 6460, Stop: 6789, Start Num: 43

Candidate Starts for Dante_8:

(5, 6190), (17, 6367), (Start: 43 @6460 has 221 MA's), (53, 6484), (62, 6523), (66, 6556), (72, 6568), (76, 6589), (78, 6595), (79, 6598), (84, 6616), (97, 6649), (105, 6667), (106, 6673), (108, 6685), (113, 6703), (115, 6712), (119, 6736), (121, 6763), (122, 6766), (128, 6784),

Gene: DeadP_8 Start: 6446, Stop: 6778, Start Num: 43

Candidate Starts for DeadP_8:

(Start: 43 @6446 has 221 MA's), (53, 6470), (58, 6488), (64, 6527), (68, 6548), (74, 6563), (78, 6581), (83, 6599), (92, 6623), (97, 6635), (99, 6641), (105, 6653), (106, 6659), (113, 6689), (119, 6722),

Gene: Deb65_8 Start: 6443, Stop: 6772, Start Num: 43

Candidate Starts for Deb65_8:

(5, 6173), (17, 6350), (Start: 43 @6443 has 221 MA's), (53, 6467), (62, 6506), (66, 6539), (72, 6551), (76, 6572), (78, 6578), (79, 6581), (84, 6599), (97, 6632), (105, 6650), (106, 6656), (108, 6668), (113, 6686), (115, 6695), (119, 6719), (121, 6746), (122, 6749), (128, 6767),

Gene: Demsculpinboyz_10 Start: 6438, Stop: 6791, Start Num: 45

Candidate Starts for Demsculpinboyz_10:

(30, 6387), (32, 6393), (Start: 45 @6438 has 37 MA's), (55, 6468), (64, 6519), (91, 6624), (97, 6642), (107, 6675), (123, 6765),

Gene: DillTech15_8 Start: 6446, Stop: 6778, Start Num: 43

Candidate Starts for DillTech15_8:

(Start: 43 @6446 has 221 MA's), (53, 6470), (58, 6488), (64, 6527), (68, 6548), (74, 6563), (78, 6581), (83, 6599), (92, 6623), (97, 6635), (99, 6641), (105, 6653), (106, 6659), (113, 6689), (119, 6722),

Gene: DirtMcgirt_9 Start: 6298, Stop: 6627, Start Num: 43

Candidate Starts for DirtMcgirt_9:

(Start: 43 @6298 has 221 MA's), (53, 6322), (62, 6361), (65, 6391), (66, 6394), (72, 6406), (76, 6427), (78, 6433), (79, 6436), (84, 6454), (97, 6487), (105, 6505), (106, 6511), (113, 6541), (115, 6550), (119, 6574), (121, 6601), (122, 6604), (128, 6622),

Gene: DocMcStuffins_9 Start: 6299, Stop: 6628, Start Num: 43

Candidate Starts for DocMcStuffins_9:

(Start: 43 @6299 has 221 MA's), (53, 6323), (62, 6362), (66, 6395), (72, 6407), (76, 6428), (78, 6434), (79, 6437), (84, 6455), (92, 6476), (97, 6488), (105, 6506), (106, 6512), (108, 6524), (113, 6542), (115, 6551), (119, 6575), (121, 6602), (122, 6605), (128, 6623),

Gene: Donkeykong_8 Start: 6462, Stop: 6791, Start Num: 43

Candidate Starts for Donkeykong_8:

(5, 6192), (17, 6369), (Start: 43 @6462 has 221 MA's), (53, 6486), (62, 6525), (66, 6558), (76, 6591), (78, 6597), (79, 6600), (84, 6618), (97, 6651), (105, 6669), (106, 6675), (108, 6687), (113, 6705), (115, 6714), (119, 6738), (121, 6765), (122, 6768), (128, 6786),

Gene: Doomphist_8 Start: 6443, Stop: 6772, Start Num: 43

Candidate Starts for Doomphist_8:

(5, 6173), (17, 6350), (Start: 43 @6443 has 221 MA's), (53, 6467), (62, 6506), (66, 6539), (72, 6551), (76, 6572), (78, 6578), (79, 6581), (84, 6599), (97, 6632), (105, 6650), (106, 6656), (108, 6668), (113, 6686), (115, 6695), (119, 6719), (121, 6746), (122, 6749), (128, 6767),

Gene: Dorothy_8 Start: 6443, Stop: 6772, Start Num: 43

Candidate Starts for Dorothy_8:

(5, 6173), (17, 6350), (Start: 43 @6443 has 221 MA's), (53, 6467), (62, 6506), (66, 6539), (72, 6551), (76, 6572), (78, 6578), (79, 6581), (84, 6599), (97, 6632), (105, 6650), (106, 6656), (108, 6668), (113, 6686), (115, 6695), (119, 6719), (121, 6746), (122, 6749), (128, 6767),

Gene: DosHalletts_9 Start: 6296, Stop: 6625, Start Num: 43

Candidate Starts for DosHalletts_9:

(Start: 43 @6296 has 221 MA's), (53, 6320), (62, 6359), (66, 6392), (72, 6404), (76, 6425), (78, 6431), (79, 6434), (84, 6452), (97, 6485), (105, 6503), (106, 6509), (108, 6521), (113, 6539), (115, 6548), (119, 6572), (121, 6599), (122, 6602), (128, 6620),

Gene: DotProduct_8 Start: 6447, Stop: 6779, Start Num: 43

Candidate Starts for DotProduct_8:

(Start: 43 @6447 has 221 MA's), (53, 6471), (58, 6489), (64, 6528), (68, 6549), (74, 6564), (78, 6582), (83, 6600), (92, 6624), (97, 6636), (99, 6642), (105, 6654), (106, 6660), (113, 6690), (119, 6723),

Gene: Doug_8 Start: 6445, Stop: 6774, Start Num: 43

Candidate Starts for Doug_8:

(5, 6175), (17, 6352), (Start: 43 @6445 has 221 MA's), (53, 6469), (62, 6508), (66, 6541), (72, 6553), (76, 6574), (78, 6580), (79, 6583), (84, 6601), (97, 6634), (105, 6652), (106, 6658), (108, 6670), (113, 6688), (115, 6697), (119, 6721), (121, 6748), (122, 6751), (128, 6769),

Gene: Drago_9 Start: 6296, Stop: 6625, Start Num: 43

Candidate Starts for Drago_9:

(Start: 43 @6296 has 221 MA's), (53, 6320), (62, 6359), (66, 6392), (72, 6404), (76, 6425), (78, 6431), (79, 6434), (84, 6452), (97, 6485), (105, 6503), (106, 6509), (113, 6539), (115, 6548), (119, 6572), (121, 6599), (122, 6602), (128, 6620),

Gene: Dre3_10 Start: 7070, Stop: 7417, Start Num: 46

Candidate Starts for Dre3_10:

(Start: 46 @7070 has 53 MA's), (89, 7232), (95, 7247), (96, 7250), (114, 7331),

Gene: EMSquaredA_10 Start: 7484, Stop: 7831, Start Num: 45

Candidate Starts for EMSquaredA_10:

(Start: 45 @7484 has 37 MA's), (73, 7592), (112, 7739), (125, 7811),

Gene: Ecliptus_10 Start: 6513, Stop: 6860, Start Num: 42

Candidate Starts for Ecliptus_10:

(3, 6228), (6, 6261), (28, 6462), (Start: 42 @6513 has 2 MA's), (73, 6624), (97, 6705), (105, 6726), (108, 6744), (114, 6771), (127, 6843), (128, 6846),

Gene: Eish_8 Start: 6433, Stop: 6762, Start Num: 43

Candidate Starts for Eish_8:

(Start: 43 @6433 has 221 MA's), (53, 6457), (62, 6496), (66, 6529), (72, 6541), (76, 6562), (78, 6568), (79, 6571), (84, 6589), (97, 6622), (105, 6640), (106, 6646), (113, 6676), (115, 6685), (119, 6709), (121, 6736), (122, 6739), (128, 6757),

Gene: EleanorGeorge_8 Start: 6446, Stop: 6778, Start Num: 43

Candidate Starts for EleanorGeorge_8:

(31, 6401), (Start: 43 @6446 has 221 MA's), (53, 6470), (58, 6488), (64, 6527), (68, 6548), (74, 6563), (78, 6581), (83, 6599), (92, 6623), (97, 6635), (99, 6641), (105, 6653), (106, 6659), (113, 6689), (119, 6722),

Gene: Elinal_11 Start: 6701, Stop: 7042, Start Num: 46

Candidate Starts for Elinal_11:

(Start: 46 @6701 has 53 MA's), (58, 6737), (87, 6860), (125, 7022),

Gene: Elliott_10 Start: 6923, Stop: 7264, Start Num: 46

Candidate Starts for Elliott_10:

(Start: 46 @6923 has 53 MA's), (51, 6932), (63, 6992), (89, 7085), (117, 7187),

Gene: Emalyn_9 Start: 6652, Stop: 6993, Start Num: 46

Candidate Starts for Emalyn_9:

(Start: 46 @6652 has 53 MA's), (91, 6817), (117, 6916), (125, 6973),

Gene: Emma_8 Start: 6446, Stop: 6778, Start Num: 43

Candidate Starts for Emma_8:

(Start: 43 @6446 has 221 MA's), (53, 6470), (58, 6488), (64, 6527), (68, 6548), (74, 6563), (78, 6581), (83, 6599), (92, 6623), (97, 6635), (99, 6641), (105, 6653), (106, 6659), (113, 6689), (119, 6722),

Gene: Empress_8 Start: 6443, Stop: 6772, Start Num: 43

Candidate Starts for Empress_8:

(5, 6173), (17, 6350), (Start: 43 @6443 has 221 MA's), (53, 6467), (62, 6506), (66, 6539), (72, 6551), (76, 6572), (78, 6578), (79, 6581), (84, 6599), (97, 6632), (105, 6650), (106, 6656), (108, 6668), (113, 6686), (115, 6695), (119, 6719), (121, 6746), (122, 6749), (128, 6767),

Gene: EnalisNailo_10 Start: 7484, Stop: 7831, Start Num: 45

Candidate Starts for EnalisNailo_10:

(Start: 45 @7484 has 37 MA's), (73, 7592), (112, 7739), (125, 7811),

Gene: Enby_9 Start: 6296, Stop: 6625, Start Num: 43

Candidate Starts for Enby_9:

(Start: 43 @6296 has 221 MA's), (53, 6320), (62, 6359), (66, 6392), (72, 6404), (76, 6425), (78, 6431), (79, 6434), (84, 6452), (97, 6485), (105, 6503), (106, 6509), (113, 6539), (115, 6548), (119, 6572), (121, 6599), (122, 6602), (128, 6620),

Gene: Eradicator_8 Start: 6444, Stop: 6773, Start Num: 43

Candidate Starts for Eradicator_8:

(5, 6174), (17, 6351), (Start: 43 @6444 has 221 MA's), (53, 6468), (62, 6507), (66, 6540), (72, 6552), (76, 6573), (78, 6579), (79, 6582), (84, 6600), (97, 6633), (105, 6651), (106, 6657), (108, 6669), (113, 6687), (115, 6696), (119, 6720), (121, 6747), (122, 6750), (128, 6768),

Gene: Estave1_8 Start: 6445, Stop: 6774, Start Num: 43

Candidate Starts for Estave1_8:

(5, 6175), (17, 6352), (Start: 43 @6445 has 221 MA's), (53, 6469), (62, 6508), (66, 6541), (72, 6553), (76, 6574), (78, 6580), (79, 6583), (84, 6601), (97, 6634), (105, 6652), (106, 6658), (108, 6670), (113, 6688), (115, 6697), (119, 6721), (121, 6748), (122, 6751), (128, 6769),

Gene: FF47_12 Start: 8188, Stop: 8562, Start Num: 39

Candidate Starts for FF47_12:

(Start: 39 @8188 has 3 MA's), (53, 8227), (67, 8299), (86, 8374), (95, 8392), (96, 8395), (122, 8527), (126, 8539),

Gene: Fancypants_8 Start: 6447, Stop: 6776, Start Num: 43

Candidate Starts for Fancypants_8:

(5, 6177), (17, 6354), (Start: 43 @6447 has 221 MA's), (53, 6471), (62, 6510), (66, 6543), (72, 6555), (76, 6576), (78, 6582), (79, 6585), (84, 6603), (97, 6636), (105, 6654), (106, 6660), (113, 6690), (115, 6699), (119, 6723), (121, 6750), (122, 6753), (128, 6771),

Gene: Fastidio_8 Start: 6446, Stop: 6775, Start Num: 43

Candidate Starts for Fastidio_8:

(Start: 43 @6446 has 221 MA's), (53, 6470), (62, 6509), (66, 6542), (72, 6554), (76, 6575), (78, 6581), (79, 6584), (84, 6602), (97, 6635), (105, 6653), (106, 6659), (108, 6671), (113, 6689), (115, 6698), (119, 6722), (120, 6740), (121, 6749), (122, 6752), (128, 6770),

Gene: Feastonyeet_9 Start: 6720, Stop: 7061, Start Num: 46

Candidate Starts for Feastonyeet_9:

(Start: 46 @6720 has 53 MA's), (58, 6756), (59, 6759), (87, 6879), (94, 6894), (125, 7041),

Gene: Filuzino_8 Start: 6447, Stop: 6779, Start Num: 43

Candidate Starts for Filuzino_8:

(Start: 43 @6447 has 221 MA's), (53, 6471), (58, 6489), (64, 6528), (68, 6549), (74, 6564), (78, 6582), (83, 6600), (92, 6624), (99, 6642), (105, 6654), (106, 6660), (113, 6690), (119, 6723),

Gene: Firehouse51_8 Start: 6446, Stop: 6778, Start Num: 43

Candidate Starts for Firehouse51_8:

(Start: 43 @6446 has 221 MA's), (53, 6470), (58, 6488), (64, 6527), (68, 6548), (74, 6563), (78, 6581), (83, 6599), (92, 6623), (97, 6635), (99, 6641), (105, 6653), (106, 6659), (113, 6689), (119, 6722),

Gene: Flathead_9 Start: 6295, Stop: 6624, Start Num: 43

Candidate Starts for Flathead_9:

(Start: 43 @6295 has 221 MA's), (53, 6319), (62, 6358), (66, 6391), (72, 6403), (76, 6424), (78, 6430), (79, 6433), (84, 6451), (97, 6484), (105, 6502), (106, 6508), (108, 6520), (113, 6538), (115, 6547), (119, 6571), (121, 6598), (122, 6601), (128, 6619),

Gene: Floral_10 Start: 7484, Stop: 7831, Start Num: 45

Candidate Starts for Floral_10:

(Start: 45 @7484 has 37 MA's), (73, 7592), (112, 7739), (125, 7811),

Gene: Florinda_8 Start: 6463, Stop: 6792, Start Num: 43

Candidate Starts for Florinda_8:

(5, 6193), (17, 6370), (Start: 43 @6463 has 221 MA's), (53, 6487), (62, 6526), (66, 6559), (76, 6592), (78, 6598), (79, 6601), (84, 6619), (97, 6652), (105, 6670), (106, 6676), (108, 6688), (113, 6706), (115, 6715), (119, 6739), (121, 6766), (122, 6769), (128, 6787),

Gene: Frankie_9 Start: 6489, Stop: 6818, Start Num: 43

Candidate Starts for Frankie_9:

(Start: 43 @6489 has 221 MA's), (53, 6513), (62, 6552), (66, 6585), (72, 6597), (76, 6618), (78, 6624), (79, 6627), (84, 6645), (97, 6678), (105, 6696), (106, 6702), (108, 6714), (113, 6732), (115, 6741), (119, 6765), (121, 6792), (122, 6795), (128, 6813),

Gene: FreddyB_8 Start: 6444, Stop: 6773, Start Num: 43

Candidate Starts for FreddyB_8:

(5, 6174), (17, 6351), (Start: 43 @6444 has 221 MA's), (53, 6468), (62, 6507), (66, 6540), (72, 6552), (76, 6573), (78, 6579), (79, 6582), (84, 6600), (97, 6633), (105, 6651), (106, 6657), (108, 6669), (113, 6687), (115, 6696), (119, 6720), (121, 6747), (122, 6750), (128, 6768),

Gene: Fribs8_11 Start: 7633, Stop: 7983, Start Num: 46

Candidate Starts for Fribs8_11:

(27, 7573), (Start: 46 @7633 has 53 MA's), (53, 7651), (60, 7675), (89, 7798), (91, 7801), (95, 7813), (96, 7816), (114, 7897), (117, 7906),

Gene: Frickyeah_10 Start: 6480, Stop: 6827, Start Num: 41

Candidate Starts for Frickyeah_10:

(33, 6444), (Start: 41 @6480 has 19 MA's), (56, 6519), (63, 6561), (82, 6633), (89, 6654), (91, 6657), (104, 6690), (110, 6717), (113, 6735), (120, 6786), (123, 6801), (125, 6807), (128, 6816),

Gene: Fruitloop_8 Start: 6447, Stop: 6779, Start Num: 43

Candidate Starts for Fruitloop_8:

(Start: 43 @6447 has 221 MA's), (53, 6471), (58, 6489), (64, 6528), (68, 6549), (74, 6564), (78, 6582), (83, 6600), (92, 6624), (99, 6642), (105, 6654), (106, 6660), (113, 6690), (119, 6723),

Gene: GTE2_08 Start: 6602, Stop: 6943, Start Num: 46
Candidate Starts for GTE2_08:
(Start: 46 @6602 has 53 MA's), (91, 6767), (123, 6917), (125, 6923),

Gene: GUmbie_8 Start: 6460, Stop: 6789, Start Num: 43
Candidate Starts for GUmbie_8:
(5, 6190), (17, 6367), (Start: 43 @6460 has 221 MA's), (53, 6484), (62, 6523), (66, 6556), (72, 6568),
(76, 6589), (78, 6595), (79, 6598), (84, 6616), (92, 6637), (97, 6649), (105, 6667), (106, 6673), (113,
6703), (115, 6712), (119, 6736), (121, 6763), (122, 6766), (128, 6784),

Gene: Gaia_7 Start: 7028, Stop: 7366, Start Num: 45
Candidate Starts for Gaia_7:
(Start: 45 @7028 has 37 MA's), (52, 7049), (53, 7052), (68, 7130), (72, 7136), (76, 7157), (77, 7160),
(80, 7169), (96, 7211), (110, 7256), (115, 7283), (116, 7286), (122, 7337), (128, 7355),

Gene: Galactic_8 Start: 6420, Stop: 6752, Start Num: 43
Candidate Starts for Galactic_8:
(Start: 43 @6420 has 221 MA's), (53, 6444), (58, 6462), (64, 6501), (68, 6522), (78, 6555), (83, 6573),
(92, 6597), (97, 6609), (99, 6615), (105, 6627), (106, 6633), (113, 6663), (119, 6696),

Gene: Gandalph_8 Start: 6460, Stop: 6789, Start Num: 43
Candidate Starts for Gandalph_8:
(5, 6190), (17, 6367), (Start: 43 @6460 has 221 MA's), (53, 6484), (62, 6523), (66, 6556), (72, 6568),
(76, 6589), (78, 6595), (79, 6598), (84, 6616), (97, 6649), (105, 6667), (106, 6673), (108, 6685), (113,
6703), (115, 6712), (119, 6736), (121, 6763), (122, 6766), (128, 6784),

Gene: Geralt_8 Start: 6443, Stop: 6772, Start Num: 43
Candidate Starts for Geralt_8:
(5, 6173), (17, 6350), (Start: 43 @6443 has 221 MA's), (53, 6467), (62, 6506), (66, 6539), (72, 6551),
(76, 6572), (78, 6578), (79, 6581), (84, 6599), (97, 6632), (105, 6650), (106, 6656), (108, 6668), (113,
6686), (115, 6695), (119, 6719), (121, 6746), (122, 6749), (128, 6767),

Gene: Getalong_10 Start: 6480, Stop: 6827, Start Num: 41
Candidate Starts for Getalong_10:
(33, 6444), (Start: 41 @6480 has 19 MA's), (56, 6519), (63, 6561), (82, 6633), (89, 6654), (91, 6657),
(104, 6690), (113, 6735), (120, 6786), (123, 6801), (128, 6816),

Gene: GiKK_13 Start: 7246, Stop: 7584, Start Num: 46
Candidate Starts for GiKK_13:
(20, 7156), (21, 7159), (23, 7165), (Start: 46 @7246 has 53 MA's), (108, 7465), (109, 7468), (125,
7564),

Gene: Gibbous_10 Start: 7070, Stop: 7417, Start Num: 46
Candidate Starts for Gibbous_10:
(Start: 46 @7070 has 53 MA's), (89, 7232), (95, 7247), (96, 7250), (114, 7331),

Gene: GigiOuiOui_8 Start: 6460, Stop: 6789, Start Num: 43
Candidate Starts for GigiOuiOui_8:
(5, 6190), (17, 6367), (Start: 43 @6460 has 221 MA's), (53, 6484), (62, 6523), (66, 6556), (76, 6589),
(78, 6595), (79, 6598), (84, 6616), (97, 6649), (105, 6667), (106, 6673), (108, 6685), (113, 6703), (115,
6712), (119, 6736), (121, 6763), (122, 6766), (128, 6784),

Gene: Girafales_9 Start: 6291, Stop: 6620, Start Num: 43

Candidate Starts for Girafales_9:

(Start: 43 @6291 has 221 MA's), (53, 6315), (62, 6354), (66, 6387), (72, 6399), (76, 6420), (78, 6426), (79, 6429), (84, 6447), (97, 6480), (105, 6498), (106, 6504), (108, 6516), (113, 6534), (115, 6543), (119, 6567), (121, 6594), (122, 6597), (128, 6615),

Gene: Girr_8 Start: 6449, Stop: 6778, Start Num: 43

Candidate Starts for Girr_8:

(Start: 43 @6449 has 221 MA's), (53, 6473), (62, 6512), (66, 6545), (72, 6557), (76, 6578), (78, 6584), (79, 6587), (84, 6605), (97, 6638), (105, 6656), (106, 6662), (113, 6692), (115, 6701), (119, 6725), (121, 6752), (122, 6755), (128, 6773),

Gene: GoldHunter_11 Start: 6924, Stop: 7265, Start Num: 46

Candidate Starts for GoldHunter_11:

(Start: 46 @6924 has 53 MA's), (51, 6933), (63, 6993), (89, 7086), (117, 7188),

Gene: Gorge_8 Start: 6432, Stop: 6761, Start Num: 43

Candidate Starts for Gorge_8:

(5, 6162), (17, 6339), (Start: 43 @6432 has 221 MA's), (53, 6456), (62, 6495), (66, 6528), (72, 6540), (76, 6561), (78, 6567), (79, 6570), (84, 6588), (97, 6621), (105, 6639), (106, 6645), (108, 6657), (113, 6675), (115, 6684), (119, 6708), (121, 6735), (122, 6738), (128, 6756),

Gene: Guppsters_8 Start: 6446, Stop: 6778, Start Num: 43

Candidate Starts for Guppsters_8:

(Start: 43 @6446 has 221 MA's), (53, 6470), (58, 6488), (64, 6527), (68, 6548), (74, 6563), (78, 6581), (83, 6599), (92, 6623), (97, 6635), (99, 6641), (105, 6653), (106, 6659), (113, 6689), (119, 6722),

Gene: Hades_8 Start: 6446, Stop: 6775, Start Num: 43

Candidate Starts for Hades_8:

(5, 6176), (17, 6353), (Start: 43 @6446 has 221 MA's), (53, 6470), (62, 6509), (66, 6542), (76, 6575), (78, 6581), (79, 6584), (84, 6602), (97, 6635), (105, 6653), (106, 6659), (113, 6689), (115, 6698), (119, 6722), (121, 6749), (122, 6752), (128, 6770),

Gene: Hamulus_8 Start: 6447, Stop: 6779, Start Num: 43

Candidate Starts for Hamulus_8:

(Start: 43 @6447 has 221 MA's), (53, 6471), (58, 6489), (64, 6528), (68, 6549), (74, 6564), (78, 6582), (83, 6600), (92, 6624), (97, 6636), (99, 6642), (105, 6654), (106, 6660), (113, 6690), (119, 6723),

Gene: Harley_8 Start: 6433, Stop: 6762, Start Num: 43

Candidate Starts for Harley_8:

(17, 6340), (Start: 43 @6433 has 221 MA's), (53, 6457), (62, 6496), (66, 6529), (72, 6541), (76, 6562), (78, 6568), (79, 6571), (84, 6589), (97, 6622), (105, 6640), (106, 6646), (108, 6658), (113, 6676), (115, 6685), (119, 6709), (121, 6736), (122, 6739), (128, 6757),

Gene: Hegedechwinu_9 Start: 6295, Stop: 6624, Start Num: 43

Candidate Starts for Hegedechwinu_9:

(Start: 43 @6295 has 221 MA's), (53, 6319), (62, 6358), (66, 6391), (72, 6403), (76, 6424), (78, 6430), (79, 6433), (84, 6451), (97, 6484), (105, 6502), (106, 6508), (108, 6520), (113, 6538), (115, 6547), (119, 6571), (121, 6598), (122, 6601), (128, 6619),

Gene: Hexbug_12 Start: 7932, Stop: 8270, Start Num: 46

Candidate Starts for Hexbug_12:

(21, 7848), (Start: 46 @7932 has 53 MA's), (71, 8031), (108, 8151), (109, 8154), (123, 8244), (125, 8250),

Gene: HippoPololi_12 Start: 7722, Stop: 8069, Start Num: 46

Candidate Starts for HippoPololi_12:

(27, 7668), (Start: 46 @7722 has 53 MA's), (89, 7884), (95, 7899), (112, 7974), (114, 7983),

Gene: Hlubikazi_8 Start: 6433, Stop: 6762, Start Num: 43

Candidate Starts for Hlubikazi_8:

(5, 6163), (17, 6340), (Start: 43 @6433 has 221 MA's), (53, 6457), (62, 6496), (66, 6529), (72, 6541), (76, 6562), (78, 6568), (79, 6571), (84, 6589), (97, 6622), (105, 6640), (106, 6646), (113, 6676), (115, 6685), (119, 6709), (121, 6736), (122, 6739), (128, 6757),

Gene: Holliday_10 Start: 6485, Stop: 6832, Start Num: 41

Candidate Starts for Holliday_10:

(33, 6449), (Start: 41 @6485 has 19 MA's), (56, 6524), (89, 6659), (91, 6662), (104, 6695), (113, 6740), (120, 6791), (123, 6806), (128, 6821),

Gene: Horseradish_11 Start: 6805, Stop: 7146, Start Num: 46

Candidate Starts for Horseradish_11:

(Start: 46 @6805 has 53 MA's), (76, 6928), (117, 7069), (123, 7120), (125, 7126),

Gene: Horus_10 Start: 6480, Stop: 6827, Start Num: 41

Candidate Starts for Horus_10:

(33, 6444), (Start: 41 @6480 has 19 MA's), (56, 6519), (63, 6561), (82, 6633), (89, 6654), (91, 6657), (104, 6690), (110, 6717), (113, 6735), (120, 6786), (123, 6801), (125, 6807), (128, 6816),

Gene: IMpilo_8 Start: 6434, Stop: 6766, Start Num: 43

Candidate Starts for IMpilo_8:

(Start: 43 @6434 has 221 MA's), (53, 6458), (58, 6476), (64, 6515), (68, 6536), (74, 6551), (78, 6569), (83, 6587), (92, 6611), (97, 6623), (99, 6629), (105, 6641), (106, 6647), (113, 6677), (119, 6710),

Gene: IbOuu_8 Start: 6442, Stop: 6771, Start Num: 43

Candidate Starts for IbOuu_8:

(5, 6172), (17, 6349), (Start: 43 @6442 has 221 MA's), (53, 6466), (62, 6505), (66, 6538), (72, 6550), (76, 6571), (78, 6577), (79, 6580), (84, 6598), (97, 6631), (105, 6649), (106, 6655), (108, 6667), (113, 6685), (115, 6694), (119, 6718), (121, 6745), (122, 6748), (128, 6766),

Gene: Ibhubesi_8 Start: 6433, Stop: 6762, Start Num: 43

Candidate Starts for Ibhubesi_8:

(17, 6340), (Start: 43 @6433 has 221 MA's), (53, 6457), (62, 6496), (66, 6529), (72, 6541), (76, 6562), (78, 6568), (79, 6571), (84, 6589), (97, 6622), (105, 6640), (106, 6646), (108, 6658), (113, 6676), (115, 6685), (119, 6709), (121, 6736), (122, 6739), (128, 6757),

Gene: Inventum_8 Start: 6443, Stop: 6772, Start Num: 43

Candidate Starts for Inventum_8:

(5, 6173), (17, 6350), (Start: 43 @6443 has 221 MA's), (53, 6467), (62, 6506), (66, 6539), (72, 6551), (76, 6572), (78, 6578), (79, 6581), (84, 6599), (97, 6632), (105, 6650), (106, 6656), (108, 6668), (113, 6686), (115, 6695), (119, 6719), (121, 6746), (122, 6749), (128, 6767),

Gene: IrishSherpFalk_8 Start: 6434, Stop: 6766, Start Num: 43

Candidate Starts for IrishSherpFalk_8:

(Start: 43 @6434 has 221 MA's), (52, 6455), (53, 6458), (62, 6497), (68, 6536), (78, 6569), (79, 6572), (90, 6605), (92, 6611), (105, 6641), (106, 6647), (113, 6677), (119, 6710), (121, 6737), (125, 6749), (128, 6758),

Gene: Jabbawokkie_11 Start: 6961, Stop: 7314, Start Num: 45

Candidate Starts for Jabbawokkie_11:

(30, 6910), (32, 6916), (Start: 45 @6961 has 37 MA's), (55, 6991), (64, 7042), (91, 7147), (97, 7165), (107, 7198), (123, 7288),

Gene: Jablanski_10 Start: 7331, Stop: 7678, Start Num: 45

Candidate Starts for Jablanski_10:

(Start: 45 @7331 has 37 MA's), (73, 7439), (81, 7484), (112, 7586), (125, 7658),

Gene: JacoRen57_9 Start: 7271, Stop: 7642, Start Num: 39

Candidate Starts for JacoRen57_9:

(14, 7157), (29, 7232), (Start: 39 @7271 has 3 MA's), (96, 7481), (97, 7484), (112, 7541), (128, 7625), (129, 7634),

Gene: JalFarm20_9 Start: 6296, Stop: 6625, Start Num: 43

Candidate Starts for JalFarm20_9:

(Start: 43 @6296 has 221 MA's), (53, 6320), (62, 6359), (66, 6392), (72, 6404), (76, 6425), (78, 6431), (79, 6434), (84, 6452), (92, 6473), (97, 6485), (105, 6503), (106, 6509), (113, 6539), (115, 6548), (119, 6572), (121, 6599), (122, 6602), (128, 6620),

Gene: James_8 Start: 6435, Stop: 6764, Start Num: 43

Candidate Starts for James_8:

(5, 6165), (17, 6342), (Start: 43 @6435 has 221 MA's), (53, 6459), (62, 6498), (66, 6531), (72, 6543), (76, 6564), (78, 6570), (79, 6573), (84, 6591), (97, 6624), (105, 6642), (106, 6648), (113, 6678), (115, 6687), (119, 6711), (121, 6738), (122, 6741), (128, 6759),

Gene: Jamzy_13 Start: 7256, Stop: 7594, Start Num: 46

Candidate Starts for Jamzy_13:

(21, 7169), (23, 7175), (Start: 46 @7256 has 53 MA's), (96, 7436), (102, 7451), (108, 7475), (110, 7481), (125, 7574),

Gene: Jacob_8 Start: 6444, Stop: 6773, Start Num: 43

Candidate Starts for Jacob_8:

(5, 6174), (17, 6351), (Start: 43 @6444 has 221 MA's), (53, 6468), (62, 6507), (66, 6540), (72, 6552), (76, 6573), (78, 6579), (79, 6582), (84, 6600), (97, 6633), (105, 6651), (106, 6657), (108, 6669), (113, 6687), (115, 6696), (119, 6720), (120, 6738), (121, 6747), (122, 6750), (128, 6768),

Gene: Jinglebell_8 Start: 6442, Stop: 6771, Start Num: 43

Candidate Starts for Jinglebell_8:

(5, 6172), (17, 6349), (Start: 43 @6442 has 221 MA's), (53, 6466), (62, 6505), (66, 6538), (72, 6550), (76, 6571), (78, 6577), (79, 6580), (84, 6598), (97, 6631), (105, 6649), (106, 6655), (113, 6685), (115, 6694), (119, 6718), (121, 6745), (122, 6748), (128, 6766),

Gene: Job42_9 Start: 6296, Stop: 6625, Start Num: 43

Candidate Starts for Job42_9:

(Start: 43 @6296 has 221 MA's), (53, 6320), (62, 6359), (66, 6392), (76, 6425), (78, 6431), (79, 6434), (84, 6452), (97, 6485), (105, 6503), (106, 6509), (108, 6521), (113, 6539), (115, 6548), (117, 6554), (119, 6572), (121, 6599), (122, 6602), (128, 6620),

Gene: JoeyJr_8 Start: 6443, Stop: 6772, Start Num: 43

Candidate Starts for JoeyJr_8:

(5, 6173), (17, 6350), (Start: 43 @6443 has 221 MA's), (53, 6467), (62, 6506), (66, 6539), (72, 6551), (76, 6572), (78, 6578), (79, 6581), (84, 6599), (97, 6632), (105, 6650), (106, 6656), (108, 6668), (113, 6686), (115, 6695), (119, 6719), (121, 6746), (122, 6749), (128, 6767),

Gene: Juice456_9 Start: 6297, Stop: 6626, Start Num: 43

Candidate Starts for Juice456_9:

(Start: 43 @6297 has 221 MA's), (53, 6321), (62, 6360), (66, 6393), (72, 6405), (76, 6426), (78, 6432), (79, 6435), (84, 6453), (97, 6486), (105, 6504), (106, 6510), (108, 6522), (113, 6540), (115, 6549), (119, 6573), (121, 6600), (122, 6603), (128, 6621),

Gene: Juniper1_8 Start: 6435, Stop: 6764, Start Num: 43

Candidate Starts for Juniper1_8:

(Start: 43 @6435 has 221 MA's), (53, 6459), (62, 6498), (66, 6531), (72, 6543), (76, 6564), (78, 6570), (79, 6573), (84, 6591), (92, 6612), (97, 6624), (105, 6642), (106, 6648), (113, 6678), (115, 6687), (119, 6711), (121, 6738), (122, 6741), (128, 6759),

Gene: Kamaru_10 Start: 6485, Stop: 6832, Start Num: 41

Candidate Starts for Kamaru_10:

(33, 6449), (Start: 41 @6485 has 19 MA's), (56, 6524), (89, 6659), (91, 6662), (104, 6695), (113, 6740), (120, 6791), (123, 6806), (128, 6821),

Gene: Karhdo_8 Start: 6447, Stop: 6776, Start Num: 43

Candidate Starts for Karhdo_8:

(5, 6177), (17, 6354), (Start: 43 @6447 has 221 MA's), (53, 6471), (62, 6510), (66, 6543), (72, 6555), (76, 6576), (78, 6582), (79, 6585), (84, 6603), (92, 6624), (97, 6636), (105, 6654), (106, 6660), (113, 6690), (115, 6699), (119, 6723), (121, 6750), (122, 6753), (128, 6771),

Gene: KayGee_10 Start: 6701, Stop: 7042, Start Num: 46

Candidate Starts for KayGee_10:

(Start: 46 @6701 has 53 MA's), (58, 6737), (87, 6860), (125, 7022),

Gene: Kenna_10 Start: 6480, Stop: 6827, Start Num: 41

Candidate Starts for Kenna_10:

(33, 6444), (Start: 41 @6480 has 19 MA's), (56, 6519), (63, 6561), (89, 6654), (91, 6657), (104, 6690), (113, 6735), (123, 6801), (128, 6816),

Gene: Kenuha5_8 Start: 6446, Stop: 6778, Start Num: 43

Candidate Starts for Kenuha5_8:

(Start: 43 @6446 has 221 MA's), (53, 6470), (58, 6488), (64, 6527), (68, 6548), (74, 6563), (78, 6581), (83, 6599), (92, 6623), (97, 6635), (99, 6641), (105, 6653), (106, 6659), (113, 6689), (119, 6722),

Gene: Kersh_8 Start: 6436, Stop: 6765, Start Num: 43

Candidate Starts for Kersh_8:

(5, 6166), (17, 6343), (Start: 43 @6436 has 221 MA's), (53, 6460), (62, 6499), (66, 6532), (72, 6544), (76, 6565), (78, 6571), (79, 6574), (84, 6592), (92, 6613), (97, 6625), (105, 6643), (106, 6649), (108, 6661), (113, 6679), (115, 6688), (119, 6712), (121, 6739), (122, 6742), (128, 6760),

Gene: Kimberlium_9 Start: 6297, Stop: 6626, Start Num: 43

Candidate Starts for Kimberlium_9:

(Start: 43 @6297 has 221 MA's), (53, 6321), (62, 6360), (66, 6393), (72, 6405), (76, 6426), (78, 6432), (79, 6435), (84, 6453), (97, 6486), (105, 6504), (106, 6510), (108, 6522), (113, 6540), (115, 6549), (119, 6573), (121, 6600), (122, 6603), (128, 6621),

Gene: KingMidas_8 Start: 6443, Stop: 6772, Start Num: 43

Candidate Starts for KingMidas_8:

(5, 6173), (17, 6350), (Start: 43 @6443 has 221 MA's), (53, 6467), (62, 6506), (66, 6539), (72, 6551), (76, 6572), (78, 6578), (79, 6581), (84, 6599), (97, 6632), (105, 6650), (106, 6656), (108, 6668), (113, 6686), (115, 6695), (119, 6719), (121, 6746), (122, 6749), (128, 6767),

Gene: Kingsley_9 Start: 6295, Stop: 6624, Start Num: 43

Candidate Starts for Kingsley_9:

(Start: 43 @6295 has 221 MA's), (53, 6319), (66, 6391), (72, 6403), (76, 6424), (78, 6430), (79, 6433), (84, 6451), (97, 6484), (105, 6502), (106, 6508), (108, 6520), (113, 6538), (115, 6547), (119, 6571), (121, 6598), (122, 6601), (128, 6619),

Gene: Koella_8 Start: 6443, Stop: 6772, Start Num: 43

Candidate Starts for Koella_8:

(5, 6173), (17, 6350), (Start: 43 @6443 has 221 MA's), (53, 6467), (62, 6506), (66, 6539), (72, 6551), (76, 6572), (78, 6578), (79, 6581), (84, 6599), (97, 6632), (105, 6650), (106, 6656), (108, 6668), (113, 6686), (115, 6695), (119, 6719), (121, 6746), (122, 6749), (128, 6767),

Gene: Krakatau_9 Start: 7098, Stop: 7430, Start Num: 43

Candidate Starts for Krakatau_9:

(Start: 43 @7098 has 221 MA's), (53, 7122), (58, 7140), (64, 7179), (68, 7200), (74, 7215), (78, 7233), (83, 7251), (92, 7275), (99, 7293), (105, 7305), (106, 7311), (113, 7341), (119, 7374),

Gene: KristaRAM_9 Start: 7094, Stop: 7426, Start Num: 43

Candidate Starts for KristaRAM_9:

(Start: 43 @7094 has 221 MA's), (53, 7118), (58, 7136), (64, 7175), (68, 7196), (74, 7211), (78, 7229), (83, 7247), (92, 7271), (97, 7283), (99, 7289), (105, 7301), (106, 7307), (113, 7337), (119, 7370),

Gene: Kuwabara_10 Start: 6791, Stop: 7132, Start Num: 45

Candidate Starts for Kuwabara_10:

(24, 6716), (35, 6758), (Start: 45 @6791 has 37 MA's), (53, 6812), (61, 6842), (89, 6956), (91, 6959), (93, 6965), (105, 6998), (114, 7043), (122, 7103), (125, 7112), (127, 7118), (128, 7121),

Gene: LastJedi_8 Start: 6435, Stop: 6764, Start Num: 43

Candidate Starts for LastJedi_8:

(5, 6165), (17, 6342), (Start: 43 @6435 has 221 MA's), (53, 6459), (62, 6498), (66, 6531), (72, 6543), (76, 6564), (78, 6570), (79, 6573), (84, 6591), (97, 6624), (105, 6642), (106, 6648), (113, 6678), (115, 6687), (119, 6711), (121, 6738), (122, 6741), (128, 6759),

Gene: Latretium_8 Start: 6432, Stop: 6761, Start Num: 43

Candidate Starts for Latretium_8:

(Start: 43 @6432 has 221 MA's), (53, 6456), (62, 6495), (66, 6528), (72, 6540), (76, 6561), (78, 6567), (79, 6570), (84, 6588), (97, 6621), (105, 6639), (106, 6645), (113, 6675), (115, 6684), (119, 6708), (121, 6735), (122, 6738), (128, 6756),

Gene: Lauer_9 Start: 6750, Stop: 7091, Start Num: 46

Candidate Starts for Lauer_9:

(Start: 46 @6750 has 53 MA's), (58, 6786), (87, 6909), (94, 6924),

Gene: Leozinho_9 Start: 6296, Stop: 6625, Start Num: 43

Candidate Starts for Leozinho_9:

(Start: 43 @6296 has 221 MA's), (53, 6320), (62, 6359), (66, 6392), (72, 6404), (76, 6425), (78, 6431), (79, 6434), (84, 6452), (97, 6485), (105, 6503), (106, 6509), (108, 6521), (113, 6539), (115, 6548),

(119, 6572), (121, 6599), (122, 6602), (128, 6620),

Gene: Leperchaun_8 Start: 6432, Stop: 6761, Start Num: 43

Candidate Starts for Leperchaun_8:

(5, 6162), (17, 6339), (Start: 43 @6432 has 221 MA's), (53, 6456), (62, 6495), (66, 6528), (72, 6540), (76, 6561), (78, 6567), (79, 6570), (84, 6588), (97, 6621), (105, 6639), (106, 6645), (108, 6657), (113, 6675), (115, 6684), (119, 6708), (121, 6735), (122, 6738), (128, 6756),

Gene: Leroy_10 Start: 6481, Stop: 6828, Start Num: 41

Candidate Starts for Leroy_10:

(33, 6445), (Start: 41 @6481 has 19 MA's), (56, 6520), (63, 6562), (82, 6634), (89, 6655), (91, 6658), (104, 6691), (110, 6718), (113, 6736), (120, 6787), (123, 6802), (125, 6808), (128, 6817),

Gene: LilMoolah_8 Start: 6444, Stop: 6773, Start Num: 43

Candidate Starts for LilMoolah_8:

(5, 6174), (17, 6351), (Start: 43 @6444 has 221 MA's), (53, 6468), (62, 6507), (66, 6540), (72, 6552), (76, 6573), (78, 6579), (79, 6582), (84, 6600), (97, 6633), (105, 6651), (106, 6657), (108, 6669), (113, 6687), (115, 6696), (119, 6720), (121, 6747), (122, 6750), (128, 6768),

Gene: LilSpotty_9 Start: 6468, Stop: 6830, Start Num: 45

Candidate Starts for LilSpotty_9:

(Start: 45 @6468 has 37 MA's), (57, 6504), (63, 6543), (68, 6570), (72, 6576), (76, 6597), (77, 6600), (95, 6648), (103, 6669), (105, 6672), (106, 6678), (111, 6702), (116, 6750), (123, 6804), (128, 6819),

Gene: Lilas_10 Start: 7484, Stop: 7831, Start Num: 45

Candidate Starts for Lilas_10:

(Start: 45 @7484 has 37 MA's), (73, 7592), (112, 7739), (125, 7811),

Gene: LitninMcQueen_10 Start: 6485, Stop: 6832, Start Num: 41

Candidate Starts for LitninMcQueen_10:

(33, 6449), (Start: 41 @6485 has 19 MA's), (56, 6524), (89, 6659), (91, 6662), (104, 6695), (113, 6740), (120, 6791), (123, 6806), (128, 6821),

Gene: LittleShirley_9 Start: 6297, Stop: 6626, Start Num: 43

Candidate Starts for LittleShirley_9:

(Start: 43 @6297 has 221 MA's), (53, 6321), (62, 6360), (66, 6393), (72, 6405), (76, 6426), (78, 6432), (79, 6435), (84, 6453), (97, 6486), (105, 6504), (106, 6510), (108, 6522), (113, 6540), (115, 6549), (119, 6573), (121, 6600), (122, 6603), (128, 6621),

Gene: Lizziana_8 Start: 6445, Stop: 6774, Start Num: 43

Candidate Starts for Lizziana_8:

(5, 6175), (17, 6352), (Start: 43 @6445 has 221 MA's), (53, 6469), (62, 6508), (66, 6541), (72, 6553), (76, 6574), (78, 6580), (79, 6583), (84, 6601), (97, 6634), (105, 6652), (106, 6658), (108, 6670), (113, 6688), (115, 6697), (119, 6721), (120, 6739), (121, 6748), (122, 6751), (128, 6769),

Gene: Llama_8 Start: 6442, Stop: 6771, Start Num: 43

Candidate Starts for Llama_8:

(5, 6172), (17, 6349), (Start: 43 @6442 has 221 MA's), (53, 6466), (62, 6505), (66, 6538), (72, 6550), (76, 6571), (78, 6577), (79, 6580), (84, 6598), (97, 6631), (105, 6649), (106, 6655), (113, 6685), (115, 6694), (119, 6718), (121, 6745), (122, 6748), (128, 6766),

Gene: Llij_8 Start: 6460, Stop: 6789, Start Num: 43

Candidate Starts for Llij_8:

(5, 6190), (17, 6367), (Start: 43 @6460 has 221 MA's), (53, 6484), (62, 6523), (66, 6556), (72, 6568), (76, 6589), (78, 6595), (79, 6598), (84, 6616), (97, 6649), (105, 6667), (106, 6673), (108, 6685), (113, 6703), (115, 6712), (119, 6736), (121, 6763), (122, 6766), (128, 6784),

Gene: LonelyBoi_10 Start: 7331, Stop: 7678, Start Num: 45

Candidate Starts for LonelyBoi_10:

(Start: 45 @7331 has 37 MA's), (73, 7439), (112, 7586), (125, 7658),

Gene: Lorde_9 Start: 6296, Stop: 6625, Start Num: 43

Candidate Starts for Lorde_9:

(Start: 43 @6296 has 221 MA's), (53, 6320), (62, 6359), (66, 6392), (72, 6404), (76, 6425), (78, 6431), (79, 6434), (84, 6452), (97, 6485), (105, 6503), (106, 6509), (113, 6539), (115, 6548), (119, 6572), (121, 6599), (122, 6602), (128, 6620),

Gene: Lucky10_9 Start: 6000, Stop: 6341, Start Num: 45

Candidate Starts for Lucky10_9:

(40, 5988), (Start: 45 @6000 has 37 MA's), (66, 6093), (76, 6126), (91, 6168), (95, 6180), (105, 6207), (108, 6225), (109, 6228), (127, 6327), (128, 6330),

Gene: LunaBlu_8 Start: 6420, Stop: 6752, Start Num: 43

Candidate Starts for LunaBlu_8:

(Start: 43 @6420 has 221 MA's), (53, 6444), (58, 6462), (64, 6501), (68, 6522), (78, 6555), (83, 6573), (92, 6597), (97, 6609), (99, 6615), (105, 6627), (106, 6633), (113, 6663), (119, 6696),

Gene: LunaStella_9 Start: 6903, Stop: 7235, Start Num: 43

Candidate Starts for LunaStella_9:

(Start: 43 @6903 has 221 MA's), (53, 6927), (64, 6987), (68, 7008), (72, 7014), (88, 7074), (92, 7083), (95, 7089), (98, 7095), (115, 7155), (116, 7158), (125, 7218), (128, 7227),

Gene: Lutum_10 Start: 6480, Stop: 6827, Start Num: 41

Candidate Starts for Lutum_10:

(33, 6444), (Start: 41 @6480 has 19 MA's), (56, 6519), (63, 6561), (89, 6654), (91, 6657), (104, 6690), (113, 6735), (123, 6801), (128, 6816),

Gene: MAnor_10 Start: 6691, Stop: 7032, Start Num: 46

Candidate Starts for MAnor_10:

(Start: 46 @6691 has 53 MA's), (58, 6727), (87, 6850), (94, 6865), (109, 6913), (125, 7012),

Gene: MScarn_12 Start: 6901, Stop: 7242, Start Num: 46

Candidate Starts for MScarn_12:

(Start: 46 @6901 has 53 MA's), (76, 7024), (117, 7165), (123, 7216), (125, 7222),

Gene: MaVan_12 Start: 7820, Stop: 8170, Start Num: 46

Candidate Starts for MaVan_12:

(27, 7760), (37, 7796), (Start: 46 @7820 has 53 MA's), (53, 7838), (60, 7862), (63, 7889), (89, 7985), (95, 8000), (105, 8030), (114, 8084), (122, 8141),

Gene: Maco6_10 Start: 7480, Stop: 7854, Start Num: 39

Candidate Starts for Maco6_10:

(Start: 39 @7480 has 3 MA's), (67, 7591), (96, 7687), (126, 7831),

Gene: MadMen_8 Start: 6459, Stop: 6788, Start Num: 43

Candidate Starts for MadMen_8:

(5, 6189), (17, 6366), (Start: 43 @6459 has 221 MA's), (53, 6483), (62, 6522), (66, 6555), (72, 6567), (76, 6588), (78, 6594), (79, 6597), (84, 6615), (97, 6648), (105, 6666), (106, 6672), (108, 6684), (113, 6702), (115, 6711), (119, 6735), (121, 6762), (122, 6765), (128, 6783),

Gene: Madiba_9 Start: 6294, Stop: 6623, Start Num: 43

Candidate Starts for Madiba_9:

(Start: 43 @6294 has 221 MA's), (53, 6318), (62, 6357), (66, 6390), (72, 6402), (76, 6423), (78, 6429), (79, 6432), (84, 6450), (97, 6483), (105, 6501), (106, 6507), (108, 6519), (113, 6537), (115, 6546), (119, 6570), (121, 6597), (122, 6600), (128, 6618),

Gene: Mahavrat_8 Start: 6432, Stop: 6761, Start Num: 43

Candidate Starts for Mahavrat_8:

(5, 6162), (17, 6339), (Start: 43 @6432 has 221 MA's), (53, 6456), (62, 6495), (66, 6528), (72, 6540), (76, 6561), (78, 6567), (79, 6570), (84, 6588), (97, 6621), (105, 6639), (106, 6645), (108, 6657), (113, 6675), (115, 6684), (119, 6708), (121, 6735), (122, 6738), (128, 6756),

Gene: MalagasyRose_16 Start: 9681, Stop: 10070, Start Num: 48

Candidate Starts for MalagasyRose_16:

(Start: 48 @9681 has 2 MA's), (70, 9786), (75, 9816), (85, 9864), (87, 9870), (100, 9906), (106, 9924), (111, 9948), (114, 9984), (118, 9996), (124, 10047),

Gene: Malisha_10 Start: 7530, Stop: 7877, Start Num: 41

Candidate Starts for Malisha_10:

(8, 7341), (12, 7398), (13, 7401), (26, 7479), (33, 7494), (34, 7497), (Start: 41 @7530 has 19 MA's), (56, 7569), (63, 7611), (73, 7644), (89, 7704), (91, 7707), (104, 7740), (113, 7785), (128, 7866),

Gene: Mandlovu_8 Start: 6433, Stop: 6762, Start Num: 43

Candidate Starts for Mandlovu_8:

(5, 6163), (17, 6340), (Start: 43 @6433 has 221 MA's), (53, 6457), (62, 6496), (66, 6529), (72, 6541), (76, 6562), (78, 6568), (79, 6571), (84, 6589), (97, 6622), (105, 6640), (106, 6646), (113, 6676), (115, 6685), (119, 6709), (121, 6736), (122, 6739), (128, 6757),

Gene: Mantra_8 Start: 6460, Stop: 6789, Start Num: 43

Candidate Starts for Mantra_8:

(5, 6190), (17, 6367), (Start: 43 @6460 has 221 MA's), (53, 6484), (62, 6523), (66, 6556), (76, 6589), (78, 6595), (79, 6598), (84, 6616), (97, 6649), (105, 6667), (106, 6673), (108, 6685), (113, 6703), (115, 6712), (119, 6736), (121, 6763), (122, 6766), (128, 6784),

Gene: Maravista_8 Start: 6433, Stop: 6762, Start Num: 43

Candidate Starts for Maravista_8:

(5, 6163), (17, 6340), (Start: 43 @6433 has 221 MA's), (53, 6457), (62, 6496), (66, 6529), (72, 6541), (76, 6562), (78, 6568), (79, 6571), (84, 6589), (97, 6622), (105, 6640), (106, 6646), (108, 6658), (113, 6676), (115, 6685), (119, 6709), (120, 6727), (121, 6736), (122, 6739), (128, 6757),

Gene: Margaret_13 Start: 7641, Stop: 7979, Start Num: 46

Candidate Starts for Margaret_13:

(20, 7551), (21, 7554), (23, 7560), (Start: 46 @7641 has 53 MA's), (58, 7677), (71, 7740), (108, 7860), (125, 7959),

Gene: Marker_9 Start: 6295, Stop: 6624, Start Num: 43

Candidate Starts for Marker_9:

(Start: 43 @6295 has 221 MA's), (53, 6319), (62, 6358), (66, 6391), (76, 6424), (78, 6430), (79, 6433), (84, 6451), (97, 6484), (105, 6502), (106, 6508), (108, 6520), (113, 6538), (115, 6547), (119, 6571),

(121, 6598), (122, 6601), (128, 6619),

Gene: Marteena_10 Start: 7484, Stop: 7831, Start Num: 45

Candidate Starts for Marteena_10:

(Start: 45 @7484 has 37 MA's), (73, 7592), (112, 7739), (125, 7811),

Gene: Martik_8 Start: 6445, Stop: 6774, Start Num: 43

Candidate Starts for Martik_8:

(5, 6175), (17, 6352), (Start: 43 @6445 has 221 MA's), (53, 6469), (62, 6508), (66, 6541), (72, 6553), (76, 6574), (78, 6580), (79, 6583), (84, 6601), (97, 6634), (105, 6652), (106, 6658), (108, 6670), (113, 6688), (115, 6697), (119, 6721), (120, 6739), (121, 6748), (122, 6751), (128, 6769),

Gene: Mattes_8 Start: 6435, Stop: 6764, Start Num: 43

Candidate Starts for Mattes_8:

(5, 6165), (17, 6342), (Start: 43 @6435 has 221 MA's), (53, 6459), (62, 6498), (66, 6531), (72, 6543), (76, 6564), (78, 6570), (79, 6573), (84, 6591), (97, 6624), (105, 6642), (106, 6648), (113, 6678), (115, 6687), (119, 6711), (121, 6738), (122, 6741), (128, 6759),

Gene: Mayweather_11 Start: 7324, Stop: 7665, Start Num: 46

Candidate Starts for Mayweather_11:

(Start: 46 @7324 has 53 MA's), (58, 7360), (87, 7483), (94, 7498), (109, 7546), (125, 7645),

Gene: Melissauren88_8 Start: 6446, Stop: 6778, Start Num: 43

Candidate Starts for Melissauren88_8:

(Start: 43 @6446 has 221 MA's), (53, 6470), (58, 6488), (64, 6527), (68, 6548), (74, 6563), (78, 6581), (83, 6599), (92, 6623), (99, 6641), (105, 6653), (106, 6659), (113, 6689), (119, 6722),

Gene: MilanaBonita_9 Start: 7094, Stop: 7426, Start Num: 43

Candidate Starts for MilanaBonita_9:

(Start: 43 @7094 has 221 MA's), (53, 7118), (58, 7136), (64, 7175), (68, 7196), (74, 7211), (78, 7229), (83, 7247), (92, 7271), (97, 7283), (99, 7289), (105, 7301), (106, 7307), (113, 7337), (119, 7370),

Gene: MilleniumForce_9 Start: 7094, Stop: 7426, Start Num: 43

Candidate Starts for MilleniumForce_9:

(Start: 43 @7094 has 221 MA's), (53, 7118), (58, 7136), (64, 7175), (68, 7196), (74, 7211), (78, 7229), (83, 7247), (92, 7271), (97, 7283), (99, 7289), (105, 7301), (106, 7307), (113, 7337), (119, 7370),

Gene: MinionDave_9 Start: 7094, Stop: 7426, Start Num: 43

Candidate Starts for MinionDave_9:

(Start: 43 @7094 has 221 MA's), (53, 7118), (58, 7136), (64, 7175), (68, 7196), (74, 7211), (78, 7229), (83, 7247), (92, 7271), (99, 7289), (105, 7301), (106, 7307), (113, 7337), (119, 7370),

Gene: Minnie_8 Start: 6460, Stop: 6789, Start Num: 43

Candidate Starts for Minnie_8:

(5, 6190), (17, 6367), (Start: 43 @6460 has 221 MA's), (53, 6484), (62, 6523), (66, 6556), (72, 6568), (76, 6589), (78, 6595), (79, 6598), (84, 6616), (97, 6649), (105, 6667), (106, 6673), (108, 6685), (113, 6703), (115, 6712), (119, 6736), (121, 6763), (122, 6766), (128, 6784),

Gene: Misha28_9 Start: 6299, Stop: 6628, Start Num: 43

Candidate Starts for Misha28_9:

(Start: 43 @6299 has 221 MA's), (53, 6323), (62, 6362), (66, 6395), (72, 6407), (76, 6428), (78, 6434), (79, 6437), (84, 6455), (92, 6476), (97, 6488), (105, 6506), (106, 6512), (108, 6524), (113, 6542), (115, 6551), (119, 6575), (121, 6602), (122, 6605), (128, 6623),

Gene: MisterCuddles_8 Start: 6449, Stop: 6778, Start Num: 43

Candidate Starts for MisterCuddles_8:

(Start: 43 @6449 has 221 MA's), (53, 6473), (62, 6512), (66, 6545), (72, 6557), (76, 6578), (78, 6584), (79, 6587), (84, 6605), (97, 6638), (105, 6656), (106, 6662), (113, 6692), (115, 6701), (119, 6725), (121, 6752), (122, 6755), (128, 6773),

Gene: Modragons_8 Start: 6442, Stop: 6771, Start Num: 43

Candidate Starts for Modragons_8:

(5, 6172), (17, 6349), (Start: 43 @6442 has 221 MA's), (53, 6466), (62, 6505), (66, 6538), (72, 6550), (76, 6571), (78, 6577), (79, 6580), (84, 6598), (97, 6631), (105, 6649), (106, 6655), (113, 6685), (115, 6694), (119, 6718), (121, 6745), (122, 6748), (128, 6766),

Gene: Moonbeam_8 Start: 6445, Stop: 6774, Start Num: 43

Candidate Starts for Moonbeam_8:

(5, 6175), (17, 6352), (Start: 43 @6445 has 221 MA's), (53, 6469), (62, 6508), (66, 6541), (76, 6574), (78, 6580), (79, 6583), (84, 6601), (97, 6634), (105, 6652), (106, 6658), (108, 6670), (113, 6688), (115, 6697), (119, 6721), (121, 6748), (122, 6751), (128, 6769),

Gene: Morkie_9 Start: 5962, Stop: 6303, Start Num: 45

Candidate Starts for Morkie_9:

(11, 5809), (32, 5917), (40, 5950), (Start: 45 @5962 has 37 MA's), (66, 6055), (91, 6130), (95, 6142), (105, 6169), (108, 6187), (127, 6289), (128, 6292),

Gene: MortyNRick_10 Start: 6791, Stop: 7132, Start Num: 45

Candidate Starts for MortyNRick_10:

(24, 6716), (35, 6758), (Start: 45 @6791 has 37 MA's), (53, 6812), (61, 6842), (89, 6956), (91, 6959), (93, 6965), (97, 6977), (114, 7043), (125, 7112), (127, 7118), (128, 7121),

Gene: Mova_9 Start: 6298, Stop: 6627, Start Num: 43

Candidate Starts for Mova_9:

(Start: 43 @6298 has 221 MA's), (53, 6322), (62, 6361), (66, 6394), (72, 6406), (76, 6427), (78, 6433), (79, 6436), (84, 6454), (92, 6475), (97, 6487), (105, 6505), (106, 6511), (108, 6523), (113, 6541), (115, 6550), (119, 6574), (121, 6601), (122, 6604), (128, 6622),

Gene: Mozy_9 Start: 6294, Stop: 6626, Start Num: 43

Candidate Starts for Mozy_9:

(Start: 43 @6294 has 221 MA's), (53, 6318), (58, 6336), (68, 6396), (74, 6411), (83, 6447), (92, 6471), (97, 6483), (99, 6489), (105, 6501), (106, 6507), (113, 6537), (119, 6570),

Gene: Ms6_8 Start: 6446, Stop: 6778, Start Num: 43

Candidate Starts for Ms6_8:

(Start: 43 @6446 has 221 MA's), (53, 6470), (58, 6488), (64, 6527), (68, 6548), (74, 6563), (78, 6581), (83, 6599), (92, 6623), (97, 6635), (99, 6641), (105, 6653), (106, 6659), (113, 6689), (119, 6722),

Gene: Muddy_12 Start: 8430, Stop: 8804, Start Num: 39

Candidate Starts for Muddy_12:

(Start: 39 @8430 has 3 MA's), (67, 8541), (96, 8637), (126, 8781), (129, 8796),

Gene: MulchExplorer_10 Start: 6297, Stop: 6626, Start Num: 43

Candidate Starts for MulchExplorer_10:

(Start: 43 @6297 has 221 MA's), (53, 6321), (62, 6360), (66, 6393), (72, 6405), (76, 6426), (78, 6432), (79, 6435), (84, 6453), (97, 6486), (105, 6504), (106, 6510), (108, 6522), (113, 6540), (115, 6549),

(119, 6573), (121, 6600), (122, 6603), (128, 6621),

Gene: MulchSalad_8 Start: 6446, Stop: 6775, Start Num: 43

Candidate Starts for MulchSalad_8:

(5, 6176), (17, 6353), (Start: 43 @6446 has 221 MA's), (53, 6470), (62, 6509), (66, 6542), (72, 6554), (76, 6575), (78, 6581), (79, 6584), (84, 6602), (97, 6635), (105, 6653), (106, 6659), (113, 6689), (115, 6698), (119, 6722), (121, 6749), (122, 6752), (128, 6770),

Gene: MunkgeeRoachy_10 Start: 6971, Stop: 7312, Start Num: 46

Candidate Starts for MunkgeeRoachy_10:

(Start: 46 @6971 has 53 MA's), (51, 6980), (63, 7040), (89, 7133), (110, 7196), (117, 7235),

Gene: Mutaforma13_8 Start: 6446, Stop: 6778, Start Num: 43

Candidate Starts for Mutaforma13_8:

(Start: 43 @6446 has 221 MA's), (52, 6467), (53, 6470), (62, 6509), (68, 6548), (78, 6581), (79, 6584), (90, 6617), (92, 6623), (105, 6653), (106, 6659), (113, 6689), (119, 6722), (121, 6749), (125, 6761), (128, 6770),

Gene: Nebkiss_7 Start: 7029, Stop: 7367, Start Num: 45

Candidate Starts for Nebkiss_7:

(Start: 45 @7029 has 37 MA's), (52, 7050), (53, 7053), (68, 7131), (72, 7137), (76, 7158), (77, 7161), (80, 7170), (96, 7212), (110, 7257), (115, 7284), (116, 7287), (122, 7338), (128, 7356),

Gene: Nergal_14 Start: 10144, Stop: 10533, Start Num: 48

Candidate Starts for Nergal_14:

(4, 9859), (Start: 48 @10144 has 2 MA's), (75, 10279), (76, 10285), (85, 10327), (87, 10333), (114, 10447), (118, 10459),

Gene: Nibbles_12 Start: 7820, Stop: 8170, Start Num: 46

Candidate Starts for Nibbles_12:

(27, 7760), (37, 7796), (Start: 46 @7820 has 53 MA's), (53, 7838), (60, 7862), (63, 7889), (89, 7985), (95, 8000), (105, 8030), (114, 8084), (122, 8141),

Gene: Nimbo_8 Start: 6443, Stop: 6772, Start Num: 43

Candidate Starts for Nimbo_8:

(5, 6173), (17, 6350), (Start: 43 @6443 has 221 MA's), (53, 6467), (62, 6506), (66, 6539), (72, 6551), (76, 6572), (78, 6578), (79, 6581), (84, 6599), (97, 6632), (105, 6650), (106, 6656), (108, 6668), (113, 6686), (115, 6695), (119, 6719), (121, 6746), (122, 6749), (128, 6767),

Gene: Nina_11 Start: 7957, Stop: 8298, Start Num: 46

Candidate Starts for Nina_11:

(Start: 46 @7957 has 53 MA's), (51, 7966), (63, 8026), (89, 8119), (112, 8203), (117, 8221),

Gene: Nitzel_9 Start: 7096, Stop: 7425, Start Num: 43

Candidate Starts for Nitzel_9:

(5, 6826), (17, 7003), (Start: 43 @7096 has 221 MA's), (53, 7120), (62, 7159), (66, 7192), (76, 7225), (78, 7231), (79, 7234), (84, 7252), (97, 7285), (105, 7303), (106, 7309), (108, 7321), (113, 7339), (115, 7348), (119, 7372), (121, 7399), (122, 7402), (128, 7420),

Gene: Nivrat_8 Start: 6444, Stop: 6773, Start Num: 43

Candidate Starts for Nivrat_8:

(5, 6174), (17, 6351), (Start: 43 @6444 has 221 MA's), (53, 6468), (62, 6507), (66, 6540), (72, 6552), (76, 6573), (78, 6579), (79, 6582), (84, 6600), (97, 6633), (105, 6651), (106, 6657), (108, 6669), (113,

6687), (115, 6696), (119, 6720), (120, 6738), (121, 6747), (122, 6750), (128, 6768),

Gene: NoShow_10 Start: 7573, Stop: 7956, Start Num: 36

Candidate Starts for NoShow_10:

(10, 7408), (16, 7483), (22, 7513), (Start: 36 @7573 has 1 MA's), (50, 7603), (63, 7666), (69, 7693), (89, 7771), (91, 7774), (93, 7780), (96, 7789), (110, 7834), (128, 7933),

Gene: Nodigi_12 Start: 7925, Stop: 8263, Start Num: 46

Candidate Starts for Nodigi_12:

(1, 7541), (2, 7628), (21, 7841), (Start: 46 @7925 has 53 MA's), (71, 8024), (108, 8144), (109, 8147), (123, 8237), (125, 8243),

Gene: NormanBulbieJr_8 Start: 6431, Stop: 6760, Start Num: 43

Candidate Starts for NormanBulbieJr_8:

(5, 6161), (17, 6338), (Start: 43 @6431 has 221 MA's), (53, 6455), (62, 6494), (66, 6527), (72, 6539), (76, 6560), (78, 6566), (79, 6569), (84, 6587), (97, 6620), (105, 6638), (106, 6644), (108, 6656), (113, 6674), (115, 6683), (119, 6707), (121, 6734), (122, 6737), (128, 6755),

Gene: ODay_10 Start: 6511, Stop: 6858, Start Num: 42

Candidate Starts for ODay_10:

(3, 6226), (6, 6259), (28, 6460), (Start: 42 @6511 has 2 MA's), (73, 6622), (97, 6703), (105, 6724), (108, 6742), (114, 6769), (127, 6841), (128, 6844),

Gene: Ochi17_8 Start: 6442, Stop: 6771, Start Num: 43

Candidate Starts for Ochi17_8:

(5, 6172), (17, 6349), (Start: 43 @6442 has 221 MA's), (53, 6466), (62, 6505), (66, 6538), (72, 6550), (76, 6571), (78, 6577), (79, 6580), (84, 6598), (97, 6631), (105, 6649), (106, 6655), (113, 6685), (115, 6694), (119, 6718), (121, 6745), (122, 6748), (128, 6766),

Gene: OfUltron_8 Start: 6442, Stop: 6771, Start Num: 43

Candidate Starts for OfUltron_8:

(5, 6172), (17, 6349), (Start: 43 @6442 has 221 MA's), (53, 6466), (62, 6505), (66, 6538), (72, 6550), (76, 6571), (78, 6577), (79, 6580), (84, 6598), (97, 6631), (105, 6649), (106, 6655), (113, 6685), (115, 6694), (119, 6718), (121, 6745), (122, 6748), (128, 6766),

Gene: Ogopogo_11 Start: 6698, Stop: 7027, Start Num: 43

Candidate Starts for Ogopogo_11:

(25, 6647), (27, 6653), (Start: 43 @6698 has 221 MA's), (53, 6722), (62, 6761), (66, 6794), (76, 6827), (78, 6833), (79, 6836), (84, 6854), (97, 6887), (105, 6905), (106, 6911), (108, 6923), (113, 6941), (115, 6950), (119, 6974), (121, 7001), (122, 7004), (128, 7022),

Gene: Oksu_9 Start: 6297, Stop: 6626, Start Num: 43

Candidate Starts for Oksu_9:

(Start: 43 @6297 has 221 MA's), (53, 6321), (62, 6360), (66, 6393), (72, 6405), (76, 6426), (78, 6432), (79, 6435), (84, 6453), (97, 6486), (105, 6504), (106, 6510), (113, 6540), (115, 6549), (119, 6573), (121, 6600), (122, 6603), (128, 6621),

Gene: OldBen_8 Start: 6443, Stop: 6772, Start Num: 43

Candidate Starts for OldBen_8:

(5, 6173), (17, 6350), (Start: 43 @6443 has 221 MA's), (53, 6467), (62, 6506), (66, 6539), (72, 6551), (76, 6572), (78, 6578), (79, 6581), (84, 6599), (97, 6632), (105, 6650), (106, 6656), (108, 6668), (113, 6686), (115, 6695), (119, 6719), (121, 6746), (122, 6749), (128, 6767),

Gene: OlympiaSaint_8 Start: 6444, Stop: 6773, Start Num: 43

Candidate Starts for OlympiaSaint_8:

(5, 6174), (17, 6351), (Start: 43 @6444 has 221 MA's), (53, 6468), (62, 6507), (66, 6540), (76, 6573), (78, 6579), (79, 6582), (84, 6600), (97, 6633), (105, 6651), (106, 6657), (108, 6669), (113, 6687), (115, 6696), (119, 6720), (121, 6747), (122, 6750), (128, 6768),

Gene: Orla_12 Start: 7929, Stop: 8267, Start Num: 46

Candidate Starts for Orla_12:

(2, 7632), (21, 7845), (Start: 46 @7929 has 53 MA's), (71, 8028), (108, 8148), (109, 8151), (123, 8241), (125, 8247),

Gene: Ovechkin_8 Start: 6446, Stop: 6778, Start Num: 43

Candidate Starts for Ovechkin_8:

(Start: 43 @6446 has 221 MA's), (53, 6470), (58, 6488), (64, 6527), (68, 6548), (74, 6563), (78, 6581), (83, 6599), (92, 6623), (99, 6641), (105, 6653), (106, 6659), (113, 6689), (119, 6722),

Gene: OwlsT2W_9 Start: 6296, Stop: 6625, Start Num: 43

Candidate Starts for OwlsT2W_9:

(Start: 43 @6296 has 221 MA's), (53, 6320), (62, 6359), (66, 6392), (72, 6404), (76, 6425), (78, 6431), (79, 6434), (84, 6452), (97, 6485), (105, 6503), (106, 6509), (108, 6521), (113, 6539), (115, 6548), (119, 6572), (121, 6599), (122, 6602), (128, 6620),

Gene: PHappiness_8 Start: 6443, Stop: 6772, Start Num: 43

Candidate Starts for PHappiness_8:

(5, 6173), (17, 6350), (Start: 43 @6443 has 221 MA's), (53, 6467), (62, 6506), (66, 6539), (72, 6551), (76, 6572), (78, 6578), (79, 6581), (84, 6599), (97, 6632), (105, 6650), (106, 6656), (108, 6668), (113, 6686), (115, 6695), (119, 6719), (121, 6746), (122, 6749), (128, 6767),

Gene: PMC_8 Start: 6460, Stop: 6789, Start Num: 43

Candidate Starts for PMC_8:

(5, 6190), (17, 6367), (Start: 43 @6460 has 221 MA's), (53, 6484), (62, 6523), (66, 6556), (72, 6568), (76, 6589), (78, 6595), (79, 6598), (84, 6616), (97, 6649), (105, 6667), (106, 6673), (108, 6685), (113, 6703), (115, 6712), (119, 6736), (121, 6763), (122, 6766), (128, 6784),

Gene: Pacc40_8 Start: 6443, Stop: 6772, Start Num: 43

Candidate Starts for Pacc40_8:

(5, 6173), (17, 6350), (Start: 43 @6443 has 221 MA's), (53, 6467), (62, 6506), (66, 6539), (72, 6551), (76, 6572), (78, 6578), (79, 6581), (84, 6599), (97, 6632), (105, 6650), (106, 6656), (108, 6668), (113, 6686), (115, 6695), (119, 6719), (121, 6746), (122, 6749), (128, 6767),

Gene: Periwinkle_10 Start: 6480, Stop: 6827, Start Num: 41

Candidate Starts for Periwinkle_10:

(33, 6444), (Start: 41 @6480 has 19 MA's), (56, 6519), (63, 6561), (82, 6633), (89, 6654), (91, 6657), (104, 6690), (113, 6735), (120, 6786), (128, 6816),

Gene: Phabuloso_10 Start: 6485, Stop: 6832, Start Num: 41

Candidate Starts for Phabuloso_10:

(33, 6449), (Start: 41 @6485 has 19 MA's), (56, 6524), (89, 6659), (91, 6662), (104, 6695), (113, 6740), (120, 6791), (123, 6806), (128, 6821),

Gene: Phalconet_8 Start: 6446, Stop: 6778, Start Num: 43

Candidate Starts for Phalconet_8:

(Start: 43 @6446 has 221 MA's), (53, 6470), (58, 6488), (64, 6527), (68, 6548), (74, 6563), (78, 6581), (83, 6599), (92, 6623), (99, 6641), (105, 6653), (106, 6659), (113, 6689), (119, 6722),

Gene: Phanphagia_8 Start: 6446, Stop: 6778, Start Num: 43

Candidate Starts for Phanphagia_8:

(Start: 43 @6446 has 221 MA's), (53, 6470), (58, 6488), (64, 6527), (68, 6548), (78, 6581), (83, 6599), (92, 6623), (97, 6635), (99, 6641), (105, 6653), (106, 6659), (113, 6689), (118, 6707), (119, 6722),

Gene: Phasih_8 Start: 6459, Stop: 6788, Start Num: 43

Candidate Starts for Phasih_8:

(Start: 43 @6459 has 221 MA's), (53, 6483), (62, 6522), (66, 6555), (72, 6567), (76, 6588), (78, 6594), (79, 6597), (84, 6615), (97, 6648), (105, 6666), (106, 6672), (113, 6702), (115, 6711), (119, 6735), (121, 6762), (122, 6765), (128, 6783),

Gene: Phatniss_8 Start: 6443, Stop: 6772, Start Num: 43

Candidate Starts for Phatniss_8:

(5, 6173), (17, 6350), (Start: 43 @6443 has 221 MA's), (53, 6467), (62, 6506), (66, 6539), (72, 6551), (76, 6572), (78, 6578), (79, 6581), (84, 6599), (97, 6632), (105, 6650), (106, 6656), (108, 6668), (113, 6686), (115, 6695), (119, 6719), (121, 6746), (122, 6749), (128, 6767),

Gene: PhesterPhotato_8 Start: 6446, Stop: 6778, Start Num: 43

Candidate Starts for PhesterPhotato_8:

(Start: 43 @6446 has 221 MA's), (53, 6470), (58, 6488), (64, 6527), (68, 6548), (74, 6563), (78, 6581), (83, 6599), (92, 6623), (99, 6641), (105, 6653), (106, 6659), (113, 6689), (119, 6722),

Gene: Philus_8 Start: 6444, Stop: 6773, Start Num: 43

Candidate Starts for Philus_8:

(5, 6174), (17, 6351), (Start: 43 @6444 has 221 MA's), (53, 6468), (62, 6507), (66, 6540), (72, 6552), (76, 6573), (78, 6579), (79, 6582), (84, 6600), (97, 6633), (105, 6651), (106, 6657), (108, 6669), (113, 6687), (115, 6696), (119, 6720), (120, 6738), (121, 6747), (122, 6750), (128, 6768),

Gene: Phistory_10 Start: 6469, Stop: 6816, Start Num: 41

Candidate Starts for Phistory_10:

(33, 6433), (Start: 41 @6469 has 19 MA's), (56, 6508), (63, 6550), (89, 6643), (91, 6646), (113, 6724), (120, 6775), (123, 6790), (128, 6805),

Gene: PhorbesPhlower_9 Start: 5962, Stop: 6303, Start Num: 45

Candidate Starts for PhorbesPhlower_9:

(11, 5809), (32, 5917), (40, 5950), (Start: 45 @5962 has 37 MA's), (66, 6055), (91, 6130), (95, 6142), (105, 6169), (108, 6187), (127, 6289), (128, 6292),

Gene: Piper2020_9 Start: 6298, Stop: 6627, Start Num: 43

Candidate Starts for Piper2020_9:

(Start: 43 @6298 has 221 MA's), (53, 6322), (62, 6361), (66, 6394), (76, 6427), (78, 6433), (79, 6436), (84, 6454), (97, 6487), (105, 6505), (106, 6511), (108, 6523), (113, 6541), (115, 6550), (119, 6574), (120, 6592), (121, 6601), (122, 6604), (128, 6622),

Gene: Pippy_8 Start: 6431, Stop: 6760, Start Num: 43

Candidate Starts for Pippy_8:

(5, 6161), (17, 6338), (Start: 43 @6431 has 221 MA's), (53, 6455), (62, 6494), (66, 6527), (72, 6539), (76, 6560), (78, 6566), (79, 6569), (84, 6587), (97, 6620), (105, 6638), (106, 6644), (108, 6656), (113, 6674), (115, 6683), (119, 6707), (121, 6734), (122, 6737), (128, 6755),

Gene: Plumbus_9 Start: 6297, Stop: 6626, Start Num: 43

Candidate Starts for Plumbus_9:

(Start: 43 @6297 has 221 MA's), (53, 6321), (62, 6360), (66, 6393), (72, 6405), (76, 6426), (78, 6432), (79, 6435), (84, 6453), (97, 6486), (105, 6504), (106, 6510), (108, 6522), (113, 6540), (115, 6549), (119, 6573), (121, 6600), (122, 6603), (128, 6621),

Gene: Poenanya_8 Start: 6443, Stop: 6772, Start Num: 43

Candidate Starts for Poenanya_8:

(5, 6173), (17, 6350), (Start: 43 @6443 has 221 MA's), (53, 6467), (62, 6506), (66, 6539), (72, 6551), (76, 6572), (78, 6578), (79, 6581), (84, 6599), (97, 6632), (105, 6650), (106, 6656), (108, 6668), (113, 6686), (115, 6695), (119, 6719), (121, 6746), (122, 6749), (128, 6767),

Gene: Polka14_8 Start: 6444, Stop: 6773, Start Num: 43

Candidate Starts for Polka14_8:

(5, 6174), (17, 6351), (Start: 43 @6444 has 221 MA's), (53, 6468), (62, 6507), (66, 6540), (72, 6552), (76, 6573), (78, 6579), (79, 6582), (84, 6600), (97, 6633), (105, 6651), (106, 6657), (108, 6669), (113, 6687), (115, 6696), (119, 6720), (121, 6747), (122, 6750), (128, 6768),

Gene: Pollux_10 Start: 7484, Stop: 7831, Start Num: 45

Candidate Starts for Pollux_10:

(Start: 45 @7484 has 37 MA's), (73, 7592), (112, 7739), (125, 7811),

Gene: Pollywog_9 Start: 6296, Stop: 6625, Start Num: 43

Candidate Starts for Pollywog_9:

(Start: 43 @6296 has 221 MA's), (53, 6320), (62, 6359), (66, 6392), (72, 6404), (76, 6425), (78, 6431), (79, 6434), (84, 6452), (97, 6485), (105, 6503), (106, 6509), (108, 6521), (113, 6539), (115, 6548), (119, 6572), (121, 6599), (122, 6602), (128, 6620),

Gene: Pons_10 Start: 6703, Stop: 7044, Start Num: 46

Candidate Starts for Pons_10:

(Start: 46 @6703 has 53 MA's), (58, 6739), (87, 6862), (94, 6877), (109, 6925), (125, 7024),

Gene: PopTart_8 Start: 6446, Stop: 6778, Start Num: 43

Candidate Starts for PopTart_8:

(Start: 43 @6446 has 221 MA's), (53, 6470), (58, 6488), (64, 6527), (68, 6548), (74, 6563), (78, 6581), (83, 6599), (92, 6623), (99, 6641), (105, 6653), (106, 6659), (113, 6689), (119, 6722),

Gene: Posh_10 Start: 7478, Stop: 7825, Start Num: 45

Candidate Starts for Posh_10:

(Start: 45 @7478 has 37 MA's), (73, 7586), (112, 7733), (125, 7805),

Gene: PotPie_10 Start: 7554, Stop: 7895, Start Num: 46

Candidate Starts for PotPie_10:

(Start: 46 @7554 has 53 MA's), (58, 7590), (87, 7713), (125, 7875),

Gene: Priscilla_8 Start: 6444, Stop: 6773, Start Num: 43

Candidate Starts for Priscilla_8:

(5, 6174), (17, 6351), (Start: 43 @6444 has 221 MA's), (53, 6468), (62, 6507), (66, 6540), (72, 6552), (76, 6573), (78, 6579), (79, 6582), (84, 6600), (97, 6633), (105, 6651), (106, 6657), (108, 6669), (113, 6687), (115, 6696), (119, 6720), (121, 6747), (122, 6750), (128, 6768),

Gene: PsychoKiller_10 Start: 6923, Stop: 7264, Start Num: 46

Candidate Starts for PsychoKiller_10:

(Start: 46 @6923 has 53 MA's), (51, 6932), (63, 6992), (89, 7085), (117, 7187),

Gene: Pytheas_10 Start: 7331, Stop: 7678, Start Num: 45

Candidate Starts for Pytheas_10:

(Start: 45 @7331 has 37 MA's), (73, 7439), (81, 7484), (112, 7586), (125, 7658),

Gene: Quasar_10 Start: 7538, Stop: 7879, Start Num: 46

Candidate Starts for Quasar_10:

(Start: 46 @7538 has 53 MA's), (51, 7547), (63, 7607), (89, 7700), (117, 7802),

Gene: QuickMath_8 Start: 6447, Stop: 6779, Start Num: 43

Candidate Starts for QuickMath_8:

(Start: 43 @6447 has 221 MA's), (53, 6471), (58, 6489), (64, 6528), (68, 6549), (74, 6564), (78, 6582), (83, 6600), (92, 6624), (97, 6636), (99, 6642), (105, 6654), (106, 6660), (113, 6690), (119, 6723),

Gene: Quico_9 Start: 6291, Stop: 6620, Start Num: 43

Candidate Starts for Quico_9:

(Start: 43 @6291 has 221 MA's), (53, 6315), (62, 6354), (66, 6387), (72, 6399), (76, 6420), (78, 6426), (79, 6429), (84, 6447), (97, 6480), (105, 6498), (106, 6504), (108, 6516), (113, 6534), (115, 6543), (119, 6567), (121, 6594), (122, 6597), (128, 6615),

Gene: Radiance_8 Start: 6443, Stop: 6772, Start Num: 43

Candidate Starts for Radiance_8:

(5, 6173), (17, 6350), (Start: 43 @6443 has 221 MA's), (53, 6467), (62, 6506), (66, 6539), (72, 6551), (76, 6572), (78, 6578), (79, 6581), (84, 6599), (97, 6632), (105, 6650), (106, 6656), (108, 6668), (113, 6686), (115, 6695), (119, 6719), (121, 6746), (122, 6749), (128, 6767),

Gene: Ramsey_9 Start: 6295, Stop: 6624, Start Num: 43

Candidate Starts for Ramsey_9:

(Start: 43 @6295 has 221 MA's), (53, 6319), (62, 6358), (66, 6391), (72, 6403), (76, 6424), (78, 6430), (79, 6433), (84, 6451), (97, 6484), (105, 6502), (106, 6508), (108, 6520), (113, 6538), (115, 6547), (119, 6571), (121, 6598), (122, 6601), (128, 6619),

Gene: RanchParmCat_13 Start: 7641, Stop: 7979, Start Num: 46

Candidate Starts for RanchParmCat_13:

(Start: 46 @7641 has 53 MA's), (58, 7677), (71, 7740), (108, 7860), (125, 7959),

Gene: RedBaron_11 Start: 6968, Stop: 7309, Start Num: 46

Candidate Starts for RedBaron_11:

(Start: 46 @6968 has 53 MA's), (51, 6977), (63, 7037), (89, 7130), (117, 7232),

Gene: RedBird_8 Start: 6443, Stop: 6772, Start Num: 43

Candidate Starts for RedBird_8:

(5, 6173), (17, 6350), (Start: 43 @6443 has 221 MA's), (53, 6467), (62, 6506), (66, 6539), (72, 6551), (76, 6572), (78, 6578), (79, 6581), (84, 6599), (97, 6632), (105, 6650), (106, 6656), (108, 6668), (113, 6686), (115, 6695), (119, 6719), (121, 6746), (122, 6749), (128, 6767),

Gene: Renaud18_9 Start: 6780, Stop: 7112, Start Num: 43

Candidate Starts for Renaud18_9:

(Start: 43 @6780 has 221 MA's), (53, 6804), (64, 6864), (68, 6885), (72, 6891), (88, 6951), (92, 6960), (95, 6966), (98, 6972), (115, 7032), (116, 7035), (125, 7095), (128, 7104),

Gene: Rialto_9 Start: 6297, Stop: 6626, Start Num: 43

Candidate Starts for Rialto_9:

(Start: 43 @6297 has 221 MA's), (53, 6321), (62, 6360), (66, 6393), (72, 6405), (76, 6426), (78, 6432), (79, 6435), (84, 6453), (97, 6486), (105, 6504), (106, 6510), (108, 6522), (113, 6540), (115, 6549), (119, 6573), (121, 6600), (122, 6603), (128, 6621),

Gene: Rita_8 Start: 6447, Stop: 6779, Start Num: 43

Candidate Starts for Rita_8:

(Start: 43 @6447 has 221 MA's), (53, 6471), (58, 6489), (64, 6528), (68, 6549), (74, 6564), (78, 6582), (83, 6600), (92, 6624), (97, 6636), (99, 6642), (105, 6654), (106, 6660), (113, 6690), (119, 6723),

Gene: RitaG_8 Start: 6443, Stop: 6772, Start Num: 43

Candidate Starts for RitaG_8:

(5, 6173), (17, 6350), (Start: 43 @6443 has 221 MA's), (53, 6467), (62, 6506), (66, 6539), (72, 6551), (76, 6572), (78, 6578), (79, 6581), (84, 6599), (97, 6632), (105, 6650), (106, 6656), (108, 6668), (113, 6686), (115, 6695), (119, 6719), (121, 6746), (122, 6749), (128, 6767),

Gene: Rockne_8 Start: 6460, Stop: 6789, Start Num: 43

Candidate Starts for Rockne_8:

(5, 6190), (17, 6367), (Start: 43 @6460 has 221 MA's), (53, 6484), (62, 6523), (66, 6556), (72, 6568), (76, 6589), (78, 6595), (79, 6598), (84, 6616), (97, 6649), (105, 6667), (106, 6673), (108, 6685), (113, 6703), (115, 6712), (119, 6736), (121, 6763), (122, 6766), (128, 6784),

Gene: RockyHorror_9 Start: 6295, Stop: 6624, Start Num: 43

Candidate Starts for RockyHorror_9:

(Start: 43 @6295 has 221 MA's), (53, 6319), (62, 6358), (66, 6391), (72, 6403), (76, 6424), (78, 6430), (84, 6451), (92, 6472), (97, 6484), (105, 6502), (106, 6508), (108, 6520), (113, 6538), (115, 6547), (119, 6571), (121, 6598), (122, 6601), (128, 6619),

Gene: Royals2015_8 Start: 6446, Stop: 6778, Start Num: 43

Candidate Starts for Royals2015_8:

(Start: 43 @6446 has 221 MA's), (53, 6470), (58, 6488), (64, 6527), (68, 6548), (74, 6563), (78, 6581), (83, 6599), (92, 6623), (99, 6641), (105, 6653), (106, 6659), (113, 6689), (119, 6722),

Gene: Ruby_8 Start: 6449, Stop: 6778, Start Num: 43

Candidate Starts for Ruby_8:

(Start: 43 @6449 has 221 MA's), (53, 6473), (62, 6512), (66, 6545), (72, 6557), (76, 6578), (78, 6584), (79, 6587), (84, 6605), (97, 6638), (105, 6656), (106, 6662), (113, 6692), (115, 6701), (119, 6725), (121, 6752), (122, 6755), (128, 6773),

Gene: SG4_8 Start: 6446, Stop: 6778, Start Num: 43

Candidate Starts for SG4_8:

(Start: 43 @6446 has 221 MA's), (53, 6470), (58, 6488), (64, 6527), (68, 6548), (74, 6563), (78, 6581), (83, 6599), (92, 6623), (97, 6635), (99, 6641), (105, 6653), (106, 6659), (113, 6689), (119, 6722),

Gene: Saal_8 Start: 6432, Stop: 6761, Start Num: 43

Candidate Starts for Saal_8:

(5, 6162), (17, 6339), (Start: 43 @6432 has 221 MA's), (53, 6456), (62, 6495), (66, 6528), (72, 6540), (76, 6561), (78, 6567), (79, 6570), (84, 6588), (97, 6621), (105, 6639), (106, 6645), (108, 6657), (113, 6675), (115, 6684), (119, 6708), (121, 6735), (122, 6738), (128, 6756),

Gene: Sabbb_8 Start: 6447, Stop: 6776, Start Num: 43

Candidate Starts for Sabbb_8:

(Start: 43 @6447 has 221 MA's), (53, 6471), (62, 6510), (66, 6543), (76, 6576), (78, 6582), (79, 6585), (84, 6603), (97, 6636), (105, 6654), (106, 6660), (113, 6690), (115, 6699), (119, 6723), (121, 6750), (122, 6753), (128, 6771),

Gene: Sandalphon_8 Start: 6460, Stop: 6789, Start Num: 43

Candidate Starts for Sandalphon_8:

(5, 6190), (17, 6367), (Start: 43 @6460 has 221 MA's), (53, 6484), (62, 6523), (66, 6556), (72, 6568), (76, 6589), (78, 6595), (79, 6598), (84, 6616), (97, 6649), (105, 6667), (106, 6673), (108, 6685), (113, 6703), (115, 6712), (119, 6736), (121, 6763), (122, 6766), (128, 6784),

Gene: Sarma624_9 Start: 6295, Stop: 6624, Start Num: 43

Candidate Starts for Sarma624_9:

(Start: 43 @6295 has 221 MA's), (53, 6319), (66, 6391), (72, 6403), (76, 6424), (78, 6430), (79, 6433), (84, 6451), (97, 6484), (105, 6502), (106, 6508), (108, 6520), (113, 6538), (115, 6547), (119, 6571), (121, 6598), (122, 6601), (128, 6619),

Gene: Sassafras_8 Start: 6443, Stop: 6772, Start Num: 43

Candidate Starts for Sassafras_8:

(5, 6173), (17, 6350), (Start: 43 @6443 has 221 MA's), (53, 6467), (62, 6506), (66, 6539), (72, 6551), (76, 6572), (78, 6578), (79, 6581), (84, 6599), (97, 6632), (105, 6650), (106, 6656), (108, 6668), (113, 6686), (115, 6695), (119, 6719), (121, 6746), (122, 6749), (128, 6767),

Gene: SassyB_8 Start: 6446, Stop: 6778, Start Num: 43

Candidate Starts for SassyB_8:

(Start: 43 @6446 has 221 MA's), (53, 6470), (58, 6488), (64, 6527), (68, 6548), (74, 6563), (78, 6581), (83, 6599), (92, 6623), (99, 6641), (105, 6653), (106, 6659), (113, 6689), (119, 6722),

Gene: Scottish_8 Start: 6443, Stop: 6772, Start Num: 43

Candidate Starts for Scottish_8:

(5, 6173), (17, 6350), (Start: 43 @6443 has 221 MA's), (53, 6467), (62, 6506), (66, 6539), (72, 6551), (76, 6572), (78, 6578), (79, 6581), (84, 6599), (97, 6632), (105, 6650), (106, 6656), (108, 6668), (113, 6686), (115, 6695), (119, 6719), (121, 6746), (122, 6749), (128, 6767),

Gene: Seabastian_8 Start: 6442, Stop: 6771, Start Num: 43

Candidate Starts for Seabastian_8:

(5, 6172), (17, 6349), (Start: 43 @6442 has 221 MA's), (53, 6466), (62, 6505), (66, 6538), (72, 6550), (76, 6571), (78, 6577), (79, 6580), (84, 6598), (97, 6631), (105, 6649), (106, 6655), (113, 6685), (115, 6694), (119, 6718), (121, 6745), (122, 6748), (128, 6766),

Gene: Seagreen_9 Start: 6296, Stop: 6625, Start Num: 43

Candidate Starts for Seagreen_9:

(Start: 43 @6296 has 221 MA's), (53, 6320), (62, 6359), (66, 6392), (72, 6404), (76, 6425), (78, 6431), (79, 6434), (84, 6452), (92, 6473), (97, 6485), (105, 6503), (106, 6509), (113, 6539), (115, 6548), (119, 6572), (121, 6599), (122, 6602), (128, 6620),

Gene: Shauna1_8 Start: 6446, Stop: 6778, Start Num: 43

Candidate Starts for Shauna1_8:

(Start: 43 @6446 has 221 MA's), (53, 6470), (58, 6488), (64, 6527), (68, 6548), (78, 6581), (83, 6599), (92, 6623), (97, 6635), (99, 6641), (105, 6653), (106, 6659), (113, 6689), (118, 6707), (119, 6722),

Gene: SheckWes_9 Start: 6691, Stop: 7032, Start Num: 46

Candidate Starts for SheckWes_9:

(Start: 46 @6691 has 53 MA's), (58, 6727), (71, 6790), (87, 6850), (94, 6865), (109, 6913), (125, 7012),

Gene: ShiLan_8 Start: 6444, Stop: 6773, Start Num: 43

Candidate Starts for ShiLan_8:

(5, 6174), (17, 6351), (Start: 43 @6444 has 221 MA's), (53, 6468), (62, 6507), (66, 6540), (72, 6552), (76, 6573), (78, 6579), (79, 6582), (84, 6600), (97, 6633), (105, 6651), (106, 6657), (108, 6669), (113, 6687), (115, 6696), (119, 6720), (120, 6738), (121, 6747), (122, 6750), (128, 6768),

Gene: ShowerHandel_8 Start: 6445, Stop: 6774, Start Num: 43

Candidate Starts for ShowerHandel_8:

(5, 6175), (17, 6352), (Start: 43 @6445 has 221 MA's), (53, 6469), (62, 6508), (66, 6541), (72, 6553), (76, 6574), (78, 6580), (79, 6583), (84, 6601), (97, 6634), (105, 6652), (106, 6658), (108, 6670), (113, 6688), (115, 6697), (119, 6721), (120, 6739), (121, 6748), (122, 6751), (128, 6769),

Gene: ShroomBoi_8 Start: 6446, Stop: 6778, Start Num: 43

Candidate Starts for ShroomBoi_8:

(Start: 43 @6446 has 221 MA's), (53, 6470), (58, 6488), (64, 6527), (68, 6548), (74, 6563), (78, 6581), (83, 6599), (92, 6623), (99, 6641), (105, 6653), (106, 6659), (113, 6689), (119, 6722),

Gene: SiSi_8 Start: 6431, Stop: 6763, Start Num: 43

Candidate Starts for SiSi_8:

(Start: 43 @6431 has 221 MA's), (53, 6455), (58, 6473), (64, 6512), (68, 6533), (74, 6548), (78, 6566), (83, 6584), (92, 6608), (97, 6620), (99, 6626), (105, 6638), (106, 6644), (113, 6674), (119, 6707),

Gene: SimranZ1_9 Start: 6296, Stop: 6625, Start Num: 43

Candidate Starts for SimranZ1_9:

(Start: 43 @6296 has 221 MA's), (53, 6320), (62, 6359), (66, 6392), (72, 6404), (76, 6425), (78, 6431), (79, 6434), (84, 6452), (97, 6485), (105, 6503), (106, 6509), (108, 6521), (113, 6539), (115, 6548), (119, 6572), (121, 6599), (122, 6602), (128, 6620),

Gene: SketchMex_9 Start: 6907, Stop: 7248, Start Num: 46

Candidate Starts for SketchMex_9:

(Start: 46 @6907 has 53 MA's), (76, 7030), (117, 7171), (123, 7222), (125, 7228),

Gene: Sopespian_10 Start: 6923, Stop: 7264, Start Num: 46

Candidate Starts for Sopespian_10:

(Start: 46 @6923 has 53 MA's), (51, 6932), (63, 6992), (89, 7085), (117, 7187),

Gene: Soul22_10 Start: 6437, Stop: 6790, Start Num: 45

Candidate Starts for Soul22_10:

(30, 6386), (32, 6392), (Start: 45 @6437 has 37 MA's), (55, 6467), (64, 6518), (91, 6623), (97, 6641), (107, 6674), (123, 6764),

Gene: Sparkdehlily_8 Start: 6459, Stop: 6788, Start Num: 43

Candidate Starts for Sparkdehlily_8:

(5, 6189), (17, 6366), (Start: 43 @6459 has 221 MA's), (53, 6483), (62, 6522), (66, 6555), (72, 6567), (76, 6588), (78, 6594), (79, 6597), (84, 6615), (97, 6648), (105, 6666), (106, 6672), (108, 6684), (113, 6702), (115, 6711), (119, 6735), (121, 6762), (122, 6765), (128, 6783),

Gene: Spartacus_8 Start: 6434, Stop: 6766, Start Num: 43

Candidate Starts for Spartacus_8:

(Start: 43 @6434 has 221 MA's), (52, 6455), (53, 6458), (62, 6497), (68, 6536), (78, 6569), (79, 6572), (90, 6605), (92, 6611), (105, 6641), (106, 6647), (113, 6677), (119, 6710), (121, 6737), (125, 6749), (128, 6758),

Gene: Spartoi_8 Start: 6006, Stop: 6344, Start Num: 44

Candidate Starts for Spartoi_8:

(Start: 44 @6006 has 1 MA's), (49, 6015), (54, 6036), (73, 6117), (87, 6174),

Gene: Spikelee_9 Start: 6296, Stop: 6625, Start Num: 43

Candidate Starts for Spikelee_9:

(Start: 43 @6296 has 221 MA's), (53, 6320), (62, 6359), (66, 6392), (72, 6404), (76, 6425), (78, 6431), (79, 6434), (84, 6452), (97, 6485), (105, 6503), (106, 6509), (108, 6521), (113, 6539), (115, 6548), (119, 6572), (121, 6599), (122, 6602), (128, 6620),

Gene: Spooky_10 Start: 6478, Stop: 6825, Start Num: 41

Candidate Starts for Spooky_10:

(2, 6193), (7, 6265), (9, 6292), (15, 6367), (26, 6427), (34, 6445), (Start: 41 @6478 has 19 MA's), (56, 6517), (63, 6559), (73, 6592), (89, 6652), (91, 6655), (113, 6733), (120, 6784), (128, 6814),

Gene: Spoonbill_8 Start: 6445, Stop: 6774, Start Num: 43

Candidate Starts for Spoonbill_8:

(Start: 43 @6445 has 221 MA's), (53, 6469), (62, 6508), (66, 6541), (72, 6553), (76, 6574), (78, 6580), (79, 6583), (84, 6601), (97, 6634), (105, 6652), (106, 6658), (108, 6670), (113, 6688), (115, 6697), (119, 6721), (121, 6748), (122, 6751), (128, 6769),

Gene: Squiddly_11 Start: 7165, Stop: 7512, Start Num: 41

Candidate Starts for Squiddly_11:

(33, 7129), (Start: 41 @7165 has 19 MA's), (56, 7204), (63, 7246), (89, 7339), (91, 7342), (113, 7420), (120, 7471), (123, 7486), (128, 7501),

Gene: Squirty_9 Start: 6294, Stop: 6623, Start Num: 43

Candidate Starts for Squirty_9:

(Start: 43 @6294 has 221 MA's), (53, 6318), (62, 6357), (66, 6390), (72, 6402), (76, 6423), (78, 6429), (79, 6432), (84, 6450), (97, 6483), (105, 6501), (106, 6507), (108, 6519), (113, 6537), (115, 6546), (119, 6570), (121, 6597), (122, 6600), (128, 6618),

Gene: StAnnes_8 Start: 6446, Stop: 6778, Start Num: 43

Candidate Starts for StAnnes_8:

(Start: 43 @6446 has 221 MA's), (53, 6470), (58, 6488), (64, 6527), (68, 6548), (74, 6563), (78, 6581), (83, 6599), (92, 6623), (99, 6641), (105, 6653), (106, 6659), (113, 6689), (119, 6722),

Gene: Stap_9 Start: 6296, Stop: 6625, Start Num: 43

Candidate Starts for Stap_9:

(Start: 43 @6296 has 221 MA's), (53, 6320), (62, 6359), (66, 6392), (72, 6404), (76, 6425), (78, 6431), (79, 6434), (84, 6452), (92, 6473), (97, 6485), (105, 6503), (106, 6509), (113, 6539), (115, 6548), (119, 6572), (121, 6599), (122, 6602), (128, 6620),

Gene: Starcevich_9 Start: 6296, Stop: 6625, Start Num: 43

Candidate Starts for Starcevich_9:

(Start: 43 @6296 has 221 MA's), (53, 6320), (62, 6359), (66, 6392), (72, 6404), (76, 6425), (78, 6431), (79, 6434), (84, 6452), (97, 6485), (105, 6503), (106, 6509), (108, 6521), (113, 6539), (115, 6548), (119, 6572), (121, 6599), (122, 6602), (128, 6620),

Gene: SteamedHams_12 Start: 6942, Stop: 7283, Start Num: 46
Candidate Starts for SteamedHams_12:
(Start: 46 @6942 has 53 MA's), (91, 7107), (123, 7257), (125, 7263),

Gene: Strokeseat_8 Start: 6433, Stop: 6762, Start Num: 43
Candidate Starts for Strokeseat_8:
(5, 6163), (17, 6340), (Start: 43 @6433 has 221 MA's), (53, 6457), (62, 6496), (66, 6529), (72, 6541),
(76, 6562), (78, 6568), (79, 6571), (84, 6589), (97, 6622), (105, 6640), (106, 6646), (113, 6676), (115,
6685), (119, 6709), (121, 6736), (122, 6739), (128, 6757),

Gene: SummitAcademy_9 Start: 6769, Stop: 7110, Start Num: 46
Candidate Starts for SummitAcademy_9:
(Start: 46 @6769 has 53 MA's), (58, 6805), (87, 6928), (125, 7090),

Gene: SuperGrey_8 Start: 6446, Stop: 6778, Start Num: 43
Candidate Starts for SuperGrey_8:
(Start: 43 @6446 has 221 MA's), (53, 6470), (58, 6488), (64, 6527), (68, 6548), (74, 6563), (78, 6581),
(83, 6599), (92, 6623), (97, 6635), (99, 6641), (105, 6653), (106, 6659), (113, 6689), (119, 6722),

Gene: Survivors_12 Start: 7674, Stop: 8024, Start Num: 46
Candidate Starts for Survivors_12:
(27, 7614), (37, 7650), (Start: 46 @7674 has 53 MA's), (53, 7692), (60, 7716), (63, 7743), (89, 7839),
(95, 7854), (105, 7884), (114, 7938), (122, 7995),

Gene: SwagPiggett_8 Start: 6445, Stop: 6774, Start Num: 43
Candidate Starts for SwagPiggett_8:
(5, 6175), (17, 6352), (Start: 43 @6445 has 221 MA's), (53, 6469), (62, 6508), (66, 6541), (72, 6553),
(76, 6574), (78, 6580), (79, 6583), (84, 6601), (97, 6634), (105, 6652), (106, 6658), (108, 6670), (113,
6688), (115, 6697), (119, 6721), (120, 6739), (121, 6748), (122, 6751), (128, 6769),

Gene: SweatNTears_12 Start: 7427, Stop: 7768, Start Num: 46
Candidate Starts for SweatNTears_12:
(Start: 46 @7427 has 53 MA's), (76, 7550), (117, 7691), (123, 7742), (125, 7748),

Gene: TChen_9 Start: 6903, Stop: 7235, Start Num: 43
Candidate Starts for TChen_9:
(Start: 43 @6903 has 221 MA's), (53, 6927), (64, 6987), (68, 7008), (72, 7014), (88, 7074), (92, 7083),
(95, 7089), (98, 7095), (115, 7155), (116, 7158), (125, 7218), (128, 7227),

Gene: TDanisky_8 Start: 6459, Stop: 6788, Start Num: 43
Candidate Starts for TDanisky_8:
(5, 6189), (17, 6366), (Start: 43 @6459 has 221 MA's), (53, 6483), (62, 6522), (66, 6555), (72, 6567),
(76, 6588), (78, 6594), (79, 6597), (84, 6615), (97, 6648), (105, 6666), (106, 6672), (108, 6684), (113,
6702), (115, 6711), (119, 6735), (121, 6762), (122, 6765), (128, 6783),

Gene: TMaxx_11 Start: 7008, Stop: 7340, Start Num: 46
Candidate Starts for TMaxx_11:
(Start: 46 @7008 has 53 MA's), (112, 7248),

Gene: Taj_8 Start: 6446, Stop: 6778, Start Num: 43
Candidate Starts for Taj_8:
(Start: 43 @6446 has 221 MA's), (53, 6470), (58, 6488), (64, 6527), (68, 6548), (74, 6563), (78, 6581),
(83, 6599), (92, 6623), (97, 6635), (99, 6641), (105, 6653), (106, 6659), (113, 6689), (119, 6722),

Gene: ThetaBob_9 Start: 6783, Stop: 7115, Start Num: 43

Candidate Starts for ThetaBob_9:

(Start: 43 @6783 has 221 MA's), (53, 6807), (64, 6867), (68, 6888), (72, 6894), (88, 6954), (92, 6963), (95, 6969), (98, 6975), (115, 7035), (116, 7038), (125, 7098), (128, 7107),

Gene: Tolls_12 Start: 6945, Stop: 7286, Start Num: 46

Candidate Starts for Tolls_12:

(Start: 46 @6945 has 53 MA's), (91, 7110), (123, 7260), (125, 7266),

Gene: TootsiePop_9 Start: 6299, Stop: 6628, Start Num: 43

Candidate Starts for TootsiePop_9:

(Start: 43 @6299 has 221 MA's), (53, 6323), (62, 6362), (66, 6395), (72, 6407), (76, 6428), (78, 6434), (79, 6437), (84, 6455), (92, 6476), (97, 6488), (105, 6506), (106, 6512), (108, 6524), (113, 6542), (115, 6551), (119, 6575), (121, 6602), (122, 6605), (128, 6623),

Gene: Tootsieroll_9 Start: 6296, Stop: 6625, Start Num: 43

Candidate Starts for Tootsieroll_9:

(Start: 43 @6296 has 221 MA's), (53, 6320), (62, 6359), (66, 6392), (72, 6404), (76, 6425), (78, 6431), (79, 6434), (84, 6452), (92, 6473), (97, 6485), (105, 6503), (106, 6509), (108, 6521), (113, 6539), (115, 6548), (119, 6572), (121, 6599), (122, 6602), (128, 6620),

Gene: Toron_9 Start: 6903, Stop: 7235, Start Num: 43

Candidate Starts for Toron_9:

(Start: 43 @6903 has 221 MA's), (53, 6927), (64, 6987), (72, 7014), (88, 7074), (92, 7083), (95, 7089), (98, 7095), (115, 7155), (116, 7158), (125, 7218), (128, 7227),

Gene: Totinger_9 Start: 6297, Stop: 6626, Start Num: 43

Candidate Starts for Totinger_9:

(Start: 43 @6297 has 221 MA's), (53, 6321), (62, 6360), (66, 6393), (72, 6405), (76, 6426), (78, 6432), (79, 6435), (84, 6453), (97, 6486), (105, 6504), (106, 6510), (108, 6522), (113, 6540), (115, 6549), (119, 6573), (121, 6600), (122, 6603), (128, 6621),

Gene: Troje_10 Start: 6901, Stop: 7242, Start Num: 46

Candidate Starts for Troje_10:

(Start: 46 @6901 has 53 MA's), (76, 7024), (117, 7165), (123, 7216), (125, 7222),

Gene: Tweety_8 Start: 6446, Stop: 6778, Start Num: 43

Candidate Starts for Tweety_8:

(Start: 43 @6446 has 221 MA's), (53, 6470), (58, 6488), (64, 6527), (68, 6548), (74, 6563), (78, 6581), (83, 6599), (92, 6623), (99, 6641), (105, 6653), (106, 6659), (113, 6689), (119, 6722),

Gene: Typhonomachy_11 Start: 6923, Stop: 7264, Start Num: 46

Candidate Starts for Typhonomachy_11:

(18, 6824), (19, 6827), (20, 6833), (Start: 46 @6923 has 53 MA's), (51, 6932), (63, 6992), (89, 7085), (117, 7187),

Gene: UncleRicky_9 Start: 6296, Stop: 6625, Start Num: 43

Candidate Starts for UncleRicky_9:

(Start: 43 @6296 has 221 MA's), (53, 6320), (62, 6359), (66, 6392), (72, 6404), (76, 6425), (78, 6431), (79, 6434), (84, 6452), (97, 6485), (105, 6503), (106, 6509), (113, 6539), (115, 6548), (119, 6572), (121, 6599), (122, 6602), (128, 6620),

Gene: VRedHorse_8 Start: 6445, Stop: 6774, Start Num: 43

Candidate Starts for VRedHorse_8:

(5, 6175), (17, 6352), (Start: 43 @6445 has 221 MA's), (53, 6469), (62, 6508), (66, 6541), (76, 6574), (78, 6580), (79, 6583), (84, 6601), (97, 6634), (105, 6652), (106, 6658), (108, 6670), (113, 6688), (115, 6697), (119, 6721), (121, 6748), (122, 6751), (128, 6769),

Gene: Velveteen_9 Start: 6295, Stop: 6624, Start Num: 43

Candidate Starts for Velveteen_9:

(Start: 43 @6295 has 221 MA's), (53, 6319), (66, 6391), (72, 6403), (76, 6424), (78, 6430), (79, 6433), (84, 6451), (97, 6484), (105, 6502), (106, 6508), (108, 6520), (113, 6538), (115, 6547), (119, 6571), (121, 6598), (122, 6601), (128, 6619),

Gene: Veteran_8 Start: 6460, Stop: 6789, Start Num: 43

Candidate Starts for Veteran_8:

(5, 6190), (17, 6367), (Start: 43 @6460 has 221 MA's), (53, 6484), (62, 6523), (66, 6556), (72, 6568), (76, 6589), (78, 6595), (79, 6598), (84, 6616), (92, 6637), (97, 6649), (105, 6667), (106, 6673), (113, 6703), (115, 6712), (119, 6736), (121, 6763), (122, 6766), (128, 6784),

Gene: Vine_11 Start: 7698, Stop: 8039, Start Num: 46

Candidate Starts for Vine_11:

(Start: 46 @7698 has 53 MA's), (58, 7734), (87, 7857), (94, 7872), (125, 8019),

Gene: Wachhund_8 Start: 6436, Stop: 6765, Start Num: 43

Candidate Starts for Wachhund_8:

(Start: 43 @6436 has 221 MA's), (53, 6460), (62, 6499), (66, 6532), (72, 6544), (76, 6565), (78, 6571), (79, 6574), (84, 6592), (97, 6625), (105, 6643), (106, 6649), (108, 6661), (113, 6679), (115, 6688), (119, 6712), (121, 6739), (122, 6742), (128, 6760),

Gene: Wee_8 Start: 6446, Stop: 6778, Start Num: 43

Candidate Starts for Wee_8:

(Start: 43 @6446 has 221 MA's), (53, 6470), (58, 6488), (64, 6527), (68, 6548), (74, 6563), (78, 6581), (83, 6599), (92, 6623), (97, 6635), (99, 6641), (105, 6653), (106, 6659), (113, 6689), (119, 6722),

Gene: Whatsapiecost_8 Start: 6446, Stop: 6778, Start Num: 43

Candidate Starts for Whatsapiecost_8:

(Start: 43 @6446 has 221 MA's), (53, 6470), (58, 6488), (64, 6527), (68, 6548), (74, 6563), (78, 6581), (83, 6599), (92, 6623), (99, 6641), (105, 6653), (106, 6659), (113, 6689), (119, 6722),

Gene: Whitney_10 Start: 6480, Stop: 6827, Start Num: 41

Candidate Starts for Whitney_10:

(33, 6444), (Start: 41 @6480 has 19 MA's), (56, 6519), (63, 6561), (82, 6633), (89, 6654), (91, 6657), (104, 6690), (113, 6735), (120, 6786), (123, 6801), (128, 6816),

Gene: Whouxphf_8 Start: 6435, Stop: 6764, Start Num: 43

Candidate Starts for Whouxphf_8:

(Start: 43 @6435 has 221 MA's), (53, 6459), (62, 6498), (66, 6531), (72, 6543), (76, 6564), (78, 6570), (79, 6573), (84, 6591), (97, 6624), (105, 6642), (106, 6648), (113, 6678), (115, 6687), (119, 6711), (121, 6738), (122, 6741), (128, 6759),

Gene: WillSterrel_8 Start: 6434, Stop: 6766, Start Num: 43

Candidate Starts for WillSterrel_8:

(Start: 43 @6434 has 221 MA's), (52, 6455), (53, 6458), (62, 6497), (68, 6536), (78, 6569), (79, 6572), (90, 6605), (92, 6611), (105, 6641), (106, 6647), (113, 6677), (119, 6710), (121, 6737), (125, 6749),

(128, 6758),

Gene: Wrigley_10 Start: 7328, Stop: 7675, Start Num: 45

Candidate Starts for Wrigley_10:

(23, 7250), (Start: 45 @7328 has 37 MA's), (73, 7436), (112, 7583), (125, 7655),

Gene: XFactor_8 Start: 6446, Stop: 6778, Start Num: 43

Candidate Starts for XFactor_8:

(Start: 43 @6446 has 221 MA's), (53, 6470), (58, 6488), (64, 6527), (68, 6548), (74, 6563), (78, 6581), (83, 6599), (92, 6623), (99, 6641), (105, 6653), (106, 6659), (113, 6689), (119, 6722),

Gene: Yakult_11 Start: 6834, Stop: 7175, Start Num: 46

Candidate Starts for Yakult_11:

(20, 6744), (21, 6747), (23, 6753), (Start: 46 @6834 has 53 MA's), (59, 6876), (63, 6906), (71, 6936), (108, 7056), (109, 7059), (125, 7155),

Gene: Yarn_9 Start: 6935, Stop: 7276, Start Num: 46

Candidate Starts for Yarn_9:

(Start: 46 @6935 has 53 MA's), (91, 7100), (123, 7250), (125, 7256),

Gene: Yorick_8 Start: 6443, Stop: 6772, Start Num: 43

Candidate Starts for Yorick_8:

(5, 6173), (17, 6350), (Start: 43 @6443 has 221 MA's), (53, 6467), (62, 6506), (66, 6539), (72, 6551), (76, 6572), (78, 6578), (79, 6581), (84, 6599), (92, 6620), (97, 6632), (105, 6650), (106, 6656), (108, 6668), (113, 6686), (115, 6695), (119, 6719), (120, 6737), (121, 6746), (122, 6749), (128, 6767),

Gene: Yoshi_10 Start: 6437, Stop: 6790, Start Num: 45

Candidate Starts for Yoshi_10:

(30, 6386), (32, 6392), (Start: 45 @6437 has 37 MA's), (55, 6467), (64, 6518), (91, 6623), (97, 6641), (107, 6674), (123, 6764),

Gene: Yummy_11 Start: 6805, Stop: 7146, Start Num: 46

Candidate Starts for Yummy_11:

(Start: 46 @6805 has 53 MA's), (76, 6928), (117, 7069), (123, 7120), (125, 7126),

Gene: Zapner_11 Start: 6962, Stop: 7315, Start Num: 45

Candidate Starts for Zapner_11:

(30, 6911), (32, 6917), (Start: 45 @6962 has 37 MA's), (55, 6992), (64, 7043), (91, 7148), (97, 7166), (107, 7199), (123, 7289),

Gene: Zareef_14 Start: 7797, Stop: 8171, Start Num: 37

Candidate Starts for Zareef_14:

(27, 7761), (37, 7797), (Start: 46 @7821 has 53 MA's), (53, 7839), (60, 7863), (63, 7890), (89, 7986), (95, 8001), (105, 8031), (114, 8085), (122, 8142),

Gene: Zerg_8 Start: 6444, Stop: 6773, Start Num: 43

Candidate Starts for Zerg_8:

(5, 6174), (17, 6351), (Start: 43 @6444 has 221 MA's), (53, 6468), (62, 6507), (66, 6540), (76, 6573), (78, 6579), (79, 6582), (84, 6600), (97, 6633), (105, 6651), (106, 6657), (108, 6669), (113, 6687), (115, 6696), (119, 6720), (121, 6747), (122, 6750), (128, 6768),

Gene: Zizzle_8 Start: 6447, Stop: 6776, Start Num: 43

Candidate Starts for Zizzle_8:

(5, 6177), (17, 6354), (Start: 43 @6447 has 221 MA's), (53, 6471), (62, 6510), (66, 6543), (72, 6555), (76, 6576), (78, 6582), (79, 6585), (84, 6603), (97, 6636), (105, 6654), (106, 6660), (108, 6672), (113, 6690), (115, 6699), (119, 6723), (120, 6741), (121, 6750), (122, 6753), (128, 6771),