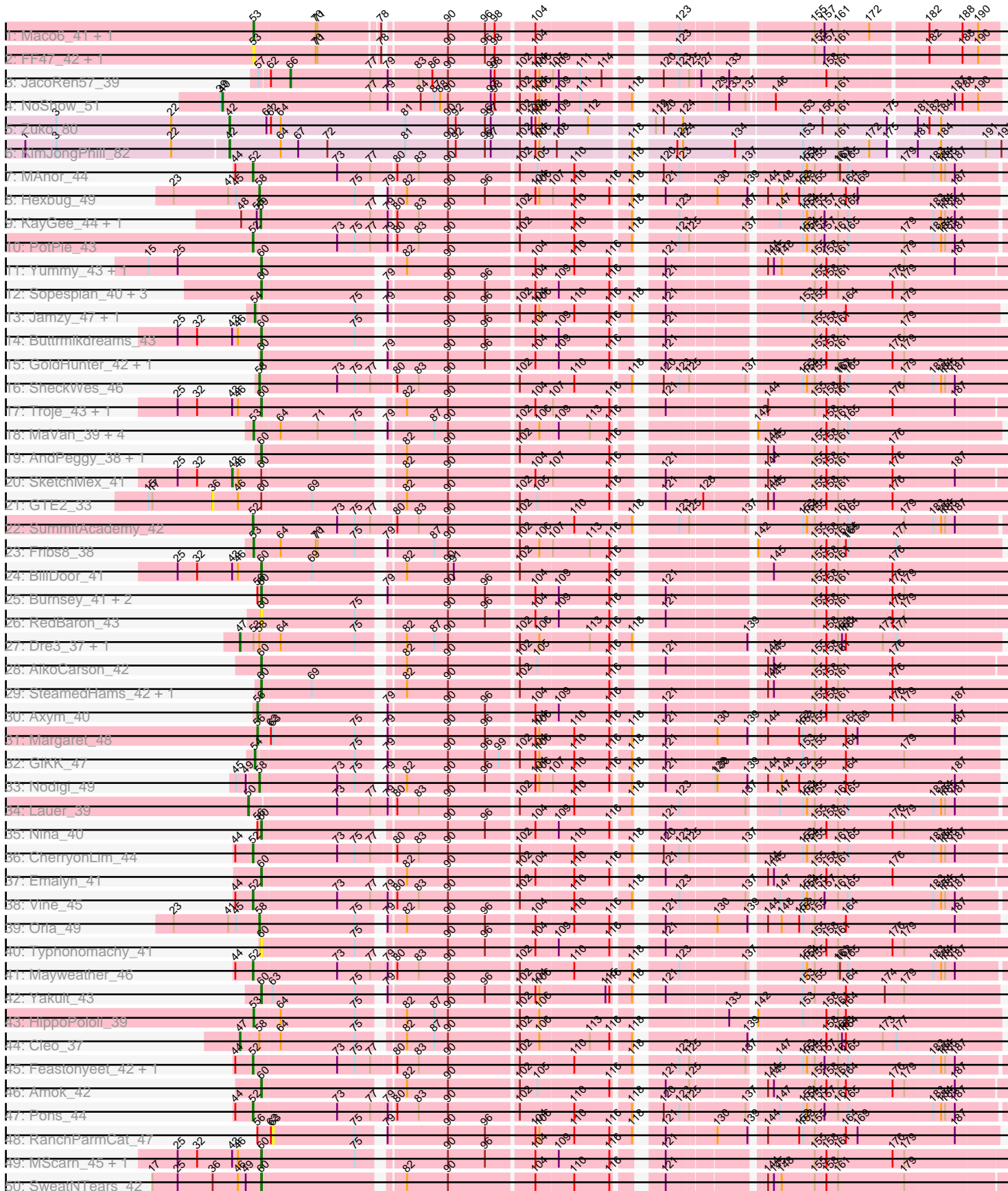
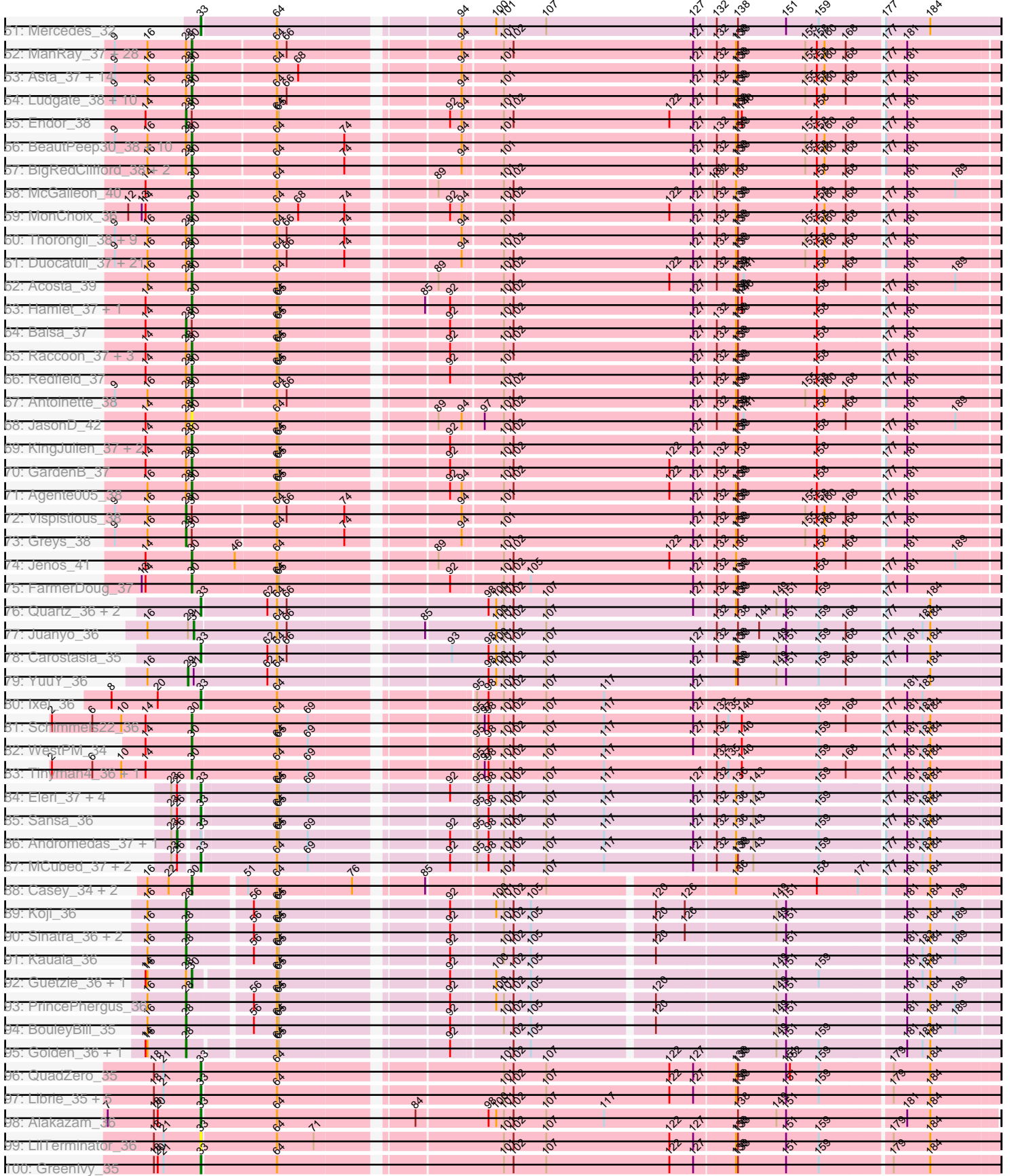


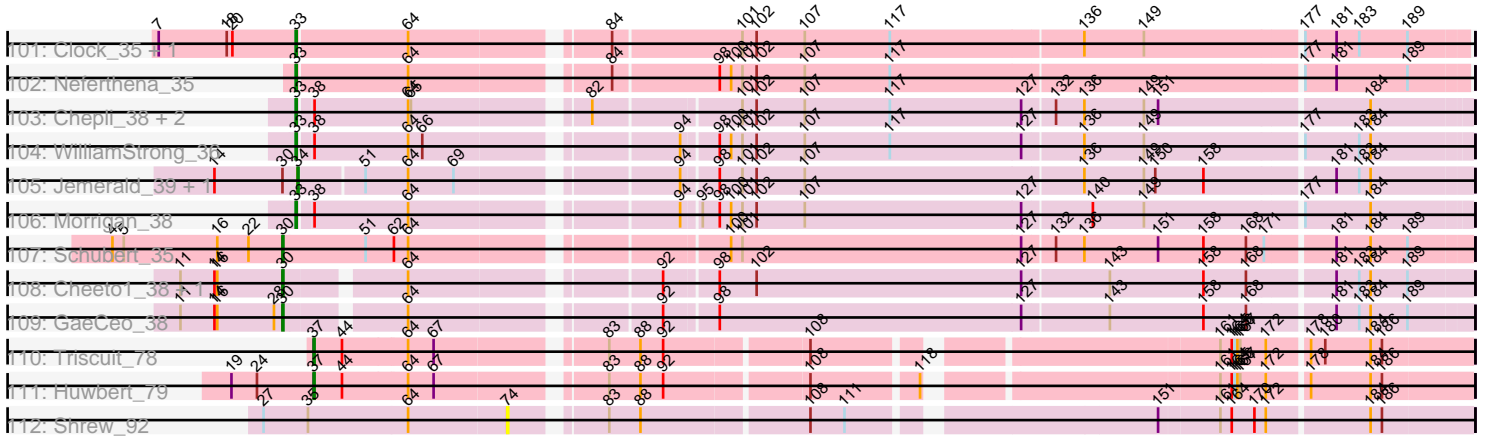
Pham 192206



Pham 192206



Pham 192206



Note: Tracks are now grouped by subcluster and scaled. Switching in subcluster is indicated by changes in track color. Track scale is now set by default to display the region 30 bp upstream of start 1 to 30 bp downstream of the last possible start. If this default region is judged to be packed too tightly with annotated starts, the track will be further scaled to only show that region of the ORF with annotated starts. This action will be indicated by adding "Zoomed" to the title. For starts, yellow indicates the location of called starts comprised solely of Glimmer/GeneMark auto-annotations, green indicates the location of called starts with at least 1 manual gene annotation.

Pham 192206 Report

This analysis was run 11/02/24 on database version 579.

Pham number 192206 has 259 members, 20 are drafts.

Phages represented in each track:

- Track 1 : Maco6_41, Muddy_43
- Track 2 : FF47_42, 8UZL_43
- Track 3 : JacoRen57_39
- Track 4 : NoShow_51
- Track 5 : Zuko_80
- Track 6 : KimJongPhill_82
- Track 7 : MAnor_44
- Track 8 : Hexbug_49
- Track 9 : KayGee_44, Elinal_46
- Track 10 : PotPie_43
- Track 11 : Yummy_43, Horseradish_43
- Track 12 : Sopespian_40, MunkgeeRoachy_39, Elliott_41, PsychoKiller_40
- Track 13 : Jamzy_47, Button_45
- Track 14 : Buttrmilkdreams_43
- Track 15 : GoldHunter_42, Quasar_41
- Track 16 : SheckWes_46
- Track 17 : Troje_43, Biskit_43
- Track 18 : MaVan_39, Azira_39, Zareef_41, Nibbles_38, Survivors_39
- Track 19 : AndPeggy_38, Yarn_38
- Track 20 : SketchMex_41
- Track 21 : GTE2_33
- Track 22 : SummitAcademy_42
- Track 23 : Fribs8_38
- Track 24 : BillDoor_41
- Track 25 : Burnsey_41, Agatha_41, Cozz_39
- Track 26 : RedBaron_43
- Track 27 : Dre3_37, Gibbous_37
- Track 28 : AikoCarson_42
- Track 29 : SteamedHams_42, Tolls_42
- Track 30 : Axym_40
- Track 31 : Margaret_48
- Track 32 : GiKK_47
- Track 33 : Nodigi_49
- Track 34 : Lauer_39
- Track 35 : Nina_40
- Track 36 : CherryonLim_44
- Track 37 : Emalyn_41

- Track 38 : Vine_45
- Track 39 : Orla_49
- Track 40 : Typhonomachy_41
- Track 41 : Mayweather_46
- Track 42 : Yakult_43
- Track 43 : HippoPololi_39
- Track 44 : Cleo_37
- Track 45 : Feastonyeet_42, BigChungus_42
- Track 46 : Amok_42
- Track 47 : Pons_44
- Track 48 : RanchParmCat_47
- Track 49 : MScarn_45, Carsonalex_44
- Track 50 : SweatNTears_42
- Track 51 : Mercedes_32
- Track 52 : ManRay_37, Christoph_37, Martin_39, Espinosa_37, MillyPhilly_38, Kurt1_38, Bandik_38, Robinson_38, TinSulphur_38, Dothraki_38, Janus167_37, MaeLinda_38, Superfresh_38, Aubergine_37, Byron23_38, Pherferi_38, Rappheph_38, Stanktossa_38, Inventa_38, Tenda_37, Phiderman_38, AlexAdler_38, Dave_38, Peep_38, TatarkaPM_38, PhredFlintston_38, Oats_37, NickSell_38, Renzie_38
- Track 53 : Asta_37, Etta_37, Raptor_38, Erla_37, Chamuel_37, TeddyBear_37, Nagem_38, Calix_37, Gershwin_37, Pocket_37, Gelo_37, SJay_38, Klimt_37, SonOfLevi_37, Baines_37
- Track 54 : Ludgate_38, Nattles_37, Phriends_38, SoilGremlin_38, Shee_38, Delphidian_38, Garey24_37, OldNelly_38, Sedgewig_37, Bonino_37, Kale_37
- Track 55 : Endor_38
- Track 56 : BeautPeep30_38, BonesMcCoy_38, Gargoyle_38, Velene_38, Convict_38, Den3_38, Knox_38, Phireproof_38, Oxtober96_38, Lovelyunicorn_38, Thompsone_38
- Track 57 : BigRedClifford_38, Blage_38, Teagan_38
- Track 58 : McGalleon_40
- Track 59 : MonChoix_36
- Track 60 : Thorongil_38, Alyxandracam_38, AxiPup_38, ParleG_38, ShaiHulud_38, MrWorldwide_38, PuppyEggo_38, WildNOut_38, Riyhil_38, Strathdee_38
- Track 61 : Duocatuli_37, Benjalaren_38, StirfryIV_37, HankSprout_38, Ilzat_37, AranulaLuti_37, Jerbirus_38, Clancy_37, JeriBeth_38, Rog141_37, HanSolo_37, Gubbabump_37, Winzigespinne_37, JasperRussell_37, HungryHenry_37, Chako_37, loannes_38, StingRay_37, Zada_38, Papafritta_37, KannH_37, Figueroism_38
- Track 62 : Acosta_39
- Track 63 : Hamlet_37, Leafus_37
- Track 64 : Balsa_37
- Track 65 : Raccoon_37, BeeBee8_38, Schnapsidee_37, Peppino_37
- Track 66 : Redfield_37
- Track 67 : Antoinette_38
- Track 68 : JasonD_42
- Track 69 : KingJulien_37, Etna_37, Stormbreaker8_37
- Track 70 : GardenB_37
- Track 71 : Agente005_38
- Track 72 : Vispistious_38
- Track 73 : Greys_38
- Track 74 : Jenos_41
- Track 75 : FarmerDoug_37
- Track 76 : Quartz_36, Mandalorian_35, Nucci_35

- Track 77 : Juanyo_36
- Track 78 : Carostasia_35
- Track 79 : YuuY_36
- Track 80 : Ixel_36
- Track 81 : Schimmels22_36
- Track 82 : WestPM_34
- Track 83 : Tinyman4_36, HerculesXL_36
- Track 84 : Eleri_37, ColaCorta_37, ChikPic_37, Shamu_37, Saratos_37
- Track 85 : Sansa_36
- Track 86 : Andromedas_37, Glamour_36
- Track 87 : MCubed_37, Finny_37, Zenitsu_37
- Track 88 : Casey_34, Pajaza_34, Pikmin_34
- Track 89 : Koji_36
- Track 90 : Sinatra_36, Bustleton_36, Pherbot_36
- Track 91 : Kauala_36
- Track 92 : Guetzie_36, SirVictor_36
- Track 93 : PrincePhergus_36
- Track 94 : BouleyBill_35
- Track 95 : Golden_36, Lucky3_36
- Track 96 : QuadZero_35
- Track 97 : Librie_35, Zepp_36, Zayuliv_35, CaptainRex_35, Fulton_35, Hasitha_35
- Track 98 : Alakazam_36
- Track 99 : LilTerminator_36
- Track 100 : Greenlvy_35
- Track 101 : Clock_35, Nebulous_35
- Track 102 : Neferthena_35
- Track 103 : Chepli_38, KatChan_38, Luna18_38
- Track 104 : WilliamStrong_36
- Track 105 : Jemerald_39, Juicer_39
- Track 106 : Morrigan_38
- Track 107 : Schubert_35
- Track 108 : Cheeto1_38, ChickenKing_37
- Track 109 : GaeCeo_38
- Track 110 : Triscuit_78
- Track 111 : Huwbert_79
- Track 112 : Shrew_92

Summary of Final Annotations (See graph section above for start numbers):

The start number called the most often in the published annotations is 30, it was called in 127 of the 239 non-draft genes in the pham.

Genes that call this "Most Annotated" start:

- Acosta_39, Agente005_38, AlexAdler_38, Alyxandracam_38, Antoinette_38, AranulaLuti_37, Asta_37, Aubergine_37, AxiPup_38, Baines_37, Bandik_38, BeautPeep30_38, BeeBee8_38, Benjalauren_38, BigRedClifford_38, Blage_38, BonesMcCoy_38, Bonino_37, Byron23_38, Calix_37, Casey_34, Chako_37, Chamuel_37, Cheeto1_38, ChickenKing_37, Christoph_37, Clancy_37, Convict_38, Dave_38, Delphidian_38, Den3_38, Dothraki_38, Duocatuli_37, Erla_37, Espinosa_37, Etna_37, Etta_37, FarmerDoug_37, Figueroism_38, GaeCeo_38,

GardenB_37, Garey24_37, Gargoyle_38, Gelo_37, Gershwin_37, Gubbabump_37, Guetzie_36, Hamlet_37, HanSolo_37, HankSprout_38, HerculesXL_36, HungryHenry_37, Ilzat_37, Inventa_38, Ioannes_38, Janus167_37, JasonD_42, JasperRussell_37, Jenos_41, Jerbirus_38, JeriBeth_38, Kale_37, KannH_37, KingJulien_37, Klimt_37, Knox_38, Kurt1_38, Leafus_37, Lovelyunicorn_38, Ludgate_38, MaeLinda_38, ManRay_37, Martin_39, McGalleon_40, MillyPhilly_38, MonChoix_36, MrWorldwide_38, Nagem_38, Nattles_37, NickSell_38, Oats_37, OldNelly_38, Oxtober96_38, Pajaza_34, Papafritta_37, ParleG_38, Peep_38, Peppino_37, Pherferi_38, Phiderman_38, Phireproof_38, PhredFlintston_38, Phriends_38, Pikmin_34, Pocket_37, PuppyEggo_38, Raccoon_37, Rapheph_38, Raptor_38, Redfield_37, Renzie_38, Riyhil_38, Robinson_38, Rog141_37, SJay_38, Schimmels22_36, Schnapsidee_37, Schubert_35, Sedgewig_37, ShaiHulud_38, Shee_38, SirVictor_36, SoilGremlin_38, SonOfLevi_37, Stanktossa_38, StingRay_37, StirfryIV_37, Stormbreaker8_37, Strathdee_38, Superfresh_38, TatarkaPM_38, Teagan_38, TeddyBear_37, Tenda_37, Thompsone_38, Thorongil_38, TinSulphur_38, Tinyman4_36, Velene_38, WestPM_34, WildNOut_38, Winzigespinne_37, Zada_38,

Genes that have the "Most Annotated" start but do not call it:

- Balsa_37, Endor_38, Greys_38, Jemerald_39, Juicer_39, Vispistious_38,

Genes that do not have the "Most Annotated" start:

- 8UZL_43, Agatha_41, AikoCarson_42, Alakazam_36, Amok_42, AndPeggy_38, Andromedas_37, Axym_40, Azira_39, BigChungus_42, BillDoor_41, Biskit_43, BouleyBill_35, Burnsey_41, Bustleton_36, Button_45, Buttrmlkdreams_43, CaptainRex_35, Carostasia_35, Carsonalex_44, Chepli_38, CherryonLim_44, ChikPic_37, Cleo_37, Clock_35, ColaCorta_37, Cozz_39, Dre3_37, Eleri_37, Elinal_46, Elliott_41, Emalyn_41, FF47_42, Feastonyeet_42, Finny_37, Fribs8_38, Fulton_35, GTE2_33, GiKK_47, Gibbous_37, Glamour_36, GoldHunter_42, Golden_36, Greenlvy_35, Hasitha_35, Hexbug_49, HippoPololi_39, Horseradish_43, Huwbert_79, Ixel_36, JacoRen57_39, Jamzy_47, Juanyo_36, KatChan_38, Kauala_36, KayGee_44, KimJongPhill_82, Koji_36, Lauer_39, Librie_35, LilTerminator_36, Lucky3_36, Luna18_38, MAnor_44, MCubed_37, MScarn_45, MaVan_39, Maco6_41, Mandalorian_35, Margaret_48, Mayweather_46, Mercedes_32, Morrigan_38, Muddy_43, MunkgeeRoachy_39, Nebulous_35, Neferthena_35, Nibbles_38, Nina_40, NoShow_51, Nodigi_49, Nucci_35, Orla_49, Pherbot_36, Pons_44, PotPie_43, PrincePhergus_36, PsychoKiller_40, QuadZero_35, Quartz_36, Quasar_41, RanchParmCat_47, RedBaron_43, Sansa_36, Saratos_37, Shamu_37, SheckWes_46, Shrew_92, Sinatra_36, SketchMex_41, Sopespian_40, SteamedHams_42, SummitAcademy_42, Survivors_39, SweatNTears_42, Tolls_42, Triscuit_78, Troje_43, Typhonmarchy_41, Vine_45, WilliamStrong_36, Yakult_43, Yarn_38, Yummy_43, YuuY_36, Zareef_41, Zayuliv_35, Zenitsu_37, Zepp_36, Zuko_80,

Summary by start number:

Start 26:

- Found in 11 of 259 (4.2%) of genes in pham
- Manual Annotations of this start: 2 of 239
- Called 18.2% of time when present
- Phage (with cluster) where this start called: Andromedas_37 (EA2), Glamour_36 (EA2),

Start 28:

- Found in 130 of 259 (50.2%) of genes in pham
- Manual Annotations of this start: 13 of 239
- Called 10.0% of time when present
- Phage (with cluster) where this start called: Balsa_37 (EA1), BouleyBill_35 (EA4), Bustleton_36 (EA4), Endor_38 (EA1), Golden_36 (EA4), Greys_38 (EA1), Kauala_36 (EA4), Koji_36 (EA4), Lucky3_36 (EA4), Pherbot_36 (EA4), PrincePhergus_36 (EA4), Sinatra_36 (EA4), Vispistious_38 (EA1),

Start 29:

- Found in 2 of 259 (0.8%) of genes in pham
- Manual Annotations of this start: 1 of 239
- Called 50.0% of time when present
- Phage (with cluster) where this start called: YuuY_36 (EA10),

Start 30:

- Found in 139 of 259 (53.7%) of genes in pham
- Manual Annotations of this start: 127 of 239
- Called 95.7% of time when present
- Phage (with cluster) where this start called: Acosta_39 (EA1), Agente005_38 (EA1), AlexAdler_38 (EA1), Alyxandracam_38 (EA1), Antoinette_38 (EA1), AranulaLuti_37 (EA1), Asta_37 (EA1), Aubergine_37 (EA1), AxiPup_38 (EA1), Baines_37 (EA1), Bandik_38 (EA1), BeautPeep30_38 (EA1), BeeBee8_38 (EA1), Benjalauren_38 (EA1), BigRedClifford_38 (EA1), Blage_38 (EA1), BonesMcCoy_38 (EA1), Bonino_37 (EA1), Byron23_38 (EA1), Calix_37 (EA1), Casey_34 (EA3), Chako_37 (EA1), Chamuel_37 (EA1), Cheeto1_38 (EA9), ChickenKing_37 (EA9), Christoph_37 (EA1), Clancy_37 (EA1), Convict_38 (EA1), Dave_38 (EA1), Delphidian_38 (EA1), Den3_38 (EA1), Dothraki_38 (EA1), Duocatuli_37 (EA1), Erla_37 (EA1), Espinosa_37 (EA1), Etna_37 (EA1), Etta_37 (EA1), FarmerDoug_37 (EA1), Figueroism_38 (EA1), GaeCeo_38 (EA9), GardenB_37 (EA1), Garey24_37 (EA1), Gargoyle_38 (EA1), Gelo_37 (EA1), Gershwin_37 (EA1), Gubbabump_37 (EA1), Guetzie_36 (EA4), Hamlet_37 (EA1), HanSolo_37 (EA1), HankSprout_38 (EA1), HerculesXL_36 (EA11), HungryHenry_37 (EA1), Ilzat_37 (EA1), Inventa_38 (EA1), Ioannes_38 (EA1), Janus167_37 (EA1), JasonD_42 (EA1), JasperRussell_37 (EA1), Jenos_41 (EA1), Jerbirus_38 (EA1), JeriBeth_38 (EA1), Kale_37 (EA1), KannH_37 (EA1), KingJulien_37 (EA1), Klimt_37 (EA1), Knox_38 (EA1), Kurt1_38 (EA1), Leafus_37 (EA1), Lovelyunicorn_38 (EA1), Ludgate_38 (EA1), MaeLinda_38 (EA1), ManRay_37 (EA1), Martin_39 (EA1), McGalleon_40 (EA1), MillyPhilly_38 (EA1), MonChoix_36 (EA1), MrWorldwide_38 (EA1), Nagem_38 (EA1), Nattles_37 (EA1), NickSell_38 (EA1), Oats_37 (EA1), OldNelly_38 (EA1), Oxtober96_38 (EA1), Pajaza_34 (EA3), Papafritta_37 (EA1), ParleG_38 (EA1), Peep_38 (EA1), Peppino_37 (EA1), Pherferi_38 (EA1), Phiderman_38 (EA1), Phireproof_38 (EA1), PhredFlintston_38 (EA1), Phriends_38 (EA1), Pikmin_34 (EA3), Pocket_37 (EA1), PuppyEggo_38 (EA1), Raccoon_37 (EA1), Rapheph_38 (EA1), Raptor_38 (EA1), Redfield_37 (EA1), Renzie_38 (EA1), Riyhil_38 (EA1), Robinson_38 (EA1), Rog141_37 (EA1), SJay_38 (EA1), Schimmels22_36 (EA11), Schnapsidee_37 (EA1), Schubert_35 (EA8), Sedgewig_37 (EA1), ShaiHulud_38 (EA1), Shee_38 (EA1), SirVictor_36 (EA4), SoilGremlin_38 (EA1), SonOfLevi_37 (EA1), Stanktossa_38 (EA1), StingRay_37 (EA1), StirfryIV_37 (EA1), Stormbreaker8_37 (EA1), Strathdee_38 (EA1), Superfresh_38 (EA1), TatarkaPM_38 (EA1), Teagan_38 (EA1), TeddyBear_37 (EA1), Tenda_37 (EA1), Thompsone_38 (EA1), Thorongil_38 (EA1), TinSulphur_38 (EA1), Tinyman4_36 (EA11), Velene_38 (EA1), WestPM_34 (EA11), WildNOut_38 (EA1), Winzigespinne_37 (EA1), Zada_38 (EA1),

Start 31:

- Found in 2 of 259 (0.8%) of genes in pham
- Manual Annotations of this start: 1 of 239
- Called 50.0% of time when present
- Phage (with cluster) where this start called: Juanyo_36 (EA10),

Start 33:

- Found in 35 of 259 (13.5%) of genes in pham
- Manual Annotations of this start: 32 of 239
- Called 94.3% of time when present
- Phage (with cluster) where this start called: Alakazam_36 (EA5), CaptainRex_35 (EA5), Carostasia_35 (EA10), Chepli_38 (EA6), ChikPic_37 (EA2), Clock_35 (EA5), ColaCorta_37 (EA2), Eleri_37 (EA2), Finny_37 (EA2), Fulton_35 (EA5), Greenlvy_35 (EA5), Hasitha_35 (EA5), Ixel_36 (EA11), KatChan_38 (EA6), Librie_35 (EA5), LilTerminator_36 (EA5), Luna18_38 (EA6), MCubed_37 (EA2), Mandalorian_35 (EA10), Mercedes_32 (EA), Morrigan_38 (EA6), Nebulous_35 (EA5), Neferthena_35 (EA5), Nucci_35 (EA10), QuadZero_35 (EA5), Quartz_36 (EA10), Sansa_36 (EA2), Saratos_37 (EA2), Shamu_37 (EA2), WilliamStrong_36 (EA6), Zayuliv_35 (EA5), Zenitsu_37 (EA2), Zepp_36 (EA5),

Start 34:

- Found in 2 of 259 (0.8%) of genes in pham
- Manual Annotations of this start: 2 of 239
- Called 100.0% of time when present
- Phage (with cluster) where this start called: Jemerald_39 (EA6), Juicer_39 (EA6),

Start 36:

- Found in 2 of 259 (0.8%) of genes in pham
- No Manual Annotations of this start.
- Called 50.0% of time when present
- Phage (with cluster) where this start called: GTE2_33 (CT),

Start 37:

- Found in 2 of 259 (0.8%) of genes in pham
- Manual Annotations of this start: 2 of 239
- Called 100.0% of time when present
- Phage (with cluster) where this start called: Huwbert_79 (GG), Triscuit_78 (GG),

Start 40:

- Found in 1 of 259 (0.4%) of genes in pham
- Manual Annotations of this start: 1 of 239
- Called 100.0% of time when present
- Phage (with cluster) where this start called: NoShow_51 (AB),

Start 42:

- Found in 2 of 259 (0.8%) of genes in pham
- Manual Annotations of this start: 2 of 239
- Called 100.0% of time when present
- Phage (with cluster) where this start called: KimJongPhill_82 (BR), Zuko_80 (BR),

Start 43:

- Found in 7 of 259 (2.7%) of genes in pham

- Manual Annotations of this start: 1 of 239
- Called 14.3% of time when present
- Phage (with cluster) where this start called: SketchMex_41 (CT),

Start 47:

- Found in 3 of 259 (1.2%) of genes in pham
- Manual Annotations of this start: 3 of 239
- Called 100.0% of time when present
- Phage (with cluster) where this start called: Cleo_37 (CT), Dre3_37 (CT), Gibbous_37 (CT),

Start 50:

- Found in 1 of 259 (0.4%) of genes in pham
- Manual Annotations of this start: 1 of 239
- Called 100.0% of time when present
- Phage (with cluster) where this start called: Lauer_39 (CT),

Start 52:

- Found in 9 of 259 (3.5%) of genes in pham
- Manual Annotations of this start: 9 of 239
- Called 100.0% of time when present
- Phage (with cluster) where this start called: BigChungus_42 (CT), CherryonLim_44 (CT), Feastonyeet_42 (CT), MAnor_44 (CT), Mayweather_46 (CT), Pons_44 (CT), PotPie_43 (CT), SummitAcademy_42 (CT), Vine_45 (CT),

Start 53:

- Found in 13 of 259 (5.0%) of genes in pham
- Manual Annotations of this start: 8 of 239
- Called 84.6% of time when present
- Phage (with cluster) where this start called: 8UZL_43 (AB), Azira_39 (CT), FF47_42 (AB), Fribs8_38 (CT), HippoPololi_39 (CT), MaVan_39 (CT), Maco6_41 (AB), Muddy_43 (AB), Nibbles_38 (CT), Survivors_39 (CT), Zareef_41 (CT),

Start 54:

- Found in 3 of 259 (1.2%) of genes in pham
- Manual Annotations of this start: 3 of 239
- Called 100.0% of time when present
- Phage (with cluster) where this start called: Button_45 (CT), GiKK_47 (CT), Jamzy_47 (CT),

Start 56:

- Found in 14 of 259 (5.4%) of genes in pham
- Manual Annotations of this start: 2 of 239
- Called 14.3% of time when present
- Phage (with cluster) where this start called: Axym_40 (CT), Margaret_48 (CT),

Start 58:

- Found in 7 of 259 (2.7%) of genes in pham
- Manual Annotations of this start: 4 of 239
- Called 57.1% of time when present
- Phage (with cluster) where this start called: Hexbug_49 (CT), Nodigi_49 (CT), Orla_49 (CT), SheckWes_46 (CT),

Start 59:

- Found in 2 of 259 (0.8%) of genes in pham
- Manual Annotations of this start: 2 of 239
- Called 100.0% of time when present
- Phage (with cluster) where this start called: Elinal_46 (CT), KayGee_44 (CT),

Start 60:

- Found in 31 of 259 (12.0%) of genes in pham
- Manual Annotations of this start: 22 of 239
- Called 93.5% of time when present
- Phage (with cluster) where this start called: Agatha_41 (CT), AikoCarson_42 (CT), Amok_42 (CT), AndPeggy_38 (CT), BillDoor_41 (CT), Biskit_43 (CT), Burnsey_41 (CT), Buttrmlkdreams_43 (CT), Carsonalex_44 (CT), Cozz_39 (CT), Elliott_41 (CT), Emalyn_41 (CT), GoldHunter_42 (CT), Horseradish_43 (CT), MScarn_45 (CT), MunkgeeRoachy_39 (CT), Nina_40 (CT), PsychoKiller_40 (CT), Quasar_41 (CT), RedBaron_43 (CT), Sopespian_40 (CT), SteamedHams_42 (CT), SweatNTears_42 (CT), Tolls_42 (CT), Troje_43 (CT), Typhonmarchy_41 (CT), Yakult_43 (CT), Yarn_38 (CT), Yummy_43 (CT),

Start 63:

- Found in 3 of 259 (1.2%) of genes in pham
- No Manual Annotations of this start.
- Called 33.3% of time when present
- Phage (with cluster) where this start called: RanchParmCat_47 (CT),

Start 66:

- Found in 81 of 259 (31.3%) of genes in pham
- Manual Annotations of this start: 1 of 239
- Called 1.2% of time when present
- Phage (with cluster) where this start called: JacoRen57_39 (AB),

Start 74:

- Found in 50 of 259 (19.3%) of genes in pham
- No Manual Annotations of this start.
- Called 2.0% of time when present
- Phage (with cluster) where this start called: Shrew_92 (singleton),

Summary by clusters:

There are 16 clusters represented in this pham: EA9, singleton, AB, EA11, EA10, EA6, EA, GG, EA8, BR, EA1, EA3, EA2, EA5, EA4, CT,

Info for manual annotations of cluster AB:

- Start number 40 was manually annotated 1 time for cluster AB.
- Start number 53 was manually annotated 2 times for cluster AB.
- Start number 66 was manually annotated 1 time for cluster AB.

Info for manual annotations of cluster BR:

- Start number 42 was manually annotated 2 times for cluster BR.

Info for manual annotations of cluster CT:

- Start number 43 was manually annotated 1 time for cluster CT.
- Start number 47 was manually annotated 3 times for cluster CT.

- Start number 50 was manually annotated 1 time for cluster CT.
- Start number 52 was manually annotated 9 times for cluster CT.
- Start number 53 was manually annotated 6 times for cluster CT.
- Start number 54 was manually annotated 3 times for cluster CT.
- Start number 56 was manually annotated 2 times for cluster CT.
- Start number 58 was manually annotated 4 times for cluster CT.
- Start number 59 was manually annotated 2 times for cluster CT.
- Start number 60 was manually annotated 22 times for cluster CT.

Info for manual annotations of cluster EA:

- Start number 33 was manually annotated 1 time for cluster EA.

Info for manual annotations of cluster EA1:

- Start number 28 was manually annotated 4 times for cluster EA1.
- Start number 30 was manually annotated 114 times for cluster EA1.

Info for manual annotations of cluster EA10:

- Start number 29 was manually annotated 1 time for cluster EA10.
- Start number 31 was manually annotated 1 time for cluster EA10.
- Start number 33 was manually annotated 4 times for cluster EA10.

Info for manual annotations of cluster EA11:

- Start number 30 was manually annotated 4 times for cluster EA11.
- Start number 33 was manually annotated 1 time for cluster EA11.

Info for manual annotations of cluster EA2:

- Start number 26 was manually annotated 2 times for cluster EA2.
- Start number 33 was manually annotated 9 times for cluster EA2.

Info for manual annotations of cluster EA3:

- Start number 30 was manually annotated 3 times for cluster EA3.

Info for manual annotations of cluster EA4:

- Start number 28 was manually annotated 9 times for cluster EA4.
- Start number 30 was manually annotated 2 times for cluster EA4.

Info for manual annotations of cluster EA5:

- Start number 33 was manually annotated 12 times for cluster EA5.

Info for manual annotations of cluster EA6:

- Start number 33 was manually annotated 5 times for cluster EA6.
- Start number 34 was manually annotated 2 times for cluster EA6.

Info for manual annotations of cluster EA8:

- Start number 30 was manually annotated 1 time for cluster EA8.

Info for manual annotations of cluster EA9:

- Start number 30 was manually annotated 3 times for cluster EA9.

Info for manual annotations of cluster GG:

- Start number 37 was manually annotated 2 times for cluster GG.

Gene Information:

Gene: 8UZL_43 Start: 31938, Stop: 30922, Start Num: 53

Candidate Starts for 8UZL_43:

(Start: 53 @31938 has 8 MA's), (70, 31845), (71, 31842), (78, 31755), (90, 31668), (96, 31611), (98, 31596), (104, 31542), (123, 31359), (155, 31188), (157, 31173), (161, 31152), (182, 31026), (188, 30975), (190, 30954),

Gene: Acosta_39 Start: 27483, Stop: 26302, Start Num: 30

Candidate Starts for Acosta_39:

(16, 27552), (Start: 28 @27492 has 13 MA's), (Start: 30 @27483 has 127 MA's), (64, 27354), (89, 27138), (101, 27045), (102, 27030), (122, 26787), (127, 26751), (132, 26721), (136, 26691), (138, 26688), (141, 26679), (158, 26565), (168, 26520), (181, 26436), (189, 26361),

Gene: Agatha_41 Start: 29791, Stop: 28760, Start Num: 60

Candidate Starts for Agatha_41:

(Start: 56 @29797 has 2 MA's), (Start: 60 @29791 has 22 MA's), (79, 29620), (90, 29533), (96, 29476), (104, 29407), (109, 29374), (116, 29296), (121, 29245), (155, 29050), (158, 29032), (161, 29014), (176, 28930), (179, 28912),

Gene: Agente005_38 Start: 27312, Stop: 26134, Start Num: 30

Candidate Starts for Agente005_38:

(16, 27381), (Start: 28 @27321 has 13 MA's), (Start: 30 @27312 has 127 MA's), (64, 27186), (65, 27183), (92, 26952), (94, 26934), (101, 26877), (102, 26862), (122, 26619), (127, 26583), (132, 26553), (136, 26523), (138, 26520), (158, 26397), (177, 26301), (181, 26268),

Gene: AikoCarson_42 Start: 30036, Stop: 29008, Start Num: 60

Candidate Starts for AikoCarson_42:

(Start: 60 @30036 has 22 MA's), (82, 29841), (90, 29778), (102, 29676), (105, 29649), (116, 29541), (121, 29490), (144, 29361), (145, 29352), (155, 29295), (158, 29277), (161, 29259), (176, 29175),

Gene: Alakazam_36 Start: 26644, Stop: 25469, Start Num: 33

Candidate Starts for Alakazam_36:

(7, 26788), (18, 26716), (20, 26710), (Start: 33 @26644 has 32 MA's), (64, 26530), (84, 26344), (98, 26236), (100, 26224), (101, 26212), (102, 26197), (107, 26146), (117, 26056), (138, 25855), (149, 25795), (151, 25780), (181, 25603), (184, 25567),

Gene: AlexAdler_38 Start: 27073, Stop: 25898, Start Num: 30

Candidate Starts for AlexAdler_38:

(9, 27193), (16, 27142), (Start: 28 @27082 has 13 MA's), (Start: 30 @27073 has 127 MA's), (64, 26950), (Start: 66 @26935 has 1 MA's), (94, 26698), (101, 26641), (102, 26626), (127, 26347), (132, 26317), (136, 26287), (138, 26284), (155, 26179), (158, 26161), (160, 26149), (168, 26116), (177, 26065), (181, 26032),

Gene: Alyxandracam_38 Start: 27083, Stop: 25908, Start Num: 30

Candidate Starts for Alyxandracam_38:

(9, 27203), (16, 27152), (Start: 28 @27092 has 13 MA's), (Start: 30 @27083 has 127 MA's), (64, 26960), (Start: 66 @26945 has 1 MA's), (74, 26858), (94, 26708), (101, 26651), (127, 26357), (132, 26327), (136, 26297), (138, 26294), (155, 26189), (158, 26171), (160, 26159), (168, 26126), (177, 26075), (181, 26042),

Gene: Amok_42 Start: 30060, Stop: 29032, Start Num: 60

Candidate Starts for Amok_42:

(Start: 60 @30060 has 22 MA's), (82, 29865), (90, 29802), (102, 29700), (105, 29673), (116, 29565), (121, 29514), (125, 29481), (144, 29385), (145, 29376), (155, 29319), (158, 29301), (161, 29283), (164, 29271), (176, 29199), (179, 29181), (187, 29106),

Gene: AndPeggy_38 Start: 29466, Stop: 28432, Start Num: 60

Candidate Starts for AndPeggy_38:

(Start: 60 @29466 has 22 MA's), (82, 29271), (90, 29208), (102, 29106), (116, 28971), (144, 28791), (145, 28782), (155, 28725), (158, 28707), (161, 28689), (176, 28605),

Gene: Andromedas_37 Start: 26832, Stop: 25642, Start Num: 26

Candidate Starts for Andromedas_37:

(23, 26841), (Start: 26 @26832 has 2 MA's), (Start: 33 @26805 has 32 MA's), (64, 26694), (65, 26691), (69, 26646), (92, 26460), (95, 26427), (98, 26409), (101, 26385), (102, 26370), (107, 26319), (117, 26229), (127, 26091), (132, 26061), (136, 26031), (143, 26004), (159, 25902), (177, 25809), (181, 25776), (183, 25752), (184, 25740),

Gene: Antoinette_38 Start: 27070, Stop: 25895, Start Num: 30

Candidate Starts for Antoinette_38:

(9, 27190), (16, 27139), (Start: 28 @27079 has 13 MA's), (Start: 30 @27070 has 127 MA's), (64, 26947), (Start: 66 @26932 has 1 MA's), (101, 26638), (102, 26623), (127, 26344), (132, 26314), (136, 26284), (138, 26281), (155, 26176), (158, 26158), (160, 26146), (168, 26113), (177, 26062), (181, 26029),

Gene: AranulaLuti_37 Start: 26767, Stop: 25592, Start Num: 30

Candidate Starts for AranulaLuti_37:

(9, 26887), (16, 26836), (Start: 28 @26776 has 13 MA's), (Start: 30 @26767 has 127 MA's), (64, 26644), (Start: 66 @26629 has 1 MA's), (74, 26542), (94, 26392), (101, 26335), (102, 26320), (127, 26041), (132, 26011), (136, 25981), (138, 25978), (155, 25873), (158, 25855), (160, 25843), (168, 25810), (177, 25759), (181, 25726),

Gene: Asta_37 Start: 26780, Stop: 25605, Start Num: 30

Candidate Starts for Asta_37:

(9, 26900), (16, 26849), (Start: 28 @26789 has 13 MA's), (Start: 30 @26780 has 127 MA's), (64, 26657), (68, 26624), (94, 26405), (101, 26348), (127, 26054), (132, 26024), (136, 25994), (138, 25991), (155, 25886), (158, 25868), (160, 25856), (168, 25823), (177, 25772), (181, 25739),

Gene: Aubergine_37 Start: 26780, Stop: 25605, Start Num: 30

Candidate Starts for Aubergine_37:

(9, 26900), (16, 26849), (Start: 28 @26789 has 13 MA's), (Start: 30 @26780 has 127 MA's), (64, 26657), (Start: 66 @26642 has 1 MA's), (94, 26405), (101, 26348), (102, 26333), (127, 26054), (132, 26024), (136, 25994), (138, 25991), (155, 25886), (158, 25868), (160, 25856), (168, 25823), (177, 25772), (181, 25739),

Gene: AxiPup_38 Start: 27052, Stop: 25877, Start Num: 30

Candidate Starts for AxiPup_38:

(9, 27172), (16, 27121), (Start: 28 @27061 has 13 MA's), (Start: 30 @27052 has 127 MA's), (64, 26929), (Start: 66 @26914 has 1 MA's), (74, 26827), (94, 26677), (101, 26620), (127, 26326), (132, 26296), (136, 26266), (138, 26263), (155, 26158), (158, 26140), (160, 26128), (168, 26095), (177, 26044), (181, 26011),

Gene: Axym_40 Start: 29775, Stop: 28738, Start Num: 56

Candidate Starts for Axym_40:

(Start: 56 @29775 has 2 MA's), (79, 29598), (90, 29511), (96, 29454), (104, 29385), (109, 29352), (116, 29274), (121, 29223), (155, 29028), (158, 29010), (161, 28992), (176, 28908), (179, 28890), (187, 28815),

Gene: Azira_39 Start: 29680, Stop: 28649, Start Num: 53

Candidate Starts for Azira_39:

(Start: 53 @29680 has 8 MA's), (64, 29641), (71, 29584), (75, 29527), (79, 29497), (87, 29431), (90, 29410), (102, 29308), (106, 29278), (109, 29251), (113, 29203), (116, 29173), (142, 29008), (158, 28912), (161, 28894), (165, 28879),

Gene: Baines_37 Start: 26770, Stop: 25595, Start Num: 30

Candidate Starts for Baines_37:

(9, 26890), (16, 26839), (Start: 28 @26779 has 13 MA's), (Start: 30 @26770 has 127 MA's), (64, 26647), (68, 26614), (94, 26395), (101, 26338), (127, 26044), (132, 26014), (136, 25984), (138, 25981), (155, 25876), (158, 25858), (160, 25846), (168, 25813), (177, 25762), (181, 25729),

Gene: Balsa_37 Start: 27212, Stop: 26025, Start Num: 28

Candidate Starts for Balsa_37:

(14, 27275), (Start: 28 @27212 has 13 MA's), (Start: 30 @27203 has 127 MA's), (64, 27077), (65, 27074), (92, 26843), (101, 26768), (102, 26753), (127, 26474), (132, 26444), (136, 26414), (138, 26411), (158, 26288), (177, 26192), (181, 26159),

Gene: Bandik_38 Start: 27078, Stop: 25903, Start Num: 30

Candidate Starts for Bandik_38:

(9, 27198), (16, 27147), (Start: 28 @27087 has 13 MA's), (Start: 30 @27078 has 127 MA's), (64, 26955), (Start: 66 @26940 has 1 MA's), (94, 26703), (101, 26646), (102, 26631), (127, 26352), (132, 26322), (136, 26292), (138, 26289), (155, 26184), (158, 26166), (160, 26154), (168, 26121), (177, 26070), (181, 26037),

Gene: BeautPeep30_38 Start: 27084, Stop: 25909, Start Num: 30

Candidate Starts for BeautPeep30_38:

(9, 27204), (16, 27153), (Start: 28 @27093 has 13 MA's), (Start: 30 @27084 has 127 MA's), (64, 26961), (74, 26859), (94, 26709), (101, 26652), (127, 26358), (132, 26328), (136, 26298), (138, 26295), (155, 26190), (158, 26172), (160, 26160), (168, 26127), (177, 26076), (181, 26043),

Gene: BeeBee8_38 Start: 27373, Stop: 26195, Start Num: 30

Candidate Starts for BeeBee8_38:

(14, 27445), (Start: 28 @27382 has 13 MA's), (Start: 30 @27373 has 127 MA's), (64, 27247), (65, 27244), (92, 27013), (101, 26938), (102, 26923), (127, 26644), (132, 26614), (136, 26584), (138, 26581), (158, 26458), (177, 26362), (181, 26329),

Gene: Benjalauren_38 Start: 26783, Stop: 25608, Start Num: 30

Candidate Starts for Benjalauren_38:

(9, 26903), (16, 26852), (Start: 28 @26792 has 13 MA's), (Start: 30 @26783 has 127 MA's), (64, 26660), (Start: 66 @26645 has 1 MA's), (74, 26558), (94, 26408), (101, 26351), (102, 26336), (127, 26057), (132, 26027), (136, 25997), (138, 25994), (155, 25889), (158, 25871), (160, 25859), (168, 25826), (177, 25775), (181, 25742),

Gene: BigChungus_42 Start: 31250, Stop: 30192, Start Num: 52

Candidate Starts for BigChungus_42:

(44, 31274), (Start: 52 @31250 has 9 MA's), (73, 31124), (75, 31097), (77, 31073), (80, 31040), (83, 31007), (90, 30962), (102, 30860), (110, 30779), (118, 30701), (123, 30653), (125, 30641), (137, 30560), (147, 30524), (153, 30491), (154, 30485), (155, 30476), (157, 30461), (161, 30440), (165,

30425), (183, 30296), (184, 30284), (185, 30278), (187, 30263),

Gene: BigRedClifford_38 Start: 27082, Stop: 25907, Start Num: 30

Candidate Starts for BigRedClifford_38:

(16, 27151), (Start: 28 @27091 has 13 MA's), (Start: 30 @27082 has 127 MA's), (64, 26959), (74, 26857), (94, 26707), (101, 26650), (127, 26356), (132, 26326), (136, 26296), (138, 26293), (155, 26188), (158, 26170), (160, 26158), (168, 26125), (177, 26074), (181, 26041),

Gene: BillDoor_41 Start: 29137, Stop: 28103, Start Num: 60

Candidate Starts for BillDoor_41:

(25, 29266), (32, 29236), (Start: 43 @29182 has 1 MA's), (46, 29173), (Start: 60 @29137 has 22 MA's), (69, 29062), (82, 28942), (90, 28879), (91, 28870), (102, 28777), (116, 28642), (145, 28453), (155, 28396), (158, 28378), (161, 28360), (176, 28276),

Gene: Biskit_43 Start: 29824, Stop: 28796, Start Num: 60

Candidate Starts for Biskit_43:

(25, 29953), (32, 29923), (Start: 43 @29869 has 1 MA's), (46, 29860), (Start: 60 @29824 has 22 MA's), (82, 29629), (90, 29566), (104, 29440), (107, 29416), (116, 29329), (121, 29278), (144, 29149), (155, 29083), (158, 29065), (161, 29047), (176, 28963), (187, 28870),

Gene: Blage_38 Start: 27082, Stop: 25907, Start Num: 30

Candidate Starts for Blage_38:

(16, 27151), (Start: 28 @27091 has 13 MA's), (Start: 30 @27082 has 127 MA's), (64, 26959), (74, 26857), (94, 26707), (101, 26650), (127, 26356), (132, 26326), (136, 26296), (138, 26293), (155, 26188), (158, 26170), (160, 26158), (168, 26125), (177, 26074), (181, 26041),

Gene: BonesMcCoy_38 Start: 27082, Stop: 25907, Start Num: 30

Candidate Starts for BonesMcCoy_38:

(9, 27202), (16, 27151), (Start: 28 @27091 has 13 MA's), (Start: 30 @27082 has 127 MA's), (64, 26959), (74, 26857), (94, 26707), (101, 26650), (127, 26356), (132, 26326), (136, 26296), (138, 26293), (155, 26188), (158, 26170), (160, 26158), (168, 26125), (177, 26074), (181, 26041),

Gene: Bonino_37 Start: 26756, Stop: 25581, Start Num: 30

Candidate Starts for Bonino_37:

(9, 26876), (16, 26825), (Start: 28 @26765 has 13 MA's), (Start: 30 @26756 has 127 MA's), (64, 26633), (Start: 66 @26618 has 1 MA's), (94, 26381), (101, 26324), (127, 26030), (132, 26000), (136, 25970), (138, 25967), (155, 25862), (158, 25844), (160, 25832), (168, 25799), (177, 25748), (181, 25715),

Gene: BouleyBill_35 Start: 26662, Stop: 25499, Start Num: 28

Candidate Starts for BouleyBill_35:

(16, 26722), (Start: 28 @26662 has 13 MA's), (Start: 56 @26572 has 2 MA's), (64, 26536), (65, 26533), (92, 26302), (101, 26227), (102, 26212), (105, 26185), (120, 26005), (149, 25825), (151, 25810), (181, 25633), (184, 25597), (189, 25558),

Gene: Burnsey_41 Start: 29782, Stop: 28751, Start Num: 60

Candidate Starts for Burnsey_41:

(Start: 56 @29788 has 2 MA's), (Start: 60 @29782 has 22 MA's), (79, 29611), (90, 29524), (96, 29467), (104, 29398), (109, 29365), (116, 29287), (121, 29236), (155, 29041), (158, 29023), (161, 29005), (176, 28921), (179, 28903),

Gene: Bustleton_36 Start: 26665, Stop: 25502, Start Num: 28

Candidate Starts for Bustleton_36:

(16, 26725), (Start: 28 @26665 has 13 MA's), (Start: 56 @26575 has 2 MA's), (64, 26539), (65, 26536), (92, 26305), (101, 26230), (102, 26215), (105, 26188), (120, 26008), (126, 25963), (149, 25828), (151, 25813), (181, 25636), (184, 25600), (189, 25561),

Gene: Button_45 Start: 30428, Stop: 29406, Start Num: 54

Candidate Starts for Button_45:

(Start: 54 @30428 has 3 MA's), (75, 30281), (79, 30251), (90, 30164), (96, 30107), (102, 30062), (104, 30038), (106, 30032), (110, 29981), (116, 29927), (118, 29903), (121, 29876), (153, 29699), (155, 29684), (164, 29636), (179, 29546),

Gene: Buttrmlkdreams_43 Start: 30271, Stop: 29240, Start Num: 60

Candidate Starts for Buttrmlkdreams_43:

(25, 30400), (32, 30370), (Start: 43 @30316 has 1 MA's), (46, 30307), (Start: 60 @30271 has 22 MA's), (75, 30130), (90, 30013), (96, 29956), (104, 29887), (109, 29854), (116, 29776), (121, 29725), (155, 29530), (158, 29512), (161, 29494), (179, 29392),

Gene: Byron23_38 Start: 27081, Stop: 25906, Start Num: 30

Candidate Starts for Byron23_38:

(9, 27201), (16, 27150), (Start: 28 @27090 has 13 MA's), (Start: 30 @27081 has 127 MA's), (64, 26958), (Start: 66 @26943 has 1 MA's), (94, 26706), (101, 26649), (102, 26634), (127, 26355), (132, 26325), (136, 26295), (138, 26292), (155, 26187), (158, 26169), (160, 26157), (168, 26124), (177, 26073), (181, 26040),

Gene: Calix_37 Start: 26763, Stop: 25588, Start Num: 30

Candidate Starts for Calix_37:

(9, 26883), (16, 26832), (Start: 28 @26772 has 13 MA's), (Start: 30 @26763 has 127 MA's), (64, 26640), (68, 26607), (94, 26388), (101, 26331), (127, 26037), (132, 26007), (136, 25977), (138, 25974), (155, 25869), (158, 25851), (160, 25839), (168, 25806), (177, 25755), (181, 25722),

Gene: CaptainRex_35 Start: 24974, Stop: 23796, Start Num: 33

Candidate Starts for CaptainRex_35:

(18, 25046), (21, 25031), (Start: 33 @24974 has 32 MA's), (64, 24860), (101, 24542), (102, 24527), (107, 24476), (122, 24284), (127, 24248), (136, 24188), (138, 24185), (151, 24110), (159, 24059), (179, 23954), (184, 23897),

Gene: Carostasia_35 Start: 26513, Stop: 25335, Start Num: 33

Candidate Starts for Carostasia_35:

(Start: 33 @26513 has 32 MA's), (62, 26414), (64, 26399), (Start: 66 @26384 has 1 MA's), (93, 26162), (98, 26105), (100, 26093), (101, 26081), (102, 26066), (107, 26015), (127, 25787), (132, 25757), (136, 25727), (138, 25724), (149, 25664), (151, 25649), (159, 25598), (168, 25556), (177, 25505), (181, 25472), (184, 25436),

Gene: Carsonalex_44 Start: 29819, Stop: 28788, Start Num: 60

Candidate Starts for Carsonalex_44:

(25, 29948), (32, 29918), (Start: 43 @29864 has 1 MA's), (46, 29855), (Start: 60 @29819 has 22 MA's), (75, 29678), (90, 29561), (96, 29504), (104, 29435), (109, 29402), (116, 29324), (121, 29273), (155, 29078), (158, 29060), (161, 29042), (176, 28958), (179, 28940),

Gene: Casey_34 Start: 25918, Stop: 24758, Start Num: 30

Candidate Starts for Casey_34:

(16, 25987), (22, 25954), (Start: 30 @25918 has 127 MA's), (51, 25843), (64, 25798), (76, 25684), (85, 25597), (101, 25489), (107, 25423), (136, 25150), (158, 25024), (171, 24961), (177, 24928), (181, 24895), (184, 24859),

Gene: Chako_37 Start: 26767, Stop: 25592, Start Num: 30

Candidate Starts for Chako_37:

(9, 26887), (16, 26836), (Start: 28 @26776 has 13 MA's), (Start: 30 @26767 has 127 MA's), (64, 26644), (Start: 66 @26629 has 1 MA's), (74, 26542), (94, 26392), (101, 26335), (102, 26320), (127, 26041), (132, 26011), (136, 25981), (138, 25978), (155, 25873), (158, 25855), (160, 25843), (168, 25810), (177, 25759), (181, 25726),

Gene: Chamuel_37 Start: 26756, Stop: 25581, Start Num: 30

Candidate Starts for Chamuel_37:

(9, 26876), (16, 26825), (Start: 28 @26765 has 13 MA's), (Start: 30 @26756 has 127 MA's), (64, 26633), (68, 26600), (94, 26381), (101, 26324), (127, 26030), (132, 26000), (136, 25970), (138, 25967), (155, 25862), (158, 25844), (160, 25832), (168, 25799), (177, 25748), (181, 25715),

Gene: Cheeto1_38 Start: 27209, Stop: 26040, Start Num: 30

Candidate Starts for Cheeto1_38:

(11, 27317), (14, 27281), (16, 27278), (Start: 30 @27209 has 127 MA's), (64, 27098), (92, 26864), (98, 26813), (102, 26774), (127, 26495), (143, 26408), (158, 26309), (168, 26264), (181, 26180), (183, 26156), (184, 26144), (189, 26105),

Gene: Chepli_38 Start: 26309, Stop: 25146, Start Num: 33

Candidate Starts for Chepli_38:

(Start: 33 @26309 has 32 MA's), (38, 26297), (64, 26198), (65, 26195), (82, 26033), (101, 25889), (102, 25874), (107, 25823), (117, 25733), (127, 25595), (132, 25565), (136, 25535), (149, 25472), (151, 25457), (184, 25244),

Gene: CherryonLim_44 Start: 32388, Stop: 31330, Start Num: 52

Candidate Starts for CherryonLim_44:

(44, 32412), (Start: 52 @32388 has 9 MA's), (73, 32262), (75, 32235), (77, 32211), (80, 32178), (83, 32145), (90, 32100), (102, 31998), (110, 31917), (118, 31839), (120, 31815), (123, 31791), (125, 31779), (137, 31698), (153, 31629), (154, 31623), (155, 31614), (161, 31578), (165, 31563), (183, 31434), (184, 31422), (185, 31416), (187, 31401),

Gene: ChickenKing_37 Start: 27122, Stop: 25956, Start Num: 30

Candidate Starts for ChickenKing_37:

(11, 27230), (14, 27194), (16, 27191), (Start: 30 @27122 has 127 MA's), (64, 27011), (92, 26777), (98, 26726), (102, 26687), (127, 26408), (143, 26321), (158, 26222), (168, 26177), (181, 26093), (183, 26069), (184, 26057), (189, 26018),

Gene: ChikPic_37 Start: 26815, Stop: 25652, Start Num: 33

Candidate Starts for ChikPic_37:

(23, 26851), (Start: 26 @26842 has 2 MA's), (Start: 33 @26815 has 32 MA's), (64, 26704), (65, 26701), (69, 26656), (92, 26470), (95, 26437), (98, 26419), (101, 26395), (102, 26380), (107, 26329), (117, 26239), (127, 26101), (132, 26071), (136, 26041), (143, 26014), (159, 25912), (177, 25819), (181, 25786), (183, 25762), (184, 25750),

Gene: Christoph_37 Start: 26778, Stop: 25603, Start Num: 30

Candidate Starts for Christoph_37:

(9, 26898), (16, 26847), (Start: 28 @26787 has 13 MA's), (Start: 30 @26778 has 127 MA's), (64, 26655), (Start: 66 @26640 has 1 MA's), (94, 26403), (101, 26346), (102, 26331), (127, 26052), (132, 26022), (136, 25992), (138, 25989), (155, 25884), (158, 25866), (160, 25854), (168, 25821), (177, 25770), (181, 25737),

Gene: Clancy_37 Start: 26812, Stop: 25637, Start Num: 30

Candidate Starts for Clancy_37:

(9, 26932), (16, 26881), (Start: 28 @26821 has 13 MA's), (Start: 30 @26812 has 127 MA's), (64, 26689), (Start: 66 @26674 has 1 MA's), (74, 26587), (94, 26437), (101, 26380), (102, 26365), (127, 26086), (132, 26056), (136, 26026), (138, 26023), (155, 25918), (158, 25900), (160, 25888), (168, 25855), (177, 25804), (181, 25771),

Gene: Cleo_37 Start: 29247, Stop: 28195, Start Num: 47

Candidate Starts for Cleo_37:

(Start: 47 @29247 has 3 MA's), (Start: 58 @29217 has 4 MA's), (64, 29187), (75, 29073), (82, 29019), (87, 28977), (90, 28956), (102, 28854), (106, 28824), (113, 28749), (116, 28719), (118, 28695), (139, 28557), (158, 28458), (161, 28440), (163, 28434), (164, 28428), (173, 28371), (177, 28350),

Gene: Clock_35 Start: 27801, Stop: 26626, Start Num: 33

Candidate Starts for Clock_35:

(7, 27945), (18, 27873), (20, 27867), (Start: 33 @27801 has 32 MA's), (64, 27687), (84, 27501), (101, 27369), (102, 27354), (107, 27303), (117, 27213), (136, 27015), (149, 26952), (177, 26793), (181, 26760), (183, 26736), (189, 26685),

Gene: ColaCorta_37 Start: 26805, Stop: 25642, Start Num: 33

Candidate Starts for ColaCorta_37:

(23, 26841), (Start: 26 @26832 has 2 MA's), (Start: 33 @26805 has 32 MA's), (64, 26694), (65, 26691), (69, 26646), (92, 26460), (95, 26427), (98, 26409), (101, 26385), (102, 26370), (107, 26319), (117, 26229), (127, 26091), (132, 26061), (136, 26031), (143, 26004), (159, 25902), (177, 25809), (181, 25776), (183, 25752), (184, 25740),

Gene: Convict_38 Start: 27082, Stop: 25907, Start Num: 30

Candidate Starts for Convict_38:

(9, 27202), (16, 27151), (Start: 28 @27091 has 13 MA's), (Start: 30 @27082 has 127 MA's), (64, 26959), (74, 26857), (94, 26707), (101, 26650), (127, 26356), (132, 26326), (136, 26296), (138, 26293), (155, 26188), (158, 26170), (160, 26158), (168, 26125), (177, 26074), (181, 26041),

Gene: Cozz_39 Start: 29379, Stop: 28348, Start Num: 60

Candidate Starts for Cozz_39:

(Start: 56 @29385 has 2 MA's), (Start: 60 @29379 has 22 MA's), (79, 29208), (90, 29121), (96, 29064), (104, 28995), (109, 28962), (116, 28884), (121, 28833), (155, 28638), (158, 28620), (161, 28602), (176, 28518), (179, 28500),

Gene: Dave_38 Start: 27070, Stop: 25895, Start Num: 30

Candidate Starts for Dave_38:

(9, 27190), (16, 27139), (Start: 28 @27079 has 13 MA's), (Start: 30 @27070 has 127 MA's), (64, 26947), (Start: 66 @26932 has 1 MA's), (94, 26695), (101, 26638), (102, 26623), (127, 26344), (132, 26314), (136, 26284), (138, 26281), (155, 26176), (158, 26158), (160, 26146), (168, 26113), (177, 26062), (181, 26029),

Gene: Delphidian_38 Start: 27081, Stop: 25906, Start Num: 30

Candidate Starts for Delphidian_38:

(9, 27201), (16, 27150), (Start: 28 @27090 has 13 MA's), (Start: 30 @27081 has 127 MA's), (64, 26958), (Start: 66 @26943 has 1 MA's), (94, 26706), (101, 26649), (127, 26355), (132, 26325), (136, 26295), (138, 26292), (155, 26187), (158, 26169), (160, 26157), (168, 26124), (177, 26073), (181, 26040),

Gene: Den3_38 Start: 27087, Stop: 25912, Start Num: 30

Candidate Starts for Den3_38:

(9, 27207), (16, 27156), (Start: 28 @27096 has 13 MA's), (Start: 30 @27087 has 127 MA's), (64, 26964), (74, 26862), (94, 26712), (101, 26655), (127, 26361), (132, 26331), (136, 26301), (138, 26298), (155, 26193), (158, 26175), (160, 26163), (168, 26130), (177, 26079), (181, 26046),

Gene: Dothraki_38 Start: 27078, Stop: 25903, Start Num: 30

Candidate Starts for Dothraki_38:

(9, 27198), (16, 27147), (Start: 28 @27087 has 13 MA's), (Start: 30 @27078 has 127 MA's), (64, 26955), (Start: 66 @26940 has 1 MA's), (94, 26703), (101, 26646), (102, 26631), (127, 26352), (132, 26322), (136, 26292), (138, 26289), (155, 26184), (158, 26166), (160, 26154), (168, 26121), (177, 26070), (181, 26037),

Gene: Dre3_37 Start: 28990, Stop: 27938, Start Num: 47

Candidate Starts for Dre3_37:

(Start: 47 @28990 has 3 MA's), (Start: 53 @28969 has 8 MA's), (Start: 58 @28960 has 4 MA's), (64, 28930), (75, 28816), (82, 28762), (87, 28720), (90, 28699), (102, 28597), (106, 28567), (113, 28492), (116, 28462), (118, 28438), (139, 28300), (158, 28201), (161, 28183), (163, 28177), (164, 28171), (173, 28114), (177, 28093),

Gene: Duocatuli_37 Start: 26767, Stop: 25592, Start Num: 30

Candidate Starts for Duocatuli_37:

(9, 26887), (16, 26836), (Start: 28 @26776 has 13 MA's), (Start: 30 @26767 has 127 MA's), (64, 26644), (Start: 66 @26629 has 1 MA's), (74, 26542), (94, 26392), (101, 26335), (102, 26320), (127, 26041), (132, 26011), (136, 25981), (138, 25978), (155, 25873), (158, 25855), (160, 25843), (168, 25810), (177, 25759), (181, 25726),

Gene: Eleri_37 Start: 26806, Stop: 25643, Start Num: 33

Candidate Starts for Eleri_37:

(23, 26842), (Start: 26 @26833 has 2 MA's), (Start: 33 @26806 has 32 MA's), (64, 26695), (65, 26692), (69, 26647), (92, 26461), (95, 26428), (98, 26410), (101, 26386), (102, 26371), (107, 26320), (117, 26230), (127, 26092), (132, 26062), (136, 26032), (143, 26005), (159, 25903), (177, 25810), (181, 25777), (183, 25753), (184, 25741),

Gene: Elinal_46 Start: 31626, Stop: 30580, Start Num: 59

Candidate Starts for Elinal_46:

(48, 31656), (55, 31632), (Start: 59 @31626 has 2 MA's), (77, 31461), (79, 31437), (80, 31428), (83, 31395), (90, 31350), (102, 31248), (110, 31167), (118, 31089), (123, 31041), (137, 30948), (147, 30912), (153, 30879), (154, 30873), (155, 30864), (157, 30849), (161, 30828), (165, 30813), (183, 30684), (184, 30672), (185, 30666), (187, 30651),

Gene: Elliott_41 Start: 29790, Stop: 28759, Start Num: 60

Candidate Starts for Elliott_41:

(Start: 60 @29790 has 22 MA's), (79, 29619), (90, 29532), (96, 29475), (104, 29406), (109, 29373), (116, 29295), (121, 29244), (155, 29049), (158, 29031), (161, 29013), (176, 28929), (179, 28911),

Gene: Emalyn_41 Start: 29228, Stop: 28200, Start Num: 60

Candidate Starts for Emalyn_41:

(Start: 60 @29228 has 22 MA's), (82, 29033), (90, 28970), (102, 28868), (104, 28844), (110, 28787), (116, 28733), (121, 28682), (144, 28553), (145, 28544), (155, 28487), (158, 28469), (161, 28451), (176, 28367),

Gene: Endor_38 Start: 27441, Stop: 26254, Start Num: 28

Candidate Starts for Endor_38:

(14, 27504), (Start: 28 @27441 has 13 MA's), (Start: 30 @27432 has 127 MA's), (64, 27306), (65, 27303), (92, 27072), (94, 27054), (101, 26997), (102, 26982), (122, 26739), (127, 26703), (136, 26643), (138, 26640), (140, 26634), (158, 26517), (177, 26421), (181, 26388),

Gene: Erla_37 Start: 26760, Stop: 25585, Start Num: 30

Candidate Starts for Erla_37:

(9, 26880), (16, 26829), (Start: 28 @26769 has 13 MA's), (Start: 30 @26760 has 127 MA's), (64, 26637), (68, 26604), (94, 26385), (101, 26328), (127, 26034), (132, 26004), (136, 25974), (138, 25971), (155, 25866), (158, 25848), (160, 25836), (168, 25803), (177, 25752), (181, 25719),

Gene: Espinosa_37 Start: 26778, Stop: 25603, Start Num: 30

Candidate Starts for Espinosa_37:

(9, 26898), (16, 26847), (Start: 28 @26787 has 13 MA's), (Start: 30 @26778 has 127 MA's), (64, 26655), (Start: 66 @26640 has 1 MA's), (94, 26403), (101, 26346), (102, 26331), (127, 26052), (132, 26022), (136, 25992), (138, 25989), (155, 25884), (158, 25866), (160, 25854), (168, 25821), (177, 25770), (181, 25737),

Gene: Etna_37 Start: 27214, Stop: 26036, Start Num: 30

Candidate Starts for Etna_37:

(14, 27286), (Start: 28 @27223 has 13 MA's), (Start: 30 @27214 has 127 MA's), (64, 27088), (65, 27085), (92, 26854), (101, 26779), (102, 26764), (127, 26485), (136, 26425), (138, 26422), (158, 26299), (177, 26203), (181, 26170),

Gene: Etta_37 Start: 26764, Stop: 25589, Start Num: 30

Candidate Starts for Etta_37:

(9, 26884), (16, 26833), (Start: 28 @26773 has 13 MA's), (Start: 30 @26764 has 127 MA's), (64, 26641), (68, 26608), (94, 26389), (101, 26332), (127, 26038), (132, 26008), (136, 25978), (138, 25975), (155, 25870), (158, 25852), (160, 25840), (168, 25807), (177, 25756), (181, 25723),

Gene: FF47_42 Start: 31849, Stop: 30833, Start Num: 53

Candidate Starts for FF47_42:

(Start: 53 @31849 has 8 MA's), (70, 31756), (71, 31753), (78, 31666), (90, 31579), (96, 31522), (98, 31507), (104, 31453), (123, 31270), (155, 31099), (157, 31084), (161, 31063), (182, 30937), (188, 30886), (190, 30865),

Gene: FarmerDoug_37 Start: 27063, Stop: 25885, Start Num: 30

Candidate Starts for FarmerDoug_37:

(13, 27141), (14, 27135), (Start: 30 @27063 has 127 MA's), (64, 26937), (65, 26934), (92, 26703), (101, 26628), (102, 26613), (105, 26586), (127, 26334), (132, 26304), (136, 26274), (138, 26271), (158, 26148), (177, 26052), (181, 26019),

Gene: Feastonyeet_42 Start: 31250, Stop: 30192, Start Num: 52

Candidate Starts for Feastonyeet_42:

(44, 31274), (Start: 52 @31250 has 9 MA's), (73, 31124), (75, 31097), (77, 31073), (80, 31040), (83, 31007), (90, 30962), (102, 30860), (110, 30779), (118, 30701), (123, 30653), (125, 30641), (137, 30560), (147, 30524), (153, 30491), (154, 30485), (155, 30476), (157, 30461), (161, 30440), (165, 30425), (183, 30296), (184, 30284), (185, 30278), (187, 30263),

Gene: Figueroism_38 Start: 27072, Stop: 25897, Start Num: 30

Candidate Starts for Figueroism_38:

(9, 27192), (16, 27141), (Start: 28 @27081 has 13 MA's), (Start: 30 @27072 has 127 MA's), (64, 26949), (Start: 66 @26934 has 1 MA's), (74, 26847), (94, 26697), (101, 26640), (102, 26625), (127, 26346), (132, 26316), (136, 26286), (138, 26283), (155, 26178), (158, 26160), (160, 26148), (168,

26115), (177, 26064), (181, 26031),

Gene: Finny_37 Start: 26846, Stop: 25683, Start Num: 33

Candidate Starts for Finny_37:

(23, 26882), (Start: 26 @26873 has 2 MA's), (Start: 33 @26846 has 32 MA's), (64, 26735), (69, 26687), (92, 26501), (95, 26468), (98, 26450), (101, 26426), (102, 26411), (107, 26360), (117, 26270), (127, 26132), (132, 26102), (136, 26072), (138, 26069), (143, 26045), (159, 25943), (177, 25850), (181, 25817), (183, 25793), (184, 25781),

Gene: Fribs8_38 Start: 29408, Stop: 28377, Start Num: 53

Candidate Starts for Fribs8_38:

(Start: 53 @29408 has 8 MA's), (64, 29369), (70, 29315), (71, 29312), (75, 29255), (79, 29225), (87, 29159), (90, 29138), (102, 29036), (106, 29006), (107, 28988), (113, 28931), (116, 28901), (142, 28736), (155, 28658), (158, 28640), (161, 28622), (164, 28610), (165, 28607), (177, 28532),

Gene: Fulton_35 Start: 24975, Stop: 23797, Start Num: 33

Candidate Starts for Fulton_35:

(18, 25047), (21, 25032), (Start: 33 @24975 has 32 MA's), (64, 24861), (101, 24543), (102, 24528), (107, 24477), (122, 24285), (127, 24249), (136, 24189), (138, 24186), (151, 24111), (159, 24060), (179, 23955), (184, 23898),

Gene: GTE2_33 Start: 29525, Stop: 28416, Start Num: 36

Candidate Starts for GTE2_33:

(15, 29624), (17, 29618), (36, 29525), (46, 29486), (Start: 60 @29450 has 22 MA's), (69, 29375), (82, 29255), (90, 29192), (102, 29090), (105, 29063), (116, 28955), (121, 28904), (128, 28853), (144, 28775), (145, 28766), (155, 28709), (158, 28691), (161, 28673), (176, 28589),

Gene: GaeCeo_38 Start: 27355, Stop: 26189, Start Num: 30

Candidate Starts for GaeCeo_38:

(11, 27463), (14, 27427), (16, 27424), (Start: 28 @27364 has 13 MA's), (Start: 30 @27355 has 127 MA's), (64, 27244), (92, 27010), (98, 26959), (127, 26641), (143, 26554), (158, 26455), (168, 26410), (181, 26326), (183, 26302), (184, 26290), (189, 26251),

Gene: GardenB_37 Start: 27181, Stop: 26003, Start Num: 30

Candidate Starts for GardenB_37:

(14, 27253), (Start: 28 @27190 has 13 MA's), (Start: 30 @27181 has 127 MA's), (64, 27055), (65, 27052), (92, 26821), (101, 26746), (102, 26731), (122, 26488), (127, 26452), (132, 26422), (138, 26389), (158, 26266), (177, 26170), (181, 26137),

Gene: Garey24_37 Start: 26746, Stop: 25571, Start Num: 30

Candidate Starts for Garey24_37:

(9, 26866), (16, 26815), (Start: 28 @26755 has 13 MA's), (Start: 30 @26746 has 127 MA's), (64, 26623), (Start: 66 @26608 has 1 MA's), (94, 26371), (101, 26314), (127, 26020), (132, 25990), (136, 25960), (138, 25957), (155, 25852), (158, 25834), (160, 25822), (168, 25789), (177, 25738), (181, 25705),

Gene: Gargoyle_38 Start: 27087, Stop: 25912, Start Num: 30

Candidate Starts for Gargoyle_38:

(9, 27207), (16, 27156), (Start: 28 @27096 has 13 MA's), (Start: 30 @27087 has 127 MA's), (64, 26964), (74, 26862), (94, 26712), (101, 26655), (127, 26361), (132, 26331), (136, 26301), (138, 26298), (155, 26193), (158, 26175), (160, 26163), (168, 26130), (177, 26079), (181, 26046),

Gene: Gelo_37 Start: 26770, Stop: 25595, Start Num: 30

Candidate Starts for Gelo_37:

(9, 26890), (16, 26839), (Start: 28 @26779 has 13 MA's), (Start: 30 @26770 has 127 MA's), (64, 26647), (68, 26614), (94, 26395), (101, 26338), (127, 26044), (132, 26014), (136, 25984), (138, 25981), (155, 25876), (158, 25858), (160, 25846), (168, 25813), (177, 25762), (181, 25729),

Gene: Gershwin_37 Start: 26780, Stop: 25605, Start Num: 30

Candidate Starts for Gershwin_37:

(9, 26900), (16, 26849), (Start: 28 @26789 has 13 MA's), (Start: 30 @26780 has 127 MA's), (64, 26657), (68, 26624), (94, 26405), (101, 26348), (127, 26054), (132, 26024), (136, 25994), (138, 25991), (155, 25886), (158, 25868), (160, 25856), (168, 25823), (177, 25772), (181, 25739),

Gene: GiKK_47 Start: 30758, Stop: 29736, Start Num: 54

Candidate Starts for GiKK_47:

(Start: 54 @30758 has 3 MA's), (75, 30611), (79, 30581), (90, 30494), (96, 30437), (99, 30416), (102, 30392), (104, 30368), (106, 30362), (110, 30311), (116, 30257), (118, 30233), (121, 30206), (153, 30029), (155, 30014), (164, 29966), (179, 29876),

Gene: Gibbous_37 Start: 28990, Stop: 27938, Start Num: 47

Candidate Starts for Gibbous_37:

(Start: 47 @28990 has 3 MA's), (Start: 53 @28969 has 8 MA's), (Start: 58 @28960 has 4 MA's), (64, 28930), (75, 28816), (82, 28762), (87, 28720), (90, 28699), (102, 28597), (106, 28567), (113, 28492), (116, 28462), (118, 28438), (139, 28300), (158, 28201), (161, 28183), (163, 28177), (164, 28171), (173, 28114), (177, 28093),

Gene: Glamour_36 Start: 26824, Stop: 25634, Start Num: 26

Candidate Starts for Glamour_36:

(23, 26833), (Start: 26 @26824 has 2 MA's), (Start: 33 @26797 has 32 MA's), (64, 26686), (65, 26683), (69, 26638), (92, 26452), (95, 26419), (98, 26401), (101, 26377), (102, 26362), (107, 26311), (117, 26221), (127, 26083), (132, 26053), (136, 26023), (143, 25996), (159, 25894), (177, 25801), (181, 25768), (183, 25744), (184, 25732),

Gene: GoldHunter_42 Start: 29791, Stop: 28760, Start Num: 60

Candidate Starts for GoldHunter_42:

(Start: 60 @29791 has 22 MA's), (79, 29620), (90, 29533), (96, 29476), (104, 29407), (109, 29374), (116, 29296), (121, 29245), (155, 29050), (158, 29032), (161, 29014), (176, 28930), (179, 28912),

Gene: Golden_36 Start: 26754, Stop: 25594, Start Num: 28

Candidate Starts for Golden_36:

(14, 26817), (16, 26814), (Start: 28 @26754 has 13 MA's), (64, 26634), (65, 26631), (92, 26400), (102, 26310), (105, 26283), (149, 25923), (151, 25908), (159, 25857), (181, 25731), (183, 25707), (184, 25695),

Gene: Greenlvy_35 Start: 25564, Stop: 24386, Start Num: 33

Candidate Starts for Greenlvy_35:

(18, 25636), (20, 25630), (21, 25621), (Start: 33 @25564 has 32 MA's), (64, 25450), (101, 25132), (102, 25117), (107, 25066), (122, 24874), (127, 24838), (136, 24778), (138, 24775), (151, 24700), (159, 24649), (179, 24544), (184, 24487),

Gene: Greys_38 Start: 27089, Stop: 25905, Start Num: 28

Candidate Starts for Greys_38:

(9, 27200), (16, 27149), (Start: 28 @27089 has 13 MA's), (Start: 30 @27080 has 127 MA's), (64, 26957), (74, 26855), (94, 26705), (101, 26648), (127, 26354), (132, 26324), (136, 26294), (138, 26291), (155, 26186), (158, 26168), (160, 26156), (168, 26123), (177, 26072), (181, 26039),

Gene: Gubbabump_37 Start: 26760, Stop: 25585, Start Num: 30

Candidate Starts for Gubbabump_37:

(9, 26880), (16, 26829), (Start: 28 @26769 has 13 MA's), (Start: 30 @26760 has 127 MA's), (64, 26637), (Start: 66 @26622 has 1 MA's), (74, 26535), (94, 26385), (101, 26328), (102, 26313), (127, 26034), (132, 26004), (136, 25974), (138, 25971), (155, 25866), (158, 25848), (160, 25836), (168, 25803), (177, 25752), (181, 25719),

Gene: Guetzie_36 Start: 26730, Stop: 25579, Start Num: 30

Candidate Starts for Guetzie_36:

(14, 26802), (16, 26799), (Start: 28 @26739 has 13 MA's), (Start: 30 @26730 has 127 MA's), (64, 26619), (65, 26616), (92, 26385), (100, 26322), (102, 26295), (105, 26268), (149, 25908), (151, 25893), (159, 25842), (181, 25716), (183, 25692), (184, 25680),

Gene: Hamlet_37 Start: 27212, Stop: 26034, Start Num: 30

Candidate Starts for Hamlet_37:

(14, 27284), (Start: 30 @27212 has 127 MA's), (64, 27086), (65, 27083), (85, 26885), (92, 26852), (101, 26777), (102, 26762), (127, 26483), (136, 26423), (138, 26420), (140, 26414), (158, 26297), (177, 26201), (181, 26168),

Gene: HanSolo_37 Start: 26767, Stop: 25592, Start Num: 30

Candidate Starts for HanSolo_37:

(9, 26887), (16, 26836), (Start: 28 @26776 has 13 MA's), (Start: 30 @26767 has 127 MA's), (64, 26644), (Start: 66 @26629 has 1 MA's), (74, 26542), (94, 26392), (101, 26335), (102, 26320), (127, 26041), (132, 26011), (136, 25981), (138, 25978), (155, 25873), (158, 25855), (160, 25843), (168, 25810), (177, 25759), (181, 25726),

Gene: HankSprout_38 Start: 26647, Stop: 25472, Start Num: 30

Candidate Starts for HankSprout_38:

(9, 26767), (16, 26716), (Start: 28 @26656 has 13 MA's), (Start: 30 @26647 has 127 MA's), (64, 26524), (Start: 66 @26509 has 1 MA's), (74, 26422), (94, 26272), (101, 26215), (102, 26200), (127, 25921), (132, 25891), (136, 25861), (138, 25858), (155, 25753), (158, 25735), (160, 25723), (168, 25690), (177, 25639), (181, 25606),

Gene: Hasitha_35 Start: 24987, Stop: 23809, Start Num: 33

Candidate Starts for Hasitha_35:

(18, 25059), (21, 25044), (Start: 33 @24987 has 32 MA's), (64, 24873), (101, 24555), (102, 24540), (107, 24489), (122, 24297), (127, 24261), (136, 24201), (138, 24198), (151, 24123), (159, 24072), (179, 23967), (184, 23910),

Gene: HerculesXL_36 Start: 25428, Stop: 24247, Start Num: 30

Candidate Starts for HerculesXL_36:

(2, 25644), (6, 25581), (10, 25536), (14, 25500), (Start: 30 @25428 has 127 MA's), (64, 25299), (69, 25251), (95, 25032), (97, 25020), (98, 25014), (101, 24990), (102, 24975), (107, 24924), (117, 24834), (132, 24666), (135, 24648), (140, 24627), (159, 24507), (168, 24465), (177, 24414), (181, 24381), (183, 24357), (184, 24345),

Gene: Hexbug_49 Start: 32527, Stop: 31505, Start Num: 58

Candidate Starts for Hexbug_49:

(23, 32659), (41, 32575), (45, 32563), (Start: 58 @32527 has 4 MA's), (75, 32383), (79, 32353), (82, 32329), (90, 32266), (96, 32209), (104, 32140), (106, 32134), (107, 32116), (110, 32083), (116, 32029), (118, 32005), (121, 31978), (130, 31909), (139, 31864), (144, 31849), (148, 31828), (152, 31801), (153, 31798), (155, 31783), (164, 31735), (169, 31717), (187, 31570),

Gene: HippoPololi_39 Start: 29421, Stop: 28390, Start Num: 53

Candidate Starts for HippoPololi_39:

(Start: 53 @29421 has 8 MA's), (64, 29382), (75, 29268), (82, 29214), (87, 29172), (90, 29151), (102, 29049), (106, 29019), (133, 28779), (142, 28749), (153, 28686), (158, 28653), (161, 28635), (164, 28623),

Gene: Horseradish_43 Start: 29685, Stop: 28657, Start Num: 60

Candidate Starts for Horseradish_43:

(15, 29859), (25, 29814), (Start: 60 @29685 has 22 MA's), (82, 29490), (90, 29427), (104, 29301), (110, 29244), (116, 29190), (121, 29139), (144, 29010), (145, 29001), (148, 28989), (155, 28944), (158, 28926), (161, 28908), (179, 28806), (187, 28731),

Gene: HungryHenry_37 Start: 26772, Stop: 25597, Start Num: 30

Candidate Starts for HungryHenry_37:

(9, 26892), (16, 26841), (Start: 28 @26781 has 13 MA's), (Start: 30 @26772 has 127 MA's), (64, 26649), (Start: 66 @26634 has 1 MA's), (74, 26547), (94, 26397), (101, 26340), (102, 26325), (127, 26046), (132, 26016), (136, 25986), (138, 25983), (155, 25878), (158, 25860), (160, 25848), (168, 25815), (177, 25764), (181, 25731),

Gene: Huwbert_79 Start: 48394, Stop: 49503, Start Num: 37

Candidate Starts for Huwbert_79:

(19, 48307), (24, 48334), (Start: 37 @48394 has 2 MA's), (44, 48424), (64, 48490), (67, 48517), (83, 48673), (88, 48706), (92, 48730), (108, 48871), (118, 48976), (161, 49252), (164, 49264), (165, 49267), (166, 49270), (167, 49273), (172, 49297), (178, 49336), (184, 49399), (186, 49411),

Gene: Ilzat_37 Start: 26783, Stop: 25608, Start Num: 30

Candidate Starts for Ilzat_37:

(9, 26903), (16, 26852), (Start: 28 @26792 has 13 MA's), (Start: 30 @26783 has 127 MA's), (64, 26660), (Start: 66 @26645 has 1 MA's), (74, 26558), (94, 26408), (101, 26351), (102, 26336), (127, 26057), (132, 26027), (136, 25997), (138, 25994), (155, 25889), (158, 25871), (160, 25859), (168, 25826), (177, 25775), (181, 25742),

Gene: Inventa_38 Start: 27078, Stop: 25903, Start Num: 30

Candidate Starts for Inventa_38:

(9, 27198), (16, 27147), (Start: 28 @27087 has 13 MA's), (Start: 30 @27078 has 127 MA's), (64, 26955), (Start: 66 @26940 has 1 MA's), (94, 26703), (101, 26646), (102, 26631), (127, 26352), (132, 26322), (136, 26292), (138, 26289), (155, 26184), (158, 26166), (160, 26154), (168, 26121), (177, 26070), (181, 26037),

Gene: loannes_38 Start: 27082, Stop: 25907, Start Num: 30

Candidate Starts for loannes_38:

(9, 27202), (16, 27151), (Start: 28 @27091 has 13 MA's), (Start: 30 @27082 has 127 MA's), (64, 26959), (Start: 66 @26944 has 1 MA's), (74, 26857), (94, 26707), (101, 26650), (102, 26635), (127, 26356), (132, 26326), (136, 26296), (138, 26293), (155, 26188), (158, 26170), (160, 26158), (168, 26125), (177, 26074), (181, 26041),

Gene: Ixel_36 Start: 25399, Stop: 24230, Start Num: 33

Candidate Starts for Ixel_36:

(8, 25537), (20, 25465), (Start: 33 @25399 has 32 MA's), (64, 25285), (95, 25018), (98, 25000), (101, 24976), (102, 24961), (107, 24910), (117, 24820), (127, 24682), (181, 24367), (183, 24343),

Gene: JacoRen57_39 Start: 32689, Stop: 31700, Start Num: 66

Candidate Starts for JacoRen57_39:

(57, 32731), (62, 32719), (Start: 66 @32689 has 1 MA's), (77, 32566), (79, 32542), (83, 32500), (86, 32479), (90, 32455), (97, 32389), (98, 32383), (102, 32353), (104, 32329), (106, 32323), (107, 32305), (109, 32296), (111, 32263), (114, 32230), (120, 32170), (123, 32146), (125, 32134), (127, 32122), (133, 32083), (158, 31951), (161, 31933),

Gene: Jamzy_47 Start: 30741, Stop: 29719, Start Num: 54

Candidate Starts for Jamzy_47:

(Start: 54 @30741 has 3 MA's), (75, 30594), (79, 30564), (90, 30477), (96, 30420), (102, 30375), (104, 30351), (106, 30345), (110, 30294), (116, 30240), (118, 30216), (121, 30189), (153, 30012), (155, 29997), (164, 29949), (179, 29859),

Gene: Janus167_37 Start: 26767, Stop: 25592, Start Num: 30

Candidate Starts for Janus167_37:

(9, 26887), (16, 26836), (Start: 28 @26776 has 13 MA's), (Start: 30 @26767 has 127 MA's), (64, 26644), (Start: 66 @26629 has 1 MA's), (94, 26392), (101, 26335), (102, 26320), (127, 26041), (132, 26011), (136, 25981), (138, 25978), (155, 25873), (158, 25855), (160, 25843), (168, 25810), (177, 25759), (181, 25726),

Gene: JasonD_42 Start: 27633, Stop: 26452, Start Num: 30

Candidate Starts for JasonD_42:

(14, 27705), (Start: 28 @27642 has 13 MA's), (Start: 30 @27633 has 127 MA's), (64, 27504), (89, 27288), (94, 27252), (97, 27225), (101, 27195), (102, 27180), (127, 26901), (132, 26871), (136, 26841), (138, 26838), (141, 26829), (158, 26715), (168, 26670), (181, 26586), (189, 26511),

Gene: JasperRussell_37 Start: 26767, Stop: 25592, Start Num: 30

Candidate Starts for JasperRussell_37:

(9, 26887), (16, 26836), (Start: 28 @26776 has 13 MA's), (Start: 30 @26767 has 127 MA's), (64, 26644), (Start: 66 @26629 has 1 MA's), (74, 26542), (94, 26392), (101, 26335), (102, 26320), (127, 26041), (132, 26011), (136, 25981), (138, 25978), (155, 25873), (158, 25855), (160, 25843), (168, 25810), (177, 25759), (181, 25726),

Gene: Jemerald_39 Start: 27469, Stop: 26306, Start Num: 34

Candidate Starts for Jemerald_39:

(14, 27556), (Start: 30 @27484 has 127 MA's), (Start: 34 @27469 has 2 MA's), (51, 27406), (64, 27361), (69, 27313), (94, 27109), (98, 27076), (101, 27052), (102, 27037), (107, 26986), (136, 26698), (149, 26635), (150, 26623), (158, 26572), (181, 26443), (183, 26419), (184, 26407),

Gene: Jenos_41 Start: 28279, Stop: 27101, Start Num: 30

Candidate Starts for Jenos_41:

(14, 28351), (Start: 30 @28279 has 127 MA's), (46, 28216), (64, 28153), (89, 27937), (101, 27844), (102, 27829), (122, 27586), (127, 27550), (132, 27520), (136, 27490), (158, 27364), (168, 27319), (181, 27235), (189, 27160),

Gene: Jerbirus_38 Start: 26767, Stop: 25592, Start Num: 30

Candidate Starts for Jerbirus_38:

(9, 26887), (16, 26836), (Start: 28 @26776 has 13 MA's), (Start: 30 @26767 has 127 MA's), (64, 26644), (Start: 66 @26629 has 1 MA's), (74, 26542), (94, 26392), (101, 26335), (102, 26320), (127, 26041), (132, 26011), (136, 25981), (138, 25978), (155, 25873), (158, 25855), (160, 25843), (168, 25810), (177, 25759), (181, 25726),

Gene: JeriBeth_38 Start: 26630, Stop: 25455, Start Num: 30

Candidate Starts for JeriBeth_38:

(9, 26750), (16, 26699), (Start: 28 @26639 has 13 MA's), (Start: 30 @26630 has 127 MA's), (64, 26507), (Start: 66 @26492 has 1 MA's), (74, 26405), (94, 26255), (101, 26198), (102, 26183), (127, 25904), (132, 25874), (136, 25844), (138, 25841), (155, 25736), (158, 25718), (160, 25706), (168, 25673), (177, 25622), (181, 25589),

Gene: Juanyo_36 Start: 26603, Stop: 25416, Start Num: 31

Candidate Starts for Juanyo_36:

(16, 26675), (Start: 29 @26612 has 1 MA's), (Start: 31 @26603 has 1 MA's), (64, 26480), (Start: 66 @26465 has 1 MA's), (85, 26279), (100, 26174), (101, 26162), (102, 26147), (107, 26096), (132, 25838), (138, 25805), (144, 25772), (151, 25730), (159, 25679), (168, 25637), (177, 25586), (183, 25529), (184, 25517),

Gene: Juicer_39 Start: 27469, Stop: 26306, Start Num: 34

Candidate Starts for Juicer_39:

(14, 27556), (Start: 30 @27484 has 127 MA's), (Start: 34 @27469 has 2 MA's), (51, 27406), (64, 27361), (69, 27313), (94, 27109), (98, 27076), (101, 27052), (102, 27037), (107, 26986), (136, 26698), (149, 26635), (150, 26623), (158, 26572), (181, 26443), (183, 26419), (184, 26407),

Gene: Kale_37 Start: 26782, Stop: 25607, Start Num: 30

Candidate Starts for Kale_37:

(9, 26902), (16, 26851), (Start: 28 @26791 has 13 MA's), (Start: 30 @26782 has 127 MA's), (64, 26659), (Start: 66 @26644 has 1 MA's), (94, 26407), (101, 26350), (127, 26056), (132, 26026), (136, 25996), (138, 25993), (155, 25888), (158, 25870), (160, 25858), (168, 25825), (177, 25774), (181, 25741),

Gene: KannH_37 Start: 26767, Stop: 25592, Start Num: 30

Candidate Starts for KannH_37:

(9, 26887), (16, 26836), (Start: 28 @26776 has 13 MA's), (Start: 30 @26767 has 127 MA's), (64, 26644), (Start: 66 @26629 has 1 MA's), (74, 26542), (94, 26392), (101, 26335), (102, 26320), (127, 26041), (132, 26011), (136, 25981), (138, 25978), (155, 25873), (158, 25855), (160, 25843), (168, 25810), (177, 25759), (181, 25726),

Gene: KatChan_38 Start: 26321, Stop: 25158, Start Num: 33

Candidate Starts for KatChan_38:

(Start: 33 @26321 has 32 MA's), (38, 26309), (64, 26210), (65, 26207), (82, 26045), (101, 25901), (102, 25886), (107, 25835), (117, 25745), (127, 25607), (132, 25577), (136, 25547), (149, 25484), (151, 25469), (184, 25256),

Gene: Kauala_36 Start: 26645, Stop: 25482, Start Num: 28

Candidate Starts for Kauala_36:

(16, 26705), (Start: 28 @26645 has 13 MA's), (Start: 56 @26555 has 2 MA's), (64, 26519), (65, 26516), (92, 26285), (101, 26210), (102, 26195), (105, 26168), (120, 25988), (151, 25793), (181, 25616), (183, 25592), (184, 25580), (189, 25541),

Gene: KayGee_44 Start: 31626, Stop: 30580, Start Num: 59

Candidate Starts for KayGee_44:

(48, 31656), (55, 31632), (Start: 59 @31626 has 2 MA's), (77, 31461), (79, 31437), (80, 31428), (83, 31395), (90, 31350), (102, 31248), (110, 31167), (118, 31089), (123, 31041), (137, 30948), (147, 30912), (153, 30879), (154, 30873), (155, 30864), (157, 30849), (161, 30828), (165, 30813), (183, 30684), (184, 30672), (185, 30666), (187, 30651),

Gene: KimJongPhill_82 Start: 60719, Stop: 61843, Start Num: 42

Candidate Starts for KimJongPhill_82:

(1, 60410), (3, 60458), (22, 60635), (Start: 42 @60719 has 2 MA's), (64, 60797), (67, 60824), (72, 60866), (81, 60986), (90, 61052), (92, 61064), (96, 61109), (97, 61118), (102, 61160), (104, 61184), (106, 61190), (108, 61214), (118, 61319), (122, 61364), (124, 61373), (134, 61451), (153, 61550), (161, 61601), (172, 61649), (175, 61676), (181, 61709), (184, 61745), (191, 61811), (192, 61835),

Gene: KingJulien_37 Start: 27202, Stop: 26024, Start Num: 30

Candidate Starts for KingJulien_37:

(14, 27274), (Start: 28 @27211 has 13 MA's), (Start: 30 @27202 has 127 MA's), (64, 27076), (65, 27073), (92, 26842), (101, 26767), (102, 26752), (127, 26473), (136, 26413), (138, 26410), (158, 26287), (177, 26191), (181, 26158),

Gene: Klimt_37 Start: 26762, Stop: 25587, Start Num: 30

Candidate Starts for Klimt_37:

(9, 26882), (16, 26831), (Start: 28 @26771 has 13 MA's), (Start: 30 @26762 has 127 MA's), (64, 26639), (68, 26606), (94, 26387), (101, 26330), (127, 26036), (132, 26006), (136, 25976), (138, 25973), (155, 25868), (158, 25850), (160, 25838), (168, 25805), (177, 25754), (181, 25721),

Gene: Knox_38 Start: 27082, Stop: 25907, Start Num: 30

Candidate Starts for Knox_38:

(9, 27202), (16, 27151), (Start: 28 @27091 has 13 MA's), (Start: 30 @27082 has 127 MA's), (64, 26959), (74, 26857), (94, 26707), (101, 26650), (127, 26356), (132, 26326), (136, 26296), (138, 26293), (155, 26188), (158, 26170), (160, 26158), (168, 26125), (177, 26074), (181, 26041),

Gene: Koji_36 Start: 26838, Stop: 25675, Start Num: 28

Candidate Starts for Koji_36:

(16, 26898), (Start: 28 @26838 has 13 MA's), (Start: 56 @26748 has 2 MA's), (64, 26712), (65, 26709), (92, 26478), (100, 26415), (101, 26403), (102, 26388), (105, 26361), (120, 26181), (126, 26136), (149, 26001), (151, 25986), (181, 25809), (184, 25773), (189, 25734),

Gene: Kurt1_38 Start: 27078, Stop: 25903, Start Num: 30

Candidate Starts for Kurt1_38:

(9, 27198), (16, 27147), (Start: 28 @27087 has 13 MA's), (Start: 30 @27078 has 127 MA's), (64, 26955), (Start: 66 @26940 has 1 MA's), (94, 26703), (101, 26646), (102, 26631), (127, 26352), (132, 26322), (136, 26292), (138, 26289), (155, 26184), (158, 26166), (160, 26154), (168, 26121), (177, 26070), (181, 26037),

Gene: Lauer_39 Start: 32447, Stop: 31389, Start Num: 50

Candidate Starts for Lauer_39:

(Start: 50 @32447 has 1 MA's), (73, 32321), (77, 32270), (79, 32246), (80, 32237), (83, 32204), (90, 32159), (102, 32057), (110, 31976), (118, 31898), (123, 31850), (137, 31757), (147, 31721), (153, 31688), (154, 31682), (155, 31673), (161, 31637), (165, 31622), (183, 31493), (184, 31481), (185, 31475), (187, 31460),

Gene: Leafus_37 Start: 27347, Stop: 26169, Start Num: 30

Candidate Starts for Leafus_37:

(14, 27419), (Start: 30 @27347 has 127 MA's), (64, 27221), (65, 27218), (85, 27020), (92, 26987), (101, 26912), (102, 26897), (127, 26618), (136, 26558), (138, 26555), (140, 26549), (158, 26432), (177, 26336), (181, 26303),

Gene: Librie_35 Start: 24974, Stop: 23796, Start Num: 33

Candidate Starts for Librie_35:

(18, 25046), (21, 25031), (Start: 33 @24974 has 32 MA's), (64, 24860), (101, 24542), (102, 24527), (107, 24476), (122, 24284), (127, 24248), (136, 24188), (138, 24185), (151, 24110), (159, 24059),

(179, 23954), (184, 23897),

Gene: LilTerminator_36 Start: 24996, Stop: 23818, Start Num: 33

Candidate Starts for LilTerminator_36:

(18, 25068), (21, 25053), (Start: 33 @24996 has 32 MA's), (64, 24882), (71, 24825), (101, 24564), (102, 24549), (107, 24498), (122, 24306), (127, 24270), (136, 24210), (138, 24207), (151, 24132), (159, 24081), (179, 23976), (184, 23919),

Gene: Lovelyunicorn_38 Start: 27083, Stop: 25908, Start Num: 30

Candidate Starts for Lovelyunicorn_38:

(9, 27203), (16, 27152), (Start: 28 @27092 has 13 MA's), (Start: 30 @27083 has 127 MA's), (64, 26960), (74, 26858), (94, 26708), (101, 26651), (127, 26357), (132, 26327), (136, 26297), (138, 26294), (155, 26189), (158, 26171), (160, 26159), (168, 26126), (177, 26075), (181, 26042),

Gene: Lucky3_36 Start: 26754, Stop: 25594, Start Num: 28

Candidate Starts for Lucky3_36:

(14, 26817), (16, 26814), (Start: 28 @26754 has 13 MA's), (64, 26634), (65, 26631), (92, 26400), (102, 26310), (105, 26283), (149, 25923), (151, 25908), (159, 25857), (181, 25731), (183, 25707), (184, 25695),

Gene: Ludgate_38 Start: 27078, Stop: 25903, Start Num: 30

Candidate Starts for Ludgate_38:

(9, 27198), (16, 27147), (Start: 28 @27087 has 13 MA's), (Start: 30 @27078 has 127 MA's), (64, 26955), (Start: 66 @26940 has 1 MA's), (94, 26703), (101, 26646), (127, 26352), (132, 26322), (136, 26292), (138, 26289), (155, 26184), (158, 26166), (160, 26154), (168, 26121), (177, 26070), (181, 26037),

Gene: Luna18_38 Start: 26321, Stop: 25158, Start Num: 33

Candidate Starts for Luna18_38:

(Start: 33 @26321 has 32 MA's), (38, 26309), (64, 26210), (65, 26207), (82, 26045), (101, 25901), (102, 25886), (107, 25835), (117, 25745), (127, 25607), (132, 25577), (136, 25547), (149, 25484), (151, 25469), (184, 25256),

Gene: MAnor_44 Start: 31980, Stop: 30922, Start Num: 52

Candidate Starts for MAnor_44:

(44, 32004), (Start: 52 @31980 has 9 MA's), (73, 31854), (77, 31803), (80, 31770), (83, 31737), (90, 31692), (102, 31590), (105, 31563), (110, 31509), (118, 31431), (120, 31407), (123, 31383), (137, 31290), (153, 31221), (154, 31215), (155, 31206), (161, 31170), (162, 31167), (165, 31155), (179, 31068), (183, 31026), (184, 31014), (185, 31008), (187, 30993),

Gene: MCubed_37 Start: 26822, Stop: 25659, Start Num: 33

Candidate Starts for MCubed_37:

(23, 26858), (Start: 26 @26849 has 2 MA's), (Start: 33 @26822 has 32 MA's), (64, 26711), (69, 26663), (92, 26477), (95, 26444), (98, 26426), (101, 26402), (102, 26387), (107, 26336), (117, 26246), (127, 26108), (132, 26078), (136, 26048), (138, 26045), (143, 26021), (159, 25919), (177, 25826), (181, 25793), (183, 25769), (184, 25757),

Gene: MScarn_45 Start: 29939, Stop: 28908, Start Num: 60

Candidate Starts for MScarn_45:

(25, 30068), (32, 30038), (Start: 43 @29984 has 1 MA's), (46, 29975), (Start: 60 @29939 has 22 MA's), (75, 29798), (90, 29681), (96, 29624), (104, 29555), (109, 29522), (116, 29444), (121, 29393), (155, 29198), (158, 29180), (161, 29162), (176, 29078), (179, 29060),

Gene: MaVan_39 Start: 29709, Stop: 28678, Start Num: 53

Candidate Starts for MaVan_39:

(Start: 53 @29709 has 8 MA's), (64, 29670), (71, 29613), (75, 29556), (79, 29526), (87, 29460), (90, 29439), (102, 29337), (106, 29307), (109, 29280), (113, 29232), (116, 29202), (142, 29037), (158, 28941), (161, 28923), (165, 28908),

Gene: Maco6_41 Start: 31189, Stop: 30173, Start Num: 53

Candidate Starts for Maco6_41:

(Start: 53 @31189 has 8 MA's), (70, 31096), (71, 31093), (78, 31006), (90, 30919), (96, 30862), (98, 30847), (104, 30793), (123, 30610), (155, 30439), (157, 30424), (161, 30403), (172, 30355), (182, 30277), (188, 30226), (190, 30205),

Gene: MaeLinda_38 Start: 27082, Stop: 25907, Start Num: 30

Candidate Starts for MaeLinda_38:

(9, 27202), (16, 27151), (Start: 28 @27091 has 13 MA's), (Start: 30 @27082 has 127 MA's), (64, 26959), (Start: 66 @26944 has 1 MA's), (94, 26707), (101, 26650), (102, 26635), (127, 26356), (132, 26326), (136, 26296), (138, 26293), (155, 26188), (158, 26170), (160, 26158), (168, 26125), (177, 26074), (181, 26041),

Gene: ManRay_37 Start: 26780, Stop: 25605, Start Num: 30

Candidate Starts for ManRay_37:

(9, 26900), (16, 26849), (Start: 28 @26789 has 13 MA's), (Start: 30 @26780 has 127 MA's), (64, 26657), (Start: 66 @26642 has 1 MA's), (94, 26405), (101, 26348), (102, 26333), (127, 26054), (132, 26024), (136, 25994), (138, 25991), (155, 25886), (158, 25868), (160, 25856), (168, 25823), (177, 25772), (181, 25739),

Gene: Mandalorian_35 Start: 26523, Stop: 25345, Start Num: 33

Candidate Starts for Mandalorian_35:

(Start: 33 @26523 has 32 MA's), (62, 26424), (64, 26409), (Start: 66 @26394 has 1 MA's), (98, 26115), (100, 26103), (101, 26091), (102, 26076), (107, 26025), (127, 25797), (132, 25767), (136, 25737), (138, 25734), (149, 25674), (151, 25659), (159, 25608), (177, 25515), (184, 25446),

Gene: Margaret_48 Start: 31484, Stop: 30459, Start Num: 56

Candidate Starts for Margaret_48:

(Start: 56 @31484 has 2 MA's), (62, 31466), (63, 31463), (75, 31337), (79, 31307), (90, 31220), (96, 31163), (104, 31094), (106, 31088), (110, 31037), (116, 30983), (118, 30959), (121, 30932), (130, 30863), (139, 30818), (144, 30803), (152, 30755), (153, 30752), (155, 30737), (164, 30689), (169, 30671), (187, 30524),

Gene: Martin_39 Start: 27087, Stop: 25912, Start Num: 30

Candidate Starts for Martin_39:

(9, 27207), (16, 27156), (Start: 28 @27096 has 13 MA's), (Start: 30 @27087 has 127 MA's), (64, 26964), (Start: 66 @26949 has 1 MA's), (94, 26712), (101, 26655), (102, 26640), (127, 26361), (132, 26331), (136, 26301), (138, 26298), (155, 26193), (158, 26175), (160, 26163), (168, 26130), (177, 26079), (181, 26046),

Gene: Mayweather_46 Start: 32259, Stop: 31201, Start Num: 52

Candidate Starts for Mayweather_46:

(44, 32283), (Start: 52 @32259 has 9 MA's), (73, 32133), (77, 32082), (79, 32058), (80, 32049), (83, 32016), (90, 31971), (102, 31869), (110, 31788), (118, 31710), (123, 31662), (137, 31569), (153, 31500), (154, 31494), (155, 31485), (161, 31449), (162, 31446), (165, 31434), (183, 31305), (184, 31293), (185, 31287), (187, 31272),

Gene: McGalleon_40 Start: 28490, Stop: 27312, Start Num: 30

Candidate Starts for McGalleon_40:

(14, 28562), (Start: 30 @28490 has 127 MA's), (64, 28364), (89, 28148), (101, 28055), (102, 28040), (127, 27761), (131, 27737), (132, 27731), (136, 27701), (158, 27575), (168, 27530), (181, 27446), (189, 27371),

Gene: Mercedes_32 Start: 23957, Stop: 22776, Start Num: 33

Candidate Starts for Mercedes_32:

(Start: 33 @23957 has 32 MA's), (64, 23843), (94, 23591), (100, 23537), (101, 23525), (107, 23459), (127, 23231), (132, 23201), (138, 23168), (151, 23093), (159, 23042), (177, 22949), (184, 22880),

Gene: MillyPhilly_38 Start: 27075, Stop: 25900, Start Num: 30

Candidate Starts for MillyPhilly_38:

(9, 27195), (16, 27144), (Start: 28 @27084 has 13 MA's), (Start: 30 @27075 has 127 MA's), (64, 26952), (Start: 66 @26937 has 1 MA's), (94, 26700), (101, 26643), (102, 26628), (127, 26349), (132, 26319), (136, 26289), (138, 26286), (155, 26181), (158, 26163), (160, 26151), (168, 26118), (177, 26067), (181, 26034),

Gene: MonChoix_36 Start: 27095, Stop: 25917, Start Num: 30

Candidate Starts for MonChoix_36:

(12, 27194), (13, 27173), (14, 27167), (Start: 30 @27095 has 127 MA's), (64, 26969), (68, 26936), (74, 26867), (92, 26735), (94, 26717), (101, 26660), (102, 26645), (122, 26402), (127, 26366), (132, 26336), (136, 26306), (138, 26303), (158, 26180), (160, 26168), (168, 26135), (177, 26084), (181, 26051),

Gene: Morrigan_38 Start: 26342, Stop: 25179, Start Num: 33

Candidate Starts for Morrigan_38:

(Start: 33 @26342 has 32 MA's), (38, 26330), (64, 26231), (94, 25979), (95, 25964), (98, 25946), (100, 25934), (101, 25922), (102, 25907), (107, 25856), (127, 25628), (140, 25559), (149, 25505), (177, 25346), (184, 25277),

Gene: MrWorldwide_38 Start: 27085, Stop: 25910, Start Num: 30

Candidate Starts for MrWorldwide_38:

(9, 27205), (16, 27154), (Start: 28 @27094 has 13 MA's), (Start: 30 @27085 has 127 MA's), (64, 26962), (Start: 66 @26947 has 1 MA's), (74, 26860), (94, 26710), (101, 26653), (127, 26359), (132, 26329), (136, 26299), (138, 26296), (155, 26191), (158, 26173), (160, 26161), (168, 26128), (177, 26077), (181, 26044),

Gene: Muddy_43 Start: 32421, Stop: 31405, Start Num: 53

Candidate Starts for Muddy_43:

(Start: 53 @32421 has 8 MA's), (70, 32328), (71, 32325), (78, 32238), (90, 32151), (96, 32094), (98, 32079), (104, 32025), (123, 31842), (155, 31671), (157, 31656), (161, 31635), (172, 31587), (182, 31509), (188, 31458), (190, 31437),

Gene: MunkgeeRoachy_39 Start: 29253, Stop: 28222, Start Num: 60

Candidate Starts for MunkgeeRoachy_39:

(Start: 60 @29253 has 22 MA's), (79, 29082), (90, 28995), (96, 28938), (104, 28869), (109, 28836), (116, 28758), (121, 28707), (155, 28512), (158, 28494), (161, 28476), (176, 28392), (179, 28374),

Gene: Nagem_38 Start: 27078, Stop: 25903, Start Num: 30

Candidate Starts for Nagem_38:

(9, 27198), (16, 27147), (Start: 28 @27087 has 13 MA's), (Start: 30 @27078 has 127 MA's), (64, 26955), (68, 26922), (94, 26703), (101, 26646), (127, 26352), (132, 26322), (136, 26292), (138,

26289), (155, 26184), (158, 26166), (160, 26154), (168, 26121), (177, 26070), (181, 26037),

Gene: Nattles_37 Start: 26767, Stop: 25592, Start Num: 30

Candidate Starts for Nattles_37:

(9, 26887), (16, 26836), (Start: 28 @26776 has 13 MA's), (Start: 30 @26767 has 127 MA's), (64, 26644), (Start: 66 @26629 has 1 MA's), (94, 26392), (101, 26335), (127, 26041), (132, 26011), (136, 25981), (138, 25978), (155, 25873), (158, 25855), (160, 25843), (168, 25810), (177, 25759), (181, 25726),

Gene: Nebulous_35 Start: 27982, Stop: 26807, Start Num: 33

Candidate Starts for Nebulous_35:

(7, 28126), (18, 28054), (20, 28048), (Start: 33 @27982 has 32 MA's), (64, 27868), (84, 27682), (101, 27550), (102, 27535), (107, 27484), (117, 27394), (136, 27196), (149, 27133), (177, 26974), (181, 26941), (183, 26917), (189, 26866),

Gene: Neferthena_35 Start: 27068, Stop: 25893, Start Num: 33

Candidate Starts for Neferthena_35:

(Start: 33 @27068 has 32 MA's), (64, 26954), (84, 26768), (98, 26660), (100, 26648), (101, 26636), (102, 26621), (107, 26570), (117, 26480), (177, 26060), (181, 26027), (189, 25952),

Gene: Nibbles_38 Start: 29396, Stop: 28365, Start Num: 53

Candidate Starts for Nibbles_38:

(Start: 53 @29396 has 8 MA's), (64, 29357), (71, 29300), (75, 29243), (79, 29213), (87, 29147), (90, 29126), (102, 29024), (106, 28994), (109, 28967), (113, 28919), (116, 28889), (142, 28724), (158, 28628), (161, 28610), (165, 28595),

Gene: NickSell_38 Start: 27087, Stop: 25909, Start Num: 30

Candidate Starts for NickSell_38:

(9, 27207), (16, 27156), (Start: 28 @27096 has 13 MA's), (Start: 30 @27087 has 127 MA's), (64, 26964), (Start: 66 @26949 has 1 MA's), (94, 26712), (101, 26655), (102, 26640), (127, 26361), (132, 26331), (136, 26301), (138, 26298), (155, 26193), (158, 26175), (160, 26163), (168, 26130), (177, 26079), (181, 26046),

Gene: Nina_40 Start: 29915, Stop: 28884, Start Num: 60

Candidate Starts for Nina_40:

(Start: 56 @29921 has 2 MA's), (Start: 60 @29915 has 22 MA's), (90, 29657), (96, 29600), (104, 29531), (109, 29498), (116, 29420), (121, 29369), (155, 29174), (158, 29156), (161, 29138), (176, 29054), (179, 29036),

Gene: NoShow_51 Start: 35399, Stop: 34308, Start Num: 40

Candidate Starts for NoShow_51:

(39, 35402), (Start: 40 @35399 has 1 MA's), (77, 35174), (79, 35150), (84, 35105), (87, 35084), (88, 35075), (90, 35063), (97, 34997), (98, 34991), (102, 34961), (104, 34937), (106, 34931), (109, 34904), (111, 34871), (118, 34802), (129, 34712), (133, 34691), (137, 34667), (146, 34634), (161, 34544), (187, 34376), (188, 34364), (190, 34343),

Gene: Nodigi_49 Start: 32513, Stop: 31491, Start Num: 58

Candidate Starts for Nodigi_49:

(45, 32543), (49, 32528), (Start: 58 @32513 has 4 MA's), (73, 32396), (75, 32369), (79, 32339), (82, 32315), (90, 32252), (96, 32195), (104, 32126), (106, 32120), (107, 32102), (110, 32069), (116, 32015), (118, 31991), (121, 31964), (129, 31898), (130, 31895), (139, 31850), (144, 31835), (148, 31814), (152, 31787), (155, 31769), (164, 31721), (187, 31556),

Gene: Nucci_35 Start: 26518, Stop: 25340, Start Num: 33

Candidate Starts for Nucci_35:

(Start: 33 @26518 has 32 MA's), (62, 26419), (64, 26404), (Start: 66 @26389 has 1 MA's), (98, 26110), (100, 26098), (101, 26086), (102, 26071), (107, 26020), (127, 25792), (132, 25762), (136, 25732), (138, 25729), (149, 25669), (151, 25654), (159, 25603), (177, 25510), (184, 25441),

Gene: Oats_37 Start: 26780, Stop: 25605, Start Num: 30

Candidate Starts for Oats_37:

(9, 26900), (16, 26849), (Start: 28 @26789 has 13 MA's), (Start: 30 @26780 has 127 MA's), (64, 26657), (Start: 66 @26642 has 1 MA's), (94, 26405), (101, 26348), (102, 26333), (127, 26054), (132, 26024), (136, 25994), (138, 25991), (155, 25886), (158, 25868), (160, 25856), (168, 25823), (177, 25772), (181, 25739),

Gene: OldNelly_38 Start: 27084, Stop: 25909, Start Num: 30

Candidate Starts for OldNelly_38:

(9, 27204), (16, 27153), (Start: 28 @27093 has 13 MA's), (Start: 30 @27084 has 127 MA's), (64, 26961), (Start: 66 @26946 has 1 MA's), (94, 26709), (101, 26652), (127, 26358), (132, 26328), (136, 26298), (138, 26295), (155, 26190), (158, 26172), (160, 26160), (168, 26127), (177, 26076), (181, 26043),

Gene: Orla_49 Start: 32486, Stop: 31464, Start Num: 58

Candidate Starts for Orla_49:

(23, 32618), (41, 32534), (45, 32522), (Start: 58 @32486 has 4 MA's), (75, 32342), (79, 32312), (82, 32288), (90, 32225), (96, 32168), (104, 32099), (110, 32042), (116, 31988), (121, 31937), (130, 31868), (139, 31823), (144, 31808), (148, 31787), (152, 31760), (153, 31757), (155, 31742), (164, 31694), (187, 31529),

Gene: Oxtob96_38 Start: 27083, Stop: 25908, Start Num: 30

Candidate Starts for Oxtob96_38:

(9, 27203), (16, 27152), (Start: 28 @27092 has 13 MA's), (Start: 30 @27083 has 127 MA's), (64, 26960), (74, 26858), (94, 26708), (101, 26651), (127, 26357), (132, 26327), (136, 26297), (138, 26294), (155, 26189), (158, 26171), (160, 26159), (168, 26126), (177, 26075), (181, 26042),

Gene: Pajaza_34 Start: 25918, Stop: 24758, Start Num: 30

Candidate Starts for Pajaza_34:

(16, 25987), (22, 25954), (Start: 30 @25918 has 127 MA's), (51, 25843), (64, 25798), (76, 25684), (85, 25597), (101, 25489), (107, 25423), (136, 25150), (158, 25024), (171, 24961), (177, 24928), (181, 24895), (184, 24859),

Gene: Papafritta_37 Start: 26788, Stop: 25613, Start Num: 30

Candidate Starts for Papafritta_37:

(9, 26908), (16, 26857), (Start: 28 @26797 has 13 MA's), (Start: 30 @26788 has 127 MA's), (64, 26665), (Start: 66 @26650 has 1 MA's), (74, 26563), (94, 26413), (101, 26356), (102, 26341), (127, 26062), (132, 26032), (136, 26002), (138, 25999), (155, 25894), (158, 25876), (160, 25864), (168, 25831), (177, 25780), (181, 25747),

Gene: ParleG_38 Start: 27085, Stop: 25910, Start Num: 30

Candidate Starts for ParleG_38:

(9, 27205), (16, 27154), (Start: 28 @27094 has 13 MA's), (Start: 30 @27085 has 127 MA's), (64, 26962), (Start: 66 @26947 has 1 MA's), (74, 26860), (94, 26710), (101, 26653), (127, 26359), (132, 26329), (136, 26299), (138, 26296), (155, 26191), (158, 26173), (160, 26161), (168, 26128), (177, 26077), (181, 26044),

Gene: Peep_38 Start: 27070, Stop: 25895, Start Num: 30

Candidate Starts for Peep_38:

(9, 27190), (16, 27139), (Start: 28 @27079 has 13 MA's), (Start: 30 @27070 has 127 MA's), (64, 26947), (Start: 66 @26932 has 1 MA's), (94, 26695), (101, 26638), (102, 26623), (127, 26344), (132, 26314), (136, 26284), (138, 26281), (155, 26176), (158, 26158), (160, 26146), (168, 26113), (177, 26062), (181, 26029),

Gene: Peppino_37 Start: 27195, Stop: 26017, Start Num: 30

Candidate Starts for Peppino_37:

(14, 27267), (Start: 28 @27204 has 13 MA's), (Start: 30 @27195 has 127 MA's), (64, 27069), (65, 27066), (92, 26835), (101, 26760), (102, 26745), (127, 26466), (132, 26436), (136, 26406), (138, 26403), (158, 26280), (177, 26184), (181, 26151),

Gene: Pherbot_36 Start: 26652, Stop: 25489, Start Num: 28

Candidate Starts for Pherbot_36:

(16, 26712), (Start: 28 @26652 has 13 MA's), (Start: 56 @26562 has 2 MA's), (64, 26526), (65, 26523), (92, 26292), (101, 26217), (102, 26202), (105, 26175), (120, 25995), (126, 25950), (149, 25815), (151, 25800), (181, 25623), (184, 25587), (189, 25548),

Gene: Pherferi_38 Start: 27078, Stop: 25903, Start Num: 30

Candidate Starts for Pherferi_38:

(9, 27198), (16, 27147), (Start: 28 @27087 has 13 MA's), (Start: 30 @27078 has 127 MA's), (64, 26955), (Start: 66 @26940 has 1 MA's), (94, 26703), (101, 26646), (102, 26631), (127, 26352), (132, 26322), (136, 26292), (138, 26289), (155, 26184), (158, 26166), (160, 26154), (168, 26121), (177, 26070), (181, 26037),

Gene: Phiderman_38 Start: 27075, Stop: 25900, Start Num: 30

Candidate Starts for Phiderman_38:

(9, 27195), (16, 27144), (Start: 28 @27084 has 13 MA's), (Start: 30 @27075 has 127 MA's), (64, 26952), (Start: 66 @26937 has 1 MA's), (94, 26700), (101, 26643), (102, 26628), (127, 26349), (132, 26319), (136, 26289), (138, 26286), (155, 26181), (158, 26163), (160, 26151), (168, 26118), (177, 26067), (181, 26034),

Gene: Phireproof_38 Start: 27084, Stop: 25909, Start Num: 30

Candidate Starts for Phireproof_38:

(9, 27204), (16, 27153), (Start: 28 @27093 has 13 MA's), (Start: 30 @27084 has 127 MA's), (64, 26961), (74, 26859), (94, 26709), (101, 26652), (127, 26358), (132, 26328), (136, 26298), (138, 26295), (155, 26190), (158, 26172), (160, 26160), (168, 26127), (177, 26076), (181, 26043),

Gene: PhredFlintston_38 Start: 27078, Stop: 25903, Start Num: 30

Candidate Starts for PhredFlintston_38:

(9, 27198), (16, 27147), (Start: 28 @27087 has 13 MA's), (Start: 30 @27078 has 127 MA's), (64, 26955), (Start: 66 @26940 has 1 MA's), (94, 26703), (101, 26646), (102, 26631), (127, 26352), (132, 26322), (136, 26292), (138, 26289), (155, 26184), (158, 26166), (160, 26154), (168, 26121), (177, 26070), (181, 26037),

Gene: Phriends_38 Start: 27084, Stop: 25909, Start Num: 30

Candidate Starts for Phriends_38:

(9, 27204), (16, 27153), (Start: 28 @27093 has 13 MA's), (Start: 30 @27084 has 127 MA's), (64, 26961), (Start: 66 @26946 has 1 MA's), (94, 26709), (101, 26652), (127, 26358), (132, 26328), (136, 26298), (138, 26295), (155, 26190), (158, 26172), (160, 26160), (168, 26127), (177, 26076), (181, 26043),

Gene: Pikmin_34 Start: 25918, Stop: 24758, Start Num: 30

Candidate Starts for Pikmin_34:

(16, 25987), (22, 25954), (Start: 30 @25918 has 127 MA's), (51, 25843), (64, 25798), (76, 25684), (85, 25597), (101, 25489), (107, 25423), (136, 25150), (158, 25024), (171, 24961), (177, 24928), (181, 24895), (184, 24859),

Gene: Pocket_37 Start: 26771, Stop: 25596, Start Num: 30

Candidate Starts for Pocket_37:

(9, 26891), (16, 26840), (Start: 28 @26780 has 13 MA's), (Start: 30 @26771 has 127 MA's), (64, 26648), (68, 26615), (94, 26396), (101, 26339), (127, 26045), (132, 26015), (136, 25985), (138, 25982), (155, 25877), (158, 25859), (160, 25847), (168, 25814), (177, 25763), (181, 25730),

Gene: Pons_44 Start: 31610, Stop: 30552, Start Num: 52

Candidate Starts for Pons_44:

(44, 31634), (Start: 52 @31610 has 9 MA's), (73, 31484), (77, 31433), (79, 31409), (80, 31400), (83, 31367), (90, 31322), (102, 31220), (110, 31139), (118, 31061), (120, 31037), (123, 31013), (125, 31001), (137, 30920), (147, 30884), (153, 30851), (154, 30845), (155, 30836), (157, 30821), (161, 30800), (165, 30785), (183, 30656), (184, 30644), (185, 30638), (187, 30623),

Gene: PotPie_43 Start: 32541, Stop: 31483, Start Num: 52

Candidate Starts for PotPie_43:

(Start: 52 @32541 has 9 MA's), (73, 32415), (75, 32388), (77, 32364), (79, 32340), (80, 32331), (83, 32298), (90, 32253), (102, 32151), (110, 32070), (118, 31992), (123, 31944), (125, 31932), (137, 31851), (153, 31782), (154, 31776), (155, 31767), (157, 31752), (161, 31731), (165, 31716), (179, 31629), (183, 31587), (184, 31575), (185, 31569), (187, 31554),

Gene: PrincePhergus_36 Start: 26667, Stop: 25504, Start Num: 28

Candidate Starts for PrincePhergus_36:

(16, 26727), (Start: 28 @26667 has 13 MA's), (Start: 56 @26577 has 2 MA's), (64, 26541), (65, 26538), (92, 26307), (100, 26244), (101, 26232), (102, 26217), (105, 26190), (120, 26010), (149, 25830), (151, 25815), (181, 25638), (184, 25602), (189, 25563),

Gene: PsychoKiller_40 Start: 29791, Stop: 28760, Start Num: 60

Candidate Starts for PsychoKiller_40:

(Start: 60 @29791 has 22 MA's), (79, 29620), (90, 29533), (96, 29476), (104, 29407), (109, 29374), (116, 29296), (121, 29245), (155, 29050), (158, 29032), (161, 29014), (176, 28930), (179, 28912),

Gene: PuppyEggo_38 Start: 27085, Stop: 25910, Start Num: 30

Candidate Starts for PuppyEggo_38:

(9, 27205), (16, 27154), (Start: 28 @27094 has 13 MA's), (Start: 30 @27085 has 127 MA's), (64, 26962), (Start: 66 @26947 has 1 MA's), (74, 26860), (94, 26710), (101, 26653), (127, 26359), (132, 26329), (136, 26299), (138, 26296), (155, 26191), (158, 26173), (160, 26161), (168, 26128), (177, 26077), (181, 26044),

Gene: QuadZero_35 Start: 25001, Stop: 23823, Start Num: 33

Candidate Starts for QuadZero_35:

(18, 25073), (21, 25058), (Start: 33 @25001 has 32 MA's), (64, 24887), (101, 24569), (102, 24554), (107, 24503), (122, 24311), (127, 24275), (136, 24215), (138, 24212), (151, 24137), (152, 24131), (159, 24086), (179, 23981), (184, 23924),

Gene: Quartz_36 Start: 26636, Stop: 25458, Start Num: 33

Candidate Starts for Quartz_36:

(Start: 33 @26636 has 32 MA's), (62, 26537), (64, 26522), (Start: 66 @26507 has 1 MA's), (98, 26228), (100, 26216), (101, 26204), (102, 26189), (107, 26138), (127, 25910), (132, 25880), (136, 25850), (138, 25847), (149, 25787), (151, 25772), (159, 25721), (177, 25628), (184, 25559),

Gene: Quasar_41 Start: 30339, Stop: 29308, Start Num: 60

Candidate Starts for Quasar_41:

(Start: 60 @30339 has 22 MA's), (79, 30168), (90, 30081), (96, 30024), (104, 29955), (109, 29922), (116, 29844), (121, 29793), (155, 29598), (158, 29580), (161, 29562), (176, 29478), (179, 29460),

Gene: Raccoon_37 Start: 27170, Stop: 25992, Start Num: 30

Candidate Starts for Raccoon_37:

(14, 27242), (Start: 28 @27179 has 13 MA's), (Start: 30 @27170 has 127 MA's), (64, 27044), (65, 27041), (92, 26810), (101, 26735), (102, 26720), (127, 26441), (132, 26411), (136, 26381), (138, 26378), (158, 26255), (177, 26159), (181, 26126),

Gene: RanchParmCat_47 Start: 31601, Stop: 30597, Start Num: 63

Candidate Starts for RanchParmCat_47:

(Start: 56 @31622 has 2 MA's), (62, 31604), (63, 31601), (75, 31475), (79, 31445), (90, 31358), (96, 31301), (104, 31232), (106, 31226), (110, 31175), (116, 31121), (118, 31097), (121, 31070), (130, 31001), (139, 30956), (144, 30941), (152, 30893), (153, 30890), (155, 30875), (164, 30827), (169, 30809), (187, 30662),

Gene: Rapheph_38 Start: 27078, Stop: 25903, Start Num: 30

Candidate Starts for Rapheph_38:

(9, 27198), (16, 27147), (Start: 28 @27087 has 13 MA's), (Start: 30 @27078 has 127 MA's), (64, 26955), (Start: 66 @26940 has 1 MA's), (94, 26703), (101, 26646), (102, 26631), (127, 26352), (132, 26322), (136, 26292), (138, 26289), (155, 26184), (158, 26166), (160, 26154), (168, 26121), (177, 26070), (181, 26037),

Gene: Raptor_38 Start: 27082, Stop: 25907, Start Num: 30

Candidate Starts for Raptor_38:

(9, 27202), (16, 27151), (Start: 28 @27091 has 13 MA's), (Start: 30 @27082 has 127 MA's), (64, 26959), (68, 26926), (94, 26707), (101, 26650), (127, 26356), (132, 26326), (136, 26296), (138, 26293), (155, 26188), (158, 26170), (160, 26158), (168, 26125), (177, 26074), (181, 26041),

Gene: RedBaron_43 Start: 30028, Stop: 28997, Start Num: 60

Candidate Starts for RedBaron_43:

(Start: 60 @30028 has 22 MA's), (75, 29887), (90, 29770), (96, 29713), (104, 29644), (109, 29611), (116, 29533), (121, 29482), (155, 29287), (158, 29269), (161, 29251), (176, 29167), (179, 29149),

Gene: Redfield_37 Start: 27202, Stop: 26024, Start Num: 30

Candidate Starts for Redfield_37:

(14, 27274), (Start: 28 @27211 has 13 MA's), (Start: 30 @27202 has 127 MA's), (64, 27076), (65, 27073), (92, 26842), (101, 26767), (127, 26473), (132, 26443), (136, 26413), (138, 26410), (158, 26287), (177, 26191), (181, 26158),

Gene: Renzie_38 Start: 27070, Stop: 25895, Start Num: 30

Candidate Starts for Renzie_38:

(9, 27190), (16, 27139), (Start: 28 @27079 has 13 MA's), (Start: 30 @27070 has 127 MA's), (64, 26947), (Start: 66 @26932 has 1 MA's), (94, 26695), (101, 26638), (102, 26623), (127, 26344), (132, 26314), (136, 26284), (138, 26281), (155, 26176), (158, 26158), (160, 26146), (168, 26113), (177, 26062), (181, 26029),

Gene: Riyhil_38 Start: 27088, Stop: 25913, Start Num: 30

Candidate Starts for Riyhil_38:

(9, 27208), (16, 27157), (Start: 28 @27097 has 13 MA's), (Start: 30 @27088 has 127 MA's), (64, 26965), (Start: 66 @26950 has 1 MA's), (74, 26863), (94, 26713), (101, 26656), (127, 26362), (132, 26332), (136, 26302), (138, 26299), (155, 26194), (158, 26176), (160, 26164), (168, 26131), (177, 26080), (181, 26047),

Gene: Robinson_38 Start: 27076, Stop: 25901, Start Num: 30

Candidate Starts for Robinson_38:

(9, 27196), (16, 27145), (Start: 28 @27085 has 13 MA's), (Start: 30 @27076 has 127 MA's), (64, 26953), (Start: 66 @26938 has 1 MA's), (94, 26701), (101, 26644), (102, 26629), (127, 26350), (132, 26320), (136, 26290), (138, 26287), (155, 26182), (158, 26164), (160, 26152), (168, 26119), (177, 26068), (181, 26035),

Gene: Rog141_37 Start: 26767, Stop: 25592, Start Num: 30

Candidate Starts for Rog141_37:

(9, 26887), (16, 26836), (Start: 28 @26776 has 13 MA's), (Start: 30 @26767 has 127 MA's), (64, 26644), (Start: 66 @26629 has 1 MA's), (74, 26542), (94, 26392), (101, 26335), (102, 26320), (127, 26041), (132, 26011), (136, 25981), (138, 25978), (155, 25873), (158, 25855), (160, 25843), (168, 25810), (177, 25759), (181, 25726),

Gene: SJay_38 Start: 27079, Stop: 25904, Start Num: 30

Candidate Starts for SJay_38:

(9, 27199), (16, 27148), (Start: 28 @27088 has 13 MA's), (Start: 30 @27079 has 127 MA's), (64, 26956), (68, 26923), (94, 26704), (101, 26647), (127, 26353), (132, 26323), (136, 26293), (138, 26290), (155, 26185), (158, 26167), (160, 26155), (168, 26122), (177, 26071), (181, 26038),

Gene: Sansa_36 Start: 26883, Stop: 25720, Start Num: 33

Candidate Starts for Sansa_36:

(23, 26919), (Start: 26 @26910 has 2 MA's), (Start: 33 @26883 has 32 MA's), (64, 26772), (65, 26769), (95, 26505), (98, 26487), (101, 26463), (102, 26448), (107, 26397), (117, 26307), (127, 26169), (132, 26139), (136, 26109), (143, 26082), (159, 25980), (177, 25887), (181, 25854), (183, 25830), (184, 25818),

Gene: Saratos_37 Start: 26791, Stop: 25628, Start Num: 33

Candidate Starts for Saratos_37:

(23, 26827), (Start: 26 @26818 has 2 MA's), (Start: 33 @26791 has 32 MA's), (64, 26680), (65, 26677), (69, 26632), (92, 26446), (95, 26413), (98, 26395), (101, 26371), (102, 26356), (107, 26305), (117, 26215), (127, 26077), (132, 26047), (136, 26017), (143, 25990), (159, 25888), (177, 25795), (181, 25762), (183, 25738), (184, 25726),

Gene: Schimmels22_36 Start: 25802, Stop: 24621, Start Num: 30

Candidate Starts for Schimmels22_36:

(2, 26018), (6, 25955), (10, 25910), (14, 25874), (Start: 30 @25802 has 127 MA's), (64, 25673), (69, 25625), (95, 25406), (97, 25394), (98, 25388), (101, 25364), (102, 25349), (107, 25298), (117, 25208), (127, 25070), (132, 25040), (135, 25022), (140, 25001), (159, 24881), (168, 24839), (177, 24788), (181, 24755), (183, 24731), (184, 24719),

Gene: Schnapsidee_37 Start: 27208, Stop: 26030, Start Num: 30

Candidate Starts for Schnapsidee_37:

(14, 27280), (Start: 28 @27217 has 13 MA's), (Start: 30 @27208 has 127 MA's), (64, 27082), (65, 27079), (92, 26848), (101, 26773), (102, 26758), (127, 26479), (132, 26449), (136, 26419), (138, 26416), (158, 26293), (177, 26197), (181, 26164),

Gene: Schubert_35 Start: 26499, Stop: 25312, Start Num: 30

Candidate Starts for Schubert_35:

(4, 26679), (5, 26667), (16, 26568), (22, 26535), (Start: 30 @26499 has 127 MA's), (51, 26412), (62, 26382), (64, 26367), (100, 26070), (101, 26058), (127, 25764), (132, 25734), (136, 25704), (151, 25626), (158, 25578), (168, 25533), (171, 25515), (181, 25449), (184, 25413), (189, 25374),

Gene: Sedgewig_37 Start: 26765, Stop: 25590, Start Num: 30

Candidate Starts for Sedgewig_37:

(9, 26885), (16, 26834), (Start: 28 @26774 has 13 MA's), (Start: 30 @26765 has 127 MA's), (64, 26642), (Start: 66 @26627 has 1 MA's), (94, 26390), (101, 26333), (127, 26039), (132, 26009), (136, 25979), (138, 25976), (155, 25871), (158, 25853), (160, 25841), (168, 25808), (177, 25757), (181, 25724),

Gene: ShaiHulud_38 Start: 27082, Stop: 25907, Start Num: 30

Candidate Starts for ShaiHulud_38:

(9, 27202), (16, 27151), (Start: 28 @27091 has 13 MA's), (Start: 30 @27082 has 127 MA's), (64, 26959), (Start: 66 @26944 has 1 MA's), (74, 26857), (94, 26707), (101, 26650), (127, 26356), (132, 26326), (136, 26296), (138, 26293), (155, 26188), (158, 26170), (160, 26158), (168, 26125), (177, 26074), (181, 26041),

Gene: Shamu_37 Start: 26812, Stop: 25649, Start Num: 33

Candidate Starts for Shamu_37:

(23, 26848), (Start: 26 @26839 has 2 MA's), (Start: 33 @26812 has 32 MA's), (64, 26701), (65, 26698), (69, 26653), (92, 26467), (95, 26434), (98, 26416), (101, 26392), (102, 26377), (107, 26326), (117, 26236), (127, 26098), (132, 26068), (136, 26038), (143, 26011), (159, 25909), (177, 25816), (181, 25783), (183, 25759), (184, 25747),

Gene: SheckWes_46 Start: 31294, Stop: 30236, Start Num: 58

Candidate Starts for SheckWes_46:

(Start: 58 @31294 has 4 MA's), (73, 31177), (75, 31150), (77, 31126), (80, 31093), (83, 31060), (90, 31015), (102, 30913), (110, 30832), (118, 30754), (120, 30730), (123, 30706), (125, 30694), (137, 30613), (153, 30544), (154, 30538), (155, 30529), (161, 30493), (162, 30490), (165, 30478), (179, 30391), (183, 30349), (184, 30337), (185, 30331), (187, 30316),

Gene: Shee_38 Start: 27075, Stop: 25900, Start Num: 30

Candidate Starts for Shee_38:

(9, 27195), (16, 27144), (Start: 28 @27084 has 13 MA's), (Start: 30 @27075 has 127 MA's), (64, 26952), (Start: 66 @26937 has 1 MA's), (94, 26700), (101, 26643), (127, 26349), (132, 26319), (136, 26289), (138, 26286), (155, 26181), (158, 26163), (160, 26151), (168, 26118), (177, 26067), (181, 26034),

Gene: Shrew_92 Start: 49924, Stop: 50844, Start Num: 74

Candidate Starts for Shrew_92:

(27, 49672), (35, 49717), (64, 49822), (74, 49924), (83, 50005), (88, 50038), (108, 50206), (111, 50242), (151, 50533), (161, 50593), (164, 50605), (170, 50629), (172, 50638), (184, 50740), (186, 50752),

Gene: Sinatra_36 Start: 26663, Stop: 25500, Start Num: 28

Candidate Starts for Sinatra_36:

(16, 26723), (Start: 28 @26663 has 13 MA's), (Start: 56 @26573 has 2 MA's), (64, 26537), (65, 26534), (92, 26303), (101, 26228), (102, 26213), (105, 26186), (120, 26006), (126, 25961), (149, 25826), (151, 25811), (181, 25634), (184, 25598), (189, 25559),

Gene: SirVictor_36 Start: 26730, Stop: 25579, Start Num: 30

Candidate Starts for SirVictor_36:

(14, 26802), (16, 26799), (Start: 28 @26739 has 13 MA's), (Start: 30 @26730 has 127 MA's), (64, 26619), (65, 26616), (92, 26385), (100, 26322), (102, 26295), (105, 26268), (149, 25908), (151, 25893), (159, 25842), (181, 25716), (183, 25692), (184, 25680),

Gene: SketchMex_41 Start: 29869, Stop: 28796, Start Num: 43

Candidate Starts for SketchMex_41:

(25, 29953), (32, 29923), (Start: 43 @29869 has 1 MA's), (46, 29860), (Start: 60 @29824 has 22 MA's), (82, 29629), (90, 29566), (104, 29440), (107, 29416), (116, 29329), (121, 29278), (144, 29149), (155, 29083), (158, 29065), (161, 29047), (176, 28963), (187, 28870),

Gene: SoilGremlin_38 Start: 27081, Stop: 25906, Start Num: 30

Candidate Starts for SoilGremlin_38:

(9, 27201), (16, 27150), (Start: 28 @27090 has 13 MA's), (Start: 30 @27081 has 127 MA's), (64, 26958), (Start: 66 @26943 has 1 MA's), (94, 26706), (101, 26649), (127, 26355), (132, 26325), (136, 26295), (138, 26292), (155, 26187), (158, 26169), (160, 26157), (168, 26124), (177, 26073), (181, 26040),

Gene: SonOfLevi_37 Start: 26762, Stop: 25587, Start Num: 30

Candidate Starts for SonOfLevi_37:

(9, 26882), (16, 26831), (Start: 28 @26771 has 13 MA's), (Start: 30 @26762 has 127 MA's), (64, 26639), (68, 26606), (94, 26387), (101, 26330), (127, 26036), (132, 26006), (136, 25976), (138, 25973), (155, 25868), (158, 25850), (160, 25838), (168, 25805), (177, 25754), (181, 25721),

Gene: Sopespian_40 Start: 29792, Stop: 28761, Start Num: 60

Candidate Starts for Sopespian_40:

(Start: 60 @29792 has 22 MA's), (79, 29621), (90, 29534), (96, 29477), (104, 29408), (109, 29375), (116, 29297), (121, 29246), (155, 29051), (158, 29033), (161, 29015), (176, 28931), (179, 28913),

Gene: Stanktossa_38 Start: 27078, Stop: 25903, Start Num: 30

Candidate Starts for Stanktossa_38:

(9, 27198), (16, 27147), (Start: 28 @27087 has 13 MA's), (Start: 30 @27078 has 127 MA's), (64, 26955), (Start: 66 @26940 has 1 MA's), (94, 26703), (101, 26646), (102, 26631), (127, 26352), (132, 26322), (136, 26292), (138, 26289), (155, 26184), (158, 26166), (160, 26154), (168, 26121), (177, 26070), (181, 26037),

Gene: SteamedHams_42 Start: 29606, Stop: 28572, Start Num: 60

Candidate Starts for SteamedHams_42:

(Start: 60 @29606 has 22 MA's), (69, 29531), (82, 29411), (90, 29348), (102, 29246), (116, 29111), (144, 28931), (145, 28922), (155, 28865), (158, 28847), (161, 28829), (176, 28745),

Gene: StingRay_37 Start: 26783, Stop: 25608, Start Num: 30

Candidate Starts for StingRay_37:

(9, 26903), (16, 26852), (Start: 28 @26792 has 13 MA's), (Start: 30 @26783 has 127 MA's), (64, 26660), (Start: 66 @26645 has 1 MA's), (74, 26558), (94, 26408), (101, 26351), (102, 26336), (127, 26057), (132, 26027), (136, 25997), (138, 25994), (155, 25889), (158, 25871), (160, 25859), (168, 25826), (177, 25775), (181, 25742),

Gene: StirfryIV_37 Start: 26776, Stop: 25601, Start Num: 30

Candidate Starts for StirfryIV_37:

(9, 26896), (16, 26845), (Start: 28 @26785 has 13 MA's), (Start: 30 @26776 has 127 MA's), (64, 26653), (Start: 66 @26638 has 1 MA's), (74, 26551), (94, 26401), (101, 26344), (102, 26329), (127, 26050), (132, 26020), (136, 25990), (138, 25987), (155, 25882), (158, 25864), (160, 25852), (168, 25819), (177, 25768), (181, 25735),

Gene: Stormbreaker8_37 Start: 27202, Stop: 26024, Start Num: 30

Candidate Starts for Stormbreaker8_37:

(14, 27274), (Start: 28 @27211 has 13 MA's), (Start: 30 @27202 has 127 MA's), (64, 27076), (65, 27073), (92, 26842), (101, 26767), (102, 26752), (127, 26473), (136, 26413), (138, 26410), (158, 26287), (177, 26191), (181, 26158),

Gene: Strathdee_38 Start: 27083, Stop: 25908, Start Num: 30

Candidate Starts for Strathdee_38:

(9, 27203), (16, 27152), (Start: 28 @27092 has 13 MA's), (Start: 30 @27083 has 127 MA's), (64, 26960), (Start: 66 @26945 has 1 MA's), (74, 26858), (94, 26708), (101, 26651), (127, 26357), (132, 26327), (136, 26297), (138, 26294), (155, 26189), (158, 26171), (160, 26159), (168, 26126), (177, 26075), (181, 26042),

Gene: SummitAcademy_42 Start: 31170, Stop: 30112, Start Num: 52

Candidate Starts for SummitAcademy_42:

(Start: 52 @31170 has 9 MA's), (73, 31044), (75, 31017), (77, 30993), (80, 30960), (83, 30927), (90, 30882), (102, 30780), (110, 30699), (118, 30621), (123, 30573), (125, 30561), (137, 30480), (153, 30411), (154, 30405), (155, 30396), (161, 30360), (165, 30345), (179, 30258), (183, 30216), (184, 30204), (185, 30198), (187, 30183),

Gene: Superfresh_38 Start: 27070, Stop: 25895, Start Num: 30

Candidate Starts for Superfresh_38:

(9, 27190), (16, 27139), (Start: 28 @27079 has 13 MA's), (Start: 30 @27070 has 127 MA's), (64, 26947), (Start: 66 @26932 has 1 MA's), (94, 26695), (101, 26638), (102, 26623), (127, 26344), (132, 26314), (136, 26284), (138, 26281), (155, 26176), (158, 26158), (160, 26146), (168, 26113), (177, 26062), (181, 26029),

Gene: Survivors_39 Start: 29605, Stop: 28574, Start Num: 53

Candidate Starts for Survivors_39:

(Start: 53 @29605 has 8 MA's), (64, 29566), (71, 29509), (75, 29452), (79, 29422), (87, 29356), (90, 29335), (102, 29233), (106, 29203), (109, 29176), (113, 29128), (116, 29098), (142, 28933), (158, 28837), (161, 28819), (165, 28804),

Gene: SweatNTears_42 Start: 29688, Stop: 28657, Start Num: 60

Candidate Starts for SweatNTears_42:

(17, 29856), (25, 29817), (36, 29763), (46, 29724), (49, 29712), (Start: 60 @29688 has 22 MA's), (82, 29493), (90, 29430), (104, 29304), (110, 29247), (116, 29193), (121, 29142), (144, 29013), (145, 29004), (148, 28992), (155, 28947), (158, 28929), (161, 28911), (179, 28809),

Gene: TatarkaPM_38 Start: 27087, Stop: 25909, Start Num: 30

Candidate Starts for TatarkaPM_38:

(9, 27207), (16, 27156), (Start: 28 @27096 has 13 MA's), (Start: 30 @27087 has 127 MA's), (64, 26964), (Start: 66 @26949 has 1 MA's), (94, 26712), (101, 26655), (102, 26640), (127, 26361), (132, 26331), (136, 26301), (138, 26298), (155, 26193), (158, 26175), (160, 26163), (168, 26130), (177, 26079), (181, 26046),

Gene: Teagan_38 Start: 27078, Stop: 25903, Start Num: 30

Candidate Starts for Teagan_38:

(16, 27147), (Start: 28 @27087 has 13 MA's), (Start: 30 @27078 has 127 MA's), (64, 26955), (74, 26853), (94, 26703), (101, 26646), (127, 26352), (132, 26322), (136, 26292), (138, 26289), (155, 26184), (158, 26166), (160, 26154), (168, 26121), (177, 26070), (181, 26037),

Gene: TeddyBear_37 Start: 26780, Stop: 25605, Start Num: 30

Candidate Starts for TeddyBear_37:

(9, 26900), (16, 26849), (Start: 28 @26789 has 13 MA's), (Start: 30 @26780 has 127 MA's), (64, 26657), (68, 26624), (94, 26405), (101, 26348), (127, 26054), (132, 26024), (136, 25994), (138, 25991), (155, 25886), (158, 25868), (160, 25856), (168, 25823), (177, 25772), (181, 25739),

Gene: Tenda_37 Start: 26778, Stop: 25603, Start Num: 30

Candidate Starts for Tenda_37:

(9, 26898), (16, 26847), (Start: 28 @26787 has 13 MA's), (Start: 30 @26778 has 127 MA's), (64, 26655), (Start: 66 @26640 has 1 MA's), (94, 26403), (101, 26346), (102, 26331), (127, 26052), (132, 26022), (136, 25992), (138, 25989), (155, 25884), (158, 25866), (160, 25854), (168, 25821), (177, 25770), (181, 25737),

Gene: Thompsone_38 Start: 27085, Stop: 25910, Start Num: 30

Candidate Starts for Thompsone_38:

(9, 27205), (16, 27154), (Start: 28 @27094 has 13 MA's), (Start: 30 @27085 has 127 MA's), (64, 26962), (74, 26860), (94, 26710), (101, 26653), (127, 26359), (132, 26329), (136, 26299), (138, 26296), (155, 26191), (158, 26173), (160, 26161), (168, 26128), (177, 26077), (181, 26044),

Gene: Thorongil_38 Start: 27085, Stop: 25910, Start Num: 30

Candidate Starts for Thorongil_38:

(9, 27205), (16, 27154), (Start: 28 @27094 has 13 MA's), (Start: 30 @27085 has 127 MA's), (64, 26962), (Start: 66 @26947 has 1 MA's), (74, 26860), (94, 26710), (101, 26653), (127, 26359), (132, 26329), (136, 26299), (138, 26296), (155, 26191), (158, 26173), (160, 26161), (168, 26128), (177, 26077), (181, 26044),

Gene: TinSulphur_38 Start: 27084, Stop: 25909, Start Num: 30

Candidate Starts for TinSulphur_38:

(9, 27204), (16, 27153), (Start: 28 @27093 has 13 MA's), (Start: 30 @27084 has 127 MA's), (64, 26961), (Start: 66 @26946 has 1 MA's), (94, 26709), (101, 26652), (102, 26637), (127, 26358), (132, 26328), (136, 26298), (138, 26295), (155, 26190), (158, 26172), (160, 26160), (168, 26127), (177, 26076), (181, 26043),

Gene: Tinyman4_36 Start: 25428, Stop: 24247, Start Num: 30

Candidate Starts for Tinyman4_36:

(2, 25644), (6, 25581), (10, 25536), (14, 25500), (Start: 30 @25428 has 127 MA's), (64, 25299), (69, 25251), (95, 25032), (97, 25020), (98, 25014), (101, 24990), (102, 24975), (107, 24924), (117, 24834), (132, 24666), (135, 24648), (140, 24627), (159, 24507), (168, 24465), (177, 24414), (181, 24381), (183, 24357), (184, 24345),

Gene: Tolls_42 Start: 29711, Stop: 28677, Start Num: 60

Candidate Starts for Tolls_42:

(Start: 60 @29711 has 22 MA's), (69, 29636), (82, 29516), (90, 29453), (102, 29351), (116, 29216), (144, 29036), (145, 29027), (155, 28970), (158, 28952), (161, 28934), (176, 28850),

Gene: Triscuit_78 Start: 48360, Stop: 49469, Start Num: 37

Candidate Starts for Triscuit_78:

(Start: 37 @48360 has 2 MA's), (44, 48390), (64, 48456), (67, 48483), (83, 48639), (88, 48672), (92, 48696), (108, 48837), (161, 49218), (164, 49230), (165, 49233), (166, 49236), (167, 49239), (172,

49263), (178, 49302), (180, 49317), (184, 49365), (186, 49377),

Gene: Troje_43 Start: 30162, Stop: 29134, Start Num: 60

Candidate Starts for Troje_43:

(25, 30291), (32, 30261), (Start: 43 @30207 has 1 MA's), (46, 30198), (Start: 60 @30162 has 22 MA's), (82, 29967), (90, 29904), (104, 29778), (107, 29754), (116, 29667), (121, 29616), (144, 29487), (155, 29421), (158, 29403), (161, 29385), (176, 29301), (187, 29208),

Gene: Typhonomachy_41 Start: 29500, Stop: 28469, Start Num: 60

Candidate Starts for Typhonomachy_41:

(Start: 60 @29500 has 22 MA's), (75, 29359), (90, 29242), (96, 29185), (104, 29116), (109, 29083), (116, 29005), (121, 28954), (155, 28759), (158, 28741), (161, 28723), (176, 28639), (179, 28621),

Gene: Velene_38 Start: 27083, Stop: 25908, Start Num: 30

Candidate Starts for Velene_38:

(9, 27203), (16, 27152), (Start: 28 @27092 has 13 MA's), (Start: 30 @27083 has 127 MA's), (64, 26960), (74, 26858), (94, 26708), (101, 26651), (127, 26357), (132, 26327), (136, 26297), (138, 26294), (155, 26189), (158, 26171), (160, 26159), (168, 26126), (177, 26075), (181, 26042),

Gene: Vine_45 Start: 31897, Stop: 30839, Start Num: 52

Candidate Starts for Vine_45:

(44, 31921), (Start: 52 @31897 has 9 MA's), (73, 31771), (77, 31720), (79, 31696), (80, 31687), (83, 31654), (90, 31609), (102, 31507), (110, 31426), (118, 31348), (123, 31300), (137, 31207), (147, 31171), (153, 31138), (154, 31132), (155, 31123), (157, 31108), (161, 31087), (165, 31072), (183, 30943), (184, 30931), (185, 30925), (187, 30910),

Gene: Vispitious_38 Start: 27094, Stop: 25910, Start Num: 28

Candidate Starts for Vispitious_38:

(9, 27205), (16, 27154), (Start: 28 @27094 has 13 MA's), (Start: 30 @27085 has 127 MA's), (64, 26962), (Start: 66 @26947 has 1 MA's), (74, 26860), (94, 26710), (101, 26653), (127, 26359), (132, 26329), (136, 26299), (138, 26296), (155, 26191), (158, 26173), (160, 26161), (168, 26128), (177, 26077), (181, 26044),

Gene: WestPM_34 Start: 25285, Stop: 24104, Start Num: 30

Candidate Starts for WestPM_34:

(14, 25357), (Start: 30 @25285 has 127 MA's), (64, 25156), (65, 25153), (69, 25108), (95, 24889), (98, 24871), (101, 24847), (102, 24832), (107, 24781), (117, 24691), (127, 24553), (132, 24523), (140, 24484), (159, 24364), (177, 24271), (181, 24238), (183, 24214), (184, 24202),

Gene: WildNOut_38 Start: 27082, Stop: 25907, Start Num: 30

Candidate Starts for WildNOut_38:

(9, 27202), (16, 27151), (Start: 28 @27091 has 13 MA's), (Start: 30 @27082 has 127 MA's), (64, 26959), (Start: 66 @26944 has 1 MA's), (74, 26857), (94, 26707), (101, 26650), (127, 26356), (132, 26326), (136, 26296), (138, 26293), (155, 26188), (158, 26170), (160, 26158), (168, 26125), (177, 26074), (181, 26041),

Gene: WilliamStrong_36 Start: 26624, Stop: 25461, Start Num: 33

Candidate Starts for WilliamStrong_36:

(Start: 33 @26624 has 32 MA's), (38, 26612), (64, 26513), (Start: 66 @26498 has 1 MA's), (94, 26261), (98, 26228), (100, 26216), (101, 26204), (102, 26189), (107, 26138), (117, 26048), (127, 25910), (136, 25850), (149, 25787), (177, 25628), (183, 25571), (184, 25559),

Gene: Winzigespinne_37 Start: 26766, Stop: 25591, Start Num: 30

Candidate Starts for Winzigespinne_37:

(9, 26886), (16, 26835), (Start: 28 @26775 has 13 MA's), (Start: 30 @26766 has 127 MA's), (64, 26643), (Start: 66 @26628 has 1 MA's), (74, 26541), (94, 26391), (101, 26334), (102, 26319), (127, 26040), (132, 26010), (136, 25980), (138, 25977), (155, 25872), (158, 25854), (160, 25842), (168, 25809), (177, 25758), (181, 25725),

Gene: Yakult_43 Start: 30412, Stop: 29396, Start Num: 60

Candidate Starts for Yakult_43:

(Start: 60 @30412 has 22 MA's), (63, 30397), (75, 30271), (79, 30241), (90, 30154), (96, 30097), (102, 30052), (104, 30028), (106, 30022), (115, 29923), (116, 29917), (118, 29893), (121, 29866), (153, 29689), (155, 29674), (164, 29626), (174, 29566), (179, 29536),

Gene: Yarn_38 Start: 29471, Stop: 28437, Start Num: 60

Candidate Starts for Yarn_38:

(Start: 60 @29471 has 22 MA's), (82, 29276), (90, 29213), (102, 29111), (116, 28976), (144, 28796), (145, 28787), (155, 28730), (158, 28712), (161, 28694), (176, 28610),

Gene: Yummy_43 Start: 29799, Stop: 28771, Start Num: 60

Candidate Starts for Yummy_43:

(15, 29973), (25, 29928), (Start: 60 @29799 has 22 MA's), (82, 29604), (90, 29541), (104, 29415), (110, 29358), (116, 29304), (121, 29253), (144, 29124), (145, 29115), (148, 29103), (155, 29058), (158, 29040), (161, 29022), (179, 28920), (187, 28845),

Gene: YuuY_36 Start: 27283, Stop: 26087, Start Num: 29

Candidate Starts for YuuY_36:

(16, 27346), (Start: 29 @27283 has 1 MA's), (Start: 31 @27274 has 1 MA's), (62, 27166), (64, 27151), (98, 26857), (100, 26845), (101, 26833), (102, 26818), (107, 26767), (127, 26539), (136, 26479), (138, 26476), (149, 26416), (151, 26401), (159, 26350), (168, 26308), (177, 26257), (184, 26188),

Gene: Zada_38 Start: 27054, Stop: 25879, Start Num: 30

Candidate Starts for Zada_38:

(9, 27174), (16, 27123), (Start: 28 @27063 has 13 MA's), (Start: 30 @27054 has 127 MA's), (64, 26931), (Start: 66 @26916 has 1 MA's), (74, 26829), (94, 26679), (101, 26622), (102, 26607), (127, 26328), (132, 26298), (136, 26268), (138, 26265), (155, 26160), (158, 26142), (160, 26130), (168, 26097), (177, 26046), (181, 26013),

Gene: Zareef_41 Start: 29699, Stop: 28668, Start Num: 53

Candidate Starts for Zareef_41:

(Start: 53 @29699 has 8 MA's), (64, 29660), (71, 29603), (75, 29546), (79, 29516), (87, 29450), (90, 29429), (102, 29327), (106, 29297), (109, 29270), (113, 29222), (116, 29192), (142, 29027), (158, 28931), (161, 28913), (165, 28898),

Gene: Zayuliv_35 Start: 25574, Stop: 24396, Start Num: 33

Candidate Starts for Zayuliv_35:

(18, 25646), (21, 25631), (Start: 33 @25574 has 32 MA's), (64, 25460), (101, 25142), (102, 25127), (107, 25076), (122, 24884), (127, 24848), (136, 24788), (138, 24785), (151, 24710), (159, 24659), (179, 24554), (184, 24497),

Gene: Zenitsu_37 Start: 26827, Stop: 25664, Start Num: 33

Candidate Starts for Zenitsu_37:

(23, 26863), (Start: 26 @26854 has 2 MA's), (Start: 33 @26827 has 32 MA's), (64, 26716), (69, 26668), (92, 26482), (95, 26449), (98, 26431), (101, 26407), (102, 26392), (107, 26341), (117, 26251), (127, 26113), (132, 26083), (136, 26053), (138, 26050), (143, 26026), (159, 25924), (177, 25831),

(181, 25798), (183, 25774), (184, 25762),

Gene: Zepp_36 Start: 25033, Stop: 23855, Start Num: 33

Candidate Starts for Zepp_36:

(18, 25105), (21, 25090), (Start: 33 @25033 has 32 MA's), (64, 24919), (101, 24601), (102, 24586), (107, 24535), (122, 24343), (127, 24307), (136, 24247), (138, 24244), (151, 24169), (159, 24118), (179, 24013), (184, 23956),

Gene: Zuko_80 Start: 60584, Stop: 61708, Start Num: 42

Candidate Starts for Zuko_80:

(3, 60317), (22, 60494), (Start: 42 @60584 has 2 MA's), (61, 60641), (62, 60647), (64, 60662), (81, 60851), (90, 60917), (92, 60929), (96, 60974), (97, 60983), (102, 61025), (103, 61043), (104, 61049), (106, 61055), (109, 61082), (112, 61127), (119, 61196), (120, 61208), (124, 61238), (153, 61415), (156, 61442), (161, 61466), (175, 61541), (181, 61574), (182, 61592), (184, 61610),