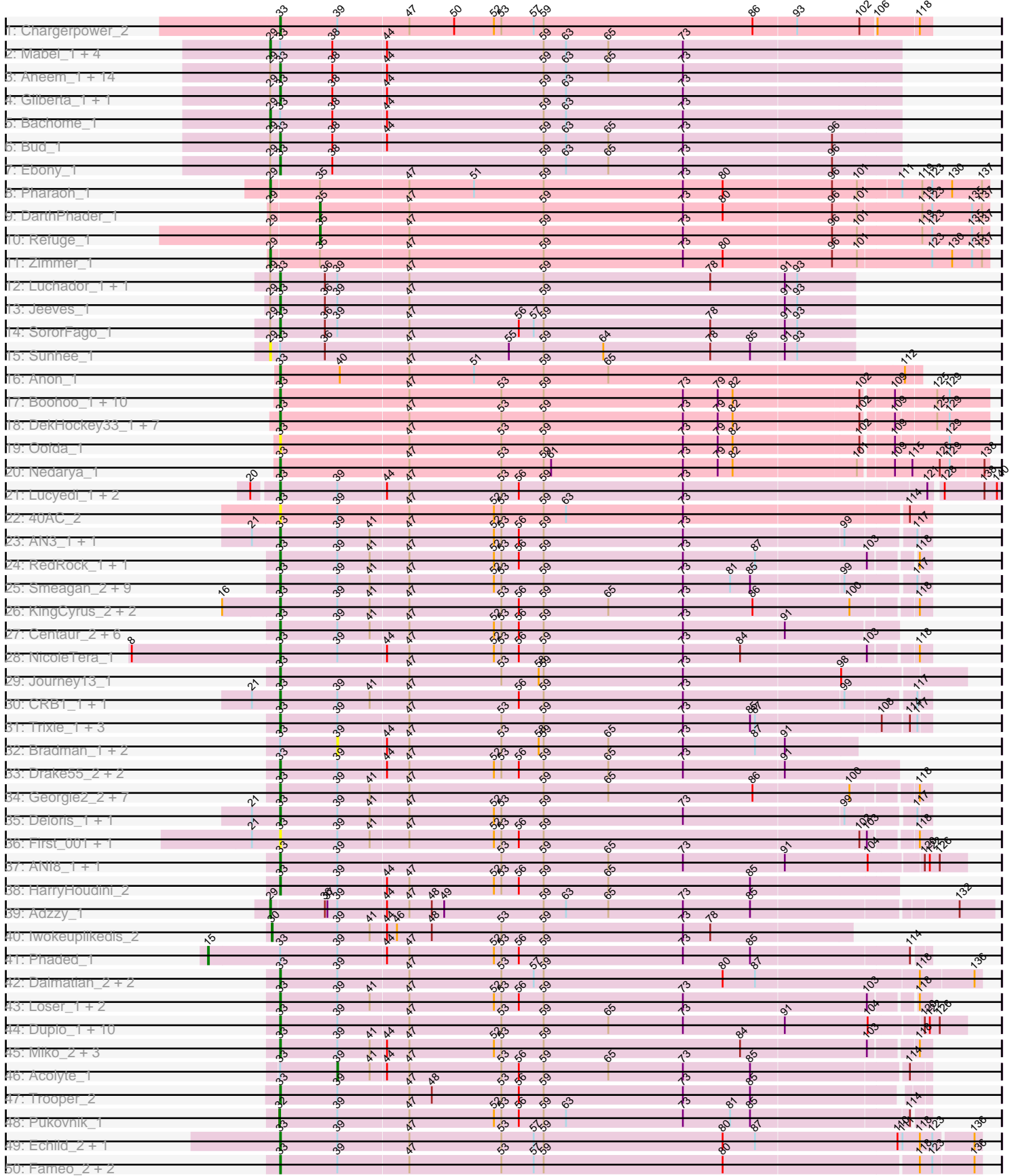
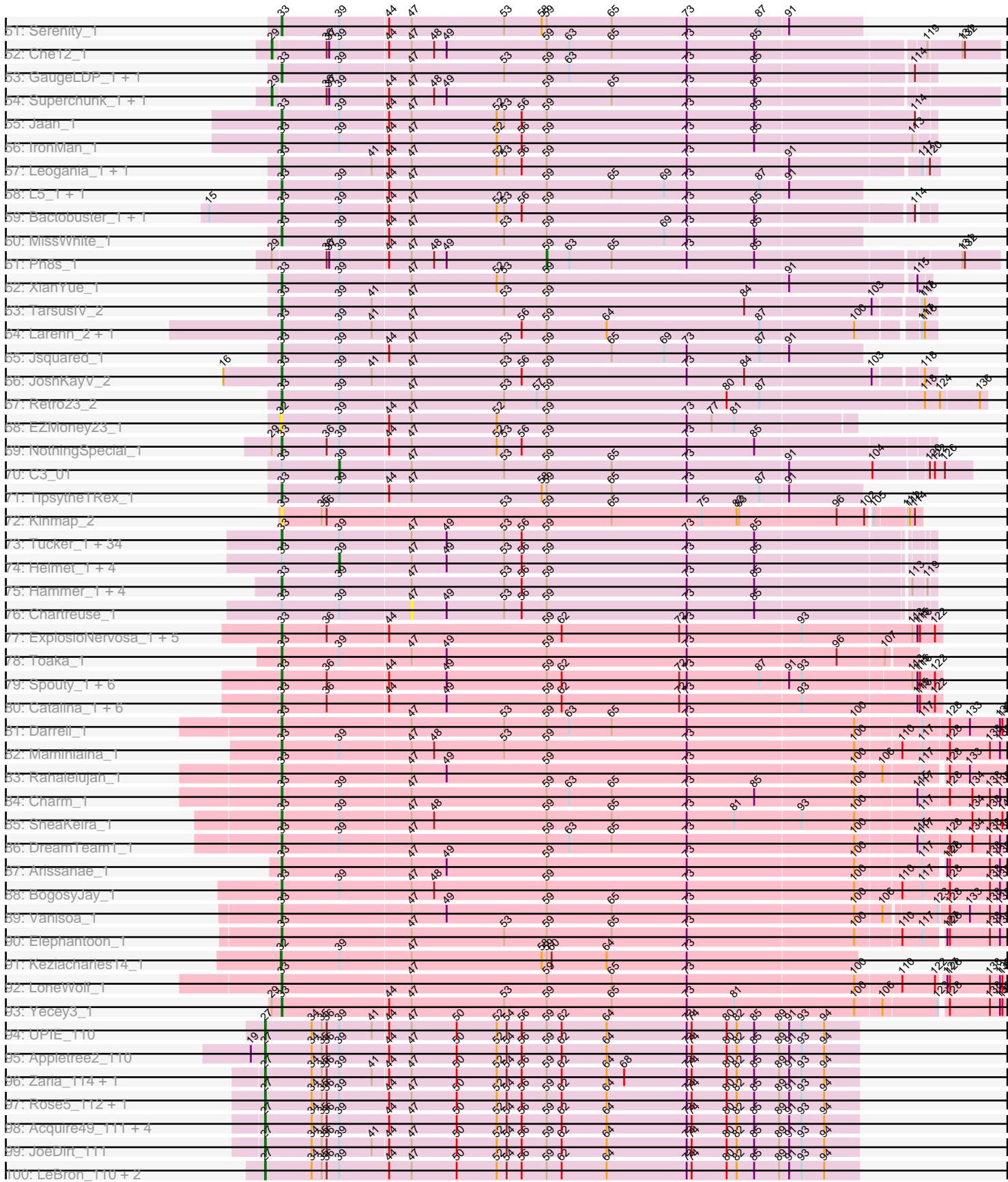


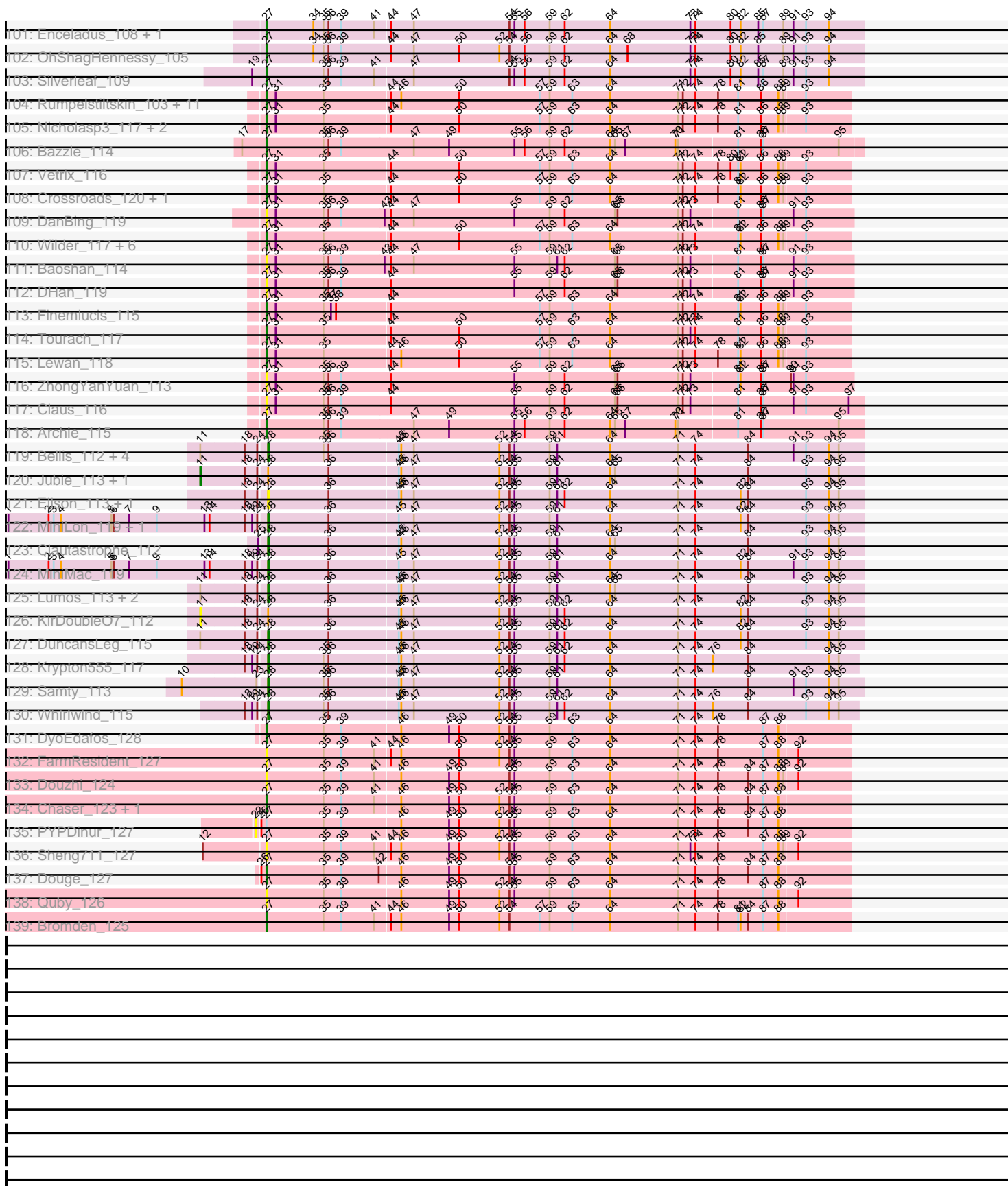
Pham 192247



Pham 192247



Pham 192247



Note: Tracks are now grouped by subcluster and scaled. Switching in subcluster is indicated by changes in track color. Track scale is now set by default to display the region 30 bp upstream of start 1 to 30 bp downstream of the last possible start. If this default region is judged to be packed too tightly with annotated starts, the track will be further scaled to only show that region of the ORF with annotated starts. This action will be indicated by adding "Zoomed" to the title. For starts, yellow indicates the location of called starts comprised solely of Glimmer/GeneMark auto-annotations, green indicates the location of called starts with at least 1 manual gene annotation.

Pham 192247 Report

This analysis was run 11/02/24 on database version 579.

Pham number 192247 has 339 members, 39 are drafts.

Phages represented in each track:

- Track 1 : Chargerpower_2
- Track 2 : Mabel_1, Joselito_1, Petersenfast_1, Insomnia_1, Salz_1
- Track 3 : Aneem_1, Mulciber_1, Munch_1, Sham4_1, Jabith_1, Lucivia_1, Timothy_1, Flaverint_1, Hutc2_1, Orange_1, TinyTimmy_1, Snape_1, Et2Brutus_1, Bowtie_1, Fibonacci_1
- Track 4 : Gilberta_1, MaCh_1
- Track 5 : Bachome_1
- Track 6 : Bud_1
- Track 7 : Ebony_1
- Track 8 : Pharaoh_1
- Track 9 : DarthPhader_1
- Track 10 : Refuge_1
- Track 11 : Zimmer_1
- Track 12 : Luchador_1, Gail_1
- Track 13 : Jeeves_1
- Track 14 : SororFago_1
- Track 15 : Sunhee_1
- Track 16 : Anon_1
- Track 17 : Boohoo_1, JSwag_1, Waits_1, Epsocamisio_1, Nebulosus_1, LastResort_1, Remus_1, Looper_1, ReMo_1, Anaysia_1, Strosahl_1
- Track 18 : DekHockey33_1, KatherineG_1, Rosalind_1, MinecraftSteve_2, ShayRa_2, Battleship_2, Soups_1, Switzerland_1
- Track 19 : Oofda_1
- Track 20 : Nedarya_1
- Track 21 : Lucyedi_1, PainterBoy_1, EagleEye_1
- Track 22 : 40AC_2
- Track 23 : AN3_1, VA6_1
- Track 24 : RedRock_1, AnnaL29_1
- Track 25 : Smeagan_2, Buggy_2, Agape74_2, Leviathan_2, Jerm_2, Dignity_2, AbbyPaige_2, Whabigail7_2, LilTurb_2, Turbido_2
- Track 26 : KingCyrus_2, ChipMunk_2, EvilGenius_2
- Track 27 : Centaur_2, NaSiaTalie_2, MiculUcigas_2, Flare16_2, WideWale_2, Equemioh13_2, Updawg_2
- Track 28 : NicoleTera_1
- Track 29 : Journey13_1
- Track 30 : CRB1_1, LadyBird_1
- Track 31 : Trixie_1, Colin_1, Kalpine_2, WeiHuaDA_2

- Track 32 : Bradman_1, MajorMajor_1, Quokka_1
- Track 33 : Drake55_2, Piro94_1, Baehexic_2
- Track 34 : Georgie2_2, QueenBeesly_2, Crucio_2, SnapTap_2, SweetiePie_2, Power_2, FiringLine_2, SemperFi_2
- Track 35 : Deloris_1, BengiVuitton_1
- Track 36 : First_001, 20ES_1
- Track 37 : ANI8_1, AN9_1
- Track 38 : HarryHoudini_2
- Track 39 : Adzzy_1
- Track 40 : Iwokeuplikedis_2
- Track 41 : Phaded_1
- Track 42 : Dalmatian_2, Anselm_2, DudeLittle_2
- Track 43 : Loser_1, ArcherNM_1, Changeling_1
- Track 44 : Duplo_1, Pomar16_1, Naji_1, D32_1, D29_1, Travvers_1, StarStuff_1, VC3_1, Kerberos_1, Tomathan_1, DBQu4n_1
- Track 45 : Miko_2, Rachaly_2, Lokk_2, BobSwaget_2
- Track 46 : Acolyte_1
- Track 47 : Trooper_2
- Track 48 : Pukovnik_1
- Track 49 : Echild_2, Benvolio_2
- Track 50 : Fameo_2, QueenB2_2, Heffalump_2
- Track 51 : Serenity_1
- Track 52 : Che12_1
- Track 53 : GaugeLDP_1, BabyBack_1
- Track 54 : Superchunk_1, Caraxes_1
- Track 55 : Jaan_1
- Track 56 : IronMan_1
- Track 57 : Leogania_1, BiancaTri92_1
- Track 58 : L5_1, Koduck_1
- Track 59 : Bactobuster_1, Landor_1
- Track 60 : MissWhite_1
- Track 61 : Ph8s_1
- Track 62 : XianYue_1
- Track 63 : TarsusIV_2
- Track 64 : Larenn_2, Malec_2
- Track 65 : Jsquared_1
- Track 66 : JoshKayV_2
- Track 67 : Retro23_2
- Track 68 : EZMoney23_1
- Track 69 : NothingSpecial_1
- Track 70 : C3_01
- Track 71 : TipsytheTRex_1
- Track 72 : Kinmap_2
- Track 73 : Tucker_1, Roksolana_1, Jordennis_1, Blinn1_1, Neeharika16_1, Zaka_1, SmellyB_1, Cookiedough_1, VohminGhazi_1, Hoot_1, Dorothea_1, McFly_1, Jeffabunny_1, ToneTone_1, SuperAwesome_1, Kazan_1, BABullseye_1, SuperCallie99_1, Newrala_1, Isiphiwo_1, Koko_1, Indra_1, DaVinci_1, Artemis2UCLA_1, CloudWang3_1, Lilbunny_1, JewelBug_1, Wiks_1, Kipper29_1, Zulu_1, Yokurt_1, Pmask_1, EricB_1, WunderPhul_1, Hexamo_1
- Track 74 : Helmet_1, Garak_1, Candra_1, GreedyLawyer_1, Priamo_1
- Track 75 : Hammer_1, Gladiator_1, Blue7_1, Gruunaga_1, Rifter_1
- Track 76 : Chartreuse_1

- Track 77 : ExplosioNervosa_1, Beemo_1, Scherzo_1, Pioneer_1, Phonnegut_1, Fayely_1
- Track 78 : Toaka_1
- Track 79 : Spouty_1, Eidsmoe_1, Qobbit_1, Priya_1, EmyBug_1, Alma_1, Conquerage_1
- Track 80 : Catalina_1, HortumSL17_1, Tubs_1, Myxus_1, Aliter_1, PackMan_1, Phaeder_1
- Track 81 : Darrell_1
- Track 82 : Maminiaina_1
- Track 83 : Rahalelujah_1
- Track 84 : Charm_1
- Track 85 : SheaKeira_1
- Track 86 : DreamTeam1_1
- Track 87 : Arissanae_1
- Track 88 : BogosyJay_1
- Track 89 : Vanisoa_1
- Track 90 : Elephantoan_1
- Track 91 : Keziacharles14_1
- Track 92 : LoneWolf_1
- Track 93 : Yecey3_1
- Track 94 : UPIE_110
- Track 95 : Appletree2_110
- Track 96 : Zaria_114, Calm_116
- Track 97 : Rose5_112, Tyson_113
- Track 98 : Acquire49_111, Halena_111, MAckerman_112, CicholasNage_107, Wamburgrxpress_110
- Track 99 : JoeDirt_111
- Track 100 : LeBron_110, AvadaKedavra_111, Wyatt2_112
- Track 101 : Enceladus_108, DirkDirk_108
- Track 102 : OhShagHennessy_105
- Track 103 : Silverleaf_109
- Track 104 : Rumpelstiltskin_103, DrSeegs_115, Breezona_117, Itos_117, Zakai_119, Gabriela_117, Winky_117, Faith1_115, Miley16_117, BobsGarage_116, BigCheese_116, Netyap_115
- Track 105 : Nicholasp3_117, Gardann_116, LilDestine_114
- Track 106 : Bazzle_114
- Track 107 : Vetrix_116
- Track 108 : Crossroads_120, GuuelaD_113
- Track 109 : DanBing_119
- Track 110 : Wilder_117, Loadrie_117, MkaliMitinis3_120, Sarshaun_118, Wigglewiggles_117, Kahlid_116, Soap141_117
- Track 111 : Baoshan_114
- Track 112 : DHan_119
- Track 113 : Finemlucis_115
- Track 114 : Tourach_117
- Track 115 : Lewan_118
- Track 116 : ZhongYanYuan_113
- Track 117 : Claus_116
- Track 118 : Archie_115
- Track 119 : Bellis_112, Moostard_109, Nicholas_111, Kingsolomon_111, Finny_113
- Track 120 : Jubie_113, MsGreen_114
- Track 121 : Ellson_113, BourbonZero_115

- Track 122 : MiniLon_119, Lolly9_114
- Track 123 : Clautastrophe_112
- Track 124 : MiniMac_119
- Track 125 : Lumos_113, Jobypre_114, Snenia_112
- Track 126 : KirDoubleO7_112
- Track 127 : DuncansLeg_115
- Track 128 : Krypton555_117
- Track 129 : Samty_113
- Track 130 : Whirlwind_115
- Track 131 : DyoEdafos_128
- Track 132 : FarmResident_127
- Track 133 : Douzhi_124
- Track 134 : Chaser_123, BrainDrainer_125
- Track 135 : PYPDinur_127
- Track 136 : Sheng711_127
- Track 137 : Douge_127
- Track 138 : Quby_126
- Track 139 : Bromden_125

Summary of Final Annotations (See graph section above for start numbers):

The start number called the most often in the published annotations is 33, it was called in 212 of the 300 non-draft genes in the pham.

Genes that call this "Most Annotated" start:

- 20ES_1, 40AC_2, AN3_1, AN9_1, ANI8_1, AbbyPaige_2, Agape74_2, Aliter_1, Alma_1, Anaysia_1, Aneem_1, AnnaL29_1, Anon_1, Anselm_2, ArcherNM_1, Arissanae_1, Artemis2UCLA_1, BABullseye_1, BabyBack_1, Bactobuster_1, Baehexic_2, Battleship_2, Beemo_1, BengiVuitton_1, Benvolio_2, BiancaTri92_1, Blinn1_1, Blue7_1, BobSwaget_2, BogosyJay_1, Boohoo_1, Bowtie_1, Bud_1, Buggy_2, CRB1_1, Catalina_1, Centaur_2, Changeling_1, Chargerpower_2, Charm_1, ChipMunk_2, CloudWang3_1, Colin_1, Conquerage_1, Cookiedough_1, Crucio_2, D29_1, D32_1, DBQu4n_1, DaVinci_1, Dalmatian_2, Darrell_1, DekHockey33_1, Deloris_1, Dignity_2, Dorothea_1, Drake55_2, DreamTeam1_1, DudeLittle_2, Duplo_1, EagleEye_1, Ebony_1, Echild_2, Eidsmoe_1, Elephantoon_1, EmyBug_1, Epsocamisio_1, Equemioh13_2, EricB_1, Et2Brutus_1, EvilGenius_2, ExplosioNervosa_1, Fameo_2, Fayely_1, Fibonacci_1, FiringLine_2, First_001, Flare16_2, Flaverint_1, Gail_1, GaugeLDP_1, Georgie2_2, Gilberta_1, Gladiator_1, Gruunaga_1, Hammer_1, HarryHoudini_2, Heffalump_2, Hexamo_1, Hoot_1, HortumSL17_1, Hutc2_1, Indra_1, IronMan_1, Isiphiwo_1, JSwag_1, Jaan_1, Jabith_1, Jeeves_1, Jeffabunny_1, Jerm_2, JewelBug_1, Jordennis_1, JoshKayV_2, Journey13_1, Jsquared_1, Kalpine_2, KatherineG_1, Kazan_1, Kerberos_1, KingCyrus_2, Kinmap_2, Kipper29_1, Koduck_1, Koko_1, L5_1, LadyBird_1, Landor_1, Larenn_2, LastResort_1, Leogania_1, Leviathan_2, LilTurb_2, Lilbunny_1, Lokk_2, LoneWolf_1, Looper_1, Loser_1, Luchador_1, Lucivia_1, Lucyedi_1, MaCh_1, Malec_2, Maminiaina_1, McFly_1, MiculUcigas_2, Miko_2, MinecraftSteve_2, MissWhite_1, Mulciber_1, Munch_1, Myxus_1, NaSiaTalie_2, Naji_1, Nebulosus_1, Nedarya_1, Neeharika16_1, Newrala_1, NicoleTera_1, NothingSpecial_1, Oofda_1, Orange_1, PackMan_1, PainterBoy_1, Phaeder_1, Phonnegut_1, Pioneer_1, Piro94_1, Pmask_1, Pomar16_1, Power_2, Priya_1,

Qobbit_1, QueenB2_2, QueenBeesly_2, Rachaly_2, Rahalelujah_1, ReMo_1, RedRock_1, Remus_1, Retro23_2, Rifter_1, Roksolana_1, Rosalind_1, Scherzo_1, SemperFi_2, Serenity_1, Sham4_1, ShayRa_2, SheaKeira_1, Smeagan_2, SmellyB_1, SnapTap_2, Snape_1, SororFago_1, Soups_1, Spouty_1, StarStuff_1, Strosahl_1, SuperAwesome_1, SuperCallie99_1, SweetiePie_2, Switzerland_1, TarsusIV_2, Timothy_1, TinyTimmy_1, TipsytheTRex_1, Toaka_1, Tomathan_1, ToneTone_1, Travvers_1, Trixie_1, Trooper_2, Tubs_1, Tucker_1, Turbido_2, Updawg_2, VA6_1, VC3_1, Vanisoa_1, VohminGhazi_1, Waits_1, WeiHuaDA_2, Whabigail7_2, WideWale_2, Wiks_1, WunderPhul_1, XianYue_1, Yecy3_1, Yokurt_1, Zaka_1, Zulu_1,

Genes that have the "Most Annotated" start but do not call it:

- Acolyte_1, Bachome_1, Bradman_1, C3_01, Candra_1, Chartreuse_1, Garak_1, GreedyLawyer_1, Helmet_1, Insomnia_1, Joselito_1, Mabel_1, MajorMajor_1, Petersenfast_1, Phaded_1, Priamo_1, Quokka_1, Salz_1, Sunhee_1,

Genes that do not have the "Most Annotated" start:

- Acquire49_111, Adzzy_1, Appletree2_110, Archie_115, AvadaKedavra_111, Baoshan_114, Bazzle_114, Bellis_112, BigCheese_116, BobsGarage_116, BourbonZero_115, BrainDrainer_125, Breezona_117, Bromden_125, Calm_116, Caraxes_1, Chaser_123, Che12_1, CicholasNage_107, Claus_116, Clautastrophe_112, Crossroads_120, DHan_119, DanBing_119, DarthPhader_1, DirkDirk_108, Douge_127, Douzhi_124, DrSeegs_115, DuncansLeg_115, DyoEdafos_128, EZMoney23_1, Ellson_113, Enceladus_108, Faith1_115, FarmResident_127, Finemlucis_115, Finnry_113, Gabriela_117, Gardann_116, GuuelaD_113, Halena_111, Itos_117, Iwokeuplikedis_2, Jobypre_114, JoeDirt_111, Jubie_113, Kahlid_116, Keziacharles14_1, Kingsolomon_111, KirDoubleO7_112, Krypton555_117, LeBron_110, Lewan_118, LilDestine_114, Loadrie_117, Lolly9_114, Lumos_113, MAckerman_112, Miley16_117, MiniLon_119, MiniMac_119, MkaliMitinis3_120, Moostard_109, MsGreen_114, Netyap_115, Nicholas_111, Nicholasp3_117, OhShagHennessy_105, PYPDinur_127, Ph8s_1, Pharaoh_1, Pukovnik_1, Quby_126, Refuge_1, Rose5_112, Rumpelstiltskin_103, Samty_113, Sarshaun_118, Sheng711_127, Silverleaf_109, Snenia_112, Soap141_117, Superchunk_1, Tourach_117, Tyson_113, UPIE_110, Vetrix_116, Wamburgexpress_110, Whirlwind_115, Wigglewiggle_117, Wilder_117, Winky_117, Wyatt2_112, Zakai_119, Zaria_114, ZhongYanYuan_113, Zimmer_1,

Summary by start number:

Start 11:

- Found in 12 of 339 (3.5%) of genes in pham
- Manual Annotations of this start: 2 of 300
- Called 25.0% of time when present
- Phage (with cluster) where this start called: Jubie_113 (L3), KirDoubleO7_112 (L3), MsGreen_114 (L3),

Start 15:

- Found in 3 of 339 (0.9%) of genes in pham
- Manual Annotations of this start: 1 of 300
- Called 33.3% of time when present
- Phage (with cluster) where this start called: Phaded_1 (A2),

Start 22:

- Found in 1 of 339 (0.3%) of genes in pham
- No Manual Annotations of this start.
- Called 100.0% of time when present
- Phage (with cluster) where this start called: PYPDinur_127 (L4),

Start 27:

- Found in 64 of 339 (18.9%) of genes in pham
- Manual Annotations of this start: 51 of 300
- Called 98.4% of time when present
- Phage (with cluster) where this start called: Acquire49_111 (L1), Appletree2_110 (L1), Archie_115 (L2), AvadaKedavra_111 (L1), Baoshan_114 (L2), Bazzle_114 (L2), BigCheese_116 (L2), BobsGarage_116 (L2), BrainDrainer_125 (L4), Breezona_117 (L2), Bromden_125 (L4), Calm_116 (L1), Chaser_123 (L4), CicholasNage_107 (L1), Claus_116 (L2), Crossroads_120 (L2), DHan_119 (L2), DanBing_119 (L2), DirkDirk_108 (L1), Douge_127 (L4), Douzhi_124 (L4), DrSeegs_115 (L2), DyoEdafos_128 (L4), Enceladus_108 (L1), Faith1_115 (L2), FarmResident_127 (L4), Finemlucis_115 (L2), Gabriela_117 (L2), Gardann_116 (L2), GuuelaD_113 (L2), Halena_111 (L1), Itos_117 (L2), JoeDirt_111 (L1), Kahlid_116 (L2), LeBron_110 (L1), Lewan_118 (L2), LilDestine_114 (L2), Loadrie_117 (L2), MAckerman_112 (L1), Miley16_117 (L2), MkaliMitinis3_120 (L2), Netyap_115 (L2), Nicholasp3_117 (L2), OhShagHennessy_105 (L1), Quby_126 (L4), Rose5_112 (L1), Rumpelstiltskin_103 (L2), Sarshaun_118 (L2), Sheng711_127 (L4), Silverleaf_109 (L1), Soap141_117 (L2), Tourach_117 (L2), Tyson_113 (L1), UPIE_110 (L1), Vetrix_116 (L2), Wamburgrxpress_110 (L1), Wigglewiggle_117 (L2), Wilder_117 (L2), Winky_117 (L2), Wyatt2_112 (L1), Zakai_119 (L2), Zaria_114 (L1), ZhongYanYuan_113 (L2),

Start 28:

- Found in 21 of 339 (6.2%) of genes in pham
- Manual Annotations of this start: 14 of 300
- Called 85.7% of time when present
- Phage (with cluster) where this start called: Bellis_112 (L3), BourbonZero_115 (L3), Clautastrophe_112 (L3), DuncansLeg_115 (L3), Ellson_113 (L3), Finnry_113 (L3), Jobypre_114 (L3), Kingsolomon_111 (L3), Krypton555_117 (L3), Lolly9_114 (L3), Lumos_113 (L3), MiniLon_119 (L3), MiniMac_119 (L3), Moostard_109 (L3), Nicholas_111 (L3), Samty_113 (L3), Snenia_112 (L3), Whirlwind_115 (L3),

Start 29:

- Found in 41 of 339 (12.1%) of genes in pham
- Manual Annotations of this start: 10 of 300
- Called 31.7% of time when present
- Phage (with cluster) where this start called: Adzzy_1 (A2), Bachome_1 (A11), Caraxes_1 (A2), Che12_1 (A2), Insomnia_1 (A11), Joselito_1 (A11), Mabel_1 (A11), Petersenfast_1 (A11), Pharaoh_1 (A12), Salz_1 (A11), Sunhee_1 (A14), Superchunk_1 (A2), Zimmer_1 (A12),

Start 30:

- Found in 1 of 339 (0.3%) of genes in pham
- Manual Annotations of this start: 1 of 300
- Called 100.0% of time when present
- Phage (with cluster) where this start called: Iwokeuplikedis_2 (A2),

Start 32:

- Found in 3 of 339 (0.9%) of genes in pham

- Manual Annotations of this start: 2 of 300
- Called 100.0% of time when present
- Phage (with cluster) where this start called: EZMoney23_1 (A2), Keziacharles14_1 (A9), Pukovnik_1 (A2),

Start 33:

- Found in 241 of 339 (71.1%) of genes in pham
- Manual Annotations of this start: 212 of 300
- Called 92.1% of time when present
- Phage (with cluster) where this start called: 20ES_1 (A2), 40AC_2 (A17), AN3_1 (A2), AN9_1 (A2), ANI8_1 (A2), AbbyPaige_2 (A2), Agape74_2 (A2), Aliter_1 (A9), Alma_1 (A9), Anaysia_1 (A15), Aneem_1 (A11), AnnaL29_1 (A2), Anon_1 (A15), Anselm_2 (A2), ArcherNM_1 (A2), Arissanae_1 (A9), Artemis2UCLA_1 (A6), BABullseye_1 (A6), BabyBack_1 (A2), Bactobuster_1 (A2), Baehexic_2 (A2), Battleship_2 (A15), Beemo_1 (A9), BengiVuitton_1 (A2), Benvolio_2 (A2), BiancaTri92_1 (A2), Blinn1_1 (A6), Blue7_1 (A6), BobSwaget_2 (A2), BogosyJay_1 (A9), Boohoo_1 (A15), Bowtie_1 (A11), Bud_1 (A11), Buggy_2 (A2), CRB1_1 (A2), Catalina_1 (A9), Centaur_2 (A2), Changeling_1 (A2), Chargerpower_2 (A), Charm_1 (A9), ChipMunk_2 (A2), CloudWang3_1 (A6), Colin_1 (A2), Conquerage_1 (A9), Cookiedough_1 (A6), Crucio_2 (A2), D29_1 (A2), D32_1 (A2), DBQu4n_1 (A2), DaVinci_1 (A6), Dalmatian_2 (A2), Darrell_1 (A9), DekHockey33_1 (A15), Deloris_1 (A2), Dignity_2 (A2), Dorothea_1 (A6), Drake55_2 (A2), DreamTeam1_1 (A9), DudeLittle_2 (A2), Duplo_1 (A2), EagleEye_1 (A16), Ebony_1 (A11), Echild_2 (A2), Eidsmoe_1 (A9), Elephantoon_1 (A9), EmyBug_1 (A9), Epsocamisio_1 (A15), Equemioh13_2 (A2), EricB_1 (A6), Et2Brutus_1 (A11), EvilGenius_2 (A2), ExplosioNervosa_1 (A9), Fameo_2 (A2), Fayely_1 (A9), Fibonacci_1 (A11), FiringLine_2 (A2), First_001 (A2), Flare16_2 (A2), Flaverint_1 (A11), Gail_1 (A14), GaugeLDP_1 (A2), Georgie2_2 (A2), Gilberta_1 (A11), Gladiator_1 (A6), Gruunaga_1 (A6), Hammer_1 (A6), HarryHoudini_2 (A2), Heffalump_2 (A2), Hexamo_1 (A6), Hoot_1 (A6), HortumSL17_1 (A9), Hutc2_1 (A11), Indra_1 (A6), IronMan_1 (A2), Isiphiwo_1 (A6), JSwag_1 (A15), Jaan_1 (A2), Jabith_1 (A11), Jeeves_1 (A14), Jeffabunny_1 (A6), Jerm_2 (A2), JewelBug_1 (A6), Jordennis_1 (A6), JoshKayV_2 (A2), Journey13_1 (A2), Jsquared_1 (A2), Kalpine_2 (A2), KatherineG_1 (A15), Kazan_1 (A6), Kerberos_1 (A2), KingCyrus_2 (A2), Kinmap_2 (A21), Kipper29_1 (A6), Koduck_1 (A2), Koko_1 (A6), L5_1 (A2), LadyBird_1 (A2), Landor_1 (A2), Larenn_2 (A2), LastResort_1 (A15), Leogania_1 (A2), Leviathan_2 (A2), LilTurb_2 (A2), Lilbunny_1 (A6), Lolk_2 (A2), LoneWolf_1 (A9), Looper_1 (A15), Loser_1 (A2), Luchador_1 (A14), Lucivia_1 (A11), Lucyedi_1 (A16), MaCh_1 (A11), Malec_2 (A2), Maminiaina_1 (A9), McFly_1 (A6), MiculUcigas_2 (A2), Miko_2 (A2), MinecraftSteve_2 (A15), MissWhite_1 (A2), Mulciber_1 (A11), Munch_1 (A11), Myxus_1 (A9), NaSiaTalie_2 (A2), Naji_1 (A2), Nebulosus_1 (A15), Nedarya_1 (A15), Neeharika16_1 (A6), Newrala_1 (A6), NicoleTera_1 (A2), NothingSpecial_1 (A2), Oofda_1 (A15), Orange_1 (A11), PackMan_1 (A9), PainterBoy_1 (A16), Phaeder_1 (A9), Phonnegut_1 (A9), Pioneer_1 (A9), Piro94_1 (A2), Pmask_1 (A6), Pomar16_1 (A2), Power_2 (A2), Priya_1 (A9), Qobbit_1 (A9), QueenB2_2 (A2), QueenBeesly_2 (A2), Rachaly_2 (A2), Rahalelujah_1 (A9), ReMo_1 (A15), RedRock_1 (A2), Remus_1 (A15), Retro23_2 (A2), Rifter_1 (A6), Roksolana_1 (A6), Rosalind_1 (A15), Scherzo_1 (A9), SemperFi_2 (A2), Serenity_1 (A2), Sham4_1 (A11), ShayRa_2 (A15), SheaKeira_1 (A9), Smeagan_2 (A2), SmellyB_1 (A6), SnapTap_2 (A2), Snape_1 (A11), SororFago_1 (A14), Soups_1 (A15), Spouty_1 (A9), StarStuff_1 (A2), Strosahl_1 (A15), SuperAwesome_1 (A6), SuperCallie99_1 (A6), SweetiePie_2 (A2), Switzerland_1 (A15), TarsusIV_2 (A2), Timothy_1 (A11), TinyTimmy_1 (A11), TipsytheTRex_1 (A2), Toaka_1 (A9), Tomathan_1 (A2),

ToneTone_1 (A6), Travvers_1 (A2), Trixie_1 (A2), Trooper_2 (A2), Tubs_1 (A9), Tucker_1 (A6), Turbido_2 (A2), Updawg_2 (A2), VA6_1 (A2), VC3_1 (A2), Vanisoa_1 (A9), VohminGhazi_1 (A6), Waits_1 (A15), WeiHuaDA_2 (A2), Whabigail7_2 (A2), WideWale_2 (A2), Wiks_1 (A6), WunderPhul_1 (A6), XianYue_1 (A2), Yecey3_1 (A9), Yokurt_1 (A6), Zaka_1 (A6), Zulu_1 (A6),

Start 35:

- Found in 77 of 339 (22.7%) of genes in pham
- Manual Annotations of this start: 2 of 300
- Called 2.6% of time when present
- Phage (with cluster) where this start called: DARTHPhader_1 (A12), Refuge_1 (A12),

Start 39:

- Found in 207 of 339 (61.1%) of genes in pham
- Manual Annotations of this start: 4 of 300
- Called 4.8% of time when present
- Phage (with cluster) where this start called: Acolyte_1 (A2), Bradman_1 (A2), C3_01 (A2), Candra_1 (A6), Garak_1 (A6), GreedyLawyer_1 (A6), Helmet_1 (A6), MajorMajor_1 (A2), Priamo_1 (A6), Quokka_1 (A2),

Start 47:

- Found in 249 of 339 (73.5%) of genes in pham
- No Manual Annotations of this start.
- Called 0.4% of time when present
- Phage (with cluster) where this start called: Chartreuse_1 (A6),

Start 59:

- Found in 339 of 339 (100.0%) of genes in pham
- Manual Annotations of this start: 1 of 300
- Called 0.3% of time when present
- Phage (with cluster) where this start called: Ph8s_1 (A2),

Summary by clusters:

There are 15 clusters represented in this pham: A15, A14, A17, A16, A11, A, A12, L1, A21, L4, A2, L2, L3, A6, A9,

Info for manual annotations of cluster A:

- Start number 33 was manually annotated 1 time for cluster A.

Info for manual annotations of cluster A11:

- Start number 29 was manually annotated 5 times for cluster A11.
- Start number 33 was manually annotated 19 times for cluster A11.

Info for manual annotations of cluster A12:

- Start number 29 was manually annotated 2 times for cluster A12.
- Start number 35 was manually annotated 2 times for cluster A12.

Info for manual annotations of cluster A14:

- Start number 33 was manually annotated 4 times for cluster A14.

Info for manual annotations of cluster A15:

- Start number 33 was manually annotated 21 times for cluster A15.

Info for manual annotations of cluster A16:

- Start number 33 was manually annotated 3 times for cluster A16.

Info for manual annotations of cluster A2:

- Start number 15 was manually annotated 1 time for cluster A2.
- Start number 29 was manually annotated 3 times for cluster A2.
- Start number 30 was manually annotated 1 time for cluster A2.
- Start number 32 was manually annotated 1 time for cluster A2.
- Start number 33 was manually annotated 91 times for cluster A2.
- Start number 39 was manually annotated 2 times for cluster A2.
- Start number 59 was manually annotated 1 time for cluster A2.

Info for manual annotations of cluster A6:

- Start number 33 was manually annotated 40 times for cluster A6.
- Start number 39 was manually annotated 2 times for cluster A6.

Info for manual annotations of cluster A9:

- Start number 32 was manually annotated 1 time for cluster A9.
- Start number 33 was manually annotated 33 times for cluster A9.

Info for manual annotations of cluster L1:

- Start number 27 was manually annotated 19 times for cluster L1.

Info for manual annotations of cluster L2:

- Start number 27 was manually annotated 28 times for cluster L2.

Info for manual annotations of cluster L3:

- Start number 11 was manually annotated 2 times for cluster L3.
- Start number 28 was manually annotated 14 times for cluster L3.

Info for manual annotations of cluster L4:

- Start number 27 was manually annotated 4 times for cluster L4.

Gene Information:

Gene: 20ES_1 Start: 569, Stop: 1336, Start Num: 33

Candidate Starts for 20ES_1:

(21, 536), (Start: 33 @569 has 212 MA's), (Start: 39 @638 has 4 MA's), (41, 677), (47, 722), (52, 824), (53, 833), (56, 854), (Start: 59 @884 has 1 MA's), (102, 1262), (103, 1271), (118, 1322),

Gene: 40AC_2 Start: 502, Stop: 1272, Start Num: 33

Candidate Starts for 40AC_2:

(Start: 33 @502 has 212 MA's), (Start: 39 @571 has 4 MA's), (47, 655), (52, 757), (53, 766), (Start: 59 @817 has 1 MA's), (63, 844), (73, 985), (114, 1246),

Gene: AN3_1 Start: 568, Stop: 1329, Start Num: 33

Candidate Starts for AN3_1:

(21, 535), (Start: 33 @568 has 212 MA's), (Start: 39 @637 has 4 MA's), (41, 676), (47, 721), (52, 823), (53, 832), (56, 853), (Start: 59 @883 has 1 MA's), (73, 1051), (99, 1240), (117, 1315),

Gene: AN9_1 Start: 391, Stop: 1203, Start Num: 33

Candidate Starts for AN9_1:

(Start: 33 @391 has 212 MA's), (Start: 39 @460 has 4 MA's), (53, 655), (Start: 59 @706 has 1 MA's), (65, 784), (73, 874), (91, 994), (104, 1093), (120, 1153), (122, 1159), (126, 1171),

Gene: ANI8_1 Start: 391, Stop: 1203, Start Num: 33

Candidate Starts for ANI8_1:

(Start: 33 @391 has 212 MA's), (Start: 39 @460 has 4 MA's), (53, 655), (Start: 59 @706 has 1 MA's), (65, 784), (73, 874), (91, 994), (104, 1093), (120, 1153), (122, 1159), (126, 1171),

Gene: AbbyPaige_2 Start: 642, Stop: 1403, Start Num: 33

Candidate Starts for AbbyPaige_2:

(Start: 33 @642 has 212 MA's), (Start: 39 @711 has 4 MA's), (41, 750), (47, 795), (52, 897), (53, 906), (Start: 59 @957 has 1 MA's), (73, 1125), (81, 1182), (85, 1206), (99, 1314), (117, 1389),

Gene: Acolyte_1 Start: 445, Stop: 1143, Start Num: 39

Candidate Starts for Acolyte_1:

(Start: 33 @376 has 212 MA's), (Start: 39 @445 has 4 MA's), (41, 484), (44, 502), (47, 529), (53, 640), (56, 661), (Start: 59 @691 has 1 MA's), (65, 769), (73, 859), (85, 940), (114, 1120),

Gene: Acquire49_111 Start: 62227, Stop: 62937, Start Num: 27

Candidate Starts for Acquire49_111:

(Start: 27 @62227 has 51 MA's), (34, 62281), (Start: 35 @62293 has 2 MA's), (36, 62299), (Start: 39 @62314 has 4 MA's), (44, 62374), (47, 62401), (50, 62455), (52, 62503), (54, 62515), (56, 62533), (Start: 59 @62563 has 1 MA's), (62, 62581), (64, 62635), (73, 62731), (74, 62737), (80, 62779), (82, 62791), (85, 62812), (89, 62842), (91, 62854), (93, 62869), (94, 62896),

Gene: Adzzy_1 Start: 381, Stop: 1229, Start Num: 29

Candidate Starts for Adzzy_1:

(Start: 29 @381 has 10 MA's), (36, 444), (37, 447), (Start: 39 @459 has 4 MA's), (44, 516), (47, 543), (48, 570), (49, 585), (Start: 59 @705 has 1 MA's), (63, 732), (65, 783), (73, 873), (85, 954), (132, 1188),

Gene: Agape74_2 Start: 642, Stop: 1403, Start Num: 33

Candidate Starts for Agape74_2:

(Start: 33 @642 has 212 MA's), (Start: 39 @711 has 4 MA's), (41, 750), (47, 795), (52, 897), (53, 906), (Start: 59 @957 has 1 MA's), (73, 1125), (81, 1182), (85, 1206), (99, 1314), (117, 1389),

Gene: Aliter_1 Start: 379, Stop: 1161, Start Num: 33

Candidate Starts for Aliter_1:

(Start: 33 @379 has 212 MA's), (36, 433), (44, 505), (49, 574), (Start: 59 @694 has 1 MA's), (62, 712), (72, 853), (73, 862), (93, 997), (115, 1132), (116, 1135), (122, 1153),

Gene: Alma_1 Start: 380, Stop: 1159, Start Num: 33

Candidate Starts for Alma_1:

(Start: 33 @380 has 212 MA's), (36, 434), (44, 506), (49, 575), (Start: 59 @695 has 1 MA's), (62, 713), (72, 854), (73, 863), (87, 950), (91, 983), (93, 998), (113, 1124), (115, 1130), (116, 1133), (122, 1151),

Gene: Anaysia_1 Start: 430, Stop: 1260, Start Num: 33

Candidate Starts for Anaysia_1:

(Start: 33 @430 has 212 MA's), (47, 583), (53, 694), (Start: 59 @745 has 1 MA's), (73, 913), (79, 955), (82, 973), (102, 1120), (109, 1153), (125, 1198), (129, 1213),

Gene: Aneem_1 Start: 367, Stop: 1107, Start Num: 33

Candidate Starts for Aneem_1:

(Start: 29 @355 has 10 MA's), (Start: 33 @367 has 212 MA's), (38, 430), (44, 493), (Start: 59 @682 has 1 MA's), (63, 709), (65, 760), (73, 850),

Gene: AnnaL29_1 Start: 370, Stop: 1134, Start Num: 33

Candidate Starts for AnnaL29_1:

(Start: 33 @370 has 212 MA's), (Start: 39 @439 has 4 MA's), (41, 478), (47, 523), (52, 625), (53, 634), (56, 655), (Start: 59 @685 has 1 MA's), (73, 853), (87, 940), (103, 1072), (118, 1120),

Gene: Anon_1 Start: 400, Stop: 1161, Start Num: 33

Candidate Starts for Anon_1:

(Start: 33 @400 has 212 MA's), (40, 472), (47, 553), (51, 631), (Start: 59 @715 has 1 MA's), (65, 793), (112, 1144),

Gene: Anselm_2 Start: 664, Stop: 1500, Start Num: 33

Candidate Starts for Anselm_2:

(Start: 33 @664 has 212 MA's), (Start: 39 @733 has 4 MA's), (47, 817), (53, 928), (57, 967), (Start: 59 @979 has 1 MA's), (80, 1195), (87, 1234), (118, 1426), (136, 1492),

Gene: Appletree2_110 Start: 62268, Stop: 62978, Start Num: 27

Candidate Starts for Appletree2_110:

(19, 62253), (Start: 27 @62268 has 51 MA's), (34, 62322), (Start: 35 @62334 has 2 MA's), (36, 62340), (Start: 39 @62355 has 4 MA's), (44, 62415), (47, 62442), (50, 62496), (52, 62544), (54, 62556), (56, 62574), (Start: 59 @62604 has 1 MA's), (62, 62622), (64, 62676), (73, 62772), (74, 62778), (80, 62820), (82, 62832), (85, 62853), (89, 62883), (91, 62895), (93, 62910), (94, 62937),

Gene: ArcherNM_1 Start: 391, Stop: 1155, Start Num: 33

Candidate Starts for ArcherNM_1:

(Start: 33 @391 has 212 MA's), (Start: 39 @460 has 4 MA's), (41, 499), (47, 544), (52, 646), (53, 655), (56, 676), (Start: 59 @706 has 1 MA's), (73, 874), (103, 1093), (118, 1141),

Gene: Archie_115 Start: 64370, Stop: 65074, Start Num: 27

Candidate Starts for Archie_115:

(Start: 27 @64370 has 51 MA's), (Start: 35 @64436 has 2 MA's), (36, 64442), (Start: 39 @64457 has 4 MA's), (47, 64541), (49, 64583), (55, 64661), (56, 64673), (Start: 59 @64703 has 1 MA's), (62, 64721), (64, 64775), (65, 64781), (67, 64793), (70, 64853), (71, 64856), (81, 64925), (86, 64952), (87, 64955), (95, 65045),

Gene: Arissanae_1 Start: 378, Stop: 1226, Start Num: 33

Candidate Starts for Arissanae_1:

(Start: 33 @378 has 212 MA's), (47, 531), (49, 573), (Start: 59 @693 has 1 MA's), (73, 861), (100, 1059), (117, 1134), (127, 1155), (128, 1158), (138, 1206), (139, 1218),

Gene: Artemis2UCLA_1 Start: 418, Stop: 1176, Start Num: 33

Candidate Starts for Artemis2UCLA_1:

(Start: 33 @418 has 212 MA's), (Start: 39 @487 has 4 MA's), (47, 571), (49, 613), (53, 682), (56, 703), (Start: 59 @733 has 1 MA's), (73, 901), (85, 982),

Gene: AvadaKedavra_111 Start: 62341, Stop: 63051, Start Num: 27

Candidate Starts for AvadaKedavra_111:

(Start: 27 @62341 has 51 MA's), (34, 62395), (Start: 35 @62407 has 2 MA's), (36, 62413), (Start: 39 @62428 has 4 MA's), (44, 62488), (47, 62515), (50, 62569), (52, 62617), (54, 62629), (56, 62647), (Start: 59 @62677 has 1 MA's), (62, 62695), (64, 62749), (73, 62845), (74, 62851), (80, 62893), (82, 62905), (85, 62926), (89, 62956), (91, 62968), (93, 62983), (94, 63010),

Gene: BABullseye_1 Start: 418, Stop: 1176, Start Num: 33

Candidate Starts for BABullseye_1:

(Start: 33 @418 has 212 MA's), (Start: 39 @487 has 4 MA's), (47, 571), (49, 613), (53, 682), (56, 703), (Start: 59 @733 has 1 MA's), (73, 901), (85, 982),

Gene: BabyBack_1 Start: 377, Stop: 1144, Start Num: 33

Candidate Starts for BabyBack_1:

(Start: 33 @377 has 212 MA's), (Start: 39 @446 has 4 MA's), (47, 530), (53, 641), (Start: 59 @692 has 1 MA's), (63, 719), (73, 860), (85, 941), (114, 1121),

Gene: Bachome_1 Start: 355, Stop: 1107, Start Num: 29

Candidate Starts for Bachome_1:

(Start: 29 @355 has 10 MA's), (Start: 33 @367 has 212 MA's), (38, 430), (44, 493), (Start: 59 @682 has 1 MA's), (63, 709), (73, 850),

Gene: Bactobuster_1 Start: 387, Stop: 1148, Start Num: 33

Candidate Starts for Bactobuster_1:

(Start: 15 @303 has 1 MA's), (Start: 33 @387 has 212 MA's), (Start: 39 @456 has 4 MA's), (44, 513), (47, 540), (52, 642), (53, 651), (56, 672), (Start: 59 @702 has 1 MA's), (73, 870), (85, 951), (114, 1131),

Gene: Baehexic_2 Start: 643, Stop: 1380, Start Num: 33

Candidate Starts for Baehexic_2:

(Start: 33 @643 has 212 MA's), (Start: 39 @712 has 4 MA's), (44, 769), (47, 796), (52, 898), (53, 907), (56, 928), (Start: 59 @958 has 1 MA's), (65, 1036), (73, 1126), (91, 1246),

Gene: Baoshan_114 Start: 64773, Stop: 65465, Start Num: 27

Candidate Starts for Baoshan_114:

(Start: 27 @64773 has 51 MA's), (31, 64782), (Start: 35 @64839 has 2 MA's), (36, 64845), (Start: 39 @64860 has 4 MA's), (43, 64911), (44, 64917), (47, 64944), (55, 65064), (Start: 59 @65106 has 1 MA's), (61, 65115), (62, 65124), (65, 65184), (66, 65187), (71, 65259), (72, 65265), (73, 65274), (81, 65328), (86, 65355), (87, 65358), (91, 65394), (93, 65409),

Gene: Battleship_2 Start: 577, Stop: 1407, Start Num: 33

Candidate Starts for Battleship_2:

(Start: 33 @577 has 212 MA's), (47, 730), (53, 841), (Start: 59 @892 has 1 MA's), (73, 1060), (79, 1102), (82, 1120), (102, 1267), (109, 1300), (125, 1345), (129, 1360),

Gene: Bazzle_114 Start: 64892, Stop: 65593, Start Num: 27

Candidate Starts for Bazzle_114:

(17, 64865), (Start: 27 @64892 has 51 MA's), (Start: 35 @64958 has 2 MA's), (36, 64964), (Start: 39 @64979 has 4 MA's), (47, 65063), (49, 65105), (55, 65183), (56, 65195), (Start: 59 @65225 has 1 MA's), (62, 65243), (64, 65297), (65, 65303), (67, 65315), (70, 65375), (71, 65378), (81, 65447), (86, 65474), (87, 65477), (95, 65567),

Gene: Beemo_1 Start: 380, Stop: 1162, Start Num: 33

Candidate Starts for Beemo_1:

(Start: 33 @380 has 212 MA's), (36, 434), (44, 506), (Start: 59 @695 has 1 MA's), (62, 713), (72, 854), (73, 863), (93, 998), (113, 1127), (115, 1133), (116, 1136), (122, 1154),

Gene: Bellis_112 Start: 64329, Stop: 65036, Start Num: 28

Candidate Starts for Bellis_112:

(Start: 11 @64254 has 2 MA's), (18, 64305), (24, 64320), (Start: 28 @64329 has 14 MA's), (Start: 35 @64395 has 2 MA's), (36, 64401), (45, 64482), (46, 64485), (47, 64500), (52, 64602), (54, 64614), (55, 64620), (Start: 59 @64662 has 1 MA's), (61, 64671), (64, 64734), (71, 64815), (74, 64836), (84, 64899), (91, 64953), (93, 64968), (94, 64995), (95, 65007),

Gene: BengiVuitton_1 Start: 432, Stop: 1193, Start Num: 33

Candidate Starts for BengiVuitton_1:

(21, 399), (Start: 33 @432 has 212 MA's), (Start: 39 @501 has 4 MA's), (41, 540), (47, 585), (52, 687), (53, 696), (Start: 59 @747 has 1 MA's), (73, 915), (99, 1104), (117, 1179),

Gene: Benvolio_2 Start: 662, Stop: 1495, Start Num: 33

Candidate Starts for Benvolio_2:

(Start: 33 @662 has 212 MA's), (Start: 39 @731 has 4 MA's), (47, 815), (53, 926), (57, 965), (Start: 59 @977 has 1 MA's), (80, 1193), (87, 1232), (110, 1400), (111, 1406), (118, 1427), (123, 1442), (136, 1487),

Gene: BiancaTri92_1 Start: 390, Stop: 1157, Start Num: 33

Candidate Starts for BiancaTri92_1:

(Start: 33 @390 has 212 MA's), (41, 498), (44, 516), (47, 543), (52, 645), (53, 654), (56, 675), (Start: 59 @705 has 1 MA's), (73, 873), (91, 993), (117, 1140), (120, 1146),

Gene: BigCheese_116 Start: 64844, Stop: 65533, Start Num: 27

Candidate Starts for BigCheese_116:

(Start: 27 @64844 has 51 MA's), (31, 64853), (Start: 35 @64910 has 2 MA's), (44, 64988), (46, 65000), (50, 65069), (57, 65165), (Start: 59 @65177 has 1 MA's), (63, 65204), (64, 65249), (71, 65330), (72, 65336), (74, 65351), (78, 65378), (81, 65402), (86, 65429), (88, 65450), (89, 65456), (93, 65480),

Gene: Blinn1_1 Start: 418, Stop: 1176, Start Num: 33

Candidate Starts for Blinn1_1:

(Start: 33 @418 has 212 MA's), (Start: 39 @487 has 4 MA's), (47, 571), (49, 613), (53, 682), (56, 703), (Start: 59 @733 has 1 MA's), (73, 901), (85, 982),

Gene: Blue7_1 Start: 410, Stop: 1171, Start Num: 33

Candidate Starts for Blue7_1:

(Start: 33 @410 has 212 MA's), (Start: 39 @479 has 4 MA's), (47, 563), (53, 674), (56, 695), (Start: 59 @725 has 1 MA's), (73, 893), (85, 974), (113, 1148), (119, 1163),

Gene: BobSwaget_2 Start: 621, Stop: 1388, Start Num: 33

Candidate Starts for BobSwaget_2:

(Start: 33 @621 has 212 MA's), (Start: 39 @690 has 4 MA's), (41, 729), (44, 747), (47, 774), (52, 876), (53, 885), (Start: 59 @936 has 1 MA's), (84, 1173), (103, 1323), (118, 1374),

Gene: BobsGarage_116 Start: 64844, Stop: 65533, Start Num: 27

Candidate Starts for BobsGarage_116:

(Start: 27 @64844 has 51 MA's), (31, 64853), (Start: 35 @64910 has 2 MA's), (44, 64988), (46, 65000), (50, 65069), (57, 65165), (Start: 59 @65177 has 1 MA's), (63, 65204), (64, 65249), (71, 65330), (72, 65336), (74, 65351), (78, 65378), (81, 65402), (86, 65429), (88, 65450), (89, 65456), (93,

65480),

Gene: BogosyJay_1 Start: 359, Stop: 1213, Start Num: 33

Candidate Starts for BogosyJay_1:

(Start: 33 @359 has 212 MA's), (Start: 39 @428 has 4 MA's), (47, 512), (48, 539), (Start: 59 @674 has 1 MA's), (73, 842), (100, 1040), (110, 1091), (117, 1115), (128, 1145), (138, 1193), (139, 1205),

Gene: Boohoo_1 Start: 430, Stop: 1260, Start Num: 33

Candidate Starts for Boohoo_1:

(Start: 33 @430 has 212 MA's), (47, 583), (53, 694), (Start: 59 @745 has 1 MA's), (73, 913), (79, 955), (82, 973), (102, 1120), (109, 1153), (125, 1198), (129, 1213),

Gene: BourbonZero_115 Start: 64501, Stop: 65208, Start Num: 28

Candidate Starts for BourbonZero_115:

(18, 64477), (24, 64492), (Start: 28 @64501 has 14 MA's), (36, 64573), (45, 64654), (46, 64657), (47, 64672), (52, 64774), (54, 64786), (55, 64792), (Start: 59 @64834 has 1 MA's), (61, 64843), (62, 64852), (64, 64906), (71, 64987), (74, 65008), (82, 65062), (84, 65071), (93, 65140), (94, 65167), (95, 65179),

Gene: Bowtie_1 Start: 367, Stop: 1107, Start Num: 33

Candidate Starts for Bowtie_1:

(Start: 29 @355 has 10 MA's), (Start: 33 @367 has 212 MA's), (38, 430), (44, 493), (Start: 59 @682 has 1 MA's), (63, 709), (65, 760), (73, 850),

Gene: Bradman_1 Start: 472, Stop: 1092, Start Num: 39

Candidate Starts for Bradman_1:

(Start: 33 @403 has 212 MA's), (Start: 39 @472 has 4 MA's), (44, 529), (47, 556), (53, 667), (58, 712), (Start: 59 @718 has 1 MA's), (65, 796), (73, 886), (87, 973), (91, 1006),

Gene: BrainDrainer_125 Start: 66108, Stop: 66797, Start Num: 27

Candidate Starts for BrainDrainer_125:

(Start: 27 @66108 has 51 MA's), (Start: 35 @66174 has 2 MA's), (Start: 39 @66195 has 4 MA's), (41, 66234), (46, 66264), (49, 66321), (50, 66333), (52, 66381), (54, 66393), (55, 66399), (Start: 59 @66441 has 1 MA's), (63, 66468), (64, 66513), (71, 66594), (74, 66615), (78, 66642), (84, 66678), (87, 66696), (88, 66714),

Gene: Breezona_117 Start: 65179, Stop: 65868, Start Num: 27

Candidate Starts for Breezona_117:

(Start: 27 @65179 has 51 MA's), (31, 65188), (Start: 35 @65245 has 2 MA's), (44, 65323), (46, 65335), (50, 65404), (57, 65500), (Start: 59 @65512 has 1 MA's), (63, 65539), (64, 65584), (71, 65665), (72, 65671), (74, 65686), (78, 65713), (81, 65737), (86, 65764), (88, 65785), (89, 65791), (93, 65815),

Gene: Bromden_125 Start: 67100, Stop: 67789, Start Num: 27

Candidate Starts for Bromden_125:

(Start: 27 @67100 has 51 MA's), (Start: 35 @67166 has 2 MA's), (Start: 39 @67187 has 4 MA's), (41, 67226), (44, 67244), (46, 67256), (49, 67313), (50, 67325), (52, 67373), (54, 67385), (57, 67421), (Start: 59 @67433 has 1 MA's), (63, 67460), (64, 67505), (71, 67586), (74, 67607), (78, 67634), (81, 67658), (82, 67661), (84, 67670), (87, 67688), (88, 67706),

Gene: Bud_1 Start: 367, Stop: 1107, Start Num: 33

Candidate Starts for Bud_1:

(Start: 29 @355 has 10 MA's), (Start: 33 @367 has 212 MA's), (38, 430), (44, 493), (Start: 59 @682 has 1 MA's), (63, 709), (65, 760), (73, 850), (96, 1027),

Gene: Buggy_2 Start: 653, Stop: 1414, Start Num: 33

Candidate Starts for Buggy_2:

(Start: 33 @653 has 212 MA's), (Start: 39 @722 has 4 MA's), (41, 761), (47, 806), (52, 908), (53, 917), (Start: 59 @968 has 1 MA's), (73, 1136), (81, 1193), (85, 1217), (99, 1325), (117, 1400),

Gene: C3_01 Start: 460, Stop: 1203, Start Num: 39

Candidate Starts for C3_01:

(Start: 33 @391 has 212 MA's), (Start: 39 @460 has 4 MA's), (47, 544), (53, 655), (Start: 59 @706 has 1 MA's), (65, 784), (73, 874), (91, 994), (104, 1093), (120, 1153), (122, 1159), (126, 1171),

Gene: CRB1_1 Start: 577, Stop: 1338, Start Num: 33

Candidate Starts for CRB1_1:

(21, 544), (Start: 33 @577 has 212 MA's), (Start: 39 @646 has 4 MA's), (41, 685), (47, 730), (56, 862), (Start: 59 @892 has 1 MA's), (73, 1060), (99, 1249), (117, 1324),

Gene: Calm_116 Start: 63187, Stop: 63894, Start Num: 27

Candidate Starts for Calm_116:

(Start: 27 @63187 has 51 MA's), (34, 63241), (Start: 35 @63253 has 2 MA's), (36, 63259), (Start: 39 @63274 has 4 MA's), (41, 63313), (44, 63331), (47, 63358), (50, 63412), (52, 63460), (54, 63472), (56, 63490), (Start: 59 @63520 has 1 MA's), (62, 63538), (64, 63592), (68, 63613), (73, 63688), (74, 63694), (80, 63736), (82, 63748), (85, 63769), (89, 63799), (91, 63811), (93, 63826), (94, 63853),

Gene: Candra_1 Start: 520, Stop: 1209, Start Num: 39

Candidate Starts for Candra_1:

(Start: 33 @451 has 212 MA's), (Start: 39 @520 has 4 MA's), (47, 604), (49, 646), (53, 715), (56, 736), (Start: 59 @766 has 1 MA's), (73, 934), (85, 1015),

Gene: Caraxes_1 Start: 381, Stop: 1229, Start Num: 29

Candidate Starts for Caraxes_1:

(Start: 29 @381 has 10 MA's), (36, 444), (37, 447), (Start: 39 @459 has 4 MA's), (44, 516), (47, 543), (48, 570), (49, 585), (Start: 59 @705 has 1 MA's), (65, 783), (73, 873), (85, 954),

Gene: Catalina_1 Start: 379, Stop: 1161, Start Num: 33

Candidate Starts for Catalina_1:

(Start: 33 @379 has 212 MA's), (36, 433), (44, 505), (49, 574), (Start: 59 @694 has 1 MA's), (62, 712), (72, 853), (73, 862), (93, 997), (115, 1132), (116, 1135), (122, 1153),

Gene: Centaur_2 Start: 642, Stop: 1376, Start Num: 33

Candidate Starts for Centaur_2:

(Start: 33 @642 has 212 MA's), (Start: 39 @711 has 4 MA's), (41, 750), (47, 795), (52, 897), (53, 906), (56, 927), (Start: 59 @957 has 1 MA's), (73, 1125), (91, 1245),

Gene: Changeling_1 Start: 391, Stop: 1155, Start Num: 33

Candidate Starts for Changeling_1:

(Start: 33 @391 has 212 MA's), (Start: 39 @460 has 4 MA's), (41, 499), (47, 544), (52, 646), (53, 655), (56, 676), (Start: 59 @706 has 1 MA's), (73, 874), (103, 1093), (118, 1141),

Gene: Chargerpower_2 Start: 504, Stop: 1277, Start Num: 33

Candidate Starts for Chargerpower_2:

(Start: 33 @504 has 212 MA's), (Start: 39 @573 has 4 MA's), (47, 657), (50, 711), (52, 759), (53, 768), (57, 807), (Start: 59 @819 has 1 MA's), (86, 1071), (93, 1122), (102, 1197), (106, 1215), (118, 1263),

Gene: Charm_1 Start: 356, Stop: 1210, Start Num: 33

Candidate Starts for Charm_1:

(Start: 33 @356 has 212 MA's), (Start: 39 @425 has 4 MA's), (47, 509), (Start: 59 @671 has 1 MA's), (63, 698), (65, 749), (73, 839), (85, 920), (100, 1037), (115, 1106), (117, 1112), (128, 1142), (134, 1169), (138, 1190), (139, 1202),

Gene: Chartreuse_1 Start: 572, Stop: 1177, Start Num: 47

Candidate Starts for Chartreuse_1:

(Start: 33 @419 has 212 MA's), (Start: 39 @488 has 4 MA's), (47, 572), (49, 614), (53, 683), (56, 704), (Start: 59 @734 has 1 MA's), (73, 902), (85, 983),

Gene: Chaser_123 Start: 65827, Stop: 66516, Start Num: 27

Candidate Starts for Chaser_123:

(Start: 27 @65827 has 51 MA's), (Start: 35 @65893 has 2 MA's), (Start: 39 @65914 has 4 MA's), (41, 65953), (46, 65983), (49, 66040), (50, 66052), (52, 66100), (54, 66112), (55, 66118), (Start: 59 @66160 has 1 MA's), (63, 66187), (64, 66232), (71, 66313), (74, 66334), (78, 66361), (84, 66397), (87, 66415), (88, 66433),

Gene: Che12_1 Start: 381, Stop: 1229, Start Num: 29

Candidate Starts for Che12_1:

(Start: 29 @381 has 10 MA's), (36, 444), (37, 447), (Start: 39 @459 has 4 MA's), (44, 516), (47, 543), (48, 570), (49, 585), (Start: 59 @705 has 1 MA's), (63, 732), (65, 783), (73, 873), (85, 954), (119, 1146), (131, 1185), (132, 1188),

Gene: ChipMunk_2 Start: 660, Stop: 1427, Start Num: 33

Candidate Starts for ChipMunk_2:

(16, 594), (Start: 33 @660 has 212 MA's), (Start: 39 @729 has 4 MA's), (41, 768), (47, 813), (53, 924), (56, 945), (Start: 59 @975 has 1 MA's), (65, 1053), (73, 1143), (86, 1227), (100, 1341), (118, 1413),

Gene: CicholasNage_107 Start: 62572, Stop: 63282, Start Num: 27

Candidate Starts for CicholasNage_107:

(Start: 27 @62572 has 51 MA's), (34, 62626), (Start: 35 @62638 has 2 MA's), (36, 62644), (Start: 39 @62659 has 4 MA's), (44, 62719), (47, 62746), (50, 62800), (52, 62848), (54, 62860), (56, 62878), (Start: 59 @62908 has 1 MA's), (62, 62926), (64, 62980), (73, 63076), (74, 63082), (80, 63124), (82, 63136), (85, 63157), (89, 63187), (91, 63199), (93, 63214), (94, 63241),

Gene: Claus_116 Start: 64869, Stop: 65573, Start Num: 27

Candidate Starts for Claus_116:

(Start: 27 @64869 has 51 MA's), (31, 64878), (Start: 35 @64935 has 2 MA's), (36, 64941), (Start: 39 @64956 has 4 MA's), (44, 65013), (55, 65160), (Start: 59 @65202 has 1 MA's), (62, 65220), (65, 65280), (66, 65283), (71, 65355), (72, 65361), (73, 65370), (81, 65424), (86, 65451), (87, 65454), (91, 65490), (93, 65505), (97, 65556),

Gene: Clautastrophe_112 Start: 64328, Stop: 65035, Start Num: 28

Candidate Starts for Clautastrophe_112:

(25, 64319), (Start: 28 @64328 has 14 MA's), (36, 64400), (45, 64481), (46, 64484), (47, 64499), (52, 64601), (54, 64613), (55, 64619), (Start: 59 @64661 has 1 MA's), (61, 64670), (64, 64733), (65, 64739), (71, 64814), (74, 64835), (84, 64898), (93, 64967), (94, 64994), (95, 65006),

Gene: CloudWang3_1 Start: 418, Stop: 1176, Start Num: 33

Candidate Starts for CloudWang3_1:

(Start: 33 @418 has 212 MA's), (Start: 39 @487 has 4 MA's), (47, 571), (49, 613), (53, 682), (56, 703), (Start: 59 @733 has 1 MA's), (73, 901), (85, 982),

Gene: Colin_1 Start: 526, Stop: 1293, Start Num: 33

Candidate Starts for Colin_1:

(Start: 33 @526 has 212 MA's), (Start: 39 @595 has 4 MA's), (47, 679), (53, 790), (Start: 59 @841 has 1 MA's), (73, 1009), (85, 1090), (87, 1096), (108, 1240), (114, 1270), (117, 1279),

Gene: Conquerage_1 Start: 379, Stop: 1158, Start Num: 33

Candidate Starts for Conquerage_1:

(Start: 33 @379 has 212 MA's), (36, 433), (44, 505), (49, 574), (Start: 59 @694 has 1 MA's), (62, 712), (72, 853), (73, 862), (87, 949), (91, 982), (93, 997), (113, 1123), (115, 1129), (116, 1132), (122, 1150),

Gene: Cookiedough_1 Start: 418, Stop: 1176, Start Num: 33

Candidate Starts for Cookiedough_1:

(Start: 33 @418 has 212 MA's), (Start: 39 @487 has 4 MA's), (47, 571), (49, 613), (53, 682), (56, 703), (Start: 59 @733 has 1 MA's), (73, 901), (85, 982),

Gene: Crossroads_120 Start: 65043, Stop: 65732, Start Num: 27

Candidate Starts for Crossroads_120:

(Start: 27 @65043 has 51 MA's), (31, 65052), (Start: 35 @65109 has 2 MA's), (44, 65187), (50, 65268), (57, 65364), (Start: 59 @65376 has 1 MA's), (63, 65403), (64, 65448), (71, 65529), (72, 65535), (74, 65550), (78, 65577), (81, 65601), (82, 65604), (86, 65628), (88, 65649), (89, 65655), (93, 65679),

Gene: Crucio_2 Start: 665, Stop: 1432, Start Num: 33

Candidate Starts for Crucio_2:

(Start: 33 @665 has 212 MA's), (Start: 39 @734 has 4 MA's), (41, 773), (47, 818), (Start: 59 @980 has 1 MA's), (65, 1058), (86, 1232), (100, 1346), (118, 1418),

Gene: D29_1 Start: 392, Stop: 1204, Start Num: 33

Candidate Starts for D29_1:

(Start: 33 @392 has 212 MA's), (Start: 39 @461 has 4 MA's), (47, 545), (53, 656), (Start: 59 @707 has 1 MA's), (65, 785), (73, 875), (91, 995), (104, 1094), (120, 1154), (122, 1160), (126, 1172),

Gene: D32_1 Start: 392, Stop: 1204, Start Num: 33

Candidate Starts for D32_1:

(Start: 33 @392 has 212 MA's), (Start: 39 @461 has 4 MA's), (47, 545), (53, 656), (Start: 59 @707 has 1 MA's), (65, 785), (73, 875), (91, 995), (104, 1094), (120, 1154), (122, 1160), (126, 1172),

Gene: DBQu4n_1 Start: 392, Stop: 1204, Start Num: 33

Candidate Starts for DBQu4n_1:

(Start: 33 @392 has 212 MA's), (Start: 39 @461 has 4 MA's), (47, 545), (53, 656), (Start: 59 @707 has 1 MA's), (65, 785), (73, 875), (91, 995), (104, 1094), (120, 1154), (122, 1160), (126, 1172),

Gene: DHan_119 Start: 65084, Stop: 65776, Start Num: 27

Candidate Starts for DHan_119:

(Start: 27 @65084 has 51 MA's), (31, 65093), (Start: 35 @65150 has 2 MA's), (36, 65156), (Start: 39 @65171 has 4 MA's), (44, 65228), (55, 65375), (Start: 59 @65417 has 1 MA's), (62, 65435), (65, 65495), (66, 65498), (71, 65570), (72, 65576), (73, 65585), (81, 65639), (86, 65666), (87, 65669), (91, 65705), (93, 65720),

Gene: DaVinci_1 Start: 419, Stop: 1177, Start Num: 33

Candidate Starts for DaVinci_1:

(Start: 33 @419 has 212 MA's), (Start: 39 @488 has 4 MA's), (47, 572), (49, 614), (53, 683), (56, 704), (Start: 59 @734 has 1 MA's), (73, 902), (85, 983),

Gene: Dalmatian_2 Start: 664, Stop: 1497, Start Num: 33

Candidate Starts for Dalmatian_2:

(Start: 33 @664 has 212 MA's), (Start: 39 @733 has 4 MA's), (47, 817), (53, 928), (57, 967), (Start: 59 @979 has 1 MA's), (80, 1195), (87, 1234), (118, 1426), (136, 1489),

Gene: DanBing_119 Start: 65368, Stop: 66060, Start Num: 27

Candidate Starts for DanBing_119:

(Start: 27 @65368 has 51 MA's), (31, 65377), (Start: 35 @65434 has 2 MA's), (36, 65440), (Start: 39 @65455 has 4 MA's), (43, 65506), (44, 65512), (47, 65539), (55, 65659), (Start: 59 @65701 has 1 MA's), (62, 65719), (65, 65779), (66, 65782), (71, 65854), (72, 65860), (73, 65869), (81, 65923), (86, 65950), (87, 65953), (91, 65989), (93, 66004),

Gene: Darrell_1 Start: 357, Stop: 1211, Start Num: 33

Candidate Starts for Darrell_1:

(Start: 33 @357 has 212 MA's), (47, 510), (53, 621), (Start: 59 @672 has 1 MA's), (63, 699), (65, 750), (73, 840), (100, 1038), (117, 1113), (128, 1143), (133, 1167), (139, 1203), (140, 1206),

Gene: DARTHPhader_1 Start: 437, Stop: 1234, Start Num: 35

Candidate Starts for DARTHPhader_1:

(Start: 29 @380 has 10 MA's), (Start: 35 @437 has 2 MA's), (47, 542), (Start: 59 @704 has 1 MA's), (73, 872), (80, 920), (96, 1049), (101, 1079), (119, 1154), (123, 1166), (135, 1214), (137, 1226),

Gene: DekHockey33_1 Start: 577, Stop: 1407, Start Num: 33

Candidate Starts for DekHockey33_1:

(Start: 33 @577 has 212 MA's), (47, 730), (53, 841), (Start: 59 @892 has 1 MA's), (73, 1060), (79, 1102), (82, 1120), (102, 1267), (109, 1300), (125, 1345), (129, 1360),

Gene: Deloris_1 Start: 432, Stop: 1193, Start Num: 33

Candidate Starts for Deloris_1:

(21, 399), (Start: 33 @432 has 212 MA's), (Start: 39 @501 has 4 MA's), (41, 540), (47, 585), (52, 687), (53, 696), (Start: 59 @747 has 1 MA's), (73, 915), (99, 1104), (117, 1179),

Gene: Dignity_2 Start: 654, Stop: 1415, Start Num: 33

Candidate Starts for Dignity_2:

(Start: 33 @654 has 212 MA's), (Start: 39 @723 has 4 MA's), (41, 762), (47, 807), (52, 909), (53, 918), (Start: 59 @969 has 1 MA's), (73, 1137), (81, 1194), (85, 1218), (99, 1326), (117, 1401),

Gene: DirkDirk_108 Start: 61597, Stop: 62304, Start Num: 27

Candidate Starts for DirkDirk_108:

(Start: 27 @61597 has 51 MA's), (34, 61651), (Start: 35 @61663 has 2 MA's), (36, 61669), (Start: 39 @61684 has 4 MA's), (41, 61723), (44, 61741), (47, 61768), (54, 61882), (55, 61888), (56, 61900), (Start: 59 @61930 has 1 MA's), (62, 61948), (64, 62002), (73, 62098), (74, 62104), (80, 62146), (82, 62158), (85, 62179), (87, 62185), (89, 62209), (91, 62221), (93, 62236), (94, 62263),

Gene: Dorothea_1 Start: 418, Stop: 1176, Start Num: 33

Candidate Starts for Dorothea_1:

(Start: 33 @418 has 212 MA's), (Start: 39 @487 has 4 MA's), (47, 571), (49, 613), (53, 682), (56, 703), (Start: 59 @733 has 1 MA's), (73, 901), (85, 982),

Gene: Douge_127 Start: 66600, Stop: 67289, Start Num: 27

Candidate Starts for Douge_127:

(26, 66594), (Start: 27 @66600 has 51 MA's), (Start: 35 @66666 has 2 MA's), (Start: 39 @66687 has 4 MA's), (42, 66732), (46, 66756), (49, 66813), (50, 66825), (54, 66885), (55, 66891), (Start: 59 @66933 has 1 MA's), (63, 66960), (64, 67005), (71, 67086), (74, 67107), (78, 67134), (84, 67170), (87, 67188), (88, 67206),

Gene: Douzhi_124 Start: 66141, Stop: 66830, Start Num: 27

Candidate Starts for Douzhi_124:

(Start: 27 @66141 has 51 MA's), (Start: 35 @66207 has 2 MA's), (Start: 39 @66228 has 4 MA's), (41, 66267), (46, 66297), (49, 66354), (50, 66366), (54, 66426), (55, 66432), (Start: 59 @66474 has 1 MA's), (63, 66501), (64, 66546), (71, 66627), (74, 66648), (78, 66675), (84, 66711), (87, 66729), (88, 66747), (89, 66753), (92, 66768),

Gene: DrSeegs_115 Start: 65179, Stop: 65868, Start Num: 27

Candidate Starts for DrSeegs_115:

(Start: 27 @65179 has 51 MA's), (31, 65188), (Start: 35 @65245 has 2 MA's), (44, 65323), (46, 65335), (50, 65404), (57, 65500), (Start: 59 @65512 has 1 MA's), (63, 65539), (64, 65584), (71, 65665), (72, 65671), (74, 65686), (78, 65713), (81, 65737), (86, 65764), (88, 65785), (89, 65791), (93, 65815),

Gene: Drake55_2 Start: 642, Stop: 1379, Start Num: 33

Candidate Starts for Drake55_2:

(Start: 33 @642 has 212 MA's), (Start: 39 @711 has 4 MA's), (44, 768), (47, 795), (52, 897), (53, 906), (56, 927), (Start: 59 @957 has 1 MA's), (65, 1035), (73, 1125), (91, 1245),

Gene: DreamTeam1_1 Start: 356, Stop: 1210, Start Num: 33

Candidate Starts for DreamTeam1_1:

(Start: 33 @356 has 212 MA's), (Start: 39 @425 has 4 MA's), (47, 509), (Start: 59 @671 has 1 MA's), (63, 698), (65, 749), (73, 839), (100, 1037), (115, 1106), (117, 1112), (128, 1142), (134, 1169), (138, 1190), (139, 1202),

Gene: DudeLittle_2 Start: 664, Stop: 1497, Start Num: 33

Candidate Starts for DudeLittle_2:

(Start: 33 @664 has 212 MA's), (Start: 39 @733 has 4 MA's), (47, 817), (53, 928), (57, 967), (Start: 59 @979 has 1 MA's), (80, 1195), (87, 1234), (118, 1426), (136, 1489),

Gene: DuncansLeg_115 Start: 64499, Stop: 65206, Start Num: 28

Candidate Starts for DuncansLeg_115:

(Start: 11 @64424 has 2 MA's), (18, 64475), (24, 64490), (Start: 28 @64499 has 14 MA's), (36, 64571), (45, 64652), (46, 64655), (47, 64670), (52, 64772), (54, 64784), (55, 64790), (Start: 59 @64832 has 1 MA's), (61, 64841), (62, 64850), (64, 64904), (71, 64985), (74, 65006), (82, 65060), (84, 65069), (93, 65138), (94, 65165), (95, 65177),

Gene: Duplo_1 Start: 392, Stop: 1204, Start Num: 33

Candidate Starts for Duplo_1:

(Start: 33 @392 has 212 MA's), (Start: 39 @461 has 4 MA's), (47, 545), (53, 656), (Start: 59 @707 has 1 MA's), (65, 785), (73, 875), (91, 995), (104, 1094), (120, 1154), (122, 1160), (126, 1172),

Gene: DyoEdafos_128 Start: 65948, Stop: 66637, Start Num: 27

Candidate Starts for DyoEdafos_128:

(Start: 27 @65948 has 51 MA's), (Start: 35 @66014 has 2 MA's), (Start: 39 @66035 has 4 MA's), (46, 66104), (49, 66161), (50, 66173), (52, 66221), (54, 66233), (55, 66239), (Start: 59 @66281 has 1 MA's), (63, 66308), (64, 66353), (71, 66434), (74, 66455), (78, 66482), (87, 66536), (88, 66554),

Gene: EZMoney23_1 Start: 400, Stop: 1080, Start Num: 32

Candidate Starts for EZMoney23_1:

(Start: 32 @400 has 2 MA's), (Start: 39 @469 has 4 MA's), (44, 526), (47, 553), (52, 655), (Start: 59 @715 has 1 MA's), (73, 883), (77, 913), (81, 940),

Gene: EagleEye_1 Start: 400, Stop: 1245, Start Num: 33

Candidate Starts for EagleEye_1:

(20, 373), (Start: 33 @400 has 212 MA's), (Start: 39 @469 has 4 MA's), (44, 526), (47, 553), (53, 664), (56, 685), (Start: 59 @715 has 1 MA's), (73, 883), (121, 1165), (128, 1177), (138, 1225), (140, 1240),

Gene: Ebony_1 Start: 367, Stop: 1107, Start Num: 33

Candidate Starts for Ebony_1:

(Start: 29 @355 has 10 MA's), (Start: 33 @367 has 212 MA's), (38, 430), (Start: 59 @682 has 1 MA's), (63, 709), (65, 760), (73, 850), (96, 1027),

Gene: Echild_2 Start: 662, Stop: 1495, Start Num: 33

Candidate Starts for Echild_2:

(Start: 33 @662 has 212 MA's), (Start: 39 @731 has 4 MA's), (47, 815), (53, 926), (57, 965), (Start: 59 @977 has 1 MA's), (80, 1193), (87, 1232), (110, 1400), (111, 1406), (118, 1427), (123, 1442), (136, 1487),

Gene: Eidsmoe_1 Start: 379, Stop: 1158, Start Num: 33

Candidate Starts for Eidsmoe_1:

(Start: 33 @379 has 212 MA's), (36, 433), (44, 505), (49, 574), (Start: 59 @694 has 1 MA's), (62, 712), (72, 853), (73, 862), (87, 949), (91, 982), (93, 997), (113, 1123), (115, 1129), (116, 1132), (122, 1150),

Gene: Elephantoon_1 Start: 358, Stop: 1206, Start Num: 33

Candidate Starts for Elephantoon_1:

(Start: 33 @358 has 212 MA's), (47, 511), (53, 622), (Start: 59 @673 has 1 MA's), (65, 751), (73, 841), (100, 1039), (110, 1090), (117, 1114), (127, 1135), (128, 1138), (138, 1186), (139, 1198),

Gene: Ellson_113 Start: 64783, Stop: 65490, Start Num: 28

Candidate Starts for Ellson_113:

(18, 64759), (24, 64774), (Start: 28 @64783 has 14 MA's), (36, 64855), (45, 64936), (46, 64939), (47, 64954), (52, 65056), (54, 65068), (55, 65074), (Start: 59 @65116 has 1 MA's), (61, 65125), (62, 65134), (64, 65188), (71, 65269), (74, 65290), (82, 65344), (84, 65353), (93, 65422), (94, 65449), (95, 65461),

Gene: EmyBug_1 Start: 379, Stop: 1158, Start Num: 33

Candidate Starts for EmyBug_1:

(Start: 33 @379 has 212 MA's), (36, 433), (44, 505), (49, 574), (Start: 59 @694 has 1 MA's), (62, 712), (72, 853), (73, 862), (87, 949), (91, 982), (93, 997), (113, 1123), (115, 1129), (116, 1132), (122, 1150),

Gene: Enceladus_108 Start: 61896, Stop: 62603, Start Num: 27

Candidate Starts for Enceladus_108:

(Start: 27 @61896 has 51 MA's), (34, 61950), (Start: 35 @61962 has 2 MA's), (36, 61968), (Start: 39 @61983 has 4 MA's), (41, 62022), (44, 62040), (47, 62067), (54, 62181), (55, 62187), (56, 62199), (Start: 59 @62229 has 1 MA's), (62, 62247), (64, 62301), (73, 62397), (74, 62403), (80, 62445), (82, 62457), (85, 62478), (87, 62484), (89, 62508), (91, 62520), (93, 62535), (94, 62562),

Gene: Epsocamisio_1 Start: 430, Stop: 1260, Start Num: 33

Candidate Starts for Epsocamisio_1:

(Start: 33 @430 has 212 MA's), (47, 583), (53, 694), (Start: 59 @745 has 1 MA's), (73, 913), (79, 955), (82, 973), (102, 1120), (109, 1153), (125, 1198), (129, 1213),

Gene: Equemioh13_2 Start: 642, Stop: 1376, Start Num: 33

Candidate Starts for Equemioh13_2:

(Start: 33 @642 has 212 MA's), (Start: 39 @711 has 4 MA's), (41, 750), (47, 795), (52, 897), (53, 906), (56, 927), (Start: 59 @957 has 1 MA's), (73, 1125), (91, 1245),

Gene: EricB_1 Start: 419, Stop: 1177, Start Num: 33

Candidate Starts for EricB_1:

(Start: 33 @419 has 212 MA's), (Start: 39 @488 has 4 MA's), (47, 572), (49, 614), (53, 683), (56, 704), (Start: 59 @734 has 1 MA's), (73, 902), (85, 983),

Gene: Et2Brutus_1 Start: 367, Stop: 1107, Start Num: 33

Candidate Starts for Et2Brutus_1:

(Start: 29 @355 has 10 MA's), (Start: 33 @367 has 212 MA's), (38, 430), (44, 493), (Start: 59 @682 has 1 MA's), (63, 709), (65, 760), (73, 850),

Gene: EvilGenius_2 Start: 660, Stop: 1427, Start Num: 33

Candidate Starts for EvilGenius_2:

(16, 594), (Start: 33 @660 has 212 MA's), (Start: 39 @729 has 4 MA's), (41, 768), (47, 813), (53, 924), (56, 945), (Start: 59 @975 has 1 MA's), (65, 1053), (73, 1143), (86, 1227), (100, 1341), (118, 1413),

Gene: ExplosioNervosa_1 Start: 379, Stop: 1161, Start Num: 33

Candidate Starts for ExplosioNervosa_1:

(Start: 33 @379 has 212 MA's), (36, 433), (44, 505), (Start: 59 @694 has 1 MA's), (62, 712), (72, 853), (73, 862), (93, 997), (113, 1126), (115, 1132), (116, 1135), (122, 1153),

Gene: Faith1_115 Start: 64487, Stop: 65176, Start Num: 27

Candidate Starts for Faith1_115:

(Start: 27 @64487 has 51 MA's), (31, 64496), (Start: 35 @64553 has 2 MA's), (44, 64631), (46, 64643), (50, 64712), (57, 64808), (Start: 59 @64820 has 1 MA's), (63, 64847), (64, 64892), (71, 64973), (72, 64979), (74, 64994), (78, 65021), (81, 65045), (86, 65072), (88, 65093), (89, 65099), (93, 65123),

Gene: Fameo_2 Start: 667, Stop: 1497, Start Num: 33

Candidate Starts for Fameo_2:

(Start: 33 @667 has 212 MA's), (Start: 39 @736 has 4 MA's), (47, 820), (53, 931), (57, 970), (Start: 59 @982 has 1 MA's), (80, 1198), (118, 1426), (123, 1441), (136, 1489),

Gene: FarmResident_127 Start: 65732, Stop: 66421, Start Num: 27

Candidate Starts for FarmResident_127:

(Start: 27 @65732 has 51 MA's), (Start: 35 @65798 has 2 MA's), (Start: 39 @65819 has 4 MA's), (41, 65858), (44, 65876), (46, 65888), (50, 65957), (52, 66005), (54, 66017), (55, 66023), (Start: 59 @66065 has 1 MA's), (63, 66092), (64, 66137), (71, 66218), (74, 66239), (78, 66266), (87, 66320), (88, 66338), (92, 66359),

Gene: Fayely_1 Start: 379, Stop: 1161, Start Num: 33

Candidate Starts for Fayely_1:

(Start: 33 @379 has 212 MA's), (36, 433), (44, 505), (Start: 59 @694 has 1 MA's), (62, 712), (72, 853), (73, 862), (93, 997), (113, 1126), (115, 1132), (116, 1135), (122, 1153),

Gene: Fibonacci_1 Start: 367, Stop: 1107, Start Num: 33

Candidate Starts for Fibonacci_1:

(Start: 29 @355 has 10 MA's), (Start: 33 @367 has 212 MA's), (38, 430), (44, 493), (Start: 59 @682 has 1 MA's), (63, 709), (65, 760), (73, 850),

Gene: Finemlucis_115 Start: 65563, Stop: 66252, Start Num: 27

Candidate Starts for Finemlucis_115:

(Start: 27 @65563 has 51 MA's), (31, 65572), (Start: 35 @65629 has 2 MA's), (37, 65638), (38, 65644), (44, 65707), (57, 65884), (Start: 59 @65896 has 1 MA's), (63, 65923), (64, 65968), (71, 66049), (72, 66055), (74, 66070), (81, 66121), (82, 66124), (86, 66148), (88, 66169), (89, 66175), (93, 66199),

Gene: Finnry_113 Start: 64677, Stop: 65384, Start Num: 28

Candidate Starts for Finnry_113:

(Start: 11 @64602 has 2 MA's), (18, 64653), (24, 64668), (Start: 28 @64677 has 14 MA's), (Start: 35 @64743 has 2 MA's), (36, 64749), (45, 64830), (46, 64833), (47, 64848), (52, 64950), (54, 64962), (55, 64968), (Start: 59 @65010 has 1 MA's), (61, 65019), (64, 65082), (71, 65163), (74, 65184), (84, 65247), (91, 65301), (93, 65316), (94, 65343), (95, 65355),

Gene: FiringLine_2 Start: 666, Stop: 1433, Start Num: 33

Candidate Starts for FiringLine_2:

(Start: 33 @666 has 212 MA's), (Start: 39 @735 has 4 MA's), (41, 774), (47, 819), (Start: 59 @981 has 1 MA's), (65, 1059), (86, 1233), (100, 1347), (118, 1419),

Gene: First_001 Start: 569, Stop: 1336, Start Num: 33

Candidate Starts for First_001:

(21, 536), (Start: 33 @569 has 212 MA's), (Start: 39 @638 has 4 MA's), (41, 677), (47, 722), (52, 824), (53, 833), (56, 854), (Start: 59 @884 has 1 MA's), (102, 1262), (103, 1271), (118, 1322),

Gene: Flare16_2 Start: 642, Stop: 1376, Start Num: 33

Candidate Starts for Flare16_2:

(Start: 33 @642 has 212 MA's), (Start: 39 @711 has 4 MA's), (41, 750), (47, 795), (52, 897), (53, 906), (56, 927), (Start: 59 @957 has 1 MA's), (73, 1125), (91, 1245),

Gene: Flaverint_1 Start: 367, Stop: 1107, Start Num: 33

Candidate Starts for Flaverint_1:

(Start: 29 @355 has 10 MA's), (Start: 33 @367 has 212 MA's), (38, 430), (44, 493), (Start: 59 @682 has 1 MA's), (63, 709), (65, 760), (73, 850),

Gene: Gabriela_117 Start: 63833, Stop: 64522, Start Num: 27

Candidate Starts for Gabriela_117:

(Start: 27 @63833 has 51 MA's), (31, 63842), (Start: 35 @63899 has 2 MA's), (44, 63977), (46, 63989), (50, 64058), (57, 64154), (Start: 59 @64166 has 1 MA's), (63, 64193), (64, 64238), (71, 64319), (72, 64325), (74, 64340), (78, 64367), (81, 64391), (86, 64418), (88, 64439), (89, 64445), (93, 64469),

Gene: Gail_1 Start: 369, Stop: 1055, Start Num: 33

Candidate Starts for Gail_1:

(Start: 29 @360 has 10 MA's), (Start: 33 @369 has 212 MA's), (36, 423), (Start: 39 @438 has 4 MA's), (47, 522), (Start: 59 @684 has 1 MA's), (78, 885), (91, 972), (93, 987),

Gene: Garak_1 Start: 487, Stop: 1176, Start Num: 39

Candidate Starts for Garak_1:

(Start: 33 @418 has 212 MA's), (Start: 39 @487 has 4 MA's), (47, 571), (49, 613), (53, 682), (56, 703), (Start: 59 @733 has 1 MA's), (73, 901), (85, 982),

Gene: Gardann_116 Start: 64511, Stop: 65200, Start Num: 27

Candidate Starts for Gardann_116:

(Start: 27 @64511 has 51 MA's), (31, 64520), (Start: 35 @64577 has 2 MA's), (44, 64655), (50, 64736), (57, 64832), (Start: 59 @64844 has 1 MA's), (63, 64871), (64, 64916), (71, 64997), (72, 65003), (74, 65018), (78, 65045), (81, 65069), (86, 65096), (88, 65117), (89, 65123), (93, 65147),

Gene: GaugeLDP_1 Start: 379, Stop: 1146, Start Num: 33

Candidate Starts for GaugeLDP_1:

(Start: 33 @379 has 212 MA's), (Start: 39 @448 has 4 MA's), (47, 532), (53, 643), (Start: 59 @694 has 1 MA's), (63, 721), (73, 862), (85, 943), (114, 1123),

Gene: Georgie2_2 Start: 665, Stop: 1432, Start Num: 33

Candidate Starts for Georgie2_2:

(Start: 33 @665 has 212 MA's), (Start: 39 @734 has 4 MA's), (41, 773), (47, 818), (Start: 59 @980 has 1 MA's), (65, 1058), (86, 1232), (100, 1346), (118, 1418),

Gene: Gilberta_1 Start: 367, Stop: 1107, Start Num: 33

Candidate Starts for Gilberta_1:

(Start: 29 @355 has 10 MA's), (Start: 33 @367 has 212 MA's), (38, 430), (44, 493), (Start: 59 @682 has 1 MA's), (63, 709), (73, 850),

Gene: Gladiator_1 Start: 411, Stop: 1172, Start Num: 33

Candidate Starts for Gladiator_1:

(Start: 33 @411 has 212 MA's), (Start: 39 @480 has 4 MA's), (47, 564), (53, 675), (56, 696), (Start: 59 @726 has 1 MA's), (73, 894), (85, 975), (113, 1149), (119, 1164),

Gene: GreedyLawyer_1 Start: 487, Stop: 1176, Start Num: 39

Candidate Starts for GreedyLawyer_1:

(Start: 33 @418 has 212 MA's), (Start: 39 @487 has 4 MA's), (47, 571), (49, 613), (53, 682), (56, 703), (Start: 59 @733 has 1 MA's), (73, 901), (85, 982),

Gene: Gruunaga_1 Start: 411, Stop: 1172, Start Num: 33

Candidate Starts for Gruunaga_1:

(Start: 33 @411 has 212 MA's), (Start: 39 @480 has 4 MA's), (47, 564), (53, 675), (56, 696), (Start: 59 @726 has 1 MA's), (73, 894), (85, 975), (113, 1149), (119, 1164),

Gene: GuuelaD_113 Start: 64633, Stop: 65322, Start Num: 27

Candidate Starts for GuuelaD_113:

(Start: 27 @64633 has 51 MA's), (31, 64642), (Start: 35 @64699 has 2 MA's), (44, 64777), (50, 64858), (57, 64954), (Start: 59 @64966 has 1 MA's), (63, 64993), (64, 65038), (71, 65119), (72, 65125), (74, 65140), (78, 65167), (81, 65191), (82, 65194), (86, 65218), (88, 65239), (89, 65245), (93, 65269),

Gene: Halena_111 Start: 62215, Stop: 62925, Start Num: 27

Candidate Starts for Halena_111:

(Start: 27 @62215 has 51 MA's), (34, 62269), (Start: 35 @62281 has 2 MA's), (36, 62287), (Start: 39 @62302 has 4 MA's), (44, 62362), (47, 62389), (50, 62443), (52, 62491), (54, 62503), (56, 62521),

(Start: 59 @62551 has 1 MA's), (62, 62569), (64, 62623), (73, 62719), (74, 62725), (80, 62767), (82, 62779), (85, 62800), (89, 62830), (91, 62842), (93, 62857), (94, 62884),

Gene: Hammer_1 Start: 410, Stop: 1171, Start Num: 33

Candidate Starts for Hammer_1:

(Start: 33 @410 has 212 MA's), (Start: 39 @479 has 4 MA's), (47, 563), (53, 674), (56, 695), (Start: 59 @725 has 1 MA's), (73, 893), (85, 974), (113, 1148), (119, 1163),

Gene: HarryHoudini_2 Start: 642, Stop: 1379, Start Num: 33

Candidate Starts for HarryHoudini_2:

(Start: 33 @642 has 212 MA's), (Start: 39 @711 has 4 MA's), (44, 768), (47, 795), (52, 897), (53, 906), (56, 927), (Start: 59 @957 has 1 MA's), (65, 1035), (85, 1206),

Gene: Heffalump_2 Start: 667, Stop: 1497, Start Num: 33

Candidate Starts for Heffalump_2:

(Start: 33 @667 has 212 MA's), (Start: 39 @736 has 4 MA's), (47, 820), (53, 931), (57, 970), (Start: 59 @982 has 1 MA's), (80, 1198), (118, 1426), (123, 1441), (136, 1489),

Gene: Helmet_1 Start: 487, Stop: 1176, Start Num: 39

Candidate Starts for Helmet_1:

(Start: 33 @418 has 212 MA's), (Start: 39 @487 has 4 MA's), (47, 571), (49, 613), (53, 682), (56, 703), (Start: 59 @733 has 1 MA's), (73, 901), (85, 982),

Gene: Hexamo_1 Start: 418, Stop: 1176, Start Num: 33

Candidate Starts for Hexamo_1:

(Start: 33 @418 has 212 MA's), (Start: 39 @487 has 4 MA's), (47, 571), (49, 613), (53, 682), (56, 703), (Start: 59 @733 has 1 MA's), (73, 901), (85, 982),

Gene: Hoot_1 Start: 418, Stop: 1176, Start Num: 33

Candidate Starts for Hoot_1:

(Start: 33 @418 has 212 MA's), (Start: 39 @487 has 4 MA's), (47, 571), (49, 613), (53, 682), (56, 703), (Start: 59 @733 has 1 MA's), (73, 901), (85, 982),

Gene: HortumSL17_1 Start: 379, Stop: 1161, Start Num: 33

Candidate Starts for HortumSL17_1:

(Start: 33 @379 has 212 MA's), (36, 433), (44, 505), (49, 574), (Start: 59 @694 has 1 MA's), (62, 712), (72, 853), (73, 862), (93, 997), (115, 1132), (116, 1135), (122, 1153),

Gene: Hutc2_1 Start: 367, Stop: 1107, Start Num: 33

Candidate Starts for Hutc2_1:

(Start: 29 @355 has 10 MA's), (Start: 33 @367 has 212 MA's), (38, 430), (44, 493), (Start: 59 @682 has 1 MA's), (63, 709), (65, 760), (73, 850),

Gene: Indra_1 Start: 418, Stop: 1176, Start Num: 33

Candidate Starts for Indra_1:

(Start: 33 @418 has 212 MA's), (Start: 39 @487 has 4 MA's), (47, 571), (49, 613), (53, 682), (56, 703), (Start: 59 @733 has 1 MA's), (73, 901), (85, 982),

Gene: Insomnia_1 Start: 355, Stop: 1107, Start Num: 29

Candidate Starts for Insomnia_1:

(Start: 29 @355 has 10 MA's), (Start: 33 @367 has 212 MA's), (38, 430), (44, 493), (Start: 59 @682 has 1 MA's), (63, 709), (65, 760), (73, 850),

Gene: IronMan_1 Start: 389, Stop: 1159, Start Num: 33

Candidate Starts for IronMan_1:

(Start: 33 @389 has 212 MA's), (Start: 39 @458 has 4 MA's), (44, 515), (47, 542), (52, 644), (56, 674), (Start: 59 @704 has 1 MA's), (73, 872), (85, 953), (113, 1136),

Gene: Isiphiwo_1 Start: 418, Stop: 1176, Start Num: 33

Candidate Starts for Isiphiwo_1:

(Start: 33 @418 has 212 MA's), (Start: 39 @487 has 4 MA's), (47, 571), (49, 613), (53, 682), (56, 703), (Start: 59 @733 has 1 MA's), (73, 901), (85, 982),

Gene: Itos_117 Start: 63393, Stop: 64082, Start Num: 27

Candidate Starts for Itos_117:

(Start: 27 @63393 has 51 MA's), (31, 63402), (Start: 35 @63459 has 2 MA's), (44, 63537), (46, 63549), (50, 63618), (57, 63714), (Start: 59 @63726 has 1 MA's), (63, 63753), (64, 63798), (71, 63879), (72, 63885), (74, 63900), (78, 63927), (81, 63951), (86, 63978), (88, 63999), (89, 64005), (93, 64029),

Gene: Iwokeuplikedis_2 Start: 649, Stop: 1341, Start Num: 30

Candidate Starts for Iwokeuplikedis_2:

(Start: 30 @649 has 1 MA's), (Start: 39 @727 has 4 MA's), (41, 766), (44, 784), (46, 796), (48, 838), (53, 922), (Start: 59 @973 has 1 MA's), (73, 1141), (78, 1174),

Gene: JSwag_1 Start: 430, Stop: 1260, Start Num: 33

Candidate Starts for JSwag_1:

(Start: 33 @430 has 212 MA's), (47, 583), (53, 694), (Start: 59 @745 has 1 MA's), (73, 913), (79, 955), (82, 973), (102, 1120), (109, 1153), (125, 1198), (129, 1213),

Gene: Jaan_1 Start: 388, Stop: 1155, Start Num: 33

Candidate Starts for Jaan_1:

(Start: 33 @388 has 212 MA's), (Start: 39 @457 has 4 MA's), (44, 514), (47, 541), (52, 643), (53, 652), (56, 673), (Start: 59 @703 has 1 MA's), (73, 871), (85, 952), (114, 1138),

Gene: Jabith_1 Start: 367, Stop: 1107, Start Num: 33

Candidate Starts for Jabith_1:

(Start: 29 @355 has 10 MA's), (Start: 33 @367 has 212 MA's), (38, 430), (44, 493), (Start: 59 @682 has 1 MA's), (63, 709), (65, 760), (73, 850),

Gene: Jeeves_1 Start: 400, Stop: 1086, Start Num: 33

Candidate Starts for Jeeves_1:

(Start: 29 @391 has 10 MA's), (Start: 33 @400 has 212 MA's), (36, 454), (Start: 39 @469 has 4 MA's), (47, 553), (Start: 59 @715 has 1 MA's), (91, 1003), (93, 1018),

Gene: Jeffabunny_1 Start: 418, Stop: 1176, Start Num: 33

Candidate Starts for Jeffabunny_1:

(Start: 33 @418 has 212 MA's), (Start: 39 @487 has 4 MA's), (47, 571), (49, 613), (53, 682), (56, 703), (Start: 59 @733 has 1 MA's), (73, 901), (85, 982),

Gene: Jerm_2 Start: 652, Stop: 1413, Start Num: 33

Candidate Starts for Jerm_2:

(Start: 33 @652 has 212 MA's), (Start: 39 @721 has 4 MA's), (41, 760), (47, 805), (52, 907), (53, 916), (Start: 59 @967 has 1 MA's), (73, 1135), (81, 1192), (85, 1216), (99, 1324), (117, 1399),

Gene: JewelBug_1 Start: 419, Stop: 1177, Start Num: 33

Candidate Starts for JewelBug_1:

(Start: 33 @419 has 212 MA's), (Start: 39 @488 has 4 MA's), (47, 572), (49, 614), (53, 683), (56, 704), (Start: 59 @734 has 1 MA's), (73, 902), (85, 983),

Gene: Jobypre_114 Start: 64326, Stop: 65033, Start Num: 28

Candidate Starts for Jobypre_114:

(Start: 11 @64251 has 2 MA's), (18, 64302), (24, 64317), (Start: 28 @64326 has 14 MA's), (36, 64398), (45, 64479), (46, 64482), (47, 64497), (52, 64599), (54, 64611), (55, 64617), (Start: 59 @64659 has 1 MA's), (61, 64668), (64, 64731), (65, 64737), (71, 64812), (74, 64833), (84, 64896), (93, 64965), (94, 64992), (95, 65004),

Gene: JoeDirt_111 Start: 63170, Stop: 63877, Start Num: 27

Candidate Starts for JoeDirt_111:

(Start: 27 @63170 has 51 MA's), (34, 63224), (Start: 35 @63236 has 2 MA's), (36, 63242), (Start: 39 @63257 has 4 MA's), (41, 63296), (44, 63314), (47, 63341), (50, 63395), (52, 63443), (54, 63455), (56, 63473), (Start: 59 @63503 has 1 MA's), (62, 63521), (64, 63575), (73, 63671), (74, 63677), (80, 63719), (82, 63731), (85, 63752), (89, 63782), (91, 63794), (93, 63809), (94, 63836),

Gene: Jordennis_1 Start: 418, Stop: 1176, Start Num: 33

Candidate Starts for Jordennis_1:

(Start: 33 @418 has 212 MA's), (Start: 39 @487 has 4 MA's), (47, 571), (49, 613), (53, 682), (56, 703), (Start: 59 @733 has 1 MA's), (73, 901), (85, 982),

Gene: Joselito_1 Start: 355, Stop: 1107, Start Num: 29

Candidate Starts for Joselito_1:

(Start: 29 @355 has 10 MA's), (Start: 33 @367 has 212 MA's), (38, 430), (44, 493), (Start: 59 @682 has 1 MA's), (63, 709), (65, 760), (73, 850),

Gene: JoshKayV_2 Start: 661, Stop: 1428, Start Num: 33

Candidate Starts for JoshKayV_2:

(16, 595), (Start: 33 @661 has 212 MA's), (Start: 39 @730 has 4 MA's), (41, 769), (47, 814), (53, 925), (56, 946), (Start: 59 @976 has 1 MA's), (73, 1144), (84, 1213), (103, 1363), (118, 1414),

Gene: Journey13_1 Start: 522, Stop: 1331, Start Num: 33

Candidate Starts for Journey13_1:

(Start: 33 @522 has 212 MA's), (47, 675), (53, 786), (58, 831), (Start: 59 @837 has 1 MA's), (73, 1005), (98, 1191),

Gene: Jsquared_1 Start: 402, Stop: 1091, Start Num: 33

Candidate Starts for Jsquared_1:

(Start: 33 @402 has 212 MA's), (Start: 39 @471 has 4 MA's), (44, 528), (47, 555), (53, 666), (Start: 59 @717 has 1 MA's), (65, 795), (69, 858), (73, 885), (87, 972), (91, 1005),

Gene: Jubie_113 Start: 64386, Stop: 65168, Start Num: 11

Candidate Starts for Jubie_113:

(Start: 11 @64386 has 2 MA's), (18, 64437), (24, 64452), (Start: 28 @64461 has 14 MA's), (36, 64533), (45, 64614), (46, 64617), (47, 64632), (52, 64734), (54, 64746), (55, 64752), (Start: 59 @64794 has 1 MA's), (61, 64803), (64, 64866), (65, 64872), (71, 64947), (74, 64968), (84, 65031), (93, 65100), (94, 65127), (95, 65139),

Gene: Kahlid_116 Start: 64796, Stop: 65485, Start Num: 27

Candidate Starts for Kahlid_116:

(Start: 27 @64796 has 51 MA's), (31, 64805), (Start: 35 @64862 has 2 MA's), (44, 64940), (50, 65021), (57, 65117), (Start: 59 @65129 has 1 MA's), (63, 65156), (64, 65201), (71, 65282), (72, 65288), (74, 65303), (81, 65354), (82, 65357), (86, 65381), (88, 65402), (89, 65408), (93, 65432),

Gene: Kalpine_2 Start: 643, Stop: 1410, Start Num: 33

Candidate Starts for Kalpine_2:

(Start: 33 @643 has 212 MA's), (Start: 39 @712 has 4 MA's), (47, 796), (53, 907), (Start: 59 @958 has 1 MA's), (73, 1126), (85, 1207), (87, 1213), (108, 1357), (114, 1387), (117, 1396),

Gene: KatherineG_1 Start: 577, Stop: 1407, Start Num: 33

Candidate Starts for KatherineG_1:

(Start: 33 @577 has 212 MA's), (47, 730), (53, 841), (Start: 59 @892 has 1 MA's), (73, 1060), (79, 1102), (82, 1120), (102, 1267), (109, 1300), (125, 1345), (129, 1360),

Gene: Kazan_1 Start: 418, Stop: 1176, Start Num: 33

Candidate Starts for Kazan_1:

(Start: 33 @418 has 212 MA's), (Start: 39 @487 has 4 MA's), (47, 571), (49, 613), (53, 682), (56, 703), (Start: 59 @733 has 1 MA's), (73, 901), (85, 982),

Gene: Kerberos_1 Start: 392, Stop: 1204, Start Num: 33

Candidate Starts for Kerberos_1:

(Start: 33 @392 has 212 MA's), (Start: 39 @461 has 4 MA's), (47, 545), (53, 656), (Start: 59 @707 has 1 MA's), (65, 785), (73, 875), (91, 995), (104, 1094), (120, 1154), (122, 1160), (126, 1172),

Gene: Keziacharles14_1 Start: 356, Stop: 1039, Start Num: 32

Candidate Starts for Keziacharles14_1:

(Start: 32 @356 has 2 MA's), (Start: 39 @425 has 4 MA's), (47, 509), (58, 665), (Start: 59 @671 has 1 MA's), (60, 677), (64, 743), (73, 839),

Gene: KingCyrus_2 Start: 661, Stop: 1428, Start Num: 33

Candidate Starts for KingCyrus_2:

(16, 595), (Start: 33 @661 has 212 MA's), (Start: 39 @730 has 4 MA's), (41, 769), (47, 814), (53, 925), (56, 946), (Start: 59 @976 has 1 MA's), (65, 1054), (73, 1144), (86, 1228), (100, 1342), (118, 1414),

Gene: Kingsolomon_111 Start: 64433, Stop: 65140, Start Num: 28

Candidate Starts for Kingsolomon_111:

(Start: 11 @64358 has 2 MA's), (18, 64409), (24, 64424), (Start: 28 @64433 has 14 MA's), (Start: 35 @64499 has 2 MA's), (36, 64505), (45, 64586), (46, 64589), (47, 64604), (52, 64706), (54, 64718), (55, 64724), (Start: 59 @64766 has 1 MA's), (61, 64775), (64, 64838), (71, 64919), (74, 64940), (84, 65003), (91, 65057), (93, 65072), (94, 65099), (95, 65111),

Gene: Kinmap_2 Start: 462, Stop: 1211, Start Num: 33

Candidate Starts for Kinmap_2:

(Start: 33 @462 has 212 MA's), (Start: 35 @510 has 2 MA's), (36, 516), (53, 726), (Start: 59 @777 has 1 MA's), (65, 855), (75, 963), (82, 1005), (83, 1008), (96, 1122), (102, 1155), (105, 1161), (111, 1194), (112, 1197), (114, 1203),

Gene: Kipper29_1 Start: 418, Stop: 1176, Start Num: 33

Candidate Starts for Kipper29_1:

(Start: 33 @418 has 212 MA's), (Start: 39 @487 has 4 MA's), (47, 571), (49, 613), (53, 682), (56, 703), (Start: 59 @733 has 1 MA's), (73, 901), (85, 982),

Gene: KirDoubleO7_112 Start: 64399, Stop: 65181, Start Num: 11

Candidate Starts for KirDoubleO7_112:

(Start: 11 @64399 has 2 MA's), (18, 64450), (24, 64465), (Start: 28 @64474 has 14 MA's), (36, 64546), (45, 64627), (46, 64630), (47, 64645), (52, 64747), (54, 64759), (55, 64765), (Start: 59 @64807 has 1 MA's), (61, 64816), (62, 64825), (64, 64879), (71, 64960), (74, 64981), (82, 65035), (84, 65044), (93, 65113), (94, 65140), (95, 65152),

Gene: Koduck_1 Start: 402, Stop: 1091, Start Num: 33

Candidate Starts for Koduck_1:

(Start: 33 @402 has 212 MA's), (Start: 39 @471 has 4 MA's), (44, 528), (47, 555), (Start: 59 @717 has 1 MA's), (65, 795), (69, 858), (73, 885), (87, 972), (91, 1005),

Gene: Koko_1 Start: 418, Stop: 1176, Start Num: 33

Candidate Starts for Koko_1:

(Start: 33 @418 has 212 MA's), (Start: 39 @487 has 4 MA's), (47, 571), (49, 613), (53, 682), (56, 703), (Start: 59 @733 has 1 MA's), (73, 901), (85, 982),

Gene: Krypton555_117 Start: 64843, Stop: 65544, Start Num: 28

Candidate Starts for Krypton555_117:

(18, 64819), (19, 64828), (24, 64834), (Start: 28 @64843 has 14 MA's), (Start: 35 @64909 has 2 MA's), (36, 64915), (45, 64996), (46, 64999), (47, 65014), (52, 65116), (54, 65128), (55, 65134), (Start: 59 @65176 has 1 MA's), (61, 65185), (62, 65194), (64, 65248), (71, 65329), (74, 65350), (76, 65371), (84, 65413), (94, 65509), (95, 65521),

Gene: L5_1 Start: 411, Stop: 1100, Start Num: 33

Candidate Starts for L5_1:

(Start: 33 @411 has 212 MA's), (Start: 39 @480 has 4 MA's), (44, 537), (47, 564), (Start: 59 @726 has 1 MA's), (65, 804), (69, 867), (73, 894), (87, 981), (91, 1014),

Gene: LadyBird_1 Start: 570, Stop: 1331, Start Num: 33

Candidate Starts for LadyBird_1:

(21, 537), (Start: 33 @570 has 212 MA's), (Start: 39 @639 has 4 MA's), (41, 678), (47, 723), (56, 855), (Start: 59 @885 has 1 MA's), (73, 1053), (99, 1242), (117, 1317),

Gene: Landor_1 Start: 387, Stop: 1154, Start Num: 33

Candidate Starts for Landor_1:

(Start: 15 @303 has 1 MA's), (Start: 33 @387 has 212 MA's), (Start: 39 @456 has 4 MA's), (44, 513), (47, 540), (52, 642), (53, 651), (56, 672), (Start: 59 @702 has 1 MA's), (73, 870), (85, 951), (114, 1137),

Gene: Larenn_2 Start: 656, Stop: 1420, Start Num: 33

Candidate Starts for Larenn_2:

(Start: 33 @656 has 212 MA's), (Start: 39 @725 has 4 MA's), (41, 764), (47, 809), (56, 941), (Start: 59 @971 has 1 MA's), (64, 1043), (87, 1226), (100, 1337), (117, 1403), (118, 1406),

Gene: LastResort_1 Start: 430, Stop: 1260, Start Num: 33

Candidate Starts for LastResort_1:

(Start: 33 @430 has 212 MA's), (47, 583), (53, 694), (Start: 59 @745 has 1 MA's), (73, 913), (79, 955), (82, 973), (102, 1120), (109, 1153), (125, 1198), (129, 1213),

Gene: LeBron_110 Start: 61831, Stop: 62541, Start Num: 27

Candidate Starts for LeBron_110:

(Start: 27 @61831 has 51 MA's), (34, 61885), (Start: 35 @61897 has 2 MA's), (36, 61903), (Start: 39 @61918 has 4 MA's), (44, 61978), (47, 62005), (50, 62059), (52, 62107), (54, 62119), (56, 62137),

(Start: 59 @62167 has 1 MA's), (62, 62185), (64, 62239), (73, 62335), (74, 62341), (80, 62383), (82, 62395), (85, 62416), (89, 62446), (91, 62458), (93, 62473), (94, 62500),

Gene: Leogania_1 Start: 390, Stop: 1157, Start Num: 33

Candidate Starts for Leogania_1:

(Start: 33 @390 has 212 MA's), (41, 498), (44, 516), (47, 543), (52, 645), (53, 654), (56, 675), (Start: 59 @705 has 1 MA's), (73, 873), (91, 993), (117, 1140), (120, 1146),

Gene: Leviathan_2 Start: 654, Stop: 1415, Start Num: 33

Candidate Starts for Leviathan_2:

(Start: 33 @654 has 212 MA's), (Start: 39 @723 has 4 MA's), (41, 762), (47, 807), (52, 909), (53, 918), (Start: 59 @969 has 1 MA's), (73, 1137), (81, 1194), (85, 1218), (99, 1326), (117, 1401),

Gene: Lewan_118 Start: 65306, Stop: 65995, Start Num: 27

Candidate Starts for Lewan_118:

(Start: 27 @65306 has 51 MA's), (31, 65315), (Start: 35 @65372 has 2 MA's), (44, 65450), (46, 65462), (50, 65531), (57, 65627), (Start: 59 @65639 has 1 MA's), (63, 65666), (64, 65711), (71, 65792), (72, 65798), (74, 65813), (78, 65840), (81, 65864), (82, 65867), (86, 65891), (88, 65912), (89, 65918), (93, 65942),

Gene: LilDestine_114 Start: 63966, Stop: 64655, Start Num: 27

Candidate Starts for LilDestine_114:

(Start: 27 @63966 has 51 MA's), (31, 63975), (Start: 35 @64032 has 2 MA's), (44, 64110), (50, 64191), (57, 64287), (Start: 59 @64299 has 1 MA's), (63, 64326), (64, 64371), (71, 64452), (72, 64458), (74, 64473), (78, 64500), (81, 64524), (86, 64551), (88, 64572), (89, 64578), (93, 64602),

Gene: LilTurb_2 Start: 652, Stop: 1413, Start Num: 33

Candidate Starts for LilTurb_2:

(Start: 33 @652 has 212 MA's), (Start: 39 @721 has 4 MA's), (41, 760), (47, 805), (52, 907), (53, 916), (Start: 59 @967 has 1 MA's), (73, 1135), (81, 1192), (85, 1216), (99, 1324), (117, 1399),

Gene: Lilbunny_1 Start: 418, Stop: 1176, Start Num: 33

Candidate Starts for Lilbunny_1:

(Start: 33 @418 has 212 MA's), (Start: 39 @487 has 4 MA's), (47, 571), (49, 613), (53, 682), (56, 703), (Start: 59 @733 has 1 MA's), (73, 901), (85, 982),

Gene: Loadrie_117 Start: 65338, Stop: 66027, Start Num: 27

Candidate Starts for Loadrie_117:

(Start: 27 @65338 has 51 MA's), (31, 65347), (Start: 35 @65404 has 2 MA's), (44, 65482), (50, 65563), (57, 65659), (Start: 59 @65671 has 1 MA's), (63, 65698), (64, 65743), (71, 65824), (72, 65830), (74, 65845), (81, 65896), (82, 65899), (86, 65923), (88, 65944), (89, 65950), (93, 65974),

Gene: Lokk_2 Start: 623, Stop: 1390, Start Num: 33

Candidate Starts for Lokk_2:

(Start: 33 @623 has 212 MA's), (Start: 39 @692 has 4 MA's), (41, 731), (44, 749), (47, 776), (52, 878), (53, 887), (Start: 59 @938 has 1 MA's), (84, 1175), (103, 1325), (118, 1376),

Gene: Lolly9_114 Start: 64846, Stop: 65553, Start Num: 28

Candidate Starts for Lolly9_114:

(1, 64540), (2, 64588), (3, 64594), (4, 64603), (5, 64663), (6, 64666), (7, 64684), (9, 64717), (13, 64774), (14, 64780), (18, 64822), (19, 64831), (24, 64837), (Start: 28 @64846 has 14 MA's), (36, 64918), (45, 64999), (47, 65017), (52, 65119), (54, 65131), (55, 65137), (Start: 59 @65179 has 1 MA's), (61, 65188), (64, 65251), (71, 65332), (74, 65353), (82, 65407), (84, 65416), (93, 65485), (94,

65512), (95, 65524),

Gene: LoneWolf_1 Start: 356, Stop: 1210, Start Num: 33

Candidate Starts for LoneWolf_1:

(Start: 33 @356 has 212 MA's), (47, 509), (Start: 59 @671 has 1 MA's), (65, 749), (73, 839), (100, 1037), (110, 1091), (122, 1130), (127, 1139), (128, 1142), (138, 1190), (139, 1202), (140, 1205),

Gene: Looper_1 Start: 430, Stop: 1260, Start Num: 33

Candidate Starts for Looper_1:

(Start: 33 @430 has 212 MA's), (47, 583), (53, 694), (Start: 59 @745 has 1 MA's), (73, 913), (79, 955), (82, 973), (102, 1120), (109, 1153), (125, 1198), (129, 1213),

Gene: Loser_1 Start: 369, Stop: 1133, Start Num: 33

Candidate Starts for Loser_1:

(Start: 33 @369 has 212 MA's), (Start: 39 @438 has 4 MA's), (41, 477), (47, 522), (52, 624), (53, 633), (56, 654), (Start: 59 @684 has 1 MA's), (73, 852), (103, 1071), (118, 1119),

Gene: Luchador_1 Start: 369, Stop: 1055, Start Num: 33

Candidate Starts for Luchador_1:

(Start: 29 @360 has 10 MA's), (Start: 33 @369 has 212 MA's), (36, 423), (Start: 39 @438 has 4 MA's), (47, 522), (Start: 59 @684 has 1 MA's), (78, 885), (91, 972), (93, 987),

Gene: Lucivia_1 Start: 367, Stop: 1107, Start Num: 33

Candidate Starts for Lucivia_1:

(Start: 29 @355 has 10 MA's), (Start: 33 @367 has 212 MA's), (38, 430), (44, 493), (Start: 59 @682 has 1 MA's), (63, 709), (65, 760), (73, 850),

Gene: Lucyedi_1 Start: 400, Stop: 1245, Start Num: 33

Candidate Starts for Lucyedi_1:

(20, 373), (Start: 33 @400 has 212 MA's), (Start: 39 @469 has 4 MA's), (44, 526), (47, 553), (53, 664), (56, 685), (Start: 59 @715 has 1 MA's), (73, 883), (121, 1165), (128, 1177), (138, 1225), (140, 1240),

Gene: Lumos_113 Start: 64323, Stop: 65030, Start Num: 28

Candidate Starts for Lumos_113:

(Start: 11 @64248 has 2 MA's), (18, 64299), (24, 64314), (Start: 28 @64323 has 14 MA's), (36, 64395), (45, 64476), (46, 64479), (47, 64494), (52, 64596), (54, 64608), (55, 64614), (Start: 59 @64656 has 1 MA's), (61, 64665), (64, 64728), (65, 64734), (71, 64809), (74, 64830), (84, 64893), (93, 64962), (94, 64989), (95, 65001),

Gene: MAckerman_112 Start: 62208, Stop: 62918, Start Num: 27

Candidate Starts for MAckerman_112:

(Start: 27 @62208 has 51 MA's), (34, 62262), (Start: 35 @62274 has 2 MA's), (36, 62280), (Start: 39 @62295 has 4 MA's), (44, 62355), (47, 62382), (50, 62436), (52, 62484), (54, 62496), (56, 62514), (Start: 59 @62544 has 1 MA's), (62, 62562), (64, 62616), (73, 62712), (74, 62718), (80, 62760), (82, 62772), (85, 62793), (89, 62823), (91, 62835), (93, 62850), (94, 62877),

Gene: MaCh_1 Start: 367, Stop: 1107, Start Num: 33

Candidate Starts for MaCh_1:

(Start: 29 @355 has 10 MA's), (Start: 33 @367 has 212 MA's), (38, 430), (44, 493), (Start: 59 @682 has 1 MA's), (63, 709), (73, 850),

Gene: Mabel_1 Start: 355, Stop: 1107, Start Num: 29

Candidate Starts for Mabel_1:

(Start: 29 @355 has 10 MA's), (Start: 33 @367 has 212 MA's), (38, 430), (44, 493), (Start: 59 @682 has 1 MA's), (63, 709), (65, 760), (73, 850),

Gene: MajorMajor_1 Start: 472, Stop: 1092, Start Num: 39

Candidate Starts for MajorMajor_1:

(Start: 33 @403 has 212 MA's), (Start: 39 @472 has 4 MA's), (44, 529), (47, 556), (53, 667), (58, 712), (Start: 59 @718 has 1 MA's), (65, 796), (73, 886), (87, 973), (91, 1006),

Gene: Malec_2 Start: 656, Stop: 1420, Start Num: 33

Candidate Starts for Malec_2:

(Start: 33 @656 has 212 MA's), (Start: 39 @725 has 4 MA's), (41, 764), (47, 809), (56, 941), (Start: 59 @971 has 1 MA's), (64, 1043), (87, 1226), (100, 1337), (117, 1403), (118, 1406),

Gene: Maminiaina_1 Start: 359, Stop: 1213, Start Num: 33

Candidate Starts for Maminiaina_1:

(Start: 33 @359 has 212 MA's), (Start: 39 @428 has 4 MA's), (47, 512), (48, 539), (53, 623), (Start: 59 @674 has 1 MA's), (73, 842), (100, 1040), (110, 1091), (117, 1115), (128, 1145), (138, 1193), (139, 1205),

Gene: McFly_1 Start: 418, Stop: 1176, Start Num: 33

Candidate Starts for McFly_1:

(Start: 33 @418 has 212 MA's), (Start: 39 @487 has 4 MA's), (47, 571), (49, 613), (53, 682), (56, 703), (Start: 59 @733 has 1 MA's), (73, 901), (85, 982),

Gene: MiculUcigas_2 Start: 642, Stop: 1376, Start Num: 33

Candidate Starts for MiculUcigas_2:

(Start: 33 @642 has 212 MA's), (Start: 39 @711 has 4 MA's), (41, 750), (47, 795), (52, 897), (53, 906), (56, 927), (Start: 59 @957 has 1 MA's), (73, 1125), (91, 1245),

Gene: Miko_2 Start: 601, Stop: 1368, Start Num: 33

Candidate Starts for Miko_2:

(Start: 33 @601 has 212 MA's), (Start: 39 @670 has 4 MA's), (41, 709), (44, 727), (47, 754), (52, 856), (53, 865), (Start: 59 @916 has 1 MA's), (84, 1153), (103, 1303), (118, 1354),

Gene: Miley16_117 Start: 65179, Stop: 65868, Start Num: 27

Candidate Starts for Miley16_117:

(Start: 27 @65179 has 51 MA's), (31, 65188), (Start: 35 @65245 has 2 MA's), (44, 65323), (46, 65335), (50, 65404), (57, 65500), (Start: 59 @65512 has 1 MA's), (63, 65539), (64, 65584), (71, 65665), (72, 65671), (74, 65686), (78, 65713), (81, 65737), (86, 65764), (88, 65785), (89, 65791), (93, 65815),

Gene: MinecraftSteve_2 Start: 577, Stop: 1407, Start Num: 33

Candidate Starts for MinecraftSteve_2:

(Start: 33 @577 has 212 MA's), (47, 730), (53, 841), (Start: 59 @892 has 1 MA's), (73, 1060), (79, 1102), (82, 1120), (102, 1267), (109, 1300), (125, 1345), (129, 1360),

Gene: MiniLon_119 Start: 64847, Stop: 65554, Start Num: 28

Candidate Starts for MiniLon_119:

(1, 64541), (2, 64589), (3, 64595), (4, 64604), (5, 64664), (6, 64667), (7, 64685), (9, 64718), (13, 64775), (14, 64781), (18, 64823), (19, 64832), (24, 64838), (Start: 28 @64847 has 14 MA's), (36, 64919), (45, 65000), (47, 65018), (52, 65120), (54, 65132), (55, 65138), (Start: 59 @65180 has 1 MA's), (61, 65189), (64, 65252), (71, 65333), (74, 65354), (82, 65408), (84, 65417), (93, 65486), (94, 65513), (95, 65525),

Gene: MiniMac_119 Start: 64849, Stop: 65556, Start Num: 28

Candidate Starts for MiniMac_119:

(1, 64543), (2, 64591), (3, 64597), (4, 64606), (5, 64666), (6, 64669), (7, 64687), (9, 64720), (13, 64777), (14, 64783), (18, 64825), (19, 64834), (24, 64840), (Start: 28 @64849 has 14 MA's), (36, 64921), (45, 65002), (47, 65020), (52, 65122), (54, 65134), (55, 65140), (Start: 59 @65182 has 1 MA's), (61, 65191), (64, 65254), (71, 65335), (74, 65356), (82, 65410), (84, 65419), (91, 65473), (93, 65488), (94, 65515), (95, 65527),

Gene: MissWhite_1 Start: 401, Stop: 1090, Start Num: 33

Candidate Starts for MissWhite_1:

(Start: 33 @401 has 212 MA's), (Start: 39 @470 has 4 MA's), (44, 527), (47, 554), (53, 665), (Start: 59 @716 has 1 MA's), (69, 857), (73, 884), (85, 965),

Gene: MkaliMitinis3_120 Start: 65023, Stop: 65712, Start Num: 27

Candidate Starts for MkaliMitinis3_120:

(Start: 27 @65023 has 51 MA's), (31, 65032), (Start: 35 @65089 has 2 MA's), (44, 65167), (50, 65248), (57, 65344), (Start: 59 @65356 has 1 MA's), (63, 65383), (64, 65428), (71, 65509), (72, 65515), (74, 65530), (81, 65581), (82, 65584), (86, 65608), (88, 65629), (89, 65635), (93, 65659),

Gene: Moostard_109 Start: 64428, Stop: 65135, Start Num: 28

Candidate Starts for Moostard_109:

(Start: 11 @64353 has 2 MA's), (18, 64404), (24, 64419), (Start: 28 @64428 has 14 MA's), (Start: 35 @64494 has 2 MA's), (36, 64500), (45, 64581), (46, 64584), (47, 64599), (52, 64701), (54, 64713), (55, 64719), (Start: 59 @64761 has 1 MA's), (61, 64770), (64, 64833), (71, 64914), (74, 64935), (84, 64998), (91, 65052), (93, 65067), (94, 65094), (95, 65106),

Gene: MsGreen_114 Start: 64250, Stop: 65032, Start Num: 11

Candidate Starts for MsGreen_114:

(Start: 11 @64250 has 2 MA's), (18, 64301), (24, 64316), (Start: 28 @64325 has 14 MA's), (36, 64397), (45, 64478), (46, 64481), (47, 64496), (52, 64598), (54, 64610), (55, 64616), (Start: 59 @64658 has 1 MA's), (61, 64667), (64, 64730), (65, 64736), (71, 64811), (74, 64832), (84, 64895), (93, 64964), (94, 64991), (95, 65003),

Gene: Mulciber_1 Start: 367, Stop: 1107, Start Num: 33

Candidate Starts for Mulciber_1:

(Start: 29 @355 has 10 MA's), (Start: 33 @367 has 212 MA's), (38, 430), (44, 493), (Start: 59 @682 has 1 MA's), (63, 709), (65, 760), (73, 850),

Gene: Munch_1 Start: 367, Stop: 1107, Start Num: 33

Candidate Starts for Munch_1:

(Start: 29 @355 has 10 MA's), (Start: 33 @367 has 212 MA's), (38, 430), (44, 493), (Start: 59 @682 has 1 MA's), (63, 709), (65, 760), (73, 850),

Gene: Myxus_1 Start: 379, Stop: 1161, Start Num: 33

Candidate Starts for Myxus_1:

(Start: 33 @379 has 212 MA's), (36, 433), (44, 505), (49, 574), (Start: 59 @694 has 1 MA's), (62, 712), (72, 853), (73, 862), (93, 997), (115, 1132), (116, 1135), (122, 1153),

Gene: NaSiaTalie_2 Start: 642, Stop: 1376, Start Num: 33

Candidate Starts for NaSiaTalie_2:

(Start: 33 @642 has 212 MA's), (Start: 39 @711 has 4 MA's), (41, 750), (47, 795), (52, 897), (53, 906), (56, 927), (Start: 59 @957 has 1 MA's), (73, 1125), (91, 1245),

Gene: Naji_1 Start: 392, Stop: 1204, Start Num: 33

Candidate Starts for Naji_1:

(Start: 33 @392 has 212 MA's), (Start: 39 @461 has 4 MA's), (47, 545), (53, 656), (Start: 59 @707 has 1 MA's), (65, 785), (73, 875), (91, 995), (104, 1094), (120, 1154), (122, 1160), (126, 1172),

Gene: Nebulosus_1 Start: 430, Stop: 1260, Start Num: 33

Candidate Starts for Nebulosus_1:

(Start: 33 @430 has 212 MA's), (47, 583), (53, 694), (Start: 59 @745 has 1 MA's), (73, 913), (79, 955), (82, 973), (102, 1120), (109, 1153), (125, 1198), (129, 1213),

Gene: Nedarya_1 Start: 399, Stop: 1232, Start Num: 33

Candidate Starts for Nedarya_1:

(Start: 33 @399 has 212 MA's), (47, 552), (53, 663), (Start: 59 @714 has 1 MA's), (61, 723), (73, 882), (79, 924), (82, 942), (101, 1086), (109, 1122), (115, 1143), (126, 1176), (129, 1188), (138, 1227),

Gene: Neeharika16_1 Start: 418, Stop: 1176, Start Num: 33

Candidate Starts for Neeharika16_1:

(Start: 33 @418 has 212 MA's), (Start: 39 @487 has 4 MA's), (47, 571), (49, 613), (53, 682), (56, 703), (Start: 59 @733 has 1 MA's), (73, 901), (85, 982),

Gene: Netyap_115 Start: 64893, Stop: 65582, Start Num: 27

Candidate Starts for Netyap_115:

(Start: 27 @64893 has 51 MA's), (31, 64902), (Start: 35 @64959 has 2 MA's), (44, 65037), (46, 65049), (50, 65118), (57, 65214), (Start: 59 @65226 has 1 MA's), (63, 65253), (64, 65298), (71, 65379), (72, 65385), (74, 65400), (78, 65427), (81, 65451), (86, 65478), (88, 65499), (89, 65505), (93, 65529),

Gene: Newrala_1 Start: 418, Stop: 1176, Start Num: 33

Candidate Starts for Newrala_1:

(Start: 33 @418 has 212 MA's), (Start: 39 @487 has 4 MA's), (47, 571), (49, 613), (53, 682), (56, 703), (Start: 59 @733 has 1 MA's), (73, 901), (85, 982),

Gene: Nicholas_111 Start: 64433, Stop: 65140, Start Num: 28

Candidate Starts for Nicholas_111:

(Start: 11 @64358 has 2 MA's), (18, 64409), (24, 64424), (Start: 28 @64433 has 14 MA's), (Start: 35 @64499 has 2 MA's), (36, 64505), (45, 64586), (46, 64589), (47, 64604), (52, 64706), (54, 64718), (55, 64724), (Start: 59 @64766 has 1 MA's), (61, 64775), (64, 64838), (71, 64919), (74, 64940), (84, 65003), (91, 65057), (93, 65072), (94, 65099), (95, 65111),

Gene: Nicholasp3_117 Start: 64511, Stop: 65200, Start Num: 27

Candidate Starts for Nicholasp3_117:

(Start: 27 @64511 has 51 MA's), (31, 64520), (Start: 35 @64577 has 2 MA's), (44, 64655), (50, 64736), (57, 64832), (Start: 59 @64844 has 1 MA's), (63, 64871), (64, 64916), (71, 64997), (72, 65003), (74, 65018), (78, 65045), (81, 65069), (86, 65096), (88, 65117), (89, 65123), (93, 65147),

Gene: NicoleTera_1 Start: 401, Stop: 1168, Start Num: 33

Candidate Starts for NicoleTera_1:

(8, 224), (Start: 33 @401 has 212 MA's), (Start: 39 @470 has 4 MA's), (44, 527), (47, 554), (52, 656), (53, 665), (56, 686), (Start: 59 @716 has 1 MA's), (73, 884), (84, 953), (103, 1103), (118, 1154),

Gene: NothingSpecial_1 Start: 398, Stop: 1165, Start Num: 33

Candidate Starts for NothingSpecial_1:

(Start: 29 @386 has 10 MA's), (Start: 33 @398 has 212 MA's), (36, 452), (Start: 39 @467 has 4 MA's), (44, 524), (47, 551), (52, 653), (53, 662), (56, 683), (Start: 59 @713 has 1 MA's), (73, 881), (85, 962),

Gene: OhShagHennessy_105 Start: 61012, Stop: 61722, Start Num: 27

Candidate Starts for OhShagHennessy_105:

(Start: 27 @61012 has 51 MA's), (34, 61066), (Start: 35 @61078 has 2 MA's), (36, 61084), (Start: 39 @61099 has 4 MA's), (44, 61159), (47, 61186), (50, 61240), (52, 61288), (54, 61300), (56, 61318), (Start: 59 @61348 has 1 MA's), (62, 61366), (64, 61420), (68, 61441), (73, 61516), (74, 61522), (80, 61564), (82, 61576), (85, 61597), (89, 61627), (91, 61639), (93, 61654), (94, 61681),

Gene: Oofda_1 Start: 431, Stop: 1261, Start Num: 33

Candidate Starts for Oofda_1:

(Start: 33 @431 has 212 MA's), (47, 584), (53, 695), (Start: 59 @746 has 1 MA's), (73, 914), (79, 956), (82, 974), (102, 1121), (109, 1154), (129, 1214),

Gene: Orange_1 Start: 367, Stop: 1107, Start Num: 33

Candidate Starts for Orange_1:

(Start: 29 @355 has 10 MA's), (Start: 33 @367 has 212 MA's), (38, 430), (44, 493), (Start: 59 @682 has 1 MA's), (63, 709), (65, 760), (73, 850),

Gene: PYPDinur_127 Start: 66604, Stop: 67302, Start Num: 22

Candidate Starts for PYPDinur_127:

(22, 66604), (26, 66607), (Start: 27 @66613 has 51 MA's), (Start: 35 @66679 has 2 MA's), (Start: 39 @66700 has 4 MA's), (46, 66769), (49, 66826), (50, 66838), (52, 66886), (54, 66898), (55, 66904), (Start: 59 @66946 has 1 MA's), (63, 66973), (64, 67018), (71, 67099), (74, 67120), (78, 67147), (84, 67183), (87, 67201), (88, 67219),

Gene: PackMan_1 Start: 379, Stop: 1161, Start Num: 33

Candidate Starts for PackMan_1:

(Start: 33 @379 has 212 MA's), (36, 433), (44, 505), (49, 574), (Start: 59 @694 has 1 MA's), (62, 712), (72, 853), (73, 862), (93, 997), (115, 1132), (116, 1135), (122, 1153),

Gene: PainterBoy_1 Start: 400, Stop: 1245, Start Num: 33

Candidate Starts for PainterBoy_1:

(20, 373), (Start: 33 @400 has 212 MA's), (Start: 39 @469 has 4 MA's), (44, 526), (47, 553), (53, 664), (56, 685), (Start: 59 @715 has 1 MA's), (73, 883), (121, 1165), (128, 1177), (138, 1225), (140, 1240),

Gene: Petersenfast_1 Start: 355, Stop: 1107, Start Num: 29

Candidate Starts for Petersenfast_1:

(Start: 29 @355 has 10 MA's), (Start: 33 @367 has 212 MA's), (38, 430), (44, 493), (Start: 59 @682 has 1 MA's), (63, 709), (65, 760), (73, 850),

Gene: Ph8s_1 Start: 705, Stop: 1229, Start Num: 59

Candidate Starts for Ph8s_1:

(Start: 29 @381 has 10 MA's), (36, 444), (37, 447), (Start: 39 @459 has 4 MA's), (44, 516), (47, 543), (48, 570), (49, 585), (Start: 59 @705 has 1 MA's), (63, 732), (65, 783), (73, 873), (85, 954), (131, 1185), (132, 1188),

Gene: Phaded_1 Start: 303, Stop: 1154, Start Num: 15

Candidate Starts for Phaded_1:

(Start: 15 @303 has 1 MA's), (Start: 33 @387 has 212 MA's), (Start: 39 @456 has 4 MA's), (44, 513), (47, 540), (52, 642), (53, 651), (56, 672), (Start: 59 @702 has 1 MA's), (73, 870), (85, 951), (114, 1137),

Gene: Phaeder_1 Start: 379, Stop: 1161, Start Num: 33

Candidate Starts for Phaeder_1:

(Start: 33 @379 has 212 MA's), (36, 433), (44, 505), (49, 574), (Start: 59 @694 has 1 MA's), (62, 712), (72, 853), (73, 862), (93, 997), (115, 1132), (116, 1135), (122, 1153),

Gene: Pharaoh_1 Start: 361, Stop: 1212, Start Num: 29

Candidate Starts for Pharaoh_1:

(Start: 29 @361 has 10 MA's), (Start: 35 @418 has 2 MA's), (47, 523), (51, 601), (Start: 59 @685 has 1 MA's), (73, 853), (80, 901), (96, 1030), (101, 1060), (111, 1108), (119, 1132), (123, 1144), (130, 1168), (137, 1204),

Gene: Phonnegut_1 Start: 379, Stop: 1161, Start Num: 33

Candidate Starts for Phonnegut_1:

(Start: 33 @379 has 212 MA's), (36, 433), (44, 505), (Start: 59 @694 has 1 MA's), (62, 712), (72, 853), (73, 862), (93, 997), (113, 1126), (115, 1132), (116, 1135), (122, 1153),

Gene: Pioneer_1 Start: 379, Stop: 1161, Start Num: 33

Candidate Starts for Pioneer_1:

(Start: 33 @379 has 212 MA's), (36, 433), (44, 505), (Start: 59 @694 has 1 MA's), (62, 712), (72, 853), (73, 862), (93, 997), (113, 1126), (115, 1132), (116, 1135), (122, 1153),

Gene: Piro94_1 Start: 643, Stop: 1380, Start Num: 33

Candidate Starts for Piro94_1:

(Start: 33 @643 has 212 MA's), (Start: 39 @712 has 4 MA's), (44, 769), (47, 796), (52, 898), (53, 907), (56, 928), (Start: 59 @958 has 1 MA's), (65, 1036), (73, 1126), (91, 1246),

Gene: Pmask_1 Start: 418, Stop: 1176, Start Num: 33

Candidate Starts for Pmask_1:

(Start: 33 @418 has 212 MA's), (Start: 39 @487 has 4 MA's), (47, 571), (49, 613), (53, 682), (56, 703), (Start: 59 @733 has 1 MA's), (73, 901), (85, 982),

Gene: Pomar16_1 Start: 392, Stop: 1204, Start Num: 33

Candidate Starts for Pomar16_1:

(Start: 33 @392 has 212 MA's), (Start: 39 @461 has 4 MA's), (47, 545), (53, 656), (Start: 59 @707 has 1 MA's), (65, 785), (73, 875), (91, 995), (104, 1094), (120, 1154), (122, 1160), (126, 1172),

Gene: Power_2 Start: 665, Stop: 1432, Start Num: 33

Candidate Starts for Power_2:

(Start: 33 @665 has 212 MA's), (Start: 39 @734 has 4 MA's), (41, 773), (47, 818), (Start: 59 @980 has 1 MA's), (65, 1058), (86, 1232), (100, 1346), (118, 1418),

Gene: Priamo_1 Start: 502, Stop: 1191, Start Num: 39

Candidate Starts for Priamo_1:

(Start: 33 @433 has 212 MA's), (Start: 39 @502 has 4 MA's), (47, 586), (49, 628), (53, 697), (56, 718), (Start: 59 @748 has 1 MA's), (73, 916), (85, 997),

Gene: Priya_1 Start: 379, Stop: 1158, Start Num: 33

Candidate Starts for Priya_1:

(Start: 33 @379 has 212 MA's), (36, 433), (44, 505), (49, 574), (Start: 59 @694 has 1 MA's), (62, 712), (72, 853), (73, 862), (87, 949), (91, 982), (93, 997), (113, 1123), (115, 1129), (116, 1132), (122, 1150),

Gene: Pukovnik_1 Start: 366, Stop: 1130, Start Num: 32

Candidate Starts for Pukovnik_1:

(Start: 32 @366 has 2 MA's), (Start: 39 @435 has 4 MA's), (47, 519), (52, 621), (53, 630), (56, 651), (Start: 59 @681 has 1 MA's), (63, 708), (73, 849), (81, 906), (85, 930), (114, 1113),

Gene: Qobbit_1 Start: 379, Stop: 1158, Start Num: 33

Candidate Starts for Qobbit_1:

(Start: 33 @379 has 212 MA's), (36, 433), (44, 505), (49, 574), (Start: 59 @694 has 1 MA's), (62, 712), (72, 853), (73, 862), (87, 949), (91, 982), (93, 997), (113, 1123), (115, 1129), (116, 1132), (122, 1150),

Gene: Quby_126 Start: 65880, Stop: 66569, Start Num: 27

Candidate Starts for Quby_126:

(Start: 27 @65880 has 51 MA's), (Start: 35 @65946 has 2 MA's), (Start: 39 @65967 has 4 MA's), (46, 66036), (49, 66093), (50, 66105), (52, 66153), (54, 66165), (55, 66171), (Start: 59 @66213 has 1 MA's), (63, 66240), (64, 66285), (71, 66366), (74, 66387), (78, 66414), (87, 66468), (88, 66486), (92, 66507),

Gene: QueenB2_2 Start: 667, Stop: 1497, Start Num: 33

Candidate Starts for QueenB2_2:

(Start: 33 @667 has 212 MA's), (Start: 39 @736 has 4 MA's), (47, 820), (53, 931), (57, 970), (Start: 59 @982 has 1 MA's), (80, 1198), (118, 1426), (123, 1441), (136, 1489),

Gene: QueenBeesly_2 Start: 666, Stop: 1433, Start Num: 33

Candidate Starts for QueenBeesly_2:

(Start: 33 @666 has 212 MA's), (Start: 39 @735 has 4 MA's), (41, 774), (47, 819), (Start: 59 @981 has 1 MA's), (65, 1059), (86, 1233), (100, 1347), (118, 1419),

Gene: Quokka_1 Start: 472, Stop: 1092, Start Num: 39

Candidate Starts for Quokka_1:

(Start: 33 @403 has 212 MA's), (Start: 39 @472 has 4 MA's), (44, 529), (47, 556), (53, 667), (58, 712), (Start: 59 @718 has 1 MA's), (65, 796), (73, 886), (87, 973), (91, 1006),

Gene: Rachaly_2 Start: 621, Stop: 1388, Start Num: 33

Candidate Starts for Rachaly_2:

(Start: 33 @621 has 212 MA's), (Start: 39 @690 has 4 MA's), (41, 729), (44, 747), (47, 774), (52, 876), (53, 885), (Start: 59 @936 has 1 MA's), (84, 1173), (103, 1323), (118, 1374),

Gene: Rahalelujah_1 Start: 356, Stop: 1204, Start Num: 33

Candidate Starts for Rahalelujah_1:

(Start: 33 @356 has 212 MA's), (47, 509), (49, 551), (Start: 59 @671 has 1 MA's), (73, 839), (100, 1037), (106, 1067), (117, 1112), (128, 1136), (133, 1160),

Gene: ReMo_1 Start: 430, Stop: 1260, Start Num: 33

Candidate Starts for ReMo_1:

(Start: 33 @430 has 212 MA's), (47, 583), (53, 694), (Start: 59 @745 has 1 MA's), (73, 913), (79, 955), (82, 973), (102, 1120), (109, 1153), (125, 1198), (129, 1213),

Gene: RedRock_1 Start: 370, Stop: 1134, Start Num: 33

Candidate Starts for RedRock_1:

(Start: 33 @370 has 212 MA's), (Start: 39 @439 has 4 MA's), (41, 478), (47, 523), (52, 625), (53, 634), (56, 655), (Start: 59 @685 has 1 MA's), (73, 853), (87, 940), (103, 1072), (118, 1120),

Gene: Refuge_1 Start: 438, Stop: 1235, Start Num: 35

Candidate Starts for Refuge_1:

(Start: 29 @381 has 10 MA's), (Start: 35 @438 has 2 MA's), (47, 543), (Start: 59 @705 has 1 MA's), (73, 873), (96, 1050), (101, 1080), (119, 1155), (123, 1167), (135, 1215), (137, 1227),

Gene: Remus_1 Start: 430, Stop: 1260, Start Num: 33

Candidate Starts for Remus_1:

(Start: 33 @430 has 212 MA's), (47, 583), (53, 694), (Start: 59 @745 has 1 MA's), (73, 913), (79, 955), (82, 973), (102, 1120), (109, 1153), (125, 1198), (129, 1213),

Gene: Retro23_2 Start: 664, Stop: 1497, Start Num: 33

Candidate Starts for Retro23_2:

(Start: 33 @664 has 212 MA's), (Start: 39 @733 has 4 MA's), (47, 817), (53, 928), (57, 967), (Start: 59 @979 has 1 MA's), (80, 1195), (87, 1234), (118, 1426), (124, 1444), (136, 1489),

Gene: Rifter_1 Start: 410, Stop: 1171, Start Num: 33

Candidate Starts for Rifter_1:

(Start: 33 @410 has 212 MA's), (Start: 39 @479 has 4 MA's), (47, 563), (53, 674), (56, 695), (Start: 59 @725 has 1 MA's), (73, 893), (85, 974), (113, 1148), (119, 1163),

Gene: Roksolana_1 Start: 418, Stop: 1176, Start Num: 33

Candidate Starts for Roksolana_1:

(Start: 33 @418 has 212 MA's), (Start: 39 @487 has 4 MA's), (47, 571), (49, 613), (53, 682), (56, 703), (Start: 59 @733 has 1 MA's), (73, 901), (85, 982),

Gene: Rosalind_1 Start: 577, Stop: 1407, Start Num: 33

Candidate Starts for Rosalind_1:

(Start: 33 @577 has 212 MA's), (47, 730), (53, 841), (Start: 59 @892 has 1 MA's), (73, 1060), (79, 1102), (82, 1120), (102, 1267), (109, 1300), (125, 1345), (129, 1360),

Gene: Rose5_112 Start: 62505, Stop: 63215, Start Num: 27

Candidate Starts for Rose5_112:

(Start: 27 @62505 has 51 MA's), (34, 62559), (Start: 35 @62571 has 2 MA's), (36, 62577), (Start: 39 @62592 has 4 MA's), (44, 62652), (47, 62679), (50, 62733), (52, 62781), (54, 62793), (56, 62811), (Start: 59 @62841 has 1 MA's), (62, 62859), (64, 62913), (73, 63009), (74, 63015), (80, 63057), (82, 63069), (85, 63090), (89, 63120), (91, 63132), (93, 63147), (94, 63174),

Gene: Rumpelstiltskin_103 Start: 62845, Stop: 63534, Start Num: 27

Candidate Starts for Rumpelstiltskin_103:

(Start: 27 @62845 has 51 MA's), (31, 62854), (Start: 35 @62911 has 2 MA's), (44, 62989), (46, 63001), (50, 63070), (57, 63166), (Start: 59 @63178 has 1 MA's), (63, 63205), (64, 63250), (71, 63331), (72, 63337), (74, 63352), (78, 63379), (81, 63403), (86, 63430), (88, 63451), (89, 63457), (93, 63481),

Gene: Salz_1 Start: 355, Stop: 1107, Start Num: 29

Candidate Starts for Salz_1:

(Start: 29 @355 has 10 MA's), (Start: 33 @367 has 212 MA's), (38, 430), (44, 493), (Start: 59 @682 has 1 MA's), (63, 709), (65, 760), (73, 850),

Gene: Samty_113 Start: 64420, Stop: 65127, Start Num: 28

Candidate Starts for Samty_113:

(10, 64324), (23, 64411), (Start: 28 @64420 has 14 MA's), (Start: 35 @64486 has 2 MA's), (36, 64492), (45, 64573), (46, 64576), (47, 64591), (52, 64693), (54, 64705), (55, 64711), (Start: 59 @64753 has 1 MA's), (61, 64762), (64, 64825), (71, 64906), (74, 64927), (84, 64990), (91, 65044), (93, 65059), (94, 65086), (95, 65098),

Gene: Sarshaun_118 Start: 65778, Stop: 66467, Start Num: 27

Candidate Starts for Sarshaun_118:

(Start: 27 @65778 has 51 MA's), (31, 65787), (Start: 35 @65844 has 2 MA's), (44, 65922), (50, 66003), (57, 66099), (Start: 59 @66111 has 1 MA's), (63, 66138), (64, 66183), (71, 66264), (72, 66270), (74, 66285), (81, 66336), (82, 66339), (86, 66363), (88, 66384), (89, 66390), (93, 66414),

Gene: Scherzo_1 Start: 379, Stop: 1161, Start Num: 33

Candidate Starts for Scherzo_1:

(Start: 33 @379 has 212 MA's), (36, 433), (44, 505), (Start: 59 @694 has 1 MA's), (62, 712), (72, 853), (73, 862), (93, 997), (113, 1126), (115, 1132), (116, 1135), (122, 1153),

Gene: SemperFi_2 Start: 666, Stop: 1433, Start Num: 33

Candidate Starts for SemperFi_2:

(Start: 33 @666 has 212 MA's), (Start: 39 @735 has 4 MA's), (41, 774), (47, 819), (Start: 59 @981 has 1 MA's), (65, 1059), (86, 1233), (100, 1347), (118, 1419),

Gene: Serenity_1 Start: 403, Stop: 1092, Start Num: 33

Candidate Starts for Serenity_1:

(Start: 33 @403 has 212 MA's), (Start: 39 @472 has 4 MA's), (44, 529), (47, 556), (53, 667), (58, 712), (Start: 59 @718 has 1 MA's), (65, 796), (73, 886), (87, 973), (91, 1006),

Gene: Sham4_1 Start: 367, Stop: 1107, Start Num: 33

Candidate Starts for Sham4_1:

(Start: 29 @355 has 10 MA's), (Start: 33 @367 has 212 MA's), (38, 430), (44, 493), (Start: 59 @682 has 1 MA's), (63, 709), (65, 760), (73, 850),

Gene: ShayRa_2 Start: 577, Stop: 1407, Start Num: 33

Candidate Starts for ShayRa_2:

(Start: 33 @577 has 212 MA's), (47, 730), (53, 841), (Start: 59 @892 has 1 MA's), (73, 1060), (79, 1102), (82, 1120), (102, 1267), (109, 1300), (125, 1345), (129, 1360),

Gene: SheaKeira_1 Start: 356, Stop: 1213, Start Num: 33

Candidate Starts for SheaKeira_1:

(Start: 33 @356 has 212 MA's), (Start: 39 @425 has 4 MA's), (47, 509), (48, 536), (Start: 59 @671 has 1 MA's), (65, 749), (73, 839), (81, 896), (93, 974), (100, 1037), (117, 1112), (134, 1172), (138, 1193), (140, 1208),

Gene: Sheng711_127 Start: 65929, Stop: 66618, Start Num: 27

Candidate Starts for Sheng711_127:

(12, 65857), (Start: 27 @65929 has 51 MA's), (Start: 35 @65995 has 2 MA's), (Start: 39 @66016 has 4 MA's), (41, 66055), (44, 66073), (46, 66085), (49, 66142), (50, 66154), (52, 66202), (54, 66214), (55, 66220), (Start: 59 @66262 has 1 MA's), (63, 66289), (64, 66334), (71, 66415), (73, 66430), (74, 66436), (78, 66463), (87, 66517), (88, 66535), (89, 66541), (92, 66556),

Gene: Silverleaf_109 Start: 61642, Stop: 62349, Start Num: 27

Candidate Starts for Silverleaf_109:

(19, 61627), (Start: 27 @61642 has 51 MA's), (Start: 35 @61708 has 2 MA's), (36, 61714), (Start: 39 @61729 has 4 MA's), (41, 61768), (47, 61813), (54, 61927), (55, 61933), (56, 61945), (Start: 59 @61975 has 1 MA's), (62, 61993), (64, 62047), (73, 62143), (74, 62149), (80, 62191), (82, 62203), (85, 62224), (87, 62230), (89, 62254), (91, 62266), (93, 62281), (94, 62308),

Gene: Smeagan_2 Start: 654, Stop: 1415, Start Num: 33

Candidate Starts for Smeagan_2:

(Start: 33 @654 has 212 MA's), (Start: 39 @723 has 4 MA's), (41, 762), (47, 807), (52, 909), (53, 918), (Start: 59 @969 has 1 MA's), (73, 1137), (81, 1194), (85, 1218), (99, 1326), (117, 1401),

Gene: SmellyB_1 Start: 418, Stop: 1176, Start Num: 33

Candidate Starts for SmellyB_1:

(Start: 33 @418 has 212 MA's), (Start: 39 @487 has 4 MA's), (47, 571), (49, 613), (53, 682), (56, 703), (Start: 59 @733 has 1 MA's), (73, 901), (85, 982),

Gene: SnapTap_2 Start: 665, Stop: 1432, Start Num: 33

Candidate Starts for SnapTap_2:

(Start: 33 @665 has 212 MA's), (Start: 39 @734 has 4 MA's), (41, 773), (47, 818), (Start: 59 @980 has 1 MA's), (65, 1058), (86, 1232), (100, 1346), (118, 1418),

Gene: Snape_1 Start: 367, Stop: 1107, Start Num: 33

Candidate Starts for Snape_1:

(Start: 29 @355 has 10 MA's), (Start: 33 @367 has 212 MA's), (38, 430), (44, 493), (Start: 59 @682 has 1 MA's), (63, 709), (65, 760), (73, 850),

Gene: Snenia_112 Start: 64327, Stop: 65034, Start Num: 28

Candidate Starts for Snenia_112:

(Start: 11 @64252 has 2 MA's), (18, 64303), (24, 64318), (Start: 28 @64327 has 14 MA's), (36, 64399), (45, 64480), (46, 64483), (47, 64498), (52, 64600), (54, 64612), (55, 64618), (Start: 59 @64660 has 1 MA's), (61, 64669), (64, 64732), (65, 64738), (71, 64813), (74, 64834), (84, 64897), (93, 64966), (94, 64993), (95, 65005),

Gene: Soap141_117 Start: 65778, Stop: 66467, Start Num: 27

Candidate Starts for Soap141_117:

(Start: 27 @65778 has 51 MA's), (31, 65787), (Start: 35 @65844 has 2 MA's), (44, 65922), (50, 66003), (57, 66099), (Start: 59 @66111 has 1 MA's), (63, 66138), (64, 66183), (71, 66264), (72, 66270), (74, 66285), (81, 66336), (82, 66339), (86, 66363), (88, 66384), (89, 66390), (93, 66414),

Gene: SororFago_1 Start: 369, Stop: 1055, Start Num: 33

Candidate Starts for SororFago_1:

(Start: 29 @360 has 10 MA's), (Start: 33 @369 has 212 MA's), (36, 423), (Start: 39 @438 has 4 MA's), (47, 522), (56, 654), (57, 672), (Start: 59 @684 has 1 MA's), (78, 885), (91, 972), (93, 987),

Gene: Soups_1 Start: 577, Stop: 1407, Start Num: 33

Candidate Starts for Soups_1:

(Start: 33 @577 has 212 MA's), (47, 730), (53, 841), (Start: 59 @892 has 1 MA's), (73, 1060), (79, 1102), (82, 1120), (102, 1267), (109, 1300), (125, 1345), (129, 1360),

Gene: Spouty_1 Start: 379, Stop: 1158, Start Num: 33

Candidate Starts for Spouty_1:

(Start: 33 @379 has 212 MA's), (36, 433), (44, 505), (49, 574), (Start: 59 @694 has 1 MA's), (62, 712), (72, 853), (73, 862), (87, 949), (91, 982), (93, 997), (113, 1123), (115, 1129), (116, 1132), (122, 1150),

Gene: StarStuff_1 Start: 392, Stop: 1204, Start Num: 33

Candidate Starts for StarStuff_1:

(Start: 33 @392 has 212 MA's), (Start: 39 @461 has 4 MA's), (47, 545), (53, 656), (Start: 59 @707 has 1 MA's), (65, 785), (73, 875), (91, 995), (104, 1094), (120, 1154), (122, 1160), (126, 1172),

Gene: Strosahl_1 Start: 430, Stop: 1260, Start Num: 33

Candidate Starts for Strosahl_1:

(Start: 33 @430 has 212 MA's), (47, 583), (53, 694), (Start: 59 @745 has 1 MA's), (73, 913), (79, 955), (82, 973), (102, 1120), (109, 1153), (125, 1198), (129, 1213),

Gene: Sunhee_1 Start: 362, Stop: 1057, Start Num: 29

Candidate Starts for Sunhee_1:

(Start: 29 @362 has 10 MA's), (Start: 33 @371 has 212 MA's), (36, 425), (47, 524), (55, 644), (Start: 59 @686 has 1 MA's), (64, 758), (78, 887), (85, 935), (91, 974), (93, 989),

Gene: SuperAwesome_1 Start: 418, Stop: 1176, Start Num: 33

Candidate Starts for SuperAwesome_1:

(Start: 33 @418 has 212 MA's), (Start: 39 @487 has 4 MA's), (47, 571), (49, 613), (53, 682), (56, 703), (Start: 59 @733 has 1 MA's), (73, 901), (85, 982),

Gene: SuperCallie99_1 Start: 419, Stop: 1177, Start Num: 33

Candidate Starts for SuperCallie99_1:

(Start: 33 @419 has 212 MA's), (Start: 39 @488 has 4 MA's), (47, 572), (49, 614), (53, 683), (56, 704), (Start: 59 @734 has 1 MA's), (73, 902), (85, 983),

Gene: Superchunk_1 Start: 381, Stop: 1229, Start Num: 29

Candidate Starts for Superchunk_1:

(Start: 29 @381 has 10 MA's), (36, 444), (37, 447), (Start: 39 @459 has 4 MA's), (44, 516), (47, 543), (48, 570), (49, 585), (Start: 59 @705 has 1 MA's), (65, 783), (73, 873), (85, 954),

Gene: SweetiePie_2 Start: 666, Stop: 1433, Start Num: 33

Candidate Starts for SweetiePie_2:

(Start: 33 @666 has 212 MA's), (Start: 39 @735 has 4 MA's), (41, 774), (47, 819), (Start: 59 @981 has 1 MA's), (65, 1059), (86, 1233), (100, 1347), (118, 1419),

Gene: Switzerland_1 Start: 577, Stop: 1407, Start Num: 33

Candidate Starts for Switzerland_1:

(Start: 33 @577 has 212 MA's), (47, 730), (53, 841), (Start: 59 @892 has 1 MA's), (73, 1060), (79, 1102), (82, 1120), (102, 1267), (109, 1300), (125, 1345), (129, 1360),

Gene: TarsusIV_2 Start: 660, Stop: 1427, Start Num: 33

Candidate Starts for TarsusIV_2:

(Start: 33 @660 has 212 MA's), (Start: 39 @729 has 4 MA's), (41, 768), (47, 813), (53, 924), (Start: 59 @975 has 1 MA's), (84, 1212), (103, 1362), (117, 1410), (118, 1413),

Gene: Timothy_1 Start: 367, Stop: 1107, Start Num: 33

Candidate Starts for Timothy_1:

(Start: 29 @355 has 10 MA's), (Start: 33 @367 has 212 MA's), (38, 430), (44, 493), (Start: 59 @682 has 1 MA's), (63, 709), (65, 760), (73, 850),

Gene: TinyTimmy_1 Start: 367, Stop: 1107, Start Num: 33

Candidate Starts for TinyTimmy_1:

(Start: 29 @355 has 10 MA's), (Start: 33 @367 has 212 MA's), (38, 430), (44, 493), (Start: 59 @682 has 1 MA's), (63, 709), (65, 760), (73, 850),

Gene: TipsytheTRex_1 Start: 401, Stop: 1090, Start Num: 33

Candidate Starts for TipsytheTRex_1:

(Start: 33 @401 has 212 MA's), (Start: 39 @470 has 4 MA's), (44, 527), (47, 554), (58, 710), (Start: 59 @716 has 1 MA's), (65, 794), (73, 884), (87, 971), (91, 1004),

Gene: Toaka_1 Start: 378, Stop: 1127, Start Num: 33

Candidate Starts for Toaka_1:

(Start: 33 @378 has 212 MA's), (Start: 39 @447 has 4 MA's), (47, 531), (49, 573), (Start: 59 @693 has 1 MA's), (73, 861), (96, 1038), (107, 1092),

Gene: Tomathan_1 Start: 392, Stop: 1204, Start Num: 33

Candidate Starts for Tomathan_1:

(Start: 33 @392 has 212 MA's), (Start: 39 @461 has 4 MA's), (47, 545), (53, 656), (Start: 59 @707 has 1 MA's), (65, 785), (73, 875), (91, 995), (104, 1094), (120, 1154), (122, 1160), (126, 1172),

Gene: ToneTone_1 Start: 418, Stop: 1176, Start Num: 33

Candidate Starts for ToneTone_1:

(Start: 33 @418 has 212 MA's), (Start: 39 @487 has 4 MA's), (47, 571), (49, 613), (53, 682), (56, 703), (Start: 59 @733 has 1 MA's), (73, 901), (85, 982),

Gene: Tourach_117 Start: 65935, Stop: 66624, Start Num: 27

Candidate Starts for Tourach_117:

(Start: 27 @65935 has 51 MA's), (31, 65944), (Start: 35 @66001 has 2 MA's), (44, 66079), (50, 66160), (57, 66256), (Start: 59 @66268 has 1 MA's), (63, 66295), (64, 66340), (71, 66421), (72, 66427), (73, 66436), (74, 66442), (81, 66493), (86, 66520), (88, 66541), (89, 66547), (93, 66571),

Gene: Travvers_1 Start: 392, Stop: 1204, Start Num: 33

Candidate Starts for Travvers_1:

(Start: 33 @392 has 212 MA's), (Start: 39 @461 has 4 MA's), (47, 545), (53, 656), (Start: 59 @707 has 1 MA's), (65, 785), (73, 875), (91, 995), (104, 1094), (120, 1154), (122, 1160), (126, 1172),

Gene: Trixie_1 Start: 507, Stop: 1274, Start Num: 33

Candidate Starts for Trixie_1:

(Start: 33 @507 has 212 MA's), (Start: 39 @576 has 4 MA's), (47, 660), (53, 771), (Start: 59 @822 has 1 MA's), (73, 990), (85, 1071), (87, 1077), (108, 1221), (114, 1251), (117, 1260),

Gene: Trooper_2 Start: 663, Stop: 1421, Start Num: 33

Candidate Starts for Trooper_2:

(Start: 33 @663 has 212 MA's), (Start: 39 @732 has 4 MA's), (47, 816), (48, 843), (53, 927), (56, 948), (Start: 59 @978 has 1 MA's), (73, 1146), (85, 1227),

Gene: Tubs_1 Start: 379, Stop: 1161, Start Num: 33

Candidate Starts for Tubs_1:

(Start: 33 @379 has 212 MA's), (36, 433), (44, 505), (49, 574), (Start: 59 @694 has 1 MA's), (62, 712), (72, 853), (73, 862), (93, 997), (115, 1132), (116, 1135), (122, 1153),

Gene: Tucker_1 Start: 418, Stop: 1176, Start Num: 33

Candidate Starts for Tucker_1:

(Start: 33 @418 has 212 MA's), (Start: 39 @487 has 4 MA's), (47, 571), (49, 613), (53, 682), (56, 703), (Start: 59 @733 has 1 MA's), (73, 901), (85, 982),

Gene: Turbido_2 Start: 652, Stop: 1413, Start Num: 33

Candidate Starts for Turbido_2:

(Start: 33 @652 has 212 MA's), (Start: 39 @721 has 4 MA's), (41, 760), (47, 805), (52, 907), (53, 916), (Start: 59 @967 has 1 MA's), (73, 1135), (81, 1192), (85, 1216), (99, 1324), (117, 1399),

Gene: Tyson_113 Start: 62935, Stop: 63645, Start Num: 27

Candidate Starts for Tyson_113:

(Start: 27 @62935 has 51 MA's), (34, 62989), (Start: 35 @63001 has 2 MA's), (36, 63007), (Start: 39 @63022 has 4 MA's), (44, 63082), (47, 63109), (50, 63163), (52, 63211), (54, 63223), (56, 63241), (Start: 59 @63271 has 1 MA's), (62, 63289), (64, 63343), (73, 63439), (74, 63445), (80, 63487), (82, 63499), (85, 63520), (89, 63550), (91, 63562), (93, 63577), (94, 63604),

Gene: UPIE_110 Start: 62175, Stop: 62882, Start Num: 27

Candidate Starts for UPIE_110:

(Start: 27 @62175 has 51 MA's), (34, 62229), (Start: 35 @62241 has 2 MA's), (36, 62247), (Start: 39 @62262 has 4 MA's), (41, 62301), (44, 62319), (47, 62346), (50, 62400), (52, 62448), (54, 62460), (56, 62478), (Start: 59 @62508 has 1 MA's), (62, 62526), (64, 62580), (73, 62676), (74, 62682), (80, 62724), (82, 62736), (85, 62757), (89, 62787), (91, 62799), (93, 62814), (94, 62841),

Gene: Updawg_2 Start: 642, Stop: 1376, Start Num: 33

Candidate Starts for Updawg_2:

(Start: 33 @642 has 212 MA's), (Start: 39 @711 has 4 MA's), (41, 750), (47, 795), (52, 897), (53, 906), (56, 927), (Start: 59 @957 has 1 MA's), (73, 1125), (91, 1245),

Gene: VA6_1 Start: 568, Stop: 1329, Start Num: 33

Candidate Starts for VA6_1:

(21, 535), (Start: 33 @568 has 212 MA's), (Start: 39 @637 has 4 MA's), (41, 676), (47, 721), (52, 823), (53, 832), (56, 853), (Start: 59 @883 has 1 MA's), (73, 1051), (99, 1240), (117, 1315),

Gene: VC3_1 Start: 391, Stop: 1203, Start Num: 33

Candidate Starts for VC3_1:

(Start: 33 @391 has 212 MA's), (Start: 39 @460 has 4 MA's), (47, 544), (53, 655), (Start: 59 @706 has 1 MA's), (65, 784), (73, 874), (91, 994), (104, 1093), (120, 1153), (122, 1159), (126, 1171),

Gene: Vanisoa_1 Start: 356, Stop: 1204, Start Num: 33

Candidate Starts for Vanisoa_1:

(Start: 33 @356 has 212 MA's), (47, 509), (49, 551), (Start: 59 @671 has 1 MA's), (65, 749), (73, 839), (100, 1037), (106, 1067), (123, 1124), (128, 1136), (133, 1160), (138, 1184), (139, 1196),

Gene: Vetric_116 Start: 65421, Stop: 66110, Start Num: 27

Candidate Starts for Vetric_116:

(Start: 27 @65421 has 51 MA's), (31, 65430), (Start: 35 @65487 has 2 MA's), (44, 65565), (50, 65646), (57, 65742), (Start: 59 @65754 has 1 MA's), (63, 65781), (64, 65826), (71, 65907), (72, 65913), (74, 65928), (78, 65955), (80, 65970), (81, 65979), (82, 65982), (86, 66006), (88, 66027), (89, 66033), (93, 66057),

Gene: VohminGhazi_1 Start: 418, Stop: 1176, Start Num: 33

Candidate Starts for VohminGhazi_1:

(Start: 33 @418 has 212 MA's), (Start: 39 @487 has 4 MA's), (47, 571), (49, 613), (53, 682), (56, 703), (Start: 59 @733 has 1 MA's), (73, 901), (85, 982),

Gene: Waits_1 Start: 430, Stop: 1260, Start Num: 33

Candidate Starts for Waits_1:

(Start: 33 @430 has 212 MA's), (47, 583), (53, 694), (Start: 59 @745 has 1 MA's), (73, 913), (79, 955), (82, 973), (102, 1120), (109, 1153), (125, 1198), (129, 1213),

Gene: Wamburgxpress_110 Start: 62568, Stop: 63278, Start Num: 27

Candidate Starts for Wamburgxpress_110:

(Start: 27 @62568 has 51 MA's), (34, 62622), (Start: 35 @62634 has 2 MA's), (36, 62640), (Start: 39 @62655 has 4 MA's), (44, 62715), (47, 62742), (50, 62796), (52, 62844), (54, 62856), (56, 62874), (Start: 59 @62904 has 1 MA's), (62, 62922), (64, 62976), (73, 63072), (74, 63078), (80, 63120), (82, 63132), (85, 63153), (89, 63183), (91, 63195), (93, 63210), (94, 63237),

Gene: WeiHuaDA_2 Start: 644, Stop: 1411, Start Num: 33

Candidate Starts for WeiHuaDA_2:

(Start: 33 @644 has 212 MA's), (Start: 39 @713 has 4 MA's), (47, 797), (53, 908), (Start: 59 @959 has 1 MA's), (73, 1127), (85, 1208), (87, 1214), (108, 1358), (114, 1388), (117, 1397),

Gene: Whabigail7_2 Start: 652, Stop: 1413, Start Num: 33

Candidate Starts for Whabigail7_2:

(Start: 33 @652 has 212 MA's), (Start: 39 @721 has 4 MA's), (41, 760), (47, 805), (52, 907), (53, 916), (Start: 59 @967 has 1 MA's), (73, 1135), (81, 1192), (85, 1216), (99, 1324), (117, 1399),

Gene: Whirlwind_115 Start: 64830, Stop: 65531, Start Num: 28

Candidate Starts for Whirlwind_115:

(18, 64806), (19, 64815), (24, 64821), (Start: 28 @64830 has 14 MA's), (Start: 35 @64896 has 2 MA's), (36, 64902), (45, 64983), (46, 64986), (47, 65001), (52, 65103), (54, 65115), (55, 65121), (Start: 59 @65163 has 1 MA's), (61, 65172), (62, 65181), (64, 65235), (71, 65316), (74, 65337), (76, 65358), (84, 65400), (93, 65469), (94, 65496), (95, 65508),

Gene: WideWale_2 Start: 642, Stop: 1376, Start Num: 33

Candidate Starts for WideWale_2:

(Start: 33 @642 has 212 MA's), (Start: 39 @711 has 4 MA's), (41, 750), (47, 795), (52, 897), (53, 906), (56, 927), (Start: 59 @957 has 1 MA's), (73, 1125), (91, 1245),

Gene: Wigglewobble_117 Start: 65017, Stop: 65706, Start Num: 27

Candidate Starts for Wigglewobble_117:

(Start: 27 @65017 has 51 MA's), (31, 65026), (Start: 35 @65083 has 2 MA's), (44, 65161), (50, 65242), (57, 65338), (Start: 59 @65350 has 1 MA's), (63, 65377), (64, 65422), (71, 65503), (72, 65509), (74, 65524), (81, 65575), (82, 65578), (86, 65602), (88, 65623), (89, 65629), (93, 65653),

Gene: Wiks_1 Start: 418, Stop: 1176, Start Num: 33

Candidate Starts for Wiks_1:

(Start: 33 @418 has 212 MA's), (Start: 39 @487 has 4 MA's), (47, 571), (49, 613), (53, 682), (56, 703), (Start: 59 @733 has 1 MA's), (73, 901), (85, 982),

Gene: Wilder_117 Start: 64650, Stop: 65339, Start Num: 27

Candidate Starts for Wilder_117:

(Start: 27 @64650 has 51 MA's), (31, 64659), (Start: 35 @64716 has 2 MA's), (44, 64794), (50, 64875), (57, 64971), (Start: 59 @64983 has 1 MA's), (63, 65010), (64, 65055), (71, 65136), (72, 65142), (74, 65157), (81, 65208), (82, 65211), (86, 65235), (88, 65256), (89, 65262), (93, 65286),

Gene: Winky_117 Start: 65180, Stop: 65869, Start Num: 27

Candidate Starts for Winky_117:

(Start: 27 @65180 has 51 MA's), (31, 65189), (Start: 35 @65246 has 2 MA's), (44, 65324), (46, 65336), (50, 65405), (57, 65501), (Start: 59 @65513 has 1 MA's), (63, 65540), (64, 65585), (71, 65666), (72, 65672), (74, 65687), (78, 65714), (81, 65738), (86, 65765), (88, 65786), (89, 65792), (93, 65816),

Gene: WunderPhul_1 Start: 418, Stop: 1176, Start Num: 33

Candidate Starts for WunderPhul_1:

(Start: 33 @418 has 212 MA's), (Start: 39 @487 has 4 MA's), (47, 571), (49, 613), (53, 682), (56, 703), (Start: 59 @733 has 1 MA's), (73, 901), (85, 982),

Gene: Wyatt2_112 Start: 62598, Stop: 63308, Start Num: 27

Candidate Starts for Wyatt2_112:

(Start: 27 @62598 has 51 MA's), (34, 62652), (Start: 35 @62664 has 2 MA's), (36, 62670), (Start: 39 @62685 has 4 MA's), (44, 62745), (47, 62772), (50, 62826), (52, 62874), (54, 62886), (56, 62904), (Start: 59 @62934 has 1 MA's), (62, 62952), (64, 63006), (73, 63102), (74, 63108), (80, 63150), (82, 63162), (85, 63183), (89, 63213), (91, 63225), (93, 63240), (94, 63267),

Gene: XianYue_1 Start: 507, Stop: 1262, Start Num: 33

Candidate Starts for XianYue_1:

(Start: 33 @507 has 212 MA's), (Start: 39 @576 has 4 MA's), (47, 660), (52, 762), (53, 771), (Start: 59 @822 has 1 MA's), (91, 1110), (115, 1248),

Gene: Yecey3_1 Start: 367, Stop: 1215, Start Num: 33

Candidate Starts for Yecey3_1:

(Start: 29 @358 has 10 MA's), (Start: 33 @367 has 212 MA's), (44, 493), (47, 520), (53, 631), (Start: 59 @682 has 1 MA's), (65, 760), (73, 850), (81, 907), (100, 1048), (106, 1078), (123, 1141), (128, 1147), (138, 1195), (139, 1207), (140, 1210),

Gene: Yokurt_1 Start: 418, Stop: 1176, Start Num: 33

Candidate Starts for Yokurt_1:

(Start: 33 @418 has 212 MA's), (Start: 39 @487 has 4 MA's), (47, 571), (49, 613), (53, 682), (56, 703), (Start: 59 @733 has 1 MA's), (73, 901), (85, 982),

Gene: Zaka_1 Start: 418, Stop: 1176, Start Num: 33

Candidate Starts for Zaka_1:

(Start: 33 @418 has 212 MA's), (Start: 39 @487 has 4 MA's), (47, 571), (49, 613), (53, 682), (56, 703), (Start: 59 @733 has 1 MA's), (73, 901), (85, 982),

Gene: Zakai_119 Start: 64890, Stop: 65579, Start Num: 27

Candidate Starts for Zakai_119:

(Start: 27 @64890 has 51 MA's), (31, 64899), (Start: 35 @64956 has 2 MA's), (44, 65034), (46, 65046), (50, 65115), (57, 65211), (Start: 59 @65223 has 1 MA's), (63, 65250), (64, 65295), (71, 65376), (72, 65382), (74, 65397), (78, 65424), (81, 65448), (86, 65475), (88, 65496), (89, 65502), (93, 65526),

Gene: Zaria_114 Start: 62652, Stop: 63359, Start Num: 27

Candidate Starts for Zaria_114:

(Start: 27 @62652 has 51 MA's), (34, 62706), (Start: 35 @62718 has 2 MA's), (36, 62724), (Start: 39 @62739 has 4 MA's), (41, 62778), (44, 62796), (47, 62823), (50, 62877), (52, 62925), (54, 62937), (56, 62955), (Start: 59 @62985 has 1 MA's), (62, 63003), (64, 63057), (68, 63078), (73, 63153), (74, 63159), (80, 63201), (82, 63213), (85, 63234), (89, 63264), (91, 63276), (93, 63291), (94, 63318),

Gene: ZhongYanYuan_113 Start: 64388, Stop: 65080, Start Num: 27

Candidate Starts for ZhongYanYuan_113:

(Start: 27 @64388 has 51 MA's), (31, 64397), (Start: 35 @64454 has 2 MA's), (36, 64460), (Start: 39 @64475 has 4 MA's), (44, 64532), (55, 64679), (Start: 59 @64721 has 1 MA's), (62, 64739), (65, 64799), (66, 64802), (71, 64874), (72, 64880), (73, 64889), (81, 64943), (82, 64946), (86, 64970), (87, 64973), (90, 65006), (91, 65009), (93, 65024),

Gene: Zimmer_1 Start: 381, Stop: 1235, Start Num: 29

Candidate Starts for Zimmer_1:

(Start: 29 @381 has 10 MA's), (Start: 35 @438 has 2 MA's), (47, 543), (Start: 59 @705 has 1 MA's),
(73, 873), (80, 921), (96, 1050), (101, 1080), (123, 1167), (130, 1191), (135, 1215), (137, 1227),

Gene: Zulu_1 Start: 418, Stop: 1176, Start Num: 33

Candidate Starts for Zulu_1:

(Start: 33 @418 has 212 MA's), (Start: 39 @487 has 4 MA's), (47, 571), (49, 613), (53, 682), (56, 703),
(Start: 59 @733 has 1 MA's), (73, 901), (85, 982),