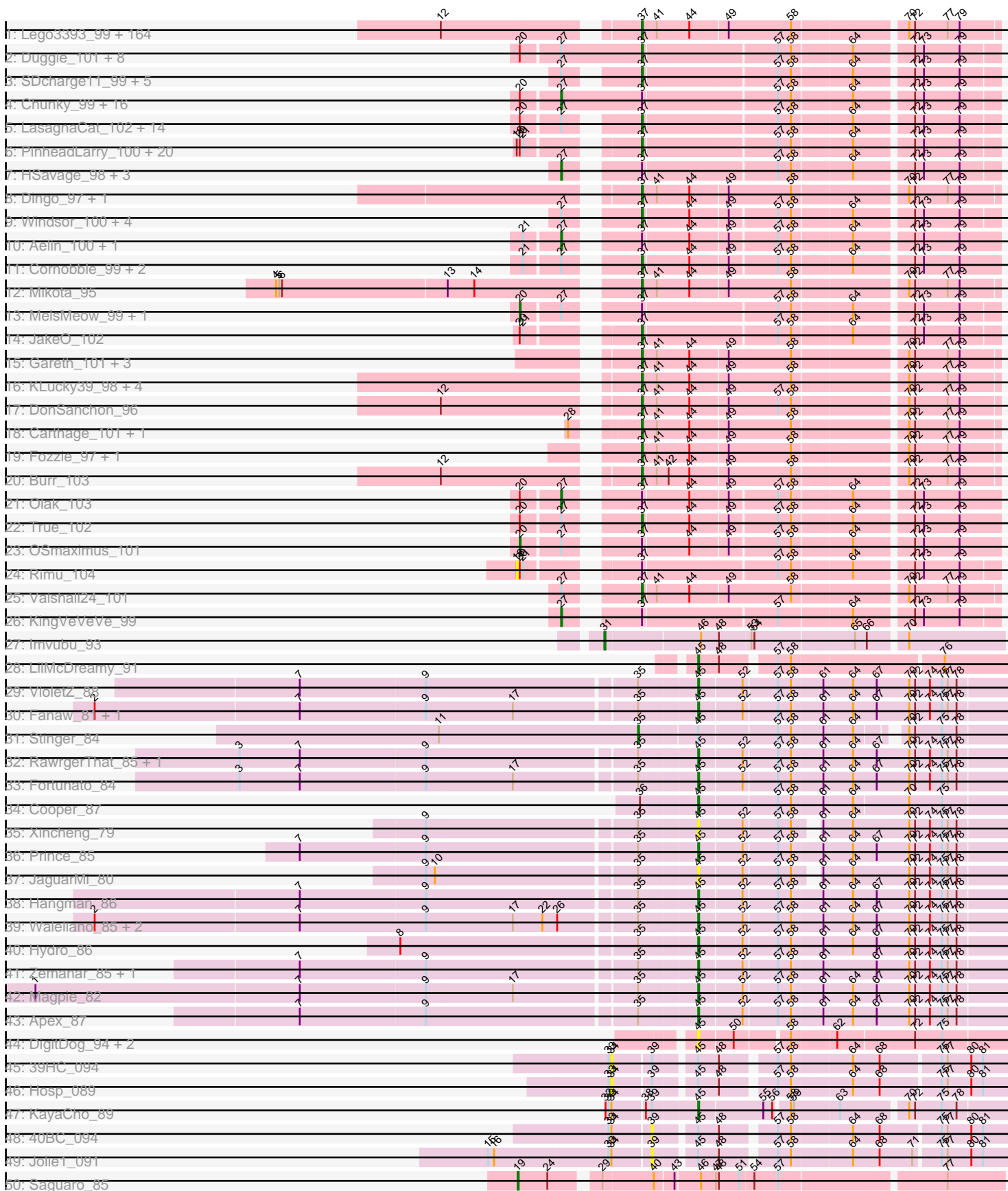
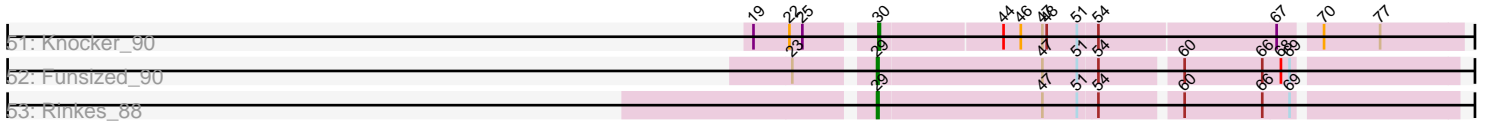


Pham 192259



Pham 192259



Note: Tracks are now grouped by subcluster and scaled. Switching in subcluster is indicated by changes in track color. Track scale is now set by default to display the region 30 bp upstream of start 1 to 30 bp downstream of the last possible start. If this default region is judged to be packed too tightly with annotated starts, the track will be further scaled to only show that region of the ORF with annotated starts. This action will be indicated by adding "Zoomed" to the title. For starts, yellow indicates the location of called starts comprised solely of Glimmer/GeneMark auto-annotations, green indicates the location of called starts with at least 1 manual gene annotation.

Pham 192259 Report

This analysis was run 11/02/24 on database version 579.

Pham number 192259 has 308 members, 22 are drafts.

Phages represented in each track:

- Track 1 : Lego3393_99, Harvey_98, Chah_103, Placalicious_98, Kikipoo_103, Pherdinand_102, Craff_102, Matalotodo_99, Xavier_100, Kimbrough_102, Giraffe_102, Puhltonio_96, Held_99, Olive_97, Quisquiliae_103, FugateOSU_101, Jillium_101, Usavi_101, Boehler_98, Selr12_105, Hetaeria_100, Zelda_101, Orfeu_101, Kwadwo_100, Mulan_100, Anderson_102, Cobra_101, Chorkpop_102, Megatron_102, Inverness_98, Slatt_103, Adriana_101, MitKao_101, Phareon_98, Squiggle_100, Hertubise_100, Phamished_100, Emiris_103, Waterdiva_102, Lasso_100, EmpTee_100, ABU_99, Mutante_102, Podrick_99, Kahve_101, LemonSlice_101, Simielle_101, Scoot17C_101, Buckeye_99, Iridoclysis_100, Beaglebox_97, Legolas_102, Bluephacebaby_100, Prickles_101, Dione_99, UAch1_101, Lumine_102, Pacifista_103, Haleema_100, Numberten_101, Oosterbaan_101, Fang_101, Haimas_98, Roscoe_99, Pipsqueak_98, Freya_97, Cosmolli16_102, Morty_101, UncleHowie_97, SilverBell_102, Childish_101, Katniss_103, Phipps_98, Frankicide_98, Sigman_100, Charles1_104, Dice_101, Serpentine_00103, Virapocalypse_102, Fringe_105, Bishoperium_101, LostAndPhound_100, Andre_105, Altwerkus_98, Newman_96, IsaacEli_103, Potter_95, Vista_100, LuckyMarjie_98, Scrick_102, Serendipity_100, Plmatters_98, Nacho_00103, MRabcd_101, Thora_99, Cannibal_101, KingTut_91, ProfessorX_98, Banjo_97, JangoPhett_99, YouGoGlencoco_101, Mana_98, Hamish_98, Grand2040_98, HenryJackson_101, Badfish_101, DoesntMatter_98, Morgushi_98, ShiVal_100, HighStump_103, Orion_99, Mecca_101, CheetO_97, Timmi_99, FluffyNinja_102, Gophee_100, Surely_101, Valjean_99, Lulumae_96, Roy17_98, Sophia_99, Megamind20_103, Squid_100, JacAttac_101, Swish_102, Lulwa_98, Colbert_99, Skippy_101, Mesh1_101, Samaymay_101, FriarPreacher_98, Vaticameos_98, OliverWalter_100, Mosaic_98, BlackStallion_100, Nicole21_102, TomBombadil_101, PG1_99, Daffy_100, SassyCat97_99, PhrodoBaggins_103, Nyala_101, Spartan300_100, Phunky_98, DirtJuice_102, Kloppinator_101, QueenBeane_101, Piglet_00100, Maru_100, LeeLot_99, AbsoluteMadLad_99, CamL_101, Gyarad_0099, Tomlarah_101, Omniscient_102, Riggan_102, ThreeOh3D2_102, Yoshand_102, Telesworld_99, Zaider_102, Murdoc_97, Eugenia_103, PhatCats2014_100, Toni_100, RedMaple_99
- Track 2 : Duggie_101, Struggle_101, Longacauda_101, Ricotta_102, Jiminy_101, Thunderbird_101, KlimbOn_100, Jiraiya_106, DelRivs_100
- Track 3 : SDcharge11_99, BlueHusk_101, Horchata_95, Sheila_95, Roliet_98, Daka_102
- Track 4 : Chunky_99, PhenghisKhan_101, PhrankReynolds_99, CharlieGBrown_99, Mcshane_103, TyrionL_101, Gwilliam_101, Schueller_100, Labeouficaum_101,

BatteryCK_99, Lopsy_97, Derpp_100, Apizium_99, Soile_102, Phergie_101, Zonia_101, MichaelPhcott_99

- Track 5 : LasagnaCat_102, ImtiyazSitla_102, Ashraf_102, DuchessDung_98, Veritas_100, Phleuron_98, Inchworm_102, Mag7_99, Kwksand96_102, Hartsy_99, Pinkman_100, Maskar_102, CampRoach_101, Kailash_99, Wallhey_102
- Track 6 : PinheadLarry_100, Durga_103, Weher20_98, GeneCoco_100, LeiMonet_103, Etaye_100, Doddsville_98, Virgeve_99, Dati_98, Hocus_100, Swiphy_105, DaddyDaniels_104, PhatLouie_103, Trypo_101, JDog_100, MrPhizzler_100, Brilliant_104, TallGrassMM_100, Vortex_99, Melc17_98, Solosis_99
- Track 7 : HSavage_98, Eremos_98, AltPhacts_98, MiniBoss_96
- Track 8 : Dingo_97, Soto_97
- Track 9 : Windsor_100, Keitherie_104, Chaelin_101, Coletti_103, Chute_101
- Track 10 : Aelin_100, Antonia_100
- Track 11 : Cornobble_99, Vivaldi_101, Manad_100
- Track 12 : Mikota_95
- Track 13 : MelsMeow_99, Oline_100
- Track 14 : JakeO_102
- Track 15 : Gareth_101, Orwigg_103, Tooj_98, Cher_101
- Track 16 : KLucky39_98, Crownjwl_98, Pops_98, Suffolk_96, Basato_99
- Track 17 : DonSanchon_96
- Track 18 : Carthage_101, Robyn_102
- Track 19 : Fozzie_97, Schadenfreude_101
- Track 20 : Burr_103
- Track 21 : Olak_103
- Track 22 : True_102
- Track 23 : OSmaximus_101
- Track 24 : Rimu_104
- Track 25 : Vaishali24_101
- Track 26 : KingVeVeVe_99
- Track 27 : Imvubu_93
- Track 28 : LilMcDreamy_91
- Track 29 : VioletZ_88
- Track 30 : Fanaw_81, Lolalove_87
- Track 31 : Stinger_84
- Track 32 : RawrgerThat_85, Mithril_85
- Track 33 : Fortunato_84
- Track 34 : Cooper_87
- Track 35 : Xincheng_79
- Track 36 : Prince_85
- Track 37 : JaguarMi_80
- Track 38 : Hangman_86
- Track 39 : Waleliano_85, Mudslide_86, BrownCNA_87
- Track 40 : Hydro_86
- Track 41 : Zemanar_85, Frederick_87
- Track 42 : Magpie_82
- Track 43 : Apex_87
- Track 44 : DigitDog_94, Shenyu_93, Nangang_93
- Track 45 : 39HC_094
- Track 46 : Hosp_089
- Track 47 : KayaCho_89
- Track 48 : 40BC_094
- Track 49 : Jolie1_091
- Track 50 : Saguaro_85

- Track 51 : Klocker_90
- Track 52 : Funsized_90
- Track 53 : Rinkes_88

Summary of Final Annotations (See graph section above for start numbers):

The start number called the most often in the published annotations is 37, it was called in 236 of the 286 non-draft genes in the pham.

Genes that call this "Most Annotated" start:

- ABU_99, AbsoluteMadLad_99, Adriana_101, Altwerkus_98, Anderson_102, Andre_105, Ashraf_102, Badfish_101, Banjo_97, Basato_99, Beaglebox_97, Bishoperium_101, BlackStallion_100, BlueHusk_101, Bluephacebaby_100, Boehler_98, Brilliant_104, Buckeye_99, Burr_103, CamL_101, CampRoach_101, Cannibal_101, Carthage_101, Chaelin_101, Chah_103, Charles1_104, CheetO_97, Cher_101, Childish_101, Chorkpop_102, Chute_101, Cobra_101, Colbert_99, Coletti_103, Cornobble_99, Cosmolli16_102, Craff_102, Crownjwl_98, DaddyDaniels_104, Daffy_100, Daka_102, Dati_98, DelRivs_100, Dice_101, Dingo_97, Dione_99, DirtJuice_102, Doddsville_98, DoesntMatter_98, DonSanchon_96, DuchessDung_98, Duggie_101, Durga_103, Emiris_103, EmpTee_100, Etaye_100, Eugenia_103, Fang_101, FluffyNinja_102, Fozzie_97, Frankicide_98, Freya_97, FriarPreacher_98, Fringe_105, FugateOSU_101, Gareth_101, GeneCoco_100, Giraffe_102, Gophee_100, Grand2040_98, Gyarad_0099, Haimas_98, Haleema_100, Hamish_98, Hartsy_99, Harvey_98, Held_99, HenryJackson_101, Hertubise_100, Hetaeria_100, HighStump_103, Hocus_100, Horchata_95, ImtiyazSitla_102, Inchworm_102, Inverness_98, Iridoclysis_100, IsaacEli_103, JDog_100, JacAttac_101, JakeO_102, JangoPhett_99, Jillium_101, Jiminy_101, Jiraiya_106, KLucky39_98, Kahve_101, Kailash_99, Katniss_103, Keitherie_104, Kikipoo_103, Kimbrough_102, KingTut_91, KlimbOn_100, Kloppinator_101, Kwadwo_100, Kwksand96_102, LasagnaCat_102, Lasso_100, LeeLot_99, Lego3393_99, Legolas_102, LeiMonet_103, LemonSlice_101, Longacauda_101, LostAndPhound_100, LuckyMarjie_98, Lulumae_96, Lulwa_98, Lumine_102, MRabcd_101, Mag7_99, Mana_98, Manad_100, Maru_100, Maskar_102, Matalotodo_99, Mecca_101, Megamind20_103, Megatron_102, Melc17_98, Mesh1_101, Mikota_95, MitKao_101, Morgushi_98, Morty_101, Mosaic_98, MrPhizzler_100, Mulan_100, Murdoc_97, Mutante_102, Nacho_00103, Newman_96, Nicole21_102, Numberten_101, Nyala_101, Olive_97, OliverWalter_100, Omniscient_102, Oosterbaan_101, Orfeu_101, Orion_99, Orwigg_103, PG1_99, Pacifista_103, Phamished_100, Phareon_98, PhatCats2014_100, PhatLouie_103, Pherdinand_102, Phipps_98, Phleuron_98, PhrodoBaggins_103, Phunky_98, Piglet_00100, PinheadLarry_100, Pinkman_100, Pipsqueak_98, Placalicious_98, Plmatters_98, Podrick_99, Pops_98, Potter_95, Prickles_101, ProfessorX_98, Puhltonio_96, QueenBeane_101, Quisquilliae_103, RedMaple_99, Ricotta_102, Riggan_102, Robyn_102, Roliet_98, Roscoe_99, Roy17_98, SDcharge11_99, Samaymay_101, SassyCat97_99, Schadenfreude_101, Scoot17C_101, Scrick_102, Selr12_105, Serendipity_100, Serpentine_00103, Sheila_95, ShiVal_100, Sigman_100, SilverBell_102, Simielle_101, Skippy_101, Slatt_103, Solosis_99, Sophia_99, Soto_97, Spartan300_100, Squid_100, Squiggle_100, Struggle_101, Suffolk_96, Surely_101, Swiphy_105, Swish_102, TallGrassMM_100, Telesworld_99, Thora_99,

ThreeOh3D2_102, Thunderbird_101, Timmi_99, TomBombadil_101, Tomlarah_101, Toni_100, Tooj_98, True_102, Trypo_101, UAch1_101, UncleHowie_97, Usavi_101, Vaishali24_101, Valjean_99, Vaticameos_98, Veritas_100, Virapocalypse_102, Virgeve_99, Vista_100, Vivaldi_101, Vortex_99, Wallhey_102, Waterdiva_102, Weher20_98, Windsor_100, Xavier_100, Yoshand_102, YouGoGlencoco_101, Zaider_102, Zelda_101,

Genes that have the "Most Annotated" start but do not call it:

- Aelin_100, AltPhacts_98, Antonia_100, Apizium_99, BatteryCK_99, CharlieGBrown_99, Chunky_99, Derpp_100, Eremos_98, Gwilliam_101, HSavage_98, KingVeVeVe_99, Labeouficaum_101, Lopsy_97, Mcshane_103, MelsMeow_99, MichaelPhcott_99, MiniBoss_96, OSmaximus_101, Olak_103, Oline_100, PhenghisKhan_101, Phergie_101, PhrankReynolds_99, Rimu_104, Schueller_100, Soile_102, TyrionL_101, Zonia_101,

Genes that do not have the "Most Annotated" start:

- 39HC_094, 40BC_094, Apex_87, BrownCNA_87, Cooper_87, DigitDog_94, Fanaw_81, Fortunato_84, Frederick_87, Funsized_90, Hangman_86, Hosp_089, Hydro_86, Imvubu_93, JaguarMi_80, Jolie1_091, KayaCho_89, Knocker_90, LilMcDreamy_91, Lolalove_87, Magpie_82, Mithril_85, Mudslide_86, Nangang_93, Prince_85, RawrgerThat_85, Rinkes_88, Saguaro_85, Shenyu_93, Stinger_84, VioletZ_88, Waleliano_85, Xincheng_79, Zemanar_85,

Summary by start number:

Start 18:

- Found in 22 of 308 (7.1%) of genes in pham
- No Manual Annotations of this start.
- Called 4.5% of time when present
- Phage (with cluster) where this start called: Rimu_104 (B1),

Start 19:

- Found in 2 of 308 (0.6%) of genes in pham
- Manual Annotations of this start: 1 of 286
- Called 50.0% of time when present
- Phage (with cluster) where this start called: Saguaro_85 (B7),

Start 20:

- Found in 69 of 308 (22.4%) of genes in pham
- Manual Annotations of this start: 3 of 286
- Called 4.3% of time when present
- Phage (with cluster) where this start called: MelsMeow_99 (B1), OSmaximus_101 (B1), Oline_100 (B1),

Start 27:

- Found in 68 of 308 (22.1%) of genes in pham
- Manual Annotations of this start: 23 of 286
- Called 36.8% of time when present
- Phage (with cluster) where this start called: Aelin_100 (B1), AltPhacts_98 (B1), Antonia_100 (B1), Apizium_99 (B1), BatteryCK_99 (B1), CharlieGBrown_99 (B1), Chunky_99 (B1), Derpp_100 (B1), Eremos_98 (B1), Gwilliam_101 (B1), HSavage_98 (B1), KingVeVeVe_99 (B1), Labeouficaum_101 (B1), Lopsy_97 (B1), Mcshane_103 (B1), MichaelPhcott_99 (B1), MiniBoss_96 (B1), Olak_103 (B1), PhenghisKhan_101

(B1), Phergie_101 (B1), PhrankReynolds_99 (B1), Schueller_100 (B1), Soile_102 (B1), TyrionL_101 (B1), Zonia_101 (B1),

Start 29:

- Found in 3 of 308 (1.0%) of genes in pham
- Manual Annotations of this start: 2 of 286
- Called 66.7% of time when present
- Phage (with cluster) where this start called: Funsized_90 (B9), Rinkes_88 (B9),

Start 30:

- Found in 1 of 308 (0.3%) of genes in pham
- Manual Annotations of this start: 1 of 286
- Called 100.0% of time when present
- Phage (with cluster) where this start called: Knocker_90 (B9),

Start 31:

- Found in 1 of 308 (0.3%) of genes in pham
- Manual Annotations of this start: 1 of 286
- Called 100.0% of time when present
- Phage (with cluster) where this start called: Imvubu_93 (B10),

Start 34:

- Found in 5 of 308 (1.6%) of genes in pham
- No Manual Annotations of this start.
- Called 40.0% of time when present
- Phage (with cluster) where this start called: 39HC_094 (B6), Hosp_089 (B6),

Start 35:

- Found in 19 of 308 (6.2%) of genes in pham
- Manual Annotations of this start: 1 of 286
- Called 5.3% of time when present
- Phage (with cluster) where this start called: Stinger_84 (B4),

Start 37:

- Found in 274 of 308 (89.0%) of genes in pham
- Manual Annotations of this start: 236 of 286
- Called 89.4% of time when present
- Phage (with cluster) where this start called: ABU_99 (B1), AbsoluteMadLad_99 (B1), Adriana_101 (B1), Altwerkus_98 (B1), Anderson_102 (B1), Andre_105 (B1), Ashraf_102 (B1), Badfish_101 (B1), Banjo_97 (B1), Basato_99 (B1), Beaglebox_97 (B1), Bishoperium_101 (B1), BlackStallion_100 (B1), BlueHusk_101 (B1), Bluephacebaby_100 (B1), Boehler_98 (B1), Brilliant_104 (B1), Buckeye_99 (B1), Burr_103 (B1), CamL_101 (B1), CampRoach_101 (B1), Cannibal_101 (B1), Carthage_101 (B1), Chaelin_101 (B1), Chah_103 (B1), Charles1_104 (B1), CheetO_97 (B1), Cher_101 (B1), Childish_101 (B1), Chorkpop_102 (B1), Chute_101 (B1), Cobra_101 (B1), Colbert_99 (B1), Coletti_103 (B1), Cornobble_99 (B1), Cosmolli16_102 (B1), Craff_102 (B1), Crownjwl_98 (B1), DaddyDaniels_104 (B1), Daffy_100 (B1), Daka_102 (B1), Dati_98 (B1), DelRivs_100 (B1), Dice_101 (B1), Dingo_97 (B1), Dione_99 (B1), DirtJuice_102 (B1), Doddsville_98 (B1), DoesntMatter_98 (B1), DonSanchon_96 (B1), DuchessDung_98 (B1), Duggie_101 (B1), Durga_103 (B1), Emiris_103 (B1), EmpTee_100 (B1), Etaye_100 (B1), Eugenia_103 (B1), Fang_101 (B1), FluffyNinja_102 (B1), Fozzie_97 (B1), Frankicide_98 (B1), Freya_97 (B1), FriarPreacher_98 (B1), Fringe_105 (B1),

FugateOSU_101 (B1), Gareth_101 (B1), GeneCoco_100 (B1), Giraffe_102 (B1), Gophe_100 (B1), Grand2040_98 (B1), Gyarad_0099 (B1), Haimas_98 (B1), Haleema_100 (B1), Hamish_98 (B1), Hartsy_99 (B1), Harvey_98 (B1), Held_99 (B1), HenryJackson_101 (B1), Hertubise_100 (B1), Hetaeria_100 (B1), HighStump_103 (B1), Hocus_100 (B1), Horchata_95 (B1), ImtiyazSitla_102 (B1), Inchworm_102 (B1), Inverness_98 (B1), Iridoclysis_100 (B1), IsaacEli_103 (B1), JDog_100 (B1), JacAttac_101 (B1), JakeO_102 (B1), JangoPhett_99 (B1), Jillium_101 (B1), Jiminy_101 (B1), Jiraiya_106 (B1), KLucky39_98 (B1), Kahve_101 (B1), Kailash_99 (B1), Katniss_103 (B1), Keitherie_104 (B1), Kikipoo_103 (B1), Kimbrough_102 (B1), KingTut_91 (B1), KlimbOn_100 (B1), Kloppinator_101 (B1), Kwadwo_100 (B1), Kwksand96_102 (B1), LasagnaCat_102 (B1), Lasso_100 (B1), LeeLot_99 (B1), Lego3393_99 (B1), Legolas_102 (B1), LeiMonet_103 (B1), LemonSlice_101 (B1), Longacauda_101 (B1), LostAndPhound_100 (B1), LuckyMarjie_98 (B1), Lulumae_96 (B1), Lulwa_98 (B1), Lumine_102 (B1), MRabcd_101 (B1), Mag7_99 (B1), Mana_98 (B1), Manad_100 (B1), Maru_100 (B1), Maskar_102 (B1), Matalotodo_99 (B1), Mecca_101 (B1), Megamind20_103 (B1), Megatron_102 (B1), Melc17_98 (B1), Mesh1_101 (B1), Mikota_95 (B1), MitKao_101 (B1), Morgushi_98 (B1), Morty_101 (B1), Mosaic_98 (B1), MrPhizzler_100 (B1), Mulan_100 (B1), Murdoc_97 (B1), Mutante_102 (B1), Nacho_00103 (B1), Newman_96 (B1), Nicole21_102 (B1), Numberten_101 (B1), Nyala_101 (B1), Olive_97 (B1), OliverWalter_100 (B1), Omniscient_102 (B1), Oosterbaan_101 (B1), Orfeu_101 (B1), Orion_99 (B1), Orwigg_103 (B1), PG1_99 (B1), Pacifista_103 (B1), Phamished_100 (B1), Phareon_98 (B1), PhatCats2014_100 (B1), PhatLouie_103 (B1), Pherdinand_102 (B1), Phipps_98 (B1), Phleuron_98 (B1), PhrodoBaggins_103 (B1), Phunky_98 (B1), Piglet_00100 (B1), PinheadLarry_100 (B1), Pinkman_100 (B1), Pipsqueak_98 (B1), Placalicious_98 (B1), Plmatters_98 (B1), Podrick_99 (B1), Pops_98 (B1), Potter_95 (B1), Prickles_101 (B1), ProfessorX_98 (B1), Puhltonio_96 (B1), QueenBeane_101 (B1), Quisquilliae_103 (B1), RedMaple_99 (B1), Ricotta_102 (B1), Riggan_102 (B1), Robyn_102 (B1), Roliet_98 (B1), Roscoe_99 (B1), Roy17_98 (B1), SDcharge11_99 (B1), Samaymay_101 (B1), SassyCat97_99 (B1), Schadenfreude_101 (B1), Scoot17C_101 (B1), Scrick_102 (B1), Selr12_105 (B1), Serendipity_100 (B1), Serpentine_00103 (B1), Sheila_95 (B1), ShiVal_100 (B1), Sigman_100 (B1), SilverBell_102 (B1), Simielle_101 (B1), Skippy_101 (B1), Slatt_103 (B1), Solosis_99 (B1), Sophia_99 (B1), Soto_97 (B1), Spartan300_100 (B1), Squid_100 (B1), Squiggle_100 (B1), Struggle_101 (B1), Suffolk_96 (B1), Surely_101 (B1), Swiphy_105 (B1), Swish_102 (B1), TallGrassMM_100 (B1), Telesworld_99 (B1), Thora_99 (B1), ThreeOh3D2_102 (B1), Thunderbird_101 (B1), Timmi_99 (B1), TomBombadil_101 (B1), Tomlarah_101 (B1), Toni_100 (B1), Tooj_98 (B1), True_102 (B1), Trypo_101 (B1), UAch1_101 (B1), UncleHowie_97 (B1), Usavi_101 (B1), Vaishali24_101 (B1), Valjean_99 (B1), Vaticameos_98 (B1), Veritas_100 (B1), Virapocalypse_102 (B1), Virgeve_99 (B1), Vista_100 (B1), Vivaldi_101 (B1), Vortex_99 (B1), Wallhey_102 (B1), Waterdiva_102 (B1), Weher20_98 (B1), Windsor_100 (B1), Xavier_100 (B1), Yoshand_102 (B1), YouGoGlencoco_101 (B1), Zaider_102 (B1), Zelda_101 (B1),

Start 39:

- Found in 5 of 308 (1.6%) of genes in pham
- No Manual Annotations of this start.
- Called 40.0% of time when present
- Phage (with cluster) where this start called: 40BC_094 (B6), Jolie1_091 (B6),

Start 45:

- Found in 29 of 308 (9.4%) of genes in pham

- Manual Annotations of this start: 18 of 286
- Called 82.8% of time when present
- Phage (with cluster) where this start called: Apex_87 (B4), BrownCNA_87 (B4), Cooper_87 (B4), DigitDog_94 (B5), Fanaw_81 (B4), Fortunato_84 (B4), Frederick_87 (B4), Hangman_86 (B4), Hydro_86 (B4), JaguarMi_80 (B4), KayaCho_89 (B6), LilMcDreamy_91 (B12), Lolalove_87 (B4), Magpie_82 (B4), Mithril_85 (B4), Mudslide_86 (B4), Nangang_93 (B5), Prince_85 (B4), RawrgerThat_85 (B4), Shenyu_93 (B5), VioletZ_88 (B4), Waleliano_85 (B4), Xincheng_79 (B4), Zemanar_85 (B4),

Summary by clusters:

There are 8 clusters represented in this pham: B4, B5, B6, B7, B12, B1, B10, B9,

Info for manual annotations of cluster B1:

- Start number 20 was manually annotated 3 times for cluster B1.
- Start number 27 was manually annotated 23 times for cluster B1.
- Start number 37 was manually annotated 236 times for cluster B1.

Info for manual annotations of cluster B10:

- Start number 31 was manually annotated 1 time for cluster B10.

Info for manual annotations of cluster B12:

- Start number 45 was manually annotated 1 time for cluster B12.

Info for manual annotations of cluster B4:

- Start number 35 was manually annotated 1 time for cluster B4.
- Start number 45 was manually annotated 16 times for cluster B4.

Info for manual annotations of cluster B6:

- Start number 45 was manually annotated 1 time for cluster B6.

Info for manual annotations of cluster B7:

- Start number 19 was manually annotated 1 time for cluster B7.

Info for manual annotations of cluster B9:

- Start number 29 was manually annotated 2 times for cluster B9.
- Start number 30 was manually annotated 1 time for cluster B9.

Gene Information:

Gene: 39HC_094 Start: 68290, Stop: 67925, Start Num: 34

Candidate Starts for 39HC_094:

(33, 68293), (34, 68290), (39, 68254), (Start: 45 @68218 has 18 MA's), (48, 68197), (57, 68149), (58, 68137), (64, 68080), (68, 68053), (75, 67996), (77, 67990), (80, 67966), (81, 67954),

Gene: 40BC_094 Start: 68254, Stop: 67925, Start Num: 39

Candidate Starts for 40BC_094:

(33, 68293), (34, 68290), (39, 68254), (Start: 45 @68218 has 18 MA's), (48, 68197), (57, 68149), (58, 68137), (64, 68080), (68, 68053), (75, 67996), (77, 67990), (80, 67966), (81, 67954),

Gene: ABU_99 Start: 68479, Stop: 68141, Start Num: 37

Candidate Starts for ABU_99:

(12, 68653), (Start: 37 @68479 has 236 MA's), (41, 68464), (44, 68431), (49, 68395), (58, 68335), (70, 68230), (72, 68224), (77, 68191), (79, 68179),

Gene: AbsoluteMadLad_99 Start: 68432, Stop: 68094, Start Num: 37

Candidate Starts for AbsoluteMadLad_99:

(12, 68606), (Start: 37 @68432 has 236 MA's), (41, 68417), (44, 68384), (49, 68348), (58, 68288), (70, 68183), (72, 68177), (77, 68144), (79, 68132),

Gene: Adriana_101 Start: 68751, Stop: 68413, Start Num: 37

Candidate Starts for Adriana_101:

(12, 68925), (Start: 37 @68751 has 236 MA's), (41, 68736), (44, 68703), (49, 68667), (58, 68607), (70, 68502), (72, 68496), (77, 68463), (79, 68451),

Gene: Aelin_100 Start: 68163, Stop: 67771, Start Num: 27

Candidate Starts for Aelin_100:

(21, 68196), (Start: 27 @68163 has 23 MA's), (Start: 37 @68106 has 236 MA's), (44, 68061), (49, 68025), (57, 67980), (58, 67968), (64, 67911), (72, 67857), (73, 67848), (79, 67812),

Gene: AltPhacts_98 Start: 67737, Stop: 67345, Start Num: 27

Candidate Starts for AltPhacts_98:

(Start: 27 @67737 has 23 MA's), (Start: 37 @67680 has 236 MA's), (57, 67551), (58, 67539), (64, 67482), (72, 67428), (73, 67419), (79, 67383),

Gene: Altwerkus_98 Start: 67808, Stop: 67470, Start Num: 37

Candidate Starts for Altwerkus_98:

(12, 67982), (Start: 37 @67808 has 236 MA's), (41, 67793), (44, 67760), (49, 67724), (58, 67664), (70, 67559), (72, 67553), (77, 67520), (79, 67508),

Gene: Anderson_102 Start: 68355, Stop: 68017, Start Num: 37

Candidate Starts for Anderson_102:

(12, 68529), (Start: 37 @68355 has 236 MA's), (41, 68340), (44, 68307), (49, 68271), (58, 68211), (70, 68106), (72, 68100), (77, 68067), (79, 68055),

Gene: Andre_105 Start: 68746, Stop: 68408, Start Num: 37

Candidate Starts for Andre_105:

(12, 68920), (Start: 37 @68746 has 236 MA's), (41, 68731), (44, 68698), (49, 68662), (58, 68602), (70, 68497), (72, 68491), (77, 68458), (79, 68446),

Gene: Antonia_100 Start: 68034, Stop: 67642, Start Num: 27

Candidate Starts for Antonia_100:

(21, 68067), (Start: 27 @68034 has 23 MA's), (Start: 37 @67977 has 236 MA's), (44, 67932), (49, 67896), (57, 67851), (58, 67839), (64, 67782), (72, 67728), (73, 67719), (79, 67683),

Gene: Apex_87 Start: 66047, Stop: 65745, Start Num: 45

Candidate Starts for Apex_87:

(7, 66434), (9, 66308), (Start: 35 @66104 has 1 MA's), (Start: 45 @66047 has 18 MA's), (52, 66005), (57, 65972), (58, 65960), (61, 65930), (64, 65903), (67, 65879), (70, 65846), (72, 65840), (74, 65825), (75, 65813), (77, 65807), (78, 65798),

Gene: Apizium_99 Start: 67685, Stop: 67293, Start Num: 27

Candidate Starts for Apizium_99:

(Start: 20 @67721 has 3 MA's), (Start: 27 @67685 has 23 MA's), (Start: 37 @67628 has 236 MA's), (57, 67499), (58, 67487), (64, 67430), (72, 67376), (73, 67367), (79, 67331),

Gene: Ashraf_102 Start: 68483, Stop: 68148, Start Num: 37

Candidate Starts for Ashraf_102:

(Start: 20 @68576 has 3 MA's), (Start: 27 @68540 has 23 MA's), (Start: 37 @68483 has 236 MA's), (57, 68354), (58, 68342), (64, 68285), (72, 68231), (73, 68222), (79, 68186),

Gene: Badfish_101 Start: 68659, Stop: 68321, Start Num: 37

Candidate Starts for Badfish_101:

(12, 68833), (Start: 37 @68659 has 236 MA's), (41, 68644), (44, 68611), (49, 68575), (58, 68515), (70, 68410), (72, 68404), (77, 68371), (79, 68359),

Gene: Banjo_97 Start: 67925, Stop: 67587, Start Num: 37

Candidate Starts for Banjo_97:

(12, 68099), (Start: 37 @67925 has 236 MA's), (41, 67910), (44, 67877), (49, 67841), (58, 67781), (70, 67676), (72, 67670), (77, 67637), (79, 67625),

Gene: Basato_99 Start: 68145, Stop: 67807, Start Num: 37

Candidate Starts for Basato_99:

(Start: 37 @68145 has 236 MA's), (41, 68130), (44, 68097), (49, 68061), (58, 68001), (70, 67896), (72, 67890), (77, 67857), (79, 67845),

Gene: BatteryCK_99 Start: 67967, Stop: 67575, Start Num: 27

Candidate Starts for BatteryCK_99:

(Start: 20 @68003 has 3 MA's), (Start: 27 @67967 has 23 MA's), (Start: 37 @67910 has 236 MA's), (57, 67781), (58, 67769), (64, 67712), (72, 67658), (73, 67649), (79, 67613),

Gene: Beaglebox_97 Start: 68047, Stop: 67709, Start Num: 37

Candidate Starts for Beaglebox_97:

(12, 68221), (Start: 37 @68047 has 236 MA's), (41, 68032), (44, 67999), (49, 67963), (58, 67903), (70, 67798), (72, 67792), (77, 67759), (79, 67747),

Gene: Bishoperium_101 Start: 68494, Stop: 68156, Start Num: 37

Candidate Starts for Bishoperium_101:

(12, 68668), (Start: 37 @68494 has 236 MA's), (41, 68479), (44, 68446), (49, 68410), (58, 68350), (70, 68245), (72, 68239), (77, 68206), (79, 68194),

Gene: BlackStallion_100 Start: 68343, Stop: 68005, Start Num: 37

Candidate Starts for BlackStallion_100:

(12, 68517), (Start: 37 @68343 has 236 MA's), (41, 68328), (44, 68295), (49, 68259), (58, 68199), (70, 68094), (72, 68088), (77, 68055), (79, 68043),

Gene: BlueHusk_101 Start: 67823, Stop: 67488, Start Num: 37

Candidate Starts for BlueHusk_101:

(Start: 27 @67880 has 23 MA's), (Start: 37 @67823 has 236 MA's), (57, 67694), (58, 67682), (64, 67625), (72, 67571), (73, 67562), (79, 67526),

Gene: Bluephacebaby_100 Start: 68528, Stop: 68190, Start Num: 37

Candidate Starts for Bluephacebaby_100:

(12, 68702), (Start: 37 @68528 has 236 MA's), (41, 68513), (44, 68480), (49, 68444), (58, 68384), (70, 68279), (72, 68273), (77, 68240), (79, 68228),

Gene: Boehler_98 Start: 67970, Stop: 67632, Start Num: 37

Candidate Starts for Boehler_98:

(12, 68144), (Start: 37 @67970 has 236 MA's), (41, 67955), (44, 67922), (49, 67886), (58, 67826), (70, 67721), (72, 67715), (77, 67682), (79, 67670),

Gene: Brilliant_104 Start: 68501, Stop: 68166, Start Num: 37

Candidate Starts for Brilliant_104:

(18, 68594), (Start: 20 @68591 has 3 MA's), (21, 68588), (Start: 37 @68501 has 236 MA's), (57, 68372), (58, 68360), (64, 68303), (72, 68249), (73, 68240), (79, 68204),

Gene: BrownCNA_87 Start: 65995, Stop: 65693, Start Num: 45

Candidate Starts for BrownCNA_87:

(2, 66586), (7, 66382), (9, 66256), (17, 66169), (22, 66139), (26, 66124), (Start: 35 @66052 has 1 MA's), (Start: 45 @65995 has 18 MA's), (52, 65953), (57, 65920), (58, 65908), (61, 65878), (64, 65851), (67, 65827), (70, 65794), (72, 65788), (74, 65773), (75, 65761), (77, 65755), (78, 65746),

Gene: Buckeye_99 Start: 68803, Stop: 68465, Start Num: 37

Candidate Starts for Buckeye_99:

(12, 68977), (Start: 37 @68803 has 236 MA's), (41, 68788), (44, 68755), (49, 68719), (58, 68659), (70, 68554), (72, 68548), (77, 68515), (79, 68503),

Gene: Burr_103 Start: 68349, Stop: 68011, Start Num: 37

Candidate Starts for Burr_103:

(12, 68523), (Start: 37 @68349 has 236 MA's), (41, 68334), (42, 68322), (44, 68301), (49, 68265), (58, 68205), (70, 68100), (72, 68094), (77, 68061), (79, 68049),

Gene: CamL_101 Start: 68279, Stop: 67941, Start Num: 37

Candidate Starts for CamL_101:

(12, 68453), (Start: 37 @68279 has 236 MA's), (41, 68264), (44, 68231), (49, 68195), (58, 68135), (70, 68030), (72, 68024), (77, 67991), (79, 67979),

Gene: CampRoach_101 Start: 68369, Stop: 68034, Start Num: 37

Candidate Starts for CampRoach_101:

(Start: 20 @68462 has 3 MA's), (Start: 27 @68426 has 23 MA's), (Start: 37 @68369 has 236 MA's), (57, 68240), (58, 68228), (64, 68171), (72, 68117), (73, 68108), (79, 68072),

Gene: Cannibal_101 Start: 68382, Stop: 68044, Start Num: 37

Candidate Starts for Cannibal_101:

(12, 68556), (Start: 37 @68382 has 236 MA's), (41, 68367), (44, 68334), (49, 68298), (58, 68238), (70, 68133), (72, 68127), (77, 68094), (79, 68082),

Gene: Carthage_101 Start: 67837, Stop: 67499, Start Num: 37

Candidate Starts for Carthage_101:

(28, 67882), (Start: 37 @67837 has 236 MA's), (41, 67822), (44, 67789), (49, 67753), (58, 67693), (70, 67588), (72, 67582), (77, 67549), (79, 67537),

Gene: Chaelin_101 Start: 68242, Stop: 67910, Start Num: 37

Candidate Starts for Chaelin_101:

(Start: 27 @68299 has 23 MA's), (Start: 37 @68242 has 236 MA's), (44, 68197), (49, 68161), (57, 68116), (58, 68104), (64, 68047), (72, 67993), (73, 67984), (79, 67948),

Gene: Chah_103 Start: 68079, Stop: 67741, Start Num: 37

Candidate Starts for Chah_103:

(12, 68253), (Start: 37 @68079 has 236 MA's), (41, 68064), (44, 68031), (49, 67995), (58, 67935), (70, 67830), (72, 67824), (77, 67791), (79, 67779),

Gene: Charles1_104 Start: 68657, Stop: 68319, Start Num: 37

Candidate Starts for Charles1_104:

(12, 68831), (Start: 37 @68657 has 236 MA's), (41, 68642), (44, 68609), (49, 68573), (58, 68513), (70, 68408), (72, 68402), (77, 68369), (79, 68357),

Gene: CharlieGBrown_99 Start: 68062, Stop: 67670, Start Num: 27

Candidate Starts for CharlieGBrown_99:

(Start: 20 @68098 has 3 MA's), (Start: 27 @68062 has 23 MA's), (Start: 37 @68005 has 236 MA's), (57, 67876), (58, 67864), (64, 67807), (72, 67753), (73, 67744), (79, 67708),

Gene: CheetO_97 Start: 68132, Stop: 67794, Start Num: 37

Candidate Starts for CheetO_97:

(12, 68306), (Start: 37 @68132 has 236 MA's), (41, 68117), (44, 68084), (49, 68048), (58, 67988), (70, 67883), (72, 67877), (77, 67844), (79, 67832),

Gene: Cher_101 Start: 68483, Stop: 68145, Start Num: 37

Candidate Starts for Cher_101:

(Start: 37 @68483 has 236 MA's), (41, 68468), (44, 68435), (49, 68399), (58, 68339), (70, 68234), (72, 68228), (77, 68195), (79, 68183),

Gene: Childish_101 Start: 68673, Stop: 68335, Start Num: 37

Candidate Starts for Childish_101:

(12, 68847), (Start: 37 @68673 has 236 MA's), (41, 68658), (44, 68625), (49, 68589), (58, 68529), (70, 68424), (72, 68418), (77, 68385), (79, 68373),

Gene: Chorkpop_102 Start: 68135, Stop: 67797, Start Num: 37

Candidate Starts for Chorkpop_102:

(12, 68309), (Start: 37 @68135 has 236 MA's), (41, 68120), (44, 68087), (49, 68051), (58, 67991), (70, 67886), (72, 67880), (77, 67847), (79, 67835),

Gene: Chunky_99 Start: 67707, Stop: 67291, Start Num: 27

Candidate Starts for Chunky_99:

(Start: 20 @67743 has 3 MA's), (Start: 27 @67707 has 23 MA's), (Start: 37 @67626 has 236 MA's), (57, 67497), (58, 67485), (64, 67428), (72, 67374), (73, 67365), (79, 67329),

Gene: Chute_101 Start: 68665, Stop: 68333, Start Num: 37

Candidate Starts for Chute_101:

(Start: 27 @68722 has 23 MA's), (Start: 37 @68665 has 236 MA's), (44, 68620), (49, 68584), (57, 68539), (58, 68527), (64, 68470), (72, 68416), (73, 68407), (79, 68371),

Gene: Cobra_101 Start: 68504, Stop: 68166, Start Num: 37

Candidate Starts for Cobra_101:

(12, 68678), (Start: 37 @68504 has 236 MA's), (41, 68489), (44, 68456), (49, 68420), (58, 68360), (70, 68255), (72, 68249), (77, 68216), (79, 68204),

Gene: Colbert_99 Start: 67403, Stop: 67065, Start Num: 37

Candidate Starts for Colbert_99:

(12, 67577), (Start: 37 @67403 has 236 MA's), (41, 67388), (44, 67355), (49, 67319), (58, 67259), (70, 67154), (72, 67148), (77, 67115), (79, 67103),

Gene: Coletti_103 Start: 69021, Stop: 68689, Start Num: 37

Candidate Starts for Coletti_103:

(Start: 27 @69078 has 23 MA's), (Start: 37 @69021 has 236 MA's), (44, 68976), (49, 68940), (57, 68895), (58, 68883), (64, 68826), (72, 68772), (73, 68763), (79, 68727),

Gene: Cooper_87 Start: 65343, Stop: 65047, Start Num: 45

Candidate Starts for Cooper_87:

(36, 65397), (Start: 45 @65343 has 18 MA's), (57, 65268), (58, 65256), (61, 65226), (64, 65199), (70, 65145), (75, 65112),

Gene: Cornobble_99 Start: 68126, Stop: 67791, Start Num: 37

Candidate Starts for Cornobble_99:

(21, 68216), (Start: 27 @68183 has 23 MA's), (Start: 37 @68126 has 236 MA's), (44, 68081), (49, 68045), (57, 68000), (58, 67988), (64, 67931), (72, 67877), (73, 67868), (79, 67832),

Gene: Cosmolli16_102 Start: 68607, Stop: 68269, Start Num: 37

Candidate Starts for Cosmolli16_102:

(12, 68781), (Start: 37 @68607 has 236 MA's), (41, 68592), (44, 68559), (49, 68523), (58, 68463), (70, 68358), (72, 68352), (77, 68319), (79, 68307),

Gene: Craff_102 Start: 68892, Stop: 68554, Start Num: 37

Candidate Starts for Craff_102:

(12, 69066), (Start: 37 @68892 has 236 MA's), (41, 68877), (44, 68844), (49, 68808), (58, 68748), (70, 68643), (72, 68637), (77, 68604), (79, 68592),

Gene: Crownjwl_98 Start: 68148, Stop: 67810, Start Num: 37

Candidate Starts for Crownjwl_98:

(Start: 37 @68148 has 236 MA's), (41, 68133), (44, 68100), (49, 68064), (58, 68004), (70, 67899), (72, 67893), (77, 67860), (79, 67848),

Gene: DaddyDaniels_104 Start: 68620, Stop: 68285, Start Num: 37

Candidate Starts for DaddyDaniels_104:

(18, 68713), (Start: 20 @68710 has 3 MA's), (21, 68707), (Start: 37 @68620 has 236 MA's), (57, 68491), (58, 68479), (64, 68422), (72, 68368), (73, 68359), (79, 68323),

Gene: Daffy_100 Start: 68120, Stop: 67782, Start Num: 37

Candidate Starts for Daffy_100:

(12, 68294), (Start: 37 @68120 has 236 MA's), (41, 68105), (44, 68072), (49, 68036), (58, 67976), (70, 67871), (72, 67865), (77, 67832), (79, 67820),

Gene: Daka_102 Start: 68077, Stop: 67742, Start Num: 37

Candidate Starts for Daka_102:

(Start: 27 @68134 has 23 MA's), (Start: 37 @68077 has 236 MA's), (57, 67948), (58, 67936), (64, 67879), (72, 67825), (73, 67816), (79, 67780),

Gene: Dati_98 Start: 68299, Stop: 67964, Start Num: 37

Candidate Starts for Dati_98:

(18, 68392), (Start: 20 @68389 has 3 MA's), (21, 68386), (Start: 37 @68299 has 236 MA's), (57, 68170), (58, 68158), (64, 68101), (72, 68047), (73, 68038), (79, 68002),

Gene: DelRivs_100 Start: 67928, Stop: 67593, Start Num: 37

Candidate Starts for DelRivs_100:

(Start: 20 @68045 has 3 MA's), (Start: 27 @68009 has 23 MA's), (Start: 37 @67928 has 236 MA's), (57, 67799), (58, 67787), (64, 67730), (72, 67676), (73, 67667), (79, 67631),

Gene: Derpp_100 Start: 68095, Stop: 67703, Start Num: 27

Candidate Starts for Derpp_100:

(Start: 20 @68131 has 3 MA's), (Start: 27 @68095 has 23 MA's), (Start: 37 @68038 has 236 MA's), (57, 67909), (58, 67897), (64, 67840), (72, 67786), (73, 67777), (79, 67741),

Gene: Dice_101 Start: 67966, Stop: 67628, Start Num: 37

Candidate Starts for Dice_101:

(12, 68140), (Start: 37 @67966 has 236 MA's), (41, 67951), (44, 67918), (49, 67882), (58, 67822), (70, 67717), (72, 67711), (77, 67678), (79, 67666),

Gene: DigitDog_94 Start: 68274, Stop: 67966, Start Num: 45

Candidate Starts for DigitDog_94:

(Start: 45 @68274 has 18 MA's), (50, 68241), (58, 68193), (62, 68151), (72, 68076), (75, 68049),

Gene: Dingo_97 Start: 67408, Stop: 67070, Start Num: 37

Candidate Starts for Dingo_97:

(Start: 37 @67408 has 236 MA's), (41, 67393), (44, 67360), (49, 67324), (58, 67264), (70, 67159), (72, 67153), (77, 67120), (79, 67108),

Gene: Dione_99 Start: 67686, Stop: 67348, Start Num: 37

Candidate Starts for Dione_99:

(12, 67860), (Start: 37 @67686 has 236 MA's), (41, 67671), (44, 67638), (49, 67602), (58, 67542), (70, 67437), (72, 67431), (77, 67398), (79, 67386),

Gene: DirtJuice_102 Start: 68795, Stop: 68457, Start Num: 37

Candidate Starts for DirtJuice_102:

(12, 68969), (Start: 37 @68795 has 236 MA's), (41, 68780), (44, 68747), (49, 68711), (58, 68651), (70, 68546), (72, 68540), (77, 68507), (79, 68495),

Gene: Doddsville_98 Start: 68120, Stop: 67785, Start Num: 37

Candidate Starts for Doddsville_98:

(18, 68213), (Start: 20 @68210 has 3 MA's), (21, 68207), (Start: 37 @68120 has 236 MA's), (57, 67991), (58, 67979), (64, 67922), (72, 67868), (73, 67859), (79, 67823),

Gene: DoesntMatter_98 Start: 67960, Stop: 67622, Start Num: 37

Candidate Starts for DoesntMatter_98:

(12, 68134), (Start: 37 @67960 has 236 MA's), (41, 67945), (44, 67912), (49, 67876), (58, 67816), (70, 67711), (72, 67705), (77, 67672), (79, 67660),

Gene: DonSanchon_96 Start: 67644, Stop: 67306, Start Num: 37

Candidate Starts for DonSanchon_96:

(12, 67818), (Start: 37 @67644 has 236 MA's), (41, 67629), (44, 67596), (49, 67560), (57, 67512), (58, 67500), (70, 67395), (72, 67389), (77, 67356), (79, 67344),

Gene: DuchessDung_98 Start: 67636, Stop: 67301, Start Num: 37

Candidate Starts for DuchessDung_98:

(Start: 20 @67729 has 3 MA's), (Start: 27 @67693 has 23 MA's), (Start: 37 @67636 has 236 MA's), (57, 67507), (58, 67495), (64, 67438), (72, 67384), (73, 67375), (79, 67339),

Gene: Duggie_101 Start: 68262, Stop: 67927, Start Num: 37

Candidate Starts for Duggie_101:

(Start: 20 @68379 has 3 MA's), (Start: 27 @68343 has 23 MA's), (Start: 37 @68262 has 236 MA's), (57, 68133), (58, 68121), (64, 68064), (72, 68010), (73, 68001), (79, 67965),

Gene: Durga_103 Start: 68743, Stop: 68408, Start Num: 37

Candidate Starts for Durga_103:

(18, 68836), (Start: 20 @68833 has 3 MA's), (21, 68830), (Start: 37 @68743 has 236 MA's), (57, 68614), (58, 68602), (64, 68545), (72, 68491), (73, 68482), (79, 68446),

Gene: Emiris_103 Start: 68656, Stop: 68318, Start Num: 37

Candidate Starts for Emiris_103:

(12, 68830), (Start: 37 @68656 has 236 MA's), (41, 68641), (44, 68608), (49, 68572), (58, 68512), (70, 68407), (72, 68401), (77, 68368), (79, 68356),

Gene: EmpTee_100 Start: 68057, Stop: 67719, Start Num: 37

Candidate Starts for EmpTee_100:

(12, 68231), (Start: 37 @68057 has 236 MA's), (41, 68042), (44, 68009), (49, 67973), (58, 67913), (70, 67808), (72, 67802), (77, 67769), (79, 67757),

Gene: Eremos_98 Start: 68156, Stop: 67764, Start Num: 27

Candidate Starts for Eremos_98:

(Start: 27 @68156 has 23 MA's), (Start: 37 @68099 has 236 MA's), (57, 67970), (58, 67958), (64, 67901), (72, 67847), (73, 67838), (79, 67802),

Gene: Etaye_100 Start: 68827, Stop: 68492, Start Num: 37

Candidate Starts for Etaye_100:

(18, 68920), (Start: 20 @68917 has 3 MA's), (21, 68914), (Start: 37 @68827 has 236 MA's), (57, 68698), (58, 68686), (64, 68629), (72, 68575), (73, 68566), (79, 68530),

Gene: Eugenia_103 Start: 68768, Stop: 68430, Start Num: 37

Candidate Starts for Eugenia_103:

(12, 68942), (Start: 37 @68768 has 236 MA's), (41, 68753), (44, 68720), (49, 68684), (58, 68624), (70, 68519), (72, 68513), (77, 68480), (79, 68468),

Gene: Fanaw_81 Start: 65582, Stop: 65280, Start Num: 45

Candidate Starts for Fanaw_81:

(2, 66173), (7, 65969), (9, 65843), (17, 65756), (Start: 35 @65639 has 1 MA's), (Start: 45 @65582 has 18 MA's), (52, 65540), (57, 65507), (58, 65495), (61, 65465), (64, 65438), (67, 65414), (70, 65381), (72, 65375), (74, 65360), (75, 65348), (77, 65342), (78, 65333),

Gene: Fang_101 Start: 68198, Stop: 67860, Start Num: 37

Candidate Starts for Fang_101:

(12, 68372), (Start: 37 @68198 has 236 MA's), (41, 68183), (44, 68150), (49, 68114), (58, 68054), (70, 67949), (72, 67943), (77, 67910), (79, 67898),

Gene: FluffyNinja_102 Start: 68345, Stop: 68007, Start Num: 37

Candidate Starts for FluffyNinja_102:

(12, 68519), (Start: 37 @68345 has 236 MA's), (41, 68330), (44, 68297), (49, 68261), (58, 68201), (70, 68096), (72, 68090), (77, 68057), (79, 68045),

Gene: Fortunato_84 Start: 65374, Stop: 65072, Start Num: 45

Candidate Starts for Fortunato_84:

(3, 65821), (7, 65761), (9, 65635), (17, 65548), (Start: 35 @65431 has 1 MA's), (Start: 45 @65374 has 18 MA's), (52, 65332), (57, 65299), (58, 65287), (61, 65257), (64, 65230), (67, 65206), (70, 65173), (72, 65167), (74, 65152), (75, 65140), (77, 65134), (78, 65125),

Gene: Fozzie_97 Start: 68394, Stop: 68056, Start Num: 37

Candidate Starts for Fozzie_97:

(Start: 37 @68394 has 236 MA's), (41, 68379), (44, 68346), (49, 68310), (58, 68250), (70, 68145), (72, 68139), (77, 68106), (79, 68094),

Gene: Frankicide_98 Start: 67894, Stop: 67556, Start Num: 37

Candidate Starts for Frankicide_98:

(12, 68068), (Start: 37 @67894 has 236 MA's), (41, 67879), (44, 67846), (49, 67810), (58, 67750), (70, 67645), (72, 67639), (77, 67606), (79, 67594),

Gene: Frederick_87 Start: 65861, Stop: 65559, Start Num: 45

Candidate Starts for Frederick_87:

(7, 66248), (9, 66122), (Start: 35 @65918 has 1 MA's), (Start: 45 @65861 has 18 MA's), (52, 65819), (57, 65786), (58, 65774), (61, 65744), (67, 65693), (70, 65660), (72, 65654), (74, 65639), (75, 65627), (77, 65621), (78, 65612),

Gene: Freya_97 Start: 67664, Stop: 67326, Start Num: 37

Candidate Starts for Freya_97:

(12, 67838), (Start: 37 @67664 has 236 MA's), (41, 67649), (44, 67616), (49, 67580), (58, 67520), (70, 67415), (72, 67409), (77, 67376), (79, 67364),

Gene: FriarPreacher_98 Start: 68043, Stop: 67705, Start Num: 37

Candidate Starts for FriarPreacher_98:

(12, 68217), (Start: 37 @68043 has 236 MA's), (41, 68028), (44, 67995), (49, 67959), (58, 67899), (70, 67794), (72, 67788), (77, 67755), (79, 67743),

Gene: Fringe_105 Start: 68820, Stop: 68482, Start Num: 37

Candidate Starts for Fringe_105:

(12, 68994), (Start: 37 @68820 has 236 MA's), (41, 68805), (44, 68772), (49, 68736), (58, 68676), (70, 68571), (72, 68565), (77, 68532), (79, 68520),

Gene: FugateOSU_101 Start: 69105, Stop: 68767, Start Num: 37

Candidate Starts for FugateOSU_101:

(12, 69279), (Start: 37 @69105 has 236 MA's), (41, 69090), (44, 69057), (49, 69021), (58, 68961), (70, 68856), (72, 68850), (77, 68817), (79, 68805),

Gene: Funsized_90 Start: 69980, Stop: 69603, Start Num: 29

Candidate Starts for Funsized_90:

(23, 70028), (Start: 29 @69980 has 2 MA's), (47, 69869), (51, 69845), (54, 69833), (60, 69782), (66, 69728), (68, 69716), (69, 69710),

Gene: Gareth_101 Start: 68494, Stop: 68156, Start Num: 37

Candidate Starts for Gareth_101:

(Start: 37 @68494 has 236 MA's), (41, 68479), (44, 68446), (49, 68410), (58, 68350), (70, 68245), (72, 68239), (77, 68206), (79, 68194),

Gene: GeneCoco_100 Start: 68424, Stop: 68089, Start Num: 37

Candidate Starts for GeneCoco_100:

(18, 68517), (Start: 20 @68514 has 3 MA's), (21, 68511), (Start: 37 @68424 has 236 MA's), (57, 68295), (58, 68283), (64, 68226), (72, 68172), (73, 68163), (79, 68127),

Gene: Giraffe_102 Start: 68498, Stop: 68160, Start Num: 37

Candidate Starts for Giraffe_102:

(12, 68672), (Start: 37 @68498 has 236 MA's), (41, 68483), (44, 68450), (49, 68414), (58, 68354), (70, 68249), (72, 68243), (77, 68210), (79, 68198),

Gene: Gophee_100 Start: 68485, Stop: 68147, Start Num: 37

Candidate Starts for Gophee_100:

(12, 68659), (Start: 37 @68485 has 236 MA's), (41, 68470), (44, 68437), (49, 68401), (58, 68341), (70, 68236), (72, 68230), (77, 68197), (79, 68185),

Gene: Grand2040_98 Start: 68220, Stop: 67882, Start Num: 37

Candidate Starts for Grand2040_98:

(12, 68394), (Start: 37 @68220 has 236 MA's), (41, 68205), (44, 68172), (49, 68136), (58, 68076), (70, 67971), (72, 67965), (77, 67932), (79, 67920),

Gene: Gwilliam_101 Start: 69104, Stop: 68688, Start Num: 27

Candidate Starts for Gwilliam_101:

(Start: 20 @69140 has 3 MA's), (Start: 27 @69104 has 23 MA's), (Start: 37 @69023 has 236 MA's), (57, 68894), (58, 68882), (64, 68825), (72, 68771), (73, 68762), (79, 68726),

Gene: Gyarad_0099 Start: 67633, Stop: 67295, Start Num: 37

Candidate Starts for Gyarad_0099:

(12, 67807), (Start: 37 @67633 has 236 MA's), (41, 67618), (44, 67585), (49, 67549), (58, 67489), (70, 67384), (72, 67378), (77, 67345), (79, 67333),

Gene: HSavage_98 Start: 67667, Stop: 67275, Start Num: 27

Candidate Starts for HSavage_98:

(Start: 27 @67667 has 23 MA's), (Start: 37 @67610 has 236 MA's), (57, 67481), (58, 67469), (64, 67412), (72, 67358), (73, 67349), (79, 67313),

Gene: Haimas_98 Start: 67925, Stop: 67587, Start Num: 37

Candidate Starts for Haimas_98:

(12, 68099), (Start: 37 @67925 has 236 MA's), (41, 67910), (44, 67877), (49, 67841), (58, 67781), (70, 67676), (72, 67670), (77, 67637), (79, 67625),

Gene: Haleema_100 Start: 68044, Stop: 67706, Start Num: 37

Candidate Starts for Haleema_100:

(12, 68218), (Start: 37 @68044 has 236 MA's), (41, 68029), (44, 67996), (49, 67960), (58, 67900), (70, 67795), (72, 67789), (77, 67756), (79, 67744),

Gene: Hamish_98 Start: 68213, Stop: 67875, Start Num: 37

Candidate Starts for Hamish_98:

(12, 68387), (Start: 37 @68213 has 236 MA's), (41, 68198), (44, 68165), (49, 68129), (58, 68069), (70, 67964), (72, 67958), (77, 67925), (79, 67913),

Gene: Hangman_86 Start: 66073, Stop: 65771, Start Num: 45

Candidate Starts for Hangman_86:

(7, 66460), (9, 66334), (Start: 35 @66130 has 1 MA's), (Start: 45 @66073 has 18 MA's), (52, 66031), (57, 65998), (58, 65986), (61, 65956), (64, 65929), (67, 65905), (70, 65872), (72, 65866), (74, 65851), (75, 65839), (77, 65833), (78, 65824),

Gene: Hartsy_99 Start: 68156, Stop: 67821, Start Num: 37

Candidate Starts for Hartsy_99:

(Start: 20 @68249 has 3 MA's), (Start: 27 @68213 has 23 MA's), (Start: 37 @68156 has 236 MA's), (57, 68027), (58, 68015), (64, 67958), (72, 67904), (73, 67895), (79, 67859),

Gene: Harvey_98 Start: 67821, Stop: 67483, Start Num: 37

Candidate Starts for Harvey_98:

(12, 67995), (Start: 37 @67821 has 236 MA's), (41, 67806), (44, 67773), (49, 67737), (58, 67677), (70, 67572), (72, 67566), (77, 67533), (79, 67521),

Gene: Held_99 Start: 67942, Stop: 67604, Start Num: 37

Candidate Starts for Held_99:

(12, 68116), (Start: 37 @67942 has 236 MA's), (41, 67927), (44, 67894), (49, 67858), (58, 67798), (70, 67693), (72, 67687), (77, 67654), (79, 67642),

Gene: HenryJackson_101 Start: 68662, Stop: 68324, Start Num: 37

Candidate Starts for HenryJackson_101:

(12, 68836), (Start: 37 @68662 has 236 MA's), (41, 68647), (44, 68614), (49, 68578), (58, 68518), (70, 68413), (72, 68407), (77, 68374), (79, 68362),

Gene: Hertubise_100 Start: 68304, Stop: 67966, Start Num: 37

Candidate Starts for Hertubise_100:

(12, 68478), (Start: 37 @68304 has 236 MA's), (41, 68289), (44, 68256), (49, 68220), (58, 68160), (70, 68055), (72, 68049), (77, 68016), (79, 68004),

Gene: Hetaeria_100 Start: 68034, Stop: 67696, Start Num: 37

Candidate Starts for Hetaeria_100:

(12, 68208), (Start: 37 @68034 has 236 MA's), (41, 68019), (44, 67986), (49, 67950), (58, 67890), (70, 67785), (72, 67779), (77, 67746), (79, 67734),

Gene: HighStump_103 Start: 68450, Stop: 68112, Start Num: 37

Candidate Starts for HighStump_103:

(12, 68624), (Start: 37 @68450 has 236 MA's), (41, 68435), (44, 68402), (49, 68366), (58, 68306), (70, 68201), (72, 68195), (77, 68162), (79, 68150),

Gene: Hocus_100 Start: 67960, Stop: 67625, Start Num: 37

Candidate Starts for Hocus_100:

(18, 68053), (Start: 20 @68050 has 3 MA's), (21, 68047), (Start: 37 @67960 has 236 MA's), (57, 67831), (58, 67819), (64, 67762), (72, 67708), (73, 67699), (79, 67663),

Gene: Horchata_95 Start: 67795, Stop: 67460, Start Num: 37

Candidate Starts for Horchata_95:

(Start: 27 @67852 has 23 MA's), (Start: 37 @67795 has 236 MA's), (57, 67666), (58, 67654), (64, 67597), (72, 67543), (73, 67534), (79, 67498),

Gene: Hosp_089 Start: 65595, Stop: 65230, Start Num: 34

Candidate Starts for Hosp_089:

(33, 65598), (34, 65595), (39, 65559), (Start: 45 @65523 has 18 MA's), (48, 65502), (57, 65454), (58, 65442), (64, 65385), (68, 65358), (75, 65301), (77, 65295), (80, 65271), (81, 65259),

Gene: Hydro_86 Start: 65948, Stop: 65646, Start Num: 45

Candidate Starts for Hydro_86:

(8, 66236), (Start: 35 @66005 has 1 MA's), (Start: 45 @65948 has 18 MA's), (52, 65906), (57, 65873), (58, 65861), (61, 65831), (64, 65804), (67, 65780), (70, 65747), (72, 65741), (74, 65726), (75, 65714), (77, 65708), (78, 65699),

Gene: ImtiyazSitla_102 Start: 68483, Stop: 68148, Start Num: 37

Candidate Starts for ImtiyazSitla_102:

(Start: 20 @68576 has 3 MA's), (Start: 27 @68540 has 23 MA's), (Start: 37 @68483 has 236 MA's), (57, 68354), (58, 68342), (64, 68285), (72, 68231), (73, 68222), (79, 68186),

Gene: Imvubu_93 Start: 66861, Stop: 66478, Start Num: 31

Candidate Starts for Imvubu_93:

(Start: 31 @66861 has 1 MA's), (46, 66768), (48, 66750), (53, 66720), (54, 66717), (65, 66618), (66, 66606), (70, 66573),

Gene: Inchworm_102 Start: 68330, Stop: 67995, Start Num: 37

Candidate Starts for Inchworm_102:

(Start: 20 @68423 has 3 MA's), (Start: 27 @68387 has 23 MA's), (Start: 37 @68330 has 236 MA's), (57, 68201), (58, 68189), (64, 68132), (72, 68078), (73, 68069), (79, 68033),

Gene: Inverness_98 Start: 67893, Stop: 67555, Start Num: 37

Candidate Starts for Inverness_98:

(12, 68067), (Start: 37 @67893 has 236 MA's), (41, 67878), (44, 67845), (49, 67809), (58, 67749), (70, 67644), (72, 67638), (77, 67605), (79, 67593),

Gene: Iridoclysis_100 Start: 68226, Stop: 67888, Start Num: 37

Candidate Starts for Iridoclysis_100:

(12, 68400), (Start: 37 @68226 has 236 MA's), (41, 68211), (44, 68178), (49, 68142), (58, 68082), (70, 67977), (72, 67971), (77, 67938), (79, 67926),

Gene: IsaacEli_103 Start: 68467, Stop: 68129, Start Num: 37

Candidate Starts for IsaacEli_103:

(12, 68641), (Start: 37 @68467 has 236 MA's), (41, 68452), (44, 68419), (49, 68383), (58, 68323), (70, 68218), (72, 68212), (77, 68179), (79, 68167),

Gene: JDog_100 Start: 68490, Stop: 68155, Start Num: 37

Candidate Starts for JDog_100:

(18, 68583), (Start: 20 @68580 has 3 MA's), (21, 68577), (Start: 37 @68490 has 236 MA's), (57, 68361), (58, 68349), (64, 68292), (72, 68238), (73, 68229), (79, 68193),

Gene: JacAttac_101 Start: 67940, Stop: 67602, Start Num: 37

Candidate Starts for JacAttac_101:

(12, 68114), (Start: 37 @67940 has 236 MA's), (41, 67925), (44, 67892), (49, 67856), (58, 67796), (70, 67691), (72, 67685), (77, 67652), (79, 67640),

Gene: JaguarMi_80 Start: 65926, Stop: 65639, Start Num: 45

Candidate Starts for JaguarMi_80:

(9, 66187), (10, 66178), (Start: 35 @65983 has 1 MA's), (Start: 45 @65926 has 18 MA's), (52, 65884), (57, 65851), (58, 65839), (61, 65824), (64, 65797), (70, 65740), (72, 65734), (74, 65719), (75, 65707), (77, 65701), (78, 65692),

Gene: JakeO_102 Start: 68218, Stop: 67883, Start Num: 37

Candidate Starts for JakeO_102:

(Start: 20 @68308 has 3 MA's), (21, 68305), (Start: 37 @68218 has 236 MA's), (57, 68089), (58, 68077), (64, 68020), (72, 67966), (73, 67957), (79, 67921),

Gene: JangoPhett_99 Start: 68302, Stop: 67964, Start Num: 37

Candidate Starts for JangoPhett_99:

(12, 68476), (Start: 37 @68302 has 236 MA's), (41, 68287), (44, 68254), (49, 68218), (58, 68158), (70, 68053), (72, 68047), (77, 68014), (79, 68002),

Gene: Jillium_101 Start: 68379, Stop: 68041, Start Num: 37

Candidate Starts for Jillium_101:

(12, 68553), (Start: 37 @68379 has 236 MA's), (41, 68364), (44, 68331), (49, 68295), (58, 68235), (70, 68130), (72, 68124), (77, 68091), (79, 68079),

Gene: Jiminy_101 Start: 68154, Stop: 67819, Start Num: 37

Candidate Starts for Jiminy_101:

(Start: 20 @68271 has 3 MA's), (Start: 27 @68235 has 23 MA's), (Start: 37 @68154 has 236 MA's), (57, 68025), (58, 68013), (64, 67956), (72, 67902), (73, 67893), (79, 67857),

Gene: Jiraiya_106 Start: 68238, Stop: 67903, Start Num: 37

Candidate Starts for Jiraiya_106:

(Start: 20 @68355 has 3 MA's), (Start: 27 @68319 has 23 MA's), (Start: 37 @68238 has 236 MA's), (57, 68109), (58, 68097), (64, 68040), (72, 67986), (73, 67977), (79, 67941),

Gene: Jolie1_091 Start: 67627, Stop: 67298, Start Num: 39

Candidate Starts for Jolie1_091:

(15, 67786), (16, 67780), (33, 67666), (34, 67663), (39, 67627), (Start: 45 @67591 has 18 MA's), (48, 67570), (57, 67522), (58, 67510), (64, 67453), (68, 67426), (71, 67393), (75, 67369), (77, 67363), (80, 67339), (81, 67327),

Gene: KLucky39_98 Start: 67765, Stop: 67427, Start Num: 37

Candidate Starts for KLucky39_98:

(Start: 37 @67765 has 236 MA's), (41, 67750), (44, 67717), (49, 67681), (58, 67621), (70, 67516), (72, 67510), (77, 67477), (79, 67465),

Gene: Kahve_101 Start: 68660, Stop: 68322, Start Num: 37

Candidate Starts for Kahve_101:

(12, 68834), (Start: 37 @68660 has 236 MA's), (41, 68645), (44, 68612), (49, 68576), (58, 68516), (70, 68411), (72, 68405), (77, 68372), (79, 68360),

Gene: Kailash_99 Start: 68354, Stop: 68019, Start Num: 37

Candidate Starts for Kailash_99:

(Start: 20 @68447 has 3 MA's), (Start: 27 @68411 has 23 MA's), (Start: 37 @68354 has 236 MA's), (57, 68225), (58, 68213), (64, 68156), (72, 68102), (73, 68093), (79, 68057),

Gene: Katniss_103 Start: 68076, Stop: 67738, Start Num: 37

Candidate Starts for Katniss_103:

(12, 68250), (Start: 37 @68076 has 236 MA's), (41, 68061), (44, 68028), (49, 67992), (58, 67932), (70, 67827), (72, 67821), (77, 67788), (79, 67776),

Gene: KayaCho_89 Start: 67455, Stop: 67165, Start Num: 45

Candidate Starts for KayaCho_89:

(32, 67539), (33, 67536), (34, 67533), (38, 67503), (39, 67497), (Start: 45 @67455 has 18 MA's), (55, 67392), (56, 67383), (58, 67371), (59, 67368), (63, 67323), (70, 67263), (72, 67257), (75, 67230), (78,

67215),

Gene: Keitherie_104 Start: 68709, Stop: 68377, Start Num: 37

Candidate Starts for Keitherie_104:

(Start: 27 @68766 has 23 MA's), (Start: 37 @68709 has 236 MA's), (44, 68664), (49, 68628), (57, 68583), (58, 68571), (64, 68514), (72, 68460), (73, 68451), (79, 68415),

Gene: Kikipoo_103 Start: 68467, Stop: 68129, Start Num: 37

Candidate Starts for Kikipoo_103:

(12, 68641), (Start: 37 @68467 has 236 MA's), (41, 68452), (44, 68419), (49, 68383), (58, 68323), (70, 68218), (72, 68212), (77, 68179), (79, 68167),

Gene: Kimbrough_102 Start: 68539, Stop: 68201, Start Num: 37

Candidate Starts for Kimbrough_102:

(12, 68713), (Start: 37 @68539 has 236 MA's), (41, 68524), (44, 68491), (49, 68455), (58, 68395), (70, 68290), (72, 68284), (77, 68251), (79, 68239),

Gene: KingTut_91 Start: 64456, Stop: 64118, Start Num: 37

Candidate Starts for KingTut_91:

(12, 64630), (Start: 37 @64456 has 236 MA's), (41, 64441), (44, 64408), (49, 64372), (58, 64312), (70, 64207), (72, 64201), (77, 64168), (79, 64156),

Gene: KingVeVeVe_99 Start: 67723, Stop: 67331, Start Num: 27

Candidate Starts for KingVeVeVe_99:

(Start: 27 @67723 has 23 MA's), (Start: 37 @67666 has 236 MA's), (57, 67537), (64, 67468), (72, 67414), (73, 67405), (79, 67369),

Gene: KlimbOn_100 Start: 67973, Stop: 67638, Start Num: 37

Candidate Starts for KlimbOn_100:

(Start: 20 @68090 has 3 MA's), (Start: 27 @68054 has 23 MA's), (Start: 37 @67973 has 236 MA's), (57, 67844), (58, 67832), (64, 67775), (72, 67721), (73, 67712), (79, 67676),

Gene: Kloppinator_101 Start: 68109, Stop: 67771, Start Num: 37

Candidate Starts for Kloppinator_101:

(12, 68283), (Start: 37 @68109 has 236 MA's), (41, 68094), (44, 68061), (49, 68025), (58, 67965), (70, 67860), (72, 67854), (77, 67821), (79, 67809),

Gene: Knocker_90 Start: 68842, Stop: 68459, Start Num: 30

Candidate Starts for Knocker_90:

(Start: 19 @68917 has 1 MA's), (22, 68893), (25, 68884), (Start: 30 @68842 has 1 MA's), (44, 68761), (46, 68749), (47, 68734), (48, 68731), (51, 68710), (54, 68698), (67, 68578), (70, 68554), (77, 68515),

Gene: Kwadwo_100 Start: 67963, Stop: 67625, Start Num: 37

Candidate Starts for Kwadwo_100:

(12, 68137), (Start: 37 @67963 has 236 MA's), (41, 67948), (44, 67915), (49, 67879), (58, 67819), (70, 67714), (72, 67708), (77, 67675), (79, 67663),

Gene: Kwksand96_102 Start: 68223, Stop: 67888, Start Num: 37

Candidate Starts for Kwksand96_102:

(Start: 20 @68316 has 3 MA's), (Start: 27 @68280 has 23 MA's), (Start: 37 @68223 has 236 MA's), (57, 68094), (58, 68082), (64, 68025), (72, 67971), (73, 67962), (79, 67926),

Gene: Labeouficaum_101 Start: 68095, Stop: 67703, Start Num: 27

Candidate Starts for Labeouficaum_101:

(Start: 20 @68131 has 3 MA's), (Start: 27 @68095 has 23 MA's), (Start: 37 @68038 has 236 MA's), (57, 67909), (58, 67897), (64, 67840), (72, 67786), (73, 67777), (79, 67741),

Gene: LasagnaCat_102 Start: 68339, Stop: 68004, Start Num: 37

Candidate Starts for LasagnaCat_102:

(Start: 20 @68432 has 3 MA's), (Start: 27 @68396 has 23 MA's), (Start: 37 @68339 has 236 MA's), (57, 68210), (58, 68198), (64, 68141), (72, 68087), (73, 68078), (79, 68042),

Gene: Lasso_100 Start: 68205, Stop: 67867, Start Num: 37

Candidate Starts for Lasso_100:

(12, 68379), (Start: 37 @68205 has 236 MA's), (41, 68190), (44, 68157), (49, 68121), (58, 68061), (70, 67956), (72, 67950), (77, 67917), (79, 67905),

Gene: LeeLot_99 Start: 68550, Stop: 68212, Start Num: 37

Candidate Starts for LeeLot_99:

(12, 68724), (Start: 37 @68550 has 236 MA's), (41, 68535), (44, 68502), (49, 68466), (58, 68406), (70, 68301), (72, 68295), (77, 68262), (79, 68250),

Gene: Lego3393_99 Start: 68666, Stop: 68328, Start Num: 37

Candidate Starts for Lego3393_99:

(12, 68840), (Start: 37 @68666 has 236 MA's), (41, 68651), (44, 68618), (49, 68582), (58, 68522), (70, 68417), (72, 68411), (77, 68378), (79, 68366),

Gene: Legolas_102 Start: 68293, Stop: 67955, Start Num: 37

Candidate Starts for Legolas_102:

(12, 68467), (Start: 37 @68293 has 236 MA's), (41, 68278), (44, 68245), (49, 68209), (58, 68149), (70, 68044), (72, 68038), (77, 68005), (79, 67993),

Gene: LeiMonet_103 Start: 68420, Stop: 68085, Start Num: 37

Candidate Starts for LeiMonet_103:

(18, 68513), (Start: 20 @68510 has 3 MA's), (21, 68507), (Start: 37 @68420 has 236 MA's), (57, 68291), (58, 68279), (64, 68222), (72, 68168), (73, 68159), (79, 68123),

Gene: LemonSlice_101 Start: 67952, Stop: 67614, Start Num: 37

Candidate Starts for LemonSlice_101:

(12, 68126), (Start: 37 @67952 has 236 MA's), (41, 67937), (44, 67904), (49, 67868), (58, 67808), (70, 67703), (72, 67697), (77, 67664), (79, 67652),

Gene: LilMcDreamy_91 Start: 68544, Stop: 68251, Start Num: 45

Candidate Starts for LilMcDreamy_91:

(Start: 45 @68544 has 18 MA's), (48, 68523), (57, 68475), (58, 68463), (76, 68319),

Gene: Lolalove_87 Start: 65892, Stop: 65590, Start Num: 45

Candidate Starts for Lolalove_87:

(2, 66483), (7, 66279), (9, 66153), (17, 66066), (Start: 35 @65949 has 1 MA's), (Start: 45 @65892 has 18 MA's), (52, 65850), (57, 65817), (58, 65805), (61, 65775), (64, 65748), (67, 65724), (70, 65691), (72, 65685), (74, 65670), (75, 65658), (77, 65652), (78, 65643),

Gene: Longacauda_101 Start: 68181, Stop: 67846, Start Num: 37

Candidate Starts for Longacauda_101:

(Start: 20 @68298 has 3 MA's), (Start: 27 @68262 has 23 MA's), (Start: 37 @68181 has 236 MA's), (57, 68052), (58, 68040), (64, 67983), (72, 67929), (73, 67920), (79, 67884),

Gene: Lopsy_97 Start: 67909, Stop: 67517, Start Num: 27

Candidate Starts for Lopsy_97:

(Start: 20 @67945 has 3 MA's), (Start: 27 @67909 has 23 MA's), (Start: 37 @67852 has 236 MA's), (57, 67723), (58, 67711), (64, 67654), (72, 67600), (73, 67591), (79, 67555),

Gene: LostAndPhound_100 Start: 68494, Stop: 68156, Start Num: 37

Candidate Starts for LostAndPhound_100:

(12, 68668), (Start: 37 @68494 has 236 MA's), (41, 68479), (44, 68446), (49, 68410), (58, 68350), (70, 68245), (72, 68239), (77, 68206), (79, 68194),

Gene: LuckyMarjie_98 Start: 67704, Stop: 67366, Start Num: 37

Candidate Starts for LuckyMarjie_98:

(12, 67878), (Start: 37 @67704 has 236 MA's), (41, 67689), (44, 67656), (49, 67620), (58, 67560), (70, 67455), (72, 67449), (77, 67416), (79, 67404),

Gene: Lulumae_96 Start: 67685, Stop: 67347, Start Num: 37

Candidate Starts for Lulumae_96:

(12, 67859), (Start: 37 @67685 has 236 MA's), (41, 67670), (44, 67637), (49, 67601), (58, 67541), (70, 67436), (72, 67430), (77, 67397), (79, 67385),

Gene: Lulwa_98 Start: 67318, Stop: 66980, Start Num: 37

Candidate Starts for Lulwa_98:

(12, 67492), (Start: 37 @67318 has 236 MA's), (41, 67303), (44, 67270), (49, 67234), (58, 67174), (70, 67069), (72, 67063), (77, 67030), (79, 67018),

Gene: Lumine_102 Start: 68142, Stop: 67804, Start Num: 37

Candidate Starts for Lumine_102:

(12, 68316), (Start: 37 @68142 has 236 MA's), (41, 68127), (44, 68094), (49, 68058), (58, 67998), (70, 67893), (72, 67887), (77, 67854), (79, 67842),

Gene: MRabcd_101 Start: 68420, Stop: 68082, Start Num: 37

Candidate Starts for MRabcd_101:

(12, 68594), (Start: 37 @68420 has 236 MA's), (41, 68405), (44, 68372), (49, 68336), (58, 68276), (70, 68171), (72, 68165), (77, 68132), (79, 68120),

Gene: Mag7_99 Start: 67898, Stop: 67563, Start Num: 37

Candidate Starts for Mag7_99:

(Start: 20 @67991 has 3 MA's), (Start: 27 @67955 has 23 MA's), (Start: 37 @67898 has 236 MA's), (57, 67769), (58, 67757), (64, 67700), (72, 67646), (73, 67637), (79, 67601),

Gene: Magpie_82 Start: 65575, Stop: 65273, Start Num: 45

Candidate Starts for Magpie_82:

(1, 66226), (7, 65962), (9, 65836), (17, 65749), (Start: 35 @65632 has 1 MA's), (Start: 45 @65575 has 18 MA's), (52, 65533), (57, 65500), (58, 65488), (61, 65458), (64, 65431), (67, 65407), (70, 65374), (72, 65368), (74, 65353), (75, 65341), (77, 65335), (78, 65326),

Gene: Mana_98 Start: 68108, Stop: 67770, Start Num: 37

Candidate Starts for Mana_98:

(12, 68282), (Start: 37 @68108 has 236 MA's), (41, 68093), (44, 68060), (49, 68024), (58, 67964), (70, 67859), (72, 67853), (77, 67820), (79, 67808),

Gene: Manad_100 Start: 68211, Stop: 67876, Start Num: 37

Candidate Starts for Manad_100:

(21, 68301), (Start: 27 @68268 has 23 MA's), (Start: 37 @68211 has 236 MA's), (44, 68166), (49, 68130), (57, 68085), (58, 68073), (64, 68016), (72, 67962), (73, 67953), (79, 67917),

Gene: Maru_100 Start: 68313, Stop: 67975, Start Num: 37

Candidate Starts for Maru_100:

(12, 68487), (Start: 37 @68313 has 236 MA's), (41, 68298), (44, 68265), (49, 68229), (58, 68169), (70, 68064), (72, 68058), (77, 68025), (79, 68013),

Gene: Maskar_102 Start: 68483, Stop: 68148, Start Num: 37

Candidate Starts for Maskar_102:

(Start: 20 @68576 has 3 MA's), (Start: 27 @68540 has 23 MA's), (Start: 37 @68483 has 236 MA's), (57, 68354), (58, 68342), (64, 68285), (72, 68231), (73, 68222), (79, 68186),

Gene: Matalotodo_99 Start: 68952, Stop: 68614, Start Num: 37

Candidate Starts for Matalotodo_99:

(12, 69126), (Start: 37 @68952 has 236 MA's), (41, 68937), (44, 68904), (49, 68868), (58, 68808), (70, 68703), (72, 68697), (77, 68664), (79, 68652),

Gene: Mcshane_103 Start: 68387, Stop: 67995, Start Num: 27

Candidate Starts for Mcshane_103:

(Start: 20 @68423 has 3 MA's), (Start: 27 @68387 has 23 MA's), (Start: 37 @68330 has 236 MA's), (57, 68201), (58, 68189), (64, 68132), (72, 68078), (73, 68069), (79, 68033),

Gene: Mecca_101 Start: 68519, Stop: 68181, Start Num: 37

Candidate Starts for Mecca_101:

(12, 68693), (Start: 37 @68519 has 236 MA's), (41, 68504), (44, 68471), (49, 68435), (58, 68375), (70, 68270), (72, 68264), (77, 68231), (79, 68219),

Gene: Megamind20_103 Start: 68299, Stop: 67961, Start Num: 37

Candidate Starts for Megamind20_103:

(12, 68473), (Start: 37 @68299 has 236 MA's), (41, 68284), (44, 68251), (49, 68215), (58, 68155), (70, 68050), (72, 68044), (77, 68011), (79, 67999),

Gene: Megatron_102 Start: 68638, Stop: 68300, Start Num: 37

Candidate Starts for Megatron_102:

(12, 68812), (Start: 37 @68638 has 236 MA's), (41, 68623), (44, 68590), (49, 68554), (58, 68494), (70, 68389), (72, 68383), (77, 68350), (79, 68338),

Gene: Melc17_98 Start: 68582, Stop: 68247, Start Num: 37

Candidate Starts for Melc17_98:

(18, 68675), (Start: 20 @68672 has 3 MA's), (21, 68669), (Start: 37 @68582 has 236 MA's), (57, 68453), (58, 68441), (64, 68384), (72, 68330), (73, 68321), (79, 68285),

Gene: MelsMeow_99 Start: 68057, Stop: 67629, Start Num: 20

Candidate Starts for MelsMeow_99:

(Start: 20 @68057 has 3 MA's), (Start: 27 @68021 has 23 MA's), (Start: 37 @67964 has 236 MA's), (57, 67835), (58, 67823), (64, 67766), (72, 67712), (73, 67703), (79, 67667),

Gene: Mesh1_101 Start: 68403, Stop: 68065, Start Num: 37

Candidate Starts for Mesh1_101:

(12, 68577), (Start: 37 @68403 has 236 MA's), (41, 68388), (44, 68355), (49, 68319), (58, 68259), (70, 68154), (72, 68148), (77, 68115), (79, 68103),

Gene: MichaelPhcott_99 Start: 67952, Stop: 67560, Start Num: 27
Candidate Starts for MichaelPhcott_99:
(Start: 20 @67988 has 3 MA's), (Start: 27 @67952 has 23 MA's), (Start: 37 @67895 has 236 MA's),
(57, 67766), (58, 67754), (64, 67697), (72, 67643), (73, 67634), (79, 67598),

Gene: Mikota_95 Start: 67396, Stop: 67058, Start Num: 37
Candidate Starts for Mikota_95:
(4, 67738), (5, 67735), (6, 67732), (13, 67567), (14, 67540), (Start: 37 @67396 has 236 MA's), (41,
67381), (44, 67348), (49, 67312), (58, 67252), (70, 67147), (72, 67141), (77, 67108), (79, 67096),

Gene: MiniBoss_96 Start: 67067, Stop: 66675, Start Num: 27
Candidate Starts for MiniBoss_96:
(Start: 27 @67067 has 23 MA's), (Start: 37 @67010 has 236 MA's), (57, 66881), (58, 66869), (64,
66812), (72, 66758), (73, 66749), (79, 66713),

Gene: MitKao_101 Start: 68121, Stop: 67783, Start Num: 37
Candidate Starts for MitKao_101:
(12, 68295), (Start: 37 @68121 has 236 MA's), (41, 68106), (44, 68073), (49, 68037), (58, 67977), (70,
67872), (72, 67866), (77, 67833), (79, 67821),

Gene: Mithril_85 Start: 65732, Stop: 65430, Start Num: 45
Candidate Starts for Mithril_85:
(3, 66179), (7, 66119), (9, 65993), (Start: 35 @65789 has 1 MA's), (Start: 45 @65732 has 18 MA's),
(52, 65690), (57, 65657), (58, 65645), (61, 65615), (64, 65588), (67, 65564), (70, 65531), (72, 65525),
(74, 65510), (75, 65498), (77, 65492), (78, 65483),

Gene: Morgushi_98 Start: 67936, Stop: 67598, Start Num: 37
Candidate Starts for Morgushi_98:
(12, 68110), (Start: 37 @67936 has 236 MA's), (41, 67921), (44, 67888), (49, 67852), (58, 67792), (70,
67687), (72, 67681), (77, 67648), (79, 67636),

Gene: Morty_101 Start: 68506, Stop: 68168, Start Num: 37
Candidate Starts for Morty_101:
(12, 68680), (Start: 37 @68506 has 236 MA's), (41, 68491), (44, 68458), (49, 68422), (58, 68362), (70,
68257), (72, 68251), (77, 68218), (79, 68206),

Gene: Mosaic_98 Start: 68117, Stop: 67779, Start Num: 37
Candidate Starts for Mosaic_98:
(12, 68291), (Start: 37 @68117 has 236 MA's), (41, 68102), (44, 68069), (49, 68033), (58, 67973), (70,
67868), (72, 67862), (77, 67829), (79, 67817),

Gene: MrPhizzler_100 Start: 68410, Stop: 68075, Start Num: 37
Candidate Starts for MrPhizzler_100:
(18, 68503), (Start: 20 @68500 has 3 MA's), (21, 68497), (Start: 37 @68410 has 236 MA's), (57,
68281), (58, 68269), (64, 68212), (72, 68158), (73, 68149), (79, 68113),

Gene: Mudslide_86 Start: 66122, Stop: 65820, Start Num: 45
Candidate Starts for Mudslide_86:
(2, 66713), (7, 66509), (9, 66383), (17, 66296), (22, 66266), (26, 66251), (Start: 35 @66179 has 1
MA's), (Start: 45 @66122 has 18 MA's), (52, 66080), (57, 66047), (58, 66035), (61, 66005), (64,
65978), (67, 65954), (70, 65921), (72, 65915), (74, 65900), (75, 65888), (77, 65882), (78, 65873),

Gene: Mulan_100 Start: 68150, Stop: 67812, Start Num: 37

Candidate Starts for Mulan_100:

(12, 68324), (Start: 37 @68150 has 236 MA's), (41, 68135), (44, 68102), (49, 68066), (58, 68006), (70, 67901), (72, 67895), (77, 67862), (79, 67850),

Gene: Murdoc_97 Start: 68229, Stop: 67891, Start Num: 37

Candidate Starts for Murdoc_97:

(12, 68403), (Start: 37 @68229 has 236 MA's), (41, 68214), (44, 68181), (49, 68145), (58, 68085), (70, 67980), (72, 67974), (77, 67941), (79, 67929),

Gene: Mutante_102 Start: 68123, Stop: 67785, Start Num: 37

Candidate Starts for Mutante_102:

(12, 68297), (Start: 37 @68123 has 236 MA's), (41, 68108), (44, 68075), (49, 68039), (58, 67979), (70, 67874), (72, 67868), (77, 67835), (79, 67823),

Gene: Nacho_00103 Start: 68950, Stop: 68612, Start Num: 37

Candidate Starts for Nacho_00103:

(12, 69124), (Start: 37 @68950 has 236 MA's), (41, 68935), (44, 68902), (49, 68866), (58, 68806), (70, 68701), (72, 68695), (77, 68662), (79, 68650),

Gene: Nangang_93 Start: 68170, Stop: 67862, Start Num: 45

Candidate Starts for Nangang_93:

(Start: 45 @68170 has 18 MA's), (50, 68137), (58, 68089), (62, 68047), (72, 67972), (75, 67945),

Gene: Newman_96 Start: 68227, Stop: 67889, Start Num: 37

Candidate Starts for Newman_96:

(12, 68401), (Start: 37 @68227 has 236 MA's), (41, 68212), (44, 68179), (49, 68143), (58, 68083), (70, 67978), (72, 67972), (77, 67939), (79, 67927),

Gene: Nicole21_102 Start: 68257, Stop: 67919, Start Num: 37

Candidate Starts for Nicole21_102:

(12, 68431), (Start: 37 @68257 has 236 MA's), (41, 68242), (44, 68209), (49, 68173), (58, 68113), (70, 68008), (72, 68002), (77, 67969), (79, 67957),

Gene: Numberten_101 Start: 68236, Stop: 67898, Start Num: 37

Candidate Starts for Numberten_101:

(12, 68410), (Start: 37 @68236 has 236 MA's), (41, 68221), (44, 68188), (49, 68152), (58, 68092), (70, 67987), (72, 67981), (77, 67948), (79, 67936),

Gene: Nyala_101 Start: 67972, Stop: 67634, Start Num: 37

Candidate Starts for Nyala_101:

(12, 68146), (Start: 37 @67972 has 236 MA's), (41, 67957), (44, 67924), (49, 67888), (58, 67828), (70, 67723), (72, 67717), (77, 67684), (79, 67672),

Gene: OSmaximus_101 Start: 68612, Stop: 68184, Start Num: 20

Candidate Starts for OSmaximus_101:

(Start: 20 @68612 has 3 MA's), (Start: 27 @68576 has 23 MA's), (Start: 37 @68519 has 236 MA's), (44, 68474), (49, 68438), (57, 68393), (58, 68381), (64, 68324), (72, 68270), (73, 68261), (79, 68225),

Gene: Olak_103 Start: 68558, Stop: 68166, Start Num: 27

Candidate Starts for Olak_103:

(Start: 20 @68594 has 3 MA's), (Start: 27 @68558 has 23 MA's), (Start: 37 @68501 has 236 MA's), (44, 68456), (49, 68420), (57, 68375), (58, 68363), (64, 68306), (72, 68252), (73, 68243), (79, 68207),

Gene: Oline_100 Start: 68214, Stop: 67786, Start Num: 20

Candidate Starts for Oline_100:

(Start: 20 @68214 has 3 MA's), (Start: 27 @68178 has 23 MA's), (Start: 37 @68121 has 236 MA's), (57, 67992), (58, 67980), (64, 67923), (72, 67869), (73, 67860), (79, 67824),

Gene: Olive_97 Start: 68369, Stop: 68031, Start Num: 37

Candidate Starts for Olive_97:

(12, 68543), (Start: 37 @68369 has 236 MA's), (41, 68354), (44, 68321), (49, 68285), (58, 68225), (70, 68120), (72, 68114), (77, 68081), (79, 68069),

Gene: OliverWalter_100 Start: 68421, Stop: 68083, Start Num: 37

Candidate Starts for OliverWalter_100:

(12, 68595), (Start: 37 @68421 has 236 MA's), (41, 68406), (44, 68373), (49, 68337), (58, 68277), (70, 68172), (72, 68166), (77, 68133), (79, 68121),

Gene: Omniscient_102 Start: 68826, Stop: 68488, Start Num: 37

Candidate Starts for Omniscient_102:

(12, 69000), (Start: 37 @68826 has 236 MA's), (41, 68811), (44, 68778), (49, 68742), (58, 68682), (70, 68577), (72, 68571), (77, 68538), (79, 68526),

Gene: Oosterbaan_101 Start: 68364, Stop: 68026, Start Num: 37

Candidate Starts for Oosterbaan_101:

(12, 68538), (Start: 37 @68364 has 236 MA's), (41, 68349), (44, 68316), (49, 68280), (58, 68220), (70, 68115), (72, 68109), (77, 68076), (79, 68064),

Gene: Orfeu_101 Start: 68485, Stop: 68147, Start Num: 37

Candidate Starts for Orfeu_101:

(12, 68659), (Start: 37 @68485 has 236 MA's), (41, 68470), (44, 68437), (49, 68401), (58, 68341), (70, 68236), (72, 68230), (77, 68197), (79, 68185),

Gene: Orion_99 Start: 68056, Stop: 67718, Start Num: 37

Candidate Starts for Orion_99:

(12, 68230), (Start: 37 @68056 has 236 MA's), (41, 68041), (44, 68008), (49, 67972), (58, 67912), (70, 67807), (72, 67801), (77, 67768), (79, 67756),

Gene: Orwigg_103 Start: 68261, Stop: 67923, Start Num: 37

Candidate Starts for Orwigg_103:

(Start: 37 @68261 has 236 MA's), (41, 68246), (44, 68213), (49, 68177), (58, 68117), (70, 68012), (72, 68006), (77, 67973), (79, 67961),

Gene: PG1_99 Start: 68628, Stop: 68290, Start Num: 37

Candidate Starts for PG1_99:

(12, 68802), (Start: 37 @68628 has 236 MA's), (41, 68613), (44, 68580), (49, 68544), (58, 68484), (70, 68379), (72, 68373), (77, 68340), (79, 68328),

Gene: Pacifista_103 Start: 68348, Stop: 68010, Start Num: 37

Candidate Starts for Pacifista_103:

(12, 68522), (Start: 37 @68348 has 236 MA's), (41, 68333), (44, 68300), (49, 68264), (58, 68204), (70, 68099), (72, 68093), (77, 68060), (79, 68048),

Gene: Phamished_100 Start: 68144, Stop: 67806, Start Num: 37

Candidate Starts for Phamished_100:

(12, 68318), (Start: 37 @68144 has 236 MA's), (41, 68129), (44, 68096), (49, 68060), (58, 68000), (70, 67895), (72, 67889), (77, 67856), (79, 67844),

Gene: Phareon_98 Start: 67669, Stop: 67331, Start Num: 37

Candidate Starts for Phareon_98:

(12, 67843), (Start: 37 @67669 has 236 MA's), (41, 67654), (44, 67621), (49, 67585), (58, 67525), (70, 67420), (72, 67414), (77, 67381), (79, 67369),

Gene: PhatCats2014_100 Start: 68629, Stop: 68291, Start Num: 37

Candidate Starts for PhatCats2014_100:

(12, 68803), (Start: 37 @68629 has 236 MA's), (41, 68614), (44, 68581), (49, 68545), (58, 68485), (70, 68380), (72, 68374), (77, 68341), (79, 68329),

Gene: PhatLouie_103 Start: 68496, Stop: 68161, Start Num: 37

Candidate Starts for PhatLouie_103:

(18, 68589), (Start: 20 @68586 has 3 MA's), (21, 68583), (Start: 37 @68496 has 236 MA's), (57, 68367), (58, 68355), (64, 68298), (72, 68244), (73, 68235), (79, 68199),

Gene: PhenghisKhan_101 Start: 68185, Stop: 67793, Start Num: 27

Candidate Starts for PhenghisKhan_101:

(Start: 20 @68221 has 3 MA's), (Start: 27 @68185 has 23 MA's), (Start: 37 @68128 has 236 MA's), (57, 67999), (58, 67987), (64, 67930), (72, 67876), (73, 67867), (79, 67831),

Gene: Pherdinand_102 Start: 68348, Stop: 68010, Start Num: 37

Candidate Starts for Pherdinand_102:

(12, 68522), (Start: 37 @68348 has 236 MA's), (41, 68333), (44, 68300), (49, 68264), (58, 68204), (70, 68099), (72, 68093), (77, 68060), (79, 68048),

Gene: Phergie_101 Start: 68174, Stop: 67782, Start Num: 27

Candidate Starts for Phergie_101:

(Start: 20 @68210 has 3 MA's), (Start: 27 @68174 has 23 MA's), (Start: 37 @68117 has 236 MA's), (57, 67988), (58, 67976), (64, 67919), (72, 67865), (73, 67856), (79, 67820),

Gene: Phipps_98 Start: 67922, Stop: 67584, Start Num: 37

Candidate Starts for Phipps_98:

(12, 68096), (Start: 37 @67922 has 236 MA's), (41, 67907), (44, 67874), (49, 67838), (58, 67778), (70, 67673), (72, 67667), (77, 67634), (79, 67622),

Gene: Phleuron_98 Start: 67928, Stop: 67593, Start Num: 37

Candidate Starts for Phleuron_98:

(Start: 20 @68021 has 3 MA's), (Start: 27 @67985 has 23 MA's), (Start: 37 @67928 has 236 MA's), (57, 67799), (58, 67787), (64, 67730), (72, 67676), (73, 67667), (79, 67631),

Gene: PhrankReynolds_99 Start: 68179, Stop: 67787, Start Num: 27

Candidate Starts for PhrankReynolds_99:

(Start: 20 @68215 has 3 MA's), (Start: 27 @68179 has 23 MA's), (Start: 37 @68122 has 236 MA's), (57, 67993), (58, 67981), (64, 67924), (72, 67870), (73, 67861), (79, 67825),

Gene: PhrodoBaggins_103 Start: 68502, Stop: 68164, Start Num: 37

Candidate Starts for PhrodoBaggins_103:

(12, 68676), (Start: 37 @68502 has 236 MA's), (41, 68487), (44, 68454), (49, 68418), (58, 68358), (70, 68253), (72, 68247), (77, 68214), (79, 68202),

Gene: Phunky_98 Start: 68004, Stop: 67666, Start Num: 37

Candidate Starts for Phunky_98:

(12, 68178), (Start: 37 @68004 has 236 MA's), (41, 67989), (44, 67956), (49, 67920), (58, 67860), (70, 67755), (72, 67749), (77, 67716), (79, 67704),

Gene: Piglet_00100 Start: 68621, Stop: 68283, Start Num: 37

Candidate Starts for Piglet_00100:

(12, 68795), (Start: 37 @68621 has 236 MA's), (41, 68606), (44, 68573), (49, 68537), (58, 68477), (70, 68372), (72, 68366), (77, 68333), (79, 68321),

Gene: PinheadLarry_100 Start: 68267, Stop: 67932, Start Num: 37

Candidate Starts for PinheadLarry_100:

(18, 68360), (Start: 20 @68357 has 3 MA's), (21, 68354), (Start: 37 @68267 has 236 MA's), (57, 68138), (58, 68126), (64, 68069), (72, 68015), (73, 68006), (79, 67970),

Gene: Pinkman_100 Start: 68339, Stop: 68004, Start Num: 37

Candidate Starts for Pinkman_100:

(Start: 20 @68432 has 3 MA's), (Start: 27 @68396 has 23 MA's), (Start: 37 @68339 has 236 MA's), (57, 68210), (58, 68198), (64, 68141), (72, 68087), (73, 68078), (79, 68042),

Gene: Pipsqueak_98 Start: 67956, Stop: 67618, Start Num: 37

Candidate Starts for Pipsqueak_98:

(12, 68130), (Start: 37 @67956 has 236 MA's), (41, 67941), (44, 67908), (49, 67872), (58, 67812), (70, 67707), (72, 67701), (77, 67668), (79, 67656),

Gene: Placalicious_98 Start: 68714, Stop: 68376, Start Num: 37

Candidate Starts for Placalicious_98:

(12, 68888), (Start: 37 @68714 has 236 MA's), (41, 68699), (44, 68666), (49, 68630), (58, 68570), (70, 68465), (72, 68459), (77, 68426), (79, 68414),

Gene: Plmatters_98 Start: 67947, Stop: 67609, Start Num: 37

Candidate Starts for Plmatters_98:

(12, 68121), (Start: 37 @67947 has 236 MA's), (41, 67932), (44, 67899), (49, 67863), (58, 67803), (70, 67698), (72, 67692), (77, 67659), (79, 67647),

Gene: Podrick_99 Start: 68035, Stop: 67697, Start Num: 37

Candidate Starts for Podrick_99:

(12, 68209), (Start: 37 @68035 has 236 MA's), (41, 68020), (44, 67987), (49, 67951), (58, 67891), (70, 67786), (72, 67780), (77, 67747), (79, 67735),

Gene: Pops_98 Start: 67995, Stop: 67657, Start Num: 37

Candidate Starts for Pops_98:

(Start: 37 @67995 has 236 MA's), (41, 67980), (44, 67947), (49, 67911), (58, 67851), (70, 67746), (72, 67740), (77, 67707), (79, 67695),

Gene: Potter_95 Start: 67956, Stop: 67618, Start Num: 37

Candidate Starts for Potter_95:

(12, 68130), (Start: 37 @67956 has 236 MA's), (41, 67941), (44, 67908), (49, 67872), (58, 67812), (70, 67707), (72, 67701), (77, 67668), (79, 67656),

Gene: Prickles_101 Start: 68082, Stop: 67744, Start Num: 37

Candidate Starts for Prickles_101:

(12, 68256), (Start: 37 @68082 has 236 MA's), (41, 68067), (44, 68034), (49, 67998), (58, 67938), (70, 67833), (72, 67827), (77, 67794), (79, 67782),

Gene: Prince_85 Start: 65989, Stop: 65687, Start Num: 45

Candidate Starts for Prince_85:

(7, 66376), (9, 66250), (Start: 35 @66046 has 1 MA's), (Start: 45 @65989 has 18 MA's), (52, 65947), (57, 65914), (58, 65902), (61, 65872), (64, 65845), (67, 65821), (70, 65788), (72, 65782), (74, 65767), (75, 65755), (77, 65749), (78, 65740),

Gene: ProfessorX_98 Start: 67715, Stop: 67377, Start Num: 37

Candidate Starts for ProfessorX_98:

(12, 67889), (Start: 37 @67715 has 236 MA's), (41, 67700), (44, 67667), (49, 67631), (58, 67571), (70, 67466), (72, 67460), (77, 67427), (79, 67415),

Gene: Puhltonio_96 Start: 67952, Stop: 67614, Start Num: 37

Candidate Starts for Puhltonio_96:

(12, 68126), (Start: 37 @67952 has 236 MA's), (41, 67937), (44, 67904), (49, 67868), (58, 67808), (70, 67703), (72, 67697), (77, 67664), (79, 67652),

Gene: QueenBeane_101 Start: 68279, Stop: 67941, Start Num: 37

Candidate Starts for QueenBeane_101:

(12, 68453), (Start: 37 @68279 has 236 MA's), (41, 68264), (44, 68231), (49, 68195), (58, 68135), (70, 68030), (72, 68024), (77, 67991), (79, 67979),

Gene: Quisquilliae_103 Start: 68290, Stop: 67952, Start Num: 37

Candidate Starts for Quisquilliae_103:

(12, 68464), (Start: 37 @68290 has 236 MA's), (41, 68275), (44, 68242), (49, 68206), (58, 68146), (70, 68041), (72, 68035), (77, 68002), (79, 67990),

Gene: RawrgerThat_85 Start: 65580, Stop: 65278, Start Num: 45

Candidate Starts for RawrgerThat_85:

(3, 66027), (7, 65967), (9, 65841), (Start: 35 @65637 has 1 MA's), (Start: 45 @65580 has 18 MA's), (52, 65538), (57, 65505), (58, 65493), (61, 65463), (64, 65436), (67, 65412), (70, 65379), (72, 65373), (74, 65358), (75, 65346), (77, 65340), (78, 65331),

Gene: RedMaple_99 Start: 68613, Stop: 68275, Start Num: 37

Candidate Starts for RedMaple_99:

(12, 68787), (Start: 37 @68613 has 236 MA's), (41, 68598), (44, 68565), (49, 68529), (58, 68469), (70, 68364), (72, 68358), (77, 68325), (79, 68313),

Gene: Ricotta_102 Start: 67969, Stop: 67634, Start Num: 37

Candidate Starts for Ricotta_102:

(Start: 20 @68086 has 3 MA's), (Start: 27 @68050 has 23 MA's), (Start: 37 @67969 has 236 MA's), (57, 67840), (58, 67828), (64, 67771), (72, 67717), (73, 67708), (79, 67672),

Gene: Riggan_102 Start: 68460, Stop: 68122, Start Num: 37

Candidate Starts for Riggan_102:

(12, 68634), (Start: 37 @68460 has 236 MA's), (41, 68445), (44, 68412), (49, 68376), (58, 68316), (70, 68211), (72, 68205), (77, 68172), (79, 68160),

Gene: Rimu_104 Start: 68526, Stop: 68098, Start Num: 18

Candidate Starts for Rimu_104:

(18, 68526), (Start: 20 @68523 has 3 MA's), (21, 68520), (Start: 37 @68433 has 236 MA's), (57, 68304), (58, 68292), (64, 68235), (72, 68181), (73, 68172), (79, 68136),

Gene: Rinkes_88 Start: 68809, Stop: 68432, Start Num: 29

Candidate Starts for Rinkes_88:

(Start: 29 @68809 has 2 MA's), (47, 68698), (51, 68674), (54, 68662), (60, 68611), (66, 68557), (69, 68539),

Gene: Robyn_102 Start: 68352, Stop: 68014, Start Num: 37

Candidate Starts for Robyn_102:

(28, 68397), (Start: 37 @68352 has 236 MA's), (41, 68337), (44, 68304), (49, 68268), (58, 68208), (70, 68103), (72, 68097), (77, 68064), (79, 68052),

Gene: Roliet_98 Start: 67314, Stop: 66979, Start Num: 37

Candidate Starts for Roliet_98:

(Start: 27 @67371 has 23 MA's), (Start: 37 @67314 has 236 MA's), (57, 67185), (58, 67173), (64, 67116), (72, 67062), (73, 67053), (79, 67017),

Gene: Roscoe_99 Start: 68232, Stop: 67894, Start Num: 37

Candidate Starts for Roscoe_99:

(12, 68406), (Start: 37 @68232 has 236 MA's), (41, 68217), (44, 68184), (49, 68148), (58, 68088), (70, 67983), (72, 67977), (77, 67944), (79, 67932),

Gene: Roy17_98 Start: 67685, Stop: 67347, Start Num: 37

Candidate Starts for Roy17_98:

(12, 67859), (Start: 37 @67685 has 236 MA's), (41, 67670), (44, 67637), (49, 67601), (58, 67541), (70, 67436), (72, 67430), (77, 67397), (79, 67385),

Gene: SDcharge11_99 Start: 67329, Stop: 66994, Start Num: 37

Candidate Starts for SDcharge11_99:

(Start: 27 @67386 has 23 MA's), (Start: 37 @67329 has 236 MA's), (57, 67200), (58, 67188), (64, 67131), (72, 67077), (73, 67068), (79, 67032),

Gene: Saguaro_85 Start: 66656, Stop: 66207, Start Num: 19

Candidate Starts for Saguaro_85:

(Start: 19 @66656 has 1 MA's), (24, 66626), (Start: 29 @66587 has 2 MA's), (40, 66539), (43, 66521), (46, 66497), (47, 66482), (48, 66479), (51, 66458), (54, 66446), (57, 66422), (77, 66263),

Gene: Samaymay_101 Start: 68279, Stop: 67941, Start Num: 37

Candidate Starts for Samaymay_101:

(12, 68453), (Start: 37 @68279 has 236 MA's), (41, 68264), (44, 68231), (49, 68195), (58, 68135), (70, 68030), (72, 68024), (77, 67991), (79, 67979),

Gene: SassyCat97_99 Start: 67947, Stop: 67609, Start Num: 37

Candidate Starts for SassyCat97_99:

(12, 68121), (Start: 37 @67947 has 236 MA's), (41, 67932), (44, 67899), (49, 67863), (58, 67803), (70, 67698), (72, 67692), (77, 67659), (79, 67647),

Gene: Schadenfreude_101 Start: 67996, Stop: 67658, Start Num: 37

Candidate Starts for Schadenfreude_101:

(Start: 37 @67996 has 236 MA's), (41, 67981), (44, 67948), (49, 67912), (58, 67852), (70, 67747), (72, 67741), (77, 67708), (79, 67696),

Gene: Schueller_100 Start: 68272, Stop: 67880, Start Num: 27

Candidate Starts for Schueller_100:

(Start: 20 @68308 has 3 MA's), (Start: 27 @68272 has 23 MA's), (Start: 37 @68215 has 236 MA's), (57, 68086), (58, 68074), (64, 68017), (72, 67963), (73, 67954), (79, 67918),

Gene: Scoot17C_101 Start: 68061, Stop: 67723, Start Num: 37

Candidate Starts for Scoot17C_101:

(12, 68235), (Start: 37 @68061 has 236 MA's), (41, 68046), (44, 68013), (49, 67977), (58, 67917), (70, 67812), (72, 67806), (77, 67773), (79, 67761),

Gene: Scrick_102 Start: 68330, Stop: 67992, Start Num: 37

Candidate Starts for Scrick_102:

(12, 68504), (Start: 37 @68330 has 236 MA's), (41, 68315), (44, 68282), (49, 68246), (58, 68186), (70, 68081), (72, 68075), (77, 68042), (79, 68030),

Gene: Selr12_105 Start: 68371, Stop: 68033, Start Num: 37

Candidate Starts for Selr12_105:

(12, 68545), (Start: 37 @68371 has 236 MA's), (41, 68356), (44, 68323), (49, 68287), (58, 68227), (70, 68122), (72, 68116), (77, 68083), (79, 68071),

Gene: Serendipity_100 Start: 68433, Stop: 68095, Start Num: 37

Candidate Starts for Serendipity_100:

(12, 68607), (Start: 37 @68433 has 236 MA's), (41, 68418), (44, 68385), (49, 68349), (58, 68289), (70, 68184), (72, 68178), (77, 68145), (79, 68133),

Gene: Serpentine_00103 Start: 68513, Stop: 68175, Start Num: 37

Candidate Starts for Serpentine_00103:

(12, 68687), (Start: 37 @68513 has 236 MA's), (41, 68498), (44, 68465), (49, 68429), (58, 68369), (70, 68264), (72, 68258), (77, 68225), (79, 68213),

Gene: Sheila_95 Start: 67507, Stop: 67172, Start Num: 37

Candidate Starts for Sheila_95:

(Start: 27 @67564 has 23 MA's), (Start: 37 @67507 has 236 MA's), (57, 67378), (58, 67366), (64, 67309), (72, 67255), (73, 67246), (79, 67210),

Gene: Shenyu_93 Start: 68168, Stop: 67860, Start Num: 45

Candidate Starts for Shenyu_93:

(Start: 45 @68168 has 18 MA's), (50, 68135), (58, 68087), (62, 68045), (72, 67970), (75, 67943),

Gene: ShiVal_100 Start: 67984, Stop: 67646, Start Num: 37

Candidate Starts for ShiVal_100:

(12, 68158), (Start: 37 @67984 has 236 MA's), (41, 67969), (44, 67936), (49, 67900), (58, 67840), (70, 67735), (72, 67729), (77, 67696), (79, 67684),

Gene: Sigman_100 Start: 67940, Stop: 67602, Start Num: 37

Candidate Starts for Sigman_100:

(12, 68114), (Start: 37 @67940 has 236 MA's), (41, 67925), (44, 67892), (49, 67856), (58, 67796), (70, 67691), (72, 67685), (77, 67652), (79, 67640),

Gene: SilverBell_102 Start: 68394, Stop: 68056, Start Num: 37

Candidate Starts for SilverBell_102:

(12, 68568), (Start: 37 @68394 has 236 MA's), (41, 68379), (44, 68346), (49, 68310), (58, 68250), (70, 68145), (72, 68139), (77, 68106), (79, 68094),

Gene: Simielle_101 Start: 67926, Stop: 67588, Start Num: 37

Candidate Starts for Simielle_101:

(12, 68100), (Start: 37 @67926 has 236 MA's), (41, 67911), (44, 67878), (49, 67842), (58, 67782), (70, 67677), (72, 67671), (77, 67638), (79, 67626),

Gene: Skippy_101 Start: 68355, Stop: 68017, Start Num: 37

Candidate Starts for Skippy_101:

(12, 68529), (Start: 37 @68355 has 236 MA's), (41, 68340), (44, 68307), (49, 68271), (58, 68211), (70, 68106), (72, 68100), (77, 68067), (79, 68055),

Gene: Slatt_103 Start: 68611, Stop: 68273, Start Num: 37

Candidate Starts for Slatt_103:

(12, 68785), (Start: 37 @68611 has 236 MA's), (41, 68596), (44, 68563), (49, 68527), (58, 68467), (70, 68362), (72, 68356), (77, 68323), (79, 68311),

Gene: Soile_102 Start: 68555, Stop: 68139, Start Num: 27

Candidate Starts for Soile_102:

(Start: 20 @68591 has 3 MA's), (Start: 27 @68555 has 23 MA's), (Start: 37 @68474 has 236 MA's), (57, 68345), (58, 68333), (64, 68276), (72, 68222), (73, 68213), (79, 68177),

Gene: Solosis_99 Start: 67945, Stop: 67610, Start Num: 37

Candidate Starts for Solosis_99:

(18, 68038), (Start: 20 @68035 has 3 MA's), (21, 68032), (Start: 37 @67945 has 236 MA's), (57, 67816), (58, 67804), (64, 67747), (72, 67693), (73, 67684), (79, 67648),

Gene: Sophia_99 Start: 67935, Stop: 67597, Start Num: 37

Candidate Starts for Sophia_99:

(12, 68109), (Start: 37 @67935 has 236 MA's), (41, 67920), (44, 67887), (49, 67851), (58, 67791), (70, 67686), (72, 67680), (77, 67647), (79, 67635),

Gene: Soto_97 Start: 67376, Stop: 67038, Start Num: 37

Candidate Starts for Soto_97:

(Start: 37 @67376 has 236 MA's), (41, 67361), (44, 67328), (49, 67292), (58, 67232), (70, 67127), (72, 67121), (77, 67088), (79, 67076),

Gene: Spartan300_100 Start: 68197, Stop: 67859, Start Num: 37

Candidate Starts for Spartan300_100:

(12, 68371), (Start: 37 @68197 has 236 MA's), (41, 68182), (44, 68149), (49, 68113), (58, 68053), (70, 67948), (72, 67942), (77, 67909), (79, 67897),

Gene: Squid_100 Start: 68225, Stop: 67887, Start Num: 37

Candidate Starts for Squid_100:

(12, 68399), (Start: 37 @68225 has 236 MA's), (41, 68210), (44, 68177), (49, 68141), (58, 68081), (70, 67976), (72, 67970), (77, 67937), (79, 67925),

Gene: Squiggle_100 Start: 67954, Stop: 67616, Start Num: 37

Candidate Starts for Squiggle_100:

(12, 68128), (Start: 37 @67954 has 236 MA's), (41, 67939), (44, 67906), (49, 67870), (58, 67810), (70, 67705), (72, 67699), (77, 67666), (79, 67654),

Gene: Stinger_84 Start: 64428, Stop: 64096, Start Num: 35

Candidate Starts for Stinger_84:

(11, 64629), (Start: 35 @64428 has 1 MA's), (Start: 45 @64374 has 18 MA's), (57, 64299), (58, 64287), (61, 64257), (64, 64230), (70, 64194), (72, 64188), (75, 64161), (78, 64146),

Gene: Struggle_101 Start: 68046, Stop: 67711, Start Num: 37

Candidate Starts for Struggle_101:

(Start: 20 @68163 has 3 MA's), (Start: 27 @68127 has 23 MA's), (Start: 37 @68046 has 236 MA's), (57, 67917), (58, 67905), (64, 67848), (72, 67794), (73, 67785), (79, 67749),

Gene: Suffolk_96 Start: 67882, Stop: 67544, Start Num: 37

Candidate Starts for Suffolk_96:

(Start: 37 @67882 has 236 MA's), (41, 67867), (44, 67834), (49, 67798), (58, 67738), (70, 67633), (72, 67627), (77, 67594), (79, 67582),

Gene: Surely_101 Start: 68517, Stop: 68179, Start Num: 37

Candidate Starts for Surely_101:

(12, 68691), (Start: 37 @68517 has 236 MA's), (41, 68502), (44, 68469), (49, 68433), (58, 68373), (70, 68268), (72, 68262), (77, 68229), (79, 68217),

Gene: Swiphy_105 Start: 68496, Stop: 68161, Start Num: 37

Candidate Starts for Swiphy_105:

(18, 68589), (Start: 20 @68586 has 3 MA's), (21, 68583), (Start: 37 @68496 has 236 MA's), (57, 68367), (58, 68355), (64, 68298), (72, 68244), (73, 68235), (79, 68199),

Gene: Swish_102 Start: 68364, Stop: 68026, Start Num: 37

Candidate Starts for Swish_102:

(12, 68538), (Start: 37 @68364 has 236 MA's), (41, 68349), (44, 68316), (49, 68280), (58, 68220), (70, 68115), (72, 68109), (77, 68076), (79, 68064),

Gene: TallGrassMM_100 Start: 68010, Stop: 67675, Start Num: 37

Candidate Starts for TallGrassMM_100:

(18, 68103), (Start: 20 @68100 has 3 MA's), (21, 68097), (Start: 37 @68010 has 236 MA's), (57, 67881), (58, 67869), (64, 67812), (72, 67758), (73, 67749), (79, 67713),

Gene: Telesworld_99 Start: 68087, Stop: 67749, Start Num: 37

Candidate Starts for Telesworld_99:

(12, 68261), (Start: 37 @68087 has 236 MA's), (41, 68072), (44, 68039), (49, 68003), (58, 67943), (70, 67838), (72, 67832), (77, 67799), (79, 67787),

Gene: Thora_99 Start: 68468, Stop: 68130, Start Num: 37

Candidate Starts for Thora_99:

(12, 68642), (Start: 37 @68468 has 236 MA's), (41, 68453), (44, 68420), (49, 68384), (58, 68324), (70, 68219), (72, 68213), (77, 68180), (79, 68168),

Gene: ThreeOh3D2_102 Start: 68621, Stop: 68283, Start Num: 37

Candidate Starts for ThreeOh3D2_102:

(12, 68795), (Start: 37 @68621 has 236 MA's), (41, 68606), (44, 68573), (49, 68537), (58, 68477), (70, 68372), (72, 68366), (77, 68333), (79, 68321),

Gene: Thunderbird_101 Start: 68203, Stop: 67868, Start Num: 37

Candidate Starts for Thunderbird_101:

(Start: 20 @68320 has 3 MA's), (Start: 27 @68284 has 23 MA's), (Start: 37 @68203 has 236 MA's), (57, 68074), (58, 68062), (64, 68005), (72, 67951), (73, 67942), (79, 67906),

Gene: Timmi_99 Start: 67984, Stop: 67646, Start Num: 37

Candidate Starts for Timmi_99:

(12, 68158), (Start: 37 @67984 has 236 MA's), (41, 67969), (44, 67936), (49, 67900), (58, 67840), (70, 67735), (72, 67729), (77, 67696), (79, 67684),

Gene: TomBombadil_101 Start: 68509, Stop: 68171, Start Num: 37

Candidate Starts for TomBombadil_101:

(12, 68683), (Start: 37 @68509 has 236 MA's), (41, 68494), (44, 68461), (49, 68425), (58, 68365), (70, 68260), (72, 68254), (77, 68221), (79, 68209),

Gene: Tomlarah_101 Start: 68817, Stop: 68479, Start Num: 37

Candidate Starts for Tomlarah_101:

(12, 68991), (Start: 37 @68817 has 236 MA's), (41, 68802), (44, 68769), (49, 68733), (58, 68673), (70, 68568), (72, 68562), (77, 68529), (79, 68517),

Gene: Toni_100 Start: 68413, Stop: 68075, Start Num: 37

Candidate Starts for Toni_100:

(12, 68587), (Start: 37 @68413 has 236 MA's), (41, 68398), (44, 68365), (49, 68329), (58, 68269), (70, 68164), (72, 68158), (77, 68125), (79, 68113),

Gene: Tooj_98 Start: 67628, Stop: 67290, Start Num: 37

Candidate Starts for Tooj_98:

(Start: 37 @67628 has 236 MA's), (41, 67613), (44, 67580), (49, 67544), (58, 67484), (70, 67379), (72, 67373), (77, 67340), (79, 67328),

Gene: True_102 Start: 68323, Stop: 67988, Start Num: 37

Candidate Starts for True_102:

(Start: 20 @68416 has 3 MA's), (Start: 27 @68380 has 23 MA's), (Start: 37 @68323 has 236 MA's), (44, 68278), (49, 68242), (57, 68197), (58, 68185), (64, 68128), (72, 68074), (73, 68065), (79, 68029),

Gene: Trypo_101 Start: 68675, Stop: 68340, Start Num: 37

Candidate Starts for Trypo_101:

(18, 68768), (Start: 20 @68765 has 3 MA's), (21, 68762), (Start: 37 @68675 has 236 MA's), (57, 68546), (58, 68534), (64, 68477), (72, 68423), (73, 68414), (79, 68378),

Gene: TyrionL_101 Start: 68095, Stop: 67703, Start Num: 27

Candidate Starts for TyrionL_101:

(Start: 20 @68131 has 3 MA's), (Start: 27 @68095 has 23 MA's), (Start: 37 @68038 has 236 MA's), (57, 67909), (58, 67897), (64, 67840), (72, 67786), (73, 67777), (79, 67741),

Gene: UAch1_101 Start: 68034, Stop: 67696, Start Num: 37

Candidate Starts for UAch1_101:

(12, 68208), (Start: 37 @68034 has 236 MA's), (41, 68019), (44, 67986), (49, 67950), (58, 67890), (70, 67785), (72, 67779), (77, 67746), (79, 67734),

Gene: UncleHowie_97 Start: 67645, Stop: 67307, Start Num: 37

Candidate Starts for UncleHowie_97:

(12, 67819), (Start: 37 @67645 has 236 MA's), (41, 67630), (44, 67597), (49, 67561), (58, 67501), (70, 67396), (72, 67390), (77, 67357), (79, 67345),

Gene: Usavi_101 Start: 68807, Stop: 68469, Start Num: 37

Candidate Starts for Usavi_101:

(12, 68981), (Start: 37 @68807 has 236 MA's), (41, 68792), (44, 68759), (49, 68723), (58, 68663), (70, 68558), (72, 68552), (77, 68519), (79, 68507),

Gene: Vaishali24_101 Start: 68022, Stop: 67687, Start Num: 37

Candidate Starts for Vaishali24_101:

(Start: 27 @68079 has 23 MA's), (Start: 37 @68022 has 236 MA's), (41, 68010), (44, 67977), (49, 67941), (58, 67881), (70, 67776), (72, 67770), (77, 67737), (79, 67725),

Gene: Valjean_99 Start: 68189, Stop: 67851, Start Num: 37

Candidate Starts for Valjean_99:

(12, 68363), (Start: 37 @68189 has 236 MA's), (41, 68174), (44, 68141), (49, 68105), (58, 68045), (70, 67940), (72, 67934), (77, 67901), (79, 67889),

Gene: Vaticameos_98 Start: 66516, Stop: 66178, Start Num: 37

Candidate Starts for Vaticameos_98:

(12, 66690), (Start: 37 @66516 has 236 MA's), (41, 66501), (44, 66468), (49, 66432), (58, 66372), (70, 66267), (72, 66261), (77, 66228), (79, 66216),

Gene: Veritas_100 Start: 68119, Stop: 67784, Start Num: 37

Candidate Starts for Veritas_100:

(Start: 20 @68212 has 3 MA's), (Start: 27 @68176 has 23 MA's), (Start: 37 @68119 has 236 MA's), (57, 67990), (58, 67978), (64, 67921), (72, 67867), (73, 67858), (79, 67822),

Gene: VioletZ_88 Start: 66079, Stop: 65777, Start Num: 45

Candidate Starts for VioletZ_88:

(7, 66466), (9, 66340), (Start: 35 @66136 has 1 MA's), (Start: 45 @66079 has 18 MA's), (52, 66037), (57, 66004), (58, 65992), (61, 65962), (64, 65935), (67, 65911), (70, 65878), (72, 65872), (74, 65857), (75, 65845), (77, 65839), (78, 65830),

Gene: Virapocalypse_102 Start: 68311, Stop: 67973, Start Num: 37

Candidate Starts for Virapocalypse_102:

(12, 68485), (Start: 37 @68311 has 236 MA's), (41, 68296), (44, 68263), (49, 68227), (58, 68167), (70, 68062), (72, 68056), (77, 68023), (79, 68011),

Gene: Virgeve_99 Start: 67923, Stop: 67588, Start Num: 37

Candidate Starts for Virgeve_99:

(18, 68016), (Start: 20 @68013 has 3 MA's), (21, 68010), (Start: 37 @67923 has 236 MA's), (57, 67794), (58, 67782), (64, 67725), (72, 67671), (73, 67662), (79, 67626),

Gene: Vista_100 Start: 68123, Stop: 67785, Start Num: 37

Candidate Starts for Vista_100:

(12, 68297), (Start: 37 @68123 has 236 MA's), (41, 68108), (44, 68075), (49, 68039), (58, 67979), (70, 67874), (72, 67868), (77, 67835), (79, 67823),

Gene: Vivaldi_101 Start: 68277, Stop: 67942, Start Num: 37

Candidate Starts for Vivaldi_101:

(21, 68367), (Start: 27 @68334 has 23 MA's), (Start: 37 @68277 has 236 MA's), (44, 68232), (49, 68196), (57, 68151), (58, 68139), (64, 68082), (72, 68028), (73, 68019), (79, 67983),

Gene: Vortex_99 Start: 68223, Stop: 67888, Start Num: 37

Candidate Starts for Vortex_99:

(18, 68316), (Start: 20 @68313 has 3 MA's), (21, 68310), (Start: 37 @68223 has 236 MA's), (57, 68094), (58, 68082), (64, 68025), (72, 67971), (73, 67962), (79, 67926),

Gene: Waleliano_85 Start: 65747, Stop: 65445, Start Num: 45

Candidate Starts for Waleliano_85:

(2, 66338), (7, 66134), (9, 66008), (17, 65921), (22, 65891), (26, 65876), (Start: 35 @65804 has 1 MA's), (Start: 45 @65747 has 18 MA's), (52, 65705), (57, 65672), (58, 65660), (61, 65630), (64, 65603), (67, 65579), (70, 65546), (72, 65540), (74, 65525), (75, 65513), (77, 65507), (78, 65498),

Gene: Wallhey_102 Start: 68222, Stop: 67887, Start Num: 37

Candidate Starts for Wallhey_102:

(Start: 20 @68315 has 3 MA's), (Start: 27 @68279 has 23 MA's), (Start: 37 @68222 has 236 MA's), (57, 68093), (58, 68081), (64, 68024), (72, 67970), (73, 67961), (79, 67925),

Gene: Waterdiva_102 Start: 68495, Stop: 68157, Start Num: 37

Candidate Starts for Waterdiva_102:

(12, 68669), (Start: 37 @68495 has 236 MA's), (41, 68480), (44, 68447), (49, 68411), (58, 68351), (70, 68246), (72, 68240), (77, 68207), (79, 68195),

Gene: Weher20_98 Start: 68561, Stop: 68226, Start Num: 37

Candidate Starts for Weher20_98:

(18, 68654), (Start: 20 @68651 has 3 MA's), (21, 68648), (Start: 37 @68561 has 236 MA's), (57, 68432), (58, 68420), (64, 68363), (72, 68309), (73, 68300), (79, 68264),

Gene: Windsor_100 Start: 68245, Stop: 67913, Start Num: 37

Candidate Starts for Windsor_100:

(Start: 27 @68302 has 23 MA's), (Start: 37 @68245 has 236 MA's), (44, 68200), (49, 68164), (57, 68119), (58, 68107), (64, 68050), (72, 67996), (73, 67987), (79, 67951),

Gene: Xavier_100 Start: 68122, Stop: 67784, Start Num: 37

Candidate Starts for Xavier_100:

(12, 68296), (Start: 37 @68122 has 236 MA's), (41, 68107), (44, 68074), (49, 68038), (58, 67978), (70, 67873), (72, 67867), (77, 67834), (79, 67822),

Gene: Xincheng_79 Start: 65877, Stop: 65590, Start Num: 45

Candidate Starts for Xincheng_79:

(9, 66138), (Start: 35 @65934 has 1 MA's), (Start: 45 @65877 has 18 MA's), (52, 65835), (57, 65802), (58, 65790), (61, 65775), (64, 65748), (70, 65691), (72, 65685), (74, 65670), (75, 65658), (77, 65652), (78, 65643),

Gene: Yoshand_102 Start: 68347, Stop: 68009, Start Num: 37

Candidate Starts for Yoshand_102:

(12, 68521), (Start: 37 @68347 has 236 MA's), (41, 68332), (44, 68299), (49, 68263), (58, 68203), (70, 68098), (72, 68092), (77, 68059), (79, 68047),

Gene: YouGoGlencoco_101 Start: 68237, Stop: 67899, Start Num: 37

Candidate Starts for YouGoGlencoco_101:

(12, 68411), (Start: 37 @68237 has 236 MA's), (41, 68222), (44, 68189), (49, 68153), (58, 68093), (70, 67988), (72, 67982), (77, 67949), (79, 67937),

Gene: Zaider_102 Start: 68612, Stop: 68274, Start Num: 37

Candidate Starts for Zaider_102:

(12, 68786), (Start: 37 @68612 has 236 MA's), (41, 68597), (44, 68564), (49, 68528), (58, 68468), (70, 68363), (72, 68357), (77, 68324), (79, 68312),

Gene: Zelda_101 Start: 68568, Stop: 68230, Start Num: 37

Candidate Starts for Zelda_101:

(12, 68742), (Start: 37 @68568 has 236 MA's), (41, 68553), (44, 68520), (49, 68484), (58, 68424), (70, 68319), (72, 68313), (77, 68280), (79, 68268),

Gene: Zemanar_85 Start: 65760, Stop: 65458, Start Num: 45

Candidate Starts for Zemanar_85:

(7, 66147), (9, 66021), (Start: 35 @65817 has 1 MA's), (Start: 45 @65760 has 18 MA's), (52, 65718), (57, 65685), (58, 65673), (61, 65643), (67, 65592), (70, 65559), (72, 65553), (74, 65538), (75, 65526), (77, 65520), (78, 65511),

Gene: Zonia_101 Start: 68729, Stop: 68337, Start Num: 27

Candidate Starts for Zonia_101:

(Start: 20 @68765 has 3 MA's), (Start: 27 @68729 has 23 MA's), (Start: 37 @68672 has 236 MA's), (57, 68543), (58, 68531), (64, 68474), (72, 68420), (73, 68411), (79, 68375),