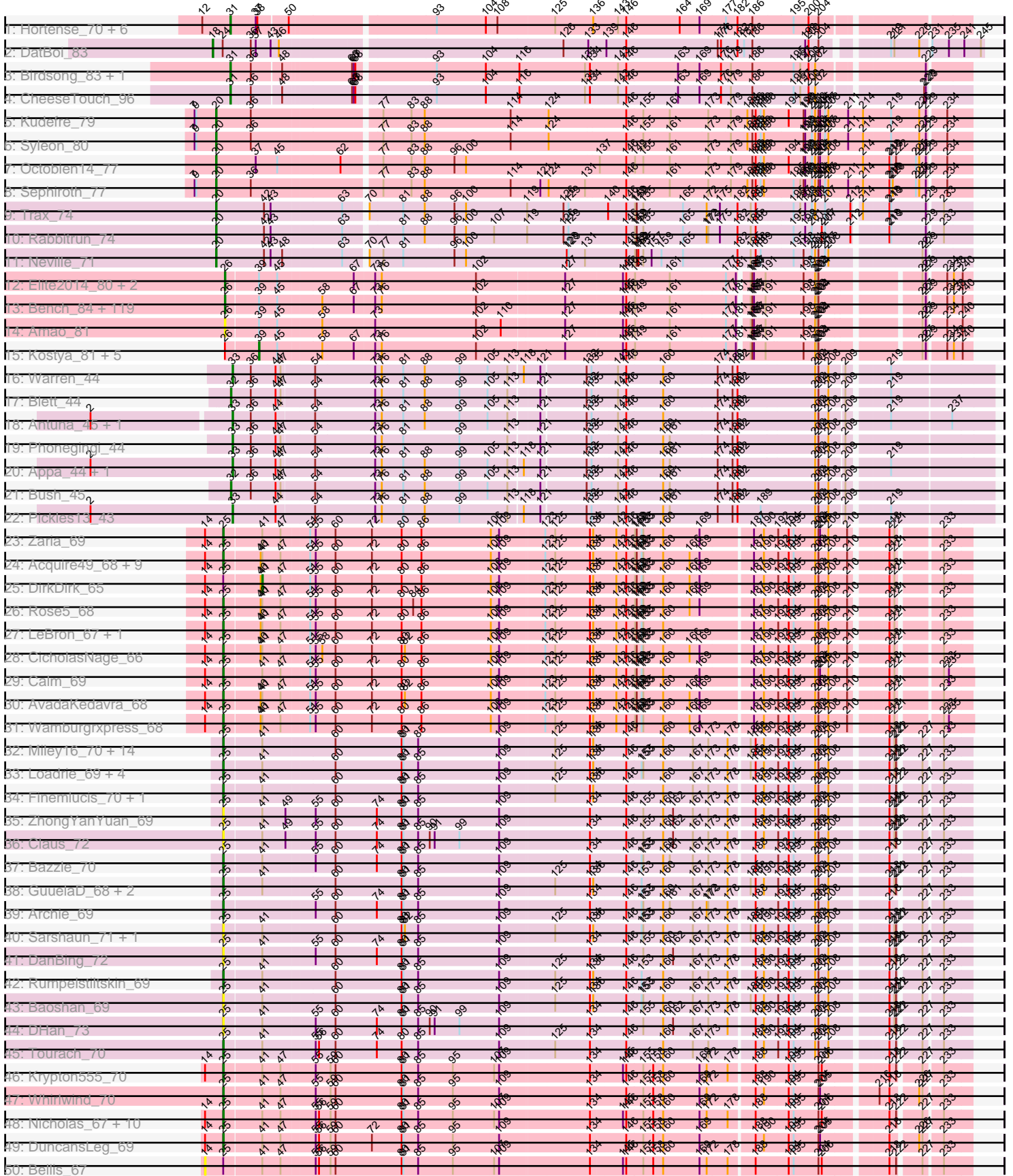


Pham 192284



Note: Tracks are now grouped by subcluster and scaled. Switching in subcluster is indicated by changes in track color. Track scale is now set by default to display the region 30 bp upstream of start 1 to 30 bp downstream of the last possible start. If this default region is judged to be packed too tightly with annotated starts, the track will be further scaled to only show that region of the ORF with annotated starts. This action will be indicated by adding "Zoomed" to the title. For starts, yellow indicates the location of called starts comprised solely of Glimmer/GeneMark auto-annotations, green indicates the location of called starts with at least 1 manual gene annotation.

Pham 192284 Report

This analysis was run 11/02/24 on database version 579.

Pham number 192284 has 275 members, 30 are drafts.

Phages represented in each track:

- Track 1 : Hortense_70, Dorito_63, DobbysSock_65, Twinkle_69, Howe_70, Adora_67, Shlim410_68
- Track 2 : DatBoi_83
- Track 3 : Birdsong_83, Asapag_84
- Track 4 : CheeseTouch_96
- Track 5 : Kudrefre_79
- Track 6 : Syleon_80
- Track 7 : Octobien14_77
- Track 8 : Sephiroth_77
- Track 9 : Trax_74
- Track 10 : Rabbitrun_74
- Track 11 : Neville_71
- Track 12 : Elite2014_80, Lilpickle_80, ChosenOne_81
- Track 13 : Bench_84, Traaww1_77, Lilizi_82, Marshmallow_79, Icee_82, HufflyPuff_84, MISSy_82, Flypotenuse_77, AmericanBeauty_85, Tarkin_80, MPhalcon_82, YassJohnny_78, Nala_83, Palpatine_83, Misfit_82, Czyszczonek_82, Maxxinista_83, 244_82, Hopey_81, CrystalP_80, Petra64142_85, NelitzaMV_79, Barbarian_80, BigBubba_81, SophKB_78, Murica_84, Myrale_81, Eureka_79, FireRed_85, Thresher_83, Miniwave_76, Balomoji_81, TBrady12_84, Harella_81, Pumpkin_84, Command613_83, TeardropMSU_77, Pat3_79, BugsBunny_81, Qualification_82, Mosby_77, Terminus_84, ShamWow_81, Rimmer_82, Argent26_85, Filch_82, IHOP_79, Cookies_78, Sassay_76, Kimchi_85, Policronamos_85, Stark_82, SirDuracell_80, Dusk_78, Tuco_82, Inca_78, Sotrice96_82, Kanye_78, RiverMonster_81, Easy2Say_82, Gator_79, Cjw1_81, Teaspoon_82, Nimrod_82, Phrux_78, Porky_80, Rakim_82, Cactus_84, DoctorDiddles_80, HanKaySha_81, Pharsalus_78, Paperbeatsrock_80, Bask21_81, Buck_82, Hoonter_84, Daikon_83, Ukulele_76, BaboJay_78, NoSleep_82, Goldilocks_84, Wiggin_83, Tomaszewski_76, Asriel_80, Emmina_81, Moldemort_84, Elph10_81, Simpliphy_80, DrDrey_81, PhatBacter_85, Glexan_80, Xandras_80, GooberAzure_84, MadamMonkfish_81, OrionPax_80, xkcd_84, Murphy_81, ABCat_78, Phaux_83, Phaja_79, Willez_76, Holt_86, Manda_82, Henry_79, Gage_83, Youngblood_84, ShereKhan_79, Lilac_83, Gemini_86, Saints25_80, GoldenSpark_85, Contagion_77, Highbury_80, Goku_79, JeTaime_81, StolenFromERC_84, Adnama_85, Dumbo_81, ChotaBhai_81, Bruin_78, StellaBean_79
- Track 14 : Amao_81

- Track 15 : Kostya_81, Toto_79, Stank_84, Mindy_80, BilboSwaggins_80, BadStone_78
- Track 16 : Warren_44
- Track 17 : Blett_44
- Track 18 : Antuna_45, MenE_45
- Track 19 : Phonegingi_44
- Track 20 : Appa_44, Dropshot_44
- Track 21 : Bush_45
- Track 22 : Pickles13_43
- Track 23 : Zaria_69
- Track 24 : Acquire49_68, Enceladus_65, UPIE_67, JoeDirt_68, MAckerman_66, Silverleaf_68, Tyson_69, OhShagHennessy_66, Halena_66, Wyatt2_69
- Track 25 : DirkDirk_65
- Track 26 : Rose5_68
- Track 27 : LeBron_67, Appletree2_67
- Track 28 : CicholasNage_66
- Track 29 : Calm_69
- Track 30 : AvadaKedavra_68
- Track 31 : Wamburgrxpress_68
- Track 32 : Miley16_70, DrSeegs_70, Winky_70, BobsGarage_70, Gardann_71, Nicholasp3_70, Crossroads_70, Breezona_70, Wigglewiggles_70, Itos_69, MkaliMitinis3_71, Zakai_71, BigCheese_70, Netyap_71, Faith1_70
- Track 33 : Loadrie_69, Lewan_71, Wilder_71, Kahlid_70, Vetrix_70
- Track 34 : Finemlucis_70, Gabriela_67
- Track 35 : ZhongYanYuan_69
- Track 36 : Claus_72
- Track 37 : Bazzle_70
- Track 38 : GuuelaD_68, LilDestine_70, Hafay_72
- Track 39 : Archie_69
- Track 40 : Sarshaun_71, Soap141_70
- Track 41 : DanBing_72
- Track 42 : Rumpelstiltskin_69
- Track 43 : Baoshan_69
- Track 44 : DHan_73
- Track 45 : Tourach_70
- Track 46 : Krypton555_70
- Track 47 : Whirlwind_70
- Track 48 : Nicholas_67, MsGreen_69, Jubie_68, Moostard_67, Clautastrophe_68, Finnry_69, Kingsolomon_67, Jobypre_70, Lumos_70, Samty_69, Snenia_68
- Track 49 : DuncansLeg_69
- Track 50 : Bellis_67
- Track 51 : Ellson_68
- Track 52 : BourbonZero_70
- Track 53 : Lolly9_69, MiniLon_73
- Track 54 : KirDoubleO7_67
- Track 55 : LiyuLake_68
- Track 56 : MiniMac_73
- Track 57 : FarmResident_71
- Track 58 : Bromden_70
- Track 59 : Sheng711_69, BrainDrainer_69
- Track 60 : Quby_69
- Track 61 : Douge_69
- Track 62 : DyoEdafos_73

- Track 63 : PYPDinur_67
- Track 64 : Chaser_67
- Track 65 : Douzhi_69
- Track 66 : Aegeus_75, Baudelaire_75
- Track 67 : Skinny_72, Glaske16_71, SlimJimmy_69, LilhomieP_69
- Track 68 : Bongo_69, Diminimus_70, Dulcita_70, TyDawg_69, Auspice_69
- Track 69 : Bricole_68, PegLeg_68, IPhane7_69
- Track 70 : Reindeer_71
- Track 71 : Aziz_76, GenevaB15_77
- Track 72 : Estes_78
- Track 73 : MrMagoo_79, GardenSalsa_78
- Track 74 : Rey_75
- Track 75 : Nanosmite_74
- Track 76 : MrSmee_56
- Track 77 : EniyanLRS_76, Cosmo_80, Azrael100_79, Wildcat_80, MaryV_80
- Track 78 : Kumao_65
- Track 79 : ArV2_61
- Track 80 : Kithara_72

Summary of Final Annotations (See graph section above for start numbers):

The start number called the most often in the published annotations is 26, it was called in 118 of the 245 non-draft genes in the pham.

Genes that call this "Most Annotated" start:

- 244_82, ABCat_78, Adnama_85, Amao_81, AmericanBeauty_85, Argent26_85, Asriel_80, BaboJay_78, Balomoji_81, Barbarian_80, Bask21_81, Bench_84, BigBubba_81, Bruin_78, Buck_82, BugsBunny_81, Cactus_84, ChosenOne_81, ChotaBhai_81, Cjw1_81, Command613_83, Contagion_77, Cookies_78, CrystalP_80, Czyszczonek1_82, Daikon_83, DoctorDiddles_80, DrDrey_81, Dumbo_81, Dusk_78, Easy2Say_82, Elite2014_80, Elph10_81, Emmina_81, Eureka_79, Filch_82, FireRed_85, Flypotenuse_77, Gage_83, Gator_79, Gemini_86, Glexan_80, Goku_79, GoldenSpark_85, Goldilocks_84, GooberAzure_84, HanKaySha_81, Harella_81, Henry_79, Highbury_80, Holt_86, Hoonter_84, Hopey_81, HufflyPuff_84, IHOP_79, Icee_82, Inca_78, JeTaime_81, Kanye_78, Kimchi_85, Lilac_83, Lilizi_82, Lilpickle_80, MISSy_82, MPhalcon_82, MadamMonkfish_81, Manda_82, Marshmallow_79, Maxxinista_83, Miniwave_76, Misfit_82, Moldemort_84, Mosby_77, Murica_84, Murphy_81, Myrale_81, Nala_83, NelitzaMV_79, Nimrod_82, NoSleep_82, OrionPax_80, Palpatine_83, Paperbeatsrock_80, Pat3_79, Petra64142_85, Phaja_79, Pharsalus_78, PhatBacter_85, Phaux_83, Phrux_78, Policronamos_85, Porky_80, Pumpkin_84, Quallification_82, Rakim_82, Rimmer_82, RiverMonster_81, Saints25_80, Sassay_76, ShamWow_81, ShereKhan_79, Simpliphy_80, SirDuracell_80, SophKB_78, Sotrice96_82, Stark_82, StellaBean_79, StolenFromERC_84, TBrady12_84, Tarkin_80, TeardropMSU_77, Teaspoon_82, Terminus_84, Thresher_83, Tomaszewski_76, Traaww1_77, Tuco_82, Ukulele_76, Wiggin_83, Willez_76, Xandras_80, YassJohnny_78, Youngblood_84, xkcd_84,

Genes that have the "Most Annotated" start but do not call it:

- BadStone_78, BilboSwaggins_80, Kostya_81, Mindy_80, Stank_84, Toto_79,

Genes that do not have the "Most Annotated" start:

- Acquire49_68, Adora_67, Aegeus_75, Antuna_45, Appa_44, Appletree2_67, ArV2_61, Archie_69, Asapag_84, Auspice_69, AvadaKedavra_68, Aziz_76, Azrael100_79, Baoshan_69, Baudelaire_75, Bazzle_70, Bellis_67, BigCheese_70, Birdsong_83, Blett_44, BobsGarage_70, Bongo_69, BourbonZero_70, BrainDrainer_69, Breezona_70, Bricole_68, Bromden_70, Bush_45, Calm_69, Chaser_67, CheeseTouch_96, CicholasNage_66, Claus_72, Clautastrophe_68, Cosmo_80, Crossroads_70, DHan_73, DanBing_72, DatBoi_83, Diminimus_70, DirkDirk_65, DobbysSock_65, Dorito_63, Douge_69, Douzhi_69, DrSeegs_70, Dropshot_44, Dulcita_70, DuncansLeg_69, DyoEdafos_73, Ellson_68, Enceladus_65, EniyanLRS_76, Estes_78, Faith1_70, FarmResident_71, Finemlucis_70, Finnry_69, Gabriela_67, Gardann_71, GardenSalsa_78, GenevaB15_77, Glaske16_71, GuuelaD_68, Hafay_72, Halena_66, Hortense_70, Howe_70, IPhane7_69, Itos_69, Jobypre_70, JoeDirt_68, Jubie_68, Kahlid_70, Kingsolomon_67, KirDoubleO7_67, Kithara_72, Krypton555_70, Kudrefre_79, Kumao_65, LeBron_67, Lewan_71, LilDestine_70, LilhomieP_69, LiyuLake_68, Loadrie_69, Lolly9_69, Lumos_70, MAckerman_66, MaryV_80, MenE_45, Miley16_70, MiniLon_73, MiniMac_73, MkaliMitinis3_71, Moostard_67, MrMagoo_79, MrSmee_56, MsGreen_69, Nanosmite_74, Netyap_71, Neville_71, Nicholas_67, Nicholasp3_70, Octobien14_77, OhShagHennessy_66, PYPDinur_67, PegLeg_68, Phonegingi_44, Pickles13_43, Quby_69, Rabbitrun_74, Reindeer_71, Rey_75, Rose5_68, Rumpelstiltskin_69, Samty_69, Sarshaun_71, Sephiroth_77, Sheng711_69, Shlim410_68, Silverleaf_68, Skinny_72, SlimJimmy_69, Snenia_68, Soap141_70, Syleon_80, Tourach_70, Trax_74, Twinkle_69, TyDawg_69, Tyson_69, UPIE_67, Vetrix_70, Wamburggrxpress_68, Warren_44, Whirlwind_70, Wigglewiggles_70, Wildcat_80, Wilder_71, Winky_70, Wyatt2_69, Zakai_71, Zaria_69, ZhongYanYuan_69,

Summary by start number:

Start 13:

- Found in 8 of 275 (2.9%) of genes in pham
- Manual Annotations of this start: 4 of 245
- Called 100.0% of time when present
- Phage (with cluster) where this start called: BrainDrainer_69 (L4), Bromden_70 (L4), Chaser_67 (L4), Douge_69 (L4), Douzhi_69 (L4), DyoEdafos_73 (L4), PYPDinur_67 (L4), Sheng711_69 (L4),

Start 14:

- Found in 36 of 275 (13.1%) of genes in pham
- No Manual Annotations of this start.
- Called 5.6% of time when present
- Phage (with cluster) where this start called: Bellis_67 (L3), KirDoubleO7_67 (L3),

Start 16:

- Found in 2 of 275 (0.7%) of genes in pham
- No Manual Annotations of this start.
- Called 100.0% of time when present
- Phage (with cluster) where this start called: FarmResident_71 (L4), Quby_69 (L4),

Start 17:

- Found in 6 of 275 (2.2%) of genes in pham

- No Manual Annotations of this start.
- Called 16.7% of time when present
- Phage (with cluster) where this start called: ArV2_61 (singleton),

Start 18:

- Found in 1 of 275 (0.4%) of genes in pham
- Manual Annotations of this start: 1 of 245
- Called 100.0% of time when present
- Phage (with cluster) where this start called: DatBoi_83 (DL),

Start 20:

- Found in 7 of 275 (2.5%) of genes in pham
- Manual Annotations of this start: 7 of 245
- Called 100.0% of time when present
- Phage (with cluster) where this start called: Kudefre_79 (DU1), Neville_71 (DU2), Octobien14_77 (DU1), Rabbitrun_74 (DU2), Sephiroth_77 (DU1), Syleon_80 (DU1), Trax_74 (DU2),

Start 21:

- Found in 16 of 275 (5.8%) of genes in pham
- Manual Annotations of this start: 6 of 245
- Called 37.5% of time when present
- Phage (with cluster) where this start called: Auspice_69 (M1), Bongo_69 (M1), Diminimus_70 (M1), Dulcita_70 (M1), Nanosmite_74 (M3), TyDawg_69 (M1),

Start 22:

- Found in 2 of 275 (0.7%) of genes in pham
- Manual Annotations of this start: 2 of 245
- Called 100.0% of time when present
- Phage (with cluster) where this start called: Aegeus_75 (L5), Baudelaire_75 (L5),

Start 23:

- Found in 4 of 275 (1.5%) of genes in pham
- Manual Annotations of this start: 4 of 245
- Called 100.0% of time when present
- Phage (with cluster) where this start called: Glaske16_71 (M1), LilhomieP_69 (M1), Skinny_72 (M1), SlimJimmy_69 (M1),

Start 25:

- Found in 77 of 275 (28.0%) of genes in pham
- Manual Annotations of this start: 62 of 245
- Called 94.8% of time when present
- Phage (with cluster) where this start called: Acquire49_68 (L1), Appletree2_67 (L1), Archie_69 (L2), AvadaKedavra_68 (L1), Baoshan_69 (L2), Bazzle_70 (L2), BigCheese_70 (L2), BobsGarage_70 (L2), BourbonZero_70 (L3), Breezona_70 (L2), Calm_69 (L1), CicholasNage_66 (L1), Claus_72 (L2), Clautastrophe_68 (L3), Crossroads_70 (L2), DHan_73 (L2), DanBing_72 (L2), DrSeegs_70 (L2), DuncansLeg_69 (L3), Ellson_68 (L3), Enceladus_65 (L1), Faith1_70 (L2), Finemlucis_70 (L2), Finnry_69 (L3), Gabriela_67 (L2), Gardann_71 (L2), GuuelaD_68 (L2), Hafay_72 (L2), Halena_66 (L1), Itos_69 (L2), Jobypre_70 (L3), JoeDirt_68 (L1), Jubie_68 (L3), Kahlid_70 (L2), Kingsolomon_67 (L3), Krypton555_70 (L3), LeBron_67 (L1), Lewan_71 (L2), LilDestine_70 (L2), Loadrie_69 (L2), Lolly9_69 (L3), Lumos_70 (L3), MAckerman_66 (L1), Miley16_70 (L2), MiniLon_73 (L3), MiniMac_73

(L3), MkaliMitinis3_71 (L2), Moostard_67 (L3), MsGreen_69 (L3), Netyap_71 (L2), Nicholas_67 (L3), Nicholasp3_70 (L2), OhShagHennessy_66 (L1), Rose5_68 (L1), Rumpelstiltskin_69 (L2), Samty_69 (L3), Sarshaun_71 (L2), Silverleaf_68 (L1), Snenia_68 (L3), Soap141_70 (L2), Tourach_70 (L2), Tyson_69 (L1), UPIE_67 (L1), Vetrix_70 (L2), Wamburgrxpress_68 (L1), Whirlwind_70 (L3), Wigglewiggle_70 (L2), Wilder_71 (L2), Winky_70 (L2), Wyatt2_69 (L1), Zakai_71 (L2), Zaria_69 (L1), ZhongYanYuan_69 (L2),

Start 26:

- Found in 130 of 275 (47.3%) of genes in pham
- Manual Annotations of this start: 118 of 245
- Called 95.4% of time when present
- Phage (with cluster) where this start called: 244_82 (E), ABCat_78 (E), Adnama_85 (E), Amao_81 (E), AmericanBeauty_85 (E), Argent26_85 (E), Asriel_80 (E), BaboJay_78 (E), Balomoji_81 (E), Barbarian_80 (E), Bask21_81 (E), Bench_84 (E), BigBubba_81 (E), Bruin_78 (E), Buck_82 (E), BugsBunny_81 (E), Cactus_84 (E), ChosenOne_81 (E), ChotaBhai_81 (E), Cjw1_81 (E), Command613_83 (E), Contagion_77 (E), Cookies_78 (E), CrystalP_80 (E), Czyszczonek_82 (E), Daikon_83 (E), DoctorDiddles_80 (E), DrDrey_81 (E), Dumbo_81 (E), Dusk_78 (E), Easy2Say_82 (E), Elite2014_80 (E), Elph10_81 (E), Emmina_81 (E), Eureka_79 (E), Filch_82 (E), FireRed_85 (E), Flypotenuse_77 (E), Gage_83 (E), Gator_79 (E), Gemini_86 (E), Glexan_80 (E), Goku_79 (E), GoldenSpark_85 (E), Goldilocks_84 (E), GooberAzure_84 (E), HanKaySha_81 (E), Harella_81 (E), Henry_79 (E), Highbury_80 (E), Holt_86 (E), Hoonter_84 (E), Hopey_81 (E), HuffyPuff_84 (E), IHOP_79 (E), Icee_82 (E), Inca_78 (E), JeTaime_81 (E), Kanye_78 (E), Kimchi_85 (E), Lilac_83 (E), Lilizi_82 (E), Lilpickle_80 (E), MISSy_82 (E), MPhalcon_82 (E), MadamMonkfish_81 (E), Manda_82 (E), Marshmallow_79 (E), Maxxinista_83 (E), Miniwave_76 (E), Misfit_82 (E), Moldemort_84 (E), Mosby_77 (E), Murica_84 (E), Murphy_81 (E), Myrale_81 (E), Nala_83 (E), NelitzaMV_79 (E), Nimrod_82 (E), NoSleep_82 (E), OrionPax_80 (E), Palpatine_83 (E), Paperbeatsrock_80 (E), Pat3_79 (E), Petra64142_85 (E), Phaja_79 (E), Pharsalus_78 (E), PhatBacter_85 (E), Phaux_83 (E), Phrux_78 (E), Policronamos_85 (E), Porky_80 (E), Pumpkin_84 (E), Quallification_82 (E), Rakim_82 (E), Rimmer_82 (E), RiverMonster_81 (E), Saints25_80 (E), Sassay_76 (E), ShamWow_81 (E), ShereKhan_79 (E), Simpliphy_80 (E), SirDuracell_80 (E), SophKB_78 (E), Sotrice96_82 (E), Stark_82 (E), StellaBean_79 (E), StolenFromERC_84 (E), TBrady12_84 (E), Tarkin_80 (E), TeardropMSU_77 (E), Teaspoon_82 (E), Terminus_84 (E), Thresher_83 (E), Tomaszewski_76 (E), Traaww1_77 (E), Tuco_82 (E), Ukulele_76 (E), Wiggin_83 (E), Willez_76 (E), Xandras_80 (E), YassJohnny_78 (E), Youngblood_84 (E), xkcd_84 (E),

Start 27:

- Found in 2 of 275 (0.7%) of genes in pham
- No Manual Annotations of this start.
- Called 50.0% of time when present
- Phage (with cluster) where this start called: Kithara_72 (singleton),

Start 28:

- Found in 1 of 275 (0.4%) of genes in pham
- Manual Annotations of this start: 1 of 245
- Called 100.0% of time when present
- Phage (with cluster) where this start called: Kumao_65 (singleton),

Start 29:

- Found in 1 of 275 (0.4%) of genes in pham
- No Manual Annotations of this start.
- Called 100.0% of time when present
- Phage (with cluster) where this start called: MrSmee_56 (UNK),

Start 30:

- Found in 5 of 275 (1.8%) of genes in pham
- Manual Annotations of this start: 5 of 245
- Called 100.0% of time when present
- Phage (with cluster) where this start called: Azrael100_79 (V), Cosmo_80 (V), EniyanLRS_76 (V), MaryV_80 (V), Wildcat_80 (V),

Start 31:

- Found in 10 of 275 (3.6%) of genes in pham
- Manual Annotations of this start: 10 of 245
- Called 100.0% of time when present
- Phage (with cluster) where this start called: Adora_67 (CZ4), Asapag_84 (DN1), Birdsong_83 (DN), CheeseTouch_96 (DN1), DobbysSock_65 (CZ4), Dorito_63 (CZ4), Hortense_70 (CZ4), Howe_70 (CZ4), Shlim410_68 (CZ4), Twinkle_69 (CZ4),

Start 32:

- Found in 2 of 275 (0.7%) of genes in pham
- Manual Annotations of this start: 2 of 245
- Called 100.0% of time when present
- Phage (with cluster) where this start called: Blett_44 (GA), Bush_45 (GA),

Start 33:

- Found in 7 of 275 (2.5%) of genes in pham
- Manual Annotations of this start: 7 of 245
- Called 100.0% of time when present
- Phage (with cluster) where this start called: Antuna_45 (GA), Appa_44 (GA), Dropshot_44 (GA), MenE_45 (GA), Phonegingi_44 (GA), Pickles13_43 (GA), Warren_44 (GA),

Start 39:

- Found in 134 of 275 (48.7%) of genes in pham
- Manual Annotations of this start: 5 of 245
- Called 4.5% of time when present
- Phage (with cluster) where this start called: BadStone_78 (E), BilboSwaggins_80 (E), Kostya_81 (E), Mindy_80 (E), Stank_84 (E), Toto_79 (E),

Start 41:

- Found in 76 of 275 (27.6%) of genes in pham
- Manual Annotations of this start: 1 of 245
- Called 2.6% of time when present
- Phage (with cluster) where this start called: DirkDirk_65 (L1), LiyuLake_68 (L3),

Start 52:

- Found in 5 of 275 (1.8%) of genes in pham
- Manual Annotations of this start: 5 of 245
- Called 100.0% of time when present

- Phage (with cluster) where this start called: Aziz_76 (M2), Estes_78 (M2), GardenSalsa_78 (M2), GenevaB15_77 (M2), MrMagoo_79 (M2),

Start 56:

- Found in 40 of 275 (14.5%) of genes in pham
- Manual Annotations of this start: 5 of 245
- Called 12.5% of time when present
- Phage (with cluster) where this start called: Bricole_68 (M1), IPhone7_69 (M1), PegLeg_68 (M1), Reindeer_71 (M1), Rey_75 (M2),

Summary by clusters:

There are 19 clusters represented in this pham: DN, singleton, E, DN1, DL, V, DU1, CZ4, L4, L5, M1, L3, GA, L1, L2, DU2, UNK, M2, M3,

Info for manual annotations of cluster CZ4:

- Start number 31 was manually annotated 7 times for cluster CZ4.

Info for manual annotations of cluster DL:

- Start number 18 was manually annotated 1 time for cluster DL.

Info for manual annotations of cluster DN:

- Start number 31 was manually annotated 1 time for cluster DN.

Info for manual annotations of cluster DN1:

- Start number 31 was manually annotated 2 times for cluster DN1.

Info for manual annotations of cluster DU1:

- Start number 20 was manually annotated 4 times for cluster DU1.

Info for manual annotations of cluster DU2:

- Start number 20 was manually annotated 3 times for cluster DU2.

Info for manual annotations of cluster E:

- Start number 26 was manually annotated 118 times for cluster E.
- Start number 39 was manually annotated 5 times for cluster E.

Info for manual annotations of cluster GA:

- Start number 32 was manually annotated 2 times for cluster GA.
- Start number 33 was manually annotated 7 times for cluster GA.

Info for manual annotations of cluster L1:

- Start number 25 was manually annotated 18 times for cluster L1.
- Start number 41 was manually annotated 1 time for cluster L1.

Info for manual annotations of cluster L2:

- Start number 25 was manually annotated 28 times for cluster L2.

Info for manual annotations of cluster L3:

- Start number 25 was manually annotated 16 times for cluster L3.

Info for manual annotations of cluster L4:

- Start number 13 was manually annotated 4 times for cluster L4.

Info for manual annotations of cluster L5:

- Start number 22 was manually annotated 2 times for cluster L5.

Info for manual annotations of cluster M1:

- Start number 21 was manually annotated 5 times for cluster M1.
- Start number 23 was manually annotated 4 times for cluster M1.
- Start number 56 was manually annotated 4 times for cluster M1.

Info for manual annotations of cluster M2:

- Start number 52 was manually annotated 5 times for cluster M2.
- Start number 56 was manually annotated 1 time for cluster M2.

Info for manual annotations of cluster M3:

- Start number 21 was manually annotated 1 time for cluster M3.

Info for manual annotations of cluster V:

- Start number 30 was manually annotated 5 times for cluster V.

Gene Information:

Gene: 244_82 Start: 50124, Stop: 51386, Start Num: 26

Candidate Starts for 244_82:

(Start: 26 @50124 has 118 MA's), (Start: 39 @50178 has 5 MA's), (45, 50211), (58, 50286), (67, 50343), (73, 50379), (76, 50391), (102, 50562), (127, 50712), (145, 50811), (146, 50817), (149, 50832), (161, 50895), (177, 50994), (181, 51012), (185, 51027), (186, 51030), (187, 51033), (191, 51054), (198, 51120), (202, 51141), (203, 51144), (204, 51147), (227, 51306), (229, 51312), (234, 51342), (238, 51354), (240, 51369),

Gene: ABCat_78 Start: 50477, Stop: 51739, Start Num: 26

Candidate Starts for ABCat_78:

(Start: 26 @50477 has 118 MA's), (Start: 39 @50531 has 5 MA's), (45, 50564), (58, 50639), (67, 50696), (73, 50732), (76, 50744), (102, 50915), (127, 51065), (145, 51164), (146, 51170), (149, 51185), (161, 51248), (177, 51347), (181, 51365), (185, 51380), (186, 51383), (187, 51386), (191, 51407), (198, 51473), (202, 51494), (203, 51497), (204, 51500), (227, 51659), (229, 51665), (234, 51695), (238, 51707), (240, 51722),

Gene: Acquire49_68 Start: 46058, Stop: 47323, Start Num: 25

Candidate Starts for Acquire49_68:

(14, 46025), (Start: 25 @46058 has 62 MA's), (40, 46118), (Start: 41 @46121 has 1 MA's), (47, 46154), (51, 46202), (55, 46211), (60, 46247), (72, 46313), (80, 46367), (86, 46403), (106, 46526), (109, 46541), (123, 46616), (125, 46631), (134, 46694), (136, 46700), (142, 46736), (146, 46754), (149, 46769), (150, 46772), (153, 46781), (155, 46784), (160, 46820), (166, 46868), (169, 46886), (187, 46973), (190, 46991), (192, 47015), (194, 47033), (195, 47042), (202, 47081), (204, 47087), (208, 47105), (210, 47135), (218, 47195), (221, 47204), (233, 47273),

Gene: Adnama_85 Start: 50500, Stop: 51762, Start Num: 26

Candidate Starts for Adnama_85:

(Start: 26 @50500 has 118 MA's), (Start: 39 @50554 has 5 MA's), (45, 50587), (58, 50662), (67, 50719), (73, 50755), (76, 50767), (102, 50938), (127, 51088), (145, 51187), (146, 51193), (149,

51208), (161, 51271), (177, 51370), (181, 51388), (185, 51403), (186, 51406), (187, 51409), (191, 51430), (198, 51496), (202, 51517), (203, 51520), (204, 51523), (227, 51682), (229, 51688), (234, 51718), (238, 51730), (240, 51745),

Gene: Adora_67 Start: 46139, Stop: 47392, Start Num: 31

Candidate Starts for Adora_67:

(12, 46088), (Start: 31 @46139 has 10 MA's), (37, 46184), (38, 46187), (50, 46238), (93, 46481), (104, 46568), (108, 46586), (125, 46685), (136, 46754), (143, 46793), (146, 46808), (164, 46904), (169, 46940), (177, 46985), (182, 47006), (186, 47033), (195, 47105), (200, 47132), (204, 47150),

Gene: Aegeus_75 Start: 48123, Stop: 49394, Start Num: 22

Candidate Starts for Aegeus_75:

(Start: 22 @48123 has 2 MA's), (Start: 39 @48183 has 5 MA's), (40, 48186), (60, 48315), (61, 48321), (65, 48342), (71, 48378), (74, 48390), (79, 48420), (81, 48438), (84, 48456), (87, 48474), (89, 48480), (91, 48495), (95, 48525), (126, 48714), (128, 48720), (138, 48780), (143, 48807), (146, 48822), (150, 48840), (158, 48870), (173, 48969), (185, 49035), (187, 49041), (190, 49059), (192, 49083), (194, 49101), (197, 49122), (198, 49128), (204, 49155), (205, 49158), (219, 49266), (222, 49275), (226, 49305), (227, 49311), (229, 49317), (233, 49341), (235, 49350), (237, 49356),

Gene: Amao_81 Start: 49894, Stop: 51156, Start Num: 26

Candidate Starts for Amao_81:

(Start: 26 @49894 has 118 MA's), (Start: 39 @49948 has 5 MA's), (45, 49981), (58, 50056), (73, 50149), (102, 50332), (110, 50374), (127, 50482), (145, 50581), (146, 50587), (149, 50602), (161, 50665), (177, 50764), (181, 50782), (185, 50797), (186, 50800), (187, 50803), (191, 50824), (198, 50890), (202, 50911), (203, 50914), (204, 50917), (227, 51076), (229, 51082), (234, 51112), (240, 51139),

Gene: AmericanBeauty_85 Start: 50646, Stop: 51908, Start Num: 26

Candidate Starts for AmericanBeauty_85:

(Start: 26 @50646 has 118 MA's), (Start: 39 @50700 has 5 MA's), (45, 50733), (58, 50808), (67, 50865), (73, 50901), (76, 50913), (102, 51084), (127, 51234), (145, 51333), (146, 51339), (149, 51354), (161, 51417), (177, 51516), (181, 51534), (185, 51549), (186, 51552), (187, 51555), (191, 51576), (198, 51642), (202, 51663), (203, 51666), (204, 51669), (227, 51828), (229, 51834), (234, 51864), (238, 51876), (240, 51891),

Gene: Antuna_45 Start: 27263, Stop: 28567, Start Num: 33

Candidate Starts for Antuna_45:

(2, 27017), (Start: 33 @27263 has 7 MA's), (36, 27296), (44, 27338), (54, 27404), (73, 27512), (76, 27524), (81, 27563), (88, 27602), (99, 27665), (105, 27716), (113, 27749), (121, 27800), (132, 27878), (135, 27887), (143, 27926), (146, 27941), (160, 28007), (174, 28103), (180, 28130), (182, 28139), (202, 28277), (204, 28283), (208, 28301), (209, 28325), (219, 28388), (237, 28493),

Gene: Appa_44 Start: 27173, Stop: 28477, Start Num: 33

Candidate Starts for Appa_44:

(2, 26915), (Start: 33 @27173 has 7 MA's), (36, 27206), (44, 27248), (47, 27257), (54, 27314), (73, 27422), (76, 27434), (81, 27473), (88, 27512), (99, 27575), (105, 27626), (113, 27659), (118, 27683), (121, 27710), (132, 27788), (135, 27797), (143, 27836), (146, 27851), (160, 27917), (161, 27929), (174, 28013), (180, 28040), (182, 28049), (202, 28187), (204, 28193), (208, 28211), (209, 28235), (219, 28298),

Gene: Appletree2_67 Start: 45673, Stop: 46938, Start Num: 25

Candidate Starts for Appletree2_67:

(14, 45640), (Start: 25 @45673 has 62 MA's), (40, 45733), (Start: 41 @45736 has 1 MA's), (47, 45769), (51, 45817), (55, 45826), (60, 45862), (72, 45928), (80, 45982), (86, 46018), (106, 46141), (109, 46156), (123, 46231), (125, 46246), (134, 46309), (136, 46315), (142, 46351), (146, 46369), (149, 46384), (150, 46387), (153, 46396), (155, 46399), (160, 46435), (187, 46588), (190, 46606), (192, 46630), (194, 46648), (195, 46657), (202, 46696), (204, 46702), (208, 46720), (210, 46750), (218, 46810), (221, 46819), (233, 46888),

Gene: ArV2_61 Start: 33084, Stop: 34412, Start Num: 17

Candidate Starts for ArV2_61:

(17, 33084), (27, 33099), (35, 33129), (36, 33144), (Start: 39 @33156 has 5 MA's), (65, 33315), (75, 33369), (112, 33585), (130, 33702), (146, 33780), (154, 33810), (188, 34011), (191, 34029), (195, 34080), (199, 34101), (200, 34107), (201, 34113), (212, 34176), (213, 34182), (224, 34257), (227, 34284), (244, 34359),

Gene: Archie_69 Start: 47541, Stop: 48806, Start Num: 25

Candidate Starts for Archie_69:

(Start: 25 @47541 has 62 MA's), (55, 47694), (60, 47730), (74, 47805), (80, 47850), (81, 47853), (85, 47880), (109, 48024), (134, 48177), (146, 48237), (153, 48264), (155, 48267), (160, 48303), (161, 48315), (167, 48357), (172, 48381), (173, 48384), (178, 48417), (188, 48459), (192, 48498), (194, 48516), (195, 48525), (202, 48564), (204, 48570), (208, 48588), (218, 48678), (227, 48726), (233, 48756),

Gene: Argent26_85 Start: 50284, Stop: 51546, Start Num: 26

Candidate Starts for Argent26_85:

(Start: 26 @50284 has 118 MA's), (Start: 39 @50338 has 5 MA's), (45, 50371), (58, 50446), (67, 50503), (73, 50539), (76, 50551), (102, 50722), (127, 50872), (145, 50971), (146, 50977), (149, 50992), (161, 51055), (177, 51154), (181, 51172), (185, 51187), (186, 51190), (187, 51193), (191, 51214), (198, 51280), (202, 51301), (203, 51304), (204, 51307), (227, 51466), (229, 51472), (234, 51502), (238, 51514), (240, 51529),

Gene: Asapag_84 Start: 48091, Stop: 49344, Start Num: 31

Candidate Starts for Asapag_84:

(Start: 31 @48091 has 10 MA's), (36, 48127), (48, 48178), (66, 48295), (67, 48298), (68, 48301), (93, 48433), (104, 48520), (116, 48577), (131, 48691), (134, 48700), (143, 48745), (146, 48760), (163, 48853), (169, 48892), (176, 48928), (179, 48946), (186, 48985), (195, 49057), (197, 49069), (200, 49084), (202, 49096), (229, 49270),

Gene: Asriel_80 Start: 48837, Stop: 50099, Start Num: 26

Candidate Starts for Asriel_80:

(Start: 26 @48837 has 118 MA's), (Start: 39 @48891 has 5 MA's), (45, 48924), (58, 48999), (67, 49056), (73, 49092), (76, 49104), (102, 49275), (127, 49425), (145, 49524), (146, 49530), (149, 49545), (161, 49608), (177, 49707), (181, 49725), (185, 49740), (186, 49743), (187, 49746), (191, 49767), (198, 49833), (202, 49854), (203, 49857), (204, 49860), (227, 50019), (229, 50025), (234, 50055), (238, 50067), (240, 50082),

Gene: Auspice_69 Start: 44854, Stop: 46140, Start Num: 21

Candidate Starts for Auspice_69:

(11, 44818), (Start: 21 @44854 has 6 MA's), (Start: 56 @45013 has 5 MA's), (74, 45118), (104, 45304), (140, 45508), (150, 45559), (161, 45619), (165, 45643), (172, 45685), (190, 45787), (191, 45790), (193, 45817), (195, 45835), (203, 45877), (204, 45880), (206, 45886), (223, 46015), (226, 46045), (227, 46051), (228, 46054), (230, 46060), (232, 46087), (236, 46099), (241, 46123), (243, 46129),

Gene: AvadaKedavra_68 Start: 46131, Stop: 47396, Start Num: 25

Candidate Starts for AvadaKedavra_68:

(14, 46098), (Start: 25 @46131 has 62 MA's), (40, 46191), (Start: 41 @46194 has 1 MA's), (47, 46227), (51, 46275), (55, 46284), (60, 46320), (72, 46386), (80, 46440), (82, 46446), (86, 46476), (106, 46599), (109, 46614), (123, 46689), (125, 46704), (134, 46767), (136, 46773), (142, 46809), (146, 46827), (149, 46842), (150, 46845), (153, 46854), (155, 46857), (160, 46893), (166, 46941), (169, 46959), (187, 47046), (190, 47064), (192, 47088), (194, 47106), (195, 47115), (202, 47154), (204, 47160), (208, 47178), (210, 47208), (218, 47268), (221, 47277), (233, 47346),

Gene: Aziz_76 Start: 47038, Stop: 48180, Start Num: 52

Candidate Starts for Aziz_76:

(Start: 21 @46891 has 6 MA's), (Start: 52 @47038 has 5 MA's), (53, 47041), (Start: 56 @47050 has 5 MA's), (58, 47056), (61, 47086), (97, 47290), (98, 47293), (104, 47344), (111, 47377), (121, 47434), (132, 47515), (150, 47599), (161, 47659), (163, 47674), (172, 47725), (186, 47806), (194, 47866), (195, 47875), (204, 47920), (206, 47926), (213, 47983), (223, 48055), (226, 48085), (227, 48091), (228, 48094), (230, 48100), (231, 48109), (236, 48139), (243, 48169),

Gene: Azrael100_79 Start: 50009, Stop: 51334, Start Num: 30

Candidate Starts for Azrael100_79:

(15, 49967), (17, 49976), (Start: 30 @50009 has 5 MA's), (53, 50144), (Start: 56 @50153 has 5 MA's), (80, 50303), (81, 50306), (82, 50309), (91, 50363), (99, 50399), (125, 50561), (126, 50576), (128, 50582), (129, 50585), (141, 50663), (143, 50669), (145, 50678), (150, 50702), (156, 50720), (159, 50747), (172, 50828), (178, 50864), (185, 50906), (186, 50909), (202, 51017), (203, 51020), (204, 51023), (217, 51125), (218, 51134), (220, 51140), (222, 51146), (228, 51194), (231, 51209), (247, 51305), (248, 51326),

Gene: BaboJay_78 Start: 49677, Stop: 50939, Start Num: 26

Candidate Starts for BaboJay_78:

(Start: 26 @49677 has 118 MA's), (Start: 39 @49731 has 5 MA's), (45, 49764), (58, 49839), (67, 49896), (73, 49932), (76, 49944), (102, 50115), (127, 50265), (145, 50364), (146, 50370), (149, 50385), (161, 50448), (177, 50547), (181, 50565), (185, 50580), (186, 50583), (187, 50586), (191, 50607), (198, 50673), (202, 50694), (203, 50697), (204, 50700), (227, 50859), (229, 50865), (234, 50895), (238, 50907), (240, 50922),

Gene: BadStone_78 Start: 50100, Stop: 51308, Start Num: 39

Candidate Starts for BadStone_78:

(Start: 26 @50046 has 118 MA's), (Start: 39 @50100 has 5 MA's), (45, 50133), (58, 50208), (67, 50265), (73, 50301), (76, 50313), (102, 50484), (127, 50634), (145, 50733), (146, 50739), (149, 50754), (161, 50817), (177, 50916), (181, 50934), (185, 50949), (186, 50952), (187, 50955), (191, 50976), (198, 51042), (202, 51063), (203, 51066), (204, 51069), (227, 51228), (229, 51234), (234, 51264), (238, 51276), (240, 51291),

Gene: Balomoji_81 Start: 50607, Stop: 51869, Start Num: 26

Candidate Starts for Balomoji_81:

(Start: 26 @50607 has 118 MA's), (Start: 39 @50661 has 5 MA's), (45, 50694), (58, 50769), (67, 50826), (73, 50862), (76, 50874), (102, 51045), (127, 51195), (145, 51294), (146, 51300), (149, 51315), (161, 51378), (177, 51477), (181, 51495), (185, 51510), (186, 51513), (187, 51516), (191, 51537), (198, 51603), (202, 51624), (203, 51627), (204, 51630), (227, 51789), (229, 51795), (234, 51825), (238, 51837), (240, 51852),

Gene: Baoshan_69 Start: 47813, Stop: 49078, Start Num: 25

Candidate Starts for Baoshan_69:

(Start: 25 @47813 has 62 MA's), (Start: 41 @47876 has 1 MA's), (60, 48002), (80, 48122), (81, 48125), (85, 48152), (109, 48296), (125, 48386), (134, 48449), (136, 48455), (146, 48509), (153, 48536), (155, 48539), (160, 48575), (167, 48629), (173, 48656), (178, 48689), (185, 48722), (188, 48731), (190, 48746), (192, 48770), (194, 48788), (195, 48797), (202, 48836), (204, 48842), (208, 48860), (218, 48950), (221, 48959), (222, 48962), (227, 48998), (233, 49028),

Gene: Barbarian_80 Start: 48837, Stop: 50099, Start Num: 26

Candidate Starts for Barbarian_80:

(Start: 26 @48837 has 118 MA's), (Start: 39 @48891 has 5 MA's), (45, 48924), (58, 48999), (67, 49056), (73, 49092), (76, 49104), (102, 49275), (127, 49425), (145, 49524), (146, 49530), (149, 49545), (161, 49608), (177, 49707), (181, 49725), (185, 49740), (186, 49743), (187, 49746), (191, 49767), (198, 49833), (202, 49854), (203, 49857), (204, 49860), (227, 50019), (229, 50025), (234, 50055), (238, 50067), (240, 50082),

Gene: Bask21_81 Start: 49460, Stop: 50722, Start Num: 26

Candidate Starts for Bask21_81:

(Start: 26 @49460 has 118 MA's), (Start: 39 @49514 has 5 MA's), (45, 49547), (58, 49622), (67, 49679), (73, 49715), (76, 49727), (102, 49898), (127, 50048), (145, 50147), (146, 50153), (149, 50168), (161, 50231), (177, 50330), (181, 50348), (185, 50363), (186, 50366), (187, 50369), (191, 50390), (198, 50456), (202, 50477), (203, 50480), (204, 50483), (227, 50642), (229, 50648), (234, 50678), (238, 50690), (240, 50705),

Gene: Baudelaire_75 Start: 48123, Stop: 49394, Start Num: 22

Candidate Starts for Baudelaire_75:

(Start: 22 @48123 has 2 MA's), (Start: 39 @48183 has 5 MA's), (40, 48186), (60, 48315), (61, 48321), (65, 48342), (71, 48378), (74, 48390), (79, 48420), (81, 48438), (84, 48456), (87, 48474), (89, 48480), (91, 48495), (95, 48525), (126, 48714), (128, 48720), (138, 48780), (143, 48807), (146, 48822), (150, 48840), (158, 48870), (173, 48969), (185, 49035), (187, 49041), (190, 49059), (192, 49083), (194, 49101), (197, 49122), (198, 49128), (204, 49155), (205, 49158), (219, 49266), (222, 49275), (226, 49305), (227, 49311), (229, 49317), (233, 49341), (235, 49350), (237, 49356),

Gene: Bazzle_70 Start: 47921, Stop: 49186, Start Num: 25

Candidate Starts for Bazzle_70:

(Start: 25 @47921 has 62 MA's), (Start: 41 @47984 has 1 MA's), (55, 48074), (60, 48110), (74, 48185), (80, 48230), (81, 48233), (85, 48260), (109, 48404), (134, 48557), (146, 48617), (153, 48644), (155, 48647), (160, 48683), (161, 48695), (167, 48737), (173, 48764), (178, 48797), (188, 48839), (192, 48878), (194, 48896), (195, 48905), (202, 48944), (204, 48950), (208, 48968), (218, 49058), (227, 49106), (233, 49136),

Gene: Bellis_67 Start: 47881, Stop: 49179, Start Num: 14

Candidate Starts for Bellis_67:

(14, 47881), (Start: 25 @47914 has 62 MA's), (Start: 41 @47977 has 1 MA's), (47, 48010), (55, 48067), (Start: 56 @48073 has 5 MA's), (59, 48094), (60, 48103), (80, 48223), (81, 48226), (85, 48253), (95, 48316), (107, 48388), (109, 48397), (134, 48550), (145, 48604), (146, 48610), (155, 48640), (158, 48658), (160, 48676), (169, 48742), (172, 48754), (178, 48790), (188, 48832), (194, 48889), (195, 48898), (204, 48943), (206, 48949), (218, 49051), (222, 49063), (227, 49099), (233, 49129),

Gene: Bench_84 Start: 50141, Stop: 51403, Start Num: 26

Candidate Starts for Bench_84:

(Start: 26 @50141 has 118 MA's), (Start: 39 @50195 has 5 MA's), (45, 50228), (58, 50303), (67, 50360), (73, 50396), (76, 50408), (102, 50579), (127, 50729), (145, 50828), (146, 50834), (149, 50849), (161, 50912), (177, 51011), (181, 51029), (185, 51044), (186, 51047), (187, 51050), (191,

51071), (198, 51137), (202, 51158), (203, 51161), (204, 51164), (227, 51323), (229, 51329), (234, 51359), (238, 51371), (240, 51386),

Gene: BigBubba_81 Start: 49853, Stop: 51115, Start Num: 26

Candidate Starts for BigBubba_81:

(Start: 26 @49853 has 118 MA's), (Start: 39 @49907 has 5 MA's), (45, 49940), (58, 50015), (67, 50072), (73, 50108), (76, 50120), (102, 50291), (127, 50441), (145, 50540), (146, 50546), (149, 50561), (161, 50624), (177, 50723), (181, 50741), (185, 50756), (186, 50759), (187, 50762), (191, 50783), (198, 50849), (202, 50870), (203, 50873), (204, 50876), (227, 51035), (229, 51041), (234, 51071), (238, 51083), (240, 51098),

Gene: BigCheese_70 Start: 47580, Stop: 48845, Start Num: 25

Candidate Starts for BigCheese_70:

(Start: 25 @47580 has 62 MA's), (Start: 41 @47643 has 1 MA's), (60, 47769), (80, 47889), (81, 47892), (85, 47919), (109, 48063), (125, 48153), (134, 48216), (136, 48222), (146, 48276), (160, 48342), (167, 48396), (173, 48423), (178, 48456), (185, 48489), (188, 48498), (190, 48513), (192, 48537), (194, 48555), (195, 48564), (202, 48603), (204, 48609), (208, 48627), (218, 48717), (221, 48726), (222, 48729), (227, 48765), (233, 48795),

Gene: BilboSwaggins_80 Start: 50536, Stop: 51744, Start Num: 39

Candidate Starts for BilboSwaggins_80:

(Start: 26 @50482 has 118 MA's), (Start: 39 @50536 has 5 MA's), (45, 50569), (58, 50644), (67, 50701), (73, 50737), (76, 50749), (102, 50920), (127, 51070), (145, 51169), (146, 51175), (149, 51190), (161, 51253), (177, 51352), (181, 51370), (185, 51385), (186, 51388), (187, 51391), (191, 51412), (198, 51478), (202, 51499), (203, 51502), (204, 51505), (227, 51664), (229, 51670), (234, 51700), (238, 51712), (240, 51727),

Gene: Birdsong_83 Start: 47827, Stop: 49080, Start Num: 31

Candidate Starts for Birdsong_83:

(Start: 31 @47827 has 10 MA's), (36, 47863), (48, 47914), (66, 48031), (67, 48034), (68, 48037), (93, 48169), (104, 48256), (116, 48313), (131, 48427), (134, 48436), (143, 48481), (146, 48496), (163, 48589), (169, 48628), (176, 48664), (179, 48682), (186, 48721), (195, 48793), (197, 48805), (200, 48820), (202, 48832), (229, 49006),

Gene: Blett_44 Start: 27368, Stop: 28672, Start Num: 32

Candidate Starts for Blett_44:

(Start: 32 @27368 has 2 MA's), (36, 27401), (44, 27443), (47, 27452), (54, 27509), (73, 27617), (76, 27629), (81, 27668), (88, 27707), (99, 27770), (105, 27821), (113, 27854), (121, 27905), (132, 27983), (135, 27992), (143, 28031), (146, 28046), (160, 28112), (174, 28208), (180, 28235), (182, 28244), (202, 28382), (204, 28388), (208, 28406), (209, 28430), (219, 28493),

Gene: BobsGarage_70 Start: 47580, Stop: 48845, Start Num: 25

Candidate Starts for BobsGarage_70:

(Start: 25 @47580 has 62 MA's), (Start: 41 @47643 has 1 MA's), (60, 47769), (80, 47889), (81, 47892), (85, 47919), (109, 48063), (125, 48153), (134, 48216), (136, 48222), (146, 48276), (160, 48342), (167, 48396), (173, 48423), (178, 48456), (185, 48489), (188, 48498), (190, 48513), (192, 48537), (194, 48555), (195, 48564), (202, 48603), (204, 48609), (208, 48627), (218, 48717), (221, 48726), (222, 48729), (227, 48765), (233, 48795),

Gene: Bongo_69 Start: 44858, Stop: 46144, Start Num: 21

Candidate Starts for Bongo_69:

(11, 44822), (Start: 21 @44858 has 6 MA's), (Start: 56 @45017 has 5 MA's), (74, 45122), (104, 45308), (140, 45512), (150, 45563), (161, 45623), (165, 45647), (172, 45689), (190, 45791), (191,

45794), (193, 45821), (195, 45839), (203, 45881), (204, 45884), (206, 45890), (223, 46019), (226, 46049), (227, 46055), (228, 46058), (230, 46064), (232, 46091), (236, 46103), (241, 46127), (243, 46133),

Gene: BourbonZero_70 Start: 47959, Stop: 49224, Start Num: 25

Candidate Starts for BourbonZero_70:

(14, 47926), (Start: 25 @47959 has 62 MA's), (Start: 41 @48022 has 1 MA's), (47, 48055), (55, 48112), (59, 48139), (60, 48148), (72, 48214), (80, 48268), (81, 48271), (85, 48298), (95, 48361), (109, 48442), (134, 48595), (146, 48655), (155, 48685), (158, 48703), (160, 48721), (169, 48787), (172, 48799), (188, 48877), (190, 48892), (194, 48934), (195, 48943), (204, 48988), (205, 48991), (218, 49096), (226, 49138), (227, 49144), (233, 49174),

Gene: BrainDrainer_69 Start: 46769, Stop: 48067, Start Num: 13

Candidate Starts for BrainDrainer_69:

(Start: 13 @46769 has 4 MA's), (57, 46964), (60, 46991), (74, 47066), (80, 47111), (99, 47216), (106, 47270), (109, 47285), (110, 47288), (121, 47351), (134, 47438), (136, 47444), (145, 47492), (146, 47498), (160, 47564), (171, 47636), (173, 47645), (185, 47711), (187, 47717), (191, 47738), (195, 47786), (197, 47798), (202, 47825), (208, 47849), (218, 47939), (221, 47948), (227, 47987), (233, 48017), (235, 48026), (236, 48029),

Gene: Breezona_70 Start: 47580, Stop: 48845, Start Num: 25

Candidate Starts for Breezona_70:

(Start: 25 @47580 has 62 MA's), (Start: 41 @47643 has 1 MA's), (60, 47769), (80, 47889), (81, 47892), (85, 47919), (109, 48063), (125, 48153), (134, 48216), (136, 48222), (146, 48276), (160, 48342), (167, 48396), (173, 48423), (178, 48456), (185, 48489), (188, 48498), (190, 48513), (192, 48537), (194, 48555), (195, 48564), (202, 48603), (204, 48609), (208, 48627), (218, 48717), (221, 48726), (222, 48729), (227, 48765), (233, 48795),

Gene: Bricole_68 Start: 44739, Stop: 45866, Start Num: 56

Candidate Starts for Bricole_68:

(11, 44544), (Start: 21 @44580 has 6 MA's), (Start: 56 @44739 has 5 MA's), (74, 44844), (104, 45030), (140, 45234), (150, 45285), (161, 45345), (165, 45369), (172, 45411), (190, 45513), (191, 45516), (193, 45543), (195, 45561), (203, 45603), (204, 45606), (206, 45612), (223, 45741), (226, 45771), (227, 45777), (228, 45780), (230, 45786), (232, 45813), (236, 45825), (241, 45849), (243, 45855),

Gene: Bromden_70 Start: 47515, Stop: 48813, Start Num: 13

Candidate Starts for Bromden_70:

(Start: 13 @47515 has 4 MA's), (60, 47737), (74, 47812), (80, 47857), (99, 47962), (106, 48016), (109, 48031), (134, 48184), (136, 48190), (145, 48238), (146, 48244), (160, 48310), (161, 48322), (171, 48382), (178, 48424), (185, 48457), (186, 48460), (187, 48463), (191, 48484), (195, 48532), (197, 48544), (202, 48571), (208, 48595), (221, 48694), (227, 48733), (233, 48763), (235, 48772), (236, 48775),

Gene: Bruin_78 Start: 49020, Stop: 50282, Start Num: 26

Candidate Starts for Bruin_78:

(Start: 26 @49020 has 118 MA's), (Start: 39 @49074 has 5 MA's), (45, 49107), (58, 49182), (67, 49239), (73, 49275), (76, 49287), (102, 49458), (127, 49608), (145, 49707), (146, 49713), (149, 49728), (161, 49791), (177, 49890), (181, 49908), (185, 49923), (186, 49926), (187, 49929), (191, 49950), (198, 50016), (202, 50037), (203, 50040), (204, 50043), (227, 50202), (229, 50208), (234, 50238), (238, 50250), (240, 50265),

Gene: Buck_82 Start: 50725, Stop: 51987, Start Num: 26

Candidate Starts for Buck_82:

(Start: 26 @50725 has 118 MA's), (Start: 39 @50779 has 5 MA's), (45, 50812), (58, 50887), (67, 50944), (73, 50980), (76, 50992), (102, 51163), (127, 51313), (145, 51412), (146, 51418), (149, 51433), (161, 51496), (177, 51595), (181, 51613), (185, 51628), (186, 51631), (187, 51634), (191, 51655), (198, 51721), (202, 51742), (203, 51745), (204, 51748), (227, 51907), (229, 51913), (234, 51943), (238, 51955), (240, 51970),

Gene: BugsBunny_81 Start: 50549, Stop: 51811, Start Num: 26

Candidate Starts for BugsBunny_81:

(Start: 26 @50549 has 118 MA's), (Start: 39 @50603 has 5 MA's), (45, 50636), (58, 50711), (67, 50768), (73, 50804), (76, 50816), (102, 50987), (127, 51137), (145, 51236), (146, 51242), (149, 51257), (161, 51320), (177, 51419), (181, 51437), (185, 51452), (186, 51455), (187, 51458), (191, 51479), (198, 51545), (202, 51566), (203, 51569), (204, 51572), (227, 51731), (229, 51737), (234, 51767), (238, 51779), (240, 51794),

Gene: Bush_45 Start: 27316, Stop: 28620, Start Num: 32

Candidate Starts for Bush_45:

(Start: 32 @27316 has 2 MA's), (36, 27349), (44, 27391), (47, 27400), (54, 27457), (73, 27565), (76, 27577), (81, 27616), (88, 27655), (99, 27718), (105, 27769), (113, 27802), (121, 27853), (132, 27931), (135, 27940), (143, 27979), (146, 27994), (160, 28060), (161, 28072), (174, 28156), (180, 28183), (182, 28192), (202, 28330), (204, 28336), (208, 28354), (209, 28378),

Gene: Cactus_84 Start: 49501, Stop: 50763, Start Num: 26

Candidate Starts for Cactus_84:

(Start: 26 @49501 has 118 MA's), (Start: 39 @49555 has 5 MA's), (45, 49588), (58, 49663), (67, 49720), (73, 49756), (76, 49768), (102, 49939), (127, 50089), (145, 50188), (146, 50194), (149, 50209), (161, 50272), (177, 50371), (181, 50389), (185, 50404), (186, 50407), (187, 50410), (191, 50431), (198, 50497), (202, 50518), (203, 50521), (204, 50524), (227, 50683), (229, 50689), (234, 50719), (238, 50731), (240, 50746),

Gene: Calm_69 Start: 45849, Stop: 47117, Start Num: 25

Candidate Starts for Calm_69:

(14, 45816), (Start: 25 @45849 has 62 MA's), (Start: 41 @45912 has 1 MA's), (47, 45945), (51, 45993), (55, 46002), (60, 46038), (72, 46104), (80, 46158), (86, 46194), (106, 46317), (109, 46332), (123, 46407), (125, 46422), (134, 46485), (136, 46491), (142, 46527), (146, 46545), (149, 46560), (150, 46563), (153, 46572), (155, 46575), (160, 46611), (169, 46677), (187, 46764), (190, 46782), (192, 46806), (194, 46824), (195, 46833), (202, 46872), (204, 46878), (205, 46881), (208, 46896), (210, 46926), (218, 46986), (221, 46995), (233, 47064), (235, 47073),

Gene: Chaser_67 Start: 46538, Stop: 47836, Start Num: 13

Candidate Starts for Chaser_67:

(Start: 13 @46538 has 4 MA's), (57, 46733), (60, 46760), (74, 46835), (80, 46880), (99, 46985), (106, 47039), (109, 47054), (134, 47207), (136, 47213), (145, 47261), (146, 47267), (160, 47333), (171, 47405), (178, 47447), (185, 47480), (187, 47486), (189, 47498), (191, 47507), (195, 47555), (197, 47567), (202, 47594), (208, 47618), (218, 47708), (221, 47717), (227, 47756), (233, 47786), (235, 47795), (236, 47798),

Gene: CheeseTouch_96 Start: 47414, Stop: 48667, Start Num: 31

Candidate Starts for CheeseTouch_96:

(Start: 31 @47414 has 10 MA's), (36, 47450), (48, 47501), (66, 47618), (67, 47621), (68, 47624), (93, 47756), (104, 47843), (116, 47900), (131, 48014), (134, 48023), (143, 48068), (146, 48083), (163, 48176), (169, 48215), (176, 48251), (179, 48269), (186, 48308), (195, 48380), (197, 48392), (200, 48407), (202, 48419), (228, 48590), (229, 48593),

Gene: ChosenOne_81 Start: 49501, Stop: 50763, Start Num: 26

Candidate Starts for ChosenOne_81:

(Start: 26 @49501 has 118 MA's), (Start: 39 @49555 has 5 MA's), (45, 49588), (67, 49720), (73, 49756), (76, 49768), (102, 49939), (127, 50089), (145, 50188), (146, 50194), (149, 50209), (161, 50272), (177, 50371), (181, 50389), (185, 50404), (186, 50407), (187, 50410), (191, 50431), (198, 50497), (202, 50518), (203, 50521), (204, 50524), (227, 50683), (229, 50689), (234, 50719), (238, 50731), (240, 50746),

Gene: ChotaBhai_81 Start: 49825, Stop: 51087, Start Num: 26

Candidate Starts for ChotaBhai_81:

(Start: 26 @49825 has 118 MA's), (Start: 39 @49879 has 5 MA's), (45, 49912), (58, 49987), (67, 50044), (73, 50080), (76, 50092), (102, 50263), (127, 50413), (145, 50512), (146, 50518), (149, 50533), (161, 50596), (177, 50695), (181, 50713), (185, 50728), (186, 50731), (187, 50734), (191, 50755), (198, 50821), (202, 50842), (203, 50845), (204, 50848), (227, 51007), (229, 51013), (234, 51043), (238, 51055), (240, 51070),

Gene: CicholasNage_66 Start: 45888, Stop: 47153, Start Num: 25

Candidate Starts for CicholasNage_66:

(14, 45855), (Start: 25 @45888 has 62 MA's), (40, 45948), (Start: 41 @45951 has 1 MA's), (47, 45984), (51, 46032), (55, 46041), (58, 46053), (60, 46077), (72, 46143), (80, 46197), (82, 46203), (86, 46233), (106, 46356), (109, 46371), (123, 46446), (125, 46461), (134, 46524), (136, 46530), (142, 46566), (146, 46584), (149, 46599), (150, 46602), (153, 46611), (155, 46614), (160, 46650), (166, 46698), (169, 46716), (187, 46803), (190, 46821), (192, 46845), (194, 46863), (195, 46872), (202, 46911), (204, 46917), (208, 46935), (210, 46965), (218, 47025), (221, 47034), (233, 47103),

Gene: Cjw1_81 Start: 51195, Stop: 52457, Start Num: 26

Candidate Starts for Cjw1_81:

(Start: 26 @51195 has 118 MA's), (Start: 39 @51249 has 5 MA's), (45, 51282), (58, 51357), (67, 51414), (73, 51450), (76, 51462), (102, 51633), (127, 51783), (145, 51882), (146, 51888), (149, 51903), (161, 51966), (177, 52065), (181, 52083), (185, 52098), (186, 52101), (187, 52104), (191, 52125), (198, 52191), (202, 52212), (203, 52215), (204, 52218), (227, 52377), (229, 52383), (234, 52413), (238, 52425), (240, 52440),

Gene: Claus_72 Start: 47951, Stop: 49216, Start Num: 25

Candidate Starts for Claus_72:

(Start: 25 @47951 has 62 MA's), (Start: 41 @48014 has 1 MA's), (49, 48056), (55, 48104), (60, 48140), (74, 48215), (80, 48260), (81, 48263), (85, 48290), (90, 48311), (91, 48320), (99, 48365), (109, 48434), (134, 48587), (146, 48647), (155, 48677), (160, 48713), (162, 48731), (167, 48767), (173, 48794), (178, 48827), (188, 48869), (190, 48884), (192, 48908), (194, 48926), (195, 48935), (202, 48974), (204, 48980), (208, 48998), (218, 49088), (221, 49097), (222, 49100), (227, 49136), (233, 49166),

Gene: Clautastrophe_68 Start: 47911, Stop: 49176, Start Num: 25

Candidate Starts for Clautastrophe_68:

(14, 47878), (Start: 25 @47911 has 62 MA's), (Start: 41 @47974 has 1 MA's), (47, 48007), (55, 48064), (Start: 56 @48070 has 5 MA's), (59, 48091), (60, 48100), (80, 48220), (81, 48223), (85, 48250), (95, 48313), (107, 48385), (109, 48394), (134, 48547), (145, 48601), (146, 48607), (155, 48637), (158, 48655), (160, 48673), (169, 48739), (172, 48751), (178, 48787), (188, 48829), (194, 48886), (195, 48895), (204, 48940), (206, 48946), (218, 49048), (222, 49060), (227, 49096), (233, 49126),

Gene: Command613_83 Start: 50540, Stop: 51802, Start Num: 26

Candidate Starts for Command613_83:

(Start: 26 @50540 has 118 MA's), (Start: 39 @50594 has 5 MA's), (45, 50627), (58, 50702), (67, 50759), (73, 50795), (76, 50807), (102, 50978), (127, 51128), (145, 51227), (146, 51233), (149, 51248), (161, 51311), (177, 51410), (181, 51428), (185, 51443), (186, 51446), (187, 51449), (191, 51470), (198, 51536), (202, 51557), (203, 51560), (204, 51563), (227, 51722), (229, 51728), (234, 51758), (238, 51770), (240, 51785),

Gene: Contagion_77 Start: 49301, Stop: 50563, Start Num: 26

Candidate Starts for Contagion_77:

(Start: 26 @49301 has 118 MA's), (Start: 39 @49355 has 5 MA's), (45, 49388), (58, 49463), (67, 49520), (73, 49556), (76, 49568), (102, 49739), (127, 49889), (145, 49988), (146, 49994), (149, 50009), (161, 50072), (177, 50171), (181, 50189), (185, 50204), (186, 50207), (187, 50210), (191, 50231), (198, 50297), (202, 50318), (203, 50321), (204, 50324), (227, 50483), (229, 50489), (234, 50519), (238, 50531), (240, 50546),

Gene: Cookies_78 Start: 49682, Stop: 50944, Start Num: 26

Candidate Starts for Cookies_78:

(Start: 26 @49682 has 118 MA's), (Start: 39 @49736 has 5 MA's), (45, 49769), (58, 49844), (67, 49901), (73, 49937), (76, 49949), (102, 50120), (127, 50270), (145, 50369), (146, 50375), (149, 50390), (161, 50453), (177, 50552), (181, 50570), (185, 50585), (186, 50588), (187, 50591), (191, 50612), (198, 50678), (202, 50699), (203, 50702), (204, 50705), (227, 50864), (229, 50870), (234, 50900), (238, 50912), (240, 50927),

Gene: Cosmo_80 Start: 50010, Stop: 51335, Start Num: 30

Candidate Starts for Cosmo_80:

(15, 49968), (17, 49977), (Start: 30 @50010 has 5 MA's), (53, 50145), (Start: 56 @50154 has 5 MA's), (80, 50304), (81, 50307), (82, 50310), (91, 50364), (99, 50400), (125, 50562), (126, 50577), (128, 50583), (129, 50586), (141, 50664), (143, 50670), (145, 50679), (150, 50703), (156, 50721), (159, 50748), (172, 50829), (178, 50865), (185, 50907), (186, 50910), (202, 51018), (203, 51021), (204, 51024), (217, 51126), (218, 51135), (220, 51141), (222, 51147), (228, 51195), (231, 51210), (247, 51306), (248, 51327),

Gene: Crossroads_70 Start: 47655, Stop: 48920, Start Num: 25

Candidate Starts for Crossroads_70:

(Start: 25 @47655 has 62 MA's), (Start: 41 @47718 has 1 MA's), (60, 47844), (80, 47964), (81, 47967), (85, 47994), (109, 48138), (125, 48228), (134, 48291), (136, 48297), (146, 48351), (160, 48417), (167, 48471), (173, 48498), (178, 48531), (185, 48564), (188, 48573), (190, 48588), (192, 48612), (194, 48630), (195, 48639), (202, 48678), (204, 48684), (208, 48702), (218, 48792), (221, 48801), (222, 48804), (227, 48840), (233, 48870),

Gene: CrystalP_80 Start: 50482, Stop: 51744, Start Num: 26

Candidate Starts for CrystalP_80:

(Start: 26 @50482 has 118 MA's), (Start: 39 @50536 has 5 MA's), (45, 50569), (58, 50644), (67, 50701), (73, 50737), (76, 50749), (102, 50920), (127, 51070), (145, 51169), (146, 51175), (149, 51190), (161, 51253), (177, 51352), (181, 51370), (185, 51385), (186, 51388), (187, 51391), (191, 51412), (198, 51478), (202, 51499), (203, 51502), (204, 51505), (227, 51664), (229, 51670), (234, 51700), (238, 51712), (240, 51727),

Gene: Czyszczone1_82 Start: 50004, Stop: 51266, Start Num: 26

Candidate Starts for Czyszczone1_82:

(Start: 26 @50004 has 118 MA's), (Start: 39 @50058 has 5 MA's), (45, 50091), (58, 50166), (67, 50223), (73, 50259), (76, 50271), (102, 50442), (127, 50592), (145, 50691), (146, 50697), (149, 50712), (161, 50775), (177, 50874), (181, 50892), (185, 50907), (186, 50910), (187, 50913), (191,

50934), (198, 51000), (202, 51021), (203, 51024), (204, 51027), (227, 51186), (229, 51192), (234, 51222), (238, 51234), (240, 51249),

Gene: DHan_73 Start: 47851, Stop: 49116, Start Num: 25

Candidate Starts for DHan_73:

(Start: 25 @47851 has 62 MA's), (Start: 41 @47914 has 1 MA's), (55, 48004), (60, 48040), (74, 48115), (80, 48160), (81, 48163), (85, 48190), (90, 48211), (91, 48220), (99, 48265), (109, 48334), (134, 48487), (146, 48547), (155, 48577), (160, 48613), (162, 48631), (167, 48667), (173, 48694), (178, 48727), (188, 48769), (190, 48784), (192, 48808), (194, 48826), (195, 48835), (202, 48874), (204, 48880), (208, 48898), (218, 48988), (221, 48997), (222, 49000), (227, 49036), (233, 49066),

Gene: Daikon_83 Start: 50628, Stop: 51890, Start Num: 26

Candidate Starts for Daikon_83:

(Start: 26 @50628 has 118 MA's), (Start: 39 @50682 has 5 MA's), (45, 50715), (58, 50790), (67, 50847), (73, 50883), (76, 50895), (102, 51066), (127, 51216), (145, 51315), (146, 51321), (149, 51336), (161, 51399), (177, 51498), (181, 51516), (185, 51531), (186, 51534), (187, 51537), (191, 51558), (198, 51624), (202, 51645), (203, 51648), (204, 51651), (227, 51810), (229, 51816), (234, 51846), (238, 51858), (240, 51873),

Gene: DanBing_72 Start: 47820, Stop: 49085, Start Num: 25

Candidate Starts for DanBing_72:

(Start: 25 @47820 has 62 MA's), (Start: 41 @47883 has 1 MA's), (55, 47973), (60, 48009), (74, 48084), (80, 48129), (81, 48132), (85, 48159), (109, 48303), (134, 48456), (146, 48516), (155, 48546), (160, 48582), (162, 48600), (167, 48636), (173, 48663), (178, 48696), (188, 48738), (190, 48753), (192, 48777), (194, 48795), (195, 48804), (202, 48843), (204, 48849), (208, 48867), (218, 48957), (221, 48966), (222, 48969), (227, 49005), (233, 49035),

Gene: DatBoi_83 Start: 58501, Stop: 57194, Start Num: 18

Candidate Starts for DatBoi_83:

(Start: 18 @58501 has 1 MA's), (24, 58483), (36, 58432), (37, 58423), (43, 58396), (46, 58381), (126, 57904), (133, 57859), (139, 57832), (146, 57796), (174, 57634), (176, 57628), (182, 57598), (183, 57586), (186, 57571), (199, 57475), (200, 57469), (204, 57451), (219, 57352), (221, 57346), (226, 57301), (231, 57286), (235, 57256), (241, 57229), (245, 57199),

Gene: Diminimus_70 Start: 44853, Stop: 46139, Start Num: 21

Candidate Starts for Diminimus_70:

(11, 44817), (Start: 21 @44853 has 6 MA's), (Start: 56 @45012 has 5 MA's), (74, 45117), (104, 45303), (140, 45507), (150, 45558), (161, 45618), (165, 45642), (172, 45684), (190, 45786), (191, 45789), (193, 45816), (195, 45834), (203, 45876), (204, 45879), (206, 45885), (223, 46014), (226, 46044), (227, 46050), (228, 46053), (230, 46059), (232, 46086), (236, 46098), (241, 46122), (243, 46128),

Gene: DirkDirk_65 Start: 45322, Stop: 46524, Start Num: 41

Candidate Starts for DirkDirk_65:

(14, 45226), (Start: 25 @45259 has 62 MA's), (40, 45319), (Start: 41 @45322 has 1 MA's), (47, 45355), (51, 45403), (55, 45412), (60, 45448), (72, 45514), (80, 45568), (86, 45604), (106, 45727), (109, 45742), (123, 45817), (125, 45832), (134, 45895), (136, 45901), (142, 45937), (146, 45955), (149, 45970), (150, 45973), (153, 45982), (155, 45985), (160, 46021), (166, 46069), (169, 46087), (187, 46174), (190, 46192), (192, 46216), (194, 46234), (195, 46243), (202, 46282), (204, 46288), (208, 46306), (210, 46336), (218, 46396), (221, 46405), (233, 46474),

Gene: DobbysSock_65 Start: 43586, Stop: 44839, Start Num: 31

Candidate Starts for DobbysSock_65:

(12, 43535), (Start: 31 @43586 has 10 MA's), (37, 43631), (38, 43634), (50, 43685), (93, 43928), (104, 44015), (108, 44033), (125, 44132), (136, 44201), (143, 44240), (146, 44255), (164, 44351), (169, 44387), (177, 44432), (182, 44453), (186, 44480), (195, 44552), (200, 44579), (204, 44597),

Gene: DoctorDiddles_80 Start: 49869, Stop: 51131, Start Num: 26

Candidate Starts for DoctorDiddles_80:

(Start: 26 @49869 has 118 MA's), (Start: 39 @49923 has 5 MA's), (45, 49956), (58, 50031), (67, 50088), (73, 50124), (76, 50136), (102, 50307), (127, 50457), (145, 50556), (146, 50562), (149, 50577), (161, 50640), (177, 50739), (181, 50757), (185, 50772), (186, 50775), (187, 50778), (191, 50799), (198, 50865), (202, 50886), (203, 50889), (204, 50892), (227, 51051), (229, 51057), (234, 51087), (238, 51099), (240, 51114),

Gene: Dorito_63 Start: 41456, Stop: 42709, Start Num: 31

Candidate Starts for Dorito_63:

(12, 41405), (Start: 31 @41456 has 10 MA's), (37, 41501), (38, 41504), (50, 41555), (93, 41798), (104, 41885), (108, 41903), (125, 42002), (136, 42071), (143, 42110), (146, 42125), (164, 42221), (169, 42257), (177, 42302), (182, 42323), (186, 42350), (195, 42422), (200, 42449), (204, 42467),

Gene: Douge_69 Start: 46538, Stop: 47836, Start Num: 13

Candidate Starts for Douge_69:

(Start: 13 @46538 has 4 MA's), (60, 46760), (74, 46835), (80, 46880), (81, 46883), (99, 46985), (106, 47039), (109, 47054), (134, 47207), (136, 47213), (146, 47267), (160, 47333), (171, 47405), (178, 47447), (185, 47480), (186, 47483), (187, 47486), (191, 47507), (195, 47555), (197, 47567), (202, 47594), (208, 47618), (221, 47717), (227, 47756), (233, 47786), (235, 47795), (236, 47798),

Gene: Douzhi_69 Start: 46588, Stop: 47886, Start Num: 13

Candidate Starts for Douzhi_69:

(Start: 13 @46588 has 4 MA's), (57, 46783), (60, 46810), (74, 46885), (80, 46930), (99, 47035), (106, 47089), (109, 47104), (134, 47257), (136, 47263), (145, 47311), (146, 47317), (160, 47383), (171, 47455), (173, 47464), (185, 47530), (187, 47536), (191, 47557), (195, 47605), (197, 47617), (202, 47644), (208, 47668), (218, 47758), (221, 47767), (222, 47770), (227, 47806), (233, 47836), (235, 47845), (236, 47848),

Gene: DrDrey_81 Start: 50923, Stop: 52185, Start Num: 26

Candidate Starts for DrDrey_81:

(Start: 26 @50923 has 118 MA's), (Start: 39 @50977 has 5 MA's), (45, 51010), (58, 51085), (67, 51142), (73, 51178), (76, 51190), (102, 51361), (127, 51511), (145, 51610), (146, 51616), (149, 51631), (161, 51694), (177, 51793), (181, 51811), (185, 51826), (186, 51829), (187, 51832), (191, 51853), (198, 51919), (202, 51940), (203, 51943), (204, 51946), (227, 52105), (229, 52111), (234, 52141), (238, 52153), (240, 52168),

Gene: DrSeegs_70 Start: 47580, Stop: 48845, Start Num: 25

Candidate Starts for DrSeegs_70:

(Start: 25 @47580 has 62 MA's), (Start: 41 @47643 has 1 MA's), (60, 47769), (80, 47889), (81, 47892), (85, 47919), (109, 48063), (125, 48153), (134, 48216), (136, 48222), (146, 48276), (160, 48342), (167, 48396), (173, 48423), (178, 48456), (185, 48489), (188, 48498), (190, 48513), (192, 48537), (194, 48555), (195, 48564), (202, 48603), (204, 48609), (208, 48627), (218, 48717), (221, 48726), (222, 48729), (227, 48765), (233, 48795),

Gene: Dropshot_44 Start: 27008, Stop: 28312, Start Num: 33

Candidate Starts for Dropshot_44:

(2, 26750), (Start: 33 @27008 has 7 MA's), (36, 27041), (44, 27083), (47, 27092), (54, 27149), (73, 27257), (76, 27269), (81, 27308), (88, 27347), (99, 27410), (105, 27461), (113, 27494), (118, 27518),

(121, 27545), (132, 27623), (135, 27632), (143, 27671), (146, 27686), (160, 27752), (161, 27764), (174, 27848), (180, 27875), (182, 27884), (202, 28022), (204, 28028), (208, 28046), (209, 28070), (219, 28133),

Gene: Dulcita_70 Start: 44854, Stop: 46140, Start Num: 21

Candidate Starts for Dulcita_70:

(11, 44818), (Start: 21 @44854 has 6 MA's), (Start: 56 @45013 has 5 MA's), (74, 45118), (104, 45304), (140, 45508), (150, 45559), (161, 45619), (165, 45643), (172, 45685), (190, 45787), (191, 45790), (193, 45817), (195, 45835), (203, 45877), (204, 45880), (206, 45886), (223, 46015), (226, 46045), (227, 46051), (228, 46054), (230, 46060), (232, 46087), (236, 46099), (241, 46123), (243, 46129),

Gene: Dumbo_81 Start: 49406, Stop: 50668, Start Num: 26

Candidate Starts for Dumbo_81:

(Start: 26 @49406 has 118 MA's), (Start: 39 @49460 has 5 MA's), (45, 49493), (58, 49568), (67, 49625), (73, 49661), (76, 49673), (102, 49844), (127, 49994), (145, 50093), (146, 50099), (149, 50114), (161, 50177), (177, 50276), (181, 50294), (185, 50309), (186, 50312), (187, 50315), (191, 50336), (198, 50402), (202, 50423), (203, 50426), (204, 50429), (227, 50588), (229, 50594), (234, 50624), (238, 50636), (240, 50651),

Gene: DuncansLeg_69 Start: 47947, Stop: 49212, Start Num: 25

Candidate Starts for DuncansLeg_69:

(14, 47914), (Start: 25 @47947 has 62 MA's), (Start: 41 @48010 has 1 MA's), (47, 48043), (55, 48100), (Start: 56 @48106 has 5 MA's), (59, 48127), (60, 48136), (72, 48202), (80, 48256), (81, 48259), (85, 48286), (95, 48349), (109, 48430), (134, 48583), (146, 48643), (155, 48673), (158, 48691), (160, 48709), (169, 48775), (188, 48865), (190, 48880), (194, 48922), (195, 48931), (204, 48976), (205, 48979), (218, 49084), (226, 49126), (227, 49132), (233, 49162),

Gene: Dusk_78 Start: 49706, Stop: 50968, Start Num: 26

Candidate Starts for Dusk_78:

(Start: 26 @49706 has 118 MA's), (Start: 39 @49760 has 5 MA's), (45, 49793), (58, 49868), (67, 49925), (73, 49961), (76, 49973), (102, 50144), (127, 50294), (145, 50393), (146, 50399), (149, 50414), (161, 50477), (177, 50576), (181, 50594), (185, 50609), (186, 50612), (187, 50615), (191, 50636), (198, 50702), (202, 50723), (203, 50726), (204, 50729), (227, 50888), (229, 50894), (234, 50924), (238, 50936), (240, 50951),

Gene: DyoEdafos_73 Start: 47030, Stop: 48331, Start Num: 13

Candidate Starts for DyoEdafos_73:

(Start: 13 @47030 has 4 MA's), (60, 47255), (74, 47330), (80, 47375), (99, 47480), (106, 47534), (109, 47549), (134, 47702), (136, 47708), (145, 47756), (146, 47762), (160, 47828), (171, 47900), (178, 47942), (185, 47975), (187, 47981), (189, 47993), (191, 48002), (195, 48050), (197, 48062), (208, 48113), (218, 48203), (221, 48212), (227, 48251), (233, 48281), (235, 48290), (236, 48293),

Gene: Easy2Say_82 Start: 50947, Stop: 52209, Start Num: 26

Candidate Starts for Easy2Say_82:

(Start: 26 @50947 has 118 MA's), (Start: 39 @51001 has 5 MA's), (45, 51034), (58, 51109), (67, 51166), (73, 51202), (76, 51214), (102, 51385), (127, 51535), (145, 51634), (146, 51640), (149, 51655), (161, 51718), (177, 51817), (181, 51835), (185, 51850), (186, 51853), (187, 51856), (191, 51877), (198, 51943), (202, 51964), (203, 51967), (204, 51970), (227, 52129), (229, 52135), (234, 52165), (238, 52177), (240, 52192),

Gene: Elite2014_80 Start: 49500, Stop: 50762, Start Num: 26

Candidate Starts for Elite2014_80:

(Start: 26 @49500 has 118 MA's), (Start: 39 @49554 has 5 MA's), (45, 49587), (67, 49719), (73, 49755), (76, 49767), (102, 49938), (127, 50088), (145, 50187), (146, 50193), (149, 50208), (161, 50271), (177, 50370), (181, 50388), (185, 50403), (186, 50406), (187, 50409), (191, 50430), (198, 50496), (202, 50517), (203, 50520), (204, 50523), (227, 50682), (229, 50688), (234, 50718), (238, 50730), (240, 50745),

Gene: Ellson_68 Start: 48262, Stop: 49527, Start Num: 25

Candidate Starts for Ellson_68:

(Start: 25 @48262 has 62 MA's), (Start: 41 @48325 has 1 MA's), (47, 48358), (55, 48415), (Start: 56 @48421 has 5 MA's), (59, 48442), (60, 48451), (72, 48517), (80, 48571), (81, 48574), (85, 48601), (95, 48664), (109, 48745), (134, 48898), (146, 48958), (155, 48988), (158, 49006), (160, 49024), (169, 49090), (172, 49102), (188, 49180), (190, 49195), (194, 49237), (195, 49246), (204, 49291), (205, 49294), (218, 49399), (226, 49441), (227, 49447), (233, 49477),

Gene: Elph10_81 Start: 49502, Stop: 50764, Start Num: 26

Candidate Starts for Elph10_81:

(Start: 26 @49502 has 118 MA's), (Start: 39 @49556 has 5 MA's), (45, 49589), (58, 49664), (67, 49721), (73, 49757), (76, 49769), (102, 49940), (127, 50090), (145, 50189), (146, 50195), (149, 50210), (161, 50273), (177, 50372), (181, 50390), (185, 50405), (186, 50408), (187, 50411), (191, 50432), (198, 50498), (202, 50519), (203, 50522), (204, 50525), (227, 50684), (229, 50690), (234, 50720), (238, 50732), (240, 50747),

Gene: Emmina_81 Start: 49404, Stop: 50666, Start Num: 26

Candidate Starts for Emmina_81:

(Start: 26 @49404 has 118 MA's), (Start: 39 @49458 has 5 MA's), (45, 49491), (58, 49566), (67, 49623), (73, 49659), (76, 49671), (102, 49842), (127, 49992), (145, 50091), (146, 50097), (149, 50112), (161, 50175), (177, 50274), (181, 50292), (185, 50307), (186, 50310), (187, 50313), (191, 50334), (198, 50400), (202, 50421), (203, 50424), (204, 50427), (227, 50586), (229, 50592), (234, 50622), (238, 50634), (240, 50649),

Gene: Enceladus_65 Start: 46016, Stop: 47281, Start Num: 25

Candidate Starts for Enceladus_65:

(14, 45983), (Start: 25 @46016 has 62 MA's), (40, 46076), (Start: 41 @46079 has 1 MA's), (47, 46112), (51, 46160), (55, 46169), (60, 46205), (72, 46271), (80, 46325), (86, 46361), (106, 46484), (109, 46499), (123, 46574), (125, 46589), (134, 46652), (136, 46658), (142, 46694), (146, 46712), (149, 46727), (150, 46730), (153, 46739), (155, 46742), (160, 46778), (166, 46826), (169, 46844), (187, 46931), (190, 46949), (192, 46973), (194, 46991), (195, 47000), (202, 47039), (204, 47045), (208, 47063), (210, 47093), (218, 47153), (221, 47162), (233, 47231),

Gene: EniyanLRS_76 Start: 49749, Stop: 51074, Start Num: 30

Candidate Starts for EniyanLRS_76:

(15, 49707), (17, 49716), (Start: 30 @49749 has 5 MA's), (53, 49884), (Start: 56 @49893 has 5 MA's), (80, 50043), (81, 50046), (82, 50049), (91, 50103), (99, 50139), (125, 50301), (126, 50316), (128, 50322), (129, 50325), (141, 50403), (143, 50409), (145, 50418), (150, 50442), (156, 50460), (159, 50487), (172, 50568), (178, 50604), (185, 50646), (186, 50649), (202, 50757), (203, 50760), (204, 50763), (217, 50865), (218, 50874), (220, 50880), (222, 50886), (228, 50934), (231, 50949), (247, 51045), (248, 51066),

Gene: Estes_78 Start: 47385, Stop: 48527, Start Num: 52

Candidate Starts for Estes_78:

(Start: 21 @47238 has 6 MA's), (Start: 52 @47385 has 5 MA's), (Start: 56 @47397 has 5 MA's), (58, 47403), (64, 47445), (97, 47637), (98, 47640), (104, 47691), (111, 47724), (121, 47781), (132, 47862), (150, 47946), (161, 48006), (163, 48021), (172, 48072), (186, 48153), (194, 48213), (195, 48222),

(204, 48267), (206, 48273), (213, 48330), (223, 48402), (226, 48432), (227, 48438), (228, 48441), (230, 48447), (231, 48456), (232, 48474), (236, 48486), (241, 48510), (243, 48516),

Gene: Eureka_79 Start: 49968, Stop: 51230, Start Num: 26

Candidate Starts for Eureka_79:

(Start: 26 @49968 has 118 MA's), (Start: 39 @50022 has 5 MA's), (45, 50055), (58, 50130), (67, 50187), (73, 50223), (76, 50235), (102, 50406), (127, 50556), (145, 50655), (146, 50661), (149, 50676), (161, 50739), (177, 50838), (181, 50856), (185, 50871), (186, 50874), (187, 50877), (191, 50898), (198, 50964), (202, 50985), (203, 50988), (204, 50991), (227, 51150), (229, 51156), (234, 51186), (238, 51198), (240, 51213),

Gene: Faith1_70 Start: 47580, Stop: 48845, Start Num: 25

Candidate Starts for Faith1_70:

(Start: 25 @47580 has 62 MA's), (Start: 41 @47643 has 1 MA's), (60, 47769), (80, 47889), (81, 47892), (85, 47919), (109, 48063), (125, 48153), (134, 48216), (136, 48222), (146, 48276), (160, 48342), (167, 48396), (173, 48423), (178, 48456), (185, 48489), (188, 48498), (190, 48513), (192, 48537), (194, 48555), (195, 48564), (202, 48603), (204, 48609), (208, 48627), (218, 48717), (221, 48726), (222, 48729), (227, 48765), (233, 48795),

Gene: FarmResident_71 Start: 46548, Stop: 47831, Start Num: 16

Candidate Starts for FarmResident_71:

(16, 46548), (57, 46728), (60, 46755), (74, 46830), (80, 46875), (99, 46980), (106, 47034), (109, 47049), (134, 47202), (136, 47208), (145, 47256), (146, 47262), (160, 47328), (171, 47400), (178, 47442), (185, 47475), (187, 47481), (189, 47493), (191, 47502), (195, 47550), (197, 47562), (202, 47589), (208, 47613), (218, 47703), (220, 47709), (221, 47712), (227, 47751), (233, 47781), (235, 47790), (236, 47793),

Gene: Filch_82 Start: 49429, Stop: 50691, Start Num: 26

Candidate Starts for Filch_82:

(Start: 26 @49429 has 118 MA's), (Start: 39 @49483 has 5 MA's), (45, 49516), (58, 49591), (67, 49648), (73, 49684), (76, 49696), (102, 49867), (127, 50017), (145, 50116), (146, 50122), (149, 50137), (161, 50200), (177, 50299), (181, 50317), (185, 50332), (186, 50335), (187, 50338), (191, 50359), (198, 50425), (202, 50446), (203, 50449), (204, 50452), (227, 50611), (229, 50617), (234, 50647), (238, 50659), (240, 50674),

Gene: Finemlucis_70 Start: 47901, Stop: 49166, Start Num: 25

Candidate Starts for Finemlucis_70:

(Start: 25 @47901 has 62 MA's), (Start: 41 @47964 has 1 MA's), (60, 48090), (80, 48210), (81, 48213), (85, 48240), (109, 48384), (125, 48474), (134, 48537), (136, 48543), (146, 48597), (160, 48663), (167, 48717), (173, 48744), (178, 48777), (188, 48819), (190, 48834), (192, 48858), (194, 48876), (195, 48885), (202, 48924), (204, 48930), (208, 48948), (218, 49038), (222, 49050), (227, 49086), (233, 49116),

Gene: Finnry_69 Start: 48175, Stop: 49440, Start Num: 25

Candidate Starts for Finnry_69:

(14, 48142), (Start: 25 @48175 has 62 MA's), (Start: 41 @48238 has 1 MA's), (47, 48271), (55, 48328), (Start: 56 @48334 has 5 MA's), (59, 48355), (60, 48364), (80, 48484), (81, 48487), (85, 48514), (95, 48577), (107, 48649), (109, 48658), (134, 48811), (145, 48865), (146, 48871), (155, 48901), (158, 48919), (160, 48937), (169, 49003), (172, 49015), (178, 49051), (188, 49093), (194, 49150), (195, 49159), (204, 49204), (206, 49210), (218, 49312), (222, 49324), (227, 49360), (233, 49390),

Gene: FireRed_85 Start: 50994, Stop: 52256, Start Num: 26

Candidate Starts for FireRed_85:

(Start: 26 @50994 has 118 MA's), (Start: 39 @51048 has 5 MA's), (45, 51081), (58, 51156), (67, 51213), (73, 51249), (76, 51261), (102, 51432), (127, 51582), (145, 51681), (146, 51687), (149, 51702), (161, 51765), (177, 51864), (181, 51882), (185, 51897), (186, 51900), (187, 51903), (191, 51924), (198, 51990), (202, 52011), (203, 52014), (204, 52017), (227, 52176), (229, 52182), (234, 52212), (238, 52224), (240, 52239),

Gene: Flypotenuse_77 Start: 49491, Stop: 50753, Start Num: 26

Candidate Starts for Flypotenuse_77:

(Start: 26 @49491 has 118 MA's), (Start: 39 @49545 has 5 MA's), (45, 49578), (58, 49653), (67, 49710), (73, 49746), (76, 49758), (102, 49929), (127, 50079), (145, 50178), (146, 50184), (149, 50199), (161, 50262), (177, 50361), (181, 50379), (185, 50394), (186, 50397), (187, 50400), (191, 50421), (198, 50487), (202, 50508), (203, 50511), (204, 50514), (227, 50673), (229, 50679), (234, 50709), (238, 50721), (240, 50736),

Gene: Gabriela_67 Start: 46027, Stop: 47292, Start Num: 25

Candidate Starts for Gabriela_67:

(Start: 25 @46027 has 62 MA's), (Start: 41 @46090 has 1 MA's), (60, 46216), (80, 46336), (81, 46339), (85, 46366), (109, 46510), (125, 46600), (134, 46663), (136, 46669), (146, 46723), (160, 46789), (167, 46843), (173, 46870), (178, 46903), (188, 46945), (190, 46960), (192, 46984), (194, 47002), (195, 47011), (202, 47050), (204, 47056), (208, 47074), (218, 47164), (222, 47176), (227, 47212), (233, 47242),

Gene: Gage_83 Start: 50284, Stop: 51546, Start Num: 26

Candidate Starts for Gage_83:

(Start: 26 @50284 has 118 MA's), (Start: 39 @50338 has 5 MA's), (45, 50371), (58, 50446), (67, 50503), (73, 50539), (76, 50551), (102, 50722), (127, 50872), (145, 50971), (146, 50977), (149, 50992), (161, 51055), (177, 51154), (181, 51172), (185, 51187), (186, 51190), (187, 51193), (191, 51214), (198, 51280), (202, 51301), (203, 51304), (204, 51307), (227, 51466), (229, 51472), (234, 51502), (238, 51514), (240, 51529),

Gene: Gardann_71 Start: 47613, Stop: 48878, Start Num: 25

Candidate Starts for Gardann_71:

(Start: 25 @47613 has 62 MA's), (Start: 41 @47676 has 1 MA's), (60, 47802), (80, 47922), (81, 47925), (85, 47952), (109, 48096), (125, 48186), (134, 48249), (136, 48255), (146, 48309), (160, 48375), (167, 48429), (173, 48456), (178, 48489), (185, 48522), (188, 48531), (190, 48546), (192, 48570), (194, 48588), (195, 48597), (202, 48636), (204, 48642), (208, 48660), (218, 48750), (221, 48759), (222, 48762), (227, 48798), (233, 48828),

Gene: GardenSalsa_78 Start: 47589, Stop: 48731, Start Num: 52

Candidate Starts for GardenSalsa_78:

(Start: 21 @47442 has 6 MA's), (Start: 52 @47589 has 5 MA's), (53, 47592), (Start: 56 @47601 has 5 MA's), (58, 47607), (97, 47841), (98, 47844), (104, 47895), (111, 47928), (121, 47985), (132, 48066), (150, 48150), (161, 48210), (163, 48225), (172, 48276), (186, 48357), (194, 48417), (195, 48426), (204, 48471), (206, 48477), (213, 48534), (223, 48606), (226, 48636), (227, 48642), (228, 48645), (230, 48651), (231, 48660), (232, 48678), (236, 48690), (243, 48720),

Gene: Gator_79 Start: 50334, Stop: 51596, Start Num: 26

Candidate Starts for Gator_79:

(Start: 26 @50334 has 118 MA's), (Start: 39 @50388 has 5 MA's), (45, 50421), (58, 50496), (67, 50553), (73, 50589), (76, 50601), (102, 50772), (127, 50922), (145, 51021), (146, 51027), (149, 51042), (161, 51105), (177, 51204), (181, 51222), (185, 51237), (186, 51240), (187, 51243), (191, 51264), (198, 51330), (202, 51351), (203, 51354), (204, 51357), (227, 51516), (229, 51522), (234,

51552), (238, 51564), (240, 51579),

Gene: Gemini_86 Start: 50801, Stop: 52063, Start Num: 26

Candidate Starts for Gemini_86:

(Start: 26 @50801 has 118 MA's), (Start: 39 @50855 has 5 MA's), (45, 50888), (58, 50963), (67, 51020), (73, 51056), (76, 51068), (102, 51239), (127, 51389), (145, 51488), (146, 51494), (149, 51509), (161, 51572), (177, 51671), (181, 51689), (185, 51704), (186, 51707), (187, 51710), (191, 51731), (198, 51797), (202, 51818), (203, 51821), (204, 51824), (227, 51983), (229, 51989), (234, 52019), (238, 52031), (240, 52046),

Gene: GenevaB15_77 Start: 47038, Stop: 48180, Start Num: 52

Candidate Starts for GenevaB15_77:

(Start: 21 @46891 has 6 MA's), (Start: 52 @47038 has 5 MA's), (53, 47041), (Start: 56 @47050 has 5 MA's), (58, 47056), (61, 47086), (97, 47290), (98, 47293), (104, 47344), (111, 47377), (121, 47434), (132, 47515), (150, 47599), (161, 47659), (163, 47674), (172, 47725), (186, 47806), (194, 47866), (195, 47875), (204, 47920), (206, 47926), (213, 47983), (223, 48055), (226, 48085), (227, 48091), (228, 48094), (230, 48100), (231, 48109), (236, 48139), (243, 48169),

Gene: Glaske16_71 Start: 45338, Stop: 46618, Start Num: 23

Candidate Starts for Glaske16_71:

(Start: 23 @45338 has 4 MA's), (Start: 56 @45491 has 5 MA's), (74, 45596), (104, 45782), (140, 45986), (150, 46037), (161, 46097), (165, 46121), (172, 46163), (190, 46265), (191, 46268), (193, 46295), (195, 46313), (203, 46355), (204, 46358), (206, 46364), (223, 46493), (226, 46523), (227, 46529), (228, 46532), (230, 46538), (232, 46565), (236, 46577), (241, 46601), (243, 46607),

Gene: Glexan_80 Start: 50621, Stop: 51883, Start Num: 26

Candidate Starts for Glexan_80:

(Start: 26 @50621 has 118 MA's), (Start: 39 @50675 has 5 MA's), (45, 50708), (58, 50783), (67, 50840), (73, 50876), (76, 50888), (102, 51059), (127, 51209), (145, 51308), (146, 51314), (149, 51329), (161, 51392), (177, 51491), (181, 51509), (185, 51524), (186, 51527), (187, 51530), (191, 51551), (198, 51617), (202, 51638), (203, 51641), (204, 51644), (227, 51803), (229, 51809), (234, 51839), (238, 51851), (240, 51866),

Gene: Goku_79 Start: 49697, Stop: 50959, Start Num: 26

Candidate Starts for Goku_79:

(Start: 26 @49697 has 118 MA's), (Start: 39 @49751 has 5 MA's), (45, 49784), (58, 49859), (67, 49916), (73, 49952), (76, 49964), (102, 50135), (127, 50285), (145, 50384), (146, 50390), (149, 50405), (161, 50468), (177, 50567), (181, 50585), (185, 50600), (186, 50603), (187, 50606), (191, 50627), (198, 50693), (202, 50714), (203, 50717), (204, 50720), (227, 50879), (229, 50885), (234, 50915), (238, 50927), (240, 50942),

Gene: GoldenSpark_85 Start: 50284, Stop: 51546, Start Num: 26

Candidate Starts for GoldenSpark_85:

(Start: 26 @50284 has 118 MA's), (Start: 39 @50338 has 5 MA's), (45, 50371), (58, 50446), (67, 50503), (73, 50539), (76, 50551), (102, 50722), (127, 50872), (145, 50971), (146, 50977), (149, 50992), (161, 51055), (177, 51154), (181, 51172), (185, 51187), (186, 51190), (187, 51193), (191, 51214), (198, 51280), (202, 51301), (203, 51304), (204, 51307), (227, 51466), (229, 51472), (234, 51502), (238, 51514), (240, 51529),

Gene: Goldilocks_84 Start: 49779, Stop: 51041, Start Num: 26

Candidate Starts for Goldilocks_84:

(Start: 26 @49779 has 118 MA's), (Start: 39 @49833 has 5 MA's), (45, 49866), (58, 49941), (67, 49998), (73, 50034), (76, 50046), (102, 50217), (127, 50367), (145, 50466), (146, 50472), (149,

50487), (161, 50550), (177, 50649), (181, 50667), (185, 50682), (186, 50685), (187, 50688), (191, 50709), (198, 50775), (202, 50796), (203, 50799), (204, 50802), (227, 50961), (229, 50967), (234, 50997), (238, 51009), (240, 51024),

Gene: GooberAzure_84 Start: 50284, Stop: 51546, Start Num: 26

Candidate Starts for GooberAzure_84:

(Start: 26 @50284 has 118 MA's), (Start: 39 @50338 has 5 MA's), (45, 50371), (58, 50446), (67, 50503), (73, 50539), (76, 50551), (102, 50722), (127, 50872), (145, 50971), (146, 50977), (149, 50992), (161, 51055), (177, 51154), (181, 51172), (185, 51187), (186, 51190), (187, 51193), (191, 51214), (198, 51280), (202, 51301), (203, 51304), (204, 51307), (227, 51466), (229, 51472), (234, 51502), (238, 51514), (240, 51529),

Gene: GuuelaD_68 Start: 47695, Stop: 48960, Start Num: 25

Candidate Starts for GuuelaD_68:

(Start: 25 @47695 has 62 MA's), (Start: 41 @47758 has 1 MA's), (60, 47884), (80, 48004), (81, 48007), (85, 48034), (109, 48178), (125, 48268), (134, 48331), (136, 48337), (146, 48391), (153, 48418), (160, 48457), (167, 48511), (173, 48538), (178, 48571), (185, 48604), (188, 48613), (190, 48628), (192, 48652), (194, 48670), (195, 48679), (202, 48718), (204, 48724), (208, 48742), (218, 48832), (221, 48841), (222, 48844), (227, 48880), (233, 48910),

Gene: Hafay_72 Start: 47684, Stop: 48949, Start Num: 25

Candidate Starts for Hafay_72:

(Start: 25 @47684 has 62 MA's), (Start: 41 @47747 has 1 MA's), (60, 47873), (80, 47993), (81, 47996), (85, 48023), (109, 48167), (125, 48257), (134, 48320), (136, 48326), (146, 48380), (153, 48407), (160, 48446), (167, 48500), (173, 48527), (178, 48560), (185, 48593), (188, 48602), (190, 48617), (192, 48641), (194, 48659), (195, 48668), (202, 48707), (204, 48713), (208, 48731), (218, 48821), (221, 48830), (222, 48833), (227, 48869), (233, 48899),

Gene: Halena_66 Start: 45296, Stop: 46561, Start Num: 25

Candidate Starts for Halena_66:

(14, 45263), (Start: 25 @45296 has 62 MA's), (40, 45356), (Start: 41 @45359 has 1 MA's), (47, 45392), (51, 45440), (55, 45449), (60, 45485), (72, 45551), (80, 45605), (86, 45641), (106, 45764), (109, 45779), (123, 45854), (125, 45869), (134, 45932), (136, 45938), (142, 45974), (146, 45992), (149, 46007), (150, 46010), (153, 46019), (155, 46022), (160, 46058), (166, 46106), (169, 46124), (187, 46211), (190, 46229), (192, 46253), (194, 46271), (195, 46280), (202, 46319), (204, 46325), (208, 46343), (210, 46373), (218, 46433), (221, 46442), (233, 46511),

Gene: HanKaySha_81 Start: 49582, Stop: 50844, Start Num: 26

Candidate Starts for HanKaySha_81:

(Start: 26 @49582 has 118 MA's), (Start: 39 @49636 has 5 MA's), (45, 49669), (58, 49744), (67, 49801), (73, 49837), (76, 49849), (102, 50020), (127, 50170), (145, 50269), (146, 50275), (149, 50290), (161, 50353), (177, 50452), (181, 50470), (185, 50485), (186, 50488), (187, 50491), (191, 50512), (198, 50578), (202, 50599), (203, 50602), (204, 50605), (227, 50764), (229, 50770), (234, 50800), (238, 50812), (240, 50827),

Gene: Harella_81 Start: 51137, Stop: 52399, Start Num: 26

Candidate Starts for Harella_81:

(Start: 26 @51137 has 118 MA's), (Start: 39 @51191 has 5 MA's), (45, 51224), (58, 51299), (67, 51356), (73, 51392), (76, 51404), (102, 51575), (127, 51725), (145, 51824), (146, 51830), (149, 51845), (161, 51908), (177, 52007), (181, 52025), (185, 52040), (186, 52043), (187, 52046), (191, 52067), (198, 52133), (202, 52154), (203, 52157), (204, 52160), (227, 52319), (229, 52325), (234, 52355), (238, 52367), (240, 52382),

Gene: Henry_79 Start: 49922, Stop: 51184, Start Num: 26

Candidate Starts for Henry_79:

(Start: 26 @49922 has 118 MA's), (Start: 39 @49976 has 5 MA's), (45, 50009), (58, 50084), (67, 50141), (73, 50177), (76, 50189), (102, 50360), (127, 50510), (145, 50609), (146, 50615), (149, 50630), (161, 50693), (177, 50792), (181, 50810), (185, 50825), (186, 50828), (187, 50831), (191, 50852), (198, 50918), (202, 50939), (203, 50942), (204, 50945), (227, 51104), (229, 51110), (234, 51140), (238, 51152), (240, 51167),

Gene: Highbury_80 Start: 49573, Stop: 50835, Start Num: 26

Candidate Starts for Highbury_80:

(Start: 26 @49573 has 118 MA's), (Start: 39 @49627 has 5 MA's), (45, 49660), (58, 49735), (67, 49792), (73, 49828), (76, 49840), (102, 50011), (127, 50161), (145, 50260), (146, 50266), (149, 50281), (161, 50344), (177, 50443), (181, 50461), (185, 50476), (186, 50479), (187, 50482), (191, 50503), (198, 50569), (202, 50590), (203, 50593), (204, 50596), (227, 50755), (229, 50761), (234, 50791), (238, 50803), (240, 50818),

Gene: Holt_86 Start: 50698, Stop: 51960, Start Num: 26

Candidate Starts for Holt_86:

(Start: 26 @50698 has 118 MA's), (Start: 39 @50752 has 5 MA's), (45, 50785), (58, 50860), (67, 50917), (73, 50953), (76, 50965), (102, 51136), (127, 51286), (145, 51385), (146, 51391), (149, 51406), (161, 51469), (177, 51568), (181, 51586), (185, 51601), (186, 51604), (187, 51607), (191, 51628), (198, 51694), (202, 51715), (203, 51718), (204, 51721), (227, 51880), (229, 51886), (234, 51916), (238, 51928), (240, 51943),

Gene: Hoonter_84 Start: 50281, Stop: 51543, Start Num: 26

Candidate Starts for Hoonter_84:

(Start: 26 @50281 has 118 MA's), (Start: 39 @50335 has 5 MA's), (45, 50368), (58, 50443), (67, 50500), (73, 50536), (76, 50548), (102, 50719), (127, 50869), (145, 50968), (146, 50974), (149, 50989), (161, 51052), (177, 51151), (181, 51169), (185, 51184), (186, 51187), (187, 51190), (191, 51211), (198, 51277), (202, 51298), (203, 51301), (204, 51304), (227, 51463), (229, 51469), (234, 51499), (238, 51511), (240, 51526),

Gene: Hopey_81 Start: 50114, Stop: 51376, Start Num: 26

Candidate Starts for Hopey_81:

(Start: 26 @50114 has 118 MA's), (Start: 39 @50168 has 5 MA's), (45, 50201), (58, 50276), (67, 50333), (73, 50369), (76, 50381), (102, 50552), (127, 50702), (145, 50801), (146, 50807), (149, 50822), (161, 50885), (177, 50984), (181, 51002), (185, 51017), (186, 51020), (187, 51023), (191, 51044), (198, 51110), (202, 51131), (203, 51134), (204, 51137), (227, 51296), (229, 51302), (234, 51332), (238, 51344), (240, 51359),

Gene: Hortense_70 Start: 47494, Stop: 48747, Start Num: 31

Candidate Starts for Hortense_70:

(12, 47443), (Start: 31 @47494 has 10 MA's), (37, 47539), (38, 47542), (50, 47593), (93, 47836), (104, 47923), (108, 47941), (125, 48040), (136, 48109), (143, 48148), (146, 48163), (164, 48259), (169, 48295), (177, 48340), (182, 48361), (186, 48388), (195, 48460), (200, 48487), (204, 48505),

Gene: Howe_70 Start: 47494, Stop: 48747, Start Num: 31

Candidate Starts for Howe_70:

(12, 47443), (Start: 31 @47494 has 10 MA's), (37, 47539), (38, 47542), (50, 47593), (93, 47836), (104, 47923), (108, 47941), (125, 48040), (136, 48109), (143, 48148), (146, 48163), (164, 48259), (169, 48295), (177, 48340), (182, 48361), (186, 48388), (195, 48460), (200, 48487), (204, 48505),

Gene: HufflyPuff_84 Start: 50947, Stop: 52209, Start Num: 26

Candidate Starts for HufflyPuff_84:

(Start: 26 @50947 has 118 MA's), (Start: 39 @51001 has 5 MA's), (45, 51034), (58, 51109), (67, 51166), (73, 51202), (76, 51214), (102, 51385), (127, 51535), (145, 51634), (146, 51640), (149, 51655), (161, 51718), (177, 51817), (181, 51835), (185, 51850), (186, 51853), (187, 51856), (191, 51877), (198, 51943), (202, 51964), (203, 51967), (204, 51970), (227, 52129), (229, 52135), (234, 52165), (238, 52177), (240, 52192),

Gene: IHOP_79 Start: 50046, Stop: 51308, Start Num: 26

Candidate Starts for IHOP_79:

(Start: 26 @50046 has 118 MA's), (Start: 39 @50100 has 5 MA's), (45, 50133), (58, 50208), (67, 50265), (73, 50301), (76, 50313), (102, 50484), (127, 50634), (145, 50733), (146, 50739), (149, 50754), (161, 50817), (177, 50916), (181, 50934), (185, 50949), (186, 50952), (187, 50955), (191, 50976), (198, 51042), (202, 51063), (203, 51066), (204, 51069), (227, 51228), (229, 51234), (234, 51264), (238, 51276), (240, 51291),

Gene: IPhone7_69 Start: 45017, Stop: 46144, Start Num: 56

Candidate Starts for IPhone7_69:

(11, 44822), (Start: 21 @44858 has 6 MA's), (Start: 56 @45017 has 5 MA's), (74, 45122), (104, 45308), (140, 45512), (150, 45563), (161, 45623), (165, 45647), (172, 45689), (190, 45791), (191, 45794), (193, 45821), (195, 45839), (203, 45881), (204, 45884), (206, 45890), (223, 46019), (226, 46049), (227, 46055), (228, 46058), (230, 46064), (232, 46091), (236, 46103), (241, 46127), (243, 46133),

Gene: Icee_82 Start: 49948, Stop: 51210, Start Num: 26

Candidate Starts for Icee_82:

(Start: 26 @49948 has 118 MA's), (Start: 39 @50002 has 5 MA's), (45, 50035), (58, 50110), (67, 50167), (73, 50203), (76, 50215), (102, 50386), (127, 50536), (145, 50635), (146, 50641), (149, 50656), (161, 50719), (177, 50818), (181, 50836), (185, 50851), (186, 50854), (187, 50857), (191, 50878), (198, 50944), (202, 50965), (203, 50968), (204, 50971), (227, 51130), (229, 51136), (234, 51166), (238, 51178), (240, 51193),

Gene: Inca_78 Start: 48574, Stop: 49836, Start Num: 26

Candidate Starts for Inca_78:

(Start: 26 @48574 has 118 MA's), (Start: 39 @48628 has 5 MA's), (45, 48661), (58, 48736), (67, 48793), (73, 48829), (76, 48841), (102, 49012), (127, 49162), (145, 49261), (146, 49267), (149, 49282), (161, 49345), (177, 49444), (181, 49462), (185, 49477), (186, 49480), (187, 49483), (191, 49504), (198, 49570), (202, 49591), (203, 49594), (204, 49597), (227, 49756), (229, 49762), (234, 49792), (238, 49804), (240, 49819),

Gene: Itos_69 Start: 46486, Stop: 47751, Start Num: 25

Candidate Starts for Itos_69:

(Start: 25 @46486 has 62 MA's), (Start: 41 @46549 has 1 MA's), (60, 46675), (80, 46795), (81, 46798), (85, 46825), (109, 46969), (125, 47059), (134, 47122), (136, 47128), (146, 47182), (160, 47248), (167, 47302), (173, 47329), (178, 47362), (185, 47395), (188, 47404), (190, 47419), (192, 47443), (194, 47461), (195, 47470), (202, 47509), (204, 47515), (208, 47533), (218, 47623), (221, 47632), (222, 47635), (227, 47671), (233, 47701),

Gene: JeTaime_81 Start: 50763, Stop: 52025, Start Num: 26

Candidate Starts for JeTaime_81:

(Start: 26 @50763 has 118 MA's), (Start: 39 @50817 has 5 MA's), (45, 50850), (58, 50925), (67, 50982), (73, 51018), (76, 51030), (102, 51201), (127, 51351), (145, 51450), (146, 51456), (149, 51471), (161, 51534), (177, 51633), (181, 51651), (185, 51666), (186, 51669), (187, 51672), (191, 51693), (198, 51759), (202, 51780), (203, 51783), (204, 51786), (227, 51945), (229, 51951), (234,

51981), (238, 51993), (240, 52008),

Gene: Jobypre_70 Start: 47911, Stop: 49176, Start Num: 25

Candidate Starts for Jobypre_70:

(14, 47878), (Start: 25 @47911 has 62 MA's), (Start: 41 @47974 has 1 MA's), (47, 48007), (55, 48064), (Start: 56 @48070 has 5 MA's), (59, 48091), (60, 48100), (80, 48220), (81, 48223), (85, 48250), (95, 48313), (107, 48385), (109, 48394), (134, 48547), (145, 48601), (146, 48607), (155, 48637), (158, 48655), (160, 48673), (169, 48739), (172, 48751), (178, 48787), (188, 48829), (194, 48886), (195, 48895), (204, 48940), (206, 48946), (218, 49048), (222, 49060), (227, 49096), (233, 49126),

Gene: JoeDirt_68 Start: 46449, Stop: 47714, Start Num: 25

Candidate Starts for JoeDirt_68:

(14, 46416), (Start: 25 @46449 has 62 MA's), (40, 46509), (Start: 41 @46512 has 1 MA's), (47, 46545), (51, 46593), (55, 46602), (60, 46638), (72, 46704), (80, 46758), (86, 46794), (106, 46917), (109, 46932), (123, 47007), (125, 47022), (134, 47085), (136, 47091), (142, 47127), (146, 47145), (149, 47160), (150, 47163), (153, 47172), (155, 47175), (160, 47211), (166, 47259), (169, 47277), (187, 47364), (190, 47382), (192, 47406), (194, 47424), (195, 47433), (202, 47472), (204, 47478), (208, 47496), (210, 47526), (218, 47586), (221, 47595), (233, 47664),

Gene: Jubie_68 Start: 48046, Stop: 49311, Start Num: 25

Candidate Starts for Jubie_68:

(14, 48013), (Start: 25 @48046 has 62 MA's), (Start: 41 @48109 has 1 MA's), (47, 48142), (55, 48199), (Start: 56 @48205 has 5 MA's), (59, 48226), (60, 48235), (80, 48355), (81, 48358), (85, 48385), (95, 48448), (107, 48520), (109, 48529), (134, 48682), (145, 48736), (146, 48742), (155, 48772), (158, 48790), (160, 48808), (169, 48874), (172, 48886), (178, 48922), (188, 48964), (194, 49021), (195, 49030), (204, 49075), (206, 49081), (218, 49183), (222, 49195), (227, 49231), (233, 49261),

Gene: Kahlid_70 Start: 47586, Stop: 48851, Start Num: 25

Candidate Starts for Kahlid_70:

(Start: 25 @47586 has 62 MA's), (Start: 41 @47649 has 1 MA's), (60, 47775), (80, 47895), (81, 47898), (85, 47925), (109, 48069), (125, 48159), (134, 48222), (136, 48228), (146, 48282), (153, 48309), (155, 48312), (160, 48348), (167, 48402), (173, 48429), (178, 48462), (185, 48495), (188, 48504), (190, 48519), (192, 48543), (194, 48561), (195, 48570), (202, 48609), (204, 48615), (208, 48633), (218, 48723), (221, 48732), (222, 48735), (227, 48771), (233, 48801),

Gene: Kanye_78 Start: 49630, Stop: 50892, Start Num: 26

Candidate Starts for Kanye_78:

(Start: 26 @49630 has 118 MA's), (Start: 39 @49684 has 5 MA's), (45, 49717), (58, 49792), (67, 49849), (73, 49885), (76, 49897), (102, 50068), (127, 50218), (145, 50317), (146, 50323), (149, 50338), (161, 50401), (177, 50500), (181, 50518), (185, 50533), (186, 50536), (187, 50539), (191, 50560), (198, 50626), (202, 50647), (203, 50650), (204, 50653), (227, 50812), (229, 50818), (234, 50848), (238, 50860), (240, 50875),

Gene: Kimchi_85 Start: 50287, Stop: 51549, Start Num: 26

Candidate Starts for Kimchi_85:

(Start: 26 @50287 has 118 MA's), (Start: 39 @50341 has 5 MA's), (45, 50374), (58, 50449), (67, 50506), (73, 50542), (76, 50554), (102, 50725), (127, 50875), (145, 50974), (146, 50980), (149, 50995), (161, 51058), (177, 51157), (181, 51175), (185, 51190), (186, 51193), (187, 51196), (191, 51217), (198, 51283), (202, 51304), (203, 51307), (204, 51310), (227, 51469), (229, 51475), (234, 51505), (238, 51517), (240, 51532),

Gene: Kingsolomon_67 Start: 47918, Stop: 49183, Start Num: 25

Candidate Starts for Kingsolomon_67:

(14, 47885), (Start: 25 @47918 has 62 MA's), (Start: 41 @47981 has 1 MA's), (47, 48014), (55, 48071), (Start: 56 @48077 has 5 MA's), (59, 48098), (60, 48107), (80, 48227), (81, 48230), (85, 48257), (95, 48320), (107, 48392), (109, 48401), (134, 48554), (145, 48608), (146, 48614), (155, 48644), (158, 48662), (160, 48680), (169, 48746), (172, 48758), (178, 48794), (188, 48836), (194, 48893), (195, 48902), (204, 48947), (206, 48953), (218, 49055), (222, 49067), (227, 49103), (233, 49133),

Gene: KirDoubleO7_67 Start: 47916, Stop: 49214, Start Num: 14

Candidate Starts for KirDoubleO7_67:

(14, 47916), (Start: 25 @47949 has 62 MA's), (Start: 41 @48012 has 1 MA's), (47, 48045), (55, 48102), (59, 48129), (60, 48138), (72, 48204), (80, 48258), (81, 48261), (85, 48288), (95, 48351), (109, 48432), (134, 48585), (146, 48645), (155, 48675), (158, 48693), (160, 48711), (169, 48777), (172, 48789), (188, 48867), (190, 48882), (194, 48924), (195, 48933), (204, 48978), (205, 48981), (218, 49086), (226, 49128), (227, 49134), (233, 49164),

Gene: Kithara_72 Start: 50508, Stop: 49216, Start Num: 27

Candidate Starts for Kithara_72:

(6, 50568), (27, 50508), (43, 50427), (83, 50178), (92, 50136), (112, 50019), (115, 50007), (118, 49992), (122, 49959), (131, 49890), (146, 49824), (149, 49809), (160, 49758), (168, 49695), (172, 49680), (184, 49608), (191, 49575), (202, 49485), (205, 49476), (214, 49419), (239, 49263), (244, 49248),

Gene: Kostya_81 Start: 50202, Stop: 51410, Start Num: 39

Candidate Starts for Kostya_81:

(Start: 26 @50148 has 118 MA's), (Start: 39 @50202 has 5 MA's), (45, 50235), (58, 50310), (67, 50367), (73, 50403), (76, 50415), (102, 50586), (127, 50736), (145, 50835), (146, 50841), (149, 50856), (161, 50919), (177, 51018), (181, 51036), (185, 51051), (186, 51054), (187, 51057), (191, 51078), (198, 51144), (202, 51165), (203, 51168), (204, 51171), (227, 51330), (229, 51336), (234, 51366), (238, 51378), (240, 51393),

Gene: Krypton555_70 Start: 48137, Stop: 49402, Start Num: 25

Candidate Starts for Krypton555_70:

(14, 48104), (Start: 25 @48137 has 62 MA's), (Start: 41 @48200 has 1 MA's), (47, 48233), (55, 48290), (59, 48317), (60, 48326), (80, 48446), (81, 48449), (85, 48476), (95, 48539), (107, 48611), (109, 48620), (134, 48773), (145, 48827), (146, 48833), (155, 48863), (158, 48881), (160, 48899), (169, 48965), (172, 48977), (178, 49013), (188, 49055), (194, 49112), (195, 49121), (204, 49166), (206, 49172), (218, 49274), (222, 49286), (227, 49322), (233, 49352),

Gene: Kudrefre_79 Start: 46823, Stop: 48133, Start Num: 20

Candidate Starts for Kudrefre_79:

(7, 46784), (9, 46787), (Start: 20 @46823 has 7 MA's), (36, 46886), (77, 47102), (83, 47153), (88, 47177), (114, 47327), (124, 47393), (146, 47528), (155, 47558), (161, 47606), (173, 47675), (179, 47714), (184, 47744), (186, 47753), (188, 47759), (189, 47768), (190, 47774), (194, 47816), (198, 47843), (199, 47846), (201, 47858), (202, 47864), (204, 47870), (205, 47873), (207, 47882), (208, 47888), (211, 47924), (214, 47951), (219, 47999), (226, 48047), (229, 48059), (234, 48089),

Gene: Kumao_65 Start: 45572, Stop: 46837, Start Num: 28

Candidate Starts for Kumao_65:

(8, 45518), (Start: 28 @45572 has 1 MA's), (48, 45665), (55, 45719), (69, 45794), (94, 45947), (101, 45986), (126, 46148), (139, 46220), (142, 46238), (143, 46241), (146, 46256), (149, 46271), (150, 46274), (161, 46334), (165, 46358), (166, 46370), (178, 46436), (186, 46478), (196, 46559), (199,

46571), (209, 46643), (212, 46652), (220, 46703), (221, 46706), (231, 46760), (236, 46793),

Gene: LeBron_67 Start: 45300, Stop: 46565, Start Num: 25

Candidate Starts for LeBron_67:

(14, 45267), (Start: 25 @45300 has 62 MA's), (40, 45360), (Start: 41 @45363 has 1 MA's), (47, 45396), (51, 45444), (55, 45453), (60, 45489), (72, 45555), (80, 45609), (86, 45645), (106, 45768), (109, 45783), (123, 45858), (125, 45873), (134, 45936), (136, 45942), (142, 45978), (146, 45996), (149, 46011), (150, 46014), (153, 46023), (155, 46026), (160, 46062), (187, 46215), (190, 46233), (192, 46257), (194, 46275), (195, 46284), (202, 46323), (204, 46329), (208, 46347), (210, 46377), (218, 46437), (221, 46446), (233, 46515),

Gene: Lewan_71 Start: 47637, Stop: 48902, Start Num: 25

Candidate Starts for Lewan_71:

(Start: 25 @47637 has 62 MA's), (Start: 41 @47700 has 1 MA's), (60, 47826), (80, 47946), (81, 47949), (85, 47976), (109, 48120), (125, 48210), (134, 48273), (136, 48279), (146, 48333), (153, 48360), (155, 48363), (160, 48399), (167, 48453), (173, 48480), (178, 48513), (185, 48546), (188, 48555), (190, 48570), (192, 48594), (194, 48612), (195, 48621), (202, 48660), (204, 48666), (208, 48684), (218, 48774), (221, 48783), (222, 48786), (227, 48822), (233, 48852),

Gene: LilDestine_70 Start: 47613, Stop: 48878, Start Num: 25

Candidate Starts for LilDestine_70:

(Start: 25 @47613 has 62 MA's), (Start: 41 @47676 has 1 MA's), (60, 47802), (80, 47922), (81, 47925), (85, 47952), (109, 48096), (125, 48186), (134, 48249), (136, 48255), (146, 48309), (153, 48336), (160, 48375), (167, 48429), (173, 48456), (178, 48489), (185, 48522), (188, 48531), (190, 48546), (192, 48570), (194, 48588), (195, 48597), (202, 48636), (204, 48642), (208, 48660), (218, 48750), (221, 48759), (222, 48762), (227, 48798), (233, 48828),

Gene: Lilac_83 Start: 49899, Stop: 51161, Start Num: 26

Candidate Starts for Lilac_83:

(Start: 26 @49899 has 118 MA's), (Start: 39 @49953 has 5 MA's), (45, 49986), (58, 50061), (67, 50118), (73, 50154), (76, 50166), (102, 50337), (127, 50487), (145, 50586), (146, 50592), (149, 50607), (161, 50670), (177, 50769), (181, 50787), (185, 50802), (186, 50805), (187, 50808), (191, 50829), (198, 50895), (202, 50916), (203, 50919), (204, 50922), (227, 51081), (229, 51087), (234, 51117), (238, 51129), (240, 51144),

Gene: LilhomieP_69 Start: 45343, Stop: 46623, Start Num: 23

Candidate Starts for LilhomieP_69:

(Start: 23 @45343 has 4 MA's), (Start: 56 @45496 has 5 MA's), (74, 45601), (104, 45787), (140, 45991), (150, 46042), (161, 46102), (165, 46126), (172, 46168), (190, 46270), (191, 46273), (193, 46300), (195, 46318), (203, 46360), (204, 46363), (206, 46369), (223, 46498), (226, 46528), (227, 46534), (228, 46537), (230, 46543), (232, 46570), (236, 46582), (241, 46606), (243, 46612),

Gene: Lilizi_82 Start: 49612, Stop: 50874, Start Num: 26

Candidate Starts for Lilizi_82:

(Start: 26 @49612 has 118 MA's), (Start: 39 @49666 has 5 MA's), (45, 49699), (58, 49774), (67, 49831), (73, 49867), (76, 49879), (102, 50050), (127, 50200), (145, 50299), (146, 50305), (149, 50320), (161, 50383), (177, 50482), (181, 50500), (185, 50515), (186, 50518), (187, 50521), (191, 50542), (198, 50608), (202, 50629), (203, 50632), (204, 50635), (227, 50794), (229, 50800), (234, 50830), (238, 50842), (240, 50857),

Gene: Lilpickle_80 Start: 49500, Stop: 50762, Start Num: 26

Candidate Starts for Lilpickle_80:

(Start: 26 @49500 has 118 MA's), (Start: 39 @49554 has 5 MA's), (45, 49587), (67, 49719), (73, 49755), (76, 49767), (102, 49938), (127, 50088), (145, 50187), (146, 50193), (149, 50208), (161, 50271), (177, 50370), (181, 50388), (185, 50403), (186, 50406), (187, 50409), (191, 50430), (198, 50496), (202, 50517), (203, 50520), (204, 50523), (227, 50682), (229, 50688), (234, 50718), (238, 50730), (240, 50745),

Gene: LiyuLake_68 Start: 48028, Stop: 49230, Start Num: 41

Candidate Starts for LiyuLake_68:

(14, 47932), (Start: 25 @47965 has 62 MA's), (Start: 41 @48028 has 1 MA's), (47, 48061), (55, 48118), (59, 48145), (60, 48154), (72, 48220), (80, 48274), (81, 48277), (85, 48304), (109, 48448), (134, 48601), (146, 48661), (155, 48691), (158, 48709), (160, 48727), (169, 48793), (172, 48805), (188, 48883), (190, 48898), (194, 48940), (195, 48949), (204, 48994), (205, 48997), (218, 49102), (226, 49144), (227, 49150), (233, 49180),

Gene: Loadrie_69 Start: 47665, Stop: 48930, Start Num: 25

Candidate Starts for Loadrie_69:

(Start: 25 @47665 has 62 MA's), (Start: 41 @47728 has 1 MA's), (60, 47854), (80, 47974), (81, 47977), (85, 48004), (109, 48148), (125, 48238), (134, 48301), (136, 48307), (146, 48361), (153, 48388), (155, 48391), (160, 48427), (167, 48481), (173, 48508), (178, 48541), (185, 48574), (188, 48583), (190, 48598), (192, 48622), (194, 48640), (195, 48649), (202, 48688), (204, 48694), (208, 48712), (218, 48802), (221, 48811), (222, 48814), (227, 48850), (233, 48880),

Gene: Lolly9_69 Start: 48037, Stop: 49302, Start Num: 25

Candidate Starts for Lolly9_69:

(Start: 25 @48037 has 62 MA's), (Start: 41 @48100 has 1 MA's), (47, 48133), (55, 48190), (59, 48217), (60, 48226), (71, 48289), (80, 48346), (81, 48349), (85, 48376), (109, 48520), (121, 48586), (134, 48673), (146, 48733), (155, 48763), (158, 48781), (160, 48799), (169, 48865), (172, 48877), (178, 48913), (188, 48955), (190, 48970), (195, 49021), (204, 49066), (205, 49069), (215, 49138), (218, 49174), (227, 49222), (233, 49252),

Gene: Lumos_70 Start: 47908, Stop: 49173, Start Num: 25

Candidate Starts for Lumos_70:

(14, 47875), (Start: 25 @47908 has 62 MA's), (Start: 41 @47971 has 1 MA's), (47, 48004), (55, 48061), (Start: 56 @48067 has 5 MA's), (59, 48088), (60, 48097), (80, 48217), (81, 48220), (85, 48247), (95, 48310), (107, 48382), (109, 48391), (134, 48544), (145, 48598), (146, 48604), (155, 48634), (158, 48652), (160, 48670), (169, 48736), (172, 48748), (178, 48784), (188, 48826), (194, 48883), (195, 48892), (204, 48937), (206, 48943), (218, 49045), (222, 49057), (227, 49093), (233, 49123),

Gene: MAckerman_66 Start: 45289, Stop: 46554, Start Num: 25

Candidate Starts for MAckerman_66:

(14, 45256), (Start: 25 @45289 has 62 MA's), (40, 45349), (Start: 41 @45352 has 1 MA's), (47, 45385), (51, 45433), (55, 45442), (60, 45478), (72, 45544), (80, 45598), (86, 45634), (106, 45757), (109, 45772), (123, 45847), (125, 45862), (134, 45925), (136, 45931), (142, 45967), (146, 45985), (149, 46000), (150, 46003), (153, 46012), (155, 46015), (160, 46051), (166, 46099), (169, 46117), (187, 46204), (190, 46222), (192, 46246), (194, 46264), (195, 46273), (202, 46312), (204, 46318), (208, 46336), (210, 46366), (218, 46426), (221, 46435), (233, 46504),

Gene: MISSy_82 Start: 50006, Stop: 51268, Start Num: 26

Candidate Starts for MISSy_82:

(Start: 26 @50006 has 118 MA's), (Start: 39 @50060 has 5 MA's), (45, 50093), (58, 50168), (67, 50225), (73, 50261), (76, 50273), (102, 50444), (127, 50594), (145, 50693), (146, 50699), (149, 50714), (161, 50777), (177, 50876), (181, 50894), (185, 50909), (186, 50912), (187, 50915), (191,

50936), (198, 51002), (202, 51023), (203, 51026), (204, 51029), (227, 51188), (229, 51194), (234, 51224), (238, 51236), (240, 51251),

Gene: MPhalcon_82 Start: 49999, Stop: 51261, Start Num: 26

Candidate Starts for MPhalcon_82:

(Start: 26 @49999 has 118 MA's), (Start: 39 @50053 has 5 MA's), (45, 50086), (58, 50161), (67, 50218), (73, 50254), (76, 50266), (102, 50437), (127, 50587), (145, 50686), (146, 50692), (149, 50707), (161, 50770), (177, 50869), (181, 50887), (185, 50902), (186, 50905), (187, 50908), (191, 50929), (198, 50995), (202, 51016), (203, 51019), (204, 51022), (227, 51181), (229, 51187), (234, 51217), (238, 51229), (240, 51244),

Gene: MadamMonkfish_81 Start: 49227, Stop: 50489, Start Num: 26

Candidate Starts for MadamMonkfish_81:

(Start: 26 @49227 has 118 MA's), (Start: 39 @49281 has 5 MA's), (45, 49314), (58, 49389), (67, 49446), (73, 49482), (76, 49494), (102, 49665), (127, 49815), (145, 49914), (146, 49920), (149, 49935), (161, 49998), (177, 50097), (181, 50115), (185, 50130), (186, 50133), (187, 50136), (191, 50157), (198, 50223), (202, 50244), (203, 50247), (204, 50250), (227, 50409), (229, 50415), (234, 50445), (238, 50457), (240, 50472),

Gene: Manda_82 Start: 51086, Stop: 52348, Start Num: 26

Candidate Starts for Manda_82:

(Start: 26 @51086 has 118 MA's), (Start: 39 @51140 has 5 MA's), (45, 51173), (58, 51248), (67, 51305), (73, 51341), (76, 51353), (102, 51524), (127, 51674), (145, 51773), (146, 51779), (149, 51794), (161, 51857), (177, 51956), (181, 51974), (185, 51989), (186, 51992), (187, 51995), (191, 52016), (198, 52082), (202, 52103), (203, 52106), (204, 52109), (227, 52268), (229, 52274), (234, 52304), (238, 52316), (240, 52331),

Gene: Marshmallow_79 Start: 50776, Stop: 52038, Start Num: 26

Candidate Starts for Marshmallow_79:

(Start: 26 @50776 has 118 MA's), (Start: 39 @50830 has 5 MA's), (45, 50863), (58, 50938), (67, 50995), (73, 51031), (76, 51043), (102, 51214), (127, 51364), (145, 51463), (146, 51469), (149, 51484), (161, 51547), (177, 51646), (181, 51664), (185, 51679), (186, 51682), (187, 51685), (191, 51706), (198, 51772), (202, 51793), (203, 51796), (204, 51799), (227, 51958), (229, 51964), (234, 51994), (238, 52006), (240, 52021),

Gene: MaryV_80 Start: 49831, Stop: 51156, Start Num: 30

Candidate Starts for MaryV_80:

(15, 49789), (17, 49798), (Start: 30 @49831 has 5 MA's), (53, 49966), (Start: 56 @49975 has 5 MA's), (80, 50125), (81, 50128), (82, 50131), (91, 50185), (99, 50221), (125, 50383), (126, 50398), (128, 50404), (129, 50407), (141, 50485), (143, 50491), (145, 50500), (150, 50524), (156, 50542), (159, 50569), (172, 50650), (178, 50686), (185, 50728), (186, 50731), (202, 50839), (203, 50842), (204, 50845), (217, 50947), (218, 50956), (220, 50962), (222, 50968), (228, 51016), (231, 51031), (247, 51127), (248, 51148),

Gene: Maxxinista_83 Start: 49872, Stop: 51134, Start Num: 26

Candidate Starts for Maxxinista_83:

(Start: 26 @49872 has 118 MA's), (Start: 39 @49926 has 5 MA's), (45, 49959), (58, 50034), (67, 50091), (73, 50127), (76, 50139), (102, 50310), (127, 50460), (145, 50559), (146, 50565), (149, 50580), (161, 50643), (177, 50742), (181, 50760), (185, 50775), (186, 50778), (187, 50781), (191, 50802), (198, 50868), (202, 50889), (203, 50892), (204, 50895), (227, 51054), (229, 51060), (234, 51090), (238, 51102), (240, 51117),

Gene: MenE_45 Start: 27285, Stop: 28589, Start Num: 33

Candidate Starts for MenE_45:

(2, 27039), (Start: 33 @27285 has 7 MA's), (36, 27318), (44, 27360), (54, 27426), (73, 27534), (76, 27546), (81, 27585), (88, 27624), (99, 27687), (105, 27738), (113, 27771), (121, 27822), (132, 27900), (135, 27909), (143, 27948), (146, 27963), (160, 28029), (174, 28125), (180, 28152), (182, 28161), (202, 28299), (204, 28305), (208, 28323), (209, 28347), (219, 28410), (237, 28515),

Gene: Miley16_70 Start: 47580, Stop: 48845, Start Num: 25

Candidate Starts for Miley16_70:

(Start: 25 @47580 has 62 MA's), (Start: 41 @47643 has 1 MA's), (60, 47769), (80, 47889), (81, 47892), (85, 47919), (109, 48063), (125, 48153), (134, 48216), (136, 48222), (146, 48276), (160, 48342), (167, 48396), (173, 48423), (178, 48456), (185, 48489), (188, 48498), (190, 48513), (192, 48537), (194, 48555), (195, 48564), (202, 48603), (204, 48609), (208, 48627), (218, 48717), (221, 48726), (222, 48729), (227, 48765), (233, 48795),

Gene: Mindy_80 Start: 49142, Stop: 50350, Start Num: 39

Candidate Starts for Mindy_80:

(Start: 26 @49088 has 118 MA's), (Start: 39 @49142 has 5 MA's), (45, 49175), (58, 49250), (67, 49307), (73, 49343), (76, 49355), (102, 49526), (127, 49676), (145, 49775), (146, 49781), (149, 49796), (161, 49859), (177, 49958), (181, 49976), (185, 49991), (186, 49994), (187, 49997), (191, 50018), (198, 50084), (202, 50105), (203, 50108), (204, 50111), (227, 50270), (229, 50276), (234, 50306), (238, 50318), (240, 50333),

Gene: MiniLon_73 Start: 48038, Stop: 49303, Start Num: 25

Candidate Starts for MiniLon_73:

(Start: 25 @48038 has 62 MA's), (Start: 41 @48101 has 1 MA's), (47, 48134), (55, 48191), (59, 48218), (60, 48227), (71, 48290), (80, 48347), (81, 48350), (85, 48377), (109, 48521), (121, 48587), (134, 48674), (146, 48734), (155, 48764), (158, 48782), (160, 48800), (169, 48866), (172, 48878), (178, 48914), (188, 48956), (190, 48971), (195, 49022), (204, 49067), (205, 49070), (215, 49139), (218, 49175), (227, 49223), (233, 49253),

Gene: MiniMac_73 Start: 48036, Stop: 49301, Start Num: 25

Candidate Starts for MiniMac_73:

(Start: 25 @48036 has 62 MA's), (Start: 41 @48099 has 1 MA's), (47, 48132), (55, 48189), (59, 48216), (60, 48225), (71, 48288), (80, 48345), (81, 48348), (85, 48375), (109, 48519), (134, 48672), (146, 48732), (155, 48762), (158, 48780), (160, 48798), (169, 48864), (172, 48876), (178, 48912), (188, 48954), (190, 48969), (195, 49020), (204, 49065), (205, 49068), (215, 49137), (218, 49173), (227, 49221), (233, 49251),

Gene: Miniwave_76 Start: 49544, Stop: 50806, Start Num: 26

Candidate Starts for Miniwave_76:

(Start: 26 @49544 has 118 MA's), (Start: 39 @49598 has 5 MA's), (45, 49631), (58, 49706), (67, 49763), (73, 49799), (76, 49811), (102, 49982), (127, 50132), (145, 50231), (146, 50237), (149, 50252), (161, 50315), (177, 50414), (181, 50432), (185, 50447), (186, 50450), (187, 50453), (191, 50474), (198, 50540), (202, 50561), (203, 50564), (204, 50567), (227, 50726), (229, 50732), (234, 50762), (238, 50774), (240, 50789),

Gene: Misfit_82 Start: 51018, Stop: 52280, Start Num: 26

Candidate Starts for Misfit_82:

(Start: 26 @51018 has 118 MA's), (Start: 39 @51072 has 5 MA's), (45, 51105), (58, 51180), (67, 51237), (73, 51273), (76, 51285), (102, 51456), (127, 51606), (145, 51705), (146, 51711), (149, 51726), (161, 51789), (177, 51888), (181, 51906), (185, 51921), (186, 51924), (187, 51927), (191, 51948), (198, 52014), (202, 52035), (203, 52038), (204, 52041), (227, 52200), (229, 52206), (234, 52236), (238, 52248), (240, 52263),

Gene: MkaliMitinis3_71 Start: 47649, Stop: 48914, Start Num: 25

Candidate Starts for MkaliMitinis3_71:

(Start: 25 @47649 has 62 MA's), (Start: 41 @47712 has 1 MA's), (60, 47838), (80, 47958), (81, 47961), (85, 47988), (109, 48132), (125, 48222), (134, 48285), (136, 48291), (146, 48345), (160, 48411), (167, 48465), (173, 48492), (178, 48525), (185, 48558), (188, 48567), (190, 48582), (192, 48606), (194, 48624), (195, 48633), (202, 48672), (204, 48678), (208, 48696), (218, 48786), (221, 48795), (222, 48798), (227, 48834), (233, 48864),

Gene: Moldemort_84 Start: 50100, Stop: 51362, Start Num: 26

Candidate Starts for Moldemort_84:

(Start: 26 @50100 has 118 MA's), (Start: 39 @50154 has 5 MA's), (45, 50187), (58, 50262), (67, 50319), (73, 50355), (76, 50367), (102, 50538), (127, 50688), (145, 50787), (146, 50793), (149, 50808), (161, 50871), (177, 50970), (181, 50988), (185, 51003), (186, 51006), (187, 51009), (191, 51030), (198, 51096), (202, 51117), (203, 51120), (204, 51123), (227, 51282), (229, 51288), (234, 51318), (238, 51330), (240, 51345),

Gene: Moostard_67 Start: 47914, Stop: 49179, Start Num: 25

Candidate Starts for Moostard_67:

(14, 47881), (Start: 25 @47914 has 62 MA's), (Start: 41 @47977 has 1 MA's), (47, 48010), (55, 48067), (Start: 56 @48073 has 5 MA's), (59, 48094), (60, 48103), (80, 48223), (81, 48226), (85, 48253), (95, 48316), (107, 48388), (109, 48397), (134, 48550), (145, 48604), (146, 48610), (155, 48640), (158, 48658), (160, 48676), (169, 48742), (172, 48754), (178, 48790), (188, 48832), (194, 48889), (195, 48898), (204, 48943), (206, 48949), (218, 49051), (222, 49063), (227, 49099), (233, 49129),

Gene: Mosby_77 Start: 49301, Stop: 50563, Start Num: 26

Candidate Starts for Mosby_77:

(Start: 26 @49301 has 118 MA's), (Start: 39 @49355 has 5 MA's), (45, 49388), (58, 49463), (67, 49520), (73, 49556), (76, 49568), (102, 49739), (127, 49889), (145, 49988), (146, 49994), (149, 50009), (161, 50072), (177, 50171), (181, 50189), (185, 50204), (186, 50207), (187, 50210), (191, 50231), (198, 50297), (202, 50318), (203, 50321), (204, 50324), (227, 50483), (229, 50489), (234, 50519), (238, 50531), (240, 50546),

Gene: MrMagoo_79 Start: 47589, Stop: 48731, Start Num: 52

Candidate Starts for MrMagoo_79:

(Start: 21 @47442 has 6 MA's), (Start: 52 @47589 has 5 MA's), (53, 47592), (Start: 56 @47601 has 5 MA's), (58, 47607), (97, 47841), (98, 47844), (104, 47895), (111, 47928), (121, 47985), (132, 48066), (150, 48150), (161, 48210), (163, 48225), (172, 48276), (186, 48357), (194, 48417), (195, 48426), (204, 48471), (206, 48477), (213, 48534), (223, 48606), (226, 48636), (227, 48642), (228, 48645), (230, 48651), (231, 48660), (232, 48678), (236, 48690), (243, 48720),

Gene: MrSmee_56 Start: 33174, Stop: 34469, Start Num: 29

Candidate Starts for MrSmee_56:

(4, 33084), (5, 33087), (9, 33123), (10, 33126), (19, 33156), (29, 33174), (34, 33195), (36, 33213), (Start: 39 @33225 has 5 MA's), (48, 33267), (55, 33321), (60, 33357), (61, 33363), (75, 33438), (84, 33498), (96, 33570), (103, 33624), (112, 33654), (115, 33666), (117, 33678), (121, 33708), (126, 33744), (128, 33750), (129, 33753), (130, 33771), (131, 33783), (134, 33792), (136, 33798), (141, 33828), (144, 33837), (146, 33849), (147, 33858), (148, 33864), (151, 33870), (154, 33879), (170, 33981), (171, 33987), (174, 34011), (182, 34047), (184, 34065), (187, 34077), (188, 34080), (189, 34089), (191, 34098), (194, 34140), (195, 34149), (197, 34161), (200, 34176), (201, 34182), (202, 34188), (204, 34194), (206, 34200), (218, 34299), (219, 34302), (222, 34311), (224, 34326), (227, 34353), (242, 34422), (246, 34455),

Gene: MsGreen_69 Start: 47911, Stop: 49176, Start Num: 25

Candidate Starts for MsGreen_69:

(14, 47878), (Start: 25 @47911 has 62 MA's), (Start: 41 @47974 has 1 MA's), (47, 48007), (55, 48064), (Start: 56 @48070 has 5 MA's), (59, 48091), (60, 48100), (80, 48220), (81, 48223), (85, 48250), (95, 48313), (107, 48385), (109, 48394), (134, 48547), (145, 48601), (146, 48607), (155, 48637), (158, 48655), (160, 48673), (169, 48739), (172, 48751), (178, 48787), (188, 48829), (194, 48886), (195, 48895), (204, 48940), (206, 48946), (218, 49048), (222, 49060), (227, 49096), (233, 49126),

Gene: Murica_84 Start: 50947, Stop: 52209, Start Num: 26

Candidate Starts for Murica_84:

(Start: 26 @50947 has 118 MA's), (Start: 39 @51001 has 5 MA's), (45, 51034), (58, 51109), (67, 51166), (73, 51202), (76, 51214), (102, 51385), (127, 51535), (145, 51634), (146, 51640), (149, 51655), (161, 51718), (177, 51817), (181, 51835), (185, 51850), (186, 51853), (187, 51856), (191, 51877), (198, 51943), (202, 51964), (203, 51967), (204, 51970), (227, 52129), (229, 52135), (234, 52165), (238, 52177), (240, 52192),

Gene: Murphy_81 Start: 50384, Stop: 51646, Start Num: 26

Candidate Starts for Murphy_81:

(Start: 26 @50384 has 118 MA's), (Start: 39 @50438 has 5 MA's), (45, 50471), (58, 50546), (67, 50603), (73, 50639), (76, 50651), (102, 50822), (127, 50972), (145, 51071), (146, 51077), (149, 51092), (161, 51155), (177, 51254), (181, 51272), (185, 51287), (186, 51290), (187, 51293), (191, 51314), (198, 51380), (202, 51401), (203, 51404), (204, 51407), (227, 51566), (229, 51572), (234, 51602), (238, 51614), (240, 51629),

Gene: Myrale_81 Start: 50644, Stop: 51906, Start Num: 26

Candidate Starts for Myrale_81:

(Start: 26 @50644 has 118 MA's), (Start: 39 @50698 has 5 MA's), (45, 50731), (58, 50806), (67, 50863), (73, 50899), (76, 50911), (102, 51082), (127, 51232), (145, 51331), (146, 51337), (149, 51352), (161, 51415), (177, 51514), (181, 51532), (185, 51547), (186, 51550), (187, 51553), (191, 51574), (198, 51640), (202, 51661), (203, 51664), (204, 51667), (227, 51826), (229, 51832), (234, 51862), (238, 51874), (240, 51889),

Gene: Nala_83 Start: 50508, Stop: 51770, Start Num: 26

Candidate Starts for Nala_83:

(Start: 26 @50508 has 118 MA's), (Start: 39 @50562 has 5 MA's), (45, 50595), (58, 50670), (67, 50727), (73, 50763), (76, 50775), (102, 50946), (127, 51096), (145, 51195), (146, 51201), (149, 51216), (161, 51279), (177, 51378), (181, 51396), (185, 51411), (186, 51414), (187, 51417), (191, 51438), (198, 51504), (202, 51525), (203, 51528), (204, 51531), (227, 51690), (229, 51696), (234, 51726), (238, 51738), (240, 51753),

Gene: Nanosmite_74 Start: 46477, Stop: 47766, Start Num: 21

Candidate Starts for Nanosmite_74:

(1, 46120), (3, 46315), (Start: 21 @46477 has 6 MA's), (Start: 56 @46636 has 5 MA's), (58, 46642), (82, 46792), (97, 46876), (98, 46879), (104, 46930), (111, 46963), (121, 47020), (140, 47134), (150, 47185), (161, 47245), (172, 47311), (194, 47452), (195, 47461), (203, 47503), (204, 47506), (206, 47512), (223, 47641), (226, 47671), (227, 47677), (228, 47680), (230, 47686), (231, 47695), (232, 47713), (241, 47749), (243, 47755),

Gene: NelitzaMV_79 Start: 49590, Stop: 50852, Start Num: 26

Candidate Starts for NelitzaMV_79:

(Start: 26 @49590 has 118 MA's), (Start: 39 @49644 has 5 MA's), (45, 49677), (58, 49752), (67, 49809), (73, 49845), (76, 49857), (102, 50028), (127, 50178), (145, 50277), (146, 50283), (149, 50298), (161, 50361), (177, 50460), (181, 50478), (185, 50493), (186, 50496), (187, 50499), (191, 50520), (198, 50586), (202, 50607), (203, 50610), (204, 50613), (227, 50772), (229, 50778), (234, 50808), (238, 50820), (240, 50835),

Gene: Netyap_71 Start: 47581, Stop: 48846, Start Num: 25

Candidate Starts for Netyap_71:

(Start: 25 @47581 has 62 MA's), (Start: 41 @47644 has 1 MA's), (60, 47770), (80, 47890), (81, 47893), (85, 47920), (109, 48064), (125, 48154), (134, 48217), (136, 48223), (146, 48277), (160, 48343), (167, 48397), (173, 48424), (178, 48457), (185, 48490), (188, 48499), (190, 48514), (192, 48538), (194, 48556), (195, 48565), (202, 48604), (204, 48610), (208, 48628), (218, 48718), (221, 48727), (222, 48730), (227, 48766), (233, 48796),

Gene: Neville_71 Start: 44951, Stop: 46249, Start Num: 20

Candidate Starts for Neville_71:

(Start: 20 @44951 has 7 MA's), (42, 45038), (43, 45050), (48, 45071), (63, 45173), (70, 45206), (77, 45230), (81, 45266), (96, 45356), (100, 45377), (128, 45554), (129, 45557), (131, 45587), (146, 45662), (149, 45677), (150, 45680), (152, 45683), (155, 45692), (157, 45707), (159, 45725), (165, 45764), (182, 45860), (185, 45884), (188, 45893), (189, 45902), (195, 45959), (198, 45977), (201, 45992), (202, 45998), (204, 46004), (207, 46016), (208, 46022), (227, 46169), (229, 46175),

Gene: Nicholas_67 Start: 47918, Stop: 49183, Start Num: 25

Candidate Starts for Nicholas_67:

(14, 47885), (Start: 25 @47918 has 62 MA's), (Start: 41 @47981 has 1 MA's), (47, 48014), (55, 48071), (Start: 56 @48077 has 5 MA's), (59, 48098), (60, 48107), (80, 48227), (81, 48230), (85, 48257), (95, 48320), (107, 48392), (109, 48401), (134, 48554), (145, 48608), (146, 48614), (155, 48644), (158, 48662), (160, 48680), (169, 48746), (172, 48758), (178, 48794), (188, 48836), (194, 48893), (195, 48902), (204, 48947), (206, 48953), (218, 49055), (222, 49067), (227, 49103), (233, 49133),

Gene: Nicholasp3_70 Start: 47613, Stop: 48878, Start Num: 25

Candidate Starts for Nicholasp3_70:

(Start: 25 @47613 has 62 MA's), (Start: 41 @47676 has 1 MA's), (60, 47802), (80, 47922), (81, 47925), (85, 47952), (109, 48096), (125, 48186), (134, 48249), (136, 48255), (146, 48309), (160, 48375), (167, 48429), (173, 48456), (178, 48489), (185, 48522), (188, 48531), (190, 48546), (192, 48570), (194, 48588), (195, 48597), (202, 48636), (204, 48642), (208, 48660), (218, 48750), (221, 48759), (222, 48762), (227, 48798), (233, 48828),

Gene: Nimrod_82 Start: 51211, Stop: 52473, Start Num: 26

Candidate Starts for Nimrod_82:

(Start: 26 @51211 has 118 MA's), (Start: 39 @51265 has 5 MA's), (45, 51298), (58, 51373), (67, 51430), (73, 51466), (76, 51478), (102, 51649), (127, 51799), (145, 51898), (146, 51904), (149, 51919), (161, 51982), (177, 52081), (181, 52099), (185, 52114), (186, 52117), (187, 52120), (191, 52141), (198, 52207), (202, 52228), (203, 52231), (204, 52234), (227, 52393), (229, 52399), (234, 52429), (238, 52441), (240, 52456),

Gene: NoSleep_82 Start: 49845, Stop: 51107, Start Num: 26

Candidate Starts for NoSleep_82:

(Start: 26 @49845 has 118 MA's), (Start: 39 @49899 has 5 MA's), (45, 49932), (58, 50007), (67, 50064), (73, 50100), (76, 50112), (102, 50283), (127, 50433), (145, 50532), (146, 50538), (149, 50553), (161, 50616), (177, 50715), (181, 50733), (185, 50748), (186, 50751), (187, 50754), (191, 50775), (198, 50841), (202, 50862), (203, 50865), (204, 50868), (227, 51027), (229, 51033), (234,

51063), (238, 51075), (240, 51090),

Gene: Octobien14_77 Start: 46162, Stop: 47472, Start Num: 20

Candidate Starts for Octobien14_77:

(Start: 20 @46162 has 7 MA's), (37, 46234), (45, 46273), (62, 46381), (77, 46441), (83, 46492), (88, 46516), (96, 46567), (100, 46588), (137, 46822), (146, 46867), (149, 46882), (155, 46897), (161, 46945), (173, 47014), (179, 47053), (186, 47092), (188, 47098), (189, 47107), (190, 47113), (194, 47155), (198, 47182), (199, 47185), (201, 47197), (202, 47203), (204, 47209), (205, 47212), (208, 47227), (214, 47290), (218, 47335), (219, 47338), (222, 47344), (225, 47380), (226, 47386), (229, 47398), (234, 47428),

Gene: OhShagHennessy_66 Start: 45165, Stop: 46430, Start Num: 25

Candidate Starts for OhShagHennessy_66:

(14, 45132), (Start: 25 @45165 has 62 MA's), (40, 45225), (Start: 41 @45228 has 1 MA's), (47, 45261), (51, 45309), (55, 45318), (60, 45354), (72, 45420), (80, 45474), (86, 45510), (106, 45633), (109, 45648), (123, 45723), (125, 45738), (134, 45801), (136, 45807), (142, 45843), (146, 45861), (149, 45876), (150, 45879), (153, 45888), (155, 45891), (160, 45927), (166, 45975), (169, 45993), (187, 46080), (190, 46098), (192, 46122), (194, 46140), (195, 46149), (202, 46188), (204, 46194), (208, 46212), (210, 46242), (218, 46302), (221, 46311), (233, 46380),

Gene: OrionPax_80 Start: 49596, Stop: 50858, Start Num: 26

Candidate Starts for OrionPax_80:

(Start: 26 @49596 has 118 MA's), (Start: 39 @49650 has 5 MA's), (45, 49683), (58, 49758), (67, 49815), (73, 49851), (76, 49863), (102, 50034), (127, 50184), (145, 50283), (146, 50289), (149, 50304), (161, 50367), (177, 50466), (181, 50484), (185, 50499), (186, 50502), (187, 50505), (191, 50526), (198, 50592), (202, 50613), (203, 50616), (204, 50619), (227, 50778), (229, 50784), (234, 50814), (238, 50826), (240, 50841),

Gene: PYPDinur_67 Start: 46618, Stop: 47916, Start Num: 13

Candidate Starts for PYPDinur_67:

(Start: 13 @46618 has 4 MA's), (60, 46840), (72, 46906), (74, 46915), (80, 46960), (81, 46963), (99, 47065), (106, 47119), (109, 47134), (134, 47287), (136, 47293), (145, 47341), (146, 47347), (160, 47413), (171, 47485), (173, 47494), (185, 47560), (187, 47566), (191, 47587), (195, 47635), (197, 47647), (202, 47674), (208, 47698), (221, 47797), (222, 47800), (227, 47836), (233, 47866), (235, 47875), (236, 47878),

Gene: Palpatine_83 Start: 50974, Stop: 52236, Start Num: 26

Candidate Starts for Palpatine_83:

(Start: 26 @50974 has 118 MA's), (Start: 39 @51028 has 5 MA's), (45, 51061), (58, 51136), (67, 51193), (73, 51229), (76, 51241), (102, 51412), (127, 51562), (145, 51661), (146, 51667), (149, 51682), (161, 51745), (177, 51844), (181, 51862), (185, 51877), (186, 51880), (187, 51883), (191, 51904), (198, 51970), (202, 51991), (203, 51994), (204, 51997), (227, 52156), (229, 52162), (234, 52192), (238, 52204), (240, 52219),

Gene: Paperbeatsrock_80 Start: 50222, Stop: 51484, Start Num: 26

Candidate Starts for Paperbeatsrock_80:

(Start: 26 @50222 has 118 MA's), (Start: 39 @50276 has 5 MA's), (45, 50309), (58, 50384), (67, 50441), (73, 50477), (76, 50489), (102, 50660), (127, 50810), (145, 50909), (146, 50915), (149, 50930), (161, 50993), (177, 51092), (181, 51110), (185, 51125), (186, 51128), (187, 51131), (191, 51152), (198, 51218), (202, 51239), (203, 51242), (204, 51245), (227, 51404), (229, 51410), (234, 51440), (238, 51452), (240, 51467),

Gene: Pat3_79 Start: 48754, Stop: 50016, Start Num: 26

Candidate Starts for Pat3_79:

(Start: 26 @48754 has 118 MA's), (Start: 39 @48808 has 5 MA's), (45, 48841), (58, 48916), (67, 48973), (73, 49009), (76, 49021), (102, 49192), (127, 49342), (145, 49441), (146, 49447), (149, 49462), (161, 49525), (177, 49624), (181, 49642), (185, 49657), (186, 49660), (187, 49663), (191, 49684), (198, 49750), (202, 49771), (203, 49774), (204, 49777), (227, 49936), (229, 49942), (234, 49972), (238, 49984), (240, 49999),

Gene: PegLeg_68 Start: 44756, Stop: 45883, Start Num: 56

Candidate Starts for PegLeg_68:

(11, 44561), (Start: 21 @44597 has 6 MA's), (Start: 56 @44756 has 5 MA's), (74, 44861), (104, 45047), (140, 45251), (150, 45302), (161, 45362), (165, 45386), (172, 45428), (190, 45530), (191, 45533), (193, 45560), (195, 45578), (203, 45620), (204, 45623), (206, 45629), (223, 45758), (226, 45788), (227, 45794), (228, 45797), (230, 45803), (232, 45830), (236, 45842), (241, 45866), (243, 45872),

Gene: Petra64142_85 Start: 51441, Stop: 52703, Start Num: 26

Candidate Starts for Petra64142_85:

(Start: 26 @51441 has 118 MA's), (Start: 39 @51495 has 5 MA's), (45, 51528), (58, 51603), (67, 51660), (73, 51696), (76, 51708), (102, 51879), (127, 52029), (145, 52128), (146, 52134), (149, 52149), (161, 52212), (177, 52311), (181, 52329), (185, 52344), (186, 52347), (187, 52350), (191, 52371), (198, 52437), (202, 52458), (203, 52461), (204, 52464), (227, 52623), (229, 52629), (234, 52659), (238, 52671), (240, 52686),

Gene: Phaja_79 Start: 50048, Stop: 51310, Start Num: 26

Candidate Starts for Phaja_79:

(Start: 26 @50048 has 118 MA's), (Start: 39 @50102 has 5 MA's), (45, 50135), (58, 50210), (67, 50267), (73, 50303), (76, 50315), (102, 50486), (127, 50636), (145, 50735), (146, 50741), (149, 50756), (161, 50819), (177, 50918), (181, 50936), (185, 50951), (186, 50954), (187, 50957), (191, 50978), (198, 51044), (202, 51065), (203, 51068), (204, 51071), (227, 51230), (229, 51236), (234, 51266), (238, 51278), (240, 51293),

Gene: Pharsalus_78 Start: 50022, Stop: 51284, Start Num: 26

Candidate Starts for Pharsalus_78:

(Start: 26 @50022 has 118 MA's), (Start: 39 @50076 has 5 MA's), (45, 50109), (58, 50184), (67, 50241), (73, 50277), (76, 50289), (102, 50460), (127, 50610), (145, 50709), (146, 50715), (149, 50730), (161, 50793), (177, 50892), (181, 50910), (185, 50925), (186, 50928), (187, 50931), (191, 50952), (198, 51018), (202, 51039), (203, 51042), (204, 51045), (227, 51204), (229, 51210), (234, 51240), (238, 51252), (240, 51267),

Gene: PhatBacter_85 Start: 50994, Stop: 52256, Start Num: 26

Candidate Starts for PhatBacter_85:

(Start: 26 @50994 has 118 MA's), (Start: 39 @51048 has 5 MA's), (45, 51081), (58, 51156), (67, 51213), (73, 51249), (76, 51261), (102, 51432), (127, 51582), (145, 51681), (146, 51687), (149, 51702), (161, 51765), (177, 51864), (181, 51882), (185, 51897), (186, 51900), (187, 51903), (191, 51924), (198, 51990), (202, 52011), (203, 52014), (204, 52017), (227, 52176), (229, 52182), (234, 52212), (238, 52224), (240, 52239),

Gene: Phaux_83 Start: 50989, Stop: 52251, Start Num: 26

Candidate Starts for Phaux_83:

(Start: 26 @50989 has 118 MA's), (Start: 39 @51043 has 5 MA's), (45, 51076), (58, 51151), (67, 51208), (73, 51244), (76, 51256), (102, 51427), (127, 51577), (145, 51676), (146, 51682), (149, 51697), (161, 51760), (177, 51859), (181, 51877), (185, 51892), (186, 51895), (187, 51898), (191, 51919), (198, 51985), (202, 52006), (203, 52009), (204, 52012), (227, 52171), (229, 52177), (234,

52207), (238, 52219), (240, 52234),

Gene: Phonegingi_44 Start: 27219, Stop: 28523, Start Num: 33

Candidate Starts for Phonegingi_44:

(Start: 33 @27219 has 7 MA's), (36, 27252), (44, 27294), (47, 27303), (54, 27360), (73, 27468), (76, 27480), (81, 27519), (99, 27621), (113, 27705), (121, 27756), (132, 27834), (135, 27843), (143, 27882), (146, 27897), (160, 27963), (161, 27975), (174, 28059), (180, 28086), (182, 28095), (202, 28233), (204, 28239), (208, 28257), (209, 28281),

Gene: Phrux_78 Start: 49582, Stop: 50844, Start Num: 26

Candidate Starts for Phrux_78:

(Start: 26 @49582 has 118 MA's), (Start: 39 @49636 has 5 MA's), (45, 49669), (58, 49744), (67, 49801), (73, 49837), (76, 49849), (102, 50020), (127, 50170), (145, 50269), (146, 50275), (149, 50290), (161, 50353), (177, 50452), (181, 50470), (185, 50485), (186, 50488), (187, 50491), (191, 50512), (198, 50578), (202, 50599), (203, 50602), (204, 50605), (227, 50764), (229, 50770), (234, 50800), (238, 50812), (240, 50827),

Gene: Pickles13_43 Start: 27483, Stop: 28787, Start Num: 33

Candidate Starts for Pickles13_43:

(2, 27225), (Start: 33 @27483 has 7 MA's), (44, 27558), (54, 27624), (73, 27732), (76, 27744), (81, 27783), (88, 27822), (99, 27885), (113, 27969), (118, 27993), (121, 28020), (132, 28098), (135, 28107), (143, 28146), (146, 28161), (160, 28227), (161, 28239), (174, 28323), (180, 28350), (182, 28359), (189, 28401), (202, 28497), (204, 28503), (208, 28521), (209, 28545), (219, 28608),

Gene: Policronamos_85 Start: 50989, Stop: 52251, Start Num: 26

Candidate Starts for Policronamos_85:

(Start: 26 @50989 has 118 MA's), (Start: 39 @51043 has 5 MA's), (45, 51076), (58, 51151), (67, 51208), (73, 51244), (76, 51256), (102, 51427), (127, 51577), (145, 51676), (146, 51682), (149, 51697), (161, 51760), (177, 51859), (181, 51877), (185, 51892), (186, 51895), (187, 51898), (191, 51919), (198, 51985), (202, 52006), (203, 52009), (204, 52012), (227, 52171), (229, 52177), (234, 52207), (238, 52219), (240, 52234),

Gene: Porky_80 Start: 49412, Stop: 50674, Start Num: 26

Candidate Starts for Porky_80:

(Start: 26 @49412 has 118 MA's), (Start: 39 @49466 has 5 MA's), (45, 49499), (58, 49574), (67, 49631), (73, 49667), (76, 49679), (102, 49850), (127, 50000), (145, 50099), (146, 50105), (149, 50120), (161, 50183), (177, 50282), (181, 50300), (185, 50315), (186, 50318), (187, 50321), (191, 50342), (198, 50408), (202, 50429), (203, 50432), (204, 50435), (227, 50594), (229, 50600), (234, 50630), (238, 50642), (240, 50657),

Gene: Pumpkin_84 Start: 50640, Stop: 51902, Start Num: 26

Candidate Starts for Pumpkin_84:

(Start: 26 @50640 has 118 MA's), (Start: 39 @50694 has 5 MA's), (45, 50727), (58, 50802), (67, 50859), (73, 50895), (76, 50907), (102, 51078), (127, 51228), (145, 51327), (146, 51333), (149, 51348), (161, 51411), (177, 51510), (181, 51528), (185, 51543), (186, 51546), (187, 51549), (191, 51570), (198, 51636), (202, 51657), (203, 51660), (204, 51663), (227, 51822), (229, 51828), (234, 51858), (238, 51870), (240, 51885),

Gene: Quallification_82 Start: 50630, Stop: 51892, Start Num: 26

Candidate Starts for Quallification_82:

(Start: 26 @50630 has 118 MA's), (Start: 39 @50684 has 5 MA's), (45, 50717), (58, 50792), (67, 50849), (73, 50885), (76, 50897), (102, 51068), (127, 51218), (145, 51317), (146, 51323), (149, 51338), (161, 51401), (177, 51500), (181, 51518), (185, 51533), (186, 51536), (187, 51539), (191,

51560), (198, 51626), (202, 51647), (203, 51650), (204, 51653), (227, 51812), (229, 51818), (234, 51848), (238, 51860), (240, 51875),

Gene: Quby_69 Start: 46513, Stop: 47796, Start Num: 16

Candidate Starts for Quby_69:

(16, 46513), (57, 46693), (60, 46720), (74, 46795), (80, 46840), (99, 46945), (106, 46999), (109, 47014), (134, 47167), (136, 47173), (145, 47221), (146, 47227), (160, 47293), (171, 47365), (178, 47407), (185, 47440), (187, 47446), (189, 47458), (191, 47467), (195, 47515), (197, 47527), (202, 47554), (208, 47578), (218, 47668), (221, 47677), (227, 47716), (233, 47746), (235, 47755), (236, 47758),

Gene: Rabbitrun_74 Start: 45135, Stop: 46433, Start Num: 20

Candidate Starts for Rabbitrun_74:

(Start: 20 @45135 has 7 MA's), (42, 45222), (43, 45234), (63, 45357), (81, 45450), (88, 45489), (96, 45540), (100, 45561), (107, 45609), (119, 45669), (126, 45732), (129, 45741), (146, 45846), (149, 45861), (150, 45864), (155, 45876), (165, 45948), (172, 45990), (173, 45993), (175, 46014), (182, 46044), (185, 46068), (188, 46077), (195, 46143), (199, 46164), (201, 46176), (206, 46194), (207, 46200), (212, 46242), (218, 46296), (219, 46299), (229, 46359), (233, 46383),

Gene: Rakim_82 Start: 50096, Stop: 51358, Start Num: 26

Candidate Starts for Rakim_82:

(Start: 26 @50096 has 118 MA's), (Start: 39 @50150 has 5 MA's), (45, 50183), (58, 50258), (67, 50315), (73, 50351), (76, 50363), (102, 50534), (127, 50684), (145, 50783), (146, 50789), (149, 50804), (161, 50867), (177, 50966), (181, 50984), (185, 50999), (186, 51002), (187, 51005), (191, 51026), (198, 51092), (202, 51113), (203, 51116), (204, 51119), (227, 51278), (229, 51284), (234, 51314), (238, 51326), (240, 51341),

Gene: Reindeer_71 Start: 46150, Stop: 47277, Start Num: 56

Candidate Starts for Reindeer_71:

(Start: 21 @45991 has 6 MA's), (53, 46141), (Start: 56 @46150 has 5 MA's), (71, 46243), (74, 46255), (87, 46339), (102, 46423), (111, 46474), (120, 46525), (146, 46678), (150, 46696), (161, 46756), (163, 46771), (165, 46780), (172, 46822), (184, 46894), (186, 46903), (190, 46924), (191, 46927), (195, 46972), (201, 47005), (203, 47014), (204, 47017), (206, 47023), (223, 47152), (226, 47182), (227, 47188), (228, 47191), (230, 47197), (236, 47236), (238, 47242), (241, 47260),

Gene: Rey_75 Start: 47125, Stop: 48252, Start Num: 56

Candidate Starts for Rey_75:

(11, 46936), (Start: 21 @46972 has 6 MA's), (Start: 56 @47125 has 5 MA's), (61, 47161), (74, 47230), (78, 47257), (95, 47356), (97, 47362), (99, 47368), (104, 47416), (111, 47449), (121, 47506), (132, 47587), (150, 47671), (161, 47731), (172, 47797), (186, 47878), (194, 47938), (195, 47947), (201, 47980), (203, 47989), (204, 47992), (206, 47998), (213, 48055), (223, 48127), (226, 48157), (227, 48163), (228, 48166), (230, 48172), (231, 48181), (236, 48211), (243, 48241),

Gene: Rimmer_82 Start: 50335, Stop: 51597, Start Num: 26

Candidate Starts for Rimmer_82:

(Start: 26 @50335 has 118 MA's), (Start: 39 @50389 has 5 MA's), (45, 50422), (58, 50497), (67, 50554), (73, 50590), (76, 50602), (102, 50773), (127, 50923), (145, 51022), (146, 51028), (149, 51043), (161, 51106), (177, 51205), (181, 51223), (185, 51238), (186, 51241), (187, 51244), (191, 51265), (198, 51331), (202, 51352), (203, 51355), (204, 51358), (227, 51517), (229, 51523), (234, 51553), (238, 51565), (240, 51580),

Gene: RiverMonster_81 Start: 50160, Stop: 51422, Start Num: 26

Candidate Starts for RiverMonster_81:

(Start: 26 @50160 has 118 MA's), (Start: 39 @50214 has 5 MA's), (45, 50247), (58, 50322), (67, 50379), (73, 50415), (76, 50427), (102, 50598), (127, 50748), (145, 50847), (146, 50853), (149, 50868), (161, 50931), (177, 51030), (181, 51048), (185, 51063), (186, 51066), (187, 51069), (191, 51090), (198, 51156), (202, 51177), (203, 51180), (204, 51183), (227, 51342), (229, 51348), (234, 51378), (238, 51390), (240, 51405),

Gene: Rose5_68 Start: 46469, Stop: 47734, Start Num: 25

Candidate Starts for Rose5_68:

(14, 46436), (Start: 25 @46469 has 62 MA's), (40, 46529), (Start: 41 @46532 has 1 MA's), (47, 46565), (51, 46613), (55, 46622), (60, 46658), (72, 46724), (80, 46778), (84, 46799), (86, 46814), (106, 46937), (109, 46952), (123, 47027), (125, 47042), (134, 47105), (136, 47111), (142, 47147), (146, 47165), (149, 47180), (150, 47183), (153, 47192), (155, 47195), (160, 47231), (166, 47279), (169, 47297), (187, 47384), (190, 47402), (192, 47426), (194, 47444), (195, 47453), (202, 47492), (204, 47498), (208, 47516), (210, 47546), (218, 47606), (221, 47615), (233, 47684),

Gene: Rumpelstiltskin_69 Start: 47006, Stop: 48271, Start Num: 25

Candidate Starts for Rumpelstiltskin_69:

(Start: 25 @47006 has 62 MA's), (Start: 41 @47069 has 1 MA's), (60, 47195), (80, 47315), (81, 47318), (85, 47345), (109, 47489), (125, 47579), (134, 47642), (136, 47648), (146, 47702), (153, 47729), (160, 47768), (167, 47822), (173, 47849), (178, 47882), (188, 47924), (190, 47939), (192, 47963), (194, 47981), (195, 47990), (202, 48029), (204, 48035), (208, 48053), (218, 48143), (222, 48155), (227, 48191), (233, 48221),

Gene: Saints25_80 Start: 49573, Stop: 50835, Start Num: 26

Candidate Starts for Saints25_80:

(Start: 26 @49573 has 118 MA's), (Start: 39 @49627 has 5 MA's), (45, 49660), (58, 49735), (67, 49792), (73, 49828), (76, 49840), (102, 50011), (127, 50161), (145, 50260), (146, 50266), (149, 50281), (161, 50344), (177, 50443), (181, 50461), (185, 50476), (186, 50479), (187, 50482), (191, 50503), (198, 50569), (202, 50590), (203, 50593), (204, 50596), (227, 50755), (229, 50761), (234, 50791), (238, 50803), (240, 50818),

Gene: Samty_69 Start: 47919, Stop: 49184, Start Num: 25

Candidate Starts for Samty_69:

(14, 47886), (Start: 25 @47919 has 62 MA's), (Start: 41 @47982 has 1 MA's), (47, 48015), (55, 48072), (Start: 56 @48078 has 5 MA's), (59, 48099), (60, 48108), (80, 48228), (81, 48231), (85, 48258), (95, 48321), (107, 48393), (109, 48402), (134, 48555), (145, 48609), (146, 48615), (155, 48645), (158, 48663), (160, 48681), (169, 48747), (172, 48759), (178, 48795), (188, 48837), (194, 48894), (195, 48903), (204, 48948), (206, 48954), (218, 49056), (222, 49068), (227, 49104), (233, 49134),

Gene: Sarshaun_71 Start: 47673, Stop: 48938, Start Num: 25

Candidate Starts for Sarshaun_71:

(Start: 25 @47673 has 62 MA's), (Start: 41 @47736 has 1 MA's), (60, 47862), (80, 47982), (81, 47985), (82, 47988), (85, 48012), (109, 48156), (125, 48246), (134, 48309), (136, 48315), (146, 48369), (153, 48396), (155, 48399), (160, 48435), (167, 48489), (173, 48516), (178, 48549), (185, 48582), (188, 48591), (190, 48606), (192, 48630), (194, 48648), (195, 48657), (202, 48696), (204, 48702), (208, 48720), (218, 48810), (221, 48819), (222, 48822), (227, 48858), (233, 48888),

Gene: Sassay_76 Start: 48263, Stop: 49525, Start Num: 26

Candidate Starts for Sassay_76:

(Start: 26 @48263 has 118 MA's), (Start: 39 @48317 has 5 MA's), (45, 48350), (58, 48425), (67, 48482), (73, 48518), (76, 48530), (102, 48701), (127, 48851), (145, 48950), (146, 48956), (149, 48971), (161, 49034), (177, 49133), (181, 49151), (185, 49166), (186, 49169), (187, 49172), (191,

49193), (198, 49259), (202, 49280), (203, 49283), (204, 49286), (227, 49445), (229, 49451), (234, 49481), (238, 49493), (240, 49508),

Gene: Sephiroth_77 Start: 46995, Stop: 48305, Start Num: 20

Candidate Starts for Sephiroth_77:

(7, 46956), (9, 46959), (Start: 20 @46995 has 7 MA's), (36, 47058), (77, 47274), (83, 47325), (88, 47349), (114, 47499), (121, 47553), (124, 47565), (131, 47631), (146, 47700), (161, 47778), (173, 47847), (179, 47886), (184, 47916), (186, 47925), (188, 47931), (189, 47940), (190, 47946), (195, 47997), (197, 48009), (198, 48015), (199, 48018), (201, 48030), (202, 48036), (204, 48042), (205, 48045), (207, 48054), (208, 48060), (211, 48096), (214, 48123), (218, 48168), (219, 48171), (220, 48174), (225, 48213), (226, 48219), (229, 48231), (234, 48261),

Gene: ShamWow_81 Start: 50482, Stop: 51744, Start Num: 26

Candidate Starts for ShamWow_81:

(Start: 26 @50482 has 118 MA's), (Start: 39 @50536 has 5 MA's), (45, 50569), (58, 50644), (67, 50701), (73, 50737), (76, 50749), (102, 50920), (127, 51070), (145, 51169), (146, 51175), (149, 51190), (161, 51253), (177, 51352), (181, 51370), (185, 51385), (186, 51388), (187, 51391), (191, 51412), (198, 51478), (202, 51499), (203, 51502), (204, 51505), (227, 51664), (229, 51670), (234, 51700), (238, 51712), (240, 51727),

Gene: Sheng711_69 Start: 46623, Stop: 47921, Start Num: 13

Candidate Starts for Sheng711_69:

(Start: 13 @46623 has 4 MA's), (57, 46818), (60, 46845), (74, 46920), (80, 46965), (99, 47070), (106, 47124), (109, 47139), (110, 47142), (121, 47205), (134, 47292), (136, 47298), (145, 47346), (146, 47352), (160, 47418), (171, 47490), (173, 47499), (185, 47565), (187, 47571), (191, 47592), (195, 47640), (197, 47652), (202, 47679), (208, 47703), (218, 47793), (221, 47802), (227, 47841), (233, 47871), (235, 47880), (236, 47883),

Gene: ShereKhan_79 Start: 50555, Stop: 51817, Start Num: 26

Candidate Starts for ShereKhan_79:

(Start: 26 @50555 has 118 MA's), (Start: 39 @50609 has 5 MA's), (45, 50642), (58, 50717), (67, 50774), (73, 50810), (76, 50822), (102, 50993), (127, 51143), (145, 51242), (146, 51248), (149, 51263), (161, 51326), (177, 51425), (181, 51443), (185, 51458), (186, 51461), (187, 51464), (191, 51485), (198, 51551), (202, 51572), (203, 51575), (204, 51578), (227, 51737), (229, 51743), (234, 51773), (238, 51785), (240, 51800),

Gene: Shlim410_68 Start: 47494, Stop: 48747, Start Num: 31

Candidate Starts for Shlim410_68:

(12, 47443), (Start: 31 @47494 has 10 MA's), (37, 47539), (38, 47542), (50, 47593), (93, 47836), (104, 47923), (108, 47941), (125, 48040), (136, 48109), (143, 48148), (146, 48163), (164, 48259), (169, 48295), (177, 48340), (182, 48361), (186, 48388), (195, 48460), (200, 48487), (204, 48505),

Gene: Silverleaf_68 Start: 45919, Stop: 47184, Start Num: 25

Candidate Starts for Silverleaf_68:

(14, 45886), (Start: 25 @45919 has 62 MA's), (40, 45979), (Start: 41 @45982 has 1 MA's), (47, 46015), (51, 46063), (55, 46072), (60, 46108), (72, 46174), (80, 46228), (86, 46264), (106, 46387), (109, 46402), (123, 46477), (125, 46492), (134, 46555), (136, 46561), (142, 46597), (146, 46615), (149, 46630), (150, 46633), (153, 46642), (155, 46645), (160, 46681), (166, 46729), (169, 46747), (187, 46834), (190, 46852), (192, 46876), (194, 46894), (195, 46903), (202, 46942), (204, 46948), (208, 46966), (210, 46996), (218, 47056), (221, 47065), (233, 47134),

Gene: Simpliphy_80 Start: 49563, Stop: 50825, Start Num: 26

Candidate Starts for Simpliphy_80:

(Start: 26 @49563 has 118 MA's), (Start: 39 @49617 has 5 MA's), (45, 49650), (58, 49725), (67, 49782), (73, 49818), (76, 49830), (102, 50001), (127, 50151), (145, 50250), (146, 50256), (149, 50271), (161, 50334), (177, 50433), (181, 50451), (185, 50466), (186, 50469), (187, 50472), (191, 50493), (198, 50559), (202, 50580), (203, 50583), (204, 50586), (227, 50745), (229, 50751), (234, 50781), (238, 50793), (240, 50808),

Gene: SirDuracell_80 Start: 48849, Stop: 50111, Start Num: 26

Candidate Starts for SirDuracell_80:

(Start: 26 @48849 has 118 MA's), (Start: 39 @48903 has 5 MA's), (45, 48936), (58, 49011), (67, 49068), (73, 49104), (76, 49116), (102, 49287), (127, 49437), (145, 49536), (146, 49542), (149, 49557), (161, 49620), (177, 49719), (181, 49737), (185, 49752), (186, 49755), (187, 49758), (191, 49779), (198, 49845), (202, 49866), (203, 49869), (204, 49872), (227, 50031), (229, 50037), (234, 50067), (238, 50079), (240, 50094),

Gene: Skinny_72 Start: 45772, Stop: 47052, Start Num: 23

Candidate Starts for Skinny_72:

(Start: 23 @45772 has 4 MA's), (Start: 56 @45925 has 5 MA's), (74, 46030), (104, 46216), (140, 46420), (150, 46471), (161, 46531), (165, 46555), (172, 46597), (190, 46699), (191, 46702), (193, 46729), (195, 46747), (203, 46789), (204, 46792), (206, 46798), (223, 46927), (226, 46957), (227, 46963), (228, 46966), (230, 46972), (232, 46999), (236, 47011), (241, 47035), (243, 47041),

Gene: SlimJimmy_69 Start: 45327, Stop: 46607, Start Num: 23

Candidate Starts for SlimJimmy_69:

(Start: 23 @45327 has 4 MA's), (Start: 56 @45480 has 5 MA's), (74, 45585), (104, 45771), (140, 45975), (150, 46026), (161, 46086), (165, 46110), (172, 46152), (190, 46254), (191, 46257), (193, 46284), (195, 46302), (203, 46344), (204, 46347), (206, 46353), (223, 46482), (226, 46512), (227, 46518), (228, 46521), (230, 46527), (232, 46554), (236, 46566), (241, 46590), (243, 46596),

Gene: Snenia_68 Start: 47912, Stop: 49177, Start Num: 25

Candidate Starts for Snenia_68:

(14, 47879), (Start: 25 @47912 has 62 MA's), (Start: 41 @47975 has 1 MA's), (47, 48008), (55, 48065), (Start: 56 @48071 has 5 MA's), (59, 48092), (60, 48101), (80, 48221), (81, 48224), (85, 48251), (95, 48314), (107, 48386), (109, 48395), (134, 48548), (145, 48602), (146, 48608), (155, 48638), (158, 48656), (160, 48674), (169, 48740), (172, 48752), (178, 48788), (188, 48830), (194, 48887), (195, 48896), (204, 48941), (206, 48947), (218, 49049), (222, 49061), (227, 49097), (233, 49127),

Gene: Soap141_70 Start: 47673, Stop: 48938, Start Num: 25

Candidate Starts for Soap141_70:

(Start: 25 @47673 has 62 MA's), (Start: 41 @47736 has 1 MA's), (60, 47862), (80, 47982), (81, 47985), (82, 47988), (85, 48012), (109, 48156), (125, 48246), (134, 48309), (136, 48315), (146, 48369), (153, 48396), (155, 48399), (160, 48435), (167, 48489), (173, 48516), (178, 48549), (185, 48582), (188, 48591), (190, 48606), (192, 48630), (194, 48648), (195, 48657), (202, 48696), (204, 48702), (208, 48720), (218, 48810), (221, 48819), (222, 48822), (227, 48858), (233, 48888),

Gene: SophKB_78 Start: 49241, Stop: 50503, Start Num: 26

Candidate Starts for SophKB_78:

(Start: 26 @49241 has 118 MA's), (Start: 39 @49295 has 5 MA's), (45, 49328), (58, 49403), (67, 49460), (73, 49496), (76, 49508), (102, 49679), (127, 49829), (145, 49928), (146, 49934), (149, 49949), (161, 50012), (177, 50111), (181, 50129), (185, 50144), (186, 50147), (187, 50150), (191, 50171), (198, 50237), (202, 50258), (203, 50261), (204, 50264), (227, 50423), (229, 50429), (234, 50459), (238, 50471), (240, 50486),

Gene: Sotrice96_82 Start: 50244, Stop: 51506, Start Num: 26

Candidate Starts for Sotrice96_82:

(Start: 26 @50244 has 118 MA's), (Start: 39 @50298 has 5 MA's), (45, 50331), (58, 50406), (67, 50463), (73, 50499), (76, 50511), (102, 50682), (127, 50832), (145, 50931), (146, 50937), (149, 50952), (161, 51015), (177, 51114), (181, 51132), (185, 51147), (186, 51150), (187, 51153), (191, 51174), (198, 51240), (202, 51261), (203, 51264), (204, 51267), (227, 51426), (229, 51432), (234, 51462), (238, 51474), (240, 51489),

Gene: Stank_84 Start: 50556, Stop: 51764, Start Num: 39

Candidate Starts for Stank_84:

(Start: 26 @50502 has 118 MA's), (Start: 39 @50556 has 5 MA's), (45, 50589), (58, 50664), (67, 50721), (73, 50757), (76, 50769), (102, 50940), (127, 51090), (145, 51189), (146, 51195), (149, 51210), (161, 51273), (177, 51372), (181, 51390), (185, 51405), (186, 51408), (187, 51411), (191, 51432), (198, 51498), (202, 51519), (203, 51522), (204, 51525), (227, 51684), (229, 51690), (234, 51720), (238, 51732), (240, 51747),

Gene: Stark_82 Start: 50043, Stop: 51305, Start Num: 26

Candidate Starts for Stark_82:

(Start: 26 @50043 has 118 MA's), (Start: 39 @50097 has 5 MA's), (45, 50130), (58, 50205), (67, 50262), (73, 50298), (76, 50310), (102, 50481), (127, 50631), (145, 50730), (146, 50736), (149, 50751), (161, 50814), (177, 50913), (181, 50931), (185, 50946), (186, 50949), (187, 50952), (191, 50973), (198, 51039), (202, 51060), (203, 51063), (204, 51066), (227, 51225), (229, 51231), (234, 51261), (238, 51273), (240, 51288),

Gene: StellaBean_79 Start: 49806, Stop: 51068, Start Num: 26

Candidate Starts for StellaBean_79:

(Start: 26 @49806 has 118 MA's), (Start: 39 @49860 has 5 MA's), (45, 49893), (58, 49968), (67, 50025), (73, 50061), (76, 50073), (102, 50244), (127, 50394), (145, 50493), (146, 50499), (149, 50514), (161, 50577), (177, 50676), (181, 50694), (185, 50709), (186, 50712), (187, 50715), (191, 50736), (198, 50802), (202, 50823), (203, 50826), (204, 50829), (227, 50988), (229, 50994), (234, 51024), (238, 51036), (240, 51051),

Gene: StolenFromERC_84 Start: 50284, Stop: 51546, Start Num: 26

Candidate Starts for StolenFromERC_84:

(Start: 26 @50284 has 118 MA's), (Start: 39 @50338 has 5 MA's), (45, 50371), (58, 50446), (67, 50503), (73, 50539), (76, 50551), (102, 50722), (127, 50872), (145, 50971), (146, 50977), (149, 50992), (161, 51055), (177, 51154), (181, 51172), (185, 51187), (186, 51190), (187, 51193), (191, 51214), (198, 51280), (202, 51301), (203, 51304), (204, 51307), (227, 51466), (229, 51472), (234, 51502), (238, 51514), (240, 51529),

Gene: Syleon_80 Start: 46933, Stop: 48243, Start Num: 20

Candidate Starts for Syleon_80:

(7, 46894), (9, 46897), (Start: 20 @46933 has 7 MA's), (36, 46996), (77, 47212), (83, 47263), (88, 47287), (114, 47437), (124, 47503), (146, 47638), (155, 47668), (161, 47716), (173, 47785), (179, 47824), (184, 47854), (186, 47863), (188, 47869), (189, 47878), (190, 47884), (198, 47953), (199, 47956), (201, 47968), (202, 47974), (204, 47980), (205, 47983), (207, 47992), (208, 47998), (211, 48034), (214, 48061), (219, 48109), (226, 48157), (229, 48169), (234, 48199),

Gene: TBrady12_84 Start: 49983, Stop: 51245, Start Num: 26

Candidate Starts for TBrady12_84:

(Start: 26 @49983 has 118 MA's), (Start: 39 @50037 has 5 MA's), (45, 50070), (58, 50145), (67, 50202), (73, 50238), (76, 50250), (102, 50421), (127, 50571), (145, 50670), (146, 50676), (149, 50691), (161, 50754), (177, 50853), (181, 50871), (185, 50886), (186, 50889), (187, 50892), (191,

50913), (198, 50979), (202, 51000), (203, 51003), (204, 51006), (227, 51165), (229, 51171), (234, 51201), (238, 51213), (240, 51228),

Gene: Tarkin_80 Start: 50231, Stop: 51493, Start Num: 26

Candidate Starts for Tarkin_80:

(Start: 26 @50231 has 118 MA's), (Start: 39 @50285 has 5 MA's), (45, 50318), (58, 50393), (67, 50450), (73, 50486), (76, 50498), (102, 50669), (127, 50819), (145, 50918), (146, 50924), (149, 50939), (161, 51002), (177, 51101), (181, 51119), (185, 51134), (186, 51137), (187, 51140), (191, 51161), (198, 51227), (202, 51248), (203, 51251), (204, 51254), (227, 51413), (229, 51419), (234, 51449), (238, 51461), (240, 51476),

Gene: TeardropMSU_77 Start: 49231, Stop: 50493, Start Num: 26

Candidate Starts for TeardropMSU_77:

(Start: 26 @49231 has 118 MA's), (Start: 39 @49285 has 5 MA's), (45, 49318), (58, 49393), (67, 49450), (73, 49486), (76, 49498), (102, 49669), (127, 49819), (145, 49918), (146, 49924), (149, 49939), (161, 50002), (177, 50101), (181, 50119), (185, 50134), (186, 50137), (187, 50140), (191, 50161), (198, 50227), (202, 50248), (203, 50251), (204, 50254), (227, 50413), (229, 50419), (234, 50449), (238, 50461), (240, 50476),

Gene: Teaspoon_82 Start: 50125, Stop: 51387, Start Num: 26

Candidate Starts for Teaspoon_82:

(Start: 26 @50125 has 118 MA's), (Start: 39 @50179 has 5 MA's), (45, 50212), (58, 50287), (67, 50344), (73, 50380), (76, 50392), (102, 50563), (127, 50713), (145, 50812), (146, 50818), (149, 50833), (161, 50896), (177, 50995), (181, 51013), (185, 51028), (186, 51031), (187, 51034), (191, 51055), (198, 51121), (202, 51142), (203, 51145), (204, 51148), (227, 51307), (229, 51313), (234, 51343), (238, 51355), (240, 51370),

Gene: Terminus_84 Start: 51018, Stop: 52280, Start Num: 26

Candidate Starts for Terminus_84:

(Start: 26 @51018 has 118 MA's), (Start: 39 @51072 has 5 MA's), (45, 51105), (58, 51180), (67, 51237), (73, 51273), (76, 51285), (102, 51456), (127, 51606), (145, 51705), (146, 51711), (149, 51726), (161, 51789), (177, 51888), (181, 51906), (185, 51921), (186, 51924), (187, 51927), (191, 51948), (198, 52014), (202, 52035), (203, 52038), (204, 52041), (227, 52200), (229, 52206), (234, 52236), (238, 52248), (240, 52263),

Gene: Thresher_83 Start: 51102, Stop: 52364, Start Num: 26

Candidate Starts for Thresher_83:

(Start: 26 @51102 has 118 MA's), (Start: 39 @51156 has 5 MA's), (45, 51189), (58, 51264), (67, 51321), (73, 51357), (76, 51369), (102, 51540), (127, 51690), (145, 51789), (146, 51795), (149, 51810), (161, 51873), (177, 51972), (181, 51990), (185, 52005), (186, 52008), (187, 52011), (191, 52032), (198, 52098), (202, 52119), (203, 52122), (204, 52125), (227, 52284), (229, 52290), (234, 52320), (238, 52332), (240, 52347),

Gene: Tomaszewski_76 Start: 49394, Stop: 50656, Start Num: 26

Candidate Starts for Tomaszewski_76:

(Start: 26 @49394 has 118 MA's), (Start: 39 @49448 has 5 MA's), (45, 49481), (58, 49556), (67, 49613), (73, 49649), (76, 49661), (102, 49832), (127, 49982), (145, 50081), (146, 50087), (149, 50102), (161, 50165), (177, 50264), (181, 50282), (185, 50297), (186, 50300), (187, 50303), (191, 50324), (198, 50390), (202, 50411), (203, 50414), (204, 50417), (227, 50576), (229, 50582), (234, 50612), (238, 50624), (240, 50639),

Gene: Toto_79 Start: 50536, Stop: 51744, Start Num: 39

Candidate Starts for Toto_79:

(Start: 26 @50482 has 118 MA's), (Start: 39 @50536 has 5 MA's), (45, 50569), (58, 50644), (67, 50701), (73, 50737), (76, 50749), (102, 50920), (127, 51070), (145, 51169), (146, 51175), (149, 51190), (161, 51253), (177, 51352), (181, 51370), (185, 51385), (186, 51388), (187, 51391), (191, 51412), (198, 51478), (202, 51499), (203, 51502), (204, 51505), (227, 51664), (229, 51670), (234, 51700), (238, 51712), (240, 51727),

Gene: Tourach_70 Start: 47952, Stop: 49217, Start Num: 25

Candidate Starts for Tourach_70:

(Start: 25 @47952 has 62 MA's), (Start: 41 @48015 has 1 MA's), (55, 48105), (Start: 56 @48111 has 5 MA's), (60, 48141), (74, 48216), (80, 48261), (85, 48291), (109, 48435), (125, 48525), (134, 48588), (146, 48648), (160, 48714), (167, 48768), (173, 48795), (188, 48870), (190, 48885), (192, 48909), (194, 48927), (195, 48936), (202, 48975), (204, 48981), (208, 48999), (218, 49089), (222, 49101), (227, 49137), (233, 49167),

Gene: Traaww1_77 Start: 49666, Stop: 50928, Start Num: 26

Candidate Starts for Traaww1_77:

(Start: 26 @49666 has 118 MA's), (Start: 39 @49720 has 5 MA's), (45, 49753), (58, 49828), (67, 49885), (73, 49921), (76, 49933), (102, 50104), (127, 50254), (145, 50353), (146, 50359), (149, 50374), (161, 50437), (177, 50536), (181, 50554), (185, 50569), (186, 50572), (187, 50575), (191, 50596), (198, 50662), (202, 50683), (203, 50686), (204, 50689), (227, 50848), (229, 50854), (234, 50884), (238, 50896), (240, 50911),

Gene: Trax_74 Start: 45842, Stop: 47140, Start Num: 20

Candidate Starts for Trax_74:

(Start: 20 @45842 has 7 MA's), (42, 45929), (43, 45941), (63, 46064), (70, 46097), (81, 46157), (88, 46196), (96, 46247), (100, 46268), (119, 46376), (126, 46439), (129, 46448), (140, 46520), (146, 46553), (149, 46568), (150, 46571), (155, 46583), (165, 46655), (172, 46697), (175, 46721), (182, 46751), (185, 46775), (188, 46784), (195, 46850), (197, 46862), (199, 46871), (201, 46883), (202, 46889), (207, 46907), (212, 46949), (214, 46958), (218, 47003), (219, 47006), (229, 47066), (233, 47090),

Gene: Tuco_82 Start: 50990, Stop: 52252, Start Num: 26

Candidate Starts for Tuco_82:

(Start: 26 @50990 has 118 MA's), (Start: 39 @51044 has 5 MA's), (45, 51077), (58, 51152), (67, 51209), (73, 51245), (76, 51257), (102, 51428), (127, 51578), (145, 51677), (146, 51683), (149, 51698), (161, 51761), (177, 51860), (181, 51878), (185, 51893), (186, 51896), (187, 51899), (191, 51920), (198, 51986), (202, 52007), (203, 52010), (204, 52013), (227, 52172), (229, 52178), (234, 52208), (238, 52220), (240, 52235),

Gene: Twinkle_69 Start: 48553, Stop: 49806, Start Num: 31

Candidate Starts for Twinkle_69:

(12, 48502), (Start: 31 @48553 has 10 MA's), (37, 48598), (38, 48601), (50, 48652), (93, 48895), (104, 48982), (108, 49000), (125, 49099), (136, 49168), (143, 49207), (146, 49222), (164, 49318), (169, 49354), (177, 49399), (182, 49420), (186, 49447), (195, 49519), (200, 49546), (204, 49564),

Gene: TyDawg_69 Start: 44858, Stop: 46144, Start Num: 21

Candidate Starts for TyDawg_69:

(11, 44822), (Start: 21 @44858 has 6 MA's), (Start: 56 @45017 has 5 MA's), (74, 45122), (104, 45308), (140, 45512), (150, 45563), (161, 45623), (165, 45647), (172, 45689), (190, 45791), (191, 45794), (193, 45821), (195, 45839), (203, 45881), (204, 45884), (206, 45890), (223, 46019), (226, 46049), (227, 46055), (228, 46058), (230, 46064), (232, 46091), (236, 46103), (241, 46127), (243, 46133),

Gene: Tyson_69 Start: 46395, Stop: 47660, Start Num: 25

Candidate Starts for Tyson_69:

(14, 46362), (Start: 25 @46395 has 62 MA's), (40, 46455), (Start: 41 @46458 has 1 MA's), (47, 46491), (51, 46539), (55, 46548), (60, 46584), (72, 46650), (80, 46704), (86, 46740), (106, 46863), (109, 46878), (123, 46953), (125, 46968), (134, 47031), (136, 47037), (142, 47073), (146, 47091), (149, 47106), (150, 47109), (153, 47118), (155, 47121), (160, 47157), (166, 47205), (169, 47223), (187, 47310), (190, 47328), (192, 47352), (194, 47370), (195, 47379), (202, 47418), (204, 47424), (208, 47442), (210, 47472), (218, 47532), (221, 47541), (233, 47610),

Gene: UPIE_67 Start: 45995, Stop: 47260, Start Num: 25

Candidate Starts for UPIE_67:

(14, 45962), (Start: 25 @45995 has 62 MA's), (40, 46055), (Start: 41 @46058 has 1 MA's), (47, 46091), (51, 46139), (55, 46148), (60, 46184), (72, 46250), (80, 46304), (86, 46340), (106, 46463), (109, 46478), (123, 46553), (125, 46568), (134, 46631), (136, 46637), (142, 46673), (146, 46691), (149, 46706), (150, 46709), (153, 46718), (155, 46721), (160, 46757), (166, 46805), (169, 46823), (187, 46910), (190, 46928), (192, 46952), (194, 46970), (195, 46979), (202, 47018), (204, 47024), (208, 47042), (210, 47072), (218, 47132), (221, 47141), (233, 47210),

Gene: Ukulele_76 Start: 49376, Stop: 50638, Start Num: 26

Candidate Starts for Ukulele_76:

(Start: 26 @49376 has 118 MA's), (Start: 39 @49430 has 5 MA's), (45, 49463), (58, 49538), (67, 49595), (73, 49631), (76, 49643), (102, 49814), (127, 49964), (145, 50063), (146, 50069), (149, 50084), (161, 50147), (177, 50246), (181, 50264), (185, 50279), (186, 50282), (187, 50285), (191, 50306), (198, 50372), (202, 50393), (203, 50396), (204, 50399), (227, 50558), (229, 50564), (234, 50594), (238, 50606), (240, 50621),

Gene: Vetrrix_70 Start: 47620, Stop: 48885, Start Num: 25

Candidate Starts for Vetrrix_70:

(Start: 25 @47620 has 62 MA's), (Start: 41 @47683 has 1 MA's), (60, 47809), (80, 47929), (81, 47932), (85, 47959), (109, 48103), (125, 48193), (134, 48256), (136, 48262), (146, 48316), (153, 48343), (155, 48346), (160, 48382), (167, 48436), (173, 48463), (178, 48496), (185, 48529), (188, 48538), (190, 48553), (192, 48577), (194, 48595), (195, 48604), (202, 48643), (204, 48649), (208, 48667), (218, 48757), (221, 48766), (222, 48769), (227, 48805), (233, 48835),

Gene: Wamburgexpress_68 Start: 46025, Stop: 47293, Start Num: 25

Candidate Starts for Wamburgexpress_68:

(14, 45992), (Start: 25 @46025 has 62 MA's), (40, 46085), (Start: 41 @46088 has 1 MA's), (47, 46121), (51, 46169), (55, 46178), (60, 46214), (72, 46280), (80, 46334), (86, 46370), (106, 46493), (109, 46508), (123, 46583), (125, 46598), (134, 46661), (136, 46667), (142, 46703), (146, 46721), (149, 46736), (150, 46739), (153, 46748), (155, 46751), (160, 46787), (166, 46835), (169, 46853), (187, 46940), (190, 46958), (192, 46982), (194, 47000), (195, 47009), (202, 47048), (204, 47054), (208, 47072), (210, 47102), (218, 47162), (221, 47171), (233, 47240), (235, 47249),

Gene: Warren_44 Start: 27229, Stop: 28533, Start Num: 33

Candidate Starts for Warren_44:

(Start: 33 @27229 has 7 MA's), (36, 27262), (44, 27304), (47, 27313), (54, 27370), (73, 27478), (76, 27490), (81, 27529), (88, 27568), (99, 27631), (105, 27682), (113, 27715), (118, 27739), (121, 27766), (132, 27844), (135, 27853), (143, 27892), (146, 27907), (160, 27973), (174, 28069), (180, 28096), (182, 28105), (202, 28243), (204, 28249), (208, 28267), (209, 28291), (219, 28354),

Gene: Whirlwind_70 Start: 48014, Stop: 49279, Start Num: 25

Candidate Starts for Whirlwind_70:

(Start: 25 @48014 has 62 MA's), (Start: 41 @48077 has 1 MA's), (47, 48110), (55, 48167), (59, 48194), (60, 48203), (80, 48323), (81, 48326), (85, 48353), (95, 48416), (109, 48497), (134, 48650), (146, 48710), (155, 48740), (158, 48758), (160, 48776), (169, 48842), (172, 48854), (188, 48932), (190, 48947), (194, 48989), (195, 48998), (204, 49043), (205, 49046), (216, 49133), (218, 49151), (226, 49193), (227, 49199), (233, 49229),

Gene: Wiggin_83 Start: 50067, Stop: 51329, Start Num: 26

Candidate Starts for Wiggin_83:

(Start: 26 @50067 has 118 MA's), (Start: 39 @50121 has 5 MA's), (45, 50154), (58, 50229), (67, 50286), (73, 50322), (76, 50334), (102, 50505), (127, 50655), (145, 50754), (146, 50760), (149, 50775), (161, 50838), (177, 50937), (181, 50955), (185, 50970), (186, 50973), (187, 50976), (191, 50997), (198, 51063), (202, 51084), (203, 51087), (204, 51090), (227, 51249), (229, 51255), (234, 51285), (238, 51297), (240, 51312),

Gene: Wigglewiggles_70 Start: 47637, Stop: 48902, Start Num: 25

Candidate Starts for Wigglewiggles_70:

(Start: 25 @47637 has 62 MA's), (Start: 41 @47700 has 1 MA's), (60, 47826), (80, 47946), (81, 47949), (85, 47976), (109, 48120), (125, 48210), (134, 48273), (136, 48279), (146, 48333), (160, 48399), (167, 48453), (173, 48480), (178, 48513), (185, 48546), (188, 48555), (190, 48570), (192, 48594), (194, 48612), (195, 48621), (202, 48660), (204, 48666), (208, 48684), (218, 48774), (221, 48783), (222, 48786), (227, 48822), (233, 48852),

Gene: Wildcat_80 Start: 49841, Stop: 51166, Start Num: 30

Candidate Starts for Wildcat_80:

(15, 49799), (17, 49808), (Start: 30 @49841 has 5 MA's), (53, 49976), (Start: 56 @49985 has 5 MA's), (80, 50135), (81, 50138), (82, 50141), (91, 50195), (99, 50231), (125, 50393), (126, 50408), (128, 50414), (129, 50417), (141, 50495), (143, 50501), (145, 50510), (150, 50534), (156, 50552), (159, 50579), (172, 50660), (178, 50696), (185, 50738), (186, 50741), (202, 50849), (203, 50852), (204, 50855), (217, 50957), (218, 50966), (220, 50972), (222, 50978), (228, 51026), (231, 51041), (247, 51137), (248, 51158),

Gene: Wilder_71 Start: 47586, Stop: 48851, Start Num: 25

Candidate Starts for Wilder_71:

(Start: 25 @47586 has 62 MA's), (Start: 41 @47649 has 1 MA's), (60, 47775), (80, 47895), (81, 47898), (85, 47925), (109, 48069), (125, 48159), (134, 48222), (136, 48228), (146, 48282), (153, 48309), (155, 48312), (160, 48348), (167, 48402), (173, 48429), (178, 48462), (185, 48495), (188, 48504), (190, 48519), (192, 48543), (194, 48561), (195, 48570), (202, 48609), (204, 48615), (208, 48633), (218, 48723), (221, 48732), (222, 48735), (227, 48771), (233, 48801),

Gene: Willez_76 Start: 48263, Stop: 49525, Start Num: 26

Candidate Starts for Willez_76:

(Start: 26 @48263 has 118 MA's), (Start: 39 @48317 has 5 MA's), (45, 48350), (58, 48425), (67, 48482), (73, 48518), (76, 48530), (102, 48701), (127, 48851), (145, 48950), (146, 48956), (149, 48971), (161, 49034), (177, 49133), (181, 49151), (185, 49166), (186, 49169), (187, 49172), (191, 49193), (198, 49259), (202, 49280), (203, 49283), (204, 49286), (227, 49445), (229, 49451), (234, 49481), (238, 49493), (240, 49508),

Gene: Winky_70 Start: 47580, Stop: 48845, Start Num: 25

Candidate Starts for Winky_70:

(Start: 25 @47580 has 62 MA's), (Start: 41 @47643 has 1 MA's), (60, 47769), (80, 47889), (81, 47892), (85, 47919), (109, 48063), (125, 48153), (134, 48216), (136, 48222), (146, 48276), (160, 48342), (167, 48396), (173, 48423), (178, 48456), (185, 48489), (188, 48498), (190, 48513), (192, 48537), (194, 48555), (195, 48564), (202, 48603), (204, 48609), (208, 48627), (218, 48717), (221,

48726), (222, 48729), (227, 48765), (233, 48795),

Gene: Wyatt2_69 Start: 46393, Stop: 47658, Start Num: 25

Candidate Starts for Wyatt2_69:

(14, 46360), (Start: 25 @46393 has 62 MA's), (40, 46453), (Start: 41 @46456 has 1 MA's), (47, 46489), (51, 46537), (55, 46546), (60, 46582), (72, 46648), (80, 46702), (86, 46738), (106, 46861), (109, 46876), (123, 46951), (125, 46966), (134, 47029), (136, 47035), (142, 47071), (146, 47089), (149, 47104), (150, 47107), (153, 47116), (155, 47119), (160, 47155), (166, 47203), (169, 47221), (187, 47308), (190, 47326), (192, 47350), (194, 47368), (195, 47377), (202, 47416), (204, 47422), (208, 47440), (210, 47470), (218, 47530), (221, 47539), (233, 47608),

Gene: Xandras_80 Start: 49475, Stop: 50737, Start Num: 26

Candidate Starts for Xandras_80:

(Start: 26 @49475 has 118 MA's), (Start: 39 @49529 has 5 MA's), (45, 49562), (58, 49637), (67, 49694), (73, 49730), (76, 49742), (102, 49913), (127, 50063), (145, 50162), (146, 50168), (149, 50183), (161, 50246), (177, 50345), (181, 50363), (185, 50378), (186, 50381), (187, 50384), (191, 50405), (198, 50471), (202, 50492), (203, 50495), (204, 50498), (227, 50657), (229, 50663), (234, 50693), (238, 50705), (240, 50720),

Gene: YassJohnny_78 Start: 49433, Stop: 50695, Start Num: 26

Candidate Starts for YassJohnny_78:

(Start: 26 @49433 has 118 MA's), (Start: 39 @49487 has 5 MA's), (45, 49520), (58, 49595), (67, 49652), (73, 49688), (76, 49700), (102, 49871), (127, 50021), (145, 50120), (146, 50126), (149, 50141), (161, 50204), (177, 50303), (181, 50321), (185, 50336), (186, 50339), (187, 50342), (191, 50363), (198, 50429), (202, 50450), (203, 50453), (204, 50456), (227, 50615), (229, 50621), (234, 50651), (238, 50663), (240, 50678),

Gene: Youngblood_84 Start: 50945, Stop: 52207, Start Num: 26

Candidate Starts for Youngblood_84:

(Start: 26 @50945 has 118 MA's), (Start: 39 @50999 has 5 MA's), (45, 51032), (58, 51107), (67, 51164), (73, 51200), (76, 51212), (102, 51383), (127, 51533), (145, 51632), (146, 51638), (149, 51653), (161, 51716), (177, 51815), (181, 51833), (185, 51848), (186, 51851), (187, 51854), (191, 51875), (198, 51941), (202, 51962), (203, 51965), (204, 51968), (227, 52127), (229, 52133), (234, 52163), (238, 52175), (240, 52190),

Gene: Zakai_71 Start: 47906, Stop: 49171, Start Num: 25

Candidate Starts for Zakai_71:

(Start: 25 @47906 has 62 MA's), (Start: 41 @47969 has 1 MA's), (60, 48095), (80, 48215), (81, 48218), (85, 48245), (109, 48389), (125, 48479), (134, 48542), (136, 48548), (146, 48602), (160, 48668), (167, 48722), (173, 48749), (178, 48782), (185, 48815), (188, 48824), (190, 48839), (192, 48863), (194, 48881), (195, 48890), (202, 48929), (204, 48935), (208, 48953), (218, 49043), (221, 49052), (222, 49055), (227, 49091), (233, 49121),

Gene: Zaria_69 Start: 45849, Stop: 47114, Start Num: 25

Candidate Starts for Zaria_69:

(14, 45816), (Start: 25 @45849 has 62 MA's), (Start: 41 @45912 has 1 MA's), (47, 45945), (51, 45993), (55, 46002), (60, 46038), (72, 46104), (80, 46158), (86, 46194), (106, 46317), (109, 46332), (123, 46407), (125, 46422), (134, 46485), (136, 46491), (142, 46527), (146, 46545), (149, 46560), (150, 46563), (153, 46572), (155, 46575), (160, 46611), (169, 46677), (187, 46764), (190, 46782), (192, 46806), (194, 46824), (195, 46833), (202, 46872), (204, 46878), (205, 46881), (208, 46896), (210, 46926), (218, 46986), (221, 46995), (233, 47064),

Gene: ZhongYanYuan_69 Start: 47475, Stop: 48740, Start Num: 25

Candidate Starts for ZhongYanYuan_69:

(Start: 25 @47475 has 62 MA's), (Start: 41 @47538 has 1 MA's), (49, 47580), (55, 47628), (60, 47664), (74, 47739), (80, 47784), (81, 47787), (85, 47814), (109, 47958), (134, 48111), (146, 48171), (155, 48201), (160, 48237), (162, 48255), (167, 48291), (173, 48318), (178, 48351), (188, 48393), (190, 48408), (192, 48432), (194, 48450), (195, 48459), (202, 48498), (204, 48504), (208, 48522), (218, 48612), (221, 48621), (222, 48624), (227, 48660), (233, 48690),

Gene: xkcd_84 Start: 51132, Stop: 52394, Start Num: 26

Candidate Starts for xkcd_84:

(Start: 26 @51132 has 118 MA's), (Start: 39 @51186 has 5 MA's), (45, 51219), (58, 51294), (67, 51351), (73, 51387), (76, 51399), (102, 51570), (127, 51720), (145, 51819), (146, 51825), (149, 51840), (161, 51903), (177, 52002), (181, 52020), (185, 52035), (186, 52038), (187, 52041), (191, 52062), (198, 52128), (202, 52149), (203, 52152), (204, 52155), (227, 52314), (229, 52320), (234, 52350), (238, 52362), (240, 52377),