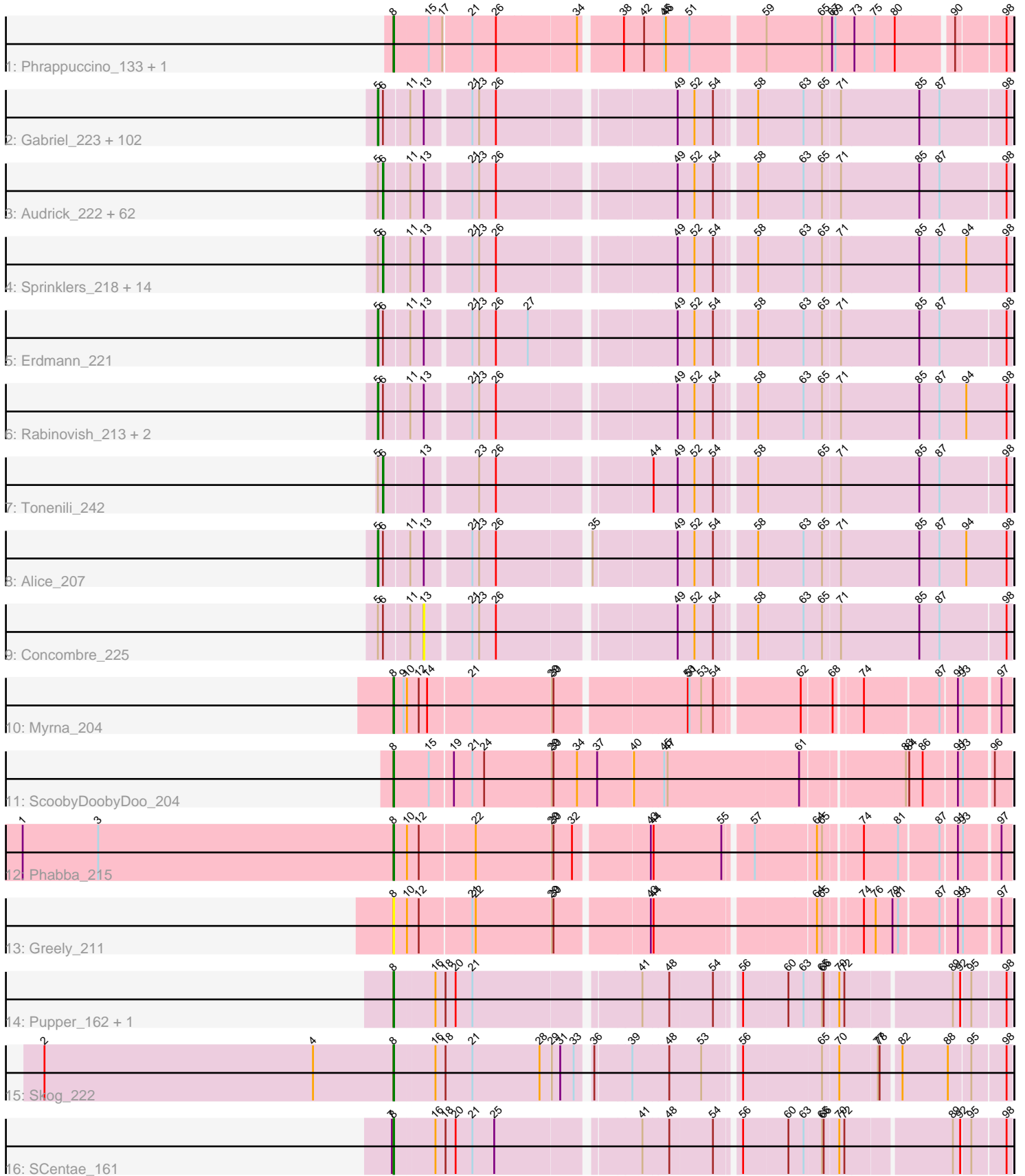


Pham 192334



Note: Tracks are now grouped by subcluster and scaled. Switching in subcluster is indicated by changes in track color. Track scale is now set by default to display the region 30 bp upstream of start 1 to 30 bp downstream of the last possible start. If this default region is judged to be packed too tightly with annotated starts, the track will be further scaled to only show that region of the ORF with annotated starts. This action will be indicated by adding "Zoomed" to the title. For starts, yellow indicates the location of called starts comprised solely of Glimmer/GeneMark auto-annotations, green indicates the location of called starts with at least 1 manual gene annotation.

## Pham 192334 Report

This analysis was run 11/02/24 on database version 579.

Pham number 192334 has 198 members, 19 are drafts.

Phages represented in each track:

- Track 1 : Phrappuccino\_133, Settecandela\_133
- Track 2 : Gabriel\_223, LRRHood\_213, Drazdys\_218, SrishMeg2525\_217, Loanshark\_217, Ghost\_220, Nidhogg\_221, Nappy\_221, JPickles\_216, Bipolarisk\_218, Iota\_215, ValleyTerrace\_221, Catera\_212, ChaylaJr\_218, ErnieJ\_213, Naija\_221, Delylah\_222, Spud\_214, BadAgartude\_214, CindyLou\_221, Ewok\_219, Pivoine\_221, Gamgam\_221, Patter\_221, Kboogie\_224, Roots515\_222, Blackdragon\_215, QBert\_212, Megamind\_217, DirtMonster\_213, Mangeria\_221, Yassified\_217, Gizmo\_226, Burrough\_222, Shelob\_221, Melpomini\_215, Delilah\_218, EasyJones\_223, Pinkcreek\_204, Capablanca\_225, ZygoTaiga\_217, LolaVince\_218, Latch\_220, McGee\_219, Maby2021\_220, Amataga\_221, Rizal\_212, Jedediah\_220, ChickenPhender\_216, Shnickers\_218, MikeLiesIn\_222, Cane17\_211, Cali\_213, RoMag\_215, Pier\_221, StephanieG\_216, YemiJoy2021\_221, LifeSavor\_219, Ronan\_216, Phusco\_218, SmallFry\_220, Atlantean\_220, Specks\_224, Basquiat\_217, Bread\_215, Shrimp\_222, Ngannou\_217, Rahel\_221, Zeenon\_222, Trinitium\_216, Phlegm\_224, Sauce\_216, Blubba\_209, FrayBell\_223, Blackbrain\_217, Bxz1\_210, Teardrop\_217, Tortoise16\_218, Jemmno\_219, Janiyra\_223, Turret\_213, NoodleTree\_226, PurduePete\_220, Ading\_221, Wally\_218, Zalkecks\_219, Tyke\_218, Pio\_228, Adlitam\_219, Norm\_220, StubbySaigey\_225, BananaFence\_217, Yucca\_220, InigoMontoya\_223, Domi\_214, NedWong\_219, Darko\_219, LinStu\_219, Daffodil\_225, TinyTim\_218, FudgeTart\_215, ShiaLabeouf\_217, Littleton\_223
- Track 3 : Audrick\_222, Essence\_217, I3\_230, Willis\_221, Naval22\_225, DTDevon\_222, SilverDipper\_224, Colt\_211, CharlieB\_214, Grasshills\_228, Koguma\_219, ScottMcG\_214, Dietrick\_209, Ava3\_219, BeanWater\_212, Breeniome\_219, Bigswole\_225, Issimir\_213, Quasimodo\_222, Spec\_215, Izajani\_218, Momo\_221, Grungle\_204, Lukilu\_211, ArcherS7\_220, Derek\_217, Astraea\_214, Fludd\_220, Jaygup\_216, Asterius\_216, ET08\_208, Napoleon13\_217, YoungMoneyMata\_219, DrPhinkDaddy\_217, Pleione\_224, Chargie21\_217, Demodog\_226, Chomp\_220, ParkTD\_219, Bangla1971\_220, Phox\_221, JulietS\_213, Morizzled23\_217, Salacia\_220, LordLeafolot\_222, Dandelion\_228, EmmaElysia\_224, EggyFarm\_229, Lee7\_220, Babyland\_223, Mikro\_216, NuevoMundo\_223, Guwapp\_215, IkeLoa\_212, Kamryn\_219, Halldule\_213, JigglyPuff\_227, Matsumoto\_219, InterFolia\_223, Cactojaque\_215, Tainan\_221, FoxtrotP1\_218, BigCity\_229
- Track 4 : Sprinklers\_218, Khaleesi\_219, Caravan\_211, Stubby\_204, Jessibeth14\_220, Sebata\_221, BackyardAgain\_216, JustHall\_214, Shaqnato\_211, Bonray\_222, Flabslab\_215, MoMoMixon\_218, HyRo\_208, McWolfish\_217,

EmToTheThree\_220

- Track 5 : Erdmann\_221
- Track 6 : Rabinovish\_213, Shifa\_197, JayJay\_218
- Track 7 : Tonenili\_242
- Track 8 : Alice\_207
- Track 9 : Concombre\_225
- Track 10 : Myrna\_204
- Track 11 : ScoobyDoobyDoo\_204
- Track 12 : Phabba\_215
- Track 13 : Greely\_211
- Track 14 : Pupper\_162, CherryTomatoes\_163
- Track 15 : Skog\_222
- Track 16 : SCentae\_161

***Summary of Final Annotations (See graph section above for start numbers):***

The start number called the most often in the published annotations is 5, it was called in 105 of the 179 non-draft genes in the pham.

Genes that call this "Most Annotated" start:

- Ading\_221, Adlitam\_219, Alice\_207, Amataga\_221, Atlantean\_220, BadAgartude\_214, BananaFence\_217, Basquiat\_217, Bipolarisk\_218, Blackbrain\_217, Blackdragon\_215, Blubba\_209, Bread\_215, Burrough\_222, Bxz1\_210, Cali\_213, Cane17\_211, Capablanca\_225, Catera\_212, ChaylaJr\_218, ChickenPhender\_216, CindyLou\_221, Daffodil\_225, Darko\_219, Delilah\_218, Delylah\_222, DirtMonster\_213, Domi\_214, Drazdys\_218, EasyJones\_223, Erdmann\_221, ErnieJ\_213, Ewok\_219, FrayBell\_223, FudgeTart\_215, Gabriel\_223, Gangam\_221, Ghost\_220, Gizmo\_226, InigoMontoya\_223, Iota\_215, JPickles\_216, Janiyra\_223, JayJay\_218, Jedediah\_220, Jemmno\_219, Kboogie\_224, LRRHood\_213, Latch\_220, LifeSavor\_219, LinStu\_219, Littleton\_223, Loanshark\_217, LolaVinca\_218, Maby2021\_220, Mangeria\_221, McGee\_219, Megamind\_217, Melpomini\_215, MikeLiesIn\_222, Naija\_221, Nappy\_221, NedWong\_219, Ngannou\_217, Nidhogg\_221, NoodleTree\_226, Norm\_220, Patter\_221, Phlegm\_224, Phusco\_218, Pier\_221, Pinkcreek\_204, Pio\_228, Pivoine\_221, PurduePete\_220, QBert\_212, Rabinovish\_213, Rahel\_221, Rizal\_212, RoMag\_215, Ronan\_216, Roots515\_222, Sauce\_216, Shelob\_221, ShiaLabeouf\_217, Shifa\_197, Shnickers\_218, Shrimp\_222, SmallFry\_220, Specks\_224, Spud\_214, SrishMeg2525\_217, StephanieG\_216, StubbySaigey\_225, Teardrop\_217, TinyTim\_218, Tortoise16\_218, Trinitium\_216, Turret\_213, Tyke\_218, ValleyTerrace\_221, Wally\_218, Yassified\_217, YemiJoy2021\_221, Yucca\_220, Zalkecks\_219, Zeenon\_222, ZygoTaiga\_217,

Genes that have the "Most Annotated" start but do not call it:

- ArcherS7\_220, Asterius\_216, Astraea\_214, Audrick\_222, Ava3\_219, Babyland\_223, BackyardAgain\_216, Bangla1971\_220, BeanWater\_212, BigCity\_229, Bigswole\_225, Bonray\_222, Breeniome\_219, Cactojaque\_215, Caravan\_211, Chargie21\_217, CharlieB\_214, Chomp\_220, Colt\_211, Concombre\_225, DTDevon\_222, Dandelion\_228, Demodog\_226, Derek\_217, Dietrick\_209, DrPhinkDaddy\_217, ET08\_208, EggyFarm\_229, EmToTheThree\_220, EmmaElysia\_224, Essence\_217, Flabslab\_215, Fludd\_220, FoxtrotP1\_218,

Grasshills\_228, Grungle\_204, Guwapp\_215, Halldule\_213, HyRo\_208, I3\_230, IkeLoa\_212, InterFolia\_223, Issimir\_213, Izajani\_218, Jaygup\_216, Jessibeth14\_220, JigglyPuff\_227, JulietS\_213, JustHall\_214, Kamryn\_219, Khaleesi\_219, Koguma\_219, Lee7\_220, LordLeafolot\_222, Lukilu\_211, Matsumoto\_219, McWolfish\_217, Mikro\_216, MoMoMixon\_218, Momo\_221, Morizzled23\_217, Napoleon13\_217, Naval22\_225, NuevoMundo\_223, ParkTD\_219, Phox\_221, Pleione\_224, Quasimodo\_222, Salacia\_220, ScottMcG\_214, Sebata\_221, Shaqnato\_211, SilverDipper\_224, Spec\_215, Sprinklers\_218, Stubby\_204, Tainan\_221, Tonenili\_242, Willis\_221, YoungMoneyMata\_219,

Genes that do not have the "Most Annotated" start:

- CherryTomatoes\_163, Greely\_211, Myrna\_204, Phabba\_215, Phrappuccino\_133, Pupper\_162, SCentae\_161, ScoobyDoobyDoo\_204, Settecandela\_133, Skog\_222,

### Summary by start number:

Start 5:

- Found in 188 of 198 ( 94.9% ) of genes in pham
- Manual Annotations of this start: 105 of 179
- Called 57.4% of time when present
- Phage (with cluster) where this start called: Ading\_221 (C1), Adlitam\_219 (C1), Alice\_207 (C1), Amataga\_221 (C1), Atlantean\_220 (C1), BadAgartude\_214 (C1), BananaFence\_217 (C1), Basquiat\_217 (C1), Bipolarisk\_218 (C1), Blackbrain\_217 (C1), Blackdragon\_215 (C1), Blubba\_209 (C1), Bread\_215 (C1), Burrough\_222 (C1), Bxz1\_210 (C1), Cali\_213 (C1), Cane17\_211 (C1), Capablanca\_225 (C1), Catera\_212 (C1), ChaylaJr\_218 (C1), ChickenPhender\_216 (C1), CindyLou\_221 (C1), Daffodil\_225 (C1), Darko\_219 (C1), Delilah\_218 (C1), Delyiah\_222 (C1), DirtMonster\_213 (C1), Domi\_214 (C1), Drazdys\_218 (C1), EasyJones\_223 (C1), Erdmann\_221 (C1), ErnieJ\_213 (C1), Ewok\_219 (C1), FrayBell\_223 (C1), FudgeTart\_215 (C1), Gabriel\_223 (C1), Gangam\_221 (C1), Ghost\_220 (C1), Gizmo\_226 (C1), InigoMontoya\_223 (C1), Iota\_215 (C1), JPickles\_216 (C1), Janiyra\_223 (C1), JayJay\_218 (C1), Jedediah\_220 (C1), Jemmno\_219 (C1), Kboogie\_224 (C1), LRRHood\_213 (C1), Latch\_220 (C1), LifeSavor\_219 (C1), LinStu\_219 (C1), Littleton\_223 (C1), Loanshark\_217 (C1), LolaVinca\_218 (C1), Maby2021\_220 (C1), Mangeria\_221 (C1), McGee\_219 (C1), Megamind\_217 (C1), Melpomini\_215 (C1), MikeLiesIn\_222 (C1), Naija\_221 (C1), Nappy\_221 (C1), NedWong\_219 (C1), Ngannou\_217 (C1), Nidhogg\_221 (C1), NoodleTree\_226 (C1), Norm\_220 (C1), Patter\_221 (C1), Phlegm\_224 (C1), Phusco\_218 (C1), Pier\_221 (C1), Pinkcreek\_204 (C1), Pio\_228 (C1), Pivoine\_221 (C1), PurduePete\_220 (C1), QBert\_212 (C1), Rabinovish\_213 (C1), Rahel\_221 (C1), Rizal\_212 (C1), RoMag\_215 (C1), Ronan\_216 (C1), Roots515\_222 (C1), Sauce\_216 (C1), Shelob\_221 (C1), ShiaLabeouf\_217 (C1), Shifa\_197 (C1), Shnickers\_218 (C1), Shrimp\_222 (C1), SmallFry\_220 (C1), Specks\_224 (C1), Spud\_214 (C1), SrishMeg2525\_217 (C1), StephanieG\_216 (C1), StubbySaigey\_225 (C1), Teardrop\_217 (C1), TinyTim\_218 (C1), Tortoise16\_218 (C1), Trinitium\_216 (C1), Turret\_213 (C1), Tyke\_218 (C1), ValleyTerrace\_221 (C1), Wally\_218 (C1), Yassified\_217 (C1), YemiJoy2021\_221 (C1), Yucca\_220 (C1), Zalkecks\_219 (C1), Zeenon\_222 (C1), ZygoTaiga\_217 (C1),

Start 6:

- Found in 188 of 198 ( 94.9% ) of genes in pham
- Manual Annotations of this start: 65 of 179
- Called 42.0% of time when present

- Phage (with cluster) where this start called: ArcherS7\_220 (C1), Asterius\_216 (C1), Astraea\_214 (C1), Audrick\_222 (C1), Ava3\_219 (C1), Babyland\_223 (C1), BackyardAgain\_216 (C1), Bangla1971\_220 (C1), BeanWater\_212 (C1), BigCity\_229 (C1), Bigswole\_225 (C1), Bonray\_222 (C1), Breeniome\_219 (C1), Cactojaque\_215 (C1), Caravan\_211 (C1), Chargie21\_217 (C1), CharlieB\_214 (C1), Chomp\_220 (C1), Colt\_211 (C1), DTDevon\_222 (C1), Dandelion\_228 (C1), Demodog\_226 (C1), Derek\_217 (C1), Dietrick\_209 (C1), DrPhinkDaddy\_217 (C1), ET08\_208 (C1), EggyFarm\_229 (C1), EmToTheThree\_220 (C1), EmmaElysia\_224 (C1), Essence\_217 (C1), Flabslab\_215 (C1), Fludd\_220 (C1), FoxtrotP1\_218 (C1), Grasshills\_228 (C1), Grungle\_204 (C1), Guwapp\_215 (C1), Halldule\_213 (C1), HyRo\_208 (C1), I3\_230 (C1), IkeLoa\_212 (C1), InterFolia\_223 (C1), Issimir\_213 (C1), Izajani\_218 (C1), Jaygup\_216 (C1), Jessibeth14\_220 (C1), JigglyPuff\_227 (C1), JulietS\_213 (C1), JustHall\_214 (C1), Kamryn\_219 (C1), Khaleesi\_219 (C1), Koguma\_219 (C1), Lee7\_220 (C1), LordLeafolot\_222 (C1), Lukilu\_211 (C1), Matsumoto\_219 (C1), McWolfish\_217 (C1), Mikro\_216 (C1), MoMoMixon\_218 (C1), Momo\_221 (C1), Morizzled23\_217 (C1), Napoleon13\_217 (C1), Naval22\_225 (C1), NuevoMundo\_223 (C1), ParkTD\_219 (C1), Phox\_221 (C1), Pleione\_224 (C1), Quasimodo\_222 (C1), Salacia\_220 (C1), ScottMcG\_214 (C1), Sebata\_221 (C1), Shaqnato\_211 (C1), SilverDipper\_224 (C1), Spec\_215 (C1), Sprinklers\_218 (C1), Stubby\_204 (C1), Tainan\_221 (C1), Tonenili\_242 (C1), Willis\_221 (C1), YoungMoneyMata\_219 (C1),

Start 8:

- Found in 10 of 198 ( 5.1% ) of genes in pham
- Manual Annotations of this start: 9 of 179
- Called 100.0% of time when present
- Phage (with cluster) where this start called: CherryTomatoes\_163 (DO), Greely\_211 (C2), Myrna\_204 (C2), Phabba\_215 (C2), Phrappuccino\_133 (AA), Pupper\_162 (DO), SCentae\_161 (DO), ScoobyDoobyDoo\_204 (C2), Settecandela\_133 (AA), Skog\_222 (DO),

Start 13:

- Found in 188 of 198 ( 94.9% ) of genes in pham
- No Manual Annotations of this start.
- Called 0.5% of time when present
- Phage (with cluster) where this start called: Concombre\_225 (C1),

### Summary by clusters:

There are 4 clusters represented in this pham: AA, C2, C1, DO,

Info for manual annotations of cluster AA:

- Start number 8 was manually annotated 2 times for cluster AA.

Info for manual annotations of cluster C1:

- Start number 5 was manually annotated 105 times for cluster C1.
- Start number 6 was manually annotated 65 times for cluster C1.

Info for manual annotations of cluster C2:

- Start number 8 was manually annotated 3 times for cluster C2.

Info for manual annotations of cluster DO:

- Start number 8 was manually annotated 4 times for cluster DO.

**Gene Information:**

Gene: Ading\_221 Start: 124316, Stop: 125341, Start Num: 5

Candidate Starts for Ading\_221:

(Start: 5 @124316 has 105 MA's), (Start: 6 @124325 has 65 MA's), (11, 124364), (13, 124385), (21, 124460), (23, 124472), (26, 124502), (49, 124784), (52, 124814), (54, 124847), (58, 124910), (63, 124988), (65, 125021), (71, 125051), (85, 125186), (87, 125222), (98, 125336),

Gene: Adlitam\_219 Start: 122920, Stop: 123945, Start Num: 5

Candidate Starts for Adlitam\_219:

(Start: 5 @122920 has 105 MA's), (Start: 6 @122929 has 65 MA's), (11, 122968), (13, 122989), (21, 123064), (23, 123076), (26, 123106), (49, 123388), (52, 123418), (54, 123451), (58, 123514), (63, 123592), (65, 123625), (71, 123655), (85, 123790), (87, 123826), (98, 123940),

Gene: Alice\_207 Start: 121883, Stop: 122914, Start Num: 5

Candidate Starts for Alice\_207:

(Start: 5 @121883 has 105 MA's), (Start: 6 @121892 has 65 MA's), (11, 121931), (13, 121952), (21, 122027), (23, 122039), (26, 122069), (35, 122219), (49, 122351), (52, 122381), (54, 122414), (58, 122477), (63, 122555), (65, 122588), (71, 122618), (85, 122753), (87, 122789), (94, 122837), (98, 122909),

Gene: Amataga\_221 Start: 122732, Stop: 123757, Start Num: 5

Candidate Starts for Amataga\_221:

(Start: 5 @122732 has 105 MA's), (Start: 6 @122741 has 65 MA's), (11, 122780), (13, 122801), (21, 122876), (23, 122888), (26, 122918), (49, 123200), (52, 123230), (54, 123263), (58, 123326), (63, 123404), (65, 123437), (71, 123467), (85, 123602), (87, 123638), (98, 123752),

Gene: ArcherS7\_220 Start: 123783, Stop: 124799, Start Num: 6

Candidate Starts for ArcherS7\_220:

(Start: 5 @123774 has 105 MA's), (Start: 6 @123783 has 65 MA's), (11, 123822), (13, 123843), (21, 123918), (23, 123930), (26, 123960), (49, 124242), (52, 124272), (54, 124305), (58, 124368), (63, 124446), (65, 124479), (71, 124509), (85, 124644), (87, 124680), (98, 124794),

Gene: Asterius\_216 Start: 123150, Stop: 124166, Start Num: 6

Candidate Starts for Asterius\_216:

(Start: 5 @123141 has 105 MA's), (Start: 6 @123150 has 65 MA's), (11, 123189), (13, 123210), (21, 123285), (23, 123297), (26, 123327), (49, 123609), (52, 123639), (54, 123672), (58, 123735), (63, 123813), (65, 123846), (71, 123876), (85, 124011), (87, 124047), (98, 124161),

Gene: Astraea\_214 Start: 122345, Stop: 123361, Start Num: 6

Candidate Starts for Astraea\_214:

(Start: 5 @122336 has 105 MA's), (Start: 6 @122345 has 65 MA's), (11, 122384), (13, 122405), (21, 122480), (23, 122492), (26, 122522), (49, 122804), (52, 122834), (54, 122867), (58, 122930), (63, 123008), (65, 123041), (71, 123071), (85, 123206), (87, 123242), (98, 123356),

Gene: Atlantean\_220 Start: 122732, Stop: 123757, Start Num: 5

Candidate Starts for Atlantean\_220:

(Start: 5 @122732 has 105 MA's), (Start: 6 @122741 has 65 MA's), (11, 122780), (13, 122801), (21, 122876), (23, 122888), (26, 122918), (49, 123200), (52, 123230), (54, 123263), (58, 123326), (63, 123404), (65, 123437), (71, 123467), (85, 123602), (87, 123638), (98, 123752),

Gene: Audrick\_222 Start: 122631, Stop: 123647, Start Num: 6

Candidate Starts for Audrick\_222:

(Start: 5 @122622 has 105 MA's), (Start: 6 @122631 has 65 MA's), (11, 122670), (13, 122691), (21, 122766), (23, 122778), (26, 122808), (49, 123090), (52, 123120), (54, 123153), (58, 123216), (63, 123294), (65, 123327), (71, 123357), (85, 123492), (87, 123528), (98, 123642),

Gene: Ava3\_219 Start: 123163, Stop: 124179, Start Num: 6

Candidate Starts for Ava3\_219:

(Start: 5 @123154 has 105 MA's), (Start: 6 @123163 has 65 MA's), (11, 123202), (13, 123223), (21, 123298), (23, 123310), (26, 123340), (49, 123622), (52, 123652), (54, 123685), (58, 123748), (63, 123826), (65, 123859), (71, 123889), (85, 124024), (87, 124060), (98, 124174),

Gene: Babyland\_223 Start: 123518, Stop: 124534, Start Num: 6

Candidate Starts for Babyland\_223:

(Start: 5 @123509 has 105 MA's), (Start: 6 @123518 has 65 MA's), (11, 123557), (13, 123578), (21, 123653), (23, 123665), (26, 123695), (49, 123977), (52, 124007), (54, 124040), (58, 124103), (63, 124181), (65, 124214), (71, 124244), (85, 124379), (87, 124415), (98, 124529),

Gene: BackyardAgain\_216 Start: 120694, Stop: 121716, Start Num: 6

Candidate Starts for BackyardAgain\_216:

(Start: 5 @120685 has 105 MA's), (Start: 6 @120694 has 65 MA's), (11, 120733), (13, 120754), (21, 120829), (23, 120841), (26, 120871), (49, 121153), (52, 121183), (54, 121216), (58, 121279), (63, 121357), (65, 121390), (71, 121420), (85, 121555), (87, 121591), (94, 121639), (98, 121711),

Gene: BadAgartude\_214 Start: 122822, Stop: 123847, Start Num: 5

Candidate Starts for BadAgartude\_214:

(Start: 5 @122822 has 105 MA's), (Start: 6 @122831 has 65 MA's), (11, 122870), (13, 122891), (21, 122966), (23, 122978), (26, 123008), (49, 123290), (52, 123320), (54, 123353), (58, 123416), (63, 123494), (65, 123527), (71, 123557), (85, 123692), (87, 123728), (98, 123842),

Gene: BananaFence\_217 Start: 122965, Stop: 123990, Start Num: 5

Candidate Starts for BananaFence\_217:

(Start: 5 @122965 has 105 MA's), (Start: 6 @122974 has 65 MA's), (11, 123013), (13, 123034), (21, 123109), (23, 123121), (26, 123151), (49, 123433), (52, 123463), (54, 123496), (58, 123559), (63, 123637), (65, 123670), (71, 123700), (85, 123835), (87, 123871), (98, 123985),

Gene: Bangla1971\_220 Start: 122747, Stop: 123763, Start Num: 6

Candidate Starts for Bangla1971\_220:

(Start: 5 @122738 has 105 MA's), (Start: 6 @122747 has 65 MA's), (11, 122786), (13, 122807), (21, 122882), (23, 122894), (26, 122924), (49, 123206), (52, 123236), (54, 123269), (58, 123332), (63, 123410), (65, 123443), (71, 123473), (85, 123608), (87, 123644), (98, 123758),

Gene: Basquiat\_217 Start: 121251, Stop: 122276, Start Num: 5

Candidate Starts for Basquiat\_217:

(Start: 5 @121251 has 105 MA's), (Start: 6 @121260 has 65 MA's), (11, 121299), (13, 121320), (21, 121395), (23, 121407), (26, 121437), (49, 121719), (52, 121749), (54, 121782), (58, 121845), (63, 121923), (65, 121956), (71, 121986), (85, 122121), (87, 122157), (98, 122271),

Gene: BeanWater\_212 Start: 121774, Stop: 122790, Start Num: 6

Candidate Starts for BeanWater\_212:

(Start: 5 @121765 has 105 MA's), (Start: 6 @121774 has 65 MA's), (11, 121813), (13, 121834), (21, 121909), (23, 121921), (26, 121951), (49, 122233), (52, 122263), (54, 122296), (58, 122359), (63,

122437), (65, 122470), (71, 122500), (85, 122635), (87, 122671), (98, 122785),

Gene: BigCity\_229 Start: 125345, Stop: 126361, Start Num: 6

Candidate Starts for BigCity\_229:

(Start: 5 @125336 has 105 MA's), (Start: 6 @125345 has 65 MA's), (11, 125384), (13, 125405), (21, 125480), (23, 125492), (26, 125522), (49, 125804), (52, 125834), (54, 125867), (58, 125930), (63, 126008), (65, 126041), (71, 126071), (85, 126206), (87, 126242), (98, 126356),

Gene: Bigswole\_225 Start: 125199, Stop: 126215, Start Num: 6

Candidate Starts for Bigswole\_225:

(Start: 5 @125190 has 105 MA's), (Start: 6 @125199 has 65 MA's), (11, 125238), (13, 125259), (21, 125334), (23, 125346), (26, 125376), (49, 125658), (52, 125688), (54, 125721), (58, 125784), (63, 125862), (65, 125895), (71, 125925), (85, 126060), (87, 126096), (98, 126210),

Gene: Bipolarisk\_218 Start: 123423, Stop: 124448, Start Num: 5

Candidate Starts for Bipolarisk\_218:

(Start: 5 @123423 has 105 MA's), (Start: 6 @123432 has 65 MA's), (11, 123471), (13, 123492), (21, 123567), (23, 123579), (26, 123609), (49, 123891), (52, 123921), (54, 123954), (58, 124017), (63, 124095), (65, 124128), (71, 124158), (85, 124293), (87, 124329), (98, 124443),

Gene: Blackbrain\_217 Start: 122324, Stop: 123349, Start Num: 5

Candidate Starts for Blackbrain\_217:

(Start: 5 @122324 has 105 MA's), (Start: 6 @122333 has 65 MA's), (11, 122372), (13, 122393), (21, 122468), (23, 122480), (26, 122510), (49, 122792), (52, 122822), (54, 122855), (58, 122918), (63, 122996), (65, 123029), (71, 123059), (85, 123194), (87, 123230), (98, 123344),

Gene: Blackdragon\_215 Start: 123056, Stop: 124081, Start Num: 5

Candidate Starts for Blackdragon\_215:

(Start: 5 @123056 has 105 MA's), (Start: 6 @123065 has 65 MA's), (11, 123104), (13, 123125), (21, 123200), (23, 123212), (26, 123242), (49, 123524), (52, 123554), (54, 123587), (58, 123650), (63, 123728), (65, 123761), (71, 123791), (85, 123926), (87, 123962), (98, 124076),

Gene: Blubba\_209 Start: 126405, Stop: 127430, Start Num: 5

Candidate Starts for Blubba\_209:

(Start: 5 @126405 has 105 MA's), (Start: 6 @126414 has 65 MA's), (11, 126453), (13, 126474), (21, 126549), (23, 126561), (26, 126591), (49, 126873), (52, 126903), (54, 126936), (58, 126999), (63, 127077), (65, 127110), (71, 127140), (85, 127275), (87, 127311), (98, 127425),

Gene: Bonray\_222 Start: 124834, Stop: 125856, Start Num: 6

Candidate Starts for Bonray\_222:

(Start: 5 @124825 has 105 MA's), (Start: 6 @124834 has 65 MA's), (11, 124873), (13, 124894), (21, 124969), (23, 124981), (26, 125011), (49, 125293), (52, 125323), (54, 125356), (58, 125419), (63, 125497), (65, 125530), (71, 125560), (85, 125695), (87, 125731), (94, 125779), (98, 125851),

Gene: Bread\_215 Start: 122835, Stop: 123860, Start Num: 5

Candidate Starts for Bread\_215:

(Start: 5 @122835 has 105 MA's), (Start: 6 @122844 has 65 MA's), (11, 122883), (13, 122904), (21, 122979), (23, 122991), (26, 123021), (49, 123303), (52, 123333), (54, 123366), (58, 123429), (63, 123507), (65, 123540), (71, 123570), (85, 123705), (87, 123741), (98, 123855),

Gene: Breeniome\_219 Start: 122298, Stop: 123314, Start Num: 6

Candidate Starts for Breeniome\_219:



(Start: 5 @122289 has 105 MA's), (Start: 6 @122298 has 65 MA's), (11, 122337), (13, 122358), (21, 122433), (23, 122445), (26, 122475), (49, 122757), (52, 122787), (54, 122820), (58, 122883), (63, 122961), (65, 122994), (71, 123024), (85, 123159), (87, 123195), (98, 123309),

Gene: Burrough\_222 Start: 124605, Stop: 125630, Start Num: 5

Candidate Starts for Burrough\_222:

(Start: 5 @124605 has 105 MA's), (Start: 6 @124614 has 65 MA's), (11, 124653), (13, 124674), (21, 124749), (23, 124761), (26, 124791), (49, 125073), (52, 125103), (54, 125136), (58, 125199), (63, 125277), (65, 125310), (71, 125340), (85, 125475), (87, 125511), (98, 125625),

Gene: Bxz1\_210 Start: 124811, Stop: 125836, Start Num: 5

Candidate Starts for Bxz1\_210:

(Start: 5 @124811 has 105 MA's), (Start: 6 @124820 has 65 MA's), (11, 124859), (13, 124880), (21, 124955), (23, 124967), (26, 124997), (49, 125279), (52, 125309), (54, 125342), (58, 125405), (63, 125483), (65, 125516), (71, 125546), (85, 125681), (87, 125717), (98, 125831),

Gene: Cactojaque\_215 Start: 121280, Stop: 122296, Start Num: 6

Candidate Starts for Cactojaque\_215:

(Start: 5 @121271 has 105 MA's), (Start: 6 @121280 has 65 MA's), (11, 121319), (13, 121340), (21, 121415), (23, 121427), (26, 121457), (49, 121739), (52, 121769), (54, 121802), (58, 121865), (63, 121943), (65, 121976), (71, 122006), (85, 122141), (87, 122177), (98, 122291),

Gene: Cali\_213 Start: 123206, Stop: 124231, Start Num: 5

Candidate Starts for Cali\_213:

(Start: 5 @123206 has 105 MA's), (Start: 6 @123215 has 65 MA's), (11, 123254), (13, 123275), (21, 123350), (23, 123362), (26, 123392), (49, 123674), (52, 123704), (54, 123737), (58, 123800), (63, 123878), (65, 123911), (71, 123941), (85, 124076), (87, 124112), (98, 124226),

Gene: Cane17\_211 Start: 126814, Stop: 127839, Start Num: 5

Candidate Starts for Cane17\_211:

(Start: 5 @126814 has 105 MA's), (Start: 6 @126823 has 65 MA's), (11, 126862), (13, 126883), (21, 126958), (23, 126970), (26, 127000), (49, 127282), (52, 127312), (54, 127345), (58, 127408), (63, 127486), (65, 127519), (71, 127549), (85, 127684), (87, 127720), (98, 127834),

Gene: Capablanca\_225 Start: 125420, Stop: 126445, Start Num: 5

Candidate Starts for Capablanca\_225:

(Start: 5 @125420 has 105 MA's), (Start: 6 @125429 has 65 MA's), (11, 125468), (13, 125489), (21, 125564), (23, 125576), (26, 125606), (49, 125888), (52, 125918), (54, 125951), (58, 126014), (63, 126092), (65, 126125), (71, 126155), (85, 126290), (87, 126326), (98, 126440),

Gene: Caravan\_211 Start: 123549, Stop: 124571, Start Num: 6

Candidate Starts for Caravan\_211:

(Start: 5 @123540 has 105 MA's), (Start: 6 @123549 has 65 MA's), (11, 123588), (13, 123609), (21, 123684), (23, 123696), (26, 123726), (49, 124008), (52, 124038), (54, 124071), (58, 124134), (63, 124212), (65, 124245), (71, 124275), (85, 124410), (87, 124446), (94, 124494), (98, 124566),

Gene: Catera\_212 Start: 121945, Stop: 122970, Start Num: 5

Candidate Starts for Catera\_212:

(Start: 5 @121945 has 105 MA's), (Start: 6 @121954 has 65 MA's), (11, 121993), (13, 122014), (21, 122089), (23, 122101), (26, 122131), (49, 122413), (52, 122443), (54, 122476), (58, 122539), (63, 122617), (65, 122650), (71, 122680), (85, 122815), (87, 122851), (98, 122965),

Gene: Charge21\_217 Start: 121260, Stop: 122276, Start Num: 6

Candidate Starts for Chargie21\_217:

(Start: 5 @121251 has 105 MA's), (Start: 6 @121260 has 65 MA's), (11, 121299), (13, 121320), (21, 121395), (23, 121407), (26, 121437), (49, 121719), (52, 121749), (54, 121782), (58, 121845), (63, 121923), (65, 121956), (71, 121986), (85, 122121), (87, 122157), (98, 122271),

Gene: CharlieB\_214 Start: 122969, Stop: 123985, Start Num: 6

Candidate Starts for CharlieB\_214:

(Start: 5 @122960 has 105 MA's), (Start: 6 @122969 has 65 MA's), (11, 123008), (13, 123029), (21, 123104), (23, 123116), (26, 123146), (49, 123428), (52, 123458), (54, 123491), (58, 123554), (63, 123632), (65, 123665), (71, 123695), (85, 123830), (87, 123866), (98, 123980),

Gene: ChaylaJr\_218 Start: 121939, Stop: 122964, Start Num: 5

Candidate Starts for ChaylaJr\_218:

(Start: 5 @121939 has 105 MA's), (Start: 6 @121948 has 65 MA's), (11, 121987), (13, 122008), (21, 122083), (23, 122095), (26, 122125), (49, 122407), (52, 122437), (54, 122470), (58, 122533), (63, 122611), (65, 122644), (71, 122674), (85, 122809), (87, 122845), (98, 122959),

Gene: CherryTomatoes\_163 Start: 114662, Stop: 115654, Start Num: 8

Candidate Starts for CherryTomatoes\_163:

(Start: 8 @114662 has 9 MA's), (16, 114731), (18, 114746), (20, 114764), (21, 114794), (41, 115061), (48, 115106), (54, 115181), (56, 115217), (60, 115295), (63, 115322), (65, 115352), (66, 115355), (70, 115379), (72, 115388), (89, 115562), (92, 115574), (95, 115589), (98, 115646),

Gene: ChickenPhender\_216 Start: 121398, Stop: 122423, Start Num: 5

Candidate Starts for ChickenPhender\_216:

(Start: 5 @121398 has 105 MA's), (Start: 6 @121407 has 65 MA's), (11, 121446), (13, 121467), (21, 121542), (23, 121554), (26, 121584), (49, 121866), (52, 121896), (54, 121929), (58, 121992), (63, 122070), (65, 122103), (71, 122133), (85, 122268), (87, 122304), (98, 122418),

Gene: Chomp\_220 Start: 124030, Stop: 125046, Start Num: 6

Candidate Starts for Chomp\_220:

(Start: 5 @124021 has 105 MA's), (Start: 6 @124030 has 65 MA's), (11, 124069), (13, 124090), (21, 124165), (23, 124177), (26, 124207), (49, 124489), (52, 124519), (54, 124552), (58, 124615), (63, 124693), (65, 124726), (71, 124756), (85, 124891), (87, 124927), (98, 125041),

Gene: CindyLou\_221 Start: 124281, Stop: 125306, Start Num: 5

Candidate Starts for CindyLou\_221:

(Start: 5 @124281 has 105 MA's), (Start: 6 @124290 has 65 MA's), (11, 124329), (13, 124350), (21, 124425), (23, 124437), (26, 124467), (49, 124749), (52, 124779), (54, 124812), (58, 124875), (63, 124953), (65, 124986), (71, 125016), (85, 125151), (87, 125187), (98, 125301),

Gene: Colt\_211 Start: 126054, Stop: 127070, Start Num: 6

Candidate Starts for Colt\_211:

(Start: 5 @126045 has 105 MA's), (Start: 6 @126054 has 65 MA's), (11, 126093), (13, 126114), (21, 126189), (23, 126201), (26, 126231), (49, 126513), (52, 126543), (54, 126576), (58, 126639), (63, 126717), (65, 126750), (71, 126780), (85, 126915), (87, 126951), (98, 127065),

Gene: Concombre\_225 Start: 124948, Stop: 125904, Start Num: 13

Candidate Starts for Concombre\_225:

(Start: 5 @124879 has 105 MA's), (Start: 6 @124888 has 65 MA's), (11, 124927), (13, 124948), (21, 125023), (23, 125035), (26, 125065), (49, 125347), (52, 125377), (54, 125410), (58, 125473), (63, 125551), (65, 125584), (71, 125614), (85, 125749), (87, 125785), (98, 125899),

Gene: DTDevon\_222 Start: 124779, Stop: 125795, Start Num: 6

Candidate Starts for DTDevon\_222:

(Start: 5 @124770 has 105 MA's), (Start: 6 @124779 has 65 MA's), (11, 124818), (13, 124839), (21, 124914), (23, 124926), (26, 124956), (49, 125238), (52, 125268), (54, 125301), (58, 125364), (63, 125442), (65, 125475), (71, 125505), (85, 125640), (87, 125676), (98, 125790),

Gene: Daffodil\_225 Start: 123723, Stop: 124748, Start Num: 5

Candidate Starts for Daffodil\_225:

(Start: 5 @123723 has 105 MA's), (Start: 6 @123732 has 65 MA's), (11, 123771), (13, 123792), (21, 123867), (23, 123879), (26, 123909), (49, 124191), (52, 124221), (54, 124254), (58, 124317), (63, 124395), (65, 124428), (71, 124458), (85, 124593), (87, 124629), (98, 124743),

Gene: Dandelion\_228 Start: 126372, Stop: 127388, Start Num: 6

Candidate Starts for Dandelion\_228:

(Start: 5 @126363 has 105 MA's), (Start: 6 @126372 has 65 MA's), (11, 126411), (13, 126432), (21, 126507), (23, 126519), (26, 126549), (49, 126831), (52, 126861), (54, 126894), (58, 126957), (63, 127035), (65, 127068), (71, 127098), (85, 127233), (87, 127269), (98, 127383),

Gene: Darko\_219 Start: 122969, Stop: 123994, Start Num: 5

Candidate Starts for Darko\_219:

(Start: 5 @122969 has 105 MA's), (Start: 6 @122978 has 65 MA's), (11, 123017), (13, 123038), (21, 123113), (23, 123125), (26, 123155), (49, 123437), (52, 123467), (54, 123500), (58, 123563), (63, 123641), (65, 123674), (71, 123704), (85, 123839), (87, 123875), (98, 123989),

Gene: Delilah\_218 Start: 123853, Stop: 124878, Start Num: 5

Candidate Starts for Delilah\_218:

(Start: 5 @123853 has 105 MA's), (Start: 6 @123862 has 65 MA's), (11, 123901), (13, 123922), (21, 123997), (23, 124009), (26, 124039), (49, 124321), (52, 124351), (54, 124384), (58, 124447), (63, 124525), (65, 124558), (71, 124588), (85, 124723), (87, 124759), (98, 124873),

Gene: Delylah\_222 Start: 124130, Stop: 125155, Start Num: 5

Candidate Starts for Delylah\_222:

(Start: 5 @124130 has 105 MA's), (Start: 6 @124139 has 65 MA's), (11, 124178), (13, 124199), (21, 124274), (23, 124286), (26, 124316), (49, 124598), (52, 124628), (54, 124661), (58, 124724), (63, 124802), (65, 124835), (71, 124865), (85, 125000), (87, 125036), (98, 125150),

Gene: Demodog\_226 Start: 124898, Stop: 125914, Start Num: 6

Candidate Starts for Demodog\_226:

(Start: 5 @124889 has 105 MA's), (Start: 6 @124898 has 65 MA's), (11, 124937), (13, 124958), (21, 125033), (23, 125045), (26, 125075), (49, 125357), (52, 125387), (54, 125420), (58, 125483), (63, 125561), (65, 125594), (71, 125624), (85, 125759), (87, 125795), (98, 125909),

Gene: Derek\_217 Start: 123307, Stop: 124323, Start Num: 6

Candidate Starts for Derek\_217:

(Start: 5 @123298 has 105 MA's), (Start: 6 @123307 has 65 MA's), (11, 123346), (13, 123367), (21, 123442), (23, 123454), (26, 123484), (49, 123766), (52, 123796), (54, 123829), (58, 123892), (63, 123970), (65, 124003), (71, 124033), (85, 124168), (87, 124204), (98, 124318),

Gene: Dietrick\_209 Start: 121983, Stop: 122999, Start Num: 6

Candidate Starts for Dietrick\_209:

(Start: 5 @121974 has 105 MA's), (Start: 6 @121983 has 65 MA's), (11, 122022), (13, 122043), (21, 122118), (23, 122130), (26, 122160), (49, 122442), (52, 122472), (54, 122505), (58, 122568), (63, 122646), (65, 122679), (71, 122709), (85, 122844), (87, 122880), (98, 122994),

Gene: DirtMonster\_213 Start: 123202, Stop: 124227, Start Num: 5

Candidate Starts for DirtMonster\_213:

(Start: 5 @123202 has 105 MA's), (Start: 6 @123211 has 65 MA's), (11, 123250), (13, 123271), (21, 123346), (23, 123358), (26, 123388), (49, 123670), (52, 123700), (54, 123733), (58, 123796), (63, 123874), (65, 123907), (71, 123937), (85, 124072), (87, 124108), (98, 124222),

Gene: Domi\_214 Start: 123313, Stop: 124338, Start Num: 5

Candidate Starts for Domi\_214:

(Start: 5 @123313 has 105 MA's), (Start: 6 @123322 has 65 MA's), (11, 123361), (13, 123382), (21, 123457), (23, 123469), (26, 123499), (49, 123781), (52, 123811), (54, 123844), (58, 123907), (63, 123985), (65, 124018), (71, 124048), (85, 124183), (87, 124219), (98, 124333),

Gene: DrPhinkDaddy\_217 Start: 124510, Stop: 125526, Start Num: 6

Candidate Starts for DrPhinkDaddy\_217:

(Start: 5 @124501 has 105 MA's), (Start: 6 @124510 has 65 MA's), (11, 124549), (13, 124570), (21, 124645), (23, 124657), (26, 124687), (49, 124969), (52, 124999), (54, 125032), (58, 125095), (63, 125173), (65, 125206), (71, 125236), (85, 125371), (87, 125407), (98, 125521),

Gene: Drazdys\_218 Start: 123415, Stop: 124440, Start Num: 5

Candidate Starts for Drazdys\_218:

(Start: 5 @123415 has 105 MA's), (Start: 6 @123424 has 65 MA's), (11, 123463), (13, 123484), (21, 123559), (23, 123571), (26, 123601), (49, 123883), (52, 123913), (54, 123946), (58, 124009), (63, 124087), (65, 124120), (71, 124150), (85, 124285), (87, 124321), (98, 124435),

Gene: ET08\_208 Start: 123003, Stop: 124019, Start Num: 6

Candidate Starts for ET08\_208:

(Start: 5 @122994 has 105 MA's), (Start: 6 @123003 has 65 MA's), (11, 123042), (13, 123063), (21, 123138), (23, 123150), (26, 123180), (49, 123462), (52, 123492), (54, 123525), (58, 123588), (63, 123666), (65, 123699), (71, 123729), (85, 123864), (87, 123900), (98, 124014),

Gene: EasyJones\_223 Start: 122494, Stop: 123519, Start Num: 5

Candidate Starts for EasyJones\_223:

(Start: 5 @122494 has 105 MA's), (Start: 6 @122503 has 65 MA's), (11, 122542), (13, 122563), (21, 122638), (23, 122650), (26, 122680), (49, 122962), (52, 122992), (54, 123025), (58, 123088), (63, 123166), (65, 123199), (71, 123229), (85, 123364), (87, 123400), (98, 123514),

Gene: EggyFarm\_229 Start: 125346, Stop: 126362, Start Num: 6

Candidate Starts for EggyFarm\_229:

(Start: 5 @125337 has 105 MA's), (Start: 6 @125346 has 65 MA's), (11, 125385), (13, 125406), (21, 125481), (23, 125493), (26, 125523), (49, 125805), (52, 125835), (54, 125868), (58, 125931), (63, 126009), (65, 126042), (71, 126072), (85, 126207), (87, 126243), (98, 126357),

Gene: EmToTheThree\_220 Start: 123883, Stop: 124905, Start Num: 6

Candidate Starts for EmToTheThree\_220:

(Start: 5 @123874 has 105 MA's), (Start: 6 @123883 has 65 MA's), (11, 123922), (13, 123943), (21, 124018), (23, 124030), (26, 124060), (49, 124342), (52, 124372), (54, 124405), (58, 124468), (63, 124546), (65, 124579), (71, 124609), (85, 124744), (87, 124780), (94, 124828), (98, 124900),

Gene: EmmaElysia\_224 Start: 124186, Stop: 125202, Start Num: 6

Candidate Starts for EmmaElysia\_224:

(Start: 5 @124177 has 105 MA's), (Start: 6 @124186 has 65 MA's), (11, 124225), (13, 124246), (21, 124321), (23, 124333), (26, 124363), (49, 124645), (52, 124675), (54, 124708), (58, 124771), (63,

124849), (65, 124882), (71, 124912), (85, 125047), (87, 125083), (98, 125197),

Gene: Erdmann\_221 Start: 123845, Stop: 124870, Start Num: 5

Candidate Starts for Erdmann\_221:

(Start: 5 @123845 has 105 MA's), (Start: 6 @123854 has 65 MA's), (11, 123893), (13, 123914), (21, 123989), (23, 124001), (26, 124031), (27, 124088), (49, 124313), (52, 124343), (54, 124376), (58, 124439), (63, 124517), (65, 124550), (71, 124580), (85, 124715), (87, 124751), (98, 124865),

Gene: ErnieJ\_213 Start: 120673, Stop: 121698, Start Num: 5

Candidate Starts for ErnieJ\_213:

(Start: 5 @120673 has 105 MA's), (Start: 6 @120682 has 65 MA's), (11, 120721), (13, 120742), (21, 120817), (23, 120829), (26, 120859), (49, 121141), (52, 121171), (54, 121204), (58, 121267), (63, 121345), (65, 121378), (71, 121408), (85, 121543), (87, 121579), (98, 121693),

Gene: Essence\_217 Start: 122636, Stop: 123652, Start Num: 6

Candidate Starts for Essence\_217:

(Start: 5 @122627 has 105 MA's), (Start: 6 @122636 has 65 MA's), (11, 122675), (13, 122696), (21, 122771), (23, 122783), (26, 122813), (49, 123095), (52, 123125), (54, 123158), (58, 123221), (63, 123299), (65, 123332), (71, 123362), (85, 123497), (87, 123533), (98, 123647),

Gene: Ewok\_219 Start: 123751, Stop: 124776, Start Num: 5

Candidate Starts for Ewok\_219:

(Start: 5 @123751 has 105 MA's), (Start: 6 @123760 has 65 MA's), (11, 123799), (13, 123820), (21, 123895), (23, 123907), (26, 123937), (49, 124219), (52, 124249), (54, 124282), (58, 124345), (63, 124423), (65, 124456), (71, 124486), (85, 124621), (87, 124657), (98, 124771),

Gene: Flabslab\_215 Start: 120812, Stop: 121834, Start Num: 6

Candidate Starts for Flabslab\_215:

(Start: 5 @120803 has 105 MA's), (Start: 6 @120812 has 65 MA's), (11, 120851), (13, 120872), (21, 120947), (23, 120959), (26, 120989), (49, 121271), (52, 121301), (54, 121334), (58, 121397), (63, 121475), (65, 121508), (71, 121538), (85, 121673), (87, 121709), (94, 121757), (98, 121829),

Gene: Fludd\_220 Start: 122215, Stop: 123231, Start Num: 6

Candidate Starts for Fludd\_220:

(Start: 5 @122206 has 105 MA's), (Start: 6 @122215 has 65 MA's), (11, 122254), (13, 122275), (21, 122350), (23, 122362), (26, 122392), (49, 122674), (52, 122704), (54, 122737), (58, 122800), (63, 122878), (65, 122911), (71, 122941), (85, 123076), (87, 123112), (98, 123226),

Gene: FoxtrotP1\_218 Start: 124440, Stop: 125456, Start Num: 6

Candidate Starts for FoxtrotP1\_218:

(Start: 5 @124431 has 105 MA's), (Start: 6 @124440 has 65 MA's), (11, 124479), (13, 124500), (21, 124575), (23, 124587), (26, 124617), (49, 124899), (52, 124929), (54, 124962), (58, 125025), (63, 125103), (65, 125136), (71, 125166), (85, 125301), (87, 125337), (98, 125451),

Gene: FrayBell\_223 Start: 122284, Stop: 123309, Start Num: 5

Candidate Starts for FrayBell\_223:

(Start: 5 @122284 has 105 MA's), (Start: 6 @122293 has 65 MA's), (11, 122332), (13, 122353), (21, 122428), (23, 122440), (26, 122470), (49, 122752), (52, 122782), (54, 122815), (58, 122878), (63, 122956), (65, 122989), (71, 123019), (85, 123154), (87, 123190), (98, 123304),

Gene: FudgeTart\_215 Start: 122898, Stop: 123923, Start Num: 5

Candidate Starts for FudgeTart\_215:

(Start: 5 @122898 has 105 MA's), (Start: 6 @122907 has 65 MA's), (11, 122946), (13, 122967), (21, 123042), (23, 123054), (26, 123084), (49, 123366), (52, 123396), (54, 123429), (58, 123492), (63, 123570), (65, 123603), (71, 123633), (85, 123768), (87, 123804), (98, 123918),

Gene: Gabriel\_223 Start: 122365, Stop: 123390, Start Num: 5

Candidate Starts for Gabriel\_223:

(Start: 5 @122365 has 105 MA's), (Start: 6 @122374 has 65 MA's), (11, 122413), (13, 122434), (21, 122509), (23, 122521), (26, 122551), (49, 122833), (52, 122863), (54, 122896), (58, 122959), (63, 123037), (65, 123070), (71, 123100), (85, 123235), (87, 123271), (98, 123385),

Gene: Gamgam\_221 Start: 122722, Stop: 123747, Start Num: 5

Candidate Starts for Gamgam\_221:

(Start: 5 @122722 has 105 MA's), (Start: 6 @122731 has 65 MA's), (11, 122770), (13, 122791), (21, 122866), (23, 122878), (26, 122908), (49, 123190), (52, 123220), (54, 123253), (58, 123316), (63, 123394), (65, 123427), (71, 123457), (85, 123592), (87, 123628), (98, 123742),

Gene: Ghost\_220 Start: 122643, Stop: 123668, Start Num: 5

Candidate Starts for Ghost\_220:

(Start: 5 @122643 has 105 MA's), (Start: 6 @122652 has 65 MA's), (11, 122691), (13, 122712), (21, 122787), (23, 122799), (26, 122829), (49, 123111), (52, 123141), (54, 123174), (58, 123237), (63, 123315), (65, 123348), (71, 123378), (85, 123513), (87, 123549), (98, 123663),

Gene: Gizmo\_226 Start: 125761, Stop: 126786, Start Num: 5

Candidate Starts for Gizmo\_226:

(Start: 5 @125761 has 105 MA's), (Start: 6 @125770 has 65 MA's), (11, 125809), (13, 125830), (21, 125905), (23, 125917), (26, 125947), (49, 126229), (52, 126259), (54, 126292), (58, 126355), (63, 126433), (65, 126466), (71, 126496), (85, 126631), (87, 126667), (98, 126781),

Gene: Grasshills\_228 Start: 125345, Stop: 126361, Start Num: 6

Candidate Starts for Grasshills\_228:

(Start: 5 @125336 has 105 MA's), (Start: 6 @125345 has 65 MA's), (11, 125384), (13, 125405), (21, 125480), (23, 125492), (26, 125522), (49, 125804), (52, 125834), (54, 125867), (58, 125930), (63, 126008), (65, 126041), (71, 126071), (85, 126206), (87, 126242), (98, 126356),

Gene: Greely\_211 Start: 119945, Stop: 120928, Start Num: 8

Candidate Starts for Greely\_211:

(Start: 8 @119945 has 9 MA's), (10, 119969), (12, 119990), (21, 120080), (22, 120086), (29, 120215), (30, 120218), (43, 120368), (44, 120371), (64, 120635), (65, 120644), (74, 120701), (76, 120722), (79, 120749), (81, 120755), (87, 120821), (91, 120848), (93, 120857), (97, 120914),

Gene: Grungle\_204 Start: 120677, Stop: 121693, Start Num: 6

Candidate Starts for Grungle\_204:

(Start: 5 @120668 has 105 MA's), (Start: 6 @120677 has 65 MA's), (11, 120716), (13, 120737), (21, 120812), (23, 120824), (26, 120854), (49, 121136), (52, 121166), (54, 121199), (58, 121262), (63, 121340), (65, 121373), (71, 121403), (85, 121538), (87, 121574), (98, 121688),

Gene: Guwapp\_215 Start: 121486, Stop: 122502, Start Num: 6

Candidate Starts for Guwapp\_215:

(Start: 5 @121477 has 105 MA's), (Start: 6 @121486 has 65 MA's), (11, 121525), (13, 121546), (21, 121621), (23, 121633), (26, 121663), (49, 121945), (52, 121975), (54, 122008), (58, 122071), (63, 122149), (65, 122182), (71, 122212), (85, 122347), (87, 122383), (98, 122497),

Gene: Halldule\_213 Start: 121859, Stop: 122875, Start Num: 6

Candidate Starts for Halldule\_213:

(Start: 5 @121850 has 105 MA's), (Start: 6 @121859 has 65 MA's), (11, 121898), (13, 121919), (21, 121994), (23, 122006), (26, 122036), (49, 122318), (52, 122348), (54, 122381), (58, 122444), (63, 122522), (65, 122555), (71, 122585), (85, 122720), (87, 122756), (98, 122870),

Gene: HyRo\_208 Start: 121990, Stop: 123012, Start Num: 6

Candidate Starts for HyRo\_208:

(Start: 5 @121981 has 105 MA's), (Start: 6 @121990 has 65 MA's), (11, 122029), (13, 122050), (21, 122125), (23, 122137), (26, 122167), (49, 122449), (52, 122479), (54, 122512), (58, 122575), (63, 122653), (65, 122686), (71, 122716), (85, 122851), (87, 122887), (94, 122935), (98, 123007),

Gene: I3\_230 Start: 124435, Stop: 125451, Start Num: 6

Candidate Starts for I3\_230:

(Start: 5 @124426 has 105 MA's), (Start: 6 @124435 has 65 MA's), (11, 124474), (13, 124495), (21, 124570), (23, 124582), (26, 124612), (49, 124894), (52, 124924), (54, 124957), (58, 125020), (63, 125098), (65, 125131), (71, 125161), (85, 125296), (87, 125332), (98, 125446),

Gene: IkeLoa\_212 Start: 122384, Stop: 123400, Start Num: 6

Candidate Starts for IkeLoa\_212:

(Start: 5 @122375 has 105 MA's), (Start: 6 @122384 has 65 MA's), (11, 122423), (13, 122444), (21, 122519), (23, 122531), (26, 122561), (49, 122843), (52, 122873), (54, 122906), (58, 122969), (63, 123047), (65, 123080), (71, 123110), (85, 123245), (87, 123281), (98, 123395),

Gene: InigoMontoya\_223 Start: 123396, Stop: 124421, Start Num: 5

Candidate Starts for InigoMontoya\_223:

(Start: 5 @123396 has 105 MA's), (Start: 6 @123405 has 65 MA's), (11, 123444), (13, 123465), (21, 123540), (23, 123552), (26, 123582), (49, 123864), (52, 123894), (54, 123927), (58, 123990), (63, 124068), (65, 124101), (71, 124131), (85, 124266), (87, 124302), (98, 124416),

Gene: InterFolia\_223 Start: 124098, Stop: 125114, Start Num: 6

Candidate Starts for InterFolia\_223:

(Start: 5 @124089 has 105 MA's), (Start: 6 @124098 has 65 MA's), (11, 124137), (13, 124158), (21, 124233), (23, 124245), (26, 124275), (49, 124557), (52, 124587), (54, 124620), (58, 124683), (63, 124761), (65, 124794), (71, 124824), (85, 124959), (87, 124995), (98, 125109),

Gene: Iota\_215 Start: 123069, Stop: 124094, Start Num: 5

Candidate Starts for Iota\_215:

(Start: 5 @123069 has 105 MA's), (Start: 6 @123078 has 65 MA's), (11, 123117), (13, 123138), (21, 123213), (23, 123225), (26, 123255), (49, 123537), (52, 123567), (54, 123600), (58, 123663), (63, 123741), (65, 123774), (71, 123804), (85, 123939), (87, 123975), (98, 124089),

Gene: Issimir\_213 Start: 123043, Stop: 124059, Start Num: 6

Candidate Starts for Issimir\_213:

(Start: 5 @123034 has 105 MA's), (Start: 6 @123043 has 65 MA's), (11, 123082), (13, 123103), (21, 123178), (23, 123190), (26, 123220), (49, 123502), (52, 123532), (54, 123565), (58, 123628), (63, 123706), (65, 123739), (71, 123769), (85, 123904), (87, 123940), (98, 124054),

Gene: Izajani\_218 Start: 123900, Stop: 124916, Start Num: 6

Candidate Starts for Izajani\_218:

(Start: 5 @123891 has 105 MA's), (Start: 6 @123900 has 65 MA's), (11, 123939), (13, 123960), (21, 124035), (23, 124047), (26, 124077), (49, 124359), (52, 124389), (54, 124422), (58, 124485), (63, 124563), (65, 124596), (71, 124626), (85, 124761), (87, 124797), (98, 124911),

Gene: JPickles\_216 Start: 121381, Stop: 122406, Start Num: 5

Candidate Starts for JPickles\_216:

(Start: 5 @121381 has 105 MA's), (Start: 6 @121390 has 65 MA's), (11, 121429), (13, 121450), (21, 121525), (23, 121537), (26, 121567), (49, 121849), (52, 121879), (54, 121912), (58, 121975), (63, 122053), (65, 122086), (71, 122116), (85, 122251), (87, 122287), (98, 122401),

Gene: Janiyra\_223 Start: 123621, Stop: 124646, Start Num: 5

Candidate Starts for Janiyra\_223:

(Start: 5 @123621 has 105 MA's), (Start: 6 @123630 has 65 MA's), (11, 123669), (13, 123690), (21, 123765), (23, 123777), (26, 123807), (49, 124089), (52, 124119), (54, 124152), (58, 124215), (63, 124293), (65, 124326), (71, 124356), (85, 124491), (87, 124527), (98, 124641),

Gene: JayJay\_218 Start: 123313, Stop: 124344, Start Num: 5

Candidate Starts for JayJay\_218:

(Start: 5 @123313 has 105 MA's), (Start: 6 @123322 has 65 MA's), (11, 123361), (13, 123382), (21, 123457), (23, 123469), (26, 123499), (49, 123781), (52, 123811), (54, 123844), (58, 123907), (63, 123985), (65, 124018), (71, 124048), (85, 124183), (87, 124219), (94, 124267), (98, 124339),

Gene: Jaygup\_216 Start: 122451, Stop: 123467, Start Num: 6

Candidate Starts for Jaygup\_216:

(Start: 5 @122442 has 105 MA's), (Start: 6 @122451 has 65 MA's), (11, 122490), (13, 122511), (21, 122586), (23, 122598), (26, 122628), (49, 122910), (52, 122940), (54, 122973), (58, 123036), (63, 123114), (65, 123147), (71, 123177), (85, 123312), (87, 123348), (98, 123462),

Gene: Jedediah\_220 Start: 123495, Stop: 124520, Start Num: 5

Candidate Starts for Jedediah\_220:

(Start: 5 @123495 has 105 MA's), (Start: 6 @123504 has 65 MA's), (11, 123543), (13, 123564), (21, 123639), (23, 123651), (26, 123681), (49, 123963), (52, 123993), (54, 124026), (58, 124089), (63, 124167), (65, 124200), (71, 124230), (85, 124365), (87, 124401), (98, 124515),

Gene: Jemmno\_219 Start: 122324, Stop: 123349, Start Num: 5

Candidate Starts for Jemmno\_219:

(Start: 5 @122324 has 105 MA's), (Start: 6 @122333 has 65 MA's), (11, 122372), (13, 122393), (21, 122468), (23, 122480), (26, 122510), (49, 122792), (52, 122822), (54, 122855), (58, 122918), (63, 122996), (65, 123029), (71, 123059), (85, 123194), (87, 123230), (98, 123344),

Gene: Jessibeth14\_220 Start: 124509, Stop: 125531, Start Num: 6

Candidate Starts for Jessibeth14\_220:

(Start: 5 @124500 has 105 MA's), (Start: 6 @124509 has 65 MA's), (11, 124548), (13, 124569), (21, 124644), (23, 124656), (26, 124686), (49, 124968), (52, 124998), (54, 125031), (58, 125094), (63, 125172), (65, 125205), (71, 125235), (85, 125370), (87, 125406), (94, 125454), (98, 125526),

Gene: JigglyPuff\_227 Start: 124896, Stop: 125912, Start Num: 6

Candidate Starts for JigglyPuff\_227:

(Start: 5 @124887 has 105 MA's), (Start: 6 @124896 has 65 MA's), (11, 124935), (13, 124956), (21, 125031), (23, 125043), (26, 125073), (49, 125355), (52, 125385), (54, 125418), (58, 125481), (63, 125559), (65, 125592), (71, 125622), (85, 125757), (87, 125793), (98, 125907),

Gene: JulietS\_213 Start: 120619, Stop: 121635, Start Num: 6

Candidate Starts for JulietS\_213:

(Start: 5 @120610 has 105 MA's), (Start: 6 @120619 has 65 MA's), (11, 120658), (13, 120679), (21, 120754), (23, 120766), (26, 120796), (49, 121078), (52, 121108), (54, 121141), (58, 121204), (63, 121282), (65, 121315), (71, 121345), (85, 121480), (87, 121516), (98, 121630),



Gene: JustHall\_214 Start: 122525, Stop: 123547, Start Num: 6

Candidate Starts for JustHall\_214:

(Start: 5 @122516 has 105 MA's), (Start: 6 @122525 has 65 MA's), (11, 122564), (13, 122585), (21, 122660), (23, 122672), (26, 122702), (49, 122984), (52, 123014), (54, 123047), (58, 123110), (63, 123188), (65, 123221), (71, 123251), (85, 123386), (87, 123422), (94, 123470), (98, 123542),

Gene: Kamryn\_219 Start: 124155, Stop: 125171, Start Num: 6

Candidate Starts for Kamryn\_219:

(Start: 5 @124146 has 105 MA's), (Start: 6 @124155 has 65 MA's), (11, 124194), (13, 124215), (21, 124290), (23, 124302), (26, 124332), (49, 124614), (52, 124644), (54, 124677), (58, 124740), (63, 124818), (65, 124851), (71, 124881), (85, 125016), (87, 125052), (98, 125166),

Gene: Kboogie\_224 Start: 123186, Stop: 124211, Start Num: 5

Candidate Starts for Kboogie\_224:

(Start: 5 @123186 has 105 MA's), (Start: 6 @123195 has 65 MA's), (11, 123234), (13, 123255), (21, 123330), (23, 123342), (26, 123372), (49, 123654), (52, 123684), (54, 123717), (58, 123780), (63, 123858), (65, 123891), (71, 123921), (85, 124056), (87, 124092), (98, 124206),

Gene: Khaleesi\_219 Start: 123976, Stop: 124998, Start Num: 6

Candidate Starts for Khaleesi\_219:

(Start: 5 @123967 has 105 MA's), (Start: 6 @123976 has 65 MA's), (11, 124015), (13, 124036), (21, 124111), (23, 124123), (26, 124153), (49, 124435), (52, 124465), (54, 124498), (58, 124561), (63, 124639), (65, 124672), (71, 124702), (85, 124837), (87, 124873), (94, 124921), (98, 124993),

Gene: Koguma\_219 Start: 122836, Stop: 123852, Start Num: 6

Candidate Starts for Koguma\_219:

(Start: 5 @122827 has 105 MA's), (Start: 6 @122836 has 65 MA's), (11, 122875), (13, 122896), (21, 122971), (23, 122983), (26, 123013), (49, 123295), (52, 123325), (54, 123358), (58, 123421), (63, 123499), (65, 123532), (71, 123562), (85, 123697), (87, 123733), (98, 123847),

Gene: LRRHood\_213 Start: 122179, Stop: 123204, Start Num: 5

Candidate Starts for LRRHood\_213:

(Start: 5 @122179 has 105 MA's), (Start: 6 @122188 has 65 MA's), (11, 122227), (13, 122248), (21, 122323), (23, 122335), (26, 122365), (49, 122647), (52, 122677), (54, 122710), (58, 122773), (63, 122851), (65, 122884), (71, 122914), (85, 123049), (87, 123085), (98, 123199),

Gene: Latch\_220 Start: 122732, Stop: 123757, Start Num: 5

Candidate Starts for Latch\_220:

(Start: 5 @122732 has 105 MA's), (Start: 6 @122741 has 65 MA's), (11, 122780), (13, 122801), (21, 122876), (23, 122888), (26, 122918), (49, 123200), (52, 123230), (54, 123263), (58, 123326), (63, 123404), (65, 123437), (71, 123467), (85, 123602), (87, 123638), (98, 123752),

Gene: Lee7\_220 Start: 125356, Stop: 126372, Start Num: 6

Candidate Starts for Lee7\_220:

(Start: 5 @125347 has 105 MA's), (Start: 6 @125356 has 65 MA's), (11, 125395), (13, 125416), (21, 125491), (23, 125503), (26, 125533), (49, 125815), (52, 125845), (54, 125878), (58, 125941), (63, 126019), (65, 126052), (71, 126082), (85, 126217), (87, 126253), (98, 126367),

Gene: LifeSavor\_219 Start: 123257, Stop: 124282, Start Num: 5

Candidate Starts for LifeSavor\_219:

(Start: 5 @123257 has 105 MA's), (Start: 6 @123266 has 65 MA's), (11, 123305), (13, 123326), (21, 123401), (23, 123413), (26, 123443), (49, 123725), (52, 123755), (54, 123788), (58, 123851), (63,

123929), (65, 123962), (71, 123992), (85, 124127), (87, 124163), (98, 124277),

Gene: LinStu\_219 Start: 122466, Stop: 123491, Start Num: 5

Candidate Starts for LinStu\_219:

(Start: 5 @122466 has 105 MA's), (Start: 6 @122475 has 65 MA's), (11, 122514), (13, 122535), (21, 122610), (23, 122622), (26, 122652), (49, 122934), (52, 122964), (54, 122997), (58, 123060), (63, 123138), (65, 123171), (71, 123201), (85, 123336), (87, 123372), (98, 123486),

Gene: Littleton\_223 Start: 123969, Stop: 124994, Start Num: 5

Candidate Starts for Littleton\_223:

(Start: 5 @123969 has 105 MA's), (Start: 6 @123978 has 65 MA's), (11, 124017), (13, 124038), (21, 124113), (23, 124125), (26, 124155), (49, 124437), (52, 124467), (54, 124500), (58, 124563), (63, 124641), (65, 124674), (71, 124704), (85, 124839), (87, 124875), (98, 124989),

Gene: Loanshark\_217 Start: 123282, Stop: 124307, Start Num: 5

Candidate Starts for Loanshark\_217:

(Start: 5 @123282 has 105 MA's), (Start: 6 @123291 has 65 MA's), (11, 123330), (13, 123351), (21, 123426), (23, 123438), (26, 123468), (49, 123750), (52, 123780), (54, 123813), (58, 123876), (63, 123954), (65, 123987), (71, 124017), (85, 124152), (87, 124188), (98, 124302),

Gene: LolaVinca\_218 Start: 123519, Stop: 124544, Start Num: 5

Candidate Starts for LolaVinca\_218:

(Start: 5 @123519 has 105 MA's), (Start: 6 @123528 has 65 MA's), (11, 123567), (13, 123588), (21, 123663), (23, 123675), (26, 123705), (49, 123987), (52, 124017), (54, 124050), (58, 124113), (63, 124191), (65, 124224), (71, 124254), (85, 124389), (87, 124425), (98, 124539),

Gene: LordLeafolot\_222 Start: 123141, Stop: 124157, Start Num: 6

Candidate Starts for LordLeafolot\_222:

(Start: 5 @123132 has 105 MA's), (Start: 6 @123141 has 65 MA's), (11, 123180), (13, 123201), (21, 123276), (23, 123288), (26, 123318), (49, 123600), (52, 123630), (54, 123663), (58, 123726), (63, 123804), (65, 123837), (71, 123867), (85, 124002), (87, 124038), (98, 124152),

Gene: Lukilu\_211 Start: 124191, Stop: 125207, Start Num: 6

Candidate Starts for Lukilu\_211:

(Start: 5 @124182 has 105 MA's), (Start: 6 @124191 has 65 MA's), (11, 124230), (13, 124251), (21, 124326), (23, 124338), (26, 124368), (49, 124650), (52, 124680), (54, 124713), (58, 124776), (63, 124854), (65, 124887), (71, 124917), (85, 125052), (87, 125088), (98, 125202),

Gene: Maby2021\_220 Start: 124423, Stop: 125448, Start Num: 5

Candidate Starts for Maby2021\_220:

(Start: 5 @124423 has 105 MA's), (Start: 6 @124432 has 65 MA's), (11, 124471), (13, 124492), (21, 124567), (23, 124579), (26, 124609), (49, 124891), (52, 124921), (54, 124954), (58, 125017), (63, 125095), (65, 125128), (71, 125158), (85, 125293), (87, 125329), (98, 125443),

Gene: Mangeria\_221 Start: 124525, Stop: 125550, Start Num: 5

Candidate Starts for Mangeria\_221:

(Start: 5 @124525 has 105 MA's), (Start: 6 @124534 has 65 MA's), (11, 124573), (13, 124594), (21, 124669), (23, 124681), (26, 124711), (49, 124993), (52, 125023), (54, 125056), (58, 125119), (63, 125197), (65, 125230), (71, 125260), (85, 125395), (87, 125431), (98, 125545),

Gene: Matsumoto\_219 Start: 123183, Stop: 124199, Start Num: 6

Candidate Starts for Matsumoto\_219:

(Start: 5 @123174 has 105 MA's), (Start: 6 @123183 has 65 MA's), (11, 123222), (13, 123243), (21, 123318), (23, 123330), (26, 123360), (49, 123642), (52, 123672), (54, 123705), (58, 123768), (63, 123846), (65, 123879), (71, 123909), (85, 124044), (87, 124080), (98, 124194),

Gene: McGee\_219 Start: 122368, Stop: 123393, Start Num: 5

Candidate Starts for McGee\_219:

(Start: 5 @122368 has 105 MA's), (Start: 6 @122377 has 65 MA's), (11, 122416), (13, 122437), (21, 122512), (23, 122524), (26, 122554), (49, 122836), (52, 122866), (54, 122899), (58, 122962), (63, 123040), (65, 123073), (71, 123103), (85, 123238), (87, 123274), (98, 123388),

Gene: McWolfish\_217 Start: 123187, Stop: 124209, Start Num: 6

Candidate Starts for McWolfish\_217:

(Start: 5 @123178 has 105 MA's), (Start: 6 @123187 has 65 MA's), (11, 123226), (13, 123247), (21, 123322), (23, 123334), (26, 123364), (49, 123646), (52, 123676), (54, 123709), (58, 123772), (63, 123850), (65, 123883), (71, 123913), (85, 124048), (87, 124084), (94, 124132), (98, 124204),

Gene: Megamind\_217 Start: 123469, Stop: 124494, Start Num: 5

Candidate Starts for Megamind\_217:

(Start: 5 @123469 has 105 MA's), (Start: 6 @123478 has 65 MA's), (11, 123517), (13, 123538), (21, 123613), (23, 123625), (26, 123655), (49, 123937), (52, 123967), (54, 124000), (58, 124063), (63, 124141), (65, 124174), (71, 124204), (85, 124339), (87, 124375), (98, 124489),

Gene: Melpomini\_215 Start: 122266, Stop: 123291, Start Num: 5

Candidate Starts for Melpomini\_215:

(Start: 5 @122266 has 105 MA's), (Start: 6 @122275 has 65 MA's), (11, 122314), (13, 122335), (21, 122410), (23, 122422), (26, 122452), (49, 122734), (52, 122764), (54, 122797), (58, 122860), (63, 122938), (65, 122971), (71, 123001), (85, 123136), (87, 123172), (98, 123286),

Gene: MikeLiesIn\_222 Start: 124605, Stop: 125630, Start Num: 5

Candidate Starts for MikeLiesIn\_222:

(Start: 5 @124605 has 105 MA's), (Start: 6 @124614 has 65 MA's), (11, 124653), (13, 124674), (21, 124749), (23, 124761), (26, 124791), (49, 125073), (52, 125103), (54, 125136), (58, 125199), (63, 125277), (65, 125310), (71, 125340), (85, 125475), (87, 125511), (98, 125625),

Gene: Mikro\_216 Start: 125163, Stop: 126179, Start Num: 6

Candidate Starts for Mikro\_216:

(Start: 5 @125154 has 105 MA's), (Start: 6 @125163 has 65 MA's), (11, 125202), (13, 125223), (21, 125298), (23, 125310), (26, 125340), (49, 125622), (52, 125652), (54, 125685), (58, 125748), (63, 125826), (65, 125859), (71, 125889), (85, 126024), (87, 126060), (98, 126174),

Gene: MoMoMixon\_218 Start: 123653, Stop: 124675, Start Num: 6

Candidate Starts for MoMoMixon\_218:

(Start: 5 @123644 has 105 MA's), (Start: 6 @123653 has 65 MA's), (11, 123692), (13, 123713), (21, 123788), (23, 123800), (26, 123830), (49, 124112), (52, 124142), (54, 124175), (58, 124238), (63, 124316), (65, 124349), (71, 124379), (85, 124514), (87, 124550), (94, 124598), (98, 124670),

Gene: Momo\_221 Start: 122741, Stop: 123757, Start Num: 6

Candidate Starts for Momo\_221:

(Start: 5 @122732 has 105 MA's), (Start: 6 @122741 has 65 MA's), (11, 122780), (13, 122801), (21, 122876), (23, 122888), (26, 122918), (49, 123200), (52, 123230), (54, 123263), (58, 123326), (63, 123404), (65, 123437), (71, 123467), (85, 123602), (87, 123638), (98, 123752),

Gene: Morizzled23\_217 Start: 122108, Stop: 123124, Start Num: 6

Candidate Starts for Morizzled23\_217:

(Start: 5 @122099 has 105 MA's), (Start: 6 @122108 has 65 MA's), (11, 122147), (13, 122168), (21, 122243), (23, 122255), (26, 122285), (49, 122567), (52, 122597), (54, 122630), (58, 122693), (63, 122771), (65, 122804), (71, 122834), (85, 122969), (87, 123005), (98, 123119),

Gene: Myrna\_204 Start: 119318, Stop: 120304, Start Num: 8

Candidate Starts for Myrna\_204:

(Start: 8 @119318 has 9 MA's), (9, 119336), (10, 119342), (12, 119363), (14, 119378), (21, 119453), (29, 119588), (30, 119591), (50, 119804), (51, 119807), (53, 119828), (54, 119849), (62, 119987), (68, 120035), (74, 120077), (87, 120197), (91, 120224), (93, 120233), (97, 120290),

Gene: Naija\_221 Start: 123435, Stop: 124460, Start Num: 5

Candidate Starts for Naija\_221:

(Start: 5 @123435 has 105 MA's), (Start: 6 @123444 has 65 MA's), (11, 123483), (13, 123504), (21, 123579), (23, 123591), (26, 123621), (49, 123903), (52, 123933), (54, 123966), (58, 124029), (63, 124107), (65, 124140), (71, 124170), (85, 124305), (87, 124341), (98, 124455),

Gene: Napoleon13\_217 Start: 122472, Stop: 123488, Start Num: 6

Candidate Starts for Napoleon13\_217:

(Start: 5 @122463 has 105 MA's), (Start: 6 @122472 has 65 MA's), (11, 122511), (13, 122532), (21, 122607), (23, 122619), (26, 122649), (49, 122931), (52, 122961), (54, 122994), (58, 123057), (63, 123135), (65, 123168), (71, 123198), (85, 123333), (87, 123369), (98, 123483),

Gene: Nappy\_221 Start: 124124, Stop: 125149, Start Num: 5

Candidate Starts for Nappy\_221:

(Start: 5 @124124 has 105 MA's), (Start: 6 @124133 has 65 MA's), (11, 124172), (13, 124193), (21, 124268), (23, 124280), (26, 124310), (49, 124592), (52, 124622), (54, 124655), (58, 124718), (63, 124796), (65, 124829), (71, 124859), (85, 124994), (87, 125030), (98, 125144),

Gene: Naval22\_225 Start: 125221, Stop: 126237, Start Num: 6

Candidate Starts for Naval22\_225:

(Start: 5 @125212 has 105 MA's), (Start: 6 @125221 has 65 MA's), (11, 125260), (13, 125281), (21, 125356), (23, 125368), (26, 125398), (49, 125680), (52, 125710), (54, 125743), (58, 125806), (63, 125884), (65, 125917), (71, 125947), (85, 126082), (87, 126118), (98, 126232),

Gene: NedWong\_219 Start: 123856, Stop: 124881, Start Num: 5

Candidate Starts for NedWong\_219:

(Start: 5 @123856 has 105 MA's), (Start: 6 @123865 has 65 MA's), (11, 123904), (13, 123925), (21, 124000), (23, 124012), (26, 124042), (49, 124324), (52, 124354), (54, 124387), (58, 124450), (63, 124528), (65, 124561), (71, 124591), (85, 124726), (87, 124762), (98, 124876),

Gene: Ngannou\_217 Start: 121714, Stop: 122739, Start Num: 5

Candidate Starts for Ngannou\_217:

(Start: 5 @121714 has 105 MA's), (Start: 6 @121723 has 65 MA's), (11, 121762), (13, 121783), (21, 121858), (23, 121870), (26, 121900), (49, 122182), (52, 122212), (54, 122245), (58, 122308), (63, 122386), (65, 122419), (71, 122449), (85, 122584), (87, 122620), (98, 122734),

Gene: Nidhogg\_221 Start: 124261, Stop: 125286, Start Num: 5

Candidate Starts for Nidhogg\_221:

(Start: 5 @124261 has 105 MA's), (Start: 6 @124270 has 65 MA's), (11, 124309), (13, 124330), (21, 124405), (23, 124417), (26, 124447), (49, 124729), (52, 124759), (54, 124792), (58, 124855), (63, 124933), (65, 124966), (71, 124996), (85, 125131), (87, 125167), (98, 125281),

Gene: NoodleTree\_226 Start: 124156, Stop: 125181, Start Num: 5

Candidate Starts for NoodleTree\_226:

(Start: 5 @124156 has 105 MA's), (Start: 6 @124165 has 65 MA's), (11, 124204), (13, 124225), (21, 124300), (23, 124312), (26, 124342), (49, 124624), (52, 124654), (54, 124687), (58, 124750), (63, 124828), (65, 124861), (71, 124891), (85, 125026), (87, 125062), (98, 125176),

Gene: Norm\_220 Start: 124161, Stop: 125186, Start Num: 5

Candidate Starts for Norm\_220:

(Start: 5 @124161 has 105 MA's), (Start: 6 @124170 has 65 MA's), (11, 124209), (13, 124230), (21, 124305), (23, 124317), (26, 124347), (49, 124629), (52, 124659), (54, 124692), (58, 124755), (63, 124833), (65, 124866), (71, 124896), (85, 125031), (87, 125067), (98, 125181),

Gene: NuevoMundo\_223 Start: 124726, Stop: 125742, Start Num: 6

Candidate Starts for NuevoMundo\_223:

(Start: 5 @124717 has 105 MA's), (Start: 6 @124726 has 65 MA's), (11, 124765), (13, 124786), (21, 124861), (23, 124873), (26, 124903), (49, 125185), (52, 125215), (54, 125248), (58, 125311), (63, 125389), (65, 125422), (71, 125452), (85, 125587), (87, 125623), (98, 125737),

Gene: ParkTD\_219 Start: 123741, Stop: 124757, Start Num: 6

Candidate Starts for ParkTD\_219:

(Start: 5 @123732 has 105 MA's), (Start: 6 @123741 has 65 MA's), (11, 123780), (13, 123801), (21, 123876), (23, 123888), (26, 123918), (49, 124200), (52, 124230), (54, 124263), (58, 124326), (63, 124404), (65, 124437), (71, 124467), (85, 124602), (87, 124638), (98, 124752),

Gene: Patter\_221 Start: 122746, Stop: 123771, Start Num: 5

Candidate Starts for Patter\_221:

(Start: 5 @122746 has 105 MA's), (Start: 6 @122755 has 65 MA's), (11, 122794), (13, 122815), (21, 122890), (23, 122902), (26, 122932), (49, 123214), (52, 123244), (54, 123277), (58, 123340), (63, 123418), (65, 123451), (71, 123481), (85, 123616), (87, 123652), (98, 123766),

Gene: Phabba\_215 Start: 119296, Stop: 120279, Start Num: 8

Candidate Starts for Phabba\_215:

(1, 118633), (3, 118768), (Start: 8 @119296 has 9 MA's), (10, 119320), (12, 119341), (22, 119437), (29, 119566), (30, 119569), (32, 119602), (43, 119719), (44, 119722), (55, 119842), (57, 119884), (64, 119986), (65, 119995), (74, 120052), (81, 120106), (87, 120172), (91, 120199), (93, 120208), (97, 120265),

Gene: Phlegm\_224 Start: 123435, Stop: 124460, Start Num: 5

Candidate Starts for Phlegm\_224:

(Start: 5 @123435 has 105 MA's), (Start: 6 @123444 has 65 MA's), (11, 123483), (13, 123504), (21, 123579), (23, 123591), (26, 123621), (49, 123903), (52, 123933), (54, 123966), (58, 124029), (63, 124107), (65, 124140), (71, 124170), (85, 124305), (87, 124341), (98, 124455),

Gene: Phox\_221 Start: 123394, Stop: 124410, Start Num: 6

Candidate Starts for Phox\_221:

(Start: 5 @123385 has 105 MA's), (Start: 6 @123394 has 65 MA's), (11, 123433), (13, 123454), (21, 123529), (23, 123541), (26, 123571), (49, 123853), (52, 123883), (54, 123916), (58, 123979), (63, 124057), (65, 124090), (71, 124120), (85, 124255), (87, 124291), (98, 124405),

Gene: Phrappuccino\_133 Start: 95976, Stop: 97007, Start Num: 8

Candidate Starts for Phrappuccino\_133:

(Start: 8 @95976 has 9 MA's), (15, 96036), (17, 96060), (21, 96108), (26, 96150), (34, 96288), (38, 96354), (42, 96390), (45, 96426), (46, 96429), (51, 96471), (59, 96594), (65, 96693), (67, 96711), (69,

96717), (73, 96750), (75, 96786), (80, 96822), (90, 96915), (98, 96996),

Gene: Phusco\_218 Start: 122267, Stop: 123292, Start Num: 5

Candidate Starts for Phusco\_218:

(Start: 5 @122267 has 105 MA's), (Start: 6 @122276 has 65 MA's), (11, 122315), (13, 122336), (21, 122411), (23, 122423), (26, 122453), (49, 122735), (52, 122765), (54, 122798), (58, 122861), (63, 122939), (65, 122972), (71, 123002), (85, 123137), (87, 123173), (98, 123287),

Gene: Pier\_221 Start: 124262, Stop: 125287, Start Num: 5

Candidate Starts for Pier\_221:

(Start: 5 @124262 has 105 MA's), (Start: 6 @124271 has 65 MA's), (11, 124310), (13, 124331), (21, 124406), (23, 124418), (26, 124448), (49, 124730), (52, 124760), (54, 124793), (58, 124856), (63, 124934), (65, 124967), (71, 124997), (85, 125132), (87, 125168), (98, 125282),

Gene: Pinkcreek\_204 Start: 121638, Stop: 122663, Start Num: 5

Candidate Starts for Pinkcreek\_204:

(Start: 5 @121638 has 105 MA's), (Start: 6 @121647 has 65 MA's), (11, 121686), (13, 121707), (21, 121782), (23, 121794), (26, 121824), (49, 122106), (52, 122136), (54, 122169), (58, 122232), (63, 122310), (65, 122343), (71, 122373), (85, 122508), (87, 122544), (98, 122658),

Gene: Pio\_228 Start: 125466, Stop: 126491, Start Num: 5

Candidate Starts for Pio\_228:

(Start: 5 @125466 has 105 MA's), (Start: 6 @125475 has 65 MA's), (11, 125514), (13, 125535), (21, 125610), (23, 125622), (26, 125652), (49, 125934), (52, 125964), (54, 125997), (58, 126060), (63, 126138), (65, 126171), (71, 126201), (85, 126336), (87, 126372), (98, 126486),

Gene: Pivoine\_221 Start: 123435, Stop: 124460, Start Num: 5

Candidate Starts for Pivoine\_221:

(Start: 5 @123435 has 105 MA's), (Start: 6 @123444 has 65 MA's), (11, 123483), (13, 123504), (21, 123579), (23, 123591), (26, 123621), (49, 123903), (52, 123933), (54, 123966), (58, 124029), (63, 124107), (65, 124140), (71, 124170), (85, 124305), (87, 124341), (98, 124455),

Gene: Pleione\_224 Start: 124207, Stop: 125223, Start Num: 6

Candidate Starts for Pleione\_224:

(Start: 5 @124198 has 105 MA's), (Start: 6 @124207 has 65 MA's), (11, 124246), (13, 124267), (21, 124342), (23, 124354), (26, 124384), (49, 124666), (52, 124696), (54, 124729), (58, 124792), (63, 124870), (65, 124903), (71, 124933), (85, 125068), (87, 125104), (98, 125218),

Gene: Pupper\_162 Start: 114902, Stop: 115894, Start Num: 8

Candidate Starts for Pupper\_162:

(Start: 8 @114902 has 9 MA's), (16, 114971), (18, 114986), (20, 115004), (21, 115034), (41, 115301), (48, 115346), (54, 115421), (56, 115457), (60, 115535), (63, 115562), (65, 115592), (66, 115595), (70, 115619), (72, 115628), (89, 115802), (92, 115814), (95, 115829), (98, 115886),

Gene: PurduePete\_220 Start: 124426, Stop: 125451, Start Num: 5

Candidate Starts for PurduePete\_220:

(Start: 5 @124426 has 105 MA's), (Start: 6 @124435 has 65 MA's), (11, 124474), (13, 124495), (21, 124570), (23, 124582), (26, 124612), (49, 124894), (52, 124924), (54, 124957), (58, 125020), (63, 125098), (65, 125131), (71, 125161), (85, 125296), (87, 125332), (98, 125446),

Gene: QBert\_212 Start: 121786, Stop: 122811, Start Num: 5

Candidate Starts for QBert\_212:

(Start: 5 @121786 has 105 MA's), (Start: 6 @121795 has 65 MA's), (11, 121834), (13, 121855), (21, 121930), (23, 121942), (26, 121972), (49, 122254), (52, 122284), (54, 122317), (58, 122380), (63, 122458), (65, 122491), (71, 122521), (85, 122656), (87, 122692), (98, 122806),

Gene: Quasimodo\_222 Start: 123077, Stop: 124093, Start Num: 6

Candidate Starts for Quasimodo\_222:

(Start: 5 @123068 has 105 MA's), (Start: 6 @123077 has 65 MA's), (11, 123116), (13, 123137), (21, 123212), (23, 123224), (26, 123254), (49, 123536), (52, 123566), (54, 123599), (58, 123662), (63, 123740), (65, 123773), (71, 123803), (85, 123938), (87, 123974), (98, 124088),

Gene: Rabinovish\_213 Start: 123331, Stop: 124362, Start Num: 5

Candidate Starts for Rabinovish\_213:

(Start: 5 @123331 has 105 MA's), (Start: 6 @123340 has 65 MA's), (11, 123379), (13, 123400), (21, 123475), (23, 123487), (26, 123517), (49, 123799), (52, 123829), (54, 123862), (58, 123925), (63, 124003), (65, 124036), (71, 124066), (85, 124201), (87, 124237), (94, 124285), (98, 124357),

Gene: Rahel\_221 Start: 123170, Stop: 124195, Start Num: 5

Candidate Starts for Rahel\_221:

(Start: 5 @123170 has 105 MA's), (Start: 6 @123179 has 65 MA's), (11, 123218), (13, 123239), (21, 123314), (23, 123326), (26, 123356), (49, 123638), (52, 123668), (54, 123701), (58, 123764), (63, 123842), (65, 123875), (71, 123905), (85, 124040), (87, 124076), (98, 124190),

Gene: Rizal\_212 Start: 121688, Stop: 122713, Start Num: 5

Candidate Starts for Rizal\_212:

(Start: 5 @121688 has 105 MA's), (Start: 6 @121697 has 65 MA's), (11, 121736), (13, 121757), (21, 121832), (23, 121844), (26, 121874), (49, 122156), (52, 122186), (54, 122219), (58, 122282), (63, 122360), (65, 122393), (71, 122423), (85, 122558), (87, 122594), (98, 122708),

Gene: RoMag\_215 Start: 123469, Stop: 124494, Start Num: 5

Candidate Starts for RoMag\_215:

(Start: 5 @123469 has 105 MA's), (Start: 6 @123478 has 65 MA's), (11, 123517), (13, 123538), (21, 123613), (23, 123625), (26, 123655), (49, 123937), (52, 123967), (54, 124000), (58, 124063), (63, 124141), (65, 124174), (71, 124204), (85, 124339), (87, 124375), (98, 124489),

Gene: Ronan\_216 Start: 121861, Stop: 122886, Start Num: 5

Candidate Starts for Ronan\_216:

(Start: 5 @121861 has 105 MA's), (Start: 6 @121870 has 65 MA's), (11, 121909), (13, 121930), (21, 122005), (23, 122017), (26, 122047), (49, 122329), (52, 122359), (54, 122392), (58, 122455), (63, 122533), (65, 122566), (71, 122596), (85, 122731), (87, 122767), (98, 122881),

Gene: Roots515\_222 Start: 124977, Stop: 126002, Start Num: 5

Candidate Starts for Roots515\_222:

(Start: 5 @124977 has 105 MA's), (Start: 6 @124986 has 65 MA's), (11, 125025), (13, 125046), (21, 125121), (23, 125133), (26, 125163), (49, 125445), (52, 125475), (54, 125508), (58, 125571), (63, 125649), (65, 125682), (71, 125712), (85, 125847), (87, 125883), (98, 125997),

Gene: SCentae\_161 Start: 115056, Stop: 116048, Start Num: 8

Candidate Starts for SCentae\_161:

(7, 115053), (Start: 8 @115056 has 9 MA's), (16, 115125), (18, 115140), (20, 115158), (21, 115188), (25, 115227), (41, 115455), (48, 115500), (54, 115575), (56, 115611), (60, 115689), (63, 115716), (65, 115746), (66, 115749), (70, 115773), (72, 115782), (89, 115956), (92, 115968), (95, 115983), (98, 116040),

Gene: Salacia\_220 Start: 123582, Stop: 124598, Start Num: 6

Candidate Starts for Salacia\_220:

(Start: 5 @123573 has 105 MA's), (Start: 6 @123582 has 65 MA's), (11, 123621), (13, 123642), (21, 123717), (23, 123729), (26, 123759), (49, 124041), (52, 124071), (54, 124104), (58, 124167), (63, 124245), (65, 124278), (71, 124308), (85, 124443), (87, 124479), (98, 124593),

Gene: Sauce\_216 Start: 122384, Stop: 123409, Start Num: 5

Candidate Starts for Sauce\_216:

(Start: 5 @122384 has 105 MA's), (Start: 6 @122393 has 65 MA's), (11, 122432), (13, 122453), (21, 122528), (23, 122540), (26, 122570), (49, 122852), (52, 122882), (54, 122915), (58, 122978), (63, 123056), (65, 123089), (71, 123119), (85, 123254), (87, 123290), (98, 123404),

Gene: ScoobyDoobyDoo\_204 Start: 117614, Stop: 118645, Start Num: 8

Candidate Starts for ScoobyDoobyDoo\_204:

(Start: 8 @117614 has 9 MA's), (15, 117677), (19, 117716), (21, 117749), (24, 117770), (29, 117887), (30, 117890), (34, 117932), (37, 117968), (40, 118028), (45, 118076), (47, 118082), (61, 118310), (83, 118475), (84, 118481), (86, 118505), (91, 118562), (93, 118571), (96, 118619),

Gene: ScottMcG\_214 Start: 122475, Stop: 123491, Start Num: 6

Candidate Starts for ScottMcG\_214:

(Start: 5 @122466 has 105 MA's), (Start: 6 @122475 has 65 MA's), (11, 122514), (13, 122535), (21, 122610), (23, 122622), (26, 122652), (49, 122934), (52, 122964), (54, 122997), (58, 123060), (63, 123138), (65, 123171), (71, 123201), (85, 123336), (87, 123372), (98, 123486),

Gene: Sebata\_221 Start: 123900, Stop: 124922, Start Num: 6

Candidate Starts for Sebata\_221:

(Start: 5 @123891 has 105 MA's), (Start: 6 @123900 has 65 MA's), (11, 123939), (13, 123960), (21, 124035), (23, 124047), (26, 124077), (49, 124359), (52, 124389), (54, 124422), (58, 124485), (63, 124563), (65, 124596), (71, 124626), (85, 124761), (87, 124797), (94, 124845), (98, 124917),

Gene: Settecandela\_133 Start: 95976, Stop: 97007, Start Num: 8

Candidate Starts for Settecandela\_133:

(Start: 8 @95976 has 9 MA's), (15, 96036), (17, 96060), (21, 96108), (26, 96150), (34, 96288), (38, 96354), (42, 96390), (45, 96426), (46, 96429), (51, 96471), (59, 96594), (65, 96693), (67, 96711), (69, 96717), (73, 96750), (75, 96786), (80, 96822), (90, 96915), (98, 96996),

Gene: Shaqnato\_211 Start: 122601, Stop: 123623, Start Num: 6

Candidate Starts for Shaqnato\_211:

(Start: 5 @122592 has 105 MA's), (Start: 6 @122601 has 65 MA's), (11, 122640), (13, 122661), (21, 122736), (23, 122748), (26, 122778), (49, 123060), (52, 123090), (54, 123123), (58, 123186), (63, 123264), (65, 123297), (71, 123327), (85, 123462), (87, 123498), (94, 123546), (98, 123618),

Gene: Shelob\_221 Start: 125332, Stop: 126357, Start Num: 5

Candidate Starts for Shelob\_221:

(Start: 5 @125332 has 105 MA's), (Start: 6 @125341 has 65 MA's), (11, 125380), (13, 125401), (21, 125476), (23, 125488), (26, 125518), (49, 125800), (52, 125830), (54, 125863), (58, 125926), (63, 126004), (65, 126037), (71, 126067), (85, 126202), (87, 126238), (98, 126352),

Gene: ShiaLabeouf\_217 Start: 122378, Stop: 123403, Start Num: 5

Candidate Starts for ShiaLabeouf\_217:

(Start: 5 @122378 has 105 MA's), (Start: 6 @122387 has 65 MA's), (11, 122426), (13, 122447), (21, 122522), (23, 122534), (26, 122564), (49, 122846), (52, 122876), (54, 122909), (58, 122972), (63, 123050), (65, 123083), (71, 123113), (85, 123248), (87, 123284), (98, 123398),



Gene: Shifa\_197 Start: 121950, Stop: 122981, Start Num: 5

Candidate Starts for Shifa\_197:

(Start: 5 @121950 has 105 MA's), (Start: 6 @121959 has 65 MA's), (11, 121998), (13, 122019), (21, 122094), (23, 122106), (26, 122136), (49, 122418), (52, 122448), (54, 122481), (58, 122544), (63, 122622), (65, 122655), (71, 122685), (85, 122820), (87, 122856), (94, 122904), (98, 122976),

Gene: Shnickers\_218 Start: 122442, Stop: 123467, Start Num: 5

Candidate Starts for Shnickers\_218:

(Start: 5 @122442 has 105 MA's), (Start: 6 @122451 has 65 MA's), (11, 122490), (13, 122511), (21, 122586), (23, 122598), (26, 122628), (49, 122910), (52, 122940), (54, 122973), (58, 123036), (63, 123114), (65, 123147), (71, 123177), (85, 123312), (87, 123348), (98, 123462),

Gene: Shrimp\_222 Start: 124499, Stop: 125524, Start Num: 5

Candidate Starts for Shrimp\_222:

(Start: 5 @124499 has 105 MA's), (Start: 6 @124508 has 65 MA's), (11, 124547), (13, 124568), (21, 124643), (23, 124655), (26, 124685), (49, 124967), (52, 124997), (54, 125030), (58, 125093), (63, 125171), (65, 125204), (71, 125234), (85, 125369), (87, 125405), (98, 125519),

Gene: SilverDipper\_224 Start: 124000, Stop: 125016, Start Num: 6

Candidate Starts for SilverDipper\_224:

(Start: 5 @123991 has 105 MA's), (Start: 6 @124000 has 65 MA's), (11, 124039), (13, 124060), (21, 124135), (23, 124147), (26, 124177), (49, 124459), (52, 124489), (54, 124522), (58, 124585), (63, 124663), (65, 124696), (71, 124726), (85, 124861), (87, 124897), (98, 125011),

Gene: Skog\_222 Start: 144522, Stop: 145520, Start Num: 8

Candidate Starts for Skog\_222:

(2, 143898), (4, 144378), (Start: 8 @144522 has 9 MA's), (16, 144591), (18, 144609), (21, 144657), (28, 144774), (29, 144792), (31, 144807), (33, 144831), (36, 144849), (39, 144909), (48, 144969), (53, 145026), (56, 145083), (65, 145218), (70, 145245), (77, 145308), (78, 145311), (82, 145341), (88, 145419), (95, 145455), (98, 145512),

Gene: SmallFry\_220 Start: 122536, Stop: 123561, Start Num: 5

Candidate Starts for SmallFry\_220:

(Start: 5 @122536 has 105 MA's), (Start: 6 @122545 has 65 MA's), (11, 122584), (13, 122605), (21, 122680), (23, 122692), (26, 122722), (49, 123004), (52, 123034), (54, 123067), (58, 123130), (63, 123208), (65, 123241), (71, 123271), (85, 123406), (87, 123442), (98, 123556),

Gene: Spec\_215 Start: 122724, Stop: 123740, Start Num: 6

Candidate Starts for Spec\_215:

(Start: 5 @122715 has 105 MA's), (Start: 6 @122724 has 65 MA's), (11, 122763), (13, 122784), (21, 122859), (23, 122871), (26, 122901), (49, 123183), (52, 123213), (54, 123246), (58, 123309), (63, 123387), (65, 123420), (71, 123450), (85, 123585), (87, 123621), (98, 123735),

Gene: Specks\_224 Start: 123840, Stop: 124865, Start Num: 5

Candidate Starts for Specks\_224:

(Start: 5 @123840 has 105 MA's), (Start: 6 @123849 has 65 MA's), (11, 123888), (13, 123909), (21, 123984), (23, 123996), (26, 124026), (49, 124308), (52, 124338), (54, 124371), (58, 124434), (63, 124512), (65, 124545), (71, 124575), (85, 124710), (87, 124746), (98, 124860),

Gene: Sprinklers\_218 Start: 123091, Stop: 124113, Start Num: 6

Candidate Starts for Sprinklers\_218:

(Start: 5 @123082 has 105 MA's), (Start: 6 @123091 has 65 MA's), (11, 123130), (13, 123151), (21, 123226), (23, 123238), (26, 123268), (49, 123550), (52, 123580), (54, 123613), (58, 123676), (63, 123754), (65, 123787), (71, 123817), (85, 123952), (87, 123988), (94, 124036), (98, 124108),

Gene: Spud\_214 Start: 122806, Stop: 123831, Start Num: 5

Candidate Starts for Spud\_214:

(Start: 5 @122806 has 105 MA's), (Start: 6 @122815 has 65 MA's), (11, 122854), (13, 122875), (21, 122950), (23, 122962), (26, 122992), (49, 123274), (52, 123304), (54, 123337), (58, 123400), (63, 123478), (65, 123511), (71, 123541), (85, 123676), (87, 123712), (98, 123826),

Gene: SrishMeg2525\_217 Start: 123958, Stop: 124983, Start Num: 5

Candidate Starts for SrishMeg2525\_217:

(Start: 5 @123958 has 105 MA's), (Start: 6 @123967 has 65 MA's), (11, 124006), (13, 124027), (21, 124102), (23, 124114), (26, 124144), (49, 124426), (52, 124456), (54, 124489), (58, 124552), (63, 124630), (65, 124663), (71, 124693), (85, 124828), (87, 124864), (98, 124978),

Gene: StephanieG\_216 Start: 123992, Stop: 125017, Start Num: 5

Candidate Starts for StephanieG\_216:

(Start: 5 @123992 has 105 MA's), (Start: 6 @124001 has 65 MA's), (11, 124040), (13, 124061), (21, 124136), (23, 124148), (26, 124178), (49, 124460), (52, 124490), (54, 124523), (58, 124586), (63, 124664), (65, 124697), (71, 124727), (85, 124862), (87, 124898), (98, 125012),

Gene: Stubby\_204 Start: 121850, Stop: 122872, Start Num: 6

Candidate Starts for Stubby\_204:

(Start: 5 @121841 has 105 MA's), (Start: 6 @121850 has 65 MA's), (11, 121889), (13, 121910), (21, 121985), (23, 121997), (26, 122027), (49, 122309), (52, 122339), (54, 122372), (58, 122435), (63, 122513), (65, 122546), (71, 122576), (85, 122711), (87, 122747), (94, 122795), (98, 122867),

Gene: StubbySaigey\_225 Start: 123525, Stop: 124550, Start Num: 5

Candidate Starts for StubbySaigey\_225:

(Start: 5 @123525 has 105 MA's), (Start: 6 @123534 has 65 MA's), (11, 123573), (13, 123594), (21, 123669), (23, 123681), (26, 123711), (49, 123993), (52, 124023), (54, 124056), (58, 124119), (63, 124197), (65, 124230), (71, 124260), (85, 124395), (87, 124431), (98, 124545),

Gene: Tainan\_221 Start: 122868, Stop: 123884, Start Num: 6

Candidate Starts for Tainan\_221:

(Start: 5 @122859 has 105 MA's), (Start: 6 @122868 has 65 MA's), (11, 122907), (13, 122928), (21, 123003), (23, 123015), (26, 123045), (49, 123327), (52, 123357), (54, 123390), (58, 123453), (63, 123531), (65, 123564), (71, 123594), (85, 123729), (87, 123765), (98, 123879),

Gene: Teardrop\_217 Start: 122038, Stop: 123063, Start Num: 5

Candidate Starts for Teardrop\_217:

(Start: 5 @122038 has 105 MA's), (Start: 6 @122047 has 65 MA's), (11, 122086), (13, 122107), (21, 122182), (23, 122194), (26, 122224), (49, 122506), (52, 122536), (54, 122569), (58, 122632), (63, 122710), (65, 122743), (71, 122773), (85, 122908), (87, 122944), (98, 123058),

Gene: TinyTim\_218 Start: 122819, Stop: 123844, Start Num: 5

Candidate Starts for TinyTim\_218:

(Start: 5 @122819 has 105 MA's), (Start: 6 @122828 has 65 MA's), (11, 122867), (13, 122888), (21, 122963), (23, 122975), (26, 123005), (49, 123287), (52, 123317), (54, 123350), (58, 123413), (63, 123491), (65, 123524), (71, 123554), (85, 123689), (87, 123725), (98, 123839),

Gene: Tonenili\_242 Start: 128649, Stop: 129665, Start Num: 6

Candidate Starts for Tonenili\_242:

(Start: 5 @128640 has 105 MA's), (Start: 6 @128649 has 65 MA's), (13, 128709), (23, 128796), (26, 128826), (44, 129066), (49, 129108), (52, 129138), (54, 129171), (58, 129234), (65, 129345), (71, 129375), (85, 129510), (87, 129546), (98, 129660),

Gene: Tortoise16\_218 Start: 123281, Stop: 124306, Start Num: 5

Candidate Starts for Tortoise16\_218:

(Start: 5 @123281 has 105 MA's), (Start: 6 @123290 has 65 MA's), (11, 123329), (13, 123350), (21, 123425), (23, 123437), (26, 123467), (49, 123749), (52, 123779), (54, 123812), (58, 123875), (63, 123953), (65, 123986), (71, 124016), (85, 124151), (87, 124187), (98, 124301),

Gene: Trinitium\_216 Start: 121573, Stop: 122598, Start Num: 5

Candidate Starts for Trinitium\_216:

(Start: 5 @121573 has 105 MA's), (Start: 6 @121582 has 65 MA's), (11, 121621), (13, 121642), (21, 121717), (23, 121729), (26, 121759), (49, 122041), (52, 122071), (54, 122104), (58, 122167), (63, 122245), (65, 122278), (71, 122308), (85, 122443), (87, 122479), (98, 122593),

Gene: Turret\_213 Start: 121155, Stop: 122180, Start Num: 5

Candidate Starts for Turret\_213:

(Start: 5 @121155 has 105 MA's), (Start: 6 @121164 has 65 MA's), (11, 121203), (13, 121224), (21, 121299), (23, 121311), (26, 121341), (49, 121623), (52, 121653), (54, 121686), (58, 121749), (63, 121827), (65, 121860), (71, 121890), (85, 122025), (87, 122061), (98, 122175),

Gene: Tyke\_218 Start: 124648, Stop: 125673, Start Num: 5

Candidate Starts for Tyke\_218:

(Start: 5 @124648 has 105 MA's), (Start: 6 @124657 has 65 MA's), (11, 124696), (13, 124717), (21, 124792), (23, 124804), (26, 124834), (49, 125116), (52, 125146), (54, 125179), (58, 125242), (63, 125320), (65, 125353), (71, 125383), (85, 125518), (87, 125554), (98, 125668),

Gene: ValleyTerrace\_221 Start: 122732, Stop: 123757, Start Num: 5

Candidate Starts for ValleyTerrace\_221:

(Start: 5 @122732 has 105 MA's), (Start: 6 @122741 has 65 MA's), (11, 122780), (13, 122801), (21, 122876), (23, 122888), (26, 122918), (49, 123200), (52, 123230), (54, 123263), (58, 123326), (63, 123404), (65, 123437), (71, 123467), (85, 123602), (87, 123638), (98, 123752),

Gene: Wally\_218 Start: 122716, Stop: 123741, Start Num: 5

Candidate Starts for Wally\_218:

(Start: 5 @122716 has 105 MA's), (Start: 6 @122725 has 65 MA's), (11, 122764), (13, 122785), (21, 122860), (23, 122872), (26, 122902), (49, 123184), (52, 123214), (54, 123247), (58, 123310), (63, 123388), (65, 123421), (71, 123451), (85, 123586), (87, 123622), (98, 123736),

Gene: Willis\_221 Start: 123627, Stop: 124643, Start Num: 6

Candidate Starts for Willis\_221:

(Start: 5 @123618 has 105 MA's), (Start: 6 @123627 has 65 MA's), (11, 123666), (13, 123687), (21, 123762), (23, 123774), (26, 123804), (49, 124086), (52, 124116), (54, 124149), (58, 124212), (63, 124290), (65, 124323), (71, 124353), (85, 124488), (87, 124524), (98, 124638),

Gene: Yassified\_217 Start: 123068, Stop: 124093, Start Num: 5

Candidate Starts for Yassified\_217:

(Start: 5 @123068 has 105 MA's), (Start: 6 @123077 has 65 MA's), (11, 123116), (13, 123137), (21, 123212), (23, 123224), (26, 123254), (49, 123536), (52, 123566), (54, 123599), (58, 123662), (63, 123740), (65, 123773), (71, 123803), (85, 123938), (87, 123974), (98, 124088),

Gene: YemiJoy2021\_221 Start: 124386, Stop: 125411, Start Num: 5

Candidate Starts for YemiJoy2021\_221:

(Start: 5 @124386 has 105 MA's), (Start: 6 @124395 has 65 MA's), (11, 124434), (13, 124455), (21, 124530), (23, 124542), (26, 124572), (49, 124854), (52, 124884), (54, 124917), (58, 124980), (63, 125058), (65, 125091), (71, 125121), (85, 125256), (87, 125292), (98, 125406),

Gene: YoungMoneyMata\_219 Start: 123209, Stop: 124225, Start Num: 6

Candidate Starts for YoungMoneyMata\_219:

(Start: 5 @123200 has 105 MA's), (Start: 6 @123209 has 65 MA's), (11, 123248), (13, 123269), (21, 123344), (23, 123356), (26, 123386), (49, 123668), (52, 123698), (54, 123731), (58, 123794), (63, 123872), (65, 123905), (71, 123935), (85, 124070), (87, 124106), (98, 124220),

Gene: Yucca\_220 Start: 124378, Stop: 125403, Start Num: 5

Candidate Starts for Yucca\_220:

(Start: 5 @124378 has 105 MA's), (Start: 6 @124387 has 65 MA's), (11, 124426), (13, 124447), (21, 124522), (23, 124534), (26, 124564), (49, 124846), (52, 124876), (54, 124909), (58, 124972), (63, 125050), (65, 125083), (71, 125113), (85, 125248), (87, 125284), (98, 125398),

Gene: Zalkecks\_219 Start: 123447, Stop: 124472, Start Num: 5

Candidate Starts for Zalkecks\_219:

(Start: 5 @123447 has 105 MA's), (Start: 6 @123456 has 65 MA's), (11, 123495), (13, 123516), (21, 123591), (23, 123603), (26, 123633), (49, 123915), (52, 123945), (54, 123978), (58, 124041), (63, 124119), (65, 124152), (71, 124182), (85, 124317), (87, 124353), (98, 124467),

Gene: Zeenon\_222 Start: 124018, Stop: 125043, Start Num: 5

Candidate Starts for Zeenon\_222:

(Start: 5 @124018 has 105 MA's), (Start: 6 @124027 has 65 MA's), (11, 124066), (13, 124087), (21, 124162), (23, 124174), (26, 124204), (49, 124486), (52, 124516), (54, 124549), (58, 124612), (63, 124690), (65, 124723), (71, 124753), (85, 124888), (87, 124924), (98, 125038),

Gene: ZygoTaiga\_217 Start: 124638, Stop: 125663, Start Num: 5

Candidate Starts for ZygoTaiga\_217:

(Start: 5 @124638 has 105 MA's), (Start: 6 @124647 has 65 MA's), (11, 124686), (13, 124707), (21, 124782), (23, 124794), (26, 124824), (49, 125106), (52, 125136), (54, 125169), (58, 125232), (63, 125310), (65, 125343), (71, 125373), (85, 125508), (87, 125544), (98, 125658),