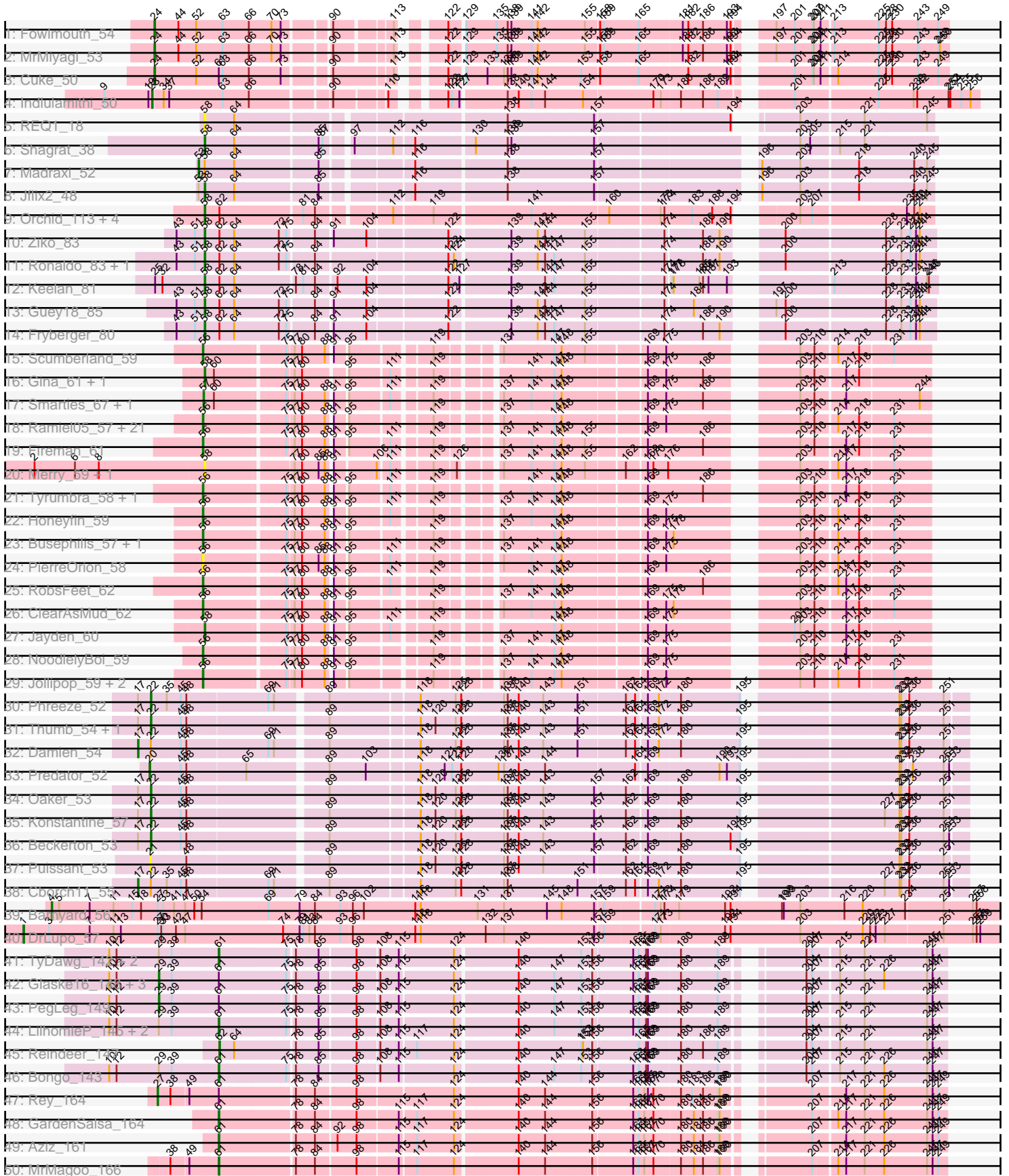
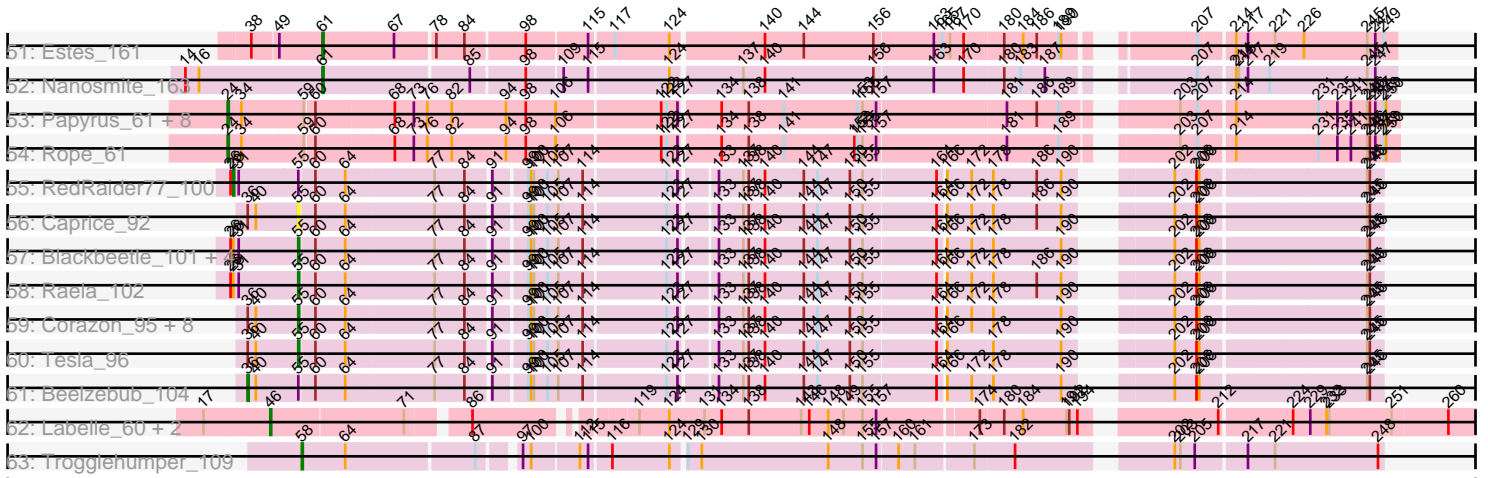


Pham 192414



Pham 192414



Note: Tracks are now grouped by subcluster and scaled. Switching in subcluster is indicated by changes in track color. Track scale is now set by default to display the region 30 bp upstream of start 1 to 30 bp downstream of the last possible start. If this default region is judged to be packed too tightly with annotated starts, the track will be further scaled to only show that region of the ORF with annotated starts. This action will be indicated by adding "Zoomed" to the title. For starts, yellow indicates the location of called starts comprised solely of Glimmer/GeneMark auto-annotations, green indicates the location of called starts with at least 1 manual gene annotation.

Pham 192414 Report

This analysis was run 11/02/24 on database version 579.

Pham number 192414 has 126 members, 9 are drafts.

Phages represented in each track:

- Track 1 : Fowlmouth_54
- Track 2 : MrMiyagi_53
- Track 3 : Cuke_50
- Track 4 : Indlulamithi_50
- Track 5 : REQ1_18
- Track 6 : Shagrat_38
- Track 7 : Madraxi_52
- Track 8 : Jflix2_48
- Track 9 : Orchid_113, Kampe_114, RobinSparkles_123, Gibbles_116, PatrickStar_114
- Track 10 : Ziko_83
- Track 11 : Ronaldo_83, Volt_83
- Track 12 : Keelan_81
- Track 13 : Guey18_85
- Track 14 : Fryberger_80
- Track 15 : Scumberland_59
- Track 16 : Gina_61, Teamocil_61
- Track 17 : Smarties_67, Ariadne_67
- Track 18 : Ramiel05_57, Kowalski_57, Selwyn23_59, Crisis_59, Jefe_58, Hermeonysus_57, Quhwah_62, Antares_58, Ganandorf_57, Piperis_59, Cranjjs_59, EarickHC_59, KaiHaiDragon_59, LittleFortune_60, Phorgeous_58, Onika_57, Yeti_59, PiperSansNom_59, BrazzalePHS_57, CrazyRich_57, Pulchra_60, Savannah_57
- Track 19 : Fireman_61
- Track 20 : Merry_59, Sunny_59
- Track 21 : Tyumbra_58, Metamorphoo_61
- Track 22 : Honeyfin_59
- Track 23 : Busephilis_57, Phrancesco_58
- Track 24 : PierreOrion_58
- Track 25 : RobsFeet_62
- Track 26 : ClearAsMud_62
- Track 27 : Jayden_60
- Track 28 : NoodlelyBoi_59
- Track 29 : Jollipop_59, Shotgun_58, Paschalis_58
- Track 30 : Phreeze_52
- Track 31 : Thumb_54, Megatron06_55
- Track 32 : Damien_54

- Track 33 : Predator_52
- Track 34 : Oaker_53
- Track 35 : Konstantine_57
- Track 36 : Beckerton_53
- Track 37 : Puissant_53
- Track 38 : Cborch11_55
- Track 39 : Barnyard_56
- Track 40 : DrLupo_57
- Track 41 : TyDawg_142, Auspice_149, IPhane7_146
- Track 42 : Glaske16_148, Dulcita_146, Skinny_152, Diminimus_146
- Track 43 : PegLeg_149
- Track 44 : LilhomieP_145, Bricole_151, SlimJimmy_146
- Track 45 : Reindeer_147
- Track 46 : Bongo_143
- Track 47 : Rey_164
- Track 48 : GardenSalsa_164
- Track 49 : Aziz_161
- Track 50 : MrMagoo_166
- Track 51 : Estes_161
- Track 52 : Nanosmite_163
- Track 53 : Papyrus_61, Riparian_63, Zenon_62, Yelo_60, Send513_61, Weiss13_60, MontyDev_62, Nilo_63, Candle_59
- Track 54 : Rope_61
- Track 55 : RedRaider77_100
- Track 56 : Caprice_92
- Track 57 : Blackbeetle_101, Poise_101, MosMoris_96, JoieB_101, Gattaca_99
- Track 58 : Raela_102
- Track 59 : Corazon_95, LittleLaf_98, Lilbit_98, FeliMaine_96, Huphlepuuff_102, Pringar_96, VasuNzinga_98, Clarkson_101, Marvin_94
- Track 60 : Tesla_96
- Track 61 : Beelzebub_104
- Track 62 : Labelle_60, Patience_61, Madrugua_59
- Track 63 : Trogglehumper_109

Summary of Final Annotations (See graph section above for start numbers):

The start number called the most often in the published annotations is 56, it was called in 35 of the 117 non-draft genes in the pham.

Genes that call this "Most Annotated" start:

- Antares_58, BrazzalePHS_57, Busephilis_57, ClearAsMud_62, Cranjis_59, CrazyRich_57, Crisis_59, EarickHC_59, Fireman_61, Ganandorf_57, Hermeonysus_57, Honeyfin_59, Jefe_58, Jollipop_59, KaiHaiDragon_59, Kowalski_57, LittleFortune_60, Metamorphoo_61, NoodlelyBoi_59, Onika_57, Paschalis_58, Phorgeous_58, Phrancesco_58, PierreOrion_58, PiperSansNom_59, Piperis_59, Pulchra_60, Quhwah_62, Ramiel05_57, RobsFeet_62, Savannah_57, Scumberland_59, Selwyn23_59, Shotgun_58, Tyrumbra_58, Yeti_59,

Genes that have the "Most Annotated" start but do not call it:

-

Genes that do not have the "Most Annotated" start:

- Ariadne_67, Auspice_149, Aziz_161, Barnyard_56, Beckerton_53, Beelzebub_104, Blackbeetle_101, Bongo_143, Bricole_151, Candle_59, Caprice_92, Cborch11_55, Clarkson_101, Corazon_95, Cuke_50, Damien_54, Diminimus_146, DrLupo_57, Dulcita_146, Estes_161, FeliMaine_96, Fowlmouth_54, Fryberger_80, GardenSalsa_164, Gattaca_99, Gibbles_116, Gina_61, Glaske16_148, Guey18_85, Huphlepuuff_102, IPhone7_146, Indlulamithi_50, Jayden_60, Jflix2_48, JoieB_101, Kampe_114, Keelan_81, Konstantine_57, Labelle_60, Lilbit_98, LilhomieP_145, LittleLaf_98, Madraxi_52, Madrugua_59, Marvin_94, Megatron06_55, Merry_59, MontyDev_62, MosMoris_96, MrMagoo_166, MrMiyagi_53, Nanosmite_163, Nilo_63, Oaker_53, Orchid_113, Papyrus_61, Patience_61, PatrickStar_114, PegLeg_149, Phreeze_52, Poise_101, Predator_52, Pringar_96, Puissant_53, REQ1_18, Raela_102, RedRaider77_100, Reindeer_147, Rey_164, Riparian_63, RobinSparkles_123, Ronaldo_83, Rope_61, Send513_61, Shagrat_38, Skinny_152, SlimJimmy_146, Smarties_67, Sunny_59, Teamocil_61, Tesla_96, Thumb_54, Trooglehumper_109, TyDawg_142, VasuNzinga_98, Volt_83, Weiss13_60, Yelo_60, Zenon_62, Ziko_83,

Summary by start number:

Start 1:

- Found in 1 of 126 (0.8%) of genes in pham
- Manual Annotations of this start: 1 of 117
- Called 100.0% of time when present
- Phage (with cluster) where this start called: DrLupo_57 (H2),

Start 4:

- Found in 1 of 126 (0.8%) of genes in pham
- Manual Annotations of this start: 1 of 117
- Called 100.0% of time when present
- Phage (with cluster) where this start called: Barnyard_56 (H2),

Start 17:

- Found in 11 of 126 (8.7%) of genes in pham
- Manual Annotations of this start: 2 of 117
- Called 18.2% of time when present
- Phage (with cluster) where this start called: Cborch11_55 (H1), Damien_54 (H1),

Start 20:

- Found in 1 of 126 (0.8%) of genes in pham
- Manual Annotations of this start: 1 of 117
- Called 100.0% of time when present
- Phage (with cluster) where this start called: Predator_52 (H1),

Start 21:

- Found in 1 of 126 (0.8%) of genes in pham
- No Manual Annotations of this start.
- Called 100.0% of time when present
- Phage (with cluster) where this start called: Puissant_53 (H1),

Start 22:

- Found in 8 of 126 (6.3%) of genes in pham

- Manual Annotations of this start: 6 of 117
- Called 75.0% of time when present
- Phage (with cluster) where this start called: Beckerton_53 (H1), Konstantine_57 (H1), Megatron06_55 (H1), Oaker_53 (H1), Phreeze_52 (H1), Thumb_54 (H1),

Start 23:

- Found in 1 of 126 (0.8%) of genes in pham
- Manual Annotations of this start: 1 of 117
- Called 100.0% of time when present
- Phage (with cluster) where this start called: Indlulamithi_50 (AC),

Start 24:

- Found in 13 of 126 (10.3%) of genes in pham
- Manual Annotations of this start: 12 of 117
- Called 100.0% of time when present
- Phage (with cluster) where this start called: Candle_59 (R), Cuke_50 (AC), Fowlmouth_54 (AC), MontyDev_62 (R), MrMiyagi_53 (AC), Nilo_63 (R), Papyrus_61 (R), Riparian_63 (R), Rope_61 (R), Send513_61 (R), Weiss13_60 (R), Yelo_60 (R), Zenon_62 (R),

Start 27:

- Found in 3 of 126 (2.4%) of genes in pham
- Manual Annotations of this start: 1 of 117
- Called 33.3% of time when present
- Phage (with cluster) where this start called: Rey_164 (M2),

Start 28:

- Found in 7 of 126 (5.6%) of genes in pham
- Manual Annotations of this start: 1 of 117
- Called 14.3% of time when present
- Phage (with cluster) where this start called: RedRaider77_100 (S),

Start 29:

- Found in 12 of 126 (9.5%) of genes in pham
- Manual Annotations of this start: 5 of 117
- Called 41.7% of time when present
- Phage (with cluster) where this start called: Diminimus_146 (M1), Dulcita_146 (M1), Glaske16_148 (M1), PegLeg_149 (M1), Skinny_152 (M1),

Start 36:

- Found in 12 of 126 (9.5%) of genes in pham
- Manual Annotations of this start: 1 of 117
- Called 8.3% of time when present
- Phage (with cluster) where this start called: Beelzebub_104 (S),

Start 46:

- Found in 3 of 126 (2.4%) of genes in pham
- Manual Annotations of this start: 3 of 117
- Called 100.0% of time when present
- Phage (with cluster) where this start called: Labelle_60 (U), Madruga_59 (U), Patience_61 (U),

Start 53:

- Found in 2 of 126 (1.6%) of genes in pham
- Manual Annotations of this start: 1 of 117
- Called 50.0% of time when present
- Phage (with cluster) where this start called: Madraxi_52 (CF),

Start 55:

- Found in 19 of 126 (15.1%) of genes in pham
- Manual Annotations of this start: 14 of 117
- Called 89.5% of time when present
- Phage (with cluster) where this start called: Blackbeetle_101 (S), Caprice_92 (S), Clarkson_101 (S), Corazon_95 (S), FeliMaine_96 (S), Gattaca_99 (S), Huphlepuuff_102 (S), JoieB_101 (S), Lilbit_98 (S), LittleLaf_98 (S), Marvin_94 (S), MosMoris_96 (S), Poise_101 (S), Pringar_96 (S), Raela_102 (S), Tesla_96 (S), VasuNzinga_98 (S),

Start 56:

- Found in 36 of 126 (28.6%) of genes in pham
- Manual Annotations of this start: 35 of 117
- Called 100.0% of time when present
- Phage (with cluster) where this start called: Antares_58 (EC), BrazzalePHS_57 (EC), Busephilis_57 (EC), ClearAsMud_62 (EC), Cranjis_59 (EC), CrazyRich_57 (EC), Crisis_59 (EC), EarickHC_59 (EC), Fireman_61 (EC), Ganandorf_57 (EC), Hermeonysus_57 (EC), Honeyfin_59 (EC), Jefe_58 (EC), Jollipop_59 (EC), KaiHaiDragon_59 (EC), Kowalski_57 (EC), LittleFortune_60 (EC), Metamorphoo_61 (EC), NoodlelyBoi_59 (EC), Onika_57 (EC), Paschalis_58 (EC), Phorgeous_58 (EC), Phrancesco_58 (EC), PierreOrion_58 (EC), PiperSansNom_59 (EC), Piperis_59 (EC), Pulchra_60 (EC), Quhwah_62 (EC), Ramiel05_57 (EC), RobsFeet_62 (EC), Savannah_57 (EC), Scumberland_59 (EC), Selwyn23_59 (EC), Shotgun_58 (EC), Tyumbra_58 (EC), Yeti_59 (EC),

Start 57:

- Found in 2 of 126 (1.6%) of genes in pham
- Manual Annotations of this start: 2 of 117
- Called 100.0% of time when present
- Phage (with cluster) where this start called: Ariadne_67 (EC), Smarties_67 (EC),

Start 58:

- Found in 21 of 126 (16.7%) of genes in pham
- Manual Annotations of this start: 17 of 117
- Called 95.2% of time when present
- Phage (with cluster) where this start called: Fryberger_80 (DP), Gibbles_116 (CX), Gina_61 (EC), Guey18_85 (DP), Jayden_60 (EC), Jflix2_48 (CF), Kampe_114 (CX), Keelan_81 (DP), Merry_59 (EC), Orchid_113 (CX), PatrickStar_114 (CX), REQ1_18 (CF), RobinSparkles_123 (CX), Ronaldo_83 (DP), Shagrat_38 (CF), Sunny_59 (EC), Teamocil_61 (EC), Trogglehumper_109 (singleton), Volt_83 (DP), Ziko_83 (DP),

Start 61:

- Found in 19 of 126 (15.1%) of genes in pham
- Manual Annotations of this start: 12 of 117
- Called 63.2% of time when present
- Phage (with cluster) where this start called: Auspice_149 (M1), Aziz_161 (M2), Bongo_143 (M1), Bricole_151 (M1), Estes_161 (M2), GardenSalsa_164 (M2), IPhane7_146 (M1), LilhomieP_145 (M1), MrMagoo_166 (M2), Nanosmite_163 (M3),

SlimJimmy_146 (M1), TyDawg_142 (M1),

Start 62:

- Found in 12 of 126 (9.5%) of genes in pham
- Manual Annotations of this start: 1 of 117
- Called 8.3% of time when present
- Phage (with cluster) where this start called: Reindeer_147 (M1),

Summary by clusters:

There are 14 clusters represented in this pham: AC, H2, H1, CF, EC, singleton, S, CX, U, M3, M2, M1, R, DP,

Info for manual annotations of cluster AC:

- Start number 23 was manually annotated 1 time for cluster AC.
- Start number 24 was manually annotated 3 times for cluster AC.

Info for manual annotations of cluster CF:

- Start number 53 was manually annotated 1 time for cluster CF.
- Start number 58 was manually annotated 2 times for cluster CF.

Info for manual annotations of cluster CX:

- Start number 58 was manually annotated 5 times for cluster CX.

Info for manual annotations of cluster DP:

- Start number 58 was manually annotated 6 times for cluster DP.

Info for manual annotations of cluster EC:

- Start number 56 was manually annotated 35 times for cluster EC.
- Start number 57 was manually annotated 2 times for cluster EC.
- Start number 58 was manually annotated 3 times for cluster EC.

Info for manual annotations of cluster H1:

- Start number 17 was manually annotated 2 times for cluster H1.
- Start number 20 was manually annotated 1 time for cluster H1.
- Start number 22 was manually annotated 6 times for cluster H1.

Info for manual annotations of cluster H2:

- Start number 1 was manually annotated 1 time for cluster H2.
- Start number 4 was manually annotated 1 time for cluster H2.

Info for manual annotations of cluster M1:

- Start number 29 was manually annotated 5 times for cluster M1.
- Start number 61 was manually annotated 7 times for cluster M1.
- Start number 62 was manually annotated 1 time for cluster M1.

Info for manual annotations of cluster M2:

- Start number 27 was manually annotated 1 time for cluster M2.
- Start number 61 was manually annotated 4 times for cluster M2.

Info for manual annotations of cluster M3:

- Start number 61 was manually annotated 1 time for cluster M3.

Info for manual annotations of cluster R:

- Start number 24 was manually annotated 9 times for cluster R.

Info for manual annotations of cluster S:

- Start number 28 was manually annotated 1 time for cluster S.
- Start number 36 was manually annotated 1 time for cluster S.
- Start number 55 was manually annotated 14 times for cluster S.

Info for manual annotations of cluster U:

- Start number 46 was manually annotated 3 times for cluster U.

Gene Information:

Gene: Antares_58 Start: 37535, Stop: 38530, Start Num: 56

Candidate Starts for Antares_58:

(Start: 56 @37535 has 35 MA's), (75, 37655), (77, 37664), (80, 37676), (88, 37709), (91, 37715), (95, 37733), (119, 37844), (137, 37925), (147, 38003), (148, 38015), (169, 38138), (175, 38168), (203, 38339), (210, 38360), (214, 38390), (218, 38423), (231, 38471),

Gene: Ariadne_67 Start: 39139, Stop: 40134, Start Num: 57

Candidate Starts for Ariadne_67:

(Start: 57 @39139 has 2 MA's), (60, 39154), (75, 39259), (77, 39268), (80, 39280), (88, 39313), (91, 39319), (95, 39337), (111, 39394), (119, 39448), (137, 39529), (141, 39571), (147, 39607), (148, 39619), (169, 39742), (175, 39772), (186, 39832), (203, 39943), (210, 39964), (217, 40006), (244, 40117),

Gene: Auspice_149 Start: 75730, Stop: 74657, Start Num: 61

Candidate Starts for Auspice_149:

(10, 75907), (12, 75895), (Start: 29 @75826 has 5 MA's), (39, 75805), (Start: 61 @75730 has 12 MA's), (75, 75625), (78, 75616), (85, 75580), (98, 75526), (108, 75493), (115, 75463), (124, 75379), (140, 75283), (153, 75184), (156, 75166), (163, 75103), (165, 75094), (168, 75082), (169, 75079), (180, 75028), (189, 74968), (204, 74869), (207, 74860), (215, 74824), (221, 74785), (245, 74689), (247, 74680),

Gene: Aziz_161 Start: 77655, Stop: 76582, Start Num: 61

Candidate Starts for Aziz_161:

(Start: 61 @77655 has 12 MA's), (78, 77541), (84, 77511), (92, 77481), (98, 77451), (115, 77388), (117, 77364), (124, 77304), (140, 77208), (144, 77166), (156, 77091), (163, 77028), (165, 77019), (167, 77010), (170, 76995), (180, 76953), (184, 76932), (186, 76917), (189, 76893), (190, 76890), (207, 76785), (217, 76740), (221, 76710), (226, 76683), (245, 76614), (247, 76605), (249, 76596),

Gene: Barnyard_56 Start: 40405, Stop: 41949, Start Num: 4

Candidate Starts for Barnyard_56:

(Start: 4 @40405 has 1 MA's), (5, 40417), (7, 40465), (11, 40504), (15, 40534), (18, 40549), (Start: 27 @40576 has 1 MA's), (33, 40585), (41, 40603), (47, 40621), (50, 40636), (54, 40648), (69, 40756), (79, 40807), (84, 40831), (93, 40870), (96, 40888), (102, 40906), (116, 40990), (118, 40999), (131, 41092), (137, 41134), (145, 41203), (148, 41227), (157, 41278), (159, 41290), (171, 41365), (173, 41374), (174, 41380), (179, 41401), (192, 41476), (194, 41485), (198, 41569), (199, 41572), (203, 41599), (216, 41671), (220, 41701), (234, 41770), (251, 41827), (257, 41875), (258, 41881),

Gene: Beckerton_53 Start: 43209, Stop: 44420, Start Num: 22

Candidate Starts for Beckerton_53:

(Start: 17 @43191 has 2 MA's), (Start: 22 @43209 has 6 MA's), (45, 43254), (48, 43263), (89, 43473), (118, 43602), (120, 43623), (125, 43656), (128, 43665), (137, 43731), (138, 43737), (140, 43755), (143, 43794), (157, 43875), (162, 43923), (169, 43953), (180, 44004), (194, 44085), (195, 44100), (232, 44319), (233, 44322), (236, 44331), (251, 44385), (253, 44394),

Gene: Beelzebub_104 Start: 58128, Stop: 57004, Start Num: 36

Candidate Starts for Beelzebub_104:

(Start: 36 @58128 has 1 MA's), (40, 58119), (Start: 55 @58074 has 14 MA's), (60, 58059), (64, 58026), (77, 57933), (84, 57900), (91, 57876), (99, 57843), (100, 57840), (101, 57837), (105, 57822), (107, 57810), (114, 57783), (123, 57696), (127, 57684), (133, 57651), (137, 57624), (138, 57618), (140, 57600), (144, 57558), (147, 57543), (150, 57507), (155, 57495), (164, 57417), (166, 57411), (172, 57384), (178, 57363), (190, 57288), (202, 57213), (206, 57192), (208, 57189), (245, 57021), (246, 57018),

Gene: Blackbeetle_101 Start: 57574, Stop: 56504, Start Num: 55

Candidate Starts for Blackbeetle_101:

(26, 57646), (Start: 28 @57643 has 1 MA's), (31, 57637), (Start: 55 @57574 has 14 MA's), (60, 57559), (64, 57526), (77, 57433), (84, 57400), (91, 57376), (99, 57343), (100, 57340), (101, 57337), (105, 57322), (107, 57310), (114, 57283), (123, 57196), (127, 57184), (133, 57151), (137, 57124), (138, 57118), (140, 57100), (144, 57058), (147, 57043), (150, 57007), (155, 56995), (164, 56917), (166, 56911), (172, 56884), (178, 56863), (190, 56788), (202, 56713), (206, 56692), (208, 56689), (245, 56521), (246, 56518),

Gene: Bongo_143 Start: 74587, Stop: 73514, Start Num: 61

Candidate Starts for Bongo_143:

(10, 74764), (12, 74752), (Start: 29 @74683 has 5 MA's), (39, 74662), (Start: 61 @74587 has 12 MA's), (75, 74482), (78, 74473), (85, 74437), (98, 74383), (108, 74350), (115, 74320), (124, 74236), (140, 74140), (147, 74083), (153, 74041), (156, 74023), (163, 73960), (165, 73951), (168, 73939), (169, 73936), (180, 73885), (189, 73825), (204, 73726), (207, 73717), (215, 73681), (221, 73642), (226, 73615), (245, 73546), (247, 73537),

Gene: BrazzalePHS_57 Start: 37331, Stop: 38326, Start Num: 56

Candidate Starts for BrazzalePHS_57:

(Start: 56 @37331 has 35 MA's), (75, 37451), (77, 37460), (80, 37472), (88, 37505), (91, 37511), (95, 37529), (119, 37640), (137, 37721), (147, 37799), (148, 37811), (169, 37934), (175, 37964), (203, 38135), (210, 38156), (214, 38186), (218, 38219), (231, 38267),

Gene: Bricole_151 Start: 75493, Stop: 74420, Start Num: 61

Candidate Starts for Bricole_151:

(10, 75670), (12, 75658), (Start: 29 @75589 has 5 MA's), (39, 75568), (Start: 61 @75493 has 12 MA's), (75, 75388), (78, 75379), (85, 75343), (98, 75289), (108, 75256), (115, 75226), (124, 75142), (140, 75046), (147, 74989), (153, 74947), (156, 74929), (163, 74866), (165, 74857), (168, 74845), (169, 74842), (180, 74791), (189, 74731), (204, 74632), (207, 74623), (215, 74587), (221, 74548), (245, 74452), (247, 74443),

Gene: Busephilis_57 Start: 37241, Stop: 38236, Start Num: 56

Candidate Starts for Busephilis_57:

(Start: 56 @37241 has 35 MA's), (75, 37361), (77, 37370), (80, 37382), (88, 37415), (91, 37421), (95, 37439), (119, 37550), (137, 37631), (147, 37709), (148, 37721), (169, 37844), (175, 37874), (178, 37886), (203, 38045), (210, 38066), (214, 38096), (218, 38129), (231, 38177),

Gene: Candle_59 Start: 44716, Stop: 45912, Start Num: 24

Candidate Starts for Candle_59:

(Start: 24 @44716 has 12 MA's), (34, 44731), (59, 44797), (60, 44806), (68, 44887), (73, 44908), (76, 44923), (82, 44950), (94, 45010), (98, 45031), (106, 45064), (122, 45175), (123, 45181), (127, 45193), (134, 45232), (138, 45262), (141, 45301), (153, 45379), (155, 45385), (157, 45400), (181, 45538), (186, 45571), (189, 45595), (203, 45688), (207, 45706), (214, 45739), (231, 45823), (235, 45844), (241, 45859), (245, 45877), (246, 45880), (247, 45886), (249, 45895), (250, 45898),

Gene: Caprice_92 Start: 57512, Stop: 56442, Start Num: 55

Candidate Starts for Caprice_92:

(Start: 36 @57566 has 1 MA's), (40, 57557), (Start: 55 @57512 has 14 MA's), (60, 57497), (64, 57464), (77, 57371), (84, 57338), (91, 57314), (99, 57281), (100, 57278), (101, 57275), (105, 57260), (107, 57248), (114, 57221), (123, 57134), (127, 57122), (133, 57089), (137, 57062), (138, 57056), (140, 57038), (144, 56996), (147, 56981), (150, 56945), (155, 56933), (164, 56855), (166, 56849), (172, 56822), (178, 56801), (186, 56753), (190, 56726), (202, 56651), (206, 56630), (208, 56627), (245, 56459), (246, 56456),

Gene: Cborch11_55 Start: 42707, Stop: 43936, Start Num: 17

Candidate Starts for Cborch11_55:

(Start: 17 @42707 has 2 MA's), (Start: 22 @42725 has 6 MA's), (35, 42749), (45, 42770), (48, 42779), (69, 42905), (71, 42914), (89, 42989), (118, 43118), (125, 43172), (128, 43181), (137, 43247), (138, 43253), (151, 43364), (162, 43439), (164, 43454), (169, 43469), (172, 43487), (180, 43520), (195, 43616), (227, 43811), (232, 43835), (233, 43838), (236, 43847), (251, 43901), (253, 43910),

Gene: Clarkson_101 Start: 57755, Stop: 56685, Start Num: 55

Candidate Starts for Clarkson_101:

(Start: 36 @57809 has 1 MA's), (40, 57800), (Start: 55 @57755 has 14 MA's), (60, 57740), (64, 57707), (77, 57614), (84, 57581), (91, 57557), (99, 57524), (100, 57521), (101, 57518), (105, 57503), (107, 57491), (114, 57464), (123, 57377), (127, 57365), (133, 57332), (137, 57305), (138, 57299), (140, 57281), (144, 57239), (147, 57224), (150, 57188), (155, 57176), (164, 57098), (166, 57092), (172, 57065), (178, 57044), (190, 56969), (202, 56894), (206, 56873), (208, 56870), (245, 56702), (246, 56699),

Gene: ClearAsMud_62 Start: 37812, Stop: 38807, Start Num: 56

Candidate Starts for ClearAsMud_62:

(Start: 56 @37812 has 35 MA's), (75, 37932), (77, 37941), (80, 37953), (88, 37986), (91, 37992), (95, 38010), (119, 38121), (137, 38202), (141, 38244), (147, 38280), (148, 38292), (169, 38415), (175, 38445), (178, 38457), (203, 38616), (210, 38637), (217, 38679), (218, 38700), (231, 38748),

Gene: Corazon_95 Start: 57949, Stop: 56879, Start Num: 55

Candidate Starts for Corazon_95:

(Start: 36 @58003 has 1 MA's), (40, 57994), (Start: 55 @57949 has 14 MA's), (60, 57934), (64, 57901), (77, 57808), (84, 57775), (91, 57751), (99, 57718), (100, 57715), (101, 57712), (105, 57697), (107, 57685), (114, 57658), (123, 57571), (127, 57559), (133, 57526), (137, 57499), (138, 57493), (140, 57475), (144, 57433), (147, 57418), (150, 57382), (155, 57370), (164, 57292), (166, 57286), (172, 57259), (178, 57238), (190, 57163), (202, 57088), (206, 57067), (208, 57064), (245, 56896), (246, 56893),

Gene: Cranjis_59 Start: 37490, Stop: 38485, Start Num: 56

Candidate Starts for Cranjis_59:

(Start: 56 @37490 has 35 MA's), (75, 37610), (77, 37619), (80, 37631), (88, 37664), (91, 37670), (95, 37688), (119, 37799), (137, 37880), (147, 37958), (148, 37970), (169, 38093), (175, 38123), (203, 38294), (210, 38315), (214, 38345), (218, 38378), (231, 38426),

Gene: CrazyRich_57 Start: 37299, Stop: 38294, Start Num: 56

Candidate Starts for CrazyRich_57:

(Start: 56 @37299 has 35 MA's), (75, 37419), (77, 37428), (80, 37440), (88, 37473), (91, 37479), (95, 37497), (119, 37608), (137, 37689), (147, 37767), (148, 37779), (169, 37902), (175, 37932), (203, 38103), (210, 38124), (214, 38154), (218, 38187), (231, 38235),

Gene: Crisis_59 Start: 37290, Stop: 38285, Start Num: 56

Candidate Starts for Crisis_59:

(Start: 56 @37290 has 35 MA's), (75, 37410), (77, 37419), (80, 37431), (88, 37464), (91, 37470), (95, 37488), (119, 37599), (137, 37680), (147, 37758), (148, 37770), (169, 37893), (175, 37923), (203, 38094), (210, 38115), (214, 38145), (218, 38178), (231, 38226),

Gene: Cuke_50 Start: 34724, Stop: 35866, Start Num: 24

Candidate Starts for Cuke_50:

(Start: 24 @34724 has 12 MA's), (52, 34790), (Start: 61 @34826 has 12 MA's), (63, 34832), (66, 34874), (73, 34925), (90, 34988), (113, 35075), (122, 35126), (129, 35147), (133, 35180), (137, 35207), (138, 35213), (139, 35219), (141, 35252), (142, 35261), (153, 35330), (158, 35357), (165, 35420), (182, 35498), (193, 35561), (194, 35567), (201, 35636), (207, 35663), (209, 35666), (211, 35675), (214, 35696), (225, 35753), (228, 35765), (230, 35774), (243, 35816), (249, 35849),

Gene: Damien_54 Start: 42670, Stop: 43899, Start Num: 17

Candidate Starts for Damien_54:

(Start: 17 @42670 has 2 MA's), (Start: 22 @42688 has 6 MA's), (45, 42733), (48, 42742), (69, 42868), (71, 42877), (89, 42952), (118, 43081), (125, 43135), (128, 43144), (137, 43210), (138, 43216), (140, 43234), (143, 43273), (151, 43327), (162, 43402), (164, 43417), (169, 43432), (172, 43450), (180, 43483), (195, 43579), (232, 43798), (233, 43801), (236, 43810), (251, 43864),

Gene: Diminimus_146 Start: 74499, Stop: 73330, Start Num: 29

Candidate Starts for Diminimus_146:

(10, 74580), (12, 74568), (Start: 29 @74499 has 5 MA's), (39, 74478), (Start: 61 @74403 has 12 MA's), (75, 74298), (78, 74289), (85, 74253), (98, 74199), (108, 74166), (115, 74136), (124, 74052), (140, 73956), (147, 73899), (153, 73857), (156, 73839), (163, 73776), (165, 73767), (168, 73755), (169, 73752), (180, 73701), (189, 73641), (204, 73542), (207, 73533), (215, 73497), (221, 73458), (226, 73431), (245, 73362), (247, 73353),

Gene: DrLupo_57 Start: 40796, Stop: 42391, Start Num: 1

Candidate Starts for DrLupo_57:

(Start: 1 @40796 has 1 MA's), (3, 40838), (7, 40904), (11, 40943), (13, 40955), (Start: 27 @41015 has 1 MA's), (30, 41021), (33, 41024), (42, 41045), (47, 41060), (74, 41219), (79, 41246), (81, 41252), (83, 41261), (84, 41270), (93, 41309), (96, 41327), (116, 41429), (118, 41438), (132, 41543), (137, 41573), (157, 41717), (159, 41729), (171, 41804), (173, 41813), (192, 41915), (194, 41924), (203, 42038), (220, 42140), (222, 42152), (223, 42161), (227, 42176), (251, 42266), (257, 42314), (258, 42320), (259, 42326),

Gene: Dulcita_146 Start: 74500, Stop: 73331, Start Num: 29

Candidate Starts for Dulcita_146:

(10, 74581), (12, 74569), (Start: 29 @74500 has 5 MA's), (39, 74479), (Start: 61 @74404 has 12 MA's), (75, 74299), (78, 74290), (85, 74254), (98, 74200), (108, 74167), (115, 74137), (124, 74053), (140, 73957), (147, 73900), (153, 73858), (156, 73840), (163, 73777), (165, 73768), (168, 73756), (169, 73753), (180, 73702), (189, 73642), (204, 73543), (207, 73534), (215, 73498), (221, 73459), (226, 73432), (245, 73363), (247, 73354),

Gene: EarickHC_59 Start: 37213, Stop: 38208, Start Num: 56

Candidate Starts for EarickHC_59:

(Start: 56 @37213 has 35 MA's), (75, 37333), (77, 37342), (80, 37354), (88, 37387), (91, 37393), (95, 37411), (119, 37522), (137, 37603), (147, 37681), (148, 37693), (169, 37816), (175, 37846), (203, 38017), (210, 38038), (214, 38068), (218, 38101), (231, 38149),

Gene: Estes_161 Start: 77859, Stop: 76786, Start Num: 61

Candidate Starts for Estes_161:

(38, 77931), (49, 77904), (Start: 61 @77859 has 12 MA's), (67, 77784), (78, 77745), (84, 77715), (98, 77655), (115, 77592), (117, 77568), (124, 77508), (140, 77412), (144, 77370), (156, 77295), (163, 77232), (165, 77223), (167, 77214), (170, 77199), (180, 77157), (184, 77136), (186, 77121), (189, 77097), (190, 77094), (207, 76989), (214, 76956), (217, 76944), (221, 76914), (226, 76887), (245, 76818), (247, 76809), (249, 76800),

Gene: FeliMaine_96 Start: 57997, Stop: 56927, Start Num: 55

Candidate Starts for FeliMaine_96:

(Start: 36 @58051 has 1 MA's), (40, 58042), (Start: 55 @57997 has 14 MA's), (60, 57982), (64, 57949), (77, 57856), (84, 57823), (91, 57799), (99, 57766), (100, 57763), (101, 57760), (105, 57745), (107, 57733), (114, 57706), (123, 57619), (127, 57607), (133, 57574), (137, 57547), (138, 57541), (140, 57523), (144, 57481), (147, 57466), (150, 57430), (155, 57418), (164, 57340), (166, 57334), (172, 57307), (178, 57286), (190, 57211), (202, 57136), (206, 57115), (208, 57112), (245, 56944), (246, 56941),

Gene: Fireman_61 Start: 39216, Stop: 40211, Start Num: 56

Candidate Starts for Fireman_61:

(Start: 56 @39216 has 35 MA's), (75, 39336), (77, 39345), (80, 39357), (88, 39390), (91, 39396), (95, 39414), (111, 39471), (119, 39525), (137, 39606), (141, 39648), (147, 39684), (148, 39696), (155, 39732), (169, 39819), (186, 39909), (203, 40020), (210, 40041), (217, 40083), (218, 40104), (231, 40152),

Gene: Fowlmouth_54 Start: 38133, Stop: 39266, Start Num: 24

Candidate Starts for Fowlmouth_54:

(Start: 24 @38133 has 12 MA's), (44, 38172), (52, 38199), (63, 38241), (66, 38283), (70, 38319), (73, 38334), (90, 38397), (113, 38475), (122, 38526), (129, 38547), (135, 38595), (138, 38613), (139, 38619), (141, 38652), (142, 38661), (155, 38736), (158, 38757), (159, 38763), (165, 38820), (181, 38889), (182, 38898), (186, 38922), (193, 38961), (194, 38967), (197, 39006), (201, 39036), (207, 39063), (209, 39066), (211, 39075), (213, 39090), (225, 39153), (228, 39165), (230, 39174), (243, 39216), (249, 39249),

Gene: Fryberger_80 Start: 42863, Stop: 41793, Start Num: 58

Candidate Starts for Fryberger_80:

(43, 42908), (51, 42878), (Start: 58 @42863 has 17 MA's), (Start: 62 @42839 has 1 MA's), (64, 42815), (72, 42743), (75, 42731), (84, 42692), (91, 42668), (104, 42617), (122, 42494), (139, 42401), (142, 42359), (144, 42347), (147, 42332), (155, 42284), (174, 42167), (186, 42110), (190, 42083), (200, 42023), (228, 41873), (233, 41849), (237, 41834), (241, 41825), (244, 41819),

Gene: Ganandorf_57 Start: 37323, Stop: 38318, Start Num: 56

Candidate Starts for Ganandorf_57:

(Start: 56 @37323 has 35 MA's), (75, 37443), (77, 37452), (80, 37464), (88, 37497), (91, 37503), (95, 37521), (119, 37632), (137, 37713), (147, 37791), (148, 37803), (169, 37926), (175, 37956), (203, 38127), (210, 38148), (214, 38178), (218, 38211), (231, 38259),

Gene: GardenSalsa_164 Start: 78536, Stop: 77463, Start Num: 61

Candidate Starts for GardenSalsa_164:

(Start: 61 @78536 has 12 MA's), (78, 78422), (84, 78392), (98, 78332), (115, 78269), (117, 78245), (124, 78185), (140, 78089), (144, 78047), (156, 77972), (163, 77909), (165, 77900), (167, 77891), (170, 77876), (180, 77834), (184, 77813), (186, 77798), (189, 77774), (190, 77771), (207, 77666), (214, 77633), (217, 77621), (221, 77591), (226, 77564), (245, 77495), (247, 77486), (249, 77477),

Gene: Gattaca_99 Start: 57986, Stop: 56916, Start Num: 55

Candidate Starts for Gattaca_99:

(26, 58058), (Start: 28 @58055 has 1 MA's), (31, 58049), (Start: 55 @57986 has 14 MA's), (60, 57971), (64, 57938), (77, 57845), (84, 57812), (91, 57788), (99, 57755), (100, 57752), (101, 57749), (105, 57734), (107, 57722), (114, 57695), (123, 57608), (127, 57596), (133, 57563), (137, 57536), (138, 57530), (140, 57512), (144, 57470), (147, 57455), (150, 57419), (155, 57407), (164, 57329), (166, 57323), (172, 57296), (178, 57275), (190, 57200), (202, 57125), (206, 57104), (208, 57101), (245, 56933), (246, 56930),

Gene: Gibbles_116 Start: 78724, Stop: 77663, Start Num: 58

Candidate Starts for Gibbles_116:

(Start: 58 @78724 has 17 MA's), (Start: 62 @78700 has 1 MA's), (81, 78571), (84, 78553), (112, 78448), (119, 78388), (141, 78238), (160, 78118), (173, 78040), (174, 78034), (183, 77992), (188, 77959), (194, 77929), (203, 77866), (207, 77848), (235, 77707), (240, 77695), (244, 77686),

Gene: Gina_61 Start: 37315, Stop: 38310, Start Num: 58

Candidate Starts for Gina_61:

(Start: 58 @37315 has 17 MA's), (60, 37330), (75, 37435), (77, 37444), (80, 37456), (95, 37513), (111, 37570), (119, 37624), (141, 37747), (147, 37783), (148, 37795), (169, 37918), (175, 37948), (186, 38008), (203, 38119), (210, 38140), (217, 38182), (218, 38203),

Gene: Glaske16_148 Start: 75618, Stop: 74449, Start Num: 29

Candidate Starts for Glaske16_148:

(10, 75699), (12, 75687), (Start: 29 @75618 has 5 MA's), (39, 75597), (Start: 61 @75522 has 12 MA's), (75, 75417), (78, 75408), (85, 75372), (98, 75318), (108, 75285), (115, 75255), (124, 75171), (140, 75075), (147, 75018), (153, 74976), (156, 74958), (163, 74895), (165, 74886), (168, 74874), (169, 74871), (180, 74820), (189, 74760), (204, 74661), (207, 74652), (215, 74616), (221, 74577), (226, 74550), (245, 74481), (247, 74472),

Gene: Guey18_85 Start: 44196, Stop: 43126, Start Num: 58

Candidate Starts for Guey18_85:

(43, 44241), (51, 44211), (Start: 58 @44196 has 17 MA's), (Start: 62 @44172 has 1 MA's), (64, 44148), (72, 44076), (75, 44064), (84, 44025), (91, 44001), (104, 43950), (122, 43827), (139, 43734), (142, 43692), (144, 43680), (155, 43617), (174, 43500), (184, 43458), (197, 43371), (200, 43356), (228, 43206), (233, 43182), (237, 43167), (241, 43158), (244, 43152),

Gene: Hermeonysus_57 Start: 37219, Stop: 38214, Start Num: 56

Candidate Starts for Hermeonysus_57:

(Start: 56 @37219 has 35 MA's), (75, 37339), (77, 37348), (80, 37360), (88, 37393), (91, 37399), (95, 37417), (119, 37528), (137, 37609), (147, 37687), (148, 37699), (169, 37822), (175, 37852), (203, 38023), (210, 38044), (214, 38074), (218, 38107), (231, 38155),

Gene: Honeyfin_59 Start: 37511, Stop: 38506, Start Num: 56

Candidate Starts for Honeyfin_59:

(Start: 56 @37511 has 35 MA's), (75, 37631), (77, 37640), (80, 37652), (88, 37685), (91, 37691), (95, 37709), (111, 37766), (119, 37820), (137, 37901), (141, 37943), (147, 37979), (148, 37991), (169, 38114), (175, 38144), (203, 38315), (210, 38336), (214, 38366), (218, 38399), (231, 38447),

Gene: Huphlepuuff_102 Start: 57560, Stop: 56490, Start Num: 55

Candidate Starts for Huphlepuuff_102:

(Start: 36 @57614 has 1 MA's), (40, 57605), (Start: 55 @57560 has 14 MA's), (60, 57545), (64, 57512), (77, 57419), (84, 57386), (91, 57362), (99, 57329), (100, 57326), (101, 57323), (105, 57308), (107, 57296), (114, 57269), (123, 57182), (127, 57170), (133, 57137), (137, 57110), (138, 57104), (140, 57086), (144, 57044), (147, 57029), (150, 56993), (155, 56981), (164, 56903), (166, 56897), (172, 56870), (178, 56849), (190, 56774), (202, 56699), (206, 56678), (208, 56675), (245, 56507), (246, 56504),

Gene: IPhane7_146 Start: 75346, Stop: 74273, Start Num: 61

Candidate Starts for IPhane7_146:

(10, 75523), (12, 75511), (Start: 29 @75442 has 5 MA's), (39, 75421), (Start: 61 @75346 has 12 MA's), (75, 75241), (78, 75232), (85, 75196), (98, 75142), (108, 75109), (115, 75079), (124, 74995), (140, 74899), (153, 74800), (156, 74782), (163, 74719), (165, 74710), (168, 74698), (169, 74695), (180, 74644), (189, 74584), (204, 74485), (207, 74476), (215, 74440), (221, 74401), (245, 74305), (247, 74296),

Gene: Indlulamithi_50 Start: 39104, Stop: 40291, Start Num: 23

Candidate Starts for Indlulamithi_50:

(9, 39026), (19, 39098), (Start: 23 @39104 has 1 MA's), (34, 39119), (37, 39128), (63, 39212), (66, 39254), (90, 39371), (110, 39443), (122, 39503), (123, 39509), (127, 39521), (138, 39590), (140, 39608), (141, 39629), (144, 39650), (154, 39710), (170, 39821), (173, 39833), (180, 39863), (186, 39899), (189, 39923), (201, 40010), (225, 40130), (239, 40184), (242, 40190), (252, 40241), (254, 40244), (255, 40262), (256, 40277),

Gene: Jayden_60 Start: 37996, Stop: 38991, Start Num: 58

Candidate Starts for Jayden_60:

(Start: 58 @37996 has 17 MA's), (75, 38116), (77, 38125), (80, 38137), (88, 38170), (91, 38176), (95, 38194), (111, 38251), (119, 38305), (147, 38464), (148, 38476), (169, 38599), (175, 38629), (201, 38791), (203, 38800), (210, 38821), (217, 38863), (218, 38884),

Gene: Jefe_58 Start: 37277, Stop: 38272, Start Num: 56

Candidate Starts for Jefe_58:

(Start: 56 @37277 has 35 MA's), (75, 37397), (77, 37406), (80, 37418), (88, 37451), (91, 37457), (95, 37475), (119, 37586), (137, 37667), (147, 37745), (148, 37757), (169, 37880), (175, 37910), (203, 38081), (210, 38102), (214, 38132), (218, 38165), (231, 38213),

Gene: Jflix2_48 Start: 34302, Stop: 33235, Start Num: 58

Candidate Starts for Jflix2_48:

(Start: 53 @34311 has 1 MA's), (Start: 58 @34302 has 17 MA's), (64, 34254), (85, 34125), (116, 33999), (138, 33858), (157, 33720), (196, 33495), (203, 33435), (218, 33351), (240, 33267), (245, 33246),

Gene: JoieB_101 Start: 58161, Stop: 57091, Start Num: 55

Candidate Starts for JoieB_101:

(26, 58233), (Start: 28 @58230 has 1 MA's), (31, 58224), (Start: 55 @58161 has 14 MA's), (60, 58146), (64, 58113), (77, 58020), (84, 57987), (91, 57963), (99, 57930), (100, 57927), (101, 57924), (105, 57909), (107, 57897), (114, 57870), (123, 57783), (127, 57771), (133, 57738), (137, 57711), (138, 57705), (140, 57687), (144, 57645), (147, 57630), (150, 57594), (155, 57582), (164, 57504), (166, 57498), (172, 57471), (178, 57450), (190, 57375), (202, 57300), (206, 57279), (208, 57276), (245, 57108), (246, 57105),

Gene: Jollipop_59 Start: 37692, Stop: 38687, Start Num: 56

Candidate Starts for Jollipop_59:

(Start: 56 @37692 has 35 MA's), (75, 37812), (77, 37821), (80, 37833), (88, 37866), (91, 37872), (95, 37890), (119, 38001), (137, 38082), (141, 38124), (147, 38160), (148, 38172), (169, 38295), (175, 38325), (203, 38496), (210, 38517), (214, 38547), (218, 38580), (231, 38628),

Gene: KaiHaiDragon_59 Start: 37213, Stop: 38208, Start Num: 56

Candidate Starts for KaiHaiDragon_59:

(Start: 56 @37213 has 35 MA's), (75, 37333), (77, 37342), (80, 37354), (88, 37387), (91, 37393), (95, 37411), (119, 37522), (137, 37603), (147, 37681), (148, 37693), (169, 37816), (175, 37846), (203, 38017), (210, 38038), (214, 38068), (218, 38101), (231, 38149),

Gene: Kampe_114 Start: 77930, Stop: 76869, Start Num: 58

Candidate Starts for Kampe_114:

(Start: 58 @77930 has 17 MA's), (Start: 62 @77906 has 1 MA's), (81, 77777), (84, 77759), (112, 77654), (119, 77594), (141, 77444), (160, 77324), (173, 77246), (174, 77240), (183, 77198), (188, 77165), (194, 77135), (203, 77072), (207, 77054), (235, 76913), (240, 76901), (244, 76892),

Gene: Keelan_81 Start: 43600, Stop: 42530, Start Num: 58

Candidate Starts for Keelan_81:

(25, 43678), (32, 43666), (Start: 58 @43600 has 17 MA's), (Start: 62 @43576 has 1 MA's), (64, 43552), (78, 43459), (81, 43447), (84, 43429), (92, 43399), (104, 43354), (122, 43231), (127, 43213), (139, 43138), (144, 43084), (147, 43069), (155, 43021), (174, 42907), (177, 42901), (178, 42898), (185, 42856), (186, 42850), (187, 42841), (193, 42811), (213, 42694), (228, 42613), (233, 42589), (241, 42565), (245, 42547), (246, 42544),

Gene: Konstantine_57 Start: 43519, Stop: 44730, Start Num: 22

Candidate Starts for Konstantine_57:

(Start: 17 @43501 has 2 MA's), (Start: 22 @43519 has 6 MA's), (45, 43564), (48, 43573), (89, 43783), (118, 43912), (120, 43933), (125, 43966), (128, 43975), (137, 44041), (138, 44047), (140, 44065), (143, 44104), (157, 44185), (162, 44233), (169, 44263), (180, 44314), (195, 44410), (227, 44605), (232, 44629), (233, 44632), (236, 44641), (251, 44695),

Gene: Kowalski_57 Start: 37326, Stop: 38321, Start Num: 56

Candidate Starts for Kowalski_57:

(Start: 56 @37326 has 35 MA's), (75, 37446), (77, 37455), (80, 37467), (88, 37500), (91, 37506), (95, 37524), (119, 37635), (137, 37716), (147, 37794), (148, 37806), (169, 37929), (175, 37959), (203, 38130), (210, 38151), (214, 38181), (218, 38214), (231, 38262),

Gene: Labelle_60 Start: 43530, Stop: 44834, Start Num: 46

Candidate Starts for Labelle_60:

(Start: 17 @43458 has 2 MA's), (Start: 46 @43530 has 3 MA's), (71, 43674), (86, 43731), (119, 43878), (124, 43911), (131, 43947), (134, 43965), (138, 43995), (143, 44052), (146, 44061), (148, 44082), (149, 44097), (155, 44118), (157, 44133), (174, 44238), (180, 44262), (184, 44283), (191, 44331), (192, 44334), (194, 44343), (212, 44466), (224, 44541), (229, 44559), (232, 44577), (233, 44580), (251, 44649), (260, 44709),

Gene: Lilbit_98 Start: 58120, Stop: 57050, Start Num: 55

Candidate Starts for Lilbit_98:

(Start: 36 @58174 has 1 MA's), (40, 58165), (Start: 55 @58120 has 14 MA's), (60, 58105), (64, 58072), (77, 57979), (84, 57946), (91, 57922), (99, 57889), (100, 57886), (101, 57883), (105, 57868), (107, 57856), (114, 57829), (123, 57742), (127, 57730), (133, 57697), (137, 57670), (138, 57664), (140, 57646), (144, 57604), (147, 57589), (150, 57553), (155, 57541), (164, 57463), (166, 57457), (172, 57430), (178, 57409), (190, 57334), (202, 57259), (206, 57238), (208, 57235), (245, 57067),

(246, 57064),

Gene: LilhomieP_145 Start: 75433, Stop: 74360, Start Num: 61

Candidate Starts for LilhomieP_145:

(10, 75610), (12, 75598), (Start: 29 @75529 has 5 MA's), (39, 75508), (Start: 61 @75433 has 12 MA's), (75, 75328), (78, 75319), (85, 75283), (98, 75229), (108, 75196), (115, 75166), (124, 75082), (140, 74986), (147, 74929), (153, 74887), (156, 74869), (163, 74806), (165, 74797), (168, 74785), (169, 74782), (180, 74731), (189, 74671), (204, 74572), (207, 74563), (215, 74527), (221, 74488), (245, 74392), (247, 74383),

Gene: LittleFortune_60 Start: 37582, Stop: 38577, Start Num: 56

Candidate Starts for LittleFortune_60:

(Start: 56 @37582 has 35 MA's), (75, 37702), (77, 37711), (80, 37723), (88, 37756), (91, 37762), (95, 37780), (119, 37891), (137, 37972), (147, 38050), (148, 38062), (169, 38185), (175, 38215), (203, 38386), (210, 38407), (214, 38437), (218, 38470), (231, 38518),

Gene: LittleLaf_98 Start: 57849, Stop: 56779, Start Num: 55

Candidate Starts for LittleLaf_98:

(Start: 36 @57903 has 1 MA's), (40, 57894), (Start: 55 @57849 has 14 MA's), (60, 57834), (64, 57801), (77, 57708), (84, 57675), (91, 57651), (99, 57618), (100, 57615), (101, 57612), (105, 57597), (107, 57585), (114, 57558), (123, 57471), (127, 57459), (133, 57426), (137, 57399), (138, 57393), (140, 57375), (144, 57333), (147, 57318), (150, 57282), (155, 57270), (164, 57192), (166, 57186), (172, 57159), (178, 57138), (190, 57063), (202, 56988), (206, 56967), (208, 56964), (245, 56796), (246, 56793),

Gene: Madraxi_52 Start: 37049, Stop: 35973, Start Num: 53

Candidate Starts for Madraxi_52:

(Start: 53 @37049 has 1 MA's), (Start: 58 @37040 has 17 MA's), (64, 36992), (85, 36863), (116, 36737), (138, 36596), (157, 36458), (196, 36233), (203, 36173), (218, 36089), (240, 36005), (245, 35984),

Gene: Madruga_59 Start: 43183, Stop: 44487, Start Num: 46

Candidate Starts for Madruga_59:

(Start: 17 @43111 has 2 MA's), (Start: 46 @43183 has 3 MA's), (71, 43327), (86, 43384), (119, 43531), (124, 43564), (131, 43600), (134, 43618), (138, 43648), (143, 43705), (146, 43714), (148, 43735), (149, 43750), (155, 43771), (157, 43786), (174, 43891), (180, 43915), (184, 43936), (191, 43984), (192, 43987), (194, 43996), (212, 44119), (224, 44194), (229, 44212), (232, 44230), (233, 44233), (251, 44302), (260, 44362),

Gene: Marvin_94 Start: 57642, Stop: 56572, Start Num: 55

Candidate Starts for Marvin_94:

(Start: 36 @57696 has 1 MA's), (40, 57687), (Start: 55 @57642 has 14 MA's), (60, 57627), (64, 57594), (77, 57501), (84, 57468), (91, 57444), (99, 57411), (100, 57408), (101, 57405), (105, 57390), (107, 57378), (114, 57351), (123, 57264), (127, 57252), (133, 57219), (137, 57192), (138, 57186), (140, 57168), (144, 57126), (147, 57111), (150, 57075), (155, 57063), (164, 56985), (166, 56979), (172, 56952), (178, 56931), (190, 56856), (202, 56781), (206, 56760), (208, 56757), (245, 56589), (246, 56586),

Gene: Megatron06_55 Start: 43265, Stop: 44476, Start Num: 22

Candidate Starts for Megatron06_55:

(Start: 17 @43247 has 2 MA's), (Start: 22 @43265 has 6 MA's), (45, 43310), (48, 43319), (89, 43529), (118, 43658), (120, 43679), (125, 43712), (128, 43721), (137, 43787), (138, 43793), (140, 43811), (143, 43850), (151, 43904), (162, 43979), (164, 43994), (169, 44009), (172, 44027), (180, 44060),

(195, 44156), (232, 44375), (233, 44378), (236, 44387), (251, 44441),

Gene: Merry_59 Start: 39138, Stop: 40133, Start Num: 58

Candidate Starts for Merry_59:

(2, 38865), (6, 38931), (8, 38970), (Start: 58 @39138 has 17 MA's), (77, 39267), (80, 39279), (85, 39303), (88, 39312), (91, 39318), (106, 39378), (111, 39393), (119, 39447), (126, 39480), (137, 39528), (141, 39570), (147, 39606), (148, 39618), (155, 39654), (162, 39711), (169, 39741), (170, 39750), (176, 39774), (203, 39942), (214, 39993), (217, 40005), (231, 40074),

Gene: Metamorphoo_61 Start: 38510, Stop: 39505, Start Num: 56

Candidate Starts for Metamorphoo_61:

(Start: 56 @38510 has 35 MA's), (75, 38630), (77, 38639), (80, 38651), (88, 38684), (91, 38690), (95, 38708), (111, 38765), (119, 38819), (141, 38942), (147, 38978), (148, 38990), (169, 39113), (186, 39203), (203, 39314), (210, 39335), (217, 39377), (218, 39398), (231, 39446),

Gene: MontyDev_62 Start: 44363, Stop: 45559, Start Num: 24

Candidate Starts for MontyDev_62:

(Start: 24 @44363 has 12 MA's), (34, 44378), (59, 44444), (60, 44453), (68, 44534), (73, 44555), (76, 44570), (82, 44597), (94, 44657), (98, 44678), (106, 44711), (122, 44822), (123, 44828), (127, 44840), (134, 44879), (138, 44909), (141, 44948), (153, 45026), (155, 45032), (157, 45047), (181, 45185), (186, 45218), (189, 45242), (203, 45335), (207, 45353), (214, 45386), (231, 45470), (235, 45491), (241, 45506), (245, 45524), (246, 45527), (247, 45533), (249, 45542), (250, 45545),

Gene: MosMoris_96 Start: 57992, Stop: 56922, Start Num: 55

Candidate Starts for MosMoris_96:

(26, 58064), (Start: 28 @58061 has 1 MA's), (31, 58055), (Start: 55 @57992 has 14 MA's), (60, 57977), (64, 57944), (77, 57851), (84, 57818), (91, 57794), (99, 57761), (100, 57758), (101, 57755), (105, 57740), (107, 57728), (114, 57701), (123, 57614), (127, 57602), (133, 57569), (137, 57542), (138, 57536), (140, 57518), (144, 57476), (147, 57461), (150, 57425), (155, 57413), (164, 57335), (166, 57329), (172, 57302), (178, 57281), (190, 57206), (202, 57131), (206, 57110), (208, 57107), (245, 56939), (246, 56936),

Gene: MrMagoo_166 Start: 78537, Stop: 77464, Start Num: 61

Candidate Starts for MrMagoo_166:

(38, 78609), (49, 78582), (Start: 61 @78537 has 12 MA's), (78, 78423), (84, 78393), (98, 78333), (115, 78270), (117, 78246), (124, 78186), (140, 78090), (144, 78048), (156, 77973), (163, 77910), (165, 77901), (167, 77892), (170, 77877), (180, 77835), (184, 77814), (186, 77799), (189, 77775), (190, 77772), (207, 77667), (214, 77634), (217, 77622), (221, 77592), (226, 77565), (245, 77496), (247, 77487), (249, 77478),

Gene: MrMiyagi_53 Start: 38517, Stop: 39650, Start Num: 24

Candidate Starts for MrMiyagi_53:

(Start: 24 @38517 has 12 MA's), (44, 38556), (52, 38583), (63, 38625), (66, 38667), (70, 38703), (73, 38718), (90, 38781), (113, 38859), (122, 38910), (129, 38931), (135, 38979), (138, 38997), (139, 39003), (141, 39036), (142, 39045), (155, 39120), (158, 39141), (159, 39147), (165, 39204), (181, 39273), (182, 39282), (186, 39306), (193, 39345), (194, 39351), (197, 39390), (201, 39420), (207, 39447), (209, 39450), (211, 39459), (213, 39474), (225, 39537), (228, 39549), (230, 39558), (243, 39600), (249, 39633), (250, 39636),

Gene: Nanosmite_163 Start: 77987, Stop: 76914, Start Num: 61

Candidate Starts for Nanosmite_163:

(14, 78134), (16, 78119), (Start: 61 @77987 has 12 MA's), (85, 77837), (98, 77783), (109, 77747), (115, 77720), (124, 77636), (137, 77564), (140, 77540), (156, 77423), (163, 77360), (170, 77327),

(180, 77285), (183, 77267), (187, 77240), (207, 77117), (214, 77084), (215, 77081), (217, 77072), (219, 77048), (245, 76946), (247, 76937),

Gene: Nilo_63 Start: 44715, Stop: 45911, Start Num: 24

Candidate Starts for Nilo_63:

(Start: 24 @44715 has 12 MA's), (34, 44730), (59, 44796), (60, 44805), (68, 44886), (73, 44907), (76, 44922), (82, 44949), (94, 45009), (98, 45030), (106, 45063), (122, 45174), (123, 45180), (127, 45192), (134, 45231), (138, 45261), (141, 45300), (153, 45378), (155, 45384), (157, 45399), (181, 45537), (186, 45570), (189, 45594), (203, 45687), (207, 45705), (214, 45738), (231, 45822), (235, 45843), (241, 45858), (245, 45876), (246, 45879), (247, 45885), (249, 45894), (250, 45897),

Gene: NoodlelyBoi_59 Start: 38103, Stop: 39098, Start Num: 56

Candidate Starts for NoodlelyBoi_59:

(Start: 56 @38103 has 35 MA's), (75, 38223), (77, 38232), (80, 38244), (88, 38277), (91, 38283), (95, 38301), (119, 38412), (137, 38493), (141, 38535), (147, 38571), (148, 38583), (169, 38706), (175, 38736), (203, 38907), (210, 38928), (217, 38970), (218, 38991), (231, 39039),

Gene: Oaker_53 Start: 42980, Stop: 44191, Start Num: 22

Candidate Starts for Oaker_53:

(Start: 17 @42962 has 2 MA's), (Start: 22 @42980 has 6 MA's), (45, 43025), (48, 43034), (89, 43244), (118, 43373), (120, 43394), (125, 43427), (128, 43436), (137, 43502), (138, 43508), (140, 43526), (143, 43565), (157, 43646), (162, 43694), (169, 43724), (180, 43775), (195, 43871), (232, 44090), (233, 44093), (236, 44102), (251, 44156),

Gene: Onika_57 Start: 37301, Stop: 38296, Start Num: 56

Candidate Starts for Onika_57:

(Start: 56 @37301 has 35 MA's), (75, 37421), (77, 37430), (80, 37442), (88, 37475), (91, 37481), (95, 37499), (119, 37610), (137, 37691), (147, 37769), (148, 37781), (169, 37904), (175, 37934), (203, 38105), (210, 38126), (214, 38156), (218, 38189), (231, 38237),

Gene: Orchid_113 Start: 77931, Stop: 76870, Start Num: 58

Candidate Starts for Orchid_113:

(Start: 58 @77931 has 17 MA's), (Start: 62 @77907 has 1 MA's), (81, 77778), (84, 77760), (112, 77655), (119, 77595), (141, 77445), (160, 77325), (173, 77247), (174, 77241), (183, 77199), (188, 77166), (194, 77136), (203, 77073), (207, 77055), (235, 76914), (240, 76902), (244, 76893),

Gene: Papyrus_61 Start: 44571, Stop: 45767, Start Num: 24

Candidate Starts for Papyrus_61:

(Start: 24 @44571 has 12 MA's), (34, 44586), (59, 44652), (60, 44661), (68, 44742), (73, 44763), (76, 44778), (82, 44805), (94, 44865), (98, 44886), (106, 44919), (122, 45030), (123, 45036), (127, 45048), (134, 45087), (138, 45117), (141, 45156), (153, 45234), (155, 45240), (157, 45255), (181, 45393), (186, 45426), (189, 45450), (203, 45543), (207, 45561), (214, 45594), (231, 45678), (235, 45699), (241, 45714), (245, 45732), (246, 45735), (247, 45741), (249, 45750), (250, 45753),

Gene: Paschalis_58 Start: 37308, Stop: 38303, Start Num: 56

Candidate Starts for Paschalis_58:

(Start: 56 @37308 has 35 MA's), (75, 37428), (77, 37437), (80, 37449), (88, 37482), (91, 37488), (95, 37506), (119, 37617), (137, 37698), (141, 37740), (147, 37776), (148, 37788), (169, 37911), (175, 37941), (203, 38112), (210, 38133), (214, 38163), (218, 38196), (231, 38244),

Gene: Patience_61 Start: 44078, Stop: 45382, Start Num: 46

Candidate Starts for Patience_61:

(Start: 17 @44006 has 2 MA's), (Start: 46 @44078 has 3 MA's), (71, 44222), (86, 44279), (119, 44426), (124, 44459), (131, 44495), (134, 44513), (138, 44543), (143, 44600), (146, 44609), (148, 44630), (149, 44645), (155, 44666), (157, 44681), (174, 44786), (180, 44810), (184, 44831), (191, 44879), (192, 44882), (194, 44891), (212, 45014), (224, 45089), (229, 45107), (232, 45125), (233, 45128), (251, 45197), (260, 45257),

Gene: PatrickStar_114 Start: 78010, Stop: 76949, Start Num: 58

Candidate Starts for PatrickStar_114:

(Start: 58 @78010 has 17 MA's), (Start: 62 @77986 has 1 MA's), (81, 77857), (84, 77839), (112, 77734), (119, 77674), (141, 77524), (160, 77404), (173, 77326), (174, 77320), (183, 77278), (188, 77245), (194, 77215), (203, 77152), (207, 77134), (235, 76993), (240, 76981), (244, 76972),

Gene: PegLeg_149 Start: 75413, Stop: 74244, Start Num: 29

Candidate Starts for PegLeg_149:

(10, 75494), (12, 75482), (Start: 29 @75413 has 5 MA's), (39, 75392), (Start: 61 @75317 has 12 MA's), (75, 75212), (78, 75203), (85, 75167), (98, 75113), (108, 75080), (115, 75050), (124, 74966), (140, 74870), (147, 74813), (153, 74771), (156, 74753), (163, 74690), (165, 74681), (168, 74669), (169, 74666), (180, 74615), (189, 74555), (204, 74456), (207, 74447), (215, 74411), (221, 74372), (245, 74276), (247, 74267),

Gene: Phorgeous_58 Start: 37142, Stop: 38137, Start Num: 56

Candidate Starts for Phorgeous_58:

(Start: 56 @37142 has 35 MA's), (75, 37262), (77, 37271), (80, 37283), (88, 37316), (91, 37322), (95, 37340), (119, 37451), (137, 37532), (147, 37610), (148, 37622), (169, 37745), (175, 37775), (203, 37946), (210, 37967), (214, 37997), (218, 38030), (231, 38078),

Gene: Phrancesco_58 Start: 37431, Stop: 38426, Start Num: 56

Candidate Starts for Phrancesco_58:

(Start: 56 @37431 has 35 MA's), (75, 37551), (77, 37560), (80, 37572), (88, 37605), (91, 37611), (95, 37629), (119, 37740), (137, 37821), (147, 37899), (148, 37911), (169, 38034), (175, 38064), (178, 38076), (203, 38235), (210, 38256), (214, 38286), (218, 38319), (231, 38367),

Gene: Phreeze_52 Start: 42285, Stop: 43496, Start Num: 22

Candidate Starts for Phreeze_52:

(Start: 17 @42267 has 2 MA's), (Start: 22 @42285 has 6 MA's), (35, 42309), (45, 42330), (48, 42339), (69, 42465), (71, 42474), (89, 42549), (118, 42678), (125, 42732), (128, 42741), (137, 42807), (138, 42813), (140, 42831), (143, 42870), (151, 42924), (162, 42999), (164, 43014), (169, 43029), (172, 43047), (180, 43080), (195, 43176), (232, 43395), (233, 43398), (236, 43407), (251, 43461),

Gene: PierreOrion_58 Start: 37551, Stop: 38546, Start Num: 56

Candidate Starts for PierreOrion_58:

(Start: 56 @37551 has 35 MA's), (75, 37671), (77, 37680), (80, 37692), (85, 37716), (88, 37725), (91, 37731), (95, 37749), (111, 37806), (119, 37860), (137, 37941), (141, 37983), (147, 38019), (148, 38031), (169, 38154), (175, 38184), (203, 38355), (210, 38376), (214, 38406), (218, 38439), (231, 38487),

Gene: PiperSansNom_59 Start: 37615, Stop: 38610, Start Num: 56

Candidate Starts for PiperSansNom_59:

(Start: 56 @37615 has 35 MA's), (75, 37735), (77, 37744), (80, 37756), (88, 37789), (91, 37795), (95, 37813), (119, 37924), (137, 38005), (147, 38083), (148, 38095), (169, 38218), (175, 38248), (203, 38419), (210, 38440), (214, 38470), (218, 38503), (231, 38551),

Gene: Piperis_59 Start: 37265, Stop: 38260, Start Num: 56

Candidate Starts for Piperis_59:

(Start: 56 @37265 has 35 MA's), (75, 37385), (77, 37394), (80, 37406), (88, 37439), (91, 37445), (95, 37463), (119, 37574), (137, 37655), (147, 37733), (148, 37745), (169, 37868), (175, 37898), (203, 38069), (210, 38090), (214, 38120), (218, 38153), (231, 38201),

Gene: Poise_101 Start: 57574, Stop: 56504, Start Num: 55

Candidate Starts for Poise_101:

(26, 57646), (Start: 28 @57643 has 1 MA's), (31, 57637), (Start: 55 @57574 has 14 MA's), (60, 57559), (64, 57526), (77, 57433), (84, 57400), (91, 57376), (99, 57343), (100, 57340), (101, 57337), (105, 57322), (107, 57310), (114, 57283), (123, 57196), (127, 57184), (133, 57151), (137, 57124), (138, 57118), (140, 57100), (144, 57058), (147, 57043), (150, 57007), (155, 56995), (164, 56917), (166, 56911), (172, 56884), (178, 56863), (190, 56788), (202, 56713), (206, 56692), (208, 56689), (245, 56521), (246, 56518),

Gene: Predator_52 Start: 40537, Stop: 41748, Start Num: 20

Candidate Starts for Predator_52:

(Start: 20 @40537 has 1 MA's), (45, 40582), (48, 40591), (65, 40681), (89, 40801), (103, 40852), (118, 40930), (121, 40966), (123, 40978), (128, 40993), (136, 41050), (137, 41059), (140, 41083), (144, 41125), (164, 41266), (169, 41281), (190, 41395), (193, 41407), (195, 41428), (232, 41647), (233, 41650), (238, 41665), (251, 41713), (253, 41722),

Gene: Pringar_96 Start: 57361, Stop: 56291, Start Num: 55

Candidate Starts for Pringar_96:

(Start: 36 @57415 has 1 MA's), (40, 57406), (Start: 55 @57361 has 14 MA's), (60, 57346), (64, 57313), (77, 57220), (84, 57187), (91, 57163), (99, 57130), (100, 57127), (101, 57124), (105, 57109), (107, 57097), (114, 57070), (123, 56983), (127, 56971), (133, 56938), (137, 56911), (138, 56905), (140, 56887), (144, 56845), (147, 56830), (150, 56794), (155, 56782), (164, 56704), (166, 56698), (172, 56671), (178, 56650), (190, 56575), (202, 56500), (206, 56479), (208, 56476), (245, 56308), (246, 56305),

Gene: Puissant_53 Start: 42359, Stop: 43570, Start Num: 21

Candidate Starts for Puissant_53:

(21, 42359), (48, 42413), (89, 42623), (118, 42752), (120, 42773), (125, 42806), (128, 42815), (137, 42881), (138, 42887), (140, 42905), (143, 42944), (157, 43025), (162, 43073), (169, 43103), (180, 43154), (195, 43250), (232, 43469), (233, 43472), (236, 43481), (251, 43535),

Gene: Pulchra_60 Start: 37662, Stop: 38657, Start Num: 56

Candidate Starts for Pulchra_60:

(Start: 56 @37662 has 35 MA's), (75, 37782), (77, 37791), (80, 37803), (88, 37836), (91, 37842), (95, 37860), (119, 37971), (137, 38052), (147, 38130), (148, 38142), (169, 38265), (175, 38295), (203, 38466), (210, 38487), (214, 38517), (218, 38550), (231, 38598),

Gene: Quhwah_62 Start: 37923, Stop: 38918, Start Num: 56

Candidate Starts for Quhwah_62:

(Start: 56 @37923 has 35 MA's), (75, 38043), (77, 38052), (80, 38064), (88, 38097), (91, 38103), (95, 38121), (119, 38232), (137, 38313), (147, 38391), (148, 38403), (169, 38526), (175, 38556), (203, 38727), (210, 38748), (214, 38778), (218, 38811), (231, 38859),

Gene: REQ1_18 Start: 6081, Stop: 5032, Start Num: 58

Candidate Starts for REQ1_18:

(Start: 58 @6081 has 17 MA's), (64, 6033), (138, 5637), (157, 5499), (194, 5295), (203, 5232), (221, 5139), (245, 5043),

Gene: Raela_102 Start: 58129, Stop: 57059, Start Num: 55

Candidate Starts for Raela_102:

(26, 58201), (Start: 28 @58198 has 1 MA's), (31, 58192), (Start: 55 @58129 has 14 MA's), (60, 58114), (64, 58081), (77, 57988), (84, 57955), (91, 57931), (99, 57898), (100, 57895), (101, 57892), (105, 57877), (107, 57865), (114, 57838), (123, 57751), (127, 57739), (133, 57706), (137, 57679), (138, 57673), (140, 57655), (144, 57613), (147, 57598), (150, 57562), (155, 57550), (164, 57472), (166, 57466), (172, 57439), (178, 57418), (186, 57370), (190, 57343), (202, 57268), (206, 57247), (208, 57244), (245, 57076), (246, 57073),

Gene: Ramiel05_57 Start: 37326, Stop: 38321, Start Num: 56

Candidate Starts for Ramiel05_57:

(Start: 56 @37326 has 35 MA's), (75, 37446), (77, 37455), (80, 37467), (88, 37500), (91, 37506), (95, 37524), (119, 37635), (137, 37716), (147, 37794), (148, 37806), (169, 37929), (175, 37959), (203, 38130), (210, 38151), (214, 38181), (218, 38214), (231, 38262),

Gene: RedRaider77_100 Start: 57591, Stop: 56452, Start Num: 28

Candidate Starts for RedRaider77_100:

(26, 57594), (Start: 28 @57591 has 1 MA's), (31, 57585), (Start: 55 @57522 has 14 MA's), (60, 57507), (64, 57474), (77, 57381), (84, 57348), (91, 57324), (99, 57291), (100, 57288), (101, 57285), (105, 57270), (107, 57258), (114, 57231), (123, 57144), (127, 57132), (133, 57099), (137, 57072), (138, 57066), (140, 57048), (144, 57006), (147, 56991), (150, 56955), (155, 56943), (164, 56865), (166, 56859), (172, 56832), (178, 56811), (186, 56763), (190, 56736), (202, 56661), (206, 56640), (208, 56637), (245, 56469), (246, 56466),

Gene: Reindeer_147 Start: 76556, Stop: 75483, Start Num: 62

Candidate Starts for Reindeer_147:

(Start: 62 @76556 has 1 MA's), (64, 76532), (78, 76442), (85, 76406), (98, 76352), (108, 76319), (115, 76289), (117, 76265), (124, 76205), (140, 76109), (153, 76010), (154, 76007), (156, 75992), (165, 75920), (168, 75908), (169, 75905), (180, 75854), (186, 75818), (189, 75794), (204, 75695), (207, 75686), (215, 75650), (221, 75611), (245, 75515), (247, 75506),

Gene: Rey_164 Start: 77837, Stop: 76674, Start Num: 27

Candidate Starts for Rey_164:

(Start: 27 @77837 has 1 MA's), (38, 77819), (49, 77792), (Start: 61 @77747 has 12 MA's), (78, 77633), (84, 77603), (98, 77543), (124, 77396), (140, 77300), (144, 77258), (156, 77183), (163, 77120), (165, 77111), (167, 77102), (169, 77096), (170, 77087), (180, 77045), (183, 77027), (186, 77009), (189, 76985), (190, 76982), (207, 76877), (217, 76832), (221, 76802), (226, 76775), (245, 76706), (247, 76697), (249, 76688),

Gene: Riparian_63 Start: 44163, Stop: 45359, Start Num: 24

Candidate Starts for Riparian_63:

(Start: 24 @44163 has 12 MA's), (34, 44178), (59, 44244), (60, 44253), (68, 44334), (73, 44355), (76, 44370), (82, 44397), (94, 44457), (98, 44478), (106, 44511), (122, 44622), (123, 44628), (127, 44640), (134, 44679), (138, 44709), (141, 44748), (153, 44826), (155, 44832), (157, 44847), (181, 44985), (186, 45018), (189, 45042), (203, 45135), (207, 45153), (214, 45186), (231, 45270), (235, 45291), (241, 45306), (245, 45324), (246, 45327), (247, 45333), (249, 45342), (250, 45345),

Gene: RobinSparkles_123 Start: 79116, Stop: 78055, Start Num: 58

Candidate Starts for RobinSparkles_123:

(Start: 58 @79116 has 17 MA's), (Start: 62 @79092 has 1 MA's), (81, 78963), (84, 78945), (112, 78840), (119, 78780), (141, 78630), (160, 78510), (173, 78432), (174, 78426), (183, 78384), (188, 78351), (194, 78321), (203, 78258), (207, 78240), (235, 78099), (240, 78087), (244, 78078),

Gene: RobsFeet_62 Start: 38777, Stop: 39772, Start Num: 56

Candidate Starts for RobsFeet_62:

(Start: 56 @38777 has 35 MA's), (75, 38897), (77, 38906), (80, 38918), (88, 38951), (91, 38957), (95, 38975), (111, 39032), (119, 39086), (141, 39209), (147, 39245), (148, 39257), (169, 39380), (186, 39470), (203, 39581), (210, 39602), (214, 39632), (217, 39644), (218, 39665), (231, 39713),

Gene: Ronaldo_83 Start: 43764, Stop: 42694, Start Num: 58

Candidate Starts for Ronaldo_83:

(43, 43809), (51, 43779), (Start: 58 @43764 has 17 MA's), (Start: 62 @43740 has 1 MA's), (64, 43716), (72, 43644), (75, 43632), (84, 43593), (122, 43395), (124, 43386), (139, 43302), (142, 43260), (144, 43248), (147, 43233), (155, 43185), (174, 43068), (186, 43011), (190, 42984), (200, 42924), (228, 42774), (233, 42750), (237, 42735), (241, 42726), (244, 42720),

Gene: Rope_61 Start: 44561, Stop: 45757, Start Num: 24

Candidate Starts for Rope_61:

(Start: 24 @44561 has 12 MA's), (34, 44576), (59, 44642), (60, 44651), (68, 44732), (73, 44753), (76, 44768), (82, 44795), (94, 44855), (98, 44876), (106, 44909), (122, 45020), (123, 45026), (127, 45038), (134, 45077), (138, 45107), (141, 45146), (152, 45221), (153, 45224), (155, 45230), (157, 45245), (181, 45383), (189, 45440), (203, 45533), (207, 45551), (214, 45584), (231, 45668), (235, 45689), (241, 45704), (245, 45722), (246, 45725), (247, 45731), (249, 45740), (250, 45743),

Gene: Savannah_57 Start: 37353, Stop: 38348, Start Num: 56

Candidate Starts for Savannah_57:

(Start: 56 @37353 has 35 MA's), (75, 37473), (77, 37482), (80, 37494), (88, 37527), (91, 37533), (95, 37551), (119, 37662), (137, 37743), (147, 37821), (148, 37833), (169, 37956), (175, 37986), (203, 38157), (210, 38178), (214, 38208), (218, 38241), (231, 38289),

Gene: Scumberland_59 Start: 37548, Stop: 38543, Start Num: 56

Candidate Starts for Scumberland_59:

(Start: 56 @37548 has 35 MA's), (75, 37668), (77, 37677), (80, 37689), (88, 37722), (91, 37728), (95, 37746), (119, 37857), (137, 37938), (147, 38016), (148, 38028), (155, 38064), (169, 38151), (175, 38181), (203, 38352), (210, 38373), (214, 38403), (218, 38436), (231, 38484),

Gene: Selwyn23_59 Start: 37496, Stop: 38491, Start Num: 56

Candidate Starts for Selwyn23_59:

(Start: 56 @37496 has 35 MA's), (75, 37616), (77, 37625), (80, 37637), (88, 37670), (91, 37676), (95, 37694), (119, 37805), (137, 37886), (147, 37964), (148, 37976), (169, 38099), (175, 38129), (203, 38300), (210, 38321), (214, 38351), (218, 38384), (231, 38432),

Gene: Send513_61 Start: 44696, Stop: 45892, Start Num: 24

Candidate Starts for Send513_61:

(Start: 24 @44696 has 12 MA's), (34, 44711), (59, 44777), (60, 44786), (68, 44867), (73, 44888), (76, 44903), (82, 44930), (94, 44990), (98, 45011), (106, 45044), (122, 45155), (123, 45161), (127, 45173), (134, 45212), (138, 45242), (141, 45281), (153, 45359), (155, 45365), (157, 45380), (181, 45518), (186, 45551), (189, 45575), (203, 45668), (207, 45686), (214, 45719), (231, 45803), (235, 45824), (241, 45839), (245, 45857), (246, 45860), (247, 45866), (249, 45875), (250, 45878),

Gene: Shagrat_38 Start: 31485, Stop: 30412, Start Num: 58

Candidate Starts for Shagrat_38:

(Start: 58 @31485 has 17 MA's), (64, 31437), (85, 31308), (87, 31302), (97, 31269), (112, 31212), (116, 31182), (130, 31092), (138, 31041), (139, 31035), (157, 30903), (203, 30618), (205, 30603), (215, 30564), (221, 30525),

Gene: Shotgun_58 Start: 37229, Stop: 38224, Start Num: 56

Candidate Starts for Shotgun_58:

(Start: 56 @37229 has 35 MA's), (75, 37349), (77, 37358), (80, 37370), (88, 37403), (91, 37409), (95, 37427), (119, 37538), (137, 37619), (141, 37661), (147, 37697), (148, 37709), (169, 37832), (175, 37862), (203, 38033), (210, 38054), (214, 38084), (218, 38117), (231, 38165),

Gene: Skinny_152 Start: 76530, Stop: 75361, Start Num: 29

Candidate Starts for Skinny_152:

(10, 76611), (12, 76599), (Start: 29 @76530 has 5 MA's), (39, 76509), (Start: 61 @76434 has 12 MA's), (75, 76329), (78, 76320), (85, 76284), (98, 76230), (108, 76197), (115, 76167), (124, 76083), (140, 75987), (147, 75930), (153, 75888), (156, 75870), (163, 75807), (165, 75798), (168, 75786), (169, 75783), (180, 75732), (189, 75672), (204, 75573), (207, 75564), (215, 75528), (221, 75489), (226, 75462), (245, 75393), (247, 75384),

Gene: SlimJimmy_146 Start: 75904, Stop: 74831, Start Num: 61

Candidate Starts for SlimJimmy_146:

(10, 76081), (12, 76069), (Start: 29 @76000 has 5 MA's), (39, 75979), (Start: 61 @75904 has 12 MA's), (75, 75799), (78, 75790), (85, 75754), (98, 75700), (108, 75667), (115, 75637), (124, 75553), (140, 75457), (147, 75400), (153, 75358), (156, 75340), (163, 75277), (165, 75268), (168, 75256), (169, 75253), (180, 75202), (189, 75142), (204, 75043), (207, 75034), (215, 74998), (221, 74959), (245, 74863), (247, 74854),

Gene: Smarties_67 Start: 39139, Stop: 40134, Start Num: 57

Candidate Starts for Smarties_67:

(Start: 57 @39139 has 2 MA's), (60, 39154), (75, 39259), (77, 39268), (80, 39280), (88, 39313), (91, 39319), (95, 39337), (111, 39394), (119, 39448), (137, 39529), (141, 39571), (147, 39607), (148, 39619), (169, 39742), (175, 39772), (186, 39832), (203, 39943), (210, 39964), (217, 40006), (244, 40117),

Gene: Sunny_59 Start: 39140, Stop: 40135, Start Num: 58

Candidate Starts for Sunny_59:

(2, 38867), (6, 38933), (8, 38972), (Start: 58 @39140 has 17 MA's), (77, 39269), (80, 39281), (85, 39305), (88, 39314), (91, 39320), (106, 39380), (111, 39395), (119, 39449), (126, 39482), (137, 39530), (141, 39572), (147, 39608), (148, 39620), (155, 39656), (162, 39713), (169, 39743), (170, 39752), (176, 39776), (203, 39944), (214, 39995), (217, 40007), (231, 40076),

Gene: Teamocil_61 Start: 37414, Stop: 38409, Start Num: 58

Candidate Starts for Teamocil_61:

(Start: 58 @37414 has 17 MA's), (60, 37429), (75, 37534), (77, 37543), (80, 37555), (95, 37612), (111, 37669), (119, 37723), (141, 37846), (147, 37882), (148, 37894), (169, 38017), (175, 38047), (186, 38107), (203, 38218), (210, 38239), (217, 38281), (218, 38302),

Gene: Tesla_96 Start: 57368, Stop: 56298, Start Num: 55

Candidate Starts for Tesla_96:

(Start: 36 @57422 has 1 MA's), (40, 57413), (Start: 55 @57368 has 14 MA's), (60, 57353), (64, 57320), (77, 57227), (84, 57194), (91, 57170), (99, 57137), (100, 57134), (101, 57131), (105, 57116), (107, 57104), (114, 57077), (123, 56990), (127, 56978), (133, 56945), (137, 56918), (138, 56912), (140, 56894), (144, 56852), (147, 56837), (150, 56801), (155, 56789), (164, 56711), (166, 56705), (178, 56657), (190, 56582), (202, 56507), (206, 56486), (208, 56483), (245, 56315), (246, 56312),

Gene: Thumb_54 Start: 42720, Stop: 43931, Start Num: 22

Candidate Starts for Thumb_54:

(Start: 17 @42702 has 2 MA's), (Start: 22 @42720 has 6 MA's), (45, 42765), (48, 42774), (89, 42984), (118, 43113), (120, 43134), (125, 43167), (128, 43176), (137, 43242), (138, 43248), (140, 43266), (143, 43305), (151, 43359), (162, 43434), (164, 43449), (169, 43464), (172, 43482), (180, 43515), (195, 43611), (232, 43830), (233, 43833), (236, 43842), (251, 43896),

Gene: Trogglehumper_109 Start: 75166, Stop: 74096, Start Num: 58

Candidate Starts for Trogglehumper_109:

(Start: 58 @75166 has 17 MA's), (64, 75118), (87, 74983), (97, 74950), (100, 74941), (112, 74893), (115, 74884), (116, 74863), (124, 74800), (129, 74788), (130, 74773), (148, 74635), (155, 74599), (157, 74584), (160, 74563), (161, 74548), (173, 74491), (182, 74449), (202, 74308), (203, 74302), (205, 74287), (217, 74239), (221, 74209), (248, 74101),

Gene: TyDawg_142 Start: 75349, Stop: 74276, Start Num: 61

Candidate Starts for TyDawg_142:

(10, 75526), (12, 75514), (Start: 29 @75445 has 5 MA's), (39, 75424), (Start: 61 @75349 has 12 MA's), (75, 75244), (78, 75235), (85, 75199), (98, 75145), (108, 75112), (115, 75082), (124, 74998), (140, 74902), (153, 74803), (156, 74785), (163, 74722), (165, 74713), (168, 74701), (169, 74698), (180, 74647), (189, 74587), (204, 74488), (207, 74479), (215, 74443), (221, 74404), (245, 74308), (247, 74299),

Gene: Tyrumbra_58 Start: 38636, Stop: 39631, Start Num: 56

Candidate Starts for Tyrumbra_58:

(Start: 56 @38636 has 35 MA's), (75, 38756), (77, 38765), (80, 38777), (88, 38810), (91, 38816), (95, 38834), (111, 38891), (119, 38945), (141, 39068), (147, 39104), (148, 39116), (169, 39239), (186, 39329), (203, 39440), (210, 39461), (217, 39503), (218, 39524), (231, 39572),

Gene: VasuNzinga_98 Start: 57452, Stop: 56382, Start Num: 55

Candidate Starts for VasuNzinga_98:

(Start: 36 @57506 has 1 MA's), (40, 57497), (Start: 55 @57452 has 14 MA's), (60, 57437), (64, 57404), (77, 57311), (84, 57278), (91, 57254), (99, 57221), (100, 57218), (101, 57215), (105, 57200), (107, 57188), (114, 57161), (123, 57074), (127, 57062), (133, 57029), (137, 57002), (138, 56996), (140, 56978), (144, 56936), (147, 56921), (150, 56885), (155, 56873), (164, 56795), (166, 56789), (172, 56762), (178, 56741), (190, 56666), (202, 56591), (206, 56570), (208, 56567), (245, 56399), (246, 56396),

Gene: Volt_83 Start: 43928, Stop: 42858, Start Num: 58

Candidate Starts for Volt_83:

(43, 43973), (51, 43943), (Start: 58 @43928 has 17 MA's), (Start: 62 @43904 has 1 MA's), (64, 43880), (72, 43808), (75, 43796), (84, 43757), (122, 43559), (124, 43550), (139, 43466), (142, 43424), (144, 43412), (147, 43397), (155, 43349), (174, 43232), (186, 43175), (190, 43148), (200, 43088), (228, 42938), (233, 42914), (237, 42899), (241, 42890), (244, 42884),

Gene: Weiss13_60 Start: 44400, Stop: 45596, Start Num: 24

Candidate Starts for Weiss13_60:

(Start: 24 @44400 has 12 MA's), (34, 44415), (59, 44481), (60, 44490), (68, 44571), (73, 44592), (76, 44607), (82, 44634), (94, 44694), (98, 44715), (106, 44748), (122, 44859), (123, 44865), (127, 44877), (134, 44916), (138, 44946), (141, 44985), (153, 45063), (155, 45069), (157, 45084), (181, 45222), (186, 45255), (189, 45279), (203, 45372), (207, 45390), (214, 45423), (231, 45507), (235, 45528), (241, 45543), (245, 45561), (246, 45564), (247, 45570), (249, 45579), (250, 45582),

Gene: Yelo_60 Start: 44779, Stop: 45975, Start Num: 24

Candidate Starts for Yelo_60:

(Start: 24 @44779 has 12 MA's), (34, 44794), (59, 44860), (60, 44869), (68, 44950), (73, 44971), (76, 44986), (82, 45013), (94, 45073), (98, 45094), (106, 45127), (122, 45238), (123, 45244), (127, 45256), (134, 45295), (138, 45325), (141, 45364), (153, 45442), (155, 45448), (157, 45463), (181, 45601), (186, 45634), (189, 45658), (203, 45751), (207, 45769), (214, 45802), (231, 45886), (235, 45907), (241, 45922), (245, 45940), (246, 45943), (247, 45949), (249, 45958), (250, 45961),

Gene: Yeti_59 Start: 37298, Stop: 38293, Start Num: 56

Candidate Starts for Yeti_59:

(Start: 56 @37298 has 35 MA's), (75, 37418), (77, 37427), (80, 37439), (88, 37472), (91, 37478), (95, 37496), (119, 37607), (137, 37688), (147, 37766), (148, 37778), (169, 37901), (175, 37931), (203, 38102), (210, 38123), (214, 38153), (218, 38186), (231, 38234),

Gene: Zenon_62 Start: 44725, Stop: 45921, Start Num: 24

Candidate Starts for Zenon_62:

(Start: 24 @44725 has 12 MA's), (34, 44740), (59, 44806), (60, 44815), (68, 44896), (73, 44917), (76, 44932), (82, 44959), (94, 45019), (98, 45040), (106, 45073), (122, 45184), (123, 45190), (127, 45202), (134, 45241), (138, 45271), (141, 45310), (153, 45388), (155, 45394), (157, 45409), (181, 45547), (186, 45580), (189, 45604), (203, 45697), (207, 45715), (214, 45748), (231, 45832), (235, 45853), (241, 45868), (245, 45886), (246, 45889), (247, 45895), (249, 45904), (250, 45907),

Gene: Ziko_83 Start: 43750, Stop: 42680, Start Num: 58

Candidate Starts for Ziko_83:

(43, 43795), (51, 43765), (Start: 58 @43750 has 17 MA's), (Start: 62 @43726 has 1 MA's), (64, 43702), (72, 43630), (75, 43618), (84, 43579), (91, 43555), (104, 43504), (122, 43381), (139, 43288), (142, 43246), (144, 43234), (155, 43171), (174, 43054), (186, 42997), (190, 42970), (200, 42910), (228, 42760), (233, 42736), (237, 42721), (241, 42712), (244, 42706),