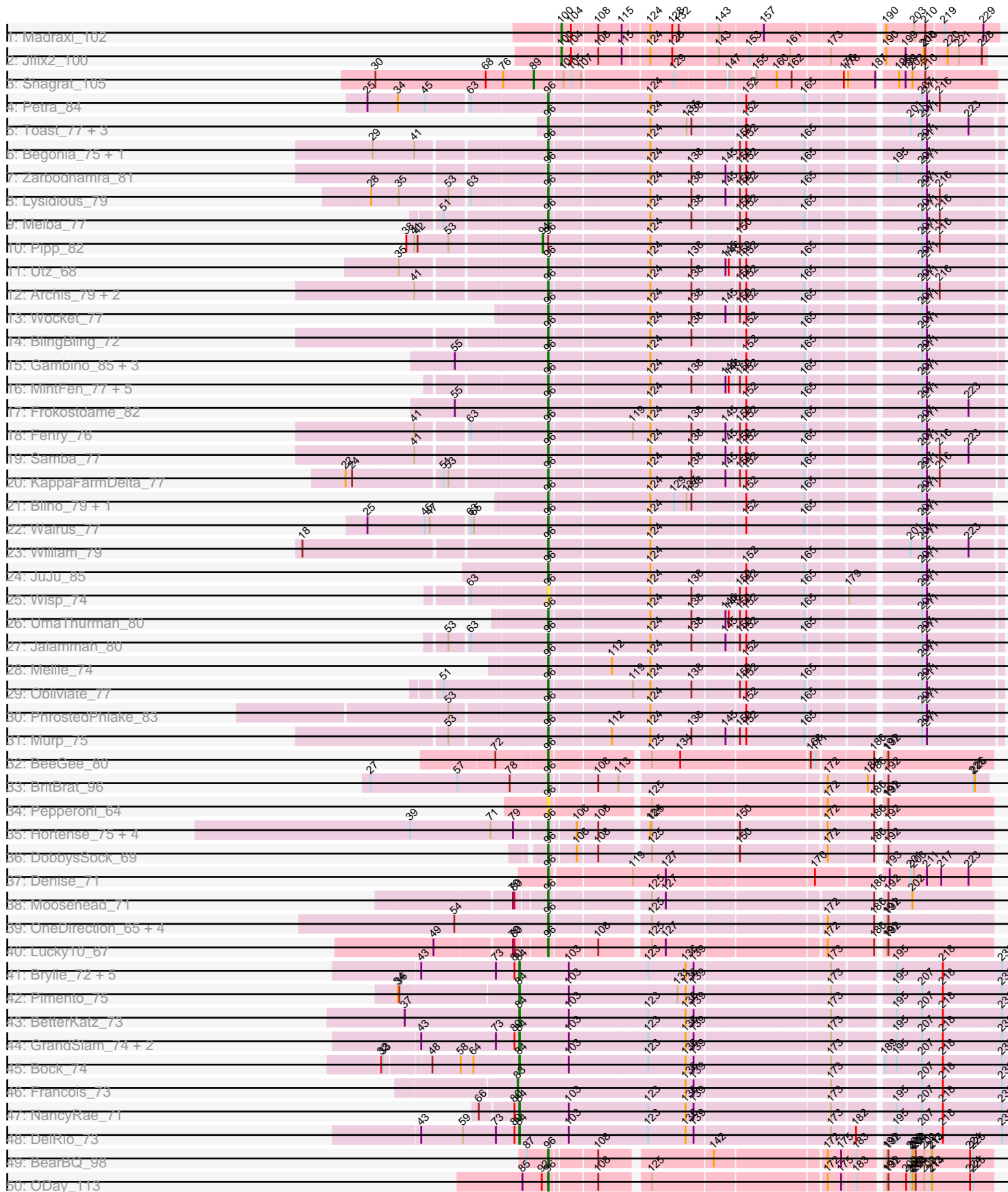
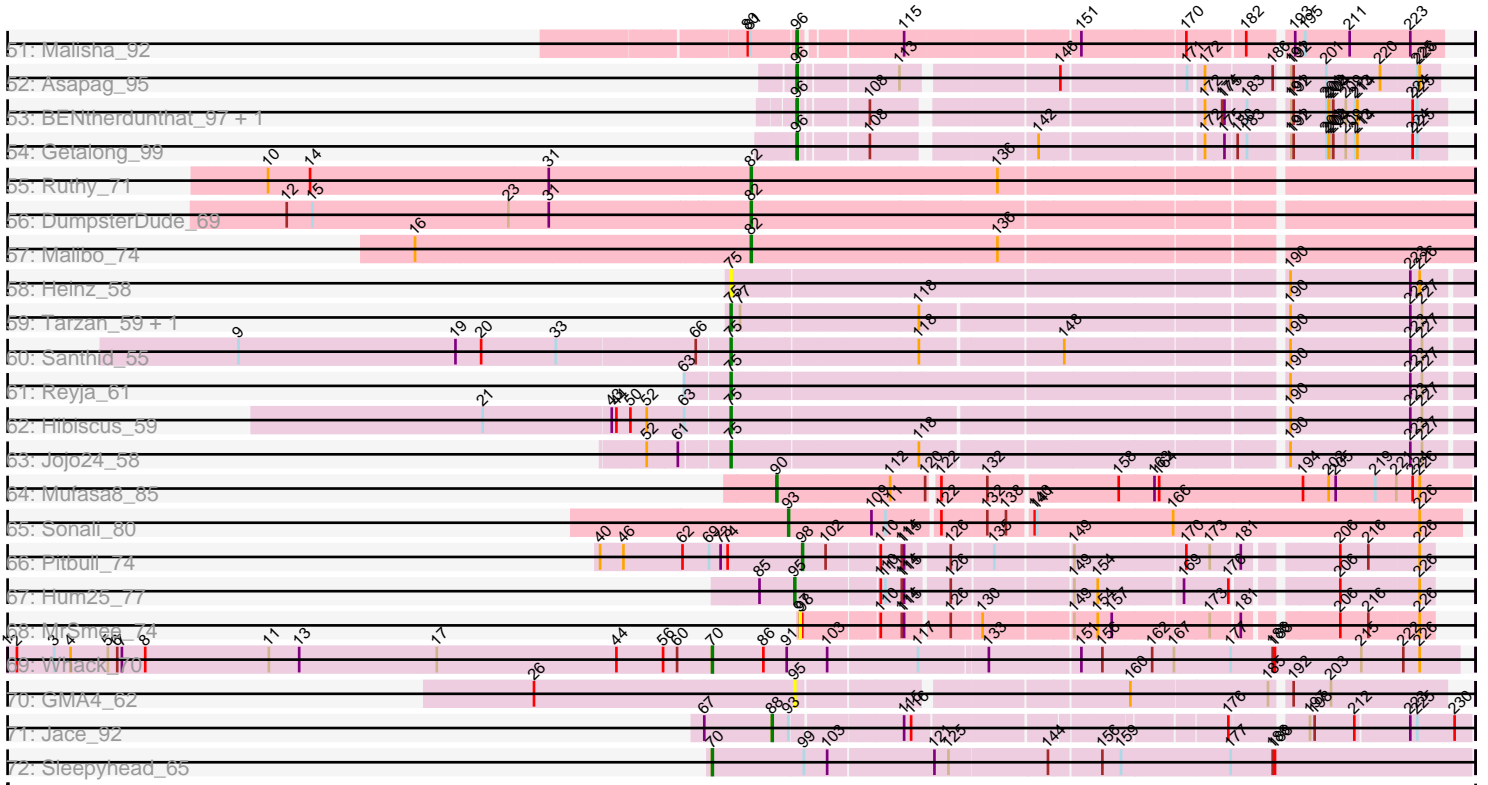


Pham 192460



Pham 192460



Note: Tracks are now grouped by subcluster and scaled. Switching in subcluster is indicated by changes in track color. Track scale is now set by default to display the region 30 bp upstream of start 1 to 30 bp downstream of the last possible start. If this default region is judged to be packed too tightly with annotated starts, the track will be further scaled to only show that region of the ORF with annotated starts. This action will be indicated by adding "Zoomed" to the title. For starts, yellow indicates the location of called starts comprised solely of Glimmer/GeneMark auto-annotations, green indicates the location of called starts with at least 1 manual gene annotation.

## Pham 192460 Report

This analysis was run 11/02/24 on database version 579.

Pham number 192460 has 104 members, 6 are drafts.

Phages represented in each track:

- Track 1 : Madraxi\_102
- Track 2 : JfliX2\_100
- Track 3 : Shagrat\_105
- Track 4 : Petra\_84
- Track 5 : Toast\_77, PrincePatrick\_79, Fairfaxidum\_80, PCoral7\_76
- Track 6 : Begonia\_75, Malachai\_75
- Track 7 : Zarbodnamra\_81
- Track 8 : Lysidious\_79
- Track 9 : Melba\_77
- Track 10 : Pipp\_82
- Track 11 : Utz\_68
- Track 12 : Archis\_79, Hitter\_75, ZiggyZoo\_78
- Track 13 : Wocket\_77
- Track 14 : BlingBling\_72
- Track 15 : Gambino\_85, Azula\_83, MissRona\_83, Blueberry\_82
- Track 16 : MintFen\_77, Guacamole\_75, Barco\_74, Delian\_80, CaptainKirk2\_77, JasperJr\_75
- Track 17 : Frokostdame\_82
- Track 18 : Fenry\_76
- Track 19 : Samba\_77
- Track 20 : KappaFarmDelta\_77
- Track 21 : Blino\_79, CarolAnn\_78
- Track 22 : Walrus\_77
- Track 23 : William\_79
- Track 24 : JuJu\_85
- Track 25 : Wisp\_74
- Track 26 : UmaThurman\_80
- Track 27 : Jalammah\_80
- Track 28 : Mellie\_74
- Track 29 : Obliviate\_77
- Track 30 : PhrostedPhlake\_83
- Track 31 : Murp\_75
- Track 32 : BeeGee\_80
- Track 33 : BritBrat\_96
- Track 34 : Pepperoni\_64
- Track 35 : Hortense\_75, Twinkle\_74, Adora\_72, Howe\_75, Shlim410\_73
- Track 36 : DobbysSock\_69

- Track 37 : Denise\_71
- Track 38 : Moosehead\_71
- Track 39 : OneDirection\_65, PhorbesPhlower\_69, Kuwabara\_89, Morkie\_71, Lton\_68
- Track 40 : Lucky10\_67
- Track 41 : Brylie\_72, Ayotoya\_73, Nadeem\_72, WheatThin\_72, Mulch\_72, Parada\_72
- Track 42 : Pimento\_75
- Track 43 : BetterKatz\_73
- Track 44 : GrandSlam\_74, Hamood\_74, Chop\_74
- Track 45 : Bock\_74
- Track 46 : Francois\_73
- Track 47 : NancyRae\_71
- Track 48 : DelRio\_73
- Track 49 : BearBQ\_98
- Track 50 : ODay\_113
- Track 51 : Malisha\_92
- Track 52 : Asapag\_95
- Track 53 : BENtherdunthat\_97, CheeseTouch\_105
- Track 54 : Getalong\_99
- Track 55 : Ruthy\_71
- Track 56 : DumpsterDude\_69
- Track 57 : Malibo\_74
- Track 58 : Heinz\_58
- Track 59 : Tarzan\_59, DonkeyMan\_57
- Track 60 : Santhid\_55
- Track 61 : Reyja\_61
- Track 62 : Hibiscus\_59
- Track 63 : Jojo24\_58
- Track 64 : Mufasa8\_85
- Track 65 : Sonali\_80
- Track 66 : Pitbull\_74
- Track 67 : Hum25\_77
- Track 68 : MrSmee\_74
- Track 69 : Whack\_70
- Track 70 : GMA4\_62
- Track 71 : Jace\_92
- Track 72 : Sleepyhead\_65

***Summary of Final Annotations (See graph section above for start numbers):***

The start number called the most often in the published annotations is 96, it was called in 64 of the 98 non-draft genes in the pham.

Genes that call this "Most Annotated" start:

• Adora\_72, Archis\_79, Asapag\_95, Azula\_83, BENtherdunthat\_97, Barco\_74, BearBQ\_98, BeeGee\_80, Begonia\_75, BlingBling\_72, Blino\_79, Blueberry\_82, BritBrat\_96, CaptainKirk2\_77, CarolAnn\_78, CheeseTouch\_105, Delian\_80, Denise\_71, DobbysSock\_69, Fairfaxidum\_80, Fenry\_76, Frokostdame\_82, Gambino\_85, Getalong\_99, Guacamole\_75, Hitter\_75, Hortense\_75, Howe\_75,

Jalammah\_80, JasperJr\_75, JuJu\_85, KappaFarmDelta\_77, Kuwabara\_89, Lton\_68, Lucky10\_67, Lysidious\_79, Malachai\_75, Malisha\_92, Melba\_77, Mellie\_74, MintFen\_77, MissRona\_83, Moosehead\_71, Morkie\_71, Murp\_75, ODay\_113, Obliviate\_77, OneDirection\_65, PCoral7\_76, Pepperoni\_64, Petra\_84, PhorbesPhlower\_69, PhrostedPhlake\_83, PrincePatrick\_79, Samba\_77, Shlim410\_73, Toast\_77, Twinkle\_74, UmaThurman\_80, Utz\_68, Walrus\_77, William\_79, Wisp\_74, Wocket\_77, Zarbodnamra\_81, ZiggyZoo\_78,

Genes that have the "Most Annotated" start but do not call it:

- Pipp\_82,

Genes that do not have the "Most Annotated" start:

- Ayotoya\_73, BetterKatz\_73, Bock\_74, Brylie\_72, Chop\_74, DelRio\_73, DonkeyMan\_57, DumpsterDude\_69, Francois\_73, GMA4\_62, GrandSlam\_74, Hamood\_74, Heinz\_58, Hibiscus\_59, Hum25\_77, Jace\_92, Jflix2\_100, Jojo24\_58, Madraxi\_102, Malibo\_74, MrSmee\_74, Mufasa8\_85, Mulch\_72, Nadeem\_72, NancyRae\_71, Parada\_72, Pimento\_75, Pitbull\_74, Reyja\_61, Ruthy\_71, Santhid\_55, Shagrat\_105, Sleepyhead\_65, Sonali\_80, Tarzan\_59, Whack\_70, WheatThin\_72,

### Summary by start number:

Start 70:

- Found in 2 of 104 ( 1.9% ) of genes in pham
- Manual Annotations of this start: 2 of 98
- Called 100.0% of time when present
- Phage (with cluster) where this start called: Sleepyhead\_65 (singleton), Whack\_70 (singleton),

Start 75:

- Found in 7 of 104 ( 6.7% ) of genes in pham
- Manual Annotations of this start: 5 of 98
- Called 100.0% of time when present
- Phage (with cluster) where this start called: DonkeyMan\_57 (DY), Heinz\_58 (DY), Hibiscus\_59 (DY), Jojo24\_58 (DY), Reyja\_61 (DY), Santhid\_55 (DY), Tarzan\_59 (DY),

Start 82:

- Found in 3 of 104 ( 2.9% ) of genes in pham
- Manual Annotations of this start: 3 of 98
- Called 100.0% of time when present
- Phage (with cluster) where this start called: DumpsterDude\_69 (DW), Malibo\_74 (DW), Ruthy\_71 (DW),

Start 83:

- Found in 1 of 104 ( 1.0% ) of genes in pham
- Manual Annotations of this start: 1 of 98
- Called 100.0% of time when present
- Phage (with cluster) where this start called: Francois\_73 (DI),

Start 84:

- Found in 14 of 104 ( 13.5% ) of genes in pham
- Manual Annotations of this start: 14 of 98

- Called 100.0% of time when present
- Phage (with cluster) where this start called: Ayotoya\_73 (DI), BetterKatz\_73 (DI), Bock\_74 (DI), Brylie\_72 (DI), Chop\_74 (DI), DelRio\_73 (DI), GrandSlam\_74 (DI), Hamood\_74 (DI), Mulch\_72 (DI), Nadeem\_72 (DI), NancyRae\_71 (DI), Parada\_72 (DI), Pimento\_75 (DI), WheatThin\_72 (DI),

Start 88:

- Found in 1 of 104 ( 1.0% ) of genes in pham
- Manual Annotations of this start: 1 of 98
- Called 100.0% of time when present
- Phage (with cluster) where this start called: Jace\_92 (singleton),

Start 89:

- Found in 1 of 104 ( 1.0% ) of genes in pham
- Manual Annotations of this start: 1 of 98
- Called 100.0% of time when present
- Phage (with cluster) where this start called: Shagrat\_105 (CF),

Start 90:

- Found in 1 of 104 ( 1.0% ) of genes in pham
- Manual Annotations of this start: 1 of 98
- Called 100.0% of time when present
- Phage (with cluster) where this start called: Mufasa8\_85 (FG),

Start 93:

- Found in 2 of 104 ( 1.9% ) of genes in pham
- Manual Annotations of this start: 1 of 98
- Called 50.0% of time when present
- Phage (with cluster) where this start called: Sonali\_80 (FG),

Start 94:

- Found in 1 of 104 ( 1.0% ) of genes in pham
- Manual Annotations of this start: 1 of 98
- Called 100.0% of time when present
- Phage (with cluster) where this start called: Pipp\_82 (CV),

Start 95:

- Found in 2 of 104 ( 1.9% ) of genes in pham
- Manual Annotations of this start: 1 of 98
- Called 100.0% of time when present
- Phage (with cluster) where this start called: GMA4\_62 (singleton), Hum25\_77 (FQ),

Start 96:

- Found in 67 of 104 ( 64.4% ) of genes in pham
- Manual Annotations of this start: 64 of 98
- Called 98.5% of time when present
- Phage (with cluster) where this start called: Adora\_72 (CZ4), Archis\_79 (CV), Asapag\_95 (DN1), Azula\_83 (CV), BENtherdunthat\_97 (DN1), Barco\_74 (CV), BearBQ\_98 (DN), BeeGee\_80 (CY), Begonia\_75 (CV), BlingBling\_72 (CV), Blino\_79 (CV), Blueberry\_82 (CV), BritBrat\_96 (CY2), CaptainKirk2\_77 (CV), CarolAnn\_78 (CV), CheeseTouch\_105 (DN1), Delian\_80 (CV), Denise\_71 (CZ5), DobbysSock\_69 (CZ4), Fairfaxidum\_80 (CV), Fenry\_76 (CV), Frokostdame\_82 (CV), Gambino\_85 (CV), Getalong\_99 (DN1), Guacamole\_75 (CV), Hitter\_75 (CV), Hortense\_75 (CZ4),

Howe\_75 (CZ4), Jalammah\_80 (CV), JasperJr\_75 (CV), JuJu\_85 (CV), KappaFarmDelta\_77 (CV), Kuwabara\_89 (DN4), Lton\_68 (CZ), Lucky10\_67 (DH), Lysidious\_79 (CV), Malachai\_75 (CV), Malisha\_92 (DN), Melba\_77 (CV), Mellie\_74 (CV), MintFen\_77 (CV), MissRona\_83 (CV), Moosehead\_71 (CZ6), Morkie\_71 (DH), Murp\_75 (CV), ODay\_113 (DN), Obliviate\_77 (CV), OneDirection\_65 (CZ6), PCoral7\_76 (CV), Pepperoni\_64 (CZ), Petra\_84 (CV), PhorbesPhlower\_69 (DH), PhrostedPhlake\_83 (CV), PrincePatrick\_79 (CV), Samba\_77 (CV), Shlim410\_73 (CZ4), Toast\_77 (CV), Twinkle\_74 (CZ4), UmaThurman\_80 (CV), Utz\_68 (CV), Walrus\_77 (CV), William\_79 (CV), Wisp\_74 (CV), Wocket\_77 (CV), Zarbodnamra\_81 (CV), ZiggyZoo\_78 (CV),

Start 97:

- Found in 1 of 104 ( 1.0% ) of genes in pham
- No Manual Annotations of this start.
- Called 100.0% of time when present
- Phage (with cluster) where this start called: MrSmee\_74 (UNK),

Start 98:

- Found in 2 of 104 ( 1.9% ) of genes in pham
- Manual Annotations of this start: 1 of 98
- Called 50.0% of time when present
- Phage (with cluster) where this start called: Pitbull\_74 (FQ),

Start 100:

- Found in 2 of 104 ( 1.9% ) of genes in pham
- Manual Annotations of this start: 2 of 98
- Called 100.0% of time when present
- Phage (with cluster) where this start called: JfliX2\_100 (CF), Madraxi\_102 (CF),

### **Summary by clusters:**

There are 19 clusters represented in this pham: DN, CY2, singleton, DH, DI, FG, CZ6, CF, CZ4, CZ5, DN4, CY, FQ, DN1, DY, CZ, DW, UNK, CV,

Info for manual annotations of cluster CF:

- Start number 89 was manually annotated 1 time for cluster CF.
- Start number 100 was manually annotated 2 times for cluster CF.

Info for manual annotations of cluster CV:

- Start number 94 was manually annotated 1 time for cluster CV.
- Start number 96 was manually annotated 41 times for cluster CV.

Info for manual annotations of cluster CY:

- Start number 96 was manually annotated 1 time for cluster CY.

Info for manual annotations of cluster CY2:

- Start number 96 was manually annotated 1 time for cluster CY2.

Info for manual annotations of cluster CZ:

- Start number 96 was manually annotated 1 time for cluster CZ.

Info for manual annotations of cluster CZ4:

- Start number 96 was manually annotated 6 times for cluster CZ4.

Info for manual annotations of cluster CZ5:

- Start number 96 was manually annotated 1 time for cluster CZ5.

Info for manual annotations of cluster CZ6:

- Start number 96 was manually annotated 2 times for cluster CZ6.

Info for manual annotations of cluster DH:

- Start number 96 was manually annotated 3 times for cluster DH.

Info for manual annotations of cluster DI:

- Start number 83 was manually annotated 1 time for cluster DI.
- Start number 84 was manually annotated 14 times for cluster DI.

Info for manual annotations of cluster DN:

- Start number 96 was manually annotated 3 times for cluster DN.

Info for manual annotations of cluster DN1:

- Start number 96 was manually annotated 4 times for cluster DN1.

Info for manual annotations of cluster DN4:

- Start number 96 was manually annotated 1 time for cluster DN4.

Info for manual annotations of cluster DW:

- Start number 82 was manually annotated 3 times for cluster DW.

Info for manual annotations of cluster DY:

- Start number 75 was manually annotated 5 times for cluster DY.

Info for manual annotations of cluster FG:

- Start number 90 was manually annotated 1 time for cluster FG.
- Start number 93 was manually annotated 1 time for cluster FG.

Info for manual annotations of cluster FQ:

- Start number 95 was manually annotated 1 time for cluster FQ.
- Start number 98 was manually annotated 1 time for cluster FQ.

### ***Gene Information:***

Gene: Adora\_72 Start: 48969, Stop: 49706, Start Num: 96

Candidate Starts for Adora\_72:

(39, 48723), (71, 48870), (79, 48912), (Start: 96 @48969 has 64 MA's), (106, 49011), (108, 49044), (124, 49125), (125, 49128), (150, 49275), (172, 49425), (186, 49506), (192, 49518),

Gene: Archis\_79 Start: 46629, Stop: 47405, Start Num: 96

Candidate Starts for Archis\_79:

(41, 46410), (Start: 96 @46629 has 64 MA's), (124, 46806), (138, 46878), (150, 46956), (152, 46968), (165, 47076), (207, 47262), (211, 47271), (216, 47295),

Gene: Asapag\_95 Start: 52545, Stop: 53270, Start Num: 96



Candidate Starts for Asapag\_95:

(Start: 96 @52545 has 64 MA's), (113, 52656), (146, 52833), (171, 52983), (172, 52998), (186, 53079), (191, 53088), (192, 53091), (201, 53133), (220, 53199), (225, 53244), (226, 53247),

Gene: Ayotoya\_73 Start: 49136, Stop: 50011, Start Num: 84

Candidate Starts for Ayotoya\_73:

(43, 48965), (73, 49097), (80, 49130), (Start: 84 @49136 has 14 MA's), (103, 49229), (123, 49376), (136, 49445), (139, 49460), (173, 49700), (195, 49799), (218, 49886), (231, 49994),

Gene: Azula\_83 Start: 51089, Stop: 51874, Start Num: 96

Candidate Starts for Azula\_83:

(55, 50924), (Start: 96 @51089 has 64 MA's), (124, 51272), (152, 51434), (165, 51542), (207, 51728), (211, 51737),

Gene: BENtherdunthat\_97 Start: 52077, Stop: 52805, Start Num: 96

Candidate Starts for BENtherdunthat\_97:

(Start: 96 @52077 has 64 MA's), (108, 52152), (172, 52527), (174, 52548), (175, 52551), (183, 52575), (191, 52617), (192, 52620), (201, 52662), (202, 52665), (203, 52668), (204, 52671), (209, 52686), (213, 52698), (214, 52701), (224, 52767), (225, 52773),

Gene: Barco\_74 Start: 46443, Stop: 47219, Start Num: 96

Candidate Starts for Barco\_74:

(Start: 96 @46443 has 64 MA's), (124, 46620), (138, 46692), (145, 46749), (146, 46755), (150, 46770), (152, 46782), (165, 46890), (207, 47076), (211, 47085),

Gene: BearBQ\_98 Start: 53192, Stop: 53920, Start Num: 96

Candidate Starts for BearBQ\_98:

(87, 53159), (Start: 96 @53192 has 64 MA's), (108, 53267), (142, 53450), (172, 53642), (175, 53666), (183, 53690), (191, 53732), (192, 53735), (201, 53777), (202, 53780), (203, 53783), (204, 53786), (209, 53801), (213, 53813), (214, 53816), (224, 53882), (225, 53888),

Gene: BeeGee\_80 Start: 50088, Stop: 50837, Start Num: 96

Candidate Starts for BeeGee\_80:

(72, 49998), (Start: 96 @50088 has 64 MA's), (125, 50253), (134, 50301), (168, 50532), (171, 50541), (186, 50637), (191, 50646), (192, 50649),

Gene: Begonia\_75 Start: 49240, Stop: 50016, Start Num: 96

Candidate Starts for Begonia\_75:

(29, 48943), (41, 49021), (Start: 96 @49240 has 64 MA's), (124, 49417), (150, 49567), (152, 49579), (165, 49687), (207, 49873), (211, 49882),

Gene: BetterKatz\_73 Start: 48918, Stop: 49793, Start Num: 84

Candidate Starts for BetterKatz\_73:

(37, 48711), (Start: 84 @48918 has 14 MA's), (103, 49011), (123, 49158), (136, 49227), (139, 49242), (173, 49482), (195, 49581), (207, 49629), (218, 49668), (231, 49776),

Gene: BlingBling\_72 Start: 46215, Stop: 46991, Start Num: 96

Candidate Starts for BlingBling\_72:

(Start: 96 @46215 has 64 MA's), (124, 46392), (138, 46464), (152, 46554), (165, 46662), (207, 46848), (211, 46857),

Gene: Blino\_79 Start: 52044, Stop: 52805, Start Num: 96

Candidate Starts for Blino\_79:

(Start: 96 @52044 has 64 MA's), (124, 52221), (129, 52260), (137, 52284), (138, 52293), (152, 52383), (165, 52491), (207, 52677), (211, 52686),

Gene: Blueberry\_82 Start: 51089, Stop: 51874, Start Num: 96

Candidate Starts for Blueberry\_82:

(55, 50924), (Start: 96 @51089 has 64 MA's), (124, 51272), (152, 51434), (165, 51542), (207, 51728), (211, 51737),

Gene: Bock\_74 Start: 48502, Stop: 49377, Start Num: 84

Candidate Starts for Bock\_74:

(32, 48271), (33, 48274), (48, 48349), (58, 48400), (64, 48421), (Start: 84 @48502 has 14 MA's), (103, 48595), (123, 48742), (136, 48811), (139, 48826), (173, 49066), (189, 49144), (195, 49165), (207, 49213), (218, 49252), (231, 49360),

Gene: BritBrat\_96 Start: 54041, Stop: 54766, Start Num: 96

Candidate Starts for BritBrat\_96:

(27, 53711), (57, 53873), (78, 53969), (Start: 96 @54041 has 64 MA's), (108, 54116), (113, 54152), (172, 54494), (184, 54563), (186, 54575), (192, 54587), (225, 54740), (226, 54743),

Gene: Brylie\_72 Start: 48152, Stop: 49027, Start Num: 84

Candidate Starts for Brylie\_72:

(43, 47981), (73, 48113), (80, 48146), (Start: 84 @48152 has 14 MA's), (103, 48245), (123, 48392), (136, 48461), (139, 48476), (173, 48716), (195, 48815), (218, 48902), (231, 49010),

Gene: CaptainKirk2\_77 Start: 46000, Stop: 46776, Start Num: 96

Candidate Starts for CaptainKirk2\_77:

(Start: 96 @46000 has 64 MA's), (124, 46177), (138, 46249), (145, 46306), (146, 46312), (150, 46327), (152, 46339), (165, 46447), (207, 46633), (211, 46642),

Gene: CarolAnn\_78 Start: 52043, Stop: 52804, Start Num: 96

Candidate Starts for CarolAnn\_78:

(Start: 96 @52043 has 64 MA's), (124, 52220), (129, 52259), (137, 52283), (138, 52292), (152, 52382), (165, 52490), (207, 52676), (211, 52685),

Gene: CheeseTouch\_105 Start: 51190, Stop: 51918, Start Num: 96

Candidate Starts for CheeseTouch\_105:

(Start: 96 @51190 has 64 MA's), (108, 51265), (172, 51640), (174, 51661), (175, 51664), (183, 51688), (191, 51730), (192, 51733), (201, 51775), (202, 51778), (203, 51781), (204, 51784), (209, 51799), (213, 51811), (214, 51814), (224, 51880), (225, 51886),

Gene: Chop\_74 Start: 49201, Stop: 50076, Start Num: 84

Candidate Starts for Chop\_74:

(43, 49030), (73, 49162), (80, 49195), (Start: 84 @49201 has 14 MA's), (103, 49294), (123, 49441), (136, 49510), (139, 49525), (173, 49765), (195, 49864), (207, 49912), (218, 49951), (231, 50059),

Gene: DelRio\_73 Start: 49243, Stop: 50118, Start Num: 84

Candidate Starts for DelRio\_73:

(43, 49072), (59, 49147), (73, 49204), (80, 49237), (Start: 84 @49243 has 14 MA's), (103, 49336), (123, 49483), (136, 49552), (139, 49567), (173, 49807), (182, 49846), (195, 49906), (207, 49954), (218, 49993), (231, 50101),

Gene: Delian\_80 Start: 45998, Stop: 46774, Start Num: 96

Candidate Starts for Delian\_80:

(Start: 96 @45998 has 64 MA's), (124, 46175), (138, 46247), (145, 46304), (146, 46310), (150, 46325), (152, 46337), (165, 46445), (207, 46631), (211, 46640),

Gene: Denise\_71 Start: 41520, Stop: 42272, Start Num: 96

Candidate Starts for Denise\_71:

(Start: 96 @41520 has 64 MA's), (119, 41658), (127, 41715), (170, 41973), (193, 42087), (201, 42126), (203, 42132), (211, 42156), (217, 42183), (223, 42234),

Gene: DobbysSock\_69 Start: 45937, Stop: 46674, Start Num: 96

Candidate Starts for DobbysSock\_69:

(Start: 96 @45937 has 64 MA's), (106, 45979), (108, 46012), (125, 46096), (150, 46243), (172, 46393), (186, 46474), (192, 46486),

Gene: DonkeyMan\_57 Start: 38622, Stop: 39494, Start Num: 75

Candidate Starts for DonkeyMan\_57:

(Start: 75 @38622 has 5 MA's), (77, 38634), (118, 38847), (190, 39276), (223, 39426), (227, 39441),

Gene: DumpsterDude\_69 Start: 50376, Stop: 51257, Start Num: 82

Candidate Starts for DumpsterDude\_69:

(12, 49788), (15, 49821), (23, 50073), (31, 50124), (Start: 82 @50376 has 3 MA's),

Gene: Fairfaxidum\_80 Start: 48694, Stop: 49470, Start Num: 96

Candidate Starts for Fairfaxidum\_80:

(Start: 96 @48694 has 64 MA's), (124, 48874), (137, 48937), (138, 48946), (152, 49036), (201, 49309), (207, 49330), (211, 49339), (223, 49417),

Gene: Fenry\_76 Start: 48068, Stop: 48844, Start Num: 96

Candidate Starts for Fenry\_76:

(41, 47849), (63, 47936), (Start: 96 @48068 has 64 MA's), (119, 48212), (124, 48245), (138, 48317), (145, 48374), (150, 48395), (152, 48407), (165, 48515), (207, 48701), (211, 48710),

Gene: Francois\_73 Start: 48813, Stop: 49691, Start Num: 83

Candidate Starts for Francois\_73:

(Start: 83 @48813 has 1 MA's), (136, 49125), (139, 49140), (173, 49380), (207, 49527), (218, 49566), (231, 49674),

Gene: Frokostdame\_82 Start: 50554, Stop: 51336, Start Num: 96

Candidate Starts for Frokostdame\_82:

(55, 50389), (Start: 96 @50554 has 64 MA's), (124, 50737), (152, 50899), (165, 51007), (207, 51193), (211, 51202), (223, 51280),

Gene: GMA4\_62 Start: 40731, Stop: 41486, Start Num: 95

Candidate Starts for GMA4\_62:

(26, 40401), (Start: 95 @40731 has 1 MA's), (160, 41109), (185, 41280), (192, 41298), (203, 41346),

Gene: Gambino\_85 Start: 51089, Stop: 51874, Start Num: 96

Candidate Starts for Gambino\_85:

(55, 50924), (Start: 96 @51089 has 64 MA's), (124, 51272), (152, 51434), (165, 51542), (207, 51728), (211, 51737),

Gene: Getalong\_99 Start: 53422, Stop: 54150, Start Num: 96

Candidate Starts for Getalong\_99:

(Start: 96 @53422 has 64 MA's), (108, 53497), (142, 53680), (172, 53872), (175, 53896), (180, 53908), (183, 53920), (191, 53962), (192, 53965), (201, 54007), (202, 54010), (203, 54013), (204, 54016), (209, 54031), (213, 54043), (214, 54046), (224, 54112), (225, 54118),

Gene: GrandSlam\_74 Start: 49201, Stop: 50076, Start Num: 84

Candidate Starts for GrandSlam\_74:

(43, 49030), (73, 49162), (80, 49195), (Start: 84 @49201 has 14 MA's), (103, 49294), (123, 49441), (136, 49510), (139, 49525), (173, 49765), (195, 49864), (207, 49912), (218, 49951), (231, 50059),

Gene: Guacamole\_75 Start: 47418, Stop: 48194, Start Num: 96

Candidate Starts for Guacamole\_75:

(Start: 96 @47418 has 64 MA's), (124, 47595), (138, 47667), (145, 47724), (146, 47730), (150, 47745), (152, 47757), (165, 47865), (207, 48051), (211, 48060),

Gene: Hamood\_74 Start: 49201, Stop: 50076, Start Num: 84

Candidate Starts for Hamood\_74:

(43, 49030), (73, 49162), (80, 49195), (Start: 84 @49201 has 14 MA's), (103, 49294), (123, 49441), (136, 49510), (139, 49525), (173, 49765), (195, 49864), (207, 49912), (218, 49951), (231, 50059),

Gene: Heinz\_58 Start: 37588, Stop: 38469, Start Num: 75

Candidate Starts for Heinz\_58:

(Start: 75 @37588 has 5 MA's), (190, 38251), (223, 38401), (226, 38413),

Gene: Hibiscus\_59 Start: 37479, Stop: 38351, Start Num: 75

Candidate Starts for Hibiscus\_59:

(21, 37173), (43, 37335), (44, 37341), (50, 37359), (52, 37380), (63, 37425), (Start: 75 @37479 has 5 MA's), (190, 38133), (223, 38283), (227, 38298),

Gene: Hitter\_75 Start: 45674, Stop: 46450, Start Num: 96

Candidate Starts for Hitter\_75:

(41, 45455), (Start: 96 @45674 has 64 MA's), (124, 45851), (138, 45923), (150, 46001), (152, 46013), (165, 46121), (207, 46307), (211, 46316), (216, 46340),

Gene: Hortense\_75 Start: 50324, Stop: 51061, Start Num: 96

Candidate Starts for Hortense\_75:

(39, 50078), (71, 50225), (79, 50267), (Start: 96 @50324 has 64 MA's), (106, 50366), (108, 50399), (124, 50480), (125, 50483), (150, 50630), (172, 50780), (186, 50861), (192, 50873),

Gene: Howe\_75 Start: 50324, Stop: 51061, Start Num: 96

Candidate Starts for Howe\_75:

(39, 50078), (71, 50225), (79, 50267), (Start: 96 @50324 has 64 MA's), (106, 50366), (108, 50399), (124, 50480), (125, 50483), (150, 50630), (172, 50780), (186, 50861), (192, 50873),

Gene: Hum25\_77 Start: 39455, Stop: 40183, Start Num: 95

Candidate Starts for Hum25\_77:

(85, 39410), (Start: 95 @39455 has 1 MA's), (110, 39554), (111, 39560), (114, 39581), (115, 39584), (126, 39635), (149, 39773), (154, 39803), (169, 39905), (176, 39959), (206, 40070), (226, 40166),

Gene: Jace\_92 Start: 51606, Stop: 52397, Start Num: 88

Candidate Starts for Jace\_92:

(67, 51519), (Start: 88 @51606 has 1 MA's), (Start: 93 @51627 has 1 MA's), (115, 51756), (116, 51765), (176, 52119), (197, 52203), (198, 52206), (212, 52257), (223, 52320), (225, 52329), (230, 52377),

Gene: Jalammah\_80 Start: 49580, Stop: 50356, Start Num: 96

Candidate Starts for Jalammah\_80:

(53, 49415), (63, 49448), (Start: 96 @49580 has 64 MA's), (124, 49757), (138, 49829), (145, 49886), (150, 49907), (152, 49919), (165, 50027), (207, 50213), (211, 50222),

Gene: JasperJr\_75 Start: 47418, Stop: 48194, Start Num: 96

Candidate Starts for JasperJr\_75:

(Start: 96 @47418 has 64 MA's), (124, 47595), (138, 47667), (145, 47724), (146, 47730), (150, 47745), (152, 47757), (165, 47865), (207, 48051), (211, 48060),

Gene: Jflix2\_100 Start: 57187, Stop: 57882, Start Num: 100

Candidate Starts for Jflix2\_100:

(Start: 100 @57187 has 2 MA's), (104, 57205), (108, 57244), (115, 57286), (124, 57328), (128, 57364), (143, 57436), (153, 57484), (161, 57559), (173, 57625), (190, 57706), (199, 57742), (208, 57775), (210, 57778), (220, 57814), (221, 57835), (228, 57874),

Gene: Jojo24\_58 Start: 37912, Stop: 38784, Start Num: 75

Candidate Starts for Jojo24\_58:

(52, 37819), (61, 37858), (Start: 75 @37912 has 5 MA's), (118, 38137), (190, 38566), (223, 38716), (227, 38731),

Gene: JuJu\_85 Start: 51321, Stop: 52103, Start Num: 96

Candidate Starts for JuJu\_85:

(Start: 96 @51321 has 64 MA's), (124, 51504), (152, 51666), (165, 51774), (207, 51960), (211, 51969),

Gene: KappaFarmDelta\_77 Start: 47260, Stop: 48036, Start Num: 96

Candidate Starts for KappaFarmDelta\_77:

(22, 46912), (24, 46924), (51, 47086), (53, 47095), (Start: 96 @47260 has 64 MA's), (124, 47437), (138, 47509), (145, 47566), (150, 47587), (152, 47599), (165, 47707), (207, 47893), (211, 47902), (216, 47926),

Gene: Kuwabara\_89 Start: 52072, Stop: 52815, Start Num: 96

Candidate Starts for Kuwabara\_89:

(54, 51901), (Start: 96 @52072 has 64 MA's), (125, 52237), (172, 52534), (186, 52615), (191, 52624), (192, 52627),

Gene: Lton\_68 Start: 39225, Stop: 39968, Start Num: 96

Candidate Starts for Lton\_68:

(54, 39054), (Start: 96 @39225 has 64 MA's), (125, 39390), (172, 39687), (186, 39768), (191, 39777), (192, 39780),

Gene: Lucky10\_67 Start: 41325, Stop: 42068, Start Num: 96

Candidate Starts for Lucky10\_67:

(49, 41145), (79, 41274), (80, 41277), (Start: 96 @41325 has 64 MA's), (108, 41406), (125, 41490), (127, 41514), (172, 41787), (186, 41868), (191, 41877), (192, 41880),

Gene: Lysidious\_79 Start: 48328, Stop: 49104, Start Num: 96

Candidate Starts for Lysidious\_79:

(28, 48028), (35, 48079), (53, 48163), (63, 48196), (Start: 96 @48328 has 64 MA's), (124, 48505), (138, 48577), (145, 48634), (150, 48655), (152, 48667), (165, 48775), (207, 48961), (211, 48970), (216, 48994),

Gene: Madraxi\_102 Start: 59347, Stop: 60069, Start Num: 100

Candidate Starts for Madraxi\_102:

(Start: 100 @59347 has 2 MA's), (104, 59365), (108, 59404), (115, 59446), (124, 59488), (128, 59524), (132, 59536), (143, 59596), (157, 59671), (190, 59866), (203, 59917), (210, 59938), (219, 59968), (229, 60040),

Gene: Malachai\_75 Start: 49240, Stop: 50016, Start Num: 96

Candidate Starts for Malachai\_75:

(29, 48943), (41, 49021), (Start: 96 @49240 has 64 MA's), (124, 49417), (150, 49567), (152, 49579), (165, 49687), (207, 49873), (211, 49882),

Gene: Malibo\_74 Start: 48036, Stop: 48914, Start Num: 82

Candidate Starts for Malibo\_74:

(16, 47619), (Start: 82 @48036 has 3 MA's), (136, 48348),

Gene: Malisha\_92 Start: 53316, Stop: 54062, Start Num: 96

Candidate Starts for Malisha\_92:

(80, 53265), (81, 53268), (Start: 96 @53316 has 64 MA's), (115, 53430), (151, 53634), (170, 53763), (182, 53829), (193, 53877), (195, 53889), (211, 53946), (223, 54024),

Gene: Melba\_77 Start: 46375, Stop: 47151, Start Num: 96

Candidate Starts for Melba\_77:

(51, 46201), (Start: 96 @46375 has 64 MA's), (124, 46552), (138, 46624), (150, 46702), (152, 46714), (165, 46822), (207, 47008), (211, 47017), (216, 47041),

Gene: Mellie\_74 Start: 46392, Stop: 47168, Start Num: 96

Candidate Starts for Mellie\_74:

(Start: 96 @46392 has 64 MA's), (112, 46497), (124, 46569), (152, 46731), (207, 47025), (211, 47034),

Gene: MintFen\_77 Start: 46614, Stop: 47390, Start Num: 96

Candidate Starts for MintFen\_77:

(Start: 96 @46614 has 64 MA's), (124, 46791), (138, 46863), (145, 46920), (146, 46926), (150, 46941), (152, 46953), (165, 47061), (207, 47247), (211, 47256),

Gene: MissRona\_83 Start: 51090, Stop: 51875, Start Num: 96

Candidate Starts for MissRona\_83:

(55, 50925), (Start: 96 @51090 has 64 MA's), (124, 51273), (152, 51435), (165, 51543), (207, 51729), (211, 51738),

Gene: Moosehead\_71 Start: 39747, Stop: 40490, Start Num: 96

Candidate Starts for Moosehead\_71:

(79, 39696), (80, 39699), (Start: 96 @39747 has 64 MA's), (125, 39912), (127, 39936), (186, 40290), (192, 40302), (202, 40347),

Gene: Morkie\_71 Start: 40373, Stop: 41116, Start Num: 96

Candidate Starts for Morkie\_71:

(54, 40202), (Start: 96 @40373 has 64 MA's), (125, 40538), (172, 40835), (186, 40916), (191, 40925), (192, 40928),

Gene: MrSmee\_74 Start: 39014, Stop: 39739, Start Num: 97

Candidate Starts for MrSmee\_74:

(97, 39014), (Start: 98 @39017 has 1 MA's), (110, 39107), (114, 39134), (115, 39137), (126, 39188), (130, 39221), (149, 39326), (154, 39356), (157, 39374), (173, 39491), (181, 39524), (206, 39626), (216, 39659), (226, 39722),

Gene: Mufasa8\_85 Start: 50444, Stop: 51298, Start Num: 90

Candidate Starts for Mufasa8\_85:

(Start: 90 @50444 has 1 MA's), (112, 50588), (120, 50633), (122, 50642), (132, 50696), (158, 50852), (163, 50897), (164, 50903), (194, 51086), (202, 51119), (205, 51128), (219, 51179), (221, 51203), (224, 51224), (226, 51233),

Gene: Mulch\_72 Start: 48191, Stop: 49066, Start Num: 84

Candidate Starts for Mulch\_72:

(43, 48020), (73, 48152), (80, 48185), (Start: 84 @48191 has 14 MA's), (103, 48284), (123, 48431), (136, 48500), (139, 48515), (173, 48755), (195, 48854), (218, 48941), (231, 49049),

Gene: Murp\_75 Start: 49491, Stop: 50267, Start Num: 96

Candidate Starts for Murp\_75:

(53, 49326), (Start: 96 @49491 has 64 MA's), (112, 49596), (124, 49668), (138, 49740), (145, 49797), (150, 49818), (152, 49830), (165, 49938), (207, 50124), (211, 50133),

Gene: Nadeem\_72 Start: 48179, Stop: 49054, Start Num: 84

Candidate Starts for Nadeem\_72:

(43, 48008), (73, 48140), (80, 48173), (Start: 84 @48179 has 14 MA's), (103, 48272), (123, 48419), (136, 48488), (139, 48503), (173, 48743), (195, 48842), (218, 48929), (231, 49037),

Gene: NancyRae\_71 Start: 48057, Stop: 48932, Start Num: 84

Candidate Starts for NancyRae\_71:

(66, 47997), (80, 48051), (Start: 84 @48057 has 14 MA's), (103, 48150), (123, 48297), (136, 48366), (139, 48381), (173, 48621), (195, 48720), (207, 48768), (218, 48807), (231, 48915),

Gene: ODay\_113 Start: 56624, Stop: 57352, Start Num: 96

Candidate Starts for ODay\_113:

(85, 56576), (92, 56612), (Start: 96 @56624 has 64 MA's), (108, 56699), (125, 56777), (172, 57074), (175, 57098), (183, 57122), (191, 57164), (192, 57167), (200, 57200), (201, 57209), (202, 57212), (203, 57215), (204, 57218), (209, 57233), (213, 57245), (214, 57248), (224, 57314), (225, 57320),

Gene: Obliviate\_77 Start: 46932, Stop: 47708, Start Num: 96

Candidate Starts for Obliviate\_77:

(51, 46752), (Start: 96 @46932 has 64 MA's), (119, 47076), (124, 47109), (138, 47181), (150, 47259), (152, 47271), (165, 47379), (207, 47565), (211, 47574),

Gene: OneDirection\_65 Start: 37787, Stop: 38530, Start Num: 96

Candidate Starts for OneDirection\_65:

(54, 37616), (Start: 96 @37787 has 64 MA's), (125, 37952), (172, 38249), (186, 38330), (191, 38339), (192, 38342),

Gene: PCoral7\_76 Start: 47524, Stop: 48300, Start Num: 96

Candidate Starts for PCoral7\_76:

(Start: 96 @47524 has 64 MA's), (124, 47704), (137, 47767), (138, 47776), (152, 47866), (201, 48139), (207, 48160), (211, 48169), (223, 48247),

Gene: Parada\_72 Start: 48191, Stop: 49066, Start Num: 84

Candidate Starts for Parada\_72:

(43, 48020), (73, 48152), (80, 48185), (Start: 84 @48191 has 14 MA's), (103, 48284), (123, 48431), (136, 48500), (139, 48515), (173, 48755), (195, 48854), (218, 48941), (231, 49049),

Gene: Pepperoni\_64 Start: 38913, Stop: 39656, Start Num: 96

Candidate Starts for Pepperoni\_64:

(Start: 96 @38913 has 64 MA's), (125, 39078), (172, 39375), (186, 39456), (191, 39465), (192, 39468),

Gene: Petra\_84 Start: 49488, Stop: 50267, Start Num: 96

Candidate Starts for Petra\_84:

(25, 49173), (34, 49230), (45, 49281), (63, 49356), (Start: 96 @49488 has 64 MA's), (124, 49665), (152, 49827), (165, 49935), (207, 50121), (211, 50130), (216, 50154),

Gene: PhorbesPhlower\_69 Start: 39768, Stop: 40511, Start Num: 96

Candidate Starts for PhorbesPhlower\_69:

(54, 39597), (Start: 96 @39768 has 64 MA's), (125, 39933), (172, 40230), (186, 40311), (191, 40320), (192, 40323),

Gene: PhrostedPhlake\_83 Start: 49071, Stop: 49847, Start Num: 96

Candidate Starts for PhrostedPhlake\_83:

(53, 48906), (Start: 96 @49071 has 64 MA's), (124, 49248), (152, 49410), (165, 49518), (207, 49704), (211, 49713),

Gene: Pimento\_75 Start: 48276, Stop: 49151, Start Num: 84

Candidate Starts for Pimento\_75:

(34, 48075), (36, 48078), (Start: 84 @48276 has 14 MA's), (103, 48369), (131, 48570), (136, 48585), (139, 48600), (173, 48840), (195, 48939), (207, 48987), (218, 49026), (231, 49134),

Gene: Pipp\_82 Start: 48884, Stop: 49675, Start Num: 94

Candidate Starts for Pipp\_82:

(38, 48650), (41, 48665), (42, 48671), (53, 48728), (Start: 94 @48884 has 1 MA's), (Start: 96 @48893 has 64 MA's), (124, 49076), (150, 49226), (207, 49532), (211, 49541), (216, 49565),

Gene: Pitbull\_74 Start: 38878, Stop: 39600, Start Num: 98

Candidate Starts for Pitbull\_74:

(40, 38620), (46, 38650), (62, 38725), (69, 38758), (73, 38773), (74, 38782), (Start: 98 @38878 has 1 MA's), (102, 38908), (110, 38968), (114, 38995), (115, 38998), (126, 39049), (135, 39097), (149, 39187), (170, 39325), (173, 39352), (181, 39385), (206, 39487), (216, 39520), (226, 39583),

Gene: PrincePatrick\_79 Start: 47344, Stop: 48120, Start Num: 96

Candidate Starts for PrincePatrick\_79:

(Start: 96 @47344 has 64 MA's), (124, 47524), (137, 47587), (138, 47596), (152, 47686), (201, 47959), (207, 47980), (211, 47989), (223, 48067),

Gene: Reyja\_61 Start: 39095, Stop: 39976, Start Num: 75

Candidate Starts for Reyja\_61:

(63, 39041), (Start: 75 @39095 has 5 MA's), (190, 39758), (223, 39908), (227, 39923),

Gene: Ruthy\_71 Start: 49474, Stop: 50355, Start Num: 82

Candidate Starts for Ruthy\_71:

(10, 48862), (14, 48916), (31, 49222), (Start: 82 @49474 has 3 MA's), (136, 49786),

Gene: Samba\_77 Start: 49525, Stop: 50301, Start Num: 96



Candidate Starts for Samba\_77:

(41, 49306), (Start: 96 @49525 has 64 MA's), (124, 49702), (138, 49774), (145, 49831), (150, 49852), (152, 49864), (165, 49972), (207, 50158), (211, 50167), (216, 50191), (223, 50245),

Gene: Santhid\_55 Start: 36515, Stop: 37387, Start Num: 75

Candidate Starts for Santhid\_55:

(9, 35897), (19, 36176), (20, 36209), (33, 36305), (66, 36476), (Start: 75 @36515 has 5 MA's), (118, 36740), (148, 36911), (190, 37169), (223, 37319), (227, 37334),

Gene: Shagrat\_105 Start: 54894, Stop: 55640, Start Num: 89

Candidate Starts for Shagrat\_105:

(30, 54600), (68, 54804), (76, 54837), (Start: 89 @54894 has 1 MA's), (101, 54939), (105, 54954), (107, 54969), (129, 55119), (147, 55200), (155, 55236), (160, 55272), (162, 55299), (176, 55386), (178, 55389), (187, 55437), (196, 55467), (199, 55479), (202, 55491), (210, 55515),

Gene: Shlim410\_73 Start: 50324, Stop: 51061, Start Num: 96

Candidate Starts for Shlim410\_73:

(39, 50078), (71, 50225), (79, 50267), (Start: 96 @50324 has 64 MA's), (106, 50366), (108, 50399), (124, 50480), (125, 50483), (150, 50630), (172, 50780), (186, 50861), (192, 50873),

Gene: Sleepyhead\_65 Start: 41971, Stop: 42924, Start Num: 70

Candidate Starts for Sleepyhead\_65:

(Start: 70 @41971 has 2 MA's), (99, 42088), (103, 42118), (121, 42250), (125, 42268), (144, 42391), (156, 42454), (159, 42478), (177, 42616), (186, 42670), (188, 42673),

Gene: Sonali\_80 Start: 50220, Stop: 51053, Start Num: 93

Candidate Starts for Sonali\_80:

(Start: 93 @50220 has 1 MA's), (109, 50325), (111, 50343), (122, 50406), (132, 50460), (138, 50484), (140, 50511), (141, 50514), (166, 50688), (226, 51000),

Gene: Tarzan\_59 Start: 37877, Stop: 38749, Start Num: 75

Candidate Starts for Tarzan\_59:

(Start: 75 @37877 has 5 MA's), (77, 37889), (118, 38102), (190, 38531), (223, 38681), (227, 38696),

Gene: Toast\_77 Start: 47524, Stop: 48300, Start Num: 96

Candidate Starts for Toast\_77:

(Start: 96 @47524 has 64 MA's), (124, 47704), (137, 47767), (138, 47776), (152, 47866), (201, 48139), (207, 48160), (211, 48169), (223, 48247),

Gene: Twinkle\_74 Start: 51383, Stop: 52120, Start Num: 96

Candidate Starts for Twinkle\_74:

(39, 51137), (71, 51284), (79, 51326), (Start: 96 @51383 has 64 MA's), (106, 51425), (108, 51458), (124, 51539), (125, 51542), (150, 51689), (172, 51839), (186, 51920), (192, 51932),

Gene: UmaThurman\_80 Start: 47661, Stop: 48437, Start Num: 96

Candidate Starts for UmaThurman\_80:

(Start: 96 @47661 has 64 MA's), (124, 47838), (138, 47910), (145, 47967), (146, 47973), (150, 47988), (152, 48000), (165, 48108), (207, 48294), (211, 48303),

Gene: Utz\_68 Start: 47303, Stop: 48079, Start Num: 96

Candidate Starts for Utz\_68:

(35, 47054), (Start: 96 @47303 has 64 MA's), (124, 47480), (138, 47552), (145, 47609), (146, 47615), (150, 47630), (152, 47642), (165, 47750), (207, 47936), (211, 47945),

Gene: Walrus\_77 Start: 48349, Stop: 49125, Start Num: 96

Candidate Starts for Walrus\_77:

(25, 48034), (45, 48142), (47, 48151), (63, 48217), (65, 48223), (Start: 96 @48349 has 64 MA's), (124, 48526), (152, 48688), (165, 48796), (207, 48982), (211, 48991),

Gene: Whack\_70 Start: 45809, Stop: 46741, Start Num: 70

Candidate Starts for Whack\_70:

(1, 44903), (2, 44915), (3, 44963), (4, 44984), (5, 45032), (6, 45044), (7, 45050), (8, 45080), (11, 45239), (13, 45278), (17, 45455), (44, 45686), (56, 45746), (60, 45764), (Start: 70 @45809 has 2 MA's), (86, 45875), (91, 45905), (103, 45956), (117, 46067), (133, 46148), (151, 46259), (156, 46286), (162, 46349), (167, 46376), (177, 46448), (186, 46502), (188, 46505), (215, 46616), (222, 46670), (226, 46691),

Gene: WheatThin\_72 Start: 48179, Stop: 49054, Start Num: 84

Candidate Starts for WheatThin\_72:

(43, 48008), (73, 48140), (80, 48173), (Start: 84 @48179 has 14 MA's), (103, 48272), (123, 48419), (136, 48488), (139, 48503), (173, 48743), (195, 48842), (218, 48929), (231, 49037),

Gene: William\_79 Start: 48596, Stop: 49372, Start Num: 96

Candidate Starts for William\_79:

(18, 48164), (Start: 96 @48596 has 64 MA's), (124, 48776), (201, 49211), (207, 49232), (211, 49241), (223, 49319),

Gene: Wisp\_74 Start: 47248, Stop: 48024, Start Num: 96

Candidate Starts for Wisp\_74:

(63, 47116), (Start: 96 @47248 has 64 MA's), (124, 47425), (138, 47497), (150, 47575), (152, 47587), (165, 47695), (179, 47761), (207, 47881), (211, 47890),

Gene: Wocket\_77 Start: 47897, Stop: 48673, Start Num: 96

Candidate Starts for Wocket\_77:

(Start: 96 @47897 has 64 MA's), (124, 48074), (138, 48146), (145, 48203), (150, 48224), (152, 48236), (165, 48344), (207, 48530), (211, 48539),

Gene: Zarbodnamra\_81 Start: 47607, Stop: 48383, Start Num: 96

Candidate Starts for Zarbodnamra\_81:

(Start: 96 @47607 has 64 MA's), (124, 47784), (138, 47856), (145, 47913), (150, 47934), (152, 47946), (165, 48054), (195, 48192), (207, 48240), (211, 48249),

Gene: ZiggyZoo\_78 Start: 49093, Stop: 49869, Start Num: 96

Candidate Starts for ZiggyZoo\_78:

(41, 48874), (Start: 96 @49093 has 64 MA's), (124, 49270), (138, 49342), (150, 49420), (152, 49432), (165, 49540), (207, 49726), (211, 49735), (216, 49759),