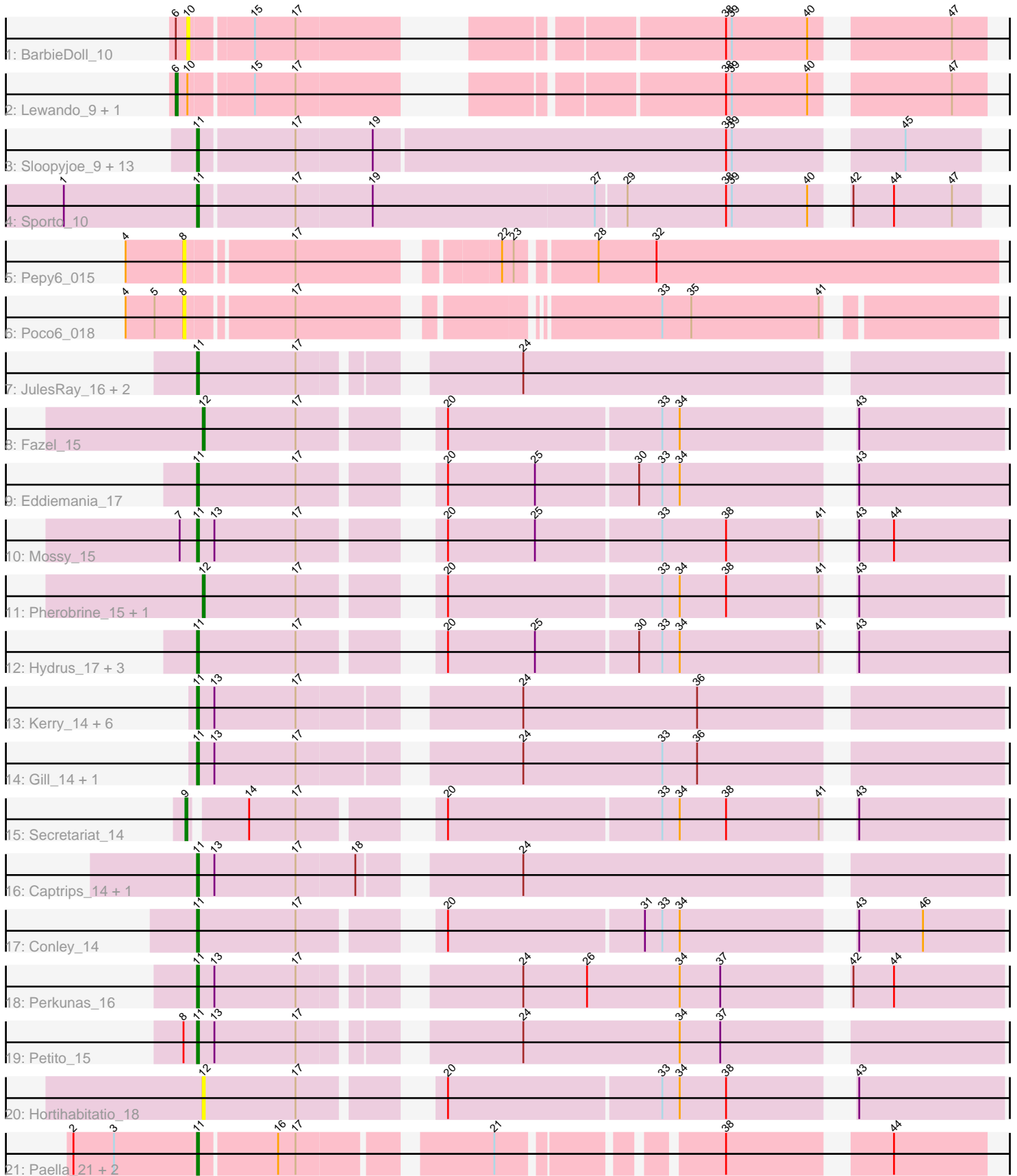


Pham 192627



Note: Tracks are now grouped by subcluster and scaled. Switching in subcluster is indicated by changes in track color. Track scale is now set by default to display the region 30 bp upstream of start 1 to 30 bp downstream of the last possible start. If this default region is judged to be packed too tightly with annotated starts, the track will be further scaled to only show that region of the ORF with annotated starts. This action will be indicated by adding "Zoomed" to the title. For starts, yellow indicates the location of called starts comprised solely of Glimmer/GeneMark auto-annotations, green indicates the location of called starts with at least 1 manual gene annotation.

Pham 192627 Report

This analysis was run 11/02/24 on database version 579.

Pham number 192627 has 51 members, 11 are drafts.

Phages represented in each track:

- Track 1 : BarbieDoll_10
- Track 2 : Lewando_9, Renaldo_10
- Track 3 : Sloopyjoe_9, Linda_9, Salk_9, MrAaronian_9, Djungelskog_9, Michelle_9, StarLord_9, ProfFrink_9, Egad_9, Raunak_9, Stayer_9, DoctorPepper_9, Shiba_9, BronxBay_9
- Track 4 : Sporto_10
- Track 5 : Pepy6_015
- Track 6 : Poco6_018
- Track 7 : JulesRay_16, Artorias_14, FortCran_14
- Track 8 : Fazel_15
- Track 9 : Eddiemania_17
- Track 10 : Mossy_15
- Track 11 : Pherobrine_15, Mysticmoon_16
- Track 12 : Hydrus_17, Kenosha_15, Arataki_14, Zeph_17
- Track 13 : Kerry_14, Roney_14, Magel_14, Capybara_14, NoPickles_14, Gravy_14, Odesza_14
- Track 14 : Gill_14, Tanis_14
- Track 15 : Secretariat_14
- Track 16 : Captrips_14, Avazak_14
- Track 17 : Conley_14
- Track 18 : Perkunas_16
- Track 19 : Petite_15
- Track 20 : Hortihabitatio_18
- Track 21 : Paella_21, Elver_20, Qui_21

Summary of Final Annotations (See graph section above for start numbers):

The start number called the most often in the published annotations is 11, it was called in 36 of the 40 non-draft genes in the pham.

Genes that call this "Most Annotated" start:

- Arataki_14, Artorias_14, Avazak_14, BronxBay_9, Captrips_14, Capybara_14, Conley_14, Djungelskog_9, DoctorPepper_9, Eddiemania_17, Egad_9, Elver_20, FortCran_14, Gill_14, Gravy_14, Hydrus_17, JulesRay_16, Kenosha_15, Kerry_14,

Linda_9, Magel_14, Michelle_9, Mossy_15, MrAaronian_9, NoPickles_14, Odesza_14, Paella_21, Perkunas_16, Petito_15, ProfFrink_9, Qui_21, Raunak_9, Roney_14, Salk_9, Shiba_9, Sloopyjoe_9, Sporto_10, StarLord_9, Stayer_9, Tanis_14, Zeph_17,

Genes that have the "Most Annotated" start but do not call it:

-

Genes that do not have the "Most Annotated" start:

- BarbieDoll_10, Fazel_15, Hortihabitatio_18, Lewando_9, Mysticmoon_16, Pepy6_015, Pherobrine_15, Poco6_018, Renaldo_10, Secretariat_14,

Summary by start number:

Start 6:

- Found in 3 of 51 (5.9%) of genes in pham
- Manual Annotations of this start: 1 of 40
- Called 66.7% of time when present
- Phage (with cluster) where this start called: Lewando_9 (AU6), Renaldo_10 (AU6),

Start 8:

- Found in 3 of 51 (5.9%) of genes in pham
- No Manual Annotations of this start.
- Called 66.7% of time when present
- Phage (with cluster) where this start called: Pepy6_015 (CC), Poco6_018 (CC),

Start 9:

- Found in 1 of 51 (2.0%) of genes in pham
- Manual Annotations of this start: 1 of 40
- Called 100.0% of time when present
- Phage (with cluster) where this start called: Secretariat_14 (DJ),

Start 10:

- Found in 3 of 51 (5.9%) of genes in pham
- No Manual Annotations of this start.
- Called 33.3% of time when present
- Phage (with cluster) where this start called: BarbieDoll_10 (AU6),

Start 11:

- Found in 41 of 51 (80.4%) of genes in pham
- Manual Annotations of this start: 36 of 40
- Called 100.0% of time when present
- Phage (with cluster) where this start called: Arataki_14 (DJ), Artorias_14 (DJ), Avazak_14 (DJ), BronxBay_9 (AW), Captrips_14 (DJ), Copybara_14 (DJ), Conley_14 (DJ), Djungelskog_9 (AW), DoctorPepper_9 (AW), Eddiemania_17 (DJ), Egad_9 (AW), Elver_20 (FK), FortCran_14 (DJ), Gill_14 (DJ), Gravy_14 (DJ), Hydrus_17 (DJ), JulesRay_16 (DJ), Kenosha_15 (DJ), Kerry_14 (DJ), Linda_9 (AW), Magel_14 (DJ), Michelle_9 (AW), Mossy_15 (DJ), MrAaronian_9 (AW), NoPickles_14 (DJ), Odesza_14 (DJ), Paella_21 (FK), Perkunas_16 (DJ), Petito_15 (DJ), ProfFrink_9 (AW), Qui_21 (FK), Raunak_9 (AW), Roney_14 (DJ), Salk_9 (AW), Shiba_9 (AW), Sloopyjoe_9 (AW), Sporto_10 (AW), StarLord_9 (AW), Stayer_9 (AW), Tanis_14 (DJ), Zeph_17 (DJ),

Start 12:

- Found in 4 of 51 (7.8%) of genes in pham
- Manual Annotations of this start: 2 of 40
- Called 100.0% of time when present
- Phage (with cluster) where this start called: Fazel_15 (DJ), Hortihabitatio_18 (DJ), Mysticmoon_16 (DJ), Pherobrine_15 (DJ),

Summary by clusters:

There are 5 clusters represented in this pham: CC, FK, DJ, AW, AU6,

Info for manual annotations of cluster AU6:

- Start number 6 was manually annotated 1 time for cluster AU6.

Info for manual annotations of cluster AW:

- Start number 11 was manually annotated 14 times for cluster AW.

Info for manual annotations of cluster DJ:

- Start number 9 was manually annotated 1 time for cluster DJ.
- Start number 11 was manually annotated 20 times for cluster DJ.
- Start number 12 was manually annotated 2 times for cluster DJ.

Info for manual annotations of cluster FK:

- Start number 11 was manually annotated 2 times for cluster FK.

Gene Information:

Gene: Arataki_14 Start: 9833, Stop: 10210, Start Num: 11

Candidate Starts for Arataki_14:

(Start: 11 @9833 has 36 MA's), (17, 9884), (20, 9938), (25, 9983), (30, 10034), (33, 10046), (34, 10055), (41, 10127), (43, 10130),

Gene: Artorias_14 Start: 9261, Stop: 9638, Start Num: 11

Candidate Starts for Artorias_14:

(Start: 11 @9261 has 36 MA's), (17, 9312), (24, 9405),

Gene: Avazak_14 Start: 9262, Stop: 9645, Start Num: 11

Candidate Starts for Avazak_14:

(Start: 11 @9262 has 36 MA's), (13, 9271), (17, 9313), (18, 9343), (24, 9412),

Gene: BarbieDoll_10 Start: 5426, Stop: 5770, Start Num: 10

Candidate Starts for BarbieDoll_10:

(Start: 6 @5420 has 1 MA's), (10, 5426), (15, 5456), (17, 5477), (38, 5651), (39, 5654), (40, 5693), (47, 5753),

Gene: BronxBay_9 Start: 5363, Stop: 5746, Start Num: 11

Candidate Starts for BronxBay_9:

(Start: 11 @5363 has 36 MA's), (17, 5411), (19, 5450), (38, 5630), (39, 5633), (45, 5708),

Gene: Captrips_14 Start: 9262, Stop: 9645, Start Num: 11

Candidate Starts for Captrips_14:
(Start: 11 @9262 has 36 MA's), (13, 9271), (17, 9313), (18, 9343), (24, 9412),

Gene: Capybara_14 Start: 8981, Stop: 9364, Start Num: 11
Candidate Starts for Capybara_14:
(Start: 11 @8981 has 36 MA's), (13, 8990), (17, 9032), (24, 9131), (36, 9221),

Gene: Conley_14 Start: 9292, Stop: 9663, Start Num: 11
Candidate Starts for Conley_14:
(Start: 11 @9292 has 36 MA's), (17, 9343), (20, 9397), (31, 9496), (33, 9505), (34, 9514), (43, 9589),
(46, 9622),

Gene: Djungelskog_9 Start: 5363, Stop: 5746, Start Num: 11
Candidate Starts for Djungelskog_9:
(Start: 11 @5363 has 36 MA's), (17, 5411), (19, 5450), (38, 5630), (39, 5633), (45, 5708),

Gene: DoctorPepper_9 Start: 5363, Stop: 5746, Start Num: 11
Candidate Starts for DoctorPepper_9:
(Start: 11 @5363 has 36 MA's), (17, 5411), (19, 5450), (38, 5630), (39, 5633), (45, 5708),

Gene: Eddiemania_17 Start: 11431, Stop: 11808, Start Num: 11
Candidate Starts for Eddiemania_17:
(Start: 11 @11431 has 36 MA's), (17, 11482), (20, 11536), (25, 11581), (30, 11632), (33, 11644), (34,
11653), (43, 11728),

Gene: Egad_9 Start: 5364, Stop: 5747, Start Num: 11
Candidate Starts for Egad_9:
(Start: 11 @5364 has 36 MA's), (17, 5412), (19, 5451), (38, 5631), (39, 5634), (45, 5709),

Gene: Elver_20 Start: 12192, Stop: 12542, Start Num: 11
Candidate Starts for Elver_20:
(2, 12129), (3, 12150), (Start: 11 @12192 has 36 MA's), (16, 12231), (17, 12240), (21, 12327), (38,
12423), (44, 12495),

Gene: Fazel_15 Start: 10968, Stop: 11336, Start Num: 12
Candidate Starts for Fazel_15:
(Start: 12 @10968 has 2 MA's), (17, 11016), (20, 11070), (33, 11178), (34, 11187), (43, 11262),

Gene: FortCran_14 Start: 9261, Stop: 9638, Start Num: 11
Candidate Starts for FortCran_14:
(Start: 11 @9261 has 36 MA's), (17, 9312), (24, 9405),

Gene: Gill_14 Start: 8981, Stop: 9364, Start Num: 11
Candidate Starts for Gill_14:
(Start: 11 @8981 has 36 MA's), (13, 8990), (17, 9032), (24, 9131), (33, 9203), (36, 9221),

Gene: Gravy_14 Start: 8981, Stop: 9364, Start Num: 11
Candidate Starts for Gravy_14:
(Start: 11 @8981 has 36 MA's), (13, 8990), (17, 9032), (24, 9131), (36, 9221),

Gene: Hortihabitatio_18 Start: 11339, Stop: 11707, Start Num: 12
Candidate Starts for Hortihabitatio_18:

(Start: 12 @11339 has 2 MA's), (17, 11387), (20, 11441), (33, 11549), (34, 11558), (38, 11582), (43, 11633),

Gene: Hydrus_17 Start: 11248, Stop: 11625, Start Num: 11

Candidate Starts for Hydrus_17:

(Start: 11 @11248 has 36 MA's), (17, 11299), (20, 11353), (25, 11398), (30, 11449), (33, 11461), (34, 11470), (41, 11542), (43, 11545),

Gene: JulesRay_16 Start: 9261, Stop: 9638, Start Num: 11

Candidate Starts for JulesRay_16:

(Start: 11 @9261 has 36 MA's), (17, 9312), (24, 9405),

Gene: Kenosha_15 Start: 9849, Stop: 10226, Start Num: 11

Candidate Starts for Kenosha_15:

(Start: 11 @9849 has 36 MA's), (17, 9900), (20, 9954), (25, 9999), (30, 10050), (33, 10062), (34, 10071), (41, 10143), (43, 10146),

Gene: Kerry_14 Start: 8981, Stop: 9364, Start Num: 11

Candidate Starts for Kerry_14:

(Start: 11 @8981 has 36 MA's), (13, 8990), (17, 9032), (24, 9131), (36, 9221),

Gene: Lewando_9 Start: 5419, Stop: 5769, Start Num: 6

Candidate Starts for Lewando_9:

(Start: 6 @5419 has 1 MA's), (10, 5425), (15, 5455), (17, 5476), (38, 5650), (39, 5653), (40, 5692), (47, 5752),

Gene: Linda_9 Start: 5363, Stop: 5746, Start Num: 11

Candidate Starts for Linda_9:

(Start: 11 @5363 has 36 MA's), (17, 5411), (19, 5450), (38, 5630), (39, 5633), (45, 5708),

Gene: Magel_14 Start: 8981, Stop: 9364, Start Num: 11

Candidate Starts for Magel_14:

(Start: 11 @8981 has 36 MA's), (13, 8990), (17, 9032), (24, 9131), (36, 9221),

Gene: Michelle_9 Start: 5363, Stop: 5746, Start Num: 11

Candidate Starts for Michelle_9:

(Start: 11 @5363 has 36 MA's), (17, 5411), (19, 5450), (38, 5630), (39, 5633), (45, 5708),

Gene: Mossy_15 Start: 10137, Stop: 10514, Start Num: 11

Candidate Starts for Mossy_15:

(7, 10128), (Start: 11 @10137 has 36 MA's), (13, 10146), (17, 10188), (20, 10242), (25, 10287), (33, 10350), (38, 10383), (41, 10431), (43, 10434), (44, 10452),

Gene: MrAaronian_9 Start: 5363, Stop: 5746, Start Num: 11

Candidate Starts for MrAaronian_9:

(Start: 11 @5363 has 36 MA's), (17, 5411), (19, 5450), (38, 5630), (39, 5633), (45, 5708),

Gene: Mysticmoon_16 Start: 9818, Stop: 10186, Start Num: 12

Candidate Starts for Mysticmoon_16:

(Start: 12 @9818 has 2 MA's), (17, 9866), (20, 9920), (33, 10028), (34, 10037), (38, 10061), (41, 10109), (43, 10112),

Gene: NoPickles_14 Start: 8981, Stop: 9364, Start Num: 11

Candidate Starts for NoPickles_14:

(Start: 11 @8981 has 36 MA's), (13, 8990), (17, 9032), (24, 9131), (36, 9221),

Gene: Odesza_14 Start: 8981, Stop: 9364, Start Num: 11

Candidate Starts for Odesza_14:

(Start: 11 @8981 has 36 MA's), (13, 8990), (17, 9032), (24, 9131), (36, 9221),

Gene: Paella_21 Start: 12194, Stop: 12544, Start Num: 11

Candidate Starts for Paella_21:

(2, 12131), (3, 12152), (Start: 11 @12194 has 36 MA's), (16, 12233), (17, 12242), (21, 12329), (38, 12425), (44, 12497),

Gene: Pepy6_015 Start: 14185, Stop: 14574, Start Num: 8

Candidate Starts for Pepy6_015:

(4, 14155), (8, 14185), (17, 14236), (22, 14326), (23, 14332), (28, 14368), (32, 14398),

Gene: Perkunas_16 Start: 9780, Stop: 10157, Start Num: 11

Candidate Starts for Perkunas_16:

(Start: 11 @9780 has 36 MA's), (13, 9789), (17, 9831), (24, 9924), (26, 9957), (34, 10005), (37, 10026), (42, 10080), (44, 10101),

Gene: Petito_15 Start: 9485, Stop: 9862, Start Num: 11

Candidate Starts for Petito_15:

(8, 9479), (Start: 11 @9485 has 36 MA's), (13, 9494), (17, 9536), (24, 9629), (34, 9710), (37, 9731),

Gene: Pherobrine_15 Start: 9816, Stop: 10184, Start Num: 12

Candidate Starts for Pherobrine_15:

(Start: 12 @9816 has 2 MA's), (17, 9864), (20, 9918), (33, 10026), (34, 10035), (38, 10059), (41, 10107), (43, 10110),

Gene: Poco6_018 Start: 17635, Stop: 18006, Start Num: 8

Candidate Starts for Poco6_018:

(4, 17605), (5, 17620), (8, 17635), (17, 17686), (33, 17848), (35, 17863), (41, 17929),

Gene: ProfFrink_9 Start: 5363, Stop: 5746, Start Num: 11

Candidate Starts for ProfFrink_9:

(Start: 11 @5363 has 36 MA's), (17, 5411), (19, 5450), (38, 5630), (39, 5633), (45, 5708),

Gene: Qui_21 Start: 12194, Stop: 12544, Start Num: 11

Candidate Starts for Qui_21:

(2, 12131), (3, 12152), (Start: 11 @12194 has 36 MA's), (16, 12233), (17, 12242), (21, 12329), (38, 12425), (44, 12497),

Gene: Raunak_9 Start: 5363, Stop: 5746, Start Num: 11

Candidate Starts for Raunak_9:

(Start: 11 @5363 has 36 MA's), (17, 5411), (19, 5450), (38, 5630), (39, 5633), (45, 5708),

Gene: Renaldo_10 Start: 5420, Stop: 5770, Start Num: 6

Candidate Starts for Renaldo_10:

(Start: 6 @5420 has 1 MA's), (10, 5426), (15, 5456), (17, 5477), (38, 5651), (39, 5654), (40, 5693), (47, 5753),

Gene: Roney_14 Start: 8981, Stop: 9364, Start Num: 11

Candidate Starts for Roney_14:

(Start: 11 @8981 has 36 MA's), (13, 8990), (17, 9032), (24, 9131), (36, 9221),

Gene: Salk_9 Start: 5363, Stop: 5746, Start Num: 11

Candidate Starts for Salk_9:

(Start: 11 @5363 has 36 MA's), (17, 5411), (19, 5450), (38, 5630), (39, 5633), (45, 5708),

Gene: Secretariat_14 Start: 9438, Stop: 9809, Start Num: 9

Candidate Starts for Secretariat_14:

(Start: 9 @9438 has 1 MA's), (14, 9465), (17, 9489), (20, 9543), (33, 9651), (34, 9660), (38, 9684), (41, 9732), (43, 9735),

Gene: Shiba_9 Start: 5363, Stop: 5746, Start Num: 11

Candidate Starts for Shiba_9:

(Start: 11 @5363 has 36 MA's), (17, 5411), (19, 5450), (38, 5630), (39, 5633), (45, 5708),

Gene: Sloopyjoe_9 Start: 5364, Stop: 5747, Start Num: 11

Candidate Starts for Sloopyjoe_9:

(Start: 11 @5364 has 36 MA's), (17, 5412), (19, 5451), (38, 5631), (39, 5634), (45, 5709),

Gene: Sporto_10 Start: 6615, Stop: 6998, Start Num: 11

Candidate Starts for Sporto_10:

(1, 6549), (Start: 11 @6615 has 36 MA's), (17, 6663), (19, 6702), (27, 6816), (29, 6831), (38, 6882), (39, 6885), (40, 6924), (42, 6933), (44, 6954), (47, 6984),

Gene: StarLord_9 Start: 5364, Stop: 5747, Start Num: 11

Candidate Starts for StarLord_9:

(Start: 11 @5364 has 36 MA's), (17, 5412), (19, 5451), (38, 5631), (39, 5634), (45, 5709),

Gene: Stayer_9 Start: 5363, Stop: 5746, Start Num: 11

Candidate Starts for Stayer_9:

(Start: 11 @5363 has 36 MA's), (17, 5411), (19, 5450), (38, 5630), (39, 5633), (45, 5708),

Gene: Tanis_14 Start: 8831, Stop: 9214, Start Num: 11

Candidate Starts for Tanis_14:

(Start: 11 @8831 has 36 MA's), (13, 8840), (17, 8882), (24, 8981), (33, 9053), (36, 9071),

Gene: Zeph_17 Start: 11230, Stop: 11607, Start Num: 11

Candidate Starts for Zeph_17:

(Start: 11 @11230 has 36 MA's), (17, 11281), (20, 11335), (25, 11380), (30, 11431), (33, 11443), (34, 11452), (41, 11524), (43, 11527),