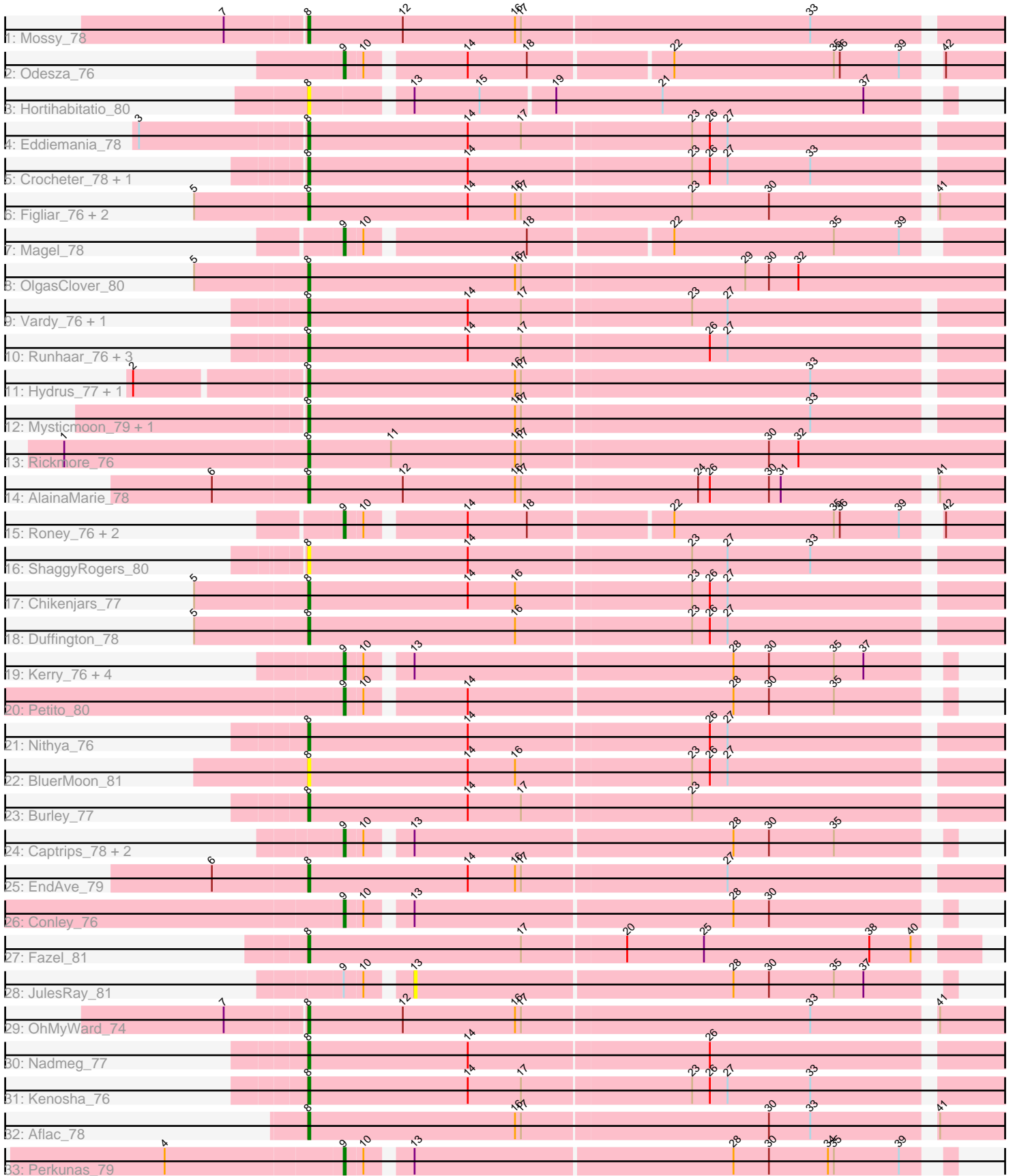


Pham 192635



Note: Tracks are now grouped by subcluster and scaled. Switching in subcluster is indicated by changes in track color. Track scale is now set by default to display the region 30 bp upstream of start 1 to 30 bp downstream of the last possible start. If this default region is judged to be packed too tightly with annotated starts, the track will be further scaled to only show that region of the ORF with annotated starts. This action will be indicated by adding "Zoomed" to the title. For starts, yellow indicates the location of called starts comprised solely of Glimmer/GeneMark auto-annotations, green indicates the location of called starts with at least 1 manual gene annotation.

Pham 192635 Report

This analysis was run 11/02/24 on database version 579.

Pham number 192635 has 50 members, 8 are drafts.

Phages represented in each track:

- Track 1 : Mossy_78
- Track 2 : Odesza_76
- Track 3 : Hortihabitatio_80
- Track 4 : Eddiemania_78
- Track 5 : Crocheter_78, Gusicorn_81
- Track 6 : Figliar_76, TenaciousP_78, Jodelie19_76
- Track 7 : Magel_78
- Track 8 : OlgasClover_80
- Track 9 : Vardy_76, Zeph_79
- Track 10 : Runhaar_76, Madvan_77, Phepper_78, Untouchable_79
- Track 11 : Hydrus_77, Arataki_74
- Track 12 : Mysticmoon_79, Pherobrine_78
- Track 13 : Rickmore_76
- Track 14 : AlainaMarie_78
- Track 15 : Roney_76, Tanis_77, Gill_77
- Track 16 : ShaggyRogers_80
- Track 17 : Chickenjars_77
- Track 18 : Duffington_78
- Track 19 : Kerry_76, Capybara_77, Gravy_76, Artorias_79, FortCran_79
- Track 20 : Petite_80
- Track 21 : Nithya_76
- Track 22 : BluerMoon_81
- Track 23 : Burley_77
- Track 24 : Captrips_78, NoPickles_78, Avazak_80
- Track 25 : EndAve_79
- Track 26 : Conley_76
- Track 27 : Fazel_81
- Track 28 : JulesRay_81
- Track 29 : OhMyWard_74
- Track 30 : Nadmeg_77
- Track 31 : Kenosha_76
- Track 32 : Aflac_78
- Track 33 : Perkunas_79

Summary of Final Annotations (See graph section above for start numbers):

The start number called the most often in the published annotations is 8, it was called in 27 of the 42 non-draft genes in the pham.

Genes that call this "Most Annotated" start:

- Aflac_78, AlainaMarie_78, Arataki_74, BluerMoon_81, Burley_77, Chikenjars_77, Crocheter_78, Duffington_78, Eddiemania_78, EndAve_79, Fazel_81, Figliar_76, Gusicorn_81, Hortihabitatio_80, Hydrus_77, Jodelie19_76, Kenosha_76, Madvan_77, Mossy_78, Mysticmoon_79, Nadmeg_77, Nithya_76, OhMyWard_74, OlgasClover_80, Phepper_78, Pherobrine_78, Rickmore_76, Runhaar_76, ShaggyRogers_80, TenaciousP_78, Untouchable_79, Vardy_76, Zeph_79,

Genes that have the "Most Annotated" start but do not call it:

-

Genes that do not have the "Most Annotated" start:

- Artorias_79, Avazak_80, Captrips_78, Copybara_77, Conley_76, FortCran_79, Gill_77, Gravy_76, JulesRay_81, Kerry_76, Magel_78, NoPickles_78, Odesza_76, Perkunas_79, Petite_80, Roney_76, Tanis_77,

Summary by start number:

Start 8:

- Found in 33 of 50 (66.0%) of genes in pham
- Manual Annotations of this start: 27 of 42
- Called 100.0% of time when present
- Phage (with cluster) where this start called: Aflac_78 (DJ), AlainaMarie_78 (DJ), Arataki_74 (DJ), BluerMoon_81 (DJ), Burley_77 (DJ), Chikenjars_77 (DJ), Crocheter_78 (DJ), Duffington_78 (DJ), Eddiemania_78 (DJ), EndAve_79 (DJ), Fazel_81 (DJ), Figliar_76 (DJ), Gusicorn_81 (DJ), Hortihabitatio_80 (DJ), Hydrus_77 (DJ), Jodelie19_76 (DJ), Kenosha_76 (DJ), Madvan_77 (DJ), Mossy_78 (DJ), Mysticmoon_79 (DJ), Nadmeg_77 (DJ), Nithya_76 (DJ), OhMyWard_74 (DJ), OlgasClover_80 (DJ), Phepper_78 (DJ), Pherobrine_78 (DJ), Rickmore_76 (DJ), Runhaar_76 (DJ), ShaggyRogers_80 (DJ), TenaciousP_78 (DJ), Untouchable_79 (DJ), Vardy_76 (DJ), Zeph_79 (DJ),

Start 9:

- Found in 17 of 50 (34.0%) of genes in pham
- Manual Annotations of this start: 15 of 42
- Called 94.1% of time when present
- Phage (with cluster) where this start called: Artorias_79 (DJ), Avazak_80 (DJ), Captrips_78 (DJ), Copybara_77 (DJ), Conley_76 (DJ), FortCran_79 (DJ), Gill_77 (DJ), Gravy_76 (DJ), Kerry_76 (DJ), Magel_78 (DJ), NoPickles_78 (DJ), Odesza_76 (DJ), Perkunas_79 (DJ), Petite_80 (DJ), Roney_76 (DJ), Tanis_77 (DJ),

Start 13:

- Found in 12 of 50 (24.0%) of genes in pham
- No Manual Annotations of this start.
- Called 8.3% of time when present
- Phage (with cluster) where this start called: JulesRay_81 (DJ),

Summary by clusters:

There is one cluster represented in this pham: DJ

Info for manual annotations of cluster DJ:

- Start number 8 was manually annotated 27 times for cluster DJ.
- Start number 9 was manually annotated 15 times for cluster DJ.

Gene Information:

Gene: Aflac_78 Start: 51861, Stop: 52208, Start Num: 8

Candidate Starts for Aflac_78:

(Start: 8 @51861 has 27 MA's), (16, 51966), (17, 51969), (30, 52092), (33, 52113), (41, 52170),

Gene: AlainaMarie_78 Start: 51906, Stop: 52253, Start Num: 8

Candidate Starts for AlainaMarie_78:

(6, 51858), (Start: 8 @51906 has 27 MA's), (12, 51954), (16, 52011), (17, 52014), (24, 52101), (26, 52107), (30, 52137), (31, 52143), (41, 52215),

Gene: Arataki_74 Start: 50900, Stop: 51247, Start Num: 8

Candidate Starts for Arataki_74:

(2, 50819), (Start: 8 @50900 has 27 MA's), (16, 51005), (17, 51008), (33, 51152),

Gene: Artorias_79 Start: 51103, Stop: 51390, Start Num: 9

Candidate Starts for Artorias_79:

(Start: 9 @51103 has 15 MA's), (10, 51112), (13, 51130), (28, 51289), (30, 51307), (35, 51340), (37, 51355),

Gene: Avazak_80 Start: 51785, Stop: 52072, Start Num: 9

Candidate Starts for Avazak_80:

(Start: 9 @51785 has 15 MA's), (10, 51794), (13, 51812), (28, 51971), (30, 51989), (35, 52022),

Gene: BluerMoon_81 Start: 51813, Stop: 52160, Start Num: 8

Candidate Starts for BluerMoon_81:

(Start: 8 @51813 has 27 MA's), (14, 51894), (16, 51918), (23, 52005), (26, 52014), (27, 52023),

Gene: Burley_77 Start: 50918, Stop: 51265, Start Num: 8

Candidate Starts for Burley_77:

(Start: 8 @50918 has 27 MA's), (14, 50999), (17, 51026), (23, 51110),

Gene: Captrips_78 Start: 50933, Stop: 51220, Start Num: 9

Candidate Starts for Captrips_78:

(Start: 9 @50933 has 15 MA's), (10, 50942), (13, 50960), (28, 51119), (30, 51137), (35, 51170),

Gene: Capybara_77 Start: 50770, Stop: 51057, Start Num: 9

Candidate Starts for Capybara_77:

(Start: 9 @50770 has 15 MA's), (10, 50779), (13, 50797), (28, 50956), (30, 50974), (35, 51007), (37, 51022),

Gene: Chikenjars_77 Start: 51872, Stop: 52219, Start Num: 8

Candidate Starts for Chikenjars_77:

(5, 51815), (Start: 8 @51872 has 27 MA's), (14, 51953), (16, 51977), (23, 52064), (26, 52073), (27, 52082),

Gene: Conley_76 Start: 51234, Stop: 51521, Start Num: 9

Candidate Starts for Conley_76:

(Start: 9 @51234 has 15 MA's), (10, 51243), (13, 51261), (28, 51420), (30, 51438),

Gene: Crocheter_78 Start: 51379, Stop: 51726, Start Num: 8

Candidate Starts for Crocheter_78:

(Start: 8 @51379 has 27 MA's), (14, 51460), (23, 51571), (26, 51580), (27, 51589), (33, 51631),

Gene: Duffington_78 Start: 51842, Stop: 52189, Start Num: 8

Candidate Starts for Duffington_78:

(5, 51785), (Start: 8 @51842 has 27 MA's), (16, 51947), (23, 52034), (26, 52043), (27, 52052),

Gene: Eddiemania_78 Start: 51958, Stop: 52305, Start Num: 8

Candidate Starts for Eddiemania_78:

(3, 51877), (Start: 8 @51958 has 27 MA's), (14, 52039), (17, 52066), (23, 52150), (26, 52159), (27, 52168),

Gene: EndAve_79 Start: 51816, Stop: 52163, Start Num: 8

Candidate Starts for EndAve_79:

(6, 51768), (Start: 8 @51816 has 27 MA's), (14, 51897), (16, 51921), (17, 51924), (27, 52026),

Gene: Fazel_81 Start: 51842, Stop: 52171, Start Num: 8

Candidate Starts for Fazel_81:

(Start: 8 @51842 has 27 MA's), (17, 51950), (20, 52001), (25, 52040), (38, 52124), (40, 52145),

Gene: Figliar_76 Start: 51641, Stop: 51988, Start Num: 8

Candidate Starts for Figliar_76:

(5, 51584), (Start: 8 @51641 has 27 MA's), (14, 51722), (16, 51746), (17, 51749), (23, 51833), (30, 51872), (41, 51950),

Gene: FortCran_79 Start: 51103, Stop: 51390, Start Num: 9

Candidate Starts for FortCran_79:

(Start: 9 @51103 has 15 MA's), (10, 51112), (13, 51130), (28, 51289), (30, 51307), (35, 51340), (37, 51355),

Gene: Gill_77 Start: 50798, Stop: 51109, Start Num: 9

Candidate Starts for Gill_77:

(Start: 9 @50798 has 15 MA's), (10, 50807), (14, 50852), (18, 50882), (22, 50951), (35, 51032), (36, 51035), (39, 51065), (42, 51077),

Gene: Gravy_76 Start: 50460, Stop: 50747, Start Num: 9

Candidate Starts for Gravy_76:

(Start: 9 @50460 has 15 MA's), (10, 50469), (13, 50487), (28, 50646), (30, 50664), (35, 50697), (37, 50712),

Gene: Gusicorn_81 Start: 51286, Stop: 51633, Start Num: 8

Candidate Starts for Gusicorn_81:

(Start: 8 @51286 has 27 MA's), (14, 51367), (23, 51478), (26, 51487), (27, 51496), (33, 51538),

Gene: Hortihabitatio_80 Start: 52238, Stop: 52543, Start Num: 8

Candidate Starts for Hortihabitatio_80:

(Start: 8 @52238 has 27 MA's), (13, 52283), (15, 52316), (19, 52352), (21, 52406), (37, 52508),

Gene: Hydrus_77 Start: 51677, Stop: 52024, Start Num: 8

Candidate Starts for Hydrus_77:

(2, 51596), (Start: 8 @51677 has 27 MA's), (16, 51782), (17, 51785), (33, 51929),

Gene: Jodelie19_76 Start: 52808, Stop: 53155, Start Num: 8

Candidate Starts for Jodelie19_76:

(5, 52751), (Start: 8 @52808 has 27 MA's), (14, 52889), (16, 52913), (17, 52916), (23, 53000), (30, 53039), (41, 53117),

Gene: JulesRay_81 Start: 51479, Stop: 51739, Start Num: 13

Candidate Starts for JulesRay_81:

(Start: 9 @51452 has 15 MA's), (10, 51461), (13, 51479), (28, 51638), (30, 51656), (35, 51689), (37, 51704),

Gene: Kenosha_76 Start: 51507, Stop: 51854, Start Num: 8

Candidate Starts for Kenosha_76:

(Start: 8 @51507 has 27 MA's), (14, 51588), (17, 51615), (23, 51699), (26, 51708), (27, 51717), (33, 51759),

Gene: Kerry_76 Start: 50523, Stop: 50810, Start Num: 9

Candidate Starts for Kerry_76:

(Start: 9 @50523 has 15 MA's), (10, 50532), (13, 50550), (28, 50709), (30, 50727), (35, 50760), (37, 50775),

Gene: Madvan_77 Start: 50974, Stop: 51321, Start Num: 8

Candidate Starts for Madvan_77:

(Start: 8 @50974 has 27 MA's), (14, 51055), (17, 51082), (26, 51175), (27, 51184),

Gene: Magel_78 Start: 50713, Stop: 51024, Start Num: 9

Candidate Starts for Magel_78:

(Start: 9 @50713 has 15 MA's), (10, 50722), (18, 50797), (22, 50866), (35, 50947), (39, 50980),

Gene: Mossy_78 Start: 52559, Stop: 52906, Start Num: 8

Candidate Starts for Mossy_78:

(7, 52520), (Start: 8 @52559 has 27 MA's), (12, 52607), (16, 52664), (17, 52667), (33, 52811),

Gene: Mysticmoon_79 Start: 52201, Stop: 52548, Start Num: 8

Candidate Starts for Mysticmoon_79:

(Start: 8 @52201 has 27 MA's), (16, 52306), (17, 52309), (33, 52453),

Gene: Nadmeg_77 Start: 51977, Stop: 52324, Start Num: 8

Candidate Starts for Nadmeg_77:

(Start: 8 @51977 has 27 MA's), (14, 52058), (26, 52178),

Gene: Nithya_76 Start: 51360, Stop: 51707, Start Num: 8

Candidate Starts for Nithya_76:

(Start: 8 @51360 has 27 MA's), (14, 51441), (26, 51561), (27, 51570),

Gene: NoPickles_78 Start: 50619, Stop: 50906, Start Num: 9

Candidate Starts for NoPickles_78:

(Start: 9 @50619 has 15 MA's), (10, 50628), (13, 50646), (28, 50805), (30, 50823), (35, 50856),

Gene: Odesza_76 Start: 50660, Stop: 50971, Start Num: 9
Candidate Starts for Odesza_76:
(Start: 9 @50660 has 15 MA's), (10, 50669), (14, 50714), (18, 50744), (22, 50813), (35, 50894), (36, 50897), (39, 50927), (42, 50939),

Gene: OhMyWard_74 Start: 52318, Stop: 52665, Start Num: 8
Candidate Starts for OhMyWard_74:
(7, 52279), (Start: 8 @52318 has 27 MA's), (12, 52366), (16, 52423), (17, 52426), (33, 52570), (41, 52627),

Gene: OlgasClover_80 Start: 52722, Stop: 53078, Start Num: 8
Candidate Starts for OlgasClover_80:
(5, 52665), (Start: 8 @52722 has 27 MA's), (16, 52827), (17, 52830), (29, 52941), (30, 52953), (32, 52968),

Gene: Perkunas_79 Start: 50720, Stop: 51007, Start Num: 9
Candidate Starts for Perkunas_79:
(4, 50633), (Start: 9 @50720 has 15 MA's), (10, 50729), (13, 50747), (28, 50906), (30, 50924), (34, 50954), (35, 50957), (39, 50990),

Gene: Petito_80 Start: 52186, Stop: 52473, Start Num: 9
Candidate Starts for Petito_80:
(Start: 9 @52186 has 15 MA's), (10, 52195), (14, 52240), (28, 52372), (30, 52390), (35, 52423),

Gene: Phepper_78 Start: 51216, Stop: 51563, Start Num: 8
Candidate Starts for Phepper_78:
(Start: 8 @51216 has 27 MA's), (14, 51297), (17, 51324), (26, 51417), (27, 51426),

Gene: Pherobrine_78 Start: 52256, Stop: 52603, Start Num: 8
Candidate Starts for Pherobrine_78:
(Start: 8 @52256 has 27 MA's), (16, 52361), (17, 52364), (33, 52508),

Gene: Rickmore_76 Start: 50323, Stop: 50679, Start Num: 8
Candidate Starts for Rickmore_76:
(1, 50200), (Start: 8 @50323 has 27 MA's), (11, 50365), (16, 50428), (17, 50431), (30, 50554), (32, 50569),

Gene: Roney_76 Start: 50823, Stop: 51134, Start Num: 9
Candidate Starts for Roney_76:
(Start: 9 @50823 has 15 MA's), (10, 50832), (14, 50877), (18, 50907), (22, 50976), (35, 51057), (36, 51060), (39, 51090), (42, 51102),

Gene: Runhaar_76 Start: 51025, Stop: 51372, Start Num: 8
Candidate Starts for Runhaar_76:
(Start: 8 @51025 has 27 MA's), (14, 51106), (17, 51133), (26, 51226), (27, 51235),

Gene: ShaggyRogers_80 Start: 51016, Stop: 51363, Start Num: 8
Candidate Starts for ShaggyRogers_80:
(Start: 8 @51016 has 27 MA's), (14, 51097), (23, 51208), (27, 51226), (33, 51268),

Gene: Tanis_77 Start: 50643, Stop: 50954, Start Num: 9
Candidate Starts for Tanis_77:

(Start: 9 @50643 has 15 MA's), (10, 50652), (14, 50697), (18, 50727), (22, 50796), (35, 50877), (36, 50880), (39, 50910), (42, 50922),

Gene: TenaciousP_78 Start: 52770, Stop: 53117, Start Num: 8

Candidate Starts for TenaciousP_78:

(5, 52713), (Start: 8 @52770 has 27 MA's), (14, 52851), (16, 52875), (17, 52878), (23, 52962), (30, 53001), (41, 53079),

Gene: Untouchable_79 Start: 52213, Stop: 52554, Start Num: 8

Candidate Starts for Untouchable_79:

(Start: 8 @52213 has 27 MA's), (14, 52294), (17, 52321), (26, 52414), (27, 52423),

Gene: Vardy_76 Start: 50912, Stop: 51259, Start Num: 8

Candidate Starts for Vardy_76:

(Start: 8 @50912 has 27 MA's), (14, 50993), (17, 51020), (23, 51104), (27, 51122),

Gene: Zeph_79 Start: 52050, Stop: 52397, Start Num: 8

Candidate Starts for Zeph_79:

(Start: 8 @52050 has 27 MA's), (14, 52131), (17, 52158), (23, 52242), (27, 52260),