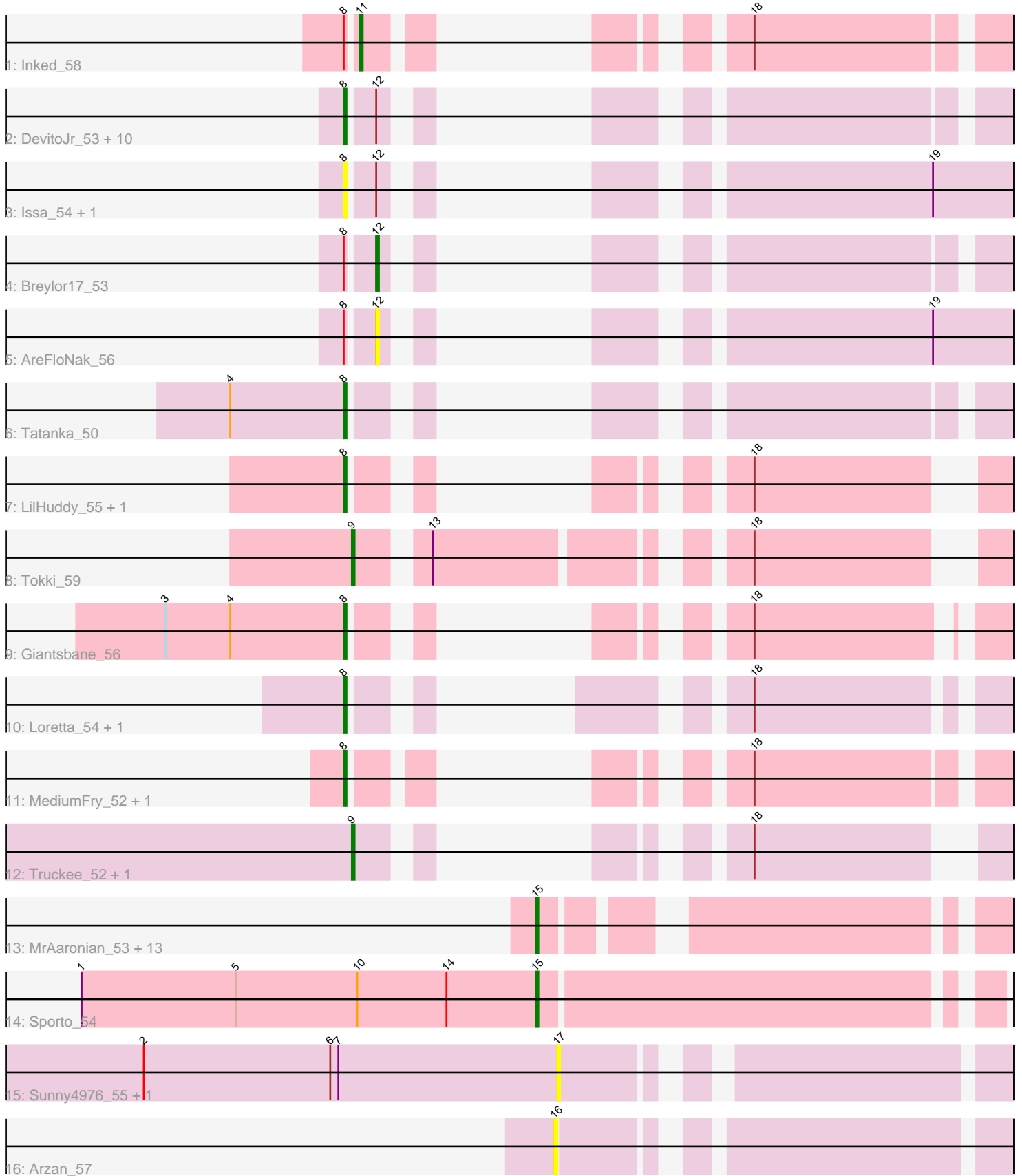


Pham 192669



Note: Tracks are now grouped by subcluster and scaled. Switching in subcluster is indicated by changes in track color. Track scale is now set by default to display the region 30 bp upstream of start 1 to 30 bp downstream of the last possible start. If this default region is judged to be packed too tightly with annotated starts, the track will be further scaled to only show that region of the ORF with annotated starts. This action will be indicated by adding "Zoomed" to the title. For starts, yellow indicates the location of called starts comprised solely of Glimmer/GeneMark auto-annotations, green indicates the location of called starts with at least 1 manual gene annotation.

Pham 192669 Report

This analysis was run 11/02/24 on database version 579.

Pham number 192669 has 45 members, 7 are drafts.

Phages represented in each track:

- Track 1 : Inked_58
- Track 2 : DevitoJr_53, Trustiboi_53, Nightmare_55, Synepsis_52, Niktson_53, ScienceWizSam_54, ElephantMan_53, Brunswick_54, CastorTray_56, Tenno_54, Darby_52
- Track 3 : Issa_54, Nivinsha_55
- Track 4 : Breylor17_53
- Track 5 : AreFloNak_56
- Track 6 : Tatanka_50
- Track 7 : LilHuddy_55, Shepard_56
- Track 8 : Tokki_59
- Track 9 : Giantsbane_56
- Track 10 : Loretta_54, Ingrid_57
- Track 11 : MediumFry_52, Caterpillar_51
- Track 12 : Truckee_52, Makai_54
- Track 13 : MrAaronian_53, DoctorPepper_52, Djungelskog_52, Salk_53, Egad_53, Stayer_53, Sloopyjoe_53, Raunak_56, Linda_53, BronxBay_53, StarLord_53, Shiba_52, Michelle_53, ProfFrink_53
- Track 14 : Sporto_54
- Track 15 : Sunny4976_55, Jazzy4900_56
- Track 16 : Arzan_57

Summary of Final Annotations (See graph section above for start numbers):

The start number called the most often in the published annotations is 8, it was called in 19 of the 38 non-draft genes in the pham.

Genes that call this "Most Annotated" start:

- Brunswick_54, CastorTray_56, Caterpillar_51, Darby_52, DevitoJr_53, ElephantMan_53, Giantsbane_56, Ingrid_57, Issa_54, LilHuddy_55, Loretta_54, MediumFry_52, Nightmare_55, Niktson_53, Nivinsha_55, ScienceWizSam_54, Shepard_56, Synepsis_52, Tatanka_50, Tenno_54, Trustiboi_53,

Genes that have the "Most Annotated" start but do not call it:

- AreFloNak_56, Breylor17_53, Inked_58,

Genes that do not have the "Most Annotated" start:

• Arzan_57, BronxBay_53, Djungelskog_52, DoctorPepper_52, Egad_53, Jazzy4900_56, Linda_53, Makai_54, Michelle_53, MrAaronian_53, ProfFrink_53, Raunak_56, Salk_53, Shiba_52, Sloopyjoe_53, Sporto_54, StarLord_53, Stayer_53, Sunny4976_55, Tokki_59, Truckee_52,

Summary by start number:

Start 8:

- Found in 24 of 45 (53.3%) of genes in pham
- Manual Annotations of this start: 19 of 38
- Called 87.5% of time when present
- Phage (with cluster) where this start called: Brunswick_54 (AU1), CastorTray_56 (AU1), Caterpillar_51 (AU4), Darby_52 (AU1), DevitoJr_53 (AU1), ElephantMan_53 (AU1), Giantsbane_56 (AU2), Ingrid_57 (AU3), Issa_54 (AU1), LilHuddy_55 (AU2), Loretta_54 (AU3), MediumFry_52 (AU4), Nightmare_55 (AU1), Niktson_53 (AU1), Nivinsha_55 (AU1), ScienceWizSam_54 (AU1), Shepard_56 (AU2), Synepsis_52 (AU1), Tatanka_50 (AU1), Tenno_54 (AU1), Trustiboi_53 (AU1),

Start 9:

- Found in 3 of 45 (6.7%) of genes in pham
- Manual Annotations of this start: 3 of 38
- Called 100.0% of time when present
- Phage (with cluster) where this start called: Makai_54 (AU5), Tokki_59 (AU2), Truckee_52 (AU5),

Start 11:

- Found in 1 of 45 (2.2%) of genes in pham
- Manual Annotations of this start: 1 of 38
- Called 100.0% of time when present
- Phage (with cluster) where this start called: Inked_58 (AU),

Start 12:

- Found in 15 of 45 (33.3%) of genes in pham
- Manual Annotations of this start: 1 of 38
- Called 13.3% of time when present
- Phage (with cluster) where this start called: AreFloNak_56 (AU1), Breylor17_53 (AU1),

Start 15:

- Found in 15 of 45 (33.3%) of genes in pham
- Manual Annotations of this start: 14 of 38
- Called 100.0% of time when present
- Phage (with cluster) where this start called: BronxBay_53 (AW), Djungelskog_52 (AW), DoctorPepper_52 (AW), Egad_53 (AW), Linda_53 (AW), Michelle_53 (AW), MrAaronian_53 (AW), ProfFrink_53 (AW), Raunak_56 (AW), Salk_53 (AW), Shiba_52 (AW), Sloopyjoe_53 (AW), Sporto_54 (AW), StarLord_53 (AW), Stayer_53 (AW),

Start 16:

- Found in 1 of 45 (2.2%) of genes in pham
- No Manual Annotations of this start.
- Called 100.0% of time when present

- Phage (with cluster) where this start called: Arzan_57 (FI),

Start 17:

- Found in 2 of 45 (4.4%) of genes in pham
- No Manual Annotations of this start.
- Called 100.0% of time when present
- Phage (with cluster) where this start called: Jazzy4900_56 (FI), Sunny4976_55 (FI),

Summary by clusters:

There are 8 clusters represented in this pham: AU1, AU3, AU2, AU5, AU4, AW, FI, AU,

Info for manual annotations of cluster AU:

- Start number 11 was manually annotated 1 time for cluster AU.

Info for manual annotations of cluster AU1:

- Start number 8 was manually annotated 12 times for cluster AU1.
- Start number 12 was manually annotated 1 time for cluster AU1.

Info for manual annotations of cluster AU2:

- Start number 8 was manually annotated 3 times for cluster AU2.
- Start number 9 was manually annotated 1 time for cluster AU2.

Info for manual annotations of cluster AU3:

- Start number 8 was manually annotated 2 times for cluster AU3.

Info for manual annotations of cluster AU4:

- Start number 8 was manually annotated 2 times for cluster AU4.

Info for manual annotations of cluster AU5:

- Start number 9 was manually annotated 2 times for cluster AU5.

Info for manual annotations of cluster AW:

- Start number 15 was manually annotated 14 times for cluster AW.

Gene Information:

Gene: AreFloNak_56 Start: 37115, Stop: 37267, Start Num: 12

Candidate Starts for AreFloNak_56:

(Start: 8 @37106 has 19 MA's), (Start: 12 @37115 has 1 MA's), (19, 37238),

Gene: Arzan_57 Start: 36656, Stop: 36799, Start Num: 16

Candidate Starts for Arzan_57:

(16, 36656),

Gene: Breylor17_53 Start: 37706, Stop: 37849, Start Num: 12

Candidate Starts for Breylor17_53:

(Start: 8 @37697 has 19 MA's), (Start: 12 @37706 has 1 MA's),

Gene: BronxBay_53 Start: 34842, Stop: 34985, Start Num: 15
Candidate Starts for BronxBay_53:
(Start: 15 @34842 has 14 MA's),

Gene: Brunswick_54 Start: 36988, Stop: 37140, Start Num: 8
Candidate Starts for Brunswick_54:
(Start: 8 @36988 has 19 MA's), (Start: 12 @36997 has 1 MA's),

Gene: CastorTray_56 Start: 37761, Stop: 37913, Start Num: 8
Candidate Starts for CastorTray_56:
(Start: 8 @37761 has 19 MA's), (Start: 12 @37770 has 1 MA's),

Gene: Caterpillar_51 Start: 36250, Stop: 36402, Start Num: 8
Candidate Starts for Caterpillar_51:
(Start: 8 @36250 has 19 MA's), (18, 36316),

Gene: Darby_52 Start: 36935, Stop: 37087, Start Num: 8
Candidate Starts for Darby_52:
(Start: 8 @36935 has 19 MA's), (Start: 12 @36944 has 1 MA's),

Gene: DevitoJr_53 Start: 37327, Stop: 37479, Start Num: 8
Candidate Starts for DevitoJr_53:
(Start: 8 @37327 has 19 MA's), (Start: 12 @37336 has 1 MA's),

Gene: Djungelskog_52 Start: 34841, Stop: 34984, Start Num: 15
Candidate Starts for Djungelskog_52:
(Start: 15 @34841 has 14 MA's),

Gene: DoctorPepper_52 Start: 34546, Stop: 34689, Start Num: 15
Candidate Starts for DoctorPepper_52:
(Start: 15 @34546 has 14 MA's),

Gene: Egad_53 Start: 34843, Stop: 34986, Start Num: 15
Candidate Starts for Egad_53:
(Start: 15 @34843 has 14 MA's),

Gene: ElephantMan_53 Start: 37611, Stop: 37763, Start Num: 8
Candidate Starts for ElephantMan_53:
(Start: 8 @37611 has 19 MA's), (Start: 12 @37620 has 1 MA's),

Gene: Giantsbane_56 Start: 36218, Stop: 36361, Start Num: 8
Candidate Starts for Giantsbane_56:
(3, 36152), (4, 36176), (Start: 8 @36218 has 19 MA's), (18, 36281),

Gene: Ingrid_57 Start: 37031, Stop: 37186, Start Num: 8
Candidate Starts for Ingrid_57:
(Start: 8 @37031 has 19 MA's), (18, 37103),

Gene: Inked_58 Start: 38160, Stop: 38309, Start Num: 11
Candidate Starts for Inked_58:
(Start: 8 @38157 has 19 MA's), (Start: 11 @38160 has 1 MA's), (18, 38223),

Gene: Issa_54 Start: 36978, Stop: 37139, Start Num: 8

Candidate Starts for Issa_54:
(Start: 8 @36978 has 19 MA's), (Start: 12 @36987 has 1 MA's), (19, 37110),

Gene: Jazzy4900_56 Start: 37435, Stop: 37575, Start Num: 17
Candidate Starts for Jazzy4900_56:
(2, 37282), (6, 37351), (7, 37354), (17, 37435),

Gene: LilHuddy_55 Start: 37156, Stop: 37296, Start Num: 8
Candidate Starts for LilHuddy_55:
(Start: 8 @37156 has 19 MA's), (18, 37219),

Gene: Linda_53 Start: 34839, Stop: 34982, Start Num: 15
Candidate Starts for Linda_53:
(Start: 15 @34839 has 14 MA's),

Gene: Loretta_54 Start: 37031, Stop: 37186, Start Num: 8
Candidate Starts for Loretta_54:
(Start: 8 @37031 has 19 MA's), (18, 37103),

Gene: Makai_54 Start: 37254, Stop: 37394, Start Num: 9
Candidate Starts for Makai_54:
(Start: 9 @37254 has 3 MA's), (18, 37317),

Gene: MediumFry_52 Start: 36539, Stop: 36691, Start Num: 8
Candidate Starts for MediumFry_52:
(Start: 8 @36539 has 19 MA's), (18, 36605),

Gene: Michelle_53 Start: 34841, Stop: 34984, Start Num: 15
Candidate Starts for Michelle_53:
(Start: 15 @34841 has 14 MA's),

Gene: MrAaronian_53 Start: 34841, Stop: 34984, Start Num: 15
Candidate Starts for MrAaronian_53:
(Start: 15 @34841 has 14 MA's),

Gene: Nightmare_55 Start: 38169, Stop: 38321, Start Num: 8
Candidate Starts for Nightmare_55:
(Start: 8 @38169 has 19 MA's), (Start: 12 @38178 has 1 MA's),

Gene: Niktson_53 Start: 37611, Stop: 37763, Start Num: 8
Candidate Starts for Niktson_53:
(Start: 8 @37611 has 19 MA's), (Start: 12 @37620 has 1 MA's),

Gene: Nivinsha_55 Start: 37106, Stop: 37267, Start Num: 8
Candidate Starts for Nivinsha_55:
(Start: 8 @37106 has 19 MA's), (Start: 12 @37115 has 1 MA's), (19, 37238),

Gene: ProfFrink_53 Start: 34842, Stop: 34985, Start Num: 15
Candidate Starts for ProfFrink_53:
(Start: 15 @34842 has 14 MA's),

Gene: Raunak_56 Start: 34539, Stop: 34682, Start Num: 15
Candidate Starts for Raunak_56:

(Start: 15 @34539 has 14 MA's),

Gene: Salk_53 Start: 34839, Stop: 34982, Start Num: 15

Candidate Starts for Salk_53:

(Start: 15 @34839 has 14 MA's),

Gene: ScienceWizSam_54 Start: 37214, Stop: 37375, Start Num: 8

Candidate Starts for ScienceWizSam_54:

(Start: 8 @37214 has 19 MA's), (Start: 12 @37223 has 1 MA's),

Gene: Shepard_56 Start: 36997, Stop: 37137, Start Num: 8

Candidate Starts for Shepard_56:

(Start: 8 @36997 has 19 MA's), (18, 37060),

Gene: Shiba_52 Start: 34539, Stop: 34682, Start Num: 15

Candidate Starts for Shiba_52:

(Start: 15 @34539 has 14 MA's),

Gene: Sloopyjoe_53 Start: 34843, Stop: 34986, Start Num: 15

Candidate Starts for Sloopyjoe_53:

(Start: 15 @34843 has 14 MA's),

Gene: Sporto_54 Start: 36328, Stop: 36486, Start Num: 15

Candidate Starts for Sporto_54:

(1, 36160), (5, 36217), (10, 36262), (14, 36295), (Start: 15 @36328 has 14 MA's),

Gene: StarLord_53 Start: 34842, Stop: 34985, Start Num: 15

Candidate Starts for StarLord_53:

(Start: 15 @34842 has 14 MA's),

Gene: Stayer_53 Start: 34839, Stop: 34982, Start Num: 15

Candidate Starts for Stayer_53:

(Start: 15 @34839 has 14 MA's),

Gene: Sunny4976_55 Start: 37435, Stop: 37575, Start Num: 17

Candidate Starts for Sunny4976_55:

(2, 37282), (6, 37351), (7, 37354), (17, 37435),

Gene: Synopsis_52 Start: 37282, Stop: 37434, Start Num: 8

Candidate Starts for Synopsis_52:

(Start: 8 @37282 has 19 MA's), (Start: 12 @37291 has 1 MA's),

Gene: Tatanka_50 Start: 37414, Stop: 37566, Start Num: 8

Candidate Starts for Tatanka_50:

(4, 37372), (Start: 8 @37414 has 19 MA's),

Gene: Tenno_54 Start: 37945, Stop: 38097, Start Num: 8

Candidate Starts for Tenno_54:

(Start: 8 @37945 has 19 MA's), (Start: 12 @37954 has 1 MA's),

Gene: Tokki_59 Start: 37333, Stop: 37527, Start Num: 9

Candidate Starts for Tokki_59:

(Start: 9 @37333 has 3 MA's), (13, 37354), (18, 37450),

Gene: Truckee_52 Start: 37044, Stop: 37184, Start Num: 9
Candidate Starts for Truckee_52:
(Start: 9 @37044 has 3 MA's), (18, 37107),

Gene: Trustiboi_53 Start: 37483, Stop: 37635, Start Num: 8
Candidate Starts for Trustiboi_53:
(Start: 8 @37483 has 19 MA's), (Start: 12 @37492 has 1 MA's),