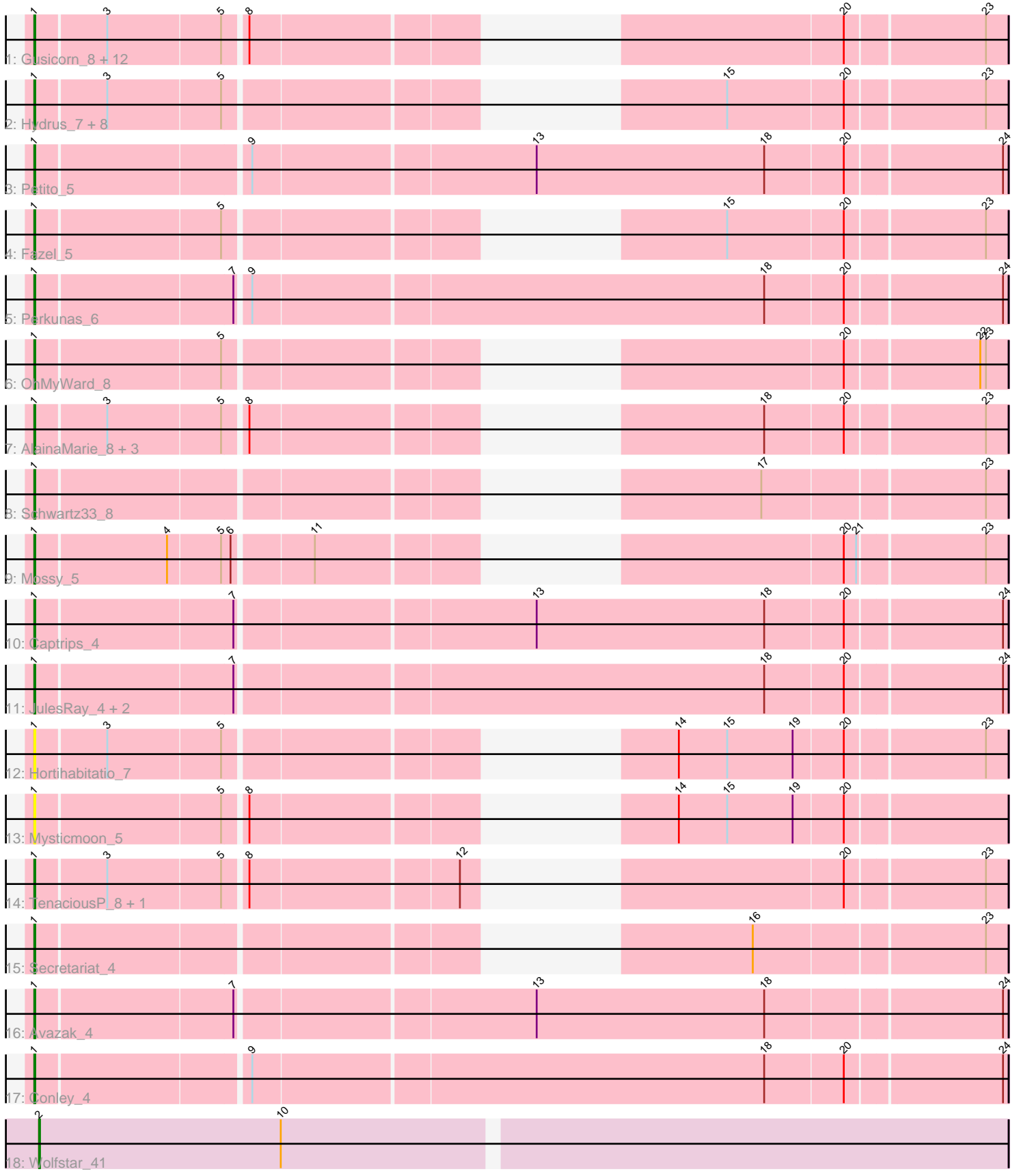


Pham 192682



Note: Tracks are now grouped by subcluster and scaled. Switching in subcluster is indicated by changes in track color. Track scale is now set by default to display the region 30 bp upstream of start 1 to 30 bp downstream of the last possible start. If this default region is judged to be packed too tightly with annotated starts, the track will be further scaled to only show that region of the ORF with annotated starts. This action will be indicated by adding "Zoomed" to the title. For starts, yellow indicates the location of called starts comprised solely of Glimmer/GeneMark auto-annotations, green indicates the location of called starts with at least 1 manual gene annotation.

Pham 192682 Report

This analysis was run 11/02/24 on database version 579.

Pham number 192682 has 44 members, 7 are drafts.

Phages represented in each track:

- Track 1 : Gusicorn_8, ShaggyRogers_8, Eddiemania_7, Burley_8, OlgasClover_8, Rickmore_7, Vardy_8, BluerMoon_9, Aflac_8, Figliar_8, Duffington_8, Nadmeg_8, Runhaar_8
- Track 2 : Hydrus_7, Phepper_8, Kenosha_5, Arataki_4, Madvan_8, Crocheter_7, Zeph_7, Untouchable_7, Pherobrine_5
- Track 3 : Petite_5
- Track 4 : Fazel_5
- Track 5 : Perkunas_6
- Track 6 : OhMyWard_8
- Track 7 : AlainaMarie_8, EndAve_8, Nithya_8, Chikenjars_8
- Track 8 : Schwartz33_8
- Track 9 : Mossy_5
- Track 10 : Captrips_4
- Track 11 : JulesRay_4, Artorias_4, FortCran_4
- Track 12 : Hortihabitatio_7
- Track 13 : Mysticmoon_5
- Track 14 : TenaciousP_8, Jodelie19_8
- Track 15 : Secretariat_4
- Track 16 : Avazak_4
- Track 17 : Conley_4
- Track 18 : Wolfstar_41

Summary of Final Annotations (See graph section above for start numbers):

The start number called the most often in the published annotations is 1, it was called in 36 of the 37 non-draft genes in the pham.

Genes that call this "Most Annotated" start:

- Aflac_8, AlainaMarie_8, Arataki_4, Artorias_4, Avazak_4, BluerMoon_9, Burley_8, Captrips_4, Chikenjars_8, Conley_4, Crocheter_7, Duffington_8, Eddiemania_7, EndAve_8, Fazel_5, Figliar_8, FortCran_4, Gusicorn_8, Hortihabitatio_7, Hydrus_7, Jodelie19_8, JulesRay_4, Kenosha_5, Madvan_8, Mossy_5, Mysticmoon_5, Nadmeg_8, Nithya_8, OhMyWard_8, OlgasClover_8, Perkunas_6, Petite_5, Phepper_8, Pherobrine_5, Rickmore_7, Runhaar_8, Schwartz33_8, Secretariat_4,

ShaggyRogers_8, TenaciousP_8, Untouchable_7, Vardy_8, Zeph_7,

Genes that have the "Most Annotated" start but do not call it:

-

Genes that do not have the "Most Annotated" start:

- Wolfstar_41,

Summary by start number:

Start 1:

- Found in 43 of 44 (97.7%) of genes in pham
- Manual Annotations of this start: 36 of 37
- Called 100.0% of time when present
- Phage (with cluster) where this start called: Aflac_8 (DJ), AlainaMarie_8 (DJ), Arataki_4 (DJ), Artorias_4 (DJ), Avazak_4 (DJ), BluerMoon_9 (DJ), Burley_8 (DJ), Captrips_4 (DJ), Chikenjars_8 (DJ), Conley_4 (DJ), Crocheter_7 (DJ), Duffington_8 (DJ), Eddiemania_7 (DJ), EndAve_8 (DJ), Fazel_5 (DJ), Figliar_8 (DJ), FortCran_4 (DJ), Gusicorn_8 (DJ), Hortihabitatio_7 (DJ), Hydrus_7 (DJ), Jodelie19_8 (DJ), JulesRay_4 (DJ), Kenosha_5 (DJ), Madvan_8 (DJ), Mossy_5 (DJ), Mysticmoon_5 (DJ), Nadmeg_8 (DJ), Nithya_8 (DJ), OhMyWard_8 (DJ), OlgasClover_8 (DJ), Perkunas_6 (DJ), Petito_5 (DJ), Phepper_8 (DJ), Pherobrine_5 (DJ), Rickmore_7 (DJ), Runhaar_8 (DJ), Schwartz33_8 (DJ), Secretariat_4 (DJ), ShaggyRogers_8 (DJ), TenaciousP_8 (DJ), Untouchable_7 (DJ), Vardy_8 (DJ), Zeph_7 (DJ),

Start 2:

- Found in 1 of 44 (2.3%) of genes in pham
- Manual Annotations of this start: 1 of 37
- Called 100.0% of time when present
- Phage (with cluster) where this start called: Wolfstar_41 (ED),

Summary by clusters:

There are 2 clusters represented in this pham: ED, DJ,

Info for manual annotations of cluster DJ:

- Start number 1 was manually annotated 36 times for cluster DJ.

Info for manual annotations of cluster ED:

- Start number 2 was manually annotated 1 time for cluster ED.

Gene Information:

Gene: Aflac_8 Start: 3585, Stop: 4418, Start Num: 1

Candidate Starts for Aflac_8:

(Start: 1 @3585 has 36 MA's), (3, 3657), (5, 3774), (8, 3795), (20, 4257), (23, 4395),

Gene: AlainaMarie_8 Start: 3576, Stop: 4409, Start Num: 1

Candidate Starts for AlainaMarie_8:

(Start: 1 @3576 has 36 MA's), (3, 3648), (5, 3765), (8, 3786), (18, 4167), (20, 4248), (23, 4386),

Gene: Arataki_4 Start: 1373, Stop: 2206, Start Num: 1
Candidate Starts for Arataki_4:
(Start: 1 @1373 has 36 MA's), (3, 1445), (5, 1562), (15, 1925), (20, 2045), (23, 2183),

Gene: Artorias_4 Start: 1145, Stop: 2128, Start Num: 1
Candidate Starts for Artorias_4:
(Start: 1 @1145 has 36 MA's), (7, 1346), (18, 1886), (20, 1967), (24, 2123),

Gene: Avazak_4 Start: 1145, Stop: 2128, Start Num: 1
Candidate Starts for Avazak_4:
(Start: 1 @1145 has 36 MA's), (7, 1346), (13, 1646), (18, 1886), (24, 2123),

Gene: BluerMoon_9 Start: 3579, Stop: 4412, Start Num: 1
Candidate Starts for BluerMoon_9:
(Start: 1 @3579 has 36 MA's), (3, 3651), (5, 3768), (8, 3789), (20, 4251), (23, 4389),

Gene: Burley_8 Start: 3582, Stop: 4415, Start Num: 1
Candidate Starts for Burley_8:
(Start: 1 @3582 has 36 MA's), (3, 3654), (5, 3771), (8, 3792), (20, 4254), (23, 4392),

Gene: Captrips_4 Start: 1145, Stop: 2128, Start Num: 1
Candidate Starts for Captrips_4:
(Start: 1 @1145 has 36 MA's), (7, 1346), (13, 1646), (18, 1886), (20, 1967), (24, 2123),

Gene: Chikenjars_8 Start: 3576, Stop: 4409, Start Num: 1
Candidate Starts for Chikenjars_8:
(Start: 1 @3576 has 36 MA's), (3, 3648), (5, 3765), (8, 3786), (18, 4167), (20, 4248), (23, 4386),

Gene: Conley_4 Start: 1146, Stop: 2129, Start Num: 1
Candidate Starts for Conley_4:
(Start: 1 @1146 has 36 MA's), (9, 1359), (18, 1887), (20, 1968), (24, 2124),

Gene: Crocheter_7 Start: 2509, Stop: 3342, Start Num: 1
Candidate Starts for Crocheter_7:
(Start: 1 @2509 has 36 MA's), (3, 2581), (5, 2698), (15, 3061), (20, 3181), (23, 3319),

Gene: Duffington_8 Start: 3561, Stop: 4394, Start Num: 1
Candidate Starts for Duffington_8:
(Start: 1 @3561 has 36 MA's), (3, 3633), (5, 3750), (8, 3771), (20, 4233), (23, 4371),

Gene: Eddiemania_7 Start: 2767, Stop: 3600, Start Num: 1
Candidate Starts for Eddiemania_7:
(Start: 1 @2767 has 36 MA's), (3, 2839), (5, 2956), (8, 2977), (20, 3439), (23, 3577),

Gene: EndAve_8 Start: 3576, Stop: 4409, Start Num: 1
Candidate Starts for EndAve_8:
(Start: 1 @3576 has 36 MA's), (3, 3648), (5, 3765), (8, 3786), (18, 4167), (20, 4248), (23, 4386),

Gene: Fazel_5 Start: 2306, Stop: 3139, Start Num: 1
Candidate Starts for Fazel_5:
(Start: 1 @2306 has 36 MA's), (5, 2495), (15, 2858), (20, 2978), (23, 3116),

Gene: Figliar_8 Start: 3585, Stop: 4418, Start Num: 1

Candidate Starts for Figliar_8:

(Start: 1 @3585 has 36 MA's), (3, 3657), (5, 3774), (8, 3795), (20, 4257), (23, 4395),

Gene: FortCran_4 Start: 1145, Stop: 2128, Start Num: 1

Candidate Starts for FortCran_4:

(Start: 1 @1145 has 36 MA's), (7, 1346), (18, 1886), (20, 1967), (24, 2123),

Gene: Gusicorn_8 Start: 3582, Stop: 4415, Start Num: 1

Candidate Starts for Gusicorn_8:

(Start: 1 @3582 has 36 MA's), (3, 3654), (5, 3771), (8, 3792), (20, 4254), (23, 4392),

Gene: Hortihabitatio_7 Start: 2863, Stop: 3696, Start Num: 1

Candidate Starts for Hortihabitatio_7:

(Start: 1 @2863 has 36 MA's), (3, 2935), (5, 3052), (14, 3364), (15, 3415), (19, 3484), (20, 3535), (23, 3673),

Gene: Hydrus_7 Start: 2767, Stop: 3600, Start Num: 1

Candidate Starts for Hydrus_7:

(Start: 1 @2767 has 36 MA's), (3, 2839), (5, 2956), (15, 3319), (20, 3439), (23, 3577),

Gene: Jodelie19_8 Start: 3579, Stop: 4412, Start Num: 1

Candidate Starts for Jodelie19_8:

(Start: 1 @3579 has 36 MA's), (3, 3651), (5, 3768), (8, 3789), (12, 3999), (20, 4251), (23, 4389),

Gene: JulesRay_4 Start: 1145, Stop: 2128, Start Num: 1

Candidate Starts for JulesRay_4:

(Start: 1 @1145 has 36 MA's), (7, 1346), (18, 1886), (20, 1967), (24, 2123),

Gene: Kenosha_5 Start: 1368, Stop: 2201, Start Num: 1

Candidate Starts for Kenosha_5:

(Start: 1 @1368 has 36 MA's), (3, 1440), (5, 1557), (15, 1920), (20, 2040), (23, 2178),

Gene: Madvan_8 Start: 3582, Stop: 4415, Start Num: 1

Candidate Starts for Madvan_8:

(Start: 1 @3582 has 36 MA's), (3, 3654), (5, 3771), (15, 4134), (20, 4254), (23, 4392),

Gene: Mossy_5 Start: 1428, Stop: 2261, Start Num: 1

Candidate Starts for Mossy_5:

(Start: 1 @1428 has 36 MA's), (4, 1563), (5, 1617), (6, 1626), (11, 1704), (20, 2100), (21, 2112), (23, 2238),

Gene: Mysticmoon_5 Start: 1338, Stop: 2171, Start Num: 1

Candidate Starts for Mysticmoon_5:

(Start: 1 @1338 has 36 MA's), (5, 1527), (8, 1548), (14, 1839), (15, 1890), (19, 1959), (20, 2010),

Gene: Nadmeg_8 Start: 3583, Stop: 4416, Start Num: 1

Candidate Starts for Nadmeg_8:

(Start: 1 @3583 has 36 MA's), (3, 3655), (5, 3772), (8, 3793), (20, 4255), (23, 4393),

Gene: Nithya_8 Start: 3576, Stop: 4409, Start Num: 1

Candidate Starts for Nithya_8:

(Start: 1 @3576 has 36 MA's), (3, 3648), (5, 3765), (8, 3786), (18, 4167), (20, 4248), (23, 4386),

Gene: OhMyWard_8 Start: 3580, Stop: 4413, Start Num: 1

Candidate Starts for OhMyWard_8:

(Start: 1 @3580 has 36 MA's), (5, 3769), (20, 4252), (22, 4384), (23, 4390),

Gene: OlgasClover_8 Start: 3576, Stop: 4409, Start Num: 1

Candidate Starts for OlgasClover_8:

(Start: 1 @3576 has 36 MA's), (3, 3648), (5, 3765), (8, 3786), (20, 4248), (23, 4386),

Gene: Perkunas_6 Start: 1664, Stop: 2647, Start Num: 1

Candidate Starts for Perkunas_6:

(Start: 1 @1664 has 36 MA's), (7, 1865), (9, 1877), (18, 2405), (20, 2486), (24, 2642),

Gene: Petito_5 Start: 1340, Stop: 2323, Start Num: 1

Candidate Starts for Petito_5:

(Start: 1 @1340 has 36 MA's), (9, 1553), (13, 1841), (18, 2081), (20, 2162), (24, 2318),

Gene: Phepper_8 Start: 3582, Stop: 4415, Start Num: 1

Candidate Starts for Phepper_8:

(Start: 1 @3582 has 36 MA's), (3, 3654), (5, 3771), (15, 4134), (20, 4254), (23, 4392),

Gene: Pherobrine_5 Start: 1339, Stop: 2172, Start Num: 1

Candidate Starts for Pherobrine_5:

(Start: 1 @1339 has 36 MA's), (3, 1411), (5, 1528), (15, 1891), (20, 2011), (23, 2149),

Gene: Rickmore_7 Start: 2144, Stop: 2977, Start Num: 1

Candidate Starts for Rickmore_7:

(Start: 1 @2144 has 36 MA's), (3, 2216), (5, 2333), (8, 2354), (20, 2816), (23, 2954),

Gene: Runhaar_8 Start: 3582, Stop: 4415, Start Num: 1

Candidate Starts for Runhaar_8:

(Start: 1 @3582 has 36 MA's), (3, 3654), (5, 3771), (8, 3792), (20, 4254), (23, 4392),

Gene: Schwartz33_8 Start: 3598, Stop: 4431, Start Num: 1

Candidate Starts for Schwartz33_8:

(Start: 1 @3598 has 36 MA's), (17, 4186), (23, 4408),

Gene: Secretariat_4 Start: 1204, Stop: 2037, Start Num: 1

Candidate Starts for Secretariat_4:

(Start: 1 @1204 has 36 MA's), (16, 1783), (23, 2014),

Gene: ShaggyRogers_8 Start: 3581, Stop: 4414, Start Num: 1

Candidate Starts for ShaggyRogers_8:

(Start: 1 @3581 has 36 MA's), (3, 3653), (5, 3770), (8, 3791), (20, 4253), (23, 4391),

Gene: TenaciousP_8 Start: 3579, Stop: 4412, Start Num: 1

Candidate Starts for TenaciousP_8:

(Start: 1 @3579 has 36 MA's), (3, 3651), (5, 3768), (8, 3789), (12, 3999), (20, 4251), (23, 4389),

Gene: Untouchable_7 Start: 2508, Stop: 3341, Start Num: 1

Candidate Starts for Untouchable_7:

(Start: 1 @2508 has 36 MA's), (3, 2580), (5, 2697), (15, 3060), (20, 3180), (23, 3318),

Gene: Vardy_8 Start: 3581, Stop: 4414, Start Num: 1

Candidate Starts for Vardy_8:

(Start: 1 @3581 has 36 MA's), (3, 3653), (5, 3770), (8, 3791), (20, 4253), (23, 4391),

Gene: Wolfstar_41 Start: 19173, Stop: 20177, Start Num: 2

Candidate Starts for Wolfstar_41:

(Start: 2 @19173 has 1 MA's), (10, 19428),

Gene: Zeph_7 Start: 2767, Stop: 3600, Start Num: 1

Candidate Starts for Zeph_7:

(Start: 1 @2767 has 36 MA's), (3, 2839), (5, 2956), (15, 3319), (20, 3439), (23, 3577),