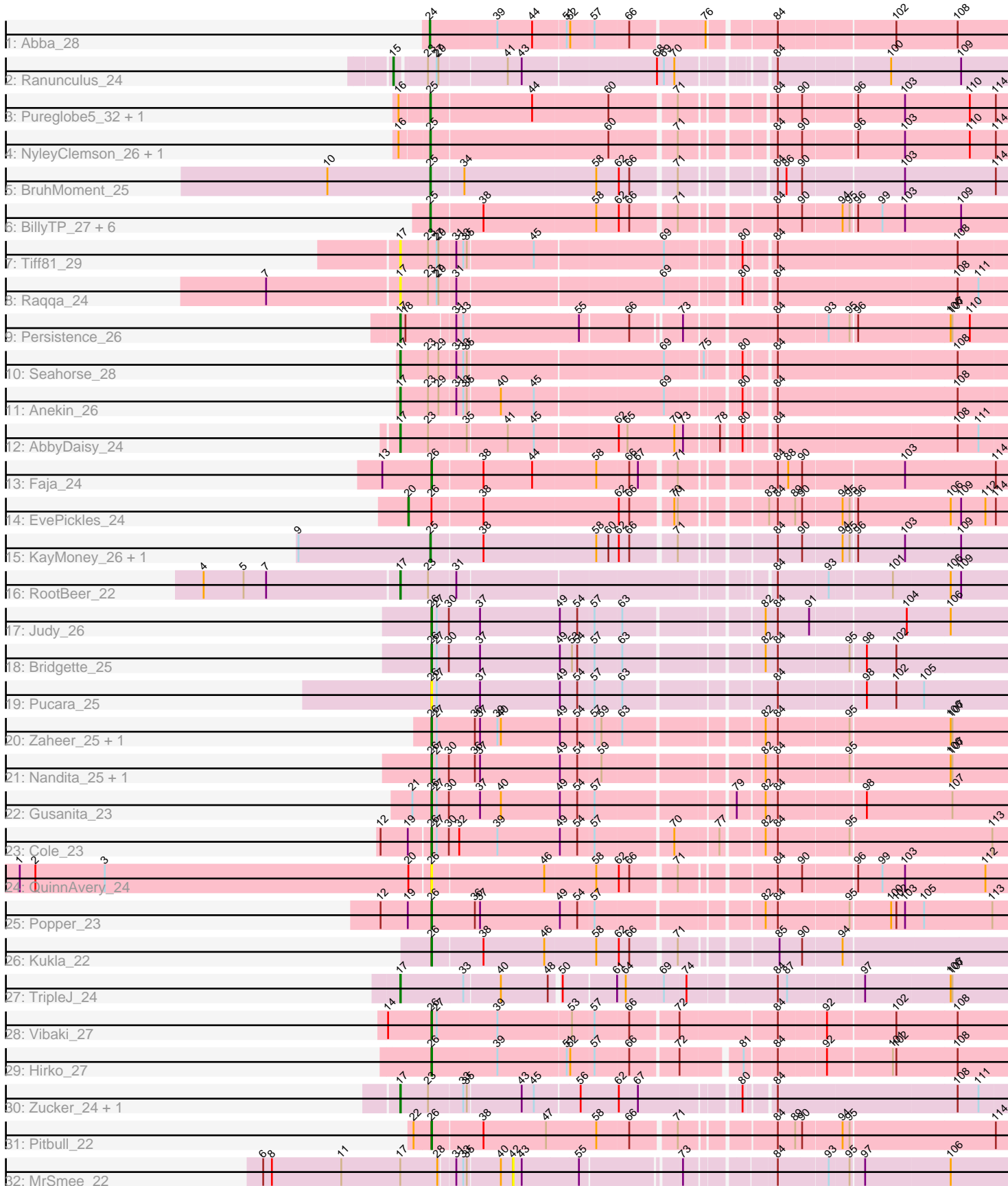


Pham 192688



Note: Tracks are now grouped by subcluster and scaled. Switching in subcluster is indicated by changes in track color. Track scale is now set by default to display the region 30 bp upstream of start 1 to 30 bp downstream of the last possible start. If this default region is judged to be packed too tightly with annotated starts, the track will be further scaled to only show that region of the ORF with annotated starts. This action will be indicated by adding "Zoomed" to the title. For starts, yellow indicates the location of called starts comprised solely of Glimmer/GeneMark auto-annotations, green indicates the location of called starts with at least 1 manual gene annotation.

Pham 192688 Report

This analysis was run 11/02/24 on database version 579.

Pham number 192688 has 44 members, 9 are drafts.

Phages represented in each track:

- Track 1 : Abba_28
- Track 2 : Ranunculus_24
- Track 3 : Pureglobe5_32, Beagle_31
- Track 4 : NyleyClemson_26, MellowYellow_27
- Track 5 : BruhMoment_25
- Track 6 : BillyTP_27, Gorpy_27, Raphaella_27, Phrank15_26, Sakai_27, Isolde_27, Lawnathon_27
- Track 7 : Tiff81_29
- Track 8 : Raqqa_24
- Track 9 : Persistence_26
- Track 10 : Seahorse_28
- Track 11 : Anekin_26
- Track 12 : AbbyDaisy_24
- Track 13 : Faja_24
- Track 14 : EvePickles_24
- Track 15 : KayMoney_26, ChuckDuck_26
- Track 16 : RootBeer_22
- Track 17 : Judy_26
- Track 18 : Bridgette_25
- Track 19 : Pucara_25
- Track 20 : Zaheer_25, Ryan_25
- Track 21 : Nandita_25, Lenoxika_25
- Track 22 : Gusanita_23
- Track 23 : Cole_23
- Track 24 : QuinnAvery_24
- Track 25 : Popper_23
- Track 26 : Kukla_22
- Track 27 : TripleJ_24
- Track 28 : Vibaki_27
- Track 29 : Hirko_27
- Track 30 : Zucker_24, Bauer_25
- Track 31 : Pitbull_22
- Track 32 : MrSmee_22

Summary of Final Annotations (See graph section above for start numbers):

The start number called the most often in the published annotations is 26, it was called in 13 of the 35 non-draft genes in the pham.

Genes that call this "Most Annotated" start:

- Bridgette_25, Cole_23, Faja_24, Gusanita_23, Hirko_27, Judy_26, Kukla_22, Lenoxika_25, Nandita_25, Pitbull_22, Popper_23, Pucara_25, QuinnAvery_24, Ryan_25, Vibaki_27, Zaheer_25,

Genes that have the "Most Annotated" start but do not call it:

- EvePickles_24,

Genes that do not have the "Most Annotated" start:

- Abba_28, AbbyDaisy_24, Anekin_26, Bauer_25, Beagle_31, BillyTP_27, BruhMoment_25, ChuckDuck_26, Gorpy_27, Isolde_27, KayMoney_26, Lawnathon_27, MellowYellow_27, MrSmee_22, NyleyClemson_26, Persistence_26, Phrank15_26, Pureglobe5_32, Ranunculus_24, Raphaella_27, Raqqa_24, RootBeer_22, Sakai_27, Seahorse_28, Tiff81_29, TripleJ_24, Zucker_24,

Summary by start number:

Start 15:

- Found in 1 of 44 (2.3%) of genes in pham
- Manual Annotations of this start: 1 of 35
- Called 100.0% of time when present
- Phage (with cluster) where this start called: Ranunculus_24 (AP),

Start 17:

- Found in 11 of 44 (25.0%) of genes in pham
- Manual Annotations of this start: 8 of 35
- Called 90.9% of time when present
- Phage (with cluster) where this start called: AbbyDaisy_24 (AY), Anekin_26 (AY), Bauer_25 (FN), Persistence_26 (AY), Raqqa_24 (AY), RootBeer_22 (FA), Seahorse_28 (AY), Tiff81_29 (AY), TripleJ_24 (FJ), Zucker_24 (FN),

Start 20:

- Found in 2 of 44 (4.5%) of genes in pham
- Manual Annotations of this start: 1 of 35
- Called 50.0% of time when present
- Phage (with cluster) where this start called: EvePickles_24 (AY),

Start 24:

- Found in 1 of 44 (2.3%) of genes in pham
- Manual Annotations of this start: 1 of 35
- Called 100.0% of time when present
- Phage (with cluster) where this start called: Abba_28 (AO3),

Start 25:

- Found in 14 of 44 (31.8%) of genes in pham
- Manual Annotations of this start: 11 of 35
- Called 100.0% of time when present
- Phage (with cluster) where this start called: Beagle_31 (AP2), BillyTP_27 (AY), BruhMoment_25 (AP3), ChuckDuck_26 (FA), Gorpy_27 (AY), Isolde_27 (AY),

KayMoney_26 (FA), Lawnathon_27 (AY), MellowYellow_27 (AP2), NyleyClemson_26 (AP2), Phrank15_26 (AY), Pureglobe5_32 (AP2), Raphaella_27 (AY), Sakai_27 (AY),

Start 26:

- Found in 17 of 44 (38.6%) of genes in pham
- Manual Annotations of this start: 13 of 35
- Called 94.1% of time when present
- Phage (with cluster) where this start called: Bridgette_25 (FA), Cole_23 (FF), Faja_24 (AY), Gusanita_23 (FF), Hirko_27 (FL), Judy_26 (FA), Kukla_22 (FJ), Lenoxika_25 (FF), Nandita_25 (FF), Pitbull_22 (FQ), Popper_23 (FF), Pucara_25 (FA), QuinnAvery_24 (FF), Ryan_25 (FF), Vibaki_27 (FL), Zaheer_25 (FF),

Start 42:

- Found in 1 of 44 (2.3%) of genes in pham
- No Manual Annotations of this start.
- Called 100.0% of time when present
- Phage (with cluster) where this start called: MrSmee_22 (UNK),

Summary by clusters:

There are 12 clusters represented in this pham: FQ, AP, AP2, AP3, FA, AO3, FF, AY, FJ, UNK, FL, FN,

Info for manual annotations of cluster AO3:

- Start number 24 was manually annotated 1 time for cluster AO3.

Info for manual annotations of cluster AP:

- Start number 15 was manually annotated 1 time for cluster AP.

Info for manual annotations of cluster AP2:

- Start number 25 was manually annotated 3 times for cluster AP2.

Info for manual annotations of cluster AP3:

- Start number 25 was manually annotated 1 time for cluster AP3.

Info for manual annotations of cluster AY:

- Start number 17 was manually annotated 4 times for cluster AY.
- Start number 20 was manually annotated 1 time for cluster AY.
- Start number 25 was manually annotated 6 times for cluster AY.
- Start number 26 was manually annotated 1 time for cluster AY.

Info for manual annotations of cluster FA:

- Start number 17 was manually annotated 1 time for cluster FA.
- Start number 25 was manually annotated 1 time for cluster FA.
- Start number 26 was manually annotated 2 times for cluster FA.

Info for manual annotations of cluster FF:

- Start number 26 was manually annotated 6 times for cluster FF.

Info for manual annotations of cluster FJ:

- Start number 17 was manually annotated 1 time for cluster FJ.
- Start number 26 was manually annotated 1 time for cluster FJ.

Info for manual annotations of cluster FL:

- Start number 26 was manually annotated 2 times for cluster FL.

Info for manual annotations of cluster FN:

- Start number 17 was manually annotated 2 times for cluster FN.

Info for manual annotations of cluster FQ:

- Start number 26 was manually annotated 1 time for cluster FQ.

Gene Information:

Gene: Abba_28 Start: 23837, Stop: 24787, Start Num: 24

Candidate Starts for Abba_28:

(Start: 24 @23837 has 1 MA's), (39, 23951), (44, 24011), (51, 24065), (52, 24071), (57, 24110), (66, 24167), (76, 24287), (84, 24389), (102, 24572), (108, 24677),

Gene: AbbyDaisy_24 Start: 18360, Stop: 19346, Start Num: 17

Candidate Starts for AbbyDaisy_24:

(Start: 17 @18360 has 8 MA's), (23, 18408), (35, 18471), (41, 18537), (45, 18582), (62, 18714), (65, 18729), (70, 18810), (73, 18822), (78, 18876), (80, 18903), (84, 18945), (108, 19245), (111, 19281),

Gene: Anekin_26 Start: 19364, Stop: 20353, Start Num: 17

Candidate Starts for Anekin_26:

(Start: 17 @19364 has 8 MA's), (23, 19412), (29, 19430), (31, 19457), (33, 19469), (35, 19475), (40, 19529), (45, 19586), (69, 19796), (80, 19907), (84, 19949), (108, 20252),

Gene: Bauer_25 Start: 19072, Stop: 20058, Start Num: 17

Candidate Starts for Bauer_25:

(Start: 17 @19072 has 8 MA's), (23, 19120), (33, 19177), (35, 19183), (43, 19273), (45, 19294), (56, 19366), (62, 19426), (67, 19459), (80, 19615), (84, 19657), (108, 19957), (111, 19993),

Gene: Beagle_31 Start: 18239, Stop: 19177, Start Num: 25

Candidate Starts for Beagle_31:

(16, 18191), (Start: 25 @18239 has 11 MA's), (44, 18410), (60, 18539), (71, 18644), (84, 18776), (90, 18812), (96, 18899), (103, 18980), (110, 19091), (114, 19133),

Gene: BillyTP_27 Start: 19185, Stop: 20132, Start Num: 25

Candidate Starts for BillyTP_27:

(Start: 25 @19185 has 11 MA's), (38, 19272), (58, 19464), (62, 19500), (66, 19518), (71, 19590), (84, 19731), (90, 19767), (94, 19833), (95, 19845), (96, 19854), (99, 19896), (103, 19935), (109, 20031),

Gene: Bridgette_25 Start: 19437, Stop: 20381, Start Num: 26

Candidate Starts for Bridgette_25:

(Start: 26 @19437 has 13 MA's), (27, 19446), (30, 19467), (37, 19521), (49, 19653), (53, 19674), (54, 19683), (57, 19710), (63, 19755), (82, 19968), (84, 19986), (95, 20097), (98, 20121), (102, 20172),

Gene: BruhMoment_25 Start: 17728, Stop: 18663, Start Num: 25

Candidate Starts for BruhMoment_25:

(10, 17551), (Start: 25 @17728 has 11 MA's), (34, 17779), (58, 18004), (62, 18040), (66, 18058), (71, 18130), (84, 18262), (86, 18271), (90, 18298), (103, 18466), (114, 18619),

Gene: ChuckDuck_26 Start: 19302, Stop: 20249, Start Num: 25

Candidate Starts for ChuckDuck_26:

(9, 19077), (Start: 25 @19302 has 11 MA's), (38, 19389), (58, 19581), (60, 19602), (62, 19617), (66, 19635), (71, 19707), (84, 19848), (90, 19884), (94, 19950), (95, 19962), (96, 19971), (103, 20052), (109, 20148),

Gene: Cole_23 Start: 18430, Stop: 19374, Start Num: 26

Candidate Starts for Cole_23:

(12, 18352), (19, 18397), (Start: 26 @18430 has 13 MA's), (27, 18439), (30, 18460), (32, 18478), (39, 18544), (49, 18646), (54, 18676), (57, 18703), (70, 18829), (77, 18898), (82, 18961), (84, 18979), (95, 19090), (113, 19327),

Gene: EvePickles_24 Start: 17997, Stop: 18980, Start Num: 20

Candidate Starts for EvePickles_24:

(Start: 20 @17997 has 1 MA's), (Start: 26 @18036 has 13 MA's), (38, 18120), (62, 18348), (66, 18366), (70, 18432), (71, 18438), (83, 18564), (84, 18579), (89, 18603), (90, 18615), (94, 18681), (95, 18693), (96, 18702), (106, 18861), (109, 18879), (112, 18921), (114, 18936),

Gene: Faja_24 Start: 17929, Stop: 18873, Start Num: 26

Candidate Starts for Faja_24:

(13, 17845), (Start: 26 @17929 has 13 MA's), (38, 18013), (44, 18097), (58, 18205), (66, 18259), (67, 18274), (71, 18331), (84, 18472), (88, 18484), (90, 18508), (103, 18676), (114, 18829),

Gene: Gorpy_27 Start: 19410, Stop: 20357, Start Num: 25

Candidate Starts for Gorpy_27:

(Start: 25 @19410 has 11 MA's), (38, 19497), (58, 19689), (62, 19725), (66, 19743), (71, 19815), (84, 19956), (90, 19992), (94, 20058), (95, 20070), (96, 20079), (99, 20121), (103, 20160), (109, 20256),

Gene: Gusanita_23 Start: 18476, Stop: 19420, Start Num: 26

Candidate Starts for Gusanita_23:

(21, 18443), (Start: 26 @18476 has 13 MA's), (27, 18485), (30, 18506), (37, 18560), (40, 18596), (49, 18692), (54, 18722), (57, 18749), (79, 18965), (82, 19007), (84, 19025), (98, 19160), (107, 19304),

Gene: Hirko_27 Start: 25896, Stop: 26837, Start Num: 26

Candidate Starts for Hirko_27:

(Start: 26 @25896 has 13 MA's), (39, 26004), (51, 26118), (52, 26124), (57, 26163), (66, 26220), (72, 26298), (81, 26391), (84, 26439), (92, 26511), (101, 26619), (102, 26625), (108, 26730),

Gene: Isolde_27 Start: 19236, Stop: 20183, Start Num: 25

Candidate Starts for Isolde_27:

(Start: 25 @19236 has 11 MA's), (38, 19323), (58, 19515), (62, 19551), (66, 19569), (71, 19641), (84, 19782), (90, 19818), (94, 19884), (95, 19896), (96, 19905), (99, 19947), (103, 19986), (109, 20082),

Gene: Judy_26 Start: 19687, Stop: 20631, Start Num: 26

Candidate Starts for Judy_26:

(Start: 26 @19687 has 13 MA's), (27, 19696), (30, 19717), (37, 19771), (49, 19903), (54, 19933), (57, 19960), (63, 20005), (82, 20218), (84, 20236), (91, 20284), (104, 20437), (106, 20512),

Gene: KayMoney_26 Start: 19306, Stop: 20253, Start Num: 25

Candidate Starts for KayMoney_26:

(9, 19081), (Start: 25 @19306 has 11 MA's), (38, 19393), (58, 19585), (60, 19606), (62, 19621), (66, 19639), (71, 19711), (84, 19852), (90, 19888), (94, 19954), (95, 19966), (96, 19975), (103, 20056),

(109, 20152),

Gene: Kukla_22 Start: 17420, Stop: 18367, Start Num: 26

Candidate Starts for Kukla_22:

(Start: 26 @17420 has 13 MA's), (38, 17504), (46, 17609), (58, 17696), (62, 17732), (66, 17750), (71, 17822), (85, 17966), (90, 18005), (94, 18071),

Gene: Lawnathon_27 Start: 19330, Stop: 20277, Start Num: 25

Candidate Starts for Lawnathon_27:

(Start: 25 @19330 has 11 MA's), (38, 19417), (58, 19609), (62, 19645), (66, 19663), (71, 19735), (84, 19876), (90, 19912), (94, 19978), (95, 19990), (96, 19999), (99, 20041), (103, 20080), (109, 20176),

Gene: Lenoxika_25 Start: 18625, Stop: 19569, Start Num: 26

Candidate Starts for Lenoxika_25:

(Start: 26 @18625 has 13 MA's), (27, 18634), (30, 18655), (36, 18700), (37, 18709), (49, 18841), (54, 18871), (59, 18910), (82, 19156), (84, 19174), (95, 19285), (106, 19450), (107, 19453),

Gene: MellowYellow_27 Start: 16974, Stop: 17912, Start Num: 25

Candidate Starts for MellowYellow_27:

(16, 16926), (Start: 25 @16974 has 11 MA's), (60, 17274), (71, 17379), (84, 17511), (90, 17547), (96, 17634), (103, 17715), (110, 17826), (114, 17868),

Gene: MrSmee_22 Start: 17272, Stop: 18069, Start Num: 42

Candidate Starts for MrSmee_22:

(6, 16855), (8, 16870), (11, 16990), (Start: 17 @17092 has 8 MA's), (28, 17155), (31, 17179), (33, 17191), (35, 17197), (40, 17251), (42, 17272), (43, 17287), (55, 17383), (73, 17539), (84, 17671), (93, 17749), (95, 17782), (97, 17803), (106, 17947),

Gene: Nandita_25 Start: 18629, Stop: 19573, Start Num: 26

Candidate Starts for Nandita_25:

(Start: 26 @18629 has 13 MA's), (27, 18638), (30, 18659), (36, 18704), (37, 18713), (49, 18845), (54, 18875), (59, 18914), (82, 19160), (84, 19178), (95, 19289), (106, 19454), (107, 19457),

Gene: NyleyClemson_26 Start: 16919, Stop: 17857, Start Num: 25

Candidate Starts for NyleyClemson_26:

(16, 16871), (Start: 25 @16919 has 11 MA's), (60, 17219), (71, 17324), (84, 17456), (90, 17492), (96, 17579), (103, 17660), (110, 17771), (114, 17813),

Gene: Persistence_26 Start: 19282, Stop: 20262, Start Num: 17

Candidate Starts for Persistence_26:

(Start: 17 @19282 has 8 MA's), (18, 19291), (31, 19369), (33, 19381), (55, 19573), (66, 19654), (73, 19729), (84, 19867), (93, 19945), (95, 19978), (96, 19987), (106, 20143), (107, 20146), (110, 20176),

Gene: Phrank15_26 Start: 19335, Stop: 20282, Start Num: 25

Candidate Starts for Phrank15_26:

(Start: 25 @19335 has 11 MA's), (38, 19422), (58, 19614), (62, 19650), (66, 19668), (71, 19740), (84, 19881), (90, 19917), (94, 19983), (95, 19995), (96, 20004), (99, 20046), (103, 20085), (109, 20181),

Gene: Pitbull_22 Start: 16646, Stop: 17593, Start Num: 26

Candidate Starts for Pitbull_22:

(22, 16619), (Start: 26 @16646 has 13 MA's), (38, 16730), (47, 16838), (58, 16925), (66, 16979), (71, 17051), (84, 17192), (89, 17216), (90, 17228), (94, 17294), (95, 17306), (114, 17549),

Gene: Popper_23 Start: 18534, Stop: 19478, Start Num: 26

Candidate Starts for Popper_23:

(12, 18450), (19, 18495), (Start: 26 @18534 has 13 MA's), (36, 18609), (37, 18618), (49, 18750), (54, 18780), (57, 18807), (82, 19065), (84, 19083), (95, 19194), (100, 19260), (102, 19269), (103, 19281), (105, 19314), (113, 19431),

Gene: Pucara_25 Start: 19341, Stop: 20285, Start Num: 26

Candidate Starts for Pucara_25:

(Start: 26 @19341 has 13 MA's), (27, 19350), (37, 19425), (49, 19557), (54, 19587), (57, 19614), (63, 19659), (84, 19890), (98, 20025), (102, 20076), (105, 20121),

Gene: Pureglobe5_32 Start: 18448, Stop: 19386, Start Num: 25

Candidate Starts for Pureglobe5_32:

(16, 18400), (Start: 25 @18448 has 11 MA's), (44, 18619), (60, 18748), (71, 18853), (84, 18985), (90, 19021), (96, 19108), (103, 19189), (110, 19300), (114, 19342),

Gene: QuinnAvery_24 Start: 18777, Stop: 19721, Start Num: 26

Candidate Starts for QuinnAvery_24:

(1, 18072), (2, 18099), (3, 18219), (Start: 20 @18744 has 1 MA's), (Start: 26 @18777 has 13 MA's), (46, 18966), (58, 19053), (62, 19089), (66, 19107), (71, 19179), (84, 19320), (90, 19356), (96, 19443), (99, 19485), (103, 19524), (112, 19662),

Gene: Ranunculus_24 Start: 17342, Stop: 18316, Start Num: 15

Candidate Starts for Ranunculus_24:

(Start: 15 @17342 has 1 MA's), (23, 17390), (27, 17405), (29, 17408), (41, 17519), (43, 17543), (68, 17762), (69, 17774), (70, 17792), (84, 17924), (100, 18101), (109, 18218),

Gene: Raphaella_27 Start: 19401, Stop: 20348, Start Num: 25

Candidate Starts for Raphaella_27:

(Start: 25 @19401 has 11 MA's), (38, 19488), (58, 19680), (62, 19716), (66, 19734), (71, 19806), (84, 19947), (90, 19983), (94, 20049), (95, 20061), (96, 20070), (99, 20112), (103, 20151), (109, 20247),

Gene: Raqqa_24 Start: 18653, Stop: 19639, Start Num: 17

Candidate Starts for Raqqa_24:

(7, 18428), (Start: 17 @18653 has 8 MA's), (23, 18701), (27, 18716), (29, 18719), (31, 18746), (69, 19085), (80, 19196), (84, 19238), (108, 19538), (111, 19574),

Gene: RootBeer_22 Start: 17010, Stop: 17987, Start Num: 17

Candidate Starts for RootBeer_22:

(4, 16677), (5, 16746), (7, 16785), (Start: 17 @17010 has 8 MA's), (23, 17055), (31, 17100), (84, 17592), (93, 17670), (101, 17772), (106, 17868), (109, 17886),

Gene: Ryan_25 Start: 19219, Stop: 20163, Start Num: 26

Candidate Starts for Ryan_25:

(Start: 26 @19219 has 13 MA's), (27, 19228), (36, 19294), (37, 19303), (39, 19333), (40, 19339), (49, 19435), (54, 19465), (57, 19492), (59, 19504), (63, 19537), (82, 19750), (84, 19768), (95, 19879), (106, 20044), (107, 20047),

Gene: Sakai_27 Start: 19410, Stop: 20357, Start Num: 25

Candidate Starts for Sakai_27:

(Start: 25 @19410 has 11 MA's), (38, 19497), (58, 19689), (62, 19725), (66, 19743), (71, 19815), (84, 19956), (90, 19992), (94, 20058), (95, 20070), (96, 20079), (99, 20121), (103, 20160), (109, 20256),

Gene: Seahorse_28 Start: 19765, Stop: 20751, Start Num: 17

Candidate Starts for Seahorse_28:

(Start: 17 @19765 has 8 MA's), (23, 19813), (29, 19831), (31, 19858), (33, 19870), (35, 19876), (69, 20197), (75, 20257), (80, 20308), (84, 20350), (108, 20650),

Gene: Tiff81_29 Start: 19493, Stop: 20479, Start Num: 17

Candidate Starts for Tiff81_29:

(Start: 17 @19493 has 8 MA's), (23, 19541), (27, 19556), (29, 19559), (31, 19586), (33, 19598), (35, 19604), (45, 19715), (69, 19925), (80, 20036), (84, 20078), (108, 20378),

Gene: TripleJ_24 Start: 18283, Stop: 19278, Start Num: 17

Candidate Starts for TripleJ_24:

(Start: 17 @18283 has 8 MA's), (33, 18391), (40, 18451), (48, 18532), (50, 18544), (61, 18631), (64, 18646), (69, 18709), (74, 18745), (84, 18883), (87, 18895), (97, 19015), (106, 19159), (107, 19162),

Gene: Vibaki_27 Start: 25425, Stop: 26384, Start Num: 26

Candidate Starts for Vibaki_27:

(14, 25350), (Start: 26 @25425 has 13 MA's), (27, 25434), (39, 25533), (53, 25656), (57, 25692), (66, 25749), (72, 25827), (84, 25986), (92, 26058), (102, 26172), (108, 26277),

Gene: Zaheer_25 Start: 19308, Stop: 20252, Start Num: 26

Candidate Starts for Zaheer_25:

(Start: 26 @19308 has 13 MA's), (27, 19317), (36, 19383), (37, 19392), (39, 19422), (40, 19428), (49, 19524), (54, 19554), (57, 19581), (59, 19593), (63, 19626), (82, 19839), (84, 19857), (95, 19968), (106, 20133), (107, 20136),

Gene: Zucker_24 Start: 18385, Stop: 19371, Start Num: 17

Candidate Starts for Zucker_24:

(Start: 17 @18385 has 8 MA's), (23, 18433), (33, 18490), (35, 18496), (43, 18586), (45, 18607), (56, 18679), (62, 18739), (67, 18772), (80, 18928), (84, 18970), (108, 19270), (111, 19306),