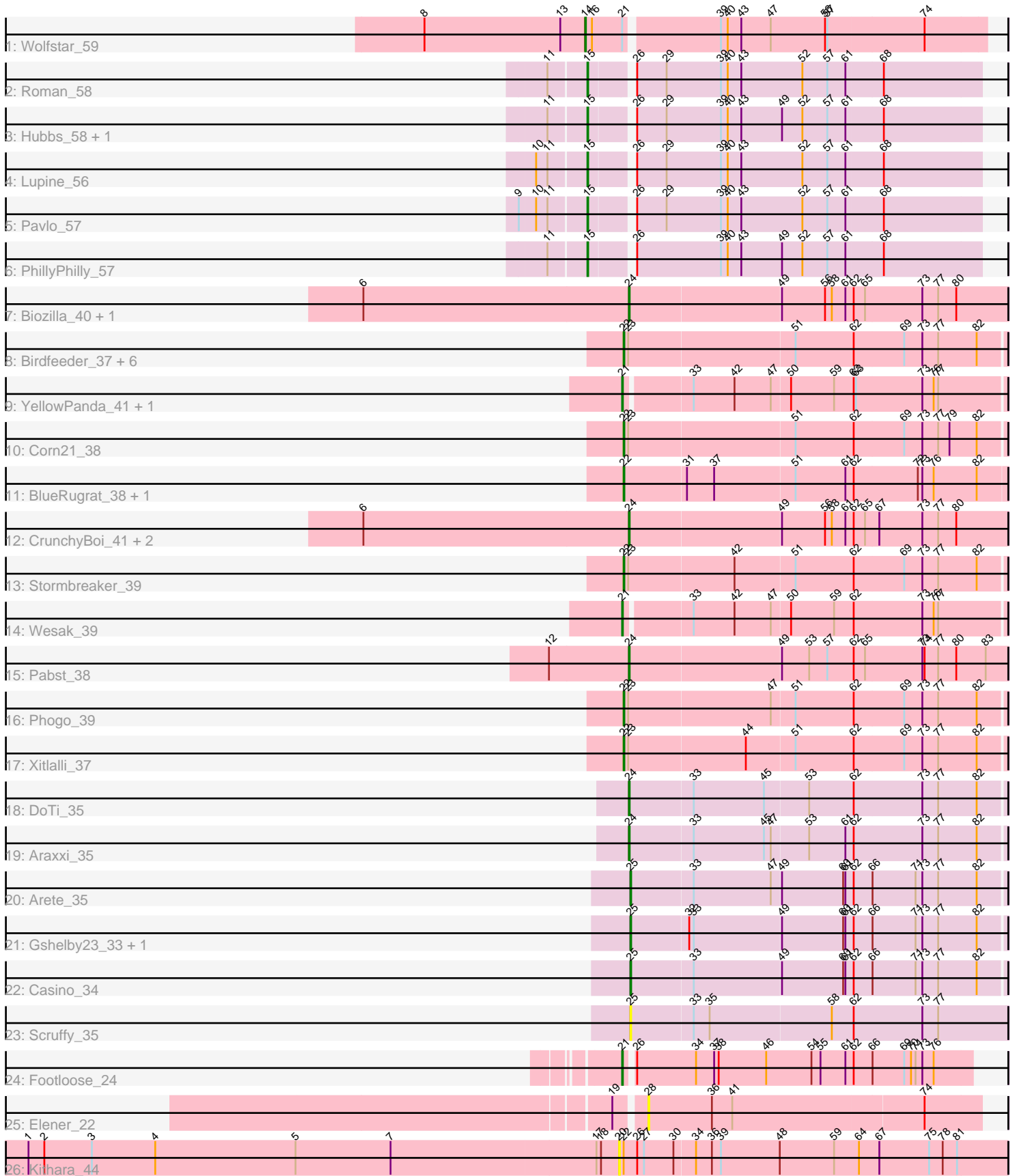


Pham 192723



Note: Tracks are now grouped by subcluster and scaled. Switching in subcluster is indicated by changes in track color. Track scale is now set by default to display the region 30 bp upstream of start 1 to 30 bp downstream of the last possible start. If this default region is judged to be packed too tightly with annotated starts, the track will be further scaled to only show that region of the ORF with annotated starts. This action will be indicated by adding "Zoomed" to the title. For starts, yellow indicates the location of called starts comprised solely of Glimmer/GeneMark auto-annotations, green indicates the location of called starts with at least 1 manual gene annotation.

Pham 192723 Report

This analysis was run 11/02/24 on database version 579.

Pham number 192723 has 39 members, 5 are drafts.

Phages represented in each track:

- Track 1 : Wolfstar_59
- Track 2 : Roman_58
- Track 3 : Hubbs_58, DejaVu_59
- Track 4 : Lupine_56
- Track 5 : Pavlo_57
- Track 6 : PhillyPhilly_57
- Track 7 : Biozilla_40, HitchHiker_41
- Track 8 : Birdfeeder_37, LilyLou_40, Dashyla_38, Unphazed_39, Alex44_39, ArMaWen_38, DumpQuist_38
- Track 9 : YellowPanda_41, TinyTimothy_38
- Track 10 : Corn21_38
- Track 11 : BlueRugrat_38, LesNorah_39
- Track 12 : CrunchyBoi_41, PineapplePluto_41, Oatly_40
- Track 13 : Stormbreaker_39
- Track 14 : Wesak_39
- Track 15 : Pabst_38
- Track 16 : Phogo_39
- Track 17 : Xitlalli_37
- Track 18 : DoTi_35
- Track 19 : Araxxi_35
- Track 20 : Arete_35
- Track 21 : Gshelby23_33, Hannabella_35
- Track 22 : Casino_34
- Track 23 : Scruffy_35
- Track 24 : Footloose_24
- Track 25 : Elener_22
- Track 26 : Kithara_44

Summary of Final Annotations (See graph section above for start numbers):

The start number called the most often in the published annotations is 22, it was called in 13 of the 34 non-draft genes in the pham.

Genes that call this "Most Annotated" start:

- Alex44_39, ArMaWen_38, Birdfeeder_37, BlueRugrat_38, Corn21_38, Dashyla_38, DumpQuist_38, LesNorah_39, LilyLou_40, Phogo_39, Stormbreaker_39, Unphazed_39, Xitlalli_37,

Genes that have the "Most Annotated" start but do not call it:

- Kithara_44,

Genes that do not have the "Most Annotated" start:

- Araxxi_35, Arete_35, Biozilla_40, Casino_34, CrunchyBoi_41, DejaVu_59, DoTi_35, Elener_22, Footloose_24, Gshelby23_33, Hannabella_35, HitchHiker_41, Hubbs_58, Lupine_56, Oatly_40, Pabst_38, Pavlo_57, PhillyPhilly_57, PineapplePluto_41, Roman_58, Scruffy_35, TinyTimothy_38, Wesak_39, Wolfstar_59, YellowPanda_41,

Summary by start number:

Start 14:

- Found in 1 of 39 (2.6%) of genes in pham
- Manual Annotations of this start: 1 of 34
- Called 100.0% of time when present
- Phage (with cluster) where this start called: Wolfstar_59 (ED),

Start 15:

- Found in 6 of 39 (15.4%) of genes in pham
- Manual Annotations of this start: 6 of 34
- Called 100.0% of time when present
- Phage (with cluster) where this start called: DejaVu_59 (ED1), Hubbs_58 (ED1), Lupine_56 (ED1), Pavlo_57 (ED1), PhillyPhilly_57 (ED1), Roman_58 (ED1),

Start 20:

- Found in 1 of 39 (2.6%) of genes in pham
- No Manual Annotations of this start.
- Called 100.0% of time when present
- Phage (with cluster) where this start called: Kithara_44 (singleton),

Start 21:

- Found in 5 of 39 (12.8%) of genes in pham
- Manual Annotations of this start: 4 of 34
- Called 80.0% of time when present
- Phage (with cluster) where this start called: Footloose_24 (singleton), TinyTimothy_38 (EK1), Wesak_39 (EK1), YellowPanda_41 (EK1),

Start 22:

- Found in 14 of 39 (35.9%) of genes in pham
- Manual Annotations of this start: 13 of 34
- Called 92.9% of time when present
- Phage (with cluster) where this start called: Alex44_39 (EK1), ArMaWen_38 (EK1), Birdfeeder_37 (EK1), BlueRugrat_38 (EK1), Corn21_38 (EK1), Dashyla_38 (EK1), DumpQuist_38 (EK1), LesNorah_39 (EK1), LilyLou_40 (EK1), Phogo_39 (EK1), Stormbreaker_39 (EK1), Unphazed_39 (EK1), Xitlalli_37 (EK1),

Start 24:

- Found in 8 of 39 (20.5%) of genes in pham
- Manual Annotations of this start: 6 of 34

- Called 100.0% of time when present
- Phage (with cluster) where this start called: Araxxi_35 (EM1), Biozilla_40 (EK1), CrunchyBoi_41 (EK1), DoTi_35 (EM1), HitchHiker_41 (EK1), Oatly_40 (EK1), Pabst_38 (EK1), PineapplePluto_41 (EK1),

Start 25:

- Found in 5 of 39 (12.8%) of genes in pham
- Manual Annotations of this start: 4 of 34
- Called 100.0% of time when present
- Phage (with cluster) where this start called: Arete_35 (EM1), Casino_34 (EM1), Gshelby23_33 (EM1), Hannabella_35 (EM1), Scruffy_35 (EM1),

Start 28:

- Found in 1 of 39 (2.6%) of genes in pham
- No Manual Annotations of this start.
- Called 100.0% of time when present
- Phage (with cluster) where this start called: Elener_22 (singleton),

Summary by clusters:

There are 5 clusters represented in this pham: ED, singleton, ED1, EM1, EK1,

Info for manual annotations of cluster ED:

- Start number 14 was manually annotated 1 time for cluster ED.

Info for manual annotations of cluster ED1:

- Start number 15 was manually annotated 6 times for cluster ED1.

Info for manual annotations of cluster EK1:

- Start number 21 was manually annotated 3 times for cluster EK1.
- Start number 22 was manually annotated 13 times for cluster EK1.
- Start number 24 was manually annotated 4 times for cluster EK1.

Info for manual annotations of cluster EM1:

- Start number 24 was manually annotated 2 times for cluster EM1.
- Start number 25 was manually annotated 4 times for cluster EM1.

Gene Information:

Gene: Alex44_39 Start: 39220, Stop: 39714, Start Num: 22

Candidate Starts for Alex44_39:

(Start: 22 @39220 has 13 MA's), (23, 39226), (51, 39442), (62, 39517), (69, 39583), (73, 39607), (77, 39628), (82, 39679),

Gene: ArMaWen_38 Start: 38763, Stop: 39257, Start Num: 22

Candidate Starts for ArMaWen_38:

(Start: 22 @38763 has 13 MA's), (23, 38769), (51, 38985), (62, 39060), (69, 39126), (73, 39150), (77, 39171), (82, 39222),

Gene: Araxxi_35 Start: 42091, Stop: 42576, Start Num: 24

Candidate Starts for Araxxi_35:

(Start: 24 @42091 has 6 MA's), (33, 42172), (45, 42265), (47, 42274), (53, 42322), (61, 42370), (62, 42379), (73, 42469), (77, 42490), (82, 42541),

Gene: Arete_35 Start: 41837, Stop: 42322, Start Num: 25

Candidate Starts for Arete_35:

(Start: 25 @41837 has 4 MA's), (33, 41918), (47, 42020), (49, 42032), (60, 42113), (61, 42116), (62, 42125), (66, 42149), (71, 42206), (73, 42215), (77, 42236), (82, 42287),

Gene: Biozilla_40 Start: 39149, Stop: 39640, Start Num: 24

Candidate Starts for Biozilla_40:

(6, 38798), (Start: 24 @39149 has 6 MA's), (49, 39344), (56, 39401), (58, 39410), (61, 39428), (62, 39437), (65, 39452), (73, 39527), (77, 39548), (80, 39572),

Gene: Birdfeeder_37 Start: 38976, Stop: 39470, Start Num: 22

Candidate Starts for Birdfeeder_37:

(Start: 22 @38976 has 13 MA's), (23, 38982), (51, 39198), (62, 39273), (69, 39339), (73, 39363), (77, 39384), (82, 39435),

Gene: BlueRugrat_38 Start: 39221, Stop: 39718, Start Num: 22

Candidate Starts for BlueRugrat_38:

(Start: 22 @39221 has 13 MA's), (31, 39302), (37, 39338), (51, 39443), (61, 39509), (62, 39518), (72, 39602), (73, 39608), (76, 39623), (82, 39680),

Gene: Casino_34 Start: 41809, Stop: 42294, Start Num: 25

Candidate Starts for Casino_34:

(Start: 25 @41809 has 4 MA's), (33, 41890), (49, 42004), (60, 42085), (61, 42088), (62, 42097), (66, 42121), (71, 42178), (73, 42187), (77, 42208), (82, 42259),

Gene: Corn21_38 Start: 39299, Stop: 39793, Start Num: 22

Candidate Starts for Corn21_38:

(Start: 22 @39299 has 13 MA's), (23, 39305), (51, 39521), (62, 39596), (69, 39662), (73, 39686), (77, 39707), (79, 39722), (82, 39758),

Gene: CrunchyBoi_41 Start: 39004, Stop: 39495, Start Num: 24

Candidate Starts for CrunchyBoi_41:

(6, 38653), (Start: 24 @39004 has 6 MA's), (49, 39199), (56, 39256), (58, 39265), (61, 39283), (62, 39292), (65, 39307), (67, 39325), (73, 39382), (77, 39403), (80, 39427),

Gene: Dashyla_38 Start: 38894, Stop: 39388, Start Num: 22

Candidate Starts for Dashyla_38:

(Start: 22 @38894 has 13 MA's), (23, 38900), (51, 39116), (62, 39191), (69, 39257), (73, 39281), (77, 39302), (82, 39353),

Gene: DejaVu_59 Start: 34858, Stop: 35358, Start Num: 15

Candidate Starts for DejaVu_59:

(11, 34816), (Start: 15 @34858 has 6 MA's), (26, 34906), (29, 34945), (39, 35017), (40, 35026), (43, 35044), (49, 35098), (52, 35125), (57, 35158), (61, 35182), (68, 35230),

Gene: DoTi_35 Start: 42195, Stop: 42680, Start Num: 24

Candidate Starts for DoTi_35:

(Start: 24 @42195 has 6 MA's), (33, 42276), (45, 42369), (53, 42426), (62, 42483), (73, 42573), (77, 42594), (82, 42645),

Gene: DumpQuist_38 Start: 38748, Stop: 39242, Start Num: 22

Candidate Starts for DumpQuist_38:

(Start: 22 @38748 has 13 MA's), (23, 38754), (51, 38970), (62, 39045), (69, 39111), (73, 39135), (77, 39156), (82, 39207),

Gene: Elener_22 Start: 20025, Stop: 20459, Start Num: 28

Candidate Starts for Elener_22:

(19, 19989), (28, 20025), (36, 20109), (41, 20136), (74, 20385),

Gene: Footloose_24 Start: 17237, Stop: 17686, Start Num: 21

Candidate Starts for Footloose_24:

(Start: 21 @17237 has 4 MA's), (26, 17246), (34, 17324), (37, 17348), (38, 17354), (46, 17417), (54, 17477), (55, 17489), (61, 17522), (62, 17531), (66, 17555), (69, 17597), (70, 17606), (71, 17612), (73, 17621), (76, 17636),

Gene: Gshelby23_33 Start: 41744, Stop: 42229, Start Num: 25

Candidate Starts for Gshelby23_33:

(Start: 25 @41744 has 4 MA's), (32, 41819), (33, 41825), (49, 41939), (60, 42020), (61, 42023), (62, 42032), (66, 42056), (71, 42113), (73, 42122), (77, 42143), (82, 42194),

Gene: Hannabella_35 Start: 41785, Stop: 42270, Start Num: 25

Candidate Starts for Hannabella_35:

(Start: 25 @41785 has 4 MA's), (32, 41860), (33, 41866), (49, 41980), (60, 42061), (61, 42064), (62, 42073), (66, 42097), (71, 42154), (73, 42163), (77, 42184), (82, 42235),

Gene: HitchHiker_41 Start: 39149, Stop: 39640, Start Num: 24

Candidate Starts for HitchHiker_41:

(6, 38798), (Start: 24 @39149 has 6 MA's), (49, 39344), (56, 39401), (58, 39410), (61, 39428), (62, 39437), (65, 39452), (73, 39527), (77, 39548), (80, 39572),

Gene: Hubbs_58 Start: 35070, Stop: 35570, Start Num: 15

Candidate Starts for Hubbs_58:

(11, 35028), (Start: 15 @35070 has 6 MA's), (26, 35118), (29, 35157), (39, 35229), (40, 35238), (43, 35256), (49, 35310), (52, 35337), (57, 35370), (61, 35394), (68, 35442),

Gene: Kithara_44 Start: 36544, Stop: 37053, Start Num: 20

Candidate Starts for Kithara_44:

(1, 35764), (2, 35785), (3, 35848), (4, 35932), (5, 36118), (7, 36244), (17, 36514), (18, 36520), (20, 36544), (Start: 22 @36550 has 13 MA's), (26, 36568), (27, 36577), (30, 36616), (34, 36643), (36, 36664), (39, 36676), (48, 36754), (59, 36826), (64, 36859), (67, 36886), (75, 36952), (78, 36970), (81, 36988),

Gene: LesNorah_39 Start: 39618, Stop: 40115, Start Num: 22

Candidate Starts for LesNorah_39:

(Start: 22 @39618 has 13 MA's), (31, 39699), (37, 39735), (51, 39840), (61, 39906), (62, 39915), (72, 39999), (73, 40005), (76, 40020), (82, 40077),

Gene: LilyLou_40 Start: 39212, Stop: 39706, Start Num: 22

Candidate Starts for LilyLou_40:

(Start: 22 @39212 has 13 MA's), (23, 39218), (51, 39434), (62, 39509), (69, 39575), (73, 39599), (77, 39620), (82, 39671),

Gene: Lupine_56 Start: 34272, Stop: 34772, Start Num: 15

Candidate Starts for Lupine_56:

(10, 34215), (11, 34230), (Start: 15 @34272 has 6 MA's), (26, 34320), (29, 34359), (39, 34431), (40, 34440), (43, 34458), (52, 34539), (57, 34572), (61, 34596), (68, 34644),

Gene: Oatly_40 Start: 38709, Stop: 39200, Start Num: 24

Candidate Starts for Oatly_40:

(6, 38358), (Start: 24 @38709 has 6 MA's), (49, 38904), (56, 38961), (58, 38970), (61, 38988), (62, 38997), (65, 39012), (67, 39030), (73, 39087), (77, 39108), (80, 39132),

Gene: Pabst_38 Start: 38773, Stop: 39264, Start Num: 24

Candidate Starts for Pabst_38:

(12, 38668), (Start: 24 @38773 has 6 MA's), (49, 38968), (53, 39004), (57, 39028), (62, 39061), (65, 39076), (73, 39151), (74, 39154), (77, 39172), (80, 39196), (83, 39235),

Gene: Pavlo_57 Start: 34917, Stop: 35417, Start Num: 15

Candidate Starts for Pavlo_57:

(9, 34839), (10, 34860), (11, 34875), (Start: 15 @34917 has 6 MA's), (26, 34965), (29, 35004), (39, 35076), (40, 35085), (43, 35103), (52, 35184), (57, 35217), (61, 35241), (68, 35289),

Gene: PhillyPhilly_57 Start: 34451, Stop: 34951, Start Num: 15

Candidate Starts for PhillyPhilly_57:

(11, 34409), (Start: 15 @34451 has 6 MA's), (26, 34499), (39, 34610), (40, 34619), (43, 34637), (49, 34691), (52, 34718), (57, 34751), (61, 34775), (68, 34823),

Gene: Phogo_39 Start: 39040, Stop: 39534, Start Num: 22

Candidate Starts for Phogo_39:

(Start: 22 @39040 has 13 MA's), (23, 39046), (47, 39232), (51, 39262), (62, 39337), (69, 39403), (73, 39427), (77, 39448), (82, 39499),

Gene: PineapplePluto_41 Start: 39071, Stop: 39562, Start Num: 24

Candidate Starts for PineapplePluto_41:

(6, 38720), (Start: 24 @39071 has 6 MA's), (49, 39266), (56, 39323), (58, 39332), (61, 39350), (62, 39359), (65, 39374), (67, 39392), (73, 39449), (77, 39470), (80, 39494),

Gene: Roman_58 Start: 34918, Stop: 35418, Start Num: 15

Candidate Starts for Roman_58:

(11, 34876), (Start: 15 @34918 has 6 MA's), (26, 34966), (29, 35005), (39, 35077), (40, 35086), (43, 35104), (52, 35185), (57, 35218), (61, 35242), (68, 35290),

Gene: Scruffy_35 Start: 42070, Stop: 42561, Start Num: 25

Candidate Starts for Scruffy_35:

(Start: 25 @42070 has 4 MA's), (33, 42151), (35, 42172), (58, 42331), (62, 42358), (73, 42448), (77, 42469),

Gene: Stormbreaker_39 Start: 39128, Stop: 39622, Start Num: 22

Candidate Starts for Stormbreaker_39:

(Start: 22 @39128 has 13 MA's), (23, 39134), (42, 39272), (51, 39350), (62, 39425), (69, 39491), (73, 39515), (77, 39536), (82, 39587),

Gene: TinyTimothy_38 Start: 40626, Stop: 41111, Start Num: 21

Candidate Starts for TinyTimothy_38:

(Start: 21 @40626 has 4 MA's), (33, 40707), (42, 40761), (47, 40809), (50, 40833), (59, 40890), (62, 40914), (63, 40917), (73, 41004), (76, 41019), (77, 41025),

Gene: Unphazed_39 Start: 39004, Stop: 39498, Start Num: 22

Candidate Starts for Unphazed_39:

(Start: 22 @39004 has 13 MA's), (23, 39010), (51, 39226), (62, 39301), (69, 39367), (73, 39391), (77, 39412), (82, 39463),

Gene: Wesak_39 Start: 40468, Stop: 40953, Start Num: 21

Candidate Starts for Wesak_39:

(Start: 21 @40468 has 4 MA's), (33, 40549), (42, 40603), (47, 40651), (50, 40675), (59, 40732), (62, 40756), (73, 40846), (76, 40861), (77, 40867),

Gene: Wolfstar_59 Start: 35948, Stop: 36460, Start Num: 14

Candidate Starts for Wolfstar_59:

(8, 35735), (13, 35915), (Start: 14 @35948 has 1 MA's), (16, 35957), (Start: 21 @35996 has 4 MA's), (39, 36113), (40, 36122), (43, 36140), (47, 36179), (56, 36251), (57, 36254), (74, 36380),

Gene: Xitlalli_37 Start: 39005, Stop: 39499, Start Num: 22

Candidate Starts for Xitlalli_37:

(Start: 22 @39005 has 13 MA's), (23, 39011), (44, 39164), (51, 39227), (62, 39302), (69, 39368), (73, 39392), (77, 39413), (82, 39464),

Gene: YellowPanda_41 Start: 40349, Stop: 40834, Start Num: 21

Candidate Starts for YellowPanda_41:

(Start: 21 @40349 has 4 MA's), (33, 40430), (42, 40484), (47, 40532), (50, 40556), (59, 40613), (62, 40637), (63, 40640), (73, 40727), (76, 40742), (77, 40748),