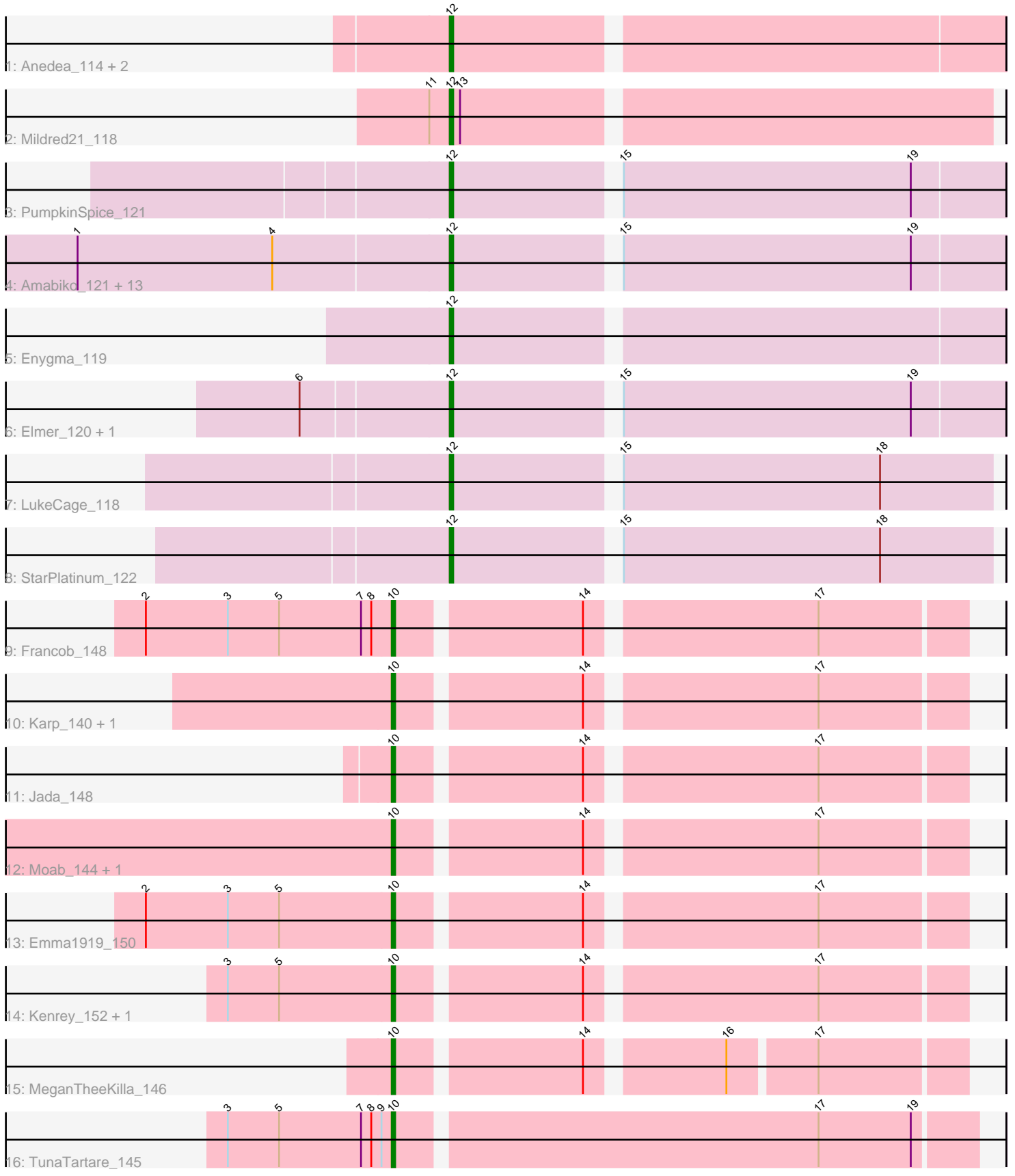


# Pham 192752



Note: Tracks are now grouped by subcluster and scaled. Switching in subcluster is indicated by changes in track color. Track scale is now set by default to display the region 30 bp upstream of start 1 to 30 bp downstream of the last possible start. If this default region is judged to be packed too tightly with annotated starts, the track will be further scaled to only show that region of the ORF with annotated starts. This action will be indicated by adding "Zoomed" to the title. For starts, yellow indicates the location of called starts comprised solely of Glimmer/GeneMark auto-annotations, green indicates the location of called starts with at least 1 manual gene annotation.

## Pham 192752 Report

This analysis was run 11/02/24 on database version 579.

Pham number 192752 has 35 members, 3 are drafts.

Phages represented in each track:

- Track 1 : Anedea\_114, Bmoc\_116, Mugiwara\_124
- Track 2 : Mildred21\_118
- Track 3 : PumpkinSpice\_121
- Track 4 : Amabiko\_121, Spelly\_121, Quaran19\_120, Wipeout\_116, Karimac\_120, Gibbi\_126, Bordeaux\_119, Starbow\_119, Jollison\_120, CeilingFan\_125, Birchlyn\_118, Battuta\_119, SaltySpitoon\_120, TomSawyer\_121
- Track 5 : Enygma\_119
- Track 6 : Elmer\_120, Wofford\_116
- Track 7 : LukeCage\_118
- Track 8 : StarPlatinum\_122
- Track 9 : Francob\_148
- Track 10 : Karp\_140, Belfort\_145
- Track 11 : Jada\_148
- Track 12 : Moab\_144, Patelgo\_146
- Track 13 : Emma1919\_150
- Track 14 : Kenrey\_152, Phredrick\_149
- Track 15 : MeganTheeKilla\_146
- Track 16 : TunaTartare\_145

### ***Summary of Final Annotations (See graph section above for start numbers):***

The start number called the most often in the published annotations is 12, it was called in 21 of the 32 non-draft genes in the pham.

Genes that call this "Most Annotated" start:

- Amabiko\_121, Anedea\_114, Battuta\_119, Birchlyn\_118, Bmoc\_116, Bordeaux\_119, CeilingFan\_125, Elmer\_120, Enygma\_119, Gibbi\_126, Jollison\_120, Karimac\_120, LukeCage\_118, Mildred21\_118, Mugiwara\_124, PumpkinSpice\_121, Quaran19\_120, SaltySpitoon\_120, Spelly\_121, StarPlatinum\_122, Starbow\_119, TomSawyer\_121, Wipeout\_116, Wofford\_116,

Genes that have the "Most Annotated" start but do not call it:

-

Genes that do not have the "Most Annotated" start:

• Belfort\_145, Emma1919\_150, Francob\_148, Jada\_148, Karp\_140, Kenrey\_152, MeganTheeKilla\_146, Moab\_144, Patelgo\_146, Phredrick\_149, TunaTartare\_145,

### Summary by start number:

Start 10:

- Found in 11 of 35 ( 31.4% ) of genes in pham
- Manual Annotations of this start: 11 of 32
- Called 100.0% of time when present
- Phage (with cluster) where this start called: Belfort\_145 (BK1), Emma1919\_150 (BK1), Francob\_148 (BK1), Jada\_148 (BK1), Karp\_140 (BK1), Kenrey\_152 (BK1), MeganTheeKilla\_146 (BK1), Moab\_144 (BK1), Patelgo\_146 (BK1), Phredrick\_149 (BK1), TunaTartare\_145 (BK1),

Start 12:

- Found in 24 of 35 ( 68.6% ) of genes in pham
- Manual Annotations of this start: 21 of 32
- Called 100.0% of time when present
- Phage (with cluster) where this start called: Amabiko\_121 (BE2), Anedea\_114 (BE1), Battuta\_119 (BE2), Birchlyn\_118 (BE2), Bmoc\_116 (BE1), Bordeaux\_119 (BE2), CeilingFan\_125 (BE2), Elmer\_120 (BE2), Enygma\_119 (BE2), Gibbi\_126 (BE2), Jollison\_120 (BE2), Karimac\_120 (BE2), LukeCage\_118 (BE2), Mildred21\_118 (BE1), Mugiwara\_124 (BE2), PumpkinSpice\_121 (BE2), Quaran19\_120 (BE2), SaltySpitoon\_120 (BE2), Spelly\_121 (BE2), StarPlatinum\_122 (BE2), Starbow\_119 (BE2), TomSawyer\_121 (BE2), Wipeout\_116 (BE2), Wofford\_116 (BE2),

### Summary by clusters:

There are 3 clusters represented in this pham: BE2, BE1, BK1,

Info for manual annotations of cluster BE1:

- Start number 12 was manually annotated 3 times for cluster BE1.

Info for manual annotations of cluster BE2:

- Start number 12 was manually annotated 18 times for cluster BE2.

Info for manual annotations of cluster BK1:

- Start number 10 was manually annotated 11 times for cluster BK1.

### Gene Information:

Gene: Amabiko\_121 Start: 77937, Stop: 78092, Start Num: 12

Candidate Starts for Amabiko\_121:

(1, 77835), (4, 77892), (Start: 12 @77937 has 21 MA's), (15, 77982), (19, 78066),

Gene: Anedea\_114 Start: 76495, Stop: 76650, Start Num: 12

Candidate Starts for Anedea\_114:

(Start: 12 @76495 has 21 MA's),

Gene: Battuta\_119 Start: 77911, Stop: 78066, Start Num: 12  
Candidate Starts for Battuta\_119:  
(1, 77809), (4, 77866), (Start: 12 @77911 has 21 MA's), (15, 77956), (19, 78040),

Gene: Belfort\_145 Start: 82737, Stop: 82892, Start Num: 10  
Candidate Starts for Belfort\_145:  
(Start: 10 @82737 has 11 MA's), (14, 82788), (17, 82851),

Gene: Birchlyn\_118 Start: 75797, Stop: 75952, Start Num: 12  
Candidate Starts for Birchlyn\_118:  
(1, 75695), (4, 75752), (Start: 12 @75797 has 21 MA's), (15, 75842), (19, 75926),

Gene: Bmoc\_116 Start: 77106, Stop: 77258, Start Num: 12  
Candidate Starts for Bmoc\_116:  
(Start: 12 @77106 has 21 MA's),

Gene: Bordeaux\_119 Start: 78066, Stop: 78221, Start Num: 12  
Candidate Starts for Bordeaux\_119:  
(1, 77964), (4, 78021), (Start: 12 @78066 has 21 MA's), (15, 78111), (19, 78195),

Gene: CeilingFan\_125 Start: 77829, Stop: 77984, Start Num: 12  
Candidate Starts for CeilingFan\_125:  
(1, 77727), (4, 77784), (Start: 12 @77829 has 21 MA's), (15, 77874), (19, 77958),

Gene: Elmer\_120 Start: 79140, Stop: 79295, Start Num: 12  
Candidate Starts for Elmer\_120:  
(6, 79104), (Start: 12 @79140 has 21 MA's), (15, 79185), (19, 79269),

Gene: Emma1919\_150 Start: 82354, Stop: 82509, Start Num: 10  
Candidate Starts for Emma1919\_150:  
(2, 82285), (3, 82309), (5, 82324), (Start: 10 @82354 has 11 MA's), (14, 82405), (17, 82468),

Gene: Enygma\_119 Start: 79456, Stop: 79611, Start Num: 12  
Candidate Starts for Enygma\_119:  
(Start: 12 @79456 has 21 MA's),

Gene: Francob\_148 Start: 82862, Stop: 83017, Start Num: 10  
Candidate Starts for Francob\_148:  
(2, 82793), (3, 82817), (5, 82832), (7, 82856), (8, 82859), (Start: 10 @82862 has 11 MA's), (14, 82913), (17, 82976),

Gene: Gibbi\_126 Start: 78049, Stop: 78204, Start Num: 12  
Candidate Starts for Gibbi\_126:  
(1, 77947), (4, 78004), (Start: 12 @78049 has 21 MA's), (15, 78094), (19, 78178),

Gene: Jada\_148 Start: 82145, Stop: 82300, Start Num: 10  
Candidate Starts for Jada\_148:  
(Start: 10 @82145 has 11 MA's), (14, 82196), (17, 82259),

Gene: Jollison\_120 Start: 77894, Stop: 78049, Start Num: 12  
Candidate Starts for Jollison\_120:  
(1, 77792), (4, 77849), (Start: 12 @77894 has 21 MA's), (15, 77939), (19, 78023),

Gene: Karimac\_120 Start: 78175, Stop: 78330, Start Num: 12  
Candidate Starts for Karimac\_120:  
(1, 78073), (4, 78130), (Start: 12 @78175 has 21 MA's), (15, 78220), (19, 78304),

Gene: Karp\_140 Start: 82164, Stop: 82319, Start Num: 10  
Candidate Starts for Karp\_140:  
(Start: 10 @82164 has 11 MA's), (14, 82215), (17, 82278),

Gene: Kenrey\_152 Start: 83476, Stop: 83631, Start Num: 10  
Candidate Starts for Kenrey\_152:  
(3, 83431), (5, 83446), (Start: 10 @83476 has 11 MA's), (14, 83527), (17, 83590),

Gene: LukeCage\_118 Start: 77847, Stop: 77999, Start Num: 12  
Candidate Starts for LukeCage\_118:  
(Start: 12 @77847 has 21 MA's), (15, 77892), (18, 77967),

Gene: MeganTheeKilla\_146 Start: 81670, Stop: 81822, Start Num: 10  
Candidate Starts for MeganTheeKilla\_146:  
(Start: 10 @81670 has 11 MA's), (14, 81721), (16, 81757), (17, 81781),

Gene: Mildred21\_118 Start: 77407, Stop: 77559, Start Num: 12  
Candidate Starts for Mildred21\_118:  
(11, 77401), (Start: 12 @77407 has 21 MA's), (13, 77410),

Gene: Moab\_144 Start: 83836, Stop: 83991, Start Num: 10  
Candidate Starts for Moab\_144:  
(Start: 10 @83836 has 11 MA's), (14, 83887), (17, 83950),

Gene: Mugiwara\_124 Start: 78535, Stop: 78690, Start Num: 12  
Candidate Starts for Mugiwara\_124:  
(Start: 12 @78535 has 21 MA's),

Gene: Patelgo\_146 Start: 84528, Stop: 84683, Start Num: 10  
Candidate Starts for Patelgo\_146:  
(Start: 10 @84528 has 11 MA's), (14, 84579), (17, 84642),

Gene: Phredrick\_149 Start: 81811, Stop: 81966, Start Num: 10  
Candidate Starts for Phredrick\_149:  
(3, 81766), (5, 81781), (Start: 10 @81811 has 11 MA's), (14, 81862), (17, 81925),

Gene: PumpkinSpice\_121 Start: 78501, Stop: 78656, Start Num: 12  
Candidate Starts for PumpkinSpice\_121:  
(Start: 12 @78501 has 21 MA's), (15, 78546), (19, 78630),

Gene: Quaran19\_120 Start: 77928, Stop: 78083, Start Num: 12  
Candidate Starts for Quaran19\_120:  
(1, 77826), (4, 77883), (Start: 12 @77928 has 21 MA's), (15, 77973), (19, 78057),

Gene: SaltySpittoon\_120 Start: 77940, Stop: 78095, Start Num: 12  
Candidate Starts for SaltySpittoon\_120:  
(1, 77838), (4, 77895), (Start: 12 @77940 has 21 MA's), (15, 77985), (19, 78069),

Gene: Spelly\_121 Start: 77892, Stop: 78047, Start Num: 12

Candidate Starts for Spelly\_121:

(1, 77790), (4, 77847), (Start: 12 @77892 has 21 MA's), (15, 77937), (19, 78021),

Gene: StarPlatinum\_122 Start: 78906, Stop: 79058, Start Num: 12

Candidate Starts for StarPlatinum\_122:

(Start: 12 @78906 has 21 MA's), (15, 78951), (18, 79026),

Gene: Starbow\_119 Start: 77913, Stop: 78068, Start Num: 12

Candidate Starts for Starbow\_119:

(1, 77811), (4, 77868), (Start: 12 @77913 has 21 MA's), (15, 77958), (19, 78042),

Gene: TomSawyer\_121 Start: 77958, Stop: 78113, Start Num: 12

Candidate Starts for TomSawyer\_121:

(1, 77856), (4, 77913), (Start: 12 @77958 has 21 MA's), (15, 78003), (19, 78087),

Gene: TunaTartare\_145 Start: 84538, Stop: 84702, Start Num: 10

Candidate Starts for TunaTartare\_145:

(3, 84490), (5, 84505), (7, 84529), (8, 84532), (9, 84535), (Start: 10 @84538 has 11 MA's), (17, 84658), (19, 84685),

Gene: Wipeout\_116 Start: 78282, Stop: 78437, Start Num: 12

Candidate Starts for Wipeout\_116:

(1, 78180), (4, 78237), (Start: 12 @78282 has 21 MA's), (15, 78327), (19, 78411),

Gene: Wofford\_116 Start: 79104, Stop: 79259, Start Num: 12

Candidate Starts for Wofford\_116:

(6, 79068), (Start: 12 @79104 has 21 MA's), (15, 79149), (19, 79233),