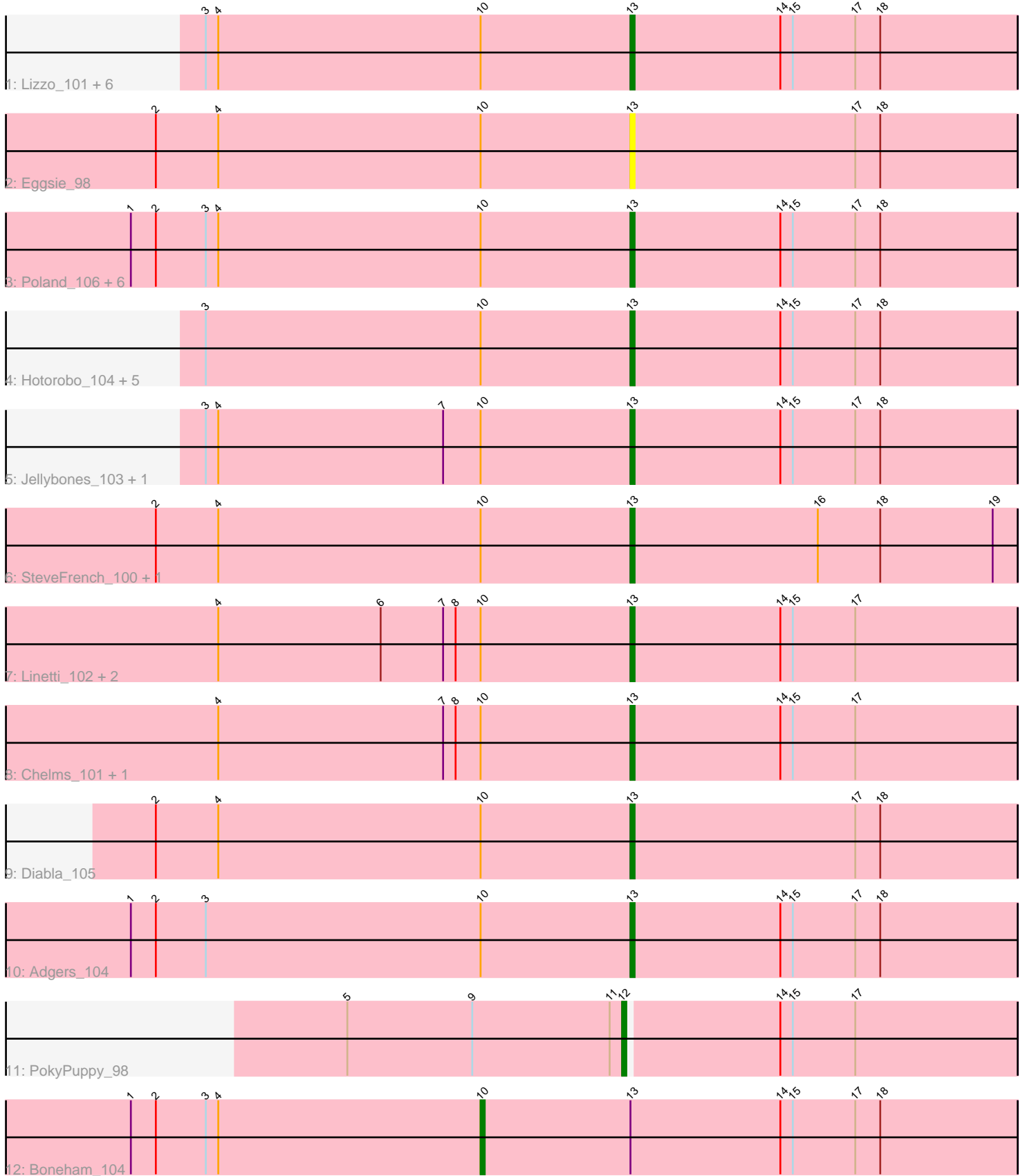


Pham 192761



Note: Tracks are now grouped by subcluster and scaled. Switching in subcluster is indicated by changes in track color. Track scale is now set by default to display the region 30 bp upstream of start 1 to 30 bp downstream of the last possible start. If this default region is judged to be packed too tightly with annotated starts, the track will be further scaled to only show that region of the ORF with annotated starts. This action will be indicated by adding "Zoomed" to the title. For starts, yellow indicates the location of called starts comprised solely of Glimmer/GeneMark auto-annotations, green indicates the location of called starts with at least 1 manual gene annotation.

Pham 192761 Report

This analysis was run 11/02/24 on database version 579.

Pham number 192761 has 34 members, 6 are drafts.

Phages represented in each track:

- Track 1 : Lizzo_101, RemRem_105, Barbochs_101, Ekhein_105, CathyBurgh_100, John316_105, Squibbles_102
- Track 2 : Eggsie_98
- Track 3 : Poland_106, FelixAlejandro_105, CinnamonToast_106, Butterball_103, Msay19_106, Sombrero_103, BirksAndSocks_105
- Track 4 : Hotorobo_104, GourdThymes_101, Sam12_100, Breezic_103, Gorko_100, Flakey_103
- Track 5 : Jellybones_103, Beaver_105
- Track 6 : SteveFrench_100, RoyalG_101
- Track 7 : Linetti_102, BenoitCattle_103, BigShaq_102
- Track 8 : Chelms_101, PierreThree_101
- Track 9 : Diabla_105
- Track 10 : Adgers_104
- Track 11 : PokyPuppy_98
- Track 12 : Boneham_104

Summary of Final Annotations (See graph section above for start numbers):

The start number called the most often in the published annotations is 13, it was called in 26 of the 28 non-draft genes in the pham.

Genes that call this "Most Annotated" start:

- Adgers_104, Barbochs_101, Beaver_105, BenoitCattle_103, BigShaq_102, BirksAndSocks_105, Breezic_103, Butterball_103, CathyBurgh_100, Chelms_101, CinnamonToast_106, Diabla_105, Eggsie_98, Ekhein_105, FelixAlejandro_105, Flakey_103, Gorko_100, GourdThymes_101, Hotorobo_104, Jellybones_103, John316_105, Linetti_102, Lizzo_101, Msay19_106, PierreThree_101, Poland_106, RemRem_105, RoyalG_101, Sam12_100, Sombrero_103, Squibbles_102, SteveFrench_100,

Genes that have the "Most Annotated" start but do not call it:

- Boneham_104,

Genes that do not have the "Most Annotated" start:

- PokyPuppy_98,

Summary by start number:

Start 10:

- Found in 33 of 34 (97.1%) of genes in pham
- Manual Annotations of this start: 1 of 28
- Called 3.0% of time when present
- Phage (with cluster) where this start called: Boneham_104 (CS2),

Start 12:

- Found in 1 of 34 (2.9%) of genes in pham
- Manual Annotations of this start: 1 of 28
- Called 100.0% of time when present
- Phage (with cluster) where this start called: PokyPuppy_98 (CS2),

Start 13:

- Found in 33 of 34 (97.1%) of genes in pham
- Manual Annotations of this start: 26 of 28
- Called 97.0% of time when present
- Phage (with cluster) where this start called: Adgers_104 (CS2), Barbochs_101 (CS2), Beaver_105 (CS2), BenoitCattle_103 (CS2), BigShaq_102 (CS2), BirksAndSocks_105 (CS2), Breezic_103 (CS2), Butterball_103 (CS2), CathyBurgh_100 (CS2), Chelms_101 (CS2), CinnamonToast_106 (CS2), Diabla_105 (CS2), Eggsie_98 (CS2), Ekhein_105 (CS2), FelixAlejandro_105 (CS2), Flakey_103 (CS2), Gorko_100 (CS2), GourdThymes_101 (CS2), Hotorobo_104 (CS2), Jellybones_103 (CS2), John316_105 (CS2), Linetti_102 (CS2), Lizzo_101 (CS2), Msay19_106 (CS2), PierreThree_101 (CS2), Poland_106 (CS2), RemRem_105 (CS2), RoyalG_101 (CS2), Sam12_100 (CS2), Sombrero_103 (CS2), Squibbles_102 (CS2), SteveFrench_100 (CS2),

Summary by clusters:

There is one cluster represented in this pham: CS2

Info for manual annotations of cluster CS2:

- Start number 10 was manually annotated 1 time for cluster CS2.
- Start number 12 was manually annotated 1 time for cluster CS2.
- Start number 13 was manually annotated 26 times for cluster CS2.

Gene Information:

Gene: Adgers_104 Start: 72897, Stop: 72805, Start Num: 13

Candidate Starts for Adgers_104:

(1, 73017), (2, 73011), (3, 72999), (Start: 10 @72933 has 1 MA's), (Start: 13 @72897 has 26 MA's), (14, 72861), (15, 72858), (17, 72843), (18, 72837),

Gene: Barbochs_101 Start: 72091, Stop: 71999, Start Num: 13

Candidate Starts for Barbochs_101:

(3, 72193), (4, 72190), (Start: 10 @72127 has 1 MA's), (Start: 13 @72091 has 26 MA's), (14, 72055), (15, 72052), (17, 72037), (18, 72031),

Gene: Beaver_105 Start: 74239, Stop: 74147, Start Num: 13

Candidate Starts for Beaver_105:

(3, 74341), (4, 74338), (7, 74284), (Start: 10 @74275 has 1 MA's), (Start: 13 @74239 has 26 MA's), (14, 74203), (15, 74200), (17, 74185), (18, 74179),

Gene: BenoitCattle_103 Start: 73455, Stop: 73363, Start Num: 13

Candidate Starts for BenoitCattle_103:

(4, 73554), (6, 73515), (7, 73500), (8, 73497), (Start: 10 @73491 has 1 MA's), (Start: 13 @73455 has 26 MA's), (14, 73419), (15, 73416), (17, 73401),

Gene: BigShaq_102 Start: 73250, Stop: 73158, Start Num: 13

Candidate Starts for BigShaq_102:

(4, 73349), (6, 73310), (7, 73295), (8, 73292), (Start: 10 @73286 has 1 MA's), (Start: 13 @73250 has 26 MA's), (14, 73214), (15, 73211), (17, 73196),

Gene: BirksAndSocks_105 Start: 73852, Stop: 73760, Start Num: 13

Candidate Starts for BirksAndSocks_105:

(1, 73972), (2, 73966), (3, 73954), (4, 73951), (Start: 10 @73888 has 1 MA's), (Start: 13 @73852 has 26 MA's), (14, 73816), (15, 73813), (17, 73798), (18, 73792),

Gene: Boneham_104 Start: 73813, Stop: 73685, Start Num: 10

Candidate Starts for Boneham_104:

(1, 73897), (2, 73891), (3, 73879), (4, 73876), (Start: 10 @73813 has 1 MA's), (Start: 13 @73777 has 26 MA's), (14, 73741), (15, 73738), (17, 73723), (18, 73717),

Gene: Breezic_103 Start: 72789, Stop: 72697, Start Num: 13

Candidate Starts for Breezic_103:

(3, 72891), (Start: 10 @72825 has 1 MA's), (Start: 13 @72789 has 26 MA's), (14, 72753), (15, 72750), (17, 72735), (18, 72729),

Gene: Butterball_103 Start: 73782, Stop: 73690, Start Num: 13

Candidate Starts for Butterball_103:

(1, 73902), (2, 73896), (3, 73884), (4, 73881), (Start: 10 @73818 has 1 MA's), (Start: 13 @73782 has 26 MA's), (14, 73746), (15, 73743), (17, 73728), (18, 73722),

Gene: CathyBurgh_100 Start: 72624, Stop: 72532, Start Num: 13

Candidate Starts for CathyBurgh_100:

(3, 72726), (4, 72723), (Start: 10 @72660 has 1 MA's), (Start: 13 @72624 has 26 MA's), (14, 72588), (15, 72585), (17, 72570), (18, 72564),

Gene: Chelms_101 Start: 73193, Stop: 73101, Start Num: 13

Candidate Starts for Chelms_101:

(4, 73292), (7, 73238), (8, 73235), (Start: 10 @73229 has 1 MA's), (Start: 13 @73193 has 26 MA's), (14, 73157), (15, 73154), (17, 73139),

Gene: CinnamonToast_106 Start: 74342, Stop: 74250, Start Num: 13

Candidate Starts for CinnamonToast_106:

(1, 74462), (2, 74456), (3, 74444), (4, 74441), (Start: 10 @74378 has 1 MA's), (Start: 13 @74342 has 26 MA's), (14, 74306), (15, 74303), (17, 74288), (18, 74282),

Gene: Diabla_105 Start: 73499, Stop: 73407, Start Num: 13

Candidate Starts for Diabla_105:

(2, 73613), (4, 73598), (Start: 10 @73535 has 1 MA's), (Start: 13 @73499 has 26 MA's), (17, 73445), (18, 73439),

Gene: Eggsie_98 Start: 71055, Stop: 70963, Start Num: 13

Candidate Starts for Eggsie_98:

(2, 71169), (4, 71154), (Start: 10 @71091 has 1 MA's), (Start: 13 @71055 has 26 MA's), (17, 71001), (18, 70995),

Gene: Ekhein_105 Start: 72842, Stop: 72750, Start Num: 13

Candidate Starts for Ekhein_105:

(3, 72944), (4, 72941), (Start: 10 @72878 has 1 MA's), (Start: 13 @72842 has 26 MA's), (14, 72806), (15, 72803), (17, 72788), (18, 72782),

Gene: FelixAlejandro_105 Start: 74295, Stop: 74203, Start Num: 13

Candidate Starts for FelixAlejandro_105:

(1, 74415), (2, 74409), (3, 74397), (4, 74394), (Start: 10 @74331 has 1 MA's), (Start: 13 @74295 has 26 MA's), (14, 74259), (15, 74256), (17, 74241), (18, 74235),

Gene: Flakey_103 Start: 73733, Stop: 73641, Start Num: 13

Candidate Starts for Flakey_103:

(3, 73835), (Start: 10 @73769 has 1 MA's), (Start: 13 @73733 has 26 MA's), (14, 73697), (15, 73694), (17, 73679), (18, 73673),

Gene: Gorko_100 Start: 72002, Stop: 71910, Start Num: 13

Candidate Starts for Gorko_100:

(3, 72104), (Start: 10 @72038 has 1 MA's), (Start: 13 @72002 has 26 MA's), (14, 71966), (15, 71963), (17, 71948), (18, 71942),

Gene: GourdThymes_101 Start: 72651, Stop: 72559, Start Num: 13

Candidate Starts for GourdThymes_101:

(3, 72753), (Start: 10 @72687 has 1 MA's), (Start: 13 @72651 has 26 MA's), (14, 72615), (15, 72612), (17, 72597), (18, 72591),

Gene: Hotorobo_104 Start: 73693, Stop: 73601, Start Num: 13

Candidate Starts for Hotorobo_104:

(3, 73795), (Start: 10 @73729 has 1 MA's), (Start: 13 @73693 has 26 MA's), (14, 73657), (15, 73654), (17, 73639), (18, 73633),

Gene: Jellybones_103 Start: 73983, Stop: 73891, Start Num: 13

Candidate Starts for Jellybones_103:

(3, 74085), (4, 74082), (7, 74028), (Start: 10 @74019 has 1 MA's), (Start: 13 @73983 has 26 MA's), (14, 73947), (15, 73944), (17, 73929), (18, 73923),

Gene: John316_105 Start: 73960, Stop: 73868, Start Num: 13

Candidate Starts for John316_105:

(3, 74062), (4, 74059), (Start: 10 @73996 has 1 MA's), (Start: 13 @73960 has 26 MA's), (14, 73924), (15, 73921), (17, 73906), (18, 73900),

Gene: Linetti_102 Start: 74413, Stop: 74321, Start Num: 13

Candidate Starts for Linetti_102:

(4, 74512), (6, 74473), (7, 74458), (8, 74455), (Start: 10 @74449 has 1 MA's), (Start: 13 @74413 has 26 MA's), (14, 74377), (15, 74374), (17, 74359),

Gene: Lizzo_101 Start: 72624, Stop: 72532, Start Num: 13

Candidate Starts for Lizzo_101:

(3, 72726), (4, 72723), (Start: 10 @72660 has 1 MA's), (Start: 13 @72624 has 26 MA's), (14, 72588), (15, 72585), (17, 72570), (18, 72564),

Gene: Msay19_106 Start: 74599, Stop: 74507, Start Num: 13

Candidate Starts for Msay19_106:

(1, 74719), (2, 74713), (3, 74701), (4, 74698), (Start: 10 @74635 has 1 MA's), (Start: 13 @74599 has 26 MA's), (14, 74563), (15, 74560), (17, 74545), (18, 74539),

Gene: PierreThree_101 Start: 73767, Stop: 73675, Start Num: 13

Candidate Starts for PierreThree_101:

(4, 73866), (7, 73812), (8, 73809), (Start: 10 @73803 has 1 MA's), (Start: 13 @73767 has 26 MA's), (14, 73731), (15, 73728), (17, 73713),

Gene: PokyPuppy_98 Start: 72815, Stop: 72723, Start Num: 12

Candidate Starts for PokyPuppy_98:

(5, 72881), (9, 72851), (11, 72818), (Start: 12 @72815 has 1 MA's), (14, 72779), (15, 72776), (17, 72761),

Gene: Poland_106 Start: 74560, Stop: 74468, Start Num: 13

Candidate Starts for Poland_106:

(1, 74680), (2, 74674), (3, 74662), (4, 74659), (Start: 10 @74596 has 1 MA's), (Start: 13 @74560 has 26 MA's), (14, 74524), (15, 74521), (17, 74506), (18, 74500),

Gene: RemRem_105 Start: 72810, Stop: 72718, Start Num: 13

Candidate Starts for RemRem_105:

(3, 72912), (4, 72909), (Start: 10 @72846 has 1 MA's), (Start: 13 @72810 has 26 MA's), (14, 72774), (15, 72771), (17, 72756), (18, 72750),

Gene: RoyalG_101 Start: 72525, Stop: 72433, Start Num: 13

Candidate Starts for RoyalG_101:

(2, 72639), (4, 72624), (Start: 10 @72561 has 1 MA's), (Start: 13 @72525 has 26 MA's), (16, 72480), (18, 72465), (19, 72438),

Gene: Sam12_100 Start: 72052, Stop: 71960, Start Num: 13

Candidate Starts for Sam12_100:

(3, 72154), (Start: 10 @72088 has 1 MA's), (Start: 13 @72052 has 26 MA's), (14, 72016), (15, 72013), (17, 71998), (18, 71992),

Gene: Sombrero_103 Start: 72863, Stop: 72771, Start Num: 13

Candidate Starts for Sombrero_103:

(1, 72983), (2, 72977), (3, 72965), (4, 72962), (Start: 10 @72899 has 1 MA's), (Start: 13 @72863 has 26 MA's), (14, 72827), (15, 72824), (17, 72809), (18, 72803),

Gene: Squibbles_102 Start: 73336, Stop: 73244, Start Num: 13

Candidate Starts for Squibbles_102:

(3, 73438), (4, 73435), (Start: 10 @73372 has 1 MA's), (Start: 13 @73336 has 26 MA's), (14, 73300), (15, 73297), (17, 73282), (18, 73276),

Gene: SteveFrench_100 Start: 72764, Stop: 72672, Start Num: 13

Candidate Starts for SteveFrench_100:

(2, 72878), (4, 72863), (Start: 10 @72800 has 1 MA's), (Start: 13 @72764 has 26 MA's), (16, 72719),
(18, 72704), (19, 72677),