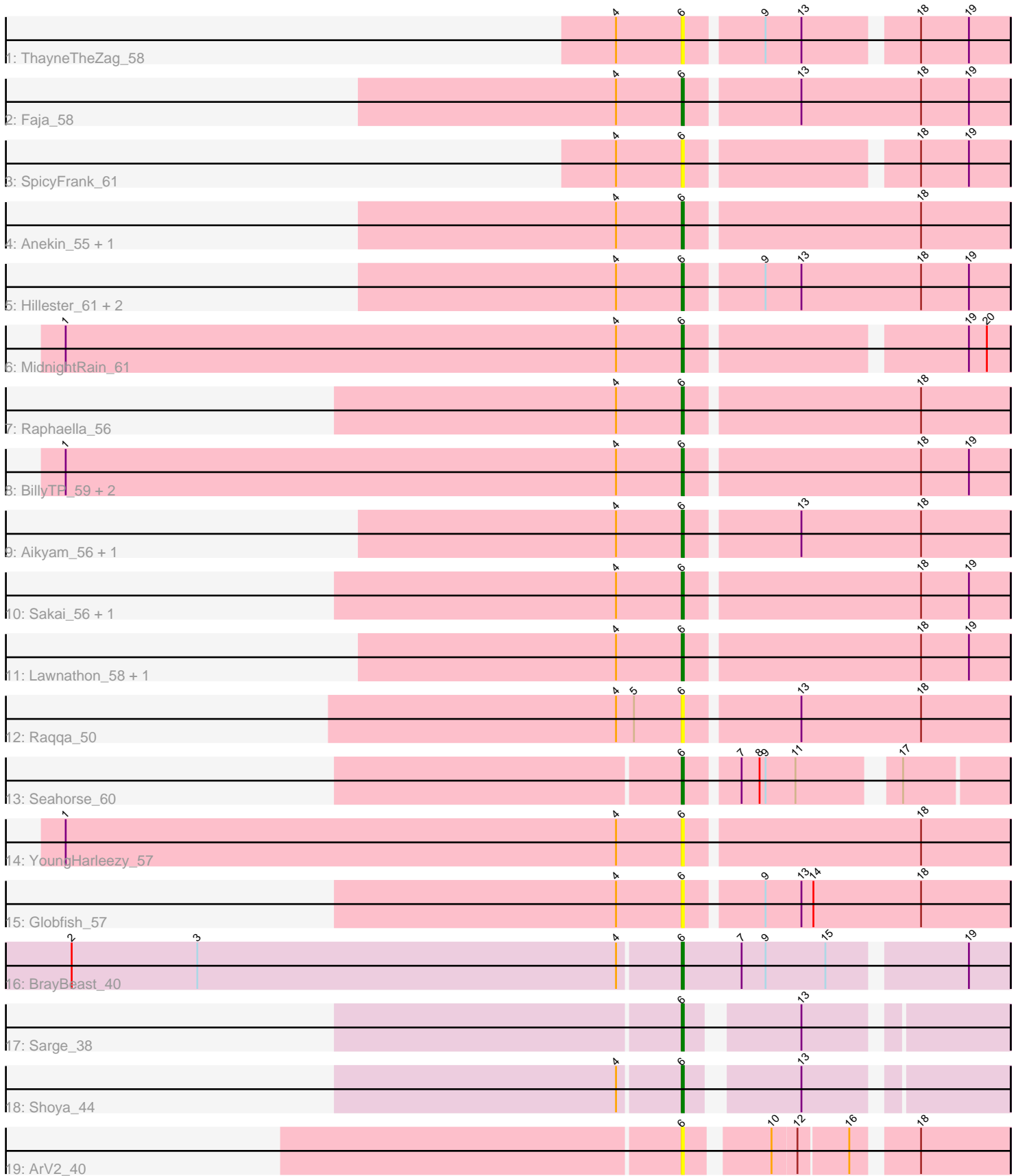


Pham 192767



Note: Tracks are now grouped by subcluster and scaled. Switching in subcluster is indicated by changes in track color. Track scale is now set by default to display the region 30 bp upstream of start 1 to 30 bp downstream of the last possible start. If this default region is judged to be packed too tightly with annotated starts, the track will be further scaled to only show that region of the ORF with annotated starts. This action will be indicated by adding "Zoomed" to the title. For starts, yellow indicates the location of called starts comprised solely of Glimmer/GeneMark auto-annotations, green indicates the location of called starts with at least 1 manual gene annotation.

Pham 192767 Report

This analysis was run 11/02/24 on database version 579.

Pham number 192767 has 27 members, 11 are drafts.

Phages represented in each track:

- Track 1 : ThayneTheZag_58
- Track 2 : Faja_58
- Track 3 : SpicyFrank_61
- Track 4 : Anekin_55, BenchScraper_56
- Track 5 : Hillester_61, RadFad_61, Tiff81_57
- Track 6 : MidnightRain_61
- Track 7 : Raphaella_56
- Track 8 : BillyTP_59, Isolde_56, CookieBear_57
- Track 9 : Aikyam_56, Auxilium_53
- Track 10 : Sakai_56, Gorpy_57
- Track 11 : Lawnathon_58, Phrank15_58
- Track 12 : Raqqa_50
- Track 13 : Seahorse_60
- Track 14 : YoungHarleezy_57
- Track 15 : Globfish_57
- Track 16 : BrayBeast_40
- Track 17 : Sarge_38
- Track 18 : Shoya_44
- Track 19 : ArV2_40

Summary of Final Annotations (See graph section above for start numbers):

The start number called the most often in the published annotations is 6, it was called in 16 of the 16 non-draft genes in the pham.

Genes that call this "Most Annotated" start:

- Aikyam_56, Anekin_55, ArV2_40, Auxilium_53, BenchScraper_56, BillyTP_59, BrayBeast_40, CookieBear_57, Faja_58, Globfish_57, Gorpy_57, Hillester_61, Isolde_56, Lawnathon_58, MidnightRain_61, Phrank15_58, RadFad_61, Raphaella_56, Raqqa_50, Sakai_56, Sarge_38, Seahorse_60, Shoya_44, SpicyFrank_61, ThayneTheZag_58, Tiff81_57, YoungHarleezy_57,

Genes that have the "Most Annotated" start but do not call it:

-

Genes that do not have the "Most Annotated" start:

-

Summary by start number:

Start 6:

- Found in 27 of 27 (100.0%) of genes in pham
- Manual Annotations of this start: 16 of 16
- Called 100.0% of time when present
- Phage (with cluster) where this start called: Aikyam_56 (AY), Anekin_55 (AY), ArV2_40 (singleton), Auxilium_53 (AY), BenchScraper_56 (AY), BillyTP_59 (AY), BrayBeast_40 (FB), CookieBear_57 (AY), Faja_58 (AY), Globfish_57 (AY), Gorpy_57 (AY), Hillester_61 (AY), Isolde_56 (AY), Lawnathon_58 (AY), MidnightRain_61 (AY), Phrank15_58 (AY), RadFad_61 (AY), Raphaella_56 (AY), Raqqa_50 (AY), Sakai_56 (AY), Sarge_38 (FB), Seahorse_60 (AY), Shoya_44 (FB), SpicyFrank_61 (AY), ThayneTheZag_58 (AY), Tiff81_57 (AY), YoungHarleezy_57 (AY),

Summary by clusters:

There are 3 clusters represented in this pham: AY, FB, singleton,

Info for manual annotations of cluster AY:

- Start number 6 was manually annotated 13 times for cluster AY.

Info for manual annotations of cluster FB:

- Start number 6 was manually annotated 3 times for cluster FB.

Gene Information:

Gene: Aikyam_56 Start: 31872, Stop: 32030, Start Num: 6

Candidate Starts for Aikyam_56:

(4, 31839), (Start: 6 @31872 has 16 MA's), (13, 31926), (18, 31986),

Gene: Anekin_55 Start: 33544, Stop: 33702, Start Num: 6

Candidate Starts for Anekin_55:

(4, 33511), (Start: 6 @33544 has 16 MA's), (18, 33658),

Gene: ArV2_40 Start: 25889, Stop: 26032, Start Num: 6

Candidate Starts for ArV2_40:

(Start: 6 @25889 has 16 MA's), (10, 25925), (12, 25937), (16, 25961), (18, 25988),

Gene: Auxilium_53 Start: 31029, Stop: 31187, Start Num: 6

Candidate Starts for Auxilium_53:

(4, 30996), (Start: 6 @31029 has 16 MA's), (13, 31083), (18, 31143),

Gene: BenchScraper_56 Start: 33194, Stop: 33352, Start Num: 6

Candidate Starts for BenchScraper_56:

(4, 33161), (Start: 6 @33194 has 16 MA's), (18, 33308),

Gene: BillyTP_59 Start: 35066, Stop: 35224, Start Num: 6

Candidate Starts for BillyTP_59:

(1, 34757), (4, 35033), (Start: 6 @35066 has 16 MA's), (18, 35180), (19, 35204),

Gene: BrayBeast_40 Start: 27217, Stop: 27372, Start Num: 6

Candidate Starts for BrayBeast_40:

(2, 26914), (3, 26977), (4, 27187), (Start: 6 @27217 has 16 MA's), (7, 27247), (9, 27259), (15, 27289), (19, 27352),

Gene: CookieBear_57 Start: 33450, Stop: 33608, Start Num: 6

Candidate Starts for CookieBear_57:

(1, 33141), (4, 33417), (Start: 6 @33450 has 16 MA's), (18, 33564), (19, 33588),

Gene: Faja_58 Start: 35034, Stop: 35192, Start Num: 6

Candidate Starts for Faja_58:

(4, 35001), (Start: 6 @35034 has 16 MA's), (13, 35088), (18, 35148), (19, 35172),

Gene: Globfish_57 Start: 33549, Stop: 33707, Start Num: 6

Candidate Starts for Globfish_57:

(4, 33516), (Start: 6 @33549 has 16 MA's), (9, 33585), (13, 33603), (14, 33609), (18, 33663),

Gene: Gorpy_57 Start: 34442, Stop: 34600, Start Num: 6

Candidate Starts for Gorpy_57:

(4, 34409), (Start: 6 @34442 has 16 MA's), (18, 34556), (19, 34580),

Gene: Hillester_61 Start: 34795, Stop: 34953, Start Num: 6

Candidate Starts for Hillester_61:

(4, 34762), (Start: 6 @34795 has 16 MA's), (9, 34831), (13, 34849), (18, 34909), (19, 34933),

Gene: Isolde_56 Start: 33119, Stop: 33277, Start Num: 6

Candidate Starts for Isolde_56:

(1, 32810), (4, 33086), (Start: 6 @33119 has 16 MA's), (18, 33233), (19, 33257),

Gene: Lawnathon_58 Start: 33611, Stop: 33769, Start Num: 6

Candidate Starts for Lawnathon_58:

(4, 33578), (Start: 6 @33611 has 16 MA's), (18, 33725), (19, 33749),

Gene: MidnightRain_61 Start: 34972, Stop: 35121, Start Num: 6

Candidate Starts for MidnightRain_61:

(1, 34663), (4, 34939), (Start: 6 @34972 has 16 MA's), (19, 35101), (20, 35110),

Gene: Phrank15_58 Start: 33748, Stop: 33906, Start Num: 6

Candidate Starts for Phrank15_58:

(4, 33715), (Start: 6 @33748 has 16 MA's), (18, 33862), (19, 33886),

Gene: RadFad_61 Start: 34795, Stop: 34953, Start Num: 6

Candidate Starts for RadFad_61:

(4, 34762), (Start: 6 @34795 has 16 MA's), (9, 34831), (13, 34849), (18, 34909), (19, 34933),

Gene: Raphaella_56 Start: 33054, Stop: 33212, Start Num: 6

Candidate Starts for Raphaella_56:

(4, 33021), (Start: 6 @33054 has 16 MA's), (18, 33168),

Gene: Raqqa_50 Start: 31059, Stop: 31217, Start Num: 6

Candidate Starts for Raqqa_50:

(4, 31026), (5, 31035), (Start: 6 @31059 has 16 MA's), (13, 31113), (18, 31173),

Gene: Sakai_56 Start: 33153, Stop: 33311, Start Num: 6

Candidate Starts for Sakai_56:

(4, 33120), (Start: 6 @33153 has 16 MA's), (18, 33267), (19, 33291),

Gene: Sarge_38 Start: 25563, Stop: 25703, Start Num: 6

Candidate Starts for Sarge_38:

(Start: 6 @25563 has 16 MA's), (13, 25611),

Gene: Seahorse_60 Start: 35386, Stop: 35529, Start Num: 6

Candidate Starts for Seahorse_60:

(Start: 6 @35386 has 16 MA's), (7, 35410), (8, 35419), (9, 35422), (11, 35437), (17, 35479),

Gene: Shoya_44 Start: 27531, Stop: 27671, Start Num: 6

Candidate Starts for Shoya_44:

(4, 27501), (Start: 6 @27531 has 16 MA's), (13, 27579),

Gene: SpicyFrank_61 Start: 34658, Stop: 34807, Start Num: 6

Candidate Starts for SpicyFrank_61:

(4, 34625), (Start: 6 @34658 has 16 MA's), (18, 34763), (19, 34787),

Gene: ThayneTheZag_58 Start: 33227, Stop: 33376, Start Num: 6

Candidate Starts for ThayneTheZag_58:

(4, 33194), (Start: 6 @33227 has 16 MA's), (9, 33263), (13, 33281), (18, 33332), (19, 33356),

Gene: Tiff81_57 Start: 31564, Stop: 31722, Start Num: 6

Candidate Starts for Tiff81_57:

(4, 31531), (Start: 6 @31564 has 16 MA's), (9, 31600), (13, 31618), (18, 31678), (19, 31702),

Gene: YoungHarleezy_57 Start: 33617, Stop: 33775, Start Num: 6

Candidate Starts for YoungHarleezy_57:

(1, 33308), (4, 33584), (Start: 6 @33617 has 16 MA's), (18, 33731),