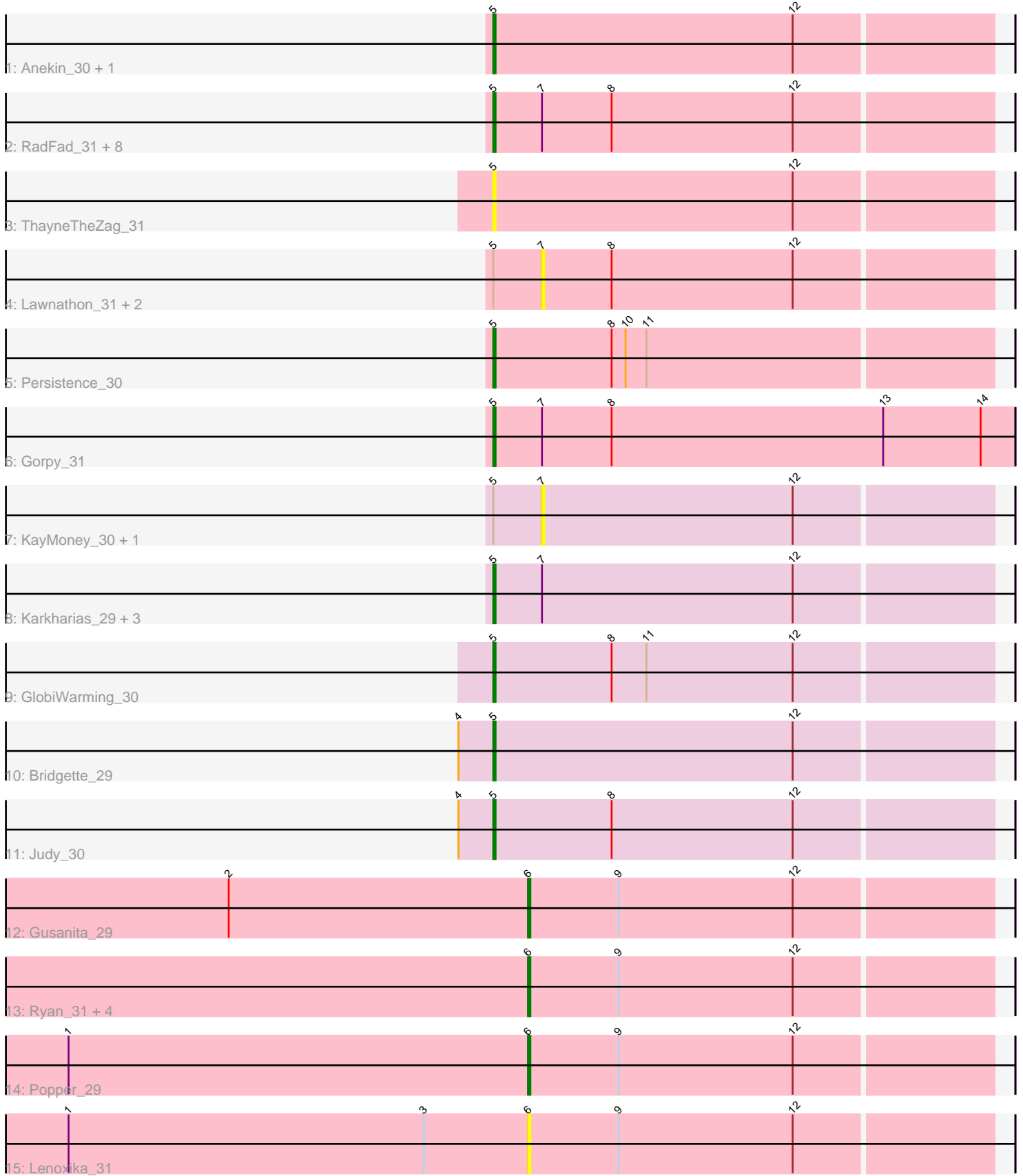


Pham 192771



Note: Tracks are now grouped by subcluster and scaled. Switching in subcluster is indicated by changes in track color. Track scale is now set by default to display the region 30 bp upstream of start 1 to 30 bp downstream of the last possible start. If this default region is judged to be packed too tightly with annotated starts, the track will be further scaled to only show that region of the ORF with annotated starts. This action will be indicated by adding "Zoomed" to the title. For starts, yellow indicates the location of called starts comprised solely of Glimmer/GeneMark auto-annotations, green indicates the location of called starts with at least 1 manual gene annotation.

Pham 192771 Report

This analysis was run 11/02/24 on database version 579.

Pham number 192771 has 34 members, 10 are drafts.

Phages represented in each track:

- Track 1 : Anekin_30, Hestia_31
- Track 2 : RadFad_31, MidnightRain_31, Hillester_31, Raphaella_31, Sakai_31, Isolde_31, Richie_31, BenchScraper_31, CookieBear_32
- Track 3 : ThayneTheZag_31
- Track 4 : Lawnathon_31, YoungHarleezy_31, Globfish_31
- Track 5 : Persistence_30
- Track 6 : Gorpy_31
- Track 7 : KayMoney_30, SpicyFrank_31
- Track 8 : Karkharias_29, PeggyLeg03_29, ChuckDuck_30, Constance_29
- Track 9 : GlobiWarming_30
- Track 10 : Bridgette_29
- Track 11 : Judy_30
- Track 12 : Gusanita_29
- Track 13 : Ryan_31, Cole_29, Zaheer_31, Nandita_31, QuinnAvery_30
- Track 14 : Popper_29
- Track 15 : Lenoxika_31

Summary of Final Annotations (See graph section above for start numbers):

The start number called the most often in the published annotations is 5, it was called in 18 of the 24 non-draft genes in the pham.

Genes that call this "Most Annotated" start:

- Anekin_30, BenchScraper_31, Bridgette_29, ChuckDuck_30, Constance_29, CookieBear_32, GlobiWarming_30, Gorpy_31, Hestia_31, Hillester_31, Isolde_31, Judy_30, Karkharias_29, MidnightRain_31, PeggyLeg03_29, Persistence_30, RadFad_31, Raphaella_31, Richie_31, Sakai_31, ThayneTheZag_31,

Genes that have the "Most Annotated" start but do not call it:

- Globfish_31, KayMoney_30, Lawnathon_31, SpicyFrank_31, YoungHarleezy_31,

Genes that do not have the "Most Annotated" start:

- Cole_29, Gusanita_29, Lenoxika_31, Nandita_31, Popper_29, QuinnAvery_30, Ryan_31, Zaheer_31,

Summary by start number:

Start 5:

- Found in 26 of 34 (76.5%) of genes in pham
- Manual Annotations of this start: 18 of 24
- Called 80.8% of time when present
- Phage (with cluster) where this start called: Anekin_30 (AY), BenchScraper_31 (AY), Bridgette_29 (FA), ChuckDuck_30 (FA), Constance_29 (FA), CookieBear_32 (AY), GlobiWarming_30 (FA), Gorpy_31 (AY), Hestia_31 (AY), Hillester_31 (AY), Isolde_31 (AY), Judy_30 (FA), Karkharias_29 (FA), MidnightRain_31 (AY), PeggyLeg03_29 (FA), Persistence_30 (AY), RadFad_31 (AY), Raphaella_31 (AY), Richie_31 (AY), Sakai_31 (AY), ThayneTheZag_31 (AY),

Start 6:

- Found in 8 of 34 (23.5%) of genes in pham
- Manual Annotations of this start: 6 of 24
- Called 100.0% of time when present
- Phage (with cluster) where this start called: Cole_29 (FF), Gusanita_29 (FF), Lenoxika_31 (FF), Nandita_31 (FF), Popper_29 (FF), QuinnAvery_30 (FF), Ryan_31 (FF), Zaheer_31 (FF),

Start 7:

- Found in 19 of 34 (55.9%) of genes in pham
- No Manual Annotations of this start.
- Called 26.3% of time when present
- Phage (with cluster) where this start called: Globfish_31 (AY), KayMoney_30 (FA), Lawnathon_31 (AY), SpicyFrank_31 (AY), YoungHarleezy_31 (AY),

Summary by clusters:

There are 3 clusters represented in this pham: AY, FA, FF,

Info for manual annotations of cluster AY:

- Start number 5 was manually annotated 11 times for cluster AY.

Info for manual annotations of cluster FA:

- Start number 5 was manually annotated 7 times for cluster FA.

Info for manual annotations of cluster FF:

- Start number 6 was manually annotated 6 times for cluster FF.

Gene Information:

Gene: Anekin_30 Start: 21604, Stop: 21816, Start Num: 5

Candidate Starts for Anekin_30:

(Start: 5 @21604 has 18 MA's), (12, 21733),

Gene: BenchScraper_31 Start: 21440, Stop: 21652, Start Num: 5

Candidate Starts for BenchScraper_31:

(Start: 5 @21440 has 18 MA's), (7, 21461), (8, 21491), (12, 21569),

Gene: Bridgette_29 Start: 21491, Stop: 21703, Start Num: 5

Candidate Starts for Bridgette_29:

(4, 21476), (Start: 5 @21491 has 18 MA's), (12, 21620),

Gene: ChuckDuck_30 Start: 21259, Stop: 21471, Start Num: 5

Candidate Starts for ChuckDuck_30:

(Start: 5 @21259 has 18 MA's), (7, 21280), (12, 21388),

Gene: Cole_29 Start: 22974, Stop: 23171, Start Num: 6

Candidate Starts for Cole_29:

(Start: 6 @22974 has 6 MA's), (9, 23013), (12, 23088),

Gene: Constance_29 Start: 21731, Stop: 21943, Start Num: 5

Candidate Starts for Constance_29:

(Start: 5 @21731 has 18 MA's), (7, 21752), (12, 21860),

Gene: CookieBear_32 Start: 21425, Stop: 21637, Start Num: 5

Candidate Starts for CookieBear_32:

(Start: 5 @21425 has 18 MA's), (7, 21446), (8, 21476), (12, 21554),

Gene: Globfish_31 Start: 21680, Stop: 21871, Start Num: 7

Candidate Starts for Globfish_31:

(Start: 5 @21659 has 18 MA's), (7, 21680), (8, 21710), (12, 21788),

Gene: GlobiWarming_30 Start: 21174, Stop: 21386, Start Num: 5

Candidate Starts for GlobiWarming_30:

(Start: 5 @21174 has 18 MA's), (8, 21225), (11, 21240), (12, 21303),

Gene: Gorpy_31 Start: 21368, Stop: 21592, Start Num: 5

Candidate Starts for Gorpy_31:

(Start: 5 @21368 has 18 MA's), (7, 21389), (8, 21419), (13, 21536), (14, 21578),

Gene: Gusanita_29 Start: 22909, Stop: 23106, Start Num: 6

Candidate Starts for Gusanita_29:

(2, 22780), (Start: 6 @22909 has 6 MA's), (9, 22948), (12, 23023),

Gene: Hestia_31 Start: 21464, Stop: 21676, Start Num: 5

Candidate Starts for Hestia_31:

(Start: 5 @21464 has 18 MA's), (12, 21593),

Gene: Hillester_31 Start: 21425, Stop: 21637, Start Num: 5

Candidate Starts for Hillester_31:

(Start: 5 @21425 has 18 MA's), (7, 21446), (8, 21476), (12, 21554),

Gene: Isolde_31 Start: 21194, Stop: 21406, Start Num: 5

Candidate Starts for Isolde_31:

(Start: 5 @21194 has 18 MA's), (7, 21215), (8, 21245), (12, 21323),

Gene: Judy_30 Start: 21742, Stop: 21954, Start Num: 5

Candidate Starts for Judy_30:

(4, 21727), (Start: 5 @21742 has 18 MA's), (8, 21793), (12, 21871),

Gene: Karkharias_29 Start: 21119, Stop: 21331, Start Num: 5

Candidate Starts for Karkharias_29:

(Start: 5 @21119 has 18 MA's), (7, 21140), (12, 21248),

Gene: KayMoney_30 Start: 21284, Stop: 21475, Start Num: 7

Candidate Starts for KayMoney_30:

(Start: 5 @21263 has 18 MA's), (7, 21284), (12, 21392),

Gene: Lawnathon_31 Start: 21309, Stop: 21500, Start Num: 7

Candidate Starts for Lawnathon_31:

(Start: 5 @21288 has 18 MA's), (7, 21309), (8, 21339), (12, 21417),

Gene: Lenoxika_31 Start: 23142, Stop: 23339, Start Num: 6

Candidate Starts for Lenoxika_31:

(1, 22944), (3, 23097), (Start: 6 @23142 has 6 MA's), (9, 23181), (12, 23256),

Gene: MidnightRain_31 Start: 21424, Stop: 21636, Start Num: 5

Candidate Starts for MidnightRain_31:

(Start: 5 @21424 has 18 MA's), (7, 21445), (8, 21475), (12, 21553),

Gene: Nandita_31 Start: 23146, Stop: 23343, Start Num: 6

Candidate Starts for Nandita_31:

(Start: 6 @23146 has 6 MA's), (9, 23185), (12, 23260),

Gene: PeggyLeg03_29 Start: 21731, Stop: 21943, Start Num: 5

Candidate Starts for PeggyLeg03_29:

(Start: 5 @21731 has 18 MA's), (7, 21752), (12, 21860),

Gene: Persistence_30 Start: 21462, Stop: 21674, Start Num: 5

Candidate Starts for Persistence_30:

(Start: 5 @21462 has 18 MA's), (8, 21513), (10, 21519), (11, 21528),

Gene: Popper_29 Start: 23059, Stop: 23256, Start Num: 6

Candidate Starts for Popper_29:

(1, 22861), (Start: 6 @23059 has 6 MA's), (9, 23098), (12, 23173),

Gene: QuinnAvery_30 Start: 23236, Stop: 23433, Start Num: 6

Candidate Starts for QuinnAvery_30:

(Start: 6 @23236 has 6 MA's), (9, 23275), (12, 23350),

Gene: RadFad_31 Start: 21425, Stop: 21637, Start Num: 5

Candidate Starts for RadFad_31:

(Start: 5 @21425 has 18 MA's), (7, 21446), (8, 21476), (12, 21554),

Gene: Raphaella_31 Start: 21359, Stop: 21571, Start Num: 5

Candidate Starts for Raphaella_31:

(Start: 5 @21359 has 18 MA's), (7, 21380), (8, 21410), (12, 21488),

Gene: Richie_31 Start: 21440, Stop: 21652, Start Num: 5

Candidate Starts for Richie_31:

(Start: 5 @21440 has 18 MA's), (7, 21461), (8, 21491), (12, 21569),

Gene: Ryan_31 Start: 23757, Stop: 23954, Start Num: 6

Candidate Starts for Ryan_31:
(Start: 6 @23757 has 6 MA's), (9, 23796), (12, 23871),

Gene: Sakai_31 Start: 21368, Stop: 21580, Start Num: 5
Candidate Starts for Sakai_31:
(Start: 5 @21368 has 18 MA's), (7, 21389), (8, 21419), (12, 21497),

Gene: SpicyFrank_31 Start: 21681, Stop: 21872, Start Num: 7
Candidate Starts for SpicyFrank_31:
(Start: 5 @21660 has 18 MA's), (7, 21681), (12, 21789),

Gene: ThayneTheZag_31 Start: 21579, Stop: 21791, Start Num: 5
Candidate Starts for ThayneTheZag_31:
(Start: 5 @21579 has 18 MA's), (12, 21708),

Gene: YoungHarleezy_31 Start: 21459, Stop: 21650, Start Num: 7
Candidate Starts for YoungHarleezy_31:
(Start: 5 @21438 has 18 MA's), (7, 21459), (8, 21489), (12, 21567),

Gene: Zaheer_31 Start: 23846, Stop: 24043, Start Num: 6
Candidate Starts for Zaheer_31:
(Start: 6 @23846 has 6 MA's), (9, 23885), (12, 23960),