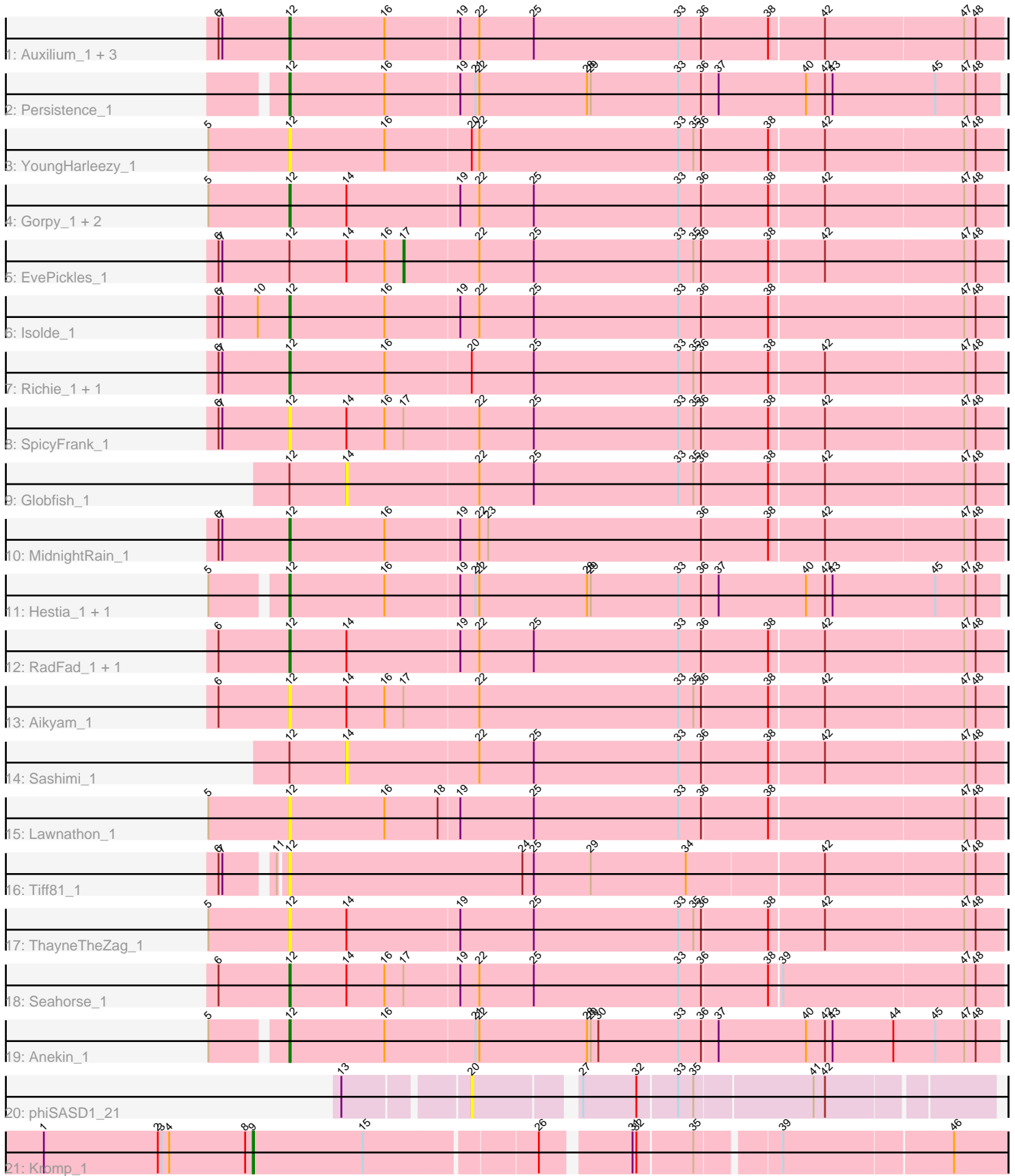


Pham 192801



Note: Tracks are now grouped by subcluster and scaled. Switching in subcluster is indicated by changes in track color. Track scale is now set by default to display the region 30 bp upstream of start 1 to 30 bp downstream of the last possible start. If this default region is judged to be packed too tightly with annotated starts, the track will be further scaled to only show that region of the ORF with annotated starts. This action will be indicated by adding "Zoomed" to the title. For starts, yellow indicates the location of called starts comprised solely of Glimmer/GeneMark auto-annotations, green indicates the location of called starts with at least 1 manual gene annotation.

## Pham 192801 Report

This analysis was run 11/02/24 on database version 579.

Pham number 192801 has 29 members, 11 are drafts.

Phages represented in each track:

- Track 1 : Auxilium\_1, BenchScraper\_1, Raphaella\_1, CookieBear\_1
- Track 2 : Persistence\_1
- Track 3 : YoungHarleezy\_1
- Track 4 : Gorpy\_1, BillyTP\_1, Sakai\_1
- Track 5 : EvePickles\_1
- Track 6 : Isolde\_1
- Track 7 : Richie\_1, Faja\_1
- Track 8 : SpicyFrank\_1
- Track 9 : Globfish\_1
- Track 10 : MidnightRain\_1
- Track 11 : Hestia\_1, Phrank15\_1
- Track 12 : RadFad\_1, Hillester\_1
- Track 13 : Aikyam\_1
- Track 14 : Sashimi\_1
- Track 15 : Lawnathon\_1
- Track 16 : Tiff81\_1
- Track 17 : ThayneTheZag\_1
- Track 18 : Seahorse\_1
- Track 19 : Anekin\_1
- Track 20 : phiSASD1\_21
- Track 21 : Kromp\_1

### ***Summary of Final Annotations (See graph section above for start numbers):***

The start number called the most often in the published annotations is 12, it was called in 16 of the 18 non-draft genes in the pham.

Genes that call this "Most Annotated" start:

- Aikyam\_1, Anekin\_1, Auxilium\_1, BenchScraper\_1, BillyTP\_1, CookieBear\_1, Faja\_1, Gorpy\_1, Hestia\_1, Hillester\_1, Isolde\_1, Lawnathon\_1, MidnightRain\_1, Persistence\_1, Phrank15\_1, RadFad\_1, Raphaella\_1, Richie\_1, Sakai\_1, Seahorse\_1, SpicyFrank\_1, ThayneTheZag\_1, Tiff81\_1, YoungHarleezy\_1,

Genes that have the "Most Annotated" start but do not call it:

- EvePickles\_1, Globfish\_1, Sashimi\_1,

Genes that do not have the "Most Annotated" start:

- Kromp\_1, phiSASD1\_21,

### Summary by start number:

Start 9:

- Found in 1 of 29 ( 3.4% ) of genes in pham
- Manual Annotations of this start: 1 of 18
- Called 100.0% of time when present
- Phage (with cluster) where this start called: Kromp\_1 (singleton),

Start 12:

- Found in 27 of 29 ( 93.1% ) of genes in pham
- Manual Annotations of this start: 16 of 18
- Called 88.9% of time when present
- Phage (with cluster) where this start called: Aikyam\_1 (AY), Anekin\_1 (AY), Auxilium\_1 (AY), BenchScraper\_1 (AY), BillyTP\_1 (AY), CookieBear\_1 (AY), Faja\_1 (AY), Gorpy\_1 (AY), Hestia\_1 (AY), Hillester\_1 (AY), Isolde\_1 (AY), Lawnathon\_1 (AY), MidnightRain\_1 (AY), Persistence\_1 (AY), Phrank15\_1 (AY), RadFad\_1 (AY), Raphaella\_1 (AY), Richie\_1 (AY), Sakai\_1 (AY), Seahorse\_1 (AY), SpicyFrank\_1 (AY), ThayneTheZag\_1 (AY), Tiff81\_1 (AY), YoungHarleezy\_1 (AY),

Start 14:

- Found in 12 of 29 ( 41.4% ) of genes in pham
- No Manual Annotations of this start.
- Called 16.7% of time when present
- Phage (with cluster) where this start called: Globfish\_1 (AY), Sashimi\_1 (AY),

Start 17:

- Found in 4 of 29 ( 13.8% ) of genes in pham
- Manual Annotations of this start: 1 of 18
- Called 25.0% of time when present
- Phage (with cluster) where this start called: EvePickles\_1 (AY),

Start 20:

- Found in 4 of 29 ( 13.8% ) of genes in pham
- No Manual Annotations of this start.
- Called 25.0% of time when present
- Phage (with cluster) where this start called: phiSASD1\_21 (BJ),

### Summary by clusters:

There are 3 clusters represented in this pham: AY, singleton, BJ,

Info for manual annotations of cluster AY:

- Start number 12 was manually annotated 16 times for cluster AY.
- Start number 17 was manually annotated 1 time for cluster AY.

### **Gene Information:**

Gene: Aikyam\_1 Start: 64, Stop: 612, Start Num: 12

Candidate Starts for Aikyam\_1:

(6, 10), (Start: 12 @64 has 16 MA's), (14, 109), (16, 139), (Start: 17 @154 has 1 MA's), (22, 211), (33, 367), (35, 379), (36, 385), (38, 436), (42, 478), (47, 583), (48, 592),

Gene: Anekin\_1 Start: 56, Stop: 607, Start Num: 12

Candidate Starts for Anekin\_1:

(5, 2), (Start: 12 @56 has 16 MA's), (16, 131), (21, 200), (22, 203), (28, 287), (29, 290), (30, 296), (33, 359), (36, 377), (37, 389), (40, 458), (42, 473), (43, 479), (44, 527), (45, 560), (47, 581), (48, 590),

Gene: Auxilium\_1 Start: 64, Stop: 612, Start Num: 12

Candidate Starts for Auxilium\_1:

(6, 10), (7, 13), (Start: 12 @64 has 16 MA's), (16, 139), (19, 196), (22, 211), (25, 253), (33, 367), (36, 385), (38, 436), (42, 478), (47, 583), (48, 592),

Gene: BenchScraper\_1 Start: 64, Stop: 612, Start Num: 12

Candidate Starts for BenchScraper\_1:

(6, 10), (7, 13), (Start: 12 @64 has 16 MA's), (16, 139), (19, 196), (22, 211), (25, 253), (33, 367), (36, 385), (38, 436), (42, 478), (47, 583), (48, 592),

Gene: BillyTP\_1 Start: 65, Stop: 613, Start Num: 12

Candidate Starts for BillyTP\_1:

(5, 2), (Start: 12 @65 has 16 MA's), (14, 110), (19, 197), (22, 212), (25, 254), (33, 368), (36, 386), (38, 437), (42, 479), (47, 584), (48, 593),

Gene: CookieBear\_1 Start: 64, Stop: 612, Start Num: 12

Candidate Starts for CookieBear\_1:

(6, 10), (7, 13), (Start: 12 @64 has 16 MA's), (16, 139), (19, 196), (22, 211), (25, 253), (33, 367), (36, 385), (38, 436), (42, 478), (47, 583), (48, 592),

Gene: EvePickles\_1 Start: 154, Stop: 612, Start Num: 17

Candidate Starts for EvePickles\_1:

(6, 10), (7, 13), (Start: 12 @64 has 16 MA's), (14, 109), (16, 139), (Start: 17 @154 has 1 MA's), (22, 211), (25, 253), (33, 367), (35, 379), (36, 385), (38, 436), (42, 478), (47, 583), (48, 592),

Gene: Faja\_1 Start: 64, Stop: 612, Start Num: 12

Candidate Starts for Faja\_1:

(6, 10), (7, 13), (Start: 12 @64 has 16 MA's), (16, 139), (20, 205), (25, 253), (33, 367), (35, 379), (36, 385), (38, 436), (42, 478), (47, 583), (48, 592),

Gene: Globfish\_1 Start: 109, Stop: 612, Start Num: 14

Candidate Starts for Globfish\_1:

(Start: 12 @64 has 16 MA's), (14, 109), (22, 211), (25, 253), (33, 367), (35, 379), (36, 385), (38, 436), (42, 478), (47, 583), (48, 592),

Gene: Gorpy\_1 Start: 65, Stop: 613, Start Num: 12

Candidate Starts for Gorpy\_1:

(5, 2), (Start: 12 @65 has 16 MA's), (14, 110), (19, 197), (22, 212), (25, 254), (33, 368), (36, 386), (38, 437), (42, 479), (47, 584), (48, 593),

Gene: Hestia\_1 Start: 56, Stop: 607, Start Num: 12

Candidate Starts for Hestia\_1:

(5, 2), (Start: 12 @56 has 16 MA's), (16, 131), (19, 188), (21, 200), (22, 203), (28, 287), (29, 290), (33, 359), (36, 377), (37, 389), (40, 458), (42, 473), (43, 479), (45, 560), (47, 581), (48, 590),

Gene: Hillester\_1 Start: 64, Stop: 612, Start Num: 12

Candidate Starts for Hillester\_1:

(6, 10), (Start: 12 @64 has 16 MA's), (14, 109), (19, 196), (22, 211), (25, 253), (33, 367), (36, 385), (38, 436), (42, 478), (47, 583), (48, 592),

Gene: Isolde\_1 Start: 64, Stop: 612, Start Num: 12

Candidate Starts for Isolde\_1:

(6, 10), (7, 13), (10, 40), (Start: 12 @64 has 16 MA's), (16, 139), (19, 196), (22, 211), (25, 253), (33, 367), (36, 385), (38, 436), (47, 583), (48, 592),

Gene: Kromp\_1 Start: 200, Stop: 754, Start Num: 9

Candidate Starts for Kromp\_1:

(1, 35), (2, 125), (3, 128), (4, 134), (8, 194), (Start: 9 @200 has 1 MA's), (15, 287), (26, 416), (31, 479), (32, 482), (35, 524), (39, 584), (46, 713),

Gene: Lawnathon\_1 Start: 65, Stop: 613, Start Num: 12

Candidate Starts for Lawnathon\_1:

(5, 2), (Start: 12 @65 has 16 MA's), (16, 140), (18, 182), (19, 197), (25, 254), (33, 368), (36, 386), (38, 437), (47, 584), (48, 593),

Gene: MidnightRain\_1 Start: 64, Stop: 612, Start Num: 12

Candidate Starts for MidnightRain\_1:

(6, 10), (7, 13), (Start: 12 @64 has 16 MA's), (16, 139), (19, 196), (22, 211), (23, 217), (36, 385), (38, 436), (42, 478), (47, 583), (48, 592),

Gene: Persistence\_1 Start: 55, Stop: 606, Start Num: 12

Candidate Starts for Persistence\_1:

(Start: 12 @55 has 16 MA's), (16, 130), (19, 187), (21, 199), (22, 202), (28, 286), (29, 289), (33, 358), (36, 376), (37, 388), (40, 457), (42, 472), (43, 478), (45, 559), (47, 580), (48, 589),

Gene: Phrank15\_1 Start: 56, Stop: 607, Start Num: 12

Candidate Starts for Phrank15\_1:

(5, 2), (Start: 12 @56 has 16 MA's), (16, 131), (19, 188), (21, 200), (22, 203), (28, 287), (29, 290), (33, 359), (36, 377), (37, 389), (40, 458), (42, 473), (43, 479), (45, 560), (47, 581), (48, 590),

Gene: RadFad\_1 Start: 64, Stop: 612, Start Num: 12

Candidate Starts for RadFad\_1:

(6, 10), (Start: 12 @64 has 16 MA's), (14, 109), (19, 196), (22, 211), (25, 253), (33, 367), (36, 385), (38, 436), (42, 478), (47, 583), (48, 592),

Gene: Raphaella\_1 Start: 64, Stop: 612, Start Num: 12

Candidate Starts for Raphaella\_1:

(6, 10), (7, 13), (Start: 12 @64 has 16 MA's), (16, 139), (19, 196), (22, 211), (25, 253), (33, 367), (36, 385), (38, 436), (42, 478), (47, 583), (48, 592),

Gene: Richie\_1 Start: 64, Stop: 612, Start Num: 12

Candidate Starts for Richie\_1:

(6, 10), (7, 13), (Start: 12 @64 has 16 MA's), (16, 139), (20, 205), (25, 253), (33, 367), (35, 379), (36, 385), (38, 436), (42, 478), (47, 583), (48, 592),

Gene: Sakai\_1 Start: 65, Stop: 613, Start Num: 12

Candidate Starts for Sakai\_1:

(5, 2), (Start: 12 @65 has 16 MA's), (14, 110), (19, 197), (22, 212), (25, 254), (33, 368), (36, 386), (38, 437), (42, 479), (47, 584), (48, 593),

Gene: Sashimi\_1 Start: 109, Stop: 612, Start Num: 14

Candidate Starts for Sashimi\_1:

(Start: 12 @64 has 16 MA's), (14, 109), (22, 211), (25, 253), (33, 367), (36, 385), (38, 436), (42, 478), (47, 583), (48, 592),

Gene: Seahorse\_1 Start: 64, Stop: 612, Start Num: 12

Candidate Starts for Seahorse\_1:

(6, 10), (Start: 12 @64 has 16 MA's), (14, 109), (16, 139), (Start: 17 @154 has 1 MA's), (19, 196), (22, 211), (25, 253), (33, 367), (36, 385), (38, 436), (39, 445), (47, 583), (48, 592),

Gene: SpicyFrank\_1 Start: 64, Stop: 612, Start Num: 12

Candidate Starts for SpicyFrank\_1:

(6, 10), (7, 13), (Start: 12 @64 has 16 MA's), (14, 109), (16, 139), (Start: 17 @154 has 1 MA's), (22, 211), (25, 253), (33, 367), (35, 379), (36, 385), (38, 436), (42, 478), (47, 583), (48, 592),

Gene: ThayneTheZag\_1 Start: 65, Stop: 613, Start Num: 12

Candidate Starts for ThayneTheZag\_1:

(5, 2), (Start: 12 @65 has 16 MA's), (14, 110), (19, 197), (25, 254), (33, 368), (35, 380), (36, 386), (38, 437), (42, 479), (47, 584), (48, 593),

Gene: Tiff81\_1 Start: 52, Stop: 603, Start Num: 12

Candidate Starts for Tiff81\_1:

(6, 10), (7, 13), (11, 46), (Start: 12 @52 has 16 MA's), (24, 235), (25, 244), (29, 289), (34, 364), (42, 469), (47, 574), (48, 583),

Gene: YoungHarleezy\_1 Start: 65, Stop: 613, Start Num: 12

Candidate Starts for YoungHarleezy\_1:

(5, 2), (Start: 12 @65 has 16 MA's), (16, 140), (20, 206), (22, 212), (33, 368), (35, 380), (36, 386), (38, 437), (42, 479), (47, 584), (48, 593),

Gene: phiSASD1\_21 Start: 188, Stop: 565, Start Num: 20

Candidate Starts for phiSASD1\_21:

(13, 98), (20, 188), (27, 260), (32, 302), (33, 332), (35, 344), (41, 434), (42, 443),