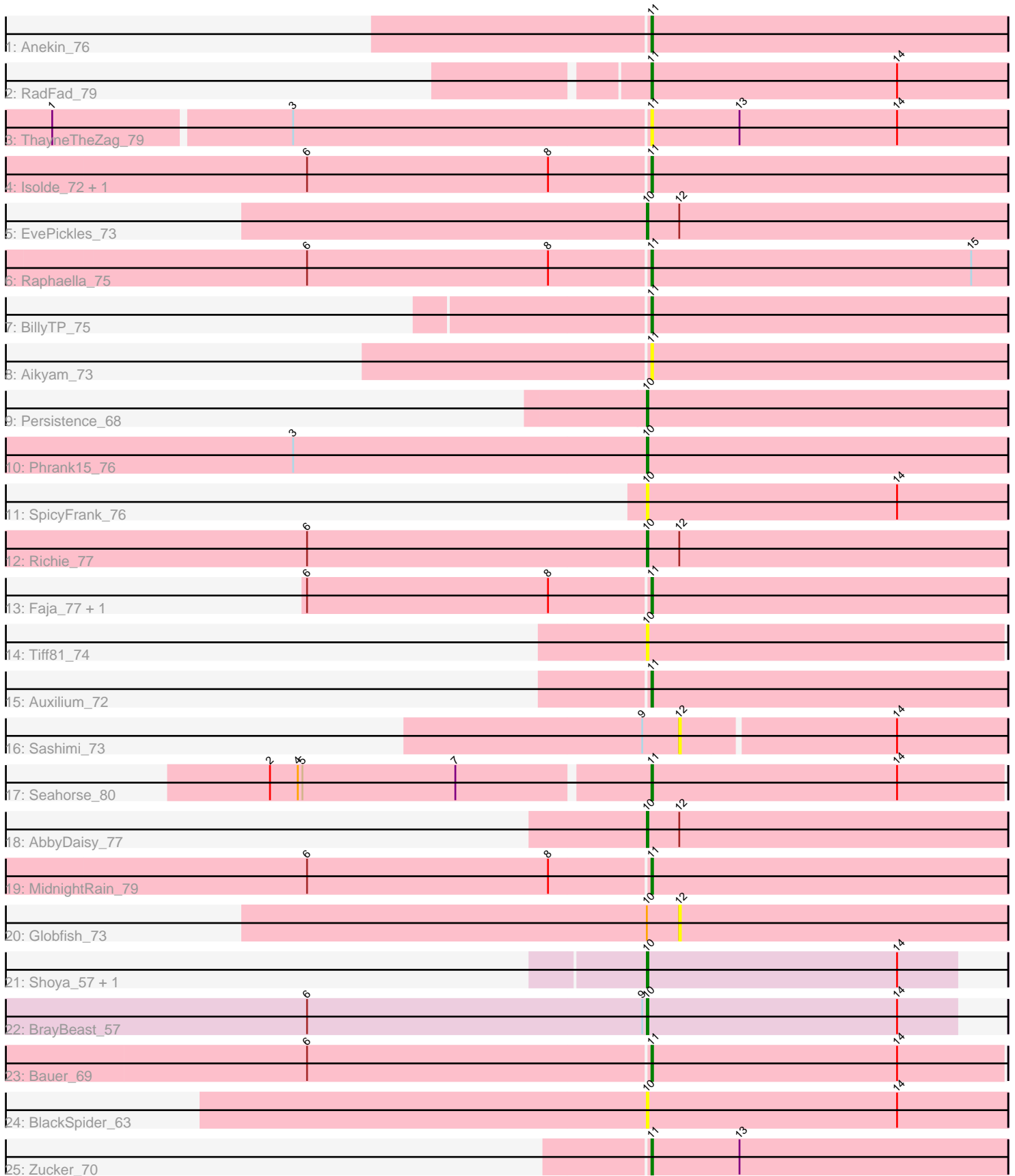


Pham 192805



Note: Tracks are now grouped by subcluster and scaled. Switching in subcluster is indicated by changes in track color. Track scale is now set by default to display the region 30 bp upstream of start 1 to 30 bp downstream of the last possible start. If this default region is judged to be packed too tightly with annotated starts, the track will be further scaled to only show that region of the ORF with annotated starts. This action will be indicated by adding "Zoomed" to the title. For starts, yellow indicates the location of called starts comprised solely of Glimmer/GeneMark auto-annotations, green indicates the location of called starts with at least 1 manual gene annotation.

Pham 192805 Report

This analysis was run 11/02/24 on database version 579.

Pham number 192805 has 28 members, 7 are drafts.

Phages represented in each track:

- Track 1 : Anekin_76
- Track 2 : RadFad_79
- Track 3 : ThayneTheZag_79
- Track 4 : Isolde_72, BenchScraper_74
- Track 5 : EvePickles_73
- Track 6 : Raphaella_75
- Track 7 : BillyTP_75
- Track 8 : Aikyam_73
- Track 9 : Persistence_68
- Track 10 : Phrank15_76
- Track 11 : SpicyFrank_76
- Track 12 : Richie_77
- Track 13 : Faja_77, Hestia_68
- Track 14 : Tiff81_74
- Track 15 : Auxilium_72
- Track 16 : Sashimi_73
- Track 17 : Seahorse_80
- Track 18 : AbbyDaisy_77
- Track 19 : MidnightRain_79
- Track 20 : Globfish_73
- Track 21 : Shoya_57, Sarge_52
- Track 22 : BrayBeast_57
- Track 23 : Bauer_69
- Track 24 : BlackSpider_63
- Track 25 : Zucker_70

Summary of Final Annotations (See graph section above for start numbers):

The start number called the most often in the published annotations is 11, it was called in 13 of the 21 non-draft genes in the pham.

Genes that call this "Most Annotated" start:

- Aikyam_73, Anekin_76, Auxilium_72, Bauer_69, BenchScraper_74, BillyTP_75, Faja_77, Hestia_68, Isolde_72, MidnightRain_79, RadFad_79, Raphaella_75,

Seahorse_80, ThayneTheZag_79, Zucker_70,

Genes that have the "Most Annotated" start but do not call it:

-

Genes that do not have the "Most Annotated" start:

- AbbyDaisy_77, BlackSpider_63, BrayBeast_57, EvePickles_73, Globfish_73, Persistence_68, Phrank15_76, Richie_77, Sarge_52, Sashimi_73, Shoya_57, SpicyFrank_76, Tiff81_74,

Summary by start number:

Start 10:

- Found in 12 of 28 (42.9%) of genes in pham
- Manual Annotations of this start: 8 of 21
- Called 91.7% of time when present
- Phage (with cluster) where this start called: AbbyDaisy_77 (AY), BlackSpider_63 (FN), BrayBeast_57 (FB), EvePickles_73 (AY), Persistence_68 (AY), Phrank15_76 (AY), Richie_77 (AY), Sarge_52 (FB), Shoya_57 (FB), SpicyFrank_76 (AY), Tiff81_74 (AY),

Start 11:

- Found in 15 of 28 (53.6%) of genes in pham
- Manual Annotations of this start: 13 of 21
- Called 100.0% of time when present
- Phage (with cluster) where this start called: Aikyam_73 (AY), Anekin_76 (AY), Auxilium_72 (AY), Bauer_69 (FN), BenchScraper_74 (AY), BillyTP_75 (AY), Faja_77 (AY), Hestia_68 (AY), Isolde_72 (AY), MidnightRain_79 (AY), RadFad_79 (AY), Raphaella_75 (AY), Seahorse_80 (AY), ThayneTheZag_79 (AY), Zucker_70 (FN),

Start 12:

- Found in 5 of 28 (17.9%) of genes in pham
- No Manual Annotations of this start.
- Called 40.0% of time when present
- Phage (with cluster) where this start called: Globfish_73 (AY), Sashimi_73 (AY),

Summary by clusters:

There are 3 clusters represented in this pham: AY, FB, FN,

Info for manual annotations of cluster AY:

- Start number 10 was manually annotated 5 times for cluster AY.
- Start number 11 was manually annotated 11 times for cluster AY.

Info for manual annotations of cluster FB:

- Start number 10 was manually annotated 3 times for cluster FB.

Info for manual annotations of cluster FN:

- Start number 11 was manually annotated 2 times for cluster FN.

Gene Information:

Gene: AbbyDaisy_77 Start: 41339, Stop: 41572, Start Num: 10
Candidate Starts for AbbyDaisy_77:
(Start: 10 @41339 has 8 MA's), (12, 41360),

Gene: Aikyam_73 Start: 37758, Stop: 37988, Start Num: 11
Candidate Starts for Aikyam_73:
(Start: 11 @37758 has 13 MA's),

Gene: Anekin_76 Start: 40330, Stop: 40560, Start Num: 11
Candidate Starts for Anekin_76:
(Start: 11 @40330 has 13 MA's),

Gene: Auxilium_72 Start: 37301, Stop: 37531, Start Num: 11
Candidate Starts for Auxilium_72:
(Start: 11 @37301 has 13 MA's),

Gene: Bauer_69 Start: 38444, Stop: 38671, Start Num: 11
Candidate Starts for Bauer_69:
(6, 38225), (Start: 11 @38444 has 13 MA's), (14, 38603),

Gene: BenchScraper_74 Start: 38463, Stop: 38693, Start Num: 11
Candidate Starts for BenchScraper_74:
(6, 38244), (8, 38400), (Start: 11 @38463 has 13 MA's),

Gene: BillyTP_75 Start: 40291, Stop: 40521, Start Num: 11
Candidate Starts for BillyTP_75:
(Start: 11 @40291 has 13 MA's),

Gene: BlackSpider_63 Start: 36439, Stop: 36672, Start Num: 10
Candidate Starts for BlackSpider_63:
(Start: 10 @36439 has 8 MA's), (14, 36601),

Gene: BrayBeast_57 Start: 32181, Stop: 32381, Start Num: 10
Candidate Starts for BrayBeast_57:
(6, 31962), (9, 32178), (Start: 10 @32181 has 8 MA's), (14, 32343),

Gene: EvePickles_73 Start: 40201, Stop: 40434, Start Num: 10
Candidate Starts for EvePickles_73:
(Start: 10 @40201 has 8 MA's), (12, 40222),

Gene: Faja_77 Start: 40979, Stop: 41209, Start Num: 11
Candidate Starts for Faja_77:
(6, 40760), (8, 40916), (Start: 11 @40979 has 13 MA's),

Gene: Globfish_73 Start: 38686, Stop: 38898, Start Num: 12
Candidate Starts for Globfish_73:
(Start: 10 @38665 has 8 MA's), (12, 38686),

Gene: Hestia_68 Start: 37202, Stop: 37432, Start Num: 11
Candidate Starts for Hestia_68:
(6, 36983), (8, 37139), (Start: 11 @37202 has 13 MA's),

Gene: Isolde_72 Start: 39048, Stop: 39278, Start Num: 11

Candidate Starts for Isolde_72:
(6, 38829), (8, 38985), (Start: 11 @39048 has 13 MA's),

Gene: MidnightRain_79 Start: 40518, Stop: 40748, Start Num: 11
Candidate Starts for MidnightRain_79:
(6, 40299), (8, 40455), (Start: 11 @40518 has 13 MA's),

Gene: Persistence_68 Start: 37585, Stop: 37818, Start Num: 10
Candidate Starts for Persistence_68:
(Start: 10 @37585 has 8 MA's),

Gene: Phrank15_76 Start: 39010, Stop: 39243, Start Num: 10
Candidate Starts for Phrank15_76:
(3, 38785), (Start: 10 @39010 has 8 MA's),

Gene: RadFad_79 Start: 40220, Stop: 40450, Start Num: 11
Candidate Starts for RadFad_79:
(Start: 11 @40220 has 13 MA's), (14, 40379),

Gene: Raphaella_75 Start: 38994, Stop: 39224, Start Num: 11
Candidate Starts for Raphaella_75:
(6, 38775), (8, 38931), (Start: 11 @38994 has 13 MA's), (15, 39201),

Gene: Richie_77 Start: 40859, Stop: 41092, Start Num: 10
Candidate Starts for Richie_77:
(6, 40640), (Start: 10 @40859 has 8 MA's), (12, 40880),

Gene: Sarge_52 Start: 30498, Stop: 30698, Start Num: 10
Candidate Starts for Sarge_52:
(Start: 10 @30498 has 8 MA's), (14, 30660),

Gene: Sashimi_73 Start: 39005, Stop: 39211, Start Num: 12
Candidate Starts for Sashimi_73:
(9, 38981), (12, 39005), (14, 39140),

Gene: Seahorse_80 Start: 42515, Stop: 42742, Start Num: 11
Candidate Starts for Seahorse_80:
(2, 42275), (4, 42293), (5, 42296), (7, 42395), (Start: 11 @42515 has 13 MA's), (14, 42674),

Gene: Shoya_57 Start: 32112, Stop: 32312, Start Num: 10
Candidate Starts for Shoya_57:
(Start: 10 @32112 has 8 MA's), (14, 32274),

Gene: SpicyFrank_76 Start: 39276, Stop: 39509, Start Num: 10
Candidate Starts for SpicyFrank_76:
(Start: 10 @39276 has 8 MA's), (14, 39438),

Gene: ThayneTheZag_79 Start: 39912, Stop: 40142, Start Num: 11
Candidate Starts for ThayneTheZag_79:
(1, 39534), (3, 39684), (Start: 11 @39912 has 13 MA's), (13, 39969), (14, 40071),

Gene: Tiff81_74 Start: 37579, Stop: 37809, Start Num: 10
Candidate Starts for Tiff81_74:

(Start: 10 @37579 has 8 MA's),

Gene: Zucker_70 Start: 40676, Stop: 40906, Start Num: 11

Candidate Starts for Zucker_70:

(Start: 11 @40676 has 13 MA's), (13, 40733),