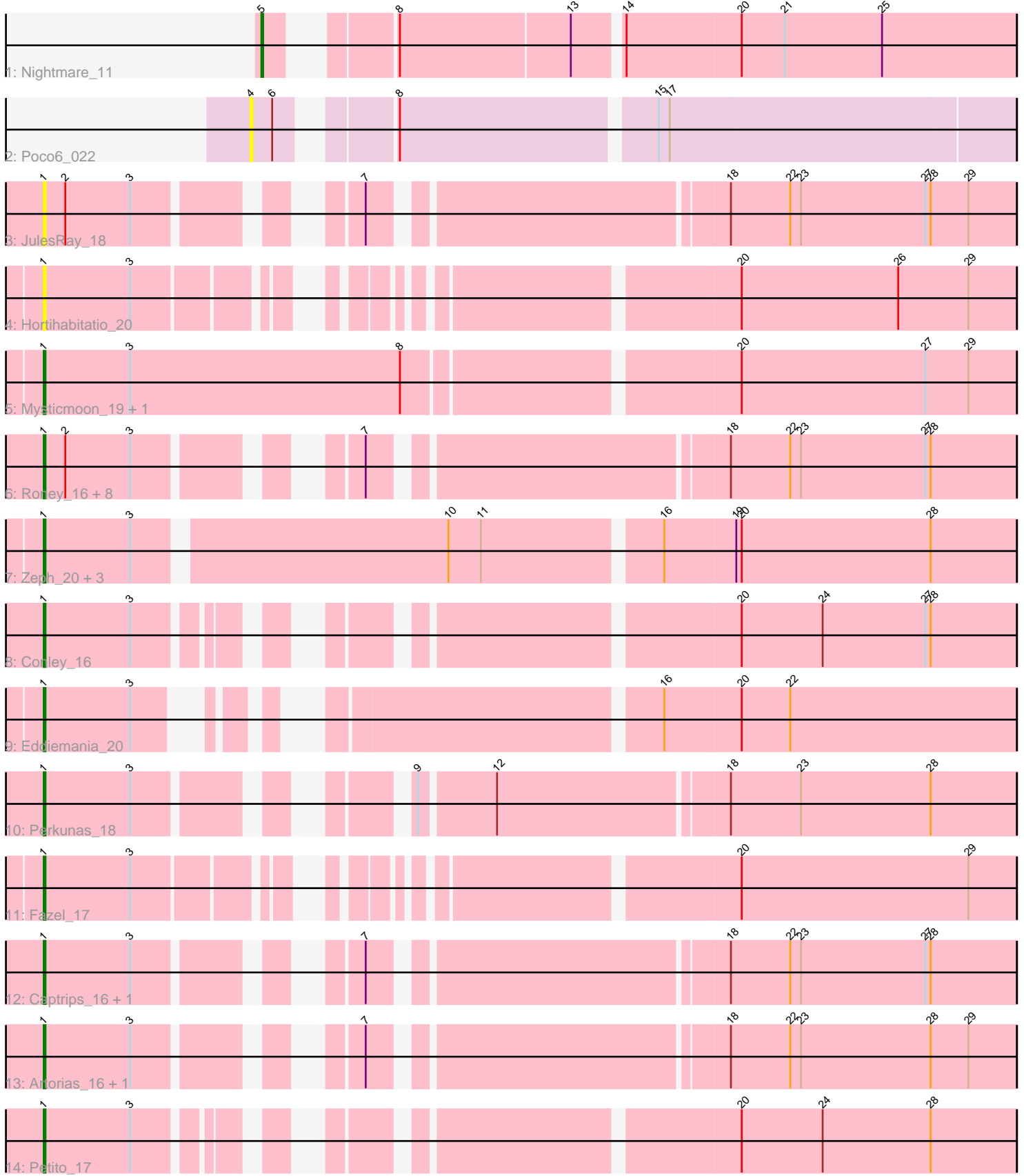


Pham 192806



Note: Tracks are now grouped by subcluster and scaled. Switching in subcluster is indicated by changes in track color. Track scale is now set by default to display the region 30 bp upstream of start 1 to 30 bp downstream of the last possible start. If this default region is judged to be packed too tightly with annotated starts, the track will be further scaled to only show that region of the ORF with annotated starts. This action will be indicated by adding "Zoomed" to the title. For starts, yellow indicates the location of called starts comprised solely of Glimmer/GeneMark auto-annotations, green indicates the location of called starts with at least 1 manual gene annotation.

Pham 192806 Report

This analysis was run 11/02/24 on database version 579.

Pham number 192806 has 28 members, 6 are drafts.

Phages represented in each track:

- Track 1 : Nightmare_11
- Track 2 : Poco6_022
- Track 3 : JulesRay_18
- Track 4 : Hortihabitatio_20
- Track 5 : Mysticmoon_19, Pherobrine_18
- Track 6 : Roney_16, Kerry_16, Gill_16, Capybara_16, Gravy_16, Tanis_16, NoPickles_16, Odesza_16, Magel_16
- Track 7 : Zeph_20, Arataki_17, Kenosha_18, Hydrus_20
- Track 8 : Conley_16
- Track 9 : Eddiemania_20
- Track 10 : Perkunas_18
- Track 11 : Fazel_17
- Track 12 : Captrips_16, Avazak_16
- Track 13 : Artorias_16, FortCran_16
- Track 14 : Petite_17

Summary of Final Annotations (See graph section above for start numbers):

The start number called the most often in the published annotations is 1, it was called in 21 of the 22 non-draft genes in the pham.

Genes that call this "Most Annotated" start:

- Arataki_17, Artorias_16, Avazak_16, Captrips_16, Capybara_16, Conley_16, Eddiemania_20, Fazel_17, FortCran_16, Gill_16, Gravy_16, Hortihabitatio_20, Hydrus_20, JulesRay_18, Kenosha_18, Kerry_16, Magel_16, Mysticmoon_19, NoPickles_16, Odesza_16, Perkunas_18, Petite_17, Pherobrine_18, Roney_16, Tanis_16, Zeph_20,

Genes that have the "Most Annotated" start but do not call it:

-

Genes that do not have the "Most Annotated" start:

- Nightmare_11, Poco6_022,

Summary by start number:

Start 1:

- Found in 26 of 28 (92.9%) of genes in pham
- Manual Annotations of this start: 21 of 22
- Called 100.0% of time when present
- Phage (with cluster) where this start called: Arataki_17 (DJ), Artorias_16 (DJ), Avazak_16 (DJ), Captrips_16 (DJ), Copybara_16 (DJ), Conley_16 (DJ), Eddiemania_20 (DJ), Fazel_17 (DJ), FortCran_16 (DJ), Gill_16 (DJ), Gravy_16 (DJ), Hortihabitatio_20 (DJ), Hydrus_20 (DJ), JulesRay_18 (DJ), Kenosha_18 (DJ), Kerry_16 (DJ), Magel_16 (DJ), Mysticmoon_19 (DJ), NoPickles_16 (DJ), Odesza_16 (DJ), Perkunas_18 (DJ), Petite_17 (DJ), Pherobrine_18 (DJ), Roney_16 (DJ), Tanis_16 (DJ), Zeph_20 (DJ),

Start 4:

- Found in 1 of 28 (3.6%) of genes in pham
- No Manual Annotations of this start.
- Called 100.0% of time when present
- Phage (with cluster) where this start called: Poco6_022 (CC),

Start 5:

- Found in 1 of 28 (3.6%) of genes in pham
- Manual Annotations of this start: 1 of 22
- Called 100.0% of time when present
- Phage (with cluster) where this start called: Nightmare_11 (AU1),

Summary by clusters:

There are 3 clusters represented in this pham: CC, AU1, DJ,

Info for manual annotations of cluster AU1:

- Start number 5 was manually annotated 1 time for cluster AU1.

Info for manual annotations of cluster DJ:

- Start number 1 was manually annotated 21 times for cluster DJ.

Gene Information:

Gene: Arataki_17 Start: 12248, Stop: 12766, Start Num: 1

Candidate Starts for Arataki_17:

(Start: 1 @12248 has 21 MA's), (3, 12296), (10, 12461), (11, 12479), (16, 12572), (19, 12611), (20, 12614), (28, 12719),

Gene: Artorias_16 Start: 10515, Stop: 10991, Start Num: 1

Candidate Starts for Artorias_16:

(Start: 1 @10515 has 21 MA's), (3, 10563), (7, 10653), (18, 10833), (22, 10866), (23, 10872), (28, 10944), (29, 10965),

Gene: Avazak_16 Start: 10522, Stop: 10998, Start Num: 1

Candidate Starts for Avazak_16:

(Start: 1 @10522 has 21 MA's), (3, 10570), (7, 10660), (18, 10840), (22, 10873), (23, 10879), (27, 10948), (28, 10951),

Gene: Captrips_16 Start: 10522, Stop: 10998, Start Num: 1

Candidate Starts for Captrips_16:

(Start: 1 @10522 has 21 MA's), (3, 10570), (7, 10660), (18, 10840), (22, 10873), (23, 10879), (27, 10948), (28, 10951),

Gene: Capybara_16 Start: 10241, Stop: 10717, Start Num: 1

Candidate Starts for Capybara_16:

(Start: 1 @10241 has 21 MA's), (2, 10253), (3, 10289), (7, 10379), (18, 10559), (22, 10592), (23, 10598), (27, 10667), (28, 10670),

Gene: Conley_16 Start: 10546, Stop: 11013, Start Num: 1

Candidate Starts for Conley_16:

(Start: 1 @10546 has 21 MA's), (3, 10594), (20, 10861), (24, 10906), (27, 10963), (28, 10966),

Gene: Eddiemania_20 Start: 13847, Stop: 14311, Start Num: 1

Candidate Starts for Eddiemania_20:

(Start: 1 @13847 has 21 MA's), (3, 13895), (16, 14117), (20, 14159), (22, 14186),

Gene: Fazel_17 Start: 12200, Stop: 12670, Start Num: 1

Candidate Starts for Fazel_17:

(Start: 1 @12200 has 21 MA's), (3, 12248), (20, 12518), (29, 12644),

Gene: FortCran_16 Start: 10515, Stop: 10991, Start Num: 1

Candidate Starts for FortCran_16:

(Start: 1 @10515 has 21 MA's), (3, 10563), (7, 10653), (18, 10833), (22, 10866), (23, 10872), (28, 10944), (29, 10965),

Gene: Gill_16 Start: 10241, Stop: 10717, Start Num: 1

Candidate Starts for Gill_16:

(Start: 1 @10241 has 21 MA's), (2, 10253), (3, 10289), (7, 10379), (18, 10559), (22, 10592), (23, 10598), (27, 10667), (28, 10670),

Gene: Gravy_16 Start: 10241, Stop: 10717, Start Num: 1

Candidate Starts for Gravy_16:

(Start: 1 @10241 has 21 MA's), (2, 10253), (3, 10289), (7, 10379), (18, 10559), (22, 10592), (23, 10598), (27, 10667), (28, 10670),

Gene: Hortihabitatio_20 Start: 12571, Stop: 13041, Start Num: 1

Candidate Starts for Hortihabitatio_20:

(Start: 1 @12571 has 21 MA's), (3, 12619), (20, 12889), (26, 12976), (29, 13015),

Gene: Hydrus_20 Start: 13663, Stop: 14181, Start Num: 1

Candidate Starts for Hydrus_20:

(Start: 1 @13663 has 21 MA's), (3, 13711), (10, 13876), (11, 13894), (16, 13987), (19, 14026), (20, 14029), (28, 14134),

Gene: JulesRay_18 Start: 10515, Stop: 10991, Start Num: 1

Candidate Starts for JulesRay_18:

(Start: 1 @10515 has 21 MA's), (2, 10527), (3, 10563), (7, 10653), (18, 10833), (22, 10866), (23, 10872), (27, 10941), (28, 10944), (29, 10965),

Gene: Kenosha_18 Start: 12264, Stop: 12782, Start Num: 1
Candidate Starts for Kenosha_18:
(Start: 1 @12264 has 21 MA's), (3, 12312), (10, 12477), (11, 12495), (16, 12588), (19, 12627), (20, 12630), (28, 12735),

Gene: Kerry_16 Start: 10241, Stop: 10717, Start Num: 1
Candidate Starts for Kerry_16:
(Start: 1 @10241 has 21 MA's), (2, 10253), (3, 10289), (7, 10379), (18, 10559), (22, 10592), (23, 10598), (27, 10667), (28, 10670),

Gene: Magel_16 Start: 10241, Stop: 10717, Start Num: 1
Candidate Starts for Magel_16:
(Start: 1 @10241 has 21 MA's), (2, 10253), (3, 10289), (7, 10379), (18, 10559), (22, 10592), (23, 10598), (27, 10667), (28, 10670),

Gene: Mysticmoon_19 Start: 12938, Stop: 13462, Start Num: 1
Candidate Starts for Mysticmoon_19:
(Start: 1 @12938 has 21 MA's), (3, 12986), (8, 13136), (20, 13310), (27, 13412), (29, 13436),

Gene: Nightmare_11 Start: 7342, Stop: 7722, Start Num: 5
Candidate Starts for Nightmare_11:
(Start: 5 @7342 has 1 MA's), (8, 7390), (13, 7483), (14, 7507), (20, 7570), (21, 7594), (25, 7648),

Gene: NoPickles_16 Start: 10241, Stop: 10717, Start Num: 1
Candidate Starts for NoPickles_16:
(Start: 1 @10241 has 21 MA's), (2, 10253), (3, 10289), (7, 10379), (18, 10559), (22, 10592), (23, 10598), (27, 10667), (28, 10670),

Gene: Odesza_16 Start: 10241, Stop: 10717, Start Num: 1
Candidate Starts for Odesza_16:
(Start: 1 @10241 has 21 MA's), (2, 10253), (3, 10289), (7, 10379), (18, 10559), (22, 10592), (23, 10598), (27, 10667), (28, 10670),

Gene: Perkunas_18 Start: 11034, Stop: 11510, Start Num: 1
Candidate Starts for Perkunas_18:
(Start: 1 @11034 has 21 MA's), (3, 11082), (9, 11190), (12, 11229), (18, 11352), (23, 11391), (28, 11463),

Gene: Petite_17 Start: 10739, Stop: 11206, Start Num: 1
Candidate Starts for Petite_17:
(Start: 1 @10739 has 21 MA's), (3, 10787), (20, 11054), (24, 11099), (28, 11159),

Gene: Pherobrine_18 Start: 12936, Stop: 13460, Start Num: 1
Candidate Starts for Pherobrine_18:
(Start: 1 @12936 has 21 MA's), (3, 12984), (8, 13134), (20, 13308), (27, 13410), (29, 13434),

Gene: Poco6_022 Start: 21022, Stop: 21411, Start Num: 4
Candidate Starts for Poco6_022:
(4, 21022), (6, 21034), (8, 21082), (15, 21217), (17, 21223),

Gene: Roney_16 Start: 10241, Stop: 10717, Start Num: 1
Candidate Starts for Roney_16:

(Start: 1 @10241 has 21 MA's), (2, 10253), (3, 10289), (7, 10379), (18, 10559), (22, 10592), (23, 10598), (27, 10667), (28, 10670),

Gene: Tanis_16 Start: 10091, Stop: 10567, Start Num: 1

Candidate Starts for Tanis_16:

(Start: 1 @10091 has 21 MA's), (2, 10103), (3, 10139), (7, 10229), (18, 10409), (22, 10442), (23, 10448), (27, 10517), (28, 10520),

Gene: Zeph_20 Start: 13645, Stop: 14163, Start Num: 1

Candidate Starts for Zeph_20:

(Start: 1 @13645 has 21 MA's), (3, 13693), (10, 13858), (11, 13876), (16, 13969), (19, 14008), (20, 14011), (28, 14116),