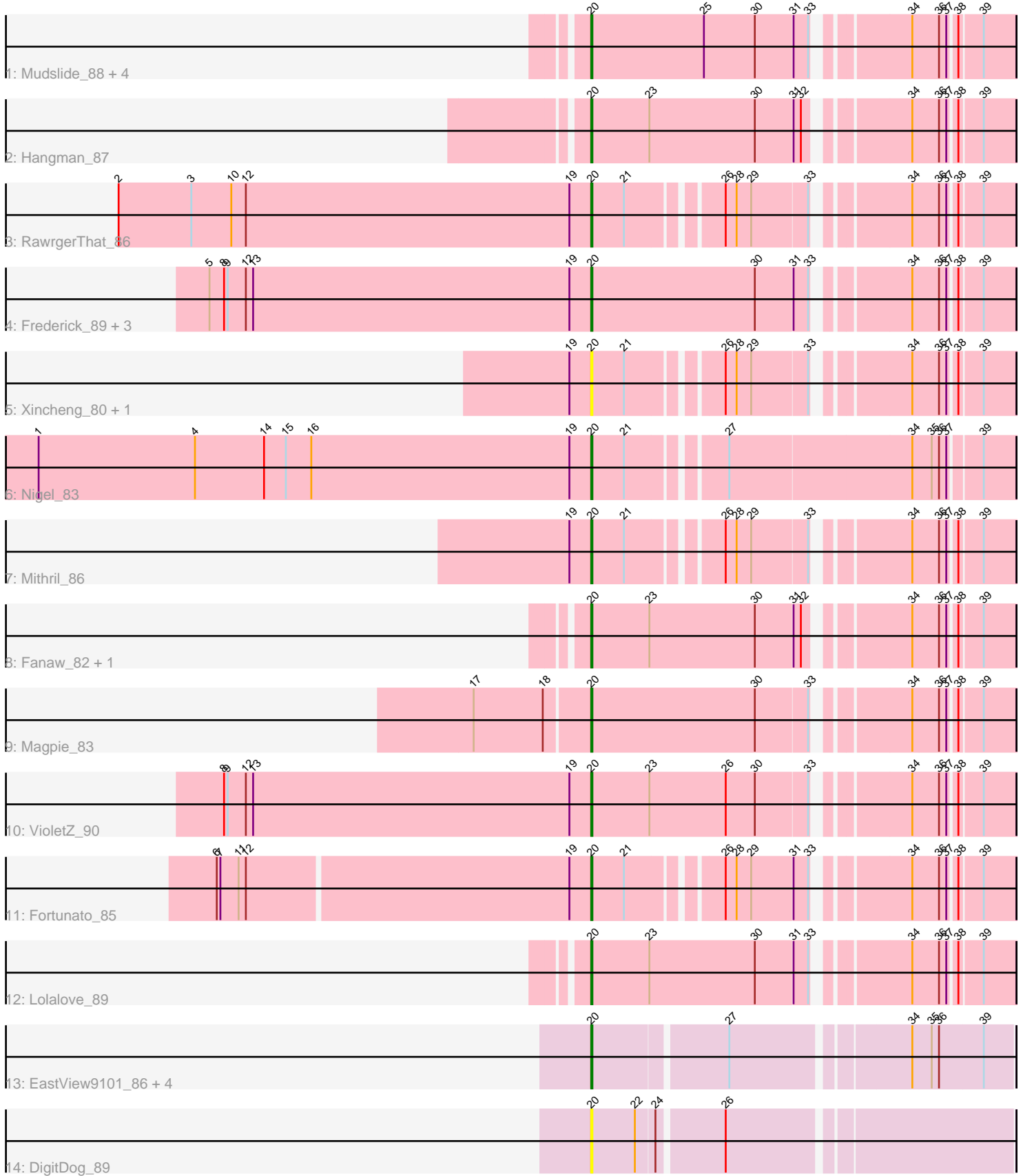


# Pham 192811



Note: Tracks are now grouped by subcluster and scaled. Switching in subcluster is indicated by changes in track color. Track scale is now set by default to display the region 30 bp upstream of start 1 to 30 bp downstream of the last possible start. If this default region is judged to be packed too tightly with annotated starts, the track will be further scaled to only show that region of the ORF with annotated starts. This action will be indicated by adding "Zoomed" to the title. For starts, yellow indicates the location of called starts comprised solely of Glimmer/GeneMark auto-annotations, green indicates the location of called starts with at least 1 manual gene annotation.

## Pham 192811 Report

This analysis was run 11/02/24 on database version 579.

Pham number 192811 has 27 members, 5 are drafts.

Phages represented in each track:

- Track 1 : Mudslide\_88, Austelle\_87, Waleliano\_86, Heath\_81, BrownCNA\_88
- Track 2 : Hangman\_87
- Track 3 : RawrgerThat\_86
- Track 4 : Frederick\_89, BobbyK\_88, Apex\_89, Zemanar\_86
- Track 5 : Xincheng\_80, JaguarMi\_82
- Track 6 : Nigel\_83
- Track 7 : Mithril\_86
- Track 8 : Fanaw\_82, Prince\_87
- Track 9 : Magpie\_83
- Track 10 : VioletZ\_90
- Track 11 : Fortunato\_85
- Track 12 : Lolalove\_89
- Track 13 : EastView9101\_86, Donny\_87, Acadian\_87, SirJeffery\_85, Suigeneris\_88
- Track 14 : DigitDog\_89

### ***Summary of Final Annotations (See graph section above for start numbers):***

The start number called the most often in the published annotations is 20, it was called in 22 of the 22 non-draft genes in the pham.

Genes that call this "Most Annotated" start:

- Acadian\_87, Apex\_89, Austelle\_87, BobbyK\_88, BrownCNA\_88, DigitDog\_89, Donny\_87, EastView9101\_86, Fanaw\_82, Fortunato\_85, Frederick\_89, Hangman\_87, Heath\_81, JaguarMi\_82, Lolalove\_89, Magpie\_83, Mithril\_86, Mudslide\_88, Nigel\_83, Prince\_87, RawrgerThat\_86, SirJeffery\_85, Suigeneris\_88, VioletZ\_90, Waleliano\_86, Xincheng\_80, Zemanar\_86,

Genes that have the "Most Annotated" start but do not call it:

- 

Genes that do not have the "Most Annotated" start:

- 

### **Summary by start number:**

Start 20:

- Found in 27 of 27 ( 100.0% ) of genes in pham
- Manual Annotations of this start: 22 of 22
- Called 100.0% of time when present
- Phage (with cluster) where this start called: Acadian\_87 (B5), Apex\_89 (B4), Austelle\_87 (B4), BobbyK\_88 (B4), BrownCNA\_88 (B4), DigitDog\_89 (B5), Donny\_87 (B5), EastView9101\_86 (B5), Fanaw\_82 (B4), Fortunato\_85 (B4), Frederick\_89 (B4), Hangman\_87 (B4), Heath\_81 (B4), JaguarMi\_82 (B4), Lolalove\_89 (B4), Magpie\_83 (B4), Mithril\_86 (B4), Mudslide\_88 (B4), Nigel\_83 (B4), Prince\_87 (B4), RawrgerThat\_86 (B4), SirJeffery\_85 (B5), Suigeneris\_88 (B5), VioletZ\_90 (B4), Waleliano\_86 (B4), Xincheng\_80 (B4), Zemanar\_86 (B4),

### Summary by clusters:

There are 2 clusters represented in this pham: B4, B5,

Info for manual annotations of cluster B4:

- Start number 20 was manually annotated 18 times for cluster B4.

Info for manual annotations of cluster B5:

- Start number 20 was manually annotated 4 times for cluster B5.

### Gene Information:

Gene: Acadian\_87 Start: 65016, Stop: 64696, Start Num: 20

Candidate Starts for Acadian\_87:

(Start: 20 @65016 has 22 MA's), (27, 64911), (34, 64776), (35, 64761), (36, 64755), (39, 64719),

Gene: Apex\_89 Start: 66595, Stop: 66278, Start Num: 20

Candidate Starts for Apex\_89:

(5, 66910), (8, 66898), (9, 66895), (12, 66880), (13, 66874), (19, 66613), (Start: 20 @66595 has 22 MA's), (30, 66460), (31, 66430), (33, 66418), (34, 66355), (36, 66334), (37, 66328), (38, 66322), (39, 66304),

Gene: Austelle\_87 Start: 67128, Stop: 66811, Start Num: 20

Candidate Starts for Austelle\_87:

(Start: 20 @67128 has 22 MA's), (25, 67035), (30, 66993), (31, 66963), (33, 66951), (34, 66888), (36, 66867), (37, 66861), (38, 66855), (39, 66837),

Gene: BobbyK\_88 Start: 66103, Stop: 65786, Start Num: 20

Candidate Starts for BobbyK\_88:

(5, 66418), (8, 66406), (9, 66403), (12, 66388), (13, 66382), (19, 66121), (Start: 20 @66103 has 22 MA's), (30, 65968), (31, 65938), (33, 65926), (34, 65863), (36, 65842), (37, 65836), (38, 65830), (39, 65812),

Gene: BrownCNA\_88 Start: 66543, Stop: 66226, Start Num: 20

Candidate Starts for BrownCNA\_88:

(Start: 20 @66543 has 22 MA's), (25, 66450), (30, 66408), (31, 66378), (33, 66366), (34, 66303), (36, 66282), (37, 66276), (38, 66270), (39, 66252),

Gene: DigitDog\_89 Start: 65516, Stop: 65193, Start Num: 20  
Candidate Starts for DigitDog\_89:  
(Start: 20 @65516 has 22 MA's), (22, 65480), (24, 65465), (26, 65414),

Gene: Donny\_87 Start: 64850, Stop: 64530, Start Num: 20  
Candidate Starts for Donny\_87:  
(Start: 20 @64850 has 22 MA's), (27, 64745), (34, 64610), (35, 64595), (36, 64589), (39, 64553),

Gene: EastView9101\_86 Start: 64761, Stop: 64441, Start Num: 20  
Candidate Starts for EastView9101\_86:  
(Start: 20 @64761 has 22 MA's), (27, 64656), (34, 64521), (35, 64506), (36, 64500), (39, 64464),

Gene: Fanaw\_82 Start: 66130, Stop: 65813, Start Num: 20  
Candidate Starts for Fanaw\_82:  
(Start: 20 @66130 has 22 MA's), (23, 66082), (30, 65995), (31, 65965), (32, 65959), (34, 65890), (36, 65869), (37, 65863), (38, 65857), (39, 65839),

Gene: Fortunato\_85 Start: 65904, Stop: 65605, Start Num: 20  
Candidate Starts for Fortunato\_85:  
(6, 66207), (7, 66204), (11, 66189), (12, 66183), (19, 65922), (Start: 20 @65904 has 22 MA's), (21, 65877), (26, 65811), (28, 65802), (29, 65790), (31, 65757), (33, 65745), (34, 65682), (36, 65661), (37, 65655), (38, 65649), (39, 65631),

Gene: Frederick\_89 Start: 66409, Stop: 66092, Start Num: 20  
Candidate Starts for Frederick\_89:  
(5, 66724), (8, 66712), (9, 66709), (12, 66694), (13, 66688), (19, 66427), (Start: 20 @66409 has 22 MA's), (30, 66274), (31, 66244), (33, 66232), (34, 66169), (36, 66148), (37, 66142), (38, 66136), (39, 66118),

Gene: Hangman\_87 Start: 66621, Stop: 66304, Start Num: 20  
Candidate Starts for Hangman\_87:  
(Start: 20 @66621 has 22 MA's), (23, 66573), (30, 66486), (31, 66456), (32, 66450), (34, 66381), (36, 66360), (37, 66354), (38, 66348), (39, 66330),

Gene: Heath\_81 Start: 64409, Stop: 64092, Start Num: 20  
Candidate Starts for Heath\_81:  
(Start: 20 @64409 has 22 MA's), (25, 64316), (30, 64274), (31, 64244), (33, 64232), (34, 64169), (36, 64148), (37, 64142), (38, 64136), (39, 64118),

Gene: JaguarMi\_82 Start: 66456, Stop: 66157, Start Num: 20  
Candidate Starts for JaguarMi\_82:  
(19, 66474), (Start: 20 @66456 has 22 MA's), (21, 66429), (26, 66363), (28, 66354), (29, 66342), (33, 66297), (34, 66234), (36, 66213), (37, 66207), (38, 66201), (39, 66183),

Gene: Lolalove\_89 Start: 66440, Stop: 66123, Start Num: 20  
Candidate Starts for Lolalove\_89:  
(Start: 20 @66440 has 22 MA's), (23, 66392), (30, 66305), (31, 66275), (33, 66263), (34, 66200), (36, 66179), (37, 66173), (38, 66167), (39, 66149),

Gene: Magpie\_83 Start: 66123, Stop: 65806, Start Num: 20  
Candidate Starts for Magpie\_83:  
(17, 66216), (18, 66159), (Start: 20 @66123 has 22 MA's), (30, 65988), (33, 65946), (34, 65883), (36, 65862), (37, 65856), (38, 65850), (39, 65832),

Gene: Mithril\_86 Start: 66262, Stop: 65963, Start Num: 20

Candidate Starts for Mithril\_86:

(19, 66280), (Start: 20 @66262 has 22 MA's), (21, 66235), (26, 66169), (28, 66160), (29, 66148), (33, 66103), (34, 66040), (36, 66019), (37, 66013), (38, 66007), (39, 65989),

Gene: Mudslide\_88 Start: 66670, Stop: 66353, Start Num: 20

Candidate Starts for Mudslide\_88:

(Start: 20 @66670 has 22 MA's), (25, 66577), (30, 66535), (31, 66505), (33, 66493), (34, 66430), (36, 66409), (37, 66403), (38, 66397), (39, 66379),

Gene: Nigel\_83 Start: 64806, Stop: 64486, Start Num: 20

Candidate Starts for Nigel\_83:

(1, 65262), (4, 65133), (14, 65076), (15, 65058), (16, 65037), (19, 64824), (Start: 20 @64806 has 22 MA's), (21, 64779), (27, 64710), (34, 64563), (35, 64548), (36, 64542), (37, 64536), (39, 64512),

Gene: Prince\_87 Start: 66537, Stop: 66220, Start Num: 20

Candidate Starts for Prince\_87:

(Start: 20 @66537 has 22 MA's), (23, 66489), (30, 66402), (31, 66372), (32, 66366), (34, 66297), (36, 66276), (37, 66270), (38, 66264), (39, 66246),

Gene: RawrgerThat\_86 Start: 66110, Stop: 65811, Start Num: 20

Candidate Starts for RawrgerThat\_86:

(2, 66500), (3, 66440), (10, 66407), (12, 66395), (19, 66128), (Start: 20 @66110 has 22 MA's), (21, 66083), (26, 66017), (28, 66008), (29, 65996), (33, 65951), (34, 65888), (36, 65867), (37, 65861), (38, 65855), (39, 65837),

Gene: SirJeffery\_85 Start: 64800, Stop: 64480, Start Num: 20

Candidate Starts for SirJeffery\_85:

(Start: 20 @64800 has 22 MA's), (27, 64695), (34, 64560), (35, 64545), (36, 64539), (39, 64503),

Gene: Suigeneris\_88 Start: 65238, Stop: 64918, Start Num: 20

Candidate Starts for Suigeneris\_88:

(Start: 20 @65238 has 22 MA's), (27, 65133), (34, 64998), (35, 64983), (36, 64977), (39, 64941),

Gene: VioletZ\_90 Start: 66627, Stop: 66310, Start Num: 20

Candidate Starts for VioletZ\_90:

(8, 66930), (9, 66927), (12, 66912), (13, 66906), (19, 66645), (Start: 20 @66627 has 22 MA's), (23, 66579), (26, 66516), (30, 66492), (33, 66450), (34, 66387), (36, 66366), (37, 66360), (38, 66354), (39, 66336),

Gene: Waleliano\_86 Start: 66295, Stop: 65978, Start Num: 20

Candidate Starts for Waleliano\_86:

(Start: 20 @66295 has 22 MA's), (25, 66202), (30, 66160), (31, 66130), (33, 66118), (34, 66055), (36, 66034), (37, 66028), (38, 66022), (39, 66004),

Gene: Xincheng\_80 Start: 66407, Stop: 66108, Start Num: 20

Candidate Starts for Xincheng\_80:

(19, 66425), (Start: 20 @66407 has 22 MA's), (21, 66380), (26, 66314), (28, 66305), (29, 66293), (33, 66248), (34, 66185), (36, 66164), (37, 66158), (38, 66152), (39, 66134),

Gene: Zemanar\_86 Start: 66308, Stop: 65991, Start Num: 20

Candidate Starts for Zemanar\_86:

(5, 66623), (8, 66611), (9, 66608), (12, 66593), (13, 66587), (19, 66326), (Start: 20 @66308 has 22 MA's), (30, 66173), (31, 66143), (33, 66131), (34, 66068), (36, 66047), (37, 66041), (38, 66035), (39, 66017),