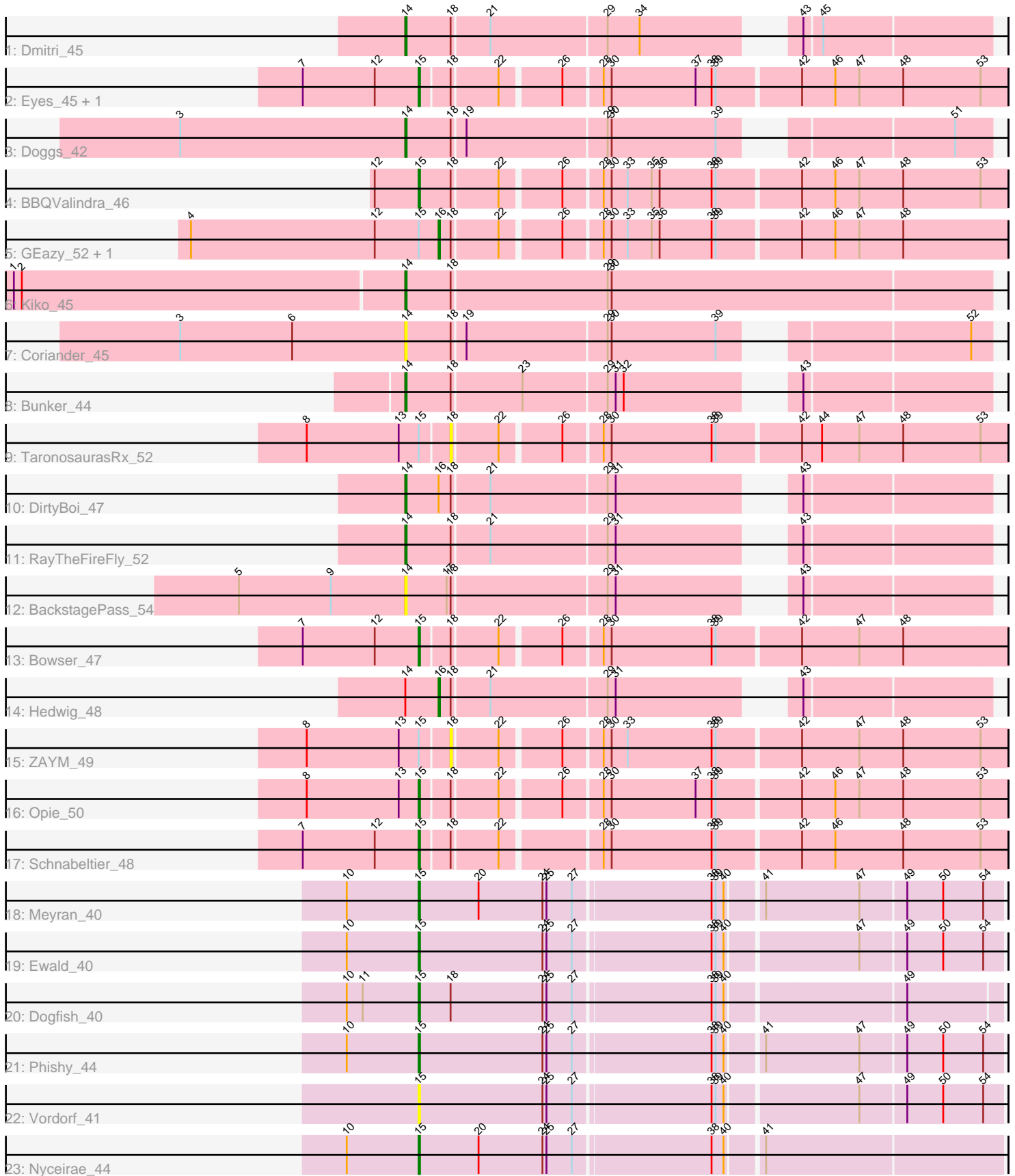


Pham 192830



Note: Tracks are now grouped by subcluster and scaled. Switching in subcluster is indicated by changes in track color. Track scale is now set by default to display the region 30 bp upstream of start 1 to 30 bp downstream of the last possible start. If this default region is judged to be packed too tightly with annotated starts, the track will be further scaled to only show that region of the ORF with annotated starts. This action will be indicated by adding "Zoomed" to the title. For starts, yellow indicates the location of called starts comprised solely of Glimmer/GeneMark auto-annotations, green indicates the location of called starts with at least 1 manual gene annotation.

Pham 192830 Report

This analysis was run 11/02/24 on database version 579.

Pham number 192830 has 25 members, 5 are drafts.

Phages represented in each track:

- Track 1 : Dmitri_45
- Track 2 : Eyes_45, MagicMan_47
- Track 3 : Doggs_42
- Track 4 : BBQValindra_46
- Track 5 : GEazy_52, HannahD_49
- Track 6 : Kiko_45
- Track 7 : Coriander_45
- Track 8 : Bunker_44
- Track 9 : TaronosaurusRx_52
- Track 10 : DirtyBoi_47
- Track 11 : RayTheFireFly_52
- Track 12 : BackstagePass_54
- Track 13 : Bowser_47
- Track 14 : Hedwig_48
- Track 15 : ZAYM_49
- Track 16 : Opie_50
- Track 17 : Schnabeltier_48
- Track 18 : Meyran_40
- Track 19 : Ewald_40
- Track 20 : Dogfish_40
- Track 21 : Phishy_44
- Track 22 : Vordorf_41
- Track 23 : Nyceirae_44

Summary of Final Annotations (See graph section above for start numbers):

The start number called the most often in the published annotations is 15, it was called in 11 of the 20 non-draft genes in the pham.

Genes that call this "Most Annotated" start:

- BBQValindra_46, Bowser_47, Dogfish_40, Ewald_40, Eyes_45, MagicMan_47, Meyran_40, Nyceirae_44, Opie_50, Phishy_44, Schnabeltier_48, Vordorf_41,

Genes that have the "Most Annotated" start but do not call it:

- GEazy_52, HannahD_49, TaronosaurusRx_52, ZAYM_49,

Genes that do not have the "Most Annotated" start:

- BackstagePass_54, Bunker_44, Coriander_45, DirtyBoi_47, Dmitri_45, Doggs_42, Hedwig_48, Kiko_45, RayTheFireFly_52,

Summary by start number:

Start 14:

- Found in 9 of 25 (36.0%) of genes in pham
- Manual Annotations of this start: 6 of 20
- Called 88.9% of time when present
- Phage (with cluster) where this start called: BackstagePass_54 (DB), Bunker_44 (DB), Coriander_45 (DB), DirtyBoi_47 (DB), Dmitri_45 (DB), Doggs_42 (DB), Kiko_45 (DB), RayTheFireFly_52 (DB),

Start 15:

- Found in 16 of 25 (64.0%) of genes in pham
- Manual Annotations of this start: 11 of 20
- Called 75.0% of time when present
- Phage (with cluster) where this start called: BBQValindra_46 (DB), Bowser_47 (DB), Dogfish_40 (DT), Ewald_40 (DT), Eyes_45 (DB), MagicMan_47 (DB), Meyran_40 (DT), Nyceirae_44 (DT), Opie_50 (DB), Phishy_44 (DT), Schnabeltier_48 (DB), Vordorf_41 (DT),

Start 16:

- Found in 4 of 25 (16.0%) of genes in pham
- Manual Annotations of this start: 3 of 20
- Called 75.0% of time when present
- Phage (with cluster) where this start called: GEazy_52 (DB), HannahD_49 (DB), Hedwig_48 (DB),

Start 18:

- Found in 20 of 25 (80.0%) of genes in pham
- No Manual Annotations of this start.
- Called 10.0% of time when present
- Phage (with cluster) where this start called: TaronosaurusRx_52 (DB), ZAYM_49 (DB),

Summary by clusters:

There are 2 clusters represented in this pham: DT, DB,

Info for manual annotations of cluster DB:

- Start number 14 was manually annotated 6 times for cluster DB.
- Start number 15 was manually annotated 6 times for cluster DB.
- Start number 16 was manually annotated 3 times for cluster DB.

Info for manual annotations of cluster DT:

- Start number 15 was manually annotated 5 times for cluster DT.

Gene Information:

Gene: BBQValindra_46 Start: 34874, Stop: 35296, Start Num: 15

Candidate Starts for BBQValindra_46:

(12, 34841), (Start: 15 @34874 has 11 MA's), (18, 34898), (22, 34931), (26, 34973), (28, 35000), (30, 35006), (33, 35018), (35, 35036), (36, 35042), (38, 35081), (39, 35084), (42, 35144), (46, 35168), (47, 35186), (48, 35219), (53, 35276),

Gene: BackstagePass_54 Start: 35033, Stop: 35422, Start Num: 14

Candidate Starts for BackstagePass_54:

(5, 34910), (9, 34979), (Start: 14 @35033 has 6 MA's), (17, 35063), (18, 35066), (29, 35177), (31, 35183), (43, 35288),

Gene: Bowser_47 Start: 34683, Stop: 35102, Start Num: 15

Candidate Starts for Bowser_47:

(7, 34596), (12, 34650), (Start: 15 @34683 has 11 MA's), (18, 34704), (22, 34737), (26, 34779), (28, 34806), (30, 34812), (38, 34887), (39, 34890), (42, 34950), (47, 34992), (48, 35025),

Gene: Bunker_44 Start: 33977, Stop: 34366, Start Num: 14

Candidate Starts for Bunker_44:

(Start: 14 @33977 has 6 MA's), (18, 34010), (23, 34061), (29, 34121), (31, 34127), (32, 34133), (43, 34232),

Gene: Coriander_45 Start: 33477, Stop: 33866, Start Num: 14

Candidate Starts for Coriander_45:

(3, 33309), (6, 33393), (Start: 14 @33477 has 6 MA's), (18, 33510), (19, 33519), (29, 33621), (30, 33624), (39, 33702), (52, 33852),

Gene: DirtyBoi_47 Start: 33515, Stop: 33904, Start Num: 14

Candidate Starts for DirtyBoi_47:

(Start: 14 @33515 has 6 MA's), (Start: 16 @33539 has 3 MA's), (18, 33548), (21, 33575), (29, 33659), (31, 33665), (43, 33770),

Gene: Dmitri_45 Start: 35048, Stop: 35437, Start Num: 14

Candidate Starts for Dmitri_45:

(Start: 14 @35048 has 6 MA's), (18, 35081), (21, 35108), (29, 35192), (34, 35216), (43, 35303), (45, 35315),

Gene: Dogfish_40 Start: 31602, Stop: 32018, Start Num: 15

Candidate Starts for Dogfish_40:

(10, 31548), (11, 31560), (Start: 15 @31602 has 11 MA's), (18, 31626), (24, 31695), (25, 31698), (27, 31716), (38, 31815), (39, 31818), (40, 31824), (49, 31950),

Gene: Doggs_42 Start: 34204, Stop: 34593, Start Num: 14

Candidate Starts for Doggs_42:

(3, 34036), (Start: 14 @34204 has 6 MA's), (18, 34237), (19, 34246), (29, 34348), (30, 34351), (39, 34429), (51, 34567),

Gene: Ewald_40 Start: 31420, Stop: 31839, Start Num: 15

Candidate Starts for Ewald_40:

(10, 31366), (Start: 15 @31420 has 11 MA's), (24, 31513), (25, 31516), (27, 31534), (38, 31633), (39, 31636), (40, 31642), (47, 31735), (49, 31768), (50, 31795), (54, 31825),

Gene: Eyes_45 Start: 34727, Stop: 35146, Start Num: 15

Candidate Starts for Eyes_45:

(7, 34640), (12, 34694), (Start: 15 @34727 has 11 MA's), (18, 34748), (22, 34781), (26, 34823), (28, 34850), (30, 34856), (37, 34919), (38, 34931), (39, 34934), (42, 34994), (46, 35018), (47, 35036), (48, 35069), (53, 35126),

Gene: GEazy_52 Start: 35017, Stop: 35424, Start Num: 16

Candidate Starts for GEazy_52:

(4, 34831), (12, 34969), (Start: 15 @35002 has 11 MA's), (Start: 16 @35017 has 3 MA's), (18, 35026), (22, 35059), (26, 35101), (28, 35128), (30, 35134), (33, 35146), (35, 35164), (36, 35170), (38, 35209), (39, 35212), (42, 35272), (46, 35296), (47, 35314), (48, 35347),

Gene: HannahD_49 Start: 34384, Stop: 34791, Start Num: 16

Candidate Starts for HannahD_49:

(4, 34198), (12, 34336), (Start: 15 @34369 has 11 MA's), (Start: 16 @34384 has 3 MA's), (18, 34393), (22, 34426), (26, 34468), (28, 34495), (30, 34501), (33, 34513), (35, 34531), (36, 34537), (38, 34576), (39, 34579), (42, 34639), (46, 34663), (47, 34681), (48, 34714),

Gene: Hedwig_48 Start: 33963, Stop: 34328, Start Num: 16

Candidate Starts for Hedwig_48:

(Start: 14 @33939 has 6 MA's), (Start: 16 @33963 has 3 MA's), (18, 33972), (21, 33999), (29, 34083), (31, 34089), (43, 34194),

Gene: Kiko_45 Start: 33830, Stop: 34261, Start Num: 14

Candidate Starts for Kiko_45:

(1, 33542), (2, 33548), (Start: 14 @33830 has 6 MA's), (18, 33863), (29, 33977), (30, 33980),

Gene: MagicMan_47 Start: 34609, Stop: 35028, Start Num: 15

Candidate Starts for MagicMan_47:

(7, 34522), (12, 34576), (Start: 15 @34609 has 11 MA's), (18, 34630), (22, 34663), (26, 34705), (28, 34732), (30, 34738), (37, 34801), (38, 34813), (39, 34816), (42, 34876), (46, 34900), (47, 34918), (48, 34951), (53, 35008),

Gene: Meyran_40 Start: 32494, Stop: 32913, Start Num: 15

Candidate Starts for Meyran_40:

(10, 32440), (Start: 15 @32494 has 11 MA's), (20, 32539), (24, 32587), (25, 32590), (27, 32608), (38, 32707), (39, 32710), (40, 32716), (41, 32740), (47, 32809), (49, 32842), (50, 32869), (54, 32899),

Gene: Nyceirae_44 Start: 32308, Stop: 32727, Start Num: 15

Candidate Starts for Nyceirae_44:

(10, 32254), (Start: 15 @32308 has 11 MA's), (20, 32353), (24, 32401), (25, 32404), (27, 32422), (38, 32521), (40, 32530), (41, 32554),

Gene: Opie_50 Start: 35554, Stop: 35973, Start Num: 15

Candidate Starts for Opie_50:

(8, 35470), (13, 35539), (Start: 15 @35554 has 11 MA's), (18, 35575), (22, 35608), (26, 35650), (28, 35677), (30, 35683), (37, 35746), (38, 35758), (39, 35761), (42, 35821), (46, 35845), (47, 35863), (48, 35896), (53, 35953),

Gene: Phishy_44 Start: 33491, Stop: 33910, Start Num: 15

Candidate Starts for Phishy_44:

(10, 33437), (Start: 15 @33491 has 11 MA's), (24, 33584), (25, 33587), (27, 33605), (38, 33704), (39, 33707), (40, 33713), (41, 33737), (47, 33806), (49, 33839), (50, 33866), (54, 33896),

Gene: RayTheFireFly_52 Start: 35103, Stop: 35492, Start Num: 14

Candidate Starts for RayTheFireFly_52:

(Start: 14 @35103 has 6 MA's), (18, 35136), (21, 35163), (29, 35247), (31, 35253), (43, 35358),

Gene: Schnabeltier_48 Start: 34802, Stop: 35221, Start Num: 15

Candidate Starts for Schnabeltier_48:

(7, 34715), (12, 34769), (Start: 15 @34802 has 11 MA's), (18, 34823), (22, 34856), (28, 34925), (30, 34931), (38, 35006), (39, 35009), (42, 35069), (46, 35093), (48, 35144), (53, 35201),

Gene: TaronosaurusRx_52 Start: 34148, Stop: 34546, Start Num: 18

Candidate Starts for TaronosaurusRx_52:

(8, 34043), (13, 34112), (Start: 15 @34127 has 11 MA's), (18, 34148), (22, 34181), (26, 34223), (28, 34250), (30, 34256), (38, 34331), (39, 34334), (42, 34394), (44, 34409), (47, 34436), (48, 34469), (53, 34526),

Gene: Vordorf_41 Start: 31757, Stop: 32176, Start Num: 15

Candidate Starts for Vordorf_41:

(Start: 15 @31757 has 11 MA's), (24, 31850), (25, 31853), (27, 31871), (38, 31970), (39, 31973), (40, 31979), (47, 32072), (49, 32105), (50, 32132), (54, 32162),

Gene: ZAYM_49 Start: 33896, Stop: 34294, Start Num: 18

Candidate Starts for ZAYM_49:

(8, 33791), (13, 33860), (Start: 15 @33875 has 11 MA's), (18, 33896), (22, 33929), (26, 33971), (28, 33998), (30, 34004), (33, 34016), (38, 34079), (39, 34082), (42, 34142), (47, 34184), (48, 34217), (53, 34274),