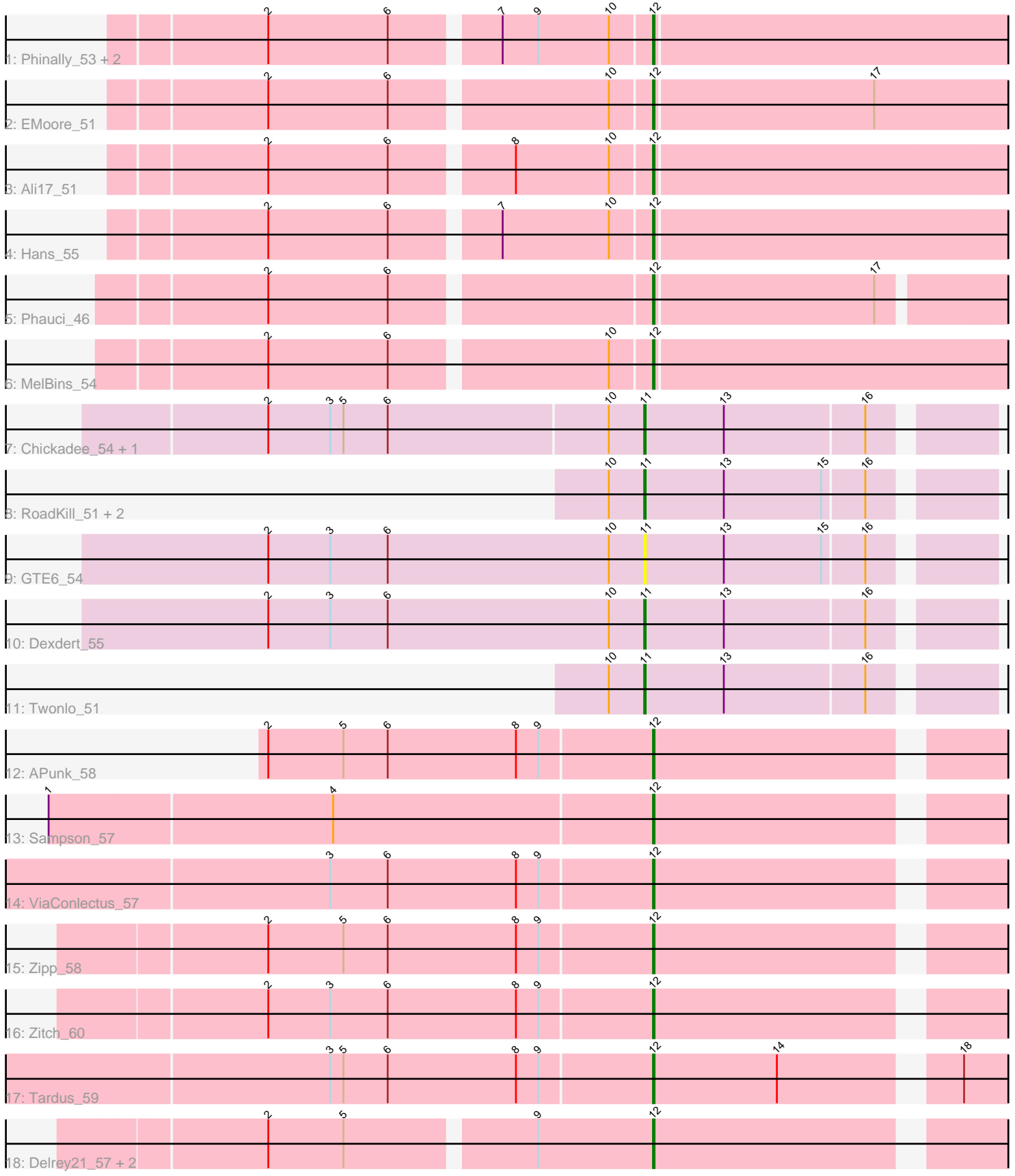


Pham 192838



Note: Tracks are now grouped by subcluster and scaled. Switching in subcluster is indicated by changes in track color. Track scale is now set by default to display the region 30 bp upstream of start 1 to 30 bp downstream of the last possible start. If this default region is judged to be packed too tightly with annotated starts, the track will be further scaled to only show that region of the ORF with annotated starts. This action will be indicated by adding "Zoomed" to the title. For starts, yellow indicates the location of called starts comprised solely of Glimmer/GeneMark auto-annotations, green indicates the location of called starts with at least 1 manual gene annotation.

## Pham 192838 Report

This analysis was run 11/02/24 on database version 579.

Pham number 192838 has 25 members, 1 are drafts.

Phages represented in each track:

- Track 1 : Phinally\_53, Leonard\_53, Inspectinfecti\_54
- Track 2 : EMOore\_51
- Track 3 : Ali17\_51
- Track 4 : Hans\_55
- Track 5 : Phauci\_46
- Track 6 : MelBins\_54
- Track 7 : Chickadee\_54, Kwekel\_54
- Track 8 : RoadKill\_51, EdmundFerry\_52, Tiamoceli\_54
- Track 9 : GTE6\_54
- Track 10 : Dextert\_55
- Track 11 : Twonlo\_51
- Track 12 : APunk\_58
- Track 13 : Sampson\_57
- Track 14 : ViaConlectus\_57
- Track 15 : Zipp\_58
- Track 16 : Zitch\_60
- Track 17 : Tardus\_59
- Track 18 : Delrey21\_57, DoctorFroggo\_57, Verity\_57

### ***Summary of Final Annotations (See graph section above for start numbers):***

The start number called the most often in the published annotations is 12, it was called in 17 of the 24 non-draft genes in the pham.

Genes that call this "Most Annotated" start:

- APunk\_58, Ali17\_51, Delrey21\_57, DoctorFroggo\_57, EMOore\_51, Hans\_55, Inspectinfecti\_54, Leonard\_53, MelBins\_54, Phauci\_46, Phinally\_53, Sampson\_57, Tardus\_59, Verity\_57, ViaConlectus\_57, Zipp\_58, Zitch\_60,

Genes that have the "Most Annotated" start but do not call it:

- 

Genes that do not have the "Most Annotated" start:

- Chickadee\_54, Dextert\_55, EdmundFerry\_52, GTE6\_54, Kwekel\_54, RoadKill\_51, Tiamoceli\_54, Twonlo\_51,

### Summary by start number:

Start 11:

- Found in 8 of 25 ( 32.0% ) of genes in pham
- Manual Annotations of this start: 7 of 24
- Called 100.0% of time when present
- Phage (with cluster) where this start called: Chickadee\_54 (DE3), Dextert\_55 (DE3), EdmundFerry\_52 (DE3), GTE6\_54 (DE3), Kwekel\_54 (DE3), RoadKill\_51 (DE3), Tiamoceli\_54 (DE3), Twonlo\_51 (DE3),

Start 12:

- Found in 17 of 25 ( 68.0% ) of genes in pham
- Manual Annotations of this start: 17 of 24
- Called 100.0% of time when present
- Phage (with cluster) where this start called: APunk\_58 (DE4), Ali17\_51 (DE2), Delrey21\_57 (DE4), DoctorFroggo\_57 (DE4), EMoore\_51 (DE2), Hans\_55 (DE2), Inspectinfecti\_54 (DE2), Leonard\_53 (DE2), MelBins\_54 (DE2), Phauci\_46 (DE2), Phinally\_53 (DE2), Sampson\_57 (DE4), Tardus\_59 (DE4), Verity\_57 (DE4), ViaConlectus\_57 (DE4), Zipp\_58 (DE4), Zitch\_60 (DE4),

### Summary by clusters:

There are 3 clusters represented in this pham: DE2, DE3, DE4,

Info for manual annotations of cluster DE2:

- Start number 12 was manually annotated 8 times for cluster DE2.

Info for manual annotations of cluster DE3:

- Start number 11 was manually annotated 7 times for cluster DE3.

Info for manual annotations of cluster DE4:

- Start number 12 was manually annotated 9 times for cluster DE4.

### Gene Information:

Gene: APunk\_58 Start: 46202, Stop: 46435, Start Num: 12

Candidate Starts for APunk\_58:

(2, 45950), (5, 46001), (6, 46031), (8, 46118), (9, 46133), (Start: 12 @46202 has 17 MA's),

Gene: Ali17\_51 Start: 44072, Stop: 44317, Start Num: 12

Candidate Starts for Ali17\_51:

(2, 43832), (6, 43913), (8, 43988), (10, 44051), (Start: 12 @44072 has 17 MA's),

Gene: Chickadee\_54 Start: 42618, Stop: 42839, Start Num: 11

Candidate Starts for Chickadee\_54:

(2, 42366), (3, 42408), (5, 42417), (6, 42447), (10, 42594), (Start: 11 @42618 has 7 MA's), (13, 42672), (16, 42765),

Gene: Delrey21\_57 Start: 47419, Stop: 47652, Start Num: 12  
Candidate Starts for Delrey21\_57:  
(2, 47176), (5, 47227), (9, 47347), (Start: 12 @47419 has 17 MA's),

Gene: Dxdert\_55 Start: 42922, Stop: 43143, Start Num: 11  
Candidate Starts for Dxdert\_55:  
(2, 42667), (3, 42709), (6, 42748), (10, 42898), (Start: 11 @42922 has 7 MA's), (13, 42976), (16, 43069),

Gene: DoctorFroggo\_57 Start: 47419, Stop: 47652, Start Num: 12  
Candidate Starts for DoctorFroggo\_57:  
(2, 47176), (5, 47227), (9, 47347), (Start: 12 @47419 has 17 MA's),

Gene: EMoore\_51 Start: 45247, Stop: 45498, Start Num: 12  
Candidate Starts for EMoore\_51:  
(2, 45007), (6, 45088), (10, 45226), (Start: 12 @45247 has 17 MA's), (17, 45394),

Gene: EdmundFerry\_52 Start: 42582, Stop: 42803, Start Num: 11  
Candidate Starts for EdmundFerry\_52:  
(10, 42558), (Start: 11 @42582 has 7 MA's), (13, 42636), (15, 42702), (16, 42729),

Gene: GTE6\_54 Start: 43173, Stop: 43394, Start Num: 11  
Candidate Starts for GTE6\_54:  
(2, 42918), (3, 42960), (6, 42999), (10, 43149), (Start: 11 @43173 has 7 MA's), (13, 43227), (15, 43293), (16, 43320),

Gene: Hans\_55 Start: 44712, Stop: 44963, Start Num: 12  
Candidate Starts for Hans\_55:  
(2, 44472), (6, 44553), (7, 44619), (10, 44691), (Start: 12 @44712 has 17 MA's),

Gene: Inspectinfecti\_54 Start: 45158, Stop: 45403, Start Num: 12  
Candidate Starts for Inspectinfecti\_54:  
(2, 44918), (6, 44999), (7, 45065), (9, 45089), (10, 45137), (Start: 12 @45158 has 17 MA's),

Gene: Kwekel\_54 Start: 42531, Stop: 42752, Start Num: 11  
Candidate Starts for Kwekel\_54:  
(2, 42279), (3, 42321), (5, 42330), (6, 42360), (10, 42507), (Start: 11 @42531 has 7 MA's), (13, 42585), (16, 42678),

Gene: Leonard\_53 Start: 44797, Stop: 45048, Start Num: 12  
Candidate Starts for Leonard\_53:  
(2, 44557), (6, 44638), (7, 44704), (9, 44728), (10, 44776), (Start: 12 @44797 has 17 MA's),

Gene: MelBins\_54 Start: 45052, Stop: 45297, Start Num: 12  
Candidate Starts for MelBins\_54:  
(2, 44812), (6, 44893), (10, 45031), (Start: 12 @45052 has 17 MA's),

Gene: Phauci\_46 Start: 41715, Stop: 41951, Start Num: 12  
Candidate Starts for Phauci\_46:  
(2, 41475), (6, 41556), (Start: 12 @41715 has 17 MA's), (17, 41862),

Gene: Phinally\_53 Start: 44794, Stop: 45045, Start Num: 12  
Candidate Starts for Phinally\_53:

(2, 44554), (6, 44635), (7, 44701), (9, 44725), (10, 44773), (Start: 12 @44794 has 17 MA's),

Gene: RoadKill\_51 Start: 42080, Stop: 42301, Start Num: 11

Candidate Starts for RoadKill\_51:

(10, 42056), (Start: 11 @42080 has 7 MA's), (13, 42134), (15, 42200), (16, 42227),

Gene: Sampson\_57 Start: 46635, Stop: 46868, Start Num: 12

Candidate Starts for Sampson\_57:

(1, 46236), (4, 46425), (Start: 12 @46635 has 17 MA's),

Gene: Tardus\_59 Start: 46390, Stop: 46623, Start Num: 12

Candidate Starts for Tardus\_59:

(3, 46180), (5, 46189), (6, 46219), (8, 46306), (9, 46321), (Start: 12 @46390 has 17 MA's), (14, 46474), (18, 46579),

Gene: Tiamoceli\_54 Start: 43371, Stop: 43592, Start Num: 11

Candidate Starts for Tiamoceli\_54:

(10, 43347), (Start: 11 @43371 has 7 MA's), (13, 43425), (15, 43491), (16, 43518),

Gene: Twonlo\_51 Start: 42001, Stop: 42222, Start Num: 11

Candidate Starts for Twonlo\_51:

(10, 41977), (Start: 11 @42001 has 7 MA's), (13, 42055), (16, 42148),

Gene: Verity\_57 Start: 47419, Stop: 47652, Start Num: 12

Candidate Starts for Verity\_57:

(2, 47176), (5, 47227), (9, 47347), (Start: 12 @47419 has 17 MA's),

Gene: ViaConlectus\_57 Start: 45345, Stop: 45578, Start Num: 12

Candidate Starts for ViaConlectus\_57:

(3, 45132), (6, 45171), (8, 45258), (9, 45273), (Start: 12 @45345 has 17 MA's),

Gene: Zipp\_58 Start: 47343, Stop: 47576, Start Num: 12

Candidate Starts for Zipp\_58:

(2, 47091), (5, 47142), (6, 47172), (8, 47259), (9, 47274), (Start: 12 @47343 has 17 MA's),

Gene: Zitch\_60 Start: 45466, Stop: 45699, Start Num: 12

Candidate Starts for Zitch\_60:

(2, 45214), (3, 45256), (6, 45295), (8, 45382), (9, 45397), (Start: 12 @45466 has 17 MA's),