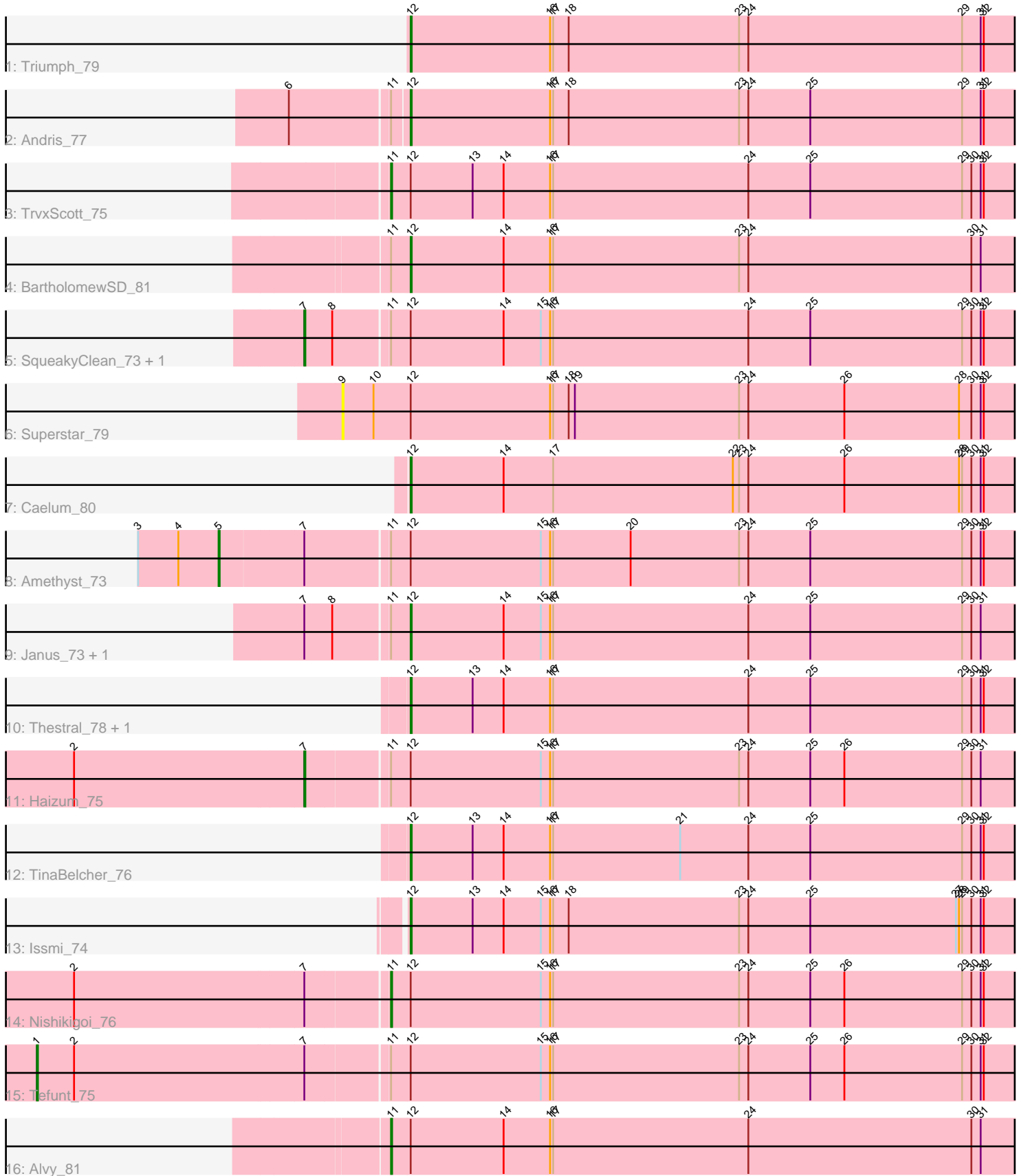


Pham 192927



Note: Tracks are now grouped by subcluster and scaled. Switching in subcluster is indicated by changes in track color. Track scale is now set by default to display the region 30 bp upstream of start 1 to 30 bp downstream of the last possible start. If this default region is judged to be packed too tightly with annotated starts, the track will be further scaled to only show that region of the ORF with annotated starts. This action will be indicated by adding "Zoomed" to the title. For starts, yellow indicates the location of called starts comprised solely of Glimmer/GeneMark auto-annotations, green indicates the location of called starts with at least 1 manual gene annotation.

Pham 192927 Report

This analysis was run 11/02/24 on database version 579.

Pham number 192927 has 19 members, 1 are drafts.

Phages represented in each track:

- Track 1 : Triumph_79
- Track 2 : Andris_77
- Track 3 : TrvxScott_75
- Track 4 : BartholomewSD_81
- Track 5 : SqueakyClean_73, GirlDinner_72
- Track 6 : Superstar_79
- Track 7 : Caelum_80
- Track 8 : Amethyst_73
- Track 9 : Janus_73, Animus_72
- Track 10 : Thestral_78, Bowden_76
- Track 11 : Haizum_75
- Track 12 : TinaBelcher_76
- Track 13 : Issmi_74
- Track 14 : Nishikigoi_76
- Track 15 : Tefunt_75
- Track 16 : Alvy_81

Summary of Final Annotations (See graph section above for start numbers):

The start number called the most often in the published annotations is 12, it was called in 10 of the 18 non-draft genes in the pham.

Genes that call this "Most Annotated" start:

- Andris_77, Animus_72, BartholomewSD_81, Bowden_76, Caelum_80, Issmi_74, Janus_73, Thestral_78, TinaBelcher_76, Triumph_79,

Genes that have the "Most Annotated" start but do not call it:

- Alvy_81, Amethyst_73, GirlDinner_72, Haizum_75, Nishikigoi_76, SqueakyClean_73, Superstar_79, Tefunt_75, TrvxScott_75,

Genes that do not have the "Most Annotated" start:

-

Summary by start number:

Start 1:

- Found in 1 of 19 (5.3%) of genes in pham
- Manual Annotations of this start: 1 of 18
- Called 100.0% of time when present
- Phage (with cluster) where this start called: Tefunt_75 (BD2),

Start 5:

- Found in 1 of 19 (5.3%) of genes in pham
- Manual Annotations of this start: 1 of 18
- Called 100.0% of time when present
- Phage (with cluster) where this start called: Amethyst_73 (BD2),

Start 7:

- Found in 8 of 19 (42.1%) of genes in pham
- Manual Annotations of this start: 3 of 18
- Called 37.5% of time when present
- Phage (with cluster) where this start called: GirlDinner_72 (BD2), Haizum_75 (BD2), SqueakyClean_73 (BD2),

Start 9:

- Found in 1 of 19 (5.3%) of genes in pham
- No Manual Annotations of this start.
- Called 100.0% of time when present
- Phage (with cluster) where this start called: Superstar_79 (BD2),

Start 11:

- Found in 12 of 19 (63.2%) of genes in pham
- Manual Annotations of this start: 3 of 18
- Called 25.0% of time when present
- Phage (with cluster) where this start called: Alvy_81 (BD2), Nishikigoi_76 (BD2), TrvxScott_75 (BD2),

Start 12:

- Found in 19 of 19 (100.0%) of genes in pham
- Manual Annotations of this start: 10 of 18
- Called 52.6% of time when present
- Phage (with cluster) where this start called: Andris_77 (BD2), Animus_72 (BD2), BartholomewSD_81 (BD2), Bowden_76 (BD2), Caelum_80 (BD2), Issmi_74 (BD2), Janus_73 (BD2), Thestral_78 (BD2), TinaBelcher_76 (BD2), Triumph_79 (BD2),

Summary by clusters:

There is one cluster represented in this pham: BD2

Info for manual annotations of cluster BD2:

- Start number 1 was manually annotated 1 time for cluster BD2.
- Start number 5 was manually annotated 1 time for cluster BD2.
- Start number 7 was manually annotated 3 times for cluster BD2.
- Start number 11 was manually annotated 3 times for cluster BD2.
- Start number 12 was manually annotated 10 times for cluster BD2.

Gene Information:

Gene: Alvy_81 Start: 49735, Stop: 49100, Start Num: 11

Candidate Starts for Alvy_81:

(Start: 11 @49735 has 3 MA's), (Start: 12 @49717 has 10 MA's), (14, 49627), (16, 49582), (17, 49579), (24, 49390), (30, 49174), (31, 49165),

Gene: Amethyst_73 Start: 46722, Stop: 45931, Start Num: 5

Candidate Starts for Amethyst_73:

(3, 46800), (4, 46761), (Start: 5 @46722 has 1 MA's), (Start: 7 @46644 has 3 MA's), (Start: 11 @46566 has 3 MA's), (Start: 12 @46548 has 10 MA's), (15, 46422), (16, 46413), (17, 46410), (20, 46335), (23, 46230), (24, 46221), (25, 46161), (29, 46014), (30, 46005), (31, 45996), (32, 45993),

Gene: Andris_77 Start: 47684, Stop: 47067, Start Num: 12

Candidate Starts for Andris_77:

(6, 47792), (Start: 11 @47699 has 3 MA's), (Start: 12 @47684 has 10 MA's), (16, 47549), (17, 47546), (18, 47531), (23, 47366), (24, 47357), (25, 47297), (29, 47150), (31, 47132), (32, 47129),

Gene: Animus_72 Start: 47796, Stop: 47179, Start Num: 12

Candidate Starts for Animus_72:

(Start: 7 @47892 has 3 MA's), (8, 47865), (Start: 11 @47814 has 3 MA's), (Start: 12 @47796 has 10 MA's), (14, 47706), (15, 47670), (16, 47661), (17, 47658), (24, 47469), (25, 47409), (29, 47262), (30, 47253), (31, 47244),

Gene: BartholomewSD_81 Start: 48836, Stop: 48219, Start Num: 12

Candidate Starts for BartholomewSD_81:

(Start: 11 @48854 has 3 MA's), (Start: 12 @48836 has 10 MA's), (14, 48746), (16, 48701), (17, 48698), (23, 48518), (24, 48509), (30, 48293), (31, 48284),

Gene: Bowden_76 Start: 49410, Stop: 48793, Start Num: 12

Candidate Starts for Bowden_76:

(Start: 12 @49410 has 10 MA's), (13, 49350), (14, 49320), (16, 49275), (17, 49272), (24, 49083), (25, 49023), (29, 48876), (30, 48867), (31, 48858), (32, 48855),

Gene: Caelum_80 Start: 47718, Stop: 47101, Start Num: 12

Candidate Starts for Caelum_80:

(Start: 12 @47718 has 10 MA's), (14, 47628), (17, 47580), (22, 47406), (23, 47400), (24, 47391), (26, 47298), (28, 47187), (29, 47184), (30, 47175), (31, 47166), (32, 47163),

Gene: GirlDinner_72 Start: 47389, Stop: 46676, Start Num: 7

Candidate Starts for GirlDinner_72:

(Start: 7 @47389 has 3 MA's), (8, 47362), (Start: 11 @47311 has 3 MA's), (Start: 12 @47293 has 10 MA's), (14, 47203), (15, 47167), (16, 47158), (17, 47155), (24, 46966), (25, 46906), (29, 46759), (30, 46750), (31, 46741), (32, 46738),

Gene: Haizum_75 Start: 47776, Stop: 47066, Start Num: 7

Candidate Starts for Haizum_75:

(2, 47995), (Start: 7 @47776 has 3 MA's), (Start: 11 @47701 has 3 MA's), (Start: 12 @47683 has 10 MA's), (15, 47557), (16, 47548), (17, 47545), (23, 47365), (24, 47356), (25, 47296), (26, 47263), (29, 47149), (30, 47140), (31, 47131),

Gene: Issmi_74 Start: 47397, Stop: 46780, Start Num: 12

Candidate Starts for Issmi_74:

(Start: 12 @47397 has 10 MA's), (13, 47337), (14, 47307), (15, 47271), (16, 47262), (17, 47259), (18, 47244), (23, 47079), (24, 47070), (25, 47010), (27, 46869), (28, 46866), (29, 46863), (30, 46854), (31, 46845), (32, 46842),

Gene: Janus_73 Start: 47630, Stop: 47013, Start Num: 12

Candidate Starts for Janus_73:

(Start: 7 @47726 has 3 MA's), (8, 47699), (Start: 11 @47648 has 3 MA's), (Start: 12 @47630 has 10 MA's), (14, 47540), (15, 47504), (16, 47495), (17, 47492), (24, 47303), (25, 47243), (29, 47096), (30, 47087), (31, 47078),

Gene: Nishikigoi_76 Start: 47701, Stop: 47066, Start Num: 11

Candidate Starts for Nishikigoi_76:

(2, 47995), (Start: 7 @47776 has 3 MA's), (Start: 11 @47701 has 3 MA's), (Start: 12 @47683 has 10 MA's), (15, 47557), (16, 47548), (17, 47545), (23, 47365), (24, 47356), (25, 47296), (26, 47263), (29, 47149), (30, 47140), (31, 47131), (32, 47128),

Gene: SqueakyClean_73 Start: 47904, Stop: 47191, Start Num: 7

Candidate Starts for SqueakyClean_73:

(Start: 7 @47904 has 3 MA's), (8, 47877), (Start: 11 @47826 has 3 MA's), (Start: 12 @47808 has 10 MA's), (14, 47718), (15, 47682), (16, 47673), (17, 47670), (24, 47481), (25, 47421), (29, 47274), (30, 47265), (31, 47256), (32, 47253),

Gene: Superstar_79 Start: 47292, Stop: 46609, Start Num: 9

Candidate Starts for Superstar_79:

(9, 47292), (10, 47262), (Start: 12 @47226 has 10 MA's), (16, 47091), (17, 47088), (18, 47073), (19, 47067), (23, 46908), (24, 46899), (26, 46806), (28, 46695), (30, 46683), (31, 46674), (32, 46671),

Gene: Tefunt_75 Start: 47945, Stop: 46980, Start Num: 1

Candidate Starts for Tefunt_75:

(Start: 1 @47945 has 1 MA's), (2, 47909), (Start: 7 @47690 has 3 MA's), (Start: 11 @47615 has 3 MA's), (Start: 12 @47597 has 10 MA's), (15, 47471), (16, 47462), (17, 47459), (23, 47279), (24, 47270), (25, 47210), (26, 47177), (29, 47063), (30, 47054), (31, 47045), (32, 47042),

Gene: Thestral_78 Start: 49437, Stop: 48820, Start Num: 12

Candidate Starts for Thestral_78:

(Start: 12 @49437 has 10 MA's), (13, 49377), (14, 49347), (16, 49302), (17, 49299), (24, 49110), (25, 49050), (29, 48903), (30, 48894), (31, 48885), (32, 48882),

Gene: TinaBelcher_76 Start: 49299, Stop: 48682, Start Num: 12

Candidate Starts for TinaBelcher_76:

(Start: 12 @49299 has 10 MA's), (13, 49239), (14, 49209), (16, 49164), (17, 49161), (21, 49038), (24, 48972), (25, 48912), (29, 48765), (30, 48756), (31, 48747), (32, 48744),

Gene: Triumph_79 Start: 48452, Stop: 47835, Start Num: 12

Candidate Starts for Triumph_79:

(Start: 12 @48452 has 10 MA's), (16, 48317), (17, 48314), (18, 48299), (23, 48134), (24, 48125), (29, 47918), (31, 47900), (32, 47897),

Gene: TrvxScott_75 Start: 49422, Stop: 48787, Start Num: 11

Candidate Starts for TrvxScott_75:

(Start: 11 @49422 has 3 MA's), (Start: 12 @49404 has 10 MA's), (13, 49344), (14, 49314), (16, 49269), (17, 49266), (24, 49077), (25, 49017), (29, 48870), (30, 48861), (31, 48852), (32, 48849),