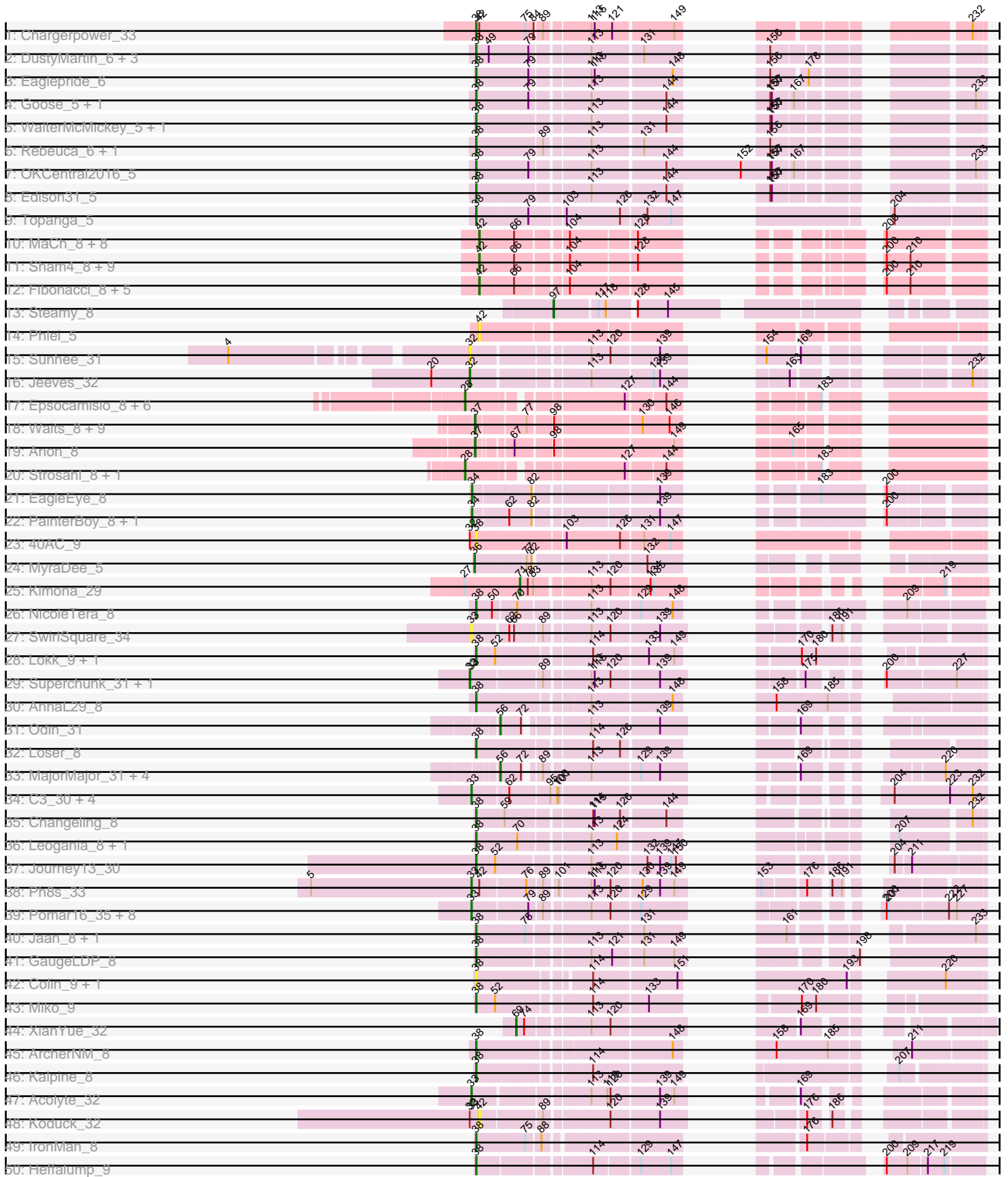
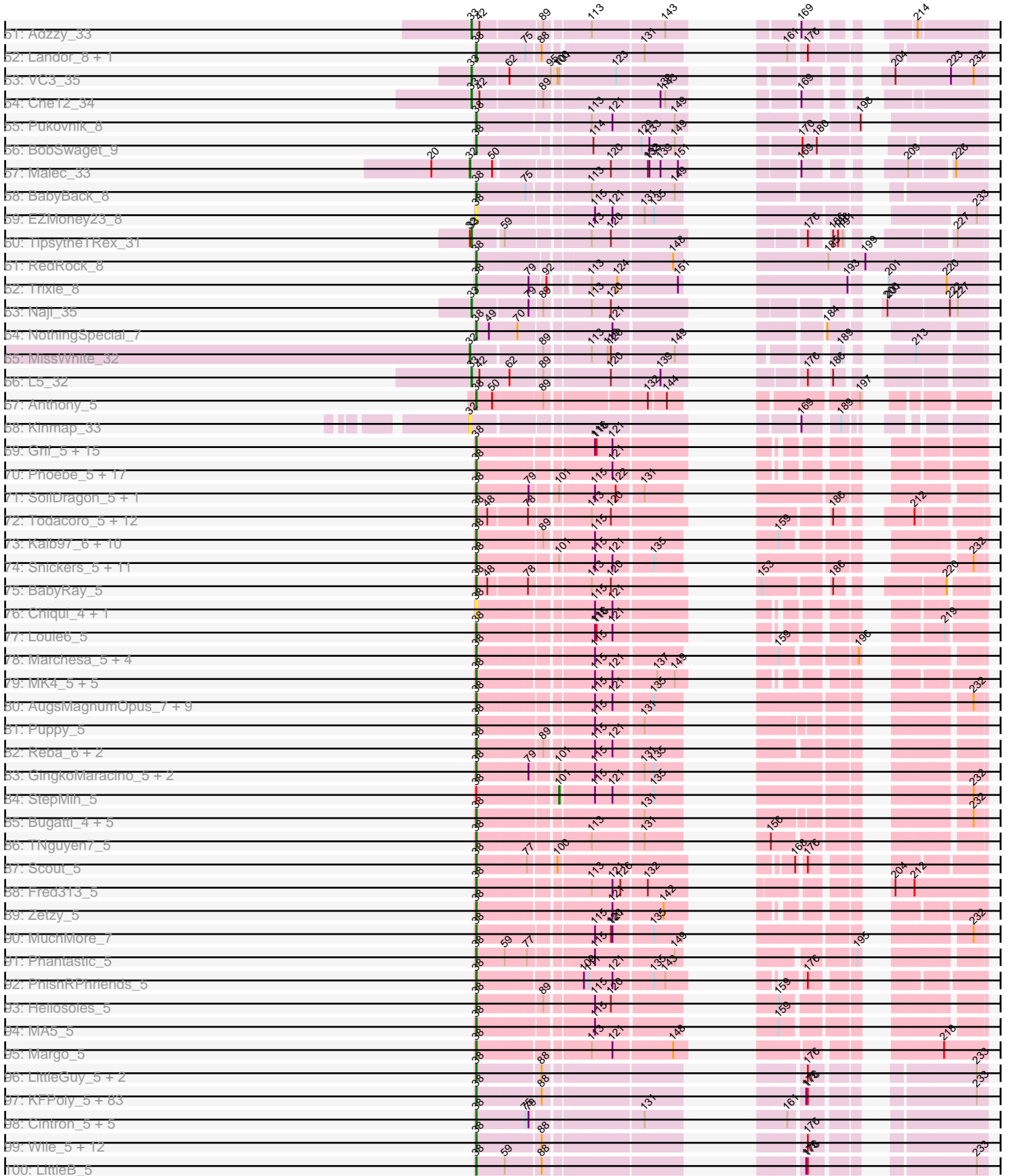


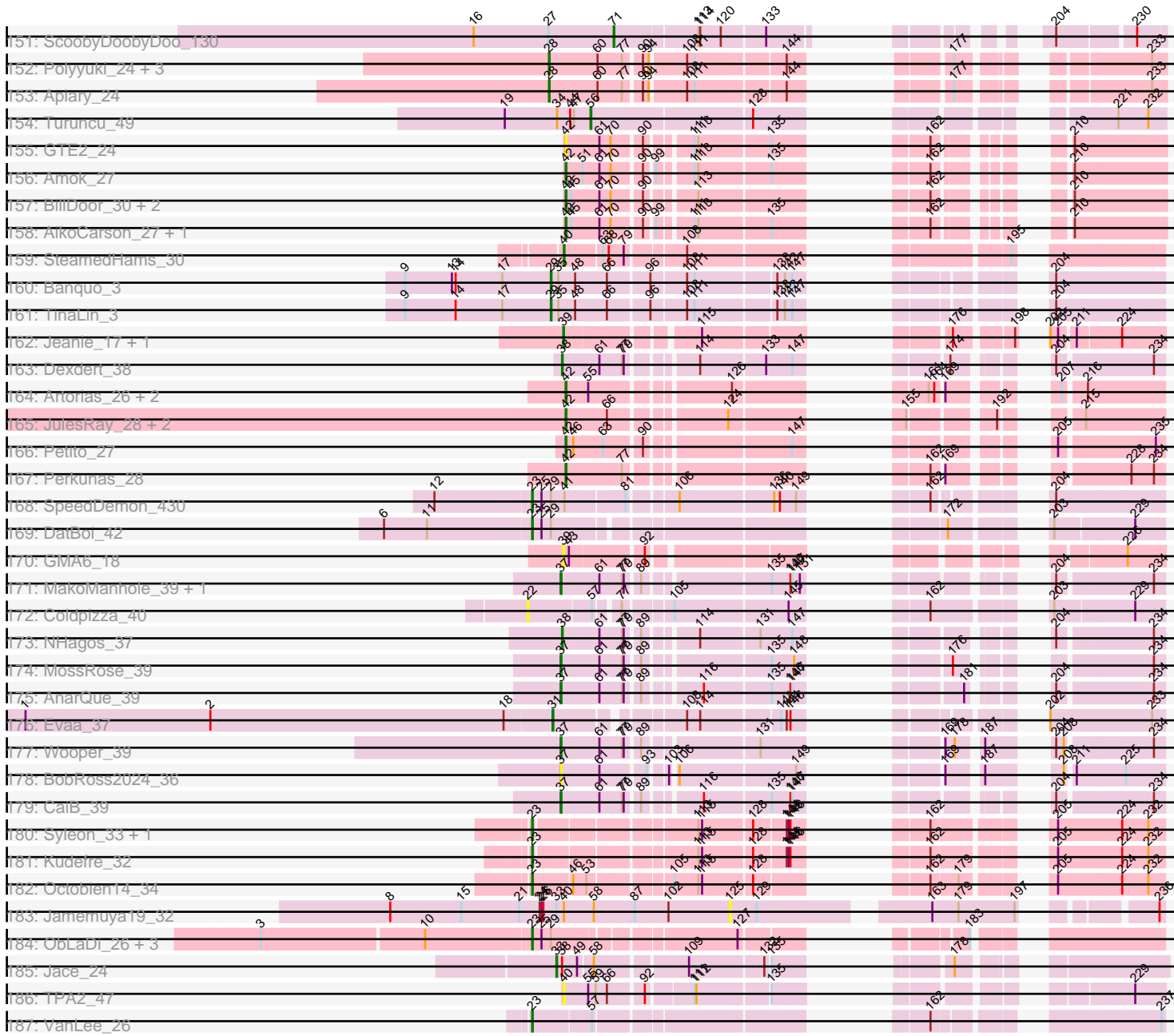
Pham 193630



Pham 193630



Pham 193630



Note: Tracks are now grouped by subcluster and scaled. Switching in subcluster is indicated by changes in track color. Track scale is now set by default to display the region 30 bp upstream of start 1 to 30 bp downstream of the last possible start. If this default region is judged to be packed too tightly with annotated starts, the track will be further scaled to only show that region of the ORF with annotated starts. This action will be indicated by adding "Zoomed" to the title. For starts, yellow indicates the location of called starts comprised solely of Glimmer/GeneMark auto-annotations, green indicates the location of called starts with at least 1 manual gene annotation.

Pham 193630 Report

This analysis was run 11/02/24 on database version 579.

Pham number 193630 has 581 members, 51 are drafts.

Phages represented in each track:

- Track 1 : Chargerpower_33
- Track 2 : DustyMartin_6, Rowdy_6, RhynO_5, Shapes_6
- Track 3 : Eaglepride_6
- Track 4 : Goose_5, Chupacabra_5
- Track 5 : WalterMcMickey_5, Twister_5
- Track 6 : Rebeuca_6, Kristoff_6
- Track 7 : OKCentral2016_5
- Track 8 : Edison31_5
- Track 9 : Topanga_5
- Track 10 : MaCh_8, Flaverint_8, Aneem_8, Bowtie_8, Munch_8, Joselito_8, Gilberta_8, Bachome_8, Timothy_8
- Track 11 : Sham4_8, Et2Brutus_7, Ebony_8, Lucivia_8, TinyTimmy_8, Petersenfast_7, Insomnia_8, Mabel_8, Orange_8, Jabith_8
- Track 12 : Fibonacci_8, Hutc2_8, Mulciber_8, Bud_8, Salz_8, Snape_8
- Track 13 : Steamy_8
- Track 14 : Phlei_5
- Track 15 : Sunhee_31
- Track 16 : Jeeves_32
- Track 17 : Epsocamisio_8, Nebulosus_8, JSwag_8, Boohoo_8, LastResort_8, Anaysia_8, ReMo_8
- Track 18 : Waits_8, Rosalind_8, MinecraftSteve_9, DekHockey33_8, KatherineG_8, ShayRa_9, Switzerland_8, Oofda_8, Battleship_9, Soups_8
- Track 19 : Anon_8
- Track 20 : Strosahl_8, Remus_8
- Track 21 : EagleEye_8
- Track 22 : PainterBoy_8, Lucyedi_8
- Track 23 : 40AC_9
- Track 24 : MyraDee_5
- Track 25 : Kimona_29
- Track 26 : NicoleTera_8
- Track 27 : SwirlSquare_34
- Track 28 : Lokk_9, Rachaly_9
- Track 29 : Superchunk_31, Caraxes_31
- Track 30 : AnnaL29_8
- Track 31 : Odin_31
- Track 32 : Loser_8
- Track 33 : MajorMajor_31, Jsquared_31, Bradman_31, Quokka_30, Serenity_31

- Track 34 : C3_30, AN9_35, ANI8_35, AN3_32, VA6_32
- Track 35 : Changeling_8
- Track 36 : Leogania_8, BiancaTri92_8
- Track 37 : Journey13_30
- Track 38 : Ph8s_33
- Track 39 : Pomar16_35, D29_32, Tomathan_35, DBQu4n_35, Travvers_35, StarStuff_35, Duplo_35, Kerberos_35, D32_35
- Track 40 : Jaan_8, Phaded_8
- Track 41 : GaugeLDP_8
- Track 42 : Colin_9, WeiHuaDA_9
- Track 43 : Miko_9
- Track 44 : XianYue_32
- Track 45 : ArcherNM_8
- Track 46 : Kalpine_8
- Track 47 : Acolyte_32
- Track 48 : Koduck_32
- Track 49 : IronMan_8
- Track 50 : Heffalump_9
- Track 51 : Adzzy_33
- Track 52 : Landor_8, Bactobuster_8
- Track 53 : VC3_35
- Track 54 : Che12_34
- Track 55 : Pukovnik_8
- Track 56 : BobSwaget_9
- Track 57 : Malec_33
- Track 58 : BabyBack_8
- Track 59 : EZMoney23_8
- Track 60 : TopsytheTRex_31
- Track 61 : RedRock_8
- Track 62 : Trixie_8
- Track 63 : Naji_35
- Track 64 : NothingSpecial_7
- Track 65 : MissWhite_32
- Track 66 : L5_32
- Track 67 : Anthony_5
- Track 68 : Kinmap_33
- Track 69 : Grif_5, Phoxy_5, KADY_6, Soshari_7, Spike509_5, Methuselah_5, Vix_5, Grum1_5, Daishi_5, LarryKay_5, Misomonster_7, Bxz2_5, BuzzBuzz_4, AgronaGT15_5, Rummer_5, HashRod_6
- Track 70 : Phoebe_5, JenCasNa_5, Cullens_5, PotatoSplit_6, MoneyMay_5, Fernando_5, LBerry_5, EpicPhail_5, Colbster_5, Marie_5, Beauxregard13_5, Taurus_5, Penny1_5, P28Green_5, JHC117_5, Sabinator_5, LugYA_7, Hercules11_5
- Track 71 : SoilDragon_5, Jobu08_5
- Track 72 : Todacoro_5, Popcicle_5, Veracruz_4, Texage_4, QuinnKiro_4, Pocahontas_5, ResDef_5, Hookmount_5, Panamaxus_5, Noella_5, Caviar_5, Norbert_4, Lambert1_5
- Track 73 : Kalb97_6, Kalnoky_6, PurpleHaze_5, Manu_6, Pawn_5, Gemma_5, Groupthink_6, OlanP_5, Marius_6, HaveUMetTed_6, ACFishhook_5
- Track 74 : Snickers_5, Dieselweasel_5, Tiffany_5, Sabia_5, Aglet_5, Stagni_5, Mainiac_5, MadMarie_5, BreSam8_5, GtownJaz_5, SoYo_5, Wooldri_7
- Track 75 : BabyRay_5
- Track 76 : Chiqui_4, BabyJohn_4

- Track 77 : Louie6_5
- Track 78 : Marchesa_5, DropBear_5, Heathen_5, Kachowdy_5, HelDan_5
- Track 79 : MK4_5, JF2_5, Rockstar_5, Isca_5, B1_04, JF4_5
- Track 80 : AugsMagnumOpus_7, Microwolf_5, DaHudson_5, PGHhamlin_7, MarQuardt_5, Watson_5, Malinsilva_7, Lilith_5, Pembroke_5, Farber_5
- Track 81 : Puppy_5
- Track 82 : Reba_6, JeppNRM_6, Phranny_6
- Track 83 : GingkoMaracino_5, Ollie_5, Anubis_7
- Track 84 : StepMih_5
- Track 85 : Bugatti_4, Pistachio_5, Idleandcovert_4, BlueBird_5, SaturnRing_4, Giroux_4
- Track 86 : TNguyen7_5
- Track 87 : Scout_5
- Track 88 : Fred313_5
- Track 89 : Zetzy_5
- Track 90 : MuchMore_7
- Track 91 : Phantastic_5
- Track 92 : PhishRPhriends_5
- Track 93 : Heliosoles_5
- Track 94 : MA5_5
- Track 95 : Margo_5
- Track 96 : LittleGuy_5, Nyxis_5, Phontbonne_5
- Track 97 : KFPoly_5, Kampy_5, Lorenzo_5, TroyPia_5, Ohfah_5, Sabertooth_5, Clarenza_5, JetBlade_5, Ruin_5, Kratak_5, Florean_5, Eagle_4, Connomayer_5, HamSlice_4, Romney_5, Mazhar510_5, Phacado_5, Eros_5, Albee_5, Bombshell_5, Maverick_5, Medusa_5, BellusTerra_5, Annyong_5, Phelipe_5, Peaches_5, ICleared_5, Taquarus_5, Avle17_5, Holli_5, Wizard007_5, MeeZee_5, LeoAvram_5, OKaNui_5, Cocoaberry_5, Millski_5, Commander_5, TygerBlood_5, Gadost_5, NorthStar_5, Baby16_5, Wilbur_5, Kingmustik0402_5, Blackmoor_5, Pipcraft_5, Iceman_5, Polymorphads_5, Palestino_5, Melvin_5, YoSam321_5, CentreCat_5, Citius_5, Sparxx_5, Caelakin_5, Kye_5, TinaFeyge_5, Bartimeaus_5, LappelDuVide_5, Roosevelt_5, Funston_5, Dhanush_5, Bruiser_5, Scamp_5, PeterPeter_5, Lunsford_5, Houdini22_5, Nemo27_5, BubbleTrouble_5, Jaykayelowell_5, Lemur_5, Noelle_5, NotAPhaseMom_5, Shaka_5, Eris_5, Chaph_5, Druantia_5, Flux_5, Eurydice_5, Thanksgivukkah_5, Morrow_5, Maxo_5, Burger_4, Eapen_5, Wander_5
- Track 98 : Cintron_5, Pumbaa_5, Phighter1804_5, Iracema64_5, LochMonster_5, Kremtemulon_5
- Track 99 : Wile_5, PetiteSangsue_5, Cici_5, Katalie136_5, Perplexer_5, Badger_5, Xena_5, Datway_5, Morpher26_5, Achebe_5, Backyardigan_5, AbbysRanger_5, Bumblebee11_5
- Track 100 : LittleB_5
- Track 101 : Stasia_5
- Track 102 : TiroTheta9_5, Broseidon_5, Nebs_5, Skipitt_5, Abdiel_5
- Track 103 : Obama12_5, SheldonCooper_5, Rosa24_4, BangNhom_4, LHTSCC_5, ChampagnePapi_5, Tinybot_4, Cerulean_5
- Track 104 : Koreni_5
- Track 105 : Ulysses_5
- Track 106 : Relief_5
- Track 107 : Shygu2_5, Happiness_5
- Track 108 : AvatarAhPeg_5, Stink_5, Miramae_5
- Track 109 : Deano_5
- Track 110 : Arturo_4

- Track 111 : DirtyDunning_5, Mundrea_5
- Track 112 : Spino_5
- Track 113 : Cindaradix_5
- Track 114 : Camperdownii_5
- Track 115 : Alberto7_5
- Track 116 : JoongJeon_5
- Track 117 : Milcery_5, Tarynearal_4, Coog_5, LittleCherry_5, Bonamassa_5, Midas2_5, HuhtaEnerson15_5, George_4, Micasa_5, Swirley_5, Cuco_5
- Track 118 : Aragog_5, AgentM_5, Zolita_4, Jovo_5, Phlorence_5
- Track 119 : Tiger_5, PickleBack_5, Conspiracy_5, Lev2_5, ForGetIt_5, Archetta_5
- Track 120 : Discoknowium_5, Bluefalcon_4
- Track 121 : Airmid_5, Benedict_5, EITiger69_5, PetterN_5, Jabiru_5, Chadwick_5, Scorpia_5
- Track 122 : SydNat_5
- Track 123 : MarysWell_4, Dublin_4
- Track 124 : UnionJack_5
- Track 125 : Theia_4
- Track 126 : Ghoulboy_5
- Track 127 : VohminGhazi_8, Dorothea_8, SuperAwesome_8, DaVinci_8, CloudWang3_8, Garak_8, Helmet_8, Artemis2UCLA_8, EricB_8, Chartreuse_8, BABullseye_8, SuperCallie99_8, Jeffabunny_8, JewelBug_8, Kipper29_8, Yokurt_8, Cookiedough_8, Lilbunny_8, Tucker_8, McFly_8, Koko_8, SmellyB_8, Gruunaga_8, GreedyLawyer_8, Gladiator_8, Jordennis_8, WunderPhul_8, Roksolana_8, Zaka_8, Hexamo_8, Pmask_8, Blue7_8, ToneTone_7, Kazan_8, Newrala_8, Wiks_8, Candra_8, Indra_8, Neeharika16_8
- Track 128 : Zulu_8, Rifter_8, Hammer_8
- Track 129 : Priamo_8, Blinn1_8
- Track 130 : Hoot_8
- Track 131 : Isiphiwo_8
- Track 132 : Stephig9_5, Expelliarmus_4, Phillis_5, Groundhog_4, Roary_5
- Track 133 : Dixon_5, Smeadley_5, Astro_5
- Track 134 : Danforth_4, Saintus_5
- Track 135 : NearlyHeadless_5
- Track 136 : Darrell_8
- Track 137 : Maminiaina_8, BogosyJay_8, Alma_8
- Track 138 : Yecey3_33
- Track 139 : Ugenie5_6, RyeScarlet_9, Onglai_7, ExplosioNervosa_8, Hanray_7, Scherzo_8, EmyBug_8, Jiawan_7, Pioneer_8, Beemo_8, Halex_7, Phonnegut_8, Fayely_8
- Track 140 : Priya_8, Conquerage_8, Eidsmoe_8
- Track 141 : LoneWolf_8
- Track 142 : Phaeder_8, HortumSL17_8, Tubs_8, Aliter_8, Myxus_8, EdogawaKiddo_6, Lilleskat_6, PackMan_8, Catalina_8, Sachima_6
- Track 143 : SheaKeira_32
- Track 144 : Toaka_31
- Track 145 : Charm_32
- Track 146 : Elephantoon_8
- Track 147 : Qobbit_8
- Track 148 : DreamTeam1_32
- Track 149 : Rahalelujah_31
- Track 150 : Phayeta_34
- Track 151 : ScoobyDoobyDoo_130
- Track 152 : Polyuyuki_24, Braxoaddie_24, Maselop_24, CoffeeBean_24

- Track 153 : Apiary_24
- Track 154 : Turuncu_49
- Track 155 : GTE2_24
- Track 156 : Amok_27
- Track 157 : BillDoor_30, AndPeggy_27, Yarn_27
- Track 158 : AikoCarson_27, Emalyn_27
- Track 159 : SteamedHams_30
- Track 160 : Banquo_3
- Track 161 : TinaLin_3
- Track 162 : Jeanie_17, McGonagall_17
- Track 163 : Dexdert_38
- Track 164 : Artorias_26, Avazak_26, FortCran_26
- Track 165 : JulesRay_28, NoPickles_26, Captrips_26
- Track 166 : Petito_27
- Track 167 : Perkunas_28
- Track 168 : SpeedDemon_430
- Track 169 : DatBoi_42
- Track 170 : GMA6_18
- Track 171 : MakoManhole_39, CloverMinnie_39
- Track 172 : Coldpizza_40
- Track 173 : NHagos_37
- Track 174 : MossRose_39
- Track 175 : AnarQue_39
- Track 176 : Evaa_37
- Track 177 : Wooper_39
- Track 178 : BobRoss2024_36
- Track 179 : CaiB_39
- Track 180 : Syleon_33, Sephiroth_33
- Track 181 : Kundefre_32
- Track 182 : Octobien14_34
- Track 183 : Jamemuya19_32
- Track 184 : ObLaDi_26, Aleemily_25, Cafasso_26, ModicumRichard_26
- Track 185 : Jace_24
- Track 186 : TPA2_47
- Track 187 : VanLee_26

Summary of Final Annotations (See graph section above for start numbers):

The start number called the most often in the published annotations is 38, it was called in 339 of the 530 non-draft genes in the pham.

Genes that call this "Most Annotated" start:

- 40AC_9, ACFishhook_5, AbbysRanger_5, Abdiel_5, Achebe_5, Aglet_5, AgronaGT15_5, Airmid_5, Albee_5, Alberto7_5, Aliter_8, Alma_8, AnnaL29_8, Annyong_5, Anthony_5, Anubis_7, ArcherNM_8, Archetta_5, Arturo_4, Astro_5, AugsMagnumOpus_7, AvatarAhPeg_5, Avle17_5, B1_04, Baby16_5, BabyBack_8, BabyJohn_4, BabyRay_5, Backyardigan_5, Bactobuster_8, Badger_5, BangNhom_4, Bartimeaus_5, Beauxregard13_5, Beemo_8, BellusTerra_5, Benedict_5, BiancaTri92_8, Blackmoor_5, BlueBird_5, BobSwaget_9, BogosyJay_8, Bombshell_5, BreSam8_5, Broseidon_5, Bruiser_5, BubbleTrouble_5, Bugatti_4,

Bumblebee11_5, Burger_4, BuzzBuzz_4, Bxz2_5, Caelakin_5, Camperdownii_5, Catalina_8, Caviar_5, CentreCat_5, Cerulean_5, Chadwick_5, ChampagnePapi_5, Changeling_8, Chaph_5, Chargerpower_33, Chiqui_4, Chupacabra_5, Cici_5, Cindaradix_5, Cintron_5, Citius_5, Clarenza_5, Cocoaberry_5, Colbster_5, Colin_9, Commander_5, Connomayer_5, Conquerage_8, Conspiracy_5, Cullens_5, DaHudson_5, Daishi_5, Danforth_4, Darrell_8, Datway_5, Deano_5, Dexdert_38, Dhanush_5, Dieselweasel_5, DirtyDunning_5, Dixon_5, DreamTeam1_32, DropBear_5, Druantia_5, DustyMartin_6, EZMoney23_8, Eagle_4, Eaglepride_6, Eapen_5, Edison31_5, EdogawaKiddo_6, Eidsmoe_8, EITiger69_5, Elephantoon_8, EmyBug_8, EpicPhail_5, Eris_5, Eros_5, Eurydice_5, Expelliarmus_4, ExplosioNervosa_8, Farber_5, Fayely_8, Fernando_5, Florean_5, Flux_5, ForGetIt_5, Fred313_5, Funston_5, Gadost_5, GaugeLDP_8, Gemma_5, GingkoMaracino_5, Giroux_4, Goose_5, Grif_5, Groundhog_4, Groupthink_6, Grum1_5, GtownJaz_5, HamSlice_4, Hanray_7, Happiness_5, HashRod_6, HaveUMetTed_6, Heathen_5, Heffalump_9, HelDan_5, Heliosoles_5, Hercules11_5, Horex_7, Holli_5, Hookmount_5, HortumSL17_8, Houdini22_5, ICleared_5, Iceman_5, Idleandcovert_4, Iracema64_5, IronMan_8, Isca_5, JF2_5, JF4_5, JHC117_5, Jaan_8, Jabiru_5, Jaykayelowell_5, JenCasNa_5, JeppNRM_6, JetBlade_5, Jiawan_7, Jobu08_5, JoongJeon_5, Journey13_30, KADY_6, KFPoly_5, Kachowdy_5, Kalb97_6, Kalnoky_6, Kalpine_8, Kampy_5, Katalie136_5, Kingmustik0402_5, Koreni_5, Kratak_5, Kremtemulon_5, Kristoff_6, Kye_5, LBerry_5, LHTSCC_5, Lambert1_5, Landor_8, LappelDuVide_5, LarryKay_5, Lemur_5, LeoAvram_5, Leogania_8, Lev2_5, Lilith_5, Lilleskat_6, LittleB_5, LittleGuy_5, LochMonster_5, Lokk_9, LoneWolf_8, Lorenzo_5, Loser_8, Louie6_5, LugYA_7, Lunsford_5, MA5_5, MK4_5, MadMarie_5, Mainiac_5, Malinsilva_7, Maminiaina_8, Manu_6, MarQuardt_5, Marchesa_5, Margo_5, Marie_5, Marius_6, Maverick_5, Maxo_5, Mazhar510_5, Medusa_5, MeeZee_5, Melvin_5, Methuselah_5, Microwolf_5, Miko_9, Millski_5, Miramae_5, Misomonster_7, MoneyMay_5, Morpher26_5, Morrow_5, MuchMore_7, Mundrea_5, Myxus_8, NHagos_37, NearlyHeadless_5, Nebs_5, Nemo27_5, NicoleTera_8, Noella_5, Noelle_5, Norbert_4, NorthStar_5, NotAPhaseMom_5, NothingSpecial_7, Nyxis_5, OKCentral2016_5, OKaNui_5, Obama12_5, Ohfah_5, OlanP_5, Ollie_5, Onglai_7, P28Green_5, PGHhamlin_7, PackMan_8, Palestino_5, Panamaxus_5, Pawn_5, Peaches_5, Pembroke_5, Penny1_5, Perplexer_5, PeterPeter_5, PetiteSangsue_5, PetterN_5, Phacado_5, Phaded_8, Phaeder_8, Phantastic_5, Phelipe_5, Phighter1804_5, Phillis_5, PhishRPhriends_5, Phoebe_5, Phonnegut_8, Phontbonne_5, Phoxy_5, Phranny_6, PickleBack_5, Pioneer_8, Pipcraft_5, Pistachio_5, Pocahontas_5, Polymorphads_5, Popcicle_5, PotatoSplit_6, Priya_8, Pukovnik_8, Pumbaa_5, Puppy_5, PurpleHaze_5, Qobbit_8, QuinnKiro_4, Rachaly_9, Reba_6, Rebeuca_6, RedRock_8, Relief_5, ResDef_5, RhynO_5, Roary_5, Rockstar_5, Romney_5, Roosevelt_5, Rosa24_4, Rowdy_6, Ruin_5, Rummer_5, RyeScarlet_9, Sabertooth_5, Sabia_5, Sabinator_5, Sachima_6, Saintus_5, SaturnRing_4, Scamp_5, Scherzo_8, Scorpia_5, Scout_5, Shaka_5, Shapes_6, SheaKeira_32, SheldonCooper_5, Shygu2_5, Skipitt_5, Smeadley_5, Snickers_5, SoYo_5, SoilDragon_5, Soshari_7, Sparxx_5, Spike509_5, Spino_5, Stagni_5, Stasia_5, Stephig9_5, Stink_5, TNguyen7_5, Taquarus_5, Taurus_5, Texage_4, Thanksgivukkah_5, Tiffany_5, Tiger_5, TinaFeyge_5, Tinybot_4, TiroTheta9_5, Todacoro_5, Topanga_5, Trixie_8, TroyPia_5, Tubs_8, Twister_5, TygerBlood_5, Ugenie5_6, Ulysses_5, UnionJack_5, Veracruz_4, Vix_5, WalterMcMickey_5, Wander_5, Watson_5, WeiHuaDA_9, Wilbur_5, Wile_5, Wizard007_5, Wooldri_7, Xena_5, YoSam321_5, Zetzy_5,

Genes that have the "Most Annotated" start but do not call it:

- Jace_24, Phayeta_34, StepMih_5,

Genes that do not have the "Most Annotated" start:

- AN3_32, AN9_35, ANI8_35, Acolyte_32, Adzzy_33, AgentM_5, AikoCarson_27, Aleemily_25, Amok_27, AnarQue_39, Anaysia_8, AndPeggy_27, Aneem_8, Anon_8, Apiary_24, Aragog_5, Artemis2UCLA_8, Artorias_26, Avazak_26, BABullseye_8, Bachome_8, Banquo_3, Battleship_9, BillDoor_30, Blinn1_8, Blue7_8, Bluefalcon_4, BobRoss2024_36, Bonamassa_5, Boohoo_8, Bowtie_8, Bradman_31, Braxoaddie_24, Bud_8, C3_30, Cafasso_26, CaiB_39, Candra_8, Captrips_26, Caraxes_31, Charm_32, Chartreuse_8, Che12_34, CloudWang3_8, CloverMinnie_39, CoffeeBean_24, Coldpizza_40, Coog_5, Cookiedough_8, Cuco_5, D29_32, D32_35, DBQu4n_35, DaVinci_8, DatBoi_42, DekHockey33_8, Discoknowium_5, Dorothea_8, Dublin_4, Duplo_35, EagleEye_8, Ebony_8, Emalyn_27, Epsocamisio_8, EricB_8, Et2Brutus_7, Evaa_37, Fibonacci_8, Flaverint_8, FortCran_26, GMA6_18, GTE2_24, Garak_8, George_4, Ghoulboy_5, Gilberta_8, Gladiator_8, GreedyLawyer_8, Gruunaga_8, Hammer_8, Helmet_8, Hexamo_8, Hoot_8, HuhtaEnerson15_5, Hutc2_8, Indra_8, Insomnia_8, Isiphiwo_8, JSwag_8, Jabith_8, Jamemuya19_32, Jeanie_17, Jeeves_32, Jeffabunny_8, JewelBug_8, Jordennis_8, Joselito_8, Jovo_5, Jsquared_31, JulesRay_28, KatherineG_8, Kazan_8, Kerberos_35, Kimona_29, Kinmap_33, Kipper29_8, Koduck_32, Koko_8, Kudrefre_32, L5_32, LastResort_8, Lilbunny_8, LittleCherry_5, Lucivia_8, Lucyedi_8, MaCh_8, Mabel_8, MajorMajor_31, MakoManhole_39, Malec_33, MarysWell_4, Maselop_24, McFly_8, McGonagall_17, Micasa_5, Midas2_5, Milcery_5, MinecraftSteve_9, MissWhite_32, ModicumRichard_26, MossRose_39, Mulciber_8, Munch_8, MyraDee_5, Naji_35, Nebulosus_8, Neeharika16_8, Newrala_8, NoPickles_26, ObLaDi_26, Octobien14_34, Odin_31, Oofda_8, Orange_8, PainterBoy_8, Perkunas_28, Petersenfast_7, Petito_27, Ph8s_33, Phlei_5, Phlorence_5, Pmask_8, Polylyuki_24, Pomar16_35, Priamo_8, Quokka_30, Rahalelujah_31, ReMo_8, Remus_8, Rifter_8, Roksolana_8, Rosalind_8, Salz_8, ScoobyDoobyDoo_130, Sephiroth_33, Serenity_31, Sham4_8, ShayRa_9, SmellyB_8, Snape_8, Soups_8, SpeedDemon_430, StarStuff_35, SteamedHams_30, Steamy_8, Strosahl_8, Sunhee_31, SuperAwesome_8, SuperCallie99_8, Superchunk_31, SwirlSquare_34, Swirley_5, Switzerland_8, SydNat_5, Syleon_33, TPA2_47, Tarynearal_4, Theia_4, Timothy_8, TinaLin_3, TinyTimmy_8, TopsytheTRex_31, Toaka_31, Tomathan_35, ToneTone_7, Travvers_35, Tucker_8, Turuncu_49, VA6_32, VC3_35, VanLee_26, VohminGhazi_8, Waits_8, Wiks_8, Wooper_39, WunderPhul_8, XianYue_32, Yarn_27, Yecey3_33, Yokurt_8, Zaka_8, Zolita_4, Zulu_8,

Summary by start number:

Start 22:

- Found in 1 of 581 (0.2%) of genes in pham
- No Manual Annotations of this start.
- Called 100.0% of time when present
- Phage (with cluster) where this start called: Coldpizza_40 (DR),

Start 23:

- Found in 11 of 581 (1.9%) of genes in pham
- Manual Annotations of this start: 10 of 530
- Called 100.0% of time when present
- Phage (with cluster) where this start called: Aleemily_25 (DZ), Cafasso_26 (DZ), DatBoi_42 (DL), Kudrefre_32 (DU1), ModicumRichard_26 (DZ), ObLaDi_26 (DZ),

Octobien14_34 (DU1), Sephiroth_33 (DU1), SpeedDemon_430 (DL), Syleon_33 (DU1), VanLee_26 (singleton),

Start 28:

- Found in 14 of 581 (2.4%) of genes in pham
- Manual Annotations of this start: 14 of 530
- Called 100.0% of time when present
- Phage (with cluster) where this start called: Anaysia_8 (A15), Apiary_24 (CR), Boohoo_8 (A15), Braxoaddie_24 (CR), CoffeeBean_24 (CR), Epsocamisio_8 (A15), JSwag_8 (A15), LastResort_8 (A15), Maselop_24 (CR), Nebulosus_8 (A15), Polyuyuki_24 (CR), ReMo_8 (A15), Remus_8 (A15), Strosahl_8 (A15),

Start 29:

- Found in 8 of 581 (1.4%) of genes in pham
- Manual Annotations of this start: 2 of 530
- Called 25.0% of time when present
- Phage (with cluster) where this start called: Banquo_3 (CU1), TinaLin_3 (CU1),

Start 30:

- Found in 46 of 581 (7.9%) of genes in pham
- Manual Annotations of this start: 42 of 530
- Called 100.0% of time when present
- Phage (with cluster) where this start called: Artemis2UCLA_8 (A6), BABullseye_8 (A6), Blinn1_8 (A6), Blue7_8 (A6), Candra_8 (A6), Chartreuse_8 (A6), CloudWang3_8 (A6), Cookiedough_8 (A6), DaVinci_8 (A6), Dorothea_8 (A6), EricB_8 (A6), Garak_8 (A6), Gladiator_8 (A6), GreedyLawyer_8 (A6), Gruunaga_8 (A6), Hammer_8 (A6), Helmet_8 (A6), Hexamo_8 (A6), Hoot_8 (A6), Indra_8 (A6), Isiphiwo_8 (A6), Jeffabunny_8 (A6), JewelBug_8 (A6), Jordennis_8 (A6), Kazan_8 (A6), Kipper29_8 (A6), Koko_8 (A6), Lilbunny_8 (A6), McFly_8 (A6), Neeharika16_8 (A6), Newrala_8 (A6), Pmask_8 (A6), Priamo_8 (A6), Rifter_8 (A6), Roksolana_8 (A6), SmellyB_8 (A6), SuperAwesome_8 (A6), SuperCallie99_8 (A6), ToneTone_7 (A6), Tucker_8 (A6), VohminGhazi_8 (A6), Wiks_8 (A6), WunderPhul_8 (A6), Yokurt_8 (A6), Zaka_8 (A6), Zulu_8 (A6),

Start 31:

- Found in 1 of 581 (0.2%) of genes in pham
- Manual Annotations of this start: 1 of 530
- Called 100.0% of time when present
- Phage (with cluster) where this start called: Evaa_37 (DR),

Start 32:

- Found in 14 of 581 (2.4%) of genes in pham
- Manual Annotations of this start: 8 of 530
- Called 78.6% of time when present
- Phage (with cluster) where this start called: Caraxes_31 (A2), Charm_32 (A9), Jeeves_32 (A14), Kinmap_33 (A21), Malec_33 (A2), MissWhite_32 (A2), Phayeta_34 (B3), Rahalelujah_31 (A9), Sunhee_31 (A14), Superchunk_31 (A2), Toaka_31 (A9),

Start 33:

- Found in 28 of 581 (4.8%) of genes in pham
- Manual Annotations of this start: 22 of 530
- Called 85.7% of time when present

- Phage (with cluster) where this start called: AN3_32 (A2), AN9_35 (A2), ANI8_35 (A2), Acolyte_32 (A2), Adzzy_33 (A2), C3_30 (A2), Che12_34 (A2), D29_32 (A2), D32_35 (A2), DBQu4n_35 (A2), Duplo_35 (A2), Jace_24 (singleton), Kerberos_35 (A2), L5_32 (A2), Naji_35 (A2), Ph8s_33 (A2), Pomar16_35 (A2), StarStuff_35 (A2), SwirlSquare_34 (A2), TipsytheTRex_31 (A2), Tomathan_35 (A2), Travvers_35 (A2), VA6_32 (A2), VC3_35 (A2),

Start 34:

- Found in 4 of 581 (0.7%) of genes in pham
- Manual Annotations of this start: 3 of 530
- Called 75.0% of time when present
- Phage (with cluster) where this start called: EagleEye_8 (A16), Lucyedi_8 (A16), PainterBoy_8 (A16),

Start 36:

- Found in 1 of 581 (0.2%) of genes in pham
- Manual Annotations of this start: 1 of 530
- Called 100.0% of time when present
- Phage (with cluster) where this start called: MyraDee_5 (A18),

Start 37:

- Found in 18 of 581 (3.1%) of genes in pham
- Manual Annotations of this start: 16 of 530
- Called 100.0% of time when present
- Phage (with cluster) where this start called: AnarQue_39 (DR), Anon_8 (A15), Battleship_9 (A15), BobRoss2024_36 (DR), CaiB_39 (DR), CloverMinnie_39 (DR), DekHockey33_8 (A15), KatherineG_8 (A15), MakoManhole_39 (DR), MinecraftSteve_9 (A15), MossRose_39 (DR), Oofda_8 (A15), Rosalind_8 (A15), ShayRa_9 (A15), Soups_8 (A15), Switzerland_8 (A15), Waits_8 (A15), Wooper_39 (DR),

Start 38:

- Found in 368 of 581 (63.3%) of genes in pham
- Manual Annotations of this start: 339 of 530
- Called 99.2% of time when present
- Phage (with cluster) where this start called: 40AC_9 (A17), ACFishhook_5 (A3), AbbysRanger_5 (A4), Abdiel_5 (A4), Achebe_5 (A4), Aglet_5 (A3), AgronaGT15_5 (A3), Airmid_5 (A5), Albee_5 (A4), Alberto7_5 (A4), Aliter_8 (A9), Alma_8 (A9), AnnaL29_8 (A2), Annyong_5 (A4), Anthony_5 (A20), Anubis_7 (A3), ArcherNM_8 (A2), Archetta_5 (A5), Arturo_4 (A4), Astro_5 (A8), AugsMagnumOpus_7 (A3), AvatarAhPeg_5 (A4), Avle17_5 (A4), B1_04 (A3), Baby16_5 (A4), BabyBack_8 (A2), BabyJohn_4 (A3), BabyRay_5 (A3), Backyardigan_5 (A4), Bactobuster_8 (A2), Badger_5 (A4), BangNhom_4 (A4), Bartimeaus_5 (A4), Beauxregard13_5 (A3), Beemo_8 (A9), BellusTerra_5 (A4), Benedict_5 (A5), BiancaTri92_8 (A2), Blackmoor_5 (A4), BlueBird_5 (A3), BobSwaget_9 (A2), BogosyJay_8 (A9), Bombshell_5 (A4), BreSam8_5 (A3), Broseidon_5 (A4), Bruiser_5 (A4), BubbleTrouble_5 (A4), Bugatti_4 (A3), Bumblebee11_5 (A4), Burger_4 (A4), BuzzBuzz_4 (A3), Bxz2_5 (A3), Caelakin_5 (A4), Camperdownii_5 (A4), Catalina_8 (A9), Caviar_5 (A3), CentreCat_5 (A4), Cerulean_5 (A4), Chadwick_5 (A5), ChampagnePapi_5 (A4), Changeling_8 (A2), Chaph_5 (A4), Chargerpower_33 (A), Chiqui_4 (A3), Chupacabra_5 (A10), Cici_5 (A4), Cindaradix_5 (A4), Cintron_5 (A4), Citius_5 (A4), Clarenza_5 (A4), Cocoaberry_5 (A4), Colbster_5 (A3), Colin_9 (A2), Commander_5 (A4), Connomayer_5 (A4), Conquerage_8 (A9), Conspiracy_5 (A5),

Cullens_5 (A3), DaHudson_5 (A3), Daishi_5 (A3), Danforth_4 (A8), Darrell_8 (A9), Datway_5 (A4), Deano_5 (A4), Dexdert_38 (DE3), Dhanush_5 (A4), Dieselweasel_5 (A3), DirtyDunning_5 (A4), Dixon_5 (A8), DreamTeam1_32 (A9), DropBear_5 (A3), Druantia_5 (A4), DustyMartin_6 (A10), EZMoney23_8 (A2), Eagle_4 (A4), Eaglepride_6 (A10), Eapen_5 (A4), Edison31_5 (A10), EdogawaKiddo_6 (A9), Eidsmoe_8 (A9), ElTiger69_5 (A5), Elephantoon_8 (A9), EmyBug_8 (A9), EpicPhail_5 (A3), Eris_5 (A4), Eros_5 (A4), Eurydice_5 (A4), Expelliarmus_4 (A8), ExplosioNervosa_8 (A9), Farber_5 (A3), Fayely_8 (A9), Fernando_5 (A3), Florean_5 (A4), Flux_5 (A4), ForGetIt_5 (A5), Fred313_5 (A3), Funston_5 (A4), Gadost_5 (A4), GaugeLDP_8 (A2), Gemma_5 (A3), GingkoMaracino_5 (A3), Giroux_4 (A3), Goose_5 (A10), Grif_5 (A3), Groundhog_4 (A8), Groupthink_6 (A3), Grum1_5 (A3), GtownJaz_5 (A3), HamSlice_4 (A4), Hanray_7 (A9), Happiness_5 (A4), HashRod_6 (A3), HaveUMetTed_6 (A3), Heathen_5 (A3), Heffalump_9 (A2), HelDan_5 (A3), Heliosoles_5 (A3), Hercules11_5 (A3), Holes_7 (A9), Holli_5 (A4), Hookmount_5 (A3), HortumSL17_8 (A9), Houdini22_5 (A4), ICleared_5 (A4), Iceman_5 (A4), Idleandcovert_4 (A3), Iracema64_5 (A4), IronMan_8 (A2), Isca_5 (A3), JF2_5 (A3), JF4_5 (A3), JHC117_5 (A3), Jaan_8 (A2), Jabiru_5 (A5), Jaykayelowell_5 (A4), JenCasNa_5 (A3), JeppNRM_6 (A3), JetBlade_5 (A4), Jiawan_7 (A9), Jobu08_5 (A3), JoongJeon_5 (A4), Journey13_30 (A2), KADY_6 (A3), KFPoly_5 (A4), Kachowdy_5 (A3), Kalb97_6 (A3), Kalnoky_6 (A3), Kalpine_8 (A2), Kampy_5 (A4), Katalie136_5 (A4), Kingmustik0402_5 (A4), Koreni_5 (A4), Kratark_5 (A4), Kremtemulon_5 (A4), Kristoff_6 (A10), Kye_5 (A4), LBBerry_5 (A3), LHTSCC_5 (A4), Lambert1_5 (A3), Landor_8 (A2), LappelDuVide_5 (A4), LarryKay_5 (A3), Lemur_5 (A4), LeoAvram_5 (A4), Leogania_8 (A2), Lev2_5 (A5), Lilith_5 (A3), Lilleskat_6 (A9), LittleB_5 (A4), LittleGuy_5 (A4), LochMonster_5 (A4), Lokk_9 (A2), LoneWolf_8 (A9), Lorenzo_5 (A4), Loser_8 (A2), Louie6_5 (A3), LugYA_7 (A3), Lunsford_5 (A4), MA5_5 (A3), MK4_5 (A3), MadMarie_5 (A3), Mainiac_5 (A3), Malinsilva_7 (A3), Maminiaina_8 (A9), Manu_6 (A3), MarQuardt_5 (A3), Marchesa_5 (A3), Margo_5 (A3), Marie_5 (A3), Marius_6 (A3), Maverick_5 (A4), Maxo_5 (A4), Mazhar510_5 (A4), Medusa_5 (A4), MeeZee_5 (A4), Melvin_5 (A4), Methuselah_5 (A3), Microwolf_5 (A3), Miko_9 (A2), Millski_5 (A4), Miramae_5 (A4), Misomonster_7 (A3), MoneyMay_5 (A3), Morpher26_5 (A4), Morrow_5 (A4), MuchMore_7 (A3), Mundrea_5 (A4), Myxus_8 (A9), NHagos_37 (DR), NearlyHeadless_5 (A8), Nebs_5 (A4), Nemo27_5 (A4), NicoleTera_8 (A2), Noella_5 (A3), Noelle_5 (A4), Norbert_4 (A3), NorthStar_5 (A4), NotAPhaseMom_5 (A4), NothingSpecial_7 (A2), Nyxis_5 (A4), OKCentral2016_5 (A10), OKaNui_5 (A4), Obama12_5 (A4), Ohfah_5 (A4), OlanP_5 (A3), Ollie_5 (A3), Onglai_7 (A9), P28Green_5 (A3), PGHhamlin_7 (A3), PackMan_8 (A9), Palestino_5 (A4), Panamaxus_5 (A3), Pawn_5 (A3), Peaches_5 (A4), Pembroke_5 (A3), Penny1_5 (A3), Perplexer_5 (A4), PeterPeter_5 (A4), PetiteSangsue_5 (A4), PetterN_5 (A5), Phacado_5 (A4), Phaded_8 (A2), Phaeder_8 (A9), Phantastic_5 (A3), Phelipe_5 (A4), Phighter1804_5 (A4), Phillis_5 (A8), PhishRPhriends_5 (A3), Phoebe_5 (A3), Phonnegut_8 (A9), Phontbonne_5 (A4), Phoxy_5 (A3), Phranny_6 (A3), PickleBack_5 (A5), Pioneer_8 (A9), Pipcraft_5 (A4), Pistachio_5 (A3), Pocahontas_5 (A3), Polymorphads_5 (A4), Popcicle_5 (A3), PotatoSplit_6 (A3), Priya_8 (A9), Pukovnik_8 (A2), Pumbaa_5 (A4), Puppy_5 (A3), PurpleHaze_5 (A3), Qobbit_8 (A9), QuinnKiro_4 (A3), Rachaly_9 (A2), Reba_6 (A3), Rebeuca_6 (A10), RedRock_8 (A2), Relief_5 (A4), ResDef_5 (A3), RhynO_5 (A10), Roary_5 (A8), Rockstar_5 (A3), Romney_5 (A4), Roosevelt_5 (A4), Rosa24_4 (A4), Rowdy_6 (A10), Ruin_5 (A4), Rummer_5 (A3), RyeScarlet_9 (A9), Sabertooth_5 (A4), Sabia_5 (A3), Sabinator_5 (A3), Sachima_6 (A9), Saintus_5 (A8), SaturnRing_4 (A3), Scamp_5 (A4), Scherzo_8 (A9), Scorpia_5 (A5), Scout_5 (A3), Shaka_5 (A4), Shapes_6 (A10), SheaKeira_32 (A9), SheldonCooper_5 (A4), Shygu2_5 (A4), Skipitt_5 (A4), Smeadley_5 (A8), Snickers_5 (A3), SoYo_5 (A3), SoilDragon_5 (A3),

Soshari_7 (A3), Sparxx_5 (A4), Spike509_5 (A3), Spino_5 (A4), Stagni_5 (A3), Stasia_5 (A4), Stephig9_5 (A8), Stink_5 (A4), TNguyen7_5 (A3), Taquarus_5 (A4), Taurus_5 (A3), Texage_4 (A3), Thanksgivukkah_5 (A4), Tiffany_5 (A3), Tiger_5 (A5), TinaFeyge_5 (A4), Tinybot_4 (A4), TiroTheta9_5 (A4), Todacoro_5 (A3), Topanga_5 (A10), Trixie_8 (A2), TroyPia_5 (A4), Tubs_8 (A9), Twister_5 (A10), TygerBlood_5 (A4), Ugenie5_6 (A9), Ulysses_5 (A4), UnionJack_5 (A5), Veracruz_4 (A3), Vix_5 (A3), WalterMcMickey_5 (A10), Wander_5 (A4), Watson_5 (A3), WeiHuaDA_9 (A2), Wilbur_5 (A4), Wile_5 (A4), Wizard007_5 (A4), Wooldri_7 (A3), Xena_5 (A4), YoSam321_5 (A4), Zetzy_5 (A3),

Start 39:

- Found in 3 of 581 (0.5%) of genes in pham
- Manual Annotations of this start: 2 of 530
- Called 100.0% of time when present
- Phage (with cluster) where this start called: GMA6_18 (DQ), Jeanie_17 (CW1), McGonagall_17 (CW1),

Start 40:

- Found in 4 of 581 (0.7%) of genes in pham
- Manual Annotations of this start: 2 of 530
- Called 75.0% of time when present
- Phage (with cluster) where this start called: SteamedHams_30 (CT), TPA2_47 (singleton), Yecey3_33 (A9),

Start 42:

- Found in 71 of 581 (12.2%) of genes in pham
- Manual Annotations of this start: 53 of 530
- Called 83.1% of time when present
- Phage (with cluster) where this start called: AikoCarson_27 (CT), Amok_27 (CT), AndPeggy_27 (CT), Aneem_8 (A11), Artorias_26 (DJ), Avazak_26 (DJ), Bachome_8 (A11), BillDoor_30 (CT), Bluefalcon_4 (A5), Bonamassa_5 (A5), Bowtie_8 (A11), Bud_8 (A11), Captrips_26 (DJ), Coog_5 (A5), Cuco_5 (A5), Discoknowium_5 (A5), Dublin_4 (A5), Ebony_8 (A11), Emalyn_27 (CT), Et2Brutus_7 (A11), Fibonacci_8 (A11), Flaverint_8 (A11), FortCran_26 (DJ), GTE2_24 (CT), George_4 (A5), Ghoulboy_5 (A5), Gilberta_8 (A11), HuhtaEnerson15_5 (A5), Hutc2_8 (A11), Insomnia_8 (A11), Jabith_8 (A11), Joselito_8 (A11), JulesRay_28 (DJ), Koduck_32 (A2), LittleCherry_5 (A5), Lucivia_8 (A11), MaCh_8 (A11), Mabel_8 (A11), MarysWell_4 (A5), Micasa_5 (A5), Midas2_5 (A5), Milcery_5 (A5), Mulciber_8 (A11), Munch_8 (A11), NoPickles_26 (DJ), Orange_8 (A11), Perkunas_28 (DJ), Petersenfast_7 (A11), Petito_27 (DJ), Phlei_5 (A13), Salz_8 (A11), Sham4_8 (A11), Snape_8 (A11), Swirley_5 (A5), Tarynearal_4 (A5), Theia_4 (A5), Timothy_8 (A11), TinyTimmy_8 (A11), Yarn_27 (CT),

Start 49:

- Found in 16 of 581 (2.8%) of genes in pham
- Manual Annotations of this start: 6 of 530
- Called 37.5% of time when present
- Phage (with cluster) where this start called: AgentM_5 (A5), Aragog_5 (A5), Jovo_5 (A5), Phlorence_5 (A5), SydNat_5 (A5), Zolita_4 (A5),

Start 56:

- Found in 7 of 581 (1.2%) of genes in pham
- Manual Annotations of this start: 4 of 530

- Called 100.0% of time when present
- Phage (with cluster) where this start called: Bradman_31 (A2), Jsquared_31 (A2), MajorMajor_31 (A2), Odin_31 (A2), Quokka_30 (A2), Serenity_31 (A2), Turuncu_49 (CR1),

Start 69:

- Found in 1 of 581 (0.2%) of genes in pham
- Manual Annotations of this start: 1 of 530
- Called 100.0% of time when present
- Phage (with cluster) where this start called: XianYue_32 (A2),

Start 71:

- Found in 2 of 581 (0.3%) of genes in pham
- Manual Annotations of this start: 2 of 530
- Called 100.0% of time when present
- Phage (with cluster) where this start called: Kimona_29 (A19), ScoobyDoobyDoo_130 (C2),

Start 97:

- Found in 1 of 581 (0.2%) of genes in pham
- Manual Annotations of this start: 1 of 530
- Called 100.0% of time when present
- Phage (with cluster) where this start called: Steamy_8 (A12),

Start 101:

- Found in 26 of 581 (4.5%) of genes in pham
- Manual Annotations of this start: 1 of 530
- Called 3.8% of time when present
- Phage (with cluster) where this start called: StepMih_5 (A3),

Start 125:

- Found in 1 of 581 (0.2%) of genes in pham
- No Manual Annotations of this start.
- Called 100.0% of time when present
- Phage (with cluster) where this start called: Jamemuya19_32 (DV),

Summary by clusters:

There are 36 clusters represented in this pham: singleton, DJ, DL, DZ, DV, DR, DQ, A15, A14, A17, A16, A11, A10, CU1, A12, CW1, A19, A18, A3, A2, A5, A4, A6, A9, DU1, A, A8, CR, C2, CT, A20, A21, CR1, A13, DE3, B3,

Info for manual annotations of cluster A:

- Start number 38 was manually annotated 1 time for cluster A.

Info for manual annotations of cluster A10:

- Start number 38 was manually annotated 11 times for cluster A10.

Info for manual annotations of cluster A11:

- Start number 42 was manually annotated 24 times for cluster A11.

Info for manual annotations of cluster A12:

- Start number 97 was manually annotated 1 time for cluster A12.

Info for manual annotations of cluster A14:

- Start number 32 was manually annotated 1 time for cluster A14.

Info for manual annotations of cluster A15:

- Start number 28 was manually annotated 9 times for cluster A15.
- Start number 37 was manually annotated 10 times for cluster A15.

Info for manual annotations of cluster A16:

- Start number 34 was manually annotated 3 times for cluster A16.

Info for manual annotations of cluster A18:

- Start number 36 was manually annotated 1 time for cluster A18.

Info for manual annotations of cluster A19:

- Start number 71 was manually annotated 1 time for cluster A19.

Info for manual annotations of cluster A2:

- Start number 32 was manually annotated 3 times for cluster A2.
- Start number 33 was manually annotated 21 times for cluster A2.
- Start number 38 was manually annotated 25 times for cluster A2.
- Start number 56 was manually annotated 3 times for cluster A2.
- Start number 69 was manually annotated 1 time for cluster A2.

Info for manual annotations of cluster A20:

- Start number 38 was manually annotated 1 time for cluster A20.

Info for manual annotations of cluster A3:

- Start number 38 was manually annotated 110 times for cluster A3.
- Start number 101 was manually annotated 1 time for cluster A3.

Info for manual annotations of cluster A4:

- Start number 38 was manually annotated 137 times for cluster A4.

Info for manual annotations of cluster A5:

- Start number 38 was manually annotated 14 times for cluster A5.
- Start number 42 was manually annotated 17 times for cluster A5.
- Start number 49 was manually annotated 6 times for cluster A5.

Info for manual annotations of cluster A6:

- Start number 30 was manually annotated 42 times for cluster A6.

Info for manual annotations of cluster A8:

- Start number 38 was manually annotated 11 times for cluster A8.

Info for manual annotations of cluster A9:

- Start number 32 was manually annotated 3 times for cluster A9.
- Start number 38 was manually annotated 27 times for cluster A9.
- Start number 40 was manually annotated 1 time for cluster A9.

Info for manual annotations of cluster B3:

- Start number 32 was manually annotated 1 time for cluster B3.

Info for manual annotations of cluster C2:

- Start number 71 was manually annotated 1 time for cluster C2.

Info for manual annotations of cluster CR:

- Start number 28 was manually annotated 5 times for cluster CR.

Info for manual annotations of cluster CR1:

- Start number 56 was manually annotated 1 time for cluster CR1.

Info for manual annotations of cluster CT:

- Start number 40 was manually annotated 1 time for cluster CT.
- Start number 42 was manually annotated 6 times for cluster CT.

Info for manual annotations of cluster CU1:

- Start number 29 was manually annotated 2 times for cluster CU1.

Info for manual annotations of cluster CW1:

- Start number 39 was manually annotated 2 times for cluster CW1.

Info for manual annotations of cluster DE3:

- Start number 38 was manually annotated 1 time for cluster DE3.

Info for manual annotations of cluster DJ:

- Start number 42 was manually annotated 6 times for cluster DJ.

Info for manual annotations of cluster DL:

- Start number 23 was manually annotated 2 times for cluster DL.

Info for manual annotations of cluster DR:

- Start number 31 was manually annotated 1 time for cluster DR.
- Start number 37 was manually annotated 6 times for cluster DR.
- Start number 38 was manually annotated 1 time for cluster DR.

Info for manual annotations of cluster DU1:

- Start number 23 was manually annotated 4 times for cluster DU1.

Info for manual annotations of cluster DZ:

- Start number 23 was manually annotated 3 times for cluster DZ.

Gene Information:

Gene: 40AC_9 Start: 5287, Stop: 5973, Start Num: 38

Candidate Starts for 40AC_9:

(Start: 32 @5275 has 8 MA's), (Start: 38 @5287 has 339 MA's), (103, 5428), (126, 5521), (131, 5560), (147, 5611),

Gene: ACFishhook_5 Start: 2969, Stop: 3619, Start Num: 38
Candidate Starts for ACFishhook_5:
(Start: 38 @2969 has 339 MA's), (89, 3077), (115, 3152), (159, 3344),

Gene: AN3_32 Start: 24571, Stop: 25236, Start Num: 33
Candidate Starts for AN3_32:
(Start: 33 @24571 has 22 MA's), (62, 24634), (95, 24694), (100, 24703), (Start: 101 @24706 has 1 MA's), (204, 25084), (223, 25174), (232, 25216),

Gene: AN9_35 Start: 24556, Stop: 25221, Start Num: 33
Candidate Starts for AN9_35:
(Start: 33 @24556 has 22 MA's), (62, 24619), (95, 24679), (100, 24688), (Start: 101 @24691 has 1 MA's), (204, 25069), (223, 25159), (232, 25201),

Gene: ANI8_35 Start: 24556, Stop: 25221, Start Num: 33
Candidate Starts for ANI8_35:
(Start: 33 @24556 has 22 MA's), (62, 24619), (95, 24679), (100, 24688), (Start: 101 @24691 has 1 MA's), (204, 25069), (223, 25159), (232, 25201),

Gene: AbbysRanger_5 Start: 2733, Stop: 3395, Start Num: 38
Candidate Starts for AbbysRanger_5:
(Start: 38 @2733 has 339 MA's), (88, 2838), (176, 3153),

Gene: Abdiel_5 Start: 2722, Stop: 3384, Start Num: 38
Candidate Starts for Abdiel_5:
(Start: 38 @2722 has 339 MA's), (88, 2827), (175, 3139), (176, 3142), (183, 3169), (233, 3367),

Gene: Achebe_5 Start: 2733, Stop: 3395, Start Num: 38
Candidate Starts for Achebe_5:
(Start: 38 @2733 has 339 MA's), (88, 2838), (176, 3153),

Gene: Acolyte_32 Start: 25057, Stop: 25704, Start Num: 33
Candidate Starts for Acolyte_32:
(Start: 33 @25057 has 22 MA's), (113, 25237), (119, 25267), (120, 25273), (139, 25357), (149, 25384), (169, 25471),

Gene: Adzzy_33 Start: 23085, Stop: 23747, Start Num: 33
Candidate Starts for Adzzy_33:
(Start: 33 @23085 has 22 MA's), (Start: 42 @23100 has 53 MA's), (89, 23199), (113, 23268), (143, 23397), (169, 23505), (214, 23631),

Gene: AgentM_5 Start: 3698, Stop: 4345, Start Num: 49
Candidate Starts for AgentM_5:
(Start: 42 @3680 has 53 MA's), (Start: 49 @3698 has 6 MA's), (66, 3746), (79, 3767), (115, 3863),

Gene: Aglet_5 Start: 2899, Stop: 3558, Start Num: 38
Candidate Starts for Aglet_5:
(Start: 38 @2899 has 339 MA's), (Start: 101 @3028 has 1 MA's), (115, 3082), (121, 3115), (135, 3184), (232, 3538),

Gene: AgronaGT15_5 Start: 2540, Stop: 3172, Start Num: 38
Candidate Starts for AgronaGT15_5:
(Start: 38 @2540 has 339 MA's), (115, 2723), (116, 2726), (121, 2753),

Gene: AikoCarson_27 Start: 22132, Stop: 22770, Start Num: 42

Candidate Starts for AikoCarson_27:

(Start: 42 @22132 has 53 MA's), (45, 22141), (61, 22183), (70, 22201), (90, 22237), (99, 22249), (111, 22291), (113, 22297), (135, 22408), (162, 22513), (210, 22627),

Gene: Airmid_5 Start: 3407, Stop: 4048, Start Num: 38

Candidate Starts for Airmid_5:

(Start: 38 @3407 has 339 MA's), (52, 3443), (62, 3464), (77, 3491), (124, 3623), (142, 3704), (147, 3719), (232, 4025),

Gene: Albee_5 Start: 2722, Stop: 3384, Start Num: 38

Candidate Starts for Albee_5:

(Start: 38 @2722 has 339 MA's), (88, 2827), (175, 3139), (176, 3142), (233, 3367),

Gene: Alberto7_5 Start: 2723, Stop: 3394, Start Num: 38

Candidate Starts for Alberto7_5:

(Start: 38 @2723 has 339 MA's), (155, 3083), (237, 3389),

Gene: Aleemily_25 Start: 23347, Stop: 24057, Start Num: 23

Candidate Starts for Aleemily_25:

(3, 22930), (10, 23185), (Start: 23 @23347 has 10 MA's), (25, 23362), (Start: 29 @23377 has 2 MA's), (127, 23629), (183, 23821),

Gene: Aliter_8 Start: 5167, Stop: 5796, Start Num: 38

Candidate Starts for Aliter_8:

(Start: 38 @5167 has 339 MA's), (54, 5206), (115, 5347), (121, 5377), (126, 5392),

Gene: Alma_8 Start: 5225, Stop: 5875, Start Num: 38

Candidate Starts for Alma_8:

(Start: 38 @5225 has 339 MA's), (114, 5402), (121, 5435), (175, 5639), (205, 5735),

Gene: Amok_27 Start: 22092, Stop: 22730, Start Num: 42

Candidate Starts for Amok_27:

(Start: 42 @22092 has 53 MA's), (51, 22116), (61, 22143), (70, 22161), (90, 22197), (99, 22209), (111, 22251), (113, 22257), (135, 22368), (162, 22473), (210, 22587),

Gene: AnarQue_39 Start: 33943, Stop: 34590, Start Num: 37

Candidate Starts for AnarQue_39:

(Start: 37 @33943 has 16 MA's), (61, 34000), (77, 34030), (79, 34033), (89, 34051), (116, 34123), (135, 34225), (146, 34255), (147, 34258), (181, 34375), (204, 34435), (234, 34573),

Gene: Anaysia_8 Start: 4403, Stop: 5071, Start Num: 28

Candidate Starts for Anaysia_8:

(Start: 28 @4403 has 14 MA's), (127, 4643), (144, 4709), (183, 4835),

Gene: AndPeggy_27 Start: 22538, Stop: 23176, Start Num: 42

Candidate Starts for AndPeggy_27:

(Start: 42 @22538 has 53 MA's), (45, 22547), (61, 22589), (70, 22607), (90, 22643), (113, 22703), (162, 22919), (210, 23033),

Gene: Aneem_8 Start: 5410, Stop: 6072, Start Num: 42

Candidate Starts for Aneem_8:

(Start: 42 @5410 has 53 MA's), (66, 5476), (104, 5551), (128, 5662), (200, 5902),

Gene: AnnaL29_8 Start: 5238, Stop: 5912, Start Num: 38

Candidate Starts for AnnaL29_8:

(Start: 38 @5238 has 339 MA's), (113, 5415), (148, 5559), (158, 5613), (185, 5709),

Gene: Annyong_5 Start: 2723, Stop: 3385, Start Num: 38

Candidate Starts for Annyong_5:

(Start: 38 @2723 has 339 MA's), (88, 2828), (175, 3140), (176, 3143), (233, 3368),

Gene: Anon_8 Start: 4936, Stop: 5598, Start Num: 37

Candidate Starts for Anon_8:

(Start: 37 @4936 has 16 MA's), (67, 4987), (98, 5041), (149, 5242), (165, 5317),

Gene: Anthony_5 Start: 2845, Stop: 3510, Start Num: 38

Candidate Starts for Anthony_5:

(Start: 38 @2845 has 339 MA's), (50, 2875), (89, 2956), (132, 3124), (144, 3154), (197, 3349),

Gene: Anubis_7 Start: 2809, Stop: 3468, Start Num: 38

Candidate Starts for Anubis_7:

(Start: 38 @2809 has 339 MA's), (79, 2896), (Start: 101 @2938 has 1 MA's), (115, 2992), (131, 3076), (135, 3094),

Gene: Apiary_24 Start: 12634, Stop: 13311, Start Num: 28

Candidate Starts for Apiary_24:

(Start: 28 @12634 has 14 MA's), (60, 12712), (77, 12745), (90, 12769), (94, 12778), (108, 12829), (111, 12838), (144, 12964), (177, 13072), (233, 13288),

Gene: Aragog_5 Start: 3728, Stop: 4375, Start Num: 49

Candidate Starts for Aragog_5:

(Start: 42 @3710 has 53 MA's), (Start: 49 @3728 has 6 MA's), (66, 3776), (79, 3797), (115, 3893),

Gene: ArcherNM_8 Start: 5248, Stop: 5922, Start Num: 38

Candidate Starts for ArcherNM_8:

(Start: 38 @5248 has 339 MA's), (148, 5569), (158, 5623), (185, 5719), (211, 5803),

Gene: Archetta_5 Start: 3446, Stop: 4087, Start Num: 38

Candidate Starts for Archetta_5:

(Start: 38 @3446 has 339 MA's), (91, 3554), (111, 3614), (124, 3662), (126, 3668), (131, 3707), (145, 3752), (147, 3758),

Gene: Artemis2UCLA_8 Start: 4544, Stop: 5242, Start Num: 30

Candidate Starts for Artemis2UCLA_8:

(Start: 30 @4544 has 42 MA's), (190, 5048), (235, 5234),

Gene: Artorias_26 Start: 18647, Stop: 19297, Start Num: 42

Candidate Starts for Artorias_26:

(Start: 42 @18647 has 53 MA's), (55, 18683), (126, 18869), (161, 19031), (164, 19040), (169, 19049), (207, 19148), (216, 19178),

Gene: Arturo_4 Start: 2722, Stop: 3387, Start Num: 38

Candidate Starts for Arturo_4:

(Start: 38 @2722 has 339 MA's), (131, 2989), (149, 3046), (171, 3133), (194, 3202), (233, 3370),

Gene: Astro_5 Start: 3347, Stop: 4006, Start Num: 38

Candidate Starts for Astro_5:

(Start: 38 @3347 has 339 MA's), (64, 3404), (86, 3446), (173, 3764), (204, 3863),

Gene: AugsMagnumOpus_7 Start: 2890, Stop: 3549, Start Num: 38

Candidate Starts for AugsMagnumOpus_7:

(Start: 38 @2890 has 339 MA's), (115, 3073), (121, 3106), (135, 3175), (232, 3529),

Gene: AvatarAhPeg_5 Start: 2718, Stop: 3383, Start Num: 38

Candidate Starts for AvatarAhPeg_5:

(Start: 38 @2718 has 339 MA's), (75, 2799), (131, 2985), (161, 3111),

Gene: Avazak_26 Start: 18654, Stop: 19304, Start Num: 42

Candidate Starts for Avazak_26:

(Start: 42 @18654 has 53 MA's), (55, 18690), (126, 18876), (161, 19038), (164, 19047), (169, 19056), (207, 19155), (216, 19185),

Gene: Avle17_5 Start: 2722, Stop: 3384, Start Num: 38

Candidate Starts for Avle17_5:

(Start: 38 @2722 has 339 MA's), (88, 2827), (175, 3139), (176, 3142), (233, 3367),

Gene: B1_04 Start: 2514, Stop: 3149, Start Num: 38

Candidate Starts for B1_04:

(Start: 38 @2514 has 339 MA's), (115, 2697), (121, 2727), (137, 2805), (149, 2838),

Gene: BABullseye_8 Start: 4661, Stop: 5359, Start Num: 30

Candidate Starts for BABullseye_8:

(Start: 30 @4661 has 42 MA's), (190, 5165), (235, 5351),

Gene: Baby16_5 Start: 2731, Stop: 3393, Start Num: 38

Candidate Starts for Baby16_5:

(Start: 38 @2731 has 339 MA's), (88, 2836), (175, 3148), (176, 3151), (233, 3376),

Gene: BabyBack_8 Start: 5112, Stop: 5783, Start Num: 38

Candidate Starts for BabyBack_8:

(Start: 38 @5112 has 339 MA's), (75, 5193), (113, 5289), (149, 5436),

Gene: BabyJohn_4 Start: 2767, Stop: 3399, Start Num: 38

Candidate Starts for BabyJohn_4:

(Start: 38 @2767 has 339 MA's), (115, 2950), (121, 2980),

Gene: BabyRay_5 Start: 2781, Stop: 3440, Start Num: 38

Candidate Starts for BabyRay_5:

(Start: 38 @2781 has 339 MA's), (48, 2802), (78, 2868), (113, 2958), (120, 2994), (153, 3138), (186, 3240), (220, 3378),

Gene: Bachome_8 Start: 5407, Stop: 6069, Start Num: 42

Candidate Starts for Bachome_8:

(Start: 42 @5407 has 53 MA's), (66, 5473), (104, 5548), (128, 5659), (200, 5899),

Gene: Backyardigan_5 Start: 2733, Stop: 3395, Start Num: 38

Candidate Starts for Backyardigan_5:

(Start: 38 @2733 has 339 MA's), (88, 2838), (176, 3153),

Gene: Bactobuster_8 Start: 5068, Stop: 5730, Start Num: 38

Candidate Starts for Bactobuster_8:

(Start: 38 @5068 has 339 MA's), (75, 5149), (88, 5173), (131, 5329), (161, 5455), (176, 5482),

Gene: Badger_5 Start: 2734, Stop: 3396, Start Num: 38

Candidate Starts for Badger_5:

(Start: 38 @2734 has 339 MA's), (88, 2839), (176, 3154),

Gene: BangNhom_4 Start: 2722, Stop: 3387, Start Num: 38

Candidate Starts for BangNhom_4:

(Start: 38 @2722 has 339 MA's), (113, 2899), (131, 2989), (161, 3115),

Gene: Banquo_3 Start: 665, Stop: 1360, Start Num: 29

Candidate Starts for Banquo_3:

(9, 434), (13, 509), (14, 515), (17, 590), (Start: 29 @665 has 2 MA's), (35, 677), (48, 704), (66, 755), (96, 812), (108, 857), (111, 866), (138, 986), (143, 998), (147, 1010), (204, 1193),

Gene: Bartimeaus_5 Start: 2722, Stop: 3384, Start Num: 38

Candidate Starts for Bartimeaus_5:

(Start: 38 @2722 has 339 MA's), (88, 2827), (175, 3139), (176, 3142), (233, 3367),

Gene: Battleship_9 Start: 4550, Stop: 5224, Start Num: 37

Candidate Starts for Battleship_9:

(Start: 37 @4550 has 16 MA's), (77, 4631), (98, 4667), (130, 4814), (146, 4862),

Gene: Beauxregard13_5 Start: 2629, Stop: 3264, Start Num: 38

Candidate Starts for Beauxregard13_5:

(Start: 38 @2629 has 339 MA's), (121, 2842),

Gene: Beemo_8 Start: 5228, Stop: 5899, Start Num: 38

Candidate Starts for Beemo_8:

(Start: 38 @5228 has 339 MA's), (113, 5402), (121, 5438), (176, 5651), (218, 5822),

Gene: BellusTerra_5 Start: 2722, Stop: 3384, Start Num: 38

Candidate Starts for BellusTerra_5:

(Start: 38 @2722 has 339 MA's), (88, 2827), (175, 3139), (176, 3142), (233, 3367),

Gene: Benedict_5 Start: 3409, Stop: 4050, Start Num: 38

Candidate Starts for Benedict_5:

(Start: 38 @3409 has 339 MA's), (52, 3445), (62, 3466), (77, 3493), (124, 3625), (142, 3706), (147, 3721), (232, 4027),

Gene: BiancaTri92_8 Start: 5044, Stop: 5694, Start Num: 38

Candidate Starts for BiancaTri92_8:

(Start: 38 @5044 has 339 MA's), (70, 5116), (113, 5221), (124, 5269), (207, 5560),

Gene: BillDoor_30 Start: 22485, Stop: 23123, Start Num: 42

Candidate Starts for BillDoor_30:

(Start: 42 @22485 has 53 MA's), (45, 22494), (61, 22536), (70, 22554), (90, 22590), (113, 22650), (162, 22866), (210, 22980),

Gene: Blackmoor_5 Start: 2722, Stop: 3384, Start Num: 38

Candidate Starts for Blackmoor_5:

(Start: 38 @2722 has 339 MA's), (88, 2827), (175, 3139), (176, 3142), (233, 3367),

Gene: Blinn1_8 Start: 4661, Stop: 5359, Start Num: 30

Candidate Starts for Blinn1_8:

(Start: 30 @4661 has 42 MA's), (166, 5102), (190, 5165), (235, 5351),

Gene: Blue7_8 Start: 4655, Stop: 5353, Start Num: 30

Candidate Starts for Blue7_8:

(Start: 30 @4655 has 42 MA's), (190, 5159), (235, 5345),

Gene: BlueBird_5 Start: 2830, Stop: 3480, Start Num: 38

Candidate Starts for BlueBird_5:

(Start: 38 @2830 has 339 MA's), (131, 3097), (232, 3460),

Gene: Bluefalcon_4 Start: 3677, Stop: 4342, Start Num: 42

Candidate Starts for Bluefalcon_4:

(Start: 42 @3677 has 53 MA's), (Start: 49 @3695 has 6 MA's), (66, 3743), (79, 3764), (115, 3860),

Gene: BobRoss2024_36 Start: 32051, Stop: 32710, Start Num: 37

Candidate Starts for BobRoss2024_36:

(Start: 37 @32051 has 16 MA's), (61, 32108), (93, 32168), (103, 32189), (106, 32195), (149, 32372), (169, 32456), (187, 32498), (208, 32567), (211, 32576), (225, 32648),

Gene: BobSwaget_9 Start: 5384, Stop: 6061, Start Num: 38

Candidate Starts for BobSwaget_9:

(Start: 38 @5384 has 339 MA's), (114, 5564), (129, 5645), (133, 5660), (149, 5708), (170, 5798), (180, 5825),

Gene: BogosyJay_8 Start: 5009, Stop: 5659, Start Num: 38

Candidate Starts for BogosyJay_8:

(Start: 38 @5009 has 339 MA's), (114, 5186), (121, 5219), (175, 5423), (205, 5519),

Gene: Bombshell_5 Start: 2722, Stop: 3384, Start Num: 38

Candidate Starts for Bombshell_5:

(Start: 38 @2722 has 339 MA's), (88, 2827), (175, 3139), (176, 3142), (233, 3367),

Gene: Bonamassa_5 Start: 3603, Stop: 4265, Start Num: 42

Candidate Starts for Bonamassa_5:

(Start: 42 @3603 has 53 MA's), (46, 3615), (55, 3639), (60, 3654), (66, 3669), (104, 3744), (132, 3873), (200, 4095),

Gene: Boohoo_8 Start: 4403, Stop: 5071, Start Num: 28

Candidate Starts for Boohoo_8:

(Start: 28 @4403 has 14 MA's), (127, 4643), (144, 4709), (183, 4835),

Gene: Bowtie_8 Start: 5410, Stop: 6072, Start Num: 42

Candidate Starts for Bowtie_8:

(Start: 42 @5410 has 53 MA's), (66, 5476), (104, 5551), (128, 5662), (200, 5902),

Gene: Bradman_31 Start: 23397, Stop: 23996, Start Num: 56

Candidate Starts for Bradman_31:

(Start: 56 @23397 has 4 MA's), (72, 23430), (89, 23448), (113, 23517), (129, 23601), (139, 23637), (169, 23754), (220, 23925),

Gene: Braxoaddie_24 Start: 12622, Stop: 13299, Start Num: 28

Candidate Starts for Braxoaddie_24:

(Start: 28 @12622 has 14 MA's), (60, 12700), (77, 12733), (90, 12757), (94, 12766), (108, 12817), (111, 12826), (144, 12952), (177, 13060), (233, 13276),

Gene: BreSam8_5 Start: 2891, Stop: 3550, Start Num: 38

Candidate Starts for BreSam8_5:

(Start: 38 @2891 has 339 MA's), (Start: 101 @3020 has 1 MA's), (115, 3074), (121, 3107), (135, 3176), (232, 3530),

Gene: Broseidon_5 Start: 2722, Stop: 3384, Start Num: 38

Candidate Starts for Broseidon_5:

(Start: 38 @2722 has 339 MA's), (88, 2827), (175, 3139), (176, 3142), (183, 3169), (233, 3367),

Gene: Bruiser_5 Start: 2722, Stop: 3384, Start Num: 38

Candidate Starts for Bruiser_5:

(Start: 38 @2722 has 339 MA's), (88, 2827), (175, 3139), (176, 3142), (233, 3367),

Gene: BubbleTrouble_5 Start: 2722, Stop: 3384, Start Num: 38

Candidate Starts for BubbleTrouble_5:

(Start: 38 @2722 has 339 MA's), (88, 2827), (175, 3139), (176, 3142), (233, 3367),

Gene: Bud_8 Start: 5416, Stop: 6078, Start Num: 42

Candidate Starts for Bud_8:

(Start: 42 @5416 has 53 MA's), (66, 5482), (104, 5557), (200, 5908), (210, 5953),

Gene: Bugatti_4 Start: 2830, Stop: 3480, Start Num: 38

Candidate Starts for Bugatti_4:

(Start: 38 @2830 has 339 MA's), (131, 3097), (232, 3460),

Gene: Bumblebee11_5 Start: 2733, Stop: 3395, Start Num: 38

Candidate Starts for Bumblebee11_5:

(Start: 38 @2733 has 339 MA's), (88, 2838), (176, 3153),

Gene: Burger_4 Start: 2722, Stop: 3384, Start Num: 38

Candidate Starts for Burger_4:

(Start: 38 @2722 has 339 MA's), (88, 2827), (175, 3139), (176, 3142), (233, 3367),

Gene: BuzzBuzz_4 Start: 2720, Stop: 3352, Start Num: 38

Candidate Starts for BuzzBuzz_4:

(Start: 38 @2720 has 339 MA's), (115, 2903), (116, 2906), (121, 2933),

Gene: Bxz2_5 Start: 2730, Stop: 3362, Start Num: 38

Candidate Starts for Bxz2_5:

(Start: 38 @2730 has 339 MA's), (115, 2913), (116, 2916), (121, 2943),

Gene: C3_30 Start: 24556, Stop: 25221, Start Num: 33

Candidate Starts for C3_30:

(Start: 33 @24556 has 22 MA's), (62, 24619), (95, 24679), (100, 24688), (Start: 101 @24691 has 1 MA's), (204, 25069), (223, 25159), (232, 25201),

Gene: Caelakin_5 Start: 2722, Stop: 3384, Start Num: 38

Candidate Starts for Caelakin_5:

(Start: 38 @2722 has 339 MA's), (88, 2827), (175, 3139), (176, 3142), (233, 3367),

Gene: Cafasso_26 Start: 23921, Stop: 24631, Start Num: 23

Candidate Starts for Cafasso_26:

(3, 23504), (10, 23759), (Start: 23 @23921 has 10 MA's), (25, 23936), (Start: 29 @23951 has 2 MA's), (127, 24203), (183, 24395),

Gene: CaiB_39 Start: 33929, Stop: 34576, Start Num: 37

Candidate Starts for CaiB_39:

(Start: 37 @33929 has 16 MA's), (61, 33986), (77, 34016), (79, 34019), (89, 34037), (116, 34109), (135, 34211), (146, 34241), (147, 34244), (204, 34421), (234, 34559),

Gene: Camperdownii_5 Start: 2727, Stop: 3401, Start Num: 38

Candidate Starts for Camperdownii_5:

(Start: 38 @2727 has 339 MA's), (59, 2778), (121, 2940), (133, 3003),

Gene: Candra_8 Start: 4694, Stop: 5392, Start Num: 30

Candidate Starts for Candra_8:

(Start: 30 @4694 has 42 MA's), (190, 5198), (235, 5384),

Gene: Captrips_26 Start: 18675, Stop: 19322, Start Num: 42

Candidate Starts for Captrips_26:

(Start: 42 @18675 has 53 MA's), (66, 18738), (124, 18888), (155, 19026), (192, 19134), (215, 19200),

Gene: Caraxes_31 Start: 22947, Stop: 23612, Start Num: 32

Candidate Starts for Caraxes_31:

(Start: 32 @22947 has 8 MA's), (Start: 33 @22950 has 22 MA's), (89, 23061), (113, 23130), (115, 23136), (120, 23166), (139, 23250), (175, 23373), (200, 23445), (227, 23562),

Gene: Catalina_8 Start: 5240, Stop: 5869, Start Num: 38

Candidate Starts for Catalina_8:

(Start: 38 @5240 has 339 MA's), (54, 5279), (115, 5420), (121, 5450), (126, 5465),

Gene: Caviar_5 Start: 2764, Stop: 3423, Start Num: 38

Candidate Starts for Caviar_5:

(Start: 38 @2764 has 339 MA's), (48, 2785), (78, 2851), (113, 2941), (120, 2977), (186, 3223), (212, 3310),

Gene: CentreCat_5 Start: 2723, Stop: 3385, Start Num: 38

Candidate Starts for CentreCat_5:

(Start: 38 @2723 has 339 MA's), (88, 2828), (175, 3140), (176, 3143), (233, 3368),

Gene: Cerulean_5 Start: 2723, Stop: 3388, Start Num: 38

Candidate Starts for Cerulean_5:

(Start: 38 @2723 has 339 MA's), (113, 2900), (131, 2990), (161, 3116),

Gene: Chadwick_5 Start: 3406, Stop: 4047, Start Num: 38

Candidate Starts for Chadwick_5:

(Start: 38 @3406 has 339 MA's), (52, 3442), (62, 3463), (77, 3490), (124, 3622), (142, 3703), (147, 3718), (232, 4024),

Gene: ChampagnePapi_5 Start: 2722, Stop: 3387, Start Num: 38
Candidate Starts for ChampagnePapi_5:
(Start: 38 @2722 has 339 MA's), (113, 2899), (131, 2989), (161, 3115),

Gene: Changeling_8 Start: 5275, Stop: 5919, Start Num: 38
Candidate Starts for Changeling_8:
(Start: 38 @5275 has 339 MA's), (59, 5326), (114, 5455), (115, 5458), (126, 5506), (144, 5584), (232, 5899),

Gene: Chaph_5 Start: 2731, Stop: 3393, Start Num: 38
Candidate Starts for Chaph_5:
(Start: 38 @2731 has 339 MA's), (88, 2836), (175, 3148), (176, 3151), (233, 3376),

Gene: Chargerpower_33 Start: 23787, Stop: 24434, Start Num: 38
Candidate Starts for Chargerpower_33:
(Start: 38 @23787 has 339 MA's), (Start: 42 @23793 has 53 MA's), (75, 23871), (84, 23886), (89, 23898), (113, 23967), (115, 23973), (121, 24006), (149, 24114), (232, 24414),

Gene: Charm_32 Start: 24071, Stop: 24721, Start Num: 32
Candidate Starts for Charm_32:
(4, 23615), (7, 23804), (20, 23999), (Start: 32 @24071 has 8 MA's), (50, 24113), (79, 24164), (113, 24254), (116, 24263), (130, 24341), (148, 24398), (169, 24488),

Gene: Chartreuse_8 Start: 4608, Stop: 5306, Start Num: 30
Candidate Starts for Chartreuse_8:
(Start: 30 @4608 has 42 MA's), (190, 5112), (235, 5298),

Gene: Che12_34 Start: 23324, Stop: 23983, Start Num: 33
Candidate Starts for Che12_34:
(Start: 33 @23324 has 22 MA's), (Start: 42 @23339 has 53 MA's), (89, 23438), (139, 23624), (143, 23633), (169, 23741),

Gene: Chiqui_4 Start: 2767, Stop: 3399, Start Num: 38
Candidate Starts for Chiqui_4:
(Start: 38 @2767 has 339 MA's), (115, 2950), (121, 2980),

Gene: Chupacabra_5 Start: 2816, Stop: 3463, Start Num: 38
Candidate Starts for Chupacabra_5:
(Start: 38 @2816 has 339 MA's), (79, 2903), (113, 2993), (144, 3125), (156, 3176), (157, 3179), (167, 3215), (233, 3449),

Gene: Cici_5 Start: 2733, Stop: 3395, Start Num: 38
Candidate Starts for Cici_5:
(Start: 38 @2733 has 339 MA's), (88, 2838), (176, 3153),

Gene: Cindaradix_5 Start: 2722, Stop: 3387, Start Num: 38
Candidate Starts for Cindaradix_5:
(Start: 38 @2722 has 339 MA's), (75, 2803), (155, 3076),

Gene: Cintron_5 Start: 2722, Stop: 3387, Start Num: 38
Candidate Starts for Cintron_5:
(Start: 38 @2722 has 339 MA's), (75, 2803), (79, 2809), (131, 2989), (161, 3115),

Gene: Citius_5 Start: 2722, Stop: 3384, Start Num: 38

Candidate Starts for Citius_5:

(Start: 38 @2722 has 339 MA's), (88, 2827), (175, 3139), (176, 3142), (233, 3367),

Gene: Clarenza_5 Start: 2722, Stop: 3384, Start Num: 38

Candidate Starts for Clarenza_5:

(Start: 38 @2722 has 339 MA's), (88, 2827), (175, 3139), (176, 3142), (233, 3367),

Gene: CloudWang3_8 Start: 4661, Stop: 5359, Start Num: 30

Candidate Starts for CloudWang3_8:

(Start: 30 @4661 has 42 MA's), (190, 5165), (235, 5351),

Gene: CloverMinnie_39 Start: 33869, Stop: 34516, Start Num: 37

Candidate Starts for CloverMinnie_39:

(Start: 37 @33869 has 16 MA's), (61, 33926), (77, 33956), (79, 33959), (89, 33977), (135, 34151), (146, 34181), (147, 34184), (151, 34196), (204, 34361), (234, 34499),

Gene: Cocoaberry_5 Start: 2722, Stop: 3384, Start Num: 38

Candidate Starts for Cocoaberry_5:

(Start: 38 @2722 has 339 MA's), (88, 2827), (175, 3139), (176, 3142), (233, 3367),

Gene: CoffeeBean_24 Start: 12577, Stop: 13254, Start Num: 28

Candidate Starts for CoffeeBean_24:

(Start: 28 @12577 has 14 MA's), (60, 12655), (77, 12688), (90, 12712), (94, 12721), (108, 12772), (111, 12781), (144, 12907), (177, 13015), (233, 13231),

Gene: Colbster_5 Start: 2629, Stop: 3264, Start Num: 38

Candidate Starts for Colbster_5:

(Start: 38 @2629 has 339 MA's), (121, 2842),

Gene: Coldpizza_40 Start: 36634, Stop: 37356, Start Num: 22

Candidate Starts for Coldpizza_40:

(22, 36634), (57, 36724), (77, 36754), (105, 36814), (145, 36985), (162, 37063), (203, 37189), (229, 37309),

Gene: Colin_9 Start: 5247, Stop: 5933, Start Num: 38

Candidate Starts for Colin_9:

(Start: 38 @5247 has 339 MA's), (114, 5421), (151, 5571), (193, 5742), (220, 5862),

Gene: Commander_5 Start: 2722, Stop: 3384, Start Num: 38

Candidate Starts for Commander_5:

(Start: 38 @2722 has 339 MA's), (88, 2827), (175, 3139), (176, 3142), (233, 3367),

Gene: Connomayer_5 Start: 2722, Stop: 3384, Start Num: 38

Candidate Starts for Connomayer_5:

(Start: 38 @2722 has 339 MA's), (88, 2827), (175, 3139), (176, 3142), (233, 3367),

Gene: Conquerage_8 Start: 5224, Stop: 5895, Start Num: 38

Candidate Starts for Conquerage_8:

(Start: 38 @5224 has 339 MA's), (121, 5434), (135, 5506), (176, 5647), (207, 5740), (218, 5818), (232, 5872),

Gene: Conspiracy_5 Start: 3447, Stop: 4088, Start Num: 38
Candidate Starts for Conspiracy_5:
(Start: 38 @3447 has 339 MA's), (91, 3555), (111, 3615), (124, 3663), (126, 3669), (131, 3708), (145, 3753), (147, 3759),

Gene: Coog_5 Start: 3571, Stop: 4233, Start Num: 42
Candidate Starts for Coog_5:
(Start: 42 @3571 has 53 MA's), (46, 3583), (55, 3607), (60, 3622), (66, 3637), (104, 3712), (132, 3841), (200, 4063),

Gene: Cookiedough_8 Start: 4661, Stop: 5359, Start Num: 30
Candidate Starts for Cookiedough_8:
(Start: 30 @4661 has 42 MA's), (190, 5165), (235, 5351),

Gene: Cuco_5 Start: 3602, Stop: 4264, Start Num: 42
Candidate Starts for Cuco_5:
(Start: 42 @3602 has 53 MA's), (46, 3614), (55, 3638), (60, 3653), (66, 3668), (104, 3743), (132, 3872), (200, 4094),

Gene: Cullens_5 Start: 2629, Stop: 3264, Start Num: 38
Candidate Starts for Cullens_5:
(Start: 38 @2629 has 339 MA's), (121, 2842),

Gene: D29_32 Start: 24412, Stop: 25083, Start Num: 33
Candidate Starts for D29_32:
(Start: 33 @24412 has 22 MA's), (79, 24502), (89, 24523), (113, 24592), (120, 24628), (129, 24676), (200, 24916), (201, 24919), (222, 25018), (227, 25033),

Gene: D32_35 Start: 24412, Stop: 25083, Start Num: 33
Candidate Starts for D32_35:
(Start: 33 @24412 has 22 MA's), (79, 24502), (89, 24523), (113, 24592), (120, 24628), (129, 24676), (200, 24916), (201, 24919), (222, 25018), (227, 25033),

Gene: DBQu4n_35 Start: 24412, Stop: 25083, Start Num: 33
Candidate Starts for DBQu4n_35:
(Start: 33 @24412 has 22 MA's), (79, 24502), (89, 24523), (113, 24592), (120, 24628), (129, 24676), (200, 24916), (201, 24919), (222, 25018), (227, 25033),

Gene: DaHudson_5 Start: 2890, Stop: 3549, Start Num: 38
Candidate Starts for DaHudson_5:
(Start: 38 @2890 has 339 MA's), (115, 3073), (121, 3106), (135, 3175), (232, 3529),

Gene: DaVinci_8 Start: 4662, Stop: 5360, Start Num: 30
Candidate Starts for DaVinci_8:
(Start: 30 @4662 has 42 MA's), (190, 5166), (235, 5352),

Gene: Daishi_5 Start: 2404, Stop: 3036, Start Num: 38
Candidate Starts for Daishi_5:
(Start: 38 @2404 has 339 MA's), (115, 2587), (116, 2590), (121, 2617),

Gene: Danforth_4 Start: 3362, Stop: 4021, Start Num: 38
Candidate Starts for Danforth_4:
(Start: 38 @3362 has 339 MA's), (64, 3419), (70, 3428), (86, 3461), (204, 3878),

Gene: Darrell_8 Start: 5117, Stop: 5806, Start Num: 38

Candidate Starts for Darrell_8:

(Start: 38 @5117 has 339 MA's), (103, 5261), (107, 5282), (126, 5354), (131, 5393), (147, 5444), (148, 5447), (182, 5579), (189, 5618), (217, 5708), (233, 5792),

Gene: DatBoi_42 Start: 38878, Stop: 39585, Start Num: 23

Candidate Starts for DatBoi_42:

(6, 38647), (11, 38716), (Start: 23 @38878 has 10 MA's), (25, 38893), (Start: 29 @38908 has 2 MA's), (172, 39325), (203, 39418), (229, 39538),

Gene: Datway_5 Start: 2733, Stop: 3395, Start Num: 38

Candidate Starts for Datway_5:

(Start: 38 @2733 has 339 MA's), (88, 2838), (176, 3153),

Gene: Deano_5 Start: 2722, Stop: 3390, Start Num: 38

Candidate Starts for Deano_5:

(Start: 38 @2722 has 339 MA's), (88, 2827), (149, 3046), (176, 3142),

Gene: DekHockey33_8 Start: 4550, Stop: 5224, Start Num: 37

Candidate Starts for DekHockey33_8:

(Start: 37 @4550 has 16 MA's), (77, 4631), (98, 4667), (130, 4814), (146, 4862),

Gene: Dextert_38 Start: 33419, Stop: 34066, Start Num: 38

Candidate Starts for Dextert_38:

(Start: 38 @33419 has 339 MA's), (61, 33476), (77, 33506), (79, 33509), (114, 33593), (133, 33692), (147, 33734), (174, 33830), (204, 33911), (234, 34049),

Gene: Dhanush_5 Start: 2721, Stop: 3383, Start Num: 38

Candidate Starts for Dhanush_5:

(Start: 38 @2721 has 339 MA's), (88, 2826), (175, 3138), (176, 3141), (233, 3366),

Gene: Dieselweasel_5 Start: 2899, Stop: 3558, Start Num: 38

Candidate Starts for Dieselweasel_5:

(Start: 38 @2899 has 339 MA's), (Start: 101 @3028 has 1 MA's), (115, 3082), (121, 3115), (135, 3184), (232, 3538),

Gene: DirtyDunning_5 Start: 2720, Stop: 3385, Start Num: 38

Candidate Starts for DirtyDunning_5:

(Start: 38 @2720 has 339 MA's), (75, 2801), (79, 2807), (113, 2897), (131, 2987), (161, 3113),

Gene: Discoknowium_5 Start: 3710, Stop: 4375, Start Num: 42

Candidate Starts for Discoknowium_5:

(Start: 42 @3710 has 53 MA's), (Start: 49 @3728 has 6 MA's), (66, 3776), (79, 3797), (115, 3893),

Gene: Dixon_5 Start: 3348, Stop: 4007, Start Num: 38

Candidate Starts for Dixon_5:

(Start: 38 @3348 has 339 MA's), (64, 3405), (86, 3447), (173, 3765), (204, 3864),

Gene: Dorothea_8 Start: 4661, Stop: 5359, Start Num: 30

Candidate Starts for Dorothea_8:

(Start: 30 @4661 has 42 MA's), (190, 5165), (235, 5351),

Gene: DreamTeam1_32 Start: 23986, Stop: 24633, Start Num: 38

Candidate Starts for DreamTeam1_32:

(Start: 38 @23986 has 339 MA's), (Start: 42 @23992 has 53 MA's), (53, 24025), (65, 24049), (84, 24085), (89, 24097), (113, 24166), (115, 24172), (116, 24175), (121, 24205), (135, 24274), (149, 24313),

Gene: DropBear_5 Start: 2913, Stop: 3572, Start Num: 38

Candidate Starts for DropBear_5:

(Start: 38 @2913 has 339 MA's), (115, 3096), (159, 3297), (196, 3417),

Gene: Druantia_5 Start: 2723, Stop: 3385, Start Num: 38

Candidate Starts for Druantia_5:

(Start: 38 @2723 has 339 MA's), (88, 2828), (175, 3140), (176, 3143), (233, 3368),

Gene: Dublin_4 Start: 3571, Stop: 4233, Start Num: 42

Candidate Starts for Dublin_4:

(Start: 42 @3571 has 53 MA's), (55, 3607), (60, 3622), (66, 3637), (104, 3712), (132, 3841), (200, 4063),

Gene: Duplo_35 Start: 24450, Stop: 25121, Start Num: 33

Candidate Starts for Duplo_35:

(Start: 33 @24450 has 22 MA's), (79, 24540), (89, 24561), (113, 24630), (120, 24666), (129, 24714), (200, 24954), (201, 24957), (222, 25056), (227, 25071),

Gene: DustyMartin_6 Start: 2752, Stop: 3399, Start Num: 38

Candidate Starts for DustyMartin_6:

(Start: 38 @2752 has 339 MA's), (Start: 49 @2776 has 6 MA's), (79, 2839), (113, 2929), (131, 3019), (156, 3112),

Gene: EZMoney23_8 Start: 5345, Stop: 6004, Start Num: 38

Candidate Starts for EZMoney23_8:

(Start: 38 @5345 has 339 MA's), (115, 5528), (121, 5561), (131, 5612), (135, 5630), (233, 5990),

Gene: Eagle_4 Start: 2722, Stop: 3384, Start Num: 38

Candidate Starts for Eagle_4:

(Start: 38 @2722 has 339 MA's), (88, 2827), (175, 3139), (176, 3142), (233, 3367),

Gene: EagleEye_8 Start: 4875, Stop: 5543, Start Num: 34

Candidate Starts for EagleEye_8:

(Start: 34 @4875 has 3 MA's), (82, 4968), (139, 5169), (183, 5310), (200, 5391),

Gene: Eaglepride_6 Start: 2816, Stop: 3460, Start Num: 38

Candidate Starts for Eaglepride_6:

(Start: 38 @2816 has 339 MA's), (79, 2903), (113, 2990), (115, 2996), (148, 3134), (156, 3173), (178, 3233),

Gene: Eapen_5 Start: 2724, Stop: 3386, Start Num: 38

Candidate Starts for Eapen_5:

(Start: 38 @2724 has 339 MA's), (88, 2829), (175, 3141), (176, 3144), (233, 3369),

Gene: Ebony_8 Start: 5416, Stop: 6078, Start Num: 42

Candidate Starts for Ebony_8:

(Start: 42 @5416 has 53 MA's), (66, 5482), (104, 5557), (128, 5668), (200, 5908), (210, 5953),

Gene: Edison31_5 Start: 2836, Stop: 3483, Start Num: 38

Candidate Starts for Edison31_5:

(Start: 38 @2836 has 339 MA's), (113, 3013), (144, 3145), (156, 3196), (157, 3199),

Gene: EdogawaKiddo_6 Start: 5239, Stop: 5868, Start Num: 38

Candidate Starts for EdogawaKiddo_6:

(Start: 38 @5239 has 339 MA's), (54, 5278), (115, 5419), (121, 5449), (126, 5464),

Gene: Eidsmoe_8 Start: 5224, Stop: 5895, Start Num: 38

Candidate Starts for Eidsmoe_8:

(Start: 38 @5224 has 339 MA's), (121, 5434), (135, 5506), (176, 5647), (207, 5740), (218, 5818), (232, 5872),

Gene: EITiger69_5 Start: 3407, Stop: 4048, Start Num: 38

Candidate Starts for EITiger69_5:

(Start: 38 @3407 has 339 MA's), (52, 3443), (62, 3464), (77, 3491), (124, 3623), (142, 3704), (147, 3719), (232, 4025),

Gene: Elephantoon_8 Start: 4805, Stop: 5470, Start Num: 38

Candidate Starts for Elephantoon_8:

(Start: 38 @4805 has 339 MA's), (121, 5009), (132, 5069), (148, 5117), (162, 5198), (210, 5333), (218, 5393), (232, 5447),

Gene: Emalyn_27 Start: 22133, Stop: 22771, Start Num: 42

Candidate Starts for Emalyn_27:

(Start: 42 @22133 has 53 MA's), (45, 22142), (61, 22184), (70, 22202), (90, 22238), (99, 22250), (111, 22292), (113, 22298), (135, 22409), (162, 22514), (210, 22628),

Gene: EmyBug_8 Start: 5224, Stop: 5895, Start Num: 38

Candidate Starts for EmyBug_8:

(Start: 38 @5224 has 339 MA's), (113, 5398), (121, 5434), (176, 5647), (218, 5818),

Gene: EpicPhail_5 Start: 2629, Stop: 3264, Start Num: 38

Candidate Starts for EpicPhail_5:

(Start: 38 @2629 has 339 MA's), (121, 2842),

Gene: Epsocamisio_8 Start: 4403, Stop: 5071, Start Num: 28

Candidate Starts for Epsocamisio_8:

(Start: 28 @4403 has 14 MA's), (127, 4643), (144, 4709), (183, 4835),

Gene: EricB_8 Start: 4662, Stop: 5360, Start Num: 30

Candidate Starts for EricB_8:

(Start: 30 @4662 has 42 MA's), (190, 5166), (235, 5352),

Gene: Eris_5 Start: 2722, Stop: 3384, Start Num: 38

Candidate Starts for Eris_5:

(Start: 38 @2722 has 339 MA's), (88, 2827), (175, 3139), (176, 3142), (233, 3367),

Gene: Eros_5 Start: 2722, Stop: 3384, Start Num: 38

Candidate Starts for Eros_5:

(Start: 38 @2722 has 339 MA's), (88, 2827), (175, 3139), (176, 3142), (233, 3367),

Gene: Et2Brutus_7 Start: 5413, Stop: 6075, Start Num: 42
Candidate Starts for Et2Brutus_7:
(Start: 42 @5413 has 53 MA's), (66, 5479), (104, 5554), (128, 5665), (200, 5905), (210, 5950),

Gene: Eurydice_5 Start: 2722, Stop: 3384, Start Num: 38
Candidate Starts for Eurydice_5:
(Start: 38 @2722 has 339 MA's), (88, 2827), (175, 3139), (176, 3142), (233, 3367),

Gene: Evaa_37 Start: 33037, Stop: 33708, Start Num: 31
Candidate Starts for Evaa_37:
(1, 32194), (2, 32491), (18, 32962), (Start: 31 @33037 has 1 MA's), (108, 33199), (114, 33217), (141, 33334), (144, 33343), (146, 33349), (202, 33529), (233, 33688),

Gene: Expelliarmus_4 Start: 3348, Stop: 4007, Start Num: 38
Candidate Starts for Expelliarmus_4:
(Start: 38 @3348 has 339 MA's), (64, 3405), (86, 3447), (204, 3864),

Gene: ExplosioNervosa_8 Start: 5227, Stop: 5898, Start Num: 38
Candidate Starts for ExplosioNervosa_8:
(Start: 38 @5227 has 339 MA's), (113, 5401), (121, 5437), (176, 5650), (218, 5821),

Gene: Farber_5 Start: 2891, Stop: 3550, Start Num: 38
Candidate Starts for Farber_5:
(Start: 38 @2891 has 339 MA's), (115, 3074), (121, 3107), (135, 3176), (232, 3530),

Gene: Fayely_8 Start: 5227, Stop: 5898, Start Num: 38
Candidate Starts for Fayely_8:
(Start: 38 @5227 has 339 MA's), (113, 5401), (121, 5437), (176, 5650), (218, 5821),

Gene: Fernando_5 Start: 2629, Stop: 3264, Start Num: 38
Candidate Starts for Fernando_5:
(Start: 38 @2629 has 339 MA's), (121, 2842),

Gene: Fibonacci_8 Start: 5413, Stop: 6075, Start Num: 42
Candidate Starts for Fibonacci_8:
(Start: 42 @5413 has 53 MA's), (66, 5479), (104, 5554), (200, 5905), (210, 5950),

Gene: Flaverint_8 Start: 5410, Stop: 6072, Start Num: 42
Candidate Starts for Flaverint_8:
(Start: 42 @5410 has 53 MA's), (66, 5476), (104, 5551), (128, 5662), (200, 5902),

Gene: Florean_5 Start: 2722, Stop: 3384, Start Num: 38
Candidate Starts for Florean_5:
(Start: 38 @2722 has 339 MA's), (88, 2827), (175, 3139), (176, 3142), (233, 3367),

Gene: Flux_5 Start: 2722, Stop: 3384, Start Num: 38
Candidate Starts for Flux_5:
(Start: 38 @2722 has 339 MA's), (88, 2827), (175, 3139), (176, 3142), (233, 3367),

Gene: ForGetIt_5 Start: 3473, Stop: 4114, Start Num: 38
Candidate Starts for ForGetIt_5:
(Start: 38 @3473 has 339 MA's), (91, 3581), (111, 3641), (124, 3689), (126, 3695), (131, 3734), (145, 3779), (147, 3785),

Gene: FortCran_26 Start: 18647, Stop: 19297, Start Num: 42

Candidate Starts for FortCran_26:

(Start: 42 @18647 has 53 MA's), (55, 18683), (126, 18869), (161, 19031), (164, 19040), (169, 19049), (207, 19148), (216, 19178),

Gene: Fred313_5 Start: 2736, Stop: 3398, Start Num: 38

Candidate Starts for Fred313_5:

(Start: 38 @2736 has 339 MA's), (113, 2913), (121, 2949), (126, 2964), (132, 3009), (204, 3237), (212, 3270),

Gene: Funston_5 Start: 2722, Stop: 3384, Start Num: 38

Candidate Starts for Funston_5:

(Start: 38 @2722 has 339 MA's), (88, 2827), (175, 3139), (176, 3142), (233, 3367),

Gene: GMA6_18 Start: 14860, Stop: 15507, Start Num: 39

Candidate Starts for GMA6_18:

(Start: 39 @14860 has 2 MA's), (43, 14869), (92, 14971), (226, 15448),

Gene: GTE2_24 Start: 22211, Stop: 22849, Start Num: 42

Candidate Starts for GTE2_24:

(Start: 42 @22211 has 53 MA's), (61, 22262), (70, 22280), (90, 22316), (111, 22370), (113, 22376), (135, 22487), (162, 22592), (210, 22706),

Gene: Gadost_5 Start: 2722, Stop: 3384, Start Num: 38

Candidate Starts for Gadost_5:

(Start: 38 @2722 has 339 MA's), (88, 2827), (175, 3139), (176, 3142), (233, 3367),

Gene: Garak_8 Start: 4661, Stop: 5359, Start Num: 30

Candidate Starts for Garak_8:

(Start: 30 @4661 has 42 MA's), (190, 5165), (235, 5351),

Gene: GaugeLDP_8 Start: 4848, Stop: 5522, Start Num: 38

Candidate Starts for GaugeLDP_8:

(Start: 38 @4848 has 339 MA's), (113, 5025), (121, 5061), (131, 5115), (149, 5172), (198, 5352),

Gene: Gemma_5 Start: 2888, Stop: 3538, Start Num: 38

Candidate Starts for Gemma_5:

(Start: 38 @2888 has 339 MA's), (89, 2996), (115, 3071), (159, 3263),

Gene: George_4 Start: 3602, Stop: 4264, Start Num: 42

Candidate Starts for George_4:

(Start: 42 @3602 has 53 MA's), (46, 3614), (55, 3638), (60, 3653), (66, 3668), (104, 3743), (132, 3872), (200, 4094),

Gene: Ghouboy_5 Start: 3679, Stop: 4344, Start Num: 42

Candidate Starts for Ghouboy_5:

(Start: 42 @3679 has 53 MA's), (Start: 49 @3697 has 6 MA's), (66, 3745), (79, 3766), (115, 3862), (225, 4291),

Gene: Gilberta_8 Start: 5407, Stop: 6069, Start Num: 42

Candidate Starts for Gilberta_8:

(Start: 42 @5407 has 53 MA's), (66, 5473), (104, 5548), (128, 5659), (200, 5899),

Gene: GingkoMaracino_5 Start: 2809, Stop: 3468, Start Num: 38
Candidate Starts for GingkoMaracino_5:
(Start: 38 @2809 has 339 MA's), (79, 2896), (Start: 101 @2938 has 1 MA's), (115, 2992), (131, 3076),
(135, 3094),

Gene: Giroux_4 Start: 2830, Stop: 3480, Start Num: 38
Candidate Starts for Giroux_4:
(Start: 38 @2830 has 339 MA's), (131, 3097), (232, 3460),

Gene: Gladiator_8 Start: 4655, Stop: 5353, Start Num: 30
Candidate Starts for Gladiator_8:
(Start: 30 @4655 has 42 MA's), (190, 5159), (235, 5345),

Gene: Goose_5 Start: 2818, Stop: 3465, Start Num: 38
Candidate Starts for Goose_5:
(Start: 38 @2818 has 339 MA's), (79, 2905), (113, 2995), (144, 3127), (156, 3178), (157, 3181), (167,
3217), (233, 3451),

Gene: GreedyLawyer_8 Start: 4661, Stop: 5359, Start Num: 30
Candidate Starts for GreedyLawyer_8:
(Start: 30 @4661 has 42 MA's), (190, 5165), (235, 5351),

Gene: Grif_5 Start: 2719, Stop: 3351, Start Num: 38
Candidate Starts for Grif_5:
(Start: 38 @2719 has 339 MA's), (115, 2902), (116, 2905), (121, 2932),

Gene: Groundhog_4 Start: 3349, Stop: 4008, Start Num: 38
Candidate Starts for Groundhog_4:
(Start: 38 @3349 has 339 MA's), (64, 3406), (86, 3448), (204, 3865),

Gene: Groupthink_6 Start: 2888, Stop: 3538, Start Num: 38
Candidate Starts for Groupthink_6:
(Start: 38 @2888 has 339 MA's), (89, 2996), (115, 3071), (159, 3263),

Gene: Grum1_5 Start: 2629, Stop: 3261, Start Num: 38
Candidate Starts for Grum1_5:
(Start: 38 @2629 has 339 MA's), (115, 2812), (116, 2815), (121, 2842),

Gene: Gruunaga_8 Start: 4655, Stop: 5353, Start Num: 30
Candidate Starts for Gruunaga_8:
(Start: 30 @4655 has 42 MA's), (190, 5159), (235, 5345),

Gene: GtownJaz_5 Start: 2899, Stop: 3558, Start Num: 38
Candidate Starts for GtownJaz_5:
(Start: 38 @2899 has 339 MA's), (Start: 101 @3028 has 1 MA's), (115, 3082), (121, 3115), (135,
3184), (232, 3538),

Gene: HamSlice_4 Start: 2723, Stop: 3385, Start Num: 38
Candidate Starts for HamSlice_4:
(Start: 38 @2723 has 339 MA's), (88, 2828), (175, 3140), (176, 3143), (233, 3368),

Gene: Hammer_8 Start: 4655, Stop: 5353, Start Num: 30

Candidate Starts for Hammer_8:

(Start: 30 @4655 has 42 MA's), (110, 4856), (190, 5159), (235, 5345),

Gene: Hanray_7 Start: 5230, Stop: 5901, Start Num: 38

Candidate Starts for Hanray_7:

(Start: 38 @5230 has 339 MA's), (113, 5404), (121, 5440), (176, 5653), (218, 5824),

Gene: Happiness_5 Start: 2724, Stop: 3389, Start Num: 38

Candidate Starts for Happiness_5:

(Start: 38 @2724 has 339 MA's), (113, 2901), (131, 2991), (161, 3117), (233, 3372),

Gene: HashRod_6 Start: 2720, Stop: 3352, Start Num: 38

Candidate Starts for HashRod_6:

(Start: 38 @2720 has 339 MA's), (115, 2903), (116, 2906), (121, 2933),

Gene: HaveUMetTed_6 Start: 2888, Stop: 3538, Start Num: 38

Candidate Starts for HaveUMetTed_6:

(Start: 38 @2888 has 339 MA's), (89, 2996), (115, 3071), (159, 3263),

Gene: Heathen_5 Start: 2661, Stop: 3311, Start Num: 38

Candidate Starts for Heathen_5:

(Start: 38 @2661 has 339 MA's), (115, 2844), (159, 3036), (196, 3156),

Gene: Heffalump_9 Start: 5602, Stop: 6279, Start Num: 38

Candidate Starts for Heffalump_9:

(Start: 38 @5602 has 339 MA's), (114, 5782), (129, 5860), (147, 5917), (200, 6112), (209, 6151), (217, 6181), (219, 6211),

Gene: HelDan_5 Start: 2913, Stop: 3563, Start Num: 38

Candidate Starts for HelDan_5:

(Start: 38 @2913 has 339 MA's), (115, 3096), (159, 3288), (196, 3408),

Gene: Heliosoles_5 Start: 2888, Stop: 3538, Start Num: 38

Candidate Starts for Heliosoles_5:

(Start: 38 @2888 has 339 MA's), (89, 2996), (115, 3071), (120, 3101), (159, 3263),

Gene: Helmet_8 Start: 4661, Stop: 5359, Start Num: 30

Candidate Starts for Helmet_8:

(Start: 30 @4661 has 42 MA's), (190, 5165), (235, 5351),

Gene: Hercules11_5 Start: 2638, Stop: 3273, Start Num: 38

Candidate Starts for Hercules11_5:

(Start: 38 @2638 has 339 MA's), (121, 2851),

Gene: Hexamo_8 Start: 4616, Stop: 5314, Start Num: 30

Candidate Starts for Hexamo_8:

(Start: 30 @4616 has 42 MA's), (190, 5120), (235, 5306),

Gene: Horex_7 Start: 5230, Stop: 5901, Start Num: 38

Candidate Starts for Horex_7:

(Start: 38 @5230 has 339 MA's), (113, 5404), (121, 5440), (176, 5653), (218, 5824),

Gene: Holli_5 Start: 2515, Stop: 3177, Start Num: 38

Candidate Starts for Holli_5:

(Start: 38 @2515 has 339 MA's), (88, 2620), (175, 2932), (176, 2935), (233, 3160),

Gene: Hookmount_5 Start: 2764, Stop: 3423, Start Num: 38

Candidate Starts for Hookmount_5:

(Start: 38 @2764 has 339 MA's), (48, 2785), (78, 2851), (113, 2941), (120, 2977), (186, 3223), (212, 3310),

Gene: Hoot_8 Start: 4661, Stop: 5359, Start Num: 30

Candidate Starts for Hoot_8:

(Start: 30 @4661 has 42 MA's), (155, 5057), (190, 5165), (235, 5351),

Gene: HortumSL17_8 Start: 5239, Stop: 5868, Start Num: 38

Candidate Starts for HortumSL17_8:

(Start: 38 @5239 has 339 MA's), (54, 5278), (115, 5419), (121, 5449), (126, 5464),

Gene: Houdini22_5 Start: 2722, Stop: 3384, Start Num: 38

Candidate Starts for Houdini22_5:

(Start: 38 @2722 has 339 MA's), (88, 2827), (175, 3139), (176, 3142), (233, 3367),

Gene: HuhtaEnerson15_5 Start: 3603, Stop: 4265, Start Num: 42

Candidate Starts for HuhtaEnerson15_5:

(Start: 42 @3603 has 53 MA's), (46, 3615), (55, 3639), (60, 3654), (66, 3669), (104, 3744), (132, 3873), (200, 4095),

Gene: Hutc2_8 Start: 5413, Stop: 6075, Start Num: 42

Candidate Starts for Hutc2_8:

(Start: 42 @5413 has 53 MA's), (66, 5479), (104, 5554), (200, 5905), (210, 5950),

Gene: ICleared_5 Start: 2722, Stop: 3384, Start Num: 38

Candidate Starts for ICleared_5:

(Start: 38 @2722 has 339 MA's), (88, 2827), (175, 3139), (176, 3142), (233, 3367),

Gene: Iceman_5 Start: 2722, Stop: 3384, Start Num: 38

Candidate Starts for Iceman_5:

(Start: 38 @2722 has 339 MA's), (88, 2827), (175, 3139), (176, 3142), (233, 3367),

Gene: Idleandcovert_4 Start: 2830, Stop: 3480, Start Num: 38

Candidate Starts for Idleandcovert_4:

(Start: 38 @2830 has 339 MA's), (131, 3097), (232, 3460),

Gene: Indra_8 Start: 4661, Stop: 5359, Start Num: 30

Candidate Starts for Indra_8:

(Start: 30 @4661 has 42 MA's), (190, 5165), (235, 5351),

Gene: Insomnia_8 Start: 5410, Stop: 6072, Start Num: 42

Candidate Starts for Insomnia_8:

(Start: 42 @5410 has 53 MA's), (66, 5476), (104, 5551), (128, 5662), (200, 5902), (210, 5947),

Gene: Iracema64_5 Start: 2722, Stop: 3387, Start Num: 38

Candidate Starts for Iracema64_5:

(Start: 38 @2722 has 339 MA's), (75, 2803), (79, 2809), (131, 2989), (161, 3115),

Gene: IronMan_8 Start: 5076, Stop: 5738, Start Num: 38
Candidate Starts for IronMan_8:
(Start: 38 @5076 has 339 MA's), (75, 5157), (88, 5181), (176, 5490),

Gene: Isca_5 Start: 2750, Stop: 3385, Start Num: 38
Candidate Starts for Isca_5:
(Start: 38 @2750 has 339 MA's), (115, 2933), (121, 2963), (137, 3041), (149, 3074),

Gene: Isiphiwo_8 Start: 4661, Stop: 5359, Start Num: 30
Candidate Starts for Isiphiwo_8:
(Start: 30 @4661 has 42 MA's), (190, 5165), (235, 5351),

Gene: JF2_5 Start: 2514, Stop: 3149, Start Num: 38
Candidate Starts for JF2_5:
(Start: 38 @2514 has 339 MA's), (115, 2697), (121, 2727), (137, 2805), (149, 2838),

Gene: JF4_5 Start: 2514, Stop: 3149, Start Num: 38
Candidate Starts for JF4_5:
(Start: 38 @2514 has 339 MA's), (115, 2697), (121, 2727), (137, 2805), (149, 2838),

Gene: JHC117_5 Start: 2629, Stop: 3264, Start Num: 38
Candidate Starts for JHC117_5:
(Start: 38 @2629 has 339 MA's), (121, 2842),

Gene: JSwag_8 Start: 4403, Stop: 5071, Start Num: 28
Candidate Starts for JSwag_8:
(Start: 28 @4403 has 14 MA's), (127, 4643), (144, 4709), (183, 4835),

Gene: Jaan_8 Start: 5072, Stop: 5734, Start Num: 38
Candidate Starts for Jaan_8:
(Start: 38 @5072 has 339 MA's), (75, 5153), (131, 5339), (161, 5465), (233, 5717),

Gene: Jabiru_5 Start: 3407, Stop: 4048, Start Num: 38
Candidate Starts for Jabiru_5:
(Start: 38 @3407 has 339 MA's), (52, 3443), (62, 3464), (77, 3491), (124, 3623), (142, 3704), (147, 3719), (232, 4025),

Gene: Jabith_8 Start: 5410, Stop: 6072, Start Num: 42
Candidate Starts for Jabith_8:
(Start: 42 @5410 has 53 MA's), (66, 5476), (104, 5551), (128, 5662), (200, 5902), (210, 5947),

Gene: Jace_24 Start: 20590, Stop: 21267, Start Num: 33
Candidate Starts for Jace_24:
(Start: 33 @20590 has 22 MA's), (Start: 38 @20599 has 339 MA's), (Start: 49 @20623 has 6 MA's), (58, 20644), (109, 20767), (132, 20878), (135, 20884), (178, 21013),

Gene: Jamemuya19_32 Start: 27651, Stop: 28208, Start Num: 125
Candidate Starts for Jamemuya19_32:
(8, 27111), (15, 27225), (21, 27318), (24, 27351), (25, 27354), (26, 27357), (Start: 33 @27378 has 22 MA's), (Start: 40 @27390 has 2 MA's), (58, 27438), (87, 27501), (102, 27555), (125, 27651), (129, 27693), (163, 27927), (179, 27966), (197, 28053), (236, 28200),

Gene: Jaykayelowell_5 Start: 2721, Stop: 3383, Start Num: 38

Candidate Starts for Jaykayelowell_5:

(Start: 38 @2721 has 339 MA's), (88, 2826), (175, 3138), (176, 3141), (233, 3366),

Gene: Jeanie_17 Start: 12036, Stop: 12680, Start Num: 39

Candidate Starts for Jeanie_17:

(Start: 39 @12036 has 2 MA's), (115, 12207), (176, 12432), (198, 12507), (202, 12513), (205, 12525), (211, 12546), (224, 12612),

Gene: Jeeves_32 Start: 23861, Stop: 24529, Start Num: 32

Candidate Starts for Jeeves_32:

(20, 23789), (Start: 32 @23861 has 8 MA's), (113, 24044), (135, 24152), (139, 24164), (163, 24272), (232, 24509),

Gene: Jeffabunny_8 Start: 4661, Stop: 5359, Start Num: 30

Candidate Starts for Jeffabunny_8:

(Start: 30 @4661 has 42 MA's), (190, 5165), (235, 5351),

Gene: JenCasNa_5 Start: 2629, Stop: 3264, Start Num: 38

Candidate Starts for JenCasNa_5:

(Start: 38 @2629 has 339 MA's), (121, 2842),

Gene: JeppNRM_6 Start: 2888, Stop: 3535, Start Num: 38

Candidate Starts for JeppNRM_6:

(Start: 38 @2888 has 339 MA's), (89, 2996), (115, 3071), (121, 3104),

Gene: JetBlade_5 Start: 2722, Stop: 3384, Start Num: 38

Candidate Starts for JetBlade_5:

(Start: 38 @2722 has 339 MA's), (88, 2827), (175, 3139), (176, 3142), (233, 3367),

Gene: JewelBug_8 Start: 4662, Stop: 5360, Start Num: 30

Candidate Starts for JewelBug_8:

(Start: 30 @4662 has 42 MA's), (190, 5166), (235, 5352),

Gene: Jiawan_7 Start: 5230, Stop: 5901, Start Num: 38

Candidate Starts for Jiawan_7:

(Start: 38 @5230 has 339 MA's), (113, 5404), (121, 5440), (176, 5653), (218, 5824),

Gene: Jobu08_5 Start: 2962, Stop: 3621, Start Num: 38

Candidate Starts for Jobu08_5:

(Start: 38 @2962 has 339 MA's), (79, 3049), (Start: 101 @3091 has 1 MA's), (115, 3145), (122, 3184), (131, 3229),

Gene: JoongJeon_5 Start: 2722, Stop: 3384, Start Num: 38

Candidate Starts for JoongJeon_5:

(Start: 38 @2722 has 339 MA's), (175, 3139), (176, 3142), (233, 3367),

Gene: Jordennis_8 Start: 4661, Stop: 5359, Start Num: 30

Candidate Starts for Jordennis_8:

(Start: 30 @4661 has 42 MA's), (190, 5165), (235, 5351),

Gene: Joselito_8 Start: 5410, Stop: 6072, Start Num: 42

Candidate Starts for Joselito_8:

(Start: 42 @5410 has 53 MA's), (66, 5476), (104, 5551), (128, 5662), (200, 5902),

Gene: Journey13_30 Start: 23737, Stop: 24387, Start Num: 38

Candidate Starts for Journey13_30:

(Start: 38 @23737 has 339 MA's), (52, 23773), (113, 23914), (132, 24010), (139, 24034), (147, 24055), (150, 24061), (204, 24235), (211, 24259),

Gene: Jovo_5 Start: 3729, Stop: 4376, Start Num: 49

Candidate Starts for Jovo_5:

(Start: 42 @3711 has 53 MA's), (Start: 49 @3729 has 6 MA's), (66, 3777), (79, 3798), (115, 3894),

Gene: Jsquared_31 Start: 23470, Stop: 24069, Start Num: 56

Candidate Starts for Jsquared_31:

(Start: 56 @23470 has 4 MA's), (72, 23503), (89, 23521), (113, 23590), (129, 23674), (139, 23710), (169, 23827), (220, 23998),

Gene: JulesRay_28 Start: 18669, Stop: 19316, Start Num: 42

Candidate Starts for JulesRay_28:

(Start: 42 @18669 has 53 MA's), (66, 18732), (124, 18882), (155, 19020), (192, 19128), (215, 19194),

Gene: KADY_6 Start: 2720, Stop: 3352, Start Num: 38

Candidate Starts for KADY_6:

(Start: 38 @2720 has 339 MA's), (115, 2903), (116, 2906), (121, 2933),

Gene: KFPoly_5 Start: 2722, Stop: 3384, Start Num: 38

Candidate Starts for KFPoly_5:

(Start: 38 @2722 has 339 MA's), (88, 2827), (175, 3139), (176, 3142), (233, 3367),

Gene: Kachowdy_5 Start: 2913, Stop: 3563, Start Num: 38

Candidate Starts for Kachowdy_5:

(Start: 38 @2913 has 339 MA's), (115, 3096), (159, 3288), (196, 3408),

Gene: Kalb97_6 Start: 2886, Stop: 3536, Start Num: 38

Candidate Starts for Kalb97_6:

(Start: 38 @2886 has 339 MA's), (89, 2994), (115, 3069), (159, 3261),

Gene: Kalnoky_6 Start: 2888, Stop: 3538, Start Num: 38

Candidate Starts for Kalnoky_6:

(Start: 38 @2888 has 339 MA's), (89, 2996), (115, 3071), (159, 3263),

Gene: Kalpine_8 Start: 5367, Stop: 6047, Start Num: 38

Candidate Starts for Kalpine_8:

(Start: 38 @5367 has 339 MA's), (114, 5547), (207, 5910),

Gene: Kampy_5 Start: 2723, Stop: 3385, Start Num: 38

Candidate Starts for Kampy_5:

(Start: 38 @2723 has 339 MA's), (88, 2828), (175, 3140), (176, 3143), (233, 3368),

Gene: Katalie136_5 Start: 2733, Stop: 3395, Start Num: 38

Candidate Starts for Katalie136_5:

(Start: 38 @2733 has 339 MA's), (88, 2838), (176, 3153),

Gene: KatherineG_8 Start: 4550, Stop: 5224, Start Num: 37

Candidate Starts for KatherineG_8:

(Start: 37 @4550 has 16 MA's), (77, 4631), (98, 4667), (130, 4814), (146, 4862),

Gene: Kazan_8 Start: 4661, Stop: 5365, Start Num: 30

Candidate Starts for Kazan_8:

(Start: 30 @4661 has 42 MA's), (190, 5171), (235, 5357),

Gene: Kerberos_35 Start: 24412, Stop: 25083, Start Num: 33

Candidate Starts for Kerberos_35:

(Start: 33 @24412 has 22 MA's), (79, 24502), (89, 24523), (113, 24592), (120, 24628), (129, 24676), (200, 24916), (201, 24919), (222, 25018), (227, 25033),

Gene: Kimona_29 Start: 22444, Stop: 23019, Start Num: 71

Candidate Starts for Kimona_29:

(27, 22342), (Start: 71 @22444 has 2 MA's), (78, 22459), (83, 22468), (113, 22552), (120, 22588), (134, 22654), (135, 22660), (219, 22954),

Gene: Kingmustik0402_5 Start: 2714, Stop: 3376, Start Num: 38

Candidate Starts for Kingmustik0402_5:

(Start: 38 @2714 has 339 MA's), (88, 2819), (175, 3131), (176, 3134), (233, 3359),

Gene: Kinmap_33 Start: 24255, Stop: 24890, Start Num: 32

Candidate Starts for Kinmap_33:

(Start: 32 @24255 has 8 MA's), (169, 24669), (189, 24723),

Gene: Kipper29_8 Start: 4661, Stop: 5359, Start Num: 30

Candidate Starts for Kipper29_8:

(Start: 30 @4661 has 42 MA's), (190, 5165), (235, 5351),

Gene: Koduck_32 Start: 23597, Stop: 24238, Start Num: 42

Candidate Starts for Koduck_32:

(Start: 32 @23579 has 8 MA's), (Start: 33 @23582 has 22 MA's), (Start: 42 @23597 has 53 MA's), (89, 23696), (120, 23801), (139, 23885), (176, 24011), (186, 24041),

Gene: Koko_8 Start: 4661, Stop: 5359, Start Num: 30

Candidate Starts for Koko_8:

(Start: 30 @4661 has 42 MA's), (190, 5165), (235, 5351),

Gene: Koreni_5 Start: 2722, Stop: 3393, Start Num: 38

Candidate Starts for Koreni_5:

(Start: 38 @2722 has 339 MA's), (155, 3082),

Gene: Kratark_5 Start: 2722, Stop: 3384, Start Num: 38

Candidate Starts for Kratark_5:

(Start: 38 @2722 has 339 MA's), (88, 2827), (175, 3139), (176, 3142), (233, 3367),

Gene: Kremtemulon_5 Start: 2722, Stop: 3387, Start Num: 38

Candidate Starts for Kremtemulon_5:

(Start: 38 @2722 has 339 MA's), (75, 2803), (79, 2809), (131, 2989), (161, 3115),

Gene: Kristoff_6 Start: 3001, Stop: 3648, Start Num: 38

Candidate Starts for Kristoff_6:

(Start: 38 @3001 has 339 MA's), (89, 3109), (113, 3178), (131, 3268), (156, 3361),

Gene: Kudefre_32 Start: 27445, Stop: 28155, Start Num: 23

Candidate Starts for Kudefre_32:

(Start: 23 @27445 has 10 MA's), (113, 27649), (115, 27655), (128, 27730), (144, 27778), (145, 27781), (146, 27784), (162, 27859), (205, 27988), (224, 28087), (232, 28129),

Gene: Kyee_5 Start: 2722, Stop: 3384, Start Num: 38

Candidate Starts for Kyee_5:

(Start: 38 @2722 has 339 MA's), (88, 2827), (175, 3139), (176, 3142), (233, 3367),

Gene: L5_32 Start: 23536, Stop: 24198, Start Num: 33

Candidate Starts for L5_32:

(Start: 33 @23536 has 22 MA's), (Start: 42 @23551 has 53 MA's), (62, 23608), (89, 23656), (120, 23761), (139, 23845), (176, 23971), (186, 24001),

Gene: LBerry_5 Start: 2629, Stop: 3264, Start Num: 38

Candidate Starts for LBerry_5:

(Start: 38 @2629 has 339 MA's), (121, 2842),

Gene: LHTSCC_5 Start: 2722, Stop: 3387, Start Num: 38

Candidate Starts for LHTSCC_5:

(Start: 38 @2722 has 339 MA's), (113, 2899), (131, 2989), (161, 3115),

Gene: Lambert1_5 Start: 2764, Stop: 3423, Start Num: 38

Candidate Starts for Lambert1_5:

(Start: 38 @2764 has 339 MA's), (48, 2785), (78, 2851), (113, 2941), (120, 2977), (186, 3223), (212, 3310),

Gene: Landor_8 Start: 5074, Stop: 5736, Start Num: 38

Candidate Starts for Landor_8:

(Start: 38 @5074 has 339 MA's), (75, 5155), (88, 5179), (131, 5335), (161, 5461), (176, 5488),

Gene: LappelDuVide_5 Start: 2722, Stop: 3384, Start Num: 38

Candidate Starts for LappelDuVide_5:

(Start: 38 @2722 has 339 MA's), (88, 2827), (175, 3139), (176, 3142), (233, 3367),

Gene: LarryKay_5 Start: 2720, Stop: 3352, Start Num: 38

Candidate Starts for LarryKay_5:

(Start: 38 @2720 has 339 MA's), (115, 2903), (116, 2906), (121, 2933),

Gene: LastResort_8 Start: 4403, Stop: 5071, Start Num: 28

Candidate Starts for LastResort_8:

(Start: 28 @4403 has 14 MA's), (127, 4643), (144, 4709), (183, 4835),

Gene: Lemur_5 Start: 2722, Stop: 3384, Start Num: 38

Candidate Starts for Lemur_5:

(Start: 38 @2722 has 339 MA's), (88, 2827), (175, 3139), (176, 3142), (233, 3367),

Gene: LeoAvram_5 Start: 2722, Stop: 3384, Start Num: 38

Candidate Starts for LeoAvram_5:

(Start: 38 @2722 has 339 MA's), (88, 2827), (175, 3139), (176, 3142), (233, 3367),

Gene: Leogania_8 Start: 5401, Stop: 6051, Start Num: 38

Candidate Starts for Leogania_8:

(Start: 38 @5401 has 339 MA's), (70, 5473), (113, 5578), (124, 5626), (207, 5917),

Gene: Lev2_5 Start: 3446, Stop: 4087, Start Num: 38

Candidate Starts for Lev2_5:

(Start: 38 @3446 has 339 MA's), (91, 3554), (111, 3614), (124, 3662), (126, 3668), (131, 3707), (145, 3752), (147, 3758),

Gene: Lilbunny_8 Start: 4661, Stop: 5359, Start Num: 30

Candidate Starts for Lilbunny_8:

(Start: 30 @4661 has 42 MA's), (190, 5165), (235, 5351),

Gene: Lilit_5 Start: 2891, Stop: 3550, Start Num: 38

Candidate Starts for Lilit_5:

(Start: 38 @2891 has 339 MA's), (115, 3074), (121, 3107), (135, 3176), (232, 3530),

Gene: Lilleskat_6 Start: 5239, Stop: 5868, Start Num: 38

Candidate Starts for Lilleskat_6:

(Start: 38 @5239 has 339 MA's), (54, 5278), (115, 5419), (121, 5449), (126, 5464),

Gene: LittleB_5 Start: 2722, Stop: 3384, Start Num: 38

Candidate Starts for LittleB_5:

(Start: 38 @2722 has 339 MA's), (59, 2773), (88, 2827), (175, 3139), (176, 3142), (233, 3367),

Gene: LittleCherry_5 Start: 3604, Stop: 4266, Start Num: 42

Candidate Starts for LittleCherry_5:

(Start: 42 @3604 has 53 MA's), (46, 3616), (55, 3640), (60, 3655), (66, 3670), (104, 3745), (132, 3874), (200, 4096),

Gene: LittleGuy_5 Start: 2722, Stop: 3384, Start Num: 38

Candidate Starts for LittleGuy_5:

(Start: 38 @2722 has 339 MA's), (88, 2827), (176, 3142), (233, 3367),

Gene: LochMonster_5 Start: 2720, Stop: 3385, Start Num: 38

Candidate Starts for LochMonster_5:

(Start: 38 @2720 has 339 MA's), (75, 2801), (79, 2807), (131, 2987), (161, 3113),

Gene: Lokk_9 Start: 5386, Stop: 6063, Start Num: 38

Candidate Starts for Lokk_9:

(Start: 38 @5386 has 339 MA's), (52, 5422), (114, 5566), (133, 5662), (149, 5710), (170, 5800), (180, 5827),

Gene: LoneWolf_8 Start: 4997, Stop: 5665, Start Num: 38

Candidate Starts for LoneWolf_8:

(Start: 38 @4997 has 339 MA's), (114, 5171), (121, 5204), (160, 5387), (210, 5528), (218, 5588),

Gene: Lorenzo_5 Start: 2722, Stop: 3384, Start Num: 38

Candidate Starts for Lorenzo_5:

(Start: 38 @2722 has 339 MA's), (88, 2827), (175, 3139), (176, 3142), (233, 3367),

Gene: Loser_8 Start: 5253, Stop: 5897, Start Num: 38

Candidate Starts for Loser_8:

(Start: 38 @5253 has 339 MA's), (114, 5433), (126, 5484),

Gene: Louie6_5 Start: 2720, Stop: 3352, Start Num: 38
Candidate Starts for Louie6_5:
(Start: 38 @2720 has 339 MA's), (115, 2903), (116, 2906), (121, 2933), (219, 3287),

Gene: Lucivia_8 Start: 5407, Stop: 6069, Start Num: 42
Candidate Starts for Lucivia_8:
(Start: 42 @5407 has 53 MA's), (66, 5473), (104, 5548), (128, 5659), (200, 5899), (210, 5944),

Gene: Lucyedi_8 Start: 4875, Stop: 5543, Start Num: 34
Candidate Starts for Lucyedi_8:
(Start: 34 @4875 has 3 MA's), (62, 4932), (82, 4968), (139, 5169), (200, 5391),

Gene: LugYA_7 Start: 2629, Stop: 3264, Start Num: 38
Candidate Starts for LugYA_7:
(Start: 38 @2629 has 339 MA's), (121, 2842),

Gene: Lunsford_5 Start: 2722, Stop: 3384, Start Num: 38
Candidate Starts for Lunsford_5:
(Start: 38 @2722 has 339 MA's), (88, 2827), (175, 3139), (176, 3142), (233, 3367),

Gene: MA5_5 Start: 2468, Stop: 3118, Start Num: 38
Candidate Starts for MA5_5:
(Start: 38 @2468 has 339 MA's), (115, 2651), (159, 2843),

Gene: MK4_5 Start: 2748, Stop: 3383, Start Num: 38
Candidate Starts for MK4_5:
(Start: 38 @2748 has 339 MA's), (115, 2931), (121, 2961), (137, 3039), (149, 3072),

Gene: MaCh_8 Start: 5407, Stop: 6069, Start Num: 42
Candidate Starts for MaCh_8:
(Start: 42 @5407 has 53 MA's), (66, 5473), (104, 5548), (128, 5659), (200, 5899),

Gene: Mabel_8 Start: 5422, Stop: 6084, Start Num: 42
Candidate Starts for Mabel_8:
(Start: 42 @5422 has 53 MA's), (66, 5488), (104, 5563), (128, 5674), (200, 5914), (210, 5959),

Gene: MadMarie_5 Start: 2900, Stop: 3559, Start Num: 38
Candidate Starts for MadMarie_5:
(Start: 38 @2900 has 339 MA's), (Start: 101 @3029 has 1 MA's), (115, 3083), (121, 3116), (135, 3185), (232, 3539),

Gene: Mainiac_5 Start: 2891, Stop: 3550, Start Num: 38
Candidate Starts for Mainiac_5:
(Start: 38 @2891 has 339 MA's), (Start: 101 @3020 has 1 MA's), (115, 3074), (121, 3107), (135, 3176), (232, 3530),

Gene: MajorMajor_31 Start: 23397, Stop: 23996, Start Num: 56
Candidate Starts for MajorMajor_31:
(Start: 56 @23397 has 4 MA's), (72, 23430), (89, 23448), (113, 23517), (129, 23601), (139, 23637), (169, 23754), (220, 23925),

Gene: MakoManhole_39 Start: 33947, Stop: 34594, Start Num: 37
Candidate Starts for MakoManhole_39:

(Start: 37 @33947 has 16 MA's), (61, 34004), (77, 34034), (79, 34037), (89, 34055), (135, 34229), (146, 34259), (147, 34262), (151, 34274), (204, 34439), (234, 34577),

Gene: Malec_33 Start: 25107, Stop: 25760, Start Num: 32

Candidate Starts for Malec_33:

(20, 25035), (Start: 32 @25107 has 8 MA's), (50, 25149), (120, 25326), (132, 25386), (133, 25389), (139, 25410), (151, 25443), (169, 25527), (209, 25641), (226, 25707),

Gene: Malinsilva_7 Start: 2890, Stop: 3549, Start Num: 38

Candidate Starts for Malinsilva_7:

(Start: 38 @2890 has 339 MA's), (115, 3073), (121, 3106), (135, 3175), (232, 3529),

Gene: Maminiaina_8 Start: 4988, Stop: 5638, Start Num: 38

Candidate Starts for Maminiaina_8:

(Start: 38 @4988 has 339 MA's), (114, 5165), (121, 5198), (175, 5402), (205, 5498),

Gene: Manu_6 Start: 2888, Stop: 3538, Start Num: 38

Candidate Starts for Manu_6:

(Start: 38 @2888 has 339 MA's), (89, 2996), (115, 3071), (159, 3263),

Gene: MarQuardt_5 Start: 2899, Stop: 3558, Start Num: 38

Candidate Starts for MarQuardt_5:

(Start: 38 @2899 has 339 MA's), (115, 3082), (121, 3115), (135, 3184), (232, 3538),

Gene: Marchesa_5 Start: 2913, Stop: 3563, Start Num: 38

Candidate Starts for Marchesa_5:

(Start: 38 @2913 has 339 MA's), (115, 3096), (159, 3288), (196, 3408),

Gene: Margo_5 Start: 2764, Stop: 3441, Start Num: 38

Candidate Starts for Margo_5:

(Start: 38 @2764 has 339 MA's), (113, 2941), (121, 2977), (148, 3085), (218, 3364),

Gene: Marie_5 Start: 2629, Stop: 3264, Start Num: 38

Candidate Starts for Marie_5:

(Start: 38 @2629 has 339 MA's), (121, 2842),

Gene: Marius_6 Start: 2888, Stop: 3538, Start Num: 38

Candidate Starts for Marius_6:

(Start: 38 @2888 has 339 MA's), (89, 2996), (115, 3071), (159, 3263),

Gene: MarysWell_4 Start: 3572, Stop: 4234, Start Num: 42

Candidate Starts for MarysWell_4:

(Start: 42 @3572 has 53 MA's), (55, 3608), (60, 3623), (66, 3638), (104, 3713), (132, 3842), (200, 4064),

Gene: Maselop_24 Start: 12653, Stop: 13330, Start Num: 28

Candidate Starts for Maselop_24:

(Start: 28 @12653 has 14 MA's), (60, 12731), (77, 12764), (90, 12788), (94, 12797), (108, 12848), (111, 12857), (144, 12983), (177, 13091), (233, 13307),

Gene: Maverick_5 Start: 2722, Stop: 3384, Start Num: 38

Candidate Starts for Maverick_5:

(Start: 38 @2722 has 339 MA's), (88, 2827), (175, 3139), (176, 3142), (233, 3367),

Gene: Maxo_5 Start: 2723, Stop: 3385, Start Num: 38

Candidate Starts for Maxo_5:

(Start: 38 @2723 has 339 MA's), (88, 2828), (175, 3140), (176, 3143), (233, 3368),

Gene: Mazhar510_5 Start: 2723, Stop: 3385, Start Num: 38

Candidate Starts for Mazhar510_5:

(Start: 38 @2723 has 339 MA's), (88, 2828), (175, 3140), (176, 3143), (233, 3368),

Gene: McFly_8 Start: 4661, Stop: 5359, Start Num: 30

Candidate Starts for McFly_8:

(Start: 30 @4661 has 42 MA's), (190, 5165), (235, 5351),

Gene: McGonagall_17 Start: 12036, Stop: 12680, Start Num: 39

Candidate Starts for McGonagall_17:

(Start: 39 @12036 has 2 MA's), (115, 12207), (176, 12432), (198, 12507), (202, 12513), (205, 12525), (211, 12546), (224, 12612),

Gene: Medusa_5 Start: 2722, Stop: 3384, Start Num: 38

Candidate Starts for Medusa_5:

(Start: 38 @2722 has 339 MA's), (88, 2827), (175, 3139), (176, 3142), (233, 3367),

Gene: MeeZee_5 Start: 2722, Stop: 3384, Start Num: 38

Candidate Starts for MeeZee_5:

(Start: 38 @2722 has 339 MA's), (88, 2827), (175, 3139), (176, 3142), (233, 3367),

Gene: Melvin_5 Start: 2722, Stop: 3384, Start Num: 38

Candidate Starts for Melvin_5:

(Start: 38 @2722 has 339 MA's), (88, 2827), (175, 3139), (176, 3142), (233, 3367),

Gene: Methuselah_5 Start: 2720, Stop: 3352, Start Num: 38

Candidate Starts for Methuselah_5:

(Start: 38 @2720 has 339 MA's), (115, 2903), (116, 2906), (121, 2933),

Gene: Micasa_5 Start: 3572, Stop: 4234, Start Num: 42

Candidate Starts for Micasa_5:

(Start: 42 @3572 has 53 MA's), (46, 3584), (55, 3608), (60, 3623), (66, 3638), (104, 3713), (132, 3842), (200, 4064),

Gene: Microwolf_5 Start: 2899, Stop: 3558, Start Num: 38

Candidate Starts for Microwolf_5:

(Start: 38 @2899 has 339 MA's), (115, 3082), (121, 3115), (135, 3184), (232, 3538),

Gene: Midas2_5 Start: 3571, Stop: 4233, Start Num: 42

Candidate Starts for Midas2_5:

(Start: 42 @3571 has 53 MA's), (46, 3583), (55, 3607), (60, 3622), (66, 3637), (104, 3712), (132, 3841), (200, 4063),

Gene: Miko_9 Start: 5364, Stop: 6041, Start Num: 38

Candidate Starts for Miko_9:

(Start: 38 @5364 has 339 MA's), (52, 5400), (114, 5544), (133, 5640), (170, 5778), (180, 5805),

Gene: Milcery_5 Start: 3602, Stop: 4264, Start Num: 42

Candidate Starts for Milcery_5:

(Start: 42 @3602 has 53 MA's), (46, 3614), (55, 3638), (60, 3653), (66, 3668), (104, 3743), (132, 3872), (200, 4094),

Gene: Millski_5 Start: 2722, Stop: 3384, Start Num: 38

Candidate Starts for Millski_5:

(Start: 38 @2722 has 339 MA's), (88, 2827), (175, 3139), (176, 3142), (233, 3367),

Gene: MinecraftSteve_9 Start: 4550, Stop: 5224, Start Num: 37

Candidate Starts for MinecraftSteve_9:

(Start: 37 @4550 has 16 MA's), (77, 4631), (98, 4667), (130, 4814), (146, 4862),

Gene: Miramae_5 Start: 2718, Stop: 3383, Start Num: 38

Candidate Starts for Miramae_5:

(Start: 38 @2718 has 339 MA's), (75, 2799), (131, 2985), (161, 3111),

Gene: Misomonster_7 Start: 2719, Stop: 3351, Start Num: 38

Candidate Starts for Misomonster_7:

(Start: 38 @2719 has 339 MA's), (115, 2902), (116, 2905), (121, 2932),

Gene: MissWhite_32 Start: 23704, Stop: 24357, Start Num: 32

Candidate Starts for MissWhite_32:

(Start: 32 @23704 has 8 MA's), (89, 23818), (113, 23887), (119, 23917), (120, 23923), (149, 24031), (189, 24172), (213, 24244),

Gene: ModicumRichard_26 Start: 23920, Stop: 24630, Start Num: 23

Candidate Starts for ModicumRichard_26:

(3, 23503), (10, 23758), (Start: 23 @23920 has 10 MA's), (25, 23935), (Start: 29 @23950 has 2 MA's), (127, 24202), (183, 24394),

Gene: MoneyMay_5 Start: 2629, Stop: 3264, Start Num: 38

Candidate Starts for MoneyMay_5:

(Start: 38 @2629 has 339 MA's), (121, 2842),

Gene: Morpher26_5 Start: 2733, Stop: 3395, Start Num: 38

Candidate Starts for Morpher26_5:

(Start: 38 @2733 has 339 MA's), (88, 2838), (176, 3153),

Gene: Morrow_5 Start: 2722, Stop: 3384, Start Num: 38

Candidate Starts for Morrow_5:

(Start: 38 @2722 has 339 MA's), (88, 2827), (175, 3139), (176, 3142), (233, 3367),

Gene: MossRose_39 Start: 33926, Stop: 34573, Start Num: 37

Candidate Starts for MossRose_39:

(Start: 37 @33926 has 16 MA's), (61, 33983), (77, 34013), (79, 34016), (89, 34034), (135, 34208), (148, 34244), (176, 34340), (234, 34556),

Gene: MuchMore_7 Start: 2890, Stop: 3549, Start Num: 38

Candidate Starts for MuchMore_7:

(Start: 38 @2890 has 339 MA's), (115, 3073), (120, 3103), (121, 3106), (135, 3175), (232, 3529),

Gene: Mulciber_8 Start: 5413, Stop: 6075, Start Num: 42

Candidate Starts for Mulciber_8:

(Start: 42 @5413 has 53 MA's), (66, 5479), (104, 5554), (200, 5905), (210, 5950),

Gene: Munch_8 Start: 5410, Stop: 6072, Start Num: 42

Candidate Starts for Munch_8:

(Start: 42 @5410 has 53 MA's), (66, 5476), (104, 5551), (128, 5662), (200, 5902),

Gene: Mundrea_5 Start: 2713, Stop: 3378, Start Num: 38

Candidate Starts for Mundrea_5:

(Start: 38 @2713 has 339 MA's), (75, 2794), (79, 2800), (113, 2890), (131, 2980), (161, 3106),

Gene: MyraDee_5 Start: 2390, Stop: 3028, Start Num: 36

Candidate Starts for MyraDee_5:

(Start: 36 @2390 has 1 MA's), (77, 2477), (82, 2486), (132, 2666),

Gene: Myxus_8 Start: 5239, Stop: 5868, Start Num: 38

Candidate Starts for Myxus_8:

(Start: 38 @5239 has 339 MA's), (54, 5278), (115, 5419), (121, 5449), (126, 5464),

Gene: NHagos_37 Start: 32544, Stop: 33191, Start Num: 38

Candidate Starts for NHagos_37:

(Start: 38 @32544 has 339 MA's), (61, 32601), (77, 32631), (79, 32634), (89, 32652), (114, 32718), (131, 32808), (147, 32859), (204, 33036), (234, 33174),

Gene: Naji_35 Start: 24412, Stop: 25083, Start Num: 33

Candidate Starts for Naji_35:

(Start: 33 @24412 has 22 MA's), (79, 24502), (89, 24523), (113, 24592), (120, 24628), (200, 24916), (201, 24919), (222, 25018), (227, 25033),

Gene: NearlyHeadless_5 Start: 3362, Stop: 4021, Start Num: 38

Candidate Starts for NearlyHeadless_5:

(Start: 38 @3362 has 339 MA's), (64, 3419), (70, 3428), (86, 3461),

Gene: Nebs_5 Start: 2722, Stop: 3384, Start Num: 38

Candidate Starts for Nebs_5:

(Start: 38 @2722 has 339 MA's), (88, 2827), (175, 3139), (176, 3142), (183, 3169), (233, 3367),

Gene: Nebulosus_8 Start: 4403, Stop: 5071, Start Num: 28

Candidate Starts for Nebulosus_8:

(Start: 28 @4403 has 14 MA's), (127, 4643), (144, 4709), (183, 4835),

Gene: Neeharika16_8 Start: 4661, Stop: 5359, Start Num: 30

Candidate Starts for Neeharika16_8:

(Start: 30 @4661 has 42 MA's), (190, 5165), (235, 5351),

Gene: Nemo27_5 Start: 2721, Stop: 3383, Start Num: 38

Candidate Starts for Nemo27_5:

(Start: 38 @2721 has 339 MA's), (88, 2826), (175, 3138), (176, 3141), (233, 3366),

Gene: Newrala_8 Start: 4661, Stop: 5359, Start Num: 30

Candidate Starts for Newrala_8:

(Start: 30 @4661 has 42 MA's), (190, 5165), (235, 5351),

Gene: NicoleTera_8 Start: 5250, Stop: 5927, Start Num: 38

Candidate Starts for NicoleTera_8:

(Start: 38 @5250 has 339 MA's), (50, 5280), (70, 5322), (113, 5427), (129, 5508), (148, 5568), (209, 5799),

Gene: NoPickles_26 Start: 18394, Stop: 19041, Start Num: 42

Candidate Starts for NoPickles_26:

(Start: 42 @18394 has 53 MA's), (66, 18457), (124, 18607), (155, 18745), (192, 18853), (215, 18919),

Gene: Noella_5 Start: 2764, Stop: 3423, Start Num: 38

Candidate Starts for Noella_5:

(Start: 38 @2764 has 339 MA's), (48, 2785), (78, 2851), (113, 2941), (120, 2977), (186, 3223), (212, 3310),

Gene: Noelle_5 Start: 2787, Stop: 3449, Start Num: 38

Candidate Starts for Noelle_5:

(Start: 38 @2787 has 339 MA's), (88, 2892), (175, 3204), (176, 3207), (233, 3432),

Gene: Norbert_4 Start: 2764, Stop: 3423, Start Num: 38

Candidate Starts for Norbert_4:

(Start: 38 @2764 has 339 MA's), (48, 2785), (78, 2851), (113, 2941), (120, 2977), (186, 3223), (212, 3310),

Gene: NorthStar_5 Start: 2722, Stop: 3384, Start Num: 38

Candidate Starts for NorthStar_5:

(Start: 38 @2722 has 339 MA's), (88, 2827), (175, 3139), (176, 3142), (233, 3367),

Gene: NotAPhaseMom_5 Start: 2722, Stop: 3384, Start Num: 38

Candidate Starts for NotAPhaseMom_5:

(Start: 38 @2722 has 339 MA's), (88, 2827), (175, 3139), (176, 3142), (233, 3367),

Gene: NothingSpecial_7 Start: 5206, Stop: 5850, Start Num: 38

Candidate Starts for NothingSpecial_7:

(Start: 38 @5206 has 339 MA's), (Start: 49 @5230 has 6 MA's), (70, 5278), (121, 5422), (184, 5650),

Gene: Nyxis_5 Start: 2725, Stop: 3387, Start Num: 38

Candidate Starts for Nyxis_5:

(Start: 38 @2725 has 339 MA's), (88, 2830), (176, 3145), (233, 3370),

Gene: OKCentral2016_5 Start: 2376, Stop: 3164, Start Num: 38

Candidate Starts for OKCentral2016_5:

(Start: 38 @2376 has 339 MA's), (79, 2463), (113, 2553), (144, 2685), (152, 2826), (156, 2877), (157, 2880), (167, 2916), (233, 3150),

Gene: OKaNui_5 Start: 2487, Stop: 3149, Start Num: 38

Candidate Starts for OKaNui_5:

(Start: 38 @2487 has 339 MA's), (88, 2592), (175, 2904), (176, 2907), (233, 3132),

Gene: ObLaDi_26 Start: 23899, Stop: 24609, Start Num: 23

Candidate Starts for ObLaDi_26:

(3, 23482), (10, 23737), (Start: 23 @23899 has 10 MA's), (25, 23914), (Start: 29 @23929 has 2 MA's), (127, 24181), (183, 24373),

Gene: Obama12_5 Start: 2724, Stop: 3389, Start Num: 38

Candidate Starts for Obama12_5:

(Start: 38 @2724 has 339 MA's), (113, 2901), (131, 2991), (161, 3117),

Gene: Octobien14_34 Start: 28125, Stop: 28844, Start Num: 23

Candidate Starts for Octobien14_34:

(Start: 23 @28125 has 10 MA's), (46, 28179), (53, 28200), (105, 28305), (113, 28338), (115, 28344), (128, 28419), (162, 28548), (179, 28587), (205, 28677), (224, 28776), (232, 28818),

Gene: Odin_31 Start: 23199, Stop: 23798, Start Num: 56

Candidate Starts for Odin_31:

(Start: 56 @23199 has 4 MA's), (72, 23232), (113, 23319), (139, 23439), (169, 23556),

Gene: Ohfah_5 Start: 2722, Stop: 3384, Start Num: 38

Candidate Starts for Ohfah_5:

(Start: 38 @2722 has 339 MA's), (88, 2827), (175, 3139), (176, 3142), (233, 3367),

Gene: OlanP_5 Start: 3068, Stop: 3718, Start Num: 38

Candidate Starts for OlanP_5:

(Start: 38 @3068 has 339 MA's), (89, 3176), (115, 3251), (159, 3443),

Gene: Ollie_5 Start: 2809, Stop: 3468, Start Num: 38

Candidate Starts for Ollie_5:

(Start: 38 @2809 has 339 MA's), (79, 2896), (Start: 101 @2938 has 1 MA's), (115, 2992), (131, 3076), (135, 3094),

Gene: Onglai_7 Start: 3560, Stop: 4231, Start Num: 38

Candidate Starts for Onglai_7:

(Start: 38 @3560 has 339 MA's), (113, 3734), (121, 3770), (176, 3983), (218, 4154),

Gene: Oofda_8 Start: 4406, Stop: 5080, Start Num: 37

Candidate Starts for Oofda_8:

(Start: 37 @4406 has 16 MA's), (77, 4487), (98, 4523), (130, 4670), (146, 4718),

Gene: Orange_8 Start: 5410, Stop: 6072, Start Num: 42

Candidate Starts for Orange_8:

(Start: 42 @5410 has 53 MA's), (66, 5476), (104, 5551), (128, 5662), (200, 5902), (210, 5947),

Gene: P28Green_5 Start: 2630, Stop: 3265, Start Num: 38

Candidate Starts for P28Green_5:

(Start: 38 @2630 has 339 MA's), (121, 2843),

Gene: PGHhamlin_7 Start: 2890, Stop: 3549, Start Num: 38

Candidate Starts for PGHhamlin_7:

(Start: 38 @2890 has 339 MA's), (115, 3073), (121, 3106), (135, 3175), (232, 3529),

Gene: PackMan_8 Start: 5239, Stop: 5868, Start Num: 38

Candidate Starts for PackMan_8:

(Start: 38 @5239 has 339 MA's), (54, 5278), (115, 5419), (121, 5449), (126, 5464),

Gene: PainterBoy_8 Start: 4875, Stop: 5543, Start Num: 34

Candidate Starts for PainterBoy_8:

(Start: 34 @4875 has 3 MA's), (62, 4932), (82, 4968), (139, 5169), (200, 5391),

Gene: Palestino_5 Start: 2722, Stop: 3384, Start Num: 38

Candidate Starts for Palestino_5:

(Start: 38 @2722 has 339 MA's), (88, 2827), (175, 3139), (176, 3142), (233, 3367),

Gene: Panamaxus_5 Start: 2764, Stop: 3423, Start Num: 38

Candidate Starts for Panamaxus_5:

(Start: 38 @2764 has 339 MA's), (48, 2785), (78, 2851), (113, 2941), (120, 2977), (186, 3223), (212, 3310),

Gene: Pawn_5 Start: 2888, Stop: 3538, Start Num: 38

Candidate Starts for Pawn_5:

(Start: 38 @2888 has 339 MA's), (89, 2996), (115, 3071), (159, 3263),

Gene: Peaches_5 Start: 2722, Stop: 3384, Start Num: 38

Candidate Starts for Peaches_5:

(Start: 38 @2722 has 339 MA's), (88, 2827), (175, 3139), (176, 3142), (233, 3367),

Gene: Pembroke_5 Start: 2890, Stop: 3558, Start Num: 38

Candidate Starts for Pembroke_5:

(Start: 38 @2890 has 339 MA's), (115, 3073), (121, 3106), (135, 3175), (232, 3538),

Gene: Penny1_5 Start: 2629, Stop: 3264, Start Num: 38

Candidate Starts for Penny1_5:

(Start: 38 @2629 has 339 MA's), (121, 2842),

Gene: Perkunas_28 Start: 19169, Stop: 19819, Start Num: 42

Candidate Starts for Perkunas_28:

(Start: 42 @19169 has 53 MA's), (77, 19253), (162, 19556), (169, 19571), (228, 19766), (234, 19802),

Gene: Perplexer_5 Start: 2733, Stop: 3395, Start Num: 38

Candidate Starts for Perplexer_5:

(Start: 38 @2733 has 339 MA's), (88, 2838), (176, 3153),

Gene: PeterPeter_5 Start: 2722, Stop: 3384, Start Num: 38

Candidate Starts for PeterPeter_5:

(Start: 38 @2722 has 339 MA's), (88, 2827), (175, 3139), (176, 3142), (233, 3367),

Gene: Petersenfast_7 Start: 5413, Stop: 6075, Start Num: 42

Candidate Starts for Petersenfast_7:

(Start: 42 @5413 has 53 MA's), (66, 5479), (104, 5554), (128, 5665), (200, 5905), (210, 5950),

Gene: PetiteSangsue_5 Start: 2733, Stop: 3395, Start Num: 38

Candidate Starts for PetiteSangsue_5:

(Start: 38 @2733 has 339 MA's), (88, 2838), (176, 3153),

Gene: Petito_27 Start: 18884, Stop: 19531, Start Num: 42

Candidate Starts for Petito_27:

(Start: 42 @18884 has 53 MA's), (46, 18896), (63, 18941), (90, 18989), (147, 19193), (205, 19376), (235, 19517),

Gene: PetterN_5 Start: 3407, Stop: 4048, Start Num: 38

Candidate Starts for PetterN_5:

(Start: 38 @3407 has 339 MA's), (52, 3443), (62, 3464), (77, 3491), (124, 3623), (142, 3704), (147, 3719), (232, 4025),

Gene: Ph8s_33 Start: 23091, Stop: 23747, Start Num: 33

Candidate Starts for Ph8s_33:

(5, 22788), (Start: 33 @23091 has 22 MA's), (Start: 42 @23106 has 53 MA's), (76, 23181), (89, 23205), (Start: 101 @23226 has 1 MA's), (113, 23274), (115, 23280), (120, 23310), (130, 23361), (139, 23394), (149, 23421), (153, 23454), (176, 23520), (186, 23550), (191, 23568),

Gene: Phacado_5 Start: 2721, Stop: 3383, Start Num: 38

Candidate Starts for Phacado_5:

(Start: 38 @2721 has 339 MA's), (88, 2826), (175, 3138), (176, 3141), (233, 3366),

Gene: Phaded_8 Start: 5071, Stop: 5733, Start Num: 38

Candidate Starts for Phaded_8:

(Start: 38 @5071 has 339 MA's), (75, 5152), (131, 5338), (161, 5464), (233, 5716),

Gene: Phaeder_8 Start: 5239, Stop: 5868, Start Num: 38

Candidate Starts for Phaeder_8:

(Start: 38 @5239 has 339 MA's), (54, 5278), (115, 5419), (121, 5449), (126, 5464),

Gene: Phantastic_5 Start: 2835, Stop: 3479, Start Num: 38

Candidate Starts for Phantastic_5:

(Start: 38 @2835 has 339 MA's), (59, 2886), (77, 2919), (115, 3018), (149, 3159), (195, 3324),

Gene: Phayeta_34 Start: 32624, Stop: 33289, Start Num: 32

Candidate Starts for Phayeta_34:

(Start: 32 @32624 has 8 MA's), (Start: 38 @32636 has 339 MA's), (Start: 49 @32660 has 6 MA's), (70, 32708), (73, 32714), (76, 32720), (80, 32726), (89, 32750), (115, 32825), (120, 32855), (132, 32915), (135, 32927), (142, 32945), (163, 33044), (164, 33047), (204, 33152), (206, 33158), (212, 33176), (231, 33263),

Gene: Phelipe_5 Start: 2722, Stop: 3384, Start Num: 38

Candidate Starts for Phelipe_5:

(Start: 38 @2722 has 339 MA's), (88, 2827), (175, 3139), (176, 3142), (233, 3367),

Gene: Phighter1804_5 Start: 2721, Stop: 3386, Start Num: 38

Candidate Starts for Phighter1804_5:

(Start: 38 @2721 has 339 MA's), (75, 2802), (79, 2808), (131, 2988), (161, 3114),

Gene: Phillis_5 Start: 3347, Stop: 4006, Start Num: 38

Candidate Starts for Phillis_5:

(Start: 38 @3347 has 339 MA's), (64, 3404), (86, 3446), (204, 3863),

Gene: PhishRPhriends_5 Start: 2400, Stop: 3035, Start Num: 38

Candidate Starts for PhishRPhriends_5:

(Start: 38 @2400 has 339 MA's), (109, 2565), (111, 2571), (121, 2613), (135, 2685), (143, 2706), (176, 2808),

Gene: Phlei_5 Start: 5021, Stop: 5680, Start Num: 42

Candidate Starts for Phlei_5:

(Start: 42 @5021 has 53 MA's),

Gene: Phlorence_5 Start: 3728, Stop: 4375, Start Num: 49
Candidate Starts for Phlorence_5:
(Start: 42 @3710 has 53 MA's), (Start: 49 @3728 has 6 MA's), (66, 3776), (79, 3797), (115, 3893),

Gene: Phoebe_5 Start: 2629, Stop: 3264, Start Num: 38
Candidate Starts for Phoebe_5:
(Start: 38 @2629 has 339 MA's), (121, 2842),

Gene: Phonnegut_8 Start: 5227, Stop: 5898, Start Num: 38
Candidate Starts for Phonnegut_8:
(Start: 38 @5227 has 339 MA's), (113, 5401), (121, 5437), (176, 5650), (218, 5821),

Gene: Phontbonne_5 Start: 2720, Stop: 3382, Start Num: 38
Candidate Starts for Phontbonne_5:
(Start: 38 @2720 has 339 MA's), (88, 2825), (176, 3140), (233, 3365),

Gene: Phoxy_5 Start: 2720, Stop: 3352, Start Num: 38
Candidate Starts for Phoxy_5:
(Start: 38 @2720 has 339 MA's), (115, 2903), (116, 2906), (121, 2933),

Gene: Phranny_6 Start: 2888, Stop: 3535, Start Num: 38
Candidate Starts for Phranny_6:
(Start: 38 @2888 has 339 MA's), (89, 2996), (115, 3071), (121, 3104),

Gene: PickleBack_5 Start: 3447, Stop: 4088, Start Num: 38
Candidate Starts for PickleBack_5:
(Start: 38 @3447 has 339 MA's), (91, 3555), (111, 3615), (124, 3663), (126, 3669), (131, 3708), (145, 3753), (147, 3759),

Gene: Pioneer_8 Start: 5227, Stop: 5898, Start Num: 38
Candidate Starts for Pioneer_8:
(Start: 38 @5227 has 339 MA's), (113, 5401), (121, 5437), (176, 5650), (218, 5821),

Gene: Pipcraft_5 Start: 2722, Stop: 3384, Start Num: 38
Candidate Starts for Pipcraft_5:
(Start: 38 @2722 has 339 MA's), (88, 2827), (175, 3139), (176, 3142), (233, 3367),

Gene: Pistachio_5 Start: 2377, Stop: 3027, Start Num: 38
Candidate Starts for Pistachio_5:
(Start: 38 @2377 has 339 MA's), (131, 2644), (232, 3007),

Gene: Pmask_8 Start: 4661, Stop: 5359, Start Num: 30
Candidate Starts for Pmask_8:
(Start: 30 @4661 has 42 MA's), (190, 5165), (235, 5351),

Gene: Pocahontas_5 Start: 2764, Stop: 3423, Start Num: 38
Candidate Starts for Pocahontas_5:
(Start: 38 @2764 has 339 MA's), (48, 2785), (78, 2851), (113, 2941), (120, 2977), (186, 3223), (212, 3310),

Gene: Polymorphads_5 Start: 2722, Stop: 3384, Start Num: 38
Candidate Starts for Polymorphads_5:
(Start: 38 @2722 has 339 MA's), (88, 2827), (175, 3139), (176, 3142), (233, 3367),

Gene: Polyuyki_24 Start: 12645, Stop: 13322, Start Num: 28

Candidate Starts for Polyuyki_24:

(Start: 28 @12645 has 14 MA's), (60, 12723), (77, 12756), (90, 12780), (94, 12789), (108, 12840), (111, 12849), (144, 12975), (177, 13083), (233, 13299),

Gene: Pomar16_35 Start: 24453, Stop: 25124, Start Num: 33

Candidate Starts for Pomar16_35:

(Start: 33 @24453 has 22 MA's), (79, 24543), (89, 24564), (113, 24633), (120, 24669), (129, 24717), (200, 24957), (201, 24960), (222, 25059), (227, 25074),

Gene: Popcicle_5 Start: 2764, Stop: 3423, Start Num: 38

Candidate Starts for Popcicle_5:

(Start: 38 @2764 has 339 MA's), (48, 2785), (78, 2851), (113, 2941), (120, 2977), (186, 3223), (212, 3310),

Gene: PotatoSplit_6 Start: 2629, Stop: 3264, Start Num: 38

Candidate Starts for PotatoSplit_6:

(Start: 38 @2629 has 339 MA's), (121, 2842),

Gene: Priamo_8 Start: 4676, Stop: 5344, Start Num: 30

Candidate Starts for Priamo_8:

(Start: 30 @4676 has 42 MA's), (166, 5087), (190, 5150), (235, 5336),

Gene: Priya_8 Start: 5225, Stop: 5896, Start Num: 38

Candidate Starts for Priya_8:

(Start: 38 @5225 has 339 MA's), (121, 5435), (135, 5507), (176, 5648), (207, 5741), (218, 5819), (232, 5873),

Gene: Pukovnik_8 Start: 5014, Stop: 5685, Start Num: 38

Candidate Starts for Pukovnik_8:

(Start: 38 @5014 has 339 MA's), (113, 5188), (121, 5224), (149, 5335), (198, 5515),

Gene: Pumbaa_5 Start: 2720, Stop: 3385, Start Num: 38

Candidate Starts for Pumbaa_5:

(Start: 38 @2720 has 339 MA's), (75, 2801), (79, 2807), (131, 2987), (161, 3113),

Gene: Puppy_5 Start: 2449, Stop: 3099, Start Num: 38

Candidate Starts for Puppy_5:

(Start: 38 @2449 has 339 MA's), (115, 2632), (131, 2716),

Gene: PurpleHaze_5 Start: 2887, Stop: 3537, Start Num: 38

Candidate Starts for PurpleHaze_5:

(Start: 38 @2887 has 339 MA's), (89, 2995), (115, 3070), (159, 3262),

Gene: Qobbit_8 Start: 5224, Stop: 5895, Start Num: 38

Candidate Starts for Qobbit_8:

(Start: 38 @5224 has 339 MA's), (113, 5398), (121, 5434), (176, 5647), (218, 5818), (232, 5872),

Gene: QuinnKiro_4 Start: 2764, Stop: 3423, Start Num: 38

Candidate Starts for QuinnKiro_4:

(Start: 38 @2764 has 339 MA's), (48, 2785), (78, 2851), (113, 2941), (120, 2977), (186, 3223), (212, 3310),

Gene: Quokka_30 Start: 23397, Stop: 23996, Start Num: 56

Candidate Starts for Quokka_30:

(Start: 56 @23397 has 4 MA's), (72, 23430), (89, 23448), (113, 23517), (129, 23601), (139, 23637), (169, 23754), (220, 23925),

Gene: Rachaly_9 Start: 5384, Stop: 6061, Start Num: 38

Candidate Starts for Rachaly_9:

(Start: 38 @5384 has 339 MA's), (52, 5420), (114, 5564), (133, 5660), (149, 5708), (170, 5798), (180, 5825),

Gene: Rahalelujah_31 Start: 23978, Stop: 24619, Start Num: 32

Candidate Starts for Rahalelujah_31:

(20, 23906), (Start: 32 @23978 has 8 MA's), (Start: 101 @24113 has 1 MA's), (113, 24161), (169, 24392), (232, 24599),

Gene: ReMo_8 Start: 4403, Stop: 5071, Start Num: 28

Candidate Starts for ReMo_8:

(Start: 28 @4403 has 14 MA's), (127, 4643), (144, 4709), (183, 4835),

Gene: Reba_6 Start: 2561, Stop: 3208, Start Num: 38

Candidate Starts for Reba_6:

(Start: 38 @2561 has 339 MA's), (89, 2669), (115, 2744), (121, 2777),

Gene: Rebeuca_6 Start: 3002, Stop: 3649, Start Num: 38

Candidate Starts for Rebeuca_6:

(Start: 38 @3002 has 339 MA's), (89, 3110), (113, 3179), (131, 3269), (156, 3362),

Gene: RedRock_8 Start: 5246, Stop: 5983, Start Num: 38

Candidate Starts for RedRock_8:

(Start: 38 @5246 has 339 MA's), (148, 5567), (185, 5717), (199, 5780),

Gene: Relief_5 Start: 2723, Stop: 3385, Start Num: 38

Candidate Starts for Relief_5:

(Start: 38 @2723 has 339 MA's), (88, 2828), (148, 3044), (175, 3140), (176, 3143), (233, 3368),

Gene: Remus_8 Start: 4403, Stop: 5071, Start Num: 28

Candidate Starts for Remus_8:

(Start: 28 @4403 has 14 MA's), (127, 4643), (144, 4709), (183, 4835),

Gene: ResDef_5 Start: 2764, Stop: 3423, Start Num: 38

Candidate Starts for ResDef_5:

(Start: 38 @2764 has 339 MA's), (48, 2785), (78, 2851), (113, 2941), (120, 2977), (186, 3223), (212, 3310),

Gene: RhynO_5 Start: 2841, Stop: 3488, Start Num: 38

Candidate Starts for RhynO_5:

(Start: 38 @2841 has 339 MA's), (Start: 49 @2865 has 6 MA's), (79, 2928), (113, 3018), (131, 3108), (156, 3201),

Gene: Rifter_8 Start: 4654, Stop: 5352, Start Num: 30

Candidate Starts for Rifter_8:

(Start: 30 @4654 has 42 MA's), (110, 4855), (190, 5158), (235, 5344),

Gene: Roary_5 Start: 3347, Stop: 4006, Start Num: 38
Candidate Starts for Roary_5:
(Start: 38 @3347 has 339 MA's), (64, 3404), (86, 3446), (204, 3863),

Gene: Rockstar_5 Start: 2748, Stop: 3383, Start Num: 38
Candidate Starts for Rockstar_5:
(Start: 38 @2748 has 339 MA's), (115, 2931), (121, 2961), (137, 3039), (149, 3072),

Gene: Roksolana_8 Start: 4661, Stop: 5359, Start Num: 30
Candidate Starts for Roksolana_8:
(Start: 30 @4661 has 42 MA's), (190, 5165), (235, 5351),

Gene: Romney_5 Start: 2721, Stop: 3383, Start Num: 38
Candidate Starts for Romney_5:
(Start: 38 @2721 has 339 MA's), (88, 2826), (175, 3138), (176, 3141), (233, 3366),

Gene: Roosevelt_5 Start: 2722, Stop: 3384, Start Num: 38
Candidate Starts for Roosevelt_5:
(Start: 38 @2722 has 339 MA's), (88, 2827), (175, 3139), (176, 3142), (233, 3367),

Gene: Rosa24_4 Start: 2720, Stop: 3385, Start Num: 38
Candidate Starts for Rosa24_4:
(Start: 38 @2720 has 339 MA's), (113, 2897), (131, 2987), (161, 3113),

Gene: Rosalind_8 Start: 4550, Stop: 5224, Start Num: 37
Candidate Starts for Rosalind_8:
(Start: 37 @4550 has 16 MA's), (77, 4631), (98, 4667), (130, 4814), (146, 4862),

Gene: Rowdy_6 Start: 2752, Stop: 3399, Start Num: 38
Candidate Starts for Rowdy_6:
(Start: 38 @2752 has 339 MA's), (Start: 49 @2776 has 6 MA's), (79, 2839), (113, 2929), (131, 3019),
(156, 3112),

Gene: Ruin_5 Start: 2721, Stop: 3383, Start Num: 38
Candidate Starts for Ruin_5:
(Start: 38 @2721 has 339 MA's), (88, 2826), (175, 3138), (176, 3141), (233, 3366),

Gene: Rummer_5 Start: 2720, Stop: 3352, Start Num: 38
Candidate Starts for Rummer_5:
(Start: 38 @2720 has 339 MA's), (115, 2903), (116, 2906), (121, 2933),

Gene: RyeScarlet_9 Start: 5230, Stop: 5901, Start Num: 38
Candidate Starts for RyeScarlet_9:
(Start: 38 @5230 has 339 MA's), (113, 5404), (121, 5440), (176, 5653), (218, 5824),

Gene: Sabertooth_5 Start: 2722, Stop: 3384, Start Num: 38
Candidate Starts for Sabertooth_5:
(Start: 38 @2722 has 339 MA's), (88, 2827), (175, 3139), (176, 3142), (233, 3367),

Gene: Sabia_5 Start: 2891, Stop: 3550, Start Num: 38
Candidate Starts for Sabia_5:

(Start: 38 @2891 has 339 MA's), (Start: 101 @3020 has 1 MA's), (115, 3074), (121, 3107), (135, 3176), (232, 3530),

Gene: Sabinator_5 Start: 2629, Stop: 3264, Start Num: 38

Candidate Starts for Sabinator_5:

(Start: 38 @2629 has 339 MA's), (121, 2842),

Gene: Sachima_6 Start: 5239, Stop: 5868, Start Num: 38

Candidate Starts for Sachima_6:

(Start: 38 @5239 has 339 MA's), (54, 5278), (115, 5419), (121, 5449), (126, 5464),

Gene: Saintus_5 Start: 3362, Stop: 4021, Start Num: 38

Candidate Starts for Saintus_5:

(Start: 38 @3362 has 339 MA's), (64, 3419), (70, 3428), (86, 3461), (204, 3878),

Gene: Salz_8 Start: 5410, Stop: 6072, Start Num: 42

Candidate Starts for Salz_8:

(Start: 42 @5410 has 53 MA's), (66, 5476), (104, 5551), (200, 5902), (210, 5947),

Gene: SaturnRing_4 Start: 2830, Stop: 3480, Start Num: 38

Candidate Starts for SaturnRing_4:

(Start: 38 @2830 has 339 MA's), (131, 3097), (232, 3460),

Gene: Scamp_5 Start: 2722, Stop: 3384, Start Num: 38

Candidate Starts for Scamp_5:

(Start: 38 @2722 has 339 MA's), (88, 2827), (175, 3139), (176, 3142), (233, 3367),

Gene: Scherzo_8 Start: 5227, Stop: 5898, Start Num: 38

Candidate Starts for Scherzo_8:

(Start: 38 @5227 has 339 MA's), (113, 5401), (121, 5437), (176, 5650), (218, 5821),

Gene: ScoobyDoobyDoo_130 Start: 79579, Stop: 80151, Start Num: 71

Candidate Starts for ScoobyDoobyDoo_130:

(16, 79357), (27, 79477), (Start: 71 @79579 has 2 MA's), (113, 79696), (114, 79699), (120, 79732), (133, 79795), (204, 80008), (230, 80110),

Gene: Scorpia_5 Start: 3408, Stop: 4049, Start Num: 38

Candidate Starts for Scorpia_5:

(Start: 38 @3408 has 339 MA's), (52, 3444), (62, 3465), (77, 3492), (124, 3624), (142, 3705), (147, 3720), (232, 4026),

Gene: Scout_5 Start: 2346, Stop: 2987, Start Num: 38

Candidate Starts for Scout_5:

(Start: 38 @2346 has 339 MA's), (77, 2430), (100, 2472), (168, 2748), (176, 2760),

Gene: Sephiroth_33 Start: 27616, Stop: 28326, Start Num: 23

Candidate Starts for Sephiroth_33:

(Start: 23 @27616 has 10 MA's), (113, 27820), (115, 27826), (128, 27901), (144, 27949), (145, 27952), (146, 27955), (162, 28030), (205, 28159), (224, 28258), (232, 28300),

Gene: Serenity_31 Start: 23522, Stop: 24121, Start Num: 56

Candidate Starts for Serenity_31:

(Start: 56 @23522 has 4 MA's), (72, 23555), (89, 23573), (113, 23642), (129, 23726), (139, 23762), (169, 23879), (220, 24050),

Gene: Shaka_5 Start: 2722, Stop: 3384, Start Num: 38

Candidate Starts for Shaka_5:

(Start: 38 @2722 has 339 MA's), (88, 2827), (175, 3139), (176, 3142), (233, 3367),

Gene: Sham4_8 Start: 5413, Stop: 6075, Start Num: 42

Candidate Starts for Sham4_8:

(Start: 42 @5413 has 53 MA's), (66, 5479), (104, 5554), (128, 5665), (200, 5905), (210, 5950),

Gene: Shapes_6 Start: 2752, Stop: 3399, Start Num: 38

Candidate Starts for Shapes_6:

(Start: 38 @2752 has 339 MA's), (Start: 49 @2776 has 6 MA's), (79, 2839), (113, 2929), (131, 3019), (156, 3112),

Gene: ShayRa_9 Start: 4550, Stop: 5224, Start Num: 37

Candidate Starts for ShayRa_9:

(Start: 37 @4550 has 16 MA's), (77, 4631), (98, 4667), (130, 4814), (146, 4862),

Gene: SheaKeira_32 Start: 24009, Stop: 24662, Start Num: 38

Candidate Starts for SheaKeira_32:

(Start: 38 @24009 has 339 MA's), (85, 24114), (89, 24126), (113, 24195), (115, 24201), (116, 24204), (121, 24234), (135, 24303), (149, 24342),

Gene: SheldonCooper_5 Start: 2723, Stop: 3388, Start Num: 38

Candidate Starts for SheldonCooper_5:

(Start: 38 @2723 has 339 MA's), (113, 2900), (131, 2990), (161, 3116),

Gene: Shygu2_5 Start: 2724, Stop: 3389, Start Num: 38

Candidate Starts for Shygu2_5:

(Start: 38 @2724 has 339 MA's), (113, 2901), (131, 2991), (161, 3117), (233, 3372),

Gene: Skipitt_5 Start: 2722, Stop: 3384, Start Num: 38

Candidate Starts for Skipitt_5:

(Start: 38 @2722 has 339 MA's), (88, 2827), (175, 3139), (176, 3142), (183, 3169), (233, 3367),

Gene: Smeadley_5 Start: 3347, Stop: 4006, Start Num: 38

Candidate Starts for Smeadley_5:

(Start: 38 @3347 has 339 MA's), (64, 3404), (86, 3446), (173, 3764), (204, 3863),

Gene: SmellyB_8 Start: 4661, Stop: 5359, Start Num: 30

Candidate Starts for SmellyB_8:

(Start: 30 @4661 has 42 MA's), (190, 5165), (235, 5351),

Gene: Snape_8 Start: 5416, Stop: 6078, Start Num: 42

Candidate Starts for Snape_8:

(Start: 42 @5416 has 53 MA's), (66, 5482), (104, 5557), (200, 5908), (210, 5953),

Gene: Snickers_5 Start: 2872, Stop: 3531, Start Num: 38

Candidate Starts for Snickers_5:

(Start: 38 @2872 has 339 MA's), (Start: 101 @3001 has 1 MA's), (115, 3055), (121, 3088), (135, 3157), (232, 3511),

Gene: SoYo_5 Start: 2809, Stop: 3468, Start Num: 38

Candidate Starts for SoYo_5:

(Start: 38 @2809 has 339 MA's), (Start: 101 @2938 has 1 MA's), (115, 2992), (121, 3025), (135, 3094), (232, 3448),

Gene: SoilDragon_5 Start: 2572, Stop: 3231, Start Num: 38

Candidate Starts for SoilDragon_5:

(Start: 38 @2572 has 339 MA's), (79, 2659), (Start: 101 @2701 has 1 MA's), (115, 2755), (122, 2794), (131, 2839),

Gene: Soshari_7 Start: 2720, Stop: 3352, Start Num: 38

Candidate Starts for Soshari_7:

(Start: 38 @2720 has 339 MA's), (115, 2903), (116, 2906), (121, 2933),

Gene: Soups_8 Start: 4550, Stop: 5224, Start Num: 37

Candidate Starts for Soups_8:

(Start: 37 @4550 has 16 MA's), (77, 4631), (98, 4667), (130, 4814), (146, 4862),

Gene: Sparxx_5 Start: 2722, Stop: 3384, Start Num: 38

Candidate Starts for Sparxx_5:

(Start: 38 @2722 has 339 MA's), (88, 2827), (175, 3139), (176, 3142), (233, 3367),

Gene: SpeedDemon_430 Start: 40514, Stop: 41227, Start Num: 23

Candidate Starts for SpeedDemon_430:

(12, 40364), (Start: 23 @40514 has 10 MA's), (25, 40529), (Start: 29 @40544 has 2 MA's), (41, 40565), (81, 40652), (106, 40709), (136, 40844), (140, 40853), (149, 40874), (162, 40943), (204, 41057),

Gene: Spike509_5 Start: 2720, Stop: 3352, Start Num: 38

Candidate Starts for Spike509_5:

(Start: 38 @2720 has 339 MA's), (115, 2903), (116, 2906), (121, 2933),

Gene: Spino_5 Start: 2722, Stop: 3384, Start Num: 38

Candidate Starts for Spino_5:

(Start: 38 @2722 has 339 MA's), (88, 2827), (175, 3139), (176, 3142),

Gene: Stagni_5 Start: 2891, Stop: 3559, Start Num: 38

Candidate Starts for Stagni_5:

(Start: 38 @2891 has 339 MA's), (Start: 101 @3020 has 1 MA's), (115, 3074), (121, 3107), (135, 3176), (232, 3539),

Gene: StarStuff_35 Start: 24412, Stop: 25083, Start Num: 33

Candidate Starts for StarStuff_35:

(Start: 33 @24412 has 22 MA's), (79, 24502), (89, 24523), (113, 24592), (120, 24628), (129, 24676), (200, 24916), (201, 24919), (222, 25018), (227, 25033),

Gene: Stasia_5 Start: 2745, Stop: 3407, Start Num: 38

Candidate Starts for Stasia_5:

(Start: 38 @2745 has 339 MA's), (75, 2826), (88, 2850),

Gene: SteamedHams_30 Start: 22667, Stop: 23359, Start Num: 40

Candidate Starts for SteamedHams_30:

(Start: 40 @22667 has 2 MA's), (63, 22724), (68, 22733), (79, 22754), (108, 22829), (195, 23171),

Gene: Steamy_8 Start: 5295, Stop: 5924, Start Num: 97

Candidate Starts for Steamy_8:

(Start: 97 @5295 has 1 MA's), (117, 5367), (118, 5376), (128, 5424), (145, 5481),

Gene: StepMih_5 Start: 3020, Stop: 3550, Start Num: 101

Candidate Starts for StepMih_5:

(Start: 38 @2891 has 339 MA's), (Start: 101 @3020 has 1 MA's), (115, 3074), (121, 3107), (135, 3176), (232, 3530),

Gene: Stephig9_5 Start: 3348, Stop: 4007, Start Num: 38

Candidate Starts for Stephig9_5:

(Start: 38 @3348 has 339 MA's), (64, 3405), (86, 3447), (204, 3864),

Gene: Stink_5 Start: 2719, Stop: 3384, Start Num: 38

Candidate Starts for Stink_5:

(Start: 38 @2719 has 339 MA's), (75, 2800), (131, 2986), (161, 3112),

Gene: Strosahl_8 Start: 4403, Stop: 5071, Start Num: 28

Candidate Starts for Strosahl_8:

(Start: 28 @4403 has 14 MA's), (127, 4643), (144, 4709), (183, 4835),

Gene: Sunhee_31 Start: 23957, Stop: 24625, Start Num: 32

Candidate Starts for Sunhee_31:

(4, 23567), (Start: 32 @23957 has 8 MA's), (113, 24140), (120, 24176), (139, 24260), (154, 24329), (169, 24383),

Gene: SuperAwesome_8 Start: 4661, Stop: 5359, Start Num: 30

Candidate Starts for SuperAwesome_8:

(Start: 30 @4661 has 42 MA's), (190, 5165), (235, 5351),

Gene: SuperCallie99_8 Start: 4662, Stop: 5360, Start Num: 30

Candidate Starts for SuperCallie99_8:

(Start: 30 @4662 has 42 MA's), (190, 5166), (235, 5352),

Gene: Superchunk_31 Start: 22947, Stop: 23612, Start Num: 32

Candidate Starts for Superchunk_31:

(Start: 32 @22947 has 8 MA's), (Start: 33 @22950 has 22 MA's), (89, 23061), (113, 23130), (115, 23136), (120, 23166), (139, 23250), (175, 23373), (200, 23445), (227, 23562),

Gene: SwirlSquare_34 Start: 23197, Stop: 23850, Start Num: 33

Candidate Starts for SwirlSquare_34:

(Start: 33 @23197 has 22 MA's), (62, 23260), (66, 23266), (89, 23308), (113, 23377), (120, 23413), (139, 23497), (186, 23653), (191, 23671),

Gene: Swirley_5 Start: 3571, Stop: 4233, Start Num: 42

Candidate Starts for Swirley_5:

(Start: 42 @3571 has 53 MA's), (46, 3583), (55, 3607), (60, 3622), (66, 3637), (104, 3712), (132, 3841), (200, 4063),

Gene: Switzerland_8 Start: 4550, Stop: 5224, Start Num: 37

Candidate Starts for Switzerland_8:

(Start: 37 @4550 has 16 MA's), (77, 4631), (98, 4667), (130, 4814), (146, 4862),

Gene: SydNat_5 Start: 3697, Stop: 4344, Start Num: 49

Candidate Starts for SydNat_5:

(Start: 42 @3679 has 53 MA's), (Start: 49 @3697 has 6 MA's), (66, 3745), (79, 3766), (115, 3862), (225, 4291),

Gene: Syleon_33 Start: 27538, Stop: 28248, Start Num: 23

Candidate Starts for Syleon_33:

(Start: 23 @27538 has 10 MA's), (113, 27742), (115, 27748), (128, 27823), (144, 27871), (145, 27874), (146, 27877), (162, 27952), (205, 28081), (224, 28180), (232, 28222),

Gene: TNguyen7_5 Start: 2828, Stop: 3478, Start Num: 38

Candidate Starts for TNguyen7_5:

(Start: 38 @2828 has 339 MA's), (113, 3005), (131, 3095), (156, 3191),

Gene: TPA2_47 Start: 36929, Stop: 37582, Start Num: 40

Candidate Starts for TPA2_47:

(Start: 40 @36929 has 2 MA's), (55, 36965), (59, 36977), (66, 36995), (92, 37040), (111, 37100), (112, 37103), (135, 37205), (229, 37535),

Gene: Taquarus_5 Start: 2725, Stop: 3387, Start Num: 38

Candidate Starts for Taquarus_5:

(Start: 38 @2725 has 339 MA's), (88, 2830), (175, 3142), (176, 3145), (233, 3370),

Gene: Tarynearal_4 Start: 3600, Stop: 4262, Start Num: 42

Candidate Starts for Tarynearal_4:

(Start: 42 @3600 has 53 MA's), (46, 3612), (55, 3636), (60, 3651), (66, 3666), (104, 3741), (132, 3870), (200, 4092),

Gene: Taurus_5 Start: 2629, Stop: 3264, Start Num: 38

Candidate Starts for Taurus_5:

(Start: 38 @2629 has 339 MA's), (121, 2842),

Gene: Texage_4 Start: 2764, Stop: 3423, Start Num: 38

Candidate Starts for Texage_4:

(Start: 38 @2764 has 339 MA's), (48, 2785), (78, 2851), (113, 2941), (120, 2977), (186, 3223), (212, 3310),

Gene: Thanksgivukkah_5 Start: 2723, Stop: 3385, Start Num: 38

Candidate Starts for Thanksgivukkah_5:

(Start: 38 @2723 has 339 MA's), (88, 2828), (175, 3140), (176, 3143), (233, 3368),

Gene: Theia_4 Start: 3572, Stop: 4234, Start Num: 42

Candidate Starts for Theia_4:

(Start: 42 @3572 has 53 MA's), (55, 3608), (60, 3623), (66, 3638), (104, 3713), (200, 4064),

Gene: Tiffany_5 Start: 2900, Stop: 3451, Start Num: 38

Candidate Starts for Tiffany_5:

(Start: 38 @2900 has 339 MA's), (Start: 101 @3029 has 1 MA's), (115, 3083), (121, 3116), (135, 3185), (232, 3431),

Gene: Tiger_5 Start: 3446, Stop: 4087, Start Num: 38

Candidate Starts for Tiger_5:

(Start: 38 @3446 has 339 MA's), (91, 3554), (111, 3614), (124, 3662), (126, 3668), (131, 3707), (145, 3752), (147, 3758),

Gene: Timothy_8 Start: 5410, Stop: 6072, Start Num: 42

Candidate Starts for Timothy_8:

(Start: 42 @5410 has 53 MA's), (66, 5476), (104, 5551), (128, 5662), (200, 5902),

Gene: TinaFeyge_5 Start: 2722, Stop: 3384, Start Num: 38

Candidate Starts for TinaFeyge_5:

(Start: 38 @2722 has 339 MA's), (88, 2827), (175, 3139), (176, 3142), (233, 3367),

Gene: TinaLin_3 Start: 665, Stop: 1360, Start Num: 29

Candidate Starts for TinaLin_3:

(9, 434), (14, 515), (17, 590), (Start: 29 @665 has 2 MA's), (35, 677), (48, 704), (66, 755), (96, 812), (108, 857), (111, 866), (138, 986), (143, 998), (147, 1010), (204, 1193),

Gene: TinyTimmy_8 Start: 5410, Stop: 6072, Start Num: 42

Candidate Starts for TinyTimmy_8:

(Start: 42 @5410 has 53 MA's), (66, 5476), (104, 5551), (128, 5662), (200, 5902), (210, 5947),

Gene: Tinybot_4 Start: 2725, Stop: 3390, Start Num: 38

Candidate Starts for Tinybot_4:

(Start: 38 @2725 has 339 MA's), (113, 2902), (131, 2992), (161, 3118),

Gene: TipsytheTRex_31 Start: 23713, Stop: 24366, Start Num: 33

Candidate Starts for TipsytheTRex_31:

(Start: 32 @23710 has 8 MA's), (Start: 33 @23713 has 22 MA's), (59, 23767), (113, 23893), (120, 23929), (176, 24139), (186, 24169), (188, 24178), (191, 24187), (227, 24316),

Gene: TiroTheta9_5 Start: 2722, Stop: 3384, Start Num: 38

Candidate Starts for TiroTheta9_5:

(Start: 38 @2722 has 339 MA's), (88, 2827), (175, 3139), (176, 3142), (183, 3169), (233, 3367),

Gene: Toaka_31 Start: 24361, Stop: 25002, Start Num: 32

Candidate Starts for Toaka_31:

(Start: 32 @24361 has 8 MA's), (79, 24454), (89, 24475), (113, 24544), (131, 24634), (149, 24691), (163, 24763), (169, 24775), (200, 24853),

Gene: Todacoro_5 Start: 2764, Stop: 3423, Start Num: 38

Candidate Starts for Todacoro_5:

(Start: 38 @2764 has 339 MA's), (48, 2785), (78, 2851), (113, 2941), (120, 2977), (186, 3223), (212, 3310),

Gene: Tomathan_35 Start: 24412, Stop: 25083, Start Num: 33

Candidate Starts for Tomathan_35:

(Start: 33 @24412 has 22 MA's), (79, 24502), (89, 24523), (113, 24592), (120, 24628), (129, 24676), (200, 24916), (201, 24919), (222, 25018), (227, 25033),

Gene: ToneTone_7 Start: 4571, Stop: 5269, Start Num: 30

Candidate Starts for ToneTone_7:

(Start: 30 @4571 has 42 MA's), (190, 5075), (235, 5261),

Gene: Topanga_5 Start: 2891, Stop: 3580, Start Num: 38

Candidate Starts for Topanga_5:

(Start: 38 @2891 has 339 MA's), (79, 2975), (103, 3035), (126, 3128), (132, 3173), (147, 3218), (204, 3431),

Gene: Travvers_35 Start: 24412, Stop: 25083, Start Num: 33

Candidate Starts for Travvers_35:

(Start: 33 @24412 has 22 MA's), (79, 24502), (89, 24523), (113, 24592), (120, 24628), (129, 24676), (200, 24916), (201, 24919), (222, 25018), (227, 25033),

Gene: Trixie_8 Start: 5232, Stop: 5918, Start Num: 38

Candidate Starts for Trixie_8:

(Start: 38 @5232 has 339 MA's), (79, 5319), (92, 5346), (113, 5403), (124, 5448), (151, 5556), (193, 5727), (201, 5748), (220, 5847),

Gene: TroyPia_5 Start: 2722, Stop: 3384, Start Num: 38

Candidate Starts for TroyPia_5:

(Start: 38 @2722 has 339 MA's), (88, 2827), (175, 3139), (176, 3142), (233, 3367),

Gene: Tubs_8 Start: 5239, Stop: 5868, Start Num: 38

Candidate Starts for Tubs_8:

(Start: 38 @5239 has 339 MA's), (54, 5278), (115, 5419), (121, 5449), (126, 5464),

Gene: Tucker_8 Start: 4661, Stop: 5359, Start Num: 30

Candidate Starts for Tucker_8:

(Start: 30 @4661 has 42 MA's), (190, 5165), (235, 5351),

Gene: Turuncu_49 Start: 36776, Stop: 37405, Start Num: 56

Candidate Starts for Turuncu_49:

(19, 36638), (Start: 34 @36722 has 3 MA's), (44, 36743), (47, 36749), (Start: 56 @36776 has 4 MA's), (128, 37004), (221, 37334), (232, 37379),

Gene: Twister_5 Start: 2837, Stop: 3484, Start Num: 38

Candidate Starts for Twister_5:

(Start: 38 @2837 has 339 MA's), (113, 3014), (144, 3146), (156, 3197), (157, 3200),

Gene: TygerBlood_5 Start: 2724, Stop: 3386, Start Num: 38

Candidate Starts for TygerBlood_5:

(Start: 38 @2724 has 339 MA's), (88, 2829), (175, 3141), (176, 3144), (233, 3369),

Gene: Ugenie5_6 Start: 5227, Stop: 5898, Start Num: 38

Candidate Starts for Ugenie5_6:

(Start: 38 @5227 has 339 MA's), (113, 5401), (121, 5437), (176, 5650), (218, 5821),

Gene: Ulysses_5 Start: 2723, Stop: 3388, Start Num: 38

Candidate Starts for Ulysses_5:

(Start: 38 @2723 has 339 MA's), (75, 2804), (116, 2903), (155, 3077),

Gene: UnionJack_5 Start: 3413, Stop: 4054, Start Num: 38

Candidate Starts for UnionJack_5:

(Start: 38 @3413 has 339 MA's), (91, 3521), (111, 3581), (124, 3629), (126, 3635), (131, 3674), (147, 3725), (232, 4031),

Gene: VA6_32 Start: 24568, Stop: 25233, Start Num: 33
Candidate Starts for VA6_32:
(Start: 33 @24568 has 22 MA's), (62, 24631), (95, 24691), (100, 24700), (Start: 101 @24703 has 1 MA's), (204, 25081), (223, 25171), (232, 25213),

Gene: VC3_35 Start: 24556, Stop: 25221, Start Num: 33
Candidate Starts for VC3_35:
(Start: 33 @24556 has 22 MA's), (62, 24619), (95, 24679), (100, 24688), (Start: 101 @24691 has 1 MA's), (123, 24784), (204, 25069), (223, 25159), (232, 25201),

Gene: VanLee_26 Start: 22797, Stop: 23510, Start Num: 23
Candidate Starts for VanLee_26:
(Start: 23 @22797 has 10 MA's), (57, 22881), (162, 23223), (237, 23505),

Gene: Veracruz_4 Start: 2764, Stop: 3423, Start Num: 38
Candidate Starts for Veracruz_4:
(Start: 38 @2764 has 339 MA's), (48, 2785), (78, 2851), (113, 2941), (120, 2977), (186, 3223), (212, 3310),

Gene: Vix_5 Start: 2719, Stop: 3351, Start Num: 38
Candidate Starts for Vix_5:
(Start: 38 @2719 has 339 MA's), (115, 2902), (116, 2905), (121, 2932),

Gene: VohminGhazi_8 Start: 4661, Stop: 5359, Start Num: 30
Candidate Starts for VohminGhazi_8:
(Start: 30 @4661 has 42 MA's), (190, 5165), (235, 5351),

Gene: Waits_8 Start: 4402, Stop: 5076, Start Num: 37
Candidate Starts for Waits_8:
(Start: 37 @4402 has 16 MA's), (77, 4483), (98, 4519), (130, 4666), (146, 4714),

Gene: WalterMcMickey_5 Start: 2837, Stop: 3484, Start Num: 38
Candidate Starts for WalterMcMickey_5:
(Start: 38 @2837 has 339 MA's), (113, 3014), (144, 3146), (156, 3197), (157, 3200),

Gene: Wander_5 Start: 2722, Stop: 3384, Start Num: 38
Candidate Starts for Wander_5:
(Start: 38 @2722 has 339 MA's), (88, 2827), (175, 3139), (176, 3142), (233, 3367),

Gene: Watson_5 Start: 2890, Stop: 3549, Start Num: 38
Candidate Starts for Watson_5:
(Start: 38 @2890 has 339 MA's), (115, 3073), (121, 3106), (135, 3175), (232, 3529),

Gene: WeiHuaDA_9 Start: 5446, Stop: 6132, Start Num: 38
Candidate Starts for WeiHuaDA_9:
(Start: 38 @5446 has 339 MA's), (114, 5620), (151, 5770), (193, 5941), (220, 6061),

Gene: Wiks_8 Start: 4661, Stop: 5359, Start Num: 30
Candidate Starts for Wiks_8:
(Start: 30 @4661 has 42 MA's), (190, 5165), (235, 5351),

Gene: Wilbur_5 Start: 2721, Stop: 3383, Start Num: 38
Candidate Starts for Wilbur_5:

(Start: 38 @2721 has 339 MA's), (88, 2826), (175, 3138), (176, 3141), (233, 3366),

Gene: Wile_5 Start: 2734, Stop: 3396, Start Num: 38

Candidate Starts for Wile_5:

(Start: 38 @2734 has 339 MA's), (88, 2839), (176, 3154),

Gene: Wizard007_5 Start: 2724, Stop: 3386, Start Num: 38

Candidate Starts for Wizard007_5:

(Start: 38 @2724 has 339 MA's), (88, 2829), (175, 3141), (176, 3144), (233, 3369),

Gene: Wooldri_7 Start: 2809, Stop: 3468, Start Num: 38

Candidate Starts for Wooldri_7:

(Start: 38 @2809 has 339 MA's), (Start: 101 @2938 has 1 MA's), (115, 2992), (121, 3025), (135, 3094), (232, 3448),

Gene: Wooper_39 Start: 33935, Stop: 34597, Start Num: 37

Candidate Starts for Wooper_39:

(Start: 37 @33935 has 16 MA's), (61, 33992), (77, 34022), (79, 34025), (89, 34043), (131, 34199), (169, 34340), (178, 34355), (187, 34385), (204, 34442), (208, 34454), (234, 34580),

Gene: WunderPhul_8 Start: 4661, Stop: 5359, Start Num: 30

Candidate Starts for WunderPhul_8:

(Start: 30 @4661 has 42 MA's), (190, 5165), (235, 5351),

Gene: Xena_5 Start: 2733, Stop: 3395, Start Num: 38

Candidate Starts for Xena_5:

(Start: 38 @2733 has 339 MA's), (88, 2838), (176, 3153),

Gene: XianYue_32 Start: 24396, Stop: 24998, Start Num: 69

Candidate Starts for XianYue_32:

(Start: 69 @24396 has 1 MA's), (74, 24408), (113, 24504), (120, 24540), (169, 24747),

Gene: Yarn_27 Start: 22532, Stop: 23170, Start Num: 42

Candidate Starts for Yarn_27:

(Start: 42 @22532 has 53 MA's), (45, 22541), (61, 22583), (70, 22601), (90, 22637), (113, 22697), (162, 22913), (210, 23027),

Gene: Yecey3_33 Start: 24132, Stop: 24764, Start Num: 40

Candidate Starts for Yecey3_33:

(Start: 40 @24132 has 2 MA's), (115, 24318), (121, 24348), (162, 24519), (164, 24525),

Gene: YoSam321_5 Start: 2722, Stop: 3384, Start Num: 38

Candidate Starts for YoSam321_5:

(Start: 38 @2722 has 339 MA's), (88, 2827), (175, 3139), (176, 3142), (233, 3367),

Gene: Yokurt_8 Start: 4661, Stop: 5359, Start Num: 30

Candidate Starts for Yokurt_8:

(Start: 30 @4661 has 42 MA's), (190, 5165), (235, 5351),

Gene: Zaka_8 Start: 4661, Stop: 5359, Start Num: 30

Candidate Starts for Zaka_8:

(Start: 30 @4661 has 42 MA's), (190, 5165), (235, 5351),

Gene: Zetzy_5 Start: 2721, Stop: 3356, Start Num: 38

Candidate Starts for Zetzy_5:

(Start: 38 @2721 has 339 MA's), (121, 2934), (142, 3024),

Gene: Zolita_4 Start: 3697, Stop: 4401, Start Num: 49

Candidate Starts for Zolita_4:

(Start: 42 @3679 has 53 MA's), (Start: 49 @3697 has 6 MA's), (66, 3745), (79, 3766), (115, 3862),

Gene: Zulu_8 Start: 4661, Stop: 5359, Start Num: 30

Candidate Starts for Zulu_8:

(Start: 30 @4661 has 42 MA's), (110, 4862), (190, 5165), (235, 5351),