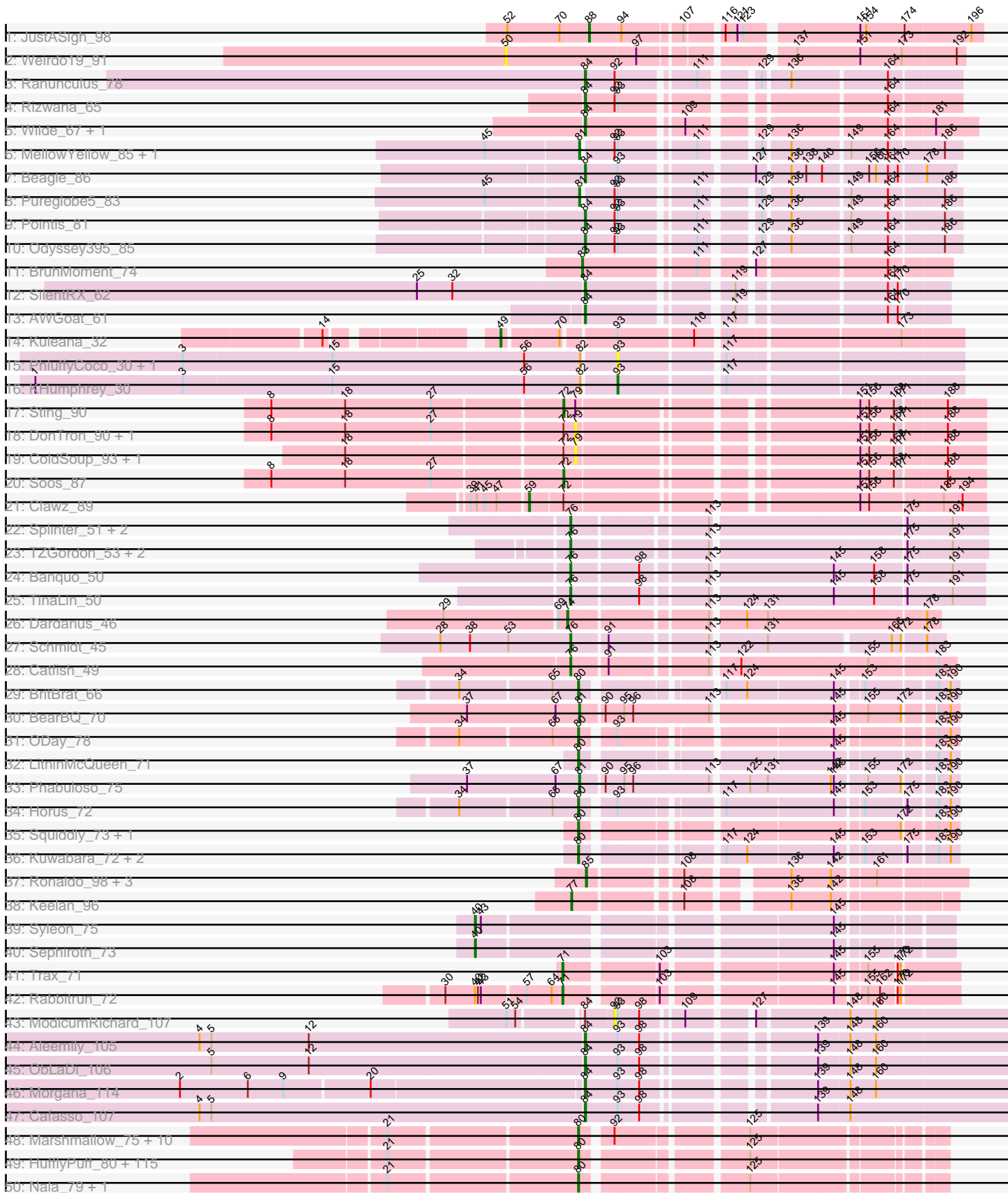
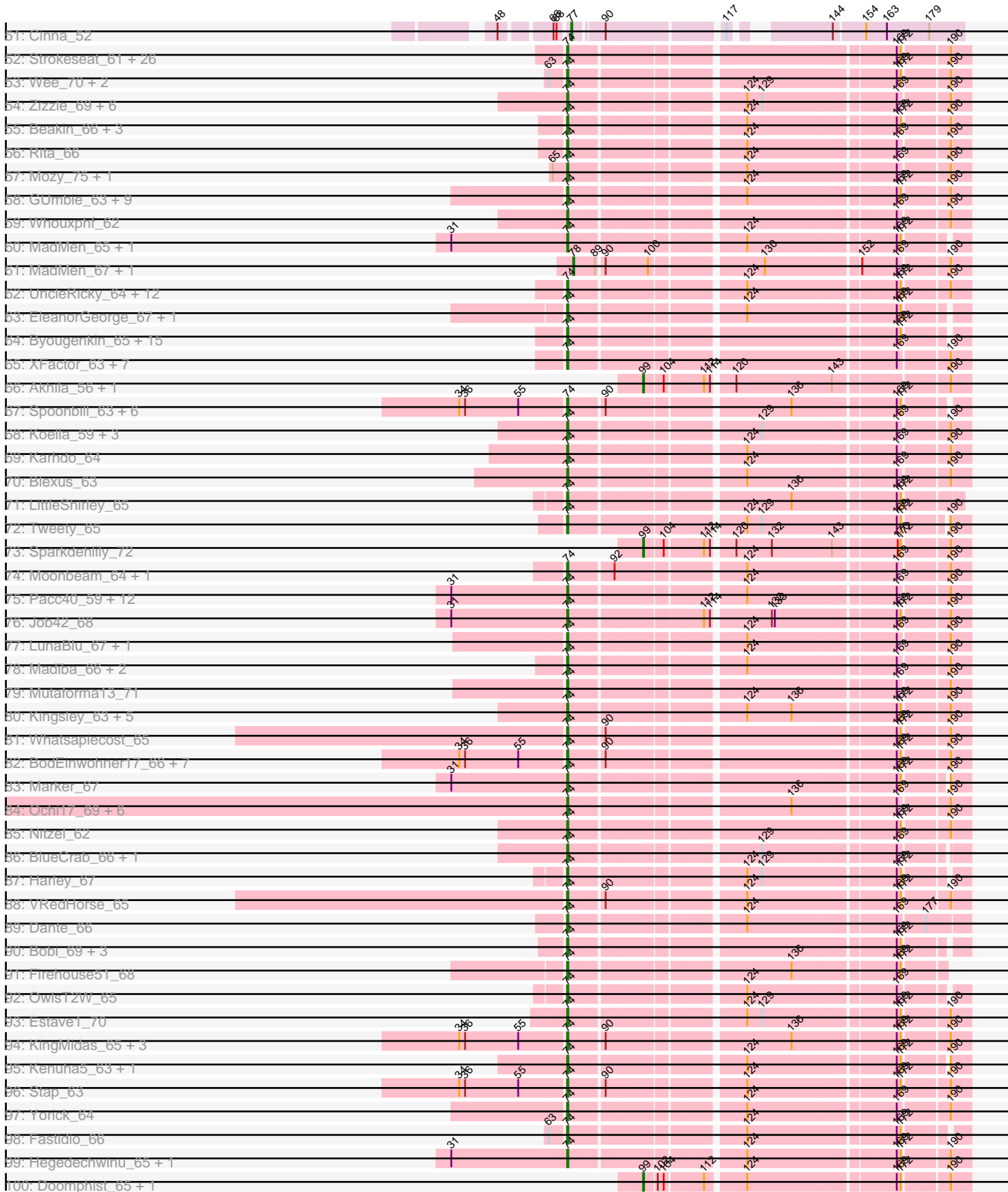


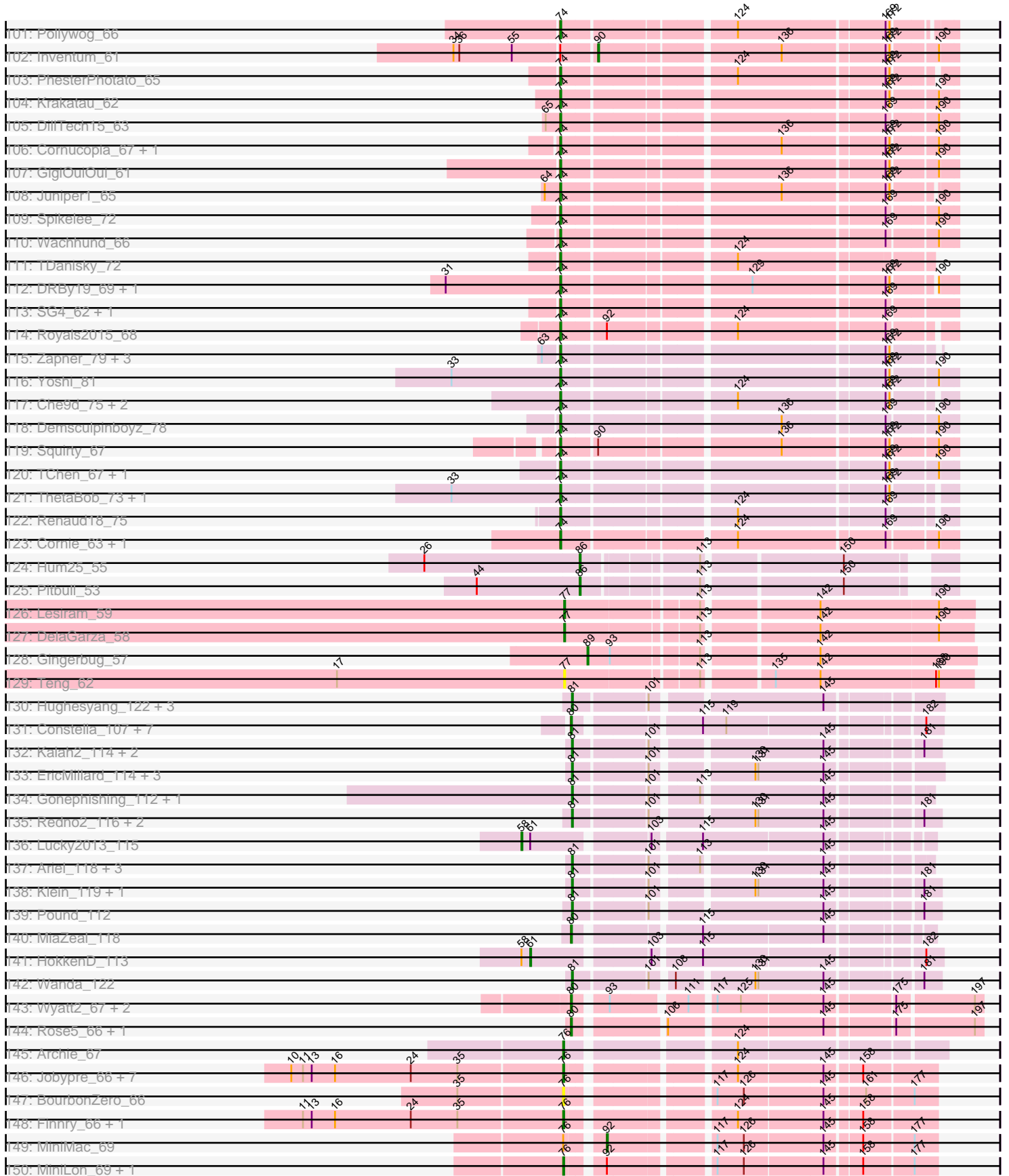
Pham 193637



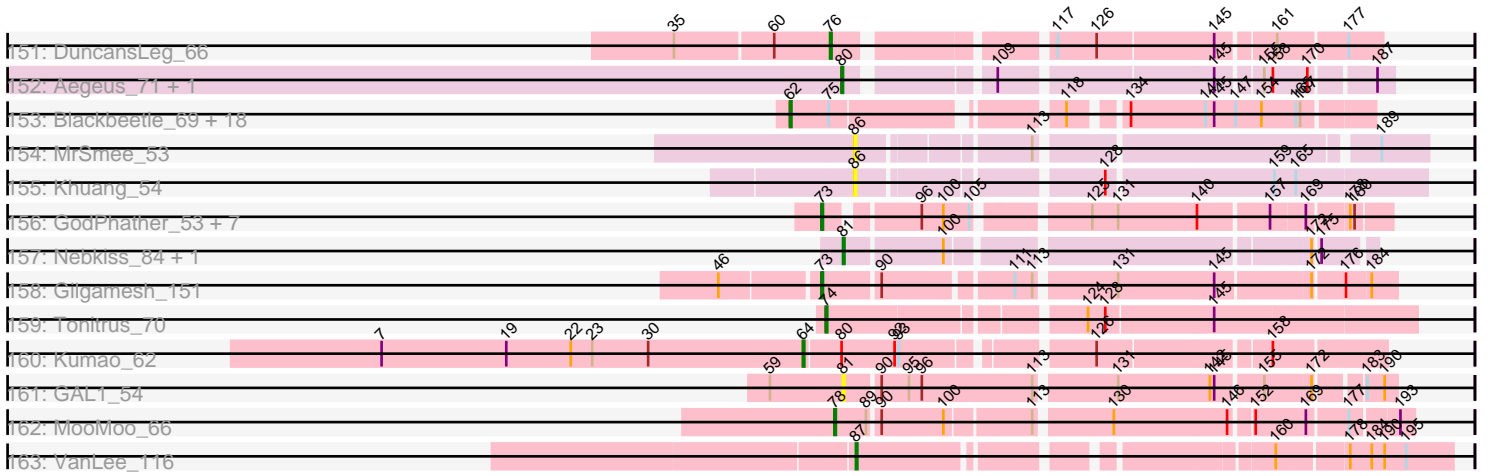
Pham 193637



Pham 193637



Pham 193637



Note: Tracks are now grouped by subcluster and scaled. Switching in subcluster is indicated by changes in track color. Track scale is now set by default to display the region 30 bp upstream of start 1 to 30 bp downstream of the last possible start. If this default region is judged to be packed too tightly with annotated starts, the track will be further scaled to only show that region of the ORF with annotated starts. This action will be indicated by adding "Zoomed" to the title. For starts, yellow indicates the location of called starts comprised solely of Glimmer/GeneMark auto-annotations, green indicates the location of called starts with at least 1 manual gene annotation.

Pham 193637 Report

This analysis was run 11/02/24 on database version 579.

Pham number 193637 has 514 members, 32 are drafts.

Phages represented in each track:

- Track 1 : JustASigh_98
- Track 2 : Weirido19_91
- Track 3 : Ranunculus_78
- Track 4 : Rizwana_65
- Track 5 : Wilde_67, Tank_65
- Track 6 : MellowYellow_85, NyleyClemson_84
- Track 7 : Beagle_86
- Track 8 : Pureglobe5_83
- Track 9 : Pointis_81
- Track 10 : Odyssey395_85
- Track 11 : BruhMoment_74
- Track 12 : SilentRX_62
- Track 13 : AWGoat_61
- Track 14 : Kuleana_32
- Track 15 : PhluffyCoco_30, Camara_30
- Track 16 : KHumphrey_30
- Track 17 : Sting_90
- Track 18 : DonTron_90, KingstonB_93
- Track 19 : ColdSoup_93, Jollymon_93
- Track 20 : Soos_87
- Track 21 : Clawz_89
- Track 22 : Splinter_51, Vendetta_51, Goib_52
- Track 23 : TZGordon_53, DinoDaryn_52, Huffy_52
- Track 24 : Banquo_50
- Track 25 : TinaLin_50
- Track 26 : Dardanus_46
- Track 27 : Schmidt_45
- Track 28 : Catfish_49
- Track 29 : BritBrat_66
- Track 30 : BearBQ_70
- Track 31 : ODay_78
- Track 32 : LitninMcQueen_71
- Track 33 : Phabuloso_75
- Track 34 : Horus_72
- Track 35 : Squiddly_73, Spooky_68
- Track 36 : Kuwabara_72, Ecliptus_75, CheeseTouch_74
- Track 37 : Ronaldo_98, Guey18_100, Volt_99, Fryberger_95

- Track 38 : Keelan_96
- Track 39 : Syleon_75
- Track 40 : Sephiroth_73
- Track 41 : Trax_71
- Track 42 : Rabbitrun_72
- Track 43 : ModicumRichard_107
- Track 44 : Aleemily_105
- Track 45 : ObLaDi_106
- Track 46 : Morgana_114
- Track 47 : Cafasso_107
- Track 48 : Marshmallow_75, Cookies_74, ChotaBhai_77, SirDuracell_76, Bask21_77, YassJohnny_74, Pat3_75, Tomaszewski_72, DoctorDiddles_76, OrionPax_76, Amao_77
- Track 49 : HufflyPuff_80, Teaspoon_78, Moldemort_80, Buck_78, Petra64142_81, NoSleep_78, Highbury_76, Glexan_76, TeardropMSU_73, Lilizi_78, Thresher_79, Inca_74, Kimchi_81, 244_78, MISSy_78, Nimrod_78, Stank_80, Gage_79, Phaja_75, Bruin_74, BilboSwaggins_76, StellaBean_75, Bench_80, AmericanBeauty_81, Myrale_77, Manda_78, Ukulele_72, Rimmer_78, Kostya_77, SophKB_74, HanKaySha_77, Miniwave_72, Pumpkin_80, Terminus_80, Stark_78, IHOP_75, Icee_78, Sassay_72, MPhalcon_78, Balomoji_77, Dusk_74, Kanye_74, Saints25_76, Cactus_80, JeTaime_77, Simpliphy_76, Traaww1_73, GooberAzure_80, PhatBacter_81, Palpatine_79, xkcd_80, Lilpickle_76, Holt_82, Murica_80, Rakim_78, Adnama_81, Gemini_82, MadamMonkfish_77, Mindy_76, Mosby_73, Dumbo_77, Lilac_79, Phaux_79, NelitzaMV_75, BadStone_74, Eureka_75, TBrady12_80, BigBubba_77, Flypotenuse_73, Hopey_77, CrystalP_76, Phrux_74, BugsBunny_77, Cjw1_77, Hoonter_80, Willez_72, BaboJay_74, Goku_75, Asriel_76, Henry_75, Barbarian_76, Xandras_76, Tuco_78, Contagion_73, Quallification_78, Goldilocks_80, StolenFromERC_80, GoldenSpark_81, Daikon_79, Easy2Say_78, Filch_78, ShamWow_77, Porky_76, Czystczon1_78, RiverMonster_77, Sotrice96_78, Harella_77, Elph10_77, Policronamos_81, Youngblood_80, Toto_75, Murphy_77, Pharsalus_74, Command613_79, Gator_75, Elite2014_76, Misfit_78, Maxxinista_79, ChosenOne_77, Emmina_77, Tarkin_76, Argent26_81, ABCat_74, Wiggin_79, DrDrey_77, Paperbeatsrock_76
- Track 50 : Nala_79, FireRed_81
- Track 51 : Cinna_52
- Track 52 : Strokeseat_61, Plumbus_68, Spartacus_67, Chevrolet_70, StAnnes_63, Hlubikazi_61, Ovechkin_65, DotProduct_60, Donkeykong_68, Girafales_73, Florinda_76, Filuzino_63, Ms6_62, IrishSherpFalk_66, PopTart_59, DLane_60, Shauna1_63, Rialto_70, Phanphagia_61, Melissauren88_63, Seagreen_64, SassyB_59, WillSterrel_66, Flathead_66, Phalconet_63, Quico_73, Mandlovu_61
- Track 53 : Wee_70, DeadP_72, Taj_70
- Track 54 : Zizzle_69, Maravista_67, ByChance_58, Pippy_64, ShowerHandel_68, Crumble_60, BobaPhett_69
- Track 55 : Beakin_66, Guppsters_66, Hades_66, Soul22_71
- Track 56 : Rita_66
- Track 57 : Mozy_75, Fancypants_68
- Track 58 : GUmbie_63, James_69, BuzzLyseyear_71, Mattes_69, Gorge_69, Lizziana_71, Saal_67, Che8_70, OlympiaSaint_67, Eradicator_58
- Track 59 : Whouxphf_62
- Track 60 : MadMen_65, Martik_65
- Track 61 : MadMen_67, Leozinho_66
- Track 62 : UncleRicky_64, ArcusAngelus_67, Lorde_65, Phatniss_63, Eish_68, Drago_62, Totinger_65, DosHalletts_67, DirtMcgirt_64, Mova_69, Llij_61,

Radiance_64, Enby_66

- Track 63 : EleanorGeorge_67, Leozinho_64
- Track 64 : Byougenkin_65, Rockne_66, Kimberlium_70, QuickMath_69, Hamulus_65, Chuckly_68, MulchExplorer_73, Juice456_66, JalFarm20_78, PMC_62, Boomer_70, SiSi_63, Ardmore_57, KristaRAM_68, Starcevich_65, Avani_73
- Track 65 : XFactor_63, Zerg_65, MisterCuddles_63, Alexphander_69, Doug_67, Girr_63, RockyHorror_66, Ruby_61
- Track 66 : Akhila_56, MilanaBonita_55
- Track 67 : Spoonbill_63, Polka14_64, JoeyJr_61, PHappiness_61, Leperchaun_58, RitaG_61, Daenerys_60
- Track 68 : Koella_59, Priscilla_65, NormanBulbieJr_65, Cabrinians_66
- Track 69 : Karhdo_64
- Track 70 : Blexus_63
- Track 71 : LittleShirley_65
- Track 72 : Tweety_65
- Track 73 : Sparkdehlily_72
- Track 74 : Moonbeam_64, Emma_67
- Track 75 : Pacc40_59, LastJedi_59, CaptainTrips_63, MinionDave_64, Nivrat_62, Minnie_68, LilMoolah_64, Clifton_60, Brocalys_60, Aubs_65, Burwell21_63, SwagPigglett_70, Sandalphon_66
- Track 76 : Job42_68
- Track 77 : LunaBlu_67, Galactic_64
- Track 78 : Madiba_66, Ramsey_64, DaWorst_65
- Track 79 : Mutaforma13_71
- Track 80 : Kingsley_63, Coco12_65, Sarma624_64, Cerasum_62, Velveteen_61, BigPhil_62
- Track 81 : Whatsapiecost_65
- Track 82 : BodEinwohner17_66, Geralt_60, Deb65_60, Empress_64, Nimbo_59, IbOuu_67, Scottish_64, OldBen_63
- Track 83 : Marker_67
- Track 84 : Ochi17_69, Modragons_69, OfUltron_71, Llama_70, Jinglebell_71, AlpineSix_71, Seabastian_71
- Track 85 : Nitzel_62
- Track 86 : BlueCrab_66, FreddyB_66
- Track 87 : Harley_67
- Track 88 : VRedHorse_65
- Track 89 : Dante_66
- Track 90 : Bobi_69, Batiatus_63, MilleniumForce_68, Ibhubesi_65
- Track 91 : Firehouse51_68
- Track 92 : OwlsT2W_65
- Track 93 : Estave1_70
- Track 94 : KingMidas_65, Sassafras_64, RedBird_64, Dorothy_64
- Track 95 : Kenuha5_63, SuperGrey_69
- Track 96 : Stap_63
- Track 97 : Yorick_64
- Track 98 : Fastidio_66
- Track 99 : Hegedechwinu_65, Gandalph_68
- Track 100 : Doomphist_65, Poenanya_65
- Track 101 : Pollywog_66
- Track 102 : Inventum_61
- Track 103 : PhesterPhotato_65
- Track 104 : Krakatau_62
- Track 105 : DillTech15_63

- Track 106 : Cornucopia_67, Veteran_62
- Track 107 : GigiOuiOui_61
- Track 108 : Juniper1_65
- Track 109 : Spikelee_72
- Track 110 : Wachhund_66
- Track 111 : TDanisky_72
- Track 112 : DRBy19_69, Philus_69
- Track 113 : SG4_62, Mahavrat_62
- Track 114 : Royals2015_68
- Track 115 : Zapner_79, Jabbawokkie_80, Blarby_78, Mantra_62
- Track 116 : Yoshi_81
- Track 117 : Che9d_75, ShiLan_64, Kersh_67
- Track 118 : Demsculpinboyz_78
- Track 119 : Squirty_67
- Track 120 : TChen_67, LunaStella_65
- Track 121 : ThetaBob_73, Ogopogo_71
- Track 122 : Renaud18_75
- Track 123 : Cornie_63, Bipolar_65
- Track 124 : Hum25_55
- Track 125 : Pitbull_53
- Track 126 : Lesiram_59
- Track 127 : DelaGarza_58
- Track 128 : Gingerbug_57
- Track 129 : Teng_62
- Track 130 : Hughesyang_122, Zelink_117, Minerva_120, ThreeRngTarjay_118
- Track 131 : Constella_107, JuicyJay_120, Phoebus_124, Thibault_106, Beem_125, Dallas_124, NihilNomen_125, Dove_109
- Track 132 : Kalah2_114, Bagrid_123, DmpstrDiver_123
- Track 133 : EricMillard_114, Duke13_117, Optimus_113, BAKA_122
- Track 134 : Gonephishing_112, LittleE_122
- Track 135 : Redno2_116, Halley_125, Ejimix_117
- Track 136 : Lucky2013_115
- Track 137 : Ariel_118, Squint_116, Courthouse_113, Superphikiman_115
- Track 138 : Klein_119, Bobby_115
- Track 139 : Pound_112
- Track 140 : MiaZeal_118
- Track 141 : HokkenD_113
- Track 142 : Wanda_122
- Track 143 : Wyatt2_67, AvadaKedavra_66, Tyson_67
- Track 144 : Rose5_66, Wamburgxpress_66
- Track 145 : Archie_67
- Track 146 : Jobypre_66, MsGreen_66, Snenia_65, Jubie_65, Lumos_67, Krypton555_67, Clautastrophe_65, Whirlwind_66
- Track 147 : BourbonZero_66
- Track 148 : Finnry_66, Samty_66
- Track 149 : MiniMac_69
- Track 150 : MiniLon_69, Lolly9_65
- Track 151 : DuncansLeg_66
- Track 152 : Aegeus_71, Baudelaire_71
- Track 153 : Blackbeetle_69, Pringar_68, VasuNzinga_68, FeliMaine_68, MosMoris_66, Clarkson_70, Tesla_66, JoieB_70, Poise_69, Gattaca_67, Raela_69, Caprice_64, Lilbit_69, LittleLaf_69, Corazon_67, Marvin_65, Beelzebub_73, RedRaider77_68, Huplepuff_71

- Track 154 : MrSmee_53
- Track 155 : Khuang_54
- Track 156 : GodPhather_53, PR_52, Megabear_52, Jeon_52, Cepens_52, D12_51, Argie_53, Taptic_52
- Track 157 : Nebkiss_84, Gaia_85
- Track 158 : Gilgamesh_151
- Track 159 : Tonitrus_70
- Track 160 : Kumao_62
- Track 161 : GAL1_54
- Track 162 : MooMoo_66
- Track 163 : VanLee_116

Summary of Final Annotations (See graph section above for start numbers):

The start number called the most often in the published annotations is 74, it was called in 210 of the 482 non-draft genes in the pham.

Genes that call this "Most Annotated" start:

- Alexphander_69, AlpineSix_71, ArcusAngelus_67, Ardmore_57, Aubs_65, Avani_73, Batiatus_63, Beakin_66, BigPhil_62, Bipolar_65, Blarby_78, Blexus_63, BlueCrab_66, BobaPhett_69, Bobi_69, BodEinwohner17_66, Boomer_70, Brocalys_60, Burwell21_63, BuzzLyseyear_71, ByChance_58, Byougenkin_65, Cabrinians_66, CaptainTrips_63, Cerasum_62, Che8_70, Che9d_75, Chevrolet_70, Chuckly_68, Clifton_60, Coco12_65, Cornie_63, Cornucopia_67, Crumble_60, DLane_60, DRBy19_69, DaWorst_65, Daenerys_60, Dante_66, Dardanus_46, DeadP_72, Deb65_60, Demsculpinboyz_78, DillTech15_63, DirtMcgirt_64, Donkeykong_68, Dorothy_64, DosHalletts_67, DotProduct_60, Doug_67, Drago_62, Eish_68, EleanorGeorge_67, Emma_67, Empress_64, Enby_66, Eradicator_58, Estave1_70, Fancypants_68, Fastidio_66, Filuzino_63, Firehouse51_68, Flathead_66, Florinda_76, FreddyB_66, GUmbie_63, Galactic_64, Gandolph_68, Geralt_60, GigiOuiOui_61, Girfales_73, Girr_63, Gorge_69, Guppsters_66, Hades_66, Hamulus_65, Harley_67, Hegedechwinu_65, Hlubikazi_61, IbOuu_67, Ibhuesi_65, IrishSherpFalk_66, Jabbawokkie_80, JalFarm20_78, James_69, Jinglebell_71, Job42_68, JoeyJr_61, Juice456_66, Juniper1_65, Karhdo_64, Kenuha5_63, Kersh_67, Kimberlium_70, KingMidas_65, Kingsley_63, Koella_59, Krakatau_62, KristaRAM_68, LastJedi_59, Leozinho_64, Leperchaun_58, LilMoolah_64, LittleShirley_65, Lizziana_71, Llama_70, Llij_61, Lorde_65, LunaBlu_67, LunaStella_65, MadMen_65, Madiba_66, Mahavrat_62, Mandlovu_61, Mantra_62, Maravista_67, Marker_67, Martik_65, Mattes_69, Melissauren88_63, MilleniumForce_68, MinionDave_64, Minnie_68, MisterCuddles_63, Modragons_69, Moonbeam_64, Mova_69, Mozy_75, Ms6_62, MulchExplorer_73, Mutaforma13_71, Nimbo_59, Nitzel_62, Nivrat_62, NormanBulbieJr_65, Ochi17_69, OfUltron_71, Ogopogo_71, OldBen_63, OlympiaSaint_67, Ovechkin_65, OwlsT2W_65, PHappiness_61, PMC_62, Pacc40_59, Phalconet_63, Phanphagia_61, Phatniss_63, PhesterPotato_65, Philus_69, Pippy_64, Plumbus_68, Polka14_64, Pollywog_66, PopTart_59, Priscilla_65, QuickMath_69, Quico_73, Radiance_64, Ramsey_64, RedBird_64, Renaud18_75, Rialto_70, RitaG_61, Rita_66, Rockne_66, RockyHorror_66, Royals2015_68, Ruby_61, SG4_62, Saal_67, Sandalphon_66, Sarma624_64, Sassafras_64, SassyB_59, Scottish_64, Seabastian_71, Seagreen_64, Shauna1_63, ShiLan_64, ShowerHandel_68, SiSi_63, Soul22_71,

Spartacus_67, Spikelee_72, Spoonbill_63, Squirty_67, StAnnes_63, Stap_63, Starcevich_65, Strokeseat_61, SuperGrey_69, SwagPiggett_70, TChen_67, TDanisky_72, Taj_70, ThetaBob_73, Tonitrus_70, Totinger_65, Tweety_65, UncleRicky_64, VRedHorse_65, Velveteen_61, Veteran_62, Wachhund_66, Wee_70, Whatsapiecost_65, Whouxphf_62, WillSterrel_66, XFactor_63, Yorick_64, Yoshi_81, Zapner_79, Zerg_65, Zizzle_69,

Genes that have the "Most Annotated" start but do not call it:

- Inventum_61,

Genes that do not have the "Most Annotated" start:

- 244_78, ABCat_74, AWGoat_61, Adnama_81, Aegeus_71, Akhila_56, Aleemily_105, Amao_77, AmericanBeauty_81, Archie_67, Argent26_81, Argie_53, Ariel_118, Asriel_76, AvadaKedavra_66, BAKA_122, BaboJay_74, BadStone_74, Bagrid_123, Balomoji_77, Banquo_50, Barbarian_76, Bask21_77, Baudelaire_71, Beagle_86, BearBQ_70, Beelzebub_73, Beem_125, Bench_80, BigBubba_77, BilboSwaggins_76, Blackbeetle_69, Bobby_115, BourbonZero_66, BritBrat_66, BruhMoment_74, Bruin_74, Buck_78, BugsBunny_77, Cactus_80, Cafasso_107, Camara_30, Caprice_64, Catfish_49, Cepens_52, CheeseTouch_74, ChosenOne_77, ChotaBhai_77, Cinna_52, Cjw1_77, Clarkson_70, Clautastrophe_65, Clawz_89, ColdSoup_93, Command613_79, Constella_107, Contagion_73, Cookies_74, Corazon_67, Courthouse_113, CrystalP_76, Czystczon1_78, D12_51, Daikon_79, Dallas_124, DelaGarza_58, DinoDaryn_52, DmpstrDiver_123, DoctorDiddles_76, DonTron_90, Doomphist_65, Dove_109, DrDrey_77, Duke13_117, Dumbo_77, DuncansLeg_66, Dusk_74, Easy2Say_78, Ecliptus_75, Ejimix_117, Elite2014_76, Elph10_77, Emmina_77, EricMillard_114, Eureka_75, FeliMaine_68, Filch_78, Finnry_66, FireRed_81, Flypotenuse_73, Fryberger_95, GAL1_54, Gage_79, Gaia_85, Gator_75, Gattaca_67, Gemini_82, Gilgamesh_151, Gingerbug_57, Glexan_76, GodPhather_53, Goib_52, Goku_75, GoldenSpark_81, Goldilocks_80, Gonephishing_112, GooberAzure_80, Guey18_100, Halley_125, HanKaySha_77, Harella_77, Henry_75, Highbury_76, HokkenD_113, Holt_82, Hoonter_80, Hopey_77, Horus_72, HufflyPuff_80, Huffy_52, Hughesyang_122, Hum25_55, Huphlepuuff_71, IHOP_75, Icee_78, Inca_74, JeTaimie_77, Jeon_52, Jobypre_66, JoieB_70, Jollymon_93, Jubie_65, JuicyJay_120, JustASigh_98, KHumphrey_30, Kalah2_114, Kanye_74, Keelan_96, Khuang_54, Kimchi_81, KingstonB_93, Klein_119, Kostya_77, Krypton555_67, Kuleana_32, Kumao_62, Kuwabara_72, Leozinho_66, Lesiram_59, Lilac_79, Lilbit_69, Lilizi_78, Lilpickle_76, LitninMcQueen_71, LittleE_122, LittleLaf_69, Lolly9_65, Lucky2013_115, Lumos_67, MISSy_78, MPhalcon_78, MadMen_67, MadamMonkfish_77, Manda_78, Marshmallow_75, Marvin_65, Maxxinista_79, Megabear_52, MellowYellow_85, MiaZeal_118, MilanaBonita_55, Mindy_76, Minerva_120, MiniLon_69, MiniMac_69, Miniwave_72, Misfit_78, ModicumRichard_107, Moldemort_80, MooMoo_66, Morgana_114, MosMoris_66, Mosby_73, MrSmee_53, MsGreen_66, Murica_80, Murphy_77, Myrale_77, Nala_79, Nebkiss_84, NelitzaMV_75, NihilNomen_125, Nimrod_78, NoSleep_78, NyleyClemson_84, ODay_78, ObLaDi_106, Odyssey395_85, Optimus_113, OrionPax_76, PR_52, Palpatine_79, Paperbeatsrock_76, Pat3_75, Petra64142_81, Phabuloso_75, Phaja_75, Pharsalus_74, PhatBacter_81, Phaux_79, PhluffyCoco_30, Phoebus_124, Phrux_74, Pitbull_53, Poenanya_65, Pointis_81, Poise_69, Policronamos_81, Porky_76, Pound_112, Pringar_68, Pumpkin_80, Pureglobe5_83, Quallification_78, Rabbitrun_72, Raela_69, Rakim_78, Ranunculus_78, RedRaider77_68, Redno2_116, Rimmer_78, RiverMonster_77, Rizwana_65, Ronaldo_98, Rose5_66, Saints25_76, Samty_66, Sassay_72, Schmidt_45,

Sephiroth_73, ShamWow_77, SilentRX_62, Simpliphy_76, SirDuracell_76, Snenia_65, Soos_87, SophKB_74, Sotrice96_78, Sparkdehlily_72, Splinter_51, Spooky_68, Squiddly_73, Squint_116, Stank_80, Stark_78, StellaBean_75, Sting_90, StolenFromERC_80, Superphikiman_115, Syleon_75, TBrady12_80, TZGordon_53, Tank_65, Taptic_52, Tarkin_76, TeardropMSU_73, Teaspoon_78, Teng_62, Terminus_80, Tesla_66, Thibault_106, ThreeRngTarjay_118, Thresher_79, TinaLin_50, Tomaszewski_72, Toto_75, Traaww1_73, Trax_71, Tuco_78, Tyson_67, Ukulele_72, VanLee_116, VasuNzinga_68, Vendetta_51, Volt_99, Wamburgexpress_66, Wanda_122, Weirdo19_91, Whirlwind_66, Wiggin_79, Wilde_67, Willez_72, Wyatt2_67, Xandras_76, YassJohnny_74, Youngblood_80, Zelink_117, xkcd_80,

Summary by start number:

Start 40:

- Found in 3 of 514 (0.6%) of genes in pham
- Manual Annotations of this start: 2 of 482
- Called 66.7% of time when present
- Phage (with cluster) where this start called: Sephiroth_73 (DU1), Syleon_75 (DU1),

Start 49:

- Found in 1 of 514 (0.2%) of genes in pham
- Manual Annotations of this start: 1 of 482
- Called 100.0% of time when present
- Phage (with cluster) where this start called: Kuleana_32 (AS2),

Start 50:

- Found in 1 of 514 (0.2%) of genes in pham
- No Manual Annotations of this start.
- Called 100.0% of time when present
- Phage (with cluster) where this start called: Weirdo19_91 (AH),

Start 58:

- Found in 2 of 514 (0.4%) of genes in pham
- Manual Annotations of this start: 1 of 482
- Called 50.0% of time when present
- Phage (with cluster) where this start called: Lucky2013_115 (J),

Start 59:

- Found in 2 of 514 (0.4%) of genes in pham
- Manual Annotations of this start: 1 of 482
- Called 50.0% of time when present
- Phage (with cluster) where this start called: Clawz_89 (CP),

Start 61:

- Found in 2 of 514 (0.4%) of genes in pham
- Manual Annotations of this start: 1 of 482
- Called 50.0% of time when present
- Phage (with cluster) where this start called: HokkenD_113 (J),

Start 62:

- Found in 19 of 514 (3.7%) of genes in pham
- Manual Annotations of this start: 16 of 482

- Called 100.0% of time when present
- Phage (with cluster) where this start called: Beelzebub_73 (S), Blackbeetle_69 (S), Caprice_64 (S), Clarkson_70 (S), Corazon_67 (S), FeliMaine_68 (S), Gattaca_67 (S), Huphlepuuff_71 (S), JoieB_70 (S), Lilbit_69 (S), LittleLaf_69 (S), Marvin_65 (S), MosMoris_66 (S), Poise_69 (S), Pringar_68 (S), Raela_69 (S), RedRaider77_68 (S), Tesla_66 (S), VasuNzinga_68 (S),

Start 64:

- Found in 3 of 514 (0.6%) of genes in pham
- Manual Annotations of this start: 1 of 482
- Called 33.3% of time when present
- Phage (with cluster) where this start called: Kumao_62 (singleton),

Start 71:

- Found in 2 of 514 (0.4%) of genes in pham
- Manual Annotations of this start: 2 of 482
- Called 100.0% of time when present
- Phage (with cluster) where this start called: Rabbitrun_72 (DU2), Trax_71 (DU2),

Start 72:

- Found in 7 of 514 (1.4%) of genes in pham
- Manual Annotations of this start: 2 of 482
- Called 28.6% of time when present
- Phage (with cluster) where this start called: Soos_87 (CP), Sting_90 (CP),

Start 73:

- Found in 9 of 514 (1.8%) of genes in pham
- Manual Annotations of this start: 9 of 482
- Called 100.0% of time when present
- Phage (with cluster) where this start called: Argie_53 (W), Cepens_52 (W), D12_51 (W), Gilgamesh_151 (singleton), GodPhather_53 (W), Jeon_52 (W), Megabear_52 (W), PR_52 (W), Taptic_52 (W),

Start 74:

- Found in 216 of 514 (42.0%) of genes in pham
- Manual Annotations of this start: 210 of 482
- Called 99.5% of time when present
- Phage (with cluster) where this start called: Alexphander_69 (F1), AlpineSix_71 (F1), ArcusAngelus_67 (F1), Ardmore_57 (F1), Aubs_65 (F1), Avani_73 (F2), Batiatus_63 (F1), Beakin_66 (F1), BigPhil_62 (F1), Bipolar_65 (F1), Blarby_78 (F), Blexus_63 (F1), BlueCrab_66 (F1), BobaPhett_69 (F1), Bobi_69 (F1), BodEinwohner17_66 (F1), Boomer_70 (F1), Brocalys_60 (F1), Burwell21_63 (F1), BuzzLyseyear_71 (F1), ByChance_58 (F1), Byougenkin_65 (F1), Cabrinians_66 (F1), CaptainTrips_63 (F1), Cerasum_62 (F1), Che8_70 (F1), Che9d_75 (F2), Chevrolet_70 (F1), Chuckly_68 (F1), Clifton_60 (F1), Coco12_65 (F1), Cornie_63 (F5), Cornucopia_67 (F1), Crumble_60 (F1), DLane_60 (F1), DRBy19_69 (F1), DaWorst_65 (F1), Daenerys_60 (F1), Dante_66 (F1), Dardanus_46 (CU3), DeadP_72 (F1), Deb65_60 (F1), Demsculpinboyz_78 (F2), DillTech15_63 (F1), DirtMcgirt_64 (F1), Donkeykong_68 (F1), Dorothy_64 (F1), DosHalletts_67 (F1), DotProduct_60 (F1), Doug_67 (F1), Drago_62 (F1), Eish_68 (F1), EleanorGeorge_67 (F1), Emma_67 (F1), Empress_64 (F1), Enby_66 (F1), Eradicator_58 (F1), Estave1_70 (F1), Fancypants_68 (F1), Fastidio_66 (F1), Filuzino_63 (F1), Firehouse51_68 (F1), Flathead_66 (F1), Florinda_76 (F1), FreddyB_66 (F1),

GUmbie_63 (F1), Galactic_64 (F1), Gandalph_68 (F1), Geralt_60 (F1),
 GigiOuiOui_61 (F1), Girafales_73 (F1), Girr_63 (F1), Gorge_69 (F1), Guppsters_66
 (F1), Hades_66 (F1), Hamulus_65 (F1), Harley_67 (F1), Hegedechwinu_65 (F1),
 Hlubikazi_61 (F1), IbOuu_67 (F1), Ibhubesi_65 (F1), IrishSherpFalk_66 (F1),
 Jabbawokkie_80 (F2), JalFarm20_78 (F1), James_69 (F1), Jinglebell_71 (F1),
 Job42_68 (F1), JoeyJr_61 (F1), Juice456_66 (F1), Juniper1_65 (F1), Karhdo_64
 (F1), Kenuha5_63 (F1), Kersh_67 (F1), Kimberlium_70 (F1), KingMidas_65 (F1),
 Kingsley_63 (F1), Koella_59 (F1), Krakatau_62 (F1), KristaRAM_68 (F1),
 LastJedi_59 (F1), Leozinho_64 (F1), Leperchaun_58 (F1), LilMoolah_64 (F1),
 LittleShirley_65 (F1), Lizziana_71 (F1), Llama_70 (F1), Llij_61 (F1), Lorde_65 (F1),
 LunaBlu_67 (F1), LunaStella_65 (F4), MadMen_65 (F1), Madiba_66 (F1),
 Mahavrat_62 (F1), Mandlovu_61 (F1), Mantra_62 (F1), Maravista_67 (F1),
 Marker_67 (F1), Martik_65 (F1), Mattes_69 (F1), Melissauren88_63 (F1),
 MilleniumForce_68 (F1), MinionDave_64 (F1), Minnie_68 (F1), MisterCuddles_63
 (F1), Modragons_69 (F1), Moonbeam_64 (F1), Mova_69 (F1), Mozy_75 (F1),
 Ms6_62 (F1), MulchExplorer_73 (F1), Mutaforma13_71 (F1), Nimbo_59 (F1),
 Nitzel_62 (F1), Nivrat_62 (F1), NormanBulbieJr_65 (F1), Ochi17_69 (F1),
 OfUltron_71 (F1), Ogoopogo_71 (F1), OldBen_63 (F1), OlympiaSaint_67 (F1),
 Ovechkin_65 (F1), OwlsT2W_65 (F1), PHappiness_61 (F1), PMC_62 (F1),
 Pacc40_59 (F1), Phalconet_63 (F1), Phanphagia_61 (F1), Phatniss_63 (F1),
 PhesterPhotato_65 (F1), Philus_69 (F1), Pippy_64 (F1), Plumbus_68 (F1),
 Polka14_64 (F1), Pollywog_66 (F1), PopTart_59 (F1), Priscilla_65 (F1),
 QuickMath_69 (F1), Quico_73 (F1), Radiance_64 (F1), Ramsey_64 (F1), RedBird_64
 (F1), Renaud18_75 (F4), Rialto_70 (F1), RitaG_61 (F1), Rita_66 (F1), Rockne_66
 (F1), RockyHorror_66 (F1), Royals2015_68 (F1), Ruby_61 (F1), SG4_62 (F1),
 Saal_67 (F1), Sandalphon_66 (F1), Sarma624_64 (F1), Sassafras_64 (F1),
 SassyB_59 (F1), Scottish_64 (F1), Seabastian_71 (F1), Seagreen_64 (F1),
 Shauna1_63 (F1), ShiLan_64 (F1), ShowerHandel_68 (F1), SiSi_63 (F1), Soul22_71
 (F2), Spartacus_67 (F1), Spikelee_72 (F1), Spoonbill_63 (F1), Squirty_67 (F3),
 StAnnes_63 (F1), Stap_63 (F1), Starceвич_65 (F1), Strokeseat_61 (F1),
 SuperGrey_69 (F1), SwagPigglett_70 (F1), TChen_67 (F4), TDanisky_72 (F1),
 Taj_70 (F1), ThetaBob_73 (F4), Tonitrus_70 (singleton), Totinger_65 (F1),
 Tweety_65 (F1), UncleRicky_64 (F1), VRedHorse_65 (F1), Velveteen_61 (F1),
 Veteran_62 (F1), Wachhund_66 (F1), Wee_70 (F1), Whatsapiecost_65 (F1),
 Whouxphf_62 (F1), WillSterrel_66 (F1), XFactor_63 (F1), Yorick_64 (F1), Yoshi_81
 (F2), Zapner_79 (F2), Zerg_65 (F1), Zizzle_69 (F1),

Start 76:

- Found in 26 of 514 (5.1%) of genes in pham
- Manual Annotations of this start: 23 of 482
- Called 96.2% of time when present
- Phage (with cluster) where this start called: Archie_67 (L2), Banquo_50 (CU1), BourbonZero_66 (L3), Catfish_49 (CU5), Clautastrophe_65 (L3), DinoDaryn_52 (CU1), DuncansLeg_66 (L3), Finny_66 (L3), Goib_52 (CU1), Huffy_52 (CU1), Jobypre_66 (L3), Jubie_65 (L3), Krypton555_67 (L3), Lolly9_65 (L3), Lumos_67 (L3), MiniLon_69 (L3), MsGreen_66 (L3), Samty_66 (L3), Schmidt_45 (CU4), Snenia_65 (L3), Splinter_51 (CU1), TZGordon_53 (CU1), TinaLin_50 (CU1), Vendetta_51 (CU1), Whirlwind_66 (L3),

Start 77:

- Found in 5 of 514 (1.0%) of genes in pham
- Manual Annotations of this start: 4 of 482
- Called 100.0% of time when present

- Phage (with cluster) where this start called: Cinna_52 (EI), DelaGarza_58 (GF), Keelan_96 (DP), Lesiram_59 (GF), Teng_62 (GF),

Start 78:

- Found in 3 of 514 (0.6%) of genes in pham
- Manual Annotations of this start: 3 of 482
- Called 100.0% of time when present
- Phage (with cluster) where this start called: Leozinho_66 (F1), MadMen_67 (F1), MooMoo_66 (singleton),

Start 79:

- Found in 5 of 514 (1.0%) of genes in pham
- No Manual Annotations of this start.
- Called 80.0% of time when present
- Phage (with cluster) where this start called: ColdSoup_93 (CP), DonTron_90 (CP), Jollymon_93 (CP), KingstonB_93 (CP),

Start 80:

- Found in 155 of 514 (30.2%) of genes in pham
- Manual Annotations of this start: 147 of 482
- Called 99.4% of time when present
- Phage (with cluster) where this start called: 244_78 (E), ABCat_74 (E), Adnama_81 (E), Aegeus_71 (L5), Amao_77 (E), AmericanBeauty_81 (E), Argent26_81 (E), Asriel_76 (E), AvadaKedavra_66 (L1), BaboJay_74 (E), BadStone_74 (E), Balomoji_77 (E), Barbarian_76 (E), Bask21_77 (E), Baudelaire_71 (L5), Beem_125 (J), Bench_80 (E), BigBubba_77 (E), BilboSwaggins_76 (E), BritBrat_66 (CY2), Bruin_74 (E), Buck_78 (E), BugsBunny_77 (E), Cactus_80 (E), CheeseTouch_74 (DN1), ChosenOne_77 (E), ChotaBhai_77 (E), Cjw1_77 (E), Command613_79 (E), Constella_107 (J), Contagion_73 (E), Cookies_74 (E), CrystalP_76 (E), Czystoczon1_78 (E), Daikon_79 (E), Dallas_124 (J), DoctorDiddles_76 (E), Dove_109 (J), DrDrey_77 (E), Dumbo_77 (E), Dusk_74 (E), Easy2Say_78 (E), Ecliptus_75 (DN), Elite2014_76 (E), Elph10_77 (E), Emmina_77 (E), Eureka_75 (E), Filch_78 (E), FireRed_81 (E), Flypotenuse_73 (E), Gage_79 (E), Gator_75 (E), Gemini_82 (E), Glexan_76 (E), Goku_75 (E), GoldenSpark_81 (E), Goldilocks_80 (E), GooberAzure_80 (E), HankaySha_77 (E), Harella_77 (E), Henry_75 (E), Highbury_76 (E), Holt_82 (E), Hoonter_80 (E), Hopey_77 (E), Horus_72 (DN1), HuffyPuff_80 (E), IHOP_75 (E), Icee_78 (E), Inca_74 (E), JeTaime_77 (E), JuicyJay_120 (J), Kanye_74 (E), Kimchi_81 (E), Kostya_77 (E), Kuwabara_72 (DN4), Lilac_79 (E), Lilizi_78 (E), Lilpickle_76 (E), LitninMcQueen_71 (DN1), MISSy_78 (E), MPhalcon_78 (E), MadamMonkfish_77 (E), Manda_78 (E), Marshmallow_75 (E), Maxxinista_79 (E), MiaZeal_118 (J), Mindy_76 (E), Miniwave_72 (E), Misfit_78 (E), Moldemort_80 (E), Mosby_73 (E), Murica_80 (E), Murphy_77 (E), Myrale_77 (E), Nala_79 (E), NelitzaMV_75 (E), NihilNomen_125 (J), Nimrod_78 (E), NoSleep_78 (E), ODay_78 (DN), OrionPax_76 (E), Palpatine_79 (E), Paperbeatsrock_76 (E), Pat3_75 (E), Petra64142_81 (E), Phaja_75 (E), Pharsalus_74 (E), PhatBacter_81 (E), Phaux_79 (E), Phoebus_124 (J), Phrux_74 (E), Policronamos_81 (E), Porky_76 (E), Pumpkin_80 (E), Quallification_78 (E), Rakim_78 (E), Rimmer_78 (E), RiverMonster_77 (E), Rose5_66 (L1), Saints25_76 (E), Sassay_72 (E), ShamWow_77 (E), Simpliphy_76 (E), SirDuracell_76 (E), SophKB_74 (E), Sotrice96_78 (E), Spooky_68 (DN2), Squiddly_73 (DN2), Stank_80 (E), Stark_78 (E), StellaBean_75 (E), StolenFromERC_80 (E), TBrady12_80 (E), Tarkin_76 (E), TeardropMSU_73 (E), Teaspoon_78 (E), Terminus_80 (E), Thibault_106 (J), Thresher_79 (E), Tomaszewski_72 (E), Toto_75 (E), Traaww1_73 (E), Tuco_78 (E),

Tyson_67 (L1), Ukulele_72 (E), Wamburgxpress_66 (L1), Wiggin_79 (E), Willez_72 (E), Wyatt2_67 (L1), Xandras_76 (E), YassJohnny_74 (E), Youngblood_80 (E), xkcd_80 (E),

Start 81:

- Found in 32 of 514 (6.2%) of genes in pham
- Manual Annotations of this start: 28 of 482
- Called 100.0% of time when present
- Phage (with cluster) where this start called: Ariel_118 (J), BAKA_122 (J), Bagrid_123 (J), BearBQ_70 (DN), Bobby_115 (J), Courthouse_113 (J), DmpstrDiver_123 (J), Duke13_117 (J), Ejimix_117 (J), EricMillard_114 (J), GAL1_54 (singleton), Gaia_85 (X), Gonephishing_112 (J), Halley_125 (J), Hughesyang_122 (J), Kalah2_114 (J), Klein_119 (J), LittleE_122 (J), MellowYellow_85 (AP2), Minerva_120 (J), Nebkiss_84 (X), NyleyClemson_84 (AP2), Optimus_113 (J), Phabuloso_75 (DN1), Pound_112 (J), Pureglobe5_83 (AP2), Redno2_116 (J), Squint_116 (J), Superphikiman_115 (J), ThreeRngTarjay_118 (J), Wanda_122 (J), Zelink_117 (J),

Start 83:

- Found in 1 of 514 (0.2%) of genes in pham
- Manual Annotations of this start: 1 of 482
- Called 100.0% of time when present
- Phage (with cluster) where this start called: BruhMoment_74 (AP3),

Start 84:

- Found in 14 of 514 (2.7%) of genes in pham
- Manual Annotations of this start: 13 of 482
- Called 92.9% of time when present
- Phage (with cluster) where this start called: AWGoat_61 (AP4), Aleemily_105 (DZ), Beagle_86 (AP2), Cafasso_107 (DZ), Morgana_114 (DZ), ObLaDi_106 (DZ), Odyssey395_85 (AP2), Pointis_81 (AP2), Ranunculus_78 (AP), Rizwana_65 (AP1), SilentRX_62 (AP4), Tank_65 (AP1), Wilde_67 (AP1),

Start 85:

- Found in 4 of 514 (0.8%) of genes in pham
- Manual Annotations of this start: 4 of 482
- Called 100.0% of time when present
- Phage (with cluster) where this start called: Fryberger_95 (DP), Guey18_100 (DP), Ronaldo_98 (DP), Volt_99 (DP),

Start 86:

- Found in 4 of 514 (0.8%) of genes in pham
- Manual Annotations of this start: 2 of 482
- Called 100.0% of time when present
- Phage (with cluster) where this start called: Hum25_55 (FQ), Khuang_54 (UNK), MrSmee_53 (UNK), Pitbull_53 (FQ),

Start 87:

- Found in 1 of 514 (0.2%) of genes in pham
- Manual Annotations of this start: 1 of 482
- Called 100.0% of time when present
- Phage (with cluster) where this start called: VanLee_116 (singleton),

Start 88:

- Found in 1 of 514 (0.2%) of genes in pham
- Manual Annotations of this start: 1 of 482
- Called 100.0% of time when present
- Phage (with cluster) where this start called: JustASigh_98 (AH),

Start 89:

- Found in 4 of 514 (0.8%) of genes in pham
- Manual Annotations of this start: 1 of 482
- Called 25.0% of time when present
- Phage (with cluster) where this start called: Gingerbug_57 (GF),

Start 90:

- Found in 32 of 514 (6.2%) of genes in pham
- Manual Annotations of this start: 1 of 482
- Called 3.1% of time when present
- Phage (with cluster) where this start called: Inventum_61 (F1),

Start 92:

- Found in 26 of 514 (5.1%) of genes in pham
- Manual Annotations of this start: 1 of 482
- Called 7.7% of time when present
- Phage (with cluster) where this start called: MiniMac_69 (L3), ModicumRichard_107 (DZ),

Start 93:

- Found in 23 of 514 (4.5%) of genes in pham
- Manual Annotations of this start: 1 of 482
- Called 13.0% of time when present
- Phage (with cluster) where this start called: Camara_30 (AS3), KHumphrey_30 (AS3), PhluffyCoco_30 (AS3),

Start 99:

- Found in 5 of 514 (1.0%) of genes in pham
- Manual Annotations of this start: 5 of 482
- Called 100.0% of time when present
- Phage (with cluster) where this start called: Akhila_56 (F1), Doomphist_65 (F1), MilanaBonita_55 (F1), Poenanya_65 (F1), Sparkdehlily_72 (F1),

Summary by clusters:

There are 42 clusters represented in this pham: DN, FQ, singleton, CY2, AP2, AP3, AP1, AP4, DZ, CU4, EI, DP, CU5, CP, CU3, CU1, DN4, DN1, DN2, DU1, DU2, AS3, AS2, E, F, AH, J, GF, S, L5, L2, L3, W, L1, X, UNK, F1, F2, F3, F4, F5, AP,

Info for manual annotations of cluster AH:

- Start number 88 was manually annotated 1 time for cluster AH.

Info for manual annotations of cluster AP:

- Start number 84 was manually annotated 1 time for cluster AP.

Info for manual annotations of cluster AP1:

- Start number 84 was manually annotated 3 times for cluster AP1.

Info for manual annotations of cluster AP2:

- Start number 81 was manually annotated 2 times for cluster AP2.
- Start number 84 was manually annotated 3 times for cluster AP2.

Info for manual annotations of cluster AP3:

- Start number 83 was manually annotated 1 time for cluster AP3.

Info for manual annotations of cluster AP4:

- Start number 84 was manually annotated 2 times for cluster AP4.

Info for manual annotations of cluster AS2:

- Start number 49 was manually annotated 1 time for cluster AS2.

Info for manual annotations of cluster AS3:

- Start number 93 was manually annotated 1 time for cluster AS3.

Info for manual annotations of cluster CP:

- Start number 59 was manually annotated 1 time for cluster CP.
- Start number 72 was manually annotated 2 times for cluster CP.

Info for manual annotations of cluster CU1:

- Start number 76 was manually annotated 8 times for cluster CU1.

Info for manual annotations of cluster CU3:

- Start number 74 was manually annotated 1 time for cluster CU3.

Info for manual annotations of cluster CU4:

- Start number 76 was manually annotated 1 time for cluster CU4.

Info for manual annotations of cluster CU5:

- Start number 76 was manually annotated 1 time for cluster CU5.

Info for manual annotations of cluster CY2:

- Start number 80 was manually annotated 1 time for cluster CY2.

Info for manual annotations of cluster DN:

- Start number 80 was manually annotated 2 times for cluster DN.
- Start number 81 was manually annotated 1 time for cluster DN.

Info for manual annotations of cluster DN1:

- Start number 80 was manually annotated 3 times for cluster DN1.
- Start number 81 was manually annotated 1 time for cluster DN1.

Info for manual annotations of cluster DN2:

- Start number 80 was manually annotated 2 times for cluster DN2.

Info for manual annotations of cluster DN4:

- Start number 80 was manually annotated 1 time for cluster DN4.

Info for manual annotations of cluster DP:

- Start number 77 was manually annotated 1 time for cluster DP.
- Start number 85 was manually annotated 4 times for cluster DP.

Info for manual annotations of cluster DU1:

- Start number 40 was manually annotated 2 times for cluster DU1.

Info for manual annotations of cluster DU2:

- Start number 71 was manually annotated 2 times for cluster DU2.

Info for manual annotations of cluster DZ:

- Start number 84 was manually annotated 4 times for cluster DZ.

Info for manual annotations of cluster E:

- Start number 80 was manually annotated 122 times for cluster E.

Info for manual annotations of cluster EI:

- Start number 77 was manually annotated 1 time for cluster EI.

Info for manual annotations of cluster F1:

- Start number 74 was manually annotated 195 times for cluster F1.
- Start number 78 was manually annotated 2 times for cluster F1.
- Start number 90 was manually annotated 1 time for cluster F1.
- Start number 99 was manually annotated 5 times for cluster F1.

Info for manual annotations of cluster F2:

- Start number 74 was manually annotated 7 times for cluster F2.

Info for manual annotations of cluster F3:

- Start number 74 was manually annotated 1 time for cluster F3.

Info for manual annotations of cluster F4:

- Start number 74 was manually annotated 4 times for cluster F4.

Info for manual annotations of cluster F5:

- Start number 74 was manually annotated 1 time for cluster F5.

Info for manual annotations of cluster FQ:

- Start number 86 was manually annotated 2 times for cluster FQ.

Info for manual annotations of cluster GF:

- Start number 77 was manually annotated 2 times for cluster GF.
- Start number 89 was manually annotated 1 time for cluster GF.

Info for manual annotations of cluster J:

- Start number 58 was manually annotated 1 time for cluster J.
- Start number 61 was manually annotated 1 time for cluster J.
- Start number 80 was manually annotated 9 times for cluster J.
- Start number 81 was manually annotated 22 times for cluster J.

Info for manual annotations of cluster L1:

- Start number 80 was manually annotated 5 times for cluster L1.

Info for manual annotations of cluster L2:

- Start number 76 was manually annotated 1 time for cluster L2.

Info for manual annotations of cluster L3:

- Start number 76 was manually annotated 12 times for cluster L3.
- Start number 92 was manually annotated 1 time for cluster L3.

Info for manual annotations of cluster L5:

- Start number 80 was manually annotated 2 times for cluster L5.

Info for manual annotations of cluster S:

- Start number 62 was manually annotated 16 times for cluster S.

Info for manual annotations of cluster W:

- Start number 73 was manually annotated 8 times for cluster W.

Info for manual annotations of cluster X:

- Start number 81 was manually annotated 2 times for cluster X.

Gene Information:

Gene: 244_78 Start: 48609, Stop: 48926, Start Num: 80

Candidate Starts for 244_78:

(21, 48426), (Start: 80 @48609 has 147 MA's), (125, 48750),

Gene: ABCat_74 Start: 48962, Stop: 49279, Start Num: 80

Candidate Starts for ABCat_74:

(21, 48779), (Start: 80 @48962 has 147 MA's), (125, 49103),

Gene: AWGoat_61 Start: 44482, Stop: 44168, Start Num: 84

Candidate Starts for AWGoat_61:

(Start: 84 @44482 has 13 MA's), (119, 44356), (164, 44224), (170, 44215),

Gene: Adnama_81 Start: 48988, Stop: 49305, Start Num: 80

Candidate Starts for Adnama_81:

(21, 48805), (Start: 80 @48988 has 147 MA's), (125, 49129),

Gene: Aegeus_71 Start: 46495, Stop: 46824, Start Num: 80

Candidate Starts for Aegeus_71:

(Start: 80 @46495 has 147 MA's), (109, 46579), (145, 46717), (155, 46744), (158, 46750), (170, 46774), (187, 46813),

Gene: Akhila_56 Start: 38018, Stop: 38311, Start Num: 99

Candidate Starts for Akhila_56:

(Start: 99 @38018 has 5 MA's), (104, 38036), (112, 38072), (114, 38078), (120, 38096), (143, 38192), (190, 38294),

Gene: Aleemily_105 Start: 59933, Stop: 60322, Start Num: 84

Candidate Starts for Aleemily_105:

(4, 59546), (5, 59558), (12, 59657), (Start: 84 @59933 has 13 MA's), (Start: 93 @59966 has 1 MA's), (98, 59987), (139, 60134), (148, 60164), (160, 60188),

Gene: Alexphander_69 Start: 42282, Stop: 42644, Start Num: 74

Candidate Starts for Alexphander_69:

(Start: 74 @42282 has 210 MA's), (169, 42582), (190, 42627),

Gene: AlpineSix_71 Start: 45319, Stop: 45681, Start Num: 74

Candidate Starts for AlpineSix_71:

(Start: 74 @45319 has 210 MA's), (136, 45523), (169, 45619), (190, 45664),

Gene: Amao_77 Start: 48382, Stop: 48699, Start Num: 80

Candidate Starts for Amao_77:

(21, 48199), (Start: 80 @48382 has 147 MA's), (Start: 92 @48406 has 1 MA's), (125, 48523),

Gene: AmericanBeauty_81 Start: 49131, Stop: 49448, Start Num: 80

Candidate Starts for AmericanBeauty_81:

(21, 48948), (Start: 80 @49131 has 147 MA's), (125, 49272),

Gene: Archie_67 Start: 46551, Stop: 46892, Start Num: 76

Candidate Starts for Archie_67:

(Start: 76 @46551 has 23 MA's), (124, 46698),

Gene: ArcusAngelus_67 Start: 42632, Stop: 42994, Start Num: 74

Candidate Starts for ArcusAngelus_67:

(Start: 74 @42632 has 210 MA's), (124, 42791), (169, 42932), (172, 42935), (190, 42977),

Gene: Ardmore_57 Start: 40049, Stop: 40405, Start Num: 74

Candidate Starts for Ardmore_57:

(Start: 74 @40049 has 210 MA's), (169, 40349), (172, 40352),

Gene: Argent26_81 Start: 48769, Stop: 49086, Start Num: 80

Candidate Starts for Argent26_81:

(21, 48586), (Start: 80 @48769 has 147 MA's), (125, 48910),

Gene: Argie_53 Start: 44207, Stop: 44548, Start Num: 73

Candidate Starts for Argie_53:

(Start: 73 @44207 has 9 MA's), (96, 44261), (100, 44276), (105, 44294), (125, 44360), (131, 44378), (140, 44432), (157, 44477), (169, 44498), (178, 44522), (180, 44525),

Gene: Ariel_118 Start: 64179, Stop: 64499, Start Num: 81

Candidate Starts for Ariel_118:

(Start: 81 @64179 has 28 MA's), (101, 64248), (113, 64290), (145, 64407),

Gene: Asriel_76 Start: 47325, Stop: 47642, Start Num: 80

Candidate Starts for Asriel_76:

(21, 47142), (Start: 80 @47325 has 147 MA's), (125, 47466),

Gene: Aubs_65 Start: 42690, Stop: 43052, Start Num: 74

Candidate Starts for Aubs_65:

(31, 42573), (Start: 74 @42690 has 210 MA's), (124, 42849), (169, 42990), (190, 43035),

Gene: AvadaKedavra_66 Start: 45153, Stop: 45521, Start Num: 80

Candidate Starts for AvadaKedavra_66:

(Start: 80 @45153 has 147 MA's), (Start: 93 @45180 has 1 MA's), (111, 45249), (117, 45270), (125, 45294), (145, 45375), (175, 45438), (197, 45513),

Gene: Avani_73 Start: 42666, Stop: 43022, Start Num: 74
Candidate Starts for Avani_73:
(Start: 74 @42666 has 210 MA's), (169, 42966), (172, 42969),

Gene: BAKA_122 Start: 67774, Stop: 68106, Start Num: 81
Candidate Starts for BAKA_122:
(Start: 81 @67774 has 28 MA's), (101, 67843), (130, 67933), (131, 67936), (145, 68002),

Gene: BaboJay_74 Start: 48162, Stop: 48479, Start Num: 80
Candidate Starts for BaboJay_74:
(21, 47979), (Start: 80 @48162 has 147 MA's), (125, 48303),

Gene: BadStone_74 Start: 48531, Stop: 48848, Start Num: 80
Candidate Starts for BadStone_74:
(21, 48348), (Start: 80 @48531 has 147 MA's), (125, 48672),

Gene: Bagrid_123 Start: 67735, Stop: 68064, Start Num: 81
Candidate Starts for Bagrid_123:
(Start: 81 @67735 has 28 MA's), (101, 67804), (145, 67963), (181, 68047),

Gene: Balomoji_77 Start: 49092, Stop: 49409, Start Num: 80
Candidate Starts for Balomoji_77:
(21, 48909), (Start: 80 @49092 has 147 MA's), (125, 49233),

Gene: Banquo_50 Start: 32516, Stop: 32896, Start Num: 76
Candidate Starts for Banquo_50:
(Start: 76 @32516 has 23 MA's), (98, 32579), (113, 32639), (145, 32756), (158, 32795), (175, 32822),
(191, 32864),

Gene: Barbarian_76 Start: 47325, Stop: 47642, Start Num: 80
Candidate Starts for Barbarian_76:
(21, 47142), (Start: 80 @47325 has 147 MA's), (125, 47466),

Gene: Bask21_77 Start: 47945, Stop: 48262, Start Num: 80
Candidate Starts for Bask21_77:
(21, 47762), (Start: 80 @47945 has 147 MA's), (Start: 92 @47969 has 1 MA's), (125, 48086),

Gene: Batiatus_63 Start: 41925, Stop: 42281, Start Num: 74
Candidate Starts for Batiatus_63:
(Start: 74 @41925 has 210 MA's), (169, 42225), (172, 42228),

Gene: Baudelaire_71 Start: 46495, Stop: 46824, Start Num: 80
Candidate Starts for Baudelaire_71:
(Start: 80 @46495 has 147 MA's), (109, 46579), (145, 46717), (155, 46744), (158, 46750), (170,
46774), (187, 46813),

Gene: Beagle_86 Start: 50592, Stop: 50260, Start Num: 84
Candidate Starts for Beagle_86:
(Start: 84 @50592 has 13 MA's), (Start: 93 @50559 has 1 MA's), (127, 50442), (136, 50412), (138,
50397), (140, 50382), (156, 50340), (160, 50334), (164, 50322), (170, 50313), (178, 50289),

Gene: Beakin_66 Start: 41229, Stop: 41591, Start Num: 74

Candidate Starts for Beakin_66:

(Start: 74 @41229 has 210 MA's), (124, 41388), (169, 41529), (172, 41532), (190, 41574),

Gene: BearBQ_70 Start: 44365, Stop: 44712, Start Num: 81

Candidate Starts for BearBQ_70:

(37, 44251), (67, 44341), (Start: 81 @44365 has 28 MA's), (Start: 90 @44386 has 1 MA's), (95, 44404), (96, 44413), (113, 44488), (145, 44605), (155, 44635), (172, 44665), (183, 44692), (190, 44704),

Gene: Beelzebub_73 Start: 40109, Stop: 40462, Start Num: 62

Candidate Starts for Beelzebub_73:

(Start: 62 @40109 has 16 MA's), (75, 40136), (118, 40271), (134, 40301), (141, 40352), (145, 40358), (147, 40373), (154, 40391), (165, 40415), (167, 40418),

Gene: Beem_125 Start: 69590, Stop: 69922, Start Num: 80

Candidate Starts for Beem_125:

(Start: 80 @69590 has 147 MA's), (115, 69701), (119, 69725), (182, 69905),

Gene: Bench_80 Start: 48629, Stop: 48946, Start Num: 80

Candidate Starts for Bench_80:

(21, 48446), (Start: 80 @48629 has 147 MA's), (125, 48770),

Gene: BigBubba_77 Start: 48341, Stop: 48658, Start Num: 80

Candidate Starts for BigBubba_77:

(21, 48158), (Start: 80 @48341 has 147 MA's), (125, 48482),

Gene: BigPhil_62 Start: 39148, Stop: 39510, Start Num: 74

Candidate Starts for BigPhil_62:

(Start: 74 @39148 has 210 MA's), (124, 39307), (136, 39352), (169, 39448), (172, 39451), (190, 39493),

Gene: BilboSwaggins_76 Start: 48970, Stop: 49287, Start Num: 80

Candidate Starts for BilboSwaggins_76:

(21, 48787), (Start: 80 @48970 has 147 MA's), (125, 49111),

Gene: Bipolar_65 Start: 42690, Stop: 43052, Start Num: 74

Candidate Starts for Bipolar_65:

(Start: 74 @42690 has 210 MA's), (124, 42849), (169, 42990), (190, 43035),

Gene: Blackbeetle_69 Start: 39121, Stop: 39474, Start Num: 62

Candidate Starts for Blackbeetle_69:

(Start: 62 @39121 has 16 MA's), (75, 39148), (118, 39283), (134, 39313), (141, 39364), (145, 39370), (147, 39385), (154, 39403), (165, 39427), (167, 39430),

Gene: Blarby_78 Start: 44162, Stop: 44503, Start Num: 74

Candidate Starts for Blarby_78:

(63, 44147), (Start: 74 @44162 has 210 MA's), (169, 44462), (172, 44465),

Gene: Blexus_63 Start: 42819, Stop: 43181, Start Num: 74

Candidate Starts for Blexus_63:

(Start: 74 @42819 has 210 MA's), (124, 42978), (169, 43119), (190, 43164),

Gene: BlueCrab_66 Start: 43528, Stop: 43884, Start Num: 74

Candidate Starts for BlueCrab_66:

(Start: 74 @43528 has 210 MA's), (129, 43702), (169, 43828),

Gene: BobaPhett_69 Start: 45114, Stop: 45476, Start Num: 74

Candidate Starts for BobaPhett_69:

(Start: 74 @45114 has 210 MA's), (124, 45273), (129, 45288), (169, 45414), (190, 45459),

Gene: Bobby_115 Start: 69193, Stop: 69522, Start Num: 81

Candidate Starts for Bobby_115:

(Start: 81 @69193 has 28 MA's), (101, 69262), (130, 69352), (131, 69355), (145, 69421), (181, 69505),

Gene: Bobi_69 Start: 43528, Stop: 43884, Start Num: 74

Candidate Starts for Bobi_69:

(Start: 74 @43528 has 210 MA's), (169, 43828), (172, 43831),

Gene: BodEinwohner17_66 Start: 42524, Stop: 42886, Start Num: 74

Candidate Starts for BodEinwohner17_66:

(34, 42419), (36, 42425), (55, 42479), (Start: 74 @42524 has 210 MA's), (Start: 90 @42557 has 1 MA's), (169, 42824), (172, 42827), (190, 42869),

Gene: Boomer_70 Start: 44186, Stop: 44542, Start Num: 74

Candidate Starts for Boomer_70:

(Start: 74 @44186 has 210 MA's), (169, 44486), (172, 44489),

Gene: BourbonZero_66 Start: 46515, Stop: 46847, Start Num: 76

Candidate Starts for BourbonZero_66:

(35, 46410), (Start: 76 @46515 has 23 MA's), (117, 46638), (126, 46665), (145, 46743), (161, 46779), (177, 46824),

Gene: BritBrat_66 Start: 43849, Stop: 44178, Start Num: 80

Candidate Starts for BritBrat_66:

(34, 43735), (65, 43825), (Start: 80 @43849 has 147 MA's), (117, 43963), (124, 43984), (145, 44068), (153, 44092), (183, 44158), (190, 44170),

Gene: Brocalys_60 Start: 39296, Stop: 39658, Start Num: 74

Candidate Starts for Brocalys_60:

(31, 39179), (Start: 74 @39296 has 210 MA's), (124, 39455), (169, 39596), (190, 39641),

Gene: BruhMoment_74 Start: 49610, Stop: 49293, Start Num: 83

Candidate Starts for BruhMoment_74:

(Start: 83 @49610 has 1 MA's), (111, 49508), (127, 49469), (164, 49349),

Gene: Bruin_74 Start: 47505, Stop: 47822, Start Num: 80

Candidate Starts for Bruin_74:

(21, 47322), (Start: 80 @47505 has 147 MA's), (125, 47646),

Gene: Buck_78 Start: 49210, Stop: 49527, Start Num: 80

Candidate Starts for Buck_78:

(21, 49027), (Start: 80 @49210 has 147 MA's), (125, 49351),

Gene: BugsBunny_77 Start: 49037, Stop: 49354, Start Num: 80

Candidate Starts for BugsBunny_77:

(21, 48854), (Start: 80 @49037 has 147 MA's), (125, 49178),

Gene: Burwell21_63 Start: 42397, Stop: 42759, Start Num: 74

Candidate Starts for Burwell21_63:

(31, 42280), (Start: 74 @42397 has 210 MA's), (124, 42556), (169, 42697), (190, 42742),

Gene: BuzzLyseyear_71 Start: 43599, Stop: 43961, Start Num: 74

Candidate Starts for BuzzLyseyear_71:

(Start: 74 @43599 has 210 MA's), (124, 43758), (169, 43899), (172, 43902), (190, 43944),

Gene: ByChance_58 Start: 38456, Stop: 38818, Start Num: 74

Candidate Starts for ByChance_58:

(Start: 74 @38456 has 210 MA's), (124, 38615), (129, 38630), (169, 38756), (190, 38801),

Gene: Byougenkin_65 Start: 42188, Stop: 42544, Start Num: 74

Candidate Starts for Byougenkin_65:

(Start: 74 @42188 has 210 MA's), (169, 42488), (172, 42491),

Gene: Cabrinians_66 Start: 42475, Stop: 42837, Start Num: 74

Candidate Starts for Cabrinians_66:

(Start: 74 @42475 has 210 MA's), (129, 42649), (169, 42775), (190, 42820),

Gene: Cactus_80 Start: 47986, Stop: 48303, Start Num: 80

Candidate Starts for Cactus_80:

(21, 47803), (Start: 80 @47986 has 147 MA's), (125, 48127),

Gene: Cafasso_107 Start: 60484, Stop: 60873, Start Num: 84

Candidate Starts for Cafasso_107:

(4, 60097), (5, 60109), (Start: 84 @60484 has 13 MA's), (Start: 93 @60517 has 1 MA's), (98, 60538), (139, 60685), (148, 60715),

Gene: Camara_30 Start: 20839, Stop: 20519, Start Num: 93

Candidate Starts for Camara_30:

(3, 21274), (15, 21124), (56, 20929), (82, 20872), (Start: 93 @20839 has 1 MA's), (117, 20743),

Gene: Caprice_64 Start: 39435, Stop: 39788, Start Num: 62

Candidate Starts for Caprice_64:

(Start: 62 @39435 has 16 MA's), (75, 39462), (118, 39597), (134, 39627), (141, 39678), (145, 39684), (147, 39699), (154, 39717), (165, 39741), (167, 39744),

Gene: CaptainTrips_63 Start: 42210, Stop: 42572, Start Num: 74

Candidate Starts for CaptainTrips_63:

(31, 42093), (Start: 74 @42210 has 210 MA's), (124, 42369), (169, 42510), (190, 42555),

Gene: Catfish_49 Start: 34051, Stop: 34401, Start Num: 76

Candidate Starts for Catfish_49:

(Start: 76 @34051 has 23 MA's), (91, 34084), (113, 34174), (122, 34198), (155, 34324), (183, 34384),

Gene: Cepens_52 Start: 43922, Stop: 44263, Start Num: 73

Candidate Starts for Cepens_52:

(Start: 73 @43922 has 9 MA's), (96, 43976), (100, 43991), (105, 44009), (125, 44075), (131, 44093), (140, 44147), (157, 44192), (169, 44213), (178, 44237), (180, 44240),

Gene: Cerasum_62 Start: 39166, Stop: 39528, Start Num: 74
Candidate Starts for Cerasum_62:
(Start: 74 @39166 has 210 MA's), (124, 39325), (136, 39370), (169, 39466), (172, 39469), (190, 39511),

Gene: Che8_70 Start: 45095, Stop: 45457, Start Num: 74
Candidate Starts for Che8_70:
(Start: 74 @45095 has 210 MA's), (124, 45254), (169, 45395), (172, 45398), (190, 45440),

Gene: Che9d_75 Start: 42864, Stop: 43220, Start Num: 74
Candidate Starts for Che9d_75:
(Start: 74 @42864 has 210 MA's), (124, 43023), (169, 43164), (172, 43167),

Gene: CheeseTouch_74 Start: 39429, Stop: 39758, Start Num: 80
Candidate Starts for CheeseTouch_74:
(Start: 80 @39429 has 147 MA's), (117, 39543), (124, 39564), (145, 39648), (153, 39672), (175, 39711), (183, 39738), (190, 39750),

Gene: Chevrolet_70 Start: 42633, Stop: 42995, Start Num: 74
Candidate Starts for Chevrolet_70:
(Start: 74 @42633 has 210 MA's), (169, 42933), (172, 42936), (190, 42978),

Gene: ChosenOne_77 Start: 47986, Stop: 48303, Start Num: 80
Candidate Starts for ChosenOne_77:
(21, 47803), (Start: 80 @47986 has 147 MA's), (125, 48127),

Gene: ChotaBhai_77 Start: 48310, Stop: 48627, Start Num: 80
Candidate Starts for ChotaBhai_77:
(21, 48127), (Start: 80 @48310 has 147 MA's), (Start: 92 @48334 has 1 MA's), (125, 48451),

Gene: Chuckly_68 Start: 42655, Stop: 43011, Start Num: 74
Candidate Starts for Chuckly_68:
(Start: 74 @42655 has 210 MA's), (169, 42955), (172, 42958),

Gene: Cinna_52 Start: 36948, Stop: 37283, Start Num: 77
Candidate Starts for Cinna_52:
(48, 36891), (66, 36936), (68, 36939), (Start: 77 @36948 has 4 MA's), (Start: 90 @36975 has 1 MA's), (117, 37083), (144, 37158), (154, 37188), (163, 37209), (179, 37248),

Gene: Cjw1_77 Start: 49683, Stop: 50000, Start Num: 80
Candidate Starts for Cjw1_77:
(21, 49500), (Start: 80 @49683 has 147 MA's), (125, 49824),

Gene: Clarkson_70 Start: 39837, Stop: 40190, Start Num: 62
Candidate Starts for Clarkson_70:
(Start: 62 @39837 has 16 MA's), (75, 39864), (118, 39999), (134, 40029), (141, 40080), (145, 40086), (147, 40101), (154, 40119), (165, 40143), (167, 40146),

Gene: Clautastrophe_65 Start: 46467, Stop: 46799, Start Num: 76
Candidate Starts for Clautastrophe_65:
(10, 46191), (11, 46203), (13, 46212), (16, 46236), (24, 46314), (35, 46362), (Start: 76 @46467 has 23 MA's), (124, 46611), (145, 46695), (158, 46728),

Gene: Clawz_89 Start: 57153, Stop: 57563, Start Num: 59
Candidate Starts for Clawz_89:
(39, 57102), (41, 57108), (45, 57114), (47, 57126), (Start: 59 @57153 has 1 MA's), (Start: 72 @57183 has 2 MA's), (151, 57444), (156, 57453), (185, 57522), (194, 57540),

Gene: Clifton_60 Start: 39647, Stop: 40009, Start Num: 74
Candidate Starts for Clifton_60:
(31, 39530), (Start: 74 @39647 has 210 MA's), (124, 39806), (169, 39947), (190, 39992),

Gene: Coco12_65 Start: 43223, Stop: 43585, Start Num: 74
Candidate Starts for Coco12_65:
(Start: 74 @43223 has 210 MA's), (124, 43382), (136, 43427), (169, 43523), (172, 43526), (190, 43568),

Gene: ColdSoup_93 Start: 57604, Stop: 57972, Start Num: 79
Candidate Starts for ColdSoup_93:
(18, 57379), (Start: 72 @57592 has 2 MA's), (79, 57604), (151, 57853), (156, 57862), (168, 57886), (171, 57892), (188, 57934),

Gene: Command613_79 Start: 49025, Stop: 49342, Start Num: 80
Candidate Starts for Command613_79:
(21, 48842), (Start: 80 @49025 has 147 MA's), (125, 49166),

Gene: Constella_107 Start: 63055, Stop: 63387, Start Num: 80
Candidate Starts for Constella_107:
(Start: 80 @63055 has 147 MA's), (115, 63166), (119, 63190), (182, 63370),

Gene: Contagion_73 Start: 47786, Stop: 48103, Start Num: 80
Candidate Starts for Contagion_73:
(21, 47603), (Start: 80 @47786 has 147 MA's), (125, 47927),

Gene: Cookies_74 Start: 48167, Stop: 48484, Start Num: 80
Candidate Starts for Cookies_74:
(21, 47984), (Start: 80 @48167 has 147 MA's), (Start: 92 @48191 has 1 MA's), (125, 48308),

Gene: Corazon_67 Start: 40031, Stop: 40384, Start Num: 62
Candidate Starts for Corazon_67:
(Start: 62 @40031 has 16 MA's), (75, 40058), (118, 40193), (134, 40223), (141, 40274), (145, 40280), (147, 40295), (154, 40313), (165, 40337), (167, 40340),

Gene: Cornie_63 Start: 40942, Stop: 41304, Start Num: 74
Candidate Starts for Cornie_63:
(Start: 74 @40942 has 210 MA's), (124, 41101), (169, 41242), (190, 41287),

Gene: Cornucopia_67 Start: 42579, Stop: 42941, Start Num: 74
Candidate Starts for Cornucopia_67:
(Start: 74 @42579 has 210 MA's), (136, 42783), (169, 42879), (172, 42882), (190, 42924),

Gene: Courthouse_113 Start: 63779, Stop: 64099, Start Num: 81
Candidate Starts for Courthouse_113:
(Start: 81 @63779 has 28 MA's), (101, 63848), (113, 63890), (145, 64007),

Gene: Crumble_60 Start: 38411, Stop: 38773, Start Num: 74

Candidate Starts for Crumble_60:
(Start: 74 @38411 has 210 MA's), (124, 38570), (129, 38585), (169, 38711), (190, 38756),

Gene: CrystalP_76 Start: 48970, Stop: 49287, Start Num: 80
Candidate Starts for CrystalP_76:
(21, 48787), (Start: 80 @48970 has 147 MA's), (125, 49111),

Gene: Czyszczone1_78 Start: 48492, Stop: 48809, Start Num: 80
Candidate Starts for Czyszczone1_78:
(21, 48309), (Start: 80 @48492 has 147 MA's), (125, 48633),

Gene: D12_51 Start: 44470, Stop: 44811, Start Num: 73
Candidate Starts for D12_51:
(Start: 73 @44470 has 9 MA's), (96, 44524), (100, 44539), (105, 44557), (125, 44623), (131, 44641),
(140, 44695), (157, 44740), (169, 44761), (178, 44785), (180, 44788),

Gene: DLane_60 Start: 40555, Stop: 40917, Start Num: 74
Candidate Starts for DLane_60:
(Start: 74 @40555 has 210 MA's), (169, 40855), (172, 40858), (190, 40900),

Gene: DRBy19_69 Start: 43907, Stop: 44263, Start Num: 74
Candidate Starts for DRBy19_69:
(31, 43790), (Start: 74 @43907 has 210 MA's), (129, 44081), (169, 44207), (172, 44210), (190,
44246),

Gene: DaWorst_65 Start: 42022, Stop: 42384, Start Num: 74
Candidate Starts for DaWorst_65:
(Start: 74 @42022 has 210 MA's), (124, 42181), (169, 42322), (190, 42367),

Gene: Daenerys_60 Start: 41329, Stop: 41685, Start Num: 74
Candidate Starts for Daenerys_60:
(34, 41224), (36, 41230), (55, 41284), (Start: 74 @41329 has 210 MA's), (Start: 90 @41362 has 1
MA's), (136, 41533), (169, 41629), (172, 41632),

Gene: Daikon_79 Start: 49113, Stop: 49430, Start Num: 80
Candidate Starts for Daikon_79:
(21, 48930), (Start: 80 @49113 has 147 MA's), (125, 49254),

Gene: Dallas_124 Start: 69105, Stop: 69437, Start Num: 80
Candidate Starts for Dallas_124:
(Start: 80 @69105 has 147 MA's), (115, 69216), (119, 69240), (182, 69420),

Gene: Dante_66 Start: 41796, Stop: 42161, Start Num: 74
Candidate Starts for Dante_66:
(Start: 74 @41796 has 210 MA's), (124, 41955), (169, 42096), (177, 42120),

Gene: Dardanus_46 Start: 31283, Stop: 31621, Start Num: 74
Candidate Starts for Dardanus_46:
(29, 31163), (69, 31274), (Start: 74 @31283 has 210 MA's), (113, 31409), (124, 31439), (131, 31460),
(178, 31610),

Gene: DeadP_72 Start: 44907, Stop: 45269, Start Num: 74
Candidate Starts for DeadP_72:

(63, 44892), (Start: 74 @44907 has 210 MA's), (169, 45207), (172, 45210), (190, 45252),

Gene: Deb65_60 Start: 41299, Stop: 41661, Start Num: 74

Candidate Starts for Deb65_60:

(34, 41194), (36, 41200), (55, 41254), (Start: 74 @41299 has 210 MA's), (Start: 90 @41332 has 1 MA's), (169, 41599), (172, 41602), (190, 41644),

Gene: DelaGarza_58 Start: 33298, Stop: 33687, Start Num: 77

Candidate Starts for DelaGarza_58:

(Start: 77 @33298 has 4 MA's), (113, 33424), (142, 33532), (190, 33652),

Gene: Demsculpinboyz_78 Start: 42611, Stop: 42973, Start Num: 74

Candidate Starts for Demsculpinboyz_78:

(Start: 74 @42611 has 210 MA's), (136, 42815), (169, 42911), (190, 42956),

Gene: DillTech15_63 Start: 40922, Stop: 41284, Start Num: 74

Candidate Starts for DillTech15_63:

(65, 40907), (Start: 74 @40922 has 210 MA's), (169, 41222), (190, 41267),

Gene: DinoDaryn_52 Start: 33048, Stop: 33431, Start Num: 76

Candidate Starts for DinoDaryn_52:

(Start: 76 @33048 has 23 MA's), (113, 33171), (175, 33354), (191, 33396),

Gene: DirtMcgirt_64 Start: 40554, Stop: 40916, Start Num: 74

Candidate Starts for DirtMcgirt_64:

(Start: 74 @40554 has 210 MA's), (124, 40713), (169, 40854), (172, 40857), (190, 40899),

Gene: DmpstrDiver_123 Start: 68024, Stop: 68353, Start Num: 81

Candidate Starts for DmpstrDiver_123:

(Start: 81 @68024 has 28 MA's), (101, 68093), (145, 68252), (181, 68336),

Gene: DoctorDiddles_76 Start: 48354, Stop: 48671, Start Num: 80

Candidate Starts for DoctorDiddles_76:

(21, 48171), (Start: 80 @48354 has 147 MA's), (Start: 92 @48378 has 1 MA's), (125, 48495),

Gene: DonTron_90 Start: 57720, Stop: 58088, Start Num: 79

Candidate Starts for DonTron_90:

(8, 57420), (18, 57495), (27, 57582), (Start: 72 @57708 has 2 MA's), (79, 57720), (151, 57969), (156, 57978), (168, 58002), (171, 58008), (188, 58050),

Gene: Donkeykong_68 Start: 44468, Stop: 44830, Start Num: 74

Candidate Starts for Donkeykong_68:

(Start: 74 @44468 has 210 MA's), (169, 44768), (172, 44771), (190, 44813),

Gene: Doomphist_65 Start: 43033, Stop: 43326, Start Num: 99

Candidate Starts for Doomphist_65:

(Start: 99 @43033 has 5 MA's), (102, 43045), (104, 43051), (112, 43087), (124, 43123), (169, 43264), (172, 43267), (190, 43309),

Gene: Dorothy_64 Start: 42261, Stop: 42623, Start Num: 74

Candidate Starts for Dorothy_64:

(34, 42156), (36, 42162), (55, 42216), (Start: 74 @42261 has 210 MA's), (Start: 90 @42294 has 1 MA's), (136, 42465), (169, 42561), (172, 42564), (190, 42606),

Gene: DosHalletts_67 Start: 43303, Stop: 43665, Start Num: 74

Candidate Starts for DosHalletts_67:

(Start: 74 @43303 has 210 MA's), (124, 43462), (169, 43603), (172, 43606), (190, 43648),

Gene: DotProduct_60 Start: 40802, Stop: 41164, Start Num: 74

Candidate Starts for DotProduct_60:

(Start: 74 @40802 has 210 MA's), (169, 41102), (172, 41105), (190, 41147),

Gene: Doug_67 Start: 42635, Stop: 42997, Start Num: 74

Candidate Starts for Doug_67:

(Start: 74 @42635 has 210 MA's), (169, 42935), (190, 42980),

Gene: Dove_109 Start: 64018, Stop: 64350, Start Num: 80

Candidate Starts for Dove_109:

(Start: 80 @64018 has 147 MA's), (115, 64129), (119, 64153), (182, 64333),

Gene: DrDrey_77 Start: 49411, Stop: 49728, Start Num: 80

Candidate Starts for DrDrey_77:

(21, 49228), (Start: 80 @49411 has 147 MA's), (125, 49552),

Gene: Drago_62 Start: 40557, Stop: 40919, Start Num: 74

Candidate Starts for Drago_62:

(Start: 74 @40557 has 210 MA's), (124, 40716), (169, 40857), (172, 40860), (190, 40902),

Gene: Duke13_117 Start: 65442, Stop: 65774, Start Num: 81

Candidate Starts for Duke13_117:

(Start: 81 @65442 has 28 MA's), (101, 65511), (130, 65601), (131, 65604), (145, 65670),

Gene: Dumbo_77 Start: 47891, Stop: 48208, Start Num: 80

Candidate Starts for Dumbo_77:

(21, 47708), (Start: 80 @47891 has 147 MA's), (125, 48032),

Gene: DuncansLeg_66 Start: 46503, Stop: 46835, Start Num: 76

Candidate Starts for DuncansLeg_66:

(35, 46398), (60, 46464), (Start: 76 @46503 has 23 MA's), (117, 46626), (126, 46653), (145, 46731), (161, 46767), (177, 46812),

Gene: Dusk_74 Start: 48191, Stop: 48508, Start Num: 80

Candidate Starts for Dusk_74:

(21, 48008), (Start: 80 @48191 has 147 MA's), (125, 48332),

Gene: Easy2Say_78 Start: 49435, Stop: 49752, Start Num: 80

Candidate Starts for Easy2Say_78:

(21, 49252), (Start: 80 @49435 has 147 MA's), (125, 49576),

Gene: Ecliptus_75 Start: 44750, Stop: 45079, Start Num: 80

Candidate Starts for Ecliptus_75:

(Start: 80 @44750 has 147 MA's), (117, 44864), (124, 44885), (145, 44969), (153, 44993), (175, 45032), (183, 45059), (190, 45071),

Gene: Eish_68 Start: 42537, Stop: 42899, Start Num: 74

Candidate Starts for Eish_68:

(Start: 74 @42537 has 210 MA's), (124, 42696), (169, 42837), (172, 42840), (190, 42882),

Gene: Ejimix_117 Start: 69176, Stop: 69505, Start Num: 81

Candidate Starts for Ejimix_117:

(Start: 81 @69176 has 28 MA's), (101, 69245), (130, 69335), (131, 69338), (145, 69404), (181, 69488),

Gene: EleanorGeorge_67 Start: 43317, Stop: 43673, Start Num: 74

Candidate Starts for EleanorGeorge_67:

(Start: 74 @43317 has 210 MA's), (124, 43476), (169, 43617), (172, 43620),

Gene: Elite2014_76 Start: 47985, Stop: 48302, Start Num: 80

Candidate Starts for Elite2014_76:

(21, 47802), (Start: 80 @47985 has 147 MA's), (125, 48126),

Gene: Elph10_77 Start: 47990, Stop: 48307, Start Num: 80

Candidate Starts for Elph10_77:

(21, 47807), (Start: 80 @47990 has 147 MA's), (125, 48131),

Gene: Emma_67 Start: 42045, Stop: 42407, Start Num: 74

Candidate Starts for Emma_67:

(Start: 74 @42045 has 210 MA's), (Start: 92 @42087 has 1 MA's), (124, 42204), (169, 42345), (190, 42390),

Gene: Emmina_77 Start: 47892, Stop: 48209, Start Num: 80

Candidate Starts for Emmina_77:

(21, 47709), (Start: 80 @47892 has 147 MA's), (125, 48033),

Gene: Empress_64 Start: 42743, Stop: 43105, Start Num: 74

Candidate Starts for Empress_64:

(34, 42638), (36, 42644), (55, 42698), (Start: 74 @42743 has 210 MA's), (Start: 90 @42776 has 1 MA's), (169, 43043), (172, 43046), (190, 43088),

Gene: Enby_66 Start: 40833, Stop: 41195, Start Num: 74

Candidate Starts for Enby_66:

(Start: 74 @40833 has 210 MA's), (124, 40992), (169, 41133), (172, 41136), (190, 41178),

Gene: Eradicator_58 Start: 40449, Stop: 40811, Start Num: 74

Candidate Starts for Eradicator_58:

(Start: 74 @40449 has 210 MA's), (124, 40608), (169, 40749), (172, 40752), (190, 40794),

Gene: EricMillard_114 Start: 67411, Stop: 67743, Start Num: 81

Candidate Starts for EricMillard_114:

(Start: 81 @67411 has 28 MA's), (101, 67480), (130, 67570), (131, 67573), (145, 67639),

Gene: Estave1_70 Start: 44873, Stop: 45235, Start Num: 74

Candidate Starts for Estave1_70:

(Start: 74 @44873 has 210 MA's), (124, 45032), (129, 45047), (169, 45173), (172, 45176), (190, 45218),

Gene: Eureka_75 Start: 48456, Stop: 48773, Start Num: 80

Candidate Starts for Eureka_75:

(21, 48273), (Start: 80 @48456 has 147 MA's), (125, 48597),

Gene: Fancypants_68 Start: 43057, Stop: 43419, Start Num: 74

Candidate Starts for Fancypants_68:

(65, 43042), (Start: 74 @43057 has 210 MA's), (124, 43216), (169, 43357), (190, 43402),

Gene: Fastidio_66 Start: 41072, Stop: 41428, Start Num: 74

Candidate Starts for Fastidio_66:

(63, 41057), (Start: 74 @41072 has 210 MA's), (124, 41231), (169, 41372), (172, 41375),

Gene: FeliMaine_68 Start: 40079, Stop: 40432, Start Num: 62

Candidate Starts for FeliMaine_68:

(Start: 62 @40079 has 16 MA's), (75, 40106), (118, 40241), (134, 40271), (141, 40322), (145, 40328), (147, 40343), (154, 40361), (165, 40385), (167, 40388),

Gene: Filch_78 Start: 47917, Stop: 48234, Start Num: 80

Candidate Starts for Filch_78:

(21, 47734), (Start: 80 @47917 has 147 MA's), (125, 48058),

Gene: Filuzino_63 Start: 40860, Stop: 41222, Start Num: 74

Candidate Starts for Filuzino_63:

(Start: 74 @40860 has 210 MA's), (169, 41160), (172, 41163), (190, 41205),

Gene: Finnry_66 Start: 46731, Stop: 47063, Start Num: 76

Candidate Starts for Finnry_66:

(11, 46467), (13, 46476), (16, 46500), (24, 46578), (35, 46626), (Start: 76 @46731 has 23 MA's), (124, 46875), (145, 46959), (158, 46992),

Gene: FireRed_81 Start: 49479, Stop: 49796, Start Num: 80

Candidate Starts for FireRed_81:

(21, 49296), (Start: 80 @49479 has 147 MA's), (125, 49620),

Gene: Firehouse51_68 Start: 46363, Stop: 46704, Start Num: 74

Candidate Starts for Firehouse51_68:

(Start: 74 @46363 has 210 MA's), (136, 46567), (169, 46663), (172, 46666),

Gene: Flathead_66 Start: 42514, Stop: 42876, Start Num: 74

Candidate Starts for Flathead_66:

(Start: 74 @42514 has 210 MA's), (169, 42814), (172, 42817), (190, 42859),

Gene: Florinda_76 Start: 43974, Stop: 44336, Start Num: 74

Candidate Starts for Florinda_76:

(Start: 74 @43974 has 210 MA's), (169, 44274), (172, 44277), (190, 44319),

Gene: Flypotenuse_73 Start: 47976, Stop: 48293, Start Num: 80

Candidate Starts for Flypotenuse_73:

(21, 47793), (Start: 80 @47976 has 147 MA's), (125, 48117),

Gene: FreddyB_66 Start: 41323, Stop: 41679, Start Num: 74

Candidate Starts for FreddyB_66:

(Start: 74 @41323 has 210 MA's), (129, 41497), (169, 41623),

Gene: Fryberger_95 Start: 48138, Stop: 48464, Start Num: 85

Candidate Starts for Fryberger_95:

(Start: 85 @48138 has 4 MA's), (108, 48219), (136, 48303), (142, 48342), (161, 48381),

Gene: GAL1_54 Start: 37553, Stop: 37900, Start Num: 81

Candidate Starts for GAL1_54:

(Start: 59 @37502 has 1 MA's), (Start: 81 @37553 has 28 MA's), (Start: 90 @37574 has 1 MA's), (95, 37592), (96, 37601), (113, 37676), (131, 37727), (142, 37790), (145, 37793), (155, 37823), (172, 37853), (183, 37880), (190, 37892),

Gene: GUmbie_63 Start: 41676, Stop: 42038, Start Num: 74

Candidate Starts for GUmbie_63:

(Start: 74 @41676 has 210 MA's), (124, 41835), (169, 41976), (172, 41979), (190, 42021),

Gene: Gage_79 Start: 48769, Stop: 49086, Start Num: 80

Candidate Starts for Gage_79:

(21, 48586), (Start: 80 @48769 has 147 MA's), (125, 48910),

Gene: Gaia_85 Start: 50308, Stop: 50631, Start Num: 81

Candidate Starts for Gaia_85:

(Start: 81 @50308 has 28 MA's), (100, 50371), (172, 50596), (175, 50599),

Gene: Galactic_64 Start: 41833, Stop: 42195, Start Num: 74

Candidate Starts for Galactic_64:

(Start: 74 @41833 has 210 MA's), (124, 41992), (169, 42133), (190, 42178),

Gene: Gandalph_68 Start: 42720, Stop: 43082, Start Num: 74

Candidate Starts for Gandalph_68:

(31, 42603), (Start: 74 @42720 has 210 MA's), (124, 42879), (169, 43020), (172, 43023), (190, 43065),

Gene: Gator_75 Start: 48822, Stop: 49139, Start Num: 80

Candidate Starts for Gator_75:

(21, 48639), (Start: 80 @48822 has 147 MA's), (125, 48963),

Gene: Gattaca_67 Start: 39225, Stop: 39578, Start Num: 62

Candidate Starts for Gattaca_67:

(Start: 62 @39225 has 16 MA's), (75, 39252), (118, 39387), (134, 39417), (141, 39468), (145, 39474), (147, 39489), (154, 39507), (165, 39531), (167, 39534),

Gene: Gemini_82 Start: 49286, Stop: 49603, Start Num: 80

Candidate Starts for Gemini_82:

(21, 49103), (Start: 80 @49286 has 147 MA's), (125, 49427),

Gene: Geralt_60 Start: 41298, Stop: 41660, Start Num: 74

Candidate Starts for Geralt_60:

(34, 41193), (36, 41199), (55, 41253), (Start: 74 @41298 has 210 MA's), (Start: 90 @41331 has 1 MA's), (169, 41598), (172, 41601), (190, 41643),

Gene: GigiOuiOui_61 Start: 40822, Stop: 41184, Start Num: 74

Candidate Starts for GigiOuiOui_61:

(Start: 74 @40822 has 210 MA's), (169, 41122), (172, 41125), (190, 41167),

Gene: Gilgamesh_151 Start: 125936, Stop: 126292, Start Num: 73

Candidate Starts for Gilgamesh_151:

(46, 125873), (Start: 73 @125936 has 9 MA's), (Start: 90 @125972 has 1 MA's), (111, 126053), (113, 126065), (131, 126116), (145, 126182), (172, 126242), (176, 126260), (184, 126275),

Gene: Gingerbug_57 Start: 33770, Stop: 34138, Start Num: 89

Candidate Starts for Gingerbug_57:

(Start: 89 @33770 has 1 MA's), (Start: 93 @33791 has 1 MA's), (113, 33872), (142, 33980),

Gene: Girafales_73 Start: 43765, Stop: 44127, Start Num: 74

Candidate Starts for Girafales_73:

(Start: 74 @43765 has 210 MA's), (169, 44065), (172, 44068), (190, 44110),

Gene: Girr_63 Start: 41692, Stop: 42054, Start Num: 74

Candidate Starts for Girr_63:

(Start: 74 @41692 has 210 MA's), (169, 41992), (190, 42037),

Gene: Glexan_76 Start: 49106, Stop: 49423, Start Num: 80

Candidate Starts for Glexan_76:

(21, 48923), (Start: 80 @49106 has 147 MA's), (125, 49247),

Gene: GodPhather_53 Start: 44710, Stop: 45051, Start Num: 73

Candidate Starts for GodPhather_53:

(Start: 73 @44710 has 9 MA's), (96, 44764), (100, 44779), (105, 44797), (125, 44863), (131, 44881), (140, 44935), (157, 44980), (169, 45001), (178, 45025), (180, 45028),

Gene: Goib_52 Start: 33585, Stop: 33968, Start Num: 76

Candidate Starts for Goib_52:

(Start: 76 @33585 has 23 MA's), (113, 33708), (175, 33891), (191, 33933),

Gene: Goku_75 Start: 48185, Stop: 48502, Start Num: 80

Candidate Starts for Goku_75:

(21, 48002), (Start: 80 @48185 has 147 MA's), (125, 48326),

Gene: GoldenSpark_81 Start: 48769, Stop: 49086, Start Num: 80

Candidate Starts for GoldenSpark_81:

(21, 48586), (Start: 80 @48769 has 147 MA's), (125, 48910),

Gene: Goldilocks_80 Start: 48267, Stop: 48584, Start Num: 80

Candidate Starts for Goldilocks_80:

(21, 48084), (Start: 80 @48267 has 147 MA's), (125, 48408),

Gene: Gonephishing_112 Start: 63185, Stop: 63505, Start Num: 81

Candidate Starts for Gonephishing_112:

(Start: 81 @63185 has 28 MA's), (101, 63254), (113, 63296), (145, 63413),

Gene: GooberAzure_80 Start: 48769, Stop: 49086, Start Num: 80

Candidate Starts for GooberAzure_80:

(21, 48586), (Start: 80 @48769 has 147 MA's), (125, 48910),

Gene: Gorge_69 Start: 43618, Stop: 43980, Start Num: 74

Candidate Starts for Gorge_69:

(Start: 74 @43618 has 210 MA's), (124, 43777), (169, 43918), (172, 43921), (190, 43963),

Gene: Guey18_100 Start: 49458, Stop: 49784, Start Num: 85

Candidate Starts for Guey18_100:

(Start: 85 @49458 has 4 MA's), (108, 49539), (136, 49623), (142, 49662), (161, 49701),

Gene: Guppsters_66 Start: 41977, Stop: 42339, Start Num: 74

Candidate Starts for Guppsters_66:

(Start: 74 @41977 has 210 MA's), (124, 42136), (169, 42277), (172, 42280), (190, 42322),

Gene: Hades_66 Start: 42692, Stop: 43054, Start Num: 74

Candidate Starts for Hades_66:

(Start: 74 @42692 has 210 MA's), (124, 42851), (169, 42992), (172, 42995), (190, 43037),

Gene: Halley_125 Start: 69492, Stop: 69821, Start Num: 81

Candidate Starts for Halley_125:

(Start: 81 @69492 has 28 MA's), (101, 69561), (130, 69651), (131, 69654), (145, 69720), (181, 69804),

Gene: Hamulus_65 Start: 42334, Stop: 42690, Start Num: 74

Candidate Starts for Hamulus_65:

(Start: 74 @42334 has 210 MA's), (169, 42634), (172, 42637),

Gene: HanKaySha_77 Start: 48070, Stop: 48387, Start Num: 80

Candidate Starts for HanKaySha_77:

(21, 47887), (Start: 80 @48070 has 147 MA's), (125, 48211),

Gene: Harella_77 Start: 49622, Stop: 49939, Start Num: 80

Candidate Starts for Harella_77:

(21, 49439), (Start: 80 @49622 has 147 MA's), (125, 49763),

Gene: Harley_67 Start: 42941, Stop: 43297, Start Num: 74

Candidate Starts for Harley_67:

(Start: 74 @42941 has 210 MA's), (124, 43100), (129, 43115), (169, 43241), (172, 43244),

Gene: Hegedechwinu_65 Start: 41510, Stop: 41872, Start Num: 74

Candidate Starts for Hegedechwinu_65:

(31, 41393), (Start: 74 @41510 has 210 MA's), (124, 41669), (169, 41810), (172, 41813), (190, 41855),

Gene: Henry_75 Start: 48410, Stop: 48727, Start Num: 80

Candidate Starts for Henry_75:

(21, 48227), (Start: 80 @48410 has 147 MA's), (125, 48551),

Gene: Highbury_76 Start: 48058, Stop: 48375, Start Num: 80

Candidate Starts for Highbury_76:

(21, 47875), (Start: 80 @48058 has 147 MA's), (125, 48199),

Gene: Hlubikazi_61 Start: 39912, Stop: 40274, Start Num: 74

Candidate Starts for Hlubikazi_61:

(Start: 74 @39912 has 210 MA's), (169, 40212), (172, 40215), (190, 40257),

Gene: HokkenD_113 Start: 67777, Stop: 68151, Start Num: 61

Candidate Starts for HokkenD_113:

(Start: 58 @67768 has 1 MA's), (Start: 61 @67777 has 1 MA's), (103, 67885), (115, 67930), (182, 68134),

Gene: Holt_82 Start: 49183, Stop: 49500, Start Num: 80

Candidate Starts for Holt_82:

(21, 49000), (Start: 80 @49183 has 147 MA's), (125, 49324),

Gene: Hoonter_80 Start: 48769, Stop: 49086, Start Num: 80

Candidate Starts for Hoonter_80:

(21, 48586), (Start: 80 @48769 has 147 MA's), (125, 48910),

Gene: Hopecy_77 Start: 48602, Stop: 48919, Start Num: 80

Candidate Starts for Hopecy_77:

(21, 48419), (Start: 80 @48602 has 147 MA's), (125, 48743),

Gene: Horus_72 Start: 44321, Stop: 44650, Start Num: 80

Candidate Starts for Horus_72:

(34, 44207), (65, 44297), (Start: 80 @44321 has 147 MA's), (Start: 93 @44348 has 1 MA's), (117, 44435), (145, 44540), (153, 44564), (175, 44603), (183, 44630), (190, 44642),

Gene: HufflyPuff_80 Start: 49435, Stop: 49752, Start Num: 80

Candidate Starts for HufflyPuff_80:

(21, 49252), (Start: 80 @49435 has 147 MA's), (125, 49576),

Gene: Huffly_52 Start: 33048, Stop: 33431, Start Num: 76

Candidate Starts for Huffly_52:

(Start: 76 @33048 has 23 MA's), (113, 33171), (175, 33354), (191, 33396),

Gene: Hughesyang_122 Start: 68948, Stop: 69280, Start Num: 81

Candidate Starts for Hughesyang_122:

(Start: 81 @68948 has 28 MA's), (101, 69017), (145, 69176),

Gene: Hum25_55 Start: 30658, Stop: 30984, Start Num: 86

Candidate Starts for Hum25_55:

(26, 30499), (Start: 86 @30658 has 2 MA's), (113, 30763), (150, 30895),

Gene: Huphlepuuff_71 Start: 39642, Stop: 39995, Start Num: 62

Candidate Starts for Huphlepuuff_71:

(Start: 62 @39642 has 16 MA's), (75, 39669), (118, 39804), (134, 39834), (141, 39885), (145, 39891), (147, 39906), (154, 39924), (165, 39948), (167, 39951),

Gene: IHOP_75 Start: 48534, Stop: 48851, Start Num: 80

Candidate Starts for IHOP_75:

(21, 48351), (Start: 80 @48534 has 147 MA's), (125, 48675),

Gene: lbOuu_67 Start: 43348, Stop: 43710, Start Num: 74

Candidate Starts for lbOuu_67:

(34, 43243), (36, 43249), (55, 43303), (Start: 74 @43348 has 210 MA's), (Start: 90 @43381 has 1 MA's), (169, 43648), (172, 43651), (190, 43693),

Gene: lbhubesi_65 Start: 41957, Stop: 42313, Start Num: 74

Candidate Starts for lbhubesi_65:

(Start: 74 @41957 has 210 MA's), (169, 42257), (172, 42260),

Gene: lcee_78 Start: 48433, Stop: 48750, Start Num: 80

Candidate Starts for Icee_78:

(21, 48250), (Start: 80 @48433 has 147 MA's), (125, 48574),

Gene: Inca_74 Start: 47059, Stop: 47376, Start Num: 80

Candidate Starts for Inca_74:

(21, 46876), (Start: 80 @47059 has 147 MA's), (125, 47200),

Gene: Inventum_61 Start: 42492, Stop: 42821, Start Num: 90

Candidate Starts for Inventum_61:

(34, 42354), (36, 42360), (55, 42414), (Start: 74 @42459 has 210 MA's), (Start: 90 @42492 has 1 MA's), (136, 42663), (169, 42759), (172, 42762), (190, 42804),

Gene: IrishSherpFalk_66 Start: 43547, Stop: 43909, Start Num: 74

Candidate Starts for IrishSherpFalk_66:

(Start: 74 @43547 has 210 MA's), (169, 43847), (172, 43850), (190, 43892),

Gene: Jabbawokkie_80 Start: 44082, Stop: 44423, Start Num: 74

Candidate Starts for Jabbawokkie_80:

(63, 44067), (Start: 74 @44082 has 210 MA's), (169, 44382), (172, 44385),

Gene: JalFarm20_78 Start: 46016, Stop: 46372, Start Num: 74

Candidate Starts for JalFarm20_78:

(Start: 74 @46016 has 210 MA's), (169, 46316), (172, 46319),

Gene: James_69 Start: 43743, Stop: 44105, Start Num: 74

Candidate Starts for James_69:

(Start: 74 @43743 has 210 MA's), (124, 43902), (169, 44043), (172, 44046), (190, 44088),

Gene: JeTaime_77 Start: 49251, Stop: 49568, Start Num: 80

Candidate Starts for JeTaime_77:

(21, 49068), (Start: 80 @49251 has 147 MA's), (125, 49392),

Gene: Jeon_52 Start: 44452, Stop: 44793, Start Num: 73

Candidate Starts for Jeon_52:

(Start: 73 @44452 has 9 MA's), (96, 44506), (100, 44521), (105, 44539), (125, 44605), (131, 44623), (140, 44677), (157, 44722), (169, 44743), (178, 44767), (180, 44770),

Gene: Jinglebell_71 Start: 45318, Stop: 45680, Start Num: 74

Candidate Starts for Jinglebell_71:

(Start: 74 @45318 has 210 MA's), (136, 45522), (169, 45618), (190, 45663),

Gene: Job42_68 Start: 44715, Stop: 45080, Start Num: 74

Candidate Starts for Job42_68:

(31, 44598), (Start: 74 @44715 has 210 MA's), (112, 44841), (114, 44847), (132, 44901), (133, 44904), (169, 45018), (172, 45021), (190, 45063),

Gene: Jobypre_66 Start: 46467, Stop: 46799, Start Num: 76

Candidate Starts for Jobypre_66:

(10, 46191), (11, 46203), (13, 46212), (16, 46236), (24, 46314), (35, 46362), (Start: 76 @46467 has 23 MA's), (124, 46611), (145, 46695), (158, 46728),

Gene: JoeyJr_61 Start: 41497, Stop: 41853, Start Num: 74

Candidate Starts for JoeyJr_61:

(34, 41392), (36, 41398), (55, 41452), (Start: 74 @41497 has 210 MA's), (Start: 90 @41530 has 1 MA's), (136, 41701), (169, 41797), (172, 41800),

Gene: JoieB_70 Start: 40075, Stop: 40428, Start Num: 62

Candidate Starts for JoieB_70:

(Start: 62 @40075 has 16 MA's), (75, 40102), (118, 40237), (134, 40267), (141, 40318), (145, 40324), (147, 40339), (154, 40357), (165, 40381), (167, 40384),

Gene: Jollymon_93 Start: 57604, Stop: 57972, Start Num: 79

Candidate Starts for Jollymon_93:

(18, 57379), (Start: 72 @57592 has 2 MA's), (79, 57604), (151, 57853), (156, 57862), (168, 57886), (171, 57892), (188, 57934),

Gene: Jubie_65 Start: 46602, Stop: 46934, Start Num: 76

Candidate Starts for Jubie_65:

(10, 46326), (11, 46338), (13, 46347), (16, 46371), (24, 46449), (35, 46497), (Start: 76 @46602 has 23 MA's), (124, 46746), (145, 46830), (158, 46863),

Gene: Juice456_66 Start: 43972, Stop: 44328, Start Num: 74

Candidate Starts for Juice456_66:

(Start: 74 @43972 has 210 MA's), (169, 44272), (172, 44275),

Gene: JuicyJay_120 Start: 70726, Stop: 71058, Start Num: 80

Candidate Starts for JuicyJay_120:

(Start: 80 @70726 has 147 MA's), (115, 70837), (119, 70861), (182, 71041),

Gene: Juniper1_65 Start: 42735, Stop: 43091, Start Num: 74

Candidate Starts for Juniper1_65:

(Start: 64 @42720 has 1 MA's), (Start: 74 @42735 has 210 MA's), (136, 42939), (169, 43035), (172, 43038),

Gene: JustASigh_98 Start: 55410, Stop: 55766, Start Num: 88

Candidate Starts for JustASigh_98:

(52, 55332), (70, 55383), (Start: 88 @55410 has 1 MA's), (94, 55437), (107, 55491), (116, 55521), (121, 55533), (123, 55539), (151, 55644), (154, 55650), (174, 55689), (196, 55755),

Gene: KHumphrey_30 Start: 20837, Stop: 20517, Start Num: 93

Candidate Starts for KHumphrey_30:

(1, 21422), (3, 21272), (15, 21122), (56, 20927), (82, 20870), (Start: 93 @20837 has 1 MA's), (117, 20741),

Gene: Kalah2_114 Start: 67637, Stop: 67966, Start Num: 81

Candidate Starts for Kalah2_114:

(Start: 81 @67637 has 28 MA's), (101, 67706), (145, 67865), (181, 67949),

Gene: Kanye_74 Start: 48115, Stop: 48432, Start Num: 80

Candidate Starts for Kanye_74:

(21, 47932), (Start: 80 @48115 has 147 MA's), (125, 48256),

Gene: Karhdo_64 Start: 43305, Stop: 43667, Start Num: 74

Candidate Starts for Karhdo_64:

(Start: 74 @43305 has 210 MA's), (124, 43464), (169, 43605), (190, 43650),

Gene: Keelan_96 Start: 49018, Stop: 49347, Start Num: 77
Candidate Starts for Keelan_96:
(Start: 77 @49018 has 4 MA's), (108, 49114), (136, 49198), (142, 49237),

Gene: Kenuha5_63 Start: 41295, Stop: 41651, Start Num: 74
Candidate Starts for Kenuha5_63:
(Start: 74 @41295 has 210 MA's), (124, 41454), (169, 41595), (172, 41598), (190, 41634),

Gene: Kersh_67 Start: 44741, Stop: 45097, Start Num: 74
Candidate Starts for Kersh_67:
(Start: 74 @44741 has 210 MA's), (124, 44900), (169, 45041), (172, 45044),

Gene: Khuang_54 Start: 31611, Stop: 31976, Start Num: 86
Candidate Starts for Khuang_54:
(Start: 86 @31611 has 2 MA's), (128, 31761), (159, 31872), (165, 31887),

Gene: Kimberlium_70 Start: 44253, Stop: 44594, Start Num: 74
Candidate Starts for Kimberlium_70:
(Start: 74 @44253 has 210 MA's), (169, 44553), (172, 44556),

Gene: Kimchi_81 Start: 48772, Stop: 49089, Start Num: 80
Candidate Starts for Kimchi_81:
(21, 48589), (Start: 80 @48772 has 147 MA's), (125, 48913),

Gene: KingMidas_65 Start: 43159, Stop: 43521, Start Num: 74
Candidate Starts for KingMidas_65:
(34, 43054), (36, 43060), (55, 43114), (Start: 74 @43159 has 210 MA's), (Start: 90 @43192 has 1 MA's), (136, 43363), (169, 43459), (172, 43462), (190, 43504),

Gene: Kingsley_63 Start: 41956, Stop: 42318, Start Num: 74
Candidate Starts for Kingsley_63:
(Start: 74 @41956 has 210 MA's), (124, 42115), (136, 42160), (169, 42256), (172, 42259), (190, 42301),

Gene: KingstonB_93 Start: 57137, Stop: 57505, Start Num: 79
Candidate Starts for KingstonB_93:
(8, 56837), (18, 56912), (27, 56999), (Start: 72 @57125 has 2 MA's), (79, 57137), (151, 57386), (156, 57395), (168, 57419), (171, 57425), (188, 57467),

Gene: Klein_119 Start: 65994, Stop: 66323, Start Num: 81
Candidate Starts for Klein_119:
(Start: 81 @65994 has 28 MA's), (101, 66063), (130, 66153), (131, 66156), (145, 66222), (181, 66306),

Gene: Koella_59 Start: 38373, Stop: 38735, Start Num: 74
Candidate Starts for Koella_59:
(Start: 74 @38373 has 210 MA's), (129, 38547), (169, 38673), (190, 38718),

Gene: Kostya_77 Start: 48633, Stop: 48950, Start Num: 80
Candidate Starts for Kostya_77:
(21, 48450), (Start: 80 @48633 has 147 MA's), (125, 48774),

Gene: Krakatau_62 Start: 41145, Stop: 41507, Start Num: 74

Candidate Starts for Krakatau_62:

(Start: 74 @41145 has 210 MA's), (169, 41445), (172, 41448), (190, 41490),

Gene: KristaRAM_68 Start: 44341, Stop: 44697, Start Num: 74

Candidate Starts for KristaRAM_68:

(Start: 74 @44341 has 210 MA's), (169, 44641), (172, 44644),

Gene: Krypton555_67 Start: 46693, Stop: 47025, Start Num: 76

Candidate Starts for Krypton555_67:

(10, 46417), (11, 46429), (13, 46438), (16, 46462), (24, 46540), (35, 46588), (Start: 76 @46693 has 23 MA's), (124, 46837), (145, 46921), (158, 46954),

Gene: Kuleana_32 Start: 21579, Stop: 21160, Start Num: 49

Candidate Starts for Kuleana_32:

(14, 21714), (Start: 49 @21579 has 1 MA's), (70, 21528), (Start: 93 @21480 has 1 MA's), (110, 21408), (117, 21384), (173, 21219),

Gene: Kumao_62 Start: 44058, Stop: 44420, Start Num: 64

Candidate Starts for Kumao_62:

(7, 43764), (19, 43851), (22, 43896), (23, 43911), (30, 43950), (Start: 64 @44058 has 1 MA's), (Start: 80 @44082 has 147 MA's), (Start: 92 @44118 has 1 MA's), (Start: 93 @44121 has 1 MA's), (126, 44235), (158, 44346),

Gene: Kuwabara_72 Start: 44078, Stop: 44407, Start Num: 80

Candidate Starts for Kuwabara_72:

(Start: 80 @44078 has 147 MA's), (117, 44192), (124, 44213), (145, 44297), (153, 44321), (175, 44360), (183, 44387), (190, 44399),

Gene: LastJedi_59 Start: 39690, Stop: 40052, Start Num: 74

Candidate Starts for LastJedi_59:

(31, 39573), (Start: 74 @39690 has 210 MA's), (124, 39849), (169, 39990), (190, 40035),

Gene: Leozinho_66 Start: 42196, Stop: 42552, Start Num: 78

Candidate Starts for Leozinho_66:

(Start: 78 @42196 has 3 MA's), (Start: 89 @42217 has 1 MA's), (Start: 90 @42223 has 1 MA's), (100, 42265), (130, 42367), (152, 42457), (169, 42490), (190, 42535),

Gene: Leozinho_64 Start: 41151, Stop: 41507, Start Num: 74

Candidate Starts for Leozinho_64:

(Start: 74 @41151 has 210 MA's), (124, 41310), (169, 41451), (172, 41454),

Gene: Leperchaun_58 Start: 40727, Stop: 41083, Start Num: 74

Candidate Starts for Leperchaun_58:

(34, 40622), (36, 40628), (55, 40682), (Start: 74 @40727 has 210 MA's), (Start: 90 @40760 has 1 MA's), (136, 40931), (169, 41027), (172, 41030),

Gene: Lesiram_59 Start: 33428, Stop: 33817, Start Num: 77

Candidate Starts for Lesiram_59:

(Start: 77 @33428 has 4 MA's), (113, 33554), (142, 33662), (190, 33782),

Gene: LilMoolah_64 Start: 42220, Stop: 42582, Start Num: 74

Candidate Starts for LilMoolah_64:

(31, 42103), (Start: 74 @42220 has 210 MA's), (124, 42379), (169, 42520), (190, 42565),

Gene: Lilac_79 Start: 48387, Stop: 48704, Start Num: 80
Candidate Starts for Lilac_79:
(21, 48204), (Start: 80 @48387 has 147 MA's), (125, 48528),

Gene: Lilbit_69 Start: 39805, Stop: 40158, Start Num: 62
Candidate Starts for Lilbit_69:
(Start: 62 @39805 has 16 MA's), (75, 39832), (118, 39967), (134, 39997), (141, 40048), (145, 40054),
(147, 40069), (154, 40087), (165, 40111), (167, 40114),

Gene: Lilizi_78 Start: 48100, Stop: 48417, Start Num: 80
Candidate Starts for Lilizi_78:
(21, 47917), (Start: 80 @48100 has 147 MA's), (125, 48241),

Gene: Lilpickle_76 Start: 47985, Stop: 48302, Start Num: 80
Candidate Starts for Lilpickle_76:
(21, 47802), (Start: 80 @47985 has 147 MA's), (125, 48126),

Gene: LitninMcQueen_71 Start: 42944, Stop: 43273, Start Num: 80
Candidate Starts for LitninMcQueen_71:
(Start: 80 @42944 has 147 MA's), (145, 43163), (183, 43253), (190, 43265),

Gene: LittleE_122 Start: 67384, Stop: 67704, Start Num: 81
Candidate Starts for LittleE_122:
(Start: 81 @67384 has 28 MA's), (101, 67453), (113, 67495), (145, 67612),

Gene: LittleLaf_69 Start: 39534, Stop: 39887, Start Num: 62
Candidate Starts for LittleLaf_69:
(Start: 62 @39534 has 16 MA's), (75, 39561), (118, 39696), (134, 39726), (141, 39777), (145, 39783),
(147, 39798), (154, 39816), (165, 39840), (167, 39843),

Gene: LittleShirley_65 Start: 42793, Stop: 43149, Start Num: 74
Candidate Starts for LittleShirley_65:
(Start: 74 @42793 has 210 MA's), (136, 42997), (169, 43093), (172, 43096),

Gene: Lizziana_71 Start: 43224, Stop: 43586, Start Num: 74
Candidate Starts for Lizziana_71:
(Start: 74 @43224 has 210 MA's), (124, 43383), (169, 43524), (172, 43527), (190, 43569),

Gene: Llama_70 Start: 45173, Stop: 45535, Start Num: 74
Candidate Starts for Llama_70:
(Start: 74 @45173 has 210 MA's), (136, 45377), (169, 45473), (190, 45518),

Gene: Llij_61 Start: 40711, Stop: 41073, Start Num: 74
Candidate Starts for Llij_61:
(Start: 74 @40711 has 210 MA's), (124, 40870), (169, 41011), (172, 41014), (190, 41056),

Gene: Lolly9_65 Start: 46290, Stop: 46622, Start Num: 76
Candidate Starts for Lolly9_65:
(Start: 76 @46290 has 23 MA's), (Start: 92 @46320 has 1 MA's), (117, 46413), (126, 46440), (145, 46518), (158, 46551), (177, 46599),

Gene: Lorde_65 Start: 39998, Stop: 40360, Start Num: 74

Candidate Starts for Lorde_65:

(Start: 74 @39998 has 210 MA's), (124, 40157), (169, 40298), (172, 40301), (190, 40343),

Gene: Lucky2013_115 Start: 64045, Stop: 64419, Start Num: 58

Candidate Starts for Lucky2013_115:

(Start: 58 @64045 has 1 MA's), (Start: 61 @64054 has 1 MA's), (103, 64162), (115, 64207), (145, 64327),

Gene: Lumos_67 Start: 46464, Stop: 46796, Start Num: 76

Candidate Starts for Lumos_67:

(10, 46188), (11, 46200), (13, 46209), (16, 46233), (24, 46311), (35, 46359), (Start: 76 @46464 has 23 MA's), (124, 46608), (145, 46692), (158, 46725),

Gene: LunaBlu_67 Start: 42492, Stop: 42854, Start Num: 74

Candidate Starts for LunaBlu_67:

(Start: 74 @42492 has 210 MA's), (124, 42651), (169, 42792), (190, 42837),

Gene: LunaStella_65 Start: 42568, Stop: 42930, Start Num: 74

Candidate Starts for LunaStella_65:

(Start: 74 @42568 has 210 MA's), (169, 42868), (172, 42871), (190, 42913),

Gene: MISSy_78 Start: 48491, Stop: 48808, Start Num: 80

Candidate Starts for MISSy_78:

(21, 48308), (Start: 80 @48491 has 147 MA's), (125, 48632),

Gene: MPhalcon_78 Start: 48484, Stop: 48801, Start Num: 80

Candidate Starts for MPhalcon_78:

(21, 48301), (Start: 80 @48484 has 147 MA's), (125, 48625),

Gene: MadMen_65 Start: 42619, Stop: 42975, Start Num: 74

Candidate Starts for MadMen_65:

(31, 42502), (Start: 74 @42619 has 210 MA's), (124, 42778), (169, 42919), (172, 42922),

Gene: MadMen_67 Start: 43664, Stop: 44020, Start Num: 78

Candidate Starts for MadMen_67:

(Start: 78 @43664 has 3 MA's), (Start: 89 @43685 has 1 MA's), (Start: 90 @43691 has 1 MA's), (100, 43733), (130, 43835), (152, 43925), (169, 43958), (190, 44003),

Gene: MadamMonkfish_77 Start: 47709, Stop: 48026, Start Num: 80

Candidate Starts for MadamMonkfish_77:

(21, 47526), (Start: 80 @47709 has 147 MA's), (125, 47850),

Gene: Madiba_66 Start: 41725, Stop: 42087, Start Num: 74

Candidate Starts for Madiba_66:

(Start: 74 @41725 has 210 MA's), (124, 41884), (169, 42025), (190, 42070),

Gene: Mahavrat_62 Start: 41431, Stop: 41787, Start Num: 74

Candidate Starts for Mahavrat_62:

(Start: 74 @41431 has 210 MA's), (169, 41731),

Gene: Manda_78 Start: 49571, Stop: 49888, Start Num: 80

Candidate Starts for Manda_78:

(21, 49388), (Start: 80 @49571 has 147 MA's), (125, 49712),

Gene: Mandlovu_61 Start: 39854, Stop: 40216, Start Num: 74
Candidate Starts for Mandlovu_61:
(Start: 74 @39854 has 210 MA's), (169, 40154), (172, 40157), (190, 40199),

Gene: Mantra_62 Start: 41207, Stop: 41563, Start Num: 74
Candidate Starts for Mantra_62:
(63, 41192), (Start: 74 @41207 has 210 MA's), (169, 41507), (172, 41510),

Gene: Maravista_67 Start: 44362, Stop: 44724, Start Num: 74
Candidate Starts for Maravista_67:
(Start: 74 @44362 has 210 MA's), (124, 44521), (129, 44536), (169, 44662), (190, 44707),

Gene: Marker_67 Start: 42458, Stop: 42814, Start Num: 74
Candidate Starts for Marker_67:
(31, 42341), (Start: 74 @42458 has 210 MA's), (169, 42758), (172, 42761), (190, 42797),

Gene: Marshmallow_75 Start: 49264, Stop: 49581, Start Num: 80
Candidate Starts for Marshmallow_75:
(21, 49081), (Start: 80 @49264 has 147 MA's), (Start: 92 @49288 has 1 MA's), (125, 49405),

Gene: Martik_65 Start: 42396, Stop: 42752, Start Num: 74
Candidate Starts for Martik_65:
(31, 42279), (Start: 74 @42396 has 210 MA's), (124, 42555), (169, 42696), (172, 42699),

Gene: Marvin_65 Start: 39295, Stop: 39648, Start Num: 62
Candidate Starts for Marvin_65:
(Start: 62 @39295 has 16 MA's), (75, 39322), (118, 39457), (134, 39487), (141, 39538), (145, 39544),
(147, 39559), (154, 39577), (165, 39601), (167, 39604),

Gene: Mattes_69 Start: 43743, Stop: 44105, Start Num: 74
Candidate Starts for Mattes_69:
(Start: 74 @43743 has 210 MA's), (124, 43902), (169, 44043), (172, 44046), (190, 44088),

Gene: Maxxinista_79 Start: 48360, Stop: 48677, Start Num: 80
Candidate Starts for Maxxinista_79:
(21, 48177), (Start: 80 @48360 has 147 MA's), (125, 48501),

Gene: Megabear_52 Start: 43843, Stop: 44184, Start Num: 73
Candidate Starts for Megabear_52:
(Start: 73 @43843 has 9 MA's), (96, 43897), (100, 43912), (105, 43930), (125, 43996), (131, 44014),
(140, 44068), (157, 44113), (169, 44134), (178, 44158), (180, 44161),

Gene: Melissauren88_63 Start: 41372, Stop: 41734, Start Num: 74
Candidate Starts for Melissauren88_63:
(Start: 74 @41372 has 210 MA's), (169, 41672), (172, 41675), (190, 41717),

Gene: MellowYellow_85 Start: 50209, Stop: 49883, Start Num: 81
Candidate Starts for MellowYellow_85:
(45, 50302), (Start: 81 @50209 has 28 MA's), (Start: 92 @50179 has 1 MA's), (Start: 93 @50176 has
1 MA's), (111, 50110), (129, 50065), (136, 50041), (149, 49987), (164, 49951), (186, 49900),

Gene: MiaZeal_118 Start: 64854, Stop: 65177, Start Num: 80

Candidate Starts for MiaZeal_118:

(Start: 80 @64854 has 147 MA's), (115, 64965), (145, 65085),

Gene: MilanaBonita_55 Start: 38018, Stop: 38311, Start Num: 99

Candidate Starts for MilanaBonita_55:

(Start: 99 @38018 has 5 MA's), (104, 38036), (112, 38072), (114, 38078), (120, 38096), (143, 38192), (190, 38294),

Gene: MilleniumForce_68 Start: 44060, Stop: 44416, Start Num: 74

Candidate Starts for MilleniumForce_68:

(Start: 74 @44060 has 210 MA's), (169, 44360), (172, 44363),

Gene: Mindy_76 Start: 47576, Stop: 47893, Start Num: 80

Candidate Starts for Mindy_76:

(21, 47393), (Start: 80 @47576 has 147 MA's), (125, 47717),

Gene: Minerva_120 Start: 67549, Stop: 67881, Start Num: 81

Candidate Starts for Minerva_120:

(Start: 81 @67549 has 28 MA's), (101, 67618), (145, 67777),

Gene: MiniLon_69 Start: 46291, Stop: 46623, Start Num: 76

Candidate Starts for MiniLon_69:

(Start: 76 @46291 has 23 MA's), (Start: 92 @46321 has 1 MA's), (117, 46414), (126, 46441), (145, 46519), (158, 46552), (177, 46600),

Gene: MiniMac_69 Start: 46319, Stop: 46621, Start Num: 92

Candidate Starts for MiniMac_69:

(Start: 76 @46289 has 23 MA's), (Start: 92 @46319 has 1 MA's), (117, 46412), (126, 46439), (145, 46517), (158, 46550), (177, 46598),

Gene: MinionDave_64 Start: 42746, Stop: 43108, Start Num: 74

Candidate Starts for MinionDave_64:

(31, 42629), (Start: 74 @42746 has 210 MA's), (124, 42905), (169, 43046), (190, 43091),

Gene: Miniwave_72 Start: 48029, Stop: 48346, Start Num: 80

Candidate Starts for Miniwave_72:

(21, 47846), (Start: 80 @48029 has 147 MA's), (125, 48170),

Gene: Minnie_68 Start: 43966, Stop: 44328, Start Num: 74

Candidate Starts for Minnie_68:

(31, 43849), (Start: 74 @43966 has 210 MA's), (124, 44125), (169, 44266), (190, 44311),

Gene: Misfit_78 Start: 49503, Stop: 49820, Start Num: 80

Candidate Starts for Misfit_78:

(21, 49320), (Start: 80 @49503 has 147 MA's), (125, 49644),

Gene: MisterCuddles_63 Start: 41692, Stop: 42054, Start Num: 74

Candidate Starts for MisterCuddles_63:

(Start: 74 @41692 has 210 MA's), (169, 41992), (190, 42037),

Gene: ModicumRichard_107 Start: 60796, Stop: 61155, Start Num: 92

Candidate Starts for ModicumRichard_107:

(51, 60703), (54, 60712), (Start: 84 @60769 has 13 MA's), (Start: 92 @60796 has 1 MA's), (Start: 93 @60799 has 1 MA's), (98, 60820), (109, 60856), (127, 60910), (148, 60997), (160, 61021),

Gene: Modragons_69 Start: 45162, Stop: 45524, Start Num: 74

Candidate Starts for Modragons_69:

(Start: 74 @45162 has 210 MA's), (136, 45366), (169, 45462), (190, 45507),

Gene: Moldemort_80 Start: 48588, Stop: 48905, Start Num: 80

Candidate Starts for Moldemort_80:

(21, 48405), (Start: 80 @48588 has 147 MA's), (125, 48729),

Gene: MooMoo_66 Start: 43589, Stop: 43945, Start Num: 78

Candidate Starts for MooMoo_66:

(Start: 78 @43589 has 3 MA's), (Start: 89 @43610 has 1 MA's), (Start: 90 @43616 has 1 MA's), (100, 43658), (113, 43712), (130, 43760), (146, 43838), (152, 43850), (169, 43883), (177, 43907), (193, 43937),

Gene: Moonbeam_64 Start: 41974, Stop: 42336, Start Num: 74

Candidate Starts for Moonbeam_64:

(Start: 74 @41974 has 210 MA's), (Start: 92 @42016 has 1 MA's), (124, 42133), (169, 42274), (190, 42319),

Gene: Morgana_114 Start: 62857, Stop: 63246, Start Num: 84

Candidate Starts for Morgana_114:

(2, 62464), (6, 62533), (9, 62569), (20, 62653), (Start: 84 @62857 has 13 MA's), (Start: 93 @62890 has 1 MA's), (98, 62911), (139, 63058), (148, 63088), (160, 63112),

Gene: MosMoris_66 Start: 39225, Stop: 39578, Start Num: 62

Candidate Starts for MosMoris_66:

(Start: 62 @39225 has 16 MA's), (75, 39252), (118, 39387), (134, 39417), (141, 39468), (145, 39474), (147, 39489), (154, 39507), (165, 39531), (167, 39534),

Gene: Mosby_73 Start: 47786, Stop: 48103, Start Num: 80

Candidate Starts for Mosby_73:

(21, 47603), (Start: 80 @47786 has 147 MA's), (125, 47927),

Gene: Mova_69 Start: 42229, Stop: 42585, Start Num: 74

Candidate Starts for Mova_69:

(Start: 74 @42229 has 210 MA's), (124, 42388), (169, 42529), (172, 42532), (190, 42568),

Gene: Mozy_75 Start: 44841, Stop: 45203, Start Num: 74

Candidate Starts for Mozy_75:

(65, 44826), (Start: 74 @44841 has 210 MA's), (124, 45000), (169, 45141), (190, 45186),

Gene: MrSmee_53 Start: 31291, Stop: 31644, Start Num: 86

Candidate Starts for MrSmee_53:

(Start: 86 @31291 has 2 MA's), (113, 31396), (189, 31612),

Gene: Ms6_62 Start: 37737, Stop: 38099, Start Num: 74

Candidate Starts for Ms6_62:

(Start: 74 @37737 has 210 MA's), (169, 38037), (172, 38040), (190, 38082),

Gene: MsGreen_66 Start: 46467, Stop: 46799, Start Num: 76

Candidate Starts for MsGreen_66:

(10, 46191), (11, 46203), (13, 46212), (16, 46236), (24, 46314), (35, 46362), (Start: 76 @46467 has 23 MA's), (124, 46611), (145, 46695), (158, 46728),

Gene: MulchExplorer_73 Start: 44252, Stop: 44593, Start Num: 74

Candidate Starts for MulchExplorer_73:

(Start: 74 @44252 has 210 MA's), (169, 44552), (172, 44555),

Gene: Murica_80 Start: 49435, Stop: 49752, Start Num: 80

Candidate Starts for Murica_80:

(21, 49252), (Start: 80 @49435 has 147 MA's), (125, 49576),

Gene: Murphy_77 Start: 48872, Stop: 49189, Start Num: 80

Candidate Starts for Murphy_77:

(21, 48689), (Start: 80 @48872 has 147 MA's), (125, 49013),

Gene: Mutaforma13_71 Start: 45673, Stop: 46035, Start Num: 74

Candidate Starts for Mutaforma13_71:

(Start: 74 @45673 has 210 MA's), (169, 45973), (190, 46018),

Gene: Myrale_77 Start: 49129, Stop: 49446, Start Num: 80

Candidate Starts for Myrale_77:

(21, 48946), (Start: 80 @49129 has 147 MA's), (125, 49270),

Gene: Nala_79 Start: 48993, Stop: 49310, Start Num: 80

Candidate Starts for Nala_79:

(21, 48810), (Start: 80 @48993 has 147 MA's), (125, 49134),

Gene: Nebkiss_84 Start: 48920, Stop: 49243, Start Num: 81

Candidate Starts for Nebkiss_84:

(Start: 81 @48920 has 28 MA's), (100, 48983), (172, 49208), (175, 49211),

Gene: NelitzaMV_75 Start: 48075, Stop: 48392, Start Num: 80

Candidate Starts for NelitzaMV_75:

(21, 47892), (Start: 80 @48075 has 147 MA's), (125, 48216),

Gene: NihilNomen_125 Start: 68678, Stop: 69010, Start Num: 80

Candidate Starts for NihilNomen_125:

(Start: 80 @68678 has 147 MA's), (115, 68789), (119, 68813), (182, 68993),

Gene: Nimbo_59 Start: 41301, Stop: 41663, Start Num: 74

Candidate Starts for Nimbo_59:

(34, 41196), (36, 41202), (55, 41256), (Start: 74 @41301 has 210 MA's), (Start: 90 @41334 has 1 MA's), (169, 41601), (172, 41604), (190, 41646),

Gene: Nimrod_78 Start: 49696, Stop: 50013, Start Num: 80

Candidate Starts for Nimrod_78:

(21, 49513), (Start: 80 @49696 has 147 MA's), (125, 49837),

Gene: Nitzel_62 Start: 41489, Stop: 41851, Start Num: 74

Candidate Starts for Nitzel_62:

(Start: 74 @41489 has 210 MA's), (169, 41789), (172, 41792), (190, 41834),

Gene: Nivrat_62 Start: 42093, Stop: 42455, Start Num: 74
Candidate Starts for Nivrat_62:
(31, 41976), (Start: 74 @42093 has 210 MA's), (124, 42252), (169, 42393), (190, 42438),

Gene: NoSleep_78 Start: 48330, Stop: 48647, Start Num: 80
Candidate Starts for NoSleep_78:
(21, 48147), (Start: 80 @48330 has 147 MA's), (125, 48471),

Gene: NormanBulbieJr_65 Start: 42386, Stop: 42748, Start Num: 74
Candidate Starts for NormanBulbieJr_65:
(Start: 74 @42386 has 210 MA's), (129, 42560), (169, 42686), (190, 42731),

Gene: NyleyClemson_84 Start: 49827, Stop: 49501, Start Num: 81
Candidate Starts for NyleyClemson_84:
(45, 49920), (Start: 81 @49827 has 28 MA's), (Start: 92 @49797 has 1 MA's), (Start: 93 @49794 has 1 MA's), (111, 49728), (129, 49683), (136, 49659), (149, 49605), (164, 49569), (186, 49518),

Gene: ODay_78 Start: 45557, Stop: 45886, Start Num: 80
Candidate Starts for ODay_78:
(34, 45443), (65, 45533), (Start: 80 @45557 has 147 MA's), (Start: 93 @45584 has 1 MA's), (145, 45776), (183, 45866), (190, 45878),

Gene: ObLaDi_106 Start: 60168, Stop: 60557, Start Num: 84
Candidate Starts for ObLaDi_106:
(5, 59793), (12, 59892), (Start: 84 @60168 has 13 MA's), (Start: 93 @60201 has 1 MA's), (98, 60222), (139, 60369), (148, 60399), (160, 60423),

Gene: Ochi17_69 Start: 44769, Stop: 45131, Start Num: 74
Candidate Starts for Ochi17_69:
(Start: 74 @44769 has 210 MA's), (136, 44973), (169, 45069), (190, 45114),

Gene: Odyssey395_85 Start: 50318, Stop: 49992, Start Num: 84
Candidate Starts for Odyssey395_85:
(Start: 84 @50318 has 13 MA's), (Start: 92 @50288 has 1 MA's), (Start: 93 @50285 has 1 MA's), (111, 50219), (129, 50174), (136, 50150), (149, 50096), (164, 50060), (186, 50009),

Gene: OfUltron_71 Start: 45318, Stop: 45680, Start Num: 74
Candidate Starts for OfUltron_71:
(Start: 74 @45318 has 210 MA's), (136, 45522), (169, 45618), (190, 45663),

Gene: Ogopogo_71 Start: 42797, Stop: 43153, Start Num: 74
Candidate Starts for Ogopogo_71:
(33, 42686), (Start: 74 @42797 has 210 MA's), (169, 43097), (172, 43100),

Gene: OldBen_63 Start: 42694, Stop: 43056, Start Num: 74
Candidate Starts for OldBen_63:
(34, 42589), (36, 42595), (55, 42649), (Start: 74 @42694 has 210 MA's), (Start: 90 @42727 has 1 MA's), (169, 42994), (172, 42997), (190, 43039),

Gene: OlympiaSaint_67 Start: 42685, Stop: 43047, Start Num: 74
Candidate Starts for OlympiaSaint_67:
(Start: 74 @42685 has 210 MA's), (124, 42844), (169, 42985), (172, 42988), (190, 43030),

Gene: Optimus_113 Start: 65945, Stop: 66277, Start Num: 81
Candidate Starts for Optimus_113:
(Start: 81 @65945 has 28 MA's), (101, 66014), (130, 66104), (131, 66107), (145, 66173),

Gene: OrionPax_76 Start: 48081, Stop: 48398, Start Num: 80
Candidate Starts for OrionPax_76:
(21, 47898), (Start: 80 @48081 has 147 MA's), (Start: 92 @48105 has 1 MA's), (125, 48222),

Gene: Ovechkin_65 Start: 42688, Stop: 43050, Start Num: 74
Candidate Starts for Ovechkin_65:
(Start: 74 @42688 has 210 MA's), (169, 42988), (172, 42991), (190, 43033),

Gene: OwlsT2W_65 Start: 42020, Stop: 42376, Start Num: 74
Candidate Starts for OwlsT2W_65:
(Start: 74 @42020 has 210 MA's), (124, 42179), (169, 42320),

Gene: PHappiness_61 Start: 41273, Stop: 41629, Start Num: 74
Candidate Starts for PHappiness_61:
(34, 41168), (36, 41174), (55, 41228), (Start: 74 @41273 has 210 MA's), (Start: 90 @41306 has 1 MA's), (136, 41477), (169, 41573), (172, 41576),

Gene: PMC_62 Start: 42410, Stop: 42766, Start Num: 74
Candidate Starts for PMC_62:
(Start: 74 @42410 has 210 MA's), (169, 42710), (172, 42713),

Gene: PR_52 Start: 44447, Stop: 44788, Start Num: 73
Candidate Starts for PR_52:
(Start: 73 @44447 has 9 MA's), (96, 44501), (100, 44516), (105, 44534), (125, 44600), (131, 44618), (140, 44672), (157, 44717), (169, 44738), (178, 44762), (180, 44765),

Gene: Pacc40_59 Start: 40742, Stop: 41104, Start Num: 74
Candidate Starts for Pacc40_59:
(31, 40625), (Start: 74 @40742 has 210 MA's), (124, 40901), (169, 41042), (190, 41087),

Gene: Palpatine_79 Start: 49462, Stop: 49779, Start Num: 80
Candidate Starts for Palpatine_79:
(21, 49279), (Start: 80 @49462 has 147 MA's), (125, 49603),

Gene: Paperbeatsrock_76 Start: 48707, Stop: 49024, Start Num: 80
Candidate Starts for Paperbeatsrock_76:
(21, 48524), (Start: 80 @48707 has 147 MA's), (125, 48848),

Gene: Pat3_75 Start: 47239, Stop: 47556, Start Num: 80
Candidate Starts for Pat3_75:
(21, 47056), (Start: 80 @47239 has 147 MA's), (Start: 92 @47263 has 1 MA's), (125, 47380),

Gene: Petra64142_81 Start: 49926, Stop: 50243, Start Num: 80
Candidate Starts for Petra64142_81:
(21, 49743), (Start: 80 @49926 has 147 MA's), (125, 50067),

Gene: Phabuloso_75 Start: 43819, Stop: 44166, Start Num: 81
Candidate Starts for Phabuloso_75:

(37, 43705), (67, 43795), (Start: 81 @43819 has 28 MA's), (Start: 90 @43840 has 1 MA's), (95, 43858), (96, 43867), (113, 43942), (125, 43975), (131, 43993), (142, 44056), (145, 44059), (155, 44089), (172, 44119), (183, 44146), (190, 44158),

Gene: Phaja_75 Start: 48533, Stop: 48850, Start Num: 80

Candidate Starts for Phaja_75:

(21, 48350), (Start: 80 @48533 has 147 MA's), (125, 48674),

Gene: Phalconet_63 Start: 40623, Stop: 40985, Start Num: 74

Candidate Starts for Phalconet_63:

(Start: 74 @40623 has 210 MA's), (169, 40923), (172, 40926), (190, 40968),

Gene: Phanphagia_61 Start: 42234, Stop: 42596, Start Num: 74

Candidate Starts for Phanphagia_61:

(Start: 74 @42234 has 210 MA's), (169, 42534), (172, 42537), (190, 42579),

Gene: Pharsalus_74 Start: 48507, Stop: 48824, Start Num: 80

Candidate Starts for Pharsalus_74:

(21, 48324), (Start: 80 @48507 has 147 MA's), (125, 48648),

Gene: PhatBacter_81 Start: 49479, Stop: 49796, Start Num: 80

Candidate Starts for PhatBacter_81:

(21, 49296), (Start: 80 @49479 has 147 MA's), (125, 49620),

Gene: Phatniss_63 Start: 41806, Stop: 42168, Start Num: 74

Candidate Starts for Phatniss_63:

(Start: 74 @41806 has 210 MA's), (124, 41965), (169, 42106), (172, 42109), (190, 42151),

Gene: Phaux_79 Start: 49474, Stop: 49791, Start Num: 80

Candidate Starts for Phaux_79:

(21, 49291), (Start: 80 @49474 has 147 MA's), (125, 49615),

Gene: PhesterPhotato_65 Start: 41443, Stop: 41799, Start Num: 74

Candidate Starts for PhesterPhotato_65:

(Start: 74 @41443 has 210 MA's), (124, 41602), (169, 41743), (172, 41746),

Gene: Philus_69 Start: 43883, Stop: 44239, Start Num: 74

Candidate Starts for Philus_69:

(31, 43766), (Start: 74 @43883 has 210 MA's), (129, 44057), (169, 44183), (172, 44186), (190, 44222),

Gene: PhluffyCoco_30 Start: 20823, Stop: 20503, Start Num: 93

Candidate Starts for PhluffyCoco_30:

(3, 21258), (15, 21108), (56, 20913), (82, 20856), (Start: 93 @20823 has 1 MA's), (117, 20727),

Gene: Phoebus_124 Start: 70535, Stop: 70867, Start Num: 80

Candidate Starts for Phoebus_124:

(Start: 80 @70535 has 147 MA's), (115, 70646), (119, 70670), (182, 70850),

Gene: Phrux_74 Start: 48070, Stop: 48387, Start Num: 80

Candidate Starts for Phrux_74:

(21, 47887), (Start: 80 @48070 has 147 MA's), (125, 48211),

Gene: Pippy_64 Start: 41724, Stop: 42086, Start Num: 74
Candidate Starts for Pippy_64:
(Start: 74 @41724 has 210 MA's), (124, 41883), (129, 41898), (169, 42024), (190, 42069),

Gene: Pitbull_53 Start: 29779, Stop: 30105, Start Num: 86
Candidate Starts for Pitbull_53:
(44, 29674), (Start: 86 @29779 has 2 MA's), (113, 29884), (150, 30016),

Gene: Plumbus_68 Start: 42573, Stop: 42935, Start Num: 74
Candidate Starts for Plumbus_68:
(Start: 74 @42573 has 210 MA's), (169, 42873), (172, 42876), (190, 42918),

Gene: Poenanya_65 Start: 43033, Stop: 43326, Start Num: 99
Candidate Starts for Poenanya_65:
(Start: 99 @43033 has 5 MA's), (102, 43045), (104, 43051), (112, 43087), (124, 43123), (169, 43264),
(172, 43267), (190, 43309),

Gene: Pointis_81 Start: 49894, Stop: 49568, Start Num: 84
Candidate Starts for Pointis_81:
(Start: 84 @49894 has 13 MA's), (Start: 92 @49864 has 1 MA's), (Start: 93 @49861 has 1 MA's),
(111, 49795), (129, 49750), (136, 49726), (149, 49672), (164, 49636), (186, 49585),

Gene: Poise_69 Start: 39121, Stop: 39474, Start Num: 62
Candidate Starts for Poise_69:
(Start: 62 @39121 has 16 MA's), (75, 39148), (118, 39283), (134, 39313), (141, 39364), (145, 39370),
(147, 39385), (154, 39403), (165, 39427), (167, 39430),

Gene: Policronamos_81 Start: 49474, Stop: 49791, Start Num: 80
Candidate Starts for Policronamos_81:
(21, 49291), (Start: 80 @49474 has 147 MA's), (125, 49615),

Gene: Polka14_64 Start: 42337, Stop: 42693, Start Num: 74
Candidate Starts for Polka14_64:
(34, 42232), (36, 42238), (55, 42292), (Start: 74 @42337 has 210 MA's), (Start: 90 @42370 has 1
MA's), (136, 42541), (169, 42637), (172, 42640),

Gene: Pollywog_66 Start: 43003, Stop: 43359, Start Num: 74
Candidate Starts for Pollywog_66:
(Start: 74 @43003 has 210 MA's), (124, 43162), (169, 43303), (172, 43306),

Gene: PopTart_59 Start: 40248, Stop: 40610, Start Num: 74
Candidate Starts for PopTart_59:
(Start: 74 @40248 has 210 MA's), (169, 40548), (172, 40551), (190, 40593),

Gene: Porky_76 Start: 47900, Stop: 48217, Start Num: 80
Candidate Starts for Porky_76:
(21, 47717), (Start: 80 @47900 has 147 MA's), (125, 48041),

Gene: Pound_112 Start: 66568, Stop: 66897, Start Num: 81
Candidate Starts for Pound_112:
(Start: 81 @66568 has 28 MA's), (101, 66637), (145, 66796), (181, 66880),

Gene: Pringar_68 Start: 39443, Stop: 39796, Start Num: 62

Candidate Starts for Pringar_68:

(Start: 62 @39443 has 16 MA's), (75, 39470), (118, 39605), (134, 39635), (141, 39686), (145, 39692), (147, 39707), (154, 39725), (165, 39749), (167, 39752),

Gene: Priscilla_65 Start: 42485, Stop: 42847, Start Num: 74

Candidate Starts for Priscilla_65:

(Start: 74 @42485 has 210 MA's), (129, 42659), (169, 42785), (190, 42830),

Gene: Pumpkin_80 Start: 49128, Stop: 49445, Start Num: 80

Candidate Starts for Pumpkin_80:

(21, 48945), (Start: 80 @49128 has 147 MA's), (125, 49269),

Gene: Pureglobe5_83 Start: 50341, Stop: 50015, Start Num: 81

Candidate Starts for Pureglobe5_83:

(45, 50434), (Start: 81 @50341 has 28 MA's), (Start: 92 @50311 has 1 MA's), (Start: 93 @50308 has 1 MA's), (111, 50242), (129, 50197), (136, 50173), (149, 50119), (164, 50083), (186, 50032),

Gene: Quallification_78 Start: 49115, Stop: 49432, Start Num: 80

Candidate Starts for Quallification_78:

(21, 48932), (Start: 80 @49115 has 147 MA's), (125, 49256),

Gene: QuickMath_69 Start: 44476, Stop: 44817, Start Num: 74

Candidate Starts for QuickMath_69:

(Start: 74 @44476 has 210 MA's), (169, 44776), (172, 44779),

Gene: Quico_73 Start: 43794, Stop: 44156, Start Num: 74

Candidate Starts for Quico_73:

(Start: 74 @43794 has 210 MA's), (169, 44094), (172, 44097), (190, 44139),

Gene: Rabbitrun_72 Start: 44571, Stop: 44918, Start Num: 71

Candidate Starts for Rabbitrun_72:

(30, 44460), (Start: 40 @44490 has 2 MA's), (42, 44493), (43, 44496), (57, 44538), (Start: 64 @44562 has 1 MA's), (Start: 71 @44571 has 2 MA's), (103, 44652), (145, 44808), (155, 44835), (162, 44847), (170, 44862), (172, 44865),

Gene: Radiance_64 Start: 41901, Stop: 42263, Start Num: 74

Candidate Starts for Radiance_64:

(Start: 74 @41901 has 210 MA's), (124, 42060), (169, 42201), (172, 42204), (190, 42246),

Gene: Raela_69 Start: 39678, Stop: 40031, Start Num: 62

Candidate Starts for Raela_69:

(Start: 62 @39678 has 16 MA's), (75, 39705), (118, 39840), (134, 39870), (141, 39921), (145, 39927), (147, 39942), (154, 39960), (165, 39984), (167, 39987),

Gene: Rakim_78 Start: 48584, Stop: 48901, Start Num: 80

Candidate Starts for Rakim_78:

(21, 48401), (Start: 80 @48584 has 147 MA's), (125, 48725),

Gene: Ramsey_64 Start: 42214, Stop: 42576, Start Num: 74

Candidate Starts for Ramsey_64:

(Start: 74 @42214 has 210 MA's), (124, 42373), (169, 42514), (190, 42559),

Gene: Ranunculus_78 Start: 52647, Stop: 52321, Start Num: 84

Candidate Starts for Ranunculus_78:

(Start: 84 @52647 has 13 MA's), (Start: 92 @52617 has 1 MA's), (111, 52548), (129, 52503), (136, 52479), (164, 52389),

Gene: RedBird_64 Start: 42140, Stop: 42502, Start Num: 74

Candidate Starts for RedBird_64:

(34, 42035), (36, 42041), (55, 42095), (Start: 74 @42140 has 210 MA's), (Start: 90 @42173 has 1 MA's), (136, 42344), (169, 42440), (172, 42443), (190, 42485),

Gene: RedRaider77_68 Start: 39066, Stop: 39419, Start Num: 62

Candidate Starts for RedRaider77_68:

(Start: 62 @39066 has 16 MA's), (75, 39093), (118, 39228), (134, 39258), (141, 39309), (145, 39315), (147, 39330), (154, 39348), (165, 39372), (167, 39375),

Gene: Redno2_116 Start: 66004, Stop: 66333, Start Num: 81

Candidate Starts for Redno2_116:

(Start: 81 @66004 has 28 MA's), (101, 66073), (130, 66163), (131, 66166), (145, 66232), (181, 66316),

Gene: Renaud18_75 Start: 44207, Stop: 44563, Start Num: 74

Candidate Starts for Renaud18_75:

(Start: 74 @44207 has 210 MA's), (124, 44366), (169, 44507),

Gene: Rialto_70 Start: 44435, Stop: 44797, Start Num: 74

Candidate Starts for Rialto_70:

(Start: 74 @44435 has 210 MA's), (169, 44735), (172, 44738), (190, 44780),

Gene: Rimmer_78 Start: 48820, Stop: 49137, Start Num: 80

Candidate Starts for Rimmer_78:

(21, 48637), (Start: 80 @48820 has 147 MA's), (125, 48961),

Gene: Rita_66 Start: 40513, Stop: 40875, Start Num: 74

Candidate Starts for Rita_66:

(Start: 74 @40513 has 210 MA's), (124, 40672), (169, 40813), (190, 40858),

Gene: RitaG_61 Start: 41618, Stop: 41974, Start Num: 74

Candidate Starts for RitaG_61:

(34, 41513), (36, 41519), (55, 41573), (Start: 74 @41618 has 210 MA's), (Start: 90 @41651 has 1 MA's), (136, 41822), (169, 41918), (172, 41921),

Gene: RiverMonster_77 Start: 48648, Stop: 48965, Start Num: 80

Candidate Starts for RiverMonster_77:

(21, 48465), (Start: 80 @48648 has 147 MA's), (125, 48789),

Gene: Rizwana_65 Start: 46684, Stop: 46358, Start Num: 84

Candidate Starts for Rizwana_65:

(Start: 84 @46684 has 13 MA's), (Start: 92 @46654 has 1 MA's), (Start: 93 @46651 has 1 MA's), (164, 46426),

Gene: Rockne_66 Start: 42422, Stop: 42778, Start Num: 74

Candidate Starts for Rockne_66:

(Start: 74 @42422 has 210 MA's), (169, 42722), (172, 42725),

Gene: RockyHorror_66 Start: 41564, Stop: 41926, Start Num: 74

Candidate Starts for RockyHorror_66:

(Start: 74 @41564 has 210 MA's), (169, 41864), (190, 41909),

Gene: Ronaldo_98 Start: 49040, Stop: 49366, Start Num: 85

Candidate Starts for Ronaldo_98:

(Start: 85 @49040 has 4 MA's), (108, 49121), (136, 49205), (142, 49244), (161, 49283),

Gene: Rose5_66 Start: 45488, Stop: 45859, Start Num: 80

Candidate Starts for Rose5_66:

(Start: 80 @45488 has 147 MA's), (106, 45566), (145, 45713), (175, 45776), (197, 45851),

Gene: Royals2015_68 Start: 42421, Stop: 42777, Start Num: 74

Candidate Starts for Royals2015_68:

(Start: 74 @42421 has 210 MA's), (Start: 92 @42463 has 1 MA's), (124, 42580), (169, 42721),

Gene: Ruby_61 Start: 41693, Stop: 42055, Start Num: 74

Candidate Starts for Ruby_61:

(Start: 74 @41693 has 210 MA's), (169, 41993), (190, 42038),

Gene: SG4_62 Start: 41300, Stop: 41665, Start Num: 74

Candidate Starts for SG4_62:

(Start: 74 @41300 has 210 MA's), (169, 41600),

Gene: Saal_67 Start: 43437, Stop: 43799, Start Num: 74

Candidate Starts for Saal_67:

(Start: 74 @43437 has 210 MA's), (124, 43596), (169, 43737), (172, 43740), (190, 43782),

Gene: Saints25_76 Start: 48058, Stop: 48375, Start Num: 80

Candidate Starts for Saints25_76:

(21, 47875), (Start: 80 @48058 has 147 MA's), (125, 48199),

Gene: Samty_66 Start: 46475, Stop: 46807, Start Num: 76

Candidate Starts for Samty_66:

(11, 46211), (13, 46220), (16, 46244), (24, 46322), (35, 46370), (Start: 76 @46475 has 23 MA's), (124, 46619), (145, 46703), (158, 46736),

Gene: Sandalphon_66 Start: 42944, Stop: 43306, Start Num: 74

Candidate Starts for Sandalphon_66:

(31, 42827), (Start: 74 @42944 has 210 MA's), (124, 43103), (169, 43244), (190, 43289),

Gene: Sarma624_64 Start: 39148, Stop: 39510, Start Num: 74

Candidate Starts for Sarma624_64:

(Start: 74 @39148 has 210 MA's), (124, 39307), (136, 39352), (169, 39448), (172, 39451), (190, 39493),

Gene: Sassafras_64 Start: 42458, Stop: 42820, Start Num: 74

Candidate Starts for Sassafras_64:

(34, 42353), (36, 42359), (55, 42413), (Start: 74 @42458 has 210 MA's), (Start: 90 @42491 has 1 MA's), (136, 42662), (169, 42758), (172, 42761), (190, 42803),

Gene: Sassay_72 Start: 46748, Stop: 47065, Start Num: 80

Candidate Starts for Sassay_72:

(21, 46565), (Start: 80 @46748 has 147 MA's), (125, 46889),

Gene: SassyB_59 Start: 40248, Stop: 40610, Start Num: 74

Candidate Starts for SassyB_59:

(Start: 74 @40248 has 210 MA's), (169, 40548), (172, 40551), (190, 40593),

Gene: Schmidt_45 Start: 30353, Stop: 30685, Start Num: 76

Candidate Starts for Schmidt_45:

(28, 30221), (38, 30251), (53, 30290), (Start: 76 @30353 has 23 MA's), (91, 30386), (113, 30476), (131, 30527), (166, 30644), (172, 30650), (178, 30671),

Gene: Scottish_64 Start: 42414, Stop: 42776, Start Num: 74

Candidate Starts for Scottish_64:

(34, 42309), (36, 42315), (55, 42369), (Start: 74 @42414 has 210 MA's), (Start: 90 @42447 has 1 MA's), (169, 42714), (172, 42717), (190, 42759),

Gene: Seabastian_71 Start: 45319, Stop: 45681, Start Num: 74

Candidate Starts for Seabastian_71:

(Start: 74 @45319 has 210 MA's), (136, 45523), (169, 45619), (190, 45664),

Gene: Seagreen_64 Start: 41603, Stop: 41965, Start Num: 74

Candidate Starts for Seagreen_64:

(Start: 74 @41603 has 210 MA's), (169, 41903), (172, 41906), (190, 41948),

Gene: Sephiroth_73 Start: 45931, Stop: 46353, Start Num: 40

Candidate Starts for Sephiroth_73:

(Start: 40 @45931 has 2 MA's), (145, 46252),

Gene: ShamWow_77 Start: 48970, Stop: 49287, Start Num: 80

Candidate Starts for ShamWow_77:

(21, 48787), (Start: 80 @48970 has 147 MA's), (125, 49111),

Gene: Shauna1_63 Start: 42143, Stop: 42505, Start Num: 74

Candidate Starts for Shauna1_63:

(Start: 74 @42143 has 210 MA's), (169, 42443), (172, 42446), (190, 42488),

Gene: ShiLan_64 Start: 42432, Stop: 42788, Start Num: 74

Candidate Starts for ShiLan_64:

(Start: 74 @42432 has 210 MA's), (124, 42591), (169, 42732), (172, 42735),

Gene: ShowerHandel_68 Start: 42396, Stop: 42758, Start Num: 74

Candidate Starts for ShowerHandel_68:

(Start: 74 @42396 has 210 MA's), (124, 42555), (129, 42570), (169, 42696), (190, 42741),

Gene: SiSi_63 Start: 41202, Stop: 41558, Start Num: 74

Candidate Starts for SiSi_63:

(Start: 74 @41202 has 210 MA's), (169, 41502), (172, 41505),

Gene: SilentRX_62 Start: 45416, Stop: 45102, Start Num: 84

Candidate Starts for SilentRX_62:

(25, 45581), (32, 45545), (Start: 84 @45416 has 13 MA's), (119, 45290), (164, 45158), (170, 45149),

Gene: Simpliphy_76 Start: 48048, Stop: 48365, Start Num: 80

Candidate Starts for Simpliphy_76:
(21, 47865), (Start: 80 @48048 has 147 MA's), (125, 48189),

Gene: SirDuracell_76 Start: 47334, Stop: 47651, Start Num: 80
Candidate Starts for SirDuracell_76:
(21, 47151), (Start: 80 @47334 has 147 MA's), (Start: 92 @47358 has 1 MA's), (125, 47475),

Gene: Snenia_65 Start: 46468, Stop: 46800, Start Num: 76
Candidate Starts for Snenia_65:
(10, 46192), (11, 46204), (13, 46213), (16, 46237), (24, 46315), (35, 46363), (Start: 76 @46468 has 23 MA's), (124, 46612), (145, 46696), (158, 46729),

Gene: Soos_87 Start: 57034, Stop: 57414, Start Num: 72
Candidate Starts for Soos_87:
(8, 56746), (18, 56821), (27, 56908), (Start: 72 @57034 has 2 MA's), (151, 57295), (156, 57304), (168, 57328), (171, 57334), (188, 57376),

Gene: SophKB_74 Start: 47726, Stop: 48043, Start Num: 80
Candidate Starts for SophKB_74:
(21, 47543), (Start: 80 @47726 has 147 MA's), (125, 47867),

Gene: Sotrice96_78 Start: 48729, Stop: 49046, Start Num: 80
Candidate Starts for Sotrice96_78:
(21, 48546), (Start: 80 @48729 has 147 MA's), (125, 48870),

Gene: Soul22_71 Start: 43477, Stop: 43839, Start Num: 74
Candidate Starts for Soul22_71:
(Start: 74 @43477 has 210 MA's), (124, 43636), (169, 43777), (172, 43780), (190, 43822),

Gene: Sparkdehlily_72 Start: 43335, Stop: 43628, Start Num: 99
Candidate Starts for Sparkdehlily_72:
(Start: 99 @43335 has 5 MA's), (104, 43353), (112, 43389), (114, 43395), (120, 43413), (132, 43449), (143, 43509), (170, 43566), (172, 43569), (190, 43611),

Gene: Spartacus_67 Start: 42463, Stop: 42825, Start Num: 74
Candidate Starts for Spartacus_67:
(Start: 74 @42463 has 210 MA's), (169, 42763), (172, 42766), (190, 42808),

Gene: Spikelee_72 Start: 44062, Stop: 44424, Start Num: 74
Candidate Starts for Spikelee_72:
(Start: 74 @44062 has 210 MA's), (169, 44362), (190, 44407),

Gene: Splinter_51 Start: 33608, Stop: 33991, Start Num: 76
Candidate Starts for Splinter_51:
(Start: 76 @33608 has 23 MA's), (113, 33731), (175, 33914), (191, 33956),

Gene: Spooky_68 Start: 42098, Stop: 42427, Start Num: 80
Candidate Starts for Spooky_68:
(Start: 80 @42098 has 147 MA's), (172, 42377), (183, 42407), (190, 42419),

Gene: Spoonbill_63 Start: 41578, Stop: 41934, Start Num: 74
Candidate Starts for Spoonbill_63:

(34, 41473), (36, 41479), (55, 41533), (Start: 74 @41578 has 210 MA's), (Start: 90 @41611 has 1 MA's), (136, 41782), (169, 41878), (172, 41881),

Gene: Squiddly_73 Start: 46416, Stop: 46745, Start Num: 80
Candidate Starts for Squiddly_73:
(Start: 80 @46416 has 147 MA's), (172, 46695), (183, 46725), (190, 46737),

Gene: Squint_116 Start: 64970, Stop: 65290, Start Num: 81
Candidate Starts for Squint_116:
(Start: 81 @64970 has 28 MA's), (101, 65039), (113, 65081), (145, 65198),

Gene: Squirty_67 Start: 43396, Stop: 43758, Start Num: 74
Candidate Starts for Squirty_67:
(Start: 74 @43396 has 210 MA's), (Start: 90 @43429 has 1 MA's), (136, 43600), (169, 43696), (172, 43699), (190, 43741),

Gene: StAnnes_63 Start: 42321, Stop: 42683, Start Num: 74
Candidate Starts for StAnnes_63:
(Start: 74 @42321 has 210 MA's), (169, 42621), (172, 42624), (190, 42666),

Gene: Stank_80 Start: 48987, Stop: 49304, Start Num: 80
Candidate Starts for Stank_80:
(21, 48804), (Start: 80 @48987 has 147 MA's), (125, 49128),

Gene: Stap_63 Start: 42347, Stop: 42709, Start Num: 74
Candidate Starts for Stap_63:
(34, 42242), (36, 42248), (55, 42302), (Start: 74 @42347 has 210 MA's), (Start: 90 @42380 has 1 MA's), (124, 42506), (169, 42647), (172, 42650), (190, 42692),

Gene: Starcevich_65 Start: 41944, Stop: 42300, Start Num: 74
Candidate Starts for Starcevich_65:
(Start: 74 @41944 has 210 MA's), (169, 42244), (172, 42247),

Gene: Stark_78 Start: 48531, Stop: 48848, Start Num: 80
Candidate Starts for Stark_78:
(21, 48348), (Start: 80 @48531 has 147 MA's), (125, 48672),

Gene: StellaBean_75 Start: 48294, Stop: 48611, Start Num: 80
Candidate Starts for StellaBean_75:
(21, 48111), (Start: 80 @48294 has 147 MA's), (125, 48435),

Gene: Sting_90 Start: 57473, Stop: 57853, Start Num: 72
Candidate Starts for Sting_90:
(8, 57185), (18, 57260), (27, 57347), (Start: 72 @57473 has 2 MA's), (79, 57485), (151, 57734), (156, 57743), (168, 57767), (171, 57773), (188, 57815),

Gene: StolenFromERC_80 Start: 48769, Stop: 49086, Start Num: 80
Candidate Starts for StolenFromERC_80:
(21, 48586), (Start: 80 @48769 has 147 MA's), (125, 48910),

Gene: Strokeseat_61 Start: 39911, Stop: 40273, Start Num: 74
Candidate Starts for Strokeseat_61:
(Start: 74 @39911 has 210 MA's), (169, 40211), (172, 40214), (190, 40256),

Gene: SuperGrey_69 Start: 44472, Stop: 44828, Start Num: 74
Candidate Starts for SuperGrey_69:
(Start: 74 @44472 has 210 MA's), (124, 44631), (169, 44772), (172, 44775), (190, 44811),

Gene: Superphikiman_115 Start: 64061, Stop: 64381, Start Num: 81
Candidate Starts for Superphikiman_115:
(Start: 81 @64061 has 28 MA's), (101, 64130), (113, 64172), (145, 64289),

Gene: SwagPigglett_70 Start: 44704, Stop: 45066, Start Num: 74
Candidate Starts for SwagPigglett_70:
(31, 44587), (Start: 74 @44704 has 210 MA's), (124, 44863), (169, 45004), (190, 45049),

Gene: Syleon_75 Start: 45869, Stop: 46291, Start Num: 40
Candidate Starts for Syleon_75:
(Start: 40 @45869 has 2 MA's), (43, 45875), (145, 46190),

Gene: TBrady12_80 Start: 48468, Stop: 48785, Start Num: 80
Candidate Starts for TBrady12_80:
(21, 48285), (Start: 80 @48468 has 147 MA's), (125, 48609),

Gene: TChen_67 Start: 44519, Stop: 44881, Start Num: 74
Candidate Starts for TChen_67:
(Start: 74 @44519 has 210 MA's), (169, 44819), (172, 44822), (190, 44864),

Gene: TDanisky_72 Start: 43265, Stop: 43606, Start Num: 74
Candidate Starts for TDanisky_72:
(Start: 74 @43265 has 210 MA's), (124, 43424),

Gene: TZGordon_53 Start: 32954, Stop: 33337, Start Num: 76
Candidate Starts for TZGordon_53:
(Start: 76 @32954 has 23 MA's), (113, 33077), (175, 33260), (191, 33302),

Gene: Taj_70 Start: 44021, Stop: 44383, Start Num: 74
Candidate Starts for Taj_70:
(63, 44006), (Start: 74 @44021 has 210 MA's), (169, 44321), (172, 44324), (190, 44366),

Gene: Tank_65 Start: 46679, Stop: 46338, Start Num: 84
Candidate Starts for Tank_65:
(Start: 84 @46679 has 13 MA's), (109, 46592), (164, 46421), (181, 46379),

Gene: Taptic_52 Start: 43843, Stop: 44184, Start Num: 73
Candidate Starts for Taptic_52:
(Start: 73 @43843 has 9 MA's), (96, 43897), (100, 43912), (105, 43930), (125, 43996), (131, 44014),
(140, 44068), (157, 44113), (169, 44134), (178, 44158), (180, 44161),

Gene: Tarkin_76 Start: 48716, Stop: 49033, Start Num: 80
Candidate Starts for Tarkin_76:
(21, 48533), (Start: 80 @48716 has 147 MA's), (125, 48857),

Gene: TeardropMSU_73 Start: 47716, Stop: 48033, Start Num: 80
Candidate Starts for TeardropMSU_73:
(21, 47533), (Start: 80 @47716 has 147 MA's), (125, 47857),

Gene: Teaspoon_78 Start: 48610, Stop: 48927, Start Num: 80
Candidate Starts for Teaspoon_78:
(21, 48427), (Start: 80 @48610 has 147 MA's), (125, 48751),

Gene: Teng_62 Start: 33271, Stop: 33660, Start Num: 77
Candidate Starts for Teng_62:
(17, 33037), (Start: 77 @33271 has 4 MA's), (113, 33397), (135, 33460), (142, 33505), (188, 33622),
(190, 33625),

Gene: Terminus_80 Start: 49503, Stop: 49820, Start Num: 80
Candidate Starts for Terminus_80:
(21, 49320), (Start: 80 @49503 has 147 MA's), (125, 49644),

Gene: Tesla_66 Start: 38915, Stop: 39268, Start Num: 62
Candidate Starts for Tesla_66:
(Start: 62 @38915 has 16 MA's), (75, 38942), (118, 39077), (134, 39107), (141, 39158), (145, 39164),
(147, 39179), (154, 39197), (165, 39221), (167, 39224),

Gene: ThetaBob_73 Start: 44248, Stop: 44604, Start Num: 74
Candidate Starts for ThetaBob_73:
(33, 44137), (Start: 74 @44248 has 210 MA's), (169, 44548), (172, 44551),

Gene: Thibault_106 Start: 63336, Stop: 63668, Start Num: 80
Candidate Starts for Thibault_106:
(Start: 80 @63336 has 147 MA's), (115, 63447), (119, 63471), (182, 63651),

Gene: ThreeRngTarjay_118 Start: 68893, Stop: 69225, Start Num: 81
Candidate Starts for ThreeRngTarjay_118:
(Start: 81 @68893 has 28 MA's), (101, 68962), (145, 69121),

Gene: Thresher_79 Start: 49590, Stop: 49907, Start Num: 80
Candidate Starts for Thresher_79:
(21, 49407), (Start: 80 @49590 has 147 MA's), (125, 49731),

Gene: TinaLin_50 Start: 32410, Stop: 32790, Start Num: 76
Candidate Starts for TinaLin_50:
(Start: 76 @32410 has 23 MA's), (98, 32473), (113, 32533), (145, 32650), (158, 32689), (175, 32716),
(191, 32758),

Gene: Tomaszewski_72 Start: 47879, Stop: 48196, Start Num: 80
Candidate Starts for Tomaszewski_72:
(21, 47696), (Start: 80 @47879 has 147 MA's), (Start: 92 @47903 has 1 MA's), (125, 48020),

Gene: Tonitrus_70 Start: 51892, Stop: 52272, Start Num: 74
Candidate Starts for Tonitrus_70:
(Start: 74 @51892 has 210 MA's), (124, 52051), (128, 52063), (145, 52135),

Gene: Totinger_65 Start: 41519, Stop: 41875, Start Num: 74
Candidate Starts for Totinger_65:
(Start: 74 @41519 has 210 MA's), (124, 41678), (169, 41819), (172, 41822), (190, 41858),

Gene: Toto_75 Start: 48970, Stop: 49287, Start Num: 80

Candidate Starts for Toto_75:

(21, 48787), (Start: 80 @48970 has 147 MA's), (125, 49111),

Gene: Traaww1_73 Start: 48154, Stop: 48471, Start Num: 80

Candidate Starts for Traaww1_73:

(21, 47971), (Start: 80 @48154 has 147 MA's), (125, 48295),

Gene: Trax_71 Start: 44944, Stop: 45291, Start Num: 71

Candidate Starts for Trax_71:

(Start: 71 @44944 has 2 MA's), (103, 45025), (145, 45181), (155, 45208), (170, 45235), (172, 45238),

Gene: Tuco_78 Start: 49478, Stop: 49795, Start Num: 80

Candidate Starts for Tuco_78:

(21, 49295), (Start: 80 @49478 has 147 MA's), (125, 49619),

Gene: Tweety_65 Start: 43115, Stop: 43471, Start Num: 74

Candidate Starts for Tweety_65:

(Start: 74 @43115 has 210 MA's), (124, 43274), (129, 43289), (169, 43415), (172, 43418), (190, 43454),

Gene: Tyson_67 Start: 45417, Stop: 45785, Start Num: 80

Candidate Starts for Tyson_67:

(Start: 80 @45417 has 147 MA's), (Start: 93 @45444 has 1 MA's), (111, 45513), (117, 45534), (125, 45558), (145, 45639), (175, 45702), (197, 45777),

Gene: Ukulele_72 Start: 47861, Stop: 48178, Start Num: 80

Candidate Starts for Ukulele_72:

(21, 47678), (Start: 80 @47861 has 147 MA's), (125, 48002),

Gene: UncleRicky_64 Start: 42054, Stop: 42416, Start Num: 74

Candidate Starts for UncleRicky_64:

(Start: 74 @42054 has 210 MA's), (124, 42213), (169, 42354), (172, 42357), (190, 42399),

Gene: VRedHorse_65 Start: 41397, Stop: 41759, Start Num: 74

Candidate Starts for VRedHorse_65:

(Start: 74 @41397 has 210 MA's), (Start: 90 @41430 has 1 MA's), (124, 41556), (169, 41697), (172, 41700), (190, 41742),

Gene: VanLee_116 Start: 60612, Stop: 60974, Start Num: 87

Candidate Starts for VanLee_116:

(Start: 87 @60612 has 1 MA's), (160, 60858), (178, 60903), (184, 60918), (190, 60927), (195, 60942),

Gene: VasuNzinga_68 Start: 39017, Stop: 39370, Start Num: 62

Candidate Starts for VasuNzinga_68:

(Start: 62 @39017 has 16 MA's), (75, 39044), (118, 39179), (134, 39209), (141, 39260), (145, 39266), (147, 39281), (154, 39299), (165, 39323), (167, 39326),

Gene: Velveteen_61 Start: 39148, Stop: 39510, Start Num: 74

Candidate Starts for Velveteen_61:

(Start: 74 @39148 has 210 MA's), (124, 39307), (136, 39352), (169, 39448), (172, 39451), (190, 39493),

Gene: Vendetta_51 Start: 33608, Stop: 33991, Start Num: 76

Candidate Starts for Vendetta_51:

(Start: 76 @33608 has 23 MA's), (113, 33731), (175, 33914), (191, 33956),

Gene: Veteran_62 Start: 40798, Stop: 41154, Start Num: 74

Candidate Starts for Veteran_62:

(Start: 74 @40798 has 210 MA's), (136, 41002), (169, 41098), (172, 41101), (190, 41137),

Gene: Volt_99 Start: 49204, Stop: 49530, Start Num: 85

Candidate Starts for Volt_99:

(Start: 85 @49204 has 4 MA's), (108, 49285), (136, 49369), (142, 49408), (161, 49447),

Gene: Wachhund_66 Start: 42028, Stop: 42390, Start Num: 74

Candidate Starts for Wachhund_66:

(Start: 74 @42028 has 210 MA's), (169, 42328), (190, 42373),

Gene: Wamburgexpress_66 Start: 45044, Stop: 45415, Start Num: 80

Candidate Starts for Wamburgexpress_66:

(Start: 80 @45044 has 147 MA's), (106, 45122), (145, 45269), (175, 45332), (197, 45407),

Gene: Wanda_122 Start: 66271, Stop: 66600, Start Num: 81

Candidate Starts for Wanda_122:

(Start: 81 @66271 has 28 MA's), (101, 66340), (108, 66358), (130, 66430), (131, 66433), (145, 66499), (181, 66583),

Gene: Wee_70 Start: 44097, Stop: 44459, Start Num: 74

Candidate Starts for Wee_70:

(63, 44082), (Start: 74 @44097 has 210 MA's), (169, 44397), (172, 44400), (190, 44442),

Gene: Weirido19_91 Start: 53190, Stop: 53612, Start Num: 50

Candidate Starts for Weirido19_91:

(50, 53190), (97, 53316), (137, 53445), (151, 53508), (173, 53550), (192, 53604),

Gene: Whatsapiecost_65 Start: 41324, Stop: 41686, Start Num: 74

Candidate Starts for Whatsapiecost_65:

(Start: 74 @41324 has 210 MA's), (Start: 90 @41357 has 1 MA's), (169, 41624), (172, 41627), (190, 41669),

Gene: Whirlwind_66 Start: 46283, Stop: 46615, Start Num: 76

Candidate Starts for Whirlwind_66:

(10, 46007), (11, 46019), (13, 46028), (16, 46052), (24, 46130), (35, 46178), (Start: 76 @46283 has 23 MA's), (124, 46427), (145, 46511), (158, 46544),

Gene: Whouxphf_62 Start: 42311, Stop: 42673, Start Num: 74

Candidate Starts for Whouxphf_62:

(Start: 74 @42311 has 210 MA's), (169, 42611), (190, 42656),

Gene: Wiggin_79 Start: 48555, Stop: 48872, Start Num: 80

Candidate Starts for Wiggin_79:

(21, 48372), (Start: 80 @48555 has 147 MA's), (125, 48696),

Gene: Wilde_67 Start: 46978, Stop: 46637, Start Num: 84

Candidate Starts for Wilde_67:

(Start: 84 @46978 has 13 MA's), (109, 46891), (164, 46720), (181, 46678),

Gene: WillSterrel_66 Start: 43580, Stop: 43942, Start Num: 74
Candidate Starts for WillSterrel_66:
(Start: 74 @43580 has 210 MA's), (169, 43880), (172, 43883), (190, 43925),

Gene: Willez_72 Start: 46748, Stop: 47065, Start Num: 80
Candidate Starts for Willez_72:
(21, 46565), (Start: 80 @46748 has 147 MA's), (125, 46889),

Gene: Wyatt2_67 Start: 45415, Stop: 45783, Start Num: 80
Candidate Starts for Wyatt2_67:
(Start: 80 @45415 has 147 MA's), (Start: 93 @45442 has 1 MA's), (111, 45511), (117, 45532), (125, 45556), (145, 45637), (175, 45700), (197, 45775),

Gene: XFactor_63 Start: 40832, Stop: 41194, Start Num: 74
Candidate Starts for XFactor_63:
(Start: 74 @40832 has 210 MA's), (169, 41132), (190, 41177),

Gene: Xandras_76 Start: 47963, Stop: 48280, Start Num: 80
Candidate Starts for Xandras_76:
(21, 47780), (Start: 80 @47963 has 147 MA's), (125, 48104),

Gene: YassJohnny_74 Start: 47918, Stop: 48235, Start Num: 80
Candidate Starts for YassJohnny_74:
(21, 47735), (Start: 80 @47918 has 147 MA's), (Start: 92 @47942 has 1 MA's), (125, 48059),

Gene: Yorick_64 Start: 42551, Stop: 42913, Start Num: 74
Candidate Starts for Yorick_64:
(Start: 74 @42551 has 210 MA's), (124, 42710), (169, 42851), (190, 42896),

Gene: Yoshi_81 Start: 44512, Stop: 44874, Start Num: 74
Candidate Starts for Yoshi_81:
(33, 44401), (Start: 74 @44512 has 210 MA's), (169, 44812), (172, 44815), (190, 44857),

Gene: Youngblood_80 Start: 49430, Stop: 49747, Start Num: 80
Candidate Starts for Youngblood_80:
(21, 49247), (Start: 80 @49430 has 147 MA's), (125, 49571),

Gene: Zapner_79 Start: 44176, Stop: 44517, Start Num: 74
Candidate Starts for Zapner_79:
(63, 44161), (Start: 74 @44176 has 210 MA's), (169, 44476), (172, 44479),

Gene: Zelink_117 Start: 68840, Stop: 69172, Start Num: 81
Candidate Starts for Zelink_117:
(Start: 81 @68840 has 28 MA's), (101, 68909), (145, 69068),

Gene: Zerg_65 Start: 41676, Stop: 42038, Start Num: 74
Candidate Starts for Zerg_65:
(Start: 74 @41676 has 210 MA's), (169, 41976), (190, 42021),

Gene: Zizzle_69 Start: 44029, Stop: 44391, Start Num: 74
Candidate Starts for Zizzle_69:
(Start: 74 @44029 has 210 MA's), (124, 44188), (129, 44203), (169, 44329), (190, 44374),

Gene: xkcd_80 Start: 49620, Stop: 49937, Start Num: 80

Candidate Starts for xkcd_80:

(21, 49437), (Start: 80 @49620 has 147 MA's), (125, 49761),