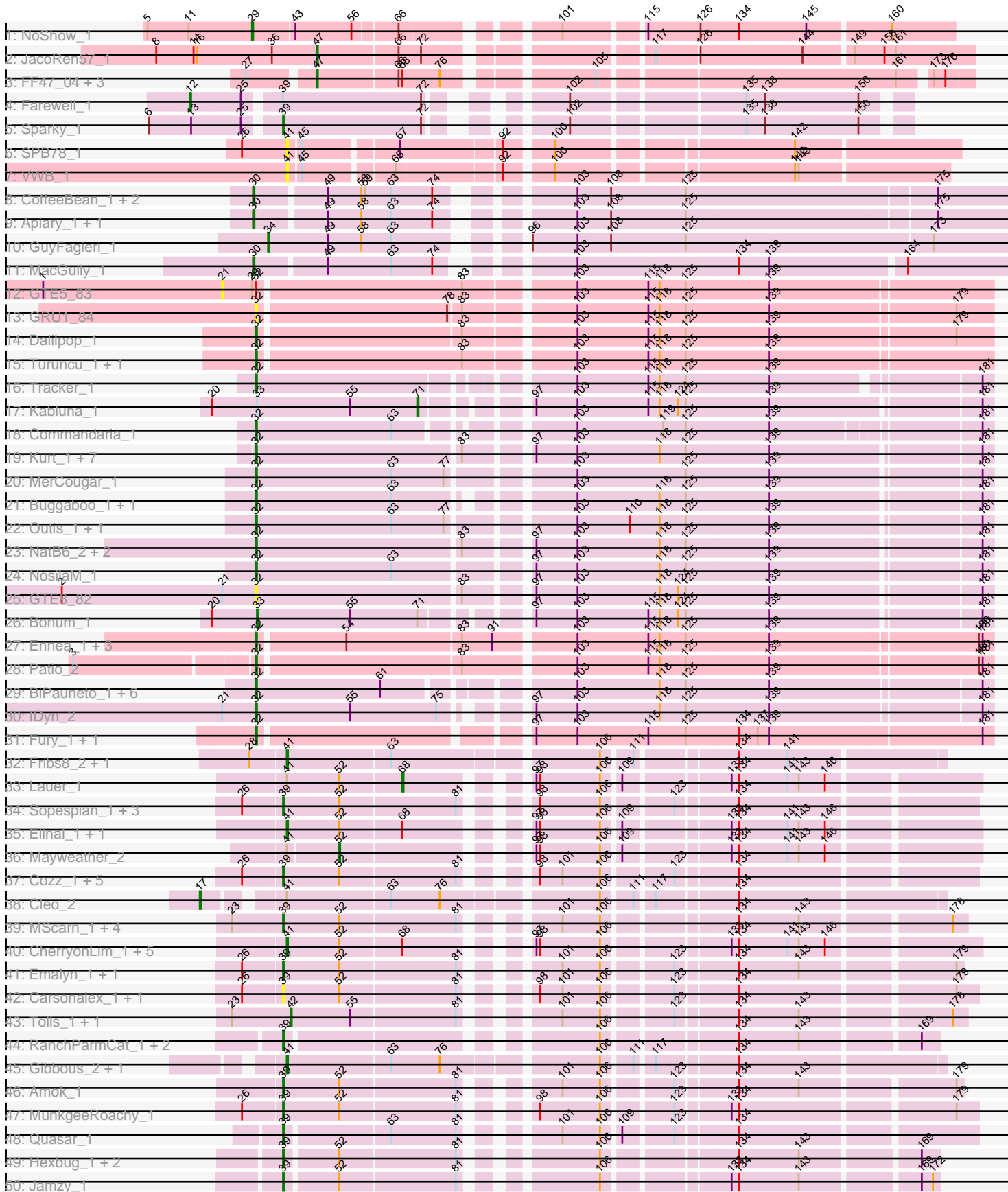
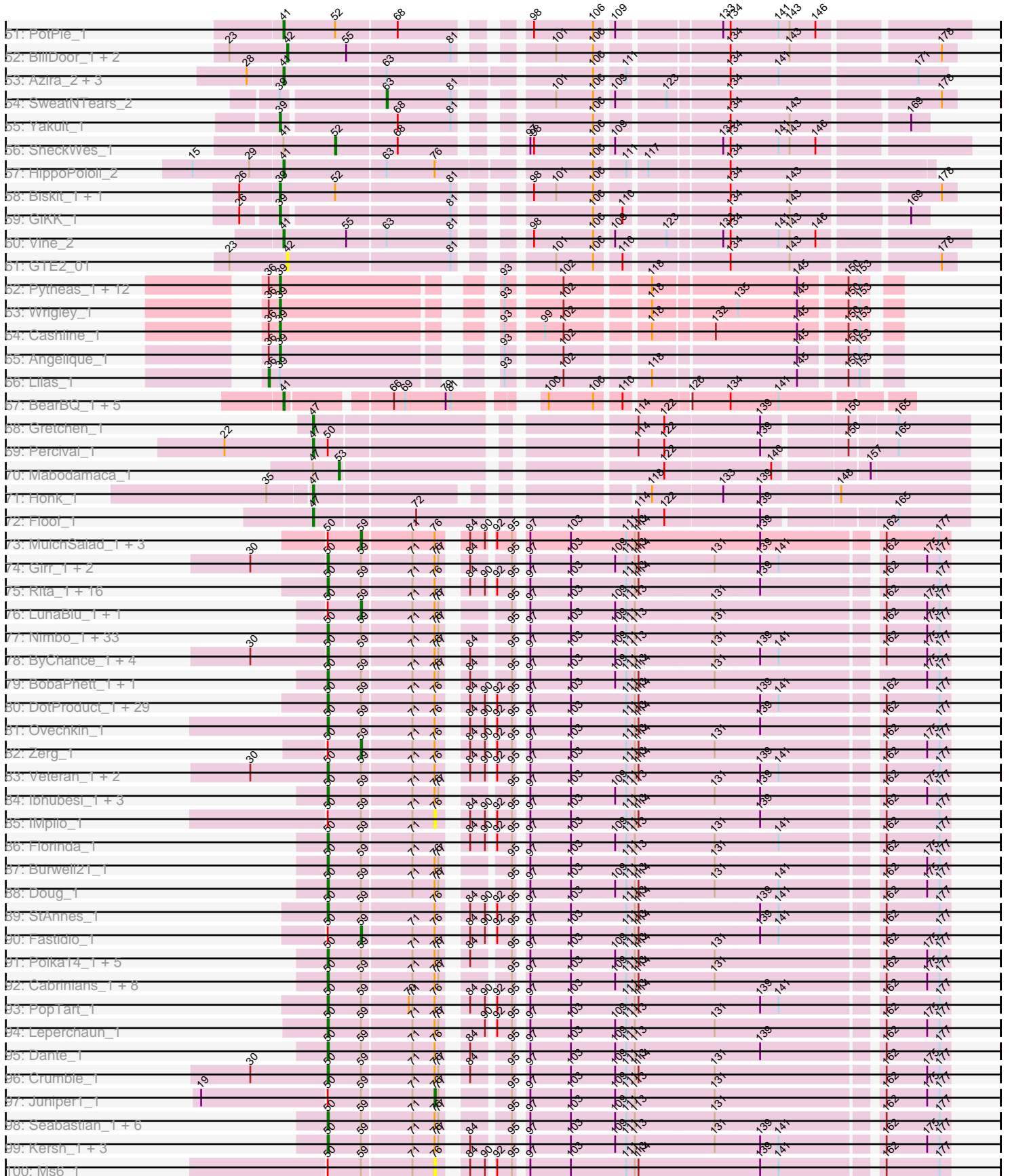


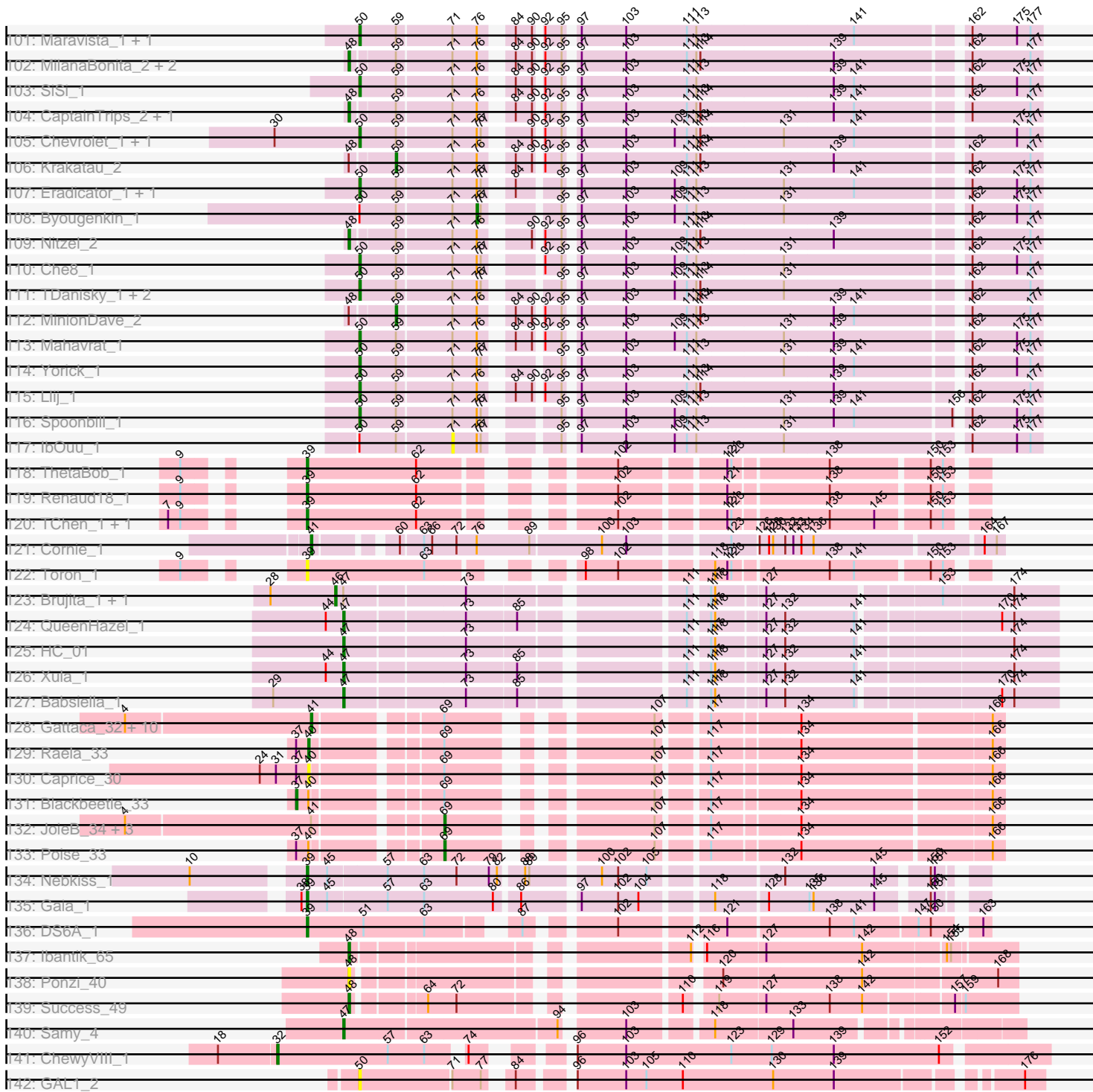
Pham 193657



Pham 193657



Pham 193657



Note: Tracks are now grouped by subcluster and scaled. Switching in subcluster is indicated by changes in track color. Track scale is now set by default to display the region 30 bp upstream of start 1 to 30 bp downstream of the last possible start. If this default region is judged to be packed too tightly with annotated starts, the track will be further scaled to only show that region of the ORF with annotated starts. This action will be indicated by adding "Zoomed" to the title. For starts, yellow indicates the location of called starts comprised solely of Glimmer/GeneMark auto-annotations, green indicates the location of called starts with at least 1 manual gene annotation.

Pham 193657 Report

This analysis was run 11/02/24 on database version 579.

WARNING: Pham size does not match number of genes in report. Either unphamerated genes have been added (by you) or starterator has removed genes due to invalid start codon.

Pham number 193657 has 359 members, 32 are drafts.

Phages represented in each track:

- Track 1 : NoShow_1
- Track 2 : JacoRen57_1
- Track 3 : FF47_04, Muddy_4, 8UZL_4, Maco6_2
- Track 4 : Farewell_1
- Track 5 : Sparky_1
- Track 6 : SPB78_1
- Track 7 : VWB_1
- Track 8 : CoffeeBean_1, Braxoaddie_1, Maselop_1
- Track 9 : Apiary_1, Polyuyuki_1
- Track 10 : GuyFagieri_1
- Track 11 : MacGully_1
- Track 12 : GTE5_83
- Track 13 : GRU1_84
- Track 14 : Dalilpop_1
- Track 15 : Turuncu_1, Flapper_1
- Track 16 : Tracker_1
- Track 17 : Kabluna_1
- Track 18 : Commandaria_1
- Track 19 : Kurt_1, Emianna_1, Jifall16_1, KidneyBean_1, Phomeo_1, Arti_1, Wheezy_1, Foxboro_1
- Track 20 : MerCougar_1
- Track 21 : Buggaboo_1, SuperSulley_1
- Track 22 : Outis_1, StarStruck_1
- Track 23 : NatB6_2, GrootJr_2, NovumRegina_2
- Track 24 : NosilaM_1
- Track 25 : GTE8_82
- Track 26 : Bonum_1
- Track 27 : Ennea_1, Skysand_1, Float294_1, Lollipop1437_1
- Track 28 : Patio_2
- Track 29 : BiPauneto_1, HubbaBubba_1, Marietta_1, Sukkupi_1, Yndexa_1, WhoseManz_1, NadineRae_1
- Track 30 : IDyn_2
- Track 31 : Fury_1, Pleakley_1

- Track 32 : Fribs8_2, Survivors_2
- Track 33 : Lauer_1
- Track 34 : Sopespian_1, Burnsey_1, Elliott_1, PsychoKiller_1
- Track 35 : Elinal_1, KayGee_1
- Track 36 : Mayweather_2
- Track 37 : Cozz_1, Agatha_1, GoldHunter_1, Nina_1, Typhonomachy_1, Axym_1
- Track 38 : Cleo_2
- Track 39 : MScarn_1, Buttrmilkdreams_1, Horseradish_1, Troje_1, Yummy_1
- Track 40 : CherryonLim_1, SummitAcademy_1, MAnor_1, Feastonyeet_1, BigChungus_1, Pons_1
- Track 41 : Emalyn_1, AikoCarson_1
- Track 42 : Carsonalex_1, RedBaron_1
- Track 43 : Tolls_1, Yarn_1
- Track 44 : RanchParmCat_1, Button_1, Margaret_1
- Track 45 : Gibbous_2, Dre3_2
- Track 46 : Amok_1
- Track 47 : MunkgeeRoachy_1
- Track 48 : Quasar_1
- Track 49 : Hexbug_1, Orla_1, Nodigi_1
- Track 50 : Jamzy_1
- Track 51 : PotPie_1
- Track 52 : BillDoor_1, SteamedHams_1, AndPeggy_1
- Track 53 : Azira_2, MaVan_2, Nibbles_2, Zareef_2
- Track 54 : SweatNTears_2
- Track 55 : Yakult_1
- Track 56 : SheckWes_1
- Track 57 : HippoPololi_2
- Track 58 : Biskit_1, SketchMex_1
- Track 59 : GiKK_1
- Track 60 : Vine_2
- Track 61 : GTE2_01
- Track 62 : Pytheas_1, EnalisNailo_1, Marteena_1, Posh_1, Bradissa_1, Jablanski_1, EMSquaredA_1, Floral_1, BritBrat_1, BeeGee_1, Confidence_1, LonelyBoi_1, Pollux_1
- Track 63 : Wrigley_1
- Track 64 : Cashline_1
- Track 65 : Angelique_1
- Track 66 : Lilas_1
- Track 67 : BearBQ_1, MortyNRick_1, Apricot_1, Birdsong_1, Kuwabara_1, Crater_1
- Track 68 : Gretchen_1
- Track 69 : Percival_1
- Track 70 : Mabodamaca_1
- Track 71 : Honk_1
- Track 72 : Floof_1
- Track 73 : MulchSalad_1, Phalconet_1, Kenuha5_1, Minnie_1
- Track 74 : Girr_1, MisterCuddles_1, Ruby_1
- Track 75 : Rita_1, Taj_1, Sabbb_1, PMC_1, Sandalphon_1, MadMen_1, EleanorGeorge_1, Donkeykong_1, QuickMath_1, Firehouse51_1, Phasih_1, DillTech15_1, Rockne_1, Batiatus_1, Whatsapiecost_1, Ardmore_1, Filuzino_1
- Track 76 : LunaBlu_1, DaddyRickover_1
- Track 77 : Nimbo_1, Scottish_1, Estave1_1, KingMidas_1, Eish_1, Wachhund_1, Saal_1, VRedHorse_1, Dorothy_1, OldBen_1, Latretium_1, BlueCrab_1, Pacc40_1, Empress_1, Geralt_1, Inventum_1, Hlubikazi_1, Sassafras_1, Gorge_1, Galactic_1

Mattes_1, RedBird_1, Radiance_1, RitaG_1, Deb65_1, BodEinwohner17_1, Strokeseat_1, PHappiness_1, JoeyJr_1, Mandlovu_1, Doomphist_1, Brocalys_1, Daenerys_1, Poenanya_1

- Track 78 : ByChance_1, ShowerHandel_1, SwagPiggett_1, Martik_1, Lizziana_1
- Track 79 : BobaPhett_1, James_1
- Track 80 : DotProduct_1, Guppsters_1, Phanphagia_1, Hades_1, Shauna1_1, XFactor_1, Zizzle_1, SuperGrey_1, Bipolar_1, Melissauen88_1, GigiOuiOui_1, DLane_1, Fruitloop_1, Aubs_1, Mantra_1, Royals2015_1, PhesterPhotato_1, SG4_1, Bubbles123_1, Blexus_1, Mutaforma13_1, Gandalph_1, Wee_1, Chuckly_1, Tweety_1, DeadP_1, Hamulus_1, ShroomBoi_1, Emma_1, SassyB_1
- Track 81 : Ovechkin_1
- Track 82 : Zerg_1
- Track 83 : Veteran_1, Karhdo_1, GUmbie_1
- Track 84 : lbhubesi_1, Harley_1, Whouxphf_1, Fancypants_1
- Track 85 : IMpilo_1
- Track 86 : Florinda_1
- Track 87 : Burwell21_1
- Track 88 : Doug_1
- Track 89 : StAnnes_1
- Track 90 : Fastidio_1
- Track 91 : Polka14_1, Nivrat_1, Philus_1, LilMoolah_1, ShiLan_1, Jarcob_1
- Track 92 : Cabrinians_1, FreddyB_1, Koella_1, NormanBulbieJr_1, OlympiaSaint_1, Pippy_1, LastJedi_1, Priscilla_1, Clifton_1
- Track 93 : PopTart_1
- Track 94 : Leperchaun_1
- Track 95 : Dante_1
- Track 96 : Crumble_1
- Track 97 : Juniper1_1
- Track 98 : Seabastian_1, Modragons_1, Ochi17_1, Llama_1, AlpineSix_1, OfUltron_1, Jinglebell_1
- Track 99 : Kersh_1, Spartacus_1, IrishSherpFalk_1, WillSterrel_1
- Track 100 : Ms6_1
- Track 101 : Maravista_1, Phatniss_1
- Track 102 : MilanaBonita_2, MilleniumForce_2, Akhila_2
- Track 103 : SiSi_1
- Track 104 : CaptainTrips_2, KristaRAM_2
- Track 105 : Chevrolet_1, ArcusAngelus_1
- Track 106 : Krakatau_2
- Track 107 : Eradicator_1, Moonbeam_1
- Track 108 : Byougenkin_1
- Track 109 : Nitzel_2
- Track 110 : Che8_1
- Track 111 : TDanisky_1, DRBy19_1, Sparkdehlily_1
- Track 112 : MinionDave_2
- Track 113 : Mahavrat_1
- Track 114 : Yorick_1
- Track 115 : Llij_1
- Track 116 : Spoonbill_1
- Track 117 : lbOuu_1
- Track 118 : ThetaBob_1
- Track 119 : Renaud18_1
- Track 120 : TChen_1, LunaStella_1
- Track 121 : Cornie_1

- Track 122 : Toron_1
- Track 123 : Brujita_1, Island3_1
- Track 124 : QueenHazel_1
- Track 125 : HC_01
- Track 126 : Xula_1
- Track 127 : Babsiella_1
- Track 128 : Gattaca_32, RedRaider77_33, Huphlepuuff_35, Lilbit_34, Corazon_31, LittleLaf_33, VasuNzinga_33, FeliMaine_33, Tesla_32, Pringar_33, Clarkson_34
- Track 129 : Raela_33
- Track 130 : Caprice_30
- Track 131 : Blackbeetle_33
- Track 132 : JoieB_34, Marvin_31, Beelzebub_37, MosMoris_31
- Track 133 : Poise_33
- Track 134 : Nebkiss_1
- Track 135 : Gaia_1
- Track 136 : DS6A_1
- Track 137 : Ibantik_65
- Track 138 : Ponzi_40
- Track 139 : Success_49
- Track 140 : Samy_4
- Track 141 : ChewyVIII_1
- Track 142 : GAL1_2

Summary of Final Annotations (See graph section above for start numbers):

The start number called the most often in the published annotations is 50, it was called in 147 of the 327 non-draft genes in the pham.

Genes that call this "Most Annotated" start:

- AlpineSix_1, ArcusAngelus_1, Ardmore_1, Aubs_1, Batiatus_1, Bipolar_1, Blexus_1, BlueCrab_1, BobaPhett_1, BodEinwohner17_1, Brocalys_1, Bubbles123_1, Burwell21_1, ByChance_1, Cabrinians_1, Che8_1, Chevrolet_1, Chuckly_1, Clifton_1, Crumble_1, DLane_1, DRBy19_1, Daenerys_1, Dante_1, DeadP_1, Deb65_1, DillTech15_1, Donkeykong_1, Doomphist_1, Dorothy_1, DotProduct_1, Doug_1, Eish_1, EleanorGeorge_1, Emma_1, Empress_1, Eradicator_1, Estave1_1, Fancypants_1, Filuzino_1, Firehouse51_1, Florinda_1, FreddyB_1, Fruitloop_1, GAL1_2, GUmbe_1, Galactic_1, Gandalph_1, Geralt_1, GigiOuiOui_1, Girr_1, Gorge_1, Guppsters_1, Hades_1, Hamulus_1, Harley_1, Hlubikazi_1, Ibhubesi_1, Inventum_1, IrishSherpFalk_1, James_1, Jarcob_1, Jinglebell_1, JoeyJr_1, Karhdo_1, Kersh_1, KingMidas_1, Koella_1, LastJedi_1, Latretium_1, Leperchaun_1, LilMoolah_1, Lizziana_1, Llama_1, Llij_1, MadMen_1, Mahavrat_1, Mandlovu_1, Mantra_1, Maravista_1, Martik_1, Mattes_1, Melissauren88_1, MisterCuddles_1, Modragons_1, Moonbeam_1, Mutaforma13_1, Nimbo_1, Nivrat_1, NormanBulbieJr_1, Ochi17_1, OfUltron_1, OldBen_1, OlympiaSaint_1, Ovechkin_1, PHappiness_1, PMC_1, Pacc40_1, Phanphagia_1, Phasih_1, Phatniss_1, PhesterPhotato_1, Philus_1, Pippy_1, Poenanya_1, Polka14_1, PopTart_1, Priscilla_1, QuickMath_1, Radiance_1, RedBird_1, RitaG_1, Rita_1, Rockne_1, Royals2015_1, Ruby_1, SG4_1, Saal_1, Sabbb_1, Sandalphon_1, Sassafras_1, SassyB_1, Scottish_1, Seabastian_1, Shauna1_1, ShiLan_1, ShowerHandel_1, ShroomBoi_1, SiSi_1, Sparkdehlily_1, Spartacus_1,

Spoonbill_1, StAnnes_1, Strokeseat_1, SuperGrey_1, SwagPigglett_1, TDanisky_1, Taj_1, Tweety_1, VRedHorse_1, Veteran_1, Wachhund_1, Wee_1, Whatsapiecost_1, Whouxphf_1, WillSterrel_1, XFactor_1, Yorick_1, Zizzle_1,

Genes that have the "Most Annotated" start but do not call it:

- Byougenkin_1, DaddyRickover_1, Fastidio_1, IMpilo_1, IbOuu_1, Juniper1_1, Kenuha5_1, LunaBlu_1, Minnie_1, Ms6_1, MulchSalad_1, Percival_1, Phalconet_1, Zerg_1,

Genes that do not have the "Most Annotated" start:

- 8UZL_4, Agatha_1, AikoCarson_1, Akhila_2, Amok_1, AndPeggy_1, Angelique_1, Apiary_1, Apricot_1, Arti_1, Axym_1, Azira_2, Babsiella_1, BearBQ_1, BeeGee_1, Beelzebub_37, BiPauneto_1, BigChungus_1, BillDoor_1, Birdsong_1, Biskit_1, Blackbeetle_33, Bonum_1, Bradissa_1, Braxoaddie_1, BritBrat_1, Brujita_1, Buggaboo_1, Burnsey_1, Button_1, Buttrmlkdreams_1, Caprice_30, CaptainTrips_2, Carsonalex_1, Cashline_1, CherryonLim_1, ChewyVIII_1, Clarkson_34, Cleo_2, CoffeeBean_1, Commandaria_1, Confidence_1, Corazon_31, Cornie_1, Cozz_1, Crater_1, DS6A_1, Dalilpop_1, Dre3_2, EMSquaredA_1, Elinal_1, Elliott_1, Emalyn_1, Emianna_1, EnalisNailo_1, Ennea_1, FF47_04, Farewell_1, Feastonyeet_1, FeliMaine_33, Flapper_1, Float294_1, Floof_1, Floral_1, Foxboro_1, Fribs8_2, Fury_1, GRU1_84, GTE2_01, GTE5_83, GTE8_82, Gaia_1, Gattaca_32, GiKK_1, Gibbous_2, GoldHunter_1, Gretchen_1, GrootJr_2, GuyFagieri_1, HC_01, Hexbug_1, HippoPololi_2, Honk_1, Horseradish_1, HubbaBubba_1, Huphlepuuff_35, IDyn_2, Ibantik_65, Island3_1, Jablanski_1, JacoRen57_1, Jamzy_1, Jifall16_1, JoieB_34, Kabluna_1, KayGee_1, KidneyBean_1, Krakatau_2, KristaRAM_2, Kurt_1, Kuwabara_1, Lauer_1, Lilas_1, Lilbit_34, LittleLaf_33, Lollipop1437_1, LonelyBoi_1, LunaStella_1, MAnor_1, MScarn_1, MaVan_2, Mabodamaca_1, MacGully_1, Maco6_2, Margaret_1, Marietta_1, Marteena_1, Marvin_31, Maselop_1, Mayweather_2, MerCougar_1, MilanaBonita_2, MilleniumForce_2, MinionDave_2, MortyNRick_1, MosMoris_31, Muddy_4, MunkgeeRoachy_1, NadineRae_1, NatB6_2, Nebkiss_1, Nibbles_2, Nina_1, Nitzel_2, NoShow_1, Nodigi_1, NosilaM_1, NovumRegina_2, Orla_1, Outis_1, Patio_2, Phomeo_1, Pleakley_1, Poise_33, Pollux_1, Polyuyuki_1, Pons_1, Ponzi_40, Posh_1, PotPie_1, Pringar_33, PsychoKiller_1, Pytheas_1, Quasar_1, QueenHazel_1, Raela_33, RanchParmCat_1, RedBaron_1, RedRaider77_33, Renaud18_1, SPB78_1, Samy_4, SheckWes_1, SketchMex_1, Skysand_1, Sopespian_1, Sparky_1, StarStruck_1, SteamedHams_1, Success_49, Sukkupi_1, SummitAcademy_1, SuperSulley_1, Survivors_2, SweatNTears_2, TChen_1, Tesla_32, ThetaBob_1, Tolls_1, Toron_1, Tracker_1, Troje_1, Turuncu_1, Typhonmochy_1, VWB_1, VasuNzinga_33, Vine_2, Wheezy_1, WhoseManz_1, Wrigley_1, Xula_1, Yakult_1, Yarn_1, Yndexa_1, Yummy_1, Zareef_2,

Summary by start number:

Start 12:

- Found in 1 of 359 (0.3%) of genes in pham
- Manual Annotations of this start: 1 of 327
- Called 100.0% of time when present
- Phage (with cluster) where this start called: Farewell_1 (AF),

Start 17:

- Found in 1 of 359 (0.3%) of genes in pham
- Manual Annotations of this start: 1 of 327

- Called 100.0% of time when present
- Phage (with cluster) where this start called: Cleo_2 (CT),

Start 21:

- Found in 3 of 359 (0.8%) of genes in pham
- No Manual Annotations of this start.
- Called 33.3% of time when present
- Phage (with cluster) where this start called: GTE5_83 (CR1),

Start 29:

- Found in 4 of 359 (1.1%) of genes in pham
- Manual Annotations of this start: 1 of 327
- Called 25.0% of time when present
- Phage (with cluster) where this start called: NoShow_1 (AB),

Start 30:

- Found in 20 of 359 (5.6%) of genes in pham
- Manual Annotations of this start: 6 of 327
- Called 30.0% of time when present
- Phage (with cluster) where this start called: Apiary_1 (CR), Braxoaddie_1 (CR), CoffeeBean_1 (CR), MacGully_1 (CR), Maselop_1 (CR), Polyuyuki_1 (CR),

Start 32:

- Found in 41 of 359 (11.4%) of genes in pham
- Manual Annotations of this start: 36 of 327
- Called 97.6% of time when present
- Phage (with cluster) where this start called: Arti_1 (CR2), BiPauneto_1 (CR4), Buggaboo_1 (CR2), ChewyVIII_1 (singleton), Commandaria_1 (CR2), Dalilpop_1 (CR1), Emianna_1 (CR2), Ennea_1 (CR3), Flapper_1 (CR1), Float294_1 (CR3), Foxboro_1 (CR2), Fury_1 (CR5), GRU1_84 (CR1), GTE8_82 (CR2), GrootJr_2 (CR2), HubbaBubba_1 (CR4), IDyn_2 (CR4), Jifall16_1 (CR2), KidneyBean_1 (CR2), Kurt_1 (CR2), Lollipop1437_1 (CR3), Marietta_1 (CR4), MerCougar_1 (CR2), NadineRae_1 (CR4), NatB6_2 (CR2), NosilaM_1 (CR2), NovumRegina_2 (CR2), Outis_1 (CR2), Patio_2 (CR3), Phomeo_1 (CR2), Pleakley_1 (CR5), Skysand_1 (CR3), StarStruck_1 (CR2), Sukkupi_1 (CR4), SuperSulley_1 (CR2), Tracker_1 (CR2), Turuncu_1 (CR1), Wheezy_1 (CR2), WhoseManz_1 (CR4), Yndexa_1 (CR4),

Start 33:

- Found in 2 of 359 (0.6%) of genes in pham
- Manual Annotations of this start: 1 of 327
- Called 50.0% of time when present
- Phage (with cluster) where this start called: Bonum_1 (CR2),

Start 34:

- Found in 1 of 359 (0.3%) of genes in pham
- Manual Annotations of this start: 1 of 327
- Called 100.0% of time when present
- Phage (with cluster) where this start called: GuyFagieri_1 (CR),

Start 36:

- Found in 18 of 359 (5.0%) of genes in pham
- Manual Annotations of this start: 1 of 327
- Called 5.6% of time when present

- Phage (with cluster) where this start called: Lilas_1 (CY1),

Start 37:

- Found in 4 of 359 (1.1%) of genes in pham
- Manual Annotations of this start: 1 of 327
- Called 25.0% of time when present
- Phage (with cluster) where this start called: Blackbeetle_33 (S),

Start 39:

- Found in 61 of 359 (17.0%) of genes in pham
- Manual Annotations of this start: 49 of 327
- Called 95.1% of time when present
- Phage (with cluster) where this start called: Agatha_1 (CT), AikoCarson_1 (CT), Amok_1 (CT), Angelique_1 (CY1), Axym_1 (CT), BeeGee_1 (CY), Biskit_1 (CT), Bradissa_1 (CY1), BritBrat_1 (CY2), Burnsey_1 (CT), Button_1 (CT), Buttrmilkdreams_1 (CT), Carsonalex_1 (CT), Cashline_1 (CY), Confidence_1 (CY1), Cozz_1 (CT), DS6A_1 (singleton), EMSquaredA_1 (CY1), Elliott_1 (CT), Emalyn_1 (CT), EnalisNailo_1 (CY1), Floral_1 (CY1), Gaia_1 (X), GiKK_1 (CT), GoldHunter_1 (CT), Hexbug_1 (CT), Horseradish_1 (CT), Jablanski_1 (CY), Jamzy_1 (CT), LonelyBoi_1 (CY), LunaStella_1 (F4), MScarn_1 (CT), Margaret_1 (CT), Marteena_1 (CY1), MunkgeeRoachy_1 (CT), Nebkiss_1 (X), Nina_1 (CT), Nodigi_1 (CT), Orla_1 (CT), Pollux_1 (CY1), Posh_1 (CY), PsychoKiller_1 (CT), Pytheas_1 (CY), Quasar_1 (CT), RanchParmCat_1 (CT), RedBaron_1 (CT), Renaud18_1 (F4), SketchMex_1 (CT), Sopespian_1 (CT), Sparky_1 (AF), TChen_1 (F4), ThetaBob_1 (F4), Toron_1 (F6), Troje_1 (CT), Typhonmarchy_1 (CT), Wrigley_1 (CY), Yakult_1 (CT), Yummy_1 (CT),

Start 40:

- Found in 4 of 359 (1.1%) of genes in pham
- Manual Annotations of this start: 1 of 327
- Called 50.0% of time when present
- Phage (with cluster) where this start called: Caprice_30 (S), Raela_33 (S),

Start 41:

- Found in 47 of 359 (13.1%) of genes in pham
- Manual Annotations of this start: 33 of 327
- Called 83.0% of time when present
- Phage (with cluster) where this start called: Apricot_1 (DN3), Azira_2 (CT), BearBQ_1 (DN), BigChungus_1 (CT), Birdsong_1 (DN), CherryonLim_1 (CT), Clarkson_34 (S), Corazon_31 (S), Cornie_1 (F5), Crater_1 (DN3), Dre3_2 (CT), Elinal_1 (CT), Feastonyet_1 (CT), FeliMaine_33 (S), Fribs8_2 (CT), Gattaca_32 (S), Gibbous_2 (CT), HippoPololi_2 (CT), Huphlepuuff_35 (S), KayGee_1 (CT), Kuwabara_1 (DN4), Lilbit_34 (S), LittleLaf_33 (S), MAnor_1 (CT), MaVan_2 (CT), MortyNRick_1 (DN), Nibbles_2 (CT), Pons_1 (CT), PotPie_1 (CT), Pringar_33 (S), RedRaider77_33 (S), SPB78_1 (BA), SummitAcademy_1 (CT), Survivors_2 (CT), Tesla_32 (S), VWB_1 (BA), VasuNzinga_33 (S), Vine_2 (CT), Zareef_2 (CT),

Start 42:

- Found in 6 of 359 (1.7%) of genes in pham
- Manual Annotations of this start: 5 of 327
- Called 100.0% of time when present
- Phage (with cluster) where this start called: AndPeggy_1 (CT), BillDoor_1 (CT), GTE2_01 (CT), SteamedHams_1 (CT), Tolls_1 (CT), Yarn_1 (CT),

Start 46:

- Found in 2 of 359 (0.6%) of genes in pham
- Manual Annotations of this start: 2 of 327
- Called 100.0% of time when present
- Phage (with cluster) where this start called: Brujita_1 (I1), Island3_1 (I1),

Start 47:

- Found in 17 of 359 (4.7%) of genes in pham
- Manual Annotations of this start: 12 of 327
- Called 82.4% of time when present
- Phage (with cluster) where this start called: 8UZL_4 (AB), Babsiella_1 (I1), FF47_04 (AB), Floof_1 (EH), Gretchen_1 (EH), HC_01 (I1), Honk_1 (EH), JacoRen57_1 (AB), Maco6_2 (AB), Muddy_4 (AB), Percival_1 (EH), QueenHazel_1 (I1), Samy_4 (singleton), Xula_1 (I1),

Start 48:

- Found in 11 of 359 (3.1%) of genes in pham
- Manual Annotations of this start: 8 of 327
- Called 81.8% of time when present
- Phage (with cluster) where this start called: Akhila_2 (F1), CaptainTrips_2 (F1), Ibantik_65 (singleton), KristaRAM_2 (F1), MilanaBonita_2 (F1), MilleniumForce_2 (F1), Nitzel_2 (F1), Ponzi_40 (singleton), Success_49 (singleton),

Start 50:

- Found in 163 of 359 (45.4%) of genes in pham
- Manual Annotations of this start: 147 of 327
- Called 91.4% of time when present
- Phage (with cluster) where this start called: AlpineSix_1 (F1), ArcusAngelus_1 (F1), Ardmore_1 (F1), Aubs_1 (F1), Batiatus_1 (F1), Bipolar_1 (F1), Blexus_1 (F1), BlueCrab_1 (F1), BobaPhett_1 (F1), BodEinwohner17_1 (F1), Brocalys_1 (F1), Bubbles123_1 (F1), Burwell21_1 (F1), ByChance_1 (F1), Cabrinians_1 (F1), Che8_1 (F1), Chevrolet_1 (F1), Chuckly_1 (F1), Clifton_1 (F1), Crumble_1 (F1), DLane_1 (F1), DRBy19_1 (F1), Daenerys_1 (F1), Dante_1 (F1), DeadP_1 (F1), Deb65_1 (F1), DillTech15_1 (F1), Donkeykong_1 (F1), Doomphist_1 (F1), Dorothy_1 (F1), DotProduct_1 (F1), Doug_1 (F1), Eish_1 (F1), EleanorGeorge_1 (F1), Emma_1 (F1), Empress_1 (F1), Eradicator_1 (F1), Estave1_1 (F1), Fancypants_1 (F1), Filuzino_1 (F1), Firehouse51_1 (F1), Florinda_1 (F1), FreddyB_1 (F1), Fruitloop_1 (F1), GAL1_2 (singleton), GUmbe_1 (F1), Galactic_1 (F1), Gandalph_1 (F1), Geralt_1 (F1), GigiOuiOui_1 (F1), Girr_1 (F1), Gorge_1 (F1), Guppsters_1 (F1), Hades_1 (F1), Hamulus_1 (F1), Harley_1 (F1), Hlubikazi_1 (F1), Ibhubes_1 (F1), Inventum_1 (F1), IrishSherpFalk_1 (F1), James_1 (F1), Jarcob_1 (F1), Jinglebell_1 (F1), JoeyJr_1 (F1), Karhdo_1 (F1), Kersh_1 (F1), KingMidas_1 (F1), Koella_1 (F1), LastJedi_1 (F1), Latretium_1 (F1), Leperchaun_1 (F1), LilMoolah_1 (F1), Lizziana_1 (F1), Llama_1 (F1), Llij_1 (F1), MadMen_1 (F1), Mahavrat_1 (F1), Mandlovu_1 (F1), Mantra_1 (F1), Maravista_1 (F1), Martik_1 (F1), Mattes_1 (F1), Melissauren88_1 (F1), MisterCuddles_1 (F1), Modragons_1 (F1), Moonbeam_1 (F1), Mutaforma13_1 (F1), Nimbo_1 (F1), Nivrat_1 (F1), NormanBulbieJr_1 (F1), Ochi17_1 (F1), OfUltron_1 (F1), OldBen_1 (F1), OlympiaSaint_1 (F1), Ovechkin_1 (F1), PHappiness_1 (F1), PMC_1 (F1), Pacc40_1 (F1), Phanphagia_1 (F1), Phasih_1 (F1), Phatniss_1 (F1), PhesterPhotato_1 (F1), Philus_1 (F1), Pippy_1 (F1), Poenanya_1 (F1), Polka14_1 (F1), PopTart_1 (F1), Priscilla_1 (F1), QuickMath_1 (F1), Radiance_1 (F1), RedBird_1 (F1), RitaG_1 (F1), Rita_1 (F1), Rockne_1 (F1),

Royals2015_1 (F1), Ruby_1 (F1), SG4_1 (F1), Saal_1 (F1), Sabb_1 (F1), Sandalphon_1 (F1), Sassafras_1 (F1), SassyB_1 (F1), Scottish_1 (F1), Seabastian_1 (F1), Shauna1_1 (F1), ShiLan_1 (F1), ShowerHandel_1 (F1), ShroomBoi_1 (F1), SiSi_1 (F1), Sparkdehlily_1 (F1), Spartacus_1 (F1), Spoonbill_1 (F1), StAnnes_1 (F1), Strokeseat_1 (F1), SuperGrey_1 (F1), SwagPigglett_1 (F1), TDanisky_1 (F1), Taj_1 (F1), Tweety_1 (F1), VRedHorse_1 (F1), Veteran_1 (F1), Wachhund_1 (F1), Wee_1 (F1), Whatsapiecost_1 (F1), Whouxphf_1 (F1), WillSterrel_1 (F1), XFactor_1 (F1), Yorick_1 (F1), Zizzle_1 (F1),

Start 52:

- Found in 39 of 359 (10.9%) of genes in pham
- Manual Annotations of this start: 2 of 327
- Called 5.1% of time when present
- Phage (with cluster) where this start called: Mayweather_2 (CT), SheckWes_1 (CT),

Start 53:

- Found in 1 of 359 (0.3%) of genes in pham
- Manual Annotations of this start: 1 of 327
- Called 100.0% of time when present
- Phage (with cluster) where this start called: Mabodamaca_1 (EH),

Start 59:

- Found in 172 of 359 (47.9%) of genes in pham
- Manual Annotations of this start: 8 of 327
- Called 5.8% of time when present
- Phage (with cluster) where this start called: DaddyRickover_1 (F1), Fastidio_1 (F1), Kenuha5_1 (F1), Krakatau_2 (F1), LunaBlu_1 (F1), MinionDave_2 (F1), Minnie_1 (F1), MulchSalad_1 (F), Phalconet_1 (F1), Zerg_1 (F1),

Start 63:

- Found in 33 of 359 (9.2%) of genes in pham
- Manual Annotations of this start: 1 of 327
- Called 3.0% of time when present
- Phage (with cluster) where this start called: SweatNTears_2 (CT),

Start 68:

- Found in 16 of 359 (4.5%) of genes in pham
- Manual Annotations of this start: 1 of 327
- Called 6.2% of time when present
- Phage (with cluster) where this start called: Lauer_1 (CT),

Start 69:

- Found in 25 of 359 (7.0%) of genes in pham
- Manual Annotations of this start: 5 of 327
- Called 20.0% of time when present
- Phage (with cluster) where this start called: Beelzebub_37 (S), JoieB_34 (S), Marvin_31 (S), MosMoris_31 (S), Poise_33 (S),

Start 71:

- Found in 171 of 359 (47.6%) of genes in pham
- Manual Annotations of this start: 1 of 327
- Called 1.2% of time when present
- Phage (with cluster) where this start called: IbOuu_1 (F1), Kabluna_1 (CR2),

Start 76:

- Found in 177 of 359 (49.3%) of genes in pham
- Manual Annotations of this start: 2 of 327
- Called 2.3% of time when present
- Phage (with cluster) where this start called: Byougenkin_1 (F1), IMpilo_1 (F1), Juniper1_1 (F1), Ms6_1 (F1),

Summary by clusters:

There are 26 clusters represented in this pham: DN, singleton, BA, X, I1, AF, DN4, DN3, CT, CY2, CY1, AB, EH, F, CR3, CY, CR, F5, CR2, F1, CR1, F4, F6, CR4, CR5, S,

Info for manual annotations of cluster AB:

- Start number 29 was manually annotated 1 time for cluster AB.
- Start number 47 was manually annotated 3 times for cluster AB.

Info for manual annotations of cluster AF:

- Start number 12 was manually annotated 1 time for cluster AF.
- Start number 39 was manually annotated 1 time for cluster AF.

Info for manual annotations of cluster CR:

- Start number 30 was manually annotated 6 times for cluster CR.
- Start number 34 was manually annotated 1 time for cluster CR.

Info for manual annotations of cluster CR1:

- Start number 32 was manually annotated 3 times for cluster CR1.

Info for manual annotations of cluster CR2:

- Start number 32 was manually annotated 18 times for cluster CR2.
- Start number 33 was manually annotated 1 time for cluster CR2.
- Start number 71 was manually annotated 1 time for cluster CR2.

Info for manual annotations of cluster CR3:

- Start number 32 was manually annotated 5 times for cluster CR3.

Info for manual annotations of cluster CR4:

- Start number 32 was manually annotated 7 times for cluster CR4.

Info for manual annotations of cluster CR5:

- Start number 32 was manually annotated 2 times for cluster CR5.

Info for manual annotations of cluster CT:

- Start number 17 was manually annotated 1 time for cluster CT.
- Start number 39 was manually annotated 25 times for cluster CT.
- Start number 41 was manually annotated 18 times for cluster CT.
- Start number 42 was manually annotated 5 times for cluster CT.
- Start number 52 was manually annotated 2 times for cluster CT.
- Start number 63 was manually annotated 1 time for cluster CT.
- Start number 68 was manually annotated 1 time for cluster CT.

Info for manual annotations of cluster CY:

- Start number 39 was manually annotated 7 times for cluster CY.

Info for manual annotations of cluster CY1:

- Start number 36 was manually annotated 1 time for cluster CY1.
- Start number 39 was manually annotated 8 times for cluster CY1.

Info for manual annotations of cluster CY2:

- Start number 39 was manually annotated 1 time for cluster CY2.

Info for manual annotations of cluster DN:

- Start number 41 was manually annotated 2 times for cluster DN.

Info for manual annotations of cluster DN3:

- Start number 41 was manually annotated 2 times for cluster DN3.

Info for manual annotations of cluster DN4:

- Start number 41 was manually annotated 1 time for cluster DN4.

Info for manual annotations of cluster EH:

- Start number 47 was manually annotated 4 times for cluster EH.
- Start number 53 was manually annotated 1 time for cluster EH.

Info for manual annotations of cluster F1:

- Start number 48 was manually annotated 6 times for cluster F1.
- Start number 50 was manually annotated 147 times for cluster F1.
- Start number 59 was manually annotated 8 times for cluster F1.
- Start number 76 was manually annotated 2 times for cluster F1.

Info for manual annotations of cluster F4:

- Start number 39 was manually annotated 4 times for cluster F4.

Info for manual annotations of cluster F5:

- Start number 41 was manually annotated 1 time for cluster F5.

Info for manual annotations of cluster I1:

- Start number 46 was manually annotated 2 times for cluster I1.
- Start number 47 was manually annotated 4 times for cluster I1.

Info for manual annotations of cluster S:

- Start number 37 was manually annotated 1 time for cluster S.
- Start number 40 was manually annotated 1 time for cluster S.
- Start number 41 was manually annotated 9 times for cluster S.
- Start number 69 was manually annotated 5 times for cluster S.

Info for manual annotations of cluster X:

- Start number 39 was manually annotated 2 times for cluster X.

Gene Information:

Gene: 8UZL_4 Start: 1322, Stop: 1795, Start Num: 47

Candidate Starts for 8UZL_4:

(27, 1274), (Start: 47 @1322 has 12 MA's), (66, 1385), (Start: 68 @1388 has 1 MA's), (Start: 76 @1418 has 2 MA's), (105, 1520), (161, 1745), (173, 1766), (176, 1775),

Gene: Agatha_1 Start: 52, Stop: 543, Start Num: 39

Candidate Starts for Agatha_1:

(26, 22), (Start: 39 @52 has 49 MA's), (Start: 52 @97 has 2 MA's), (81, 187), (98, 223), (101, 241), (106, 271), (123, 319), (134, 364),

Gene: AikoCarson_1 Start: 52, Stop: 531, Start Num: 39

Candidate Starts for AikoCarson_1:

(26, 22), (Start: 39 @52 has 49 MA's), (Start: 52 @97 has 2 MA's), (81, 187), (101, 241), (106, 271), (123, 319), (134, 364), (143, 412), (179, 526),

Gene: Akhila_2 Start: 754, Stop: 1212, Start Num: 48

Candidate Starts for Akhila_2:

(Start: 48 @754 has 8 MA's), (Start: 59 @784 has 8 MA's), (Start: 71 @823 has 1 MA's), (Start: 76 @841 has 2 MA's), (84, 856), (90, 868), (92, 871), (95, 883), (97, 889), (103, 922), (111, 967), (113, 973), (114, 976), (139, 1072), (162, 1162), (177, 1204),

Gene: AlpineSix_1 Start: 109, Stop: 564, Start Num: 50

Candidate Starts for AlpineSix_1:

(Start: 50 @109 has 147 MA's), (Start: 59 @136 has 8 MA's), (Start: 71 @175 has 1 MA's), (Start: 76 @193 has 2 MA's), (77, 196), (95, 235), (97, 241), (103, 274), (109, 310), (111, 319), (113, 325), (131, 388), (162, 514), (177, 556),

Gene: Amok_1 Start: 53, Stop: 532, Start Num: 39

Candidate Starts for Amok_1:

(Start: 39 @53 has 49 MA's), (Start: 52 @98 has 2 MA's), (81, 188), (101, 242), (106, 272), (123, 320), (134, 365), (143, 413), (179, 527),

Gene: AndPeggy_1 Start: 59, Stop: 535, Start Num: 42

Candidate Starts for AndPeggy_1:

(23, 14), (Start: 42 @59 has 5 MA's), (55, 107), (81, 188), (101, 242), (106, 272), (134, 365), (143, 413), (178, 524),

Gene: Angelique_1 Start: 82, Stop: 504, Start Num: 39

Candidate Starts for Angelique_1:

(Start: 36 @73 has 1 MA's), (Start: 39 @82 has 49 MA's), (93, 226), (102, 265), (145, 436), (150, 472), (153, 481),

Gene: Apiary_1 Start: 110, Stop: 667, Start Num: 30

Candidate Starts for Apiary_1:

(Start: 30 @110 has 6 MA's), (49, 161), (58, 188), (Start: 63 @212 has 1 MA's), (74, 245), (103, 326), (108, 353), (125, 413), (175, 608),

Gene: Apricot_1 Start: 50, Stop: 484, Start Num: 41

Candidate Starts for Apricot_1:

(Start: 41 @50 has 33 MA's), (66, 125), (Start: 69 @134 has 5 MA's), (79, 167), (81, 170), (100, 218), (106, 254), (110, 272), (126, 317), (134, 347), (141, 386),

Gene: ArcusAngelus_1 Start: 110, Stop: 565, Start Num: 50

Candidate Starts for ArcusAngelus_1:

(Start: 30 @50 has 6 MA's), (Start: 50 @110 has 147 MA's), (Start: 59 @137 has 8 MA's), (Start: 71 @176 has 1 MA's), (Start: 76 @194 has 2 MA's), (77, 197), (90, 221), (92, 224), (95, 236), (97, 242), (103, 275), (109, 311), (111, 320), (113, 326), (114, 329), (131, 389), (141, 440), (175, 548), (177, 557),

Gene: Ardmore_1 Start: 109, Stop: 564, Start Num: 50

Candidate Starts for Ardmore_1:

(Start: 50 @109 has 147 MA's), (Start: 59 @136 has 8 MA's), (Start: 71 @175 has 1 MA's), (Start: 76 @193 has 2 MA's), (84, 208), (90, 220), (92, 223), (95, 235), (97, 241), (103, 274), (111, 319), (113, 325), (114, 328), (139, 424), (162, 514), (177, 556),

Gene: Arti_1 Start: 158, Stop: 715, Start Num: 32

Candidate Starts for Arti_1:

(Start: 32 @158 has 36 MA's), (83, 317), (97, 362), (103, 395), (118, 461), (125, 482), (139, 548), (181, 707),

Gene: Aubs_1 Start: 109, Stop: 564, Start Num: 50

Candidate Starts for Aubs_1:

(Start: 50 @109 has 147 MA's), (Start: 59 @136 has 8 MA's), (Start: 71 @175 has 1 MA's), (Start: 76 @193 has 2 MA's), (84, 208), (90, 220), (92, 223), (95, 235), (97, 241), (103, 274), (111, 319), (113, 325), (114, 328), (139, 424), (141, 439), (162, 514), (177, 556),

Gene: Axym_1 Start: 52, Stop: 543, Start Num: 39

Candidate Starts for Axym_1:

(26, 22), (Start: 39 @52 has 49 MA's), (Start: 52 @97 has 2 MA's), (81, 187), (98, 223), (101, 241), (106, 271), (123, 319), (134, 364),

Gene: Azira_2 Start: 425, Stop: 922, Start Num: 41

Candidate Starts for Azira_2:

(28, 398), (Start: 41 @425 has 33 MA's), (Start: 63 @506 has 1 MA's), (106, 659), (111, 680), (134, 752), (141, 791), (171, 899),

Gene: Babsiella_1 Start: 67, Stop: 540, Start Num: 47

Candidate Starts for Babsiella_1:

(Start: 29 @16 has 1 MA's), (Start: 47 @67 has 12 MA's), (73, 151), (85, 187), (111, 292), (117, 304), (118, 307), (127, 340), (132, 352), (141, 403), (170, 499), (174, 508),

Gene: Batiatus_1 Start: 109, Stop: 564, Start Num: 50

Candidate Starts for Batiatus_1:

(Start: 50 @109 has 147 MA's), (Start: 59 @136 has 8 MA's), (Start: 71 @175 has 1 MA's), (Start: 76 @193 has 2 MA's), (84, 208), (90, 220), (92, 223), (95, 235), (97, 241), (103, 274), (111, 319), (113, 325), (114, 328), (139, 424), (162, 514), (177, 556),

Gene: BearBQ_1 Start: 50, Stop: 484, Start Num: 41

Candidate Starts for BearBQ_1:

(Start: 41 @50 has 33 MA's), (66, 125), (Start: 69 @134 has 5 MA's), (79, 167), (81, 170), (100, 218), (106, 254), (110, 272), (126, 317), (134, 347), (141, 386),

Gene: BeeGee_1 Start: 82, Stop: 504, Start Num: 39

Candidate Starts for BeeGee_1:

(Start: 36 @73 has 1 MA's), (Start: 39 @82 has 49 MA's), (93, 226), (102, 265), (118, 325), (145, 436), (150, 472), (153, 481),

Gene: Beelzebub_37 Start: 10803, Stop: 11156, Start Num: 69

Candidate Starts for Beelzebub_37:

(4, 10587), (Start: 41 @10722 has 33 MA's), (Start: 69 @10803 has 5 MA's), (107, 10923), (117, 10953), (134, 11013), (166, 11148),

Gene: BiPauneto_1 Start: 159, Stop: 710, Start Num: 32

Candidate Starts for BiPauneto_1:

(Start: 32 @159 has 36 MA's), (61, 258), (103, 387), (118, 453), (125, 474), (139, 540), (181, 702),

Gene: BigChungus_1 Start: 56, Stop: 547, Start Num: 41

Candidate Starts for BigChungus_1:

(Start: 41 @56 has 33 MA's), (Start: 52 @98 has 2 MA's), (Start: 68 @146 has 1 MA's), (97, 221), (98, 224), (106, 272), (133, 359), (134, 365), (141, 404), (143, 413), (146, 434),

Gene: BillDoor_1 Start: 59, Stop: 535, Start Num: 42

Candidate Starts for BillDoor_1:

(23, 14), (Start: 42 @59 has 5 MA's), (55, 107), (81, 188), (101, 242), (106, 272), (134, 365), (143, 413), (178, 524),

Gene: Bipolar_1 Start: 109, Stop: 564, Start Num: 50

Candidate Starts for Bipolar_1:

(Start: 50 @109 has 147 MA's), (Start: 59 @136 has 8 MA's), (Start: 71 @175 has 1 MA's), (Start: 76 @193 has 2 MA's), (84, 208), (90, 220), (92, 223), (95, 235), (97, 241), (103, 274), (111, 319), (113, 325), (114, 328), (139, 424), (141, 439), (162, 514), (177, 556),

Gene: Birdsong_1 Start: 50, Stop: 484, Start Num: 41

Candidate Starts for Birdsong_1:

(Start: 41 @50 has 33 MA's), (66, 125), (Start: 69 @134 has 5 MA's), (79, 167), (81, 170), (100, 218), (106, 254), (110, 272), (126, 317), (134, 347), (141, 386),

Gene: Biskit_1 Start: 52, Stop: 534, Start Num: 39

Candidate Starts for Biskit_1:

(26, 22), (Start: 39 @52 has 49 MA's), (Start: 52 @97 has 2 MA's), (81, 187), (98, 223), (101, 241), (106, 271), (134, 364), (143, 412), (178, 523),

Gene: Blackbeetle_33 Start: 9732, Stop: 10175, Start Num: 37

Candidate Starts for Blackbeetle_33:

(Start: 37 @9732 has 1 MA's), (Start: 40 @9741 has 1 MA's), (Start: 69 @9822 has 5 MA's), (107, 9942), (117, 9972), (134, 10032), (166, 10167),

Gene: Blexus_1 Start: 109, Stop: 564, Start Num: 50

Candidate Starts for Blexus_1:

(Start: 50 @109 has 147 MA's), (Start: 59 @136 has 8 MA's), (Start: 71 @175 has 1 MA's), (Start: 76 @193 has 2 MA's), (84, 208), (90, 220), (92, 223), (95, 235), (97, 241), (103, 274), (111, 319), (113, 325), (114, 328), (139, 424), (141, 439), (162, 514), (177, 556),

Gene: BlueCrab_1 Start: 108, Stop: 563, Start Num: 50

Candidate Starts for BlueCrab_1:

(Start: 50 @108 has 147 MA's), (Start: 59 @135 has 8 MA's), (Start: 71 @174 has 1 MA's), (Start: 76 @192 has 2 MA's), (77, 195), (95, 234), (97, 240), (103, 273), (109, 309), (111, 318), (113, 324), (131, 387), (162, 513), (175, 546), (177, 555),

Gene: BobaPhett_1 Start: 109, Stop: 564, Start Num: 50

Candidate Starts for BobaPhett_1:

(Start: 50 @109 has 147 MA's), (Start: 59 @136 has 8 MA's), (Start: 71 @175 has 1 MA's), (Start: 76 @193 has 2 MA's), (77, 196), (84, 208), (95, 235), (97, 241), (103, 274), (109, 310), (111, 319), (113, 325), (114, 328), (131, 388), (175, 547), (177, 556),

Gene: BodEinwohner17_1 Start: 108, Stop: 563, Start Num: 50

Candidate Starts for BodEinwohner17_1:

(Start: 50 @108 has 147 MA's), (Start: 59 @135 has 8 MA's), (Start: 71 @174 has 1 MA's), (Start: 76 @192 has 2 MA's), (77, 195), (95, 234), (97, 240), (103, 273), (109, 309), (111, 318), (113, 324), (131, 387), (162, 513), (175, 546), (177, 555),

Gene: Bonum_1 Start: 160, Stop: 708, Start Num: 33

Candidate Starts for Bonum_1:

(20, 124), (Start: 33 @160 has 1 MA's), (55, 235), (Start: 71 @289 has 1 MA's), (97, 355), (103, 388), (115, 445), (118, 454), (124, 469), (125, 475), (139, 541), (181, 700),

Gene: Bradissa_1 Start: 82, Stop: 504, Start Num: 39

Candidate Starts for Bradissa_1:

(Start: 36 @73 has 1 MA's), (Start: 39 @82 has 49 MA's), (93, 226), (102, 265), (118, 325), (145, 436), (150, 472), (153, 481),

Gene: Braxoaddie_1 Start: 110, Stop: 667, Start Num: 30

Candidate Starts for Braxoaddie_1:

(Start: 30 @110 has 6 MA's), (49, 161), (58, 188), (Start: 59 @191 has 8 MA's), (Start: 63 @212 has 1 MA's), (74, 245), (103, 326), (108, 353), (125, 413), (175, 608),

Gene: BritBrat_1 Start: 82, Stop: 504, Start Num: 39

Candidate Starts for BritBrat_1:

(Start: 36 @73 has 1 MA's), (Start: 39 @82 has 49 MA's), (93, 226), (102, 265), (118, 325), (145, 436), (150, 472), (153, 481),

Gene: Brocalys_1 Start: 109, Stop: 564, Start Num: 50

Candidate Starts for Brocalys_1:

(Start: 50 @109 has 147 MA's), (Start: 59 @136 has 8 MA's), (Start: 71 @175 has 1 MA's), (Start: 76 @193 has 2 MA's), (77, 196), (95, 235), (97, 241), (103, 274), (109, 310), (111, 319), (113, 325), (131, 388), (162, 514), (175, 547), (177, 556),

Gene: Brujita_1 Start: 62, Stop: 541, Start Num: 46

Candidate Starts for Brujita_1:

(28, 14), (Start: 46 @62 has 2 MA's), (Start: 47 @68 has 12 MA's), (73, 152), (111, 293), (117, 305), (118, 308), (127, 341), (153, 458), (174, 509),

Gene: Bubbles123_1 Start: 109, Stop: 564, Start Num: 50

Candidate Starts for Bubbles123_1:

(Start: 50 @109 has 147 MA's), (Start: 59 @136 has 8 MA's), (Start: 71 @175 has 1 MA's), (Start: 76 @193 has 2 MA's), (84, 208), (90, 220), (92, 223), (95, 235), (97, 241), (103, 274), (111, 319), (113, 325), (114, 328), (139, 424), (141, 439), (162, 514), (177, 556),

Gene: Buggaboo_1 Start: 157, Stop: 702, Start Num: 32

Candidate Starts for Buggaboo_1:

(Start: 32 @157 has 36 MA's), (Start: 63 @265 has 1 MA's), (103, 382), (118, 448), (125, 469), (139, 535), (181, 694),

Gene: Burnsey_1 Start: 52, Stop: 543, Start Num: 39

Candidate Starts for Burnsey_1:

(26, 22), (Start: 39 @52 has 49 MA's), (Start: 52 @97 has 2 MA's), (81, 187), (98, 223), (106, 271), (123, 319), (134, 364),

Gene: Burwell21_1 Start: 108, Stop: 563, Start Num: 50

Candidate Starts for Burwell21_1:

(Start: 50 @108 has 147 MA's), (Start: 59 @135 has 8 MA's), (Start: 71 @174 has 1 MA's), (Start: 76 @192 has 2 MA's), (77, 195), (95, 234), (97, 240), (103, 273), (111, 318), (113, 324), (131, 387), (162, 513), (175, 546), (177, 555),

Gene: Button_1 Start: 50, Stop: 505, Start Num: 39

Candidate Starts for Button_1:

(Start: 39 @50 has 49 MA's), (106, 263), (134, 356), (143, 404), (169, 491),

Gene: Buttrmlkdreams_1 Start: 53, Stop: 535, Start Num: 39

Candidate Starts for Buttrmlkdreams_1:

(23, 14), (Start: 39 @53 has 49 MA's), (Start: 52 @98 has 2 MA's), (81, 188), (101, 242), (106, 272), (134, 365), (143, 413), (178, 524),

Gene: ByChance_1 Start: 110, Stop: 565, Start Num: 50

Candidate Starts for ByChance_1:

(Start: 30 @50 has 6 MA's), (Start: 50 @110 has 147 MA's), (Start: 59 @137 has 8 MA's), (Start: 71 @176 has 1 MA's), (Start: 76 @194 has 2 MA's), (77, 197), (84, 209), (95, 236), (97, 242), (103, 275), (109, 311), (111, 320), (113, 326), (131, 389), (139, 425), (141, 440), (162, 515), (175, 548), (177, 557),

Gene: Byougenkin_1 Start: 193, Stop: 564, Start Num: 76

Candidate Starts for Byougenkin_1:

(Start: 50 @109 has 147 MA's), (Start: 59 @136 has 8 MA's), (Start: 71 @175 has 1 MA's), (Start: 76 @193 has 2 MA's), (77, 196), (95, 235), (97, 241), (103, 274), (109, 310), (111, 319), (113, 325), (131, 388), (162, 514), (175, 547), (177, 556),

Gene: Cabrinians_1 Start: 109, Stop: 564, Start Num: 50

Candidate Starts for Cabrinians_1:

(Start: 50 @109 has 147 MA's), (Start: 59 @136 has 8 MA's), (Start: 71 @175 has 1 MA's), (Start: 76 @193 has 2 MA's), (77, 196), (95, 235), (97, 241), (103, 274), (109, 310), (111, 319), (113, 325), (114, 328), (131, 388), (162, 514), (175, 547), (177, 556),

Gene: Caprice_30 Start: 9811, Stop: 10245, Start Num: 40

Candidate Starts for Caprice_30:

(24, 9775), (31, 9787), (Start: 37 @9802 has 1 MA's), (Start: 40 @9811 has 1 MA's), (Start: 69 @9892 has 5 MA's), (107, 10012), (117, 10042), (134, 10102), (166, 10237),

Gene: CaptainTrips_2 Start: 754, Stop: 1212, Start Num: 48

Candidate Starts for CaptainTrips_2:

(Start: 48 @754 has 8 MA's), (Start: 59 @784 has 8 MA's), (Start: 71 @823 has 1 MA's), (Start: 76 @841 has 2 MA's), (84, 856), (90, 868), (92, 871), (95, 883), (97, 889), (103, 922), (111, 967), (113, 973), (114, 976), (139, 1072), (141, 1087), (162, 1162), (177, 1204),

Gene: Carsonalex_1 Start: 52, Stop: 543, Start Num: 39

Candidate Starts for Carsonalex_1:

(26, 22), (Start: 39 @52 has 49 MA's), (Start: 52 @97 has 2 MA's), (81, 187), (98, 223), (101, 241), (106, 271), (123, 319), (134, 364), (179, 526),

Gene: Cashline_1 Start: 82, Stop: 504, Start Num: 39

Candidate Starts for Cashline_1:

(Start: 36 @73 has 1 MA's), (Start: 39 @82 has 49 MA's), (93, 226), (99, 250), (102, 265), (118, 325), (132, 370), (145, 436), (150, 472), (153, 481),

Gene: Che8_1 Start: 108, Stop: 563, Start Num: 50

Candidate Starts for Che8_1:

(Start: 50 @108 has 147 MA's), (Start: 59 @135 has 8 MA's), (Start: 71 @174 has 1 MA's), (Start: 76 @192 has 2 MA's), (77, 195), (92, 222), (95, 234), (97, 240), (103, 273), (109, 309), (111, 318), (113, 324), (131, 387), (162, 513), (175, 546), (177, 555),

Gene: CherryonLim_1 Start: 56, Stop: 547, Start Num: 41

Candidate Starts for CherryonLim_1:

(Start: 41 @56 has 33 MA's), (Start: 52 @98 has 2 MA's), (Start: 68 @146 has 1 MA's), (97, 221), (98, 224), (106, 272), (133, 359), (134, 365), (141, 404), (143, 413), (146, 434),

Gene: Chevrolet_1 Start: 110, Stop: 565, Start Num: 50

Candidate Starts for Chevrolet_1:

(Start: 30 @50 has 6 MA's), (Start: 50 @110 has 147 MA's), (Start: 59 @137 has 8 MA's), (Start: 71 @176 has 1 MA's), (Start: 76 @194 has 2 MA's), (77, 197), (90, 221), (92, 224), (95, 236), (97, 242), (103, 275), (109, 311), (111, 320), (113, 326), (114, 329), (131, 389), (141, 440), (175, 548), (177, 557),

Gene: ChewyVIII_1 Start: 141, Stop: 653, Start Num: 32

Candidate Starts for ChewyVIII_1:

(18, 99), (Start: 32 @141 has 36 MA's), (57, 222), (Start: 63 @249 has 1 MA's), (74, 270), (96, 315), (103, 351), (123, 429), (129, 459), (139, 504), (152, 582),

Gene: Chuckly_1 Start: 109, Stop: 564, Start Num: 50

Candidate Starts for Chuckly_1:

(Start: 50 @109 has 147 MA's), (Start: 59 @136 has 8 MA's), (Start: 71 @175 has 1 MA's), (Start: 76 @193 has 2 MA's), (84, 208), (90, 220), (92, 223), (95, 235), (97, 241), (103, 274), (111, 319), (113, 325), (114, 328), (139, 424), (141, 439), (162, 514), (177, 556),

Gene: Clarkson_34 Start: 10423, Stop: 10857, Start Num: 41

Candidate Starts for Clarkson_34:

(4, 10288), (Start: 41 @10423 has 33 MA's), (Start: 69 @10504 has 5 MA's), (107, 10624), (117, 10654), (134, 10714), (166, 10849),

Gene: Cleo_2 Start: 447, Stop: 983, Start Num: 17

Candidate Starts for Cleo_2:

(Start: 17 @447 has 1 MA's), (Start: 41 @498 has 33 MA's), (Start: 63 @579 has 1 MA's), (Start: 76 @618 has 2 MA's), (106, 732), (111, 753), (117, 765), (134, 825),

Gene: Clifton_1 Start: 109, Stop: 564, Start Num: 50

Candidate Starts for Clifton_1:

(Start: 50 @109 has 147 MA's), (Start: 59 @136 has 8 MA's), (Start: 71 @175 has 1 MA's), (Start: 76 @193 has 2 MA's), (77, 196), (95, 235), (97, 241), (103, 274), (109, 310), (111, 319), (113, 325), (114, 328), (131, 388), (162, 514), (175, 547), (177, 556),

Gene: CoffeeBean_1 Start: 110, Stop: 667, Start Num: 30

Candidate Starts for CoffeeBean_1:

(Start: 30 @110 has 6 MA's), (49, 161), (58, 188), (Start: 59 @191 has 8 MA's), (Start: 63 @212 has 1 MA's), (74, 245), (103, 326), (108, 353), (125, 413), (175, 608),

Gene: Commandaria_1 Start: 158, Stop: 700, Start Num: 32

Candidate Starts for Commandaria_1:

(Start: 32 @158 has 36 MA's), (Start: 63 @266 has 1 MA's), (103, 383), (119, 452), (125, 470), (139, 536), (181, 692),

Gene: Confidence_1 Start: 82, Stop: 504, Start Num: 39

Candidate Starts for Confidence_1:

(Start: 36 @73 has 1 MA's), (Start: 39 @82 has 49 MA's), (93, 226), (102, 265), (118, 325), (145, 436), (150, 472), (153, 481),

Gene: Corazon_31 Start: 10376, Stop: 10810, Start Num: 41

Candidate Starts for Corazon_31:

(4, 10241), (Start: 41 @10376 has 33 MA's), (Start: 69 @10457 has 5 MA's), (107, 10577), (117, 10607), (134, 10667), (166, 10802),

Gene: Cornie_1 Start: 85, Stop: 549, Start Num: 41

Candidate Starts for Cornie_1:

(Start: 41 @85 has 33 MA's), (60, 133), (Start: 63 @148 has 1 MA's), (66, 154), (72, 172), (Start: 76 @187 has 2 MA's), (89, 226), (100, 277), (103, 295), (123, 361), (126, 379), (128, 385), (130, 388), (132, 397), (133, 403), (134, 409), (136, 418), (164, 535), (167, 544),

Gene: Cozz_1 Start: 52, Stop: 543, Start Num: 39

Candidate Starts for Cozz_1:

(26, 22), (Start: 39 @52 has 49 MA's), (Start: 52 @97 has 2 MA's), (81, 187), (98, 223), (101, 241), (106, 271), (123, 319), (134, 364),

Gene: Crater_1 Start: 50, Stop: 484, Start Num: 41

Candidate Starts for Crater_1:

(Start: 41 @50 has 33 MA's), (66, 125), (Start: 69 @134 has 5 MA's), (79, 167), (81, 170), (100, 218), (106, 254), (110, 272), (126, 317), (134, 347), (141, 386),

Gene: Crumble_1 Start: 110, Stop: 565, Start Num: 50

Candidate Starts for Crumble_1:

(Start: 30 @50 has 6 MA's), (Start: 50 @110 has 147 MA's), (Start: 59 @137 has 8 MA's), (Start: 71 @176 has 1 MA's), (Start: 76 @194 has 2 MA's), (77, 197), (84, 209), (95, 236), (97, 242), (103, 275), (109, 311), (111, 320), (113, 326), (114, 329), (131, 389), (162, 515), (175, 548), (177, 557),

Gene: DLane_1 Start: 109, Stop: 564, Start Num: 50

Candidate Starts for DLane_1:

(Start: 50 @109 has 147 MA's), (Start: 59 @136 has 8 MA's), (Start: 71 @175 has 1 MA's), (Start: 76 @193 has 2 MA's), (84, 208), (90, 220), (92, 223), (95, 235), (97, 241), (103, 274), (111, 319), (113, 325), (114, 328), (139, 424), (141, 439), (162, 514), (177, 556),

Gene: DRBy19_1 Start: 110, Stop: 565, Start Num: 50

Candidate Starts for DRBy19_1:

(Start: 50 @110 has 147 MA's), (Start: 59 @137 has 8 MA's), (Start: 71 @176 has 1 MA's), (Start: 76 @194 has 2 MA's), (77, 197), (95, 236), (97, 242), (103, 275), (109, 311), (111, 320), (113, 326), (114, 329), (131, 389), (162, 515), (177, 557),

Gene: DS6A_1 Start: 246, Stop: 680, Start Num: 39

Candidate Starts for DS6A_1:

(Start: 39 @246 has 49 MA's), (51, 288), (Start: 63 @333 has 1 MA's), (87, 384), (102, 435), (121, 504), (138, 576), (141, 594), (147, 639), (150, 648), (163, 675),

Gene: DaddyRickover_1 Start: 135, Stop: 563, Start Num: 59

Candidate Starts for DaddyRickover_1:

(Start: 50 @108 has 147 MA's), (Start: 59 @135 has 8 MA's), (Start: 71 @174 has 1 MA's), (Start: 76 @192 has 2 MA's), (77, 195), (95, 234), (97, 240), (103, 273), (109, 309), (111, 318), (113, 324), (131, 387), (162, 513), (175, 546), (177, 555),

Gene: Daenerys_1 Start: 108, Stop: 563, Start Num: 50

Candidate Starts for Daenerys_1:

(Start: 50 @108 has 147 MA's), (Start: 59 @135 has 8 MA's), (Start: 71 @174 has 1 MA's), (Start: 76 @192 has 2 MA's), (77, 195), (95, 234), (97, 240), (103, 273), (109, 309), (111, 318), (113, 324), (131, 387), (162, 513), (175, 546), (177, 555),

Gene: Dalilpop_1 Start: 122, Stop: 685, Start Num: 32

Candidate Starts for Dalilpop_1:

(Start: 32 @122 has 36 MA's), (83, 278), (103, 359), (115, 416), (118, 425), (125, 446), (139, 512), (179, 656),

Gene: Dante_1 Start: 109, Stop: 564, Start Num: 50

Candidate Starts for Dante_1:

(Start: 50 @109 has 147 MA's), (Start: 59 @136 has 8 MA's), (Start: 71 @175 has 1 MA's), (Start: 76 @193 has 2 MA's), (84, 208), (95, 235), (97, 241), (103, 274), (109, 310), (111, 319), (113, 325), (139, 424), (162, 514), (177, 556),

Gene: DeadP_1 Start: 109, Stop: 564, Start Num: 50

Candidate Starts for DeadP_1:

(Start: 50 @109 has 147 MA's), (Start: 59 @136 has 8 MA's), (Start: 71 @175 has 1 MA's), (Start: 76 @193 has 2 MA's), (84, 208), (90, 220), (92, 223), (95, 235), (97, 241), (103, 274), (111, 319), (113, 325), (114, 328), (139, 424), (141, 439), (162, 514), (177, 556),

Gene: Deb65_1 Start: 108, Stop: 563, Start Num: 50

Candidate Starts for Deb65_1:

(Start: 50 @108 has 147 MA's), (Start: 59 @135 has 8 MA's), (Start: 71 @174 has 1 MA's), (Start: 76 @192 has 2 MA's), (77, 195), (95, 234), (97, 240), (103, 273), (109, 309), (111, 318), (113, 324), (131, 387), (162, 513), (175, 546), (177, 555),

Gene: DillTech15_1 Start: 109, Stop: 564, Start Num: 50

Candidate Starts for DillTech15_1:

(Start: 50 @109 has 147 MA's), (Start: 59 @136 has 8 MA's), (Start: 71 @175 has 1 MA's), (Start: 76 @193 has 2 MA's), (84, 208), (90, 220), (92, 223), (95, 235), (97, 241), (103, 274), (111, 319), (113, 325), (114, 328), (139, 424), (162, 514), (177, 556),

Gene: Donkeykong_1 Start: 109, Stop: 564, Start Num: 50

Candidate Starts for Donkeykong_1:

(Start: 50 @109 has 147 MA's), (Start: 59 @136 has 8 MA's), (Start: 71 @175 has 1 MA's), (Start: 76 @193 has 2 MA's), (84, 208), (90, 220), (92, 223), (95, 235), (97, 241), (103, 274), (111, 319), (113, 325), (114, 328), (139, 424), (162, 514), (177, 556),

Gene: Doomphist_1 Start: 108, Stop: 563, Start Num: 50

Candidate Starts for Doomphist_1:

(Start: 50 @108 has 147 MA's), (Start: 59 @135 has 8 MA's), (Start: 71 @174 has 1 MA's), (Start: 76 @192 has 2 MA's), (77, 195), (95, 234), (97, 240), (103, 273), (109, 309), (111, 318), (113, 324), (131, 387), (162, 513), (175, 546), (177, 555),

Gene: Dorothy_1 Start: 108, Stop: 563, Start Num: 50

Candidate Starts for Dorothy_1:

(Start: 50 @108 has 147 MA's), (Start: 59 @135 has 8 MA's), (Start: 71 @174 has 1 MA's), (Start: 76 @192 has 2 MA's), (77, 195), (95, 234), (97, 240), (103, 273), (109, 309), (111, 318), (113, 324), (131, 387), (162, 513), (175, 546), (177, 555),

Gene: DotProduct_1 Start: 110, Stop: 565, Start Num: 50

Candidate Starts for DotProduct_1:

(Start: 50 @110 has 147 MA's), (Start: 59 @137 has 8 MA's), (Start: 71 @176 has 1 MA's), (Start: 76 @194 has 2 MA's), (84, 209), (90, 221), (92, 224), (95, 236), (97, 242), (103, 275), (111, 320), (113, 326), (114, 329), (139, 425), (141, 440), (162, 515), (177, 557),

Gene: Doug_1 Start: 109, Stop: 564, Start Num: 50

Candidate Starts for Doug_1:

(Start: 50 @109 has 147 MA's), (Start: 59 @136 has 8 MA's), (Start: 71 @175 has 1 MA's), (Start: 76 @193 has 2 MA's), (77, 196), (95, 235), (97, 241), (103, 274), (109, 310), (111, 319), (113, 325), (114, 328), (131, 388), (141, 439), (162, 514), (175, 547), (177, 556),

Gene: Dre3_2 Start: 442, Stop: 927, Start Num: 41

Candidate Starts for Dre3_2:

(Start: 41 @442 has 33 MA's), (Start: 63 @523 has 1 MA's), (Start: 76 @562 has 2 MA's), (106, 676), (111, 697), (117, 709), (134, 769),

Gene: EMSquaredA_1 Start: 82, Stop: 504, Start Num: 39

Candidate Starts for EMSquaredA_1:

(Start: 36 @73 has 1 MA's), (Start: 39 @82 has 49 MA's), (93, 226), (102, 265), (118, 325), (145, 436), (150, 472), (153, 481),

Gene: Eish_1 Start: 109, Stop: 564, Start Num: 50

Candidate Starts for Eish_1:

(Start: 50 @109 has 147 MA's), (Start: 59 @136 has 8 MA's), (Start: 71 @175 has 1 MA's), (Start: 76 @193 has 2 MA's), (77, 196), (95, 235), (97, 241), (103, 274), (109, 310), (111, 319), (113, 325), (131, 388), (162, 514), (175, 547), (177, 556),

Gene: EleanorGeorge_1 Start: 109, Stop: 564, Start Num: 50

Candidate Starts for EleanorGeorge_1:

(Start: 50 @109 has 147 MA's), (Start: 59 @136 has 8 MA's), (Start: 71 @175 has 1 MA's), (Start: 76 @193 has 2 MA's), (84, 208), (90, 220), (92, 223), (95, 235), (97, 241), (103, 274), (111, 319), (113, 325), (114, 328), (139, 424), (162, 514), (177, 556),

Gene: Elinal_1 Start: 56, Stop: 547, Start Num: 41

Candidate Starts for Elinal_1:

(Start: 41 @56 has 33 MA's), (Start: 52 @98 has 2 MA's), (Start: 68 @146 has 1 MA's), (97, 221), (98, 224), (106, 272), (109, 284), (133, 359), (134, 365), (141, 404), (143, 413), (146, 434),

Gene: Elliott_1 Start: 52, Stop: 543, Start Num: 39

Candidate Starts for Elliott_1:

(26, 22), (Start: 39 @52 has 49 MA's), (Start: 52 @97 has 2 MA's), (81, 187), (98, 223), (106, 271), (123, 319), (134, 364),

Gene: Emalyn_1 Start: 52, Stop: 531, Start Num: 39

Candidate Starts for Emalyn_1:

(26, 22), (Start: 39 @52 has 49 MA's), (Start: 52 @97 has 2 MA's), (81, 187), (101, 241), (106, 271), (123, 319), (134, 364), (143, 412), (179, 526),

Gene: Emianna_1 Start: 158, Stop: 715, Start Num: 32

Candidate Starts for Emianna_1:

(Start: 32 @158 has 36 MA's), (83, 317), (97, 362), (103, 395), (118, 461), (125, 482), (139, 548), (181, 707),

Gene: Emma_1 Start: 109, Stop: 564, Start Num: 50

Candidate Starts for Emma_1:

(Start: 50 @109 has 147 MA's), (Start: 59 @136 has 8 MA's), (Start: 71 @175 has 1 MA's), (Start: 76 @193 has 2 MA's), (84, 208), (90, 220), (92, 223), (95, 235), (97, 241), (103, 274), (111, 319), (113, 325), (114, 328), (139, 424), (141, 439), (162, 514), (177, 556),

Gene: Empress_1 Start: 108, Stop: 563, Start Num: 50

Candidate Starts for Empress_1:

(Start: 50 @108 has 147 MA's), (Start: 59 @135 has 8 MA's), (Start: 71 @174 has 1 MA's), (Start: 76 @192 has 2 MA's), (77, 195), (95, 234), (97, 240), (103, 273), (109, 309), (111, 318), (113, 324), (131, 387), (162, 513), (175, 546), (177, 555),

Gene: EnalisNailo_1 Start: 82, Stop: 504, Start Num: 39

Candidate Starts for EnalisNailo_1:

(Start: 36 @73 has 1 MA's), (Start: 39 @82 has 49 MA's), (93, 226), (102, 265), (118, 325), (145, 436), (150, 472), (153, 481),

Gene: Ennea_1 Start: 121, Stop: 687, Start Num: 32

Candidate Starts for Ennea_1:

(Start: 32 @121 has 36 MA's), (54, 187), (83, 277), (91, 301), (103, 361), (115, 418), (118, 427), (125, 448), (139, 514), (180, 676), (181, 679),

Gene: Eradicator_1 Start: 109, Stop: 564, Start Num: 50

Candidate Starts for Eradicator_1:

(Start: 50 @109 has 147 MA's), (Start: 59 @136 has 8 MA's), (Start: 71 @175 has 1 MA's), (Start: 76 @193 has 2 MA's), (77, 196), (84, 208), (95, 235), (97, 241), (103, 274), (109, 310), (111, 319), (113, 325), (131, 388), (141, 439), (162, 514), (175, 547), (177, 556),

Gene: Estave1_1 Start: 109, Stop: 564, Start Num: 50

Candidate Starts for Estave1_1:

(Start: 50 @109 has 147 MA's), (Start: 59 @136 has 8 MA's), (Start: 71 @175 has 1 MA's), (Start: 76 @193 has 2 MA's), (77, 196), (95, 235), (97, 241), (103, 274), (109, 310), (111, 319), (113, 325), (131, 388), (162, 514), (175, 547), (177, 556),

Gene: FF47_04 Start: 1302, Stop: 1775, Start Num: 47

Candidate Starts for FF47_04:

(27, 1254), (Start: 47 @1302 has 12 MA's), (66, 1365), (Start: 68 @1368 has 1 MA's), (Start: 76 @1398 has 2 MA's), (105, 1500), (161, 1725), (173, 1746), (176, 1755),

Gene: Fancypants_1 Start: 109, Stop: 564, Start Num: 50

Candidate Starts for Fancypants_1:

(Start: 50 @109 has 147 MA's), (Start: 59 @136 has 8 MA's), (Start: 71 @175 has 1 MA's), (Start: 76 @193 has 2 MA's), (77, 196), (95, 235), (97, 241), (103, 274), (109, 310), (111, 319), (113, 325), (131, 388), (139, 424), (162, 514), (175, 547), (177, 556),

Gene: Farewell_1 Start: 34, Stop: 528, Start Num: 12

Candidate Starts for Farewell_1:

(Start: 12 @34 has 1 MA's), (25, 73), (Start: 39 @97 has 49 MA's), (72, 208), (102, 280), (135, 406), (138, 421), (150, 496),

Gene: Fastidio_1 Start: 136, Stop: 564, Start Num: 59

Candidate Starts for Fastidio_1:

(Start: 50 @109 has 147 MA's), (Start: 59 @136 has 8 MA's), (Start: 71 @175 has 1 MA's), (Start: 76 @193 has 2 MA's), (84, 208), (90, 220), (92, 223), (95, 235), (97, 241), (103, 274), (111, 319), (113, 325), (114, 328), (139, 424), (141, 439), (162, 514), (177, 556),

Gene: Feastonyeet_1 Start: 56, Stop: 547, Start Num: 41

Candidate Starts for Feastonyeet_1:

(Start: 41 @56 has 33 MA's), (Start: 52 @98 has 2 MA's), (Start: 68 @146 has 1 MA's), (97, 221), (98, 224), (106, 272), (133, 359), (134, 365), (141, 404), (143, 413), (146, 434),

Gene: FeliMaine_33 Start: 10424, Stop: 10858, Start Num: 41

Candidate Starts for FeliMaine_33:

(4, 10289), (Start: 41 @10424 has 33 MA's), (Start: 69 @10505 has 5 MA's), (107, 10625), (117, 10655), (134, 10715), (166, 10850),

Gene: Filuzino_1 Start: 110, Stop: 565, Start Num: 50

Candidate Starts for Filuzino_1:

(Start: 50 @110 has 147 MA's), (Start: 59 @137 has 8 MA's), (Start: 71 @176 has 1 MA's), (Start: 76 @194 has 2 MA's), (84, 209), (90, 221), (92, 224), (95, 236), (97, 242), (103, 275), (111, 320), (113, 326), (114, 329), (139, 425), (162, 515), (177, 557),

Gene: Firehouse51_1 Start: 109, Stop: 564, Start Num: 50

Candidate Starts for Firehouse51_1:

(Start: 50 @109 has 147 MA's), (Start: 59 @136 has 8 MA's), (Start: 71 @175 has 1 MA's), (Start: 76 @193 has 2 MA's), (84, 208), (90, 220), (92, 223), (95, 235), (97, 241), (103, 274), (111, 319), (113, 325), (114, 328), (139, 424), (162, 514), (177, 556),

Gene: Flapper_1 Start: 122, Stop: 685, Start Num: 32

Candidate Starts for Flapper_1:

(Start: 32 @122 has 36 MA's), (83, 278), (103, 359), (115, 416), (118, 425), (125, 446), (139, 512),

Gene: Float294_1 Start: 121, Stop: 687, Start Num: 32

Candidate Starts for Float294_1:

(Start: 32 @121 has 36 MA's), (54, 187), (83, 277), (91, 301), (103, 361), (115, 418), (118, 427), (125, 448), (139, 514), (180, 676), (181, 679),

Gene: Floof_1 Start: 122, Stop: 601, Start Num: 47

Candidate Starts for Floof_1:

(Start: 47 @122 has 12 MA's), (72, 200), (114, 350), (122, 371), (139, 446), (165, 545),

Gene: Floral_1 Start: 82, Stop: 504, Start Num: 39

Candidate Starts for Floral_1:

(Start: 36 @73 has 1 MA's), (Start: 39 @82 has 49 MA's), (93, 226), (102, 265), (118, 325), (145, 436), (150, 472), (153, 481),

Gene: Florinda_1 Start: 106, Stop: 561, Start Num: 50

Candidate Starts for Florinda_1:

(Start: 50 @106 has 147 MA's), (Start: 59 @133 has 8 MA's), (Start: 71 @172 has 1 MA's), (84, 205), (90, 217), (92, 220), (95, 232), (97, 238), (103, 271), (109, 307), (111, 316), (113, 322), (131, 385), (141, 436), (162, 511), (177, 553),

Gene: Foxboro_1 Start: 158, Stop: 715, Start Num: 32

Candidate Starts for Foxboro_1:

(Start: 32 @158 has 36 MA's), (83, 317), (97, 362), (103, 395), (118, 461), (125, 482), (139, 548), (181, 707),

Gene: FreddyB_1 Start: 109, Stop: 564, Start Num: 50

Candidate Starts for FreddyB_1:

(Start: 50 @109 has 147 MA's), (Start: 59 @136 has 8 MA's), (Start: 71 @175 has 1 MA's), (Start: 76 @193 has 2 MA's), (77, 196), (95, 235), (97, 241), (103, 274), (109, 310), (111, 319), (113, 325), (114, 328), (131, 388), (162, 514), (175, 547), (177, 556),

Gene: Fribs8_2 Start: 426, Stop: 911, Start Num: 41

Candidate Starts for Fribs8_2:

(28, 399), (Start: 41 @426 has 33 MA's), (Start: 63 @507 has 1 MA's), (106, 660), (111, 681), (134, 753), (141, 792),

Gene: Fruitloop_1 Start: 109, Stop: 564, Start Num: 50

Candidate Starts for Fruitloop_1:

(Start: 50 @109 has 147 MA's), (Start: 59 @136 has 8 MA's), (Start: 71 @175 has 1 MA's), (Start: 76 @193 has 2 MA's), (84, 208), (90, 220), (92, 223), (95, 235), (97, 241), (103, 274), (111, 319), (113, 325), (114, 328), (139, 424), (141, 439), (162, 514), (177, 556),

Gene: Fury_1 Start: 122, Stop: 679, Start Num: 32

Candidate Starts for Fury_1:

(Start: 32 @122 has 36 MA's), (97, 317), (103, 350), (115, 407), (125, 437), (134, 479), (137, 494), (139, 503), (181, 671),

Gene: GAL1_2 Start: 720, Stop: 1169, Start Num: 50

Candidate Starts for GAL1_2:

(Start: 50 @720 has 147 MA's), (Start: 71 @786 has 1 MA's), (77, 807), (84, 819), (96, 849), (103, 885), (105, 900), (110, 927), (130, 993), (139, 1038), (176, 1155),

Gene: GRU1_84 Start: 59190, Stop: 59753, Start Num: 32

Candidate Starts for GRU1_84:

(Start: 32 @59190 has 36 MA's), (78, 59337), (83, 59346), (103, 59427), (115, 59484), (118, 59493), (125, 59514), (139, 59580), (179, 59724),

Gene: GTE2_01 Start: 59, Stop: 535, Start Num: 42

Candidate Starts for GTE2_01:

(23, 14), (Start: 42 @59 has 5 MA's), (81, 188), (101, 242), (106, 272), (110, 290), (134, 365), (143, 413), (178, 524),

Gene: GTE5_83 Start: 60179, Stop: 60772, Start Num: 21

Candidate Starts for GTE5_83:

(1, 60035), (21, 60179), (Start: 29 @60203 has 1 MA's), (Start: 32 @60206 has 36 MA's), (83, 60365), (103, 60446), (115, 60503), (118, 60512), (125, 60533), (139, 60599),

Gene: GTE8_82 Start: 60392, Stop: 60949, Start Num: 32

Candidate Starts for GTE8_82:

(2, 60236), (21, 60365), (Start: 32 @60392 has 36 MA's), (83, 60551), (97, 60596), (103, 60629), (118, 60695), (124, 60710), (125, 60716), (139, 60782), (181, 60941),

Gene: GUmbie_1 Start: 110, Stop: 565, Start Num: 50

Candidate Starts for GUmbie_1:

(Start: 30 @50 has 6 MA's), (Start: 50 @110 has 147 MA's), (Start: 59 @137 has 8 MA's), (Start: 71 @176 has 1 MA's), (Start: 76 @194 has 2 MA's), (84, 209), (90, 221), (92, 224), (95, 236), (97, 242), (103, 275), (111, 320), (113, 326), (114, 329), (139, 425), (141, 440), (162, 515), (177, 557),

Gene: Gaia_1 Start: 129, Stop: 578, Start Num: 39

Candidate Starts for Gaia_1:

(38, 126), (Start: 39 @129 has 49 MA's), (45, 144), (57, 186), (Start: 63 @213 has 1 MA's), (80, 264), (86, 279), (97, 315), (102, 342), (104, 357), (118, 402), (128, 438), (135, 468), (136, 471), (145, 516), (150, 549), (151, 552),

Gene: Galactic_1 Start: 108, Stop: 563, Start Num: 50

Candidate Starts for Galactic_1:

(Start: 50 @108 has 147 MA's), (Start: 59 @135 has 8 MA's), (Start: 71 @174 has 1 MA's), (Start: 76 @192 has 2 MA's), (77, 195), (95, 234), (97, 240), (103, 273), (109, 309), (111, 318), (113, 324), (131, 387), (162, 513), (175, 546), (177, 555),

Gene: Gandalph_1 Start: 109, Stop: 564, Start Num: 50

Candidate Starts for Gandalph_1:

(Start: 50 @109 has 147 MA's), (Start: 59 @136 has 8 MA's), (Start: 71 @175 has 1 MA's), (Start: 76 @193 has 2 MA's), (84, 208), (90, 220), (92, 223), (95, 235), (97, 241), (103, 274), (111, 319), (113, 325), (114, 328), (139, 424), (141, 439), (162, 514), (177, 556),

Gene: Gattaca_32 Start: 9603, Stop: 10037, Start Num: 41

Candidate Starts for Gattaca_32:

(4, 9468), (Start: 41 @9603 has 33 MA's), (Start: 69 @9684 has 5 MA's), (107, 9804), (117, 9834), (134, 9894), (166, 10029),

Gene: Geralt_1 Start: 108, Stop: 563, Start Num: 50

Candidate Starts for Geralt_1:

(Start: 50 @108 has 147 MA's), (Start: 59 @135 has 8 MA's), (Start: 71 @174 has 1 MA's), (Start: 76 @192 has 2 MA's), (77, 195), (95, 234), (97, 240), (103, 273), (109, 309), (111, 318), (113, 324), (131, 387), (162, 513), (175, 546), (177, 555),

Gene: GiKK_1 Start: 49, Stop: 504, Start Num: 39

Candidate Starts for GiKK_1:

(26, 22), (Start: 39 @49 has 49 MA's), (81, 178), (106, 262), (110, 280), (134, 355), (143, 403), (169, 490),

Gene: Gibbous_2 Start: 442, Stop: 927, Start Num: 41

Candidate Starts for Gibbous_2:

(Start: 41 @442 has 33 MA's), (Start: 63 @523 has 1 MA's), (Start: 76 @562 has 2 MA's), (106, 676), (111, 697), (117, 709), (134, 769),

Gene: GigiOuiOui_1 Start: 109, Stop: 564, Start Num: 50

Candidate Starts for GigiOuiOui_1:

(Start: 50 @109 has 147 MA's), (Start: 59 @136 has 8 MA's), (Start: 71 @175 has 1 MA's), (Start: 76 @193 has 2 MA's), (84, 208), (90, 220), (92, 223), (95, 235), (97, 241), (103, 274), (111, 319), (113, 325), (114, 328), (139, 424), (141, 439), (162, 514), (177, 556),

Gene: Girr_1 Start: 110, Stop: 565, Start Num: 50

Candidate Starts for Girr_1:

(Start: 30 @50 has 6 MA's), (Start: 50 @110 has 147 MA's), (Start: 59 @137 has 8 MA's), (Start: 71 @176 has 1 MA's), (Start: 76 @194 has 2 MA's), (77, 197), (84, 209), (95, 236), (97, 242), (103, 275), (109, 311), (111, 320), (113, 326), (114, 329), (131, 389), (139, 425), (141, 440), (162, 515), (175, 548), (177, 557),

Gene: GoldHunter_1 Start: 52, Stop: 543, Start Num: 39

Candidate Starts for GoldHunter_1:

(26, 22), (Start: 39 @52 has 49 MA's), (Start: 52 @97 has 2 MA's), (81, 187), (98, 223), (101, 241), (106, 271), (123, 319), (134, 364),

Gene: Gorge_1 Start: 109, Stop: 564, Start Num: 50

Candidate Starts for Gorge_1:

(Start: 50 @109 has 147 MA's), (Start: 59 @136 has 8 MA's), (Start: 71 @175 has 1 MA's), (Start: 76 @193 has 2 MA's), (77, 196), (95, 235), (97, 241), (103, 274), (109, 310), (111, 319), (113, 325), (131, 388), (162, 514), (175, 547), (177, 556),

Gene: Gretchen_1 Start: 128, Stop: 607, Start Num: 47

Candidate Starts for Gretchen_1:

(Start: 47 @128 has 12 MA's), (114, 356), (122, 377), (139, 452), (150, 515), (165, 551),

Gene: GrootJr_2 Start: 773, Stop: 1330, Start Num: 32

Candidate Starts for GrootJr_2:

(Start: 32 @773 has 36 MA's), (83, 932), (97, 977), (103, 1010), (118, 1076), (125, 1097), (139, 1163), (181, 1322),

Gene: Guppsters_1 Start: 109, Stop: 564, Start Num: 50

Candidate Starts for Guppsters_1:

(Start: 50 @109 has 147 MA's), (Start: 59 @136 has 8 MA's), (Start: 71 @175 has 1 MA's), (Start: 76 @193 has 2 MA's), (84, 208), (90, 220), (92, 223), (95, 235), (97, 241), (103, 274), (111, 319), (113, 325), (114, 328), (139, 424), (141, 439), (162, 514), (177, 556),

Gene: GuyFagieri_1 Start: 112, Stop: 669, Start Num: 34

Candidate Starts for GuyFagieri_1:

(Start: 34 @112 has 1 MA's), (49, 160), (58, 187), (Start: 63 @211 has 1 MA's), (96, 289), (103, 325), (108, 352), (125, 412), (173, 607),

Gene: HC_01 Start: 67, Stop: 540, Start Num: 47

Candidate Starts for HC_01:

(Start: 47 @67 has 12 MA's), (73, 151), (111, 292), (117, 304), (118, 307), (127, 340), (132, 352), (141, 403), (174, 508),

Gene: Hades_1 Start: 109, Stop: 564, Start Num: 50

Candidate Starts for Hades_1:

(Start: 50 @109 has 147 MA's), (Start: 59 @136 has 8 MA's), (Start: 71 @175 has 1 MA's), (Start: 76 @193 has 2 MA's), (84, 208), (90, 220), (92, 223), (95, 235), (97, 241), (103, 274), (111, 319), (113,

325), (114, 328), (139, 424), (141, 439), (162, 514), (177, 556),

Gene: Hamulus_1 Start: 110, Stop: 565, Start Num: 50

Candidate Starts for Hamulus_1:

(Start: 50 @110 has 147 MA's), (Start: 59 @137 has 8 MA's), (Start: 71 @176 has 1 MA's), (Start: 76 @194 has 2 MA's), (84, 209), (90, 221), (92, 224), (95, 236), (97, 242), (103, 275), (111, 320), (113, 326), (114, 329), (139, 425), (141, 440), (162, 515), (177, 557),

Gene: Harley_1 Start: 109, Stop: 564, Start Num: 50

Candidate Starts for Harley_1:

(Start: 50 @109 has 147 MA's), (Start: 59 @136 has 8 MA's), (Start: 71 @175 has 1 MA's), (Start: 76 @193 has 2 MA's), (77, 196), (95, 235), (97, 241), (103, 274), (109, 310), (111, 319), (113, 325), (131, 388), (139, 424), (162, 514), (175, 547), (177, 556),

Gene: Hexbug_1 Start: 50, Stop: 505, Start Num: 39

Candidate Starts for Hexbug_1:

(Start: 39 @50 has 49 MA's), (Start: 52 @89 has 2 MA's), (81, 179), (106, 263), (134, 356), (143, 404), (169, 491),

Gene: HippoPololi_2 Start: 449, Stop: 934, Start Num: 41

Candidate Starts for HippoPololi_2:

(15, 380), (Start: 29 @425 has 1 MA's), (Start: 41 @449 has 33 MA's), (Start: 63 @530 has 1 MA's), (Start: 76 @569 has 2 MA's), (106, 683), (111, 704), (117, 716), (134, 776),

Gene: Hlubikazi_1 Start: 109, Stop: 564, Start Num: 50

Candidate Starts for Hlubikazi_1:

(Start: 50 @109 has 147 MA's), (Start: 59 @136 has 8 MA's), (Start: 71 @175 has 1 MA's), (Start: 76 @193 has 2 MA's), (77, 196), (95, 235), (97, 241), (103, 274), (109, 310), (111, 319), (113, 325), (131, 388), (162, 514), (175, 547), (177, 556),

Gene: Honk_1 Start: 161, Stop: 634, Start Num: 47

Candidate Starts for Honk_1:

(35, 128), (Start: 47 @161 has 12 MA's), (118, 383), (133, 437), (139, 467), (148, 530),

Gene: Horseradish_1 Start: 53, Stop: 535, Start Num: 39

Candidate Starts for Horseradish_1:

(23, 14), (Start: 39 @53 has 49 MA's), (Start: 52 @98 has 2 MA's), (81, 188), (101, 242), (106, 272), (134, 365), (143, 413), (178, 524),

Gene: HubbaBubba_1 Start: 158, Stop: 709, Start Num: 32

Candidate Starts for HubbaBubba_1:

(Start: 32 @158 has 36 MA's), (61, 257), (103, 386), (118, 452), (125, 473), (139, 539), (181, 701),

Gene: Huphlepuuff_35 Start: 10228, Stop: 10662, Start Num: 41

Candidate Starts for Huphlepuuff_35:

(4, 10093), (Start: 41 @10228 has 33 MA's), (Start: 69 @10309 has 5 MA's), (107, 10429), (117, 10459), (134, 10519), (166, 10654),

Gene: IDyn_2 Start: 786, Stop: 1334, Start Num: 32

Candidate Starts for IDyn_2:

(21, 759), (Start: 32 @786 has 36 MA's), (55, 861), (75, 930), (97, 978), (103, 1011), (118, 1077), (125, 1098), (139, 1164), (181, 1326),

Gene: IMpilo_1 Start: 194, Stop: 565, Start Num: 76

Candidate Starts for IMpilo_1:

(Start: 50 @110 has 147 MA's), (Start: 59 @137 has 8 MA's), (Start: 71 @176 has 1 MA's), (Start: 76 @194 has 2 MA's), (84, 209), (90, 221), (92, 224), (95, 236), (97, 242), (103, 275), (111, 320), (113, 326), (114, 329), (139, 425), (162, 515), (177, 557),

Gene: lbOuu_1 Start: 174, Stop: 563, Start Num: 71

Candidate Starts for lbOuu_1:

(Start: 50 @108 has 147 MA's), (Start: 59 @135 has 8 MA's), (Start: 71 @174 has 1 MA's), (Start: 76 @192 has 2 MA's), (77, 195), (95, 234), (97, 240), (103, 273), (109, 309), (111, 318), (113, 324), (131, 387), (162, 513), (175, 546), (177, 555),

Gene: lbantik_65 Start: 27614, Stop: 28042, Start Num: 48

Candidate Starts for lbantik_65:

(Start: 48 @27614 has 8 MA's), (112, 27824), (116, 27827), (127, 27869), (142, 27938), (154, 27995), (155, 27998),

Gene: lbhubesi_1 Start: 109, Stop: 564, Start Num: 50

Candidate Starts for lbhubesi_1:

(Start: 50 @109 has 147 MA's), (Start: 59 @136 has 8 MA's), (Start: 71 @175 has 1 MA's), (Start: 76 @193 has 2 MA's), (77, 196), (95, 235), (97, 241), (103, 274), (109, 310), (111, 319), (113, 325), (131, 388), (139, 424), (162, 514), (175, 547), (177, 556),

Gene: Inventum_1 Start: 108, Stop: 563, Start Num: 50

Candidate Starts for Inventum_1:

(Start: 50 @108 has 147 MA's), (Start: 59 @135 has 8 MA's), (Start: 71 @174 has 1 MA's), (Start: 76 @192 has 2 MA's), (77, 195), (95, 234), (97, 240), (103, 273), (109, 309), (111, 318), (113, 324), (131, 387), (162, 513), (175, 546), (177, 555),

Gene: IrishSherpFalk_1 Start: 112, Stop: 567, Start Num: 50

Candidate Starts for IrishSherpFalk_1:

(Start: 50 @112 has 147 MA's), (Start: 59 @139 has 8 MA's), (Start: 71 @178 has 1 MA's), (Start: 76 @196 has 2 MA's), (77, 199), (84, 211), (95, 238), (97, 244), (103, 277), (109, 313), (111, 322), (113, 328), (131, 391), (139, 427), (141, 442), (162, 517), (175, 550), (177, 559),

Gene: Island3_1 Start: 62, Stop: 541, Start Num: 46

Candidate Starts for Island3_1:

(28, 14), (Start: 46 @62 has 2 MA's), (Start: 47 @68 has 12 MA's), (73, 152), (111, 293), (117, 305), (118, 308), (127, 341), (153, 458), (174, 509),

Gene: Jablanski_1 Start: 82, Stop: 504, Start Num: 39

Candidate Starts for Jablanski_1:

(Start: 36 @73 has 1 MA's), (Start: 39 @82 has 49 MA's), (93, 226), (102, 265), (118, 325), (145, 436), (150, 472), (153, 481),

Gene: JacoRen57_1 Start: 190, Stop: 669, Start Num: 47

Candidate Starts for JacoRen57_1:

(8, 61), (14, 91), (16, 94), (Start: 36 @154 has 1 MA's), (Start: 47 @190 has 12 MA's), (66, 253), (72, 271), (117, 424), (126, 457), (144, 538), (149, 574), (158, 598), (161, 607),

Gene: James_1 Start: 109, Stop: 564, Start Num: 50

Candidate Starts for James_1:

(Start: 50 @109 has 147 MA's), (Start: 59 @136 has 8 MA's), (Start: 71 @175 has 1 MA's), (Start: 76 @193 has 2 MA's), (77, 196), (84, 208), (95, 235), (97, 241), (103, 274), (109, 310), (111, 319), (113, 325), (114, 328), (131, 388), (175, 547), (177, 556),

Gene: Jamzy_1 Start: 49, Stop: 504, Start Num: 39

Candidate Starts for Jamzy_1:

(Start: 39 @49 has 49 MA's), (Start: 52 @88 has 2 MA's), (81, 178), (106, 262), (133, 349), (134, 355), (143, 403), (169, 490), (172, 499),

Gene: Jarcob_1 Start: 109, Stop: 564, Start Num: 50

Candidate Starts for Jarcob_1:

(Start: 50 @109 has 147 MA's), (Start: 59 @136 has 8 MA's), (Start: 71 @175 has 1 MA's), (Start: 76 @193 has 2 MA's), (77, 196), (84, 208), (95, 235), (97, 241), (103, 274), (109, 310), (111, 319), (113, 325), (114, 328), (131, 388), (162, 514), (175, 547), (177, 556),

Gene: Jifall16_1 Start: 158, Stop: 715, Start Num: 32

Candidate Starts for Jifall16_1:

(Start: 32 @158 has 36 MA's), (83, 317), (97, 362), (103, 395), (118, 461), (125, 482), (139, 548), (181, 707),

Gene: Jinglebell_1 Start: 109, Stop: 564, Start Num: 50

Candidate Starts for Jinglebell_1:

(Start: 50 @109 has 147 MA's), (Start: 59 @136 has 8 MA's), (Start: 71 @175 has 1 MA's), (Start: 76 @193 has 2 MA's), (77, 196), (95, 235), (97, 241), (103, 274), (109, 310), (111, 319), (113, 325), (131, 388), (162, 514), (177, 556),

Gene: JoeyJr_1 Start: 108, Stop: 563, Start Num: 50

Candidate Starts for JoeyJr_1:

(Start: 50 @108 has 147 MA's), (Start: 59 @135 has 8 MA's), (Start: 71 @174 has 1 MA's), (Start: 76 @192 has 2 MA's), (77, 195), (95, 234), (97, 240), (103, 273), (109, 309), (111, 318), (113, 324), (131, 387), (162, 513), (175, 546), (177, 555),

Gene: JoieB_34 Start: 10528, Stop: 10881, Start Num: 69

Candidate Starts for JoieB_34:

(4, 10312), (Start: 41 @10447 has 33 MA's), (Start: 69 @10528 has 5 MA's), (107, 10648), (117, 10678), (134, 10738), (166, 10873),

Gene: Juniper1_1 Start: 192, Stop: 563, Start Num: 76

Candidate Starts for Juniper1_1:

(19, 9), (Start: 50 @108 has 147 MA's), (Start: 59 @135 has 8 MA's), (Start: 71 @174 has 1 MA's), (Start: 76 @192 has 2 MA's), (77, 195), (95, 234), (97, 240), (103, 273), (109, 309), (111, 318), (113, 324), (131, 387), (162, 513), (175, 546), (177, 555),

Gene: Kabluna_1 Start: 289, Stop: 708, Start Num: 71

Candidate Starts for Kabluna_1:

(20, 124), (Start: 33 @160 has 1 MA's), (55, 235), (Start: 71 @289 has 1 MA's), (97, 355), (103, 388), (115, 445), (118, 454), (124, 469), (125, 475), (139, 541), (181, 700),

Gene: Karhdo_1 Start: 110, Stop: 565, Start Num: 50

Candidate Starts for Karhdo_1:

(Start: 30 @50 has 6 MA's), (Start: 50 @110 has 147 MA's), (Start: 59 @137 has 8 MA's), (Start: 71 @176 has 1 MA's), (Start: 76 @194 has 2 MA's), (84, 209), (90, 221), (92, 224), (95, 236), (97, 242), (103, 275), (111, 320), (113, 326), (114, 329), (139, 425), (141, 440), (162, 515), (177, 557),

Gene: KayGee_1 Start: 56, Stop: 547, Start Num: 41

Candidate Starts for KayGee_1:

(Start: 41 @56 has 33 MA's), (Start: 52 @98 has 2 MA's), (Start: 68 @146 has 1 MA's), (97, 221), (98, 224), (106, 272), (109, 284), (133, 359), (134, 365), (141, 404), (143, 413), (146, 434),

Gene: Kenuha5_1 Start: 136, Stop: 564, Start Num: 59

Candidate Starts for Kenuha5_1:

(Start: 50 @109 has 147 MA's), (Start: 59 @136 has 8 MA's), (Start: 71 @175 has 1 MA's), (Start: 76 @193 has 2 MA's), (84, 208), (90, 220), (92, 223), (95, 235), (97, 241), (103, 274), (111, 319), (113, 325), (114, 328), (139, 424), (162, 514), (177, 556),

Gene: Kersh_1 Start: 112, Stop: 567, Start Num: 50

Candidate Starts for Kersh_1:

(Start: 50 @112 has 147 MA's), (Start: 59 @139 has 8 MA's), (Start: 71 @178 has 1 MA's), (Start: 76 @196 has 2 MA's), (77, 199), (84, 211), (95, 238), (97, 244), (103, 277), (109, 313), (111, 322), (113, 328), (131, 391), (139, 427), (141, 442), (162, 517), (175, 550), (177, 559),

Gene: KidneyBean_1 Start: 158, Stop: 715, Start Num: 32

Candidate Starts for KidneyBean_1:

(Start: 32 @158 has 36 MA's), (83, 317), (97, 362), (103, 395), (118, 461), (125, 482), (139, 548), (181, 707),

Gene: KingMidas_1 Start: 108, Stop: 563, Start Num: 50

Candidate Starts for KingMidas_1:

(Start: 50 @108 has 147 MA's), (Start: 59 @135 has 8 MA's), (Start: 71 @174 has 1 MA's), (Start: 76 @192 has 2 MA's), (77, 195), (95, 234), (97, 240), (103, 273), (109, 309), (111, 318), (113, 324), (131, 387), (162, 513), (175, 546), (177, 555),

Gene: Koella_1 Start: 109, Stop: 564, Start Num: 50

Candidate Starts for Koella_1:

(Start: 50 @109 has 147 MA's), (Start: 59 @136 has 8 MA's), (Start: 71 @175 has 1 MA's), (Start: 76 @193 has 2 MA's), (77, 196), (95, 235), (97, 241), (103, 274), (109, 310), (111, 319), (113, 325), (114, 328), (131, 388), (162, 514), (175, 547), (177, 556),

Gene: Krakatau_2 Start: 784, Stop: 1212, Start Num: 59

Candidate Starts for Krakatau_2:

(Start: 48 @754 has 8 MA's), (Start: 59 @784 has 8 MA's), (Start: 71 @823 has 1 MA's), (Start: 76 @841 has 2 MA's), (84, 856), (90, 868), (92, 871), (95, 883), (97, 889), (103, 922), (111, 967), (113, 973), (114, 976), (139, 1072), (162, 1162), (177, 1204),

Gene: KristaRAM_2 Start: 754, Stop: 1212, Start Num: 48

Candidate Starts for KristaRAM_2:

(Start: 48 @754 has 8 MA's), (Start: 59 @784 has 8 MA's), (Start: 71 @823 has 1 MA's), (Start: 76 @841 has 2 MA's), (84, 856), (90, 868), (92, 871), (95, 883), (97, 889), (103, 922), (111, 967), (113, 973), (114, 976), (139, 1072), (141, 1087), (162, 1162), (177, 1204),

Gene: Kurt_1 Start: 158, Stop: 715, Start Num: 32

Candidate Starts for Kurt_1:

(Start: 32 @158 has 36 MA's), (83, 317), (97, 362), (103, 395), (118, 461), (125, 482), (139, 548), (181, 707),

Gene: Kuwabara_1 Start: 50, Stop: 484, Start Num: 41

Candidate Starts for Kuwabara_1:

(Start: 41 @50 has 33 MA's), (66, 125), (Start: 69 @134 has 5 MA's), (79, 167), (81, 170), (100, 218), (106, 254), (110, 272), (126, 317), (134, 347), (141, 386),

Gene: LastJedi_1 Start: 109, Stop: 564, Start Num: 50

Candidate Starts for LastJedi_1:

(Start: 50 @109 has 147 MA's), (Start: 59 @136 has 8 MA's), (Start: 71 @175 has 1 MA's), (Start: 76 @193 has 2 MA's), (77, 196), (95, 235), (97, 241), (103, 274), (109, 310), (111, 319), (113, 325), (114, 328), (131, 388), (162, 514), (175, 547), (177, 556),

Gene: Latretium_1 Start: 108, Stop: 563, Start Num: 50

Candidate Starts for Latretium_1:

(Start: 50 @108 has 147 MA's), (Start: 59 @135 has 8 MA's), (Start: 71 @174 has 1 MA's), (Start: 76 @192 has 2 MA's), (77, 195), (95, 234), (97, 240), (103, 273), (109, 309), (111, 318), (113, 324), (131, 387), (162, 513), (175, 546), (177, 555),

Gene: Lauer_1 Start: 146, Stop: 547, Start Num: 68

Candidate Starts for Lauer_1:

(Start: 41 @56 has 33 MA's), (Start: 52 @98 has 2 MA's), (Start: 68 @146 has 1 MA's), (97, 221), (98, 224), (106, 272), (109, 284), (133, 359), (134, 365), (141, 404), (143, 413), (146, 434),

Gene: Leperchaun_1 Start: 109, Stop: 564, Start Num: 50

Candidate Starts for Leperchaun_1:

(Start: 50 @109 has 147 MA's), (Start: 59 @136 has 8 MA's), (Start: 71 @175 has 1 MA's), (Start: 76 @193 has 2 MA's), (77, 196), (90, 220), (92, 223), (95, 235), (97, 241), (103, 274), (109, 310), (111, 319), (113, 325), (131, 388), (162, 514), (175, 547), (177, 556),

Gene: LilMoolah_1 Start: 109, Stop: 564, Start Num: 50

Candidate Starts for LilMoolah_1:

(Start: 50 @109 has 147 MA's), (Start: 59 @136 has 8 MA's), (Start: 71 @175 has 1 MA's), (Start: 76 @193 has 2 MA's), (77, 196), (84, 208), (95, 235), (97, 241), (103, 274), (109, 310), (111, 319), (113, 325), (114, 328), (131, 388), (162, 514), (175, 547), (177, 556),

Gene: Lilas_1 Start: 73, Stop: 504, Start Num: 36

Candidate Starts for Lilas_1:

(Start: 36 @73 has 1 MA's), (Start: 39 @82 has 49 MA's), (93, 226), (102, 265), (118, 325), (145, 436), (150, 472), (153, 481),

Gene: Lilbit_34 Start: 10424, Stop: 10858, Start Num: 41

Candidate Starts for Lilbit_34:

(4, 10289), (Start: 41 @10424 has 33 MA's), (Start: 69 @10505 has 5 MA's), (107, 10625), (117, 10655), (134, 10715), (166, 10850),

Gene: LittleLaf_33 Start: 10153, Stop: 10587, Start Num: 41

Candidate Starts for LittleLaf_33:

(4, 10018), (Start: 41 @10153 has 33 MA's), (Start: 69 @10234 has 5 MA's), (107, 10354), (117, 10384), (134, 10444), (166, 10579),

Gene: Lizziana_1 Start: 110, Stop: 565, Start Num: 50

Candidate Starts for Lizziana_1:

(Start: 30 @50 has 6 MA's), (Start: 50 @110 has 147 MA's), (Start: 59 @137 has 8 MA's), (Start: 71 @176 has 1 MA's), (Start: 76 @194 has 2 MA's), (77, 197), (84, 209), (95, 236), (97, 242), (103, 275), (109, 311), (111, 320), (113, 326), (131, 389), (139, 425), (141, 440), (162, 515), (175, 548), (177,

557),

Gene: Llama_1 Start: 109, Stop: 564, Start Num: 50

Candidate Starts for Llama_1:

(Start: 50 @109 has 147 MA's), (Start: 59 @136 has 8 MA's), (Start: 71 @175 has 1 MA's), (Start: 76 @193 has 2 MA's), (77, 196), (95, 235), (97, 241), (103, 274), (109, 310), (111, 319), (113, 325), (131, 388), (162, 514), (177, 556),

Gene: Llij_1 Start: 109, Stop: 564, Start Num: 50

Candidate Starts for Llij_1:

(Start: 50 @109 has 147 MA's), (Start: 59 @136 has 8 MA's), (Start: 71 @175 has 1 MA's), (Start: 76 @193 has 2 MA's), (84, 208), (90, 220), (92, 223), (95, 235), (97, 241), (103, 274), (111, 319), (113, 325), (114, 328), (139, 424), (162, 514), (177, 556),

Gene: Lollipop1437_1 Start: 121, Stop: 687, Start Num: 32

Candidate Starts for Lollipop1437_1:

(Start: 32 @121 has 36 MA's), (54, 187), (83, 277), (91, 301), (103, 361), (115, 418), (118, 427), (125, 448), (139, 514), (180, 676), (181, 679),

Gene: LonelyBoi_1 Start: 82, Stop: 504, Start Num: 39

Candidate Starts for LonelyBoi_1:

(Start: 36 @73 has 1 MA's), (Start: 39 @82 has 49 MA's), (93, 226), (102, 265), (118, 325), (145, 436), (150, 472), (153, 481),

Gene: LunaBlu_1 Start: 135, Stop: 563, Start Num: 59

Candidate Starts for LunaBlu_1:

(Start: 50 @108 has 147 MA's), (Start: 59 @135 has 8 MA's), (Start: 71 @174 has 1 MA's), (Start: 76 @192 has 2 MA's), (77, 195), (95, 234), (97, 240), (103, 273), (109, 309), (111, 318), (113, 324), (131, 387), (162, 513), (175, 546), (177, 555),

Gene: LunaStella_1 Start: 55, Stop: 477, Start Num: 39

Candidate Starts for LunaStella_1:

(7, 7), (9, 16), (Start: 39 @55 has 49 MA's), (62, 136), (102, 238), (121, 307), (123, 310), (138, 376), (145, 409), (150, 445), (153, 454),

Gene: MAnor_1 Start: 56, Stop: 547, Start Num: 41

Candidate Starts for MAnor_1:

(Start: 41 @56 has 33 MA's), (Start: 52 @98 has 2 MA's), (Start: 68 @146 has 1 MA's), (97, 221), (98, 224), (106, 272), (133, 359), (134, 365), (141, 404), (143, 413), (146, 434),

Gene: MScarn_1 Start: 53, Stop: 535, Start Num: 39

Candidate Starts for MScarn_1:

(23, 14), (Start: 39 @53 has 49 MA's), (Start: 52 @98 has 2 MA's), (81, 188), (101, 242), (106, 272), (134, 365), (143, 413), (178, 524),

Gene: MaVan_2 Start: 426, Stop: 923, Start Num: 41

Candidate Starts for MaVan_2:

(28, 399), (Start: 41 @426 has 33 MA's), (Start: 63 @507 has 1 MA's), (106, 660), (111, 681), (134, 753), (141, 792), (171, 900),

Gene: Mabodamaca_1 Start: 146, Stop: 604, Start Num: 53

Candidate Starts for Mabodamaca_1:

(Start: 47 @125 has 12 MA's), (Start: 53 @146 has 1 MA's), (122, 374), (140, 458), (157, 527),

Gene: MacGully_1 Start: 112, Stop: 666, Start Num: 30

Candidate Starts for MacGully_1:

(Start: 30 @112 has 6 MA's), (49, 163), (Start: 63 @214 has 1 MA's), (74, 247), (103, 325), (134, 454), (139, 478), (164, 583),

Gene: Maco6_2 Start: 581, Stop: 1054, Start Num: 47

Candidate Starts for Maco6_2:

(27, 533), (Start: 47 @581 has 12 MA's), (66, 644), (Start: 68 @647 has 1 MA's), (Start: 76 @677 has 2 MA's), (105, 779), (161, 1004), (173, 1025), (176, 1034),

Gene: MadMen_1 Start: 109, Stop: 564, Start Num: 50

Candidate Starts for MadMen_1:

(Start: 50 @109 has 147 MA's), (Start: 59 @136 has 8 MA's), (Start: 71 @175 has 1 MA's), (Start: 76 @193 has 2 MA's), (84, 208), (90, 220), (92, 223), (95, 235), (97, 241), (103, 274), (111, 319), (113, 325), (114, 328), (139, 424), (162, 514), (177, 556),

Gene: Mahavrat_1 Start: 108, Stop: 563, Start Num: 50

Candidate Starts for Mahavrat_1:

(Start: 50 @108 has 147 MA's), (Start: 59 @135 has 8 MA's), (Start: 71 @174 has 1 MA's), (Start: 76 @192 has 2 MA's), (84, 207), (90, 219), (92, 222), (95, 234), (97, 240), (103, 273), (109, 309), (111, 318), (113, 324), (131, 387), (139, 423), (162, 513), (175, 546), (177, 555),

Gene: Mandlovu_1 Start: 109, Stop: 564, Start Num: 50

Candidate Starts for Mandlovu_1:

(Start: 50 @109 has 147 MA's), (Start: 59 @136 has 8 MA's), (Start: 71 @175 has 1 MA's), (Start: 76 @193 has 2 MA's), (77, 196), (95, 235), (97, 241), (103, 274), (109, 310), (111, 319), (113, 325), (131, 388), (162, 514), (175, 547), (177, 556),

Gene: Mantra_1 Start: 109, Stop: 564, Start Num: 50

Candidate Starts for Mantra_1:

(Start: 50 @109 has 147 MA's), (Start: 59 @136 has 8 MA's), (Start: 71 @175 has 1 MA's), (Start: 76 @193 has 2 MA's), (84, 208), (90, 220), (92, 223), (95, 235), (97, 241), (103, 274), (111, 319), (113, 325), (114, 328), (139, 424), (141, 439), (162, 514), (177, 556),

Gene: Maravista_1 Start: 109, Stop: 564, Start Num: 50

Candidate Starts for Maravista_1:

(Start: 50 @109 has 147 MA's), (Start: 59 @136 has 8 MA's), (Start: 71 @175 has 1 MA's), (Start: 76 @193 has 2 MA's), (84, 208), (90, 220), (92, 223), (95, 235), (97, 241), (103, 274), (111, 319), (113, 325), (141, 439), (162, 514), (175, 547), (177, 556),

Gene: Margaret_1 Start: 49, Stop: 504, Start Num: 39

Candidate Starts for Margaret_1:

(Start: 39 @49 has 49 MA's), (106, 262), (134, 355), (143, 403), (169, 490),

Gene: Marietta_1 Start: 159, Stop: 710, Start Num: 32

Candidate Starts for Marietta_1:

(Start: 32 @159 has 36 MA's), (61, 258), (103, 387), (118, 453), (125, 474), (139, 540), (181, 702),

Gene: Marteena_1 Start: 82, Stop: 504, Start Num: 39

Candidate Starts for Marteena_1:

(Start: 36 @73 has 1 MA's), (Start: 39 @82 has 49 MA's), (93, 226), (102, 265), (118, 325), (145, 436), (150, 472), (153, 481),

Gene: Martik_1 Start: 110, Stop: 565, Start Num: 50

Candidate Starts for Martik_1:

(Start: 30 @50 has 6 MA's), (Start: 50 @110 has 147 MA's), (Start: 59 @137 has 8 MA's), (Start: 71 @176 has 1 MA's), (Start: 76 @194 has 2 MA's), (77, 197), (84, 209), (95, 236), (97, 242), (103, 275), (109, 311), (111, 320), (113, 326), (131, 389), (139, 425), (141, 440), (162, 515), (175, 548), (177, 557),

Gene: Marvin_31 Start: 10504, Stop: 10857, Start Num: 69

Candidate Starts for Marvin_31:

(4, 10288), (Start: 41 @10423 has 33 MA's), (Start: 69 @10504 has 5 MA's), (107, 10624), (117, 10654), (134, 10714), (166, 10849),

Gene: Maselop_1 Start: 110, Stop: 667, Start Num: 30

Candidate Starts for Maselop_1:

(Start: 30 @110 has 6 MA's), (49, 161), (58, 188), (Start: 59 @191 has 8 MA's), (Start: 63 @212 has 1 MA's), (74, 245), (103, 326), (108, 353), (125, 413), (175, 608),

Gene: Mattes_1 Start: 109, Stop: 564, Start Num: 50

Candidate Starts for Mattes_1:

(Start: 50 @109 has 147 MA's), (Start: 59 @136 has 8 MA's), (Start: 71 @175 has 1 MA's), (Start: 76 @193 has 2 MA's), (77, 196), (95, 235), (97, 241), (103, 274), (109, 310), (111, 319), (113, 325), (131, 388), (162, 514), (175, 547), (177, 556),

Gene: Mayweather_2 Start: 513, Stop: 962, Start Num: 52

Candidate Starts for Mayweather_2:

(Start: 41 @474 has 33 MA's), (Start: 52 @513 has 2 MA's), (97, 636), (98, 639), (106, 687), (109, 699), (133, 774), (134, 780), (141, 819), (143, 828), (146, 849),

Gene: Melissauren88_1 Start: 109, Stop: 564, Start Num: 50

Candidate Starts for Melissauren88_1:

(Start: 50 @109 has 147 MA's), (Start: 59 @136 has 8 MA's), (Start: 71 @175 has 1 MA's), (Start: 76 @193 has 2 MA's), (84, 208), (90, 220), (92, 223), (95, 235), (97, 241), (103, 274), (111, 319), (113, 325), (114, 328), (139, 424), (141, 439), (162, 514), (177, 556),

Gene: MerCougar_1 Start: 158, Stop: 715, Start Num: 32

Candidate Starts for MerCougar_1:

(Start: 32 @158 has 36 MA's), (Start: 63 @266 has 1 MA's), (77, 308), (103, 395), (125, 482), (139, 548), (181, 707),

Gene: MilanaBonita_2 Start: 754, Stop: 1212, Start Num: 48

Candidate Starts for MilanaBonita_2:

(Start: 48 @754 has 8 MA's), (Start: 59 @784 has 8 MA's), (Start: 71 @823 has 1 MA's), (Start: 76 @841 has 2 MA's), (84, 856), (90, 868), (92, 871), (95, 883), (97, 889), (103, 922), (111, 967), (113, 973), (114, 976), (139, 1072), (162, 1162), (177, 1204),

Gene: MilleniumForce_2 Start: 754, Stop: 1212, Start Num: 48

Candidate Starts for MilleniumForce_2:

(Start: 48 @754 has 8 MA's), (Start: 59 @784 has 8 MA's), (Start: 71 @823 has 1 MA's), (Start: 76 @841 has 2 MA's), (84, 856), (90, 868), (92, 871), (95, 883), (97, 889), (103, 922), (111, 967), (113, 973), (114, 976), (139, 1072), (162, 1162), (177, 1204),

Gene: MinionDave_2 Start: 784, Stop: 1212, Start Num: 59

Candidate Starts for MinionDave_2:

(Start: 48 @754 has 8 MA's), (Start: 59 @784 has 8 MA's), (Start: 71 @823 has 1 MA's), (Start: 76 @841 has 2 MA's), (84, 856), (90, 868), (92, 871), (95, 883), (97, 889), (103, 922), (111, 967), (113, 973), (114, 976), (139, 1072), (141, 1087), (162, 1162), (177, 1204),

Gene: Minnie_1 Start: 136, Stop: 564, Start Num: 59

Candidate Starts for Minnie_1:

(Start: 50 @109 has 147 MA's), (Start: 59 @136 has 8 MA's), (Start: 71 @175 has 1 MA's), (Start: 76 @193 has 2 MA's), (84, 208), (90, 220), (92, 223), (95, 235), (97, 241), (103, 274), (111, 319), (113, 325), (114, 328), (139, 424), (162, 514), (177, 556),

Gene: MisterCuddles_1 Start: 110, Stop: 565, Start Num: 50

Candidate Starts for MisterCuddles_1:

(Start: 30 @50 has 6 MA's), (Start: 50 @110 has 147 MA's), (Start: 59 @137 has 8 MA's), (Start: 71 @176 has 1 MA's), (Start: 76 @194 has 2 MA's), (77, 197), (84, 209), (95, 236), (97, 242), (103, 275), (109, 311), (111, 320), (113, 326), (114, 329), (131, 389), (139, 425), (141, 440), (162, 515), (175, 548), (177, 557),

Gene: Modragons_1 Start: 109, Stop: 564, Start Num: 50

Candidate Starts for Modragons_1:

(Start: 50 @109 has 147 MA's), (Start: 59 @136 has 8 MA's), (Start: 71 @175 has 1 MA's), (Start: 76 @193 has 2 MA's), (77, 196), (95, 235), (97, 241), (103, 274), (109, 310), (111, 319), (113, 325), (131, 388), (162, 514), (177, 556),

Gene: Moonbeam_1 Start: 109, Stop: 564, Start Num: 50

Candidate Starts for Moonbeam_1:

(Start: 50 @109 has 147 MA's), (Start: 59 @136 has 8 MA's), (Start: 71 @175 has 1 MA's), (Start: 76 @193 has 2 MA's), (77, 196), (84, 208), (95, 235), (97, 241), (103, 274), (109, 310), (111, 319), (113, 325), (131, 388), (141, 439), (162, 514), (175, 547), (177, 556),

Gene: MortyNRick_1 Start: 50, Stop: 484, Start Num: 41

Candidate Starts for MortyNRick_1:

(Start: 41 @50 has 33 MA's), (66, 125), (Start: 69 @134 has 5 MA's), (79, 167), (81, 170), (100, 218), (106, 254), (110, 272), (126, 317), (134, 347), (141, 386),

Gene: MosMoris_31 Start: 9684, Stop: 10037, Start Num: 69

Candidate Starts for MosMoris_31:

(4, 9468), (Start: 41 @9603 has 33 MA's), (Start: 69 @9684 has 5 MA's), (107, 9804), (117, 9834), (134, 9894), (166, 10029),

Gene: Ms6_1 Start: 193, Stop: 564, Start Num: 76

Candidate Starts for Ms6_1:

(Start: 50 @109 has 147 MA's), (Start: 59 @136 has 8 MA's), (Start: 71 @175 has 1 MA's), (Start: 76 @193 has 2 MA's), (84, 208), (90, 220), (92, 223), (95, 235), (97, 241), (103, 274), (111, 319), (113, 325), (114, 328), (139, 424), (141, 439), (162, 514), (177, 556),

Gene: Muddy_4 Start: 1535, Stop: 2008, Start Num: 47

Candidate Starts for Muddy_4:

(27, 1487), (Start: 47 @1535 has 12 MA's), (66, 1598), (Start: 68 @1601 has 1 MA's), (Start: 76 @1631 has 2 MA's), (105, 1733), (161, 1958), (173, 1979), (176, 1988),

Gene: MulchSalad_1 Start: 135, Stop: 563, Start Num: 59

Candidate Starts for MulchSalad_1:

(Start: 50 @108 has 147 MA's), (Start: 59 @135 has 8 MA's), (Start: 71 @174 has 1 MA's), (Start: 76 @192 has 2 MA's), (84, 207), (90, 219), (92, 222), (95, 234), (97, 240), (103, 273), (111, 318), (113, 324), (114, 327), (139, 423), (162, 513), (177, 555),

Gene: MunkgeeRoachy_1 Start: 52, Stop: 543, Start Num: 39

Candidate Starts for MunkgeeRoachy_1:

(26, 22), (Start: 39 @52 has 49 MA's), (Start: 52 @97 has 2 MA's), (81, 187), (98, 223), (106, 271), (123, 319), (133, 358), (134, 364), (179, 526),

Gene: Mutaforma13_1 Start: 109, Stop: 564, Start Num: 50

Candidate Starts for Mutaforma13_1:

(Start: 50 @109 has 147 MA's), (Start: 59 @136 has 8 MA's), (Start: 71 @175 has 1 MA's), (Start: 76 @193 has 2 MA's), (84, 208), (90, 220), (92, 223), (95, 235), (97, 241), (103, 274), (111, 319), (113, 325), (114, 328), (139, 424), (141, 439), (162, 514), (177, 556),

Gene: NadineRae_1 Start: 159, Stop: 710, Start Num: 32

Candidate Starts for NadineRae_1:

(Start: 32 @159 has 36 MA's), (61, 258), (103, 387), (118, 453), (125, 474), (139, 540), (181, 702),

Gene: NatB6_2 Start: 773, Stop: 1330, Start Num: 32

Candidate Starts for NatB6_2:

(Start: 32 @773 has 36 MA's), (83, 932), (97, 977), (103, 1010), (118, 1076), (125, 1097), (139, 1163), (181, 1322),

Gene: Nebkiss_1 Start: 130, Stop: 579, Start Num: 39

Candidate Starts for Nebkiss_1:

(10, 58), (Start: 39 @130 has 49 MA's), (45, 145), (57, 187), (Start: 63 @214 has 1 MA's), (72, 238), (79, 262), (82, 268), (88, 283), (89, 286), (100, 331), (102, 343), (105, 364), (132, 451), (145, 517), (150, 550), (151, 553),

Gene: Nibbles_2 Start: 426, Stop: 923, Start Num: 41

Candidate Starts for Nibbles_2:

(28, 399), (Start: 41 @426 has 33 MA's), (Start: 63 @507 has 1 MA's), (106, 660), (111, 681), (134, 753), (141, 792), (171, 900),

Gene: Nimbo_1 Start: 108, Stop: 563, Start Num: 50

Candidate Starts for Nimbo_1:

(Start: 50 @108 has 147 MA's), (Start: 59 @135 has 8 MA's), (Start: 71 @174 has 1 MA's), (Start: 76 @192 has 2 MA's), (77, 195), (95, 234), (97, 240), (103, 273), (109, 309), (111, 318), (113, 324), (131, 387), (162, 513), (175, 546), (177, 555),

Gene: Nina_1 Start: 52, Stop: 543, Start Num: 39

Candidate Starts for Nina_1:

(26, 22), (Start: 39 @52 has 49 MA's), (Start: 52 @97 has 2 MA's), (81, 187), (98, 223), (101, 241), (106, 271), (123, 319), (134, 364),

Gene: Nitzel_2 Start: 754, Stop: 1212, Start Num: 48

Candidate Starts for Nitzel_2:

(Start: 48 @754 has 8 MA's), (Start: 59 @784 has 8 MA's), (Start: 71 @823 has 1 MA's), (Start: 76 @841 has 2 MA's), (90, 868), (92, 871), (95, 883), (97, 889), (103, 922), (111, 967), (113, 973), (114, 976), (139, 1072), (162, 1162), (177, 1204),

Gene: Nivrat_1 Start: 109, Stop: 564, Start Num: 50

Candidate Starts for Nivrat_1:

(Start: 50 @109 has 147 MA's), (Start: 59 @136 has 8 MA's), (Start: 71 @175 has 1 MA's), (Start: 76 @193 has 2 MA's), (77, 196), (84, 208), (95, 235), (97, 241), (103, 274), (109, 310), (111, 319), (113, 325), (114, 328), (131, 388), (162, 514), (175, 547), (177, 556),

Gene: NoShow_1 Start: 166, Stop: 675, Start Num: 29

Candidate Starts for NoShow_1:

(5, 82), (11, 115), (Start: 29 @166 has 1 MA's), (43, 199), (56, 244), (66, 277), (101, 379), (115, 436), (126, 478), (134, 508), (145, 562), (160, 625),

Gene: Nodigi_1 Start: 50, Stop: 505, Start Num: 39

Candidate Starts for Nodigi_1:

(Start: 39 @50 has 49 MA's), (Start: 52 @89 has 2 MA's), (81, 179), (106, 263), (134, 356), (143, 404), (169, 491),

Gene: NormanBulbieJr_1 Start: 109, Stop: 564, Start Num: 50

Candidate Starts for NormanBulbieJr_1:

(Start: 50 @109 has 147 MA's), (Start: 59 @136 has 8 MA's), (Start: 71 @175 has 1 MA's), (Start: 76 @193 has 2 MA's), (77, 196), (95, 235), (97, 241), (103, 274), (109, 310), (111, 319), (113, 325), (114, 328), (131, 388), (162, 514), (175, 547), (177, 556),

Gene: NosilaM_1 Start: 158, Stop: 715, Start Num: 32

Candidate Starts for NosilaM_1:

(Start: 32 @158 has 36 MA's), (Start: 63 @266 has 1 MA's), (97, 362), (103, 395), (118, 461), (125, 482), (139, 548), (181, 707),

Gene: NovumRegina_2 Start: 773, Stop: 1330, Start Num: 32

Candidate Starts for NovumRegina_2:

(Start: 32 @773 has 36 MA's), (83, 932), (97, 977), (103, 1010), (118, 1076), (125, 1097), (139, 1163), (181, 1322),

Gene: Ochi17_1 Start: 109, Stop: 564, Start Num: 50

Candidate Starts for Ochi17_1:

(Start: 50 @109 has 147 MA's), (Start: 59 @136 has 8 MA's), (Start: 71 @175 has 1 MA's), (Start: 76 @193 has 2 MA's), (77, 196), (95, 235), (97, 241), (103, 274), (109, 310), (111, 319), (113, 325), (131, 388), (162, 514), (177, 556),

Gene: OfUltron_1 Start: 109, Stop: 564, Start Num: 50

Candidate Starts for OfUltron_1:

(Start: 50 @109 has 147 MA's), (Start: 59 @136 has 8 MA's), (Start: 71 @175 has 1 MA's), (Start: 76 @193 has 2 MA's), (77, 196), (95, 235), (97, 241), (103, 274), (109, 310), (111, 319), (113, 325), (131, 388), (162, 514), (177, 556),

Gene: OldBen_1 Start: 108, Stop: 563, Start Num: 50

Candidate Starts for OldBen_1:

(Start: 50 @108 has 147 MA's), (Start: 59 @135 has 8 MA's), (Start: 71 @174 has 1 MA's), (Start: 76 @192 has 2 MA's), (77, 195), (95, 234), (97, 240), (103, 273), (109, 309), (111, 318), (113, 324), (131, 387), (162, 513), (175, 546), (177, 555),

Gene: OlympiaSaint_1 Start: 109, Stop: 564, Start Num: 50

Candidate Starts for OlympiaSaint_1:

(Start: 50 @109 has 147 MA's), (Start: 59 @136 has 8 MA's), (Start: 71 @175 has 1 MA's), (Start: 76 @193 has 2 MA's), (77, 196), (95, 235), (97, 241), (103, 274), (109, 310), (111, 319), (113, 325), (114,

328), (131, 388), (162, 514), (175, 547), (177, 556),

Gene: Orla_1 Start: 49, Stop: 504, Start Num: 39

Candidate Starts for Orla_1:

(Start: 39 @49 has 49 MA's), (Start: 52 @88 has 2 MA's), (81, 178), (106, 262), (134, 355), (143, 403), (169, 490),

Gene: Outis_1 Start: 158, Stop: 715, Start Num: 32

Candidate Starts for Outis_1:

(Start: 32 @158 has 36 MA's), (Start: 63 @266 has 1 MA's), (77, 308), (103, 395), (110, 437), (118, 461), (125, 482), (139, 548), (181, 707),

Gene: Ovechkin_1 Start: 109, Stop: 564, Start Num: 50

Candidate Starts for Ovechkin_1:

(Start: 50 @109 has 147 MA's), (Start: 59 @136 has 8 MA's), (Start: 71 @175 has 1 MA's), (Start: 76 @193 has 2 MA's), (84, 208), (90, 220), (92, 223), (95, 235), (97, 241), (103, 274), (111, 319), (113, 325), (114, 328), (139, 424), (162, 514), (177, 556),

Gene: PHappiness_1 Start: 108, Stop: 563, Start Num: 50

Candidate Starts for PHappiness_1:

(Start: 50 @108 has 147 MA's), (Start: 59 @135 has 8 MA's), (Start: 71 @174 has 1 MA's), (Start: 76 @192 has 2 MA's), (77, 195), (95, 234), (97, 240), (103, 273), (109, 309), (111, 318), (113, 324), (131, 387), (162, 513), (175, 546), (177, 555),

Gene: PMC_1 Start: 109, Stop: 564, Start Num: 50

Candidate Starts for PMC_1:

(Start: 50 @109 has 147 MA's), (Start: 59 @136 has 8 MA's), (Start: 71 @175 has 1 MA's), (Start: 76 @193 has 2 MA's), (84, 208), (90, 220), (92, 223), (95, 235), (97, 241), (103, 274), (111, 319), (113, 325), (114, 328), (139, 424), (162, 514), (177, 556),

Gene: Pacc40_1 Start: 108, Stop: 563, Start Num: 50

Candidate Starts for Pacc40_1:

(Start: 50 @108 has 147 MA's), (Start: 59 @135 has 8 MA's), (Start: 71 @174 has 1 MA's), (Start: 76 @192 has 2 MA's), (77, 195), (95, 234), (97, 240), (103, 273), (109, 309), (111, 318), (113, 324), (131, 387), (162, 513), (175, 546), (177, 555),

Gene: Patio_2 Start: 777, Stop: 1343, Start Num: 32

Candidate Starts for Patio_2:

(3, 642), (Start: 32 @777 has 36 MA's), (83, 933), (103, 1017), (115, 1074), (118, 1083), (125, 1104), (139, 1170), (180, 1332), (181, 1335),

Gene: Percival_1 Start: 128, Stop: 607, Start Num: 47

Candidate Starts for Percival_1:

(22, 56), (Start: 47 @128 has 12 MA's), (Start: 50 @140 has 147 MA's), (114, 356), (122, 377), (139, 452), (150, 515), (165, 551),

Gene: Phalconet_1 Start: 136, Stop: 564, Start Num: 59

Candidate Starts for Phalconet_1:

(Start: 50 @109 has 147 MA's), (Start: 59 @136 has 8 MA's), (Start: 71 @175 has 1 MA's), (Start: 76 @193 has 2 MA's), (84, 208), (90, 220), (92, 223), (95, 235), (97, 241), (103, 274), (111, 319), (113, 325), (114, 328), (139, 424), (162, 514), (177, 556),

Gene: Phanphagia_1 Start: 109, Stop: 564, Start Num: 50

Candidate Starts for Phanphagia_1:

(Start: 50 @109 has 147 MA's), (Start: 59 @136 has 8 MA's), (Start: 71 @175 has 1 MA's), (Start: 76 @193 has 2 MA's), (84, 208), (90, 220), (92, 223), (95, 235), (97, 241), (103, 274), (111, 319), (113, 325), (114, 328), (139, 424), (141, 439), (162, 514), (177, 556),

Gene: Phasih_1 Start: 109, Stop: 564, Start Num: 50

Candidate Starts for Phasih_1:

(Start: 50 @109 has 147 MA's), (Start: 59 @136 has 8 MA's), (Start: 71 @175 has 1 MA's), (Start: 76 @193 has 2 MA's), (84, 208), (90, 220), (92, 223), (95, 235), (97, 241), (103, 274), (111, 319), (113, 325), (114, 328), (139, 424), (162, 514), (177, 556),

Gene: Phatniss_1 Start: 109, Stop: 564, Start Num: 50

Candidate Starts for Phatniss_1:

(Start: 50 @109 has 147 MA's), (Start: 59 @136 has 8 MA's), (Start: 71 @175 has 1 MA's), (Start: 76 @193 has 2 MA's), (84, 208), (90, 220), (92, 223), (95, 235), (97, 241), (103, 274), (111, 319), (113, 325), (141, 439), (162, 514), (175, 547), (177, 556),

Gene: PhesterPhotato_1 Start: 109, Stop: 564, Start Num: 50

Candidate Starts for PhesterPhotato_1:

(Start: 50 @109 has 147 MA's), (Start: 59 @136 has 8 MA's), (Start: 71 @175 has 1 MA's), (Start: 76 @193 has 2 MA's), (84, 208), (90, 220), (92, 223), (95, 235), (97, 241), (103, 274), (111, 319), (113, 325), (114, 328), (139, 424), (141, 439), (162, 514), (177, 556),

Gene: Philus_1 Start: 109, Stop: 564, Start Num: 50

Candidate Starts for Philus_1:

(Start: 50 @109 has 147 MA's), (Start: 59 @136 has 8 MA's), (Start: 71 @175 has 1 MA's), (Start: 76 @193 has 2 MA's), (77, 196), (84, 208), (95, 235), (97, 241), (103, 274), (109, 310), (111, 319), (113, 325), (114, 328), (131, 388), (162, 514), (175, 547), (177, 556),

Gene: Phomeo_1 Start: 158, Stop: 715, Start Num: 32

Candidate Starts for Phomeo_1:

(Start: 32 @158 has 36 MA's), (83, 317), (97, 362), (103, 395), (118, 461), (125, 482), (139, 548), (181, 707),

Gene: Pippy_1 Start: 109, Stop: 564, Start Num: 50

Candidate Starts for Pippy_1:

(Start: 50 @109 has 147 MA's), (Start: 59 @136 has 8 MA's), (Start: 71 @175 has 1 MA's), (Start: 76 @193 has 2 MA's), (77, 196), (95, 235), (97, 241), (103, 274), (109, 310), (111, 319), (113, 325), (114, 328), (131, 388), (162, 514), (175, 547), (177, 556),

Gene: Pleakley_1 Start: 122, Stop: 679, Start Num: 32

Candidate Starts for Pleakley_1:

(Start: 32 @122 has 36 MA's), (97, 317), (103, 350), (115, 407), (125, 437), (134, 479), (137, 494), (139, 503), (181, 671),

Gene: Poenanya_1 Start: 108, Stop: 563, Start Num: 50

Candidate Starts for Poenanya_1:

(Start: 50 @108 has 147 MA's), (Start: 59 @135 has 8 MA's), (Start: 71 @174 has 1 MA's), (Start: 76 @192 has 2 MA's), (77, 195), (95, 234), (97, 240), (103, 273), (109, 309), (111, 318), (113, 324), (131, 387), (162, 513), (175, 546), (177, 555),

Gene: Poise_33 Start: 9822, Stop: 10175, Start Num: 69

Candidate Starts for Poise_33:

(Start: 37 @9732 has 1 MA's), (Start: 40 @9741 has 1 MA's), (Start: 69 @9822 has 5 MA's), (107, 9942), (117, 9972), (134, 10032), (166, 10167),

Gene: Polka14_1 Start: 109, Stop: 564, Start Num: 50

Candidate Starts for Polka14_1:

(Start: 50 @109 has 147 MA's), (Start: 59 @136 has 8 MA's), (Start: 71 @175 has 1 MA's), (Start: 76 @193 has 2 MA's), (77, 196), (84, 208), (95, 235), (97, 241), (103, 274), (109, 310), (111, 319), (113, 325), (114, 328), (131, 388), (162, 514), (175, 547), (177, 556),

Gene: Pollux_1 Start: 82, Stop: 504, Start Num: 39

Candidate Starts for Pollux_1:

(Start: 36 @73 has 1 MA's), (Start: 39 @82 has 49 MA's), (93, 226), (102, 265), (118, 325), (145, 436), (150, 472), (153, 481),

Gene: Polyuki_1 Start: 110, Stop: 667, Start Num: 30

Candidate Starts for Polyuki_1:

(Start: 30 @110 has 6 MA's), (49, 161), (58, 188), (Start: 63 @212 has 1 MA's), (74, 245), (103, 326), (108, 353), (125, 413), (175, 608),

Gene: Pons_1 Start: 56, Stop: 547, Start Num: 41

Candidate Starts for Pons_1:

(Start: 41 @56 has 33 MA's), (Start: 52 @98 has 2 MA's), (Start: 68 @146 has 1 MA's), (97, 221), (98, 224), (106, 272), (133, 359), (134, 365), (141, 404), (143, 413), (146, 434),

Gene: Ponzi_40 Start: 22312, Stop: 22740, Start Num: 48

Candidate Starts for Ponzi_40:

(Start: 48 @22312 has 8 MA's), (120, 22534), (142, 22633), (168, 22726),

Gene: PopTart_1 Start: 109, Stop: 564, Start Num: 50

Candidate Starts for PopTart_1:

(Start: 50 @109 has 147 MA's), (Start: 59 @136 has 8 MA's), (70, 172), (Start: 71 @175 has 1 MA's), (Start: 76 @193 has 2 MA's), (84, 208), (90, 220), (92, 223), (95, 235), (97, 241), (103, 274), (111, 319), (113, 325), (114, 328), (139, 424), (141, 439), (162, 514), (177, 556),

Gene: Posh_1 Start: 82, Stop: 504, Start Num: 39

Candidate Starts for Posh_1:

(Start: 36 @73 has 1 MA's), (Start: 39 @82 has 49 MA's), (93, 226), (102, 265), (118, 325), (145, 436), (150, 472), (153, 481),

Gene: PotPie_1 Start: 56, Stop: 547, Start Num: 41

Candidate Starts for PotPie_1:

(Start: 41 @56 has 33 MA's), (Start: 52 @98 has 2 MA's), (Start: 68 @146 has 1 MA's), (98, 224), (106, 272), (109, 284), (133, 359), (134, 365), (141, 404), (143, 413), (146, 434),

Gene: Pringar_33 Start: 10053, Stop: 10487, Start Num: 41

Candidate Starts for Pringar_33:

(4, 9918), (Start: 41 @10053 has 33 MA's), (Start: 69 @10134 has 5 MA's), (107, 10254), (117, 10284), (134, 10344), (166, 10479),

Gene: Priscilla_1 Start: 109, Stop: 564, Start Num: 50

Candidate Starts for Priscilla_1:

(Start: 50 @109 has 147 MA's), (Start: 59 @136 has 8 MA's), (Start: 71 @175 has 1 MA's), (Start: 76 @193 has 2 MA's), (77, 196), (95, 235), (97, 241), (103, 274), (109, 310), (111, 319), (113, 325), (114,

328), (131, 388), (162, 514), (175, 547), (177, 556),

Gene: PsychoKiller_1 Start: 52, Stop: 543, Start Num: 39

Candidate Starts for PsychoKiller_1:

(26, 22), (Start: 39 @52 has 49 MA's), (Start: 52 @97 has 2 MA's), (81, 187), (98, 223), (106, 271), (123, 319), (134, 364),

Gene: Pytheas_1 Start: 82, Stop: 504, Start Num: 39

Candidate Starts for Pytheas_1:

(Start: 36 @73 has 1 MA's), (Start: 39 @82 has 49 MA's), (93, 226), (102, 265), (118, 325), (145, 436), (150, 472), (153, 481),

Gene: Quasar_1 Start: 679, Stop: 1164, Start Num: 39

Candidate Starts for Quasar_1:

(Start: 39 @679 has 49 MA's), (Start: 63 @757 has 1 MA's), (81, 808), (101, 862), (106, 892), (109, 904), (123, 940), (134, 985),

Gene: QueenHazel_1 Start: 67, Stop: 540, Start Num: 47

Candidate Starts for QueenHazel_1:

(44, 55), (Start: 47 @67 has 12 MA's), (73, 151), (85, 187), (111, 292), (117, 304), (118, 307), (127, 340), (132, 352), (141, 403), (170, 499), (174, 508),

Gene: QuickMath_1 Start: 109, Stop: 564, Start Num: 50

Candidate Starts for QuickMath_1:

(Start: 50 @109 has 147 MA's), (Start: 59 @136 has 8 MA's), (Start: 71 @175 has 1 MA's), (Start: 76 @193 has 2 MA's), (84, 208), (90, 220), (92, 223), (95, 235), (97, 241), (103, 274), (111, 319), (113, 325), (114, 328), (139, 424), (162, 514), (177, 556),

Gene: Radiance_1 Start: 108, Stop: 563, Start Num: 50

Candidate Starts for Radiance_1:

(Start: 50 @108 has 147 MA's), (Start: 59 @135 has 8 MA's), (Start: 71 @174 has 1 MA's), (Start: 76 @192 has 2 MA's), (77, 195), (95, 234), (97, 240), (103, 273), (109, 309), (111, 318), (113, 324), (131, 387), (162, 513), (175, 546), (177, 555),

Gene: Raela_33 Start: 10296, Stop: 10730, Start Num: 40

Candidate Starts for Raela_33:

(Start: 37 @10287 has 1 MA's), (Start: 40 @10296 has 1 MA's), (Start: 69 @10377 has 5 MA's), (107, 10497), (117, 10527), (134, 10587), (166, 10722),

Gene: RanchParmCat_1 Start: 49, Stop: 504, Start Num: 39

Candidate Starts for RanchParmCat_1:

(Start: 39 @49 has 49 MA's), (106, 262), (134, 355), (143, 403), (169, 490),

Gene: RedBaron_1 Start: 52, Stop: 543, Start Num: 39

Candidate Starts for RedBaron_1:

(26, 22), (Start: 39 @52 has 49 MA's), (Start: 52 @97 has 2 MA's), (81, 187), (98, 223), (101, 241), (106, 271), (123, 319), (134, 364), (179, 526),

Gene: RedBird_1 Start: 108, Stop: 563, Start Num: 50

Candidate Starts for RedBird_1:

(Start: 50 @108 has 147 MA's), (Start: 59 @135 has 8 MA's), (Start: 71 @174 has 1 MA's), (Start: 76 @192 has 2 MA's), (77, 195), (95, 234), (97, 240), (103, 273), (109, 309), (111, 318), (113, 324), (131, 387), (162, 513), (175, 546), (177, 555),

Gene: RedRaider77_33 Start: 10197, Stop: 10631, Start Num: 41

Candidate Starts for RedRaider77_33:

(4, 10062), (Start: 41 @10197 has 33 MA's), (Start: 69 @10278 has 5 MA's), (107, 10398), (117, 10428), (134, 10488), (166, 10623),

Gene: Renaud18_1 Start: 55, Stop: 477, Start Num: 39

Candidate Starts for Renaud18_1:

(9, 16), (Start: 39 @55 has 49 MA's), (62, 136), (102, 238), (121, 307), (138, 376), (150, 445), (153, 454),

Gene: Rita_1 Start: 110, Stop: 565, Start Num: 50

Candidate Starts for Rita_1:

(Start: 50 @110 has 147 MA's), (Start: 59 @137 has 8 MA's), (Start: 71 @176 has 1 MA's), (Start: 76 @194 has 2 MA's), (84, 209), (90, 221), (92, 224), (95, 236), (97, 242), (103, 275), (111, 320), (113, 326), (114, 329), (139, 425), (162, 515), (177, 557),

Gene: RitaG_1 Start: 108, Stop: 563, Start Num: 50

Candidate Starts for RitaG_1:

(Start: 50 @108 has 147 MA's), (Start: 59 @135 has 8 MA's), (Start: 71 @174 has 1 MA's), (Start: 76 @192 has 2 MA's), (77, 195), (95, 234), (97, 240), (103, 273), (109, 309), (111, 318), (113, 324), (131, 387), (162, 513), (175, 546), (177, 555),

Gene: Rockne_1 Start: 109, Stop: 564, Start Num: 50

Candidate Starts for Rockne_1:

(Start: 50 @109 has 147 MA's), (Start: 59 @136 has 8 MA's), (Start: 71 @175 has 1 MA's), (Start: 76 @193 has 2 MA's), (84, 208), (90, 220), (92, 223), (95, 235), (97, 241), (103, 274), (111, 319), (113, 325), (114, 328), (139, 424), (162, 514), (177, 556),

Gene: Royals2015_1 Start: 109, Stop: 564, Start Num: 50

Candidate Starts for Royals2015_1:

(Start: 50 @109 has 147 MA's), (Start: 59 @136 has 8 MA's), (Start: 71 @175 has 1 MA's), (Start: 76 @193 has 2 MA's), (84, 208), (90, 220), (92, 223), (95, 235), (97, 241), (103, 274), (111, 319), (113, 325), (114, 328), (139, 424), (141, 439), (162, 514), (177, 556),

Gene: Ruby_1 Start: 110, Stop: 565, Start Num: 50

Candidate Starts for Ruby_1:

(Start: 30 @50 has 6 MA's), (Start: 50 @110 has 147 MA's), (Start: 59 @137 has 8 MA's), (Start: 71 @176 has 1 MA's), (Start: 76 @194 has 2 MA's), (77, 197), (84, 209), (95, 236), (97, 242), (103, 275), (109, 311), (111, 320), (113, 326), (114, 329), (131, 389), (139, 425), (141, 440), (162, 515), (175, 548), (177, 557),

Gene: SG4_1 Start: 109, Stop: 564, Start Num: 50

Candidate Starts for SG4_1:

(Start: 50 @109 has 147 MA's), (Start: 59 @136 has 8 MA's), (Start: 71 @175 has 1 MA's), (Start: 76 @193 has 2 MA's), (84, 208), (90, 220), (92, 223), (95, 235), (97, 241), (103, 274), (111, 319), (113, 325), (114, 328), (139, 424), (141, 439), (162, 514), (177, 556),

Gene: SPB78_1 Start: 51220, Stop: 426, Start Num: 41

Candidate Starts for SPB78_1:

(26, 51184), (Start: 41 @51220 has 33 MA's), (45, 51229), (67, 51298), (92, 51373), (100, 51406), (142, 51580),

Gene: Saal_1 Start: 109, Stop: 564, Start Num: 50

Candidate Starts for Saal_1:

(Start: 50 @109 has 147 MA's), (Start: 59 @136 has 8 MA's), (Start: 71 @175 has 1 MA's), (Start: 76 @193 has 2 MA's), (77, 196), (95, 235), (97, 241), (103, 274), (109, 310), (111, 319), (113, 325), (131, 388), (162, 514), (175, 547), (177, 556),

Gene: Sabbb_1 Start: 109, Stop: 564, Start Num: 50

Candidate Starts for Sabbb_1:

(Start: 50 @109 has 147 MA's), (Start: 59 @136 has 8 MA's), (Start: 71 @175 has 1 MA's), (Start: 76 @193 has 2 MA's), (84, 208), (90, 220), (92, 223), (95, 235), (97, 241), (103, 274), (111, 319), (113, 325), (114, 328), (139, 424), (162, 514), (177, 556),

Gene: Samy_4 Start: 1334, Stop: 1780, Start Num: 47

Candidate Starts for Samy_4:

(Start: 47 @1334 has 12 MA's), (94, 1484), (103, 1523), (118, 1577), (133, 1631),

Gene: Sandalphon_1 Start: 109, Stop: 564, Start Num: 50

Candidate Starts for Sandalphon_1:

(Start: 50 @109 has 147 MA's), (Start: 59 @136 has 8 MA's), (Start: 71 @175 has 1 MA's), (Start: 76 @193 has 2 MA's), (84, 208), (90, 220), (92, 223), (95, 235), (97, 241), (103, 274), (111, 319), (113, 325), (114, 328), (139, 424), (162, 514), (177, 556),

Gene: Sassafras_1 Start: 108, Stop: 563, Start Num: 50

Candidate Starts for Sassafras_1:

(Start: 50 @108 has 147 MA's), (Start: 59 @135 has 8 MA's), (Start: 71 @174 has 1 MA's), (Start: 76 @192 has 2 MA's), (77, 195), (95, 234), (97, 240), (103, 273), (109, 309), (111, 318), (113, 324), (131, 387), (162, 513), (175, 546), (177, 555),

Gene: SassyB_1 Start: 109, Stop: 564, Start Num: 50

Candidate Starts for SassyB_1:

(Start: 50 @109 has 147 MA's), (Start: 59 @136 has 8 MA's), (Start: 71 @175 has 1 MA's), (Start: 76 @193 has 2 MA's), (84, 208), (90, 220), (92, 223), (95, 235), (97, 241), (103, 274), (111, 319), (113, 325), (114, 328), (139, 424), (141, 439), (162, 514), (177, 556),

Gene: Scottish_1 Start: 108, Stop: 563, Start Num: 50

Candidate Starts for Scottish_1:

(Start: 50 @108 has 147 MA's), (Start: 59 @135 has 8 MA's), (Start: 71 @174 has 1 MA's), (Start: 76 @192 has 2 MA's), (77, 195), (95, 234), (97, 240), (103, 273), (109, 309), (111, 318), (113, 324), (131, 387), (162, 513), (175, 546), (177, 555),

Gene: Seabastian_1 Start: 109, Stop: 564, Start Num: 50

Candidate Starts for Seabastian_1:

(Start: 50 @109 has 147 MA's), (Start: 59 @136 has 8 MA's), (Start: 71 @175 has 1 MA's), (Start: 76 @193 has 2 MA's), (77, 196), (95, 235), (97, 241), (103, 274), (109, 310), (111, 319), (113, 325), (131, 388), (162, 514), (177, 556),

Gene: Shauna1_1 Start: 109, Stop: 564, Start Num: 50

Candidate Starts for Shauna1_1:

(Start: 50 @109 has 147 MA's), (Start: 59 @136 has 8 MA's), (Start: 71 @175 has 1 MA's), (Start: 76 @193 has 2 MA's), (84, 208), (90, 220), (92, 223), (95, 235), (97, 241), (103, 274), (111, 319), (113, 325), (114, 328), (139, 424), (141, 439), (162, 514), (177, 556),

Gene: SheckWes_1 Start: 98, Stop: 547, Start Num: 52

Candidate Starts for SheckWes_1:

(Start: 41 @56 has 33 MA's), (Start: 52 @98 has 2 MA's), (Start: 68 @146 has 1 MA's), (97, 221), (98, 224), (106, 272), (109, 284), (133, 359), (134, 365), (141, 404), (143, 413), (146, 434),

Gene: ShiLan_1 Start: 109, Stop: 564, Start Num: 50

Candidate Starts for ShiLan_1:

(Start: 50 @109 has 147 MA's), (Start: 59 @136 has 8 MA's), (Start: 71 @175 has 1 MA's), (Start: 76 @193 has 2 MA's), (77, 196), (84, 208), (95, 235), (97, 241), (103, 274), (109, 310), (111, 319), (113, 325), (114, 328), (131, 388), (162, 514), (175, 547), (177, 556),

Gene: ShowerHandel_1 Start: 110, Stop: 565, Start Num: 50

Candidate Starts for ShowerHandel_1:

(Start: 30 @50 has 6 MA's), (Start: 50 @110 has 147 MA's), (Start: 59 @137 has 8 MA's), (Start: 71 @176 has 1 MA's), (Start: 76 @194 has 2 MA's), (77, 197), (84, 209), (95, 236), (97, 242), (103, 275), (109, 311), (111, 320), (113, 326), (131, 389), (139, 425), (141, 440), (162, 515), (175, 548), (177, 557),

Gene: ShroomBoi_1 Start: 109, Stop: 564, Start Num: 50

Candidate Starts for ShroomBoi_1:

(Start: 50 @109 has 147 MA's), (Start: 59 @136 has 8 MA's), (Start: 71 @175 has 1 MA's), (Start: 76 @193 has 2 MA's), (84, 208), (90, 220), (92, 223), (95, 235), (97, 241), (103, 274), (111, 319), (113, 325), (114, 328), (139, 424), (141, 439), (162, 514), (177, 556),

Gene: SiSi_1 Start: 109, Stop: 564, Start Num: 50

Candidate Starts for SiSi_1:

(Start: 50 @109 has 147 MA's), (Start: 59 @136 has 8 MA's), (Start: 71 @175 has 1 MA's), (Start: 76 @193 has 2 MA's), (84, 208), (90, 220), (92, 223), (95, 235), (97, 241), (103, 274), (111, 319), (113, 325), (139, 424), (141, 439), (162, 514), (175, 547), (177, 556),

Gene: SketchMex_1 Start: 52, Stop: 534, Start Num: 39

Candidate Starts for SketchMex_1:

(26, 22), (Start: 39 @52 has 49 MA's), (Start: 52 @97 has 2 MA's), (81, 187), (98, 223), (101, 241), (106, 271), (134, 364), (143, 412), (178, 523),

Gene: Skysand_1 Start: 121, Stop: 687, Start Num: 32

Candidate Starts for Skysand_1:

(Start: 32 @121 has 36 MA's), (54, 187), (83, 277), (91, 301), (103, 361), (115, 418), (118, 427), (125, 448), (139, 514), (180, 676), (181, 679),

Gene: Sopespian_1 Start: 52, Stop: 543, Start Num: 39

Candidate Starts for Sopespian_1:

(26, 22), (Start: 39 @52 has 49 MA's), (Start: 52 @97 has 2 MA's), (81, 187), (98, 223), (106, 271), (123, 319), (134, 364),

Gene: Sparkdehlily_1 Start: 110, Stop: 565, Start Num: 50

Candidate Starts for Sparkdehlily_1:

(Start: 50 @110 has 147 MA's), (Start: 59 @137 has 8 MA's), (Start: 71 @176 has 1 MA's), (Start: 76 @194 has 2 MA's), (77, 197), (95, 236), (97, 242), (103, 275), (109, 311), (111, 320), (113, 326), (114, 329), (131, 389), (162, 515), (177, 557),

Gene: Sparky_1 Start: 98, Stop: 529, Start Num: 39

Candidate Starts for Sparky_1:

(6, 2), (13, 35), (25, 74), (Start: 39 @98 has 49 MA's), (72, 209), (102, 281), (135, 407), (138, 422), (150, 497),

Gene: Spartacus_1 Start: 112, Stop: 567, Start Num: 50

Candidate Starts for Spartacus_1:

(Start: 50 @112 has 147 MA's), (Start: 59 @139 has 8 MA's), (Start: 71 @178 has 1 MA's), (Start: 76 @196 has 2 MA's), (77, 199), (84, 211), (95, 238), (97, 244), (103, 277), (109, 313), (111, 322), (113, 328), (131, 391), (139, 427), (141, 442), (162, 517), (175, 550), (177, 559),

Gene: Spoonbill_1 Start: 109, Stop: 564, Start Num: 50

Candidate Starts for Spoonbill_1:

(Start: 50 @109 has 147 MA's), (Start: 59 @136 has 8 MA's), (Start: 71 @175 has 1 MA's), (Start: 76 @193 has 2 MA's), (77, 196), (95, 235), (97, 241), (103, 274), (109, 310), (111, 319), (113, 325), (131, 388), (139, 424), (141, 439), (156, 508), (162, 514), (175, 547), (177, 556),

Gene: StAnnes_1 Start: 109, Stop: 564, Start Num: 50

Candidate Starts for StAnnes_1:

(Start: 50 @109 has 147 MA's), (Start: 59 @136 has 8 MA's), (Start: 76 @193 has 2 MA's), (84, 208), (90, 220), (92, 223), (95, 235), (97, 241), (103, 274), (111, 319), (113, 325), (114, 328), (139, 424), (141, 439), (162, 514), (177, 556),

Gene: StarStruck_1 Start: 158, Stop: 715, Start Num: 32

Candidate Starts for StarStruck_1:

(Start: 32 @158 has 36 MA's), (Start: 63 @266 has 1 MA's), (77, 308), (103, 395), (110, 437), (118, 461), (125, 482), (139, 548), (181, 707),

Gene: SteamedHams_1 Start: 59, Stop: 535, Start Num: 42

Candidate Starts for SteamedHams_1:

(23, 14), (Start: 42 @59 has 5 MA's), (55, 107), (81, 188), (101, 242), (106, 272), (134, 365), (143, 413), (178, 524),

Gene: Strokeseat_1 Start: 109, Stop: 564, Start Num: 50

Candidate Starts for Strokeseat_1:

(Start: 50 @109 has 147 MA's), (Start: 59 @136 has 8 MA's), (Start: 71 @175 has 1 MA's), (Start: 76 @193 has 2 MA's), (77, 196), (95, 235), (97, 241), (103, 274), (109, 310), (111, 319), (113, 325), (131, 388), (162, 514), (175, 547), (177, 556),

Gene: Success_49 Start: 25367, Stop: 25792, Start Num: 48

Candidate Starts for Success_49:

(Start: 48 @25367 has 8 MA's), (64, 25412), (72, 25433), (110, 25568), (119, 25586), (127, 25619), (138, 25664), (142, 25688), (157, 25748), (159, 25754),

Gene: Sukkupi_1 Start: 159, Stop: 710, Start Num: 32

Candidate Starts for Sukkupi_1:

(Start: 32 @159 has 36 MA's), (61, 258), (103, 387), (118, 453), (125, 474), (139, 540), (181, 702),

Gene: SummitAcademy_1 Start: 56, Stop: 547, Start Num: 41

Candidate Starts for SummitAcademy_1:

(Start: 41 @56 has 33 MA's), (Start: 52 @98 has 2 MA's), (Start: 68 @146 has 1 MA's), (97, 221), (98, 224), (106, 272), (133, 359), (134, 365), (141, 404), (143, 413), (146, 434),

Gene: SuperGrey_1 Start: 109, Stop: 564, Start Num: 50

Candidate Starts for SuperGrey_1:

(Start: 50 @109 has 147 MA's), (Start: 59 @136 has 8 MA's), (Start: 71 @175 has 1 MA's), (Start: 76 @193 has 2 MA's), (84, 208), (90, 220), (92, 223), (95, 235), (97, 241), (103, 274), (111, 319), (113, 325), (114, 328), (139, 424), (141, 439), (162, 514), (177, 556),

Gene: SuperSulley_1 Start: 157, Stop: 702, Start Num: 32

Candidate Starts for SuperSulley_1:

(Start: 32 @157 has 36 MA's), (Start: 63 @265 has 1 MA's), (103, 382), (118, 448), (125, 469), (139, 535), (181, 694),

Gene: Survivors_2 Start: 426, Stop: 911, Start Num: 41

Candidate Starts for Survivors_2:

(28, 399), (Start: 41 @426 has 33 MA's), (Start: 63 @507 has 1 MA's), (106, 660), (111, 681), (134, 753), (141, 792),

Gene: SwagPigglett_1 Start: 110, Stop: 565, Start Num: 50

Candidate Starts for SwagPigglett_1:

(Start: 30 @50 has 6 MA's), (Start: 50 @110 has 147 MA's), (Start: 59 @137 has 8 MA's), (Start: 71 @176 has 1 MA's), (Start: 76 @194 has 2 MA's), (77, 197), (84, 209), (95, 236), (97, 242), (103, 275), (109, 311), (111, 320), (113, 326), (131, 389), (139, 425), (141, 440), (162, 515), (175, 548), (177, 557),

Gene: SweatNTears_2 Start: 757, Stop: 1155, Start Num: 63

Candidate Starts for SweatNTears_2:

(Start: 39 @679 has 49 MA's), (Start: 63 @757 has 1 MA's), (81, 808), (101, 862), (106, 892), (109, 904), (123, 940), (134, 985), (178, 1144),

Gene: TChen_1 Start: 55, Stop: 477, Start Num: 39

Candidate Starts for TChen_1:

(7, 7), (9, 16), (Start: 39 @55 has 49 MA's), (62, 136), (102, 238), (121, 307), (123, 310), (138, 376), (145, 409), (150, 445), (153, 454),

Gene: TDanisky_1 Start: 110, Stop: 565, Start Num: 50

Candidate Starts for TDanisky_1:

(Start: 50 @110 has 147 MA's), (Start: 59 @137 has 8 MA's), (Start: 71 @176 has 1 MA's), (Start: 76 @194 has 2 MA's), (77, 197), (95, 236), (97, 242), (103, 275), (109, 311), (111, 320), (113, 326), (114, 329), (131, 389), (162, 515), (177, 557),

Gene: Taj_1 Start: 109, Stop: 564, Start Num: 50

Candidate Starts for Taj_1:

(Start: 50 @109 has 147 MA's), (Start: 59 @136 has 8 MA's), (Start: 71 @175 has 1 MA's), (Start: 76 @193 has 2 MA's), (84, 208), (90, 220), (92, 223), (95, 235), (97, 241), (103, 274), (111, 319), (113, 325), (114, 328), (139, 424), (162, 514), (177, 556),

Gene: Tesla_32 Start: 10046, Stop: 10480, Start Num: 41

Candidate Starts for Tesla_32:

(4, 9911), (Start: 41 @10046 has 33 MA's), (Start: 69 @10127 has 5 MA's), (107, 10247), (117, 10277), (134, 10337), (166, 10472),

Gene: ThetaBob_1 Start: 55, Stop: 477, Start Num: 39

Candidate Starts for ThetaBob_1:

(9, 16), (Start: 39 @55 has 49 MA's), (62, 136), (102, 238), (121, 307), (123, 310), (138, 376), (150, 445), (153, 454),

Gene: Tolls_1 Start: 59, Stop: 535, Start Num: 42

Candidate Starts for Tolls_1:

(23, 14), (Start: 42 @59 has 5 MA's), (55, 107), (81, 188), (101, 242), (106, 272), (123, 320), (134, 365), (143, 413), (178, 524),

Gene: Toron_1 Start: 55, Stop: 477, Start Num: 39

Candidate Starts for Toron_1:

(9, 16), (Start: 39 @55 has 49 MA's), (Start: 63 @142 has 1 MA's), (98, 214), (102, 238), (118, 298), (121, 307), (123, 310), (138, 376), (141, 394), (150, 445), (153, 454),

Gene: Tracker_1 Start: 159, Stop: 701, Start Num: 32

Candidate Starts for Tracker_1:

(Start: 32 @159 has 36 MA's), (103, 387), (115, 444), (118, 453), (125, 474), (139, 540), (181, 693),

Gene: Troje_1 Start: 53, Stop: 535, Start Num: 39

Candidate Starts for Troje_1:

(23, 14), (Start: 39 @53 has 49 MA's), (Start: 52 @98 has 2 MA's), (81, 188), (101, 242), (106, 272), (134, 365), (143, 413), (178, 524),

Gene: Turuncu_1 Start: 122, Stop: 688, Start Num: 32

Candidate Starts for Turuncu_1:

(Start: 32 @122 has 36 MA's), (83, 281), (103, 362), (115, 419), (118, 428), (125, 449), (139, 515),

Gene: Tweety_1 Start: 109, Stop: 564, Start Num: 50

Candidate Starts for Tweety_1:

(Start: 50 @109 has 147 MA's), (Start: 59 @136 has 8 MA's), (Start: 71 @175 has 1 MA's), (Start: 76 @193 has 2 MA's), (84, 208), (90, 220), (92, 223), (95, 235), (97, 241), (103, 274), (111, 319), (113, 325), (114, 328), (139, 424), (141, 439), (162, 514), (177, 556),

Gene: Typhonomachy_1 Start: 52, Stop: 543, Start Num: 39

Candidate Starts for Typhonomachy_1:

(26, 22), (Start: 39 @52 has 49 MA's), (Start: 52 @97 has 2 MA's), (81, 187), (98, 223), (101, 241), (106, 271), (123, 319), (134, 364),

Gene: VRedHorse_1 Start: 109, Stop: 564, Start Num: 50

Candidate Starts for VRedHorse_1:

(Start: 50 @109 has 147 MA's), (Start: 59 @136 has 8 MA's), (Start: 71 @175 has 1 MA's), (Start: 76 @193 has 2 MA's), (77, 196), (95, 235), (97, 241), (103, 274), (109, 310), (111, 319), (113, 325), (131, 388), (162, 514), (175, 547), (177, 556),

Gene: VWB_1 Start: 1, Stop: 480, Start Num: 41

Candidate Starts for VWB_1:

(Start: 41 @1 has 33 MA's), (45, 10), (65, 76), (92, 154), (100, 187), (142, 361), (143, 364),

Gene: VasuNzinga_33 Start: 9630, Stop: 10064, Start Num: 41

Candidate Starts for VasuNzinga_33:

(4, 9495), (Start: 41 @9630 has 33 MA's), (Start: 69 @9711 has 5 MA's), (107, 9831), (117, 9861), (134, 9921), (166, 10056),

Gene: Veteran_1 Start: 110, Stop: 565, Start Num: 50

Candidate Starts for Veteran_1:

(Start: 30 @50 has 6 MA's), (Start: 50 @110 has 147 MA's), (Start: 59 @137 has 8 MA's), (Start: 71 @176 has 1 MA's), (Start: 76 @194 has 2 MA's), (84, 209), (90, 221), (92, 224), (95, 236), (97, 242),

(103, 275), (111, 320), (113, 326), (114, 329), (139, 425), (141, 440), (162, 515), (177, 557),

Gene: Vine_2 Start: 681, Stop: 1172, Start Num: 41

Candidate Starts for Vine_2:

(Start: 41 @681 has 33 MA's), (55, 732), (Start: 63 @762 has 1 MA's), (81, 813), (98, 849), (106, 897), (109, 909), (123, 945), (133, 984), (134, 990), (141, 1029), (143, 1038), (146, 1059),

Gene: Wachhund_1 Start: 109, Stop: 564, Start Num: 50

Candidate Starts for Wachhund_1:

(Start: 50 @109 has 147 MA's), (Start: 59 @136 has 8 MA's), (Start: 71 @175 has 1 MA's), (Start: 76 @193 has 2 MA's), (77, 196), (95, 235), (97, 241), (103, 274), (109, 310), (111, 319), (113, 325), (131, 388), (162, 514), (175, 547), (177, 556),

Gene: Wee_1 Start: 109, Stop: 564, Start Num: 50

Candidate Starts for Wee_1:

(Start: 50 @109 has 147 MA's), (Start: 59 @136 has 8 MA's), (Start: 71 @175 has 1 MA's), (Start: 76 @193 has 2 MA's), (84, 208), (90, 220), (92, 223), (95, 235), (97, 241), (103, 274), (111, 319), (113, 325), (114, 328), (139, 424), (141, 439), (162, 514), (177, 556),

Gene: Whatsapiecost_1 Start: 109, Stop: 564, Start Num: 50

Candidate Starts for Whatsapiecost_1:

(Start: 50 @109 has 147 MA's), (Start: 59 @136 has 8 MA's), (Start: 71 @175 has 1 MA's), (Start: 76 @193 has 2 MA's), (84, 208), (90, 220), (92, 223), (95, 235), (97, 241), (103, 274), (111, 319), (113, 325), (114, 328), (139, 424), (162, 514), (177, 556),

Gene: Wheezy_1 Start: 158, Stop: 715, Start Num: 32

Candidate Starts for Wheezy_1:

(Start: 32 @158 has 36 MA's), (83, 317), (97, 362), (103, 395), (118, 461), (125, 482), (139, 548), (181, 707),

Gene: WhoseManz_1 Start: 159, Stop: 710, Start Num: 32

Candidate Starts for WhoseManz_1:

(Start: 32 @159 has 36 MA's), (61, 258), (103, 387), (118, 453), (125, 474), (139, 540), (181, 702),

Gene: Whouxphf_1 Start: 109, Stop: 564, Start Num: 50

Candidate Starts for Whouxphf_1:

(Start: 50 @109 has 147 MA's), (Start: 59 @136 has 8 MA's), (Start: 71 @175 has 1 MA's), (Start: 76 @193 has 2 MA's), (77, 196), (95, 235), (97, 241), (103, 274), (109, 310), (111, 319), (113, 325), (131, 388), (139, 424), (162, 514), (175, 547), (177, 556),

Gene: WillSterrel_1 Start: 112, Stop: 567, Start Num: 50

Candidate Starts for WillSterrel_1:

(Start: 50 @112 has 147 MA's), (Start: 59 @139 has 8 MA's), (Start: 71 @178 has 1 MA's), (Start: 76 @196 has 2 MA's), (77, 199), (84, 211), (95, 238), (97, 244), (103, 277), (109, 313), (111, 322), (113, 328), (131, 391), (139, 427), (141, 442), (162, 517), (175, 550), (177, 559),

Gene: Wrigley_1 Start: 82, Stop: 504, Start Num: 39

Candidate Starts for Wrigley_1:

(Start: 36 @73 has 1 MA's), (Start: 39 @82 has 49 MA's), (93, 226), (102, 265), (118, 325), (135, 388), (145, 436), (150, 472), (153, 481),

Gene: XFactor_1 Start: 109, Stop: 564, Start Num: 50

Candidate Starts for XFactor_1:

(Start: 50 @109 has 147 MA's), (Start: 59 @136 has 8 MA's), (Start: 71 @175 has 1 MA's), (Start: 76 @193 has 2 MA's), (84, 208), (90, 220), (92, 223), (95, 235), (97, 241), (103, 274), (111, 319), (113, 325), (114, 328), (139, 424), (141, 439), (162, 514), (177, 556),

Gene: Xula_1 Start: 67, Stop: 540, Start Num: 47

Candidate Starts for Xula_1:

(44, 55), (Start: 47 @67 has 12 MA's), (73, 151), (85, 187), (111, 292), (117, 304), (118, 307), (127, 340), (132, 352), (141, 403), (174, 508),

Gene: Yakult_1 Start: 48, Stop: 503, Start Num: 39

Candidate Starts for Yakult_1:

(Start: 39 @48 has 49 MA's), (Start: 68 @135 has 1 MA's), (81, 177), (106, 261), (134, 354), (143, 402), (169, 489),

Gene: Yarn_1 Start: 59, Stop: 535, Start Num: 42

Candidate Starts for Yarn_1:

(23, 14), (Start: 42 @59 has 5 MA's), (55, 107), (81, 188), (101, 242), (106, 272), (123, 320), (134, 365), (143, 413), (178, 524),

Gene: Yndexa_1 Start: 159, Stop: 710, Start Num: 32

Candidate Starts for Yndexa_1:

(Start: 32 @159 has 36 MA's), (61, 258), (103, 387), (118, 453), (125, 474), (139, 540), (181, 702),

Gene: Yorick_1 Start: 108, Stop: 563, Start Num: 50

Candidate Starts for Yorick_1:

(Start: 50 @108 has 147 MA's), (Start: 59 @135 has 8 MA's), (Start: 71 @174 has 1 MA's), (Start: 76 @192 has 2 MA's), (77, 195), (95, 234), (97, 240), (103, 273), (111, 318), (113, 324), (131, 387), (139, 423), (141, 438), (162, 513), (175, 546), (177, 555),

Gene: Yummy_1 Start: 53, Stop: 535, Start Num: 39

Candidate Starts for Yummy_1:

(23, 14), (Start: 39 @53 has 49 MA's), (Start: 52 @98 has 2 MA's), (81, 188), (101, 242), (106, 272), (134, 365), (143, 413), (178, 524),

Gene: Zareef_2 Start: 426, Stop: 923, Start Num: 41

Candidate Starts for Zareef_2:

(28, 399), (Start: 41 @426 has 33 MA's), (Start: 63 @507 has 1 MA's), (106, 660), (111, 681), (134, 753), (141, 792), (171, 900),

Gene: Zerg_1 Start: 136, Stop: 564, Start Num: 59

Candidate Starts for Zerg_1:

(Start: 50 @109 has 147 MA's), (Start: 59 @136 has 8 MA's), (Start: 71 @175 has 1 MA's), (Start: 76 @193 has 2 MA's), (84, 208), (90, 220), (92, 223), (95, 235), (97, 241), (103, 274), (111, 319), (113, 325), (114, 328), (131, 388), (162, 514), (175, 547), (177, 556),

Gene: Zizzle_1 Start: 109, Stop: 564, Start Num: 50

Candidate Starts for Zizzle_1:

(Start: 50 @109 has 147 MA's), (Start: 59 @136 has 8 MA's), (Start: 71 @175 has 1 MA's), (Start: 76 @193 has 2 MA's), (84, 208), (90, 220), (92, 223), (95, 235), (97, 241), (103, 274), (111, 319), (113, 325), (114, 328), (139, 424), (141, 439), (162, 514), (177, 556),