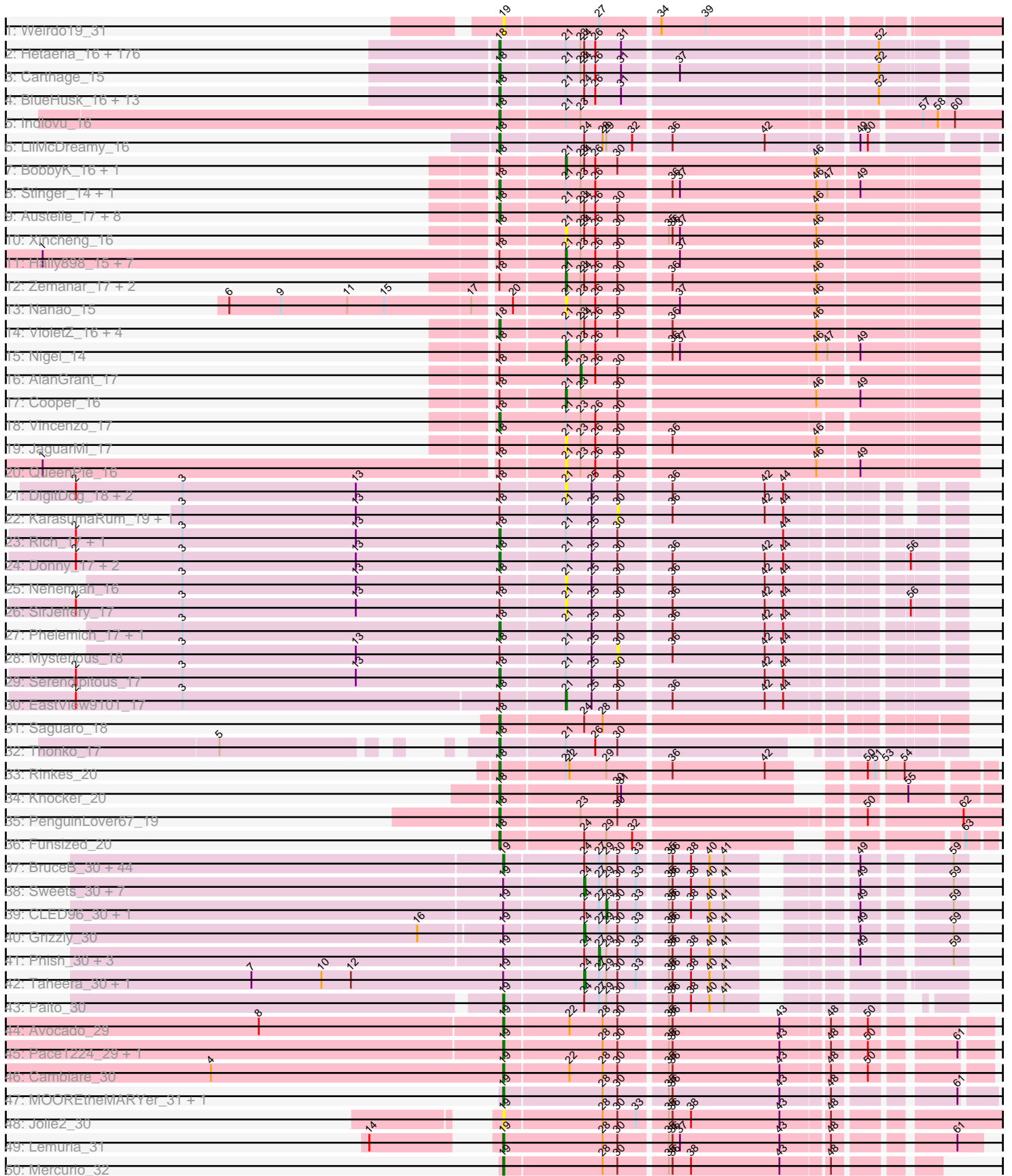


Pham 193659



Note: Tracks are now grouped by subcluster and scaled. Switching in subcluster is indicated by changes in track color. Track scale is now set by default to display the region 30 bp upstream of start 1 to 30 bp downstream of the last possible start. If this default region is judged to be packed too tightly with annotated starts, the track will be further scaled to only show that region of the ORF with annotated starts. This action will be indicated by adding "Zoomed" to the title. For starts, yellow indicates the location of called starts comprised solely of Glimmer/GeneMark auto-annotations, green indicates the location of called starts with at least 1 manual gene annotation.

Pham 193659 Report

This analysis was run 11/02/24 on database version 579.

Pham number 193659 has 351 members, 27 are drafts.

Phages represented in each track:

- Track 1 : Weirido19_31
- Track 2 : Hetaeria_16, Soto_16, HSavage_16, Phergie_15, Zaider_17, Simielle_15, HenryJackson_15, Struggle_15, Cornobble_15, FugateOSU_15, Fringe_16, JacAttac_16, Orfeu_15, Phamished_16, Dione_15, Toni_15, Vivaldi_16, Mecca_15, Plmatters_16, Melc17_16, Hocus_15, Nacho_0016, CheetO_16, Hartsy_16, JakeO_15, Piglet_0015, Spartan300_16, Squid_16, Morty_16, CamL_16, Roscoe_17, Antonia_15, Mosaic_15, Weher20_16, Serpentine_0016, Gyarad_0016, KlimbOn_16, PhenghisKhan_15, Vista_16, Sophia_15, Grand2040_15, Solosis_15, Mutante_15, Keitherie_16, PhrankReynolds_15, Maru_15, Roy17_16, Aelin_15, Inchworm_16, TomBombadil_16, Labeouficaum_15, CharlieGBrown_15, Placalicious_15, Adriana_16, Dati_16, Haimas_16, Oline_15, Pherdinand_16, Jillium_15, Nicole21_16, Chorkpop_16, Phleuron_15, Slatt_16, Altwerkus_15, Derpp_15, Burr_15, Selr12_16, DaddyDaniels_16, Valjean_16, Pipsqueak_16, Kwadwo_15, Virapocalypse_16, Childish_15, Ricotta_15, Soile_16, Mulan_15, Duggie_15, MichaelPhcott_15, Kailash_16, Magic8_16, Zonia_16, True_15, TyrionL_15, Timmi_15, MitKao_16, Boehler_16, Olak_15, JangoPhett_16, DoesntMatter_16, Durga_16, BlackStallion_16, Riggan_16, Bishoperium_15, Mesh1_16, UAch1_16, Mcshane_15, AbsoluteMadLad_15, Quisquilliae_16, Wallhey_15, Craff_16, Waterdiva_16, PhrodoBaggins_15, Gareth_15, Kwksand96_15, Beaglebox_15, Mag7_15, Cannibal_16, FriarPreacher_16, Sheila_16, Samaymay_16, LostAndPhound_15, Tooj_16, Schadenfreude_15, Freya_15, Haleema_15, RedMaple_15, ProfessorX_16, Pacifista_15, Lulumae_15, Chaelin_15, AltPhacts_16, Xavier_15, SassyCat97_15, Charles1_16, Emiris_16, Cobra_16, QueenBeane_16, Telesworld_15, LeeLot_16, Giraffe_16, Omniscient_16, Bluephacebaby_15, KingTut_15, Vaticameos_16, PinheadLarry_16, Held_16, Lego3393_16, Kimbrough_16, CampRoach_16, Lumine_15, Tomlarah_16, Legolas_15, Matalotodo_16, Roliet_16, GeneCoco_16, LemonSlice_16, Phareon_16, Hertubise_16, Jiminy_15, Fozzie_15, Zelda_16, EmpTee_16, DonSanchon_15, Windsor_15, MRabcd_15, HighStump_15, LasagnaCat_16, Frankicide_16, LuckyMarjie_15, Daka_16, Dice_15, Cher_15, Scrick_15, Buckeye_16, Trypo_16, Brilliant_16, Veritas_15, Skippy_16, Kahve_15, Phunky_16, YouGoGlencoco_16, Squiggle_16, Cosmolli16_15, ShiVal_16, Surely_16, Kloppinator_16, PhatCats2014_16
- Track 3 : Carthage_15
- Track 4 : BlueHusk_16, Mikota_16, Crownjwl_16, DirtJuice_16, MiniBoss_16, Horchata_16, SDcharge11_16, Podrick_16, Robyn_15, Lulwa_16, Chunky_16, Dingo_16, Usavi_16, KingVeVeVe_16

- Track 5 : Indlovu_16
- Track 6 : LilMcDreamy_16
- Track 7 : BobbyK_16, Apex_16
- Track 8 : Stinger_14, JAMaL_16
- Track 9 : Austelle_17, Fortunato_16, Magpie_16, Mudslide_16, Frederick_16, Mithril_16, Lolalove_16, Prince_16, BrownCNA_17
- Track 10 : Xincheng_16
- Track 11 : Hally898_15, Lambano_15, ChrisnMich_15, Epah_15, Poster_15, GinPorsche_15, Antihero_15, Ahwei_15
- Track 12 : Zemanar_17, RawrgerThat_16, Fanaw_16
- Track 13 : Nanao_15
- Track 14 : VioletZ_16, Hydro_16, Heath_16, Hangman_16, Waleliano_16
- Track 15 : Nigel_14
- Track 16 : AlanGrant_17
- Track 17 : Cooper_16
- Track 18 : Vincenzo_17
- Track 19 : JaguarMi_17
- Track 20 : QueenPie_16
- Track 21 : DigitDog_18, Shenyu_17, Nangang_17
- Track 22 : KarasumaRum_19, StinkyVeggy_19
- Track 23 : Rich_17, Bae_17
- Track 24 : Donny_17, Acadian_17, Suigeneris_17
- Track 25 : Nehemiah_16
- Track 26 : SirJeffery_17
- Track 27 : Phelemich_17, Reprobate_17
- Track 28 : Mysterious_18
- Track 29 : Serendipitous_17
- Track 30 : EastView9101_17
- Track 31 : Saguaro_18
- Track 32 : Thonko_17
- Track 33 : Rinkes_20
- Track 34 : Knocker_20
- Track 35 : PenguinLover67_19
- Track 36 : Funsized_20
- Track 37 : BruceB_30, Halo_30, Kareem_30, Frosty24_30, Rabbs_30, Zombie_30, Darionha_30, JorRay_30, Phreak_30, Annihilator_30, Cherrybomb426_30, Sneeze_30, Jane_30, PinkYoshi_30, Jolene_30, CassieYates_30, Angel_30, GoldenAsh_30, Hope_30, Remy19_30, TomBrady_30, ECartman_30, Marmie_30, OctaviousRex_30, Renaissance_30, Gideon_30, Periodt_30, Avrafan_30, ZoMa_30, Schiebel_30, Sizemore_30, Jonghyun_30, BQuat_30, Gomashi_30, Coleslaw_30, BPs_30, LouisV14_30, Plagueis_30, Aroostook_30, Peeb_30, Mowgli_30, Chance64_30, DMoney_30, ShaboiShabazz_30, Liefie_30
- Track 38 : Sweets_30, Kasen3_30, Olga_30, Hotshotbaby7_30, Barkley26_30, DNAll_0030, Cedasite_30, Camri_30
- Track 39 : CLED96_30, Wendigo_30
- Track 40 : Grizzly_30
- Track 41 : Phish_30, Crespo_30, AzulaCat_30, Maliketh_30
- Track 42 : Taheera_30, Terror_30
- Track 43 : Paito_30
- Track 44 : Avocado_29
- Track 45 : Pace1224_29, FlagStaff_29
- Track 46 : Cambiare_30
- Track 47 : MOOREtheMARYer_31, Pinnie_31

- Track 48 : Jolie2_30
- Track 49 : Lemuria_31
- Track 50 : Mercurio_32
- Track 51 : Antsirabe_30
- Track 52 : Stargaze_30
- Track 53 : Dewey_34, Forge_34, Hail_34, OBUpride_35, Luna22_34, Hadrien_35, HH92_34, Wishmaker_34, Amymech_35, Gancho_34, Webster2_35, Amochick_35, Giles_34, LilHazelNut_35, Ubuntu_35, DeepSoil15_35, Kinbote_35, Gravaillia_34, Evanesce_34, Luke_35, Ein37_35, Daegal_36

Summary of Final Annotations (See graph section above for start numbers):

The start number called the most often in the published annotations is 18, it was called in 247 of the 324 non-draft genes in the pham.

Genes that call this "Most Annotated" start:

- AbsoluteMadLad_15, Acadian_17, Adriana_16, Aelin_15, AltPhacts_16, Altwerkus_15, Amochick_35, Amymech_35, Antonia_15, Austelle_17, Bae_17, Beaglebox_15, Bishoperium_15, BlackStallion_16, BlueHusk_16, Bluephacebaby_15, Boehler_16, Brilliant_16, BrownCNA_17, Buckeye_16, Burr_15, CamL_16, CampRoach_16, Cannibal_16, Carthage_15, Chaelin_15, Charles1_16, CharlieGBrown_15, CheetO_16, Cher_15, Childish_15, Chorkpop_16, Chunky_16, Cobra_16, Cornobble_15, Cosmolli16_15, Craff_16, Crownjwl_16, DaddyDaniels_16, Daegal_36, Daka_16, Dati_16, DeepSoil15_35, Derpp_15, Dewey_34, Dice_15, Dingo_16, Dione_15, DirtJuice_16, DoesntMatter_16, DonSanchon_15, Donny_17, Duggie_15, Durga_16, Ein37_35, Emiris_16, EmpTee_16, Evanesce_34, Forge_34, Fortunato_16, Fozzie_15, Frankicide_16, Frederick_16, Freya_15, FriarPreacher_16, Fringe_16, FugateOSU_15, Funsized_20, Gancho_34, Gareth_15, GeneCoco_16, Giles_34, Giraffe_16, Grand2040_15, Gravaillia_34, Gyarad_0016, HH92_34, HSavage_16, Hadrien_35, Hail_34, Haimas_16, Haleema_15, Hangman_16, Hartsy_16, Heath_16, Held_16, HenryJackson_15, Hertubise_16, Hetaeria_16, HighStump_15, Hocus_15, Horchata_16, Hydro_16, Inchworm_16, Indlovu_16, JAMaL_16, JacAttac_16, JakeO_15, JangoPhett_16, Jillium_15, Jiminy_15, Kahve_15, Kailash_16, Keitherie_16, Kimbrough_16, Kinbote_35, KingTut_15, KingVeVeVe_16, KlimbOn_16, Kloppinator_16, Knocker_20, Kwadwo_15, Kwksand96_15, Labeouficaum_15, LasagnaCat_16, LeeLot_16, Lego3393_16, Legolas_15, LemonSlice_16, LilHazelNut_35, LilMcDreamy_16, Lolalove_16, LostAndPhound_15, LuckyMarjie_15, Luke_35, Lulumae_15, Lulwa_16, Lumine_15, Luna22_34, MRabcd_15, Mag7_15, Magic8_16, Magpie_16, Maru_15, Matalotodo_16, Mcshane_15, Mecca_15, Melc17_16, Mesh1_16, MichaelPhcott_15, Mikota_16, MiniBoss_16, MitKao_16, Mithril_16, Morty_16, Mosaic_15, Mudslide_16, Mulan_15, Mutante_15, Nacho_0016, Nicole21_16, OBUpride_35, Olak_15, Oline_15, Omniscient_16, Orfeu_15, Pacifista_15, PenguinLover67_19, Phamished_16, Phareon_16, PhatCats2014_16, Phelemich_17, PhenghisKhan_15, Pherdinand_16, Phergie_15, Phleuron_15, PhrankReynolds_15, PhrodoBaggins_15, Phunky_16, Piglet_0015, PinheadLarry_16, Pipsqueak_16, Placalicious_15, Plmatters_16, Podrick_16, Prince_16, ProfessorX_16, QueenBeane_16, Quisquilliae_16, RedMaple_15, Reprobate_17, Rich_17, Ricotta_15, Riggan_16, Rinkes_20, Robyn_15, Roliet_16, Roscoe_17, Roy17_16, SDcharge11_16, Saguaro_18, Samaymay_16, SassyCat97_15, Schadenfreude_15, Scrick_15,

Selr12_16, Serendipitous_17, Serpentine_0016, Sheila_16, ShiVal_16, Simielle_15, Skippy_16, Slatt_16, Soile_16, Solosis_15, Sophia_15, Soto_16, Spartan300_16, Squid_16, Squiggle_16, Stinger_14, Struggle_15, Suigeneris_17, Surely_16, Telesworld_15, Thonko_17, Timmi_15, TomBombadil_16, Tomlarah_16, Toni_15, Tooj_16, True_15, Trypo_16, TyrionL_15, UAch1_16, Ubuntu_35, Usavi_16, Valjean_16, Vaticameos_16, Veritas_15, Vincenzo_17, VioletZ_16, Virapocalypse_16, Vista_16, Vivaldi_16, Waleliano_16, Wallhey_15, Waterdiva_16, Webster2_35, Weher20_16, Windsor_15, Wishmaker_34, Xavier_15, YouGoGlencoco_16, Zaider_17, Zelda_16, Zonia_16,

Genes that have the "Most Annotated" start but do not call it:

- Ahwei_15, AlanGrant_17, Antihero_15, Apex_16, BobbyK_16, ChrisnMich_15, Cooper_16, DigitDog_18, EastView9101_17, Epah_15, Fanaw_16, GinPorsche_15, Hally898_15, JaguarMi_17, KarasumaRum_19, Lambano_15, Mysterious_18, Nangang_17, Nehemiah_16, Nigel_14, Poster_15, QueenPie_16, RawrgerThat_16, Shenyu_17, SirJeffery_17, StinkyVeggy_19, Xincheng_16, Zemanar_17,

Genes that do not have the "Most Annotated" start:

- Angel_30, Annihilator_30, Antsirabe_30, Aroostook_30, Avocado_29, Avrafan_30, AzulaCat_30, BPs_30, BQuat_30, Barkley26_30, BruceB_30, CLED96_30, Cambiare_30, Camri_30, CassieYates_30, Cedasite_30, Chance64_30, Cherrybomb426_30, Coleslaw_30, Crespo_30, DMoney_30, DNAllI_0030, Darionha_30, ECartman_30, FlagStaff_29, Frosty24_30, Gideon_30, GoldenAsh_30, Gomashi_30, Grizzly_30, Halo_30, Hope_30, Hotshotbaby7_30, Jane_30, Jolene_30, Jolie2_30, Jonghyun_30, JorRay_30, Kareem_30, Kasen3_30, Lemuria_31, Liefie_30, LouisV14_30, MOOREtheMARYer_31, Maliketh_30, Marmie_30, Mercurio_32, Mowgli_30, Nanao_15, OctaviousRex_30, Olga_30, Pace1224_29, Paito_30, Peeb_30, Periodt_30, Phish_30, Phreak_30, PinkYoshi_30, Pinnie_31, Plagueis_30, Rabbs_30, Remy19_30, Renaissance_30, Schiebel_30, ShaboiShabazz_30, Sizemore_30, Sneeze_30, Stargaze_30, Sweets_30, Taheera_30, Terror_30, TomBrady_30, Weirido19_31, Wendigo_30, ZoMa_30, Zombie_30,

Summary by start number:

Start 18:

- Found in 275 of 351 (78.3%) of genes in pham
- Manual Annotations of this start: 247 of 324
- Called 89.8% of time when present
- Phage (with cluster) where this start called: AbsoluteMadLad_15 (B1), Acadian_17 (B5), Adriana_16 (B1), Aelin_15 (B1), AltPhacts_16 (B1), Altwerkus_15 (B1), Amochick_35 (Q), Amymech_35 (Q), Antonia_15 (B1), Austelle_17 (B4), Bae_17 (B5), Beaglebox_15 (B1), Bishoperium_15 (B1), BlackStallion_16 (B1), BlueHusk_16 (B1), Bluephacebaby_15 (B1), Boehler_16 (B1), Brilliant_16 (B1), BrownCNA_17 (B4), Buckeye_16 (B1), Burr_15 (B1), CamL_16 (B1), CampRoach_16 (B1), Cannibal_16 (B1), Carthage_15 (B1), Chaelin_15 (B1), Charles1_16 (B1), CharlieGBrown_15 (B1), CheetO_16 (B1), Cher_15 (B1), Childish_15 (B1), Chorkpop_16 (B1), Chunky_16 (B1), Cobra_16 (B1), Cornobble_15 (B1), Cosmolli16_15 (B1), Craff_16 (B1), Crownjwl_16 (B1), DaddyDaniels_16 (B1), Daegal_36 (Q), Daka_16 (B1), Dati_16 (B1), DeepSoil15_35 (Q), Derpp_15 (B1), Dewey_34 (Q), Dice_15 (B1), Dingo_16 (B1), Dione_15 (B1), DirtJuice_16 (B1), DoesntMatter_16 (B1), DonSanchon_15 (B1), Donny_17 (B5), Duggie_15 (B1), Durga_16 (B1), Ein37_35 (Q), Emiris_16 (B1), EmpTee_16 (B1), Evanesce_34 (Q),

Forge_34 (Q), Fortunato_16 (B4), Fozzie_15 (B1), Frankicide_16 (B1), Frederick_16 (B4), Freya_15 (B1), FriarPreacher_16 (B1), Fringe_16 (B1), FugateOSU_15 (B1), Funsized_20 (B9), Gancho_34 (Q), Gareth_15 (B1), GeneCoco_16 (B1), Giles_34 (Q), Giraffe_16 (B1), Grand2040_15 (B1), Gravaillia_34 (Q), Gyarad_0016 (B1), HH92_34 (Q), HSavage_16 (B1), Hadrien_35 (Q), Hail_34 (Q), Haimas_16 (B1), Haleema_15 (B1), Hangman_16 (B4), Hartsy_16 (B1), Heath_16 (B4), Held_16 (B1), HenryJackson_15 (B1), Hertubise_16 (B1), Hetaeria_16 (B1), HighStump_15 (B1), Hocus_15 (B1), Horchata_16 (B1), Hydro_16 (B4), Inchworm_16 (B1), Indlovu_16 (B11), JAMaL_16 (B4), JacAttac_16 (B1), JakeO_15 (B1), JangoPhett_16 (B1), Jillium_15 (B1), Jiminy_15 (B1), Kahve_15 (B1), Kailash_16 (B1), Keitherie_16 (B1), Kimbrough_16 (B1), Kinbote_35 (Q), KingTut_15 (B1), KingVeVeVe_16 (B1), KlimbOn_16 (B1), Kloppinator_16 (B1), Knocker_20 (B9), Kwadwo_15 (B1), Kwksand96_15 (B1), Labeouficaum_15 (B1), LasagnaCat_16 (B1), LeeLot_16 (B1), Lego3393_16 (B1), Legolas_15 (B1), LemonSlice_16 (B1), LilHazelNut_35 (Q), LilMcDreamy_16 (B12), Lolalove_16 (B4), LostAndPhound_15 (B1), LuckyMarjie_15 (B1), Luke_35 (Q), Lulumae_15 (B1), Lulwa_16 (B1), Lumine_15 (B1), Luna22_34 (Q), MRabcd_15 (B1), Mag7_15 (B1), Magic8_16 (B1), Magpie_16 (B4), Maru_15 (B1), Matalotodo_16 (B1), Mcshane_15 (B1), Mecca_15 (B1), Melc17_16 (B1), Mesh1_16 (B1), MichaelPhcott_15 (B1), Mikota_16 (B1), MiniBoss_16 (B1), MitKao_16 (B1), Mithril_16 (B4), Morty_16 (B1), Mosaic_15 (B1), Mudslide_16 (B4), Mulan_15 (B1), Mutante_15 (B1), Nacho_0016 (B1), Nicole21_16 (B1), OBUpride_35 (Q), Olak_15 (B1), Oline_15 (B1), Omniscient_16 (B1), Orfeu_15 (B1), Pacifista_15 (B1), PenguinLover67_19 (B9), Phamished_16 (B1), Phareon_16 (B1), PhatCats2014_16 (B1), Phelemich_17 (B5), PhenghisKhan_15 (B1), Pherdinand_16 (B1), Phergie_15 (B1), Phleuron_15 (B1), PhrankReynolds_15 (B1), PhrodoBaggins_15 (B1), Phunky_16 (B1), Piglet_0015 (B1), PinheadLarry_16 (B1), Pipsqueak_16 (B1), Placalicious_15 (B1), Plmatters_16 (B1), Podrick_16 (B1), Prince_16 (B4), ProfessorX_16 (B1), QueenBeane_16 (B1), Quisquillae_16 (B1), RedMaple_15 (B1), Reprobate_17 (B5), Rich_17 (B5), Ricotta_15 (B1), Riggan_16 (B1), Rinkes_20 (B9), Robyn_15 (B1), Roliet_16 (B1), Roscoe_17 (B1), Roy17_16 (B1), SDcharge11_16 (B1), Saguaro_18 (B7), Samaymay_16 (B1), SassyCat97_15 (B1), Schadenfreude_15 (B1), Scrick_15 (B1), Selr12_16 (B1), Serendipitous_17 (B5), Serpentine_0016 (B1), Sheila_16 (B1), ShiVal_16 (B1), Simielle_15 (B1), Skippy_16 (B1), Slatt_16 (B1), Soile_16 (B1), Solosis_15 (B1), Sophia_15 (B1), Soto_16 (B1), Spartan300_16 (B1), Squid_16 (B1), Squiggle_16 (B1), Stinger_14 (B4), Struggle_15 (B1), Suigeneris_17 (B5), Surely_16 (B1), Telesworld_15 (B1), Thonko_17 (B8), Timmi_15 (B1), TomBombadil_16 (B1), Tomlarah_16 (B1), Toni_15 (B1), Tooj_16 (B1), True_15 (B1), Trypo_16 (B1), TyrionL_15 (B1), UAch1_16 (B1), Ubuntu_35 (Q), Usavi_16 (B1), Valjean_16 (B1), Vaticameos_16 (B1), Veritas_15 (B1), Vincenzo_17 (B4), VioletZ_16 (B4), Virapocalypse_16 (B1), Vista_16 (B1), Vivaldi_16 (B1), Waleliano_16 (B4), Wallhey_15 (B1), Waterdiva_16 (B1), Webster2_35 (Q), Weher20_16 (B1), Windsor_15 (B1), Wishmaker_34 (Q), Xavier_15 (B1), YouGoGlencoco_16 (B1), Zaider_17 (B1), Zelda_16 (B1), Zonia_16 (B1),

Start 19:

- Found in 75 of 351 (21.4%) of genes in pham
- Manual Annotations of this start: 54 of 324
- Called 77.3% of time when present
- Phage (with cluster) where this start called: Angel_30 (G1), Annihilator_30 (G1), Antsirabe_30 (G5), Aroostook_30 (G1), Avocado_29 (G2), Avrafan_30 (G1), BPs_30 (G1), BQuat_30 (G1), BruceB_30 (G1), Cambiare_30 (G2), CassieYates_30 (G1), Chance64_30 (G1), Cherrybomb426_30 (G1), Coleslaw_30 (G1), DMoney_30 (G1),

Darionha_30 (G1), ECartman_30 (G1), FlagStaff_29 (G2), Frosty24_30 (G1), Gideon_30 (G1), GoldenAsh_30 (G1), Gomashi_30 (G1), Halo_30 (G1), Hope_30 (G1), Jane_30 (G1), Jolene_30 (G1), Jolie2_30 (G4), Jonghyun_30 (G1), JorRay_30 (G1), Kareem_30 (G1), Lemuria_31 (G4), Liefie_30 (G1), LouisV14_30 (G1), MOOREtheMARYer_31 (G3), Marmie_30 (G1), Mercurio_32 (G4), Mowgli_30 (G1), OctaviousRex_30 (G1), Pace1224_29 (G2), Paito_30 (G1), Peeb_30 (G1), Periodt_30 (G1), Phreak_30 (G1), PinkYoshi_30 (G1), Pinnie_31 (G3), Plagueis_30 (G1), Rabbs_30 (G1), Remy19_30 (G1), Renaissance_30 (G1), Schiebel_30 (G1), ShaboiShabazz_30 (G1), Sizemore_30 (G1), Sneeze_30 (G1), Stargaze_30 (G5), TomBrady_30 (G1), Weirdo19_31 (AH), ZoMa_30 (G1), Zombie_30 (G1),

Start 21:

- Found in 249 of 351 (70.9%) of genes in pham
- Manual Annotations of this start: 8 of 324
- Called 10.0% of time when present
- Phage (with cluster) where this start called: Ahwei_15 (B4), Antihero_15 (B4), Apex_16 (B4), BobbyK_16 (B4), ChrisnMich_15 (B4), Cooper_16 (B4), DigitDog_18 (B5), EastView9101_17 (B5), Epah_15 (B4), Fanaw_16 (B4), GinPorsche_15 (B4), Hally898_15 (B4), JaguarMi_17 (B4), Lambano_15 (B4), Nanao_15 (B4), Nangang_17 (B5), Nehemiah_16 (B5), Nigel_14 (B4), Poster_15 (B4), QueenPie_16 (B4), RawrgerThat_16 (B4), Shenyu_17 (B5), SirJeffery_17 (B5), Xincheng_16 (B4), Zemanar_17 (B4),

Start 23:

- Found in 217 of 351 (61.8%) of genes in pham
- Manual Annotations of this start: 1 of 324
- Called 0.5% of time when present
- Phage (with cluster) where this start called: AlanGrant_17 (B4),

Start 24:

- Found in 278 of 351 (79.2%) of genes in pham
- Manual Annotations of this start: 11 of 324
- Called 4.0% of time when present
- Phage (with cluster) where this start called: Barkley26_30 (G1), Camri_30 (G1), Cedasite_30 (G1), DNAlll_0030 (G1), Grizzly_30 (G1), Hotshotbaby7_30 (G1), Kasen3_30 (G1), Olga_30 (G1), Sweets_30 (G1), Taheera_30 (G1), Terror_30 (G1),

Start 27:

- Found in 86 of 351 (24.5%) of genes in pham
- Manual Annotations of this start: 2 of 324
- Called 4.7% of time when present
- Phage (with cluster) where this start called: AzulaCat_30 (G1), Crespo_30 (G1), Maliketh_30 (G1), Phish_30 (G1),

Start 29:

- Found in 66 of 351 (18.8%) of genes in pham
- Manual Annotations of this start: 1 of 324
- Called 3.0% of time when present
- Phage (with cluster) where this start called: CLED96_30 (G1), Wendigo_30 (G1),

Start 30:

- Found in 149 of 351 (42.5%) of genes in pham
- No Manual Annotations of this start.

- Called 2.0% of time when present
- Phage (with cluster) where this start called: KarasumaRum_19 (B5), Mysterious_18 (B5), StinkyVeggy_19 (B5),

Summary by clusters:

There are 15 clusters represented in this pham: Q, G5, G4, G3, G2, G1, AH, B4, B5, B7, B12, B1, B11, B8, B9,

Info for manual annotations of cluster B1:

- Start number 18 was manually annotated 192 times for cluster B1.

Info for manual annotations of cluster B11:

- Start number 18 was manually annotated 1 time for cluster B11.

Info for manual annotations of cluster B12:

- Start number 18 was manually annotated 1 time for cluster B12.

Info for manual annotations of cluster B4:

- Start number 18 was manually annotated 17 times for cluster B4.
- Start number 21 was manually annotated 7 times for cluster B4.
- Start number 23 was manually annotated 1 time for cluster B4.

Info for manual annotations of cluster B5:

- Start number 18 was manually annotated 8 times for cluster B5.
- Start number 21 was manually annotated 1 time for cluster B5.

Info for manual annotations of cluster B7:

- Start number 18 was manually annotated 1 time for cluster B7.

Info for manual annotations of cluster B8:

- Start number 18 was manually annotated 1 time for cluster B8.

Info for manual annotations of cluster B9:

- Start number 18 was manually annotated 4 times for cluster B9.

Info for manual annotations of cluster G1:

- Start number 19 was manually annotated 46 times for cluster G1.
- Start number 24 was manually annotated 11 times for cluster G1.
- Start number 27 was manually annotated 2 times for cluster G1.
- Start number 29 was manually annotated 1 time for cluster G1.

Info for manual annotations of cluster G2:

- Start number 19 was manually annotated 3 times for cluster G2.

Info for manual annotations of cluster G3:

- Start number 19 was manually annotated 2 times for cluster G3.

Info for manual annotations of cluster G4:

- Start number 19 was manually annotated 2 times for cluster G4.

Info for manual annotations of cluster G5:

- Start number 19 was manually annotated 1 time for cluster G5.

Info for manual annotations of cluster Q:

- Start number 18 was manually annotated 22 times for cluster Q.

Gene Information:

Gene: AbsoluteMadLad_15 Start: 13646, Stop: 13996, Start Num: 18

Candidate Starts for AbsoluteMadLad_15:

(Start: 18 @13646 has 247 MA's), (Start: 21 @13697 has 8 MA's), (Start: 23 @13709 has 1 MA's),
(Start: 24 @13712 has 11 MA's), (26, 13721), (31, 13742), (52, 13937),

Gene: Acadian_17 Start: 15257, Stop: 15601, Start Num: 18

Candidate Starts for Acadian_17:

(2, 14912), (3, 14999), (13, 15140), (Start: 18 @15257 has 247 MA's), (Start: 21 @15308 has 8 MA's),
(25, 15329), (30, 15350), (36, 15389), (42, 15464), (44, 15479), (56, 15563),

Gene: Adriana_16 Start: 13644, Stop: 13994, Start Num: 18

Candidate Starts for Adriana_16:

(Start: 18 @13644 has 247 MA's), (Start: 21 @13695 has 8 MA's), (Start: 23 @13707 has 1 MA's),
(Start: 24 @13710 has 11 MA's), (26, 13719), (31, 13740), (52, 13935),

Gene: Aelin_15 Start: 13209, Stop: 13559, Start Num: 18

Candidate Starts for Aelin_15:

(Start: 18 @13209 has 247 MA's), (Start: 21 @13260 has 8 MA's), (Start: 23 @13272 has 1 MA's),
(Start: 24 @13275 has 11 MA's), (26, 13284), (31, 13305), (52, 13500),

Gene: Ahwei_15 Start: 14361, Stop: 14681, Start Num: 21

Candidate Starts for Ahwei_15:

(1, 13947), (Start: 18 @14310 has 247 MA's), (Start: 21 @14361 has 8 MA's), (Start: 23 @14373 has
1 MA's), (26, 14385), (30, 14403), (37, 14448), (46, 14559),

Gene: AlanGrant_17 Start: 16219, Stop: 16518, Start Num: 23

Candidate Starts for AlanGrant_17:

(Start: 18 @16153 has 247 MA's), (Start: 21 @16207 has 8 MA's), (Start: 23 @16219 has 1 MA's),
(26, 16231), (30, 16249),

Gene: AltPhacts_16 Start: 13639, Stop: 13989, Start Num: 18

Candidate Starts for AltPhacts_16:

(Start: 18 @13639 has 247 MA's), (Start: 21 @13690 has 8 MA's), (Start: 23 @13702 has 1 MA's),
(Start: 24 @13705 has 11 MA's), (26, 13714), (31, 13735), (52, 13930),

Gene: Altwerkus_15 Start: 13339, Stop: 13689, Start Num: 18

Candidate Starts for Altwerkus_15:

(Start: 18 @13339 has 247 MA's), (Start: 21 @13390 has 8 MA's), (Start: 23 @13402 has 1 MA's),
(Start: 24 @13405 has 11 MA's), (26, 13414), (31, 13435), (52, 13630),

Gene: Amochick_35 Start: 30022, Stop: 30342, Start Num: 18

Candidate Starts for Amochick_35:

(Start: 18 @30022 has 247 MA's), (Start: 27 @30100 has 2 MA's), (30, 30115), (32, 30127), (35,
30157), (37, 30166), (41, 30202), (45, 30235), (52, 30289),

Gene: Amymech_35 Start: 30016, Stop: 30336, Start Num: 18

Candidate Starts for Amymech_35:

(Start: 18 @30016 has 247 MA's), (Start: 27 @30094 has 2 MA's), (30, 30109), (32, 30121), (35, 30151), (37, 30160), (41, 30196), (45, 30229), (52, 30283),

Gene: Angel_30 Start: 26790, Stop: 27110, Start Num: 19

Candidate Starts for Angel_30:

(Start: 19 @26790 has 54 MA's), (Start: 24 @26853 has 11 MA's), (Start: 27 @26865 has 2 MA's), (Start: 29 @26871 has 1 MA's), (30, 26880), (33, 26895), (35, 26916), (36, 26919), (38, 26934), (40, 26949), (41, 26961), (49, 27039), (59, 27099),

Gene: Annihilator_30 Start: 26781, Stop: 27101, Start Num: 19

Candidate Starts for Annihilator_30:

(Start: 19 @26781 has 54 MA's), (Start: 24 @26844 has 11 MA's), (Start: 27 @26856 has 2 MA's), (Start: 29 @26862 has 1 MA's), (30, 26871), (33, 26886), (35, 26907), (36, 26910), (38, 26925), (40, 26940), (41, 26952), (49, 27030), (59, 27090),

Gene: Antihero_15 Start: 14361, Stop: 14681, Start Num: 21

Candidate Starts for Antihero_15:

(1, 13947), (Start: 18 @14310 has 247 MA's), (Start: 21 @14361 has 8 MA's), (Start: 23 @14373 has 1 MA's), (26, 14385), (30, 14403), (37, 14448), (46, 14559),

Gene: Antonia_15 Start: 13209, Stop: 13559, Start Num: 18

Candidate Starts for Antonia_15:

(Start: 18 @13209 has 247 MA's), (Start: 21 @13260 has 8 MA's), (Start: 23 @13272 has 1 MA's), (Start: 24 @13275 has 11 MA's), (26, 13284), (31, 13305), (52, 13500),

Gene: Antsirabe_30 Start: 28475, Stop: 28837, Start Num: 19

Candidate Starts for Antsirabe_30:

(15, 28415), (Start: 19 @28475 has 54 MA's), (28, 28553), (33, 28580), (35, 28601), (36, 28604), (43, 28691),

Gene: Apex_16 Start: 15606, Stop: 15926, Start Num: 21

Candidate Starts for Apex_16:

(Start: 18 @15555 has 247 MA's), (Start: 21 @15606 has 8 MA's), (Start: 23 @15618 has 1 MA's), (Start: 24 @15621 has 11 MA's), (26, 15630), (30, 15648), (46, 15804),

Gene: Aroostook_30 Start: 26790, Stop: 27110, Start Num: 19

Candidate Starts for Aroostook_30:

(Start: 19 @26790 has 54 MA's), (Start: 24 @26853 has 11 MA's), (Start: 27 @26865 has 2 MA's), (Start: 29 @26871 has 1 MA's), (30, 26880), (33, 26895), (35, 26916), (36, 26919), (38, 26934), (40, 26949), (41, 26961), (49, 27039), (59, 27099),

Gene: Austelle_17 Start: 16011, Stop: 16382, Start Num: 18

Candidate Starts for Austelle_17:

(Start: 18 @16011 has 247 MA's), (Start: 21 @16062 has 8 MA's), (Start: 23 @16074 has 1 MA's), (Start: 24 @16077 has 11 MA's), (26, 16086), (30, 16104), (46, 16260),

Gene: Avocado_29 Start: 28477, Stop: 28833, Start Num: 19

Candidate Starts for Avocado_29:

(8, 28282), (Start: 19 @28477 has 54 MA's), (22, 28528), (28, 28555), (30, 28567), (35, 28603), (36, 28606), (43, 28693), (48, 28729), (50, 28753),

Gene: Avrafan_30 Start: 26790, Stop: 27110, Start Num: 19

Candidate Starts for Avrafan_30:

(Start: 19 @26790 has 54 MA's), (Start: 24 @26853 has 11 MA's), (Start: 27 @26865 has 2 MA's), (Start: 29 @26871 has 1 MA's), (30, 26880), (33, 26895), (35, 26916), (36, 26919), (38, 26934), (40, 26949), (41, 26961), (49, 27039), (59, 27099),

Gene: AzulaCat_30 Start: 26865, Stop: 27110, Start Num: 27

Candidate Starts for AzulaCat_30:

(Start: 19 @26790 has 54 MA's), (Start: 24 @26853 has 11 MA's), (Start: 27 @26865 has 2 MA's), (Start: 29 @26871 has 1 MA's), (30, 26880), (33, 26895), (35, 26916), (36, 26919), (38, 26934), (40, 26949), (41, 26961), (49, 27039), (59, 27099),

Gene: BPs_30 Start: 26790, Stop: 27110, Start Num: 19

Candidate Starts for BPs_30:

(Start: 19 @26790 has 54 MA's), (Start: 24 @26853 has 11 MA's), (Start: 27 @26865 has 2 MA's), (Start: 29 @26871 has 1 MA's), (30, 26880), (33, 26895), (35, 26916), (36, 26919), (38, 26934), (40, 26949), (41, 26961), (49, 27039), (59, 27099),

Gene: BQuat_30 Start: 26781, Stop: 27101, Start Num: 19

Candidate Starts for BQuat_30:

(Start: 19 @26781 has 54 MA's), (Start: 24 @26844 has 11 MA's), (Start: 27 @26856 has 2 MA's), (Start: 29 @26862 has 1 MA's), (30, 26871), (33, 26886), (35, 26907), (36, 26910), (38, 26925), (40, 26940), (41, 26952), (49, 27030), (59, 27090),

Gene: Bae_17 Start: 15403, Stop: 15747, Start Num: 18

Candidate Starts for Bae_17:

(2, 15058), (3, 15145), (13, 15286), (Start: 18 @15403 has 247 MA's), (Start: 21 @15454 has 8 MA's), (25, 15475), (30, 15496), (44, 15625),

Gene: Barkley26_30 Start: 26875, Stop: 27132, Start Num: 24

Candidate Starts for Barkley26_30:

(Start: 19 @26812 has 54 MA's), (Start: 24 @26875 has 11 MA's), (Start: 27 @26887 has 2 MA's), (Start: 29 @26893 has 1 MA's), (30, 26902), (33, 26917), (35, 26938), (36, 26941), (38, 26956), (40, 26971), (41, 26983), (49, 27061), (59, 27121),

Gene: Beaglebox_15 Start: 13363, Stop: 13713, Start Num: 18

Candidate Starts for Beaglebox_15:

(Start: 18 @13363 has 247 MA's), (Start: 21 @13414 has 8 MA's), (Start: 23 @13426 has 1 MA's), (Start: 24 @13429 has 11 MA's), (26, 13438), (31, 13459), (52, 13654),

Gene: Bishoperium_15 Start: 13352, Stop: 13702, Start Num: 18

Candidate Starts for Bishoperium_15:

(Start: 18 @13352 has 247 MA's), (Start: 21 @13403 has 8 MA's), (Start: 23 @13415 has 1 MA's), (Start: 24 @13418 has 11 MA's), (26, 13427), (31, 13448), (52, 13643),

Gene: BlackStallion_16 Start: 13654, Stop: 14004, Start Num: 18

Candidate Starts for BlackStallion_16:

(Start: 18 @13654 has 247 MA's), (Start: 21 @13705 has 8 MA's), (Start: 23 @13717 has 1 MA's), (Start: 24 @13720 has 11 MA's), (26, 13729), (31, 13750), (52, 13945),

Gene: BlueHusk_16 Start: 13635, Stop: 13985, Start Num: 18

Candidate Starts for BlueHusk_16:

(Start: 18 @13635 has 247 MA's), (Start: 21 @13686 has 8 MA's), (Start: 24 @13701 has 11 MA's), (26, 13710), (31, 13731), (52, 13926),

Gene: Bluephacebaby_15 Start: 13352, Stop: 13702, Start Num: 18

Candidate Starts for Bluephacebaby_15:

(Start: 18 @13352 has 247 MA's), (Start: 21 @13403 has 8 MA's), (Start: 23 @13415 has 1 MA's), (Start: 24 @13418 has 11 MA's), (26, 13427), (31, 13448), (52, 13643),

Gene: BobbyK_16 Start: 15425, Stop: 15745, Start Num: 21

Candidate Starts for BobbyK_16:

(Start: 18 @15374 has 247 MA's), (Start: 21 @15425 has 8 MA's), (Start: 23 @15437 has 1 MA's), (Start: 24 @15440 has 11 MA's), (26, 15449), (30, 15467), (46, 15623),

Gene: Boehler_16 Start: 13662, Stop: 14012, Start Num: 18

Candidate Starts for Boehler_16:

(Start: 18 @13662 has 247 MA's), (Start: 21 @13713 has 8 MA's), (Start: 23 @13725 has 1 MA's), (Start: 24 @13728 has 11 MA's), (26, 13737), (31, 13758), (52, 13953),

Gene: Brilliant_16 Start: 13356, Stop: 13706, Start Num: 18

Candidate Starts for Brilliant_16:

(Start: 18 @13356 has 247 MA's), (Start: 21 @13407 has 8 MA's), (Start: 23 @13419 has 1 MA's), (Start: 24 @13422 has 11 MA's), (26, 13431), (31, 13452), (52, 13647),

Gene: BrownCNA_17 Start: 15628, Stop: 15999, Start Num: 18

Candidate Starts for BrownCNA_17:

(Start: 18 @15628 has 247 MA's), (Start: 21 @15679 has 8 MA's), (Start: 23 @15691 has 1 MA's), (Start: 24 @15694 has 11 MA's), (26, 15703), (30, 15721), (46, 15877),

Gene: BruceB_30 Start: 26790, Stop: 27110, Start Num: 19

Candidate Starts for BruceB_30:

(Start: 19 @26790 has 54 MA's), (Start: 24 @26853 has 11 MA's), (Start: 27 @26865 has 2 MA's), (Start: 29 @26871 has 1 MA's), (30, 26880), (33, 26895), (35, 26916), (36, 26919), (38, 26934), (40, 26949), (41, 26961), (49, 27039), (59, 27099),

Gene: Buckeye_16 Start: 13670, Stop: 14020, Start Num: 18

Candidate Starts for Buckeye_16:

(Start: 18 @13670 has 247 MA's), (Start: 21 @13721 has 8 MA's), (Start: 23 @13733 has 1 MA's), (Start: 24 @13736 has 11 MA's), (26, 13745), (31, 13766), (52, 13961),

Gene: Burr_15 Start: 13352, Stop: 13702, Start Num: 18

Candidate Starts for Burr_15:

(Start: 18 @13352 has 247 MA's), (Start: 21 @13403 has 8 MA's), (Start: 23 @13415 has 1 MA's), (Start: 24 @13418 has 11 MA's), (26, 13427), (31, 13448), (52, 13643),

Gene: CLED96_30 Start: 26871, Stop: 27110, Start Num: 29

Candidate Starts for CLED96_30:

(Start: 19 @26790 has 54 MA's), (Start: 24 @26853 has 11 MA's), (Start: 27 @26865 has 2 MA's), (Start: 29 @26871 has 1 MA's), (30, 26880), (33, 26895), (35, 26916), (36, 26919), (38, 26934), (40, 26949), (41, 26961), (49, 27039), (59, 27099),

Gene: CamL_16 Start: 13650, Stop: 14000, Start Num: 18

Candidate Starts for CamL_16:

(Start: 18 @13650 has 247 MA's), (Start: 21 @13701 has 8 MA's), (Start: 23 @13713 has 1 MA's),
(Start: 24 @13716 has 11 MA's), (26, 13725), (31, 13746), (52, 13941),

Gene: Cambiare_30 Start: 28945, Stop: 29301, Start Num: 19

Candidate Starts for Cambiare_30:

(4, 28708), (Start: 19 @28945 has 54 MA's), (22, 28996), (28, 29023), (30, 29035), (35, 29071), (36,
29074), (43, 29161), (48, 29197), (50, 29221),

Gene: CampRoach_16 Start: 13641, Stop: 13991, Start Num: 18

Candidate Starts for CampRoach_16:

(Start: 18 @13641 has 247 MA's), (Start: 21 @13692 has 8 MA's), (Start: 23 @13704 has 1 MA's),
(Start: 24 @13707 has 11 MA's), (26, 13716), (31, 13737), (52, 13932),

Gene: Camri_30 Start: 26853, Stop: 27110, Start Num: 24

Candidate Starts for Camri_30:

(Start: 19 @26790 has 54 MA's), (Start: 24 @26853 has 11 MA's), (Start: 27 @26865 has 2 MA's),
(Start: 29 @26871 has 1 MA's), (30, 26880), (33, 26895), (35, 26916), (36, 26919), (38, 26934), (40,
26949), (41, 26961), (49, 27039), (59, 27099),

Gene: Cannibal_16 Start: 13635, Stop: 13985, Start Num: 18

Candidate Starts for Cannibal_16:

(Start: 18 @13635 has 247 MA's), (Start: 21 @13686 has 8 MA's), (Start: 23 @13698 has 1 MA's),
(Start: 24 @13701 has 11 MA's), (26, 13710), (31, 13731), (52, 13926),

Gene: Carthage_15 Start: 13313, Stop: 13663, Start Num: 18

Candidate Starts for Carthage_15:

(Start: 18 @13313 has 247 MA's), (Start: 21 @13364 has 8 MA's), (Start: 23 @13376 has 1 MA's),
(Start: 24 @13379 has 11 MA's), (26, 13388), (31, 13409), (37, 13451), (52, 13604),

Gene: CassieYates_30 Start: 26790, Stop: 27110, Start Num: 19

Candidate Starts for CassieYates_30:

(Start: 19 @26790 has 54 MA's), (Start: 24 @26853 has 11 MA's), (Start: 27 @26865 has 2 MA's),
(Start: 29 @26871 has 1 MA's), (30, 26880), (33, 26895), (35, 26916), (36, 26919), (38, 26934), (40,
26949), (41, 26961), (49, 27039), (59, 27099),

Gene: Cedasite_30 Start: 26853, Stop: 27110, Start Num: 24

Candidate Starts for Cedasite_30:

(Start: 19 @26790 has 54 MA's), (Start: 24 @26853 has 11 MA's), (Start: 27 @26865 has 2 MA's),
(Start: 29 @26871 has 1 MA's), (30, 26880), (33, 26895), (35, 26916), (36, 26919), (38, 26934), (40,
26949), (41, 26961), (49, 27039), (59, 27099),

Gene: Chaelin_15 Start: 13317, Stop: 13667, Start Num: 18

Candidate Starts for Chaelin_15:

(Start: 18 @13317 has 247 MA's), (Start: 21 @13368 has 8 MA's), (Start: 23 @13380 has 1 MA's),
(Start: 24 @13383 has 11 MA's), (26, 13392), (31, 13413), (52, 13608),

Gene: Chance64_30 Start: 26790, Stop: 27110, Start Num: 19

Candidate Starts for Chance64_30:

(Start: 19 @26790 has 54 MA's), (Start: 24 @26853 has 11 MA's), (Start: 27 @26865 has 2 MA's),
(Start: 29 @26871 has 1 MA's), (30, 26880), (33, 26895), (35, 26916), (36, 26919), (38, 26934), (40,
26949), (41, 26961), (49, 27039), (59, 27099),

Gene: Charles1_16 Start: 13632, Stop: 13982, Start Num: 18

Candidate Starts for Charles1_16:

(Start: 18 @13632 has 247 MA's), (Start: 21 @13683 has 8 MA's), (Start: 23 @13695 has 1 MA's), (Start: 24 @13698 has 11 MA's), (26, 13707), (31, 13728), (52, 13923),

Gene: CharlieGBrown_15 Start: 13221, Stop: 13571, Start Num: 18

Candidate Starts for CharlieGBrown_15:

(Start: 18 @13221 has 247 MA's), (Start: 21 @13272 has 8 MA's), (Start: 23 @13284 has 1 MA's), (Start: 24 @13287 has 11 MA's), (26, 13296), (31, 13317), (52, 13512),

Gene: CheetO_16 Start: 13650, Stop: 14000, Start Num: 18

Candidate Starts for CheetO_16:

(Start: 18 @13650 has 247 MA's), (Start: 21 @13701 has 8 MA's), (Start: 23 @13713 has 1 MA's), (Start: 24 @13716 has 11 MA's), (26, 13725), (31, 13746), (52, 13941),

Gene: Cher_15 Start: 13375, Stop: 13725, Start Num: 18

Candidate Starts for Cher_15:

(Start: 18 @13375 has 247 MA's), (Start: 21 @13426 has 8 MA's), (Start: 23 @13438 has 1 MA's), (Start: 24 @13441 has 11 MA's), (26, 13450), (31, 13471), (52, 13666),

Gene: Cherrybomb426_30 Start: 26790, Stop: 27110, Start Num: 19

Candidate Starts for Cherrybomb426_30:

(Start: 19 @26790 has 54 MA's), (Start: 24 @26853 has 11 MA's), (Start: 27 @26865 has 2 MA's), (Start: 29 @26871 has 1 MA's), (30, 26880), (33, 26895), (35, 26916), (36, 26919), (38, 26934), (40, 26949), (41, 26961), (49, 27039), (59, 27099),

Gene: Childish_15 Start: 13363, Stop: 13713, Start Num: 18

Candidate Starts for Childish_15:

(Start: 18 @13363 has 247 MA's), (Start: 21 @13414 has 8 MA's), (Start: 23 @13426 has 1 MA's), (Start: 24 @13429 has 11 MA's), (26, 13438), (31, 13459), (52, 13654),

Gene: Chorkpop_16 Start: 13375, Stop: 13725, Start Num: 18

Candidate Starts for Chorkpop_16:

(Start: 18 @13375 has 247 MA's), (Start: 21 @13426 has 8 MA's), (Start: 23 @13438 has 1 MA's), (Start: 24 @13441 has 11 MA's), (26, 13450), (31, 13471), (52, 13666),

Gene: ChrisnMich_15 Start: 14361, Stop: 14681, Start Num: 21

Candidate Starts for ChrisnMich_15:

(1, 13947), (Start: 18 @14310 has 247 MA's), (Start: 21 @14361 has 8 MA's), (Start: 23 @14373 has 1 MA's), (26, 14385), (30, 14403), (37, 14448), (46, 14559),

Gene: Chunky_16 Start: 13662, Stop: 14012, Start Num: 18

Candidate Starts for Chunky_16:

(Start: 18 @13662 has 247 MA's), (Start: 21 @13713 has 8 MA's), (Start: 24 @13728 has 11 MA's), (26, 13737), (31, 13758), (52, 13953),

Gene: Cobra_16 Start: 13653, Stop: 14003, Start Num: 18

Candidate Starts for Cobra_16:

(Start: 18 @13653 has 247 MA's), (Start: 21 @13704 has 8 MA's), (Start: 23 @13716 has 1 MA's), (Start: 24 @13719 has 11 MA's), (26, 13728), (31, 13749), (52, 13944),

Gene: Coleslaw_30 Start: 26781, Stop: 27101, Start Num: 19

Candidate Starts for Coleslaw_30:

(Start: 19 @26781 has 54 MA's), (Start: 24 @26844 has 11 MA's), (Start: 27 @26856 has 2 MA's), (Start: 29 @26862 has 1 MA's), (30, 26871), (33, 26886), (35, 26907), (36, 26910), (38, 26925), (40, 26940), (41, 26952), (49, 27030), (59, 27090),

Gene: Cooper_16 Start: 14469, Stop: 14792, Start Num: 21

Candidate Starts for Cooper_16:

(Start: 18 @14418 has 247 MA's), (Start: 21 @14469 has 8 MA's), (Start: 23 @14481 has 1 MA's), (30, 14511), (46, 14667), (49, 14703),

Gene: Cornobble_15 Start: 13210, Stop: 13560, Start Num: 18

Candidate Starts for Cornobble_15:

(Start: 18 @13210 has 247 MA's), (Start: 21 @13261 has 8 MA's), (Start: 23 @13273 has 1 MA's), (Start: 24 @13276 has 11 MA's), (26, 13285), (31, 13306), (52, 13501),

Gene: Cosmolli16_15 Start: 13367, Stop: 13717, Start Num: 18

Candidate Starts for Cosmolli16_15:

(Start: 18 @13367 has 247 MA's), (Start: 21 @13418 has 8 MA's), (Start: 23 @13430 has 1 MA's), (Start: 24 @13433 has 11 MA's), (26, 13442), (31, 13463), (52, 13658),

Gene: Craff_16 Start: 13656, Stop: 14006, Start Num: 18

Candidate Starts for Craff_16:

(Start: 18 @13656 has 247 MA's), (Start: 21 @13707 has 8 MA's), (Start: 23 @13719 has 1 MA's), (Start: 24 @13722 has 11 MA's), (26, 13731), (31, 13752), (52, 13947),

Gene: Crespo_30 Start: 26866, Stop: 27111, Start Num: 27

Candidate Starts for Crespo_30:

(Start: 19 @26791 has 54 MA's), (Start: 24 @26854 has 11 MA's), (Start: 27 @26866 has 2 MA's), (Start: 29 @26872 has 1 MA's), (30, 26881), (33, 26896), (35, 26917), (36, 26920), (38, 26935), (40, 26950), (41, 26962), (49, 27040), (59, 27100),

Gene: Crownjwl_16 Start: 13423, Stop: 13773, Start Num: 18

Candidate Starts for Crownjwl_16:

(Start: 18 @13423 has 247 MA's), (Start: 21 @13474 has 8 MA's), (Start: 24 @13489 has 11 MA's), (26, 13498), (31, 13519), (52, 13714),

Gene: DMoney_30 Start: 26790, Stop: 27110, Start Num: 19

Candidate Starts for DMoney_30:

(Start: 19 @26790 has 54 MA's), (Start: 24 @26853 has 11 MA's), (Start: 27 @26865 has 2 MA's), (Start: 29 @26871 has 1 MA's), (30, 26880), (33, 26895), (35, 26916), (36, 26919), (38, 26934), (40, 26949), (41, 26961), (49, 27039), (59, 27099),

Gene: DNAlll_0030 Start: 26604, Stop: 26861, Start Num: 24

Candidate Starts for DNAlll_0030:

(Start: 19 @26541 has 54 MA's), (Start: 24 @26604 has 11 MA's), (Start: 27 @26616 has 2 MA's), (Start: 29 @26622 has 1 MA's), (30, 26631), (33, 26646), (35, 26667), (36, 26670), (38, 26685), (40, 26700), (41, 26712), (49, 26790), (59, 26850),

Gene: DaddyDaniels_16 Start: 13359, Stop: 13709, Start Num: 18

Candidate Starts for DaddyDaniels_16:

(Start: 18 @13359 has 247 MA's), (Start: 21 @13410 has 8 MA's), (Start: 23 @13422 has 1 MA's), (Start: 24 @13425 has 11 MA's), (26, 13434), (31, 13455), (52, 13650),

Gene: Daegal_36 Start: 30310, Stop: 30630, Start Num: 18

Candidate Starts for Daegal_36:

(Start: 18 @30310 has 247 MA's), (Start: 27 @30388 has 2 MA's), (30, 30403), (32, 30415), (35, 30445), (37, 30454), (41, 30490), (45, 30523), (52, 30577),

Gene: Daka_16 Start: 13653, Stop: 14003, Start Num: 18

Candidate Starts for Daka_16:

(Start: 18 @13653 has 247 MA's), (Start: 21 @13704 has 8 MA's), (Start: 23 @13716 has 1 MA's), (Start: 24 @13719 has 11 MA's), (26, 13728), (31, 13749), (52, 13944),

Gene: Darionha_30 Start: 26790, Stop: 27110, Start Num: 19

Candidate Starts for Darionha_30:

(Start: 19 @26790 has 54 MA's), (Start: 24 @26853 has 11 MA's), (Start: 27 @26865 has 2 MA's), (Start: 29 @26871 has 1 MA's), (30, 26880), (33, 26895), (35, 26916), (36, 26919), (38, 26934), (40, 26949), (41, 26961), (49, 27039), (59, 27099),

Gene: Dati_16 Start: 13363, Stop: 13713, Start Num: 18

Candidate Starts for Dati_16:

(Start: 18 @13363 has 247 MA's), (Start: 21 @13414 has 8 MA's), (Start: 23 @13426 has 1 MA's), (Start: 24 @13429 has 11 MA's), (26, 13438), (31, 13459), (52, 13654),

Gene: DeepSoil15_35 Start: 30016, Stop: 30336, Start Num: 18

Candidate Starts for DeepSoil15_35:

(Start: 18 @30016 has 247 MA's), (Start: 27 @30094 has 2 MA's), (30, 30109), (32, 30121), (35, 30151), (37, 30160), (41, 30196), (45, 30229), (52, 30283),

Gene: Derpp_15 Start: 13209, Stop: 13559, Start Num: 18

Candidate Starts for Derpp_15:

(Start: 18 @13209 has 247 MA's), (Start: 21 @13260 has 8 MA's), (Start: 23 @13272 has 1 MA's), (Start: 24 @13275 has 11 MA's), (26, 13284), (31, 13305), (52, 13500),

Gene: Dewey_34 Start: 30016, Stop: 30336, Start Num: 18

Candidate Starts for Dewey_34:

(Start: 18 @30016 has 247 MA's), (Start: 27 @30094 has 2 MA's), (30, 30109), (32, 30121), (35, 30151), (37, 30160), (41, 30196), (45, 30229), (52, 30283),

Gene: Dice_15 Start: 13350, Stop: 13700, Start Num: 18

Candidate Starts for Dice_15:

(Start: 18 @13350 has 247 MA's), (Start: 21 @13401 has 8 MA's), (Start: 23 @13413 has 1 MA's), (Start: 24 @13416 has 11 MA's), (26, 13425), (31, 13446), (52, 13641),

Gene: DigitDog_18 Start: 15284, Stop: 15568, Start Num: 21

Candidate Starts for DigitDog_18:

(2, 14888), (3, 14975), (13, 15116), (Start: 18 @15233 has 247 MA's), (Start: 21 @15284 has 8 MA's), (25, 15305), (30, 15326), (36, 15365), (42, 15440), (44, 15455),

Gene: Dingo_16 Start: 13635, Stop: 13985, Start Num: 18

Candidate Starts for Dingo_16:

(Start: 18 @13635 has 247 MA's), (Start: 21 @13686 has 8 MA's), (Start: 24 @13701 has 11 MA's), (26, 13710), (31, 13731), (52, 13926),

Gene: Dione_15 Start: 13351, Stop: 13701, Start Num: 18

Candidate Starts for Dione_15:

(Start: 18 @13351 has 247 MA's), (Start: 21 @13402 has 8 MA's), (Start: 23 @13414 has 1 MA's), (Start: 24 @13417 has 11 MA's), (26, 13426), (31, 13447), (52, 13642),

Gene: DirtJuice_16 Start: 13638, Stop: 13988, Start Num: 18

Candidate Starts for DirtJuice_16:

(Start: 18 @13638 has 247 MA's), (Start: 21 @13689 has 8 MA's), (Start: 24 @13704 has 11 MA's), (26, 13713), (31, 13734), (52, 13929),

Gene: DoesntMatter_16 Start: 13632, Stop: 13982, Start Num: 18

Candidate Starts for DoesntMatter_16:

(Start: 18 @13632 has 247 MA's), (Start: 21 @13683 has 8 MA's), (Start: 23 @13695 has 1 MA's), (Start: 24 @13698 has 11 MA's), (26, 13707), (31, 13728), (52, 13923),

Gene: DonSanchon_15 Start: 13351, Stop: 13701, Start Num: 18

Candidate Starts for DonSanchon_15:

(Start: 18 @13351 has 247 MA's), (Start: 21 @13402 has 8 MA's), (Start: 23 @13414 has 1 MA's), (Start: 24 @13417 has 11 MA's), (26, 13426), (31, 13447), (52, 13642),

Gene: Donny_17 Start: 15259, Stop: 15603, Start Num: 18

Candidate Starts for Donny_17:

(2, 14914), (3, 15001), (13, 15142), (Start: 18 @15259 has 247 MA's), (Start: 21 @15310 has 8 MA's), (25, 15331), (30, 15352), (36, 15391), (42, 15466), (44, 15481), (56, 15565),

Gene: Duggie_15 Start: 13365, Stop: 13715, Start Num: 18

Candidate Starts for Duggie_15:

(Start: 18 @13365 has 247 MA's), (Start: 21 @13416 has 8 MA's), (Start: 23 @13428 has 1 MA's), (Start: 24 @13431 has 11 MA's), (26, 13440), (31, 13461), (52, 13656),

Gene: Durga_16 Start: 13664, Stop: 14014, Start Num: 18

Candidate Starts for Durga_16:

(Start: 18 @13664 has 247 MA's), (Start: 21 @13715 has 8 MA's), (Start: 23 @13727 has 1 MA's), (Start: 24 @13730 has 11 MA's), (26, 13739), (31, 13760), (52, 13955),

Gene: ECartman_30 Start: 26790, Stop: 27110, Start Num: 19

Candidate Starts for ECartman_30:

(Start: 19 @26790 has 54 MA's), (Start: 24 @26853 has 11 MA's), (Start: 27 @26865 has 2 MA's), (Start: 29 @26871 has 1 MA's), (30, 26880), (33, 26895), (35, 26916), (36, 26919), (38, 26934), (40, 26949), (41, 26961), (49, 27039), (59, 27099),

Gene: EastView9101_17 Start: 15313, Stop: 15612, Start Num: 21

Candidate Starts for EastView9101_17:

(2, 14920), (3, 15007), (Start: 18 @15262 has 247 MA's), (Start: 21 @15313 has 8 MA's), (25, 15334), (30, 15355), (36, 15394), (42, 15469), (44, 15484),

Gene: Ein37_35 Start: 30016, Stop: 30336, Start Num: 18

Candidate Starts for Ein37_35:

(Start: 18 @30016 has 247 MA's), (Start: 27 @30094 has 2 MA's), (30, 30109), (32, 30121), (35, 30151), (37, 30160), (41, 30196), (45, 30229), (52, 30283),

Gene: Emiris_16 Start: 13645, Stop: 13995, Start Num: 18

Candidate Starts for Emiris_16:

(Start: 18 @13645 has 247 MA's), (Start: 21 @13696 has 8 MA's), (Start: 23 @13708 has 1 MA's), (Start: 24 @13711 has 11 MA's), (26, 13720), (31, 13741), (52, 13936),

Gene: EmpTee_16 Start: 13651, Stop: 14001, Start Num: 18

Candidate Starts for EmpTee_16:

(Start: 18 @13651 has 247 MA's), (Start: 21 @13702 has 8 MA's), (Start: 23 @13714 has 1 MA's),
(Start: 24 @13717 has 11 MA's), (26, 13726), (31, 13747), (52, 13942),

Gene: Epah_15 Start: 14361, Stop: 14681, Start Num: 21

Candidate Starts for Epah_15:

(1, 13947), (Start: 18 @14310 has 247 MA's), (Start: 21 @14361 has 8 MA's), (Start: 23 @14373 has
1 MA's), (26, 14385), (30, 14403), (37, 14448), (46, 14559),

Gene: Evanesce_34 Start: 30016, Stop: 30336, Start Num: 18

Candidate Starts for Evanesce_34:

(Start: 18 @30016 has 247 MA's), (Start: 27 @30094 has 2 MA's), (30, 30109), (32, 30121), (35,
30151), (37, 30160), (41, 30196), (45, 30229), (52, 30283),

Gene: Fanaw_16 Start: 15455, Stop: 15775, Start Num: 21

Candidate Starts for Fanaw_16:

(Start: 18 @15404 has 247 MA's), (Start: 21 @15455 has 8 MA's), (Start: 23 @15467 has 1 MA's),
(Start: 24 @15470 has 11 MA's), (26, 15479), (30, 15497), (36, 15536), (46, 15653),

Gene: FlagStaff_29 Start: 28264, Stop: 28620, Start Num: 19

Candidate Starts for FlagStaff_29:

(Start: 19 @28264 has 54 MA's), (28, 28342), (30, 28354), (35, 28390), (36, 28393), (43, 28480), (48,
28516), (50, 28540), (61, 28597),

Gene: Forge_34 Start: 30016, Stop: 30336, Start Num: 18

Candidate Starts for Forge_34:

(Start: 18 @30016 has 247 MA's), (Start: 27 @30094 has 2 MA's), (30, 30109), (32, 30121), (35,
30151), (37, 30160), (41, 30196), (45, 30229), (52, 30283),

Gene: Fortunato_16 Start: 15368, Stop: 15739, Start Num: 18

Candidate Starts for Fortunato_16:

(Start: 18 @15368 has 247 MA's), (Start: 21 @15419 has 8 MA's), (Start: 23 @15431 has 1 MA's),
(Start: 24 @15434 has 11 MA's), (26, 15443), (30, 15461), (46, 15617),

Gene: Fozzie_15 Start: 13660, Stop: 14010, Start Num: 18

Candidate Starts for Fozzie_15:

(Start: 18 @13660 has 247 MA's), (Start: 21 @13711 has 8 MA's), (Start: 23 @13723 has 1 MA's),
(Start: 24 @13726 has 11 MA's), (26, 13735), (31, 13756), (52, 13951),

Gene: Frankicide_16 Start: 13652, Stop: 14002, Start Num: 18

Candidate Starts for Frankicide_16:

(Start: 18 @13652 has 247 MA's), (Start: 21 @13703 has 8 MA's), (Start: 23 @13715 has 1 MA's),
(Start: 24 @13718 has 11 MA's), (26, 13727), (31, 13748), (52, 13943),

Gene: Frederick_16 Start: 15377, Stop: 15748, Start Num: 18

Candidate Starts for Frederick_16:

(Start: 18 @15377 has 247 MA's), (Start: 21 @15428 has 8 MA's), (Start: 23 @15440 has 1 MA's),
(Start: 24 @15443 has 11 MA's), (26, 15452), (30, 15470), (46, 15626),

Gene: Freya_15 Start: 13346, Stop: 13696, Start Num: 18

Candidate Starts for Freya_15:

(Start: 18 @13346 has 247 MA's), (Start: 21 @13397 has 8 MA's), (Start: 23 @13409 has 1 MA's), (Start: 24 @13412 has 11 MA's), (26, 13421), (31, 13442), (52, 13637),

Gene: FriarPreacher_16 Start: 13671, Stop: 14021, Start Num: 18

Candidate Starts for FriarPreacher_16:

(Start: 18 @13671 has 247 MA's), (Start: 21 @13722 has 8 MA's), (Start: 23 @13734 has 1 MA's), (Start: 24 @13737 has 11 MA's), (26, 13746), (31, 13767), (52, 13962),

Gene: Fringe_16 Start: 13633, Stop: 13983, Start Num: 18

Candidate Starts for Fringe_16:

(Start: 18 @13633 has 247 MA's), (Start: 21 @13684 has 8 MA's), (Start: 23 @13696 has 1 MA's), (Start: 24 @13699 has 11 MA's), (26, 13708), (31, 13729), (52, 13924),

Gene: Frosty24_30 Start: 26790, Stop: 27110, Start Num: 19

Candidate Starts for Frosty24_30:

(Start: 19 @26790 has 54 MA's), (Start: 24 @26853 has 11 MA's), (Start: 27 @26865 has 2 MA's), (Start: 29 @26871 has 1 MA's), (30, 26880), (33, 26895), (35, 26916), (36, 26919), (38, 26934), (40, 26949), (41, 26961), (49, 27039), (59, 27099),

Gene: FugateOSU_15 Start: 13357, Stop: 13707, Start Num: 18

Candidate Starts for FugateOSU_15:

(Start: 18 @13357 has 247 MA's), (Start: 21 @13408 has 8 MA's), (Start: 23 @13420 has 1 MA's), (Start: 24 @13423 has 11 MA's), (26, 13432), (31, 13453), (52, 13648),

Gene: Funsized_20 Start: 17389, Stop: 17733, Start Num: 18

Candidate Starts for Funsized_20:

(Start: 18 @17389 has 247 MA's), (Start: 24 @17455 has 11 MA's), (Start: 29 @17473 has 1 MA's), (32, 17494), (63, 17713),

Gene: Gancho_34 Start: 29739, Stop: 30059, Start Num: 18

Candidate Starts for Gancho_34:

(Start: 18 @29739 has 247 MA's), (Start: 27 @29817 has 2 MA's), (30, 29832), (32, 29844), (35, 29874), (37, 29883), (41, 29919), (45, 29952), (52, 30006),

Gene: Gareth_15 Start: 13354, Stop: 13704, Start Num: 18

Candidate Starts for Gareth_15:

(Start: 18 @13354 has 247 MA's), (Start: 21 @13405 has 8 MA's), (Start: 23 @13417 has 1 MA's), (Start: 24 @13420 has 11 MA's), (26, 13429), (31, 13450), (52, 13645),

Gene: GeneCoco_16 Start: 13656, Stop: 14006, Start Num: 18

Candidate Starts for GeneCoco_16:

(Start: 18 @13656 has 247 MA's), (Start: 21 @13707 has 8 MA's), (Start: 23 @13719 has 1 MA's), (Start: 24 @13722 has 11 MA's), (26, 13731), (31, 13752), (52, 13947),

Gene: Gideon_30 Start: 26790, Stop: 27110, Start Num: 19

Candidate Starts for Gideon_30:

(Start: 19 @26790 has 54 MA's), (Start: 24 @26853 has 11 MA's), (Start: 27 @26865 has 2 MA's), (Start: 29 @26871 has 1 MA's), (30, 26880), (33, 26895), (35, 26916), (36, 26919), (38, 26934), (40, 26949), (41, 26961), (49, 27039), (59, 27099),

Gene: Giles_34 Start: 30016, Stop: 30336, Start Num: 18

Candidate Starts for Giles_34:

(Start: 18 @30016 has 247 MA's), (Start: 27 @30094 has 2 MA's), (30, 30109), (32, 30121), (35, 30151), (37, 30160), (41, 30196), (45, 30229), (52, 30283),

Gene: GinPorsche_15 Start: 14361, Stop: 14681, Start Num: 21

Candidate Starts for GinPorsche_15:

(1, 13947), (Start: 18 @14310 has 247 MA's), (Start: 21 @14361 has 8 MA's), (Start: 23 @14373 has 1 MA's), (26, 14385), (30, 14403), (37, 14448), (46, 14559),

Gene: Giraffe_16 Start: 13358, Stop: 13708, Start Num: 18

Candidate Starts for Giraffe_16:

(Start: 18 @13358 has 247 MA's), (Start: 21 @13409 has 8 MA's), (Start: 23 @13421 has 1 MA's), (Start: 24 @13424 has 11 MA's), (26, 13433), (31, 13454), (52, 13649),

Gene: GoldenAsh_30 Start: 26790, Stop: 27110, Start Num: 19

Candidate Starts for GoldenAsh_30:

(Start: 19 @26790 has 54 MA's), (Start: 24 @26853 has 11 MA's), (Start: 27 @26865 has 2 MA's), (Start: 29 @26871 has 1 MA's), (30, 26880), (33, 26895), (35, 26916), (36, 26919), (38, 26934), (40, 26949), (41, 26961), (49, 27039), (59, 27099),

Gene: Gomashi_30 Start: 26791, Stop: 27111, Start Num: 19

Candidate Starts for Gomashi_30:

(Start: 19 @26791 has 54 MA's), (Start: 24 @26854 has 11 MA's), (Start: 27 @26866 has 2 MA's), (Start: 29 @26872 has 1 MA's), (30, 26881), (33, 26896), (35, 26917), (36, 26920), (38, 26935), (40, 26950), (41, 26962), (49, 27040), (59, 27100),

Gene: Grand2040_15 Start: 13373, Stop: 13723, Start Num: 18

Candidate Starts for Grand2040_15:

(Start: 18 @13373 has 247 MA's), (Start: 21 @13424 has 8 MA's), (Start: 23 @13436 has 1 MA's), (Start: 24 @13439 has 11 MA's), (26, 13448), (31, 13469), (52, 13664),

Gene: Gravaillia_34 Start: 29745, Stop: 30065, Start Num: 18

Candidate Starts for Gravaillia_34:

(Start: 18 @29745 has 247 MA's), (Start: 27 @29823 has 2 MA's), (30, 29838), (32, 29850), (35, 29880), (37, 29889), (41, 29925), (45, 29958), (52, 30012),

Gene: Grizzly_30 Start: 26853, Stop: 27110, Start Num: 24

Candidate Starts for Grizzly_30:

(16, 26727), (Start: 19 @26790 has 54 MA's), (Start: 24 @26853 has 11 MA's), (Start: 27 @26865 has 2 MA's), (Start: 29 @26871 has 1 MA's), (30, 26880), (33, 26895), (35, 26916), (36, 26919), (40, 26949), (41, 26961), (49, 27039), (59, 27099),

Gene: Gyarad_0016 Start: 13650, Stop: 14000, Start Num: 18

Candidate Starts for Gyarad_0016:

(Start: 18 @13650 has 247 MA's), (Start: 21 @13701 has 8 MA's), (Start: 23 @13713 has 1 MA's), (Start: 24 @13716 has 11 MA's), (26, 13725), (31, 13746), (52, 13941),

Gene: HH92_34 Start: 30016, Stop: 30336, Start Num: 18

Candidate Starts for HH92_34:

(Start: 18 @30016 has 247 MA's), (Start: 27 @30094 has 2 MA's), (30, 30109), (32, 30121), (35, 30151), (37, 30160), (41, 30196), (45, 30229), (52, 30283),

Gene: HSavage_16 Start: 13658, Stop: 14008, Start Num: 18

Candidate Starts for HSavage_16:

(Start: 18 @13658 has 247 MA's), (Start: 21 @13709 has 8 MA's), (Start: 23 @13721 has 1 MA's),
(Start: 24 @13724 has 11 MA's), (26, 13733), (31, 13754), (52, 13949),

Gene: Hadrien_35 Start: 30016, Stop: 30336, Start Num: 18

Candidate Starts for Hadrien_35:

(Start: 18 @30016 has 247 MA's), (Start: 27 @30094 has 2 MA's), (30, 30109), (32, 30121), (35,
30151), (37, 30160), (41, 30196), (45, 30229), (52, 30283),

Gene: Hail_34 Start: 30016, Stop: 30336, Start Num: 18

Candidate Starts for Hail_34:

(Start: 18 @30016 has 247 MA's), (Start: 27 @30094 has 2 MA's), (30, 30109), (32, 30121), (35,
30151), (37, 30160), (41, 30196), (45, 30229), (52, 30283),

Gene: Haimas_16 Start: 13650, Stop: 14000, Start Num: 18

Candidate Starts for Haimas_16:

(Start: 18 @13650 has 247 MA's), (Start: 21 @13701 has 8 MA's), (Start: 23 @13713 has 1 MA's),
(Start: 24 @13716 has 11 MA's), (26, 13725), (31, 13746), (52, 13941),

Gene: Haleema_15 Start: 13375, Stop: 13725, Start Num: 18

Candidate Starts for Haleema_15:

(Start: 18 @13375 has 247 MA's), (Start: 21 @13426 has 8 MA's), (Start: 23 @13438 has 1 MA's),
(Start: 24 @13441 has 11 MA's), (26, 13450), (31, 13471), (52, 13666),

Gene: Hally898_15 Start: 14361, Stop: 14681, Start Num: 21

Candidate Starts for Hally898_15:

(1, 13947), (Start: 18 @14310 has 247 MA's), (Start: 21 @14361 has 8 MA's), (Start: 23 @14373 has
1 MA's), (26, 14385), (30, 14403), (37, 14448), (46, 14559),

Gene: Halo_30 Start: 26785, Stop: 27105, Start Num: 19

Candidate Starts for Halo_30:

(Start: 19 @26785 has 54 MA's), (Start: 24 @26848 has 11 MA's), (Start: 27 @26860 has 2 MA's),
(Start: 29 @26866 has 1 MA's), (30, 26875), (33, 26890), (35, 26911), (36, 26914), (38, 26929), (40,
26944), (41, 26956), (49, 27034), (59, 27094),

Gene: Hangman_16 Start: 15377, Stop: 15748, Start Num: 18

Candidate Starts for Hangman_16:

(Start: 18 @15377 has 247 MA's), (Start: 21 @15428 has 8 MA's), (Start: 23 @15440 has 1 MA's),
(Start: 24 @15443 has 11 MA's), (26, 15452), (30, 15470), (36, 15509), (46, 15626),

Gene: Hartsy_16 Start: 13647, Stop: 13997, Start Num: 18

Candidate Starts for Hartsy_16:

(Start: 18 @13647 has 247 MA's), (Start: 21 @13698 has 8 MA's), (Start: 23 @13710 has 1 MA's),
(Start: 24 @13713 has 11 MA's), (26, 13722), (31, 13743), (52, 13938),

Gene: Heath_16 Start: 15374, Stop: 15745, Start Num: 18

Candidate Starts for Heath_16:

(Start: 18 @15374 has 247 MA's), (Start: 21 @15425 has 8 MA's), (Start: 23 @15437 has 1 MA's),
(Start: 24 @15440 has 11 MA's), (26, 15449), (30, 15467), (36, 15506), (46, 15623),

Gene: Held_16 Start: 13358, Stop: 13708, Start Num: 18

Candidate Starts for Held_16:

(Start: 18 @13358 has 247 MA's), (Start: 21 @13409 has 8 MA's), (Start: 23 @13421 has 1 MA's),
(Start: 24 @13424 has 11 MA's), (26, 13433), (31, 13454), (52, 13649),

Gene: HenryJackson_15 Start: 13372, Stop: 13722, Start Num: 18

Candidate Starts for HenryJackson_15:

(Start: 18 @13372 has 247 MA's), (Start: 21 @13423 has 8 MA's), (Start: 23 @13435 has 1 MA's),
(Start: 24 @13438 has 11 MA's), (26, 13447), (31, 13468), (52, 13663),

Gene: Hertubise_16 Start: 13665, Stop: 14015, Start Num: 18

Candidate Starts for Hertubise_16:

(Start: 18 @13665 has 247 MA's), (Start: 21 @13716 has 8 MA's), (Start: 23 @13728 has 1 MA's),
(Start: 24 @13731 has 11 MA's), (26, 13740), (31, 13761), (52, 13956),

Gene: Hetaeria_16 Start: 13668, Stop: 14018, Start Num: 18

Candidate Starts for Hetaeria_16:

(Start: 18 @13668 has 247 MA's), (Start: 21 @13719 has 8 MA's), (Start: 23 @13731 has 1 MA's),
(Start: 24 @13734 has 11 MA's), (26, 13743), (31, 13764), (52, 13959),

Gene: HighStump_15 Start: 13357, Stop: 13707, Start Num: 18

Candidate Starts for HighStump_15:

(Start: 18 @13357 has 247 MA's), (Start: 21 @13408 has 8 MA's), (Start: 23 @13420 has 1 MA's),
(Start: 24 @13423 has 11 MA's), (26, 13432), (31, 13453), (52, 13648),

Gene: Hocus_15 Start: 13357, Stop: 13707, Start Num: 18

Candidate Starts for Hocus_15:

(Start: 18 @13357 has 247 MA's), (Start: 21 @13408 has 8 MA's), (Start: 23 @13420 has 1 MA's),
(Start: 24 @13423 has 11 MA's), (26, 13432), (31, 13453), (52, 13648),

Gene: Hope_30 Start: 26790, Stop: 27110, Start Num: 19

Candidate Starts for Hope_30:

(Start: 19 @26790 has 54 MA's), (Start: 24 @26853 has 11 MA's), (Start: 27 @26865 has 2 MA's),
(Start: 29 @26871 has 1 MA's), (30, 26880), (33, 26895), (35, 26916), (36, 26919), (38, 26934), (40,
26949), (41, 26961), (49, 27039), (59, 27099),

Gene: Horchata_16 Start: 13637, Stop: 13987, Start Num: 18

Candidate Starts for Horchata_16:

(Start: 18 @13637 has 247 MA's), (Start: 21 @13688 has 8 MA's), (Start: 24 @13703 has 11 MA's),
(26, 13712), (31, 13733), (52, 13928),

Gene: Hotshotbaby7_30 Start: 26853, Stop: 27110, Start Num: 24

Candidate Starts for Hotshotbaby7_30:

(Start: 19 @26790 has 54 MA's), (Start: 24 @26853 has 11 MA's), (Start: 27 @26865 has 2 MA's),
(Start: 29 @26871 has 1 MA's), (30, 26880), (33, 26895), (35, 26916), (36, 26919), (38, 26934), (40,
26949), (41, 26961), (49, 27039), (59, 27099),

Gene: Hydro_16 Start: 15374, Stop: 15745, Start Num: 18

Candidate Starts for Hydro_16:

(Start: 18 @15374 has 247 MA's), (Start: 21 @15425 has 8 MA's), (Start: 23 @15437 has 1 MA's),
(Start: 24 @15440 has 11 MA's), (26, 15449), (30, 15467), (36, 15506), (46, 15623),

Gene: Inchworm_16 Start: 13641, Stop: 13991, Start Num: 18

Candidate Starts for Inchworm_16:

(Start: 18 @13641 has 247 MA's), (Start: 21 @13692 has 8 MA's), (Start: 23 @13704 has 1 MA's),
(Start: 24 @13707 has 11 MA's), (26, 13716), (31, 13737), (52, 13932),

Gene: Indlovu_16 Start: 15203, Stop: 15598, Start Num: 18

Candidate Starts for Indlovu_16:

(Start: 18 @15203 has 247 MA's), (Start: 21 @15254 has 8 MA's), (Start: 23 @15266 has 1 MA's), (57, 15521), (58, 15533), (60, 15545),

Gene: JAMaL_16 Start: 15558, Stop: 15929, Start Num: 18

Candidate Starts for JAMaL_16:

(Start: 18 @15558 has 247 MA's), (Start: 21 @15609 has 8 MA's), (Start: 23 @15621 has 1 MA's), (26, 15633), (36, 15690), (37, 15696), (46, 15807), (47, 15816), (49, 15840),

Gene: JacAttac_16 Start: 13641, Stop: 13991, Start Num: 18

Candidate Starts for JacAttac_16:

(Start: 18 @13641 has 247 MA's), (Start: 21 @13692 has 8 MA's), (Start: 23 @13704 has 1 MA's), (Start: 24 @13707 has 11 MA's), (26, 13716), (31, 13737), (52, 13932),

Gene: JaguarMi_17 Start: 15255, Stop: 15575, Start Num: 21

Candidate Starts for JaguarMi_17:

(Start: 18 @15204 has 247 MA's), (Start: 21 @15255 has 8 MA's), (Start: 23 @15267 has 1 MA's), (26, 15279), (30, 15297), (36, 15336), (46, 15453),

Gene: JakeO_15 Start: 13365, Stop: 13715, Start Num: 18

Candidate Starts for JakeO_15:

(Start: 18 @13365 has 247 MA's), (Start: 21 @13416 has 8 MA's), (Start: 23 @13428 has 1 MA's), (Start: 24 @13431 has 11 MA's), (26, 13440), (31, 13461), (52, 13656),

Gene: Jane_30 Start: 26790, Stop: 27110, Start Num: 19

Candidate Starts for Jane_30:

(Start: 19 @26790 has 54 MA's), (Start: 24 @26853 has 11 MA's), (Start: 27 @26865 has 2 MA's), (Start: 29 @26871 has 1 MA's), (30, 26880), (33, 26895), (35, 26916), (36, 26919), (38, 26934), (40, 26949), (41, 26961), (49, 27039), (59, 27099),

Gene: JangoPhett_16 Start: 13642, Stop: 13992, Start Num: 18

Candidate Starts for JangoPhett_16:

(Start: 18 @13642 has 247 MA's), (Start: 21 @13693 has 8 MA's), (Start: 23 @13705 has 1 MA's), (Start: 24 @13708 has 11 MA's), (26, 13717), (31, 13738), (52, 13933),

Gene: Jillium_15 Start: 13363, Stop: 13713, Start Num: 18

Candidate Starts for Jillium_15:

(Start: 18 @13363 has 247 MA's), (Start: 21 @13414 has 8 MA's), (Start: 23 @13426 has 1 MA's), (Start: 24 @13429 has 11 MA's), (26, 13438), (31, 13459), (52, 13654),

Gene: Jiminy_15 Start: 13205, Stop: 13555, Start Num: 18

Candidate Starts for Jiminy_15:

(Start: 18 @13205 has 247 MA's), (Start: 21 @13256 has 8 MA's), (Start: 23 @13268 has 1 MA's), (Start: 24 @13271 has 11 MA's), (26, 13280), (31, 13301), (52, 13496),

Gene: Jolene_30 Start: 26790, Stop: 27110, Start Num: 19

Candidate Starts for Jolene_30:

(Start: 19 @26790 has 54 MA's), (Start: 24 @26853 has 11 MA's), (Start: 27 @26865 has 2 MA's), (Start: 29 @26871 has 1 MA's), (30, 26880), (33, 26895), (35, 26916), (36, 26919), (38, 26934), (40, 26949), (41, 26961), (49, 27039), (59, 27099),

Gene: Jolie2_30 Start: 27308, Stop: 27706, Start Num: 19

Candidate Starts for Jolie2_30:

(Start: 19 @27308 has 54 MA's), (28, 27386), (30, 27398), (33, 27413), (35, 27434), (36, 27437), (38, 27452), (43, 27524), (48, 27560),

Gene: Jonghyun_30 Start: 26790, Stop: 27110, Start Num: 19

Candidate Starts for Jonghyun_30:

(Start: 19 @26790 has 54 MA's), (Start: 24 @26853 has 11 MA's), (Start: 27 @26865 has 2 MA's), (Start: 29 @26871 has 1 MA's), (30, 26880), (33, 26895), (35, 26916), (36, 26919), (38, 26934), (40, 26949), (41, 26961), (49, 27039), (59, 27099),

Gene: JorRay_30 Start: 26790, Stop: 27110, Start Num: 19

Candidate Starts for JorRay_30:

(Start: 19 @26790 has 54 MA's), (Start: 24 @26853 has 11 MA's), (Start: 27 @26865 has 2 MA's), (Start: 29 @26871 has 1 MA's), (30, 26880), (33, 26895), (35, 26916), (36, 26919), (38, 26934), (40, 26949), (41, 26961), (49, 27039), (59, 27099),

Gene: Kahve_15 Start: 13372, Stop: 13722, Start Num: 18

Candidate Starts for Kahve_15:

(Start: 18 @13372 has 247 MA's), (Start: 21 @13423 has 8 MA's), (Start: 23 @13435 has 1 MA's), (Start: 24 @13438 has 11 MA's), (26, 13447), (31, 13468), (52, 13663),

Gene: Kailash_16 Start: 13659, Stop: 14009, Start Num: 18

Candidate Starts for Kailash_16:

(Start: 18 @13659 has 247 MA's), (Start: 21 @13710 has 8 MA's), (Start: 23 @13722 has 1 MA's), (Start: 24 @13725 has 11 MA's), (26, 13734), (31, 13755), (52, 13950),

Gene: KarasumaRum_19 Start: 15482, Stop: 15724, Start Num: 30

Candidate Starts for KarasumaRum_19:

(3, 15131), (13, 15272), (Start: 18 @15389 has 247 MA's), (Start: 21 @15440 has 8 MA's), (25, 15461), (30, 15482), (36, 15521), (42, 15596), (44, 15611),

Gene: Kareem_30 Start: 26790, Stop: 27110, Start Num: 19

Candidate Starts for Kareem_30:

(Start: 19 @26790 has 54 MA's), (Start: 24 @26853 has 11 MA's), (Start: 27 @26865 has 2 MA's), (Start: 29 @26871 has 1 MA's), (30, 26880), (33, 26895), (35, 26916), (36, 26919), (38, 26934), (40, 26949), (41, 26961), (49, 27039), (59, 27099),

Gene: Kasen3_30 Start: 26854, Stop: 27111, Start Num: 24

Candidate Starts for Kasen3_30:

(Start: 19 @26791 has 54 MA's), (Start: 24 @26854 has 11 MA's), (Start: 27 @26866 has 2 MA's), (Start: 29 @26872 has 1 MA's), (30, 26881), (33, 26896), (35, 26917), (36, 26920), (38, 26935), (40, 26950), (41, 26962), (49, 27040), (59, 27100),

Gene: Keitherie_16 Start: 13670, Stop: 14020, Start Num: 18

Candidate Starts for Keitherie_16:

(Start: 18 @13670 has 247 MA's), (Start: 21 @13721 has 8 MA's), (Start: 23 @13733 has 1 MA's), (Start: 24 @13736 has 11 MA's), (26, 13745), (31, 13766), (52, 13961),

Gene: Kimbrough_16 Start: 13360, Stop: 13710, Start Num: 18

Candidate Starts for Kimbrough_16:

(Start: 18 @13360 has 247 MA's), (Start: 21 @13411 has 8 MA's), (Start: 23 @13423 has 1 MA's), (Start: 24 @13426 has 11 MA's), (26, 13435), (31, 13456), (52, 13651),

Gene: Kinbote_35 Start: 30016, Stop: 30336, Start Num: 18

Candidate Starts for Kinbote_35:

(Start: 18 @30016 has 247 MA's), (Start: 27 @30094 has 2 MA's), (30, 30109), (32, 30121), (35, 30151), (37, 30160), (41, 30196), (45, 30229), (52, 30283),

Gene: KingTut_15 Start: 13352, Stop: 13702, Start Num: 18

Candidate Starts for KingTut_15:

(Start: 18 @13352 has 247 MA's), (Start: 21 @13403 has 8 MA's), (Start: 23 @13415 has 1 MA's), (Start: 24 @13418 has 11 MA's), (26, 13427), (31, 13448), (52, 13643),

Gene: KingVeVeVe_16 Start: 13639, Stop: 13989, Start Num: 18

Candidate Starts for KingVeVeVe_16:

(Start: 18 @13639 has 247 MA's), (Start: 21 @13690 has 8 MA's), (Start: 24 @13705 has 11 MA's), (26, 13714), (31, 13735), (52, 13930),

Gene: KlimbOn_16 Start: 13650, Stop: 14000, Start Num: 18

Candidate Starts for KlimbOn_16:

(Start: 18 @13650 has 247 MA's), (Start: 21 @13701 has 8 MA's), (Start: 23 @13713 has 1 MA's), (Start: 24 @13716 has 11 MA's), (26, 13725), (31, 13746), (52, 13941),

Gene: Kloppinator_16 Start: 13666, Stop: 14016, Start Num: 18

Candidate Starts for Kloppinator_16:

(Start: 18 @13666 has 247 MA's), (Start: 21 @13717 has 8 MA's), (Start: 23 @13729 has 1 MA's), (Start: 24 @13732 has 11 MA's), (26, 13741), (31, 13762), (52, 13957),

Gene: Knocker_20 Start: 17715, Stop: 18101, Start Num: 18

Candidate Starts for Knocker_20:

(Start: 18 @17715 has 247 MA's), (30, 17808), (31, 17811), (55, 18000),

Gene: Kwadwo_15 Start: 13351, Stop: 13701, Start Num: 18

Candidate Starts for Kwadwo_15:

(Start: 18 @13351 has 247 MA's), (Start: 21 @13402 has 8 MA's), (Start: 23 @13414 has 1 MA's), (Start: 24 @13417 has 11 MA's), (26, 13426), (31, 13447), (52, 13642),

Gene: Kwksand96_15 Start: 13215, Stop: 13565, Start Num: 18

Candidate Starts for Kwksand96_15:

(Start: 18 @13215 has 247 MA's), (Start: 21 @13266 has 8 MA's), (Start: 23 @13278 has 1 MA's), (Start: 24 @13281 has 11 MA's), (26, 13290), (31, 13311), (52, 13506),

Gene: Labeouficaum_15 Start: 13209, Stop: 13559, Start Num: 18

Candidate Starts for Labeouficaum_15:

(Start: 18 @13209 has 247 MA's), (Start: 21 @13260 has 8 MA's), (Start: 23 @13272 has 1 MA's), (Start: 24 @13275 has 11 MA's), (26, 13284), (31, 13305), (52, 13500),

Gene: Lambano_15 Start: 14361, Stop: 14681, Start Num: 21

Candidate Starts for Lambano_15:

(1, 13947), (Start: 18 @14310 has 247 MA's), (Start: 21 @14361 has 8 MA's), (Start: 23 @14373 has 1 MA's), (26, 14385), (30, 14403), (37, 14448), (46, 14559),

Gene: LasagnaCat_16 Start: 13653, Stop: 14003, Start Num: 18

Candidate Starts for LasagnaCat_16:

(Start: 18 @13653 has 247 MA's), (Start: 21 @13704 has 8 MA's), (Start: 23 @13716 has 1 MA's), (Start: 24 @13719 has 11 MA's), (26, 13728), (31, 13749), (52, 13944),

Gene: LeeLot_16 Start: 13650, Stop: 14000, Start Num: 18

Candidate Starts for LeeLot_16:

(Start: 18 @13650 has 247 MA's), (Start: 21 @13701 has 8 MA's), (Start: 23 @13713 has 1 MA's),
(Start: 24 @13716 has 11 MA's), (26, 13725), (31, 13746), (52, 13941),

Gene: Lego3393_16 Start: 13666, Stop: 14016, Start Num: 18

Candidate Starts for Lego3393_16:

(Start: 18 @13666 has 247 MA's), (Start: 21 @13717 has 8 MA's), (Start: 23 @13729 has 1 MA's),
(Start: 24 @13732 has 11 MA's), (26, 13741), (31, 13762), (52, 13957),

Gene: Legolas_15 Start: 13367, Stop: 13717, Start Num: 18

Candidate Starts for Legolas_15:

(Start: 18 @13367 has 247 MA's), (Start: 21 @13418 has 8 MA's), (Start: 23 @13430 has 1 MA's),
(Start: 24 @13433 has 11 MA's), (26, 13442), (31, 13463), (52, 13658),

Gene: LemonSlice_16 Start: 13361, Stop: 13711, Start Num: 18

Candidate Starts for LemonSlice_16:

(Start: 18 @13361 has 247 MA's), (Start: 21 @13412 has 8 MA's), (Start: 23 @13424 has 1 MA's),
(Start: 24 @13427 has 11 MA's), (26, 13436), (31, 13457), (52, 13652),

Gene: Lemuria_31 Start: 28466, Stop: 28822, Start Num: 19

Candidate Starts for Lemuria_31:

(14, 28391), (Start: 19 @28466 has 54 MA's), (28, 28547), (30, 28559), (35, 28595), (36, 28598), (37,
28604), (43, 28685), (48, 28721), (61, 28802),

Gene: Liefie_30 Start: 26788, Stop: 27108, Start Num: 19

Candidate Starts for Liefie_30:

(Start: 19 @26788 has 54 MA's), (Start: 24 @26851 has 11 MA's), (Start: 27 @26863 has 2 MA's),
(Start: 29 @26869 has 1 MA's), (30, 26878), (33, 26893), (35, 26914), (36, 26917), (38, 26932), (40,
26947), (41, 26959), (49, 27037), (59, 27097),

Gene: LilHazelnut_35 Start: 30016, Stop: 30336, Start Num: 18

Candidate Starts for LilHazelnut_35:

(Start: 18 @30016 has 247 MA's), (Start: 27 @30094 has 2 MA's), (30, 30109), (32, 30121), (35,
30151), (37, 30160), (41, 30196), (45, 30229), (52, 30283),

Gene: LilMcDreamy_16 Start: 15832, Stop: 16200, Start Num: 18

Candidate Starts for LilMcDreamy_16:

(Start: 18 @15832 has 247 MA's), (Start: 24 @15898 has 11 MA's), (28, 15913), (Start: 29 @15916
has 1 MA's), (32, 15937), (36, 15964), (42, 16039), (49, 16105), (50, 16111),

Gene: Lolalove_16 Start: 15374, Stop: 15745, Start Num: 18

Candidate Starts for Lolalove_16:

(Start: 18 @15374 has 247 MA's), (Start: 21 @15425 has 8 MA's), (Start: 23 @15437 has 1 MA's),
(Start: 24 @15440 has 11 MA's), (26, 15449), (30, 15467), (46, 15623),

Gene: LostAndPhound_15 Start: 13363, Stop: 13713, Start Num: 18

Candidate Starts for LostAndPhound_15:

(Start: 18 @13363 has 247 MA's), (Start: 21 @13414 has 8 MA's), (Start: 23 @13426 has 1 MA's),
(Start: 24 @13429 has 11 MA's), (26, 13438), (31, 13459), (52, 13654),

Gene: LouisV14_30 Start: 26790, Stop: 27110, Start Num: 19

Candidate Starts for LouisV14_30:

(Start: 19 @26790 has 54 MA's), (Start: 24 @26853 has 11 MA's), (Start: 27 @26865 has 2 MA's), (Start: 29 @26871 has 1 MA's), (30, 26880), (33, 26895), (35, 26916), (36, 26919), (38, 26934), (40, 26949), (41, 26961), (49, 27039), (59, 27099),

Gene: LuckyMarjie_15 Start: 13375, Stop: 13725, Start Num: 18

Candidate Starts for LuckyMarjie_15:

(Start: 18 @13375 has 247 MA's), (Start: 21 @13426 has 8 MA's), (Start: 23 @13438 has 1 MA's), (Start: 24 @13441 has 11 MA's), (26, 13450), (31, 13471), (52, 13666),

Gene: Luke_35 Start: 29971, Stop: 30291, Start Num: 18

Candidate Starts for Luke_35:

(Start: 18 @29971 has 247 MA's), (Start: 27 @30049 has 2 MA's), (30, 30064), (32, 30076), (35, 30106), (37, 30115), (41, 30151), (45, 30184), (52, 30238),

Gene: Lulumae_15 Start: 13352, Stop: 13702, Start Num: 18

Candidate Starts for Lulumae_15:

(Start: 18 @13352 has 247 MA's), (Start: 21 @13403 has 8 MA's), (Start: 23 @13415 has 1 MA's), (Start: 24 @13418 has 11 MA's), (26, 13427), (31, 13448), (52, 13643),

Gene: Lulwa_16 Start: 13641, Stop: 13991, Start Num: 18

Candidate Starts for Lulwa_16:

(Start: 18 @13641 has 247 MA's), (Start: 21 @13692 has 8 MA's), (Start: 24 @13707 has 11 MA's), (26, 13716), (31, 13737), (52, 13932),

Gene: Lumine_15 Start: 13345, Stop: 13695, Start Num: 18

Candidate Starts for Lumine_15:

(Start: 18 @13345 has 247 MA's), (Start: 21 @13396 has 8 MA's), (Start: 23 @13408 has 1 MA's), (Start: 24 @13411 has 11 MA's), (26, 13420), (31, 13441), (52, 13636),

Gene: Luna22_34 Start: 30016, Stop: 30336, Start Num: 18

Candidate Starts for Luna22_34:

(Start: 18 @30016 has 247 MA's), (Start: 27 @30094 has 2 MA's), (30, 30109), (32, 30121), (35, 30151), (37, 30160), (41, 30196), (45, 30229), (52, 30283),

Gene: MOOREtheMARYer_31 Start: 28761, Stop: 29120, Start Num: 19

Candidate Starts for MOOREtheMARYer_31:

(Start: 19 @28761 has 54 MA's), (28, 28839), (30, 28851), (35, 28887), (36, 28890), (43, 28977), (48, 29013), (61, 29094),

Gene: MRabcd_15 Start: 13354, Stop: 13704, Start Num: 18

Candidate Starts for MRabcd_15:

(Start: 18 @13354 has 247 MA's), (Start: 21 @13405 has 8 MA's), (Start: 23 @13417 has 1 MA's), (Start: 24 @13420 has 11 MA's), (26, 13429), (31, 13450), (52, 13645),

Gene: Mag7_15 Start: 13209, Stop: 13559, Start Num: 18

Candidate Starts for Mag7_15:

(Start: 18 @13209 has 247 MA's), (Start: 21 @13260 has 8 MA's), (Start: 23 @13272 has 1 MA's), (Start: 24 @13275 has 11 MA's), (26, 13284), (31, 13305), (52, 13500),

Gene: Magic8_16 Start: 13647, Stop: 13997, Start Num: 18

Candidate Starts for Magic8_16:

(Start: 18 @13647 has 247 MA's), (Start: 21 @13698 has 8 MA's), (Start: 23 @13710 has 1 MA's),
(Start: 24 @13713 has 11 MA's), (26, 13722), (31, 13743), (52, 13938),

Gene: Magpie_16 Start: 15559, Stop: 15933, Start Num: 18

Candidate Starts for Magpie_16:

(Start: 18 @15559 has 247 MA's), (Start: 21 @15610 has 8 MA's), (Start: 23 @15622 has 1 MA's),
(Start: 24 @15625 has 11 MA's), (26, 15634), (30, 15652), (46, 15808),

Gene: Maliketh_30 Start: 26865, Stop: 27110, Start Num: 27

Candidate Starts for Maliketh_30:

(Start: 19 @26790 has 54 MA's), (Start: 24 @26853 has 11 MA's), (Start: 27 @26865 has 2 MA's),
(Start: 29 @26871 has 1 MA's), (30, 26880), (33, 26895), (35, 26916), (36, 26919), (38, 26934), (40,
26949), (41, 26961), (49, 27039), (59, 27099),

Gene: Marmie_30 Start: 26790, Stop: 27110, Start Num: 19

Candidate Starts for Marmie_30:

(Start: 19 @26790 has 54 MA's), (Start: 24 @26853 has 11 MA's), (Start: 27 @26865 has 2 MA's),
(Start: 29 @26871 has 1 MA's), (30, 26880), (33, 26895), (35, 26916), (36, 26919), (38, 26934), (40,
26949), (41, 26961), (49, 27039), (59, 27099),

Gene: Maru_15 Start: 13355, Stop: 13705, Start Num: 18

Candidate Starts for Maru_15:

(Start: 18 @13355 has 247 MA's), (Start: 21 @13406 has 8 MA's), (Start: 23 @13418 has 1 MA's),
(Start: 24 @13421 has 11 MA's), (26, 13430), (31, 13451), (52, 13646),

Gene: Matalotodo_16 Start: 13645, Stop: 13995, Start Num: 18

Candidate Starts for Matalotodo_16:

(Start: 18 @13645 has 247 MA's), (Start: 21 @13696 has 8 MA's), (Start: 23 @13708 has 1 MA's),
(Start: 24 @13711 has 11 MA's), (26, 13720), (31, 13741), (52, 13936),

Gene: Mcshane_15 Start: 13351, Stop: 13701, Start Num: 18

Candidate Starts for Mcshane_15:

(Start: 18 @13351 has 247 MA's), (Start: 21 @13402 has 8 MA's), (Start: 23 @13414 has 1 MA's),
(Start: 24 @13417 has 11 MA's), (26, 13426), (31, 13447), (52, 13642),

Gene: Mecca_15 Start: 13348, Stop: 13698, Start Num: 18

Candidate Starts for Mecca_15:

(Start: 18 @13348 has 247 MA's), (Start: 21 @13399 has 8 MA's), (Start: 23 @13411 has 1 MA's),
(Start: 24 @13414 has 11 MA's), (26, 13423), (31, 13444), (52, 13639),

Gene: Melc17_16 Start: 13641, Stop: 13991, Start Num: 18

Candidate Starts for Melc17_16:

(Start: 18 @13641 has 247 MA's), (Start: 21 @13692 has 8 MA's), (Start: 23 @13704 has 1 MA's),
(Start: 24 @13707 has 11 MA's), (26, 13716), (31, 13737), (52, 13932),

Gene: Mercurio_32 Start: 28993, Stop: 29313, Start Num: 19

Candidate Starts for Mercurio_32:

(Start: 19 @28993 has 54 MA's), (28, 29071), (30, 29083), (35, 29119), (36, 29122), (38, 29137), (43,
29209), (48, 29245),

Gene: Mesh1_16 Start: 13659, Stop: 14009, Start Num: 18

Candidate Starts for Mesh1_16:

(Start: 18 @13659 has 247 MA's), (Start: 21 @13710 has 8 MA's), (Start: 23 @13722 has 1 MA's), (Start: 24 @13725 has 11 MA's), (26, 13734), (31, 13755), (52, 13950),

Gene: MichaelPhcott_15 Start: 13209, Stop: 13559, Start Num: 18

Candidate Starts for MichaelPhcott_15:

(Start: 18 @13209 has 247 MA's), (Start: 21 @13260 has 8 MA's), (Start: 23 @13272 has 1 MA's), (Start: 24 @13275 has 11 MA's), (26, 13284), (31, 13305), (52, 13500),

Gene: Mikota_16 Start: 13636, Stop: 13986, Start Num: 18

Candidate Starts for Mikota_16:

(Start: 18 @13636 has 247 MA's), (Start: 21 @13687 has 8 MA's), (Start: 24 @13702 has 11 MA's), (26, 13711), (31, 13732), (52, 13927),

Gene: MiniBoss_16 Start: 13638, Stop: 13988, Start Num: 18

Candidate Starts for MiniBoss_16:

(Start: 18 @13638 has 247 MA's), (Start: 21 @13689 has 8 MA's), (Start: 24 @13704 has 11 MA's), (26, 13713), (31, 13734), (52, 13929),

Gene: MitKao_16 Start: 13357, Stop: 13707, Start Num: 18

Candidate Starts for MitKao_16:

(Start: 18 @13357 has 247 MA's), (Start: 21 @13408 has 8 MA's), (Start: 23 @13420 has 1 MA's), (Start: 24 @13423 has 11 MA's), (26, 13432), (31, 13453), (52, 13648),

Gene: Mithril_16 Start: 15377, Stop: 15748, Start Num: 18

Candidate Starts for Mithril_16:

(Start: 18 @15377 has 247 MA's), (Start: 21 @15428 has 8 MA's), (Start: 23 @15440 has 1 MA's), (Start: 24 @15443 has 11 MA's), (26, 15452), (30, 15470), (46, 15626),

Gene: Morty_16 Start: 13659, Stop: 14009, Start Num: 18

Candidate Starts for Morty_16:

(Start: 18 @13659 has 247 MA's), (Start: 21 @13710 has 8 MA's), (Start: 23 @13722 has 1 MA's), (Start: 24 @13725 has 11 MA's), (26, 13734), (31, 13755), (52, 13950),

Gene: Mosaic_15 Start: 13364, Stop: 13714, Start Num: 18

Candidate Starts for Mosaic_15:

(Start: 18 @13364 has 247 MA's), (Start: 21 @13415 has 8 MA's), (Start: 23 @13427 has 1 MA's), (Start: 24 @13430 has 11 MA's), (26, 13439), (31, 13460), (52, 13655),

Gene: Mowgli_30 Start: 26790, Stop: 27110, Start Num: 19

Candidate Starts for Mowgli_30:

(Start: 19 @26790 has 54 MA's), (Start: 24 @26853 has 11 MA's), (Start: 27 @26865 has 2 MA's), (Start: 29 @26871 has 1 MA's), (30, 26880), (33, 26895), (35, 26916), (36, 26919), (38, 26934), (40, 26949), (41, 26961), (49, 27039), (59, 27099),

Gene: Mudslide_16 Start: 15622, Stop: 15993, Start Num: 18

Candidate Starts for Mudslide_16:

(Start: 18 @15622 has 247 MA's), (Start: 21 @15673 has 8 MA's), (Start: 23 @15685 has 1 MA's), (Start: 24 @15688 has 11 MA's), (26, 15697), (30, 15715), (46, 15871),

Gene: Mulan_15 Start: 13357, Stop: 13707, Start Num: 18

Candidate Starts for Mulan_15:

(Start: 18 @13357 has 247 MA's), (Start: 21 @13408 has 8 MA's), (Start: 23 @13420 has 1 MA's), (Start: 24 @13423 has 11 MA's), (26, 13432), (31, 13453), (52, 13648),

Gene: Mutante_15 Start: 13360, Stop: 13710, Start Num: 18

Candidate Starts for Mutante_15:

(Start: 18 @13360 has 247 MA's), (Start: 21 @13411 has 8 MA's), (Start: 23 @13423 has 1 MA's), (Start: 24 @13426 has 11 MA's), (26, 13435), (31, 13456), (52, 13651),

Gene: Mysterious_18 Start: 15593, Stop: 15844, Start Num: 30

Candidate Starts for Mysterious_18:

(3, 15242), (13, 15383), (Start: 18 @15500 has 247 MA's), (Start: 21 @15551 has 8 MA's), (25, 15572), (30, 15593), (36, 15632), (42, 15707), (44, 15722),

Gene: Nacho_0016 Start: 13650, Stop: 14000, Start Num: 18

Candidate Starts for Nacho_0016:

(Start: 18 @13650 has 247 MA's), (Start: 21 @13701 has 8 MA's), (Start: 23 @13713 has 1 MA's), (Start: 24 @13716 has 11 MA's), (26, 13725), (31, 13746), (52, 13941),

Gene: Nanao_15 Start: 14360, Stop: 14680, Start Num: 21

Candidate Starts for Nanao_15:

(6, 14099), (9, 14141), (11, 14195), (15, 14225), (17, 14294), (20, 14321), (Start: 21 @14360 has 8 MA's), (Start: 23 @14372 has 1 MA's), (26, 14384), (30, 14402), (37, 14447), (46, 14558),

Gene: Nangang_17 Start: 15284, Stop: 15568, Start Num: 21

Candidate Starts for Nangang_17:

(2, 14888), (3, 14975), (13, 15116), (Start: 18 @15233 has 247 MA's), (Start: 21 @15284 has 8 MA's), (25, 15305), (30, 15326), (36, 15365), (42, 15440), (44, 15455),

Gene: Nehemiah_16 Start: 15551, Stop: 15844, Start Num: 21

Candidate Starts for Nehemiah_16:

(3, 15242), (13, 15383), (Start: 18 @15500 has 247 MA's), (Start: 21 @15551 has 8 MA's), (25, 15572), (30, 15593), (36, 15632), (42, 15707), (44, 15722),

Gene: Nicole21_16 Start: 13642, Stop: 13992, Start Num: 18

Candidate Starts for Nicole21_16:

(Start: 18 @13642 has 247 MA's), (Start: 21 @13693 has 8 MA's), (Start: 23 @13705 has 1 MA's), (Start: 24 @13708 has 11 MA's), (26, 13717), (31, 13738), (52, 13933),

Gene: Nigel_14 Start: 14277, Stop: 14597, Start Num: 21

Candidate Starts for Nigel_14:

(Start: 18 @14226 has 247 MA's), (Start: 21 @14277 has 8 MA's), (Start: 23 @14289 has 1 MA's), (26, 14301), (36, 14358), (37, 14364), (46, 14475), (47, 14484), (49, 14508),

Gene: OBUpride_35 Start: 30010, Stop: 30330, Start Num: 18

Candidate Starts for OBUpride_35:

(Start: 18 @30010 has 247 MA's), (Start: 27 @30088 has 2 MA's), (30, 30103), (32, 30115), (35, 30145), (37, 30154), (41, 30190), (45, 30223), (52, 30277),

Gene: OctaviousRex_30 Start: 26790, Stop: 27110, Start Num: 19

Candidate Starts for OctaviousRex_30:

(Start: 19 @26790 has 54 MA's), (Start: 24 @26853 has 11 MA's), (Start: 27 @26865 has 2 MA's), (Start: 29 @26871 has 1 MA's), (30, 26880), (33, 26895), (35, 26916), (36, 26919), (38, 26934), (40, 26949), (41, 26961), (49, 27039), (59, 27099),

Gene: Olak_15 Start: 13349, Stop: 13699, Start Num: 18

Candidate Starts for Olak_15:

(Start: 18 @13349 has 247 MA's), (Start: 21 @13400 has 8 MA's), (Start: 23 @13412 has 1 MA's),
(Start: 24 @13415 has 11 MA's), (26, 13424), (31, 13445), (52, 13640),

Gene: Olga_30 Start: 26853, Stop: 27110, Start Num: 24

Candidate Starts for Olga_30:

(Start: 19 @26790 has 54 MA's), (Start: 24 @26853 has 11 MA's), (Start: 27 @26865 has 2 MA's),
(Start: 29 @26871 has 1 MA's), (30, 26880), (33, 26895), (35, 26916), (36, 26919), (38, 26934), (40,
26949), (41, 26961), (49, 27039), (59, 27099),

Gene: Oline_15 Start: 13209, Stop: 13559, Start Num: 18

Candidate Starts for Oline_15:

(Start: 18 @13209 has 247 MA's), (Start: 21 @13260 has 8 MA's), (Start: 23 @13272 has 1 MA's),
(Start: 24 @13275 has 11 MA's), (26, 13284), (31, 13305), (52, 13500),

Gene: Omniscient_16 Start: 13659, Stop: 14009, Start Num: 18

Candidate Starts for Omniscient_16:

(Start: 18 @13659 has 247 MA's), (Start: 21 @13710 has 8 MA's), (Start: 23 @13722 has 1 MA's),
(Start: 24 @13725 has 11 MA's), (26, 13734), (31, 13755), (52, 13950),

Gene: Orfeu_15 Start: 13350, Stop: 13700, Start Num: 18

Candidate Starts for Orfeu_15:

(Start: 18 @13350 has 247 MA's), (Start: 21 @13401 has 8 MA's), (Start: 23 @13413 has 1 MA's),
(Start: 24 @13416 has 11 MA's), (26, 13425), (31, 13446), (52, 13641),

Gene: Pace1224_29 Start: 28264, Stop: 28620, Start Num: 19

Candidate Starts for Pace1224_29:

(Start: 19 @28264 has 54 MA's), (28, 28342), (30, 28354), (35, 28390), (36, 28393), (43, 28480), (48,
28516), (50, 28540), (61, 28597),

Gene: Pacifista_15 Start: 13354, Stop: 13704, Start Num: 18

Candidate Starts for Pacifista_15:

(Start: 18 @13354 has 247 MA's), (Start: 21 @13405 has 8 MA's), (Start: 23 @13417 has 1 MA's),
(Start: 24 @13420 has 11 MA's), (26, 13429), (31, 13450), (52, 13645),

Gene: Paito_30 Start: 27024, Stop: 27332, Start Num: 19

Candidate Starts for Paito_30:

(Start: 19 @27024 has 54 MA's), (Start: 24 @27087 has 11 MA's), (Start: 27 @27099 has 2 MA's),
(Start: 29 @27105 has 1 MA's), (30, 27114), (35, 27150), (36, 27153), (38, 27168), (40, 27183), (41,
27195),

Gene: Peeb_30 Start: 26790, Stop: 27110, Start Num: 19

Candidate Starts for Peeb_30:

(Start: 19 @26790 has 54 MA's), (Start: 24 @26853 has 11 MA's), (Start: 27 @26865 has 2 MA's),
(Start: 29 @26871 has 1 MA's), (30, 26880), (33, 26895), (35, 26916), (36, 26919), (38, 26934), (40,
26949), (41, 26961), (49, 27039), (59, 27099),

Gene: PenguinLover67_19 Start: 16545, Stop: 16991, Start Num: 18

Candidate Starts for PenguinLover67_19:

(Start: 18 @16545 has 247 MA's), (Start: 23 @16608 has 1 MA's), (30, 16638), (50, 16824), (62,
16896),

Gene: Periodt_30 Start: 26781, Stop: 27101, Start Num: 19

Candidate Starts for Periodt_30:

(Start: 19 @26781 has 54 MA's), (Start: 24 @26844 has 11 MA's), (Start: 27 @26856 has 2 MA's), (Start: 29 @26862 has 1 MA's), (30, 26871), (33, 26886), (35, 26907), (36, 26910), (38, 26925), (40, 26940), (41, 26952), (49, 27030), (59, 27090),

Gene: Phamished_16 Start: 13656, Stop: 14006, Start Num: 18

Candidate Starts for Phamished_16:

(Start: 18 @13656 has 247 MA's), (Start: 21 @13707 has 8 MA's), (Start: 23 @13719 has 1 MA's), (Start: 24 @13722 has 11 MA's), (26, 13731), (31, 13752), (52, 13947),

Gene: Phareon_16 Start: 13357, Stop: 13707, Start Num: 18

Candidate Starts for Phareon_16:

(Start: 18 @13357 has 247 MA's), (Start: 21 @13408 has 8 MA's), (Start: 23 @13420 has 1 MA's), (Start: 24 @13423 has 11 MA's), (26, 13432), (31, 13453), (52, 13648),

Gene: PhatCats2014_16 Start: 13666, Stop: 14016, Start Num: 18

Candidate Starts for PhatCats2014_16:

(Start: 18 @13666 has 247 MA's), (Start: 21 @13717 has 8 MA's), (Start: 23 @13729 has 1 MA's), (Start: 24 @13732 has 11 MA's), (26, 13741), (31, 13762), (52, 13957),

Gene: Phelemich_17 Start: 15504, Stop: 15848, Start Num: 18

Candidate Starts for Phelemich_17:

(3, 15246), (Start: 18 @15504 has 247 MA's), (Start: 21 @15555 has 8 MA's), (25, 15576), (30, 15597), (36, 15636), (42, 15711), (44, 15726),

Gene: PhenghisKhan_15 Start: 13209, Stop: 13559, Start Num: 18

Candidate Starts for PhenghisKhan_15:

(Start: 18 @13209 has 247 MA's), (Start: 21 @13260 has 8 MA's), (Start: 23 @13272 has 1 MA's), (Start: 24 @13275 has 11 MA's), (26, 13284), (31, 13305), (52, 13500),

Gene: Pherdinand_16 Start: 13654, Stop: 14004, Start Num: 18

Candidate Starts for Pherdinand_16:

(Start: 18 @13654 has 247 MA's), (Start: 21 @13705 has 8 MA's), (Start: 23 @13717 has 1 MA's), (Start: 24 @13720 has 11 MA's), (26, 13729), (31, 13750), (52, 13945),

Gene: Phergie_15 Start: 13203, Stop: 13553, Start Num: 18

Candidate Starts for Phergie_15:

(Start: 18 @13203 has 247 MA's), (Start: 21 @13254 has 8 MA's), (Start: 23 @13266 has 1 MA's), (Start: 24 @13269 has 11 MA's), (26, 13278), (31, 13299), (52, 13494),

Gene: Phish_30 Start: 26865, Stop: 27110, Start Num: 27

Candidate Starts for Phish_30:

(Start: 19 @26790 has 54 MA's), (Start: 24 @26853 has 11 MA's), (Start: 27 @26865 has 2 MA's), (Start: 29 @26871 has 1 MA's), (30, 26880), (33, 26895), (35, 26916), (36, 26919), (38, 26934), (40, 26949), (41, 26961), (49, 27039), (59, 27099),

Gene: Phleuron_15 Start: 13209, Stop: 13559, Start Num: 18

Candidate Starts for Phleuron_15:

(Start: 18 @13209 has 247 MA's), (Start: 21 @13260 has 8 MA's), (Start: 23 @13272 has 1 MA's), (Start: 24 @13275 has 11 MA's), (26, 13284), (31, 13305), (52, 13500),

Gene: PhrankReynolds_15 Start: 13209, Stop: 13559, Start Num: 18

Candidate Starts for PhrankReynolds_15:

(Start: 18 @13209 has 247 MA's), (Start: 21 @13260 has 8 MA's), (Start: 23 @13272 has 1 MA's), (Start: 24 @13275 has 11 MA's), (26, 13284), (31, 13305), (52, 13500),

Gene: Phreak_30 Start: 26790, Stop: 27110, Start Num: 19

Candidate Starts for Phreak_30:

(Start: 19 @26790 has 54 MA's), (Start: 24 @26853 has 11 MA's), (Start: 27 @26865 has 2 MA's), (Start: 29 @26871 has 1 MA's), (30, 26880), (33, 26895), (35, 26916), (36, 26919), (38, 26934), (40, 26949), (41, 26961), (49, 27039), (59, 27099),

Gene: PhrodoBaggins_15 Start: 13644, Stop: 13994, Start Num: 18

Candidate Starts for PhrodoBaggins_15:

(Start: 18 @13644 has 247 MA's), (Start: 21 @13695 has 8 MA's), (Start: 23 @13707 has 1 MA's), (Start: 24 @13710 has 11 MA's), (26, 13719), (31, 13740), (52, 13935),

Gene: Phunky_16 Start: 13650, Stop: 14000, Start Num: 18

Candidate Starts for Phunky_16:

(Start: 18 @13650 has 247 MA's), (Start: 21 @13701 has 8 MA's), (Start: 23 @13713 has 1 MA's), (Start: 24 @13716 has 11 MA's), (26, 13725), (31, 13746), (52, 13941),

Gene: Piglet_0015 Start: 13653, Stop: 14003, Start Num: 18

Candidate Starts for Piglet_0015:

(Start: 18 @13653 has 247 MA's), (Start: 21 @13704 has 8 MA's), (Start: 23 @13716 has 1 MA's), (Start: 24 @13719 has 11 MA's), (26, 13728), (31, 13749), (52, 13944),

Gene: PinheadLarry_16 Start: 13369, Stop: 13719, Start Num: 18

Candidate Starts for PinheadLarry_16:

(Start: 18 @13369 has 247 MA's), (Start: 21 @13420 has 8 MA's), (Start: 23 @13432 has 1 MA's), (Start: 24 @13435 has 11 MA's), (26, 13444), (31, 13465), (52, 13660),

Gene: PinkYoshi_30 Start: 26781, Stop: 27101, Start Num: 19

Candidate Starts for PinkYoshi_30:

(Start: 19 @26781 has 54 MA's), (Start: 24 @26844 has 11 MA's), (Start: 27 @26856 has 2 MA's), (Start: 29 @26862 has 1 MA's), (30, 26871), (33, 26886), (35, 26907), (36, 26910), (38, 26925), (40, 26940), (41, 26952), (49, 27030), (59, 27090),

Gene: Pinnie_31 Start: 29132, Stop: 29491, Start Num: 19

Candidate Starts for Pinnie_31:

(Start: 19 @29132 has 54 MA's), (28, 29210), (30, 29222), (35, 29258), (36, 29261), (43, 29348), (48, 29384), (61, 29465),

Gene: Pipsqueak_16 Start: 13656, Stop: 14006, Start Num: 18

Candidate Starts for Pipsqueak_16:

(Start: 18 @13656 has 247 MA's), (Start: 21 @13707 has 8 MA's), (Start: 23 @13719 has 1 MA's), (Start: 24 @13722 has 11 MA's), (26, 13731), (31, 13752), (52, 13947),

Gene: Placalicious_15 Start: 13351, Stop: 13701, Start Num: 18

Candidate Starts for Placalicious_15:

(Start: 18 @13351 has 247 MA's), (Start: 21 @13402 has 8 MA's), (Start: 23 @13414 has 1 MA's), (Start: 24 @13417 has 11 MA's), (26, 13426), (31, 13447), (52, 13642),

Gene: Plagueis_30 Start: 26625, Stop: 26945, Start Num: 19

Candidate Starts for Plagueis_30:

(Start: 19 @26625 has 54 MA's), (Start: 24 @26688 has 11 MA's), (Start: 27 @26700 has 2 MA's), (Start: 29 @26706 has 1 MA's), (30, 26715), (33, 26730), (35, 26751), (36, 26754), (38, 26769), (40, 26784), (41, 26796), (49, 26874), (59, 26934),

Gene: Plmatters_16 Start: 13650, Stop: 14000, Start Num: 18

Candidate Starts for Plmatters_16:

(Start: 18 @13650 has 247 MA's), (Start: 21 @13701 has 8 MA's), (Start: 23 @13713 has 1 MA's), (Start: 24 @13716 has 11 MA's), (26, 13725), (31, 13746), (52, 13941),

Gene: Podrick_16 Start: 13641, Stop: 13991, Start Num: 18

Candidate Starts for Podrick_16:

(Start: 18 @13641 has 247 MA's), (Start: 21 @13692 has 8 MA's), (Start: 24 @13707 has 11 MA's), (26, 13716), (31, 13737), (52, 13932),

Gene: Poster_15 Start: 14361, Stop: 14681, Start Num: 21

Candidate Starts for Poster_15:

(1, 13947), (Start: 18 @14310 has 247 MA's), (Start: 21 @14361 has 8 MA's), (Start: 23 @14373 has 1 MA's), (26, 14385), (30, 14403), (37, 14448), (46, 14559),

Gene: Prince_16 Start: 15534, Stop: 15905, Start Num: 18

Candidate Starts for Prince_16:

(Start: 18 @15534 has 247 MA's), (Start: 21 @15585 has 8 MA's), (Start: 23 @15597 has 1 MA's), (Start: 24 @15600 has 11 MA's), (26, 15609), (30, 15627), (46, 15783),

Gene: ProfessorX_16 Start: 13642, Stop: 13992, Start Num: 18

Candidate Starts for ProfessorX_16:

(Start: 18 @13642 has 247 MA's), (Start: 21 @13693 has 8 MA's), (Start: 23 @13705 has 1 MA's), (Start: 24 @13708 has 11 MA's), (26, 13717), (31, 13738), (52, 13933),

Gene: QueenBeane_16 Start: 13650, Stop: 14000, Start Num: 18

Candidate Starts for QueenBeane_16:

(Start: 18 @13650 has 247 MA's), (Start: 21 @13701 has 8 MA's), (Start: 23 @13713 has 1 MA's), (Start: 24 @13716 has 11 MA's), (26, 13725), (31, 13746), (52, 13941),

Gene: QueenPie_16 Start: 15959, Stop: 16279, Start Num: 21

Candidate Starts for QueenPie_16:

(1, 15545), (Start: 18 @15908 has 247 MA's), (Start: 21 @15959 has 8 MA's), (Start: 23 @15971 has 1 MA's), (26, 15983), (30, 16001), (46, 16157), (49, 16190),

Gene: Quisquilliae_16 Start: 13665, Stop: 14015, Start Num: 18

Candidate Starts for Quisquilliae_16:

(Start: 18 @13665 has 247 MA's), (Start: 21 @13716 has 8 MA's), (Start: 23 @13728 has 1 MA's), (Start: 24 @13731 has 11 MA's), (26, 13740), (31, 13761), (52, 13956),

Gene: Rabbs_30 Start: 26873, Stop: 27193, Start Num: 19

Candidate Starts for Rabbs_30:

(Start: 19 @26873 has 54 MA's), (Start: 24 @26936 has 11 MA's), (Start: 27 @26948 has 2 MA's), (Start: 29 @26954 has 1 MA's), (30, 26963), (33, 26978), (35, 26999), (36, 27002), (38, 27017), (40, 27032), (41, 27044), (49, 27122), (59, 27182),

Gene: RawrgerThat_16 Start: 15422, Stop: 15742, Start Num: 21

Candidate Starts for RawrgerThat_16:

(Start: 18 @15371 has 247 MA's), (Start: 21 @15422 has 8 MA's), (Start: 23 @15434 has 1 MA's), (Start: 24 @15437 has 11 MA's), (26, 15446), (30, 15464), (36, 15503), (46, 15620),

Gene: RedMaple_15 Start: 13662, Stop: 14012, Start Num: 18

Candidate Starts for RedMaple_15:

(Start: 18 @13662 has 247 MA's), (Start: 21 @13713 has 8 MA's), (Start: 23 @13725 has 1 MA's), (Start: 24 @13728 has 11 MA's), (26, 13737), (31, 13758), (52, 13953),

Gene: Remy19_30 Start: 26790, Stop: 27110, Start Num: 19

Candidate Starts for Remy19_30:

(Start: 19 @26790 has 54 MA's), (Start: 24 @26853 has 11 MA's), (Start: 27 @26865 has 2 MA's), (Start: 29 @26871 has 1 MA's), (30, 26880), (33, 26895), (35, 26916), (36, 26919), (38, 26934), (40, 26949), (41, 26961), (49, 27039), (59, 27099),

Gene: Renaissance_30 Start: 26790, Stop: 27110, Start Num: 19

Candidate Starts for Renaissance_30:

(Start: 19 @26790 has 54 MA's), (Start: 24 @26853 has 11 MA's), (Start: 27 @26865 has 2 MA's), (Start: 29 @26871 has 1 MA's), (30, 26880), (33, 26895), (35, 26916), (36, 26919), (38, 26934), (40, 26949), (41, 26961), (49, 27039), (59, 27099),

Gene: Reprobate_17 Start: 15501, Stop: 15845, Start Num: 18

Candidate Starts for Reprobate_17:

(3, 15243), (Start: 18 @15501 has 247 MA's), (Start: 21 @15552 has 8 MA's), (25, 15573), (30, 15594), (36, 15633), (42, 15708), (44, 15723),

Gene: Rich_17 Start: 15400, Stop: 15744, Start Num: 18

Candidate Starts for Rich_17:

(2, 15055), (3, 15142), (13, 15283), (Start: 18 @15400 has 247 MA's), (Start: 21 @15451 has 8 MA's), (25, 15472), (30, 15493), (44, 15622),

Gene: Ricotta_15 Start: 13374, Stop: 13724, Start Num: 18

Candidate Starts for Ricotta_15:

(Start: 18 @13374 has 247 MA's), (Start: 21 @13425 has 8 MA's), (Start: 23 @13437 has 1 MA's), (Start: 24 @13440 has 11 MA's), (26, 13449), (31, 13470), (52, 13665),

Gene: Riggan_16 Start: 13630, Stop: 13980, Start Num: 18

Candidate Starts for Riggan_16:

(Start: 18 @13630 has 247 MA's), (Start: 21 @13681 has 8 MA's), (Start: 23 @13693 has 1 MA's), (Start: 24 @13696 has 11 MA's), (26, 13705), (31, 13726), (52, 13921),

Gene: Rinkes_20 Start: 17321, Stop: 17668, Start Num: 18

Candidate Starts for Rinkes_20:

(Start: 18 @17321 has 247 MA's), (Start: 21 @17372 has 8 MA's), (22, 17375), (Start: 29 @17405 has 1 MA's), (36, 17453), (42, 17528), (50, 17579), (51, 17585), (53, 17588), (54, 17603),

Gene: Robyn_15 Start: 13223, Stop: 13573, Start Num: 18

Candidate Starts for Robyn_15:

(Start: 18 @13223 has 247 MA's), (Start: 21 @13274 has 8 MA's), (Start: 24 @13289 has 11 MA's), (26, 13298), (31, 13319), (52, 13514),

Gene: Roliet_16 Start: 13650, Stop: 14000, Start Num: 18

Candidate Starts for Roliet_16:

(Start: 18 @13650 has 247 MA's), (Start: 21 @13701 has 8 MA's), (Start: 23 @13713 has 1 MA's),
(Start: 24 @13716 has 11 MA's), (26, 13725), (31, 13746), (52, 13941),

Gene: Roscoe_17 Start: 13891, Stop: 14241, Start Num: 18

Candidate Starts for Roscoe_17:

(Start: 18 @13891 has 247 MA's), (Start: 21 @13942 has 8 MA's), (Start: 23 @13954 has 1 MA's),
(Start: 24 @13957 has 11 MA's), (26, 13966), (31, 13987), (52, 14182),

Gene: Roy17_16 Start: 13352, Stop: 13702, Start Num: 18

Candidate Starts for Roy17_16:

(Start: 18 @13352 has 247 MA's), (Start: 21 @13403 has 8 MA's), (Start: 23 @13415 has 1 MA's),
(Start: 24 @13418 has 11 MA's), (26, 13427), (31, 13448), (52, 13643),

Gene: SDcharge11_16 Start: 13631, Stop: 13981, Start Num: 18

Candidate Starts for SDcharge11_16:

(Start: 18 @13631 has 247 MA's), (Start: 21 @13682 has 8 MA's), (Start: 24 @13697 has 11 MA's),
(26, 13706), (31, 13727), (52, 13922),

Gene: Saguaro_18 Start: 16390, Stop: 16737, Start Num: 18

Candidate Starts for Saguaro_18:

(Start: 18 @16390 has 247 MA's), (Start: 24 @16456 has 11 MA's), (28, 16471),

Gene: Samaymay_16 Start: 13650, Stop: 14000, Start Num: 18

Candidate Starts for Samaymay_16:

(Start: 18 @13650 has 247 MA's), (Start: 21 @13701 has 8 MA's), (Start: 23 @13713 has 1 MA's),
(Start: 24 @13716 has 11 MA's), (26, 13725), (31, 13746), (52, 13941),

Gene: SassyCat97_15 Start: 13357, Stop: 13707, Start Num: 18

Candidate Starts for SassyCat97_15:

(Start: 18 @13357 has 247 MA's), (Start: 21 @13408 has 8 MA's), (Start: 23 @13420 has 1 MA's),
(Start: 24 @13423 has 11 MA's), (26, 13432), (31, 13453), (52, 13648),

Gene: Schadenfreude_15 Start: 13207, Stop: 13557, Start Num: 18

Candidate Starts for Schadenfreude_15:

(Start: 18 @13207 has 247 MA's), (Start: 21 @13258 has 8 MA's), (Start: 23 @13270 has 1 MA's),
(Start: 24 @13273 has 11 MA's), (26, 13282), (31, 13303), (52, 13498),

Gene: Schiebel_30 Start: 26790, Stop: 27110, Start Num: 19

Candidate Starts for Schiebel_30:

(Start: 19 @26790 has 54 MA's), (Start: 24 @26853 has 11 MA's), (Start: 27 @26865 has 2 MA's),
(Start: 29 @26871 has 1 MA's), (30, 26880), (33, 26895), (35, 26916), (36, 26919), (38, 26934), (40,
26949), (41, 26961), (49, 27039), (59, 27099),

Gene: Scrick_15 Start: 13370, Stop: 13720, Start Num: 18

Candidate Starts for Scrick_15:

(Start: 18 @13370 has 247 MA's), (Start: 21 @13421 has 8 MA's), (Start: 23 @13433 has 1 MA's),
(Start: 24 @13436 has 11 MA's), (26, 13445), (31, 13466), (52, 13661),

Gene: Selr12_16 Start: 13375, Stop: 13725, Start Num: 18

Candidate Starts for Selr12_16:

(Start: 18 @13375 has 247 MA's), (Start: 21 @13426 has 8 MA's), (Start: 23 @13438 has 1 MA's),
(Start: 24 @13441 has 11 MA's), (26, 13450), (31, 13471), (52, 13666),

Gene: Serendipitous_17 Start: 15447, Stop: 15791, Start Num: 18
Candidate Starts for Serendipitous_17:
(2, 15102), (3, 15189), (13, 15330), (Start: 18 @15447 has 247 MA's), (Start: 21 @15498 has 8 MA's),
(25, 15519), (30, 15540), (42, 15654), (44, 15669),

Gene: Serpentine_0016 Start: 13653, Stop: 14003, Start Num: 18
Candidate Starts for Serpentine_0016:
(Start: 18 @13653 has 247 MA's), (Start: 21 @13704 has 8 MA's), (Start: 23 @13716 has 1 MA's),
(Start: 24 @13719 has 11 MA's), (26, 13728), (31, 13749), (52, 13944),

Gene: ShaboiShabazz_30 Start: 26790, Stop: 27110, Start Num: 19
Candidate Starts for ShaboiShabazz_30:
(Start: 19 @26790 has 54 MA's), (Start: 24 @26853 has 11 MA's), (Start: 27 @26865 has 2 MA's),
(Start: 29 @26871 has 1 MA's), (30, 26880), (33, 26895), (35, 26916), (36, 26919), (38, 26934), (40,
26949), (41, 26961), (49, 27039), (59, 27099),

Gene: Sheila_16 Start: 13642, Stop: 13992, Start Num: 18
Candidate Starts for Sheila_16:
(Start: 18 @13642 has 247 MA's), (Start: 21 @13693 has 8 MA's), (Start: 23 @13705 has 1 MA's),
(Start: 24 @13708 has 11 MA's), (26, 13717), (31, 13738), (52, 13933),

Gene: Shenyu_17 Start: 15284, Stop: 15568, Start Num: 21
Candidate Starts for Shenyu_17:
(2, 14888), (3, 14975), (13, 15116), (Start: 18 @15233 has 247 MA's), (Start: 21 @15284 has 8 MA's),
(25, 15305), (30, 15326), (36, 15365), (42, 15440), (44, 15455),

Gene: ShiVal_16 Start: 13644, Stop: 13994, Start Num: 18
Candidate Starts for ShiVal_16:
(Start: 18 @13644 has 247 MA's), (Start: 21 @13695 has 8 MA's), (Start: 23 @13707 has 1 MA's),
(Start: 24 @13710 has 11 MA's), (26, 13719), (31, 13740), (52, 13935),

Gene: Simielle_15 Start: 13342, Stop: 13692, Start Num: 18
Candidate Starts for Simielle_15:
(Start: 18 @13342 has 247 MA's), (Start: 21 @13393 has 8 MA's), (Start: 23 @13405 has 1 MA's),
(Start: 24 @13408 has 11 MA's), (26, 13417), (31, 13438), (52, 13633),

Gene: SirJeffery_17 Start: 15310, Stop: 15603, Start Num: 21
Candidate Starts for SirJeffery_17:
(2, 14914), (3, 15001), (13, 15142), (Start: 18 @15259 has 247 MA's), (Start: 21 @15310 has 8 MA's),
(25, 15331), (30, 15352), (36, 15391), (42, 15466), (44, 15481), (56, 15565),

Gene: Sizemore_30 Start: 26791, Stop: 27111, Start Num: 19
Candidate Starts for Sizemore_30:
(Start: 19 @26791 has 54 MA's), (Start: 24 @26854 has 11 MA's), (Start: 27 @26866 has 2 MA's),
(Start: 29 @26872 has 1 MA's), (30, 26881), (33, 26896), (35, 26917), (36, 26920), (38, 26935), (40,
26950), (41, 26962), (49, 27040), (59, 27100),

Gene: Skippy_16 Start: 13635, Stop: 13985, Start Num: 18
Candidate Starts for Skippy_16:
(Start: 18 @13635 has 247 MA's), (Start: 21 @13686 has 8 MA's), (Start: 23 @13698 has 1 MA's),
(Start: 24 @13701 has 11 MA's), (26, 13710), (31, 13731), (52, 13926),

Gene: Slatt_16 Start: 13667, Stop: 14017, Start Num: 18

Candidate Starts for Slatt_16:

(Start: 18 @13667 has 247 MA's), (Start: 21 @13718 has 8 MA's), (Start: 23 @13730 has 1 MA's),
(Start: 24 @13733 has 11 MA's), (26, 13742), (31, 13763), (52, 13958),

Gene: Sneeze_30 Start: 26872, Stop: 27192, Start Num: 19

Candidate Starts for Sneeze_30:

(Start: 19 @26872 has 54 MA's), (Start: 24 @26935 has 11 MA's), (Start: 27 @26947 has 2 MA's),
(Start: 29 @26953 has 1 MA's), (30, 26962), (33, 26977), (35, 26998), (36, 27001), (38, 27016), (40,
27031), (41, 27043), (49, 27121), (59, 27181),

Gene: Soile_16 Start: 13362, Stop: 13712, Start Num: 18

Candidate Starts for Soile_16:

(Start: 18 @13362 has 247 MA's), (Start: 21 @13413 has 8 MA's), (Start: 23 @13425 has 1 MA's),
(Start: 24 @13428 has 11 MA's), (26, 13437), (31, 13458), (52, 13653),

Gene: Solosis_15 Start: 13369, Stop: 13719, Start Num: 18

Candidate Starts for Solosis_15:

(Start: 18 @13369 has 247 MA's), (Start: 21 @13420 has 8 MA's), (Start: 23 @13432 has 1 MA's),
(Start: 24 @13435 has 11 MA's), (26, 13444), (31, 13465), (52, 13660),

Gene: Sophia_15 Start: 13357, Stop: 13707, Start Num: 18

Candidate Starts for Sophia_15:

(Start: 18 @13357 has 247 MA's), (Start: 21 @13408 has 8 MA's), (Start: 23 @13420 has 1 MA's),
(Start: 24 @13423 has 11 MA's), (26, 13432), (31, 13453), (52, 13648),

Gene: Soto_16 Start: 13647, Stop: 13997, Start Num: 18

Candidate Starts for Soto_16:

(Start: 18 @13647 has 247 MA's), (Start: 21 @13698 has 8 MA's), (Start: 23 @13710 has 1 MA's),
(Start: 24 @13713 has 11 MA's), (26, 13722), (31, 13743), (52, 13938),

Gene: Spartan300_16 Start: 13647, Stop: 13997, Start Num: 18

Candidate Starts for Spartan300_16:

(Start: 18 @13647 has 247 MA's), (Start: 21 @13698 has 8 MA's), (Start: 23 @13710 has 1 MA's),
(Start: 24 @13713 has 11 MA's), (26, 13722), (31, 13743), (52, 13938),

Gene: Squid_16 Start: 13357, Stop: 13707, Start Num: 18

Candidate Starts for Squid_16:

(Start: 18 @13357 has 247 MA's), (Start: 21 @13408 has 8 MA's), (Start: 23 @13420 has 1 MA's),
(Start: 24 @13423 has 11 MA's), (26, 13432), (31, 13453), (52, 13648),

Gene: Squiggle_16 Start: 13357, Stop: 13707, Start Num: 18

Candidate Starts for Squiggle_16:

(Start: 18 @13357 has 247 MA's), (Start: 21 @13408 has 8 MA's), (Start: 23 @13420 has 1 MA's),
(Start: 24 @13423 has 11 MA's), (26, 13432), (31, 13453), (52, 13648),

Gene: Stargaze_30 Start: 28544, Stop: 28897, Start Num: 19

Candidate Starts for Stargaze_30:

(Start: 19 @28544 has 54 MA's), (22, 28595), (28, 28622), (30, 28634), (35, 28670), (36, 28673), (43,
28760), (48, 28796), (61, 28877),

Gene: Stinger_14 Start: 13873, Stop: 14244, Start Num: 18

Candidate Starts for Stinger_14:

(Start: 18 @13873 has 247 MA's), (Start: 21 @13924 has 8 MA's), (Start: 23 @13936 has 1 MA's), (26, 13948), (36, 14005), (37, 14011), (46, 14122), (47, 14131), (49, 14155),

Gene: StinkyVeggy_19 Start: 15482, Stop: 15724, Start Num: 30

Candidate Starts for StinkyVeggy_19:

(3, 15131), (13, 15272), (Start: 18 @15389 has 247 MA's), (Start: 21 @15440 has 8 MA's), (25, 15461), (30, 15482), (36, 15521), (42, 15596), (44, 15611),

Gene: Struggle_15 Start: 13203, Stop: 13553, Start Num: 18

Candidate Starts for Struggle_15:

(Start: 18 @13203 has 247 MA's), (Start: 21 @13254 has 8 MA's), (Start: 23 @13266 has 1 MA's), (Start: 24 @13269 has 11 MA's), (26, 13278), (31, 13299), (52, 13494),

Gene: Suigeneris_17 Start: 15259, Stop: 15603, Start Num: 18

Candidate Starts for Suigeneris_17:

(2, 14914), (3, 15001), (13, 15142), (Start: 18 @15259 has 247 MA's), (Start: 21 @15310 has 8 MA's), (25, 15331), (30, 15352), (36, 15391), (42, 15466), (44, 15481), (56, 15565),

Gene: Surely_16 Start: 13659, Stop: 14009, Start Num: 18

Candidate Starts for Surely_16:

(Start: 18 @13659 has 247 MA's), (Start: 21 @13710 has 8 MA's), (Start: 23 @13722 has 1 MA's), (Start: 24 @13725 has 11 MA's), (26, 13734), (31, 13755), (52, 13950),

Gene: Sweets_30 Start: 26848, Stop: 27105, Start Num: 24

Candidate Starts for Sweets_30:

(Start: 19 @26785 has 54 MA's), (Start: 24 @26848 has 11 MA's), (Start: 27 @26860 has 2 MA's), (Start: 29 @26866 has 1 MA's), (30, 26875), (33, 26890), (35, 26911), (36, 26914), (38, 26929), (40, 26944), (41, 26956), (49, 27034), (59, 27094),

Gene: Taheera_30 Start: 26974, Stop: 27234, Start Num: 24

Candidate Starts for Taheera_30:

(7, 26707), (10, 26764), (12, 26788), (Start: 19 @26911 has 54 MA's), (Start: 24 @26974 has 11 MA's), (Start: 27 @26986 has 2 MA's), (Start: 29 @26992 has 1 MA's), (30, 27001), (33, 27016), (35, 27037), (36, 27040), (38, 27055), (40, 27070), (41, 27082),

Gene: Telesworld_15 Start: 13357, Stop: 13707, Start Num: 18

Candidate Starts for Telesworld_15:

(Start: 18 @13357 has 247 MA's), (Start: 21 @13408 has 8 MA's), (Start: 23 @13420 has 1 MA's), (Start: 24 @13423 has 11 MA's), (26, 13432), (31, 13453), (52, 13648),

Gene: Terror_30 Start: 26974, Stop: 27234, Start Num: 24

Candidate Starts for Terror_30:

(7, 26707), (10, 26764), (12, 26788), (Start: 19 @26911 has 54 MA's), (Start: 24 @26974 has 11 MA's), (Start: 27 @26986 has 2 MA's), (Start: 29 @26992 has 1 MA's), (30, 27001), (33, 27016), (35, 27037), (36, 27040), (38, 27055), (40, 27070), (41, 27082),

Gene: Thonko_17 Start: 13214, Stop: 13540, Start Num: 18

Candidate Starts for Thonko_17:

(5, 13052), (Start: 18 @13214 has 247 MA's), (Start: 21 @13265 has 8 MA's), (26, 13289), (30, 13307),

Gene: Timmi_15 Start: 13369, Stop: 13719, Start Num: 18

Candidate Starts for Timmi_15:

(Start: 18 @13369 has 247 MA's), (Start: 21 @13420 has 8 MA's), (Start: 23 @13432 has 1 MA's),
(Start: 24 @13435 has 11 MA's), (26, 13444), (31, 13465), (52, 13660),

Gene: TomBombadil_16 Start: 13653, Stop: 14003, Start Num: 18

Candidate Starts for TomBombadil_16:

(Start: 18 @13653 has 247 MA's), (Start: 21 @13704 has 8 MA's), (Start: 23 @13716 has 1 MA's),
(Start: 24 @13719 has 11 MA's), (26, 13728), (31, 13749), (52, 13944),

Gene: TomBrady_30 Start: 26791, Stop: 27111, Start Num: 19

Candidate Starts for TomBrady_30:

(Start: 19 @26791 has 54 MA's), (Start: 24 @26854 has 11 MA's), (Start: 27 @26866 has 2 MA's),
(Start: 29 @26872 has 1 MA's), (30, 26881), (33, 26896), (35, 26917), (36, 26920), (38, 26935), (40,
26950), (41, 26962), (49, 27040), (59, 27100),

Gene: Tomlarah_16 Start: 13644, Stop: 13994, Start Num: 18

Candidate Starts for Tomlarah_16:

(Start: 18 @13644 has 247 MA's), (Start: 21 @13695 has 8 MA's), (Start: 23 @13707 has 1 MA's),
(Start: 24 @13710 has 11 MA's), (26, 13719), (31, 13740), (52, 13935),

Gene: Toni_15 Start: 13355, Stop: 13705, Start Num: 18

Candidate Starts for Toni_15:

(Start: 18 @13355 has 247 MA's), (Start: 21 @13406 has 8 MA's), (Start: 23 @13418 has 1 MA's),
(Start: 24 @13421 has 11 MA's), (26, 13430), (31, 13451), (52, 13646),

Gene: Tooj_16 Start: 13657, Stop: 14007, Start Num: 18

Candidate Starts for Tooj_16:

(Start: 18 @13657 has 247 MA's), (Start: 21 @13708 has 8 MA's), (Start: 23 @13720 has 1 MA's),
(Start: 24 @13723 has 11 MA's), (26, 13732), (31, 13753), (52, 13948),

Gene: True_15 Start: 13358, Stop: 13708, Start Num: 18

Candidate Starts for True_15:

(Start: 18 @13358 has 247 MA's), (Start: 21 @13409 has 8 MA's), (Start: 23 @13421 has 1 MA's),
(Start: 24 @13424 has 11 MA's), (26, 13433), (31, 13454), (52, 13649),

Gene: Trypo_16 Start: 13647, Stop: 13997, Start Num: 18

Candidate Starts for Trypo_16:

(Start: 18 @13647 has 247 MA's), (Start: 21 @13698 has 8 MA's), (Start: 23 @13710 has 1 MA's),
(Start: 24 @13713 has 11 MA's), (26, 13722), (31, 13743), (52, 13938),

Gene: TyrionL_15 Start: 13209, Stop: 13559, Start Num: 18

Candidate Starts for TyrionL_15:

(Start: 18 @13209 has 247 MA's), (Start: 21 @13260 has 8 MA's), (Start: 23 @13272 has 1 MA's),
(Start: 24 @13275 has 11 MA's), (26, 13284), (31, 13305), (52, 13500),

Gene: UAch1_16 Start: 13668, Stop: 14018, Start Num: 18

Candidate Starts for UAch1_16:

(Start: 18 @13668 has 247 MA's), (Start: 21 @13719 has 8 MA's), (Start: 23 @13731 has 1 MA's),
(Start: 24 @13734 has 11 MA's), (26, 13743), (31, 13764), (52, 13959),

Gene: Ubuntu_35 Start: 30016, Stop: 30336, Start Num: 18

Candidate Starts for Ubuntu_35:

(Start: 18 @30016 has 247 MA's), (Start: 27 @30094 has 2 MA's), (30, 30109), (32, 30121), (35,
30151), (37, 30160), (41, 30196), (45, 30229), (52, 30283),

Gene: Usavi_16 Start: 13659, Stop: 14009, Start Num: 18

Candidate Starts for Usavi_16:

(Start: 18 @13659 has 247 MA's), (Start: 21 @13710 has 8 MA's), (Start: 24 @13725 has 11 MA's), (26, 13734), (31, 13755), (52, 13950),

Gene: Valjean_16 Start: 13650, Stop: 14000, Start Num: 18

Candidate Starts for Valjean_16:

(Start: 18 @13650 has 247 MA's), (Start: 21 @13701 has 8 MA's), (Start: 23 @13713 has 1 MA's), (Start: 24 @13716 has 11 MA's), (26, 13725), (31, 13746), (52, 13941),

Gene: Vaticameos_16 Start: 13348, Stop: 13698, Start Num: 18

Candidate Starts for Vaticameos_16:

(Start: 18 @13348 has 247 MA's), (Start: 21 @13399 has 8 MA's), (Start: 23 @13411 has 1 MA's), (Start: 24 @13414 has 11 MA's), (26, 13423), (31, 13444), (52, 13639),

Gene: Veritas_15 Start: 13197, Stop: 13547, Start Num: 18

Candidate Starts for Veritas_15:

(Start: 18 @13197 has 247 MA's), (Start: 21 @13248 has 8 MA's), (Start: 23 @13260 has 1 MA's), (Start: 24 @13263 has 11 MA's), (26, 13272), (31, 13293), (52, 13488),

Gene: Vincenzo_17 Start: 16153, Stop: 16518, Start Num: 18

Candidate Starts for Vincenzo_17:

(Start: 18 @16153 has 247 MA's), (Start: 21 @16207 has 8 MA's), (Start: 23 @16219 has 1 MA's), (26, 16231), (30, 16249),

Gene: VioletZ_16 Start: 15407, Stop: 15778, Start Num: 18

Candidate Starts for VioletZ_16:

(Start: 18 @15407 has 247 MA's), (Start: 21 @15458 has 8 MA's), (Start: 23 @15470 has 1 MA's), (Start: 24 @15473 has 11 MA's), (26, 15482), (30, 15500), (36, 15539), (46, 15656),

Gene: Virapocalypse_16 Start: 13642, Stop: 13992, Start Num: 18

Candidate Starts for Virapocalypse_16:

(Start: 18 @13642 has 247 MA's), (Start: 21 @13693 has 8 MA's), (Start: 23 @13705 has 1 MA's), (Start: 24 @13708 has 11 MA's), (26, 13717), (31, 13738), (52, 13933),

Gene: Vista_16 Start: 13653, Stop: 14003, Start Num: 18

Candidate Starts for Vista_16:

(Start: 18 @13653 has 247 MA's), (Start: 21 @13704 has 8 MA's), (Start: 23 @13716 has 1 MA's), (Start: 24 @13719 has 11 MA's), (26, 13728), (31, 13749), (52, 13944),

Gene: Vivaldi_16 Start: 13684, Stop: 14034, Start Num: 18

Candidate Starts for Vivaldi_16:

(Start: 18 @13684 has 247 MA's), (Start: 21 @13735 has 8 MA's), (Start: 23 @13747 has 1 MA's), (Start: 24 @13750 has 11 MA's), (26, 13759), (31, 13780), (52, 13975),

Gene: Waleliano_16 Start: 15377, Stop: 15748, Start Num: 18

Candidate Starts for Waleliano_16:

(Start: 18 @15377 has 247 MA's), (Start: 21 @15428 has 8 MA's), (Start: 23 @15440 has 1 MA's), (Start: 24 @15443 has 11 MA's), (26, 15452), (30, 15470), (36, 15509), (46, 15626),

Gene: Wallhey_15 Start: 13215, Stop: 13565, Start Num: 18

Candidate Starts for Wallhey_15:

(Start: 18 @13215 has 247 MA's), (Start: 21 @13266 has 8 MA's), (Start: 23 @13278 has 1 MA's),
(Start: 24 @13281 has 11 MA's), (26, 13290), (31, 13311), (52, 13506),

Gene: Waterdiva_16 Start: 13651, Stop: 14001, Start Num: 18

Candidate Starts for Waterdiva_16:

(Start: 18 @13651 has 247 MA's), (Start: 21 @13702 has 8 MA's), (Start: 23 @13714 has 1 MA's),
(Start: 24 @13717 has 11 MA's), (26, 13726), (31, 13747), (52, 13942),

Gene: Webster2_35 Start: 30016, Stop: 30336, Start Num: 18

Candidate Starts for Webster2_35:

(Start: 18 @30016 has 247 MA's), (Start: 27 @30094 has 2 MA's), (30, 30109), (32, 30121), (35,
30151), (37, 30160), (41, 30196), (45, 30229), (52, 30283),

Gene: Weher20_16 Start: 13641, Stop: 13991, Start Num: 18

Candidate Starts for Weher20_16:

(Start: 18 @13641 has 247 MA's), (Start: 21 @13692 has 8 MA's), (Start: 23 @13704 has 1 MA's),
(Start: 24 @13707 has 11 MA's), (26, 13716), (31, 13737), (52, 13932),

Gene: Weirido19_31 Start: 28110, Stop: 28523, Start Num: 19

Candidate Starts for Weirido19_31:

(Start: 19 @28110 has 54 MA's), (Start: 27 @28185 has 2 MA's), (34, 28230), (39, 28266),

Gene: Wendigo_30 Start: 26871, Stop: 27110, Start Num: 29

Candidate Starts for Wendigo_30:

(Start: 19 @26790 has 54 MA's), (Start: 24 @26853 has 11 MA's), (Start: 27 @26865 has 2 MA's),
(Start: 29 @26871 has 1 MA's), (30, 26880), (33, 26895), (35, 26916), (36, 26919), (38, 26934), (40,
26949), (41, 26961), (49, 27039), (59, 27099),

Gene: Windsor_15 Start: 13317, Stop: 13667, Start Num: 18

Candidate Starts for Windsor_15:

(Start: 18 @13317 has 247 MA's), (Start: 21 @13368 has 8 MA's), (Start: 23 @13380 has 1 MA's),
(Start: 24 @13383 has 11 MA's), (26, 13392), (31, 13413), (52, 13608),

Gene: Wishmaker_34 Start: 30016, Stop: 30336, Start Num: 18

Candidate Starts for Wishmaker_34:

(Start: 18 @30016 has 247 MA's), (Start: 27 @30094 has 2 MA's), (30, 30109), (32, 30121), (35,
30151), (37, 30160), (41, 30196), (45, 30229), (52, 30283),

Gene: Xavier_15 Start: 13369, Stop: 13719, Start Num: 18

Candidate Starts for Xavier_15:

(Start: 18 @13369 has 247 MA's), (Start: 21 @13420 has 8 MA's), (Start: 23 @13432 has 1 MA's),
(Start: 24 @13435 has 11 MA's), (26, 13444), (31, 13465), (52, 13660),

Gene: Xincheng_16 Start: 15249, Stop: 15569, Start Num: 21

Candidate Starts for Xincheng_16:

(Start: 18 @15198 has 247 MA's), (Start: 21 @15249 has 8 MA's), (Start: 23 @15261 has 1 MA's),
(Start: 24 @15264 has 11 MA's), (26, 15273), (30, 15291), (35, 15327), (36, 15330), (37, 15336), (46,
15447),

Gene: YouGoGlencoco_16 Start: 13647, Stop: 13997, Start Num: 18

Candidate Starts for YouGoGlencoco_16:

(Start: 18 @13647 has 247 MA's), (Start: 21 @13698 has 8 MA's), (Start: 23 @13710 has 1 MA's),
(Start: 24 @13713 has 11 MA's), (26, 13722), (31, 13743), (52, 13938),

Gene: Zaider_17 Start: 13880, Stop: 14230, Start Num: 18

Candidate Starts for Zaider_17:

(Start: 18 @13880 has 247 MA's), (Start: 21 @13931 has 8 MA's), (Start: 23 @13943 has 1 MA's),
(Start: 24 @13946 has 11 MA's), (26, 13955), (31, 13976), (52, 14171),

Gene: Zelda_16 Start: 13650, Stop: 14000, Start Num: 18

Candidate Starts for Zelda_16:

(Start: 18 @13650 has 247 MA's), (Start: 21 @13701 has 8 MA's), (Start: 23 @13713 has 1 MA's),
(Start: 24 @13716 has 11 MA's), (26, 13725), (31, 13746), (52, 13941),

Gene: Zemanar_17 Start: 15428, Stop: 15748, Start Num: 21

Candidate Starts for Zemanar_17:

(Start: 18 @15377 has 247 MA's), (Start: 21 @15428 has 8 MA's), (Start: 23 @15440 has 1 MA's),
(Start: 24 @15443 has 11 MA's), (26, 15452), (30, 15470), (36, 15509), (46, 15626),

Gene: ZoMa_30 Start: 26790, Stop: 27110, Start Num: 19

Candidate Starts for ZoMa_30:

(Start: 19 @26790 has 54 MA's), (Start: 24 @26853 has 11 MA's), (Start: 27 @26865 has 2 MA's),
(Start: 29 @26871 has 1 MA's), (30, 26880), (33, 26895), (35, 26916), (36, 26919), (38, 26934), (40,
26949), (41, 26961), (49, 27039), (59, 27099),

Gene: Zombie_30 Start: 26790, Stop: 27110, Start Num: 19

Candidate Starts for Zombie_30:

(Start: 19 @26790 has 54 MA's), (Start: 24 @26853 has 11 MA's), (Start: 27 @26865 has 2 MA's),
(Start: 29 @26871 has 1 MA's), (30, 26880), (33, 26895), (35, 26916), (36, 26919), (38, 26934), (40,
26949), (41, 26961), (49, 27039), (59, 27099),

Gene: Zonia_16 Start: 13664, Stop: 14014, Start Num: 18

Candidate Starts for Zonia_16:

(Start: 18 @13664 has 247 MA's), (Start: 21 @13715 has 8 MA's), (Start: 23 @13727 has 1 MA's),
(Start: 24 @13730 has 11 MA's), (26, 13739), (31, 13760), (52, 13955),