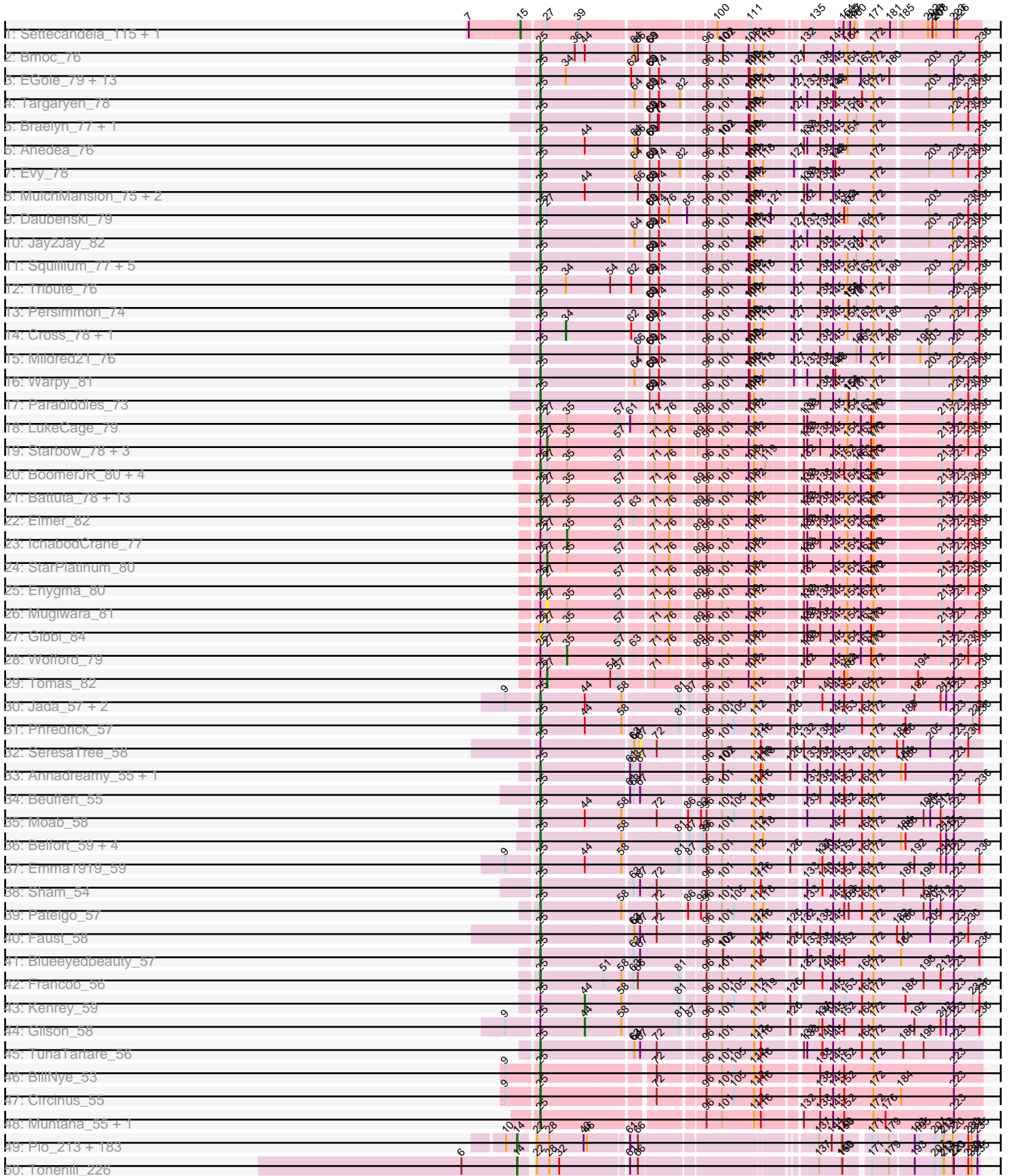
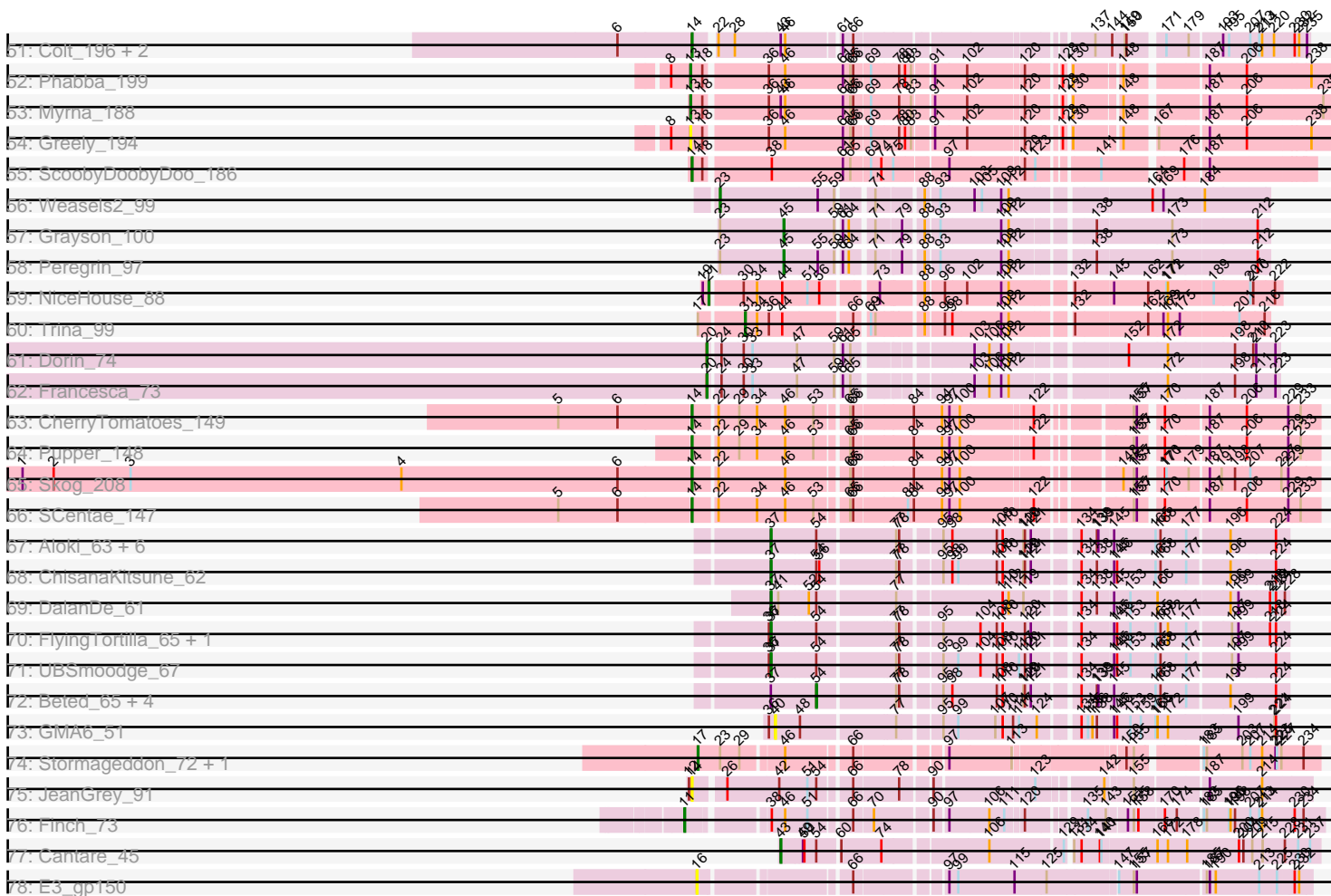


Pham 193668



Pham 193668



Note: Tracks are now grouped by subcluster and scaled. Switching in subcluster is indicated by changes in track color. Track scale is now set by default to display the region 30 bp upstream of start 1 to 30 bp downstream of the last possible start. If this default region is judged to be packed too tightly with annotated starts, the track will be further scaled to only show that region of the ORF with annotated starts. This action will be indicated by adding "Zoomed" to the title. For starts, yellow indicates the location of called starts comprised solely of Glimmer/GeneMark auto-annotations, green indicates the location of called starts with at least 1 manual gene annotation.

Pham 193668 Report

This analysis was run 11/02/24 on database version 579.

Pham number 193668 has 326 members, 34 are drafts.

Phages represented in each track:

- Track 1 : Settecandela_115, Phrappuccino_115
- Track 2 : Bmoc_76
- Track 3 : EGole_79, Cursive_76, HangryHippo_78, PacManQ_77, BlueOtter_78, Larnav_78, Samisti12_78, Leo04_79, Scheme_79, Lululemon_77, Teutsch_78, Watermoore_78, Sushi23_77, Pepperwood_78
- Track 4 : Targaryen_78
- Track 5 : Braelyn_77, Navo_75
- Track 6 : Anedea_76
- Track 7 : Evy_78
- Track 8 : MulchMansion_75, LilMartin_75, Angela_74
- Track 9 : Daubenski_79
- Track 10 : Jay2Jay_82
- Track 11 : Squillium_77, NootNoot_73, WhereRU_74, Liandry_76, Bartholomune_76, PinkiePie_76
- Track 12 : Tribute_76
- Track 13 : Persimmon_74
- Track 14 : Cross_78, Peebs_77
- Track 15 : Mildred21_76
- Track 16 : Warpy_81
- Track 17 : Paradiddles_73
- Track 18 : LukeCage_79
- Track 19 : Starbow_78, CeilingFan_82, Amabiko_80, Wipeout_77
- Track 20 : BoomerJR_80, Stanimal_80, Sollertia_80, Genie2_80, Yaboi_80
- Track 21 : Battuta_78, Birchlyn_77, Bordeaux_78, Spelly_80, TomSawyer_78, Karimac_79, Spilled_81, KentuckyRacer_80, JimJam_80, Quaran19_79, PumpkinSpice_79, SaltySpittoon_79, Jollison_79, MindFlayer_77
- Track 22 : Elmer_82
- Track 23 : IchabodCrane_77
- Track 24 : StarPlatinum_80
- Track 25 : Enygma_80
- Track 26 : Mugiwara_81
- Track 27 : Gibbi_84
- Track 28 : Wofford_79
- Track 29 : Tomas_82
- Track 30 : Jada_57, Forrest_59, MeganTheeKilla_56
- Track 31 : Phredrick_57
- Track 32 : SeresaTree_58

- Track 33 : Annadreamy_55, Limpid_55
- Track 34 : Beuffert_55
- Track 35 : Moab_58
- Track 36 : Belfort_59, Karp_56, SparkleGoddess_58, Comrade_58, Stigma_57
- Track 37 : Emma1919_59
- Track 38 : Sham_54
- Track 39 : Patelgo_57
- Track 40 : Faust_58
- Track 41 : Blueeyedbeauty_57
- Track 42 : Francob_56
- Track 43 : Kenrey_59
- Track 44 : Gilson_58
- Track 45 : TunaTartare_56
- Track 46 : BillNye_53
- Track 47 : Circinus_55
- Track 48 : Muntaha_55, Wakanda_54
- Track 49 : Pio_213, Amataga_206, Burrough_207, Napoleon13_202, InigoMontoya_208, ShiaLabeouf_202, Bigswole_210, CindyLou_206, Willis_206, Breeniome_204, Shelob_206, I3_215, Ghost_205, Tainan_206, Bonray_207, BeanWater_197, MikeLiesIn_207, Loanshark_202, Cali_198, NuevoMundo_208, Derek_202, RoMag_200, JPickles_201, Rizal_197, LifeSavor_204, SilverDipper_209, Basquiat_202, Littleton_208, Yassified_202, Patter_206, Rahel_206, Latch_205, SmallFry_205, Ngannou_202, LolaVinca_203, MoMoMixon_203, Astraea_199, Concombre_210, Daffodil_210, Bread_200, Quasimodo_207, Chomp_205, Morizzled23_202, Grasshills_213, Naval22_210, Dietrick_194, Ading_206, Stubby_189, BadAgartude_199, Jemmno_204, YemiJoy2021_206, Phlegm_209, Norm_205, Janiyra_208, Capablanca_210, Babyland_208, BackyardAgain_200, Megamind_202, Audrick_207, Atlantean_205, Koguma_204, Erdmann_206, Phusco_203, Zeenon_207, Asterius_201, Issimir_198, Teardrop_202, Melpomini_200, Blackbrain_202, McWolfish_202, Salacia_205, EmToTheThree_205, ChickenPhender_201, Turret_198, JayJay_203, Blackdragon_200, Gabriel_208, Naija_206, FrayBell_208, Mikro_201, Shifa_182, Sauce_201, Khaleesi_204, Delylah_207, Catera_198, Spec_200, ChaylaJr_202, DTDevon_207, Delilah_203, Lukilu_196, Halldule_198, ArcherS7_205, Maby2021_205, Ava3_204, EmmaElysia_208, BananaFence_202, EasyJones_208, DrPhinkDaddy_202, Sprinklers_203, StubbySaigey_210, Bipolarisk_203, Cactojaque_200, FudgeTart_200, ValleyTerrace_206, Iota_200, Demodog_211, Gizmo_211, NoodleTree_211, Momo_206, Shaqnato_196, EggyFarm_214, Alice_192, Pleione_209, Mangeria_206, TinyTim_203, Shrimp_207, BigCity_214, DirtMonster_198, Spud_199, Grungle_189, Gamgam_206, Yucca_205, Pier_206, Jaygup_201, Bxz1_195, Phox_206, QBert_197, Dandelion_213, McGee_204, Shnickers_203, Zalkecks_204, Bangla1971_205, HyRo_193, ErnieJ_198, FoxtrotP1_203, Trinitium_201, Chargie21_202, Ewok_204, Flabslab_200, Tortoise16_203, LordLeafolot_207, JustHall_199, NedWong_204, Izajani_203, JigglyPuff_212, JulietS_198, Kamryn_204, InterFolia_208, Pivoine_206, YoungMoneyMata_203, ET08_193, Darko_204, LRRHood_198, Jessibeth14_205, LinStu_204, CharlieB_199, PurduePete_205, Sebata_206, Jedediah_205, Lee7_205, Essence_202, SrishMeg2525_202, Wally_203, Fludd_205, IkeLoa_197, Ronan_201, Roots515_207, Guwapp_200, Nidhogg_206, Domi_199, Adlitam_204, Tyke_203, Kboogie_209, Matsumoto_204, Specks_209, ScottMcG_198, ParkTD_204, Nappy_206, Caravan_196, Rabinovish_198, ZygoTaiga_202, StephanieG_201, Pinkcreek_189, Drazdys_203
- Track 50 : Tonenili_226

- Track 51 : Colt_196, Cane17_196, Blubba_194
- Track 52 : Phabba_199
- Track 53 : Myrna_188
- Track 54 : Greely_194
- Track 55 : ScoobyDoobyDoo_186
- Track 56 : Weasels2_99
- Track 57 : Grayson_100
- Track 58 : Peregrin_97
- Track 59 : NiceHouse_88
- Track 60 : Trina_99
- Track 61 : Dorin_74
- Track 62 : Francesca_73
- Track 63 : CherryTomatoes_149
- Track 64 : Pupper_148
- Track 65 : Skog_208
- Track 66 : SCentae_147
- Track 67 : Alok_63, Gray_66, Kabocha_67, MintFritos_63, Oogie_65, Pakusa_63, Schomber_64
- Track 68 : ChisanaKitsune_62
- Track 69 : DalanDe_61
- Track 70 : FlyingTortilla_65, ScarletRaider_64
- Track 71 : UBSmoodge_67
- Track 72 : Beted_65, Lenoshki_65, Chidiebere_66, Hanem_65, Twin_63
- Track 73 : GMA6_51
- Track 74 : Stormageddon_72, RedWattleHog_75
- Track 75 : JeanGrey_91
- Track 76 : Finch_73
- Track 77 : Cantare_45
- Track 78 : E3_gp150

Summary of Final Annotations (See graph section above for start numbers):

The start number called the most often in the published annotations is 14, it was called in 175 of the 292 non-draft genes in the pham.

Genes that call this "Most Annotated" start:

- Ading_206, Adlitam_204, Alice_192, Amataga_206, ArcherS7_205, Asterius_201, Astraea_199, Atlantean_205, Audrick_207, Ava3_204, Babyland_208, BackyardAgain_200, BadAgartude_199, BananaFence_202, Bangla1971_205, Basquiat_202, BeanWater_197, BigCity_214, Bigswole_210, Bipolarisk_203, Blackbrain_202, Blackdragon_200, Blubba_194, Bonray_207, Bread_200, Breeniome_204, Burrough_207, Bxz1_195, Cactojaque_200, Cali_198, Cane17_196, Capablanca_210, Caravan_196, Catera_198, Chargie21_202, CharlieB_199, ChaylaJr_202, CherryTomatoes_149, ChickenPhender_201, Chomp_205, CindyLou_206, Colt_196, Concombre_210, DTDevon_207, Daffodil_210, Dandelion_213, Darko_204, Delilah_203, Delylah_207, Demodog_211, Derek_202, Dietrick_194, DirtMonster_198, Domi_199, DrPhinkDaddy_202, Drazdys_203, ET08_193, EasyJones_208, EggyFarm_214, EmToTheThree_205, EmmaElysia_208, Erdmann_206, ErnieJ_198, Essence_202, Ewok_204, Flabslab_200, Fludd_205, FoxtrotP1_203, FrayBell_208, FudgeTart_200,

Gabriel_208, Gamgam_206, Ghost_205, Gizmo_211, Grasshills_213, Grungle_189, Guwapp_200, Halldule_198, HyRo_193, I3_215, IkeLoa_197, InigoMontoya_208, InterFolia_208, Iota_200, Issimir_198, Izajani_203, JPickles_201, Janiyra_208, JayJay_203, Jaygup_201, JeanGrey_91, Jedediah_205, Jemmno_204, Jessibeth14_205, JigglyPuff_212, JulietS_198, JustHall_199, Kamryn_204, Kboogie_209, Khaleesi_204, Koguma_204, LRRHood_198, Latch_205, Lee7_205, LifeSavor_204, LinStu_204, Littleton_208, Loanshark_202, LolaVinca_203, LordLeafolot_207, Lukilu_196, Maby2021_205, Mangeria_206, Matsumoto_204, McGee_204, McWolfish_202, Megamind_202, Melpomini_200, MikeLiesIn_207, Mikro_201, MoMoMixon_203, Momo_206, Morizzled23_202, Naija_206, Napoleon13_202, Nappy_206, Naval22_210, NedWong_204, Ngannou_202, Nidhogg_206, NoodleTree_211, Norm_205, NuevoMundo_208, ParkTD_204, Patter_206, Phlegm_209, Phox_206, Phusco_203, Pier_206, Pinkcreek_189, Pio_213, Pivoine_206, Pleione_209, Pupper_148, PurduePete_205, QBert_197, Quasimodo_207, Rabinovish_198, Rahel_206, Rizal_197, RoMag_200, Ronan_201, Roots515_207, SCentae_147, Salacia_205, Sauce_201, ScoobyDoobyDoo_186, ScottMcG_198, Sebata_206, Shaqnato_196, Shelob_206, ShiaLabeouf_202, Shifa_182, Shnickers_203, Shrimp_207, SilverDipper_209, Skog_208, SmallFry_205, Spec_200, Specks_209, Sprinklers_203, Spud_199, SrishMeg2525_202, StephanieG_201, StubbySaigey_210, Stubby_189, Tainan_206, Teardrop_202, TinyTim_203, Tonenili_226, Tortoise16_203, Trinitium_201, Turret_198, Tyke_203, ValleyTerrace_206, Wally_203, Willis_206, Yassified_202, YemiJoy2021_206, YoungMoneyMata_203, Yucca_205, Zalkecks_204, Zeenon_207, ZygoTaiga_202,

Genes that have the "Most Annotated" start but do not call it:

-

Genes that do not have the "Most Annotated" start:

- Alok_i_63, Amabiko_80, Anedea_76, Angela_74, Annadreamy_55, Bartholomune_76, Battuta_78, Belfort_59, Beted_65, Beuffert_55, BillNye_53, Birchlyn_77, BlueOtter_78, Blueeyedbeauty_57, Bmoc_76, BoomerJR_80, Bordeaux_78, Braelyn_77, Cantare_45, CeilingFan_82, Chidiebere_66, ChisanaKitsune_62, Circinus_55, Comrade_58, Cross_78, Cursive_76, DalanDe_61, Daubenski_79, Dorin_74, E3_gp150, EGole_79, Elmer_82, Emma1919_59, Enygma_80, Evy_78, Faust_58, Finch_73, FlyingTortilla_65, Forrest_59, Francesca_73, Francob_56, GMA6_51, Genie2_80, Gibbi_84, Gilson_58, Gray_66, Grayson_100, Greely_194, Hanem_65, HangryHippo_78, IchabodCrane_77, Jada_57, Jay2Jay_82, JimJam_80, Jollison_79, Kabocha_67, Karimac_79, Karp_56, Kenrey_59, KentuckyRacer_80, Larnav_78, Lenoshki_65, Leo04_79, Liandry_76, LilMartin_75, Limpid_55, LukeCage_79, Lululemon_77, MeganTheeKilla_56, Mildred21_76, MindFlayer_77, MintFritos_63, Moab_58, Mugiwara_81, MulchMansion_75, Muntaha_55, Myrna_188, Navo_75, NiceHouse_88, NootNoot_73, Oogie_65, PacManQ_77, Pakusa_63, Paradiddles_73, Patelgo_57, Peebs_77, Pepperwood_78, Peregrin_97, Persimmon_74, Phabba_199, Phrappuccino_115, Phredrick_57, PinkiePie_76, PumpkinSpice_79, Quarant19_79, RedWattleHog_75, SaltySpittoon_79, Samisti12_78, ScarletRaider_64, Scheme_79, Schomber_64, SeresaTree_58, Settecandela_115, Sham_54, Sollertia_80, SparkleGoddess_58, Spelly_80, Spilled_81, Squillium_77, Stanimal_80, StarPlatinum_80, Starbow_78, Stigma_57, Stormageddon_72, Sushi23_77, Targaryen_78, Deutsch_78, TomSawyer_78, Tomas_82, Tribute_76, Trina_99, TunaTartare_56, Twin_63, UBSmoodge_67, Wakanda_54, Warpy_81, Watermoore_78, Weasels2_99, WhereRU_74, Wipeout_77, Wofford_79, Yaboi_80,

Summary by start number:

Start 11:

- Found in 1 of 326 (0.3%) of genes in pham
- Manual Annotations of this start: 1 of 292
- Called 100.0% of time when present
- Phage (with cluster) where this start called: Finch_73 (singleton),

Start 13:

- Found in 3 of 326 (0.9%) of genes in pham
- Manual Annotations of this start: 2 of 292
- Called 100.0% of time when present
- Phage (with cluster) where this start called: Greely_194 (C2), Myrna_188 (C2), Phabba_199 (C2),

Start 14:

- Found in 194 of 326 (59.5%) of genes in pham
- Manual Annotations of this start: 175 of 292
- Called 100.0% of time when present
- Phage (with cluster) where this start called: Ading_206 (C1), Adlitam_204 (C1), Alice_192 (C1), Amataga_206 (C1), ArcherS7_205 (C1), Asterius_201 (C1), Astraea_199 (C1), Atlantean_205 (C1), Audrick_207 (C1), Ava3_204 (C1), Babyland_208 (C1), BackyardAgain_200 (C1), BadAgartude_199 (C1), BananaFence_202 (C1), Bangla1971_205 (C1), Basquiat_202 (C1), BeanWater_197 (C1), BigCity_214 (C1), Bigswole_210 (C1), Bipolarisk_203 (C1), Blackbrain_202 (C1), Blackdragon_200 (C1), Blubba_194 (C1), Bonray_207 (C1), Bread_200 (C1), Breeniome_204 (C1), Burrough_207 (C1), Bxz1_195 (C1), Cactojaque_200 (C1), Cali_198 (C1), Cane17_196 (C1), Capablanca_210 (C1), Caravan_196 (C1), Catera_198 (C1), Chargie21_202 (C1), CharlieB_199 (C1), ChaylaJr_202 (C1), CherryTomatoes_149 (DO), ChickenPhender_201 (C1), Chomp_205 (C1), CindyLou_206 (C1), Colt_196 (C1), Concombre_210 (C1), DTDevon_207 (C1), Daffodil_210 (C1), Dandelion_213 (C1), Darko_204 (C1), Delilah_203 (C1), Delylah_207 (C1), Demodog_211 (C1), Derek_202 (C1), Dietrick_194 (C1), DirtMonster_198 (C1), Domi_199 (C1), DrPhinkDaddy_202 (C1), Drazdys_203 (C1), ET08_193 (C1), EasyJones_208 (C1), EggyFarm_214 (C1), EmToTheThree_205 (C1), EmmaElysia_208 (C1), Erdmann_206 (C1), ErnieJ_198 (C1), Essence_202 (C1), Ewok_204 (C1), Flabslab_200 (C1), Fludd_205 (C1), FoxtrotP1_203 (C1), FrayBell_208 (C1), FudgeTart_200 (C1), Gabriel_208 (C1), Gamgam_206 (C1), Ghost_205 (C1), Gizmo_211 (C1), Grasshills_213 (C1), Grungle_189 (C1), Guwapp_200 (C1), Halldule_198 (C1), HyRo_193 (C1), I3_215 (C1), IkeLoa_197 (C1), InigoMontoya_208 (C1), InterFolia_208 (C1), Iota_200 (C1), Issimir_198 (C1), Izajani_203 (C1), JPickles_201 (C1), Janiyr_208 (C1), JayJay_203 (C1), Jaygup_201 (C1), JeanGrey_91 (singleton), Jedediah_205 (C1), Jemmno_204 (C1), Jessibeth14_205 (C1), JigglyPuff_212 (C1), JulietS_198 (C1), JustHall_199 (C1), Kamryn_204 (C1), Kboogie_209 (C1), Khaleesi_204 (C1), Koguma_204 (C1), LRRHood_198 (C1), Latch_205 (C1), Lee7_205 (C1), LifeSavor_204 (C1), LinStu_204 (C1), Littleton_208 (C1), Loanshark_202 (C1), LolaVinca_203 (C1), LordLeafolot_207 (C1), Lukilu_196 (C1), Maby2021_205 (C1), Mangeria_206 (C1), Matsumoto_204 (C1), McGee_204 (C1), McWolfish_202 (C1), Megamind_202 (C1), Melpomini_200 (C1), MikeLiesIn_207 (C1), Mikro_201 (C1), MoMoMixon_203 (C1), Momo_206 (C1), Morizzled23_202 (C1), Naija_206 (C1), Napoleon13_202 (C1), Nappy_206 (C1), Naval22_210 (C1), NedWong_204 (C1), Ngannou_202 (C1), Nidhogg_206 (C1), NoodleTree_211 (C1), Norm_205 (C1), NuevoMundo_208 (C1),

ParkTD_204 (C1), Patter_206 (C1), Phlegm_209 (C1), Phox_206 (C1), Phusco_203 (C1), Pier_206 (C1), Pinkcreek_189 (C1), Pio_213 (C1), Pivoine_206 (C1), Pleione_209 (C1), Pupper_148 (DO), PurduePete_205 (C1), QBert_197 (C1), Quasimodo_207 (C1), Rabinovish_198 (C1), Rahel_206 (C1), Rizal_197 (C1), RoMag_200 (C1), Ronan_201 (C1), Roots515_207 (C1), SCentae_147 (DO), Salacia_205 (C1), Sauce_201 (C1), ScoobyDoobyDoo_186 (C2), ScottMcG_198 (C1), Sebata_206 (C1), Shaqnato_196 (C1), Shelob_206 (C1), ShiaLabeouf_202 (C1), Shifa_182 (C1), Shnickers_203 (C1), Shrimp_207 (C1), SilverDipper_209 (C1), Skog_208 (DO), SmallFry_205 (C1), Spec_200 (C1), Specks_209 (C1), Sprinklers_203 (C1), Spud_199 (C1), SrishMeg2525_202 (C1), StephanieG_201 (C1), StubbySaigey_210 (C1), Stubby_189 (C1), Tainan_206 (C1), Teardrop_202 (C1), TinyTim_203 (C1), Tonenili_226 (C1), Tortoise16_203 (C1), Trinitium_201 (C1), Turret_198 (C1), Tyke_203 (C1), ValleyTerrace_206 (C1), Wally_203 (C1), Willis_206 (C1), Yassified_202 (C1), YemiJoy2021_206 (C1), YoungMoneyMata_203 (C1), Yucca_205 (C1), Zalkecks_204 (C1), Zeenon_207 (C1), ZygoTaiga_202 (C1),

Start 15:

- Found in 2 of 326 (0.6%) of genes in pham
- Manual Annotations of this start: 2 of 292
- Called 100.0% of time when present
- Phage (with cluster) where this start called: Phrappuccino_115 (AA), Settecandela_115 (AA),

Start 16:

- Found in 1 of 326 (0.3%) of genes in pham
- No Manual Annotations of this start.
- Called 100.0% of time when present
- Phage (with cluster) where this start called: E3_gp150 (singleton),

Start 17:

- Found in 3 of 326 (0.9%) of genes in pham
- Manual Annotations of this start: 2 of 292
- Called 66.7% of time when present
- Phage (with cluster) where this start called: RedWattleHog_75 (DX), Stormageddon_72 (DX),

Start 20:

- Found in 2 of 326 (0.6%) of genes in pham
- Manual Annotations of this start: 2 of 292
- Called 100.0% of time when present
- Phage (with cluster) where this start called: Dorin_74 (CG), Francesca_73 (CG),

Start 21:

- Found in 1 of 326 (0.3%) of genes in pham
- Manual Annotations of this start: 1 of 292
- Called 100.0% of time when present
- Phage (with cluster) where this start called: NiceHouse_88 (CE),

Start 23:

- Found in 5 of 326 (1.5%) of genes in pham
- Manual Annotations of this start: 1 of 292
- Called 20.0% of time when present
- Phage (with cluster) where this start called: Weasels2_99 (CB),

Start 25:

- Found in 97 of 326 (29.8%) of genes in pham
- Manual Annotations of this start: 81 of 292
- Called 85.6% of time when present
- Phage (with cluster) where this start called: Anedea_76 (BE1), Angela_74 (BE1), Annadreamy_55 (BK1), Bartholomune_76 (BE1), Battuta_78 (BE2), Belfort_59 (BK1), Beuffert_55 (BK1), BillNye_53 (BK2), Birchlyn_77 (BE2), BlueOtter_78 (BE1), Blueeyedbeauty_57 (BK1), Bmoc_76 (BE1), BoomerJR_80 (BE2), Bordeaux_78 (BE2), Braelyn_77 (BE1), Circinus_55 (BK2), Comrade_58 (BK1), Cursive_76 (BE1), Daubenski_79 (BE1), EGole_79 (BE1), Elmer_82 (BE2), Emma1919_59 (BK1), Enygma_80 (BE2), Evy_78 (BE1), Faust_58 (BK1), Forrest_59 (BK1), Francob_56 (BK1), Genie2_80 (BE2), Gibbi_84 (BE2), HangryHippo_78 (BE1), Jada_57 (BK1), Jay2Jay_82 (BE1), JimJam_80 (BE2), Jollison_79 (BE2), Karimac_79 (BE2), Karp_56 (BK1), KentuckyRacer_80 (BE2), Larnav_78 (BE1), Leo04_79 (BE1), Liandry_76 (BE1), LilMartin_75 (BE1), Limpid_55 (BK1), LukeCage_79 (BE2), Lululemon_77 (BE1), MeganTheeKilla_56 (BK1), Mildred21_76 (BE1), MindFlayer_77 (BE2), Moab_58 (BK1), MulchMansion_75 (BE1), Muntaha_55 (BK2), Navo_75 (BE1), NootNoot_73 (BE1), PacManQ_77 (BE1), Paradiddles_73 (BE1), Patelgo_57 (BK1), Pepperwood_78 (BE1), Persimmon_74 (BE1), Phredrick_57 (BK1), PinkiePie_76 (BE1), PumpkinSpice_79 (BE2), Quarant19_79 (BE2), SaltySpittoon_79 (BE2), Samisti12_78 (BE1), Scheme_79 (BE1), Sham_54 (BK1), Sollertia_80 (BE2), SparkleGoddess_58 (BK1), Spelly_80 (BE2), Spilled_81 (BE2), Squillum_77 (BE1), Stanimal_80 (BE2), Stigma_57 (BK1), Sushi23_77 (BE1), Targaryen_78 (BE1), Teutsch_78 (BE1), TomSawyer_78 (BE2), Tribute_76 (BE1), TunaTartare_56 (BK1), Wakanda_54 (BK2), Warpy_81 (BE1), Watermoore_78 (BE1), WhereRU_74 (BE1), Yaboi_80 (BE2),

Start 27:

- Found in 35 of 326 (10.7%) of genes in pham
- Manual Annotations of this start: 5 of 292
- Called 20.0% of time when present
- Phage (with cluster) where this start called: Amabiko_80 (BE2), CeilingFan_82 (BE2), Mugiwara_81 (BE2), StarPlatinum_80 (BE2), Starbow_78 (BE2), Tomas_82 (BE2), Wipeout_77 (BE2),

Start 31:

- Found in 1 of 326 (0.3%) of genes in pham
- Manual Annotations of this start: 1 of 292
- Called 100.0% of time when present
- Phage (with cluster) where this start called: Trina_99 (CE),

Start 34:

- Found in 22 of 326 (6.7%) of genes in pham
- Manual Annotations of this start: 2 of 292
- Called 9.1% of time when present
- Phage (with cluster) where this start called: Cross_78 (BE1), Peebs_77 (BE1),

Start 35:

- Found in 30 of 326 (9.2%) of genes in pham
- Manual Annotations of this start: 2 of 292
- Called 6.7% of time when present

- Phage (with cluster) where this start called: IchabodCrane_77 (BE2), Wofford_79 (BE2),

Start 37:

- Found in 17 of 326 (5.2%) of genes in pham
- Manual Annotations of this start: 8 of 292
- Called 70.6% of time when present
- Phage (with cluster) where this start called: Alok_i_63 (DQ), ChisanaKitsune_62 (DQ), DalanDe_61 (DQ), FlyingTortilla_65 (DQ), Gray_66 (DQ), Kabocha_67 (DQ), MintFritos_63 (DQ), Oogie_65 (DQ), Pakusa_63 (DQ), ScarletRaider_64 (DQ), Schomber_64 (DQ), UBSmoodge_67 (DQ),

Start 40:

- Found in 1 of 326 (0.3%) of genes in pham
- No Manual Annotations of this start.
- Called 100.0% of time when present
- Phage (with cluster) where this start called: GMA6_51 (DQ),

Start 43:

- Found in 189 of 326 (58.0%) of genes in pham
- Manual Annotations of this start: 1 of 292
- Called 0.5% of time when present
- Phage (with cluster) where this start called: Cantare_45 (singleton),

Start 44:

- Found in 15 of 326 (4.6%) of genes in pham
- Manual Annotations of this start: 2 of 292
- Called 13.3% of time when present
- Phage (with cluster) where this start called: Gilson_58 (BK1), Kenrey_59 (BK1),

Start 45:

- Found in 2 of 326 (0.6%) of genes in pham
- Manual Annotations of this start: 2 of 292
- Called 100.0% of time when present
- Phage (with cluster) where this start called: Grayson_100 (CB), Peregrin_97 (CB),

Start 54:

- Found in 21 of 326 (6.4%) of genes in pham
- Manual Annotations of this start: 2 of 292
- Called 23.8% of time when present
- Phage (with cluster) where this start called: Beted_65 (DQ), Chidiebere_66 (DQ), Hanem_65 (DQ), Lenoshki_65 (DQ), Twin_63 (DQ),

Start 67:

- Found in 8 of 326 (2.5%) of genes in pham
- No Manual Annotations of this start.
- Called 12.5% of time when present
- Phage (with cluster) where this start called: SeresaTree_58 (BK1),

Summary by clusters:

There are 14 clusters represented in this pham: AA, DO, singleton, DX, CB, CG, CE, BK1, BK2, BE2, C2, C1, BE1, DQ,

Info for manual annotations of cluster AA:

- Start number 15 was manually annotated 2 times for cluster AA.

Info for manual annotations of cluster BE1:

- Start number 25 was manually annotated 35 times for cluster BE1.
- Start number 34 was manually annotated 2 times for cluster BE1.

Info for manual annotations of cluster BE2:

- Start number 25 was manually annotated 22 times for cluster BE2.
- Start number 27 was manually annotated 5 times for cluster BE2.
- Start number 35 was manually annotated 2 times for cluster BE2.

Info for manual annotations of cluster BK1:

- Start number 25 was manually annotated 20 times for cluster BK1.
- Start number 44 was manually annotated 2 times for cluster BK1.

Info for manual annotations of cluster BK2:

- Start number 25 was manually annotated 4 times for cluster BK2.

Info for manual annotations of cluster C1:

- Start number 14 was manually annotated 170 times for cluster C1.

Info for manual annotations of cluster C2:

- Start number 13 was manually annotated 2 times for cluster C2.
- Start number 14 was manually annotated 1 time for cluster C2.

Info for manual annotations of cluster CB:

- Start number 23 was manually annotated 1 time for cluster CB.
- Start number 45 was manually annotated 2 times for cluster CB.

Info for manual annotations of cluster CE:

- Start number 21 was manually annotated 1 time for cluster CE.
- Start number 31 was manually annotated 1 time for cluster CE.

Info for manual annotations of cluster CG:

- Start number 20 was manually annotated 2 times for cluster CG.

Info for manual annotations of cluster DO:

- Start number 14 was manually annotated 4 times for cluster DO.

Info for manual annotations of cluster DQ:

- Start number 37 was manually annotated 8 times for cluster DQ.
- Start number 54 was manually annotated 2 times for cluster DQ.

Info for manual annotations of cluster DX:

- Start number 17 was manually annotated 2 times for cluster DX.

Gene Information:

Gene: Ading_206 Start: 110649, Stop: 111722, Start Num: 14

Candidate Starts for Ading_206:

(10, 110622), (Start: 14 @110649 has 175 MA's), (22, 110682), (28, 110715), (Start: 43 @110805 has 1 MA's), (46, 110814), (61, 110910), (66, 110931), (137, 111339), (144, 111369), (149, 111393), (150, 111396), (171, 111456), (179, 111498), (193, 111558), (195, 111570), (207, 111609), (213, 111627), (214, 111633), (220, 111657), (230, 111693), (232, 111702), (235, 111717),

Gene: Adlitam_204 Start: 109253, Stop: 110326, Start Num: 14

Candidate Starts for Adlitam_204:

(10, 109226), (Start: 14 @109253 has 175 MA's), (22, 109286), (28, 109319), (Start: 43 @109409 has 1 MA's), (46, 109418), (61, 109514), (66, 109535), (137, 109943), (144, 109973), (149, 109997), (150, 110000), (171, 110060), (179, 110102), (193, 110162), (195, 110174), (207, 110213), (213, 110231), (214, 110237), (220, 110261), (230, 110297), (232, 110306), (235, 110321),

Gene: Alice_192 Start: 109221, Stop: 110294, Start Num: 14

Candidate Starts for Alice_192:

(10, 109194), (Start: 14 @109221 has 175 MA's), (22, 109254), (28, 109287), (Start: 43 @109377 has 1 MA's), (46, 109386), (61, 109482), (66, 109503), (137, 109911), (144, 109941), (149, 109965), (150, 109968), (171, 110028), (179, 110070), (193, 110130), (195, 110142), (207, 110181), (213, 110199), (214, 110205), (220, 110229), (230, 110265), (232, 110274), (235, 110289),

Gene: Alok_i_63 Start: 52730, Stop: 51792, Start Num: 37

Candidate Starts for Alok_i_63:

(Start: 37 @52730 has 8 MA's), (Start: 54 @52643 has 2 MA's), (77, 52502), (78, 52496), (95, 52430), (98, 52412), (108, 52325), (110, 52313), (119, 52271), (120, 52268), (121, 52256), (134, 52181), (138, 52151), (139, 52148), (145, 52121), (165, 52040), (168, 52031), (177, 51980), (196, 51902), (224, 51818),

Gene: Amabiko_80 Start: 56400, Stop: 57458, Start Num: 27

Candidate Starts for Amabiko_80:

(Start: 25 @56382 has 81 MA's), (Start: 27 @56400 has 5 MA's), (Start: 35 @56454 has 2 MA's), (57, 56589), (71, 56664), (76, 56700), (89, 56757), (96, 56781), (101, 56823), (109, 56895), (112, 56910), (132, 57006), (133, 57015), (138, 57045), (145, 57075), (154, 57114), (163, 57150), (170, 57177), (172, 57183), (213, 57348), (223, 57381), (230, 57420), (236, 57450),

Gene: Amataga_206 Start: 109065, Stop: 110138, Start Num: 14

Candidate Starts for Amataga_206:

(10, 109038), (Start: 14 @109065 has 175 MA's), (22, 109098), (28, 109131), (Start: 43 @109221 has 1 MA's), (46, 109230), (61, 109326), (66, 109347), (137, 109755), (144, 109785), (149, 109809), (150, 109812), (171, 109872), (179, 109914), (193, 109974), (195, 109986), (207, 110025), (213, 110043), (214, 110049), (220, 110073), (230, 110109), (232, 110118), (235, 110133),

Gene: Anedea_76 Start: 55980, Stop: 57044, Start Num: 25

Candidate Starts for Anedea_76:

(Start: 25 @55980 has 81 MA's), (Start: 44 @56100 has 2 MA's), (64, 56220), (66, 56229), (68, 56244), (69, 56247), (96, 56373), (101, 56415), (102, 56418), (109, 56487), (110, 56490), (112, 56502), (132, 56598), (133, 56607), (138, 56637), (145, 56667), (154, 56706), (172, 56775), (236, 57036),

Gene: Angela_74 Start: 55439, Stop: 56503, Start Num: 25

Candidate Starts for Angela_74:

(Start: 25 @55439 has 81 MA's), (Start: 44 @55559 has 2 MA's), (66, 55688), (68, 55703), (69, 55706), (74, 55727), (96, 55832), (101, 55874), (109, 55946), (110, 55949), (112, 55961), (132, 56057), (133, 56066), (138, 56096), (145, 56126), (172, 56234), (236, 56495),

Gene: Annadreamy_55 Start: 45380, Stop: 46477, Start Num: 25

Candidate Starts for Annadreamy_55:

(Start: 25 @45380 has 81 MA's), (61, 45608), (63, 45617), (67, 45635), (96, 45788), (101, 45830), (102, 45833), (112, 45917), (116, 45935), (118, 45941), (126, 46001), (133, 46028), (138, 46058), (145, 46088), (152, 46118), (164, 46166), (172, 46196), (184, 46262), (188, 46274), (223, 46400),

Gene: ArcherS7_205 Start: 110107, Stop: 111180, Start Num: 14

Candidate Starts for ArcherS7_205:

(10, 110080), (Start: 14 @110107 has 175 MA's), (22, 110140), (28, 110173), (Start: 43 @110263 has 1 MA's), (46, 110272), (61, 110368), (66, 110389), (137, 110797), (144, 110827), (149, 110851), (150, 110854), (171, 110914), (179, 110956), (193, 111016), (195, 111028), (207, 111067), (213, 111085), (214, 111091), (220, 111115), (230, 111151), (232, 111160), (235, 111175),

Gene: Asterius_201 Start: 109474, Stop: 110547, Start Num: 14

Candidate Starts for Asterius_201:

(10, 109447), (Start: 14 @109474 has 175 MA's), (22, 109507), (28, 109540), (Start: 43 @109630 has 1 MA's), (46, 109639), (61, 109735), (66, 109756), (137, 110164), (144, 110194), (149, 110218), (150, 110221), (171, 110281), (179, 110323), (193, 110383), (195, 110395), (207, 110434), (213, 110452), (214, 110458), (220, 110482), (230, 110518), (232, 110527), (235, 110542),

Gene: Astraea_199 Start: 108669, Stop: 109742, Start Num: 14

Candidate Starts for Astraea_199:

(10, 108642), (Start: 14 @108669 has 175 MA's), (22, 108702), (28, 108735), (Start: 43 @108825 has 1 MA's), (46, 108834), (61, 108930), (66, 108951), (137, 109359), (144, 109389), (149, 109413), (150, 109416), (171, 109476), (179, 109518), (193, 109578), (195, 109590), (207, 109629), (213, 109647), (214, 109653), (220, 109677), (230, 109713), (232, 109722), (235, 109737),

Gene: Atlantean_205 Start: 109065, Stop: 110138, Start Num: 14

Candidate Starts for Atlantean_205:

(10, 109038), (Start: 14 @109065 has 175 MA's), (22, 109098), (28, 109131), (Start: 43 @109221 has 1 MA's), (46, 109230), (61, 109326), (66, 109347), (137, 109755), (144, 109785), (149, 109809), (150, 109812), (171, 109872), (179, 109914), (193, 109974), (195, 109986), (207, 110025), (213, 110043), (214, 110049), (220, 110073), (230, 110109), (232, 110118), (235, 110133),

Gene: Audrick_207 Start: 108955, Stop: 110028, Start Num: 14

Candidate Starts for Audrick_207:

(10, 108928), (Start: 14 @108955 has 175 MA's), (22, 108988), (28, 109021), (Start: 43 @109111 has 1 MA's), (46, 109120), (61, 109216), (66, 109237), (137, 109645), (144, 109675), (149, 109699), (150, 109702), (171, 109762), (179, 109804), (193, 109864), (195, 109876), (207, 109915), (213, 109933), (214, 109939), (220, 109963), (230, 109999), (232, 110008), (235, 110023),

Gene: Ava3_204 Start: 109499, Stop: 110572, Start Num: 14

Candidate Starts for Ava3_204:

(10, 109472), (Start: 14 @109499 has 175 MA's), (22, 109532), (28, 109565), (Start: 43 @109655 has 1 MA's), (46, 109664), (61, 109760), (66, 109781), (137, 110189), (144, 110219), (149, 110243), (150, 110246), (171, 110306), (179, 110348), (193, 110408), (195, 110420), (207, 110459), (213, 110477), (214, 110483), (220, 110507), (230, 110543), (232, 110552), (235, 110567),

Gene: Babyland_208 Start: 109842, Stop: 110915, Start Num: 14

Candidate Starts for Babyland_208:

(10, 109815), (Start: 14 @109842 has 175 MA's), (22, 109875), (28, 109908), (Start: 43 @109998 has 1 MA's), (46, 110007), (61, 110103), (66, 110124), (137, 110532), (144, 110562), (149, 110586), (150,

110589), (171, 110649), (179, 110691), (193, 110751), (195, 110763), (207, 110802), (213, 110820), (214, 110826), (220, 110850), (230, 110886), (232, 110895), (235, 110910),

Gene: BackyardAgain_200 Start: 107751, Stop: 108824, Start Num: 14

Candidate Starts for BackyardAgain_200:

(10, 107724), (Start: 14 @107751 has 175 MA's), (22, 107784), (28, 107817), (Start: 43 @107907 has 1 MA's), (46, 107916), (61, 108012), (66, 108033), (137, 108441), (144, 108471), (149, 108495), (150, 108498), (171, 108558), (179, 108600), (193, 108660), (195, 108672), (207, 108711), (213, 108729), (214, 108735), (220, 108759), (230, 108795), (232, 108804), (235, 108819),

Gene: BadAgartude_199 Start: 109164, Stop: 110237, Start Num: 14

Candidate Starts for BadAgartude_199:

(10, 109137), (Start: 14 @109164 has 175 MA's), (22, 109197), (28, 109230), (Start: 43 @109320 has 1 MA's), (46, 109329), (61, 109425), (66, 109446), (137, 109854), (144, 109884), (149, 109908), (150, 109911), (171, 109971), (179, 110013), (193, 110073), (195, 110085), (207, 110124), (213, 110142), (214, 110148), (220, 110172), (230, 110208), (232, 110217), (235, 110232),

Gene: BananaFence_202 Start: 109298, Stop: 110371, Start Num: 14

Candidate Starts for BananaFence_202:

(10, 109271), (Start: 14 @109298 has 175 MA's), (22, 109331), (28, 109364), (Start: 43 @109454 has 1 MA's), (46, 109463), (61, 109559), (66, 109580), (137, 109988), (144, 110018), (149, 110042), (150, 110045), (171, 110105), (179, 110147), (193, 110207), (195, 110219), (207, 110258), (213, 110276), (214, 110282), (220, 110306), (230, 110342), (232, 110351), (235, 110366),

Gene: Bangla1971_205 Start: 109071, Stop: 110144, Start Num: 14

Candidate Starts for Bangla1971_205:

(10, 109044), (Start: 14 @109071 has 175 MA's), (22, 109104), (28, 109137), (Start: 43 @109227 has 1 MA's), (46, 109236), (61, 109332), (66, 109353), (137, 109761), (144, 109791), (149, 109815), (150, 109818), (171, 109878), (179, 109920), (193, 109980), (195, 109992), (207, 110031), (213, 110049), (214, 110055), (220, 110079), (230, 110115), (232, 110124), (235, 110139),

Gene: Bartholomune_76 Start: 55796, Stop: 56860, Start Num: 25

Candidate Starts for Bartholomune_76:

(Start: 25 @55796 has 81 MA's), (68, 56060), (69, 56063), (74, 56084), (96, 56189), (101, 56231), (109, 56303), (110, 56306), (112, 56318), (127, 56402), (138, 56453), (145, 56483), (154, 56522), (161, 56546), (172, 56591), (220, 56780), (230, 56822), (236, 56852),

Gene: Basquiat_202 Start: 108577, Stop: 109650, Start Num: 14

Candidate Starts for Basquiat_202:

(10, 108550), (Start: 14 @108577 has 175 MA's), (22, 108610), (28, 108643), (Start: 43 @108733 has 1 MA's), (46, 108742), (61, 108838), (66, 108859), (137, 109267), (144, 109297), (149, 109321), (150, 109324), (171, 109384), (179, 109426), (193, 109486), (195, 109498), (207, 109537), (213, 109555), (214, 109561), (220, 109585), (230, 109621), (232, 109630), (235, 109645),

Gene: Battuta_78 Start: 56356, Stop: 57432, Start Num: 25

Candidate Starts for Battuta_78:

(Start: 25 @56356 has 81 MA's), (Start: 27 @56374 has 5 MA's), (Start: 35 @56428 has 2 MA's), (57, 56563), (71, 56638), (76, 56674), (89, 56731), (96, 56755), (101, 56797), (109, 56869), (112, 56884), (132, 56980), (133, 56989), (138, 57019), (145, 57049), (154, 57088), (163, 57124), (170, 57151), (172, 57157), (213, 57322), (223, 57355), (230, 57394), (236, 57424),

Gene: BeanWater_197 Start: 109103, Stop: 110176, Start Num: 14

Candidate Starts for BeanWater_197:

(10, 109076), (Start: 14 @109103 has 175 MA's), (22, 109136), (28, 109169), (Start: 43 @109259 has 1 MA's), (46, 109268), (61, 109364), (66, 109385), (137, 109793), (144, 109823), (149, 109847), (150, 109850), (171, 109910), (179, 109952), (193, 110012), (195, 110024), (207, 110063), (213, 110081), (214, 110087), (220, 110111), (230, 110147), (232, 110156), (235, 110171),

Gene: Belfort_59 Start: 47917, Stop: 49014, Start Num: 25

Candidate Starts for Belfort_59:

(Start: 25 @47917 has 81 MA's), (58, 48133), (81, 48271), (87, 48286), (93, 48316), (96, 48325), (101, 48367), (112, 48454), (118, 48478), (145, 48625), (164, 48703), (172, 48733), (184, 48799), (188, 48811), (212, 48901), (217, 48916), (223, 48937),

Gene: Beted_65 Start: 54338, Stop: 53487, Start Num: 54

Candidate Starts for Beted_65:

(Start: 37 @54425 has 8 MA's), (Start: 54 @54338 has 2 MA's), (77, 54197), (78, 54191), (95, 54125), (98, 54107), (108, 54020), (110, 54008), (119, 53966), (120, 53963), (121, 53951), (134, 53876), (138, 53846), (139, 53843), (145, 53816), (165, 53735), (168, 53726), (177, 53675), (196, 53597), (224, 53513),

Gene: Beuffert_55 Start: 46518, Stop: 47615, Start Num: 25

Candidate Starts for Beuffert_55:

(Start: 25 @46518 has 81 MA's), (61, 46746), (63, 46755), (67, 46773), (96, 46926), (101, 46968), (112, 47055), (116, 47073), (133, 47166), (138, 47196), (145, 47226), (152, 47256), (164, 47304), (172, 47334), (223, 47538), (236, 47607),

Gene: BigCity_214 Start: 112674, Stop: 113747, Start Num: 14

Candidate Starts for BigCity_214:

(10, 112647), (Start: 14 @112674 has 175 MA's), (22, 112707), (28, 112740), (Start: 43 @112830 has 1 MA's), (46, 112839), (61, 112935), (66, 112956), (137, 113364), (144, 113394), (149, 113418), (150, 113421), (171, 113481), (179, 113523), (193, 113583), (195, 113595), (207, 113634), (213, 113652), (214, 113658), (220, 113682), (230, 113718), (232, 113727), (235, 113742),

Gene: Bigswole_210 Start: 112525, Stop: 113598, Start Num: 14

Candidate Starts for Bigswole_210:

(10, 112498), (Start: 14 @112525 has 175 MA's), (22, 112558), (28, 112591), (Start: 43 @112681 has 1 MA's), (46, 112690), (61, 112786), (66, 112807), (137, 113215), (144, 113245), (149, 113269), (150, 113272), (171, 113332), (179, 113374), (193, 113434), (195, 113446), (207, 113485), (213, 113503), (214, 113509), (220, 113533), (230, 113569), (232, 113578), (235, 113593),

Gene: BillNye_53 Start: 49370, Stop: 50452, Start Num: 25

Candidate Starts for BillNye_53:

(9, 49286), (Start: 25 @49370 has 81 MA's), (72, 49652), (96, 49763), (101, 49805), (105, 49838), (112, 49892), (116, 49910), (138, 50033), (145, 50063), (152, 50093), (172, 50171), (223, 50375),

Gene: Bipolarisk_203 Start: 109768, Stop: 110841, Start Num: 14

Candidate Starts for Bipolarisk_203:

(10, 109741), (Start: 14 @109768 has 175 MA's), (22, 109801), (28, 109834), (Start: 43 @109924 has 1 MA's), (46, 109933), (61, 110029), (66, 110050), (137, 110458), (144, 110488), (149, 110512), (150, 110515), (171, 110575), (179, 110617), (193, 110677), (195, 110689), (207, 110728), (213, 110746), (214, 110752), (220, 110776), (230, 110812), (232, 110821), (235, 110836),

Gene: Birchlyn_77 Start: 54239, Stop: 55315, Start Num: 25

Candidate Starts for Birchlyn_77:

(Start: 25 @54239 has 81 MA's), (Start: 27 @54257 has 5 MA's), (Start: 35 @54311 has 2 MA's), (57, 54446), (71, 54521), (76, 54557), (89, 54614), (96, 54638), (101, 54680), (109, 54752), (112, 54767), (132, 54863), (133, 54872), (138, 54902), (145, 54932), (154, 54971), (163, 55007), (170, 55034), (172, 55040), (213, 55205), (223, 55238), (230, 55277), (236, 55307),

Gene: Blackbrain_202 Start: 109662, Stop: 110735, Start Num: 14

Candidate Starts for Blackbrain_202:

(10, 109635), (Start: 14 @109662 has 175 MA's), (22, 109695), (28, 109728), (Start: 43 @109818 has 1 MA's), (46, 109827), (61, 109923), (66, 109944), (137, 110352), (144, 110382), (149, 110406), (150, 110409), (171, 110469), (179, 110511), (193, 110571), (195, 110583), (207, 110622), (213, 110640), (214, 110646), (220, 110670), (230, 110706), (232, 110715), (235, 110730),

Gene: Blackdragon_200 Start: 109401, Stop: 110474, Start Num: 14

Candidate Starts for Blackdragon_200:

(10, 109374), (Start: 14 @109401 has 175 MA's), (22, 109434), (28, 109467), (Start: 43 @109557 has 1 MA's), (46, 109566), (61, 109662), (66, 109683), (137, 110091), (144, 110121), (149, 110145), (150, 110148), (171, 110208), (179, 110250), (193, 110310), (195, 110322), (207, 110361), (213, 110379), (214, 110385), (220, 110409), (230, 110445), (232, 110454), (235, 110469),

Gene: Blubba_194 Start: 112787, Stop: 113860, Start Num: 14

Candidate Starts for Blubba_194:

(6, 112637), (Start: 14 @112787 has 175 MA's), (22, 112820), (28, 112853), (Start: 43 @112943 has 1 MA's), (46, 112952), (61, 113048), (66, 113069), (137, 113477), (144, 113507), (149, 113531), (150, 113534), (171, 113594), (179, 113636), (193, 113696), (195, 113708), (207, 113747), (213, 113765), (214, 113771), (220, 113795), (230, 113831), (232, 113840), (235, 113855),

Gene: BlueOtter_78 Start: 57170, Stop: 58234, Start Num: 25

Candidate Starts for BlueOtter_78:

(Start: 25 @57170 has 81 MA's), (Start: 34 @57239 has 2 MA's), (62, 57401), (68, 57434), (69, 57437), (74, 57458), (96, 57563), (101, 57605), (109, 57677), (110, 57680), (112, 57692), (118, 57716), (127, 57776), (138, 57827), (145, 57857), (154, 57896), (163, 57932), (172, 57965), (180, 58004), (203, 58094), (223, 58157), (236, 58226),

Gene: Blueeyedbeauty_57 Start: 45892, Stop: 46989, Start Num: 25

Candidate Starts for Blueeyedbeauty_57:

(Start: 25 @45892 has 81 MA's), (63, 46129), (67, 46147), (96, 46300), (101, 46342), (102, 46345), (112, 46429), (116, 46447), (126, 46513), (133, 46540), (138, 46570), (145, 46600), (152, 46630), (172, 46708), (184, 46774), (223, 46912), (236, 46981),

Gene: Bmoc_76 Start: 55817, Stop: 56881, Start Num: 25

Candidate Starts for Bmoc_76:

(Start: 25 @55817 has 81 MA's), (36, 55910), (Start: 44 @55937 has 2 MA's), (64, 56057), (66, 56066), (68, 56081), (69, 56084), (96, 56210), (101, 56252), (102, 56255), (109, 56324), (112, 56339), (118, 56363), (132, 56435), (145, 56504), (154, 56543), (172, 56612), (236, 56873),

Gene: Bonray_207 Start: 111170, Stop: 112243, Start Num: 14

Candidate Starts for Bonray_207:

(10, 111143), (Start: 14 @111170 has 175 MA's), (22, 111203), (28, 111236), (Start: 43 @111326 has 1 MA's), (46, 111335), (61, 111431), (66, 111452), (137, 111860), (144, 111890), (149, 111914), (150, 111917), (171, 111977), (179, 112019), (193, 112079), (195, 112091), (207, 112130), (213, 112148), (214, 112154), (220, 112178), (230, 112214), (232, 112223), (235, 112238),

Gene: BoomerJR_80 Start: 56222, Stop: 57298, Start Num: 25

Candidate Starts for BoomerJR_80:

(Start: 25 @56222 has 81 MA's), (Start: 27 @56240 has 5 MA's), (Start: 35 @56294 has 2 MA's), (57, 56429), (71, 56504), (76, 56540), (96, 56621), (101, 56663), (109, 56735), (112, 56750), (119, 56780), (132, 56846), (145, 56915), (152, 56945), (161, 56978), (163, 56990), (170, 57017), (172, 57023), (213, 57188), (223, 57221), (236, 57290),

Gene: Bordeaux_78 Start: 56511, Stop: 57587, Start Num: 25

Candidate Starts for Bordeaux_78:

(Start: 25 @56511 has 81 MA's), (Start: 27 @56529 has 5 MA's), (Start: 35 @56583 has 2 MA's), (57, 56718), (71, 56793), (76, 56829), (89, 56886), (96, 56910), (101, 56952), (109, 57024), (112, 57039), (132, 57135), (133, 57144), (138, 57174), (145, 57204), (154, 57243), (163, 57279), (170, 57306), (172, 57312), (213, 57477), (223, 57510), (230, 57549), (236, 57579),

Gene: Braelyn_77 Start: 56563, Stop: 57627, Start Num: 25

Candidate Starts for Braelyn_77:

(Start: 25 @56563 has 81 MA's), (68, 56827), (69, 56830), (73, 56848), (74, 56851), (96, 56956), (101, 56998), (109, 57070), (110, 57073), (112, 57085), (127, 57169), (138, 57220), (145, 57250), (154, 57289), (161, 57313), (172, 57358), (220, 57547), (230, 57589), (236, 57619),

Gene: Bread_200 Start: 109168, Stop: 110241, Start Num: 14

Candidate Starts for Bread_200:

(10, 109141), (Start: 14 @109168 has 175 MA's), (22, 109201), (28, 109234), (Start: 43 @109324 has 1 MA's), (46, 109333), (61, 109429), (66, 109450), (137, 109858), (144, 109888), (149, 109912), (150, 109915), (171, 109975), (179, 110017), (193, 110077), (195, 110089), (207, 110128), (213, 110146), (214, 110152), (220, 110176), (230, 110212), (232, 110221), (235, 110236),

Gene: Breeniome_204 Start: 108622, Stop: 109695, Start Num: 14

Candidate Starts for Breeniome_204:

(10, 108595), (Start: 14 @108622 has 175 MA's), (22, 108655), (28, 108688), (Start: 43 @108778 has 1 MA's), (46, 108787), (61, 108883), (66, 108904), (137, 109312), (144, 109342), (149, 109366), (150, 109369), (171, 109429), (179, 109471), (193, 109531), (195, 109543), (207, 109582), (213, 109600), (214, 109606), (220, 109630), (230, 109666), (232, 109675), (235, 109690),

Gene: Burrough_207 Start: 110938, Stop: 112011, Start Num: 14

Candidate Starts for Burrough_207:

(10, 110911), (Start: 14 @110938 has 175 MA's), (22, 110971), (28, 111004), (Start: 43 @111094 has 1 MA's), (46, 111103), (61, 111199), (66, 111220), (137, 111628), (144, 111658), (149, 111682), (150, 111685), (171, 111745), (179, 111787), (193, 111847), (195, 111859), (207, 111898), (213, 111916), (214, 111922), (220, 111946), (230, 111982), (232, 111991), (235, 112006),

Gene: Bxz1_195 Start: 112137, Stop: 113210, Start Num: 14

Candidate Starts for Bxz1_195:

(10, 112110), (Start: 14 @112137 has 175 MA's), (22, 112170), (28, 112203), (Start: 43 @112293 has 1 MA's), (46, 112302), (61, 112398), (66, 112419), (137, 112827), (144, 112857), (149, 112881), (150, 112884), (171, 112944), (179, 112986), (193, 113046), (195, 113058), (207, 113097), (213, 113115), (214, 113121), (220, 113145), (230, 113181), (232, 113190), (235, 113205),

Gene: Cactojaque_200 Start: 108597, Stop: 109670, Start Num: 14

Candidate Starts for Cactojaque_200:

(10, 108570), (Start: 14 @108597 has 175 MA's), (22, 108630), (28, 108663), (Start: 43 @108753 has 1 MA's), (46, 108762), (61, 108858), (66, 108879), (137, 109287), (144, 109317), (149, 109341), (150, 109344), (171, 109404), (179, 109446), (193, 109506), (195, 109518), (207, 109557), (213, 109575), (214, 109581), (220, 109605), (230, 109641), (232, 109650), (235, 109665),

Gene: Cali_198 Start: 110544, Stop: 111617, Start Num: 14

Candidate Starts for Cali_198:

(10, 110517), (Start: 14 @110544 has 175 MA's), (22, 110577), (28, 110610), (Start: 43 @110700 has 1 MA's), (46, 110709), (61, 110805), (66, 110826), (137, 111234), (144, 111264), (149, 111288), (150, 111291), (171, 111351), (179, 111393), (193, 111453), (195, 111465), (207, 111504), (213, 111522), (214, 111528), (220, 111552), (230, 111588), (232, 111597), (235, 111612),

Gene: Cane17_196 Start: 113196, Stop: 114269, Start Num: 14

Candidate Starts for Cane17_196:

(6, 113046), (Start: 14 @113196 has 175 MA's), (22, 113229), (28, 113262), (Start: 43 @113352 has 1 MA's), (46, 113361), (61, 113457), (66, 113478), (137, 113886), (144, 113916), (149, 113940), (150, 113943), (171, 114003), (179, 114045), (193, 114105), (195, 114117), (207, 114156), (213, 114174), (214, 114180), (220, 114204), (230, 114240), (232, 114249), (235, 114264),

Gene: Cantare_45 Start: 41518, Stop: 40511, Start Num: 43

Candidate Starts for Cantare_45:

(Start: 43 @41518 has 1 MA's), (49, 41479), (50, 41476), (Start: 54 @41452 has 2 MA's), (60, 41413), (74, 41332), (106, 41143), (129, 41005), (131, 40999), (134, 40984), (140, 40948), (141, 40945), (166, 40840), (172, 40819), (178, 40780), (200, 40675), (204, 40666), (209, 40648), (215, 40627), (228, 40582), (231, 40555), (237, 40531),

Gene: Capablanca_210 Start: 111765, Stop: 112838, Start Num: 14

Candidate Starts for Capablanca_210:

(10, 111738), (Start: 14 @111765 has 175 MA's), (22, 111798), (28, 111831), (Start: 43 @111921 has 1 MA's), (46, 111930), (61, 112026), (66, 112047), (137, 112455), (144, 112485), (149, 112509), (150, 112512), (171, 112572), (179, 112614), (193, 112674), (195, 112686), (207, 112725), (213, 112743), (214, 112749), (220, 112773), (230, 112809), (232, 112818), (235, 112833),

Gene: Caravan_196 Start: 109885, Stop: 110958, Start Num: 14

Candidate Starts for Caravan_196:

(10, 109858), (Start: 14 @109885 has 175 MA's), (22, 109918), (28, 109951), (Start: 43 @110041 has 1 MA's), (46, 110050), (61, 110146), (66, 110167), (137, 110575), (144, 110605), (149, 110629), (150, 110632), (171, 110692), (179, 110734), (193, 110794), (195, 110806), (207, 110845), (213, 110863), (214, 110869), (220, 110893), (230, 110929), (232, 110938), (235, 110953),

Gene: Catera_198 Start: 108278, Stop: 109351, Start Num: 14

Candidate Starts for Catera_198:

(10, 108251), (Start: 14 @108278 has 175 MA's), (22, 108311), (28, 108344), (Start: 43 @108434 has 1 MA's), (46, 108443), (61, 108539), (66, 108560), (137, 108968), (144, 108998), (149, 109022), (150, 109025), (171, 109085), (179, 109127), (193, 109187), (195, 109199), (207, 109238), (213, 109256), (214, 109262), (220, 109286), (230, 109322), (232, 109331), (235, 109346),

Gene: CeilingFan_82 Start: 56289, Stop: 57347, Start Num: 27

Candidate Starts for CeilingFan_82:

(Start: 25 @56271 has 81 MA's), (Start: 27 @56289 has 5 MA's), (Start: 35 @56343 has 2 MA's), (57, 56478), (71, 56553), (76, 56589), (89, 56646), (96, 56670), (101, 56712), (109, 56784), (112, 56799), (132, 56895), (133, 56904), (138, 56934), (145, 56964), (154, 57003), (163, 57039), (170, 57066), (172, 57072), (213, 57237), (223, 57270), (230, 57309), (236, 57339),

Gene: Chargie21_202 Start: 108577, Stop: 109650, Start Num: 14

Candidate Starts for Chargie21_202:

(10, 108550), (Start: 14 @108577 has 175 MA's), (22, 108610), (28, 108643), (Start: 43 @108733 has 1 MA's), (46, 108742), (61, 108838), (66, 108859), (137, 109267), (144, 109297), (149, 109321), (150, 109324), (171, 109384), (179, 109426), (193, 109486), (195, 109498), (207, 109537), (213, 109555), (214, 109561), (220, 109585), (230, 109621), (232, 109630), (235, 109645),

Gene: CharlieB_199 Start: 109305, Stop: 110378, Start Num: 14

Candidate Starts for CharlieB_199:

(10, 109278), (Start: 14 @109305 has 175 MA's), (22, 109338), (28, 109371), (Start: 43 @109461 has 1 MA's), (46, 109470), (61, 109566), (66, 109587), (137, 109995), (144, 110025), (149, 110049), (150, 110052), (171, 110112), (179, 110154), (193, 110214), (195, 110226), (207, 110265), (213, 110283), (214, 110289), (220, 110313), (230, 110349), (232, 110358), (235, 110373),

Gene: ChaylaJr_202 Start: 109005, Stop: 110078, Start Num: 14

Candidate Starts for ChaylaJr_202:

(10, 108978), (Start: 14 @109005 has 175 MA's), (22, 109038), (28, 109071), (Start: 43 @109161 has 1 MA's), (46, 109170), (61, 109266), (66, 109287), (137, 109695), (144, 109725), (149, 109749), (150, 109752), (171, 109812), (179, 109854), (193, 109914), (195, 109926), (207, 109965), (213, 109983), (214, 109989), (220, 110013), (230, 110049), (232, 110058), (235, 110073),

Gene: CherryTomatoes_149 Start: 102880, Stop: 103995, Start Num: 14

Candidate Starts for CherryTomatoes_149:

(5, 102616), (6, 102736), (Start: 14 @102880 has 175 MA's), (22, 102922), (29, 102964), (Start: 34 @103000 has 2 MA's), (46, 103057), (53, 103114), (65, 103168), (66, 103174), (84, 103288), (94, 103345), (97, 103360), (100, 103381), (122, 103516), (155, 103663), (157, 103669), (170, 103705), (187, 103783), (206, 103855), (229, 103933), (233, 103957),

Gene: ChickenPhender_201 Start: 108724, Stop: 109797, Start Num: 14

Candidate Starts for ChickenPhender_201:

(10, 108697), (Start: 14 @108724 has 175 MA's), (22, 108757), (28, 108790), (Start: 43 @108880 has 1 MA's), (46, 108889), (61, 108985), (66, 109006), (137, 109414), (144, 109444), (149, 109468), (150, 109471), (171, 109531), (179, 109573), (193, 109633), (195, 109645), (207, 109684), (213, 109702), (214, 109708), (220, 109732), (230, 109768), (232, 109777), (235, 109792),

Gene: Chidiebere_66 Start: 53174, Stop: 52323, Start Num: 54

Candidate Starts for Chidiebere_66:

(Start: 37 @53261 has 8 MA's), (Start: 54 @53174 has 2 MA's), (77, 53033), (78, 53027), (95, 52961), (98, 52943), (108, 52856), (110, 52844), (119, 52802), (120, 52799), (121, 52787), (134, 52712), (138, 52682), (139, 52679), (145, 52652), (165, 52571), (168, 52562), (177, 52511), (196, 52433), (224, 52349),

Gene: ChisanaKitsune_62 Start: 52034, Stop: 51096, Start Num: 37

Candidate Starts for ChisanaKitsune_62:

(Start: 37 @52034 has 8 MA's), (Start: 54 @51947 has 2 MA's), (56, 51941), (77, 51806), (78, 51800), (95, 51734), (98, 51716), (99, 51704), (108, 51629), (110, 51617), (119, 51575), (120, 51572), (121, 51560), (134, 51485), (138, 51455), (145, 51425), (146, 51419), (165, 51344), (168, 51335), (177, 51284), (196, 51206), (224, 51122),

Gene: Chomp_205 Start: 110354, Stop: 111427, Start Num: 14

Candidate Starts for Chomp_205:

(10, 110327), (Start: 14 @110354 has 175 MA's), (22, 110387), (28, 110420), (Start: 43 @110510 has 1 MA's), (46, 110519), (61, 110615), (66, 110636), (137, 111044), (144, 111074), (149, 111098), (150, 111101), (171, 111161), (179, 111203), (193, 111263), (195, 111275), (207, 111314), (213, 111332), (214, 111338), (220, 111362), (230, 111398), (232, 111407), (235, 111422),

Gene: CindyLou_206 Start: 110614, Stop: 111687, Start Num: 14

Candidate Starts for CindyLou_206:

(10, 110587), (Start: 14 @110614 has 175 MA's), (22, 110647), (28, 110680), (Start: 43 @110770 has 1 MA's), (46, 110779), (61, 110875), (66, 110896), (137, 111304), (144, 111334), (149, 111358), (150, 111361), (171, 111421), (179, 111463), (193, 111523), (195, 111535), (207, 111574), (213, 111592), (214, 111598), (220, 111622), (230, 111658), (232, 111667), (235, 111682),

Gene: Circinus_55 Start: 49509, Stop: 50591, Start Num: 25

Candidate Starts for Circinus_55:

(9, 49425), (Start: 25 @49509 has 81 MA's), (72, 49791), (96, 49902), (101, 49944), (105, 49977), (112, 50031), (116, 50049), (138, 50172), (145, 50202), (152, 50232), (172, 50310), (184, 50376), (223, 50514),

Gene: Colt_196 Start: 112427, Stop: 113500, Start Num: 14

Candidate Starts for Colt_196:

(6, 112277), (Start: 14 @112427 has 175 MA's), (22, 112460), (28, 112493), (Start: 43 @112583 has 1 MA's), (46, 112592), (61, 112688), (66, 112709), (137, 113117), (144, 113147), (149, 113171), (150, 113174), (171, 113234), (179, 113276), (193, 113336), (195, 113348), (207, 113387), (213, 113405), (214, 113411), (220, 113435), (230, 113471), (232, 113480), (235, 113495),

Gene: Comrade_58 Start: 47533, Stop: 48630, Start Num: 25

Candidate Starts for Comrade_58:

(Start: 25 @47533 has 81 MA's), (58, 47749), (81, 47887), (87, 47902), (93, 47932), (96, 47941), (101, 47983), (112, 48070), (118, 48094), (145, 48241), (164, 48319), (172, 48349), (184, 48415), (188, 48427), (212, 48517), (217, 48532), (223, 48553),

Gene: Concombre_210 Start: 112217, Stop: 113290, Start Num: 14

Candidate Starts for Concombre_210:

(10, 112190), (Start: 14 @112217 has 175 MA's), (22, 112250), (28, 112283), (Start: 43 @112373 has 1 MA's), (46, 112382), (61, 112478), (66, 112499), (137, 112907), (144, 112937), (149, 112961), (150, 112964), (171, 113024), (179, 113066), (193, 113126), (195, 113138), (207, 113177), (213, 113195), (214, 113201), (220, 113225), (230, 113261), (232, 113270), (235, 113285),

Gene: Cross_78 Start: 57240, Stop: 58235, Start Num: 34

Candidate Starts for Cross_78:

(Start: 25 @57171 has 81 MA's), (Start: 34 @57240 has 2 MA's), (62, 57402), (68, 57435), (69, 57438), (74, 57459), (96, 57564), (101, 57606), (109, 57678), (110, 57681), (112, 57693), (118, 57717), (127, 57777), (138, 57828), (145, 57858), (154, 57897), (163, 57933), (172, 57966), (180, 58005), (203, 58095), (223, 58158), (236, 58227),

Gene: Cursive_76 Start: 56696, Stop: 57760, Start Num: 25

Candidate Starts for Cursive_76:

(Start: 25 @56696 has 81 MA's), (Start: 34 @56765 has 2 MA's), (62, 56927), (68, 56960), (69, 56963), (74, 56984), (96, 57089), (101, 57131), (109, 57203), (110, 57206), (112, 57218), (118, 57242), (127, 57302), (138, 57353), (145, 57383), (154, 57422), (163, 57458), (172, 57491), (180, 57530), (203, 57620), (223, 57683), (236, 57752),

Gene: DTDevon_207 Start: 111103, Stop: 112176, Start Num: 14

Candidate Starts for DTDevon_207:

(10, 111076), (Start: 14 @111103 has 175 MA's), (22, 111136), (28, 111169), (Start: 43 @111259 has 1 MA's), (46, 111268), (61, 111364), (66, 111385), (137, 111793), (144, 111823), (149, 111847), (150, 111850), (171, 111910), (179, 111952), (193, 112012), (195, 112024), (207, 112063), (213, 112081),

(214, 112087), (220, 112111), (230, 112147), (232, 112156), (235, 112171),

Gene: Daffodil_210 Start: 110068, Stop: 111141, Start Num: 14

Candidate Starts for Daffodil_210:

(10, 110041), (Start: 14 @110068 has 175 MA's), (22, 110101), (28, 110134), (Start: 43 @110224 has 1 MA's), (46, 110233), (61, 110329), (66, 110350), (137, 110758), (144, 110788), (149, 110812), (150, 110815), (171, 110875), (179, 110917), (193, 110977), (195, 110989), (207, 111028), (213, 111046), (214, 111052), (220, 111076), (230, 111112), (232, 111121), (235, 111136),

Gene: DalanDe_61 Start: 55926, Stop: 54979, Start Num: 37

Candidate Starts for DalanDe_61:

(Start: 37 @55926 has 8 MA's), (41, 55911), (52, 55854), (Start: 54 @55839 has 2 MA's), (77, 55698), (110, 55506), (112, 55494), (119, 55464), (134, 55374), (138, 55344), (145, 55314), (153, 55284), (166, 55230), (196, 55089), (199, 55077), (218, 55017), (219, 55011), (224, 55005), (228, 54987),

Gene: Dandelion_213 Start: 113701, Stop: 114774, Start Num: 14

Candidate Starts for Dandelion_213:

(10, 113674), (Start: 14 @113701 has 175 MA's), (22, 113734), (28, 113767), (Start: 43 @113857 has 1 MA's), (46, 113866), (61, 113962), (66, 113983), (137, 114391), (144, 114421), (149, 114445), (150, 114448), (171, 114508), (179, 114550), (193, 114610), (195, 114622), (207, 114661), (213, 114679), (214, 114685), (220, 114709), (230, 114745), (232, 114754), (235, 114769),

Gene: Darko_204 Start: 109302, Stop: 110375, Start Num: 14

Candidate Starts for Darko_204:

(10, 109275), (Start: 14 @109302 has 175 MA's), (22, 109335), (28, 109368), (Start: 43 @109458 has 1 MA's), (46, 109467), (61, 109563), (66, 109584), (137, 109992), (144, 110022), (149, 110046), (150, 110049), (171, 110109), (179, 110151), (193, 110211), (195, 110223), (207, 110262), (213, 110280), (214, 110286), (220, 110310), (230, 110346), (232, 110355), (235, 110370),

Gene: Daubenski_79 Start: 56909, Stop: 57973, Start Num: 25

Candidate Starts for Daubenski_79:

(Start: 25 @56909 has 81 MA's), (Start: 27 @56927 has 5 MA's), (68, 57173), (69, 57176), (74, 57197), (76, 57221), (85, 57257), (96, 57302), (101, 57344), (109, 57416), (110, 57419), (112, 57431), (121, 57476), (132, 57527), (145, 57596), (152, 57626), (154, 57635), (172, 57704), (203, 57833), (230, 57935), (236, 57965),

Gene: Delilah_203 Start: 110186, Stop: 111259, Start Num: 14

Candidate Starts for Delilah_203:

(10, 110159), (Start: 14 @110186 has 175 MA's), (22, 110219), (28, 110252), (Start: 43 @110342 has 1 MA's), (46, 110351), (61, 110447), (66, 110468), (137, 110876), (144, 110906), (149, 110930), (150, 110933), (171, 110993), (179, 111035), (193, 111095), (195, 111107), (207, 111146), (213, 111164), (214, 111170), (220, 111194), (230, 111230), (232, 111239), (235, 111254),

Gene: Delylah_207 Start: 110475, Stop: 111548, Start Num: 14

Candidate Starts for Delylah_207:

(10, 110448), (Start: 14 @110475 has 175 MA's), (22, 110508), (28, 110541), (Start: 43 @110631 has 1 MA's), (46, 110640), (61, 110736), (66, 110757), (137, 111165), (144, 111195), (149, 111219), (150, 111222), (171, 111282), (179, 111324), (193, 111384), (195, 111396), (207, 111435), (213, 111453), (214, 111459), (220, 111483), (230, 111519), (232, 111528), (235, 111543),

Gene: Demodog_211 Start: 112227, Stop: 113300, Start Num: 14

Candidate Starts for Demodog_211:

(10, 112200), (Start: 14 @112227 has 175 MA's), (22, 112260), (28, 112293), (Start: 43 @112383 has 1 MA's), (46, 112392), (61, 112488), (66, 112509), (137, 112917), (144, 112947), (149, 112971), (150, 112974), (171, 113034), (179, 113076), (193, 113136), (195, 113148), (207, 113187), (213, 113205), (214, 113211), (220, 113235), (230, 113271), (232, 113280), (235, 113295),

Gene: Derek_202 Start: 109631, Stop: 110704, Start Num: 14

Candidate Starts for Derek_202:

(10, 109604), (Start: 14 @109631 has 175 MA's), (22, 109664), (28, 109697), (Start: 43 @109787 has 1 MA's), (46, 109796), (61, 109892), (66, 109913), (137, 110321), (144, 110351), (149, 110375), (150, 110378), (171, 110438), (179, 110480), (193, 110540), (195, 110552), (207, 110591), (213, 110609), (214, 110615), (220, 110639), (230, 110675), (232, 110684), (235, 110699),

Gene: Dietrick_194 Start: 108307, Stop: 109380, Start Num: 14

Candidate Starts for Dietrick_194:

(10, 108280), (Start: 14 @108307 has 175 MA's), (22, 108340), (28, 108373), (Start: 43 @108463 has 1 MA's), (46, 108472), (61, 108568), (66, 108589), (137, 108997), (144, 109027), (149, 109051), (150, 109054), (171, 109114), (179, 109156), (193, 109216), (195, 109228), (207, 109267), (213, 109285), (214, 109291), (220, 109315), (230, 109351), (232, 109360), (235, 109375),

Gene: DirtMonster_198 Start: 109547, Stop: 110620, Start Num: 14

Candidate Starts for DirtMonster_198:

(10, 109520), (Start: 14 @109547 has 175 MA's), (22, 109580), (28, 109613), (Start: 43 @109703 has 1 MA's), (46, 109712), (61, 109808), (66, 109829), (137, 110237), (144, 110267), (149, 110291), (150, 110294), (171, 110354), (179, 110396), (193, 110456), (195, 110468), (207, 110507), (213, 110525), (214, 110531), (220, 110555), (230, 110591), (232, 110600), (235, 110615),

Gene: Domi_199 Start: 109658, Stop: 110731, Start Num: 14

Candidate Starts for Domi_199:

(10, 109631), (Start: 14 @109658 has 175 MA's), (22, 109691), (28, 109724), (Start: 43 @109814 has 1 MA's), (46, 109823), (61, 109919), (66, 109940), (137, 110348), (144, 110378), (149, 110402), (150, 110405), (171, 110465), (179, 110507), (193, 110567), (195, 110579), (207, 110618), (213, 110636), (214, 110642), (220, 110666), (230, 110702), (232, 110711), (235, 110726),

Gene: Dorin_74 Start: 58073, Stop: 59086, Start Num: 20

Candidate Starts for Dorin_74:

(Start: 20 @58073 has 2 MA's), (24, 58091), (30, 58133), (33, 58148), (47, 58238), (59, 58310), (61, 58316), (65, 58331), (103, 58526), (106, 58556), (109, 58580), (112, 58595), (152, 58793), (172, 58871), (198, 59000), (210, 59033), (211, 59039), (223, 59078),

Gene: DrPhinkDaddy_202 Start: 110846, Stop: 111919, Start Num: 14

Candidate Starts for DrPhinkDaddy_202:

(10, 110819), (Start: 14 @110846 has 175 MA's), (22, 110879), (28, 110912), (Start: 43 @111002 has 1 MA's), (46, 111011), (61, 111107), (66, 111128), (137, 111536), (144, 111566), (149, 111590), (150, 111593), (171, 111653), (179, 111695), (193, 111755), (195, 111767), (207, 111806), (213, 111824), (214, 111830), (220, 111854), (230, 111890), (232, 111899), (235, 111914),

Gene: Drazdys_203 Start: 109748, Stop: 110821, Start Num: 14

Candidate Starts for Drazdys_203:

(10, 109721), (Start: 14 @109748 has 175 MA's), (22, 109781), (28, 109814), (Start: 43 @109904 has 1 MA's), (46, 109913), (61, 110009), (66, 110030), (137, 110438), (144, 110468), (149, 110492), (150, 110495), (171, 110555), (179, 110597), (193, 110657), (195, 110669), (207, 110708), (213, 110726), (214, 110732), (220, 110756), (230, 110792), (232, 110801), (235, 110816),

Gene: E3_gp150 Start: 99938, Stop: 101044, Start Num: 16

Candidate Starts for E3_gp150:

(16, 99938), (66, 100202), (97, 100355), (99, 100373), (115, 100487), (125, 100550), (147, 100682), (155, 100712), (157, 100718), (185, 100847), (187, 100853), (190, 100865), (213, 100949), (225, 100985), (230, 101015), (232, 101024),

Gene: EGole_79 Start: 58117, Stop: 59181, Start Num: 25

Candidate Starts for EGole_79:

(Start: 25 @58117 has 81 MA's), (Start: 34 @58186 has 2 MA's), (62, 58348), (68, 58381), (69, 58384), (74, 58405), (96, 58510), (101, 58552), (109, 58624), (110, 58627), (112, 58639), (118, 58663), (127, 58723), (138, 58774), (145, 58804), (154, 58843), (163, 58879), (172, 58912), (180, 58951), (203, 59041), (223, 59104), (236, 59173),

Gene: ET08_193 Start: 109339, Stop: 110412, Start Num: 14

Candidate Starts for ET08_193:

(10, 109312), (Start: 14 @109339 has 175 MA's), (22, 109372), (28, 109405), (Start: 43 @109495 has 1 MA's), (46, 109504), (61, 109600), (66, 109621), (137, 110029), (144, 110059), (149, 110083), (150, 110086), (171, 110146), (179, 110188), (193, 110248), (195, 110260), (207, 110299), (213, 110317), (214, 110323), (220, 110347), (230, 110383), (232, 110392), (235, 110407),

Gene: EasyJones_208 Start: 109820, Stop: 110893, Start Num: 14

Candidate Starts for EasyJones_208:

(10, 109793), (Start: 14 @109820 has 175 MA's), (22, 109853), (28, 109886), (Start: 43 @109976 has 1 MA's), (46, 109985), (61, 110081), (66, 110102), (137, 110510), (144, 110540), (149, 110564), (150, 110567), (171, 110627), (179, 110669), (193, 110729), (195, 110741), (207, 110780), (213, 110798), (214, 110804), (220, 110828), (230, 110864), (232, 110873), (235, 110888),

Gene: EggyFarm_214 Start: 112675, Stop: 113748, Start Num: 14

Candidate Starts for EggyFarm_214:

(10, 112648), (Start: 14 @112675 has 175 MA's), (22, 112708), (28, 112741), (Start: 43 @112831 has 1 MA's), (46, 112840), (61, 112936), (66, 112957), (137, 113365), (144, 113395), (149, 113419), (150, 113422), (171, 113482), (179, 113524), (193, 113584), (195, 113596), (207, 113635), (213, 113653), (214, 113659), (220, 113683), (230, 113719), (232, 113728), (235, 113743),

Gene: Elmer_82 Start: 57463, Stop: 58539, Start Num: 25

Candidate Starts for Elmer_82:

(Start: 25 @57463 has 81 MA's), (Start: 27 @57481 has 5 MA's), (Start: 35 @57535 has 2 MA's), (57, 57670), (63, 57700), (71, 57745), (76, 57781), (89, 57838), (96, 57862), (101, 57904), (109, 57976), (112, 57991), (132, 58087), (133, 58096), (138, 58126), (145, 58156), (154, 58195), (163, 58231), (170, 58258), (172, 58264), (213, 58429), (223, 58462), (230, 58501), (236, 58531),

Gene: EmToTheThree_205 Start: 110219, Stop: 111292, Start Num: 14

Candidate Starts for EmToTheThree_205:

(10, 110192), (Start: 14 @110219 has 175 MA's), (22, 110252), (28, 110285), (Start: 43 @110375 has 1 MA's), (46, 110384), (61, 110480), (66, 110501), (137, 110909), (144, 110939), (149, 110963), (150, 110966), (171, 111026), (179, 111068), (193, 111128), (195, 111140), (207, 111179), (213, 111197), (214, 111203), (220, 111227), (230, 111263), (232, 111272), (235, 111287),

Gene: Emma1919_59 Start: 46318, Stop: 47415, Start Num: 25

Candidate Starts for Emma1919_59:

(9, 46234), (Start: 25 @46318 has 81 MA's), (Start: 44 @46438 has 2 MA's), (58, 46534), (81, 46672), (87, 46687), (96, 46726), (101, 46768), (112, 46855), (126, 46939), (137, 46993), (140, 47002), (145, 47026), (152, 47056), (164, 47104), (172, 47134), (192, 47236), (212, 47302), (217, 47317), (223,

47338), (236, 47407),

Gene: EmmaElysia_208 Start: 110238, Stop: 111311, Start Num: 14

Candidate Starts for EmmaElysia_208:

(10, 110211), (Start: 14 @110238 has 175 MA's), (22, 110271), (28, 110304), (Start: 43 @110394 has 1 MA's), (46, 110403), (61, 110499), (66, 110520), (137, 110928), (144, 110958), (149, 110982), (150, 110985), (171, 111045), (179, 111087), (193, 111147), (195, 111159), (207, 111198), (213, 111216), (214, 111222), (220, 111246), (230, 111282), (232, 111291), (235, 111306),

Gene: Enygma_80 Start: 58165, Stop: 59241, Start Num: 25

Candidate Starts for Enygma_80:

(Start: 25 @58165 has 81 MA's), (Start: 27 @58183 has 5 MA's), (57, 58372), (71, 58447), (76, 58483), (89, 58540), (96, 58564), (101, 58606), (109, 58678), (112, 58693), (132, 58789), (145, 58858), (154, 58897), (163, 58933), (170, 58960), (172, 58966), (213, 59131), (223, 59164), (230, 59203), (236, 59233),

Gene: Erdmann_206 Start: 110177, Stop: 111250, Start Num: 14

Candidate Starts for Erdmann_206:

(10, 110150), (Start: 14 @110177 has 175 MA's), (22, 110210), (28, 110243), (Start: 43 @110333 has 1 MA's), (46, 110342), (61, 110438), (66, 110459), (137, 110867), (144, 110897), (149, 110921), (150, 110924), (171, 110984), (179, 111026), (193, 111086), (195, 111098), (207, 111137), (213, 111155), (214, 111161), (220, 111185), (230, 111221), (232, 111230), (235, 111245),

Gene: ErnieJ_198 Start: 107999, Stop: 109072, Start Num: 14

Candidate Starts for ErnieJ_198:

(10, 107972), (Start: 14 @107999 has 175 MA's), (22, 108032), (28, 108065), (Start: 43 @108155 has 1 MA's), (46, 108164), (61, 108260), (66, 108281), (137, 108689), (144, 108719), (149, 108743), (150, 108746), (171, 108806), (179, 108848), (193, 108908), (195, 108920), (207, 108959), (213, 108977), (214, 108983), (220, 109007), (230, 109043), (232, 109052), (235, 109067),

Gene: Essence_202 Start: 108960, Stop: 110033, Start Num: 14

Candidate Starts for Essence_202:

(10, 108933), (Start: 14 @108960 has 175 MA's), (22, 108993), (28, 109026), (Start: 43 @109116 has 1 MA's), (46, 109125), (61, 109221), (66, 109242), (137, 109650), (144, 109680), (149, 109704), (150, 109707), (171, 109767), (179, 109809), (193, 109869), (195, 109881), (207, 109920), (213, 109938), (214, 109944), (220, 109968), (230, 110004), (232, 110013), (235, 110028),

Gene: Evy_78 Start: 57067, Stop: 58131, Start Num: 25

Candidate Starts for Evy_78:

(Start: 25 @57067 has 81 MA's), (64, 57307), (68, 57331), (69, 57334), (74, 57355), (82, 57409), (96, 57460), (101, 57502), (109, 57574), (110, 57577), (112, 57589), (118, 57613), (127, 57673), (138, 57724), (145, 57754), (146, 57760), (172, 57862), (203, 57991), (220, 58051), (230, 58093), (236, 58123),

Gene: Ewok_204 Start: 110096, Stop: 111169, Start Num: 14

Candidate Starts for Ewok_204:

(10, 110069), (Start: 14 @110096 has 175 MA's), (22, 110129), (28, 110162), (Start: 43 @110252 has 1 MA's), (46, 110261), (61, 110357), (66, 110378), (137, 110786), (144, 110816), (149, 110840), (150, 110843), (171, 110903), (179, 110945), (193, 111005), (195, 111017), (207, 111056), (213, 111074), (214, 111080), (220, 111104), (230, 111140), (232, 111149), (235, 111164),

Gene: Faust_58 Start: 47454, Stop: 48551, Start Num: 25

Candidate Starts for Faust_58:

(Start: 25 @47454 has 81 MA's), (63, 47691), (64, 47694), (67, 47709), (72, 47751), (96, 47862), (101, 47904), (112, 47991), (116, 48009), (126, 48075), (132, 48093), (138, 48132), (145, 48162), (172, 48270), (182, 48330), (186, 48342), (205, 48414), (223, 48474), (230, 48513),

Gene: Finch_73 Start: 62417, Stop: 63523, Start Num: 11

Candidate Starts for Finch_73:

(Start: 11 @62417 has 1 MA's), (38, 62549), (46, 62576), (51, 62621), (66, 62693), (70, 62729), (90, 62831), (97, 62852), (106, 62930), (111, 62960), (120, 62990), (135, 63086), (143, 63122), (151, 63155), (155, 63167), (158, 63176), (170, 63224), (174, 63248), (183, 63290), (185, 63296), (195, 63341), (196, 63344), (198, 63353), (207, 63380), (213, 63398), (214, 63404), (230, 63464), (234, 63482),

Gene: Flabslab_200 Start: 108141, Stop: 109214, Start Num: 14

Candidate Starts for Flabslab_200:

(10, 108114), (Start: 14 @108141 has 175 MA's), (22, 108174), (28, 108207), (Start: 43 @108297 has 1 MA's), (46, 108306), (61, 108402), (66, 108423), (137, 108831), (144, 108861), (149, 108885), (150, 108888), (171, 108948), (179, 108990), (193, 109050), (195, 109062), (207, 109101), (213, 109119), (214, 109125), (220, 109149), (230, 109185), (232, 109194), (235, 109209),

Gene: Fludd_205 Start: 109532, Stop: 110605, Start Num: 14

Candidate Starts for Fludd_205:

(10, 109505), (Start: 14 @109532 has 175 MA's), (22, 109565), (28, 109598), (Start: 43 @109688 has 1 MA's), (46, 109697), (61, 109793), (66, 109814), (137, 110222), (144, 110252), (149, 110276), (150, 110279), (171, 110339), (179, 110381), (193, 110441), (195, 110453), (207, 110492), (213, 110510), (214, 110516), (220, 110540), (230, 110576), (232, 110585), (235, 110600),

Gene: FlyingTortilla_65 Start: 56355, Stop: 55417, Start Num: 37

Candidate Starts for FlyingTortilla_65:

(36, 56358), (Start: 37 @56355 has 8 MA's), (Start: 54 @56268 has 2 MA's), (77, 56127), (78, 56121), (95, 56055), (104, 55983), (108, 55950), (110, 55938), (120, 55893), (121, 55881), (134, 55806), (145, 55746), (146, 55740), (153, 55716), (165, 55665), (168, 55656), (172, 55641), (177, 55605), (197, 55524), (199, 55515), (218, 55455), (224, 55443),

Gene: Forrest_59 Start: 47015, Stop: 48112, Start Num: 25

Candidate Starts for Forrest_59:

(9, 46931), (Start: 25 @47015 has 81 MA's), (Start: 44 @47135 has 2 MA's), (58, 47231), (81, 47369), (87, 47384), (96, 47423), (101, 47465), (112, 47552), (126, 47636), (140, 47699), (145, 47723), (152, 47753), (164, 47801), (172, 47831), (192, 47933), (212, 47999), (217, 48014), (223, 48035), (236, 48104),

Gene: FoxtrotP1_203 Start: 110776, Stop: 111849, Start Num: 14

Candidate Starts for FoxtrotP1_203:

(10, 110749), (Start: 14 @110776 has 175 MA's), (22, 110809), (28, 110842), (Start: 43 @110932 has 1 MA's), (46, 110941), (61, 111037), (66, 111058), (137, 111466), (144, 111496), (149, 111520), (150, 111523), (171, 111583), (179, 111625), (193, 111685), (195, 111697), (207, 111736), (213, 111754), (214, 111760), (220, 111784), (230, 111820), (232, 111829), (235, 111844),

Gene: Francesca_73 Start: 58256, Stop: 59269, Start Num: 20

Candidate Starts for Francesca_73:

(Start: 20 @58256 has 2 MA's), (24, 58274), (30, 58316), (33, 58331), (47, 58421), (59, 58493), (61, 58499), (65, 58514), (103, 58709), (106, 58739), (109, 58763), (112, 58778), (172, 59054), (198, 59183), (211, 59222), (223, 59261),

Gene: Francob_56 Start: 46379, Stop: 47476, Start Num: 25

Candidate Starts for Francob_56:

(Start: 25 @46379 has 81 MA's), (51, 46547), (58, 46595), (63, 46616), (66, 46628), (81, 46733), (96, 46787), (101, 46829), (112, 46916), (132, 47018), (140, 47063), (145, 47087), (164, 47165), (172, 47195), (198, 47321), (212, 47363), (223, 47399),

Gene: FrayBell_208 Start: 109621, Stop: 110694, Start Num: 14

Candidate Starts for FrayBell_208:

(10, 109594), (Start: 14 @109621 has 175 MA's), (22, 109654), (28, 109687), (Start: 43 @109777 has 1 MA's), (46, 109786), (61, 109882), (66, 109903), (137, 110311), (144, 110341), (149, 110365), (150, 110368), (171, 110428), (179, 110470), (193, 110530), (195, 110542), (207, 110581), (213, 110599), (214, 110605), (220, 110629), (230, 110665), (232, 110674), (235, 110689),

Gene: FudgeTart_200 Start: 109243, Stop: 110316, Start Num: 14

Candidate Starts for FudgeTart_200:

(10, 109216), (Start: 14 @109243 has 175 MA's), (22, 109276), (28, 109309), (Start: 43 @109399 has 1 MA's), (46, 109408), (61, 109504), (66, 109525), (137, 109933), (144, 109963), (149, 109987), (150, 109990), (171, 110050), (179, 110092), (193, 110152), (195, 110164), (207, 110203), (213, 110221), (214, 110227), (220, 110251), (230, 110287), (232, 110296), (235, 110311),

Gene: GMA6_51 Start: 44602, Stop: 43667, Start Num: 40

Candidate Starts for GMA6_51:

(36, 44614), (40, 44602), (48, 44557), (77, 44383), (95, 44311), (99, 44281), (107, 44209), (110, 44194), (114, 44173), (117, 44161), (124, 44125), (134, 44062), (135, 44050), (136, 44041), (138, 44032), (145, 44002), (146, 43996), (153, 43972), (159, 43951), (165, 43921), (166, 43918), (172, 43897), (199, 43765), (221, 43696), (224, 43693),

Gene: Gabriel_208 Start: 108698, Stop: 109771, Start Num: 14

Candidate Starts for Gabriel_208:

(10, 108671), (Start: 14 @108698 has 175 MA's), (22, 108731), (28, 108764), (Start: 43 @108854 has 1 MA's), (46, 108863), (61, 108959), (66, 108980), (137, 109388), (144, 109418), (149, 109442), (150, 109445), (171, 109505), (179, 109547), (193, 109607), (195, 109619), (207, 109658), (213, 109676), (214, 109682), (220, 109706), (230, 109742), (232, 109751), (235, 109766),

Gene: Gamgam_206 Start: 109055, Stop: 110128, Start Num: 14

Candidate Starts for Gamgam_206:

(10, 109028), (Start: 14 @109055 has 175 MA's), (22, 109088), (28, 109121), (Start: 43 @109211 has 1 MA's), (46, 109220), (61, 109316), (66, 109337), (137, 109745), (144, 109775), (149, 109799), (150, 109802), (171, 109862), (179, 109904), (193, 109964), (195, 109976), (207, 110015), (213, 110033), (214, 110039), (220, 110063), (230, 110099), (232, 110108), (235, 110123),

Gene: Genie2_80 Start: 56336, Stop: 57412, Start Num: 25

Candidate Starts for Genie2_80:

(Start: 25 @56336 has 81 MA's), (Start: 27 @56354 has 5 MA's), (Start: 35 @56408 has 2 MA's), (57, 56543), (71, 56618), (76, 56654), (96, 56735), (101, 56777), (109, 56849), (112, 56864), (119, 56894), (132, 56960), (145, 57029), (152, 57059), (161, 57092), (163, 57104), (170, 57131), (172, 57137), (213, 57302), (223, 57335), (236, 57404),

Gene: Ghost_205 Start: 108976, Stop: 110049, Start Num: 14

Candidate Starts for Ghost_205:

(10, 108949), (Start: 14 @108976 has 175 MA's), (22, 109009), (28, 109042), (Start: 43 @109132 has 1 MA's), (46, 109141), (61, 109237), (66, 109258), (137, 109666), (144, 109696), (149, 109720), (150, 109723), (171, 109783), (179, 109825), (193, 109885), (195, 109897), (207, 109936), (213, 109954),

(214, 109960), (220, 109984), (230, 110020), (232, 110029), (235, 110044),

Gene: Gibbi_84 Start: 56494, Stop: 57570, Start Num: 25

Candidate Starts for Gibbi_84:

(Start: 25 @56494 has 81 MA's), (Start: 27 @56512 has 5 MA's), (Start: 35 @56566 has 2 MA's), (57, 56701), (71, 56776), (76, 56812), (89, 56869), (96, 56893), (101, 56935), (109, 57007), (112, 57022), (132, 57118), (133, 57127), (138, 57157), (145, 57187), (154, 57226), (163, 57262), (170, 57289), (172, 57295), (213, 57460), (223, 57493), (236, 57562),

Gene: Gilson_58 Start: 46391, Stop: 47368, Start Num: 44

Candidate Starts for Gilson_58:

(9, 46187), (Start: 25 @46271 has 81 MA's), (Start: 44 @46391 has 2 MA's), (58, 46487), (81, 46625), (87, 46640), (96, 46679), (101, 46721), (112, 46808), (126, 46892), (137, 46946), (140, 46955), (145, 46979), (152, 47009), (164, 47057), (172, 47087), (192, 47189), (212, 47255), (217, 47270), (223, 47291), (236, 47360),

Gene: Gizmo_211 Start: 112094, Stop: 113167, Start Num: 14

Candidate Starts for Gizmo_211:

(10, 112067), (Start: 14 @112094 has 175 MA's), (22, 112127), (28, 112160), (Start: 43 @112250 has 1 MA's), (46, 112259), (61, 112355), (66, 112376), (137, 112784), (144, 112814), (149, 112838), (150, 112841), (171, 112901), (179, 112943), (193, 113003), (195, 113015), (207, 113054), (213, 113072), (214, 113078), (220, 113102), (230, 113138), (232, 113147), (235, 113162),

Gene: Grasshills_213 Start: 112674, Stop: 113747, Start Num: 14

Candidate Starts for Grasshills_213:

(10, 112647), (Start: 14 @112674 has 175 MA's), (22, 112707), (28, 112740), (Start: 43 @112830 has 1 MA's), (46, 112839), (61, 112935), (66, 112956), (137, 113364), (144, 113394), (149, 113418), (150, 113421), (171, 113481), (179, 113523), (193, 113583), (195, 113595), (207, 113634), (213, 113652), (214, 113658), (220, 113682), (230, 113718), (232, 113727), (235, 113742),

Gene: Gray_66 Start: 53261, Stop: 52323, Start Num: 37

Candidate Starts for Gray_66:

(Start: 37 @53261 has 8 MA's), (Start: 54 @53174 has 2 MA's), (77, 53033), (78, 53027), (95, 52961), (98, 52943), (108, 52856), (110, 52844), (119, 52802), (120, 52799), (121, 52787), (134, 52712), (138, 52682), (139, 52679), (145, 52652), (165, 52571), (168, 52562), (177, 52511), (196, 52433), (224, 52349),

Gene: Grayson_100 Start: 60346, Stop: 61206, Start Num: 45

Candidate Starts for Grayson_100:

(Start: 23 @60223 has 1 MA's), (Start: 45 @60346 has 2 MA's), (59, 60445), (61, 60451), (64, 60463), (71, 60499), (79, 60544), (88, 60577), (93, 60601), (109, 60721), (112, 60736), (138, 60874), (173, 61021), (212, 61183),

Gene: Greely_194 Start: 106927, Stop: 108072, Start Num: 13

Candidate Starts for Greely_194:

(8, 106888), (Start: 13 @106927 has 2 MA's), (18, 106951), (36, 107065), (46, 107098), (61, 107215), (65, 107230), (66, 107236), (69, 107266), (78, 107320), (80, 107332), (83, 107344), (91, 107377), (102, 107437), (120, 107539), (128, 107593), (130, 107602), (148, 107683), (167, 107734), (187, 107821), (206, 107896), (238, 108016),

Gene: Grungle_189 Start: 107013, Stop: 108086, Start Num: 14

Candidate Starts for Grungle_189:

(10, 106986), (Start: 14 @107013 has 175 MA's), (22, 107046), (28, 107079), (Start: 43 @107169 has 1 MA's), (46, 107178), (61, 107274), (66, 107295), (137, 107703), (144, 107733), (149, 107757), (150, 107760), (171, 107820), (179, 107862), (193, 107922), (195, 107934), (207, 107973), (213, 107991), (214, 107997), (220, 108021), (230, 108057), (232, 108066), (235, 108081),

Gene: Guwapp_200 Start: 107810, Stop: 108883, Start Num: 14

Candidate Starts for Guwapp_200:

(10, 107783), (Start: 14 @107810 has 175 MA's), (22, 107843), (28, 107876), (Start: 43 @107966 has 1 MA's), (46, 107975), (61, 108071), (66, 108092), (137, 108500), (144, 108530), (149, 108554), (150, 108557), (171, 108617), (179, 108659), (193, 108719), (195, 108731), (207, 108770), (213, 108788), (214, 108794), (220, 108818), (230, 108854), (232, 108863), (235, 108878),

Gene: Halldule_198 Start: 108195, Stop: 109268, Start Num: 14

Candidate Starts for Halldule_198:

(10, 108168), (Start: 14 @108195 has 175 MA's), (22, 108228), (28, 108261), (Start: 43 @108351 has 1 MA's), (46, 108360), (61, 108456), (66, 108477), (137, 108885), (144, 108915), (149, 108939), (150, 108942), (171, 109002), (179, 109044), (193, 109104), (195, 109116), (207, 109155), (213, 109173), (214, 109179), (220, 109203), (230, 109239), (232, 109248), (235, 109263),

Gene: Hanem_65 Start: 52643, Stop: 51792, Start Num: 54

Candidate Starts for Hanem_65:

(Start: 37 @52730 has 8 MA's), (Start: 54 @52643 has 2 MA's), (77, 52502), (78, 52496), (95, 52430), (98, 52412), (108, 52325), (110, 52313), (119, 52271), (120, 52268), (121, 52256), (134, 52181), (138, 52151), (139, 52148), (145, 52121), (165, 52040), (168, 52031), (177, 51980), (196, 51902), (224, 51818),

Gene: HangryHippo_78 Start: 57170, Stop: 58234, Start Num: 25

Candidate Starts for HangryHippo_78:

(Start: 25 @57170 has 81 MA's), (Start: 34 @57239 has 2 MA's), (62, 57401), (68, 57434), (69, 57437), (74, 57458), (96, 57563), (101, 57605), (109, 57677), (110, 57680), (112, 57692), (118, 57716), (127, 57776), (138, 57827), (145, 57857), (154, 57896), (163, 57932), (172, 57965), (180, 58004), (203, 58094), (223, 58157), (236, 58226),

Gene: HyRo_193 Start: 109319, Stop: 110392, Start Num: 14

Candidate Starts for HyRo_193:

(10, 109292), (Start: 14 @109319 has 175 MA's), (22, 109352), (28, 109385), (Start: 43 @109475 has 1 MA's), (46, 109484), (61, 109580), (66, 109601), (137, 110009), (144, 110039), (149, 110063), (150, 110066), (171, 110126), (179, 110168), (193, 110228), (195, 110240), (207, 110279), (213, 110297), (214, 110303), (220, 110327), (230, 110363), (232, 110372), (235, 110387),

Gene: I3_215 Start: 112055, Stop: 113128, Start Num: 14

Candidate Starts for I3_215:

(10, 112028), (Start: 14 @112055 has 175 MA's), (22, 112088), (28, 112121), (Start: 43 @112211 has 1 MA's), (46, 112220), (61, 112316), (66, 112337), (137, 112745), (144, 112775), (149, 112799), (150, 112802), (171, 112862), (179, 112904), (193, 112964), (195, 112976), (207, 113015), (213, 113033), (214, 113039), (220, 113063), (230, 113099), (232, 113108), (235, 113123),

Gene: IchabodCrane_77 Start: 56155, Stop: 57159, Start Num: 35

Candidate Starts for IchabodCrane_77:

(Start: 25 @56083 has 81 MA's), (Start: 27 @56101 has 5 MA's), (Start: 35 @56155 has 2 MA's), (57, 56290), (71, 56365), (76, 56401), (89, 56458), (96, 56482), (101, 56524), (109, 56596), (112, 56611), (132, 56707), (133, 56716), (138, 56746), (145, 56776), (154, 56815), (163, 56851), (170, 56878), (172, 56884), (213, 57049), (223, 57082), (230, 57121), (236, 57151),

Gene: IkeLoa_197 Start: 108717, Stop: 109790, Start Num: 14

Candidate Starts for IkeLoa_197:

(10, 108690), (Start: 14 @108717 has 175 MA's), (22, 108750), (28, 108783), (Start: 43 @108873 has 1 MA's), (46, 108882), (61, 108978), (66, 108999), (137, 109407), (144, 109437), (149, 109461), (150, 109464), (171, 109524), (179, 109566), (193, 109626), (195, 109638), (207, 109677), (213, 109695), (214, 109701), (220, 109725), (230, 109761), (232, 109770), (235, 109785),

Gene: InigoMontoya_208 Start: 109729, Stop: 110802, Start Num: 14

Candidate Starts for InigoMontoya_208:

(10, 109702), (Start: 14 @109729 has 175 MA's), (22, 109762), (28, 109795), (Start: 43 @109885 has 1 MA's), (46, 109894), (61, 109990), (66, 110011), (137, 110419), (144, 110449), (149, 110473), (150, 110476), (171, 110536), (179, 110578), (193, 110638), (195, 110650), (207, 110689), (213, 110707), (214, 110713), (220, 110737), (230, 110773), (232, 110782), (235, 110797),

Gene: InterFolia_208 Start: 111427, Stop: 112500, Start Num: 14

Candidate Starts for InterFolia_208:

(10, 111400), (Start: 14 @111427 has 175 MA's), (22, 111460), (28, 111493), (Start: 43 @111583 has 1 MA's), (46, 111592), (61, 111688), (66, 111709), (137, 112117), (144, 112147), (149, 112171), (150, 112174), (171, 112234), (179, 112276), (193, 112336), (195, 112348), (207, 112387), (213, 112405), (214, 112411), (220, 112435), (230, 112471), (232, 112480), (235, 112495),

Gene: Iota_200 Start: 109414, Stop: 110487, Start Num: 14

Candidate Starts for Iota_200:

(10, 109387), (Start: 14 @109414 has 175 MA's), (22, 109447), (28, 109480), (Start: 43 @109570 has 1 MA's), (46, 109579), (61, 109675), (66, 109696), (137, 110104), (144, 110134), (149, 110158), (150, 110161), (171, 110221), (179, 110263), (193, 110323), (195, 110335), (207, 110374), (213, 110392), (214, 110398), (220, 110422), (230, 110458), (232, 110467), (235, 110482),

Gene: Issimir_198 Start: 109367, Stop: 110440, Start Num: 14

Candidate Starts for Issimir_198:

(10, 109340), (Start: 14 @109367 has 175 MA's), (22, 109400), (28, 109433), (Start: 43 @109523 has 1 MA's), (46, 109532), (61, 109628), (66, 109649), (137, 110057), (144, 110087), (149, 110111), (150, 110114), (171, 110174), (179, 110216), (193, 110276), (195, 110288), (207, 110327), (213, 110345), (214, 110351), (220, 110375), (230, 110411), (232, 110420), (235, 110435),

Gene: Izajani_203 Start: 110236, Stop: 111309, Start Num: 14

Candidate Starts for Izajani_203:

(10, 110209), (Start: 14 @110236 has 175 MA's), (22, 110269), (28, 110302), (Start: 43 @110392 has 1 MA's), (46, 110401), (61, 110497), (66, 110518), (137, 110926), (144, 110956), (149, 110980), (150, 110983), (171, 111043), (179, 111085), (193, 111145), (195, 111157), (207, 111196), (213, 111214), (214, 111220), (220, 111244), (230, 111280), (232, 111289), (235, 111304),

Gene: JPickles_201 Start: 107714, Stop: 108787, Start Num: 14

Candidate Starts for JPickles_201:

(10, 107687), (Start: 14 @107714 has 175 MA's), (22, 107747), (28, 107780), (Start: 43 @107870 has 1 MA's), (46, 107879), (61, 107975), (66, 107996), (137, 108404), (144, 108434), (149, 108458), (150, 108461), (171, 108521), (179, 108563), (193, 108623), (195, 108635), (207, 108674), (213, 108692), (214, 108698), (220, 108722), (230, 108758), (232, 108767), (235, 108782),

Gene: Jada_57 Start: 46197, Stop: 47294, Start Num: 25

Candidate Starts for Jada_57:

(9, 46113), (Start: 25 @46197 has 81 MA's), (Start: 44 @46317 has 2 MA's), (58, 46413), (81, 46551), (87, 46566), (96, 46605), (101, 46647), (112, 46734), (126, 46818), (140, 46881), (145, 46905), (152, 46935), (164, 46983), (172, 47013), (192, 47115), (212, 47181), (217, 47196), (223, 47217), (236, 47286),

Gene: Janiyra_208 Start: 109954, Stop: 111027, Start Num: 14

Candidate Starts for Janiyra_208:

(10, 109927), (Start: 14 @109954 has 175 MA's), (22, 109987), (28, 110020), (Start: 43 @110110 has 1 MA's), (46, 110119), (61, 110215), (66, 110236), (137, 110644), (144, 110674), (149, 110698), (150, 110701), (171, 110761), (179, 110803), (193, 110863), (195, 110875), (207, 110914), (213, 110932), (214, 110938), (220, 110962), (230, 110998), (232, 111007), (235, 111022),

Gene: Jay2Jay_82 Start: 57920, Stop: 58984, Start Num: 25

Candidate Starts for Jay2Jay_82:

(Start: 25 @57920 has 81 MA's), (64, 58160), (68, 58184), (69, 58187), (74, 58208), (96, 58313), (101, 58355), (109, 58427), (110, 58430), (112, 58442), (118, 58466), (127, 58526), (133, 58547), (138, 58577), (145, 58607), (164, 58685), (172, 58715), (203, 58844), (220, 58904), (230, 58946), (236, 58976),

Gene: JayJay_203 Start: 110651, Stop: 111724, Start Num: 14

Candidate Starts for JayJay_203:

(10, 110624), (Start: 14 @110651 has 175 MA's), (22, 110684), (28, 110717), (Start: 43 @110807 has 1 MA's), (46, 110816), (61, 110912), (66, 110933), (137, 111341), (144, 111371), (149, 111395), (150, 111398), (171, 111458), (179, 111500), (193, 111560), (195, 111572), (207, 111611), (213, 111629), (214, 111635), (220, 111659), (230, 111695), (232, 111704), (235, 111719),

Gene: Jaygup_201 Start: 108775, Stop: 109848, Start Num: 14

Candidate Starts for Jaygup_201:

(10, 108748), (Start: 14 @108775 has 175 MA's), (22, 108808), (28, 108841), (Start: 43 @108931 has 1 MA's), (46, 108940), (61, 109036), (66, 109057), (137, 109465), (144, 109495), (149, 109519), (150, 109522), (171, 109582), (179, 109624), (193, 109684), (195, 109696), (207, 109735), (213, 109753), (214, 109759), (220, 109783), (230, 109819), (232, 109828), (235, 109843),

Gene: JeanGrey_91 Start: 72203, Stop: 73294, Start Num: 14

Candidate Starts for JeanGrey_91:

(12, 72197), (Start: 14 @72203 has 175 MA's), (26, 72257), (42, 72359), (51, 72416), (Start: 54 @72434 has 2 MA's), (66, 72488), (78, 72572), (90, 72623), (123, 72806), (142, 72917), (155, 72965), (187, 73097), (214, 73199),

Gene: Jedediah_205 Start: 109828, Stop: 110901, Start Num: 14

Candidate Starts for Jedediah_205:

(10, 109801), (Start: 14 @109828 has 175 MA's), (22, 109861), (28, 109894), (Start: 43 @109984 has 1 MA's), (46, 109993), (61, 110089), (66, 110110), (137, 110518), (144, 110548), (149, 110572), (150, 110575), (171, 110635), (179, 110677), (193, 110737), (195, 110749), (207, 110788), (213, 110806), (214, 110812), (220, 110836), (230, 110872), (232, 110881), (235, 110896),

Gene: Jemmno_204 Start: 108657, Stop: 109730, Start Num: 14

Candidate Starts for Jemmno_204:

(10, 108630), (Start: 14 @108657 has 175 MA's), (22, 108690), (28, 108723), (Start: 43 @108813 has 1 MA's), (46, 108822), (61, 108918), (66, 108939), (137, 109347), (144, 109377), (149, 109401), (150, 109404), (171, 109464), (179, 109506), (193, 109566), (195, 109578), (207, 109617), (213, 109635), (214, 109641), (220, 109665), (230, 109701), (232, 109710), (235, 109725),

Gene: Jessibeth14_205 Start: 110845, Stop: 111918, Start Num: 14

Candidate Starts for Jessibeth14_205:

(10, 110818), (Start: 14 @110845 has 175 MA's), (22, 110878), (28, 110911), (Start: 43 @111001 has 1 MA's), (46, 111010), (61, 111106), (66, 111127), (137, 111535), (144, 111565), (149, 111589), (150, 111592), (171, 111652), (179, 111694), (193, 111754), (195, 111766), (207, 111805), (213, 111823), (214, 111829), (220, 111853), (230, 111889), (232, 111898), (235, 111913),

Gene: JigglyPuff_212 Start: 112225, Stop: 113298, Start Num: 14

Candidate Starts for JigglyPuff_212:

(10, 112198), (Start: 14 @112225 has 175 MA's), (22, 112258), (28, 112291), (Start: 43 @112381 has 1 MA's), (46, 112390), (61, 112486), (66, 112507), (137, 112915), (144, 112945), (149, 112969), (150, 112972), (171, 113032), (179, 113074), (193, 113134), (195, 113146), (207, 113185), (213, 113203), (214, 113209), (220, 113233), (230, 113269), (232, 113278), (235, 113293),

Gene: JimJam_80 Start: 56457, Stop: 57533, Start Num: 25

Candidate Starts for JimJam_80:

(Start: 25 @56457 has 81 MA's), (Start: 27 @56475 has 5 MA's), (Start: 35 @56529 has 2 MA's), (57, 56664), (71, 56739), (76, 56775), (89, 56832), (96, 56856), (101, 56898), (109, 56970), (112, 56985), (132, 57081), (133, 57090), (138, 57120), (145, 57150), (154, 57189), (163, 57225), (170, 57252), (172, 57258), (213, 57423), (223, 57456), (230, 57495), (236, 57525),

Gene: Jollison_79 Start: 56339, Stop: 57415, Start Num: 25

Candidate Starts for Jollison_79:

(Start: 25 @56339 has 81 MA's), (Start: 27 @56357 has 5 MA's), (Start: 35 @56411 has 2 MA's), (57, 56546), (71, 56621), (76, 56657), (89, 56714), (96, 56738), (101, 56780), (109, 56852), (112, 56867), (132, 56963), (133, 56972), (138, 57002), (145, 57032), (154, 57071), (163, 57107), (170, 57134), (172, 57140), (213, 57305), (223, 57338), (230, 57377), (236, 57407),

Gene: JulietS_198 Start: 106946, Stop: 108019, Start Num: 14

Candidate Starts for JulietS_198:

(10, 106919), (Start: 14 @106946 has 175 MA's), (22, 106979), (28, 107012), (Start: 43 @107102 has 1 MA's), (46, 107111), (61, 107207), (66, 107228), (137, 107636), (144, 107666), (149, 107690), (150, 107693), (171, 107753), (179, 107795), (193, 107855), (195, 107867), (207, 107906), (213, 107924), (214, 107930), (220, 107954), (230, 107990), (232, 107999), (235, 108014),

Gene: JustHall_199 Start: 108861, Stop: 109934, Start Num: 14

Candidate Starts for JustHall_199:

(10, 108834), (Start: 14 @108861 has 175 MA's), (22, 108894), (28, 108927), (Start: 43 @109017 has 1 MA's), (46, 109026), (61, 109122), (66, 109143), (137, 109551), (144, 109581), (149, 109605), (150, 109608), (171, 109668), (179, 109710), (193, 109770), (195, 109782), (207, 109821), (213, 109839), (214, 109845), (220, 109869), (230, 109905), (232, 109914), (235, 109929),

Gene: Kabocha_67 Start: 54073, Stop: 53135, Start Num: 37

Candidate Starts for Kabocha_67:

(Start: 37 @54073 has 8 MA's), (Start: 54 @53986 has 2 MA's), (77, 53845), (78, 53839), (95, 53773), (98, 53755), (108, 53668), (110, 53656), (119, 53614), (120, 53611), (121, 53599), (134, 53524), (138, 53494), (139, 53491), (145, 53464), (165, 53383), (168, 53374), (177, 53323), (196, 53245), (224, 53161),

Gene: Kamryn_204 Start: 110491, Stop: 111564, Start Num: 14

Candidate Starts for Kamryn_204:

(10, 110464), (Start: 14 @110491 has 175 MA's), (22, 110524), (28, 110557), (Start: 43 @110647 has 1 MA's), (46, 110656), (61, 110752), (66, 110773), (137, 111181), (144, 111211), (149, 111235), (150,

111238), (171, 111298), (179, 111340), (193, 111400), (195, 111412), (207, 111451), (213, 111469), (214, 111475), (220, 111499), (230, 111535), (232, 111544), (235, 111559),

Gene: Karimac_79 Start: 56488, Stop: 57564, Start Num: 25

Candidate Starts for Karimac_79:

(Start: 25 @56488 has 81 MA's), (Start: 27 @56506 has 5 MA's), (Start: 35 @56560 has 2 MA's), (57, 56695), (71, 56770), (76, 56806), (89, 56863), (96, 56887), (101, 56929), (109, 57001), (112, 57016), (132, 57112), (133, 57121), (138, 57151), (145, 57181), (154, 57220), (163, 57256), (170, 57283), (172, 57289), (213, 57454), (223, 57487), (230, 57526), (236, 57556),

Gene: Karp_56 Start: 47132, Stop: 48229, Start Num: 25

Candidate Starts for Karp_56:

(Start: 25 @47132 has 81 MA's), (58, 47348), (81, 47486), (87, 47501), (93, 47531), (96, 47540), (101, 47582), (112, 47669), (118, 47693), (145, 47840), (164, 47918), (172, 47948), (184, 48014), (188, 48026), (212, 48116), (217, 48131), (223, 48152),

Gene: Kboogie_209 Start: 109519, Stop: 110592, Start Num: 14

Candidate Starts for Kboogie_209:

(10, 109492), (Start: 14 @109519 has 175 MA's), (22, 109552), (28, 109585), (Start: 43 @109675 has 1 MA's), (46, 109684), (61, 109780), (66, 109801), (137, 110209), (144, 110239), (149, 110263), (150, 110266), (171, 110326), (179, 110368), (193, 110428), (195, 110440), (207, 110479), (213, 110497), (214, 110503), (220, 110527), (230, 110563), (232, 110572), (235, 110587),

Gene: Kenrey_59 Start: 46586, Stop: 47563, Start Num: 44

Candidate Starts for Kenrey_59:

(Start: 25 @46466 has 81 MA's), (Start: 44 @46586 has 2 MA's), (58, 46682), (81, 46820), (96, 46874), (101, 46916), (105, 46949), (112, 47003), (119, 47033), (126, 47087), (145, 47174), (153, 47207), (164, 47252), (172, 47282), (188, 47360), (223, 47486), (233, 47537), (236, 47555),

Gene: KentuckyRacer_80 Start: 56272, Stop: 57348, Start Num: 25

Candidate Starts for KentuckyRacer_80:

(Start: 25 @56272 has 81 MA's), (Start: 27 @56290 has 5 MA's), (Start: 35 @56344 has 2 MA's), (57, 56479), (71, 56554), (76, 56590), (89, 56647), (96, 56671), (101, 56713), (109, 56785), (112, 56800), (132, 56896), (133, 56905), (138, 56935), (145, 56965), (154, 57004), (163, 57040), (170, 57067), (172, 57073), (213, 57238), (223, 57271), (230, 57310), (236, 57340),

Gene: Khaleesi_204 Start: 110312, Stop: 111385, Start Num: 14

Candidate Starts for Khaleesi_204:

(10, 110285), (Start: 14 @110312 has 175 MA's), (22, 110345), (28, 110378), (Start: 43 @110468 has 1 MA's), (46, 110477), (61, 110573), (66, 110594), (137, 111002), (144, 111032), (149, 111056), (150, 111059), (171, 111119), (179, 111161), (193, 111221), (195, 111233), (207, 111272), (213, 111290), (214, 111296), (220, 111320), (230, 111356), (232, 111365), (235, 111380),

Gene: Koguma_204 Start: 109172, Stop: 110245, Start Num: 14

Candidate Starts for Koguma_204:

(10, 109145), (Start: 14 @109172 has 175 MA's), (22, 109205), (28, 109238), (Start: 43 @109328 has 1 MA's), (46, 109337), (61, 109433), (66, 109454), (137, 109862), (144, 109892), (149, 109916), (150, 109919), (171, 109979), (179, 110021), (193, 110081), (195, 110093), (207, 110132), (213, 110150), (214, 110156), (220, 110180), (230, 110216), (232, 110225), (235, 110240),

Gene: LRRHood_198 Start: 109517, Stop: 110590, Start Num: 14

Candidate Starts for LRRHood_198:

(10, 109490), (Start: 14 @109517 has 175 MA's), (22, 109550), (28, 109583), (Start: 43 @109673 has 1 MA's), (46, 109682), (61, 109778), (66, 109799), (137, 110207), (144, 110237), (149, 110261), (150, 110264), (171, 110324), (179, 110366), (193, 110426), (195, 110438), (207, 110477), (213, 110495), (214, 110501), (220, 110525), (230, 110561), (232, 110570), (235, 110585),

Gene: Larnav_78 Start: 57155, Stop: 58219, Start Num: 25

Candidate Starts for Larnav_78:

(Start: 25 @57155 has 81 MA's), (Start: 34 @57224 has 2 MA's), (62, 57386), (68, 57419), (69, 57422), (74, 57443), (96, 57548), (101, 57590), (109, 57662), (110, 57665), (112, 57677), (118, 57701), (127, 57761), (138, 57812), (145, 57842), (154, 57881), (163, 57917), (172, 57950), (180, 57989), (203, 58079), (223, 58142), (236, 58211),

Gene: Latch_205 Start: 109065, Stop: 110138, Start Num: 14

Candidate Starts for Latch_205:

(10, 109038), (Start: 14 @109065 has 175 MA's), (22, 109098), (28, 109131), (Start: 43 @109221 has 1 MA's), (46, 109230), (61, 109326), (66, 109347), (137, 109755), (144, 109785), (149, 109809), (150, 109812), (171, 109872), (179, 109914), (193, 109974), (195, 109986), (207, 110025), (213, 110043), (214, 110049), (220, 110073), (230, 110109), (232, 110118), (235, 110133),

Gene: Lee7_205 Start: 111692, Stop: 112765, Start Num: 14

Candidate Starts for Lee7_205:

(10, 111665), (Start: 14 @111692 has 175 MA's), (22, 111725), (28, 111758), (Start: 43 @111848 has 1 MA's), (46, 111857), (61, 111953), (66, 111974), (137, 112382), (144, 112412), (149, 112436), (150, 112439), (171, 112499), (179, 112541), (193, 112601), (195, 112613), (207, 112652), (213, 112670), (214, 112676), (220, 112700), (230, 112736), (232, 112745), (235, 112760),

Gene: Lenoshki_65 Start: 54338, Stop: 53487, Start Num: 54

Candidate Starts for Lenoshki_65:

(Start: 37 @54425 has 8 MA's), (Start: 54 @54338 has 2 MA's), (77, 54197), (78, 54191), (95, 54125), (98, 54107), (108, 54020), (110, 54008), (119, 53966), (120, 53963), (121, 53951), (134, 53876), (138, 53846), (139, 53843), (145, 53816), (165, 53735), (168, 53726), (177, 53675), (196, 53597), (224, 53513),

Gene: Leo04_79 Start: 57670, Stop: 58734, Start Num: 25

Candidate Starts for Leo04_79:

(Start: 25 @57670 has 81 MA's), (Start: 34 @57739 has 2 MA's), (62, 57901), (68, 57934), (69, 57937), (74, 57958), (96, 58063), (101, 58105), (109, 58177), (110, 58180), (112, 58192), (118, 58216), (127, 58276), (138, 58327), (145, 58357), (154, 58396), (163, 58432), (172, 58465), (180, 58504), (203, 58594), (223, 58657), (236, 58726),

Gene: Liandry_76 Start: 56545, Stop: 57609, Start Num: 25

Candidate Starts for Liandry_76:

(Start: 25 @56545 has 81 MA's), (68, 56809), (69, 56812), (74, 56833), (96, 56938), (101, 56980), (109, 57052), (110, 57055), (112, 57067), (127, 57151), (138, 57202), (145, 57232), (154, 57271), (161, 57295), (172, 57340), (220, 57529), (230, 57571), (236, 57601),

Gene: LifeSavor_204 Start: 109590, Stop: 110663, Start Num: 14

Candidate Starts for LifeSavor_204:

(10, 109563), (Start: 14 @109590 has 175 MA's), (22, 109623), (28, 109656), (Start: 43 @109746 has 1 MA's), (46, 109755), (61, 109851), (66, 109872), (137, 110280), (144, 110310), (149, 110334), (150, 110337), (171, 110397), (179, 110439), (193, 110499), (195, 110511), (207, 110550), (213, 110568), (214, 110574), (220, 110598), (230, 110634), (232, 110643), (235, 110658),

Gene: LilMartin_75 Start: 55387, Stop: 56451, Start Num: 25

Candidate Starts for LilMartin_75:

(Start: 25 @55387 has 81 MA's), (Start: 44 @55507 has 2 MA's), (66, 55636), (68, 55651), (69, 55654), (74, 55675), (96, 55780), (101, 55822), (109, 55894), (110, 55897), (112, 55909), (132, 56005), (133, 56014), (138, 56044), (145, 56074), (172, 56182), (236, 56443),

Gene: Limpid_55 Start: 45379, Stop: 46476, Start Num: 25

Candidate Starts for Limpid_55:

(Start: 25 @45379 has 81 MA's), (61, 45607), (63, 45616), (67, 45634), (96, 45787), (101, 45829), (102, 45832), (112, 45916), (116, 45934), (118, 45940), (126, 46000), (133, 46027), (138, 46057), (145, 46087), (152, 46117), (164, 46165), (172, 46195), (184, 46261), (188, 46273), (223, 46399),

Gene: LinStu_204 Start: 109804, Stop: 110877, Start Num: 14

Candidate Starts for LinStu_204:

(10, 109777), (Start: 14 @109804 has 175 MA's), (22, 109837), (28, 109870), (Start: 43 @109960 has 1 MA's), (46, 109969), (61, 110065), (66, 110086), (137, 110494), (144, 110524), (149, 110548), (150, 110551), (171, 110611), (179, 110653), (193, 110713), (195, 110725), (207, 110764), (213, 110782), (214, 110788), (220, 110812), (230, 110848), (232, 110857), (235, 110872),

Gene: Littleton_208 Start: 110302, Stop: 111375, Start Num: 14

Candidate Starts for Littleton_208:

(10, 110275), (Start: 14 @110302 has 175 MA's), (22, 110335), (28, 110368), (Start: 43 @110458 has 1 MA's), (46, 110467), (61, 110563), (66, 110584), (137, 110992), (144, 111022), (149, 111046), (150, 111049), (171, 111109), (179, 111151), (193, 111211), (195, 111223), (207, 111262), (213, 111280), (214, 111286), (220, 111310), (230, 111346), (232, 111355), (235, 111370),

Gene: Loanshark_202 Start: 109627, Stop: 110700, Start Num: 14

Candidate Starts for Loanshark_202:

(10, 109600), (Start: 14 @109627 has 175 MA's), (22, 109660), (28, 109693), (Start: 43 @109783 has 1 MA's), (46, 109792), (61, 109888), (66, 109909), (137, 110317), (144, 110347), (149, 110371), (150, 110374), (171, 110434), (179, 110476), (193, 110536), (195, 110548), (207, 110587), (213, 110605), (214, 110611), (220, 110635), (230, 110671), (232, 110680), (235, 110695),

Gene: LolaVince_203 Start: 110857, Stop: 111930, Start Num: 14

Candidate Starts for LolaVince_203:

(10, 110830), (Start: 14 @110857 has 175 MA's), (22, 110890), (28, 110923), (Start: 43 @111013 has 1 MA's), (46, 111022), (61, 111118), (66, 111139), (137, 111547), (144, 111577), (149, 111601), (150, 111604), (171, 111664), (179, 111706), (193, 111766), (195, 111778), (207, 111817), (213, 111835), (214, 111841), (220, 111865), (230, 111901), (232, 111910), (235, 111925),

Gene: LordLeafolot_207 Start: 110469, Stop: 111542, Start Num: 14

Candidate Starts for LordLeafolot_207:

(10, 110442), (Start: 14 @110469 has 175 MA's), (22, 110502), (28, 110535), (Start: 43 @110625 has 1 MA's), (46, 110634), (61, 110730), (66, 110751), (137, 111159), (144, 111189), (149, 111213), (150, 111216), (171, 111276), (179, 111318), (193, 111378), (195, 111390), (207, 111429), (213, 111447), (214, 111453), (220, 111477), (230, 111513), (232, 111522), (235, 111537),

Gene: LukeCage_79 Start: 56251, Stop: 57327, Start Num: 25

Candidate Starts for LukeCage_79:

(Start: 25 @56251 has 81 MA's), (Start: 27 @56269 has 5 MA's), (Start: 35 @56323 has 2 MA's), (57, 56458), (61, 56479), (71, 56533), (76, 56569), (89, 56626), (96, 56650), (101, 56692), (109, 56764), (112, 56779), (132, 56875), (133, 56884), (145, 56944), (154, 56983), (163, 57019), (170, 57046), (172, 57052), (213, 57217), (223, 57250), (230, 57289), (236, 57319),

Gene: Lukilu_196 Start: 110527, Stop: 111600, Start Num: 14

Candidate Starts for Lukilu_196:

(10, 110500), (Start: 14 @110527 has 175 MA's), (22, 110560), (28, 110593), (Start: 43 @110683 has 1 MA's), (46, 110692), (61, 110788), (66, 110809), (137, 111217), (144, 111247), (149, 111271), (150, 111274), (171, 111334), (179, 111376), (193, 111436), (195, 111448), (207, 111487), (213, 111505), (214, 111511), (220, 111535), (230, 111571), (232, 111580), (235, 111595),

Gene: Lululemon_77 Start: 56551, Stop: 57615, Start Num: 25

Candidate Starts for Lululemon_77:

(Start: 25 @56551 has 81 MA's), (Start: 34 @56620 has 2 MA's), (62, 56782), (68, 56815), (69, 56818), (74, 56839), (96, 56944), (101, 56986), (109, 57058), (110, 57061), (112, 57073), (118, 57097), (127, 57157), (138, 57208), (145, 57238), (154, 57277), (163, 57313), (172, 57346), (180, 57385), (203, 57475), (223, 57538), (236, 57607),

Gene: Maby2021_205 Start: 110756, Stop: 111829, Start Num: 14

Candidate Starts for Maby2021_205:

(10, 110729), (Start: 14 @110756 has 175 MA's), (22, 110789), (28, 110822), (Start: 43 @110912 has 1 MA's), (46, 110921), (61, 111017), (66, 111038), (137, 111446), (144, 111476), (149, 111500), (150, 111503), (171, 111563), (179, 111605), (193, 111665), (195, 111677), (207, 111716), (213, 111734), (214, 111740), (220, 111764), (230, 111800), (232, 111809), (235, 111824),

Gene: Mangeria_206 Start: 110858, Stop: 111931, Start Num: 14

Candidate Starts for Mangeria_206:

(10, 110831), (Start: 14 @110858 has 175 MA's), (22, 110891), (28, 110924), (Start: 43 @111014 has 1 MA's), (46, 111023), (61, 111119), (66, 111140), (137, 111548), (144, 111578), (149, 111602), (150, 111605), (171, 111665), (179, 111707), (193, 111767), (195, 111779), (207, 111818), (213, 111836), (214, 111842), (220, 111866), (230, 111902), (232, 111911), (235, 111926),

Gene: Matsumoto_204 Start: 109507, Stop: 110580, Start Num: 14

Candidate Starts for Matsumoto_204:

(10, 109480), (Start: 14 @109507 has 175 MA's), (22, 109540), (28, 109573), (Start: 43 @109663 has 1 MA's), (46, 109672), (61, 109768), (66, 109789), (137, 110197), (144, 110227), (149, 110251), (150, 110254), (171, 110314), (179, 110356), (193, 110416), (195, 110428), (207, 110467), (213, 110485), (214, 110491), (220, 110515), (230, 110551), (232, 110560), (235, 110575),

Gene: McGee_204 Start: 108701, Stop: 109774, Start Num: 14

Candidate Starts for McGee_204:

(10, 108674), (Start: 14 @108701 has 175 MA's), (22, 108734), (28, 108767), (Start: 43 @108857 has 1 MA's), (46, 108866), (61, 108962), (66, 108983), (137, 109391), (144, 109421), (149, 109445), (150, 109448), (171, 109508), (179, 109550), (193, 109610), (195, 109622), (207, 109661), (213, 109679), (214, 109685), (220, 109709), (230, 109745), (232, 109754), (235, 109769),

Gene: McWolfish_202 Start: 109523, Stop: 110596, Start Num: 14

Candidate Starts for McWolfish_202:

(10, 109496), (Start: 14 @109523 has 175 MA's), (22, 109556), (28, 109589), (Start: 43 @109679 has 1 MA's), (46, 109688), (61, 109784), (66, 109805), (137, 110213), (144, 110243), (149, 110267), (150, 110270), (171, 110330), (179, 110372), (193, 110432), (195, 110444), (207, 110483), (213, 110501), (214, 110507), (220, 110531), (230, 110567), (232, 110576), (235, 110591),

Gene: Megamind_202 Start: 109814, Stop: 110887, Start Num: 14

Candidate Starts for Megamind_202:

(10, 109787), (Start: 14 @109814 has 175 MA's), (22, 109847), (28, 109880), (Start: 43 @109970 has 1 MA's), (46, 109979), (61, 110075), (66, 110096), (137, 110504), (144, 110534), (149, 110558), (150, 110561), (171, 110621), (179, 110663), (193, 110723), (195, 110735), (207, 110774), (213, 110792), (214, 110798), (220, 110822), (230, 110858), (232, 110867), (235, 110882),

Gene: MeganTheeKilla_56 Start: 45632, Stop: 46729, Start Num: 25

Candidate Starts for MeganTheeKilla_56:

(9, 45548), (Start: 25 @45632 has 81 MA's), (Start: 44 @45752 has 2 MA's), (58, 45848), (81, 45986), (87, 46001), (96, 46040), (101, 46082), (112, 46169), (126, 46253), (140, 46316), (145, 46340), (152, 46370), (164, 46418), (172, 46448), (192, 46550), (212, 46616), (217, 46631), (223, 46652), (236, 46721),

Gene: Melpomini_200 Start: 108599, Stop: 109672, Start Num: 14

Candidate Starts for Melpomini_200:

(10, 108572), (Start: 14 @108599 has 175 MA's), (22, 108632), (28, 108665), (Start: 43 @108755 has 1 MA's), (46, 108764), (61, 108860), (66, 108881), (137, 109289), (144, 109319), (149, 109343), (150, 109346), (171, 109406), (179, 109448), (193, 109508), (195, 109520), (207, 109559), (213, 109577), (214, 109583), (220, 109607), (230, 109643), (232, 109652), (235, 109667),

Gene: MikeLiesIn_207 Start: 110950, Stop: 112023, Start Num: 14

Candidate Starts for MikeLiesIn_207:

(10, 110923), (Start: 14 @110950 has 175 MA's), (22, 110983), (28, 111016), (Start: 43 @111106 has 1 MA's), (46, 111115), (61, 111211), (66, 111232), (137, 111640), (144, 111670), (149, 111694), (150, 111697), (171, 111757), (179, 111799), (193, 111859), (195, 111871), (207, 111910), (213, 111928), (214, 111934), (220, 111958), (230, 111994), (232, 112003), (235, 112018),

Gene: Mikro_201 Start: 111499, Stop: 112572, Start Num: 14

Candidate Starts for Mikro_201:

(10, 111472), (Start: 14 @111499 has 175 MA's), (22, 111532), (28, 111565), (Start: 43 @111655 has 1 MA's), (46, 111664), (61, 111760), (66, 111781), (137, 112189), (144, 112219), (149, 112243), (150, 112246), (171, 112306), (179, 112348), (193, 112408), (195, 112420), (207, 112459), (213, 112477), (214, 112483), (220, 112507), (230, 112543), (232, 112552), (235, 112567),

Gene: Mildred21_76 Start: 55591, Stop: 56655, Start Num: 25

Candidate Starts for Mildred21_76:

(Start: 25 @55591 has 81 MA's), (66, 55840), (68, 55855), (69, 55858), (74, 55879), (96, 55984), (101, 56026), (109, 56098), (110, 56101), (112, 56113), (127, 56197), (138, 56248), (145, 56278), (161, 56341), (163, 56353), (172, 56386), (180, 56425), (196, 56491), (203, 56515), (220, 56575), (236, 56647),

Gene: MindFlayer_77 Start: 55990, Stop: 57066, Start Num: 25

Candidate Starts for MindFlayer_77:

(Start: 25 @55990 has 81 MA's), (Start: 27 @56008 has 5 MA's), (Start: 35 @56062 has 2 MA's), (57, 56197), (71, 56272), (76, 56308), (89, 56365), (96, 56389), (101, 56431), (109, 56503), (112, 56518), (132, 56614), (133, 56623), (138, 56653), (145, 56683), (154, 56722), (163, 56758), (170, 56785), (172, 56791), (213, 56956), (223, 56989), (230, 57028), (236, 57058),

Gene: MintFritos_63 Start: 52731, Stop: 51793, Start Num: 37

Candidate Starts for MintFritos_63:

(Start: 37 @52731 has 8 MA's), (Start: 54 @52644 has 2 MA's), (77, 52503), (78, 52497), (95, 52431), (98, 52413), (108, 52326), (110, 52314), (119, 52272), (120, 52269), (121, 52257), (134, 52182), (138, 52152), (139, 52149), (145, 52122), (165, 52041), (168, 52032), (177, 51981), (196, 51903), (224, 51819),

Gene: MoMoMixon_203 Start: 109989, Stop: 111062, Start Num: 14

Candidate Starts for MoMoMixon_203:

(10, 109962), (Start: 14 @109989 has 175 MA's), (22, 110022), (28, 110055), (Start: 43 @110145 has 1 MA's), (46, 110154), (61, 110250), (66, 110271), (137, 110679), (144, 110709), (149, 110733), (150, 110736), (171, 110796), (179, 110838), (193, 110898), (195, 110910), (207, 110949), (213, 110967), (214, 110973), (220, 110997), (230, 111033), (232, 111042), (235, 111057),

Gene: Moab_58 Start: 47488, Stop: 48585, Start Num: 25

Candidate Starts for Moab_58:

(Start: 25 @47488 has 81 MA's), (Start: 44 @47608 has 2 MA's), (58, 47704), (72, 47785), (86, 47854), (92, 47881), (96, 47896), (101, 47938), (105, 47971), (112, 48025), (118, 48049), (133, 48136), (145, 48196), (152, 48226), (164, 48274), (172, 48304), (198, 48430), (205, 48448), (212, 48472), (223, 48508),

Gene: Momo_206 Start: 109065, Stop: 110138, Start Num: 14

Candidate Starts for Momo_206:

(10, 109038), (Start: 14 @109065 has 175 MA's), (22, 109098), (28, 109131), (Start: 43 @109221 has 1 MA's), (46, 109230), (61, 109326), (66, 109347), (137, 109755), (144, 109785), (149, 109809), (150, 109812), (171, 109872), (179, 109914), (193, 109974), (195, 109986), (207, 110025), (213, 110043), (214, 110049), (220, 110073), (230, 110109), (232, 110118), (235, 110133),

Gene: Morizzled23_202 Start: 108432, Stop: 109505, Start Num: 14

Candidate Starts for Morizzled23_202:

(10, 108405), (Start: 14 @108432 has 175 MA's), (22, 108465), (28, 108498), (Start: 43 @108588 has 1 MA's), (46, 108597), (61, 108693), (66, 108714), (137, 109122), (144, 109152), (149, 109176), (150, 109179), (171, 109239), (179, 109281), (193, 109341), (195, 109353), (207, 109392), (213, 109410), (214, 109416), (220, 109440), (230, 109476), (232, 109485), (235, 109500),

Gene: Mugiwara_81 Start: 56768, Stop: 57826, Start Num: 27

Candidate Starts for Mugiwara_81:

(Start: 25 @56750 has 81 MA's), (Start: 27 @56768 has 5 MA's), (Start: 35 @56822 has 2 MA's), (57, 56957), (71, 57032), (76, 57068), (89, 57125), (96, 57149), (101, 57191), (109, 57263), (112, 57278), (132, 57374), (133, 57383), (138, 57413), (145, 57443), (154, 57482), (163, 57518), (172, 57551), (213, 57716), (223, 57749), (236, 57818),

Gene: MulchMansion_75 Start: 55387, Stop: 56451, Start Num: 25

Candidate Starts for MulchMansion_75:

(Start: 25 @55387 has 81 MA's), (Start: 44 @55507 has 2 MA's), (66, 55636), (68, 55651), (69, 55654), (74, 55675), (96, 55780), (101, 55822), (109, 55894), (110, 55897), (112, 55909), (132, 56005), (133, 56014), (138, 56044), (145, 56074), (172, 56182), (236, 56443),

Gene: Muntaha_55 Start: 47745, Stop: 48827, Start Num: 25

Candidate Starts for Muntaha_55:

(Start: 25 @47745 has 81 MA's), (96, 48138), (101, 48180), (112, 48267), (116, 48285), (132, 48369), (138, 48408), (145, 48438), (152, 48468), (172, 48546), (176, 48576), (223, 48750),

Gene: Myrna_188 Start: 106597, Stop: 107742, Start Num: 13

Candidate Starts for Myrna_188:

(Start: 13 @106597 has 2 MA's), (18, 106621), (36, 106735), (Start: 43 @106759 has 1 MA's), (46, 106768), (61, 106885), (65, 106900), (66, 106906), (69, 106936), (78, 106990), (83, 107014), (91, 107047), (102, 107107), (120, 107209), (128, 107263), (130, 107272), (148, 107353), (187, 107491), (206, 107566), (239, 107710),

Gene: Naija_206 Start: 109768, Stop: 110841, Start Num: 14

Candidate Starts for Naija_206:

(10, 109741), (Start: 14 @109768 has 175 MA's), (22, 109801), (28, 109834), (Start: 43 @109924 has 1 MA's), (46, 109933), (61, 110029), (66, 110050), (137, 110458), (144, 110488), (149, 110512), (150, 110515), (171, 110575), (179, 110617), (193, 110677), (195, 110689), (207, 110728), (213, 110746), (214, 110752), (220, 110776), (230, 110812), (232, 110821), (235, 110836),

Gene: Napoleon13_202 Start: 108796, Stop: 109869, Start Num: 14

Candidate Starts for Napoleon13_202:

(10, 108769), (Start: 14 @108796 has 175 MA's), (22, 108829), (28, 108862), (Start: 43 @108952 has 1 MA's), (46, 108961), (61, 109057), (66, 109078), (137, 109486), (144, 109516), (149, 109540), (150, 109543), (171, 109603), (179, 109645), (193, 109705), (195, 109717), (207, 109756), (213, 109774), (214, 109780), (220, 109804), (230, 109840), (232, 109849), (235, 109864),

Gene: Nappy_206 Start: 111462, Stop: 112535, Start Num: 14

Candidate Starts for Nappy_206:

(10, 111435), (Start: 14 @111462 has 175 MA's), (22, 111495), (28, 111528), (Start: 43 @111618 has 1 MA's), (46, 111627), (61, 111723), (66, 111744), (137, 112152), (144, 112182), (149, 112206), (150, 112209), (171, 112269), (179, 112311), (193, 112371), (195, 112383), (207, 112422), (213, 112440), (214, 112446), (220, 112470), (230, 112506), (232, 112515), (235, 112530),

Gene: Naval22_210 Start: 111545, Stop: 112618, Start Num: 14

Candidate Starts for Naval22_210:

(10, 111518), (Start: 14 @111545 has 175 MA's), (22, 111578), (28, 111611), (Start: 43 @111701 has 1 MA's), (46, 111710), (61, 111806), (66, 111827), (137, 112235), (144, 112265), (149, 112289), (150, 112292), (171, 112352), (179, 112394), (193, 112454), (195, 112466), (207, 112505), (213, 112523), (214, 112529), (220, 112553), (230, 112589), (232, 112598), (235, 112613),

Gene: Navo_75 Start: 56467, Stop: 57531, Start Num: 25

Candidate Starts for Navo_75:

(Start: 25 @56467 has 81 MA's), (68, 56731), (69, 56734), (73, 56752), (74, 56755), (96, 56860), (101, 56902), (109, 56974), (110, 56977), (112, 56989), (127, 57073), (138, 57124), (145, 57154), (154, 57193), (161, 57217), (172, 57262), (220, 57451), (230, 57493), (236, 57523),

Gene: NedWong_204 Start: 110201, Stop: 111274, Start Num: 14

Candidate Starts for NedWong_204:

(10, 110174), (Start: 14 @110201 has 175 MA's), (22, 110234), (28, 110267), (Start: 43 @110357 has 1 MA's), (46, 110366), (61, 110462), (66, 110483), (137, 110891), (144, 110921), (149, 110945), (150, 110948), (171, 111008), (179, 111050), (193, 111110), (195, 111122), (207, 111161), (213, 111179), (214, 111185), (220, 111209), (230, 111245), (232, 111254), (235, 111269),

Gene: Ngannou_202 Start: 108047, Stop: 109120, Start Num: 14

Candidate Starts for Ngannou_202:

(10, 108020), (Start: 14 @108047 has 175 MA's), (22, 108080), (28, 108113), (Start: 43 @108203 has 1 MA's), (46, 108212), (61, 108308), (66, 108329), (137, 108737), (144, 108767), (149, 108791), (150, 108794), (171, 108854), (179, 108896), (193, 108956), (195, 108968), (207, 109007), (213, 109025), (214, 109031), (220, 109055), (230, 109091), (232, 109100), (235, 109115),

Gene: NiceHouse_88 Start: 62950, Stop: 63975, Start Num: 21

Candidate Starts for NiceHouse_88:

(19, 62938), (Start: 21 @62950 has 1 MA's), (30, 63007), (Start: 34 @63031 has 2 MA's), (Start: 44 @63082 has 2 MA's), (51, 63130), (56, 63154), (73, 63247), (88, 63319), (96, 63352), (102, 63394),

(109, 63463), (112, 63478), (132, 63577), (145, 63649), (162, 63718), (171, 63754), (172, 63757), (189, 63844), (207, 63913), (210, 63919), (222, 63961),

Gene: Nidhogg_206 Start: 110594, Stop: 111667, Start Num: 14

Candidate Starts for Nidhogg_206:

(10, 110567), (Start: 14 @110594 has 175 MA's), (22, 110627), (28, 110660), (Start: 43 @110750 has 1 MA's), (46, 110759), (61, 110855), (66, 110876), (137, 111284), (144, 111314), (149, 111338), (150, 111341), (171, 111401), (179, 111443), (193, 111503), (195, 111515), (207, 111554), (213, 111572), (214, 111578), (220, 111602), (230, 111638), (232, 111647), (235, 111662),

Gene: NoodleTree_211 Start: 110501, Stop: 111574, Start Num: 14

Candidate Starts for NoodleTree_211:

(10, 110474), (Start: 14 @110501 has 175 MA's), (22, 110534), (28, 110567), (Start: 43 @110657 has 1 MA's), (46, 110666), (61, 110762), (66, 110783), (137, 111191), (144, 111221), (149, 111245), (150, 111248), (171, 111308), (179, 111350), (193, 111410), (195, 111422), (207, 111461), (213, 111479), (214, 111485), (220, 111509), (230, 111545), (232, 111554), (235, 111569),

Gene: NootNoot_73 Start: 55459, Stop: 56523, Start Num: 25

Candidate Starts for NootNoot_73:

(Start: 25 @55459 has 81 MA's), (68, 55723), (69, 55726), (74, 55747), (96, 55852), (101, 55894), (109, 55966), (110, 55969), (112, 55981), (127, 56065), (138, 56116), (145, 56146), (154, 56185), (161, 56209), (172, 56254), (220, 56443), (230, 56485), (236, 56515),

Gene: Norm_205 Start: 110503, Stop: 111576, Start Num: 14

Candidate Starts for Norm_205:

(10, 110476), (Start: 14 @110503 has 175 MA's), (22, 110536), (28, 110569), (Start: 43 @110659 has 1 MA's), (46, 110668), (61, 110764), (66, 110785), (137, 111193), (144, 111223), (149, 111247), (150, 111250), (171, 111310), (179, 111352), (193, 111412), (195, 111424), (207, 111463), (213, 111481), (214, 111487), (220, 111511), (230, 111547), (232, 111556), (235, 111571),

Gene: NuevoMundo_208 Start: 112055, Stop: 113128, Start Num: 14

Candidate Starts for NuevoMundo_208:

(10, 112028), (Start: 14 @112055 has 175 MA's), (22, 112088), (28, 112121), (Start: 43 @112211 has 1 MA's), (46, 112220), (61, 112316), (66, 112337), (137, 112745), (144, 112775), (149, 112799), (150, 112802), (171, 112862), (179, 112904), (193, 112964), (195, 112976), (207, 113015), (213, 113033), (214, 113039), (220, 113063), (230, 113099), (232, 113108), (235, 113123),

Gene: Oogie_65 Start: 54451, Stop: 53513, Start Num: 37

Candidate Starts for Oogie_65:

(Start: 37 @54451 has 8 MA's), (Start: 54 @54364 has 2 MA's), (77, 54223), (78, 54217), (95, 54151), (98, 54133), (108, 54046), (110, 54034), (119, 53992), (120, 53989), (121, 53977), (134, 53902), (138, 53872), (139, 53869), (145, 53842), (165, 53761), (168, 53752), (177, 53701), (196, 53623), (224, 53539),

Gene: PacManQ_77 Start: 56551, Stop: 57615, Start Num: 25

Candidate Starts for PacManQ_77:

(Start: 25 @56551 has 81 MA's), (Start: 34 @56620 has 2 MA's), (62, 56782), (68, 56815), (69, 56818), (74, 56839), (96, 56944), (101, 56986), (109, 57058), (110, 57061), (112, 57073), (118, 57097), (127, 57157), (138, 57208), (145, 57238), (154, 57277), (163, 57313), (172, 57346), (180, 57385), (203, 57475), (223, 57538), (236, 57607),

Gene: Pakusa_63 Start: 52472, Stop: 51534, Start Num: 37

Candidate Starts for Pakusa_63:

(Start: 37 @52472 has 8 MA's), (Start: 54 @52385 has 2 MA's), (77, 52244), (78, 52238), (95, 52172), (98, 52154), (108, 52067), (110, 52055), (119, 52013), (120, 52010), (121, 51998), (134, 51923), (138, 51893), (139, 51890), (145, 51863), (165, 51782), (168, 51773), (177, 51722), (196, 51644), (224, 51560),

Gene: Paradiddles_73 Start: 55723, Stop: 56787, Start Num: 25

Candidate Starts for Paradiddles_73:

(Start: 25 @55723 has 81 MA's), (68, 55987), (69, 55990), (74, 56011), (96, 56116), (101, 56158), (109, 56230), (110, 56233), (112, 56245), (138, 56380), (145, 56410), (154, 56449), (156, 56452), (161, 56473), (172, 56518), (220, 56707), (230, 56749), (236, 56779),

Gene: ParkTD_204 Start: 110065, Stop: 111138, Start Num: 14

Candidate Starts for ParkTD_204:

(10, 110038), (Start: 14 @110065 has 175 MA's), (22, 110098), (28, 110131), (Start: 43 @110221 has 1 MA's), (46, 110230), (61, 110326), (66, 110347), (137, 110755), (144, 110785), (149, 110809), (150, 110812), (171, 110872), (179, 110914), (193, 110974), (195, 110986), (207, 111025), (213, 111043), (214, 111049), (220, 111073), (230, 111109), (232, 111118), (235, 111133),

Gene: Patelgo_57 Start: 47675, Stop: 48772, Start Num: 25

Candidate Starts for Patelgo_57:

(Start: 25 @47675 has 81 MA's), (58, 47891), (72, 47972), (86, 48041), (92, 48068), (96, 48083), (101, 48125), (105, 48158), (112, 48212), (118, 48236), (133, 48323), (145, 48383), (152, 48413), (156, 48425), (164, 48461), (172, 48491), (198, 48617), (205, 48635), (212, 48659), (223, 48695),

Gene: Patter_206 Start: 109079, Stop: 110152, Start Num: 14

Candidate Starts for Patter_206:

(10, 109052), (Start: 14 @109079 has 175 MA's), (22, 109112), (28, 109145), (Start: 43 @109235 has 1 MA's), (46, 109244), (61, 109340), (66, 109361), (137, 109769), (144, 109799), (149, 109823), (150, 109826), (171, 109886), (179, 109928), (193, 109988), (195, 110000), (207, 110039), (213, 110057), (214, 110063), (220, 110087), (230, 110123), (232, 110132), (235, 110147),

Gene: Peebs_77 Start: 56974, Stop: 57969, Start Num: 34

Candidate Starts for Peebs_77:

(Start: 25 @56905 has 81 MA's), (Start: 34 @56974 has 2 MA's), (62, 57136), (68, 57169), (69, 57172), (74, 57193), (96, 57298), (101, 57340), (109, 57412), (110, 57415), (112, 57427), (118, 57451), (127, 57511), (138, 57562), (145, 57592), (154, 57631), (163, 57667), (172, 57700), (180, 57739), (203, 57829), (223, 57892), (236, 57961),

Gene: Pepperwood_78 Start: 57038, Stop: 58102, Start Num: 25

Candidate Starts for Pepperwood_78:

(Start: 25 @57038 has 81 MA's), (Start: 34 @57107 has 2 MA's), (62, 57269), (68, 57302), (69, 57305), (74, 57326), (96, 57431), (101, 57473), (109, 57545), (110, 57548), (112, 57560), (118, 57584), (127, 57644), (138, 57695), (145, 57725), (154, 57764), (163, 57800), (172, 57833), (180, 57872), (203, 57962), (223, 58025), (236, 58094),

Gene: Peregrin_97 Start: 58713, Stop: 59573, Start Num: 45

Candidate Starts for Peregrin_97:

(Start: 23 @58590 has 1 MA's), (Start: 45 @58713 has 2 MA's), (55, 58779), (59, 58812), (61, 58818), (64, 58830), (71, 58866), (79, 58911), (88, 58944), (93, 58968), (109, 59088), (112, 59103), (138, 59241), (173, 59388), (212, 59550),

Gene: Persimmon_74 Start: 55392, Stop: 56456, Start Num: 25

Candidate Starts for Persimmon_74:

(Start: 25 @55392 has 81 MA's), (68, 55656), (69, 55659), (74, 55680), (96, 55785), (101, 55827), (109, 55899), (110, 55902), (112, 55914), (127, 55998), (138, 56049), (145, 56079), (154, 56118), (156, 56121), (161, 56142), (172, 56187), (220, 56376), (230, 56418), (236, 56448),

Gene: Phabba_199 Start: 106502, Stop: 107647, Start Num: 13

Candidate Starts for Phabba_199:

(8, 106463), (Start: 13 @106502 has 2 MA's), (18, 106526), (36, 106640), (46, 106673), (61, 106790), (65, 106805), (66, 106811), (69, 106841), (78, 106895), (80, 106907), (83, 106919), (91, 106952), (102, 107012), (120, 107114), (128, 107168), (130, 107177), (148, 107258), (187, 107396), (206, 107471), (238, 107591),

Gene: Phlegm_209 Start: 109768, Stop: 110841, Start Num: 14

Candidate Starts for Phlegm_209:

(10, 109741), (Start: 14 @109768 has 175 MA's), (22, 109801), (28, 109834), (Start: 43 @109924 has 1 MA's), (46, 109933), (61, 110029), (66, 110050), (137, 110458), (144, 110488), (149, 110512), (150, 110515), (171, 110575), (179, 110617), (193, 110677), (195, 110689), (207, 110728), (213, 110746), (214, 110752), (220, 110776), (230, 110812), (232, 110821), (235, 110836),

Gene: Phox_206 Start: 110723, Stop: 111796, Start Num: 14

Candidate Starts for Phox_206:

(10, 110696), (Start: 14 @110723 has 175 MA's), (22, 110756), (28, 110789), (Start: 43 @110879 has 1 MA's), (46, 110888), (61, 110984), (66, 111005), (137, 111413), (144, 111443), (149, 111467), (150, 111470), (171, 111530), (179, 111572), (193, 111632), (195, 111644), (207, 111683), (213, 111701), (214, 111707), (220, 111731), (230, 111767), (232, 111776), (235, 111791),

Gene: Phrappuccino_115 Start: 83314, Stop: 84369, Start Num: 15

Candidate Starts for Phrappuccino_115:

(7, 83179), (Start: 15 @83314 has 2 MA's), (Start: 27 @83374 has 5 MA's), (39, 83455), (100, 83776), (111, 83863), (135, 83980), (151, 84043), (155, 84055), (157, 84061), (160, 84073), (171, 84097), (181, 84142), (185, 84166), (202, 84235), (206, 84247), (207, 84250), (208, 84253), (223, 84301), (226, 84310),

Gene: Phredrick_57 Start: 45537, Stop: 46634, Start Num: 25

Candidate Starts for Phredrick_57:

(Start: 25 @45537 has 81 MA's), (Start: 44 @45657 has 2 MA's), (58, 45753), (81, 45891), (96, 45945), (101, 45987), (105, 46020), (112, 46074), (126, 46158), (145, 46245), (153, 46278), (164, 46323), (172, 46353), (188, 46431), (223, 46557), (233, 46608), (236, 46626),

Gene: Phusco_203 Start: 108600, Stop: 109673, Start Num: 14

Candidate Starts for Phusco_203:

(10, 108573), (Start: 14 @108600 has 175 MA's), (22, 108633), (28, 108666), (Start: 43 @108756 has 1 MA's), (46, 108765), (61, 108861), (66, 108882), (137, 109290), (144, 109320), (149, 109344), (150, 109347), (171, 109407), (179, 109449), (193, 109509), (195, 109521), (207, 109560), (213, 109578), (214, 109584), (220, 109608), (230, 109644), (232, 109653), (235, 109668),

Gene: Pier_206 Start: 111597, Stop: 112670, Start Num: 14

Candidate Starts for Pier_206:

(10, 111570), (Start: 14 @111597 has 175 MA's), (22, 111630), (28, 111663), (Start: 43 @111753 has 1 MA's), (46, 111762), (61, 111858), (66, 111879), (137, 112287), (144, 112317), (149, 112341), (150, 112344), (171, 112404), (179, 112446), (193, 112506), (195, 112518), (207, 112557), (213, 112575), (214, 112581), (220, 112605), (230, 112641), (232, 112650), (235, 112665),

Gene: Pinkcreek_189 Start: 108976, Stop: 110049, Start Num: 14

Candidate Starts for Pinkcreek_189:

(10, 108949), (Start: 14 @108976 has 175 MA's), (22, 109009), (28, 109042), (Start: 43 @109132 has 1 MA's), (46, 109141), (61, 109237), (66, 109258), (137, 109666), (144, 109696), (149, 109720), (150, 109723), (171, 109783), (179, 109825), (193, 109885), (195, 109897), (207, 109936), (213, 109954), (214, 109960), (220, 109984), (230, 110020), (232, 110029), (235, 110044),

Gene: PinkiePie_76 Start: 56545, Stop: 57609, Start Num: 25

Candidate Starts for PinkiePie_76:

(Start: 25 @56545 has 81 MA's), (68, 56809), (69, 56812), (74, 56833), (96, 56938), (101, 56980), (109, 57052), (110, 57055), (112, 57067), (127, 57151), (138, 57202), (145, 57232), (154, 57271), (161, 57295), (172, 57340), (220, 57529), (230, 57571), (236, 57601),

Gene: Pio_213 Start: 112792, Stop: 113865, Start Num: 14

Candidate Starts for Pio_213:

(10, 112765), (Start: 14 @112792 has 175 MA's), (22, 112825), (28, 112858), (Start: 43 @112948 has 1 MA's), (46, 112957), (61, 113053), (66, 113074), (137, 113482), (144, 113512), (149, 113536), (150, 113539), (171, 113599), (179, 113641), (193, 113701), (195, 113713), (207, 113752), (213, 113770), (214, 113776), (220, 113800), (230, 113836), (232, 113845), (235, 113860),

Gene: Pivoine_206 Start: 109768, Stop: 110841, Start Num: 14

Candidate Starts for Pivoine_206:

(10, 109741), (Start: 14 @109768 has 175 MA's), (22, 109801), (28, 109834), (Start: 43 @109924 has 1 MA's), (46, 109933), (61, 110029), (66, 110050), (137, 110458), (144, 110488), (149, 110512), (150, 110515), (171, 110575), (179, 110617), (193, 110677), (195, 110689), (207, 110728), (213, 110746), (214, 110752), (220, 110776), (230, 110812), (232, 110821), (235, 110836),

Gene: Pleione_209 Start: 110543, Stop: 111616, Start Num: 14

Candidate Starts for Pleione_209:

(10, 110516), (Start: 14 @110543 has 175 MA's), (22, 110576), (28, 110609), (Start: 43 @110699 has 1 MA's), (46, 110708), (61, 110804), (66, 110825), (137, 111233), (144, 111263), (149, 111287), (150, 111290), (171, 111350), (179, 111392), (193, 111452), (195, 111464), (207, 111503), (213, 111521), (214, 111527), (220, 111551), (230, 111587), (232, 111596), (235, 111611),

Gene: PumpkinSpice_79 Start: 56382, Stop: 57458, Start Num: 25

Candidate Starts for PumpkinSpice_79:

(Start: 25 @56382 has 81 MA's), (Start: 27 @56400 has 5 MA's), (Start: 35 @56454 has 2 MA's), (57, 56589), (71, 56664), (76, 56700), (89, 56757), (96, 56781), (101, 56823), (109, 56895), (112, 56910), (132, 57006), (133, 57015), (138, 57045), (145, 57075), (154, 57114), (163, 57150), (170, 57177), (172, 57183), (213, 57348), (223, 57381), (230, 57420), (236, 57450),

Gene: Pupper_148 Start: 103120, Stop: 104235, Start Num: 14

Candidate Starts for Pupper_148:

(Start: 14 @103120 has 175 MA's), (22, 103162), (29, 103204), (Start: 34 @103240 has 2 MA's), (46, 103297), (53, 103354), (65, 103408), (66, 103414), (84, 103528), (94, 103585), (97, 103600), (100, 103621), (122, 103756), (155, 103903), (157, 103909), (170, 103945), (187, 104023), (206, 104095), (229, 104173), (233, 104197),

Gene: PurduePete_205 Start: 110771, Stop: 111844, Start Num: 14

Candidate Starts for PurduePete_205:

(10, 110744), (Start: 14 @110771 has 175 MA's), (22, 110804), (28, 110837), (Start: 43 @110927 has 1 MA's), (46, 110936), (61, 111032), (66, 111053), (137, 111461), (144, 111491), (149, 111515), (150, 111518), (171, 111578), (179, 111620), (193, 111680), (195, 111692), (207, 111731), (213, 111749), (214, 111755), (220, 111779), (230, 111815), (232, 111824), (235, 111839),

Gene: QBert_197 Start: 109124, Stop: 110197, Start Num: 14

Candidate Starts for QBert_197:

(10, 109097), (Start: 14 @109124 has 175 MA's), (22, 109157), (28, 109190), (Start: 43 @109280 has 1 MA's), (46, 109289), (61, 109385), (66, 109406), (137, 109814), (144, 109844), (149, 109868), (150, 109871), (171, 109931), (179, 109973), (193, 110033), (195, 110045), (207, 110084), (213, 110102), (214, 110108), (220, 110132), (230, 110168), (232, 110177), (235, 110192),

Gene: Quaran19_79 Start: 56373, Stop: 57449, Start Num: 25

Candidate Starts for Quaran19_79:

(Start: 25 @56373 has 81 MA's), (Start: 27 @56391 has 5 MA's), (Start: 35 @56445 has 2 MA's), (57, 56580), (71, 56655), (76, 56691), (89, 56748), (96, 56772), (101, 56814), (109, 56886), (112, 56901), (132, 56997), (133, 57006), (138, 57036), (145, 57066), (154, 57105), (163, 57141), (170, 57168), (172, 57174), (213, 57339), (223, 57372), (230, 57411), (236, 57441),

Gene: Quasimodo_207 Start: 110394, Stop: 111467, Start Num: 14

Candidate Starts for Quasimodo_207:

(10, 110367), (Start: 14 @110394 has 175 MA's), (22, 110427), (28, 110460), (Start: 43 @110550 has 1 MA's), (46, 110559), (61, 110655), (66, 110676), (137, 111084), (144, 111114), (149, 111138), (150, 111141), (171, 111201), (179, 111243), (193, 111303), (195, 111315), (207, 111354), (213, 111372), (214, 111378), (220, 111402), (230, 111438), (232, 111447), (235, 111462),

Gene: Rabinovish_198 Start: 110669, Stop: 111742, Start Num: 14

Candidate Starts for Rabinovish_198:

(10, 110642), (Start: 14 @110669 has 175 MA's), (22, 110702), (28, 110735), (Start: 43 @110825 has 1 MA's), (46, 110834), (61, 110930), (66, 110951), (137, 111359), (144, 111389), (149, 111413), (150, 111416), (171, 111476), (179, 111518), (193, 111578), (195, 111590), (207, 111629), (213, 111647), (214, 111653), (220, 111677), (230, 111713), (232, 111722), (235, 111737),

Gene: Rahel_206 Start: 109503, Stop: 110576, Start Num: 14

Candidate Starts for Rahel_206:

(10, 109476), (Start: 14 @109503 has 175 MA's), (22, 109536), (28, 109569), (Start: 43 @109659 has 1 MA's), (46, 109668), (61, 109764), (66, 109785), (137, 110193), (144, 110223), (149, 110247), (150, 110250), (171, 110310), (179, 110352), (193, 110412), (195, 110424), (207, 110463), (213, 110481), (214, 110487), (220, 110511), (230, 110547), (232, 110556), (235, 110571),

Gene: RedWattleHog_75 Start: 68343, Stop: 69437, Start Num: 17

Candidate Starts for RedWattleHog_75:

(Start: 17 @68343 has 2 MA's), (Start: 23 @68388 has 1 MA's), (29, 68427), (46, 68502), (66, 68619), (97, 68772), (113, 68895), (150, 69090), (155, 69105), (183, 69210), (185, 69216), (203, 69288), (207, 69300), (214, 69324), (223, 69348), (225, 69351), (227, 69360), (234, 69405),

Gene: Rizal_197 Start: 108021, Stop: 109094, Start Num: 14

Candidate Starts for Rizal_197:

(10, 107994), (Start: 14 @108021 has 175 MA's), (22, 108054), (28, 108087), (Start: 43 @108177 has 1 MA's), (46, 108186), (61, 108282), (66, 108303), (137, 108711), (144, 108741), (149, 108765), (150, 108768), (171, 108828), (179, 108870), (193, 108930), (195, 108942), (207, 108981), (213, 108999), (214, 109005), (220, 109029), (230, 109065), (232, 109074), (235, 109089),

Gene: RoMag_200 Start: 109814, Stop: 110887, Start Num: 14

Candidate Starts for RoMag_200:

(10, 109787), (Start: 14 @109814 has 175 MA's), (22, 109847), (28, 109880), (Start: 43 @109970 has 1 MA's), (46, 109979), (61, 110075), (66, 110096), (137, 110504), (144, 110534), (149, 110558), (150,

110561), (171, 110621), (179, 110663), (193, 110723), (195, 110735), (207, 110774), (213, 110792), (214, 110798), (220, 110822), (230, 110858), (232, 110867), (235, 110882),

Gene: Ronan_201 Start: 108206, Stop: 109279, Start Num: 14

Candidate Starts for Ronan_201:

(10, 108179), (Start: 14 @108206 has 175 MA's), (22, 108239), (28, 108272), (Start: 43 @108362 has 1 MA's), (46, 108371), (61, 108467), (66, 108488), (137, 108896), (144, 108926), (149, 108950), (150, 108953), (171, 109013), (179, 109055), (193, 109115), (195, 109127), (207, 109166), (213, 109184), (214, 109190), (220, 109214), (230, 109250), (232, 109259), (235, 109274),

Gene: Roots515_207 Start: 111322, Stop: 112395, Start Num: 14

Candidate Starts for Roots515_207:

(10, 111295), (Start: 14 @111322 has 175 MA's), (22, 111355), (28, 111388), (Start: 43 @111478 has 1 MA's), (46, 111487), (61, 111583), (66, 111604), (137, 112012), (144, 112042), (149, 112066), (150, 112069), (171, 112129), (179, 112171), (193, 112231), (195, 112243), (207, 112282), (213, 112300), (214, 112306), (220, 112330), (230, 112366), (232, 112375), (235, 112390),

Gene: SCentae_147 Start: 103271, Stop: 104386, Start Num: 14

Candidate Starts for SCentae_147:

(5, 103007), (6, 103127), (Start: 14 @103271 has 175 MA's), (22, 103313), (Start: 34 @103391 has 2 MA's), (46, 103448), (53, 103505), (65, 103559), (66, 103565), (81, 103667), (84, 103679), (94, 103736), (97, 103751), (100, 103772), (122, 103907), (155, 104054), (157, 104060), (170, 104096), (187, 104174), (206, 104246), (229, 104324), (233, 104348),

Gene: Salacia_205 Start: 109906, Stop: 110979, Start Num: 14

Candidate Starts for Salacia_205:

(10, 109879), (Start: 14 @109906 has 175 MA's), (22, 109939), (28, 109972), (Start: 43 @110062 has 1 MA's), (46, 110071), (61, 110167), (66, 110188), (137, 110596), (144, 110626), (149, 110650), (150, 110653), (171, 110713), (179, 110755), (193, 110815), (195, 110827), (207, 110866), (213, 110884), (214, 110890), (220, 110914), (230, 110950), (232, 110959), (235, 110974),

Gene: SaltySpittoon_79 Start: 56382, Stop: 57458, Start Num: 25

Candidate Starts for SaltySpittoon_79:

(Start: 25 @56382 has 81 MA's), (Start: 27 @56400 has 5 MA's), (Start: 35 @56454 has 2 MA's), (57, 56589), (71, 56664), (76, 56700), (89, 56757), (96, 56781), (101, 56823), (109, 56895), (112, 56910), (132, 57006), (133, 57015), (138, 57045), (145, 57075), (154, 57114), (163, 57150), (170, 57177), (172, 57183), (213, 57348), (223, 57381), (230, 57420), (236, 57450),

Gene: Samisti12_78 Start: 58348, Stop: 59412, Start Num: 25

Candidate Starts for Samisti12_78:

(Start: 25 @58348 has 81 MA's), (Start: 34 @58417 has 2 MA's), (62, 58579), (68, 58612), (69, 58615), (74, 58636), (96, 58741), (101, 58783), (109, 58855), (110, 58858), (112, 58870), (118, 58894), (127, 58954), (138, 59005), (145, 59035), (154, 59074), (163, 59110), (172, 59143), (180, 59182), (203, 59272), (223, 59335), (236, 59404),

Gene: Sauce_201 Start: 108720, Stop: 109793, Start Num: 14

Candidate Starts for Sauce_201:

(10, 108693), (Start: 14 @108720 has 175 MA's), (22, 108753), (28, 108786), (Start: 43 @108876 has 1 MA's), (46, 108885), (61, 108981), (66, 109002), (137, 109410), (144, 109440), (149, 109464), (150, 109467), (171, 109527), (179, 109569), (193, 109629), (195, 109641), (207, 109680), (213, 109698), (214, 109704), (220, 109728), (230, 109764), (232, 109773), (235, 109788),

Gene: ScarletRaider_64 Start: 55642, Stop: 54704, Start Num: 37

Candidate Starts for ScarletRaider_64:

(36, 55645), (Start: 37 @55642 has 8 MA's), (Start: 54 @55555 has 2 MA's), (77, 55414), (78, 55408), (95, 55342), (104, 55270), (108, 55237), (110, 55225), (120, 55180), (121, 55168), (134, 55093), (145, 55033), (146, 55027), (153, 55003), (165, 54952), (168, 54943), (172, 54928), (177, 54892), (197, 54811), (199, 54802), (218, 54742), (224, 54730),

Gene: Scheme_79 Start: 57752, Stop: 58816, Start Num: 25

Candidate Starts for Scheme_79:

(Start: 25 @57752 has 81 MA's), (Start: 34 @57821 has 2 MA's), (62, 57983), (68, 58016), (69, 58019), (74, 58040), (96, 58145), (101, 58187), (109, 58259), (110, 58262), (112, 58274), (118, 58298), (127, 58358), (138, 58409), (145, 58439), (154, 58478), (163, 58514), (172, 58547), (180, 58586), (203, 58676), (223, 58739), (236, 58808),

Gene: Schomber_64 Start: 52480, Stop: 51542, Start Num: 37

Candidate Starts for Schomber_64:

(Start: 37 @52480 has 8 MA's), (Start: 54 @52393 has 2 MA's), (77, 52252), (78, 52246), (95, 52180), (98, 52162), (108, 52075), (110, 52063), (119, 52021), (120, 52018), (121, 52006), (134, 51931), (138, 51901), (139, 51898), (145, 51871), (165, 51790), (168, 51781), (177, 51730), (196, 51652), (224, 51568),

Gene: ScoobyDoobyDoo_186 Start: 103679, Stop: 104788, Start Num: 14

Candidate Starts for ScoobyDoobyDoo_186:

(Start: 14 @103679 has 175 MA's), (18, 103700), (38, 103820), (61, 103964), (65, 103979), (69, 104015), (74, 104036), (75, 104060), (97, 104147), (120, 104285), (123, 104306), (141, 104402), (176, 104546), (187, 104585),

Gene: ScottMcG_198 Start: 108527, Stop: 109600, Start Num: 14

Candidate Starts for ScottMcG_198:

(10, 108500), (Start: 14 @108527 has 175 MA's), (22, 108560), (28, 108593), (Start: 43 @108683 has 1 MA's), (46, 108692), (61, 108788), (66, 108809), (137, 109217), (144, 109247), (149, 109271), (150, 109274), (171, 109334), (179, 109376), (193, 109436), (195, 109448), (207, 109487), (213, 109505), (214, 109511), (220, 109535), (230, 109571), (232, 109580), (235, 109595),

Gene: Sebata_206 Start: 111229, Stop: 112302, Start Num: 14

Candidate Starts for Sebata_206:

(10, 111202), (Start: 14 @111229 has 175 MA's), (22, 111262), (28, 111295), (Start: 43 @111385 has 1 MA's), (46, 111394), (61, 111490), (66, 111511), (137, 111919), (144, 111949), (149, 111973), (150, 111976), (171, 112036), (179, 112078), (193, 112138), (195, 112150), (207, 112189), (213, 112207), (214, 112213), (220, 112237), (230, 112273), (232, 112282), (235, 112297),

Gene: SeresaTree_58 Start: 47099, Stop: 47941, Start Num: 67

Candidate Starts for SeresaTree_58:

(Start: 25 @46844 has 81 MA's), (63, 47081), (64, 47084), (67, 47099), (72, 47141), (96, 47252), (101, 47294), (112, 47381), (116, 47399), (126, 47465), (132, 47483), (138, 47522), (145, 47552), (172, 47660), (182, 47720), (186, 47732), (205, 47804), (223, 47864), (230, 47903),

Gene: Settecandela_115 Start: 83314, Stop: 84369, Start Num: 15

Candidate Starts for Settecandela_115:

(7, 83179), (Start: 15 @83314 has 2 MA's), (Start: 27 @83374 has 5 MA's), (39, 83455), (100, 83776), (111, 83863), (135, 83980), (151, 84043), (155, 84055), (157, 84061), (160, 84073), (171, 84097), (181, 84142), (185, 84166), (202, 84235), (206, 84247), (207, 84250), (208, 84253), (223, 84301), (226, 84310),

Gene: Sham_54 Start: 47385, Stop: 48482, Start Num: 25

Candidate Starts for Sham_54:

(Start: 25 @47385 has 81 MA's), (63, 47622), (67, 47640), (72, 47682), (96, 47793), (101, 47835), (112, 47922), (116, 47940), (133, 48033), (140, 48069), (145, 48093), (152, 48123), (164, 48171), (172, 48201), (186, 48273), (198, 48327), (223, 48405),

Gene: Shaqnato_196 Start: 108937, Stop: 110010, Start Num: 14

Candidate Starts for Shaqnato_196:

(10, 108910), (Start: 14 @108937 has 175 MA's), (22, 108970), (28, 109003), (Start: 43 @109093 has 1 MA's), (46, 109102), (61, 109198), (66, 109219), (137, 109627), (144, 109657), (149, 109681), (150, 109684), (171, 109744), (179, 109786), (193, 109846), (195, 109858), (207, 109897), (213, 109915), (214, 109921), (220, 109945), (230, 109981), (232, 109990), (235, 110005),

Gene: Shelob_206 Start: 111677, Stop: 112750, Start Num: 14

Candidate Starts for Shelob_206:

(10, 111650), (Start: 14 @111677 has 175 MA's), (22, 111710), (28, 111743), (Start: 43 @111833 has 1 MA's), (46, 111842), (61, 111938), (66, 111959), (137, 112367), (144, 112397), (149, 112421), (150, 112424), (171, 112484), (179, 112526), (193, 112586), (195, 112598), (207, 112637), (213, 112655), (214, 112661), (220, 112685), (230, 112721), (232, 112730), (235, 112745),

Gene: ShiaLabeouf_202 Start: 108711, Stop: 109784, Start Num: 14

Candidate Starts for ShiaLabeouf_202:

(10, 108684), (Start: 14 @108711 has 175 MA's), (22, 108744), (28, 108777), (Start: 43 @108867 has 1 MA's), (46, 108876), (61, 108972), (66, 108993), (137, 109401), (144, 109431), (149, 109455), (150, 109458), (171, 109518), (179, 109560), (193, 109620), (195, 109632), (207, 109671), (213, 109689), (214, 109695), (220, 109719), (230, 109755), (232, 109764), (235, 109779),

Gene: Shifa_182 Start: 109288, Stop: 110361, Start Num: 14

Candidate Starts for Shifa_182:

(10, 109261), (Start: 14 @109288 has 175 MA's), (22, 109321), (28, 109354), (Start: 43 @109444 has 1 MA's), (46, 109453), (61, 109549), (66, 109570), (137, 109978), (144, 110008), (149, 110032), (150, 110035), (171, 110095), (179, 110137), (193, 110197), (195, 110209), (207, 110248), (213, 110266), (214, 110272), (220, 110296), (230, 110332), (232, 110341), (235, 110356),

Gene: Shnickers_203 Start: 108775, Stop: 109848, Start Num: 14

Candidate Starts for Shnickers_203:

(10, 108748), (Start: 14 @108775 has 175 MA's), (22, 108808), (28, 108841), (Start: 43 @108931 has 1 MA's), (46, 108940), (61, 109036), (66, 109057), (137, 109465), (144, 109495), (149, 109519), (150, 109522), (171, 109582), (179, 109624), (193, 109684), (195, 109696), (207, 109735), (213, 109753), (214, 109759), (220, 109783), (230, 109819), (232, 109828), (235, 109843),

Gene: Shrimp_207 Start: 110832, Stop: 111905, Start Num: 14

Candidate Starts for Shrimp_207:

(10, 110805), (Start: 14 @110832 has 175 MA's), (22, 110865), (28, 110898), (Start: 43 @110988 has 1 MA's), (46, 110997), (61, 111093), (66, 111114), (137, 111522), (144, 111552), (149, 111576), (150, 111579), (171, 111639), (179, 111681), (193, 111741), (195, 111753), (207, 111792), (213, 111810), (214, 111816), (220, 111840), (230, 111876), (232, 111885), (235, 111900),

Gene: SilverDipper_209 Start: 110324, Stop: 111397, Start Num: 14

Candidate Starts for SilverDipper_209:

(10, 110297), (Start: 14 @110324 has 175 MA's), (22, 110357), (28, 110390), (Start: 43 @110480 has 1 MA's), (46, 110489), (61, 110585), (66, 110606), (137, 111014), (144, 111044), (149, 111068), (150, 111071), (171, 111131), (179, 111173), (193, 111233), (195, 111245), (207, 111284), (213, 111302),

(214, 111308), (220, 111332), (230, 111368), (232, 111377), (235, 111392),

Gene: Skog_208 Start: 132502, Stop: 133617, Start Num: 14

Candidate Starts for Skog_208:

(1, 131149), (2, 131212), (3, 131368), (4, 131917), (6, 132355), (Start: 14 @132502 has 175 MA's), (22, 132544), (46, 132679), (65, 132790), (66, 132796), (84, 132910), (94, 132967), (97, 132982), (100, 133003), (148, 133264), (155, 133285), (157, 133291), (170, 133327), (171, 133330), (179, 133372), (187, 133405), (191, 133429), (198, 133456), (207, 133480), (227, 133543), (229, 133555),

Gene: SmallFry_205 Start: 108869, Stop: 109942, Start Num: 14

Candidate Starts for SmallFry_205:

(10, 108842), (Start: 14 @108869 has 175 MA's), (22, 108902), (28, 108935), (Start: 43 @109025 has 1 MA's), (46, 109034), (61, 109130), (66, 109151), (137, 109559), (144, 109589), (149, 109613), (150, 109616), (171, 109676), (179, 109718), (193, 109778), (195, 109790), (207, 109829), (213, 109847), (214, 109853), (220, 109877), (230, 109913), (232, 109922), (235, 109937),

Gene: Sollertia_80 Start: 56336, Stop: 57412, Start Num: 25

Candidate Starts for Sollertia_80:

(Start: 25 @56336 has 81 MA's), (Start: 27 @56354 has 5 MA's), (Start: 35 @56408 has 2 MA's), (57, 56543), (71, 56618), (76, 56654), (96, 56735), (101, 56777), (109, 56849), (112, 56864), (119, 56894), (132, 56960), (145, 57029), (152, 57059), (161, 57092), (163, 57104), (170, 57131), (172, 57137), (213, 57302), (223, 57335), (236, 57404),

Gene: SparkleGoddess_58 Start: 47534, Stop: 48631, Start Num: 25

Candidate Starts for SparkleGoddess_58:

(Start: 25 @47534 has 81 MA's), (58, 47750), (81, 47888), (87, 47903), (93, 47933), (96, 47942), (101, 47984), (112, 48071), (118, 48095), (145, 48242), (164, 48320), (172, 48350), (184, 48416), (188, 48428), (212, 48518), (217, 48533), (223, 48554),

Gene: Spec_200 Start: 109060, Stop: 110133, Start Num: 14

Candidate Starts for Spec_200:

(10, 109033), (Start: 14 @109060 has 175 MA's), (22, 109093), (28, 109126), (Start: 43 @109216 has 1 MA's), (46, 109225), (61, 109321), (66, 109342), (137, 109750), (144, 109780), (149, 109804), (150, 109807), (171, 109867), (179, 109909), (193, 109969), (195, 109981), (207, 110020), (213, 110038), (214, 110044), (220, 110068), (230, 110104), (232, 110113), (235, 110128),

Gene: Specks_209 Start: 111176, Stop: 112249, Start Num: 14

Candidate Starts for Specks_209:

(10, 111149), (Start: 14 @111176 has 175 MA's), (22, 111209), (28, 111242), (Start: 43 @111332 has 1 MA's), (46, 111341), (61, 111437), (66, 111458), (137, 111866), (144, 111896), (149, 111920), (150, 111923), (171, 111983), (179, 112025), (193, 112085), (195, 112097), (207, 112136), (213, 112154), (214, 112160), (220, 112184), (230, 112220), (232, 112229), (235, 112244),

Gene: Spelly_80 Start: 56337, Stop: 57413, Start Num: 25

Candidate Starts for Spelly_80:

(Start: 25 @56337 has 81 MA's), (Start: 27 @56355 has 5 MA's), (Start: 35 @56409 has 2 MA's), (57, 56544), (71, 56619), (76, 56655), (89, 56712), (96, 56736), (101, 56778), (109, 56850), (112, 56865), (132, 56961), (133, 56970), (138, 57000), (145, 57030), (154, 57069), (163, 57105), (170, 57132), (172, 57138), (213, 57303), (223, 57336), (230, 57375), (236, 57405),

Gene: Spilled_81 Start: 56454, Stop: 57530, Start Num: 25

Candidate Starts for Spilled_81:

(Start: 25 @56454 has 81 MA's), (Start: 27 @56472 has 5 MA's), (Start: 35 @56526 has 2 MA's), (57, 56661), (71, 56736), (76, 56772), (89, 56829), (96, 56853), (101, 56895), (109, 56967), (112, 56982), (132, 57078), (133, 57087), (138, 57117), (145, 57147), (154, 57186), (163, 57222), (170, 57249), (172, 57255), (213, 57420), (223, 57453), (230, 57492), (236, 57522),

Gene: Sprinklers_203 Start: 109427, Stop: 110500, Start Num: 14

Candidate Starts for Sprinklers_203:

(10, 109400), (Start: 14 @109427 has 175 MA's), (22, 109460), (28, 109493), (Start: 43 @109583 has 1 MA's), (46, 109592), (61, 109688), (66, 109709), (137, 110117), (144, 110147), (149, 110171), (150, 110174), (171, 110234), (179, 110276), (193, 110336), (195, 110348), (207, 110387), (213, 110405), (214, 110411), (220, 110435), (230, 110471), (232, 110480), (235, 110495),

Gene: Spud_199 Start: 109139, Stop: 110212, Start Num: 14

Candidate Starts for Spud_199:

(10, 109112), (Start: 14 @109139 has 175 MA's), (22, 109172), (28, 109205), (Start: 43 @109295 has 1 MA's), (46, 109304), (61, 109400), (66, 109421), (137, 109829), (144, 109859), (149, 109883), (150, 109886), (171, 109946), (179, 109988), (193, 110048), (195, 110060), (207, 110099), (213, 110117), (214, 110123), (220, 110147), (230, 110183), (232, 110192), (235, 110207),

Gene: Squillium_77 Start: 56546, Stop: 57610, Start Num: 25

Candidate Starts for Squillium_77:

(Start: 25 @56546 has 81 MA's), (68, 56810), (69, 56813), (74, 56834), (96, 56939), (101, 56981), (109, 57053), (110, 57056), (112, 57068), (127, 57152), (138, 57203), (145, 57233), (154, 57272), (161, 57296), (172, 57341), (220, 57530), (230, 57572), (236, 57602),

Gene: SrishMeg2525_202 Start: 110303, Stop: 111376, Start Num: 14

Candidate Starts for SrishMeg2525_202:

(10, 110276), (Start: 14 @110303 has 175 MA's), (22, 110336), (28, 110369), (Start: 43 @110459 has 1 MA's), (46, 110468), (61, 110564), (66, 110585), (137, 110993), (144, 111023), (149, 111047), (150, 111050), (171, 111110), (179, 111152), (193, 111212), (195, 111224), (207, 111263), (213, 111281), (214, 111287), (220, 111311), (230, 111347), (232, 111356), (235, 111371),

Gene: Stanimal_80 Start: 56225, Stop: 57301, Start Num: 25

Candidate Starts for Stanimal_80:

(Start: 25 @56225 has 81 MA's), (Start: 27 @56243 has 5 MA's), (Start: 35 @56297 has 2 MA's), (57, 56432), (71, 56507), (76, 56543), (96, 56624), (101, 56666), (109, 56738), (112, 56753), (119, 56783), (132, 56849), (145, 56918), (152, 56948), (161, 56981), (163, 56993), (170, 57020), (172, 57026), (213, 57191), (223, 57224), (236, 57293),

Gene: StarPlatinum_80 Start: 56915, Stop: 57973, Start Num: 27

Candidate Starts for StarPlatinum_80:

(Start: 25 @56897 has 81 MA's), (Start: 27 @56915 has 5 MA's), (Start: 35 @56969 has 2 MA's), (57, 57104), (71, 57179), (76, 57215), (89, 57272), (96, 57296), (101, 57338), (109, 57410), (112, 57425), (132, 57521), (133, 57530), (145, 57590), (154, 57629), (163, 57665), (170, 57692), (172, 57698), (213, 57863), (223, 57896), (230, 57935), (236, 57965),

Gene: Starbow_78 Start: 56376, Stop: 57434, Start Num: 27

Candidate Starts for Starbow_78:

(Start: 25 @56358 has 81 MA's), (Start: 27 @56376 has 5 MA's), (Start: 35 @56430 has 2 MA's), (57, 56565), (71, 56640), (76, 56676), (89, 56733), (96, 56757), (101, 56799), (109, 56871), (112, 56886), (132, 56982), (133, 56991), (138, 57021), (145, 57051), (154, 57090), (163, 57126), (170, 57153), (172, 57159), (213, 57324), (223, 57357), (230, 57396), (236, 57426),

Gene: StephanieG_201 Start: 110334, Stop: 111407, Start Num: 14

Candidate Starts for StephanieG_201:

(10, 110307), (Start: 14 @110334 has 175 MA's), (22, 110367), (28, 110400), (Start: 43 @110490 has 1 MA's), (46, 110499), (61, 110595), (66, 110616), (137, 111024), (144, 111054), (149, 111078), (150, 111081), (171, 111141), (179, 111183), (193, 111243), (195, 111255), (207, 111294), (213, 111312), (214, 111318), (220, 111342), (230, 111378), (232, 111387), (235, 111402),

Gene: Stigma_57 Start: 47548, Stop: 48645, Start Num: 25

Candidate Starts for Stigma_57:

(Start: 25 @47548 has 81 MA's), (58, 47764), (81, 47902), (87, 47917), (93, 47947), (96, 47956), (101, 47998), (112, 48085), (118, 48109), (145, 48256), (164, 48334), (172, 48364), (184, 48430), (188, 48442), (212, 48532), (217, 48547), (223, 48568),

Gene: Stormageddon_72 Start: 68324, Stop: 69418, Start Num: 17

Candidate Starts for Stormageddon_72:

(Start: 17 @68324 has 2 MA's), (Start: 23 @68369 has 1 MA's), (29, 68408), (46, 68483), (66, 68600), (97, 68753), (113, 68876), (150, 69071), (155, 69086), (183, 69191), (185, 69197), (203, 69269), (207, 69281), (214, 69305), (223, 69329), (225, 69332), (227, 69341), (234, 69386),

Gene: Stubby_189 Start: 109179, Stop: 110252, Start Num: 14

Candidate Starts for Stubby_189:

(10, 109152), (Start: 14 @109179 has 175 MA's), (22, 109212), (28, 109245), (Start: 43 @109335 has 1 MA's), (46, 109344), (61, 109440), (66, 109461), (137, 109869), (144, 109899), (149, 109923), (150, 109926), (171, 109986), (179, 110028), (193, 110088), (195, 110100), (207, 110139), (213, 110157), (214, 110163), (220, 110187), (230, 110223), (232, 110232), (235, 110247),

Gene: StubbySaigey_210 Start: 109858, Stop: 110931, Start Num: 14

Candidate Starts for StubbySaigey_210:

(10, 109831), (Start: 14 @109858 has 175 MA's), (22, 109891), (28, 109924), (Start: 43 @110014 has 1 MA's), (46, 110023), (61, 110119), (66, 110140), (137, 110548), (144, 110578), (149, 110602), (150, 110605), (171, 110665), (179, 110707), (193, 110767), (195, 110779), (207, 110818), (213, 110836), (214, 110842), (220, 110866), (230, 110902), (232, 110911), (235, 110926),

Gene: Sushi23_77 Start: 57263, Stop: 58327, Start Num: 25

Candidate Starts for Sushi23_77:

(Start: 25 @57263 has 81 MA's), (Start: 34 @57332 has 2 MA's), (62, 57494), (68, 57527), (69, 57530), (74, 57551), (96, 57656), (101, 57698), (109, 57770), (110, 57773), (112, 57785), (118, 57809), (127, 57869), (138, 57920), (145, 57950), (154, 57989), (163, 58025), (172, 58058), (180, 58097), (203, 58187), (223, 58250), (236, 58319),

Gene: Tainan_206 Start: 110196, Stop: 111269, Start Num: 14

Candidate Starts for Tainan_206:

(10, 110169), (Start: 14 @110196 has 175 MA's), (22, 110229), (28, 110262), (Start: 43 @110352 has 1 MA's), (46, 110361), (61, 110457), (66, 110478), (137, 110886), (144, 110916), (149, 110940), (150, 110943), (171, 111003), (179, 111045), (193, 111105), (195, 111117), (207, 111156), (213, 111174), (214, 111180), (220, 111204), (230, 111240), (232, 111249), (235, 111264),

Gene: Targaryen_78 Start: 57969, Stop: 59033, Start Num: 25

Candidate Starts for Targaryen_78:

(Start: 25 @57969 has 81 MA's), (64, 58209), (68, 58233), (69, 58236), (74, 58257), (82, 58311), (96, 58362), (101, 58404), (109, 58476), (110, 58479), (112, 58491), (118, 58515), (127, 58575), (133, 58596), (138, 58626), (145, 58656), (146, 58662), (164, 58734), (172, 58764), (203, 58893), (220, 58953), (230, 58995), (236, 59025),

Gene: Teardrop_202 Start: 108371, Stop: 109444, Start Num: 14

Candidate Starts for Teardrop_202:

(10, 108344), (Start: 14 @108371 has 175 MA's), (22, 108404), (28, 108437), (Start: 43 @108527 has 1 MA's), (46, 108536), (61, 108632), (66, 108653), (137, 109061), (144, 109091), (149, 109115), (150, 109118), (171, 109178), (179, 109220), (193, 109280), (195, 109292), (207, 109331), (213, 109349), (214, 109355), (220, 109379), (230, 109415), (232, 109424), (235, 109439),

Gene: Teutsch_78 Start: 57526, Stop: 58590, Start Num: 25

Candidate Starts for Teutsch_78:

(Start: 25 @57526 has 81 MA's), (Start: 34 @57595 has 2 MA's), (62, 57757), (68, 57790), (69, 57793), (74, 57814), (96, 57919), (101, 57961), (109, 58033), (110, 58036), (112, 58048), (118, 58072), (127, 58132), (138, 58183), (145, 58213), (154, 58252), (163, 58288), (172, 58321), (180, 58360), (203, 58450), (223, 58513), (236, 58582),

Gene: TinyTim_203 Start: 109152, Stop: 110225, Start Num: 14

Candidate Starts for TinyTim_203:

(10, 109125), (Start: 14 @109152 has 175 MA's), (22, 109185), (28, 109218), (Start: 43 @109308 has 1 MA's), (46, 109317), (61, 109413), (66, 109434), (137, 109842), (144, 109872), (149, 109896), (150, 109899), (171, 109959), (179, 110001), (193, 110061), (195, 110073), (207, 110112), (213, 110130), (214, 110136), (220, 110160), (230, 110196), (232, 110205), (235, 110220),

Gene: TomSawyer_78 Start: 55976, Stop: 57052, Start Num: 25

Candidate Starts for TomSawyer_78:

(Start: 25 @55976 has 81 MA's), (Start: 27 @55994 has 5 MA's), (Start: 35 @56048 has 2 MA's), (57, 56183), (71, 56258), (76, 56294), (89, 56351), (96, 56375), (101, 56417), (109, 56489), (112, 56504), (132, 56600), (133, 56609), (138, 56639), (145, 56669), (154, 56708), (163, 56744), (170, 56771), (172, 56777), (213, 56942), (223, 56975), (230, 57014), (236, 57044),

Gene: Tomas_82 Start: 58734, Stop: 59792, Start Num: 27

Candidate Starts for Tomas_82:

(Start: 25 @58716 has 81 MA's), (Start: 27 @58734 has 5 MA's), (Start: 54 @58902 has 2 MA's), (57, 58923), (71, 58998), (96, 59115), (101, 59157), (109, 59229), (112, 59244), (132, 59340), (145, 59409), (152, 59439), (154, 59448), (172, 59517), (194, 59622), (223, 59715), (236, 59784),

Gene: Tonenili_226 Start: 115973, Stop: 117046, Start Num: 14

Candidate Starts for Tonenili_226:

(6, 115823), (Start: 14 @115973 has 175 MA's), (22, 116006), (28, 116039), (32, 116066), (61, 116234), (66, 116255), (137, 116663), (149, 116717), (150, 116720), (171, 116780), (179, 116822), (193, 116882), (207, 116933), (213, 116951), (214, 116957), (220, 116981), (223, 116984), (230, 117017), (232, 117026), (235, 117041),

Gene: Tortoise16_203 Start: 109614, Stop: 110687, Start Num: 14

Candidate Starts for Tortoise16_203:

(10, 109587), (Start: 14 @109614 has 175 MA's), (22, 109647), (28, 109680), (Start: 43 @109770 has 1 MA's), (46, 109779), (61, 109875), (66, 109896), (137, 110304), (144, 110334), (149, 110358), (150, 110361), (171, 110421), (179, 110463), (193, 110523), (195, 110535), (207, 110574), (213, 110592), (214, 110598), (220, 110622), (230, 110658), (232, 110667), (235, 110682),

Gene: Tribute_76 Start: 56732, Stop: 57796, Start Num: 25

Candidate Starts for Tribute_76:

(Start: 25 @56732 has 81 MA's), (Start: 34 @56801 has 2 MA's), (Start: 54 @56918 has 2 MA's), (62, 56963), (68, 56996), (69, 56999), (74, 57020), (96, 57125), (101, 57167), (109, 57239), (110, 57242),

(112, 57254), (118, 57278), (127, 57338), (138, 57389), (145, 57419), (154, 57458), (163, 57494), (172, 57527), (180, 57566), (203, 57656), (223, 57719), (236, 57788),

Gene: Trina_99 Start: 66025, Stop: 66966, Start Num: 31

Candidate Starts for Trina_99:

(Start: 17 @65941 has 2 MA's), (Start: 31 @66025 has 1 MA's), (Start: 34 @66049 has 2 MA's), (36, 66073), (Start: 44 @66100 has 2 MA's), (66, 66229), (69, 66247), (71, 66256), (88, 66337), (96, 66370), (98, 66385), (109, 66481), (112, 66496), (132, 66595), (162, 66736), (169, 66766), (172, 66775), (175, 66799), (201, 66913), (216, 66958),

Gene: Trinitium_201 Start: 108899, Stop: 109972, Start Num: 14

Candidate Starts for Trinitium_201:

(10, 108872), (Start: 14 @108899 has 175 MA's), (22, 108932), (28, 108965), (Start: 43 @109055 has 1 MA's), (46, 109064), (61, 109160), (66, 109181), (137, 109589), (144, 109619), (149, 109643), (150, 109646), (171, 109706), (179, 109748), (193, 109808), (195, 109820), (207, 109859), (213, 109877), (214, 109883), (220, 109907), (230, 109943), (232, 109952), (235, 109967),

Gene: TunaTartare_56 Start: 47688, Stop: 48785, Start Num: 25

Candidate Starts for TunaTartare_56:

(Start: 25 @47688 has 81 MA's), (63, 47925), (64, 47928), (67, 47943), (72, 47985), (96, 48096), (101, 48138), (112, 48225), (116, 48243), (132, 48327), (133, 48336), (140, 48372), (145, 48396), (164, 48474), (172, 48504), (186, 48576), (198, 48630), (223, 48708),

Gene: Turret_198 Start: 108481, Stop: 109554, Start Num: 14

Candidate Starts for Turret_198:

(10, 108454), (Start: 14 @108481 has 175 MA's), (22, 108514), (28, 108547), (Start: 43 @108637 has 1 MA's), (46, 108646), (61, 108742), (66, 108763), (137, 109171), (144, 109201), (149, 109225), (150, 109228), (171, 109288), (179, 109330), (193, 109390), (195, 109402), (207, 109441), (213, 109459), (214, 109465), (220, 109489), (230, 109525), (232, 109534), (235, 109549),

Gene: Twin_63 Start: 52643, Stop: 51792, Start Num: 54

Candidate Starts for Twin_63:

(Start: 37 @52730 has 8 MA's), (Start: 54 @52643 has 2 MA's), (77, 52502), (78, 52496), (95, 52430), (98, 52412), (108, 52325), (110, 52313), (119, 52271), (120, 52268), (121, 52256), (134, 52181), (138, 52151), (139, 52148), (145, 52121), (165, 52040), (168, 52031), (177, 51980), (196, 51902), (224, 51818),

Gene: Tyke_203 Start: 110981, Stop: 112054, Start Num: 14

Candidate Starts for Tyke_203:

(10, 110954), (Start: 14 @110981 has 175 MA's), (22, 111014), (28, 111047), (Start: 43 @111137 has 1 MA's), (46, 111146), (61, 111242), (66, 111263), (137, 111671), (144, 111701), (149, 111725), (150, 111728), (171, 111788), (179, 111830), (193, 111890), (195, 111902), (207, 111941), (213, 111959), (214, 111965), (220, 111989), (230, 112025), (232, 112034), (235, 112049),

Gene: UBSmoodge_67 Start: 56124, Stop: 55186, Start Num: 37

Candidate Starts for UBSmoodge_67:

(36, 56127), (Start: 37 @56124 has 8 MA's), (Start: 54 @56037 has 2 MA's), (77, 55896), (78, 55890), (95, 55824), (99, 55794), (104, 55752), (108, 55719), (110, 55707), (117, 55674), (120, 55662), (121, 55650), (134, 55575), (145, 55515), (146, 55509), (153, 55485), (165, 55434), (168, 55425), (177, 55374), (197, 55293), (199, 55284), (224, 55212),

Gene: ValleyTerrace_206 Start: 109065, Stop: 110138, Start Num: 14

Candidate Starts for ValleyTerrace_206:

(10, 109038), (Start: 14 @109065 has 175 MA's), (22, 109098), (28, 109131), (Start: 43 @109221 has 1 MA's), (46, 109230), (61, 109326), (66, 109347), (137, 109755), (144, 109785), (149, 109809), (150, 109812), (171, 109872), (179, 109914), (193, 109974), (195, 109986), (207, 110025), (213, 110043), (214, 110049), (220, 110073), (230, 110109), (232, 110118), (235, 110133),

Gene: Wakanda_54 Start: 47682, Stop: 48764, Start Num: 25

Candidate Starts for Wakanda_54:

(Start: 25 @47682 has 81 MA's), (96, 48075), (101, 48117), (112, 48204), (116, 48222), (132, 48306), (138, 48345), (145, 48375), (152, 48405), (172, 48483), (176, 48513), (223, 48687),

Gene: Wally_203 Start: 109049, Stop: 110122, Start Num: 14

Candidate Starts for Wally_203:

(10, 109022), (Start: 14 @109049 has 175 MA's), (22, 109082), (28, 109115), (Start: 43 @109205 has 1 MA's), (46, 109214), (61, 109310), (66, 109331), (137, 109739), (144, 109769), (149, 109793), (150, 109796), (171, 109856), (179, 109898), (193, 109958), (195, 109970), (207, 110009), (213, 110027), (214, 110033), (220, 110057), (230, 110093), (232, 110102), (235, 110117),

Gene: Warpy_81 Start: 57433, Stop: 58497, Start Num: 25

Candidate Starts for Warpy_81:

(Start: 25 @57433 has 81 MA's), (64, 57673), (68, 57697), (69, 57700), (74, 57721), (96, 57826), (101, 57868), (109, 57940), (110, 57943), (112, 57955), (118, 57979), (127, 58039), (133, 58060), (138, 58090), (145, 58120), (146, 58126), (172, 58228), (203, 58357), (220, 58417), (230, 58459), (236, 58489),

Gene: Watermoore_78 Start: 57742, Stop: 58806, Start Num: 25

Candidate Starts for Watermoore_78:

(Start: 25 @57742 has 81 MA's), (Start: 34 @57811 has 2 MA's), (62, 57973), (68, 58006), (69, 58009), (74, 58030), (96, 58135), (101, 58177), (109, 58249), (110, 58252), (112, 58264), (118, 58288), (127, 58348), (138, 58399), (145, 58429), (154, 58468), (163, 58504), (172, 58537), (180, 58576), (203, 58666), (223, 58729), (236, 58798),

Gene: Weasels2_99 Start: 59743, Stop: 60729, Start Num: 23

Candidate Starts for Weasels2_99:

(Start: 23 @59743 has 1 MA's), (55, 59932), (59, 59965), (71, 60019), (88, 60097), (93, 60121), (103, 60187), (105, 60202), (109, 60241), (112, 60256), (164, 60505), (169, 60526), (184, 60604),

Gene: WhereRU_74 Start: 55983, Stop: 57047, Start Num: 25

Candidate Starts for WhereRU_74:

(Start: 25 @55983 has 81 MA's), (68, 56247), (69, 56250), (74, 56271), (96, 56376), (101, 56418), (109, 56490), (110, 56493), (112, 56505), (127, 56589), (138, 56640), (145, 56670), (154, 56709), (161, 56733), (172, 56778), (220, 56967), (230, 57009), (236, 57039),

Gene: Willis_206 Start: 109963, Stop: 111036, Start Num: 14

Candidate Starts for Willis_206:

(10, 109936), (Start: 14 @109963 has 175 MA's), (22, 109996), (28, 110029), (Start: 43 @110119 has 1 MA's), (46, 110128), (61, 110224), (66, 110245), (137, 110653), (144, 110683), (149, 110707), (150, 110710), (171, 110770), (179, 110812), (193, 110872), (195, 110884), (207, 110923), (213, 110941), (214, 110947), (220, 110971), (230, 111007), (232, 111016), (235, 111031),

Gene: Wipeout_77 Start: 56745, Stop: 57803, Start Num: 27

Candidate Starts for Wipeout_77:

(Start: 25 @56727 has 81 MA's), (Start: 27 @56745 has 5 MA's), (Start: 35 @56799 has 2 MA's), (57, 56934), (71, 57009), (76, 57045), (89, 57102), (96, 57126), (101, 57168), (109, 57240), (112, 57255),

(132, 57351), (133, 57360), (138, 57390), (145, 57420), (154, 57459), (163, 57495), (170, 57522), (172, 57528), (213, 57693), (223, 57726), (230, 57765), (236, 57795),

Gene: Wofford_79 Start: 57498, Stop: 58502, Start Num: 35

Candidate Starts for Wofford_79:

(Start: 25 @57426 has 81 MA's), (Start: 27 @57444 has 5 MA's), (Start: 35 @57498 has 2 MA's), (57, 57633), (63, 57663), (71, 57708), (76, 57744), (89, 57801), (96, 57825), (101, 57867), (109, 57939), (112, 57954), (132, 58050), (133, 58059), (145, 58119), (154, 58158), (163, 58194), (170, 58221), (172, 58227), (213, 58392), (223, 58425), (230, 58464), (236, 58494),

Gene: Yaboi_80 Start: 56313, Stop: 57389, Start Num: 25

Candidate Starts for Yaboi_80:

(Start: 25 @56313 has 81 MA's), (Start: 27 @56331 has 5 MA's), (Start: 35 @56385 has 2 MA's), (57, 56520), (71, 56595), (76, 56631), (96, 56712), (101, 56754), (109, 56826), (112, 56841), (119, 56871), (132, 56937), (145, 57006), (152, 57036), (161, 57069), (163, 57081), (170, 57108), (172, 57114), (213, 57279), (223, 57312), (236, 57381),

Gene: Yassified_202 Start: 109404, Stop: 110477, Start Num: 14

Candidate Starts for Yassified_202:

(10, 109377), (Start: 14 @109404 has 175 MA's), (22, 109437), (28, 109470), (Start: 43 @109560 has 1 MA's), (46, 109569), (61, 109665), (66, 109686), (137, 110094), (144, 110124), (149, 110148), (150, 110151), (171, 110211), (179, 110253), (193, 110313), (195, 110325), (207, 110364), (213, 110382), (214, 110388), (220, 110412), (230, 110448), (232, 110457), (235, 110472),

Gene: YemiJoy2021_206 Start: 110719, Stop: 111792, Start Num: 14

Candidate Starts for YemiJoy2021_206:

(10, 110692), (Start: 14 @110719 has 175 MA's), (22, 110752), (28, 110785), (Start: 43 @110875 has 1 MA's), (46, 110884), (61, 110980), (66, 111001), (137, 111409), (144, 111439), (149, 111463), (150, 111466), (171, 111526), (179, 111568), (193, 111628), (195, 111640), (207, 111679), (213, 111697), (214, 111703), (220, 111727), (230, 111763), (232, 111772), (235, 111787),

Gene: YoungMoneyMata_203 Start: 109261, Stop: 110334, Start Num: 14

Candidate Starts for YoungMoneyMata_203:

(10, 109234), (Start: 14 @109261 has 175 MA's), (22, 109294), (28, 109327), (Start: 43 @109417 has 1 MA's), (46, 109426), (61, 109522), (66, 109543), (137, 109951), (144, 109981), (149, 110005), (150, 110008), (171, 110068), (179, 110110), (193, 110170), (195, 110182), (207, 110221), (213, 110239), (214, 110245), (220, 110269), (230, 110305), (232, 110314), (235, 110329),

Gene: Yucca_205 Start: 110711, Stop: 111784, Start Num: 14

Candidate Starts for Yucca_205:

(10, 110684), (Start: 14 @110711 has 175 MA's), (22, 110744), (28, 110777), (Start: 43 @110867 has 1 MA's), (46, 110876), (61, 110972), (66, 110993), (137, 111401), (144, 111431), (149, 111455), (150, 111458), (171, 111518), (179, 111560), (193, 111620), (195, 111632), (207, 111671), (213, 111689), (214, 111695), (220, 111719), (230, 111755), (232, 111764), (235, 111779),

Gene: Zalkecks_204 Start: 109792, Stop: 110865, Start Num: 14

Candidate Starts for Zalkecks_204:

(10, 109765), (Start: 14 @109792 has 175 MA's), (22, 109825), (28, 109858), (Start: 43 @109948 has 1 MA's), (46, 109957), (61, 110053), (66, 110074), (137, 110482), (144, 110512), (149, 110536), (150, 110539), (171, 110599), (179, 110641), (193, 110701), (195, 110713), (207, 110752), (213, 110770), (214, 110776), (220, 110800), (230, 110836), (232, 110845), (235, 110860),

Gene: Zeenon_207 Start: 110363, Stop: 111436, Start Num: 14

Candidate Starts for Zeenon_207:

(10, 110336), (Start: 14 @110363 has 175 MA's), (22, 110396), (28, 110429), (Start: 43 @110519 has 1 MA's), (46, 110528), (61, 110624), (66, 110645), (137, 111053), (144, 111083), (149, 111107), (150, 111110), (171, 111170), (179, 111212), (193, 111272), (195, 111284), (207, 111323), (213, 111341), (214, 111347), (220, 111371), (230, 111407), (232, 111416), (235, 111431),

Gene: ZygoTaiga_202 Start: 110983, Stop: 112056, Start Num: 14

Candidate Starts for ZygoTaiga_202:

(10, 110956), (Start: 14 @110983 has 175 MA's), (22, 111016), (28, 111049), (Start: 43 @111139 has 1 MA's), (46, 111148), (61, 111244), (66, 111265), (137, 111673), (144, 111703), (149, 111727), (150, 111730), (171, 111790), (179, 111832), (193, 111892), (195, 111904), (207, 111943), (213, 111961), (214, 111967), (220, 111991), (230, 112027), (232, 112036), (235, 112051),