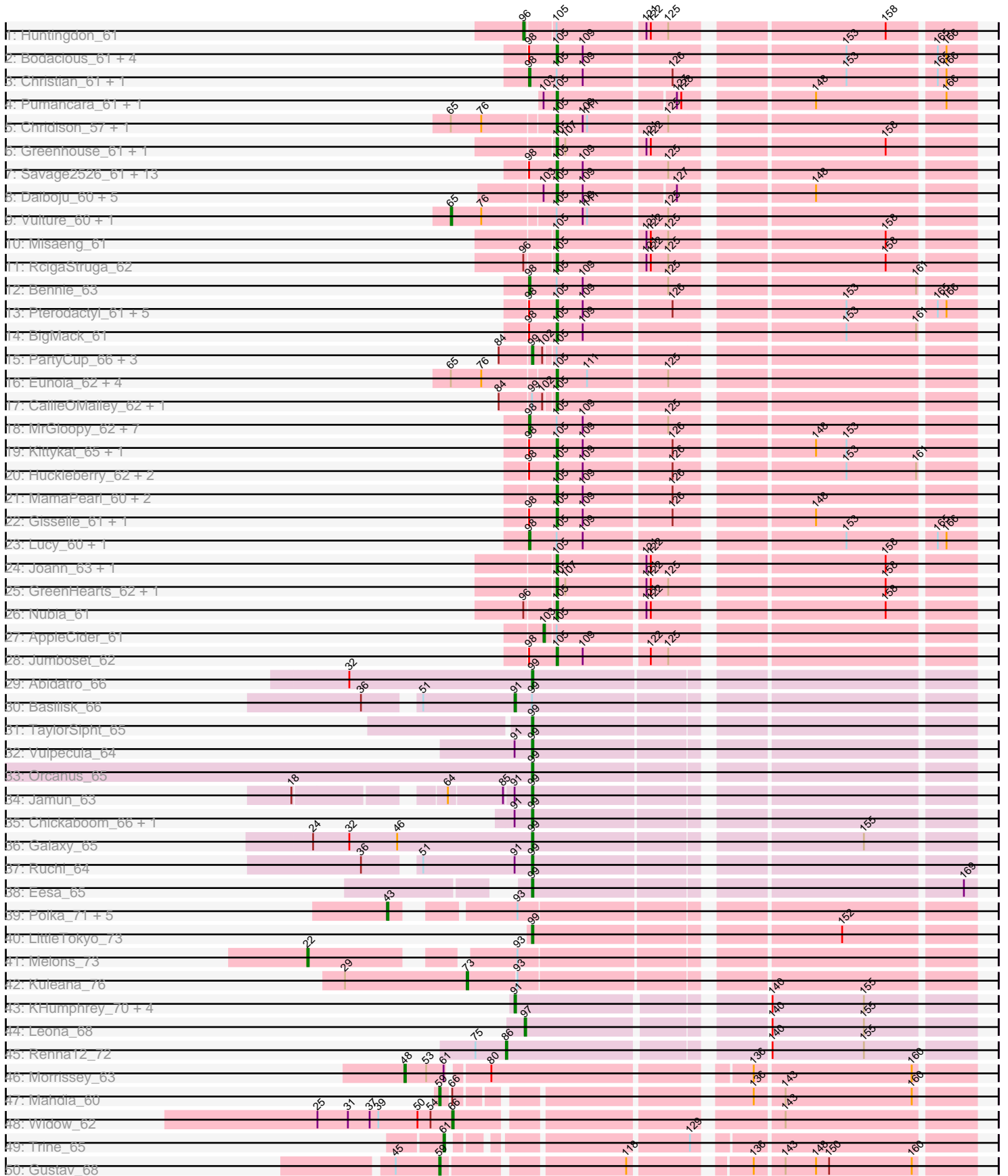
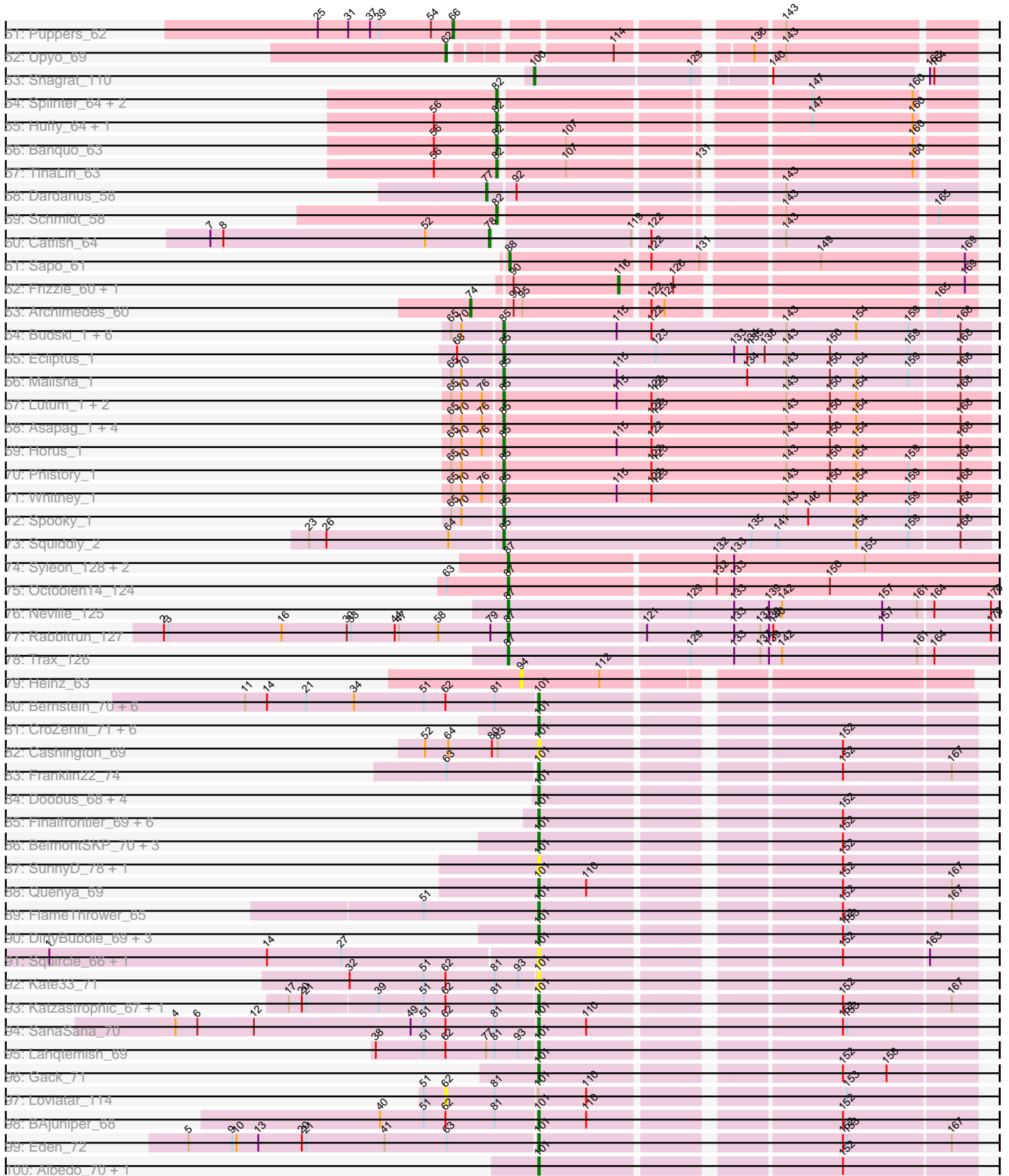


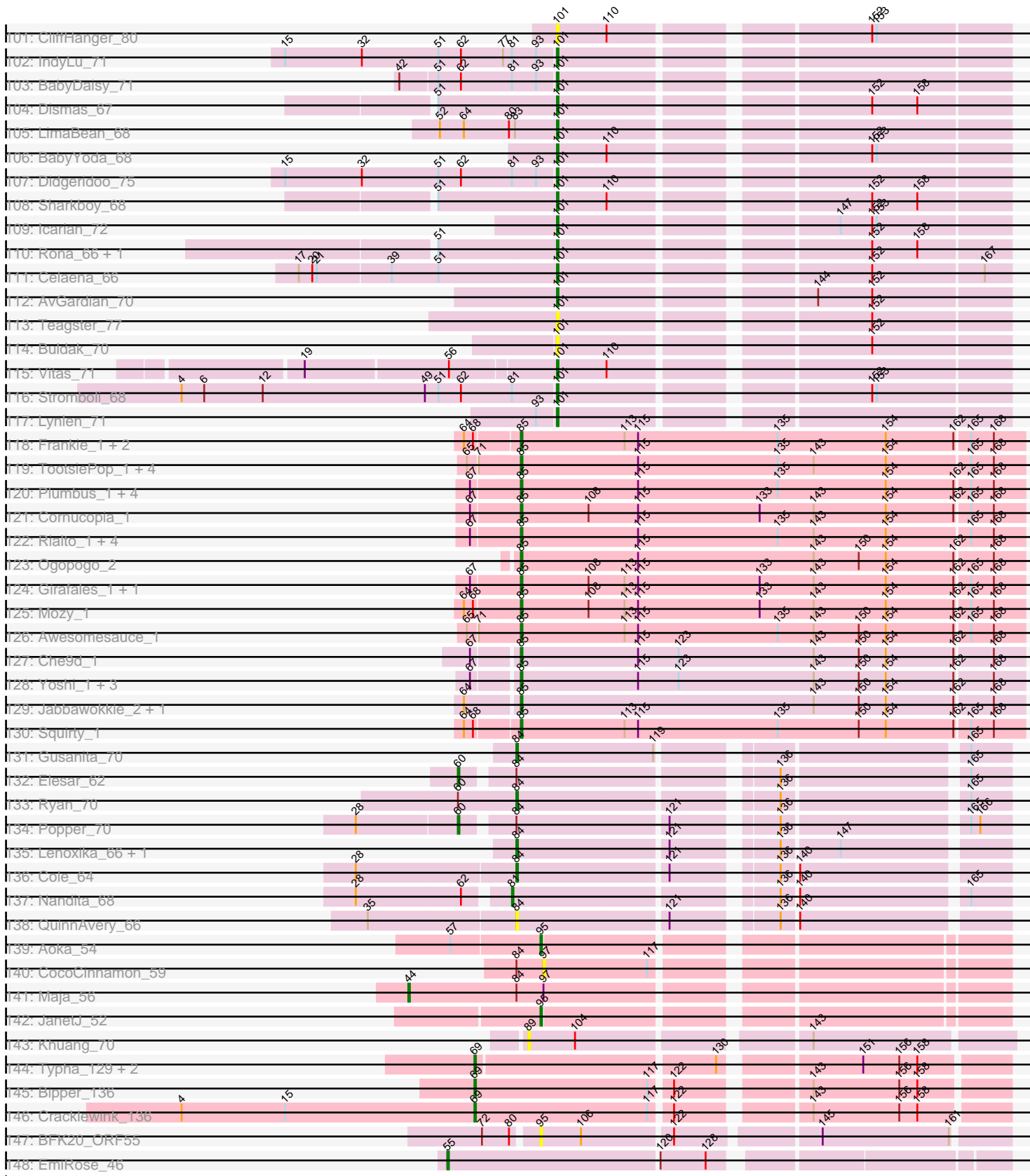
Pham 193684



Pham 193684



Pham 193684



Note: Tracks are now grouped by subcluster and scaled. Switching in subcluster is indicated by changes in track color. Track scale is now set by default to display the region 30 bp upstream of start 1 to 30 bp downstream of the last possible start. If this default region is judged to be packed too tightly with annotated starts, the track will be further scaled to only show that region of the ORF with annotated starts. This action will be indicated by adding "Zoomed" to the title. For starts, yellow indicates the location of called starts comprised solely of Glimmer/GeneMark auto-annotations, green indicates the location of called starts with at least 1 manual gene annotation.

Pham 193684 Report

This analysis was run 11/02/24 on database version 579.

Pham number 193684 has 287 members, 25 are drafts.

Phages represented in each track:

- Track 1 : Huntingdon_61
- Track 2 : Bodacious_61, CristinaYang_61, Nancia_61, LilStuart_60, Lasagna_59
- Track 3 : Christian_61, PitaDog_61
- Track 4 : Pumancara_61, PinkFriday_61
- Track 5 : Chridison_57, Supakev_60
- Track 6 : Greenhouse_61, Albanese_61
- Track 7 : Savage2526_61, Potatoes_62, BrotherBLo_62, Cholula_62, Zorro_62, Carpal_61, TattModd_61, Wawa_62, Rozby_60, Immaculata_62, Kalizoi_62, Korra_62, Riverdale_61, Beethoven_63
- Track 8 : Daiboju_60, Maria1952_59, Herb_60, Sergei_60, KingBob_60, Temper16_60
- Track 9 : Vulture_60, HunterDalle_60
- Track 10 : Misaeng_61
- Track 11 : RcigaStruga_62
- Track 12 : Bennie_63
- Track 13 : Pterodactyl_61, Makoto_60, Lennox_61, ChewChew_61, OurGirlNessie_59, WonderBoy_59
- Track 14 : BigMack_61
- Track 15 : PartyCup_66, Wayne_64, Suppi_62, Canowicakte_62
- Track 16 : Eunoia_62, OMalley_60, Aledel_60, AustinPowers_60, Riovina_60
- Track 17 : CallieOMalley_62, Litotes_62
- Track 18 : MrGloopy_62, Glenn_64, RAP15_63, MeganNoll_63, Vallejo_62, Scuttle_61, Dino_62, Fluke_62
- Track 19 : Kittykat_65, Preamble_64
- Track 20 : Huckleberry_62, Moki_62, HeadNerd_62
- Track 21 : MamaPearl_60, EstebanJulior_60, Urla_62
- Track 22 : Gisselle_61, DreamTeam_61
- Track 23 : Lucy_60, DrRobert_59
- Track 24 : Joann_63, Oxynfrius_62
- Track 25 : GreenHearts_62, Lakshmi_61
- Track 26 : Nubia_61
- Track 27 : AppleCider_61
- Track 28 : Jumboset_62
- Track 29 : Abidatro_66
- Track 30 : Basilisk_66
- Track 31 : TaylorSipht_65
- Track 32 : Vulpecula_64

- Track 33 : Orcanus_65
- Track 34 : Jamun_63
- Track 35 : Chickaboom_66, Brynnie_64
- Track 36 : Galaxy_65
- Track 37 : Ruchi_64
- Track 38 : Eesa_65
- Track 39 : Polka_71, Cote_75, Amelia_71, Kepler_75, Coral_72, Daob_71
- Track 40 : LittleTokyo_73
- Track 41 : Melons_73
- Track 42 : Kuleana_76
- Track 43 : KHumphrey_70, Juno112_69, PhluffyCoco_69, Camara_69, RedFox_71
- Track 44 : Leona_68
- Track 45 : Renna12_72
- Track 46 : Morrissey_63
- Track 47 : Mahdia_60
- Track 48 : Widow_62
- Track 49 : Trine_65
- Track 50 : Gustav_68
- Track 51 : Puppies_62
- Track 52 : Upyo_69
- Track 53 : Shagrat_110
- Track 54 : Splinter_64, TZGordon_65, Vendetta_64
- Track 55 : Huffy_64, DinoDaryn_64
- Track 56 : Banquo_63
- Track 57 : TinaLin_63
- Track 58 : Dardanus_58
- Track 59 : Schmidt_58
- Track 60 : Catfish_64
- Track 61 : Sapo_61
- Track 62 : Frizzle_60, Ghobes_59
- Track 63 : Archimedes_60
- Track 64 : Budski_1, CheeseTouch_1, Phabuloso_1, ODay_1, LitninMcQueen_1, Kamaru_1, Holliday_1
- Track 65 : Ecliptus_1
- Track 66 : Malisha_1
- Track 67 : Lutum_1, Periwinkle_1, Kenna_1
- Track 68 : Asapag_1, Leroy_1, Getalong_1, BENtherdunthat_1, Frickyeah_1
- Track 69 : Horus_1
- Track 70 : Phistory_1
- Track 71 : Whitney_1
- Track 72 : Spooky_1
- Track 73 : Squiddly_2
- Track 74 : Syleon_128, Kundefre_128, Sephiroth_123
- Track 75 : Octobien14_124
- Track 76 : Neville_125
- Track 77 : Rabbitrun_127
- Track 78 : Trax_126
- Track 79 : Heinz_63
- Track 80 : Bernstein_70, Brahms_70, Clayda5_72, Armstrong_70, Skylord_70, Coltrane_70, Rollins_70
- Track 81 : CroZenni_71, QMacho_72, Abigail_70, Johnathan_70, SarBear_72, Phisb_72, Burritobowl_72
- Track 82 : Cashington_69

- Track 83 : Franklin22_74
- Track 84 : Doobus_68, Albright_69, BubbaBear_68, DickRichards_68, Avocadoman_69
- Track 85 : Finalfrontier_69, Eula_69, TukTuk_70, Nicky22_69, Jovita_68, Swervy_70, Slay_70
- Track 86 : BelmontSKP_70, Arroyo_71, AnnaLie_70, SansAfet_72
- Track 87 : SunnyD_78, Shayna_75
- Track 88 : Quenya_69
- Track 89 : FlameThrower_65
- Track 90 : DirtyBubble_69, Elva_73, Stoor_69, WalkingDead_71
- Track 91 : Squircle_66, Olliecat_66
- Track 92 : Kate33_71
- Track 93 : Katzastrophic_67, Bachaco_66
- Track 94 : SanaSana_70
- Track 95 : Lahqtemish_69
- Track 96 : Gack_71
- Track 97 : Loviatar_114
- Track 98 : BAjuniper_68
- Track 99 : Eden_72
- Track 100 : Albedo_70, Kenzers_69
- Track 101 : CliffHanger_80
- Track 102 : IndyLu_71
- Track 103 : BabyDaisy_71
- Track 104 : Dismas_67
- Track 105 : LimaBean_68
- Track 106 : BabyYoda_68
- Track 107 : Didgeridoo_75
- Track 108 : Sharkboy_68
- Track 109 : Icarian_72
- Track 110 : Rona_66, Kieran_65
- Track 111 : Celaena_66
- Track 112 : AvGardian_70
- Track 113 : Teagster_77
- Track 114 : Buldak_70
- Track 115 : Vitas_71
- Track 116 : Stromboli_68
- Track 117 : Lynlen_71
- Track 118 : Frankie_1, Flathead_1, Hegedechwinu_1
- Track 119 : TootsiePop_1, DocMcStuffins_1, Piper2020_1, Misha28_1, ChickenDinner_1
- Track 120 : Plumbus_1, MulchExplorer_1, Job42_1, Kimberlium_1, Juice456_1
- Track 121 : Cornucopia_1
- Track 122 : Rialto_1, Starcevich_1, LittleShirley_1, Mova_1, Totinger_1
- Track 123 : Ogopogo_2
- Track 124 : Girafales_1, Quico_1
- Track 125 : Mozy_1
- Track 126 : Awesomesauce_1
- Track 127 : Che9d_1
- Track 128 : Yoshi_1, Soul22_1, Avani_1, Demsculpinboyz_1
- Track 129 : Jabbawokkie_2, Zapner_2
- Track 130 : Squirty_1
- Track 131 : Gusanita_70
- Track 132 : Elesar_62

- Track 133 : Ryan_70
- Track 134 : Popper_70
- Track 135 : Lenoxika_66, Zaheer_69
- Track 136 : Cole_64
- Track 137 : Nandita_68
- Track 138 : QuinnAvery_66
- Track 139 : Aoka_54
- Track 140 : CocoCinnamon_59
- Track 141 : Maja_56
- Track 142 : JanetJ_52
- Track 143 : Khuang_70
- Track 144 : Typha_129, Hilltopfarm_134, AuntGwenStacy_132
- Track 145 : Bipper_136
- Track 146 : Cracklewink_136
- Track 147 : BFK20_ORF55
- Track 148 : EmiRose_46

Summary of Final Annotations (See graph section above for start numbers):

The start number called the most often in the published annotations is 105, it was called in 63 of the 262 non-draft genes in the pham.

Genes that call this "Most Annotated" start:

- Albanese_61, Aledel_60, AustinPowers_60, Beethoven_63, BigMack_61, Bodacious_61, BrotherBLo_62, CallieOMalley_62, Carpal_61, ChewChew_61, Cholula_62, Chridison_57, CristinaYang_61, Daiboju_60, DreamTeam_61, EstebanJulior_60, Eunoia_62, Gisselle_61, GreenHearts_62, Greenhouse_61, HeadNerd_62, Herb_60, Huckleberry_62, Immaculata_62, Joann_63, Jumboset_62, Kalizoi_62, KingBob_60, Kittykat_65, Korra_62, Lakshmi_61, Lasagna_59, Lennox_61, LilStuart_60, Litotes_62, Makoto_60, MamaPearl_60, Maria1952_59, Misaeng_61, Moki_62, Nancia_61, Nubia_61, OMalley_60, OurGirlNessie_59, Oxynfrius_62, PinkFriday_61, Potatoes_62, Preamble_64, Pterodactyl_61, Pumancara_61, RcigaStruga_62, Riovina_60, Riverdale_61, Rozby_60, Savage2526_61, Sergei_60, Supakev_60, TattModd_61, Temper16_60, Urla_62, Wawa_62, WonderBoy_59, Zorro_62,

Genes that have the "Most Annotated" start but do not call it:

- AppleCider_61, Bennie_63, Canowicakte_62, Christian_61, Dino_62, DrRobert_59, Fluke_62, Glenn_64, HunterDalle_60, Huntingdon_61, Lucy_60, MeganNoll_63, MrGloopy_62, PartyCup_66, PitaDog_61, RAP15_63, Scuttle_61, Suppi_62, Vallejo_62, Vulture_60, Wayne_64,

Genes that do not have the "Most Annotated" start:

- Abidatro_66, Abigail_70, Albedo_70, Albright_69, Amelia_71, AnnaLie_70, Aoka_54, Archimedes_60, Armstrong_70, Arroyo_71, Asapag_1, AuntGwenStacy_132, AvGardian_70, Avani_1, Avocadoman_69, Awesomesauce_1, BAjuniper_68, BENtherdunthat_1, BFK20_ORF55, BabyDaisy_71, BabyYoda_68, Bachaco_66, Banquo_63, Basilisk_66, BelmontSKP_70, Bernstein_70, Bipper_136, Brahms_70, Brynnie_64, BubbaBear_68, Budski_1, Buldak_70, Burritobowl_72, Camara_69, Cashington_69, Catfish_64, Celaena_66, Che9d_1, CheeseTouch_1,

Chickaboom_66, ChickenDinner_1, Clayda5_72, CliffHanger_80, CocoCinnamon_59, Cole_64, Coltrane_70, Coral_72, Cornucopia_1, Cote_75, Cracklewink_136, CroZenni_71, Daob_71, Dardanus_58, Demsculpinboyz_1, DickRichards_68, Didgeridoo_75, DinoDaryn_64, DirtyBubble_69, Dismas_67, DocMcStuffins_1, Doobus_68, Ecliptus_1, Eden_72, Eesa_65, Elesar_62, Elva_73, EmiRose_46, Eula_69, Finalfrontier_69, FlameThrower_65, Flathead_1, Frankie_1, Franklin22_74, Frickyeah_1, Frizzle_60, Gack_71, Galaxy_65, Getalong_1, Ghobes_59, Girafales_1, Gusanita_70, Gustav_68, Hegedechwinu_1, Heinz_63, Hilltopfarm_134, Holliday_1, Horus_1, Huffy_64, Icarian_72, IndyLu_71, Jabbawokkie_2, Jamun_63, JanetJ_52, Job42_1, Johnathan_70, Jovita_68, Juice456_1, Juno112_69, KHumphrey_70, Kamaru_1, Kate33_71, Katzastrophic_67, Kenna_1, Kenzers_69, Kepler_75, Khuang_70, Kieran_65, Kimberlium_1, Kudrefre_128, Kuleana_76, Lahqtemish_69, Lenoxika_66, Leona_68, Leroy_1, LimaBean_68, LitninMcQueen_1, LittleShirley_1, LittleTokyo_73, Loviatar_114, Lutum_1, Lynlen_71, Mahdia_60, Maja_56, Malisha_1, Melons_73, Misha28_1, Morrissey_63, Mova_1, Mozy_1, MulchExplorer_1, Nandita_68, Neville_125, Nicky22_69, ODay_1, Octobien14_124, Ogopogo_2, Olliecat_66, Orcanus_65, Periwinkle_1, Phabuloso_1, Phisb_72, Phistory_1, PhluffyCoco_69, Piper2020_1, Plumbus_1, Polka_71, Popper_70, Puppies_62, QMacho_72, Quenya_69, Quico_1, QuinnAvery_66, Rabbitrun_127, RedFox_71, Renna12_72, Rialto_1, Rollins_70, Rona_66, Ruchi_64, Ryan_70, SanaSana_70, SansAfet_72, Sapo_61, SarBear_72, Schmidt_58, Sephiroth_123, Shagrat_110, Sharkboy_68, Shayna_75, Skylord_70, Slay_70, Soul22_1, Splinter_64, Spooky_1, Squiddly_2, Squircle_66, Squirty_1, Starcevich_1, Stoor_69, Stromboli_68, SunnyD_78, Swervy_70, Syleon_128, TZGordon_65, TaylorSipht_65, Teagster_77, TinaLin_63, TootsiePop_1, Totinger_1, Trax_126, Trine_65, TukTuk_70, Typha_129, Upyo_69, Vendetta_64, Vitas_71, Vulpecula_64, WalkingDead_71, Whitney_1, Widow_62, Yoshi_1, Zaheer_69, Zapner_2,

Summary by start number:

Start 22:

- Found in 1 of 287 (0.3%) of genes in pham
- Manual Annotations of this start: 1 of 262
- Called 100.0% of time when present
- Phage (with cluster) where this start called: Melons_73 (AS2),

Start 43:

- Found in 6 of 287 (2.1%) of genes in pham
- Manual Annotations of this start: 6 of 262
- Called 100.0% of time when present
- Phage (with cluster) where this start called: Amelia_71 (AS2), Coral_72 (AS2), Cote_75 (AS2), Daob_71 (AS2), Kepler_75 (AS2), Polka_71 (AS2),

Start 44:

- Found in 2 of 287 (0.7%) of genes in pham
- Manual Annotations of this start: 1 of 262
- Called 50.0% of time when present
- Phage (with cluster) where this start called: Maja_56 (FO),

Start 48:

- Found in 1 of 287 (0.3%) of genes in pham
- Manual Annotations of this start: 1 of 262
- Called 100.0% of time when present

- Phage (with cluster) where this start called: Morrissey_63 (CD),

Start 55:

- Found in 1 of 287 (0.3%) of genes in pham
- Manual Annotations of this start: 1 of 262
- Called 100.0% of time when present
- Phage (with cluster) where this start called: EmiRose_46 (singleton),

Start 59:

- Found in 2 of 287 (0.7%) of genes in pham
- Manual Annotations of this start: 2 of 262
- Called 100.0% of time when present
- Phage (with cluster) where this start called: Gustav_68 (CD), Mahdia_60 (CD),

Start 60:

- Found in 3 of 287 (1.0%) of genes in pham
- Manual Annotations of this start: 2 of 262
- Called 66.7% of time when present
- Phage (with cluster) where this start called: Elesar_62 (FF), Popper_70 (FF),

Start 61:

- Found in 2 of 287 (0.7%) of genes in pham
- Manual Annotations of this start: 1 of 262
- Called 50.0% of time when present
- Phage (with cluster) where this start called: Trine_65 (CD),

Start 62:

- Found in 20 of 287 (7.0%) of genes in pham
- Manual Annotations of this start: 1 of 262
- Called 10.0% of time when present
- Phage (with cluster) where this start called: Loviatar_114 (EB), Upyo_69 (CD),

Start 65:

- Found in 35 of 287 (12.2%) of genes in pham
- Manual Annotations of this start: 2 of 262
- Called 5.7% of time when present
- Phage (with cluster) where this start called: HunterDalle_60 (AK), Vulture_60 (AK),

Start 66:

- Found in 3 of 287 (1.0%) of genes in pham
- Manual Annotations of this start: 2 of 262
- Called 66.7% of time when present
- Phage (with cluster) where this start called: Puppies_62 (CD), Widow_62 (CD),

Start 69:

- Found in 5 of 287 (1.7%) of genes in pham
- Manual Annotations of this start: 4 of 262
- Called 100.0% of time when present
- Phage (with cluster) where this start called: AuntGwenStacy_132 (Y), Bipper_136 (Y), Cracklewink_136 (Y), Hilltopfarm_134 (Y), Typha_129 (Y),

Start 73:

- Found in 1 of 287 (0.3%) of genes in pham

- Manual Annotations of this start: 1 of 262
- Called 100.0% of time when present
- Phage (with cluster) where this start called: Kuleana_76 (AS2),

Start 74:

- Found in 1 of 287 (0.3%) of genes in pham
- Manual Annotations of this start: 1 of 262
- Called 100.0% of time when present
- Phage (with cluster) where this start called: Archimedes_60 (DA),

Start 77:

- Found in 3 of 287 (1.0%) of genes in pham
- Manual Annotations of this start: 1 of 262
- Called 33.3% of time when present
- Phage (with cluster) where this start called: Dardanus_58 (CU3),

Start 78:

- Found in 1 of 287 (0.3%) of genes in pham
- Manual Annotations of this start: 1 of 262
- Called 100.0% of time when present
- Phage (with cluster) where this start called: Catfish_64 (CU5),

Start 81:

- Found in 19 of 287 (6.6%) of genes in pham
- Manual Annotations of this start: 1 of 262
- Called 5.3% of time when present
- Phage (with cluster) where this start called: Nandita_68 (FF),

Start 82:

- Found in 8 of 287 (2.8%) of genes in pham
- Manual Annotations of this start: 8 of 262
- Called 100.0% of time when present
- Phage (with cluster) where this start called: Banquo_63 (CU1), DinoDaryn_64 (CU1), Huffy_64 (CU1), Schmidt_58 (CU4), Splinter_64 (CU1), TZGordon_65 (CU1), TinaLin_63 (CU1), Vendetta_64 (CU1),

Start 84:

- Found in 16 of 287 (5.6%) of genes in pham
- Manual Annotations of this start: 4 of 262
- Called 37.5% of time when present
- Phage (with cluster) where this start called: Cole_64 (FF), Gusanita_70 (FF), Lenoxika_66 (FF), QuinnAvery_66 (FF), Ryan_70 (FF), Zaheer_69 (FF),

Start 85:

- Found in 55 of 287 (19.2%) of genes in pham
- Manual Annotations of this start: 51 of 262
- Called 98.2% of time when present
- Phage (with cluster) where this start called: Asapag_1 (DN1), Avani_1 (F2), Awesomesauce_1 (F1), BENtherdunthat_1 (DN1), Budski_1 (DN), Che9d_1 (F2), CheeseTouch_1 (DN1), ChickenDinner_1 (F1), Cornucopia_1 (F1), Demsculpinboyz_1 (F2), DocMcStuffins_1 (F1), Ecliptus_1 (DN), Flathead_1 (F1), Frankie_1 (F1), Frickyeah_1 (DN1), Getalong_1 (DN1), Girafales_1 (F1), Hegedechwinu_1 (F1), Holliday_1 (DN1), Horus_1 (DN1), Jabbawokkie_2 (F2),

Job42_1 (F1), Juice456_1 (F1), Kamaru_1 (DN1), Kenna_1 (DN1), Kimberlium_1 (F1), Leroy_1 (DN1), LitninMcQueen_1 (DN1), LittleShirley_1 (F1), Lutum_1 (DN1), Malisha_1 (DN), Misha28_1 (F1), Mova_1 (F1), Mozy_1 (F1), MulchExplorer_1 (F1), ODay_1 (DN), Ogopogo_2 (F1), Periwinkle_1 (DN1), Phabuloso_1 (DN1), Phistory_1 (DN1), Piper2020_1 (F1), Plumbus_1 (F1), Quico_1 (F1), Rialto_1 (F1), Soul22_1 (F2), Spooky_1 (DN2), Squiddly_2 (DN2), Squirty_1 (F3), Starcevich_1 (F1), TootsiePop_1 (F1), Totinger_1 (F1), Whitney_1 (DN1), Yoshi_1 (F2), Zapner_2 (F2),

Start 86:

- Found in 1 of 287 (0.3%) of genes in pham
- Manual Annotations of this start: 1 of 262
- Called 100.0% of time when present
- Phage (with cluster) where this start called: Renna12_72 (AS3),

Start 87:

- Found in 7 of 287 (2.4%) of genes in pham
- Manual Annotations of this start: 7 of 262
- Called 100.0% of time when present
- Phage (with cluster) where this start called: Kudefre_128 (DU1), Neville_125 (DU2), Octobien14_124 (DU1), Rabbitrun_127 (DU2), Sephiroth_123 (DU1), Syleon_128 (DU1), Trax_126 (DU2),

Start 88:

- Found in 1 of 287 (0.3%) of genes in pham
- Manual Annotations of this start: 1 of 262
- Called 100.0% of time when present
- Phage (with cluster) where this start called: Sapo_61 (DA),

Start 89:

- Found in 1 of 287 (0.3%) of genes in pham
- No Manual Annotations of this start.
- Called 100.0% of time when present
- Phage (with cluster) where this start called: Khuang_70 (UNK),

Start 91:

- Found in 11 of 287 (3.8%) of genes in pham
- Manual Annotations of this start: 4 of 262
- Called 54.5% of time when present
- Phage (with cluster) where this start called: Basilisk_66 (AS1), Camara_69 (AS3), Juno112_69 (AS3), KHumphrey_70 (AS3), PhluffyCoco_69 (AS3), RedFox_71 (AS3),

Start 94:

- Found in 1 of 287 (0.3%) of genes in pham
- No Manual Annotations of this start.
- Called 100.0% of time when present
- Phage (with cluster) where this start called: Heinz_63 (DY),

Start 95:

- Found in 4 of 287 (1.4%) of genes in pham
- Manual Annotations of this start: 2 of 262
- Called 75.0% of time when present
- Phage (with cluster) where this start called: Aoka_54 (FO), BFK20_ORF55 (singleton), JanetJ_52 (FO),

Start 96:

- Found in 3 of 287 (1.0%) of genes in pham
- Manual Annotations of this start: 1 of 262
- Called 33.3% of time when present
- Phage (with cluster) where this start called: Huntingdon_61 (AK),

Start 97:

- Found in 3 of 287 (1.0%) of genes in pham
- Manual Annotations of this start: 1 of 262
- Called 66.7% of time when present
- Phage (with cluster) where this start called: CocoCinnamon_59 (FO), Leona_68 (AS3),

Start 98:

- Found in 47 of 287 (16.4%) of genes in pham
- Manual Annotations of this start: 13 of 262
- Called 27.7% of time when present
- Phage (with cluster) where this start called: Bennie_63 (AK), Christian_61 (AK), Dino_62 (AK), DrRobert_59 (AK), Fluke_62 (AK), Glenn_64 (AK), Lucy_60 (AK), MeganNoll_63 (AK), MrGloopy_62 (AK), PitaDog_61 (AK), RAP15_63 (AK), Scuttle_61 (AK), Vallejo_62 (AK),

Start 99:

- Found in 18 of 287 (6.3%) of genes in pham
- Manual Annotations of this start: 14 of 262
- Called 83.3% of time when present
- Phage (with cluster) where this start called: Abidatro_66 (AS1), Brynnie_64 (AS1), Canowicakte_62 (AK), Chickaboom_66 (AS1), Eesa_65 (AS1), Galaxy_65 (AS1), Jamun_63 (AS1), LittleTokyo_73 (AS2), Orcanus_65 (AS1), PartyCup_66 (AK), Ruchi_64 (AS1), Suppi_62 (AK), TaylorSipht_65 (AS1), Vulpecula_64 (AS1), Wayne_64 (AK),

Start 100:

- Found in 1 of 287 (0.3%) of genes in pham
- Manual Annotations of this start: 1 of 262
- Called 100.0% of time when present
- Phage (with cluster) where this start called: Shagrat_110 (CF),

Start 101:

- Found in 71 of 287 (24.7%) of genes in pham
- Manual Annotations of this start: 60 of 262
- Called 98.6% of time when present
- Phage (with cluster) where this start called: Abigail_70 (EB), Albedo_70 (EB), Albright_69 (EB), AnnaLie_70 (EB), Armstrong_70 (EB), Arroyo_71 (EB), AvGuardian_70 (EB), Avocadoman_69 (EB), BAjuniper_68 (EB), BabyDaisy_71 (EB), BabyYoda_68 (EB), Bachaco_66 (EB), BelmontSKP_70 (EB), Bernstein_70 (EB), Brahms_70 (EB), BubbaBear_68 (EB), Buldak_70 (EB), Burritobowl_72 (EB), Cashington_69 (EB), Celaena_66 (EB), Clayda5_72 (EB), CliffHanger_80 (EB), Coltrane_70 (EB), CroZenni_71 (EB), DickRichards_68 (EB), Didgeridoo_75 (EB), DirtyBubble_69 (EB), Dismas_67 (EB), Doobus_68 (EB), Eden_72 (EB), Elva_73 (EB), Eula_69 (EB), Finalfrontier_69 (EB), FlameThrower_65 (EB), Franklin22_74 (EB), Gack_71 (EB), Icarian_72 (EB), IndyLu_71 (EB), Johnathan_70 (EB), Jovita_68

(EB), Kate33_71 (EB), Katzastrophic_67 (EB), Kenzers_69 (EB), Kieran_65 (EB), Lahqtemish_69 (EB), LimaBean_68 (EB), Lynlen_71 (EB), Nicky22_69 (EB), Olliecat_66 (EB), Phisb_72 (EB), QMacho_72 (EB), Quenya_69 (EB), Rollins_70 (EB), Rona_66 (EB), SanaSana_70 (EB), SansAfet_72 (EB), SarBear_72 (EB), Sharkboy_68 (EB), Shayna_75 (EB), Skylord_70 (EB), Slay_70 (EB), Squirrel_66 (EB), Stoor_69 (EB), Stromboli_68 (EB), SunnyD_78 (EB), Swervy_70 (EB), Teagster_77 (EB), TukTuk_70 (EB), Vitas_71 (EB), WalkingDead_71 (EB),

Start 103:

- Found in 9 of 287 (3.1%) of genes in pham
- Manual Annotations of this start: 1 of 262
- Called 11.1% of time when present
- Phage (with cluster) where this start called: AppleCider_61 (AK),

Start 105:

- Found in 84 of 287 (29.3%) of genes in pham
- Manual Annotations of this start: 63 of 262
- Called 75.0% of time when present
- Phage (with cluster) where this start called: Albanese_61 (AK), Aledel_60 (AK), AustinPowers_60 (AK), Beethoven_63 (AK), BigMack_61 (AK), Bodacious_61 (AK), BrotherBLo_62 (AK), CallieOMalley_62 (AK), Carpal_61 (AK), ChewChew_61 (AK), Cholula_62 (AK), Chridison_57 (AK), CristinaYang_61 (AK), Daiboju_60 (AK), DreamTeam_61 (AK), EstebanJulior_60 (AK), Eunoia_62 (AK), Gisselle_61 (AK), GreenHearts_62 (AK), Greenhouse_61 (AK), HeadNerd_62 (AK), Herb_60 (AK), Huckleberry_62 (AK), Immaculata_62 (AK), Joann_63 (AK), Jumboset_62 (AK), Kalizoi_62 (AK), KingBob_60 (AK), Kittykat_65 (AK), Korra_62 (AK), Lakshmi_61 (AK), Lasagna_59 (AK), Lennox_61 (AK), LilStuart_60 (AK), Litotes_62 (AK), Makoto_60 (AK), MamaPearl_60 (AK), Maria1952_59 (AK), Misaeng_61 (AK), Moki_62 (AK), Nancia_61 (AK), Nubia_61 (AK), OMalley_60 (AK), OurGirlNessie_59 (AK), Oxynfrius_62 (AK), PinkFriday_61 (AK), Potatoes_62 (AK), Preamble_64 (AK), Pterodactyl_61 (AK), Pumancara_61 (AK), RcigaStruga_62 (AK), Rivovina_60 (AK), Riverdale_61 (AK), Rozby_60 (AK), Savage2526_61 (AK), Sergei_60 (AK), Supakev_60 (AK), TattModd_61 (AK), Temper16_60 (AK), Urla_62 (AK), Wawa_62 (AK), WonderBoy_59 (AK), Zorro_62 (AK),

Start 116:

- Found in 2 of 287 (0.7%) of genes in pham
- Manual Annotations of this start: 1 of 262
- Called 100.0% of time when present
- Phage (with cluster) where this start called: Frizzle_60 (DA), Ghobes_59 (DA),

Summary by clusters:

There are 26 clusters represented in this pham: DN, singleton, DA, FF, DY, FO, CU5, UNK, CU3, CU1, DN1, DN2, DU1, DU2, AS3, AS2, AS1, AK, CF, EB, CU4, Y, CD, F1, F2, F3,

Info for manual annotations of cluster AK:

- Start number 65 was manually annotated 2 times for cluster AK.
- Start number 96 was manually annotated 1 time for cluster AK.
- Start number 98 was manually annotated 13 times for cluster AK.
- Start number 99 was manually annotated 3 times for cluster AK.
- Start number 103 was manually annotated 1 time for cluster AK.

- Start number 105 was manually annotated 63 times for cluster AK.

Info for manual annotations of cluster AS1:

- Start number 91 was manually annotated 1 time for cluster AS1.
- Start number 99 was manually annotated 10 times for cluster AS1.

Info for manual annotations of cluster AS2:

- Start number 22 was manually annotated 1 time for cluster AS2.
- Start number 43 was manually annotated 6 times for cluster AS2.
- Start number 73 was manually annotated 1 time for cluster AS2.
- Start number 99 was manually annotated 1 time for cluster AS2.

Info for manual annotations of cluster AS3:

- Start number 86 was manually annotated 1 time for cluster AS3.
- Start number 91 was manually annotated 3 times for cluster AS3.
- Start number 97 was manually annotated 1 time for cluster AS3.

Info for manual annotations of cluster CD:

- Start number 48 was manually annotated 1 time for cluster CD.
- Start number 59 was manually annotated 2 times for cluster CD.
- Start number 61 was manually annotated 1 time for cluster CD.
- Start number 62 was manually annotated 1 time for cluster CD.
- Start number 66 was manually annotated 2 times for cluster CD.

Info for manual annotations of cluster CF:

- Start number 100 was manually annotated 1 time for cluster CF.

Info for manual annotations of cluster CU1:

- Start number 82 was manually annotated 7 times for cluster CU1.

Info for manual annotations of cluster CU3:

- Start number 77 was manually annotated 1 time for cluster CU3.

Info for manual annotations of cluster CU4:

- Start number 82 was manually annotated 1 time for cluster CU4.

Info for manual annotations of cluster CU5:

- Start number 78 was manually annotated 1 time for cluster CU5.

Info for manual annotations of cluster DA:

- Start number 74 was manually annotated 1 time for cluster DA.
- Start number 88 was manually annotated 1 time for cluster DA.
- Start number 116 was manually annotated 1 time for cluster DA.

Info for manual annotations of cluster DN:

- Start number 85 was manually annotated 4 times for cluster DN.

Info for manual annotations of cluster DN1:

- Start number 85 was manually annotated 15 times for cluster DN1.

Info for manual annotations of cluster DN2:

- Start number 85 was manually annotated 2 times for cluster DN2.

Info for manual annotations of cluster DU1:

- Start number 87 was manually annotated 4 times for cluster DU1.

Info for manual annotations of cluster DU2:

- Start number 87 was manually annotated 3 times for cluster DU2.

Info for manual annotations of cluster EB:

- Start number 101 was manually annotated 60 times for cluster EB.

Info for manual annotations of cluster F1:

- Start number 85 was manually annotated 22 times for cluster F1.

Info for manual annotations of cluster F2:

- Start number 85 was manually annotated 7 times for cluster F2.

Info for manual annotations of cluster F3:

- Start number 85 was manually annotated 1 time for cluster F3.

Info for manual annotations of cluster FF:

- Start number 60 was manually annotated 2 times for cluster FF.
- Start number 81 was manually annotated 1 time for cluster FF.
- Start number 84 was manually annotated 4 times for cluster FF.

Info for manual annotations of cluster FO:

- Start number 44 was manually annotated 1 time for cluster FO.
- Start number 95 was manually annotated 2 times for cluster FO.

Info for manual annotations of cluster Y:

- Start number 69 was manually annotated 4 times for cluster Y.

Gene Information:

Gene: Abidatro_66 Start: 38766, Stop: 39044, Start Num: 99

Candidate Starts for Abidatro_66:

(32, 38640), (Start: 99 @38766 has 14 MA's),

Gene: Abigail_70 Start: 40540, Stop: 40815, Start Num: 101

Candidate Starts for Abigail_70:

(Start: 101 @40540 has 60 MA's),

Gene: Albanese_61 Start: 43774, Stop: 44034, Start Num: 105

Candidate Starts for Albanese_61:

(Start: 105 @43774 has 63 MA's), (107, 43780), (121, 43831), (122, 43834), (158, 43978),

Gene: Albedo_70 Start: 41350, Stop: 41625, Start Num: 101

Candidate Starts for Albedo_70:

(Start: 101 @41350 has 60 MA's), (152, 41536),

Gene: Albright_69 Start: 40420, Stop: 40695, Start Num: 101

Candidate Starts for Albright_69:
(Start: 101 @40420 has 60 MA's),

Gene: Aledel_60 Start: 43400, Stop: 43660, Start Num: 105
Candidate Starts for Aledel_60:
(Start: 65 @43331 has 2 MA's), (76, 43352), (Start: 105 @43400 has 63 MA's), (111, 43421), (125, 43472),

Gene: Amelia_71 Start: 37701, Stop: 38054, Start Num: 43
Candidate Starts for Amelia_71:
(Start: 43 @37701 has 6 MA's), (93, 37767),

Gene: AnnaLie_70 Start: 41202, Stop: 41477, Start Num: 101
Candidate Starts for AnnaLie_70:
(Start: 101 @41202 has 60 MA's), (152, 41388),

Gene: Aoka_54 Start: 36392, Stop: 36673, Start Num: 95
Candidate Starts for Aoka_54:
(57, 36335), (Start: 95 @36392 has 2 MA's),

Gene: AppleCider_61 Start: 43353, Stop: 43619, Start Num: 103
Candidate Starts for AppleCider_61:
(Start: 103 @43353 has 1 MA's), (Start: 105 @43359 has 63 MA's),

Gene: Archimedes_60 Start: 44555, Stop: 44878, Start Num: 74
Candidate Starts for Archimedes_60:
(Start: 74 @44555 has 1 MA's), (90, 44582), (Start: 95 @44588 has 2 MA's), (122, 44672), (124, 44681), (165, 44852),

Gene: Armstrong_70 Start: 39580, Stop: 39855, Start Num: 101
Candidate Starts for Armstrong_70:
(11, 39382), (14, 39397), (21, 39424), (34, 39457), (51, 39505), (Start: 62 @39520 has 1 MA's), (Start: 81 @39553 has 1 MA's), (Start: 101 @39580 has 60 MA's),

Gene: Arroyo_71 Start: 41666, Stop: 41941, Start Num: 101
Candidate Starts for Arroyo_71:
(Start: 101 @41666 has 60 MA's), (152, 41852),

Gene: Asapag_1 Start: 39, Stop: 371, Start Num: 85
Candidate Starts for Asapag_1:
(Start: 65 @9 has 2 MA's), (70, 15), (76, 27), (Start: 85 @39 has 51 MA's), (122, 141), (123, 144), (143, 234), (150, 264), (154, 282), (168, 351),

Gene: AuntGwenStacy_132 Start: 74981, Stop: 75304, Start Num: 69
Candidate Starts for AuntGwenStacy_132:
(Start: 69 @74981 has 4 MA's), (130, 75131), (151, 75212), (156, 75236), (158, 75248),

Gene: AustinPowers_60 Start: 43422, Stop: 43682, Start Num: 105
Candidate Starts for AustinPowers_60:
(Start: 65 @43353 has 2 MA's), (76, 43374), (Start: 105 @43422 has 63 MA's), (111, 43443), (125, 43494),

Gene: AvGardian_70 Start: 41184, Stop: 41459, Start Num: 101

Candidate Starts for AvGardian_70:

(Start: 101 @41184 has 60 MA's), (144, 41334), (152, 41370),

Gene: Avani_1 Start: 38, Stop: 370, Start Num: 85

Candidate Starts for Avani_1:

(67, 11), (Start: 85 @38 has 51 MA's), (115, 116), (123, 143), (143, 233), (150, 263), (154, 281), (162, 326), (168, 350),

Gene: Avocadoman_69 Start: 40737, Stop: 41012, Start Num: 101

Candidate Starts for Avocadoman_69:

(Start: 101 @40737 has 60 MA's),

Gene: Awesomesauce_1 Start: 42, Stop: 374, Start Num: 85

Candidate Starts for Awesomesauce_1:

(Start: 65 @9 has 2 MA's), (71, 15), (Start: 85 @42 has 51 MA's), (113, 111), (115, 120), (135, 213), (143, 237), (150, 267), (154, 285), (162, 330), (165, 339), (168, 354),

Gene: BAjuniper_68 Start: 41633, Stop: 41908, Start Num: 101

Candidate Starts for BAjuniper_68:

(40, 41528), (51, 41558), (Start: 62 @41573 has 1 MA's), (Start: 81 @41606 has 1 MA's), (Start: 101 @41633 has 60 MA's), (110, 41666), (152, 41819),

Gene: BENtherdunthat_1 Start: 39, Stop: 371, Start Num: 85

Candidate Starts for BENtherdunthat_1:

(Start: 65 @9 has 2 MA's), (70, 15), (76, 27), (Start: 85 @39 has 51 MA's), (122, 141), (123, 144), (143, 234), (150, 264), (154, 282), (168, 351),

Gene: BFK20_ORF55 Start: 42590, Stop: 42880, Start Num: 95

Candidate Starts for BFK20_ORF55:

(72, 42557), (80, 42575), (Start: 95 @42590 has 2 MA's), (106, 42617), (122, 42674), (145, 42761), (161, 42845),

Gene: BabyDaisy_71 Start: 41763, Stop: 42038, Start Num: 101

Candidate Starts for BabyDaisy_71:

(42, 41664), (51, 41688), (Start: 62 @41703 has 1 MA's), (Start: 81 @41736 has 1 MA's), (93, 41751), (Start: 101 @41763 has 60 MA's),

Gene: BabyYoda_68 Start: 41093, Stop: 41368, Start Num: 101

Candidate Starts for BabyYoda_68:

(Start: 101 @41093 has 60 MA's), (110, 41126), (152, 41279), (153, 41282),

Gene: Bachaco_66 Start: 42043, Stop: 42318, Start Num: 101

Candidate Starts for Bachaco_66:

(17, 41878), (20, 41887), (21, 41890), (39, 41938), (51, 41968), (Start: 62 @41983 has 1 MA's), (Start: 81 @42016 has 1 MA's), (Start: 101 @42043 has 60 MA's), (152, 42229), (167, 42301),

Gene: Banquo_63 Start: 39126, Stop: 39422, Start Num: 82

Candidate Starts for Banquo_63:

(56, 39084), (Start: 82 @39126 has 8 MA's), (107, 39168), (160, 39384),

Gene: Basilisk_66 Start: 38281, Stop: 38571, Start Num: 91

Candidate Starts for Basilisk_66:

(36, 38188), (51, 38218), (Start: 91 @38281 has 4 MA's), (Start: 99 @38293 has 14 MA's),

Gene: Beethoven_63 Start: 43598, Stop: 43858, Start Num: 105
Candidate Starts for Beethoven_63:
(Start: 98 @43580 has 13 MA's), (Start: 105 @43598 has 63 MA's), (109, 43616), (125, 43670),

Gene: BelmontSKP_70 Start: 41202, Stop: 41477, Start Num: 101
Candidate Starts for BelmontSKP_70:
(Start: 101 @41202 has 60 MA's), (152, 41388),

Gene: Bennie_63 Start: 42720, Stop: 42998, Start Num: 98
Candidate Starts for Bennie_63:
(Start: 98 @42720 has 13 MA's), (Start: 105 @42738 has 63 MA's), (109, 42756), (125, 42810), (161, 42963),

Gene: Bernstein_70 Start: 39578, Stop: 39853, Start Num: 101
Candidate Starts for Bernstein_70:
(11, 39380), (14, 39395), (21, 39422), (34, 39455), (51, 39503), (Start: 62 @39518 has 1 MA's), (Start: 81 @39551 has 1 MA's), (Start: 101 @39578 has 60 MA's),

Gene: BigMack_61 Start: 43021, Stop: 43281, Start Num: 105
Candidate Starts for BigMack_61:
(Start: 98 @43003 has 13 MA's), (Start: 105 @43021 has 63 MA's), (109, 43039), (153, 43198), (161, 43246),

Gene: Bipper_136 Start: 77103, Stop: 77429, Start Num: 69
Candidate Starts for Bipper_136:
(Start: 69 @77103 has 4 MA's), (117, 77217), (122, 77229), (143, 77304), (156, 77361), (158, 77373),

Gene: Bodacious_61 Start: 42903, Stop: 43163, Start Num: 105
Candidate Starts for Bodacious_61:
(Start: 98 @42885 has 13 MA's), (Start: 105 @42903 has 63 MA's), (109, 42921), (153, 43080), (165, 43137), (166, 43143),

Gene: Brahms_70 Start: 39480, Stop: 39755, Start Num: 101
Candidate Starts for Brahms_70:
(11, 39282), (14, 39297), (21, 39324), (34, 39357), (51, 39405), (Start: 62 @39420 has 1 MA's), (Start: 81 @39453 has 1 MA's), (Start: 101 @39480 has 60 MA's),

Gene: BrotherBLo_62 Start: 43314, Stop: 43574, Start Num: 105
Candidate Starts for BrotherBLo_62:
(Start: 98 @43296 has 13 MA's), (Start: 105 @43314 has 63 MA's), (109, 43332), (125, 43386),

Gene: Brynnie_64 Start: 38238, Stop: 38516, Start Num: 99
Candidate Starts for Brynnie_64:
(Start: 91 @38226 has 4 MA's), (Start: 99 @38238 has 14 MA's),

Gene: BubbaBear_68 Start: 41351, Stop: 41626, Start Num: 101
Candidate Starts for BubbaBear_68:
(Start: 101 @41351 has 60 MA's),

Gene: Budski_1 Start: 39, Stop: 371, Start Num: 85
Candidate Starts for Budski_1:

(Start: 65 @9 has 2 MA's), (70, 15), (Start: 85 @39 has 51 MA's), (115, 117), (122, 141), (143, 234), (154, 282), (159, 318), (168, 351),

Gene: Buldak_70 Start: 39158, Stop: 39433, Start Num: 101

Candidate Starts for Buldak_70:

(Start: 101 @39158 has 60 MA's), (152, 39344),

Gene: Burritobowl_72 Start: 40954, Stop: 41229, Start Num: 101

Candidate Starts for Burritobowl_72:

(Start: 101 @40954 has 60 MA's),

Gene: CallieOMalley_62 Start: 43522, Stop: 43782, Start Num: 105

Candidate Starts for CallieOMalley_62:

(Start: 84 @43489 has 4 MA's), (Start: 99 @43510 has 14 MA's), (102, 43516), (Start: 105 @43522 has 63 MA's),

Gene: Camara_69 Start: 37993, Stop: 38280, Start Num: 91

Candidate Starts for Camara_69:

(Start: 91 @37993 has 4 MA's), (140, 38146), (155, 38209),

Gene: Canowicakte_62 Start: 43562, Stop: 43834, Start Num: 99

Candidate Starts for Canowicakte_62:

(Start: 84 @43541 has 4 MA's), (Start: 99 @43562 has 14 MA's), (102, 43568), (Start: 105 @43574 has 63 MA's),

Gene: Carpal_61 Start: 43369, Stop: 43629, Start Num: 105

Candidate Starts for Carpal_61:

(Start: 98 @43351 has 13 MA's), (Start: 105 @43369 has 63 MA's), (109, 43387), (125, 43441),

Gene: Cashington_69 Start: 41137, Stop: 41412, Start Num: 101

Candidate Starts for Cashington_69:

(52, 41062), (64, 41077), (80, 41107), (83, 41110), (Start: 101 @41137 has 60 MA's), (152, 41323),

Gene: Catfish_64 Start: 41148, Stop: 41444, Start Num: 78

Candidate Starts for Catfish_64:

(7, 40959), (8, 40968), (52, 41106), (Start: 78 @41148 has 1 MA's), (119, 41235), (122, 41244), (143, 41319),

Gene: Celaena_66 Start: 41809, Stop: 42084, Start Num: 101

Candidate Starts for Celaena_66:

(17, 41641), (20, 41650), (21, 41653), (39, 41701), (51, 41731), (Start: 101 @41809 has 60 MA's), (152, 41995), (167, 42067),

Gene: Che9d_1 Start: 48, Stop: 380, Start Num: 85

Candidate Starts for Che9d_1:

(67, 21), (Start: 85 @48 has 51 MA's), (115, 126), (123, 153), (143, 243), (150, 273), (154, 291), (162, 336), (168, 360),

Gene: CheeseTouch_1 Start: 39, Stop: 371, Start Num: 85

Candidate Starts for CheeseTouch_1:

(Start: 65 @9 has 2 MA's), (70, 15), (Start: 85 @39 has 51 MA's), (115, 117), (122, 141), (143, 234), (154, 282), (159, 318), (168, 351),

Gene: ChewChew_61 Start: 43103, Stop: 43363, Start Num: 105
Candidate Starts for ChewChew_61:
(Start: 98 @43085 has 13 MA's), (Start: 105 @43103 has 63 MA's), (109, 43121), (126, 43178), (153, 43280), (165, 43337), (166, 43343),

Gene: Chickaboom_66 Start: 38402, Stop: 38680, Start Num: 99
Candidate Starts for Chickaboom_66:
(Start: 91 @38390 has 4 MA's), (Start: 99 @38402 has 14 MA's),

Gene: ChickenDinner_1 Start: 42, Stop: 374, Start Num: 85
Candidate Starts for ChickenDinner_1:
(Start: 65 @9 has 2 MA's), (71, 15), (Start: 85 @42 has 51 MA's), (115, 120), (135, 213), (143, 237), (154, 285), (165, 339), (168, 354),

Gene: Cholula_62 Start: 43324, Stop: 43584, Start Num: 105
Candidate Starts for Cholula_62:
(Start: 98 @43306 has 13 MA's), (Start: 105 @43324 has 63 MA's), (109, 43342), (125, 43396),

Gene: Chridison_57 Start: 42676, Stop: 42936, Start Num: 105
Candidate Starts for Chridison_57:
(Start: 65 @42607 has 2 MA's), (76, 42628), (Start: 105 @42676 has 63 MA's), (109, 42694), (111, 42697), (125, 42748),

Gene: Christian_61 Start: 42727, Stop: 43005, Start Num: 98
Candidate Starts for Christian_61:
(Start: 98 @42727 has 13 MA's), (Start: 105 @42745 has 63 MA's), (109, 42763), (126, 42820), (153, 42922), (165, 42979), (166, 42985),

Gene: Clayda5_72 Start: 39546, Stop: 39821, Start Num: 101
Candidate Starts for Clayda5_72:
(11, 39348), (14, 39363), (21, 39390), (34, 39423), (51, 39471), (Start: 62 @39486 has 1 MA's), (Start: 81 @39519 has 1 MA's), (Start: 101 @39546 has 60 MA's),

Gene: CliffHanger_80 Start: 40817, Stop: 41092, Start Num: 101
Candidate Starts for CliffHanger_80:
(Start: 101 @40817 has 60 MA's), (110, 40850), (152, 41003), (153, 41006),

Gene: CocoCinnamon_59 Start: 36037, Stop: 36318, Start Num: 97
Candidate Starts for CocoCinnamon_59:
(Start: 84 @36019 has 4 MA's), (Start: 97 @36037 has 1 MA's), (117, 36106),

Gene: Cole_64 Start: 41483, Stop: 41779, Start Num: 84
Candidate Starts for Cole_64:
(28, 41378), (Start: 84 @41483 has 4 MA's), (121, 41579), (136, 41639), (140, 41648),

Gene: Coltrane_70 Start: 39480, Stop: 39755, Start Num: 101
Candidate Starts for Coltrane_70:
(11, 39282), (14, 39297), (21, 39324), (34, 39357), (51, 39405), (Start: 62 @39420 has 1 MA's), (Start: 81 @39453 has 1 MA's), (Start: 101 @39480 has 60 MA's),

Gene: Coral_72 Start: 37893, Stop: 38243, Start Num: 43
Candidate Starts for Coral_72:
(Start: 43 @37893 has 6 MA's), (93, 37956),

Gene: Cornucopia_1 Start: 41, Stop: 373, Start Num: 85

Candidate Starts for Cornucopia_1:

(67, 11), (Start: 85 @41 has 51 MA's), (108, 86), (115, 119), (133, 200), (143, 236), (154, 284), (162, 329), (165, 338), (168, 353),

Gene: Cote_75 Start: 38617, Stop: 38970, Start Num: 43

Candidate Starts for Cote_75:

(Start: 43 @38617 has 6 MA's), (93, 38683),

Gene: Cracklewink_136 Start: 76262, Stop: 76588, Start Num: 69

Candidate Starts for Cracklewink_136:

(4, 76067), (15, 76136), (Start: 69 @76262 has 4 MA's), (117, 76376), (122, 76388), (143, 76463), (156, 76520), (158, 76532),

Gene: CristinaYang_61 Start: 43030, Stop: 43290, Start Num: 105

Candidate Starts for CristinaYang_61:

(Start: 98 @43012 has 13 MA's), (Start: 105 @43030 has 63 MA's), (109, 43048), (153, 43207), (165, 43264), (166, 43270),

Gene: CroZenni_71 Start: 41008, Stop: 41283, Start Num: 101

Candidate Starts for CroZenni_71:

(Start: 101 @41008 has 60 MA's),

Gene: Daiboju_60 Start: 43614, Stop: 43871, Start Num: 105

Candidate Starts for Daiboju_60:

(Start: 103 @43605 has 1 MA's), (Start: 105 @43614 has 63 MA's), (109, 43632), (127, 43689), (148, 43767),

Gene: Daob_71 Start: 37543, Stop: 37893, Start Num: 43

Candidate Starts for Daob_71:

(Start: 43 @37543 has 6 MA's), (93, 37606),

Gene: Dardanus_58 Start: 37373, Stop: 37678, Start Num: 77

Candidate Starts for Dardanus_58:

(Start: 77 @37373 has 1 MA's), (92, 37391), (143, 37553),

Gene: Demsculpinboyz_1 Start: 38, Stop: 370, Start Num: 85

Candidate Starts for Demsculpinboyz_1:

(67, 11), (Start: 85 @38 has 51 MA's), (115, 116), (123, 143), (143, 233), (150, 263), (154, 281), (162, 326), (168, 350),

Gene: DickRichards_68 Start: 40877, Stop: 41152, Start Num: 101

Candidate Starts for DickRichards_68:

(Start: 101 @40877 has 60 MA's),

Gene: Didgeridoo_75 Start: 42192, Stop: 42467, Start Num: 101

Candidate Starts for Didgeridoo_75:

(15, 42015), (32, 42066), (51, 42117), (Start: 62 @42132 has 1 MA's), (Start: 81 @42165 has 1 MA's), (93, 42180), (Start: 101 @42192 has 60 MA's),

Gene: Dino_62 Start: 43208, Stop: 43486, Start Num: 98

Candidate Starts for Dino_62:

(Start: 98 @43208 has 13 MA's), (Start: 105 @43226 has 63 MA's), (109, 43244), (125, 43298),

Gene: DinoDaryn_64 Start: 39227, Stop: 39523, Start Num: 82

Candidate Starts for DinoDaryn_64:

(56, 39185), (Start: 82 @39227 has 8 MA's), (147, 39416), (160, 39485),

Gene: DirtyBubble_69 Start: 41228, Stop: 41503, Start Num: 101

Candidate Starts for DirtyBubble_69:

(Start: 101 @41228 has 60 MA's), (152, 41414), (153, 41417),

Gene: Dismas_67 Start: 41256, Stop: 41531, Start Num: 101

Candidate Starts for Dismas_67:

(51, 41181), (Start: 101 @41256 has 60 MA's), (152, 41442), (158, 41472),

Gene: DocMcStuffins_1 Start: 42, Stop: 374, Start Num: 85

Candidate Starts for DocMcStuffins_1:

(Start: 65 @9 has 2 MA's), (71, 15), (Start: 85 @42 has 51 MA's), (115, 120), (135, 213), (143, 237), (154, 285), (165, 339), (168, 354),

Gene: Doobus_68 Start: 40732, Stop: 41007, Start Num: 101

Candidate Starts for Doobus_68:

(Start: 101 @40732 has 60 MA's),

Gene: DrRobert_59 Start: 42246, Stop: 42524, Start Num: 98

Candidate Starts for DrRobert_59:

(Start: 98 @42246 has 13 MA's), (Start: 105 @42264 has 63 MA's), (109, 42282), (153, 42441), (165, 42498), (166, 42504),

Gene: DreamTeam_61 Start: 42752, Stop: 43012, Start Num: 105

Candidate Starts for DreamTeam_61:

(Start: 98 @42734 has 13 MA's), (Start: 105 @42752 has 63 MA's), (109, 42770), (126, 42827), (148, 42908),

Gene: Ecliptus_1 Start: 40, Stop: 372, Start Num: 85

Candidate Starts for Ecliptus_1:

(68, 13), (Start: 85 @40 has 51 MA's), (123, 145), (133, 199), (134, 208), (135, 211), (138, 220), (143, 235), (150, 265), (159, 319), (168, 352),

Gene: Eden_72 Start: 40483, Stop: 40758, Start Num: 101

Candidate Starts for Eden_72:

(5, 40246), (9, 40276), (10, 40279), (13, 40294), (20, 40324), (21, 40327), (41, 40381), (63, 40423), (Start: 101 @40483 has 60 MA's), (152, 40669), (153, 40672), (167, 40741),

Gene: Eesa_65 Start: 39439, Stop: 39717, Start Num: 99

Candidate Starts for Eesa_65:

(Start: 99 @39439 has 14 MA's), (169, 39709),

Gene: Elesar_62 Start: 42571, Stop: 42897, Start Num: 60

Candidate Starts for Elesar_62:

(Start: 60 @42571 has 2 MA's), (Start: 84 @42601 has 4 MA's), (136, 42757), (165, 42871),

Gene: Elva_73 Start: 41675, Stop: 41950, Start Num: 101

Candidate Starts for Elva_73:

(Start: 101 @41675 has 60 MA's), (152, 41861), (153, 41864),

Gene: EmiRose_46 Start: 36892, Stop: 37236, Start Num: 55

Candidate Starts for EmiRose_46:

(Start: 55 @36892 has 1 MA's), (120, 37030), (128, 37060),

Gene: EstebanJulior_60 Start: 43409, Stop: 43669, Start Num: 105

Candidate Starts for EstebanJulior_60:

(Start: 105 @43409 has 63 MA's), (109, 43427), (126, 43484),

Gene: Eula_69 Start: 40916, Stop: 41191, Start Num: 101

Candidate Starts for Eula_69:

(Start: 101 @40916 has 60 MA's), (152, 41102),

Gene: Eunoia_62 Start: 44077, Stop: 44337, Start Num: 105

Candidate Starts for Eunoia_62:

(Start: 65 @44008 has 2 MA's), (76, 44029), (Start: 105 @44077 has 63 MA's), (111, 44098), (125, 44149),

Gene: Finalfrontier_69 Start: 41583, Stop: 41858, Start Num: 101

Candidate Starts for Finalfrontier_69:

(Start: 101 @41583 has 60 MA's), (152, 41769),

Gene: FlameThrower_65 Start: 40846, Stop: 41121, Start Num: 101

Candidate Starts for FlameThrower_65:

(51, 40768), (Start: 101 @40846 has 60 MA's), (152, 41032), (167, 41104),

Gene: Flathead_1 Start: 40, Stop: 372, Start Num: 85

Candidate Starts for Flathead_1:

(64, 7), (68, 13), (Start: 85 @40 has 51 MA's), (113, 109), (115, 118), (135, 211), (154, 283), (162, 328), (165, 337), (168, 352),

Gene: Fluke_62 Start: 43458, Stop: 43736, Start Num: 98

Candidate Starts for Fluke_62:

(Start: 98 @43458 has 13 MA's), (Start: 105 @43476 has 63 MA's), (109, 43494), (125, 43548),

Gene: Frankie_1 Start: 40, Stop: 372, Start Num: 85

Candidate Starts for Frankie_1:

(64, 7), (68, 13), (Start: 85 @40 has 51 MA's), (113, 109), (115, 118), (135, 211), (154, 283), (162, 328), (165, 337), (168, 352),

Gene: Franklin22_74 Start: 40216, Stop: 40491, Start Num: 101

Candidate Starts for Franklin22_74:

(63, 40156), (Start: 101 @40216 has 60 MA's), (152, 40402), (167, 40474),

Gene: Frickyeah_1 Start: 39, Stop: 371, Start Num: 85

Candidate Starts for Frickyeah_1:

(Start: 65 @9 has 2 MA's), (70, 15), (76, 27), (Start: 85 @39 has 51 MA's), (122, 141), (123, 144), (143, 234), (150, 264), (154, 282), (168, 351),

Gene: Frizzle_60 Start: 45090, Stop: 45314, Start Num: 116

Candidate Starts for Frizzle_60:

(90, 45018), (Start: 116 @45090 has 1 MA's), (126, 45123), (169, 45306),

Gene: Gack_71 Start: 40197, Stop: 40472, Start Num: 101
Candidate Starts for Gack_71:
(Start: 101 @40197 has 60 MA's), (152, 40383), (158, 40413),

Gene: Galaxy_65 Start: 37453, Stop: 37731, Start Num: 99
Candidate Starts for Galaxy_65:
(24, 37303), (32, 37327), (46, 37360), (Start: 99 @37453 has 14 MA's), (155, 37660),

Gene: Getalong_1 Start: 39, Stop: 371, Start Num: 85
Candidate Starts for Getalong_1:
(Start: 65 @9 has 2 MA's), (70, 15), (76, 27), (Start: 85 @39 has 51 MA's), (122, 141), (123, 144),
(143, 234), (150, 264), (154, 282), (168, 351),

Gene: Ghobes_59 Start: 45003, Stop: 45227, Start Num: 116
Candidate Starts for Ghobes_59:
(90, 44931), (Start: 116 @45003 has 1 MA's), (126, 45036), (169, 45219),

Gene: Girafales_1 Start: 41, Stop: 373, Start Num: 85
Candidate Starts for Girafales_1:
(67, 11), (Start: 85 @41 has 51 MA's), (108, 86), (113, 110), (115, 119), (133, 200), (143, 236), (154,
284), (162, 329), (165, 338), (168, 353),

Gene: Gisselle_61 Start: 42752, Stop: 43012, Start Num: 105
Candidate Starts for Gisselle_61:
(Start: 98 @42734 has 13 MA's), (Start: 105 @42752 has 63 MA's), (109, 42770), (126, 42827), (148,
42908),

Gene: Glenn_64 Start: 44035, Stop: 44313, Start Num: 98
Candidate Starts for Glenn_64:
(Start: 98 @44035 has 13 MA's), (Start: 105 @44053 has 63 MA's), (109, 44071), (125, 44125),

Gene: GreenHearts_62 Start: 43911, Stop: 44171, Start Num: 105
Candidate Starts for GreenHearts_62:
(Start: 105 @43911 has 63 MA's), (107, 43917), (121, 43968), (122, 43971), (125, 43983), (158,
44115),

Gene: Greenhouse_61 Start: 43637, Stop: 43897, Start Num: 105
Candidate Starts for Greenhouse_61:
(Start: 105 @43637 has 63 MA's), (107, 43643), (121, 43694), (122, 43697), (158, 43841),

Gene: Gusanita_70 Start: 42391, Stop: 42687, Start Num: 84
Candidate Starts for Gusanita_70:
(Start: 84 @42391 has 4 MA's), (119, 42481), (165, 42661),

Gene: Gustav_68 Start: 43674, Stop: 44000, Start Num: 59
Candidate Starts for Gustav_68:
(45, 43644), (Start: 59 @43674 has 2 MA's), (118, 43788), (136, 43857), (143, 43875), (148, 43896),
(150, 43905), (160, 43962),

Gene: HeadNerd_62 Start: 42632, Stop: 42892, Start Num: 105
Candidate Starts for HeadNerd_62:

(Start: 98 @42614 has 13 MA's), (Start: 105 @42632 has 63 MA's), (109, 42650), (126, 42707), (153, 42809), (161, 42857),

Gene: Hegedechwinu_1 Start: 40, Stop: 372, Start Num: 85

Candidate Starts for Hegedechwinu_1:

(64, 7), (68, 13), (Start: 85 @40 has 51 MA's), (113, 109), (115, 118), (135, 211), (154, 283), (162, 328), (165, 337), (168, 352),

Gene: Heinz_63 Start: 39746, Stop: 40030, Start Num: 94

Candidate Starts for Heinz_63:

(94, 39746), (112, 39800),

Gene: Herb_60 Start: 43613, Stop: 43870, Start Num: 105

Candidate Starts for Herb_60:

(Start: 103 @43604 has 1 MA's), (Start: 105 @43613 has 63 MA's), (109, 43631), (127, 43688), (148, 43766),

Gene: Hilltopfarm_134 Start: 76128, Stop: 76451, Start Num: 69

Candidate Starts for Hilltopfarm_134:

(Start: 69 @76128 has 4 MA's), (130, 76278), (151, 76359), (156, 76383), (158, 76395),

Gene: Holliday_1 Start: 39, Stop: 371, Start Num: 85

Candidate Starts for Holliday_1:

(Start: 65 @9 has 2 MA's), (70, 15), (Start: 85 @39 has 51 MA's), (115, 117), (122, 141), (143, 234), (154, 282), (159, 318), (168, 351),

Gene: Horus_1 Start: 39, Stop: 371, Start Num: 85

Candidate Starts for Horus_1:

(Start: 65 @9 has 2 MA's), (70, 15), (76, 27), (Start: 85 @39 has 51 MA's), (115, 117), (122, 141), (143, 234), (150, 264), (154, 282), (168, 351),

Gene: Huckleberry_62 Start: 42636, Stop: 42896, Start Num: 105

Candidate Starts for Huckleberry_62:

(Start: 98 @42618 has 13 MA's), (Start: 105 @42636 has 63 MA's), (109, 42654), (126, 42711), (153, 42813), (161, 42861),

Gene: Huffu_64 Start: 39227, Stop: 39523, Start Num: 82

Candidate Starts for Huffu_64:

(56, 39185), (Start: 82 @39227 has 8 MA's), (147, 39416), (160, 39485),

Gene: HunterDalle_60 Start: 42928, Stop: 43257, Start Num: 65

Candidate Starts for HunterDalle_60:

(Start: 65 @42928 has 2 MA's), (76, 42949), (Start: 105 @42997 has 63 MA's), (109, 43015), (111, 43018), (125, 43069),

Gene: Huntingdon_61 Start: 43533, Stop: 43811, Start Num: 96

Candidate Starts for Huntingdon_61:

(Start: 96 @43533 has 1 MA's), (Start: 105 @43551 has 63 MA's), (121, 43608), (122, 43611), (125, 43623), (158, 43755),

Gene: Icarian_72 Start: 41856, Stop: 42131, Start Num: 101

Candidate Starts for Icarian_72:

(Start: 101 @41856 has 60 MA's), (147, 42021), (152, 42042), (153, 42045),

Gene: Immaculata_62 Start: 43324, Stop: 43584, Start Num: 105
Candidate Starts for Immaculata_62:
(Start: 98 @43306 has 13 MA's), (Start: 105 @43324 has 63 MA's), (109, 43342), (125, 43396),

Gene: IndyLu_71 Start: 41495, Stop: 41770, Start Num: 101
Candidate Starts for IndyLu_71:
(15, 41318), (32, 41369), (51, 41420), (Start: 62 @41435 has 1 MA's), (Start: 77 @41462 has 1 MA's),
(Start: 81 @41468 has 1 MA's), (93, 41483), (Start: 101 @41495 has 60 MA's),

Gene: Jabbawokkie_2 Start: 561, Stop: 893, Start Num: 85
Candidate Starts for Jabbawokkie_2:
(64, 528), (Start: 85 @561 has 51 MA's), (143, 756), (150, 786), (154, 804), (162, 849), (168, 873),

Gene: Jamun_63 Start: 38467, Stop: 38745, Start Num: 99
Candidate Starts for Jamun_63:
(18, 38326), (64, 38413), (Start: 85 @38449 has 51 MA's), (Start: 91 @38455 has 4 MA's), (Start: 99 @38467 has 14 MA's),

Gene: JanetJ_52 Start: 36634, Stop: 36915, Start Num: 95
Candidate Starts for JanetJ_52:
(Start: 95 @36634 has 2 MA's),

Gene: Joann_63 Start: 43843, Stop: 44103, Start Num: 105
Candidate Starts for Joann_63:
(Start: 105 @43843 has 63 MA's), (121, 43900), (122, 43903), (158, 44047),

Gene: Job42_1 Start: 41, Stop: 373, Start Num: 85
Candidate Starts for Job42_1:
(67, 11), (Start: 85 @41 has 51 MA's), (115, 119), (135, 212), (154, 284), (162, 329), (165, 338), (168, 353),

Gene: Johnathan_70 Start: 40508, Stop: 40783, Start Num: 101
Candidate Starts for Johnathan_70:
(Start: 101 @40508 has 60 MA's),

Gene: Jovita_68 Start: 40684, Stop: 40959, Start Num: 101
Candidate Starts for Jovita_68:
(Start: 101 @40684 has 60 MA's), (152, 40870),

Gene: Juice456_1 Start: 41, Stop: 373, Start Num: 85
Candidate Starts for Juice456_1:
(67, 11), (Start: 85 @41 has 51 MA's), (115, 119), (135, 212), (154, 284), (162, 329), (165, 338), (168, 353),

Gene: Jumboset_62 Start: 43444, Stop: 43704, Start Num: 105
Candidate Starts for Jumboset_62:
(Start: 98 @43426 has 13 MA's), (Start: 105 @43444 has 63 MA's), (109, 43462), (122, 43504), (125, 43516),

Gene: Juno112_69 Start: 38104, Stop: 38391, Start Num: 91
Candidate Starts for Juno112_69:
(Start: 91 @38104 has 4 MA's), (140, 38257), (155, 38320),

Gene: KHumphrey_70 Start: 37978, Stop: 38265, Start Num: 91

Candidate Starts for KHumphrey_70:

(Start: 91 @37978 has 4 MA's), (140, 38131), (155, 38194),

Gene: Kalizoi_62 Start: 43182, Stop: 43442, Start Num: 105

Candidate Starts for Kalizoi_62:

(Start: 98 @43164 has 13 MA's), (Start: 105 @43182 has 63 MA's), (109, 43200), (125, 43254),

Gene: Kamaru_1 Start: 39, Stop: 371, Start Num: 85

Candidate Starts for Kamaru_1:

(Start: 65 @9 has 2 MA's), (70, 15), (Start: 85 @39 has 51 MA's), (115, 117), (122, 141), (143, 234), (154, 282), (159, 318), (168, 351),

Gene: Kate33_71 Start: 41226, Stop: 41501, Start Num: 101

Candidate Starts for Kate33_71:

(32, 41100), (51, 41151), (Start: 62 @41166 has 1 MA's), (Start: 81 @41199 has 1 MA's), (93, 41214), (Start: 101 @41226 has 60 MA's),

Gene: Katzastrophic_67 Start: 41352, Stop: 41627, Start Num: 101

Candidate Starts for Katzastrophic_67:

(17, 41187), (20, 41196), (21, 41199), (39, 41247), (51, 41277), (Start: 62 @41292 has 1 MA's), (Start: 81 @41325 has 1 MA's), (Start: 101 @41352 has 60 MA's), (152, 41538), (167, 41610),

Gene: Kenna_1 Start: 39, Stop: 371, Start Num: 85

Candidate Starts for Kenna_1:

(Start: 65 @9 has 2 MA's), (70, 15), (76, 27), (Start: 85 @39 has 51 MA's), (115, 117), (122, 141), (123, 144), (143, 234), (150, 264), (154, 282), (168, 351),

Gene: Kenzers_69 Start: 40798, Stop: 41073, Start Num: 101

Candidate Starts for Kenzers_69:

(Start: 101 @40798 has 60 MA's), (152, 40984),

Gene: Kepler_75 Start: 38025, Stop: 38375, Start Num: 43

Candidate Starts for Kepler_75:

(Start: 43 @38025 has 6 MA's), (93, 38088),

Gene: Khuang_70 Start: 39192, Stop: 39488, Start Num: 89

Candidate Starts for Khuang_70:

(89, 39192), (104, 39222), (143, 39360),

Gene: Kieran_65 Start: 41080, Stop: 41355, Start Num: 101

Candidate Starts for Kieran_65:

(51, 41005), (Start: 101 @41080 has 60 MA's), (152, 41266), (158, 41296),

Gene: Kimberlium_1 Start: 41, Stop: 373, Start Num: 85

Candidate Starts for Kimberlium_1:

(67, 11), (Start: 85 @41 has 51 MA's), (115, 119), (135, 212), (154, 284), (162, 329), (165, 338), (168, 353),

Gene: KingBob_60 Start: 43614, Stop: 43871, Start Num: 105

Candidate Starts for KingBob_60:

(Start: 103 @43605 has 1 MA's), (Start: 105 @43614 has 63 MA's), (109, 43632), (127, 43689), (148, 43767),

Gene: Kittykat_65 Start: 43266, Stop: 43526, Start Num: 105

Candidate Starts for Kittykat_65:

(Start: 98 @43248 has 13 MA's), (Start: 105 @43266 has 63 MA's), (109, 43284), (126, 43341), (148, 43422), (153, 43443),

Gene: Korra_62 Start: 43371, Stop: 43631, Start Num: 105

Candidate Starts for Korra_62:

(Start: 98 @43353 has 13 MA's), (Start: 105 @43371 has 63 MA's), (109, 43389), (125, 43443),

Gene: Kudrefre_128 Start: 69247, Stop: 69579, Start Num: 87

Candidate Starts for Kudrefre_128:

(Start: 87 @69247 has 7 MA's), (132, 69385), (133, 69397), (155, 69487),

Gene: Kuleana_76 Start: 38455, Stop: 38775, Start Num: 73

Candidate Starts for Kuleana_76:

(29, 38371), (Start: 73 @38455 has 1 MA's), (93, 38488),

Gene: Lahqtemish_69 Start: 41710, Stop: 41985, Start Num: 101

Candidate Starts for Lahqtemish_69:

(38, 41602), (51, 41635), (Start: 62 @41650 has 1 MA's), (Start: 77 @41677 has 1 MA's), (Start: 81 @41683 has 1 MA's), (93, 41698), (Start: 101 @41710 has 60 MA's),

Gene: Lakshmi_61 Start: 43678, Stop: 43938, Start Num: 105

Candidate Starts for Lakshmi_61:

(Start: 105 @43678 has 63 MA's), (107, 43684), (121, 43735), (122, 43738), (125, 43750), (158, 43882),

Gene: Lasagna_59 Start: 42266, Stop: 42526, Start Num: 105

Candidate Starts for Lasagna_59:

(Start: 98 @42248 has 13 MA's), (Start: 105 @42266 has 63 MA's), (109, 42284), (153, 42443), (165, 42500), (166, 42506),

Gene: Lennox_61 Start: 42751, Stop: 43011, Start Num: 105

Candidate Starts for Lennox_61:

(Start: 98 @42733 has 13 MA's), (Start: 105 @42751 has 63 MA's), (109, 42769), (126, 42826), (153, 42928), (165, 42985), (166, 42991),

Gene: Lenoxika_66 Start: 41766, Stop: 42062, Start Num: 84

Candidate Starts for Lenoxika_66:

(Start: 84 @41766 has 4 MA's), (121, 41862), (136, 41922), (147, 41958),

Gene: Leona_68 Start: 38237, Stop: 38518, Start Num: 97

Candidate Starts for Leona_68:

(Start: 97 @38237 has 1 MA's), (140, 38384), (155, 38447),

Gene: Leroy_1 Start: 39, Stop: 371, Start Num: 85

Candidate Starts for Leroy_1:

(Start: 65 @9 has 2 MA's), (70, 15), (76, 27), (Start: 85 @39 has 51 MA's), (122, 141), (123, 144), (143, 234), (150, 264), (154, 282), (168, 351),

Gene: LilStuart_60 Start: 42614, Stop: 42874, Start Num: 105

Candidate Starts for LilStuart_60:

(Start: 98 @42596 has 13 MA's), (Start: 105 @42614 has 63 MA's), (109, 42632), (153, 42791), (165, 42848), (166, 42854),

Gene: LimaBean_68 Start: 40790, Stop: 41065, Start Num: 101

Candidate Starts for LimaBean_68:

(52, 40715), (64, 40730), (80, 40760), (83, 40763), (Start: 101 @40790 has 60 MA's),

Gene: LitninMcQueen_1 Start: 39, Stop: 371, Start Num: 85

Candidate Starts for LitninMcQueen_1:

(Start: 65 @9 has 2 MA's), (70, 15), (Start: 85 @39 has 51 MA's), (115, 117), (122, 141), (143, 234), (154, 282), (159, 318), (168, 351),

Gene: Litotes_62 Start: 43156, Stop: 43416, Start Num: 105

Candidate Starts for Litotes_62:

(Start: 84 @43123 has 4 MA's), (Start: 99 @43144 has 14 MA's), (102, 43150), (Start: 105 @43156 has 63 MA's),

Gene: LittleShirley_1 Start: 41, Stop: 373, Start Num: 85

Candidate Starts for LittleShirley_1:

(67, 11), (Start: 85 @41 has 51 MA's), (115, 119), (135, 212), (143, 236), (154, 284), (165, 338), (168, 353),

Gene: LittleTokyo_73 Start: 38604, Stop: 38882, Start Num: 99

Candidate Starts for LittleTokyo_73:

(Start: 99 @38604 has 14 MA's), (152, 38796),

Gene: Loviatar_114 Start: 42044, Stop: 42379, Start Num: 62

Candidate Starts for Loviatar_114:

(51, 42029), (Start: 62 @42044 has 1 MA's), (Start: 81 @42077 has 1 MA's), (Start: 101 @42104 has 60 MA's), (110, 42137), (153, 42293),

Gene: Lucy_60 Start: 42591, Stop: 42869, Start Num: 98

Candidate Starts for Lucy_60:

(Start: 98 @42591 has 13 MA's), (Start: 105 @42609 has 63 MA's), (109, 42627), (153, 42786), (165, 42843), (166, 42849),

Gene: Lutum_1 Start: 39, Stop: 371, Start Num: 85

Candidate Starts for Lutum_1:

(Start: 65 @9 has 2 MA's), (70, 15), (76, 27), (Start: 85 @39 has 51 MA's), (115, 117), (122, 141), (123, 144), (143, 234), (150, 264), (154, 282), (168, 351),

Gene: Lynlen_71 Start: 40984, Stop: 41259, Start Num: 101

Candidate Starts for Lynlen_71:

(93, 40972), (Start: 101 @40984 has 60 MA's),

Gene: Mahdia_60 Start: 41790, Stop: 42113, Start Num: 59

Candidate Starts for Mahdia_60:

(Start: 59 @41790 has 2 MA's), (Start: 66 @41796 has 2 MA's), (136, 41970), (143, 41988), (160, 42075),

Gene: Maja_56 Start: 36343, Stop: 36714, Start Num: 44

Candidate Starts for Maja_56:

(Start: 44 @36343 has 1 MA's), (Start: 84 @36415 has 4 MA's), (Start: 97 @36433 has 1 MA's),

Gene: Makoto_60 Start: 42571, Stop: 42831, Start Num: 105

Candidate Starts for Makoto_60:

(Start: 98 @42553 has 13 MA's), (Start: 105 @42571 has 63 MA's), (109, 42589), (126, 42646), (153, 42748), (165, 42805), (166, 42811),

Gene: Malisha_1 Start: 39, Stop: 371, Start Num: 85

Candidate Starts for Malisha_1:

(Start: 65 @9 has 2 MA's), (70, 15), (Start: 85 @39 has 51 MA's), (115, 117), (134, 207), (143, 234), (150, 264), (154, 282), (159, 318), (168, 351),

Gene: MamaPearl_60 Start: 43409, Stop: 43669, Start Num: 105

Candidate Starts for MamaPearl_60:

(Start: 105 @43409 has 63 MA's), (109, 43427), (126, 43484),

Gene: Maria1952_59 Start: 43613, Stop: 43870, Start Num: 105

Candidate Starts for Maria1952_59:

(Start: 103 @43604 has 1 MA's), (Start: 105 @43613 has 63 MA's), (109, 43631), (127, 43688), (148, 43766),

Gene: MeganNoll_63 Start: 43904, Stop: 44182, Start Num: 98

Candidate Starts for MeganNoll_63:

(Start: 98 @43904 has 13 MA's), (Start: 105 @43922 has 63 MA's), (109, 43940), (125, 43994),

Gene: Melons_73 Start: 37979, Stop: 38383, Start Num: 22

Candidate Starts for Melons_73:

(Start: 22 @37979 has 1 MA's), (93, 38096),

Gene: Misaeng_61 Start: 43477, Stop: 43737, Start Num: 105

Candidate Starts for Misaeng_61:

(Start: 105 @43477 has 63 MA's), (121, 43534), (122, 43537), (125, 43549), (158, 43681),

Gene: Misha28_1 Start: 42, Stop: 374, Start Num: 85

Candidate Starts for Misha28_1:

(Start: 65 @9 has 2 MA's), (71, 15), (Start: 85 @42 has 51 MA's), (115, 120), (135, 213), (143, 237), (154, 285), (165, 339), (168, 354),

Gene: Moki_62 Start: 42825, Stop: 43085, Start Num: 105

Candidate Starts for Moki_62:

(Start: 98 @42807 has 13 MA's), (Start: 105 @42825 has 63 MA's), (109, 42843), (126, 42900), (153, 43002), (161, 43050),

Gene: Morrissey_63 Start: 43651, Stop: 44007, Start Num: 48

Candidate Starts for Morrissey_63:

(Start: 48 @43651 has 1 MA's), (53, 43666), (Start: 61 @43678 has 1 MA's), (80, 43702), (136, 43864), (160, 43969),

Gene: Mova_1 Start: 41, Stop: 373, Start Num: 85

Candidate Starts for Mova_1:

(67, 11), (Start: 85 @41 has 51 MA's), (115, 119), (135, 212), (143, 236), (154, 284), (165, 338), (168, 353),

Gene: Mozy_1 Start: 40, Stop: 372, Start Num: 85

Candidate Starts for Mozy_1:

(64, 7), (68, 13), (Start: 85 @40 has 51 MA's), (108, 85), (113, 109), (115, 118), (133, 199), (143, 235), (154, 283), (162, 328), (165, 337), (168, 352),

Gene: MrGloopy_62 Start: 43347, Stop: 43625, Start Num: 98

Candidate Starts for MrGloopy_62:

(Start: 98 @43347 has 13 MA's), (Start: 105 @43365 has 63 MA's), (109, 43383), (125, 43437),

Gene: MulchExplorer_1 Start: 41, Stop: 373, Start Num: 85

Candidate Starts for MulchExplorer_1:

(67, 11), (Start: 85 @41 has 51 MA's), (115, 119), (135, 212), (154, 284), (162, 329), (165, 338), (168, 353),

Gene: Nancia_61 Start: 42902, Stop: 43162, Start Num: 105

Candidate Starts for Nancia_61:

(Start: 98 @42884 has 13 MA's), (Start: 105 @42902 has 63 MA's), (109, 42920), (153, 43079), (165, 43136), (166, 43142),

Gene: Nandita_68 Start: 42024, Stop: 42323, Start Num: 81

Candidate Starts for Nandita_68:

(28, 41931), (Start: 62 @42000 has 1 MA's), (Start: 81 @42024 has 1 MA's), (136, 42183), (140, 42192), (165, 42297),

Gene: Neville_125 Start: 70232, Stop: 70561, Start Num: 87

Candidate Starts for Neville_125:

(Start: 87 @70232 has 7 MA's), (129, 70352), (133, 70382), (139, 70406), (142, 70415), (157, 70484), (161, 70508), (164, 70517), (170, 70556),

Gene: Nicky22_69 Start: 41321, Stop: 41596, Start Num: 101

Candidate Starts for Nicky22_69:

(Start: 101 @41321 has 60 MA's), (152, 41507),

Gene: Nubia_61 Start: 43705, Stop: 43965, Start Num: 105

Candidate Starts for Nubia_61:

(Start: 96 @43687 has 1 MA's), (Start: 105 @43705 has 63 MA's), (121, 43762), (122, 43765), (158, 43909),

Gene: ODay_1 Start: 39, Stop: 371, Start Num: 85

Candidate Starts for ODay_1:

(Start: 65 @9 has 2 MA's), (70, 15), (Start: 85 @39 has 51 MA's), (115, 117), (122, 141), (143, 234), (154, 282), (159, 318), (168, 351),

Gene: OMalley_60 Start: 43400, Stop: 43660, Start Num: 105

Candidate Starts for OMalley_60:

(Start: 65 @43331 has 2 MA's), (76, 43352), (Start: 105 @43400 has 63 MA's), (111, 43421), (125, 43472),

Gene: Octobien14_124 Start: 67781, Stop: 68113, Start Num: 87

Candidate Starts for Octobien14_124:

(63, 67739), (Start: 87 @67781 has 7 MA's), (132, 67919), (133, 67931), (150, 67997),

Gene: Ogotogo_2 Start: 299, Stop: 631, Start Num: 85
Candidate Starts for Ogotogo_2:
(Start: 85 @299 has 51 MA's), (115, 377), (143, 494), (150, 524), (154, 542), (162, 587), (168, 611),

Gene: Olliecat_66 Start: 38762, Stop: 39037, Start Num: 101
Candidate Starts for Olliecat_66:
(1, 38429), (14, 38579), (27, 38630), (Start: 101 @38762 has 60 MA's), (152, 38948), (163, 39005),

Gene: Orcanus_65 Start: 39051, Stop: 39329, Start Num: 99
Candidate Starts for Orcanus_65:
(Start: 99 @39051 has 14 MA's),

Gene: OurGirlNessie_59 Start: 42225, Stop: 42485, Start Num: 105
Candidate Starts for OurGirlNessie_59:
(Start: 98 @42207 has 13 MA's), (Start: 105 @42225 has 63 MA's), (109, 42243), (126, 42300), (153, 42402), (165, 42459), (166, 42465),

Gene: Oxynfrius_62 Start: 43823, Stop: 44083, Start Num: 105
Candidate Starts for Oxynfrius_62:
(Start: 105 @43823 has 63 MA's), (121, 43880), (122, 43883), (158, 44027),

Gene: PartyCup_66 Start: 43576, Stop: 43848, Start Num: 99
Candidate Starts for PartyCup_66:
(Start: 84 @43555 has 4 MA's), (Start: 99 @43576 has 14 MA's), (102, 43582), (Start: 105 @43588 has 63 MA's),

Gene: Periwinkle_1 Start: 39, Stop: 371, Start Num: 85
Candidate Starts for Periwinkle_1:
(Start: 65 @9 has 2 MA's), (70, 15), (76, 27), (Start: 85 @39 has 51 MA's), (115, 117), (122, 141), (123, 144), (143, 234), (150, 264), (154, 282), (168, 351),

Gene: Phabuloso_1 Start: 39, Stop: 371, Start Num: 85
Candidate Starts for Phabuloso_1:
(Start: 65 @9 has 2 MA's), (70, 15), (Start: 85 @39 has 51 MA's), (115, 117), (122, 141), (143, 234), (154, 282), (159, 318), (168, 351),

Gene: Phisb_72 Start: 41092, Stop: 41367, Start Num: 101
Candidate Starts for Phisb_72:
(Start: 101 @41092 has 60 MA's),

Gene: Phistory_1 Start: 39, Stop: 371, Start Num: 85
Candidate Starts for Phistory_1:
(Start: 65 @9 has 2 MA's), (70, 15), (Start: 85 @39 has 51 MA's), (122, 141), (123, 144), (143, 234), (150, 264), (154, 282), (159, 318), (168, 351),

Gene: PhluffyCoco_69 Start: 38203, Stop: 38490, Start Num: 91
Candidate Starts for PhluffyCoco_69:
(Start: 91 @38203 has 4 MA's), (140, 38356), (155, 38419),

Gene: PinkFriday_61 Start: 42959, Stop: 43216, Start Num: 105
Candidate Starts for PinkFriday_61:
(Start: 103 @42950 has 1 MA's), (Start: 105 @42959 has 63 MA's), (127, 43034), (128, 43037), (148, 43112), (166, 43196),

Gene: Piper2020_1 Start: 42, Stop: 374, Start Num: 85

Candidate Starts for Piper2020_1:

(Start: 65 @9 has 2 MA's), (71, 15), (Start: 85 @42 has 51 MA's), (115, 120), (135, 213), (143, 237), (154, 285), (165, 339), (168, 354),

Gene: PitaDog_61 Start: 42609, Stop: 42887, Start Num: 98

Candidate Starts for PitaDog_61:

(Start: 98 @42609 has 13 MA's), (Start: 105 @42627 has 63 MA's), (109, 42645), (126, 42702), (153, 42804), (165, 42861), (166, 42867),

Gene: Plumbus_1 Start: 41, Stop: 373, Start Num: 85

Candidate Starts for Plumbus_1:

(67, 11), (Start: 85 @41 has 51 MA's), (115, 119), (135, 212), (154, 284), (162, 329), (165, 338), (168, 353),

Gene: Polka_71 Start: 37650, Stop: 38003, Start Num: 43

Candidate Starts for Polka_71:

(Start: 43 @37650 has 6 MA's), (93, 37716),

Gene: Popper_70 Start: 41441, Stop: 41767, Start Num: 60

Candidate Starts for Popper_70:

(28, 41375), (Start: 60 @41441 has 2 MA's), (Start: 84 @41471 has 4 MA's), (121, 41567), (136, 41627), (165, 41741), (166, 41747),

Gene: Potatoes_62 Start: 43324, Stop: 43584, Start Num: 105

Candidate Starts for Potatoes_62:

(Start: 98 @43306 has 13 MA's), (Start: 105 @43324 has 63 MA's), (109, 43342), (125, 43396),

Gene: Preamble_64 Start: 43037, Stop: 43297, Start Num: 105

Candidate Starts for Preamble_64:

(Start: 98 @43019 has 13 MA's), (Start: 105 @43037 has 63 MA's), (109, 43055), (126, 43112), (148, 43193), (153, 43214),

Gene: Pterodactyl_61 Start: 42938, Stop: 43198, Start Num: 105

Candidate Starts for Pterodactyl_61:

(Start: 98 @42920 has 13 MA's), (Start: 105 @42938 has 63 MA's), (109, 42956), (126, 43013), (153, 43115), (165, 43172), (166, 43178),

Gene: Pumancara_61 Start: 42494, Stop: 42751, Start Num: 105

Candidate Starts for Pumancara_61:

(Start: 103 @42485 has 1 MA's), (Start: 105 @42494 has 63 MA's), (127, 42569), (128, 42572), (148, 42647), (166, 42731),

Gene: Puppies_62 Start: 41790, Stop: 42113, Start Num: 66

Candidate Starts for Puppies_62:

(25, 41697), (31, 41718), (37, 41733), (39, 41739), (54, 41775), (Start: 66 @41790 has 2 MA's), (143, 41988),

Gene: QMacho_72 Start: 41222, Stop: 41497, Start Num: 101

Candidate Starts for QMacho_72:

(Start: 101 @41222 has 60 MA's),

Gene: Quenya_69 Start: 41516, Stop: 41791, Start Num: 101
Candidate Starts for Quenya_69:
(Start: 101 @41516 has 60 MA's), (110, 41549), (152, 41702), (167, 41774),

Gene: Quico_1 Start: 41, Stop: 373, Start Num: 85
Candidate Starts for Quico_1:
(67, 11), (Start: 85 @41 has 51 MA's), (108, 86), (113, 110), (115, 119), (133, 200), (143, 236), (154, 284), (162, 329), (165, 338), (168, 353),

Gene: QuinnAvery_66 Start: 42826, Stop: 43122, Start Num: 84
Candidate Starts for QuinnAvery_66:
(35, 42730), (Start: 84 @42826 has 4 MA's), (121, 42922), (136, 42982), (140, 42991),

Gene: RAP15_63 Start: 43905, Stop: 44183, Start Num: 98
Candidate Starts for RAP15_63:
(Start: 98 @43905 has 13 MA's), (Start: 105 @43923 has 63 MA's), (109, 43941), (125, 43995),

Gene: Rabbitrun_127 Start: 71852, Stop: 72181, Start Num: 87
Candidate Starts for Rabbitrun_127:
(2, 71615), (3, 71618), (16, 71696), (30, 71741), (33, 71744), (Start: 44 @71774 has 1 MA's), (47, 71777), (58, 71804), (79, 71840), (Start: 87 @71852 has 7 MA's), (121, 71942), (133, 72002), (137, 72020), (139, 72026), (140, 72029), (157, 72104), (170, 72176),

Gene: RcigaStruga_62 Start: 43551, Stop: 43811, Start Num: 105
Candidate Starts for RcigaStruga_62:
(Start: 96 @43533 has 1 MA's), (Start: 105 @43551 has 63 MA's), (121, 43608), (122, 43611), (125, 43623), (158, 43755),

Gene: RedFox_71 Start: 38363, Stop: 38650, Start Num: 91
Candidate Starts for RedFox_71:
(Start: 91 @38363 has 4 MA's), (140, 38516), (155, 38579),

Gene: Renna12_72 Start: 38798, Stop: 39091, Start Num: 86
Candidate Starts for Renna12_72:
(75, 38777), (Start: 86 @38798 has 1 MA's), (140, 38957), (155, 39020),

Gene: Rialto_1 Start: 41, Stop: 373, Start Num: 85
Candidate Starts for Rialto_1:
(67, 11), (Start: 85 @41 has 51 MA's), (115, 119), (135, 212), (143, 236), (154, 284), (165, 338), (168, 353),

Gene: Riovina_60 Start: 43400, Stop: 43660, Start Num: 105
Candidate Starts for Riovina_60:
(Start: 65 @43331 has 2 MA's), (76, 43352), (Start: 105 @43400 has 63 MA's), (111, 43421), (125, 43472),

Gene: Riverdale_61 Start: 43055, Stop: 43315, Start Num: 105
Candidate Starts for Riverdale_61:
(Start: 98 @43037 has 13 MA's), (Start: 105 @43055 has 63 MA's), (109, 43073), (125, 43127),

Gene: Rollins_70 Start: 39578, Stop: 39853, Start Num: 101
Candidate Starts for Rollins_70:

(11, 39380), (14, 39395), (21, 39422), (34, 39455), (51, 39503), (Start: 62 @39518 has 1 MA's), (Start: 81 @39551 has 1 MA's), (Start: 101 @39578 has 60 MA's),

Gene: Rona_66 Start: 41247, Stop: 41522, Start Num: 101
Candidate Starts for Rona_66:
(51, 41172), (Start: 101 @41247 has 60 MA's), (152, 41433), (158, 41463),

Gene: Rozby_60 Start: 42859, Stop: 43119, Start Num: 105
Candidate Starts for Rozby_60:
(Start: 98 @42841 has 13 MA's), (Start: 105 @42859 has 63 MA's), (109, 42877), (125, 42931),

Gene: Ruchi_64 Start: 38215, Stop: 38493, Start Num: 99
Candidate Starts for Ruchi_64:
(36, 38110), (51, 38140), (Start: 91 @38203 has 4 MA's), (Start: 99 @38215 has 14 MA's),

Gene: Ryan_70 Start: 42477, Stop: 42773, Start Num: 84
Candidate Starts for Ryan_70:
(Start: 60 @42438 has 2 MA's), (Start: 84 @42477 has 4 MA's), (136, 42633), (165, 42747),

Gene: SanaSana_70 Start: 41542, Stop: 41817, Start Num: 101
Candidate Starts for SanaSana_70:
(4, 41296), (6, 41311), (12, 41350), (49, 41458), (51, 41467), (Start: 62 @41482 has 1 MA's), (Start: 81 @41515 has 1 MA's), (Start: 101 @41542 has 60 MA's), (110, 41575), (152, 41728), (153, 41731),

Gene: SansAfet_72 Start: 41068, Stop: 41343, Start Num: 101
Candidate Starts for SansAfet_72:
(Start: 101 @41068 has 60 MA's), (152, 41254),

Gene: Sapo_61 Start: 45211, Stop: 45513, Start Num: 88
Candidate Starts for Sapo_61:
(Start: 88 @45211 has 1 MA's), (122, 45304), (131, 45337), (149, 45412), (169, 45505),

Gene: SarBear_72 Start: 41148, Stop: 41423, Start Num: 101
Candidate Starts for SarBear_72:
(Start: 101 @41148 has 60 MA's),

Gene: Savage2526_61 Start: 43082, Stop: 43342, Start Num: 105
Candidate Starts for Savage2526_61:
(Start: 98 @43064 has 13 MA's), (Start: 105 @43082 has 63 MA's), (109, 43100), (125, 43154),

Gene: Schmidt_58 Start: 36837, Stop: 37133, Start Num: 82
Candidate Starts for Schmidt_58:
(Start: 82 @36837 has 8 MA's), (143, 37008), (165, 37107),

Gene: Scuttle_61 Start: 43375, Stop: 43653, Start Num: 98
Candidate Starts for Scuttle_61:
(Start: 98 @43375 has 13 MA's), (Start: 105 @43393 has 63 MA's), (109, 43411), (125, 43465),

Gene: Sephiroth_123 Start: 69017, Stop: 69349, Start Num: 87
Candidate Starts for Sephiroth_123:
(Start: 87 @69017 has 7 MA's), (132, 69155), (133, 69167), (155, 69257),

Gene: Sergei_60 Start: 43614, Stop: 43871, Start Num: 105

Candidate Starts for Sergei_60:

(Start: 103 @43605 has 1 MA's), (Start: 105 @43614 has 63 MA's), (109, 43632), (127, 43689), (148, 43767),

Gene: Shagrat_110 Start: 58151, Stop: 58423, Start Num: 100

Candidate Starts for Shagrat_110:

(Start: 100 @58151 has 1 MA's), (129, 58256), (140, 58295), (163, 58391), (164, 58394),

Gene: Sharkboy_68 Start: 41611, Stop: 41886, Start Num: 101

Candidate Starts for Sharkboy_68:

(51, 41536), (Start: 101 @41611 has 60 MA's), (110, 41644), (152, 41797), (158, 41827),

Gene: Shayna_75 Start: 41004, Stop: 41279, Start Num: 101

Candidate Starts for Shayna_75:

(Start: 101 @41004 has 60 MA's), (152, 41190),

Gene: Skylord_70 Start: 39495, Stop: 39770, Start Num: 101

Candidate Starts for Skylord_70:

(11, 39297), (14, 39312), (21, 39339), (34, 39372), (51, 39420), (Start: 62 @39435 has 1 MA's), (Start: 81 @39468 has 1 MA's), (Start: 101 @39495 has 60 MA's),

Gene: Slay_70 Start: 41458, Stop: 41733, Start Num: 101

Candidate Starts for Slay_70:

(Start: 101 @41458 has 60 MA's), (152, 41644),

Gene: Soul22_1 Start: 38, Stop: 370, Start Num: 85

Candidate Starts for Soul22_1:

(67, 11), (Start: 85 @38 has 51 MA's), (115, 116), (123, 143), (143, 233), (150, 263), (154, 281), (162, 326), (168, 350),

Gene: Splinter_64 Start: 40315, Stop: 40611, Start Num: 82

Candidate Starts for Splinter_64:

(Start: 82 @40315 has 8 MA's), (147, 40504), (160, 40573),

Gene: Spooky_1 Start: 39, Stop: 371, Start Num: 85

Candidate Starts for Spooky_1:

(Start: 65 @9 has 2 MA's), (70, 15), (Start: 85 @39 has 51 MA's), (143, 234), (146, 249), (154, 282), (159, 318), (168, 351),

Gene: Squiddly_2 Start: 730, Stop: 1062, Start Num: 85

Candidate Starts for Squiddly_2:

(23, 601), (26, 613), (64, 697), (Start: 85 @730 has 51 MA's), (135, 901), (141, 919), (154, 973), (159, 1009), (168, 1042),

Gene: Squirrel_66 Start: 38761, Stop: 39036, Start Num: 101

Candidate Starts for Squirrel_66:

(1, 38428), (14, 38578), (27, 38629), (Start: 101 @38761 has 60 MA's), (152, 38947), (163, 39004),

Gene: Squirty_1 Start: 40, Stop: 372, Start Num: 85

Candidate Starts for Squirty_1:

(64, 7), (68, 13), (Start: 85 @40 has 51 MA's), (113, 109), (115, 118), (135, 211), (150, 265), (154, 283), (162, 328), (165, 337), (168, 352),

Gene: Starcevich_1 Start: 41, Stop: 373, Start Num: 85
Candidate Starts for Starcevich_1:
(67, 11), (Start: 85 @41 has 51 MA's), (115, 119), (135, 212), (143, 236), (154, 284), (165, 338), (168, 353),

Gene: Stoor_69 Start: 41350, Stop: 41625, Start Num: 101
Candidate Starts for Stoor_69:
(Start: 101 @41350 has 60 MA's), (152, 41536), (153, 41539),

Gene: Stromboli_68 Start: 41130, Stop: 41405, Start Num: 101
Candidate Starts for Stromboli_68:
(4, 40884), (6, 40899), (12, 40938), (49, 41046), (51, 41055), (Start: 62 @41070 has 1 MA's), (Start: 81 @41103 has 1 MA's), (Start: 101 @41130 has 60 MA's), (152, 41316), (153, 41319),

Gene: SunnyD_78 Start: 41007, Stop: 41282, Start Num: 101
Candidate Starts for SunnyD_78:
(Start: 101 @41007 has 60 MA's), (152, 41193),

Gene: Supakev_60 Start: 43425, Stop: 43685, Start Num: 105
Candidate Starts for Supakev_60:
(Start: 65 @43356 has 2 MA's), (76, 43377), (Start: 105 @43425 has 63 MA's), (109, 43443), (111, 43446), (125, 43497),

Gene: Suppi_62 Start: 43562, Stop: 43834, Start Num: 99
Candidate Starts for Suppi_62:
(Start: 84 @43541 has 4 MA's), (Start: 99 @43562 has 14 MA's), (102, 43568), (Start: 105 @43574 has 63 MA's),

Gene: Swervy_70 Start: 41047, Stop: 41322, Start Num: 101
Candidate Starts for Swervy_70:
(Start: 101 @41047 has 60 MA's), (152, 41233),

Gene: Syleon_128 Start: 69768, Stop: 70100, Start Num: 87
Candidate Starts for Syleon_128:
(Start: 87 @69768 has 7 MA's), (132, 69906), (133, 69918), (155, 70008),

Gene: TZGordon_65 Start: 39203, Stop: 39499, Start Num: 82
Candidate Starts for TZGordon_65:
(Start: 82 @39203 has 8 MA's), (147, 39392), (160, 39461),

Gene: TattModd_61 Start: 43209, Stop: 43469, Start Num: 105
Candidate Starts for TattModd_61:
(Start: 98 @43191 has 13 MA's), (Start: 105 @43209 has 63 MA's), (109, 43227), (125, 43281),

Gene: TaylorSipht_65 Start: 38681, Stop: 38959, Start Num: 99
Candidate Starts for TaylorSipht_65:
(Start: 99 @38681 has 14 MA's),

Gene: Teagster_77 Start: 41426, Stop: 41701, Start Num: 101
Candidate Starts for Teagster_77:
(Start: 101 @41426 has 60 MA's), (152, 41612),

Gene: Temper16_60 Start: 43614, Stop: 43871, Start Num: 105

Candidate Starts for Temper16_60:

(Start: 103 @43605 has 1 MA's), (Start: 105 @43614 has 63 MA's), (109, 43632), (127, 43689), (148, 43767),

Gene: TinaLin_63 Start: 39046, Stop: 39342, Start Num: 82

Candidate Starts for TinaLin_63:

(56, 39004), (Start: 82 @39046 has 8 MA's), (107, 39088), (131, 39172), (160, 39304),

Gene: TootsiePop_1 Start: 42, Stop: 374, Start Num: 85

Candidate Starts for TootsiePop_1:

(Start: 65 @9 has 2 MA's), (71, 15), (Start: 85 @42 has 51 MA's), (115, 120), (135, 213), (143, 237), (154, 285), (165, 339), (168, 354),

Gene: Totinger_1 Start: 41, Stop: 373, Start Num: 85

Candidate Starts for Totinger_1:

(67, 11), (Start: 85 @41 has 51 MA's), (115, 119), (135, 212), (143, 236), (154, 284), (165, 338), (168, 353),

Gene: Trax_126 Start: 71052, Stop: 71381, Start Num: 87

Candidate Starts for Trax_126:

(Start: 87 @71052 has 7 MA's), (129, 71172), (133, 71202), (137, 71220), (139, 71226), (142, 71235), (161, 71328), (164, 71337),

Gene: Trine_65 Start: 43058, Stop: 43372, Start Num: 61

Candidate Starts for Trine_65:

(Start: 61 @43058 has 1 MA's), (129, 43199),

Gene: TukTuk_70 Start: 41237, Stop: 41512, Start Num: 101

Candidate Starts for TukTuk_70:

(Start: 101 @41237 has 60 MA's), (152, 41423),

Gene: Typha_129 Start: 74982, Stop: 75305, Start Num: 69

Candidate Starts for Typha_129:

(Start: 69 @74982 has 4 MA's), (130, 75132), (151, 75213), (156, 75237), (158, 75249),

Gene: Upyo_69 Start: 44979, Stop: 45296, Start Num: 62

Candidate Starts for Upyo_69:

(Start: 62 @44979 has 1 MA's), (114, 45075), (136, 45153), (143, 45171),

Gene: Urla_62 Start: 43603, Stop: 43863, Start Num: 105

Candidate Starts for Urla_62:

(Start: 105 @43603 has 63 MA's), (109, 43621), (126, 43678),

Gene: Vallejo_62 Start: 43253, Stop: 43531, Start Num: 98

Candidate Starts for Vallejo_62:

(Start: 98 @43253 has 13 MA's), (Start: 105 @43271 has 63 MA's), (109, 43289), (125, 43343),

Gene: Vendetta_64 Start: 40315, Stop: 40611, Start Num: 82

Candidate Starts for Vendetta_64:

(Start: 82 @40315 has 8 MA's), (147, 40504), (160, 40573),

Gene: Vitas_71 Start: 39646, Stop: 39921, Start Num: 101

Candidate Starts for Vitas_71:

(19, 39487), (56, 39580), (Start: 101 @39646 has 60 MA's), (110, 39679),

Gene: Vulpecula_64 Start: 37410, Stop: 37688, Start Num: 99

Candidate Starts for Vulpecula_64:

(Start: 91 @37398 has 4 MA's), (Start: 99 @37410 has 14 MA's),

Gene: Vulture_60 Start: 42928, Stop: 43257, Start Num: 65

Candidate Starts for Vulture_60:

(Start: 65 @42928 has 2 MA's), (76, 42949), (Start: 105 @42997 has 63 MA's), (109, 43015), (111, 43018), (125, 43069),

Gene: WalkingDead_71 Start: 42012, Stop: 42287, Start Num: 101

Candidate Starts for WalkingDead_71:

(Start: 101 @42012 has 60 MA's), (152, 42198), (153, 42201),

Gene: Wawa_62 Start: 43514, Stop: 43774, Start Num: 105

Candidate Starts for Wawa_62:

(Start: 98 @43496 has 13 MA's), (Start: 105 @43514 has 63 MA's), (109, 43532), (125, 43586),

Gene: Wayne_64 Start: 44019, Stop: 44291, Start Num: 99

Candidate Starts for Wayne_64:

(Start: 84 @43998 has 4 MA's), (Start: 99 @44019 has 14 MA's), (102, 44025), (Start: 105 @44031 has 63 MA's),

Gene: Whitney_1 Start: 39, Stop: 371, Start Num: 85

Candidate Starts for Whitney_1:

(Start: 65 @9 has 2 MA's), (70, 15), (76, 27), (Start: 85 @39 has 51 MA's), (115, 117), (122, 141), (123, 144), (143, 234), (150, 264), (154, 282), (159, 318), (168, 351),

Gene: Widow_62 Start: 42336, Stop: 42659, Start Num: 66

Candidate Starts for Widow_62:

(25, 42243), (31, 42264), (37, 42279), (39, 42285), (50, 42312), (54, 42321), (Start: 66 @42336 has 2 MA's), (143, 42534),

Gene: WonderBoy_59 Start: 42399, Stop: 42659, Start Num: 105

Candidate Starts for WonderBoy_59:

(Start: 98 @42381 has 13 MA's), (Start: 105 @42399 has 63 MA's), (109, 42417), (126, 42474), (153, 42576), (165, 42633), (166, 42639),

Gene: Yoshi_1 Start: 38, Stop: 370, Start Num: 85

Candidate Starts for Yoshi_1:

(67, 11), (Start: 85 @38 has 51 MA's), (115, 116), (123, 143), (143, 233), (150, 263), (154, 281), (162, 326), (168, 350),

Gene: Zaheer_69 Start: 42523, Stop: 42819, Start Num: 84

Candidate Starts for Zaheer_69:

(Start: 84 @42523 has 4 MA's), (121, 42619), (136, 42679), (147, 42715),

Gene: Zapner_2 Start: 562, Stop: 894, Start Num: 85

Candidate Starts for Zapner_2:

(64, 529), (Start: 85 @562 has 51 MA's), (143, 757), (150, 787), (154, 805), (162, 850), (168, 874),

Gene: Zorro_62 Start: 43226, Stop: 43486, Start Num: 105

Candidate Starts for Zorro_62:

(Start: 98 @43208 has 13 MA's), (Start: 105 @43226 has 63 MA's), (109, 43244), (125, 43298),