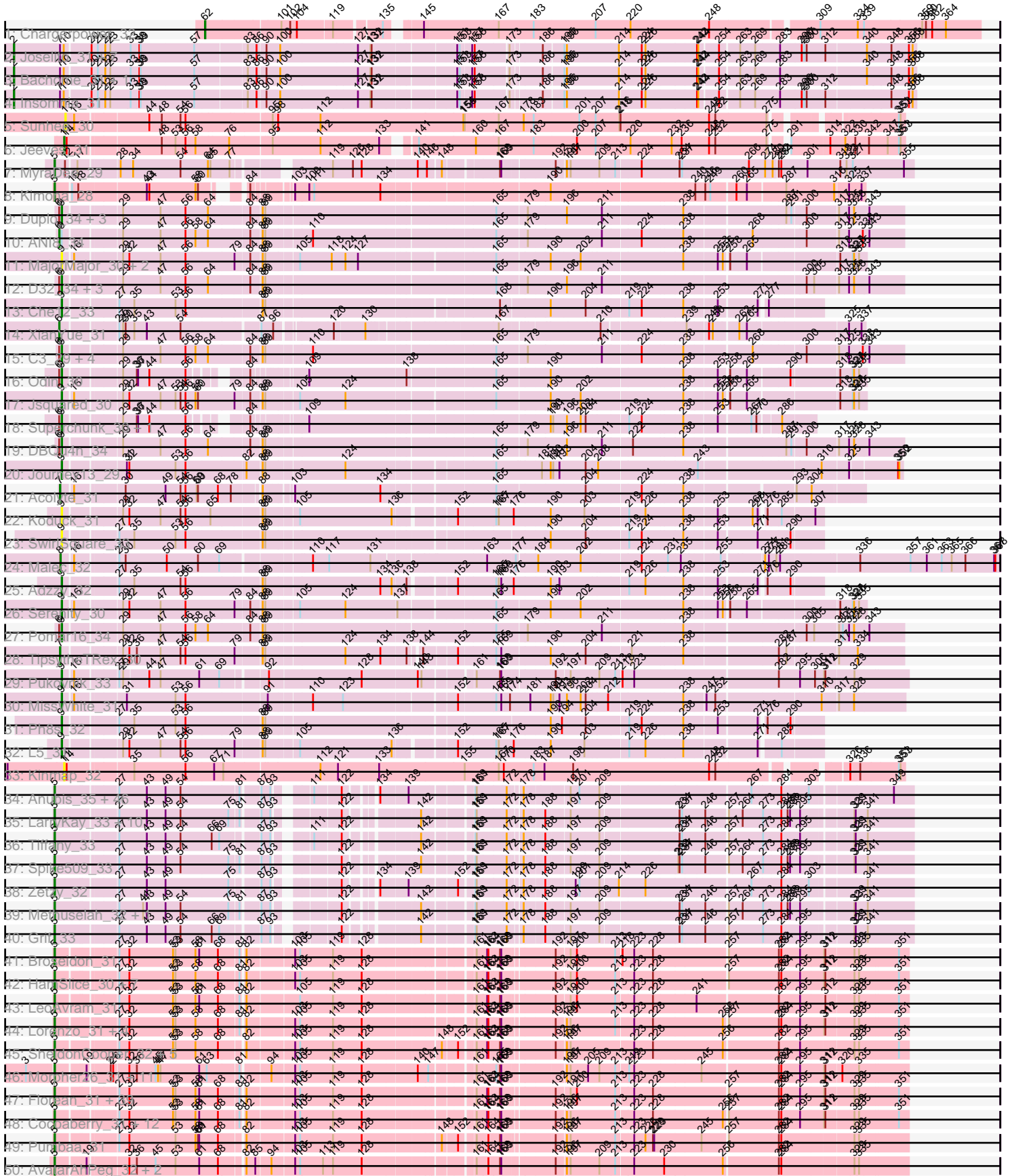


Pham 193699



Note: Tracks are now grouped by subcluster and scaled. Switching in subcluster is indicated by changes in track color. Track scale is now set by default to display the region 30 bp upstream of start 1 to 30 bp downstream of the last possible start. If this default region is judged to be packed too tightly with annotated starts, the track will be further scaled to only show that region of the ORF with annotated starts. This action will be indicated by adding "Zoomed" to the title. For starts, yellow indicates the location of called starts comprised solely of Glimmer/GeneMark auto-annotations, green indicates the location of called starts with at least 1 manual gene annotation.

Pham 193699 Report

This analysis was run 11/02/24 on database version 579.

Pham number 193699 has 262 members, 11 are drafts.

Phages represented in each track:

- Track 1 : Chargerpower_32
- Track 2 : Joselito_31, Munch_31, Flaverint_31, Lucivia_31, Jabith_31, Aneem_31, Bowtie_31, Gilberta_31
- Track 3 : Bachome_31, MaCh_31
- Track 4 : Insomnia_31
- Track 5 : Sunhee_30
- Track 6 : Jeeves_31
- Track 7 : MyraDee_29
- Track 8 : Kimona_28
- Track 9 : Duplo_34, Tomathan_34, StarStuff_34, Kerberos_34
- Track 10 : ANI8_34
- Track 11 : MajorMajor_30, Bradman_30, Quokka_29
- Track 12 : D32_34, Naji_34, D29_31, Travvers_34
- Track 13 : Che12_33
- Track 14 : XianYue_31
- Track 15 : C3_29, AN3_31, AN9_34, VA6_31, VC3_34
- Track 16 : Odin_30
- Track 17 : Jsquared_30
- Track 18 : Superchunk_30, Caraxes_30
- Track 19 : DBQu4n_34
- Track 20 : Journey13_29
- Track 21 : Acolyte_31
- Track 22 : Koduck_31
- Track 23 : SwirlSquare_33
- Track 24 : Malec_32
- Track 25 : Adzzy_32
- Track 26 : Serenity_30
- Track 27 : Pomar16_34
- Track 28 : TipsytheTRex_30
- Track 29 : Pukovnik_33
- Track 30 : MissWhite_31
- Track 31 : Ph8s_32
- Track 32 : L5_31
- Track 33 : Kinmap_32
- Track 34 : Anubis_35, EpicPhail_33, Vix_33, Microwolf_33, Taurus_33, Grub_33, PGHhamlin_35, Penny1_33, Mainiac_33, Watson_33, Dieselweasel_33, Malinsilva_35, MadMarie_33, MuchMore_35, PotatoSplit_34, Farber_33, Aglet_33,

MarQuardt_33, DaHudson_33, Colbster_33, Phoebe_33, P28Green_33, Grum1_33, AugsMagnumOpus_35, JenCasNa_33, GingkoMaracino_33, SoYo_33, Snickers_33, Pembroke_33, Ollie_33, BreSam8_33, Cullens_33, LugYA_35, LBerry_33, Beauxregard13_33, GtownJaz_33, Wooldri_35, Hercules11_33, MoneyMay_33, Marie_33, Stagni_33, Sabinator_33, StepMih_33, JHC117_33, Fernando_33, Sabia_33, Lilith_33

- Track 35 : LarryKay_33, HashRod_34, BuzzBuzz_32, Misomonster_35, KADY_34, Phoxy_33, Rummer_33, Daishi_32, Bxz2_32, Louie6_33, AgronaGT15_33
- Track 36 : Tiffany_33
- Track 37 : Spike509_33
- Track 38 : Zetzy_32
- Track 39 : Methuselah_32, Soshari_35
- Track 40 : Grif_33
- Track 41 : Broseidon_31
- Track 42 : HamSlice_30, Pipcraft_31, Citius_31, LappelDuVide_31, Lunsford_32, TroyPia_31, Eapen_31, Relief_31
- Track 43 : LeoAvram_31
- Track 44 : Lorenzo_31, ICleared_31, Mazhar510_31, PeterPeter_31, Shaka_31
- Track 45 : SheldonCooper_32, BangNhom_31, Cerulean_32, LHTSCC_32, Obama12_32, Eagle_30
- Track 46 : Morpher26_31, Perplexer_31, Datway_31, Badger_31, PetiteSangsue_31, Backyardigan_31, Bumblebee11_31, Xena_31, AbbysRanger_31, Katalie136_31, Cici_31, Achebe_30
- Track 47 : Florean_31, Bartimeaus_31, Dhanush_31, Taquarus_31, CentreCat_31, Commander_31, Thanksgivukkah_31, Ruin_31, Albee_31, Baby16_31, Roosevelt_31, Flux_31, Lemur_31, LittleB_31, Chaph_31, Medusa_31, Druantia_31, Bombshell_31, TiroTheta9_31, Sabertooth_31, Clarenza_31, Blackmoor_31, Skipitt_31, Kingmustik0402_31, JoongJeon_31, Holli_31, TygerBlood_31, Melvin_31, Eros_31, Peaches_31, Wilbur_31, Romney_31, Millski_30, Burger_30, Deano_31, YoSam321_31, Wizard007_31, JetBlade_31, Connomayer_31, Phelipe_31
- Track 48 : Cocoaberry_31, Avle17_31, Gadost_31, Alberto7_32, Bruiser_30, Koreni_30, Nemo27_31, Caelakin_31, Houdini22_31, Maverick_31, Phacado_31, Spino_31, Wander_31
- Track 49 : Pumbaa_31
- Track 50 : AvatarAhPeg_32, Stink_32, Miramae_31
- Track 51 : Tinybot_30, Rosa24_30
- Track 52 : Kyee_31, MeeZee_31, Annyong_31, BubbleTrouble_31, KFPoly_31
- Track 53 : Arturo_30
- Track 54 : Jaykayelowell_31
- Track 55 : ChampagnePapi_32
- Track 56 : Mundrea_31
- Track 57 : Funston_31, Eris_30
- Track 58 : Maxo_31, Sparxx_31, Kampy_31
- Track 59 : TinaFeyge_31, NorthStar_31
- Track 60 : Phighter1804_31, DirtyDunning_31, Ulysses_30, LochMonster_31, Iracema64_32
- Track 61 : Camperdownii_30
- Track 62 : Cindaradix_30
- Track 63 : LittleGuy_31
- Track 64 : NotAPhaseMom_31
- Track 65 : BellusTerra_31, Nebs_31, Polymorphads_31, Eurydice_31, Ohfah_31
- Track 66 : Kremtemulon_31
- Track 67 : Kratak_31

- Track 68 : Iceman_32
- Track 69 : Morrow_31
- Track 70 : Scamp_31
- Track 71 : Shygu2_31
- Track 72 : OKaNui_32
- Track 73 : Abdiel_30
- Track 74 : Nyxis_31
- Track 75 : Phontbonne_31
- Track 76 : Happiness_31
- Track 77 : Noelle_31
- Track 78 : Wile_31
- Track 79 : Cintron_31
- Track 80 : Palestino_30
- Track 81 : Yecey3_32
- Track 82 : DreamTeam1_31
- Track 83 : Charm_31
- Track 84 : SheaKeira_31
- Track 85 : Rahalelujah_30
- Track 86 : Toaka_30
- Track 87 : Nergal_25

Summary of Final Annotations (See graph section above for start numbers):

The start number called the most often in the published annotations is 5, it was called in 201 of the 251 non-draft genes in the pham.

Genes that call this "Most Annotated" start:

- AbbysRanger_31, Abdiel_30, Achebe_30, Aglet_33, AgronaGT15_33, Albee_31, Alberto7_32, Annyong_31, Anubis_35, Arturo_30, AugsMagnumOpus_35, AvatarAhPeg_32, Avle17_31, Baby16_31, Backyardigan_31, Badger_31, BangNhom_31, Bartimeaus_31, Beauxregard13_33, BellusTerra_31, Blackmoor_31, Bombshell_31, BreSam8_33, Broseidon_31, Bruiser_30, BubbleTrouble_31, Bumblebee11_31, Burger_30, BuzzBuzz_32, Bxz2_32, Caelakin_31, Camperdownii_30, CentreCat_31, Cerulean_32, ChampagnePapi_32, Chaph_31, Cici_31, Cindaradix_30, Cintron_31, Citius_31, Clarenza_31, Cocoaberry_31, Colbster_33, Commander_31, Connomayer_31, Cullens_33, DaHudson_33, Daishi_32, Datway_31, Deano_31, Dhanush_31, Dieselweasel_33, DirtyDunning_31, Druantia_31, Eagle_30, Eapen_31, EpicPhail_33, Eris_30, Eros_31, Eurydice_31, Farber_33, Fernando_33, Florean_31, Flux_31, Funston_31, Gadost_31, GingkoMaracino_33, Grif_33, Grub_33, Grum1_33, GtownJaz_33, HamSlice_30, Happiness_31, HashRod_34, Hercules11_33, Holli_31, Houdini22_31, ICleared_31, Iceman_32, Iracema64_32, JHC117_33, Jaykayelowell_31, JenCasNa_33, JetBlade_31, JoongJeon_31, KADY_34, KFPoly_31, Kampy_31, Katalie136_31, Kimona_28, Kingmustik0402_31, Koreni_30, Kratak_31, Kremtemulon_31, Kyee_31, LBerry_33, LHTSCC_32, LappelDuVide_31, LarryKay_33, Lemur_31, LeoAvram_31, Lilith_33, LittleB_31, LittleGuy_31, LochMonster_31, Lorenzo_31, Louie6_33, LugYA_35, Lunsford_32, MadMarie_33, Mainiac_33, Malinsilva_35, MarQuardt_33, Marie_33, Maverick_31, Maxo_31, Mazhar510_31, Medusa_31, MeeZee_31, Melvin_31, Methuselah_32, Microwolf_33, Millski_30, Miramae_31, Misomonster_35, MoneyMay_33, Morpher26_31, Morrow_31, MuchMore_35, Mundrea_31,

MyraDee_29, Nebs_31, Nemo27_31, Noelle_31, NorthStar_31, NotAPhaseMom_31, Nyxis_31, OKaNui_32, Obama12_32, Ohfah_31, Ollie_33, P28Green_33, PGHhamlin_35, Palestino_30, Peaches_31, Pembroke_33, Penny1_33, Perplexer_31, PeterPeter_31, PetiteSangsue_31, Phacado_31, Phelipe_31, Phighter1804_31, Phoebe_33, Phontbonne_31, Phoxy_33, Pipcraft_31, Polymorphads_31, PotatoSplit_34, Pumbaa_31, Relief_31, Romney_31, Roosevelt_31, Rosa24_30, Ruin_31, Rummer_33, Sabertooth_31, Sabia_33, Sabinator_33, Scamp_31, Shaka_31, SheldonCooper_32, Shygu2_31, Skipitt_31, Snickers_33, SoYo_33, Soshari_35, Sparxx_31, Spike509_33, Spino_31, Stagni_33, StepMih_33, Stink_32, Taquarus_31, Taurus_33, Thanksgivukkah_31, Tiffany_33, TinaFeyge_31, Tinybot_30, TiroTheta9_31, TroyPia_31, TygerBlood_31, Ulysses_30, Vix_33, Wander_31, Watson_33, Wilbur_31, Wile_31, Wizard007_31, Wooldri_35, Xena_31, YoSam321_31, Zetzy_32,

Genes that have the "Most Annotated" start but do not call it:

-

Genes that do not have the "Most Annotated" start:

- AN3_31, AN9_34, AN18_34, Acolyte_31, Adzzy_32, Aneem_31, Bachome_31, Bowtie_31, Bradman_30, C3_29, Caraxes_30, Chargerpower_32, Charm_31, Che12_33, D29_31, D32_34, DBQu4n_34, DreamTeam1_31, Duplo_34, Flaverint_31, Gilberta_31, Insomnia_31, Jabith_31, Jeeves_31, Joselito_31, Journey13_29, Jsquared_30, Kerberos_34, Kinmap_32, Koduck_31, L5_31, Lucivia_31, MaCh_31, MajorMajor_30, Malec_32, MissWhite_31, Munch_31, Naji_34, Nergal_25, Odin_30, Ph8s_32, Pomar16_34, Pukovnik_33, Quokka_29, Rahalelujah_30, Serenity_30, SheaKeira_31, StarStuff_34, Sunhee_30, Superchunk_30, SwirlSquare_33, TipsytheTRex_30, Toaka_30, Tomathan_34, Travvers_34, VA6_31, VC3_34, XianYue_31, Yecey3_32,

Summary by start number:

Start 2:

- Found in 11 of 262 (4.2%) of genes in pham
- Manual Annotations of this start: 11 of 251
- Called 100.0% of time when present
- Phage (with cluster) where this start called: Aneem_31 (A11), Bachome_31 (A11), Bowtie_31 (A11), Flaverint_31 (A11), Gilberta_31 (A11), Insomnia_31 (A11), Jabith_31 (A11), Joselito_31 (A11), Lucivia_31 (A11), MaCh_31 (A11), Munch_31 (A11),

Start 5:

- Found in 203 of 262 (77.5%) of genes in pham
- Manual Annotations of this start: 201 of 251
- Called 100.0% of time when present
- Phage (with cluster) where this start called: AbbysRanger_31 (A4), Abdiel_30 (A4), Achebe_30 (A4), Aglet_33 (A3), AgronaGT15_33 (A3), Albee_31 (A4), Alberto7_32 (A4), Annyong_31 (A4), Anubis_35 (A3), Arturo_30 (A4), AugsMagnumOpus_35 (A3), AvatarAhPeg_32 (A4), Avle17_31 (A4), Baby16_31 (A4), Backyardigan_31 (A4), Badger_31 (A4), BangNhom_31 (A4), Bartimeaus_31 (A4), Beauxregard13_33 (A3), BellusTerra_31 (A4), Blackmoor_31 (A4), Bombshell_31 (A4), BreSam8_33 (A3), Broseidon_31 (A4), Bruiser_30 (A4), BubbleTrouble_31 (A4), Bumblebee11_31 (A4), Burger_30 (A4), BuzzBuzz_32 (A3), Bxz2_32 (A3), Caelakin_31 (A4), Camperdownii_30 (A4), CentreCat_31 (A4), Cerulean_32 (A4), ChampagnePapi_32

(A4), Chaph_31 (A4), Cici_31 (A4), Cindaradix_30 (A4), Cintron_31 (A4), Citius_31 (A4), Clarenza_31 (A4), Cocoaberry_31 (A4), Colbster_33 (A3), Commander_31 (A4), Connomayer_31 (A4), Cullens_33 (A3), DaHudson_33 (A3), Daishi_32 (A3), Datway_31 (A4), Deano_31 (A4), Dhanush_31 (A4), Dieselweasel_33 (A3), DirtyDunning_31 (A4), Druantia_31 (A4), Eagle_30 (A4), Eapen_31 (A4), EpicPhail_33 (A3), Eris_30 (A4), Eros_31 (A4), Eurydice_31 (A4), Farber_33 (A3), Fernando_33 (A3), Florean_31 (A4), Flux_31 (A4), Funston_31 (A4), Gadost_31 (A4), GingkoMaracino_33 (A3), Grif_33 (A3), Grub_33 (A3), Grum1_33 (A3), GtownJaz_33 (A3), HamSlice_30 (A4), Happiness_31 (A4), HashRod_34 (A3), Hercules11_33 (A3), Holli_31 (A4), Houdini22_31 (A4), ICleared_31 (A4), Iceman_32 (A4), Iracema64_32 (A4), JHC117_33 (A3), Jaykayelowell_31 (A4), JenCasNa_33 (A3), JetBlade_31 (A4), JoongJeon_31 (A4), KADY_34 (A3), KFPoly_31 (A4), Kamy_31 (A4), Katalie136_31 (A4), Kimona_28 (A19), Kingmustik0402_31 (A4), Koreni_30 (A4), Kratak_31 (A4), Kremtemulon_31 (A4), Kyee_31 (A4), LBerry_33 (A3), LHTSCC_32 (A4), LappelDuVide_31 (A4), LarryKay_33 (A3), Lemur_31 (A4), LeoAvram_31 (A4), Lilith_33 (A3), LittleB_31 (A4), LittleGuy_31 (A4), LochMonster_31 (A4), Lorenzo_31 (A4), Louie6_33 (A3), LugYA_35 (A3), Lunsford_32 (A4), MadMarie_33 (A3), Mainiac_33 (A3), Malinsilva_35 (A3), MarQuardt_33 (A3), Marie_33 (A3), Maverick_31 (A4), Maxo_31 (A4), Mazhar510_31 (A4), Medusa_31 (A4), MeeZee_31 (A4), Melvin_31 (A4), Methuselah_32 (A3), Microwolf_33 (A3), Millski_30 (A4), Miramae_31 (A4), Misomonster_35 (A3), MoneyMay_33 (A3), Morpher26_31 (A4), Morrow_31 (A4), MuchMore_35 (A3), Mundrea_31 (A4), MyraDee_29 (A18), Nebs_31 (A4), Nemo27_31 (A4), Noelle_31 (A4), NorthStar_31 (A4), NotAPhaseMom_31 (A4), Nyxis_31 (A4), OKaNui_32 (A4), Obama12_32 (A4), Ohfah_31 (A4), Ollie_33 (A3), P28Green_33 (A3), PGHhamlin_35 (A3), Palestino_30 (A4), Peaches_31 (A4), Pembroke_33 (A3), Penny1_33 (A3), Perplexer_31 (A4), PeterPeter_31 (A4), PetiteSangsue_31 (A4), Phacado_31 (A4), Phelipe_31 (A4), Phighter1804_31 (A4), Phoebe_33 (A3), Phontbonne_31 (A4), Phoxy_33 (A3), Pipcraft_31 (A4), Polymorphads_31 (A4), PotatoSplit_34 (A3), Pumbaa_31 (A4), Relief_31 (A4), Romney_31 (A4), Roosevelt_31 (A4), Rosa24_30 (A4), Ruin_31 (A4), Rummer_33 (A3), Sabertooth_31 (A4), Sabia_33 (A3), Sabinator_33 (A3), Scamp_31 (A4), Shaka_31 (A4), SheldonCooper_32 (A4), Shygu2_31 (A4), Skipitt_31 (A4), Snickers_33 (A3), SoYo_33 (A3), Soshari_35 (A3), Sparxx_31 (A4), Spike509_33 (A3), Spino_31 (A4), Stagni_33 (A3), StepMih_33 (A3), Stink_32 (A4), Taquarus_31 (A4), Taurus_33 (A3), Thanksgivukkah_31 (A4), Tiffany_33 (A3), TinaFeyge_31 (A4), Tinybot_30 (A4), TiroTheta9_31 (A4), TroyPia_31 (A4), TygerBlood_31 (A4), Ulysses_30 (A4), Vix_33 (A3), Wander_31 (A4), Watson_33 (A3), Wilbur_31 (A4), Wile_31 (A4), Wizard007_31 (A4), Wooldri_35 (A3), Xena_31 (A4), YoSam321_31 (A4), Zetzy_32 (A3),

Start 6:

- Found in 21 of 262 (8.0%) of genes in pham
- Manual Annotations of this start: 3 of 251
- Called 14.3% of time when present
- Phage (with cluster) where this start called: ANI8_34 (A2), XianYue_31 (A2), Yecey3_32 (A9),

Start 7:

- Found in 13 of 262 (5.0%) of genes in pham
- Manual Annotations of this start: 2 of 251
- Called 15.4% of time when present
- Phage (with cluster) where this start called: Acolyte_31 (A2), TipsytheTRex_30 (A2),

Start 8:

- Found in 1 of 262 (0.4%) of genes in pham
- Manual Annotations of this start: 1 of 251
- Called 100.0% of time when present
- Phage (with cluster) where this start called: Malec_32 (A2),

Start 9:

- Found in 33 of 262 (12.6%) of genes in pham
- Manual Annotations of this start: 25 of 251
- Called 97.0% of time when present
- Phage (with cluster) where this start called: AN3_31 (A2), AN9_34 (A2), Adzzy_32 (A2), Bradman_30 (A2), C3_29 (A2), Caraxes_30 (A2), Che12_33 (A2), D29_31 (A2), D32_34 (A2), DBQu4n_34 (A2), Duplo_34 (A2), Journey13_29 (A2), Jsquared_30 (A2), Kerberos_34 (A2), Koduck_31 (A2), L5_31 (A2), MajorMajor_30 (A2), MissWhite_31 (A2), Naji_34 (A2), Odin_30 (A2), Ph8s_32 (A2), Pomar16_34 (A2), Pukovnik_33 (A2), Quokka_29 (A2), Serenity_30 (A2), StarStuff_34 (A2), Superchunk_30 (A2), SwirlSquare_33 (A2), Tomathan_34 (A2), Travvers_34 (A2), VA6_31 (A2), VC3_34 (A2),

Start 11:

- Found in 7 of 262 (2.7%) of genes in pham
- Manual Annotations of this start: 6 of 251
- Called 100.0% of time when present
- Phage (with cluster) where this start called: Charm_31 (A9), DreamTeam1_31 (A9), Jeeves_31 (A14), Kinmap_32 (A21), Rahalelujah_30 (A9), SheaKeira_31 (A9), Toaka_30 (A9),

Start 13:

- Found in 1 of 262 (0.4%) of genes in pham
- No Manual Annotations of this start.
- Called 100.0% of time when present
- Phage (with cluster) where this start called: Sunhee_30 (A14),

Start 32:

- Found in 146 of 262 (55.7%) of genes in pham
- Manual Annotations of this start: 1 of 251
- Called 0.7% of time when present
- Phage (with cluster) where this start called: Nergal_25 (AG),

Start 62:

- Found in 1 of 262 (0.4%) of genes in pham
- Manual Annotations of this start: 1 of 251
- Called 100.0% of time when present
- Phage (with cluster) where this start called: Chargerpower_32 (A),

Summary by clusters:

There are 11 clusters represented in this pham: A, A14, A11, AG, A21, A19, A18, A3, A2, A4, A9,

Info for manual annotations of cluster A:

- Start number 62 was manually annotated 1 time for cluster A.

Info for manual annotations of cluster A11:

- Start number 2 was manually annotated 11 times for cluster A11.

Info for manual annotations of cluster A14:

- Start number 11 was manually annotated 1 time for cluster A14.

Info for manual annotations of cluster A18:

- Start number 5 was manually annotated 1 time for cluster A18.

Info for manual annotations of cluster A19:

- Start number 5 was manually annotated 1 time for cluster A19.

Info for manual annotations of cluster A2:

- Start number 6 was manually annotated 2 times for cluster A2.
- Start number 7 was manually annotated 2 times for cluster A2.
- Start number 8 was manually annotated 1 time for cluster A2.
- Start number 9 was manually annotated 25 times for cluster A2.

Info for manual annotations of cluster A3:

- Start number 5 was manually annotated 63 times for cluster A3.

Info for manual annotations of cluster A4:

- Start number 5 was manually annotated 136 times for cluster A4.

Info for manual annotations of cluster A9:

- Start number 6 was manually annotated 1 time for cluster A9.
- Start number 11 was manually annotated 5 times for cluster A9.

Info for manual annotations of cluster AG:

- Start number 32 was manually annotated 1 time for cluster AG.

Gene Information:

Gene: AN3_31 Start: 22715, Stop: 24571, Start Num: 9

Candidate Starts for AN3_31:

(Start: 6 @22709 has 3 MA's), (Start: 9 @22715 has 25 MA's), (29, 22835), (47, 22925), (56, 22985), (58, 23009), (64, 23036), (84, 23129), (88, 23153), (89, 23159), (110, 23261), (165, 23666), (179, 23735), (211, 23903), (224, 23990), (238, 24086), (268, 24236), (300, 24350), (317, 24419), (325, 24443), (338, 24473), (343, 24488),

Gene: AN9_34 Start: 22703, Stop: 24556, Start Num: 9

Candidate Starts for AN9_34:

(Start: 6 @22697 has 3 MA's), (Start: 9 @22703 has 25 MA's), (29, 22823), (47, 22913), (56, 22973), (58, 22997), (64, 23024), (84, 23117), (88, 23141), (89, 23147), (110, 23249), (165, 23654), (179, 23723), (211, 23891), (224, 23978), (238, 24074), (268, 24221), (300, 24335), (317, 24404), (325, 24428), (338, 24458), (343, 24473),

Gene: ANI8_34 Start: 22697, Stop: 24556, Start Num: 6

Candidate Starts for ANI8_34:

(Start: 6 @22697 has 3 MA's), (Start: 9 @22703 has 25 MA's), (29, 22823), (47, 22913), (56, 22973), (58, 22997), (64, 23024), (84, 23117), (88, 23141), (89, 23147), (110, 23249), (165, 23654), (179, 23723), (211, 23891), (224, 23978), (238, 24074), (268, 24221), (300, 24335), (317, 24404), (325, 24428), (338, 24458), (343, 24473),

Gene: AbbysRanger_31 Start: 22986, Stop: 24845, Start Num: 5

Candidate Starts for AbbysRanger_31:

(3, 22926), (Start: 5 @22986 has 201 MA's), (19, 23052), (24, 23097), (26, 23103), (Start: 32 @23136 has 1 MA's), (36, 23154), (45, 23199), (46, 23205), (47, 23211), (61, 23304), (63, 23319), (81, 23391), (94, 23451), (103, 23502), (105, 23514), (119, 23592), (128, 23661), (140, 23784), (147, 23808), (161, 23889), (165, 23934), (168, 23943), (169, 23946), (196, 24075), (197, 24084), (205, 24126), (209, 24153), (213, 24189), (219, 24216), (223, 24228), (245, 24384), (282, 24558), (284, 24564), (295, 24609), (311, 24660), (312, 24663), (320, 24699), (335, 24735),

Gene: Abdiel_30 Start: 22957, Stop: 24813, Start Num: 5

Candidate Starts for Abdiel_30:

(Start: 5 @22957 has 201 MA's), (27, 23083), (Start: 32 @23107 has 1 MA's), (52, 23212), (53, 23218), (58, 23266), (61, 23275), (68, 23317), (81, 23362), (82, 23368), (105, 23485), (119, 23563), (128, 23632), (161, 23860), (164, 23887), (168, 23914), (169, 23917), (192, 24022), (197, 24052), (200, 24067), (213, 24157), (223, 24196), (228, 24241), (282, 24526), (284, 24532), (295, 24577), (306, 24610), (311, 24628), (312, 24631), (320, 24667), (335, 24703),

Gene: Achebe_30 Start: 22969, Stop: 24828, Start Num: 5

Candidate Starts for Achebe_30:

(3, 22909), (Start: 5 @22969 has 201 MA's), (19, 23035), (24, 23080), (26, 23086), (Start: 32 @23119 has 1 MA's), (36, 23137), (45, 23182), (46, 23188), (47, 23194), (61, 23287), (63, 23302), (81, 23374), (94, 23434), (103, 23485), (105, 23497), (119, 23575), (128, 23644), (140, 23767), (147, 23791), (161, 23872), (165, 23917), (168, 23926), (169, 23929), (196, 24058), (197, 24067), (205, 24109), (209, 24136), (213, 24172), (219, 24199), (223, 24211), (245, 24367), (282, 24541), (284, 24547), (295, 24592), (311, 24643), (312, 24646), (320, 24682), (335, 24718),

Gene: Acolyte_31 Start: 23339, Stop: 25057, Start Num: 7

Candidate Starts for Acolyte_31:

(Start: 7 @23339 has 2 MA's), (16, 23363), (30, 23468), (49, 23564), (54, 23600), (56, 23612), (59, 23639), (60, 23642), (68, 23687), (78, 23717), (88, 23768), (103, 23822), (134, 24026), (165, 24263), (204, 24461), (224, 24584), (238, 24680), (293, 24908), (304, 24941),

Gene: Adzzy_32 Start: 21442, Stop: 23085, Start Num: 9

Candidate Starts for Adzzy_32:

(Start: 9 @21442 has 25 MA's), (27, 21553), (35, 21589), (54, 21700), (56, 21712), (88, 21880), (89, 21886), (134, 22150), (136, 22174), (138, 22201), (152, 22288), (165, 22372), (167, 22378), (169, 22384), (176, 22414), (190, 22498), (193, 22519), (219, 22672), (226, 22711), (238, 22798), (253, 22870), (271, 22957), (276, 22966), (290, 23014),

Gene: Aglet_33 Start: 23278, Stop: 25035, Start Num: 5

Candidate Starts for Aglet_33:

(Start: 5 @23278 has 201 MA's), (27, 23413), (43, 23479), (49, 23524), (54, 23560), (81, 23692), (87, 23728), (93, 23749), (111, 23806), (122, 23866), (134, 23920), (139, 23980), (159, 24100), (161, 24103), (172, 24172), (178, 24196), (197, 24289), (201, 24310), (209, 24355), (267, 24685), (284, 24754), (303, 24817), (349, 24988),

Gene: AgronaGT15_33 Start: 23185, Stop: 24936, Start Num: 5

Candidate Starts for AgronaGT15_33:

(Start: 5 @23185 has 201 MA's), (27, 23320), (43, 23386), (49, 23431), (54, 23467), (75, 23578), (81, 23599), (87, 23635), (93, 23656), (122, 23773), (142, 23911), (159, 24007), (161, 24010), (172, 24079), (178, 24103), (188, 24148), (197, 24196), (209, 24262), (234, 24433), (237, 24439), (246, 24490), (257, 24535), (264, 24565), (273, 24613), (284, 24655), (288, 24670), (289, 24673), (295, 24697), (329, 24799), (331, 24802), (341, 24826),

Gene: Albee_31 Start: 22960, Stop: 24816, Start Num: 5

Candidate Starts for Albee_31:

(Start: 5 @22960 has 201 MA's), (27, 23086), (Start: 32 @23110 has 1 MA's), (52, 23215), (53, 23221), (58, 23269), (61, 23278), (68, 23320), (81, 23365), (82, 23371), (103, 23476), (105, 23488), (119, 23566), (128, 23635), (161, 23863), (163, 23887), (164, 23890), (168, 23917), (169, 23920), (192, 24025), (197, 24055), (200, 24070), (213, 24160), (223, 24199), (228, 24244), (257, 24412), (282, 24529), (284, 24535), (295, 24580), (311, 24631), (312, 24634), (329, 24697), (335, 24706), (351, 24793),

Gene: Alberto7_32 Start: 23262, Stop: 25118, Start Num: 5

Candidate Starts for Alberto7_32:

(Start: 5 @23262 has 201 MA's), (27, 23388), (Start: 32 @23412 has 1 MA's), (52, 23517), (53, 23523), (58, 23571), (61, 23580), (68, 23622), (81, 23667), (82, 23673), (103, 23778), (105, 23790), (119, 23868), (128, 23937), (161, 24165), (163, 24189), (164, 24192), (168, 24219), (169, 24222), (192, 24327), (196, 24348), (197, 24357), (213, 24462), (223, 24501), (228, 24546), (256, 24708), (257, 24714), (282, 24831), (284, 24837), (295, 24882), (311, 24933), (312, 24936), (329, 24999), (335, 25008), (351, 25095),

Gene: Aneem_31 Start: 23397, Stop: 25388, Start Num: 2

Candidate Starts for Aneem_31:

(Start: 2 @23397 has 11 MA's), (Start: 7 @23508 has 2 MA's), (10, 23517), (20, 23574), (21, 23589), (22, 23607), (23, 23619), (33, 23667), (38, 23685), (39, 23688), (57, 23808), (83, 23922), (86, 23943), (90, 23961), (100, 23994), (127, 24177), (131, 24207), (132, 24210), (151, 24384), (153, 24390), (157, 24414), (158, 24420), (173, 24495), (186, 24558), (195, 24600), (196, 24606), (214, 24729), (224, 24777), (226, 24786), (242, 24903), (244, 24906), (254, 24948), (263, 24990), (269, 25026), (283, 25080), (296, 25131), (297, 25137), (300, 25143), (312, 25185), (340, 25275), (348, 25332), (356, 25371), (358, 25380),

Gene: Annyong_31 Start: 22961, Stop: 24817, Start Num: 5

Candidate Starts for Annyong_31:

(Start: 5 @22961 has 201 MA's), (27, 23087), (Start: 32 @23111 has 1 MA's), (52, 23216), (53, 23222), (58, 23270), (61, 23279), (68, 23321), (81, 23366), (82, 23372), (103, 23477), (105, 23489), (119, 23567), (128, 23636), (161, 23864), (163, 23888), (164, 23891), (168, 23918), (169, 23921), (192, 24026), (196, 24047), (197, 24056), (213, 24161), (223, 24200), (228, 24245), (257, 24413), (282, 24530), (284, 24536), (295, 24581), (311, 24632), (312, 24635), (329, 24698), (335, 24707), (351, 24794),

Gene: Anubis_35 Start: 23163, Stop: 24920, Start Num: 5

Candidate Starts for Anubis_35:

(Start: 5 @23163 has 201 MA's), (27, 23298), (43, 23364), (49, 23409), (54, 23445), (81, 23577), (87, 23613), (93, 23634), (111, 23691), (122, 23751), (134, 23805), (139, 23865), (159, 23985), (161, 23988), (172, 24057), (178, 24081), (197, 24174), (201, 24195), (209, 24240), (267, 24570), (284, 24639), (303, 24702), (349, 24873),

Gene: Arturo_30 Start: 23069, Stop: 24925, Start Num: 5

Candidate Starts for Arturo_30:

(Start: 5 @23069 has 201 MA's), (27, 23195), (Start: 32 @23219 has 1 MA's), (52, 23324), (53, 23330), (58, 23378), (61, 23387), (68, 23429), (81, 23474), (82, 23480), (103, 23585), (105, 23597), (115, 23660), (119, 23675), (128, 23744), (161, 23972), (163, 23996), (164, 23999), (168, 24026), (169, 24029), (192, 24134), (196, 24155), (197, 24164), (213, 24269), (223, 24308), (228, 24353), (241, 24452), (282, 24638), (284, 24644), (295, 24689), (311, 24740), (312, 24743), (329, 24806), (335, 24815), (351, 24902),

Gene: AugsMagnumOpus_35 Start: 23269, Stop: 25026, Start Num: 5

Candidate Starts for AugsMagnumOpus_35:

(Start: 5 @23269 has 201 MA's), (27, 23404), (43, 23470), (49, 23515), (54, 23551), (81, 23683), (87, 23719), (93, 23740), (111, 23797), (122, 23857), (134, 23911), (139, 23971), (159, 24091), (161, 24094), (172, 24163), (178, 24187), (197, 24280), (201, 24301), (209, 24346), (267, 24676), (284, 24745), (303, 24808), (349, 24979),

Gene: AvatarAhPeg_32 Start: 23239, Stop: 25098, Start Num: 5

Candidate Starts for AvatarAhPeg_32:

(Start: 5 @23239 has 201 MA's), (19, 23305), (Start: 32 @23389 has 1 MA's), (36, 23407), (45, 23452), (53, 23500), (61, 23557), (68, 23599), (82, 23650), (85, 23671), (94, 23704), (103, 23755), (105, 23767), (113, 23821), (119, 23845), (128, 23914), (161, 24142), (164, 24169), (168, 24196), (169, 24199), (192, 24307), (196, 24328), (197, 24337), (209, 24406), (213, 24442), (223, 24481), (230, 24550), (256, 24688), (282, 24811), (284, 24817), (329, 24979), (335, 24988),

Gene: Avle17_31 Start: 22960, Stop: 24816, Start Num: 5

Candidate Starts for Avle17_31:

(Start: 5 @22960 has 201 MA's), (27, 23086), (Start: 32 @23110 has 1 MA's), (52, 23215), (53, 23221), (58, 23269), (61, 23278), (68, 23320), (81, 23365), (82, 23371), (103, 23476), (105, 23488), (119, 23566), (128, 23635), (161, 23863), (163, 23887), (164, 23890), (168, 23917), (169, 23920), (192, 24025), (196, 24046), (197, 24055), (213, 24160), (223, 24199), (228, 24244), (256, 24406), (257, 24412), (282, 24529), (284, 24535), (295, 24580), (311, 24631), (312, 24634), (329, 24697), (335, 24706), (351, 24793),

Gene: Baby16_31 Start: 22969, Stop: 24825, Start Num: 5

Candidate Starts for Baby16_31:

(Start: 5 @22969 has 201 MA's), (27, 23095), (Start: 32 @23119 has 1 MA's), (52, 23224), (53, 23230), (58, 23278), (61, 23287), (68, 23329), (81, 23374), (82, 23380), (103, 23485), (105, 23497), (119, 23575), (128, 23644), (161, 23872), (163, 23896), (164, 23899), (168, 23926), (169, 23929), (192, 24034), (197, 24064), (200, 24079), (213, 24169), (223, 24208), (228, 24253), (257, 24421), (282, 24538), (284, 24544), (295, 24589), (311, 24640), (312, 24643), (329, 24706), (335, 24715), (351, 24802),

Gene: Bachome_31 Start: 23388, Stop: 25376, Start Num: 2

Candidate Starts for Bachome_31:

(Start: 2 @23388 has 11 MA's), (Start: 7 @23499 has 2 MA's), (10, 23508), (20, 23565), (21, 23580), (22, 23598), (23, 23610), (33, 23658), (38, 23676), (39, 23679), (57, 23799), (83, 23913), (86, 23934), (90, 23952), (100, 23985), (127, 24168), (131, 24198), (132, 24201), (151, 24375), (153, 24381), (157, 24405), (158, 24411), (173, 24486), (186, 24549), (195, 24591), (196, 24597), (214, 24720), (224, 24768), (226, 24777), (242, 24894), (244, 24897), (254, 24939), (263, 24981), (269, 25017), (283, 25071), (340, 25263), (348, 25320), (356, 25359), (358, 25368),

Gene: Backyardigan_31 Start: 22981, Stop: 24840, Start Num: 5

Candidate Starts for Backyardigan_31:

(3, 22921), (Start: 5 @22981 has 201 MA's), (19, 23047), (24, 23092), (26, 23098), (Start: 32 @23131 has 1 MA's), (36, 23149), (45, 23194), (46, 23200), (47, 23206), (61, 23299), (63, 23314), (81, 23386),

(94, 23446), (103, 23497), (105, 23509), (119, 23587), (128, 23656), (140, 23779), (147, 23803), (161, 23884), (165, 23929), (168, 23938), (169, 23941), (196, 24070), (197, 24079), (205, 24121), (209, 24148), (213, 24184), (219, 24211), (223, 24223), (245, 24379), (282, 24553), (284, 24559), (295, 24604), (311, 24655), (312, 24658), (320, 24694), (335, 24730),

Gene: Badger_31 Start: 22970, Stop: 24829, Start Num: 5

Candidate Starts for Badger_31:

(3, 22910), (Start: 5 @22970 has 201 MA's), (19, 23036), (24, 23081), (26, 23087), (Start: 32 @23120 has 1 MA's), (36, 23138), (45, 23183), (46, 23189), (47, 23195), (61, 23288), (63, 23303), (81, 23375), (94, 23435), (103, 23486), (105, 23498), (119, 23576), (128, 23645), (140, 23768), (147, 23792), (161, 23873), (165, 23918), (168, 23927), (169, 23930), (196, 24059), (197, 24068), (205, 24110), (209, 24137), (213, 24173), (219, 24200), (223, 24212), (245, 24368), (282, 24542), (284, 24548), (295, 24593), (311, 24644), (312, 24647), (320, 24683), (335, 24719),

Gene: BangNhom_31 Start: 23274, Stop: 25130, Start Num: 5

Candidate Starts for BangNhom_31:

(Start: 5 @23274 has 201 MA's), (27, 23400), (Start: 32 @23424 has 1 MA's), (52, 23529), (53, 23535), (58, 23583), (68, 23634), (82, 23685), (103, 23790), (105, 23802), (119, 23880), (128, 23949), (148, 24117), (152, 24147), (161, 24177), (163, 24201), (164, 24204), (168, 24231), (169, 24234), (192, 24339), (196, 24360), (197, 24369), (223, 24513), (228, 24558), (256, 24720), (282, 24843), (295, 24894), (329, 25011), (335, 25020), (351, 25107),

Gene: Bartimeaus_31 Start: 22960, Stop: 24816, Start Num: 5

Candidate Starts for Bartimeaus_31:

(Start: 5 @22960 has 201 MA's), (27, 23086), (Start: 32 @23110 has 1 MA's), (52, 23215), (53, 23221), (58, 23269), (61, 23278), (68, 23320), (81, 23365), (82, 23371), (103, 23476), (105, 23488), (119, 23566), (128, 23635), (161, 23863), (163, 23887), (164, 23890), (168, 23917), (169, 23920), (192, 24025), (197, 24055), (200, 24070), (213, 24160), (223, 24199), (228, 24244), (257, 24412), (282, 24529), (284, 24535), (295, 24580), (311, 24631), (312, 24634), (329, 24697), (335, 24706), (351, 24793),

Gene: Beauxregard13_33 Start: 23277, Stop: 25034, Start Num: 5

Candidate Starts for Beauxregard13_33:

(Start: 5 @23277 has 201 MA's), (27, 23412), (43, 23478), (49, 23523), (54, 23559), (81, 23691), (87, 23727), (93, 23748), (111, 23805), (122, 23865), (134, 23919), (139, 23979), (159, 24099), (161, 24102), (172, 24171), (178, 24195), (197, 24288), (201, 24309), (209, 24354), (267, 24684), (284, 24753), (303, 24816), (349, 24987),

Gene: BellusTerra_31 Start: 22957, Stop: 24813, Start Num: 5

Candidate Starts for BellusTerra_31:

(Start: 5 @22957 has 201 MA's), (27, 23083), (Start: 32 @23107 has 1 MA's), (52, 23212), (53, 23218), (58, 23266), (61, 23275), (68, 23317), (81, 23362), (82, 23368), (105, 23485), (119, 23563), (128, 23632), (161, 23860), (163, 23884), (164, 23887), (168, 23914), (169, 23917), (192, 24022), (197, 24052), (200, 24067), (213, 24157), (223, 24196), (226, 24223), (228, 24241), (241, 24340), (282, 24526), (295, 24577), (312, 24631), (329, 24694), (335, 24703), (351, 24790),

Gene: Blackmoor_31 Start: 22960, Stop: 24816, Start Num: 5

Candidate Starts for Blackmoor_31:

(Start: 5 @22960 has 201 MA's), (27, 23086), (Start: 32 @23110 has 1 MA's), (52, 23215), (53, 23221), (58, 23269), (61, 23278), (68, 23320), (81, 23365), (82, 23371), (103, 23476), (105, 23488), (119, 23566), (128, 23635), (161, 23863), (163, 23887), (164, 23890), (168, 23917), (169, 23920), (192, 24025), (197, 24055), (200, 24070), (213, 24160), (223, 24199), (228, 24244), (257, 24412), (282, 24529), (284, 24535), (295, 24580), (311, 24631), (312, 24634), (329, 24697), (335, 24706),

(351, 24793),

Gene: Bombshell_31 Start: 22960, Stop: 24816, Start Num: 5

Candidate Starts for Bombshell_31:

(Start: 5 @22960 has 201 MA's), (27, 23086), (Start: 32 @23110 has 1 MA's), (52, 23215), (53, 23221), (58, 23269), (61, 23278), (68, 23320), (81, 23365), (82, 23371), (103, 23476), (105, 23488), (119, 23566), (128, 23635), (161, 23863), (163, 23887), (164, 23890), (168, 23917), (169, 23920), (192, 24025), (197, 24055), (200, 24070), (213, 24160), (223, 24199), (228, 24244), (257, 24412), (282, 24529), (284, 24535), (295, 24580), (311, 24631), (312, 24634), (329, 24697), (335, 24706), (351, 24793),

Gene: Bowtie_31 Start: 23397, Stop: 25388, Start Num: 2

Candidate Starts for Bowtie_31:

(Start: 2 @23397 has 11 MA's), (Start: 7 @23508 has 2 MA's), (10, 23517), (20, 23574), (21, 23589), (22, 23607), (23, 23619), (33, 23667), (38, 23685), (39, 23688), (57, 23808), (83, 23922), (86, 23943), (90, 23961), (100, 23994), (127, 24177), (131, 24207), (132, 24210), (151, 24384), (153, 24390), (157, 24414), (158, 24420), (173, 24495), (186, 24558), (195, 24600), (196, 24606), (214, 24729), (224, 24777), (226, 24786), (242, 24903), (244, 24906), (254, 24948), (263, 24990), (269, 25026), (283, 25080), (296, 25131), (297, 25137), (300, 25143), (312, 25185), (340, 25275), (348, 25332), (356, 25371), (358, 25380),

Gene: Bradman_30 Start: 21646, Stop: 23397, Start Num: 9

Candidate Starts for Bradman_30:

(Start: 9 @21646 has 25 MA's), (16, 21667), (29, 21766), (Start: 32 @21781 has 1 MA's), (47, 21856), (56, 21916), (79, 22027), (84, 22060), (88, 22084), (89, 22090), (105, 22162), (118, 22237), (124, 22270), (127, 22300), (165, 22588), (190, 22708), (202, 22777), (238, 23008), (253, 23083), (256, 23095), (258, 23104), (265, 23143), (318, 23338), (327, 23365), (328, 23368), (335, 23380),

Gene: BreSam8_33 Start: 23270, Stop: 25027, Start Num: 5

Candidate Starts for BreSam8_33:

(Start: 5 @23270 has 201 MA's), (27, 23405), (43, 23471), (49, 23516), (54, 23552), (81, 23684), (87, 23720), (93, 23741), (111, 23798), (122, 23858), (134, 23912), (139, 23972), (159, 24092), (161, 24095), (172, 24164), (178, 24188), (197, 24281), (201, 24302), (209, 24347), (267, 24677), (284, 24746), (303, 24809), (349, 24980),

Gene: Broseidon_31 Start: 22960, Stop: 24816, Start Num: 5

Candidate Starts for Broseidon_31:

(Start: 5 @22960 has 201 MA's), (27, 23086), (Start: 32 @23110 has 1 MA's), (52, 23215), (53, 23221), (58, 23269), (61, 23278), (68, 23320), (81, 23365), (82, 23371), (103, 23476), (105, 23488), (119, 23566), (128, 23635), (161, 23863), (163, 23887), (164, 23890), (168, 23917), (169, 23920), (192, 24025), (197, 24055), (200, 24070), (213, 24160), (218, 24172), (223, 24199), (228, 24244), (257, 24412), (282, 24529), (284, 24535), (295, 24580), (311, 24631), (312, 24634), (329, 24697), (335, 24706), (351, 24793),

Gene: Bruiser_30 Start: 22960, Stop: 24816, Start Num: 5

Candidate Starts for Bruiser_30:

(Start: 5 @22960 has 201 MA's), (27, 23086), (Start: 32 @23110 has 1 MA's), (52, 23215), (53, 23221), (58, 23269), (61, 23278), (68, 23320), (81, 23365), (82, 23371), (103, 23476), (105, 23488), (119, 23566), (128, 23635), (161, 23863), (163, 23887), (164, 23890), (168, 23917), (169, 23920), (192, 24025), (196, 24046), (197, 24055), (213, 24160), (223, 24199), (228, 24244), (256, 24406), (257, 24412), (282, 24529), (284, 24535), (295, 24580), (311, 24631), (312, 24634), (329, 24697), (335, 24706), (351, 24793),

Gene: BubbleTrouble_31 Start: 22960, Stop: 24816, Start Num: 5

Candidate Starts for BubbleTrouble_31:

(Start: 5 @22960 has 201 MA's), (27, 23086), (Start: 32 @23110 has 1 MA's), (52, 23215), (53, 23221), (58, 23269), (61, 23278), (68, 23320), (81, 23365), (82, 23371), (103, 23476), (105, 23488), (119, 23566), (128, 23635), (161, 23863), (163, 23887), (164, 23890), (168, 23917), (169, 23920), (192, 24025), (196, 24046), (197, 24055), (213, 24160), (223, 24199), (228, 24244), (257, 24412), (282, 24529), (284, 24535), (295, 24580), (311, 24631), (312, 24634), (329, 24697), (335, 24706), (351, 24793),

Gene: Bumblebee11_31 Start: 22972, Stop: 24831, Start Num: 5

Candidate Starts for Bumblebee11_31:

(3, 22912), (Start: 5 @22972 has 201 MA's), (19, 23038), (24, 23083), (26, 23089), (Start: 32 @23122 has 1 MA's), (36, 23140), (45, 23185), (46, 23191), (47, 23197), (61, 23290), (63, 23305), (81, 23377), (94, 23437), (103, 23488), (105, 23500), (119, 23578), (128, 23647), (140, 23770), (147, 23794), (161, 23875), (165, 23920), (168, 23929), (169, 23932), (196, 24061), (197, 24070), (205, 24112), (209, 24139), (213, 24175), (219, 24202), (223, 24214), (245, 24370), (282, 24544), (284, 24550), (295, 24595), (311, 24646), (312, 24649), (320, 24685), (335, 24721),

Gene: Burger_30 Start: 22960, Stop: 24816, Start Num: 5

Candidate Starts for Burger_30:

(Start: 5 @22960 has 201 MA's), (27, 23086), (Start: 32 @23110 has 1 MA's), (52, 23215), (53, 23221), (58, 23269), (61, 23278), (68, 23320), (81, 23365), (82, 23371), (103, 23476), (105, 23488), (119, 23566), (128, 23635), (161, 23863), (163, 23887), (164, 23890), (168, 23917), (169, 23920), (192, 24025), (197, 24055), (200, 24070), (213, 24160), (223, 24199), (228, 24244), (257, 24412), (282, 24529), (284, 24535), (295, 24580), (311, 24631), (312, 24634), (329, 24697), (335, 24706), (351, 24793),

Gene: BuzzBuzz_32 Start: 23364, Stop: 25115, Start Num: 5

Candidate Starts for BuzzBuzz_32:

(Start: 5 @23364 has 201 MA's), (27, 23499), (43, 23565), (49, 23610), (54, 23646), (75, 23757), (81, 23778), (87, 23814), (93, 23835), (122, 23952), (142, 24090), (159, 24186), (161, 24189), (172, 24258), (178, 24282), (188, 24327), (197, 24375), (209, 24441), (234, 24612), (237, 24618), (246, 24669), (257, 24714), (264, 24744), (273, 24792), (284, 24834), (288, 24849), (289, 24852), (295, 24876), (329, 24978), (331, 24981), (341, 25005),

Gene: Bxz2_32 Start: 23371, Stop: 25122, Start Num: 5

Candidate Starts for Bxz2_32:

(Start: 5 @23371 has 201 MA's), (27, 23506), (43, 23572), (49, 23617), (54, 23653), (75, 23764), (81, 23785), (87, 23821), (93, 23842), (122, 23959), (142, 24097), (159, 24193), (161, 24196), (172, 24265), (178, 24289), (188, 24334), (197, 24382), (209, 24448), (234, 24619), (237, 24625), (246, 24676), (257, 24721), (264, 24751), (273, 24799), (284, 24841), (288, 24856), (289, 24859), (295, 24883), (329, 24985), (331, 24988), (341, 25012),

Gene: C3_29 Start: 22703, Stop: 24556, Start Num: 9

Candidate Starts for C3_29:

(Start: 6 @22697 has 3 MA's), (Start: 9 @22703 has 25 MA's), (29, 22823), (47, 22913), (56, 22973), (58, 22997), (64, 23024), (84, 23117), (88, 23141), (89, 23147), (110, 23249), (165, 23654), (179, 23723), (211, 23891), (224, 23978), (238, 24074), (268, 24221), (300, 24335), (317, 24404), (325, 24428), (338, 24458), (343, 24473),

Gene: Caelakin_31 Start: 22960, Stop: 24816, Start Num: 5

Candidate Starts for Caelakin_31:

(Start: 5 @22960 has 201 MA's), (27, 23086), (Start: 32 @23110 has 1 MA's), (52, 23215), (53, 23221), (58, 23269), (61, 23278), (68, 23320), (81, 23365), (82, 23371), (103, 23476), (105, 23488), (119, 23566), (128, 23635), (161, 23863), (163, 23887), (164, 23890), (168, 23917), (169, 23920), (192, 24025), (196, 24046), (197, 24055), (213, 24160), (223, 24199), (228, 24244), (256, 24406), (257, 24412), (282, 24529), (284, 24535), (295, 24580), (311, 24631), (312, 24634), (329, 24697), (335, 24706), (351, 24793),

Gene: Camperdownii_30 Start: 22579, Stop: 24435, Start Num: 5

Candidate Starts for Camperdownii_30:

(Start: 5 @22579 has 201 MA's), (27, 22705), (Start: 32 @22729 has 1 MA's), (52, 22834), (53, 22840), (58, 22888), (68, 22939), (82, 22990), (103, 23095), (105, 23107), (119, 23185), (128, 23254), (148, 23422), (152, 23452), (161, 23482), (164, 23509), (168, 23536), (169, 23539), (192, 23644), (196, 23665), (197, 23674), (213, 23779), (223, 23818), (226, 23845), (228, 23863), (229, 23866), (245, 23974), (257, 24031), (282, 24148), (284, 24154), (329, 24316), (335, 24325),

Gene: Caraxes_30 Start: 21397, Stop: 22950, Start Num: 9

Candidate Starts for Caraxes_30:

(Start: 6 @21391 has 3 MA's), (Start: 9 @21397 has 25 MA's), (29, 21517), (36, 21550), (37, 21553), (44, 21580), (56, 21667), (84, 21754), (109, 21856), (190, 22384), (191, 22390), (196, 22420), (202, 22453), (204, 22465), (219, 22558), (224, 22588), (238, 22684), (253, 22756), (267, 22822), (270, 22834), (286, 22879),

Gene: CentreCat_31 Start: 22961, Stop: 24817, Start Num: 5

Candidate Starts for CentreCat_31:

(Start: 5 @22961 has 201 MA's), (27, 23087), (Start: 32 @23111 has 1 MA's), (52, 23216), (53, 23222), (58, 23270), (61, 23279), (68, 23321), (81, 23366), (82, 23372), (103, 23477), (105, 23489), (119, 23567), (128, 23636), (161, 23864), (163, 23888), (164, 23891), (168, 23918), (169, 23921), (192, 24026), (197, 24056), (200, 24071), (213, 24161), (223, 24200), (228, 24245), (257, 24413), (282, 24530), (284, 24536), (295, 24581), (311, 24632), (312, 24635), (329, 24698), (335, 24707), (351, 24794),

Gene: Cerulean_32 Start: 23275, Stop: 25131, Start Num: 5

Candidate Starts for Cerulean_32:

(Start: 5 @23275 has 201 MA's), (27, 23401), (Start: 32 @23425 has 1 MA's), (52, 23530), (53, 23536), (58, 23584), (68, 23635), (82, 23686), (103, 23791), (105, 23803), (119, 23881), (128, 23950), (148, 24118), (152, 24148), (161, 24178), (163, 24202), (164, 24205), (168, 24232), (169, 24235), (192, 24340), (196, 24361), (197, 24370), (223, 24514), (228, 24559), (256, 24721), (282, 24844), (295, 24895), (329, 25012), (335, 25021), (351, 25108),

Gene: ChampagnePapi_32 Start: 23274, Stop: 25130, Start Num: 5

Candidate Starts for ChampagnePapi_32:

(Start: 5 @23274 has 201 MA's), (27, 23400), (Start: 32 @23424 has 1 MA's), (52, 23529), (53, 23535), (58, 23583), (68, 23634), (82, 23685), (103, 23790), (105, 23802), (119, 23880), (128, 23949), (161, 24177), (163, 24201), (164, 24204), (168, 24231), (169, 24234), (192, 24339), (197, 24369), (200, 24384), (213, 24474), (223, 24513), (228, 24558), (257, 24726), (282, 24843), (295, 24894), (329, 25011), (335, 25020), (351, 25107),

Gene: Chaph_31 Start: 22969, Stop: 24825, Start Num: 5

Candidate Starts for Chaph_31:

(Start: 5 @22969 has 201 MA's), (27, 23095), (Start: 32 @23119 has 1 MA's), (52, 23224), (53, 23230), (58, 23278), (61, 23287), (68, 23329), (81, 23374), (82, 23380), (103, 23485), (105, 23497), (119, 23575), (128, 23644), (161, 23872), (163, 23896), (164, 23899), (168, 23926), (169, 23929), (192, 24034), (197, 24064), (200, 24079), (213, 24169), (223, 24208), (228, 24253), (257, 24421),

(282, 24538), (284, 24544), (295, 24589), (311, 24640), (312, 24643), (329, 24706), (335, 24715), (351, 24802),

Gene: Chargerpower_32 Start: 22051, Stop: 23787, Start Num: 62

Candidate Starts for Chargerpower_32:

(Start: 62 @22051 has 1 MA's), (101, 22222), (102, 22243), (104, 22255), (119, 22333), (135, 22432), (145, 22492), (167, 22666), (183, 22750), (207, 22894), (220, 22978), (248, 23167), (309, 23404), (334, 23494), (339, 23509), (359, 23647), (360, 23656), (362, 23671), (364, 23704),

Gene: Charm_31 Start: 22329, Stop: 24071, Start Num: 11

Candidate Starts for Charm_31:

(Start: 11 @22329 has 6 MA's), (14, 22335), (36, 22485), (44, 22515), (51, 22566), (60, 22632), (70, 22680), (80, 22704), (99, 22779), (129, 22893), (149, 23004), (162, 23070), (180, 23184), (187, 23220), (201, 23301), (207, 23340), (225, 23454), (227, 23466), (248, 23613), (252, 23628), (259, 23673), (319, 23925), (330, 23958), (332, 23961), (344, 23997), (351, 24060),

Gene: Che12_33 Start: 21672, Stop: 23324, Start Num: 9

Candidate Starts for Che12_33:

(Start: 9 @21672 has 25 MA's), (27, 21783), (35, 21819), (53, 21918), (56, 21942), (88, 22110), (89, 22116), (168, 22626), (190, 22737), (204, 22818), (219, 22911), (224, 22941), (238, 23037), (253, 23109), (271, 23196), (277, 23208),

Gene: Cici_31 Start: 22966, Stop: 24825, Start Num: 5

Candidate Starts for Cici_31:

(3, 22906), (Start: 5 @22966 has 201 MA's), (19, 23032), (24, 23077), (26, 23083), (Start: 32 @23116 has 1 MA's), (36, 23134), (45, 23179), (46, 23185), (47, 23191), (61, 23284), (63, 23299), (81, 23371), (94, 23431), (103, 23482), (105, 23494), (119, 23572), (128, 23641), (140, 23764), (147, 23788), (161, 23869), (165, 23914), (168, 23923), (169, 23926), (196, 24055), (197, 24064), (205, 24106), (209, 24133), (213, 24169), (219, 24196), (223, 24208), (245, 24364), (282, 24538), (284, 24544), (295, 24589), (311, 24640), (312, 24643), (320, 24679), (335, 24715),

Gene: Cindaradix_30 Start: 22690, Stop: 24546, Start Num: 5

Candidate Starts for Cindaradix_30:

(Start: 5 @22690 has 201 MA's), (Start: 32 @22840 has 1 MA's), (36, 22858), (40, 22870), (45, 22903), (47, 22915), (53, 22951), (61, 23008), (63, 23023), (94, 23155), (103, 23206), (105, 23218), (119, 23296), (122, 23317), (128, 23365), (161, 23593), (168, 23647), (169, 23650), (192, 23755), (196, 23776), (197, 23785), (213, 23890), (245, 24085), (257, 24142), (282, 24259), (284, 24265), (335, 24436),

Gene: Cintron_31 Start: 23005, Stop: 24864, Start Num: 5

Candidate Starts for Cintron_31:

(Start: 5 @23005 has 201 MA's), (27, 23131), (Start: 32 @23155 has 1 MA's), (52, 23260), (53, 23266), (58, 23314), (61, 23323), (68, 23365), (81, 23410), (82, 23416), (103, 23521), (105, 23533), (119, 23611), (128, 23680), (148, 23848), (161, 23908), (163, 23932), (164, 23935), (168, 23962), (169, 23965), (192, 24070), (197, 24100), (200, 24115), (213, 24205), (223, 24244), (226, 24271), (228, 24289), (284, 24580), (306, 24658), (308, 24670), (311, 24676), (320, 24715), (329, 24742), (334, 24748), (351, 24841),

Gene: Citius_31 Start: 22975, Stop: 24831, Start Num: 5

Candidate Starts for Citius_31:

(Start: 5 @22975 has 201 MA's), (27, 23101), (Start: 32 @23125 has 1 MA's), (52, 23230), (53, 23236), (58, 23284), (68, 23335), (81, 23380), (82, 23386), (103, 23491), (105, 23503), (119, 23581), (128, 23650), (161, 23878), (163, 23902), (164, 23905), (168, 23932), (169, 23935), (192, 24040),

(197, 24070), (200, 24085), (213, 24175), (223, 24214), (228, 24259), (257, 24427), (282, 24544), (284, 24550), (295, 24595), (311, 24646), (312, 24649), (329, 24712), (335, 24721), (351, 24808),

Gene: Clarenza_31 Start: 22957, Stop: 24813, Start Num: 5

Candidate Starts for Clarenza_31:

(Start: 5 @22957 has 201 MA's), (27, 23083), (Start: 32 @23107 has 1 MA's), (52, 23212), (53, 23218), (58, 23266), (61, 23275), (68, 23317), (81, 23362), (82, 23368), (103, 23473), (105, 23485), (119, 23563), (128, 23632), (161, 23860), (163, 23884), (164, 23887), (168, 23914), (169, 23917), (192, 24022), (197, 24052), (200, 24067), (213, 24157), (223, 24196), (228, 24241), (257, 24409), (282, 24526), (284, 24532), (295, 24577), (311, 24628), (312, 24631), (329, 24694), (335, 24703), (351, 24790),

Gene: Cocoaberry_31 Start: 22964, Stop: 24820, Start Num: 5

Candidate Starts for Cocoaberry_31:

(Start: 5 @22964 has 201 MA's), (27, 23090), (Start: 32 @23114 has 1 MA's), (52, 23219), (53, 23225), (58, 23273), (61, 23282), (68, 23324), (81, 23369), (82, 23375), (103, 23480), (105, 23492), (119, 23570), (128, 23639), (161, 23867), (163, 23891), (164, 23894), (168, 23921), (169, 23924), (192, 24029), (196, 24050), (197, 24059), (213, 24164), (223, 24203), (228, 24248), (256, 24410), (257, 24416), (282, 24533), (284, 24539), (295, 24584), (311, 24635), (312, 24638), (329, 24701), (335, 24710), (351, 24797),

Gene: Colbster_33 Start: 23277, Stop: 25034, Start Num: 5

Candidate Starts for Colbster_33:

(Start: 5 @23277 has 201 MA's), (27, 23412), (43, 23478), (49, 23523), (54, 23559), (81, 23691), (87, 23727), (93, 23748), (111, 23805), (122, 23865), (134, 23919), (139, 23979), (159, 24099), (161, 24102), (172, 24171), (178, 24195), (197, 24288), (201, 24309), (209, 24354), (267, 24684), (284, 24753), (303, 24816), (349, 24987),

Gene: Commander_31 Start: 22960, Stop: 24816, Start Num: 5

Candidate Starts for Commander_31:

(Start: 5 @22960 has 201 MA's), (27, 23086), (Start: 32 @23110 has 1 MA's), (52, 23215), (53, 23221), (58, 23269), (61, 23278), (68, 23320), (81, 23365), (82, 23371), (103, 23476), (105, 23488), (119, 23566), (128, 23635), (161, 23863), (163, 23887), (164, 23890), (168, 23917), (169, 23920), (192, 24025), (197, 24055), (200, 24070), (213, 24160), (223, 24199), (228, 24244), (257, 24412), (282, 24529), (284, 24535), (295, 24580), (311, 24631), (312, 24634), (329, 24697), (335, 24706), (351, 24793),

Gene: Connomayer_31 Start: 22960, Stop: 24816, Start Num: 5

Candidate Starts for Connomayer_31:

(Start: 5 @22960 has 201 MA's), (27, 23086), (Start: 32 @23110 has 1 MA's), (52, 23215), (53, 23221), (58, 23269), (61, 23278), (68, 23320), (81, 23365), (82, 23371), (103, 23476), (105, 23488), (119, 23566), (128, 23635), (161, 23863), (163, 23887), (164, 23890), (168, 23917), (169, 23920), (192, 24025), (197, 24055), (200, 24070), (213, 24160), (223, 24199), (228, 24244), (257, 24412), (282, 24529), (284, 24535), (295, 24580), (311, 24631), (312, 24634), (329, 24697), (335, 24706), (351, 24793),

Gene: Cullens_33 Start: 23276, Stop: 25033, Start Num: 5

Candidate Starts for Cullens_33:

(Start: 5 @23276 has 201 MA's), (27, 23411), (43, 23477), (49, 23522), (54, 23558), (81, 23690), (87, 23726), (93, 23747), (111, 23804), (122, 23864), (134, 23918), (139, 23978), (159, 24098), (161, 24101), (172, 24170), (178, 24194), (197, 24287), (201, 24308), (209, 24353), (267, 24683), (284, 24752), (303, 24815), (349, 24986),

Gene: D29_31 Start: 22559, Stop: 24412, Start Num: 9

Candidate Starts for D29_31:

(Start: 6 @22553 has 3 MA's), (Start: 9 @22559 has 25 MA's), (29, 22679), (47, 22769), (56, 22829), (64, 22880), (84, 22973), (88, 22997), (89, 23003), (165, 23510), (179, 23579), (196, 23666), (211, 23747), (300, 24191), (305, 24206), (317, 24260), (325, 24284), (328, 24293), (343, 24329),

Gene: D32_34 Start: 22559, Stop: 24412, Start Num: 9

Candidate Starts for D32_34:

(Start: 6 @22553 has 3 MA's), (Start: 9 @22559 has 25 MA's), (29, 22679), (47, 22769), (56, 22829), (64, 22880), (84, 22973), (88, 22997), (89, 23003), (165, 23510), (179, 23579), (196, 23666), (211, 23747), (300, 24191), (305, 24206), (317, 24260), (325, 24284), (328, 24293), (343, 24329),

Gene: DBQu4n_34 Start: 22559, Stop: 24412, Start Num: 9

Candidate Starts for DBQu4n_34:

(Start: 6 @22553 has 3 MA's), (Start: 9 @22559 has 25 MA's), (29, 22679), (47, 22769), (56, 22829), (64, 22880), (84, 22973), (88, 22997), (89, 23003), (165, 23510), (179, 23579), (196, 23666), (211, 23747), (222, 23813), (238, 23930), (287, 24149), (291, 24161), (300, 24191), (317, 24260), (325, 24284), (328, 24293), (343, 24329),

Gene: DaHudson_33 Start: 23269, Stop: 25026, Start Num: 5

Candidate Starts for DaHudson_33:

(Start: 5 @23269 has 201 MA's), (27, 23404), (43, 23470), (49, 23515), (54, 23551), (81, 23683), (87, 23719), (93, 23740), (111, 23797), (122, 23857), (134, 23911), (139, 23971), (159, 24091), (161, 24094), (172, 24163), (178, 24187), (197, 24280), (201, 24301), (209, 24346), (267, 24676), (284, 24745), (303, 24808), (349, 24979),

Gene: Daishi_32 Start: 22205, Stop: 23956, Start Num: 5

Candidate Starts for Daishi_32:

(Start: 5 @22205 has 201 MA's), (27, 22340), (43, 22406), (49, 22451), (54, 22487), (75, 22598), (81, 22619), (87, 22655), (93, 22676), (122, 22793), (142, 22931), (159, 23027), (161, 23030), (172, 23099), (178, 23123), (188, 23168), (197, 23216), (209, 23282), (234, 23453), (237, 23459), (246, 23510), (257, 23555), (264, 23585), (273, 23633), (284, 23675), (288, 23690), (289, 23693), (295, 23717), (329, 23819), (331, 23822), (341, 23846),

Gene: Datway_31 Start: 22981, Stop: 24840, Start Num: 5

Candidate Starts for Datway_31:

(3, 22921), (Start: 5 @22981 has 201 MA's), (19, 23047), (24, 23092), (26, 23098), (Start: 32 @23131 has 1 MA's), (36, 23149), (45, 23194), (46, 23200), (47, 23206), (61, 23299), (63, 23314), (81, 23386), (94, 23446), (103, 23497), (105, 23509), (119, 23587), (128, 23656), (140, 23779), (147, 23803), (161, 23884), (165, 23929), (168, 23938), (169, 23941), (196, 24070), (197, 24079), (205, 24121), (209, 24148), (213, 24184), (219, 24211), (223, 24223), (245, 24379), (282, 24553), (284, 24559), (295, 24604), (311, 24655), (312, 24658), (320, 24694), (335, 24730),

Gene: Deano_31 Start: 22968, Stop: 24824, Start Num: 5

Candidate Starts for Deano_31:

(Start: 5 @22968 has 201 MA's), (27, 23094), (Start: 32 @23118 has 1 MA's), (52, 23223), (53, 23229), (58, 23277), (61, 23286), (68, 23328), (81, 23373), (82, 23379), (103, 23484), (105, 23496), (119, 23574), (128, 23643), (161, 23871), (163, 23895), (164, 23898), (168, 23925), (169, 23928), (192, 24033), (197, 24063), (200, 24078), (213, 24168), (223, 24207), (228, 24252), (257, 24420), (282, 24537), (284, 24543), (295, 24588), (311, 24639), (312, 24642), (329, 24705), (335, 24714), (351, 24801),

Gene: Dhanush_31 Start: 22963, Stop: 24819, Start Num: 5

Candidate Starts for Dhanush_31:

(Start: 5 @22963 has 201 MA's), (27, 23089), (Start: 32 @23113 has 1 MA's), (52, 23218), (53, 23224), (58, 23272), (61, 23281), (68, 23323), (81, 23368), (82, 23374), (103, 23479), (105, 23491), (119, 23569), (128, 23638), (161, 23866), (163, 23890), (164, 23893), (168, 23920), (169, 23923), (192, 24028), (197, 24058), (200, 24073), (213, 24163), (223, 24202), (228, 24247), (257, 24415), (282, 24532), (284, 24538), (295, 24583), (311, 24634), (312, 24637), (329, 24700), (335, 24709), (351, 24796),

Gene: Dieselweasel_33 Start: 23278, Stop: 25035, Start Num: 5

Candidate Starts for Dieselweasel_33:

(Start: 5 @23278 has 201 MA's), (27, 23413), (43, 23479), (49, 23524), (54, 23560), (81, 23692), (87, 23728), (93, 23749), (111, 23806), (122, 23866), (134, 23920), (139, 23980), (159, 24100), (161, 24103), (172, 24172), (178, 24196), (197, 24289), (201, 24310), (209, 24355), (267, 24685), (284, 24754), (303, 24817), (349, 24988),

Gene: DirtyDunning_31 Start: 22953, Stop: 24809, Start Num: 5

Candidate Starts for DirtyDunning_31:

(Start: 5 @22953 has 201 MA's), (27, 23079), (Start: 32 @23103 has 1 MA's), (52, 23208), (53, 23214), (58, 23262), (61, 23271), (68, 23313), (81, 23358), (82, 23364), (103, 23469), (105, 23481), (115, 23544), (119, 23559), (128, 23628), (148, 23796), (161, 23856), (164, 23883), (168, 23910), (169, 23913), (192, 24018), (196, 24039), (197, 24048), (213, 24153), (228, 24237), (241, 24336), (282, 24522), (284, 24528), (295, 24573), (311, 24624), (312, 24627), (329, 24690), (335, 24699), (351, 24786),

Gene: DreamTeam1_31 Start: 22328, Stop: 23986, Start Num: 11

Candidate Starts for DreamTeam1_31:

(Start: 11 @22328 has 6 MA's), (14, 22334), (36, 22484), (44, 22514), (51, 22565), (60, 22631), (70, 22679), (80, 22703), (99, 22778), (129, 22892), (180, 23183), (187, 23219), (207, 23339), (225, 23453), (248, 23612), (252, 23627), (261, 23681), (330, 23870),

Gene: Druantia_31 Start: 22961, Stop: 24817, Start Num: 5

Candidate Starts for Druantia_31:

(Start: 5 @22961 has 201 MA's), (27, 23087), (Start: 32 @23111 has 1 MA's), (52, 23216), (53, 23222), (58, 23270), (61, 23279), (68, 23321), (81, 23366), (82, 23372), (103, 23477), (105, 23489), (119, 23567), (128, 23636), (161, 23864), (163, 23888), (164, 23891), (168, 23918), (169, 23921), (192, 24026), (197, 24056), (200, 24071), (213, 24161), (223, 24200), (228, 24245), (257, 24413), (282, 24530), (284, 24536), (295, 24581), (311, 24632), (312, 24635), (329, 24698), (335, 24707), (351, 24794),

Gene: Duplo_34 Start: 22597, Stop: 24450, Start Num: 9

Candidate Starts for Duplo_34:

(Start: 6 @22591 has 3 MA's), (Start: 9 @22597 has 25 MA's), (29, 22717), (47, 22807), (56, 22867), (64, 22918), (84, 23011), (88, 23035), (89, 23041), (165, 23548), (179, 23617), (196, 23704), (211, 23785), (238, 23968), (287, 24187), (291, 24199), (300, 24229), (317, 24298), (325, 24322), (328, 24331), (343, 24367),

Gene: Eagle_30 Start: 22960, Stop: 24816, Start Num: 5

Candidate Starts for Eagle_30:

(Start: 5 @22960 has 201 MA's), (27, 23086), (Start: 32 @23110 has 1 MA's), (52, 23215), (53, 23221), (58, 23269), (68, 23320), (82, 23371), (103, 23476), (105, 23488), (119, 23566), (128, 23635), (148, 23803), (152, 23833), (161, 23863), (163, 23887), (164, 23890), (168, 23917), (169, 23920), (192, 24025), (196, 24046), (197, 24055), (223, 24199), (228, 24244), (256, 24406), (282, 24529), (295, 24580), (329, 24697), (335, 24706), (351, 24793),

Gene: Eapen_31 Start: 22959, Stop: 24815, Start Num: 5

Candidate Starts for Eapen_31:

(Start: 5 @22959 has 201 MA's), (27, 23085), (Start: 32 @23109 has 1 MA's), (52, 23214), (53, 23220), (58, 23268), (68, 23319), (81, 23364), (82, 23370), (103, 23475), (105, 23487), (119, 23565), (128, 23634), (161, 23862), (163, 23886), (164, 23889), (168, 23916), (169, 23919), (192, 24024), (197, 24054), (200, 24069), (213, 24159), (223, 24198), (228, 24243), (257, 24411), (282, 24528), (284, 24534), (295, 24579), (311, 24630), (312, 24633), (329, 24696), (335, 24705), (351, 24792),

Gene: EpicPhail_33 Start: 23277, Stop: 25034, Start Num: 5

Candidate Starts for EpicPhail_33:

(Start: 5 @23277 has 201 MA's), (27, 23412), (43, 23478), (49, 23523), (54, 23559), (81, 23691), (87, 23727), (93, 23748), (111, 23805), (122, 23865), (134, 23919), (139, 23979), (159, 24099), (161, 24102), (172, 24171), (178, 24195), (197, 24288), (201, 24309), (209, 24354), (267, 24684), (284, 24753), (303, 24816), (349, 24987),

Gene: Eris_30 Start: 22960, Stop: 24816, Start Num: 5

Candidate Starts for Eris_30:

(Start: 5 @22960 has 201 MA's), (27, 23086), (Start: 32 @23110 has 1 MA's), (52, 23215), (53, 23221), (58, 23269), (68, 23320), (81, 23365), (82, 23371), (103, 23476), (105, 23488), (119, 23566), (128, 23635), (161, 23863), (163, 23887), (164, 23890), (168, 23917), (169, 23920), (192, 24025), (196, 24046), (197, 24055), (213, 24160), (223, 24199), (228, 24244), (257, 24412), (282, 24529), (284, 24535), (295, 24580), (311, 24631), (312, 24634), (329, 24697), (335, 24706), (351, 24793),

Gene: Eros_31 Start: 22960, Stop: 24816, Start Num: 5

Candidate Starts for Eros_31:

(Start: 5 @22960 has 201 MA's), (27, 23086), (Start: 32 @23110 has 1 MA's), (52, 23215), (53, 23221), (58, 23269), (61, 23278), (68, 23320), (81, 23365), (82, 23371), (103, 23476), (105, 23488), (119, 23566), (128, 23635), (161, 23863), (163, 23887), (164, 23890), (168, 23917), (169, 23920), (192, 24025), (197, 24055), (200, 24070), (213, 24160), (223, 24199), (228, 24244), (257, 24412), (282, 24529), (284, 24535), (295, 24580), (311, 24631), (312, 24634), (329, 24697), (335, 24706), (351, 24793),

Gene: Eurydice_31 Start: 22957, Stop: 24813, Start Num: 5

Candidate Starts for Eurydice_31:

(Start: 5 @22957 has 201 MA's), (27, 23083), (Start: 32 @23107 has 1 MA's), (52, 23212), (53, 23218), (58, 23266), (61, 23275), (68, 23317), (81, 23362), (82, 23368), (105, 23485), (119, 23563), (128, 23632), (161, 23860), (163, 23884), (164, 23887), (168, 23914), (169, 23917), (192, 24022), (197, 24052), (200, 24067), (213, 24157), (223, 24196), (226, 24223), (228, 24241), (241, 24340), (282, 24526), (295, 24577), (312, 24631), (329, 24694), (335, 24703), (351, 24790),

Gene: Farber_33 Start: 23270, Stop: 25027, Start Num: 5

Candidate Starts for Farber_33:

(Start: 5 @23270 has 201 MA's), (27, 23405), (43, 23471), (49, 23516), (54, 23552), (81, 23684), (87, 23720), (93, 23741), (111, 23798), (122, 23858), (134, 23912), (139, 23972), (159, 24092), (161, 24095), (172, 24164), (178, 24188), (197, 24281), (201, 24302), (209, 24347), (267, 24677), (284, 24746), (303, 24809), (349, 24980),

Gene: Fernando_33 Start: 23276, Stop: 25033, Start Num: 5

Candidate Starts for Fernando_33:

(Start: 5 @23276 has 201 MA's), (27, 23411), (43, 23477), (49, 23522), (54, 23558), (81, 23690), (87, 23726), (93, 23747), (111, 23804), (122, 23864), (134, 23918), (139, 23978), (159, 24098), (161, 24101), (172, 24170), (178, 24194), (197, 24287), (201, 24308), (209, 24353), (267, 24683), (284,

24752), (303, 24815), (349, 24986),

Gene: Flaverint_31 Start: 23391, Stop: 25382, Start Num: 2

Candidate Starts for Flaverint_31:

(Start: 2 @23391 has 11 MA's), (Start: 7 @23502 has 2 MA's), (10, 23511), (20, 23568), (21, 23583), (22, 23601), (23, 23613), (33, 23661), (38, 23679), (39, 23682), (57, 23802), (83, 23916), (86, 23937), (90, 23955), (100, 23988), (127, 24171), (131, 24201), (132, 24204), (151, 24378), (153, 24384), (157, 24408), (158, 24414), (173, 24489), (186, 24552), (195, 24594), (196, 24600), (214, 24723), (224, 24771), (226, 24780), (242, 24897), (244, 24900), (254, 24942), (263, 24984), (269, 25020), (283, 25074), (296, 25125), (297, 25131), (300, 25137), (312, 25179), (340, 25269), (348, 25326), (356, 25365), (358, 25374),

Gene: Florean_31 Start: 22957, Stop: 24813, Start Num: 5

Candidate Starts for Florean_31:

(Start: 5 @22957 has 201 MA's), (27, 23083), (Start: 32 @23107 has 1 MA's), (52, 23212), (53, 23218), (58, 23266), (61, 23275), (68, 23317), (81, 23362), (82, 23368), (103, 23473), (105, 23485), (119, 23563), (128, 23632), (161, 23860), (163, 23884), (164, 23887), (168, 23914), (169, 23917), (192, 24022), (197, 24052), (200, 24067), (213, 24157), (223, 24196), (228, 24241), (257, 24409), (282, 24526), (284, 24532), (295, 24577), (311, 24628), (312, 24631), (329, 24694), (335, 24703), (351, 24790),

Gene: Flux_31 Start: 22960, Stop: 24816, Start Num: 5

Candidate Starts for Flux_31:

(Start: 5 @22960 has 201 MA's), (27, 23086), (Start: 32 @23110 has 1 MA's), (52, 23215), (53, 23221), (58, 23269), (61, 23278), (68, 23320), (81, 23365), (82, 23371), (103, 23476), (105, 23488), (119, 23566), (128, 23635), (161, 23863), (163, 23887), (164, 23890), (168, 23917), (169, 23920), (192, 24025), (197, 24055), (200, 24070), (213, 24160), (223, 24199), (228, 24244), (257, 24412), (282, 24529), (284, 24535), (295, 24580), (311, 24631), (312, 24634), (329, 24697), (335, 24706), (351, 24793),

Gene: Funston_31 Start: 22960, Stop: 24816, Start Num: 5

Candidate Starts for Funston_31:

(Start: 5 @22960 has 201 MA's), (27, 23086), (Start: 32 @23110 has 1 MA's), (52, 23215), (53, 23221), (58, 23269), (68, 23320), (81, 23365), (82, 23371), (103, 23476), (105, 23488), (119, 23566), (128, 23635), (161, 23863), (163, 23887), (164, 23890), (168, 23917), (169, 23920), (192, 24025), (196, 24046), (197, 24055), (213, 24160), (223, 24199), (228, 24244), (257, 24412), (282, 24529), (284, 24535), (295, 24580), (311, 24631), (312, 24634), (329, 24697), (335, 24706), (351, 24793),

Gene: Gadost_31 Start: 22964, Stop: 24820, Start Num: 5

Candidate Starts for Gadost_31:

(Start: 5 @22964 has 201 MA's), (27, 23090), (Start: 32 @23114 has 1 MA's), (52, 23219), (53, 23225), (58, 23273), (61, 23282), (68, 23324), (81, 23369), (82, 23375), (103, 23480), (105, 23492), (119, 23570), (128, 23639), (161, 23867), (163, 23891), (164, 23894), (168, 23921), (169, 23924), (192, 24029), (196, 24050), (197, 24059), (213, 24164), (223, 24203), (228, 24248), (256, 24410), (257, 24416), (282, 24533), (284, 24539), (295, 24584), (311, 24635), (312, 24638), (329, 24701), (335, 24710), (351, 24797),

Gene: Gilberta_31 Start: 23388, Stop: 25379, Start Num: 2

Candidate Starts for Gilberta_31:

(Start: 2 @23388 has 11 MA's), (Start: 7 @23499 has 2 MA's), (10, 23508), (20, 23565), (21, 23580), (22, 23598), (23, 23610), (33, 23658), (38, 23676), (39, 23679), (57, 23799), (83, 23913), (86, 23934), (90, 23952), (100, 23985), (127, 24168), (131, 24198), (132, 24201), (151, 24375), (153, 24381), (157, 24405), (158, 24411), (173, 24486), (186, 24549), (195, 24591), (196, 24597), (214, 24720), (224,

24768), (226, 24777), (242, 24894), (244, 24897), (254, 24939), (263, 24981), (269, 25017), (283, 25071), (296, 25122), (297, 25128), (300, 25134), (312, 25176), (340, 25266), (348, 25323), (356, 25362), (358, 25371),

Gene: GingkoMaracino_33 Start: 23163, Stop: 24920, Start Num: 5

Candidate Starts for GingkoMaracino_33:

(Start: 5 @23163 has 201 MA's), (27, 23298), (43, 23364), (49, 23409), (54, 23445), (81, 23577), (87, 23613), (93, 23634), (111, 23691), (122, 23751), (134, 23805), (139, 23865), (159, 23985), (161, 23988), (172, 24057), (178, 24081), (197, 24174), (201, 24195), (209, 24240), (267, 24570), (284, 24639), (303, 24702), (349, 24873),

Gene: Grif_33 Start: 23360, Stop: 25111, Start Num: 5

Candidate Starts for Grif_33:

(Start: 5 @23360 has 201 MA's), (27, 23495), (43, 23561), (49, 23606), (54, 23642), (66, 23714), (69, 23732), (87, 23810), (93, 23831), (122, 23948), (142, 24086), (159, 24182), (161, 24185), (172, 24254), (178, 24278), (188, 24323), (197, 24371), (209, 24437), (234, 24608), (237, 24614), (246, 24665), (257, 24710), (273, 24788), (284, 24830), (295, 24872), (329, 24974), (331, 24977), (341, 25001),

Gene: Grub_33 Start: 23269, Stop: 25026, Start Num: 5

Candidate Starts for Grub_33:

(Start: 5 @23269 has 201 MA's), (27, 23404), (43, 23470), (49, 23515), (54, 23551), (81, 23683), (87, 23719), (93, 23740), (111, 23797), (122, 23857), (134, 23911), (139, 23971), (159, 24091), (161, 24094), (172, 24163), (178, 24187), (197, 24280), (201, 24301), (209, 24346), (267, 24676), (284, 24745), (303, 24808), (349, 24979),

Gene: Grum1_33 Start: 23276, Stop: 25033, Start Num: 5

Candidate Starts for Grum1_33:

(Start: 5 @23276 has 201 MA's), (27, 23411), (43, 23477), (49, 23522), (54, 23558), (81, 23690), (87, 23726), (93, 23747), (111, 23804), (122, 23864), (134, 23918), (139, 23978), (159, 24098), (161, 24101), (172, 24170), (178, 24194), (197, 24287), (201, 24308), (209, 24353), (267, 24683), (284, 24752), (303, 24815), (349, 24986),

Gene: GtownJaz_33 Start: 23278, Stop: 25035, Start Num: 5

Candidate Starts for GtownJaz_33:

(Start: 5 @23278 has 201 MA's), (27, 23413), (43, 23479), (49, 23524), (54, 23560), (81, 23692), (87, 23728), (93, 23749), (111, 23806), (122, 23866), (134, 23920), (139, 23980), (159, 24100), (161, 24103), (172, 24172), (178, 24196), (197, 24289), (201, 24310), (209, 24355), (267, 24685), (284, 24754), (303, 24817), (349, 24988),

Gene: HamSlice_30 Start: 22958, Stop: 24814, Start Num: 5

Candidate Starts for HamSlice_30:

(Start: 5 @22958 has 201 MA's), (27, 23084), (Start: 32 @23108 has 1 MA's), (52, 23213), (53, 23219), (58, 23267), (68, 23318), (81, 23363), (82, 23369), (103, 23474), (105, 23486), (119, 23564), (128, 23633), (161, 23861), (163, 23885), (164, 23888), (168, 23915), (169, 23918), (192, 24023), (197, 24053), (200, 24068), (213, 24158), (223, 24197), (228, 24242), (257, 24410), (282, 24527), (284, 24533), (295, 24578), (311, 24629), (312, 24632), (329, 24695), (335, 24704), (351, 24791),

Gene: Happiness_31 Start: 22966, Stop: 24822, Start Num: 5

Candidate Starts for Happiness_31:

(Start: 5 @22966 has 201 MA's), (27, 23092), (Start: 32 @23116 has 1 MA's), (47, 23191), (52, 23221), (58, 23275), (61, 23284), (68, 23326), (82, 23377), (103, 23482), (105, 23494), (119, 23572), (128, 23641), (148, 23809), (152, 23839), (161, 23869), (163, 23893), (164, 23896), (168, 23923),

(169, 23926), (192, 24031), (196, 24052), (197, 24061), (213, 24166), (223, 24205), (228, 24250), (256, 24412), (282, 24535), (295, 24586), (311, 24637), (312, 24640), (329, 24703), (335, 24712), (351, 24799),

Gene: HashRod_34 Start: 23364, Stop: 25115, Start Num: 5

Candidate Starts for HashRod_34:

(Start: 5 @23364 has 201 MA's), (27, 23499), (43, 23565), (49, 23610), (54, 23646), (75, 23757), (81, 23778), (87, 23814), (93, 23835), (122, 23952), (142, 24090), (159, 24186), (161, 24189), (172, 24258), (178, 24282), (188, 24327), (197, 24375), (209, 24441), (234, 24612), (237, 24618), (246, 24669), (257, 24714), (264, 24744), (273, 24792), (284, 24834), (288, 24849), (289, 24852), (295, 24876), (329, 24978), (331, 24981), (341, 25005),

Gene: Hercules11_33 Start: 23284, Stop: 25041, Start Num: 5

Candidate Starts for Hercules11_33:

(Start: 5 @23284 has 201 MA's), (27, 23419), (43, 23485), (49, 23530), (54, 23566), (81, 23698), (87, 23734), (93, 23755), (111, 23812), (122, 23872), (134, 23926), (139, 23986), (159, 24106), (161, 24109), (172, 24178), (178, 24202), (197, 24295), (201, 24316), (209, 24361), (267, 24691), (284, 24760), (303, 24823), (349, 24994),

Gene: Holli_31 Start: 22750, Stop: 24606, Start Num: 5

Candidate Starts for Holli_31:

(Start: 5 @22750 has 201 MA's), (27, 22876), (Start: 32 @22900 has 1 MA's), (52, 23005), (53, 23011), (58, 23059), (61, 23068), (68, 23110), (81, 23155), (82, 23161), (103, 23266), (105, 23278), (119, 23356), (128, 23425), (161, 23653), (163, 23677), (164, 23680), (168, 23707), (169, 23710), (192, 23815), (197, 23845), (200, 23860), (213, 23950), (223, 23989), (228, 24034), (257, 24202), (282, 24319), (284, 24325), (295, 24370), (311, 24421), (312, 24424), (329, 24487), (335, 24496), (351, 24583),

Gene: Houdini22_31 Start: 22964, Stop: 24820, Start Num: 5

Candidate Starts for Houdini22_31:

(Start: 5 @22964 has 201 MA's), (27, 23090), (Start: 32 @23114 has 1 MA's), (52, 23219), (53, 23225), (58, 23273), (61, 23282), (68, 23324), (81, 23369), (82, 23375), (103, 23480), (105, 23492), (119, 23570), (128, 23639), (161, 23867), (163, 23891), (164, 23894), (168, 23921), (169, 23924), (192, 24029), (196, 24050), (197, 24059), (213, 24164), (223, 24203), (228, 24248), (256, 24410), (257, 24416), (282, 24533), (284, 24539), (295, 24584), (311, 24635), (312, 24638), (329, 24701), (335, 24710), (351, 24797),

Gene: ICleared_31 Start: 22958, Stop: 24814, Start Num: 5

Candidate Starts for ICleared_31:

(Start: 5 @22958 has 201 MA's), (27, 23084), (Start: 32 @23108 has 1 MA's), (52, 23213), (53, 23219), (58, 23267), (68, 23318), (81, 23363), (82, 23369), (103, 23474), (105, 23486), (119, 23564), (128, 23633), (161, 23861), (163, 23885), (164, 23888), (168, 23915), (169, 23918), (192, 24023), (196, 24044), (197, 24053), (213, 24158), (223, 24197), (228, 24242), (256, 24404), (257, 24410), (282, 24527), (284, 24533), (295, 24578), (311, 24629), (312, 24632), (329, 24695), (335, 24704), (351, 24791),

Gene: Iceman_32 Start: 23249, Stop: 25105, Start Num: 5

Candidate Starts for Iceman_32:

(Start: 5 @23249 has 201 MA's), (27, 23375), (Start: 32 @23399 has 1 MA's), (52, 23504), (53, 23510), (58, 23558), (68, 23609), (81, 23654), (82, 23660), (103, 23765), (105, 23777), (119, 23855), (128, 23924), (161, 24152), (163, 24176), (164, 24179), (168, 24206), (169, 24209), (192, 24314), (197, 24344), (200, 24359), (213, 24449), (223, 24488), (228, 24533), (257, 24701), (281, 24812), (282, 24818), (284, 24824), (295, 24869), (311, 24920), (312, 24923), (329, 24986), (335, 24995),

(351, 25082),

Gene: Insomnia_31 Start: 23449, Stop: 25440, Start Num: 2

Candidate Starts for Insomnia_31:

(Start: 2 @23449 has 11 MA's), (Start: 7 @23560 has 2 MA's), (10, 23569), (20, 23626), (21, 23641), (22, 23659), (23, 23671), (33, 23719), (38, 23737), (39, 23740), (57, 23860), (83, 23974), (86, 23995), (90, 24013), (100, 24046), (127, 24229), (131, 24259), (132, 24262), (151, 24436), (153, 24442), (157, 24466), (158, 24472), (173, 24547), (186, 24610), (195, 24652), (196, 24658), (214, 24781), (224, 24829), (226, 24838), (242, 24955), (244, 24958), (254, 25000), (263, 25042), (269, 25078), (283, 25132), (296, 25183), (297, 25189), (300, 25195), (312, 25237), (348, 25384), (356, 25423), (358, 25432),

Gene: Iracema64_32 Start: 23268, Stop: 25124, Start Num: 5

Candidate Starts for Iracema64_32:

(Start: 5 @23268 has 201 MA's), (27, 23394), (Start: 32 @23418 has 1 MA's), (52, 23523), (53, 23529), (58, 23577), (61, 23586), (68, 23628), (81, 23673), (82, 23679), (103, 23784), (105, 23796), (115, 23859), (119, 23874), (128, 23943), (148, 24111), (161, 24171), (164, 24198), (168, 24225), (169, 24228), (192, 24333), (196, 24354), (197, 24363), (213, 24468), (228, 24552), (241, 24651), (282, 24837), (284, 24843), (295, 24888), (311, 24939), (312, 24942), (329, 25005), (335, 25014), (351, 25101),

Gene: JHC117_33 Start: 23275, Stop: 25032, Start Num: 5

Candidate Starts for JHC117_33:

(Start: 5 @23275 has 201 MA's), (27, 23410), (43, 23476), (49, 23521), (54, 23557), (81, 23689), (87, 23725), (93, 23746), (111, 23803), (122, 23863), (134, 23917), (139, 23977), (159, 24097), (161, 24100), (172, 24169), (178, 24193), (197, 24286), (201, 24307), (209, 24352), (267, 24682), (284, 24751), (303, 24814), (349, 24985),

Gene: Jabith_31 Start: 23449, Stop: 25440, Start Num: 2

Candidate Starts for Jabith_31:

(Start: 2 @23449 has 11 MA's), (Start: 7 @23560 has 2 MA's), (10, 23569), (20, 23626), (21, 23641), (22, 23659), (23, 23671), (33, 23719), (38, 23737), (39, 23740), (57, 23860), (83, 23974), (86, 23995), (90, 24013), (100, 24046), (127, 24229), (131, 24259), (132, 24262), (151, 24436), (153, 24442), (157, 24466), (158, 24472), (173, 24547), (186, 24610), (195, 24652), (196, 24658), (214, 24781), (224, 24829), (226, 24838), (242, 24955), (244, 24958), (254, 25000), (263, 25042), (269, 25078), (283, 25132), (296, 25183), (297, 25189), (300, 25195), (312, 25237), (340, 25327), (348, 25384), (356, 25423), (358, 25432),

Gene: Jaykayelowell_31 Start: 22956, Stop: 24812, Start Num: 5

Candidate Starts for Jaykayelowell_31:

(Start: 5 @22956 has 201 MA's), (27, 23082), (Start: 32 @23106 has 1 MA's), (52, 23211), (53, 23217), (58, 23265), (68, 23316), (81, 23361), (82, 23367), (103, 23472), (105, 23484), (119, 23562), (128, 23631), (161, 23859), (164, 23886), (168, 23913), (169, 23916), (192, 24021), (197, 24051), (200, 24066), (213, 24156), (223, 24195), (228, 24240), (257, 24408), (282, 24525), (284, 24531), (295, 24576), (311, 24627), (312, 24630), (329, 24693), (335, 24702), (351, 24789),

Gene: Jeeves_31 Start: 21978, Stop: 23861, Start Num: 11

Candidate Starts for Jeeves_31:

(Start: 11 @21978 has 6 MA's), (14, 21984), (48, 22194), (53, 22227), (56, 22251), (58, 22272), (76, 22347), (95, 22437), (112, 22551), (133, 22692), (141, 22746), (160, 22881), (167, 22935), (183, 23019), (200, 23118), (207, 23163), (220, 23247), (232, 23346), (236, 23370), (248, 23436), (252, 23451), (275, 23571), (291, 23598), (314, 23688), (322, 23724), (330, 23748), (342, 23781), (347, 23823), (351, 23850), (353, 23853),

Gene: JenCasNa_33 Start: 23276, Stop: 25033, Start Num: 5

Candidate Starts for JenCasNa_33:

(Start: 5 @23276 has 201 MA's), (27, 23411), (43, 23477), (49, 23522), (54, 23558), (81, 23690), (87, 23726), (93, 23747), (111, 23804), (122, 23864), (134, 23918), (139, 23978), (159, 24098), (161, 24101), (172, 24170), (178, 24194), (197, 24287), (201, 24308), (209, 24353), (267, 24683), (284, 24752), (303, 24815), (349, 24986),

Gene: JetBlade_31 Start: 22957, Stop: 24813, Start Num: 5

Candidate Starts for JetBlade_31:

(Start: 5 @22957 has 201 MA's), (27, 23083), (Start: 32 @23107 has 1 MA's), (52, 23212), (53, 23218), (58, 23266), (61, 23275), (68, 23317), (81, 23362), (82, 23368), (103, 23473), (105, 23485), (119, 23563), (128, 23632), (161, 23860), (163, 23884), (164, 23887), (168, 23914), (169, 23917), (192, 24022), (197, 24052), (200, 24067), (213, 24157), (223, 24196), (228, 24241), (257, 24409), (282, 24526), (284, 24532), (295, 24577), (311, 24628), (312, 24631), (329, 24694), (335, 24703), (351, 24790),

Gene: JoongJeon_31 Start: 22960, Stop: 24816, Start Num: 5

Candidate Starts for JoongJeon_31:

(Start: 5 @22960 has 201 MA's), (27, 23086), (Start: 32 @23110 has 1 MA's), (52, 23215), (53, 23221), (58, 23269), (61, 23278), (68, 23320), (81, 23365), (82, 23371), (103, 23476), (105, 23488), (119, 23566), (128, 23635), (161, 23863), (163, 23887), (164, 23890), (168, 23917), (169, 23920), (192, 24025), (197, 24055), (200, 24070), (213, 24160), (223, 24199), (228, 24244), (257, 24412), (282, 24529), (284, 24535), (295, 24580), (311, 24631), (312, 24634), (329, 24697), (335, 24706), (351, 24793),

Gene: Joselito_31 Start: 23397, Stop: 25388, Start Num: 2

Candidate Starts for Joselito_31:

(Start: 2 @23397 has 11 MA's), (Start: 7 @23508 has 2 MA's), (10, 23517), (20, 23574), (21, 23589), (22, 23607), (23, 23619), (33, 23667), (38, 23685), (39, 23688), (57, 23808), (83, 23922), (86, 23943), (90, 23961), (100, 23994), (127, 24177), (131, 24207), (132, 24210), (151, 24384), (153, 24390), (157, 24414), (158, 24420), (173, 24495), (186, 24558), (195, 24600), (196, 24606), (214, 24729), (224, 24777), (226, 24786), (242, 24903), (244, 24906), (254, 24948), (263, 24990), (269, 25026), (283, 25080), (296, 25131), (297, 25137), (300, 25143), (312, 25185), (340, 25275), (348, 25332), (356, 25371), (358, 25380),

Gene: Journey13_29 Start: 21908, Stop: 23737, Start Num: 9

Candidate Starts for Journey13_29:

(Start: 9 @21908 has 25 MA's), (31, 22037), (Start: 32 @22043 has 1 MA's), (53, 22154), (56, 22178), (82, 22313), (88, 22346), (89, 22352), (124, 22532), (165, 22850), (185, 22952), (190, 22973), (191, 22979), (193, 22994), (204, 23054), (208, 23081), (243, 23300), (310, 23564), (325, 23624), (350, 23726), (352, 23729),

Gene: Jsquared_30 Start: 21719, Stop: 23470, Start Num: 9

Candidate Starts for Jsquared_30:

(Start: 9 @21719 has 25 MA's), (16, 21740), (29, 21839), (Start: 32 @21854 has 1 MA's), (47, 21929), (53, 21965), (54, 21977), (56, 21989), (58, 22013), (60, 22019), (79, 22100), (84, 22133), (88, 22157), (89, 22163), (105, 22235), (124, 22343), (165, 22661), (190, 22781), (202, 22850), (238, 23081), (253, 23156), (256, 23168), (258, 23177), (265, 23216), (318, 23411), (327, 23438), (328, 23441), (335, 23453),

Gene: KADY_34 Start: 23364, Stop: 25115, Start Num: 5

Candidate Starts for KADY_34:

(Start: 5 @23364 has 201 MA's), (27, 23499), (43, 23565), (49, 23610), (54, 23646), (75, 23757), (81, 23778), (87, 23814), (93, 23835), (122, 23952), (142, 24090), (159, 24186), (161, 24189), (172, 24258), (178, 24282), (188, 24327), (197, 24375), (209, 24441), (234, 24612), (237, 24618), (246, 24669), (257, 24714), (264, 24744), (273, 24792), (284, 24834), (288, 24849), (289, 24852), (295, 24876), (329, 24978), (331, 24981), (341, 25005),

Gene: KFPoly_31 Start: 22957, Stop: 24813, Start Num: 5

Candidate Starts for KFPoly_31:

(Start: 5 @22957 has 201 MA's), (27, 23083), (Start: 32 @23107 has 1 MA's), (52, 23212), (53, 23218), (58, 23266), (61, 23275), (68, 23317), (81, 23362), (82, 23368), (103, 23473), (105, 23485), (119, 23563), (128, 23632), (161, 23860), (163, 23884), (164, 23887), (168, 23914), (169, 23917), (192, 24022), (196, 24043), (197, 24052), (213, 24157), (223, 24196), (228, 24241), (257, 24409), (282, 24526), (284, 24532), (295, 24577), (311, 24628), (312, 24631), (329, 24694), (335, 24703), (351, 24790),

Gene: Kampy_31 Start: 22958, Stop: 24814, Start Num: 5

Candidate Starts for Kampy_31:

(Start: 5 @22958 has 201 MA's), (27, 23084), (Start: 32 @23108 has 1 MA's), (52, 23213), (53, 23219), (58, 23267), (61, 23276), (68, 23318), (81, 23363), (82, 23369), (103, 23474), (105, 23486), (119, 23564), (128, 23633), (161, 23861), (163, 23885), (164, 23888), (168, 23915), (169, 23918), (192, 24023), (197, 24053), (200, 24068), (213, 24158), (223, 24197), (226, 24224), (228, 24242), (241, 24341), (282, 24527), (295, 24578), (312, 24632), (329, 24695), (335, 24704), (351, 24791),

Gene: Katalie136_31 Start: 22972, Stop: 24831, Start Num: 5

Candidate Starts for Katalie136_31:

(3, 22912), (Start: 5 @22972 has 201 MA's), (19, 23038), (24, 23083), (26, 23089), (Start: 32 @23122 has 1 MA's), (36, 23140), (45, 23185), (46, 23191), (47, 23197), (61, 23290), (63, 23305), (81, 23377), (94, 23437), (103, 23488), (105, 23500), (119, 23578), (128, 23647), (140, 23770), (147, 23794), (161, 23875), (165, 23920), (168, 23929), (169, 23932), (196, 24061), (197, 24070), (205, 24112), (209, 24139), (213, 24175), (219, 24202), (223, 24214), (245, 24370), (282, 24544), (284, 24550), (295, 24595), (311, 24646), (312, 24649), (320, 24685), (335, 24721),

Gene: Kerberos_34 Start: 22559, Stop: 24412, Start Num: 9

Candidate Starts for Kerberos_34:

(Start: 6 @22553 has 3 MA's), (Start: 9 @22559 has 25 MA's), (29, 22679), (47, 22769), (56, 22829), (64, 22880), (84, 22973), (88, 22997), (89, 23003), (165, 23510), (179, 23579), (196, 23666), (211, 23747), (238, 23930), (287, 24149), (291, 24161), (300, 24191), (317, 24260), (325, 24284), (328, 24293), (343, 24329),

Gene: Kimona_28 Start: 20738, Stop: 22444, Start Num: 5

Candidate Starts for Kimona_28:

(Start: 5 @20738 has 201 MA's), (15, 20771), (18, 20786), (43, 20936), (44, 20942), (58, 21053), (60, 21059), (84, 21116), (103, 21185), (109, 21218), (111, 21230), (134, 21389), (190, 21752), (240, 22079), (246, 22100), (249, 22112), (260, 22166), (265, 22190), (287, 22271), (316, 22379), (325, 22409), (337, 22436),

Gene: Kingmustik0402_31 Start: 22952, Stop: 24808, Start Num: 5

Candidate Starts for Kingmustik0402_31:

(Start: 5 @22952 has 201 MA's), (27, 23078), (Start: 32 @23102 has 1 MA's), (52, 23207), (53, 23213), (58, 23261), (61, 23270), (68, 23312), (81, 23357), (82, 23363), (103, 23468), (105, 23480), (119, 23558), (128, 23627), (161, 23855), (163, 23879), (164, 23882), (168, 23909), (169, 23912), (192, 24017), (197, 24047), (200, 24062), (213, 24152), (223, 24191), (228, 24236), (257, 24404), (282, 24521), (284, 24527), (295, 24572), (311, 24623), (312, 24626), (329, 24689), (335, 24698),

(351, 24785),

Gene: Kinmap_32 Start: 22357, Stop: 24255, Start Num: 11

Candidate Starts for Kinmap_32:

(1, 22222), (Start: 11 @22357 has 6 MA's), (14, 22363), (35, 22507), (56, 22630), (67, 22696), (71, 22717), (112, 22936), (121, 22978), (133, 23077), (155, 23281), (167, 23362), (170, 23374), (183, 23446), (187, 23470), (198, 23536), (248, 23863), (252, 23878), (326, 24130), (336, 24154), (351, 24244), (353, 24247),

Gene: Koduck_31 Start: 21936, Stop: 23582, Start Num: 9

Candidate Starts for Koduck_31:

(Start: 9 @21936 has 25 MA's), (29, 22056), (Start: 32 @22071 has 1 MA's), (47, 22146), (54, 22194), (56, 22206), (65, 22263), (88, 22374), (89, 22380), (105, 22452), (136, 22671), (152, 22785), (165, 22869), (167, 22875), (176, 22911), (190, 22995), (203, 23073), (219, 23169), (226, 23208), (238, 23295), (253, 23367), (268, 23442), (271, 23454), (276, 23463), (285, 23493), (307, 23562),

Gene: Koreni_30 Start: 22606, Stop: 24462, Start Num: 5

Candidate Starts for Koreni_30:

(Start: 5 @22606 has 201 MA's), (27, 22732), (Start: 32 @22756 has 1 MA's), (52, 22861), (53, 22867), (58, 22915), (61, 22924), (68, 22966), (81, 23011), (82, 23017), (103, 23122), (105, 23134), (119, 23212), (128, 23281), (161, 23509), (163, 23533), (164, 23536), (168, 23563), (169, 23566), (192, 23671), (196, 23692), (197, 23701), (213, 23806), (223, 23845), (228, 23890), (256, 24052), (257, 24058), (282, 24175), (284, 24181), (295, 24226), (311, 24277), (312, 24280), (329, 24343), (335, 24352), (351, 24439),

Gene: Kratak_31 Start: 22952, Stop: 24808, Start Num: 5

Candidate Starts for Kratak_31:

(Start: 5 @22952 has 201 MA's), (27, 23078), (Start: 32 @23102 has 1 MA's), (52, 23207), (53, 23213), (58, 23261), (68, 23312), (81, 23357), (82, 23363), (103, 23468), (105, 23480), (115, 23543), (119, 23558), (128, 23627), (161, 23855), (163, 23879), (164, 23882), (168, 23909), (169, 23912), (192, 24017), (196, 24038), (197, 24047), (213, 24152), (223, 24191), (228, 24236), (241, 24335), (282, 24521), (284, 24527), (295, 24572), (311, 24623), (312, 24626), (329, 24689), (335, 24698), (351, 24785),

Gene: Kremtemulon_31 Start: 23008, Stop: 24867, Start Num: 5

Candidate Starts for Kremtemulon_31:

(Start: 5 @23008 has 201 MA's), (27, 23134), (Start: 32 @23158 has 1 MA's), (52, 23263), (53, 23269), (58, 23317), (61, 23326), (68, 23368), (82, 23419), (103, 23524), (105, 23536), (119, 23614), (128, 23683), (161, 23911), (164, 23938), (168, 23965), (169, 23968), (192, 24073), (197, 24103), (200, 24118), (213, 24208), (223, 24247), (226, 24274), (228, 24292), (284, 24583), (306, 24661), (308, 24673), (311, 24679), (320, 24718), (329, 24745), (334, 24751), (351, 24844),

Gene: Kyee_31 Start: 22958, Stop: 24814, Start Num: 5

Candidate Starts for Kyee_31:

(Start: 5 @22958 has 201 MA's), (27, 23084), (Start: 32 @23108 has 1 MA's), (52, 23213), (53, 23219), (58, 23267), (61, 23276), (68, 23318), (81, 23363), (82, 23369), (103, 23474), (105, 23486), (119, 23564), (128, 23633), (161, 23861), (163, 23885), (164, 23888), (168, 23915), (169, 23918), (192, 24023), (196, 24044), (197, 24053), (213, 24158), (223, 24197), (228, 24242), (257, 24410), (282, 24527), (284, 24533), (295, 24578), (311, 24629), (312, 24632), (329, 24695), (335, 24704), (351, 24791),

Gene: L5_31 Start: 21890, Stop: 23536, Start Num: 9

Candidate Starts for L5_31:

(Start: 9 @21890 has 25 MA's), (29, 22010), (Start: 32 @22025 has 1 MA's), (47, 22100), (54, 22148), (56, 22160), (79, 22271), (88, 22328), (89, 22334), (105, 22406), (136, 22625), (152, 22739), (165, 22823), (167, 22829), (176, 22865), (190, 22949), (203, 23027), (219, 23123), (226, 23162), (238, 23249), (271, 23408), (285, 23447),

Gene: LBerry_33 Start: 23277, Stop: 25034, Start Num: 5

Candidate Starts for LBerry_33:

(Start: 5 @23277 has 201 MA's), (27, 23412), (43, 23478), (49, 23523), (54, 23559), (81, 23691), (87, 23727), (93, 23748), (111, 23805), (122, 23865), (134, 23919), (139, 23979), (159, 24099), (161, 24102), (172, 24171), (178, 24195), (197, 24288), (201, 24309), (209, 24354), (267, 24684), (284, 24753), (303, 24816), (349, 24987),

Gene: LHTSCC_32 Start: 23274, Stop: 25130, Start Num: 5

Candidate Starts for LHTSCC_32:

(Start: 5 @23274 has 201 MA's), (27, 23400), (Start: 32 @23424 has 1 MA's), (52, 23529), (53, 23535), (58, 23583), (68, 23634), (82, 23685), (103, 23790), (105, 23802), (119, 23880), (128, 23949), (148, 24117), (152, 24147), (161, 24177), (163, 24201), (164, 24204), (168, 24231), (169, 24234), (192, 24339), (196, 24360), (197, 24369), (223, 24513), (228, 24558), (256, 24720), (282, 24843), (295, 24894), (329, 25011), (335, 25020), (351, 25107),

Gene: LappelDuVide_31 Start: 22957, Stop: 24813, Start Num: 5

Candidate Starts for LappelDuVide_31:

(Start: 5 @22957 has 201 MA's), (27, 23083), (Start: 32 @23107 has 1 MA's), (52, 23212), (53, 23218), (58, 23266), (68, 23317), (81, 23362), (82, 23368), (103, 23473), (105, 23485), (119, 23563), (128, 23632), (161, 23860), (163, 23884), (164, 23887), (168, 23914), (169, 23917), (192, 24022), (197, 24052), (200, 24067), (213, 24157), (223, 24196), (228, 24241), (257, 24409), (282, 24526), (284, 24532), (295, 24577), (311, 24628), (312, 24631), (329, 24694), (335, 24703), (351, 24790),

Gene: LarryKay_33 Start: 23366, Stop: 25117, Start Num: 5

Candidate Starts for LarryKay_33:

(Start: 5 @23366 has 201 MA's), (27, 23501), (43, 23567), (49, 23612), (54, 23648), (75, 23759), (81, 23780), (87, 23816), (93, 23837), (122, 23954), (142, 24092), (159, 24188), (161, 24191), (172, 24260), (178, 24284), (188, 24329), (197, 24377), (209, 24443), (234, 24614), (237, 24620), (246, 24671), (257, 24716), (264, 24746), (273, 24794), (284, 24836), (288, 24851), (289, 24854), (295, 24878), (329, 24980), (331, 24983), (341, 25007),

Gene: Lemur_31 Start: 22957, Stop: 24813, Start Num: 5

Candidate Starts for Lemur_31:

(Start: 5 @22957 has 201 MA's), (27, 23083), (Start: 32 @23107 has 1 MA's), (52, 23212), (53, 23218), (58, 23266), (61, 23275), (68, 23317), (81, 23362), (82, 23368), (103, 23473), (105, 23485), (119, 23563), (128, 23632), (161, 23860), (163, 23884), (164, 23887), (168, 23914), (169, 23917), (192, 24022), (197, 24052), (200, 24067), (213, 24157), (223, 24196), (228, 24241), (257, 24409), (282, 24526), (284, 24532), (295, 24577), (311, 24628), (312, 24631), (329, 24694), (335, 24703), (351, 24790),

Gene: LeoAvram_31 Start: 22957, Stop: 24813, Start Num: 5

Candidate Starts for LeoAvram_31:

(Start: 5 @22957 has 201 MA's), (27, 23083), (Start: 32 @23107 has 1 MA's), (52, 23212), (53, 23218), (58, 23266), (61, 23275), (68, 23317), (81, 23362), (82, 23368), (105, 23485), (119, 23563), (128, 23632), (161, 23860), (163, 23884), (164, 23887), (168, 23914), (169, 23917), (192, 24022), (197, 24052), (200, 24067), (213, 24157), (223, 24196), (228, 24241), (241, 24340), (282, 24526), (295, 24577), (312, 24631), (329, 24694), (335, 24703), (351, 24790),

Gene: Lilit_33 Start: 23270, Stop: 25027, Start Num: 5

Candidate Starts for Lilit_33:

(Start: 5 @23270 has 201 MA's), (27, 23405), (43, 23471), (49, 23516), (54, 23552), (81, 23684), (87, 23720), (93, 23741), (111, 23798), (122, 23858), (134, 23912), (139, 23972), (159, 24092), (161, 24095), (172, 24164), (178, 24188), (197, 24281), (201, 24302), (209, 24347), (267, 24677), (284, 24746), (303, 24809), (349, 24980),

Gene: LittleB_31 Start: 22960, Stop: 24816, Start Num: 5

Candidate Starts for LittleB_31:

(Start: 5 @22960 has 201 MA's), (27, 23086), (Start: 32 @23110 has 1 MA's), (52, 23215), (53, 23221), (58, 23269), (61, 23278), (68, 23320), (81, 23365), (82, 23371), (103, 23476), (105, 23488), (119, 23566), (128, 23635), (161, 23863), (163, 23887), (164, 23890), (168, 23917), (169, 23920), (192, 24025), (197, 24055), (200, 24070), (213, 24160), (223, 24199), (228, 24244), (257, 24412), (282, 24529), (284, 24535), (295, 24580), (311, 24631), (312, 24634), (329, 24697), (335, 24706), (351, 24793),

Gene: LittleGuy_31 Start: 22903, Stop: 24762, Start Num: 5

Candidate Starts for LittleGuy_31:

(Start: 5 @22903 has 201 MA's), (27, 23029), (Start: 32 @23053 has 1 MA's), (52, 23158), (53, 23164), (58, 23212), (61, 23221), (68, 23263), (81, 23308), (82, 23314), (103, 23419), (105, 23431), (119, 23509), (128, 23578), (168, 23860), (169, 23863), (192, 23968), (197, 23998), (213, 24103), (223, 24142), (226, 24169), (228, 24187), (284, 24478), (306, 24556), (308, 24568), (311, 24574), (320, 24613), (329, 24640), (334, 24646), (335, 24649), (351, 24739),

Gene: LochMonster_31 Start: 22932, Stop: 24788, Start Num: 5

Candidate Starts for LochMonster_31:

(Start: 5 @22932 has 201 MA's), (27, 23058), (Start: 32 @23082 has 1 MA's), (52, 23187), (53, 23193), (58, 23241), (61, 23250), (68, 23292), (81, 23337), (82, 23343), (103, 23448), (105, 23460), (115, 23523), (119, 23538), (128, 23607), (148, 23775), (161, 23835), (164, 23862), (168, 23889), (169, 23892), (192, 23997), (196, 24018), (197, 24027), (213, 24132), (228, 24216), (241, 24315), (282, 24501), (284, 24507), (295, 24552), (311, 24603), (312, 24606), (329, 24669), (335, 24678), (351, 24765),

Gene: Lorenzo_31 Start: 22960, Stop: 24816, Start Num: 5

Candidate Starts for Lorenzo_31:

(Start: 5 @22960 has 201 MA's), (27, 23086), (Start: 32 @23110 has 1 MA's), (52, 23215), (53, 23221), (58, 23269), (68, 23320), (81, 23365), (82, 23371), (103, 23476), (105, 23488), (119, 23566), (128, 23635), (161, 23863), (163, 23887), (164, 23890), (168, 23917), (169, 23920), (192, 24025), (196, 24046), (197, 24055), (213, 24160), (223, 24199), (228, 24244), (256, 24406), (257, 24412), (282, 24529), (284, 24535), (295, 24580), (311, 24631), (312, 24634), (329, 24697), (335, 24706), (351, 24793),

Gene: Louie6_33 Start: 23364, Stop: 25115, Start Num: 5

Candidate Starts for Louie6_33:

(Start: 5 @23364 has 201 MA's), (27, 23499), (43, 23565), (49, 23610), (54, 23646), (75, 23757), (81, 23778), (87, 23814), (93, 23835), (122, 23952), (142, 24090), (159, 24186), (161, 24189), (172, 24258), (178, 24282), (188, 24327), (197, 24375), (209, 24441), (234, 24612), (237, 24618), (246, 24669), (257, 24714), (264, 24744), (273, 24792), (284, 24834), (288, 24849), (289, 24852), (295, 24876), (329, 24978), (331, 24981), (341, 25005),

Gene: Lucivia_31 Start: 23446, Stop: 25437, Start Num: 2

Candidate Starts for Lucivia_31:

(Start: 2 @23446 has 11 MA's), (Start: 7 @23557 has 2 MA's), (10, 23566), (20, 23623), (21, 23638), (22, 23656), (23, 23668), (33, 23716), (38, 23734), (39, 23737), (57, 23857), (83, 23971), (86, 23992), (90, 24010), (100, 24043), (127, 24226), (131, 24256), (132, 24259), (151, 24433), (153, 24439), (157, 24463), (158, 24469), (173, 24544), (186, 24607), (195, 24649), (196, 24655), (214, 24778), (224, 24826), (226, 24835), (242, 24952), (244, 24955), (254, 24997), (263, 25039), (269, 25075), (283, 25129), (296, 25180), (297, 25186), (300, 25192), (312, 25234), (340, 25324), (348, 25381), (356, 25420), (358, 25429),

Gene: LugYA_35 Start: 23277, Stop: 25034, Start Num: 5

Candidate Starts for LugYA_35:

(Start: 5 @23277 has 201 MA's), (27, 23412), (43, 23478), (49, 23523), (54, 23559), (81, 23691), (87, 23727), (93, 23748), (111, 23805), (122, 23865), (134, 23919), (139, 23979), (159, 24099), (161, 24102), (172, 24171), (178, 24195), (197, 24288), (201, 24309), (209, 24354), (267, 24684), (284, 24753), (303, 24816), (349, 24987),

Gene: Lunsford_32 Start: 22957, Stop: 24813, Start Num: 5

Candidate Starts for Lunsford_32:

(Start: 5 @22957 has 201 MA's), (27, 23083), (Start: 32 @23107 has 1 MA's), (52, 23212), (53, 23218), (58, 23266), (68, 23317), (81, 23362), (82, 23368), (103, 23473), (105, 23485), (119, 23563), (128, 23632), (161, 23860), (163, 23884), (164, 23887), (168, 23914), (169, 23917), (192, 24022), (197, 24052), (200, 24067), (213, 24157), (223, 24196), (228, 24241), (257, 24409), (282, 24526), (284, 24532), (295, 24577), (311, 24628), (312, 24631), (329, 24694), (335, 24703), (351, 24790),

Gene: MaCh_31 Start: 23388, Stop: 25376, Start Num: 2

Candidate Starts for MaCh_31:

(Start: 2 @23388 has 11 MA's), (Start: 7 @23499 has 2 MA's), (10, 23508), (20, 23565), (21, 23580), (22, 23598), (23, 23610), (33, 23658), (38, 23676), (39, 23679), (57, 23799), (83, 23913), (86, 23934), (90, 23952), (100, 23985), (127, 24168), (131, 24198), (132, 24201), (151, 24375), (153, 24381), (157, 24405), (158, 24411), (173, 24486), (186, 24549), (195, 24591), (196, 24597), (214, 24720), (224, 24768), (226, 24777), (242, 24894), (244, 24897), (254, 24939), (263, 24981), (269, 25017), (283, 25071), (340, 25263), (348, 25320), (356, 25359), (358, 25368),

Gene: MadMarie_33 Start: 23279, Stop: 25036, Start Num: 5

Candidate Starts for MadMarie_33:

(Start: 5 @23279 has 201 MA's), (27, 23414), (43, 23480), (49, 23525), (54, 23561), (81, 23693), (87, 23729), (93, 23750), (111, 23807), (122, 23867), (134, 23921), (139, 23981), (159, 24101), (161, 24104), (172, 24173), (178, 24197), (197, 24290), (201, 24311), (209, 24356), (267, 24686), (284, 24755), (303, 24818), (349, 24989),

Gene: Mainiac_33 Start: 23270, Stop: 25027, Start Num: 5

Candidate Starts for Mainiac_33:

(Start: 5 @23270 has 201 MA's), (27, 23405), (43, 23471), (49, 23516), (54, 23552), (81, 23684), (87, 23720), (93, 23741), (111, 23798), (122, 23858), (134, 23912), (139, 23972), (159, 24092), (161, 24095), (172, 24164), (178, 24188), (197, 24281), (201, 24302), (209, 24347), (267, 24677), (284, 24746), (303, 24809), (349, 24980),

Gene: MajorMajor_30 Start: 21646, Stop: 23397, Start Num: 9

Candidate Starts for MajorMajor_30:

(Start: 9 @21646 has 25 MA's), (16, 21667), (29, 21766), (Start: 32 @21781 has 1 MA's), (47, 21856), (56, 21916), (79, 22027), (84, 22060), (88, 22084), (89, 22090), (105, 22162), (118, 22237), (124, 22270), (127, 22300), (165, 22588), (190, 22708), (202, 22777), (238, 23008), (253, 23083), (256, 23095), (258, 23104), (265, 23143), (318, 23338), (327, 23365), (328, 23368), (335, 23380),

Gene: Malec_32 Start: 23029, Stop: 25110, Start Num: 8

Candidate Starts for Malec_32:

(Start: 8 @23029 has 1 MA's), (16, 23053), (27, 23143), (30, 23158), (50, 23257), (60, 23332), (69, 23380), (110, 23569), (117, 23608), (131, 23704), (163, 23953), (177, 24016), (184, 24061), (202, 24163), (224, 24301), (231, 24364), (235, 24394), (255, 24478), (274, 24568), (277, 24577), (281, 24592), (283, 24601), (336, 24775), (357, 24895), (361, 24934), (363, 24970), (365, 24994), (366, 25027), (367, 25096), (368, 25099),

Gene: Malinsilva_35 Start: 23269, Stop: 25026, Start Num: 5

Candidate Starts for Malinsilva_35:

(Start: 5 @23269 has 201 MA's), (27, 23404), (43, 23470), (49, 23515), (54, 23551), (81, 23683), (87, 23719), (93, 23740), (111, 23797), (122, 23857), (134, 23911), (139, 23971), (159, 24091), (161, 24094), (172, 24163), (178, 24187), (197, 24280), (201, 24301), (209, 24346), (267, 24676), (284, 24745), (303, 24808), (349, 24979),

Gene: MarQuardt_33 Start: 23278, Stop: 25035, Start Num: 5

Candidate Starts for MarQuardt_33:

(Start: 5 @23278 has 201 MA's), (27, 23413), (43, 23479), (49, 23524), (54, 23560), (81, 23692), (87, 23728), (93, 23749), (111, 23806), (122, 23866), (134, 23920), (139, 23980), (159, 24100), (161, 24103), (172, 24172), (178, 24196), (197, 24289), (201, 24310), (209, 24355), (267, 24685), (284, 24754), (303, 24817), (349, 24988),

Gene: Marie_33 Start: 23276, Stop: 25033, Start Num: 5

Candidate Starts for Marie_33:

(Start: 5 @23276 has 201 MA's), (27, 23411), (43, 23477), (49, 23522), (54, 23558), (81, 23690), (87, 23726), (93, 23747), (111, 23804), (122, 23864), (134, 23918), (139, 23978), (159, 24098), (161, 24101), (172, 24170), (178, 24194), (197, 24287), (201, 24308), (209, 24353), (267, 24683), (284, 24752), (303, 24815), (349, 24986),

Gene: Maverick_31 Start: 22960, Stop: 24816, Start Num: 5

Candidate Starts for Maverick_31:

(Start: 5 @22960 has 201 MA's), (27, 23086), (Start: 32 @23110 has 1 MA's), (52, 23215), (53, 23221), (58, 23269), (61, 23278), (68, 23320), (81, 23365), (82, 23371), (103, 23476), (105, 23488), (119, 23566), (128, 23635), (161, 23863), (163, 23887), (164, 23890), (168, 23917), (169, 23920), (192, 24025), (196, 24046), (197, 24055), (213, 24160), (223, 24199), (228, 24244), (256, 24406), (257, 24412), (282, 24529), (284, 24535), (295, 24580), (311, 24631), (312, 24634), (329, 24697), (335, 24706), (351, 24793),

Gene: Maxo_31 Start: 22958, Stop: 24814, Start Num: 5

Candidate Starts for Maxo_31:

(Start: 5 @22958 has 201 MA's), (27, 23084), (Start: 32 @23108 has 1 MA's), (52, 23213), (53, 23219), (58, 23267), (61, 23276), (68, 23318), (81, 23363), (82, 23369), (103, 23474), (105, 23486), (119, 23564), (128, 23633), (161, 23861), (163, 23885), (164, 23888), (168, 23915), (169, 23918), (192, 24023), (197, 24053), (200, 24068), (213, 24158), (223, 24197), (226, 24224), (228, 24242), (241, 24341), (282, 24527), (295, 24578), (312, 24632), (329, 24695), (335, 24704), (351, 24791),

Gene: Mazhar510_31 Start: 22961, Stop: 24817, Start Num: 5

Candidate Starts for Mazhar510_31:

(Start: 5 @22961 has 201 MA's), (27, 23087), (Start: 32 @23111 has 1 MA's), (52, 23216), (53, 23222), (58, 23270), (68, 23321), (81, 23366), (82, 23372), (103, 23477), (105, 23489), (119, 23567), (128, 23636), (161, 23864), (163, 23888), (164, 23891), (168, 23918), (169, 23921), (192, 24026), (196, 24047), (197, 24056), (213, 24161), (223, 24200), (228, 24245), (256, 24407), (257, 24413), (282, 24530), (284, 24536), (295, 24581), (311, 24632), (312, 24635), (329, 24698), (335, 24707),

(351, 24794),

Gene: Medusa_31 Start: 22961, Stop: 24817, Start Num: 5

Candidate Starts for Medusa_31:

(Start: 5 @22961 has 201 MA's), (27, 23087), (Start: 32 @23111 has 1 MA's), (52, 23216), (53, 23222), (58, 23270), (61, 23279), (68, 23321), (81, 23366), (82, 23372), (103, 23477), (105, 23489), (119, 23567), (128, 23636), (161, 23864), (163, 23888), (164, 23891), (168, 23918), (169, 23921), (192, 24026), (197, 24056), (200, 24071), (213, 24161), (223, 24200), (228, 24245), (257, 24413), (282, 24530), (284, 24536), (295, 24581), (311, 24632), (312, 24635), (329, 24698), (335, 24707), (351, 24794),

Gene: MeeZee_31 Start: 22960, Stop: 24816, Start Num: 5

Candidate Starts for MeeZee_31:

(Start: 5 @22960 has 201 MA's), (27, 23086), (Start: 32 @23110 has 1 MA's), (52, 23215), (53, 23221), (58, 23269), (61, 23278), (68, 23320), (81, 23365), (82, 23371), (103, 23476), (105, 23488), (119, 23566), (128, 23635), (161, 23863), (163, 23887), (164, 23890), (168, 23917), (169, 23920), (192, 24025), (196, 24046), (197, 24055), (213, 24160), (223, 24199), (228, 24244), (257, 24412), (282, 24529), (284, 24535), (295, 24580), (311, 24631), (312, 24634), (329, 24697), (335, 24706), (351, 24793),

Gene: Melvin_31 Start: 22960, Stop: 24816, Start Num: 5

Candidate Starts for Melvin_31:

(Start: 5 @22960 has 201 MA's), (27, 23086), (Start: 32 @23110 has 1 MA's), (52, 23215), (53, 23221), (58, 23269), (61, 23278), (68, 23320), (81, 23365), (82, 23371), (103, 23476), (105, 23488), (119, 23566), (128, 23635), (161, 23863), (163, 23887), (164, 23890), (168, 23917), (169, 23920), (192, 24025), (197, 24055), (200, 24070), (213, 24160), (223, 24199), (228, 24244), (257, 24412), (282, 24529), (284, 24535), (295, 24580), (311, 24631), (312, 24634), (329, 24697), (335, 24706), (351, 24793),

Gene: Methuselah_32 Start: 23360, Stop: 25111, Start Num: 5

Candidate Starts for Methuselah_32:

(Start: 5 @23360 has 201 MA's), (27, 23495), (41, 23552), (43, 23561), (49, 23606), (54, 23642), (75, 23753), (81, 23774), (87, 23810), (93, 23831), (122, 23948), (142, 24086), (159, 24182), (161, 24185), (172, 24254), (178, 24278), (188, 24323), (197, 24371), (209, 24437), (234, 24608), (237, 24614), (246, 24665), (257, 24710), (264, 24740), (273, 24788), (284, 24830), (288, 24845), (289, 24848), (295, 24872), (329, 24974), (331, 24977), (341, 25001),

Gene: Microwolf_33 Start: 23278, Stop: 25035, Start Num: 5

Candidate Starts for Microwolf_33:

(Start: 5 @23278 has 201 MA's), (27, 23413), (43, 23479), (49, 23524), (54, 23560), (81, 23692), (87, 23728), (93, 23749), (111, 23806), (122, 23866), (134, 23920), (139, 23980), (159, 24100), (161, 24103), (172, 24172), (178, 24196), (197, 24289), (201, 24310), (209, 24355), (267, 24685), (284, 24754), (303, 24817), (349, 24988),

Gene: Millski_30 Start: 22963, Stop: 24819, Start Num: 5

Candidate Starts for Millski_30:

(Start: 5 @22963 has 201 MA's), (27, 23089), (Start: 32 @23113 has 1 MA's), (52, 23218), (53, 23224), (58, 23272), (61, 23281), (68, 23323), (81, 23368), (82, 23374), (103, 23479), (105, 23491), (119, 23569), (128, 23638), (161, 23866), (163, 23890), (164, 23893), (168, 23920), (169, 23923), (192, 24028), (197, 24058), (200, 24073), (213, 24163), (223, 24202), (228, 24247), (257, 24415), (282, 24532), (284, 24538), (295, 24583), (311, 24634), (312, 24637), (329, 24700), (335, 24709), (351, 24796),

Gene: Miramae_31 Start: 22903, Stop: 24762, Start Num: 5

Candidate Starts for Miramae_31:

(Start: 5 @22903 has 201 MA's), (19, 22969), (Start: 32 @23053 has 1 MA's), (36, 23071), (45, 23116), (53, 23164), (61, 23221), (68, 23263), (82, 23314), (85, 23335), (94, 23368), (103, 23419), (105, 23431), (113, 23485), (119, 23509), (128, 23578), (161, 23806), (164, 23833), (168, 23860), (169, 23863), (192, 23971), (196, 23992), (197, 24001), (209, 24070), (213, 24106), (223, 24145), (230, 24214), (256, 24352), (282, 24475), (284, 24481), (329, 24643), (335, 24652),

Gene: Misomonster_35 Start: 23363, Stop: 25114, Start Num: 5

Candidate Starts for Misomonster_35:

(Start: 5 @23363 has 201 MA's), (27, 23498), (43, 23564), (49, 23609), (54, 23645), (75, 23756), (81, 23777), (87, 23813), (93, 23834), (122, 23951), (142, 24089), (159, 24185), (161, 24188), (172, 24257), (178, 24281), (188, 24326), (197, 24374), (209, 24440), (234, 24611), (237, 24617), (246, 24668), (257, 24713), (264, 24743), (273, 24791), (284, 24833), (288, 24848), (289, 24851), (295, 24875), (329, 24977), (331, 24980), (341, 25004),

Gene: MissWhite_31 Start: 21856, Stop: 23703, Start Num: 9

Candidate Starts for MissWhite_31:

(Start: 9 @21856 has 25 MA's), (16, 21877), (31, 21985), (53, 22102), (56, 22126), (91, 22306), (110, 22402), (123, 22474), (152, 22711), (165, 22795), (169, 22807), (174, 22828), (181, 22876), (190, 22921), (191, 22927), (193, 22942), (196, 22957), (202, 22990), (204, 23002), (212, 23053), (238, 23221), (247, 23266), (252, 23284), (310, 23512), (317, 23548), (328, 23581),

Gene: MoneyMay_33 Start: 23276, Stop: 25033, Start Num: 5

Candidate Starts for MoneyMay_33:

(Start: 5 @23276 has 201 MA's), (27, 23411), (43, 23477), (49, 23522), (54, 23558), (81, 23690), (87, 23726), (93, 23747), (111, 23804), (122, 23864), (134, 23918), (139, 23978), (159, 24098), (161, 24101), (172, 24170), (178, 24194), (197, 24287), (201, 24308), (209, 24353), (267, 24683), (284, 24752), (303, 24815), (349, 24986),

Gene: Morpher26_31 Start: 22972, Stop: 24831, Start Num: 5

Candidate Starts for Morpher26_31:

(3, 22912), (Start: 5 @22972 has 201 MA's), (19, 23038), (24, 23083), (26, 23089), (Start: 32 @23122 has 1 MA's), (36, 23140), (45, 23185), (46, 23191), (47, 23197), (61, 23290), (63, 23305), (81, 23377), (94, 23437), (103, 23488), (105, 23500), (119, 23578), (128, 23647), (140, 23770), (147, 23794), (161, 23875), (165, 23920), (168, 23929), (169, 23932), (196, 24061), (197, 24070), (205, 24112), (209, 24139), (213, 24175), (219, 24202), (223, 24214), (245, 24370), (282, 24544), (284, 24550), (295, 24595), (311, 24646), (312, 24649), (320, 24685), (335, 24721),

Gene: Morrow_31 Start: 22963, Stop: 24819, Start Num: 5

Candidate Starts for Morrow_31:

(Start: 5 @22963 has 201 MA's), (27, 23089), (Start: 32 @23113 has 1 MA's), (52, 23218), (53, 23224), (58, 23272), (61, 23281), (68, 23323), (81, 23368), (82, 23374), (105, 23491), (119, 23569), (128, 23638), (161, 23866), (163, 23890), (164, 23893), (169, 23923), (192, 24028), (197, 24058), (200, 24073), (213, 24163), (223, 24202), (226, 24229), (228, 24247), (241, 24346), (282, 24532), (295, 24583), (312, 24637), (329, 24700), (335, 24709), (351, 24796),

Gene: MuchMore_35 Start: 23269, Stop: 25026, Start Num: 5

Candidate Starts for MuchMore_35:

(Start: 5 @23269 has 201 MA's), (27, 23404), (43, 23470), (49, 23515), (54, 23551), (81, 23683), (87, 23719), (93, 23740), (111, 23797), (122, 23857), (134, 23911), (139, 23971), (159, 24091), (161, 24094), (172, 24163), (178, 24187), (197, 24280), (201, 24301), (209, 24346), (267, 24676), (284, 24745), (303, 24808), (349, 24979),

Gene: Munch_31 Start: 23397, Stop: 25388, Start Num: 2

Candidate Starts for Munch_31:

(Start: 2 @23397 has 11 MA's), (Start: 7 @23508 has 2 MA's), (10, 23517), (20, 23574), (21, 23589), (22, 23607), (23, 23619), (33, 23667), (38, 23685), (39, 23688), (57, 23808), (83, 23922), (86, 23943), (90, 23961), (100, 23994), (127, 24177), (131, 24207), (132, 24210), (151, 24384), (153, 24390), (157, 24414), (158, 24420), (173, 24495), (186, 24558), (195, 24600), (196, 24606), (214, 24729), (224, 24777), (226, 24786), (242, 24903), (244, 24906), (254, 24948), (263, 24990), (269, 25026), (283, 25080), (296, 25131), (297, 25137), (300, 25143), (312, 25185), (340, 25275), (348, 25332), (356, 25371), (358, 25380),

Gene: Mundrea_31 Start: 22930, Stop: 24786, Start Num: 5

Candidate Starts for Mundrea_31:

(Start: 5 @22930 has 201 MA's), (Start: 32 @23080 has 1 MA's), (36, 23098), (40, 23110), (45, 23143), (47, 23155), (61, 23248), (63, 23263), (94, 23395), (103, 23446), (105, 23458), (119, 23536), (128, 23605), (161, 23833), (168, 23887), (169, 23890), (192, 23995), (196, 24016), (197, 24025), (213, 24130), (245, 24325), (257, 24382), (282, 24499), (284, 24505), (335, 24676),

Gene: MyraDee_29 Start: 20768, Stop: 22630, Start Num: 5

Candidate Starts for MyraDee_29:

(Start: 5 @20768 has 201 MA's), (12, 20789), (17, 20810), (28, 20894), (34, 20924), (54, 21038), (64, 21101), (65, 21107), (77, 21152), (119, 21344), (126, 21392), (128, 21413), (140, 21536), (146, 21557), (148, 21581), (168, 21695), (169, 21698), (192, 21806), (196, 21827), (197, 21836), (209, 21905), (213, 21941), (224, 21998), (234, 22085), (237, 22091), (266, 22250), (274, 22289), (280, 22304), (282, 22313), (284, 22319), (301, 22382), (318, 22457), (323, 22472), (327, 22487), (355, 22607),

Gene: Naji_34 Start: 22559, Stop: 24412, Start Num: 9

Candidate Starts for Naji_34:

(Start: 6 @22553 has 3 MA's), (Start: 9 @22559 has 25 MA's), (29, 22679), (47, 22769), (56, 22829), (64, 22880), (84, 22973), (88, 22997), (89, 23003), (165, 23510), (179, 23579), (196, 23666), (211, 23747), (300, 24191), (305, 24206), (317, 24260), (325, 24284), (328, 24293), (343, 24329),

Gene: Nebs_31 Start: 22957, Stop: 24813, Start Num: 5

Candidate Starts for Nebs_31:

(Start: 5 @22957 has 201 MA's), (27, 23083), (Start: 32 @23107 has 1 MA's), (52, 23212), (53, 23218), (58, 23266), (61, 23275), (68, 23317), (81, 23362), (82, 23368), (105, 23485), (119, 23563), (128, 23632), (161, 23860), (163, 23884), (164, 23887), (168, 23914), (169, 23917), (192, 24022), (197, 24052), (200, 24067), (213, 24157), (223, 24196), (226, 24223), (228, 24241), (241, 24340), (282, 24526), (295, 24577), (312, 24631), (329, 24694), (335, 24703), (351, 24790),

Gene: Nemo27_31 Start: 22959, Stop: 24815, Start Num: 5

Candidate Starts for Nemo27_31:

(Start: 5 @22959 has 201 MA's), (27, 23085), (Start: 32 @23109 has 1 MA's), (52, 23214), (53, 23220), (58, 23268), (61, 23277), (68, 23319), (81, 23364), (82, 23370), (103, 23475), (105, 23487), (119, 23565), (128, 23634), (161, 23862), (163, 23886), (164, 23889), (168, 23916), (169, 23919), (192, 24024), (196, 24045), (197, 24054), (213, 24159), (223, 24198), (228, 24243), (256, 24405), (257, 24411), (282, 24528), (284, 24534), (295, 24579), (311, 24630), (312, 24633), (329, 24696), (335, 24705), (351, 24792),

Gene: Nergal_25 Start: 20708, Stop: 22390, Start Num: 32

Candidate Starts for Nergal_25:

(Start: 32 @20708 has 1 MA's), (46, 20774), (106, 21074), (150, 21374), (171, 21488), (182, 21542), (186, 21566), (189, 21578), (195, 21617), (206, 21686), (210, 21701), (217, 21749), (238, 21893), (242, 21923), (248, 21944), (251, 21956), (254, 21968), (292, 22127), (299, 22151), (300, 22154), (302, 22157), (313, 22196), (333, 22250), (346, 22310), (354, 22358),

Gene: Noelle_31 Start: 23041, Stop: 24900, Start Num: 5

Candidate Starts for Noelle_31:

(Start: 5 @23041 has 201 MA's), (33, 23194), (42, 23227), (43, 23233), (45, 23254), (47, 23266), (59, 23353), (63, 23374), (85, 23473), (103, 23557), (105, 23569), (116, 23635), (119, 23647), (128, 23716), (161, 23944), (165, 23989), (168, 23998), (169, 24001), (196, 24130), (197, 24139), (205, 24181), (209, 24208), (213, 24244), (219, 24271), (223, 24283), (226, 24310), (245, 24439), (257, 24496), (258, 24499), (282, 24613), (284, 24619), (303, 24685), (311, 24715), (331, 24784), (335, 24790),

Gene: NorthStar_31 Start: 22960, Stop: 24816, Start Num: 5

Candidate Starts for NorthStar_31:

(Start: 5 @22960 has 201 MA's), (27, 23086), (Start: 32 @23110 has 1 MA's), (52, 23215), (53, 23221), (58, 23269), (61, 23278), (68, 23320), (81, 23365), (82, 23371), (103, 23476), (105, 23488), (113, 23542), (119, 23566), (128, 23635), (161, 23863), (163, 23887), (164, 23890), (168, 23917), (169, 23920), (192, 24025), (197, 24055), (200, 24070), (213, 24160), (223, 24199), (228, 24244), (257, 24412), (282, 24529), (284, 24535), (295, 24580), (311, 24631), (312, 24634), (329, 24697), (335, 24706), (351, 24793),

Gene: NotAPhaseMom_31 Start: 22964, Stop: 24820, Start Num: 5

Candidate Starts for NotAPhaseMom_31:

(Start: 5 @22964 has 201 MA's), (27, 23090), (Start: 32 @23114 has 1 MA's), (52, 23219), (53, 23225), (58, 23273), (61, 23282), (68, 23324), (81, 23369), (82, 23375), (103, 23480), (105, 23492), (119, 23570), (128, 23639), (161, 23867), (163, 23891), (164, 23894), (168, 23921), (169, 23924), (192, 24029), (196, 24050), (197, 24059), (213, 24164), (223, 24203), (228, 24248), (256, 24410), (257, 24416), (282, 24533), (284, 24539), (295, 24584), (311, 24635), (329, 24701), (335, 24710), (351, 24797),

Gene: Nyxis_31 Start: 22903, Stop: 24762, Start Num: 5

Candidate Starts for Nyxis_31:

(Start: 5 @22903 has 201 MA's), (27, 23029), (Start: 32 @23053 has 1 MA's), (52, 23158), (53, 23164), (58, 23212), (61, 23221), (68, 23263), (81, 23308), (82, 23314), (105, 23431), (119, 23509), (128, 23578), (168, 23860), (169, 23863), (192, 23968), (197, 23998), (213, 24103), (223, 24142), (226, 24169), (228, 24187), (284, 24478), (306, 24556), (308, 24568), (311, 24574), (320, 24613), (329, 24640), (334, 24646), (335, 24649), (351, 24739),

Gene: OKaNui_32 Start: 23013, Stop: 24869, Start Num: 5

Candidate Starts for OKaNui_32:

(Start: 5 @23013 has 201 MA's), (27, 23139), (Start: 32 @23163 has 1 MA's), (52, 23268), (53, 23274), (58, 23322), (61, 23331), (68, 23373), (81, 23418), (82, 23424), (103, 23529), (105, 23541), (113, 23595), (119, 23619), (128, 23688), (148, 23856), (161, 23916), (163, 23940), (164, 23943), (165, 23961), (168, 23970), (169, 23973), (192, 24078), (197, 24108), (200, 24123), (213, 24213), (223, 24252), (228, 24297), (257, 24465), (282, 24582), (284, 24588), (295, 24633), (311, 24684), (312, 24687), (329, 24750), (335, 24759), (351, 24846),

Gene: Obama12_32 Start: 23276, Stop: 25132, Start Num: 5

Candidate Starts for Obama12_32:

(Start: 5 @23276 has 201 MA's), (27, 23402), (Start: 32 @23426 has 1 MA's), (52, 23531), (53, 23537), (58, 23585), (68, 23636), (82, 23687), (103, 23792), (105, 23804), (119, 23882), (128, 23951),

(148, 24119), (152, 24149), (161, 24179), (163, 24203), (164, 24206), (168, 24233), (169, 24236), (192, 24341), (196, 24362), (197, 24371), (223, 24515), (228, 24560), (256, 24722), (282, 24845), (295, 24896), (329, 25013), (335, 25022), (351, 25109),

Gene: Odin_30 Start: 21523, Stop: 23199, Start Num: 9

Candidate Starts for Odin_30:

(Start: 6 @21517 has 3 MA's), (Start: 9 @21523 has 25 MA's), (29, 21643), (36, 21676), (37, 21679), (44, 21706), (56, 21793), (84, 21880), (109, 21982), (138, 22204), (165, 22390), (190, 22510), (238, 22810), (253, 22885), (258, 22906), (265, 22945), (290, 23035), (318, 23140), (327, 23167), (328, 23170), (335, 23182),

Gene: Ohfah_31 Start: 22957, Stop: 24813, Start Num: 5

Candidate Starts for Ohfah_31:

(Start: 5 @22957 has 201 MA's), (27, 23083), (Start: 32 @23107 has 1 MA's), (52, 23212), (53, 23218), (58, 23266), (61, 23275), (68, 23317), (81, 23362), (82, 23368), (105, 23485), (119, 23563), (128, 23632), (161, 23860), (163, 23884), (164, 23887), (168, 23914), (169, 23917), (192, 24022), (197, 24052), (200, 24067), (213, 24157), (223, 24196), (226, 24223), (228, 24241), (241, 24340), (282, 24526), (295, 24577), (312, 24631), (329, 24694), (335, 24703), (351, 24790),

Gene: Ollie_33 Start: 23147, Stop: 24904, Start Num: 5

Candidate Starts for Ollie_33:

(Start: 5 @23147 has 201 MA's), (27, 23282), (43, 23348), (49, 23393), (54, 23429), (81, 23561), (87, 23597), (93, 23618), (111, 23675), (122, 23735), (134, 23789), (139, 23849), (159, 23969), (161, 23972), (172, 24041), (178, 24065), (197, 24158), (201, 24179), (209, 24224), (267, 24554), (284, 24623), (303, 24686), (349, 24857),

Gene: P28Green_33 Start: 23278, Stop: 25035, Start Num: 5

Candidate Starts for P28Green_33:

(Start: 5 @23278 has 201 MA's), (27, 23413), (43, 23479), (49, 23524), (54, 23560), (81, 23692), (87, 23728), (93, 23749), (111, 23806), (122, 23866), (134, 23920), (139, 23980), (159, 24100), (161, 24103), (172, 24172), (178, 24196), (197, 24289), (201, 24310), (209, 24355), (267, 24685), (284, 24754), (303, 24817), (349, 24988),

Gene: PGHhamlin_35 Start: 23269, Stop: 25026, Start Num: 5

Candidate Starts for PGHhamlin_35:

(Start: 5 @23269 has 201 MA's), (27, 23404), (43, 23470), (49, 23515), (54, 23551), (81, 23683), (87, 23719), (93, 23740), (111, 23797), (122, 23857), (134, 23911), (139, 23971), (159, 24091), (161, 24094), (172, 24163), (178, 24187), (197, 24280), (201, 24301), (209, 24346), (267, 24676), (284, 24745), (303, 24808), (349, 24979),

Gene: Palestino_30 Start: 22960, Stop: 24816, Start Num: 5

Candidate Starts for Palestino_30:

(Start: 5 @22960 has 201 MA's), (27, 23086), (Start: 32 @23110 has 1 MA's), (52, 23215), (53, 23221), (58, 23269), (61, 23278), (68, 23320), (72, 23335), (81, 23365), (82, 23371), (103, 23476), (105, 23488), (119, 23566), (128, 23635), (161, 23863), (163, 23887), (164, 23890), (168, 23917), (169, 23920), (192, 24025), (196, 24046), (197, 24055), (213, 24160), (223, 24199), (228, 24244), (257, 24412), (282, 24529), (284, 24535), (295, 24580), (311, 24631), (312, 24634), (329, 24697), (335, 24706), (351, 24793),

Gene: Peaches_31 Start: 22959, Stop: 24815, Start Num: 5

Candidate Starts for Peaches_31:

(Start: 5 @22959 has 201 MA's), (27, 23085), (Start: 32 @23109 has 1 MA's), (52, 23214), (53, 23220), (58, 23268), (61, 23277), (68, 23319), (81, 23364), (82, 23370), (103, 23475), (105, 23487),

(119, 23565), (128, 23634), (161, 23862), (163, 23886), (164, 23889), (168, 23916), (169, 23919), (192, 24024), (197, 24054), (200, 24069), (213, 24159), (223, 24198), (228, 24243), (257, 24411), (282, 24528), (284, 24534), (295, 24579), (311, 24630), (312, 24633), (329, 24696), (335, 24705), (351, 24792),

Gene: Pembroke_33 Start: 23278, Stop: 25035, Start Num: 5

Candidate Starts for Pembroke_33:

(Start: 5 @23278 has 201 MA's), (27, 23413), (43, 23479), (49, 23524), (54, 23560), (81, 23692), (87, 23728), (93, 23749), (111, 23806), (122, 23866), (134, 23920), (139, 23980), (159, 24100), (161, 24103), (172, 24172), (178, 24196), (197, 24289), (201, 24310), (209, 24355), (267, 24685), (284, 24754), (303, 24817), (349, 24988),

Gene: Penny1_33 Start: 23277, Stop: 25034, Start Num: 5

Candidate Starts for Penny1_33:

(Start: 5 @23277 has 201 MA's), (27, 23412), (43, 23478), (49, 23523), (54, 23559), (81, 23691), (87, 23727), (93, 23748), (111, 23805), (122, 23865), (134, 23919), (139, 23979), (159, 24099), (161, 24102), (172, 24171), (178, 24195), (197, 24288), (201, 24309), (209, 24354), (267, 24684), (284, 24753), (303, 24816), (349, 24987),

Gene: Perplexer_31 Start: 22969, Stop: 24828, Start Num: 5

Candidate Starts for Perplexer_31:

(3, 22909), (Start: 5 @22969 has 201 MA's), (19, 23035), (24, 23080), (26, 23086), (Start: 32 @23119 has 1 MA's), (36, 23137), (45, 23182), (46, 23188), (47, 23194), (61, 23287), (63, 23302), (81, 23374), (94, 23434), (103, 23485), (105, 23497), (119, 23575), (128, 23644), (140, 23767), (147, 23791), (161, 23872), (165, 23917), (168, 23926), (169, 23929), (196, 24058), (197, 24067), (205, 24109), (209, 24136), (213, 24172), (219, 24199), (223, 24211), (245, 24367), (282, 24541), (284, 24547), (295, 24592), (311, 24643), (312, 24646), (320, 24682), (335, 24718),

Gene: PeterPeter_31 Start: 22960, Stop: 24816, Start Num: 5

Candidate Starts for PeterPeter_31:

(Start: 5 @22960 has 201 MA's), (27, 23086), (Start: 32 @23110 has 1 MA's), (52, 23215), (53, 23221), (58, 23269), (68, 23320), (81, 23365), (82, 23371), (103, 23476), (105, 23488), (119, 23566), (128, 23635), (161, 23863), (163, 23887), (164, 23890), (168, 23917), (169, 23920), (192, 24025), (196, 24046), (197, 24055), (213, 24160), (223, 24199), (228, 24244), (256, 24406), (257, 24412), (282, 24529), (284, 24535), (295, 24580), (311, 24631), (312, 24634), (329, 24697), (335, 24706), (351, 24793),

Gene: PetiteSangsue_31 Start: 22972, Stop: 24831, Start Num: 5

Candidate Starts for PetiteSangsue_31:

(3, 22912), (Start: 5 @22972 has 201 MA's), (19, 23038), (24, 23083), (26, 23089), (Start: 32 @23122 has 1 MA's), (36, 23140), (45, 23185), (46, 23191), (47, 23197), (61, 23290), (63, 23305), (81, 23377), (94, 23437), (103, 23488), (105, 23500), (119, 23578), (128, 23647), (140, 23770), (147, 23794), (161, 23875), (165, 23920), (168, 23929), (169, 23932), (196, 24061), (197, 24070), (205, 24112), (209, 24139), (213, 24175), (219, 24202), (223, 24214), (245, 24370), (282, 24544), (284, 24550), (295, 24595), (311, 24646), (312, 24649), (320, 24685), (335, 24721),

Gene: Ph8s_32 Start: 21442, Stop: 23091, Start Num: 9

Candidate Starts for Ph8s_32:

(Start: 9 @21442 has 25 MA's), (27, 21553), (35, 21589), (53, 21688), (56, 21712), (88, 21880), (89, 21886), (190, 22504), (194, 22531), (204, 22585), (219, 22678), (224, 22708), (238, 22804), (253, 22876), (271, 22963), (276, 22972), (290, 23020),

Gene: Phacado_31 Start: 22959, Stop: 24815, Start Num: 5

Candidate Starts for Phacado_31:

(Start: 5 @22959 has 201 MA's), (27, 23085), (Start: 32 @23109 has 1 MA's), (52, 23214), (53, 23220), (58, 23268), (61, 23277), (68, 23319), (81, 23364), (82, 23370), (103, 23475), (105, 23487), (119, 23565), (128, 23634), (161, 23862), (163, 23886), (164, 23889), (168, 23916), (169, 23919), (192, 24024), (196, 24045), (197, 24054), (213, 24159), (223, 24198), (228, 24243), (256, 24405), (257, 24411), (282, 24528), (284, 24534), (295, 24579), (311, 24630), (312, 24633), (329, 24696), (335, 24705), (351, 24792),

Gene: Phelipe_31 Start: 22960, Stop: 24816, Start Num: 5

Candidate Starts for Phelipe_31:

(Start: 5 @22960 has 201 MA's), (27, 23086), (Start: 32 @23110 has 1 MA's), (52, 23215), (53, 23221), (58, 23269), (61, 23278), (68, 23320), (81, 23365), (82, 23371), (103, 23476), (105, 23488), (119, 23566), (128, 23635), (161, 23863), (163, 23887), (164, 23890), (168, 23917), (169, 23920), (192, 24025), (197, 24055), (200, 24070), (213, 24160), (223, 24199), (228, 24244), (257, 24412), (282, 24529), (284, 24535), (295, 24580), (311, 24631), (312, 24634), (329, 24697), (335, 24706), (351, 24793),

Gene: Phighter1804_31 Start: 22935, Stop: 24791, Start Num: 5

Candidate Starts for Phighter1804_31:

(Start: 5 @22935 has 201 MA's), (27, 23061), (Start: 32 @23085 has 1 MA's), (52, 23190), (53, 23196), (58, 23244), (61, 23253), (68, 23295), (81, 23340), (82, 23346), (103, 23451), (105, 23463), (115, 23526), (119, 23541), (128, 23610), (148, 23778), (161, 23838), (164, 23865), (168, 23892), (169, 23895), (192, 24000), (196, 24021), (197, 24030), (213, 24135), (228, 24219), (241, 24318), (282, 24504), (284, 24510), (295, 24555), (311, 24606), (312, 24609), (329, 24672), (335, 24681), (351, 24768),

Gene: Phoebe_33 Start: 23275, Stop: 25032, Start Num: 5

Candidate Starts for Phoebe_33:

(Start: 5 @23275 has 201 MA's), (27, 23410), (43, 23476), (49, 23521), (54, 23557), (81, 23689), (87, 23725), (93, 23746), (111, 23803), (122, 23863), (134, 23917), (139, 23977), (159, 24097), (161, 24100), (172, 24169), (178, 24193), (197, 24286), (201, 24307), (209, 24352), (267, 24682), (284, 24751), (303, 24814), (349, 24985),

Gene: Phontbonne_31 Start: 22904, Stop: 24763, Start Num: 5

Candidate Starts for Phontbonne_31:

(Start: 5 @22904 has 201 MA's), (27, 23030), (Start: 32 @23054 has 1 MA's), (52, 23159), (53, 23165), (58, 23213), (61, 23222), (68, 23264), (81, 23309), (82, 23315), (105, 23432), (119, 23510), (128, 23579), (168, 23861), (169, 23864), (192, 23969), (197, 23999), (213, 24104), (223, 24143), (226, 24170), (228, 24188), (284, 24479), (306, 24557), (308, 24569), (311, 24575), (320, 24614), (329, 24641), (334, 24647), (351, 24740),

Gene: Phoxy_33 Start: 23361, Stop: 25112, Start Num: 5

Candidate Starts for Phoxy_33:

(Start: 5 @23361 has 201 MA's), (27, 23496), (43, 23562), (49, 23607), (54, 23643), (75, 23754), (81, 23775), (87, 23811), (93, 23832), (122, 23949), (142, 24087), (159, 24183), (161, 24186), (172, 24255), (178, 24279), (188, 24324), (197, 24372), (209, 24438), (234, 24609), (237, 24615), (246, 24666), (257, 24711), (264, 24741), (273, 24789), (284, 24831), (288, 24846), (289, 24849), (295, 24873), (329, 24975), (331, 24978), (341, 25002),

Gene: Pipcraft_31 Start: 22960, Stop: 24816, Start Num: 5

Candidate Starts for Pipcraft_31:

(Start: 5 @22960 has 201 MA's), (27, 23086), (Start: 32 @23110 has 1 MA's), (52, 23215), (53, 23221), (58, 23269), (68, 23320), (81, 23365), (82, 23371), (103, 23476), (105, 23488), (119, 23566),

(128, 23635), (161, 23863), (163, 23887), (164, 23890), (168, 23917), (169, 23920), (192, 24025), (197, 24055), (200, 24070), (213, 24160), (223, 24199), (228, 24244), (257, 24412), (282, 24529), (284, 24535), (295, 24580), (311, 24631), (312, 24634), (329, 24697), (335, 24706), (351, 24793),

Gene: Polymorphads_31 Start: 22957, Stop: 24813, Start Num: 5

Candidate Starts for Polymorphads_31:

(Start: 5 @22957 has 201 MA's), (27, 23083), (Start: 32 @23107 has 1 MA's), (52, 23212), (53, 23218), (58, 23266), (61, 23275), (68, 23317), (81, 23362), (82, 23368), (105, 23485), (119, 23563), (128, 23632), (161, 23860), (163, 23884), (164, 23887), (168, 23914), (169, 23917), (192, 24022), (197, 24052), (200, 24067), (213, 24157), (223, 24196), (226, 24223), (228, 24241), (241, 24340), (282, 24526), (295, 24577), (312, 24631), (329, 24694), (335, 24703), (351, 24790),

Gene: Pomar16_34 Start: 22600, Stop: 24453, Start Num: 9

Candidate Starts for Pomar16_34:

(Start: 6 @22594 has 3 MA's), (Start: 9 @22600 has 25 MA's), (29, 22720), (47, 22810), (56, 22870), (58, 22894), (64, 22921), (84, 23014), (88, 23038), (89, 23044), (165, 23551), (179, 23620), (211, 23788), (238, 23971), (300, 24232), (305, 24247), (317, 24301), (321, 24310), (325, 24325), (328, 24334), (343, 24370),

Gene: PotatoSplit_34 Start: 23277, Stop: 25034, Start Num: 5

Candidate Starts for PotatoSplit_34:

(Start: 5 @23277 has 201 MA's), (27, 23412), (43, 23478), (49, 23523), (54, 23559), (81, 23691), (87, 23727), (93, 23748), (111, 23805), (122, 23865), (134, 23919), (139, 23979), (159, 24099), (161, 24102), (172, 24171), (178, 24195), (197, 24288), (201, 24309), (209, 24354), (267, 24684), (284, 24753), (303, 24816), (349, 24987),

Gene: Pukovnik_33 Start: 24251, Stop: 26089, Start Num: 9

Candidate Starts for Pukovnik_33:

(Start: 9 @24251 has 25 MA's), (16, 24272), (27, 24362), (29, 24371), (44, 24428), (47, 24455), (61, 24548), (69, 24593), (92, 24689), (128, 24905), (140, 25028), (143, 25037), (161, 25133), (168, 25187), (169, 25190), (192, 25298), (197, 25328), (209, 25397), (213, 25433), (218, 25445), (223, 25472), (282, 25802), (295, 25853), (306, 25886), (311, 25904), (312, 25907), (329, 25970),

Gene: Pumbaa_31 Start: 22935, Stop: 24791, Start Num: 5

Candidate Starts for Pumbaa_31:

(Start: 5 @22935 has 201 MA's), (27, 23061), (Start: 32 @23085 has 1 MA's), (53, 23196), (58, 23244), (60, 23250), (61, 23253), (68, 23295), (82, 23346), (103, 23451), (105, 23463), (119, 23541), (128, 23610), (148, 23778), (152, 23808), (161, 23838), (164, 23865), (168, 23892), (169, 23895), (192, 24000), (196, 24021), (197, 24030), (213, 24135), (223, 24174), (226, 24201), (228, 24219), (229, 24222), (245, 24330), (257, 24387), (282, 24504), (284, 24510), (329, 24672), (335, 24681),

Gene: Quokka_29 Start: 21646, Stop: 23397, Start Num: 9

Candidate Starts for Quokka_29:

(Start: 9 @21646 has 25 MA's), (16, 21667), (29, 21766), (Start: 32 @21781 has 1 MA's), (47, 21856), (56, 21916), (79, 22027), (84, 22060), (88, 22084), (89, 22090), (105, 22162), (118, 22237), (124, 22270), (127, 22300), (165, 22588), (190, 22708), (202, 22777), (238, 23008), (253, 23083), (256, 23095), (258, 23104), (265, 23143), (318, 23338), (327, 23365), (328, 23368), (335, 23380),

Gene: Rahalelujah_30 Start: 22236, Stop: 23978, Start Num: 11

Candidate Starts for Rahalelujah_30:

(Start: 11 @22236 has 6 MA's), (14, 22242), (29, 22359), (36, 22392), (56, 22509), (60, 22539), (70, 22587), (73, 22596), (74, 22599), (99, 22686), (108, 22731), (114, 22758), (141, 22833), (149, 22911), (162, 22977), (183, 23103), (252, 23535), (259, 23580), (289, 23712), (326, 23853), (330, 23865),

(344, 23904), (351, 23967),

Gene: Relief_31 Start: 22958, Stop: 24814, Start Num: 5

Candidate Starts for Relief_31:

(Start: 5 @22958 has 201 MA's), (27, 23084), (Start: 32 @23108 has 1 MA's), (52, 23213), (53, 23219), (58, 23267), (68, 23318), (81, 23363), (82, 23369), (103, 23474), (105, 23486), (119, 23564), (128, 23633), (161, 23861), (163, 23885), (164, 23888), (168, 23915), (169, 23918), (192, 24023), (197, 24053), (200, 24068), (213, 24158), (223, 24197), (228, 24242), (257, 24410), (282, 24527), (284, 24533), (295, 24578), (311, 24629), (312, 24632), (329, 24695), (335, 24704), (351, 24791),

Gene: Romney_31 Start: 22960, Stop: 24816, Start Num: 5

Candidate Starts for Romney_31:

(Start: 5 @22960 has 201 MA's), (27, 23086), (Start: 32 @23110 has 1 MA's), (52, 23215), (53, 23221), (58, 23269), (61, 23278), (68, 23320), (81, 23365), (82, 23371), (103, 23476), (105, 23488), (119, 23566), (128, 23635), (161, 23863), (163, 23887), (164, 23890), (168, 23917), (169, 23920), (192, 24025), (197, 24055), (200, 24070), (213, 24160), (223, 24199), (228, 24244), (257, 24412), (282, 24529), (284, 24535), (295, 24580), (311, 24631), (312, 24634), (329, 24697), (335, 24706), (351, 24793),

Gene: Roosevelt_31 Start: 22960, Stop: 24816, Start Num: 5

Candidate Starts for Roosevelt_31:

(Start: 5 @22960 has 201 MA's), (27, 23086), (Start: 32 @23110 has 1 MA's), (52, 23215), (53, 23221), (58, 23269), (61, 23278), (68, 23320), (81, 23365), (82, 23371), (103, 23476), (105, 23488), (119, 23566), (128, 23635), (161, 23863), (163, 23887), (164, 23890), (168, 23917), (169, 23920), (192, 24025), (197, 24055), (200, 24070), (213, 24160), (223, 24199), (228, 24244), (257, 24412), (282, 24529), (284, 24535), (295, 24580), (311, 24631), (312, 24634), (329, 24697), (335, 24706), (351, 24793),

Gene: Rosa24_30 Start: 22935, Stop: 24791, Start Num: 5

Candidate Starts for Rosa24_30:

(Start: 5 @22935 has 201 MA's), (27, 23061), (Start: 32 @23085 has 1 MA's), (58, 23244), (61, 23253), (68, 23295), (81, 23340), (82, 23346), (103, 23451), (105, 23463), (119, 23541), (128, 23610), (148, 23778), (152, 23808), (161, 23838), (164, 23865), (168, 23892), (169, 23895), (192, 24000), (196, 24021), (197, 24030), (213, 24135), (223, 24174), (228, 24219), (256, 24381), (282, 24504), (284, 24510), (329, 24672), (335, 24681),

Gene: Ruin_31 Start: 22956, Stop: 24812, Start Num: 5

Candidate Starts for Ruin_31:

(Start: 5 @22956 has 201 MA's), (27, 23082), (Start: 32 @23106 has 1 MA's), (52, 23211), (53, 23217), (58, 23265), (61, 23274), (68, 23316), (81, 23361), (82, 23367), (103, 23472), (105, 23484), (119, 23562), (128, 23631), (161, 23859), (163, 23883), (164, 23886), (168, 23913), (169, 23916), (192, 24021), (197, 24051), (200, 24066), (213, 24156), (223, 24195), (228, 24240), (257, 24408), (282, 24525), (284, 24531), (295, 24576), (311, 24627), (312, 24630), (329, 24693), (335, 24702), (351, 24789),

Gene: Rummer_33 Start: 23361, Stop: 25112, Start Num: 5

Candidate Starts for Rummer_33:

(Start: 5 @23361 has 201 MA's), (27, 23496), (43, 23562), (49, 23607), (54, 23643), (75, 23754), (81, 23775), (87, 23811), (93, 23832), (122, 23949), (142, 24087), (159, 24183), (161, 24186), (172, 24255), (178, 24279), (188, 24324), (197, 24372), (209, 24438), (234, 24609), (237, 24615), (246, 24666), (257, 24711), (264, 24741), (273, 24789), (284, 24831), (288, 24846), (289, 24849), (295, 24873), (329, 24975), (331, 24978), (341, 25002),

Gene: Sabertooth_31 Start: 22957, Stop: 24813, Start Num: 5

Candidate Starts for Sabertooth_31:

(Start: 5 @22957 has 201 MA's), (27, 23083), (Start: 32 @23107 has 1 MA's), (52, 23212), (53, 23218), (58, 23266), (61, 23275), (68, 23317), (81, 23362), (82, 23368), (103, 23473), (105, 23485), (119, 23563), (128, 23632), (161, 23860), (163, 23884), (164, 23887), (168, 23914), (169, 23917), (192, 24022), (197, 24052), (200, 24067), (213, 24157), (223, 24196), (228, 24241), (257, 24409), (282, 24526), (284, 24532), (295, 24577), (311, 24628), (312, 24631), (329, 24694), (335, 24703), (351, 24790),

Gene: Sabia_33 Start: 23270, Stop: 25027, Start Num: 5

Candidate Starts for Sabia_33:

(Start: 5 @23270 has 201 MA's), (27, 23405), (43, 23471), (49, 23516), (54, 23552), (81, 23684), (87, 23720), (93, 23741), (111, 23798), (122, 23858), (134, 23912), (139, 23972), (159, 24092), (161, 24095), (172, 24164), (178, 24188), (197, 24281), (201, 24302), (209, 24347), (267, 24677), (284, 24746), (303, 24809), (349, 24980),

Gene: Sabinator_33 Start: 23275, Stop: 25032, Start Num: 5

Candidate Starts for Sabinator_33:

(Start: 5 @23275 has 201 MA's), (27, 23410), (43, 23476), (49, 23521), (54, 23557), (81, 23689), (87, 23725), (93, 23746), (111, 23803), (122, 23863), (134, 23917), (139, 23977), (159, 24097), (161, 24100), (172, 24169), (178, 24193), (197, 24286), (201, 24307), (209, 24352), (267, 24682), (284, 24751), (303, 24814), (349, 24985),

Gene: Scamp_31 Start: 22960, Stop: 24816, Start Num: 5

Candidate Starts for Scamp_31:

(Start: 5 @22960 has 201 MA's), (27, 23086), (Start: 32 @23110 has 1 MA's), (52, 23215), (53, 23221), (58, 23269), (68, 23320), (81, 23365), (82, 23371), (103, 23476), (105, 23488), (119, 23566), (128, 23635), (161, 23863), (163, 23887), (164, 23890), (168, 23917), (169, 23920), (192, 24025), (197, 24055), (213, 24160), (223, 24199), (228, 24244), (257, 24412), (282, 24529), (284, 24535), (295, 24580), (311, 24631), (312, 24634), (329, 24697), (335, 24706), (351, 24793),

Gene: Serenity_30 Start: 21771, Stop: 23522, Start Num: 9

Candidate Starts for Serenity_30:

(Start: 9 @21771 has 25 MA's), (16, 21792), (29, 21891), (Start: 32 @21906 has 1 MA's), (47, 21981), (56, 22041), (79, 22152), (84, 22185), (88, 22209), (89, 22215), (105, 22287), (124, 22395), (137, 22512), (165, 22713), (190, 22833), (202, 22902), (238, 23133), (253, 23208), (256, 23220), (258, 23229), (265, 23268), (318, 23463), (327, 23490), (328, 23493), (335, 23505),

Gene: Shaka_31 Start: 22960, Stop: 24816, Start Num: 5

Candidate Starts for Shaka_31:

(Start: 5 @22960 has 201 MA's), (27, 23086), (Start: 32 @23110 has 1 MA's), (52, 23215), (53, 23221), (58, 23269), (68, 23320), (81, 23365), (82, 23371), (103, 23476), (105, 23488), (119, 23566), (128, 23635), (161, 23863), (163, 23887), (164, 23890), (168, 23917), (169, 23920), (192, 24025), (196, 24046), (197, 24055), (213, 24160), (223, 24199), (228, 24244), (256, 24406), (257, 24412), (282, 24529), (284, 24535), (295, 24580), (311, 24631), (312, 24634), (329, 24697), (335, 24706), (351, 24793),

Gene: SheaKeira_31 Start: 22351, Stop: 24009, Start Num: 11

Candidate Starts for SheaKeira_31:

(Start: 11 @22351 has 6 MA's), (25, 22453), (36, 22507), (43, 22531), (44, 22537), (55, 22618), (56, 22624), (60, 22654), (70, 22702), (80, 22726), (99, 22801), (162, 23092), (198, 23308), (207, 23362), (225, 23476), (227, 23488), (248, 23635), (252, 23650), (324, 23875), (345, 23938),

Gene: SheldonCooper_32 Start: 23275, Stop: 25131, Start Num: 5

Candidate Starts for SheldonCooper_32:

(Start: 5 @23275 has 201 MA's), (27, 23401), (Start: 32 @23425 has 1 MA's), (52, 23530), (53, 23536), (58, 23584), (68, 23635), (82, 23686), (103, 23791), (105, 23803), (119, 23881), (128, 23950), (148, 24118), (152, 24148), (161, 24178), (163, 24202), (164, 24205), (168, 24232), (169, 24235), (192, 24340), (196, 24361), (197, 24370), (223, 24514), (228, 24559), (256, 24721), (282, 24844), (295, 24895), (329, 25012), (335, 25021), (351, 25108),

Gene: Shygu2_31 Start: 22966, Stop: 24825, Start Num: 5

Candidate Starts for Shygu2_31:

(3, 22903), (Start: 5 @22966 has 201 MA's), (18, 23014), (19, 23032), (Start: 32 @23116 has 1 MA's), (36, 23134), (45, 23179), (47, 23191), (81, 23371), (94, 23431), (103, 23482), (105, 23494), (119, 23572), (128, 23641), (161, 23869), (164, 23896), (168, 23923), (169, 23926), (192, 24034), (196, 24055), (197, 24064), (209, 24133), (213, 24169), (223, 24208), (256, 24415), (282, 24538), (295, 24589), (329, 24706), (335, 24715),

Gene: Skipitt_31 Start: 22957, Stop: 24813, Start Num: 5

Candidate Starts for Skipitt_31:

(Start: 5 @22957 has 201 MA's), (27, 23083), (Start: 32 @23107 has 1 MA's), (52, 23212), (53, 23218), (58, 23266), (61, 23275), (68, 23317), (81, 23362), (82, 23368), (103, 23473), (105, 23485), (119, 23563), (128, 23632), (161, 23860), (163, 23884), (164, 23887), (168, 23914), (169, 23917), (192, 24022), (197, 24052), (200, 24067), (213, 24157), (223, 24196), (228, 24241), (257, 24409), (282, 24526), (284, 24532), (295, 24577), (311, 24628), (312, 24631), (329, 24694), (335, 24703), (351, 24790),

Gene: Snickers_33 Start: 23251, Stop: 25008, Start Num: 5

Candidate Starts for Snickers_33:

(Start: 5 @23251 has 201 MA's), (27, 23386), (43, 23452), (49, 23497), (54, 23533), (81, 23665), (87, 23701), (93, 23722), (111, 23779), (122, 23839), (134, 23893), (139, 23953), (159, 24073), (161, 24076), (172, 24145), (178, 24169), (197, 24262), (201, 24283), (209, 24328), (267, 24658), (284, 24727), (303, 24790), (349, 24961),

Gene: SoYo_33 Start: 23188, Stop: 24945, Start Num: 5

Candidate Starts for SoYo_33:

(Start: 5 @23188 has 201 MA's), (27, 23323), (43, 23389), (49, 23434), (54, 23470), (81, 23602), (87, 23638), (93, 23659), (111, 23716), (122, 23776), (134, 23830), (139, 23890), (159, 24010), (161, 24013), (172, 24082), (178, 24106), (197, 24199), (201, 24220), (209, 24265), (267, 24595), (284, 24664), (303, 24727), (349, 24898),

Gene: Soshari_35 Start: 23360, Stop: 25111, Start Num: 5

Candidate Starts for Soshari_35:

(Start: 5 @23360 has 201 MA's), (27, 23495), (41, 23552), (43, 23561), (49, 23606), (54, 23642), (75, 23753), (81, 23774), (87, 23810), (93, 23831), (122, 23948), (142, 24086), (159, 24182), (161, 24185), (172, 24254), (178, 24278), (188, 24323), (197, 24371), (209, 24437), (234, 24608), (237, 24614), (246, 24665), (257, 24710), (264, 24740), (273, 24788), (284, 24830), (288, 24845), (289, 24848), (295, 24872), (329, 24974), (331, 24977), (341, 25001),

Gene: Sparxx_31 Start: 22958, Stop: 24814, Start Num: 5

Candidate Starts for Sparxx_31:

(Start: 5 @22958 has 201 MA's), (27, 23084), (Start: 32 @23108 has 1 MA's), (52, 23213), (53, 23219), (58, 23267), (61, 23276), (68, 23318), (81, 23363), (82, 23369), (103, 23474), (105, 23486), (119, 23564), (128, 23633), (161, 23861), (163, 23885), (164, 23888), (168, 23915), (169, 23918), (192, 24023), (197, 24053), (200, 24068), (213, 24158), (223, 24197), (226, 24224), (228, 24242),

(241, 24341), (282, 24527), (295, 24578), (312, 24632), (329, 24695), (335, 24704), (351, 24791),

Gene: Spike509_33 Start: 23361, Stop: 25112, Start Num: 5

Candidate Starts for Spike509_33:

(Start: 5 @23361 has 201 MA's), (27, 23496), (43, 23562), (49, 23607), (54, 23643), (75, 23754), (81, 23775), (87, 23811), (93, 23832), (122, 23949), (142, 24087), (159, 24183), (161, 24186), (172, 24255), (178, 24279), (188, 24324), (197, 24372), (209, 24438), (233, 24606), (234, 24609), (237, 24615), (246, 24666), (257, 24711), (264, 24741), (273, 24789), (284, 24831), (288, 24846), (289, 24849), (295, 24873), (329, 24975), (331, 24978), (341, 25002),

Gene: Spino_31 Start: 22960, Stop: 24816, Start Num: 5

Candidate Starts for Spino_31:

(Start: 5 @22960 has 201 MA's), (27, 23086), (Start: 32 @23110 has 1 MA's), (52, 23215), (53, 23221), (58, 23269), (61, 23278), (68, 23320), (81, 23365), (82, 23371), (103, 23476), (105, 23488), (119, 23566), (128, 23635), (161, 23863), (163, 23887), (164, 23890), (168, 23917), (169, 23920), (192, 24025), (196, 24046), (197, 24055), (213, 24160), (223, 24199), (228, 24244), (256, 24406), (257, 24412), (282, 24529), (284, 24535), (295, 24580), (311, 24631), (312, 24634), (329, 24697), (335, 24706), (351, 24793),

Gene: Stagni_33 Start: 23279, Stop: 25036, Start Num: 5

Candidate Starts for Stagni_33:

(Start: 5 @23279 has 201 MA's), (27, 23414), (43, 23480), (49, 23525), (54, 23561), (81, 23693), (87, 23729), (93, 23750), (111, 23807), (122, 23867), (134, 23921), (139, 23981), (159, 24101), (161, 24104), (172, 24173), (178, 24197), (197, 24290), (201, 24311), (209, 24356), (267, 24686), (284, 24755), (303, 24818), (349, 24989),

Gene: StarStuff_34 Start: 22559, Stop: 24412, Start Num: 9

Candidate Starts for StarStuff_34:

(Start: 6 @22553 has 3 MA's), (Start: 9 @22559 has 25 MA's), (29, 22679), (47, 22769), (56, 22829), (64, 22880), (84, 22973), (88, 22997), (89, 23003), (165, 23510), (179, 23579), (196, 23666), (211, 23747), (238, 23930), (287, 24149), (291, 24161), (300, 24191), (317, 24260), (325, 24284), (328, 24293), (343, 24329),

Gene: StepMih_33 Start: 23270, Stop: 25027, Start Num: 5

Candidate Starts for StepMih_33:

(Start: 5 @23270 has 201 MA's), (27, 23405), (43, 23471), (49, 23516), (54, 23552), (81, 23684), (87, 23720), (93, 23741), (111, 23798), (122, 23858), (134, 23912), (139, 23972), (159, 24092), (161, 24095), (172, 24164), (178, 24188), (197, 24281), (201, 24302), (209, 24347), (267, 24677), (284, 24746), (303, 24809), (349, 24980),

Gene: Stink_32 Start: 23240, Stop: 25099, Start Num: 5

Candidate Starts for Stink_32:

(Start: 5 @23240 has 201 MA's), (19, 23306), (Start: 32 @23390 has 1 MA's), (36, 23408), (45, 23453), (53, 23501), (61, 23558), (68, 23600), (82, 23651), (85, 23672), (94, 23705), (103, 23756), (105, 23768), (113, 23822), (119, 23846), (128, 23915), (161, 24143), (164, 24170), (168, 24197), (169, 24200), (192, 24308), (196, 24329), (197, 24338), (209, 24407), (213, 24443), (223, 24482), (230, 24551), (256, 24689), (282, 24812), (284, 24818), (329, 24980), (335, 24989),

Gene: Sunhee_30 Start: 22065, Stop: 23957, Start Num: 13

Candidate Starts for Sunhee_30:

(13, 22065), (16, 22086), (44, 22248), (48, 22278), (54, 22323), (56, 22335), (95, 22524), (98, 22536), (112, 22638), (154, 22980), (155, 22983), (167, 23064), (178, 23124), (183, 23148), (201, 23253), (207, 23292), (215, 23349), (216, 23352), (248, 23565), (252, 23580), (275, 23700), (351, 23946),

(353, 23949),

Gene: Superchunk_30 Start: 21397, Stop: 22950, Start Num: 9

Candidate Starts for Superchunk_30:

(Start: 6 @21391 has 3 MA's), (Start: 9 @21397 has 25 MA's), (29, 21517), (36, 21550), (37, 21553), (44, 21580), (56, 21667), (84, 21754), (109, 21856), (190, 22384), (191, 22390), (196, 22420), (202, 22453), (204, 22465), (219, 22558), (224, 22588), (238, 22684), (253, 22756), (267, 22822), (270, 22834), (286, 22879),

Gene: SwirlSquare_33 Start: 21533, Stop: 23197, Start Num: 9

Candidate Starts for SwirlSquare_33:

(Start: 9 @21533 has 25 MA's), (27, 21644), (35, 21680), (53, 21779), (56, 21803), (88, 21971), (89, 21977), (190, 22598), (204, 22679), (219, 22772), (224, 22802), (238, 22898), (253, 22970), (271, 23057), (290, 23126),

Gene: Taquarus_31 Start: 22963, Stop: 24819, Start Num: 5

Candidate Starts for Taquarus_31:

(Start: 5 @22963 has 201 MA's), (27, 23089), (Start: 32 @23113 has 1 MA's), (52, 23218), (53, 23224), (58, 23272), (61, 23281), (68, 23323), (81, 23368), (82, 23374), (103, 23479), (105, 23491), (119, 23569), (128, 23638), (161, 23866), (163, 23890), (164, 23893), (168, 23920), (169, 23923), (192, 24028), (197, 24058), (200, 24073), (213, 24163), (223, 24202), (228, 24247), (257, 24415), (282, 24532), (284, 24538), (295, 24583), (311, 24634), (312, 24637), (329, 24700), (335, 24709), (351, 24796),

Gene: Taurus_33 Start: 23276, Stop: 25033, Start Num: 5

Candidate Starts for Taurus_33:

(Start: 5 @23276 has 201 MA's), (27, 23411), (43, 23477), (49, 23522), (54, 23558), (81, 23690), (87, 23726), (93, 23747), (111, 23804), (122, 23864), (134, 23918), (139, 23978), (159, 24098), (161, 24101), (172, 24170), (178, 24194), (197, 24287), (201, 24308), (209, 24353), (267, 24683), (284, 24752), (303, 24815), (349, 24986),

Gene: Thanksgivukkah_31 Start: 22961, Stop: 24817, Start Num: 5

Candidate Starts for Thanksgivukkah_31:

(Start: 5 @22961 has 201 MA's), (27, 23087), (Start: 32 @23111 has 1 MA's), (52, 23216), (53, 23222), (58, 23270), (61, 23279), (68, 23321), (81, 23366), (82, 23372), (103, 23477), (105, 23489), (119, 23567), (128, 23636), (161, 23864), (163, 23888), (164, 23891), (168, 23918), (169, 23921), (192, 24026), (197, 24056), (200, 24071), (213, 24161), (223, 24200), (228, 24245), (257, 24413), (282, 24530), (284, 24536), (295, 24581), (311, 24632), (312, 24635), (329, 24698), (335, 24707), (351, 24794),

Gene: Tiffany_33 Start: 23171, Stop: 24922, Start Num: 5

Candidate Starts for Tiffany_33:

(Start: 5 @23171 has 201 MA's), (27, 23306), (43, 23372), (49, 23417), (54, 23453), (66, 23525), (69, 23543), (87, 23621), (93, 23642), (111, 23699), (122, 23759), (142, 23897), (159, 23993), (161, 23996), (172, 24065), (178, 24089), (188, 24134), (197, 24182), (209, 24248), (234, 24419), (237, 24425), (246, 24476), (257, 24521), (273, 24599), (284, 24641), (295, 24683), (329, 24785), (331, 24788), (341, 24812),

Gene: TinaFeyge_31 Start: 22957, Stop: 24813, Start Num: 5

Candidate Starts for TinaFeyge_31:

(Start: 5 @22957 has 201 MA's), (27, 23083), (Start: 32 @23107 has 1 MA's), (52, 23212), (53, 23218), (58, 23266), (61, 23275), (68, 23317), (81, 23362), (82, 23368), (103, 23473), (105, 23485), (113, 23539), (119, 23563), (128, 23632), (161, 23860), (163, 23884), (164, 23887), (168, 23914),

(169, 23917), (192, 24022), (197, 24052), (200, 24067), (213, 24157), (223, 24196), (228, 24241), (257, 24409), (282, 24526), (284, 24532), (295, 24577), (311, 24628), (312, 24631), (329, 24694), (335, 24703), (351, 24790),

Gene: Tinybot_30 Start: 22937, Stop: 24793, Start Num: 5

Candidate Starts for Tinybot_30:

(Start: 5 @22937 has 201 MA's), (27, 23063), (Start: 32 @23087 has 1 MA's), (58, 23246), (61, 23255), (68, 23297), (81, 23342), (82, 23348), (103, 23453), (105, 23465), (119, 23543), (128, 23612), (148, 23780), (152, 23810), (161, 23840), (164, 23867), (168, 23894), (169, 23897), (192, 24002), (196, 24023), (197, 24032), (213, 24137), (223, 24176), (228, 24221), (256, 24383), (282, 24506), (284, 24512), (329, 24674), (335, 24683),

Gene: TopsytheTRex_30 Start: 21878, Stop: 23713, Start Num: 7

Candidate Starts for TopsytheTRex_30:

(Start: 7 @21878 has 2 MA's), (29, 22001), (Start: 32 @22016 has 1 MA's), (36, 22034), (47, 22091), (54, 22139), (56, 22151), (79, 22262), (88, 22319), (89, 22325), (124, 22505), (134, 22589), (138, 22640), (144, 22661), (152, 22727), (165, 22811), (169, 22823), (190, 22931), (204, 23012), (221, 23111), (238, 23231), (282, 23435), (287, 23450), (317, 23561), (334, 23603),

Gene: TiroTheta9_31 Start: 22957, Stop: 24813, Start Num: 5

Candidate Starts for TiroTheta9_31:

(Start: 5 @22957 has 201 MA's), (27, 23083), (Start: 32 @23107 has 1 MA's), (52, 23212), (53, 23218), (58, 23266), (61, 23275), (68, 23317), (81, 23362), (82, 23368), (103, 23473), (105, 23485), (119, 23563), (128, 23632), (161, 23860), (163, 23884), (164, 23887), (168, 23914), (169, 23917), (192, 24022), (197, 24052), (200, 24067), (213, 24157), (223, 24196), (228, 24241), (257, 24409), (282, 24526), (284, 24532), (295, 24577), (311, 24628), (312, 24631), (329, 24694), (335, 24703), (351, 24790),

Gene: Toaka_30 Start: 22544, Stop: 24361, Start Num: 11

Candidate Starts for Toaka_30:

(Start: 11 @22544 has 6 MA's), (14, 22550), (26, 22649), (53, 22793), (56, 22817), (128, 23180), (129, 23183), (141, 23216), (149, 23294), (154, 23318), (156, 23336), (162, 23360), (183, 23486), (198, 23576), (220, 23714), (252, 23918), (259, 23963), (261, 23972), (278, 24047), (279, 24050), (351, 24350),

Gene: Tomathan_34 Start: 22559, Stop: 24412, Start Num: 9

Candidate Starts for Tomathan_34:

(Start: 6 @22553 has 3 MA's), (Start: 9 @22559 has 25 MA's), (29, 22679), (47, 22769), (56, 22829), (64, 22880), (84, 22973), (88, 22997), (89, 23003), (165, 23510), (179, 23579), (196, 23666), (211, 23747), (238, 23930), (287, 24149), (291, 24161), (300, 24191), (317, 24260), (325, 24284), (328, 24293), (343, 24329),

Gene: Travvers_34 Start: 22559, Stop: 24412, Start Num: 9

Candidate Starts for Travvers_34:

(Start: 6 @22553 has 3 MA's), (Start: 9 @22559 has 25 MA's), (29, 22679), (47, 22769), (56, 22829), (64, 22880), (84, 22973), (88, 22997), (89, 23003), (165, 23510), (179, 23579), (196, 23666), (211, 23747), (300, 24191), (305, 24206), (317, 24260), (325, 24284), (328, 24293), (343, 24329),

Gene: TroyPia_31 Start: 22960, Stop: 24816, Start Num: 5

Candidate Starts for TroyPia_31:

(Start: 5 @22960 has 201 MA's), (27, 23086), (Start: 32 @23110 has 1 MA's), (52, 23215), (53, 23221), (58, 23269), (68, 23320), (81, 23365), (82, 23371), (103, 23476), (105, 23488), (119, 23566), (128, 23635), (161, 23863), (163, 23887), (164, 23890), (168, 23917), (169, 23920), (192, 24025),

(197, 24055), (200, 24070), (213, 24160), (223, 24199), (228, 24244), (257, 24412), (282, 24529), (284, 24535), (295, 24580), (311, 24631), (312, 24634), (329, 24697), (335, 24706), (351, 24793),

Gene: TygerBlood_31 Start: 22960, Stop: 24816, Start Num: 5

Candidate Starts for TygerBlood_31:

(Start: 5 @22960 has 201 MA's), (27, 23086), (Start: 32 @23110 has 1 MA's), (52, 23215), (53, 23221), (58, 23269), (61, 23278), (68, 23320), (81, 23365), (82, 23371), (103, 23476), (105, 23488), (119, 23566), (128, 23635), (161, 23863), (163, 23887), (164, 23890), (168, 23917), (169, 23920), (192, 24025), (197, 24055), (200, 24070), (213, 24160), (223, 24199), (228, 24244), (257, 24412), (282, 24529), (284, 24535), (295, 24580), (311, 24631), (312, 24634), (329, 24697), (335, 24706), (351, 24793),

Gene: Ulysses_30 Start: 22678, Stop: 24534, Start Num: 5

Candidate Starts for Ulysses_30:

(Start: 5 @22678 has 201 MA's), (27, 22804), (Start: 32 @22828 has 1 MA's), (52, 22933), (53, 22939), (58, 22987), (61, 22996), (68, 23038), (81, 23083), (82, 23089), (103, 23194), (105, 23206), (115, 23269), (119, 23284), (128, 23353), (148, 23521), (161, 23581), (164, 23608), (168, 23635), (169, 23638), (192, 23743), (196, 23764), (197, 23773), (213, 23878), (228, 23962), (241, 24061), (282, 24247), (284, 24253), (295, 24298), (311, 24349), (312, 24352), (329, 24415), (335, 24424), (351, 24511),

Gene: VA6_31 Start: 22715, Stop: 24568, Start Num: 9

Candidate Starts for VA6_31:

(Start: 6 @22709 has 3 MA's), (Start: 9 @22715 has 25 MA's), (29, 22835), (47, 22925), (56, 22985), (58, 23009), (64, 23036), (84, 23129), (88, 23153), (89, 23159), (110, 23261), (165, 23666), (179, 23735), (211, 23903), (224, 23990), (238, 24086), (268, 24233), (300, 24347), (317, 24416), (325, 24440), (338, 24470), (343, 24485),

Gene: VC3_34 Start: 22703, Stop: 24556, Start Num: 9

Candidate Starts for VC3_34:

(Start: 6 @22697 has 3 MA's), (Start: 9 @22703 has 25 MA's), (29, 22823), (47, 22913), (56, 22973), (58, 22997), (64, 23024), (84, 23117), (88, 23141), (89, 23147), (110, 23249), (165, 23654), (179, 23723), (211, 23891), (224, 23978), (238, 24074), (268, 24221), (300, 24335), (317, 24404), (325, 24428), (338, 24458), (343, 24473),

Gene: Vix_33 Start: 23359, Stop: 25116, Start Num: 5

Candidate Starts for Vix_33:

(Start: 5 @23359 has 201 MA's), (27, 23494), (43, 23560), (49, 23605), (54, 23641), (81, 23773), (87, 23809), (93, 23830), (111, 23887), (122, 23947), (134, 24001), (139, 24061), (159, 24181), (161, 24184), (172, 24253), (178, 24277), (197, 24370), (201, 24391), (209, 24436), (267, 24766), (284, 24835), (303, 24898), (349, 25069),

Gene: Wander_31 Start: 22960, Stop: 24816, Start Num: 5

Candidate Starts for Wander_31:

(Start: 5 @22960 has 201 MA's), (27, 23086), (Start: 32 @23110 has 1 MA's), (52, 23215), (53, 23221), (58, 23269), (61, 23278), (68, 23320), (81, 23365), (82, 23371), (103, 23476), (105, 23488), (119, 23566), (128, 23635), (161, 23863), (163, 23887), (164, 23890), (168, 23917), (169, 23920), (192, 24025), (196, 24046), (197, 24055), (213, 24160), (223, 24199), (228, 24244), (256, 24406), (257, 24412), (282, 24529), (284, 24535), (295, 24580), (311, 24631), (312, 24634), (329, 24697), (335, 24706), (351, 24793),

Gene: Watson_33 Start: 23269, Stop: 25026, Start Num: 5

Candidate Starts for Watson_33:

(Start: 5 @23269 has 201 MA's), (27, 23404), (43, 23470), (49, 23515), (54, 23551), (81, 23683), (87, 23719), (93, 23740), (111, 23797), (122, 23857), (134, 23911), (139, 23971), (159, 24091), (161, 24094), (172, 24163), (178, 24187), (197, 24280), (201, 24301), (209, 24346), (267, 24676), (284, 24745), (303, 24808), (349, 24979),

Gene: Wilbur_31 Start: 22960, Stop: 24816, Start Num: 5

Candidate Starts for Wilbur_31:

(Start: 5 @22960 has 201 MA's), (27, 23086), (Start: 32 @23110 has 1 MA's), (52, 23215), (53, 23221), (58, 23269), (61, 23278), (68, 23320), (81, 23365), (82, 23371), (103, 23476), (105, 23488), (119, 23566), (128, 23635), (161, 23863), (163, 23887), (164, 23890), (168, 23917), (169, 23920), (192, 24025), (197, 24055), (200, 24070), (213, 24160), (223, 24199), (228, 24244), (257, 24412), (282, 24529), (284, 24535), (295, 24580), (311, 24631), (312, 24634), (329, 24697), (335, 24706), (351, 24793),

Gene: Wile_31 Start: 22982, Stop: 24841, Start Num: 5

Candidate Starts for Wile_31:

(3, 22922), (4, 22937), (Start: 5 @22982 has 201 MA's), (19, 23048), (24, 23093), (26, 23099), (Start: 32 @23132 has 1 MA's), (36, 23150), (45, 23195), (46, 23201), (47, 23207), (61, 23300), (63, 23315), (81, 23387), (94, 23447), (103, 23498), (105, 23510), (119, 23588), (128, 23657), (140, 23780), (147, 23804), (161, 23885), (165, 23930), (168, 23939), (169, 23942), (196, 24071), (197, 24080), (205, 24122), (209, 24149), (213, 24185), (219, 24212), (223, 24224), (245, 24380), (282, 24554), (284, 24560), (295, 24605), (311, 24656), (312, 24659), (320, 24695), (335, 24731),

Gene: Wizard007_31 Start: 22962, Stop: 24818, Start Num: 5

Candidate Starts for Wizard007_31:

(Start: 5 @22962 has 201 MA's), (27, 23088), (Start: 32 @23112 has 1 MA's), (52, 23217), (53, 23223), (58, 23271), (61, 23280), (68, 23322), (81, 23367), (82, 23373), (103, 23478), (105, 23490), (119, 23568), (128, 23637), (161, 23865), (163, 23889), (164, 23892), (168, 23919), (169, 23922), (192, 24027), (197, 24057), (200, 24072), (213, 24162), (223, 24201), (228, 24246), (257, 24414), (282, 24531), (284, 24537), (295, 24582), (311, 24633), (312, 24636), (329, 24699), (335, 24708), (351, 24795),

Gene: Wooldri_35 Start: 23188, Stop: 24945, Start Num: 5

Candidate Starts for Wooldri_35:

(Start: 5 @23188 has 201 MA's), (27, 23323), (43, 23389), (49, 23434), (54, 23470), (81, 23602), (87, 23638), (93, 23659), (111, 23716), (122, 23776), (134, 23830), (139, 23890), (159, 24010), (161, 24013), (172, 24082), (178, 24106), (197, 24199), (201, 24220), (209, 24265), (267, 24595), (284, 24664), (303, 24727), (349, 24898),

Gene: Xena_31 Start: 22969, Stop: 24828, Start Num: 5

Candidate Starts for Xena_31:

(3, 22909), (Start: 5 @22969 has 201 MA's), (19, 23035), (24, 23080), (26, 23086), (Start: 32 @23119 has 1 MA's), (36, 23137), (45, 23182), (46, 23188), (47, 23194), (61, 23287), (63, 23302), (81, 23374), (94, 23434), (103, 23485), (105, 23497), (119, 23575), (128, 23644), (140, 23767), (147, 23791), (161, 23872), (165, 23917), (168, 23926), (169, 23929), (196, 24058), (197, 24067), (205, 24109), (209, 24136), (213, 24172), (219, 24199), (223, 24211), (245, 24367), (282, 24541), (284, 24547), (295, 24592), (311, 24643), (312, 24646), (320, 24682), (335, 24718),

Gene: XianYue_31 Start: 22723, Stop: 24396, Start Num: 6

Candidate Starts for XianYue_31:

(Start: 6 @22723 has 3 MA's), (27, 22840), (29, 22849), (30, 22855), (35, 22876), (43, 22906), (54, 22987), (87, 23155), (96, 23179), (120, 23287), (130, 23353), (167, 23620), (210, 23833), (239, 24019), (248, 24064), (250, 24073), (262, 24124), (265, 24142), (325, 24361), (337, 24388),

Gene: Yecey3_32 Start: 22435, Stop: 24132, Start Num: 6

Candidate Starts for Yecey3_32:

(Start: 6 @22435 has 3 MA's), (25, 22540), (36, 22594), (44, 22624), (53, 22687), (56, 22711), (88, 22789), (95, 22810), (97, 22813), (107, 22864), (110, 22885), (124, 22963), (125, 22966), (165, 23278), (166, 23281), (175, 23314), (176, 23320), (190, 23404), (191, 23410), (193, 23425), (204, 23485), (226, 23617), (238, 23704), (266, 23839), (272, 23866), (294, 23941), (298, 23956), (310, 23992), (315, 24016), (324, 24049), (328, 24061),

Gene: YoSam321_31 Start: 22957, Stop: 24813, Start Num: 5

Candidate Starts for YoSam321_31:

(Start: 5 @22957 has 201 MA's), (27, 23083), (Start: 32 @23107 has 1 MA's), (52, 23212), (53, 23218), (58, 23266), (61, 23275), (68, 23317), (81, 23362), (82, 23368), (103, 23473), (105, 23485), (119, 23563), (128, 23632), (161, 23860), (163, 23884), (164, 23887), (168, 23914), (169, 23917), (192, 24022), (197, 24052), (200, 24067), (213, 24157), (223, 24196), (228, 24241), (257, 24409), (282, 24526), (284, 24532), (295, 24577), (311, 24628), (312, 24631), (329, 24694), (335, 24703), (351, 24790),

Gene: Zetzy_32 Start: 22817, Stop: 24574, Start Num: 5

Candidate Starts for Zetzy_32:

(Start: 5 @22817 has 201 MA's), (27, 22952), (43, 23018), (49, 23063), (75, 23210), (87, 23267), (93, 23288), (122, 23405), (134, 23459), (139, 23519), (152, 23612), (159, 23639), (161, 23642), (172, 23711), (178, 23735), (188, 23780), (199, 23840), (201, 23849), (209, 23894), (214, 23933), (226, 23990), (267, 24224), (284, 24293), (303, 24356), (341, 24464),