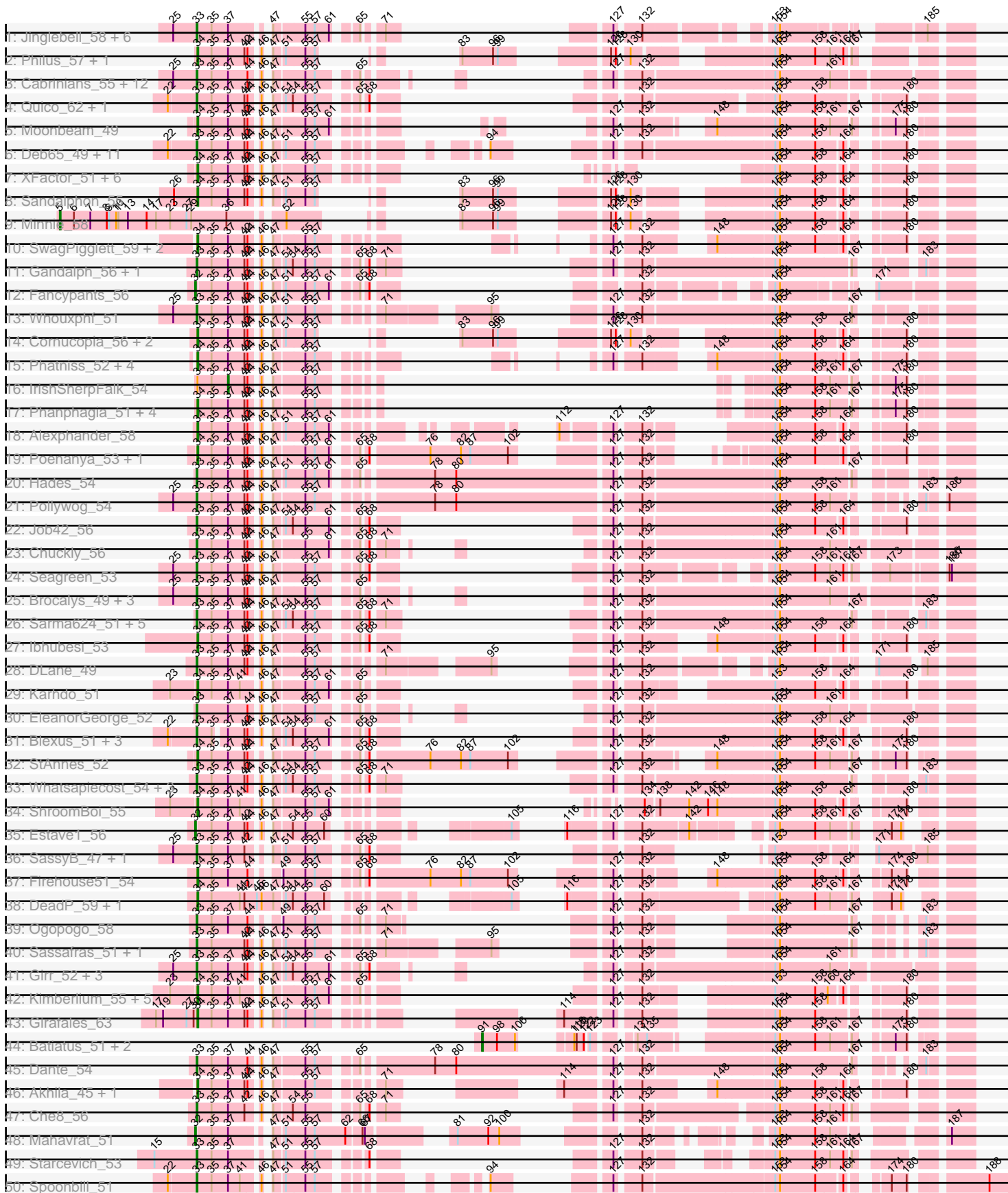
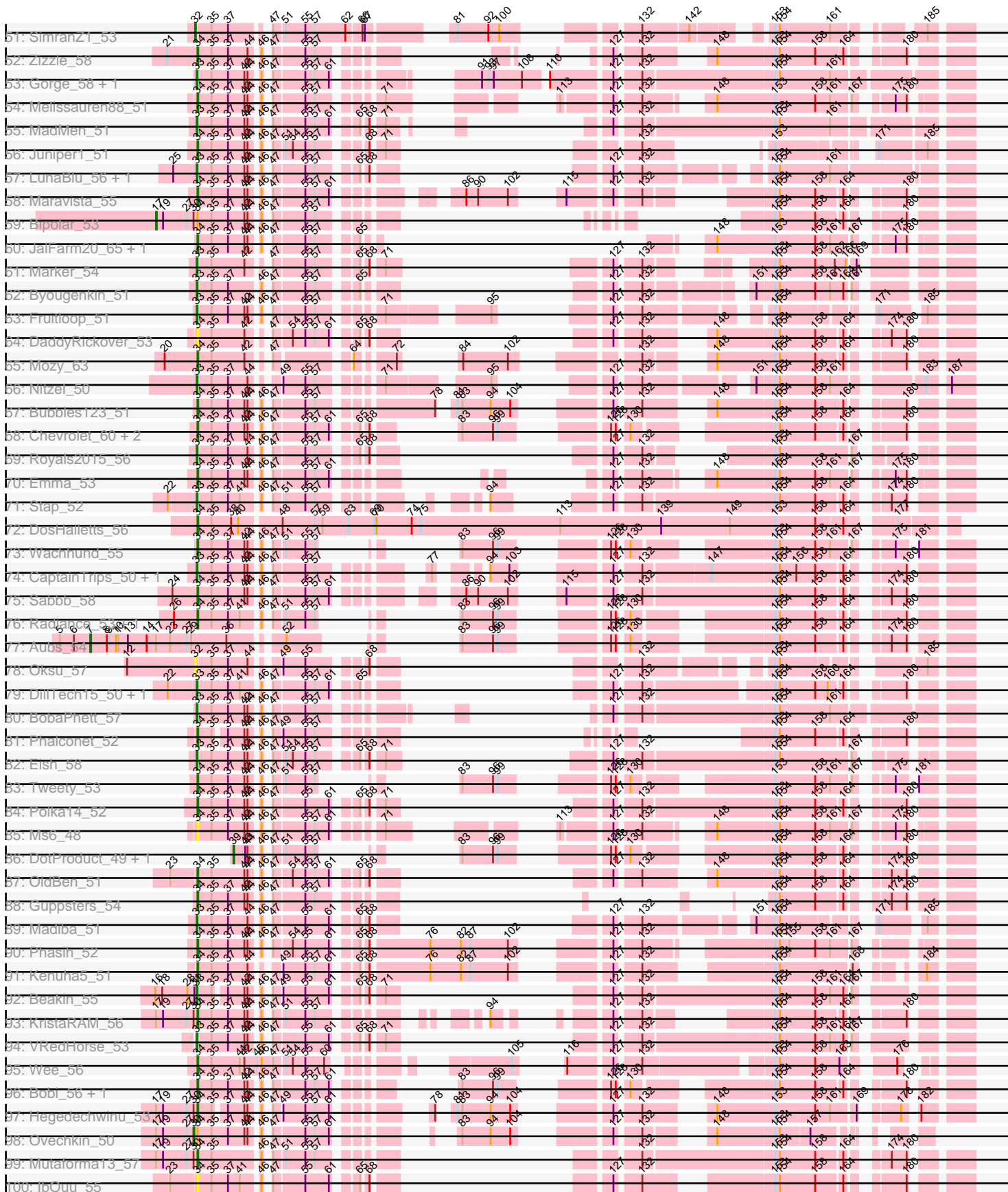


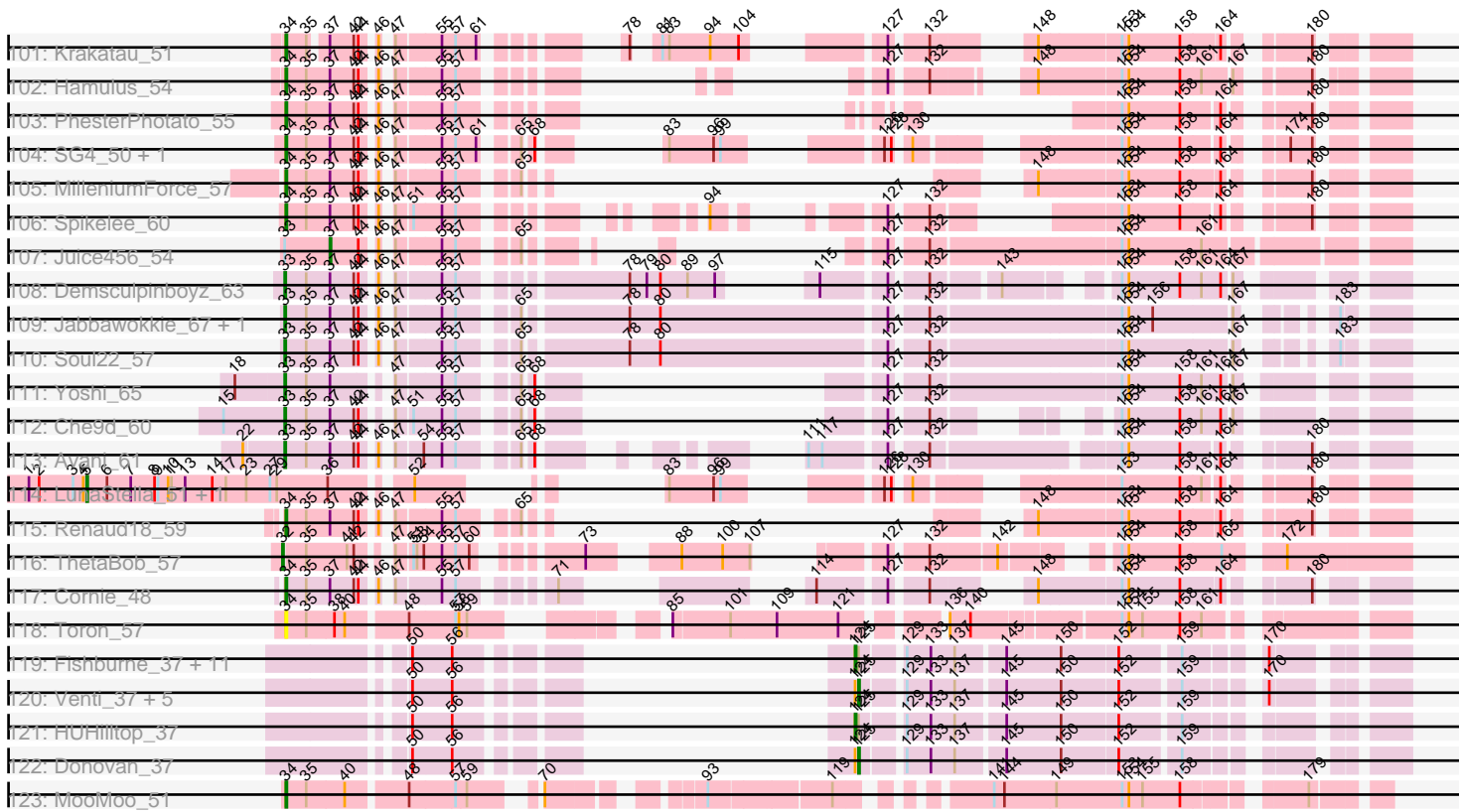
Pham 193715



Pham 193715



Pham 193715



Note: Tracks are now grouped by subcluster and scaled. Switching in subcluster is indicated by changes in track color. Track scale is now set by default to display the region 30 bp upstream of start 1 to 30 bp downstream of the last possible start. If this default region is judged to be packed too tightly with annotated starts, the track will be further scaled to only show that region of the ORF with annotated starts. This action will be indicated by adding "Zoomed" to the title. For starts, yellow indicates the location of called starts comprised solely of Glimmer/GeneMark auto-annotations, green indicates the location of called starts with at least 1 manual gene annotation.

Pham 193715 Report

This analysis was run 11/02/24 on database version 579.

Pham number 193715 has 231 members, 10 are drafts.

Phages represented in each track:

- Track 1 : Jinglebell_58, OfUltron_58, Ochi17_56, Llama_58, Modragons_57, Seabastian_58, AlpineSix_58
- Track 2 : Philus_57, DRBy19_57
- Track 3 : Cabrinians_55, Burwell21_52, Jarcob_54, Koella_48, Martik_54, Lizziana_60, ShowerHandel_57, NormanBulbieJr_54, ShiLan_53, FreddyB_55, Priscilla_54, Crumble_49, Yorick_53
- Track 4 : Quico_62, Florinda_65
- Track 5 : Moonbeam_49
- Track 6 : Deb65_49, Nimbo_48, Leperchaun_46, JoeyJr_49, PHappiness_49, RitaG_49, Scottish_52, Geralt_49, Daenerys_48, Pacc40_48, Empress_52, KingMidas_53
- Track 7 : XFactor_51, Doug_56, DaWorst_55, RockyHorror_54, Sparkdehlily_61, TDanisky_61, Zerg_53
- Track 8 : Sandalphon_55
- Track 9 : Minnie_58
- Track 10 : SwagPigglett_59, LilMoolah_52, Nivrat_50
- Track 11 : Gandalph_56, Mova_54
- Track 12 : Fancypants_56
- Track 13 : Whouxphf_51
- Track 14 : Cornucopia_56, Ardmore_45, OwlsT2W_54
- Track 15 : Phatniss_52, Llij_50, Drago_52, DirtMcgirt_53, UncleRicky_53
- Track 16 : IrishSherpFalk_54
- Track 17 : Phanphagia_51, Shauna1_52, Spartacus_55, SuperGrey_57, WillSterrel_54
- Track 18 : Alexphander_58
- Track 19 : Poenanya_53, Doomphist_53
- Track 20 : Hades_54
- Track 21 : Pollywog_54
- Track 22 : Job42_56
- Track 23 : Chuckly_56
- Track 24 : Seagreen_53
- Track 25 : Brocalys_49, Clifton_49, LastJedi_48, Pippy_52
- Track 26 : Sarma624_51, Velveteen_48, Kingsley_50, BigPhil_49, Coco12_52, Cerasum_49
- Track 27 : lbhubesi_53
- Track 28 : DLane_49
- Track 29 : Karhdo_51

- Track 30 : EleanorGeorge_52
- Track 31 : Blexus_51, Kersh_55, Tootsieroll_55, Ramsey_54
- Track 32 : StAnnes_52
- Track 33 : Whatsapiecost_54, Rockne_54, PMC_50, Boomer_58
- Track 34 : ShroomBoi_55
- Track 35 : Estave1_56
- Track 36 : SassyB_47, PopTart_47
- Track 37 : Firehouse51_54
- Track 38 : DeadP_59, Taj_57
- Track 39 : Ogopogo_58
- Track 40 : Sassafras_51, Inventum_48
- Track 41 : Girr_52, Leozinho_53, Ruby_50, MisterCuddles_52
- Track 42 : Kimberlium_55, QuickMath_54, SiSi_51, Mantra_49, MulchExplorer_59, Plumbus_55
- Track 43 : Girafales_63
- Track 44 : Batiatus_51, IMpilo_50, Filuzino_51
- Track 45 : Dante_54
- Track 46 : Akhila_45, MilanaBonita_44
- Track 47 : Che8_56
- Track 48 : Mahavrat_51
- Track 49 : Starcevich_53
- Track 50 : Spoonbill_51
- Track 51 : SimranZ1_53
- Track 52 : Zizzle_58
- Track 53 : Gorge_58, Saal_56
- Track 54 : Melissauren88_51
- Track 55 : MadMen_51
- Track 56 : Juniper1_51
- Track 57 : LunaBlu_56, Galactic_53
- Track 58 : Maravista_55
- Track 59 : Bipolar_53
- Track 60 : JalFarm20_65, Flathead_53
- Track 61 : Marker_54
- Track 62 : Byougenkin_51
- Track 63 : Fruitloop_51
- Track 64 : DaddyRickover_53
- Track 65 : Mozy_63
- Track 66 : Nitzel_50
- Track 67 : Bubbles123_51
- Track 68 : Chevrolet_60, ArcusAngelus_57, Lorde_54
- Track 69 : Royals2015_56
- Track 70 : Emma_53
- Track 71 : Stap_52
- Track 72 : DosHalletts_56
- Track 73 : Wachhund_55
- Track 74 : CaptainTrips_50, MinionDave_52
- Track 75 : Sabbb_58
- Track 76 : Radiance_53, BodEinwohner17_54
- Track 77 : Aubs_54
- Track 78 : Oksu_57
- Track 79 : DillTech15_50, Fastidio_53
- Track 80 : BobaPhett_57
- Track 81 : Phalconet_52

- Track 82 : Eish_58
- Track 83 : Tweety_53
- Track 84 : Polka14_52
- Track 85 : Ms6_48
- Track 86 : DotProduct_49, GigiOuiOui_50
- Track 87 : OldBen_51
- Track 88 : Guppsters_54
- Track 89 : Madiba_51
- Track 90 : Phasih_52
- Track 91 : Kenuha5_51
- Track 92 : Beakin_55
- Track 93 : KristaRAM_56
- Track 94 : VRedHorse_53
- Track 95 : Wee_56
- Track 96 : Bobi_56, Harley_55
- Track 97 : Hegedechwinu_53
- Track 98 : Ovechkin_50
- Track 99 : Mutaforma13_57
- Track 100 : IbOuu_55
- Track 101 : Krakatau_51
- Track 102 : Hamulus_54
- Track 103 : PhesterPhotato_55
- Track 104 : SG4_50, Enby_54
- Track 105 : MilleniumForce_57
- Track 106 : Spikelee_60
- Track 107 : Juice456_54
- Track 108 : Demsculpinboyz_63
- Track 109 : Jabbawokkie_67, Zapner_66
- Track 110 : Soul22_57
- Track 111 : Yoshi_65
- Track 112 : Che9d_60
- Track 113 : Avani_61
- Track 114 : LunaStella_51, TChen_53
- Track 115 : Renaud18_59
- Track 116 : ThetaBob_57
- Track 117 : Cornie_48
- Track 118 : Toron_57
- Track 119 : Fishburne_37, Bartholomew_36, Majeke_37, Mangethe_37, Phineas_37, Vidya_37, Necropolis_37, Kari_37, Zilizebeth_37, Arib1_37, Jebeks_38, Techage_37
- Track 120 : Venti_37, Dynamo_37, Langerak_37, FirstPlacePfu_37, Sonah_37, Phegasus_37
- Track 121 : HUHilltop_37
- Track 122 : Donovan_37
- Track 123 : MooMoo_51

Summary of Final Annotations (See graph section above for start numbers):

The start number called the most often in the published annotations is 33, it was called in 102 of the 221 non-draft genes in the pham.

Genes that call this "Most Annotated" start:

- AlpineSix_58, Avani_61, Beakin_55, BigPhil_49, Blexus_51, BobaPhett_57, Boomer_58, Brocalys_49, Burwell21_52, Byougenkin_51, Cabrinians_55, CaptainTrips_50, Cerasum_49, Che8_56, Che9d_60, Chuckly_56, Clifton_49, Coco12_52, Crumble_49, DLane_49, Daenerys_48, Dante_54, Deb65_49, Demsculpinboyz_63, DillTech15_50, Eish_58, EleanorGeorge_52, Empress_52, Fastidio_53, Florinda_65, FreddyB_55, Fruitloop_51, Galactic_53, Gandolph_56, Geralt_49, Girr_52, Gorge_58, Hades_54, Inventum_48, Jabbawokkie_67, Jarcob_54, Jinglebell_58, Job42_56, JoeyJr_49, Kersh_55, KingMidas_53, Kingsley_50, Koella_48, LastJedi_48, Leozinho_53, Leperchaun_46, Lizziana_60, Llama_58, LunaBlu_56, MadMen_51, Madiba_51, Marker_54, Martik_54, MinionDave_52, MisterCuddles_52, Modragons_57, Mova_54, Nimbo_48, Nitzel_50, NormanBulbieJr_54, Ochi17_56, OfUltron_58, Ogopogo_58, PHappiness_49, PMC_50, Pacc40_48, Pippy_52, Pollywog_54, PopTart_47, Priscilla_54, Quico_62, Ramsey_54, RitaG_49, Rockne_54, Royals2015_56, Ruby_50, Saal_56, Sarma624_51, Sassafras_51, SassyB_47, Scottish_52, Seabastian_58, Seagreen_53, ShiLan_53, ShowerHandel_57, Soul22_57, Spoonbill_51, Stap_52, Starcevich_53, Tootsieroll_55, VRedHorse_53, Velveteen_48, Whatsapiecost_54, Whouxphf_51, Yorick_53, Yoshi_65, Zapner_66,

Genes that have the "Most Annotated" start but do not call it:

- Juice456_54,

Genes that do not have the "Most Annotated" start:

- Akhila_45, Alexphander_58, ArcusAngelus_57, Ardmore_45, Arib1_37, Aubs_54, Bartholomew_36, Batiatus_51, Bipolar_53, Bobi_56, BodEinwohner17_54, Bubbles123_51, Chevrolet_60, Cornie_48, Cornucopia_56, DRBy19_57, DaWorst_55, DaddyRickover_53, DeadP_59, DirtMcgirt_53, Donovan_37, Doomphist_53, DosHalletts_56, DotProduct_49, Doug_56, Drago_52, Dynamo_37, Emma_53, Enby_54, Estave1_56, Fancypants_56, Filuzino_51, Firehouse51_54, FirstPlacePfu_37, Fishburne_37, Flathead_53, GigiOuiOui_50, Girafales_63, Guppsters_54, HUHilltop_37, Hamulus_54, Harley_55, Hegedechwinu_53, IMpilo_50, IbOuu_55, Ibhubesi_53, IrishSherpFalk_54, JalFarm20_65, Jebeks_38, Juniper1_51, Karhdo_51, Kari_37, Kenuha5_51, Kimberlium_55, Krakatau_51, KristaRAM_56, Langerak_37, LilMoolah_52, Llij_50, Lorde_54, LunaStella_51, Mahavrat_51, Majeke_37, Mangethe_37, Mantra_49, Maravista_55, Melissauren88_51, MilanaBonita_44, MilleniumForce_57, Minnie_58, MooMoo_51, Moonbeam_49, Mozy_63, Ms6_48, MulchExplorer_59, Mutaforma13_57, Necropolis_37, Nivrat_50, Oksu_57, OldBen_51, Ovechkin_50, OwlsT2W_54, Phalconet_52, Phanphagia_51, Phasih_52, Phatniss_52, Phegasus_37, PhesterPhotato_55, Philus_57, Phineas_37, Plumbus_55, Poenanya_53, Polka14_52, QuickMath_54, Radiance_53, Renaud18_59, RockyHorror_54, SG4_50, Sabb_58, Sandalphon_55, Shauna1_52, ShroomBoi_55, SiSi_51, SimranZ1_53, Sonah_37, Sparkdehlily_61, Spartacus_55, Spikelee_60, StAnnes_52, SuperGrey_57, SwagPiggett_59, TChen_53, TDanisky_61, Taj_57, Techage_37, ThetaBob_57, Toron_57, Tweety_53, UncleRicky_53, Venti_37, Vidya_37, Wachhund_55, Wee_56, WillSterrel_54, XFactor_51, Zerg_53, Zilizebeth_37, Zizzle_58,

Summary by start number:

Start 5:

- Found in 4 of 231 (1.7%) of genes in pham
- Manual Annotations of this start: 3 of 221
- Called 75.0% of time when present
- Phage (with cluster) where this start called: LunaStella_51 (F4), Minnie_58 (F1), TChen_53 (F4),

Start 7:

- Found in 4 of 231 (1.7%) of genes in pham
- Manual Annotations of this start: 1 of 221
- Called 25.0% of time when present
- Phage (with cluster) where this start called: Aubs_54 (F1),

Start 17:

- Found in 10 of 231 (4.3%) of genes in pham
- Manual Annotations of this start: 1 of 221
- Called 10.0% of time when present
- Phage (with cluster) where this start called: Bipolar_53 (F1),

Start 30:

- Found in 6 of 231 (2.6%) of genes in pham
- Manual Annotations of this start: 1 of 221
- Called 16.7% of time when present
- Phage (with cluster) where this start called: Ovechkin_50 (F1),

Start 32:

- Found in 6 of 231 (2.6%) of genes in pham
- Manual Annotations of this start: 5 of 221
- Called 100.0% of time when present
- Phage (with cluster) where this start called: Estave1_56 (F1), Fancypants_56 (F1), Mahavrat_51 (F1), Oksu_57 (F1), SimranZ1_53 (F1), ThetaBob_57 (F4),

Start 33:

- Found in 103 of 231 (44.6%) of genes in pham
- Manual Annotations of this start: 102 of 221
- Called 99.0% of time when present
- Phage (with cluster) where this start called: AlpineSix_58 (F1), Avani_61 (F2), Beakin_55 (F1), BigPhil_49 (F1), Blexus_51 (F1), BobaPhett_57 (F1), Boomer_58 (F1), Brocalys_49 (F1), Burwell21_52 (F1), Byougenkin_51 (F1), Cabrinians_55 (F1), CaptainTrips_50 (F1), Cerasum_49 (F1), Che8_56 (F1), Che9d_60 (F2), Chuckly_56 (F1), Clifton_49 (F1), Coco12_52 (F1), Crumble_49 (F1), DLane_49 (F1), Daenerys_48 (F1), Dante_54 (F1), Deb65_49 (F1), Demsculpinboyz_63 (F2), DillTech15_50 (F1), Eish_58 (F1), EleanorGeorge_52 (F1), Empress_52 (F1), Fastidio_53 (F1), Florinda_65 (F1), FreddyB_55 (F1), Fruitloop_51 (F1), Galactic_53 (F1), Gandolph_56 (F1), Geralt_49 (F1), Girr_52 (F1), Gorge_58 (F1), Hades_54 (F1), Inventum_48 (F1), Jabbawokkie_67 (F2), Jarcob_54 (F1), Jinglebell_58 (F1), Job42_56 (F1), JoeyJr_49 (F1), Kersh_55 (F1), KingMidas_53 (F1), Kingsley_50 (F1), Koella_48 (F1), LastJedi_48 (F1), Leozinho_53 (F1), Leperchaun_46 (F1), Lizziana_60 (F1), Llama_58 (F1), LunaBlu_56 (F1), MadMen_51 (F1), Madiba_51 (F1), Marker_54 (F1), Martik_54 (F1), MinionDave_52 (F1), MisterCuddles_52 (F1), Modragons_57 (F1), Mova_54 (F1), Nimbo_48 (F1), Nitzel_50 (F1), NormanBulbieJr_54 (F1), Ochi17_56 (F1), OfUltron_58 (F1), Ogotogo_58 (F1), PHappiness_49 (F1), PMC_50 (F1), Pacc40_48 (F1), Pippy_52 (F1), Pollywog_54 (F1), PopTart_47 (F1), Priscilla_54 (F1), Quico_62 (F1), Ramsey_54 (F1), RitaG_49

(F1), Rockne_54 (F1), Royals2015_56 (F1), Ruby_50 (F1), Saal_56 (F1), Sarma624_51 (F1), Sassafras_51 (F1), SassyB_47 (F1), Scottish_52 (F1), Seabastian_58 (F1), Seagreen_53 (F1), ShiLan_53 (F1), ShowerHandel_57 (F1), Soul22_57 (F2), Spoonbill_51 (F1), Stap_52 (F1), Starcevich_53 (F1), Tootsieroll_55 (F1), VRedHorse_53 (F1), Velveteen_48 (F1), Whatsapiecost_54 (F1), Whouxphf_51 (F1), Yorick_53 (F1), Yoshi_65 (F2), Zapner_66 (F2),

Start 34:

- Found in 93 of 231 (40.3%) of genes in pham
- Manual Annotations of this start: 84 of 221
- Called 96.8% of time when present
- Phage (with cluster) where this start called: Akhila_45 (F1), Alexphander_58 (F1), ArcusAngelus_57 (F1), Ardmore_45 (F1), Bobi_56 (F1), BodEinwohner17_54 (F1), Bubbles123_51 (F1), Chevrolet_60 (F1), Cornie_48 (F5), Cornucopia_56 (F1), DRBy19_57 (F1), DaWorst_55 (F1), DaddyRickover_53 (F1), DeadP_59 (F1), DirtMcgirt_53 (F1), Doomphist_53 (F1), DosHalletts_56 (F1), Doug_56 (F1), Drago_52 (F1), Emma_53 (F1), Enby_54 (F1), Firehouse51_54 (F1), Flathead_53 (F1), Girafales_63 (F1), Guppsters_54 (F1), Hamulus_54 (F1), Harley_55 (F1), Hegedechwinu_53 (F1), IbOuu_55 (F1), Ibhubesi_53 (F1), JalFarm20_65 (F1), Juniper1_51 (F1), Karhdo_51 (F1), Kenuha5_51 (F1), Kimberlium_55 (F1), Krakatau_51 (F1), KristaRAM_56 (F1), LilMoolah_52 (F1), Llij_50 (F1), Lorde_54 (F1), Mantra_49 (F1), Maravista_55 (F1), Melissauren88_51 (F1), MilanaBonita_44 (F1), MilleniumForce_57 (F1), MooMoo_51 (singleton), Moonbeam_49 (F1), Mozy_63 (F1), Ms6_48 (F1), MulchExplorer_59 (F1), Mutaforma13_57 (F1), Nivrat_50 (F1), OldBen_51 (F1), OwlsT2W_54 (F1), Phalconet_52 (F1), Phanphagia_51 (F1), Phasih_52 (F1), Phatniss_52 (F1), PhesterPhotato_55 (F1), Philus_57 (F1), Plumbus_55 (F1), Poenanya_53 (F1), Polka14_52 (F1), QuickMath_54 (F1), Radiance_53 (F1), Renaud18_59 (F4), RockyHorror_54 (F1), SG4_50 (F1), Sabbb_58 (F1), Sandalphon_55 (F1), Shauna1_52 (F1), ShroomBoi_55 (F1), SiSi_51 (F1), Sparkdehliily_61 (F1), Spartacus_55 (F1), Spikelee_60 (F1), StAnnes_52 (F1), SuperGrey_57 (F1), SwagPiggett_59 (F1), TDanisky_61 (F1), Taj_57 (F1), Toron_57 (F6), Tweety_53 (F1), UncleRicky_53 (F1), Wachhund_55 (F1), Wee_56 (F1), WillSterrel_54 (F1), XFactor_51 (F1), Zerg_53 (F1), Zizzle_58 (F1),

Start 37:

- Found in 188 of 231 (81.4%) of genes in pham
- Manual Annotations of this start: 2 of 221
- Called 1.1% of time when present
- Phage (with cluster) where this start called: IrishSherpFalk_54 (F1), Juice456_54 (F1),

Start 39:

- Found in 2 of 231 (0.9%) of genes in pham
- Manual Annotations of this start: 2 of 221
- Called 100.0% of time when present
- Phage (with cluster) where this start called: DotProduct_49 (F1), GigiOuiOui_50 (F1),

Start 91:

- Found in 5 of 231 (2.2%) of genes in pham
- Manual Annotations of this start: 2 of 221
- Called 60.0% of time when present

- Phage (with cluster) where this start called: Batiatus_51 (F1), Filuzino_51 (F1), IMpilo_50 (F1),

Start 124:

- Found in 20 of 231 (8.7%) of genes in pham
- Manual Annotations of this start: 11 of 221
- Called 65.0% of time when present
- Phage (with cluster) where this start called: Arib1_37 (P1), Bartholomew_36 (P1), Fishburne_37 (P1), HUHilltop_37 (P1), Jebeks_38 (P1), Kari_37 (P1), Majeke_37 (P1), Mangethe_37 (P1), Necropolis_37 (P1), Phineas_37 (P1), Techage_37 (P1), Vidya_37 (P1), Zilizebeth_37 (P1),

Start 125:

- Found in 20 of 231 (8.7%) of genes in pham
- Manual Annotations of this start: 7 of 221
- Called 35.0% of time when present
- Phage (with cluster) where this start called: Donovan_37 (P1), Dynamo_37 (P1), FirstPlacePfu_37 (P1), Langerak_37 (P1), Phegasus_37 (P1), Sonah_37 (P1), Venti_37 (P1),

Summary by clusters:

There are 7 clusters represented in this pham: F1, F2, P1, F4, F5, F6, singleton,

Info for manual annotations of cluster F1:

- Start number 5 was manually annotated 1 time for cluster F1.
- Start number 7 was manually annotated 1 time for cluster F1.
- Start number 17 was manually annotated 1 time for cluster F1.
- Start number 30 was manually annotated 1 time for cluster F1.
- Start number 32 was manually annotated 4 times for cluster F1.
- Start number 33 was manually annotated 95 times for cluster F1.
- Start number 34 was manually annotated 81 times for cluster F1.
- Start number 37 was manually annotated 2 times for cluster F1.
- Start number 39 was manually annotated 2 times for cluster F1.
- Start number 91 was manually annotated 2 times for cluster F1.

Info for manual annotations of cluster F2:

- Start number 33 was manually annotated 7 times for cluster F2.

Info for manual annotations of cluster F4:

- Start number 5 was manually annotated 2 times for cluster F4.
- Start number 32 was manually annotated 1 time for cluster F4.
- Start number 34 was manually annotated 1 time for cluster F4.

Info for manual annotations of cluster F5:

- Start number 34 was manually annotated 1 time for cluster F5.

Info for manual annotations of cluster P1:

- Start number 124 was manually annotated 11 times for cluster P1.
- Start number 125 was manually annotated 7 times for cluster P1.

Gene Information:

Gene: Akhila_45 Start: 33238, Stop: 33918, Start Num: 34

Candidate Starts for Akhila_45:

(Start: 34 @33238 has 84 MA's), (35, 33256), (Start: 37 @33277 has 2 MA's), (42, 33298), (44, 33301), (46, 33310), (47, 33313), (55, 33349), (57, 33361), (71, 33418), (114, 33526), (127, 33580), (132, 33607), (148, 33661), (153, 33730), (154, 33736), (158, 33781), (164, 33811), (180, 33859),

Gene: Alexphander_58 Start: 38096, Stop: 38746, Start Num: 34

Candidate Starts for Alexphander_58:

(Start: 34 @38096 has 84 MA's), (35, 38114), (Start: 37 @38135 has 2 MA's), (42, 38156), (44, 38159), (46, 38168), (47, 38171), (51, 38183), (55, 38207), (57, 38219), (61, 38237), (112, 38384), (127, 38438), (132, 38465), (153, 38558), (154, 38564), (158, 38609), (164, 38639), (180, 38687),

Gene: AlpineSix_58 Start: 39417, Stop: 40004, Start Num: 33

Candidate Starts for AlpineSix_58:

(25, 39387), (Start: 33 @39417 has 102 MA's), (35, 39435), (Start: 37 @39456 has 2 MA's), (47, 39492), (55, 39528), (57, 39540), (61, 39558), (65, 39579), (71, 39597), (127, 39663), (132, 39690), (153, 39813), (154, 39819), (185, 39957),

Gene: ArcusAngelus_57 Start: 38680, Stop: 39342, Start Num: 34

Candidate Starts for ArcusAngelus_57:

(Start: 34 @38680 has 84 MA's), (35, 38698), (Start: 37 @38719 has 2 MA's), (42, 38740), (44, 38743), (46, 38752), (47, 38755), (55, 38791), (57, 38803), (61, 38821), (65, 38842), (68, 38848), (83, 38878), (96, 38917), (99, 38923), (126, 39004), (128, 39010), (130, 39019), (153, 39154), (154, 39160), (158, 39205), (164, 39235), (180, 39283),

Gene: Ardmore_45 Start: 35444, Stop: 36049, Start Num: 34

Candidate Starts for Ardmore_45:

(Start: 34 @35444 has 84 MA's), (35, 35462), (Start: 37 @35483 has 2 MA's), (42, 35504), (44, 35507), (46, 35516), (47, 35519), (51, 35531), (55, 35555), (57, 35567), (83, 35585), (96, 35624), (99, 35630), (126, 35711), (128, 35717), (130, 35726), (153, 35861), (154, 35867), (158, 35912), (164, 35942), (180, 35990),

Gene: Arib1_37 Start: 29346, Stop: 29747, Start Num: 124

Candidate Starts for Arib1_37:

(50, 29202), (56, 29235), (Start: 124 @29346 has 11 MA's), (Start: 125 @29349 has 7 MA's), (129, 29379), (133, 29400), (137, 29421), (145, 29460), (150, 29508), (152, 29556), (159, 29604), (170, 29655),

Gene: Aubs_54 Start: 37500, Stop: 38252, Start Num: 7

Candidate Starts for Aubs_54:

(Start: 5 @37461 has 3 MA's), (6, 37479), (Start: 7 @37500 has 1 MA's), (8, 37521), (9, 37524), (10, 37533), (11, 37536), (13, 37548), (14, 37572), (Start: 17 @37584 has 1 MA's), (23, 37602), (27, 37623), (29, 37629), (36, 37674), (52, 37728), (83, 37788), (96, 37827), (99, 37833), (126, 37914), (128, 37920), (130, 37929), (153, 38064), (154, 38070), (158, 38115), (164, 38145), (174, 38175), (180, 38193),

Gene: Avani_61 Start: 37581, Stop: 38282, Start Num: 33

Candidate Starts for Avani_61:

(22, 37551), (Start: 33 @37581 has 102 MA's), (35, 37599), (Start: 37 @37620 has 2 MA's), (42, 37641), (44, 37644), (46, 37653), (47, 37656), (54, 37677), (55, 37692), (57, 37704), (65, 37743), (68, 37749), (111, 37860), (117, 37872), (127, 37920), (132, 37947), (153, 38094), (154, 38100), (158,

38145), (164, 38175), (180, 38223),

Gene: Bartholomew_36 Start: 29343, Stop: 29744, Start Num: 124

Candidate Starts for Bartholomew_36:

(50, 29199), (56, 29232), (Start: 124 @29343 has 11 MA's), (Start: 125 @29346 has 7 MA's), (129, 29376), (133, 29397), (137, 29418), (145, 29457), (150, 29505), (152, 29553), (159, 29601), (170, 29652),

Gene: Batiatus_51 Start: 37273, Stop: 37695, Start Num: 91

Candidate Starts for Batiatus_51:

(Start: 91 @37273 has 2 MA's), (98, 37291), (106, 37312), (118, 37333), (120, 37336), (122, 37345), (123, 37348), (131, 37384), (135, 37396), (153, 37507), (154, 37513), (158, 37558), (161, 37576), (167, 37597), (175, 37627), (180, 37639),

Gene: Beakin_55 Start: 37066, Stop: 37683, Start Num: 33

Candidate Starts for Beakin_55:

(16, 37015), (18, 37024), (28, 37054), (31, 37063), (Start: 33 @37066 has 102 MA's), (35, 37084), (Start: 37 @37096 has 2 MA's), (42, 37117), (44, 37120), (46, 37129), (47, 37132), (49, 37141), (55, 37168), (61, 37198), (65, 37219), (68, 37225), (71, 37237), (127, 37297), (132, 37324), (153, 37483), (154, 37489), (158, 37534), (161, 37552), (164, 37567), (167, 37573),

Gene: BigPhil_49 Start: 33538, Stop: 34161, Start Num: 33

Candidate Starts for BigPhil_49:

(Start: 33 @33538 has 102 MA's), (35, 33556), (Start: 37 @33577 has 2 MA's), (42, 33598), (44, 33601), (46, 33610), (47, 33613), (51, 33625), (54, 33634), (55, 33649), (57, 33661), (65, 33700), (68, 33706), (71, 33718), (127, 33784), (132, 33811), (153, 33970), (154, 33976), (167, 34060), (183, 34114),

Gene: Bipolar_53 Start: 37987, Stop: 38499, Start Num: 17

Candidate Starts for Bipolar_53:

(Start: 17 @37987 has 1 MA's), (19, 37996), (27, 38026), (Start: 30 @38035 has 1 MA's), (Start: 34 @38038 has 84 MA's), (35, 38056), (Start: 37 @38077 has 2 MA's), (42, 38098), (44, 38101), (46, 38110), (47, 38113), (55, 38149), (57, 38161), (153, 38311), (154, 38317), (158, 38362), (164, 38392), (180, 38440),

Gene: Blexus_51 Start: 37239, Stop: 37844, Start Num: 33

Candidate Starts for Blexus_51:

(22, 37209), (Start: 33 @37239 has 102 MA's), (35, 37257), (Start: 37 @37269 has 2 MA's), (42, 37290), (44, 37293), (46, 37302), (47, 37305), (51, 37317), (54, 37326), (55, 37341), (61, 37371), (65, 37392), (68, 37398), (127, 37470), (132, 37497), (153, 37656), (154, 37662), (158, 37707), (164, 37737), (180, 37785),

Gene: BobaPhett_57 Start: 40029, Stop: 40682, Start Num: 33

Candidate Starts for BobaPhett_57:

(Start: 33 @40029 has 102 MA's), (35, 40047), (Start: 37 @40068 has 2 MA's), (42, 40089), (44, 40092), (46, 40101), (47, 40104), (55, 40140), (57, 40152), (127, 40275), (132, 40302), (153, 40461), (154, 40467), (161, 40530),

Gene: Bobi_56 Start: 38447, Stop: 39109, Start Num: 34

Candidate Starts for Bobi_56:

(Start: 34 @38447 has 84 MA's), (35, 38465), (Start: 37 @38486 has 2 MA's), (42, 38507), (44, 38510), (46, 38519), (47, 38522), (55, 38558), (57, 38570), (61, 38588), (83, 38645), (96, 38684), (99, 38690), (126, 38771), (128, 38777), (130, 38786), (153, 38921), (154, 38927), (158, 38972), (164,

39002), (180, 39050),

Gene: BodEinwohner17_54 Start: 37181, Stop: 37786, Start Num: 34

Candidate Starts for BodEinwohner17_54:

(26, 37151), (Start: 34 @37181 has 84 MA's), (35, 37199), (Start: 37 @37220 has 2 MA's), (41, 37235), (46, 37253), (47, 37256), (51, 37268), (55, 37292), (57, 37304), (83, 37322), (96, 37361), (99, 37367), (126, 37448), (128, 37454), (130, 37463), (153, 37598), (154, 37604), (158, 37649), (164, 37679), (180, 37727),

Gene: Boomer_58 Start: 39232, Stop: 39855, Start Num: 33

Candidate Starts for Boomer_58:

(Start: 33 @39232 has 102 MA's), (35, 39250), (Start: 37 @39271 has 2 MA's), (42, 39292), (44, 39295), (46, 39304), (47, 39307), (51, 39319), (54, 39328), (55, 39343), (57, 39355), (65, 39394), (68, 39400), (71, 39412), (127, 39478), (132, 39505), (153, 39664), (154, 39670), (167, 39754), (183, 39808),

Gene: Brocalys_49 Start: 34514, Stop: 35161, Start Num: 33

Candidate Starts for Brocalys_49:

(25, 34484), (Start: 33 @34514 has 102 MA's), (35, 34532), (Start: 37 @34553 has 2 MA's), (42, 34574), (44, 34577), (46, 34586), (47, 34589), (55, 34625), (57, 34637), (65, 34676), (127, 34754), (132, 34781), (153, 34940), (154, 34946), (161, 35009),

Gene: Bubbles123_51 Start: 37879, Stop: 38607, Start Num: 34

Candidate Starts for Bubbles123_51:

(Start: 34 @37879 has 84 MA's), (35, 37897), (Start: 37 @37918 has 2 MA's), (42, 37939), (44, 37942), (46, 37951), (47, 37954), (55, 37990), (57, 38002), (78, 38122), (81, 38131), (83, 38137), (94, 38173), (104, 38197), (127, 38269), (132, 38296), (148, 38350), (153, 38419), (154, 38425), (158, 38470), (164, 38500), (180, 38548),

Gene: Burwell21_52 Start: 37612, Stop: 38259, Start Num: 33

Candidate Starts for Burwell21_52:

(25, 37582), (Start: 33 @37612 has 102 MA's), (35, 37630), (Start: 37 @37651 has 2 MA's), (44, 37675), (46, 37684), (47, 37687), (55, 37723), (57, 37735), (65, 37774), (127, 37852), (132, 37879), (153, 38038), (154, 38044), (161, 38107),

Gene: Byougenkin_51 Start: 37130, Stop: 37723, Start Num: 33

Candidate Starts for Byougenkin_51:

(Start: 33 @37130 has 102 MA's), (35, 37148), (Start: 37 @37169 has 2 MA's), (46, 37202), (47, 37205), (55, 37241), (57, 37253), (65, 37292), (127, 37370), (132, 37397), (151, 37502), (153, 37523), (154, 37529), (158, 37574), (161, 37592), (164, 37607), (167, 37613),

Gene: Cabrinians_55 Start: 37690, Stop: 38337, Start Num: 33

Candidate Starts for Cabrinians_55:

(25, 37660), (Start: 33 @37690 has 102 MA's), (35, 37708), (Start: 37 @37729 has 2 MA's), (44, 37753), (46, 37762), (47, 37765), (55, 37801), (57, 37813), (65, 37852), (127, 37930), (132, 37957), (153, 38116), (154, 38122), (161, 38185),

Gene: CaptainTrips_50 Start: 36293, Stop: 37006, Start Num: 33

Candidate Starts for CaptainTrips_50:

(Start: 33 @36293 has 102 MA's), (35, 36311), (Start: 37 @36332 has 2 MA's), (42, 36353), (44, 36356), (46, 36365), (47, 36368), (55, 36404), (57, 36416), (77, 36503), (94, 36539), (103, 36563), (127, 36635), (132, 36662), (147, 36743), (153, 36818), (154, 36824), (156, 36845), (158, 36869), (164, 36899), (180, 36947),

Gene: Cerasum_49 Start: 33556, Stop: 34179, Start Num: 33

Candidate Starts for Cerasum_49:

(Start: 33 @33556 has 102 MA's), (35, 33574), (Start: 37 @33595 has 2 MA's), (42, 33616), (44, 33619), (46, 33628), (47, 33631), (51, 33643), (54, 33652), (55, 33667), (57, 33679), (65, 33718), (68, 33724), (71, 33736), (127, 33802), (132, 33829), (153, 33988), (154, 33994), (167, 34078), (183, 34132),

Gene: Che8_56 Start: 38547, Stop: 39161, Start Num: 33

Candidate Starts for Che8_56:

(Start: 33 @38547 has 102 MA's), (35, 38565), (Start: 37 @38586 has 2 MA's), (42, 38607), (46, 38619), (47, 38622), (54, 38643), (55, 38658), (65, 38709), (68, 38715), (71, 38727), (127, 38787), (132, 38814), (153, 38961), (154, 38967), (158, 39012), (161, 39030), (164, 39045), (167, 39051),

Gene: Che9d_60 Start: 37007, Stop: 37564, Start Num: 33

Candidate Starts for Che9d_60:

(15, 36953), (Start: 33 @37007 has 102 MA's), (35, 37025), (Start: 37 @37046 has 2 MA's), (42, 37067), (44, 37070), (47, 37082), (51, 37094), (55, 37118), (57, 37130), (65, 37169), (68, 37175), (127, 37253), (132, 37280), (153, 37364), (154, 37370), (158, 37415), (161, 37433), (164, 37448), (167, 37454),

Gene: Chevrolet_60 Start: 38681, Stop: 39343, Start Num: 34

Candidate Starts for Chevrolet_60:

(Start: 34 @38681 has 84 MA's), (35, 38699), (Start: 37 @38720 has 2 MA's), (42, 38741), (44, 38744), (46, 38753), (47, 38756), (55, 38792), (57, 38804), (61, 38822), (65, 38843), (68, 38849), (83, 38879), (96, 38918), (99, 38924), (126, 39005), (128, 39011), (130, 39020), (153, 39155), (154, 39161), (158, 39206), (164, 39236), (180, 39284),

Gene: Chuckly_56 Start: 38038, Stop: 38685, Start Num: 33

Candidate Starts for Chuckly_56:

(Start: 33 @38038 has 102 MA's), (35, 38056), (Start: 37 @38077 has 2 MA's), (42, 38098), (44, 38101), (46, 38110), (47, 38113), (55, 38149), (61, 38179), (65, 38200), (68, 38206), (71, 38218), (127, 38278), (132, 38305), (153, 38464), (154, 38470), (161, 38533),

Gene: Clifton_49 Start: 34865, Stop: 35512, Start Num: 33

Candidate Starts for Clifton_49:

(25, 34835), (Start: 33 @34865 has 102 MA's), (35, 34883), (Start: 37 @34904 has 2 MA's), (42, 34925), (44, 34928), (46, 34937), (47, 34940), (55, 34976), (57, 34988), (65, 35027), (127, 35105), (132, 35132), (153, 35291), (154, 35297), (161, 35360),

Gene: Coco12_52 Start: 37613, Stop: 38236, Start Num: 33

Candidate Starts for Coco12_52:

(Start: 33 @37613 has 102 MA's), (35, 37631), (Start: 37 @37652 has 2 MA's), (42, 37673), (44, 37676), (46, 37685), (47, 37688), (51, 37700), (54, 37709), (55, 37724), (57, 37736), (65, 37775), (68, 37781), (71, 37793), (127, 37859), (132, 37886), (153, 38045), (154, 38051), (167, 38135), (183, 38189),

Gene: Cornie_48 Start: 35673, Stop: 36353, Start Num: 34

Candidate Starts for Cornie_48:

(Start: 34 @35673 has 84 MA's), (35, 35691), (Start: 37 @35712 has 2 MA's), (42, 35733), (44, 35736), (46, 35745), (47, 35748), (55, 35784), (57, 35796), (71, 35853), (114, 35961), (127, 36015), (132, 36042), (148, 36096), (153, 36165), (154, 36171), (158, 36216), (164, 36246), (180, 36294),

Gene: Cornucopia_56 Start: 38383, Stop: 38988, Start Num: 34

Candidate Starts for Cornucopia_56:

(Start: 34 @38383 has 84 MA's), (35, 38401), (Start: 37 @38422 has 2 MA's), (42, 38443), (44, 38446), (46, 38455), (47, 38458), (51, 38470), (55, 38494), (57, 38506), (83, 38524), (96, 38563), (99, 38569), (126, 38650), (128, 38656), (130, 38665), (153, 38800), (154, 38806), (158, 38851), (164, 38881), (180, 38929),

Gene: Crumble_49 Start: 33626, Stop: 34273, Start Num: 33

Candidate Starts for Crumble_49:

(25, 33596), (Start: 33 @33626 has 102 MA's), (35, 33644), (Start: 37 @33665 has 2 MA's), (44, 33689), (46, 33698), (47, 33701), (55, 33737), (57, 33749), (65, 33788), (127, 33866), (132, 33893), (153, 34052), (154, 34058), (161, 34121),

Gene: DLane_49 Start: 36378, Stop: 37049, Start Num: 33

Candidate Starts for DLane_49:

(Start: 33 @36378 has 102 MA's), (35, 36396), (Start: 37 @36417 has 2 MA's), (42, 36438), (44, 36441), (46, 36450), (47, 36453), (55, 36489), (57, 36501), (71, 36558), (95, 36666), (127, 36720), (132, 36747), (153, 36870), (154, 36876), (171, 36960), (185, 37002),

Gene: DRBy19_57 Start: 38817, Stop: 39434, Start Num: 34

Candidate Starts for DRBy19_57:

(Start: 34 @38817 has 84 MA's), (35, 38835), (Start: 37 @38856 has 2 MA's), (42, 38877), (44, 38880), (46, 38889), (47, 38892), (51, 38904), (55, 38928), (57, 38940), (83, 38958), (96, 38997), (99, 39003), (126, 39084), (128, 39090), (130, 39099), (153, 39234), (154, 39240), (158, 39285), (161, 39303), (164, 39318), (167, 39324),

Gene: DaWorst_55 Start: 38273, Stop: 38734, Start Num: 34

Candidate Starts for DaWorst_55:

(Start: 34 @38273 has 84 MA's), (35, 38291), (Start: 37 @38312 has 2 MA's), (42, 38333), (44, 38336), (46, 38345), (47, 38348), (55, 38384), (57, 38396), (153, 38546), (154, 38552), (158, 38597), (164, 38627), (180, 38675),

Gene: DaddyRickover_53 Start: 37900, Stop: 38478, Start Num: 34

Candidate Starts for DaddyRickover_53:

(Start: 34 @37900 has 84 MA's), (35, 37918), (42, 37960), (47, 37975), (54, 37996), (55, 38011), (57, 38023), (61, 38041), (65, 38062), (68, 38068), (127, 38140), (132, 38167), (148, 38221), (153, 38290), (154, 38296), (158, 38341), (164, 38371), (174, 38401), (180, 38419),

Gene: Daenerys_48 Start: 35908, Stop: 36597, Start Num: 33

Candidate Starts for Daenerys_48:

(22, 35878), (Start: 33 @35908 has 102 MA's), (35, 35926), (Start: 37 @35947 has 2 MA's), (42, 35968), (44, 35971), (46, 35980), (47, 35983), (51, 35995), (55, 36019), (57, 36031), (94, 36151), (127, 36223), (132, 36250), (153, 36409), (154, 36415), (158, 36460), (164, 36490), (180, 36538),

Gene: Dante_54 Start: 37263, Stop: 38090, Start Num: 33

Candidate Starts for Dante_54:

(Start: 33 @37263 has 102 MA's), (35, 37281), (Start: 37 @37302 has 2 MA's), (44, 37326), (46, 37335), (47, 37338), (55, 37374), (57, 37386), (65, 37425), (78, 37506), (80, 37533), (127, 37725), (132, 37752), (153, 37911), (154, 37917), (167, 38001), (183, 38043),

Gene: DeadP_59 Start: 39156, Stop: 39872, Start Num: 34

Candidate Starts for DeadP_59:

(Start: 34 @39156 has 84 MA's), (35, 39174), (41, 39210), (42, 39216), (45, 39231), (46, 39237), (47, 39252), (51, 39264), (54, 39273), (55, 39288), (60, 39312), (105, 39450), (116, 39462), (127, 39510), (132, 39537), (153, 39684), (154, 39690), (158, 39735), (161, 39753), (167, 39774), (174, 39804), (178, 39816),

Gene: Deb65_49 Start: 35877, Stop: 36566, Start Num: 33

Candidate Starts for Deb65_49:

(22, 35847), (Start: 33 @35877 has 102 MA's), (35, 35895), (Start: 37 @35916 has 2 MA's), (42, 35937), (44, 35940), (46, 35949), (47, 35952), (51, 35964), (55, 35988), (57, 36000), (94, 36120), (127, 36192), (132, 36219), (153, 36378), (154, 36384), (158, 36429), (164, 36459), (180, 36507),

Gene: Demsculpinboyz_63 Start: 37137, Stop: 37874, Start Num: 33

Candidate Starts for Demsculpinboyz_63:

(Start: 33 @37137 has 102 MA's), (35, 37155), (Start: 37 @37176 has 2 MA's), (42, 37197), (44, 37200), (46, 37209), (47, 37212), (55, 37248), (57, 37260), (78, 37380), (79, 37395), (80, 37407), (89, 37431), (97, 37455), (115, 37476), (127, 37527), (132, 37554), (143, 37605), (153, 37674), (154, 37680), (158, 37725), (161, 37743), (164, 37758), (167, 37764),

Gene: DillTech15_50 Start: 36028, Stop: 36630, Start Num: 33

Candidate Starts for DillTech15_50:

(22, 35998), (Start: 33 @36028 has 102 MA's), (35, 36046), (Start: 37 @36067 has 2 MA's), (41, 36082), (46, 36100), (47, 36103), (55, 36139), (57, 36151), (61, 36169), (65, 36190), (127, 36268), (132, 36295), (153, 36442), (154, 36448), (158, 36493), (160, 36508), (164, 36523), (180, 36571),

Gene: DirtMcgirt_53 Start: 36388, Stop: 36972, Start Num: 34

Candidate Starts for DirtMcgirt_53:

(Start: 34 @36388 has 84 MA's), (35, 36406), (Start: 37 @36427 has 2 MA's), (42, 36448), (44, 36451), (46, 36460), (47, 36463), (55, 36499), (57, 36511), (127, 36634), (132, 36661), (148, 36715), (153, 36784), (154, 36790), (158, 36835), (164, 36865), (180, 36913),

Gene: Donovan_37 Start: 29365, Stop: 29763, Start Num: 125

Candidate Starts for Donovan_37:

(50, 29218), (56, 29251), (Start: 124 @29362 has 11 MA's), (Start: 125 @29365 has 7 MA's), (129, 29395), (133, 29416), (137, 29437), (145, 29476), (150, 29524), (152, 29572), (159, 29620),

Gene: Doomphist_53 Start: 38418, Stop: 39137, Start Num: 34

Candidate Starts for Doomphist_53:

(Start: 34 @38418 has 84 MA's), (35, 38436), (Start: 37 @38457 has 2 MA's), (42, 38478), (44, 38481), (46, 38490), (47, 38493), (55, 38529), (57, 38541), (61, 38559), (65, 38580), (68, 38586), (76, 38655), (82, 38694), (87, 38706), (102, 38754), (127, 38829), (132, 38856), (153, 38949), (154, 38955), (158, 39000), (164, 39030), (180, 39078),

Gene: DosHalletts_56 Start: 38883, Stop: 39794, Start Num: 34

Candidate Starts for DosHalletts_56:

(Start: 34 @38883 has 84 MA's), (35, 38901), (38, 38925), (40, 38934), (48, 38982), (57, 39021), (59, 39030), (63, 39063), (69, 39096), (70, 39099), (74, 39144), (75, 39156), (113, 39333), (139, 39462), (149, 39549), (153, 39606), (158, 39657), (164, 39687), (177, 39735),

Gene: DotProduct_49 Start: 36494, Stop: 37054, Start Num: 39

Candidate Starts for DotProduct_49:

(Start: 39 @36494 has 2 MA's), (43, 36509), (44, 36512), (46, 36521), (47, 36524), (51, 36536), (55, 36560), (57, 36572), (83, 36590), (96, 36629), (99, 36635), (126, 36716), (128, 36722), (130, 36731), (153, 36866), (154, 36872), (158, 36917), (164, 36947), (180, 36995),

Gene: Doug_56 Start: 38539, Stop: 39000, Start Num: 34

Candidate Starts for Doug_56:

(Start: 34 @38539 has 84 MA's), (35, 38557), (Start: 37 @38578 has 2 MA's), (42, 38599), (44, 38602), (46, 38611), (47, 38614), (55, 38650), (57, 38662), (153, 38812), (154, 38818), (158, 38863), (164, 38893), (180, 38941),

Gene: Drago_52 Start: 36391, Stop: 36975, Start Num: 34

Candidate Starts for Drago_52:

(Start: 34 @36391 has 84 MA's), (35, 36409), (Start: 37 @36430 has 2 MA's), (42, 36451), (44, 36454), (46, 36463), (47, 36466), (55, 36502), (57, 36514), (127, 36637), (132, 36664), (148, 36718), (153, 36787), (154, 36793), (158, 36838), (164, 36868), (180, 36916),

Gene: Dynamo_37 Start: 29754, Stop: 30152, Start Num: 125

Candidate Starts for Dynamo_37:

(50, 29607), (56, 29640), (Start: 124 @29751 has 11 MA's), (Start: 125 @29754 has 7 MA's), (129, 29784), (133, 29805), (137, 29826), (145, 29865), (150, 29913), (152, 29961), (159, 30009), (170, 30060),

Gene: Eish_58 Start: 38625, Stop: 39248, Start Num: 33

Candidate Starts for Eish_58:

(Start: 33 @38625 has 102 MA's), (35, 38643), (Start: 37 @38664 has 2 MA's), (42, 38685), (44, 38688), (46, 38697), (47, 38700), (51, 38712), (54, 38721), (55, 38736), (57, 38748), (65, 38787), (68, 38793), (71, 38805), (127, 38871), (132, 38898), (153, 39057), (154, 39063), (167, 39147),

Gene: EleanorGeorge_52 Start: 36852, Stop: 37499, Start Num: 33

Candidate Starts for EleanorGeorge_52:

(Start: 33 @36852 has 102 MA's), (Start: 37 @36891 has 2 MA's), (44, 36915), (46, 36924), (47, 36927), (55, 36963), (57, 36975), (65, 37014), (127, 37092), (132, 37119), (153, 37278), (154, 37284), (161, 37347),

Gene: Emma_53 Start: 36635, Stop: 37219, Start Num: 34

Candidate Starts for Emma_53:

(Start: 34 @36635 has 84 MA's), (35, 36653), (Start: 37 @36674 has 2 MA's), (42, 36695), (44, 36698), (46, 36707), (47, 36710), (55, 36746), (57, 36758), (61, 36776), (127, 36881), (132, 36908), (148, 36962), (153, 37031), (154, 37037), (158, 37082), (161, 37100), (167, 37121), (175, 37151), (180, 37163),

Gene: Empress_52 Start: 37322, Stop: 38011, Start Num: 33

Candidate Starts for Empress_52:

(22, 37292), (Start: 33 @37322 has 102 MA's), (35, 37340), (Start: 37 @37361 has 2 MA's), (42, 37382), (44, 37385), (46, 37394), (47, 37397), (51, 37409), (55, 37433), (57, 37445), (94, 37565), (127, 37637), (132, 37664), (153, 37823), (154, 37829), (158, 37874), (164, 37904), (180, 37952),

Gene: Enby_54 Start: 35779, Stop: 36441, Start Num: 34

Candidate Starts for Enby_54:

(Start: 34 @35779 has 84 MA's), (35, 35797), (Start: 37 @35818 has 2 MA's), (42, 35839), (44, 35842), (46, 35851), (47, 35854), (55, 35890), (57, 35902), (61, 35920), (65, 35941), (68, 35947), (83, 35977), (96, 36016), (99, 36022), (126, 36103), (128, 36109), (130, 36118), (153, 36253), (154, 36259), (158, 36304), (164, 36334), (174, 36364), (180, 36382),

Gene: Estave1_56 Start: 37990, Stop: 38661, Start Num: 32

Candidate Starts for Estave1_56:

(Start: 32 @37990 has 5 MA's), (35, 38008), (Start: 37 @38029 has 2 MA's), (42, 38050), (44, 38053), (46, 38062), (47, 38065), (54, 38086), (55, 38101), (60, 38125), (105, 38263), (116, 38275), (127, 38323), (132, 38350), (142, 38404), (153, 38473), (154, 38479), (158, 38524), (161, 38542), (167, 38563), (174, 38593), (178, 38605),

Gene: Fancypants_56 Start: 38391, Stop: 38969, Start Num: 32

Candidate Starts for Fancypants_56:

(Start: 32 @38391 has 5 MA's), (35, 38409), (Start: 37 @38430 has 2 MA's), (42, 38451), (44, 38454), (46, 38463), (47, 38466), (51, 38478), (55, 38502), (57, 38514), (61, 38532), (65, 38553), (68, 38559), (132, 38658), (153, 38778), (154, 38784), (171, 38868),

Gene: Fastidio_53 Start: 36175, Stop: 36777, Start Num: 33

Candidate Starts for Fastidio_53:

(22, 36145), (Start: 33 @36175 has 102 MA's), (35, 36193), (Start: 37 @36214 has 2 MA's), (41, 36229), (46, 36247), (47, 36250), (55, 36286), (57, 36298), (61, 36316), (65, 36337), (127, 36415), (132, 36442), (153, 36589), (154, 36595), (158, 36640), (160, 36655), (164, 36670), (180, 36718),

Gene: Filuzino_51 Start: 36320, Stop: 36742, Start Num: 91

Candidate Starts for Filuzino_51:

(Start: 91 @36320 has 2 MA's), (98, 36338), (106, 36359), (118, 36380), (120, 36383), (122, 36392), (123, 36395), (131, 36431), (135, 36443), (153, 36554), (154, 36560), (158, 36605), (161, 36623), (167, 36644), (175, 36674), (180, 36686),

Gene: Firehouse51_54 Start: 40200, Stop: 40946, Start Num: 34

Candidate Starts for Firehouse51_54:

(Start: 34 @40200 has 84 MA's), (35, 40218), (Start: 37 @40239 has 2 MA's), (44, 40263), (49, 40284), (55, 40311), (57, 40323), (65, 40362), (68, 40368), (76, 40437), (82, 40476), (87, 40488), (102, 40536), (127, 40611), (132, 40638), (148, 40689), (153, 40758), (154, 40764), (158, 40809), (164, 40839), (174, 40869), (180, 40887),

Gene: FirstPlacePfu_37 Start: 29378, Stop: 29776, Start Num: 125

Candidate Starts for FirstPlacePfu_37:

(50, 29231), (56, 29264), (Start: 124 @29375 has 11 MA's), (Start: 125 @29378 has 7 MA's), (129, 29408), (133, 29429), (137, 29450), (145, 29489), (150, 29537), (152, 29585), (159, 29633), (170, 29684),

Gene: Fishburne_37 Start: 29343, Stop: 29744, Start Num: 124

Candidate Starts for Fishburne_37:

(50, 29199), (56, 29232), (Start: 124 @29343 has 11 MA's), (Start: 125 @29346 has 7 MA's), (129, 29376), (133, 29397), (137, 29418), (145, 29457), (150, 29505), (152, 29553), (159, 29601), (170, 29652),

Gene: Flathead_53 Start: 37749, Stop: 38234, Start Num: 34

Candidate Starts for Flathead_53:

(Start: 34 @37749 has 84 MA's), (35, 37767), (Start: 37 @37788 has 2 MA's), (42, 37809), (44, 37812), (46, 37821), (47, 37824), (55, 37860), (57, 37872), (65, 37911), (148, 37974), (153, 38046), (158, 38097), (161, 38115), (167, 38136), (175, 38166), (180, 38178),

Gene: Florinda_65 Start: 39887, Stop: 40492, Start Num: 33

Candidate Starts for Florinda_65:

(22, 39857), (Start: 33 @39887 has 102 MA's), (35, 39905), (Start: 37 @39926 has 2 MA's), (42, 39947), (44, 39950), (46, 39959), (47, 39962), (51, 39974), (54, 39983), (55, 39998), (57, 40010), (65, 40049), (68, 40055), (132, 40154), (153, 40301), (154, 40307), (158, 40352), (180, 40433),

Gene: FreddyB_55 Start: 36538, Stop: 37185, Start Num: 33

Candidate Starts for FreddyB_55:

(25, 36508), (Start: 33 @36538 has 102 MA's), (35, 36556), (Start: 37 @36577 has 2 MA's), (44, 36601), (46, 36610), (47, 36613), (55, 36649), (57, 36661), (65, 36700), (127, 36778), (132, 36805), (153, 36964), (154, 36970), (161, 37033),

Gene: Fruitloop_51 Start: 37994, Stop: 38665, Start Num: 33

Candidate Starts for Fruitloop_51:

(Start: 33 @37994 has 102 MA's), (35, 38012), (Start: 37 @38033 has 2 MA's), (42, 38054), (44, 38057), (46, 38066), (47, 38069), (55, 38105), (57, 38117), (71, 38174), (95, 38282), (127, 38336), (132, 38363), (153, 38486), (154, 38492), (171, 38576), (185, 38618),

Gene: Galactic_53 Start: 37613, Stop: 38224, Start Num: 33

Candidate Starts for Galactic_53:

(25, 37583), (Start: 33 @37613 has 102 MA's), (35, 37631), (Start: 37 @37652 has 2 MA's), (42, 37673), (44, 37676), (46, 37685), (47, 37688), (55, 37724), (57, 37736), (65, 37775), (68, 37781), (127, 37853), (132, 37880), (153, 38003), (154, 38009), (161, 38072),

Gene: Gandalph_56 Start: 37657, Stop: 38280, Start Num: 33

Candidate Starts for Gandalph_56:

(Start: 33 @37657 has 102 MA's), (35, 37675), (Start: 37 @37696 has 2 MA's), (42, 37717), (44, 37720), (46, 37729), (47, 37732), (51, 37744), (54, 37753), (55, 37768), (57, 37780), (65, 37819), (68, 37825), (71, 37837), (127, 37903), (132, 37930), (153, 38089), (154, 38095), (167, 38179), (183, 38233),

Gene: Geralt_49 Start: 35876, Stop: 36565, Start Num: 33

Candidate Starts for Geralt_49:

(22, 35846), (Start: 33 @35876 has 102 MA's), (35, 35894), (Start: 37 @35915 has 2 MA's), (42, 35936), (44, 35939), (46, 35948), (47, 35951), (51, 35963), (55, 35987), (57, 35999), (94, 36119), (127, 36191), (132, 36218), (153, 36377), (154, 36383), (158, 36428), (164, 36458), (180, 36506),

Gene: GigiOuiOui_50 Start: 36639, Stop: 37199, Start Num: 39

Candidate Starts for GigiOuiOui_50:

(Start: 39 @36639 has 2 MA's), (43, 36654), (44, 36657), (46, 36666), (47, 36669), (51, 36681), (55, 36705), (57, 36717), (83, 36735), (96, 36774), (99, 36780), (126, 36861), (128, 36867), (130, 36876), (153, 37011), (154, 37017), (158, 37062), (164, 37092), (180, 37140),

Gene: Girafales_63 Start: 39600, Stop: 40283, Start Num: 34

Candidate Starts for Girafales_63:

(Start: 17 @39549 has 1 MA's), (19, 39558), (27, 39588), (Start: 30 @39597 has 1 MA's), (Start: 34 @39600 has 84 MA's), (35, 39618), (Start: 37 @39639 has 2 MA's), (42, 39660), (44, 39663), (46, 39672), (47, 39675), (51, 39687), (55, 39711), (57, 39723), (114, 39888), (127, 39942), (132, 39969), (153, 40092), (154, 40098), (158, 40143), (180, 40224),

Gene: Girr_52 Start: 37416, Stop: 38063, Start Num: 33

Candidate Starts for Girr_52:

(25, 37386), (Start: 33 @37416 has 102 MA's), (35, 37434), (Start: 37 @37455 has 2 MA's), (42, 37476), (44, 37479), (46, 37488), (47, 37491), (51, 37503), (54, 37512), (55, 37527), (61, 37557), (65, 37578), (68, 37584), (127, 37656), (132, 37683), (153, 37842), (154, 37848), (161, 37911),

Gene: Gorge_58 Start: 38905, Stop: 39702, Start Num: 33

Candidate Starts for Gorge_58:

(Start: 33 @38905 has 102 MA's), (35, 38923), (Start: 37 @38944 has 2 MA's), (42, 38965), (44, 38968), (46, 38977), (47, 38980), (55, 39016), (57, 39028), (61, 39046), (Start: 91 @39148 has 2 MA's), (93, 39157), (97, 39163), (108, 39199), (110, 39223), (127, 39295), (132, 39322), (153, 39481), (154, 39487), (161, 39550),

Gene: Guppsters_54 Start: 36848, Stop: 37258, Start Num: 34

Candidate Starts for Guppsters_54:

(Start: 34 @36848 has 84 MA's), (35, 36866), (Start: 37 @36887 has 2 MA's), (42, 36908), (44, 36911), (46, 36920), (47, 36923), (55, 36959), (57, 36971), (153, 37070), (154, 37076), (158, 37121), (164, 37151), (174, 37181), (180, 37199),

Gene: HUHilltop_37 Start: 29373, Stop: 29774, Start Num: 124

Candidate Starts for HUHilltop_37:

(50, 29229), (56, 29262), (Start: 124 @29373 has 11 MA's), (Start: 125 @29376 has 7 MA's), (129, 29406), (133, 29427), (137, 29448), (145, 29487), (150, 29535), (152, 29583), (159, 29631),

Gene: Hades_54 Start: 37504, Stop: 38343, Start Num: 33

Candidate Starts for Hades_54:

(Start: 33 @37504 has 102 MA's), (35, 37522), (Start: 37 @37543 has 2 MA's), (42, 37564), (44, 37567), (46, 37576), (47, 37579), (51, 37591), (55, 37615), (57, 37627), (61, 37645), (65, 37666), (78, 37747), (80, 37774), (127, 37966), (132, 37993), (153, 38152), (154, 38158), (167, 38242),

Gene: Hamulus_54 Start: 38023, Stop: 38607, Start Num: 34

Candidate Starts for Hamulus_54:

(Start: 34 @38023 has 84 MA's), (35, 38041), (Start: 37 @38062 has 2 MA's), (42, 38083), (44, 38086), (46, 38095), (47, 38098), (55, 38134), (57, 38146), (127, 38269), (132, 38296), (148, 38350), (153, 38419), (154, 38425), (158, 38470), (161, 38488), (167, 38509), (180, 38551),

Gene: Harley_55 Start: 37379, Stop: 38041, Start Num: 34

Candidate Starts for Harley_55:

(Start: 34 @37379 has 84 MA's), (35, 37397), (Start: 37 @37418 has 2 MA's), (42, 37439), (44, 37442), (46, 37451), (47, 37454), (55, 37490), (57, 37502), (61, 37520), (83, 37577), (96, 37616), (99, 37622), (126, 37703), (128, 37709), (130, 37718), (153, 37853), (154, 37859), (158, 37904), (164, 37934), (180, 37982),

Gene: Hegedechwinu_53 Start: 35958, Stop: 36644, Start Num: 34

Candidate Starts for Hegedechwinu_53:

(Start: 17 @35907 has 1 MA's), (19, 35916), (27, 35946), (Start: 30 @35955 has 1 MA's), (Start: 34 @35958 has 84 MA's), (35, 35976), (Start: 37 @35988 has 2 MA's), (42, 36009), (44, 36012), (46, 36021), (47, 36024), (49, 36033), (55, 36060), (57, 36072), (61, 36090), (78, 36156), (81, 36165), (83, 36171), (94, 36207), (104, 36231), (127, 36303), (132, 36330), (148, 36384), (153, 36456), (158, 36507), (161, 36525), (169, 36546), (178, 36576), (182, 36588),

Gene: IMpilo_50 Start: 35763, Stop: 36185, Start Num: 91

Candidate Starts for IMpilo_50:

(Start: 91 @35763 has 2 MA's), (98, 35781), (106, 35802), (118, 35823), (120, 35826), (122, 35835), (123, 35838), (131, 35874), (135, 35886), (153, 35997), (154, 36003), (158, 36048), (161, 36066), (167, 36087), (175, 36117), (180, 36129),

Gene: lbOuu_55 Start: 38158, Stop: 38736, Start Num: 34

Candidate Starts for lbOuu_55:

(23, 38128), (Start: 34 @38158 has 84 MA's), (35, 38176), (Start: 37 @38197 has 2 MA's), (41, 38212), (46, 38230), (47, 38233), (55, 38269), (61, 38299), (65, 38320), (68, 38326), (127, 38398),

(132, 38425), (153, 38548), (154, 38554), (158, 38599), (164, 38629), (180, 38677),

Gene: lbhubesi_53 Start: 36972, Stop: 37550, Start Num: 34

Candidate Starts for lbhubesi_53:

(Start: 34 @36972 has 84 MA's), (35, 36990), (Start: 37 @37011 has 2 MA's), (42, 37032), (44, 37035), (46, 37044), (47, 37047), (55, 37083), (57, 37095), (65, 37134), (68, 37140), (127, 37212), (132, 37239), (148, 37293), (153, 37362), (154, 37368), (158, 37413), (164, 37443), (180, 37491),

Gene: Inventum_48 Start: 36392, Stop: 37033, Start Num: 33

Candidate Starts for Inventum_48:

(Start: 33 @36392 has 102 MA's), (35, 36410), (42, 36452), (44, 36455), (46, 36464), (47, 36467), (51, 36479), (55, 36503), (57, 36515), (71, 36572), (95, 36680), (127, 36734), (132, 36761), (153, 36854), (154, 36860), (167, 36944), (183, 36986),

Gene: IrishSherpFalk_54 Start: 38745, Stop: 39116, Start Num: 37

Candidate Starts for IrishSherpFalk_54:

(Start: 34 @38706 has 84 MA's), (35, 38724), (Start: 37 @38745 has 2 MA's), (42, 38766), (44, 38769), (46, 38778), (47, 38781), (55, 38817), (57, 38829), (153, 38928), (154, 38934), (158, 38979), (161, 38997), (167, 39018), (175, 39048), (180, 39060),

Gene: Jabbawokkie_67 Start: 38459, Stop: 39289, Start Num: 33

Candidate Starts for Jabbawokkie_67:

(Start: 33 @38459 has 102 MA's), (35, 38477), (Start: 37 @38498 has 2 MA's), (42, 38519), (44, 38522), (46, 38531), (47, 38534), (55, 38570), (57, 38582), (65, 38621), (78, 38702), (80, 38729), (127, 38921), (132, 38948), (153, 39107), (154, 39113), (156, 39134), (167, 39197), (183, 39242),

Gene: JalFarm20_65 Start: 40779, Stop: 41264, Start Num: 34

Candidate Starts for JalFarm20_65:

(Start: 34 @40779 has 84 MA's), (35, 40797), (Start: 37 @40818 has 2 MA's), (42, 40839), (44, 40842), (46, 40851), (47, 40854), (55, 40890), (57, 40902), (65, 40941), (148, 41004), (153, 41076), (158, 41127), (161, 41145), (167, 41166), (175, 41196), (180, 41208),

Gene: Jarcob_54 Start: 37658, Stop: 38305, Start Num: 33

Candidate Starts for Jarcob_54:

(25, 37628), (Start: 33 @37658 has 102 MA's), (35, 37676), (Start: 37 @37697 has 2 MA's), (44, 37721), (46, 37730), (47, 37733), (55, 37769), (57, 37781), (65, 37820), (127, 37898), (132, 37925), (153, 38084), (154, 38090), (161, 38153),

Gene: Jebeks_38 Start: 29328, Stop: 29729, Start Num: 124

Candidate Starts for Jebeks_38:

(50, 29184), (56, 29217), (Start: 124 @29328 has 11 MA's), (Start: 125 @29331 has 7 MA's), (129, 29361), (133, 29382), (137, 29403), (145, 29442), (150, 29490), (152, 29538), (159, 29586), (170, 29637),

Gene: Jinglebell_58 Start: 39416, Stop: 40003, Start Num: 33

Candidate Starts for Jinglebell_58:

(25, 39386), (Start: 33 @39416 has 102 MA's), (35, 39434), (Start: 37 @39455 has 2 MA's), (47, 39491), (55, 39527), (57, 39539), (61, 39557), (65, 39578), (71, 39596), (127, 39662), (132, 39689), (153, 39812), (154, 39818), (185, 39956),

Gene: Job42_56 Start: 39633, Stop: 40247, Start Num: 33

Candidate Starts for Job42_56:

(Start: 33 @39633 has 102 MA's), (35, 39651), (Start: 37 @39672 has 2 MA's), (42, 39693), (44, 39696), (46, 39705), (47, 39708), (51, 39720), (54, 39729), (55, 39744), (61, 39774), (65, 39795), (68, 39801), (127, 39873), (132, 39900), (153, 40059), (154, 40065), (158, 40110), (164, 40140), (180, 40188),

Gene: JoeyJr_49 Start: 36076, Stop: 36765, Start Num: 33

Candidate Starts for JoeyJr_49:

(22, 36046), (Start: 33 @36076 has 102 MA's), (35, 36094), (Start: 37 @36115 has 2 MA's), (42, 36136), (44, 36139), (46, 36148), (47, 36151), (51, 36163), (55, 36187), (57, 36199), (94, 36319), (127, 36391), (132, 36418), (153, 36577), (154, 36583), (158, 36628), (164, 36658), (180, 36706),

Gene: Juice456_54 Start: 38793, Stop: 39401, Start Num: 37

Candidate Starts for Juice456_54:

(Start: 33 @38754 has 102 MA's), (Start: 37 @38793 has 2 MA's), (44, 38817), (46, 38826), (47, 38829), (55, 38865), (57, 38877), (65, 38916), (127, 38994), (132, 39021), (153, 39180), (154, 39186), (161, 39249),

Gene: Juniper1_51 Start: 36864, Stop: 37370, Start Num: 34

Candidate Starts for Juniper1_51:

(Start: 34 @36864 has 84 MA's), (35, 36882), (Start: 37 @36903 has 2 MA's), (42, 36924), (44, 36927), (46, 36936), (47, 36939), (51, 36951), (54, 36960), (55, 36975), (57, 36987), (68, 37032), (71, 37044), (132, 37131), (153, 37179), (171, 37269), (185, 37323),

Gene: Karhdo_51 Start: 37236, Stop: 37814, Start Num: 34

Candidate Starts for Karhdo_51:

(23, 37206), (Start: 34 @37236 has 84 MA's), (35, 37254), (Start: 37 @37275 has 2 MA's), (41, 37290), (46, 37308), (47, 37311), (55, 37347), (57, 37359), (61, 37377), (65, 37398), (127, 37476), (132, 37503), (153, 37626), (158, 37677), (164, 37707), (180, 37755),

Gene: Kari_37 Start: 29340, Stop: 29741, Start Num: 124

Candidate Starts for Kari_37:

(50, 29196), (56, 29229), (Start: 124 @29340 has 11 MA's), (Start: 125 @29343 has 7 MA's), (129, 29373), (133, 29394), (137, 29415), (145, 29454), (150, 29502), (152, 29550), (159, 29598), (170, 29649),

Gene: Kenuha5_51 Start: 36362, Stop: 37102, Start Num: 34

Candidate Starts for Kenuha5_51:

(Start: 34 @36362 has 84 MA's), (35, 36380), (Start: 37 @36401 has 2 MA's), (44, 36425), (49, 36446), (55, 36473), (57, 36485), (61, 36503), (65, 36524), (68, 36530), (76, 36599), (82, 36638), (87, 36650), (102, 36698), (127, 36773), (132, 36800), (153, 36923), (154, 36929), (168, 37013), (184, 37055),

Gene: Kersh_55 Start: 39189, Stop: 39803, Start Num: 33

Candidate Starts for Kersh_55:

(22, 39159), (Start: 33 @39189 has 102 MA's), (35, 39207), (Start: 37 @39228 has 2 MA's), (42, 39249), (44, 39252), (46, 39261), (47, 39264), (51, 39276), (54, 39285), (55, 39300), (61, 39330), (65, 39351), (68, 39357), (127, 39429), (132, 39456), (153, 39615), (154, 39621), (158, 39666), (164, 39696), (180, 39744),

Gene: Kimberlium_55 Start: 39048, Stop: 39626, Start Num: 34

Candidate Starts for Kimberlium_55:

(23, 39018), (Start: 34 @39048 has 84 MA's), (35, 39066), (Start: 37 @39087 has 2 MA's), (41, 39102), (46, 39120), (47, 39123), (55, 39159), (57, 39171), (61, 39189), (65, 39210), (127, 39288),

(132, 39315), (153, 39438), (158, 39489), (160, 39504), (164, 39519), (180, 39567),

Gene: KingMidas_53 Start: 37738, Stop: 38427, Start Num: 33

Candidate Starts for KingMidas_53:

(22, 37708), (Start: 33 @37738 has 102 MA's), (35, 37756), (Start: 37 @37777 has 2 MA's), (42, 37798), (44, 37801), (46, 37810), (47, 37813), (51, 37825), (55, 37849), (57, 37861), (94, 37981), (127, 38053), (132, 38080), (153, 38239), (154, 38245), (158, 38290), (164, 38320), (180, 38368),

Gene: Kingsley_50 Start: 36346, Stop: 36969, Start Num: 33

Candidate Starts for Kingsley_50:

(Start: 33 @36346 has 102 MA's), (35, 36364), (Start: 37 @36385 has 2 MA's), (42, 36406), (44, 36409), (46, 36418), (47, 36421), (51, 36433), (54, 36442), (55, 36457), (57, 36469), (65, 36508), (68, 36514), (71, 36526), (127, 36592), (132, 36619), (153, 36778), (154, 36784), (167, 36868), (183, 36922),

Gene: Koella_48 Start: 33588, Stop: 34235, Start Num: 33

Candidate Starts for Koella_48:

(25, 33558), (Start: 33 @33588 has 102 MA's), (35, 33606), (Start: 37 @33627 has 2 MA's), (44, 33651), (46, 33660), (47, 33663), (55, 33699), (57, 33711), (65, 33750), (127, 33828), (132, 33855), (153, 34014), (154, 34020), (161, 34083),

Gene: Krakatau_51 Start: 37074, Stop: 37757, Start Num: 34

Candidate Starts for Krakatau_51:

(Start: 34 @37074 has 84 MA's), (35, 37092), (Start: 37 @37104 has 2 MA's), (42, 37125), (44, 37128), (46, 37137), (47, 37140), (55, 37176), (57, 37188), (61, 37206), (78, 37272), (81, 37281), (83, 37287), (94, 37323), (104, 37347), (127, 37419), (132, 37446), (148, 37500), (153, 37569), (154, 37575), (158, 37620), (164, 37650), (180, 37698),

Gene: KristaRAM_56 Start: 39407, Stop: 40030, Start Num: 34

Candidate Starts for KristaRAM_56:

(Start: 17 @39356 has 1 MA's), (19, 39365), (27, 39395), (Start: 30 @39404 has 1 MA's), (Start: 34 @39407 has 84 MA's), (35, 39425), (Start: 37 @39446 has 2 MA's), (42, 39467), (44, 39470), (46, 39479), (47, 39482), (51, 39494), (55, 39518), (57, 39530), (94, 39650), (127, 39722), (132, 39749), (153, 39842), (154, 39848), (158, 39893), (164, 39923), (180, 39971),

Gene: Langerak_37 Start: 29359, Stop: 29757, Start Num: 125

Candidate Starts for Langerak_37:

(50, 29212), (56, 29245), (Start: 124 @29356 has 11 MA's), (Start: 125 @29359 has 7 MA's), (129, 29389), (133, 29410), (137, 29431), (145, 29470), (150, 29518), (152, 29566), (159, 29614), (170, 29665),

Gene: LastJedi_48 Start: 34908, Stop: 35555, Start Num: 33

Candidate Starts for LastJedi_48:

(25, 34878), (Start: 33 @34908 has 102 MA's), (35, 34926), (Start: 37 @34947 has 2 MA's), (42, 34968), (44, 34971), (46, 34980), (47, 34983), (55, 35019), (57, 35031), (65, 35070), (127, 35148), (132, 35175), (153, 35334), (154, 35340), (161, 35403),

Gene: Leozinho_53 Start: 36989, Stop: 37636, Start Num: 33

Candidate Starts for Leozinho_53:

(25, 36959), (Start: 33 @36989 has 102 MA's), (35, 37007), (Start: 37 @37028 has 2 MA's), (42, 37049), (44, 37052), (46, 37061), (47, 37064), (51, 37076), (54, 37085), (55, 37100), (61, 37130), (65, 37151), (68, 37157), (127, 37229), (132, 37256), (153, 37415), (154, 37421), (161, 37484),

Gene: Leperchaun_46 Start: 35306, Stop: 35995, Start Num: 33

Candidate Starts for Leperchaun_46:

(22, 35276), (Start: 33 @35306 has 102 MA's), (35, 35324), (Start: 37 @35345 has 2 MA's), (42, 35366), (44, 35369), (46, 35378), (47, 35381), (51, 35393), (55, 35417), (57, 35429), (94, 35549), (127, 35621), (132, 35648), (153, 35807), (154, 35813), (158, 35858), (164, 35888), (180, 35936),

Gene: LilMoolah_52 Start: 37168, Stop: 37752, Start Num: 34

Candidate Starts for LilMoolah_52:

(Start: 34 @37168 has 84 MA's), (35, 37186), (Start: 37 @37207 has 2 MA's), (42, 37228), (44, 37231), (46, 37240), (47, 37243), (55, 37279), (57, 37291), (127, 37414), (132, 37441), (148, 37495), (153, 37564), (154, 37570), (158, 37615), (164, 37645), (180, 37693),

Gene: Lizziana_60 Start: 38661, Stop: 39308, Start Num: 33

Candidate Starts for Lizziana_60:

(25, 38631), (Start: 33 @38661 has 102 MA's), (35, 38679), (Start: 37 @38700 has 2 MA's), (44, 38724), (46, 38733), (47, 38736), (55, 38772), (57, 38784), (65, 38823), (127, 38901), (132, 38928), (153, 39087), (154, 39093), (161, 39156),

Gene: Llama_58 Start: 39414, Stop: 40001, Start Num: 33

Candidate Starts for Llama_58:

(25, 39384), (Start: 33 @39414 has 102 MA's), (35, 39432), (Start: 37 @39453 has 2 MA's), (47, 39489), (55, 39525), (57, 39537), (61, 39555), (65, 39576), (71, 39594), (127, 39660), (132, 39687), (153, 39810), (154, 39816), (185, 39954),

Gene: Llij_50 Start: 36545, Stop: 37129, Start Num: 34

Candidate Starts for Llij_50:

(Start: 34 @36545 has 84 MA's), (35, 36563), (Start: 37 @36584 has 2 MA's), (42, 36605), (44, 36608), (46, 36617), (47, 36620), (55, 36656), (57, 36668), (127, 36791), (132, 36818), (148, 36872), (153, 36941), (154, 36947), (158, 36992), (164, 37022), (180, 37070),

Gene: Lorde_54 Start: 35754, Stop: 36416, Start Num: 34

Candidate Starts for Lorde_54:

(Start: 34 @35754 has 84 MA's), (35, 35772), (Start: 37 @35793 has 2 MA's), (42, 35814), (44, 35817), (46, 35826), (47, 35829), (55, 35865), (57, 35877), (61, 35895), (65, 35916), (68, 35922), (83, 35952), (96, 35991), (99, 35997), (126, 36078), (128, 36084), (130, 36093), (153, 36228), (154, 36234), (158, 36279), (164, 36309), (180, 36357),

Gene: LunaBlu_56 Start: 38272, Stop: 38883, Start Num: 33

Candidate Starts for LunaBlu_56:

(25, 38242), (Start: 33 @38272 has 102 MA's), (35, 38290), (Start: 37 @38311 has 2 MA's), (42, 38332), (44, 38335), (46, 38344), (47, 38347), (55, 38383), (57, 38395), (65, 38434), (68, 38440), (127, 38512), (132, 38539), (153, 38662), (154, 38668), (161, 38731),

Gene: LunaStella_51 Start: 35924, Stop: 36715, Start Num: 5

Candidate Starts for LunaStella_51:

(1, 35873), (2, 35882), (3, 35912), (4, 35921), (Start: 5 @35924 has 3 MA's), (6, 35942), (Start: 7 @35963 has 1 MA's), (8, 35984), (9, 35987), (10, 35996), (11, 35999), (13, 36011), (14, 36035), (Start: 17 @36047 has 1 MA's), (23, 36065), (27, 36086), (29, 36092), (36, 36137), (52, 36191), (83, 36251), (96, 36290), (99, 36296), (126, 36377), (128, 36383), (130, 36392), (153, 36527), (158, 36578), (161, 36596), (164, 36608), (180, 36656),

Gene: MadMen_51 Start: 37141, Stop: 37788, Start Num: 33

Candidate Starts for MadMen_51:

(Start: 33 @37141 has 102 MA's), (35, 37159), (Start: 37 @37180 has 2 MA's), (42, 37201), (44, 37204), (46, 37213), (47, 37216), (55, 37252), (57, 37264), (61, 37282), (65, 37303), (68, 37309), (71, 37321), (127, 37381), (132, 37408), (153, 37567), (154, 37573), (161, 37636),

Gene: Madiba_51 Start: 35891, Stop: 36466, Start Num: 33

Candidate Starts for Madiba_51:

(Start: 33 @35891 has 102 MA's), (35, 35909), (Start: 37 @35930 has 2 MA's), (44, 35954), (46, 35963), (47, 35966), (55, 36002), (61, 36032), (65, 36053), (68, 36059), (127, 36131), (132, 36158), (151, 36266), (153, 36287), (154, 36293), (171, 36377), (185, 36419),

Gene: Mahavrat_51 Start: 36698, Stop: 37408, Start Num: 32

Candidate Starts for Mahavrat_51:

(Start: 32 @36698 has 5 MA's), (35, 36716), (Start: 37 @36737 has 2 MA's), (47, 36773), (51, 36785), (55, 36809), (57, 36821), (62, 36860), (66, 36878), (67, 36881), (81, 36959), (92, 36998), (100, 37010), (132, 37115), (153, 37208), (154, 37214), (158, 37259), (161, 37277), (187, 37379),

Gene: Majeke_37 Start: 29381, Stop: 29782, Start Num: 124

Candidate Starts for Majeke_37:

(50, 29237), (56, 29270), (Start: 124 @29381 has 11 MA's), (Start: 125 @29384 has 7 MA's), (129, 29414), (133, 29435), (137, 29456), (145, 29495), (150, 29543), (152, 29591), (159, 29639), (170, 29690),

Gene: Mangethe_37 Start: 29381, Stop: 29782, Start Num: 124

Candidate Starts for Mangethe_37:

(50, 29237), (56, 29270), (Start: 124 @29381 has 11 MA's), (Start: 125 @29384 has 7 MA's), (129, 29414), (133, 29435), (137, 29456), (145, 29495), (150, 29543), (152, 29591), (159, 29639), (170, 29690),

Gene: Mantra_49 Start: 36324, Stop: 36902, Start Num: 34

Candidate Starts for Mantra_49:

(23, 36294), (Start: 34 @36324 has 84 MA's), (35, 36342), (Start: 37 @36363 has 2 MA's), (41, 36378), (46, 36396), (47, 36399), (55, 36435), (57, 36447), (61, 36465), (65, 36486), (127, 36564), (132, 36591), (153, 36714), (158, 36765), (160, 36780), (164, 36795), (180, 36843),

Gene: Maravista_55 Start: 39079, Stop: 39756, Start Num: 34

Candidate Starts for Maravista_55:

(Start: 34 @39079 has 84 MA's), (35, 39097), (Start: 37 @39118 has 2 MA's), (42, 39139), (44, 39142), (46, 39151), (47, 39154), (55, 39190), (57, 39202), (61, 39220), (86, 39322), (90, 39337), (102, 39373), (115, 39397), (127, 39448), (132, 39475), (153, 39568), (154, 39574), (158, 39619), (164, 39649), (180, 39697),

Gene: Marker_54 Start: 37382, Stop: 37948, Start Num: 33

Candidate Starts for Marker_54:

(Start: 33 @37382 has 102 MA's), (35, 37400), (42, 37442), (47, 37457), (55, 37493), (57, 37505), (65, 37544), (68, 37550), (71, 37562), (127, 37628), (132, 37655), (153, 37748), (154, 37754), (158, 37799), (162, 37823), (166, 37835), (169, 37844),

Gene: Martik_54 Start: 37614, Stop: 38261, Start Num: 33

Candidate Starts for Martik_54:

(25, 37584), (Start: 33 @37614 has 102 MA's), (35, 37632), (Start: 37 @37653 has 2 MA's), (44, 37677), (46, 37686), (47, 37689), (55, 37725), (57, 37737), (65, 37776), (127, 37854), (132, 37881), (153, 38040), (154, 38046), (161, 38109),

Gene: Melissauern88_51 Start: 36531, Stop: 37214, Start Num: 34

Candidate Starts for Melissauern88_51:

(Start: 34 @36531 has 84 MA's), (35, 36549), (Start: 37 @36570 has 2 MA's), (42, 36591), (44, 36594), (46, 36603), (47, 36606), (55, 36642), (57, 36654), (71, 36711), (113, 36819), (127, 36873), (132, 36900), (148, 36954), (153, 37026), (158, 37077), (161, 37095), (167, 37116), (175, 37146), (180, 37158),

Gene: MilanaBonita_44 Start: 33238, Stop: 33918, Start Num: 34

Candidate Starts for MilanaBonita_44:

(Start: 34 @33238 has 84 MA's), (35, 33256), (Start: 37 @33277 has 2 MA's), (42, 33298), (44, 33301), (46, 33310), (47, 33313), (55, 33349), (57, 33361), (71, 33418), (114, 33526), (127, 33580), (132, 33607), (148, 33661), (153, 33730), (154, 33736), (158, 33781), (164, 33811), (180, 33859),

Gene: MilleniumForce_57 Start: 39630, Stop: 40112, Start Num: 34

Candidate Starts for MilleniumForce_57:

(Start: 34 @39630 has 84 MA's), (35, 39648), (Start: 37 @39669 has 2 MA's), (42, 39690), (44, 39693), (46, 39702), (47, 39705), (55, 39741), (57, 39753), (65, 39792), (148, 39855), (153, 39924), (154, 39930), (158, 39975), (164, 40005), (180, 40053),

Gene: MinionDave_52 Start: 37068, Stop: 37781, Start Num: 33

Candidate Starts for MinionDave_52:

(Start: 33 @37068 has 102 MA's), (35, 37086), (Start: 37 @37107 has 2 MA's), (42, 37128), (44, 37131), (46, 37140), (47, 37143), (55, 37179), (57, 37191), (77, 37278), (94, 37314), (103, 37338), (127, 37410), (132, 37437), (147, 37518), (153, 37593), (154, 37599), (156, 37620), (158, 37644), (164, 37674), (180, 37722),

Gene: Minnie_58 Start: 39392, Stop: 40183, Start Num: 5

Candidate Starts for Minnie_58:

(Start: 5 @39392 has 3 MA's), (6, 39410), (Start: 7 @39431 has 1 MA's), (8, 39452), (9, 39455), (10, 39464), (11, 39467), (13, 39479), (14, 39503), (Start: 17 @39515 has 1 MA's), (23, 39533), (27, 39554), (29, 39560), (36, 39605), (52, 39659), (83, 39719), (96, 39758), (99, 39764), (126, 39845), (128, 39851), (130, 39860), (153, 39995), (154, 40001), (158, 40046), (164, 40076), (180, 40124),

Gene: MisterCuddles_52 Start: 37416, Stop: 38063, Start Num: 33

Candidate Starts for MisterCuddles_52:

(25, 37386), (Start: 33 @37416 has 102 MA's), (35, 37434), (Start: 37 @37455 has 2 MA's), (42, 37476), (44, 37479), (46, 37488), (47, 37491), (51, 37503), (54, 37512), (55, 37527), (61, 37557), (65, 37578), (68, 37584), (127, 37656), (132, 37683), (153, 37842), (154, 37848), (161, 37911),

Gene: Modragons_57 Start: 39260, Stop: 39847, Start Num: 33

Candidate Starts for Modragons_57:

(25, 39230), (Start: 33 @39260 has 102 MA's), (35, 39278), (Start: 37 @39299 has 2 MA's), (47, 39335), (55, 39371), (57, 39383), (61, 39401), (65, 39422), (71, 39440), (127, 39506), (132, 39533), (153, 39656), (154, 39662), (185, 39800),

Gene: MooMoo_51 Start: 36852, Stop: 37634, Start Num: 34

Candidate Starts for MooMoo_51:

(Start: 34 @36852 has 84 MA's), (35, 36870), (40, 36903), (48, 36951), (57, 36990), (59, 36999), (70, 37038), (93, 37140), (119, 37239), (141, 37332), (144, 37341), (149, 37386), (153, 37443), (154, 37449), (155, 37461), (158, 37494), (179, 37578),

Gene: Moonbeam_49 Start: 36588, Stop: 37172, Start Num: 34

Candidate Starts for Moonbeam_49:

(Start: 34 @36588 has 84 MA's), (35, 36606), (Start: 37 @36627 has 2 MA's), (42, 36648), (44, 36651), (46, 36660), (47, 36663), (55, 36699), (57, 36711), (61, 36729), (127, 36834), (132, 36861), (148, 36915), (153, 36984), (154, 36990), (158, 37035), (161, 37053), (167, 37074), (175, 37104), (180, 37116),

Gene: Mova_54 Start: 36914, Stop: 37537, Start Num: 33

Candidate Starts for Mova_54:

(Start: 33 @36914 has 102 MA's), (35, 36932), (Start: 37 @36953 has 2 MA's), (42, 36974), (44, 36977), (46, 36986), (47, 36989), (51, 37001), (54, 37010), (55, 37025), (57, 37037), (65, 37076), (68, 37082), (71, 37094), (127, 37160), (132, 37187), (153, 37346), (154, 37352), (167, 37436), (183, 37490),

Gene: Mozy_63 Start: 40170, Stop: 40844, Start Num: 34

Candidate Starts for Mozy_63:

(20, 40128), (Start: 34 @40170 has 84 MA's), (35, 40188), (42, 40230), (47, 40245), (64, 40320), (72, 40359), (84, 40371), (102, 40428), (132, 40533), (148, 40584), (153, 40656), (154, 40662), (158, 40707), (164, 40737), (180, 40785),

Gene: Ms6_48 Start: 32289, Stop: 32969, Start Num: 34

Candidate Starts for Ms6_48:

(Start: 34 @32289 has 84 MA's), (35, 32307), (Start: 37 @32328 has 2 MA's), (42, 32349), (44, 32352), (46, 32361), (47, 32364), (55, 32400), (57, 32412), (61, 32430), (71, 32469), (113, 32577), (127, 32631), (132, 32658), (148, 32712), (153, 32781), (154, 32787), (158, 32832), (161, 32850), (167, 32871), (175, 32901), (180, 32913),

Gene: MulchExplorer_59 Start: 39047, Stop: 39625, Start Num: 34

Candidate Starts for MulchExplorer_59:

(23, 39017), (Start: 34 @39047 has 84 MA's), (35, 39065), (Start: 37 @39086 has 2 MA's), (41, 39101), (46, 39119), (47, 39122), (55, 39158), (57, 39170), (61, 39188), (65, 39209), (127, 39287), (132, 39314), (153, 39437), (158, 39488), (160, 39503), (164, 39518), (180, 39566),

Gene: Mutaforma13_57 Start: 39642, Stop: 40256, Start Num: 34

Candidate Starts for Mutaforma13_57:

(Start: 17 @39591 has 1 MA's), (19, 39600), (27, 39630), (Start: 30 @39639 has 1 MA's), (Start: 34 @39642 has 84 MA's), (35, 39660), (46, 39714), (47, 39717), (51, 39729), (55, 39753), (57, 39765), (132, 39909), (153, 40068), (154, 40074), (158, 40119), (164, 40149), (174, 40179), (180, 40197),

Gene: Necropolis_37 Start: 29340, Stop: 29741, Start Num: 124

Candidate Starts for Necropolis_37:

(50, 29196), (56, 29229), (Start: 124 @29340 has 11 MA's), (Start: 125 @29343 has 7 MA's), (129, 29373), (133, 29394), (137, 29415), (145, 29454), (150, 29502), (152, 29550), (159, 29598), (170, 29649),

Gene: Nimbo_48 Start: 35879, Stop: 36568, Start Num: 33

Candidate Starts for Nimbo_48:

(22, 35849), (Start: 33 @35879 has 102 MA's), (35, 35897), (Start: 37 @35918 has 2 MA's), (42, 35939), (44, 35942), (46, 35951), (47, 35954), (51, 35966), (55, 35990), (57, 36002), (94, 36122), (127, 36194), (132, 36221), (153, 36380), (154, 36386), (158, 36431), (164, 36461), (180, 36509),

Gene: Nitzel_50 Start: 36307, Stop: 37011, Start Num: 33

Candidate Starts for Nitzel_50:

(Start: 33 @36307 has 102 MA's), (35, 36325), (Start: 37 @36346 has 2 MA's), (44, 36370), (49, 36391), (55, 36418), (57, 36430), (71, 36487), (95, 36595), (127, 36649), (132, 36676), (151, 36784),

(153, 36805), (154, 36811), (158, 36856), (161, 36874), (183, 36961), (187, 36982),

Gene: Nivrat_50 Start: 37041, Stop: 37625, Start Num: 34

Candidate Starts for Nivrat_50:

(Start: 34 @37041 has 84 MA's), (35, 37059), (Start: 37 @37080 has 2 MA's), (42, 37101), (44, 37104), (46, 37113), (47, 37116), (55, 37152), (57, 37164), (127, 37287), (132, 37314), (148, 37368), (153, 37437), (154, 37443), (158, 37488), (164, 37518), (180, 37566),

Gene: NormanBulbieJr_54 Start: 37601, Stop: 38248, Start Num: 33

Candidate Starts for NormanBulbieJr_54:

(25, 37571), (Start: 33 @37601 has 102 MA's), (35, 37619), (Start: 37 @37640 has 2 MA's), (44, 37664), (46, 37673), (47, 37676), (55, 37712), (57, 37724), (65, 37763), (127, 37841), (132, 37868), (153, 38027), (154, 38033), (161, 38096),

Gene: Ochi17_56 Start: 38867, Stop: 39454, Start Num: 33

Candidate Starts for Ochi17_56:

(25, 38837), (Start: 33 @38867 has 102 MA's), (35, 38885), (Start: 37 @38906 has 2 MA's), (47, 38942), (55, 38978), (57, 38990), (61, 39008), (65, 39029), (71, 39047), (127, 39113), (132, 39140), (153, 39263), (154, 39269), (185, 39407),

Gene: OfUltron_58 Start: 39416, Stop: 40003, Start Num: 33

Candidate Starts for OfUltron_58:

(25, 39386), (Start: 33 @39416 has 102 MA's), (35, 39434), (Start: 37 @39455 has 2 MA's), (47, 39491), (55, 39527), (57, 39539), (61, 39557), (65, 39578), (71, 39596), (127, 39662), (132, 39689), (153, 39812), (154, 39818), (185, 39956),

Gene: Ogopogo_58 Start: 38167, Stop: 38712, Start Num: 33

Candidate Starts for Ogopogo_58:

(Start: 33 @38167 has 102 MA's), (35, 38185), (Start: 37 @38206 has 2 MA's), (44, 38230), (49, 38251), (55, 38278), (57, 38290), (65, 38329), (71, 38347), (127, 38413), (132, 38440), (153, 38533), (154, 38539), (167, 38623), (183, 38665),

Gene: Oksu_57 Start: 39625, Stop: 40206, Start Num: 32

Candidate Starts for Oksu_57:

(12, 39538), (Start: 32 @39625 has 5 MA's), (35, 39643), (Start: 37 @39664 has 2 MA's), (44, 39688), (49, 39709), (55, 39736), (68, 39793), (132, 39892), (153, 40015), (154, 40021), (185, 40159),

Gene: OldBen_51 Start: 37594, Stop: 38172, Start Num: 34

Candidate Starts for OldBen_51:

(23, 37564), (Start: 34 @37594 has 84 MA's), (35, 37612), (42, 37654), (44, 37657), (46, 37666), (47, 37669), (54, 37690), (55, 37705), (57, 37717), (61, 37735), (65, 37756), (68, 37762), (127, 37834), (132, 37861), (148, 37915), (153, 37984), (154, 37990), (158, 38035), (164, 38065), (174, 38095), (180, 38113),

Gene: Ovechkin_50 Start: 36858, Stop: 37478, Start Num: 30

Candidate Starts for Ovechkin_50:

(Start: 17 @36810 has 1 MA's), (19, 36819), (27, 36849), (Start: 30 @36858 has 1 MA's), (Start: 34 @36861 has 84 MA's), (35, 36879), (Start: 37 @36900 has 2 MA's), (42, 36921), (44, 36924), (46, 36933), (47, 36936), (55, 36972), (57, 36984), (61, 37002), (83, 37071), (94, 37107), (104, 37131), (127, 37203), (132, 37230), (148, 37281), (153, 37350), (154, 37356), (157, 37392),

Gene: OwlsT2W_54 Start: 37885, Stop: 38490, Start Num: 34

Candidate Starts for OwlsT2W_54:

(Start: 34 @37885 has 84 MA's), (35, 37903), (Start: 37 @37924 has 2 MA's), (42, 37945), (44, 37948), (46, 37957), (47, 37960), (51, 37972), (55, 37996), (57, 38008), (83, 38026), (96, 38065), (99, 38071), (126, 38152), (128, 38158), (130, 38167), (153, 38302), (154, 38308), (158, 38353), (164, 38383), (180, 38431),

Gene: PHappiness_49 Start: 35852, Stop: 36541, Start Num: 33

Candidate Starts for PHappiness_49:

(22, 35822), (Start: 33 @35852 has 102 MA's), (35, 35870), (Start: 37 @35891 has 2 MA's), (42, 35912), (44, 35915), (46, 35924), (47, 35927), (51, 35939), (55, 35963), (57, 35975), (94, 36095), (127, 36167), (132, 36194), (153, 36353), (154, 36359), (158, 36404), (164, 36434), (180, 36482),

Gene: PMC_50 Start: 37468, Stop: 38091, Start Num: 33

Candidate Starts for PMC_50:

(Start: 33 @37468 has 102 MA's), (35, 37486), (Start: 37 @37507 has 2 MA's), (42, 37528), (44, 37531), (46, 37540), (47, 37543), (51, 37555), (54, 37564), (55, 37579), (57, 37591), (65, 37630), (68, 37636), (71, 37648), (127, 37714), (132, 37741), (153, 37900), (154, 37906), (167, 37990), (183, 38044),

Gene: Pacc40_48 Start: 35926, Stop: 36615, Start Num: 33

Candidate Starts for Pacc40_48:

(22, 35896), (Start: 33 @35926 has 102 MA's), (35, 35944), (Start: 37 @35965 has 2 MA's), (42, 35986), (44, 35989), (46, 35998), (47, 36001), (51, 36013), (55, 36037), (57, 36049), (94, 36169), (127, 36241), (132, 36268), (153, 36427), (154, 36433), (158, 36478), (164, 36508), (180, 36556),

Gene: Phalconet_52 Start: 36835, Stop: 37287, Start Num: 34

Candidate Starts for Phalconet_52:

(Start: 34 @36835 has 84 MA's), (35, 36853), (Start: 37 @36865 has 2 MA's), (42, 36886), (44, 36889), (46, 36898), (47, 36901), (49, 36910), (55, 36937), (57, 36949), (153, 37099), (154, 37105), (158, 37150), (164, 37180), (180, 37228),

Gene: Phanphagia_51 Start: 37739, Stop: 38149, Start Num: 34

Candidate Starts for Phanphagia_51:

(Start: 34 @37739 has 84 MA's), (35, 37757), (Start: 37 @37778 has 2 MA's), (42, 37799), (44, 37802), (46, 37811), (47, 37814), (55, 37850), (57, 37862), (153, 37961), (154, 37967), (158, 38012), (161, 38030), (167, 38051), (175, 38081), (180, 38093),

Gene: Phasih_52 Start: 37932, Stop: 38681, Start Num: 34

Candidate Starts for Phasih_52:

(Start: 34 @37932 has 84 MA's), (35, 37950), (Start: 37 @37971 has 2 MA's), (42, 37992), (44, 37995), (46, 38004), (47, 38007), (54, 38028), (55, 38043), (61, 38073), (65, 38094), (68, 38100), (76, 38169), (82, 38208), (87, 38220), (102, 38268), (127, 38343), (132, 38370), (153, 38493), (154, 38499), (155, 38511), (158, 38544), (161, 38562), (167, 38583),

Gene: Phatniss_52 Start: 37640, Stop: 38224, Start Num: 34

Candidate Starts for Phatniss_52:

(Start: 34 @37640 has 84 MA's), (35, 37658), (Start: 37 @37679 has 2 MA's), (42, 37700), (44, 37703), (46, 37712), (47, 37715), (55, 37751), (57, 37763), (127, 37886), (132, 37913), (148, 37967), (153, 38036), (154, 38042), (158, 38087), (164, 38117), (180, 38165),

Gene: Phegasus_37 Start: 29351, Stop: 29749, Start Num: 125

Candidate Starts for Phegasus_37:

(50, 29204), (56, 29237), (Start: 124 @29348 has 11 MA's), (Start: 125 @29351 has 7 MA's), (129, 29381), (133, 29402), (137, 29423), (145, 29462), (150, 29510), (152, 29558), (159, 29606), (170,

29657),

Gene: PhesterPhotato_55 Start: 37823, Stop: 38284, Start Num: 34

Candidate Starts for PhesterPhotato_55:

(Start: 34 @37823 has 84 MA's), (35, 37841), (Start: 37 @37862 has 2 MA's), (42, 37883), (44, 37886), (46, 37895), (47, 37898), (55, 37934), (57, 37946), (153, 38096), (154, 38102), (158, 38147), (164, 38177), (180, 38225),

Gene: Philus_57 Start: 38793, Stop: 39410, Start Num: 34

Candidate Starts for Philus_57:

(Start: 34 @38793 has 84 MA's), (35, 38811), (Start: 37 @38832 has 2 MA's), (42, 38853), (44, 38856), (46, 38865), (47, 38868), (51, 38880), (55, 38904), (57, 38916), (83, 38934), (96, 38973), (99, 38979), (126, 39060), (128, 39066), (130, 39075), (153, 39210), (154, 39216), (158, 39261), (161, 39279), (164, 39294), (167, 39300),

Gene: Phineas_37 Start: 29711, Stop: 30112, Start Num: 124

Candidate Starts for Phineas_37:

(50, 29567), (56, 29600), (Start: 124 @29711 has 11 MA's), (Start: 125 @29714 has 7 MA's), (129, 29744), (133, 29765), (137, 29786), (145, 29825), (150, 29873), (152, 29921), (159, 29969), (170, 30020),

Gene: Pippy_52 Start: 36472, Stop: 37119, Start Num: 33

Candidate Starts for Pippy_52:

(25, 36442), (Start: 33 @36472 has 102 MA's), (35, 36490), (Start: 37 @36511 has 2 MA's), (42, 36532), (44, 36535), (46, 36544), (47, 36547), (55, 36583), (57, 36595), (65, 36634), (127, 36712), (132, 36739), (153, 36898), (154, 36904), (161, 36967),

Gene: Plumbus_55 Start: 37701, Stop: 38279, Start Num: 34

Candidate Starts for Plumbus_55:

(23, 37671), (Start: 34 @37701 has 84 MA's), (35, 37719), (Start: 37 @37740 has 2 MA's), (41, 37755), (46, 37773), (47, 37776), (55, 37812), (57, 37824), (61, 37842), (65, 37863), (127, 37941), (132, 37968), (153, 38091), (158, 38142), (160, 38157), (164, 38172), (180, 38220),

Gene: Poenanya_53 Start: 38418, Stop: 39137, Start Num: 34

Candidate Starts for Poenanya_53:

(Start: 34 @38418 has 84 MA's), (35, 38436), (Start: 37 @38457 has 2 MA's), (42, 38478), (44, 38481), (46, 38490), (47, 38493), (55, 38529), (57, 38541), (61, 38559), (65, 38580), (68, 38586), (76, 38655), (82, 38694), (87, 38706), (102, 38754), (127, 38829), (132, 38856), (153, 38949), (154, 38955), (158, 39000), (164, 39030), (180, 39078),

Gene: Polka14_52 Start: 37024, Stop: 37638, Start Num: 34

Candidate Starts for Polka14_52:

(Start: 34 @37024 has 84 MA's), (35, 37042), (Start: 37 @37063 has 2 MA's), (42, 37084), (44, 37087), (46, 37096), (47, 37099), (55, 37135), (61, 37165), (65, 37186), (68, 37192), (71, 37204), (127, 37264), (132, 37291), (153, 37450), (154, 37456), (158, 37501), (164, 37531), (180, 37579),

Gene: Pollywog_54 Start: 38085, Stop: 38915, Start Num: 33

Candidate Starts for Pollywog_54:

(25, 38055), (Start: 33 @38085 has 102 MA's), (35, 38103), (Start: 37 @38124 has 2 MA's), (42, 38145), (44, 38148), (46, 38157), (47, 38160), (55, 38196), (57, 38208), (78, 38328), (80, 38355), (127, 38547), (132, 38574), (153, 38733), (154, 38739), (158, 38784), (161, 38802), (183, 38868), (186, 38883),

Gene: PopTart_47 Start: 36238, Stop: 36744, Start Num: 33

Candidate Starts for PopTart_47:

(25, 36208), (Start: 33 @36238 has 102 MA's), (35, 36256), (Start: 37 @36277 has 2 MA's), (42, 36298), (47, 36313), (51, 36325), (55, 36349), (57, 36361), (65, 36400), (68, 36406), (132, 36505), (153, 36553), (171, 36643), (185, 36697),

Gene: Priscilla_54 Start: 37700, Stop: 38347, Start Num: 33

Candidate Starts for Priscilla_54:

(25, 37670), (Start: 33 @37700 has 102 MA's), (35, 37718), (Start: 37 @37739 has 2 MA's), (44, 37763), (46, 37772), (47, 37775), (55, 37811), (57, 37823), (65, 37862), (127, 37940), (132, 37967), (153, 38126), (154, 38132), (161, 38195),

Gene: QuickMath_54 Start: 39271, Stop: 39849, Start Num: 34

Candidate Starts for QuickMath_54:

(23, 39241), (Start: 34 @39271 has 84 MA's), (35, 39289), (Start: 37 @39310 has 2 MA's), (41, 39325), (46, 39343), (47, 39346), (55, 39382), (57, 39394), (61, 39412), (65, 39433), (127, 39511), (132, 39538), (153, 39661), (158, 39712), (160, 39727), (164, 39742), (180, 39790),

Gene: Quico_62 Start: 39707, Stop: 40312, Start Num: 33

Candidate Starts for Quico_62:

(22, 39677), (Start: 33 @39707 has 102 MA's), (35, 39725), (Start: 37 @39746 has 2 MA's), (42, 39767), (44, 39770), (46, 39779), (47, 39782), (51, 39794), (54, 39803), (55, 39818), (57, 39830), (65, 39869), (68, 39875), (132, 39974), (153, 40121), (154, 40127), (158, 40172), (180, 40253),

Gene: Radiance_53 Start: 37766, Stop: 38371, Start Num: 34

Candidate Starts for Radiance_53:

(26, 37736), (Start: 34 @37766 has 84 MA's), (35, 37784), (Start: 37 @37805 has 2 MA's), (41, 37820), (46, 37838), (47, 37841), (51, 37853), (55, 37877), (57, 37889), (83, 37907), (96, 37946), (99, 37952), (126, 38033), (128, 38039), (130, 38048), (153, 38183), (154, 38189), (158, 38234), (164, 38264), (180, 38312),

Gene: Ramsey_54 Start: 38423, Stop: 39037, Start Num: 33

Candidate Starts for Ramsey_54:

(22, 38393), (Start: 33 @38423 has 102 MA's), (35, 38441), (Start: 37 @38462 has 2 MA's), (42, 38483), (44, 38486), (46, 38495), (47, 38498), (51, 38510), (54, 38519), (55, 38534), (61, 38564), (65, 38585), (68, 38591), (127, 38663), (132, 38690), (153, 38849), (154, 38855), (158, 38900), (164, 38930), (180, 38978),

Gene: Renaud18_59 Start: 38442, Stop: 38924, Start Num: 34

Candidate Starts for Renaud18_59:

(Start: 34 @38442 has 84 MA's), (35, 38460), (Start: 37 @38481 has 2 MA's), (42, 38502), (44, 38505), (46, 38514), (47, 38517), (55, 38553), (57, 38565), (65, 38604), (148, 38667), (153, 38736), (154, 38742), (158, 38787), (164, 38817), (180, 38865),

Gene: RitaG_49 Start: 36197, Stop: 36886, Start Num: 33

Candidate Starts for RitaG_49:

(22, 36167), (Start: 33 @36197 has 102 MA's), (35, 36215), (Start: 37 @36236 has 2 MA's), (42, 36257), (44, 36260), (46, 36269), (47, 36272), (51, 36284), (55, 36308), (57, 36320), (94, 36440), (127, 36512), (132, 36539), (153, 36698), (154, 36704), (158, 36749), (164, 36779), (180, 36827),

Gene: Rockne_54 Start: 37468, Stop: 38091, Start Num: 33

Candidate Starts for Rockne_54:

(Start: 33 @37468 has 102 MA's), (35, 37486), (Start: 37 @37507 has 2 MA's), (42, 37528), (44, 37531), (46, 37540), (47, 37543), (51, 37555), (54, 37564), (55, 37579), (57, 37591), (65, 37630), (68, 37636), (71, 37648), (127, 37714), (132, 37741), (153, 37900), (154, 37906), (167, 37990), (183, 38044),

Gene: RockyHorror_54 Start: 37296, Stop: 37757, Start Num: 34

Candidate Starts for RockyHorror_54:

(Start: 34 @37296 has 84 MA's), (35, 37314), (Start: 37 @37335 has 2 MA's), (42, 37356), (44, 37359), (46, 37368), (47, 37371), (55, 37407), (57, 37419), (153, 37569), (154, 37575), (158, 37620), (164, 37650), (180, 37698),

Gene: Royals2015_56 Start: 37542, Stop: 38093, Start Num: 33

Candidate Starts for Royals2015_56:

(Start: 33 @37542 has 102 MA's), (35, 37560), (Start: 37 @37581 has 2 MA's), (44, 37605), (46, 37614), (47, 37617), (55, 37653), (57, 37665), (65, 37704), (68, 37710), (127, 37782), (132, 37809), (153, 37902), (154, 37908), (167, 37992),

Gene: Ruby_50 Start: 37417, Stop: 38064, Start Num: 33

Candidate Starts for Ruby_50:

(25, 37387), (Start: 33 @37417 has 102 MA's), (35, 37435), (Start: 37 @37456 has 2 MA's), (42, 37477), (44, 37480), (46, 37489), (47, 37492), (51, 37504), (54, 37513), (55, 37528), (61, 37558), (65, 37579), (68, 37585), (127, 37657), (132, 37684), (153, 37843), (154, 37849), (161, 37912),

Gene: SG4_50 Start: 36264, Stop: 36926, Start Num: 34

Candidate Starts for SG4_50:

(Start: 34 @36264 has 84 MA's), (35, 36282), (Start: 37 @36303 has 2 MA's), (42, 36324), (44, 36327), (46, 36336), (47, 36339), (55, 36375), (57, 36387), (61, 36405), (65, 36426), (68, 36432), (83, 36462), (96, 36501), (99, 36507), (126, 36588), (128, 36594), (130, 36603), (153, 36738), (154, 36744), (158, 36789), (164, 36819), (174, 36849), (180, 36867),

Gene: Saal_56 Start: 38724, Stop: 39521, Start Num: 33

Candidate Starts for Saal_56:

(Start: 33 @38724 has 102 MA's), (35, 38742), (Start: 37 @38763 has 2 MA's), (42, 38784), (44, 38787), (46, 38796), (47, 38799), (55, 38835), (57, 38847), (61, 38865), (Start: 91 @38967 has 2 MA's), (93, 38976), (97, 38982), (108, 39018), (110, 39042), (127, 39114), (132, 39141), (153, 39300), (154, 39306), (161, 39369),

Gene: Sabbb_58 Start: 38465, Stop: 39208, Start Num: 34

Candidate Starts for Sabbb_58:

(24, 38435), (Start: 34 @38465 has 84 MA's), (35, 38483), (Start: 37 @38504 has 2 MA's), (42, 38525), (44, 38528), (46, 38537), (47, 38540), (55, 38576), (57, 38588), (61, 38606), (86, 38708), (90, 38723), (102, 38759), (115, 38783), (127, 38834), (132, 38861), (153, 39020), (154, 39026), (158, 39071), (164, 39101), (174, 39131), (180, 39149),

Gene: Sandalphon_55 Start: 38373, Stop: 38978, Start Num: 34

Candidate Starts for Sandalphon_55:

(26, 38343), (Start: 34 @38373 has 84 MA's), (35, 38391), (Start: 37 @38412 has 2 MA's), (42, 38433), (44, 38436), (46, 38445), (47, 38448), (51, 38460), (55, 38484), (57, 38496), (83, 38514), (96, 38553), (99, 38559), (126, 38640), (128, 38646), (130, 38655), (153, 38790), (154, 38796), (158, 38841), (164, 38871), (180, 38919),

Gene: Sarma624_51 Start: 33538, Stop: 34161, Start Num: 33

Candidate Starts for Sarma624_51:

(Start: 33 @33538 has 102 MA's), (35, 33556), (Start: 37 @33577 has 2 MA's), (42, 33598), (44, 33601), (46, 33610), (47, 33613), (51, 33625), (54, 33634), (55, 33649), (57, 33661), (65, 33700), (68, 33706), (71, 33718), (127, 33784), (132, 33811), (153, 33970), (154, 33976), (167, 34060), (183, 34114),

Gene: Sassafras_51 Start: 36391, Stop: 37032, Start Num: 33

Candidate Starts for Sassafras_51:

(Start: 33 @36391 has 102 MA's), (35, 36409), (42, 36451), (44, 36454), (46, 36463), (47, 36466), (51, 36478), (55, 36502), (57, 36514), (71, 36571), (95, 36679), (127, 36733), (132, 36760), (153, 36853), (154, 36859), (167, 36943), (183, 36985),

Gene: SassyB_47 Start: 36238, Stop: 36744, Start Num: 33

Candidate Starts for SassyB_47:

(25, 36208), (Start: 33 @36238 has 102 MA's), (35, 36256), (Start: 37 @36277 has 2 MA's), (42, 36298), (47, 36313), (51, 36325), (55, 36349), (57, 36361), (65, 36400), (68, 36406), (132, 36505), (153, 36553), (171, 36643), (185, 36697),

Gene: Scottish_52 Start: 37209, Stop: 37898, Start Num: 33

Candidate Starts for Scottish_52:

(22, 37179), (Start: 33 @37209 has 102 MA's), (35, 37227), (Start: 37 @37248 has 2 MA's), (42, 37269), (44, 37272), (46, 37281), (47, 37284), (51, 37296), (55, 37320), (57, 37332), (94, 37452), (127, 37524), (132, 37551), (153, 37710), (154, 37716), (158, 37761), (164, 37791), (180, 37839),

Gene: Seabastian_58 Start: 39417, Stop: 40004, Start Num: 33

Candidate Starts for Seabastian_58:

(25, 39387), (Start: 33 @39417 has 102 MA's), (35, 39435), (Start: 37 @39456 has 2 MA's), (47, 39492), (55, 39528), (57, 39540), (61, 39558), (65, 39579), (71, 39597), (127, 39663), (132, 39690), (153, 39813), (154, 39819), (185, 39957),

Gene: Seagreen_53 Start: 36966, Stop: 37559, Start Num: 33

Candidate Starts for Seagreen_53:

(25, 36936), (Start: 33 @36966 has 102 MA's), (35, 36984), (Start: 37 @37005 has 2 MA's), (42, 37026), (44, 37029), (46, 37038), (47, 37041), (55, 37077), (57, 37089), (65, 37128), (68, 37134), (127, 37206), (132, 37233), (153, 37356), (154, 37362), (158, 37407), (161, 37425), (164, 37440), (167, 37446), (173, 37476), (186, 37527), (187, 37530),

Gene: Shauna1_52 Start: 37720, Stop: 38130, Start Num: 34

Candidate Starts for Shauna1_52:

(Start: 34 @37720 has 84 MA's), (35, 37738), (Start: 37 @37759 has 2 MA's), (42, 37780), (44, 37783), (46, 37792), (47, 37795), (55, 37831), (57, 37843), (153, 37942), (154, 37948), (158, 37993), (161, 38011), (167, 38032), (175, 38062), (180, 38074),

Gene: ShiLan_53 Start: 37647, Stop: 38294, Start Num: 33

Candidate Starts for ShiLan_53:

(25, 37617), (Start: 33 @37647 has 102 MA's), (35, 37665), (Start: 37 @37686 has 2 MA's), (44, 37710), (46, 37719), (47, 37722), (55, 37758), (57, 37770), (65, 37809), (127, 37887), (132, 37914), (153, 38073), (154, 38079), (161, 38142),

Gene: ShowerHandel_57 Start: 37614, Stop: 38261, Start Num: 33

Candidate Starts for ShowerHandel_57:

(25, 37584), (Start: 33 @37614 has 102 MA's), (35, 37632), (Start: 37 @37653 has 2 MA's), (44, 37677), (46, 37686), (47, 37689), (55, 37725), (57, 37737), (65, 37776), (127, 37854), (132, 37881), (153, 38040), (154, 38046), (161, 38109),

Gene: ShroomBoi_55 Start: 37834, Stop: 38421, Start Num: 34

Candidate Starts for ShroomBoi_55:

(23, 37804), (Start: 34 @37834 has 84 MA's), (35, 37852), (Start: 37 @37873 has 2 MA's), (41, 37888), (46, 37906), (47, 37909), (55, 37945), (57, 37957), (61, 37975), (134, 38077), (138, 38092), (142, 38128), (146, 38152), (148, 38164), (153, 38233), (154, 38239), (158, 38284), (164, 38314), (180, 38362),

Gene: SiSi_51 Start: 36788, Stop: 37366, Start Num: 34

Candidate Starts for SiSi_51:

(23, 36758), (Start: 34 @36788 has 84 MA's), (35, 36806), (Start: 37 @36827 has 2 MA's), (41, 36842), (46, 36860), (47, 36863), (55, 36899), (57, 36911), (61, 36929), (65, 36950), (127, 37028), (132, 37055), (153, 37178), (158, 37229), (160, 37244), (164, 37259), (180, 37307),

Gene: SimranZ1_53 Start: 36878, Stop: 37609, Start Num: 32

Candidate Starts for SimranZ1_53:

(Start: 32 @36878 has 5 MA's), (35, 36896), (Start: 37 @36917 has 2 MA's), (47, 36953), (51, 36965), (55, 36989), (57, 37001), (62, 37040), (66, 37058), (67, 37061), (81, 37139), (92, 37178), (100, 37190), (132, 37295), (142, 37349), (153, 37418), (154, 37424), (161, 37487), (185, 37562),

Gene: Sonah_37 Start: 29332, Stop: 29730, Start Num: 125

Candidate Starts for Sonah_37:

(50, 29185), (56, 29218), (Start: 124 @29329 has 11 MA's), (Start: 125 @29332 has 7 MA's), (129, 29362), (133, 29383), (137, 29404), (145, 29443), (150, 29491), (152, 29539), (159, 29587), (170, 29638),

Gene: Soul22_57 Start: 37584, Stop: 38414, Start Num: 33

Candidate Starts for Soul22_57:

(Start: 33 @37584 has 102 MA's), (35, 37602), (Start: 37 @37623 has 2 MA's), (42, 37644), (44, 37647), (46, 37656), (47, 37659), (55, 37695), (57, 37707), (65, 37746), (78, 37827), (80, 37854), (127, 38046), (132, 38073), (153, 38232), (154, 38238), (167, 38322), (183, 38367),

Gene: Sparkdehlily_61 Start: 39036, Stop: 39497, Start Num: 34

Candidate Starts for Sparkdehlily_61:

(Start: 34 @39036 has 84 MA's), (35, 39054), (Start: 37 @39075 has 2 MA's), (42, 39096), (44, 39099), (46, 39108), (47, 39111), (55, 39147), (57, 39159), (153, 39309), (154, 39315), (158, 39360), (164, 39390), (180, 39438),

Gene: Spartacus_55 Start: 37623, Stop: 38033, Start Num: 34

Candidate Starts for Spartacus_55:

(Start: 34 @37623 has 84 MA's), (35, 37641), (Start: 37 @37662 has 2 MA's), (42, 37683), (44, 37686), (46, 37695), (47, 37698), (55, 37734), (57, 37746), (153, 37845), (154, 37851), (158, 37896), (161, 37914), (167, 37935), (175, 37965), (180, 37977),

Gene: Spikelee_60 Start: 39125, Stop: 39748, Start Num: 34

Candidate Starts for Spikelee_60:

(Start: 34 @39125 has 84 MA's), (35, 39143), (Start: 37 @39164 has 2 MA's), (42, 39185), (44, 39188), (46, 39197), (47, 39200), (51, 39212), (55, 39236), (57, 39248), (94, 39368), (127, 39440), (132, 39467), (153, 39560), (154, 39566), (158, 39611), (164, 39641), (180, 39689),

Gene: Spoonbill_51 Start: 36151, Stop: 36924, Start Num: 33

Candidate Starts for Spoonbill_51:

(22, 36121), (Start: 33 @36151 has 102 MA's), (35, 36169), (Start: 37 @36190 has 2 MA's), (41, 36205), (46, 36223), (47, 36226), (51, 36238), (55, 36262), (57, 36274), (94, 36394), (127, 36466), (132, 36493), (153, 36652), (154, 36658), (158, 36703), (164, 36733), (174, 36763), (180, 36781), (188, 36859),

Gene: StAnnes_52 Start: 37618, Stop: 38367, Start Num: 34

Candidate Starts for StAnnes_52:

(Start: 34 @37618 has 84 MA's), (35, 37636), (Start: 37 @37657 has 2 MA's), (42, 37678), (44, 37681), (47, 37693), (55, 37729), (57, 37741), (65, 37780), (68, 37786), (76, 37855), (82, 37894), (87, 37906), (102, 37954), (127, 38029), (132, 38056), (148, 38110), (153, 38179), (154, 38185), (158, 38230), (161, 38248), (167, 38269), (175, 38299), (180, 38311),

Gene: Stap_52 Start: 36952, Stop: 37641, Start Num: 33

Candidate Starts for Stap_52:

(22, 36922), (Start: 33 @36952 has 102 MA's), (35, 36970), (Start: 37 @36991 has 2 MA's), (41, 37006), (46, 37024), (47, 37027), (51, 37039), (55, 37063), (57, 37075), (94, 37195), (127, 37267), (132, 37294), (153, 37453), (154, 37459), (158, 37504), (164, 37534), (174, 37564), (180, 37582),

Gene: Starcevich_53 Start: 37660, Stop: 38220, Start Num: 33

Candidate Starts for Starcevich_53:

(15, 37606), (Start: 33 @37660 has 102 MA's), (35, 37678), (Start: 37 @37699 has 2 MA's), (47, 37735), (51, 37747), (55, 37771), (57, 37783), (68, 37828), (127, 37900), (132, 37927), (153, 38020), (154, 38026), (158, 38071), (161, 38089), (164, 38104), (167, 38110),

Gene: SuperGrey_57 Start: 39146, Stop: 39556, Start Num: 34

Candidate Starts for SuperGrey_57:

(Start: 34 @39146 has 84 MA's), (35, 39164), (Start: 37 @39185 has 2 MA's), (42, 39206), (44, 39209), (46, 39218), (47, 39221), (55, 39257), (57, 39269), (153, 39368), (154, 39374), (158, 39419), (161, 39437), (167, 39458), (175, 39488), (180, 39500),

Gene: SwagPigglett_59 Start: 39987, Stop: 40571, Start Num: 34

Candidate Starts for SwagPigglett_59:

(Start: 34 @39987 has 84 MA's), (35, 40005), (Start: 37 @40026 has 2 MA's), (42, 40047), (44, 40050), (46, 40059), (47, 40062), (55, 40098), (57, 40110), (127, 40233), (132, 40260), (148, 40314), (153, 40383), (154, 40389), (158, 40434), (164, 40464), (180, 40512),

Gene: TChen_53 Start: 37875, Stop: 38666, Start Num: 5

Candidate Starts for TChen_53:

(1, 37824), (2, 37833), (3, 37863), (4, 37872), (Start: 5 @37875 has 3 MA's), (6, 37893), (Start: 7 @37914 has 1 MA's), (8, 37935), (9, 37938), (10, 37947), (11, 37950), (13, 37962), (14, 37986), (Start: 17 @37998 has 1 MA's), (23, 38016), (27, 38037), (29, 38043), (36, 38088), (52, 38142), (83, 38202), (96, 38241), (99, 38247), (126, 38328), (128, 38334), (130, 38343), (153, 38478), (158, 38529), (161, 38547), (164, 38559), (180, 38607),

Gene: TDanisky_61 Start: 39036, Stop: 39497, Start Num: 34

Candidate Starts for TDanisky_61:

(Start: 34 @39036 has 84 MA's), (35, 39054), (Start: 37 @39075 has 2 MA's), (42, 39096), (44, 39099), (46, 39108), (47, 39111), (55, 39147), (57, 39159), (153, 39309), (154, 39315), (158, 39360), (164, 39390), (180, 39438),

Gene: Taj_57 Start: 38366, Stop: 39082, Start Num: 34

Candidate Starts for Taj_57:

(Start: 34 @38366 has 84 MA's), (35, 38384), (41, 38420), (42, 38426), (45, 38441), (46, 38447), (47, 38462), (51, 38474), (54, 38483), (55, 38498), (60, 38522), (105, 38660), (116, 38672), (127, 38720), (132, 38747), (153, 38894), (154, 38900), (158, 38945), (161, 38963), (167, 38984), (174, 39014), (178, 39026),

Gene: Techage_37 Start: 29366, Stop: 29767, Start Num: 124

Candidate Starts for Techage_37:

(50, 29222), (56, 29255), (Start: 124 @29366 has 11 MA's), (Start: 125 @29369 has 7 MA's), (129, 29399), (133, 29420), (137, 29441), (145, 29480), (150, 29528), (152, 29576), (159, 29624), (170, 29675),

Gene: ThetaBob_57 Start: 37869, Stop: 38615, Start Num: 32

Candidate Starts for ThetaBob_57:

(Start: 32 @37869 has 5 MA's), (35, 37887), (41, 37923), (42, 37929), (47, 37944), (51, 37956), (53, 37959), (54, 37965), (55, 37980), (57, 37992), (60, 38004), (73, 38067), (88, 38121), (100, 38157), (107, 38181), (127, 38232), (132, 38259), (142, 38313), (153, 38382), (154, 38388), (158, 38433), (165, 38469), (172, 38508),

Gene: Tootsieroll_55 Start: 36978, Stop: 37592, Start Num: 33

Candidate Starts for Tootsieroll_55:

(22, 36948), (Start: 33 @36978 has 102 MA's), (35, 36996), (Start: 37 @37017 has 2 MA's), (42, 37038), (44, 37041), (46, 37050), (47, 37053), (51, 37065), (54, 37074), (55, 37089), (61, 37119), (65, 37140), (68, 37146), (127, 37218), (132, 37245), (153, 37404), (154, 37410), (158, 37455), (164, 37485), (180, 37533),

Gene: Toron_57 Start: 39017, Stop: 39823, Start Num: 34

Candidate Starts for Toron_57:

(Start: 34 @39017 has 84 MA's), (35, 39035), (38, 39059), (40, 39068), (48, 39116), (57, 39155), (58, 39158), (59, 39164), (85, 39272), (101, 39320), (109, 39359), (121, 39413), (136, 39482), (140, 39500), (153, 39617), (154, 39623), (155, 39635), (158, 39668), (161, 39686),

Gene: Tweety_53 Start: 38001, Stop: 38609, Start Num: 34

Candidate Starts for Tweety_53:

(Start: 34 @38001 has 84 MA's), (35, 38019), (Start: 37 @38040 has 2 MA's), (42, 38061), (44, 38064), (46, 38073), (47, 38076), (51, 38088), (55, 38112), (57, 38124), (83, 38142), (96, 38181), (99, 38187), (126, 38268), (128, 38274), (130, 38283), (153, 38421), (158, 38472), (161, 38490), (167, 38511), (175, 38541), (181, 38553),

Gene: UncleRicky_53 Start: 37888, Stop: 38472, Start Num: 34

Candidate Starts for UncleRicky_53:

(Start: 34 @37888 has 84 MA's), (35, 37906), (Start: 37 @37927 has 2 MA's), (42, 37948), (44, 37951), (46, 37960), (47, 37963), (55, 37999), (57, 38011), (127, 38134), (132, 38161), (148, 38215), (153, 38284), (154, 38290), (158, 38335), (164, 38365), (180, 38413),

Gene: VRedHorse_53 Start: 36755, Stop: 37381, Start Num: 33

Candidate Starts for VRedHorse_53:

(Start: 33 @36755 has 102 MA's), (35, 36773), (Start: 37 @36794 has 2 MA's), (42, 36815), (44, 36818), (46, 36827), (47, 36830), (55, 36866), (61, 36896), (65, 36917), (68, 36923), (71, 36935), (127, 36995), (132, 37022), (153, 37181), (154, 37187), (158, 37232), (161, 37250), (164, 37265), (167, 37271),

Gene: Velveteen_48 Start: 33538, Stop: 34161, Start Num: 33

Candidate Starts for Velveteen_48:

(Start: 33 @33538 has 102 MA's), (35, 33556), (Start: 37 @33577 has 2 MA's), (42, 33598), (44, 33601), (46, 33610), (47, 33613), (51, 33625), (54, 33634), (55, 33649), (57, 33661), (65, 33700), (68, 33706), (71, 33718), (127, 33784), (132, 33811), (153, 33970), (154, 33976), (167, 34060), (183, 34114),

Gene: Venti_37 Start: 29346, Stop: 29744, Start Num: 125

Candidate Starts for Venti_37:

(50, 29199), (56, 29232), (Start: 124 @29343 has 11 MA's), (Start: 125 @29346 has 7 MA's), (129, 29376), (133, 29397), (137, 29418), (145, 29457), (150, 29505), (152, 29553), (159, 29601), (170, 29652),

Gene: Vidya_37 Start: 29376, Stop: 29777, Start Num: 124

Candidate Starts for Vidya_37:

(50, 29232), (56, 29265), (Start: 124 @29376 has 11 MA's), (Start: 125 @29379 has 7 MA's), (129, 29409), (133, 29430), (137, 29451), (145, 29490), (150, 29538), (152, 29586), (159, 29634), (170, 29685),

Gene: Wachhund_55 Start: 37144, Stop: 37749, Start Num: 34

Candidate Starts for Wachhund_55:

(Start: 34 @37144 has 84 MA's), (35, 37162), (Start: 37 @37183 has 2 MA's), (42, 37204), (44, 37207), (46, 37216), (47, 37219), (51, 37231), (55, 37255), (57, 37267), (83, 37285), (96, 37324), (99, 37330), (126, 37411), (128, 37417), (130, 37426), (153, 37561), (154, 37567), (158, 37612), (161, 37630), (167, 37651), (175, 37681), (181, 37693),

Gene: Wee_56 Start: 38638, Stop: 39354, Start Num: 34

Candidate Starts for Wee_56:

(Start: 34 @38638 has 84 MA's), (35, 38656), (41, 38692), (42, 38698), (45, 38713), (46, 38719), (47, 38734), (51, 38746), (54, 38755), (55, 38770), (60, 38794), (105, 38932), (116, 38944), (127, 38992), (132, 39019), (153, 39166), (154, 39172), (158, 39217), (163, 39247), (176, 39295),

Gene: Whatsapiecost_54 Start: 36928, Stop: 37551, Start Num: 33

Candidate Starts for Whatsapiecost_54:

(Start: 33 @36928 has 102 MA's), (35, 36946), (Start: 37 @36967 has 2 MA's), (42, 36988), (44, 36991), (46, 37000), (47, 37003), (51, 37015), (54, 37024), (55, 37039), (57, 37051), (65, 37090), (68, 37096), (71, 37108), (127, 37174), (132, 37201), (153, 37360), (154, 37366), (167, 37450), (183, 37504),

Gene: Whouxphf_51 Start: 37452, Stop: 38171, Start Num: 33

Candidate Starts for Whouxphf_51:

(25, 37422), (Start: 33 @37452 has 102 MA's), (35, 37470), (Start: 37 @37491 has 2 MA's), (42, 37512), (44, 37515), (46, 37524), (47, 37527), (51, 37539), (55, 37563), (57, 37575), (71, 37632), (95, 37740), (127, 37794), (132, 37821), (153, 37980), (154, 37986), (167, 38070),

Gene: WillSterrel_54 Start: 38739, Stop: 39149, Start Num: 34

Candidate Starts for WillSterrel_54:

(Start: 34 @38739 has 84 MA's), (35, 38757), (Start: 37 @38778 has 2 MA's), (42, 38799), (44, 38802), (46, 38811), (47, 38814), (55, 38850), (57, 38862), (153, 38961), (154, 38967), (158, 39012), (161, 39030), (167, 39051), (175, 39081), (180, 39093),

Gene: XFactor_51 Start: 36239, Stop: 36700, Start Num: 34

Candidate Starts for XFactor_51:

(Start: 34 @36239 has 84 MA's), (35, 36257), (Start: 37 @36278 has 2 MA's), (42, 36299), (44, 36302), (46, 36311), (47, 36314), (55, 36350), (57, 36362), (153, 36512), (154, 36518), (158, 36563),

(164, 36593), (180, 36641),

Gene: Yorick_53 Start: 37988, Stop: 38635, Start Num: 33

Candidate Starts for Yorick_53:

(25, 37958), (Start: 33 @37988 has 102 MA's), (35, 38006), (Start: 37 @38027 has 2 MA's), (44, 38051), (46, 38060), (47, 38063), (55, 38099), (57, 38111), (65, 38150), (127, 38228), (132, 38255), (153, 38414), (154, 38420), (161, 38483),

Gene: Yoshi_65 Start: 38992, Stop: 39624, Start Num: 33

Candidate Starts for Yoshi_65:

(18, 38950), (Start: 33 @38992 has 102 MA's), (35, 39010), (Start: 37 @39031 has 2 MA's), (47, 39067), (55, 39103), (57, 39115), (65, 39154), (68, 39160), (127, 39238), (132, 39265), (153, 39424), (154, 39430), (158, 39475), (161, 39493), (164, 39508), (167, 39514),

Gene: Zapner_66 Start: 38460, Stop: 39290, Start Num: 33

Candidate Starts for Zapner_66:

(Start: 33 @38460 has 102 MA's), (35, 38478), (Start: 37 @38499 has 2 MA's), (42, 38520), (44, 38523), (46, 38532), (47, 38535), (55, 38571), (57, 38583), (65, 38622), (78, 38703), (80, 38730), (127, 38922), (132, 38949), (153, 39108), (154, 39114), (156, 39135), (167, 39198), (183, 39243),

Gene: Zerg_53 Start: 37405, Stop: 37866, Start Num: 34

Candidate Starts for Zerg_53:

(Start: 34 @37405 has 84 MA's), (35, 37423), (Start: 37 @37444 has 2 MA's), (42, 37465), (44, 37468), (46, 37477), (47, 37480), (55, 37516), (57, 37528), (153, 37678), (154, 37684), (158, 37729), (164, 37759), (180, 37807),

Gene: Zilizebeth_37 Start: 29375, Stop: 29776, Start Num: 124

Candidate Starts for Zilizebeth_37:

(50, 29231), (56, 29264), (Start: 124 @29375 has 11 MA's), (Start: 125 @29378 has 7 MA's), (129, 29408), (133, 29429), (137, 29450), (145, 29489), (150, 29537), (152, 29585), (159, 29633), (170, 29684),

Gene: Zizzle_58 Start: 39306, Stop: 39890, Start Num: 34

Candidate Starts for Zizzle_58:

(21, 39276), (Start: 34 @39306 has 84 MA's), (35, 39324), (Start: 37 @39345 has 2 MA's), (44, 39369), (46, 39378), (47, 39381), (55, 39417), (57, 39429), (127, 39552), (132, 39579), (148, 39633), (153, 39702), (154, 39708), (158, 39753), (164, 39783), (180, 39831),