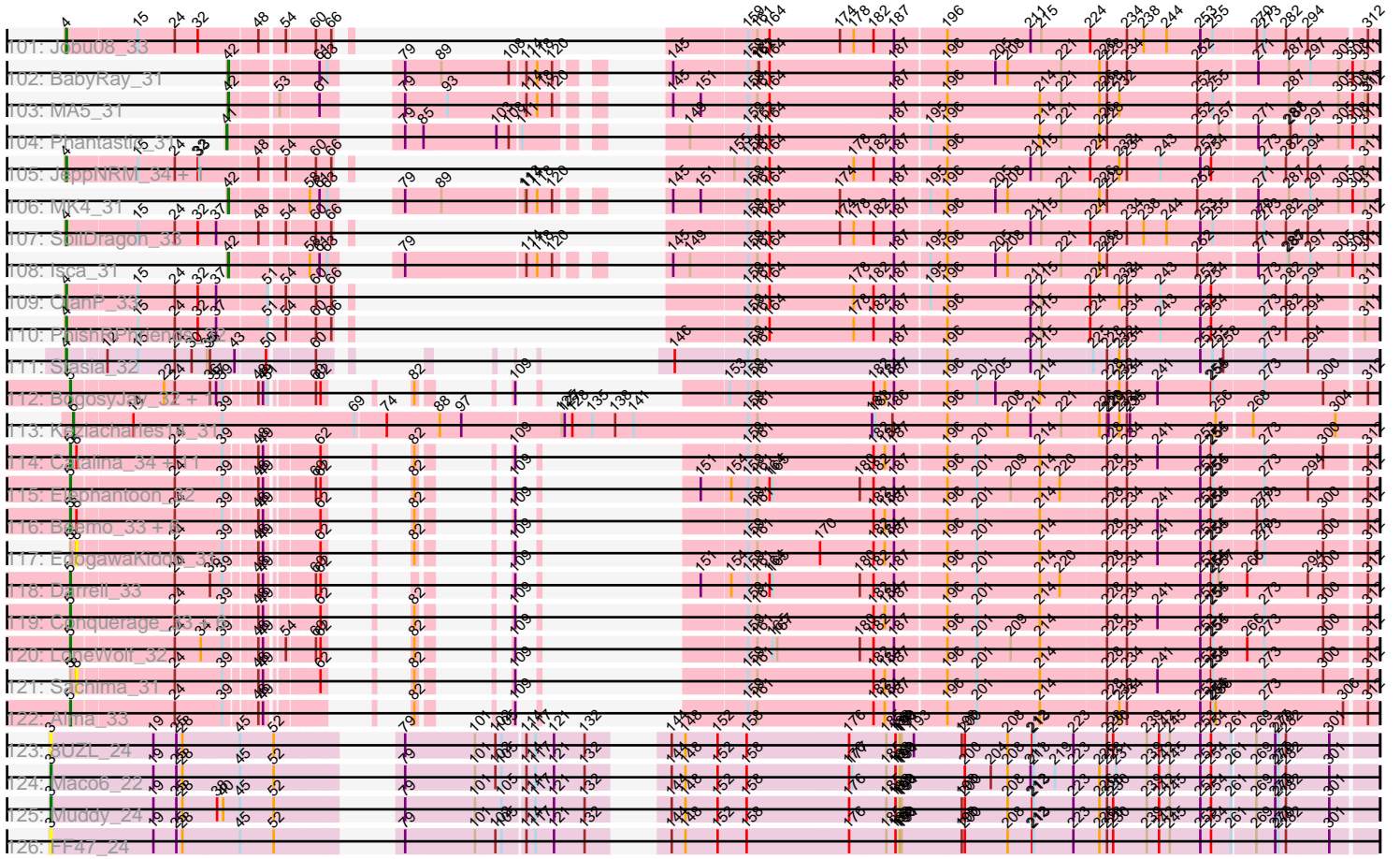


Pham 193744



Note: Tracks are now grouped by subcluster and scaled. Switching in subcluster is indicated by changes in track color. Track scale is now set by default to display the region 30 bp upstream of start 1 to 30 bp downstream of the last possible start. If this default region is judged to be packed too tightly with annotated starts, the track will be further scaled to only show that region of the ORF with annotated starts. This action will be indicated by adding "Zoomed" to the title. For starts, yellow indicates the location of called starts comprised solely of Glimmer/GeneMark auto-annotations, green indicates the location of called starts with at least 1 manual gene annotation.

Pham 193744 Report

This analysis was run 11/02/24 on database version 579.

Pham number 193744 has 197 members, 30 are drafts.

Phages represented in each track:

- Track 1 : Topanga_33
- Track 2 : KittenMittens_31
- Track 3 : Chupacabra_32
- Track 4 : Drake94_31
- Track 5 : DontArgue_31
- Track 6 : Trike_30
- Track 7 : Goose_32
- Track 8 : Rowdy_37, Shapes_37, DustyMartin_37
- Track 9 : PeaceMeal1_31
- Track 10 : Kristoff_34
- Track 11 : Rebeuca_34
- Track 12 : WalterMcMickey_33, Twister_33
- Track 13 : Severus_31
- Track 14 : Eaglepride_34
- Track 15 : OKCentral2016_32
- Track 16 : RhynO_34
- Track 17 : Edison31_33
- Track 18 : Poompha_31
- Track 19 : SororFago_31
- Track 20 : Gail_31
- Track 21 : Luchador_33
- Track 22 : 40AC_34
- Track 23 : HarryHoudini_33
- Track 24 : Baehexic_32, Centaur_33
- Track 25 : Trooper_31
- Track 26 : CRB1_31
- Track 27 : ArcherNM_34
- Track 28 : GaugeLDP_33
- Track 29 : BobSwaget_34
- Track 30 : BiancaTri92_33
- Track 31 : NothingSpecial_33
- Track 32 : Updawg_33, Equemioh13_33, WideWale_33
- Track 33 : Agape74_33, AbbyPaige_33
- Track 34 : Loser_35
- Track 35 : Turbido_33, Whabigail7_33, LilTurb_33
- Track 36 : SweetiePie_31
- Track 37 : Landor_33

- Track 38 : BengiVuitton_32
- Track 39 : Miko_34
- Track 40 : DudeLittle_31
- Track 41 : Iwokeuplikedis_32
- Track 42 : Crucio_31, SnapTap_31
- Track 43 : First_0031
- Track 44 : Bactobuster_33
- Track 45 : QueenBeesly_31, FiringLine_31
- Track 46 : NaSiaTalie_31
- Track 47 : Benvolio_31, Echild_31
- Track 48 : Drake55_33
- Track 49 : Dignity_33
- Track 50 : Jaan_35
- Track 51 : Buggy_33
- Track 52 : MiculUcigas_31
- Track 53 : Colin_35
- Track 54 : Lokk_34
- Track 55 : IronMan_34
- Track 56 : Larenn_32
- Track 57 : Flare16_31
- Track 58 : TarsusIV_31
- Track 59 : Anselm_31
- Track 60 : Leogania_33
- Track 61 : NicoleTera_35
- Track 62 : LadyBird_31
- Track 63 : Fameo_31, QueenB2_31
- Track 64 : Retro23_31
- Track 65 : RedRock_35
- Track 66 : Power_31
- Track 67 : WeiHuaDA_37
- Track 68 : Piro94_32
- Track 69 : Georgie2_32
- Track 70 : Rachaly_34
- Track 71 : BabyBack_33
- Track 72 : AnnaL29_35
- Track 73 : Deloris_32
- Track 74 : Leviathan_33
- Track 75 : Changeling_34
- Track 76 : Jerm_33
- Track 77 : SemperFi_33
- Track 78 : Dalmatian_31
- Track 79 : Phaded_35
- Track 80 : Smeagan_33
- Track 81 : Heffalump_33
- Track 82 : EZMoney23_35
- Track 83 : Trixie_34
- Track 84 : 20ES_31
- Track 85 : JoshKayV_33
- Track 86 : Kalpine_34
- Track 87 : Lambert1_32, Noella_32, Norbert_31, Hookmount_32, Popcicle_32, Caviar_32, Pocahontas_32, Panamaxus_31, Texage_31
- Track 88 : Kalb97_34
- Track 89 : JF4_31, JF2_31

- Track 90 : Rockstar_31
- Track 91 : ResDef_32
- Track 92 : Pawn_34, Marius_34, Heliosoles_33, Manu_34, Gemma_33, Groupthink_34, PurpleHaze_33
- Track 93 : B1_29
- Track 94 : Puppy_32, Bugatti_31, TNguyen7_31, Giroux_31, Pistachio_32, Idleandcovert_31, BlueBird_32, SaturnRing_31
- Track 95 : Heathen_31, DropBear_31, Fred313_31, Scout_31, Kachowdy_31, HelDan_31, Marchesa_31
- Track 96 : Reba_34, Phranny_34
- Track 97 : Todacoro_32, QuinnKiro_31, Veracruz_31
- Track 98 : ACFishhook_33, HaveUMetTed_34
- Track 99 : Margo_32
- Track 100 : BabyJohn_30, Chiqui_30
- Track 101 : Jobu08_33
- Track 102 : BabyRay_31
- Track 103 : MA5_31
- Track 104 : Phantastic_31
- Track 105 : JeppNRM_34, Kalnoky_34
- Track 106 : MK4_31
- Track 107 : SoilDragon_33
- Track 108 : Isca_31
- Track 109 : OlanP_33
- Track 110 : PhishRPhriends_32
- Track 111 : Stasia_32
- Track 112 : BogosyJay_32, Maminiaina_32
- Track 113 : Keziacharles14_31
- Track 114 : Catalina_34, PackMan_33, HortumSL17_33, Aliter_33, Phaeder_33, Lilleskat_31, Fayely_33, Myxus_33, Tubs_33, Halex_32, Ugenie5_30, Scherzo_33
- Track 115 : Elephantoon_32
- Track 116 : Beemo_33, Jiawan_32, Pioneer_33, RyeScarlet_34, Onglai_32, Hanray_32, Phonnegut_33
- Track 117 : EdogawaKiddo_31
- Track 118 : Darrell_33
- Track 119 : Conquerage_33, EmyBug_33, Eidsmoe_33, Spouty_33, Priya_33, Qobbit_33, ExplosioNervosa_33
- Track 120 : LoneWolf_32
- Track 121 : Sachima_31
- Track 122 : Alma_33
- Track 123 : 8UZL_24
- Track 124 : Maco6_22
- Track 125 : Muddy_24
- Track 126 : FF47_24

Summary of Final Annotations (See graph section above for start numbers):

The start number called the most often in the published annotations is 4, it was called in 41 of the 167 non-draft genes in the pham.

Genes that call this "Most Annotated" start:

- ACFishhook_33, Bactobuster_33, BiancaTri92_33, Chupacabra_32, DontArgue_31, Drake94_31, DustyMartin_37, Eaglepride_34, Edison31_33, Gemma_33, Goose_32, Groupthink_34, HaveUMetTed_34, Heliosoles_33, Jaan_35, JeppNRM_34, Jobu08_33, Kalb97_34, Kalnoky_34, KittenMittens_31, Kristoff_34, Landor_33, Leogania_33, Manu_34, Marius_34, OKCentral2016_32, OlanP_33, Pawn_34, PeaceMeal1_31, Phaded_35, PhishRPhriends_32, Phranny_34, Poompha_31, PurpleHaze_33, Reba_34, Rebeuca_34, RhynO_34, Rowdy_37, Severus_31, Shapes_37, SoilDragon_33, Stasia_32, Topanga_33, Trike_30, Twister_33, WalterMcMickey_33,

Genes that have the "Most Annotated" start but do not call it:

-

Genes that do not have the "Most Annotated" start:

- 20ES_31, 40AC_34, 8UZL_24, AbbyPaige_33, Agape74_33, Aliter_33, Alma_33, AnnaL29_35, Anselm_31, ArcherNM_34, B1_29, BabyBack_33, BabyJohn_30, BabyRay_31, Baehexic_32, Beemo_33, BengiVuitton_32, Benvolio_31, BlueBird_32, BobSwaget_34, BogosyJay_32, Bugatti_31, Buggy_33, CRB1_31, Catalina_34, Caviar_32, Centaur_33, Changeling_34, Chiqui_30, Colin_35, Conquerage_33, Crucio_31, Dalmatian_31, Darrell_33, Deloris_32, Dignity_33, Drake55_33, DropBear_31, DudeLittle_31, EZMoney23_35, Echild_31, EdogawaKiddo_31, Eidsmoe_33, Elephantoon_32, EmyBug_33, Equemioh13_33, ExplosioNervosa_33, FF47_24, Fameo_31, Fayely_33, FiringLine_31, First_0031, Flare16_31, Fred313_31, Gail_31, GaugeLDP_33, Georgie2_32, Giroux_31, Hanray_32, HarryHoudini_33, Heathen_31, Heffalump_33, HelDan_31, Horex_32, Hookmount_32, HortumSL17_33, Idleandcovert_31, IronMan_34, Isca_31, Iwokeuplikedis_32, JF2_31, JF4_31, Jerm_33, Jiawan_32, JoshKayV_33, Kachowdy_31, Kalpine_34, Keziacharles14_31, LadyBird_31, Lambert1_32, Larenn_32, Leviathan_33, LiITurb_33, Lilleskat_31, Lokk_34, LoneWolf_32, Loser_35, Luchador_33, MA5_31, MK4_31, Maco6_22, Maminiaina_32, Marchesa_31, Margo_32, MiculUcigas_31, Miko_34, Muddy_24, Myxus_33, NaSiaTalie_31, NicoleTera_35, Noella_32, Norbert_31, NothingSpecial_33, Onglai_32, PackMan_33, Panamaxus_31, Phaeder_33, Phantastic_31, Phonnegut_33, Pioneer_33, Piro94_32, Pistachio_32, Pocahontas_32, Popcicle_32, Power_31, Priya_33, Puppy_32, Qobbit_33, QueenB2_31, QueenBeesly_31, QuinnKiro_31, Rachaly_34, RedRock_35, ResDef_32, Retro23_31, Rockstar_31, RyeScarlet_34, Sachima_31, SaturnRing_31, Scherzo_33, Scout_31, SemperFi_33, Smeagan_33, SnapTap_31, SororFago_31, Spouty_33, SweetiePie_31, TNguyen7_31, TarsusIV_31, Texage_31, Todacoro_32, Trixie_34, Trooper_31, Tubs_33, Turbido_33, Ugenie5_30, Updawg_33, Veracruz_31, WeiHuaDA_37, Whabigail7_33, WideWale_33,

Summary by start number:

Start 3:

- Found in 4 of 197 (2.0%) of genes in pham
- Manual Annotations of this start: 2 of 167
- Called 100.0% of time when present
- Phage (with cluster) where this start called: 8UZL_24 (AB), FF47_24 (AB), Maco6_22 (AB), Muddy_24 (AB),

Start 4:

- Found in 46 of 197 (23.4%) of genes in pham

- Manual Annotations of this start: 41 of 167
- Called 100.0% of time when present
- Phage (with cluster) where this start called: ACFishhook_33 (A3), Bactobuster_33 (A2), BiancaTri92_33 (A2), Chupacabra_32 (A10), DontArgue_31 (A10), Drake94_31 (A10), DustyMartin_37 (A10), Eaglepride_34 (A10), Edison31_33 (A10), Gemma_33 (A3), Goose_32 (A10), Groupthink_34 (A3), HaveUMetTed_34 (A3), Heliosoles_33 (A3), Jaan_35 (A2), JeppNRM_34 (A3), Jobu08_33 (A3), Kalb97_34 (A3), Kalnoky_34 (A3), KittenMittens_31 (A10), Kristoff_34 (A10), Landor_33 (A2), Leogania_33 (A2), Manu_34 (A3), Marius_34 (A3), OKCentral2016_32 (A10), OlanP_33 (A3), Pawn_34 (A3), PeaceMeal1_31 (A10), Phaded_35 (A2), PhishRPhriends_32 (A3), Phranny_34 (A3), Poompha_31 (A10), PurpleHaze_33 (A3), Reba_34 (A3), Rebeuca_34 (A10), RhynO_34 (A10), Rowdy_37 (A10), Severus_31 (A10), Shapes_37 (A10), SoilDragon_33 (A3), Stasia_32 (A4), Topanga_33 (A10), Trike_30 (A10), Twister_33 (A10), WalterMcMickey_33 (A10),

Start 5:

- Found in 39 of 197 (19.8%) of genes in pham
- Manual Annotations of this start: 29 of 167
- Called 94.9% of time when present
- Phage (with cluster) where this start called: Aliter_33 (A9), Alma_33 (A9), Beemo_33 (A9), BogosyJay_32 (A9), Catalina_34 (A9), Colin_35 (A2), Conquerage_33 (A9), Darrell_33 (A9), Eidsmoe_33 (A9), Elephantoon_32 (A9), EmyBug_33 (A9), ExplosioNervosa_33 (A9), Fayely_33 (A9), Hanray_32 (A9), Horex_32 (A9), HortumSL17_33 (A9), Jiawan_32 (A9), Kalpine_34 (A2), Lilleskat_31 (A9), LoneWolf_32 (A9), Maminina_32 (A9), Myxus_33 (A9), NicoleTera_35 (A2), Onglai_32 (A9), PackMan_33 (A9), Phaeder_33 (A9), Phonnegut_33 (A9), Pioneer_33 (A9), Priya_33 (A9), Qobbit_33 (A9), RyeScarlet_34 (A9), Scherzo_33 (A9), Spouty_33 (A9), Trixie_34 (A2), Tubs_33 (A9), Ugenie5_30 (A9), WeiHuaDA_37 (A2),

Start 6:

- Found in 34 of 197 (17.3%) of genes in pham
- Manual Annotations of this start: 34 of 167
- Called 100.0% of time when present
- Phage (with cluster) where this start called: AbbyPaige_33 (A2), Agape74_33 (A2), Baehexic_32 (A2), Benvolio_31 (A2), BobSwaget_34 (A2), Buggy_33 (A2), Centaur_33 (A2), Dignity_33 (A2), Drake55_33 (A2), Echild_31 (A2), Equemioh13_33 (A2), Flare16_31 (A2), Gail_31 (A14), HarryHoudini_33 (A2), Iwokeuplikedis_32 (A2), Jerm_33 (A2), Keziacharles14_31 (A9), LadyBird_31 (A2), Larenn_32 (A2), Leviathan_33 (A2), LilTurb_33 (A2), Lokk_34 (A2), Luchador_33 (A14), MiculUcigas_31 (A2), Miko_34 (A2), NaSiaTalie_31 (A2), Piro94_32 (A2), Rachaly_34 (A2), Smeagan_33 (A2), SororFago_31 (A14), Turbido_33 (A2), Updawg_33 (A2), Whabigail7_33 (A2), WideWale_33 (A2),

Start 7:

- Found in 34 of 197 (17.3%) of genes in pham
- Manual Annotations of this start: 29 of 167
- Called 100.0% of time when present
- Phage (with cluster) where this start called: 20ES_31 (A2), 40AC_34 (A17), AnnaL29_35 (A2), Anselm_31 (A2), ArcherNM_34 (A2), BabyBack_33 (A2), BengiVuitton_32 (A2), CRB1_31 (A2), Changeling_34 (A2), Crucio_31 (A2), Dalmatian_31 (A2), Deloris_32 (A2), DudeLittle_31 (A2), EZMoney23_35 (A2), Fameo_31 (A2), FiringLine_31 (A2), First_0031 (A2), GaugeLDP_33 (A2),

Georgie2_32 (A2), Heffalump_33 (A2), IronMan_34 (A2), JoshKayV_33 (A2), Loser_35 (A2), NothingSpecial_33 (A2), Power_31 (A2), QueenB2_31 (A2), QueenBeesly_31 (A2), RedRock_35 (A2), Retro23_31 (A2), SemperFi_33 (A2), SnapTap_31 (A2), SweetiePie_31 (A2), TarsusIV_31 (A2), Trooper_31 (A2),

Start 8:

- Found in 22 of 197 (11.2%) of genes in pham
- No Manual Annotations of this start.
- Called 9.1% of time when present
- Phage (with cluster) where this start called: EdogawaKiddo_31 (A9), Sachima_31 (A9),

Start 41:

- Found in 1 of 197 (0.5%) of genes in pham
- Manual Annotations of this start: 1 of 167
- Called 100.0% of time when present
- Phage (with cluster) where this start called: Phantastic_31 (A3),

Start 42:

- Found in 39 of 197 (19.8%) of genes in pham
- Manual Annotations of this start: 31 of 167
- Called 100.0% of time when present
- Phage (with cluster) where this start called: B1_29 (A3), BabyJohn_30 (A3), BabyRay_31 (A3), BlueBird_32 (A3), Bugatti_31 (A3), Caviar_32 (A3), Chiqui_30 (A3), DropBear_31 (A3), Fred313_31 (A3), Giroux_31 (A3), Heathen_31 (A3), HelDan_31 (A3), Hookmount_32 (A3), Idleandcovert_31 (A3), Isca_31 (A3), JF2_31 (A3), JF4_31 (A3), Kachowdy_31 (A3), Lambert1_32 (A3), MA5_31 (A3), MK4_31 (A3), Marchesa_31 (A3), Margo_32 (A3), Noella_32 (A3), Norbert_31 (A3), Panamaxus_31 (A3), Pistachio_32 (A3), Pocahontas_32 (A3), Popcicle_32 (A3), Puppy_32 (A3), QuinnKiro_31 (A3), ResDef_32 (A3), Rockstar_31 (A3), SaturnRing_31 (A3), Scout_31 (A3), TNguyen7_31 (A3), Texage_31 (A3), Todacoro_32 (A3), Veracruz_31 (A3),

Summary by clusters:

There are 8 clusters represented in this pham: A14, A17, AB, A10, A3, A2, A4, A9,

Info for manual annotations of cluster A10:

- Start number 4 was manually annotated 17 times for cluster A10.

Info for manual annotations of cluster A14:

- Start number 6 was manually annotated 3 times for cluster A14.

Info for manual annotations of cluster A2:

- Start number 4 was manually annotated 6 times for cluster A2.
- Start number 5 was manually annotated 3 times for cluster A2.
- Start number 6 was manually annotated 30 times for cluster A2.
- Start number 7 was manually annotated 29 times for cluster A2.

Info for manual annotations of cluster A3:

- Start number 4 was manually annotated 17 times for cluster A3.
- Start number 41 was manually annotated 1 time for cluster A3.

- Start number 42 was manually annotated 31 times for cluster A3.

Info for manual annotations of cluster A4:

- Start number 4 was manually annotated 1 time for cluster A4.

Info for manual annotations of cluster A9:

- Start number 5 was manually annotated 26 times for cluster A9.
- Start number 6 was manually annotated 1 time for cluster A9.

Info for manual annotations of cluster AB:

- Start number 3 was manually annotated 2 times for cluster AB.

Gene Information:

Gene: 20ES_31 Start: 22797, Stop: 25202, Start Num: 7

Candidate Starts for 20ES_31:

(Start: 7 @22797 has 29 MA's), (10, 22818), (15, 22908), (17, 22917), (20, 22938), (30, 23001), (36, 23037), (47, 23118), (57, 23187), (60, 23208), (62, 23217), (73, 23328), (75, 23349), (87, 23439), (89, 23454), (106, 23574), (110, 23607), (114, 23616), (129, 23715), (134, 23742), (150, 23955), (159, 24045), (161, 24063), (164, 24087), (182, 24288), (187, 24327), (192, 24348), (195, 24384), (196, 24417), (197, 24438), (201, 24474), (207, 24528), (211, 24579), (215, 24600), (226, 24705), (228, 24720), (258, 24930), (273, 24999), (310, 25170), (311, 25179), (312, 25185),

Gene: 40AC_34 Start: 24978, Stop: 26762, Start Num: 7

Candidate Starts for 40AC_34:

(Start: 7 @24978 has 29 MA's), (10, 24999), (17, 25098), (18, 25104), (21, 25131), (27, 25167), (30, 25188), (36, 25224), (37, 25236), (39, 25248), (54, 25350), (56, 25371), (81, 25425), (86, 25437), (150, 25503), (159, 25593), (161, 25611), (164, 25635), (173, 25770), (182, 25836), (187, 25875), (196, 25965), (201, 26022), (209, 26088), (214, 26145), (234, 26307), (253, 26445), (255, 26469), (271, 26547), (273, 26559), (292, 26622), (294, 26640), (312, 26745),

Gene: 8UZL_24 Start: 19399, Stop: 21717, Start Num: 3

Candidate Starts for 8UZL_24:

(Start: 3 @19399 has 2 MA's), (19, 19600), (25, 19645), (28, 19657), (45, 19768), (52, 19834), (79, 19975), (101, 20107), (102, 20146), (105, 20158), (114, 20197), (117, 20215), (121, 20251), (132, 20311), (144, 20386), (148, 20413), (152, 20476), (158, 20533), (176, 20728), (185, 20797), (188, 20815), (189, 20821), (190, 20824), (191, 20827), (193, 20851), (198, 20944), (200, 20950), (208, 21028), (212, 21076), (213, 21079), (223, 21157), (228, 21223), (230, 21235), (239, 21298), (242, 21319), (245, 21340), (253, 21397), (254, 21418), (261, 21457), (269, 21499), (277, 21532), (279, 21538), (282, 21553), (301, 21637),

Gene: ACFishhook_33 Start: 23442, Stop: 25250, Start Num: 4

Candidate Starts for ACFishhook_33:

(Start: 4 @23442 has 41 MA's), (15, 23577), (24, 23643), (32, 23688), (33, 23691), (54, 23838), (60, 23883), (66, 23913), (159, 24081), (161, 24099), (164, 24123), (178, 24285), (182, 24324), (187, 24363), (196, 24453), (211, 24615), (215, 24636), (224, 24723), (232, 24780), (234, 24795), (243, 24858), (253, 24933), (254, 24954), (273, 25047), (282, 25086), (294, 25128), (311, 25227),

Gene: AbbyPaige_33 Start: 23268, Stop: 25358, Start Num: 6

Candidate Starts for AbbyPaige_33:

(Start: 6 @23268 has 34 MA's), (15, 23382), (17, 23391), (18, 23397), (30, 23481), (37, 23529), (51, 23619), (54, 23643), (62, 23697), (87, 23808), (106, 23943), (159, 24180), (161, 24198), (164, 24222), (171, 24330), (179, 24393), (182, 24423), (187, 24462), (196, 24552), (201, 24609), (202, 24612), (208, 24669), (211, 24714), (215, 24735), (236, 24912), (237, 24924), (242, 24951), (255, 25056), (274, 25146), (303, 25269), (305, 25281), (307, 25305), (312, 25335), (315, 25350),

Gene: Agape74_33 Start: 23244, Stop: 25334, Start Num: 6

Candidate Starts for Agape74_33:

(Start: 6 @23244 has 34 MA's), (15, 23358), (17, 23367), (18, 23373), (30, 23457), (37, 23505), (51, 23595), (54, 23619), (62, 23673), (87, 23784), (106, 23919), (159, 24156), (161, 24174), (164, 24198), (171, 24306), (179, 24369), (182, 24399), (187, 24438), (196, 24528), (201, 24585), (202, 24588), (208, 24645), (211, 24690), (215, 24711), (236, 24888), (237, 24900), (242, 24927), (255, 25032), (274, 25122), (303, 25245), (305, 25257), (307, 25281), (312, 25311), (315, 25326),

Gene: Aliter_33 Start: 24305, Stop: 26071, Start Num: 5

Candidate Starts for Aliter_33:

(Start: 5 @24305 has 29 MA's), (8, 24317), (24, 24491), (39, 24581), (48, 24626), (49, 24635), (62, 24713), (82, 24737), (109, 24773), (159, 24902), (161, 24920), (182, 25145), (184, 25166), (187, 25184), (196, 25274), (201, 25331), (214, 25454), (228, 25577), (234, 25616), (241, 25673), (253, 25754), (254, 25775), (255, 25778), (273, 25868), (300, 25979), (312, 26054),

Gene: Alma_33 Start: 24420, Stop: 26186, Start Num: 5

Candidate Starts for Alma_33:

(Start: 5 @24420 has 29 MA's), (24, 24606), (39, 24696), (48, 24741), (49, 24750), (82, 24852), (109, 24888), (159, 25017), (161, 25035), (182, 25260), (184, 25281), (187, 25299), (196, 25389), (201, 25446), (214, 25569), (228, 25692), (232, 25716), (234, 25731), (253, 25869), (254, 25890), (255, 25893), (256, 25899), (273, 25983), (306, 26133), (312, 26169),

Gene: AnnaL29_35 Start: 25114, Stop: 26892, Start Num: 7

Candidate Starts for AnnaL29_35:

(Start: 7 @25114 has 29 MA's), (15, 25225), (17, 25234), (30, 25321), (36, 25357), (37, 25369), (39, 25381), (60, 25528), (62, 25537), (81, 25558), (86, 25570), (159, 25726), (161, 25744), (171, 25876), (182, 25969), (187, 26008), (195, 26065), (196, 26098), (201, 26155), (207, 26209), (214, 26278), (228, 26401), (234, 26440), (238, 26470), (253, 26575), (254, 26596), (255, 26599), (273, 26689), (294, 26770), (305, 26830),

Gene: Anselm_31 Start: 22873, Stop: 25074, Start Num: 7

Candidate Starts for Anselm_31:

(Start: 7 @22873 has 29 MA's), (10, 22894), (17, 22993), (26, 23056), (30, 23083), (36, 23119), (51, 23221), (53, 23233), (62, 23299), (87, 23410), (104, 23542), (106, 23545), (159, 23899), (161, 23917), (164, 23941), (182, 24142), (187, 24181), (196, 24271), (201, 24328), (208, 24388), (211, 24433), (215, 24454), (226, 24559), (228, 24574), (237, 24643), (242, 24670), (248, 24715), (255, 24775), (259, 24799), (298, 24949), (305, 24997), (307, 25021),

Gene: ArcherNM_34 Start: 25064, Stop: 26842, Start Num: 7

Candidate Starts for ArcherNM_34:

(Start: 7 @25064 has 29 MA's), (10, 25085), (15, 25175), (17, 25184), (30, 25271), (36, 25307), (37, 25319), (39, 25331), (62, 25487), (81, 25508), (86, 25520), (150, 25586), (159, 25676), (161, 25694), (164, 25718), (175, 25862), (182, 25919), (187, 25958), (195, 26015), (196, 26048), (201, 26105), (207, 26159), (214, 26228), (228, 26351), (232, 26375), (234, 26390), (253, 26525), (254, 26546), (273, 26639), (294, 26720), (305, 26780), (312, 26825),

Gene: B1_29 Start: 22527, Stop: 24386, Start Num: 42

Candidate Starts for B1_29:

(Start: 42 @22527 has 31 MA's), (58, 22653), (61, 22671), (63, 22686), (79, 22728), (89, 22791), (113, 22944), (114, 22947), (118, 22968), (120, 22995), (145, 23070), (151, 23121), (159, 23208), (164, 23250), (187, 23490), (195, 23547), (196, 23580), (205, 23673), (208, 23697), (221, 23802), (226, 23868), (228, 23883), (252, 24054), (271, 24159), (287, 24213), (297, 24252), (305, 24306), (308, 24333), (311, 24357),

Gene: BabyBack_33 Start: 24351, Stop: 26132, Start Num: 7

Candidate Starts for BabyBack_33:

(Start: 7 @24351 has 29 MA's), (10, 24372), (15, 24462), (17, 24471), (18, 24477), (37, 24609), (39, 24621), (50, 24696), (90, 24810), (159, 24966), (161, 24984), (164, 25008), (172, 25122), (182, 25209), (187, 25248), (196, 25338), (197, 25359), (207, 25449), (211, 25500), (215, 25521), (232, 25665), (234, 25680), (253, 25815), (254, 25836), (258, 25857), (266, 25896), (270, 25914), (273, 25929), (282, 25968), (294, 26010), (300, 26040), (301, 26052), (311, 26109),

Gene: BabyJohn_30 Start: 23109, Stop: 24968, Start Num: 42

Candidate Starts for BabyJohn_30:

(Start: 42 @23109 has 31 MA's), (61, 23253), (79, 23310), (114, 23529), (117, 23547), (118, 23550), (120, 23577), (143, 23646), (145, 23652), (159, 23790), (161, 23808), (164, 23832), (187, 24072), (196, 24162), (214, 24342), (221, 24384), (226, 24450), (228, 24465), (252, 24636), (255, 24666), (287, 24795), (305, 24888), (308, 24915), (311, 24939), (312, 24945),

Gene: BabyRay_31 Start: 23087, Stop: 24946, Start Num: 42

Candidate Starts for BabyRay_31:

(Start: 42 @23087 has 31 MA's), (61, 23231), (63, 23246), (79, 23288), (89, 23351), (108, 23483), (114, 23507), (118, 23528), (120, 23555), (145, 23630), (159, 23768), (161, 23786), (162, 23789), (164, 23810), (187, 24050), (196, 24140), (205, 24233), (208, 24257), (221, 24362), (226, 24428), (228, 24443), (234, 24482), (252, 24614), (271, 24719), (287, 24773), (297, 24812), (305, 24866), (308, 24893), (311, 24917),

Gene: Bactobuster_33 Start: 24863, Stop: 26638, Start Num: 4

Candidate Starts for Bactobuster_33:

(2, 24824), (Start: 4 @24863 has 41 MA's), (15, 24974), (17, 24983), (26, 25040), (30, 25067), (46, 25160), (60, 25274), (81, 25304), (154, 25439), (159, 25472), (161, 25490), (164, 25514), (172, 25628), (178, 25676), (182, 25715), (187, 25754), (190, 25766), (195, 25811), (211, 26006), (215, 26027), (225, 26120), (234, 26186), (244, 26258), (253, 26321), (270, 26420), (273, 26435), (294, 26516), (305, 26576), (312, 26621),

Gene: Baehexic_32 Start: 23237, Stop: 25444, Start Num: 6

Candidate Starts for Baehexic_32:

(Start: 6 @23237 has 34 MA's), (15, 23351), (17, 23360), (18, 23366), (20, 23387), (26, 23423), (37, 23498), (51, 23588), (53, 23600), (87, 23777), (96, 23816), (106, 23912), (145, 24125), (150, 24173), (159, 24263), (163, 24293), (164, 24305), (187, 24545), (196, 24644), (197, 24665), (207, 24755), (208, 24761), (209, 24767), (211, 24806), (215, 24827), (220, 24863), (221, 24866), (226, 24932), (255, 25148), (263, 25196), (280, 25259), (298, 25319), (305, 25367), (312, 25421),

Gene: Beemo_33 Start: 24411, Stop: 26177, Start Num: 5

Candidate Starts for Beemo_33:

(Start: 5 @24411 has 29 MA's), (8, 24423), (24, 24597), (39, 24687), (48, 24732), (49, 24741), (62, 24819), (82, 24843), (109, 24879), (159, 25008), (161, 25026), (182, 25251), (184, 25272), (187, 25290), (196, 25380), (201, 25437), (214, 25560), (228, 25683), (234, 25722), (241, 25779), (253, 25860), (254, 25881), (255, 25884), (270, 25959), (273, 25974), (300, 26085), (312, 26160),

Gene: BengiVuitton_32 Start: 23191, Stop: 25377, Start Num: 7

Candidate Starts for BengiVuitton_32:

(Start: 7 @23191 has 29 MA's), (10, 23212), (15, 23302), (20, 23332), (30, 23395), (36, 23431), (44, 23485), (57, 23581), (62, 23611), (75, 23743), (87, 23833), (89, 23848), (106, 23968), (110, 24001), (114, 24010), (159, 24205), (161, 24223), (182, 24451), (187, 24490), (195, 24547), (196, 24580), (197, 24601), (201, 24637), (208, 24697), (211, 24742), (215, 24763), (217, 24772), (228, 24883), (232, 24907), (234, 24922), (235, 24928), (253, 25060), (260, 25114), (271, 25162), (273, 25174), (282, 25213), (311, 25354), (313, 25363),

Gene: Benvolio_31 Start: 22854, Stop: 25181, Start Num: 6

Candidate Starts for Benvolio_31:

(Start: 6 @22854 has 34 MA's), (10, 22878), (17, 22977), (18, 22983), (21, 23010), (30, 23067), (36, 23103), (44, 23157), (47, 23184), (51, 23205), (54, 23229), (62, 23283), (87, 23394), (106, 23529), (110, 23562), (139, 23748), (159, 24000), (161, 24018), (164, 24042), (182, 24243), (187, 24282), (196, 24372), (201, 24429), (208, 24489), (211, 24534), (215, 24555), (228, 24675), (232, 24699), (237, 24744), (242, 24777), (265, 24933), (293, 25044), (305, 25104), (312, 25158), (314, 25167),

Gene: BiancaTri92_33 Start: 24557, Stop: 26335, Start Num: 4

Candidate Starts for BiancaTri92_33:

(Start: 4 @24557 has 41 MA's), (15, 24668), (17, 24677), (26, 24737), (30, 24764), (36, 24800), (62, 24980), (81, 25001), (86, 25013), (156, 25148), (159, 25169), (161, 25187), (164, 25211), (171, 25319), (180, 25385), (187, 25451), (195, 25508), (196, 25541), (201, 25598), (226, 25829), (232, 25868), (234, 25883), (253, 26018), (255, 26042), (256, 26048), (270, 26117), (273, 26132), (282, 26171), (294, 26213), (312, 26318),

Gene: BlueBird_32 Start: 22838, Stop: 24697, Start Num: 42

Candidate Starts for BlueBird_32:

(Start: 42 @22838 has 31 MA's), (61, 22982), (63, 22997), (79, 23039), (100, 23162), (103, 23210), (111, 23252), (114, 23258), (118, 23279), (159, 23519), (163, 23549), (169, 23597), (178, 23723), (182, 23762), (187, 23801), (195, 23858), (196, 23891), (211, 24053), (212, 24056), (221, 24113), (226, 24179), (228, 24194), (255, 24395), (285, 24521), (287, 24524), (303, 24605), (305, 24617), (308, 24644), (312, 24674),

Gene: BobSwaget_34 Start: 24339, Stop: 26123, Start Num: 6

Candidate Starts for BobSwaget_34:

(Start: 6 @24339 has 34 MA's), (10, 24363), (15, 24453), (17, 24462), (24, 24519), (150, 24867), (151, 24870), (159, 24957), (161, 24975), (164, 24999), (171, 25107), (182, 25200), (187, 25239), (196, 25329), (202, 25389), (207, 25440), (211, 25491), (215, 25512), (232, 25656), (234, 25671), (236, 25689), (254, 25827), (258, 25848), (273, 25920), (277, 25938), (282, 25959), (291, 25980), (294, 26001), (305, 26061), (312, 26106),

Gene: BogosyJay_32 Start: 23933, Stop: 25699, Start Num: 5

Candidate Starts for BogosyJay_32:

(Start: 5 @23933 has 29 MA's), (22, 24098), (24, 24119), (36, 24185), (37, 24197), (39, 24209), (48, 24254), (49, 24263), (51, 24272), (60, 24332), (62, 24341), (82, 24365), (109, 24401), (153, 24494), (159, 24530), (161, 24548), (182, 24773), (184, 24794), (187, 24812), (196, 24902), (201, 24959), (205, 24995), (214, 25082), (228, 25205), (232, 25229), (234, 25244), (241, 25301), (254, 25403), (255, 25406), (273, 25496), (300, 25607), (312, 25682),

Gene: Bugatti_31 Start: 22838, Stop: 24697, Start Num: 42

Candidate Starts for Bugatti_31:

(Start: 42 @22838 has 31 MA's), (61, 22982), (63, 22997), (79, 23039), (100, 23162), (103, 23210), (111, 23252), (114, 23258), (118, 23279), (159, 23519), (163, 23549), (169, 23597), (178, 23723),

(182, 23762), (187, 23801), (195, 23858), (196, 23891), (211, 24053), (212, 24056), (221, 24113), (226, 24179), (228, 24194), (255, 24395), (285, 24521), (287, 24524), (303, 24605), (305, 24617), (308, 24644), (312, 24674),

Gene: Buggy_33 Start: 23267, Stop: 25489, Start Num: 6

Candidate Starts for Buggy_33:

(Start: 6 @23267 has 34 MA's), (15, 23381), (17, 23390), (18, 23396), (30, 23480), (51, 23618), (54, 23642), (62, 23696), (96, 23846), (106, 23942), (112, 23978), (115, 23987), (159, 24293), (164, 24335), (187, 24575), (196, 24674), (197, 24695), (203, 24752), (208, 24791), (209, 24797), (220, 24893), (221, 24896), (226, 24962), (237, 25046), (248, 25118), (263, 25238), (293, 25349), (303, 25400), (305, 25412),

Gene: CRB1_31 Start: 22754, Stop: 24937, Start Num: 7

Candidate Starts for CRB1_31:

(Start: 7 @22754 has 29 MA's), (10, 22775), (15, 22865), (17, 22874), (20, 22895), (26, 22931), (30, 22958), (36, 22994), (51, 23096), (62, 23174), (87, 23285), (96, 23324), (106, 23420), (110, 23453), (159, 23774), (161, 23792), (162, 23795), (164, 23816), (182, 24017), (187, 24056), (192, 24077), (195, 24113), (196, 24146), (197, 24167), (201, 24203), (209, 24269), (211, 24308), (215, 24329), (226, 24434), (228, 24449), (241, 24542), (253, 24623), (258, 24665), (273, 24734), (282, 24773), (288, 24782), (311, 24914), (312, 24920),

Gene: Catalina_34 Start: 24377, Stop: 26143, Start Num: 5

Candidate Starts for Catalina_34:

(Start: 5 @24377 has 29 MA's), (8, 24389), (24, 24563), (39, 24653), (48, 24698), (49, 24707), (62, 24785), (82, 24809), (109, 24845), (159, 24974), (161, 24992), (182, 25217), (184, 25238), (187, 25256), (196, 25346), (201, 25403), (214, 25526), (228, 25649), (234, 25688), (241, 25745), (253, 25826), (254, 25847), (255, 25850), (273, 25940), (300, 26051), (312, 26126),

Gene: Caviar_32 Start: 23373, Stop: 25232, Start Num: 42

Candidate Starts for Caviar_32:

(Start: 42 @23373 has 31 MA's), (61, 23517), (65, 23535), (79, 23574), (83, 23595), (89, 23637), (95, 23655), (118, 23814), (120, 23841), (149, 23946), (151, 23967), (159, 24054), (164, 24096), (187, 24336), (196, 24426), (201, 24483), (221, 24648), (225, 24702), (226, 24714), (228, 24729), (247, 24858), (248, 24870), (255, 24930), (257, 24942), (267, 24987), (271, 25005), (305, 25152), (308, 25179), (312, 25209),

Gene: Centaur_33 Start: 23215, Stop: 25422, Start Num: 6

Candidate Starts for Centaur_33:

(Start: 6 @23215 has 34 MA's), (15, 23329), (17, 23338), (18, 23344), (20, 23365), (26, 23401), (37, 23476), (51, 23566), (53, 23578), (87, 23755), (96, 23794), (106, 23890), (145, 24103), (150, 24151), (159, 24241), (163, 24271), (164, 24283), (187, 24523), (196, 24622), (197, 24643), (207, 24733), (208, 24739), (209, 24745), (211, 24784), (215, 24805), (220, 24841), (221, 24844), (226, 24910), (255, 25126), (263, 25174), (280, 25237), (298, 25297), (305, 25345), (312, 25399),

Gene: Changeling_34 Start: 25115, Stop: 26890, Start Num: 7

Candidate Starts for Changeling_34:

(1, 25016), (Start: 7 @25115 has 29 MA's), (15, 25226), (17, 25235), (30, 25319), (36, 25355), (37, 25367), (39, 25379), (54, 25481), (57, 25505), (81, 25556), (86, 25568), (156, 25703), (159, 25724), (161, 25742), (164, 25766), (182, 25967), (187, 26006), (195, 26063), (196, 26096), (201, 26153), (207, 26207), (214, 26276), (226, 26384), (228, 26399), (234, 26438), (254, 26594), (273, 26687), (294, 26768), (305, 26828), (312, 26873),

Gene: Chiqui_30 Start: 23109, Stop: 24977, Start Num: 42

Candidate Starts for Chiqui_30:

(Start: 42 @23109 has 31 MA's), (61, 23253), (79, 23310), (114, 23538), (117, 23556), (118, 23559), (120, 23586), (143, 23655), (145, 23661), (159, 23799), (161, 23817), (164, 23841), (187, 24081), (196, 24171), (214, 24351), (221, 24393), (226, 24459), (228, 24474), (252, 24645), (255, 24675), (287, 24804), (305, 24897), (308, 24924), (311, 24948), (312, 24954),

Gene: Chupacabra_32 Start: 23269, Stop: 25104, Start Num: 4

Candidate Starts for Chupacabra_32:

(Start: 4 @23269 has 41 MA's), (9, 23302), (11, 23317), (51, 23629), (54, 23653), (55, 23671), (56, 23674), (57, 23677), (60, 23698), (64, 23725), (159, 23938), (161, 23956), (164, 23980), (173, 24115), (175, 24124), (187, 24220), (195, 24277), (196, 24310), (207, 24421), (214, 24490), (226, 24598), (228, 24613), (234, 24652), (235, 24658), (244, 24724), (253, 24787), (254, 24808), (255, 24811), (256, 24817), (258, 24829), (270, 24886), (273, 24901), (275, 24910), (294, 24982), (305, 25042), (312, 25087), (313, 25090),

Gene: Colin_35 Start: 24479, Stop: 26257, Start Num: 5

Candidate Starts for Colin_35:

(Start: 5 @24479 has 29 MA's), (15, 24593), (17, 24602), (37, 24734), (150, 25001), (159, 25091), (161, 25109), (164, 25133), (182, 25334), (187, 25373), (196, 25463), (201, 25520), (207, 25574), (214, 25643), (227, 25760), (234, 25805), (236, 25823), (253, 25940), (254, 25961), (258, 25982), (273, 26054), (294, 26135), (300, 26165), (305, 26195), (312, 26240),

Gene: Conquerage_33 Start: 24407, Stop: 26173, Start Num: 5

Candidate Starts for Conquerage_33:

(Start: 5 @24407 has 29 MA's), (24, 24593), (39, 24683), (48, 24728), (49, 24737), (62, 24815), (82, 24839), (109, 24875), (159, 25004), (161, 25022), (182, 25247), (184, 25268), (187, 25286), (196, 25376), (201, 25433), (214, 25556), (228, 25679), (234, 25718), (241, 25775), (253, 25856), (254, 25877), (255, 25880), (273, 25970), (300, 26081), (312, 26156),

Gene: Crucio_31 Start: 22638, Stop: 24842, Start Num: 7

Candidate Starts for Crucio_31:

(Start: 7 @22638 has 29 MA's), (10, 22659), (18, 22764), (30, 22848), (36, 22884), (51, 22986), (53, 22998), (87, 23175), (106, 23310), (118, 23373), (159, 23664), (161, 23682), (164, 23706), (174, 23844), (182, 23907), (187, 23946), (196, 24036), (201, 24093), (208, 24153), (211, 24198), (215, 24219), (228, 24339), (232, 24363), (237, 24408), (248, 24480), (255, 24540), (297, 24711), (305, 24765), (309, 24792), (312, 24819),

Gene: Dalmatian_31 Start: 22845, Stop: 25049, Start Num: 7

Candidate Starts for Dalmatian_31:

(Start: 7 @22845 has 29 MA's), (10, 22866), (30, 23055), (36, 23091), (51, 23193), (53, 23205), (77, 23316), (87, 23382), (106, 23517), (159, 23871), (164, 23913), (174, 24051), (182, 24114), (187, 24153), (196, 24243), (201, 24300), (208, 24360), (211, 24405), (215, 24426), (228, 24546), (232, 24570), (237, 24615), (248, 24687), (255, 24747), (297, 24918), (305, 24972), (309, 24999), (312, 25026),

Gene: Darrell_33 Start: 24371, Stop: 26137, Start Num: 5

Candidate Starts for Darrell_33:

(Start: 5 @24371 has 29 MA's), (24, 24557), (36, 24623), (39, 24647), (48, 24692), (49, 24701), (60, 24770), (62, 24779), (109, 24839), (151, 24881), (154, 24935), (159, 24968), (161, 24986), (164, 25010), (165, 25016), (180, 25184), (182, 25211), (187, 25250), (196, 25340), (201, 25397), (214, 25520), (220, 25559), (228, 25643), (234, 25682), (253, 25820), (254, 25841), (255, 25844), (257, 25856), (266, 25901), (294, 26015), (300, 26045), (312, 26120),

Gene: Deloris_32 Start: 23191, Stop: 25377, Start Num: 7

Candidate Starts for Deloris_32:

(Start: 7 @23191 has 29 MA's), (10, 23212), (15, 23302), (20, 23332), (30, 23395), (36, 23431), (44, 23485), (57, 23581), (62, 23611), (75, 23743), (87, 23833), (89, 23848), (106, 23968), (110, 24001), (114, 24010), (159, 24205), (161, 24223), (182, 24451), (187, 24490), (195, 24547), (196, 24580), (197, 24601), (201, 24637), (208, 24697), (211, 24742), (215, 24763), (217, 24772), (228, 24883), (232, 24907), (234, 24922), (235, 24928), (253, 25060), (271, 25162), (273, 25174), (282, 25213), (311, 25354), (313, 25363),

Gene: Dignity_33 Start: 23212, Stop: 25416, Start Num: 6

Candidate Starts for Dignity_33:

(Start: 6 @23212 has 34 MA's), (15, 23326), (17, 23335), (18, 23341), (30, 23425), (51, 23563), (54, 23587), (62, 23641), (87, 23752), (106, 23887), (114, 23929), (126, 24001), (156, 24220), (159, 24241), (161, 24259), (164, 24283), (171, 24391), (182, 24484), (187, 24523), (196, 24613), (201, 24670), (202, 24673), (208, 24730), (209, 24736), (211, 24775), (215, 24796), (237, 24985), (242, 25012), (264, 25165), (270, 25189), (284, 25243), (286, 25246), (297, 25285), (298, 25291), (305, 25339),

Gene: DontArgue_31 Start: 21656, Stop: 23866, Start Num: 4

Candidate Starts for DontArgue_31:

(Start: 4 @21656 has 41 MA's), (9, 21689), (23, 21839), (46, 21971), (54, 22040), (57, 22064), (60, 22085), (62, 22094), (67, 22118), (70, 22178), (78, 22241), (94, 22331), (133, 22466), (146, 22562), (149, 22592), (159, 22700), (160, 22709), (164, 22742), (166, 22751), (182, 22943), (184, 22964), (187, 22982), (195, 23039), (196, 23072), (201, 23129), (208, 23189), (211, 23234), (215, 23255), (216, 23258), (219, 23282), (225, 23348), (226, 23360), (232, 23399), (244, 23486), (255, 23573), (266, 23630), (270, 23648), (273, 23663), (282, 23702),

Gene: Drake55_33 Start: 23226, Stop: 25310, Start Num: 6

Candidate Starts for Drake55_33:

(Start: 6 @23226 has 34 MA's), (15, 23340), (18, 23355), (20, 23376), (33, 23454), (51, 23577), (62, 23655), (87, 23766), (91, 23787), (106, 23901), (112, 23937), (159, 24138), (161, 24156), (164, 24180), (170, 24279), (182, 24381), (187, 24420), (190, 24432), (196, 24510), (208, 24627), (209, 24633), (215, 24693), (226, 24798), (228, 24813), (248, 24954), (249, 24957), (254, 25008), (257, 25023), (261, 25047), (272, 25101), (276, 25125), (301, 25230), (313, 25296),

Gene: Drake94_31 Start: 21398, Stop: 23680, Start Num: 4

Candidate Starts for Drake94_31:

(Start: 4 @21398 has 41 MA's), (9, 21431), (14, 21515), (23, 21581), (46, 21713), (60, 21827), (62, 21836), (70, 21920), (80, 21995), (94, 22073), (122, 22148), (136, 22238), (143, 22364), (159, 22511), (161, 22529), (164, 22553), (182, 22754), (187, 22793), (196, 22883), (201, 22940), (207, 22994), (211, 23045), (215, 23066), (217, 23075), (219, 23093), (221, 23105), (232, 23210), (234, 23225), (235, 23231), (239, 23264), (253, 23363), (254, 23384), (255, 23387), (266, 23444), (270, 23462), (271, 23465), (273, 23477), (282, 23516), (294, 23558), (296, 23561), (312, 23663),

Gene: DropBear_31 Start: 22899, Stop: 24758, Start Num: 42

Candidate Starts for DropBear_31:

(Start: 42 @22899 has 31 MA's), (58, 23025), (59, 23034), (79, 23100), (83, 23121), (89, 23163), (114, 23319), (120, 23367), (143, 23436), (145, 23442), (149, 23472), (159, 23580), (161, 23598), (164, 23622), (187, 23862), (196, 23952), (208, 24069), (221, 24174), (226, 24240), (228, 24255), (252, 24426), (271, 24531), (287, 24585), (297, 24624), (305, 24678), (308, 24705), (311, 24729),

Gene: DudeLittle_31 Start: 22847, Stop: 25045, Start Num: 7

Candidate Starts for DudeLittle_31:

(Start: 7 @22847 has 29 MA's), (10, 22868), (18, 22973), (30, 23057), (36, 23093), (51, 23195), (53, 23207), (77, 23318), (87, 23384), (106, 23519), (112, 23555), (118, 23582), (150, 23780), (159, 23867), (161, 23885), (164, 23909), (168, 23939), (182, 24110), (190, 24161), (196, 24239), (201, 24296), (211, 24401), (215, 24422), (218, 24434), (226, 24527), (228, 24542), (237, 24611), (242, 24638), (263, 24791), (270, 24815), (305, 24968), (310, 25007),

Gene: DustyMartin_37 Start: 23534, Stop: 25366, Start Num: 4

Candidate Starts for DustyMartin_37:

(Start: 4 @23534 has 41 MA's), (9, 23567), (23, 23717), (29, 23744), (54, 23918), (56, 23939), (57, 23942), (159, 24203), (161, 24221), (187, 24482), (195, 24539), (196, 24572), (207, 24683), (214, 24752), (225, 24848), (226, 24860), (228, 24875), (232, 24899), (234, 24914), (235, 24920), (237, 24944), (244, 24986), (250, 25031), (253, 25049), (255, 25073), (270, 25148), (273, 25163), (275, 25172), (282, 25202), (294, 25244), (312, 25349), (313, 25352),

Gene: EZMoney23_35 Start: 24766, Stop: 26544, Start Num: 7

Candidate Starts for EZMoney23_35:

(Start: 7 @24766 has 29 MA's), (10, 24787), (15, 24877), (17, 24886), (30, 24970), (39, 25030), (62, 25186), (150, 25285), (159, 25375), (161, 25393), (164, 25417), (182, 25618), (187, 25657), (196, 25747), (201, 25804), (228, 26050), (234, 26089), (241, 26146), (253, 26227), (254, 26248), (273, 26341), (294, 26422),

Gene: Eaglepride_34 Start: 23450, Stop: 25285, Start Num: 4

Candidate Starts for Eaglepride_34:

(Start: 4 @23450 has 41 MA's), (9, 23483), (10, 23486), (29, 23660), (37, 23720), (57, 23858), (60, 23879), (64, 23906), (146, 23981), (147, 23987), (151, 24032), (157, 24104), (159, 24119), (161, 24137), (184, 24383), (187, 24401), (195, 24458), (196, 24491), (197, 24512), (201, 24548), (207, 24602), (211, 24653), (215, 24674), (225, 24767), (228, 24794), (232, 24818), (234, 24833), (235, 24839), (253, 24968), (254, 24989), (255, 24992), (270, 25067), (273, 25082), (275, 25091), (282, 25121), (294, 25163), (300, 25193), (305, 25223), (312, 25268),

Gene: Echild_31 Start: 22854, Stop: 25181, Start Num: 6

Candidate Starts for Echild_31:

(Start: 6 @22854 has 34 MA's), (10, 22878), (17, 22977), (18, 22983), (21, 23010), (30, 23067), (36, 23103), (44, 23157), (47, 23184), (51, 23205), (54, 23229), (62, 23283), (87, 23394), (106, 23529), (110, 23562), (139, 23748), (159, 24000), (161, 24018), (164, 24042), (182, 24243), (187, 24282), (196, 24372), (201, 24429), (208, 24489), (211, 24534), (215, 24555), (228, 24675), (232, 24699), (237, 24744), (242, 24777), (265, 24933), (293, 25044), (305, 25104), (312, 25158), (314, 25167),

Gene: Edison31_33 Start: 23483, Stop: 25318, Start Num: 4

Candidate Starts for Edison31_33:

(Start: 4 @23483 has 41 MA's), (9, 23516), (29, 23693), (55, 23885), (57, 23891), (60, 23912), (64, 23939), (154, 24119), (159, 24152), (161, 24170), (164, 24194), (171, 24302), (180, 24368), (187, 24434), (195, 24491), (196, 24524), (201, 24581), (207, 24635), (210, 24650), (214, 24704), (226, 24812), (228, 24827), (232, 24851), (234, 24866), (250, 24983), (253, 25001), (254, 25022), (255, 25025), (270, 25100), (273, 25115), (294, 25196), (300, 25226), (305, 25256), (312, 25301), (313, 25304),

Gene: EdogawaKiddo_31 Start: 24389, Stop: 26143, Start Num: 8

Candidate Starts for EdogawaKiddo_31:

(Start: 5 @24377 has 29 MA's), (8, 24389), (24, 24563), (39, 24653), (48, 24698), (49, 24707), (62, 24785), (82, 24809), (109, 24845), (159, 24974), (161, 24992), (170, 25115), (182, 25217), (184, 25238), (187, 25256), (196, 25346), (201, 25403), (214, 25526), (228, 25649), (234, 25688), (241, 25745), (253, 25826), (254, 25847), (255, 25850), (270, 25925), (273, 25940), (300, 26051), (312,

26126),

Gene: Eidsmoe_33 Start: 24443, Stop: 26209, Start Num: 5

Candidate Starts for Eidsmoe_33:

(Start: 5 @24443 has 29 MA's), (24, 24629), (39, 24719), (48, 24764), (49, 24773), (62, 24851), (82, 24875), (109, 24911), (159, 25040), (161, 25058), (182, 25283), (184, 25304), (187, 25322), (196, 25412), (201, 25469), (214, 25592), (228, 25715), (234, 25754), (241, 25811), (253, 25892), (254, 25913), (255, 25916), (273, 26006), (300, 26117), (312, 26192),

Gene: Elephantoon_32 Start: 23816, Stop: 25582, Start Num: 5

Candidate Starts for Elephantoon_32:

(Start: 5 @23816 has 29 MA's), (24, 24002), (39, 24092), (48, 24137), (49, 24146), (60, 24215), (62, 24224), (82, 24248), (109, 24284), (151, 24326), (154, 24380), (159, 24413), (161, 24431), (164, 24455), (165, 24461), (180, 24629), (182, 24656), (187, 24695), (196, 24785), (201, 24842), (209, 24908), (214, 24965), (220, 25004), (228, 25088), (234, 25127), (253, 25265), (254, 25286), (255, 25289), (273, 25379), (294, 25460), (312, 25565),

Gene: EmyBug_33 Start: 24443, Stop: 26209, Start Num: 5

Candidate Starts for EmyBug_33:

(Start: 5 @24443 has 29 MA's), (24, 24629), (39, 24719), (48, 24764), (49, 24773), (62, 24851), (82, 24875), (109, 24911), (159, 25040), (161, 25058), (182, 25283), (184, 25304), (187, 25322), (196, 25412), (201, 25469), (214, 25592), (228, 25715), (234, 25754), (241, 25811), (253, 25892), (254, 25913), (255, 25916), (273, 26006), (300, 26117), (312, 26192),

Gene: Equemioh13_33 Start: 23218, Stop: 25425, Start Num: 6

Candidate Starts for Equemioh13_33:

(Start: 6 @23218 has 34 MA's), (15, 23332), (17, 23341), (18, 23347), (20, 23368), (37, 23479), (51, 23569), (53, 23581), (87, 23758), (96, 23797), (106, 23893), (150, 24154), (159, 24244), (163, 24274), (164, 24286), (181, 24484), (196, 24625), (197, 24646), (207, 24736), (208, 24742), (209, 24748), (211, 24787), (215, 24808), (220, 24844), (221, 24847), (226, 24913), (228, 24928), (229, 24931), (232, 24952), (236, 24985), (255, 25129), (263, 25177), (280, 25240), (298, 25300), (305, 25348), (312, 25402),

Gene: ExplosioNervosa_33 Start: 24446, Stop: 26212, Start Num: 5

Candidate Starts for ExplosioNervosa_33:

(Start: 5 @24446 has 29 MA's), (24, 24632), (39, 24722), (48, 24767), (49, 24776), (62, 24854), (82, 24878), (109, 24914), (159, 25043), (161, 25061), (182, 25286), (184, 25307), (187, 25325), (196, 25415), (201, 25472), (214, 25595), (228, 25718), (234, 25757), (241, 25814), (253, 25895), (254, 25916), (255, 25919), (273, 26009), (300, 26120), (312, 26195),

Gene: FF47_24 Start: 19326, Stop: 21644, Start Num: 3

Candidate Starts for FF47_24:

(Start: 3 @19326 has 2 MA's), (19, 19527), (25, 19572), (28, 19584), (45, 19695), (52, 19761), (79, 19902), (101, 20034), (102, 20073), (105, 20085), (114, 20124), (117, 20142), (121, 20178), (132, 20238), (144, 20313), (148, 20340), (152, 20403), (158, 20460), (176, 20655), (185, 20724), (188, 20742), (189, 20748), (190, 20751), (191, 20754), (198, 20871), (200, 20877), (208, 20955), (212, 21003), (213, 21006), (223, 21084), (226, 21135), (228, 21150), (230, 21162), (239, 21225), (242, 21246), (245, 21267), (253, 21324), (254, 21345), (261, 21384), (269, 21426), (277, 21459), (279, 21465), (282, 21480), (301, 21564),

Gene: Fameo_31 Start: 22816, Stop: 25014, Start Num: 7

Candidate Starts for Fameo_31:

(Start: 7 @22816 has 29 MA's), (10, 22837), (17, 22936), (30, 23026), (36, 23062), (51, 23164), (53, 23176), (87, 23353), (106, 23488), (129, 23629), (159, 23842), (161, 23860), (164, 23884), (182, 24085), (196, 24214), (201, 24271), (208, 24331), (211, 24376), (215, 24397), (228, 24517), (241, 24607), (242, 24610), (255, 24715), (259, 24739), (266, 24769), (267, 24772), (305, 24937), (312, 24991),

Gene: Fayely_33 Start: 24410, Stop: 26176, Start Num: 5

Candidate Starts for Fayely_33:

(Start: 5 @24410 has 29 MA's), (8, 24422), (24, 24596), (39, 24686), (48, 24731), (49, 24740), (62, 24818), (82, 24842), (109, 24878), (159, 25007), (161, 25025), (182, 25250), (184, 25271), (187, 25289), (196, 25379), (201, 25436), (214, 25559), (228, 25682), (234, 25721), (241, 25778), (253, 25859), (254, 25880), (255, 25883), (273, 25973), (300, 26084), (312, 26159),

Gene: FiringLine_31 Start: 22638, Stop: 24839, Start Num: 7

Candidate Starts for FiringLine_31:

(Start: 7 @22638 has 29 MA's), (10, 22659), (17, 22758), (18, 22764), (21, 22791), (22, 22794), (30, 22848), (36, 22884), (51, 22986), (87, 23175), (104, 23307), (106, 23310), (159, 23664), (161, 23682), (164, 23706), (182, 23907), (187, 23946), (196, 24036), (201, 24093), (208, 24153), (211, 24198), (215, 24219), (226, 24324), (228, 24339), (232, 24363), (237, 24408), (242, 24435), (248, 24480), (259, 24564), (298, 24714), (305, 24762), (307, 24786),

Gene: First_0031 Start: 22858, Stop: 25263, Start Num: 7

Candidate Starts for First_0031:

(Start: 7 @22858 has 29 MA's), (10, 22879), (15, 22969), (17, 22978), (20, 22999), (30, 23062), (36, 23098), (47, 23179), (57, 23248), (60, 23269), (62, 23278), (75, 23410), (87, 23500), (89, 23515), (106, 23635), (110, 23668), (114, 23677), (129, 23776), (134, 23803), (150, 24016), (159, 24106), (161, 24124), (164, 24148), (182, 24349), (187, 24388), (192, 24409), (195, 24445), (196, 24478), (197, 24499), (201, 24535), (207, 24589), (211, 24640), (215, 24661), (226, 24766), (228, 24781), (253, 24949), (258, 24991), (273, 25060), (310, 25231), (311, 25240), (312, 25246),

Gene: Flare16_31 Start: 22776, Stop: 24998, Start Num: 6

Candidate Starts for Flare16_31:

(Start: 6 @22776 has 34 MA's), (15, 22890), (18, 22905), (37, 23037), (54, 23151), (56, 23172), (62, 23205), (87, 23316), (96, 23355), (106, 23451), (123, 23553), (159, 23802), (163, 23832), (164, 23844), (179, 24015), (187, 24084), (196, 24183), (207, 24294), (208, 24300), (209, 24306), (211, 24345), (220, 24402), (221, 24405), (226, 24471), (237, 24555), (248, 24627), (263, 24747), (293, 24858), (303, 24909), (305, 24921),

Gene: Fred313_31 Start: 22584, Stop: 24443, Start Num: 42

Candidate Starts for Fred313_31:

(Start: 42 @22584 has 31 MA's), (58, 22710), (59, 22719), (79, 22785), (83, 22806), (89, 22848), (114, 23004), (120, 23052), (143, 23121), (145, 23127), (149, 23157), (159, 23265), (161, 23283), (164, 23307), (187, 23547), (196, 23637), (208, 23754), (221, 23859), (226, 23925), (228, 23940), (252, 24111), (271, 24216), (287, 24270), (297, 24309), (305, 24363), (308, 24390), (311, 24414),

Gene: Gail_31 Start: 22024, Stop: 24468, Start Num: 6

Candidate Starts for Gail_31:

(Start: 6 @22024 has 34 MA's), (31, 22237), (39, 22294), (43, 22315), (84, 22669), (97, 22747), (115, 22870), (116, 22873), (124, 22930), (125, 22936), (128, 22954), (133, 22981), (137, 23035), (138, 23038), (156, 23272), (160, 23302), (161, 23311), (171, 23443), (179, 23506), (181, 23533), (186, 23572), (196, 23674), (203, 23752), (208, 23791), (211, 23836), (214, 23854), (221, 23896), (226, 23962), (228, 23977), (234, 24016), (235, 24022), (258, 24193), (262, 24214), (268, 24241), (299, 24358), (304, 24388),

Gene: GaugeLDP_33 Start: 24026, Stop: 25807, Start Num: 7

Candidate Starts for GaugeLDP_33:

(Start: 7 @24026 has 29 MA's), (10, 24047), (15, 24137), (17, 24146), (18, 24152), (37, 24284), (39, 24296), (47, 24353), (50, 24371), (90, 24485), (150, 24551), (159, 24641), (161, 24659), (164, 24683), (182, 24884), (187, 24923), (196, 25013), (197, 25034), (207, 25124), (211, 25175), (215, 25196), (232, 25340), (234, 25355), (238, 25385), (253, 25490), (254, 25511), (273, 25604), (282, 25643), (294, 25685), (300, 25715), (312, 25790),

Gene: Gemma_33 Start: 23357, Stop: 25165, Start Num: 4

Candidate Starts for Gemma_33:

(Start: 4 @23357 has 41 MA's), (15, 23492), (24, 23558), (32, 23603), (37, 23639), (51, 23729), (54, 23753), (60, 23798), (66, 23828), (159, 23996), (161, 24014), (164, 24038), (178, 24200), (182, 24239), (187, 24278), (196, 24368), (211, 24530), (215, 24551), (224, 24638), (232, 24695), (234, 24710), (243, 24773), (253, 24848), (254, 24869), (273, 24962), (282, 25001), (294, 25043), (311, 25142),

Gene: Georgie2_32 Start: 22683, Stop: 24884, Start Num: 7

Candidate Starts for Georgie2_32:

(Start: 7 @22683 has 29 MA's), (10, 22704), (17, 22803), (18, 22809), (21, 22836), (22, 22839), (30, 22893), (36, 22929), (51, 23031), (87, 23220), (104, 23352), (106, 23355), (159, 23709), (161, 23727), (164, 23751), (182, 23952), (187, 23991), (196, 24081), (201, 24138), (208, 24198), (211, 24243), (215, 24264), (226, 24369), (228, 24384), (232, 24408), (237, 24453), (242, 24480), (248, 24525), (255, 24585), (259, 24609), (298, 24759), (305, 24807), (307, 24831),

Gene: Giroux_31 Start: 22838, Stop: 24697, Start Num: 42

Candidate Starts for Giroux_31:

(Start: 42 @22838 has 31 MA's), (61, 22982), (63, 22997), (79, 23039), (100, 23162), (103, 23210), (111, 23252), (114, 23258), (118, 23279), (159, 23519), (163, 23549), (169, 23597), (178, 23723), (182, 23762), (187, 23801), (195, 23858), (196, 23891), (211, 24053), (212, 24056), (221, 24113), (226, 24179), (228, 24194), (255, 24395), (285, 24521), (287, 24524), (303, 24605), (305, 24617), (308, 24644), (312, 24674),

Gene: Goose_32 Start: 23270, Stop: 25105, Start Num: 4

Candidate Starts for Goose_32:

(Start: 4 @23270 has 41 MA's), (9, 23303), (11, 23318), (51, 23630), (54, 23654), (55, 23672), (56, 23675), (57, 23678), (60, 23699), (64, 23726), (159, 23939), (161, 23957), (164, 23981), (173, 24116), (175, 24125), (187, 24221), (195, 24278), (196, 24311), (207, 24422), (214, 24491), (226, 24599), (228, 24614), (234, 24653), (235, 24659), (244, 24725), (253, 24788), (254, 24809), (255, 24812), (256, 24818), (258, 24830), (270, 24887), (273, 24902), (275, 24911), (279, 24926), (294, 24983), (305, 25043), (312, 25088), (313, 25091),

Gene: Groupthink_34 Start: 23361, Stop: 25169, Start Num: 4

Candidate Starts for Groupthink_34:

(Start: 4 @23361 has 41 MA's), (15, 23496), (24, 23562), (32, 23607), (37, 23643), (51, 23733), (54, 23757), (60, 23802), (66, 23832), (159, 24000), (161, 24018), (164, 24042), (178, 24204), (182, 24243), (187, 24282), (196, 24372), (211, 24534), (215, 24555), (224, 24642), (232, 24699), (234, 24714), (243, 24777), (253, 24852), (254, 24873), (273, 24966), (282, 25005), (294, 25047), (311, 25146),

Gene: Hanray_32 Start: 24381, Stop: 26147, Start Num: 5

Candidate Starts for Hanray_32:

(Start: 5 @24381 has 29 MA's), (8, 24393), (24, 24567), (39, 24657), (48, 24702), (49, 24711), (62, 24789), (82, 24813), (109, 24849), (159, 24978), (161, 24996), (182, 25221), (184, 25242), (187, 25260), (196, 25350), (201, 25407), (214, 25530), (228, 25653), (234, 25692), (241, 25749), (253, 25830), (254, 25851), (255, 25854), (270, 25929), (273, 25944), (300, 26055), (312, 26130),

Gene: HarryHoudini_33 Start: 23229, Stop: 25313, Start Num: 6

Candidate Starts for HarryHoudini_33:

(Start: 6 @23229 has 34 MA's), (15, 23343), (18, 23358), (51, 23580), (53, 23592), (87, 23769), (106, 23904), (112, 23940), (159, 24141), (161, 24159), (164, 24183), (182, 24384), (187, 24423), (190, 24435), (196, 24513), (201, 24570), (208, 24630), (209, 24636), (215, 24696), (226, 24801), (228, 24816), (233, 24843), (248, 24957), (249, 24960), (254, 25011), (256, 25020), (257, 25026), (261, 25050), (272, 25104), (276, 25128), (301, 25233), (313, 25299),

Gene: HaveUMetTed_34 Start: 23354, Stop: 25162, Start Num: 4

Candidate Starts for HaveUMetTed_34:

(Start: 4 @23354 has 41 MA's), (15, 23489), (24, 23555), (32, 23600), (33, 23603), (54, 23750), (60, 23795), (66, 23825), (159, 23993), (161, 24011), (164, 24035), (178, 24197), (182, 24236), (187, 24275), (196, 24365), (211, 24527), (215, 24548), (224, 24635), (232, 24692), (234, 24707), (243, 24770), (253, 24845), (254, 24866), (273, 24959), (282, 24998), (294, 25040), (311, 25139),

Gene: Heathen_31 Start: 22640, Stop: 24499, Start Num: 42

Candidate Starts for Heathen_31:

(Start: 42 @22640 has 31 MA's), (58, 22766), (59, 22775), (79, 22841), (83, 22862), (89, 22904), (114, 23060), (120, 23108), (143, 23177), (145, 23183), (149, 23213), (159, 23321), (161, 23339), (164, 23363), (187, 23603), (196, 23693), (208, 23810), (221, 23915), (226, 23981), (228, 23996), (252, 24167), (271, 24272), (287, 24326), (297, 24365), (305, 24419), (308, 24446), (311, 24470),

Gene: Heffalump_33 Start: 24558, Stop: 26342, Start Num: 7

Candidate Starts for Heffalump_33:

(Start: 7 @24558 has 29 MA's), (10, 24579), (17, 24678), (21, 24711), (30, 24768), (36, 24804), (150, 25083), (151, 25086), (159, 25173), (161, 25191), (164, 25215), (170, 25314), (178, 25377), (182, 25416), (187, 25455), (196, 25545), (199, 25575), (202, 25605), (204, 25629), (211, 25707), (215, 25728), (232, 25872), (234, 25887), (253, 26025), (254, 26046), (273, 26139), (282, 26178), (288, 26187), (294, 26220), (300, 26250), (305, 26280), (311, 26319),

Gene: HelDan_31 Start: 22892, Stop: 24751, Start Num: 42

Candidate Starts for HelDan_31:

(Start: 42 @22892 has 31 MA's), (58, 23018), (59, 23027), (79, 23093), (83, 23114), (89, 23156), (114, 23312), (120, 23360), (143, 23429), (145, 23435), (149, 23465), (159, 23573), (161, 23591), (164, 23615), (187, 23855), (196, 23945), (208, 24062), (221, 24167), (226, 24233), (228, 24248), (252, 24419), (271, 24524), (287, 24578), (297, 24617), (305, 24671), (308, 24698), (311, 24722),

Gene: Heliosoles_33 Start: 23361, Stop: 25169, Start Num: 4

Candidate Starts for Heliosoles_33:

(Start: 4 @23361 has 41 MA's), (15, 23496), (24, 23562), (32, 23607), (37, 23643), (51, 23733), (54, 23757), (60, 23802), (66, 23832), (159, 24000), (161, 24018), (164, 24042), (178, 24204), (182, 24243), (187, 24282), (196, 24372), (211, 24534), (215, 24555), (224, 24642), (232, 24699), (234, 24714), (243, 24777), (253, 24852), (254, 24873), (273, 24966), (282, 25005), (294, 25047), (311, 25146),

Gene: Holec_32 Start: 24381, Stop: 26147, Start Num: 5

Candidate Starts for Holec_32:

(Start: 5 @24381 has 29 MA's), (8, 24393), (24, 24567), (39, 24657), (48, 24702), (49, 24711), (62, 24789), (82, 24813), (109, 24849), (159, 24978), (161, 24996), (182, 25221), (184, 25242), (187, 25260), (196, 25350), (201, 25407), (214, 25530), (228, 25653), (234, 25692), (241, 25749), (253, 25830), (254, 25851), (255, 25854), (273, 25944), (300, 26055), (312, 26130),

Gene: Hookmount_32 Start: 23374, Stop: 25233, Start Num: 42

Candidate Starts for Hookmount_32:

(Start: 42 @23374 has 31 MA's), (61, 23518), (65, 23536), (79, 23575), (83, 23596), (89, 23638), (95, 23656), (118, 23815), (120, 23842), (149, 23947), (151, 23968), (159, 24055), (164, 24097), (187, 24337), (196, 24427), (201, 24484), (221, 24649), (225, 24703), (226, 24715), (228, 24730), (247, 24859), (248, 24871), (255, 24931), (257, 24943), (267, 24988), (271, 25006), (305, 25153), (308, 25180), (312, 25210),

Gene: HortumSL17_33 Start: 24377, Stop: 26143, Start Num: 5

Candidate Starts for HortumSL17_33:

(Start: 5 @24377 has 29 MA's), (8, 24389), (24, 24563), (39, 24653), (48, 24698), (49, 24707), (62, 24785), (82, 24809), (109, 24845), (159, 24974), (161, 24992), (182, 25217), (184, 25238), (187, 25256), (196, 25346), (201, 25403), (214, 25526), (228, 25649), (234, 25688), (241, 25745), (253, 25826), (254, 25847), (255, 25850), (273, 25940), (300, 26051), (312, 26126),

Gene: Idleandcovert_31 Start: 22838, Stop: 24697, Start Num: 42

Candidate Starts for Idleandcovert_31:

(Start: 42 @22838 has 31 MA's), (61, 22982), (63, 22997), (79, 23039), (100, 23162), (103, 23210), (111, 23252), (114, 23258), (118, 23279), (159, 23519), (163, 23549), (169, 23597), (178, 23723), (182, 23762), (187, 23801), (195, 23858), (196, 23891), (211, 24053), (212, 24056), (221, 24113), (226, 24179), (228, 24194), (255, 24395), (285, 24521), (287, 24524), (303, 24605), (305, 24617), (308, 24644), (312, 24674),

Gene: IronMan_34 Start: 24846, Stop: 26621, Start Num: 7

Candidate Starts for IronMan_34:

(1, 24744), (Start: 7 @24846 has 29 MA's), (10, 24867), (15, 24957), (17, 24966), (26, 25023), (30, 25050), (33, 25065), (46, 25143), (57, 25236), (60, 25257), (81, 25287), (86, 25299), (154, 25422), (159, 25455), (161, 25473), (164, 25497), (172, 25611), (182, 25698), (187, 25737), (195, 25794), (211, 25989), (215, 26010), (232, 26154), (234, 26169), (253, 26304), (255, 26328), (273, 26418), (294, 26499), (312, 26604),

Gene: Isca_31 Start: 22776, Stop: 24635, Start Num: 42

Candidate Starts for Isca_31:

(Start: 42 @22776 has 31 MA's), (58, 22902), (61, 22920), (63, 22935), (79, 22977), (114, 23196), (118, 23217), (120, 23244), (145, 23319), (149, 23349), (159, 23457), (161, 23475), (164, 23499), (187, 23739), (195, 23796), (196, 23829), (205, 23922), (208, 23946), (221, 24051), (226, 24117), (228, 24132), (252, 24303), (271, 24408), (285, 24459), (287, 24462), (297, 24501), (305, 24555), (308, 24582), (311, 24606),

Gene: Iwokeuplikedis_32 Start: 22493, Stop: 24805, Start Num: 6

Candidate Starts for Iwokeuplikedis_32:

(Start: 6 @22493 has 34 MA's), (17, 22616), (18, 22622), (21, 22649), (24, 22673), (54, 22868), (75, 23054), (87, 23144), (91, 23165), (98, 23201), (106, 23279), (110, 23312), (114, 23321), (156, 23612), (159, 23633), (161, 23651), (164, 23675), (171, 23783), (182, 23876), (187, 23915), (196, 24005), (208, 24122), (211, 24167), (215, 24188), (237, 24377), (241, 24398), (255, 24506), (259, 24530), (266, 24560), (297, 24674), (298, 24680), (305, 24728), (312, 24782),

Gene: JF2_31 Start: 22527, Stop: 24386, Start Num: 42

Candidate Starts for JF2_31:

(Start: 42 @22527 has 31 MA's), (58, 22653), (61, 22671), (63, 22686), (79, 22728), (89, 22791), (113, 22944), (114, 22947), (118, 22968), (120, 22995), (145, 23070), (151, 23121), (159, 23208), (164, 23250), (187, 23490), (195, 23547), (196, 23580), (205, 23673), (208, 23697), (221, 23802), (226, 23868), (228, 23883), (252, 24054), (271, 24159), (287, 24213), (297, 24252), (304, 24300), (305, 24306), (308, 24333), (311, 24357),

Gene: JF4_31 Start: 22527, Stop: 24386, Start Num: 42

Candidate Starts for JF4_31:

(Start: 42 @22527 has 31 MA's), (58, 22653), (61, 22671), (63, 22686), (79, 22728), (89, 22791), (113, 22944), (114, 22947), (118, 22968), (120, 22995), (145, 23070), (151, 23121), (159, 23208), (164, 23250), (187, 23490), (195, 23547), (196, 23580), (205, 23673), (208, 23697), (221, 23802), (226, 23868), (228, 23883), (252, 24054), (271, 24159), (287, 24213), (297, 24252), (304, 24300), (305, 24306), (308, 24333), (311, 24357),

Gene: Jaan_35 Start: 25218, Stop: 26993, Start Num: 4

Candidate Starts for Jaan_35:

(2, 25179), (Start: 4 @25218 has 41 MA's), (15, 25329), (17, 25338), (26, 25395), (30, 25422), (46, 25515), (57, 25608), (60, 25629), (81, 25659), (86, 25671), (154, 25794), (159, 25827), (161, 25845), (164, 25869), (172, 25983), (174, 26007), (182, 26070), (187, 26109), (190, 26121), (195, 26166), (211, 26361), (215, 26382), (234, 26541), (235, 26547), (244, 26613), (253, 26676), (254, 26697), (273, 26790), (294, 26871), (300, 26901), (305, 26931), (312, 26976),

Gene: JeppNRM_34 Start: 23360, Stop: 25168, Start Num: 4

Candidate Starts for JeppNRM_34:

(Start: 4 @23360 has 41 MA's), (15, 23495), (24, 23561), (32, 23606), (33, 23609), (48, 23714), (54, 23756), (60, 23801), (66, 23831), (155, 23972), (159, 23999), (161, 24017), (164, 24041), (178, 24203), (182, 24242), (187, 24281), (196, 24371), (211, 24533), (215, 24554), (224, 24641), (232, 24698), (234, 24713), (243, 24776), (253, 24851), (254, 24872), (273, 24965), (282, 25004), (294, 25046), (311, 25145),

Gene: Jerm_33 Start: 23204, Stop: 25408, Start Num: 6

Candidate Starts for Jerm_33:

(Start: 6 @23204 has 34 MA's), (15, 23318), (17, 23327), (21, 23360), (30, 23417), (51, 23555), (87, 23744), (106, 23879), (114, 23921), (126, 23993), (159, 24233), (161, 24251), (164, 24275), (171, 24383), (182, 24476), (187, 24515), (196, 24605), (201, 24662), (202, 24665), (208, 24722), (209, 24728), (211, 24767), (215, 24788), (242, 25004), (248, 25049), (270, 25181), (278, 25217), (286, 25238), (297, 25277), (305, 25331), (315, 25400),

Gene: Jiawan_32 Start: 24413, Stop: 26179, Start Num: 5

Candidate Starts for Jiawan_32:

(Start: 5 @24413 has 29 MA's), (8, 24425), (24, 24599), (39, 24689), (48, 24734), (49, 24743), (62, 24821), (82, 24845), (109, 24881), (159, 25010), (161, 25028), (182, 25253), (184, 25274), (187, 25292), (196, 25382), (201, 25439), (214, 25562), (228, 25685), (234, 25724), (241, 25781), (253, 25862), (254, 25883), (255, 25886), (270, 25961), (273, 25976), (300, 26087), (312, 26162),

Gene: Jobu08_33 Start: 23349, Stop: 25154, Start Num: 4

Candidate Starts for Jobu08_33:

(Start: 4 @23349 has 41 MA's), (15, 23484), (24, 23550), (32, 23595), (48, 23703), (54, 23745), (60, 23790), (66, 23820), (159, 23988), (161, 24006), (164, 24030), (174, 24168), (178, 24192), (182, 24231), (187, 24270), (196, 24360), (211, 24522), (215, 24543), (224, 24630), (234, 24702), (238, 24732), (244, 24774), (253, 24837), (255, 24861), (270, 24936), (273, 24951), (282, 24990), (294, 25032), (312, 25137),

Gene: JoshKayV_33 Start: 23180, Stop: 25381, Start Num: 7

Candidate Starts for JoshKayV_33:

(Start: 7 @23180 has 29 MA's), (10, 23201), (15, 23291), (17, 23300), (30, 23390), (51, 23528), (54, 23552), (62, 23606), (87, 23717), (92, 23741), (106, 23852), (114, 23894), (159, 24206), (161, 24224), (164, 24248), (171, 24356), (182, 24449), (187, 24488), (196, 24578), (208, 24695), (209, 24701), (211, 24740), (215, 24761), (237, 24950), (242, 24977), (248, 25022), (278, 25190), (286, 25211), (297, 25250), (305, 25304), (315, 25373),

Gene: Kachowdy_31 Start: 22892, Stop: 24751, Start Num: 42

Candidate Starts for Kachowdy_31:

(Start: 42 @22892 has 31 MA's), (58, 23018), (59, 23027), (79, 23093), (83, 23114), (89, 23156), (114, 23312), (120, 23360), (143, 23429), (145, 23435), (149, 23465), (159, 23573), (161, 23591), (164, 23615), (187, 23855), (196, 23945), (208, 24062), (221, 24167), (226, 24233), (228, 24248), (252, 24419), (271, 24524), (287, 24578), (297, 24617), (305, 24671), (308, 24698), (311, 24722),

Gene: Kalb97_34 Start: 23360, Stop: 25168, Start Num: 4

Candidate Starts for Kalb97_34:

(Start: 4 @23360 has 41 MA's), (15, 23495), (24, 23561), (32, 23606), (37, 23642), (51, 23732), (54, 23756), (60, 23801), (66, 23831), (159, 23999), (161, 24017), (164, 24041), (178, 24203), (182, 24242), (187, 24281), (196, 24371), (211, 24533), (215, 24554), (224, 24641), (232, 24698), (234, 24713), (243, 24776), (253, 24851), (254, 24872), (273, 24965), (282, 25004), (288, 25013), (294, 25046), (311, 25145),

Gene: Kalnoky_34 Start: 23361, Stop: 25169, Start Num: 4

Candidate Starts for Kalnoky_34:

(Start: 4 @23361 has 41 MA's), (15, 23496), (24, 23562), (32, 23607), (33, 23610), (48, 23715), (54, 23757), (60, 23802), (66, 23832), (155, 23973), (159, 24000), (161, 24018), (164, 24042), (178, 24204), (182, 24243), (187, 24282), (196, 24372), (211, 24534), (215, 24555), (224, 24642), (232, 24699), (234, 24714), (243, 24777), (253, 24852), (254, 24873), (273, 24966), (282, 25005), (294, 25047), (311, 25146),

Gene: Kalpine_34 Start: 24570, Stop: 26348, Start Num: 5

Candidate Starts for Kalpine_34:

(Start: 5 @24570 has 29 MA's), (15, 24684), (17, 24693), (37, 24825), (150, 25092), (159, 25182), (161, 25200), (182, 25425), (187, 25464), (190, 25476), (196, 25554), (201, 25611), (207, 25665), (214, 25734), (227, 25851), (234, 25896), (242, 25953), (253, 26031), (254, 26052), (258, 26073), (273, 26145), (294, 26226), (300, 26256), (305, 26286), (312, 26331),

Gene: Keziacharles14_31 Start: 22419, Stop: 24875, Start Num: 6

Candidate Starts for Keziacharles14_31:

(Start: 6 @22419 has 34 MA's), (14, 22524), (39, 22692), (69, 22947), (74, 23004), (88, 23106), (97, 23148), (125, 23337), (127, 23340), (128, 23355), (135, 23394), (138, 23439), (141, 23475), (159, 23700), (161, 23718), (181, 23940), (183, 23946), (186, 23979), (196, 24081), (208, 24198), (211, 24243), (221, 24303), (226, 24369), (228, 24384), (229, 24387), (232, 24408), (234, 24423), (235, 24429), (256, 24588), (268, 24648), (304, 24795),

Gene: KittenMittens_31 Start: 21406, Stop: 23688, Start Num: 4

Candidate Starts for KittenMittens_31:

(Start: 4 @21406 has 41 MA's), (9, 21439), (14, 21523), (23, 21589), (60, 21835), (62, 21844), (70, 21928), (80, 22003), (94, 22081), (122, 22156), (136, 22246), (140, 22279), (143, 22372), (159, 22519), (161, 22537), (164, 22561), (182, 22762), (187, 22801), (196, 22891), (201, 22948), (215, 23074), (217, 23083), (219, 23101), (221, 23113), (232, 23218), (234, 23233), (235, 23239), (239,

23272), (253, 23371), (254, 23392), (255, 23395), (266, 23452), (270, 23470), (271, 23473), (273, 23485), (282, 23524), (294, 23566), (296, 23569), (312, 23671),

Gene: Kristoff_34 Start: 23647, Stop: 25482, Start Num: 4

Candidate Starts for Kristoff_34:

(Start: 4 @23647 has 41 MA's), (9, 23680), (29, 23857), (55, 24049), (57, 24055), (60, 24076), (64, 24103), (154, 24283), (159, 24316), (161, 24334), (164, 24358), (171, 24466), (187, 24598), (195, 24655), (196, 24688), (201, 24745), (207, 24799), (210, 24814), (214, 24868), (226, 24976), (228, 24991), (232, 25015), (234, 25030), (250, 25147), (253, 25165), (254, 25186), (255, 25189), (270, 25264), (273, 25279), (294, 25360), (300, 25390), (305, 25420), (312, 25465), (313, 25468),

Gene: LadyBird_31 Start: 22727, Stop: 25135, Start Num: 6

Candidate Starts for LadyBird_31:

(Start: 6 @22727 has 34 MA's), (15, 22841), (30, 22934), (36, 22970), (57, 23120), (60, 23141), (62, 23150), (75, 23282), (87, 23372), (106, 23507), (110, 23540), (114, 23549), (129, 23648), (150, 23888), (159, 23978), (161, 23996), (164, 24020), (182, 24221), (187, 24260), (192, 24281), (195, 24317), (196, 24350), (197, 24371), (201, 24407), (207, 24461), (211, 24512), (215, 24533), (226, 24638), (228, 24653), (253, 24821), (258, 24863), (273, 24932), (310, 25103), (311, 25112), (312, 25118),

Gene: Lambert1_32 Start: 23373, Stop: 25232, Start Num: 42

Candidate Starts for Lambert1_32:

(Start: 42 @23373 has 31 MA's), (61, 23517), (65, 23535), (79, 23574), (83, 23595), (89, 23637), (95, 23655), (118, 23814), (120, 23841), (149, 23946), (151, 23967), (159, 24054), (164, 24096), (187, 24336), (196, 24426), (201, 24483), (221, 24648), (225, 24702), (226, 24714), (228, 24729), (247, 24858), (248, 24870), (255, 24930), (257, 24942), (267, 24987), (271, 25005), (305, 25152), (308, 25179), (312, 25209),

Gene: Landor_33 Start: 24870, Stop: 26645, Start Num: 4

Candidate Starts for Landor_33:

(2, 24831), (Start: 4 @24870 has 41 MA's), (15, 24981), (17, 24990), (26, 25047), (30, 25074), (46, 25167), (57, 25260), (60, 25281), (81, 25311), (86, 25323), (154, 25446), (159, 25479), (161, 25497), (164, 25521), (172, 25635), (178, 25683), (182, 25722), (187, 25761), (190, 25773), (195, 25818), (211, 26013), (215, 26034), (225, 26127), (234, 26193), (244, 26265), (253, 26328), (270, 26427), (273, 26442), (294, 26523), (305, 26583), (312, 26628),

Gene: Larenn_32 Start: 23024, Stop: 25237, Start Num: 6

Candidate Starts for Larenn_32:

(Start: 6 @23024 has 34 MA's), (15, 23138), (18, 23153), (33, 23252), (44, 23327), (51, 23375), (53, 23387), (87, 23564), (96, 23603), (106, 23699), (110, 23732), (114, 23741), (123, 23801), (134, 23867), (159, 24053), (163, 24083), (164, 24095), (179, 24266), (187, 24335), (196, 24434), (207, 24545), (208, 24551), (209, 24557), (211, 24596), (215, 24617), (220, 24653), (221, 24656), (226, 24722), (242, 24833), (255, 24938), (266, 24992), (298, 25112), (305, 25160), (307, 25184),

Gene: Leogania_33 Start: 24913, Stop: 26691, Start Num: 4

Candidate Starts for Leogania_33:

(Start: 4 @24913 has 41 MA's), (15, 25024), (17, 25033), (30, 25120), (62, 25336), (81, 25357), (86, 25369), (156, 25504), (159, 25525), (161, 25543), (164, 25567), (171, 25675), (187, 25807), (195, 25864), (196, 25897), (201, 25954), (226, 26185), (232, 26224), (234, 26239), (253, 26374), (255, 26398), (256, 26404), (270, 26473), (273, 26488), (282, 26527), (288, 26536), (294, 26569), (312, 26674), (314, 26683),

Gene: Leviathan_33 Start: 23260, Stop: 25464, Start Num: 6

Candidate Starts for Leviathan_33:

(Start: 6 @23260 has 34 MA's), (15, 23374), (17, 23383), (18, 23389), (30, 23473), (51, 23611), (54, 23635), (62, 23689), (87, 23800), (106, 23935), (114, 23977), (126, 24049), (156, 24268), (159, 24289), (161, 24307), (164, 24331), (171, 24439), (182, 24532), (187, 24571), (196, 24661), (201, 24718), (202, 24721), (208, 24778), (209, 24784), (211, 24823), (215, 24844), (237, 25033), (240, 25054), (255, 25165), (290, 25303), (301, 25369), (305, 25387), (315, 25456),

Gene: LilTurb_33 Start: 23263, Stop: 25467, Start Num: 6

Candidate Starts for LilTurb_33:

(Start: 6 @23263 has 34 MA's), (15, 23377), (17, 23386), (21, 23419), (30, 23476), (51, 23614), (87, 23803), (106, 23938), (114, 23980), (126, 24052), (159, 24292), (161, 24310), (164, 24334), (171, 24442), (182, 24535), (187, 24574), (196, 24664), (201, 24721), (202, 24724), (208, 24781), (209, 24787), (211, 24826), (215, 24847), (237, 25036), (242, 25063), (264, 25216), (270, 25240), (284, 25294), (286, 25297), (297, 25336), (298, 25342), (305, 25390),

Gene: Lilleskat_31 Start: 24377, Stop: 26143, Start Num: 5

Candidate Starts for Lilleskat_31:

(Start: 5 @24377 has 29 MA's), (8, 24389), (24, 24563), (39, 24653), (48, 24698), (49, 24707), (62, 24785), (82, 24809), (109, 24845), (159, 24974), (161, 24992), (182, 25217), (184, 25238), (187, 25256), (196, 25346), (201, 25403), (214, 25526), (228, 25649), (234, 25688), (241, 25745), (253, 25826), (254, 25847), (255, 25850), (273, 25940), (300, 26051), (312, 26126),

Gene: Lokk_34 Start: 24358, Stop: 26142, Start Num: 6

Candidate Starts for Lokk_34:

(Start: 6 @24358 has 34 MA's), (10, 24382), (15, 24472), (17, 24481), (24, 24538), (150, 24886), (151, 24889), (159, 24976), (161, 24994), (164, 25018), (171, 25126), (182, 25219), (187, 25258), (196, 25348), (202, 25408), (207, 25459), (211, 25510), (215, 25531), (222, 25576), (232, 25675), (234, 25690), (236, 25708), (254, 25846), (258, 25867), (273, 25939), (277, 25957), (282, 25978), (291, 25999), (294, 26020), (305, 26080), (312, 26125),

Gene: LoneWolf_32 Start: 23970, Stop: 25736, Start Num: 5

Candidate Starts for LoneWolf_32:

(Start: 5 @23970 has 29 MA's), (24, 24156), (34, 24204), (39, 24246), (48, 24291), (49, 24300), (54, 24324), (60, 24369), (62, 24378), (82, 24402), (109, 24438), (159, 24567), (161, 24585), (165, 24615), (167, 24624), (180, 24783), (182, 24810), (187, 24849), (196, 24939), (201, 24996), (209, 25062), (214, 25119), (228, 25242), (234, 25281), (253, 25419), (254, 25440), (255, 25443), (266, 25500), (273, 25533), (300, 25644), (312, 25719),

Gene: Loser_35 Start: 25033, Stop: 26811, Start Num: 7

Candidate Starts for Loser_35:

(Start: 7 @25033 has 29 MA's), (15, 25144), (17, 25153), (22, 25186), (30, 25240), (36, 25276), (37, 25288), (39, 25300), (60, 25447), (62, 25456), (81, 25477), (86, 25489), (150, 25555), (156, 25624), (159, 25645), (161, 25663), (164, 25687), (170, 25786), (171, 25795), (187, 25927), (195, 25984), (196, 26017), (201, 26074), (207, 26128), (214, 26197), (228, 26320), (234, 26359), (241, 26413), (253, 26494), (254, 26515), (258, 26536), (273, 26608), (294, 26689),

Gene: Luchador_33 Start: 23273, Stop: 25723, Start Num: 6

Candidate Starts for Luchador_33:

(Start: 6 @23273 has 34 MA's), (8, 23279), (31, 23489), (39, 23546), (43, 23567), (69, 23798), (82, 23909), (107, 24083), (116, 24125), (124, 24182), (125, 24188), (128, 24206), (131, 24227), (133, 24233), (135, 24245), (156, 24524), (164, 24587), (172, 24701), (179, 24758), (186, 24824), (187, 24827), (190, 24839), (194, 24881), (196, 24923), (211, 25085), (215, 25106), (221, 25145), (233, 25253), (237, 25295), (240, 25316), (247, 25355), (252, 25397), (262, 25466), (289, 25565), (295,

25592), (297, 25595), (305, 25649), (308, 25676),

Gene: MA5_31 Start: 22455, Stop: 24314, Start Num: 42

Candidate Starts for MA5_31:

(Start: 42 @22455 has 31 MA's), (53, 22533), (61, 22599), (79, 22656), (93, 22731), (114, 22875), (118, 22896), (120, 22923), (145, 22998), (151, 23049), (159, 23136), (161, 23154), (164, 23178), (187, 23418), (196, 23508), (214, 23688), (221, 23730), (226, 23796), (228, 23811), (232, 23835), (252, 23982), (255, 24012), (287, 24141), (305, 24234), (308, 24261), (311, 24285), (312, 24291),

Gene: MK4_31 Start: 22761, Stop: 24620, Start Num: 42

Candidate Starts for MK4_31:

(Start: 42 @22761 has 31 MA's), (58, 22887), (61, 22905), (63, 22920), (79, 22962), (89, 23025), (113, 23178), (114, 23181), (118, 23202), (120, 23229), (145, 23304), (151, 23355), (159, 23442), (161, 23460), (164, 23484), (174, 23622), (187, 23724), (195, 23781), (196, 23814), (205, 23907), (208, 23931), (221, 24036), (226, 24102), (228, 24117), (252, 24288), (271, 24393), (287, 24447), (297, 24486), (305, 24540), (308, 24567), (311, 24591),

Gene: Maco6_22 Start: 18657, Stop: 20975, Start Num: 3

Candidate Starts for Maco6_22:

(Start: 3 @18657 has 2 MA's), (19, 18858), (25, 18903), (28, 18915), (45, 19026), (52, 19092), (79, 19233), (101, 19365), (102, 19404), (105, 19416), (114, 19455), (117, 19473), (121, 19509), (132, 19569), (144, 19644), (148, 19671), (152, 19734), (158, 19791), (176, 19986), (177, 19989), (185, 20055), (188, 20073), (189, 20079), (190, 20082), (191, 20085), (200, 20208), (204, 20256), (208, 20286), (211, 20331), (213, 20337), (219, 20379), (223, 20415), (226, 20466), (228, 20481), (231, 20499), (239, 20556), (242, 20577), (245, 20598), (253, 20655), (254, 20676), (261, 20715), (269, 20757), (277, 20790), (279, 20796), (282, 20811), (301, 20895),

Gene: Maminiaina_32 Start: 23915, Stop: 25681, Start Num: 5

Candidate Starts for Maminiaina_32:

(Start: 5 @23915 has 29 MA's), (22, 24080), (24, 24101), (36, 24167), (37, 24179), (39, 24191), (48, 24236), (49, 24245), (51, 24254), (60, 24314), (62, 24323), (82, 24347), (109, 24383), (153, 24476), (159, 24512), (161, 24530), (182, 24755), (184, 24776), (187, 24794), (196, 24884), (201, 24941), (205, 24977), (214, 25064), (228, 25187), (232, 25211), (234, 25226), (241, 25283), (254, 25385), (255, 25388), (273, 25478), (300, 25589), (312, 25664),

Gene: Manu_34 Start: 23361, Stop: 25169, Start Num: 4

Candidate Starts for Manu_34:

(Start: 4 @23361 has 41 MA's), (15, 23496), (24, 23562), (32, 23607), (37, 23643), (51, 23733), (54, 23757), (60, 23802), (66, 23832), (159, 24000), (161, 24018), (164, 24042), (178, 24204), (182, 24243), (187, 24282), (196, 24372), (211, 24534), (215, 24555), (224, 24642), (232, 24699), (234, 24714), (243, 24777), (253, 24852), (254, 24873), (273, 24966), (282, 25005), (294, 25047), (311, 25146),

Gene: Marchesa_31 Start: 22890, Stop: 24749, Start Num: 42

Candidate Starts for Marchesa_31:

(Start: 42 @22890 has 31 MA's), (58, 23016), (59, 23025), (79, 23091), (83, 23112), (89, 23154), (114, 23310), (120, 23358), (143, 23427), (145, 23433), (149, 23463), (159, 23571), (161, 23589), (164, 23613), (187, 23853), (196, 23943), (208, 24060), (221, 24165), (226, 24231), (228, 24246), (252, 24417), (271, 24522), (287, 24576), (297, 24615), (305, 24669), (308, 24696), (311, 24720),

Gene: Margo_32 Start: 23399, Stop: 25258, Start Num: 42

Candidate Starts for Margo_32:

(Start: 42 @23399 has 31 MA's), (61, 23543), (79, 23600), (83, 23621), (89, 23663), (95, 23681), (118, 23840), (120, 23867), (149, 23972), (151, 23993), (159, 24080), (164, 24122), (187, 24362), (196, 24452), (201, 24509), (221, 24674), (225, 24728), (226, 24740), (228, 24755), (247, 24884), (248, 24896), (255, 24956), (257, 24968), (267, 25013), (271, 25031), (305, 25178), (308, 25205), (312, 25235),

Gene: Marius_34 Start: 23361, Stop: 25169, Start Num: 4

Candidate Starts for Marius_34:

(Start: 4 @23361 has 41 MA's), (15, 23496), (24, 23562), (32, 23607), (37, 23643), (51, 23733), (54, 23757), (60, 23802), (66, 23832), (159, 24000), (161, 24018), (164, 24042), (178, 24204), (182, 24243), (187, 24282), (196, 24372), (211, 24534), (215, 24555), (224, 24642), (232, 24699), (234, 24714), (243, 24777), (253, 24852), (254, 24873), (273, 24966), (282, 25005), (294, 25047), (311, 25146),

Gene: MiculUcigas_31 Start: 22775, Stop: 24997, Start Num: 6

Candidate Starts for MiculUcigas_31:

(Start: 6 @22775 has 34 MA's), (15, 22889), (18, 22904), (54, 23150), (62, 23204), (87, 23315), (96, 23354), (106, 23450), (123, 23552), (159, 23801), (163, 23831), (164, 23843), (179, 24014), (187, 24083), (196, 24182), (207, 24293), (208, 24299), (209, 24305), (211, 24344), (220, 24401), (221, 24404), (226, 24470), (237, 24554), (248, 24626), (263, 24746), (293, 24857), (303, 24908), (305, 24920),

Gene: Miko_34 Start: 24326, Stop: 26263, Start Num: 6

Candidate Starts for Miko_34:

(Start: 6 @24326 has 34 MA's), (10, 24350), (15, 24440), (17, 24449), (24, 24506), (150, 25007), (159, 25097), (161, 25115), (164, 25139), (171, 25247), (182, 25340), (187, 25379), (196, 25469), (202, 25529), (211, 25631), (215, 25652), (232, 25796), (234, 25811), (254, 25967), (258, 25988), (273, 26060), (277, 26078), (291, 26120), (294, 26141), (305, 26201), (312, 26246),

Gene: Muddy_24 Start: 19607, Stop: 21925, Start Num: 3

Candidate Starts for Muddy_24:

(Start: 3 @19607 has 2 MA's), (19, 19808), (25, 19853), (28, 19865), (38, 19931), (40, 19943), (45, 19976), (52, 20042), (79, 20183), (101, 20315), (105, 20366), (114, 20405), (117, 20423), (121, 20459), (132, 20519), (144, 20594), (148, 20621), (152, 20684), (158, 20741), (176, 20936), (185, 21005), (188, 21023), (189, 21029), (190, 21032), (191, 21035), (198, 21152), (200, 21158), (208, 21236), (212, 21284), (213, 21287), (223, 21365), (226, 21416), (228, 21431), (230, 21443), (239, 21506), (242, 21527), (245, 21548), (253, 21605), (254, 21626), (261, 21665), (269, 21707), (277, 21740), (279, 21746), (282, 21761), (301, 21845),

Gene: Myxus_33 Start: 24377, Stop: 26143, Start Num: 5

Candidate Starts for Myxus_33:

(Start: 5 @24377 has 29 MA's), (8, 24389), (24, 24563), (39, 24653), (48, 24698), (49, 24707), (62, 24785), (82, 24809), (109, 24845), (159, 24974), (161, 24992), (182, 25217), (184, 25238), (187, 25256), (196, 25346), (201, 25403), (214, 25526), (228, 25649), (234, 25688), (241, 25745), (253, 25826), (254, 25847), (255, 25850), (273, 25940), (300, 26051), (312, 26126),

Gene: NaSiaTalie_31 Start: 22773, Stop: 24995, Start Num: 6

Candidate Starts for NaSiaTalie_31:

(Start: 6 @22773 has 34 MA's), (15, 22887), (17, 22896), (18, 22902), (20, 22923), (26, 22959), (37, 23034), (51, 23124), (53, 23136), (87, 23313), (96, 23352), (106, 23448), (159, 23799), (163, 23829), (164, 23841), (179, 24012), (187, 24081), (196, 24180), (207, 24291), (208, 24297), (209, 24303), (211, 24342), (220, 24399), (221, 24402), (226, 24468), (237, 24552), (248, 24624), (266, 24750), (267, 24753), (293, 24855), (298, 24870), (305, 24918),

Gene: NicoleTera_35 Start: 24630, Stop: 26411, Start Num: 5

Candidate Starts for NicoleTera_35:

(Start: 5 @24630 has 29 MA's), (15, 24744), (17, 24753), (30, 24840), (148, 25128), (159, 25245), (161, 25263), (164, 25287), (182, 25488), (187, 25527), (211, 25779), (214, 25797), (226, 25905), (232, 25944), (234, 25959), (238, 25989), (254, 26115), (258, 26136), (273, 26208), (291, 26268), (294, 26289), (312, 26394),

Gene: Noella_32 Start: 23374, Stop: 25233, Start Num: 42

Candidate Starts for Noella_32:

(Start: 42 @23374 has 31 MA's), (61, 23518), (65, 23536), (79, 23575), (83, 23596), (89, 23638), (95, 23656), (118, 23815), (120, 23842), (149, 23947), (151, 23968), (159, 24055), (164, 24097), (187, 24337), (196, 24427), (201, 24484), (221, 24649), (225, 24703), (226, 24715), (228, 24730), (247, 24859), (248, 24871), (255, 24931), (257, 24943), (267, 24988), (271, 25006), (305, 25153), (308, 25180), (312, 25210),

Gene: Norbert_31 Start: 23373, Stop: 25232, Start Num: 42

Candidate Starts for Norbert_31:

(Start: 42 @23373 has 31 MA's), (61, 23517), (65, 23535), (79, 23574), (83, 23595), (89, 23637), (95, 23655), (118, 23814), (120, 23841), (149, 23946), (151, 23967), (159, 24054), (164, 24096), (187, 24336), (196, 24426), (201, 24483), (221, 24648), (225, 24702), (226, 24714), (228, 24729), (247, 24858), (248, 24870), (255, 24930), (257, 24942), (267, 24987), (271, 25005), (305, 25152), (308, 25179), (312, 25209),

Gene: NothingSpecial_33 Start: 24784, Stop: 26571, Start Num: 7

Candidate Starts for NothingSpecial_33:

(Start: 7 @24784 has 29 MA's), (10, 24805), (13, 24883), (15, 24895), (16, 24898), (17, 24904), (18, 24910), (28, 24979), (39, 25057), (90, 25246), (159, 25402), (161, 25420), (164, 25444), (182, 25645), (196, 25774), (197, 25795), (201, 25831), (209, 25897), (215, 25957), (234, 26116), (235, 26122), (243, 26179), (244, 26191), (254, 26275), (273, 26368), (282, 26407), (294, 26449), (304, 26503), (310, 26539),

Gene: OKCentral2016_32 Start: 22976, Stop: 24811, Start Num: 4

Candidate Starts for OKCentral2016_32:

(Start: 4 @22976 has 41 MA's), (9, 23009), (11, 23024), (51, 23336), (54, 23360), (55, 23378), (56, 23381), (57, 23384), (60, 23405), (64, 23432), (159, 23645), (161, 23663), (164, 23687), (173, 23822), (175, 23831), (187, 23927), (195, 23984), (196, 24017), (207, 24128), (214, 24197), (226, 24305), (228, 24320), (234, 24359), (235, 24365), (244, 24431), (253, 24494), (254, 24515), (255, 24518), (256, 24524), (258, 24536), (270, 24593), (273, 24608), (275, 24617), (292, 24671), (294, 24689), (305, 24749), (312, 24794), (313, 24797),

Gene: OlanP_33 Start: 23541, Stop: 25349, Start Num: 4

Candidate Starts for OlanP_33:

(Start: 4 @23541 has 41 MA's), (15, 23676), (24, 23742), (32, 23787), (37, 23823), (51, 23913), (54, 23937), (60, 23982), (66, 24012), (159, 24180), (161, 24198), (164, 24222), (178, 24384), (182, 24423), (187, 24462), (195, 24519), (196, 24552), (211, 24714), (215, 24735), (224, 24822), (232, 24879), (234, 24894), (243, 24957), (253, 25032), (254, 25053), (273, 25146), (282, 25185), (294, 25227), (311, 25326),

Gene: Onglai_32 Start: 22711, Stop: 24477, Start Num: 5

Candidate Starts for Onglai_32:

(Start: 5 @22711 has 29 MA's), (8, 22723), (24, 22897), (39, 22987), (48, 23032), (49, 23041), (62, 23119), (82, 23143), (109, 23179), (159, 23308), (161, 23326), (182, 23551), (184, 23572), (187,

23590), (196, 23680), (201, 23737), (214, 23860), (228, 23983), (234, 24022), (241, 24079), (253, 24160), (254, 24181), (255, 24184), (270, 24259), (273, 24274), (300, 24385), (312, 24460),

Gene: PackMan_33 Start: 24377, Stop: 26143, Start Num: 5

Candidate Starts for PackMan_33:

(Start: 5 @24377 has 29 MA's), (8, 24389), (24, 24563), (39, 24653), (48, 24698), (49, 24707), (62, 24785), (82, 24809), (109, 24845), (159, 24974), (161, 24992), (182, 25217), (184, 25238), (187, 25256), (196, 25346), (201, 25403), (214, 25526), (228, 25649), (234, 25688), (241, 25745), (253, 25826), (254, 25847), (255, 25850), (273, 25940), (300, 26051), (312, 26126),

Gene: Panamaxus_31 Start: 23373, Stop: 25232, Start Num: 42

Candidate Starts for Panamaxus_31:

(Start: 42 @23373 has 31 MA's), (61, 23517), (65, 23535), (79, 23574), (83, 23595), (89, 23637), (95, 23655), (118, 23814), (120, 23841), (149, 23946), (151, 23967), (159, 24054), (164, 24096), (187, 24336), (196, 24426), (201, 24483), (221, 24648), (225, 24702), (226, 24714), (228, 24729), (247, 24858), (248, 24870), (255, 24930), (257, 24942), (267, 24987), (271, 25005), (305, 25152), (308, 25179), (312, 25209),

Gene: Pawn_34 Start: 23361, Stop: 25169, Start Num: 4

Candidate Starts for Pawn_34:

(Start: 4 @23361 has 41 MA's), (15, 23496), (24, 23562), (32, 23607), (37, 23643), (51, 23733), (54, 23757), (60, 23802), (66, 23832), (159, 24000), (161, 24018), (164, 24042), (178, 24204), (182, 24243), (187, 24282), (196, 24372), (211, 24534), (215, 24555), (224, 24642), (232, 24699), (234, 24714), (243, 24777), (253, 24852), (254, 24873), (273, 24966), (282, 25005), (294, 25047), (311, 25146),

Gene: PeaceMeal1_31 Start: 21407, Stop: 23689, Start Num: 4

Candidate Starts for PeaceMeal1_31:

(Start: 4 @21407 has 41 MA's), (9, 21440), (14, 21524), (23, 21590), (46, 21722), (60, 21836), (62, 21845), (70, 21929), (80, 22004), (94, 22082), (122, 22157), (136, 22247), (143, 22373), (150, 22430), (159, 22520), (161, 22538), (164, 22562), (182, 22763), (187, 22802), (196, 22892), (201, 22949), (211, 23054), (215, 23075), (217, 23084), (219, 23102), (221, 23114), (226, 23180), (232, 23219), (234, 23234), (235, 23240), (239, 23273), (253, 23372), (254, 23393), (255, 23396), (266, 23453), (270, 23471), (271, 23474), (273, 23486), (282, 23525), (294, 23567), (296, 23570), (312, 23672),

Gene: Phaded_35 Start: 25217, Stop: 26992, Start Num: 4

Candidate Starts for Phaded_35:

(2, 25178), (Start: 4 @25217 has 41 MA's), (15, 25328), (17, 25337), (26, 25394), (30, 25421), (46, 25514), (57, 25607), (60, 25628), (62, 25637), (81, 25658), (86, 25670), (154, 25793), (159, 25826), (161, 25844), (164, 25868), (172, 25982), (182, 26069), (187, 26108), (190, 26120), (195, 26165), (211, 26360), (215, 26381), (234, 26540), (235, 26546), (244, 26612), (253, 26675), (254, 26696), (273, 26789), (294, 26870), (300, 26900), (305, 26930), (312, 26975),

Gene: Phaeder_33 Start: 24377, Stop: 26143, Start Num: 5

Candidate Starts for Phaeder_33:

(Start: 5 @24377 has 29 MA's), (8, 24389), (24, 24563), (39, 24653), (48, 24698), (49, 24707), (62, 24785), (82, 24809), (109, 24845), (159, 24974), (161, 24992), (182, 25217), (184, 25238), (187, 25256), (196, 25346), (201, 25403), (214, 25526), (228, 25649), (234, 25688), (241, 25745), (253, 25826), (254, 25847), (255, 25850), (273, 25940), (300, 26051), (312, 26126),

Gene: Phantastic_31 Start: 22796, Stop: 24658, Start Num: 41

Candidate Starts for Phantastic_31:

(Start: 41 @22796 has 1 MA's), (79, 23000), (85, 23033), (103, 23171), (108, 23195), (111, 23213), (149, 23372), (159, 23480), (162, 23501), (164, 23522), (187, 23762), (195, 23819), (196, 23852), (214, 24032), (221, 24074), (226, 24140), (228, 24155), (252, 24326), (257, 24368), (271, 24431), (287, 24485), (288, 24488), (297, 24524), (305, 24578), (308, 24605), (311, 24629),

Gene: PhishRPhriends_32 Start: 22545, Stop: 24353, Start Num: 4

Candidate Starts for PhishRPhriends_32:

(Start: 4 @22545 has 41 MA's), (15, 22680), (24, 22746), (32, 22791), (37, 22827), (51, 22917), (54, 22941), (60, 22986), (66, 23016), (159, 23184), (161, 23202), (164, 23226), (178, 23388), (182, 23427), (187, 23466), (196, 23556), (211, 23718), (215, 23739), (224, 23826), (234, 23898), (243, 23961), (253, 24036), (254, 24057), (273, 24150), (282, 24189), (294, 24231), (311, 24330),

Gene: Phonnegut_33 Start: 24410, Stop: 26176, Start Num: 5

Candidate Starts for Phonnegut_33:

(Start: 5 @24410 has 29 MA's), (8, 24422), (24, 24596), (39, 24686), (48, 24731), (49, 24740), (62, 24818), (82, 24842), (109, 24878), (159, 25007), (161, 25025), (182, 25250), (184, 25271), (187, 25289), (196, 25379), (201, 25436), (214, 25559), (228, 25682), (234, 25721), (241, 25778), (253, 25859), (254, 25880), (255, 25883), (270, 25958), (273, 25973), (300, 26084), (312, 26159),

Gene: Phranny_34 Start: 23353, Stop: 25161, Start Num: 4

Candidate Starts for Phranny_34:

(Start: 4 @23353 has 41 MA's), (15, 23488), (24, 23554), (32, 23599), (33, 23602), (54, 23749), (60, 23794), (66, 23824), (159, 23992), (161, 24010), (164, 24034), (178, 24196), (182, 24235), (187, 24274), (196, 24364), (211, 24526), (215, 24547), (224, 24634), (234, 24706), (243, 24769), (253, 24844), (254, 24865), (273, 24958), (282, 24997), (294, 25039), (311, 25138),

Gene: Pioneer_33 Start: 24410, Stop: 26176, Start Num: 5

Candidate Starts for Pioneer_33:

(Start: 5 @24410 has 29 MA's), (8, 24422), (24, 24596), (39, 24686), (48, 24731), (49, 24740), (62, 24818), (82, 24842), (109, 24878), (159, 25007), (161, 25025), (182, 25250), (184, 25271), (187, 25289), (196, 25379), (201, 25436), (214, 25559), (228, 25682), (234, 25721), (241, 25778), (253, 25859), (254, 25880), (255, 25883), (270, 25958), (273, 25973), (300, 26084), (312, 26159),

Gene: Piro94_32 Start: 23234, Stop: 25318, Start Num: 6

Candidate Starts for Piro94_32:

(Start: 6 @23234 has 34 MA's), (15, 23348), (18, 23363), (33, 23462), (51, 23585), (53, 23597), (56, 23630), (87, 23774), (91, 23795), (106, 23909), (112, 23945), (159, 24146), (161, 24164), (164, 24188), (170, 24287), (182, 24389), (187, 24428), (190, 24440), (196, 24518), (208, 24635), (209, 24641), (215, 24701), (226, 24806), (228, 24821), (248, 24962), (249, 24965), (254, 25016), (257, 25031), (261, 25055), (272, 25109), (276, 25133), (301, 25238), (313, 25304),

Gene: Pistachio_32 Start: 22385, Stop: 24244, Start Num: 42

Candidate Starts for Pistachio_32:

(Start: 42 @22385 has 31 MA's), (61, 22529), (63, 22544), (79, 22586), (100, 22709), (103, 22757), (111, 22799), (114, 22805), (118, 22826), (159, 23066), (163, 23096), (169, 23144), (178, 23270), (182, 23309), (187, 23348), (195, 23405), (196, 23438), (211, 23600), (212, 23603), (221, 23660), (226, 23726), (228, 23741), (255, 23942), (285, 24068), (287, 24071), (303, 24152), (305, 24164), (308, 24191), (312, 24221),

Gene: Pocahontas_32 Start: 23370, Stop: 25229, Start Num: 42

Candidate Starts for Pocahontas_32:

(Start: 42 @23370 has 31 MA's), (61, 23514), (65, 23532), (79, 23571), (83, 23592), (89, 23634), (95, 23652), (118, 23811), (120, 23838), (149, 23943), (151, 23964), (159, 24051), (164, 24093), (187,

24333), (196, 24423), (201, 24480), (221, 24645), (225, 24699), (226, 24711), (228, 24726), (247, 24855), (248, 24867), (255, 24927), (257, 24939), (267, 24984), (271, 25002), (305, 25149), (308, 25176), (312, 25206),

Gene: Poompha_31 Start: 21405, Stop: 23687, Start Num: 4

Candidate Starts for Poompha_31:

(Start: 4 @21405 has 41 MA's), (9, 21438), (14, 21522), (23, 21588), (37, 21675), (46, 21720), (60, 21834), (62, 21843), (70, 21927), (80, 22002), (94, 22080), (122, 22155), (143, 22371), (150, 22428), (159, 22518), (161, 22536), (164, 22560), (166, 22569), (182, 22761), (187, 22800), (196, 22890), (201, 22947), (211, 23052), (217, 23082), (219, 23100), (221, 23112), (232, 23217), (234, 23232), (235, 23238), (239, 23271), (253, 23370), (254, 23391), (255, 23394), (266, 23451), (270, 23469), (271, 23472), (273, 23484), (282, 23523), (294, 23565), (296, 23568), (312, 23670),

Gene: Popcicle_32 Start: 23370, Stop: 25229, Start Num: 42

Candidate Starts for Popcicle_32:

(Start: 42 @23370 has 31 MA's), (61, 23514), (65, 23532), (79, 23571), (83, 23592), (89, 23634), (95, 23652), (118, 23811), (120, 23838), (149, 23943), (151, 23964), (159, 24051), (164, 24093), (187, 24333), (196, 24423), (201, 24480), (221, 24645), (225, 24699), (226, 24711), (228, 24726), (247, 24855), (248, 24867), (255, 24927), (257, 24939), (267, 24984), (271, 25002), (305, 25149), (308, 25176), (312, 25206),

Gene: Power_31 Start: 22692, Stop: 24893, Start Num: 7

Candidate Starts for Power_31:

(Start: 7 @22692 has 29 MA's), (10, 22713), (17, 22812), (18, 22818), (21, 22845), (22, 22848), (30, 22902), (36, 22938), (51, 23040), (87, 23229), (104, 23361), (106, 23364), (119, 23442), (159, 23718), (161, 23736), (164, 23760), (182, 23961), (187, 24000), (196, 24090), (201, 24147), (208, 24207), (211, 24252), (215, 24273), (226, 24378), (228, 24393), (232, 24417), (237, 24462), (242, 24489), (248, 24534), (255, 24594), (259, 24618), (298, 24768), (305, 24816), (307, 24840),

Gene: Priya_33 Start: 24444, Stop: 26210, Start Num: 5

Candidate Starts for Priya_33:

(Start: 5 @24444 has 29 MA's), (24, 24630), (39, 24720), (48, 24765), (49, 24774), (62, 24852), (82, 24876), (109, 24912), (159, 25041), (161, 25059), (182, 25284), (184, 25305), (187, 25323), (196, 25413), (201, 25470), (214, 25593), (228, 25716), (234, 25755), (241, 25812), (253, 25893), (254, 25914), (255, 25917), (273, 26007), (300, 26118), (312, 26193),

Gene: Puppy_32 Start: 22455, Stop: 24314, Start Num: 42

Candidate Starts for Puppy_32:

(Start: 42 @22455 has 31 MA's), (61, 22599), (63, 22614), (79, 22656), (100, 22779), (103, 22827), (111, 22869), (114, 22875), (118, 22896), (159, 23136), (163, 23166), (169, 23214), (178, 23340), (182, 23379), (187, 23418), (195, 23475), (196, 23508), (211, 23670), (212, 23673), (221, 23730), (226, 23796), (228, 23811), (255, 24012), (285, 24138), (287, 24141), (303, 24222), (305, 24234), (308, 24261), (312, 24291),

Gene: PurpleHaze_33 Start: 23360, Stop: 25168, Start Num: 4

Candidate Starts for PurpleHaze_33:

(Start: 4 @23360 has 41 MA's), (15, 23495), (24, 23561), (32, 23606), (37, 23642), (51, 23732), (54, 23756), (60, 23801), (66, 23831), (159, 23999), (161, 24017), (164, 24041), (178, 24203), (182, 24242), (187, 24281), (196, 24371), (211, 24533), (215, 24554), (224, 24641), (232, 24698), (234, 24713), (243, 24776), (253, 24851), (254, 24872), (273, 24965), (282, 25004), (294, 25046), (311, 25145),

Gene: Qobbit_33 Start: 24407, Stop: 26173, Start Num: 5

Candidate Starts for Qobbit_33:

(Start: 5 @24407 has 29 MA's), (24, 24593), (39, 24683), (48, 24728), (49, 24737), (62, 24815), (82, 24839), (109, 24875), (159, 25004), (161, 25022), (182, 25247), (184, 25268), (187, 25286), (196, 25376), (201, 25433), (214, 25556), (228, 25679), (234, 25718), (241, 25775), (253, 25856), (254, 25877), (255, 25880), (273, 25970), (300, 26081), (312, 26156),

Gene: QueenB2_31 Start: 22756, Stop: 24954, Start Num: 7

Candidate Starts for QueenB2_31:

(Start: 7 @22756 has 29 MA's), (10, 22777), (17, 22876), (30, 22966), (36, 23002), (51, 23104), (53, 23116), (87, 23293), (106, 23428), (129, 23569), (159, 23782), (161, 23800), (164, 23824), (182, 24025), (196, 24154), (201, 24211), (208, 24271), (211, 24316), (215, 24337), (228, 24457), (241, 24547), (242, 24550), (255, 24655), (259, 24679), (266, 24709), (267, 24712), (305, 24877), (312, 24931),

Gene: QueenBeesly_31 Start: 22638, Stop: 24839, Start Num: 7

Candidate Starts for QueenBeesly_31:

(Start: 7 @22638 has 29 MA's), (10, 22659), (17, 22758), (18, 22764), (21, 22791), (22, 22794), (30, 22848), (36, 22884), (51, 22986), (87, 23175), (104, 23307), (106, 23310), (159, 23664), (161, 23682), (164, 23706), (182, 23907), (187, 23946), (196, 24036), (201, 24093), (208, 24153), (211, 24198), (215, 24219), (226, 24324), (228, 24339), (232, 24363), (237, 24408), (242, 24435), (248, 24480), (259, 24564), (298, 24714), (305, 24762), (307, 24786),

Gene: QuinnKiro_31 Start: 23373, Stop: 25232, Start Num: 42

Candidate Starts for QuinnKiro_31:

(Start: 42 @23373 has 31 MA's), (61, 23517), (65, 23535), (79, 23574), (83, 23595), (89, 23637), (95, 23655), (118, 23814), (120, 23841), (149, 23946), (151, 23967), (159, 24054), (164, 24096), (184, 24318), (187, 24336), (196, 24426), (201, 24483), (221, 24648), (225, 24702), (226, 24714), (228, 24729), (247, 24858), (248, 24870), (255, 24930), (257, 24942), (267, 24987), (271, 25005), (305, 25152), (308, 25179), (312, 25209),

Gene: Rachaly_34 Start: 24354, Stop: 26138, Start Num: 6

Candidate Starts for Rachaly_34:

(Start: 6 @24354 has 34 MA's), (10, 24378), (15, 24468), (17, 24477), (24, 24534), (150, 24882), (151, 24885), (159, 24972), (161, 24990), (164, 25014), (171, 25122), (182, 25215), (184, 25236), (187, 25254), (190, 25266), (196, 25344), (202, 25404), (211, 25506), (215, 25527), (232, 25671), (234, 25686), (254, 25842), (258, 25863), (273, 25935), (277, 25953), (291, 25995), (294, 26016), (305, 26076), (312, 26121),

Gene: Reba_34 Start: 23026, Stop: 24834, Start Num: 4

Candidate Starts for Reba_34:

(Start: 4 @23026 has 41 MA's), (15, 23161), (24, 23227), (32, 23272), (33, 23275), (54, 23422), (60, 23467), (66, 23497), (159, 23665), (161, 23683), (164, 23707), (178, 23869), (182, 23908), (187, 23947), (196, 24037), (211, 24199), (215, 24220), (224, 24307), (234, 24379), (243, 24442), (253, 24517), (254, 24538), (273, 24631), (282, 24670), (294, 24712), (311, 24811),

Gene: Rebeuca_34 Start: 23648, Stop: 25483, Start Num: 4

Candidate Starts for Rebeuca_34:

(Start: 4 @23648 has 41 MA's), (9, 23681), (29, 23858), (55, 24050), (57, 24056), (60, 24077), (64, 24104), (154, 24284), (159, 24317), (161, 24335), (164, 24359), (171, 24467), (187, 24599), (195, 24656), (196, 24689), (201, 24746), (207, 24800), (214, 24869), (226, 24977), (228, 24992), (232, 25016), (234, 25031), (250, 25148), (253, 25166), (254, 25187), (255, 25190), (270, 25265), (273, 25280), (294, 25361), (300, 25391), (305, 25421), (312, 25466), (313, 25469),

Gene: RedRock_35 Start: 25191, Stop: 26969, Start Num: 7

Candidate Starts for RedRock_35:

(Start: 7 @25191 has 29 MA's), (15, 25302), (17, 25311), (22, 25344), (30, 25398), (36, 25434), (37, 25446), (39, 25458), (60, 25605), (62, 25614), (81, 25635), (86, 25647), (150, 25713), (156, 25782), (159, 25803), (161, 25821), (164, 25845), (170, 25944), (171, 25953), (187, 26085), (195, 26142), (196, 26175), (201, 26232), (207, 26286), (214, 26355), (234, 26517), (241, 26571), (253, 26652), (254, 26673), (258, 26694), (273, 26766), (294, 26847),

Gene: ResDef_32 Start: 23373, Stop: 25232, Start Num: 42

Candidate Starts for ResDef_32:

(Start: 42 @23373 has 31 MA's), (61, 23517), (65, 23535), (79, 23574), (83, 23595), (89, 23637), (95, 23655), (118, 23814), (120, 23841), (151, 23967), (159, 24054), (164, 24096), (187, 24336), (196, 24426), (201, 24483), (221, 24648), (225, 24702), (226, 24714), (228, 24729), (247, 24858), (248, 24870), (255, 24930), (257, 24942), (267, 24987), (271, 25005), (305, 25152), (308, 25179), (312, 25209),

Gene: Retro23_31 Start: 22846, Stop: 25044, Start Num: 7

Candidate Starts for Retro23_31:

(Start: 7 @22846 has 29 MA's), (10, 22867), (17, 22966), (30, 23056), (36, 23092), (51, 23194), (53, 23206), (77, 23317), (87, 23383), (104, 23515), (106, 23518), (118, 23581), (159, 23872), (161, 23890), (164, 23914), (182, 24115), (187, 24154), (196, 24244), (201, 24301), (208, 24361), (211, 24406), (215, 24427), (228, 24547), (241, 24637), (242, 24640), (255, 24745), (266, 24799), (305, 24967), (312, 25021),

Gene: RhynO_34 Start: 23623, Stop: 25455, Start Num: 4

Candidate Starts for RhynO_34:

(Start: 4 @23623 has 41 MA's), (9, 23656), (23, 23806), (29, 23833), (47, 23962), (54, 24007), (56, 24028), (57, 24031), (159, 24292), (161, 24310), (187, 24571), (195, 24628), (196, 24661), (207, 24772), (214, 24841), (225, 24937), (226, 24949), (228, 24964), (232, 24988), (234, 25003), (235, 25009), (237, 25033), (244, 25075), (250, 25120), (253, 25138), (255, 25162), (270, 25237), (273, 25252), (275, 25261), (282, 25291), (294, 25333), (312, 25438), (313, 25441),

Gene: Rockstar_31 Start: 22769, Stop: 24628, Start Num: 42

Candidate Starts for Rockstar_31:

(Start: 42 @22769 has 31 MA's), (58, 22895), (61, 22913), (63, 22928), (79, 22970), (89, 23033), (114, 23189), (118, 23210), (120, 23237), (145, 23312), (151, 23363), (159, 23450), (161, 23468), (164, 23492), (187, 23732), (195, 23789), (196, 23822), (205, 23915), (208, 23939), (221, 24044), (226, 24110), (228, 24125), (252, 24296), (271, 24401), (287, 24455), (297, 24494), (305, 24548), (308, 24575), (311, 24599),

Gene: Rowdy_37 Start: 23534, Stop: 25366, Start Num: 4

Candidate Starts for Rowdy_37:

(Start: 4 @23534 has 41 MA's), (9, 23567), (23, 23717), (29, 23744), (54, 23918), (56, 23939), (57, 23942), (159, 24203), (161, 24221), (187, 24482), (195, 24539), (196, 24572), (207, 24683), (214, 24752), (225, 24848), (226, 24860), (228, 24875), (232, 24899), (234, 24914), (235, 24920), (237, 24944), (244, 24986), (250, 25031), (253, 25049), (255, 25073), (270, 25148), (273, 25163), (275, 25172), (282, 25202), (294, 25244), (312, 25349), (313, 25352),

Gene: RyeScarlet_34 Start: 24381, Stop: 26147, Start Num: 5

Candidate Starts for RyeScarlet_34:

(Start: 5 @24381 has 29 MA's), (8, 24393), (24, 24567), (39, 24657), (48, 24702), (49, 24711), (62, 24789), (82, 24813), (109, 24849), (159, 24978), (161, 24996), (182, 25221), (184, 25242), (187, 25260), (196, 25350), (201, 25407), (214, 25530), (228, 25653), (234, 25692), (241, 25749), (253,

25830), (254, 25851), (255, 25854), (270, 25929), (273, 25944), (300, 26055), (312, 26130),

Gene: Sachima_31 Start: 24389, Stop: 26143, Start Num: 8

Candidate Starts for Sachima_31:

(Start: 5 @24377 has 29 MA's), (8, 24389), (24, 24563), (39, 24653), (48, 24698), (49, 24707), (62, 24785), (82, 24809), (109, 24845), (159, 24974), (161, 24992), (182, 25217), (184, 25238), (187, 25256), (196, 25346), (201, 25403), (214, 25526), (228, 25649), (234, 25688), (241, 25745), (253, 25826), (254, 25847), (255, 25850), (273, 25940), (300, 26051), (312, 26126),

Gene: SaturnRing_31 Start: 22838, Stop: 24697, Start Num: 42

Candidate Starts for SaturnRing_31:

(Start: 42 @22838 has 31 MA's), (61, 22982), (63, 22997), (79, 23039), (100, 23162), (103, 23210), (111, 23252), (114, 23258), (118, 23279), (159, 23519), (163, 23549), (169, 23597), (178, 23723), (182, 23762), (187, 23801), (195, 23858), (196, 23891), (211, 24053), (212, 24056), (221, 24113), (226, 24179), (228, 24194), (255, 24395), (285, 24521), (287, 24524), (303, 24605), (305, 24617), (308, 24644), (312, 24674),

Gene: Scherzo_33 Start: 24410, Stop: 26176, Start Num: 5

Candidate Starts for Scherzo_33:

(Start: 5 @24410 has 29 MA's), (8, 24422), (24, 24596), (39, 24686), (48, 24731), (49, 24740), (62, 24818), (82, 24842), (109, 24878), (159, 25007), (161, 25025), (182, 25250), (184, 25271), (187, 25289), (196, 25379), (201, 25436), (214, 25559), (228, 25682), (234, 25721), (241, 25778), (253, 25859), (254, 25880), (255, 25883), (273, 25973), (300, 26084), (312, 26159),

Gene: Scout_31 Start: 22139, Stop: 23998, Start Num: 42

Candidate Starts for Scout_31:

(Start: 42 @22139 has 31 MA's), (58, 22265), (59, 22274), (79, 22340), (83, 22361), (89, 22403), (114, 22559), (120, 22607), (143, 22676), (145, 22682), (149, 22712), (159, 22820), (161, 22838), (164, 22862), (187, 23102), (196, 23192), (208, 23309), (221, 23414), (226, 23480), (228, 23495), (252, 23666), (271, 23771), (287, 23825), (297, 23864), (305, 23918), (308, 23945), (311, 23969),

Gene: SemperFi_33 Start: 23055, Stop: 25259, Start Num: 7

Candidate Starts for SemperFi_33:

(Start: 7 @23055 has 29 MA's), (10, 23076), (17, 23175), (30, 23265), (36, 23301), (51, 23403), (87, 23592), (106, 23727), (118, 23790), (129, 23868), (159, 24081), (161, 24099), (164, 24123), (182, 24324), (187, 24363), (196, 24453), (201, 24510), (208, 24570), (211, 24615), (215, 24636), (228, 24756), (232, 24780), (242, 24855), (255, 24960), (259, 24984), (266, 25014), (281, 25074), (298, 25134), (305, 25182), (307, 25206), (309, 25209), (312, 25236),

Gene: Severus_31 Start: 21405, Stop: 23687, Start Num: 4

Candidate Starts for Severus_31:

(Start: 4 @21405 has 41 MA's), (9, 21438), (14, 21522), (23, 21588), (46, 21720), (51, 21765), (54, 21789), (56, 21810), (57, 21813), (62, 21843), (67, 21867), (68, 21885), (71, 21942), (80, 22002), (94, 22080), (122, 22155), (136, 22245), (142, 22305), (143, 22371), (159, 22518), (161, 22536), (164, 22560), (175, 22704), (182, 22761), (187, 22800), (192, 22821), (196, 22890), (208, 23007), (211, 23052), (217, 23082), (219, 23100), (221, 23112), (226, 23178), (232, 23217), (234, 23232), (235, 23238), (239, 23271), (241, 23289), (254, 23391), (255, 23394), (266, 23451), (270, 23469), (271, 23472), (273, 23484), (282, 23523), (294, 23565), (296, 23568), (312, 23670),

Gene: Shapes_37 Start: 23534, Stop: 25366, Start Num: 4

Candidate Starts for Shapes_37:

(Start: 4 @23534 has 41 MA's), (9, 23567), (23, 23717), (29, 23744), (54, 23918), (56, 23939), (57, 23942), (159, 24203), (161, 24221), (187, 24482), (195, 24539), (196, 24572), (207, 24683), (214,

24752), (225, 24848), (226, 24860), (228, 24875), (232, 24899), (234, 24914), (235, 24920), (237, 24944), (244, 24986), (250, 25031), (253, 25049), (255, 25073), (270, 25148), (273, 25163), (275, 25172), (282, 25202), (294, 25244), (312, 25349), (313, 25352),

Gene: Smeagan_33 Start: 23263, Stop: 25350, Start Num: 6

Candidate Starts for Smeagan_33:

(Start: 6 @23263 has 34 MA's), (15, 23377), (17, 23386), (18, 23392), (21, 23419), (30, 23476), (51, 23614), (87, 23803), (106, 23938), (114, 23980), (123, 24040), (156, 24154), (159, 24175), (161, 24193), (164, 24217), (171, 24325), (182, 24418), (184, 24439), (187, 24457), (196, 24547), (201, 24604), (202, 24607), (208, 24664), (209, 24670), (211, 24709), (215, 24730), (237, 24919), (240, 24940), (255, 25051), (290, 25189), (301, 25255), (305, 25273), (315, 25342),

Gene: SnapTap_31 Start: 22698, Stop: 24902, Start Num: 7

Candidate Starts for SnapTap_31:

(Start: 7 @22698 has 29 MA's), (10, 22719), (18, 22824), (30, 22908), (36, 22944), (51, 23046), (53, 23058), (87, 23235), (106, 23370), (118, 23433), (159, 23724), (161, 23742), (164, 23766), (174, 23904), (182, 23967), (187, 24006), (196, 24096), (201, 24153), (208, 24213), (211, 24258), (215, 24279), (228, 24399), (232, 24423), (237, 24468), (248, 24540), (255, 24600), (297, 24771), (305, 24825), (309, 24852), (312, 24879),

Gene: SoilDragon_33 Start: 22965, Stop: 24770, Start Num: 4

Candidate Starts for SoilDragon_33:

(Start: 4 @22965 has 41 MA's), (15, 23100), (24, 23166), (32, 23211), (37, 23247), (48, 23319), (54, 23361), (60, 23406), (66, 23436), (159, 23604), (161, 23622), (164, 23646), (174, 23784), (178, 23808), (182, 23847), (187, 23886), (196, 23976), (211, 24138), (215, 24159), (224, 24246), (234, 24318), (238, 24348), (244, 24390), (253, 24453), (255, 24477), (270, 24552), (273, 24567), (282, 24606), (294, 24648), (312, 24753),

Gene: SororFago_31 Start: 21994, Stop: 24447, Start Num: 6

Candidate Starts for SororFago_31:

(Start: 6 @21994 has 34 MA's), (31, 22210), (39, 22267), (43, 22288), (62, 22453), (76, 22588), (115, 22843), (116, 22846), (125, 22909), (128, 22927), (133, 22954), (135, 22966), (137, 23008), (138, 23011), (156, 23245), (160, 23275), (161, 23284), (171, 23416), (179, 23479), (186, 23545), (187, 23548), (196, 23647), (203, 23725), (208, 23764), (211, 23809), (221, 23869), (226, 23935), (228, 23950), (240, 24040), (242, 24046), (252, 24121), (262, 24190), (301, 24355), (305, 24373), (308, 24400),

Gene: Spouty_33 Start: 24443, Stop: 26209, Start Num: 5

Candidate Starts for Spouty_33:

(Start: 5 @24443 has 29 MA's), (24, 24629), (39, 24719), (48, 24764), (49, 24773), (62, 24851), (82, 24875), (109, 24911), (159, 25040), (161, 25058), (182, 25283), (184, 25304), (187, 25322), (196, 25412), (201, 25469), (214, 25592), (228, 25715), (234, 25754), (241, 25811), (253, 25892), (254, 25913), (255, 25916), (273, 26006), (300, 26117), (312, 26192),

Gene: Stasia_32 Start: 23404, Stop: 25242, Start Num: 4

Candidate Starts for Stasia_32:

(Start: 4 @23404 has 41 MA's), (12, 23470), (15, 23530), (24, 23596), (30, 23629), (35, 23659), (36, 23665), (43, 23713), (50, 23764), (60, 23836), (146, 23938), (159, 24076), (161, 24094), (187, 24358), (196, 24448), (211, 24610), (215, 24631), (225, 24724), (228, 24751), (232, 24775), (234, 24790), (253, 24925), (255, 24949), (258, 24967), (273, 25039), (294, 25120),

Gene: SweetiePie_31 Start: 22698, Stop: 24902, Start Num: 7

Candidate Starts for SweetiePie_31:

(Start: 7 @22698 has 29 MA's), (10, 22719), (18, 22824), (30, 22908), (36, 22944), (51, 23046), (53, 23058), (87, 23235), (106, 23370), (159, 23724), (161, 23742), (164, 23766), (174, 23904), (182, 23967), (187, 24006), (196, 24096), (201, 24153), (208, 24213), (211, 24258), (215, 24279), (228, 24399), (232, 24423), (237, 24468), (248, 24540), (255, 24600), (297, 24771), (305, 24825), (309, 24852), (312, 24879),

Gene: TNguyen7_31 Start: 22806, Stop: 24665, Start Num: 42

Candidate Starts for TNguyen7_31:

(Start: 42 @22806 has 31 MA's), (61, 22950), (63, 22965), (79, 23007), (100, 23130), (103, 23178), (111, 23220), (114, 23226), (118, 23247), (159, 23487), (163, 23517), (169, 23565), (178, 23691), (182, 23730), (187, 23769), (195, 23826), (196, 23859), (211, 24021), (212, 24024), (221, 24081), (226, 24147), (228, 24162), (255, 24363), (285, 24489), (287, 24492), (303, 24573), (305, 24585), (308, 24612), (312, 24642),

Gene: TarsusIV_31 Start: 22846, Stop: 25041, Start Num: 7

Candidate Starts for TarsusIV_31:

(Start: 7 @22846 has 29 MA's), (10, 22867), (15, 22957), (17, 22966), (24, 23023), (50, 23191), (51, 23194), (54, 23218), (62, 23272), (87, 23383), (96, 23422), (106, 23518), (112, 23554), (129, 23659), (159, 23869), (161, 23887), (182, 24112), (190, 24163), (196, 24241), (201, 24298), (211, 24403), (215, 24424), (220, 24460), (226, 24529), (232, 24568), (237, 24613), (242, 24640), (252, 24715), (255, 24745), (259, 24769), (298, 24919), (302, 24952), (305, 24967),

Gene: Texage_31 Start: 23374, Stop: 25233, Start Num: 42

Candidate Starts for Texage_31:

(Start: 42 @23374 has 31 MA's), (61, 23518), (65, 23536), (79, 23575), (83, 23596), (89, 23638), (95, 23656), (118, 23815), (120, 23842), (149, 23947), (151, 23968), (159, 24055), (164, 24097), (187, 24337), (196, 24427), (201, 24484), (221, 24649), (225, 24703), (226, 24715), (228, 24730), (247, 24859), (248, 24871), (255, 24931), (257, 24943), (267, 24988), (271, 25006), (305, 25153), (308, 25180), (312, 25210),

Gene: Todacoro_32 Start: 23373, Stop: 25232, Start Num: 42

Candidate Starts for Todacoro_32:

(Start: 42 @23373 has 31 MA's), (61, 23517), (65, 23535), (79, 23574), (83, 23595), (89, 23637), (95, 23655), (118, 23814), (120, 23841), (149, 23946), (151, 23967), (159, 24054), (164, 24096), (184, 24318), (187, 24336), (196, 24426), (201, 24483), (221, 24648), (225, 24702), (226, 24714), (228, 24729), (247, 24858), (248, 24870), (255, 24930), (257, 24942), (267, 24987), (271, 25005), (305, 25152), (308, 25179), (312, 25209),

Gene: Topanga_33 Start: 23566, Stop: 25401, Start Num: 4

Candidate Starts for Topanga_33:

(Start: 4 @23566 has 41 MA's), (19, 23713), (23, 23749), (47, 23905), (57, 23974), (60, 23995), (64, 24022), (159, 24235), (161, 24253), (178, 24439), (182, 24478), (187, 24517), (195, 24574), (196, 24607), (201, 24664), (207, 24718), (215, 24790), (216, 24793), (228, 24910), (232, 24934), (234, 24949), (235, 24955), (241, 25003), (246, 25030), (253, 25084), (254, 25105), (255, 25108), (258, 25126), (270, 25183), (273, 25198), (288, 25246), (294, 25279), (300, 25309), (312, 25384),

Gene: Trike_30 Start: 21413, Stop: 23695, Start Num: 4

Candidate Starts for Trike_30:

(Start: 4 @21413 has 41 MA's), (9, 21446), (14, 21530), (23, 21596), (46, 21728), (60, 21842), (62, 21851), (70, 21935), (80, 22010), (94, 22088), (122, 22163), (130, 22208), (143, 22379), (159, 22526), (160, 22535), (161, 22544), (164, 22568), (182, 22769), (187, 22808), (196, 22898), (201, 22955), (206, 22997), (207, 23009), (211, 23060), (217, 23090), (219, 23108), (221, 23120), (234, 23240), (235, 23246), (253, 23378), (254, 23399), (255, 23402), (266, 23459), (272, 23486), (273, 23492),

(294, 23573), (296, 23576), (312, 23678), (313, 23681),

Gene: Trixie_34 Start: 24439, Stop: 26220, Start Num: 5

Candidate Starts for Trixie_34:

(Start: 5 @24439 has 29 MA's), (15, 24556), (17, 24565), (37, 24697), (150, 24964), (159, 25054), (161, 25072), (164, 25096), (187, 25336), (196, 25426), (201, 25483), (214, 25606), (227, 25723), (234, 25768), (253, 25903), (254, 25924), (258, 25945), (273, 26017), (294, 26098), (300, 26128), (305, 26158),

Gene: Trooper_31 Start: 22613, Stop: 24916, Start Num: 7

Candidate Starts for Trooper_31:

(Start: 7 @22613 has 29 MA's), (10, 22634), (15, 22724), (24, 22790), (51, 22961), (69, 23105), (72, 23141), (75, 23171), (87, 23261), (99, 23327), (106, 23396), (150, 23657), (159, 23744), (161, 23762), (164, 23786), (168, 23816), (182, 23987), (190, 24038), (196, 24116), (201, 24173), (211, 24278), (215, 24299), (218, 24311), (226, 24404), (228, 24419), (232, 24443), (237, 24488), (241, 24509), (242, 24512), (251, 24575), (255, 24617), (260, 24650), (266, 24671), (283, 24743), (298, 24791), (305, 24839), (312, 24893),

Gene: Tubs_33 Start: 24377, Stop: 26143, Start Num: 5

Candidate Starts for Tubs_33:

(Start: 5 @24377 has 29 MA's), (8, 24389), (24, 24563), (39, 24653), (48, 24698), (49, 24707), (62, 24785), (82, 24809), (109, 24845), (159, 24974), (161, 24992), (182, 25217), (184, 25238), (187, 25256), (196, 25346), (201, 25403), (214, 25526), (228, 25649), (234, 25688), (241, 25745), (253, 25826), (254, 25847), (255, 25850), (273, 25940), (300, 26051), (312, 26126),

Gene: Turbido_33 Start: 23266, Stop: 25470, Start Num: 6

Candidate Starts for Turbido_33:

(Start: 6 @23266 has 34 MA's), (15, 23380), (17, 23389), (21, 23422), (30, 23479), (51, 23617), (87, 23806), (106, 23941), (114, 23983), (126, 24055), (159, 24295), (161, 24313), (164, 24337), (171, 24445), (182, 24538), (187, 24577), (196, 24667), (201, 24724), (202, 24727), (208, 24784), (209, 24790), (211, 24829), (215, 24850), (237, 25039), (242, 25066), (264, 25219), (270, 25243), (284, 25297), (286, 25300), (297, 25339), (298, 25345), (305, 25393),

Gene: Twister_33 Start: 23481, Stop: 25316, Start Num: 4

Candidate Starts for Twister_33:

(Start: 4 @23481 has 41 MA's), (9, 23514), (23, 23664), (57, 23889), (60, 23910), (64, 23937), (154, 24117), (159, 24150), (161, 24168), (164, 24192), (171, 24300), (187, 24432), (195, 24489), (196, 24522), (201, 24579), (207, 24633), (210, 24648), (214, 24702), (226, 24810), (228, 24825), (232, 24849), (234, 24864), (244, 24936), (250, 24981), (253, 24999), (254, 25020), (255, 25023), (270, 25098), (273, 25113), (294, 25194), (300, 25224), (305, 25254), (312, 25299), (313, 25302),

Gene: Ugenie5_30 Start: 24410, Stop: 26176, Start Num: 5

Candidate Starts for Ugenie5_30:

(Start: 5 @24410 has 29 MA's), (8, 24422), (24, 24596), (39, 24686), (48, 24731), (49, 24740), (62, 24818), (82, 24842), (109, 24878), (159, 25007), (161, 25025), (182, 25250), (184, 25271), (187, 25289), (196, 25379), (201, 25436), (214, 25559), (228, 25682), (234, 25721), (241, 25778), (253, 25859), (254, 25880), (255, 25883), (273, 25973), (300, 26084), (312, 26159),

Gene: Updawg_33 Start: 23218, Stop: 25425, Start Num: 6

Candidate Starts for Updawg_33:

(Start: 6 @23218 has 34 MA's), (15, 23332), (17, 23341), (18, 23347), (20, 23368), (37, 23479), (51, 23569), (53, 23581), (87, 23758), (96, 23797), (106, 23893), (150, 24154), (159, 24244), (163, 24274), (164, 24286), (181, 24484), (196, 24625), (197, 24646), (207, 24736), (208, 24742), (209, 24748),

(211, 24787), (215, 24808), (220, 24844), (221, 24847), (226, 24913), (228, 24928), (229, 24931), (232, 24952), (236, 24985), (255, 25129), (263, 25177), (280, 25240), (298, 25300), (305, 25348), (312, 25402),

Gene: Veracruz_31 Start: 23373, Stop: 25232, Start Num: 42

Candidate Starts for Veracruz_31:

(Start: 42 @23373 has 31 MA's), (61, 23517), (65, 23535), (79, 23574), (83, 23595), (89, 23637), (95, 23655), (118, 23814), (120, 23841), (149, 23946), (151, 23967), (159, 24054), (164, 24096), (184, 24318), (187, 24336), (196, 24426), (201, 24483), (221, 24648), (225, 24702), (226, 24714), (228, 24729), (247, 24858), (248, 24870), (255, 24930), (257, 24942), (267, 24987), (271, 25005), (305, 25152), (308, 25179), (312, 25209),

Gene: WalterMcMickey_33 Start: 23481, Stop: 25316, Start Num: 4

Candidate Starts for WalterMcMickey_33:

(Start: 4 @23481 has 41 MA's), (9, 23514), (23, 23664), (57, 23889), (60, 23910), (64, 23937), (154, 24117), (159, 24150), (161, 24168), (164, 24192), (171, 24300), (187, 24432), (195, 24489), (196, 24522), (201, 24579), (207, 24633), (210, 24648), (214, 24702), (226, 24810), (228, 24825), (232, 24849), (234, 24864), (244, 24936), (250, 24981), (253, 24999), (254, 25020), (255, 25023), (270, 25098), (273, 25113), (294, 25194), (300, 25224), (305, 25254), (312, 25299), (313, 25302),

Gene: WeiHuaDA_37 Start: 25110, Stop: 26891, Start Num: 5

Candidate Starts for WeiHuaDA_37:

(Start: 5 @25110 has 29 MA's), (15, 25227), (17, 25236), (37, 25368), (60, 25527), (150, 25635), (151, 25638), (159, 25725), (161, 25743), (164, 25767), (182, 25968), (187, 26007), (196, 26097), (201, 26154), (207, 26208), (214, 26277), (227, 26394), (234, 26439), (253, 26574), (254, 26595), (258, 26616), (272, 26682), (294, 26769), (300, 26799), (305, 26829), (312, 26874),

Gene: Whabigail7_33 Start: 23254, Stop: 25458, Start Num: 6

Candidate Starts for Whabigail7_33:

(Start: 6 @23254 has 34 MA's), (15, 23368), (17, 23377), (21, 23410), (30, 23467), (51, 23605), (87, 23794), (106, 23929), (114, 23971), (126, 24043), (159, 24283), (161, 24301), (164, 24325), (171, 24433), (182, 24526), (187, 24565), (196, 24655), (201, 24712), (202, 24715), (208, 24772), (209, 24778), (211, 24817), (215, 24838), (237, 25027), (242, 25054), (264, 25207), (270, 25231), (284, 25285), (286, 25288), (297, 25327), (298, 25333), (305, 25381),

Gene: WideWale_33 Start: 23218, Stop: 25425, Start Num: 6

Candidate Starts for WideWale_33:

(Start: 6 @23218 has 34 MA's), (15, 23332), (17, 23341), (18, 23347), (20, 23368), (37, 23479), (51, 23569), (53, 23581), (87, 23758), (96, 23797), (106, 23893), (150, 24154), (159, 24244), (163, 24274), (164, 24286), (181, 24484), (196, 24625), (197, 24646), (207, 24736), (208, 24742), (209, 24748), (211, 24787), (215, 24808), (220, 24844), (221, 24847), (226, 24913), (228, 24928), (229, 24931), (232, 24952), (236, 24985), (255, 25129), (263, 25177), (280, 25240), (298, 25300), (305, 25348), (312, 25402),