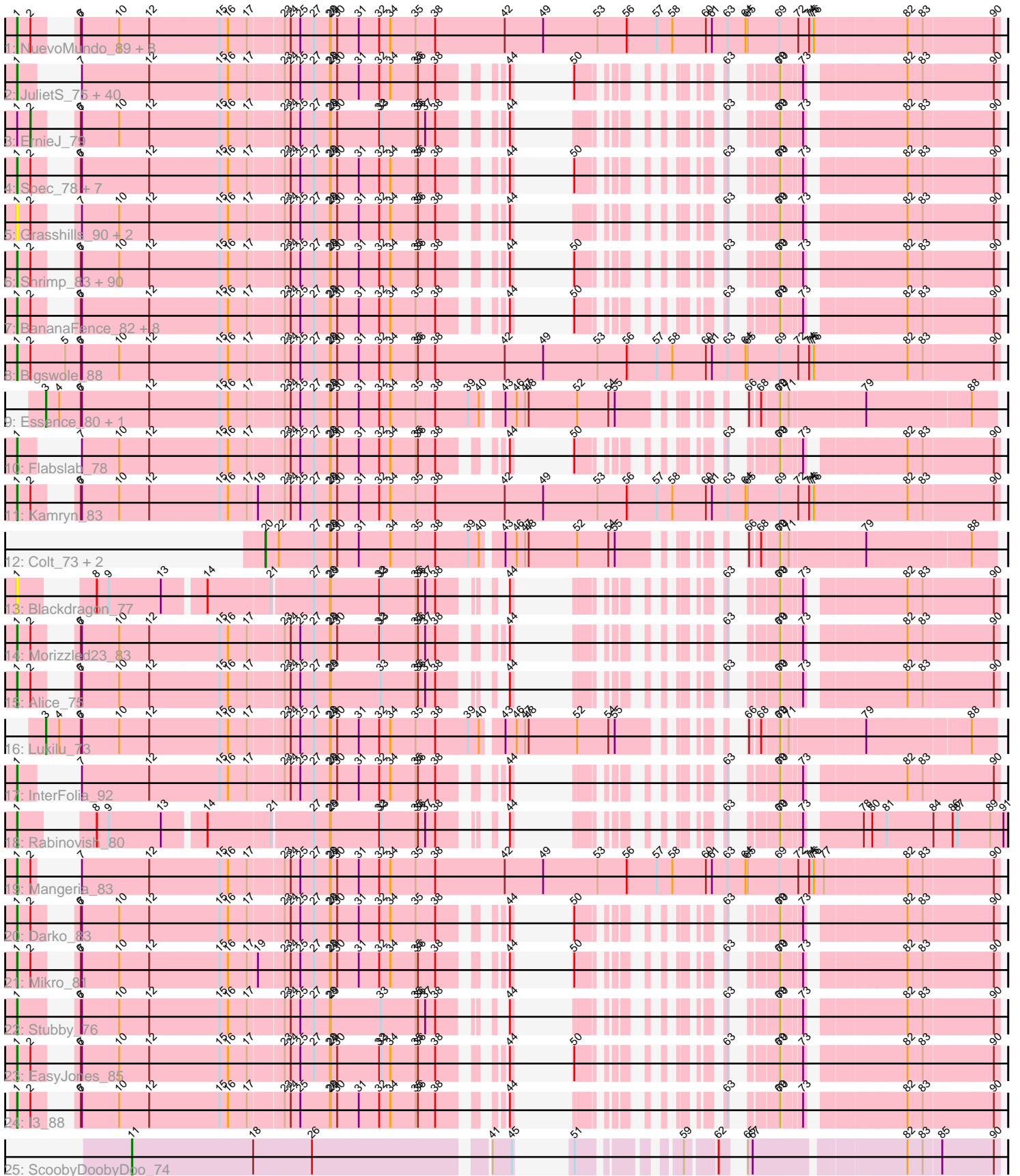


Pham 193766



Note: Tracks are now grouped by subcluster and scaled. Switching in subcluster is indicated by changes in track color. Track scale is now set by default to display the region 30 bp upstream of start 1 to 30 bp downstream of the last possible start. If this default region is judged to be packed too tightly with annotated starts, the track will be further scaled to only show that region of the ORF with annotated starts. This action will be indicated by adding "Zoomed" to the title. For starts, yellow indicates the location of called starts comprised solely of Glimmer/GeneMark auto-annotations, green indicates the location of called starts with at least 1 manual gene annotation.

Pham 193766 Report

This analysis was run 11/02/24 on database version 579.

Pham number 193766 has 183 members, 14 are drafts.

Phages represented in each track:

- Track 1 : NuevoMundo_89, Bxz1_83, Naval22_88, Pio_86, Caravan_78, NoodleTree_86, Burrough_83, Dandelion_89, Chomp_82
- Track 2 : JulietS_75, Ading_83, DirtMonster_76, Bangla1971_84, Iota_77, Koguma_79, Rahel_82, Ronan_76, Shifa_72, BackyardAgain_80, Cali_78, Sauce_83, Bread_83, QBert_77, LinStu_82, ArcherS7_83, BeanWater_75, Derek_83, HyRo_76, LRRHood_77, ET08_72, Jaygup_83, Phusco_83, Grungle_71, SmallFry_83, JustHall_79, Sprinklers_78, Drazdys_83, Littleton_83, Adlitam_83, FudgeTart_83, Phox_79, Halldule_75, CharlieB_79, Roots515_82, Matsumoto_81, ShiaLabeouf_83, Sebata_83, Shaqnato_75, Shnickers_83, Jedediah_86
- Track 3 : ErnieJ_79
- Track 4 : Spec_78, Breeniome_83, Tyke_85, DTDevon_84, LifeSavor_82, Tortoise16_81, Salacia_87, Gabriel_85
- Track 5 : Grasshills_90, Concombre_90, Demodog_90
- Track 6 : Shrimp_83, PurduePete_83, ScottMcG_79, Khaleesi_82, Yucca_82, Cactojaque_78, Lee7_81, Megamind_82, Amataga_83, Nidhogg_83, Guwapp_82, StubbySaigey_84, CindyLou_84, Naija_82, Ewok_84, ParkTD_84, YoungMoneyMata_83, Ghost_82, Loanshark_83, Melpomini_77, TinyTim_83, Catera_81, Momo_82, Ngannou_79, Jemmno_83, Zalkecks_84, Nappy_84, EmToTheThree_86, Audrick_85, Gizmo_87, Pinkcreek_73, NedWong_84, Willis_84, Basquiat_79, InigoMontoya_84, Specks_89, Izajani_83, DrPhinkDaddy_82, FoxtrotP1_83, Asterius_80, Chargie21_79, Bipolarisk_82, LolaVinca_85, JayJay_85, Pivoine_82, Janiyra_85, ChickenPhender_79, Norm_84, Spud_82, Blackbrain_78, Quasimodo_83, SrishMeg2525_82, Jessibeth14_82, ChaylaJr_78, Delylah_86, EmmaElysia_82, Turret_78, Erdmann_83, Teardrop_83, Latch_83, Pleione_85, Fludd_83, McWolfish_81, Capablanca_85, Gamgam_83, Maby2021_83, Daffodil_87, Napoleon13_79, Dietrick_76, Wally_81, YemiJoy2021_84, Issimir_82, Shelob_85, ValleyTerrace_83, Delilah_83, Patter_83, Zeenon_84, Ava3_84, MoMoMixon_83, MikeLiesIn_83, Trinitium_79, ZygoTaiga_82, Yassified_79, Astraea_81, Kboogie_86, Atlantean_82, JPickles_81, SilverDipper_84, Phlegm_85, Rizal_80, McGee_84
- Track 7 : BananaFence_82, FrayBell_89, RoMag_78, Domi_77, BadAgartude_80, IkeLoa_77, StephanieG_83, Bonray_83, Pier_87
- Track 8 : Bigswole_88
- Track 9 : Essence_80, LordLeafolot_87
- Track 10 : Flabslab_78
- Track 11 : Kamryn_83
- Track 12 : Colt_73, Blubba_73, Cane17_71
- Track 13 : Blackdragon_77

- Track 14 : Morizzled23_83
- Track 15 : Alice_75
- Track 16 : Lukilu_73
- Track 17 : InterFolia_92
- Track 18 : Rabinovish_80
- Track 19 : Mangeria_83
- Track 20 : Darko_83
- Track 21 : Mikro_81
- Track 22 : Stubby_76
- Track 23 : EasyJones_85
- Track 24 : l3_88
- Track 25 : ScoobyDoobyDoo_74

Summary of Final Annotations (See graph section above for start numbers):

The start number called the most often in the published annotations is 1, it was called in 162 of the 169 non-draft genes in the pham.

Genes that call this "Most Annotated" start:

• Ading_83, Adlitam_83, Alice_75, Amataga_83, ArcherS7_83, Asterius_80, Astraea_81, Atlantean_82, Audrick_85, Ava3_84, BackyardAgain_80, BadAgartude_80, BananaFence_82, Bangla1971_84, Basquiat_79, BeanWater_75, Bigswole_88, Bipolarisk_82, Blackbrain_78, Blackdragon_77, Bonray_83, Bread_83, Breeniome_83, Burrough_83, Bxz1_83, Cactojaque_78, Cali_78, Capablanca_85, Caravan_78, Catera_81, Chargie21_79, CharlieB_79, ChaylaJr_78, ChickenPhender_79, Chomp_82, CindyLou_84, Concombre_90, DTDevon_84, Daffodil_87, Dandelion_89, Darko_83, Delilah_83, Delylah_86, Demodog_90, Derek_83, Dietrick_76, DirtMonster_76, Domi_77, DrPhinkDaddy_82, Drazdys_83, ET08_72, EasyJones_85, EmToTheThree_86, EmmaElysia_82, Erdmann_83, Ewok_84, Flabslab_78, Fludd_83, FoxtrotP1_83, FrayBell_89, FudgeTart_83, Gabriel_85, Gamgam_83, Ghost_82, Gizmo_87, Grasshills_90, Grungle_71, Guwapp_82, Halldule_75, HyRo_76, l3_88, IkeLoa_77, InigoMontoya_84, InterFolia_92, Iota_77, Issimir_82, Izajani_83, JPickles_81, Janiyra_85, JayJay_85, Jaygup_83, Jedediah_86, Jemmno_83, Jessibeth14_82, JulietS_75, JustHall_79, Kamryn_83, Kboogie_86, Khaleesi_82, Koguma_79, LRRHood_77, Latch_83, Lee7_81, LifeSavor_82, LinStu_82, Littleton_83, Loanshark_83, LolaVinca_85, Maby2021_83, Mangeria_83, Matsumoto_81, McGee_84, McWolfish_81, Megamind_82, Melpomini_77, MikeLiesIn_83, Mikro_81, MoMoMixon_83, Momo_82, Morizzled23_83, Naija_82, Napoleon13_79, Nappy_84, Naval22_88, NedWong_84, Ngannou_79, Nidhogg_83, NoodleTree_86, Norm_84, NuevoMundo_89, ParkTD_84, Patter_83, Phlegm_85, Phox_79, Phusco_83, Pier_87, Pinkcreek_73, Pio_86, Pivoine_82, Pleione_85, PurduePete_83, QBert_77, Quasimodo_83, Rabinovish_80, Rahel_82, Rizal_80, RoMag_78, Ronan_76, Roots515_82, Salacia_87, Sauce_83, ScottMcG_79, Sebata_83, Shaqnato_75, Shelob_85, ShiaLabeouf_83, Shifa_72, Shnickers_83, Shrimp_83, SilverDipper_84, SmallFry_83, Spec_78, Specks_89, Sprinklers_78, Spud_82, SrishMeg2525_82, StephanieG_83, StubbySaigey_84, Stubby_76, Teardrop_83, TinyTim_83, Tortoise16_81, Trinitium_79, Turret_78, Tyke_85, ValleyTerrace_83, Wally_81, Willis_84, Yassified_79, YemiJoy2021_84, YoungMoneyMata_83, Yucca_82, Zalkecks_84, Zeenon_84, ZygoTaiga_82,

Genes that have the "Most Annotated" start but do not call it:

- ErnieJ_79,

Genes that do not have the "Most Annotated" start:

- Blubba_73, Cane17_71, Colt_73, Essence_80, LordLeafolot_87, Lukilu_73, ScoobyDoobyDoo_74,

Summary by start number:

Start 1:

- Found in 176 of 183 (96.2%) of genes in pham
- Manual Annotations of this start: 162 of 169
- Called 99.4% of time when present
- Phage (with cluster) where this start called: Ading_83 (C1), Adlitam_83 (C1), Alice_75 (C1), Amataga_83 (C1), ArcherS7_83 (C1), Asterius_80 (C1), Astraea_81 (C1), Atlantean_82 (C1), Audrick_85 (C1), Ava3_84 (C1), BackyardAgain_80 (C1), BadAgartude_80 (C1), BananaFence_82 (C1), Bangla1971_84 (C1), Basquiat_79 (C1), BeanWater_75 (C1), Bigswole_88 (C1), Bipolarisk_82 (C1), Blackbrain_78 (C1), Blackdragon_77 (C1), Bonray_83 (C1), Bread_83 (C1), Breeniome_83 (C1), Burrough_83 (C1), Bxz1_83 (C1), Cactojaque_78 (C1), Cali_78 (C1), Capablanca_85 (C1), Caravan_78 (C1), Catera_81 (C1), Chargie21_79 (C1), CharlieB_79 (C1), ChaylaJr_78 (C1), ChickenPhender_79 (C1), Chomp_82 (C1), CindyLou_84 (C1), Concombre_90 (C1), DTDevon_84 (C1), Daffodil_87 (C1), Dandelion_89 (C1), Darko_83 (C1), Delilah_83 (C1), Delylah_86 (C1), Demodog_90 (C1), Derek_83 (C1), Dietrick_76 (C1), DirtMonster_76 (C1), Domi_77 (C1), DrPhinkDaddy_82 (C1), Drazdys_83 (C1), ET08_72 (C1), EasyJones_85 (C1), EmToTheThree_86 (C1), EmmaElysia_82 (C1), Erdmann_83 (C1), Ewok_84 (C1), Flabslab_78 (C1), Fludd_83 (C1), FoxtrotP1_83 (C1), FrayBell_89 (C1), FudgeTart_83 (C1), Gabriel_85 (C1), Gamgam_83 (C1), Ghost_82 (C1), Gizmo_87 (C1), Grasshills_90 (C1), Grungle_71 (C1), Guwapp_82 (C1), Halldule_75 (C1), HyRo_76 (C1), I3_88 (C1), IkeLoa_77 (C1), InigoMontoya_84 (C1), InterFolia_92 (C1), Iota_77 (C1), Issimir_82 (C1), Izajani_83 (C1), JPickles_81 (C1), Janiyr_85 (C1), JayJay_85 (C1), Jaygup_83 (C1), Jedediah_86 (C1), Jemmno_83 (C1), Jessibeth14_82 (C1), JulietS_75 (C1), JustHall_79 (C1), Kamryn_83 (C1), Kboogie_86 (C1), Khaleesi_82 (C1), Koguma_79 (C1), LRRHood_77 (C1), Latch_83 (C1), Lee7_81 (C1), LifeSavor_82 (C1), LinStu_82 (C1), Littleton_83 (C1), Loanshark_83 (C1), LolaVinca_85 (C1), Maby2021_83 (C1), Mangeria_83 (C1), Matsumoto_81 (C1), McGee_84 (C1), McWolfish_81 (C1), Megamind_82 (C1), Melpomini_77 (C1), MikeLiesIn_83 (C1), Mikro_81 (C1), MoMoMixon_83 (C1), Momo_82 (C1), Morizzled23_83 (C1), Naija_82 (C1), Napoleon13_79 (C1), Nappy_84 (C1), Naval22_88 (C1), NedWong_84 (C1), Ngannou_79 (C1), Nidhogg_83 (C1), NoodleTree_86 (C1), Norm_84 (C1), NuevoMundo_89 (C1), ParkTD_84 (C1), Patter_83 (C1), Phlegm_85 (C1), Phox_79 (C1), Phusco_83 (C1), Pier_87 (C1), Pinkcreek_73 (C1), Pio_86 (C1), Pivoine_82 (C1), Pleione_85 (C1), PurduePete_83 (C1), QBert_77 (C1), Quasimodo_83 (C1), Rabinovish_80 (C1), Rahel_82 (C1), Rizal_80 (C1), RoMag_78 (C1), Ronan_76 (C1), Roots515_82 (C1), Salacia_87 (C1), Sauce_83 (C1), ScottMcG_79 (C1), Sebata_83 (C1), Shaqnato_75 (C1), Shelob_85 (C1), ShiaLabeouf_83 (C1), Shifa_72 (C1), Shnickers_83 (C1), Shrimp_83 (C1), SilverDipper_84 (C1), SmallFry_83 (C1), Spec_78 (C1), Specks_89 (C1), Sprinklers_78 (C1), Spud_82 (C1), SrishMeg2525_82 (C1), StephanieG_83 (C1), StubbySaigey_84 (C1), Stubby_76 (C1), Teardrop_83 (C1), TinyTim_83 (C1), Tortoise16_81 (C1), Trinitium_79 (C1), Turret_78 (C1), Tyke_85 (C1), ValleyTerrace_83 (C1), Wally_81 (C1), Willis_84 (C1), Yassified_79 (C1), YemiJoy2021_84 (C1), YoungMoneyMata_83 (C1), Yucca_82

(C1), Zalkecks_84 (C1), Zeenon_84 (C1), ZygoTaiga_82 (C1),

Start 2:

- Found in 130 of 183 (71.0%) of genes in pham
- Manual Annotations of this start: 1 of 169
- Called 0.8% of time when present
- Phage (with cluster) where this start called: ErnieJ_79 (C1),

Start 3:

- Found in 3 of 183 (1.6%) of genes in pham
- Manual Annotations of this start: 2 of 169
- Called 100.0% of time when present
- Phage (with cluster) where this start called: Essence_80 (C1), LordLeafolot_87 (C1), Lukilu_73 (C1),

Start 11:

- Found in 1 of 183 (0.5%) of genes in pham
- Manual Annotations of this start: 1 of 169
- Called 100.0% of time when present
- Phage (with cluster) where this start called: ScoobyDoobyDoo_74 (C2),

Start 20:

- Found in 3 of 183 (1.6%) of genes in pham
- Manual Annotations of this start: 3 of 169
- Called 100.0% of time when present
- Phage (with cluster) where this start called: Blubba_73 (C1), Cane17_71 (C1), Colt_73 (C1),

Summary by clusters:

There are 2 clusters represented in this pham: C2, C1,

Info for manual annotations of cluster C1:

- Start number 1 was manually annotated 162 times for cluster C1.
- Start number 2 was manually annotated 1 time for cluster C1.
- Start number 3 was manually annotated 2 times for cluster C1.
- Start number 20 was manually annotated 3 times for cluster C1.

Info for manual annotations of cluster C2:

- Start number 11 was manually annotated 1 time for cluster C2.

Gene Information:

Gene: Ading_83 Start: 28623, Stop: 30308, Start Num: 1

Candidate Starts for Ading_83:

(Start: 1 @28623 has 162 MA's), (7, 28671), (12, 28839), (15, 29007), (16, 29028), (17, 29073), (23, 29151), (24, 29166), (25, 29190), (27, 29223), (28, 29262), (29, 29265), (30, 29280), (31, 29331), (32, 29382), (34, 29409), (35, 29472), (36, 29478), (38, 29520), (44, 29616), (50, 29628), (63, 29787), (69, 29853), (70, 29856), (73, 29895), (82, 30093), (83, 30129), (90, 30294),

Gene: Adlitam_83 Start: 28640, Stop: 30325, Start Num: 1

Candidate Starts for Adlitam_83:

(Start: 1 @28640 has 162 MA's), (7, 28688), (12, 28856), (15, 29024), (16, 29045), (17, 29090), (23, 29168), (24, 29183), (25, 29207), (27, 29240), (28, 29279), (29, 29282), (30, 29297), (31, 29348), (32, 29399), (34, 29426), (35, 29489), (36, 29495), (38, 29537), (44, 29633), (50, 29645), (63, 29804), (69, 29870), (70, 29873), (73, 29912), (82, 30110), (83, 30146), (90, 30311),

Gene: Alice_75 Start: 27514, Stop: 29223, Start Num: 1

Candidate Starts for Alice_75:

(Start: 1 @27514 has 162 MA's), (Start: 2 @27547 has 1 MA's), (6, 27601), (7, 27604), (10, 27697), (12, 27772), (15, 27940), (16, 27961), (17, 28006), (23, 28084), (24, 28099), (25, 28123), (27, 28156), (28, 28195), (29, 28198), (33, 28318), (35, 28405), (36, 28411), (37, 28429), (38, 28453), (44, 28531), (63, 28702), (69, 28768), (70, 28771), (73, 28810), (82, 29008), (83, 29044), (90, 29209),

Gene: Amataga_83 Start: 28644, Stop: 30371, Start Num: 1

Candidate Starts for Amataga_83:

(Start: 1 @28644 has 162 MA's), (Start: 2 @28677 has 1 MA's), (6, 28731), (7, 28734), (10, 28827), (12, 28902), (15, 29070), (16, 29091), (17, 29136), (23, 29214), (24, 29229), (25, 29253), (27, 29286), (28, 29325), (29, 29328), (30, 29343), (31, 29394), (32, 29445), (34, 29472), (35, 29535), (36, 29541), (38, 29583), (44, 29679), (50, 29691), (63, 29850), (69, 29916), (70, 29919), (73, 29958), (82, 30156), (83, 30192), (90, 30357),

Gene: ArcherS7_83 Start: 29007, Stop: 30692, Start Num: 1

Candidate Starts for ArcherS7_83:

(Start: 1 @29007 has 162 MA's), (7, 29055), (12, 29223), (15, 29391), (16, 29412), (17, 29457), (23, 29535), (24, 29550), (25, 29574), (27, 29607), (28, 29646), (29, 29649), (30, 29664), (31, 29715), (32, 29766), (34, 29793), (35, 29856), (36, 29862), (38, 29904), (44, 30000), (50, 30012), (63, 30171), (69, 30237), (70, 30240), (73, 30279), (82, 30477), (83, 30513), (90, 30678),

Gene: Asterius_80 Start: 29042, Stop: 30769, Start Num: 1

Candidate Starts for Asterius_80:

(Start: 1 @29042 has 162 MA's), (Start: 2 @29075 has 1 MA's), (6, 29129), (7, 29132), (10, 29225), (12, 29300), (15, 29468), (16, 29489), (17, 29534), (23, 29612), (24, 29627), (25, 29651), (27, 29684), (28, 29723), (29, 29726), (30, 29741), (31, 29792), (32, 29843), (34, 29870), (35, 29933), (36, 29939), (38, 29981), (44, 30077), (50, 30089), (63, 30248), (69, 30314), (70, 30317), (73, 30356), (82, 30554), (83, 30590), (90, 30755),

Gene: Astraea_81 Start: 28921, Stop: 30648, Start Num: 1

Candidate Starts for Astraea_81:

(Start: 1 @28921 has 162 MA's), (Start: 2 @28954 has 1 MA's), (6, 29008), (7, 29011), (10, 29104), (12, 29179), (15, 29347), (16, 29368), (17, 29413), (23, 29491), (24, 29506), (25, 29530), (27, 29563), (28, 29602), (29, 29605), (30, 29620), (31, 29671), (32, 29722), (34, 29749), (35, 29812), (36, 29818), (38, 29860), (44, 29956), (50, 29968), (63, 30127), (69, 30193), (70, 30196), (73, 30235), (82, 30433), (83, 30469), (90, 30634),

Gene: Atlantean_82 Start: 28644, Stop: 30371, Start Num: 1

Candidate Starts for Atlantean_82:

(Start: 1 @28644 has 162 MA's), (Start: 2 @28677 has 1 MA's), (6, 28731), (7, 28734), (10, 28827), (12, 28902), (15, 29070), (16, 29091), (17, 29136), (23, 29214), (24, 29229), (25, 29253), (27, 29286), (28, 29325), (29, 29328), (30, 29343), (31, 29394), (32, 29445), (34, 29472), (35, 29535), (36, 29541), (38, 29583), (44, 29679), (50, 29691), (63, 29850), (69, 29916), (70, 29919), (73, 29958), (82, 30156), (83, 30192), (90, 30357),

Gene: Audrick_85 Start: 28623, Stop: 30350, Start Num: 1

Candidate Starts for Audrick_85:

(Start: 1 @28623 has 162 MA's), (Start: 2 @28656 has 1 MA's), (6, 28710), (7, 28713), (10, 28806), (12, 28881), (15, 29049), (16, 29070), (17, 29115), (23, 29193), (24, 29208), (25, 29232), (27, 29265), (28, 29304), (29, 29307), (30, 29322), (31, 29373), (32, 29424), (34, 29451), (35, 29514), (36, 29520), (38, 29562), (44, 29658), (50, 29670), (63, 29829), (69, 29895), (70, 29898), (73, 29937), (82, 30135), (83, 30171), (90, 30336),

Gene: Ava3_84 Start: 29793, Stop: 31520, Start Num: 1

Candidate Starts for Ava3_84:

(Start: 1 @29793 has 162 MA's), (Start: 2 @29826 has 1 MA's), (6, 29880), (7, 29883), (10, 29976), (12, 30051), (15, 30219), (16, 30240), (17, 30285), (23, 30363), (24, 30378), (25, 30402), (27, 30435), (28, 30474), (29, 30477), (30, 30492), (31, 30543), (32, 30594), (34, 30621), (35, 30684), (36, 30690), (38, 30732), (44, 30828), (50, 30840), (63, 30999), (69, 31065), (70, 31068), (73, 31107), (82, 31305), (83, 31341), (90, 31506),

Gene: BackyardAgain_80 Start: 28575, Stop: 30260, Start Num: 1

Candidate Starts for BackyardAgain_80:

(Start: 1 @28575 has 162 MA's), (7, 28623), (12, 28791), (15, 28959), (16, 28980), (17, 29025), (23, 29103), (24, 29118), (25, 29142), (27, 29175), (28, 29214), (29, 29217), (30, 29232), (31, 29283), (32, 29334), (34, 29361), (35, 29424), (36, 29430), (38, 29472), (44, 29568), (50, 29580), (63, 29739), (69, 29805), (70, 29808), (73, 29847), (82, 30045), (83, 30081), (90, 30246),

Gene: BadAgartude_80 Start: 29681, Stop: 31408, Start Num: 1

Candidate Starts for BadAgartude_80:

(Start: 1 @29681 has 162 MA's), (Start: 2 @29714 has 1 MA's), (6, 29768), (7, 29771), (12, 29939), (15, 30107), (16, 30128), (17, 30173), (23, 30251), (24, 30266), (25, 30290), (27, 30323), (28, 30362), (29, 30365), (30, 30380), (31, 30431), (32, 30482), (34, 30509), (35, 30572), (38, 30620), (44, 30716), (50, 30728), (63, 30887), (69, 30953), (70, 30956), (73, 30995), (82, 31193), (83, 31229), (90, 31394),

Gene: BananaFence_82 Start: 29163, Stop: 30890, Start Num: 1

Candidate Starts for BananaFence_82:

(Start: 1 @29163 has 162 MA's), (Start: 2 @29196 has 1 MA's), (6, 29250), (7, 29253), (12, 29421), (15, 29589), (16, 29610), (17, 29655), (23, 29733), (24, 29748), (25, 29772), (27, 29805), (28, 29844), (29, 29847), (30, 29862), (31, 29913), (32, 29964), (34, 29991), (35, 30054), (38, 30102), (44, 30198), (50, 30210), (63, 30369), (69, 30435), (70, 30438), (73, 30477), (82, 30675), (83, 30711), (90, 30876),

Gene: Bangla1971_84 Start: 29137, Stop: 30822, Start Num: 1

Candidate Starts for Bangla1971_84:

(Start: 1 @29137 has 162 MA's), (7, 29185), (12, 29353), (15, 29521), (16, 29542), (17, 29587), (23, 29665), (24, 29680), (25, 29704), (27, 29737), (28, 29776), (29, 29779), (30, 29794), (31, 29845), (32, 29896), (34, 29923), (35, 29986), (36, 29992), (38, 30034), (44, 30130), (50, 30142), (63, 30301), (69, 30367), (70, 30370), (73, 30409), (82, 30607), (83, 30643), (90, 30808),

Gene: Basquiat_79 Start: 28126, Stop: 29853, Start Num: 1

Candidate Starts for Basquiat_79:

(Start: 1 @28126 has 162 MA's), (Start: 2 @28159 has 1 MA's), (6, 28213), (7, 28216), (10, 28309), (12, 28384), (15, 28552), (16, 28573), (17, 28618), (23, 28696), (24, 28711), (25, 28735), (27, 28768), (28, 28807), (29, 28810), (30, 28825), (31, 28876), (32, 28927), (34, 28954), (35, 29017), (36, 29023), (38, 29065), (44, 29161), (50, 29173), (63, 29332), (69, 29398), (70, 29401), (73, 29440), (82, 29638), (83, 29674), (90, 29839),

Gene: BeanWater_75 Start: 28277, Stop: 29962, Start Num: 1

Candidate Starts for BeanWater_75:

(Start: 1 @28277 has 162 MA's), (7, 28325), (12, 28493), (15, 28661), (16, 28682), (17, 28727), (23, 28805), (24, 28820), (25, 28844), (27, 28877), (28, 28916), (29, 28919), (30, 28934), (31, 28985), (32, 29036), (34, 29063), (35, 29126), (36, 29132), (38, 29174), (44, 29270), (50, 29282), (63, 29441), (69, 29507), (70, 29510), (73, 29549), (82, 29747), (83, 29783), (90, 29948),

Gene: Bigswole_88 Start: 31408, Stop: 33789, Start Num: 1

Candidate Starts for Bigswole_88:

(Start: 1 @31408 has 162 MA's), (Start: 2 @31441 has 1 MA's), (5, 31528), (6, 31567), (7, 31570), (10, 31663), (12, 31738), (15, 31906), (16, 31927), (17, 31972), (23, 32050), (24, 32065), (25, 32089), (27, 32122), (28, 32161), (29, 32164), (30, 32179), (31, 32230), (32, 32281), (34, 32308), (35, 32371), (36, 32377), (38, 32419), (42, 32593), (49, 32689), (53, 32824), (56, 32896), (57, 32971), (58, 33010), (60, 33094), (61, 33109), (63, 33148), (64, 33193), (65, 33199), (69, 33277), (72, 33325), (74, 33352), (75, 33358), (76, 33364), (82, 33574), (83, 33610), (90, 33775),

Gene: Bipolarisk_82 Start: 29445, Stop: 31172, Start Num: 1

Candidate Starts for Bipolarisk_82:

(Start: 1 @29445 has 162 MA's), (Start: 2 @29478 has 1 MA's), (6, 29532), (7, 29535), (10, 29628), (12, 29703), (15, 29871), (16, 29892), (17, 29937), (23, 30015), (24, 30030), (25, 30054), (27, 30087), (28, 30126), (29, 30129), (30, 30144), (31, 30195), (32, 30246), (34, 30273), (35, 30336), (36, 30342), (38, 30384), (44, 30480), (50, 30492), (63, 30651), (69, 30717), (70, 30720), (73, 30759), (82, 30957), (83, 30993), (90, 31158),

Gene: Blackbrain_78 Start: 27943, Stop: 29670, Start Num: 1

Candidate Starts for Blackbrain_78:

(Start: 1 @27943 has 162 MA's), (Start: 2 @27976 has 1 MA's), (6, 28030), (7, 28033), (10, 28126), (12, 28201), (15, 28369), (16, 28390), (17, 28435), (23, 28513), (24, 28528), (25, 28552), (27, 28585), (28, 28624), (29, 28627), (30, 28642), (31, 28693), (32, 28744), (34, 28771), (35, 28834), (36, 28840), (38, 28882), (44, 28978), (50, 28990), (63, 29149), (69, 29215), (70, 29218), (73, 29257), (82, 29455), (83, 29491), (90, 29656),

Gene: Blackdragon_77 Start: 28246, Stop: 29898, Start Num: 1

Candidate Starts for Blackdragon_77:

(Start: 1 @28246 has 162 MA's), (8, 28351), (9, 28381), (13, 28510), (14, 28606), (21, 28741), (27, 28831), (28, 28870), (29, 28873), (32, 28990), (33, 28993), (35, 29080), (36, 29086), (37, 29104), (38, 29128), (44, 29206), (63, 29377), (69, 29443), (70, 29446), (73, 29485), (82, 29683), (83, 29719), (90, 29884),

Gene: Blubba_73 Start: 26317, Stop: 27831, Start Num: 20

Candidate Starts for Blubba_73:

(Start: 20 @26317 has 3 MA's), (22, 26350), (27, 26431), (28, 26470), (29, 26473), (30, 26488), (31, 26539), (34, 26617), (35, 26680), (38, 26728), (39, 26809), (40, 26836), (43, 26881), (46, 26905), (47, 26926), (48, 26935), (52, 27052), (54, 27127), (55, 27139), (66, 27304), (68, 27325), (69, 27364), (70, 27367), (71, 27382), (79, 27547), (88, 27778),

Gene: Bonray_83 Start: 29725, Stop: 31452, Start Num: 1

Candidate Starts for Bonray_83:

(Start: 1 @29725 has 162 MA's), (Start: 2 @29758 has 1 MA's), (6, 29812), (7, 29815), (12, 29983), (15, 30151), (16, 30172), (17, 30217), (23, 30295), (24, 30310), (25, 30334), (27, 30367), (28, 30406), (29, 30409), (30, 30424), (31, 30475), (32, 30526), (34, 30553), (35, 30616), (38, 30664), (44, 30760), (50, 30772), (63, 30931), (69, 30997), (70, 31000), (73, 31039), (82, 31237), (83, 31273), (90, 31438),

Gene: Bread_83 Start: 29379, Stop: 31064, Start Num: 1

Candidate Starts for Bread_83:

(Start: 1 @29379 has 162 MA's), (7, 29427), (12, 29595), (15, 29763), (16, 29784), (17, 29829), (23, 29907), (24, 29922), (25, 29946), (27, 29979), (28, 30018), (29, 30021), (30, 30036), (31, 30087), (32, 30138), (34, 30165), (35, 30228), (36, 30234), (38, 30276), (44, 30372), (50, 30384), (63, 30543), (69, 30609), (70, 30612), (73, 30651), (82, 30849), (83, 30885), (90, 31050),

Gene: Breeniome_83 Start: 28468, Stop: 30195, Start Num: 1

Candidate Starts for Breeniome_83:

(Start: 1 @28468 has 162 MA's), (Start: 2 @28501 has 1 MA's), (6, 28555), (7, 28558), (12, 28726), (15, 28894), (16, 28915), (17, 28960), (23, 29038), (24, 29053), (25, 29077), (27, 29110), (28, 29149), (29, 29152), (30, 29167), (31, 29218), (32, 29269), (34, 29296), (35, 29359), (36, 29365), (38, 29407), (44, 29503), (50, 29515), (63, 29674), (69, 29740), (70, 29743), (73, 29782), (82, 29980), (83, 30016), (90, 30181),

Gene: Burrough_83 Start: 29412, Stop: 31721, Start Num: 1

Candidate Starts for Burrough_83:

(Start: 1 @29412 has 162 MA's), (Start: 2 @29445 has 1 MA's), (6, 29499), (7, 29502), (10, 29595), (12, 29670), (15, 29838), (16, 29859), (17, 29904), (23, 29982), (24, 29997), (25, 30021), (27, 30054), (28, 30093), (29, 30096), (30, 30111), (31, 30162), (32, 30213), (34, 30240), (35, 30303), (38, 30351), (42, 30525), (49, 30621), (53, 30756), (56, 30828), (57, 30903), (58, 30942), (60, 31026), (61, 31041), (63, 31080), (64, 31125), (65, 31131), (69, 31209), (72, 31257), (74, 31284), (75, 31290), (76, 31296), (82, 31506), (83, 31542), (90, 31707),

Gene: Bxz1_83 Start: 30463, Stop: 32772, Start Num: 1

Candidate Starts for Bxz1_83:

(Start: 1 @30463 has 162 MA's), (Start: 2 @30496 has 1 MA's), (6, 30550), (7, 30553), (10, 30646), (12, 30721), (15, 30889), (16, 30910), (17, 30955), (23, 31033), (24, 31048), (25, 31072), (27, 31105), (28, 31144), (29, 31147), (30, 31162), (31, 31213), (32, 31264), (34, 31291), (35, 31354), (38, 31402), (42, 31576), (49, 31672), (53, 31807), (56, 31879), (57, 31954), (58, 31993), (60, 32077), (61, 32092), (63, 32131), (64, 32176), (65, 32182), (69, 32260), (72, 32308), (74, 32335), (75, 32341), (76, 32347), (82, 32557), (83, 32593), (90, 32758),

Gene: Cactojaque_78 Start: 28050, Stop: 29777, Start Num: 1

Candidate Starts for Cactojaque_78:

(Start: 1 @28050 has 162 MA's), (Start: 2 @28083 has 1 MA's), (6, 28137), (7, 28140), (10, 28233), (12, 28308), (15, 28476), (16, 28497), (17, 28542), (23, 28620), (24, 28635), (25, 28659), (27, 28692), (28, 28731), (29, 28734), (30, 28749), (31, 28800), (32, 28851), (34, 28878), (35, 28941), (36, 28947), (38, 28989), (44, 29085), (50, 29097), (63, 29256), (69, 29322), (70, 29325), (73, 29364), (82, 29562), (83, 29598), (90, 29763),

Gene: Cali_78 Start: 29514, Stop: 31199, Start Num: 1

Candidate Starts for Cali_78:

(Start: 1 @29514 has 162 MA's), (7, 29562), (12, 29730), (15, 29898), (16, 29919), (17, 29964), (23, 30042), (24, 30057), (25, 30081), (27, 30114), (28, 30153), (29, 30156), (30, 30171), (31, 30222), (32, 30273), (34, 30300), (35, 30363), (36, 30369), (38, 30411), (44, 30507), (50, 30519), (63, 30678), (69, 30744), (70, 30747), (73, 30786), (82, 30984), (83, 31020), (90, 31185),

Gene: Cane17_71 Start: 25927, Stop: 27441, Start Num: 20

Candidate Starts for Cane17_71:

(Start: 20 @25927 has 3 MA's), (22, 25960), (27, 26041), (28, 26080), (29, 26083), (30, 26098), (31, 26149), (34, 26227), (35, 26290), (38, 26338), (39, 26419), (40, 26446), (43, 26491), (46, 26515), (47, 26536), (48, 26545), (52, 26662), (54, 26737), (55, 26749), (66, 26914), (68, 26935), (69, 26974), (70, 26977), (71, 26992), (79, 27157), (88, 27388),

Gene: Capablanca_85 Start: 29769, Stop: 31496, Start Num: 1

Candidate Starts for Capablanca_85:

(Start: 1 @29769 has 162 MA's), (Start: 2 @29802 has 1 MA's), (6, 29856), (7, 29859), (10, 29952), (12, 30027), (15, 30195), (16, 30216), (17, 30261), (23, 30339), (24, 30354), (25, 30378), (27, 30411), (28, 30450), (29, 30453), (30, 30468), (31, 30519), (32, 30570), (34, 30597), (35, 30660), (36, 30666), (38, 30708), (44, 30804), (50, 30816), (63, 30975), (69, 31041), (70, 31044), (73, 31083), (82, 31281), (83, 31317), (90, 31482),

Gene: Caravan_78 Start: 28807, Stop: 31116, Start Num: 1

Candidate Starts for Caravan_78:

(Start: 1 @28807 has 162 MA's), (Start: 2 @28840 has 1 MA's), (6, 28894), (7, 28897), (10, 28990), (12, 29065), (15, 29233), (16, 29254), (17, 29299), (23, 29377), (24, 29392), (25, 29416), (27, 29449), (28, 29488), (29, 29491), (30, 29506), (31, 29557), (32, 29608), (34, 29635), (35, 29698), (38, 29746), (42, 29920), (49, 30016), (53, 30151), (56, 30223), (57, 30298), (58, 30337), (60, 30421), (61, 30436), (63, 30475), (64, 30520), (65, 30526), (69, 30604), (72, 30652), (74, 30679), (75, 30685), (76, 30691), (82, 30901), (83, 30937), (90, 31102),

Gene: Catera_81 Start: 28190, Stop: 29917, Start Num: 1

Candidate Starts for Catera_81:

(Start: 1 @28190 has 162 MA's), (Start: 2 @28223 has 1 MA's), (6, 28277), (7, 28280), (10, 28373), (12, 28448), (15, 28616), (16, 28637), (17, 28682), (23, 28760), (24, 28775), (25, 28799), (27, 28832), (28, 28871), (29, 28874), (30, 28889), (31, 28940), (32, 28991), (34, 29018), (35, 29081), (36, 29087), (38, 29129), (44, 29225), (50, 29237), (63, 29396), (69, 29462), (70, 29465), (73, 29504), (82, 29702), (83, 29738), (90, 29903),

Gene: Chargie21_79 Start: 28126, Stop: 29853, Start Num: 1

Candidate Starts for Chargie21_79:

(Start: 1 @28126 has 162 MA's), (Start: 2 @28159 has 1 MA's), (6, 28213), (7, 28216), (10, 28309), (12, 28384), (15, 28552), (16, 28573), (17, 28618), (23, 28696), (24, 28711), (25, 28735), (27, 28768), (28, 28807), (29, 28810), (30, 28825), (31, 28876), (32, 28927), (34, 28954), (35, 29017), (36, 29023), (38, 29065), (44, 29161), (50, 29173), (63, 29332), (69, 29398), (70, 29401), (73, 29440), (82, 29638), (83, 29674), (90, 29839),

Gene: CharlieB_79 Start: 27512, Stop: 29197, Start Num: 1

Candidate Starts for CharlieB_79:

(Start: 1 @27512 has 162 MA's), (7, 27560), (12, 27728), (15, 27896), (16, 27917), (17, 27962), (23, 28040), (24, 28055), (25, 28079), (27, 28112), (28, 28151), (29, 28154), (30, 28169), (31, 28220), (32, 28271), (34, 28298), (35, 28361), (36, 28367), (38, 28409), (44, 28505), (50, 28517), (63, 28676), (69, 28742), (70, 28745), (73, 28784), (82, 28982), (83, 29018), (90, 29183),

Gene: ChaylaJr_78 Start: 27841, Stop: 29568, Start Num: 1

Candidate Starts for ChaylaJr_78:

(Start: 1 @27841 has 162 MA's), (Start: 2 @27874 has 1 MA's), (6, 27928), (7, 27931), (10, 28024), (12, 28099), (15, 28267), (16, 28288), (17, 28333), (23, 28411), (24, 28426), (25, 28450), (27, 28483), (28, 28522), (29, 28525), (30, 28540), (31, 28591), (32, 28642), (34, 28669), (35, 28732), (36, 28738), (38, 28780), (44, 28876), (50, 28888), (63, 29047), (69, 29113), (70, 29116), (73, 29155), (82, 29353), (83, 29389), (90, 29554),

Gene: ChickenPhender_79 Start: 28174, Stop: 29901, Start Num: 1

Candidate Starts for ChickenPhender_79:

(Start: 1 @28174 has 162 MA's), (Start: 2 @28207 has 1 MA's), (6, 28261), (7, 28264), (10, 28357), (12, 28432), (15, 28600), (16, 28621), (17, 28666), (23, 28744), (24, 28759), (25, 28783), (27, 28816), (28, 28855), (29, 28858), (30, 28873), (31, 28924), (32, 28975), (34, 29002), (35, 29065), (36, 29071),

(38, 29113), (44, 29209), (50, 29221), (63, 29380), (69, 29446), (70, 29449), (73, 29488), (82, 29686), (83, 29722), (90, 29887),

Gene: Chomp_82 Start: 28644, Stop: 30953, Start Num: 1

Candidate Starts for Chomp_82:

(Start: 1 @28644 has 162 MA's), (Start: 2 @28677 has 1 MA's), (6, 28731), (7, 28734), (10, 28827), (12, 28902), (15, 29070), (16, 29091), (17, 29136), (23, 29214), (24, 29229), (25, 29253), (27, 29286), (28, 29325), (29, 29328), (30, 29343), (31, 29394), (32, 29445), (34, 29472), (35, 29535), (38, 29583), (42, 29757), (49, 29853), (53, 29988), (56, 30060), (57, 30135), (58, 30174), (60, 30258), (61, 30273), (63, 30312), (64, 30357), (65, 30363), (69, 30441), (72, 30489), (74, 30516), (75, 30522), (76, 30528), (82, 30738), (83, 30774), (90, 30939),

Gene: CindyLou_84 Start: 29169, Stop: 30896, Start Num: 1

Candidate Starts for CindyLou_84:

(Start: 1 @29169 has 162 MA's), (Start: 2 @29202 has 1 MA's), (6, 29256), (7, 29259), (10, 29352), (12, 29427), (15, 29595), (16, 29616), (17, 29661), (23, 29739), (24, 29754), (25, 29778), (27, 29811), (28, 29850), (29, 29853), (30, 29868), (31, 29919), (32, 29970), (34, 29997), (35, 30060), (36, 30066), (38, 30108), (44, 30204), (50, 30216), (63, 30375), (69, 30441), (70, 30444), (73, 30483), (82, 30681), (83, 30717), (90, 30882),

Gene: Colt_73 Start: 26989, Stop: 28503, Start Num: 20

Candidate Starts for Colt_73:

(Start: 20 @26989 has 3 MA's), (22, 27022), (27, 27103), (28, 27142), (29, 27145), (30, 27160), (31, 27211), (34, 27289), (35, 27352), (38, 27400), (39, 27481), (40, 27508), (43, 27553), (46, 27577), (47, 27598), (48, 27607), (52, 27724), (54, 27799), (55, 27811), (66, 27976), (68, 27997), (69, 28036), (70, 28039), (71, 28054), (79, 28219), (88, 28450),

Gene: Concombres_90 Start: 32098, Stop: 33825, Start Num: 1

Candidate Starts for Concombres_90:

(Start: 1 @32098 has 162 MA's), (Start: 2 @32131 has 1 MA's), (7, 32188), (10, 32281), (12, 32356), (15, 32524), (16, 32545), (17, 32590), (23, 32668), (24, 32683), (25, 32707), (27, 32740), (28, 32779), (29, 32782), (30, 32797), (31, 32848), (32, 32899), (34, 32926), (35, 32989), (36, 32995), (38, 33037), (44, 33133), (63, 33304), (69, 33370), (70, 33373), (73, 33412), (82, 33610), (83, 33646), (90, 33811),

Gene: DTDevon_84 Start: 29808, Stop: 31535, Start Num: 1

Candidate Starts for DTDevon_84:

(Start: 1 @29808 has 162 MA's), (Start: 2 @29841 has 1 MA's), (6, 29895), (7, 29898), (12, 30066), (15, 30234), (16, 30255), (17, 30300), (23, 30378), (24, 30393), (25, 30417), (27, 30450), (28, 30489), (29, 30492), (30, 30507), (31, 30558), (32, 30609), (34, 30636), (35, 30699), (36, 30705), (38, 30747), (44, 30843), (50, 30855), (63, 31014), (69, 31080), (70, 31083), (73, 31122), (82, 31320), (83, 31356), (90, 31521),

Gene: Daffodil_87 Start: 29733, Stop: 31460, Start Num: 1

Candidate Starts for Daffodil_87:

(Start: 1 @29733 has 162 MA's), (Start: 2 @29766 has 1 MA's), (6, 29820), (7, 29823), (10, 29916), (12, 29991), (15, 30159), (16, 30180), (17, 30225), (23, 30303), (24, 30318), (25, 30342), (27, 30375), (28, 30414), (29, 30417), (30, 30432), (31, 30483), (32, 30534), (34, 30561), (35, 30624), (36, 30630), (38, 30672), (44, 30768), (50, 30780), (63, 30939), (69, 31005), (70, 31008), (73, 31047), (82, 31245), (83, 31281), (90, 31446),

Gene: Dandelion_89 Start: 31814, Stop: 34132, Start Num: 1

Candidate Starts for Dandelion_89:

(Start: 1 @31814 has 162 MA's), (Start: 2 @31847 has 1 MA's), (6, 31910), (7, 31913), (10, 32006), (12, 32081), (15, 32249), (16, 32270), (17, 32315), (23, 32393), (24, 32408), (25, 32432), (27, 32465), (28, 32504), (29, 32507), (30, 32522), (31, 32573), (32, 32624), (34, 32651), (35, 32714), (38, 32762), (42, 32936), (49, 33032), (53, 33167), (56, 33239), (57, 33314), (58, 33353), (60, 33437), (61, 33452), (63, 33491), (64, 33536), (65, 33542), (69, 33620), (72, 33668), (74, 33695), (75, 33701), (76, 33707), (82, 33917), (83, 33953), (90, 34118),

Gene: Darko_83 Start: 29551, Stop: 31278, Start Num: 1

Candidate Starts for Darko_83:

(Start: 1 @29551 has 162 MA's), (Start: 2 @29584 has 1 MA's), (6, 29638), (7, 29641), (10, 29734), (12, 29809), (15, 29977), (16, 29998), (17, 30043), (23, 30121), (24, 30136), (25, 30160), (27, 30193), (28, 30232), (29, 30235), (30, 30250), (31, 30301), (32, 30352), (34, 30379), (35, 30442), (38, 30490), (44, 30586), (50, 30598), (63, 30757), (69, 30823), (70, 30826), (73, 30865), (82, 31063), (83, 31099), (90, 31264),

Gene: Delilah_83 Start: 29734, Stop: 31461, Start Num: 1

Candidate Starts for Delilah_83:

(Start: 1 @29734 has 162 MA's), (Start: 2 @29767 has 1 MA's), (6, 29821), (7, 29824), (10, 29917), (12, 29992), (15, 30160), (16, 30181), (17, 30226), (23, 30304), (24, 30319), (25, 30343), (27, 30376), (28, 30415), (29, 30418), (30, 30433), (31, 30484), (32, 30535), (34, 30562), (35, 30625), (36, 30631), (38, 30673), (44, 30769), (50, 30781), (63, 30940), (69, 31006), (70, 31009), (73, 31048), (82, 31246), (83, 31282), (90, 31447),

Gene: Delylah_86 Start: 29527, Stop: 31254, Start Num: 1

Candidate Starts for Delylah_86:

(Start: 1 @29527 has 162 MA's), (Start: 2 @29560 has 1 MA's), (6, 29614), (7, 29617), (10, 29710), (12, 29785), (15, 29953), (16, 29974), (17, 30019), (23, 30097), (24, 30112), (25, 30136), (27, 30169), (28, 30208), (29, 30211), (30, 30226), (31, 30277), (32, 30328), (34, 30355), (35, 30418), (36, 30424), (38, 30466), (44, 30562), (50, 30574), (63, 30733), (69, 30799), (70, 30802), (73, 30841), (82, 31039), (83, 31075), (90, 31240),

Gene: Demodog_90 Start: 32098, Stop: 33825, Start Num: 1

Candidate Starts for Demodog_90:

(Start: 1 @32098 has 162 MA's), (Start: 2 @32131 has 1 MA's), (7, 32188), (10, 32281), (12, 32356), (15, 32524), (16, 32545), (17, 32590), (23, 32668), (24, 32683), (25, 32707), (27, 32740), (28, 32779), (29, 32782), (30, 32797), (31, 32848), (32, 32899), (34, 32926), (35, 32989), (36, 32995), (38, 33037), (44, 33133), (63, 33304), (69, 33370), (70, 33373), (73, 33412), (82, 33610), (83, 33646), (90, 33811),

Gene: Derek_83 Start: 28975, Stop: 30660, Start Num: 1

Candidate Starts for Derek_83:

(Start: 1 @28975 has 162 MA's), (7, 29023), (12, 29191), (15, 29359), (16, 29380), (17, 29425), (23, 29503), (24, 29518), (25, 29542), (27, 29575), (28, 29614), (29, 29617), (30, 29632), (31, 29683), (32, 29734), (34, 29761), (35, 29824), (36, 29830), (38, 29872), (44, 29968), (50, 29980), (63, 30139), (69, 30205), (70, 30208), (73, 30247), (82, 30445), (83, 30481), (90, 30646),

Gene: Dietrick_76 Start: 27852, Stop: 29579, Start Num: 1

Candidate Starts for Dietrick_76:

(Start: 1 @27852 has 162 MA's), (Start: 2 @27885 has 1 MA's), (6, 27939), (7, 27942), (10, 28035), (12, 28110), (15, 28278), (16, 28299), (17, 28344), (23, 28422), (24, 28437), (25, 28461), (27, 28494), (28, 28533), (29, 28536), (30, 28551), (31, 28602), (32, 28653), (34, 28680), (35, 28743), (36, 28749), (38, 28791), (44, 28887), (50, 28899), (63, 29058), (69, 29124), (70, 29127), (73, 29166), (82, 29364), (83, 29400), (90, 29565),

Gene: DirtMonster_76 Start: 28371, Stop: 30056, Start Num: 1

Candidate Starts for DirtMonster_76:

(Start: 1 @28371 has 162 MA's), (7, 28419), (12, 28587), (15, 28755), (16, 28776), (17, 28821), (23, 28899), (24, 28914), (25, 28938), (27, 28971), (28, 29010), (29, 29013), (30, 29028), (31, 29079), (32, 29130), (34, 29157), (35, 29220), (36, 29226), (38, 29268), (44, 29364), (50, 29376), (63, 29535), (69, 29601), (70, 29604), (73, 29643), (82, 29841), (83, 29877), (90, 30042),

Gene: Domi_77 Start: 28945, Stop: 30672, Start Num: 1

Candidate Starts for Domi_77:

(Start: 1 @28945 has 162 MA's), (Start: 2 @28978 has 1 MA's), (6, 29032), (7, 29035), (12, 29203), (15, 29371), (16, 29392), (17, 29437), (23, 29515), (24, 29530), (25, 29554), (27, 29587), (28, 29626), (29, 29629), (30, 29644), (31, 29695), (32, 29746), (34, 29773), (35, 29836), (38, 29884), (44, 29980), (50, 29992), (63, 30151), (69, 30217), (70, 30220), (73, 30259), (82, 30457), (83, 30493), (90, 30658),

Gene: DrPhinkDaddy_82 Start: 29789, Stop: 31516, Start Num: 1

Candidate Starts for DrPhinkDaddy_82:

(Start: 1 @29789 has 162 MA's), (Start: 2 @29822 has 1 MA's), (6, 29876), (7, 29879), (10, 29972), (12, 30047), (15, 30215), (16, 30236), (17, 30281), (23, 30359), (24, 30374), (25, 30398), (27, 30431), (28, 30470), (29, 30473), (30, 30488), (31, 30539), (32, 30590), (34, 30617), (35, 30680), (36, 30686), (38, 30728), (44, 30824), (50, 30836), (63, 30995), (69, 31061), (70, 31064), (73, 31103), (82, 31301), (83, 31337), (90, 31502),

Gene: Drazdys_83 Start: 29481, Stop: 31166, Start Num: 1

Candidate Starts for Drazdys_83:

(Start: 1 @29481 has 162 MA's), (7, 29529), (12, 29697), (15, 29865), (16, 29886), (17, 29931), (23, 30009), (24, 30024), (25, 30048), (27, 30081), (28, 30120), (29, 30123), (30, 30138), (31, 30189), (32, 30240), (34, 30267), (35, 30330), (36, 30336), (38, 30378), (44, 30474), (50, 30486), (63, 30645), (69, 30711), (70, 30714), (73, 30753), (82, 30951), (83, 30987), (90, 31152),

Gene: ET08_72 Start: 27380, Stop: 29065, Start Num: 1

Candidate Starts for ET08_72:

(Start: 1 @27380 has 162 MA's), (7, 27428), (12, 27596), (15, 27764), (16, 27785), (17, 27830), (23, 27908), (24, 27923), (25, 27947), (27, 27980), (28, 28019), (29, 28022), (30, 28037), (31, 28088), (32, 28139), (34, 28166), (35, 28229), (36, 28235), (38, 28277), (44, 28373), (50, 28385), (63, 28544), (69, 28610), (70, 28613), (73, 28652), (82, 28850), (83, 28886), (90, 29051),

Gene: EasyJones_85 Start: 29233, Stop: 30960, Start Num: 1

Candidate Starts for EasyJones_85:

(Start: 1 @29233 has 162 MA's), (Start: 2 @29266 has 1 MA's), (6, 29320), (7, 29323), (10, 29416), (12, 29491), (15, 29659), (16, 29680), (17, 29725), (23, 29803), (24, 29818), (25, 29842), (27, 29875), (28, 29914), (29, 29917), (30, 29932), (32, 30034), (33, 30037), (34, 30061), (35, 30124), (36, 30130), (38, 30172), (44, 30268), (50, 30280), (63, 30439), (69, 30505), (70, 30508), (73, 30547), (82, 30745), (83, 30781), (90, 30946),

Gene: EmToTheThree_86 Start: 31206, Stop: 32933, Start Num: 1

Candidate Starts for EmToTheThree_86:

(Start: 1 @31206 has 162 MA's), (Start: 2 @31239 has 1 MA's), (6, 31293), (7, 31296), (10, 31389), (12, 31464), (15, 31632), (16, 31653), (17, 31698), (23, 31776), (24, 31791), (25, 31815), (27, 31848), (28, 31887), (29, 31890), (30, 31905), (31, 31956), (32, 32007), (34, 32034), (35, 32097), (36, 32103), (38, 32145), (44, 32241), (50, 32253), (63, 32412), (69, 32478), (70, 32481), (73, 32520), (82, 32718), (83, 32754), (90, 32919),

Gene: EmmaElysia_82 Start: 28214, Stop: 29941, Start Num: 1

Candidate Starts for EmmaElysia_82:

(Start: 1 @28214 has 162 MA's), (Start: 2 @28247 has 1 MA's), (6, 28301), (7, 28304), (10, 28397), (12, 28472), (15, 28640), (16, 28661), (17, 28706), (23, 28784), (24, 28799), (25, 28823), (27, 28856), (28, 28895), (29, 28898), (30, 28913), (31, 28964), (32, 29015), (34, 29042), (35, 29105), (36, 29111), (38, 29153), (44, 29249), (50, 29261), (63, 29420), (69, 29486), (70, 29489), (73, 29528), (82, 29726), (83, 29762), (90, 29927),

Gene: Erdmann_83 Start: 29734, Stop: 31461, Start Num: 1

Candidate Starts for Erdmann_83:

(Start: 1 @29734 has 162 MA's), (Start: 2 @29767 has 1 MA's), (6, 29821), (7, 29824), (10, 29917), (12, 29992), (15, 30160), (16, 30181), (17, 30226), (23, 30304), (24, 30319), (25, 30343), (27, 30376), (28, 30415), (29, 30418), (30, 30433), (31, 30484), (32, 30535), (34, 30562), (35, 30625), (36, 30631), (38, 30673), (44, 30769), (50, 30781), (63, 30940), (69, 31006), (70, 31009), (73, 31048), (82, 31246), (83, 31282), (90, 31447),

Gene: ErnieJ_79 Start: 28163, Stop: 29857, Start Num: 2

Candidate Starts for ErnieJ_79:

(Start: 1 @28130 has 162 MA's), (Start: 2 @28163 has 1 MA's), (6, 28217), (7, 28220), (10, 28313), (12, 28388), (15, 28556), (16, 28577), (17, 28622), (23, 28700), (24, 28715), (25, 28739), (27, 28772), (28, 28811), (29, 28814), (30, 28829), (32, 28931), (33, 28934), (35, 29021), (36, 29027), (37, 29045), (38, 29069), (44, 29165), (63, 29336), (69, 29402), (70, 29405), (73, 29444), (82, 29642), (83, 29678), (90, 29843),

Gene: Essence_80 Start: 27727, Stop: 29769, Start Num: 3

Candidate Starts for Essence_80:

(Start: 3 @27727 has 2 MA's), (4, 27760), (6, 27814), (7, 27817), (12, 27985), (15, 28153), (16, 28174), (17, 28219), (23, 28297), (24, 28312), (25, 28336), (27, 28369), (28, 28408), (29, 28411), (30, 28426), (31, 28477), (32, 28528), (34, 28555), (35, 28618), (38, 28666), (39, 28747), (40, 28774), (43, 28819), (46, 28843), (47, 28864), (48, 28873), (52, 28990), (54, 29065), (55, 29077), (66, 29242), (68, 29263), (69, 29302), (70, 29305), (71, 29320), (79, 29485), (88, 29716),

Gene: Ewok_84 Start: 29736, Stop: 31463, Start Num: 1

Candidate Starts for Ewok_84:

(Start: 1 @29736 has 162 MA's), (Start: 2 @29769 has 1 MA's), (6, 29823), (7, 29826), (10, 29919), (12, 29994), (15, 30162), (16, 30183), (17, 30228), (23, 30306), (24, 30321), (25, 30345), (27, 30378), (28, 30417), (29, 30420), (30, 30435), (31, 30486), (32, 30537), (34, 30564), (35, 30627), (36, 30633), (38, 30675), (44, 30771), (50, 30783), (63, 30942), (69, 31008), (70, 31011), (73, 31050), (82, 31248), (83, 31284), (90, 31449),

Gene: Flabslab_78 Start: 27953, Stop: 29638, Start Num: 1

Candidate Starts for Flabslab_78:

(Start: 1 @27953 has 162 MA's), (7, 28001), (10, 28094), (12, 28169), (15, 28337), (16, 28358), (17, 28403), (23, 28481), (24, 28496), (25, 28520), (27, 28553), (28, 28592), (29, 28595), (30, 28610), (31, 28661), (32, 28712), (34, 28739), (35, 28802), (36, 28808), (38, 28850), (44, 28946), (50, 28958), (63, 29117), (69, 29183), (70, 29186), (73, 29225), (82, 29423), (83, 29459), (90, 29624),

Gene: Fludd_83 Start: 28573, Stop: 30300, Start Num: 1

Candidate Starts for Fludd_83:

(Start: 1 @28573 has 162 MA's), (Start: 2 @28606 has 1 MA's), (6, 28660), (7, 28663), (10, 28756), (12, 28831), (15, 28999), (16, 29020), (17, 29065), (23, 29143), (24, 29158), (25, 29182), (27, 29215), (28, 29254), (29, 29257), (30, 29272), (31, 29323), (32, 29374), (34, 29401), (35, 29464), (36, 29470), (38, 29512), (44, 29608), (50, 29620), (63, 29779), (69, 29845), (70, 29848), (73, 29887), (82, 30085), (83, 30121), (90, 30286),

Gene: FoxtrotP1_83 Start: 30136, Stop: 31863, Start Num: 1

Candidate Starts for FoxtrotP1_83:

(Start: 1 @30136 has 162 MA's), (Start: 2 @30169 has 1 MA's), (6, 30223), (7, 30226), (10, 30319), (12, 30394), (15, 30562), (16, 30583), (17, 30628), (23, 30706), (24, 30721), (25, 30745), (27, 30778), (28, 30817), (29, 30820), (30, 30835), (31, 30886), (32, 30937), (34, 30964), (35, 31027), (36, 31033), (38, 31075), (44, 31171), (50, 31183), (63, 31342), (69, 31408), (70, 31411), (73, 31450), (82, 31648), (83, 31684), (90, 31849),

Gene: FrayBell_89 Start: 31066, Stop: 32793, Start Num: 1

Candidate Starts for FrayBell_89:

(Start: 1 @31066 has 162 MA's), (Start: 2 @31099 has 1 MA's), (6, 31153), (7, 31156), (12, 31324), (15, 31492), (16, 31513), (17, 31558), (23, 31636), (24, 31651), (25, 31675), (27, 31708), (28, 31747), (29, 31750), (30, 31765), (31, 31816), (32, 31867), (34, 31894), (35, 31957), (38, 32005), (44, 32101), (50, 32113), (63, 32272), (69, 32338), (70, 32341), (73, 32380), (82, 32578), (83, 32614), (90, 32779),

Gene: FudgeTart_83 Start: 28849, Stop: 30534, Start Num: 1

Candidate Starts for FudgeTart_83:

(Start: 1 @28849 has 162 MA's), (7, 28897), (12, 29065), (15, 29233), (16, 29254), (17, 29299), (23, 29377), (24, 29392), (25, 29416), (27, 29449), (28, 29488), (29, 29491), (30, 29506), (31, 29557), (32, 29608), (34, 29635), (35, 29698), (36, 29704), (38, 29746), (44, 29842), (50, 29854), (63, 30013), (69, 30079), (70, 30082), (73, 30121), (82, 30319), (83, 30355), (90, 30520),

Gene: Gabriel_85 Start: 28877, Stop: 30604, Start Num: 1

Candidate Starts for Gabriel_85:

(Start: 1 @28877 has 162 MA's), (Start: 2 @28910 has 1 MA's), (6, 28964), (7, 28967), (12, 29135), (15, 29303), (16, 29324), (17, 29369), (23, 29447), (24, 29462), (25, 29486), (27, 29519), (28, 29558), (29, 29561), (30, 29576), (31, 29627), (32, 29678), (34, 29705), (35, 29768), (36, 29774), (38, 29816), (44, 29912), (50, 29924), (63, 30083), (69, 30149), (70, 30152), (73, 30191), (82, 30389), (83, 30425), (90, 30590),

Gene: Gamgam_83 Start: 28644, Stop: 30371, Start Num: 1

Candidate Starts for Gamgam_83:

(Start: 1 @28644 has 162 MA's), (Start: 2 @28677 has 1 MA's), (6, 28731), (7, 28734), (10, 28827), (12, 28902), (15, 29070), (16, 29091), (17, 29136), (23, 29214), (24, 29229), (25, 29253), (27, 29286), (28, 29325), (29, 29328), (30, 29343), (31, 29394), (32, 29445), (34, 29472), (35, 29535), (36, 29541), (38, 29583), (44, 29679), (50, 29691), (63, 29850), (69, 29916), (70, 29919), (73, 29958), (82, 30156), (83, 30192), (90, 30357),

Gene: Ghost_82 Start: 28644, Stop: 30371, Start Num: 1

Candidate Starts for Ghost_82:

(Start: 1 @28644 has 162 MA's), (Start: 2 @28677 has 1 MA's), (6, 28731), (7, 28734), (10, 28827), (12, 28902), (15, 29070), (16, 29091), (17, 29136), (23, 29214), (24, 29229), (25, 29253), (27, 29286), (28, 29325), (29, 29328), (30, 29343), (31, 29394), (32, 29445), (34, 29472), (35, 29535), (36, 29541), (38, 29583), (44, 29679), (50, 29691), (63, 29850), (69, 29916), (70, 29919), (73, 29958), (82, 30156), (83, 30192), (90, 30357),

Gene: Gizmo_87 Start: 29417, Stop: 31144, Start Num: 1

Candidate Starts for Gizmo_87:

(Start: 1 @29417 has 162 MA's), (Start: 2 @29450 has 1 MA's), (6, 29504), (7, 29507), (10, 29600), (12, 29675), (15, 29843), (16, 29864), (17, 29909), (23, 29987), (24, 30002), (25, 30026), (27, 30059), (28, 30098), (29, 30101), (30, 30116), (31, 30167), (32, 30218), (34, 30245), (35, 30308), (36, 30314), (38, 30356), (44, 30452), (50, 30464), (63, 30623), (69, 30689), (70, 30692), (73, 30731), (82, 30929),

(83, 30965), (90, 31130),

Gene: Grasshills_90 Start: 31820, Stop: 33547, Start Num: 1

Candidate Starts for Grasshills_90:

(Start: 1 @31820 has 162 MA's), (Start: 2 @31853 has 1 MA's), (7, 31910), (10, 32003), (12, 32078), (15, 32246), (16, 32267), (17, 32312), (23, 32390), (24, 32405), (25, 32429), (27, 32462), (28, 32501), (29, 32504), (30, 32519), (31, 32570), (32, 32621), (34, 32648), (35, 32711), (36, 32717), (38, 32759), (44, 32855), (63, 33026), (69, 33092), (70, 33095), (73, 33134), (82, 33332), (83, 33368), (90, 33533),

Gene: Grungle_71 Start: 26064, Stop: 27749, Start Num: 1

Candidate Starts for Grungle_71:

(Start: 1 @26064 has 162 MA's), (7, 26112), (12, 26280), (15, 26448), (16, 26469), (17, 26514), (23, 26592), (24, 26607), (25, 26631), (27, 26664), (28, 26703), (29, 26706), (30, 26721), (31, 26772), (32, 26823), (34, 26850), (35, 26913), (36, 26919), (38, 26961), (44, 27057), (50, 27069), (63, 27228), (69, 27294), (70, 27297), (73, 27336), (82, 27534), (83, 27570), (90, 27735),

Gene: Guwapp_82 Start: 28739, Stop: 30466, Start Num: 1

Candidate Starts for Guwapp_82:

(Start: 1 @28739 has 162 MA's), (Start: 2 @28772 has 1 MA's), (6, 28826), (7, 28829), (10, 28922), (12, 28997), (15, 29165), (16, 29186), (17, 29231), (23, 29309), (24, 29324), (25, 29348), (27, 29381), (28, 29420), (29, 29423), (30, 29438), (31, 29489), (32, 29540), (34, 29567), (35, 29630), (36, 29636), (38, 29678), (44, 29774), (50, 29786), (63, 29945), (69, 30011), (70, 30014), (73, 30053), (82, 30251), (83, 30287), (90, 30452),

Gene: Halldule_75 Start: 27094, Stop: 28779, Start Num: 1

Candidate Starts for Halldule_75:

(Start: 1 @27094 has 162 MA's), (7, 27142), (12, 27310), (15, 27478), (16, 27499), (17, 27544), (23, 27622), (24, 27637), (25, 27661), (27, 27694), (28, 27733), (29, 27736), (30, 27751), (31, 27802), (32, 27853), (34, 27880), (35, 27943), (36, 27949), (38, 27991), (44, 28087), (50, 28099), (63, 28258), (69, 28324), (70, 28327), (73, 28366), (82, 28564), (83, 28600), (90, 28765),

Gene: HyRo_76 Start: 28344, Stop: 30029, Start Num: 1

Candidate Starts for HyRo_76:

(Start: 1 @28344 has 162 MA's), (7, 28392), (12, 28560), (15, 28728), (16, 28749), (17, 28794), (23, 28872), (24, 28887), (25, 28911), (27, 28944), (28, 28983), (29, 28986), (30, 29001), (31, 29052), (32, 29103), (34, 29130), (35, 29193), (36, 29199), (38, 29241), (44, 29337), (50, 29349), (63, 29508), (69, 29574), (70, 29577), (73, 29616), (82, 29814), (83, 29850), (90, 30015),

Gene: I3_88 Start: 30016, Stop: 31743, Start Num: 1

Candidate Starts for I3_88:

(Start: 1 @30016 has 162 MA's), (Start: 2 @30049 has 1 MA's), (6, 30103), (7, 30106), (10, 30199), (12, 30274), (15, 30442), (16, 30463), (17, 30508), (23, 30586), (24, 30601), (25, 30625), (28, 30697), (29, 30700), (30, 30715), (31, 30766), (32, 30817), (34, 30844), (35, 30907), (36, 30913), (38, 30955), (44, 31051), (63, 31222), (69, 31288), (70, 31291), (73, 31330), (82, 31528), (83, 31564), (90, 31729),

Gene: IkeLoa_77 Start: 27982, Stop: 29709, Start Num: 1

Candidate Starts for IkeLoa_77:

(Start: 1 @27982 has 162 MA's), (Start: 2 @28015 has 1 MA's), (6, 28069), (7, 28072), (12, 28240), (15, 28408), (16, 28429), (17, 28474), (23, 28552), (24, 28567), (25, 28591), (27, 28624), (28, 28663), (29, 28666), (30, 28681), (31, 28732), (32, 28783), (34, 28810), (35, 28873), (38, 28921), (44, 29017), (50, 29029), (63, 29188), (69, 29254), (70, 29257), (73, 29296), (82, 29494), (83, 29530), (90, 29695),

Gene: InigoMontoya_84 Start: 28605, Stop: 30332, Start Num: 1

Candidate Starts for InigoMontoya_84:

(Start: 1 @28605 has 162 MA's), (Start: 2 @28638 has 1 MA's), (6, 28692), (7, 28695), (10, 28788), (12, 28863), (15, 29031), (16, 29052), (17, 29097), (23, 29175), (24, 29190), (25, 29214), (27, 29247), (28, 29286), (29, 29289), (30, 29304), (31, 29355), (32, 29406), (34, 29433), (35, 29496), (36, 29502), (38, 29544), (44, 29640), (50, 29652), (63, 29811), (69, 29877), (70, 29880), (73, 29919), (82, 30117), (83, 30153), (90, 30318),

Gene: InterFolia_92 Start: 32186, Stop: 33871, Start Num: 1

Candidate Starts for InterFolia_92:

(Start: 1 @32186 has 162 MA's), (7, 32234), (12, 32402), (15, 32570), (16, 32591), (17, 32636), (23, 32714), (24, 32729), (25, 32753), (27, 32786), (28, 32825), (29, 32828), (30, 32843), (31, 32894), (32, 32945), (34, 32972), (35, 33035), (36, 33041), (38, 33083), (44, 33179), (63, 33350), (69, 33416), (70, 33419), (73, 33458), (82, 33656), (83, 33692), (90, 33857),

Gene: Iota_77 Start: 28423, Stop: 30108, Start Num: 1

Candidate Starts for Iota_77:

(Start: 1 @28423 has 162 MA's), (7, 28471), (12, 28639), (15, 28807), (16, 28828), (17, 28873), (23, 28951), (24, 28966), (25, 28990), (27, 29023), (28, 29062), (29, 29065), (30, 29080), (31, 29131), (32, 29182), (34, 29209), (35, 29272), (36, 29278), (38, 29320), (44, 29416), (50, 29428), (63, 29587), (69, 29653), (70, 29656), (73, 29695), (82, 29893), (83, 29929), (90, 30094),

Gene: Issimir_82 Start: 29677, Stop: 31404, Start Num: 1

Candidate Starts for Issimir_82:

(Start: 1 @29677 has 162 MA's), (Start: 2 @29710 has 1 MA's), (6, 29764), (7, 29767), (10, 29860), (12, 29935), (15, 30103), (16, 30124), (17, 30169), (23, 30247), (24, 30262), (25, 30286), (27, 30319), (28, 30358), (29, 30361), (30, 30376), (31, 30427), (32, 30478), (34, 30505), (35, 30568), (36, 30574), (38, 30616), (44, 30712), (50, 30724), (63, 30883), (69, 30949), (70, 30952), (73, 30991), (82, 31189), (83, 31225), (90, 31390),

Gene: Izajani_83 Start: 29750, Stop: 31477, Start Num: 1

Candidate Starts for Izajani_83:

(Start: 1 @29750 has 162 MA's), (Start: 2 @29783 has 1 MA's), (6, 29837), (7, 29840), (10, 29933), (12, 30008), (15, 30176), (16, 30197), (17, 30242), (23, 30320), (24, 30335), (25, 30359), (27, 30392), (28, 30431), (29, 30434), (30, 30449), (31, 30500), (32, 30551), (34, 30578), (35, 30641), (36, 30647), (38, 30689), (44, 30785), (50, 30797), (63, 30956), (69, 31022), (70, 31025), (73, 31064), (82, 31262), (83, 31298), (90, 31463),

Gene: JPickles_81 Start: 27071, Stop: 28798, Start Num: 1

Candidate Starts for JPickles_81:

(Start: 1 @27071 has 162 MA's), (Start: 2 @27104 has 1 MA's), (6, 27158), (7, 27161), (10, 27254), (12, 27329), (15, 27497), (16, 27518), (17, 27563), (23, 27641), (24, 27656), (25, 27680), (27, 27713), (28, 27752), (29, 27755), (30, 27770), (31, 27821), (32, 27872), (34, 27899), (35, 27962), (36, 27968), (38, 28010), (44, 28106), (50, 28118), (63, 28277), (69, 28343), (70, 28346), (73, 28385), (82, 28583), (83, 28619), (90, 28784),

Gene: Janiyra_85 Start: 29403, Stop: 31130, Start Num: 1

Candidate Starts for Janiyra_85:

(Start: 1 @29403 has 162 MA's), (Start: 2 @29436 has 1 MA's), (6, 29490), (7, 29493), (10, 29586), (12, 29661), (15, 29829), (16, 29850), (17, 29895), (23, 29973), (24, 29988), (25, 30012), (27, 30045), (28, 30084), (29, 30087), (30, 30102), (31, 30153), (32, 30204), (34, 30231), (35, 30294), (36, 30300), (38, 30342), (44, 30438), (50, 30450), (63, 30609), (69, 30675), (70, 30678), (73, 30717), (82, 30915), (83, 30951), (90, 31116),

Gene: JayJay_85 Start: 30230, Stop: 31957, Start Num: 1

Candidate Starts for JayJay_85:

(Start: 1 @30230 has 162 MA's), (Start: 2 @30263 has 1 MA's), (6, 30317), (7, 30320), (10, 30413), (12, 30488), (15, 30656), (16, 30677), (17, 30722), (23, 30800), (24, 30815), (25, 30839), (27, 30872), (28, 30911), (29, 30914), (30, 30929), (31, 30980), (32, 31031), (34, 31058), (35, 31121), (36, 31127), (38, 31169), (44, 31265), (50, 31277), (63, 31436), (69, 31502), (70, 31505), (73, 31544), (82, 31742), (83, 31778), (90, 31943),

Gene: Jaygup_83 Start: 28641, Stop: 30326, Start Num: 1

Candidate Starts for Jaygup_83:

(Start: 1 @28641 has 162 MA's), (7, 28689), (12, 28857), (15, 29025), (16, 29046), (17, 29091), (23, 29169), (24, 29184), (25, 29208), (27, 29241), (28, 29280), (29, 29283), (30, 29298), (31, 29349), (32, 29400), (34, 29427), (35, 29490), (36, 29496), (38, 29538), (44, 29634), (50, 29646), (63, 29805), (69, 29871), (70, 29874), (73, 29913), (82, 30111), (83, 30147), (90, 30312),

Gene: Jedediah_86 Start: 29141, Stop: 30826, Start Num: 1

Candidate Starts for Jedediah_86:

(Start: 1 @29141 has 162 MA's), (7, 29189), (12, 29357), (15, 29525), (16, 29546), (17, 29591), (23, 29669), (24, 29684), (25, 29708), (27, 29741), (28, 29780), (29, 29783), (30, 29798), (31, 29849), (32, 29900), (34, 29927), (35, 29990), (36, 29996), (38, 30038), (44, 30134), (50, 30146), (63, 30305), (69, 30371), (70, 30374), (73, 30413), (82, 30611), (83, 30647), (90, 30812),

Gene: Jemmno_83 Start: 28644, Stop: 30371, Start Num: 1

Candidate Starts for Jemmno_83:

(Start: 1 @28644 has 162 MA's), (Start: 2 @28677 has 1 MA's), (6, 28731), (7, 28734), (10, 28827), (12, 28902), (15, 29070), (16, 29091), (17, 29136), (23, 29214), (24, 29229), (25, 29253), (27, 29286), (28, 29325), (29, 29328), (30, 29343), (31, 29394), (32, 29445), (34, 29472), (35, 29535), (36, 29541), (38, 29583), (44, 29679), (50, 29691), (63, 29850), (69, 29916), (70, 29919), (73, 29958), (82, 30156), (83, 30192), (90, 30357),

Gene: Jessibeth14_82 Start: 29519, Stop: 31246, Start Num: 1

Candidate Starts for Jessibeth14_82:

(Start: 1 @29519 has 162 MA's), (Start: 2 @29552 has 1 MA's), (6, 29606), (7, 29609), (10, 29702), (12, 29777), (15, 29945), (16, 29966), (17, 30011), (23, 30089), (24, 30104), (25, 30128), (27, 30161), (28, 30200), (29, 30203), (30, 30218), (31, 30269), (32, 30320), (34, 30347), (35, 30410), (36, 30416), (38, 30458), (44, 30554), (50, 30566), (63, 30725), (69, 30791), (70, 30794), (73, 30833), (82, 31031), (83, 31067), (90, 31232),

Gene: JulietS_75 Start: 26945, Stop: 28630, Start Num: 1

Candidate Starts for JulietS_75:

(Start: 1 @26945 has 162 MA's), (7, 26993), (12, 27161), (15, 27329), (16, 27350), (17, 27395), (23, 27473), (24, 27488), (25, 27512), (27, 27545), (28, 27584), (29, 27587), (30, 27602), (31, 27653), (32, 27704), (34, 27731), (35, 27794), (36, 27800), (38, 27842), (44, 27938), (50, 27950), (63, 28109), (69, 28175), (70, 28178), (73, 28217), (82, 28415), (83, 28451), (90, 28616),

Gene: JustHall_79 Start: 28963, Stop: 30648, Start Num: 1

Candidate Starts for JustHall_79:

(Start: 1 @28963 has 162 MA's), (7, 29011), (12, 29179), (15, 29347), (16, 29368), (17, 29413), (23, 29491), (24, 29506), (25, 29530), (27, 29563), (28, 29602), (29, 29605), (30, 29620), (31, 29671), (32, 29722), (34, 29749), (35, 29812), (36, 29818), (38, 29860), (44, 29956), (50, 29968), (63, 30127), (69, 30193), (70, 30196), (73, 30235), (82, 30433), (83, 30469), (90, 30634),

Gene: Kamryn_83 Start: 29676, Stop: 31985, Start Num: 1

Candidate Starts for Kamryn_83:

(Start: 1 @29676 has 162 MA's), (Start: 2 @29709 has 1 MA's), (6, 29763), (7, 29766), (10, 29859), (12, 29934), (15, 30102), (16, 30123), (17, 30168), (19, 30186), (23, 30246), (24, 30261), (25, 30285), (27, 30318), (28, 30357), (29, 30360), (30, 30375), (31, 30426), (32, 30477), (34, 30504), (35, 30567), (38, 30615), (42, 30789), (49, 30885), (53, 31020), (56, 31092), (57, 31167), (58, 31206), (60, 31290), (61, 31305), (63, 31344), (64, 31389), (65, 31395), (69, 31473), (72, 31521), (74, 31548), (75, 31554), (76, 31560), (82, 31770), (83, 31806), (90, 31971),

Gene: Kboogie_86 Start: 28685, Stop: 30412, Start Num: 1

Candidate Starts for Kboogie_86:

(Start: 1 @28685 has 162 MA's), (Start: 2 @28718 has 1 MA's), (6, 28772), (7, 28775), (10, 28868), (12, 28943), (15, 29111), (16, 29132), (17, 29177), (23, 29255), (24, 29270), (25, 29294), (27, 29327), (28, 29366), (29, 29369), (30, 29384), (31, 29435), (32, 29486), (34, 29513), (35, 29576), (36, 29582), (38, 29624), (44, 29720), (50, 29732), (63, 29891), (69, 29957), (70, 29960), (73, 29999), (82, 30197), (83, 30233), (90, 30398),

Gene: Khaleesi_82 Start: 29481, Stop: 31208, Start Num: 1

Candidate Starts for Khaleesi_82:

(Start: 1 @29481 has 162 MA's), (Start: 2 @29514 has 1 MA's), (6, 29568), (7, 29571), (10, 29664), (12, 29739), (15, 29907), (16, 29928), (17, 29973), (23, 30051), (24, 30066), (25, 30090), (27, 30123), (28, 30162), (29, 30165), (30, 30180), (31, 30231), (32, 30282), (34, 30309), (35, 30372), (36, 30378), (38, 30420), (44, 30516), (50, 30528), (63, 30687), (69, 30753), (70, 30756), (73, 30795), (82, 30993), (83, 31029), (90, 31194),

Gene: Koguma_79 Start: 27165, Stop: 28850, Start Num: 1

Candidate Starts for Koguma_79:

(Start: 1 @27165 has 162 MA's), (7, 27213), (12, 27381), (15, 27549), (16, 27570), (17, 27615), (23, 27693), (24, 27708), (25, 27732), (27, 27765), (28, 27804), (29, 27807), (30, 27822), (31, 27873), (32, 27924), (34, 27951), (35, 28014), (36, 28020), (38, 28062), (44, 28158), (50, 28170), (63, 28329), (69, 28395), (70, 28398), (73, 28437), (82, 28635), (83, 28671), (90, 28836),

Gene: LRRHood_77 Start: 28984, Stop: 30669, Start Num: 1

Candidate Starts for LRRHood_77:

(Start: 1 @28984 has 162 MA's), (7, 29032), (12, 29200), (15, 29368), (16, 29389), (17, 29434), (23, 29512), (24, 29527), (25, 29551), (27, 29584), (28, 29623), (29, 29626), (30, 29641), (31, 29692), (32, 29743), (34, 29770), (35, 29833), (36, 29839), (38, 29881), (44, 29977), (50, 29989), (63, 30148), (69, 30214), (70, 30217), (73, 30256), (82, 30454), (83, 30490), (90, 30655),

Gene: Latch_83 Start: 28644, Stop: 30371, Start Num: 1

Candidate Starts for Latch_83:

(Start: 1 @28644 has 162 MA's), (Start: 2 @28677 has 1 MA's), (6, 28731), (7, 28734), (10, 28827), (12, 28902), (15, 29070), (16, 29091), (17, 29136), (23, 29214), (24, 29229), (25, 29253), (27, 29286), (28, 29325), (29, 29328), (30, 29343), (31, 29394), (32, 29445), (34, 29472), (35, 29535), (36, 29541), (38, 29583), (44, 29679), (50, 29691), (63, 29850), (69, 29916), (70, 29919), (73, 29958), (82, 30156), (83, 30192), (90, 30357),

Gene: Lee7_81 Start: 29734, Stop: 31461, Start Num: 1

Candidate Starts for Lee7_81:

(Start: 1 @29734 has 162 MA's), (Start: 2 @29767 has 1 MA's), (6, 29821), (7, 29824), (10, 29917), (12, 29992), (15, 30160), (16, 30181), (17, 30226), (23, 30304), (24, 30319), (25, 30343), (27, 30376), (28, 30415), (29, 30418), (30, 30433), (31, 30484), (32, 30535), (34, 30562), (35, 30625), (36, 30631), (38, 30673), (44, 30769), (50, 30781), (63, 30940), (69, 31006), (70, 31009), (73, 31048), (82, 31246), (83, 31282), (90, 31447),

Gene: LifeSavor_82 Start: 28364, Stop: 30091, Start Num: 1

Candidate Starts for LifeSavor_82:

(Start: 1 @28364 has 162 MA's), (Start: 2 @28397 has 1 MA's), (6, 28451), (7, 28454), (12, 28622), (15, 28790), (16, 28811), (17, 28856), (23, 28934), (24, 28949), (25, 28973), (27, 29006), (28, 29045), (29, 29048), (30, 29063), (31, 29114), (32, 29165), (34, 29192), (35, 29255), (36, 29261), (38, 29303), (44, 29399), (50, 29411), (63, 29570), (69, 29636), (70, 29639), (73, 29678), (82, 29876), (83, 29912), (90, 30077),

Gene: LinStu_82 Start: 30143, Stop: 31828, Start Num: 1

Candidate Starts for LinStu_82:

(Start: 1 @30143 has 162 MA's), (7, 30191), (12, 30359), (15, 30527), (16, 30548), (17, 30593), (23, 30671), (24, 30686), (25, 30710), (27, 30743), (28, 30782), (29, 30785), (30, 30800), (31, 30851), (32, 30902), (34, 30929), (35, 30992), (36, 30998), (38, 31040), (44, 31136), (50, 31148), (63, 31307), (69, 31373), (70, 31376), (73, 31415), (82, 31613), (83, 31649), (90, 31814),

Gene: Littleton_83 Start: 28644, Stop: 30329, Start Num: 1

Candidate Starts for Littleton_83:

(Start: 1 @28644 has 162 MA's), (7, 28692), (12, 28860), (15, 29028), (16, 29049), (17, 29094), (23, 29172), (24, 29187), (25, 29211), (27, 29244), (28, 29283), (29, 29286), (30, 29301), (31, 29352), (32, 29403), (34, 29430), (35, 29493), (36, 29499), (38, 29541), (44, 29637), (50, 29649), (63, 29808), (69, 29874), (70, 29877), (73, 29916), (82, 30114), (83, 30150), (90, 30315),

Gene: Loanshark_83 Start: 29734, Stop: 31461, Start Num: 1

Candidate Starts for Loanshark_83:

(Start: 1 @29734 has 162 MA's), (Start: 2 @29767 has 1 MA's), (6, 29821), (7, 29824), (10, 29917), (12, 29992), (15, 30160), (16, 30181), (17, 30226), (23, 30304), (24, 30319), (25, 30343), (27, 30376), (28, 30415), (29, 30418), (30, 30433), (31, 30484), (32, 30535), (34, 30562), (35, 30625), (36, 30631), (38, 30673), (44, 30769), (50, 30781), (63, 30940), (69, 31006), (70, 31009), (73, 31048), (82, 31246), (83, 31282), (90, 31447),

Gene: LolaVinca_85 Start: 30894, Stop: 32621, Start Num: 1

Candidate Starts for LolaVinca_85:

(Start: 1 @30894 has 162 MA's), (Start: 2 @30927 has 1 MA's), (6, 30981), (7, 30984), (10, 31077), (12, 31152), (15, 31320), (16, 31341), (17, 31386), (23, 31464), (24, 31479), (25, 31503), (27, 31536), (28, 31575), (29, 31578), (30, 31593), (31, 31644), (32, 31695), (34, 31722), (35, 31785), (36, 31791), (38, 31833), (44, 31929), (50, 31941), (63, 32100), (69, 32166), (70, 32169), (73, 32208), (82, 32406), (83, 32442), (90, 32607),

Gene: LordLeafolot_87 Start: 31065, Stop: 33107, Start Num: 3

Candidate Starts for LordLeafolot_87:

(Start: 3 @31065 has 2 MA's), (4, 31098), (6, 31152), (7, 31155), (12, 31323), (15, 31491), (16, 31512), (17, 31557), (23, 31635), (24, 31650), (25, 31674), (27, 31707), (28, 31746), (29, 31749), (30, 31764), (31, 31815), (32, 31866), (34, 31893), (35, 31956), (38, 32004), (39, 32085), (40, 32112), (43, 32157), (46, 32181), (47, 32202), (48, 32211), (52, 32328), (54, 32403), (55, 32415), (66, 32580), (68, 32601), (69, 32640), (70, 32643), (71, 32658), (79, 32823), (88, 33054),

Gene: Lukilu_73 Start: 28187, Stop: 30229, Start Num: 3

Candidate Starts for Lukilu_73:

(Start: 3 @28187 has 2 MA's), (4, 28220), (6, 28274), (7, 28277), (10, 28370), (12, 28445), (15, 28613), (16, 28634), (17, 28679), (23, 28757), (24, 28772), (25, 28796), (27, 28829), (28, 28868), (29, 28871), (30, 28886), (31, 28937), (32, 28988), (34, 29015), (35, 29078), (38, 29126), (39, 29207), (40, 29234), (43, 29279), (46, 29303), (47, 29324), (48, 29333), (52, 29450), (54, 29525), (55, 29537), (66,

29702), (68, 29723), (69, 29762), (70, 29765), (71, 29780), (79, 29945), (88, 30176),

Gene: Maby2021_83 Start: 29415, Stop: 31142, Start Num: 1

Candidate Starts for Maby2021_83:

(Start: 1 @29415 has 162 MA's), (Start: 2 @29448 has 1 MA's), (6, 29502), (7, 29505), (10, 29598), (12, 29673), (15, 29841), (16, 29862), (17, 29907), (23, 29985), (24, 30000), (25, 30024), (27, 30057), (28, 30096), (29, 30099), (30, 30114), (31, 30165), (32, 30216), (34, 30243), (35, 30306), (36, 30312), (38, 30354), (44, 30450), (50, 30462), (63, 30621), (69, 30687), (70, 30690), (73, 30729), (82, 30927), (83, 30963), (90, 31128),

Gene: Mangeria_83 Start: 29155, Stop: 31422, Start Num: 1

Candidate Starts for Mangeria_83:

(Start: 1 @29155 has 162 MA's), (Start: 2 @29188 has 1 MA's), (7, 29203), (12, 29371), (15, 29539), (16, 29560), (17, 29605), (23, 29683), (24, 29698), (25, 29722), (27, 29755), (28, 29794), (29, 29797), (30, 29812), (31, 29863), (32, 29914), (34, 29941), (35, 30004), (38, 30052), (42, 30226), (49, 30322), (53, 30457), (56, 30529), (57, 30604), (58, 30643), (60, 30727), (61, 30742), (63, 30781), (64, 30826), (65, 30832), (69, 30910), (72, 30958), (74, 30985), (75, 30991), (76, 30997), (77, 31021), (82, 31207), (83, 31243), (90, 31408),

Gene: Matsumoto_81 Start: 28605, Stop: 30290, Start Num: 1

Candidate Starts for Matsumoto_81:

(Start: 1 @28605 has 162 MA's), (7, 28653), (12, 28821), (15, 28989), (16, 29010), (17, 29055), (23, 29133), (24, 29148), (25, 29172), (27, 29205), (28, 29244), (29, 29247), (30, 29262), (31, 29313), (32, 29364), (34, 29391), (35, 29454), (36, 29460), (38, 29502), (44, 29598), (50, 29610), (63, 29769), (69, 29835), (70, 29838), (73, 29877), (82, 30075), (83, 30111), (90, 30276),

Gene: McGee_84 Start: 27828, Stop: 29555, Start Num: 1

Candidate Starts for McGee_84:

(Start: 1 @27828 has 162 MA's), (Start: 2 @27861 has 1 MA's), (6, 27915), (7, 27918), (10, 28011), (12, 28086), (15, 28254), (16, 28275), (17, 28320), (23, 28398), (24, 28413), (25, 28437), (27, 28470), (28, 28509), (29, 28512), (30, 28527), (31, 28578), (32, 28629), (34, 28656), (35, 28719), (36, 28725), (38, 28767), (44, 28863), (50, 28875), (63, 29034), (69, 29100), (70, 29103), (73, 29142), (82, 29340), (83, 29376), (90, 29541),

Gene: McWolfish_81 Start: 29162, Stop: 30889, Start Num: 1

Candidate Starts for McWolfish_81:

(Start: 1 @29162 has 162 MA's), (Start: 2 @29195 has 1 MA's), (6, 29249), (7, 29252), (10, 29345), (12, 29420), (15, 29588), (16, 29609), (17, 29654), (23, 29732), (24, 29747), (25, 29771), (27, 29804), (28, 29843), (29, 29846), (30, 29861), (31, 29912), (32, 29963), (34, 29990), (35, 30053), (36, 30059), (38, 30101), (44, 30197), (50, 30209), (63, 30368), (69, 30434), (70, 30437), (73, 30476), (82, 30674), (83, 30710), (90, 30875),

Gene: Megamind_82 Start: 29400, Stop: 31127, Start Num: 1

Candidate Starts for Megamind_82:

(Start: 1 @29400 has 162 MA's), (Start: 2 @29433 has 1 MA's), (6, 29487), (7, 29490), (10, 29583), (12, 29658), (15, 29826), (16, 29847), (17, 29892), (23, 29970), (24, 29985), (25, 30009), (27, 30042), (28, 30081), (29, 30084), (30, 30099), (31, 30150), (32, 30201), (34, 30228), (35, 30291), (36, 30297), (38, 30339), (44, 30435), (50, 30447), (63, 30606), (69, 30672), (70, 30675), (73, 30714), (82, 30912), (83, 30948), (90, 31113),

Gene: Melpomini_77 Start: 27198, Stop: 28925, Start Num: 1

Candidate Starts for Melpomini_77:

(Start: 1 @27198 has 162 MA's), (Start: 2 @27231 has 1 MA's), (6, 27285), (7, 27288), (10, 27381), (12, 27456), (15, 27624), (16, 27645), (17, 27690), (23, 27768), (24, 27783), (25, 27807), (27, 27840), (28, 27879), (29, 27882), (30, 27897), (31, 27948), (32, 27999), (34, 28026), (35, 28089), (36, 28095), (38, 28137), (44, 28233), (50, 28245), (63, 28404), (69, 28470), (70, 28473), (73, 28512), (82, 28710), (83, 28746), (90, 28911),

Gene: MikeLiesIn_83 Start: 29747, Stop: 31474, Start Num: 1

Candidate Starts for MikeLiesIn_83:

(Start: 1 @29747 has 162 MA's), (Start: 2 @29780 has 1 MA's), (6, 29834), (7, 29837), (10, 29930), (12, 30005), (15, 30173), (16, 30194), (17, 30239), (23, 30317), (24, 30332), (25, 30356), (27, 30389), (28, 30428), (29, 30431), (30, 30446), (31, 30497), (32, 30548), (34, 30575), (35, 30638), (36, 30644), (38, 30686), (44, 30782), (50, 30794), (63, 30953), (69, 31019), (70, 31022), (73, 31061), (82, 31259), (83, 31295), (90, 31460),

Gene: Mikro_81 Start: 30541, Stop: 32268, Start Num: 1

Candidate Starts for Mikro_81:

(Start: 1 @30541 has 162 MA's), (Start: 2 @30574 has 1 MA's), (6, 30628), (7, 30631), (10, 30724), (12, 30799), (15, 30967), (16, 30988), (17, 31033), (19, 31051), (23, 31111), (24, 31126), (25, 31150), (27, 31183), (28, 31222), (29, 31225), (30, 31240), (31, 31291), (32, 31342), (34, 31369), (35, 31432), (36, 31438), (38, 31480), (44, 31576), (50, 31588), (63, 31747), (69, 31813), (70, 31816), (73, 31855), (82, 32053), (83, 32089), (90, 32254),

Gene: MoMoMixon_83 Start: 29847, Stop: 31574, Start Num: 1

Candidate Starts for MoMoMixon_83:

(Start: 1 @29847 has 162 MA's), (Start: 2 @29880 has 1 MA's), (6, 29934), (7, 29937), (10, 30030), (12, 30105), (15, 30273), (16, 30294), (17, 30339), (23, 30417), (24, 30432), (25, 30456), (27, 30489), (28, 30528), (29, 30531), (30, 30546), (31, 30597), (32, 30648), (34, 30675), (35, 30738), (36, 30744), (38, 30786), (44, 30882), (50, 30894), (63, 31053), (69, 31119), (70, 31122), (73, 31161), (82, 31359), (83, 31395), (90, 31560),

Gene: Momo_82 Start: 28644, Stop: 30371, Start Num: 1

Candidate Starts for Momo_82:

(Start: 1 @28644 has 162 MA's), (Start: 2 @28677 has 1 MA's), (6, 28731), (7, 28734), (10, 28827), (12, 28902), (15, 29070), (16, 29091), (17, 29136), (23, 29214), (24, 29229), (25, 29253), (27, 29286), (28, 29325), (29, 29328), (30, 29343), (31, 29394), (32, 29445), (34, 29472), (35, 29535), (36, 29541), (38, 29583), (44, 29679), (50, 29691), (63, 29850), (69, 29916), (70, 29919), (73, 29958), (82, 30156), (83, 30192), (90, 30357),

Gene: Morizzled23_83 Start: 28813, Stop: 30540, Start Num: 1

Candidate Starts for Morizzled23_83:

(Start: 1 @28813 has 162 MA's), (Start: 2 @28846 has 1 MA's), (6, 28900), (7, 28903), (10, 28996), (12, 29071), (15, 29239), (16, 29260), (17, 29305), (23, 29383), (24, 29398), (25, 29422), (27, 29455), (28, 29494), (29, 29497), (30, 29512), (32, 29614), (33, 29617), (35, 29704), (36, 29710), (37, 29728), (38, 29752), (44, 29848), (63, 30019), (69, 30085), (70, 30088), (73, 30127), (82, 30325), (83, 30361), (90, 30526),

Gene: Naija_82 Start: 28644, Stop: 30371, Start Num: 1

Candidate Starts for Naija_82:

(Start: 1 @28644 has 162 MA's), (Start: 2 @28677 has 1 MA's), (6, 28731), (7, 28734), (10, 28827), (12, 28902), (15, 29070), (16, 29091), (17, 29136), (23, 29214), (24, 29229), (25, 29253), (27, 29286), (28, 29325), (29, 29328), (30, 29343), (31, 29394), (32, 29445), (34, 29472), (35, 29535), (36, 29541), (38, 29583), (44, 29679), (50, 29691), (63, 29850), (69, 29916), (70, 29919), (73, 29958), (82, 30156), (83, 30192), (90, 30357),

Gene: Napoleon13_79 Start: 27542, Stop: 29269, Start Num: 1

Candidate Starts for Napoleon13_79:

(Start: 1 @27542 has 162 MA's), (Start: 2 @27575 has 1 MA's), (6, 27629), (7, 27632), (10, 27725), (12, 27800), (15, 27968), (16, 27989), (17, 28034), (23, 28112), (24, 28127), (25, 28151), (27, 28184), (28, 28223), (29, 28226), (30, 28241), (31, 28292), (32, 28343), (34, 28370), (35, 28433), (36, 28439), (38, 28481), (44, 28577), (50, 28589), (63, 28748), (69, 28814), (70, 28817), (73, 28856), (82, 29054), (83, 29090), (90, 29255),

Gene: Nappy_84 Start: 30036, Stop: 31763, Start Num: 1

Candidate Starts for Nappy_84:

(Start: 1 @30036 has 162 MA's), (Start: 2 @30069 has 1 MA's), (6, 30123), (7, 30126), (10, 30219), (12, 30294), (15, 30462), (16, 30483), (17, 30528), (23, 30606), (24, 30621), (25, 30645), (27, 30678), (28, 30717), (29, 30720), (30, 30735), (31, 30786), (32, 30837), (34, 30864), (35, 30927), (36, 30933), (38, 30975), (44, 31071), (50, 31083), (63, 31242), (69, 31308), (70, 31311), (73, 31350), (82, 31548), (83, 31584), (90, 31749),

Gene: Naval22_88 Start: 30756, Stop: 33065, Start Num: 1

Candidate Starts for Naval22_88:

(Start: 1 @30756 has 162 MA's), (Start: 2 @30789 has 1 MA's), (6, 30843), (7, 30846), (10, 30939), (12, 31014), (15, 31182), (16, 31203), (17, 31248), (23, 31326), (24, 31341), (25, 31365), (27, 31398), (28, 31437), (29, 31440), (30, 31455), (31, 31506), (32, 31557), (34, 31584), (35, 31647), (38, 31695), (42, 31869), (49, 31965), (53, 32100), (56, 32172), (57, 32247), (58, 32286), (60, 32370), (61, 32385), (63, 32424), (64, 32469), (65, 32475), (69, 32553), (72, 32601), (74, 32628), (75, 32634), (76, 32640), (82, 32850), (83, 32886), (90, 33051),

Gene: NedWong_84 Start: 29734, Stop: 31461, Start Num: 1

Candidate Starts for NedWong_84:

(Start: 1 @29734 has 162 MA's), (Start: 2 @29767 has 1 MA's), (6, 29821), (7, 29824), (10, 29917), (12, 29992), (15, 30160), (16, 30181), (17, 30226), (23, 30304), (24, 30319), (25, 30343), (27, 30376), (28, 30415), (29, 30418), (30, 30433), (31, 30484), (32, 30535), (34, 30562), (35, 30625), (36, 30631), (38, 30673), (44, 30769), (50, 30781), (63, 30940), (69, 31006), (70, 31009), (73, 31048), (82, 31246), (83, 31282), (90, 31447),

Gene: Ngannou_79 Start: 27626, Stop: 29353, Start Num: 1

Candidate Starts for Ngannou_79:

(Start: 1 @27626 has 162 MA's), (Start: 2 @27659 has 1 MA's), (6, 27713), (7, 27716), (10, 27809), (12, 27884), (15, 28052), (16, 28073), (17, 28118), (23, 28196), (24, 28211), (25, 28235), (27, 28268), (28, 28307), (29, 28310), (30, 28325), (31, 28376), (32, 28427), (34, 28454), (35, 28517), (36, 28523), (38, 28565), (44, 28661), (50, 28673), (63, 28832), (69, 28898), (70, 28901), (73, 28940), (82, 29138), (83, 29174), (90, 29339),

Gene: Nidhogg_83 Start: 29588, Stop: 31315, Start Num: 1

Candidate Starts for Nidhogg_83:

(Start: 1 @29588 has 162 MA's), (Start: 2 @29621 has 1 MA's), (6, 29675), (7, 29678), (10, 29771), (12, 29846), (15, 30014), (16, 30035), (17, 30080), (23, 30158), (24, 30173), (25, 30197), (27, 30230), (28, 30269), (29, 30272), (30, 30287), (31, 30338), (32, 30389), (34, 30416), (35, 30479), (36, 30485), (38, 30527), (44, 30623), (50, 30635), (63, 30794), (69, 30860), (70, 30863), (73, 30902), (82, 31100), (83, 31136), (90, 31301),

Gene: NoodleTree_86 Start: 30183, Stop: 32492, Start Num: 1

Candidate Starts for NoodleTree_86:

(Start: 1 @30183 has 162 MA's), (Start: 2 @30216 has 1 MA's), (6, 30270), (7, 30273), (10, 30366), (12, 30441), (15, 30609), (16, 30630), (17, 30675), (23, 30753), (24, 30768), (25, 30792), (27, 30825), (28, 30864), (29, 30867), (30, 30882), (31, 30933), (32, 30984), (34, 31011), (35, 31074), (38, 31122), (42, 31296), (49, 31392), (53, 31527), (56, 31599), (57, 31674), (58, 31713), (60, 31797), (61, 31812), (63, 31851), (64, 31896), (65, 31902), (69, 31980), (72, 32028), (74, 32055), (75, 32061), (76, 32067), (82, 32277), (83, 32313), (90, 32478),

Gene: Norm_84 Start: 29736, Stop: 31463, Start Num: 1

Candidate Starts for Norm_84:

(Start: 1 @29736 has 162 MA's), (Start: 2 @29769 has 1 MA's), (6, 29823), (7, 29826), (10, 29919), (12, 29994), (15, 30162), (16, 30183), (17, 30228), (23, 30306), (24, 30321), (25, 30345), (27, 30378), (28, 30417), (29, 30420), (30, 30435), (31, 30486), (32, 30537), (34, 30564), (35, 30627), (36, 30633), (38, 30675), (44, 30771), (50, 30783), (63, 30942), (69, 31008), (70, 31011), (73, 31050), (82, 31248), (83, 31284), (90, 31449),

Gene: NuevoMundo_89 Start: 31113, Stop: 33422, Start Num: 1

Candidate Starts for NuevoMundo_89:

(Start: 1 @31113 has 162 MA's), (Start: 2 @31146 has 1 MA's), (6, 31200), (7, 31203), (10, 31296), (12, 31371), (15, 31539), (16, 31560), (17, 31605), (23, 31683), (24, 31698), (25, 31722), (27, 31755), (28, 31794), (29, 31797), (30, 31812), (31, 31863), (32, 31914), (34, 31941), (35, 32004), (38, 32052), (42, 32226), (49, 32322), (53, 32457), (56, 32529), (57, 32604), (58, 32643), (60, 32727), (61, 32742), (63, 32781), (64, 32826), (65, 32832), (69, 32910), (72, 32958), (74, 32985), (75, 32991), (76, 32997), (82, 33207), (83, 33243), (90, 33408),

Gene: ParkTD_84 Start: 29730, Stop: 31457, Start Num: 1

Candidate Starts for ParkTD_84:

(Start: 1 @29730 has 162 MA's), (Start: 2 @29763 has 1 MA's), (6, 29817), (7, 29820), (10, 29913), (12, 29988), (15, 30156), (16, 30177), (17, 30222), (23, 30300), (24, 30315), (25, 30339), (27, 30372), (28, 30411), (29, 30414), (30, 30429), (31, 30480), (32, 30531), (34, 30558), (35, 30621), (36, 30627), (38, 30669), (44, 30765), (50, 30777), (63, 30936), (69, 31002), (70, 31005), (73, 31044), (82, 31242), (83, 31278), (90, 31443),

Gene: Patter_83 Start: 28661, Stop: 30388, Start Num: 1

Candidate Starts for Patter_83:

(Start: 1 @28661 has 162 MA's), (Start: 2 @28694 has 1 MA's), (6, 28748), (7, 28751), (10, 28844), (12, 28919), (15, 29087), (16, 29108), (17, 29153), (23, 29231), (24, 29246), (25, 29270), (27, 29303), (28, 29342), (29, 29345), (30, 29360), (31, 29411), (32, 29462), (34, 29489), (35, 29552), (36, 29558), (38, 29600), (44, 29696), (50, 29708), (63, 29867), (69, 29933), (70, 29936), (73, 29975), (82, 30173), (83, 30209), (90, 30374),

Gene: Phlegm_85 Start: 28644, Stop: 30371, Start Num: 1

Candidate Starts for Phlegm_85:

(Start: 1 @28644 has 162 MA's), (Start: 2 @28677 has 1 MA's), (6, 28731), (7, 28734), (10, 28827), (12, 28902), (15, 29070), (16, 29091), (17, 29136), (23, 29214), (24, 29229), (25, 29253), (27, 29286), (28, 29325), (29, 29328), (30, 29343), (31, 29394), (32, 29445), (34, 29472), (35, 29535), (36, 29541), (38, 29583), (44, 29679), (50, 29691), (63, 29850), (69, 29916), (70, 29919), (73, 29958), (82, 30156), (83, 30192), (90, 30357),

Gene: Phox_79 Start: 29666, Stop: 31351, Start Num: 1

Candidate Starts for Phox_79:

(Start: 1 @29666 has 162 MA's), (7, 29714), (12, 29882), (15, 30050), (16, 30071), (17, 30116), (23, 30194), (24, 30209), (25, 30233), (27, 30266), (28, 30305), (29, 30308), (30, 30323), (31, 30374), (32, 30425), (34, 30452), (35, 30515), (36, 30521), (38, 30563), (44, 30659), (50, 30671), (63, 30830), (69,

30896), (70, 30899), (73, 30938), (82, 31136), (83, 31172), (90, 31337),

Gene: Phusco_83 Start: 29454, Stop: 31139, Start Num: 1

Candidate Starts for Phusco_83:

(Start: 1 @29454 has 162 MA's), (7, 29502), (12, 29670), (15, 29838), (16, 29859), (17, 29904), (23, 29982), (24, 29997), (25, 30021), (27, 30054), (28, 30093), (29, 30096), (30, 30111), (31, 30162), (32, 30213), (34, 30240), (35, 30303), (36, 30309), (38, 30351), (44, 30447), (50, 30459), (63, 30618), (69, 30684), (70, 30687), (73, 30726), (82, 30924), (83, 30960), (90, 31125),

Gene: Pier_87 Start: 29814, Stop: 31541, Start Num: 1

Candidate Starts for Pier_87:

(Start: 1 @29814 has 162 MA's), (Start: 2 @29847 has 1 MA's), (6, 29901), (7, 29904), (12, 30072), (15, 30240), (16, 30261), (17, 30306), (23, 30384), (24, 30399), (25, 30423), (27, 30456), (28, 30495), (29, 30498), (30, 30513), (31, 30564), (32, 30615), (34, 30642), (35, 30705), (38, 30753), (44, 30849), (50, 30861), (63, 31020), (69, 31086), (70, 31089), (73, 31128), (82, 31326), (83, 31362), (90, 31527),

Gene: Pinkcreek_73 Start: 26825, Stop: 28552, Start Num: 1

Candidate Starts for Pinkcreek_73:

(Start: 1 @26825 has 162 MA's), (Start: 2 @26858 has 1 MA's), (6, 26912), (7, 26915), (10, 27008), (12, 27083), (15, 27251), (16, 27272), (17, 27317), (23, 27395), (24, 27410), (25, 27434), (27, 27467), (28, 27506), (29, 27509), (30, 27524), (31, 27575), (32, 27626), (34, 27653), (35, 27716), (36, 27722), (38, 27764), (44, 27860), (50, 27872), (63, 28031), (69, 28097), (70, 28100), (73, 28139), (82, 28337), (83, 28373), (90, 28538),

Gene: Pio_86 Start: 30081, Stop: 32390, Start Num: 1

Candidate Starts for Pio_86:

(Start: 1 @30081 has 162 MA's), (Start: 2 @30114 has 1 MA's), (6, 30168), (7, 30171), (10, 30264), (12, 30339), (15, 30507), (16, 30528), (17, 30573), (23, 30651), (24, 30666), (25, 30690), (27, 30723), (28, 30762), (29, 30765), (30, 30780), (31, 30831), (32, 30882), (34, 30909), (35, 30972), (38, 31020), (42, 31194), (49, 31290), (53, 31425), (56, 31497), (57, 31572), (58, 31611), (60, 31695), (61, 31710), (63, 31749), (64, 31794), (65, 31800), (69, 31878), (72, 31926), (74, 31953), (75, 31959), (76, 31965), (82, 32175), (83, 32211), (90, 32376),

Gene: Pivoine_82 Start: 28644, Stop: 30371, Start Num: 1

Candidate Starts for Pivoine_82:

(Start: 1 @28644 has 162 MA's), (Start: 2 @28677 has 1 MA's), (6, 28731), (7, 28734), (10, 28827), (12, 28902), (15, 29070), (16, 29091), (17, 29136), (23, 29214), (24, 29229), (25, 29253), (27, 29286), (28, 29325), (29, 29328), (30, 29343), (31, 29394), (32, 29445), (34, 29472), (35, 29535), (36, 29541), (38, 29583), (44, 29679), (50, 29691), (63, 29850), (69, 29916), (70, 29919), (73, 29958), (82, 30156), (83, 30192), (90, 30357),

Gene: Pleione_85 Start: 29733, Stop: 31460, Start Num: 1

Candidate Starts for Pleione_85:

(Start: 1 @29733 has 162 MA's), (Start: 2 @29766 has 1 MA's), (6, 29820), (7, 29823), (10, 29916), (12, 29991), (15, 30159), (16, 30180), (17, 30225), (23, 30303), (24, 30318), (25, 30342), (27, 30375), (28, 30414), (29, 30417), (30, 30432), (31, 30483), (32, 30534), (34, 30561), (35, 30624), (36, 30630), (38, 30672), (44, 30768), (50, 30780), (63, 30939), (69, 31005), (70, 31008), (73, 31047), (82, 31245), (83, 31281), (90, 31446),

Gene: PurduePete_83 Start: 29778, Stop: 31505, Start Num: 1

Candidate Starts for PurduePete_83:

(Start: 1 @29778 has 162 MA's), (Start: 2 @29811 has 1 MA's), (6, 29865), (7, 29868), (10, 29961), (12, 30036), (15, 30204), (16, 30225), (17, 30270), (23, 30348), (24, 30363), (25, 30387), (27, 30420),

(28, 30459), (29, 30462), (30, 30477), (31, 30528), (32, 30579), (34, 30606), (35, 30669), (36, 30675), (38, 30717), (44, 30813), (50, 30825), (63, 30984), (69, 31050), (70, 31053), (73, 31092), (82, 31290), (83, 31326), (90, 31491),

Gene: QBert_77 Start: 29177, Stop: 30862, Start Num: 1

Candidate Starts for QBert_77:

(Start: 1 @29177 has 162 MA's), (7, 29225), (12, 29393), (15, 29561), (16, 29582), (17, 29627), (23, 29705), (24, 29720), (25, 29744), (27, 29777), (28, 29816), (29, 29819), (30, 29834), (31, 29885), (32, 29936), (34, 29963), (35, 30026), (36, 30032), (38, 30074), (44, 30170), (50, 30182), (63, 30341), (69, 30407), (70, 30410), (73, 30449), (82, 30647), (83, 30683), (90, 30848),

Gene: Quasimodo_83 Start: 29662, Stop: 31389, Start Num: 1

Candidate Starts for Quasimodo_83:

(Start: 1 @29662 has 162 MA's), (Start: 2 @29695 has 1 MA's), (6, 29749), (7, 29752), (10, 29845), (12, 29920), (15, 30088), (16, 30109), (17, 30154), (23, 30232), (24, 30247), (25, 30271), (27, 30304), (28, 30343), (29, 30346), (30, 30361), (31, 30412), (32, 30463), (34, 30490), (35, 30553), (36, 30559), (38, 30601), (44, 30697), (50, 30709), (63, 30868), (69, 30934), (70, 30937), (73, 30976), (82, 31174), (83, 31210), (90, 31375),

Gene: Rabinovish_80 Start: 29539, Stop: 31248, Start Num: 1

Candidate Starts for Rabinovish_80:

(Start: 1 @29539 has 162 MA's), (8, 29644), (9, 29674), (13, 29803), (14, 29899), (21, 30034), (27, 30124), (28, 30163), (29, 30166), (32, 30283), (33, 30286), (35, 30373), (36, 30379), (37, 30397), (38, 30421), (44, 30499), (63, 30670), (69, 30736), (70, 30739), (73, 30778), (78, 30889), (80, 30910), (81, 30946), (84, 31063), (86, 31111), (87, 31123), (89, 31204), (91, 31237),

Gene: Rahel_82 Start: 28242, Stop: 29927, Start Num: 1

Candidate Starts for Rahel_82:

(Start: 1 @28242 has 162 MA's), (7, 28290), (12, 28458), (15, 28626), (16, 28647), (17, 28692), (23, 28770), (24, 28785), (25, 28809), (27, 28842), (28, 28881), (29, 28884), (30, 28899), (31, 28950), (32, 29001), (34, 29028), (35, 29091), (36, 29097), (38, 29139), (44, 29235), (50, 29247), (63, 29406), (69, 29472), (70, 29475), (73, 29514), (82, 29712), (83, 29748), (90, 29913),

Gene: Rizal_80 Start: 28651, Stop: 30378, Start Num: 1

Candidate Starts for Rizal_80:

(Start: 1 @28651 has 162 MA's), (Start: 2 @28684 has 1 MA's), (6, 28738), (7, 28741), (10, 28834), (12, 28909), (15, 29077), (16, 29098), (17, 29143), (23, 29221), (24, 29236), (25, 29260), (27, 29293), (28, 29332), (29, 29335), (30, 29350), (31, 29401), (32, 29452), (34, 29479), (35, 29542), (36, 29548), (38, 29590), (44, 29686), (50, 29698), (63, 29857), (69, 29923), (70, 29926), (73, 29965), (82, 30163), (83, 30199), (90, 30364),

Gene: RoMag_78 Start: 28976, Stop: 30703, Start Num: 1

Candidate Starts for RoMag_78:

(Start: 1 @28976 has 162 MA's), (Start: 2 @29009 has 1 MA's), (6, 29063), (7, 29066), (12, 29234), (15, 29402), (16, 29423), (17, 29468), (23, 29546), (24, 29561), (25, 29585), (27, 29618), (28, 29657), (29, 29660), (30, 29675), (31, 29726), (32, 29777), (34, 29804), (35, 29867), (38, 29915), (44, 30011), (50, 30023), (63, 30182), (69, 30248), (70, 30251), (73, 30290), (82, 30488), (83, 30524), (90, 30689),

Gene: Ronan_76 Start: 26483, Stop: 28168, Start Num: 1

Candidate Starts for Ronan_76:

(Start: 1 @26483 has 162 MA's), (7, 26531), (12, 26699), (15, 26867), (16, 26888), (17, 26933), (23, 27011), (24, 27026), (25, 27050), (27, 27083), (28, 27122), (29, 27125), (30, 27140), (31, 27191), (32, 27242), (34, 27269), (35, 27332), (36, 27338), (38, 27380), (44, 27476), (50, 27488), (63, 27647), (69,

27713), (70, 27716), (73, 27755), (82, 27953), (83, 27989), (90, 28154),

Gene: Roots515_82 Start: 29103, Stop: 30788, Start Num: 1

Candidate Starts for Roots515_82:

(Start: 1 @29103 has 162 MA's), (7, 29151), (12, 29319), (15, 29487), (16, 29508), (17, 29553), (23, 29631), (24, 29646), (25, 29670), (27, 29703), (28, 29742), (29, 29745), (30, 29760), (31, 29811), (32, 29862), (34, 29889), (35, 29952), (36, 29958), (38, 30000), (44, 30096), (50, 30108), (63, 30267), (69, 30333), (70, 30336), (73, 30375), (82, 30573), (83, 30609), (90, 30774),

Gene: Salacia_87 Start: 29756, Stop: 31483, Start Num: 1

Candidate Starts for Salacia_87:

(Start: 1 @29756 has 162 MA's), (Start: 2 @29789 has 1 MA's), (6, 29843), (7, 29846), (12, 30014), (15, 30182), (16, 30203), (17, 30248), (23, 30326), (24, 30341), (25, 30365), (27, 30398), (28, 30437), (29, 30440), (30, 30455), (31, 30506), (32, 30557), (34, 30584), (35, 30647), (36, 30653), (38, 30695), (44, 30791), (50, 30803), (63, 30962), (69, 31028), (70, 31031), (73, 31070), (82, 31268), (83, 31304), (90, 31469),

Gene: Sauce_83 Start: 28531, Stop: 30216, Start Num: 1

Candidate Starts for Sauce_83:

(Start: 1 @28531 has 162 MA's), (7, 28579), (12, 28747), (15, 28915), (16, 28936), (17, 28981), (23, 29059), (24, 29074), (25, 29098), (27, 29131), (28, 29170), (29, 29173), (30, 29188), (31, 29239), (32, 29290), (34, 29317), (35, 29380), (36, 29386), (38, 29428), (44, 29524), (50, 29536), (63, 29695), (69, 29761), (70, 29764), (73, 29803), (82, 30001), (83, 30037), (90, 30202),

Gene: ScoobyDoobyDoo_74 Start: 27112, Stop: 28845, Start Num: 11

Candidate Starts for ScoobyDoobyDoo_74:

(Start: 11 @27112 has 1 MA's), (18, 27412), (26, 27556), (41, 27958), (45, 28006), (51, 28024), (59, 28201), (62, 28267), (65, 28294), (67, 28306), (82, 28630), (83, 28666), (85, 28708), (90, 28831),

Gene: ScottMcG_79 Start: 29088, Stop: 30815, Start Num: 1

Candidate Starts for ScottMcG_79:

(Start: 1 @29088 has 162 MA's), (Start: 2 @29121 has 1 MA's), (6, 29175), (7, 29178), (10, 29271), (12, 29346), (15, 29514), (16, 29535), (17, 29580), (23, 29658), (24, 29673), (25, 29697), (27, 29730), (28, 29769), (29, 29772), (30, 29787), (31, 29838), (32, 29889), (34, 29916), (35, 29979), (36, 29985), (38, 30027), (44, 30123), (50, 30135), (63, 30294), (69, 30360), (70, 30363), (73, 30402), (82, 30600), (83, 30636), (90, 30801),

Gene: Sebata_83 Start: 30262, Stop: 31947, Start Num: 1

Candidate Starts for Sebata_83:

(Start: 1 @30262 has 162 MA's), (7, 30310), (12, 30478), (15, 30646), (16, 30667), (17, 30712), (23, 30790), (24, 30805), (25, 30829), (27, 30862), (28, 30901), (29, 30904), (30, 30919), (31, 30970), (32, 31021), (34, 31048), (35, 31111), (36, 31117), (38, 31159), (44, 31255), (50, 31267), (63, 31426), (69, 31492), (70, 31495), (73, 31534), (82, 31732), (83, 31768), (90, 31933),

Gene: Shaqnato_75 Start: 27406, Stop: 29091, Start Num: 1

Candidate Starts for Shaqnato_75:

(Start: 1 @27406 has 162 MA's), (7, 27454), (12, 27622), (15, 27790), (16, 27811), (17, 27856), (23, 27934), (24, 27949), (25, 27973), (27, 28006), (28, 28045), (29, 28048), (30, 28063), (31, 28114), (32, 28165), (34, 28192), (35, 28255), (36, 28261), (38, 28303), (44, 28399), (50, 28411), (63, 28570), (69, 28636), (70, 28639), (73, 28678), (82, 28876), (83, 28912), (90, 29077),

Gene: Shelob_85 Start: 30726, Stop: 32453, Start Num: 1

Candidate Starts for Shelob_85:

(Start: 1 @30726 has 162 MA's), (Start: 2 @30759 has 1 MA's), (6, 30813), (7, 30816), (10, 30909), (12, 30984), (15, 31152), (16, 31173), (17, 31218), (23, 31296), (24, 31311), (25, 31335), (27, 31368), (28, 31407), (29, 31410), (30, 31425), (31, 31476), (32, 31527), (34, 31554), (35, 31617), (36, 31623), (38, 31665), (44, 31761), (50, 31773), (63, 31932), (69, 31998), (70, 32001), (73, 32040), (82, 32238), (83, 32274), (90, 32439),

Gene: ShiaLabeouf_83 Start: 29081, Stop: 30766, Start Num: 1

Candidate Starts for ShiaLabeouf_83:

(Start: 1 @29081 has 162 MA's), (7, 29129), (12, 29297), (15, 29465), (16, 29486), (17, 29531), (23, 29609), (24, 29624), (25, 29648), (27, 29681), (28, 29720), (29, 29723), (30, 29738), (31, 29789), (32, 29840), (34, 29867), (35, 29930), (36, 29936), (38, 29978), (44, 30074), (50, 30086), (63, 30245), (69, 30311), (70, 30314), (73, 30353), (82, 30551), (83, 30587), (90, 30752),

Gene: Shifa_72 Start: 27368, Stop: 29053, Start Num: 1

Candidate Starts for Shifa_72:

(Start: 1 @27368 has 162 MA's), (7, 27416), (12, 27584), (15, 27752), (16, 27773), (17, 27818), (23, 27896), (24, 27911), (25, 27935), (27, 27968), (28, 28007), (29, 28010), (30, 28025), (31, 28076), (32, 28127), (34, 28154), (35, 28217), (36, 28223), (38, 28265), (44, 28361), (50, 28373), (63, 28532), (69, 28598), (70, 28601), (73, 28640), (82, 28838), (83, 28874), (90, 29039),

Gene: Shnickers_83 Start: 28641, Stop: 30326, Start Num: 1

Candidate Starts for Shnickers_83:

(Start: 1 @28641 has 162 MA's), (7, 28689), (12, 28857), (15, 29025), (16, 29046), (17, 29091), (23, 29169), (24, 29184), (25, 29208), (27, 29241), (28, 29280), (29, 29283), (30, 29298), (31, 29349), (32, 29400), (34, 29427), (35, 29490), (36, 29496), (38, 29538), (44, 29634), (50, 29646), (63, 29805), (69, 29871), (70, 29874), (73, 29913), (82, 30111), (83, 30147), (90, 30312),

Gene: Shrimp_83 Start: 29738, Stop: 31465, Start Num: 1

Candidate Starts for Shrimp_83:

(Start: 1 @29738 has 162 MA's), (Start: 2 @29771 has 1 MA's), (6, 29825), (7, 29828), (10, 29921), (12, 29996), (15, 30164), (16, 30185), (17, 30230), (23, 30308), (24, 30323), (25, 30347), (27, 30380), (28, 30419), (29, 30422), (30, 30437), (31, 30488), (32, 30539), (34, 30566), (35, 30629), (36, 30635), (38, 30677), (44, 30773), (50, 30785), (63, 30944), (69, 31010), (70, 31013), (73, 31052), (82, 31250), (83, 31286), (90, 31451),

Gene: SilverDipper_84 Start: 28644, Stop: 30371, Start Num: 1

Candidate Starts for SilverDipper_84:

(Start: 1 @28644 has 162 MA's), (Start: 2 @28677 has 1 MA's), (6, 28731), (7, 28734), (10, 28827), (12, 28902), (15, 29070), (16, 29091), (17, 29136), (23, 29214), (24, 29229), (25, 29253), (27, 29286), (28, 29325), (29, 29328), (30, 29343), (31, 29394), (32, 29445), (34, 29472), (35, 29535), (36, 29541), (38, 29583), (44, 29679), (50, 29691), (63, 29850), (69, 29916), (70, 29919), (73, 29958), (82, 30156), (83, 30192), (90, 30357),

Gene: SmallFry_83 Start: 28640, Stop: 30325, Start Num: 1

Candidate Starts for SmallFry_83:

(Start: 1 @28640 has 162 MA's), (7, 28688), (12, 28856), (15, 29024), (16, 29045), (17, 29090), (23, 29168), (24, 29183), (25, 29207), (27, 29240), (28, 29279), (29, 29282), (30, 29297), (31, 29348), (32, 29399), (34, 29426), (35, 29489), (36, 29495), (38, 29537), (44, 29633), (50, 29645), (63, 29804), (69, 29870), (70, 29873), (73, 29912), (82, 30110), (83, 30146), (90, 30311),

Gene: Spec_78 Start: 28364, Stop: 30091, Start Num: 1

Candidate Starts for Spec_78:

(Start: 1 @28364 has 162 MA's), (Start: 2 @28397 has 1 MA's), (6, 28451), (7, 28454), (12, 28622), (15, 28790), (16, 28811), (17, 28856), (23, 28934), (24, 28949), (25, 28973), (27, 29006), (28, 29045), (29, 29048), (30, 29063), (31, 29114), (32, 29165), (34, 29192), (35, 29255), (36, 29261), (38, 29303), (44, 29399), (50, 29411), (63, 29570), (69, 29636), (70, 29639), (73, 29678), (82, 29876), (83, 29912), (90, 30077),

Gene: Specks_89 Start: 31528, Stop: 33255, Start Num: 1

Candidate Starts for Specks_89:

(Start: 1 @31528 has 162 MA's), (Start: 2 @31561 has 1 MA's), (6, 31615), (7, 31618), (10, 31711), (12, 31786), (15, 31954), (16, 31975), (17, 32020), (23, 32098), (24, 32113), (25, 32137), (27, 32170), (28, 32209), (29, 32212), (30, 32227), (31, 32278), (32, 32329), (34, 32356), (35, 32419), (36, 32425), (38, 32467), (44, 32563), (50, 32575), (63, 32734), (69, 32800), (70, 32803), (73, 32842), (82, 33040), (83, 33076), (90, 33241),

Gene: Sprinklers_78 Start: 27903, Stop: 29588, Start Num: 1

Candidate Starts for Sprinklers_78:

(Start: 1 @27903 has 162 MA's), (7, 27951), (12, 28119), (15, 28287), (16, 28308), (17, 28353), (23, 28431), (24, 28446), (25, 28470), (27, 28503), (28, 28542), (29, 28545), (30, 28560), (31, 28611), (32, 28662), (34, 28689), (35, 28752), (36, 28758), (38, 28800), (44, 28896), (50, 28908), (63, 29067), (69, 29133), (70, 29136), (73, 29175), (82, 29373), (83, 29409), (90, 29574),

Gene: Spud_82 Start: 30049, Stop: 31776, Start Num: 1

Candidate Starts for Spud_82:

(Start: 1 @30049 has 162 MA's), (Start: 2 @30082 has 1 MA's), (6, 30136), (7, 30139), (10, 30232), (12, 30307), (15, 30475), (16, 30496), (17, 30541), (23, 30619), (24, 30634), (25, 30658), (27, 30691), (28, 30730), (29, 30733), (30, 30748), (31, 30799), (32, 30850), (34, 30877), (35, 30940), (36, 30946), (38, 30988), (44, 31084), (50, 31096), (63, 31255), (69, 31321), (70, 31324), (73, 31363), (82, 31561), (83, 31597), (90, 31762),

Gene: SrishMeg2525_82 Start: 29445, Stop: 31172, Start Num: 1

Candidate Starts for SrishMeg2525_82:

(Start: 1 @29445 has 162 MA's), (Start: 2 @29478 has 1 MA's), (6, 29532), (7, 29535), (10, 29628), (12, 29703), (15, 29871), (16, 29892), (17, 29937), (23, 30015), (24, 30030), (25, 30054), (27, 30087), (28, 30126), (29, 30129), (30, 30144), (31, 30195), (32, 30246), (34, 30273), (35, 30336), (36, 30342), (38, 30384), (44, 30480), (50, 30492), (63, 30651), (69, 30717), (70, 30720), (73, 30759), (82, 30957), (83, 30993), (90, 31158),

Gene: StephanieG_83 Start: 30433, Stop: 32160, Start Num: 1

Candidate Starts for StephanieG_83:

(Start: 1 @30433 has 162 MA's), (Start: 2 @30466 has 1 MA's), (6, 30520), (7, 30523), (12, 30691), (15, 30859), (16, 30880), (17, 30925), (23, 31003), (24, 31018), (25, 31042), (27, 31075), (28, 31114), (29, 31117), (30, 31132), (31, 31183), (32, 31234), (34, 31261), (35, 31324), (38, 31372), (44, 31468), (50, 31480), (63, 31639), (69, 31705), (70, 31708), (73, 31747), (82, 31945), (83, 31981), (90, 32146),

Gene: Stubby_76 Start: 28152, Stop: 29861, Start Num: 1

Candidate Starts for Stubby_76:

(Start: 1 @28152 has 162 MA's), (6, 28239), (7, 28242), (10, 28335), (12, 28410), (15, 28578), (16, 28599), (17, 28644), (23, 28722), (24, 28737), (25, 28761), (27, 28794), (28, 28833), (29, 28836), (33, 28956), (35, 29043), (36, 29049), (37, 29067), (38, 29091), (44, 29169), (63, 29340), (69, 29406), (70, 29409), (73, 29448), (82, 29646), (83, 29682), (90, 29847),

Gene: StubbySaigey_84 Start: 28374, Stop: 30101, Start Num: 1

Candidate Starts for StubbySaigey_84:

(Start: 1 @28374 has 162 MA's), (Start: 2 @28407 has 1 MA's), (6, 28461), (7, 28464), (10, 28557), (12, 28632), (15, 28800), (16, 28821), (17, 28866), (23, 28944), (24, 28959), (25, 28983), (27, 29016), (28, 29055), (29, 29058), (30, 29073), (31, 29124), (32, 29175), (34, 29202), (35, 29265), (36, 29271), (38, 29313), (44, 29409), (50, 29421), (63, 29580), (69, 29646), (70, 29649), (73, 29688), (82, 29886), (83, 29922), (90, 30087),

Gene: Teardrop_83 Start: 28852, Stop: 30579, Start Num: 1

Candidate Starts for Teardrop_83:

(Start: 1 @28852 has 162 MA's), (Start: 2 @28885 has 1 MA's), (6, 28939), (7, 28942), (10, 29035), (12, 29110), (15, 29278), (16, 29299), (17, 29344), (23, 29422), (24, 29437), (25, 29461), (27, 29494), (28, 29533), (29, 29536), (30, 29551), (31, 29602), (32, 29653), (34, 29680), (35, 29743), (36, 29749), (38, 29791), (44, 29887), (50, 29899), (63, 30058), (69, 30124), (70, 30127), (73, 30166), (82, 30364), (83, 30400), (90, 30565),

Gene: TinyTim_83 Start: 29734, Stop: 31461, Start Num: 1

Candidate Starts for TinyTim_83:

(Start: 1 @29734 has 162 MA's), (Start: 2 @29767 has 1 MA's), (6, 29821), (7, 29824), (10, 29917), (12, 29992), (15, 30160), (16, 30181), (17, 30226), (23, 30304), (24, 30319), (25, 30343), (27, 30376), (28, 30415), (29, 30418), (30, 30433), (31, 30484), (32, 30535), (34, 30562), (35, 30625), (36, 30631), (38, 30673), (44, 30769), (50, 30781), (63, 30940), (69, 31006), (70, 31009), (73, 31048), (82, 31246), (83, 31282), (90, 31447),

Gene: Tortoise16_81 Start: 29500, Stop: 31227, Start Num: 1

Candidate Starts for Tortoise16_81:

(Start: 1 @29500 has 162 MA's), (Start: 2 @29533 has 1 MA's), (6, 29587), (7, 29590), (12, 29758), (15, 29926), (16, 29947), (17, 29992), (23, 30070), (24, 30085), (25, 30109), (27, 30142), (28, 30181), (29, 30184), (30, 30199), (31, 30250), (32, 30301), (34, 30328), (35, 30391), (36, 30397), (38, 30439), (44, 30535), (50, 30547), (63, 30706), (69, 30772), (70, 30775), (73, 30814), (82, 31012), (83, 31048), (90, 31213),

Gene: Trinitium_79 Start: 28159, Stop: 29886, Start Num: 1

Candidate Starts for Trinitium_79:

(Start: 1 @28159 has 162 MA's), (Start: 2 @28192 has 1 MA's), (6, 28246), (7, 28249), (10, 28342), (12, 28417), (15, 28585), (16, 28606), (17, 28651), (23, 28729), (24, 28744), (25, 28768), (27, 28801), (28, 28840), (29, 28843), (30, 28858), (31, 28909), (32, 28960), (34, 28987), (35, 29050), (36, 29056), (38, 29098), (44, 29194), (50, 29206), (63, 29365), (69, 29431), (70, 29434), (73, 29473), (82, 29671), (83, 29707), (90, 29872),

Gene: Turret_78 Start: 27825, Stop: 29552, Start Num: 1

Candidate Starts for Turret_78:

(Start: 1 @27825 has 162 MA's), (Start: 2 @27858 has 1 MA's), (6, 27912), (7, 27915), (10, 28008), (12, 28083), (15, 28251), (16, 28272), (17, 28317), (23, 28395), (24, 28410), (25, 28434), (27, 28467), (28, 28506), (29, 28509), (30, 28524), (31, 28575), (32, 28626), (34, 28653), (35, 28716), (36, 28722), (38, 28764), (44, 28860), (50, 28872), (63, 29031), (69, 29097), (70, 29100), (73, 29139), (82, 29337), (83, 29373), (90, 29538),

Gene: Tyke_85 Start: 30404, Stop: 32131, Start Num: 1

Candidate Starts for Tyke_85:

(Start: 1 @30404 has 162 MA's), (Start: 2 @30437 has 1 MA's), (6, 30491), (7, 30494), (12, 30662), (15, 30830), (16, 30851), (17, 30896), (23, 30974), (24, 30989), (25, 31013), (27, 31046), (28, 31085), (29, 31088), (30, 31103), (31, 31154), (32, 31205), (34, 31232), (35, 31295), (36, 31301), (38, 31343), (44, 31439), (50, 31451), (63, 31610), (69, 31676), (70, 31679), (73, 31718), (82, 31916), (83, 31952), (90, 32117),

Gene: ValleyTerrace_83 Start: 28644, Stop: 30371, Start Num: 1

Candidate Starts for ValleyTerrace_83:

(Start: 1 @28644 has 162 MA's), (Start: 2 @28677 has 1 MA's), (6, 28731), (7, 28734), (10, 28827), (12, 28902), (15, 29070), (16, 29091), (17, 29136), (23, 29214), (24, 29229), (25, 29253), (27, 29286), (28, 29325), (29, 29328), (30, 29343), (31, 29394), (32, 29445), (34, 29472), (35, 29535), (36, 29541), (38, 29583), (44, 29679), (50, 29691), (63, 29850), (69, 29916), (70, 29919), (73, 29958), (82, 30156), (83, 30192), (90, 30357),

Gene: Wally_81 Start: 28289, Stop: 30016, Start Num: 1

Candidate Starts for Wally_81:

(Start: 1 @28289 has 162 MA's), (Start: 2 @28322 has 1 MA's), (6, 28376), (7, 28379), (10, 28472), (12, 28547), (15, 28715), (16, 28736), (17, 28781), (23, 28859), (24, 28874), (25, 28898), (27, 28931), (28, 28970), (29, 28973), (30, 28988), (31, 29039), (32, 29090), (34, 29117), (35, 29180), (36, 29186), (38, 29228), (44, 29324), (50, 29336), (63, 29495), (69, 29561), (70, 29564), (73, 29603), (82, 29801), (83, 29837), (90, 30002),

Gene: Willis_84 Start: 29629, Stop: 31356, Start Num: 1

Candidate Starts for Willis_84:

(Start: 1 @29629 has 162 MA's), (Start: 2 @29662 has 1 MA's), (6, 29716), (7, 29719), (10, 29812), (12, 29887), (15, 30055), (16, 30076), (17, 30121), (23, 30199), (24, 30214), (25, 30238), (27, 30271), (28, 30310), (29, 30313), (30, 30328), (31, 30379), (32, 30430), (34, 30457), (35, 30520), (36, 30526), (38, 30568), (44, 30664), (50, 30676), (63, 30835), (69, 30901), (70, 30904), (73, 30943), (82, 31141), (83, 31177), (90, 31342),

Gene: Yassified_79 Start: 28144, Stop: 29871, Start Num: 1

Candidate Starts for Yassified_79:

(Start: 1 @28144 has 162 MA's), (Start: 2 @28177 has 1 MA's), (6, 28231), (7, 28234), (10, 28327), (12, 28402), (15, 28570), (16, 28591), (17, 28636), (23, 28714), (24, 28729), (25, 28753), (27, 28786), (28, 28825), (29, 28828), (30, 28843), (31, 28894), (32, 28945), (34, 28972), (35, 29035), (36, 29041), (38, 29083), (44, 29179), (50, 29191), (63, 29350), (69, 29416), (70, 29419), (73, 29458), (82, 29656), (83, 29692), (90, 29857),

Gene: YemiJoy2021_84 Start: 29731, Stop: 31458, Start Num: 1

Candidate Starts for YemiJoy2021_84:

(Start: 1 @29731 has 162 MA's), (Start: 2 @29764 has 1 MA's), (6, 29818), (7, 29821), (10, 29914), (12, 29989), (15, 30157), (16, 30178), (17, 30223), (23, 30301), (24, 30316), (25, 30340), (27, 30373), (28, 30412), (29, 30415), (30, 30430), (31, 30481), (32, 30532), (34, 30559), (35, 30622), (36, 30628), (38, 30670), (44, 30766), (50, 30778), (63, 30937), (69, 31003), (70, 31006), (73, 31045), (82, 31243), (83, 31279), (90, 31444),

Gene: YoungMoneyMata_83 Start: 28395, Stop: 30122, Start Num: 1

Candidate Starts for YoungMoneyMata_83:

(Start: 1 @28395 has 162 MA's), (Start: 2 @28428 has 1 MA's), (6, 28482), (7, 28485), (10, 28578), (12, 28653), (15, 28821), (16, 28842), (17, 28887), (23, 28965), (24, 28980), (25, 29004), (27, 29037), (28, 29076), (29, 29079), (30, 29094), (31, 29145), (32, 29196), (34, 29223), (35, 29286), (36, 29292), (38, 29334), (44, 29430), (50, 29442), (63, 29601), (69, 29667), (70, 29670), (73, 29709), (82, 29907), (83, 29943), (90, 30108),

Gene: Yucca_82 Start: 29656, Stop: 31383, Start Num: 1

Candidate Starts for Yucca_82:

(Start: 1 @29656 has 162 MA's), (Start: 2 @29689 has 1 MA's), (6, 29743), (7, 29746), (10, 29839), (12, 29914), (15, 30082), (16, 30103), (17, 30148), (23, 30226), (24, 30241), (25, 30265), (27, 30298),

(28, 30337), (29, 30340), (30, 30355), (31, 30406), (32, 30457), (34, 30484), (35, 30547), (36, 30553), (38, 30595), (44, 30691), (50, 30703), (63, 30862), (69, 30928), (70, 30931), (73, 30970), (82, 31168), (83, 31204), (90, 31369),

Gene: Zalkecks_84 Start: 29419, Stop: 31146, Start Num: 1

Candidate Starts for Zalkecks_84:

(Start: 1 @29419 has 162 MA's), (Start: 2 @29452 has 1 MA's), (6, 29506), (7, 29509), (10, 29602), (12, 29677), (15, 29845), (16, 29866), (17, 29911), (23, 29989), (24, 30004), (25, 30028), (27, 30061), (28, 30100), (29, 30103), (30, 30118), (31, 30169), (32, 30220), (34, 30247), (35, 30310), (36, 30316), (38, 30358), (44, 30454), (50, 30466), (63, 30625), (69, 30691), (70, 30694), (73, 30733), (82, 30931), (83, 30967), (90, 31132),

Gene: Zeenon_84 Start: 29721, Stop: 31448, Start Num: 1

Candidate Starts for Zeenon_84:

(Start: 1 @29721 has 162 MA's), (Start: 2 @29754 has 1 MA's), (6, 29808), (7, 29811), (10, 29904), (12, 29979), (15, 30147), (16, 30168), (17, 30213), (23, 30291), (24, 30306), (25, 30330), (27, 30363), (28, 30402), (29, 30405), (30, 30420), (31, 30471), (32, 30522), (34, 30549), (35, 30612), (36, 30618), (38, 30660), (44, 30756), (50, 30768), (63, 30927), (69, 30993), (70, 30996), (73, 31035), (82, 31233), (83, 31269), (90, 31434),

Gene: ZygoTaiga_82 Start: 29735, Stop: 31462, Start Num: 1

Candidate Starts for ZygoTaiga_82:

(Start: 1 @29735 has 162 MA's), (Start: 2 @29768 has 1 MA's), (6, 29822), (7, 29825), (10, 29918), (12, 29993), (15, 30161), (16, 30182), (17, 30227), (23, 30305), (24, 30320), (25, 30344), (27, 30377), (28, 30416), (29, 30419), (30, 30434), (31, 30485), (32, 30536), (34, 30563), (35, 30626), (36, 30632), (38, 30674), (44, 30770), (50, 30782), (63, 30941), (69, 31007), (70, 31010), (73, 31049), (82, 31247), (83, 31283), (90, 31448),