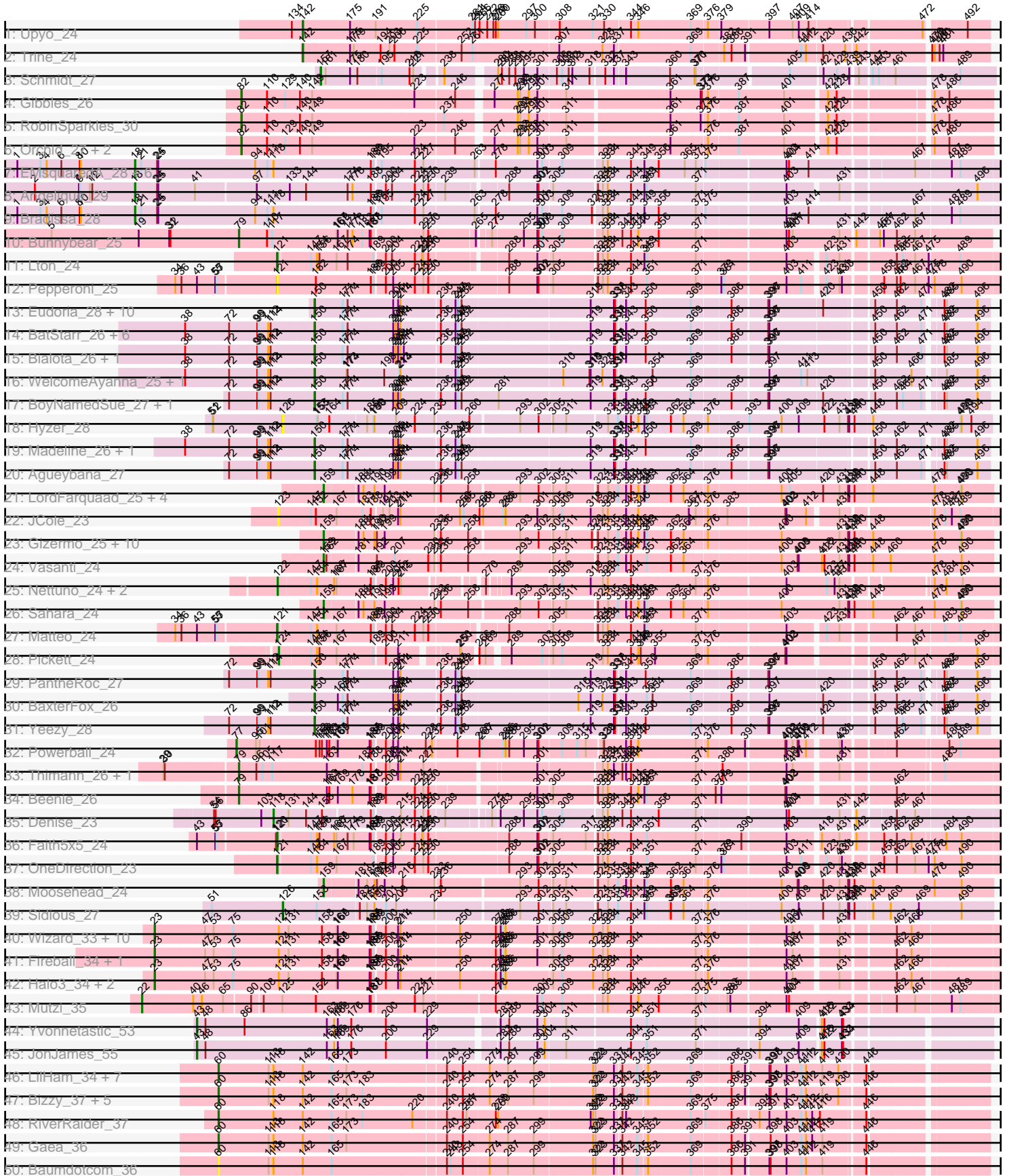
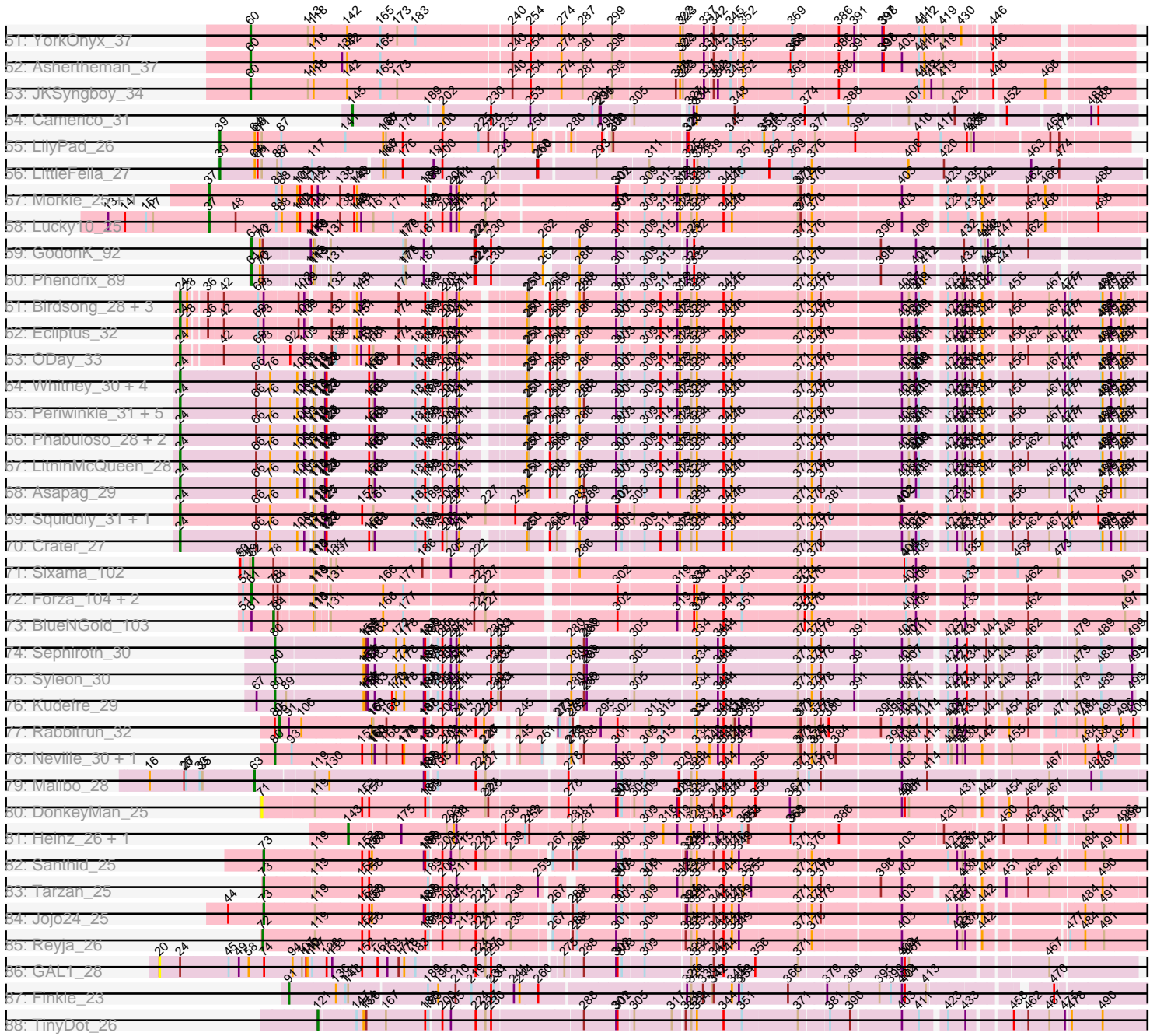


Pham 193770



Pham 193770



Note: Tracks are now grouped by subcluster and scaled. Switching in subcluster is indicated by changes in track color. Track scale is now set by default to display the region 30 bp upstream of start 1 to 30 bp downstream of the last possible start. If this default region is judged to be packed too tightly with annotated starts, the track will be further scaled to only show that region of the ORF with annotated starts. This action will be indicated by adding "Zoomed" to the title. For starts, yellow indicates the location of called starts comprised solely of Glimmer/GeneMark auto-annotations, green indicates the location of called starts with at least 1 manual gene annotation.

Pham 193770 Report

This analysis was run 11/02/24 on database version 579.

Pham number 193770 has 178 members, 17 are drafts.

Phages represented in each track:

- Track 1 : Upyo_24
- Track 2 : Trine_24
- Track 3 : Schmidt_27
- Track 4 : Gibbles_26
- Track 5 : RobinSparkles_30
- Track 6 : Orchid_27, Kampe_27, PatrickStar_27
- Track 7 : EMSquaredA_28, Pollux_28, Marteenaa_28, BritBrat_28, Floral_28, Lilas_28, EnalisNailo_28
- Track 8 : Angelique_29
- Track 9 : Bradissa_28
- Track 10 : Bunnybear_25
- Track 11 : Lton_24
- Track 12 : Pepperoni_25
- Track 13 : Eudoria_28, Polly_25, Suscepit_28, Tayonia_28, Antonio_28, Neobush_28, Maridalia_27, Trumpet_28, Manasvini_28, Kita_28, Zameen_28
- Track 14 : BatStarr_26, Nymphadora_26, Hugley_26, TimTam_26, Bosnia_26, Herod_26, Eviarto_26
- Track 15 : Bialota_26, Zirinka_26
- Track 16 : WelcomeAyanna_25, ThankyouJordi_25
- Track 17 : BoyNamedSue_27, AlumE_27
- Track 18 : Hyzer_28
- Track 19 : Madeline_26, Ohgeesy_26
- Track 20 : Agueybana_27
- Track 21 : LordFarquaad_25, Attis_25, Yeet412_25, Bjanes7_25, SoilAssassin_25
- Track 22 : JCole_23
- Track 23 : Gizermo_25, Clap_25, Savage_25, GemG_25, Haley23_25, Cynthia_25, Ebert_25, Sproutie_25, Mocha12_25, Whiteclaw_25, TuertoX_25
- Track 24 : Vasanti_24
- Track 25 : Nettuno_24, Lamberg_24, EdnaMode_24
- Track 26 : Sahara_24
- Track 27 : Matteo_24
- Track 28 : Pickett_24
- Track 29 : PantheRoc_27
- Track 30 : BaxterFox_26
- Track 31 : Yeezy_28
- Track 32 : Powerball_24
- Track 33 : Thimann_26, Suerte_24

- Track 34 : Beenie_26
- Track 35 : Denise_23
- Track 36 : Faith5x5_24
- Track 37 : OneDirection_23
- Track 38 : Moosehead_24
- Track 39 : Sidious_27
- Track 40 : Wizard_33, SmokingBunny_33, Gezellig_34, PullumCavea_33, Jambalaya_33, KimmyK_35, Phlop_33, Valary_36, Nubi_33, Togo_33, Savbucketdawg_33
- Track 41 : Fireball_34, TillyBobJoe_33
- Track 42 : Halo3_34, Salvador_33, Evamon_33
- Track 43 : Mutzi_35
- Track 44 : Yvonnetastic_53
- Track 45 : JonJames_55
- Track 46 : LilHam_34, Ribeye_37, Baddon_36, Derg_34, StorminNorm_36, Kwobi_37, Tycho_36, SchottB_35
- Track 47 : Bizzy_37, Saronaya_36, Flatwoods_37, Tangerine_36, Gustavo_36, Kroos_37
- Track 48 : RiverRaider_37
- Track 49 : Gaea_36
- Track 50 : Baumdotcom_36
- Track 51 : YorkOnyx_37
- Track 52 : Ashertheman_37
- Track 53 : JKSyngboy_34
- Track 54 : Camerico_31
- Track 55 : LilyPad_26
- Track 56 : LittleFella_27
- Track 57 : Morkie_25, PhorbPhlower_25
- Track 58 : Lucky10_25
- Track 59 : GodonK_92
- Track 60 : Phendrix_89
- Track 61 : Birdsong_28, BearBQ_28, Kuwabara_28, MortyNRick_28
- Track 62 : Ecliptus_32
- Track 63 : ODay_33
- Track 64 : Whitney_30, Kamaru_29, Getalong_30, Budski_29, Holliday_29
- Track 65 : Periwinkle_31, Phistory_30, Apricot_28, Horus_29, Frickyeah_28, Leroy_29
- Track 66 : Phabuloso_28, Lutum_29, Kenna_28
- Track 67 : LitninMcQueen_28
- Track 68 : Asapag_29
- Track 69 : Squiddly_31, Spooky_29
- Track 70 : Crater_27
- Track 71 : Sixama_102
- Track 72 : Forza_104, Boopy_104, Mareelih_102
- Track 73 : BlueNGold_103
- Track 74 : Sephiroth_30
- Track 75 : Syleon_30
- Track 76 : Kudrefre_29
- Track 77 : Rabbitrun_32
- Track 78 : Neville_30, Trax_30
- Track 79 : Malibo_28
- Track 80 : DonkeyMan_25
- Track 81 : Heinz_26, Hibiscus_25

- Track 82 : Santhid_25
- Track 83 : Tarzan_25
- Track 84 : Jojo24_25
- Track 85 : Reyja_26
- Track 86 : GAL1_28
- Track 87 : Finkle_23
- Track 88 : TinyDot_26

Summary of Final Annotations (See graph section above for start numbers):

The start number called the most often in the published annotations is 150, it was called in 29 of the 161 non-draft genes in the pham.

Genes that call this "Most Annotated" start:

- Agueybana_27, AlumE_27, Antonio_28, BatStarr_26, BaxterFox_26, Bialota_26, Bosnia_26, BoyNamedSue_27, Eudoria_28, Eviarto_26, Herod_26, Hugley_26, Kita_28, Madeline_26, Manasvini_28, Maridalia_27, Neobush_28, Nymphadora_26, Ohgeesy_26, PantheRoc_27, Polly_25, Suscepit_28, Tayonia_28, ThankyouJordi_25, TimTam_26, Trumpet_28, WelcomeAyanna_25, Yeezy_28, Zameen_28, Zirinka_26,

Genes that have the "Most Annotated" start but do not call it:

-

Genes that do not have the "Most Annotated" start:

- Angelique_29, Apricot_28, Asapag_29, Ashertheman_37, Attis_25, Baddon_36, Baumdotcom_36, BearBQ_28, Beenie_26, Birdsong_28, Bizzy_37, Bjanes7_25, BlueNGold_103, Boopy_104, Bradissa_28, BritBrat_28, Budski_29, Bunnybear_25, Camerico_31, Clap_25, Crater_27, Cynthia_25, Denise_23, Derg_34, DonkeyMan_25, EMsquaredA_28, Ebert_25, Ecliptus_32, EdnaMode_24, EnalisNailo_28, Evamon_33, Faith5x5_24, Finkle_23, Fireball_34, Flatwoods_37, Floral_28, Forza_104, Frickyeah_28, GAL1_28, Gaea_36, GemG_25, Getalong_30, Gezellig_34, Gibbles_26, Gizermo_25, GodonK_92, Gustavo_36, Haley23_25, Halo3_34, Heinz_26, Hibiscus_25, Holliday_29, Horus_29, Hyzer_28, JCole_23, JKSyngboy_34, Jambalaya_33, Jojo24_25, JonJames_55, Kamaru_29, Kampe_27, Kenna_28, KimmyK_35, Kroos_37, Kudrefre_29, Kuwabara_28, Kwobi_37, Lamberg_24, Leroy_29, LilHam_34, Lilas_28, LilyPad_26, LitninMcQueen_28, LittleFella_27, LordFarquaad_25, Lton_24, Lucky10_25, Lutum_29, Malibo_28, Mareelih_102, Marteena_28, Matteo_24, Mocha12_25, Moosehead_24, Morkie_25, MortyNRick_28, Mutzi_35, Nettuno_24, Neville_30, Nubi_33, ODay_33, OneDirection_23, Orchid_27, PatrickStar_27, Pepperoni_25, Periwinkle_31, Phabuloso_28, Phendrix_89, Phistory_30, Phlop_33, PhorbesPhlower_25, Pickett_24, Pollux_28, Powerball_24, PullumCavea_33, Rabbitrun_32, Reyja_26, Ribeye_37, RiverRaider_37, RobinSparkles_30, Sahara_24, Salvador_33, Santhid_25, Saronaya_36, Savage_25, Savbucketdawg_33, Schmidt_27, SchottB_35, Sephiroth_30, Sidious_27, Sixama_102, SmokingBunny_33, SoilAssassin_25, Spooky_29, Sproutie_25, Squiddly_31, StorminNorm_36, Suerte_24, Syleon_30, Tangerine_36, Tarzan_25, Thimann_26, TillyBobJoe_33, TinyDot_26, Togo_33, Trax_30, Trine_24, TuertoX_25, Tycho_36, Upyo_24, Valary_36, Vasanti_24, Whiteclaw_25, Whitney_30, Wizard_33, Yeet412_25,

YorkOnyx_37, Yvonnetastic_53,

Summary by start number:

Start 18:

- Found in 9 of 178 (5.1%) of genes in pham
- Manual Annotations of this start: 9 of 161
- Called 100.0% of time when present
- Phage (with cluster) where this start called: Angelique_29 (CY1), Bradissa_28 (CY1), BritBrat_28 (CY2), EMSquaredA_28 (CY1), EnalisNailo_28 (CY1), Floral_28 (CY1), Lilas_28 (CY1), Marteenaa_28 (CY1), Pollux_28 (CY1),

Start 20:

- Found in 1 of 178 (0.6%) of genes in pham
- No Manual Annotations of this start.
- Called 100.0% of time when present
- Phage (with cluster) where this start called: GAL1_28 (singleton),

Start 22:

- Found in 1 of 178 (0.6%) of genes in pham
- Manual Annotations of this start: 1 of 161
- Called 100.0% of time when present
- Phage (with cluster) where this start called: Mutzi_35 (DC1),

Start 23:

- Found in 16 of 178 (9.0%) of genes in pham
- Manual Annotations of this start: 15 of 161
- Called 100.0% of time when present
- Phage (with cluster) where this start called: Evamon_33 (DC1), Fireball_34 (DC1), Gezellig_34 (DC1), Halo3_34 (DC1), Jambalaya_33 (DC1), KimmyK_35 (DC1), Nubi_33 (DC1), Phlop_33 (DC1), PullumCavea_33 (DC1), Salvador_33 (DC1), Savbucketdawg_33 (DC1), SmokingBunny_33 (DC1), TillyBobJoe_33 (DC1), Togo_33 (DC1), Valary_36 (DC1), Wizard_33 (DC1),

Start 24:

- Found in 35 of 178 (19.7%) of genes in pham
- Manual Annotations of this start: 23 of 161
- Called 71.4% of time when present
- Phage (with cluster) where this start called: Apricot_28 (DN3), Asapag_29 (DN1), BearBQ_28 (DN), Birdsong_28 (DN), Budski_29 (DN), Crater_27 (DN3), Ecliptus_32 (DN), Frickyeah_28 (DN1), Getalong_30 (DN1), Holliday_29 (DN1), Horus_29 (DN1), Kamaru_29 (DN1), Kenna_28 (DN1), Kuwabara_28 (DN4), Leroy_29 (DN1), LitninMcQueen_28 (DN1), Lutum_29 (DN1), MortyNRick_28 (DN), ODay_33 (DN), Periwinkle_31 (DN1), Phabuloso_28 (DN1), Phistory_30 (DN1), Spooky_29 (DN2), Squiddly_31 (DN2), Whitney_30 (DN1),

Start 37:

- Found in 3 of 178 (1.7%) of genes in pham
- Manual Annotations of this start: 3 of 161
- Called 100.0% of time when present
- Phage (with cluster) where this start called: Lucky10_25 (DH), Morkie_25 (DH), PhorbesPhlower_25 (DH),

Start 39:

- Found in 2 of 178 (1.1%) of genes in pham
- Manual Annotations of this start: 2 of 161
- Called 100.0% of time when present
- Phage (with cluster) where this start called: LilyPad_26 (DG1), LittleFella_27 (DG2),

Start 43:

- Found in 5 of 178 (2.8%) of genes in pham
- Manual Annotations of this start: 2 of 161
- Called 40.0% of time when present
- Phage (with cluster) where this start called: JonJames_55 (DD), Yvonnetastic_53 (DD),

Start 60:

- Found in 20 of 178 (11.2%) of genes in pham
- Manual Annotations of this start: 13 of 161
- Called 100.0% of time when present
- Phage (with cluster) where this start called: Ashertheman_37 (DE1), Baddon_36 (DE1), Baumdotcom_36 (DE1), Bizzy_37 (DE1), Derg_34 (DE1), Flatwoods_37 (DE1), Gaea_36 (DE1), Gustavo_36 (DE1), JKSyngboy_34 (DE1), Kroos_37 (DE1), Kwobi_37 (DE1), LilHam_34 (DE1), Ribeye_37 (DE1), RiverRaider_37 (DE1), Saronaya_36 (DE1), SchottB_35 (DE1), StorminNorm_36 (DE1), Tangerine_36 (DE1), Tycho_36 (DE1), YorkOnyx_37 (DE1),

Start 61:

- Found in 6 of 178 (3.4%) of genes in pham
- Manual Annotations of this start: 5 of 161
- Called 83.3% of time when present
- Phage (with cluster) where this start called: Boopy_104 (DS), Forza_104 (DS), GodonK_92 (DK), Mareelih_102 (DS), Phendrix_89 (DK),

Start 62:

- Found in 1 of 178 (0.6%) of genes in pham
- Manual Annotations of this start: 1 of 161
- Called 100.0% of time when present
- Phage (with cluster) where this start called: Sixama_102 (DS),

Start 63:

- Found in 1 of 178 (0.6%) of genes in pham
- Manual Annotations of this start: 1 of 161
- Called 100.0% of time when present
- Phage (with cluster) where this start called: Malibo_28 (DW),

Start 71:

- Found in 3 of 178 (1.7%) of genes in pham
- No Manual Annotations of this start.
- Called 33.3% of time when present
- Phage (with cluster) where this start called: DonkeyMan_25 (DY),

Start 72:

- Found in 21 of 178 (11.8%) of genes in pham
- Manual Annotations of this start: 1 of 161
- Called 4.8% of time when present

- Phage (with cluster) where this start called: Reyja_26 (DY),

Start 73:

- Found in 9 of 178 (5.1%) of genes in pham
- Manual Annotations of this start: 3 of 161
- Called 33.3% of time when present
- Phage (with cluster) where this start called: Jojo24_25 (DY), Santhid_25 (DY), Tarzan_25 (DY),

Start 77:

- Found in 1 of 178 (0.6%) of genes in pham
- Manual Annotations of this start: 1 of 161
- Called 100.0% of time when present
- Phage (with cluster) where this start called: Powerball_24 (CZ4),

Start 78:

- Found in 5 of 178 (2.8%) of genes in pham
- Manual Annotations of this start: 1 of 161
- Called 20.0% of time when present
- Phage (with cluster) where this start called: BlueNGold_103 (DS),

Start 79:

- Found in 4 of 178 (2.2%) of genes in pham
- Manual Annotations of this start: 4 of 161
- Called 100.0% of time when present
- Phage (with cluster) where this start called: Beenie_26 (CZ4), Bunnybear_25 (CZ), Suerte_24 (CZ4), Thimann_26 (CZ4),

Start 80:

- Found in 6 of 178 (3.4%) of genes in pham
- Manual Annotations of this start: 5 of 161
- Called 83.3% of time when present
- Phage (with cluster) where this start called: Kudrefre_29 (DU1), Neville_30 (DU2), Sephiroth_30 (DU1), Syleon_30 (DU1), Trax_30 (DU2),

Start 82:

- Found in 5 of 178 (2.8%) of genes in pham
- Manual Annotations of this start: 5 of 161
- Called 100.0% of time when present
- Phage (with cluster) where this start called: Gibbles_26 (CX), Kampe_27 (CX), Orchid_27 (CX), PatrickStar_27 (CX), RobinSparkles_30 (CX),

Start 85:

- Found in 1 of 178 (0.6%) of genes in pham
- Manual Annotations of this start: 1 of 161
- Called 100.0% of time when present
- Phage (with cluster) where this start called: Rabbitrun_32 (DU2),

Start 91:

- Found in 2 of 178 (1.1%) of genes in pham
- Manual Annotations of this start: 1 of 161
- Called 50.0% of time when present
- Phage (with cluster) where this start called: Finkle_23 (singleton),

Start 118:

- Found in 55 of 178 (30.9%) of genes in pham
- Manual Annotations of this start: 1 of 161
- Called 1.8% of time when present
- Phage (with cluster) where this start called: Denise_23 (CZ5),

Start 121:

- Found in 9 of 178 (5.1%) of genes in pham
- Manual Annotations of this start: 5 of 161
- Called 66.7% of time when present
- Phage (with cluster) where this start called: Faith5x5_24 (CZ6), Lton_24 (CZ), Matteo_24 (CZ2), OneDirection_23 (CZ6), Pepperoni_25 (CZ), TinyDot_26 (singleton),

Start 122:

- Found in 3 of 178 (1.7%) of genes in pham
- Manual Annotations of this start: 3 of 161
- Called 100.0% of time when present
- Phage (with cluster) where this start called: EdnaMode_24 (CZ2), Lamberg_24 (CZ2), Nettuno_24 (CZ2),

Start 123:

- Found in 1 of 178 (0.6%) of genes in pham
- No Manual Annotations of this start.
- Called 100.0% of time when present
- Phage (with cluster) where this start called: JCole_23 (CZ2),

Start 124:

- Found in 17 of 178 (9.6%) of genes in pham
- Manual Annotations of this start: 1 of 161
- Called 5.9% of time when present
- Phage (with cluster) where this start called: Pickett_24 (CZ2),

Start 126:

- Found in 2 of 178 (1.1%) of genes in pham
- Manual Annotations of this start: 1 of 161
- Called 100.0% of time when present
- Phage (with cluster) where this start called: Hyzer_28 (CZ1), Sidious_27 (CZ7),

Start 142:

- Found in 22 of 178 (12.4%) of genes in pham
- Manual Annotations of this start: 2 of 161
- Called 9.1% of time when present
- Phage (with cluster) where this start called: Trine_24 (CD), Upyo_24 (CD),

Start 143:

- Found in 3 of 178 (1.7%) of genes in pham
- Manual Annotations of this start: 1 of 161
- Called 66.7% of time when present
- Phage (with cluster) where this start called: Heinz_26 (DY), Hibiscus_25 (DY),

Start 145:

- Found in 1 of 178 (0.6%) of genes in pham
- Manual Annotations of this start: 1 of 161
- Called 100.0% of time when present
- Phage (with cluster) where this start called: Camerico_31 (DF),

Start 150:

- Found in 30 of 178 (16.9%) of genes in pham
- Manual Annotations of this start: 29 of 161
- Called 100.0% of time when present
- Phage (with cluster) where this start called: Agueybana_27 (CZ1), AlumE_27 (CZ1), Antonio_28 (CZ1), BatStarr_26 (CZ1), BaxterFox_26 (CZ3), Bialota_26 (CZ1), Bosnia_26 (CZ1), BoyNamedSue_27 (CZ1), Eudoria_28 (CZ1), Eviarto_26 (CZ1), Herod_26 (CZ1), Hugley_26 (CZ1), Kita_28 (CZ1), Madeline_26 (CZ1), Manasvini_28 (CZ1), Maridalia_27 (CZ1), Neobush_28 (CZ1), Nymphadora_26 (CZ1), Ohgeesy_26 (CZ), PantheRoc_27 (CZ3), Polly_25 (CZ1), Suscepit_28 (CZ1), Tayonia_28 (CZ1), ThankyouJordi_25 (CZ1), TimTam_26 (CZ1), Trumpet_28 (CZ1), WelcomeAyanna_25 (CZ1), Yeezy_28 (CZ3), Zameen_28 (CZ1), Zirinka_26 (CZ1),

Start 157:

- Found in 4 of 178 (2.2%) of genes in pham
- Manual Annotations of this start: 1 of 161
- Called 25.0% of time when present
- Phage (with cluster) where this start called: Schmidt_27 (CU4),

Start 159:

- Found in 19 of 178 (10.7%) of genes in pham
- Manual Annotations of this start: 19 of 161
- Called 100.0% of time when present
- Phage (with cluster) where this start called: Attis_25 (CZ2), Bjaner7_25 (CZ2), Clap_25 (CZ2), Cynthia_25 (CZ2), Ebert_25 (CZ2), GemG_25 (CZ2), Gizermo_25 (CZ2), Haley23_25 (CZ2), LordFarquaad_25 (CZ2), Mocha12_25 (CZ2), Moosehead_24 (CZ6), Sahara_24 (CZ2), Savage_25 (CZ2), SoilAssassin_25 (CZ2), Sproutie_25 (CZ2), TuertoX_25 (CZ2), Vasanti_24 (CZ2), Whiteclaw_25 (CZ2), Yeet412_25 (CZ2),

Summary by clusters:

There are 32 clusters represented in this pham: DN, singleton, DK, DH, CZ2, CZ3, DD, CZ1, CZ6, CZ7, CZ4, CZ5, DY, DW, DS, CU4, DN4, DF, DN1, DN3, DN2, DU1, DU2, CY2, CY1, CD, DG2, CZ, CX, DC1, DE1, DG1,

Info for manual annotations of cluster CD:

- Start number 142 was manually annotated 2 times for cluster CD.

Info for manual annotations of cluster CU4:

- Start number 157 was manually annotated 1 time for cluster CU4.

Info for manual annotations of cluster CX:

- Start number 82 was manually annotated 5 times for cluster CX.

Info for manual annotations of cluster CY1:

- Start number 18 was manually annotated 8 times for cluster CY1.

Info for manual annotations of cluster CY2:

- Start number 18 was manually annotated 1 time for cluster CY2.

Info for manual annotations of cluster CZ:

- Start number 79 was manually annotated 1 time for cluster CZ.
- Start number 121 was manually annotated 1 time for cluster CZ.
- Start number 150 was manually annotated 1 time for cluster CZ.

Info for manual annotations of cluster CZ1:

- Start number 150 was manually annotated 25 times for cluster CZ1.

Info for manual annotations of cluster CZ2:

- Start number 121 was manually annotated 1 time for cluster CZ2.
- Start number 122 was manually annotated 3 times for cluster CZ2.
- Start number 124 was manually annotated 1 time for cluster CZ2.
- Start number 159 was manually annotated 18 times for cluster CZ2.

Info for manual annotations of cluster CZ3:

- Start number 150 was manually annotated 3 times for cluster CZ3.

Info for manual annotations of cluster CZ4:

- Start number 77 was manually annotated 1 time for cluster CZ4.
- Start number 79 was manually annotated 3 times for cluster CZ4.

Info for manual annotations of cluster CZ5:

- Start number 118 was manually annotated 1 time for cluster CZ5.

Info for manual annotations of cluster CZ6:

- Start number 121 was manually annotated 2 times for cluster CZ6.
- Start number 159 was manually annotated 1 time for cluster CZ6.

Info for manual annotations of cluster CZ7:

- Start number 126 was manually annotated 1 time for cluster CZ7.

Info for manual annotations of cluster DC1:

- Start number 22 was manually annotated 1 time for cluster DC1.
- Start number 23 was manually annotated 15 times for cluster DC1.

Info for manual annotations of cluster DD:

- Start number 43 was manually annotated 2 times for cluster DD.

Info for manual annotations of cluster DE1:

- Start number 60 was manually annotated 13 times for cluster DE1.

Info for manual annotations of cluster DF:

- Start number 145 was manually annotated 1 time for cluster DF.

Info for manual annotations of cluster DG1:

- Start number 39 was manually annotated 1 time for cluster DG1.

Info for manual annotations of cluster DG2:

- Start number 39 was manually annotated 1 time for cluster DG2.

Info for manual annotations of cluster DH:

- Start number 37 was manually annotated 3 times for cluster DH.

Info for manual annotations of cluster DK:

- Start number 61 was manually annotated 2 times for cluster DK.

Info for manual annotations of cluster DN:

- Start number 24 was manually annotated 5 times for cluster DN.

Info for manual annotations of cluster DN1:

- Start number 24 was manually annotated 13 times for cluster DN1.

Info for manual annotations of cluster DN2:

- Start number 24 was manually annotated 2 times for cluster DN2.

Info for manual annotations of cluster DN3:

- Start number 24 was manually annotated 2 times for cluster DN3.

Info for manual annotations of cluster DN4:

- Start number 24 was manually annotated 1 time for cluster DN4.

Info for manual annotations of cluster DS:

- Start number 61 was manually annotated 3 times for cluster DS.
- Start number 62 was manually annotated 1 time for cluster DS.
- Start number 78 was manually annotated 1 time for cluster DS.

Info for manual annotations of cluster DU1:

- Start number 80 was manually annotated 3 times for cluster DU1.

Info for manual annotations of cluster DU2:

- Start number 80 was manually annotated 2 times for cluster DU2.
- Start number 85 was manually annotated 1 time for cluster DU2.

Info for manual annotations of cluster DW:

- Start number 63 was manually annotated 1 time for cluster DW.

Info for manual annotations of cluster DY:

- Start number 72 was manually annotated 1 time for cluster DY.
- Start number 73 was manually annotated 3 times for cluster DY.
- Start number 143 was manually annotated 1 time for cluster DY.

Gene Information:

Gene: Agueybana_27 Start: 22803, Stop: 24308, Start Num: 150

Candidate Starts for Agueybana_27:

(Start: 72 @22596 has 1 MA's), (98, 22665), (99, 22668), (112, 22692), (114, 22698), (Start: 150 @22803 has 29 MA's), (171, 22872), (174, 22884), (205, 22995), (208, 23001), (211, 23007), (214, 23013), (236, 23100), (247, 23136), (249, 23142), (252, 23151), (319, 23445), (337, 23499), (338, 23502), (343, 23523), (369, 23673), (386, 23757), (396, 23838), (397, 23841), (450, 24060), (462, 24108), (471, 24168), (482, 24201), (485, 24207), (496, 24279),

Gene: AlumE_27 Start: 22802, Stop: 24307, Start Num: 150

Candidate Starts for AlumE_27:

(Start: 72 @22595 has 1 MA's), (98, 22664), (99, 22667), (112, 22691), (114, 22697), (Start: 150 @22802 has 29 MA's), (171, 22871), (174, 22883), (205, 22994), (208, 23000), (211, 23006), (214, 23012), (236, 23099), (247, 23135), (249, 23141), (252, 23150), (281, 23234), (319, 23444), (337, 23498), (338, 23501), (343, 23522), (350, 23567), (369, 23672), (386, 23756), (396, 23837), (397, 23840), (420, 23963), (450, 24059), (462, 24107), (465, 24122), (471, 24167), (482, 24200), (485, 24206), (496, 24278),

Gene: Angelique_29 Start: 23414, Stop: 25348, Start Num: 18

Candidate Starts for Angelique_29:

(2, 23168), (7, 23276), (9, 23279), (11, 23303), (12, 23309), (Start: 18 @23414 has 9 MA's), (Start: 24 @23468 has 23 MA's), (25, 23471), (41, 23558), (97, 23699), (133, 23777), (144, 23816), (174, 23918), (178, 23930), (188, 23975), (200, 24002), (204, 24017), (224, 24071), (227, 24092), (230, 24104), (239, 24140), (288, 24269), (301, 24335), (302, 24338), (305, 24368), (324, 24467), (329, 24479), (334, 24491), (344, 24548), (349, 24581), (351, 24587), (371, 24698), (403, 24890), (431, 25001), (496, 25301),

Gene: Antonio_28 Start: 22923, Stop: 24428, Start Num: 150

Candidate Starts for Antonio_28:

(Start: 150 @22923 has 29 MA's), (171, 22992), (174, 23004), (205, 23115), (211, 23127), (214, 23133), (236, 23220), (247, 23256), (249, 23262), (252, 23271), (319, 23565), (337, 23619), (338, 23622), (343, 23643), (350, 23688), (369, 23793), (386, 23877), (396, 23958), (397, 23961), (420, 24084), (450, 24180), (462, 24228), (471, 24288), (482, 24321), (485, 24327), (496, 24399),

Gene: Apricot_28 Start: 21679, Stop: 23514, Start Num: 24

Candidate Starts for Apricot_28:

(Start: 24 @21679 has 23 MA's), (66, 21841), (76, 21871), (100, 21925), (109, 21940), (Start: 118 @21952 has 1 MA's), (119, 21955), (125, 21970), (127, 21973), (128, 21976), (158, 22066), (161, 22075), (163, 22078), (183, 22165), (188, 22186), (189, 22192), (200, 22213), (203, 22222), (211, 22243), (214, 22249), (250, 22351), (251, 22354), (266, 22384), (269, 22396), (286, 22420), (288, 22429), (301, 22495), (303, 22507), (309, 22549), (314, 22582), (319, 22615), (322, 22621), (329, 22645), (334, 22657), (344, 22714), (346, 22732), (371, 22864), (376, 22888), (378, 22906), (403, 23059), (407, 23074), (409, 23089), (411, 23095), (423, 23140), (427, 23158), (431, 23170), (433, 23176), (438, 23188), (442, 23197), (456, 23251), (467, 23320), (475, 23353), (477, 23359), (489, 23422), (490, 23425), (493, 23443), (496, 23464), (497, 23473),

Gene: Asapag_29 Start: 22121, Stop: 23956, Start Num: 24

Candidate Starts for Asapag_29:

(Start: 24 @22121 has 23 MA's), (66, 22283), (76, 22313), (100, 22367), (109, 22382), (Start: 118 @22394 has 1 MA's), (119, 22397), (125, 22412), (127, 22415), (128, 22418), (158, 22508), (161, 22517), (163, 22520), (183, 22607), (188, 22628), (189, 22634), (200, 22655), (211, 22685), (214, 22691), (250, 22793), (251, 22796), (266, 22826), (269, 22838), (286, 22862), (288, 22871), (301, 22937), (303, 22949), (309, 22991), (314, 23024), (319, 23057), (322, 23063), (329, 23087), (334, 23099), (344, 23156), (346, 23174), (371, 23306), (376, 23330), (378, 23348), (403, 23501), (407, 23516), (409, 23531), (411, 23537), (423, 23582), (427, 23600), (431, 23612), (433, 23618), (438, 23630), (442, 23639), (456, 23693), (467, 23762), (475, 23795), (477, 23801), (489, 23864), (490, 23867), (493, 23885), (496, 23906), (497, 23915),

Gene: Ashertheman_37 Start: 32252, Stop: 33973, Start Num: 60

Candidate Starts for Ashertheman_37:

(Start: 60 @32252 has 13 MA's), (Start: 118 @32387 has 1 MA's), (139, 32444), (Start: 142 @32453 has 2 MA's), (165, 32522), (240, 32783), (254, 32822), (274, 32882), (287, 32927), (299, 32987), (322,

33122), (323, 33128), (337, 33170), (342, 33185), (345, 33221), (352, 33242), (368, 33338), (369, 33341), (386, 33425), (391, 33458), (397, 33503), (398, 33506), (403, 33542), (411, 33578), (412, 33590), (419, 33626), (446, 33716),

Gene: Attis_25 Start: 20498, Stop: 22021, Start Num: 159

Candidate Starts for Attis_25:

(Start: 159 @20498 has 19 MA's), (181, 20570), (184, 20582), (190, 20609), (199, 20633), (233, 20753), (236, 20762), (258, 20828), (293, 20942), (302, 20984), (305, 21014), (311, 21044), (324, 21110), (335, 21134), (339, 21158), (343, 21176), (344, 21188), (346, 21206), (349, 21221), (351, 21227), (362, 21278), (364, 21305), (376, 21356), (400, 21524), (405, 21545), (420, 21623), (431, 21662), (438, 21683), (439, 21686), (440, 21698), (448, 21737), (478, 21884), (489, 21944), (490, 21947),

Gene: Baddon_36 Start: 33049, Stop: 34770, Start Num: 60

Candidate Starts for Baddon_36:

(Start: 60 @33049 has 13 MA's), (113, 33172), (Start: 118 @33184 has 1 MA's), (Start: 142 @33250 has 2 MA's), (165, 33319), (173, 33355), (240, 33580), (254, 33619), (274, 33679), (287, 33724), (299, 33784), (322, 33919), (323, 33925), (337, 33967), (342, 33982), (345, 34018), (352, 34039), (369, 34138), (386, 34222), (391, 34255), (397, 34300), (398, 34303), (403, 34339), (411, 34375), (412, 34387), (419, 34423), (430, 34459), (446, 34513),

Gene: BatStarr_26 Start: 22926, Stop: 24431, Start Num: 150

Candidate Starts for BatStarr_26:

(38, 22611), (Start: 72 @22719 has 1 MA's), (98, 22788), (99, 22791), (112, 22815), (114, 22821), (Start: 150 @22926 has 29 MA's), (171, 22995), (174, 23007), (205, 23118), (208, 23124), (211, 23130), (214, 23136), (236, 23223), (247, 23259), (249, 23265), (252, 23274), (319, 23568), (337, 23622), (338, 23625), (343, 23646), (350, 23691), (369, 23796), (386, 23880), (396, 23961), (397, 23964), (450, 24183), (462, 24231), (471, 24291), (482, 24324), (485, 24330), (496, 24402),

Gene: Baumdotcom_36 Start: 31904, Stop: 33625, Start Num: 60

Candidate Starts for Baumdotcom_36:

(Start: 60 @31904 has 13 MA's), (113, 32027), (Start: 118 @32039 has 1 MA's), (Start: 142 @32105 has 2 MA's), (165, 32174), (240, 32435), (243, 32444), (254, 32474), (274, 32534), (287, 32579), (299, 32639), (322, 32774), (323, 32780), (337, 32822), (342, 32837), (345, 32873), (352, 32894), (369, 32993), (386, 33077), (391, 33110), (397, 33155), (398, 33158), (403, 33194), (411, 33230), (412, 33242), (419, 33278), (446, 33368),

Gene: BaxterFox_26 Start: 22126, Stop: 23631, Start Num: 150

Candidate Starts for BaxterFox_26:

(Start: 150 @22126 has 29 MA's), (169, 22183), (171, 22195), (174, 22207), (205, 22318), (208, 22324), (211, 22330), (214, 22336), (236, 22423), (247, 22459), (249, 22465), (252, 22474), (316, 22738), (319, 22768), (328, 22795), (337, 22822), (338, 22825), (343, 22846), (351, 22894), (354, 22906), (369, 22996), (386, 23080), (397, 23164), (420, 23287), (450, 23383), (462, 23431), (471, 23491), (482, 23524), (485, 23530), (496, 23602),

Gene: BearBQ_28 Start: 22958, Stop: 24742, Start Num: 24

Candidate Starts for BearBQ_28:

(Start: 24 @22958 has 23 MA's), (28, 22973), (36, 23000), (42, 23030), (69, 23102), (Start: 73 @23114 has 3 MA's), (102, 23177), (109, 23189), (132, 23231), (148, 23270), (151, 23279), (174, 23357), (188, 23414), (189, 23420), (200, 23441), (203, 23450), (211, 23471), (214, 23477), (250, 23579), (251, 23582), (266, 23612), (269, 23624), (286, 23648), (288, 23657), (301, 23723), (303, 23735), (309, 23777), (314, 23810), (319, 23843), (322, 23849), (329, 23873), (334, 23885), (344, 23942), (346, 23960), (371, 24092), (376, 24116), (378, 24134), (403, 24287), (407, 24302), (409,

24317), (411, 24323), (423, 24368), (427, 24386), (431, 24398), (433, 24404), (438, 24416), (442, 24425), (456, 24479), (467, 24548), (475, 24581), (477, 24587), (489, 24650), (490, 24653), (493, 24671), (496, 24692), (497, 24701),

Gene: Beenie_26 Start: 22391, Stop: 24076, Start Num: 79

Candidate Starts for Beenie_26:

(Start: 79 @22391 has 4 MA's), (163, 22601), (164, 22607), (169, 22628), (178, 22664), (187, 22706), (188, 22709), (200, 22736), (224, 22805), (227, 22826), (230, 22838), (301, 23066), (305, 23099), (324, 23198), (329, 23210), (334, 23222), (344, 23279), (346, 23297), (349, 23312), (351, 23318), (371, 23429), (378, 23471), (379, 23480), (402, 23618), (403, 23621), (462, 23843),

Gene: Bialota_26 Start: 22938, Stop: 24443, Start Num: 150

Candidate Starts for Bialota_26:

(38, 22623), (Start: 72 @22731 has 1 MA's), (98, 22800), (99, 22803), (112, 22827), (114, 22833), (Start: 150 @22938 has 29 MA's), (171, 23007), (174, 23019), (205, 23130), (208, 23136), (211, 23142), (214, 23148), (217, 23154), (236, 23235), (247, 23271), (249, 23277), (252, 23286), (319, 23580), (337, 23634), (338, 23637), (343, 23658), (350, 23703), (369, 23808), (386, 23892), (396, 23973), (397, 23976), (450, 24195), (462, 24243), (471, 24303), (482, 24336), (485, 24342), (496, 24414),

Gene: Birdsong_28 Start: 21851, Stop: 23635, Start Num: 24

Candidate Starts for Birdsong_28:

(Start: 24 @21851 has 23 MA's), (28, 21866), (36, 21893), (42, 21923), (69, 21995), (Start: 73 @22007 has 3 MA's), (102, 22070), (109, 22082), (132, 22124), (148, 22163), (151, 22172), (174, 22250), (188, 22307), (189, 22313), (200, 22334), (203, 22343), (211, 22364), (214, 22370), (250, 22472), (251, 22475), (266, 22505), (269, 22517), (286, 22541), (288, 22550), (301, 22616), (303, 22628), (309, 22670), (314, 22703), (319, 22736), (322, 22742), (329, 22766), (334, 22778), (344, 22835), (346, 22853), (371, 22985), (376, 23009), (378, 23027), (403, 23180), (407, 23195), (409, 23210), (411, 23216), (423, 23261), (427, 23279), (431, 23291), (433, 23297), (438, 23309), (442, 23318), (456, 23372), (467, 23441), (475, 23474), (477, 23480), (489, 23543), (490, 23546), (493, 23564), (496, 23585), (497, 23594),

Gene: Bizzy_37 Start: 32196, Stop: 33917, Start Num: 60

Candidate Starts for Bizzy_37:

(Start: 60 @32196 has 13 MA's), (113, 32319), (Start: 118 @32331 has 1 MA's), (Start: 142 @32397 has 2 MA's), (165, 32466), (173, 32502), (183, 32541), (240, 32727), (254, 32766), (274, 32826), (287, 32871), (299, 32931), (322, 33066), (323, 33072), (337, 33114), (342, 33129), (345, 33165), (352, 33186), (369, 33285), (386, 33369), (391, 33402), (397, 33447), (398, 33450), (403, 33486), (411, 33522), (412, 33534), (419, 33570), (430, 33606), (446, 33660),

Gene: Bjan7_25 Start: 20498, Stop: 22021, Start Num: 159

Candidate Starts for Bjan7_25:

(Start: 159 @20498 has 19 MA's), (181, 20570), (184, 20582), (190, 20609), (199, 20633), (233, 20753), (236, 20762), (258, 20828), (293, 20942), (302, 20984), (305, 21014), (311, 21044), (324, 21110), (335, 21134), (339, 21158), (343, 21176), (344, 21188), (346, 21206), (349, 21221), (351, 21227), (362, 21278), (364, 21305), (376, 21356), (400, 21524), (405, 21545), (420, 21623), (431, 21662), (438, 21683), (439, 21686), (440, 21698), (448, 21737), (478, 21884), (489, 21944), (490, 21947),

Gene: BlueNGold_103 Start: 62535, Stop: 64172, Start Num: 78

Candidate Starts for BlueNGold_103:

(51, 62475), (Start: 61 @62493 has 5 MA's), (Start: 78 @62535 has 1 MA's), (84, 62544), (Start: 118 @62610 has 1 MA's), (119, 62613), (131, 62634), (166, 62745), (177, 62787), (222, 62925), (227,

62949), (302, 63195), (319, 63312), (332, 63339), (334, 63345), (344, 63399), (351, 63438), (371, 63549), (374, 63564), (376, 63573), (405, 63744), (409, 63765), (433, 63858), (462, 63966), (497, 64143),

Gene: Boopy_104 Start: 62505, Stop: 64184, Start Num: 61

Candidate Starts for Boopy_104:

(51, 62487), (Start: 61 @62505 has 5 MA's), (Start: 78 @62547 has 1 MA's), (84, 62556), (Start: 118 @62622 has 1 MA's), (119, 62625), (131, 62646), (166, 62757), (177, 62799), (222, 62937), (227, 62961), (302, 63207), (319, 63324), (332, 63351), (334, 63357), (344, 63411), (351, 63450), (371, 63561), (374, 63576), (376, 63585), (405, 63756), (409, 63777), (433, 63870), (462, 63978), (497, 64155),

Gene: Bosnia_26 Start: 22926, Stop: 24431, Start Num: 150

Candidate Starts for Bosnia_26:

(38, 22611), (Start: 72 @22719 has 1 MA's), (98, 22788), (99, 22791), (112, 22815), (114, 22821), (Start: 150 @22926 has 29 MA's), (171, 22995), (174, 23007), (205, 23118), (208, 23124), (211, 23130), (214, 23136), (236, 23223), (247, 23259), (249, 23265), (252, 23274), (319, 23568), (337, 23622), (338, 23625), (343, 23646), (350, 23691), (369, 23796), (386, 23880), (396, 23961), (397, 23964), (450, 24183), (462, 24231), (471, 24291), (482, 24324), (485, 24330), (496, 24402),

Gene: BoyNamedSue_27 Start: 22802, Stop: 24307, Start Num: 150

Candidate Starts for BoyNamedSue_27:

(Start: 72 @22595 has 1 MA's), (98, 22664), (99, 22667), (112, 22691), (114, 22697), (Start: 150 @22802 has 29 MA's), (171, 22871), (174, 22883), (205, 22994), (208, 23000), (211, 23006), (214, 23012), (236, 23099), (247, 23135), (249, 23141), (252, 23150), (281, 23234), (319, 23444), (337, 23498), (338, 23501), (343, 23522), (350, 23567), (369, 23672), (386, 23756), (396, 23837), (397, 23840), (420, 23963), (450, 24059), (462, 24107), (465, 24122), (471, 24167), (482, 24200), (485, 24206), (496, 24278),

Gene: Bradissa_28 Start: 22770, Stop: 24722, Start Num: 18

Candidate Starts for Bradissa_28:

(1, 22482), (3, 22539), (4, 22554), (6, 22590), (8, 22635), (10, 22638), (Start: 18 @22770 has 9 MA's), (21, 22785), (Start: 24 @22824 has 23 MA's), (25, 22827), (94, 23055), (111, 23082), (Start: 118 @23097 has 1 MA's), (188, 23331), (189, 23337), (195, 23349), (224, 23427), (227, 23448), (263, 23568), (278, 23610), (301, 23703), (303, 23715), (309, 23757), (320, 23829), (329, 23847), (334, 23859), (344, 23916), (349, 23949), (356, 23982), (371, 24066), (375, 24084), (403, 24258), (414, 24312), (467, 24534), (487, 24615), (489, 24636),

Gene: BritBrat_28 Start: 22623, Stop: 24575, Start Num: 18

Candidate Starts for BritBrat_28:

(1, 22335), (3, 22392), (4, 22407), (6, 22443), (8, 22488), (10, 22491), (Start: 18 @22623 has 9 MA's), (21, 22638), (Start: 24 @22677 has 23 MA's), (25, 22680), (94, 22908), (111, 22935), (Start: 118 @22950 has 1 MA's), (188, 23184), (189, 23190), (195, 23202), (224, 23280), (227, 23301), (263, 23421), (278, 23463), (301, 23556), (303, 23568), (309, 23610), (329, 23700), (334, 23712), (344, 23769), (349, 23802), (356, 23835), (365, 23895), (371, 23919), (375, 23937), (403, 24111), (404, 24117), (414, 24165), (467, 24387), (487, 24468), (489, 24489),

Gene: Budski_29 Start: 22226, Stop: 24061, Start Num: 24

Candidate Starts for Budski_29:

(Start: 24 @22226 has 23 MA's), (66, 22388), (76, 22418), (100, 22472), (109, 22487), (Start: 118 @22499 has 1 MA's), (119, 22502), (125, 22517), (127, 22520), (128, 22523), (158, 22613), (161, 22622), (163, 22625), (183, 22712), (188, 22733), (189, 22739), (200, 22760), (203, 22769), (211, 22790), (214, 22796), (250, 22898), (251, 22901), (266, 22931), (269, 22943), (286, 22967), (301,

23042), (303, 23054), (309, 23096), (314, 23129), (319, 23162), (322, 23168), (329, 23192), (334, 23204), (344, 23261), (346, 23279), (371, 23411), (376, 23435), (378, 23453), (403, 23606), (407, 23621), (408, 23633), (409, 23636), (411, 23642), (423, 23687), (427, 23705), (431, 23717), (433, 23723), (438, 23735), (442, 23744), (456, 23798), (467, 23867), (475, 23900), (477, 23906), (489, 23969), (490, 23972), (493, 23990), (496, 24011), (497, 24020),

Gene: Bunnybear_25 Start: 23020, Stop: 24708, Start Num: 79

Candidate Starts for Bunnybear_25:

(5, 22567), (19, 22780), (31, 22852), (32, 22855), (Start: 79 @23020 has 4 MA's), (110, 23089), (117, 23101), (167, 23254), (169, 23257), (174, 23281), (178, 23293), (183, 23317), (187, 23335), (188, 23338), (227, 23455), (230, 23467), (265, 23569), (275, 23593), (295, 23665), (301, 23695), (302, 23698), (303, 23707), (309, 23755), (329, 23845), (334, 23857), (342, 23893), (344, 23914), (346, 23932), (356, 23980), (371, 24064), (403, 24256), (404, 24262), (407, 24271), (431, 24382), (442, 24409), (454, 24457), (457, 24460), (462, 24487), (467, 24532),

Gene: Camerico_31 Start: 38003, Stop: 39535, Start Num: 145

Candidate Starts for Camerico_31:

(Start: 145 @38003 has 1 MA's), (189, 38162), (202, 38186), (230, 38288), (253, 38372), (291, 38495), (294, 38510), (295, 38513), (305, 38579), (327, 38681), (331, 38690), (334, 38696), (348, 38777), (374, 38921), (388, 38999), (407, 39122), (426, 39212), (452, 39299), (487, 39440), (488, 39455),

Gene: Clap_25 Start: 20505, Stop: 22028, Start Num: 159

Candidate Starts for Clap_25:

(Start: 159 @20505 has 19 MA's), (181, 20577), (184, 20589), (190, 20616), (192, 20622), (199, 20640), (233, 20760), (236, 20769), (258, 20835), (293, 20949), (302, 20991), (305, 21021), (311, 21051), (320, 21111), (324, 21117), (335, 21141), (339, 21165), (343, 21183), (344, 21195), (346, 21213), (349, 21228), (351, 21234), (362, 21285), (364, 21312), (376, 21363), (400, 21531), (431, 21669), (438, 21690), (439, 21693), (440, 21705), (448, 21744), (478, 21891), (489, 21951), (490, 21954),

Gene: Crater_27 Start: 21679, Stop: 23514, Start Num: 24

Candidate Starts for Crater_27:

(Start: 24 @21679 has 23 MA's), (66, 21841), (76, 21871), (100, 21925), (109, 21940), (Start: 118 @21952 has 1 MA's), (119, 21955), (125, 21970), (127, 21973), (128, 21976), (158, 22066), (161, 22075), (163, 22078), (183, 22165), (188, 22186), (189, 22192), (200, 22213), (203, 22222), (211, 22243), (214, 22249), (250, 22351), (251, 22354), (266, 22384), (269, 22396), (286, 22420), (301, 22495), (303, 22507), (309, 22549), (314, 22582), (319, 22615), (322, 22621), (329, 22645), (334, 22657), (344, 22714), (346, 22732), (371, 22864), (376, 22888), (378, 22906), (403, 23059), (407, 23074), (409, 23089), (411, 23095), (423, 23140), (427, 23158), (431, 23170), (433, 23176), (438, 23188), (442, 23197), (456, 23251), (462, 23275), (467, 23320), (475, 23353), (477, 23359), (489, 23422), (490, 23425), (493, 23443), (496, 23464), (497, 23473),

Gene: Cynthia_25 Start: 20505, Stop: 22028, Start Num: 159

Candidate Starts for Cynthia_25:

(Start: 159 @20505 has 19 MA's), (181, 20577), (184, 20589), (190, 20616), (192, 20622), (199, 20640), (233, 20760), (236, 20769), (258, 20835), (293, 20949), (302, 20991), (305, 21021), (311, 21051), (320, 21111), (324, 21117), (335, 21141), (339, 21165), (343, 21183), (344, 21195), (346, 21213), (349, 21228), (351, 21234), (362, 21285), (364, 21312), (376, 21363), (400, 21531), (431, 21669), (438, 21690), (439, 21693), (440, 21705), (448, 21744), (478, 21891), (489, 21951), (490, 21954),

Gene: Denise_23 Start: 19509, Stop: 21110, Start Num: 118

Candidate Starts for Denise_23:

(54, 19368), (56, 19371), (103, 19479), (Start: 118 @19509 has 1 MA's), (131, 19542), (144, 19581), (158, 19620), (188, 19728), (189, 19734), (215, 19791), (224, 19824), (227, 19845), (230, 19857), (239, 19893), (275, 19983), (283, 19998), (295, 20055), (301, 20085), (303, 20097), (309, 20145), (329, 20235), (334, 20247), (342, 20283), (344, 20304), (356, 20370), (371, 20454), (403, 20646), (404, 20652), (431, 20772), (442, 20799), (462, 20877), (467, 20922),

Gene: Derg_34 Start: 31792, Stop: 33513, Start Num: 60

Candidate Starts for Derg_34:

(Start: 60 @31792 has 13 MA's), (113, 31915), (Start: 118 @31927 has 1 MA's), (Start: 142 @31993 has 2 MA's), (165, 32062), (173, 32098), (240, 32323), (254, 32362), (274, 32422), (287, 32467), (299, 32527), (322, 32662), (323, 32668), (337, 32710), (342, 32725), (345, 32761), (352, 32782), (369, 32881), (386, 32965), (391, 32998), (397, 33043), (398, 33046), (403, 33082), (411, 33118), (412, 33130), (419, 33166), (430, 33202), (446, 33256),

Gene: DonkeyMan_25 Start: 19656, Stop: 21356, Start Num: 71

Candidate Starts for DonkeyMan_25:

(71, 19656), (119, 19755), (152, 19851), (158, 19866), (188, 19986), (189, 19992), (227, 20103), (228, 20109), (278, 20262), (301, 20355), (302, 20358), (303, 20367), (305, 20388), (309, 20409), (319, 20478), (320, 20481), (329, 20499), (334, 20511), (342, 20547), (344, 20568), (346, 20586), (356, 20634), (367, 20703), (371, 20718), (403, 20910), (404, 20916), (407, 20925), (431, 21036), (442, 21063), (454, 21111), (462, 21141), (467, 21186),

Gene: EMSquaredA_28 Start: 22623, Stop: 24575, Start Num: 18

Candidate Starts for EMSquaredA_28:

(1, 22335), (3, 22392), (4, 22407), (6, 22443), (8, 22488), (10, 22491), (Start: 18 @22623 has 9 MA's), (21, 22638), (Start: 24 @22677 has 23 MA's), (25, 22680), (94, 22908), (111, 22935), (Start: 118 @22950 has 1 MA's), (188, 23184), (189, 23190), (195, 23202), (224, 23280), (227, 23301), (263, 23421), (278, 23463), (301, 23556), (303, 23568), (309, 23610), (329, 23700), (334, 23712), (344, 23769), (349, 23802), (356, 23835), (365, 23895), (371, 23919), (375, 23937), (403, 24111), (404, 24117), (414, 24165), (467, 24387), (487, 24468), (489, 24489),

Gene: Ebert_25 Start: 20505, Stop: 22028, Start Num: 159

Candidate Starts for Ebert_25:

(Start: 159 @20505 has 19 MA's), (181, 20577), (184, 20589), (190, 20616), (192, 20622), (199, 20640), (233, 20760), (236, 20769), (258, 20835), (293, 20949), (302, 20991), (305, 21021), (311, 21051), (320, 21111), (324, 21117), (335, 21141), (339, 21165), (343, 21183), (344, 21195), (346, 21213), (349, 21228), (351, 21234), (362, 21285), (364, 21312), (376, 21363), (400, 21531), (431, 21669), (438, 21690), (439, 21693), (440, 21705), (448, 21744), (478, 21891), (489, 21951), (490, 21954),

Gene: Ecliptus_32 Start: 23700, Stop: 25484, Start Num: 24

Candidate Starts for Ecliptus_32:

(Start: 24 @23700 has 23 MA's), (28, 23715), (36, 23742), (42, 23772), (69, 23844), (Start: 73 @23856 has 3 MA's), (102, 23919), (109, 23931), (132, 23973), (148, 24012), (151, 24021), (174, 24099), (188, 24156), (189, 24162), (200, 24183), (203, 24192), (211, 24213), (214, 24219), (250, 24321), (251, 24324), (266, 24354), (269, 24366), (286, 24390), (301, 24465), (303, 24477), (309, 24519), (314, 24552), (319, 24585), (322, 24591), (329, 24615), (334, 24627), (344, 24684), (346, 24702), (371, 24834), (376, 24858), (378, 24876), (403, 25029), (407, 25044), (409, 25059), (411, 25065), (423, 25110), (427, 25128), (431, 25140), (433, 25146), (438, 25158), (442, 25167), (456, 25221), (467, 25290), (475, 25323), (477, 25329), (489, 25392), (490, 25395), (493, 25413), (496, 25434), (497, 25443),

Gene: EdnaMode_24 Start: 19408, Stop: 20961, Start Num: 122

Candidate Starts for EdnaMode_24:

(Start: 122 @19408 has 3 MA's), (147, 19477), (154, 19492), (166, 19534), (167, 19540), (188, 19624), (189, 19630), (200, 19651), (205, 19669), (212, 19681), (215, 19687), (270, 19843), (289, 19885), (305, 19978), (309, 19999), (319, 20065), (329, 20095), (334, 20107), (344, 20164), (371, 20314), (376, 20338), (403, 20506), (423, 20605), (427, 20623), (431, 20635), (478, 20812), (484, 20839), (491, 20878),

Gene: EnalisNailo_28 Start: 22772, Stop: 24724, Start Num: 18

Candidate Starts for EnalisNailo_28:

(1, 22484), (3, 22541), (4, 22556), (6, 22592), (8, 22637), (10, 22640), (Start: 18 @22772 has 9 MA's), (21, 22787), (Start: 24 @22826 has 23 MA's), (25, 22829), (94, 23057), (111, 23084), (Start: 118 @23099 has 1 MA's), (188, 23333), (189, 23339), (195, 23351), (224, 23429), (227, 23450), (263, 23570), (278, 23612), (301, 23705), (303, 23717), (309, 23759), (329, 23849), (334, 23861), (344, 23918), (349, 23951), (356, 23984), (365, 24044), (371, 24068), (375, 24086), (403, 24260), (404, 24266), (414, 24314), (467, 24536), (487, 24617), (489, 24638),

Gene: Eudoria_28 Start: 22923, Stop: 24428, Start Num: 150

Candidate Starts for Eudoria_28:

(Start: 150 @22923 has 29 MA's), (171, 22992), (174, 23004), (205, 23115), (211, 23127), (214, 23133), (236, 23220), (247, 23256), (249, 23262), (252, 23271), (319, 23565), (337, 23619), (338, 23622), (343, 23643), (350, 23688), (369, 23793), (386, 23877), (396, 23958), (397, 23961), (420, 24084), (450, 24180), (462, 24228), (471, 24288), (482, 24321), (485, 24327), (496, 24399),

Gene: Evamon_33 Start: 28220, Stop: 30142, Start Num: 23

Candidate Starts for Evamon_33:

(Start: 23 @28220 has 15 MA's), (47, 28343), (53, 28364), (75, 28412), (Start: 124 @28520 has 1 MA's), (131, 28541), (158, 28622), (167, 28658), (169, 28661), (187, 28739), (188, 28742), (189, 28748), (200, 28769), (211, 28799), (214, 28805), (250, 28940), (278, 29027), (283, 29036), (285, 29042), (286, 29048), (305, 29156), (309, 29177), (322, 29249), (329, 29273), (334, 29285), (344, 29342), (371, 29492), (376, 29516), (403, 29684), (407, 29699), (431, 29795), (462, 29906), (466, 29942),

Gene: Eviarto_26 Start: 22926, Stop: 24431, Start Num: 150

Candidate Starts for Eviarto_26:

(38, 22611), (Start: 72 @22719 has 1 MA's), (98, 22788), (99, 22791), (112, 22815), (114, 22821), (Start: 150 @22926 has 29 MA's), (171, 22995), (174, 23007), (205, 23118), (208, 23124), (211, 23130), (214, 23136), (236, 23223), (247, 23259), (249, 23265), (252, 23274), (319, 23568), (337, 23622), (338, 23625), (343, 23646), (350, 23691), (369, 23796), (386, 23880), (396, 23961), (397, 23964), (450, 24183), (462, 24231), (471, 24291), (482, 24324), (485, 24330), (496, 24402),

Gene: Faith5x5_24 Start: 19344, Stop: 20945, Start Num: 121

Candidate Starts for Faith5x5_24:

(Start: 43 @19161 has 2 MA's), (55, 19206), (57, 19209), (120, 19341), (Start: 121 @19344 has 5 MA's), (147, 19416), (154, 19431), (156, 19437), (166, 19473), (167, 19479), (174, 19506), (179, 19521), (187, 19560), (188, 19563), (189, 19569), (200, 19590), (205, 19608), (215, 19626), (224, 19659), (226, 19677), (227, 19680), (230, 19692), (288, 19878), (301, 19944), (302, 19947), (305, 19977), (317, 20055), (324, 20076), (329, 20088), (334, 20100), (344, 20157), (351, 20196), (371, 20307), (390, 20403), (403, 20499), (418, 20568), (431, 20610), (442, 20637), (458, 20691), (462, 20715), (466, 20751), (484, 20823), (490, 20859),

Gene: Finkle_23 Start: 19627, Stop: 21318, Start Num: 91

Candidate Starts for Finkle_23:

(Start: 91 @19627 has 1 MA's), (136, 19726), (141, 19744), (Start: 143 @19750 has 1 MA's), (189, 19909), (196, 19930), (210, 19963), (219, 19996), (230, 20038), (231, 20044), (241, 20080), (244, 20092), (260, 20131), (325, 20422), (329, 20431), (336, 20455), (341, 20473), (342, 20476), (346, 20512), (349, 20527), (351, 20533), (366, 20632), (379, 20707), (389, 20752), (395, 20818), (399, 20842), (403, 20866), (404, 20872), (413, 20917), (470, 21133),

Gene: Fireball_34 Start: 28343, Stop: 30265, Start Num: 23

Candidate Starts for Fireball_34:

(Start: 23 @28343 has 15 MA's), (47, 28466), (53, 28487), (75, 28535), (Start: 124 @28643 has 1 MA's), (131, 28664), (158, 28745), (167, 28781), (169, 28784), (187, 28862), (188, 28865), (189, 28871), (200, 28892), (211, 28922), (214, 28928), (250, 29063), (278, 29150), (283, 29159), (285, 29165), (286, 29171), (301, 29246), (305, 29279), (309, 29300), (322, 29372), (329, 29396), (334, 29408), (344, 29465), (371, 29615), (376, 29639), (403, 29807), (407, 29822), (431, 29918), (462, 30029), (466, 30065),

Gene: Flatwoods_37 Start: 32153, Stop: 33874, Start Num: 60

Candidate Starts for Flatwoods_37:

(Start: 60 @32153 has 13 MA's), (113, 32276), (Start: 118 @32288 has 1 MA's), (Start: 142 @32354 has 2 MA's), (165, 32423), (173, 32459), (183, 32498), (240, 32684), (254, 32723), (274, 32783), (287, 32828), (299, 32888), (322, 33023), (323, 33029), (337, 33071), (342, 33086), (345, 33122), (352, 33143), (369, 33242), (386, 33326), (391, 33359), (397, 33404), (398, 33407), (403, 33443), (411, 33479), (412, 33491), (419, 33527), (430, 33563), (446, 33617),

Gene: Floral_28 Start: 22623, Stop: 24575, Start Num: 18

Candidate Starts for Floral_28:

(1, 22335), (3, 22392), (4, 22407), (6, 22443), (8, 22488), (10, 22491), (Start: 18 @22623 has 9 MA's), (21, 22638), (Start: 24 @22677 has 23 MA's), (25, 22680), (94, 22908), (111, 22935), (Start: 118 @22950 has 1 MA's), (188, 23184), (189, 23190), (195, 23202), (224, 23280), (227, 23301), (263, 23421), (278, 23463), (301, 23556), (303, 23568), (309, 23610), (329, 23700), (334, 23712), (344, 23769), (349, 23802), (356, 23835), (365, 23895), (371, 23919), (375, 23937), (403, 24111), (404, 24117), (414, 24165), (467, 24387), (487, 24468), (489, 24489),

Gene: Forza_104 Start: 62421, Stop: 64100, Start Num: 61

Candidate Starts for Forza_104:

(51, 62403), (Start: 61 @62421 has 5 MA's), (Start: 78 @62463 has 1 MA's), (84, 62472), (Start: 118 @62538 has 1 MA's), (119, 62541), (131, 62562), (166, 62673), (177, 62715), (222, 62853), (227, 62877), (302, 63123), (319, 63240), (332, 63267), (334, 63273), (344, 63327), (351, 63366), (371, 63477), (374, 63492), (376, 63501), (405, 63672), (409, 63693), (433, 63786), (462, 63894), (497, 64071),

Gene: Frickyeah_28 Start: 21884, Stop: 23719, Start Num: 24

Candidate Starts for Frickyeah_28:

(Start: 24 @21884 has 23 MA's), (66, 22046), (76, 22076), (100, 22130), (109, 22145), (Start: 118 @22157 has 1 MA's), (119, 22160), (125, 22175), (127, 22178), (128, 22181), (158, 22271), (161, 22280), (163, 22283), (183, 22370), (188, 22391), (189, 22397), (200, 22418), (203, 22427), (211, 22448), (214, 22454), (250, 22556), (251, 22559), (266, 22589), (269, 22601), (286, 22625), (288, 22634), (301, 22700), (303, 22712), (309, 22754), (314, 22787), (319, 22820), (322, 22826), (329, 22850), (334, 22862), (344, 22919), (346, 22937), (371, 23069), (376, 23093), (378, 23111), (403, 23264), (407, 23279), (409, 23294), (411, 23300), (423, 23345), (427, 23363), (431, 23375), (433, 23381), (438, 23393), (442, 23402), (456, 23456), (467, 23525), (475, 23558), (477, 23564), (489, 23627), (490, 23630), (493, 23648), (496, 23669), (497, 23678),

Gene: GAL1_28 Start: 22722, Stop: 24629, Start Num: 20

Candidate Starts for GAL1_28:

(20, 22722), (Start: 24 @22764 has 23 MA's), (45, 22866), (49, 22887), (58, 22908), (74, 22941), (94, 22995), (107, 23013), (110, 23022), (112, 23025), (117, 23034), (128, 23061), (133, 23073), (152, 23136), (164, 23169), (169, 23190), (174, 23214), (178, 23226), (183, 23250), (224, 23367), (227, 23388), (230, 23400), (275, 23526), (288, 23562), (301, 23628), (302, 23631), (303, 23640), (309, 23682), (329, 23772), (334, 23784), (342, 23820), (344, 23841), (356, 23907), (371, 23991), (403, 24183), (404, 24189), (407, 24198), (467, 24459),

Gene: Gaea_36 Start: 31801, Stop: 33522, Start Num: 60

Candidate Starts for Gaea_36:

(Start: 60 @31801 has 13 MA's), (113, 31924), (Start: 118 @31936 has 1 MA's), (Start: 142 @32002 has 2 MA's), (165, 32071), (173, 32107), (240, 32332), (254, 32371), (274, 32431), (287, 32476), (299, 32536), (322, 32671), (323, 32677), (337, 32719), (342, 32734), (345, 32770), (352, 32791), (369, 32890), (386, 32974), (391, 33007), (398, 33055), (403, 33091), (411, 33127), (412, 33139), (415, 33154), (419, 33175), (446, 33265),

Gene: GemG_25 Start: 20505, Stop: 22028, Start Num: 159

Candidate Starts for GemG_25:

(Start: 159 @20505 has 19 MA's), (181, 20577), (184, 20589), (190, 20616), (192, 20622), (199, 20640), (233, 20760), (236, 20769), (258, 20835), (293, 20949), (302, 20991), (305, 21021), (311, 21051), (320, 21111), (324, 21117), (335, 21141), (339, 21165), (343, 21183), (344, 21195), (346, 21213), (349, 21228), (351, 21234), (362, 21285), (364, 21312), (376, 21363), (400, 21531), (431, 21669), (438, 21690), (439, 21693), (440, 21705), (448, 21744), (478, 21891), (489, 21951), (490, 21954),

Gene: Getalong_30 Start: 22921, Stop: 24756, Start Num: 24

Candidate Starts for Getalong_30:

(Start: 24 @22921 has 23 MA's), (66, 23083), (76, 23113), (100, 23167), (109, 23182), (Start: 118 @23194 has 1 MA's), (119, 23197), (125, 23212), (127, 23215), (128, 23218), (158, 23308), (161, 23317), (163, 23320), (183, 23407), (188, 23428), (189, 23434), (200, 23455), (203, 23464), (211, 23485), (214, 23491), (250, 23593), (251, 23596), (266, 23626), (269, 23638), (286, 23662), (301, 23737), (303, 23749), (309, 23791), (314, 23824), (319, 23857), (322, 23863), (329, 23887), (334, 23899), (344, 23956), (346, 23974), (371, 24106), (376, 24130), (378, 24148), (403, 24301), (407, 24316), (408, 24328), (409, 24331), (411, 24337), (423, 24382), (427, 24400), (431, 24412), (433, 24418), (438, 24430), (442, 24439), (456, 24493), (467, 24562), (475, 24595), (477, 24601), (489, 24664), (490, 24667), (493, 24685), (496, 24706), (497, 24715),

Gene: Gezellig_34 Start: 28352, Stop: 30274, Start Num: 23

Candidate Starts for Gezellig_34:

(Start: 23 @28352 has 15 MA's), (47, 28475), (53, 28496), (75, 28544), (Start: 124 @28652 has 1 MA's), (131, 28673), (158, 28754), (167, 28790), (169, 28793), (187, 28871), (188, 28874), (189, 28880), (200, 28901), (211, 28931), (214, 28937), (250, 29072), (278, 29159), (283, 29168), (285, 29174), (286, 29180), (301, 29255), (305, 29288), (309, 29309), (322, 29381), (329, 29405), (334, 29417), (344, 29474), (371, 29624), (376, 29648), (403, 29816), (407, 29831), (431, 29927), (462, 30038), (466, 30074),

Gene: Gibbles_26 Start: 31491, Stop: 33176, Start Num: 82

Candidate Starts for Gibbles_26:

(Start: 82 @31491 has 5 MA's), (110, 31554), (129, 31599), (140, 31635), (149, 31665), (223, 31914), (246, 32007), (277, 32076), (292, 32133), (293, 32139), (298, 32160), (301, 32178), (311, 32241), (361, 32469), (373, 32538), (374, 32541), (376, 32550), (387, 32616), (401, 32727), (424, 32820), (428, 32841), (478, 33039), (486, 33072),

Gene: Gizermo_25 Start: 20505, Stop: 22028, Start Num: 159

Candidate Starts for Gizermo_25:

(Start: 159 @20505 has 19 MA's), (181, 20577), (184, 20589), (190, 20616), (192, 20622), (199, 20640), (233, 20760), (236, 20769), (258, 20835), (293, 20949), (302, 20991), (305, 21021), (311, 21051), (320, 21111), (324, 21117), (335, 21141), (339, 21165), (343, 21183), (344, 21195), (346, 21213), (349, 21228), (351, 21234), (362, 21285), (364, 21312), (376, 21363), (400, 21531), (431, 21669), (438, 21690), (439, 21693), (440, 21705), (448, 21744), (478, 21891), (489, 21951), (490, 21954),

Gene: GodonK_92 Start: 54828, Stop: 56522, Start Num: 61

Candidate Starts for GodonK_92:

(Start: 61 @54828 has 5 MA's), (70, 54846), (Start: 72 @54852 has 1 MA's), (115, 54942), (Start: 118 @54948 has 1 MA's), (119, 54951), (131, 54972), (177, 55125), (179, 55128), (187, 55167), (222, 55263), (224, 55266), (230, 55299), (262, 55404), (286, 55455), (301, 55530), (309, 55584), (315, 55620), (325, 55662), (332, 55677), (371, 55887), (376, 55911), (396, 56043), (409, 56115), (432, 56205), (441, 56229), (443, 56238), (445, 56244), (447, 56262), (462, 56313),

Gene: Gustavo_36 Start: 31956, Stop: 33677, Start Num: 60

Candidate Starts for Gustavo_36:

(Start: 60 @31956 has 13 MA's), (113, 32079), (Start: 118 @32091 has 1 MA's), (Start: 142 @32157 has 2 MA's), (165, 32226), (173, 32262), (183, 32301), (240, 32487), (254, 32526), (274, 32586), (287, 32631), (299, 32691), (322, 32826), (323, 32832), (337, 32874), (342, 32889), (345, 32925), (352, 32946), (369, 33045), (386, 33129), (391, 33162), (397, 33207), (398, 33210), (403, 33246), (411, 33282), (412, 33294), (419, 33330), (430, 33366), (446, 33420),

Gene: Haley23_25 Start: 20505, Stop: 22028, Start Num: 159

Candidate Starts for Haley23_25:

(Start: 159 @20505 has 19 MA's), (181, 20577), (184, 20589), (190, 20616), (192, 20622), (199, 20640), (233, 20760), (236, 20769), (258, 20835), (293, 20949), (302, 20991), (305, 21021), (311, 21051), (320, 21111), (324, 21117), (335, 21141), (339, 21165), (343, 21183), (344, 21195), (346, 21213), (349, 21228), (351, 21234), (362, 21285), (364, 21312), (376, 21363), (400, 21531), (431, 21669), (438, 21690), (439, 21693), (440, 21705), (448, 21744), (478, 21891), (489, 21951), (490, 21954),

Gene: Halo3_34 Start: 28645, Stop: 30567, Start Num: 23

Candidate Starts for Halo3_34:

(Start: 23 @28645 has 15 MA's), (47, 28768), (53, 28789), (75, 28837), (Start: 124 @28945 has 1 MA's), (131, 28966), (158, 29047), (167, 29083), (169, 29086), (187, 29164), (188, 29167), (189, 29173), (200, 29194), (211, 29224), (214, 29230), (250, 29365), (278, 29452), (283, 29461), (285, 29467), (286, 29473), (305, 29581), (309, 29602), (322, 29674), (329, 29698), (334, 29710), (344, 29767), (371, 29917), (376, 29941), (403, 30109), (407, 30124), (431, 30220), (462, 30331), (466, 30367),

Gene: Heinz_26 Start: 19746, Stop: 21263, Start Num: 143

Candidate Starts for Heinz_26:

(Start: 143 @19746 has 1 MA's), (175, 19845), (203, 19941), (208, 19956), (211, 19962), (236, 20055), (249, 20097), (252, 20106), (281, 20190), (287, 20211), (309, 20331), (316, 20370), (319, 20400), (328, 20427), (337, 20454), (343, 20478), (351, 20526), (353, 20535), (354, 20538), (368, 20625), (369, 20628), (386, 20712), (420, 20919), (450, 21015), (462, 21063), (466, 21099), (471, 21123), (485, 21162), (496, 21234), (498, 21249),

Gene: Herod_26 Start: 22926, Stop: 24431, Start Num: 150

Candidate Starts for Herod_26:

(38, 22611), (Start: 72 @22719 has 1 MA's), (98, 22788), (99, 22791), (112, 22815), (114, 22821), (Start: 150 @22926 has 29 MA's), (171, 22995), (174, 23007), (205, 23118), (208, 23124), (211, 23130), (214, 23136), (236, 23223), (247, 23259), (249, 23265), (252, 23274), (319, 23568), (337, 23622), (338, 23625), (343, 23646), (350, 23691), (369, 23796), (386, 23880), (396, 23961), (397, 23964), (450, 24183), (462, 24231), (471, 24291), (482, 24324), (485, 24330), (496, 24402),

Gene: Hibiscus_25 Start: 19694, Stop: 21211, Start Num: 143

Candidate Starts for Hibiscus_25:

(Start: 143 @19694 has 1 MA's), (175, 19793), (203, 19889), (208, 19904), (211, 19910), (236, 20003), (249, 20045), (252, 20054), (281, 20138), (287, 20159), (309, 20279), (316, 20318), (319, 20348), (328, 20375), (337, 20402), (343, 20426), (351, 20474), (353, 20483), (354, 20486), (368, 20573), (369, 20576), (386, 20660), (420, 20867), (450, 20963), (462, 21011), (466, 21047), (471, 21071), (485, 21110), (496, 21182), (498, 21197),

Gene: Holliday_29 Start: 22226, Stop: 24061, Start Num: 24

Candidate Starts for Holliday_29:

(Start: 24 @22226 has 23 MA's), (66, 22388), (76, 22418), (100, 22472), (109, 22487), (Start: 118 @22499 has 1 MA's), (119, 22502), (125, 22517), (127, 22520), (128, 22523), (158, 22613), (161, 22622), (163, 22625), (183, 22712), (188, 22733), (189, 22739), (200, 22760), (203, 22769), (211, 22790), (214, 22796), (250, 22898), (251, 22901), (266, 22931), (269, 22943), (286, 22967), (301, 23042), (303, 23054), (309, 23096), (314, 23129), (319, 23162), (322, 23168), (329, 23192), (334, 23204), (344, 23261), (346, 23279), (371, 23411), (376, 23435), (378, 23453), (403, 23606), (407, 23621), (408, 23633), (409, 23636), (411, 23642), (423, 23687), (427, 23705), (431, 23717), (433, 23723), (438, 23735), (442, 23744), (456, 23798), (467, 23867), (475, 23900), (477, 23906), (489, 23969), (490, 23972), (493, 23990), (496, 24011), (497, 24020),

Gene: Horus_29 Start: 22143, Stop: 23978, Start Num: 24

Candidate Starts for Horus_29:

(Start: 24 @22143 has 23 MA's), (66, 22305), (76, 22335), (100, 22389), (109, 22404), (Start: 118 @22416 has 1 MA's), (119, 22419), (125, 22434), (127, 22437), (128, 22440), (158, 22530), (161, 22539), (163, 22542), (183, 22629), (188, 22650), (189, 22656), (200, 22677), (203, 22686), (211, 22707), (214, 22713), (250, 22815), (251, 22818), (266, 22848), (269, 22860), (286, 22884), (288, 22893), (301, 22959), (303, 22971), (309, 23013), (314, 23046), (319, 23079), (322, 23085), (329, 23109), (334, 23121), (344, 23178), (346, 23196), (371, 23328), (376, 23352), (378, 23370), (403, 23523), (407, 23538), (409, 23553), (411, 23559), (423, 23604), (427, 23622), (431, 23634), (433, 23640), (438, 23652), (442, 23661), (456, 23715), (467, 23784), (475, 23817), (477, 23823), (489, 23886), (490, 23889), (493, 23907), (496, 23928), (497, 23937),

Gene: Hugley_26 Start: 22926, Stop: 24431, Start Num: 150

Candidate Starts for Hugley_26:

(38, 22611), (Start: 72 @22719 has 1 MA's), (98, 22788), (99, 22791), (112, 22815), (114, 22821), (Start: 150 @22926 has 29 MA's), (171, 22995), (174, 23007), (205, 23118), (208, 23124), (211, 23130), (214, 23136), (236, 23223), (247, 23259), (249, 23265), (252, 23274), (319, 23568), (337, 23622), (338, 23625), (343, 23646), (350, 23691), (369, 23796), (386, 23880), (396, 23961), (397, 23964), (450, 24183), (462, 24231), (471, 24291), (482, 24324), (485, 24330), (496, 24402),

Gene: Hyzer_28 Start: 23631, Stop: 25250, Start Num: 126

Candidate Starts for Hyzer_28:

(51, 23460), (52, 23463), (Start: 126 @23631 has 1 MA's), (153, 23709), (155, 23712), (164, 23739), (185, 23823), (189, 23838), (190, 23841), (209, 23892), (224, 23937), (233, 23985), (260, 24063), (293, 24174), (302, 24216), (305, 24246), (311, 24276), (335, 24366), (339, 24390), (343, 24408), (344, 24420), (346, 24438), (349, 24453), (351, 24459), (362, 24510), (364, 24537), (376, 24588), (393, 24678), (400, 24756), (409, 24798), (422, 24858), (431, 24894), (438, 24915), (439, 24918),

(440, 24930), (448, 24969), (489, 25176), (490, 25179), (494, 25203),

Gene: JCole_23 Start: 19364, Stop: 20980, Start Num: 123

Candidate Starts for JCole_23:

(123, 19364), (147, 19436), (152, 19448), (167, 19496), (183, 19559), (188, 19580), (197, 19601), (203, 19616), (211, 19637), (214, 19643), (250, 19778), (255, 19787), (266, 19826), (268, 19835), (285, 19880), (286, 19886), (301, 19961), (305, 19994), (309, 20015), (319, 20081), (329, 20111), (334, 20123), (343, 20168), (346, 20198), (367, 20315), (371, 20330), (376, 20354), (383, 20396), (402, 20522), (403, 20525), (412, 20573), (431, 20636), (478, 20831), (483, 20855), (487, 20870), (489, 20891),

Gene: JKSyngboy_34 Start: 32531, Stop: 34252, Start Num: 60

Candidate Starts for JKSyngboy_34:

(Start: 60 @32531 has 13 MA's), (113, 32654), (Start: 118 @32666 has 1 MA's), (Start: 142 @32732 has 2 MA's), (165, 32801), (173, 32837), (240, 33062), (254, 33101), (274, 33161), (287, 33206), (299, 33266), (318, 33392), (322, 33401), (323, 33407), (337, 33449), (342, 33464), (343, 33473), (345, 33500), (352, 33521), (369, 33620), (386, 33704), (411, 33857), (412, 33869), (415, 33884), (419, 33905), (446, 33995), (466, 34088),

Gene: Jambalaya_33 Start: 27999, Stop: 29921, Start Num: 23

Candidate Starts for Jambalaya_33:

(Start: 23 @27999 has 15 MA's), (47, 28122), (53, 28143), (75, 28191), (Start: 124 @28299 has 1 MA's), (131, 28320), (158, 28401), (167, 28437), (169, 28440), (187, 28518), (188, 28521), (189, 28527), (200, 28548), (211, 28578), (214, 28584), (250, 28719), (278, 28806), (283, 28815), (285, 28821), (286, 28827), (301, 28902), (305, 28935), (309, 28956), (322, 29028), (329, 29052), (334, 29064), (344, 29121), (371, 29271), (376, 29295), (403, 29463), (407, 29478), (431, 29574), (462, 29685), (466, 29721),

Gene: Jojo24_25 Start: 19691, Stop: 21388, Start Num: 73

Candidate Starts for Jojo24_25:

(44, 19616), (Start: 73 @19691 has 3 MA's), (119, 19790), (152, 19886), (158, 19901), (160, 19907), (187, 20018), (188, 20021), (189, 20027), (200, 20048), (205, 20066), (215, 20084), (224, 20117), (227, 20138), (239, 20186), (267, 20255), (282, 20291), (285, 20294), (301, 20375), (303, 20387), (309, 20429), (324, 20510), (325, 20513), (329, 20522), (334, 20534), (342, 20570), (344, 20591), (346, 20609), (349, 20624), (371, 20741), (376, 20765), (378, 20783), (403, 20936), (423, 21035), (427, 21053), (431, 21065), (442, 21092), (484, 21269), (491, 21308),

Gene: JonJames_55 Start: 39392, Stop: 41158, Start Num: 43

Candidate Starts for JonJames_55:

(Start: 43 @39392 has 2 MA's), (48, 39413), (163, 39707), (166, 39725), (169, 39734), (176, 39767), (200, 39851), (229, 39950), (283, 40097), (288, 40118), (301, 40184), (304, 40202), (311, 40247), (344, 40391), (351, 40430), (371, 40541), (394, 40667), (409, 40763), (418, 40805), (422, 40811), (433, 40853), (434, 40856),

Gene: Kamaru_29 Start: 22226, Stop: 24061, Start Num: 24

Candidate Starts for Kamaru_29:

(Start: 24 @22226 has 23 MA's), (66, 22388), (76, 22418), (100, 22472), (109, 22487), (Start: 118 @22499 has 1 MA's), (119, 22502), (125, 22517), (127, 22520), (128, 22523), (158, 22613), (161, 22622), (163, 22625), (183, 22712), (188, 22733), (189, 22739), (200, 22760), (203, 22769), (211, 22790), (214, 22796), (250, 22898), (251, 22901), (266, 22931), (269, 22943), (286, 22967), (301, 23042), (303, 23054), (309, 23096), (314, 23129), (319, 23162), (322, 23168), (329, 23192), (334, 23204), (344, 23261), (346, 23279), (371, 23411), (376, 23435), (378, 23453), (403, 23606), (407, 23621), (408, 23633), (409, 23636), (411, 23642), (423, 23687), (427, 23705), (431, 23717), (433,

23723), (438, 23735), (442, 23744), (456, 23798), (467, 23867), (475, 23900), (477, 23906), (489, 23969), (490, 23972), (493, 23990), (496, 24011), (497, 24020),

Gene: Kampe_27 Start: 31352, Stop: 33037, Start Num: 82

Candidate Starts for Kampe_27:

(Start: 82 @31352 has 5 MA's), (110, 31415), (129, 31460), (140, 31496), (149, 31526), (223, 31775), (246, 31868), (277, 31937), (292, 31994), (293, 32000), (298, 32021), (301, 32039), (311, 32102), (361, 32330), (376, 32411), (387, 32477), (401, 32588), (424, 32681), (428, 32702), (478, 32900), (486, 32933),

Gene: Kenna_28 Start: 22119, Stop: 23954, Start Num: 24

Candidate Starts for Kenna_28:

(Start: 24 @22119 has 23 MA's), (66, 22281), (76, 22311), (100, 22365), (109, 22380), (Start: 118 @22392 has 1 MA's), (119, 22395), (125, 22410), (127, 22413), (128, 22416), (158, 22506), (161, 22515), (163, 22518), (183, 22605), (188, 22626), (189, 22632), (200, 22653), (203, 22662), (211, 22683), (214, 22689), (250, 22791), (251, 22794), (266, 22824), (269, 22836), (286, 22860), (301, 22935), (303, 22947), (309, 22989), (314, 23022), (319, 23055), (322, 23061), (329, 23085), (334, 23097), (344, 23154), (346, 23172), (371, 23304), (376, 23328), (378, 23346), (403, 23499), (407, 23514), (409, 23529), (411, 23535), (423, 23580), (427, 23598), (431, 23610), (433, 23616), (438, 23628), (442, 23637), (456, 23691), (467, 23760), (475, 23793), (477, 23799), (489, 23862), (490, 23865), (493, 23883), (496, 23904), (497, 23913),

Gene: KimmyK_35 Start: 28934, Stop: 30856, Start Num: 23

Candidate Starts for KimmyK_35:

(Start: 23 @28934 has 15 MA's), (47, 29057), (53, 29078), (75, 29126), (Start: 124 @29234 has 1 MA's), (131, 29255), (158, 29336), (167, 29372), (169, 29375), (187, 29453), (188, 29456), (189, 29462), (200, 29483), (211, 29513), (214, 29519), (250, 29654), (278, 29741), (283, 29750), (285, 29756), (286, 29762), (301, 29837), (305, 29870), (309, 29891), (322, 29963), (329, 29987), (334, 29999), (344, 30056), (371, 30206), (376, 30230), (403, 30398), (407, 30413), (431, 30509), (462, 30620), (466, 30656),

Gene: Kita_28 Start: 22923, Stop: 24428, Start Num: 150

Candidate Starts for Kita_28:

(Start: 150 @22923 has 29 MA's), (171, 22992), (174, 23004), (205, 23115), (211, 23127), (214, 23133), (236, 23220), (247, 23256), (249, 23262), (252, 23271), (319, 23565), (337, 23619), (338, 23622), (343, 23643), (350, 23688), (369, 23793), (386, 23877), (396, 23958), (397, 23961), (420, 24084), (450, 24180), (462, 24228), (471, 24288), (482, 24321), (485, 24327), (496, 24399),

Gene: Kroos_37 Start: 32709, Stop: 34430, Start Num: 60

Candidate Starts for Kroos_37:

(Start: 60 @32709 has 13 MA's), (113, 32832), (Start: 118 @32844 has 1 MA's), (Start: 142 @32910 has 2 MA's), (165, 32979), (173, 33015), (183, 33054), (240, 33240), (254, 33279), (274, 33339), (287, 33384), (299, 33444), (322, 33579), (323, 33585), (337, 33627), (342, 33642), (345, 33678), (352, 33699), (369, 33798), (386, 33882), (391, 33915), (397, 33960), (398, 33963), (403, 33999), (411, 34035), (412, 34047), (419, 34083), (430, 34119), (446, 34173),

Gene: Kudfre_29 Start: 24004, Stop: 25656, Start Num: 80

Candidate Starts for Kudfre_29:

(67, 23965), (Start: 80 @24004 has 5 MA's), (89, 24025), (154, 24178), (156, 24184), (Start: 157 @24187 has 1 MA's), (163, 24202), (170, 24235), (172, 24244), (178, 24256), (187, 24298), (188, 24301), (189, 24307), (195, 24319), (200, 24328), (205, 24346), (211, 24358), (214, 24364), (230, 24430), (233, 24445), (234, 24451), (280, 24586), (288, 24613), (289, 24619), (305, 24712), (334, 24832), (343, 24874), (344, 24886), (371, 25036), (376, 25060), (378, 25078), (391, 25141), (403,

25228), (407, 25243), (411, 25264), (423, 25309), (427, 25327), (434, 25348), (444, 25390), (449, 25414), (462, 25462), (479, 25537), (489, 25588), (499, 25651),

Gene: Kuwabara_28 Start: 21545, Stop: 23329, Start Num: 24

Candidate Starts for Kuwabara_28:

(Start: 24 @21545 has 23 MA's), (28, 21560), (36, 21587), (42, 21617), (69, 21689), (Start: 73 @21701 has 3 MA's), (102, 21764), (109, 21776), (132, 21818), (148, 21857), (151, 21866), (174, 21944), (188, 22001), (189, 22007), (200, 22028), (203, 22037), (211, 22058), (214, 22064), (250, 22166), (251, 22169), (266, 22199), (269, 22211), (286, 22235), (288, 22244), (301, 22310), (303, 22322), (309, 22364), (314, 22397), (319, 22430), (322, 22436), (329, 22460), (334, 22472), (344, 22529), (346, 22547), (371, 22679), (376, 22703), (378, 22721), (403, 22874), (407, 22889), (409, 22904), (411, 22910), (423, 22955), (427, 22973), (431, 22985), (433, 22991), (438, 23003), (442, 23012), (456, 23066), (467, 23135), (475, 23168), (477, 23174), (489, 23237), (490, 23240), (493, 23258), (496, 23279), (497, 23288),

Gene: Kwobi_37 Start: 32695, Stop: 34416, Start Num: 60

Candidate Starts for Kwobi_37:

(Start: 60 @32695 has 13 MA's), (113, 32818), (Start: 118 @32830 has 1 MA's), (Start: 142 @32896 has 2 MA's), (165, 32965), (173, 33001), (240, 33226), (254, 33265), (274, 33325), (287, 33370), (299, 33430), (322, 33565), (323, 33571), (337, 33613), (342, 33628), (345, 33664), (352, 33685), (369, 33784), (386, 33868), (391, 33901), (397, 33946), (398, 33949), (403, 33985), (411, 34021), (412, 34033), (419, 34069), (430, 34105), (446, 34159),

Gene: Lamberg_24 Start: 19408, Stop: 20961, Start Num: 122

Candidate Starts for Lamberg_24:

(Start: 122 @19408 has 3 MA's), (147, 19477), (154, 19492), (166, 19534), (167, 19540), (188, 19624), (189, 19630), (200, 19651), (205, 19669), (212, 19681), (215, 19687), (270, 19843), (289, 19885), (305, 19978), (309, 19999), (319, 20065), (329, 20095), (334, 20107), (344, 20164), (371, 20314), (376, 20338), (403, 20506), (423, 20605), (427, 20623), (431, 20635), (478, 20812), (484, 20839), (491, 20878),

Gene: Leroy_29 Start: 22144, Stop: 23979, Start Num: 24

Candidate Starts for Leroy_29:

(Start: 24 @22144 has 23 MA's), (66, 22306), (76, 22336), (100, 22390), (109, 22405), (Start: 118 @22417 has 1 MA's), (119, 22420), (125, 22435), (127, 22438), (128, 22441), (158, 22531), (161, 22540), (163, 22543), (183, 22630), (188, 22651), (189, 22657), (200, 22678), (203, 22687), (211, 22708), (214, 22714), (250, 22816), (251, 22819), (266, 22849), (269, 22861), (286, 22885), (288, 22894), (301, 22960), (303, 22972), (309, 23014), (314, 23047), (319, 23080), (322, 23086), (329, 23110), (334, 23122), (344, 23179), (346, 23197), (371, 23329), (376, 23353), (378, 23371), (403, 23524), (407, 23539), (409, 23554), (411, 23560), (423, 23605), (427, 23623), (431, 23635), (433, 23641), (438, 23653), (442, 23662), (456, 23716), (467, 23785), (475, 23818), (477, 23824), (489, 23887), (490, 23890), (493, 23908), (496, 23929), (497, 23938),

Gene: LilHam_34 Start: 31298, Stop: 33019, Start Num: 60

Candidate Starts for LilHam_34:

(Start: 60 @31298 has 13 MA's), (113, 31421), (Start: 118 @31433 has 1 MA's), (Start: 142 @31499 has 2 MA's), (165, 31568), (173, 31604), (240, 31829), (254, 31868), (274, 31928), (287, 31973), (299, 32033), (322, 32168), (323, 32174), (337, 32216), (342, 32231), (345, 32267), (352, 32288), (369, 32387), (386, 32471), (391, 32504), (397, 32549), (398, 32552), (403, 32588), (411, 32624), (412, 32636), (419, 32672), (430, 32708), (446, 32762),

Gene: Lilas_28 Start: 22772, Stop: 24724, Start Num: 18

Candidate Starts for Lilas_28:

(1, 22484), (3, 22541), (4, 22556), (6, 22592), (8, 22637), (10, 22640), (Start: 18 @22772 has 9 MA's), (21, 22787), (Start: 24 @22826 has 23 MA's), (25, 22829), (94, 23057), (111, 23084), (Start: 118 @23099 has 1 MA's), (188, 23333), (189, 23339), (195, 23351), (224, 23429), (227, 23450), (263, 23570), (278, 23612), (301, 23705), (303, 23717), (309, 23759), (329, 23849), (334, 23861), (344, 23918), (349, 23951), (356, 23984), (365, 24044), (371, 24068), (375, 24086), (403, 24260), (404, 24266), (414, 24314), (467, 24536), (487, 24617), (489, 24638),

Gene: LilyPad_26 Start: 21924, Stop: 23648, Start Num: 39

Candidate Starts for LilyPad_26:

(Start: 39 @21924 has 2 MA's), (64, 21999), (68, 22005), (71, 22014), (87, 22056), (141, 22188), (166, 22266), (167, 22272), (176, 22308), (200, 22392), (225, 22467), (228, 22488), (235, 22512), (256, 22566), (280, 22620), (296, 22674), (299, 22683), (300, 22686), (325, 22821), (326, 22824), (345, 22908), (357, 22959), (358, 22962), (363, 22980), (369, 23016), (377, 23055), (392, 23133), (410, 23247), (417, 23292), (434, 23346), (437, 23355), (439, 23361), (468, 23505), (474, 23523),

Gene: LitninMcQueen_28 Start: 21875, Stop: 23710, Start Num: 24

Candidate Starts for LitninMcQueen_28:

(Start: 24 @21875 has 23 MA's), (66, 22037), (76, 22067), (100, 22121), (109, 22136), (Start: 118 @22148 has 1 MA's), (119, 22151), (125, 22166), (127, 22169), (128, 22172), (158, 22262), (161, 22271), (163, 22274), (183, 22361), (188, 22382), (189, 22388), (200, 22409), (203, 22418), (211, 22439), (214, 22445), (250, 22547), (251, 22550), (266, 22580), (269, 22592), (286, 22616), (301, 22691), (303, 22703), (309, 22745), (314, 22778), (319, 22811), (322, 22817), (329, 22841), (334, 22853), (344, 22910), (346, 22928), (371, 23060), (376, 23084), (378, 23102), (403, 23255), (407, 23270), (408, 23282), (409, 23285), (411, 23291), (423, 23336), (427, 23354), (431, 23366), (433, 23372), (438, 23384), (442, 23393), (456, 23447), (462, 23471), (475, 23549), (477, 23555), (489, 23618), (490, 23621), (493, 23639), (496, 23660), (497, 23669),

Gene: LittleFella_27 Start: 23800, Stop: 25635, Start Num: 39

Candidate Starts for LittleFella_27:

(Start: 39 @23800 has 2 MA's), (64, 23875), (68, 23881), (71, 23890), (83, 23923), (87, 23932), (117, 23998), (166, 24130), (167, 24136), (176, 24172), (193, 24238), (200, 24256), (233, 24370), (258, 24445), (260, 24448), (293, 24559), (311, 24661), (325, 24730), (332, 24745), (335, 24751), (339, 24775), (351, 24844), (362, 24895), (369, 24940), (376, 24973), (406, 25153), (420, 25225), (463, 25408), (474, 25468),

Gene: LordFarquaad_25 Start: 20498, Stop: 22021, Start Num: 159

Candidate Starts for LordFarquaad_25:

(Start: 159 @20498 has 19 MA's), (181, 20570), (184, 20582), (190, 20609), (199, 20633), (233, 20753), (236, 20762), (258, 20828), (293, 20942), (302, 20984), (305, 21014), (311, 21044), (324, 21110), (335, 21134), (339, 21158), (343, 21176), (344, 21188), (346, 21206), (349, 21221), (351, 21227), (362, 21278), (364, 21305), (376, 21356), (400, 21524), (405, 21545), (420, 21623), (431, 21662), (438, 21683), (439, 21686), (440, 21698), (448, 21737), (478, 21884), (489, 21944), (490, 21947),

Gene: Lton_24 Start: 19437, Stop: 21029, Start Num: 121

Candidate Starts for Lton_24:

(Start: 121 @19437 has 5 MA's), (147, 19506), (154, 19521), (156, 19527), (167, 19569), (174, 19596), (189, 19659), (200, 19680), (204, 19695), (224, 19749), (226, 19767), (227, 19770), (230, 19782), (288, 19947), (301, 20013), (305, 20046), (324, 20145), (329, 20157), (334, 20169), (344, 20226), (349, 20259), (351, 20265), (371, 20376), (403, 20571), (423, 20652), (431, 20682), (462, 20793), (465, 20808), (467, 20838), (475, 20871), (489, 20940),

Gene: Lucky10_25 Start: 20304, Stop: 22139, Start Num: 37

Candidate Starts for Lucky10_25:

(13, 20088), (14, 20124), (15, 20169), (17, 20184), (Start: 37 @20304 has 3 MA's), (48, 20361), (81, 20448), (88, 20460), (100, 20493), (104, 20499), (116, 20523), (Start: 121 @20535 has 5 MA's), (138, 20580), (146, 20610), (148, 20616), (151, 20625), (161, 20649), (171, 20691), (188, 20760), (189, 20766), (200, 20787), (205, 20805), (211, 20817), (214, 20823), (227, 20877), (301, 21132), (302, 21135), (309, 21186), (315, 21222), (319, 21252), (322, 21258), (329, 21282), (334, 21294), (344, 21351), (346, 21369), (371, 21501), (372, 21507), (376, 21525), (403, 21693), (423, 21774), (435, 21816), (442, 21831), (462, 21912), (466, 21948), (488, 22047),

Gene: Lutum_29 Start: 22119, Stop: 23954, Start Num: 24

Candidate Starts for Lutum_29:

(Start: 24 @22119 has 23 MA's), (66, 22281), (76, 22311), (100, 22365), (109, 22380), (Start: 118 @22392 has 1 MA's), (119, 22395), (125, 22410), (127, 22413), (128, 22416), (158, 22506), (161, 22515), (163, 22518), (183, 22605), (188, 22626), (189, 22632), (200, 22653), (203, 22662), (211, 22683), (214, 22689), (250, 22791), (251, 22794), (266, 22824), (269, 22836), (286, 22860), (301, 22935), (303, 22947), (309, 22989), (314, 23022), (319, 23055), (322, 23061), (329, 23085), (334, 23097), (344, 23154), (346, 23172), (371, 23304), (376, 23328), (378, 23346), (403, 23499), (407, 23514), (409, 23529), (411, 23535), (423, 23580), (427, 23598), (431, 23610), (433, 23616), (438, 23628), (442, 23637), (456, 23691), (467, 23760), (475, 23793), (477, 23799), (489, 23862), (490, 23865), (493, 23883), (496, 23904), (497, 23913),

Gene: Madeline_26 Start: 23224, Stop: 24729, Start Num: 150

Candidate Starts for Madeline_26:

(38, 22909), (Start: 72 @23017 has 1 MA's), (98, 23086), (99, 23089), (112, 23113), (114, 23119), (Start: 150 @23224 has 29 MA's), (171, 23293), (174, 23305), (205, 23416), (208, 23422), (211, 23428), (214, 23434), (236, 23521), (247, 23557), (249, 23563), (252, 23572), (319, 23866), (337, 23920), (338, 23923), (343, 23944), (350, 23989), (369, 24094), (386, 24178), (396, 24259), (397, 24262), (450, 24481), (462, 24529), (471, 24589), (482, 24622), (485, 24628), (496, 24700),

Gene: Malibo_28 Start: 21996, Stop: 23735, Start Num: 63

Candidate Starts for Malibo_28:

(16, 21789), (26, 21858), (27, 21861), (33, 21885), (35, 21891), (Start: 63 @21996 has 1 MA's), (119, 22107), (130, 22134), (187, 22335), (188, 22338), (189, 22344), (195, 22356), (224, 22434), (227, 22455), (278, 22617), (301, 22710), (303, 22722), (309, 22770), (320, 22842), (329, 22860), (334, 22872), (344, 22929), (356, 22995), (371, 23079), (375, 23097), (378, 23121), (403, 23271), (414, 23325), (467, 23547), (487, 23628), (489, 23649),

Gene: Manasvini_28 Start: 22923, Stop: 24428, Start Num: 150

Candidate Starts for Manasvini_28:

(Start: 150 @22923 has 29 MA's), (171, 22992), (174, 23004), (205, 23115), (211, 23127), (214, 23133), (236, 23220), (247, 23256), (249, 23262), (252, 23271), (319, 23565), (337, 23619), (338, 23622), (343, 23643), (350, 23688), (369, 23793), (386, 23877), (396, 23958), (397, 23961), (420, 24084), (450, 24180), (462, 24228), (471, 24288), (482, 24321), (485, 24327), (496, 24399),

Gene: Mareelih_102 Start: 61923, Stop: 63602, Start Num: 61

Candidate Starts for Mareelih_102:

(51, 61905), (Start: 61 @61923 has 5 MA's), (Start: 78 @61965 has 1 MA's), (84, 61974), (Start: 118 @62040 has 1 MA's), (119, 62043), (131, 62064), (166, 62175), (177, 62217), (222, 62355), (227, 62379), (302, 62625), (319, 62742), (332, 62769), (334, 62775), (344, 62829), (351, 62868), (371, 62979), (374, 62994), (376, 63003), (405, 63174), (409, 63195), (433, 63288), (462, 63396), (497, 63573),

Gene: Maridalia_27 Start: 22923, Stop: 24428, Start Num: 150

Candidate Starts for Maridalia_27:

(Start: 150 @22923 has 29 MA's), (171, 22992), (174, 23004), (205, 23115), (211, 23127), (214, 23133), (236, 23220), (247, 23256), (249, 23262), (252, 23271), (319, 23565), (337, 23619), (338, 23622), (343, 23643), (350, 23688), (369, 23793), (386, 23877), (396, 23958), (397, 23961), (420, 24084), (450, 24180), (462, 24228), (471, 24288), (482, 24321), (485, 24327), (496, 24399),

Gene: Marteena_28 Start: 22623, Stop: 24575, Start Num: 18

Candidate Starts for Marteena_28:

(1, 22335), (3, 22392), (4, 22407), (6, 22443), (8, 22488), (10, 22491), (Start: 18 @22623 has 9 MA's), (21, 22638), (Start: 24 @22677 has 23 MA's), (25, 22680), (94, 22908), (111, 22935), (Start: 118 @22950 has 1 MA's), (188, 23184), (189, 23190), (195, 23202), (224, 23280), (227, 23301), (263, 23421), (278, 23463), (301, 23556), (303, 23568), (309, 23610), (329, 23700), (334, 23712), (344, 23769), (349, 23802), (356, 23835), (365, 23895), (371, 23919), (375, 23937), (403, 24111), (404, 24117), (414, 24165), (467, 24387), (487, 24468), (489, 24489),

Gene: Matteo_24 Start: 19369, Stop: 20961, Start Num: 121

Candidate Starts for Matteo_24:

(34, 19135), (36, 19150), (Start: 43 @19186 has 2 MA's), (55, 19231), (57, 19234), (Start: 121 @19369 has 5 MA's), (147, 19438), (154, 19453), (167, 19501), (188, 19585), (189, 19591), (200, 19612), (204, 19627), (224, 19681), (227, 19702), (230, 19714), (288, 19879), (305, 19978), (324, 20077), (329, 20089), (334, 20101), (344, 20158), (349, 20191), (351, 20197), (371, 20308), (403, 20503), (423, 20584), (431, 20614), (462, 20725), (467, 20770), (483, 20836), (489, 20872),

Gene: Mocha12_25 Start: 20505, Stop: 22028, Start Num: 159

Candidate Starts for Mocha12_25:

(Start: 159 @20505 has 19 MA's), (181, 20577), (184, 20589), (190, 20616), (192, 20622), (199, 20640), (233, 20760), (236, 20769), (258, 20835), (293, 20949), (302, 20991), (305, 21021), (311, 21051), (320, 21111), (324, 21117), (335, 21141), (339, 21165), (343, 21183), (344, 21195), (346, 21213), (349, 21228), (351, 21234), (362, 21285), (364, 21312), (376, 21363), (400, 21531), (431, 21669), (438, 21690), (439, 21693), (440, 21705), (448, 21744), (478, 21891), (489, 21951), (490, 21954),

Gene: Moosehead_24 Start: 19352, Stop: 20872, Start Num: 159

Candidate Starts for Moosehead_24:

(Start: 159 @19352 has 19 MA's), (181, 19421), (185, 19442), (190, 19460), (192, 19466), (199, 19484), (216, 19526), (233, 19604), (236, 19613), (293, 19793), (302, 19835), (305, 19865), (311, 19895), (324, 19961), (335, 19985), (339, 20009), (343, 20027), (344, 20039), (349, 20072), (351, 20078), (362, 20129), (364, 20156), (376, 20207), (400, 20375), (408, 20414), (409, 20417), (420, 20474), (431, 20513), (438, 20534), (439, 20537), (440, 20549), (448, 20588), (478, 20735), (490, 20798),

Gene: Morkie_25 Start: 20143, Stop: 21978, Start Num: 37

Candidate Starts for Morkie_25:

(Start: 37 @20143 has 3 MA's), (81, 20287), (88, 20299), (100, 20332), (104, 20338), (116, 20362), (Start: 121 @20374 has 5 MA's), (138, 20419), (146, 20449), (148, 20455), (188, 20599), (189, 20605), (205, 20644), (211, 20656), (214, 20662), (227, 20716), (301, 20971), (302, 20974), (309, 21025), (315, 21061), (319, 21091), (322, 21097), (329, 21121), (334, 21133), (344, 21190), (346, 21208), (371, 21340), (372, 21346), (376, 21364), (403, 21532), (423, 21613), (435, 21655), (442, 21670), (462, 21751), (466, 21787), (488, 21886),

Gene: MortyNRick_28 Start: 21851, Stop: 23635, Start Num: 24

Candidate Starts for MortyNRick_28:

(Start: 24 @21851 has 23 MA's), (28, 21866), (36, 21893), (42, 21923), (69, 21995), (Start: 73 @22007 has 3 MA's), (102, 22070), (109, 22082), (132, 22124), (148, 22163), (151, 22172), (174, 22250), (188, 22307), (189, 22313), (200, 22334), (203, 22343), (211, 22364), (214, 22370), (250, 22472), (251, 22475), (266, 22505), (269, 22517), (286, 22541), (288, 22550), (301, 22616), (303, 22628), (309, 22670), (314, 22703), (319, 22736), (322, 22742), (329, 22766), (334, 22778), (344, 22835), (346, 22853), (371, 22985), (376, 23009), (378, 23027), (403, 23180), (407, 23195), (409, 23210), (411, 23216), (423, 23261), (427, 23279), (431, 23291), (433, 23297), (438, 23309), (442, 23318), (456, 23372), (467, 23441), (475, 23474), (477, 23480), (489, 23543), (490, 23546), (493, 23564), (496, 23585), (497, 23594),

Gene: Mutzi_35 Start: 28649, Stop: 30571, Start Num: 22

Candidate Starts for Mutzi_35:

(Start: 22 @28649 has 1 MA's), (40, 28772), (46, 28793), (65, 28841), (90, 28895), (108, 28916), (125, 28958), (152, 29039), (187, 29171), (188, 29174), (224, 29270), (227, 29291), (278, 29453), (301, 29546), (303, 29558), (309, 29606), (329, 29696), (334, 29708), (344, 29765), (346, 29783), (356, 29831), (371, 29915), (375, 29933), (383, 29981), (385, 29987), (403, 30107), (404, 30113), (462, 30338), (467, 30383), (487, 30464), (489, 30485),

Gene: Neobush_28 Start: 22923, Stop: 24428, Start Num: 150

Candidate Starts for Neobush_28:

(Start: 150 @22923 has 29 MA's), (171, 22992), (174, 23004), (205, 23115), (211, 23127), (214, 23133), (236, 23220), (247, 23256), (249, 23262), (252, 23271), (319, 23565), (337, 23619), (338, 23622), (343, 23643), (350, 23688), (369, 23793), (386, 23877), (396, 23958), (397, 23961), (420, 24084), (450, 24180), (462, 24228), (471, 24288), (482, 24321), (485, 24327), (496, 24399),

Gene: Nettuno_24 Start: 19408, Stop: 20961, Start Num: 122

Candidate Starts for Nettuno_24:

(Start: 122 @19408 has 3 MA's), (147, 19477), (154, 19492), (166, 19534), (167, 19540), (188, 19624), (189, 19630), (200, 19651), (205, 19669), (212, 19681), (215, 19687), (270, 19843), (289, 19885), (305, 19978), (309, 19999), (319, 20065), (329, 20095), (334, 20107), (344, 20164), (371, 20314), (376, 20338), (403, 20506), (423, 20605), (427, 20623), (431, 20635), (478, 20812), (484, 20839), (491, 20878),

Gene: Neville_30 Start: 25504, Stop: 27090, Start Num: 80

Candidate Starts for Neville_30:

(Start: 80 @25504 has 5 MA's), (93, 25540), (152, 25684), (160, 25705), (161, 25708), (163, 25711), (168, 25735), (176, 25765), (178, 25768), (187, 25810), (188, 25813), (200, 25840), (203, 25849), (211, 25870), (214, 25876), (226, 25927), (227, 25930), (245, 25951), (261, 25993), (279, 26014), (280, 26017), (288, 26029), (301, 26095), (309, 26149), (315, 26185), (334, 26248), (340, 26272), (343, 26290), (344, 26302), (346, 26320), (349, 26335), (371, 26452), (372, 26458), (376, 26476), (377, 26482), (378, 26494), (384, 26521), (399, 26620), (403, 26644), (407, 26659), (414, 26698), (423, 26725), (425, 26731), (427, 26743), (431, 26755), (433, 26761), (442, 26797), (455, 26851), (484, 26980), (488, 27007), (495, 27040),

Gene: Nubi_33 Start: 28222, Stop: 30144, Start Num: 23

Candidate Starts for Nubi_33:

(Start: 23 @28222 has 15 MA's), (47, 28345), (53, 28366), (75, 28414), (Start: 124 @28522 has 1 MA's), (131, 28543), (158, 28624), (167, 28660), (169, 28663), (187, 28741), (188, 28744), (189, 28750), (200, 28771), (211, 28801), (214, 28807), (250, 28942), (278, 29029), (283, 29038), (285, 29044), (286, 29050), (301, 29125), (305, 29158), (309, 29179), (322, 29251), (329, 29275), (334, 29287), (344, 29344), (371, 29494), (376, 29518), (403, 29686), (407, 29701), (431, 29797), (462, 29908), (466, 29944),

Gene: Nymphadora_26 Start: 22926, Stop: 24431, Start Num: 150

Candidate Starts for Nymphadora_26:

(38, 22611), (Start: 72 @22719 has 1 MA's), (98, 22788), (99, 22791), (112, 22815), (114, 22821), (Start: 150 @22926 has 29 MA's), (171, 22995), (174, 23007), (205, 23118), (208, 23124), (211, 23130), (214, 23136), (236, 23223), (247, 23259), (249, 23265), (252, 23274), (319, 23568), (337, 23622), (338, 23625), (343, 23646), (350, 23691), (369, 23796), (386, 23880), (396, 23961), (397, 23964), (450, 24183), (462, 24231), (471, 24291), (482, 24324), (485, 24330), (496, 24402),

Gene: ODay_33 Start: 23997, Stop: 25781, Start Num: 24

Candidate Starts for ODay_33:

(Start: 24 @23997 has 23 MA's), (42, 24069), (69, 24141), (Start: 73 @24153 has 3 MA's), (92, 24198), (109, 24228), (132, 24270), (135, 24273), (148, 24309), (151, 24318), (158, 24333), (161, 24342), (174, 24396), (183, 24432), (188, 24453), (189, 24459), (200, 24480), (203, 24489), (211, 24510), (214, 24516), (250, 24618), (251, 24621), (266, 24651), (269, 24663), (286, 24687), (301, 24762), (303, 24774), (309, 24816), (314, 24849), (319, 24882), (322, 24888), (329, 24912), (334, 24924), (344, 24981), (346, 24999), (371, 25131), (376, 25155), (378, 25173), (403, 25326), (407, 25341), (409, 25356), (411, 25362), (423, 25407), (427, 25425), (431, 25437), (433, 25443), (438, 25455), (442, 25464), (456, 25518), (462, 25542), (467, 25587), (475, 25620), (477, 25626), (489, 25689), (490, 25692), (493, 25710), (496, 25731), (497, 25740),

Gene: Ohgeesy_26 Start: 22549, Stop: 24054, Start Num: 150

Candidate Starts for Ohgeesy_26:

(38, 22234), (Start: 72 @22342 has 1 MA's), (98, 22411), (99, 22414), (112, 22438), (114, 22444), (Start: 150 @22549 has 29 MA's), (171, 22618), (174, 22630), (205, 22741), (208, 22747), (211, 22753), (214, 22759), (236, 22846), (247, 22882), (249, 22888), (252, 22897), (319, 23191), (337, 23245), (338, 23248), (343, 23269), (350, 23314), (369, 23419), (386, 23503), (396, 23584), (397, 23587), (450, 23806), (462, 23854), (471, 23914), (482, 23947), (485, 23953), (496, 24025),

Gene: OneDirection_23 Start: 19380, Stop: 20984, Start Num: 121

Candidate Starts for OneDirection_23:

(Start: 121 @19380 has 5 MA's), (147, 19449), (154, 19464), (167, 19512), (189, 19602), (200, 19623), (205, 19641), (224, 19692), (227, 19713), (230, 19725), (288, 19911), (301, 19977), (302, 19980), (305, 20010), (324, 20109), (329, 20121), (334, 20133), (344, 20190), (351, 20229), (371, 20340), (379, 20391), (381, 20397), (403, 20532), (411, 20568), (423, 20613), (431, 20643), (433, 20649), (458, 20724), (462, 20748), (467, 20793), (475, 20826), (478, 20835), (490, 20898),

Gene: Orchid_27 Start: 31352, Stop: 33037, Start Num: 82

Candidate Starts for Orchid_27:

(Start: 82 @31352 has 5 MA's), (110, 31415), (129, 31460), (140, 31496), (149, 31526), (223, 31775), (246, 31868), (277, 31937), (292, 31994), (293, 32000), (298, 32021), (301, 32039), (311, 32102), (361, 32330), (376, 32411), (387, 32477), (401, 32588), (424, 32681), (428, 32702), (478, 32900), (486, 32933),

Gene: PantheRoc_27 Start: 22121, Stop: 23626, Start Num: 150

Candidate Starts for PantheRoc_27:

(Start: 72 @21914 has 1 MA's), (98, 21983), (99, 21986), (112, 22010), (114, 22016), (Start: 150 @22121 has 29 MA's), (171, 22190), (174, 22202), (205, 22313), (211, 22325), (214, 22331), (236, 22418), (247, 22454), (249, 22460), (252, 22469), (319, 22763), (337, 22817), (338, 22820), (343, 22841), (350, 22886), (369, 22991), (386, 23075), (396, 23156), (397, 23159), (450, 23378), (462, 23426), (471, 23486), (482, 23519), (485, 23525), (496, 23597),

Gene: PatrickStar_27 Start: 31352, Stop: 33037, Start Num: 82

Candidate Starts for PatrickStar_27:

(Start: 82 @31352 has 5 MA's), (110, 31415), (129, 31460), (140, 31496), (149, 31526), (223, 31775), (246, 31868), (277, 31937), (292, 31994), (293, 32000), (298, 32021), (301, 32039), (311, 32102), (361, 32330), (376, 32411), (387, 32477), (401, 32588), (424, 32681), (428, 32702), (478, 32900), (486, 32933),

Gene: Pepperoni_25 Start: 20244, Stop: 21851, Start Num: 121

Candidate Starts for Pepperoni_25:

(34, 20010), (36, 20025), (Start: 43 @20061 has 2 MA's), (55, 20106), (57, 20109), (Start: 121 @20244 has 5 MA's), (152, 20331), (188, 20463), (189, 20469), (200, 20490), (205, 20508), (224, 20559), (227, 20580), (230, 20592), (288, 20778), (301, 20844), (302, 20847), (305, 20877), (324, 20976), (329, 20988), (334, 21000), (344, 21057), (351, 21096), (371, 21207), (379, 21258), (381, 21264), (403, 21399), (411, 21435), (423, 21480), (431, 21510), (433, 21516), (458, 21591), (462, 21615), (464, 21624), (467, 21660), (475, 21693), (478, 21702), (490, 21765),

Gene: Periwinkle_31 Start: 22588, Stop: 24423, Start Num: 24

Candidate Starts for Periwinkle_31:

(Start: 24 @22588 has 23 MA's), (66, 22750), (76, 22780), (100, 22834), (109, 22849), (Start: 118 @22861 has 1 MA's), (119, 22864), (125, 22879), (127, 22882), (128, 22885), (158, 22975), (161, 22984), (163, 22987), (183, 23074), (188, 23095), (189, 23101), (200, 23122), (203, 23131), (211, 23152), (214, 23158), (250, 23260), (251, 23263), (266, 23293), (269, 23305), (286, 23329), (288, 23338), (301, 23404), (303, 23416), (309, 23458), (314, 23491), (319, 23524), (322, 23530), (329, 23554), (334, 23566), (344, 23623), (346, 23641), (371, 23773), (376, 23797), (378, 23815), (403, 23968), (407, 23983), (409, 23998), (411, 24004), (423, 24049), (427, 24067), (431, 24079), (433, 24085), (438, 24097), (442, 24106), (456, 24160), (467, 24229), (475, 24262), (477, 24268), (489, 24331), (490, 24334), (493, 24352), (496, 24373), (497, 24382),

Gene: Phabuloso_28 Start: 21875, Stop: 23710, Start Num: 24

Candidate Starts for Phabuloso_28:

(Start: 24 @21875 has 23 MA's), (66, 22037), (76, 22067), (100, 22121), (109, 22136), (Start: 118 @22148 has 1 MA's), (119, 22151), (125, 22166), (127, 22169), (128, 22172), (158, 22262), (161, 22271), (163, 22274), (183, 22361), (188, 22382), (189, 22388), (200, 22409), (203, 22418), (211, 22439), (214, 22445), (250, 22547), (251, 22550), (266, 22580), (269, 22592), (286, 22616), (301, 22691), (303, 22703), (309, 22745), (314, 22778), (319, 22811), (322, 22817), (329, 22841), (334, 22853), (344, 22910), (346, 22928), (371, 23060), (376, 23084), (378, 23102), (403, 23255), (407, 23270), (409, 23285), (411, 23291), (423, 23336), (427, 23354), (431, 23366), (433, 23372), (438, 23384), (442, 23393), (456, 23447), (467, 23516), (475, 23549), (477, 23555), (489, 23618), (490, 23621), (493, 23639), (496, 23660), (497, 23669),

Gene: Phendrix_89 Start: 54539, Stop: 56233, Start Num: 61

Candidate Starts for Phendrix_89:

(Start: 61 @54539 has 5 MA's), (70, 54557), (Start: 72 @54563 has 1 MA's), (115, 54653), (Start: 118 @54659 has 1 MA's), (119, 54662), (131, 54683), (177, 54836), (179, 54839), (187, 54878), (222, 54974), (224, 54977), (230, 55010), (262, 55115), (286, 55166), (301, 55241), (309, 55295), (315, 55331), (325, 55373), (332, 55388), (371, 55598), (376, 55622), (396, 55754), (409, 55826), (412, 55844), (432, 55916), (443, 55949), (445, 55955), (447, 55973),

Gene: Phistory_30 Start: 22909, Stop: 24744, Start Num: 24

Candidate Starts for Phistory_30:

(Start: 24 @22909 has 23 MA's), (66, 23071), (76, 23101), (100, 23155), (109, 23170), (Start: 118 @23182 has 1 MA's), (119, 23185), (125, 23200), (127, 23203), (128, 23206), (158, 23296), (161, 23305), (163, 23308), (183, 23395), (188, 23416), (189, 23422), (200, 23443), (203, 23452), (211, 23473), (214, 23479), (250, 23581), (251, 23584), (266, 23614), (269, 23626), (286, 23650), (288, 23659), (301, 23725), (303, 23737), (309, 23779), (314, 23812), (319, 23845), (322, 23851), (329,

23875), (334, 23887), (344, 23944), (346, 23962), (371, 24094), (376, 24118), (378, 24136), (403, 24289), (407, 24304), (409, 24319), (411, 24325), (423, 24370), (427, 24388), (431, 24400), (433, 24406), (438, 24418), (442, 24427), (456, 24481), (467, 24550), (475, 24583), (477, 24589), (489, 24652), (490, 24655), (493, 24673), (496, 24694), (497, 24703),

Gene: Phlop_33 Start: 28304, Stop: 30226, Start Num: 23

Candidate Starts for Phlop_33:

(Start: 23 @28304 has 15 MA's), (47, 28427), (53, 28448), (75, 28496), (Start: 124 @28604 has 1 MA's), (131, 28625), (158, 28706), (167, 28742), (169, 28745), (187, 28823), (188, 28826), (189, 28832), (200, 28853), (211, 28883), (214, 28889), (250, 29024), (278, 29111), (283, 29120), (285, 29126), (286, 29132), (301, 29207), (305, 29240), (309, 29261), (322, 29333), (329, 29357), (334, 29369), (344, 29426), (371, 29576), (376, 29600), (403, 29768), (407, 29783), (431, 29879), (462, 29990), (466, 30026),

Gene: PhorbesPhlower_25 Start: 20143, Stop: 21978, Start Num: 37

Candidate Starts for PhorbesPhlower_25:

(Start: 37 @20143 has 3 MA's), (81, 20287), (88, 20299), (100, 20332), (104, 20338), (116, 20362), (Start: 121 @20374 has 5 MA's), (138, 20419), (146, 20449), (148, 20455), (188, 20599), (189, 20605), (205, 20644), (211, 20656), (214, 20662), (227, 20716), (301, 20971), (302, 20974), (309, 21025), (315, 21061), (319, 21091), (322, 21097), (329, 21121), (334, 21133), (344, 21190), (346, 21208), (371, 21340), (372, 21346), (376, 21364), (403, 21532), (423, 21613), (435, 21655), (442, 21670), (462, 21751), (466, 21787), (488, 21886),

Gene: Pickett_24 Start: 19332, Stop: 20870, Start Num: 124

Candidate Starts for Pickett_24:

(Start: 124 @19332 has 1 MA's), (147, 19401), (154, 19416), (156, 19422), (167, 19464), (189, 19554), (200, 19575), (211, 19605), (250, 19713), (251, 19716), (266, 19746), (269, 19758), (289, 19797), (303, 19869), (305, 19890), (309, 19911), (329, 20007), (334, 20019), (344, 20076), (346, 20094), (348, 20100), (355, 20133), (371, 20226), (376, 20250), (402, 20415), (403, 20418), (467, 20679), (496, 20823),

Gene: Pollux_28 Start: 22623, Stop: 24575, Start Num: 18

Candidate Starts for Pollux_28:

(1, 22335), (3, 22392), (4, 22407), (6, 22443), (8, 22488), (10, 22491), (Start: 18 @22623 has 9 MA's), (21, 22638), (Start: 24 @22677 has 23 MA's), (25, 22680), (94, 22908), (111, 22935), (Start: 118 @22950 has 1 MA's), (188, 23184), (189, 23190), (195, 23202), (224, 23280), (227, 23301), (263, 23421), (278, 23463), (301, 23556), (303, 23568), (309, 23610), (329, 23700), (334, 23712), (344, 23769), (349, 23802), (356, 23835), (365, 23895), (371, 23919), (375, 23937), (403, 24111), (404, 24117), (414, 24165), (467, 24387), (487, 24468), (489, 24489),

Gene: Polly_25 Start: 22366, Stop: 23871, Start Num: 150

Candidate Starts for Polly_25:

(Start: 150 @22366 has 29 MA's), (171, 22435), (174, 22447), (205, 22558), (211, 22570), (214, 22576), (236, 22663), (247, 22699), (249, 22705), (252, 22714), (319, 23008), (337, 23062), (338, 23065), (343, 23086), (350, 23131), (369, 23236), (386, 23320), (396, 23401), (397, 23404), (420, 23527), (450, 23623), (462, 23671), (471, 23731), (482, 23764), (485, 23770), (496, 23842),

Gene: Powerball_24 Start: 20546, Stop: 22255, Start Num: 77

Candidate Starts for Powerball_24:

(Start: 77 @20546 has 1 MA's), (95, 20594), (101, 20603), (152, 20729), (156, 20738), (158, 20744), (163, 20756), (164, 20762), (167, 20780), (169, 20783), (187, 20861), (188, 20864), (189, 20870), (200, 20891), (205, 20909), (211, 20921), (228, 20987), (232, 21002), (248, 21059), (266, 21113), (267, 21119), (285, 21170), (286, 21176), (288, 21185), (295, 21221), (301, 21251), (302, 21254),

(309, 21305), (315, 21341), (317, 21359), (329, 21392), (330, 21395), (343, 21449), (344, 21461), (346, 21479), (371, 21611), (376, 21635), (391, 21716), (402, 21800), (403, 21803), (407, 21818), (408, 21830), (409, 21833), (412, 21851), (431, 21914), (433, 21920), (462, 22022), (486, 22136), (489, 22163),

Gene: PullumCavea_33 Start: 28304, Stop: 30226, Start Num: 23

Candidate Starts for PullumCavea_33:

(Start: 23 @28304 has 15 MA's), (47, 28427), (53, 28448), (75, 28496), (Start: 124 @28604 has 1 MA's), (131, 28625), (158, 28706), (167, 28742), (169, 28745), (187, 28823), (188, 28826), (189, 28832), (200, 28853), (211, 28883), (214, 28889), (250, 29024), (278, 29111), (283, 29120), (285, 29126), (286, 29132), (301, 29207), (305, 29240), (309, 29261), (322, 29333), (329, 29357), (334, 29369), (344, 29426), (371, 29576), (376, 29600), (403, 29768), (407, 29783), (431, 29879), (462, 29990), (466, 30026),

Gene: Rabbitrun_32 Start: 25825, Stop: 27402, Start Num: 85

Candidate Starts for Rabbitrun_32:

(Start: 80 @25816 has 5 MA's), (Start: 85 @25825 has 1 MA's), (Start: 91 @25846 has 1 MA's), (106, 25873), (160, 26017), (161, 26020), (168, 26044), (187, 26119), (188, 26122), (200, 26149), (211, 26179), (214, 26185), (224, 26218), (226, 26236), (245, 26266), (271, 26314), (273, 26317), (279, 26332), (282, 26338), (295, 26383), (302, 26416), (311, 26476), (315, 26503), (333, 26563), (334, 26566), (343, 26608), (344, 26620), (347, 26641), (348, 26644), (349, 26653), (355, 26677), (371, 26770), (372, 26776), (377, 26800), (378, 26812), (380, 26824), (396, 26917), (399, 26938), (403, 26962), (407, 26977), (411, 26998), (414, 27016), (423, 27043), (425, 27049), (427, 27061), (433, 27079), (444, 27124), (454, 27163), (462, 27196), (471, 27244), (479, 27277), (484, 27295), (490, 27331), (496, 27367), (500, 27391),

Gene: Reyja_26 Start: 19864, Stop: 21561, Start Num: 72

Candidate Starts for Reyja_26:

(Start: 72 @19864 has 1 MA's), (119, 19963), (152, 20059), (158, 20074), (188, 20194), (189, 20200), (200, 20221), (215, 20257), (224, 20290), (227, 20311), (239, 20359), (267, 20428), (282, 20464), (285, 20467), (301, 20548), (309, 20602), (324, 20683), (329, 20695), (334, 20707), (342, 20743), (344, 20764), (346, 20782), (349, 20797), (371, 20914), (376, 20938), (403, 21109), (427, 21226), (431, 21238), (433, 21244), (442, 21265), (477, 21412), (484, 21442), (491, 21481),

Gene: Ribeye_37 Start: 33113, Stop: 34834, Start Num: 60

Candidate Starts for Ribeye_37:

(Start: 60 @33113 has 13 MA's), (113, 33236), (Start: 118 @33248 has 1 MA's), (Start: 142 @33314 has 2 MA's), (165, 33383), (173, 33419), (240, 33644), (254, 33683), (274, 33743), (287, 33788), (299, 33848), (322, 33983), (323, 33989), (337, 34031), (342, 34046), (345, 34082), (352, 34103), (369, 34202), (386, 34286), (391, 34319), (397, 34364), (398, 34367), (403, 34403), (411, 34439), (412, 34451), (419, 34487), (430, 34523), (446, 34577),

Gene: RiverRaider_37 Start: 31407, Stop: 33125, Start Num: 60

Candidate Starts for RiverRaider_37:

(Start: 60 @31407 has 13 MA's), (Start: 118 @31542 has 1 MA's), (Start: 142 @31608 has 2 MA's), (165, 31677), (173, 31713), (183, 31752), (220, 31866), (240, 31938), (254, 31977), (257, 31986), (278, 32052), (280, 32058), (319, 32271), (322, 32277), (323, 32283), (337, 32325), (342, 32340), (343, 32349), (369, 32493), (375, 32520), (386, 32577), (394, 32634), (397, 32655), (403, 32694), (411, 32730), (412, 32742), (415, 32757), (416, 32772), (446, 32868),

Gene: RobinSparkles_30 Start: 32266, Stop: 33954, Start Num: 82

Candidate Starts for RobinSparkles_30:

(Start: 82 @32266 has 5 MA's), (110, 32329), (140, 32410), (149, 32440), (237, 32755), (292, 32911), (293, 32917), (298, 32938), (301, 32956), (311, 33019), (361, 33247), (373, 33316), (376, 33328), (387, 33394), (401, 33505), (424, 33598), (428, 33619), (478, 33817), (486, 33850),

Gene: Sahara_24 Start: 20177, Stop: 21700, Start Num: 159

Candidate Starts for Sahara_24:

(Start: 159 @20177 has 19 MA's), (181, 20249), (184, 20261), (190, 20288), (199, 20312), (233, 20432), (236, 20441), (258, 20507), (293, 20621), (302, 20663), (305, 20693), (311, 20723), (324, 20789), (335, 20813), (339, 20837), (343, 20855), (344, 20867), (346, 20885), (349, 20900), (351, 20906), (362, 20957), (364, 20984), (376, 21035), (400, 21203), (431, 21341), (438, 21362), (439, 21365), (440, 21377), (448, 21416), (478, 21563), (489, 21623), (490, 21626),

Gene: Salvador_33 Start: 28218, Stop: 30140, Start Num: 23

Candidate Starts for Salvador_33:

(Start: 23 @28218 has 15 MA's), (47, 28341), (53, 28362), (75, 28410), (Start: 124 @28518 has 1 MA's), (131, 28539), (158, 28620), (167, 28656), (169, 28659), (187, 28737), (188, 28740), (189, 28746), (200, 28767), (211, 28797), (214, 28803), (250, 28938), (278, 29025), (283, 29034), (285, 29040), (286, 29046), (305, 29154), (309, 29175), (322, 29247), (329, 29271), (334, 29283), (344, 29340), (371, 29490), (376, 29514), (403, 29682), (407, 29697), (431, 29793), (462, 29904), (466, 29940),

Gene: Santhid_25 Start: 19699, Stop: 21399, Start Num: 73

Candidate Starts for Santhid_25:

(Start: 73 @19699 has 3 MA's), (119, 19798), (152, 19894), (158, 19909), (160, 19915), (187, 20026), (188, 20029), (189, 20035), (200, 20056), (205, 20074), (215, 20092), (224, 20125), (227, 20146), (239, 20194), (267, 20263), (282, 20299), (285, 20302), (301, 20383), (303, 20395), (309, 20437), (324, 20518), (325, 20521), (329, 20530), (334, 20542), (342, 20578), (344, 20599), (346, 20617), (349, 20632), (371, 20749), (376, 20773), (403, 20944), (423, 21043), (427, 21061), (431, 21073), (433, 21079), (442, 21100), (484, 21277), (491, 21316),

Gene: Saronaya_36 Start: 31956, Stop: 33677, Start Num: 60

Candidate Starts for Saronaya_36:

(Start: 60 @31956 has 13 MA's), (113, 32079), (Start: 118 @32091 has 1 MA's), (Start: 142 @32157 has 2 MA's), (165, 32226), (173, 32262), (183, 32301), (240, 32487), (254, 32526), (274, 32586), (287, 32631), (299, 32691), (322, 32826), (323, 32832), (337, 32874), (342, 32889), (345, 32925), (352, 32946), (369, 33045), (386, 33129), (391, 33162), (397, 33207), (398, 33210), (403, 33246), (411, 33282), (412, 33294), (419, 33330), (430, 33366), (446, 33420),

Gene: Savage_25 Start: 20505, Stop: 22028, Start Num: 159

Candidate Starts for Savage_25:

(Start: 159 @20505 has 19 MA's), (181, 20577), (184, 20589), (190, 20616), (192, 20622), (199, 20640), (233, 20760), (236, 20769), (258, 20835), (293, 20949), (302, 20991), (305, 21021), (311, 21051), (320, 21111), (324, 21117), (335, 21141), (339, 21165), (343, 21183), (344, 21195), (346, 21213), (349, 21228), (351, 21234), (362, 21285), (364, 21312), (376, 21363), (400, 21531), (431, 21669), (438, 21690), (439, 21693), (440, 21705), (448, 21744), (478, 21891), (489, 21951), (490, 21954),

Gene: Savbucketdawg_33 Start: 27999, Stop: 29921, Start Num: 23

Candidate Starts for Savbucketdawg_33:

(Start: 23 @27999 has 15 MA's), (47, 28122), (53, 28143), (75, 28191), (Start: 124 @28299 has 1 MA's), (131, 28320), (158, 28401), (167, 28437), (169, 28440), (187, 28518), (188, 28521), (189, 28527), (200, 28548), (211, 28578), (214, 28584), (250, 28719), (278, 28806), (283, 28815), (285, 28821), (286, 28827), (301, 28902), (305, 28935), (309, 28956), (322, 29028), (329, 29052), (334,

29064), (344, 29121), (371, 29271), (376, 29295), (403, 29463), (407, 29478), (431, 29574), (462, 29685), (466, 29721),

Gene: Schmidt_27 Start: 20153, Stop: 21607, Start Num: 157

Candidate Starts for Schmidt_27:

(Start: 157 @20153 has 1 MA's), (161, 20165), (175, 20222), (180, 20240), (195, 20294), (218, 20360), (221, 20369), (238, 20420), (280, 20525), (284, 20534), (288, 20552), (290, 20567), (295, 20588), (301, 20618), (306, 20660), (309, 20672), (312, 20684), (313, 20693), (318, 20732), (332, 20762), (337, 20783), (343, 20807), (360, 20906), (370, 20963), (371, 20966), (405, 21170), (421, 21242), (429, 21275), (439, 21302), (443, 21314), (447, 21338), (453, 21353), (461, 21386), (489, 21524),

Gene: SchottB_35 Start: 32971, Stop: 34692, Start Num: 60

Candidate Starts for SchottB_35:

(Start: 60 @32971 has 13 MA's), (113, 33094), (Start: 118 @33106 has 1 MA's), (Start: 142 @33172 has 2 MA's), (165, 33241), (173, 33277), (240, 33502), (254, 33541), (274, 33601), (287, 33646), (299, 33706), (322, 33841), (323, 33847), (337, 33889), (342, 33904), (345, 33940), (352, 33961), (369, 34060), (386, 34144), (391, 34177), (397, 34222), (398, 34225), (403, 34261), (411, 34297), (412, 34309), (419, 34345), (430, 34381), (446, 34435),

Gene: Sephiroth_30 Start: 24175, Stop: 25827, Start Num: 80

Candidate Starts for Sephiroth_30:

(Start: 80 @24175 has 5 MA's), (154, 24349), (156, 24355), (Start: 157 @24358 has 1 MA's), (163, 24373), (172, 24415), (178, 24427), (187, 24469), (188, 24472), (189, 24478), (195, 24490), (200, 24499), (205, 24517), (211, 24529), (214, 24535), (230, 24601), (233, 24616), (234, 24622), (280, 24757), (288, 24784), (289, 24790), (305, 24883), (334, 25003), (343, 25045), (344, 25057), (371, 25207), (376, 25231), (378, 25249), (391, 25312), (403, 25399), (407, 25414), (411, 25435), (423, 25480), (427, 25498), (434, 25519), (444, 25561), (449, 25585), (462, 25633), (479, 25708), (489, 25759), (499, 25822),

Gene: Sidious_27 Start: 22956, Stop: 24578, Start Num: 126

Candidate Starts for Sidious_27:

(51, 22788), (Start: 126 @22956 has 1 MA's), (153, 23034), (182, 23130), (185, 23148), (190, 23166), (201, 23193), (209, 23217), (233, 23310), (293, 23499), (302, 23541), (305, 23571), (311, 23601), (324, 23667), (335, 23691), (339, 23715), (344, 23745), (349, 23778), (351, 23784), (359, 23832), (362, 23835), (364, 23862), (376, 23913), (400, 24081), (409, 24123), (420, 24180), (431, 24219), (438, 24240), (439, 24243), (440, 24255), (448, 24294), (460, 24333), (469, 24402), (490, 24504),

Gene: Sixama_102 Start: 61915, Stop: 63603, Start Num: 62

Candidate Starts for Sixama_102:

(50, 61888), (51, 61894), (59, 61909), (Start: 62 @61915 has 1 MA's), (Start: 78 @61957 has 1 MA's), (Start: 118 @62032 has 1 MA's), (119, 62035), (131, 62056), (137, 62068), (186, 62248), (205, 62299), (222, 62347), (286, 62539), (371, 62971), (376, 62995), (404, 63175), (405, 63178), (409, 63199), (435, 63298), (459, 63376), (473, 63457),

Gene: SmokingBunny_33 Start: 28209, Stop: 30131, Start Num: 23

Candidate Starts for SmokingBunny_33:

(Start: 23 @28209 has 15 MA's), (47, 28332), (53, 28353), (75, 28401), (Start: 124 @28509 has 1 MA's), (131, 28530), (158, 28611), (167, 28647), (169, 28650), (187, 28728), (188, 28731), (189, 28737), (200, 28758), (211, 28788), (214, 28794), (250, 28929), (278, 29016), (283, 29025), (285, 29031), (286, 29037), (301, 29112), (305, 29145), (309, 29166), (322, 29238), (329, 29262), (334, 29274), (344, 29331), (371, 29481), (376, 29505), (403, 29673), (407, 29688), (431, 29784), (462, 29895), (466, 29931),

Gene: SoilAssassin_25 Start: 20498, Stop: 22021, Start Num: 159

Candidate Starts for SoilAssassin_25:

(Start: 159 @20498 has 19 MA's), (181, 20570), (184, 20582), (190, 20609), (199, 20633), (233, 20753), (236, 20762), (258, 20828), (293, 20942), (302, 20984), (305, 21014), (311, 21044), (324, 21110), (335, 21134), (339, 21158), (343, 21176), (344, 21188), (346, 21206), (349, 21221), (351, 21227), (362, 21278), (364, 21305), (376, 21356), (400, 21524), (405, 21545), (420, 21623), (431, 21662), (438, 21683), (439, 21686), (440, 21698), (448, 21737), (478, 21884), (489, 21944), (490, 21947),

Gene: Spooky_29 Start: 22210, Stop: 24102, Start Num: 24

Candidate Starts for Spooky_29:

(Start: 24 @22210 has 23 MA's), (66, 22372), (76, 22402), (Start: 118 @22483 has 1 MA's), (119, 22486), (125, 22501), (127, 22504), (152, 22582), (161, 22606), (183, 22696), (189, 22723), (200, 22744), (205, 22762), (211, 22774), (227, 22834), (242, 22888), (283, 23002), (289, 23029), (301, 23089), (302, 23092), (305, 23122), (329, 23239), (334, 23251), (344, 23308), (346, 23326), (371, 23458), (376, 23482), (381, 23515), (402, 23647), (403, 23650), (423, 23731), (431, 23761), (456, 23842), (478, 23953), (488, 24007),

Gene: Sproutie_25 Start: 20505, Stop: 22028, Start Num: 159

Candidate Starts for Sproutie_25:

(Start: 159 @20505 has 19 MA's), (181, 20577), (184, 20589), (190, 20616), (192, 20622), (199, 20640), (233, 20760), (236, 20769), (258, 20835), (293, 20949), (302, 20991), (305, 21021), (311, 21051), (320, 21111), (324, 21117), (335, 21141), (339, 21165), (343, 21183), (344, 21195), (346, 21213), (349, 21228), (351, 21234), (362, 21285), (364, 21312), (376, 21363), (400, 21531), (431, 21669), (438, 21690), (439, 21693), (440, 21705), (448, 21744), (478, 21891), (489, 21951), (490, 21954),

Gene: Squiddly_31 Start: 23622, Stop: 25514, Start Num: 24

Candidate Starts for Squiddly_31:

(Start: 24 @23622 has 23 MA's), (66, 23784), (76, 23814), (Start: 118 @23895 has 1 MA's), (119, 23898), (125, 23913), (127, 23916), (152, 23994), (161, 24018), (183, 24108), (189, 24135), (200, 24156), (205, 24174), (211, 24186), (227, 24246), (242, 24300), (283, 24414), (289, 24441), (301, 24501), (302, 24504), (305, 24534), (329, 24651), (334, 24663), (344, 24720), (346, 24738), (371, 24870), (376, 24894), (381, 24927), (402, 25059), (403, 25062), (423, 25143), (431, 25173), (456, 25254), (478, 25365), (488, 25419),

Gene: StorminNorm_36 Start: 31838, Stop: 33559, Start Num: 60

Candidate Starts for StorminNorm_36:

(Start: 60 @31838 has 13 MA's), (113, 31961), (Start: 118 @31973 has 1 MA's), (Start: 142 @32039 has 2 MA's), (165, 32108), (173, 32144), (240, 32369), (254, 32408), (274, 32468), (287, 32513), (299, 32573), (322, 32708), (323, 32714), (337, 32756), (342, 32771), (345, 32807), (352, 32828), (369, 32927), (386, 33011), (391, 33044), (397, 33089), (398, 33092), (403, 33128), (411, 33164), (412, 33176), (419, 33212), (430, 33248), (446, 33302),

Gene: Suerte_24 Start: 21509, Stop: 23182, Start Num: 79

Candidate Starts for Suerte_24:

(29, 21338), (30, 21341), (Start: 79 @21509 has 4 MA's), (96, 21551), (105, 21566), (117, 21590), (163, 21719), (183, 21806), (188, 21827), (200, 21854), (203, 21863), (211, 21884), (214, 21890), (227, 21944), (301, 22187), (329, 22331), (334, 22343), (337, 22358), (342, 22379), (343, 22388), (344, 22400), (371, 22550), (380, 22604), (403, 22742), (407, 22757), (431, 22853), (483, 23060),

Gene: Suscepit_28 Start: 22923, Stop: 24428, Start Num: 150

Candidate Starts for Susceptit_28:

(Start: 150 @22923 has 29 MA's), (171, 22992), (174, 23004), (205, 23115), (211, 23127), (214, 23133), (236, 23220), (247, 23256), (249, 23262), (252, 23271), (319, 23565), (337, 23619), (338, 23622), (343, 23643), (350, 23688), (369, 23793), (386, 23877), (396, 23958), (397, 23961), (420, 24084), (450, 24180), (462, 24228), (471, 24288), (482, 24321), (485, 24327), (496, 24399),

Gene: Syleon_30 Start: 24097, Stop: 25749, Start Num: 80

Candidate Starts for Syleon_30:

(Start: 80 @24097 has 5 MA's), (154, 24271), (156, 24277), (Start: 157 @24280 has 1 MA's), (163, 24295), (172, 24337), (178, 24349), (187, 24391), (188, 24394), (189, 24400), (195, 24412), (200, 24421), (205, 24439), (211, 24451), (214, 24457), (230, 24523), (233, 24538), (234, 24544), (280, 24679), (288, 24706), (289, 24712), (305, 24805), (334, 24925), (343, 24967), (344, 24979), (371, 25129), (376, 25153), (378, 25171), (391, 25234), (403, 25321), (407, 25336), (423, 25402), (427, 25420), (434, 25441), (444, 25483), (449, 25507), (462, 25555), (479, 25630), (489, 25681), (499, 25744),

Gene: Tangerine_36 Start: 31841, Stop: 33562, Start Num: 60

Candidate Starts for Tangerine_36:

(Start: 60 @31841 has 13 MA's), (113, 31964), (Start: 118 @31976 has 1 MA's), (Start: 142 @32042 has 2 MA's), (165, 32111), (173, 32147), (183, 32186), (240, 32372), (254, 32411), (274, 32471), (287, 32516), (299, 32576), (322, 32711), (323, 32717), (337, 32759), (342, 32774), (345, 32810), (352, 32831), (369, 32930), (386, 33014), (391, 33047), (397, 33092), (398, 33095), (403, 33131), (411, 33167), (412, 33179), (419, 33215), (430, 33251), (446, 33305),

Gene: Tarzan_25 Start: 19667, Stop: 21313, Start Num: 73

Candidate Starts for Tarzan_25:

(Start: 73 @19667 has 3 MA's), (119, 19766), (152, 19862), (158, 19877), (189, 20003), (200, 20024), (211, 20054), (259, 20180), (301, 20300), (302, 20303), (303, 20312), (309, 20354), (311, 20363), (319, 20420), (323, 20432), (329, 20450), (334, 20462), (344, 20519), (352, 20561), (355, 20576), (371, 20669), (376, 20693), (378, 20711), (396, 20819), (403, 20864), (431, 20975), (433, 20981), (442, 21002), (451, 21044), (462, 21080), (467, 21125), (490, 21230),

Gene: Tayonia_28 Start: 22923, Stop: 24428, Start Num: 150

Candidate Starts for Tayonia_28:

(Start: 150 @22923 has 29 MA's), (171, 22992), (174, 23004), (205, 23115), (211, 23127), (214, 23133), (236, 23220), (247, 23256), (249, 23262), (252, 23271), (319, 23565), (337, 23619), (338, 23622), (343, 23643), (350, 23688), (369, 23793), (386, 23877), (396, 23958), (397, 23961), (420, 24084), (450, 24180), (462, 24228), (471, 24288), (482, 24321), (485, 24327), (496, 24399),

Gene: ThankyouJordi_25 Start: 22901, Stop: 24409, Start Num: 150

Candidate Starts for ThankyouJordi_25:

(38, 22586), (Start: 72 @22694 has 1 MA's), (98, 22763), (99, 22766), (112, 22790), (114, 22796), (Start: 150 @22901 has 29 MA's), (173, 22979), (174, 22982), (198, 23072), (213, 23108), (214, 23111), (247, 23234), (249, 23240), (252, 23249), (310, 23480), (318, 23543), (319, 23546), (328, 23573), (337, 23600), (338, 23603), (354, 23684), (369, 23774), (397, 23942), (411, 24017), (413, 24032), (450, 24161), (466, 24245), (485, 24308), (496, 24380),

Gene: Thimann_26 Start: 21977, Stop: 23650, Start Num: 79

Candidate Starts for Thimann_26:

(29, 21806), (30, 21809), (Start: 79 @21977 has 4 MA's), (96, 22019), (105, 22034), (117, 22058), (163, 22187), (183, 22274), (188, 22295), (200, 22322), (203, 22331), (211, 22352), (214, 22358), (227, 22412), (301, 22655), (329, 22799), (334, 22811), (337, 22826), (342, 22847), (343, 22856), (344, 22868), (371, 23018), (380, 23072), (403, 23210), (407, 23225), (431, 23321), (483, 23528),

Gene: TillyBobJoe_33 Start: 28008, Stop: 29942, Start Num: 23

Candidate Starts for TillyBobJoe_33:

(Start: 23 @28008 has 15 MA's), (47, 28131), (53, 28152), (75, 28200), (Start: 124 @28308 has 1 MA's), (131, 28329), (158, 28410), (167, 28446), (169, 28449), (187, 28527), (188, 28530), (189, 28536), (200, 28557), (211, 28587), (214, 28593), (250, 28728), (278, 28815), (283, 28824), (285, 28830), (286, 28836), (301, 28911), (305, 28944), (309, 28965), (322, 29037), (329, 29061), (334, 29073), (344, 29130), (371, 29280), (376, 29304), (403, 29472), (407, 29487), (431, 29583), (462, 29694), (466, 29730),

Gene: TimTam_26 Start: 22926, Stop: 24431, Start Num: 150

Candidate Starts for TimTam_26:

(38, 22611), (Start: 72 @22719 has 1 MA's), (98, 22788), (99, 22791), (112, 22815), (114, 22821), (Start: 150 @22926 has 29 MA's), (171, 22995), (174, 23007), (205, 23118), (208, 23124), (211, 23130), (214, 23136), (236, 23223), (247, 23259), (249, 23265), (252, 23274), (319, 23568), (337, 23622), (338, 23625), (343, 23646), (350, 23691), (369, 23796), (386, 23880), (396, 23961), (397, 23964), (450, 24183), (462, 24231), (471, 24291), (482, 24324), (485, 24330), (496, 24402),

Gene: TinyDot_26 Start: 19859, Stop: 21466, Start Num: 121

Candidate Starts for TinyDot_26:

(Start: 121 @19859 has 5 MA's), (147, 19928), (154, 19943), (156, 19949), (167, 19991), (188, 20075), (189, 20081), (200, 20102), (205, 20120), (224, 20171), (227, 20192), (230, 20204), (288, 20390), (301, 20456), (302, 20459), (305, 20489), (317, 20567), (324, 20588), (329, 20600), (334, 20612), (344, 20669), (351, 20708), (371, 20819), (381, 20876), (390, 20915), (403, 21011), (411, 21047), (423, 21092), (433, 21128), (458, 21203), (462, 21227), (467, 21272), (475, 21305), (478, 21314), (490, 21377),

Gene: Togo_33 Start: 28209, Stop: 30131, Start Num: 23

Candidate Starts for Togo_33:

(Start: 23 @28209 has 15 MA's), (47, 28332), (53, 28353), (75, 28401), (Start: 124 @28509 has 1 MA's), (131, 28530), (158, 28611), (167, 28647), (169, 28650), (187, 28728), (188, 28731), (189, 28737), (200, 28758), (211, 28788), (214, 28794), (250, 28929), (278, 29016), (283, 29025), (285, 29031), (286, 29037), (301, 29112), (305, 29145), (309, 29166), (322, 29238), (329, 29262), (334, 29274), (344, 29331), (371, 29481), (376, 29505), (403, 29673), (407, 29688), (431, 29784), (462, 29895), (466, 29931),

Gene: Trax_30 Start: 25810, Stop: 27396, Start Num: 80

Candidate Starts for Trax_30:

(Start: 80 @25810 has 5 MA's), (93, 25846), (152, 25990), (160, 26011), (161, 26014), (163, 26017), (168, 26041), (176, 26071), (178, 26074), (187, 26116), (188, 26119), (200, 26146), (203, 26155), (211, 26176), (214, 26182), (226, 26233), (227, 26236), (245, 26257), (261, 26299), (279, 26320), (280, 26323), (288, 26335), (301, 26401), (309, 26455), (315, 26491), (334, 26554), (340, 26578), (343, 26596), (344, 26608), (346, 26626), (349, 26641), (371, 26758), (372, 26764), (376, 26782), (377, 26788), (378, 26800), (384, 26827), (399, 26926), (403, 26950), (407, 26965), (414, 27004), (423, 27031), (425, 27037), (427, 27049), (431, 27061), (433, 27067), (442, 27103), (455, 27157), (484, 27286), (488, 27313), (495, 27346),

Gene: Trine_24 Start: 19054, Stop: 20592, Start Num: 142

Candidate Starts for Trine_24:

(Start: 142 @19054 has 2 MA's), (175, 19165), (179, 19174), (194, 19240), (203, 19261), (206, 19273), (225, 19327), (252, 19426), (261, 19453), (307, 19648), (328, 19750), (337, 19777), (369, 19951), (382, 20017), (386, 20035), (391, 20068), (411, 20191), (412, 20203), (420, 20239), (436, 20287), (442, 20302), (476, 20455), (478, 20461), (480, 20473), (481, 20482),

Gene: Trumpet_28 Start: 22923, Stop: 24428, Start Num: 150

Candidate Starts for Trumpet_28:

(Start: 150 @22923 has 29 MA's), (171, 22992), (174, 23004), (205, 23115), (211, 23127), (214, 23133), (236, 23220), (247, 23256), (249, 23262), (252, 23271), (319, 23565), (337, 23619), (338, 23622), (343, 23643), (350, 23688), (369, 23793), (386, 23877), (396, 23958), (397, 23961), (420, 24084), (450, 24180), (462, 24228), (471, 24288), (482, 24321), (485, 24327), (496, 24399),

Gene: TuertoX_25 Start: 20505, Stop: 22028, Start Num: 159

Candidate Starts for TuertoX_25:

(Start: 159 @20505 has 19 MA's), (181, 20577), (184, 20589), (190, 20616), (192, 20622), (199, 20640), (233, 20760), (236, 20769), (258, 20835), (293, 20949), (302, 20991), (305, 21021), (311, 21051), (320, 21111), (324, 21117), (335, 21141), (339, 21165), (343, 21183), (344, 21195), (346, 21213), (349, 21228), (351, 21234), (362, 21285), (364, 21312), (376, 21363), (400, 21531), (431, 21669), (438, 21690), (439, 21693), (440, 21705), (448, 21744), (478, 21891), (489, 21951), (490, 21954),

Gene: Tycho_36 Start: 31930, Stop: 33651, Start Num: 60

Candidate Starts for Tycho_36:

(Start: 60 @31930 has 13 MA's), (113, 32053), (Start: 118 @32065 has 1 MA's), (Start: 142 @32131 has 2 MA's), (165, 32200), (173, 32236), (240, 32461), (254, 32500), (274, 32560), (287, 32605), (299, 32665), (322, 32800), (323, 32806), (337, 32848), (342, 32863), (345, 32899), (352, 32920), (369, 33019), (386, 33103), (391, 33136), (397, 33181), (398, 33184), (403, 33220), (411, 33256), (412, 33268), (419, 33304), (430, 33340), (446, 33394),

Gene: Upyo_24 Start: 19301, Stop: 20836, Start Num: 142

Candidate Starts for Upyo_24:

(134, 19277), (Start: 142 @19301 has 2 MA's), (175, 19412), (191, 19475), (225, 19574), (261, 19700), (264, 19706), (266, 19712), (272, 19730), (276, 19745), (278, 19751), (280, 19757), (297, 19826), (300, 19844), (308, 19898), (321, 19976), (330, 20003), (344, 20063), (346, 20081), (369, 20201), (376, 20234), (379, 20261), (397, 20369), (407, 20426), (409, 20441), (414, 20465), (472, 20699), (492, 20786),

Gene: Valary_36 Start: 29154, Stop: 31076, Start Num: 23

Candidate Starts for Valary_36:

(Start: 23 @29154 has 15 MA's), (47, 29277), (53, 29298), (75, 29346), (Start: 124 @29454 has 1 MA's), (131, 29475), (158, 29556), (167, 29592), (169, 29595), (187, 29673), (188, 29676), (189, 29682), (200, 29703), (211, 29733), (214, 29739), (250, 29874), (278, 29961), (283, 29970), (285, 29976), (286, 29982), (301, 30057), (305, 30090), (309, 30111), (322, 30183), (329, 30207), (334, 30219), (344, 30276), (371, 30426), (376, 30450), (403, 30618), (407, 30633), (431, 30729), (462, 30840), (466, 30876),

Gene: Vasanti_24 Start: 20059, Stop: 21591, Start Num: 159

Candidate Starts for Vasanti_24:

(Start: 159 @20059 has 19 MA's), (162, 20065), (181, 20131), (192, 20176), (207, 20215), (230, 20296), (233, 20311), (236, 20320), (258, 20386), (293, 20512), (305, 20584), (311, 20614), (324, 20680), (335, 20704), (339, 20728), (343, 20746), (344, 20758), (351, 20797), (362, 20848), (364, 20875), (400, 21094), (408, 21133), (409, 21136), (418, 21190), (422, 21196), (431, 21232), (438, 21253), (439, 21256), (440, 21268), (448, 21307), (460, 21346), (478, 21454), (490, 21517),

Gene: WelcomeAyanna_25 Start: 22901, Stop: 24409, Start Num: 150

Candidate Starts for WelcomeAyanna_25:

(38, 22586), (Start: 72 @22694 has 1 MA's), (98, 22763), (99, 22766), (112, 22790), (114, 22796), (Start: 150 @22901 has 29 MA's), (173, 22979), (174, 22982), (198, 23072), (213, 23108), (214, 23111), (247, 23234), (249, 23240), (252, 23249), (310, 23480), (318, 23543), (319, 23546), (328, 23573), (337, 23600), (338, 23603), (354, 23684), (369, 23774), (397, 23942), (411, 24017), (413, 24032), (450, 24161), (466, 24245), (485, 24308), (496, 24380),

Gene: Whiteclaw_25 Start: 20505, Stop: 22028, Start Num: 159

Candidate Starts for Whiteclaw_25:

(Start: 159 @20505 has 19 MA's), (181, 20577), (184, 20589), (190, 20616), (192, 20622), (199, 20640), (233, 20760), (236, 20769), (258, 20835), (293, 20949), (302, 20991), (305, 21021), (311, 21051), (320, 21111), (324, 21117), (335, 21141), (339, 21165), (343, 21183), (344, 21195), (346, 21213), (349, 21228), (351, 21234), (362, 21285), (364, 21312), (376, 21363), (400, 21531), (431, 21669), (438, 21690), (439, 21693), (440, 21705), (448, 21744), (478, 21891), (489, 21951), (490, 21954),

Gene: Whitney_30 Start: 23030, Stop: 24865, Start Num: 24

Candidate Starts for Whitney_30:

(Start: 24 @23030 has 23 MA's), (66, 23192), (76, 23222), (100, 23276), (109, 23291), (Start: 118 @23303 has 1 MA's), (119, 23306), (125, 23321), (127, 23324), (128, 23327), (158, 23417), (161, 23426), (163, 23429), (183, 23516), (188, 23537), (189, 23543), (200, 23564), (203, 23573), (211, 23594), (214, 23600), (250, 23702), (251, 23705), (266, 23735), (269, 23747), (286, 23771), (301, 23846), (303, 23858), (309, 23900), (314, 23933), (319, 23966), (322, 23972), (329, 23996), (334, 24008), (344, 24065), (346, 24083), (371, 24215), (376, 24239), (378, 24257), (403, 24410), (407, 24425), (408, 24437), (409, 24440), (411, 24446), (423, 24491), (427, 24509), (431, 24521), (433, 24527), (438, 24539), (442, 24548), (456, 24602), (467, 24671), (475, 24704), (477, 24710), (489, 24773), (490, 24776), (493, 24794), (496, 24815), (497, 24824),

Gene: Wizard_33 Start: 28352, Stop: 30274, Start Num: 23

Candidate Starts for Wizard_33:

(Start: 23 @28352 has 15 MA's), (47, 28475), (53, 28496), (75, 28544), (Start: 124 @28652 has 1 MA's), (131, 28673), (158, 28754), (167, 28790), (169, 28793), (187, 28871), (188, 28874), (189, 28880), (200, 28901), (211, 28931), (214, 28937), (250, 29072), (278, 29159), (283, 29168), (285, 29174), (286, 29180), (301, 29255), (305, 29288), (309, 29309), (322, 29381), (329, 29405), (334, 29417), (344, 29474), (371, 29624), (376, 29648), (403, 29816), (407, 29831), (431, 29927), (462, 30038), (466, 30074),

Gene: Yeet412_25 Start: 20498, Stop: 22021, Start Num: 159

Candidate Starts for Yeet412_25:

(Start: 159 @20498 has 19 MA's), (181, 20570), (184, 20582), (190, 20609), (199, 20633), (233, 20753), (236, 20762), (258, 20828), (293, 20942), (302, 20984), (305, 21014), (311, 21044), (324, 21110), (335, 21134), (339, 21158), (343, 21176), (344, 21188), (346, 21206), (349, 21221), (351, 21227), (362, 21278), (364, 21305), (376, 21356), (400, 21524), (405, 21545), (420, 21623), (431, 21662), (438, 21683), (439, 21686), (440, 21698), (448, 21737), (478, 21884), (489, 21944), (490, 21947),

Gene: Yeezy_28 Start: 22145, Stop: 23650, Start Num: 150

Candidate Starts for Yeezy_28:

(Start: 72 @21938 has 1 MA's), (98, 22007), (99, 22010), (112, 22034), (114, 22040), (Start: 150 @22145 has 29 MA's), (171, 22214), (174, 22226), (205, 22337), (211, 22349), (214, 22355), (236, 22442), (247, 22478), (249, 22484), (252, 22493), (319, 22787), (337, 22841), (338, 22844), (343, 22865), (350, 22910), (369, 23015), (386, 23099), (396, 23180), (397, 23183), (420, 23306), (450, 23402), (462, 23450), (465, 23465), (471, 23510), (482, 23543), (485, 23549), (496, 23621),

Gene: YorkOnyx_37 Start: 32189, Stop: 33910, Start Num: 60

Candidate Starts for YorkOnyx_37:

(Start: 60 @32189 has 13 MA's), (113, 32312), (Start: 118 @32324 has 1 MA's), (Start: 142 @32390 has 2 MA's), (165, 32459), (173, 32495), (183, 32534), (240, 32720), (254, 32759), (274, 32819), (287, 32864), (299, 32924), (322, 33059), (323, 33065), (337, 33107), (342, 33122), (345, 33158), (352, 33179), (369, 33278), (386, 33362), (391, 33395), (397, 33440), (398, 33443), (411, 33515), (412, 33527), (419, 33563), (430, 33599), (446, 33653),

Gene: Yvonnetastic_53 Start: 36927, Stop: 38693, Start Num: 43

Candidate Starts for Yvonnetastic_53:

(Start: 43 @36927 has 2 MA's), (48, 36948), (86, 37044), (163, 37242), (166, 37260), (169, 37269), (176, 37302), (200, 37386), (229, 37485), (283, 37632), (288, 37653), (301, 37719), (304, 37737), (311, 37782), (344, 37926), (351, 37965), (371, 38076), (394, 38202), (409, 38298), (418, 38340), (422, 38346), (433, 38388), (434, 38391),

Gene: Zameen_28 Start: 22923, Stop: 24428, Start Num: 150

Candidate Starts for Zameen_28:

(Start: 150 @22923 has 29 MA's), (171, 22992), (174, 23004), (205, 23115), (211, 23127), (214, 23133), (236, 23220), (247, 23256), (249, 23262), (252, 23271), (319, 23565), (337, 23619), (338, 23622), (343, 23643), (350, 23688), (369, 23793), (386, 23877), (396, 23958), (397, 23961), (420, 24084), (450, 24180), (462, 24228), (471, 24288), (482, 24321), (485, 24327), (496, 24399),

Gene: Zirinka_26 Start: 22938, Stop: 24443, Start Num: 150

Candidate Starts for Zirinka_26:

(38, 22623), (Start: 72 @22731 has 1 MA's), (98, 22800), (99, 22803), (112, 22827), (114, 22833), (Start: 150 @22938 has 29 MA's), (171, 23007), (174, 23019), (205, 23130), (208, 23136), (211, 23142), (214, 23148), (217, 23154), (236, 23235), (247, 23271), (249, 23277), (252, 23286), (319, 23580), (337, 23634), (338, 23637), (343, 23658), (350, 23703), (369, 23808), (386, 23892), (396, 23973), (397, 23976), (450, 24195), (462, 24243), (471, 24303), (482, 24336), (485, 24342), (496, 24414),