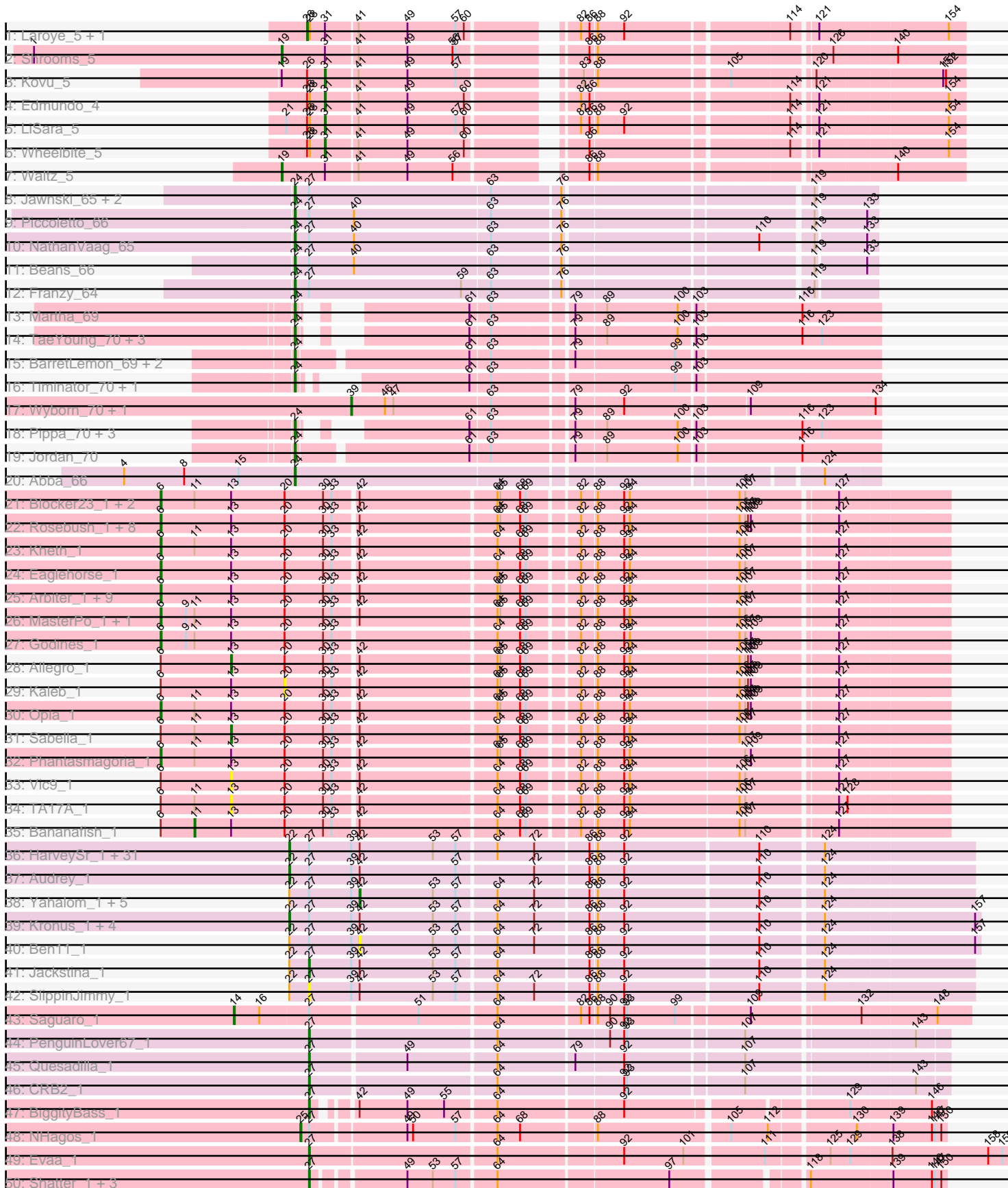
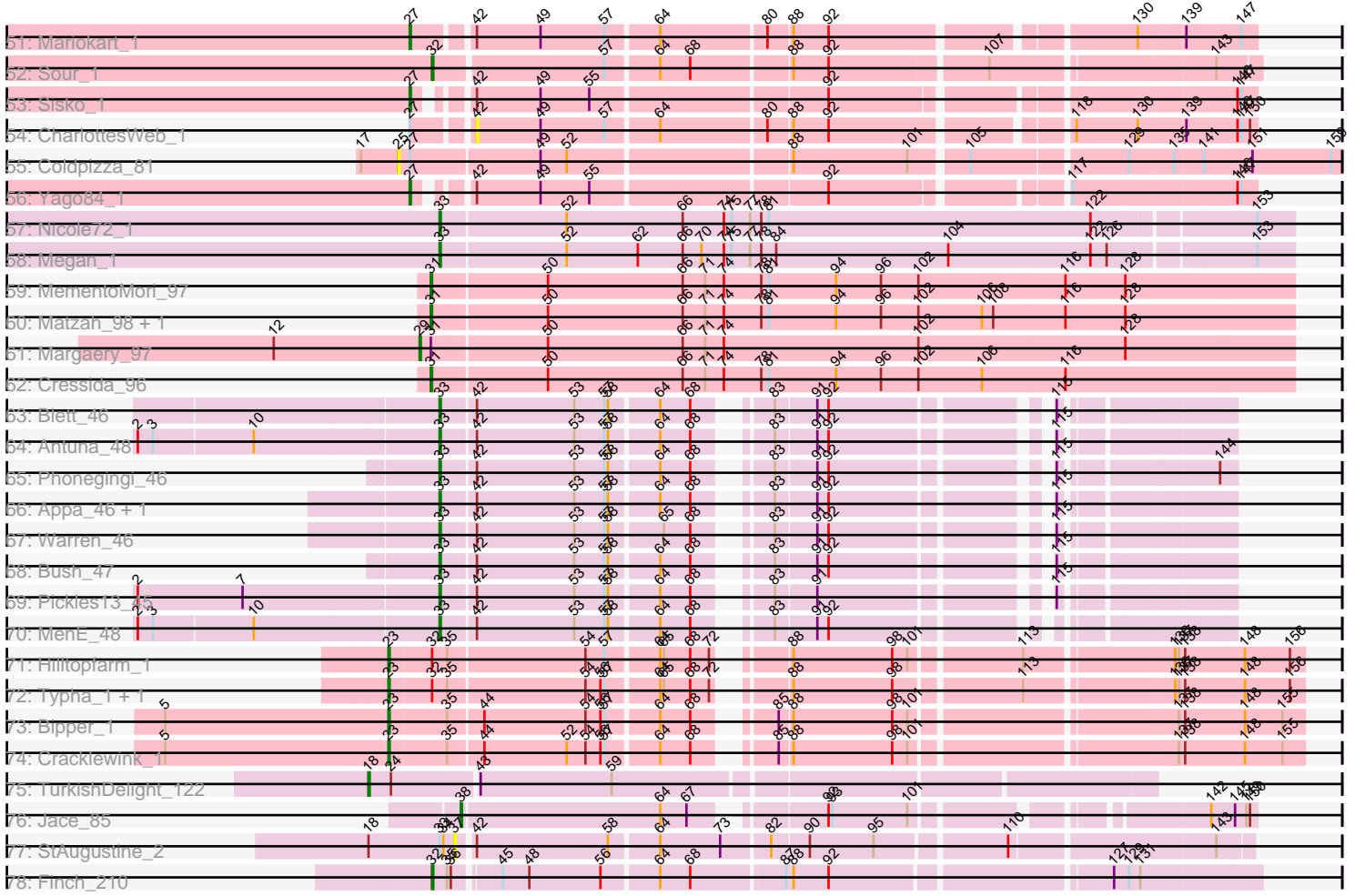


Pham 193790



Pham 193790



Note: Tracks are now grouped by subcluster and scaled. Switching in subcluster is indicated by changes in track color. Track scale is now set by default to display the region 30 bp upstream of start 1 to 30 bp downstream of the last possible start. If this default region is judged to be packed too tightly with annotated starts, the track will be further scaled to only show that region of the ORF with annotated starts. This action will be indicated by adding "Zoomed" to the title. For starts, yellow indicates the location of called starts comprised solely of Glimmer/GeneMark auto-annotations, green indicates the location of called starts with at least 1 manual gene annotation.

Pham 193790 Report

This analysis was run 11/02/24 on database version 579.

Pham number 193790 has 157 members, 10 are drafts.

Phages represented in each track:

- Track 1 : Laroye_5, Salgado_5
- Track 2 : Shrooms_5
- Track 3 : Kovu_5
- Track 4 : Edmundo_4
- Track 5 : LiSara_5
- Track 6 : Wheelbite_5
- Track 7 : Waltz_5
- Track 8 : Jawnski_65, King2_64, Brent_66
- Track 9 : Piccoletto_66
- Track 10 : NathanVaag_65
- Track 11 : Beans_66
- Track 12 : Franzy_64
- Track 13 : Martha_69
- Track 14 : TaeYoung_70, JKerns_69, Grekaycon_70, BossLady_71
- Track 15 : BarretLemon_69, GravityBall_69, StevieBAY_70
- Track 16 : Timinator_70, LeeroyJ_70
- Track 17 : Wyborn_70, Sicarius2_71
- Track 18 : Pippa_70, Shade_69, Sonny_69, Zartrosa_71
- Track 19 : Jordan_70
- Track 20 : Abba_66
- Track 21 : Blocker23_1, Laurie_1, Tres_1
- Track 22 : Rosebush_1, Hedgerow_1, Boyle_1, Faze9_1, Brownie5_1, FrenchFry_1, Coffee_1, Tinciduntolum_1, West99_1
- Track 23 : Kheth_1
- Track 24 : Eaglehorse_1
- Track 25 : Arbiter_1, ItsyBitsy1_1, Lars_1, Ares_1, Calamitous_1, Qyrzula_1, Glass_1, Rhinoforte_1, LizLemon_1, Holeinone_1
- Track 26 : MasterPo_1, Lephleur_1
- Track 27 : Godines_1
- Track 28 : Allegro_1
- Track 29 : Kaleb_1
- Track 30 : Opia_1
- Track 31 : Sabella_1
- Track 32 : Phantasmagoria_1
- Track 33 : Vic9_1
- Track 34 : TA17A_1
- Track 35 : Bananafish_1

- Track 36 : HarveySr_1, Briakila_1, Phlyer_1, Philly_1, Devonte_1, ChaChing_1, Gadget_1, Neos5_1, MmasiCarm_1, GlenHope_1, SynergyX_1, Rita1961_1, Pipefish_1, Heathcliff_1, Abinghost_1, Marley1013_1, Baloo_1, RagingRooster_1, RomaT_1, Nozo_1, Obutu_1, Compostia_1, Yinz_1, Chandler_1, Athena_1, Gervas_1, OrangeOswald_1, Deenasa_1, Akoma_1, LestyG_1, Daisy_1, Corofin_1
- Track 37 : Audrey_1
- Track 38 : Yahalom_1, Bernardo_1, Morty007_1, Tydolla_1, Phaedrus_1, Kamiyu_1
- Track 39 : Kronus_1, Halfpint_1, Casbah_1, Phayeta_1, Mortcellus_1
- Track 40 : Ben11_1
- Track 41 : Jackstina_1
- Track 42 : SlippinJimmy_1
- Track 43 : Saguaro_1
- Track 44 : PenguinLover67_1
- Track 45 : Quesadilla_1
- Track 46 : CRB2_1
- Track 47 : BiggityBass_1
- Track 48 : NHagos_1
- Track 49 : Evaa_1
- Track 50 : Shatter_1, Fresco_1, Axumite_1, Ligma_1
- Track 51 : Mariokart_1
- Track 52 : Sour_1
- Track 53 : Sisko_1
- Track 54 : CharlottesWeb_1
- Track 55 : Coldpizza_81
- Track 56 : Yago84_1
- Track 57 : Nicole72_1
- Track 58 : Megan_1
- Track 59 : MementoMori_97
- Track 60 : Matzah_98, Cinna_94
- Track 61 : Margaery_97
- Track 62 : Cressida_96
- Track 63 : Blett_46
- Track 64 : Antuna_48
- Track 65 : Phonegingi_46
- Track 66 : Appa_46, Dropshot_46
- Track 67 : Warren_46
- Track 68 : Bush_47
- Track 69 : Pickles13_45
- Track 70 : MenE_48
- Track 71 : Hilltopfarm_1
- Track 72 : Typha_1, AuntGwenStacy_1
- Track 73 : Bipper_1
- Track 74 : Cracklewink_1
- Track 75 : TurkishDelight_122
- Track 76 : Jace_85
- Track 77 : StAugustine_2
- Track 78 : Finch_210

Summary of Final Annotations (See graph section above for start numbers):

The start number called the most often in the published annotations is 22, it was called in 38 of the 147 non-draft genes in the pham.

Genes that call this "Most Annotated" start:

- Abinghost_1, Akoma_1, Athena_1, Audrey_1, Baloo_1, Briakila_1, Casbah_1, ChaChing_1, Chandler_1, Compostia_1, Corofin_1, Daisy_1, Deenasa_1, Devonte_1, Gadget_1, Gervas_1, GlenHope_1, Halfpint_1, HarveySr_1, Heathcliff_1, Kronus_1, LestyG_1, Marley1013_1, MmasiCarm_1, Mortcellus_1, Neos5_1, Nozo_1, Obutu_1, OrangeOswald_1, Phayeta_1, Philly_1, Phlyer_1, Pipefish_1, RagingRooster_1, Rita1961_1, RomaT_1, SynergyX_1, Yinz_1,

Genes that have the "Most Annotated" start but do not call it:

- Ben11_1, Bernardo_1, Jackstina_1, Kamiyu_1, Morty007_1, Phaedrus_1, SlippinJimmy_1, Tydolla_1, Yahalom_1,

Genes that do not have the "Most Annotated" start:

- Abba_66, Allegro_1, Antuna_48, Appa_46, Arbitrator_1, Ares_1, AuntGwenStacy_1, Axumite_1, Bananafish_1, BarretLemon_69, Beans_66, BiggityBass_1, Bipper_1, Blett_46, Blocker23_1, BossLady_71, Boyle_1, Brent_66, Brownie5_1, Bush_47, CRB2_1, Calamitous_1, CharlottesWeb_1, Cinna_94, Coffee_1, Coldpizza_81, Cracklewink_1, Cressida_96, Dropshot_46, Eaglehorse_1, Edmundo_4, Evaa_1, Faze9_1, Finch_210, Franzy_64, FrenchFry_1, Fresco_1, Glass_1, Godines_1, GravityBall_69, Grekaycon_70, Hedgerow_1, Hilltopfarm_1, Holeinone_1, ItsyBitsy1_1, JKerns_69, Jace_85, Jawnski_65, Jordan_70, Kaleb_1, Kheth_1, King2_64, Kovu_5, Laroye_5, Lars_1, Laurie_1, LeeroyJ_70, Lephleur_1, LiSara_5, Ligma_1, LizLemon_1, Margaery_97, Mariokart_1, Martha_69, MasterPo_1, Matzah_98, Megan_1, MementoMori_97, MenE_48, NHagos_1, NathanVaag_65, Nicole72_1, Opia_1, PenguinLover67_1, Phantasmagoria_1, Phonegingi_46, Piccoletto_66, Pickles13_45, Pippa_70, Quesadilla_1, Qyrzula_1, Rhinoforte_1, Rosebush_1, Sabella_1, Saguaro_1, Salgado_5, Shade_69, Shatter_1, Shrooms_5, Sicarius2_71, Sisko_1, Sonny_69, Sour_1, StAugustine_2, StevieBAY_70, TA17A_1, TaeYoung_70, Timinator_70, Tinciduntolum_1, Tres_1, TurkishDelight_122, Typha_1, Vic9_1, Waltz_5, Warren_46, West99_1, Wheelbite_5, Wyborn_70, Yago84_1, Zartrosa_71,

Summary by start number:

Start 6:

- Found in 35 of 157 (22.3%) of genes in pham
- Manual Annotations of this start: 29 of 147
- Called 82.9% of time when present
- Phage (with cluster) where this start called: Arbitrator_1 (B2), Ares_1 (B2), Blocker23_1 (B2), Boyle_1 (B2), Brownie5_1 (B2), Calamitous_1 (B2), Coffee_1 (B2), Eaglehorse_1 (B2), Faze9_1 (B2), FrenchFry_1 (B2), Glass_1 (B2), Godines_1 (B2), Hedgerow_1 (B2), Holeinone_1 (B2), ItsyBitsy1_1 (B2), Kheth_1 (B2), Lars_1 (B2), Laurie_1 (B2), Lephleur_1 (B2), LizLemon_1 (B2), MasterPo_1 (B2), Opia_1 (B2), Phantasmagoria_1 (B2), Qyrzula_1 (B2), Rhinoforte_1 (B2), Rosebush_1 (B2), Tinciduntolum_1 (B2), Tres_1 (B2), West99_1 (B2),

Start 11:

- Found in 12 of 157 (7.6%) of genes in pham
- Manual Annotations of this start: 1 of 147
- Called 8.3% of time when present

- Phage (with cluster) where this start called: Bananafish_1 (B2),

Start 13:

- Found in 35 of 157 (22.3%) of genes in pham
- Manual Annotations of this start: 2 of 147
- Called 11.4% of time when present
- Phage (with cluster) where this start called: Allegro_1 (B2), Sabella_1 (B2), TA17A_1 (B2), Vic9_1 (B2),

Start 14:

- Found in 1 of 157 (0.6%) of genes in pham
- Manual Annotations of this start: 1 of 147
- Called 100.0% of time when present
- Phage (with cluster) where this start called: Saguaro_1 (B7),

Start 18:

- Found in 2 of 157 (1.3%) of genes in pham
- Manual Annotations of this start: 1 of 147
- Called 50.0% of time when present
- Phage (with cluster) where this start called: TurkishDelight_122 (singleton),

Start 19:

- Found in 3 of 157 (1.9%) of genes in pham
- Manual Annotations of this start: 2 of 147
- Called 66.7% of time when present
- Phage (with cluster) where this start called: Shrooms_5 (AL), Waltz_5 (AL),

Start 20:

- Found in 35 of 157 (22.3%) of genes in pham
- No Manual Annotations of this start.
- Called 2.9% of time when present
- Phage (with cluster) where this start called: Kaleb_1 (B2),

Start 22:

- Found in 47 of 157 (29.9%) of genes in pham
- Manual Annotations of this start: 38 of 147
- Called 80.9% of time when present
- Phage (with cluster) where this start called: Abinghost_1 (B3), Akoma_1 (B3), Athena_1 (B3), Audrey_1 (B3), Baloo_1 (B3), Briakila_1 (B3), Casbah_1 (B3), ChaChing_1 (B3), Chandler_1 (B3), Compostia_1 (B3), Corofin_1 (B3), Daisy_1 (B3), Deenasa_1 (B3), Devonte_1 (B3), Gadget_1 (B3), Gervas_1 (B3), GlenHope_1 (B3), Halfpint_1 (B3), HarveySr_1 (B3), Heathcliff_1 (B3), Kronus_1 (B3), LestyG_1 (B3), Marley1013_1 (B3), MmasiCarm_1 (B3), Mortcellus_1 (B3), Neos5_1 (B3), Nozo_1 (B3), Obutu_1 (B3), OrangeOswald_1 (B3), Phayeta_1 (B3), Philly_1 (B3), Phlyer_1 (B3), Pipefish_1 (B3), RagingRooster_1 (B3), Rita1961_1 (B3), RomaT_1 (B3), SynergyX_1 (B3), Yinz_1 (B3),

Start 23:

- Found in 5 of 157 (3.2%) of genes in pham
- Manual Annotations of this start: 4 of 147
- Called 100.0% of time when present
- Phage (with cluster) where this start called: AuntGwenStacy_1 (Y), Bipper_1 (Y), Cracklewink_1 (Y), Hilltopfarm_1 (Y), Typha_1 (Y),

Start 24:

- Found in 24 of 157 (15.3%) of genes in pham
- Manual Annotations of this start: 22 of 147
- Called 95.8% of time when present
- Phage (with cluster) where this start called: Abba_66 (AO3), BarretLemon_69 (AO2), Beans_66 (AO1), BossLady_71 (AO2), Brent_66 (AO1), Franzy_64 (AO1), GravityBall_69 (AO2), Grekaycon_70 (AO2), JKerns_69 (AO2), Jawnski_65 (AO1), Jordan_70 (AO2), King2_64 (AO1), LeeroyJ_70 (AO2), Martha_69 (AO2), NathanVaag_65 (AO1), Piccoletto_66 (AO1), Pippa_70 (AO2), Shade_69 (AO2), Sonny_69 (AO2), StevieBAY_70 (AO2), TaeYoung_70 (AO2), Timinator_70 (AO2), Zartrosa_71 (AO2),

Start 25:

- Found in 2 of 157 (1.3%) of genes in pham
- Manual Annotations of this start: 1 of 147
- Called 100.0% of time when present
- Phage (with cluster) where this start called: Coldpizza_81 (DR), NHagos_1 (DR),

Start 26:

- Found in 6 of 157 (3.8%) of genes in pham
- Manual Annotations of this start: 2 of 147
- Called 33.3% of time when present
- Phage (with cluster) where this start called: Laroye_5 (AL), Salgado_5 (AL),

Start 27:

- Found in 70 of 157 (44.6%) of genes in pham
- Manual Annotations of this start: 13 of 147
- Called 20.0% of time when present
- Phage (with cluster) where this start called: Axumite_1 (DR), BiggityBass_1 (DR), CRB2_1 (B9), Evaa_1 (DR), Fresco_1 (DR), Jackstina_1 (B3), Ligma_1 (DR), Mariokart_1 (DR), PenguinLover67_1 (B9), Quesadilla_1 (B9), Shatter_1 (DR), Sisko_1 (DR), SlippinJimmy_1 (B3), Yago84_1 (DR),

Start 29:

- Found in 1 of 157 (0.6%) of genes in pham
- Manual Annotations of this start: 1 of 147
- Called 100.0% of time when present
- Phage (with cluster) where this start called: Margaery_97 (EI),

Start 31:

- Found in 13 of 157 (8.3%) of genes in pham
- Manual Annotations of this start: 8 of 147
- Called 61.5% of time when present
- Phage (with cluster) where this start called: Cinna_94 (EI), Cressida_96 (EI), Edmundo_4 (AL), Kovu_5 (AL), LiSara_5 (AL), Matzah_98 (EI), MementoMori_97 (EI), Wheelbite_5 (AL),

Start 32:

- Found in 5 of 157 (3.2%) of genes in pham
- Manual Annotations of this start: 2 of 147
- Called 40.0% of time when present
- Phage (with cluster) where this start called: Finch_210 (singleton), Sour_1 (DR),

Start 33:

- Found in 47 of 157 (29.9%) of genes in pham
- Manual Annotations of this start: 11 of 147
- Called 23.4% of time when present
- Phage (with cluster) where this start called: Antuna_48 (GA), Appa_46 (GA), Blett_46 (GA), Bush_47 (GA), Dropshot_46 (GA), Megan_1 (EC), MenE_48 (GA), Nicole72_1 (EC), Phonegingi_46 (GA), Pickles13_45 (GA), Warren_46 (GA),

Start 37:

- Found in 1 of 157 (0.6%) of genes in pham
- No Manual Annotations of this start.
- Called 100.0% of time when present
- Phage (with cluster) where this start called: StAugustine_2 (singleton),

Start 38:

- Found in 1 of 157 (0.6%) of genes in pham
- Manual Annotations of this start: 1 of 147
- Called 100.0% of time when present
- Phage (with cluster) where this start called: Jace_85 (singleton),

Start 39:

- Found in 49 of 157 (31.2%) of genes in pham
- Manual Annotations of this start: 2 of 147
- Called 4.1% of time when present
- Phage (with cluster) where this start called: Sicarius2_71 (AO2), Wyborn_70 (AO2),

Start 42:

- Found in 96 of 157 (61.1%) of genes in pham
- Manual Annotations of this start: 6 of 147
- Called 8.3% of time when present
- Phage (with cluster) where this start called: Ben11_1 (B3), Bernardo_1 (B3), CharlottesWeb_1 (DR), Kamiyu_1 (B3), Morty007_1 (B3), Phaedrus_1 (B3), Tydolla_1 (B3), Yahalom_1 (B3),

Summary by clusters:

There are 14 clusters represented in this pham: singleton, EI, AO1, B2, EC, AL, B7, AO3, AO2, GA, B3, Y, DR, B9,

Info for manual annotations of cluster AL:

- Start number 19 was manually annotated 2 times for cluster AL.
- Start number 26 was manually annotated 2 times for cluster AL.
- Start number 31 was manually annotated 4 times for cluster AL.

Info for manual annotations of cluster AO1:

- Start number 24 was manually annotated 7 times for cluster AO1.

Info for manual annotations of cluster AO2:

- Start number 24 was manually annotated 14 times for cluster AO2.
- Start number 39 was manually annotated 2 times for cluster AO2.

Info for manual annotations of cluster AO3:

- Start number 24 was manually annotated 1 time for cluster AO3.

Info for manual annotations of cluster B2:

- Start number 6 was manually annotated 29 times for cluster B2.
- Start number 11 was manually annotated 1 time for cluster B2.
- Start number 13 was manually annotated 2 times for cluster B2.

Info for manual annotations of cluster B3:

- Start number 22 was manually annotated 38 times for cluster B3.
- Start number 27 was manually annotated 1 time for cluster B3.
- Start number 42 was manually annotated 6 times for cluster B3.

Info for manual annotations of cluster B7:

- Start number 14 was manually annotated 1 time for cluster B7.

Info for manual annotations of cluster B9:

- Start number 27 was manually annotated 3 times for cluster B9.

Info for manual annotations of cluster DR:

- Start number 25 was manually annotated 1 time for cluster DR.
- Start number 27 was manually annotated 9 times for cluster DR.
- Start number 32 was manually annotated 1 time for cluster DR.

Info for manual annotations of cluster EC:

- Start number 33 was manually annotated 2 times for cluster EC.

Info for manual annotations of cluster EI:

- Start number 29 was manually annotated 1 time for cluster EI.
- Start number 31 was manually annotated 4 times for cluster EI.

Info for manual annotations of cluster GA:

- Start number 33 was manually annotated 9 times for cluster GA.

Info for manual annotations of cluster Y:

- Start number 23 was manually annotated 4 times for cluster Y.

Gene Information:

Gene: Abba_66 Start: 41901, Stop: 42479, Start Num: 24

Candidate Starts for Abba_66:

(4, 41721), (8, 41784), (15, 41841), (Start: 24 @41901 has 22 MA's), (124, 42423),

Gene: Abinghost_1 Start: 1, Stop: 693, Start Num: 22

Candidate Starts for Abinghost_1:

(Start: 22 @1 has 38 MA's), (Start: 27 @22 has 13 MA's), (Start: 39 @64 has 2 MA's), (Start: 42 @73 has 6 MA's), (53, 151), (57, 175), (64, 214), (72, 253), (86, 307), (88, 313), (92, 340), (110, 478), (124, 541),

Gene: Akoma_1 Start: 1, Stop: 693, Start Num: 22

Candidate Starts for Akoma_1:

(Start: 22 @1 has 38 MA's), (Start: 27 @22 has 13 MA's), (Start: 39 @64 has 2 MA's), (Start: 42 @73 has 6 MA's), (53, 151), (57, 175), (64, 214), (72, 253), (86, 307), (88, 313), (92, 340), (110, 478), (124, 541),

Gene: Allegro_1 Start: 76, Stop: 792, Start Num: 13

Candidate Starts for Allegro_1:

(Start: 6 @1 has 29 MA's), (Start: 13 @76 has 2 MA's), (20, 133), (30, 172), (Start: 33 @181 has 11 MA's), (Start: 42 @202 has 6 MA's), (64, 343), (65, 346), (68, 367), (69, 373), (82, 421), (88, 436), (92, 463), (94, 469), (106, 583), (107, 589), (108, 592), (109, 595), (127, 679),

Gene: Antuna_48 Start: 29370, Stop: 29903, Start Num: 33

Candidate Starts for Antuna_48:

(2, 29136), (3, 29148), (10, 29226), (Start: 33 @29370 has 11 MA's), (Start: 42 @29394 has 6 MA's), (53, 29472), (57, 29496), (58, 29499), (64, 29535), (68, 29559), (83, 29598), (91, 29628), (92, 29637), (115, 29784),

Gene: Appa_46 Start: 29135, Stop: 29668, Start Num: 33

Candidate Starts for Appa_46:

(Start: 33 @29135 has 11 MA's), (Start: 42 @29159 has 6 MA's), (53, 29237), (57, 29261), (58, 29264), (64, 29300), (68, 29324), (83, 29363), (91, 29393), (92, 29402), (115, 29549),

Gene: Arbiter_1 Start: 1, Stop: 792, Start Num: 6

Candidate Starts for Arbiter_1:

(Start: 6 @1 has 29 MA's), (Start: 13 @76 has 2 MA's), (20, 133), (30, 172), (Start: 33 @181 has 11 MA's), (Start: 42 @202 has 6 MA's), (64, 343), (65, 346), (68, 367), (69, 373), (82, 421), (88, 436), (92, 463), (94, 469), (106, 583), (107, 589), (127, 679),

Gene: Ares_1 Start: 1, Stop: 792, Start Num: 6

Candidate Starts for Ares_1:

(Start: 6 @1 has 29 MA's), (Start: 13 @76 has 2 MA's), (20, 133), (30, 172), (Start: 33 @181 has 11 MA's), (Start: 42 @202 has 6 MA's), (64, 343), (65, 346), (68, 367), (69, 373), (82, 421), (88, 436), (92, 463), (94, 469), (106, 583), (107, 589), (127, 679),

Gene: Athena_1 Start: 1, Stop: 693, Start Num: 22

Candidate Starts for Athena_1:

(Start: 22 @1 has 38 MA's), (Start: 27 @22 has 13 MA's), (Start: 39 @64 has 2 MA's), (Start: 42 @73 has 6 MA's), (53, 151), (57, 175), (64, 214), (72, 253), (86, 307), (88, 313), (92, 340), (110, 478), (124, 541),

Gene: Audrey_1 Start: 1, Stop: 693, Start Num: 22

Candidate Starts for Audrey_1:

(Start: 22 @1 has 38 MA's), (Start: 27 @22 has 13 MA's), (Start: 39 @64 has 2 MA's), (Start: 42 @73 has 6 MA's), (57, 175), (72, 253), (86, 307), (88, 313), (92, 340), (110, 478), (124, 541),

Gene: AuntGwenStacy_1 Start: 202, Stop: 861, Start Num: 23

Candidate Starts for AuntGwenStacy_1:

(Start: 23 @202 has 4 MA's), (Start: 32 @235 has 2 MA's), (35, 247), (54, 352), (56, 364), (57, 367), (64, 406), (65, 409), (68, 430), (72, 445), (88, 481), (98, 559), (113, 652), (136, 760), (137, 763), (138, 766), (148, 814), (156, 850),

Gene: Axumite_1 Start: 1, Stop: 606, Start Num: 27

Candidate Starts for Axumite_1:

(Start: 27 @1 has 13 MA's), (49, 85), (53, 112), (57, 136), (64, 175), (97, 349), (118, 472), (139, 553), (146, 592), (147, 595), (150, 601),

Gene: Baloo_1 Start: 1, Stop: 693, Start Num: 22

Candidate Starts for Baloo_1:

(Start: 22 @1 has 38 MA's), (Start: 27 @22 has 13 MA's), (Start: 39 @64 has 2 MA's), (Start: 42 @73 has 6 MA's), (53, 151), (57, 175), (64, 214), (72, 253), (86, 307), (88, 313), (92, 340), (110, 478), (124, 541),

Gene: Bananafish_1 Start: 37, Stop: 792, Start Num: 11

Candidate Starts for Bananafish_1:

(Start: 6 @1 has 29 MA's), (Start: 11 @37 has 1 MA's), (Start: 13 @76 has 2 MA's), (20, 133), (30, 172), (Start: 33 @181 has 11 MA's), (Start: 42 @202 has 6 MA's), (64, 343), (68, 367), (69, 373), (82, 421), (88, 436), (92, 463), (94, 469), (106, 583), (107, 589), (127, 679),

Gene: BarretLemon_69 Start: 44545, Stop: 45120, Start Num: 24

Candidate Starts for BarretLemon_69:

(Start: 24 @44545 has 22 MA's), (61, 44716), (63, 44734), (79, 44809), (99, 44911), (103, 44929),

Gene: Beans_66 Start: 44464, Stop: 45042, Start Num: 24

Candidate Starts for Beans_66:

(Start: 24 @44464 has 22 MA's), (Start: 27 @44479 has 13 MA's), (40, 44527), (63, 44668), (76, 44737), (119, 44980), (133, 45031),

Gene: Ben11_1 Start: 73, Stop: 699, Start Num: 42

Candidate Starts for Ben11_1:

(Start: 22 @1 has 38 MA's), (Start: 27 @22 has 13 MA's), (Start: 39 @64 has 2 MA's), (Start: 42 @73 has 6 MA's), (53, 151), (57, 175), (64, 214), (72, 253), (86, 307), (88, 313), (92, 340), (110, 478), (124, 541), (157, 694),

Gene: Bernardo_1 Start: 73, Stop: 693, Start Num: 42

Candidate Starts for Bernardo_1:

(Start: 22 @1 has 38 MA's), (Start: 27 @22 has 13 MA's), (Start: 39 @64 has 2 MA's), (Start: 42 @73 has 6 MA's), (53, 151), (57, 175), (64, 214), (72, 253), (86, 307), (88, 313), (92, 340), (110, 478), (124, 541),

Gene: BiggityBass_1 Start: 1, Stop: 600, Start Num: 27

Candidate Starts for BiggityBass_1:

(Start: 27 @1 has 13 MA's), (Start: 42 @28 has 6 MA's), (49, 79), (55, 118), (64, 169), (92, 295), (129, 508), (146, 586),

Gene: Bipper_1 Start: 202, Stop: 861, Start Num: 23

Candidate Starts for Bipper_1:

(5, 25), (Start: 23 @202 has 4 MA's), (35, 247), (44, 271), (54, 352), (56, 364), (57, 367), (64, 406), (68, 430), (85, 472), (88, 481), (98, 559), (101, 571), (137, 763), (138, 766), (148, 814), (155, 844),

Gene: Blett_46 Start: 29321, Stop: 29854, Start Num: 33

Candidate Starts for Blett_46:

(Start: 33 @29321 has 11 MA's), (Start: 42 @29345 has 6 MA's), (53, 29423), (57, 29447), (58, 29450), (64, 29486), (68, 29510), (83, 29549), (91, 29579), (92, 29588), (115, 29735),

Gene: Blocker23_1 Start: 1, Stop: 792, Start Num: 6

Candidate Starts for Blocker23_1:

(Start: 6 @1 has 29 MA's), (Start: 11 @37 has 1 MA's), (Start: 13 @76 has 2 MA's), (20, 133), (30, 172), (Start: 33 @181 has 11 MA's), (Start: 42 @202 has 6 MA's), (64, 343), (65, 346), (68, 367), (69, 373), (82, 421), (88, 436), (92, 463), (94, 469), (106, 583), (107, 589), (127, 679),

Gene: BossLady_71 Start: 45159, Stop: 45689, Start Num: 24

Candidate Starts for BossLady_71:

(Start: 24 @45159 has 22 MA's), (61, 45285), (63, 45303), (79, 45378), (89, 45408), (100, 45483), (103, 45498), (116, 45606), (123, 45627),

Gene: Boyle_1 Start: 1, Stop: 792, Start Num: 6

Candidate Starts for Boyle_1:

(Start: 6 @1 has 29 MA's), (Start: 13 @76 has 2 MA's), (20, 133), (30, 172), (Start: 33 @181 has 11 MA's), (Start: 42 @202 has 6 MA's), (64, 343), (65, 346), (68, 367), (69, 373), (82, 421), (88, 436), (92, 463), (94, 469), (106, 583), (107, 589), (108, 592), (109, 595), (127, 679),

Gene: Brent_66 Start: 44549, Stop: 45127, Start Num: 24

Candidate Starts for Brent_66:

(Start: 24 @44549 has 22 MA's), (Start: 27 @44564 has 13 MA's), (63, 44753), (76, 44822), (119, 45065),

Gene: Briakila_1 Start: 1, Stop: 693, Start Num: 22

Candidate Starts for Briakila_1:

(Start: 22 @1 has 38 MA's), (Start: 27 @22 has 13 MA's), (Start: 39 @64 has 2 MA's), (Start: 42 @73 has 6 MA's), (53, 151), (57, 175), (64, 214), (72, 253), (86, 307), (88, 313), (92, 340), (110, 478), (124, 541),

Gene: Brownie5_1 Start: 1, Stop: 792, Start Num: 6

Candidate Starts for Brownie5_1:

(Start: 6 @1 has 29 MA's), (Start: 13 @76 has 2 MA's), (20, 133), (30, 172), (Start: 33 @181 has 11 MA's), (Start: 42 @202 has 6 MA's), (64, 343), (65, 346), (68, 367), (69, 373), (82, 421), (88, 436), (92, 463), (94, 469), (106, 583), (107, 589), (108, 592), (109, 595), (127, 679),

Gene: Bush_47 Start: 29269, Stop: 29802, Start Num: 33

Candidate Starts for Bush_47:

(Start: 33 @29269 has 11 MA's), (Start: 42 @29293 has 6 MA's), (53, 29371), (57, 29395), (58, 29398), (64, 29434), (68, 29458), (83, 29497), (91, 29527), (92, 29536), (115, 29683),

Gene: CRB2_1 Start: 1, Stop: 633, Start Num: 27

Candidate Starts for CRB2_1:

(Start: 27 @1 has 13 MA's), (64, 187), (92, 313), (93, 316), (107, 433), (143, 601),

Gene: Calamitous_1 Start: 1, Stop: 792, Start Num: 6

Candidate Starts for Calamitous_1:

(Start: 6 @1 has 29 MA's), (Start: 13 @76 has 2 MA's), (20, 133), (30, 172), (Start: 33 @181 has 11 MA's), (Start: 42 @202 has 6 MA's), (64, 343), (65, 346), (68, 367), (69, 373), (82, 421), (88, 436), (92, 463), (94, 469), (106, 583), (107, 589), (127, 679),

Gene: Casbah_1 Start: 1, Stop: 699, Start Num: 22

Candidate Starts for Casbah_1:

(Start: 22 @1 has 38 MA's), (Start: 27 @22 has 13 MA's), (Start: 39 @64 has 2 MA's), (Start: 42 @73 has 6 MA's), (53, 151), (57, 175), (64, 214), (72, 253), (86, 307), (88, 313), (92, 340), (110, 478), (124, 541), (157, 694),

Gene: ChaChing_1 Start: 1, Stop: 693, Start Num: 22

Candidate Starts for ChaChing_1:

(Start: 22 @1 has 38 MA's), (Start: 27 @22 has 13 MA's), (Start: 39 @64 has 2 MA's), (Start: 42 @73 has 6 MA's), (53, 151), (57, 175), (64, 214), (72, 253), (86, 307), (88, 313), (92, 340), (110, 478), (124, 541),

Gene: Chandler_1 Start: 1, Stop: 693, Start Num: 22

Candidate Starts for Chandler_1:

(Start: 22 @1 has 38 MA's), (Start: 27 @22 has 13 MA's), (Start: 39 @64 has 2 MA's), (Start: 42 @73 has 6 MA's), (53, 151), (57, 175), (64, 214), (72, 253), (86, 307), (88, 313), (92, 340), (110, 478), (124, 541),

Gene: CharlottesWeb_1 Start: 40, Stop: 612, Start Num: 42

Candidate Starts for CharlottesWeb_1:

(Start: 27 @1 has 13 MA's), (Start: 42 @40 has 6 MA's), (49, 91), (57, 142), (64, 181), (80, 262), (88, 280), (92, 307), (118, 478), (130, 526), (139, 559), (146, 598), (147, 601), (150, 607),

Gene: Cinna_94 Start: 54580, Stop: 55263, Start Num: 31

Candidate Starts for Cinna_94:

(Start: 31 @54580 has 8 MA's), (50, 54667), (66, 54775), (71, 54793), (74, 54808), (78, 54838), (81, 54844), (94, 54898), (96, 54934), (102, 54964), (106, 55015), (108, 55024), (116, 55081), (128, 55129),

Gene: Coffee_1 Start: 1, Stop: 792, Start Num: 6

Candidate Starts for Coffee_1:

(Start: 6 @1 has 29 MA's), (Start: 13 @76 has 2 MA's), (20, 133), (30, 172), (Start: 33 @181 has 11 MA's), (Start: 42 @202 has 6 MA's), (64, 343), (65, 346), (68, 367), (69, 373), (82, 421), (88, 436), (92, 463), (94, 469), (106, 583), (107, 589), (108, 592), (109, 595), (127, 679),

Gene: Coldpizza_81 Start: 61643, Stop: 699, Start Num: 25

Candidate Starts for Coldpizza_81:

(17, 61613), (Start: 25 @61643 has 1 MA's), (Start: 27 @61652 has 13 MA's), (49, 61751), (52, 61772), (88, 61940), (101, 62030), (105, 62072), (129, 62189), (135, 62222), (141, 62243), (151, 62279), (159, 62342),

Gene: Compostia_1 Start: 1, Stop: 693, Start Num: 22

Candidate Starts for Compostia_1:

(Start: 22 @1 has 38 MA's), (Start: 27 @22 has 13 MA's), (Start: 39 @64 has 2 MA's), (Start: 42 @73 has 6 MA's), (53, 151), (57, 175), (64, 214), (72, 253), (86, 307), (88, 313), (92, 340), (110, 478), (124, 541),

Gene: Corofin_1 Start: 1, Stop: 693, Start Num: 22

Candidate Starts for Corofin_1:

(Start: 22 @1 has 38 MA's), (Start: 27 @22 has 13 MA's), (Start: 39 @64 has 2 MA's), (Start: 42 @73 has 6 MA's), (53, 151), (57, 175), (64, 214), (72, 253), (86, 307), (88, 313), (92, 340), (110, 478), (124, 541),

Gene: Cracklewink_1 Start: 202, Stop: 861, Start Num: 23

Candidate Starts for Cracklewink_1:

(5, 25), (Start: 23 @202 has 4 MA's), (35, 247), (44, 271), (52, 337), (54, 352), (56, 364), (57, 367), (64, 406), (68, 430), (85, 472), (88, 481), (98, 559), (101, 571), (137, 763), (138, 766), (148, 814), (155, 844),

Gene: Cressida_96 Start: 55174, Stop: 55857, Start Num: 31

Candidate Starts for Cressida_96:

(Start: 31 @55174 has 8 MA's), (50, 55261), (66, 55369), (71, 55387), (74, 55402), (78, 55432), (81, 55438), (94, 55492), (96, 55528), (102, 55558), (106, 55609), (116, 55675),

Gene: Daisy_1 Start: 1, Stop: 693, Start Num: 22

Candidate Starts for Daisy_1:

(Start: 22 @1 has 38 MA's), (Start: 27 @22 has 13 MA's), (Start: 39 @64 has 2 MA's), (Start: 42 @73 has 6 MA's), (53, 151), (57, 175), (64, 214), (72, 253), (86, 307), (88, 313), (92, 340), (110, 478), (124, 541),

Gene: Deenasa_1 Start: 1, Stop: 693, Start Num: 22

Candidate Starts for Deenasa_1:

(Start: 22 @1 has 38 MA's), (Start: 27 @22 has 13 MA's), (Start: 39 @64 has 2 MA's), (Start: 42 @73 has 6 MA's), (53, 151), (57, 175), (64, 214), (72, 253), (86, 307), (88, 313), (92, 340), (110, 478), (124, 541),

Gene: Devonte_1 Start: 1, Stop: 693, Start Num: 22

Candidate Starts for Devonte_1:

(Start: 22 @1 has 38 MA's), (Start: 27 @22 has 13 MA's), (Start: 39 @64 has 2 MA's), (Start: 42 @73 has 6 MA's), (53, 151), (57, 175), (64, 214), (72, 253), (86, 307), (88, 313), (92, 340), (110, 478), (124, 541),

Gene: Dropshot_46 Start: 28970, Stop: 29503, Start Num: 33

Candidate Starts for Dropshot_46:

(Start: 33 @28970 has 11 MA's), (Start: 42 @28994 has 6 MA's), (53, 29072), (57, 29096), (58, 29099), (64, 29135), (68, 29159), (83, 29198), (91, 29228), (92, 29237), (115, 29384),

Gene: Eaglehorse_1 Start: 1, Stop: 792, Start Num: 6

Candidate Starts for Eaglehorse_1:

(Start: 6 @1 has 29 MA's), (Start: 13 @76 has 2 MA's), (20, 133), (30, 172), (Start: 33 @181 has 11 MA's), (Start: 42 @202 has 6 MA's), (64, 343), (68, 367), (69, 373), (82, 421), (88, 436), (92, 463), (94, 469), (106, 583), (107, 589), (127, 679),

Gene: Edmundo_4 Start: 3516, Stop: 4121, Start Num: 31

Candidate Starts for Edmundo_4:

(Start: 26 @3498 has 2 MA's), (28, 3501), (Start: 31 @3516 has 8 MA's), (41, 3546), (49, 3597), (60, 3657), (82, 3747), (86, 3756), (114, 3951), (121, 3972), (154, 4104),

Gene: Evaa_1 Start: 1, Stop: 699, Start Num: 27

Candidate Starts for Evaa_1:

(Start: 27 @1 has 13 MA's), (64, 190), (92, 316), (101, 379), (111, 457), (125, 517), (129, 538), (138, 577), (158, 676), (159, 691),

Gene: Faze9_1 Start: 1, Stop: 792, Start Num: 6

Candidate Starts for Faze9_1:

(Start: 6 @1 has 29 MA's), (Start: 13 @76 has 2 MA's), (20, 133), (30, 172), (Start: 33 @181 has 11 MA's), (Start: 42 @202 has 6 MA's), (64, 343), (65, 346), (68, 367), (69, 373), (82, 421), (88, 436), (92, 463), (94, 469), (106, 583), (107, 589), (108, 592), (109, 595), (127, 679),

Gene: Finch_210 Start: 122277, Stop: 122888, Start Num: 32

Candidate Starts for Finch_210:

(Start: 32 @122277 has 2 MA's), (35, 122289), (36, 122292), (45, 122322), (48, 122343), (56, 122400), (64, 122442), (68, 122466), (87, 122535), (88, 122541), (92, 122568), (127, 122775), (129, 122787), (131, 122796),

Gene: Franzy_64 Start: 44565, Stop: 45143, Start Num: 24

Candidate Starts for Franzy_64:

(Start: 24 @44565 has 22 MA's), (Start: 27 @44580 has 13 MA's), (59, 44742), (63, 44769), (76, 44838), (119, 45081),

Gene: FrenchFry_1 Start: 1, Stop: 792, Start Num: 6

Candidate Starts for FrenchFry_1:

(Start: 6 @1 has 29 MA's), (Start: 13 @76 has 2 MA's), (20, 133), (30, 172), (Start: 33 @181 has 11 MA's), (Start: 42 @202 has 6 MA's), (64, 343), (65, 346), (68, 367), (69, 373), (82, 421), (88, 436), (92, 463), (94, 469), (106, 583), (107, 589), (108, 592), (109, 595), (127, 679),

Gene: Fresco_1 Start: 1, Stop: 606, Start Num: 27

Candidate Starts for Fresco_1:

(Start: 27 @1 has 13 MA's), (49, 85), (53, 112), (57, 136), (64, 175), (97, 349), (118, 472), (139, 553), (146, 592), (147, 595), (150, 601),

Gene: Gadget_1 Start: 1, Stop: 693, Start Num: 22

Candidate Starts for Gadget_1:

(Start: 22 @1 has 38 MA's), (Start: 27 @22 has 13 MA's), (Start: 39 @64 has 2 MA's), (Start: 42 @73 has 6 MA's), (53, 151), (57, 175), (64, 214), (72, 253), (86, 307), (88, 313), (92, 340), (110, 478), (124, 541),

Gene: Gervas_1 Start: 1, Stop: 693, Start Num: 22

Candidate Starts for Gervas_1:

(Start: 22 @1 has 38 MA's), (Start: 27 @22 has 13 MA's), (Start: 39 @64 has 2 MA's), (Start: 42 @73 has 6 MA's), (53, 151), (57, 175), (64, 214), (72, 253), (86, 307), (88, 313), (92, 340), (110, 478), (124, 541),

Gene: Glass_1 Start: 1, Stop: 792, Start Num: 6

Candidate Starts for Glass_1:

(Start: 6 @1 has 29 MA's), (Start: 13 @76 has 2 MA's), (20, 133), (30, 172), (Start: 33 @181 has 11 MA's), (Start: 42 @202 has 6 MA's), (64, 343), (65, 346), (68, 367), (69, 373), (82, 421), (88, 436), (92, 463), (94, 469), (106, 583), (107, 589), (127, 679),

Gene: GlenHope_1 Start: 1, Stop: 693, Start Num: 22

Candidate Starts for GlenHope_1:

(Start: 22 @1 has 38 MA's), (Start: 27 @22 has 13 MA's), (Start: 39 @64 has 2 MA's), (Start: 42 @73 has 6 MA's), (53, 151), (57, 175), (64, 214), (72, 253), (86, 307), (88, 313), (92, 340), (110, 478), (124, 541),

Gene: Godines_1 Start: 1, Stop: 792, Start Num: 6

Candidate Starts for Godines_1:

(Start: 6 @1 has 29 MA's), (9, 28), (Start: 11 @37 has 1 MA's), (Start: 13 @76 has 2 MA's), (20, 133), (30, 172), (Start: 33 @181 has 11 MA's), (64, 343), (68, 367), (69, 373), (82, 421), (88, 436), (92, 463), (94, 469), (106, 583), (107, 589), (109, 595), (127, 679),

Gene: GravityBall_69 Start: 44845, Stop: 45375, Start Num: 24

Candidate Starts for GravityBall_69:

(Start: 24 @44845 has 22 MA's), (61, 44971), (63, 44989), (79, 45064), (99, 45166), (103, 45184),

Gene: Grekaycon_70 Start: 45072, Stop: 45602, Start Num: 24

Candidate Starts for Grekaycon_70:

(Start: 24 @45072 has 22 MA's), (61, 45198), (63, 45216), (79, 45291), (89, 45321), (100, 45396), (103, 45411), (116, 45519), (123, 45540),

Gene: Halfpint_1 Start: 1, Stop: 699, Start Num: 22

Candidate Starts for Halfpint_1:

(Start: 22 @1 has 38 MA's), (Start: 27 @22 has 13 MA's), (Start: 39 @64 has 2 MA's), (Start: 42 @73 has 6 MA's), (53, 151), (57, 175), (64, 214), (72, 253), (86, 307), (88, 313), (92, 340), (110, 478), (124, 541), (157, 694),

Gene: HarveySr_1 Start: 1, Stop: 693, Start Num: 22

Candidate Starts for HarveySr_1:

(Start: 22 @1 has 38 MA's), (Start: 27 @22 has 13 MA's), (Start: 39 @64 has 2 MA's), (Start: 42 @73 has 6 MA's), (53, 151), (57, 175), (64, 214), (72, 253), (86, 307), (88, 313), (92, 340), (110, 478), (124, 541),

Gene: Heathcliff_1 Start: 1, Stop: 693, Start Num: 22

Candidate Starts for Heathcliff_1:

(Start: 22 @1 has 38 MA's), (Start: 27 @22 has 13 MA's), (Start: 39 @64 has 2 MA's), (Start: 42 @73 has 6 MA's), (53, 151), (57, 175), (64, 214), (72, 253), (86, 307), (88, 313), (92, 340), (110, 478), (124, 541),

Gene: Hedgerow_1 Start: 1, Stop: 792, Start Num: 6

Candidate Starts for Hedgerow_1:

(Start: 6 @1 has 29 MA's), (Start: 13 @76 has 2 MA's), (20, 133), (30, 172), (Start: 33 @181 has 11 MA's), (Start: 42 @202 has 6 MA's), (64, 343), (65, 346), (68, 367), (69, 373), (82, 421), (88, 436), (92, 463), (94, 469), (106, 583), (107, 589), (108, 592), (109, 595), (127, 679),

Gene: Hilltopfarm_1 Start: 202, Stop: 861, Start Num: 23

Candidate Starts for Hilltopfarm_1:

(Start: 23 @202 has 4 MA's), (Start: 32 @235 has 2 MA's), (35, 247), (54, 352), (57, 367), (64, 406), (65, 409), (68, 430), (72, 445), (88, 481), (98, 559), (101, 571), (113, 652), (136, 760), (137, 763), (138, 766), (148, 814), (156, 850),

Gene: Holeinone_1 Start: 1, Stop: 792, Start Num: 6

Candidate Starts for Holeinone_1:

(Start: 6 @1 has 29 MA's), (Start: 13 @76 has 2 MA's), (20, 133), (30, 172), (Start: 33 @181 has 11 MA's), (Start: 42 @202 has 6 MA's), (64, 343), (65, 346), (68, 367), (69, 373), (82, 421), (88, 436), (92, 463), (94, 469), (106, 583), (107, 589), (127, 679),

Gene: ItsyBitsy1_1 Start: 1, Stop: 792, Start Num: 6

Candidate Starts for ItsyBitsy1_1:

(Start: 6 @1 has 29 MA's), (Start: 13 @76 has 2 MA's), (20, 133), (30, 172), (Start: 33 @181 has 11 MA's), (Start: 42 @202 has 6 MA's), (64, 343), (65, 346), (68, 367), (69, 373), (82, 421), (88, 436), (92, 463), (94, 469), (106, 583), (107, 589), (127, 679),

Gene: JKerns_69 Start: 45051, Stop: 45626, Start Num: 24

Candidate Starts for JKerns_69:

(Start: 24 @45051 has 22 MA's), (61, 45222), (63, 45240), (79, 45315), (89, 45345), (100, 45420), (103, 45435), (116, 45543), (123, 45564),

Gene: Jace_85 Start: 47046, Stop: 47594, Start Num: 38

Candidate Starts for Jace_85:

(Start: 38 @47046 has 1 MA's), (64, 47202), (67, 47223), (92, 47304), (93, 47307), (101, 47367), (142, 47559), (145, 47577), (149, 47586), (150, 47589),

Gene: Jackstina_1 Start: 22, Stop: 693, Start Num: 27

Candidate Starts for Jackstina_1:

(Start: 22 @1 has 38 MA's), (Start: 27 @22 has 13 MA's), (Start: 39 @64 has 2 MA's), (Start: 42 @73 has 6 MA's), (53, 151), (57, 175), (64, 214), (86, 307), (88, 313), (92, 340), (110, 478), (124, 541),

Gene: Jawnski_65 Start: 44074, Stop: 44652, Start Num: 24

Candidate Starts for Jawnski_65:

(Start: 24 @44074 has 22 MA's), (Start: 27 @44089 has 13 MA's), (63, 44278), (76, 44347), (119, 44590),

Gene: Jordan_70 Start: 45176, Stop: 45751, Start Num: 24

Candidate Starts for Jordan_70:

(Start: 24 @45176 has 22 MA's), (61, 45347), (63, 45365), (79, 45440), (89, 45470), (100, 45545), (103, 45560), (116, 45668),

Gene: Kaleb_1 Start: 133, Stop: 792, Start Num: 20

Candidate Starts for Kaleb_1:

(Start: 6 @1 has 29 MA's), (Start: 13 @76 has 2 MA's), (20, 133), (30, 172), (Start: 33 @181 has 11 MA's), (Start: 42 @202 has 6 MA's), (64, 343), (65, 346), (68, 367), (69, 373), (82, 421), (88, 436), (92, 463), (94, 469), (106, 583), (107, 589), (108, 592), (109, 595), (127, 679),

Gene: Kamiyu_1 Start: 73, Stop: 693, Start Num: 42

Candidate Starts for Kamiyu_1:

(Start: 22 @1 has 38 MA's), (Start: 27 @22 has 13 MA's), (Start: 39 @64 has 2 MA's), (Start: 42 @73 has 6 MA's), (53, 151), (57, 175), (64, 214), (72, 253), (86, 307), (88, 313), (92, 340), (110, 478), (124, 541),

Gene: Kheth_1 Start: 1, Stop: 792, Start Num: 6

Candidate Starts for Kheth_1:

(Start: 6 @1 has 29 MA's), (Start: 11 @37 has 1 MA's), (Start: 13 @76 has 2 MA's), (20, 133), (30, 172), (Start: 33 @181 has 11 MA's), (Start: 42 @202 has 6 MA's), (64, 343), (68, 367), (69, 373), (82, 421), (88, 436), (92, 463), (94, 469), (106, 583), (107, 589), (127, 679),

Gene: King2_64 Start: 44610, Stop: 45188, Start Num: 24

Candidate Starts for King2_64:

(Start: 24 @44610 has 22 MA's), (Start: 27 @44625 has 13 MA's), (63, 44814), (76, 44883), (119, 45126),

Gene: Kovu_5 Start: 3470, Stop: 4075, Start Num: 31

Candidate Starts for Kovu_5:

(Start: 19 @3425 has 2 MA's), (Start: 26 @3452 has 2 MA's), (Start: 31 @3470 has 8 MA's), (41, 3500), (49, 3551), (57, 3602), (83, 3704), (88, 3716), (105, 3845), (120, 3923), (151, 4052), (152, 4055),

Gene: Kronus_1 Start: 1, Stop: 699, Start Num: 22

Candidate Starts for Kronus_1:

(Start: 22 @1 has 38 MA's), (Start: 27 @22 has 13 MA's), (Start: 39 @64 has 2 MA's), (Start: 42 @73 has 6 MA's), (53, 151), (57, 175), (64, 214), (72, 253), (86, 307), (88, 313), (92, 340), (110, 478), (124,

541), (157, 694),

Gene: Laroye_5 Start: 3276, Stop: 3899, Start Num: 26

Candidate Starts for Laroye_5:

(Start: 26 @3276 has 2 MA's), (28, 3279), (Start: 31 @3294 has 8 MA's), (41, 3324), (49, 3375), (57, 3426), (60, 3435), (82, 3525), (86, 3534), (88, 3540), (92, 3567), (114, 3729), (121, 3750), (154, 3882),

Gene: Lars_1 Start: 1, Stop: 792, Start Num: 6

Candidate Starts for Lars_1:

(Start: 6 @1 has 29 MA's), (Start: 13 @76 has 2 MA's), (20, 133), (30, 172), (Start: 33 @181 has 11 MA's), (Start: 42 @202 has 6 MA's), (64, 343), (65, 346), (68, 367), (69, 373), (82, 421), (88, 436), (92, 463), (94, 469), (106, 583), (107, 589), (127, 679),

Gene: Laurie_1 Start: 1, Stop: 792, Start Num: 6

Candidate Starts for Laurie_1:

(Start: 6 @1 has 29 MA's), (Start: 11 @37 has 1 MA's), (Start: 13 @76 has 2 MA's), (20, 133), (30, 172), (Start: 33 @181 has 11 MA's), (Start: 42 @202 has 6 MA's), (64, 343), (65, 346), (68, 367), (69, 373), (82, 421), (88, 436), (92, 463), (94, 469), (106, 583), (107, 589), (127, 679),

Gene: LeeroyJ_70 Start: 44774, Stop: 45304, Start Num: 24

Candidate Starts for LeeroyJ_70:

(Start: 24 @44774 has 22 MA's), (61, 44900), (63, 44918), (99, 45095), (103, 45113),

Gene: Lephleur_1 Start: 1, Stop: 792, Start Num: 6

Candidate Starts for Lephleur_1:

(Start: 6 @1 has 29 MA's), (9, 28), (Start: 11 @37 has 1 MA's), (Start: 13 @76 has 2 MA's), (20, 133), (30, 172), (Start: 33 @181 has 11 MA's), (Start: 42 @202 has 6 MA's), (64, 343), (65, 346), (68, 367), (69, 373), (82, 421), (88, 436), (92, 463), (94, 469), (106, 583), (107, 589), (127, 679),

Gene: LestyG_1 Start: 1, Stop: 693, Start Num: 22

Candidate Starts for LestyG_1:

(Start: 22 @1 has 38 MA's), (Start: 27 @22 has 13 MA's), (Start: 39 @64 has 2 MA's), (Start: 42 @73 has 6 MA's), (53, 151), (57, 175), (64, 214), (72, 253), (86, 307), (88, 313), (92, 340), (110, 478), (124, 541),

Gene: LiSara_5 Start: 3325, Stop: 3930, Start Num: 31

Candidate Starts for LiSara_5:

(21, 3286), (Start: 26 @3307 has 2 MA's), (28, 3310), (Start: 31 @3325 has 8 MA's), (41, 3355), (49, 3406), (57, 3457), (60, 3466), (82, 3556), (86, 3565), (88, 3571), (92, 3598), (114, 3760), (121, 3781), (154, 3913),

Gene: Ligma_1 Start: 1, Stop: 606, Start Num: 27

Candidate Starts for Ligma_1:

(Start: 27 @1 has 13 MA's), (49, 85), (53, 112), (57, 136), (64, 175), (97, 349), (118, 472), (139, 553), (146, 592), (147, 595), (150, 601),

Gene: LizLemon_1 Start: 1, Stop: 792, Start Num: 6

Candidate Starts for LizLemon_1:

(Start: 6 @1 has 29 MA's), (Start: 13 @76 has 2 MA's), (20, 133), (30, 172), (Start: 33 @181 has 11 MA's), (Start: 42 @202 has 6 MA's), (64, 343), (65, 346), (68, 367), (69, 373), (82, 421), (88, 436), (92, 463), (94, 469), (106, 583), (107, 589), (127, 679),

Gene: Margaery_97 Start: 55238, Stop: 55930, Start Num: 29

Candidate Starts for Margaery_97:

(12, 55121), (Start: 29 @55238 has 1 MA's), (Start: 31 @55247 has 8 MA's), (50, 55334), (66, 55442), (71, 55460), (74, 55475), (102, 55631), (128, 55796),

Gene: Mariokart_1 Start: 1, Stop: 612, Start Num: 27

Candidate Starts for Mariokart_1:

(Start: 27 @1 has 13 MA's), (Start: 42 @40 has 6 MA's), (49, 91), (57, 142), (64, 181), (80, 262), (88, 280), (92, 307), (130, 526), (139, 559), (147, 601),

Gene: Marley1013_1 Start: 1, Stop: 693, Start Num: 22

Candidate Starts for Marley1013_1:

(Start: 22 @1 has 38 MA's), (Start: 27 @22 has 13 MA's), (Start: 39 @64 has 2 MA's), (Start: 42 @73 has 6 MA's), (53, 151), (57, 175), (64, 214), (72, 253), (86, 307), (88, 313), (92, 340), (110, 478), (124, 541),

Gene: Martha_69 Start: 45008, Stop: 45538, Start Num: 24

Candidate Starts for Martha_69:

(Start: 24 @45008 has 22 MA's), (61, 45134), (63, 45152), (79, 45227), (89, 45257), (100, 45332), (103, 45347), (116, 45455),

Gene: MasterPo_1 Start: 1, Stop: 792, Start Num: 6

Candidate Starts for MasterPo_1:

(Start: 6 @1 has 29 MA's), (9, 28), (Start: 11 @37 has 1 MA's), (Start: 13 @76 has 2 MA's), (20, 133), (30, 172), (Start: 33 @181 has 11 MA's), (Start: 42 @202 has 6 MA's), (64, 343), (65, 346), (68, 367), (69, 373), (82, 421), (88, 436), (92, 463), (94, 469), (106, 583), (107, 589), (127, 679),

Gene: Matzah_98 Start: 54900, Stop: 55583, Start Num: 31

Candidate Starts for Matzah_98:

(Start: 31 @54900 has 8 MA's), (50, 54987), (66, 55095), (71, 55113), (74, 55128), (78, 55158), (81, 55164), (94, 55218), (96, 55254), (102, 55284), (106, 55335), (108, 55344), (116, 55401), (128, 55449),

Gene: Megan_1 Start: 1, Stop: 666, Start Num: 33

Candidate Starts for Megan_1:

(Start: 33 @1 has 11 MA's), (52, 97), (62, 154), (66, 190), (70, 205), (74, 223), (75, 229), (77, 244), (78, 253), (84, 265), (104, 403), (122, 517), (126, 529), (153, 637),

Gene: MementoMori_97 Start: 54789, Stop: 55472, Start Num: 31

Candidate Starts for MementoMori_97:

(Start: 31 @54789 has 8 MA's), (50, 54876), (66, 54984), (71, 55002), (74, 55017), (78, 55047), (81, 55053), (94, 55107), (96, 55143), (102, 55173), (116, 55290), (128, 55338),

Gene: MenE_48 Start: 29392, Stop: 29925, Start Num: 33

Candidate Starts for MenE_48:

(2, 29158), (3, 29170), (10, 29248), (Start: 33 @29392 has 11 MA's), (Start: 42 @29416 has 6 MA's), (53, 29494), (57, 29518), (58, 29521), (64, 29557), (68, 29581), (83, 29620), (91, 29650), (92, 29659),

Gene: MmasiCarm_1 Start: 1, Stop: 693, Start Num: 22

Candidate Starts for MmasiCarm_1:

(Start: 22 @1 has 38 MA's), (Start: 27 @22 has 13 MA's), (Start: 39 @64 has 2 MA's), (Start: 42 @73 has 6 MA's), (53, 151), (57, 175), (64, 214), (72, 253), (86, 307), (88, 313), (92, 340), (110, 478), (124, 541),

Gene: Mortcellus_1 Start: 1, Stop: 699, Start Num: 22

Candidate Starts for Mortcellus_1:

(Start: 22 @1 has 38 MA's), (Start: 27 @22 has 13 MA's), (Start: 39 @64 has 2 MA's), (Start: 42 @73 has 6 MA's), (53, 151), (57, 175), (64, 214), (72, 253), (86, 307), (88, 313), (92, 340), (110, 478), (124, 541), (157, 694),

Gene: Morty007_1 Start: 73, Stop: 693, Start Num: 42

Candidate Starts for Morty007_1:

(Start: 22 @1 has 38 MA's), (Start: 27 @22 has 13 MA's), (Start: 39 @64 has 2 MA's), (Start: 42 @73 has 6 MA's), (53, 151), (57, 175), (64, 214), (72, 253), (86, 307), (88, 313), (92, 340), (110, 478), (124, 541),

Gene: NHagos_1 Start: 1, Stop: 633, Start Num: 25

Candidate Starts for NHagos_1:

(Start: 25 @1 has 1 MA's), (Start: 27 @10 has 13 MA's), (49, 103), (50, 109), (57, 154), (64, 193), (68, 217), (88, 292), (105, 424), (112, 463), (130, 547), (139, 580), (146, 619), (147, 622), (150, 628),

Gene: NathanVaag_65 Start: 44298, Stop: 44876, Start Num: 24

Candidate Starts for NathanVaag_65:

(Start: 24 @44298 has 22 MA's), (Start: 27 @44313 has 13 MA's), (40, 44361), (63, 44502), (76, 44571), (110, 44763), (119, 44814), (133, 44865),

Gene: Neos5_1 Start: 1, Stop: 693, Start Num: 22

Candidate Starts for Neos5_1:

(Start: 22 @1 has 38 MA's), (Start: 27 @22 has 13 MA's), (Start: 39 @64 has 2 MA's), (Start: 42 @73 has 6 MA's), (53, 151), (57, 175), (64, 214), (72, 253), (86, 307), (88, 313), (92, 340), (110, 478), (124, 541),

Gene: Nicole72_1 Start: 1, Stop: 666, Start Num: 33

Candidate Starts for Nicole72_1:

(Start: 33 @1 has 11 MA's), (52, 97), (66, 190), (74, 223), (75, 229), (77, 244), (78, 253), (81, 259), (122, 517), (153, 637),

Gene: Nozo_1 Start: 1, Stop: 693, Start Num: 22

Candidate Starts for Nozo_1:

(Start: 22 @1 has 38 MA's), (Start: 27 @22 has 13 MA's), (Start: 39 @64 has 2 MA's), (Start: 42 @73 has 6 MA's), (53, 151), (57, 175), (64, 214), (72, 253), (86, 307), (88, 313), (92, 340), (110, 478), (124, 541),

Gene: Obutu_1 Start: 1, Stop: 693, Start Num: 22

Candidate Starts for Obutu_1:

(Start: 22 @1 has 38 MA's), (Start: 27 @22 has 13 MA's), (Start: 39 @64 has 2 MA's), (Start: 42 @73 has 6 MA's), (53, 151), (57, 175), (64, 214), (72, 253), (86, 307), (88, 313), (92, 340), (110, 478), (124, 541),

Gene: Opia_1 Start: 1, Stop: 792, Start Num: 6

Candidate Starts for Opia_1:

(Start: 6 @1 has 29 MA's), (Start: 11 @37 has 1 MA's), (Start: 13 @76 has 2 MA's), (20, 133), (30, 172), (Start: 33 @181 has 11 MA's), (Start: 42 @202 has 6 MA's), (64, 343), (65, 346), (68, 367), (69, 373), (82, 421), (88, 436), (92, 463), (94, 469), (106, 583), (107, 589), (108, 592), (109, 595), (127, 679),

Gene: OrangeOswald_1 Start: 1, Stop: 693, Start Num: 22

Candidate Starts for OrangeOswald_1:

(Start: 22 @1 has 38 MA's), (Start: 27 @22 has 13 MA's), (Start: 39 @64 has 2 MA's), (Start: 42 @73 has 6 MA's), (53, 151), (57, 175), (64, 214), (72, 253), (86, 307), (88, 313), (92, 340), (110, 478), (124, 541),

Gene: PenguinLover67_1 Start: 1, Stop: 633, Start Num: 27

Candidate Starts for PenguinLover67_1:

(Start: 27 @1 has 13 MA's), (64, 187), (90, 298), (92, 313), (93, 316), (107, 433), (143, 601),

Gene: Phaedrus_1 Start: 73, Stop: 693, Start Num: 42

Candidate Starts for Phaedrus_1:

(Start: 22 @1 has 38 MA's), (Start: 27 @22 has 13 MA's), (Start: 39 @64 has 2 MA's), (Start: 42 @73 has 6 MA's), (53, 151), (57, 175), (64, 214), (72, 253), (86, 307), (88, 313), (92, 340), (110, 478), (124, 541),

Gene: Phantasmagoria_1 Start: 1, Stop: 792, Start Num: 6

Candidate Starts for Phantasmagoria_1:

(Start: 6 @1 has 29 MA's), (Start: 11 @37 has 1 MA's), (Start: 13 @76 has 2 MA's), (20, 133), (30, 172), (Start: 33 @181 has 11 MA's), (Start: 42 @202 has 6 MA's), (64, 343), (65, 346), (68, 367), (69, 373), (82, 421), (88, 436), (92, 463), (94, 469), (107, 589), (109, 595), (127, 679),

Gene: Phayeta_1 Start: 1, Stop: 699, Start Num: 22

Candidate Starts for Phayeta_1:

(Start: 22 @1 has 38 MA's), (Start: 27 @22 has 13 MA's), (Start: 39 @64 has 2 MA's), (Start: 42 @73 has 6 MA's), (53, 151), (57, 175), (64, 214), (72, 253), (86, 307), (88, 313), (92, 340), (110, 478), (124, 541), (157, 694),

Gene: Philly_1 Start: 1, Stop: 693, Start Num: 22

Candidate Starts for Philly_1:

(Start: 22 @1 has 38 MA's), (Start: 27 @22 has 13 MA's), (Start: 39 @64 has 2 MA's), (Start: 42 @73 has 6 MA's), (53, 151), (57, 175), (64, 214), (72, 253), (86, 307), (88, 313), (92, 340), (110, 478), (124, 541),

Gene: Phlyer_1 Start: 1, Stop: 693, Start Num: 22

Candidate Starts for Phlyer_1:

(Start: 22 @1 has 38 MA's), (Start: 27 @22 has 13 MA's), (Start: 39 @64 has 2 MA's), (Start: 42 @73 has 6 MA's), (53, 151), (57, 175), (64, 214), (72, 253), (86, 307), (88, 313), (92, 340), (110, 478), (124, 541),

Gene: Phonegingi_46 Start: 29171, Stop: 29704, Start Num: 33

Candidate Starts for Phonegingi_46:

(Start: 33 @29171 has 11 MA's), (Start: 42 @29195 has 6 MA's), (53, 29273), (57, 29297), (58, 29300), (64, 29336), (68, 29360), (83, 29399), (91, 29429), (92, 29438), (115, 29585), (144, 29693),

Gene: Piccoletto_66 Start: 44460, Stop: 45038, Start Num: 24

Candidate Starts for Piccoletto_66:

(Start: 24 @44460 has 22 MA's), (Start: 27 @44475 has 13 MA's), (40, 44523), (63, 44664), (76, 44733), (119, 44976), (133, 45027),

Gene: Pickles13_45 Start: 29439, Stop: 29972, Start Num: 33

Candidate Starts for Pickles13_45:

(2, 29202), (7, 29286), (Start: 33 @29439 has 11 MA's), (Start: 42 @29463 has 6 MA's), (53, 29541), (57, 29565), (58, 29568), (64, 29604), (68, 29628), (83, 29667), (91, 29697), (115, 29853),

Gene: Pipefish_1 Start: 1, Stop: 693, Start Num: 22

Candidate Starts for Pipefish_1:

(Start: 22 @1 has 38 MA's), (Start: 27 @22 has 13 MA's), (Start: 39 @64 has 2 MA's), (Start: 42 @73 has 6 MA's), (53, 151), (57, 175), (64, 214), (72, 253), (86, 307), (88, 313), (92, 340), (110, 478), (124, 541),

Gene: Pippa_70 Start: 45043, Stop: 45573, Start Num: 24

Candidate Starts for Pippa_70:

(Start: 24 @45043 has 22 MA's), (61, 45169), (63, 45187), (79, 45262), (89, 45292), (100, 45367), (103, 45382), (116, 45490), (123, 45511),

Gene: Quesadilla_1 Start: 1, Stop: 633, Start Num: 27

Candidate Starts for Quesadilla_1:

(Start: 27 @1 has 13 MA's), (49, 97), (64, 187), (79, 265), (92, 313), (107, 433),

Gene: Qyrzula_1 Start: 1, Stop: 792, Start Num: 6

Candidate Starts for Qyrzula_1:

(Start: 6 @1 has 29 MA's), (Start: 13 @76 has 2 MA's), (20, 133), (30, 172), (Start: 33 @181 has 11 MA's), (Start: 42 @202 has 6 MA's), (64, 343), (65, 346), (68, 367), (69, 373), (82, 421), (88, 436), (92, 463), (94, 469), (106, 583), (107, 589), (127, 679),

Gene: RagingRooster_1 Start: 1, Stop: 693, Start Num: 22

Candidate Starts for RagingRooster_1:

(Start: 22 @1 has 38 MA's), (Start: 27 @22 has 13 MA's), (Start: 39 @64 has 2 MA's), (Start: 42 @73 has 6 MA's), (53, 151), (57, 175), (64, 214), (72, 253), (86, 307), (88, 313), (92, 340), (110, 478), (124, 541),

Gene: Rhinoforte_1 Start: 1, Stop: 792, Start Num: 6

Candidate Starts for Rhinoforte_1:

(Start: 6 @1 has 29 MA's), (Start: 13 @76 has 2 MA's), (20, 133), (30, 172), (Start: 33 @181 has 11 MA's), (Start: 42 @202 has 6 MA's), (64, 343), (65, 346), (68, 367), (69, 373), (82, 421), (88, 436), (92, 463), (94, 469), (106, 583), (107, 589), (127, 679),

Gene: Rita1961_1 Start: 1, Stop: 693, Start Num: 22

Candidate Starts for Rita1961_1:

(Start: 22 @1 has 38 MA's), (Start: 27 @22 has 13 MA's), (Start: 39 @64 has 2 MA's), (Start: 42 @73 has 6 MA's), (53, 151), (57, 175), (64, 214), (72, 253), (86, 307), (88, 313), (92, 340), (110, 478), (124, 541),

Gene: RomaT_1 Start: 1, Stop: 693, Start Num: 22

Candidate Starts for RomaT_1:

(Start: 22 @1 has 38 MA's), (Start: 27 @22 has 13 MA's), (Start: 39 @64 has 2 MA's), (Start: 42 @73 has 6 MA's), (53, 151), (57, 175), (64, 214), (72, 253), (86, 307), (88, 313), (92, 340), (110, 478), (124, 541),

Gene: Rosebush_1 Start: 1, Stop: 792, Start Num: 6

Candidate Starts for Rosebush_1:

(Start: 6 @1 has 29 MA's), (Start: 13 @76 has 2 MA's), (20, 133), (30, 172), (Start: 33 @181 has 11 MA's), (Start: 42 @202 has 6 MA's), (64, 343), (65, 346), (68, 367), (69, 373), (82, 421), (88, 436), (92, 463), (94, 469), (106, 583), (107, 589), (108, 592), (109, 595), (127, 679),

Gene: Sabella_1 Start: 76, Stop: 792, Start Num: 13

Candidate Starts for Sabella_1:

(Start: 6 @1 has 29 MA's), (Start: 11 @37 has 1 MA's), (Start: 13 @76 has 2 MA's), (20, 133), (30, 172), (Start: 33 @181 has 11 MA's), (Start: 42 @202 has 6 MA's), (64, 343), (68, 367), (69, 373), (82, 421), (88, 436), (92, 463), (94, 469), (106, 583), (107, 589), (127, 679),

Gene: Saguaro_1 Start: 1, Stop: 735, Start Num: 14

Candidate Starts for Saguaro_1:

(Start: 14 @1 has 1 MA's), (16, 28), (Start: 27 @79 has 13 MA's), (51, 187), (64, 265), (82, 349), (86, 358), (88, 364), (90, 376), (92, 391), (93, 394), (99, 445), (109, 517), (132, 625), (148, 700),

Gene: Salgado_5 Start: 3284, Stop: 3907, Start Num: 26

Candidate Starts for Salgado_5:

(Start: 26 @3284 has 2 MA's), (28, 3287), (Start: 31 @3302 has 8 MA's), (41, 3332), (49, 3383), (57, 3434), (60, 3443), (82, 3533), (86, 3542), (88, 3548), (92, 3575), (114, 3737), (121, 3758), (154, 3890),

Gene: Shade_69 Start: 44814, Stop: 45389, Start Num: 24

Candidate Starts for Shade_69:

(Start: 24 @44814 has 22 MA's), (61, 44985), (63, 45003), (79, 45078), (89, 45108), (100, 45183), (103, 45198), (116, 45306), (123, 45327),

Gene: Shatter_1 Start: 1, Stop: 606, Start Num: 27

Candidate Starts for Shatter_1:

(Start: 27 @1 has 13 MA's), (49, 85), (53, 112), (57, 136), (64, 175), (97, 349), (118, 472), (139, 553), (146, 592), (147, 595), (150, 601),

Gene: Shrooms_5 Start: 3310, Stop: 3960, Start Num: 19

Candidate Starts for Shrooms_5:

(1, 3046), (Start: 19 @3310 has 2 MA's), (Start: 31 @3355 has 8 MA's), (41, 3385), (49, 3436), (56, 3484), (57, 3487), (86, 3595), (88, 3601), (126, 3826), (140, 3889),

Gene: Sicarius2_71 Start: 43199, Stop: 43729, Start Num: 39

Candidate Starts for Sicarius2_71:

(Start: 39 @43199 has 2 MA's), (46, 43235), (47, 43244), (63, 43343), (79, 43421), (92, 43469), (109, 43592), (134, 43724),

Gene: Sisko_1 Start: 1, Stop: 600, Start Num: 27

Candidate Starts for Sisko_1:

(Start: 27 @1 has 13 MA's), (Start: 42 @28 has 6 MA's), (49, 79), (55, 118), (92, 295), (146, 586), (147, 589),

Gene: SlippinJimmy_1 Start: 22, Stop: 693, Start Num: 27

Candidate Starts for SlippinJimmy_1:

(Start: 22 @1 has 38 MA's), (Start: 27 @22 has 13 MA's), (Start: 39 @64 has 2 MA's), (Start: 42 @73 has 6 MA's), (53, 151), (57, 175), (64, 214), (72, 253), (86, 307), (88, 313), (92, 340), (110, 478), (124, 541),

Gene: Sonny_69 Start: 44737, Stop: 45312, Start Num: 24

Candidate Starts for Sonny_69:

(Start: 24 @44737 has 22 MA's), (61, 44908), (63, 44926), (79, 45001), (89, 45031), (100, 45106), (103, 45121), (116, 45229), (123, 45250),

Gene: Sour_1 Start: 1, Stop: 615, Start Num: 32

Candidate Starts for Sour_1:

(Start: 32 @1 has 2 MA's), (57, 130), (64, 169), (68, 193), (88, 268), (92, 295), (107, 415), (143, 583),

Gene: StAugustine_2 Start: 428, Stop: 1015, Start Num: 37

Candidate Starts for StAugustine_2:

(Start: 18 @359 has 1 MA's), (Start: 33 @416 has 11 MA's), (34, 419), (37, 428), (Start: 42 @437 has 6 MA's), (58, 542), (64, 578), (73, 626), (82, 662), (90, 689), (95, 740), (110, 836), (143, 989),

Gene: StevieBAY_70 Start: 45067, Stop: 45597, Start Num: 24

Candidate Starts for StevieBAY_70:

(Start: 24 @45067 has 22 MA's), (61, 45193), (63, 45211), (79, 45286), (99, 45388), (103, 45406),

Gene: SynergyX_1 Start: 1, Stop: 693, Start Num: 22

Candidate Starts for SynergyX_1:

(Start: 22 @1 has 38 MA's), (Start: 27 @22 has 13 MA's), (Start: 39 @64 has 2 MA's), (Start: 42 @73 has 6 MA's), (53, 151), (57, 175), (64, 214), (72, 253), (86, 307), (88, 313), (92, 340), (110, 478), (124, 541),

Gene: TA17A_1 Start: 76, Stop: 792, Start Num: 13

Candidate Starts for TA17A_1:

(Start: 6 @1 has 29 MA's), (Start: 11 @37 has 1 MA's), (Start: 13 @76 has 2 MA's), (20, 133), (30, 172), (Start: 33 @181 has 11 MA's), (Start: 42 @202 has 6 MA's), (64, 343), (68, 367), (69, 373), (82, 421), (88, 436), (92, 463), (94, 469), (106, 583), (107, 589), (127, 679), (128, 688),

Gene: TaeYoung_70 Start: 44980, Stop: 45510, Start Num: 24

Candidate Starts for TaeYoung_70:

(Start: 24 @44980 has 22 MA's), (61, 45106), (63, 45124), (79, 45199), (89, 45229), (100, 45304), (103, 45319), (116, 45427), (123, 45448),

Gene: Timinator_70 Start: 44887, Stop: 45417, Start Num: 24

Candidate Starts for Timinator_70:

(Start: 24 @44887 has 22 MA's), (61, 45013), (63, 45031), (99, 45208), (103, 45226),

Gene: Tinciduntolum_1 Start: 1, Stop: 792, Start Num: 6

Candidate Starts for Tinciduntolum_1:

(Start: 6 @1 has 29 MA's), (Start: 13 @76 has 2 MA's), (20, 133), (30, 172), (Start: 33 @181 has 11 MA's), (Start: 42 @202 has 6 MA's), (64, 343), (65, 346), (68, 367), (69, 373), (82, 421), (88, 436), (92, 463), (94, 469), (106, 583), (107, 589), (108, 592), (109, 595), (127, 679),

Gene: Tres_1 Start: 1, Stop: 792, Start Num: 6

Candidate Starts for Tres_1:

(Start: 6 @1 has 29 MA's), (Start: 11 @37 has 1 MA's), (Start: 13 @76 has 2 MA's), (20, 133), (30, 172), (Start: 33 @181 has 11 MA's), (Start: 42 @202 has 6 MA's), (64, 343), (65, 346), (68, 367), (69, 373), (82, 421), (88, 436), (92, 463), (94, 469), (106, 583), (107, 589), (127, 679),

Gene: TurkishDelight_122 Start: 89500, Stop: 90093, Start Num: 18

Candidate Starts for TurkishDelight_122:

(Start: 18 @89500 has 1 MA's), (Start: 24 @89518 has 22 MA's), (43, 89584), (59, 89689),

Gene: Tydolla_1 Start: 73, Stop: 693, Start Num: 42

Candidate Starts for Tydolla_1:

(Start: 22 @1 has 38 MA's), (Start: 27 @22 has 13 MA's), (Start: 39 @64 has 2 MA's), (Start: 42 @73 has 6 MA's), (53, 151), (57, 175), (64, 214), (72, 253), (86, 307), (88, 313), (92, 340), (110, 478), (124, 541),

Gene: Typha_1 Start: 202, Stop: 861, Start Num: 23

Candidate Starts for Typha_1:

(Start: 23 @202 has 4 MA's), (Start: 32 @235 has 2 MA's), (35, 247), (54, 352), (56, 364), (57, 367), (64, 406), (65, 409), (68, 430), (72, 445), (88, 481), (98, 559), (113, 652), (136, 760), (137, 763), (138, 766), (148, 814), (156, 850),

Gene: Vic9_1 Start: 76, Stop: 792, Start Num: 13

Candidate Starts for Vic9_1:

(Start: 6 @1 has 29 MA's), (Start: 13 @76 has 2 MA's), (20, 133), (30, 172), (Start: 33 @181 has 11 MA's), (Start: 42 @202 has 6 MA's), (64, 343), (68, 367), (69, 373), (82, 421), (88, 436), (92, 463), (94, 469), (106, 583), (107, 589), (127, 679),

Gene: Waltz_5 Start: 3398, Stop: 4048, Start Num: 19

Candidate Starts for Waltz_5:

(Start: 19 @3398 has 2 MA's), (Start: 31 @3443 has 8 MA's), (41, 3473), (49, 3524), (56, 3572), (86, 3683), (88, 3689), (140, 3977),

Gene: Warren_46 Start: 29178, Stop: 29711, Start Num: 33

Candidate Starts for Warren_46:

(Start: 33 @29178 has 11 MA's), (Start: 42 @29202 has 6 MA's), (53, 29280), (57, 29304), (58, 29307), (65, 29346), (68, 29367), (83, 29406), (91, 29436), (92, 29445), (115, 29592),

Gene: West99_1 Start: 1, Stop: 792, Start Num: 6

Candidate Starts for West99_1:

(Start: 6 @1 has 29 MA's), (Start: 13 @76 has 2 MA's), (20, 133), (30, 172), (Start: 33 @181 has 11 MA's), (Start: 42 @202 has 6 MA's), (64, 343), (65, 346), (68, 367), (69, 373), (82, 421), (88, 436), (92, 463), (94, 469), (106, 583), (107, 589), (108, 592), (109, 595), (127, 679),

Gene: Wheelbite_5 Start: 3393, Stop: 3998, Start Num: 31

Candidate Starts for Wheelbite_5:

(Start: 26 @3375 has 2 MA's), (28, 3378), (Start: 31 @3393 has 8 MA's), (41, 3423), (49, 3474), (60, 3534), (86, 3633), (114, 3828), (121, 3849), (154, 3981),

Gene: Wyborn_70 Start: 43934, Stop: 44464, Start Num: 39

Candidate Starts for Wyborn_70:

(Start: 39 @43934 has 2 MA's), (46, 43970), (47, 43979), (63, 44078), (79, 44156), (92, 44204), (109, 44327), (134, 44459),

Gene: Yago84_1 Start: 1, Stop: 600, Start Num: 27

Candidate Starts for Yago84_1:

(Start: 27 @1 has 13 MA's), (Start: 42 @28 has 6 MA's), (49, 79), (55, 118), (92, 295), (117, 463), (146, 586), (147, 589),

Gene: Yahalom_1 Start: 73, Stop: 693, Start Num: 42

Candidate Starts for Yahalom_1:

(Start: 22 @1 has 38 MA's), (Start: 27 @22 has 13 MA's), (Start: 39 @64 has 2 MA's), (Start: 42 @73 has 6 MA's), (53, 151), (57, 175), (64, 214), (72, 253), (86, 307), (88, 313), (92, 340), (110, 478), (124, 541),

Gene: Yinz_1 Start: 1, Stop: 693, Start Num: 22

Candidate Starts for Yinz_1:

(Start: 22 @1 has 38 MA's), (Start: 27 @22 has 13 MA's), (Start: 39 @64 has 2 MA's), (Start: 42 @73 has 6 MA's), (53, 151), (57, 175), (64, 214), (72, 253), (86, 307), (88, 313), (92, 340), (110, 478), (124, 541),

Gene: Zartrosa_71 Start: 45067, Stop: 45642, Start Num: 24

Candidate Starts for Zartrosa_71:

(Start: 24 @45067 has 22 MA's), (61, 45238), (63, 45256), (79, 45331), (89, 45361), (100, 45436), (103, 45451), (116, 45559), (123, 45580),