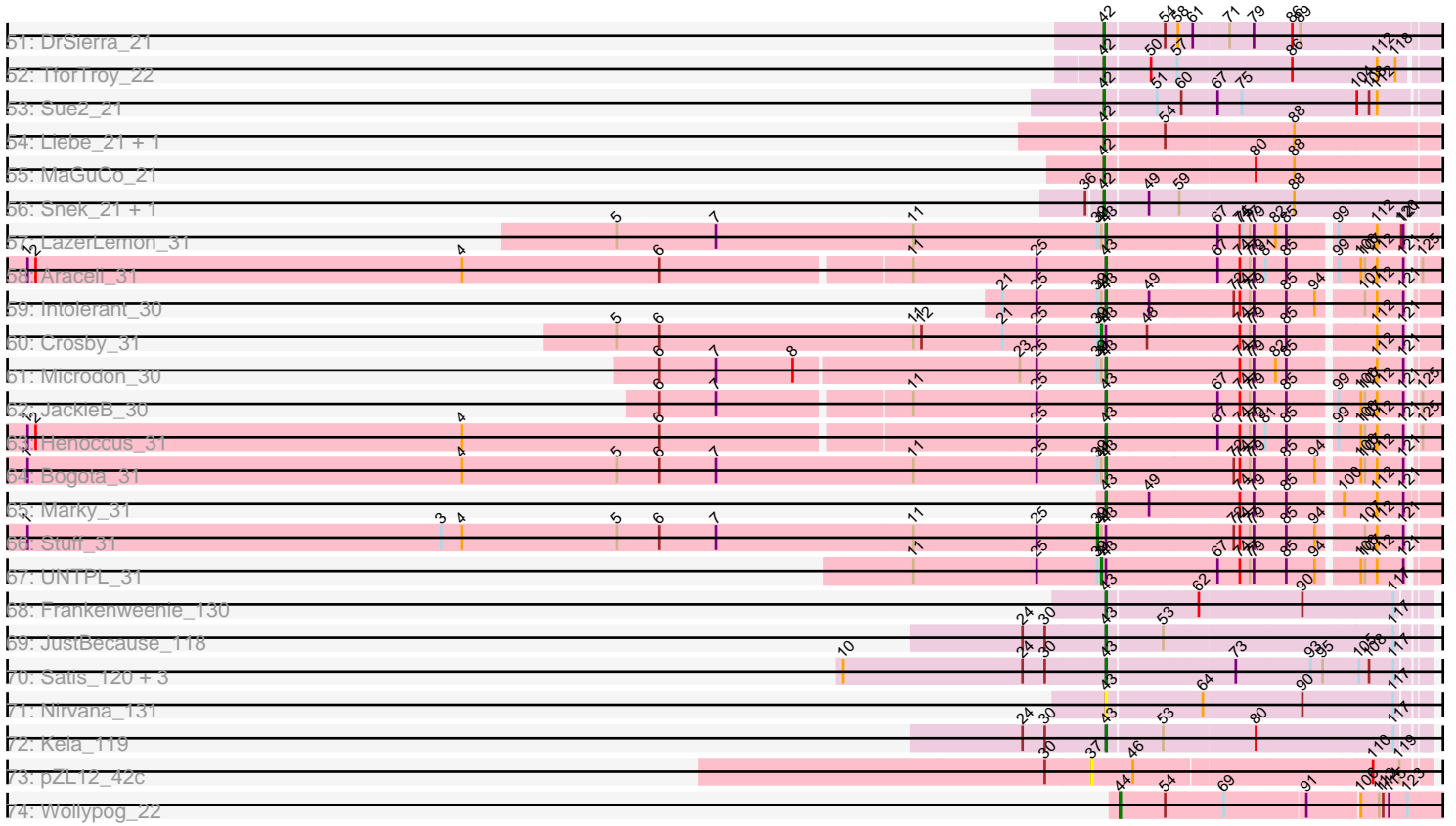


Pham 193824



Note: Tracks are now grouped by subcluster and scaled. Switching in subcluster is indicated by changes in track color. Track scale is now set by default to display the region 30 bp upstream of start 1 to 30 bp downstream of the last possible start. If this default region is judged to be packed too tightly with annotated starts, the track will be further scaled to only show that region of the ORF with annotated starts. This action will be indicated by adding "Zoomed" to the title. For starts, yellow indicates the location of called starts comprised solely of Glimmer/GeneMark auto-annotations, green indicates the location of called starts with at least 1 manual gene annotation.

Pham 193824 Report

This analysis was run 11/02/24 on database version 579.

WARNING: Pham size does not match number of genes in report. Either unphamerated genes have been added (by you) or starterator has removed genes due to invalid start codon.

Pham number 193824 has 130 members, 5 are drafts.

Phages represented in each track:

- Track 1 : Kittykat_19, Preamble_19
- Track 2 : Makoto_19, OurGirlNessie_19
- Track 3 : Albanese_23, Lakshmi_23, Nubia_23, Oxyntrius_23
- Track 4 : GreenHearts_23
- Track 5 : Immaculata_23, Cholula_23, Potatoes_23
- Track 6 : PitaDog_19, CristinaYang_19, LilStuart_19, Nancia_19, Bodacious_19, ChewChew_19
- Track 7 : BigMack_19
- Track 8 : EstebanJulior_19, MamaPearl_19
- Track 9 : Glenn_23, Korra_24, Dino_23, Zorro_23
- Track 10 : Sergei_19, KingBob_19, Herb_19, Temper16_19, Maria1952_19, Daiboju_19
- Track 11 : RAP15_23, Jumboset_23, MeganNoll_23, Savage2526_23, BrotherBLo_23
- Track 12 : OMalley_19, Eunoia_19, Aledel_19, Chridison_19, Riovina_19, Supakev_19
- Track 13 : TattModd_23
- Track 14 : Moki_19, Huckleberry_19, HeadNerd_19, Bennie_19
- Track 15 : AustinPowers_19, HunterDalle_19, Vulture_19
- Track 16 : Rozby_23, Scuttle_23
- Track 17 : Lasagna_19
- Track 18 : Kalizoi_23
- Track 19 : Litotes_23
- Track 20 : CallieOMalley_23
- Track 21 : Fluke_23
- Track 22 : Urla_19
- Track 23 : MrGloopy_23, Carpal_23
- Track 24 : Wawa_23
- Track 25 : Canowicakte_23, Suppi_23
- Track 26 : Riverdale_23, Beethoven_23
- Track 27 : DrRobert_19
- Track 28 : DreamTeam_19, Gisselle_19
- Track 29 : Pumancara_19

- Track 30 : Misaeng_23
- Track 31 : RcigaStruga_23, Huntingdon_23
- Track 32 : Greenhouse_23
- Track 33 : PartyCup_23
- Track 34 : Christian_19, Lucy_19, Lennox_19, Pterodactyl_19, WonderBoy_19
- Track 35 : PinkFriday_19
- Track 36 : AppleCider_23
- Track 37 : Vallejo_23
- Track 38 : Joann_23
- Track 39 : Wayne_23
- Track 40 : Asa16_22, Niobe_22, Jstan_23
- Track 41 : London_22, Elezi_22, Eraser_22
- Track 42 : Crewmate_22, ObiToo_21
- Track 43 : Berrie_22
- Track 44 : Tuck_23, Community_22
- Track 45 : KeAlii_21
- Track 46 : Phives_23
- Track 47 : Reedo_21
- Track 48 : Janeemi_23
- Track 49 : Wildwest_22
- Track 50 : VResidence_21
- Track 51 : DrSierra_21
- Track 52 : TforTroy_22
- Track 53 : Sue2_21
- Track 54 : Liebe_21, Maureen_21
- Track 55 : MaGuCo_21
- Track 56 : Snek_21, Tweety19_21
- Track 57 : LazerLemon_31
- Track 58 : Araceli_31
- Track 59 : Intolerant_30
- Track 60 : Crosby_31
- Track 61 : Microdon_30
- Track 62 : JackieB_30
- Track 63 : Henoccus_31
- Track 64 : Bogota_31
- Track 65 : Marky_31
- Track 66 : Stuff_31
- Track 67 : UNTPL_31
- Track 68 : Frankenweenie_130
- Track 69 : JustBecause_118
- Track 70 : Satis_120, Quantum_119, EhyElimayoE_121, Kradal_120
- Track 71 : Nirvana_131
- Track 72 : Kela_119
- Track 73 : pZL12_42c
- Track 74 : Wollypog_22

Summary of Final Annotations (See graph section above for start numbers):

The start number called the most often in the published annotations is 45, it was called in 83 of the 125 non-draft genes in the pham.

Genes that call this "Most Annotated" start:

- Albanese_23, Aledel_19, AppleCider_23, AustinPowers_19, Beethoven_23, Bennie_19, BigMack_19, Bodacious_19, BrotherBLo_23, CallieOMalley_23, Canowicakte_23, Carpal_23, ChewChew_19, Cholula_23, Chridison_19, Christian_19, CristinaYang_19, Daiboju_19, Dino_23, DrRobert_19, DreamTeam_19, EstebanJulior_19, Eunoia_19, Fluke_23, Gisselle_19, Glenn_23, GreenHearts_23, Greenhouse_23, HeadNerd_19, Herb_19, Huckleberry_19, HunterDalle_19, Huntingdon_23, Immaculata_23, Joann_23, Jumboset_23, Kalizoi_23, KingBob_19, Kittykat_19, Korra_24, Lakshmi_23, Lasagna_19, Lennox_19, LilStuart_19, Litotes_23, Lucy_19, Makoto_19, MamaPearl_19, Maria1952_19, MeganNoll_23, Misaeng_23, Moki_19, MrGloopy_23, Nancia_19, Nubia_23, OMalley_19, OurGirlNessie_19, Oxynfrius_23, PartyCup_23, PinkFriday_19, PitaDog_19, Potatoes_23, Preamble_19, Pterodactyl_19, Pumancara_19, RAP15_23, RcigaStruga_23, Riovina_19, Riverdale_23, Rozby_23, Savage2526_23, Scuttle_23, Sergei_19, Supakev_19, Suppi_23, TattModd_23, Temper16_19, Urla_19, Vallejo_23, Vulture_19, Wawa_23, Wayne_23, WonderBoy_19, Zorro_23,

Genes that have the "Most Annotated" start but do not call it:

-

Genes that do not have the "Most Annotated" start:

- Araceli_31, Asa16_22, Berrie_22, Bogota_31, Community_22, Crewmate_22, Crosby_31, DrSierra_21, EhyElimayoE_121, Elezi_22, Eraser_22, Frankenweenie_130, Henoccus_31, Intolerant_30, JackieB_30, Janeemi_23, Jstan_23, JustBecause_118, KeAlii_21, Kela_119, Kradal_120, LazerLemon_31, Liebe_21, London_22, MaGuCo_21, Marky_31, Maureen_21, Microdon_30, Niobe_22, Nirvana_131, ObiToo_21, Phives_23, Quantum_119, Reedo_21, Satis_120, Snek_21, Stuff_31, Sue2_21, TforTroy_22, Tuck_23, Tweety19_21, UNTPL_31, VResidence_21, Wildwest_22, Wollypog_22, pZL12_42c,

Summary by start number:

Start 37:

- Found in 1 of 130 (0.8%) of genes in pham
- No Manual Annotations of this start.
- Called 100.0% of time when present
- Phage (with cluster) where this start called: pZL12_42c (singleton),

Start 39:

- Found in 7 of 130 (5.4%) of genes in pham
- Manual Annotations of this start: 1 of 125
- Called 14.3% of time when present
- Phage (with cluster) where this start called: Stuff_31 (BH),

Start 40:

- Found in 1 of 130 (0.8%) of genes in pham
- Manual Annotations of this start: 1 of 125
- Called 100.0% of time when present
- Phage (with cluster) where this start called: KeAlii_21 (AZ1),

Start 41:

- Found in 7 of 130 (5.4%) of genes in pham

- Manual Annotations of this start: 2 of 125
- Called 28.6% of time when present
- Phage (with cluster) where this start called: Crosby_31 (BH), UNTPL_31 (BH),

Start 42:

- Found in 24 of 130 (18.5%) of genes in pham
- Manual Annotations of this start: 22 of 125
- Called 100.0% of time when present
- Phage (with cluster) where this start called: Asa16_22 (AZ1), Berrie_22 (AZ1), Community_22 (AZ1), Crewmate_22 (AZ1), DrSierra_21 (AZ1), Elezi_22 (AZ1), Eraser_22 (AZ1), Janeemi_23 (AZ1), Jstan_23 (AZ1), Liebe_21 (AZ2), London_22 (AZ1), MaGuCo_21 (AZ2), Maureen_21 (AZ2), Niobe_22 (AZ1), ObiToo_21 (AZ1), Phives_23 (AZ1), Reedo_21 (AZ1), Sneak_21 (AZ3), Sue2_21 (AZ1), TforTroy_22 (AZ1), Tuck_23 (AZ1), Tweety19_21 (AZ3), VResidence_21 (AZ1), Wildwest_22 (AZ1),

Start 43:

- Found in 19 of 130 (14.6%) of genes in pham
- Manual Annotations of this start: 15 of 125
- Called 84.2% of time when present
- Phage (with cluster) where this start called: Araceli_31 (BH), Bogota_31 (BH), EhyElimayoE_121 (BM), Frankenweenie_130 (BM), Henoccus_31 (BH), Intolerant_30 (BH), JackieB_30 (BH), JustBecause_118 (BM), Kela_119 (BM), Kradal_120 (BM), LazerLemon_31 (BH), Marky_31 (BH), Microdon_30 (BH), Nirvana_131 (BM), Quantum_119 (BM), Satis_120 (BM),

Start 44:

- Found in 1 of 130 (0.8%) of genes in pham
- Manual Annotations of this start: 1 of 125
- Called 100.0% of time when present
- Phage (with cluster) where this start called: Wollypog_22 (singleton),

Start 45:

- Found in 84 of 130 (64.6%) of genes in pham
- Manual Annotations of this start: 83 of 125
- Called 100.0% of time when present
- Phage (with cluster) where this start called: Albanese_23 (AK), Aledel_19 (AK), AppleCider_23 (AK), AustinPowers_19 (AK), Beethoven_23 (AK), Bennie_19 (AK), BigMack_19 (AK), Bodacious_19 (AK), BrotherBLo_23 (AK), CallieOMalley_23 (AK), Canowicakte_23 (AK), Carpal_23 (AK), ChewChew_19 (AK), Cholula_23 (AK), Chridison_19 (AK), Christian_19 (AK), CristinaYang_19 (AK), Daiboju_19 (AK), Dino_23 (AK), DrRobert_19 (AK), DreamTeam_19 (AK), EstebanJulior_19 (AK), Eunoia_19 (AK), Fluke_23 (AK), Gisselle_19 (AK), Glenn_23 (AK), GreenHearts_23 (AK), Greenhouse_23 (AK), HeadNerd_19 (AK), Herb_19 (AK), Huckleberry_19 (AK), HunterDalle_19 (AK), Huntingdon_23 (AK), Immaculata_23 (AK), Joann_23 (AK), Jumboset_23 (AK), Kalizoi_23 (AK), KingBob_19 (AK), Kittykat_19 (AK), Korra_24 (AK), Lakshmi_23 (AK), Lasagna_19 (AK), Lennox_19 (AK), LilStuart_19 (AK), Litotes_23 (AK), Lucy_19 (AK), Makoto_19 (AK), MamaPearl_19 (AK), Maria1952_19 (AK), MeganNoll_23 (AK), Misaeng_23 (AK), Moki_19 (AK), MrGloopy_23 (AK), Nancia_19 (AK), Nubia_23 (AK), OMalley_19 (AK), OurGirlNessie_19 (AK), Oxynfrius_23 (AK), PartyCup_23 (AK), PinkFriday_19 (AK), PitaDog_19 (AK), Potatoes_23 (AK), Preamble_19 (AK), Pterodactyl_19 (AK), Pumancara_19 (AK), RAP15_23 (AK), RcigaStruga_23 (AK), Riovina_19 (AK), Riverdale_23 (AK),

Rozby_23 (AK), Savage2526_23 (AK), Scuttle_23 (AK), Sergei_19 (AK), Supakev_19 (AK), Suppi_23 (AK), TattModd_23 (AK), Temper16_19 (AK), Urla_19 (AK), Vallejo_23 (AK), Vulture_19 (AK), Wawa_23 (AK), Wayne_23 (AK), WonderBoy_19 (AK), Zorro_23 (AK),

Summary by clusters:

There are 7 clusters represented in this pham: singleton, BM, AK, BH, AZ1, AZ2, AZ3,

Info for manual annotations of cluster AK:

- Start number 45 was manually annotated 83 times for cluster AK.

Info for manual annotations of cluster AZ1:

- Start number 40 was manually annotated 1 time for cluster AZ1.
- Start number 42 was manually annotated 17 times for cluster AZ1.

Info for manual annotations of cluster AZ2:

- Start number 42 was manually annotated 3 times for cluster AZ2.

Info for manual annotations of cluster AZ3:

- Start number 42 was manually annotated 2 times for cluster AZ3.

Info for manual annotations of cluster BH:

- Start number 39 was manually annotated 1 time for cluster BH.
- Start number 41 was manually annotated 2 times for cluster BH.
- Start number 43 was manually annotated 8 times for cluster BH.

Info for manual annotations of cluster BM:

- Start number 43 was manually annotated 7 times for cluster BM.

Gene Information:

Gene: Albanese_23 Start: 19329, Stop: 19769, Start Num: 45

Candidate Starts for Albanese_23:

(14, 19065), (16, 19095), (17, 19107), (19, 19125), (26, 19203), (29, 19212), (31, 19218), (32, 19230), (Start: 45 @19329 has 83 MA's), (52, 19380), (73, 19494), (74, 19500), (79, 19521), (83, 19557), (96, 19617), (109, 19680), (110, 19683), (115, 19707), (124, 19740),

Gene: Aledel_19 Start: 17655, Stop: 18098, Start Num: 45

Candidate Starts for Aledel_19:

(13, 17385), (14, 17391), (22, 17490), (32, 17556), (Start: 45 @17655 has 83 MA's), (52, 17706), (53, 17712), (56, 17724), (83, 17883), (87, 17901), (104, 17985), (108, 18003), (110, 18009),

Gene: AppleCider_23 Start: 19272, Stop: 19721, Start Num: 45

Candidate Starts for AppleCider_23:

(28, 19152), (32, 19173), (34, 19203), (38, 19227), (Start: 45 @19272 has 83 MA's), (52, 19323), (65, 19392), (83, 19500), (87, 19518), (97, 19566), (98, 19569), (103, 19602), (107, 19620), (115, 19656), (116, 19659),

Gene: Araceli_31 Start: 26097, Stop: 26549, Start Num: 43

Candidate Starts for Araceli_31:

(1, 24528), (2, 24540), (4, 25173), (6, 25461), (11, 25818), (25, 25998), (Start: 43 @26097 has 15 MA's), (67, 26259), (74, 26292), (77, 26307), (79, 26313), (81, 26328), (85, 26358), (99, 26421), (106, 26451), (107, 26457), (112, 26475), (121, 26514), (125, 26523),

Gene: Asa16_22 Start: 19280, Stop: 19747, Start Num: 42

Candidate Starts for Asa16_22:

(Start: 42 @19280 has 22 MA's), (52, 19355), (53, 19361), (72, 19457), (86, 19544), (88, 19547), (89, 19556), (118, 19694), (122, 19709),

Gene: AustinPowers_19 Start: 17656, Stop: 18099, Start Num: 45

Candidate Starts for AustinPowers_19:

(13, 17386), (14, 17392), (22, 17491), (32, 17557), (Start: 45 @17656 has 83 MA's), (52, 17707), (53, 17713), (56, 17725), (83, 17884), (87, 17902), (101, 17974), (104, 17986), (108, 18004), (110, 18010),

Gene: Beethoven_23 Start: 19209, Stop: 19658, Start Num: 45

Candidate Starts for Beethoven_23:

(Start: 45 @19209 has 83 MA's), (52, 19260), (67, 19347), (78, 19398), (83, 19437), (87, 19455), (97, 19503), (103, 19539), (107, 19557), (110, 19569), (115, 19593), (116, 19596),

Gene: Bennie_19 Start: 17667, Stop: 18116, Start Num: 45

Candidate Starts for Bennie_19:

(14, 17403), (17, 17445), (18, 17448), (20, 17481), (32, 17568), (33, 17592), (Start: 45 @17667 has 83 MA's), (52, 17718), (63, 17781), (65, 17787), (75, 17841), (78, 17856), (83, 17895), (84, 17901), (87, 17913), (97, 17961), (103, 17997), (107, 18015), (109, 18024), (110, 18027), (115, 18051), (116, 18054),

Gene: Berrie_22 Start: 19835, Stop: 20302, Start Num: 42

Candidate Starts for Berrie_22:

(Start: 42 @19835 has 22 MA's), (51, 19907), (53, 19916), (67, 19988), (88, 20102), (89, 20111), (118, 20249), (122, 20264),

Gene: BigMack_19 Start: 17655, Stop: 18104, Start Num: 45

Candidate Starts for BigMack_19:

(13, 17385), (32, 17556), (33, 17580), (34, 17586), (35, 17598), (Start: 45 @17655 has 83 MA's), (52, 17706), (63, 17769), (67, 17793), (75, 17829), (83, 17883), (87, 17901), (90, 17910), (97, 17949), (103, 17985), (107, 18003), (109, 18012), (115, 18039), (116, 18042),

Gene: Bodacious_19 Start: 17674, Stop: 18117, Start Num: 45

Candidate Starts for Bodacious_19:

(13, 17404), (17, 17452), (20, 17488), (28, 17554), (32, 17575), (35, 17617), (Start: 45 @17674 has 83 MA's), (52, 17725), (53, 17731), (54, 17734), (67, 17812), (70, 17827), (74, 17845), (83, 17902), (103, 17998), (108, 18022), (109, 18025), (110, 18028), (115, 18052),

Gene: Bogota_31 Start: 26235, Stop: 26687, Start Num: 43

Candidate Starts for Bogota_31:

(1, 24645), (4, 25290), (5, 25521), (6, 25578), (7, 25662), (11, 25953), (25, 26136), (Start: 39 @26226 has 1 MA's), (Start: 41 @26232 has 2 MA's), (Start: 43 @26235 has 15 MA's), (72, 26421), (74, 26430), (77, 26445), (79, 26451), (85, 26496), (94, 26538), (106, 26589), (107, 26595), (112, 26613), (121, 26652),

Gene: BrotherBLo_23 Start: 19215, Stop: 19664, Start Num: 45

Candidate Starts for BrotherBLo_23:

(Start: 45 @19215 has 83 MA's), (52, 19266), (63, 19329), (67, 19353), (69, 19362), (78, 19404), (83, 19443), (87, 19461), (97, 19509), (103, 19545), (110, 19575), (115, 19599), (116, 19602),

Gene: CallieOMalley_23 Start: 19272, Stop: 19721, Start Num: 45

Candidate Starts for CallieOMalley_23:

(14, 19008), (28, 19152), (32, 19173), (34, 19203), (Start: 45 @19272 has 83 MA's), (52, 19323), (53, 19329), (65, 19392), (83, 19500), (87, 19518), (97, 19566), (103, 19602), (107, 19620), (115, 19656), (116, 19659),

Gene: Canowicakte_23 Start: 19307, Stop: 19756, Start Num: 45

Candidate Starts for Canowicakte_23:

(14, 19043), (28, 19187), (32, 19208), (34, 19238), (Start: 45 @19307 has 83 MA's), (52, 19358), (53, 19364), (63, 19421), (65, 19427), (83, 19535), (87, 19553), (97, 19601), (98, 19604), (103, 19637), (107, 19655), (115, 19691), (116, 19694),

Gene: Carpal_23 Start: 19216, Stop: 19665, Start Num: 45

Candidate Starts for Carpal_23:

(Start: 45 @19216 has 83 MA's), (52, 19267), (67, 19354), (69, 19363), (76, 19399), (78, 19405), (83, 19444), (87, 19462), (97, 19510), (103, 19546), (109, 19573), (110, 19576), (115, 19600), (116, 19603),

Gene: ChewChew_19 Start: 17673, Stop: 18116, Start Num: 45

Candidate Starts for ChewChew_19:

(13, 17403), (17, 17451), (20, 17487), (28, 17553), (32, 17574), (35, 17616), (Start: 45 @17673 has 83 MA's), (52, 17724), (53, 17730), (54, 17733), (67, 17811), (70, 17826), (74, 17844), (83, 17901), (103, 17997), (108, 18021), (109, 18024), (110, 18027), (115, 18051),

Gene: Cholula_23 Start: 19261, Stop: 19710, Start Num: 45

Candidate Starts for Cholula_23:

(Start: 45 @19261 has 83 MA's), (52, 19312), (67, 19399), (78, 19450), (83, 19489), (87, 19507), (97, 19555), (103, 19591), (110, 19621), (115, 19645), (116, 19648),

Gene: Chridison_19 Start: 17656, Stop: 18099, Start Num: 45

Candidate Starts for Chridison_19:

(13, 17386), (14, 17392), (22, 17491), (32, 17557), (Start: 45 @17656 has 83 MA's), (52, 17707), (53, 17713), (56, 17725), (83, 17884), (87, 17902), (104, 17986), (108, 18004), (110, 18010),

Gene: Christian_19 Start: 17674, Stop: 18117, Start Num: 45

Candidate Starts for Christian_19:

(13, 17404), (17, 17452), (20, 17488), (28, 17554), (32, 17575), (35, 17617), (Start: 45 @17674 has 83 MA's), (52, 17725), (53, 17731), (54, 17734), (67, 17812), (74, 17845), (83, 17902), (103, 17998), (108, 18022), (109, 18025), (110, 18028), (115, 18052),

Gene: Community_22 Start: 20920, Stop: 21387, Start Num: 42

Candidate Starts for Community_22:

(Start: 42 @20920 has 22 MA's), (51, 20992), (53, 21001), (67, 21073), (72, 21097), (85, 21175), (118, 21334), (122, 21349),

Gene: Crewmate_22 Start: 17739, Stop: 18200, Start Num: 42

Candidate Starts for Crewmate_22:

(Start: 42 @17739 has 22 MA's), (50, 17802), (55, 17826), (57, 17838), (71, 17907), (85, 17991), (92, 18024), (118, 18150),

Gene: CristinaYang_19 Start: 17674, Stop: 18117, Start Num: 45

Candidate Starts for CristinaYang_19:

(13, 17404), (17, 17452), (20, 17488), (28, 17554), (32, 17575), (35, 17617), (Start: 45 @17674 has 83 MA's), (52, 17725), (53, 17731), (54, 17734), (67, 17812), (70, 17827), (74, 17845), (83, 17902), (103, 17998), (108, 18022), (109, 18025), (110, 18028), (115, 18052),

Gene: Crosby_31 Start: 26221, Stop: 26676, Start Num: 41

Candidate Starts for Crosby_31:

(5, 25510), (6, 25570), (11, 25942), (12, 25954), (21, 26074), (25, 26125), (Start: 39 @26215 has 1 MA's), (Start: 41 @26221 has 2 MA's), (Start: 43 @26224 has 15 MA's), (48, 26284), (74, 26419), (77, 26434), (79, 26440), (85, 26485), (112, 26602), (121, 26641),

Gene: Daiboju_19 Start: 17670, Stop: 18113, Start Num: 45

Candidate Starts for Daiboju_19:

(13, 17400), (17, 17448), (28, 17550), (31, 17559), (Start: 45 @17670 has 83 MA's), (52, 17721), (56, 17739), (68, 17811), (83, 17898), (87, 17916), (97, 17964), (104, 18000), (108, 18018),

Gene: Dino_23 Start: 19214, Stop: 19663, Start Num: 45

Candidate Starts for Dino_23:

(Start: 45 @19214 has 83 MA's), (52, 19265), (67, 19352), (69, 19361), (78, 19403), (83, 19442), (87, 19460), (97, 19508), (103, 19544), (109, 19571), (110, 19574), (115, 19598), (116, 19601),

Gene: DrRobert_19 Start: 17674, Stop: 18117, Start Num: 45

Candidate Starts for DrRobert_19:

(17, 17452), (20, 17488), (26, 17548), (28, 17554), (32, 17575), (35, 17617), (Start: 45 @17674 has 83 MA's), (52, 17725), (53, 17731), (54, 17734), (67, 17812), (74, 17845), (83, 17902), (103, 17998), (108, 18022), (109, 18025), (110, 18028), (115, 18052),

Gene: DrSierra_21 Start: 17797, Stop: 18261, Start Num: 42

Candidate Starts for DrSierra_21:

(Start: 42 @17797 has 22 MA's), (54, 17881), (58, 17899), (61, 17917), (71, 17968), (79, 18004), (86, 18061), (89, 18073),

Gene: DreamTeam_19 Start: 17707, Stop: 18156, Start Num: 45

Candidate Starts for DreamTeam_19:

(Start: 45 @17707 has 83 MA's), (63, 17821), (66, 17836), (69, 17854), (83, 17935), (84, 17941), (87, 17953), (97, 18001), (103, 18037), (107, 18055), (109, 18064), (110, 18067), (115, 18091), (116, 18094),

Gene: EhyElimayoE_121 Start: 79011, Stop: 79445, Start Num: 43

Candidate Starts for EhyElimayoE_121:

(10, 78627), (24, 78894), (30, 78927), (Start: 43 @79011 has 15 MA's), (73, 79185), (93, 79293), (95, 79311), (105, 79359), (108, 79374), (117, 79410),

Gene: Elezi_22 Start: 19281, Stop: 19748, Start Num: 42

Candidate Starts for Elezi_22:

(Start: 42 @19281 has 22 MA's), (52, 19356), (53, 19362), (72, 19458), (86, 19545), (89, 19557), (118, 19695), (122, 19710),

Gene: Eraser_22 Start: 19281, Stop: 19748, Start Num: 42

Candidate Starts for Eraser_22:

(Start: 42 @19281 has 22 MA's), (52, 19356), (53, 19362), (72, 19458), (86, 19545), (89, 19557), (118, 19695), (122, 19710),

Gene: EstebanJulior_19 Start: 17672, Stop: 18121, Start Num: 45

Candidate Starts for EstebanJulior_19:

(Start: 45 @17672 has 83 MA's), (52, 17723), (75, 17846), (83, 17900), (87, 17918), (97, 17966), (103, 18002), (109, 18029), (110, 18032),

Gene: Eunoia_19 Start: 17655, Stop: 18098, Start Num: 45

Candidate Starts for Eunoia_19:

(13, 17385), (14, 17391), (22, 17490), (32, 17556), (Start: 45 @17655 has 83 MA's), (52, 17706), (53, 17712), (56, 17724), (83, 17883), (87, 17901), (104, 17985), (108, 18003), (110, 18009),

Gene: Fluke_23 Start: 19257, Stop: 19706, Start Num: 45

Candidate Starts for Fluke_23:

(Start: 45 @19257 has 83 MA's), (52, 19308), (67, 19395), (78, 19446), (83, 19485), (87, 19503), (103, 19587), (109, 19614), (110, 19617), (115, 19641), (116, 19644),

Gene: Frankenweenie_130 Start: 83927, Stop: 84361, Start Num: 43

Candidate Starts for Frankenweenie_130:

(Start: 43 @83927 has 15 MA's), (62, 84050), (90, 84197), (117, 84326),

Gene: Gisselle_19 Start: 17707, Stop: 18156, Start Num: 45

Candidate Starts for Gisselle_19:

(Start: 45 @17707 has 83 MA's), (63, 17821), (66, 17836), (69, 17854), (83, 17935), (84, 17941), (87, 17953), (97, 18001), (103, 18037), (107, 18055), (109, 18064), (110, 18067), (115, 18091), (116, 18094),

Gene: Glenn_23 Start: 19266, Stop: 19715, Start Num: 45

Candidate Starts for Glenn_23:

(Start: 45 @19266 has 83 MA's), (52, 19317), (67, 19404), (69, 19413), (78, 19455), (83, 19494), (87, 19512), (97, 19560), (103, 19596), (109, 19623), (110, 19626), (115, 19650), (116, 19653),

Gene: GreenHearts_23 Start: 19376, Stop: 19825, Start Num: 45

Candidate Starts for GreenHearts_23:

(14, 19112), (17, 19154), (19, 19172), (29, 19259), (31, 19265), (32, 19277), (34, 19307), (Start: 45 @19376 has 83 MA's), (47, 19406), (52, 19427), (63, 19490), (83, 19604), (87, 19622), (90, 19631), (107, 19724), (109, 19733), (110, 19736), (115, 19760), (116, 19763),

Gene: Greenhouse_23 Start: 19300, Stop: 19749, Start Num: 45

Candidate Starts for Greenhouse_23:

(14, 19036), (17, 19078), (19, 19096), (32, 19201), (34, 19231), (Start: 45 @19300 has 83 MA's), (47, 19330), (49, 19336), (52, 19351), (63, 19414), (83, 19528), (87, 19546), (90, 19555), (107, 19648), (109, 19657), (110, 19660), (115, 19684), (116, 19687),

Gene: HeadNerd_19 Start: 17667, Stop: 18116, Start Num: 45

Candidate Starts for HeadNerd_19:

(14, 17403), (17, 17445), (18, 17448), (20, 17481), (32, 17568), (33, 17592), (Start: 45 @17667 has 83 MA's), (52, 17718), (63, 17781), (65, 17787), (75, 17841), (78, 17856), (83, 17895), (84, 17901), (87, 17913), (97, 17961), (103, 17997), (107, 18015), (109, 18024), (110, 18027), (115, 18051), (116, 18054),

Gene: Henoccus_31 Start: 26107, Stop: 26559, Start Num: 43

Candidate Starts for Henoccus_31:

(1, 24538), (2, 24550), (4, 25183), (6, 25471), (25, 26008), (Start: 43 @26107 has 15 MA's), (67, 26269), (74, 26302), (77, 26317), (79, 26323), (81, 26338), (85, 26368), (99, 26431), (106, 26461), (107, 26467), (112, 26485), (121, 26524), (125, 26533),

Gene: Herb_19 Start: 17670, Stop: 18113, Start Num: 45

Candidate Starts for Herb_19:

(13, 17400), (17, 17448), (28, 17550), (31, 17559), (Start: 45 @17670 has 83 MA's), (52, 17721), (56, 17739), (68, 17811), (83, 17898), (87, 17916), (97, 17964), (104, 18000), (108, 18018),

Gene: Huckleberry_19 Start: 17667, Stop: 18116, Start Num: 45

Candidate Starts for Huckleberry_19:

(14, 17403), (17, 17445), (18, 17448), (20, 17481), (32, 17568), (33, 17592), (Start: 45 @17667 has 83 MA's), (52, 17718), (63, 17781), (65, 17787), (75, 17841), (78, 17856), (83, 17895), (84, 17901), (87, 17913), (97, 17961), (103, 17997), (107, 18015), (109, 18024), (110, 18027), (115, 18051), (116, 18054),

Gene: HunterDalle_19 Start: 17655, Stop: 18098, Start Num: 45

Candidate Starts for HunterDalle_19:

(13, 17385), (14, 17391), (22, 17490), (32, 17556), (Start: 45 @17655 has 83 MA's), (52, 17706), (53, 17712), (56, 17724), (83, 17883), (87, 17901), (101, 17973), (104, 17985), (108, 18003), (110, 18009),

Gene: Huntingdon_23 Start: 19268, Stop: 19717, Start Num: 45

Candidate Starts for Huntingdon_23:

(14, 19004), (32, 19169), (Start: 45 @19268 has 83 MA's), (63, 19382), (83, 19496), (87, 19514), (92, 19532), (97, 19562), (98, 19565), (103, 19598), (107, 19616), (109, 19625), (110, 19628), (115, 19652), (124, 19685),

Gene: Immaculata_23 Start: 19260, Stop: 19709, Start Num: 45

Candidate Starts for Immaculata_23:

(Start: 45 @19260 has 83 MA's), (52, 19311), (67, 19398), (78, 19449), (83, 19488), (87, 19506), (97, 19554), (103, 19590), (110, 19620), (115, 19644), (116, 19647),

Gene: Intolerant_30 Start: 26098, Stop: 26550, Start Num: 43

Candidate Starts for Intolerant_30:

(21, 25948), (25, 25999), (Start: 39 @26089 has 1 MA's), (Start: 41 @26095 has 2 MA's), (Start: 43 @26098 has 15 MA's), (49, 26161), (72, 26284), (74, 26293), (77, 26308), (79, 26314), (85, 26359), (94, 26401), (107, 26458), (112, 26476), (121, 26515),

Gene: JackieB_30 Start: 25962, Stop: 26414, Start Num: 43

Candidate Starts for JackieB_30:

(6, 25326), (7, 25410), (11, 25683), (25, 25863), (Start: 43 @25962 has 15 MA's), (67, 26124), (74, 26157), (77, 26172), (79, 26178), (85, 26223), (99, 26286), (106, 26316), (107, 26322), (112, 26340), (121, 26379), (125, 26388),

Gene: Janeemi_23 Start: 20928, Stop: 21395, Start Num: 42

Candidate Starts for Janeemi_23:

(Start: 42 @20928 has 22 MA's), (52, 21003), (53, 21009), (72, 21105), (86, 21192), (89, 21204), (118, 21342), (122, 21357),

Gene: Joann_23 Start: 19280, Stop: 19720, Start Num: 45

Candidate Starts for Joann_23:

(29, 19163), (31, 19169), (32, 19181), (Start: 45 @19280 has 83 MA's), (52, 19331), (65, 19400), (67, 19418), (73, 19445), (74, 19451), (79, 19472), (83, 19508), (96, 19568), (109, 19631), (110, 19634),

(115, 19658), (124, 19691),

Gene: Jstan_23 Start: 19281, Stop: 19748, Start Num: 42

Candidate Starts for Jstan_23:

(Start: 42 @19281 has 22 MA's), (52, 19356), (53, 19362), (72, 19458), (86, 19545), (88, 19548), (89, 19557), (118, 19695), (122, 19710),

Gene: Jumboset_23 Start: 19209, Stop: 19658, Start Num: 45

Candidate Starts for Jumboset_23:

(Start: 45 @19209 has 83 MA's), (52, 19260), (63, 19323), (67, 19347), (69, 19356), (78, 19398), (83, 19437), (87, 19455), (97, 19503), (103, 19539), (110, 19569), (115, 19593), (116, 19596),

Gene: JustBecause_118 Start: 78079, Stop: 78513, Start Num: 43

Candidate Starts for JustBecause_118:

(24, 77962), (30, 77995), (Start: 43 @78079 has 15 MA's), (53, 78157), (117, 78478),

Gene: Kalizoi_23 Start: 19208, Stop: 19657, Start Num: 45

Candidate Starts for Kalizoi_23:

(Start: 45 @19208 has 83 MA's), (52, 19259), (67, 19346), (69, 19355), (78, 19397), (83, 19436), (87, 19454), (97, 19502), (103, 19538), (110, 19568), (115, 19592), (116, 19595),

Gene: KeAlii_21 Start: 17311, Stop: 17772, Start Num: 40

Candidate Starts for KeAlii_21:

(Start: 40 @17311 has 1 MA's), (51, 17383), (112, 17695),

Gene: Kela_119 Start: 77959, Stop: 78393, Start Num: 43

Candidate Starts for Kela_119:

(24, 77842), (30, 77875), (Start: 43 @77959 has 15 MA's), (53, 78037), (80, 78163), (117, 78358),

Gene: KingBob_19 Start: 17670, Stop: 18113, Start Num: 45

Candidate Starts for KingBob_19:

(13, 17400), (17, 17448), (28, 17550), (31, 17559), (Start: 45 @17670 has 83 MA's), (52, 17721), (56, 17739), (68, 17811), (83, 17898), (87, 17916), (97, 17964), (104, 18000), (108, 18018),

Gene: Kittykat_19 Start: 17691, Stop: 18140, Start Num: 45

Candidate Starts for Kittykat_19:

(Start: 45 @17691 has 83 MA's), (63, 17805), (66, 17820), (69, 17838), (75, 17865), (83, 17919), (84, 17925), (87, 17937), (97, 17985), (103, 18021), (107, 18039), (109, 18048), (110, 18051), (115, 18075), (116, 18078),

Gene: Korra_24 Start: 19214, Stop: 19663, Start Num: 45

Candidate Starts for Korra_24:

(Start: 45 @19214 has 83 MA's), (52, 19265), (67, 19352), (69, 19361), (78, 19403), (83, 19442), (87, 19460), (97, 19508), (103, 19544), (109, 19571), (110, 19574), (115, 19598), (116, 19601),

Gene: Kradal_120 Start: 79008, Stop: 79442, Start Num: 43

Candidate Starts for Kradal_120:

(10, 78624), (24, 78891), (30, 78924), (Start: 43 @79008 has 15 MA's), (73, 79182), (93, 79290), (95, 79308), (105, 79356), (108, 79371), (117, 79407),

Gene: Lakshmi_23 Start: 19305, Stop: 19745, Start Num: 45

Candidate Starts for Lakshmi_23:

(14, 19041), (16, 19071), (17, 19083), (19, 19101), (26, 19179), (29, 19188), (31, 19194), (32, 19206), (Start: 45 @19305 has 83 MA's), (52, 19356), (73, 19470), (74, 19476), (79, 19497), (83, 19533), (96, 19593), (109, 19656), (110, 19659), (115, 19683), (124, 19716),

Gene: Lasagna_19 Start: 17674, Stop: 18117, Start Num: 45

Candidate Starts for Lasagna_19:

(28, 17554), (32, 17575), (35, 17617), (Start: 45 @17674 has 83 MA's), (52, 17725), (53, 17731), (54, 17734), (67, 17812), (74, 17845), (83, 17902), (103, 17998), (108, 18022), (109, 18025), (110, 18028), (115, 18052),

Gene: LazerLemon_31 Start: 26614, Stop: 27063, Start Num: 43

Candidate Starts for LazerLemon_31:

(5, 25897), (7, 26041), (11, 26332), (Start: 39 @26605 has 1 MA's), (Start: 41 @26611 has 2 MA's), (Start: 43 @26614 has 15 MA's), (67, 26776), (74, 26809), (75, 26812), (77, 26824), (79, 26830), (82, 26860), (85, 26875), (99, 26938), (112, 26992), (120, 27028), (121, 27031),

Gene: Lennox_19 Start: 17662, Stop: 18105, Start Num: 45

Candidate Starts for Lennox_19:

(13, 17392), (17, 17440), (20, 17476), (28, 17542), (32, 17563), (35, 17605), (Start: 45 @17662 has 83 MA's), (52, 17713), (53, 17719), (54, 17722), (67, 17800), (74, 17833), (83, 17890), (103, 17986), (108, 18010), (109, 18013), (110, 18016), (115, 18040),

Gene: Liebe_21 Start: 18736, Stop: 19206, Start Num: 42

Candidate Starts for Liebe_21:

(Start: 42 @18736 has 22 MA's), (54, 18820), (88, 19000),

Gene: LilStuart_19 Start: 17662, Stop: 18105, Start Num: 45

Candidate Starts for LilStuart_19:

(13, 17392), (17, 17440), (20, 17476), (28, 17542), (32, 17563), (35, 17605), (Start: 45 @17662 has 83 MA's), (52, 17713), (53, 17719), (54, 17722), (67, 17800), (70, 17815), (74, 17833), (83, 17890), (103, 17986), (108, 18010), (109, 18013), (110, 18016), (115, 18040),

Gene: Litotes_23 Start: 19257, Stop: 19706, Start Num: 45

Candidate Starts for Litotes_23:

(28, 19137), (32, 19158), (34, 19188), (Start: 45 @19257 has 83 MA's), (52, 19308), (53, 19314), (63, 19371), (65, 19377), (83, 19485), (87, 19503), (97, 19551), (98, 19554), (103, 19587), (107, 19605), (115, 19641), (116, 19644),

Gene: London_22 Start: 19281, Stop: 19748, Start Num: 42

Candidate Starts for London_22:

(Start: 42 @19281 has 22 MA's), (52, 19356), (53, 19362), (72, 19458), (86, 19545), (89, 19557), (118, 19695), (122, 19710),

Gene: Lucy_19 Start: 17654, Stop: 18097, Start Num: 45

Candidate Starts for Lucy_19:

(13, 17384), (17, 17432), (20, 17468), (28, 17534), (32, 17555), (35, 17597), (Start: 45 @17654 has 83 MA's), (52, 17705), (53, 17711), (54, 17714), (67, 17792), (74, 17825), (83, 17882), (103, 17978), (108, 18002), (109, 18005), (110, 18008), (115, 18032),

Gene: MaGuCo_21 Start: 18669, Stop: 19139, Start Num: 42

Candidate Starts for MaGuCo_21:

(Start: 42 @18669 has 22 MA's), (80, 18876), (88, 18933),

Gene: Makoto_19 Start: 17675, Stop: 18118, Start Num: 45

Candidate Starts for Makoto_19:

(13, 17405), (17, 17453), (20, 17489), (26, 17549), (28, 17555), (32, 17576), (35, 17618), (Start: 45 @17675 has 83 MA's), (52, 17726), (53, 17732), (54, 17735), (67, 17813), (74, 17846), (83, 17903), (103, 17999), (108, 18023), (109, 18026), (110, 18029), (115, 18053),

Gene: MamaPearl_19 Start: 17672, Stop: 18121, Start Num: 45

Candidate Starts for MamaPearl_19:

(Start: 45 @17672 has 83 MA's), (52, 17723), (75, 17846), (83, 17900), (87, 17918), (97, 17966), (103, 18002), (109, 18029), (110, 18032),

Gene: Maria1952_19 Start: 17670, Stop: 18113, Start Num: 45

Candidate Starts for Maria1952_19:

(13, 17400), (17, 17448), (28, 17550), (31, 17559), (Start: 45 @17670 has 83 MA's), (52, 17721), (56, 17739), (68, 17811), (83, 17898), (87, 17916), (97, 17964), (104, 18000), (108, 18018),

Gene: Marky_31 Start: 25965, Stop: 26429, Start Num: 43

Candidate Starts for Marky_31:

(Start: 43 @25965 has 15 MA's), (49, 26028), (74, 26160), (79, 26181), (85, 26226), (100, 26295), (112, 26343), (121, 26382),

Gene: Maureen_21 Start: 18736, Stop: 19206, Start Num: 42

Candidate Starts for Maureen_21:

(Start: 42 @18736 has 22 MA's), (54, 18820), (88, 19000),

Gene: MeganNoll_23 Start: 19266, Stop: 19715, Start Num: 45

Candidate Starts for MeganNoll_23:

(Start: 45 @19266 has 83 MA's), (52, 19317), (63, 19380), (67, 19404), (69, 19413), (78, 19455), (83, 19494), (87, 19512), (97, 19560), (103, 19596), (110, 19626), (115, 19650), (116, 19653),

Gene: Microdon_30 Start: 25921, Stop: 26373, Start Num: 43

Candidate Starts for Microdon_30:

(6, 25276), (7, 25360), (8, 25474), (23, 25798), (25, 25822), (Start: 39 @25912 has 1 MA's), (Start: 41 @25918 has 2 MA's), (Start: 43 @25921 has 15 MA's), (74, 26116), (77, 26131), (79, 26137), (82, 26167), (85, 26182), (112, 26299), (121, 26338),

Gene: Misaeng_23 Start: 19350, Stop: 19799, Start Num: 45

Candidate Starts for Misaeng_23:

(29, 19233), (32, 19251), (Start: 45 @19350 has 83 MA's), (47, 19380), (48, 19383), (52, 19401), (57, 19428), (63, 19464), (65, 19470), (78, 19539), (83, 19578), (87, 19596), (97, 19644), (107, 19698), (110, 19710), (115, 19734), (116, 19737),

Gene: Moki_19 Start: 17667, Stop: 18116, Start Num: 45

Candidate Starts for Moki_19:

(14, 17403), (17, 17445), (18, 17448), (20, 17481), (32, 17568), (33, 17592), (Start: 45 @17667 has 83 MA's), (52, 17718), (63, 17781), (65, 17787), (75, 17841), (78, 17856), (83, 17895), (84, 17901), (87, 17913), (97, 17961), (103, 17997), (107, 18015), (109, 18024), (110, 18027), (115, 18051), (116, 18054),

Gene: MrGloopy_23 Start: 19200, Stop: 19649, Start Num: 45

Candidate Starts for MrGloopy_23:

(Start: 45 @19200 has 83 MA's), (52, 19251), (67, 19338), (69, 19347), (76, 19383), (78, 19389), (83, 19428), (87, 19446), (97, 19494), (103, 19530), (109, 19557), (110, 19560), (115, 19584), (116,

19587),

Gene: Nancia_19 Start: 17674, Stop: 18117, Start Num: 45

Candidate Starts for Nancia_19:

(13, 17404), (17, 17452), (20, 17488), (28, 17554), (32, 17575), (35, 17617), (Start: 45 @17674 has 83 MA's), (52, 17725), (53, 17731), (54, 17734), (67, 17812), (70, 17827), (74, 17845), (83, 17902), (103, 17998), (108, 18022), (109, 18025), (110, 18028), (115, 18052),

Gene: Niobe_22 Start: 19281, Stop: 19748, Start Num: 42

Candidate Starts for Niobe_22:

(Start: 42 @19281 has 22 MA's), (52, 19356), (53, 19362), (72, 19458), (86, 19545), (88, 19548), (89, 19557), (118, 19695), (122, 19710),

Gene: Nirvana_131 Start: 82324, Stop: 82758, Start Num: 43

Candidate Starts for Nirvana_131:

(Start: 43 @82324 has 15 MA's), (64, 82453), (90, 82594), (117, 82723),

Gene: Nubia_23 Start: 19265, Stop: 19705, Start Num: 45

Candidate Starts for Nubia_23:

(14, 19001), (16, 19031), (17, 19043), (19, 19061), (26, 19139), (29, 19148), (31, 19154), (32, 19166), (Start: 45 @19265 has 83 MA's), (52, 19316), (73, 19430), (74, 19436), (79, 19457), (83, 19493), (96, 19553), (109, 19616), (110, 19619), (115, 19643), (124, 19676),

Gene: OMalley_19 Start: 17655, Stop: 18098, Start Num: 45

Candidate Starts for OMalley_19:

(13, 17385), (14, 17391), (22, 17490), (32, 17556), (Start: 45 @17655 has 83 MA's), (52, 17706), (53, 17712), (56, 17724), (83, 17883), (87, 17901), (104, 17985), (108, 18003), (110, 18009),

Gene: ObiToo_21 Start: 17476, Stop: 17937, Start Num: 42

Candidate Starts for ObiToo_21:

(Start: 42 @17476 has 22 MA's), (50, 17539), (55, 17563), (57, 17575), (71, 17644), (85, 17728), (92, 17761), (118, 17887),

Gene: OurGirlNessie_19 Start: 17654, Stop: 18097, Start Num: 45

Candidate Starts for OurGirlNessie_19:

(13, 17384), (17, 17432), (20, 17468), (26, 17528), (28, 17534), (32, 17555), (35, 17597), (Start: 45 @17654 has 83 MA's), (52, 17705), (53, 17711), (54, 17714), (67, 17792), (74, 17825), (83, 17882), (103, 17978), (108, 18002), (109, 18005), (110, 18008), (115, 18032),

Gene: Oxynfrius_23 Start: 19278, Stop: 19718, Start Num: 45

Candidate Starts for Oxynfrius_23:

(14, 19014), (16, 19044), (17, 19056), (19, 19074), (26, 19152), (29, 19161), (31, 19167), (32, 19179), (Start: 45 @19278 has 83 MA's), (52, 19329), (73, 19443), (74, 19449), (79, 19470), (83, 19506), (96, 19566), (109, 19629), (110, 19632), (115, 19656), (124, 19689),

Gene: PartyCup_23 Start: 19304, Stop: 19753, Start Num: 45

Candidate Starts for PartyCup_23:

(28, 19184), (32, 19205), (34, 19235), (Start: 45 @19304 has 83 MA's), (52, 19355), (53, 19361), (65, 19424), (83, 19532), (87, 19550), (97, 19598), (98, 19601), (103, 19634), (107, 19652), (115, 19688), (116, 19691),

Gene: Phives_23 Start: 20757, Stop: 21224, Start Num: 42

Candidate Starts for Phives_23:

(Start: 42 @20757 has 22 MA's), (51, 20829), (53, 20838), (67, 20910), (72, 20934), (118, 21171), (122, 21186),

Gene: PinkFriday_19 Start: 17691, Stop: 18134, Start Num: 45

Candidate Starts for PinkFriday_19:

(Start: 45 @17691 has 83 MA's), (49, 17727), (52, 17742), (56, 17760), (83, 17919), (87, 17937), (95, 17976), (97, 17985), (104, 18021), (108, 18039), (115, 18069),

Gene: PitaDog_19 Start: 17665, Stop: 18108, Start Num: 45

Candidate Starts for PitaDog_19:

(13, 17395), (17, 17443), (20, 17479), (28, 17545), (32, 17566), (35, 17608), (Start: 45 @17665 has 83 MA's), (52, 17716), (53, 17722), (54, 17725), (67, 17803), (70, 17818), (74, 17836), (83, 17893), (103, 17989), (108, 18013), (109, 18016), (110, 18019), (115, 18043),

Gene: Potatoes_23 Start: 19261, Stop: 19710, Start Num: 45

Candidate Starts for Potatoes_23:

(Start: 45 @19261 has 83 MA's), (52, 19312), (67, 19399), (78, 19450), (83, 19489), (87, 19507), (97, 19555), (103, 19591), (110, 19621), (115, 19645), (116, 19648),

Gene: Preamble_19 Start: 17668, Stop: 18117, Start Num: 45

Candidate Starts for Preamble_19:

(Start: 45 @17668 has 83 MA's), (63, 17782), (66, 17797), (69, 17815), (75, 17842), (83, 17896), (84, 17902), (87, 17914), (97, 17962), (103, 17998), (107, 18016), (109, 18025), (110, 18028), (115, 18052), (116, 18055),

Gene: Pterodactyl_19 Start: 17655, Stop: 18098, Start Num: 45

Candidate Starts for Pterodactyl_19:

(13, 17385), (17, 17433), (20, 17469), (28, 17535), (32, 17556), (35, 17598), (Start: 45 @17655 has 83 MA's), (52, 17706), (53, 17712), (54, 17715), (67, 17793), (74, 17826), (83, 17883), (103, 17979), (108, 18003), (109, 18006), (110, 18009), (115, 18033),

Gene: Pumancara_19 Start: 17673, Stop: 18116, Start Num: 45

Candidate Starts for Pumancara_19:

(17, 17451), (28, 17553), (31, 17562), (Start: 45 @17673 has 83 MA's), (49, 17709), (52, 17724), (56, 17742), (83, 17901), (87, 17919), (95, 17958), (97, 17967), (104, 18003), (108, 18021), (115, 18051),

Gene: Quantum_119 Start: 79008, Stop: 79442, Start Num: 43

Candidate Starts for Quantum_119:

(10, 78624), (24, 78891), (30, 78924), (Start: 43 @79008 has 15 MA's), (73, 79182), (93, 79290), (95, 79308), (105, 79356), (108, 79371), (117, 79407),

Gene: RAP15_23 Start: 19266, Stop: 19715, Start Num: 45

Candidate Starts for RAP15_23:

(Start: 45 @19266 has 83 MA's), (52, 19317), (63, 19380), (67, 19404), (69, 19413), (78, 19455), (83, 19494), (87, 19512), (97, 19560), (103, 19596), (110, 19626), (115, 19650), (116, 19653),

Gene: RcigaStruga_23 Start: 19268, Stop: 19717, Start Num: 45

Candidate Starts for RcigaStruga_23:

(14, 19004), (32, 19169), (Start: 45 @19268 has 83 MA's), (63, 19382), (83, 19496), (87, 19514), (92, 19532), (97, 19562), (98, 19565), (103, 19598), (107, 19616), (109, 19625), (110, 19628), (115, 19652), (124, 19685),

Gene: Reedo_21 Start: 17318, Stop: 17776, Start Num: 42

Candidate Starts for Reedo_21:

(36, 17300), (Start: 42 @17318 has 22 MA's), (55, 17405), (94, 17612), (102, 17663), (111, 17699),

Gene: Riovina_19 Start: 17655, Stop: 18098, Start Num: 45

Candidate Starts for Riovina_19:

(13, 17385), (14, 17391), (22, 17490), (32, 17556), (Start: 45 @17655 has 83 MA's), (52, 17706), (53, 17712), (56, 17724), (83, 17883), (87, 17901), (104, 17985), (108, 18003), (110, 18009),

Gene: Riverdale_23 Start: 19196, Stop: 19645, Start Num: 45

Candidate Starts for Riverdale_23:

(Start: 45 @19196 has 83 MA's), (52, 19247), (67, 19334), (78, 19385), (83, 19424), (87, 19442), (97, 19490), (103, 19526), (107, 19544), (110, 19556), (115, 19580), (116, 19583),

Gene: Rozby_23 Start: 19197, Stop: 19646, Start Num: 45

Candidate Starts for Rozby_23:

(Start: 45 @19197 has 83 MA's), (52, 19248), (67, 19335), (78, 19386), (83, 19425), (87, 19443), (97, 19491), (103, 19527), (109, 19554), (110, 19557), (115, 19581), (116, 19584),

Gene: Satis_120 Start: 79004, Stop: 79438, Start Num: 43

Candidate Starts for Satis_120:

(10, 78620), (24, 78887), (30, 78920), (Start: 43 @79004 has 15 MA's), (73, 79178), (93, 79286), (95, 79304), (105, 79352), (108, 79367), (117, 79403),

Gene: Savage2526_23 Start: 19260, Stop: 19709, Start Num: 45

Candidate Starts for Savage2526_23:

(Start: 45 @19260 has 83 MA's), (52, 19311), (63, 19374), (67, 19398), (69, 19407), (78, 19449), (83, 19488), (87, 19506), (97, 19554), (103, 19590), (110, 19620), (115, 19644), (116, 19647),

Gene: Scuttle_23 Start: 19265, Stop: 19714, Start Num: 45

Candidate Starts for Scuttle_23:

(Start: 45 @19265 has 83 MA's), (52, 19316), (67, 19403), (78, 19454), (83, 19493), (87, 19511), (97, 19559), (103, 19595), (109, 19622), (110, 19625), (115, 19649), (116, 19652),

Gene: Sergei_19 Start: 17670, Stop: 18113, Start Num: 45

Candidate Starts for Sergei_19:

(13, 17400), (17, 17448), (28, 17550), (31, 17559), (Start: 45 @17670 has 83 MA's), (52, 17721), (56, 17739), (68, 17811), (83, 17898), (87, 17916), (97, 17964), (104, 18000), (108, 18018),

Gene: Snek_21 Start: 16347, Stop: 16814, Start Num: 42

Candidate Starts for Snek_21:

(36, 16329), (Start: 42 @16347 has 22 MA's), (49, 16407), (59, 16449), (88, 16611),

Gene: Stuff_31 Start: 26387, Stop: 26848, Start Num: 39

Candidate Starts for Stuff_31:

(1, 24806), (3, 25421), (4, 25451), (5, 25682), (6, 25739), (7, 25823), (11, 26114), (25, 26297), (Start: 39 @26387 has 1 MA's), (Start: 41 @26393 has 2 MA's), (Start: 43 @26396 has 15 MA's), (72, 26582), (74, 26591), (77, 26606), (79, 26612), (85, 26657), (94, 26699), (107, 26756), (112, 26774), (121, 26813),

Gene: Sue2_21 Start: 17971, Stop: 18432, Start Num: 42

Candidate Starts for Sue2_21:

(Start: 42 @17971 has 22 MA's), (51, 18043), (60, 18076), (67, 18124), (75, 18160), (104, 18328), (108, 18346), (112, 18358),

Gene: Supakev_19 Start: 17657, Stop: 18100, Start Num: 45

Candidate Starts for Supakev_19:

(13, 17387), (14, 17393), (22, 17492), (32, 17558), (Start: 45 @17657 has 83 MA's), (52, 17708), (53, 17714), (56, 17726), (83, 17885), (87, 17903), (104, 17987), (108, 18005), (110, 18011),

Gene: Suppi_23 Start: 19307, Stop: 19756, Start Num: 45

Candidate Starts for Suppi_23:

(14, 19043), (28, 19187), (32, 19208), (34, 19238), (Start: 45 @19307 has 83 MA's), (52, 19358), (53, 19364), (63, 19421), (65, 19427), (83, 19535), (87, 19553), (97, 19601), (98, 19604), (103, 19637), (107, 19655), (115, 19691), (116, 19694),

Gene: TattModd_23 Start: 19259, Stop: 19708, Start Num: 45

Candidate Starts for TattModd_23:

(Start: 45 @19259 has 83 MA's), (52, 19310), (67, 19397), (69, 19406), (76, 19442), (78, 19448), (83, 19487), (87, 19505), (97, 19553), (103, 19589), (110, 19619), (115, 19643), (116, 19646),

Gene: Temper16_19 Start: 17670, Stop: 18113, Start Num: 45

Candidate Starts for Temper16_19:

(13, 17400), (17, 17448), (28, 17550), (31, 17559), (Start: 45 @17670 has 83 MA's), (52, 17721), (56, 17739), (68, 17811), (83, 17898), (87, 17916), (97, 17964), (104, 18000), (108, 18018),

Gene: TforTroy_22 Start: 19431, Stop: 19886, Start Num: 42

Candidate Starts for TforTroy_22:

(Start: 42 @19431 has 22 MA's), (50, 19494), (57, 19530), (86, 19692), (112, 19815), (118, 19842),

Gene: Tuck_23 Start: 20900, Stop: 21367, Start Num: 42

Candidate Starts for Tuck_23:

(Start: 42 @20900 has 22 MA's), (51, 20972), (53, 20981), (67, 21053), (72, 21077), (85, 21155), (118, 21314), (122, 21329),

Gene: Tweety19_21 Start: 16346, Stop: 16813, Start Num: 42

Candidate Starts for Tweety19_21:

(36, 16328), (Start: 42 @16346 has 22 MA's), (49, 16406), (59, 16448), (88, 16610),

Gene: UNTPL_31 Start: 26213, Stop: 26668, Start Num: 41

Candidate Starts for UNTPL_31:

(11, 25934), (25, 26117), (Start: 39 @26207 has 1 MA's), (Start: 41 @26213 has 2 MA's), (Start: 43 @26216 has 15 MA's), (67, 26378), (74, 26411), (77, 26426), (79, 26432), (85, 26477), (94, 26519), (106, 26570), (107, 26576), (112, 26594), (121, 26633),

Gene: Urla_19 Start: 17674, Stop: 18123, Start Num: 45

Candidate Starts for Urla_19:

(Start: 45 @17674 has 83 MA's), (75, 17848), (83, 17902), (87, 17920), (97, 17968), (103, 18004), (109, 18031), (110, 18034),

Gene: VResidence_21 Start: 17376, Stop: 17837, Start Num: 42

Candidate Starts for VResidence_21:

(Start: 42 @17376 has 22 MA's), (50, 17439), (51, 17448), (55, 17463), (105, 17736),

Gene: Vallejo_23 Start: 19198, Stop: 19647, Start Num: 45

Candidate Starts for Vallejo_23:

(Start: 45 @19198 has 83 MA's), (52, 19249), (67, 19336), (69, 19345), (78, 19387), (83, 19426), (87, 19444), (97, 19492), (103, 19528), (107, 19546), (109, 19555), (110, 19558), (115, 19582), (116, 19585),

Gene: Vulture_19 Start: 17655, Stop: 18098, Start Num: 45

Candidate Starts for Vulture_19:

(13, 17385), (14, 17391), (22, 17490), (32, 17556), (Start: 45 @17655 has 83 MA's), (52, 17706), (53, 17712), (56, 17724), (83, 17883), (87, 17901), (101, 17973), (104, 17985), (108, 18003), (110, 18009),

Gene: Wawa_23 Start: 19235, Stop: 19684, Start Num: 45

Candidate Starts for Wawa_23:

(Start: 45 @19235 has 83 MA's), (52, 19286), (67, 19373), (69, 19382), (78, 19424), (83, 19463), (87, 19481), (97, 19529), (109, 19592), (110, 19595), (115, 19619), (116, 19622),

Gene: Wayne_23 Start: 19353, Stop: 19802, Start Num: 45

Candidate Starts for Wayne_23:

(28, 19233), (32, 19254), (34, 19284), (Start: 45 @19353 has 83 MA's), (52, 19404), (53, 19410), (65, 19473), (83, 19581), (87, 19599), (97, 19647), (103, 19683), (107, 19701), (115, 19737), (116, 19740),

Gene: Wildwest_22 Start: 18728, Stop: 19186, Start Num: 42

Candidate Starts for Wildwest_22:

(9, 18344), (15, 18524), (27, 18647), (Start: 42 @18728 has 22 MA's), (50, 18791), (51, 18800), (53, 18809), (55, 18815), (72, 18905), (75, 18917), (85, 18983), (86, 18992), (104, 19085), (118, 19142),

Gene: Wollypog_22 Start: 20463, Stop: 20921, Start Num: 44

Candidate Starts for Wollypog_22:

(Start: 44 @20463 has 1 MA's), (54, 20529), (69, 20613), (91, 20727), (106, 20802), (113, 20829), (114, 20835), (115, 20844), (123, 20868),

Gene: WonderBoy_19 Start: 17655, Stop: 18098, Start Num: 45

Candidate Starts for WonderBoy_19:

(13, 17385), (17, 17433), (20, 17469), (28, 17535), (32, 17556), (35, 17598), (Start: 45 @17655 has 83 MA's), (52, 17706), (53, 17712), (54, 17715), (67, 17793), (74, 17826), (83, 17883), (103, 17979), (108, 18003), (109, 18006), (110, 18009), (115, 18033),

Gene: Zorro_23 Start: 19214, Stop: 19663, Start Num: 45

Candidate Starts for Zorro_23:

(Start: 45 @19214 has 83 MA's), (52, 19265), (67, 19352), (69, 19361), (78, 19403), (83, 19442), (87, 19460), (97, 19508), (103, 19544), (109, 19571), (110, 19574), (115, 19598), (116, 19601),

Gene: pZL12_42c Start: 31108, Stop: 30641, Start Num: 37

Candidate Starts for pZL12_42c:

(30, 31177), (37, 31108), (46, 31048), (110, 30715), (119, 30676),