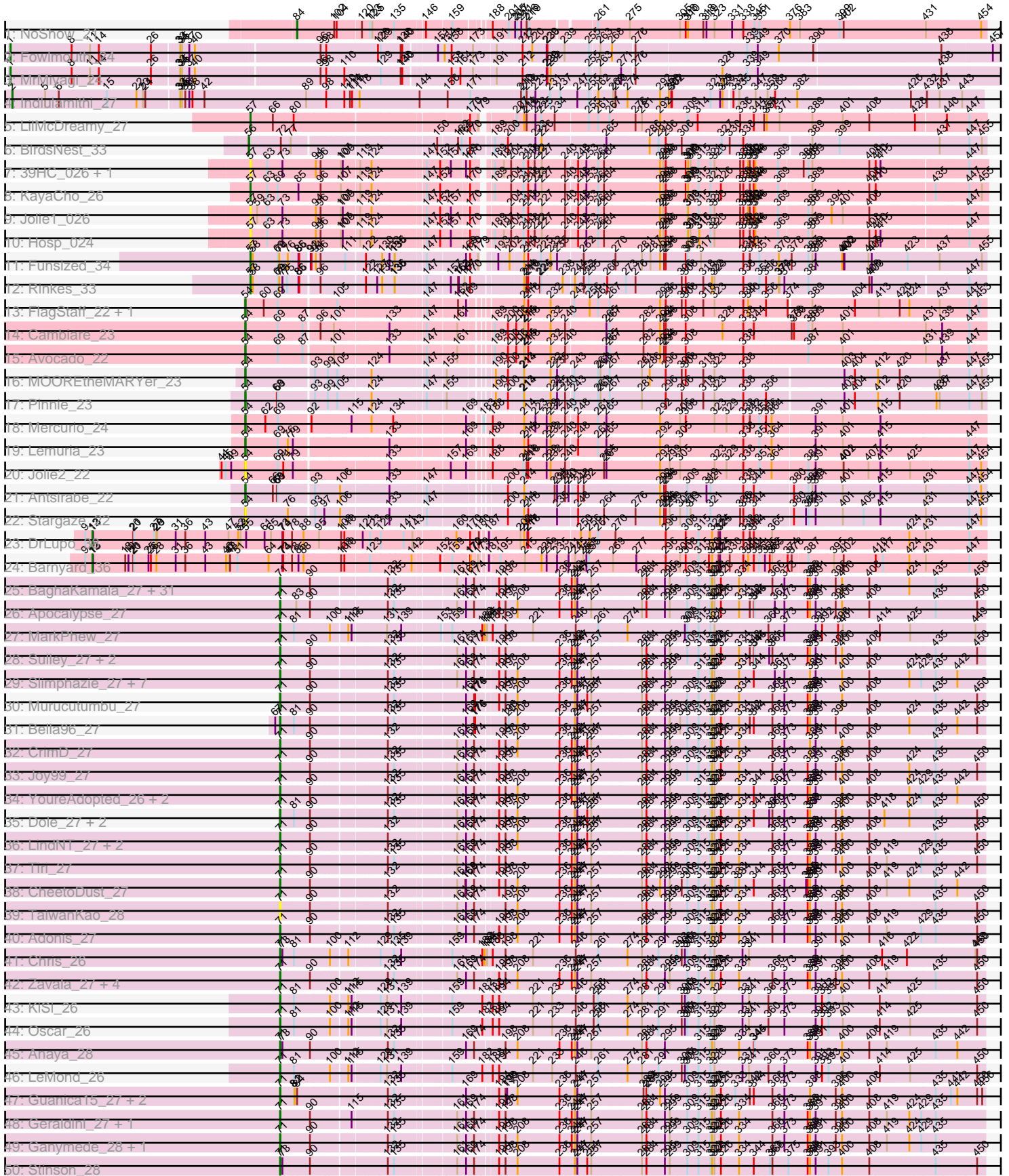


Pham 193832



Note: Tracks are now grouped by subcluster and scaled. Switching in subcluster is indicated by changes in track color. Track scale is now set by default to display the region 30 bp upstream of start 1 to 30 bp downstream of the last possible start. If this default region is judged to be packed too tightly with annotated starts, the track will be further scaled to only show that region of the ORF with annotated starts. This action will be indicated by adding "Zoomed" to the title. For starts, yellow indicates the location of called starts comprised solely of Glimmer/GeneMark auto-annotations, green indicates the location of called starts with at least 1 manual gene annotation.

Pham 193832 Report

This analysis was run 11/02/24 on database version 579.

Pham number 193832 has 129 members, 9 are drafts.

Phages represented in each track:

- Track 1 : NoShow_21
- Track 2 : Fowlmouth_24
- Track 3 : MrMiyagi_24
- Track 4 : Indlulamithi_27
- Track 5 : LilMcDreamy_27
- Track 6 : BirdsNest_33
- Track 7 : 39HC_026, 40BC_026
- Track 8 : KayaCho_26
- Track 9 : Jolie1_026
- Track 10 : Hosp_024
- Track 11 : Funsized_34
- Track 12 : Rinkes_33
- Track 13 : FlagStaff_22, Pace1224_22
- Track 14 : Cambiare_23
- Track 15 : Avocado_22
- Track 16 : MOOREtheMARYer_23
- Track 17 : Pinnie_23
- Track 18 : Mercurio_24
- Track 19 : Lemuria_23
- Track 20 : Jolie2_22
- Track 21 : Antsirabe_22
- Track 22 : Stargaze_22
- Track 23 : DrLupo_38
- Track 24 : Barnyard_36
- Track 25 : BaghaKamala_27, Durfee_27, Piatt_27, BarrelRoll_27, Boiiii_27, Belladonna_27, Pokerus_26, Peel_27, Blizzard_27, Padfoot_27, Topper_27, Dalmuri_27, Inky_27, Asayake_27, JAWS_27, Jeckyll_27, Capricorn_27, BGIluviae_27, CREW_27, AlishaPH_27, Hyperbowlee_27, CaseJules_27, ShiaSurprise_27, Ramen_27, Jarvi_27, Homura_27, BEEST_27, Spock_27, Rosmarinus_27, Twitch_27, Lunahalos_27, Llorens_27
- Track 26 : Apocalypse_27
- Track 27 : MarkPhew_27
- Track 28 : Sulley_27, Angelica_27, Deby_27
- Track 29 : Slimphazie_27, HedwigODU_27, Jayhawk_27, ActinUp_27, Veliki_27, Zabiza_27, Rapunzel97_27, Adephagia_27
- Track 30 : Murucutumbu_27
- Track 31 : Bella96_27

- Track 32 : CrimD_27
- Track 33 : Joy99_27
- Track 34 : YoureAdopted_26, Tachez_27, Atiba_27
- Track 35 : Dole_27, Illumine_27, Devera_27
- Track 36 : LindNT_27, TreyKay_27, Prithvi_27
- Track 37 : Tiri_27
- Track 38 : CheetoDust_27
- Track 39 : TaiwanKao_28
- Track 40 : Adonis_27
- Track 41 : Chris_26
- Track 42 : Zavala_27, Mynx_27, Emerson_27, Padpat_27, TruffulaTree_27
- Track 43 : KiSi_26
- Track 44 : Oscar_26
- Track 45 : Anaya_28
- Track 46 : LeMond_26
- Track 47 : Guanica15_27, Efra2_27, Yunkel11_27
- Track 48 : Geraldini_27, MeaningOfLife_27
- Track 49 : Ganymede_28, QuincyRose_26
- Track 50 : Stinson_28
- Track 51 : LaterM_27
- Track 52 : Beezoo_27
- Track 53 : Ageofdapage_27
- Track 54 : Scarlett_26
- Track 55 : DrHayes_27, Urkel_27, SamuelLPlaqson_27
- Track 56 : TiniBug_27
- Track 57 : Nibb_26
- Track 58 : Megsy_27
- Track 59 : SirPhilip_26
- Track 60 : Marshawn_28
- Track 61 : Aminay_25
- Track 62 : Zenon_31
- Track 63 : Rope_30, Send513_30, Candle_30
- Track 64 : Yelo_30
- Track 65 : MontyDev_30
- Track 66 : Nilo_31
- Track 67 : Weiss13_30
- Track 68 : Papyrus_30
- Track 69 : Riparian_30

Summary of Final Annotations (See graph section above for start numbers):

The start number called the most often in the published annotations is 71, it was called in 92 of the 120 non-draft genes in the pham.

Genes that call this "Most Annotated" start:

- ActinUp_27, Adephegia_27, Adonis_27, Ageofdapage_27, AlishaPH_27, Aminay_25, Anaya_28, Angelica_27, Apocalypse_27, Asayake_27, Atiba_27, BEEST_27, BGlluviae_27, BaghaKamala_27, BarrelRoll_27, Beezoo_27, Bella96_27, Belladonna_27, Blizzard_27, Boiii_27, CREW_27, Capricorn_27, CaseJules_27, CheetoDust_27, Chris_26, CrimD_27, Dalmuri_27, Deby_27,

Devera_27, Dole_27, DrHayes_27, Durfee_27, Efra2_27, Emerson_27, Ganymede_28, Geraldini_27, Guanica15_27, HedwigODU_27, Homura_27, Hyperbowlee_27, Illumine_27, Inky_27, JAWS_27, Jarvi_27, Jayhawk_27, Jeckyll_27, Joy99_27, KiSi_26, LaterM_27, LeMond_26, LindNT_27, Llorens_27, Lunahalos_27, MarkPhew_27, Marshawn_28, MeaningOfLife_27, Megsy_27, Murucutumbu_27, Mynx_27, Nibb_26, Oscar_26, Padfoot_27, Padpat_27, Peel_27, Piatt_27, Pokerus_26, Prithvi_27, QuincyRose_26, Ramen_27, Rapunzel97_27, Rosmarinus_27, SamuelLPlaqson_27, Scarlett_26, ShiaSurprise_27, SirPhilip_26, Slimphazie_27, Spock_27, Stinson_28, Sulley_27, Tachez_27, TaiwanKao_28, TiniBug_27, Tiri_27, Topper_27, TreyKay_27, TruffulaTree_27, Twitch_27, Urkel_27, Veliki_27, YoureAdopted_26, Yunkel11_27, Zabiza_27, Zavala_27,

Genes that have the "Most Annotated" start but do not call it:

-

Genes that do not have the "Most Annotated" start:

- 39HC_026, 40BC_026, Antsirabe_22, Avocado_22, Barnyard_36, BirdsNest_33, Cambiare_23, Candle_30, DrLupo_38, FlagStaff_22, Fowlmouth_24, Funsized_34, Hosp_024, Indlulamithi_27, Jolie1_026, Jolie2_22, KayaCho_26, Lemuria_23, LilMcDreamy_27, MOOREtheMARYer_23, Mercurio_24, MontyDev_30, MrMiyagi_24, Nilo_31, NoShow_21, Pace1224_22, Papyrus_30, Pinnie_23, Rinkes_33, Riparian_30, Rope_30, Send513_30, Stargaze_22, Weiss13_30, Yelo_30, Zenon_31,

Summary by start number:

Start 1:

- Found in 12 of 129 (9.3%) of genes in pham
- Manual Annotations of this start: 10 of 120
- Called 91.7% of time when present
- Phage (with cluster) where this start called: Candle_30 (R), Fowlmouth_24 (AC), MrMiyagi_24 (AC), Nilo_31 (R), Papyrus_30 (R), Riparian_30 (R), Rope_30 (R), Send513_30 (R), Weiss13_30 (R), Yelo_30 (R), Zenon_31 (R),

Start 2:

- Found in 1 of 129 (0.8%) of genes in pham
- Manual Annotations of this start: 1 of 120
- Called 100.0% of time when present
- Phage (with cluster) where this start called: Indlulamithi_27 (AC),

Start 4:

- Found in 10 of 129 (7.8%) of genes in pham
- Manual Annotations of this start: 1 of 120
- Called 10.0% of time when present
- Phage (with cluster) where this start called: MontyDev_30 (R),

Start 12:

- Found in 2 of 129 (1.6%) of genes in pham
- Manual Annotations of this start: 2 of 120
- Called 100.0% of time when present
- Phage (with cluster) where this start called: Barnyard_36 (H2), DrLupo_38 (H2),

Start 54:

- Found in 11 of 129 (8.5%) of genes in pham
- Manual Annotations of this start: 8 of 120
- Called 100.0% of time when present
- Phage (with cluster) where this start called: Antsirabe_22 (G5), Avocado_22 (G2), Cambiare_23 (G2), FlagStaff_22 (G2), Jolie2_22 (G4), Lemuria_23 (G4), MOOREtheMARYer_23 (G3), Mercurio_24 (G4), Pace1224_22 (G2), Pinnie_23 (G3), Stargaze_22 (G5),

Start 56:

- Found in 1 of 129 (0.8%) of genes in pham
- Manual Annotations of this start: 1 of 120
- Called 100.0% of time when present
- Phage (with cluster) where this start called: BirdsNest_33 (B13),

Start 57:

- Found in 8 of 129 (6.2%) of genes in pham
- Manual Annotations of this start: 4 of 120
- Called 100.0% of time when present
- Phage (with cluster) where this start called: 39HC_026 (B6), 40BC_026 (B6), Funsized_34 (B9), Hosp_024 (B6), Jolie1_026 (B6), KayaCho_26 (B6), LilMcDreamy_27 (B12), Rinkes_33 (B9),

Start 71:

- Found in 93 of 129 (72.1%) of genes in pham
- Manual Annotations of this start: 92 of 120
- Called 100.0% of time when present
- Phage (with cluster) where this start called: ActinUp_27 (K1), Adephegia_27 (K1), Adonis_27 (K1), Ageofdapage_27 (K1), AlishaPH_27 (K1), Aminay_25 (K7), Anaya_28 (K1), Angelica_27 (K1), Apocalypse_27 (K1), Asayake_27 (K1), Atiba_27 (K1), BEEEST_27 (K1), BGlluviae_27 (K1), BaghaKamala_27 (K1), BarrelRoll_27 (K1), Beezoo_27 (K1), Bella96_27 (K1), Belladonna_27 (K1), Blizzard_27 (K1), Boiiii_27 (K1), CREW_27 (K1), Capricorn_27 (K1), CaseJules_27 (K1), CheetoDust_27 (K1), Chris_26 (K1), CrimD_27 (K1), Dalmuri_27 (K1), Deby_27 (K1), Devera_27 (K1), Dole_27 (K1), DrHayes_27 (K1), Durfee_27 (K1), Efra2_27 (K1), Emerson_27 (K1), Ganymede_28 (K1), Geraldini_27 (K1), Guanica15_27 (K1), HedwigODU_27 (K1), Homura_27 (K1), Hyperbowlee_27 (K1), Illumine_27 (K1), Inky_27 (K1), JAWS_27 (K1), Jarvi_27 (K1), Jayhawk_27 (K1), Jeckyll_27 (K1), Joy99_27 (K1), KiSi_26 (K1), LaterM_27 (K1), LeMond_26 (K1), LindNT_27 (K1), Llorens_27 (K1), Lunahalos_27 (K1), MarkPhew_27 (K1), Marshawn_28 (K6), MeaningOfLife_27 (K1), Megsy_27 (K1), Murucutumbu_27 (K1), Mynx_27 (K1), Nibb_26 (K1), Oscar_26 (K1), Padfoot_27 (K1), Padpat_27 (K1), Peel_27 (K1), Piatt_27 (K1), Pokerus_26 (K1), Prithvi_27 (K1), QuincyRose_26 (K1), Ramen_27 (K1), Rapunzel97_27 (K1), Rosmarinus_27 (K1), SamuelLPlaqson_27 (K1), Scarlett_26 (K1), ShiaSurprise_27 (K1), SirPhilip_26 (K6), Slimphazie_27 (K1), Spock_27 (K1), Stinson_28 (K1), Sulley_27 (K1), Tachez_27 (K1), TaiwanKao_28 (K1), TiniBug_27 (K1), Tiri_27 (K1), Topper_27 (K1), TreyKay_27 (K1), TruffulaTree_27 (K1), Twitch_27 (K1), Urkel_27 (K1), Veliki_27 (K1), YoureAdopted_26 (K1), Yunkel11_27 (K1), Zabiza_27 (K1), Zavala_27 (K1),

Start 84:

- Found in 4 of 129 (3.1%) of genes in pham
- Manual Annotations of this start: 1 of 120
- Called 25.0% of time when present

- Phage (with cluster) where this start called: NoShow_21 (AB),

Summary by clusters:

There are 15 clusters represented in this pham: AC, G4, G3, G2, K6, H2, G5, K1, R, K7, B6, B12, B9, AB, B13,

Info for manual annotations of cluster AB:

- Start number 84 was manually annotated 1 time for cluster AB.

Info for manual annotations of cluster AC:

- Start number 1 was manually annotated 2 times for cluster AC.
- Start number 2 was manually annotated 1 time for cluster AC.

Info for manual annotations of cluster B12:

- Start number 57 was manually annotated 1 time for cluster B12.

Info for manual annotations of cluster B13:

- Start number 56 was manually annotated 1 time for cluster B13.

Info for manual annotations of cluster B6:

- Start number 57 was manually annotated 1 time for cluster B6.

Info for manual annotations of cluster B9:

- Start number 57 was manually annotated 2 times for cluster B9.

Info for manual annotations of cluster G2:

- Start number 54 was manually annotated 3 times for cluster G2.

Info for manual annotations of cluster G3:

- Start number 54 was manually annotated 2 times for cluster G3.

Info for manual annotations of cluster G4:

- Start number 54 was manually annotated 2 times for cluster G4.

Info for manual annotations of cluster G5:

- Start number 54 was manually annotated 1 time for cluster G5.

Info for manual annotations of cluster H2:

- Start number 12 was manually annotated 2 times for cluster H2.

Info for manual annotations of cluster K1:

- Start number 71 was manually annotated 89 times for cluster K1.

Info for manual annotations of cluster K6:

- Start number 71 was manually annotated 2 times for cluster K6.

Info for manual annotations of cluster K7:

- Start number 71 was manually annotated 1 time for cluster K7.

Info for manual annotations of cluster R:

- Start number 1 was manually annotated 8 times for cluster R.
- Start number 4 was manually annotated 1 time for cluster R.

Gene Information:

Gene: 39HC_026 Start: 27572, Stop: 30067, Start Num: 57

Candidate Starts for 39HC_026:

(Start: 57 @27572 has 4 MA's), (63, 27629), (73, 27686), (94, 27806), (96, 27824), (107, 27896), (109, 27902), (119, 27956), (124, 27992), (147, 28175), (152, 28220), (157, 28259), (169, 28307), (170, 28313), (189, 28361), (197, 28391), (204, 28418), (213, 28454), (218, 28472), (222, 28496), (227, 28520), (240, 28604), (248, 28640), (253, 28670), (261, 28706), (264, 28724), (292, 28931), (293, 28943), (296, 28952), (308, 29021), (309, 29027), (310, 29030), (311, 29039), (315, 29069), (321, 29114), (323, 29129), (336, 29210), (338, 29222), (340, 29240), (342, 29246), (344, 29261), (346, 29267), (369, 29348), (384, 29420), (387, 29438), (389, 29453), (408, 29663), (410, 29684), (415, 29702), (447, 29999),

Gene: 40BC_026 Start: 27572, Stop: 30067, Start Num: 57

Candidate Starts for 40BC_026:

(Start: 57 @27572 has 4 MA's), (63, 27629), (73, 27686), (94, 27806), (96, 27824), (107, 27896), (109, 27902), (119, 27956), (124, 27992), (147, 28175), (152, 28220), (157, 28259), (169, 28307), (170, 28313), (189, 28361), (197, 28391), (204, 28418), (213, 28454), (218, 28472), (222, 28496), (227, 28520), (240, 28604), (248, 28640), (253, 28670), (261, 28706), (264, 28724), (292, 28931), (293, 28943), (296, 28952), (308, 29021), (309, 29027), (310, 29030), (311, 29039), (315, 29069), (321, 29114), (323, 29129), (336, 29210), (338, 29222), (340, 29240), (342, 29246), (344, 29261), (346, 29267), (369, 29348), (384, 29420), (387, 29438), (389, 29453), (408, 29663), (410, 29684), (415, 29702), (447, 29999),

Gene: ActinUp_27 Start: 20881, Stop: 23313, Start Num: 71

Candidate Starts for ActinUp_27:

(Start: 71 @20881 has 92 MA's), (90, 20980), (132, 21241), (135, 21262), (161, 21469), (169, 21502), (174, 21532), (194, 21604), (198, 21628), (208, 21673), (236, 21826), (242, 21871), (244, 21883), (247, 21892), (257, 21943), (281, 22123), (284, 22138), (295, 22207), (299, 22219), (315, 22324), (321, 22363), (322, 22369), (323, 22378), (334, 22459), (344, 22507), (367, 22582), (373, 22618), (388, 22699), (391, 22720), (400, 22813), (408, 22909), (424, 23056), (429, 23098), (435, 23137), (442, 23212),

Gene: Adephagia_27 Start: 20878, Stop: 23310, Start Num: 71

Candidate Starts for Adephagia_27:

(Start: 71 @20878 has 92 MA's), (90, 20977), (132, 21238), (135, 21259), (161, 21466), (169, 21499), (174, 21529), (194, 21601), (198, 21625), (208, 21670), (236, 21823), (242, 21868), (244, 21880), (247, 21889), (257, 21940), (281, 22120), (284, 22135), (295, 22204), (299, 22216), (315, 22321), (321, 22360), (322, 22366), (323, 22375), (334, 22456), (344, 22504), (367, 22579), (373, 22615), (388, 22696), (391, 22717), (400, 22810), (408, 22906), (424, 23053), (429, 23095), (435, 23134), (442, 23209),

Gene: Adonis_27 Start: 20884, Stop: 23316, Start Num: 71

Candidate Starts for Adonis_27:

(Start: 71 @20884 has 92 MA's), (90, 20983), (132, 21244), (135, 21265), (161, 21472), (169, 21505), (174, 21535), (194, 21607), (198, 21631), (208, 21676), (236, 21829), (242, 21874), (244, 21886), (247, 21895), (257, 21946), (281, 22126), (284, 22141), (295, 22210), (309, 22285), (315, 22327), (321, 22366), (322, 22372), (323, 22381), (326, 22402), (334, 22462), (366, 22579), (373, 22621), (386, 22693), (388, 22702), (391, 22723), (396, 22795), (400, 22816), (408, 22912), (419, 22975), (429, 23101), (435, 23140), (450, 23287),

Gene: Ageofdapage_27 Start: 20828, Stop: 23260, Start Num: 71

Candidate Starts for Ageofdapage_27:

(Start: 71 @20828 has 92 MA's), (90, 20927), (91, 20930), (112, 21056), (132, 21188), (135, 21209), (148, 21341), (169, 21449), (194, 21551), (198, 21575), (203, 21593), (208, 21620), (223, 21686), (236, 21773), (244, 21830), (247, 21839), (254, 21875), (257, 21890), (281, 22070), (284, 22085), (299, 22166), (309, 22229), (315, 22271), (321, 22310), (322, 22316), (323, 22325), (334, 22406), (342, 22439), (344, 22454), (345, 22457), (361, 22511), (366, 22523), (386, 22637), (388, 22646), (408, 22856), (429, 23045), (435, 23084), (450, 23231),

Gene: AlishaPH_27 Start: 20871, Stop: 23303, Start Num: 71

Candidate Starts for AlishaPH_27:

(Start: 71 @20871 has 92 MA's), (90, 20970), (132, 21231), (135, 21252), (161, 21459), (169, 21492), (174, 21522), (194, 21594), (198, 21618), (236, 21816), (242, 21861), (244, 21873), (247, 21882), (257, 21933), (281, 22113), (284, 22128), (295, 22197), (299, 22209), (309, 22272), (315, 22314), (321, 22353), (322, 22359), (323, 22368), (326, 22389), (334, 22449), (366, 22566), (373, 22608), (386, 22680), (388, 22689), (391, 22710), (396, 22782), (400, 22803), (408, 22899), (424, 23046), (435, 23127), (450, 23274),

Gene: Aminay_25 Start: 21018, Stop: 23477, Start Num: 71

Candidate Starts for Aminay_25:

(Start: 71 @21018 has 92 MA's), (90, 21120), (117, 21264), (126, 21327), (130, 21360), (135, 21402), (160, 21609), (168, 21642), (181, 21693), (194, 21756), (196, 21771), (198, 21780), (199, 21786), (203, 21798), (228, 21921), (230, 21933), (241, 22011), (258, 22104), (261, 22119), (270, 22179), (276, 22251), (283, 22287), (290, 22332), (292, 22341), (302, 22380), (308, 22431), (309, 22437), (338, 22638), (344, 22677), (348, 22686), (391, 22878), (400, 22971), (414, 23109), (433, 23277),

Gene: Anaya_28 Start: 20897, Stop: 23329, Start Num: 71

Candidate Starts for Anaya_28:

(Start: 71 @20897 has 92 MA's), (73, 20906), (90, 20996), (132, 21257), (135, 21278), (169, 21518), (174, 21548), (198, 21644), (208, 21689), (236, 21842), (242, 21887), (244, 21899), (247, 21908), (257, 21959), (281, 22139), (284, 22154), (295, 22223), (315, 22340), (321, 22379), (322, 22385), (323, 22394), (334, 22475), (344, 22523), (345, 22526), (386, 22706), (388, 22715), (391, 22736), (400, 22829), (408, 22925), (419, 22988), (435, 23153), (442, 23228),

Gene: Angelica_27 Start: 20846, Stop: 23278, Start Num: 71

Candidate Starts for Angelica_27:

(Start: 71 @20846 has 92 MA's), (90, 20945), (132, 21206), (135, 21227), (161, 21434), (169, 21467), (174, 21497), (194, 21569), (198, 21593), (236, 21791), (242, 21836), (244, 21848), (247, 21857), (257, 21908), (281, 22088), (284, 22103), (295, 22172), (299, 22184), (309, 22247), (315, 22289), (321, 22328), (322, 22334), (323, 22343), (326, 22364), (334, 22424), (342, 22457), (344, 22472), (345, 22475), (361, 22529), (366, 22541), (386, 22655), (388, 22664), (391, 22685), (396, 22757), (400, 22778), (408, 22874), (435, 23102), (450, 23249),

Gene: Antsirabe_22 Start: 20760, Stop: 23216, Start Num: 54

Candidate Starts for Antsirabe_22:

(Start: 54 @20760 has 8 MA's), (66, 20850), (68, 20865), (69, 20868), (93, 20988), (106, 21063), (133, 21222), (147, 21339), (200, 21561), (214, 21612), (234, 21720), (235, 21729), (240, 21759), (241, 21771), (248, 21795), (252, 21816), (292, 22083), (294, 22098), (296, 22104), (309, 22179), (319, 22251), (321, 22266), (338, 22374), (344, 22413), (380, 22548), (387, 22590), (389, 22605), (391, 22617), (401, 22716), (415, 22854), (431, 23010), (447, 23154), (454, 23196),

Gene: Apocalypse_27 Start: 20849, Stop: 23281, Start Num: 71

Candidate Starts for Apocalypse_27:

(Start: 71 @20849 has 92 MA's), (83, 20906), (90, 20948), (132, 21209), (135, 21230), (161, 21437), (169, 21470), (174, 21500), (194, 21572), (198, 21596), (208, 21641), (236, 21794), (242, 21839), (244, 21851), (247, 21860), (257, 21911), (281, 22091), (284, 22106), (295, 22175), (299, 22187), (309, 22250), (315, 22292), (321, 22331), (322, 22337), (323, 22346), (326, 22367), (334, 22427), (342, 22460), (344, 22475), (345, 22478), (367, 22550), (373, 22586), (386, 22658), (388, 22667), (391, 22688), (396, 22760), (400, 22781), (408, 22877), (435, 23105), (450, 23252),

Gene: Asayake_27 Start: 20912, Stop: 23344, Start Num: 71

Candidate Starts for Asayake_27:

(Start: 71 @20912 has 92 MA's), (90, 21011), (132, 21272), (135, 21293), (161, 21500), (169, 21533), (174, 21563), (194, 21635), (198, 21659), (236, 21857), (242, 21902), (244, 21914), (247, 21923), (257, 21974), (281, 22154), (284, 22169), (295, 22238), (299, 22250), (309, 22313), (315, 22355), (321, 22394), (322, 22400), (323, 22409), (326, 22430), (334, 22490), (366, 22607), (373, 22649), (386, 22721), (388, 22730), (391, 22751), (396, 22823), (400, 22844), (408, 22940), (424, 23087), (435, 23168), (450, 23315),

Gene: Atiba_27 Start: 20841, Stop: 23273, Start Num: 71

Candidate Starts for Atiba_27:

(Start: 71 @20841 has 92 MA's), (90, 20940), (132, 21201), (135, 21222), (161, 21429), (169, 21462), (174, 21492), (194, 21564), (198, 21588), (208, 21633), (236, 21786), (242, 21831), (244, 21843), (247, 21852), (257, 21903), (281, 22083), (284, 22098), (295, 22167), (299, 22179), (315, 22284), (321, 22323), (322, 22329), (323, 22338), (334, 22419), (344, 22467), (367, 22542), (373, 22578), (386, 22650), (388, 22659), (391, 22680), (400, 22773), (408, 22869), (424, 23016), (429, 23058), (435, 23097), (442, 23172),

Gene: Avocado_22 Start: 20763, Stop: 23240, Start Num: 54

Candidate Starts for Avocado_22:

(Start: 54 @20763 has 8 MA's), (69, 20871), (87, 20961), (101, 21051), (133, 21228), (147, 21345), (161, 21444), (189, 21525), (200, 21567), (206, 21591), (214, 21618), (215, 21621), (218, 21633), (232, 21714), (240, 21765), (265, 21894), (267, 21906), (282, 22032), (292, 22092), (294, 22107), (296, 22113), (308, 22182), (338, 22383), (387, 22614), (401, 22740), (431, 23034), (439, 23085), (447, 23178),

Gene: BEEST_27 Start: 20912, Stop: 23344, Start Num: 71

Candidate Starts for BEEST_27:

(Start: 71 @20912 has 92 MA's), (90, 21011), (132, 21272), (135, 21293), (161, 21500), (169, 21533), (174, 21563), (194, 21635), (198, 21659), (236, 21857), (242, 21902), (244, 21914), (247, 21923), (257, 21974), (281, 22154), (284, 22169), (295, 22238), (299, 22250), (309, 22313), (315, 22355), (321, 22394), (322, 22400), (323, 22409), (326, 22430), (334, 22490), (366, 22607), (373, 22649), (386, 22721), (388, 22730), (391, 22751), (396, 22823), (400, 22844), (408, 22940), (424, 23087), (435, 23168), (450, 23315),

Gene: BGlluviae_27 Start: 20912, Stop: 23344, Start Num: 71

Candidate Starts for BGlluviae_27:

(Start: 71 @20912 has 92 MA's), (90, 21011), (132, 21272), (135, 21293), (161, 21500), (169, 21533), (174, 21563), (194, 21635), (198, 21659), (236, 21857), (242, 21902), (244, 21914), (247, 21923), (257, 21974), (281, 22154), (284, 22169), (295, 22238), (299, 22250), (309, 22313), (315, 22355), (321, 22394), (322, 22400), (323, 22409), (326, 22430), (334, 22490), (366, 22607), (373, 22649), (386, 22721), (388, 22730), (391, 22751), (396, 22823), (400, 22844), (408, 22940), (424, 23087), (435, 23168), (450, 23315),

Gene: BaghaKamala_27 Start: 20841, Stop: 23273, Start Num: 71

Candidate Starts for BaghaKamala_27:

(Start: 71 @20841 has 92 MA's), (90, 20940), (132, 21201), (135, 21222), (161, 21429), (169, 21462), (174, 21492), (194, 21564), (198, 21588), (236, 21786), (242, 21831), (244, 21843), (247, 21852), (257, 21903), (281, 22083), (284, 22098), (295, 22167), (299, 22179), (309, 22242), (315, 22284), (321, 22323), (322, 22329), (323, 22338), (326, 22359), (334, 22419), (366, 22536), (373, 22578), (386, 22650), (388, 22659), (391, 22680), (396, 22752), (400, 22773), (408, 22869), (424, 23016), (435, 23097), (450, 23244),

Gene: Barnyard_36 Start: 26772, Stop: 29858, Start Num: 12

Candidate Starts for Barnyard_36:

(9, 26745), (Start: 12 @26772 has 2 MA's), (13, 26775), (18, 26895), (19, 26907), (20, 26925), (21, 26928), (25, 26982), (26, 26991), (28, 27012), (31, 27084), (36, 27120), (43, 27195), (46, 27273), (47, 27282), (48, 27288), (51, 27315), (64, 27432), (73, 27483), (74, 27486), (78, 27516), (85, 27540), (88, 27558), (108, 27690), (110, 27702), (123, 27783), (142, 27933), (152, 28017), (159, 28053), (170, 28107), (172, 28110), (179, 28128), (187, 28146), (195, 28182), (215, 28263), (226, 28323), (229, 28341), (235, 28377), (241, 28419), (245, 28431), (251, 28461), (253, 28473), (255, 28482), (269, 28557), (277, 28644), (296, 28752), (305, 28797), (308, 28818), (315, 28866), (320, 28905), (322, 28917), (324, 28941), (325, 28947), (330, 28977), (338, 29019), (340, 29037), (344, 29058), (351, 29079), (355, 29100), (362, 29118), (365, 29127), (374, 29181), (378, 29190), (387, 29232), (395, 29325), (402, 29358), (410, 29478), (417, 29505), (424, 29598), (431, 29652), (447, 29796),

Gene: BarrelRoll_27 Start: 20864, Stop: 23296, Start Num: 71

Candidate Starts for BarrelRoll_27:

(Start: 71 @20864 has 92 MA's), (90, 20963), (132, 21224), (135, 21245), (161, 21452), (169, 21485), (174, 21515), (194, 21587), (198, 21611), (236, 21809), (242, 21854), (244, 21866), (247, 21875), (257, 21926), (281, 22106), (284, 22121), (295, 22190), (299, 22202), (309, 22265), (315, 22307), (321, 22346), (322, 22352), (323, 22361), (326, 22382), (334, 22442), (366, 22559), (373, 22601), (386, 22673), (388, 22682), (391, 22703), (396, 22775), (400, 22796), (408, 22892), (424, 23039), (435, 23120), (450, 23267),

Gene: Beezoo_27 Start: 20888, Stop: 23320, Start Num: 71

Candidate Starts for Beezoo_27:

(Start: 71 @20888 has 92 MA's), (90, 20987), (132, 21248), (135, 21269), (161, 21476), (169, 21509), (174, 21539), (186, 21578), (194, 21611), (198, 21635), (208, 21680), (236, 21833), (242, 21878), (244, 21890), (247, 21899), (257, 21950), (281, 22130), (284, 22145), (295, 22214), (299, 22226), (309, 22289), (315, 22331), (321, 22370), (322, 22376), (323, 22385), (326, 22406), (334, 22466), (366, 22583), (386, 22697), (388, 22706), (391, 22727), (396, 22799), (400, 22820), (408, 22916), (435, 23144), (450, 23291),

Gene: Bella96_27 Start: 20822, Stop: 23254, Start Num: 71

Candidate Starts for Bella96_27:

(67, 20804), (Start: 71 @20822 has 92 MA's), (81, 20870), (90, 20921), (132, 21182), (135, 21203), (169, 21443), (174, 21473), (176, 21476), (198, 21569), (201, 21581), (208, 21614), (236, 21767), (244, 21824), (247, 21833), (257, 21884), (281, 22064), (284, 22079), (295, 22148), (299, 22160), (305, 22196), (309, 22223), (315, 22265), (321, 22304), (322, 22310), (323, 22319), (326, 22340), (334, 22400), (342, 22433), (344, 22448), (366, 22517), (373, 22559), (386, 22631), (388, 22640), (391, 22661), (396, 22733), (408, 22850), (424, 22997), (435, 23078), (442, 23153), (450, 23225),

Gene: Belladonna_27 Start: 20912, Stop: 23344, Start Num: 71

Candidate Starts for Belladonna_27:

(Start: 71 @20912 has 92 MA's), (90, 21011), (132, 21272), (135, 21293), (161, 21500), (169, 21533), (174, 21563), (194, 21635), (198, 21659), (236, 21857), (242, 21902), (244, 21914), (247, 21923), (257, 21974), (281, 22154), (284, 22169), (295, 22238), (299, 22250), (309, 22313), (315, 22355),

(321, 22394), (322, 22400), (323, 22409), (326, 22430), (334, 22490), (366, 22607), (373, 22649), (386, 22721), (388, 22730), (391, 22751), (396, 22823), (400, 22844), (408, 22940), (424, 23087), (435, 23168), (450, 23315),

Gene: BirdsNest_33 Start: 28321, Stop: 30801, Start Num: 56

Candidate Starts for BirdsNest_33:

(Start: 56 @28321 has 1 MA's), (72, 28435), (77, 28468), (150, 28945), (162, 29011), (165, 29023), (170, 29041), (189, 29107), (200, 29149), (223, 29242), (226, 29263), (265, 29476), (286, 29632), (291, 29665), (296, 29692), (306, 29746), (327, 29896), (330, 29920), (338, 29962), (389, 30193), (399, 30292), (437, 30634), (447, 30739), (455, 30784),

Gene: Blizzard_27 Start: 20912, Stop: 23344, Start Num: 71

Candidate Starts for Blizzard_27:

(Start: 71 @20912 has 92 MA's), (90, 21011), (132, 21272), (135, 21293), (161, 21500), (169, 21533), (174, 21563), (194, 21635), (198, 21659), (236, 21857), (242, 21902), (244, 21914), (247, 21923), (257, 21974), (281, 22154), (284, 22169), (295, 22238), (299, 22250), (309, 22313), (315, 22355), (321, 22394), (322, 22400), (323, 22409), (326, 22430), (334, 22490), (366, 22607), (373, 22649), (386, 22721), (388, 22730), (391, 22751), (396, 22823), (400, 22844), (408, 22940), (424, 23087), (435, 23168), (450, 23315),

Gene: Boiiii_27 Start: 20914, Stop: 23346, Start Num: 71

Candidate Starts for Boiiii_27:

(Start: 71 @20914 has 92 MA's), (90, 21013), (132, 21274), (135, 21295), (161, 21502), (169, 21535), (174, 21565), (194, 21637), (198, 21661), (236, 21859), (242, 21904), (244, 21916), (247, 21925), (257, 21976), (281, 22156), (284, 22171), (295, 22240), (299, 22252), (309, 22315), (315, 22357), (321, 22396), (322, 22402), (323, 22411), (326, 22432), (334, 22492), (366, 22609), (373, 22651), (386, 22723), (388, 22732), (391, 22753), (396, 22825), (400, 22846), (408, 22942), (424, 23089), (435, 23170), (450, 23317),

Gene: CREW_27 Start: 20912, Stop: 23344, Start Num: 71

Candidate Starts for CREW_27:

(Start: 71 @20912 has 92 MA's), (90, 21011), (132, 21272), (135, 21293), (161, 21500), (169, 21533), (174, 21563), (194, 21635), (198, 21659), (236, 21857), (242, 21902), (244, 21914), (247, 21923), (257, 21974), (281, 22154), (284, 22169), (295, 22238), (299, 22250), (309, 22313), (315, 22355), (321, 22394), (322, 22400), (323, 22409), (326, 22430), (334, 22490), (366, 22607), (373, 22649), (386, 22721), (388, 22730), (391, 22751), (396, 22823), (400, 22844), (408, 22940), (424, 23087), (435, 23168), (450, 23315),

Gene: Cambiare_23 Start: 21228, Stop: 23705, Start Num: 54

Candidate Starts for Cambiare_23:

(Start: 54 @21228 has 8 MA's), (69, 21336), (87, 21426), (96, 21474), (101, 21516), (133, 21693), (147, 21810), (161, 21909), (189, 21990), (200, 22032), (206, 22056), (214, 22083), (215, 22086), (218, 22098), (232, 22179), (240, 22230), (265, 22359), (267, 22371), (282, 22497), (292, 22557), (294, 22572), (296, 22578), (308, 22647), (328, 22785), (338, 22848), (344, 22887), (378, 23022), (380, 23031), (387, 23079), (389, 23094), (401, 23205), (431, 23499), (439, 23550), (447, 23643),

Gene: Candle_30 Start: 24637, Stop: 28131, Start Num: 1

Candidate Starts for Candle_30:

(Start: 1 @24637 has 10 MA's), (3, 24649), (Start: 4 @24661 has 1 MA's), (7, 24844), (10, 24925), (16, 25024), (17, 25048), (18, 25066), (30, 25225), (32, 25258), (37, 25306), (41, 25345), (50, 25471), (52, 25480), (76, 25666), (110, 25867), (137, 26044), (149, 26143), (154, 26176), (161, 26221), (164, 26233), (173, 26275), (175, 26281), (177, 26284), (192, 26353), (210, 26431), (212, 26437), (222, 26482), (223, 26485), (236, 26569), (280, 26824), (286, 26863), (312, 27010), (313, 27016), (336,

27190), (343, 27223), (348, 27244), (351, 27253), (357, 27280), (397, 27523), (411, 27667), (434, 27865), (439, 27895), (442, 27952), (445, 27988), (448, 28015), (451, 28027),

Gene: Capricorn_27 Start: 20912, Stop: 23344, Start Num: 71

Candidate Starts for Capricorn_27:

(Start: 71 @20912 has 92 MA's), (90, 21011), (132, 21272), (135, 21293), (161, 21500), (169, 21533), (174, 21563), (194, 21635), (198, 21659), (236, 21857), (242, 21902), (244, 21914), (247, 21923), (257, 21974), (281, 22154), (284, 22169), (295, 22238), (299, 22250), (309, 22313), (315, 22355), (321, 22394), (322, 22400), (323, 22409), (326, 22430), (334, 22490), (366, 22607), (373, 22649), (386, 22721), (388, 22730), (391, 22751), (396, 22823), (400, 22844), (408, 22940), (424, 23087), (435, 23168), (450, 23315),

Gene: CaseJules_27 Start: 20912, Stop: 23344, Start Num: 71

Candidate Starts for CaseJules_27:

(Start: 71 @20912 has 92 MA's), (90, 21011), (132, 21272), (135, 21293), (161, 21500), (169, 21533), (174, 21563), (194, 21635), (198, 21659), (236, 21857), (242, 21902), (244, 21914), (247, 21923), (257, 21974), (281, 22154), (284, 22169), (295, 22238), (299, 22250), (309, 22313), (315, 22355), (321, 22394), (322, 22400), (323, 22409), (326, 22430), (334, 22490), (366, 22607), (373, 22649), (386, 22721), (388, 22730), (391, 22751), (396, 22823), (400, 22844), (408, 22940), (424, 23087), (435, 23168), (450, 23315),

Gene: CheetoDust_27 Start: 20889, Stop: 23321, Start Num: 71

Candidate Starts for CheetoDust_27:

(Start: 71 @20889 has 92 MA's), (90, 20988), (132, 21249), (161, 21477), (168, 21507), (169, 21510), (174, 21540), (194, 21612), (198, 21636), (208, 21681), (236, 21834), (242, 21879), (244, 21891), (247, 21900), (257, 21951), (281, 22131), (284, 22146), (292, 22197), (295, 22215), (299, 22227), (306, 22269), (309, 22290), (315, 22332), (321, 22371), (322, 22377), (323, 22386), (326, 22407), (333, 22455), (334, 22467), (344, 22515), (366, 22584), (373, 22626), (385, 22695), (386, 22698), (388, 22707), (391, 22728), (400, 22821), (408, 22917), (419, 22980), (424, 23064), (435, 23145), (442, 23220),

Gene: Chris_26 Start: 20139, Stop: 22598, Start Num: 71

Candidate Starts for Chris_26:

(Start: 71 @20139 has 92 MA's), (73, 20148), (81, 20187), (100, 20310), (112, 20367), (129, 20472), (135, 20520), (139, 20547), (159, 20709), (182, 20820), (184, 20829), (185, 20838), (188, 20859), (198, 20907), (221, 21009), (246, 21168), (261, 21249), (274, 21351), (281, 21405), (291, 21465), (303, 21528), (306, 21543), (307, 21555), (309, 21564), (315, 21606), (321, 21651), (323, 21666), (337, 21753), (341, 21777), (391, 22014), (401, 22110), (416, 22248), (422, 22332), (449, 22563), (450, 22569),

Gene: CrimD_27 Start: 20850, Stop: 23282, Start Num: 71

Candidate Starts for CrimD_27:

(Start: 71 @20850 has 92 MA's), (90, 20949), (132, 21210), (161, 21438), (169, 21471), (174, 21501), (194, 21573), (198, 21597), (208, 21642), (236, 21795), (242, 21840), (244, 21852), (247, 21861), (254, 21897), (257, 21912), (281, 22092), (284, 22107), (295, 22176), (299, 22188), (309, 22251), (315, 22293), (321, 22332), (322, 22338), (323, 22347), (326, 22368), (334, 22428), (366, 22545), (373, 22587), (388, 22668), (391, 22689), (400, 22782), (408, 22878), (435, 23106),

Gene: Dalmuri_27 Start: 20912, Stop: 23344, Start Num: 71

Candidate Starts for Dalmuri_27:

(Start: 71 @20912 has 92 MA's), (90, 21011), (132, 21272), (135, 21293), (161, 21500), (169, 21533), (174, 21563), (194, 21635), (198, 21659), (236, 21857), (242, 21902), (244, 21914), (247, 21923), (257, 21974), (281, 22154), (284, 22169), (295, 22238), (299, 22250), (309, 22313), (315, 22355),

(321, 22394), (322, 22400), (323, 22409), (326, 22430), (334, 22490), (366, 22607), (373, 22649), (386, 22721), (388, 22730), (391, 22751), (396, 22823), (400, 22844), (408, 22940), (424, 23087), (435, 23168), (450, 23315),

Gene: Deby_27 Start: 20846, Stop: 23278, Start Num: 71

Candidate Starts for Deby_27:

(Start: 71 @20846 has 92 MA's), (90, 20945), (132, 21206), (135, 21227), (161, 21434), (169, 21467), (174, 21497), (194, 21569), (198, 21593), (236, 21791), (242, 21836), (244, 21848), (247, 21857), (257, 21908), (281, 22088), (284, 22103), (295, 22172), (299, 22184), (309, 22247), (315, 22289), (321, 22328), (322, 22334), (323, 22343), (326, 22364), (334, 22424), (342, 22457), (344, 22472), (345, 22475), (361, 22529), (366, 22541), (386, 22655), (388, 22664), (391, 22685), (396, 22757), (400, 22778), (408, 22874), (435, 23102), (450, 23249),

Gene: Devera_27 Start: 20893, Stop: 23325, Start Num: 71

Candidate Starts for Devera_27:

(Start: 71 @20893 has 92 MA's), (81, 20941), (90, 20992), (132, 21253), (135, 21274), (161, 21481), (169, 21514), (174, 21544), (194, 21616), (198, 21640), (208, 21685), (236, 21838), (244, 21895), (247, 21904), (254, 21940), (257, 21955), (281, 22135), (284, 22150), (295, 22219), (299, 22231), (309, 22294), (315, 22336), (321, 22375), (322, 22381), (323, 22390), (326, 22411), (334, 22471), (344, 22519), (361, 22576), (366, 22588), (373, 22630), (386, 22702), (388, 22711), (396, 22804), (400, 22825), (408, 22921), (418, 22975), (424, 23068), (435, 23149), (450, 23296),

Gene: Dole_27 Start: 20895, Stop: 23327, Start Num: 71

Candidate Starts for Dole_27:

(Start: 71 @20895 has 92 MA's), (81, 20943), (90, 20994), (132, 21255), (135, 21276), (161, 21483), (169, 21516), (174, 21546), (194, 21618), (198, 21642), (208, 21687), (236, 21840), (244, 21897), (247, 21906), (254, 21942), (257, 21957), (281, 22137), (284, 22152), (295, 22221), (299, 22233), (309, 22296), (315, 22338), (321, 22377), (322, 22383), (323, 22392), (326, 22413), (334, 22473), (344, 22521), (361, 22578), (366, 22590), (373, 22632), (386, 22704), (388, 22713), (396, 22806), (400, 22827), (408, 22923), (418, 22977), (424, 23070), (435, 23151), (450, 23298),

Gene: DrHayes_27 Start: 20840, Stop: 23272, Start Num: 71

Candidate Starts for DrHayes_27:

(67, 20822), (Start: 71 @20840 has 92 MA's), (81, 20888), (90, 20939), (132, 21200), (135, 21221), (168, 21458), (169, 21461), (174, 21491), (176, 21494), (194, 21563), (198, 21587), (199, 21593), (201, 21599), (208, 21632), (236, 21785), (244, 21842), (247, 21851), (257, 21902), (281, 22082), (284, 22097), (295, 22166), (299, 22178), (305, 22214), (309, 22241), (315, 22283), (321, 22322), (322, 22328), (323, 22337), (326, 22358), (334, 22418), (342, 22451), (345, 22469), (366, 22535), (373, 22577), (386, 22649), (388, 22658), (391, 22679), (396, 22751), (408, 22868), (424, 23015), (435, 23096), (442, 23171), (450, 23243),

Gene: DrLupo_38 Start: 27172, Stop: 30258, Start Num: 12

Candidate Starts for DrLupo_38:

(9, 27145), (Start: 12 @27172 has 2 MA's), (13, 27175), (20, 27325), (21, 27328), (27, 27403), (28, 27412), (29, 27415), (31, 27484), (36, 27520), (43, 27595), (47, 27682), (52, 27718), (53, 27727), (55, 27748), (61, 27817), (65, 27841), (73, 27883), (74, 27886), (78, 27916), (88, 27958), (95, 28009), (108, 28090), (110, 28102), (121, 28162), (123, 28183), (129, 28222), (141, 28303), (143, 28336), (160, 28468), (170, 28507), (180, 28531), (187, 28546), (209, 28648), (214, 28660), (217, 28672), (218, 28675), (250, 28852), (256, 28885), (261, 28909), (270, 28966), (296, 29152), (308, 29218), (315, 29266), (322, 29317), (324, 29341), (325, 29347), (338, 29419), (342, 29443), (344, 29458), (365, 29527), (424, 29998), (431, 30052), (447, 30196),

Gene: Durfee_27 Start: 20912, Stop: 23344, Start Num: 71

Candidate Starts for Durfee_27:

(Start: 71 @20912 has 92 MA's), (90, 21011), (132, 21272), (135, 21293), (161, 21500), (169, 21533), (174, 21563), (194, 21635), (198, 21659), (236, 21857), (242, 21902), (244, 21914), (247, 21923), (257, 21974), (281, 22154), (284, 22169), (295, 22238), (299, 22250), (309, 22313), (315, 22355), (321, 22394), (322, 22400), (323, 22409), (326, 22430), (334, 22490), (366, 22607), (373, 22649), (386, 22721), (388, 22730), (391, 22751), (396, 22823), (400, 22844), (408, 22940), (424, 23087), (435, 23168), (450, 23315),

Gene: Efra2_27 Start: 20082, Stop: 22514, Start Num: 71

Candidate Starts for Efra2_27:

(Start: 71 @20082 has 92 MA's), (81, 20130), (82, 20133), (Start: 84 @20142 has 1 MA's), (132, 20442), (135, 20463), (169, 20703), (194, 20805), (198, 20829), (199, 20835), (208, 20874), (236, 21027), (244, 21084), (247, 21093), (257, 21144), (282, 21330), (284, 21339), (285, 21345), (292, 21390), (295, 21408), (309, 21483), (315, 21525), (321, 21564), (322, 21570), (323, 21579), (326, 21600), (333, 21648), (342, 21693), (344, 21708), (366, 21777), (373, 21819), (388, 21900), (396, 21993), (400, 22014), (408, 22110), (435, 22338), (441, 22392), (442, 22413), (450, 22485), (456, 22503),

Gene: Emerson_27 Start: 20872, Stop: 23304, Start Num: 71

Candidate Starts for Emerson_27:

(Start: 71 @20872 has 92 MA's), (90, 20971), (132, 21232), (135, 21253), (161, 21460), (169, 21493), (174, 21523), (194, 21595), (198, 21619), (208, 21664), (236, 21817), (242, 21862), (244, 21874), (247, 21883), (257, 21934), (281, 22114), (284, 22129), (295, 22198), (299, 22210), (309, 22273), (315, 22315), (321, 22354), (322, 22360), (323, 22369), (326, 22390), (334, 22450), (366, 22567), (373, 22609), (386, 22681), (388, 22690), (391, 22711), (396, 22783), (400, 22804), (408, 22900), (419, 22963), (435, 23128), (450, 23275),

Gene: FlagStaff_22 Start: 20643, Stop: 23102, Start Num: 54

Candidate Starts for FlagStaff_22:

(Start: 54 @20643 has 8 MA's), (60, 20703), (69, 20751), (105, 20946), (147, 21234), (162, 21336), (169, 21360), (214, 21504), (218, 21519), (232, 21600), (243, 21675), (256, 21732), (261, 21756), (267, 21792), (292, 21978), (296, 21999), (306, 22047), (308, 22062), (318, 22128), (323, 22170), (338, 22263), (340, 22281), (356, 22347), (374, 22428), (389, 22494), (404, 22647), (413, 22737), (420, 22806), (424, 22842), (437, 22935), (447, 23040), (453, 23076),

Gene: Fowlmouth_24 Start: 20553, Stop: 24044, Start Num: 1

Candidate Starts for Fowlmouth_24:

(Start: 1 @20553 has 10 MA's), (8, 20778), (11, 20847), (14, 20880), (26, 21075), (33, 21171), (34, 21174), (35, 21180), (37, 21207), (40, 21225), (96, 21675), (98, 21696), (128, 21879), (129, 21882), (138, 21951), (140, 21957), (151, 22053), (154, 22077), (158, 22101), (173, 22176), (191, 22251), (212, 22338), (220, 22374), (229, 22425), (230, 22428), (239, 22488), (255, 22566), (263, 22599), (268, 22638), (276, 22710), (339, 23100), (349, 23136), (370, 23211), (390, 23334), (438, 23790), (457, 23973),

Gene: Funsized_34 Start: 32646, Stop: 35123, Start Num: 57

Candidate Starts for Funsized_34:

(Start: 57 @32646 has 4 MA's), (58, 32655), (69, 32742), (70, 32748), (76, 32778), (85, 32817), (86, 32820), (91, 32847), (92, 32850), (94, 32865), (96, 32883), (111, 32958), (122, 33021), (130, 33078), (133, 33105), (135, 33120), (136, 33123), (147, 33222), (169, 33354), (170, 33360), (179, 33384), (193, 33420), (202, 33459), (214, 33504), (218, 33519), (225, 33564), (232, 33600), (235, 33621), (252, 33708), (270, 33810), (281, 33909), (287, 33939), (292, 33975), (294, 33990), (296, 33996), (308, 34065), (309, 34071), (317, 34122), (338, 34263), (342, 34287), (351, 34323), (370, 34389), (378, 34434), (387, 34491), (389, 34506), (391, 34518), (400, 34611), (402, 34617), (403, 34620),

(407, 34710), (409, 34722), (423, 34848), (437, 34953), (455, 35106),

Gene: Ganymede_28 Start: 20892, Stop: 23324, Start Num: 71

Candidate Starts for Ganymede_28:

(Start: 71 @20892 has 92 MA's), (90, 20991), (132, 21252), (135, 21273), (161, 21480), (169, 21513), (174, 21543), (194, 21615), (198, 21639), (208, 21684), (236, 21837), (242, 21882), (244, 21894), (247, 21903), (257, 21954), (281, 22134), (284, 22149), (295, 22218), (299, 22230), (309, 22293), (315, 22335), (321, 22374), (322, 22380), (323, 22389), (326, 22410), (334, 22470), (366, 22587), (373, 22629), (386, 22701), (388, 22710), (391, 22731), (396, 22803), (400, 22824), (408, 22920), (419, 22983), (424, 23067), (429, 23109), (435, 23148),

Gene: Geraldini_27 Start: 20888, Stop: 23320, Start Num: 71

Candidate Starts for Geraldini_27:

(Start: 71 @20888 has 92 MA's), (90, 20987), (115, 21128), (132, 21248), (135, 21269), (161, 21476), (169, 21509), (174, 21539), (194, 21611), (198, 21635), (236, 21833), (242, 21878), (244, 21890), (247, 21899), (257, 21950), (281, 22130), (284, 22145), (295, 22214), (299, 22226), (309, 22289), (315, 22331), (321, 22370), (322, 22376), (323, 22385), (326, 22406), (334, 22466), (366, 22583), (373, 22625), (386, 22697), (388, 22706), (391, 22727), (396, 22799), (400, 22820), (408, 22916), (419, 22979), (424, 23063), (429, 23105), (435, 23144),

Gene: Guanica15_27 Start: 20098, Stop: 22530, Start Num: 71

Candidate Starts for Guanica15_27:

(Start: 71 @20098 has 92 MA's), (81, 20146), (82, 20149), (Start: 84 @20158 has 1 MA's), (132, 20458), (135, 20479), (169, 20719), (194, 20821), (198, 20845), (199, 20851), (208, 20890), (236, 21043), (244, 21100), (247, 21109), (257, 21160), (282, 21346), (284, 21355), (285, 21361), (292, 21406), (295, 21424), (309, 21499), (315, 21541), (321, 21580), (322, 21586), (323, 21595), (326, 21616), (333, 21664), (342, 21709), (344, 21724), (366, 21793), (373, 21835), (388, 21916), (396, 22009), (400, 22030), (408, 22126), (435, 22354), (441, 22408), (442, 22429), (450, 22501), (456, 22519),

Gene: HedwigODU_27 Start: 20881, Stop: 23313, Start Num: 71

Candidate Starts for HedwigODU_27:

(Start: 71 @20881 has 92 MA's), (90, 20980), (132, 21241), (135, 21262), (161, 21469), (169, 21502), (174, 21532), (194, 21604), (198, 21628), (208, 21673), (236, 21826), (242, 21871), (244, 21883), (247, 21892), (257, 21943), (281, 22123), (284, 22138), (295, 22207), (299, 22219), (315, 22324), (321, 22363), (322, 22369), (323, 22378), (334, 22459), (344, 22507), (367, 22582), (373, 22618), (388, 22699), (391, 22720), (400, 22813), (408, 22909), (424, 23056), (429, 23098), (435, 23137), (442, 23212),

Gene: Homura_27 Start: 20912, Stop: 23344, Start Num: 71

Candidate Starts for Homura_27:

(Start: 71 @20912 has 92 MA's), (90, 21011), (132, 21272), (135, 21293), (161, 21500), (169, 21533), (174, 21563), (194, 21635), (198, 21659), (236, 21857), (242, 21902), (244, 21914), (247, 21923), (257, 21974), (281, 22154), (284, 22169), (295, 22238), (299, 22250), (309, 22313), (315, 22355), (321, 22394), (322, 22400), (323, 22409), (326, 22430), (334, 22490), (366, 22607), (373, 22649), (386, 22721), (388, 22730), (391, 22751), (396, 22823), (400, 22844), (408, 22940), (424, 23087), (435, 23168), (450, 23315),

Gene: Hosp_024 Start: 25768, Stop: 28263, Start Num: 57

Candidate Starts for Hosp_024:

(Start: 57 @25768 has 4 MA's), (63, 25825), (73, 25882), (94, 26002), (96, 26020), (107, 26092), (109, 26098), (119, 26152), (124, 26188), (147, 26371), (152, 26416), (157, 26455), (170, 26509), (189, 26557), (197, 26587), (204, 26614), (213, 26650), (218, 26668), (222, 26692), (227, 26716), (240,

26800), (248, 26836), (253, 26866), (261, 26902), (264, 26920), (292, 27127), (293, 27139), (296, 27148), (309, 27223), (310, 27226), (311, 27235), (315, 27265), (316, 27268), (321, 27310), (323, 27325), (336, 27406), (338, 27418), (342, 27442), (344, 27457), (346, 27463), (369, 27544), (387, 27634), (389, 27649), (408, 27859), (410, 27880), (415, 27898), (447, 28195),

Gene: Hyperbowlee_27 Start: 20912, Stop: 23344, Start Num: 71

Candidate Starts for Hyperbowlee_27:

(Start: 71 @20912 has 92 MA's), (90, 21011), (132, 21272), (135, 21293), (161, 21500), (169, 21533), (174, 21563), (194, 21635), (198, 21659), (236, 21857), (242, 21902), (244, 21914), (247, 21923), (257, 21974), (281, 22154), (284, 22169), (295, 22238), (299, 22250), (309, 22313), (315, 22355), (321, 22394), (322, 22400), (323, 22409), (326, 22430), (334, 22490), (366, 22607), (373, 22649), (386, 22721), (388, 22730), (391, 22751), (396, 22823), (400, 22844), (408, 22940), (424, 23087), (435, 23168), (450, 23315),

Gene: Illumine_27 Start: 20895, Stop: 23327, Start Num: 71

Candidate Starts for Illumine_27:

(Start: 71 @20895 has 92 MA's), (81, 20943), (90, 20994), (132, 21255), (135, 21276), (161, 21483), (169, 21516), (174, 21546), (194, 21618), (198, 21642), (208, 21687), (236, 21840), (244, 21897), (247, 21906), (254, 21942), (257, 21957), (281, 22137), (284, 22152), (295, 22221), (299, 22233), (309, 22296), (315, 22338), (321, 22377), (322, 22383), (323, 22392), (326, 22413), (334, 22473), (344, 22521), (361, 22578), (366, 22590), (373, 22632), (386, 22704), (388, 22713), (396, 22806), (400, 22827), (408, 22923), (418, 22977), (424, 23070), (435, 23151), (450, 23298),

Gene: Indlulamithi_27 Start: 22936, Stop: 26442, Start Num: 2

Candidate Starts for Indlulamithi_27:

(Start: 2 @22936 has 1 MA's), (5, 23059), (6, 23110), (15, 23290), (22, 23401), (23, 23425), (24, 23434), (33, 23551), (34, 23554), (35, 23560), (36, 23572), (37, 23587), (38, 23596), (42, 23641), (89, 24019), (98, 24088), (110, 24154), (114, 24175), (116, 24181), (118, 24205), (144, 24430), (156, 24535), (171, 24619), (210, 24799), (213, 24808), (216, 24820), (223, 24853), (231, 24904), (237, 24940), (247, 25003), (255, 25045), (262, 25072), (269, 25126), (270, 25135), (274, 25180), (292, 25300), (298, 25330), (301, 25339), (302, 25342), (321, 25486), (325, 25522), (328, 25531), (332, 25558), (335, 25579), (347, 25639), (359, 25678), (368, 25702), (382, 25780), (426, 26194), (432, 26251), (437, 26293), (443, 26371),

Gene: Inky_27 Start: 20912, Stop: 23344, Start Num: 71

Candidate Starts for Inky_27:

(Start: 71 @20912 has 92 MA's), (90, 21011), (132, 21272), (135, 21293), (161, 21500), (169, 21533), (174, 21563), (194, 21635), (198, 21659), (236, 21857), (242, 21902), (244, 21914), (247, 21923), (257, 21974), (281, 22154), (284, 22169), (295, 22238), (299, 22250), (309, 22313), (315, 22355), (321, 22394), (322, 22400), (323, 22409), (326, 22430), (334, 22490), (366, 22607), (373, 22649), (386, 22721), (388, 22730), (391, 22751), (396, 22823), (400, 22844), (408, 22940), (424, 23087), (435, 23168), (450, 23315),

Gene: JAWS_27 Start: 20866, Stop: 23298, Start Num: 71

Candidate Starts for JAWS_27:

(Start: 71 @20866 has 92 MA's), (90, 20965), (132, 21226), (135, 21247), (161, 21454), (169, 21487), (174, 21517), (194, 21589), (198, 21613), (236, 21811), (242, 21856), (244, 21868), (247, 21877), (257, 21928), (281, 22108), (284, 22123), (295, 22192), (299, 22204), (309, 22267), (315, 22309), (321, 22348), (322, 22354), (323, 22363), (326, 22384), (334, 22444), (366, 22561), (373, 22603), (386, 22675), (388, 22684), (391, 22705), (396, 22777), (400, 22798), (408, 22894), (424, 23041), (435, 23122), (450, 23269),

Gene: Jarvi_27 Start: 20912, Stop: 23344, Start Num: 71

Candidate Starts for Jarvi_27:

(Start: 71 @20912 has 92 MA's), (90, 21011), (132, 21272), (135, 21293), (161, 21500), (169, 21533), (174, 21563), (194, 21635), (198, 21659), (236, 21857), (242, 21902), (244, 21914), (247, 21923), (257, 21974), (281, 22154), (284, 22169), (295, 22238), (299, 22250), (309, 22313), (315, 22355), (321, 22394), (322, 22400), (323, 22409), (326, 22430), (334, 22490), (366, 22607), (373, 22649), (386, 22721), (388, 22730), (391, 22751), (396, 22823), (400, 22844), (408, 22940), (424, 23087), (435, 23168), (450, 23315),

Gene: Jayhawk_27 Start: 20879, Stop: 23311, Start Num: 71

Candidate Starts for Jayhawk_27:

(Start: 71 @20879 has 92 MA's), (90, 20978), (132, 21239), (135, 21260), (161, 21467), (169, 21500), (174, 21530), (194, 21602), (198, 21626), (208, 21671), (236, 21824), (242, 21869), (244, 21881), (247, 21890), (257, 21941), (281, 22121), (284, 22136), (295, 22205), (299, 22217), (315, 22322), (321, 22361), (322, 22367), (323, 22376), (334, 22457), (344, 22505), (367, 22580), (373, 22616), (388, 22697), (391, 22718), (400, 22811), (408, 22907), (424, 23054), (429, 23096), (435, 23135), (442, 23210),

Gene: Jeckyll_27 Start: 20912, Stop: 23344, Start Num: 71

Candidate Starts for Jeckyll_27:

(Start: 71 @20912 has 92 MA's), (90, 21011), (132, 21272), (135, 21293), (161, 21500), (169, 21533), (174, 21563), (194, 21635), (198, 21659), (236, 21857), (242, 21902), (244, 21914), (247, 21923), (257, 21974), (281, 22154), (284, 22169), (295, 22238), (299, 22250), (309, 22313), (315, 22355), (321, 22394), (322, 22400), (323, 22409), (326, 22430), (334, 22490), (366, 22607), (373, 22649), (386, 22721), (388, 22730), (391, 22751), (396, 22823), (400, 22844), (408, 22940), (424, 23087), (435, 23168), (450, 23315),

Gene: Jolie1_026 Start: 27564, Stop: 30065, Start Num: 57

Candidate Starts for Jolie1_026:

(Start: 57 @27564 has 4 MA's), (59, 27585), (63, 27621), (73, 27678), (94, 27798), (96, 27816), (107, 27888), (109, 27894), (119, 27948), (124, 27984), (147, 28167), (152, 28212), (157, 28251), (170, 28305), (204, 28410), (213, 28446), (218, 28464), (227, 28512), (240, 28596), (248, 28632), (253, 28662), (261, 28698), (264, 28716), (292, 28923), (293, 28935), (296, 28944), (309, 29019), (310, 29022), (315, 29061), (321, 29106), (323, 29121), (336, 29202), (338, 29214), (340, 29232), (342, 29238), (344, 29253), (346, 29259), (369, 29340), (387, 29430), (389, 29445), (394, 29517), (401, 29556), (408, 29655), (447, 29997),

Gene: Jolie2_22 Start: 19776, Stop: 22241, Start Num: 54

Candidate Starts for Jolie2_22:

(44, 19692), (45, 19707), (49, 19728), (Start: 54 @19776 has 8 MA's), (69, 19884), (74, 19905), (79, 19938), (133, 20241), (157, 20433), (169, 20484), (188, 20529), (213, 20628), (216, 20640), (218, 20646), (229, 20712), (232, 20727), (240, 20778), (264, 20898), (265, 20907), (292, 21105), (299, 21141), (305, 21180), (323, 21309), (329, 21354), (338, 21405), (351, 21465), (364, 21510), (387, 21621), (391, 21648), (401, 21747), (402, 21750), (407, 21843), (415, 21885), (425, 21990), (447, 22179), (454, 22221),

Gene: Joy99_27 Start: 20841, Stop: 23273, Start Num: 71

Candidate Starts for Joy99_27:

(Start: 71 @20841 has 92 MA's), (90, 20940), (132, 21201), (135, 21222), (161, 21429), (169, 21462), (174, 21492), (194, 21564), (198, 21588), (236, 21786), (242, 21831), (244, 21843), (247, 21852), (257, 21903), (281, 22083), (284, 22098), (295, 22167), (299, 22179), (309, 22242), (315, 22284), (321, 22323), (322, 22329), (323, 22338), (326, 22359), (334, 22419), (366, 22536), (373, 22578), (386, 22650), (391, 22680), (396, 22752), (400, 22773), (408, 22869), (424, 23016), (435, 23097), (450, 23244),

Gene: KayaCho_26 Start: 27566, Stop: 30061, Start Num: 57

Candidate Starts for KayaCho_26:

(Start: 57 @27566 has 4 MA's), (63, 27623), (69, 27662), (85, 27737), (96, 27818), (107, 27890), (119, 27950), (124, 27986), (147, 28169), (152, 28214), (170, 28307), (189, 28355), (204, 28412), (213, 28448), (218, 28466), (223, 28493), (227, 28514), (240, 28598), (248, 28634), (253, 28664), (261, 28700), (264, 28718), (292, 28925), (293, 28937), (296, 28946), (308, 29015), (309, 29021), (310, 29024), (315, 29063), (321, 29108), (326, 29147), (336, 29204), (338, 29216), (342, 29240), (344, 29255), (346, 29261), (369, 29342), (389, 29447), (408, 29657), (410, 29678), (435, 29870), (447, 29993), (455, 30038),

Gene: KiSi_26 Start: 20041, Stop: 22500, Start Num: 71

Candidate Starts for KiSi_26:

(Start: 71 @20041 has 92 MA's), (81, 20089), (100, 20212), (112, 20269), (115, 20281), (129, 20374), (131, 20398), (139, 20449), (159, 20611), (182, 20722), (188, 20761), (194, 20785), (221, 20908), (233, 20980), (246, 21067), (258, 21133), (261, 21148), (274, 21250), (281, 21304), (291, 21364), (306, 21442), (307, 21454), (309, 21463), (315, 21505), (323, 21565), (337, 21652), (341, 21676), (360, 21748), (373, 21805), (391, 21916), (392, 21940), (393, 21961), (401, 22012), (414, 22141), (425, 22246), (450, 22471),

Gene: LaterM_27 Start: 20812, Stop: 23244, Start Num: 71

Candidate Starts for LaterM_27:

(Start: 71 @20812 has 92 MA's), (83, 20869), (90, 20911), (132, 21172), (135, 21193), (161, 21400), (169, 21433), (174, 21463), (194, 21535), (198, 21559), (208, 21604), (236, 21757), (244, 21814), (247, 21823), (254, 21859), (257, 21874), (281, 22054), (284, 22069), (295, 22138), (299, 22150), (309, 22213), (315, 22255), (321, 22294), (322, 22300), (323, 22309), (326, 22330), (334, 22390), (344, 22438), (345, 22441), (350, 22456), (363, 22498), (366, 22507), (375, 22564), (386, 22621), (388, 22630), (391, 22651), (393, 22696), (400, 22744), (408, 22840), (435, 23068), (450, 23215),

Gene: LeMond_26 Start: 20112, Stop: 22571, Start Num: 71

Candidate Starts for LeMond_26:

(Start: 71 @20112 has 92 MA's), (81, 20160), (100, 20283), (112, 20340), (115, 20352), (129, 20445), (131, 20469), (139, 20520), (159, 20682), (182, 20793), (188, 20832), (194, 20856), (221, 20979), (233, 21051), (246, 21138), (261, 21219), (274, 21321), (281, 21375), (291, 21435), (306, 21513), (307, 21525), (309, 21534), (315, 21576), (321, 21621), (323, 21636), (337, 21723), (341, 21747), (360, 21819), (373, 21876), (391, 21987), (392, 22011), (393, 22032), (401, 22083), (414, 22212), (425, 22317), (450, 22542),

Gene: Lemuria_23 Start: 20578, Stop: 23055, Start Num: 54

Candidate Starts for Lemuria_23:

(Start: 54 @20578 has 8 MA's), (69, 20686), (76, 20722), (79, 20740), (133, 21052), (169, 21295), (188, 21340), (214, 21442), (218, 21457), (229, 21523), (232, 21538), (240, 21589), (248, 21625), (261, 21691), (265, 21718), (292, 21916), (305, 21991), (338, 22216), (351, 22276), (364, 22321), (391, 22459), (401, 22555), (415, 22693), (447, 22993),

Gene: LilMcDreamy_27 Start: 29183, Stop: 31675, Start Num: 57

Candidate Starts for LilMcDreamy_27:

(Start: 57 @29183 has 4 MA's), (66, 29261), (80, 29336), (170, 29906), (179, 29930), (207, 30029), (214, 30053), (216, 30062), (223, 30095), (225, 30113), (234, 30161), (255, 30275), (261, 30302), (267, 30341), (276, 30437), (281, 30461), (292, 30527), (309, 30623), (314, 30662), (336, 30806), (344, 30857), (354, 30896), (358, 30905), (371, 30950), (389, 31061), (401, 31172), (408, 31271), (428, 31430), (440, 31532), (447, 31613),

Gene: LindNT_27 Start: 20846, Stop: 23278, Start Num: 71

Candidate Starts for LindNT_27:

(Start: 71 @20846 has 92 MA's), (90, 20945), (132, 21206), (161, 21434), (169, 21467), (174, 21497), (194, 21569), (198, 21593), (208, 21638), (236, 21791), (242, 21836), (244, 21848), (247, 21857), (254, 21893), (257, 21908), (281, 22088), (284, 22103), (295, 22172), (299, 22184), (309, 22247), (315, 22289), (321, 22328), (322, 22334), (323, 22343), (326, 22364), (334, 22424), (366, 22541), (373, 22583), (386, 22655), (388, 22664), (391, 22685), (396, 22757), (400, 22778), (408, 22874), (435, 23102), (450, 23249),

Gene: Llorens_27 Start: 20912, Stop: 23344, Start Num: 71

Candidate Starts for Llorens_27:

(Start: 71 @20912 has 92 MA's), (90, 21011), (132, 21272), (135, 21293), (161, 21500), (169, 21533), (174, 21563), (194, 21635), (198, 21659), (236, 21857), (242, 21902), (244, 21914), (247, 21923), (257, 21974), (281, 22154), (284, 22169), (295, 22238), (299, 22250), (309, 22313), (315, 22355), (321, 22394), (322, 22400), (323, 22409), (326, 22430), (334, 22490), (366, 22607), (373, 22649), (386, 22721), (388, 22730), (391, 22751), (396, 22823), (400, 22844), (408, 22940), (424, 23087), (435, 23168), (450, 23315),

Gene: Lunahalos_27 Start: 20912, Stop: 23344, Start Num: 71

Candidate Starts for Lunahalos_27:

(Start: 71 @20912 has 92 MA's), (90, 21011), (132, 21272), (135, 21293), (161, 21500), (169, 21533), (174, 21563), (194, 21635), (198, 21659), (236, 21857), (242, 21902), (244, 21914), (247, 21923), (257, 21974), (281, 22154), (284, 22169), (295, 22238), (299, 22250), (309, 22313), (315, 22355), (321, 22394), (322, 22400), (323, 22409), (326, 22430), (334, 22490), (366, 22607), (373, 22649), (386, 22721), (388, 22730), (391, 22751), (396, 22823), (400, 22844), (408, 22940), (424, 23087), (435, 23168), (450, 23315),

Gene: MOOREtheMARYer_23 Start: 20802, Stop: 23264, Start Num: 54

Candidate Starts for MOOREtheMARYer_23:

(Start: 54 @20802 has 8 MA's), (93, 21030), (99, 21072), (105, 21105), (124, 21210), (147, 21393), (155, 21453), (190, 21576), (200, 21615), (213, 21663), (214, 21666), (232, 21762), (235, 21783), (243, 21837), (261, 21918), (263, 21927), (267, 21954), (281, 22074), (286, 22101), (296, 22161), (306, 22209), (308, 22224), (318, 22290), (323, 22332), (338, 22425), (403, 22770), (404, 22809), (412, 22896), (420, 22968), (437, 23097), (447, 23202), (455, 23247),

Gene: MarkPhew_27 Start: 19997, Stop: 22450, Start Num: 71

Candidate Starts for MarkPhew_27:

(Start: 71 @19997 has 92 MA's), (81, 20045), (100, 20168), (112, 20225), (115, 20237), (131, 20354), (139, 20405), (153, 20534), (159, 20567), (182, 20678), (184, 20687), (185, 20696), (188, 20717), (198, 20765), (221, 20867), (246, 21026), (261, 21107), (274, 21209), (307, 21413), (309, 21422), (315, 21464), (321, 21509), (323, 21524), (360, 21707), (373, 21764), (391, 21866), (392, 21890), (398, 21947), (401, 21962), (414, 22091), (425, 22196), (449, 22415),

Gene: Marshawn_28 Start: 20676, Stop: 23132, Start Num: 71

Candidate Starts for Marshawn_28:

(Start: 71 @20676 has 92 MA's), (76, 20703), (90, 20775), (100, 20847), (112, 20904), (115, 20916), (121, 20949), (130, 21015), (131, 21033), (135, 21057), (136, 21060), (139, 21084), (145, 21156), (159, 21246), (166, 21282), (184, 21366), (194, 21420), (198, 21441), (199, 21447), (208, 21486), (221, 21543), (246, 21702), (253, 21741), (261, 21783), (264, 21801), (274, 21885), (276, 21915), (281, 21939), (288, 21972), (289, 21993), (306, 22077), (309, 22098), (315, 22140), (322, 22191), (323, 22200), (328, 22227), (337, 22287), (352, 22353), (356, 22374), (360, 22383), (372, 22431), (379, 22470), (386, 22515), (391, 22545), (393, 22590), (401, 22641), (403, 22647), (414, 22770), (421, 22839), (427, 22881), (446, 23067), (449, 23097),

Gene: MeaningOfLife_27 Start: 20848, Stop: 23280, Start Num: 71

Candidate Starts for MeaningOfLife_27:

(Start: 71 @20848 has 92 MA's), (90, 20947), (115, 21088), (132, 21208), (135, 21229), (161, 21436), (169, 21469), (174, 21499), (194, 21571), (198, 21595), (236, 21793), (242, 21838), (244, 21850), (247, 21859), (257, 21910), (281, 22090), (284, 22105), (295, 22174), (299, 22186), (309, 22249), (315, 22291), (321, 22330), (322, 22336), (323, 22345), (326, 22366), (334, 22426), (366, 22543), (373, 22585), (386, 22657), (388, 22666), (391, 22687), (396, 22759), (400, 22780), (408, 22876), (419, 22939), (424, 23023), (429, 23065), (435, 23104),

Gene: Megsy_27 Start: 20849, Stop: 23281, Start Num: 71

Candidate Starts for Megsy_27:

(Start: 71 @20849 has 92 MA's), (90, 20948), (132, 21209), (161, 21437), (169, 21470), (174, 21500), (194, 21572), (198, 21596), (236, 21794), (242, 21839), (244, 21851), (247, 21860), (257, 21911), (281, 22091), (284, 22106), (295, 22175), (299, 22187), (309, 22250), (315, 22292), (321, 22331), (322, 22337), (323, 22346), (326, 22367), (334, 22427), (366, 22544), (373, 22586), (386, 22658), (388, 22667), (391, 22688), (396, 22760), (400, 22781), (408, 22877), (435, 23105), (450, 23252),

Gene: Mercurio_24 Start: 21194, Stop: 23665, Start Num: 54

Candidate Starts for Mercurio_24:

(Start: 54 @21194 has 8 MA's), (62, 21260), (69, 21302), (92, 21410), (115, 21533), (124, 21596), (134, 21674), (169, 21905), (183, 21938), (188, 21950), (214, 22052), (223, 22094), (229, 22133), (232, 22148), (240, 22199), (248, 22235), (261, 22301), (265, 22328), (292, 22526), (305, 22601), (308, 22622), (323, 22730), (329, 22775), (338, 22826), (342, 22850), (351, 22886), (356, 22910), (364, 22931), (391, 23069), (401, 23165), (415, 23303),

Gene: MontyDev_30 Start: 24302, Stop: 27778, Start Num: 4

Candidate Starts for MontyDev_30:

(Start: 1 @24278 has 10 MA's), (3, 24290), (Start: 4 @24302 has 1 MA's), (7, 24485), (10, 24566), (16, 24665), (17, 24689), (18, 24707), (30, 24866), (32, 24899), (37, 24947), (41, 24986), (50, 25112), (52, 25121), (76, 25307), (110, 25508), (137, 25685), (149, 25784), (154, 25817), (161, 25862), (164, 25874), (173, 25916), (175, 25922), (177, 25925), (192, 25994), (210, 26072), (212, 26078), (222, 26123), (223, 26126), (236, 26210), (249, 26279), (259, 26324), (267, 26369), (272, 26414), (274, 26435), (276, 26453), (278, 26456), (279, 26462), (280, 26465), (304, 26603), (312, 26651), (313, 26657), (323, 26738), (336, 26831), (348, 26891), (351, 26900), (353, 26906), (357, 26927), (390, 27092), (395, 27158), (397, 27170), (400, 27188), (402, 27194), (426, 27428), (430, 27467), (434, 27512), (439, 27542), (445, 27635), (448, 27662),

Gene: MrMiyagi_24 Start: 20573, Stop: 24064, Start Num: 1

Candidate Starts for MrMiyagi_24:

(Start: 1 @20573 has 10 MA's), (8, 20798), (11, 20867), (14, 20900), (26, 21095), (33, 21191), (34, 21194), (35, 21200), (37, 21227), (40, 21245), (96, 21695), (98, 21716), (110, 21782), (129, 21902), (138, 21971), (140, 21977), (158, 22121), (164, 22154), (173, 22196), (191, 22271), (212, 22358), (229, 22445), (230, 22448), (232, 22460), (255, 22586), (263, 22619), (271, 22691), (276, 22730), (328, 23030), (339, 23120), (349, 23156), (438, 23810),

Gene: Murucutumbu_27 Start: 20831, Stop: 23263, Start Num: 71

Candidate Starts for Murucutumbu_27:

(Start: 71 @20831 has 92 MA's), (90, 20930), (132, 21191), (135, 21212), (169, 21452), (174, 21482), (176, 21485), (194, 21554), (198, 21578), (208, 21623), (236, 21776), (244, 21833), (247, 21842), (254, 21878), (257, 21893), (281, 22073), (284, 22088), (295, 22157), (309, 22232), (315, 22274), (321, 22313), (322, 22319), (323, 22328), (334, 22409), (366, 22526), (373, 22568), (386, 22640), (388, 22649), (391, 22670), (400, 22763), (408, 22859), (435, 23087), (450, 23234),

Gene: Mynx_27 Start: 20895, Stop: 23327, Start Num: 71

Candidate Starts for Mynx_27:

(Start: 71 @20895 has 92 MA's), (90, 20994), (132, 21255), (135, 21276), (161, 21483), (169, 21516), (174, 21546), (194, 21618), (198, 21642), (208, 21687), (236, 21840), (242, 21885), (244, 21897), (247, 21906), (257, 21957), (281, 22137), (284, 22152), (295, 22221), (299, 22233), (309, 22296), (315, 22338), (321, 22377), (322, 22383), (323, 22392), (326, 22413), (334, 22473), (366, 22590), (373, 22632), (386, 22704), (388, 22713), (391, 22734), (396, 22806), (400, 22827), (408, 22923), (419, 22986), (435, 23151), (450, 23298),

Gene: Nibb_26 Start: 20138, Stop: 22591, Start Num: 71

Candidate Starts for Nibb_26:

(Start: 71 @20138 has 92 MA's), (100, 20309), (112, 20366), (115, 20378), (131, 20495), (135, 20519), (139, 20546), (153, 20675), (159, 20708), (182, 20819), (184, 20828), (185, 20837), (188, 20858), (198, 20906), (221, 21008), (246, 21167), (261, 21248), (274, 21350), (306, 21542), (309, 21563), (315, 21605), (321, 21650), (323, 21665), (360, 21848), (373, 21905), (380, 21938), (391, 22007), (392, 22031), (398, 22088), (401, 22103), (406, 22181), (423, 22328), (425, 22337),

Gene: Nilo_31 Start: 24634, Stop: 28134, Start Num: 1

Candidate Starts for Nilo_31:

(Start: 1 @24634 has 10 MA's), (3, 24646), (Start: 4 @24658 has 1 MA's), (7, 24841), (10, 24922), (16, 25021), (17, 25045), (18, 25063), (30, 25222), (32, 25255), (37, 25303), (41, 25342), (50, 25468), (52, 25477), (76, 25663), (110, 25864), (137, 26041), (149, 26140), (154, 26173), (161, 26218), (164, 26230), (173, 26272), (178, 26284), (192, 26350), (212, 26434), (216, 26449), (222, 26479), (239, 26584), (249, 26635), (259, 26680), (267, 26725), (272, 26770), (274, 26791), (276, 26809), (278, 26812), (279, 26818), (280, 26821), (304, 26959), (312, 27007), (313, 27013), (323, 27094), (336, 27187), (348, 27247), (351, 27256), (353, 27262), (357, 27283), (390, 27448), (395, 27514), (397, 27526), (400, 27544), (402, 27550), (426, 27784), (430, 27823), (434, 27868), (439, 27898), (445, 27991), (448, 28018),

Gene: NoShow_21 Start: 18882, Stop: 21146, Start Num: 84

Candidate Starts for NoShow_21:

(Start: 84 @18882 has 1 MA's), (102, 19005), (104, 19014), (120, 19098), (123, 19122), (125, 19131), (135, 19209), (146, 19311), (159, 19398), (188, 19488), (201, 19545), (205, 19563), (207, 19569), (211, 19584), (216, 19599), (219, 19608), (261, 19800), (275, 19908), (305, 20088), (308, 20109), (310, 20118), (318, 20175), (319, 20187), (323, 20217), (331, 20271), (338, 20304), (345, 20346), (351, 20364), (376, 20469), (383, 20499), (399, 20640), (402, 20652), (431, 20943), (454, 21126),

Gene: Oscar_26 Start: 20113, Stop: 22572, Start Num: 71

Candidate Starts for Oscar_26:

(Start: 71 @20113 has 92 MA's), (81, 20161), (100, 20284), (112, 20341), (115, 20353), (129, 20446), (131, 20470), (139, 20521), (159, 20683), (182, 20794), (188, 20833), (194, 20857), (221, 20980), (233, 21052), (246, 21139), (258, 21205), (261, 21220), (274, 21322), (281, 21376), (291, 21436), (306, 21514), (307, 21526), (309, 21535), (315, 21577), (321, 21622), (323, 21637), (337, 21724), (341, 21748), (360, 21820), (373, 21877), (391, 21988), (392, 22012), (393, 22033), (401, 22084), (414, 22213), (425, 22318), (450, 22543),

Gene: Pace1224_22 Start: 20643, Stop: 23102, Start Num: 54

Candidate Starts for Pace1224_22:

(Start: 54 @20643 has 8 MA's), (60, 20703), (69, 20751), (105, 20946), (147, 21234), (162, 21336), (169, 21360), (214, 21504), (218, 21519), (232, 21600), (243, 21675), (256, 21732), (261, 21756), (267, 21792), (292, 21978), (296, 21999), (306, 22047), (308, 22062), (318, 22128), (323, 22170), (338, 22263), (340, 22281), (356, 22347), (374, 22428), (389, 22494), (404, 22647), (413, 22737),

(420, 22806), (424, 22842), (437, 22935), (447, 23040), (453, 23076),

Gene: Padfoot_27 Start: 20912, Stop: 23344, Start Num: 71

Candidate Starts for Padfoot_27:

(Start: 71 @20912 has 92 MA's), (90, 21011), (132, 21272), (135, 21293), (161, 21500), (169, 21533), (174, 21563), (194, 21635), (198, 21659), (236, 21857), (242, 21902), (244, 21914), (247, 21923), (257, 21974), (281, 22154), (284, 22169), (295, 22238), (299, 22250), (309, 22313), (315, 22355), (321, 22394), (322, 22400), (323, 22409), (326, 22430), (334, 22490), (366, 22607), (373, 22649), (386, 22721), (388, 22730), (391, 22751), (396, 22823), (400, 22844), (408, 22940), (424, 23087), (435, 23168), (450, 23315),

Gene: Padpat_27 Start: 20872, Stop: 23304, Start Num: 71

Candidate Starts for Padpat_27:

(Start: 71 @20872 has 92 MA's), (90, 20971), (132, 21232), (135, 21253), (161, 21460), (169, 21493), (174, 21523), (194, 21595), (198, 21619), (208, 21664), (236, 21817), (242, 21862), (244, 21874), (247, 21883), (257, 21934), (281, 22114), (284, 22129), (295, 22198), (299, 22210), (309, 22273), (315, 22315), (321, 22354), (322, 22360), (323, 22369), (326, 22390), (334, 22450), (366, 22567), (373, 22609), (386, 22681), (388, 22690), (391, 22711), (396, 22783), (400, 22804), (408, 22900), (419, 22963), (435, 23128), (450, 23275),

Gene: Papyrus_30 Start: 24299, Stop: 27793, Start Num: 1

Candidate Starts for Papyrus_30:

(Start: 1 @24299 has 10 MA's), (3, 24311), (Start: 4 @24323 has 1 MA's), (7, 24506), (10, 24587), (16, 24686), (17, 24710), (18, 24728), (30, 24887), (32, 24920), (37, 24968), (41, 25007), (50, 25133), (52, 25142), (76, 25328), (110, 25529), (137, 25706), (149, 25805), (154, 25838), (161, 25883), (177, 25946), (192, 26015), (210, 26093), (212, 26099), (222, 26144), (223, 26147), (236, 26231), (280, 26486), (286, 26525), (312, 26672), (313, 26678), (336, 26852), (343, 26885), (348, 26906), (351, 26915), (357, 26942), (397, 27185), (411, 27329), (434, 27527), (439, 27557), (442, 27614), (445, 27650), (448, 27677), (451, 27689),

Gene: Peel_27 Start: 20912, Stop: 23344, Start Num: 71

Candidate Starts for Peel_27:

(Start: 71 @20912 has 92 MA's), (90, 21011), (132, 21272), (135, 21293), (161, 21500), (169, 21533), (174, 21563), (194, 21635), (198, 21659), (236, 21857), (242, 21902), (244, 21914), (247, 21923), (257, 21974), (281, 22154), (284, 22169), (295, 22238), (299, 22250), (309, 22313), (315, 22355), (321, 22394), (322, 22400), (323, 22409), (326, 22430), (334, 22490), (366, 22607), (373, 22649), (386, 22721), (388, 22730), (391, 22751), (396, 22823), (400, 22844), (408, 22940), (424, 23087), (435, 23168), (450, 23315),

Gene: Piatt_27 Start: 20912, Stop: 23344, Start Num: 71

Candidate Starts for Piatt_27:

(Start: 71 @20912 has 92 MA's), (90, 21011), (132, 21272), (135, 21293), (161, 21500), (169, 21533), (174, 21563), (194, 21635), (198, 21659), (236, 21857), (242, 21902), (244, 21914), (247, 21923), (257, 21974), (281, 22154), (284, 22169), (295, 22238), (299, 22250), (309, 22313), (315, 22355), (321, 22394), (322, 22400), (323, 22409), (326, 22430), (334, 22490), (366, 22607), (373, 22649), (386, 22721), (388, 22730), (391, 22751), (396, 22823), (400, 22844), (408, 22940), (424, 23087), (435, 23168), (450, 23315),

Gene: Pinnie_23 Start: 21181, Stop: 23643, Start Num: 54

Candidate Starts for Pinnie_23:

(Start: 54 @21181 has 8 MA's), (68, 21286), (69, 21289), (93, 21409), (99, 21451), (105, 21484), (124, 21589), (147, 21772), (155, 21832), (190, 21955), (200, 21994), (213, 22042), (214, 22045), (232, 22141), (235, 22162), (240, 22192), (243, 22216), (261, 22297), (263, 22306), (267, 22333), (281,

22453), (296, 22540), (306, 22588), (318, 22669), (323, 22711), (338, 22804), (356, 22888), (403, 23149), (404, 23188), (412, 23275), (420, 23347), (436, 23464), (437, 23476), (447, 23581), (455, 23626),

Gene: Pokerus_26 Start: 20829, Stop: 23261, Start Num: 71

Candidate Starts for Pokerus_26:

(Start: 71 @20829 has 92 MA's), (90, 20928), (132, 21189), (135, 21210), (161, 21417), (169, 21450), (174, 21480), (194, 21552), (198, 21576), (236, 21774), (242, 21819), (244, 21831), (247, 21840), (257, 21891), (281, 22071), (284, 22086), (295, 22155), (299, 22167), (309, 22230), (315, 22272), (321, 22311), (322, 22317), (323, 22326), (326, 22347), (334, 22407), (366, 22524), (373, 22566), (386, 22638), (388, 22647), (391, 22668), (396, 22740), (400, 22761), (408, 22857), (424, 23004), (435, 23085), (450, 23232),

Gene: Prithvi_27 Start: 20846, Stop: 23278, Start Num: 71

Candidate Starts for Prithvi_27:

(Start: 71 @20846 has 92 MA's), (90, 20945), (132, 21206), (161, 21434), (169, 21467), (174, 21497), (194, 21569), (198, 21593), (208, 21638), (236, 21791), (242, 21836), (244, 21848), (247, 21857), (254, 21893), (257, 21908), (281, 22088), (284, 22103), (295, 22172), (299, 22184), (309, 22247), (315, 22289), (321, 22328), (322, 22334), (323, 22343), (326, 22364), (334, 22424), (366, 22541), (373, 22583), (386, 22655), (388, 22664), (391, 22685), (396, 22757), (400, 22778), (408, 22874), (435, 23102), (450, 23249),

Gene: QuincyRose_26 Start: 20892, Stop: 23324, Start Num: 71

Candidate Starts for QuincyRose_26:

(Start: 71 @20892 has 92 MA's), (90, 20991), (132, 21252), (135, 21273), (161, 21480), (169, 21513), (174, 21543), (194, 21615), (198, 21639), (208, 21684), (236, 21837), (242, 21882), (244, 21894), (247, 21903), (257, 21954), (281, 22134), (284, 22149), (295, 22218), (299, 22230), (309, 22293), (315, 22335), (321, 22374), (322, 22380), (323, 22389), (326, 22410), (334, 22470), (366, 22587), (373, 22629), (386, 22701), (388, 22710), (391, 22731), (396, 22803), (400, 22824), (408, 22920), (419, 22983), (424, 23067), (429, 23109), (435, 23148),

Gene: Ramen_27 Start: 20878, Stop: 23310, Start Num: 71

Candidate Starts for Ramen_27:

(Start: 71 @20878 has 92 MA's), (90, 20977), (132, 21238), (135, 21259), (161, 21466), (169, 21499), (174, 21529), (194, 21601), (198, 21625), (236, 21823), (242, 21868), (244, 21880), (247, 21889), (257, 21940), (281, 22120), (284, 22135), (295, 22204), (299, 22216), (309, 22279), (315, 22321), (321, 22360), (322, 22366), (323, 22375), (326, 22396), (334, 22456), (366, 22573), (373, 22615), (386, 22687), (388, 22696), (391, 22717), (396, 22789), (400, 22810), (408, 22906), (424, 23053), (435, 23134), (450, 23281),

Gene: Rapunzel97_27 Start: 20879, Stop: 23311, Start Num: 71

Candidate Starts for Rapunzel97_27:

(Start: 71 @20879 has 92 MA's), (90, 20978), (132, 21239), (135, 21260), (161, 21467), (169, 21500), (174, 21530), (194, 21602), (198, 21626), (208, 21671), (236, 21824), (242, 21869), (244, 21881), (247, 21890), (257, 21941), (281, 22121), (284, 22136), (295, 22205), (299, 22217), (315, 22322), (321, 22361), (322, 22367), (323, 22376), (334, 22457), (344, 22505), (367, 22580), (373, 22616), (388, 22697), (391, 22718), (400, 22811), (408, 22907), (424, 23054), (429, 23096), (435, 23135), (442, 23210),

Gene: Rinkes_33 Start: 31333, Stop: 33816, Start Num: 57

Candidate Starts for Rinkes_33:

(Start: 57 @31333 has 4 MA's), (58, 31342), (69, 31429), (70, 31435), (73, 31447), (75, 31462), (85, 31504), (86, 31507), (96, 31570), (122, 31708), (127, 31747), (130, 31765), (135, 31807), (136,

31810), (147, 31909), (157, 31984), (162, 32011), (163, 32014), (167, 32035), (170, 32047), (214, 32209), (216, 32218), (218, 32224), (224, 32266), (225, 32269), (238, 32347), (244, 32380), (252, 32413), (255, 32431), (266, 32488), (273, 32557), (276, 32593), (306, 32758), (308, 32773), (318, 32839), (322, 32872), (323, 32881), (338, 32968), (351, 33028), (356, 33052), (370, 33097), (371, 33100), (373, 33118), (387, 33199), (408, 33421), (409, 33430), (447, 33754),

Gene: Riparian_30 Start: 24095, Stop: 27595, Start Num: 1

Candidate Starts for Riparian_30:

(Start: 1 @24095 has 10 MA's), (3, 24107), (Start: 4 @24119 has 1 MA's), (7, 24302), (10, 24383), (16, 24482), (17, 24506), (18, 24524), (30, 24683), (32, 24716), (37, 24764), (41, 24803), (50, 24929), (52, 24938), (76, 25124), (110, 25325), (137, 25502), (149, 25601), (154, 25634), (161, 25679), (173, 25733), (178, 25745), (192, 25811), (212, 25895), (216, 25910), (222, 25940), (239, 26045), (249, 26096), (259, 26141), (267, 26186), (272, 26231), (274, 26252), (276, 26270), (278, 26273), (279, 26279), (280, 26282), (304, 26420), (312, 26468), (313, 26474), (320, 26534), (323, 26555), (336, 26648), (348, 26708), (351, 26717), (353, 26723), (357, 26744), (390, 26909), (395, 26975), (397, 26987), (400, 27005), (402, 27011), (426, 27245), (430, 27284), (434, 27329), (439, 27359), (445, 27452), (448, 27479),

Gene: Rope_30 Start: 24281, Stop: 27775, Start Num: 1

Candidate Starts for Rope_30:

(Start: 1 @24281 has 10 MA's), (3, 24293), (Start: 4 @24305 has 1 MA's), (7, 24488), (10, 24569), (16, 24668), (17, 24692), (18, 24710), (30, 24869), (32, 24902), (37, 24950), (41, 24989), (50, 25115), (52, 25124), (76, 25310), (110, 25511), (137, 25688), (149, 25787), (154, 25820), (161, 25865), (164, 25877), (173, 25919), (175, 25925), (177, 25928), (192, 25997), (210, 26075), (212, 26081), (222, 26126), (223, 26129), (236, 26213), (280, 26468), (286, 26507), (312, 26654), (313, 26660), (336, 26834), (343, 26867), (348, 26888), (351, 26897), (357, 26924), (397, 27167), (411, 27311), (434, 27509), (439, 27539), (442, 27596), (445, 27632), (448, 27659), (451, 27671),

Gene: Rosmarinus_27 Start: 20900, Stop: 23332, Start Num: 71

Candidate Starts for Rosmarinus_27:

(Start: 71 @20900 has 92 MA's), (90, 20999), (132, 21260), (135, 21281), (161, 21488), (169, 21521), (174, 21551), (194, 21623), (198, 21647), (236, 21845), (242, 21890), (244, 21902), (247, 21911), (257, 21962), (281, 22142), (284, 22157), (295, 22226), (299, 22238), (309, 22301), (315, 22343), (321, 22382), (322, 22388), (323, 22397), (326, 22418), (334, 22478), (366, 22595), (373, 22637), (386, 22709), (388, 22718), (391, 22739), (396, 22811), (400, 22832), (408, 22928), (424, 23075), (435, 23156), (450, 23303),

Gene: SamuelLPlaqson_27 Start: 20840, Stop: 23272, Start Num: 71

Candidate Starts for SamuelLPlaqson_27:

(67, 20822), (Start: 71 @20840 has 92 MA's), (81, 20888), (90, 20939), (132, 21200), (135, 21221), (168, 21458), (169, 21461), (174, 21491), (176, 21494), (194, 21563), (198, 21587), (199, 21593), (201, 21599), (208, 21632), (236, 21785), (244, 21842), (247, 21851), (257, 21902), (281, 22082), (284, 22097), (295, 22166), (299, 22178), (305, 22214), (309, 22241), (315, 22283), (321, 22322), (322, 22328), (323, 22337), (326, 22358), (334, 22418), (342, 22451), (345, 22469), (366, 22535), (373, 22577), (386, 22649), (388, 22658), (391, 22679), (396, 22751), (408, 22868), (424, 23015), (435, 23096), (442, 23171), (450, 23243),

Gene: Scarlett_26 Start: 20115, Stop: 22574, Start Num: 71

Candidate Starts for Scarlett_26:

(Start: 71 @20115 has 92 MA's), (81, 20163), (100, 20286), (112, 20343), (115, 20355), (129, 20448), (131, 20472), (139, 20523), (159, 20685), (182, 20796), (188, 20835), (194, 20859), (221, 20982), (233, 21054), (246, 21141), (261, 21222), (274, 21324), (281, 21378), (291, 21438), (306, 21516), (307, 21528), (309, 21537), (315, 21579), (321, 21624), (323, 21639), (337, 21726), (341, 21750),

(351, 21789), (360, 21822), (373, 21879), (391, 21990), (392, 22014), (393, 22035), (401, 22086), (414, 22215), (425, 22320), (450, 22545),

Gene: Send513_30 Start: 24637, Stop: 28131, Start Num: 1

Candidate Starts for Send513_30:

(Start: 1 @24637 has 10 MA's), (3, 24649), (Start: 4 @24661 has 1 MA's), (7, 24844), (10, 24925), (16, 25024), (17, 25048), (18, 25066), (30, 25225), (32, 25258), (37, 25306), (41, 25345), (50, 25471), (52, 25480), (76, 25666), (110, 25867), (137, 26044), (149, 26143), (154, 26176), (161, 26221), (164, 26233), (173, 26275), (175, 26281), (177, 26284), (192, 26353), (210, 26431), (212, 26437), (222, 26482), (223, 26485), (236, 26569), (280, 26824), (286, 26863), (312, 27010), (313, 27016), (336, 27190), (343, 27223), (348, 27244), (351, 27253), (357, 27280), (397, 27523), (411, 27667), (434, 27865), (439, 27895), (442, 27952), (445, 27988), (448, 28015), (451, 28027),

Gene: ShiaSurprise_27 Start: 20912, Stop: 23344, Start Num: 71

Candidate Starts for ShiaSurprise_27:

(Start: 71 @20912 has 92 MA's), (90, 21011), (132, 21272), (135, 21293), (161, 21500), (169, 21533), (174, 21563), (194, 21635), (198, 21659), (236, 21857), (242, 21902), (244, 21914), (247, 21923), (257, 21974), (281, 22154), (284, 22169), (295, 22238), (299, 22250), (309, 22313), (315, 22355), (321, 22394), (322, 22400), (323, 22409), (326, 22430), (334, 22490), (366, 22607), (373, 22649), (386, 22721), (388, 22730), (391, 22751), (396, 22823), (400, 22844), (408, 22940), (424, 23087), (435, 23168), (450, 23315),

Gene: SirPhilip_26 Start: 19755, Stop: 22217, Start Num: 71

Candidate Starts for SirPhilip_26:

(Start: 71 @19755 has 92 MA's), (76, 19782), (81, 19803), (100, 19926), (103, 19944), (113, 19986), (115, 19995), (129, 20088), (131, 20112), (198, 20523), (246, 20784), (253, 20823), (260, 20862), (261, 20865), (281, 21024), (284, 21039), (297, 21117), (300, 21123), (309, 21183), (315, 21225), (321, 21270), (322, 21276), (323, 21285), (325, 21306), (342, 21402), (346, 21423), (360, 21471), (370, 21507), (377, 21546), (386, 21597), (391, 21627), (396, 21699), (406, 21801), (408, 21816), (420, 21924), (423, 21954), (444, 22146), (452, 22191),

Gene: Slimphazie_27 Start: 20879, Stop: 23311, Start Num: 71

Candidate Starts for Slimphazie_27:

(Start: 71 @20879 has 92 MA's), (90, 20978), (132, 21239), (135, 21260), (161, 21467), (169, 21500), (174, 21530), (194, 21602), (198, 21626), (208, 21671), (236, 21824), (242, 21869), (244, 21881), (247, 21890), (257, 21941), (281, 22121), (284, 22136), (295, 22205), (299, 22217), (315, 22322), (321, 22361), (322, 22367), (323, 22376), (334, 22457), (344, 22505), (367, 22580), (373, 22616), (388, 22697), (391, 22718), (400, 22811), (408, 22907), (424, 23054), (429, 23096), (435, 23135), (442, 23210),

Gene: Spock_27 Start: 20912, Stop: 23344, Start Num: 71

Candidate Starts for Spock_27:

(Start: 71 @20912 has 92 MA's), (90, 21011), (132, 21272), (135, 21293), (161, 21500), (169, 21533), (174, 21563), (194, 21635), (198, 21659), (236, 21857), (242, 21902), (244, 21914), (247, 21923), (257, 21974), (281, 22154), (284, 22169), (295, 22238), (299, 22250), (309, 22313), (315, 22355), (321, 22394), (322, 22400), (323, 22409), (326, 22430), (334, 22490), (366, 22607), (373, 22649), (386, 22721), (388, 22730), (391, 22751), (396, 22823), (400, 22844), (408, 22940), (424, 23087), (435, 23168), (450, 23315),

Gene: Stargaze_22 Start: 20828, Stop: 23284, Start Num: 54

Candidate Starts for Stargaze_22:

(Start: 54 @20828 has 8 MA's), (76, 20972), (93, 21056), (97, 21086), (106, 21131), (133, 21290), (147, 21407), (200, 21629), (214, 21680), (218, 21695), (235, 21797), (248, 21863), (264, 21947),

(276, 22061), (292, 22151), (294, 22166), (296, 22172), (299, 22181), (305, 22220), (309, 22247), (311, 22259), (321, 22334), (336, 22430), (338, 22442), (344, 22481), (380, 22616), (385, 22649), (387, 22658), (391, 22685), (401, 22784), (405, 22862), (415, 22922), (431, 23078), (447, 23222), (454, 23264),

Gene: Stinson_28 Start: 21121, Stop: 23553, Start Num: 71

Candidate Starts for Stinson_28:

(Start: 71 @21121 has 92 MA's), (73, 21130), (90, 21220), (132, 21481), (135, 21502), (161, 21709), (169, 21742), (174, 21772), (194, 21844), (198, 21868), (208, 21913), (236, 22066), (244, 22123), (247, 22132), (254, 22168), (257, 22183), (281, 22363), (284, 22378), (295, 22447), (299, 22459), (309, 22522), (315, 22564), (321, 22603), (322, 22609), (323, 22618), (326, 22639), (334, 22699), (344, 22747), (363, 22807), (366, 22816), (375, 22873), (386, 22930), (388, 22939), (391, 22960), (393, 23005), (400, 23053), (408, 23149), (435, 23377), (450, 23524),

Gene: Sulley_27 Start: 20845, Stop: 23277, Start Num: 71

Candidate Starts for Sulley_27:

(Start: 71 @20845 has 92 MA's), (90, 20944), (132, 21205), (135, 21226), (161, 21433), (169, 21466), (174, 21496), (194, 21568), (198, 21592), (236, 21790), (242, 21835), (244, 21847), (247, 21856), (257, 21907), (281, 22087), (284, 22102), (295, 22171), (299, 22183), (309, 22246), (315, 22288), (321, 22327), (322, 22333), (323, 22342), (326, 22363), (334, 22423), (342, 22456), (344, 22471), (345, 22474), (361, 22528), (366, 22540), (386, 22654), (388, 22663), (391, 22684), (396, 22756), (400, 22777), (408, 22873), (435, 23101), (450, 23248),

Gene: Tachez_27 Start: 20841, Stop: 23273, Start Num: 71

Candidate Starts for Tachez_27:

(Start: 71 @20841 has 92 MA's), (90, 20940), (132, 21201), (135, 21222), (161, 21429), (169, 21462), (174, 21492), (194, 21564), (198, 21588), (208, 21633), (236, 21786), (242, 21831), (244, 21843), (247, 21852), (257, 21903), (281, 22083), (284, 22098), (295, 22167), (299, 22179), (315, 22284), (321, 22323), (322, 22329), (323, 22338), (334, 22419), (344, 22467), (367, 22542), (373, 22578), (386, 22650), (388, 22659), (391, 22680), (400, 22773), (408, 22869), (424, 23016), (429, 23058), (435, 23097), (442, 23172),

Gene: TaiwanKao_28 Start: 20852, Stop: 23284, Start Num: 71

Candidate Starts for TaiwanKao_28:

(Start: 71 @20852 has 92 MA's), (90, 20951), (132, 21212), (161, 21440), (169, 21473), (174, 21503), (198, 21599), (208, 21644), (236, 21797), (242, 21842), (244, 21854), (247, 21863), (257, 21914), (281, 22094), (284, 22109), (295, 22178), (299, 22190), (309, 22253), (315, 22295), (321, 22334), (322, 22340), (323, 22349), (326, 22370), (334, 22430), (366, 22547), (373, 22589), (386, 22661), (388, 22670), (391, 22691), (396, 22763), (400, 22784), (408, 22880), (435, 23108), (450, 23255),

Gene: TiniBug_27 Start: 20837, Stop: 23269, Start Num: 71

Candidate Starts for TiniBug_27:

(67, 20819), (Start: 71 @20837 has 92 MA's), (81, 20885), (90, 20936), (132, 21197), (135, 21218), (168, 21455), (169, 21458), (174, 21488), (176, 21491), (194, 21560), (198, 21584), (199, 21590), (201, 21596), (208, 21629), (236, 21782), (244, 21839), (247, 21848), (257, 21899), (281, 22079), (284, 22094), (295, 22163), (299, 22175), (305, 22211), (309, 22238), (315, 22280), (321, 22319), (322, 22325), (323, 22334), (326, 22355), (334, 22415), (342, 22448), (345, 22466), (366, 22532), (373, 22574), (386, 22646), (388, 22655), (391, 22676), (396, 22748), (424, 23012), (435, 23093), (442, 23168), (450, 23240),

Gene: Tiri_27 Start: 20884, Stop: 23316, Start Num: 71

Candidate Starts for Tiri_27:

(Start: 71 @20884 has 92 MA's), (90, 20983), (132, 21244), (135, 21265), (161, 21472), (169, 21505), (174, 21535), (194, 21607), (198, 21631), (236, 21829), (242, 21874), (244, 21886), (247, 21895), (257, 21946), (281, 22126), (284, 22141), (295, 22210), (299, 22222), (309, 22285), (315, 22327), (321, 22366), (322, 22372), (323, 22381), (326, 22402), (334, 22462), (366, 22579), (373, 22621), (386, 22693), (388, 22702), (391, 22723), (396, 22795), (400, 22816), (408, 22912), (419, 22975), (429, 23101), (435, 23140), (450, 23287),

Gene: Topper_27 Start: 20912, Stop: 23344, Start Num: 71

Candidate Starts for Topper_27:

(Start: 71 @20912 has 92 MA's), (90, 21011), (132, 21272), (135, 21293), (161, 21500), (169, 21533), (174, 21563), (194, 21635), (198, 21659), (236, 21857), (242, 21902), (244, 21914), (247, 21923), (257, 21974), (281, 22154), (284, 22169), (295, 22238), (299, 22250), (309, 22313), (315, 22355), (321, 22394), (322, 22400), (323, 22409), (326, 22430), (334, 22490), (366, 22607), (373, 22649), (386, 22721), (388, 22730), (391, 22751), (396, 22823), (400, 22844), (408, 22940), (424, 23087), (435, 23168), (450, 23315),

Gene: TreyKay_27 Start: 20846, Stop: 23278, Start Num: 71

Candidate Starts for TreyKay_27:

(Start: 71 @20846 has 92 MA's), (90, 20945), (132, 21206), (161, 21434), (169, 21467), (174, 21497), (194, 21569), (198, 21593), (208, 21638), (236, 21791), (242, 21836), (244, 21848), (247, 21857), (254, 21893), (257, 21908), (281, 22088), (284, 22103), (295, 22172), (299, 22184), (309, 22247), (315, 22289), (321, 22328), (322, 22334), (323, 22343), (326, 22364), (334, 22424), (366, 22541), (373, 22583), (386, 22655), (388, 22664), (391, 22685), (396, 22757), (400, 22778), (408, 22874), (435, 23102), (450, 23249),

Gene: TruffulaTree_27 Start: 20875, Stop: 23307, Start Num: 71

Candidate Starts for TruffulaTree_27:

(Start: 71 @20875 has 92 MA's), (90, 20974), (132, 21235), (135, 21256), (161, 21463), (169, 21496), (174, 21526), (194, 21598), (198, 21622), (208, 21667), (236, 21820), (242, 21865), (244, 21877), (247, 21886), (257, 21937), (281, 22117), (284, 22132), (295, 22201), (299, 22213), (309, 22276), (315, 22318), (321, 22357), (322, 22363), (323, 22372), (326, 22393), (334, 22453), (366, 22570), (373, 22612), (386, 22684), (388, 22693), (391, 22714), (396, 22786), (400, 22807), (408, 22903), (419, 22966), (435, 23131), (450, 23278),

Gene: Twitch_27 Start: 20912, Stop: 23344, Start Num: 71

Candidate Starts for Twitch_27:

(Start: 71 @20912 has 92 MA's), (90, 21011), (132, 21272), (135, 21293), (161, 21500), (169, 21533), (174, 21563), (194, 21635), (198, 21659), (236, 21857), (242, 21902), (244, 21914), (247, 21923), (257, 21974), (281, 22154), (284, 22169), (295, 22238), (299, 22250), (309, 22313), (315, 22355), (321, 22394), (322, 22400), (323, 22409), (326, 22430), (334, 22490), (366, 22607), (373, 22649), (386, 22721), (388, 22730), (391, 22751), (396, 22823), (400, 22844), (408, 22940), (424, 23087), (435, 23168), (450, 23315),

Gene: Urkel_27 Start: 20840, Stop: 23272, Start Num: 71

Candidate Starts for Urkel_27:

(67, 20822), (Start: 71 @20840 has 92 MA's), (81, 20888), (90, 20939), (132, 21200), (135, 21221), (168, 21458), (169, 21461), (174, 21491), (176, 21494), (194, 21563), (198, 21587), (199, 21593), (201, 21599), (208, 21632), (236, 21785), (244, 21842), (247, 21851), (257, 21902), (281, 22082), (284, 22097), (295, 22166), (299, 22178), (305, 22214), (309, 22241), (315, 22283), (321, 22322), (322, 22328), (323, 22337), (326, 22358), (334, 22418), (342, 22451), (345, 22469), (366, 22535), (373, 22577), (386, 22649), (388, 22658), (391, 22679), (396, 22751), (408, 22868), (424, 23015), (435, 23096), (442, 23171), (450, 23243),

Gene: Veliki_27 Start: 20915, Stop: 23347, Start Num: 71

Candidate Starts for Veliki_27:

(Start: 71 @20915 has 92 MA's), (90, 21014), (132, 21275), (135, 21296), (161, 21503), (169, 21536), (174, 21566), (194, 21638), (198, 21662), (208, 21707), (236, 21860), (242, 21905), (244, 21917), (247, 21926), (257, 21977), (281, 22157), (284, 22172), (295, 22241), (299, 22253), (315, 22358), (321, 22397), (322, 22403), (323, 22412), (334, 22493), (344, 22541), (367, 22616), (373, 22652), (388, 22733), (391, 22754), (400, 22847), (408, 22943), (424, 23090), (429, 23132), (435, 23171), (442, 23246),

Gene: Weiss13_30 Start: 24327, Stop: 27827, Start Num: 1

Candidate Starts for Weiss13_30:

(Start: 1 @24327 has 10 MA's), (3, 24339), (Start: 4 @24351 has 1 MA's), (7, 24534), (10, 24615), (16, 24714), (17, 24738), (18, 24756), (30, 24915), (32, 24948), (37, 24996), (39, 25011), (41, 25035), (50, 25161), (52, 25170), (76, 25356), (110, 25557), (137, 25734), (149, 25833), (154, 25866), (161, 25911), (164, 25923), (173, 25965), (178, 25977), (192, 26043), (212, 26127), (216, 26142), (222, 26172), (239, 26277), (249, 26328), (259, 26373), (267, 26418), (272, 26463), (274, 26484), (276, 26502), (278, 26505), (279, 26511), (280, 26514), (304, 26652), (312, 26700), (313, 26706), (320, 26766), (323, 26787), (336, 26880), (348, 26940), (351, 26949), (353, 26955), (357, 26976), (381, 27081), (390, 27141), (395, 27207), (397, 27219), (400, 27237), (402, 27243), (426, 27477), (430, 27516), (434, 27561), (439, 27591), (445, 27684), (448, 27711),

Gene: Yelo_30 Start: 24620, Stop: 28120, Start Num: 1

Candidate Starts for Yelo_30:

(Start: 1 @24620 has 10 MA's), (3, 24632), (Start: 4 @24644 has 1 MA's), (7, 24827), (10, 24908), (16, 25007), (17, 25031), (18, 25049), (30, 25208), (32, 25241), (37, 25289), (41, 25328), (50, 25454), (52, 25463), (76, 25649), (110, 25850), (137, 26027), (149, 26126), (154, 26159), (161, 26204), (173, 26258), (177, 26267), (178, 26270), (192, 26336), (212, 26420), (216, 26435), (222, 26465), (239, 26570), (249, 26621), (259, 26666), (267, 26711), (272, 26756), (274, 26777), (276, 26795), (278, 26798), (279, 26804), (280, 26807), (304, 26945), (312, 26993), (313, 26999), (320, 27059), (323, 27080), (336, 27173), (348, 27233), (351, 27242), (353, 27248), (357, 27269), (390, 27434), (395, 27500), (397, 27512), (400, 27530), (402, 27536), (426, 27770), (430, 27809), (434, 27854), (439, 27884), (445, 27977), (448, 28004),

Gene: YoureAdopted_26 Start: 20848, Stop: 23280, Start Num: 71

Candidate Starts for YoureAdopted_26:

(Start: 71 @20848 has 92 MA's), (90, 20947), (132, 21208), (135, 21229), (161, 21436), (169, 21469), (174, 21499), (194, 21571), (198, 21595), (208, 21640), (236, 21793), (242, 21838), (244, 21850), (247, 21859), (257, 21910), (281, 22090), (284, 22105), (295, 22174), (299, 22186), (315, 22291), (321, 22330), (322, 22336), (323, 22345), (334, 22426), (344, 22474), (367, 22549), (373, 22585), (386, 22657), (388, 22666), (391, 22687), (400, 22780), (408, 22876), (424, 23023), (429, 23065), (435, 23104), (442, 23179),

Gene: Yunkel11_27 Start: 20098, Stop: 22530, Start Num: 71

Candidate Starts for Yunkel11_27:

(Start: 71 @20098 has 92 MA's), (81, 20146), (82, 20149), (Start: 84 @20158 has 1 MA's), (132, 20458), (135, 20479), (169, 20719), (194, 20821), (198, 20845), (199, 20851), (208, 20890), (236, 21043), (244, 21100), (247, 21109), (257, 21160), (282, 21346), (284, 21355), (285, 21361), (292, 21406), (295, 21424), (309, 21499), (315, 21541), (321, 21580), (322, 21586), (323, 21595), (326, 21616), (333, 21664), (342, 21709), (344, 21724), (366, 21793), (373, 21835), (388, 21916), (396, 22009), (400, 22030), (408, 22126), (435, 22354), (441, 22408), (442, 22429), (450, 22501), (456, 22519),

Gene: Zabiza_27 Start: 20879, Stop: 23311, Start Num: 71

Candidate Starts for Zabiza_27:

(Start: 71 @20879 has 92 MA's), (90, 20978), (132, 21239), (135, 21260), (161, 21467), (169, 21500), (174, 21530), (194, 21602), (198, 21626), (208, 21671), (236, 21824), (242, 21869), (244, 21881), (247, 21890), (257, 21941), (281, 22121), (284, 22136), (295, 22205), (299, 22217), (315, 22322), (321, 22361), (322, 22367), (323, 22376), (334, 22457), (344, 22505), (367, 22580), (373, 22616), (388, 22697), (391, 22718), (400, 22811), (408, 22907), (424, 23054), (429, 23096), (435, 23135), (442, 23210),

Gene: Zavala_27 Start: 20854, Stop: 23286, Start Num: 71

Candidate Starts for Zavala_27:

(Start: 71 @20854 has 92 MA's), (90, 20953), (132, 21214), (135, 21235), (161, 21442), (169, 21475), (174, 21505), (194, 21577), (198, 21601), (208, 21646), (236, 21799), (242, 21844), (244, 21856), (247, 21865), (257, 21916), (281, 22096), (284, 22111), (295, 22180), (299, 22192), (309, 22255), (315, 22297), (321, 22336), (322, 22342), (323, 22351), (326, 22372), (334, 22432), (366, 22549), (373, 22591), (386, 22663), (388, 22672), (391, 22693), (396, 22765), (400, 22786), (408, 22882), (419, 22945), (435, 23110), (450, 23257),

Gene: Zenon_31 Start: 24639, Stop: 28139, Start Num: 1

Candidate Starts for Zenon_31:

(Start: 1 @24639 has 10 MA's), (3, 24651), (Start: 4 @24663 has 1 MA's), (7, 24846), (10, 24927), (16, 25026), (17, 25050), (18, 25068), (30, 25227), (32, 25260), (37, 25308), (41, 25347), (50, 25473), (52, 25482), (76, 25668), (110, 25869), (137, 26046), (149, 26145), (154, 26178), (161, 26223), (164, 26235), (173, 26277), (178, 26289), (192, 26355), (212, 26439), (216, 26454), (222, 26484), (239, 26589), (249, 26640), (259, 26685), (267, 26730), (272, 26775), (274, 26796), (276, 26814), (278, 26817), (279, 26823), (280, 26826), (304, 26964), (312, 27012), (313, 27018), (320, 27078), (323, 27099), (336, 27192), (348, 27252), (351, 27261), (353, 27267), (357, 27288), (390, 27453), (395, 27519), (397, 27531), (400, 27549), (402, 27555), (426, 27789), (430, 27828), (434, 27873), (439, 27903), (445, 27996), (448, 28023),