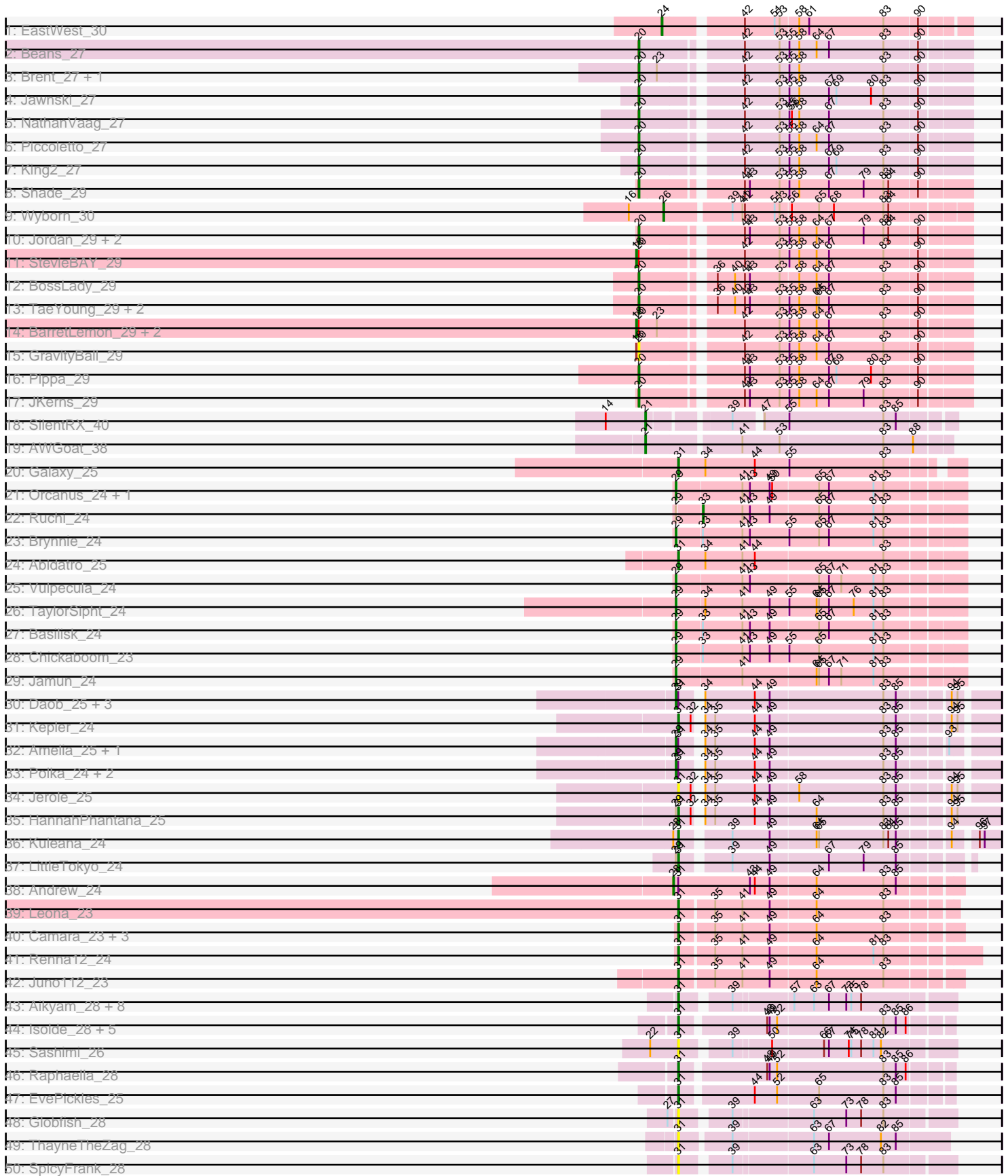
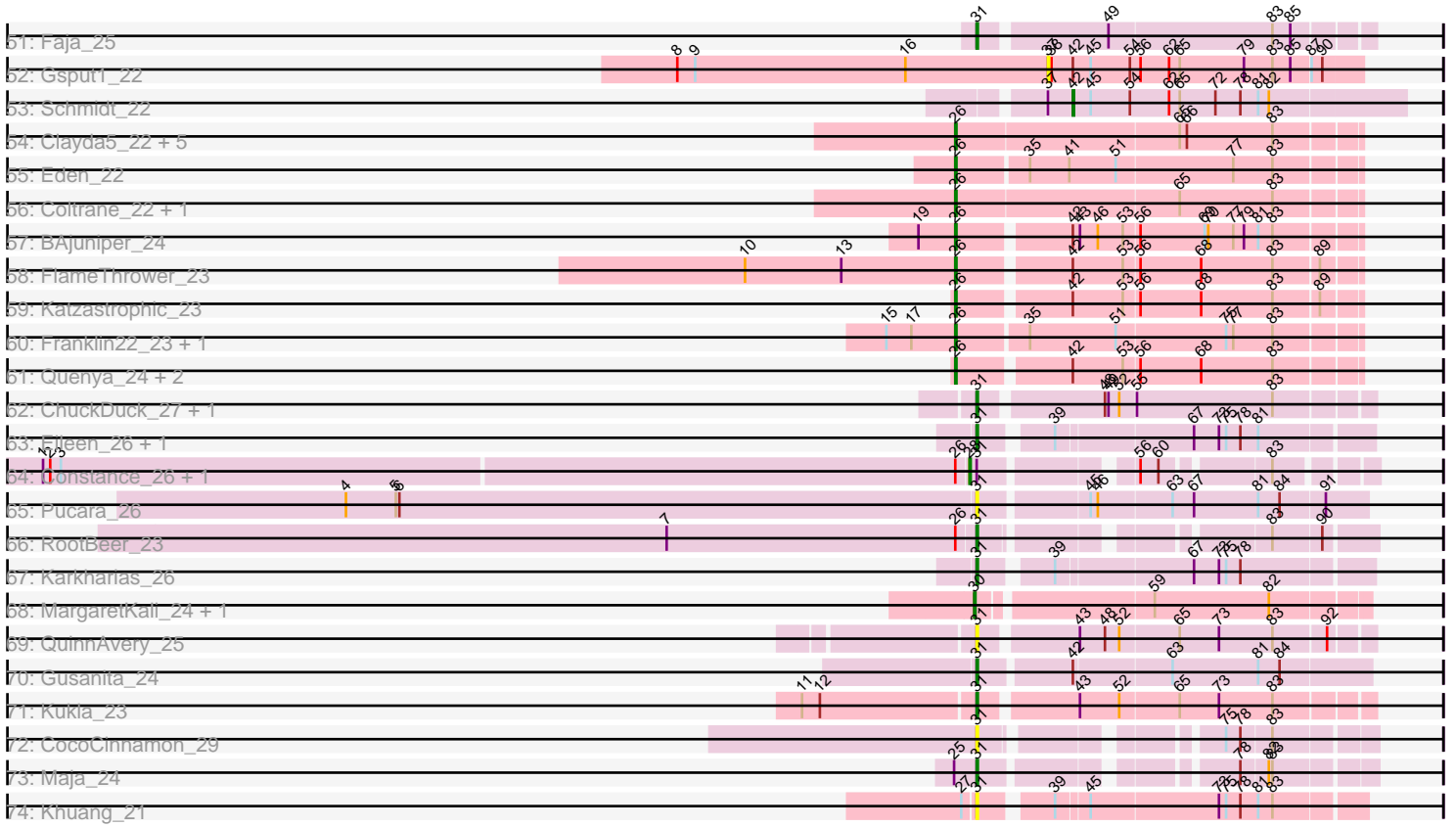


Pham 193855



Pham 193855



Note: Tracks are now grouped by subcluster and scaled. Switching in subcluster is indicated by changes in track color. Track scale is now set by default to display the region 30 bp upstream of start 1 to 30 bp downstream of the last possible start. If this default region is judged to be packed too tightly with annotated starts, the track will be further scaled to only show that region of the ORF with annotated starts. This action will be indicated by adding "Zoomed" to the title. For starts, yellow indicates the location of called starts comprised solely of Glimmer/GeneMark auto-annotations, green indicates the location of called starts with at least 1 manual gene annotation.

Pham 193855 Report

This analysis was run 11/02/24 on database version 579.

Pham number 193855 has 117 members, 21 are drafts.

Phages represented in each track:

- Track 1 : EastWest_30
- Track 2 : Beans_27
- Track 3 : Brent_27, Franzy_27
- Track 4 : Jawnski_27
- Track 5 : NathanVaag_27
- Track 6 : Piccoletto_27
- Track 7 : King2_27
- Track 8 : Shade_29
- Track 9 : Wyborn_30
- Track 10 : Jordan_29, Zartrosa_29, Sonny_29
- Track 11 : StevieBAY_29
- Track 12 : BossLady_29
- Track 13 : TaeYoung_29, Martha_29, Grekaycon_29
- Track 14 : BarretLemon_29, LeeroyJ_29, Timinator_29
- Track 15 : GravityBall_29
- Track 16 : Pippa_29
- Track 17 : JKerns_29
- Track 18 : SilentRX_40
- Track 19 : AWGoat_38
- Track 20 : Galaxy_25
- Track 21 : Orcanus_24, Eesa_24
- Track 22 : Ruchi_24
- Track 23 : Brynnie_24
- Track 24 : Abidatro_25
- Track 25 : Vulpecula_24
- Track 26 : TaylorSipht_24
- Track 27 : Basilisk_24
- Track 28 : Chickaboom_23
- Track 29 : Jamun_24
- Track 30 : Daob_25, Melons_25, Cote_25, Lunar_25
- Track 31 : Kepler_24
- Track 32 : Amelia_25, Coral_24
- Track 33 : Polka_24, Bedetta_25, Colusalem_24
- Track 34 : Jerole_25
- Track 35 : HannahPhantana_25
- Track 36 : Kuleana_24
- Track 37 : LittleTokyo_24

- Track 38 : Andrew_24
- Track 39 : Leona_23
- Track 40 : Camara_23, KHumphrey_23, PhluffyCoco_23, RedFox_23
- Track 41 : Renna12_24
- Track 42 : Juno112_23
- Track 43 : Aikyam_28, CookieBear_29, RadFad_28, Richie_28, Auxilium_28, Hillester_28, YoungHarleezy_28, MidnightRain_28, BenchScraper_28
- Track 44 : Isolde_28, Phrank15_27, Sakai_28, BillyTP_28, Lawnathon_28, Gorpy_28
- Track 45 : Sashimi_26
- Track 46 : Raphaella_28
- Track 47 : EvePickles_25
- Track 48 : Globfish_28
- Track 49 : ThayneTheZag_28
- Track 50 : SpicyFrank_28
- Track 51 : Faja_25
- Track 52 : Gspu1_22
- Track 53 : Schmidt_22
- Track 54 : Clayda5_22, Skylord_22, Rollins_22, Bernstein_22, Armstrong_22, Vitas_22
- Track 55 : Eden_22
- Track 56 : Coltrane_22, Brahms_22
- Track 57 : BAjuniper_24
- Track 58 : FlameThrower_23
- Track 59 : Katzastrophic_23
- Track 60 : Franklin22_23, Gack_22
- Track 61 : Quenya_24, Celaena_23, Bachaco_23
- Track 62 : ChuckDuck_27, KayMoney_27
- Track 63 : Eileen_26, Peas_26
- Track 64 : Constance_26, PeggyLeg03_26
- Track 65 : Pucara_26
- Track 66 : RootBeer_23
- Track 67 : Karkharias_26
- Track 68 : MargaretKali_24, Kumotta_24
- Track 69 : QuinnAvery_25
- Track 70 : Gusanita_24
- Track 71 : Kukla_23
- Track 72 : CocoCinnamon_29
- Track 73 : Maja_24
- Track 74 : Khuang_21

Summary of Final Annotations (See graph section above for start numbers):

The start number called the most often in the published annotations is 31, it was called in 32 of the 96 non-draft genes in the pham.

Genes that call this "Most Annotated" start:

- Abidatro_25, Aikyam_28, Auxilium_28, BenchScraper_28, BillyTP_28, Camara_23, ChuckDuck_27, CocoCinnamon_29, CookieBear_29, Eileen_26, EvePickles_25, Faja_25, Galaxy_25, Globfish_28, Gorpy_28, Gusanita_24, HannahPhantana_25,

Hillester_28, Isolde_28, Jerole_25, Juno112_23, KHumphrey_23, Karkharias_26, KayMoney_27, Kepler_24, Khuang_21, Kukla_23, Kuleana_24, Lawnathon_28, Leona_23, LittleTokyo_24, Maja_24, MidnightRain_28, Peas_26, PhluffyCoco_23, Phrank15_27, Pucara_26, QuinnAvery_25, RadFad_28, Raphaella_28, RedFox_23, Renna12_24, Richie_28, RootBeer_23, Sakai_28, Sashimi_26, SpicyFrank_28, ThayneTheZag_28, YoungHarleezy_28,

Genes that have the "Most Annotated" start but do not call it:

- Amelia_25, Andrew_24, Bedetta_25, Colusalem_24, Constance_26, Coral_24, Cote_25, Daob_25, Lunar_25, Melons_25, PeggyLeg03_26, Polka_24,

Genes that do not have the "Most Annotated" start:

- AWGoat_38, Armstrong_22, BAjuniper_24, Bachaco_23, BarretLemon_29, Basilisk_24, Beans_27, Bernstein_22, BossLady_29, Brahms_22, Brent_27, Brynnie_24, Celaena_23, Chickaboom_23, Clayda5_22, Coltrane_22, EastWest_30, Eden_22, Eesa_24, FlameThrower_23, Franklin22_23, Franzy_27, Gack_22, GravityBall_29, Grekaycon_29, Gspu1_22, JKerns_29, Jamun_24, Jawnski_27, Jordan_29, Katzastrophic_23, King2_27, Kumotta_24, LeeroyJ_29, MargaretKali_24, Martha_29, NathanVaag_27, Orcanus_24, Piccoletto_27, Pippa_29, Quenya_24, Rollins_22, Ruchi_24, Schmidt_22, Shade_29, SilentRX_40, Skylord_22, Sonny_29, StevieBAY_29, TaeYoung_29, TaylorSipht_24, Timinator_29, Vitas_22, Vulpecula_24, Wyborn_30, Zartrosa_29,

Summary by start number:

Start 18:

- Found in 5 of 117 (4.3%) of genes in pham
- Manual Annotations of this start: 4 of 96
- Called 80.0% of time when present
- Phage (with cluster) where this start called: BarretLemon_29 (AO2), LeeroyJ_29 (AO2), StevieBAY_29 (AO2), Timinator_29 (AO2),

Start 20:

- Found in 22 of 117 (18.8%) of genes in pham
- Manual Annotations of this start: 17 of 96
- Called 81.8% of time when present
- Phage (with cluster) where this start called: Beans_27 (AO1), BossLady_29 (AO2), Brent_27 (AO1), Franzy_27 (AO1), GravityBall_29 (AO2), Grekaycon_29 (AO2), JKerns_29 (AO2), Jawnski_27 (AO1), Jordan_29 (AO2), King2_27 (AO1), Martha_29 (AO2), NathanVaag_27 (AO1), Piccoletto_27 (AO1), Pippa_29 (AO2), Shade_29 (AO2), Sonny_29 (AO2), TaeYoung_29 (AO2), Zartrosa_29 (AO2),

Start 21:

- Found in 2 of 117 (1.7%) of genes in pham
- Manual Annotations of this start: 2 of 96
- Called 100.0% of time when present
- Phage (with cluster) where this start called: AWGoat_38 (AP4), SilentRX_40 (AP4),

Start 24:

- Found in 1 of 117 (0.9%) of genes in pham
- Manual Annotations of this start: 1 of 96
- Called 100.0% of time when present
- Phage (with cluster) where this start called: EastWest_30 (AO),

Start 26:

- Found in 21 of 117 (17.9%) of genes in pham
- Manual Annotations of this start: 18 of 96
- Called 85.7% of time when present
- Phage (with cluster) where this start called: Armstrong_22 (EB), BAjuniper_24 (EB), Bachaco_23 (EB), Bernstein_22 (EB), Brahms_22 (EB), Celaena_23 (EB), Clayda5_22 (EB), Coltrane_22 (EB), Eden_22 (EB), FlameThrower_23 (EB), Franklin22_23 (EB), Gack_22 (EB), Katzastrophic_23 (EB), Quenya_24 (EB), Rollins_22 (EB), Skylord_22 (EB), Vitas_22 (EB), Wybourn_30 (AO2),

Start 28:

- Found in 4 of 117 (3.4%) of genes in pham
- Manual Annotations of this start: 3 of 96
- Called 75.0% of time when present
- Phage (with cluster) where this start called: Andrew_24 (AS3), Constance_26 (FA), PeggyLeg03_26 (FA),

Start 29:

- Found in 20 of 117 (17.1%) of genes in pham
- Manual Annotations of this start: 15 of 96
- Called 85.0% of time when present
- Phage (with cluster) where this start called: Amelia_25 (AS2), Basilisk_24 (AS1), Bedetta_25 (AS2), Brynnie_24 (AS1), Chickaboom_23 (AS1), Colusalem_24 (AS2), Coral_24 (AS2), Cote_25 (AS2), Daob_25 (AS2), Eesa_24 (AS1), Jamun_24 (AS1), Lunar_25 (AS2), Melons_25 (AS2), Orcanus_24 (AS1), Polka_24 (AS2), TaylorSipt_24 (AS1), Vulpecula_24 (AS1),

Start 30:

- Found in 2 of 117 (1.7%) of genes in pham
- Manual Annotations of this start: 2 of 96
- Called 100.0% of time when present
- Phage (with cluster) where this start called: Kumotta_24 (FB), MargaretKali_24 (FB),

Start 31:

- Found in 61 of 117 (52.1%) of genes in pham
- Manual Annotations of this start: 32 of 96
- Called 80.3% of time when present
- Phage (with cluster) where this start called: Abidatro_25 (AS1), Aikyam_28 (AY), Auxilium_28 (AY), BenchScraper_28 (AY), BillyTP_28 (AY), Camara_23 (AS3), ChuckDuck_27 (FA), CocoCinnamon_29 (FO), CookieBear_29 (AY), Eileen_26 (FA), EvePickles_25 (AY), Faja_25 (AY), Galaxy_25 (AS1), Globfish_28 (AY), Gorpy_28 (AY), Gusanita_24 (FF), HannahPhantana_25 (AS2), Hillester_28 (AY), Isolde_28 (AY), Jerole_25 (AS2), Juno112_23 (AS3), KHumphrey_23 (AS3), Karkharias_26 (FA), KayMoney_27 (FA), Kepler_24 (AS2), Khuang_21 (UNK), Kukla_23 (FJ), Kuleana_24 (AS2), Lawnathon_28 (AY), Leona_23 (AS3), LittleTokyo_24 (AS2), Maja_24 (FO), MidnightRain_28 (AY), Peas_26 (FA), PhluffyCoco_23 (AS3), Phrank15_27 (AY), Pucara_26 (FA), QuinnAvery_25 (FF), RadFad_28 (AY), Raphaella_28 (AY), RedFox_23 (AS3), Renna12_24 (AS3), Richie_28 (AY), RootBeer_23 (FA), Sakai_28 (AY), Sashimi_26 (AY), SpicyFrank_28 (AY), ThayneTheZag_28 (AY), YoungHarleezy_28 (AY),

Start 33:

- Found in 4 of 117 (3.4%) of genes in pham
- Manual Annotations of this start: 1 of 96
- Called 25.0% of time when present
- Phage (with cluster) where this start called: Ruchi_24 (AS1),

Start 37:

- Found in 2 of 117 (1.7%) of genes in pham
- No Manual Annotations of this start.
- Called 50.0% of time when present
- Phage (with cluster) where this start called: Gsput1_22 (CU2),

Start 42:

- Found in 33 of 117 (28.2%) of genes in pham
- Manual Annotations of this start: 1 of 96
- Called 3.0% of time when present
- Phage (with cluster) where this start called: Schmidt_22 (CU4),

Summary by clusters:

There are 17 clusters represented in this pham: AS3, AS2, AS1, CU2, AO1, AO, AP4, EB, FA, FB, CU4, AO2, FF, AY, FJ, UNK, FO,

Info for manual annotations of cluster AO:

- Start number 24 was manually annotated 1 time for cluster AO.

Info for manual annotations of cluster AO1:

- Start number 20 was manually annotated 7 times for cluster AO1.

Info for manual annotations of cluster AO2:

- Start number 18 was manually annotated 4 times for cluster AO2.
- Start number 20 was manually annotated 10 times for cluster AO2.
- Start number 26 was manually annotated 1 time for cluster AO2.

Info for manual annotations of cluster AP4:

- Start number 21 was manually annotated 2 times for cluster AP4.

Info for manual annotations of cluster AS1:

- Start number 29 was manually annotated 8 times for cluster AS1.
- Start number 31 was manually annotated 2 times for cluster AS1.
- Start number 33 was manually annotated 1 time for cluster AS1.

Info for manual annotations of cluster AS2:

- Start number 29 was manually annotated 7 times for cluster AS2.
- Start number 31 was manually annotated 4 times for cluster AS2.

Info for manual annotations of cluster AS3:

- Start number 28 was manually annotated 1 time for cluster AS3.
- Start number 31 was manually annotated 5 times for cluster AS3.

Info for manual annotations of cluster AY:

- Start number 31 was manually annotated 13 times for cluster AY.

Info for manual annotations of cluster CU4:

- Start number 42 was manually annotated 1 time for cluster CU4.

Info for manual annotations of cluster EB:

- Start number 26 was manually annotated 17 times for cluster EB.

Info for manual annotations of cluster FA:

- Start number 28 was manually annotated 2 times for cluster FA.
- Start number 31 was manually annotated 5 times for cluster FA.

Info for manual annotations of cluster FB:

- Start number 30 was manually annotated 2 times for cluster FB.

Info for manual annotations of cluster FF:

- Start number 31 was manually annotated 1 time for cluster FF.

Info for manual annotations of cluster FJ:

- Start number 31 was manually annotated 1 time for cluster FJ.

Info for manual annotations of cluster FO:

- Start number 31 was manually annotated 1 time for cluster FO.

Gene Information:

Gene: AWGoat_38 Start: 34355, Stop: 34708, Start Num: 21

Candidate Starts for AWGoat_38:

(Start: 21 @34355 has 2 MA's), (41, 34463), (53, 34508), (83, 34631), (88, 34667),

Gene: Abidatro_25 Start: 18908, Stop: 19243, Start Num: 31

Candidate Starts for Abidatro_25:

(Start: 31 @18908 has 32 MA's), (34, 18941), (41, 18986), (44, 19001), (83, 19154),

Gene: Aikyam_28 Start: 20431, Stop: 20736, Start Num: 31

Candidate Starts for Aikyam_28:

(Start: 31 @20431 has 32 MA's), (39, 20482), (57, 20548), (63, 20572), (67, 20590), (73, 20611), (75, 20617), (78, 20629),

Gene: Amelia_25 Start: 18043, Stop: 18393, Start Num: 29

Candidate Starts for Amelia_25:

(Start: 29 @18043 has 15 MA's), (Start: 31 @18046 has 32 MA's), (34, 18064), (35, 18076), (44, 18124), (49, 18142), (83, 18277), (85, 18292), (93, 18343),

Gene: Andrew_24 Start: 18042, Stop: 18377, Start Num: 28

Candidate Starts for Andrew_24:

(Start: 28 @18042 has 3 MA's), (Start: 31 @18048 has 32 MA's), (43, 18135), (44, 18141), (49, 18159), (64, 18213), (83, 18294), (85, 18309),

Gene: Armstrong_22 Start: 17107, Stop: 17433, Start Num: 26

Candidate Starts for Armstrong_22:

(Start: 26 @17107 has 18 MA's), (65, 17290), (66, 17296), (83, 17368),

Gene: Auxilium_28 Start: 20421, Stop: 20726, Start Num: 31

Candidate Starts for Auxilium_28:

(Start: 31 @20421 has 32 MA's), (39, 20472), (57, 20538), (63, 20562), (67, 20580), (73, 20601), (75, 20607), (78, 20619),

Gene: BAjuniper_24 Start: 20341, Stop: 20658, Start Num: 26

Candidate Starts for BAjuniper_24:

(19, 20311), (Start: 26 @20341 has 18 MA's), (Start: 42 @20428 has 1 MA's), (43, 20434), (46, 20449), (53, 20470), (56, 20482), (69, 20536), (70, 20539), (77, 20560), (79, 20569), (81, 20581), (83, 20593),

Gene: Bachaco_23 Start: 20374, Stop: 20691, Start Num: 26

Candidate Starts for Bachaco_23:

(Start: 26 @20374 has 18 MA's), (Start: 42 @20461 has 1 MA's), (53, 20503), (56, 20515), (68, 20566), (83, 20626),

Gene: BarretLemon_29 Start: 25316, Stop: 25687, Start Num: 18

Candidate Starts for BarretLemon_29:

(Start: 18 @25316 has 4 MA's), (Start: 20 @25319 has 17 MA's), (23, 25340), (Start: 42 @25424 has 1 MA's), (53, 25466), (55, 25475), (58, 25487), (64, 25508), (67, 25523), (83, 25589), (90, 25628),

Gene: Basilisk_24 Start: 19320, Stop: 19652, Start Num: 29

Candidate Starts for Basilisk_24:

(Start: 29 @19320 has 15 MA's), (Start: 33 @19347 has 1 MA's), (41, 19395), (43, 19404), (49, 19428), (65, 19485), (67, 19497), (81, 19551), (83, 19563),

Gene: Beans_27 Start: 24983, Stop: 25351, Start Num: 20

Candidate Starts for Beans_27:

(Start: 20 @24983 has 17 MA's), (Start: 42 @25088 has 1 MA's), (53, 25130), (55, 25139), (58, 25151), (64, 25172), (67, 25187), (83, 25253), (90, 25292),

Gene: Bedetta_25 Start: 18047, Stop: 18397, Start Num: 29

Candidate Starts for Bedetta_25:

(Start: 29 @18047 has 15 MA's), (Start: 31 @18050 has 32 MA's), (34, 18068), (35, 18080), (44, 18128), (49, 18146), (83, 18281), (85, 18296),

Gene: BenchScraper_28 Start: 20436, Stop: 20741, Start Num: 31

Candidate Starts for BenchScraper_28:

(Start: 31 @20436 has 32 MA's), (39, 20487), (57, 20553), (63, 20577), (67, 20595), (73, 20616), (75, 20622), (78, 20634),

Gene: Bernstein_22 Start: 17162, Stop: 17488, Start Num: 26

Candidate Starts for Bernstein_22:

(Start: 26 @17162 has 18 MA's), (65, 17345), (66, 17351), (83, 17423),

Gene: BillyTP_28 Start: 20144, Stop: 20452, Start Num: 31

Candidate Starts for BillyTP_28:

(Start: 31 @20144 has 32 MA's), (48, 20240), (49, 20243), (52, 20252), (83, 20378), (85, 20393), (86, 20405),

Gene: BossLady_29 Start: 25299, Stop: 25667, Start Num: 20

Candidate Starts for BossLady_29:

(Start: 20 @25299 has 17 MA's), (36, 25371), (40, 25392), (Start: 42 @25404 has 1 MA's), (43, 25410), (53, 25446), (58, 25467), (64, 25488), (67, 25503), (83, 25569), (90, 25608),

Gene: Brahms_22 Start: 17110, Stop: 17436, Start Num: 26

Candidate Starts for Brahms_22:

(Start: 26 @17110 has 18 MA's), (65, 17293), (83, 17371),

Gene: Brent_27 Start: 24986, Stop: 25354, Start Num: 20

Candidate Starts for Brent_27:

(Start: 20 @24986 has 17 MA's), (23, 25007), (Start: 42 @25091 has 1 MA's), (53, 25133), (55, 25142), (58, 25154), (83, 25256), (90, 25295),

Gene: Brynnie_24 Start: 19128, Stop: 19460, Start Num: 29

Candidate Starts for Brynnie_24:

(Start: 29 @19128 has 15 MA's), (Start: 33 @19155 has 1 MA's), (41, 19203), (43, 19212), (55, 19257), (65, 19293), (67, 19305), (81, 19359), (83, 19371),

Gene: Camara_23 Start: 17623, Stop: 17946, Start Num: 31

Candidate Starts for Camara_23:

(Start: 31 @17623 has 32 MA's), (35, 17662), (41, 17695), (49, 17728), (64, 17782), (83, 17863),

Gene: Celaena_23 Start: 20322, Stop: 20639, Start Num: 26

Candidate Starts for Celaena_23:

(Start: 26 @20322 has 18 MA's), (Start: 42 @20409 has 1 MA's), (53, 20451), (56, 20463), (68, 20514), (83, 20574),

Gene: Chickaboom_23 Start: 18049, Stop: 18381, Start Num: 29

Candidate Starts for Chickaboom_23:

(Start: 29 @18049 has 15 MA's), (Start: 33 @18076 has 1 MA's), (41, 18124), (43, 18133), (49, 18157), (55, 18178), (65, 18214), (81, 18280), (83, 18292),

Gene: ChuckDuck_27 Start: 20261, Stop: 20569, Start Num: 31

Candidate Starts for ChuckDuck_27:

(Start: 31 @20261 has 32 MA's), (48, 20357), (49, 20360), (52, 20369), (55, 20381), (83, 20495),

Gene: Clayda5_22 Start: 17113, Stop: 17439, Start Num: 26

Candidate Starts for Clayda5_22:

(Start: 26 @17113 has 18 MA's), (65, 17296), (66, 17302), (83, 17374),

Gene: CocoCinnamon_29 Start: 20011, Stop: 20283, Start Num: 31

Candidate Starts for CocoCinnamon_29:

(Start: 31 @20011 has 32 MA's), (75, 20170), (78, 20182), (83, 20206),

Gene: Coltrane_22 Start: 17110, Stop: 17436, Start Num: 26

Candidate Starts for Coltrane_22:

(Start: 26 @17110 has 18 MA's), (65, 17293), (83, 17371),

Gene: Colusalem_24 Start: 17886, Stop: 18236, Start Num: 29

Candidate Starts for Colusalem_24:

(Start: 29 @17886 has 15 MA's), (Start: 31 @17889 has 32 MA's), (34, 17907), (35, 17919), (44, 17967), (49, 17985), (83, 18120), (85, 18135),

Gene: Constance_26 Start: 20763, Stop: 21041, Start Num: 28

Candidate Starts for Constance_26:

(1, 19992), (2, 19998), (3, 20007), (Start: 26 @20754 has 18 MA's), (Start: 28 @20763 has 3 MA's), (Start: 31 @20769 has 32 MA's), (56, 20877), (60, 20892), (83, 20970),

Gene: CookieBear_29 Start: 20421, Stop: 20726, Start Num: 31

Candidate Starts for CookieBear_29:

(Start: 31 @20421 has 32 MA's), (39, 20472), (57, 20538), (63, 20562), (67, 20580), (73, 20601), (75, 20607), (78, 20619),

Gene: Coral_24 Start: 17882, Stop: 18232, Start Num: 29

Candidate Starts for Coral_24:

(Start: 29 @17882 has 15 MA's), (Start: 31 @17885 has 32 MA's), (34, 17903), (35, 17915), (44, 17963), (49, 17981), (83, 18116), (85, 18131), (93, 18182),

Gene: Cote_25 Start: 18034, Stop: 18384, Start Num: 29

Candidate Starts for Cote_25:

(Start: 29 @18034 has 15 MA's), (Start: 31 @18037 has 32 MA's), (34, 18055), (44, 18115), (49, 18133), (83, 18268), (85, 18283), (94, 18337), (95, 18343),

Gene: Daob_25 Start: 18039, Stop: 18389, Start Num: 29

Candidate Starts for Daob_25:

(Start: 29 @18039 has 15 MA's), (Start: 31 @18042 has 32 MA's), (34, 18060), (44, 18120), (49, 18138), (83, 18273), (85, 18288), (94, 18342), (95, 18348),

Gene: EastWest_30 Start: 25176, Stop: 25514, Start Num: 24

Candidate Starts for EastWest_30:

(Start: 24 @25176 has 1 MA's), (Start: 42 @25257 has 1 MA's), (51, 25293), (53, 25299), (58, 25320), (61, 25332), (83, 25422), (90, 25461),

Gene: Eden_22 Start: 17389, Stop: 17712, Start Num: 26

Candidate Starts for Eden_22:

(Start: 26 @17389 has 18 MA's), (35, 17446), (41, 17479), (51, 17518), (77, 17614), (83, 17647),

Gene: Eesa_24 Start: 19277, Stop: 19609, Start Num: 29

Candidate Starts for Eesa_24:

(Start: 29 @19277 has 15 MA's), (41, 19352), (43, 19361), (49, 19385), (50, 19388), (65, 19442), (67, 19454), (81, 19508), (83, 19520),

Gene: Eileen_26 Start: 20113, Stop: 20415, Start Num: 31

Candidate Starts for Eileen_26:

(Start: 31 @20113 has 32 MA's), (39, 20164), (67, 20272), (73, 20293), (75, 20299), (78, 20311), (81, 20326),

Gene: EvePickles_25 Start: 18992, Stop: 19300, Start Num: 31

Candidate Starts for EvePickles_25:

(Start: 31 @18992 has 32 MA's), (44, 19073), (52, 19100), (65, 19148), (83, 19226), (85, 19241),

Gene: Faja_25 Start: 18886, Stop: 19194, Start Num: 31

Candidate Starts for Faja_25:

(Start: 31 @18886 has 32 MA's), (49, 18985), (83, 19120), (85, 19135),

Gene: FlameThrower_23 Start: 19859, Stop: 20176, Start Num: 26

Candidate Starts for FlameThrower_23:

(10, 19682), (13, 19763), (Start: 26 @19859 has 18 MA's), (Start: 42 @19946 has 1 MA's), (53, 19988), (56, 20000), (68, 20051), (83, 20111), (89, 20147),

Gene: Franklin22_23 Start: 17574, Stop: 17897, Start Num: 26

Candidate Starts for Franklin22_23:

(15, 17517), (17, 17538), (Start: 26 @17574 has 18 MA's), (35, 17631), (51, 17703), (75, 17793), (77, 17799), (83, 17832),

Gene: Franzy_27 Start: 24985, Stop: 25353, Start Num: 20

Candidate Starts for Franzy_27:

(Start: 20 @24985 has 17 MA's), (23, 25006), (Start: 42 @25090 has 1 MA's), (53, 25132), (55, 25141), (58, 25153), (83, 25255), (90, 25294),

Gene: Gack_22 Start: 17460, Stop: 17783, Start Num: 26

Candidate Starts for Gack_22:

(15, 17403), (17, 17424), (Start: 26 @17460 has 18 MA's), (35, 17517), (51, 17589), (75, 17679), (77, 17685), (83, 17718),

Gene: Galaxy_25 Start: 19013, Stop: 19336, Start Num: 31

Candidate Starts for Galaxy_25:

(Start: 31 @19013 has 32 MA's), (34, 19046), (44, 19106), (55, 19145), (83, 19259),

Gene: Globfish_28 Start: 20655, Stop: 20960, Start Num: 31

Candidate Starts for Globfish_28:

(27, 20646), (Start: 31 @20655 has 32 MA's), (39, 20706), (63, 20796), (73, 20835), (78, 20853), (83, 20880),

Gene: Gorpy_28 Start: 20369, Stop: 20677, Start Num: 31

Candidate Starts for Gorpy_28:

(Start: 31 @20369 has 32 MA's), (48, 20465), (49, 20468), (52, 20477), (83, 20603), (85, 20618), (86, 20630),

Gene: GravityBall_29 Start: 25318, Stop: 25686, Start Num: 20

Candidate Starts for GravityBall_29:

(Start: 18 @25315 has 4 MA's), (Start: 20 @25318 has 17 MA's), (Start: 42 @25423 has 1 MA's), (53, 25465), (55, 25474), (58, 25486), (64, 25507), (67, 25522), (83, 25588), (90, 25627),

Gene: Grekaycon_29 Start: 25245, Stop: 25613, Start Num: 20

Candidate Starts for Grekaycon_29:

(Start: 20 @25245 has 17 MA's), (36, 25317), (40, 25338), (Start: 42 @25350 has 1 MA's), (43, 25356), (53, 25392), (55, 25401), (58, 25413), (64, 25434), (65, 25437), (67, 25449), (83, 25515), (90, 25554),

Gene: Gspu1_22 Start: 18136, Stop: 18396, Start Num: 37

Candidate Starts for Gspu1_22:

(8, 17824), (9, 17839), (16, 18016), (37, 18136), (38, 18139), (Start: 42 @18157 has 1 MA's), (45, 18172), (54, 18205), (56, 18214), (62, 18238), (65, 18247), (79, 18301), (83, 18325), (85, 18340), (87, 18355), (90, 18364),

Gene: Gusanita_24 Start: 19423, Stop: 19737, Start Num: 31

Candidate Starts for Gusanita_24:

(Start: 31 @19423 has 32 MA's), (Start: 42 @19495 has 1 MA's), (63, 19573), (81, 19645), (84, 19663),

Gene: HannahPhantana_25 Start: 18037, Stop: 18396, Start Num: 31

Candidate Starts for HannahPhantana_25:

(Start: 29 @18034 has 15 MA's), (Start: 31 @18037 has 32 MA's), (32, 18052), (34, 18055), (35, 18067), (44, 18115), (49, 18133), (64, 18187), (83, 18268), (85, 18283), (94, 18337), (95, 18343),

Gene: Hillester_28 Start: 20421, Stop: 20726, Start Num: 31

Candidate Starts for Hillester_28:

(Start: 31 @20421 has 32 MA's), (39, 20472), (57, 20538), (63, 20562), (67, 20580), (73, 20601), (75, 20607), (78, 20619),

Gene: Isolde_28 Start: 20195, Stop: 20503, Start Num: 31

Candidate Starts for Isolde_28:

(Start: 31 @20195 has 32 MA's), (48, 20291), (49, 20294), (52, 20303), (83, 20429), (85, 20444), (86, 20456),

Gene: JKerns_29 Start: 25272, Stop: 25640, Start Num: 20

Candidate Starts for JKerns_29:

(Start: 20 @25272 has 17 MA's), (Start: 42 @25377 has 1 MA's), (43, 25383), (53, 25419), (55, 25428), (58, 25440), (64, 25461), (67, 25476), (79, 25518), (83, 25542), (90, 25581),

Gene: Jamun_24 Start: 18726, Stop: 19058, Start Num: 29

Candidate Starts for Jamun_24:

(Start: 29 @18726 has 15 MA's), (41, 18801), (64, 18888), (65, 18891), (67, 18903), (71, 18918), (81, 18957), (83, 18969),

Gene: Jawnski_27 Start: 24995, Stop: 25363, Start Num: 20

Candidate Starts for Jawnski_27:

(Start: 20 @24995 has 17 MA's), (Start: 42 @25100 has 1 MA's), (53, 25142), (55, 25151), (58, 25163), (67, 25199), (69, 25208), (80, 25250), (83, 25265), (90, 25304),

Gene: Jerole_25 Start: 18034, Stop: 18381, Start Num: 31

Candidate Starts for Jerole_25:

(Start: 31 @18034 has 32 MA's), (32, 18049), (34, 18052), (35, 18064), (44, 18112), (49, 18130), (58, 18163), (83, 18265), (85, 18280), (94, 18334), (95, 18340),

Gene: Jordan_29 Start: 25242, Stop: 25610, Start Num: 20

Candidate Starts for Jordan_29:

(Start: 20 @25242 has 17 MA's), (Start: 42 @25347 has 1 MA's), (43, 25353), (53, 25389), (55, 25398), (58, 25410), (64, 25431), (67, 25446), (79, 25488), (83, 25512), (84, 25518), (90, 25551),

Gene: Juno112_23 Start: 17622, Stop: 17945, Start Num: 31

Candidate Starts for Juno112_23:

(Start: 31 @17622 has 32 MA's), (35, 17661), (41, 17694), (49, 17727), (64, 17781), (83, 17862),

Gene: KHumphrey_23 Start: 17620, Stop: 17943, Start Num: 31

Candidate Starts for KHumphrey_23:

(Start: 31 @17620 has 32 MA's), (35, 17659), (41, 17692), (49, 17725), (64, 17779), (83, 17860),

Gene: Karkharias_26 Start: 20115, Stop: 20417, Start Num: 31

Candidate Starts for Karkharias_26:

(Start: 31 @20115 has 32 MA's), (39, 20166), (67, 20274), (73, 20295), (75, 20301), (78, 20313),

Gene: Katzastrophic_23 Start: 19980, Stop: 20297, Start Num: 26

Candidate Starts for Katzastrophic_23:

(Start: 26 @19980 has 18 MA's), (Start: 42 @20067 has 1 MA's), (53, 20109), (56, 20121), (68, 20172), (83, 20232), (89, 20268),

Gene: KayMoney_27 Start: 20265, Stop: 20573, Start Num: 31

Candidate Starts for KayMoney_27:

(Start: 31 @20265 has 32 MA's), (48, 20361), (49, 20364), (52, 20373), (55, 20385), (83, 20499),

Gene: Kepler_24 Start: 17872, Stop: 18219, Start Num: 31

Candidate Starts for Kepler_24:

(Start: 31 @17872 has 32 MA's), (32, 17887), (34, 17890), (35, 17902), (44, 17950), (49, 17968), (83, 18103), (85, 18118), (94, 18172), (95, 18178),

Gene: Khuang_21 Start: 17688, Stop: 17984, Start Num: 31

Candidate Starts for Khuang_21:

(27, 17679), (Start: 31 @17688 has 32 MA's), (39, 17739), (45, 17763), (73, 17868), (75, 17874), (78, 17886), (81, 17901), (83, 17913),

Gene: King2_27 Start: 24982, Stop: 25350, Start Num: 20

Candidate Starts for King2_27:

(Start: 20 @24982 has 17 MA's), (Start: 42 @25087 has 1 MA's), (53, 25129), (55, 25138), (58, 25150), (67, 25186), (69, 25195), (83, 25252), (90, 25291),

Gene: Kukla_23 Start: 18379, Stop: 18687, Start Num: 31

Candidate Starts for Kukla_23:

(11, 18238), (12, 18253), (Start: 31 @18379 has 32 MA's), (43, 18454), (52, 18487), (65, 18535), (73, 18568), (83, 18613),

Gene: Kuleana_24 Start: 17910, Stop: 18254, Start Num: 31

Candidate Starts for Kuleana_24:

(Start: 28 @17904 has 3 MA's), (Start: 31 @17910 has 32 MA's), (39, 17961), (49, 18006), (64, 18060), (65, 18063), (83, 18141), (84, 18147), (85, 18156), (94, 18210), (96, 18231), (97, 18237),

Gene: Kumotta_24 Start: 18861, Stop: 19166, Start Num: 30

Candidate Starts for Kumotta_24:

(Start: 30 @18861 has 2 MA's), (59, 18996), (82, 19092),

Gene: Lawnathon_28 Start: 20289, Stop: 20597, Start Num: 31

Candidate Starts for Lawnathon_28:

(Start: 31 @20289 has 32 MA's), (48, 20385), (49, 20388), (52, 20397), (83, 20523), (85, 20538), (86, 20550),

Gene: LeeroyJ_29 Start: 25315, Stop: 25686, Start Num: 18

Candidate Starts for LeeroyJ_29:

(Start: 18 @25315 has 4 MA's), (Start: 20 @25318 has 17 MA's), (23, 25339), (Start: 42 @25423 has 1 MA's), (53, 25465), (55, 25474), (58, 25486), (64, 25507), (67, 25522), (83, 25588), (90, 25627),

Gene: Leona_23 Start: 17683, Stop: 18000, Start Num: 31

Candidate Starts for Leona_23:

(Start: 31 @17683 has 32 MA's), (35, 17722), (41, 17755), (49, 17788), (64, 17842), (83, 17923),

Gene: LittleTokyo_24 Start: 17866, Stop: 18186, Start Num: 31

Candidate Starts for LittleTokyo_24:

(Start: 29 @17863 has 15 MA's), (Start: 31 @17866 has 32 MA's), (39, 17917), (49, 17962), (67, 18031), (79, 18073), (85, 18112),

Gene: Lunar_25 Start: 18034, Stop: 18384, Start Num: 29

Candidate Starts for Lunar_25:

(Start: 29 @18034 has 15 MA's), (Start: 31 @18037 has 32 MA's), (34, 18055), (44, 18115), (49, 18133), (83, 18268), (85, 18283), (94, 18337), (95, 18343),

Gene: Maja_24 Start: 18850, Stop: 19128, Start Num: 31

Candidate Starts for Maja_24:

(25, 18832), (Start: 31 @18850 has 32 MA's), (78, 19027), (82, 19048), (83, 19051),

Gene: MargaretKali_24 Start: 18496, Stop: 18801, Start Num: 30

Candidate Starts for MargaretKali_24:

(Start: 30 @18496 has 2 MA's), (59, 18631), (82, 18727),

Gene: Martha_29 Start: 25246, Stop: 25614, Start Num: 20

Candidate Starts for Martha_29:

(Start: 20 @25246 has 17 MA's), (36, 25318), (40, 25339), (Start: 42 @25351 has 1 MA's), (43, 25357), (53, 25393), (55, 25402), (58, 25414), (64, 25435), (65, 25438), (67, 25450), (83, 25516), (90, 25555),

Gene: Melons_25 Start: 18034, Stop: 18384, Start Num: 29

Candidate Starts for Melons_25:

(Start: 29 @18034 has 15 MA's), (Start: 31 @18037 has 32 MA's), (34, 18055), (44, 18115), (49, 18133), (83, 18268), (85, 18283), (94, 18337), (95, 18343),

Gene: MidnightRain_28 Start: 20420, Stop: 20725, Start Num: 31

Candidate Starts for MidnightRain_28:

(Start: 31 @20420 has 32 MA's), (39, 20471), (57, 20537), (63, 20561), (67, 20579), (73, 20600), (75, 20606), (78, 20618),

Gene: NathanVaag_27 Start: 24958, Stop: 25326, Start Num: 20

Candidate Starts for NathanVaag_27:

(Start: 20 @24958 has 17 MA's), (Start: 42 @25063 has 1 MA's), (53, 25105), (55, 25114), (56, 25117), (58, 25126), (67, 25162), (83, 25228), (90, 25267),

Gene: Orcanus_24 Start: 18977, Stop: 19309, Start Num: 29

Candidate Starts for Orcanus_24:

(Start: 29 @18977 has 15 MA's), (41, 19052), (43, 19061), (49, 19085), (50, 19088), (65, 19142), (67, 19154), (81, 19208), (83, 19220),

Gene: Peas_26 Start: 20113, Stop: 20415, Start Num: 31

Candidate Starts for Peas_26:

(Start: 31 @20113 has 32 MA's), (39, 20164), (67, 20272), (73, 20293), (75, 20299), (78, 20311), (81, 20326),

Gene: PeggyLeg03_26 Start: 20763, Stop: 21041, Start Num: 28

Candidate Starts for PeggyLeg03_26:

(1, 19992), (2, 19998), (3, 20007), (Start: 26 @20754 has 18 MA's), (Start: 28 @20763 has 3 MA's), (Start: 31 @20769 has 32 MA's), (56, 20877), (60, 20892), (83, 20970),

Gene: PhluffyCoco_23 Start: 17622, Stop: 17930, Start Num: 31
Candidate Starts for PhluffyCoco_23:
(Start: 31 @17622 has 32 MA's), (35, 17661), (41, 17694), (49, 17727), (64, 17781), (83, 17862),

Gene: Phrank15_27 Start: 20294, Stop: 20602, Start Num: 31
Candidate Starts for Phrank15_27:
(Start: 31 @20294 has 32 MA's), (48, 20390), (49, 20393), (52, 20402), (83, 20528), (85, 20543), (86, 20555),

Gene: Piccoletto_27 Start: 24960, Stop: 25328, Start Num: 20
Candidate Starts for Piccoletto_27:
(Start: 20 @24960 has 17 MA's), (Start: 42 @25065 has 1 MA's), (53, 25107), (55, 25116), (58, 25128), (64, 25149), (67, 25164), (83, 25230), (90, 25269),

Gene: Pippa_29 Start: 25371, Stop: 25739, Start Num: 20
Candidate Starts for Pippa_29:
(Start: 20 @25371 has 17 MA's), (Start: 42 @25476 has 1 MA's), (43, 25482), (53, 25518), (55, 25527), (58, 25539), (67, 25575), (69, 25584), (80, 25626), (83, 25641), (90, 25680),

Gene: Polka_24 Start: 17889, Stop: 18239, Start Num: 29
Candidate Starts for Polka_24:
(Start: 29 @17889 has 15 MA's), (Start: 31 @17892 has 32 MA's), (34, 17910), (35, 17922), (44, 17970), (49, 17988), (83, 18123), (85, 18138),

Gene: Pucara_26 Start: 20288, Stop: 20599, Start Num: 31
Candidate Starts for Pucara_26:
(4, 19760), (5, 19802), (6, 19805), (Start: 31 @20288 has 32 MA's), (45, 20372), (46, 20378), (63, 20438), (67, 20456), (81, 20510), (84, 20528), (91, 20564),

Gene: Quenya_24 Start: 19845, Stop: 20162, Start Num: 26
Candidate Starts for Quenya_24:
(Start: 26 @19845 has 18 MA's), (Start: 42 @19932 has 1 MA's), (53, 19974), (56, 19986), (68, 20037), (83, 20097),

Gene: QuinnAvery_25 Start: 19733, Stop: 20041, Start Num: 31
Candidate Starts for QuinnAvery_25:
(Start: 31 @19733 has 32 MA's), (43, 19808), (48, 19829), (52, 19841), (65, 19889), (73, 19922), (83, 19967), (92, 20009),

Gene: RadFad_28 Start: 20421, Stop: 20726, Start Num: 31
Candidate Starts for RadFad_28:
(Start: 31 @20421 has 32 MA's), (39, 20472), (57, 20538), (63, 20562), (67, 20580), (73, 20601), (75, 20607), (78, 20619),

Gene: Raphaella_28 Start: 20360, Stop: 20668, Start Num: 31
Candidate Starts for Raphaella_28:
(Start: 31 @20360 has 32 MA's), (48, 20456), (49, 20459), (52, 20468), (83, 20594), (85, 20609), (86, 20621),

Gene: RedFox_23 Start: 17622, Stop: 17945, Start Num: 31
Candidate Starts for RedFox_23:
(Start: 31 @17622 has 32 MA's), (35, 17661), (41, 17694), (49, 17727), (64, 17781), (83, 17862),

Gene: Renna12_24 Start: 17975, Stop: 18319, Start Num: 31

Candidate Starts for Renna12_24:

(Start: 31 @17975 has 32 MA's), (35, 18014), (41, 18047), (49, 18080), (64, 18134), (81, 18203), (83, 18215),

Gene: Richie_28 Start: 20436, Stop: 20741, Start Num: 31

Candidate Starts for Richie_28:

(Start: 31 @20436 has 32 MA's), (39, 20487), (57, 20553), (63, 20577), (67, 20595), (73, 20616), (75, 20622), (78, 20634),

Gene: Rollins_22 Start: 17162, Stop: 17488, Start Num: 26

Candidate Starts for Rollins_22:

(Start: 26 @17162 has 18 MA's), (65, 17345), (66, 17351), (83, 17423),

Gene: RootBeer_23 Start: 17990, Stop: 18268, Start Num: 31

Candidate Starts for RootBeer_23:

(7, 17732), (Start: 26 @17975 has 18 MA's), (Start: 31 @17990 has 32 MA's), (83, 18188), (90, 18227),

Gene: Ruchi_24 Start: 19293, Stop: 19598, Start Num: 33

Candidate Starts for Ruchi_24:

(Start: 29 @19266 has 15 MA's), (Start: 33 @19293 has 1 MA's), (41, 19341), (43, 19350), (49, 19374), (65, 19431), (67, 19443), (81, 19497), (83, 19509),

Gene: Sakai_28 Start: 20369, Stop: 20677, Start Num: 31

Candidate Starts for Sakai_28:

(Start: 31 @20369 has 32 MA's), (48, 20465), (49, 20468), (52, 20477), (83, 20603), (85, 20618), (86, 20630),

Gene: Sashimi_26 Start: 18795, Stop: 19100, Start Num: 31

Candidate Starts for Sashimi_26:

(22, 18762), (Start: 31 @18795 has 32 MA's), (39, 18846), (50, 18888), (66, 18948), (67, 18954), (74, 18978), (75, 18981), (78, 18993), (81, 19008), (82, 19017),

Gene: Schmidt_22 Start: 17098, Stop: 17373, Start Num: 42

Candidate Starts for Schmidt_22:

(37, 17077), (Start: 42 @17098 has 1 MA's), (45, 17113), (54, 17146), (62, 17179), (65, 17188), (72, 17218), (78, 17239), (81, 17254), (82, 17263),

Gene: Shade_29 Start: 25212, Stop: 25580, Start Num: 20

Candidate Starts for Shade_29:

(Start: 20 @25212 has 17 MA's), (Start: 42 @25317 has 1 MA's), (43, 25323), (53, 25359), (55, 25368), (58, 25380), (67, 25416), (79, 25458), (83, 25482), (84, 25488), (90, 25521),

Gene: SilentRX_40 Start: 35414, Stop: 35743, Start Num: 21

Candidate Starts for SilentRX_40:

(14, 35366), (Start: 21 @35414 has 2 MA's), (39, 35498), (47, 35525), (55, 35552), (83, 35666), (85, 35681),

Gene: Skylord_22 Start: 17110, Stop: 17436, Start Num: 26

Candidate Starts for Skylord_22:

(Start: 26 @17110 has 18 MA's), (65, 17293), (66, 17299), (83, 17371),

Gene: Sonny_29 Start: 25242, Stop: 25610, Start Num: 20

Candidate Starts for Sonny_29:

(Start: 20 @25242 has 17 MA's), (Start: 42 @25347 has 1 MA's), (43, 25353), (53, 25389), (55, 25398), (58, 25410), (64, 25431), (67, 25446), (79, 25488), (83, 25512), (84, 25518), (90, 25551),

Gene: SpicyFrank_28 Start: 20656, Stop: 20961, Start Num: 31

Candidate Starts for SpicyFrank_28:

(Start: 31 @20656 has 32 MA's), (39, 20707), (63, 20797), (73, 20836), (78, 20854), (83, 20881),

Gene: StevieBAY_29 Start: 25315, Stop: 25686, Start Num: 18

Candidate Starts for StevieBAY_29:

(Start: 18 @25315 has 4 MA's), (Start: 20 @25318 has 17 MA's), (Start: 42 @25423 has 1 MA's), (53, 25465), (55, 25474), (58, 25486), (64, 25507), (67, 25522), (83, 25588), (90, 25627),

Gene: TaeYoung_29 Start: 25246, Stop: 25614, Start Num: 20

Candidate Starts for TaeYoung_29:

(Start: 20 @25246 has 17 MA's), (36, 25318), (40, 25339), (Start: 42 @25351 has 1 MA's), (43, 25357), (53, 25393), (55, 25402), (58, 25414), (64, 25435), (65, 25438), (67, 25450), (83, 25516), (90, 25555),

Gene: TaylorSipht_24 Start: 18002, Stop: 18337, Start Num: 29

Candidate Starts for TaylorSipht_24:

(Start: 29 @18002 has 15 MA's), (34, 18032), (41, 18077), (49, 18110), (55, 18131), (64, 18164), (65, 18167), (67, 18179), (76, 18209), (81, 18233), (83, 18245),

Gene: ThayneTheZag_28 Start: 20519, Stop: 20830, Start Num: 31

Candidate Starts for ThayneTheZag_28:

(Start: 31 @20519 has 32 MA's), (39, 20576), (63, 20669), (67, 20687), (82, 20750), (85, 20768),

Gene: Timinator_29 Start: 25315, Stop: 25686, Start Num: 18

Candidate Starts for Timinator_29:

(Start: 18 @25315 has 4 MA's), (Start: 20 @25318 has 17 MA's), (23, 25339), (Start: 42 @25423 has 1 MA's), (53, 25465), (55, 25474), (58, 25486), (64, 25507), (67, 25522), (83, 25588), (90, 25627),

Gene: Vitas_22 Start: 17102, Stop: 17428, Start Num: 26

Candidate Starts for Vitas_22:

(Start: 26 @17102 has 18 MA's), (65, 17285), (66, 17291), (83, 17363),

Gene: Vulpecula_24 Start: 18724, Stop: 19056, Start Num: 29

Candidate Starts for Vulpecula_24:

(Start: 29 @18724 has 15 MA's), (41, 18799), (43, 18808), (65, 18889), (67, 18901), (71, 18916), (81, 18955), (83, 18967),

Gene: Wyborn_30 Start: 25584, Stop: 25931, Start Num: 26

Candidate Starts for Wyborn_30:

(16, 25542), (Start: 26 @25584 has 18 MA's), (39, 25656), (41, 25668), (Start: 42 @25671 has 1 MA's), (51, 25707), (53, 25713), (56, 25725), (65, 25758), (68, 25776), (83, 25836), (84, 25842),

Gene: YoungHarleezy_28 Start: 20434, Stop: 20739, Start Num: 31

Candidate Starts for YoungHarleezy_28:

(Start: 31 @20434 has 32 MA's), (39, 20485), (57, 20551), (63, 20575), (67, 20593), (73, 20614), (75, 20620), (78, 20632),

Gene: Zartrosa_29 Start: 25236, Stop: 25604, Start Num: 20

Candidate Starts for Zartrosa_29:

(Start: 20 @25236 has 17 MA's), (Start: 42 @25341 has 1 MA's), (43, 25347), (53, 25383), (55, 25392), (58, 25404), (64, 25425), (67, 25440), (79, 25482), (83, 25506), (84, 25512), (90, 25545),