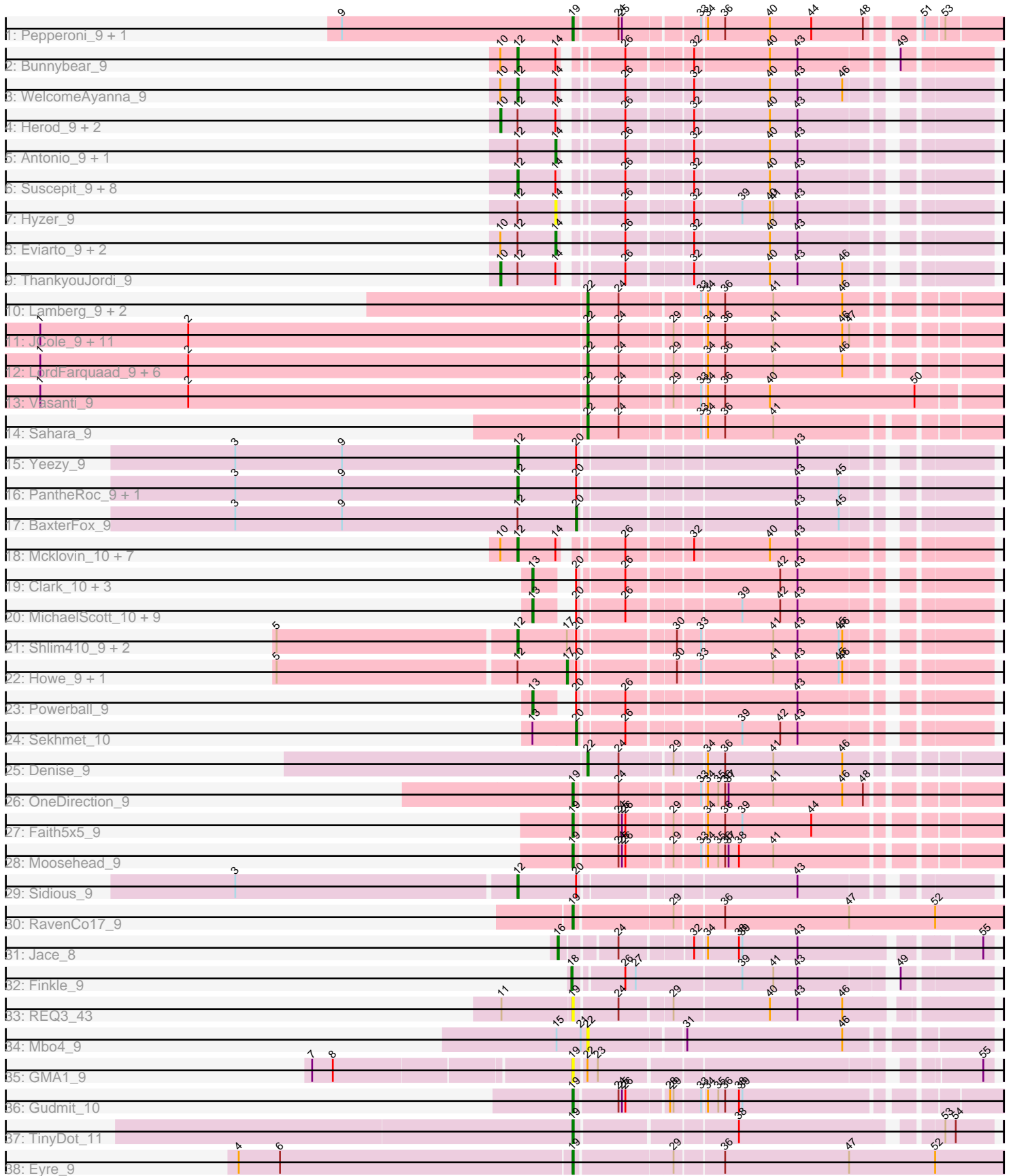


Pham 193908



Note: Tracks are now grouped by subcluster and scaled. Switching in subcluster is indicated by changes in track color. Track scale is now set by default to display the region 30 bp upstream of start 1 to 30 bp downstream of the last possible start. If this default region is judged to be packed too tightly with annotated starts, the track will be further scaled to only show that region of the ORF with annotated starts. This action will be indicated by adding "Zoomed" to the title. For starts, yellow indicates the location of called starts comprised solely of Glimmer/GeneMark auto-annotations, green indicates the location of called starts with at least 1 manual gene annotation.

Pham 193908 Report

This analysis was run 11/02/24 on database version 579.

Pham number 193908 has 94 members, 9 are drafts.

Phages represented in each track:

- Track 1 : Pepperoni_9, Lton_9
- Track 2 : Bunnybear_9
- Track 3 : WelcomeAyanna_9
- Track 4 : Herod_9, BatStarr_9, Zirinka_9
- Track 5 : Antonio_9, Maridalia_9
- Track 6 : Suscepit_9, Polly_9, Manasvini_9, Trumpet_9, Tayonia_9, Kita_9, Zameen_9, Eudoria_9, Neobush_9
- Track 7 : Hyzer_9
- Track 8 : Eviarto_9, Hugley_9, TimTam_9
- Track 9 : ThankyouJordi_9
- Track 10 : Lamberg_9, EdnaMode_9, Nettuno_9
- Track 11 : JCole_9, Cynthia_9, Clap_9, GemG_9, Whiteclaw_9, Sproutie_9, Gizermo_9, Ebert_9, Savage_9, Haley23_9, TuertoX_9, Mocha12_9
- Track 12 : LordFarquaad_9, Yeet412_9, Attis_9, SoilAssassin_9, Matteo_9, Bjanes7_9, Pickett_9
- Track 13 : Vasanti_9
- Track 14 : Sahara_9
- Track 15 : Yeezy_9
- Track 16 : PantheRoc_9, Ohgeesy_9
- Track 17 : BaxterFox_9
- Track 18 : Mcklovin_10, Agueybana_9, Nymphadora_9, AlumE_9, Bialota_9, BoyNamedSue_9, Madeline_9, Bosnia_9
- Track 19 : Clark_10, Annalisa_10, Dorito_9, PhriskyACE_9
- Track 20 : MichaelScott_10, DobbysSock_9, Suerte_9, WinkNick_10, Easley_10, Dolores_10, Oregano_10, Samman98_10, Beenie_10, Thimann_10
- Track 21 : Shlim410_9, Hortense_9, Adora_9
- Track 22 : Howe_9, Twinkle_9
- Track 23 : Powerball_9
- Track 24 : Sekhmet_10
- Track 25 : Denise_9
- Track 26 : OneDirection_9
- Track 27 : Faith5x5_9
- Track 28 : Moosehead_9
- Track 29 : Sidious_9
- Track 30 : RavenCo17_9
- Track 31 : Jace_8
- Track 32 : Finkle_9

- Track 33 : REQ3_43
- Track 34 : Mbo4_9
- Track 35 : GMA1_9
- Track 36 : Gudmit_10
- Track 37 : TinyDot_11
- Track 38 : Eyre_9

Summary of Final Annotations (See graph section above for start numbers):

The start number called the most often in the published annotations is 12, it was called in 26 of the 85 non-draft genes in the pham.

Genes that call this "Most Annotated" start:

- Adora_9, Agueybana_9, AlumE_9, Bialota_9, Bosnia_9, BoyNamedSue_9, Bunnybear_9, Eudoria_9, Hortense_9, Kita_9, Madeline_9, Manasvini_9, Mcklovin_10, Neobush_9, Nymphadora_9, Ohgeesy_9, PantheRoc_9, Polly_9, Shlim410_9, Sidious_9, Suscepit_9, Tayonia_9, Trumpet_9, WelcomeAyanna_9, Yeezy_9, Zameen_9,

Genes that have the "Most Annotated" start but do not call it:

- Antonio_9, BatStarr_9, BaxterFox_9, Eviarto_9, Herod_9, Howe_9, Hugley_9, Hyzer_9, Maridalia_9, ThankyouJordi_9, TimTam_9, Twinkle_9, Zirinka_9,

Genes that do not have the "Most Annotated" start:

- Annalisa_10, Attis_9, Beenie_10, Bjaner7_9, Clap_9, Clark_10, Cynthia_9, Denise_9, DobbysSock_9, Dolores_10, Dorito_9, Easley_10, Ebert_9, EdnaMode_9, Eyre_9, Faith5x5_9, Finkle_9, GMA1_9, GemG_9, Gizermo_9, Gudmit_10, Haley23_9, JCole_9, Jace_8, Lamberg_9, LordFarquaad_9, Lton_9, Matteo_9, Mbo4_9, MichaelScott_10, Mocha12_9, Moosehead_9, Nettuno_9, OneDirection_9, Oregano_10, Pepperoni_9, PhriskyACE_9, Pickett_9, Powerball_9, REQ3_43, RavenCo17_9, Sahara_9, Samman98_10, Savage_9, Sekhmet_10, SoilAssassin_9, Sproutie_9, Suerte_9, Thimann_10, TinyDot_11, TuertoX_9, Vasanti_9, Whiteclaw_9, WinkNick_10, Yeet412_9,

Summary by start number:

Start 10:

- Found in 17 of 94 (18.1%) of genes in pham
- Manual Annotations of this start: 4 of 85
- Called 23.5% of time when present
- Phage (with cluster) where this start called: BatStarr_9 (CZ1), Herod_9 (CZ1), ThankyouJordi_9 (CZ1), Zirinka_9 (CZ1),

Start 12:

- Found in 39 of 94 (41.5%) of genes in pham
- Manual Annotations of this start: 26 of 85
- Called 66.7% of time when present
- Phage (with cluster) where this start called: Adora_9 (CZ4), Agueybana_9 (CZ1), AlumE_9 (CZ1), Bialota_9 (CZ1), Bosnia_9 (CZ1), BoyNamedSue_9 (CZ1), Bunnybear_9 (CZ), Eudoria_9 (CZ1), Hortense_9 (CZ4), Kita_9 (CZ1), Madeline_9

(CZ1), Manasvini_9 (CZ1), Mcklovin_10 (CZ4), Neobush_9 (CZ1), Nymphadora_9 (CZ1), Ohgeesy_9 (CZ), PantheRoc_9 (CZ3), Polly_9 (CZ1), Shlim410_9 (CZ4), Sidious_9 (CZ7), Suscepit_9 (CZ1), Tayonia_9 (CZ1), Trumpet_9 (CZ1), WelcomeAyanna_9 (CZ1), Yeezy_9 (CZ3), Zameen_9 (CZ1),

Start 13:

- Found in 16 of 94 (17.0%) of genes in pham
- Manual Annotations of this start: 13 of 85
- Called 93.8% of time when present
- Phage (with cluster) where this start called: Annalisa_10 (CZ4), Beenie_10 (CZ4), Clark_10 (CZ4), DobbysSock_9 (CZ4), Dolores_10 (CZ4), Dorito_9 (CZ4), Easley_10 (CZ4), MichaelScott_10 (CZ4), Oregano_10 (CZ4), PhriskyACE_9 (CZ4), Powerball_9 (CZ4), Samman98_10 (CZ4), Suerte_9 (CZ4), Thimann_10 (CZ4), WinkNick_10 (CZ4),

Start 14:

- Found in 29 of 94 (30.9%) of genes in pham
- Manual Annotations of this start: 4 of 85
- Called 20.7% of time when present
- Phage (with cluster) where this start called: Antonio_9 (CZ1), Eviarto_9 (CZ1), Hugley_9 (CZ1), Hyzer_9 (CZ1), Maridalia_9 (CZ1), TimTam_9 (CZ1),

Start 16:

- Found in 1 of 94 (1.1%) of genes in pham
- Manual Annotations of this start: 1 of 85
- Called 100.0% of time when present
- Phage (with cluster) where this start called: Jace_8 (singleton),

Start 17:

- Found in 5 of 94 (5.3%) of genes in pham
- Manual Annotations of this start: 2 of 85
- Called 40.0% of time when present
- Phage (with cluster) where this start called: Howe_9 (CZ4), Twinkle_9 (CZ4),

Start 18:

- Found in 1 of 94 (1.1%) of genes in pham
- Manual Annotations of this start: 1 of 85
- Called 100.0% of time when present
- Phage (with cluster) where this start called: Finkle_9 (singleton),

Start 19:

- Found in 11 of 94 (11.7%) of genes in pham
- Manual Annotations of this start: 8 of 85
- Called 100.0% of time when present
- Phage (with cluster) where this start called: Eyre_9 (singleton), Faith5x5_9 (CZ6), GMA1_9 (singleton), Gudmit_10 (singleton), Lton_9 (CZ), Moosehead_9 (CZ6), OneDirection_9 (CZ6), Pepperoni_9 (CZ), REQ3_43 (singleton), RavenCo17_9 (CZ8), TinyDot_11 (singleton),

Start 20:

- Found in 26 of 94 (27.7%) of genes in pham
- Manual Annotations of this start: 2 of 85
- Called 7.7% of time when present

- Phage (with cluster) where this start called: BaxterFox_9 (CZ3), Sekhmet_10 (CZ4),

Start 22:

- Found in 27 of 94 (28.7%) of genes in pham
- Manual Annotations of this start: 24 of 85
- Called 96.3% of time when present
- Phage (with cluster) where this start called: Attis_9 (CZ2), Bjaner7_9 (CZ2), Clap_9 (CZ2), Cynthia_9 (CZ2), Denise_9 (CZ5), Ebert_9 (CZ2), EdnaMode_9 (CZ2), GemG_9 (CZ2), Gizermo_9 (CZ2), Haley23_9 (CZ2), JCole_9 (CZ2), Lamberg_9 (CZ2), LordFarquaad_9 (CZ2), Matteo_9 (CZ2), Mbo4_9 (singleton), Mocha12_9 (CZ2), Nettuno_9 (CZ2), Pickett_9 (CZ2), Sahara_9 (CZ2), Savage_9 (CZ2), SoilAssassin_9 (CZ2), Sproutie_9 (CZ2), TuertoX_9 (CZ2), Vasanti_9 (CZ2), Whiteclaw_9 (CZ2), Yeet412_9 (CZ2),

Summary by clusters:

There are 10 clusters represented in this pham: singleton, CZ2, CZ3, CZ1, CZ6, CZ7, CZ4, CZ5, CZ, CZ8,

Info for manual annotations of cluster CZ:

- Start number 12 was manually annotated 2 times for cluster CZ.
- Start number 19 was manually annotated 1 time for cluster CZ.

Info for manual annotations of cluster CZ1:

- Start number 10 was manually annotated 4 times for cluster CZ1.
- Start number 12 was manually annotated 17 times for cluster CZ1.
- Start number 14 was manually annotated 4 times for cluster CZ1.

Info for manual annotations of cluster CZ2:

- Start number 22 was manually annotated 23 times for cluster CZ2.

Info for manual annotations of cluster CZ3:

- Start number 12 was manually annotated 2 times for cluster CZ3.
- Start number 20 was manually annotated 1 time for cluster CZ3.

Info for manual annotations of cluster CZ4:

- Start number 12 was manually annotated 4 times for cluster CZ4.
- Start number 13 was manually annotated 13 times for cluster CZ4.
- Start number 17 was manually annotated 2 times for cluster CZ4.
- Start number 20 was manually annotated 1 time for cluster CZ4.

Info for manual annotations of cluster CZ5:

- Start number 22 was manually annotated 1 time for cluster CZ5.

Info for manual annotations of cluster CZ6:

- Start number 19 was manually annotated 3 times for cluster CZ6.

Info for manual annotations of cluster CZ7:

- Start number 12 was manually annotated 1 time for cluster CZ7.

Info for manual annotations of cluster CZ8:

- Start number 19 was manually annotated 1 time for cluster CZ8.

Gene Information:

Gene: Adora_9 Start: 6677, Stop: 7039, Start Num: 12

Candidate Starts for Adora_9:

(5, 6473), (Start: 12 @6677 has 26 MA's), (Start: 17 @6719 has 2 MA's), (Start: 20 @6725 has 2 MA's), (30, 6800), (33, 6818), (41, 6878), (43, 6899), (45, 6935), (46, 6938),

Gene: Agueybana_9 Start: 7344, Stop: 7697, Start Num: 12

Candidate Starts for Agueybana_9:

(Start: 10 @7329 has 4 MA's), (Start: 12 @7344 has 26 MA's), (Start: 14 @7377 has 4 MA's), (26, 7419), (32, 7470), (40, 7533), (43, 7557),

Gene: AlumE_9 Start: 7344, Stop: 7697, Start Num: 12

Candidate Starts for AlumE_9:

(Start: 10 @7329 has 4 MA's), (Start: 12 @7344 has 26 MA's), (Start: 14 @7377 has 4 MA's), (26, 7419), (32, 7470), (40, 7533), (43, 7557),

Gene: Annalisa_10 Start: 7010, Stop: 7345, Start Num: 13

Candidate Starts for Annalisa_10:

(Start: 13 @7010 has 13 MA's), (Start: 20 @7031 has 2 MA's), (26, 7067), (42, 7190), (43, 7205),

Gene: Antonio_9 Start: 7377, Stop: 7697, Start Num: 14

Candidate Starts for Antonio_9:

(Start: 12 @7344 has 26 MA's), (Start: 14 @7377 has 4 MA's), (26, 7419), (32, 7470), (40, 7533), (43, 7557),

Gene: Attis_9 Start: 6508, Stop: 6834, Start Num: 22

Candidate Starts for Attis_9:

(1, 6034), (2, 6163), (Start: 22 @6508 has 24 MA's), (24, 6535), (29, 6577), (34, 6601), (36, 6616), (41, 6658), (46, 6718),

Gene: BatStarr_9 Start: 7329, Stop: 7697, Start Num: 10

Candidate Starts for BatStarr_9:

(Start: 10 @7329 has 4 MA's), (Start: 12 @7344 has 26 MA's), (Start: 14 @7377 has 4 MA's), (26, 7419), (32, 7470), (40, 7533), (43, 7557),

Gene: BaxterFox_9 Start: 6731, Stop: 7045, Start Num: 20

Candidate Starts for BaxterFox_9:

(3, 6434), (9, 6527), (Start: 12 @6680 has 26 MA's), (Start: 20 @6731 has 2 MA's), (43, 6905), (45, 6941),

Gene: Beenie_10 Start: 7004, Stop: 7339, Start Num: 13

Candidate Starts for Beenie_10:

(Start: 13 @7004 has 13 MA's), (Start: 20 @7025 has 2 MA's), (26, 7061), (39, 7151), (42, 7184), (43, 7199),

Gene: Bialota_9 Start: 7344, Stop: 7697, Start Num: 12

Candidate Starts for Bialota_9:

(Start: 10 @7329 has 4 MA's), (Start: 12 @7344 has 26 MA's), (Start: 14 @7377 has 4 MA's), (26, 7419), (32, 7470), (40, 7533), (43, 7557),

Gene: Bjaner7_9 Start: 6508, Stop: 6834, Start Num: 22

Candidate Starts for Bjaner7_9:

(1, 6034), (2, 6163), (Start: 22 @6508 has 24 MA's), (24, 6535), (29, 6577), (34, 6601), (36, 6616), (41, 6658), (46, 6718),

Gene: Bosnia_9 Start: 7344, Stop: 7697, Start Num: 12

Candidate Starts for Bosnia_9:

(Start: 10 @7329 has 4 MA's), (Start: 12 @7344 has 26 MA's), (Start: 14 @7377 has 4 MA's), (26, 7419), (32, 7470), (40, 7533), (43, 7557),

Gene: BoyNamedSue_9 Start: 7344, Stop: 7697, Start Num: 12

Candidate Starts for BoyNamedSue_9:

(Start: 10 @7329 has 4 MA's), (Start: 12 @7344 has 26 MA's), (Start: 14 @7377 has 4 MA's), (26, 7419), (32, 7470), (40, 7533), (43, 7557),

Gene: Bunnybear_9 Start: 7335, Stop: 7688, Start Num: 12

Candidate Starts for Bunnybear_9:

(Start: 10 @7320 has 4 MA's), (Start: 12 @7335 has 26 MA's), (Start: 14 @7368 has 4 MA's), (26, 7410), (32, 7461), (40, 7524), (43, 7548), (49, 7617),

Gene: Clap_9 Start: 6508, Stop: 6834, Start Num: 22

Candidate Starts for Clap_9:

(1, 6034), (2, 6163), (Start: 22 @6508 has 24 MA's), (24, 6535), (29, 6577), (34, 6601), (36, 6616), (41, 6658), (46, 6718), (47, 6724),

Gene: Clark_10 Start: 7010, Stop: 7345, Start Num: 13

Candidate Starts for Clark_10:

(Start: 13 @7010 has 13 MA's), (Start: 20 @7031 has 2 MA's), (26, 7067), (42, 7190), (43, 7205),

Gene: Cynthia_9 Start: 6508, Stop: 6834, Start Num: 22

Candidate Starts for Cynthia_9:

(1, 6034), (2, 6163), (Start: 22 @6508 has 24 MA's), (24, 6535), (29, 6577), (34, 6601), (36, 6616), (41, 6658), (46, 6718), (47, 6724),

Gene: Denise_9 Start: 6517, Stop: 6843, Start Num: 22

Candidate Starts for Denise_9:

(Start: 22 @6517 has 24 MA's), (24, 6544), (29, 6586), (34, 6610), (36, 6625), (41, 6667), (46, 6727),

Gene: DobbysSock_9 Start: 6502, Stop: 6837, Start Num: 13

Candidate Starts for DobbysSock_9:

(Start: 13 @6502 has 13 MA's), (Start: 20 @6523 has 2 MA's), (26, 6559), (39, 6649), (42, 6682), (43, 6697),

Gene: Dolores_10 Start: 7004, Stop: 7339, Start Num: 13

Candidate Starts for Dolores_10:

(Start: 13 @7004 has 13 MA's), (Start: 20 @7025 has 2 MA's), (26, 7061), (39, 7151), (42, 7184), (43, 7199),

Gene: Dorito_9 Start: 6508, Stop: 6843, Start Num: 13

Candidate Starts for Dorito_9:

(Start: 13 @6508 has 13 MA's), (Start: 20 @6529 has 2 MA's), (26, 6565), (42, 6688), (43, 6703),

Gene: Easley_10 Start: 7004, Stop: 7339, Start Num: 13

Candidate Starts for Easley_10:

(Start: 13 @7004 has 13 MA's), (Start: 20 @7025 has 2 MA's), (26, 7061), (39, 7151), (42, 7184), (43, 7199),

Gene: Ebert_9 Start: 6508, Stop: 6834, Start Num: 22

Candidate Starts for Ebert_9:

(1, 6034), (2, 6163), (Start: 22 @6508 has 24 MA's), (24, 6535), (29, 6577), (34, 6601), (36, 6616), (41, 6658), (46, 6718), (47, 6724),

Gene: EdnaMode_9 Start: 6508, Stop: 6834, Start Num: 22

Candidate Starts for EdnaMode_9:

(Start: 22 @6508 has 24 MA's), (24, 6535), (33, 6598), (34, 6601), (36, 6616), (41, 6658), (46, 6718),

Gene: Eudoria_9 Start: 7344, Stop: 7697, Start Num: 12

Candidate Starts for Eudoria_9:

(Start: 12 @7344 has 26 MA's), (Start: 14 @7377 has 4 MA's), (26, 7419), (32, 7470), (40, 7533), (43, 7557),

Gene: Eviarto_9 Start: 7377, Stop: 7697, Start Num: 14

Candidate Starts for Eviarto_9:

(Start: 10 @7329 has 4 MA's), (Start: 12 @7344 has 26 MA's), (Start: 14 @7377 has 4 MA's), (26, 7419), (32, 7470), (40, 7533), (43, 7557),

Gene: Eyre_9 Start: 7136, Stop: 7498, Start Num: 19

Candidate Starts for Eyre_9:

(4, 6848), (6, 6884), (Start: 19 @7136 has 8 MA's), (29, 7217), (36, 7256), (47, 7364), (52, 7439),

Gene: Faith5x5_9 Start: 6467, Stop: 6802, Start Num: 19

Candidate Starts for Faith5x5_9:

(Start: 19 @6467 has 8 MA's), (24, 6503), (25, 6506), (26, 6509), (29, 6545), (34, 6569), (36, 6584), (39, 6599), (44, 6659),

Gene: Finkle_9 Start: 6638, Stop: 6967, Start Num: 18

Candidate Starts for Finkle_9:

(Start: 18 @6638 has 1 MA's), (26, 6677), (27, 6686), (39, 6776), (41, 6803), (43, 6824), (49, 6896),

Gene: GMA1_9 Start: 6867, Stop: 7187, Start Num: 19

Candidate Starts for GMA1_9:

(7, 6651), (8, 6669), (Start: 19 @6867 has 8 MA's), (Start: 22 @6876 has 24 MA's), (23, 6885), (55, 7179),

Gene: GemG_9 Start: 6508, Stop: 6834, Start Num: 22

Candidate Starts for GemG_9:

(1, 6034), (2, 6163), (Start: 22 @6508 has 24 MA's), (24, 6535), (29, 6577), (34, 6601), (36, 6616), (41, 6658), (46, 6718), (47, 6724),

Gene: Gizermo_9 Start: 6508, Stop: 6834, Start Num: 22

Candidate Starts for Gizermo_9:

(1, 6034), (2, 6163), (Start: 22 @6508 has 24 MA's), (24, 6535), (29, 6577), (34, 6601), (36, 6616), (41, 6658), (46, 6718), (47, 6724),

Gene: Gudmit_10 Start: 7283, Stop: 7618, Start Num: 19

Candidate Starts for Gudmit_10:

(Start: 19 @7283 has 8 MA's), (24, 7319), (25, 7322), (26, 7325), (28, 7358), (29, 7361), (33, 7382), (34, 7385), (35, 7394), (36, 7400), (38, 7412), (39, 7415),

Gene: Haley23_9 Start: 6508, Stop: 6834, Start Num: 22

Candidate Starts for Haley23_9:

(1, 6034), (2, 6163), (Start: 22 @6508 has 24 MA's), (24, 6535), (29, 6577), (34, 6601), (36, 6616), (41, 6658), (46, 6718), (47, 6724),

Gene: Herod_9 Start: 7329, Stop: 7697, Start Num: 10

Candidate Starts for Herod_9:

(Start: 10 @7329 has 4 MA's), (Start: 12 @7344 has 26 MA's), (Start: 14 @7377 has 4 MA's), (26, 7419), (32, 7470), (40, 7533), (43, 7557),

Gene: Hortense_9 Start: 6677, Stop: 7039, Start Num: 12

Candidate Starts for Hortense_9:

(5, 6473), (Start: 12 @6677 has 26 MA's), (Start: 17 @6719 has 2 MA's), (Start: 20 @6725 has 2 MA's), (30, 6800), (33, 6818), (41, 6878), (43, 6899), (45, 6935), (46, 6938),

Gene: Howe_9 Start: 6719, Stop: 7039, Start Num: 17

Candidate Starts for Howe_9:

(5, 6473), (Start: 12 @6677 has 26 MA's), (Start: 17 @6719 has 2 MA's), (Start: 20 @6725 has 2 MA's), (30, 6800), (33, 6818), (41, 6878), (43, 6899), (45, 6935), (46, 6938),

Gene: Hugley_9 Start: 7377, Stop: 7697, Start Num: 14

Candidate Starts for Hugley_9:

(Start: 10 @7329 has 4 MA's), (Start: 12 @7344 has 26 MA's), (Start: 14 @7377 has 4 MA's), (26, 7419), (32, 7470), (40, 7533), (43, 7557),

Gene: Hyzer_9 Start: 7378, Stop: 7698, Start Num: 14

Candidate Starts for Hyzer_9:

(Start: 12 @7345 has 26 MA's), (Start: 14 @7378 has 4 MA's), (26, 7420), (32, 7471), (39, 7510), (40, 7534), (41, 7537), (43, 7558),

Gene: JCole_9 Start: 6508, Stop: 6834, Start Num: 22

Candidate Starts for JCole_9:

(1, 6034), (2, 6163), (Start: 22 @6508 has 24 MA's), (24, 6535), (29, 6577), (34, 6601), (36, 6616), (41, 6658), (46, 6718), (47, 6724),

Gene: Jace_8 Start: 7053, Stop: 7382, Start Num: 16

Candidate Starts for Jace_8:

(Start: 16 @7053 has 1 MA's), (24, 7095), (32, 7152), (34, 7161), (38, 7188), (39, 7191), (43, 7239), (55, 7374),

Gene: Kita_9 Start: 7344, Stop: 7697, Start Num: 12

Candidate Starts for Kita_9:

(Start: 12 @7344 has 26 MA's), (Start: 14 @7377 has 4 MA's), (26, 7419), (32, 7470), (40, 7533), (43, 7557),

Gene: Lamberg_9 Start: 6508, Stop: 6834, Start Num: 22

Candidate Starts for Lamberg_9:

(Start: 22 @6508 has 24 MA's), (24, 6535), (33, 6598), (34, 6601), (36, 6616), (41, 6658), (46, 6718),

Gene: LordFarquaad_9 Start: 6508, Stop: 6834, Start Num: 22

Candidate Starts for LordFarquaad_9:

(1, 6034), (2, 6163), (Start: 22 @6508 has 24 MA's), (24, 6535), (29, 6577), (34, 6601), (36, 6616), (41, 6658), (46, 6718),

Gene: Lton_9 Start: 6521, Stop: 6856, Start Num: 19

Candidate Starts for Lton_9:

(9, 6320), (Start: 19 @6521 has 8 MA's), (24, 6557), (25, 6560), (33, 6620), (34, 6623), (36, 6638), (40, 6677), (44, 6713), (48, 6758), (51, 6794), (53, 6809),

Gene: Madeline_9 Start: 7344, Stop: 7697, Start Num: 12

Candidate Starts for Madeline_9:

(Start: 10 @7329 has 4 MA's), (Start: 12 @7344 has 26 MA's), (Start: 14 @7377 has 4 MA's), (26, 7419), (32, 7470), (40, 7533), (43, 7557),

Gene: Manasvini_9 Start: 7344, Stop: 7697, Start Num: 12

Candidate Starts for Manasvini_9:

(Start: 12 @7344 has 26 MA's), (Start: 14 @7377 has 4 MA's), (26, 7419), (32, 7470), (40, 7533), (43, 7557),

Gene: Maridalia_9 Start: 7377, Stop: 7697, Start Num: 14

Candidate Starts for Maridalia_9:

(Start: 12 @7344 has 26 MA's), (Start: 14 @7377 has 4 MA's), (26, 7419), (32, 7470), (40, 7533), (43, 7557),

Gene: Matteo_9 Start: 6508, Stop: 6834, Start Num: 22

Candidate Starts for Matteo_9:

(1, 6034), (2, 6163), (Start: 22 @6508 has 24 MA's), (24, 6535), (29, 6577), (34, 6601), (36, 6616), (41, 6658), (46, 6718),

Gene: Mbo4_9 Start: 7186, Stop: 7509, Start Num: 22

Candidate Starts for Mbo4_9:

(15, 7159), (21, 7180), (Start: 22 @7186 has 24 MA's), (31, 7264), (46, 7399),

Gene: Mcklovin_10 Start: 7803, Stop: 8156, Start Num: 12

Candidate Starts for Mcklovin_10:

(Start: 10 @7788 has 4 MA's), (Start: 12 @7803 has 26 MA's), (Start: 14 @7836 has 4 MA's), (26, 7878), (32, 7929), (40, 7992), (43, 8016),

Gene: MichaelScott_10 Start: 7004, Stop: 7339, Start Num: 13

Candidate Starts for MichaelScott_10:

(Start: 13 @7004 has 13 MA's), (Start: 20 @7025 has 2 MA's), (26, 7061), (39, 7151), (42, 7184), (43, 7199),

Gene: Mocha12_9 Start: 6508, Stop: 6834, Start Num: 22

Candidate Starts for Mocha12_9:

(1, 6034), (2, 6163), (Start: 22 @6508 has 24 MA's), (24, 6535), (29, 6577), (34, 6601), (36, 6616), (41, 6658), (46, 6718), (47, 6724),

Gene: Moosehead_9 Start: 6464, Stop: 6799, Start Num: 19

Candidate Starts for Moosehead_9:

(Start: 19 @6464 has 8 MA's), (24, 6500), (25, 6503), (26, 6506), (29, 6542), (33, 6563), (34, 6566), (35, 6575), (36, 6581), (37, 6584), (38, 6593), (41, 6623),

Gene: Neobush_9 Start: 7344, Stop: 7697, Start Num: 12
Candidate Starts for Neobush_9:
(Start: 12 @7344 has 26 MA's), (Start: 14 @7377 has 4 MA's), (26, 7419), (32, 7470), (40, 7533), (43, 7557),

Gene: Nettuno_9 Start: 6508, Stop: 6834, Start Num: 22
Candidate Starts for Nettuno_9:
(Start: 22 @6508 has 24 MA's), (24, 6535), (33, 6598), (34, 6601), (36, 6616), (41, 6658), (46, 6718),

Gene: Nymphadora_9 Start: 7344, Stop: 7697, Start Num: 12
Candidate Starts for Nymphadora_9:
(Start: 10 @7329 has 4 MA's), (Start: 12 @7344 has 26 MA's), (Start: 14 @7377 has 4 MA's), (26, 7419), (32, 7470), (40, 7533), (43, 7557),

Gene: Ohgeesy_9 Start: 6680, Stop: 7045, Start Num: 12
Candidate Starts for Ohgeesy_9:
(3, 6434), (9, 6527), (Start: 12 @6680 has 26 MA's), (Start: 20 @6731 has 2 MA's), (43, 6905), (45, 6941),

Gene: OneDirection_9 Start: 6465, Stop: 6800, Start Num: 19
Candidate Starts for OneDirection_9:
(Start: 19 @6465 has 8 MA's), (24, 6501), (33, 6564), (34, 6567), (35, 6576), (36, 6582), (37, 6585), (41, 6624), (46, 6684), (48, 6702),

Gene: Oregano_10 Start: 6675, Stop: 7010, Start Num: 13
Candidate Starts for Oregano_10:
(Start: 13 @6675 has 13 MA's), (Start: 20 @6696 has 2 MA's), (26, 6732), (39, 6822), (42, 6855), (43, 6870),

Gene: PantheRoc_9 Start: 6680, Stop: 7045, Start Num: 12
Candidate Starts for PantheRoc_9:
(3, 6434), (9, 6527), (Start: 12 @6680 has 26 MA's), (Start: 20 @6731 has 2 MA's), (43, 6905), (45, 6941),

Gene: Pepperoni_9 Start: 6815, Stop: 7150, Start Num: 19
Candidate Starts for Pepperoni_9:
(9, 6614), (Start: 19 @6815 has 8 MA's), (24, 6851), (25, 6854), (33, 6914), (34, 6917), (36, 6932), (40, 6971), (44, 7007), (48, 7052), (51, 7088), (53, 7103),

Gene: PhriskyACE_9 Start: 6508, Stop: 6843, Start Num: 13
Candidate Starts for PhriskyACE_9:
(Start: 13 @6508 has 13 MA's), (Start: 20 @6529 has 2 MA's), (26, 6565), (42, 6688), (43, 6703),

Gene: Pickett_9 Start: 6508, Stop: 6834, Start Num: 22
Candidate Starts for Pickett_9:
(1, 6034), (2, 6163), (Start: 22 @6508 has 24 MA's), (24, 6535), (29, 6577), (34, 6601), (36, 6616), (41, 6658), (46, 6718),

Gene: Polly_9 Start: 7344, Stop: 7697, Start Num: 12
Candidate Starts for Polly_9:
(Start: 12 @7344 has 26 MA's), (Start: 14 @7377 has 4 MA's), (26, 7419), (32, 7470), (40, 7533), (43, 7557),

Gene: Powerball_9 Start: 6508, Stop: 6843, Start Num: 13
Candidate Starts for Powerball_9:
(Start: 13 @6508 has 13 MA's), (Start: 20 @6529 has 2 MA's), (26, 6565), (43, 6703),

Gene: REQ3_43 Start: 23906, Stop: 24238, Start Num: 19
Candidate Starts for REQ3_43:
(11, 23846), (Start: 19 @23906 has 8 MA's), (24, 23942), (29, 23984), (40, 24065), (43, 24089), (46, 24128),

Gene: RavenCo17_9 Start: 7317, Stop: 7679, Start Num: 19
Candidate Starts for RavenCo17_9:
(Start: 19 @7317 has 8 MA's), (29, 7398), (36, 7437), (47, 7545), (52, 7620),

Gene: Sahara_9 Start: 6524, Stop: 6850, Start Num: 22
Candidate Starts for Sahara_9:
(Start: 22 @6524 has 24 MA's), (24, 6551), (33, 6614), (34, 6617), (36, 6632), (41, 6674),

Gene: Samman98_10 Start: 7004, Stop: 7339, Start Num: 13
Candidate Starts for Samman98_10:
(Start: 13 @7004 has 13 MA's), (Start: 20 @7025 has 2 MA's), (26, 7061), (39, 7151), (42, 7184), (43, 7199),

Gene: Savage_9 Start: 6508, Stop: 6834, Start Num: 22
Candidate Starts for Savage_9:
(1, 6034), (2, 6163), (Start: 22 @6508 has 24 MA's), (24, 6535), (29, 6577), (34, 6601), (36, 6616), (41, 6658), (46, 6718), (47, 6724),

Gene: Sekhmet_10 Start: 7025, Stop: 7339, Start Num: 20
Candidate Starts for Sekhmet_10:
(Start: 13 @7004 has 13 MA's), (Start: 20 @7025 has 2 MA's), (26, 7061), (39, 7151), (42, 7184), (43, 7199),

Gene: Shlim410_9 Start: 6677, Stop: 7039, Start Num: 12
Candidate Starts for Shlim410_9:
(5, 6473), (Start: 12 @6677 has 26 MA's), (Start: 17 @6719 has 2 MA's), (Start: 20 @6725 has 2 MA's), (30, 6800), (33, 6818), (41, 6878), (43, 6899), (45, 6935), (46, 6938),

Gene: Sidious_9 Start: 6674, Stop: 7039, Start Num: 12
Candidate Starts for Sidious_9:
(3, 6434), (Start: 12 @6674 has 26 MA's), (Start: 20 @6725 has 2 MA's), (43, 6899),

Gene: SoilAssassin_9 Start: 6508, Stop: 6834, Start Num: 22
Candidate Starts for SoilAssassin_9:
(1, 6034), (2, 6163), (Start: 22 @6508 has 24 MA's), (24, 6535), (29, 6577), (34, 6601), (36, 6616), (41, 6658), (46, 6718),

Gene: Sproutie_9 Start: 6508, Stop: 6834, Start Num: 22
Candidate Starts for Sproutie_9:
(1, 6034), (2, 6163), (Start: 22 @6508 has 24 MA's), (24, 6535), (29, 6577), (34, 6601), (36, 6616), (41, 6658), (46, 6718), (47, 6724),

Gene: Suerte_9 Start: 6502, Stop: 6837, Start Num: 13
Candidate Starts for Suerte_9:

(Start: 13 @6502 has 13 MA's), (Start: 20 @6523 has 2 MA's), (26, 6559), (39, 6649), (42, 6682), (43, 6697),

Gene: Suscepit_9 Start: 7344, Stop: 7697, Start Num: 12

Candidate Starts for Suscepit_9:

(Start: 12 @7344 has 26 MA's), (Start: 14 @7377 has 4 MA's), (26, 7419), (32, 7470), (40, 7533), (43, 7557),

Gene: Tayonia_9 Start: 7344, Stop: 7697, Start Num: 12

Candidate Starts for Tayonia_9:

(Start: 12 @7344 has 26 MA's), (Start: 14 @7377 has 4 MA's), (26, 7419), (32, 7470), (40, 7533), (43, 7557),

Gene: ThankyouJordi_9 Start: 7327, Stop: 7695, Start Num: 10

Candidate Starts for ThankyouJordi_9:

(Start: 10 @7327 has 4 MA's), (Start: 12 @7342 has 26 MA's), (Start: 14 @7375 has 4 MA's), (26, 7417), (32, 7468), (40, 7531), (43, 7555), (46, 7594),

Gene: Thimann_10 Start: 7004, Stop: 7339, Start Num: 13

Candidate Starts for Thimann_10:

(Start: 13 @7004 has 13 MA's), (Start: 20 @7025 has 2 MA's), (26, 7061), (39, 7151), (42, 7184), (43, 7199),

Gene: TimTam_9 Start: 7377, Stop: 7697, Start Num: 14

Candidate Starts for TimTam_9:

(Start: 10 @7329 has 4 MA's), (Start: 12 @7344 has 26 MA's), (Start: 14 @7377 has 4 MA's), (26, 7419), (32, 7470), (40, 7533), (43, 7557),

Gene: TinyDot_11 Start: 7635, Stop: 7961, Start Num: 19

Candidate Starts for TinyDot_11:

(Start: 19 @7635 has 8 MA's), (38, 7764), (53, 7920), (54, 7929),

Gene: Trumpet_9 Start: 7344, Stop: 7697, Start Num: 12

Candidate Starts for Trumpet_9:

(Start: 12 @7344 has 26 MA's), (Start: 14 @7377 has 4 MA's), (26, 7419), (32, 7470), (40, 7533), (43, 7557),

Gene: TuertoX_9 Start: 6508, Stop: 6834, Start Num: 22

Candidate Starts for TuertoX_9:

(1, 6034), (2, 6163), (Start: 22 @6508 has 24 MA's), (24, 6535), (29, 6577), (34, 6601), (36, 6616), (41, 6658), (46, 6718), (47, 6724),

Gene: Twinkle_9 Start: 6719, Stop: 7039, Start Num: 17

Candidate Starts for Twinkle_9:

(5, 6473), (Start: 12 @6677 has 26 MA's), (Start: 17 @6719 has 2 MA's), (Start: 20 @6725 has 2 MA's), (30, 6800), (33, 6818), (41, 6878), (43, 6899), (45, 6935), (46, 6938),

Gene: Vasanti_9 Start: 6512, Stop: 6853, Start Num: 22

Candidate Starts for Vasanti_9:

(1, 6038), (2, 6167), (Start: 22 @6512 has 24 MA's), (24, 6539), (29, 6581), (33, 6602), (34, 6605), (36, 6620), (40, 6659), (50, 6785),

Gene: WelcomeAyanna_9 Start: 7342, Stop: 7695, Start Num: 12

Candidate Starts for WelcomeAyanna_9:

(Start: 10 @7327 has 4 MA's), (Start: 12 @7342 has 26 MA's), (Start: 14 @7375 has 4 MA's), (26, 7417), (32, 7468), (40, 7531), (43, 7555), (46, 7594),

Gene: Whiteclaw_9 Start: 6508, Stop: 6834, Start Num: 22

Candidate Starts for Whiteclaw_9:

(1, 6034), (2, 6163), (Start: 22 @6508 has 24 MA's), (24, 6535), (29, 6577), (34, 6601), (36, 6616), (41, 6658), (46, 6718), (47, 6724),

Gene: WinkNick_10 Start: 7004, Stop: 7339, Start Num: 13

Candidate Starts for WinkNick_10:

(Start: 13 @7004 has 13 MA's), (Start: 20 @7025 has 2 MA's), (26, 7061), (39, 7151), (42, 7184), (43, 7199),

Gene: Yeet412_9 Start: 6508, Stop: 6834, Start Num: 22

Candidate Starts for Yeet412_9:

(1, 6034), (2, 6163), (Start: 22 @6508 has 24 MA's), (24, 6535), (29, 6577), (34, 6601), (36, 6616), (41, 6658), (46, 6718),

Gene: Yeezy_9 Start: 6677, Stop: 7042, Start Num: 12

Candidate Starts for Yeezy_9:

(3, 6431), (9, 6524), (Start: 12 @6677 has 26 MA's), (Start: 20 @6728 has 2 MA's), (43, 6902),

Gene: Zameen_9 Start: 7344, Stop: 7697, Start Num: 12

Candidate Starts for Zameen_9:

(Start: 12 @7344 has 26 MA's), (Start: 14 @7377 has 4 MA's), (26, 7419), (32, 7470), (40, 7533), (43, 7557),

Gene: Zirinka_9 Start: 7329, Stop: 7697, Start Num: 10

Candidate Starts for Zirinka_9:

(Start: 10 @7329 has 4 MA's), (Start: 12 @7344 has 26 MA's), (Start: 14 @7377 has 4 MA's), (26, 7419), (32, 7470), (40, 7533), (43, 7557),