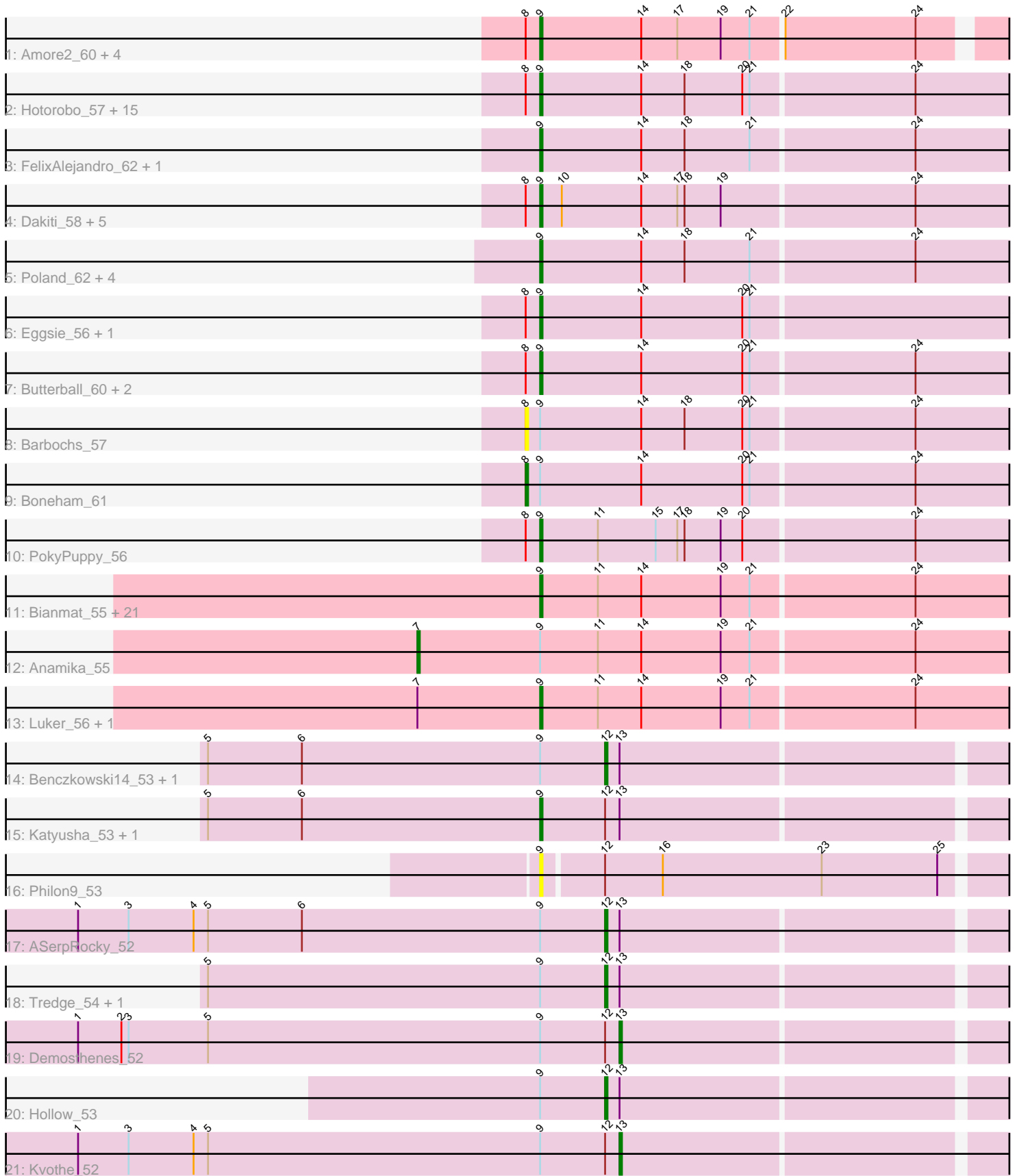


Pham 193948



Note: Tracks are now grouped by subcluster and scaled. Switching in subcluster is indicated by changes in track color. Track scale is now set by default to display the region 30 bp upstream of start 1 to 30 bp downstream of the last possible start. If this default region is judged to be packed too tightly with annotated starts, the track will be further scaled to only show that region of the ORF with annotated starts. This action will be indicated by adding "Zoomed" to the title. For starts, yellow indicates the location of called starts comprised solely of Glimmer/GeneMark auto-annotations, green indicates the location of called starts with at least 1 manual gene annotation.

Pham 193948 Report

This analysis was run 11/02/24 on database version 579.

Pham number 193948 has 78 members, 11 are drafts.

Phages represented in each track:

- Track 1 : Amore2_60, HayZem_60, Austin_59, GMA7_49, GTE7_48
- Track 2 : Hotorobo_57, Squibbles_56, BirksAndSocks_62, Exiguo_56, Beaver_60, RemRem_58, Lizzo_57, John316_60, Sam12_56, Monty_56, GourdThymes_57, Gorko_56, CathyBurgh_56, Ekhein_57, Breezic_57, Flakey_56
- Track 3 : FelixAlejandro_62, Sombrero_58
- Track 4 : Dakiti_58, BenoitCattle_57, BigShaq_56, PierreThree_56, Chelms_57, Linetti_57
- Track 5 : Poland_62, Msay19_62, Adgers_60, CinnamonToast_63, Jellybones_59
- Track 6 : Eggsie_56, Diabla_61
- Track 7 : Butterball_60, RoyalG_57, SteveFrench_56
- Track 8 : Barbochs_57
- Track 9 : Boneham_61
- Track 10 : PokyPuppy_56
- Track 11 : Bianmat_55, Guillaume_55, GalacticEye_55, Woes_55, Sticker17_55, Berries_55, Hello_55, Jams_55, Harambe_55, Lahirium_55, Shelley_55, Teal_55, Newt_56, Kaseim_55, MrWormie_55, Neoevie_55, Minos_56, Jormungandr_55, Charianelly_55, Nimi13_55, Damp_55, Lidong_55
- Track 12 : Anamika_55
- Track 13 : Luker_56, Hail2Pitt_54
- Track 14 : Benczkowski14_53, Niagara_53
- Track 15 : Katyusha_53, Teech_53
- Track 16 : Philon9_53
- Track 17 : ASerpRocky_52
- Track 18 : Tredge_54, Teatealatte_54
- Track 19 : Demosthenes_52
- Track 20 : Hollow_53
- Track 21 : Kvothe_52

Summary of Final Annotations (See graph section above for start numbers):

The start number called the most often in the published annotations is 9, it was called in 57 of the 67 non-draft genes in the pham.

Genes that call this "Most Annotated" start:

- Adgers_60, Amore2_60, Austin_59, Beaver_60, BenoitCattle_57, Berries_55, Bianmat_55, BigShaq_56, BirksAndSocks_62, Breezic_57, Butterball_60, CathyBurgh_56, Charianelly_55, Chelms_57, CinnamonToast_63, Dakiti_58, Damp_55, Diabla_61, Eggsie_56, Ekhein_57, Exiguo_56, FelixAlejandro_62, Flakey_56, GMA7_49, GTE7_48, GalacticEye_55, Gorko_56, GourdThymes_57, Guillaume_55, Hail2Pitt_54, Harambe_55, HayZem_60, Hello_55, Hotorobo_57, Jams_55, Jellybones_59, John316_60, Jormungandr_55, Kaseim_55, Katyusha_53, Lahirium_55, Lidong_55, Linetti_57, Lizzo_57, Luker_56, Minos_56, Monty_56, MrWormie_55, Msay19_62, Neoevie_55, Newt_56, Nimi13_55, Philon9_53, PierreThree_56, PokyPuppy_56, Poland_62, RemRem_58, RoyalG_57, Sam12_56, Shelley_55, Sombrero_58, Squibbles_56, SteveFrench_56, Sticker17_55, Teal_55, Teech_53, Woes_55,

Genes that have the "Most Annotated" start but do not call it:

- ASerpRocky_52, Anamika_55, Barbochs_57, Benczkowski14_53, Boneham_61, Demosthenes_52, Hollow_53, Kvothe_52, Niagara_53, Teatealatte_54, Tredge_54,

Genes that do not have the "Most Annotated" start:

-

Summary by start number:

Start 7:

- Found in 3 of 78 (3.8%) of genes in pham
- Manual Annotations of this start: 1 of 67
- Called 33.3% of time when present
- Phage (with cluster) where this start called: Anamika_55 (CS3),

Start 8:

- Found in 35 of 78 (44.9%) of genes in pham
- Manual Annotations of this start: 1 of 67
- Called 5.7% of time when present
- Phage (with cluster) where this start called: Barbochs_57 (CS2), Boneham_61 (CS2),

Start 9:

- Found in 78 of 78 (100.0%) of genes in pham
- Manual Annotations of this start: 57 of 67
- Called 85.9% of time when present
- Phage (with cluster) where this start called: Adgers_60 (CS2), Amore2_60 (CS1), Austin_59 (CS1), Beaver_60 (CS2), BenoitCattle_57 (CS2), Berries_55 (CS3), Bianmat_55 (CS3), BigShaq_56 (CS2), BirksAndSocks_62 (CS2), Breezic_57 (CS2), Butterball_60 (CS2), CathyBurgh_56 (CS2), Charianelly_55 (CS3), Chelms_57 (CS2), CinnamonToast_63 (CS2), Dakiti_58 (CS2), Damp_55 (CS3), Diabla_61 (CS2), Eggsie_56 (CS2), Ekhein_57 (CS2), Exiguo_56 (CS2), FelixAlejandro_62 (CS2), Flakey_56 (CS2), GMA7_49 (CS1), GTE7_48 (CS1), GalacticEye_55 (CS3), Gorko_56 (CS2), GourdThymes_57 (CS2), Guillaume_55 (CS3), Hail2Pitt_54 (CS3), Harambe_55 (CS3), HayZem_60 (CS1), Hello_55 (CS3), Hotorobo_57 (CS2), Jams_55 (CS3), Jellybones_59 (CS2), John316_60 (CS2), Jormungandr_55 (CS3), Kaseim_55 (CS3), Katyusha_53 (CS4), Lahirium_55 (CS3), Lidong_55 (CS3), Linetti_57 (CS2), Lizzo_57 (CS2), Luker_56 (CS3), Minos_56 (CS3), Monty_56 (CS2), MrWormie_55 (CS3), Msay19_62 (CS2), Neoevie_55 (CS3), Newt_56 (CS3), Nimi13_55 (CS3), Philon9_53 (CS4), PierreThree_56 (CS2), PokyPuppy_56 (CS2),

Poland_62 (CS2), RemRem_58 (CS2), RoyalG_57 (CS2), Sam12_56 (CS2), Shelley_55 (CS3), Sombrero_58 (CS2), Squibbles_56 (CS2), SteveFrench_56 (CS2), Sticker17_55 (CS3), Teal_55 (CS3), Teech_53 (CS4), Woes_55 (CS3),

Start 12:

- Found in 11 of 78 (14.1%) of genes in pham
- Manual Annotations of this start: 6 of 67
- Called 54.5% of time when present
- Phage (with cluster) where this start called: ASerpRocky_52 (CS4), Benczkowski14_53 (CS4), Hollow_53 (CS4), Niagara_53 (CS4), Teatealatte_54 (CS4), Tredge_54 (CS4),

Start 13:

- Found in 10 of 78 (12.8%) of genes in pham
- Manual Annotations of this start: 2 of 67
- Called 20.0% of time when present
- Phage (with cluster) where this start called: Demosthenes_52 (CS4), Kvothe_52 (CS4),

Summary by clusters:

There are 4 clusters represented in this pham: CS4, CS1, CS3, CS2,

Info for manual annotations of cluster CS1:

- Start number 9 was manually annotated 3 times for cluster CS1.

Info for manual annotations of cluster CS2:

- Start number 8 was manually annotated 1 time for cluster CS2.
- Start number 9 was manually annotated 30 times for cluster CS2.

Info for manual annotations of cluster CS3:

- Start number 7 was manually annotated 1 time for cluster CS3.
- Start number 9 was manually annotated 23 times for cluster CS3.

Info for manual annotations of cluster CS4:

- Start number 9 was manually annotated 1 time for cluster CS4.
- Start number 12 was manually annotated 6 times for cluster CS4.
- Start number 13 was manually annotated 2 times for cluster CS4.

Gene Information:

Gene: ASerpRocky_52 Start: 50628, Stop: 50467, Start Num: 12

Candidate Starts for ASerpRocky_52:

(1, 50847), (3, 50826), (4, 50799), (5, 50793), (6, 50754), (Start: 9 @50655 has 57 MA's), (Start: 12 @50628 has 6 MA's), (Start: 13 @50622 has 2 MA's),

Gene: Adgers_60 Start: 50114, Stop: 49920, Start Num: 9

Candidate Starts for Adgers_60:

(Start: 9 @50114 has 57 MA's), (14, 50072), (18, 50054), (21, 50027), (24, 49961),

Gene: Amore2_60 Start: 50552, Stop: 50367, Start Num: 9

Candidate Starts for Amore2_60:

(Start: 8 @50558 has 1 MA's), (Start: 9 @50552 has 57 MA's), (14, 50510), (17, 50495), (19, 50477), (21, 50465), (22, 50453), (24, 50399),

Gene: Anamika_55 Start: 50962, Stop: 50717, Start Num: 7

Candidate Starts for Anamika_55:

(Start: 7 @50962 has 1 MA's), (Start: 9 @50911 has 57 MA's), (11, 50887), (14, 50869), (19, 50836), (21, 50824), (24, 50758),

Gene: Austin_59 Start: 50550, Stop: 50365, Start Num: 9

Candidate Starts for Austin_59:

(Start: 8 @50556 has 1 MA's), (Start: 9 @50550 has 57 MA's), (14, 50508), (17, 50493), (19, 50475), (21, 50463), (22, 50451), (24, 50397),

Gene: Barbochs_57 Start: 49664, Stop: 49464, Start Num: 8

Candidate Starts for Barbochs_57:

(Start: 8 @49664 has 1 MA's), (Start: 9 @49658 has 57 MA's), (14, 49616), (18, 49598), (20, 49574), (21, 49571), (24, 49505),

Gene: Beaver_60 Start: 51428, Stop: 51234, Start Num: 9

Candidate Starts for Beaver_60:

(Start: 8 @51434 has 1 MA's), (Start: 9 @51428 has 57 MA's), (14, 51386), (18, 51368), (20, 51344), (21, 51341), (24, 51275),

Gene: Benczkowski14_53 Start: 50899, Stop: 50738, Start Num: 12

Candidate Starts for Benczkowski14_53:

(5, 51064), (6, 51025), (Start: 9 @50926 has 57 MA's), (Start: 12 @50899 has 6 MA's), (Start: 13 @50893 has 2 MA's),

Gene: BenoitCattle_57 Start: 50065, Stop: 49871, Start Num: 9

Candidate Starts for BenoitCattle_57:

(Start: 8 @50071 has 1 MA's), (Start: 9 @50065 has 57 MA's), (10, 50056), (14, 50023), (17, 50008), (18, 50005), (19, 49990), (24, 49912),

Gene: Berries_55 Start: 50883, Stop: 50689, Start Num: 9

Candidate Starts for Berries_55:

(Start: 9 @50883 has 57 MA's), (11, 50859), (14, 50841), (19, 50808), (21, 50796), (24, 50730),

Gene: Bianmat_55 Start: 50923, Stop: 50729, Start Num: 9

Candidate Starts for Bianmat_55:

(Start: 9 @50923 has 57 MA's), (11, 50899), (14, 50881), (19, 50848), (21, 50836), (24, 50770),

Gene: BigShaq_56 Start: 50070, Stop: 49876, Start Num: 9

Candidate Starts for BigShaq_56:

(Start: 8 @50076 has 1 MA's), (Start: 9 @50070 has 57 MA's), (10, 50061), (14, 50028), (17, 50013), (18, 50010), (19, 49995), (24, 49917),

Gene: BirksAndSocks_62 Start: 51778, Stop: 51584, Start Num: 9

Candidate Starts for BirksAndSocks_62:

(Start: 8 @51784 has 1 MA's), (Start: 9 @51778 has 57 MA's), (14, 51736), (18, 51718), (20, 51694), (21, 51691), (24, 51625),

Gene: Boneham_61 Start: 51685, Stop: 51485, Start Num: 8

Candidate Starts for Boneham_61:

(Start: 8 @51685 has 1 MA's), (Start: 9 @51679 has 57 MA's), (14, 51637), (20, 51595), (21, 51592), (24, 51526),

Gene: Breezic_57 Start: 49671, Stop: 49477, Start Num: 9

Candidate Starts for Breezic_57:

(Start: 8 @49677 has 1 MA's), (Start: 9 @49671 has 57 MA's), (14, 49629), (18, 49611), (20, 49587), (21, 49584), (24, 49518),

Gene: Butterball_60 Start: 51684, Stop: 51490, Start Num: 9

Candidate Starts for Butterball_60:

(Start: 8 @51690 has 1 MA's), (Start: 9 @51684 has 57 MA's), (14, 51642), (20, 51600), (21, 51597), (24, 51531),

Gene: CathyBurgh_56 Start: 50248, Stop: 50054, Start Num: 9

Candidate Starts for CathyBurgh_56:

(Start: 8 @50254 has 1 MA's), (Start: 9 @50248 has 57 MA's), (14, 50206), (18, 50188), (20, 50164), (21, 50161), (24, 50095),

Gene: Charianelly_55 Start: 50633, Stop: 50439, Start Num: 9

Candidate Starts for Charianelly_55:

(Start: 9 @50633 has 57 MA's), (11, 50609), (14, 50591), (19, 50558), (21, 50546), (24, 50480),

Gene: Chelms_57 Start: 50214, Stop: 50020, Start Num: 9

Candidate Starts for Chelms_57:

(Start: 8 @50220 has 1 MA's), (Start: 9 @50214 has 57 MA's), (10, 50205), (14, 50172), (17, 50157), (18, 50154), (19, 50139), (24, 50061),

Gene: CinnamonToast_63 Start: 51738, Stop: 51544, Start Num: 9

Candidate Starts for CinnamonToast_63:

(Start: 9 @51738 has 57 MA's), (14, 51696), (18, 51678), (21, 51651), (24, 51585),

Gene: Dakiti_58 Start: 51082, Stop: 50888, Start Num: 9

Candidate Starts for Dakiti_58:

(Start: 8 @51088 has 1 MA's), (Start: 9 @51082 has 57 MA's), (10, 51073), (14, 51040), (17, 51025), (18, 51022), (19, 51007), (24, 50929),

Gene: Damp_55 Start: 49797, Stop: 49603, Start Num: 9

Candidate Starts for Damp_55:

(Start: 9 @49797 has 57 MA's), (11, 49773), (14, 49755), (19, 49722), (21, 49710), (24, 49644),

Gene: Demosthenes_52 Start: 50598, Stop: 50443, Start Num: 13

Candidate Starts for Demosthenes_52:

(1, 50823), (2, 50805), (3, 50802), (5, 50769), (Start: 9 @50631 has 57 MA's), (Start: 12 @50604 has 6 MA's), (Start: 13 @50598 has 2 MA's),

Gene: Diabla_61 Start: 51737, Stop: 51543, Start Num: 9

Candidate Starts for Diabla_61:

(Start: 8 @51743 has 1 MA's), (Start: 9 @51737 has 57 MA's), (14, 51695), (20, 51653), (21, 51650),

Gene: Eggsie_56 Start: 49514, Stop: 49320, Start Num: 9

Candidate Starts for Eggsie_56:

(Start: 8 @49520 has 1 MA's), (Start: 9 @49514 has 57 MA's), (14, 49472), (20, 49430), (21, 49427),

Gene: Ekhein_57 Start: 49376, Stop: 49182, Start Num: 9

Candidate Starts for Ekhein_57:

(Start: 8 @49382 has 1 MA's), (Start: 9 @49376 has 57 MA's), (14, 49334), (18, 49316), (20, 49292), (21, 49289), (24, 49223),

Gene: Exiguo_56 Start: 49388, Stop: 49194, Start Num: 9

Candidate Starts for Exiguo_56:

(Start: 8 @49394 has 1 MA's), (Start: 9 @49388 has 57 MA's), (14, 49346), (18, 49328), (20, 49304), (21, 49301), (24, 49235),

Gene: FelixAlejandro_62 Start: 52082, Stop: 51888, Start Num: 9

Candidate Starts for FelixAlejandro_62:

(Start: 9 @52082 has 57 MA's), (14, 52040), (18, 52022), (21, 51995), (24, 51929),

Gene: Flakey_56 Start: 50252, Stop: 50058, Start Num: 9

Candidate Starts for Flakey_56:

(Start: 8 @50258 has 1 MA's), (Start: 9 @50252 has 57 MA's), (14, 50210), (18, 50192), (20, 50168), (21, 50165), (24, 50099),

Gene: GMA7_49 Start: 44766, Stop: 44581, Start Num: 9

Candidate Starts for GMA7_49:

(Start: 8 @44772 has 1 MA's), (Start: 9 @44766 has 57 MA's), (14, 44724), (17, 44709), (19, 44691), (21, 44679), (22, 44667), (24, 44613),

Gene: GTE7_48 Start: 44797, Stop: 44612, Start Num: 9

Candidate Starts for GTE7_48:

(Start: 8 @44803 has 1 MA's), (Start: 9 @44797 has 57 MA's), (14, 44755), (17, 44740), (19, 44722), (21, 44710), (22, 44698), (24, 44644),

Gene: GalacticEye_55 Start: 50594, Stop: 50400, Start Num: 9

Candidate Starts for GalacticEye_55:

(Start: 9 @50594 has 57 MA's), (11, 50570), (14, 50552), (19, 50519), (21, 50507), (24, 50441),

Gene: Gorko_56 Start: 49380, Stop: 49186, Start Num: 9

Candidate Starts for Gorko_56:

(Start: 8 @49386 has 1 MA's), (Start: 9 @49380 has 57 MA's), (14, 49338), (18, 49320), (20, 49296), (21, 49293), (24, 49227),

Gene: GourdThymes_57 Start: 50254, Stop: 50060, Start Num: 9

Candidate Starts for GourdThymes_57:

(Start: 8 @50260 has 1 MA's), (Start: 9 @50254 has 57 MA's), (14, 50212), (18, 50194), (20, 50170), (21, 50167), (24, 50101),

Gene: Guillaume_55 Start: 50644, Stop: 50450, Start Num: 9

Candidate Starts for Guillaume_55:

(Start: 9 @50644 has 57 MA's), (11, 50620), (14, 50602), (19, 50569), (21, 50557), (24, 50491),

Gene: Hail2Pitt_54 Start: 51120, Stop: 50926, Start Num: 9

Candidate Starts for Hail2Pitt_54:

(Start: 7 @51171 has 1 MA's), (Start: 9 @51120 has 57 MA's), (11, 51096), (14, 51078), (19, 51045), (21, 51033), (24, 50967),

Gene: Harambe_55 Start: 50911, Stop: 50717, Start Num: 9
Candidate Starts for Harambe_55:
(Start: 9 @50911 has 57 MA's), (11, 50887), (14, 50869), (19, 50836), (21, 50824), (24, 50758),

Gene: HayZem_60 Start: 50549, Stop: 50364, Start Num: 9
Candidate Starts for HayZem_60:
(Start: 8 @50555 has 1 MA's), (Start: 9 @50549 has 57 MA's), (14, 50507), (17, 50492), (19, 50474),
(21, 50462), (22, 50450), (24, 50396),

Gene: Hello_55 Start: 50873, Stop: 50679, Start Num: 9
Candidate Starts for Hello_55:
(Start: 9 @50873 has 57 MA's), (11, 50849), (14, 50831), (19, 50798), (21, 50786), (24, 50720),

Gene: Hollow_53 Start: 51080, Stop: 50919, Start Num: 12
Candidate Starts for Hollow_53:
(Start: 9 @51107 has 57 MA's), (Start: 12 @51080 has 6 MA's), (Start: 13 @51074 has 2 MA's),

Gene: Hotorobo_57 Start: 50259, Stop: 50065, Start Num: 9
Candidate Starts for Hotorobo_57:
(Start: 8 @50265 has 1 MA's), (Start: 9 @50259 has 57 MA's), (14, 50217), (18, 50199), (20, 50175),
(21, 50172), (24, 50106),

Gene: Jams_55 Start: 50083, Stop: 49889, Start Num: 9
Candidate Starts for Jams_55:
(Start: 9 @50083 has 57 MA's), (11, 50059), (14, 50041), (19, 50008), (21, 49996), (24, 49930),

Gene: Jellybones_59 Start: 51354, Stop: 51160, Start Num: 9
Candidate Starts for Jellybones_59:
(Start: 9 @51354 has 57 MA's), (14, 51312), (18, 51294), (21, 51267), (24, 51201),

Gene: John316_60 Start: 51417, Stop: 51223, Start Num: 9
Candidate Starts for John316_60:
(Start: 8 @51423 has 1 MA's), (Start: 9 @51417 has 57 MA's), (14, 51375), (18, 51357), (20, 51333),
(21, 51330), (24, 51264),

Gene: Jormungandr_55 Start: 50626, Stop: 50432, Start Num: 9
Candidate Starts for Jormungandr_55:
(Start: 9 @50626 has 57 MA's), (11, 50602), (14, 50584), (19, 50551), (21, 50539), (24, 50473),

Gene: Kaseim_55 Start: 50068, Stop: 49874, Start Num: 9
Candidate Starts for Kaseim_55:
(Start: 9 @50068 has 57 MA's), (11, 50044), (14, 50026), (19, 49993), (21, 49981), (24, 49915),

Gene: Katyusha_53 Start: 50926, Stop: 50738, Start Num: 9
Candidate Starts for Katyusha_53:
(5, 51064), (6, 51025), (Start: 9 @50926 has 57 MA's), (Start: 12 @50899 has 6 MA's), (Start: 13
@50893 has 2 MA's),

Gene: Kvothe_52 Start: 50792, Stop: 50637, Start Num: 13
Candidate Starts for Kvothe_52:
(1, 51017), (3, 50996), (4, 50969), (5, 50963), (Start: 9 @50825 has 57 MA's), (Start: 12 @50798 has
6 MA's), (Start: 13 @50792 has 2 MA's),

Gene: Lahirium_55 Start: 51148, Stop: 50954, Start Num: 9
Candidate Starts for Lahirium_55:
(Start: 9 @51148 has 57 MA's), (11, 51124), (14, 51106), (19, 51073), (21, 51061), (24, 50995),

Gene: Lidong_55 Start: 50883, Stop: 50689, Start Num: 9
Candidate Starts for Lidong_55:
(Start: 9 @50883 has 57 MA's), (11, 50859), (14, 50841), (19, 50808), (21, 50796), (24, 50730),

Gene: Linetti_57 Start: 51067, Stop: 50873, Start Num: 9
Candidate Starts for Linetti_57:
(Start: 8 @51073 has 1 MA's), (Start: 9 @51067 has 57 MA's), (10, 51058), (14, 51025), (17, 51010),
(18, 51007), (19, 50992), (24, 50914),

Gene: Lizzo_57 Start: 50248, Stop: 50054, Start Num: 9
Candidate Starts for Lizzo_57:
(Start: 8 @50254 has 1 MA's), (Start: 9 @50248 has 57 MA's), (14, 50206), (18, 50188), (20, 50164),
(21, 50161), (24, 50095),

Gene: Luker_56 Start: 51101, Stop: 50907, Start Num: 9
Candidate Starts for Luker_56:
(Start: 7 @51152 has 1 MA's), (Start: 9 @51101 has 57 MA's), (11, 51077), (14, 51059), (19, 51026),
(21, 51014), (24, 50948),

Gene: Minos_56 Start: 50625, Stop: 50431, Start Num: 9
Candidate Starts for Minos_56:
(Start: 9 @50625 has 57 MA's), (11, 50601), (14, 50583), (19, 50550), (21, 50538), (24, 50472),

Gene: Monty_56 Start: 49398, Stop: 49204, Start Num: 9
Candidate Starts for Monty_56:
(Start: 8 @49404 has 1 MA's), (Start: 9 @49398 has 57 MA's), (14, 49356), (18, 49338), (20, 49314),
(21, 49311), (24, 49245),

Gene: MrWormie_55 Start: 49786, Stop: 49592, Start Num: 9
Candidate Starts for MrWormie_55:
(Start: 9 @49786 has 57 MA's), (11, 49762), (14, 49744), (19, 49711), (21, 49699), (24, 49633),

Gene: Msay19_62 Start: 51968, Stop: 51774, Start Num: 9
Candidate Starts for Msay19_62:
(Start: 9 @51968 has 57 MA's), (14, 51926), (18, 51908), (21, 51881), (24, 51815),

Gene: Neevie_55 Start: 50887, Stop: 50693, Start Num: 9
Candidate Starts for Neevie_55:
(Start: 9 @50887 has 57 MA's), (11, 50863), (14, 50845), (19, 50812), (21, 50800), (24, 50734),

Gene: Newt_56 Start: 51115, Stop: 50921, Start Num: 9
Candidate Starts for Newt_56:
(Start: 9 @51115 has 57 MA's), (11, 51091), (14, 51073), (19, 51040), (21, 51028), (24, 50962),

Gene: Niagara_53 Start: 50889, Stop: 50728, Start Num: 12
Candidate Starts for Niagara_53:
(5, 51054), (6, 51015), (Start: 9 @50916 has 57 MA's), (Start: 12 @50889 has 6 MA's), (Start: 13
@50883 has 2 MA's),

Gene: Nimi13_55 Start: 50634, Stop: 50440, Start Num: 9
Candidate Starts for Nimi13_55:
(Start: 9 @50634 has 57 MA's), (11, 50610), (14, 50592), (19, 50559), (21, 50547), (24, 50481),

Gene: Philon9_53 Start: 51773, Stop: 51585, Start Num: 9
Candidate Starts for Philon9_53:
(Start: 9 @51773 has 57 MA's), (Start: 12 @51749 has 6 MA's), (16, 51725), (23, 51659), (25, 51611),

Gene: PierreThree_56 Start: 50713, Stop: 50519, Start Num: 9
Candidate Starts for PierreThree_56:
(Start: 8 @50719 has 1 MA's), (Start: 9 @50713 has 57 MA's), (10, 50704), (14, 50671), (17, 50656),
(18, 50653), (19, 50638), (24, 50560),

Gene: PokyPuppy_56 Start: 50707, Stop: 50513, Start Num: 9
Candidate Starts for PokyPuppy_56:
(Start: 8 @50713 has 1 MA's), (Start: 9 @50707 has 57 MA's), (11, 50683), (15, 50659), (17, 50650),
(18, 50647), (19, 50632), (20, 50623), (24, 50554),

Gene: Poland_62 Start: 51947, Stop: 51753, Start Num: 9
Candidate Starts for Poland_62:
(Start: 9 @51947 has 57 MA's), (14, 51905), (18, 51887), (21, 51860), (24, 51794),

Gene: RemRem_58 Start: 49388, Stop: 49194, Start Num: 9
Candidate Starts for RemRem_58:
(Start: 8 @49394 has 1 MA's), (Start: 9 @49388 has 57 MA's), (14, 49346), (18, 49328), (20, 49304),
(21, 49301), (24, 49235),

Gene: RoyalG_57 Start: 50163, Stop: 49969, Start Num: 9
Candidate Starts for RoyalG_57:
(Start: 8 @50169 has 1 MA's), (Start: 9 @50163 has 57 MA's), (14, 50121), (20, 50079), (21, 50076),
(24, 50010),

Gene: Sam12_56 Start: 49388, Stop: 49194, Start Num: 9
Candidate Starts for Sam12_56:
(Start: 8 @49394 has 1 MA's), (Start: 9 @49388 has 57 MA's), (14, 49346), (18, 49328), (20, 49304),
(21, 49301), (24, 49235),

Gene: Shelley_55 Start: 50110, Stop: 49916, Start Num: 9
Candidate Starts for Shelley_55:
(Start: 9 @50110 has 57 MA's), (11, 50086), (14, 50068), (19, 50035), (21, 50023), (24, 49957),

Gene: Sombrero_58 Start: 49955, Stop: 49761, Start Num: 9
Candidate Starts for Sombrero_58:
(Start: 9 @49955 has 57 MA's), (14, 49913), (18, 49895), (21, 49868), (24, 49802),

Gene: Squibbles_56 Start: 50251, Stop: 50057, Start Num: 9
Candidate Starts for Squibbles_56:
(Start: 8 @50257 has 1 MA's), (Start: 9 @50251 has 57 MA's), (14, 50209), (18, 50191), (20, 50167),
(21, 50164), (24, 50098),

Gene: SteveFrench_56 Start: 50403, Stop: 50209, Start Num: 9
Candidate Starts for SteveFrench_56:

(Start: 8 @50409 has 1 MA's), (Start: 9 @50403 has 57 MA's), (14, 50361), (20, 50319), (21, 50316), (24, 50250),

Gene: Sticker17_55 Start: 50625, Stop: 50431, Start Num: 9

Candidate Starts for Sticker17_55:

(Start: 9 @50625 has 57 MA's), (11, 50601), (14, 50583), (19, 50550), (21, 50538), (24, 50472),

Gene: Teal_55 Start: 51092, Stop: 50898, Start Num: 9

Candidate Starts for Teal_55:

(Start: 9 @51092 has 57 MA's), (11, 51068), (14, 51050), (19, 51017), (21, 51005), (24, 50939),

Gene: Teatealatte_54 Start: 50801, Stop: 50640, Start Num: 12

Candidate Starts for Teatealatte_54:

(5, 50966), (Start: 9 @50828 has 57 MA's), (Start: 12 @50801 has 6 MA's), (Start: 13 @50795 has 2 MA's),

Gene: Teech_53 Start: 50629, Stop: 50441, Start Num: 9

Candidate Starts for Teech_53:

(5, 50767), (6, 50728), (Start: 9 @50629 has 57 MA's), (Start: 12 @50602 has 6 MA's), (Start: 13 @50596 has 2 MA's),

Gene: Tredge_54 Start: 50801, Stop: 50640, Start Num: 12

Candidate Starts for Tredge_54:

(5, 50966), (Start: 9 @50828 has 57 MA's), (Start: 12 @50801 has 6 MA's), (Start: 13 @50795 has 2 MA's),

Gene: Woes_55 Start: 51143, Stop: 50949, Start Num: 9

Candidate Starts for Woes_55:

(Start: 9 @51143 has 57 MA's), (11, 51119), (14, 51101), (19, 51068), (21, 51056), (24, 50990),