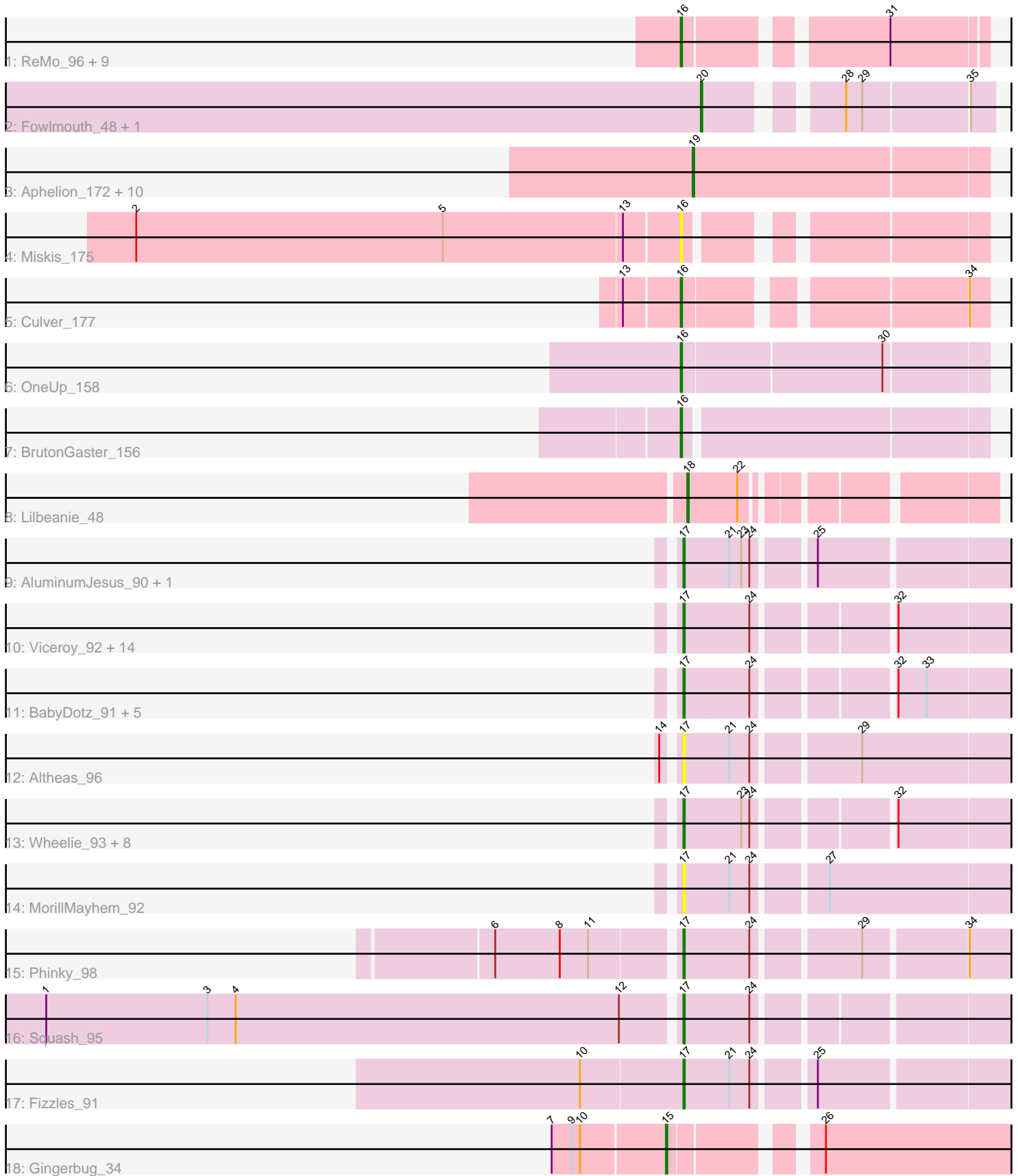


Pham 194001



Note: Tracks are now grouped by subcluster and scaled. Switching in subcluster is indicated by changes in track color. Track scale is now set by default to display the region 30 bp upstream of start 1 to 30 bp downstream of the last possible start. If this default region is judged to be packed too tightly with annotated starts, the track will be further scaled to only show that region of the ORF with annotated starts. This action will be indicated by adding "Zoomed" to the title. For starts, yellow indicates the location of called starts comprised solely of Glimmer/GeneMark auto-annotations, green indicates the location of called starts with at least 1 manual gene annotation.

Pham 194001 Report

This analysis was run 11/02/24 on database version 579.

Pham number 194001 has 66 members, 12 are drafts.

Phages represented in each track:

- Track 1 : ReMo_96, Looper_95, LastResort_96, Anaysia_98, Switzerland_96, Epsocamisio_96, JSwag_99, Boohoo_97, Nebulosus_95, ShayRa_96
- Track 2 : Fowlmouth_48, MrMiyagi_47
- Track 3 : Aphelion_172, WilliamBoone_179, Smoothie_175, ClubL_174, Cucurbita_173, Toniann_174, PhinkBoden_171, Lozinak_174, Geeche_178, Norvs_171, Bachita_176
- Track 4 : Miskis_175
- Track 5 : Culver_177
- Track 6 : OneUp_158
- Track 7 : BrutonGaster_156
- Track 8 : Lilbeanie_48
- Track 9 : AluminumJesus_90, Gazebo_92
- Track 10 : Viceroy_92, FrankDeliGuy_93, DonaldDuck_95, Rudy_91, Hyperion_92, Zagie_95, Lonelysoil_91, Sillytadpoles_96, Mashley_92, Nike_91, Judebell_93, Kyva_97, Quammi_93, Zhafia_99, Llemily_95
- Track 11 : BabyDotz_91, Statler_98, Casend_94, Rowlf_90, Blab_90, EverythinBagel_93
- Track 12 : Altheas_96
- Track 13 : Wheelie_93, Namago_95, StrawberryJamm_99, SallyK_95, Wayne3_95, Teehee_94, Grassboy_98, Phabia_93, Jehoshaphat_95
- Track 14 : MorillMayhem_92
- Track 15 : Phinky_98
- Track 16 : Squash_95
- Track 17 : Fizzles_91
- Track 18 : Gingerbug_34

Summary of Final Annotations (See graph section above for start numbers):

The start number called the most often in the published annotations is 17, it was called in 27 of the 54 non-draft genes in the pham.

Genes that call this "Most Annotated" start:

- Altheas_96, AluminumJesus_90, BabyDotz_91, Blab_90, Casend_94, DonaldDuck_95, EverythinBagel_93, Fizzles_91, FrankDeliGuy_93, Gazebo_92,

Grassboy_98, Hyperion_92, Jehoshaphat_95, Judebell_93, Kyva_97, Llemily_95, Lonelysoil_91, Mashley_92, MorillMayhem_92, Namago_95, Nike_91, Phabia_93, Phinky_98, Quammi_93, Rowlf_90, Rudy_91, SallyK_95, Sillytadpoles_96, Squash_95, Statler_98, StrawberryJamm_99, Teehee_94, Viceroy_92, Wayne3_95, Wheelie_93, Zagie_95, Zhafia_99,

Genes that have the "Most Annotated" start but do not call it:

-

Genes that do not have the "Most Annotated" start:

- Anaysia_98, Aphelion_172, Bachita_176, Boohoo_97, BrutonGaster_156, ClubL_174, Cucurbita_173, Culver_177, Epsocamisio_96, Fowlmouth_48, Geeche_178, Gingerbug_34, JSwag_99, LastResort_96, Lilbeanie_48, Looper_95, Lozinak_174, Miskis_175, MrMiyagi_47, Nebulosus_95, Norvs_171, OneUp_158, PhinkBoden_171, ReMo_96, ShayRa_96, Smoothie_175, Switzerland_96, Toniann_174, WilliamBoone_179,

Summary by start number:

Start 15:

- Found in 1 of 66 (1.5%) of genes in pham
- Manual Annotations of this start: 1 of 54
- Called 100.0% of time when present
- Phage (with cluster) where this start called: Gingerbug_34 (GF),

Start 16:

- Found in 14 of 66 (21.2%) of genes in pham
- Manual Annotations of this start: 13 of 54
- Called 100.0% of time when present
- Phage (with cluster) where this start called: Anaysia_98 (A15), Boohoo_97 (A15), BrutonGaster_156 (CQ2), Culver_177 (CQ1), Epsocamisio_96 (A15), JSwag_99 (A15), LastResort_96 (A15), Looper_95 (A15), Miskis_175 (CQ1), Nebulosus_95 (A15), OneUp_158 (CQ2), ReMo_96 (A15), ShayRa_96 (A15), Switzerland_96 (A15),

Start 17:

- Found in 37 of 66 (56.1%) of genes in pham
- Manual Annotations of this start: 27 of 54
- Called 100.0% of time when present
- Phage (with cluster) where this start called: Altheas_96 (EG), AluminumJesus_90 (EG), BabyDotz_91 (EG), Blab_90 (EG), Casend_94 (EG), DonaldDuck_95 (EG), EverythinBagel_93 (EG), Fizzles_91 (EG), FrankDeliGuy_93 (EG), Gazebo_92 (EG), Grassboy_98 (EG), Hyperion_92 (EG), Jehoshaphat_95 (EG), Judebell_93 (EG), Kyva_97 (EG), Llemily_95 (EG), Lonelysoil_91 (EG), Mashley_92 (EG), MorillMayhem_92 (EG), Namago_95 (EG), Nike_91 (EG), Phabia_93 (EG), Phinky_98 (EG), Quammi_93 (EG), Rowlf_90 (EG), Rudy_91 (EG), SallyK_95 (EG), Sillytadpoles_96 (EG), Squash_95 (EG), Statler_98 (EG), StrawberryJamm_99 (EG), Teehee_94 (EG), Viceroy_92 (EG), Wayne3_95 (EG), Wheelie_93 (EG), Zagie_95 (EG), Zhafia_99 (EG),

Start 18:

- Found in 1 of 66 (1.5%) of genes in pham
- Manual Annotations of this start: 1 of 54
- Called 100.0% of time when present

- Phage (with cluster) where this start called: Lilbeanie_48 (DE5),

Start 19:

- Found in 11 of 66 (16.7%) of genes in pham
- Manual Annotations of this start: 10 of 54
- Called 100.0% of time when present
- Phage (with cluster) where this start called: Aphelion_172 (CQ1), Bachita_176 (CQ1), ClubL_174 (CQ1), Cucurbita_173 (CQ1), Geeche_178 (CQ1), Lozinak_174 (CQ1), Norvs_171 (CQ1), PhinkBoden_171 (CQ1), Smoothie_175 (CQ1), Toniann_174 (CQ1), WilliamBoone_179 (CQ1),

Start 20:

- Found in 2 of 66 (3.0%) of genes in pham
- Manual Annotations of this start: 2 of 54
- Called 100.0% of time when present
- Phage (with cluster) where this start called: Fowlmouth_48 (AC), MrMiyagi_47 (AC),

Summary by clusters:

There are 7 clusters represented in this pham: A15, AC, EG, DE5, GF, CQ2, CQ1,

Info for manual annotations of cluster A15:

- Start number 16 was manually annotated 10 times for cluster A15.

Info for manual annotations of cluster AC:

- Start number 20 was manually annotated 2 times for cluster AC.

Info for manual annotations of cluster CQ1:

- Start number 16 was manually annotated 1 time for cluster CQ1.
- Start number 19 was manually annotated 10 times for cluster CQ1.

Info for manual annotations of cluster CQ2:

- Start number 16 was manually annotated 2 times for cluster CQ2.

Info for manual annotations of cluster DE5:

- Start number 18 was manually annotated 1 time for cluster DE5.

Info for manual annotations of cluster EG:

- Start number 17 was manually annotated 27 times for cluster EG.

Info for manual annotations of cluster GF:

- Start number 15 was manually annotated 1 time for cluster GF.

Gene Information:

Gene: Altheas_96 Start: 58403, Stop: 58167, Start Num: 17

Candidate Starts for Altheas_96:

(14, 58412), (Start: 17 @58403 has 27 MA's), (21, 58370), (24, 58355), (29, 58283),

Gene: AluminumJesus_90 Start: 56836, Stop: 56606, Start Num: 17

Candidate Starts for AluminumJesus_90:

(Start: 17 @56836 has 27 MA's), (21, 56803), (23, 56794), (24, 56788), (25, 56749),

Gene: Anaysia_98 Start: 50449, Stop: 50252, Start Num: 16

Candidate Starts for Anaysia_98:

(Start: 16 @50449 has 13 MA's), (31, 50320),

Gene: Aphelion_172 Start: 87944, Stop: 87729, Start Num: 19

Candidate Starts for Aphelion_172:

(Start: 19 @87944 has 10 MA's),

Gene: BabyDotz_91 Start: 58703, Stop: 58476, Start Num: 17

Candidate Starts for BabyDotz_91:

(Start: 17 @58703 has 27 MA's), (24, 58655), (32, 58565), (33, 58544),

Gene: Bachita_176 Start: 88020, Stop: 87805, Start Num: 19

Candidate Starts for Bachita_176:

(Start: 19 @88020 has 10 MA's),

Gene: Blab_90 Start: 57409, Stop: 57182, Start Num: 17

Candidate Starts for Blab_90:

(Start: 17 @57409 has 27 MA's), (24, 57361), (32, 57271), (33, 57250),

Gene: Boohoo_97 Start: 49766, Stop: 49569, Start Num: 16

Candidate Starts for Boohoo_97:

(Start: 16 @49766 has 13 MA's), (31, 49637),

Gene: BrutonGaster_156 Start: 84309, Stop: 84094, Start Num: 16

Candidate Starts for BrutonGaster_156:

(Start: 16 @84309 has 13 MA's),

Gene: Casend_94 Start: 58038, Stop: 57811, Start Num: 17

Candidate Starts for Casend_94:

(Start: 17 @58038 has 27 MA's), (24, 57990), (32, 57900), (33, 57879),

Gene: ClubL_174 Start: 87265, Stop: 87050, Start Num: 19

Candidate Starts for ClubL_174:

(Start: 19 @87265 has 10 MA's),

Gene: Cucurbita_173 Start: 88326, Stop: 88111, Start Num: 19

Candidate Starts for Cucurbita_173:

(Start: 19 @88326 has 10 MA's),

Gene: Culver_177 Start: 86978, Stop: 86781, Start Num: 16

Candidate Starts for Culver_177:

(13, 87017), (Start: 16 @86978 has 13 MA's), (34, 86795),

Gene: DonaldDuck_95 Start: 57438, Stop: 57211, Start Num: 17

Candidate Starts for DonaldDuck_95:

(Start: 17 @57438 has 27 MA's), (24, 57390), (32, 57300),

Gene: Epsocamisio_96 Start: 50125, Stop: 49928, Start Num: 16

Candidate Starts for Epsocamisio_96:

(Start: 16 @50125 has 13 MA's), (31, 49996),

Gene: EverythinBagel_93 Start: 57233, Stop: 57006, Start Num: 17
Candidate Starts for EverythinBagel_93:
(Start: 17 @57233 has 27 MA's), (24, 57185), (32, 57095), (33, 57074),

Gene: Fizzles_91 Start: 57426, Stop: 57196, Start Num: 17
Candidate Starts for Fizzles_91:
(10, 57501), (Start: 17 @57426 has 27 MA's), (21, 57393), (24, 57378), (25, 57339),

Gene: Fowlmouth_48 Start: 36213, Stop: 36398, Start Num: 20
Candidate Starts for Fowlmouth_48:
(Start: 20 @36213 has 2 MA's), (28, 36294), (29, 36306), (35, 36381),

Gene: FrankDeliGuy_93 Start: 57716, Stop: 57489, Start Num: 17
Candidate Starts for FrankDeliGuy_93:
(Start: 17 @57716 has 27 MA's), (24, 57668), (32, 57578),

Gene: Gazebo_92 Start: 57414, Stop: 57184, Start Num: 17
Candidate Starts for Gazebo_92:
(Start: 17 @57414 has 27 MA's), (21, 57381), (23, 57372), (24, 57366), (25, 57327),

Gene: Geeche_178 Start: 88689, Stop: 88474, Start Num: 19
Candidate Starts for Geeche_178:
(Start: 19 @88689 has 10 MA's),

Gene: Gingerbug_34 Start: 23484, Stop: 23242, Start Num: 15
Candidate Starts for Gingerbug_34:
(7, 23565), (9, 23550), (10, 23544), (Start: 15 @23484 has 1 MA's), (26, 23394),

Gene: Grassboy_98 Start: 58339, Stop: 58112, Start Num: 17
Candidate Starts for Grassboy_98:
(Start: 17 @58339 has 27 MA's), (23, 58297), (24, 58291), (32, 58201),

Gene: Hyperion_92 Start: 57476, Stop: 57249, Start Num: 17
Candidate Starts for Hyperion_92:
(Start: 17 @57476 has 27 MA's), (24, 57428), (32, 57338),

Gene: JSwag_99 Start: 49973, Stop: 49776, Start Num: 16
Candidate Starts for JSwag_99:
(Start: 16 @49973 has 13 MA's), (31, 49844),

Gene: Jehoshaphat_95 Start: 58072, Stop: 57845, Start Num: 17
Candidate Starts for Jehoshaphat_95:
(Start: 17 @58072 has 27 MA's), (23, 58030), (24, 58024), (32, 57934),

Gene: Judebell_93 Start: 57470, Stop: 57243, Start Num: 17
Candidate Starts for Judebell_93:
(Start: 17 @57470 has 27 MA's), (24, 57422), (32, 57332),

Gene: Kyva_97 Start: 58363, Stop: 58136, Start Num: 17
Candidate Starts for Kyva_97:
(Start: 17 @58363 has 27 MA's), (24, 58315), (32, 58225),

Gene: LastResort_96 Start: 50207, Stop: 50010, Start Num: 16
Candidate Starts for LastResort_96:
(Start: 16 @50207 has 13 MA's), (31, 50078),

Gene: Lilbeanie_48 Start: 36836, Stop: 37033, Start Num: 18
Candidate Starts for Lilbeanie_48:
(Start: 18 @36836 has 1 MA's), (22, 36872),

Gene: Llemily_95 Start: 57133, Stop: 56906, Start Num: 17
Candidate Starts for Llemily_95:
(Start: 17 @57133 has 27 MA's), (24, 57085), (32, 56995),

Gene: Lonelysoil_91 Start: 56893, Stop: 56666, Start Num: 17
Candidate Starts for Lonelysoil_91:
(Start: 17 @56893 has 27 MA's), (24, 56845), (32, 56755),

Gene: Looper_95 Start: 49056, Stop: 48859, Start Num: 16
Candidate Starts for Looper_95:
(Start: 16 @49056 has 13 MA's), (31, 48927),

Gene: Lozinak_174 Start: 87869, Stop: 87654, Start Num: 19
Candidate Starts for Lozinak_174:
(Start: 19 @87869 has 10 MA's),

Gene: Mashley_92 Start: 57565, Stop: 57338, Start Num: 17
Candidate Starts for Mashley_92:
(Start: 17 @57565 has 27 MA's), (24, 57517), (32, 57427),

Gene: Miskis_175 Start: 86835, Stop: 86647, Start Num: 16
Candidate Starts for Miskis_175:
(2, 87228), (5, 87000), (13, 86868), (Start: 16 @86835 has 13 MA's),

Gene: MorillMayhem_92 Start: 57693, Stop: 57457, Start Num: 17
Candidate Starts for MorillMayhem_92:
(Start: 17 @57693 has 27 MA's), (21, 57660), (24, 57645), (27, 57597),

Gene: MrMiyagi_47 Start: 36597, Stop: 36782, Start Num: 20
Candidate Starts for MrMiyagi_47:
(Start: 20 @36597 has 2 MA's), (28, 36678), (29, 36690), (35, 36765),

Gene: Namago_95 Start: 57620, Stop: 57393, Start Num: 17
Candidate Starts for Namago_95:
(Start: 17 @57620 has 27 MA's), (23, 57578), (24, 57572), (32, 57482),

Gene: Nebulosus_95 Start: 49764, Stop: 49567, Start Num: 16
Candidate Starts for Nebulosus_95:
(Start: 16 @49764 has 13 MA's), (31, 49635),

Gene: Nike_91 Start: 57838, Stop: 57611, Start Num: 17
Candidate Starts for Nike_91:
(Start: 17 @57838 has 27 MA's), (24, 57790), (32, 57700),

Gene: Norvs_171 Start: 87045, Stop: 86830, Start Num: 19

Candidate Starts for Norvs_171:
(Start: 19 @87045 has 10 MA's),

Gene: OneUp_158 Start: 86856, Stop: 86638, Start Num: 16
Candidate Starts for OneUp_158:
(Start: 16 @86856 has 13 MA's), (30, 86712),

Gene: Phabia_93 Start: 57470, Stop: 57243, Start Num: 17
Candidate Starts for Phabia_93:
(Start: 17 @57470 has 27 MA's), (23, 57428), (24, 57422), (32, 57332),

Gene: PhinkBoden_171 Start: 87443, Stop: 87228, Start Num: 19
Candidate Starts for PhinkBoden_171:
(Start: 19 @87443 has 10 MA's),

Gene: Phinky_98 Start: 59193, Stop: 58963, Start Num: 17
Candidate Starts for Phinky_98:
(6, 59322), (8, 59274), (11, 59253), (Start: 17 @59193 has 27 MA's), (24, 59145), (29, 59073), (34, 59001),

Gene: Quammi_93 Start: 57415, Stop: 57188, Start Num: 17
Candidate Starts for Quammi_93:
(Start: 17 @57415 has 27 MA's), (24, 57367), (32, 57277),

Gene: ReMo_96 Start: 50190, Stop: 49993, Start Num: 16
Candidate Starts for ReMo_96:
(Start: 16 @50190 has 13 MA's), (31, 50061),

Gene: Rowlf_90 Start: 57283, Stop: 57056, Start Num: 17
Candidate Starts for Rowlf_90:
(Start: 17 @57283 has 27 MA's), (24, 57235), (32, 57145), (33, 57124),

Gene: Rudy_91 Start: 57281, Stop: 57054, Start Num: 17
Candidate Starts for Rudy_91:
(Start: 17 @57281 has 27 MA's), (24, 57233), (32, 57143),

Gene: SallyK_95 Start: 58436, Stop: 58209, Start Num: 17
Candidate Starts for SallyK_95:
(Start: 17 @58436 has 27 MA's), (23, 58394), (24, 58388), (32, 58298),

Gene: ShayRa_96 Start: 48822, Stop: 48625, Start Num: 16
Candidate Starts for ShayRa_96:
(Start: 16 @48822 has 13 MA's), (31, 48693),

Gene: Sillytadpoles_96 Start: 57121, Stop: 56894, Start Num: 17
Candidate Starts for Sillytadpoles_96:
(Start: 17 @57121 has 27 MA's), (24, 57073), (32, 56983),

Gene: Smoothie_175 Start: 87741, Stop: 87526, Start Num: 19
Candidate Starts for Smoothie_175:
(Start: 19 @87741 has 10 MA's),

Gene: Squash_95 Start: 57828, Stop: 57601, Start Num: 17

Candidate Starts for Squash_95:
(1, 58293), (3, 58173), (4, 58152), (12, 57867), (Start: 17 @57828 has 27 MA's), (24, 57780),

Gene: Statler_98 Start: 57852, Stop: 57625, Start Num: 17
Candidate Starts for Statler_98:
(Start: 17 @57852 has 27 MA's), (24, 57804), (32, 57714), (33, 57693),

Gene: StrawberryJamm_99 Start: 57390, Stop: 57163, Start Num: 17
Candidate Starts for StrawberryJamm_99:
(Start: 17 @57390 has 27 MA's), (23, 57348), (24, 57342), (32, 57252),

Gene: Switzerland_96 Start: 49791, Stop: 49594, Start Num: 16
Candidate Starts for Switzerland_96:
(Start: 16 @49791 has 13 MA's), (31, 49662),

Gene: Teehee_94 Start: 58069, Stop: 57842, Start Num: 17
Candidate Starts for Teehee_94:
(Start: 17 @58069 has 27 MA's), (23, 58027), (24, 58021), (32, 57931),

Gene: Toniann_174 Start: 87186, Stop: 86971, Start Num: 19
Candidate Starts for Toniann_174:
(Start: 19 @87186 has 10 MA's),

Gene: Viceroy_92 Start: 57236, Stop: 57009, Start Num: 17
Candidate Starts for Viceroy_92:
(Start: 17 @57236 has 27 MA's), (24, 57188), (32, 57098),

Gene: Wayne3_95 Start: 58039, Stop: 57812, Start Num: 17
Candidate Starts for Wayne3_95:
(Start: 17 @58039 has 27 MA's), (23, 57997), (24, 57991), (32, 57901),

Gene: Wheelie_93 Start: 57360, Stop: 57133, Start Num: 17
Candidate Starts for Wheelie_93:
(Start: 17 @57360 has 27 MA's), (23, 57318), (24, 57312), (32, 57222),

Gene: WilliamBoone_179 Start: 86680, Stop: 86468, Start Num: 19
Candidate Starts for WilliamBoone_179:
(Start: 19 @86680 has 10 MA's),

Gene: Zagie_95 Start: 57881, Stop: 57654, Start Num: 17
Candidate Starts for Zagie_95:
(Start: 17 @57881 has 27 MA's), (24, 57833), (32, 57743),

Gene: Zhafia_99 Start: 57915, Stop: 57688, Start Num: 17
Candidate Starts for Zhafia_99:
(Start: 17 @57915 has 27 MA's), (24, 57867), (32, 57777),